

1 **Enhancing Interventional Cardiology Training: A Porcine Heart-Based Coronary Intervention**

2 **Simulator** Joerg Reifart, MD ¹; Paul Anthony Iaizzo PhD ¹.

3 ¹ *Visible Heart Laboratories, Department of Surgery, University of Minnesota, Minneapolis,*

4 *Minnesota, USA*

5 **Abbreviated Title: LOW-COST CORONARY INTERVENTION TRAINER**

6 **Data availability statement:** Not applicable

7 **Funding:** None

8 **Conflicts of interest:** The authors have no potential conflicts of interest in regards to this
9 publication

10 **Ethics approval statement:** Not applicable

11 **Patient consent statement:** Not applicable

12 **Permission to reproduce material from other sources:** Not applicable

13 **Clinical trial registration:** Not applicable

14

15 **Word count: 1866**

16

17 **Address for Correspondence:**

18 Joerg Reifart MD, PhD

19 Visible Heart Laboratories, University of Minnesota

20 B172 Mayo, MMC195 | 420 Delaware Street S.E..

21 Minneapolis, MN 55455

22 Email: reifartpublications@gmail.com

23 Twitter/X handle: @opnaccesscardio

24

25 **ABSTRACT:**

26 **Introduction:**

27 Access to simulators for interventional cardiology is currently limited. High acuity, low occurrence
28 procedures (HALO), such as coronary perforation or iatrogenic dissection, are not trained in currently
29 available simulators. We developed a cost-effective coronary intervention simulator designed to
30 enhance the training of both novice and experienced interventionalists.

31 **Methods:**

32 Porcine hearts from 6-month-old Yorkshire pigs (heart weight: 300-500g) were obtained from a large
33 animal research laboratory. Guide catheters were inserted into the coronary artery ostia and secured
34 with superglue. To maintain shape and rigidity, commercially available polyurethane insulation foam
35 was injected into the ventricles. The guide catheter was then connected to a Tuohy valve linked to a 3-
36 way stopcock. One connection led to a pressure infusion bag filled with tap water (inflated at > 300
37 mmHg); the other was used for contrast injection. The heart was set on a radiolucent box with a fluid
38 collector underneath. Clinical scenarios were simulated using 3D-printed stenoses and occlusions, blood
39 clots for occlusive myocardial infarction, balloon oversizing for dissections, and needle trauma for
40 perforations.

41 **Results:**

42 The simulator was used to practice coronary angiography, managing perforations, bifurcations,
43 dissections, and acute coronary occlusions.

44 Assembly, set-up, and simulation time until refilling the perfusion bag was required were 50, 25, and 30
45 minutes, respectively. Intravascular imaging with Optical Coherence Tomography was successfully used

46 to guide interventions. The simulator was frozen and reused more than three times without notable
47 deterioration.

48 **Conclusion:**

49 A wide range of clinical scenarios can be trained with our model. Its preparatory flexibility, including the
50 ability to be frozen for on-demand training, enhances its utility. Limitations include the absence of
51 pulsatile flow, heart movement, and the inability to train guide catheter intubation.

52

53

54 **INTRODUCTION:**

55 Several studies showed the benefits of simulation of interventional or angiographic training with virtual
56 reality simulators to have new interventional fellows gain their first experience with coronary
57 procedures[1-3]. Hands-on alternatives are physical computer-based simulator systems, which have
58 learners more practically experience angiography and coronary interventions[4-7]. However, because
59 these systems are cost-prohibitive (only available online quote: \$55.380), this type of training is not
60 currently widely adopted[8].

61 Most interventional trainees take their first interventional steps, learning angiography and simple
62 procedures in patients under close supervision by their respective mentors. This may increase patient
63 risk, but it is also associated with high psychophysiologic stress experienced by the trainees[9].

64 Here, we present a low-cost system using porcine hearts that could be conjured from large animal
65 research facilities or possibly a slaughterhouse to create a training system. It allows novice
66 interventionalists to learn both what angulations to use in coronary angiography as well as coronary
67 interventions, including complication management training.

68

69

70 **METHODS:**

71 **HEART PREPARATION:**

72 Porcine hearts (fresh or frozen) from 6-month-old Yorkshire pigs (weight animal 60 – 80kg, weight of the
73 hearts 300 -500g) that had been used for differing research projects in the Visible Heart Laboratories
74 were used in this model.

75 Depending on the extent of dissection, guide catheters (6-8F JL4.0, EBU 3.75, or JR 4.0—previously used)
76 were placed into both coronary ostia (Figure 1, (C)). The aortic root can be trimmed in case of excess
77 aortic tissue or difficulty cannulating the ostia. To prevent the catheters from exiting the ostia, they were
78 fixed in position with super glue.

79 We used commercially available polyurethane insulation foam (6.99\$) to fill the ventricles, atria, the
80 pulmonary artery, and the aorta. This is to prevent fluid from entering the ventricles, fix the guide
81 catheters in place, and to lend support to the organ, resulting in realistic coronary projections (Figure 1
82 (D)). Excess insulation foam was cut. Foam in hard-to-reach places or within vessels can be dissolved
83 using commercially available acetone. The guide catheter was then connected to a Tuohy valve and a
84 manifold, of which one port was connected to a pressure infusion bag filled with tap water (Figure 2;
85 Supplemental Digital Content 1 - Figure for fast refilling method). System assembly duration was timed
86 in minutes. The total cost for the used materials was \$42.56 (Table 1).

87

88 **SYSTEM SET-UP:**

89 The heart was placed on a support structure for which either a clear 28 Qt | 27l Storage Box with a cut-off
90 2 liter PET bottle was fixed to the bottom with epoxy (Figure 2) or alternatively two Polyethylene
91 terephthalate (PETE) packages from Affinity Fusion Oxygenators (Supplemental Digital Content 2 -suppl

92 Figure). The support structure collects the fluid and contrast that circulates through the heart and
93 positions it at a height and angle similar to in-human coronary angiograms.

94 The pressure infusion system was inflated to pressures ~300mmHg, which allows for continuous
95 antegrade contrast clearance when valves are opened (standard). If feasible in the local catheterization
96 laboratory environment, a hose-based continuous perfusion set-up can be chosen to allow for
97 uninterrupted training (Supplemental Digital Content 3 -Suppl Figure 3). We acquired residual unused
98 Iohexol from Catheterisation Laboratories and Radiology departments for intravenous contrast.
99 Alternatively, 10% Lugol's solution (Iodine potassium iodide) can be used as an inexpensive alternative
100 contrast medium in this model. Lugol's solution, however, will stain the materials used.

101 System set-up duration was timed in minutes.

102

103 **TRAINING SCENARIOS:**

104 Different standard training scenarios apart from standard angiography angulations, balloon/stent
105 exchange practice, and handling of devices such as Optical Coherence Tomography (OCT) catheters for
106 intravascular imaging were simulated:

- 107 • Circular sutures around the artery produced Simple Type A lesions.
- 108 • Thrombotic acute occlusions were simulated by injecting previously collected coagulated
109 porcine blood directly before guide catheter placement or through the guide catheters
110 themselves.
- 111 • Complex lesions like chronic totally occluded coronary artery lesions or severely calcified lesions
112 were modeled from diseased human coronary arteries and then 3-D printed. In short: Formalin-
113 fixed human hearts underwent iodine-enhanced micro-computed tomography scanning (North

114 Star Imaging X3000 Micro-CT scanner, Rogers, Minnesota))and were subsequently
115 segmented (Figure 3, MIMICS 26.0, Materialise, Plymouth, MI, USA), Figure 3, A). The
116 segmented coronary lesions were then 3-D printed at actual scale (Figure 3, B) and inserted into
117 the coronary arteries before fixing the guide catheters to the coronary ostia.

- 118 • Short, proximal, calcified stenoses were created by injection of Super-Glue mixed with Barium
119 sulfate powder into the artery before inserting the guide catheter.
- 120 • Dissections were created by inflating grossly oversized balloons (e.g., 4.5mm Balloon in a 2.5mm
121 diameter vessel).
- 122 • Simple lacerations with a needle or scalpel were used to simulate coronary perforations.

123 Duration, until the perfusing pressurized saline bag had to be refilled, was timed in minutes. Further
124 recommendations are in the supplementary Appendix.

125

126

127

128 **RESULTS:**

129 Initial assembly, including the polyurethane curing time of the coronary intervention trainer, was 50
130 minutes. Set-up in the catheterization laboratory was 25 minutes. Continuous antegrade perfusion on 1l
131 pressure perfusion allowed for 30 minutes of uninterrupted simulation. High-pressure infusion through
132 the guiding catheter via the connected pressured fluid bag resulted in appropriate, non-collapsed vessel
133 diameters during interventions, with antegrade contrast clearance (see Videos, Supplemental Digital
134 Content 4 & 5). Optical coherence tomography (OCT) worked to acquire intravascular images without
135 the need for additional contrast injection.

136 Previously described scenarios were successfully simulated:

- 137 - Figure 4 : Angiographic and OCT image of the created acute thrombotic occlusion within the
138 simulator.
- 139 - Figure 5 & Video, Supplemental Digital Content 6: Coronary perforation on OCT and angiography
- 140 - Video, Supplemental Digital Content 7: Angiography of the 3D-printed CTO.

141 Other trainable coronary interventions and maneuvers are presented in Table 2.

142 The assembled hearts with guide catheters in place were frozen and used again more than three times,
143 with the main limitation to re-freezing and re-using being the accidental dislodgement of guiding
144 catheters.

145

146 **DISCUSSION:**

147 The coronary angiography and intervention trainer presented here could be valuable for novice and
148 advanced interventional cardiologists. As virtual reality-based angiography simulation training has
149 shown positive results, a physical system like the one we presented is likely to improve skills
150 surrounding coronary angiography angulations and interpretation[2]. Technical skills that other non-
151 digital PCI-focused trainers focused on can also be trained on our model[10,11]. Current non-digital
152 trainers tend to be more reductive and focus on single tasks such as balloon exchange or two-
153 dimensional wiring and interventions[10,11]. Currently available models do not meet the need to train
154 complex situations such as complications and other high acuity low occurrence (HALO) procedures.
155 Accordingly, interventional cardiologists may feel inappropriately prepared to deal with these events.

156 Simsiek et al. assessed the educational experience of interventional cardiologists in the US and Canada
157 and found that even after dedicated training, less than half of the fellows felt comfortable performing
158 various atherectomy techniques, implanting covered stents, fat embolization, or using embolic
159 protection devices[12].

160 Interventions on porcine hearts for research, training, and educational purposes, as demonstrated in the
161 Visible Heart Apparatus, are established as a valuable tool[13-16] Unfortunately, these methods are not
162 easily accessible to trainees.

163 We provided instructions to make these procedures more accessible. Compared to a computer-based
164 PCI simulator, which comes at a cost of ~\$55,000, we were able to compile a system for less than 50\$. In
165 contrast to the digitally simulated computer-based trainers, the model presented here allows any device
166 to be used or tested. Properly cleaned used wires, balloons, catheters, and microcatheters can be
167 trained and used for training to gain experience with these devices, as well as HALO procedures.

168 Furthermore, this model enables medical device prototype testing and the development or modification
169 of interventional techniques. Eventually, data sets from CT scans of patients with difficult coronary
170 lesions could be used to create 3D-printed lesions to incorporate into this model to have trainees
171 perform a previous case completed by a different operator or to train robotic PCI devices.

172 **LIMITATIONS:**

173 While the simulator described here is reasonably realistic, some aspects lead to reduced fidelity of the
174 system. As the guiding catheters are already in place, this system is not valuable for teaching catheter
175 intubation or the difficulties in achieving and maintaining a good guide catheter position. There are no
176 ECG or pressure curves on display in this setup. Learning to recognize ischemia on ECG or dampened and
177 ventricularized pressure waveforms are important aspects of coronary intervention[17]. As the system is
178 not pulsatile, there is no heart movement. Therefore, especially RCA interventions, which can be more
179 difficult because of equipment movement, are not as realistic[18].

180 Porcine vessels are more compliant than diseased human coronary arteries and without coronary artery
181 disease. Therefore, the haptic feedback of balloon inflation and wire manipulation will not be the same.
182 Even though lesion characteristics can feasibly be modeled using 3-D printing, there is likely to be a
183 difference. Similarly, the propensity to dissect or perforate differs between juvenile porcine arteries and
184 diseased human coronary arteries.

185 Acquiring an appropriate heart specimen may pose difficulties. Ideally, large animal hearts from
186 research facilities are used. Most commercially available hearts for human consumption are dissected
187 and cannot be used. Hearts used for school dissection projects can be formalin-fixed and may show
188 more tissue rigidity than is ideal for this setting.

189

190 **CONCLUSION:**

191 We report on how to build and use a low-cost simulator for coronary angiography and percutaneous
192 coronary artery interventions. This model's reusability and versatility make it a valuable tool in training
193 interventional cardiologists. It could feasibly be used in any catheterization laboratory worldwide
194 without requiring specific equipment for assembly and set-up. Dedicated training units with more
195 specific preparation instructions and scenarios incorporating digital display simulation of arterial
196 pressures and ECG are promising next steps to increase the simulator's fidelity.

197

198

199

200 **ACKNOWLEDGMENTS:**

201 We thank the Visible Heart Laboratory staff and volunteers for their continuous engagement, which
202 makes this such an inspiring place to work. We also thank Erik Donley for his work on the support
203 structure.

204

205 **FINANCIAL DISCLOSURE SUMMARY:**

206 P.A.I. has a research contract and serves as an education consultant arrangement with Medtronic
207 (Minneapolis, MN, USA). These arrangements did not influence any part of the work presented here.

208

209 **REFERENCES**

- 210 1. Voelker W, Petri N, Tönissen C, Störk S, Birkemeyer R, Kaiser E, et al. Does Simulation-Based
211 Training Improve Procedural Skills of Beginners in Interventional Cardiology?—A Stratified
212 Randomized Study. *Journal of Interventional Cardiology* 2016;29:75-82.
- 213 2. Popovic B, Pinelli S, Albuissou E, Metzendorf PA, Mourer B, Tran N, et al. The Simulation Training in
214 Coronary Angiography and Its Impact on Real Life Conduct in the Catheterization Laboratory.
215 *American Journal of Cardiology* 2019;123:1208-13.
- 216 3. Jensen UJ, Jensen J, Ahlberg G, Tornvall P. Virtual reality training in coronary angiography and its
217 transfer effect to real-life catheterisation lab. *EuroIntervention* 2016;11:1503-10.
- 218 4. Lee KS, Natarajan B, Wong WX, Yousman W, Koester S, Nyotowidjojo I, et al. A randomized
219 controlled trial of simulation training in teaching coronary angiographic views. *BMC Med Educ*
220 2022;22:644.
- 221 5. Schuetz M, Moenk S, Vollmer J, Kurz S, Mollnau H, Post F, et al. High Degree of Realism in
222 Teaching Percutaneous Coronary Interventions by Combining a Virtual Reality Trainer With a Full
223 Scale Patient Simulator. *Simulation in Healthcare* 2008;3:242-6.
- 224 6. Jensen UJ, Jensen J, Olivecrona GK, Ahlberg G, Tornvall P. Technical Skills Assessment in a
225 Coronary Angiography Simulator for Construct Validation. *Simulation in Healthcare* 2013;8:324-
226 8.
- 227 7. Räder SBEW, Abildgaard U, Jørgensen E, Bech B, Lönn L, Ringsted CV. Association Between
228 Endovascular Performance in a Simulated Setting and in the Catheterization Laboratory.
229 *Simulation in Healthcare* 2014;9:241-8.
- 230 8. Healthcare C. CAECathLabVR. GT Simulators Website:
231 <https://www.gtsimulators.com/products/cathlabvr-simulator-base-unit> Accessed April 29, 2024
232 2018.
- 233 9. Detling N, Smith A, Nishimura R, Keller S, Martinez M, Young W, et al. Psychophysiologic
234 responses of invasive cardiologists in an academic catheterization laboratory. *American Heart*
235 *Journal* 2006;151:522-8.
- 236 10. Petri N, Weber C, Maniuc O, Oder D, Lengenfelder B, Voelker W. A Skill Trainer for Balloon/Stent
237 Exchange in Percutaneous Coronary Intervention—Concept and Evaluation. *Simulation in*
238 *Healthcare* 2022;17:249-55.
- 239 11. Nanto S. PCI TRAINER for BEGINNERS. Medialpha Web site:
240 https://medialpha.jp/book_category/en Accessed May 2 2024 2011.
- 241 12. Simsek B, Kostantinis S, Karacsonyi J, Hakeem A, Prasad A, Prasad A, et al. Educational
242 Experience of Interventional Cardiology Fellows in the United States and Canada. *JACC*
243 *Cardiovasc Interv* 2023;16:247-57.
- 244 13. Valenzuela TF, Burzotta F, Iles TL, Lassen JF, Iazzo PA. Assessment of single and double coronary
245 bifurcation stenting techniques using multimodal imaging and 3D modeling in reanimated swine
246 hearts using Visible Heart® methodologies. *The International Journal of Cardiovascular Imaging*
247 2021;37:2591-601.
- 248 14. Burzotta F, Cook B, Iazzo PA, Singh J, Louvard Y, Latib A. Coronary bifurcations as you have
249 never seen them: the Visible Heart® Laboratory bifurcation programme. *EuroIntervention*
250 2015;11:V40-V3.

- 251 15. Cangemi S, Burzotta F, Bianchini F, DeVos A, Valenzuela T, Trani C, et al. Configuration of two-
252 stent coronary bifurcation techniques in explanted beating hearts: the MOBBEM study.
253 *EuroIntervention* 2023;19:e423-e31.
- 254 16. Bianchini F, Cangemi S, DeVos A, Bielecki M, Aurigemma C, Romagnoli E, et al. Multimodal
255 Comparisons of Results Achieved by Different Side Branch Ballooning Techniques for Bifurcation
256 Provisional Stenting. *Circ Cardiovasc Interv* 2023;16:e012908.
- 257 17. Klein LW, Korpu D. Damped and Ventricularized Coronary Pressure Waveforms. *J Invasive*
258 *Cardiol* 2017;29:387-9.
- 259 18. Chen GC, Lu XM, Song YM, Gyawail L, Geng ZH, Song MB, et al. A 3-year experience of a simple,
260 novel technique for accurate ostial/non-ostial coronary stenting: The buddy balloon anchor
261 stent technique. *Catheter Cardiovasc Interv* 2018;92:1147-52.

262

263

264 **Figures:**

265 Figure 1: (A) Porcine heart with aorta attached. (B) Heart after cutting the Aorta so the coronary ostia
266 can be accessed easily. (C) Guide catheters placed into the right and left coronary ostium and fixed in
267 place with Super-glue. (D) Injection of polyurethane foam into the left and right ventricle, leading to
268 expansion of all cavities and great vessels.

269

270 Figure 2: Coronary Intervention Simulator final setup. Fluoroscopy C-Arm on the left (blue box). Prepped
271 heart with guide catheters in place below the detector on the support structure putting it at the
272 isocenter of the fluoroscopy machine and allowing to follow all clinically used coronary projections
273 (yellow box). Pressure infusion set on the right, as well as contrast solution – following a standard
274 catheterization laboratory setup (red box).

275

276 Figure 3: (A) Digital 3-D model of a coronary chronically occluded artery segmented from a high-
277 resolution micro-computed tomography scan. (B) 3D print of the artery segment before introduction
278 into the intervention simulator. Penny for scale.

279

280 Figure 4: OCT showing occlusive (A) and non-occlusive (B) white thrombus in the RCA that was saved
281 from a previous porcine case and then injected via the guide catheter. To train thrombus aspiration.

282

283 Figure 5: OCT of Ellis III coronary artery perforation before treatment.

284

285 **Supplemental Digital Content**

286 Supplemental Digital Content 1: Supplemental Figure of our set up to quickly refill the infusion bag
287 with tap water. A hose adapter was attached to a faucet. Then the drip counter of a IV Administration
288 Set was cut in the lower third and then connected to the hose with a ½ inch connector.

289

290 Supplemental Digital Content 2: Supplemental Figure of how two Polyethylene terephthalate (PETE)
291 packages from Affinity Fusion Oxygenators were altered to be used as the support and fluid collection
292 structure for the trainer. One package edge was cut off to fit into the other upside down.

293 Supplemental Digital Content 3: Figure of a tube, 3-way stopcock and connector setup that allows the
294 PCI trainer to be directly connected to a faucet-hose system for continuous perfusion.

295 Supplemental Video Content 1: wmv Video of an anterior-posterior projection of an angiogram of the
296 Left anterior descending artery (LAD) showing contrast being cleared from the vessel by the pressurized
297 fluid bag. Note small air bubble embolization.

298

299 Supplemental Video Content 2: avi Video of an OCT recording from within the LAD at the level of the
300 second diagonal branch showing the initiation perfusion via the guiding catheter with the notable
301 expansion of the vessel lumen as the artery is pressurized.

302

303 Supplemental Video Content 3: wmv Video of Angiogram of a needle induced coronary artery
304 perforation Ellis III before treatment.

305

306 Supplemental Video Content 4: wmv Video of the 3-D printed chronic total occlusion in the right
307 coronary artery with concurrent contralateral injection to show potential septal collaterals.

308

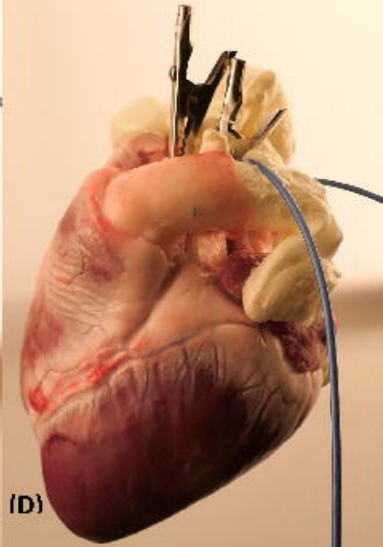
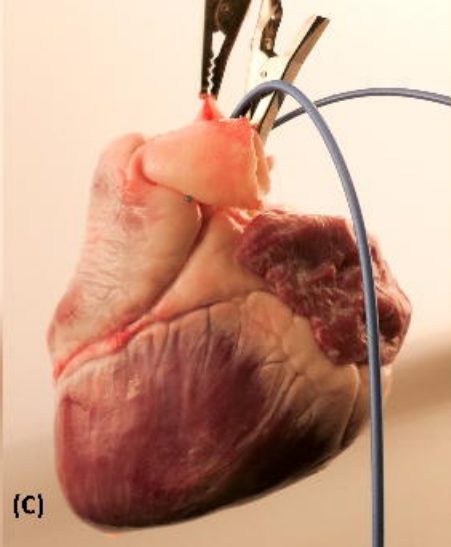
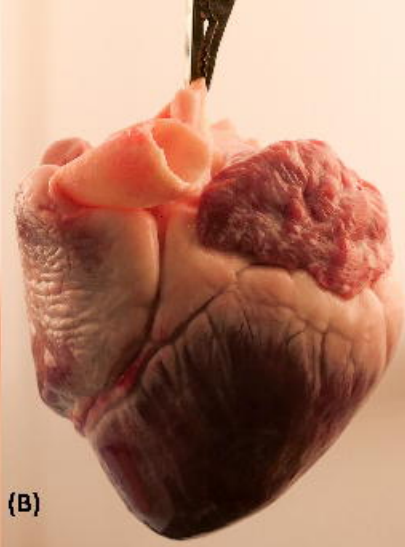
Table 1: Cost of Materials Used for single reusable PCI Trainer

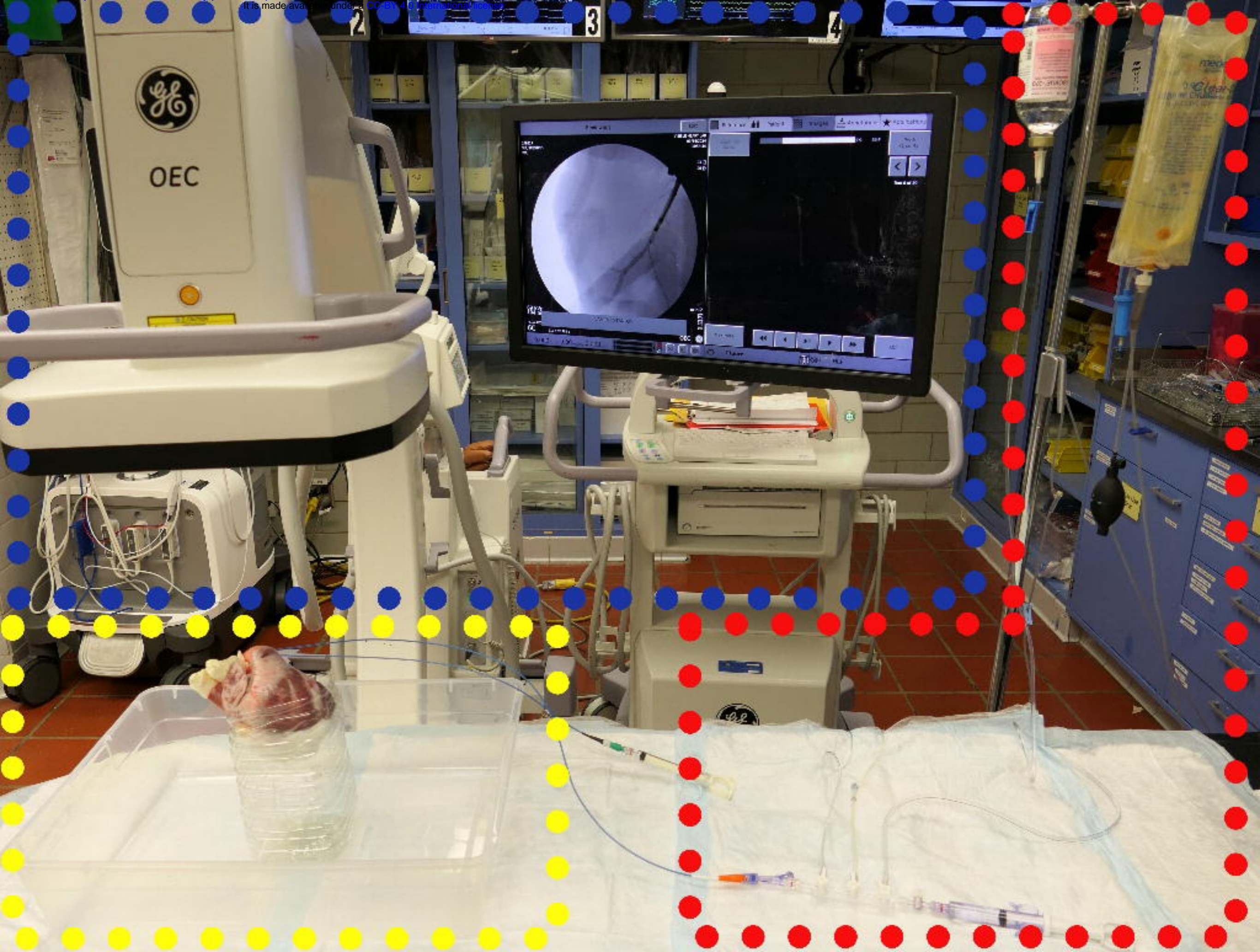
Component	Reusable	Cost per Unit	Source
Heart	Yes	\$10.50	Research lab, butcher
Tap water 1l	N/A	N/A	
Polyurethane foam	Yes	\$6.99	Hardware store
Super glue	Yes	\$3.64	Hardware store
Box	Yes	\$5.98	Hardware store
Empty 2l bottle	Yes	N/A	Recycle
Guide catheter & Pressure bag	No	N/A	Cath Lab
Iohexol/ Lugol's solution 500ml	No	\$25.95	Cath Lab/Chemical supplier
Total cost		42.56	

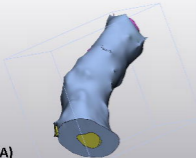
Table 2: Trainable and non-trainable clinical situations

Trainable	Non-trainable
Wiring of tortuous vessels and side-branches	Ostial Interventions
Wiring septal/other collaterals for retrograde approach	Bypass Graft interventions
Precise placement of stents in bifurcated lesions	Fractional Flow Reserve (FFR)
Transcoronary ablation of septal hypertrophy (TASH)	Electrophysiologic Interventions
Embolization to occlude perforated, small vessels	Structural Interventions
Placement of covered stents to seal perforations	
Use of Atherectomy devices (rotational and orbital)	
Use of OCT and IVUS to guide PCI*	
Thrombus aspiration	

*Optical Coherence Tomography (OCT) and Intravascular Ultrasound (IVUS)



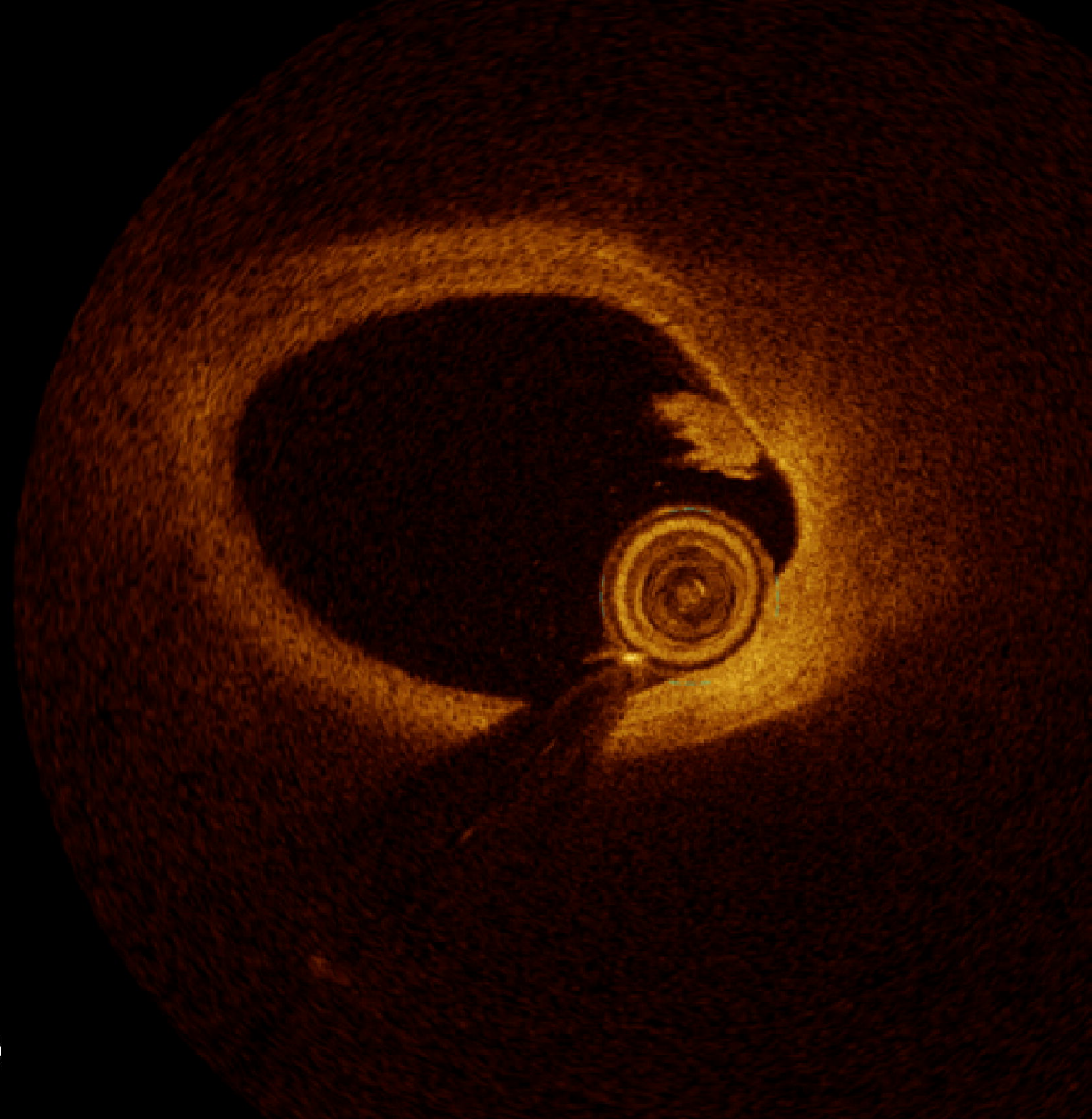
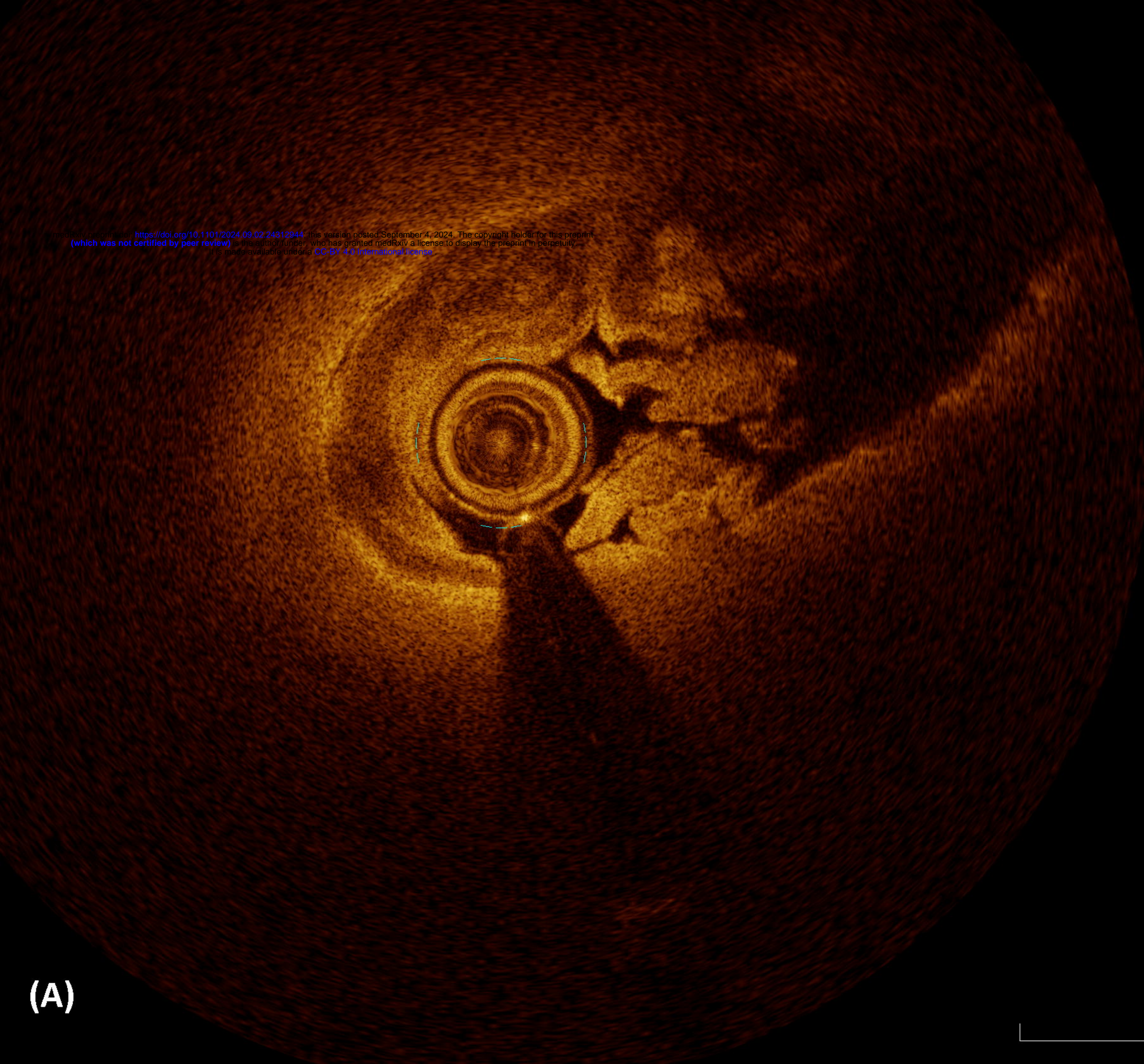




(A)



(B)



(A)

1 mm

(B)

