

1
2
3
4
5
6
7
8
9
10
11
12
13
14
15
16
17
18
19
20
21
22
23
24
25
26
27
28
29

Beyond Words: Non-verbal auditory cognitive impairments in Alzheimer's Disease dementia

Meher Lad^{1*}, Charlotte Deasy², Christopher J Plack^{3,4}, John-Paul Taylor^{1,5**}, Timothy D Griffiths^{6**}

1. Translational and Clinical Research Institute, Faculty of Medical Sciences, Newcastle University, Newcastle upon Tyne, NE2 4HH
2. Cumbria, Northumberland, Tyne and Wear NHS Foundation Trust
3. Manchester Centre for Audiology and Deafness, The University of Manchester
4. Department of Psychology, Lancaster University
5. Newcastle NIHR Biomedical Research Centre, Newcastle University
6. Biosciences Institute, Newcastle University

* Corresponding Author

** Joint senior author

ABSTRACT

30
31
32
33
34
35
36
37
38
39
40
41
42
43
44
45
46
47
48
49
50
51
52
53

Background: Verbal speech-in-noise (SIN) measures are impaired in early Alzheimer's disease (AD) but may be confounded by linguistic and cultural factors. We investigated whether non-verbal auditory memory could predict cognitive impairment in AD.

Methods: We evaluated 158 cognitively healthy individuals, 26 with mild cognitive impairment (MCI), and 28 with AD dementia using the Addenbrooke's Cognitive Examination (ACE-III), pure-tone audiometry, verbal SIN tests, and non-verbal auditory memory tests for basic sound features. Group differences were assessed adjusting for age, sex, and education. Logistic regression and receiver operating characteristic (ROC) analyses compared model fit of verbal and non-verbal auditory variables.

Results: All auditory cognition measures were significantly associated with cognition. Non-verbal measures provided a better fit to diagnosis than verbal measures (AIC difference >10), although ROC analyses showed no significant differences between models.

Conclusions: Non-verbal auditory measures are effective measures in distinguishing between cognitively healthy, MCI, and AD dementia individuals.

Keywords:

hearing, auditory cognition, Alzheimer's disease, biomarkers, non-verbal memory, speech-in-noise

54
55
56
57
58
59
60
61
62
63
64
65
66
67
68
69
70
71
72
73
74
75
76
77
78
79

INTRODUCTION

Central hearing impairments can accompany cognitive impairment in Alzheimer's disease (AD) and may precede the onset of dementia [1,2]. The underlying mechanisms linking central hearing and cognitive impairment in AD are not fully understood but some hypotheses suggest that it may relate to overlapping neuroanatomical substrates involved in speech-in-noise (SIN) hearing and neurodegeneration in AD [3]. This overlap implies that central auditory measures could serve as early indicators of neurodegenerative changes in AD, offering an avenue for screening and diagnostic assessments for AD dementia.

Verbal central auditory tasks have been commonly studied in people with AD dementia [4]. These tests commonly use digits, words or sentences as stimuli and performance is determined by a threshold measurement which signifies the ability of a person to correctly identify these on a background of artificial or natural sounds. In the digits-in-noise (DIN) test, a person is usually played three numbers on a background of white noise whereas in a sentence-in-babble test the stimulus consists of a short sentence on a background of multitalker babble. In cross-sectional studies, performance in both of these tasks reduces at a group-level from cognitively healthy to people with mild memory complaints to those with a dementia diagnosis [1]. Poor performance on both of these tests has also been linked to an increased risk of dementia, particularly AD, in independent studies [2,4].

Performance on these tests has been related to neurodegenerative biomarkers underlying the disease process [5]. One cross-sectional study showed an association between cerebrospinal fluid biomarkers of AD and performance on speech-in-noise perception tests. Poor auditory performance was correlated with high total-tau and phosphorylated-tau levels, after statistically adjusting for the effects of age, education, sex APOE4 status and pure-tone audiometry results.

80 Tau deposition in the brain is associated with cognitive impairment in AD and raised
81 phosphorylated-tau in the cerebrospinal fluid is associated with a greater risk of AD dementia in
82 the future [6,7]. Although this study was conducted in healthy individuals, this finding suggests a
83 relationship between central hearing ability and neurobiological processes linked to an
84 increased risk of AD dementia.

85
86 Speech-in-noise measures may, however, be confounded by linguistic proficiency, cultural
87 background and educational attainment. These tests may therefore be less applicable to people
88 from under-represented groups who are non-native speakers or those with low literacy levels.
89 Such factors may lead to inaccurate measurements in these populations. Non-verbal measures
90 of auditory cognition may be able to overcome these issues.

91
92 We used previously developed auditory cognitive tests to investigate how verbal and non-verbal
93 metrics related to one another in ageing [8,9]. Auditory memory (the general ability to hold
94 sound objects in mind) for basic sound features correlated with SIN perception ability as
95 measured by sentence-in-babble thresholds. Verbal measures of auditory memory are also
96 important determinants of SIN ability in older adults and those with hearing loss [10]. In previous
97 work, we have found significant relationships with auditory memory for frequency and
98 amplitude-modulation rate precision. We used a novel auditory paradigm which measured
99 auditory memory as a continuous resource that is flexibly distributable to a sound object and
100 provides a fine-grained measure of memory, rather than conventional discrete measures [11].
101 Further work established that including these measures in a linear model with educational
102 attainment and verbal speech-in-noise measures allowed an accurate prediction of cognitive
103 measures that are widely used as screening tools for dementia diagnosis [8].

104

105 In this study, we test the utility of non-verbal measures only in classifying a diagnosis of AD
106 diagnosis. We hypothesised that non-verbal measures would be as effective as verbal SIN
107 measures in distinguishing cognitive status among participants, including those of AD dementia.
108 Therefore, the objectives of this study were: (1) to assess the utility of non-verbal auditory
109 cognitive measures in distinguishing between different cognitive statuses associated with AD,
110 and (2) to compare the effectiveness of non-verbal auditory measures with traditional verbal
111 speech-in-noise tests in classifying cognitive impairment in AD.

112

113 We found that non-verbal auditory measures are as effective as verbal tests in distinguishing
114 cognitive status among participants, including those with AD dementia. Non-verbal measures
115 provided a better statistical fit for classifying cognitive status and were equally effective in
116 discriminating between cognitively healthy individuals, those with mild cognitive impairment
117 (MCI) and those with AD dementia. These results suggest that non-verbal auditory cognitive
118 tests are valuable tools for detecting cognitive impairment associated with AD and may offer a
119 more inclusive and generalisable approach for early detection and monitoring across diverse
120 populations.

121

122

METHODS

123

124 *Participants*

125 Participants were recruited from the AudCog study, an ongoing observational study
126 investigating auditory measures in cognitive health and disease. Inclusion criteria for cognitively
127 healthy individuals included age between 50 and 85 years, normal cognitive screening scores
128 (ACE-III \geq 88) and no history of neurological or psychiatric disorders. Participants with MCI and
129 AD dementia were also recruited and were diagnosed based on established clinical criteria by a
130 neurologist or psychiatrist with specialist experience in dementia [12].

131

132 Participants were recruited from a variety of sources including local volunteer databases, the
133 Join Dementia Research register and through the friends and family of patients from Memory
134 Clinics for cognitively healthy participants. People with MCI and AD dementia were recruited
135 through local memory and cognitive neurology clinics. In order to maximise diversity, equity and
136 inclusion, we appealed to all individuals regardless of culture, race, gender or sexual orientation.
137 A total of 212 participants were recruited: 158 cognitively healthy controls, 26 with MCI, and 28
138 with AD dementia. Demographic characteristics and auditory measurements are detailed in
139 Table 1.

140

141 *Study Design*

142 This study had a cross-sectional observational design. In-person written consent was obtained
143 from all participants. All participants had one visit to the Auditory Laboratory at Newcastle
144 University or a home visit was conducted to the participant's home. After the consenting

145 process, participants underwent a pure-tone audiometric test followed by auditory cognitive
146 assessment. Finally, the cognitive screening test (described below) was administered. The
147 recruitment period occurred from March 2022 to March 2024. Ethical approval was obtained
148 from the Oxford C NHS Research Ethics Committee (21/SC/0139) and written informed consent
149 was obtained from all participants. The study was performed in accordance with the ethical
150 standards as laid down in the 1964 Declaration of Helsinki and its later amendments.

151

152 *Auditory Assessments*

153 Pure tone audiometry (PTA) testing was performed on both ears from 250 Hz to 8 kHz at octave
154 intervals for air conduction using an Interacoustics AD629 Diagnostic Audiometer and RadioEar
155 DD450 circumaural headphones according to British Society of Audiology testing guidelines
156 [13]. Pure tones were manually presented as short bursts twice starting at 30 dB HL then
157 increased in 5 dB HL increments until comfortably audible if necessary. Then 5 dB HL
158 reductions were made until the tone was not audible. This process was repeated twice, and the
159 lowest audible volume was chosen as the value for a particular frequency. If maximum
160 amplification at 100 dB HL could not be perceived, then this was used as the ceiling value at a
161 particular frequency. The overall mean of high frequency values between 4 and 8 kHz for the
162 best ear was taken as the threshold value for an individual for further analysis. This value was
163 chosen as high-frequency thresholds are suspected to deteriorate first in age-related hearing
164 loss and previous research from our group has suggested that PTA thresholds in this range
165 correlate with speech-in-noise difficulties [14,15].

166

167 People wore Sennheiser Momentum 4 over-ear headphones for central auditory tests. Central
168 hearing tests included verbal speech-in-noise perception tests using digits (Digits-in-Noise, DIN)
169 and sentences (Speech-in-Babble, SIB). In these tests, the level difference between speech and
170 background (white noise for DIN and 16-talker babble for SIB) is varied adaptively until a signal-

171 to-masker ratio (in dB) at speech recognition threshold is obtained for each individual [8].

172 Participants had two practice trials at the beginning of the task to familiarise themselves with the

173 stimuli at an SNR of 10 dB. An adaptive 1-up, 1-down psychophysical paradigm was

174 implemented whereby a correct response resulted in the SNR being reduced and an incorrect

175 one caused the SNR to increase. The starting SNR was 0 dB and the step sizes decreased

176 from 5 to 2 dB after 3 reversals, which then reduced to 0.5 dB after 3 more reversals. The run

177 terminated after 10 reversals and the SNR at the last 5 reversals was averaged to calculate the

178 DIN threshold for each participant. Lower SNR values indicate a better performance. For the

179 DIN task, select the digits they had heard from a keypad shown on the screen. For the SIB task,

180 target sentences had the form <name> <verb> number> <adjective> <noun> (e.g. “Alan

181 gives four pretty flowers”) and participants had to click on the correct word from a list of five

182 columns (10 options for each word) shown on the screen with the same structure.

183

184 Non-verbal auditory tests measure Auditory Memory (AuM) precision for basic sound features

185 over several seconds. These tests are usually self-directed and take approximately 5-10

186 minutes. This tests short-term memory performance for two basic sound features: frequency of

187 pure-tone and temporal fluctuation (modulation rate of amplitude-modulated white noise) [9]. A

188 one-second tone or AM modulated white noise stimulus is presented to a participant after which

189 they are asked to ‘find’ the sound on a horizontal scale on a computer screen. Participants

190 move a mouse and click on the line to produce a sound at that location. They can make as
191 many clicks as they want with no set time limit. After they were satisfied with their choice, they
192 would advance to the next trial by pressing the ‘Enter’ key on a keyboard. Frequencies that
193 determined the pure-tone sounds were chosen from a uniform distribution between 440 and 880
194 Hz and AM rates for the white noise stimulus were 5–20 Hz with a sinusoidal function used to
195 apply this modulation. Hanning windows were applied to all synthetic sounds to avoid clicks and
196 the beginning and end of the stimuli. The task consisted of 32 trials with the frequency and AM
197 rate matching trials being interleaved. Participants had a short break after 16 trials. A Gaussian
198 function was used to estimate the standard deviation of the errors in each trial across the whole
199 experiment and the inverse of this value, the precision, was used for further analysis. Thus, one
200 obtains precision scores for frequency AuM (AuMF) and AM rate AuM (AuMA). Studies in vision
201 have found that this measure better reflects the memory resource a participant can allocate in a
202 given task [16]. Participants had two practice trials with each stimulus (2 for frequency and 2 for
203 AM rate AuM) at the beginning of the task to familiarise themselves with the stimuli.

204

205 *Cognitive Assessment*

206 All participants underwent a cognitive screening test using the Addenbrooke’s Cognitive
207 Examination 3rd Edition (ACE-III). A score of 88 is commonly used to delineate cognitive
208 impairment [17]. The ACE-III demonstrated variable sensitivity (ranging from 82% to 97% for
209 dementia at thresholds of 82 and 88) and specificity (ranging from 4% to 77% for dementia)
210 across different thresholds and patient populations, with more variability observed in specificity.

211

212 *Statistical analysis*

213 All variable data were checked for normality by visually examining their distributions. AuM
214 values were log-transformed to achieve normality. Mean and standard deviation (SD) values
215 were calculated using absolute values in order to facilitate comparison between groups using an

216 Analysis of Variance (ANOVA). To assess group differences across cognitive and auditory
217 measures, one-way ANOVA was performed for each outcome variable: adjusted ACE-III total
218 score, DIN, SIB, AuMF and AuMA z-scores. Each ANOVA tested for differences across three
219 cognitive groups: Cognitively Healthy (CN), MCI, and AD Dementia. Post-hoc analyses using
220 Tukey's HSD test were conducted to explore pairwise group differences where applicable. All
221 analyses controlled for age, sex at birth, and educational status, and significance was set at $p <$
222 0.05. To aid analysis using linear models, these values were standardised using z-scores.

223
224 Multinomial logistic regression models were used to assess the association between the non-
225 verbal auditory measures and clinical diagnosis, using age, sex and educational attainment as
226 regressors of no interest. In order to compare this model to one created using verbal measures,
227 we used Bayesian Model Comparison: Model 1 with the DIN and SIB tests and Model 2 with
228 AuMF and AuMA. We used the Akaike Information Criterion (AIC) to define the best model. A
229 lower AIC with a difference of 2 from the other model was used to define an informative model
230 with parsimonious degrees of freedom. The models were also evaluated and compared (using
231 bootstrapped confidence intervals) for classification accuracy for diagnosis using Receiver
232 Operator Characteristic (ROC) curves.

233
234 All statistical analyses were conducted using Python programming language within Jupyter
235 notebooks and Visual Studio Code environments. We utilised several Python libraries to
236 perform data processing and statistical modelling. Specifically, we employed statsmodels for
237 implementing multinomial logistic regression models and assessing model parameters. The
238 patsy library was used for creating design matrices necessary for the regression analyses. To
239 evaluate multicollinearity among predictors, we calculated the Variance Inflation Factor using
240 functions from statsmodels.stats.outliers_influence. For data preprocessing, including
241 standardisation and label binarization, we used functions from scikit-learn (sklearn), specifically

242 the preprocessing module. The dataset was split into training and testing subsets using
243 `train_test_split` from `sklearn.model_selection`. Multinomial logistic regression models were
244 implemented using `OneVsRestClassifier` and `LogisticRegression` from `sklearn.linear_model`.
245 Receiver Operating Characteristic (ROC) curves were generated, and the Area Under the Curve
246 (AUC) values were calculated using functions from `sklearn.metrics`. This allowed us to assess
247 the discriminative power of the verbal and non-verbal auditory measures in classifying cognitive
248 status.
249
250

251

RESULTS

252

253 As shown in Table 1, cognitively healthy people were younger and better educated than those
254 with mild cognitive impairment or AD dementia and therefore these measures were used as
255 regressors of no interest along with sex at birth. Cognitive scores on the ACE-III also decreased
256 from cognitively normal to mild cognitively impaired people to people with a diagnosis of AD
257 dementia. Adjusted pure-tone audiometric thresholds did not differ between groups. The
258 unadjusted average audiograms for each group are shown in Figure 1.

259

260 Statistical analysis revealed significant differences in cognitive and auditory performance across
261 groups (Figure 2). ANOVA results showed that ACE-III total scores differed significantly
262 between groups ($F(2, 203) = 325.47, p < 0.0001$), with lower scores in the MCI and AD groups
263 compared to cognitively healthy participants. Similarly, significant group differences were
264 observed in auditory measures: DIN ($F(2, 203) = 9.24, p < 0.001$), SIB ($F(2, 203) = 45.63, p <$
265 0.001), AuMF ($F(2, 203) = 14.57, p < 0.0001$), and AuMA ($F(2, 203) = 28.43, p < 0.001$). Figure
266 3 further highlights significant correlations between the ACE-III total score and auditory
267 measures. Strong correlations were observed for both verbal (SIB; $r = 0.74, p < 0.001$) and non-
268 verbal measures (AuMA; $r = 0.58, p < 0.001$), indicating that auditory processing, both verbal
269 and non-verbal, declines in parallel with cognitive impairment.

270

271 We conducted multinomial logistic regression analyses to compare the effectiveness of verbal
272 and non-verbal auditory measures in distinguishing between cognitively normal, mild cognitive
273 impairment, and AD dementia groups. Model 1, which included verbal measures, explained
274 26% of the variance in cognitive status (Log-likelihood: -110.56, AIC: 247). Within this model,
275 SIB had the largest effect on both mild cognitive impairment and AD dementia, indicating its
276 strong association with cognitive impairment. Model 2 focused on non-verbal measures and

277 demonstrated a better fit, explaining 32% of the variance (Log-likelihood: -100.99, AIC: 228). In
278 this model, auditory memory for amplitude modulation rate had the largest effect size,
279 significantly associated with both mild cognitively impaired people and people with AD
280 dementia. The comparison of AIC values suggests that the non-verbal measures model (Model
281 2) provided a statistically better fit than the verbal measures model (Model 1).

282
283 To further assess the discriminative power of the verbal and non-verbal auditory measures,
284 ROC curve analysis was performed, and the Area Under the Curve (AUC) values were
285 calculated for each model (Figure 1). The verbal measures model produced AUCs of 0.85 for
286 cognitively healthy, 0.78 for mild cognitively impaired people, and 0.82 for people with AD
287 dementia, indicating a high level of accuracy in distinguishing between the cognitive groups.
288 Similarly, the non-verbal measures model yielded AUCs of 0.83 for cognitively healthy, 0.79 for
289 mild cognitively impaired people, and 0.80 for people with AD dementia, demonstrating that
290 non-verbal measures were equally effective in classifying cognitive status. The comparative
291 analysis of the ROC curves showed no significant difference in the AUC values between the
292 verbal and non-verbal models ($p > 0.05$), suggesting that non-verbal auditory tests are as
293 effective as verbal tests in identifying cognitive impairment.

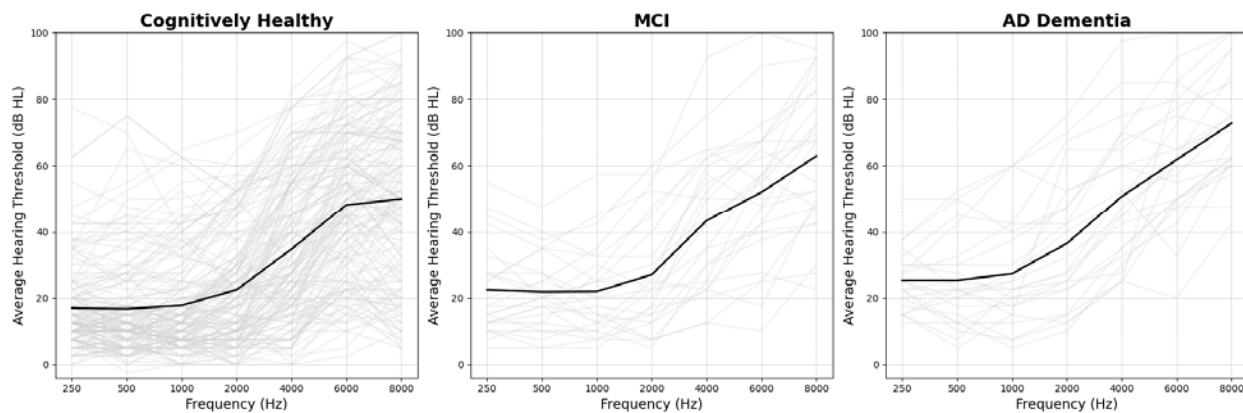
294

295

296 *Table 1*
 297 **Demographic and Auditory Characteristics**
 298

	Cognitively Healthy (n = 158)	Mild Cognitive Impairment (n=26)	Alzheimer's Disease Dementia (n=28)
<i>Demographic</i>			
Age, mean (SD)	67.0 (9.5)	73.2 (6.9)	75.2 (5.1)
Female, n (%)	96 (62)	16 (62)	9 (38)
Advanced education, n (%)	31 (20)	4 (15)	1 (4)
Hearing aid use, n (%)	23 (15)	4 (15)	7 (29)
<i>Cognition</i>			
ACE-III, mean/100 (SD)	96 (3)	84 (6)	73 (9)
<i>Hearing measures</i>			
Adjusted PTA threshold, mean, dB HL (SD)	44.8 (20)	46.6 (17)	40.6 (16)
DIN threshold, dB (SD)	-8.9 (4.1)	-7.5 (3.6)	-4.2 (2.9)
SIB threshold, dB (SD)	-6.9 (3.4)	-3.4 (6.9)	-0.5 (7.9)
AuMF, au (SD)	0.29 (0.2)	0.13 (0.1)	0.09 (0.1)
AuMA, au (SD)	0.08 (0.03)	0.05 (0.03)	0.04 (0.02)

299
 300 Abbreviations: ACE-III, Addenbrooke's Cognitive Examination (3rd Edition); au, arbitrary units; AuMA,
 301 Auditory Memory for Amplitude Modulation rate; AuMF, Auditory Memory for Frequency; DIN, Digits-in-
 302 Noise test; SIB, Speech-in-Babble test; PTA, Pure Tone Audiometry.



303

304

305 **Figure 1.** *Pure-tone audiogram results for cognitively healthy, Mild Cognitive Impairment (MCI) and*

306 *Alzheimer's Disease (AD) dementia groups.* The figure presents the unadjusted averaged hearing

307 thresholds (dB HL) across frequencies (250–8000 Hz) for three cognitive groups: Cognitively Healthy,

308 MCI, and AD Dementia. Individual participants' audiograms are shown as translucent grey lines, while the

309 group average for each frequency is represented by a solid black line. Hearing thresholds are averaged

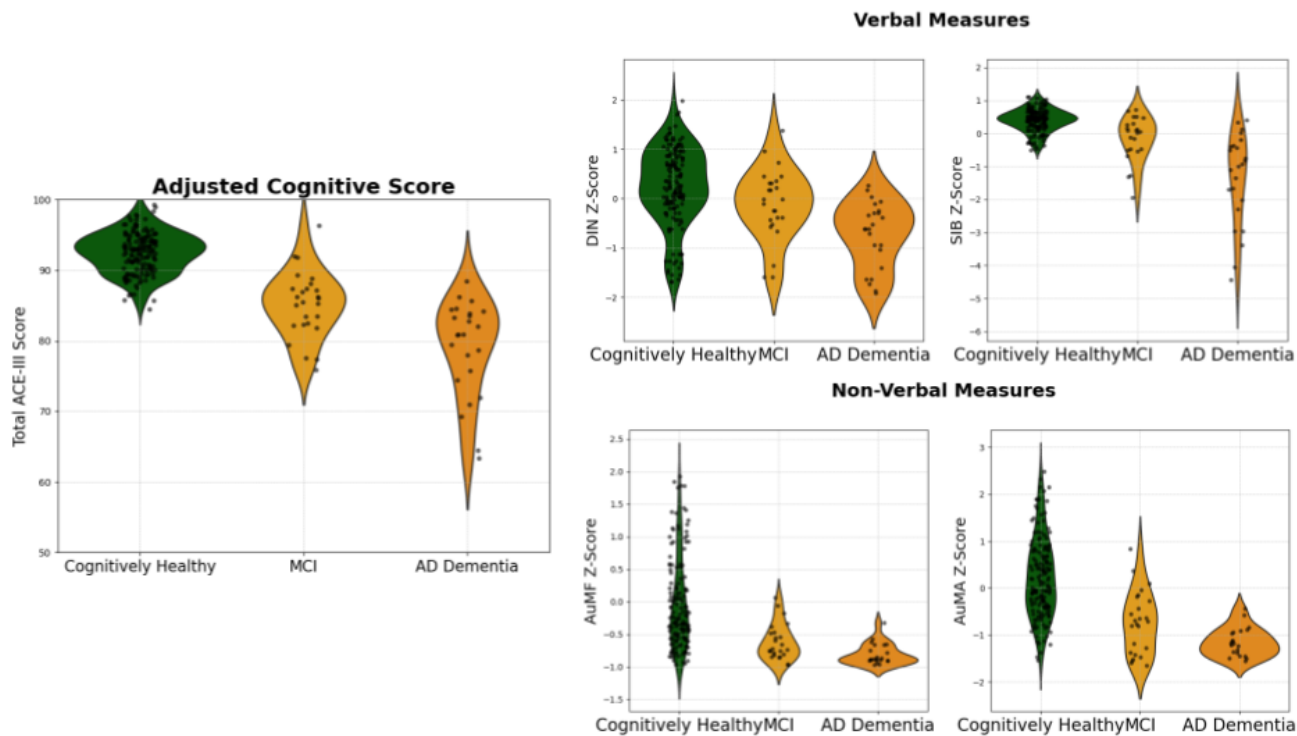
310 between the left and right ears for each participant. This figure illustrates a general trend of increasing

311 hearing impairment with higher frequencies across all groups.

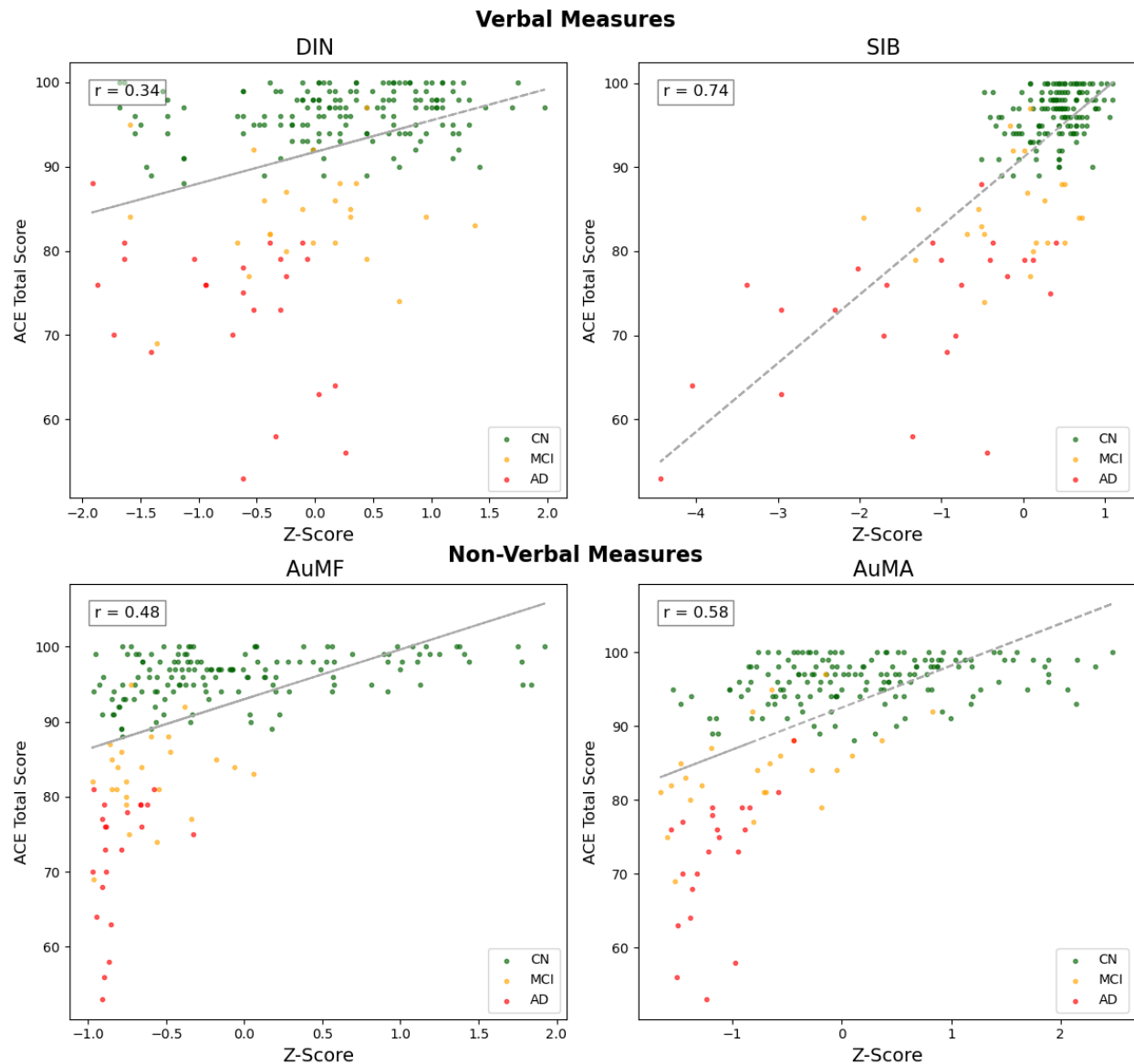
312

313

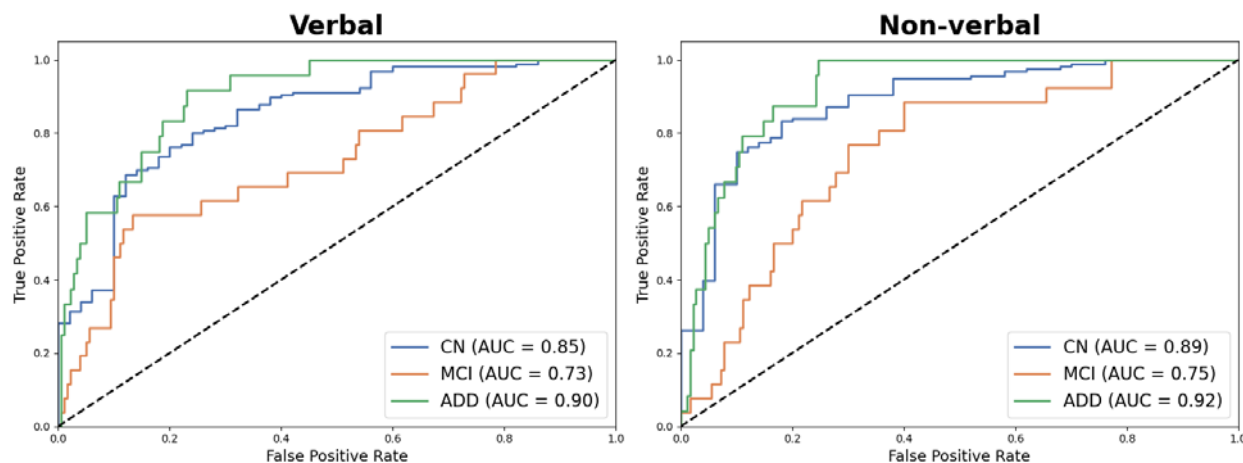
314
315
316
317
318
319
320
321
322
323
324
325
326
327
328
329
330
331



332 **Figure 2.** *Cognitive and auditory measure distributions by participant group.* The left panel shows the
333 adjusted ACE-III total scores for three cognitive groups: Cognitively Healthy (CN), Mild Cognitive
334 Impairment (MCI), and Alzheimer's Dementia (AD). The right panel is split into two sections: Verbal
335 Measures (top) and Non-Verbal Measures (bottom). The Verbal Measures display violin plots for the
336 Digits in Noise (DIN) and Speech in Babble (SIB) z-scores, while the Non-Verbal Measures show
337 distributions for Auditory Memory for Frequency (AuMF) and Auditory Memory for Amplitude Modulation
338 (AuMA) z-scores. Each plot visualises the distribution of individual scores within each cognitive group,
339 with individual data points overlaid in black.



340
341 **Figure 3.** Correlations between cognitive and auditory measures and ACE-III total score. This figure
342 shows scatterplots of four cognitive and auditory measures, grouped by cognitive status (Cognitively
343 Healthy (CN), Mild Cognitive Impairment (MCI), Alzheimer's Disease (AD) dementia) and their
344 relationship with the ACE-III total score. The upper row (Verbal Measures) presents the associations for
345 the Digits in Noise (DIN) and Speech in Babble (SIB) z-scores, while the lower row (Non-Verbal
346 Measures) presents the associations for Auditory Memory for Frequency (AuMF) and Auditory Memory
347 for Amplitude Modulation (AuMA) z-scores. Trendlines (dark grey) highlight the correlations, with
348 corresponding r-values displayed in each subplot. All correlations were statistically significant with $p <$
349 0.001.



350

351

352 **Figure 4.** Receiver Operating Characteristic (ROC) Curves for Verbal and Non-Verbal Auditory Measures

353 in Discriminating Cognitive Status. The figure displays the ROC curves for two multinomial logistic

354 regression models used to differentiate between cognitively normal (CN), mild cognitive impairment (MCI)

355 and Alzheimer's disease dementia (ADD) groups based on auditory performance. The leftward image

356 represents the model using verbal auditory measures, specifically the digits-in-noise performance and

357 sentence-in-babble threshold. The rightward image shows the model using non-verbal auditory

358 measures, including auditory memory for frequency and auditory memory for amplitude modulation rate.

359 Each ROC curve corresponds to the classification of one cognitive status group (CN, MCI, ADD). The

360 area under the curve (AUC) values are reported for each ROC curve, indicating the model's ability to

361 correctly classify people across cognitive statuses. Both verbal and non-verbal models demonstrate

362 similar AUC values, suggesting that non-verbal auditory measures are as effective as verbal measures in

363 associating with cognitive impairment.

364
365
366
367
368
369
370
371
372
373
374
375
376
377
378
379
380
381
382
383
384
385
386
387
388
389

DISCUSSION

We demonstrate that simple non-verbal measures of auditory cognition are significantly associated with cognitive impairment in AD and can effectively discriminate between individuals with and without AD dementia. Auditory memory is linked to cognition across the AD spectrum and, when combined with demographic factors, can classify a clinical diagnosis. These findings lay the groundwork for future investigations into auditory memory as a potential measure of brain function, alongside fluid biomarkers that are sensitive and specific to AD, offering a more inclusive and accessible diagnostic tool.

Previous clinical observations in individuals with AD dementia have highlighted an aversion or heightened sensitivity to sound processing, particularly in noisy environments. However, detailed evaluations of these symptoms using non-verbal auditory paradigms are only now beginning to emerge [18]. Our results align with prior research showing impairments in auditory scene analysis and spatial processing when using complex sound stimuli [19,20]. Additionally, this study extends our understanding of non-verbal auditory cognition beyond individuals without dementia to those experiencing memory and cognitive difficulties due to AD dementia.

Auditory memory is a crucial cognitive ability that supports SIN perception, particularly as one ages [10,21]. Successful SIN perception requires the listener to attend to the correct auditory stream, track it and remember it over time despite interference from competing sounds. This process likely involves several cognitive factors. Previous research suggests that phonological auditory memory becomes increasingly important as individuals age and experience hearing loss [21]. While the underlying reasons for this are unclear, they may be related to the increased working memory resources required to comprehend sentences in noisy environments when perceptual systems are partially degraded.

390

391 The auditory memory precision measure, which is based on a continuous scale rather than
392 conventional discrete phonological measures, has been shown to reflect the total memory
393 'resource' an individual can allocate to a given task [16]. The specific reasons for the
394 associations between SIN perception and auditory memory for features such as frequency
395 precision and amplitude modulation rates remain uncertain. This may relate to the evolutionary
396 importance of humans tracking the source of a sound object e.g. voices, where frequency is
397 particularly important and the natural modulations that occur in the envelope of speech sounds
398 (which were similar to the rates used as stimuli in this study) [22–24].

399

400 The reasons for specific associations with auditory memory and cognition in AD have also not
401 yet been thoroughly investigated. Some hypotheses propose that non-verbal measures of
402 auditory memory link speech-in-noise perception ability and cognition in AD due to their
403 neuroanatomical substrates [3]. Performing these tasks is known to activate medial temporal
404 lobe structures, regions implicated in the early stages of AD pathology [25,26]. Degeneration of
405 these structures could impair auditory memory and contribute to cognitive deficits detected by
406 other screening tools. Additionally, damage to these areas, regardless of aetiology, can similarly
407 affect performance in visual cognitive tasks [27,28]. It is also important to recognise that hearing
408 function, age and brain neuropathology independently influence cognition and may collectively
409 contribute to cognitive decline in AD [29].

410

411 This study benefits from incorporating both peripheral and detailed central auditory testing in
412 individuals with and without dementia. Including such comprehensive measures is crucial, as a
413 combination of peripheral and central auditory assessments may provide a more complete
414 understanding of the neurobiological link between hearing and dementia. Previous studies
415 relying solely on pure-tone audiograms or subjective measures have not consistently

416 demonstrated relationships with the underlying neurobiological processes in AD [30,31]. This
417 contrasts with some work using central measures [5]. Central auditory measures may also help
418 clarify whether hearing aids can prevent or delay dementia. The lack of success in trials using
419 hearing aids as an intervention may be due to their limited effectiveness in individuals with
420 central auditory impairments, suggesting that hearing aids might be most beneficial for those
421 without central auditory dysfunction [32].

422
423 Limitations of this study include the relatively small sample size of cognitively impaired
424 individuals, the cross-sectional design and the lack of neurodegenerative biomarkers to
425 characterise the participants. The progression of cognitive impairment in ageing is known to
426 vary based on biomarker status and future work should incorporate these *in-vivo* markers to
427 provide a more comprehensive understanding of the relationship between auditory cognition
428 and AD progression [33]. While participants with normal cognitive function were younger and
429 had higher education levels than other groups, these factors were statistically controlled for in
430 the analyses. Future studies should aim to include more diverse populations, as these auditory
431 measures are applicable across various cultural and linguistic backgrounds. Longitudinal
432 research is also necessary to determine whether auditory cognition measures can predict the
433 onset or progression of AD dementia, particularly in preclinical or mildly impaired individuals.

434
435 This work showcases simple non-verbal auditory stimuli which could potentially be used
436 alongside clinical and neurodegenerative biomarkers for screening and monitoring cognitive
437 impairment due to AD. These measures are potentially less susceptible to confounding factors
438 such as linguistic and cultural differences, offering a broader applicability in diverse populations.
439 Additionally, their suitability for use in remote or resource-limited settings enhances their
440 practical utility [34]. Further work is necessary to see whether these non-verbal auditory tasks,
441 like verbal SIN measures, can predict AD dementia, particularly in individuals with MCI [2].

442 Studying auditory memory alongside highly sensitive and specific fluid biomarkers of AD, such
443 as phosphorylated-Tau, would explain whether poor auditory cognition is a harbinger of
444 dementia [6]. Auditory cognition may also be associated with more general markers of
445 neurodegeneration, such as cortical thinning, detectable through neuroimaging. Urgent work is
446 required to investigate the relationship between auditory cognitive decline and these
447 neuroimaging metrics [35].

448
449 In conclusion, this study demonstrates that non-verbal auditory memory tasks are strongly
450 associated with cognitive impairment in Alzheimer's disease and show potential as early
451 indicators of cognitive decline. These tasks, particularly when combined with demographic
452 factors, could help distinguish AD dementia from normal cognitive ageing. The findings suggest
453 that non-verbal auditory measures tap into neural processes that are particularly vulnerable to
454 early AD pathology, especially in medial temporal lobe structures. Further longitudinal studies
455 incorporating auditory cognition, fluid biomarkers and neuroimaging are essential to clarify the
456 role of auditory memory in predicting dementia and to explore whether these measures could
457 enhance early detection or improve the monitoring of AD progression.

458

Acknowledgements

459 The authors would like to thank all the participants and their carers for participating in this
460 research.

461

462

Sources of Funding and Disclosures

463 The authors have no conflicts of interests or competing interests to declare. Data is available
464 upon request to the corresponding author. ML has received funding from the Guarantors of
465 Brain (Brain Entry Fellowship) and Medical Research Council (MR/V006568/1) in the United
466 Kingdom. CJP receives funding from the National Institute for Health and Care Research
467 Manchester Biomedical Research Centre (NIHR203308). JT receives funding and support from
468 the National Institute for Health Research Biomedical Research Centre (NIHR203309), United
469 Kingdom in Newcastle upon Tyne. TG receives funding from the Medical Research Council
470 (MR/T032553/1), Wellcome Trust (WT106964MA) and National Institute on Deafness and Other
471 Communication Disorders (DC000242 36).

472

473

Contributors

474 ML conceived the study. ML collected and analysed the data. ML drafted the initial manuscript.
475 All authors contributed to revision and editing of the manuscript.

476 **References**

477

- 478 [1] Gates GA, Anderson ML, Feeney MP, McCurry SM, Larson EB. Central Auditory
479 Dysfunction in Older Persons With Memory Impairment or Alzheimer Dementia. *Arch*
480 *Otolaryngol Neck Surg* 2008;134:771–7. <https://doi.org/10.1001/archotol.134.7.771>.
- 481 [2] Stevenson JS, Clifton L, Kuźma E, Littlejohns TJ. Speech-in-noise hearing impairment is
482 associated with an increased risk of incident dementia in 82,039 UK Biobank participants.
483 *Alzheimers Dement J Alzheimers Assoc* 2022;18:445–56.
484 <https://doi.org/10.1002/alz.12416>.
- 485 [3] Griffiths TD, Lad M, Kumar S, Holmes E, McMurray B, Maguire EA, et al. How Can
486 Hearing Loss Cause Dementia? *Neuron* 2020;108:401–12.
487 <https://doi.org/10.1016/j.neuron.2020.08.003>.
- 488 [4] Mohammed A, Gibbons LE, Gates G, Anderson ML, McCurry SM, McCormick W, et al.
489 Association of Performance on Dichotic Auditory Tests With Risk for Incident Dementia
490 and Alzheimer Dementia. *JAMA Otolaryngol-- Head Neck Surg* 2022;148:20–7.
491 <https://doi.org/10.1001/jamaoto.2021.2716>.
- 492 [5] Tuwaig M, Savard M, Jutras B, Poirier J, Collins DL, Rosa-Neto P, et al. Deficit in Central
493 Auditory Processing as a Biomarker of Pre-Clinical Alzheimer's Disease. *J Alzheimers Dis*
494 2017;60:1589–600. <https://doi.org/10.3233/JAD-170545>.
- 495 [6] Palmqvist S, Tideman P, Cullen N, Zetterberg H, Blennow K, Alzheimer's Disease
496 Neuroimaging Initiative, et al. Prediction of future Alzheimer's disease dementia using
497 plasma phospho-tau combined with other accessible measures. *Nat Med* 2021;27:1034–
498 42. <https://doi.org/10.1038/s41591-021-01348-z>.
- 499 [7] Bejanin A, Schonhaut DR, La Joie R, Kramer JH, Baker SL, Sosa N, et al. Tau pathology
500 and neurodegeneration contribute to cognitive impairment in Alzheimer's disease. *Brain J*
501 *Neurol* 2017;140:3286–300. <https://doi.org/10.1093/brain/awx243>.
- 502 [8] Lad M, Taylor J-P, Griffiths TD. The contribution of short-term memory for sound features
503 to speech-in-noise perception and cognition. *Hear Res* 2024;451:109081.
504 <https://doi.org/10.1016/j.heares.2024.109081>.
- 505 [9] Lad M, Holmes E, Chu A, Griffiths TD. Speech-in-noise detection is related to auditory
506 working memory precision for frequency. *Sci Rep* 2020;10:13997.
507 <https://doi.org/10.1038/s41598-020-70952-9>.
- 508 [10] Akeroyd MA. Are individual differences in speech reception related to individual differences
509 in cognitive ability? A survey of twenty experimental studies with normal and hearing-
510 impaired adults. *Int J Audiol* 2008;47 Suppl 2:S53-71.
511 <https://doi.org/10.1080/14992020802301142>.
- 512 [11] Joseph S, Teki S, Kumar S, Husain M, Griffiths TD. Resource allocation models of auditory
513 working memory. *Brain Res* 2016;1640:183–92.
514 <https://doi.org/10.1016/j.brainres.2016.01.044>.
- 515 [12] McKhann GM, Knopman DS, Chertkow H, Hyman BT, Jack CR, Kawas CH, et al. The
516 diagnosis of dementia due to Alzheimer's disease: recommendations from the National
517 Institute on Aging-Alzheimer's Association workgroups on diagnostic guidelines for
518 Alzheimer's disease. *Alzheimers Dement J Alzheimers Assoc* 2011;7:263–9.
519 <https://doi.org/10.1016/j.jalz.2011.03.005>.
- 520 [13] British Society of Audiology. Pure-tone air-conduction and boneconduction threshold
521 audiometry with and without masking 2018.
- 522 [14] Holmes E, Griffiths TD. 'Normal' hearing thresholds and fundamental auditory grouping
523 processes predict difficulties with speech-in-noise perception. *Sci Rep* 2019;9:1–11.
524 <https://doi.org/10.1038/s41598-019-53353-5>.
- 525 [15] TI W, R C, L C, Dm N, KJ C. Changes in hearing thresholds over 10 years in older adults. J

- 526 Am Acad Audiol 2008;19. <https://doi.org/10.3766/jaaa.19.4.2>.
- 527 [16] Ma WJ, Husain M, Bays PM. Changing concepts of working memory. *Nat Neurosci*
528 2014;17:347–56. <https://doi.org/10.1038/nn.3655>.
- 529 [17] Beishon LC, Batterham AP, Quinn TJ, Nelson CP, Panerai RB, Robinson T, et al.
530 Addenbrooke's Cognitive Examination III (ACE-III) and mini-ACE for the detection of
531 dementia and mild cognitive impairment. *Cochrane Database Syst Rev*
532 2019;2019:CD013282. <https://doi.org/10.1002/14651858.CD013282.pub2>.
- 533 [18] Fletcher PD, Downey LE, Golden HL, Clark CN, Slattery CF, Paterson RW, et al. Auditory
534 hedonic phenotypes in dementia: A behavioural and neuroanatomical analysis. *Cortex*
535 2015;67:95–105. <https://doi.org/10.1016/j.cortex.2015.03.021>.
- 536 [19] Goll JC, Kim LG, Ridgway GR, Hailstone JC, Lehmann M, Buckley AH, et al. Impairments
537 of auditory scene analysis in Alzheimer's disease. *Brain J Neurol* 2012;135:190–200.
538 <https://doi.org/10.1093/brain/awr260>.
- 539 [20] Golden HL, Nicholas JM, Yong KXX, Downey LE, Schott JM, Mummery CJ, et al. Auditory
540 spatial processing in Alzheimer's disease. *Brain J Neurol* 2015;138:189–202.
541 <https://doi.org/10.1093/brain/awu337>.
- 542 [21] Füllgrabe C, Rosen S. On The (Un)importance of Working Memory in Speech-in-Noise
543 Processing for Listeners with Normal Hearing Thresholds. *Front Psychol* 2016;7:1268.
544 <https://doi.org/10.3389/fpsyg.2016.01268>.
- 545 [22] Assmann PF, Summerfield Q. The contribution of waveform interactions to the perception
546 of concurrent vowels. *J Acoust Soc Am* 1994;95:471–84. <https://doi.org/10.1121/1.408342>.
- 547 [23] Oxenham AJ. Pitch Perception. *J Neurosci* 2012;32:13335–8.
548 <https://doi.org/10.1523/JNEUROSCI.3815-12.2012>.
- 549 [24] Goswami U. Speech rhythm and language acquisition: an amplitude modulation phase
550 hierarchy perspective. *Ann N Y Acad Sci* 2019;1453:67–78.
551 <https://doi.org/10.1111/nyas.14137>.
- 552 [25] Kumar S, Joseph S, Gander PE, Barascud N, Halpern AR, Griffiths TD. A Brain System for
553 Auditory Working Memory. *J Neurosci Off J Soc Neurosci* 2016;36:4492–505.
554 <https://doi.org/10.1523/JNEUROSCI.4341-14.2016>.
- 555 [26] Kumar S, Gander PE, Berger JI, Billig AJ, Nourski KV, Oya H, et al. Oscillatory correlates
556 of auditory working memory examined with human electrocorticography. *Neuropsychologia*
557 2020;150:107691. <https://doi.org/10.1016/j.neuropsychologia.2020.107691>.
- 558 [27] Borders AA, Ranganath C, Yonelinas AP. The hippocampus supports high-precision
559 binding in visual working memory. *Hippocampus* 2022;32:217–30.
560 <https://doi.org/10.1002/hipo.23401>.
- 561 [28] Zokaei N, Nour MM, Sillence A, Drew D, Adcock J, Stacey R, et al. Binding deficits in
562 visual short-term memory in patients with temporal lobe lobectomy. *Hippocampus*
563 2019;29:63–7. <https://doi.org/10.1002/hipo.22998>.
- 564 [29] Kirschen RM, Leaver AM. Hearing function moderates age-related changes in brain
565 morphometry in the HCP Aging cohort. *BioRxiv Prepr Serv Biol* 2024:2024.04.22.590589.
566 <https://doi.org/10.1101/2024.04.22.590589>.
- 567 [30] Sarant JZ, Harris DC, Busby PA, Fowler C, Frupp J, Masters CL, et al. No Influence of Age-
568 Related Hearing Loss on Brain Amyloid- β . *J Alzheimers Dis JAD* 2022;85:359–67.
569 <https://doi.org/10.3233/JAD-215121>.
- 570 [31] Lad M, Taylor J-P, Griffiths TD, Alzheimer's Disease Neuroimaging Initiative. Subjective
571 hearing loss is not associated with an increased risk of Alzheimer's disease dementia.
572 *Heliyon* 2024;10:e30423. <https://doi.org/10.1016/j.heliyon.2024.e30423>.
- 573 [32] Lin FR, Pike JR, Albert MS, Arnold M, Burgard S, Chisolm T, et al. Hearing intervention
574 versus health education control to reduce cognitive decline in older adults with hearing loss
575 in the USA (ACHIEVE): a multicentre, randomised controlled trial. *The Lancet*
576 2023;402:786–97. [https://doi.org/10.1016/S0140-6736\(23\)01406-X](https://doi.org/10.1016/S0140-6736(23)01406-X).

- 577 [33] Hansson O. Biomarkers for neurodegenerative diseases. *Nat Med* 2021;27:954–63.
578 <https://doi.org/10.1038/s41591-021-01382-x>.
- 579 [34] Lad M, Taylor J-P, Griffiths T. Reliable Online Auditory Cognitive Testing: An observational
580 study 2024:2024.09.17.24313794. <https://doi.org/10.1101/2024.09.17.24313794>.
- 581 [35] Bakkour A, Morris JC, Wolk DA, Dickerson BC. The effects of aging and Alzheimer's
582 disease on cerebral cortical anatomy: Specificity and differential relationships with
583 cognition. *NeuroImage* 2013;76:332–44. <https://doi.org/10.1016/j.neuroimage.2013.02.059>.
584
585
586
587