

1 **Wastewater testing during the South African 2022-2023** 2 **measles outbreak demonstrates the potential of** 3 **environmental surveillance to support measles elimination**

4 Nkosenhle Ndlovu¹, Victor Mabasa¹, Chenoa Sankar¹, Nosihle Msomi¹, Emmanuel Phalane¹, Natasha
5 Singh¹, Sipho Gwala¹, Fiona Els^{1,2,4}, Mokgaetji Macheke¹, Sibonginkosi Maposa¹, and Mukhlid
6 Yousif^{¶1,3}, Kerrigan M. McCarthy ^{*¶1,3,4}

7

8 ¹Wastewater Genomics, Centre for Vaccines and Immunology, National Institute for Communicable
9 Diseases, Johannesburg, Gauteng, South Africa,

10 ²Gauteng City-Region Observatory (GCRO), Gauteng, South Africa,

11 ³Department of Virology, School of Pathology, Faculty of Health Sciences, University of
12 Witwatersrand, Johannesburg, Gauteng, South Africa.

13 ⁴ School of Public Health, Faculty of Health Sciences, University of Witwatersrand, Johannesburg,
14 Gauteng, South Africa.

15

16 [¶]These authors contributed equally to this work

17

18 *Corresponding author

19 Address: Centre for Vaccines and Immunology, National Institute for Communicable Diseases, 1
20 Modderfontein Rd, Sandringham, Johannesburg, 2192, South Africa.

21 E-mail: kerriganm@nicd.ac.za

22

23 **Author contributions**

Name (Abbreviation)	Contributions	ORCID ID
Nkosenhle Ndlovu (NN)	Data curation, Formal analysis, Investigation, Writing – original draft	
Victor Mabasa (VM)	Conceptualisation, Formal analysis, Investigation, Methodology, Project administration, Resources, Software, Validation, Writing – review and	0000-0002-0564-0344

NOTE: This preprint reports new research that has not been certified by peer review and should not be used to guide clinical practice.

Chenoa Sankar (CS)	Data curation, Formal analysis, Investigation, Methodology, Software, Writing – review and editing	0009-0007-7869-2026
Nosihle Msomi (NM)	Data curation, Formal analysis, Investigation, Software, Writing – review and editing	0000-0003-0053-0928
Emmanuel Phalane (EP)	Data curation, Investigation, Writing – review and editing	0000-0003-1208-3037
Natasha Singh (NS)	Investigation, Writing – review and editing	0000-0003-3074-8303
Sipho Gwala (SG)	Investigation, Writing – review and editing	0000-0002-8912-5584
Fiona Els (FE)	Writing – review and editing	0000-0002-4169-813X
Mokgaetji Macheke (MM)	Investigation, Writing – review and editing	0000-0002-5179-8230
Sibonginkosi Maposa (SM)	Investigation, Project administration, Resources, Supervision, Writing – review and editing	0000-0003-0575-1420
Mukhlid Yousif (MY)	Conceptualisation, Funding acquisition, Methodology, Supervision Validation, Writing – review and editing	0000-0002-8707-2255
Kerrigan McCarthy (KM)	Conceptualisation, Funding acquisition, Formal analysis, Methodology, Supervision, Validation, Writing original draft, Writing – review and editing	0000-0001-8958-9795

25 **Abstract**

26 **Background**

27 Sensitive clinical surveillance and high vaccination coverage are required to meet the WHO 2030
28 measles elimination target. Whilst wastewater and environmental surveillance (WES) has proven
29 usefulness in polio surveillance, it has not been applied to measles control. We describe the
30 development of digital RT-PCR (RT-dPCR) for detection and quantification of measles virus (MeV)
31 in wastewater, and application to retained concentrated samples obtained from 28 national sentinel
32 SARS-CoV-2 wastewater surveillance sites and 19 localised collection points in a single province
33 before, during and after a measles outbreak of over 2,000 laboratory-confirmed cases.

34 **Methods**

35 We validated a RT-dPCR assay incorporating WHO-recommended primers for detection and
36 differentiation of wild-type and vaccine genotypes. We applied this to retained wastewater samples
37 concentrated by ultrafiltration and stored at -20°C. We compared wastewater findings by district and
38 epidemiological weeks with laboratory-confirmed measles case data obtained from national fever-
39 rash surveillance for districts with adequate surveillance indicators (>2/100,000 non-measles cases)

40 **Findings**

41 Amongst 2,149 wastewater concentrates obtained between 16 February 2021 and 08 March 2024, we
42 identified 43 (2%) samples containing MeV RNA in concentrations ranging from 2,04-6,11 genome
43 copies/mL. MeV genotype A (vaccine strain) was co-detected in wastewater in 6 instances along with
44 non-A (wild-type) genotypes. Comparison of wastewater and clinical fever-rash surveillance data by
45 epidemiological week and district identified 27 district-time instances where at least one positive
46 wastewater sample was identified, of which 14 (52%) districts reported at least one laboratory-
47 confirmed clinical case in that same epidemiological week. Amongst districts with positive
48 wastewater samples, wastewater surveillance detected MeV in 13/27 (48%) time-district pairs when
49 clinical surveillance failed to detect cases. Amongst district-time instances where at least one
50 laboratory-confirmed measles case was detected (N=127), MeV was detected in at least one
51 wastewater sample collected in that same epidemiological week in 14 (11%) districts

52 **Interpretation**

53 Wastewater surveillance may be a useful complementary surveillance tool for identification of
54 districts with ongoing measles circulation. MeV detection rates may be improved by real-time testing
55 to limit RNA degradation and improved concentration and nucleic acid extraction processes.
56 Ongoing wastewater surveillance for MeV should be conducted in order to understand the role of
57 WES in measles control and elimination.

58 **Funding**

59 This work was funded by BMGF (INV-049271)

60

61 Introduction

62 Measles, a highly infectious, vaccine-preventable viral infection, is targeted by the World Health
63 Organization (WHO) for elimination by 2030[1]. Measles incidence and mortality have declined
64 dramatically since the year 2000 due to increasing global vaccination coverage from 72% in 2000 to
65 83% in 2022, despite a transient decline in 2021 due to the COVID-19 pandemic.[2] Global measles
66 indicators have decreased from 1,072,800 deaths and 145 cases per million in 2000, to 136,200 deaths
67 and 29 cases per million in 2022, of which the largest reduction originates from the WHO-AFRO region
68 (85,417 deaths)[2,3]. Despite these improvements, and recovery of vaccination coverage after the
69 decline during the COVID-19 pandemic, measles is still a leading cause of child death under the age of
70 5 years in low- and middle-income countries[3]. In support of the 2021-2030 strategic framework for
71 measles and rubella elimination, ongoing global efforts are in place to control viral transmission[1].
72 These include the provision of two doses of measles vaccine before the age of 5 years as part of the
73 expanded programme of immunisation (EPI)[4], supplementary immunisation activities (SIAs) every
74 4-5 years where routine vaccination coverage does not achieve 95% coverage, fever-rash surveillance,
75 and rapid, outbreak response[1]. High vaccination coverage and sensitive surveillance systems are vital
76 to achieving elimination.[1]

77 As measles elimination targets and dates approach, the WHO and national public health authorities rely
78 increasingly on measles surveillance to support program monitoring.[1] However, clinical measles
79 surveillance has several limitations. Firstly, many patients and their care-givers do not seek medical
80 care especially when their clinical presentation is uncomplicated. Secondly, health system factors
81 including clinician awareness, propensity to test and notify, financial allocations for testing, and
82 submission of diagnostic specimens often limit submission of diagnostic specimens[5]. Thirdly,
83 incomplete provision of clinical data (such as date of rash onset and vaccination history) leads to
84 challenges in case classification, contact tracing and outbreak response[6]. Fourthly, urine or throat
85 swabs are less frequently submitted for PCR testing, rendering genomic surveillance challenging as the
86 blood submitted for serology testing infrequently contains measles virus (MeV). [7]

87 The National Institute for Communicable Diseases (NICD) in Johannesburg, South Africa is one of 86
88 accredited World Health Organization Global Measles and Rubella Laboratory Network (GMRLN)
89 laboratories and conducts measles testing (IgM and IgG serology, PCR, and sequencing) for South
90 Africa and the southern Africa region.[8] Blood from suspected measles cases (any person with fever,
91 rash and one of cough, conjunctivitis or coryza) is submitted by provincial and district health department
92 staff to the NICD. South African surveillance indicators have consistently achieved more than the
93 required two non-measles fever-rash cases/100,000, except for 2020, when this threshold was only just
94 attained during the SARS-CoV-2 pandemic. [9]

95 Intermittent measles outbreaks have continued to occur over the last 25 years in South Africa, the largest
96 of which led to over 21,000 laboratory-confirmed cases[9–11]. Most recently, an outbreak of over
97 1,383 cases commenced in 2022 following apparent importation of the B3 genotype from immediate
98 neighbours.[12,13] The majority of laboratory-confirmed cases were under 15 years of age, with attack
99 rates as high as 31/100,000 in selected age groups and provinces.[12,13] The measles SIA was
100 conducted from February- April 2023 targeting children 1-15 years of age, however only a 54%
101 coverage rate was achieved (personal communication, WHO-AFRO Daudi Peter Manyanga).

102 Wastewater and environmental surveillance (WES) is presently used to provide highly sensitive
103 surveillance data as part of the WHO-lead global polio elimination initiative (GPEI).[14,15] In 2022
104 and 2023, following widespread uptake of WES to support SARS-CoV-2 and Mpox
105 surveillance,[16,17] the WHO issued and subsequently updated guidance to support the
106 implementation of WES as a complementary surveillance tool for SARS-CoV-2 outbreak preparedness
107 and response.[18] On the basis of these global experiences, it has been suggested that WES be applied
108 as a surveillance tool for other pathogens targeted for elimination.[19] Whilst a number of groups have
109 developed testing methodologies,[20–23] measles WES has not been implemented as part of routine
110 surveillance or during outbreak response. To date, only Benschkop *et al* detected MeV in 6/56 (10,7%)
111 wastewater samples collected for polio surveillance during a measles outbreak in a vaccine-hesitant
112 community.[24]

113 In 2020, the NICD expanded polio testing at 18 WES sentinel sites to include SARS-CoV-2 across nine
114 provinces of SA.[25] Over time, and dependent on funding, the number and location of sites changed.
115 Presently, the NICD coordinates a national WES sentinel surveillance network comprising sampling
116 sites at 28 wastewater treatment plants (WWTPs) across nine South African provinces and border
117 transit points, and a network of 19 sampling sites located within the catchment areas of three large
118 WWTPs in the densely populated Gauteng Province.[25] In this paper, we describe the development,
119 optimization and validation of a RT-dPCR assay for detection and quantification of MeV in wastewater,
120 which we applied to retained concentrated wastewater samples from the national sentinel surveillance
121 network and Gauteng catchment sites. As wastewater samples were collected during the ongoing
122 national measles outbreak that began in October 2022, we compared wastewater findings with clinical
123 surveillance data to explore the role of WES as a complementary surveillance tool for programmatic
124 purposes.

125 **Methods and methods**

126 **Study design and context**

127 We developed and compared RT-qPCR and RT-dPCR assays that detected and differentiated MeV
128 vaccine and wild-type strains. We applied these and a RT-dPCR assay for PMMoV (to normalize MeV

129 results relative to fecal contamination) to retained concentrates of wastewater samples collected from
130 the NICD wastewater surveillance network. Presently the network comprises 28 national WWTP
131 sentinel sites and 19 Gauteng sub-catchment inspection holes. Sampling commenced in February 2021
132 or later, and progressively included all nine SA provinces (Fig 1).

133

134 **Figure 1. Sampling locations at South African wastewater treatment plants (national sentinel**
135 **surveillance sites) and in-line sewer sampling sites (sub-catchment areas in City of Tshwane,**
136 **Johannesburg and Ekurhuleni, inset)**

137

138 **Laboratory methods**

139 *Wastewater sample collection, concentration and storage.*

140 Grab samples of one liter in volume were collected monthly, weekly or biweekly from collection sites
141 and were transported at 4°C to the NICD within 24 hours of collection. On receipt, samples were
142 refrigerated at 4°C, and within 24-48 hours, 200mL of raw sewage was centrifuged at 4650g at 4°C
143 for 30 minutes to clarify the sample. Then 70mL of supernatant was centrifuged at 3500g for 15 minutes
144 through a Centricon® Plus-70 centrifugal ultra-filter (Merck Millipore, Tullagreen, Ireland). Material
145 retained in the filter was eluted to a concentrate volume of approximately 1 mL. Concentrates were
146 processed immediately for SARS-CoV-2, and the balance was retained at -20 °C for extraction and
147 PCR once MeV and other assays were developed and validated

148

149

150

151 *Primers and probes for measles and pepper mild mottle virus (PMMoV) detection*

152 Measles- and pepper mild mottle virus (PMMoV)-specific primers and probes were identified from
153 previously described methods (Table 1)[26,27]. We then designed primers and probes to detect MeV
154 genotypes dominant in recent South African outbreaks (B3, D8 and H1) and differentiate these from
155 vaccine strain (genotype A). These were designed by retrieving partial reference genome sequences
156 coding for the N gene of these genotypes from NCBI. Sequence alignments were performed using
157 MAFFT, and BioEdit was used to identify regions of similarity and difference[28]-[29]. Candidate
158 primers were checked for *in silico* specificity, secondary structure formation, GC content and melting
159 temperature using BLAST (blast.ncbi.nlm.nih.gov/Blast.cgi) and OligoAnalyzer Tool
160 (www.idtdna.com). Final sequences and alignments are shown in Figure 2. Wild-type and vaccine
161 probes were created and labeled with ROX and FAM dyes respectively by Integrated DNA Technology
162 (Coralville, Iowa, USA)

163 **Table 1. Primers, probes and source references used for PCR detection of measles virus in**
 164 **wastewater samples.**

Target	Genes	Primer name	Sequence (5'-3')	Ref
MeV pan	Nucleocapsid	MVN1139	TGGCATCTGAACTCGGTATCAC	Yoshioka N et al.,2013 (31)
		MVN1213R	TGTCCTCAGTAGTATGCATTGCAA	
		MVNP1163Probe	TAMRA-CCGAGGATGCAAGGCTTGTTCAGA	
MeV vaccine (genotype A)	Nucleocapsid	VMA168F	GAGATTGGGGGGCAAGGAAGAT	In-house primers
		VMA242R	GCATCACTTGCTCTGCTGGGCC	
		VMA190P	FAM-AGGAGGGTCAAACAGAGTCGA-MGB	
MeV wild-type (genotype non-A)	Nucleocapsid	VMB168F	RRGATTRGGGGGYAAGGARGAY	In-house primers
		VMB242R	RCATCACTTGMTCTGCTRGRYY	
		VMB190P	ROX-AGGAGGGTCARACAGARYCGR	
PMMoV	Unspecified 5' end	PMMOV_END_F	TTC GCA CTG CAC GGA TAA AGT AT	Daire N et al.,2022 (33)
		PMMOV_END_R	GCC CCA AAT TCA TCT GCT GGA A	
		PMMOV_END_M	FAM-ACGCTGTCGCTTTGC	

165

166

167 **Figure 2. Primers and probe design to differentiate measles virus vaccine strain (Edmonston)**
 168 **from wild genotypes (B3, D8, and H1).**

169 ***Digital PCR optimisation and determination of limit of detection***

170 We determined the limit of detection (LOD) (defined as the concentration in genome copies/uL of the
 171 lowest dilution that is theoretically detectable when using optimized methods) with a single- and duplex
 172 RT-dPCR assay using pan-MeV primers with and without rubella virus (Ruv) primers (not described).
 173 In triplicate, we serially diluted the measles RNA-positive control provided by the Global Measles
 174 Reference Laboratory Network (GMRLN) in 14 two-fold dilutions (neat to 1:16,384) and subjected
 175 these to the QIAcuity OneStep Advanced Probe RT-dPCR assay (Qiagen, Hilden, Germany) on
 176 QIAcuity® One, 5plex System dPCR platform (Qiagen) using 96-well 8.5k nanoplates. The pan-MeV
 177 RT-dPCR master mix contained 3 µL of 4× QIAcuity One-Step Advanced Probe Master Mix, 0.12 µL
 178 of 100× One-Step Advanced RT-Mix, 0.6 µL of 20× primer-probe mix MeV (TAMRA), 0.6 µL of 20×
 179 RuV primer-probe mix (data not shown) (Cy5) and 1 µL of QIAcuity Enhancer GC. The same master

180 mix set-up was used for vaccine and wild-type primers and probe reactions. Cycling conditions for RT-
181 dPCR were reverse transcription at 50°C for 40 minutes, RT enzyme inactivation at 95°C for 1 minute
182 and 45 cycles of annealing & extension at 60°C.

183 Each RNA dilution of the positive control was also tested using RT-qPCR conducted on the Applied
184 Biosystems® 7500 Real-Time PCR System (Applied Biosystems, Foster City, CA, USA) using the
185 QIAcuity One-Step Advanced Probe Master Mix. The RT-qPCR master mix contained 4x One-Step
186 Advanced Probe Master Mix 6.25 µL, 100x One-Step Advanced RT-Mix 0.25 µL, 20x primer-probe
187 mix MV (TAMRA) 1.25 µL, 20x primer-probe mix RV (Cy5) 1.25 µL, Enhancer GC 2 µL, RNase-
188 free water 6 µL.

189 ***Testing of retained wastewater concentrates***

190 Following thawing, retained concentrates were tested in batches of 92 samples. Total nucleic acids were
191 extracted from 200 µL of viral concentrate on the 96 KingFisher Flex Purification System (Thermo
192 Fisher Scientific, Waltham, MA USA) using the MagMAX™ Wastewater Ultra Nucleic Acid Isolation
193 kit (Thermo Fisher Scientific) according to the manufacturers instructions. Briefly, nucleic acids were
194 captured in 520 µL of lysis binding solution before they were washed in 1ml of Wash 1 and 3 solutions
195 and eluted in 60 µL of elution buffer. We used the formula below to determine the genome copy number
196 per millilitre of the original wastewater sample:

$$197 \quad SC = (C_{rxn} * V_{rxn vol.} * (\frac{V_{elute}}{V_{NA}}) * (\frac{V_{total conc.}}{V_{conc. extracted}})) / V_{sample conc.}$$

198 SC = Sample concentration (gc/ml)

199 C_{rxn} = Concentration (gc/µl) obtained from dPCR machine.

200 $V_{rxn vol.}$ = Volume (µl) of the PCR reaction.

201 V_{elute} = Total volume (µl) of the extraction elute.

202 V_{NA} = Volume (µl) of nucleic acids used in the PCR reaction.

203 $V_{total conc.}$ = Total volume (µl) of the concentrate.

204 $V_{conc. extracted}$ = Volume (ml) of concentrate used for extraction.

205 $V_{sample conc.}$ = Volume of the wastewater sample concentrated.

206

207 ***Differentiation of wild-type and vaccine strains***

208 After identification of MeV positive wastewater samples, we returned to residual retained concentrates
209 from these samples and subjected them to a second extraction and PCR using the QIAcuity® One, 5plex
210 System (Qiagen, Hilden, Germany) as described above using both vaccine and wild-type primers to
211 determine genotype A (vaccine) vs non-genotype A (wild-type)(31). we used the commercially
212 available OMZYTA® MMR live attenuated vaccine (derived from Enders' attenuated Edmonston
213 strain) and RNA from clinical samples collected during an outbreak in South Africa, as positive controls
214 for vaccine and wild-type respectively,

215 **Fever-rash surveillance and diagnostic testing**

216 *2.1.2. Fever-rash surveillance*

217 Blood specimens from persons with suspected measles are transported to NICD on ice, and tested for
218 the presence of both measles-specific immunoglobulin M (IgM) antibodies using Euroimmun Anti-
219 Measles virus ELISA (IgM), (Euroimmun AG, Luebeck, Germany). In the absence of vaccination
220 history, NICD surveillance protocols define a laboratory-confirmed case as a positive IgM serologic
221 test for measles in a person with fever, rash and one of cough, conjunctivitis or coryza.

222

223 **Data analysis**

224 *Comparison of dPCR and qPCR results, determination of limit of detection and indicators of fecal* 225 *contamination*

226 We conducted a regression comparing qPCR Ct thresholds and dPCR genome copies/reaction for each
227 dilution of the positive control in monoplex (MeV) and duplex (MeV plus RuV) to determine the limit
228 of detection (LoD) and to assist with interpretation of low concentrations of MeV detected by dPCR
229 (Fig 1). We determined the presence and concentration of PMMoV in gc/uL, and determined the ratio
230 of MeV:PMMoV

231

232

233 **Fig 3. PCR reactions using serial dilutions (1:32 to 1:16,384) of control sequences (obtained**
234 **from the World Health Organization Global Measles and Rubella Laboratory Network**
235 **programme) of measles virus (MeV, red) and MeV duplexed with rubella virus (RuV, blue)**
236 **showing (A) genome copies per microlitre of reaction (vertical axis) by dilution, (dilutions 1:32,**
237 **1:64, 1:128, 1:256, 1:512 omitted from the insert) and (B) the cycle threshold (vertical axis) and**
238 **log of genome copies per microlitre (gc/uL) (horizontal axis). The limit of detection was**
239 **determined to be 0,365 gc/uL in duplex reaction with RuV.**

240

241 *2.4.2. Comparison of clinical surveillance and wastewater measles testing data*

242 We grouped and tallied the total number and the number of IgM-positive clinical specimens submitted
243 for testing by epidemiological week of sample collection and district of health facility where the case
244 was identified using case-line lists collected as part of national measles fever-rash surveillance. We also
245 grouped and tallied wastewater samples by epidemiological week and district. We merged these clinical
246 and wastewater results by epidemiological week and district and eliminated week-district pairs where
247 no wastewater samples were tested. We defined a ‘positive concordant wastewater-clinical pair’ as any
248 instance in a given epidemiological-week in a specified district where at least one wastewater sample
249 tested positive for MeV and one case was identified. Conversely we defined a ‘negative concordant
250 pair’ as one where all wastewater and clinical samples tested negative or no clinical samples were

251 submitted. The remaining ‘discordant’ pairs were those where least one case was detected but all
252 wastewater samples were negative, or vice versa. We determined and described the proportion of
253 concordant and discordant week-district pairs, and presented these in two-by-two tables. In concordant
254 instances, we also determined the relationship between the number of measles cases detected and the
255 proportion testing positive with the wastewater levels of MeV in genome copies/mL using simple
256 regression. Given intrinsic weaknesses in measles surveillance (e.g. absent patient health seeking), we
257 investigated and described the discordant instances where MeV was detected in wastewater, but no
258 clinical cases were detected, to identify if clinical cases had been identified in neighbouring districts in
259 the same epidemiological week, or in the same district during the week before or after the positive
260 sample.

261 **Ethics**

262 The protocol for this study was reviewed and approved by the University of the Witwatersrand Human
263 Research Ethics Committee (MM220904)

264 **Results**

265 **RT-dPCR assay optimisation and determination of the limit of detection**

266 The manufacture’s cycling profile recommended extension for 30s was increased to 1 minute, and the
267 cycling profile increase from 40 to 45 cycles in order to obtain optimal separation of positive and
268 negative partitions on the RT-dPCR platform. Our in-house primers and assay successfully
269 differentiated clinical MeV strains from vaccine strain (see Supplement). Following optimization of
270 MeV and multiplex MeV and RuV qPCR and dPCR protocols, we determined the relationship between
271 the number positive dPCR partitions and Ct values of qPCR (Fig 1). The limit of detection was
272 determined to be 0,365 gc/uL in duplex reaction with RuV.

273

274

275 **Testing of retained concentrates from wastewater samples**

276

277 A total of 2,149 wastewater concentrates had been stored after processing of grab samples collected
278 across nine provinces between 16 February 2021 and 08 March 2024. Wastewater samples from
279 Limpopo, Mpumalanga, NorthWest and the Northern Cape provinces accounted for 58/2149 (2,6%) as
280 sampling from these sites commenced in November 2023-January 2024, or ceased in May 2022
281 (Northern Cape Province). Retained concentrates underwent extraction and duplex MeV and RuV
282 (results not presented here) PCR in batches from November 2023 to March 2024. Of the total, 43
283 samples (2%) tested positive for MeV (Table 2). The majority of wastewater samples were collected
284 in Gauteng province (n=1492), which also had the highest percentage of samples positive for MeV (31,
285 2,1%, Table 2). No MeV was detected in wastewater from the provinces with the lowest numbers of

286 tested samples (Table 1). Over the two year period, the majority of positive samples were identified in
 287 2024 (Fig 2, Fig S2). Amongst 42 samples undergoing PCR genotyping, 6 tested positive for both A
 288 (vaccine) and non-A (wild-type) genotypes , whilst 36 tested positive for non-A (wild-type) genotype
 289 only. All but one sample with vaccine strain detected were collected in Gauteng province, and all were
 290 collected at least one month after completion of the national outbreak response SIA. The median MeV
 291 concentration amongst positive samples was 2,12 (2,04-2,25) gc/mL, and the median ratio of
 292 MeV:PMMoV was 441×10^{-3} (range 276×10^{-3} - 1528×10^{-3}).

293

294 **Table 2: The number of samples tested for MeV by province (and district of Gauteng Province)**

295 together with the number and proportion testing positive and the range of genome copies/uL amongst
 296 positive samples. All samples tested positive for crAssphage, and the range of quantitative results in
 297 genome copies/uL is also provided.

298

Province	District	Time period		MeV (# tested)	MeV (# positive, %)	MeV gc/mL (median Q1 - Q3)	PMMoV gc/mL (median, Q1-Q3)	Ratio MeV:PMMoV $\times 10^{-3}$ (median, Q1-Q3)
		Date from	Date to					
Eastern Cape	Buffalo City and Nelson Mandela Metro	April 2021	March 2024	187	3 (1.6)	2,12 (2,05-6,4)	404 (346-504)	7,37 (5,33-16,9)
Free State	Mangaung	August 2021	March 2024	183	3 (1,6)	2,17 (2,07-4,12)	310 (155-548)	11,17 (6,96-15,37)
Gauteng	City of Tshwane	April 2021	March 2024	637	13 (2)	2,12 (2,08-6,11)	1017 (338-2871)	3,27 (1,11-8,04)
Gauteng	City of Ekurhuleni	April 2021	March 2024	547	13 (2.4)	2,11 (2,04-2,19)	442 (316-1421)	5,54 (1,43-15,78)
Gauteng	City of Johannesburg	April 2021	March 2024	308	5 (1.6)	2,14 (2,11-2,16)	177 (123-199)	11,29 (10,96-17,49)
KwaZulu-Natal	eThekwin	August 2021	March 2024	149	5 (3,4)	2,04 (2,04-4,17)	1079 (387-2343)	4,08 (0,87-5,27)
North West	Bojanala	November 2023	March 2024	22	0	-	1231 (653-1914)	-
Northern Cape	Namakwa	August 2021	May 2022	14	0	-	927 (505 - 105)	-
Western Cape	City of Cape Town	August 2021	March 2024	72	1 (1.4)	2.1*	1934	1,1
Mpumalanga	Ehlanzeni	February 2024	March 2024	10	0	-	616 (217- 821)	-
Limpopo	Mopani	February 2024	March 2024	12	0	-	370 (201 - 740)	-
South Africa		April 2021	March 2024	2149	43 (2)	2,12 (2,04-2,25)	441 (276-1528)	5,27 (1,37-15,72)

299

300

301

302 **Fig 4: Epidemiological curve showing the number clinical cases submitted to the National**
303 **Institute for Communicable Diseases as part of fever-rash surveillance that tested positive for**
304 **measles IgM (blue bars) and the number of positive wastewater samples (orange or green) by**
305 **epidemiological week (2021, week 52, to 2024, week 10) from A) the entire South Africa, and B)**
306 **Gauteng Province**

307
308
309

310 **Comparison of clinical surveillance data with wastewater MeV samples.**

311 For each district, the number and proportion of wastewater samples testing positive over the period of
312 observation ranged from 0 to 40% (week 12, 2023 Ekurhuleni Metropole) as seen in Fig 2A&B and S2.
313 We identified 481 epidemiological week-districts where both wastewater samples and clinical
314 diagnostic tests were submitted for surveillance. Amongst week-districts, some districts had multiple
315 wastewater samples (median=2, range 1-19 samples) for a given week from a number of sampling
316 locations (n=1-7), and 357 week-district pairs had more than one positive clinical case per week,
317 ranging from 1-104 cases, with a median of 3 cases per week.

318 Amongst all week-district pairs, measles was identified in the week-district by both wastewater and
319 clinical surveillance in 2.9% (14) pairs, or, by neither wastewater and clinical surveillance in 343 (71%)
320 of pairs (Table 3). Discordance was observed in the remaining 124 (25.8%) of week-district pairs of
321 which the larger proportion (23.1%) were those with negative wastewater samples in districts where
322 clinical cases were detected. When the time frame for a concordant positive test was broadened to
323 include the presence of clinical cases up to a week before or after a positive wastewater sample, the
324 number of clinical-wastewater time-district pairs where wastewater tested positive and clinical cases
325 were detected increased to 17 (3.5%), whilst the number of time-district pairs where wastewater
326 detected evidence of measles and clinical surveillance failed to detect a case, decreased to 10 (2.1%,
327 Table 3). Amongst concordant wastewater and clinical week-district pairs, there was no discernable
328 relationship between number of cases and measles genome copies/ml in wastewater. Amongst
329 discordant week-district pairs where MeV was detected in wastewater (Table 4), no clinical testing was
330 conducted in nine districts during that week, whilst 1-15 laboratory-confirmed cases of measles were
331 identified in eight of 14 neighbouring districts.

332 For both wastewater and clinical surveillance, results were considered positive if one or more specimens
333 or samples tested positive in that epidemiological week, and negative if no specimens or samples tested
334 positive. In part A, clinical results were evaluated for the same epidemiological week as wastewater
335 results. In part B, clinical results from the previous, same and next epidemiological week were
336 considered together and compared with wastewater results for a specific week, in order to accommodate
337 for a 7-14 day measles incubation period. No dose-relationship was discernable between the

338 concentration of MeV detected in wastewater and the number of laboratory-confirmed cases in the same
 339 district and epidemiological week (Figure S2)

340

341 **Table 3. A comparison of wastewater and clinical testing results in the same district and**
 342 **epidemiological week for surveillance conducted between epidemiological week 7, 2021 to**
 343 **epidemiological Week 10, 2024.**

Part A: same epidemiological week		Wastewater Results		
		Positive	Negative	Total
Clinical Results (IgM)	Positive (IgM)	14 (2.9%)	111 (23.1%)	125
	Negative (IgM)	13 (2.7%)	343 (71.3%)	356
	Total	27	454	481*
Part B: same epidemiological week + clinical results one week before and one after		Wastewater Results		
		Positive	Negative	Total
Clinical Results (IgM)	Positive (IgM)	17 (3.5%)	190 (39.5%)	207
	Negative (IgM)	10 (2.1%)	264 (54.9%)	274
	Total	27	454	481

344

345 **Table 4. Fever-rash surveillance results for epidemiological weeks and districts where wastewater**
 346 **samples tested positive for measles RNA during epidemiological week 7, 2021 to epidemiological**
 347 **Week 10, 2024.** Epidemiological weeks are designated with the year followed by the week number.

Epidemiological week	District	District under observation		Clinical cases in neighbouring districts		
		Wastewater (positive/total)	Clinical (IgM +/-total)	Cases in that week	Cases the week before	Cases the week after
2021-W45	Ekurhuleni	1/2	.	0	0	0
2021-W45	Tshwane	1/2	.	0	0	0
2022-W04	Buffalo city	1/2	.	0	0	0
2022-W04	Ekurhuleni	1/2	0/2	2	0	2
2022-W05	Ethekwini	1/2	.	0	0	0
2022-W07	Buffalo city	1/2	.	0	0	0
2022-W18	Tshwane	1/2	0/2	1	0	1
2022-W42	Ekurhuleni	1/2	.	5	4	5
2023-W12	Ethekwini	1/1	0/6	0	1	1
2023-W12	Mangaung	1/2	0/2	4	1	1
2023-W15	Ekurhuleni	1/1	0/1	15	15	7
2023-W20	Johannesburg	1/6	.	9	12	12
2023-W25	Ethekwini	1/1	.	0	0	0
2023-W33	Ekurhuleni	1/5	0/1	7	4	9
2023-W37	Buffalo city	1/4	.	0	0	0

2023-W37	Ekurhuleni	1/10	0/1	2	9	12
----------	------------	------	-----	---	---	----

348

349

350

351 4. Discussion

352 Retrospective testing of retained wastewater concentrates sampled from national and sentinel site
353 surveillance during an ongoing measles outbreak in South Africa detected MeV RNA at copy numbers
354 ranging from 1,97 - 165,8 gc/mL in 43 (2%) of wastewater samples. We observed positive MeV
355 wastewater detections in health districts where no cases were detected. Despite likely RNA decay on
356 account of sample storage, our results illustrate the usefulness of this surveillance modality, and suggest
357 that real-time wastewater surveillance should be conducted together with clinical surveillance to
358 determine the sensitivity of MeV WES and to develop appropriate public health responses to wastewater
359 findings.

360 For a number of reasons, we believe that detection of MeV in wastewater is representative of measles
361 infections in the catchment area and district and has public health significance. Firstly, MeV is excreted
362 in urine for up to 14 days post vaccination,[30] and will therefore be present in wastewater following
363 wild-type infection. Secondly, viruses from point sources may be detectable in sewage networks for
364 several days after shedding ceases on account of dispersion due to differing gradients, varying flow
365 rates and entrapment in sediment.[31] Thirdly, a positive finding of MeV in wastewater samples even
366 at low copy numbers, is likely to be true, as we demonstrated validity of low copy numbers by testing
367 serial dilutions of positive controls by qPCR and dPCR. Fourthly, MeV has been detected in wastewater
368 in an outbreak context.[24] and in low copy numbers ranging from 2-22 genome copies per
369 milliliter[23]. Fifthly, in our study, laboratory-confirmed measles cases were detected in 14/27 (52%)
370 districts where wastewater tested positive for MeV. MeV negative results in the remaining districts may
371 be explained by the intrinsic limitations of wastewater detection for viral RNA targets (such as viral
372 decay in wastewater matrix, and/or excessive dilution, or timing of sampling), geographical mismatch
373 between case location and wastewater catchment area, or due to prolonged storage of concentrates at -
374 20°C. Lastly, the finding of MeV in wastewater when clinical surveillance fails to identify cases
375 indicates potential for measles outbreaks in our context where vaccination coverage is reportedly less
376 than 95%.

377 Several limitations are evident from our findings. Sample storage and wastewater concentration
378 methods (ultrafiltration) may have contributed to low viral recovery rates and concentrations[32]. Real
379 time processing and newer concentration-extraction methodologies may enhance detection rates.
380 Despite wastewater sample collection during an outbreak (October 2022 and ongoing) and subsequent

381 12 week vaccination campaign (February to April 2023), we identified vaccine genotype in only 6
382 samples, all of which were collected outside the campaign window. RNA decay, and viral dynamics in
383 wild-type infection vs vaccine inoculation, coupled with vaccination of largely immune persons may
384 account for this. This may account for the absence of a dose-response relationship between the
385 concentration of MeV detected in wastewater and the number of laboratory-confirmed cases in the same
386 district and epidemiological week. Lastly, in the context of the coupling of measles and rubella vaccine
387 and combined programmatic goals, there is merit in using a multiplex assays for WES detection of
388 measles and rubella wild-type and vaccine strain detection. Our assays, whilst multiplexed with RuV,
389 did not include vaccine-specific primers and probes for either virus. The inclusion of vaccine-strain-
390 specific primers and probes in the detection assay would facilitate interpretation of results and support
391 immediate public health action. Lastly, there is no available evidence at this moment to support the need
392 for normalizing PCR targets relative to population size using fecal indicators, flow rates or
393 combinations thereof for MeV detection. All our retained samples tested positive for PMMoV at high
394 genome copies/uL, indicating the presence of fecal contamination.

395 Optimal public health responses to detection of MeV in wastewater in the absence of clinical cases need
396 careful consideration. Following detection of clinical cases, WHO presently recommends case
397 investigation and diagnostic testing, contact tracing with ring vaccination, case finding, and district
398 wide supplementary immunization activities (SIA) if a threshold of cases (two to five cases per health
399 district per month) are identified.[33] Our approach to analysis of our findings, namely a comparison
400 of wastewater and clinical surveillance data at a district level by epidemiological week, is informed by
401 biological parameters of measles infection and WHO guidelines regarding public health responses to
402 measles cases as follows: the incubation period of measles is 1-2 *weeks*, and current surveillance
403 guidelines suggest a threshold of 2-5 cases *per district* in one month before initiating appropriate public
404 health interventions[34]. Therefore, assessment of wastewater detection vs cases per week in a given
405 geographical area may provide forewarning of incubating cases, and support heightened surveillance as
406 a minimum public health response. However, as the sensitivity of WES MeV surveillance becomes
407 clearer, and given the elimination agenda, it may become evident that WES MeV detection should
408 trigger a supplementary immunization activity.

409 Our findings suggest that real-time WES for measles holds promise to support the global measles and
410 rubella elimination agendas. WES may complement clinical surveillance or be used as the only
411 surveillance modality in contexts with limited access to diagnostic testing. Evaluation of more efficient
412 concentration, extraction and detection methods to improve sensitivity and provide sufficient material
413 for genotyping are desirable. Integration of real-time MeV WES together with clinical surveillance
414 may allow for sensitivity estimations and insight into public health actions following detection of
415 wastewater.

416

417 **Acknowledgements**

418 We would like to acknowledge the contribution of the NICD Centre for Vaccines and Immunology for
419 use of the polio environmental laboratory, and measles surveillance data (also approved by Wits
420 HREC). We thank the municipal workers, and NICD drivers who collected and transported certain
421 wastewater samples. We thank our sample collectors Lebohang Rabotapi, Lethabo Monametsi, and
422 laboratory technicians Thabo Mangena, Mantshali Motloung for collecting and initial processing of
423 the samples, and our administrator Namhla Madikane for her helpful support and willingness to go to
424 the field when necessary.

425

426 **Supplementary material**

427

428

429 **Figure S1. Epidemiological curves by province of South Africa showing the number of IgM**
430 **positive cases submitted to the National Institute for Communicable Diseases as part of fever-**
431 **rash surveillance and the number of positive wastewater samples (green) by epidemiological**
432 **week (2021, week 52, to 2024, week 10)**

433 **Figure S2. The number of laboratory-confirmed measles cases (vertical axis) by the number of**
434 **genome copies of measles virus per millilitre of wastewater (horizontal axis) in wastewater**
435 **collected from a sample collection point in the district where the measles case was identified**
436 **(n=43)**

437

438

439

440

441 **References**

- 442 1. WHO. Measles and Rubella Strategic Framework: 2020-2030. Geneva: WHO; 2020. Available:
443 <https://www.who.int/publications/i/item/measles-and-rubella-strategic-framework-2021-2030>
- 444 2. Dixon MG, Ferrari M, Antoni S, Li X, Portnoy A, Lambert B, et al. Progress Toward Regional Measles
445 Elimination - Worldwide, 2000-2020. *MMWR Morb Mortal Wkly Rep.* 2021;70: 1563–1569.
446 doi:10.15585/mmwr.mm7045a1
- 447 3. Minta AA, Ferrari M, Antoni S, Portnoy A, Sbarra A, Lambert B, et al. Progress Toward Measles
448 Elimination - Worldwide, 2000-2022. *MMWR Morb Mortal Wkly Rep.* 2023;72: 1262–1268.
449 doi:10.15585/mmwr.mm7246a3
- 450 4. Measles vaccines: WHO position paper – April 2017. *Releve Epidemiol Hebd.* 2017;92: 205–227.

- 451 5. Patel MK, Gibson R, Cohen A, Dumolard L, Gacic-Dobo M. Global landscape of measles and rubella
452 surveillance. *Vaccine*. 2018;36: 7385–7392. doi:10.1016/j.vaccine.2018.10.007
- 453 6. Orenstein WA, Hinman A, Nkowane B, Olive JM, Reingold A. Measles and Rubella Global Strategic
454 Plan 2012-2020 midterm review. *Vaccine*. 2018;36 Suppl 1: A1–A34. doi:10.1016/j.vaccine.2017.09.026
- 455 7. Hübschen JM, Gouandjika-Vasilache I, Dina J. Measles. *Lancet Lond Engl*. 2022;399: 678–690.
456 doi:10.1016/S0140-6736(21)02004-3
- 457 8. World Health Organization. Manual for the laboratory-based surveillance of measles, rubella, and
458 congenital rubella syndrome. Geneva, Switzerland; 2018. Available: [https://www.who.int/immunization/
459 monitoring_surveillance/burden/laboratory/manual/en/](https://www.who.int/immunization/monitoring_surveillance/burden/laboratory/manual/en/)
- 460 9. Yousif M, Hong H, Malfeld S, Smit S, Makhathini L, Motsamai T, et al. Measles incidence in South
461 Africa: a six-year review, 2015–2020. *BMC Public Health*. 2022;22: 1647. doi:10.1186/s12889-022-14069-w
- 462 10. McMorrow ML, Gebremedhin G, van den Heever J, Kezaala R, Harris BN, Nandy R, et al. Measles
463 outbreak in South Africa, 2003–2005. *South Afr Med J Suid-Afr Tydskr Vir Geneesk*. 2009;99: 314–319.
- 464 11. Ntshoe GM, McAnerney JM, Archer BN, Smit SB, Harris BN, Tempia S, et al. Measles outbreak in
465 South Africa: epidemiology of laboratory-confirmed measles cases and assessment of intervention, 2009–2011.
466 *PloS One*. 2013;8: e55682. doi:10.1371/journal.pone.0055682
- 467 12. National Institute for Communicable diseases. South African Measles Outbreak Update, 2023.
468 Johannesburg, South Africa: National Institute for Communicable Diseases; 2023 Jun. Available:
469 <https://www.nicd.ac.za/south-african-measles-outbreak-update-2023-2-june-2023/>
- 470 13. National Institute for Communicable diseases. Measles and Rubella Monthly Surveillance Report, 8
471 April 2024. Johannesburg, South Africa: National Institute for Communicable Diseases; 2024 Apr. Available:
472 <https://www.nicd.ac.za/measles-and-rubella-monthly-surveillance-report-08-april-2023/>
- 473 14. Global polio elimination initiative. Polio Eradication Strategy 2022–2026: Delivering on a Promise.
474 WHO; 2022. Available: <https://polioeradication.org/gpei-strategy-2022-2026/>
- 475 15. O’Reilly KM, Verity R, Durry E, Asghar H, Sharif S, Zaidi SZ, et al. Population sensitivity of acute
476 flaccid paralysis and environmental surveillance for serotype 1 poliovirus in Pakistan: an observational study.
477 *BMC Infect Dis*. 2018;18: 176. doi:10.1186/s12879-018-3070-4
- 478 16. Kilaru P, Hill D, Anderson K, Collins MB, Green H, Kmush BL, et al. Wastewater Surveillance for
479 Infectious Disease: A Systematic Review. *Am J Epidemiol*. 2023;192: 305–322. doi:10.1093/aje/kwac175
- 480 17. Wolfe MK, Yu AT, Duong D, Rane MS, Hughes B, Chan-Herur V, et al. Use of Wastewater for Mpox
481 Outbreak Surveillance in California. *N Engl J Med*. 2023;388: 570–572. doi:10.1056/NEJMc2213882
- 482 18. WHO. Environmental surveillance for SARS-CoV-2 to complement other public health surveillance.
483 Geneva, Switzerland; 2023. Available: <https://www.who.int/publications/i/item/9789240080638>
- 484 19. Shaw AG, Troman C, Akello JO, O’Reilly KM, Gauld J, Grow S, et al. Defining a research agenda for
485 environmental wastewater surveillance of pathogens. *Nat Med*. 2023;29: 2155–2157. doi:10.1038/s41591-023-
486 02457-7
- 487 20. Hayes EK, Gouthro MT, LeBlanc JJ, Gagnon GA. Simultaneous detection of SARS-CoV-2, influenza
488 A, respiratory syncytial virus, and measles in wastewater by multiplex RT-qPCR. *Sci Total Environ*. 2023;889:
489 164261. doi:10.1016/j.scitotenv.2023.164261
- 490 21. Wu J, Wang MX, Kalvapalle P, Nute M, Treangen TJ, Ensor K, et al. Multiplexed detection,
491 partitioning, and persistence of wild type and vaccine strains of measles, mumps, and rubella viruses in
492 wastewater. *medRxiv*; 2024. p. 2024.05.23.24307763. doi:10.1101/2024.05.23.24307763
- 493 22. Kevill JL, Lambert-Slosarska K, Pellett C, Woodhall N, Richardson-O’Neill I, Pântea I, et al.
494 Assessment of two types of passive sampler for the efficient recovery of SARS-CoV-2 and other viruses from
495 wastewater. *Sci Total Environ*. 2022;838: 156580. doi:10.1016/j.scitotenv.2022.156580

- 496 23. Rector A, Bloemen M, Hoorelbeke B, Ranst MV, Wollants E. Detection of measles virus genotype D8
497 in wastewater of Brussels capital region, Belgium, March 2024. medRxiv; 2024. p. 2024.04.08.24305478.
498 doi:10.1101/2024.04.08.24305478
- 499 24. Benschop KSM, van der Avoort HG, Jusic E, Vennema H, van Binnendijk R, Duizer E. Polio and
500 Measles Down the Drain: Environmental Enterovirus Surveillance in the Netherlands, 2005 to 2015. Appl
501 Environ Microbiol. 2017;83: e00558-17. doi:10.1128/AEM.00558-17
- 502 25. NICD. Wastewater-based epidemiology for SARS-CoV-2 surveillance in South Africa - weekly report.
503 Johannesburg, South Africa: NICD; 2024 Epidemiological week. Available: [https://www.nicd.ac.za/diseases-a-](https://www.nicd.ac.za/diseases-a-z-index/disease-index-covid-19/surveillance-reports/weekly-reports/wastewater-based-epidemiology-for-sars-cov-2-in-south-africa/)
504 [z-index/disease-index-covid-19/surveillance-reports/weekly-reports/wastewater-based-epidemiology-for-sars-](https://www.nicd.ac.za/diseases-a-z-index/disease-index-covid-19/surveillance-reports/weekly-reports/wastewater-based-epidemiology-for-sars-cov-2-in-south-africa/)
505 [cov-2-in-south-africa/](https://www.nicd.ac.za/diseases-a-z-index/disease-index-covid-19/surveillance-reports/weekly-reports/wastewater-based-epidemiology-for-sars-cov-2-in-south-africa/)
- 506 26. Yoshioka N, Hagiya H, Deguchi M, Hamaguchi S, Kagita M, Tomono K. Simultaneous and rapid
507 detection method for measles and rubella using single-tube multiplex real-time quantitative RT-PCR. J Infect
508 Chemother Off J Jpn Soc Chemother. 2019;25: 829–831. doi:10.1016/j.jiac.2019.05.005
- 509 27. Cantillon D, Roberts AP. Development and evaluation of TaqMan-based, one-step, real-time RT-PCR
510 assays for pepper mild mottle virus detection for near source tracking and wastewater-based epidemiology
511 validation. PloS One. 2022;17: e0278784. doi:10.1371/journal.pone.0278784
- 512 28. Yamada KD, Tomii K, Katoh K. Application of the MAFFT sequence alignment program to large
513 data—reexamination of the usefulness of chained guide trees. Bioinformatics. 2016;32: 3246–3251.
514 doi:10.1093/bioinformatics/btw412
- 515 29. Carlsblad, C. H T. BioEdit: An important software for molecular biology. GEF bulletin of
516 Biosciences. 2011;2: 60–61.
- 517 30. Rota PA, Khan AS, Durigon E, Yuran T, Villamarzo YS, Bellini WJ. Detection of measles virus RNA
518 in urine specimens from vaccine recipients. J Clin Microbiol. 1995;33: 2485–2488. doi:10.1128/jcm.33.9.2485-
519 2488.1995
- 520 31. Hovi T, Stenvik M, Partanen H, Kangas A. Poliovirus surveillance by examining sewage specimens.
521 Quantitative recovery of virus after introduction into sewerage at remote upstream location. Epidemiol Infect.
522 2001;127: 101–106. doi:10.1017/s0950268801005787
- 523 32. Rusiñol M, Martínez-Puchol S, Forés E, Itarte M, Girones R, Bofill-Mas S. Concentration methods for
524 the quantification of coronavirus and other potentially pandemic enveloped virus from wastewater. Curr Opin
525 Environ Sci Health. 2020;17: 21–28. doi:10.1016/j.coesh.2020.08.002
- 526 33. WHO. Measles outbreak guide. Geneva, Switzerland: WHO; 2022. Available:
527 <https://www.who.int/publications/i/item/9789240052079>
- 528 34. WHO. WHO African Regional measles and rubella surveillance guidelines. WHO AFRO; 2015.
529 Available: [https://www.afro.who.int/publications/who-african-regional-measles-and-rubella-surveillance-](https://www.afro.who.int/publications/who-african-regional-measles-and-rubella-surveillance-guidelines-0)
530 [guidelines-0](https://www.afro.who.int/publications/who-african-regional-measles-and-rubella-surveillance-guidelines-0)
- 531

	Forward Primer			Probe			Reverse Primer			
	1400	1410	1420	1430	1440	1450	1460	1470	1480	1490
AF266288.2 Edmonston	acc	gagattggggggcaaggaagat	aggaggggtcaaacagagtcga	ggagaagccagggagagctacagagaaaccg	ggcccagcagagcaagtgatgc					
MN893225.1 Measles B3	gc.....t.....g.cac.....g.....c.....g.....c.....g.....c.....g.....c.....g.....c.....g.....c.....g.....c.....
OR290098.1 Measles B3	gt.....g.ca.ac.....c.....c.....a.....t.....a.....t.....a.....t.....a.....t.....a.....t.....a.....t.....
OR290098.1 Measles B3	gt.....g.ca.ac.....c.....c.....a.....t.....a.....t.....a.....t.....a.....t.....a.....t.....a.....t.....
KX838946.2 Measles B3	gt.....g.cac.....c.....c.....a.....t.....a.....t.....a.....t.....a.....t.....a.....t.....a.....t.....
PP998307.1 Measles D8	..	ag.....g.....t.gg.....g.....a.....t.....a.....t.....a.....t.....a.....t.....a.....t.....a.....t.....
MF496200.1 Measles D8	..	ag.....g.....g.....g.....g.....a.....t.....a.....t.....a.....t.....a.....t.....a.....t.....a.....t.....
MF496201.1 Measles D8	..	ag.....g.....g.....g.....g.....a.....t.....a.....t.....a.....t.....a.....t.....a.....t.....a.....t.....
MH356237.1 Measles D8	g	ag.....gg.g.....gtagtg.....tt.....ttg.....t.....ttg.....t.....ttg.....t.....ttg.....t.....ttg.....t.....ttg.....
MZ483930.1 Measles H1	..	g.....a.....g.....aa.....c.....g.....g.....g.....g.....g.....g.....g.....g.....g.....g.....g.....g.....
MZ483937.1 Measles H1	..	g.....a.....g.....aa.....c.....g.....g.....g.....g.....g.....g.....g.....g.....g.....g.....g.....g.....
KJ755976.1 Measles H1	..	g.....a.....g.....aa.....c.....g.....g.....g.....g.....g.....g.....g.....g.....g.....g.....g.....g.....
KJ755979.1 Measles H1	..	g.....a.....g.....aa.....c.....g.....g.....g.....g.....g.....g.....g.....g.....g.....g.....g.....g.....

Figure X. Primers and probe design to differentiate measles virus vaccine strain (Edmonston) from wild genotypes (B3, D8, and H1).



Figure S1. Sampling locations at South African wastewater treatment plants (national sentinel surveillance sites) and in-line sewers (case-study sub-catchment areas in City of Tshwane, Johannesburg and Ekurhuleni, inset)

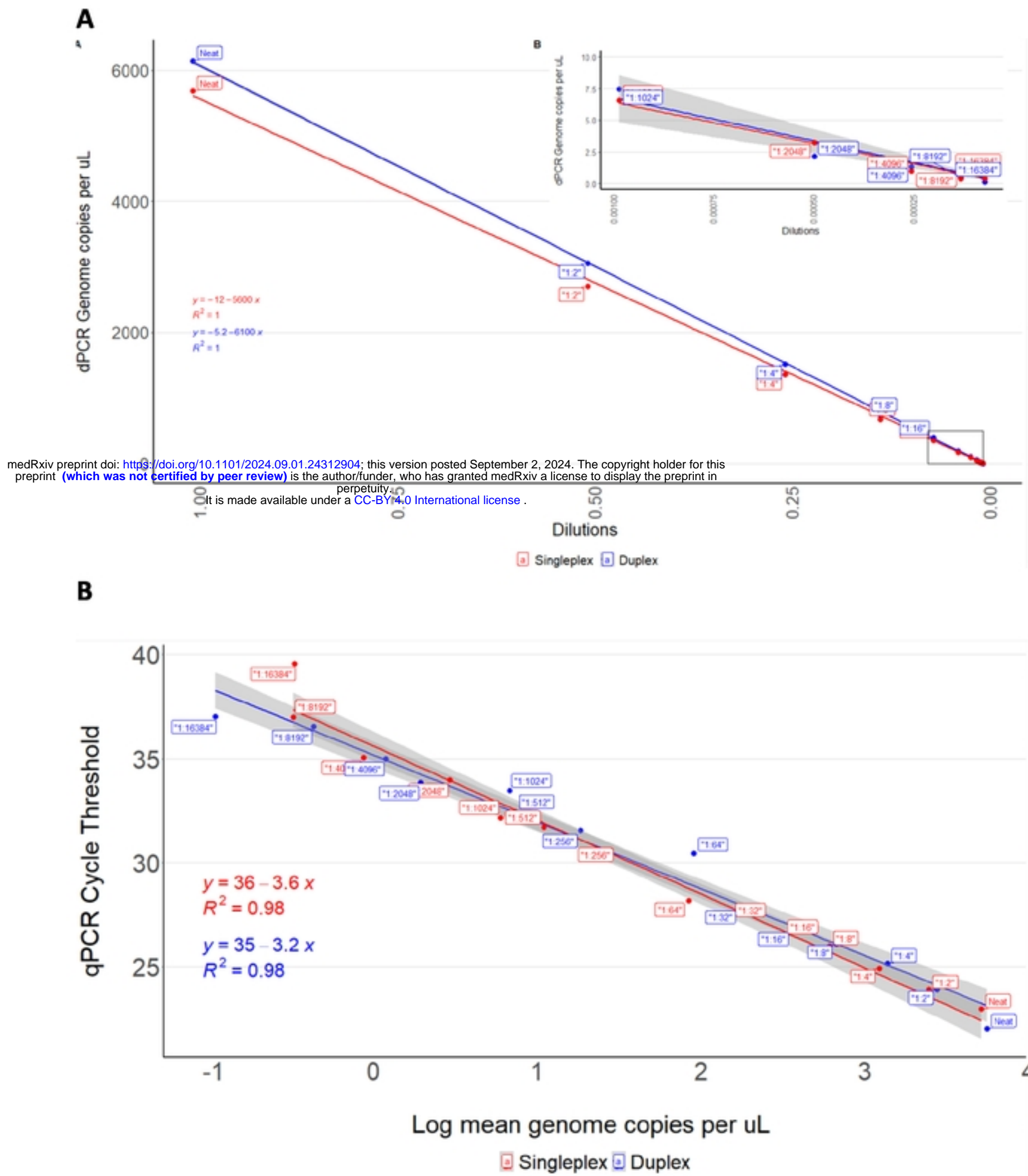


Figure 1. Graphs constructed for PCR reactions using serial dilutions (1:32 to 1:16,384) of control sequences (obtained from the World Health Organization Global Measles and Rubella Laboratory Network programme) of measles virus (MeV, red) and MeV duplexed with rubella virus (RuV, blue) showing (A) genome copies per microlitre of reaction (vertical axis) by dilution, (dilutions 1:32, 1:64, 1:128, 1:256, 1:512 omitted from the insert) and (B) the cycle threshold (vertical axis) and log of genome copies per microlitre (gc/uL) (horizontal axis). The limit of quantification was determined to be 0,365 gc/uL in duplex reaction with RuV.

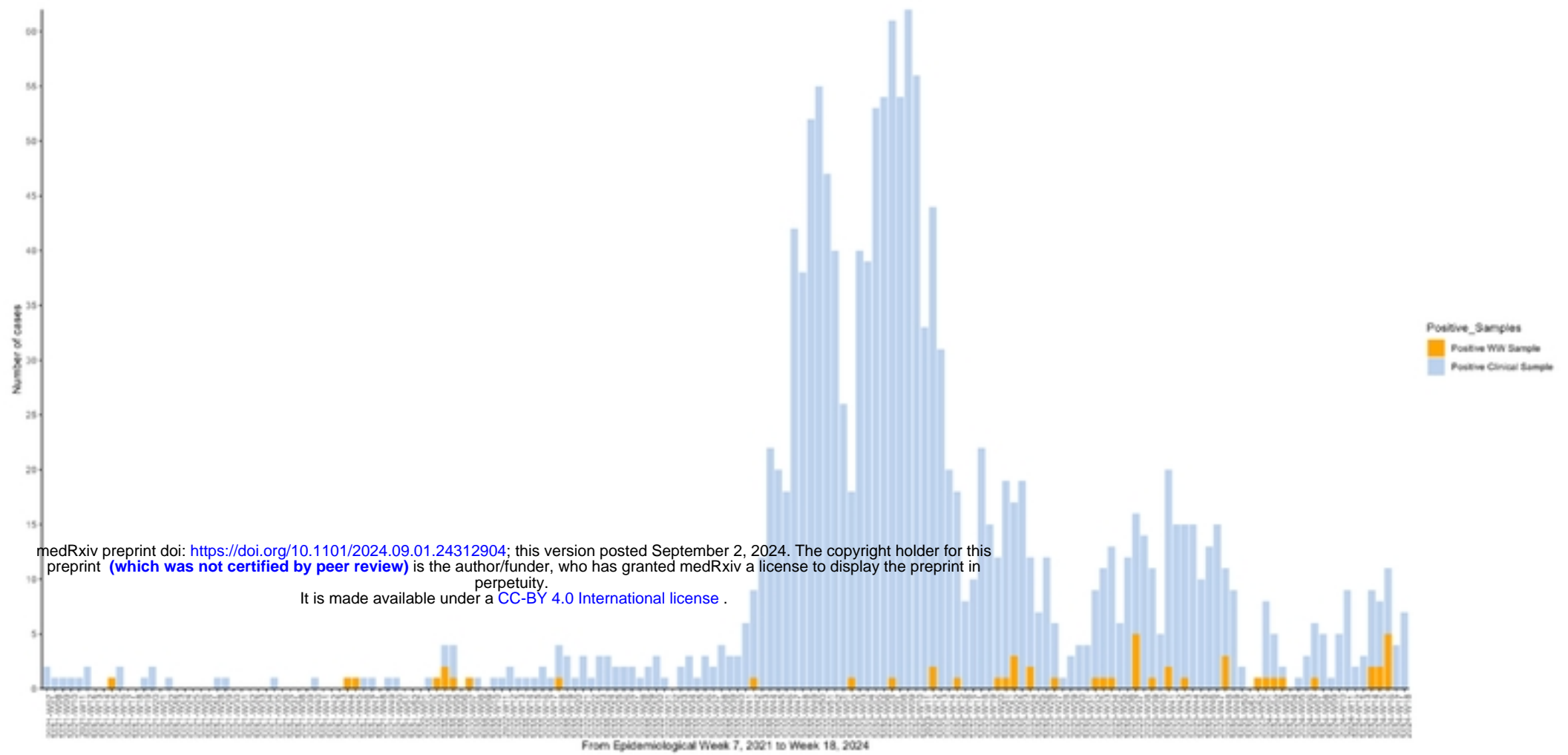
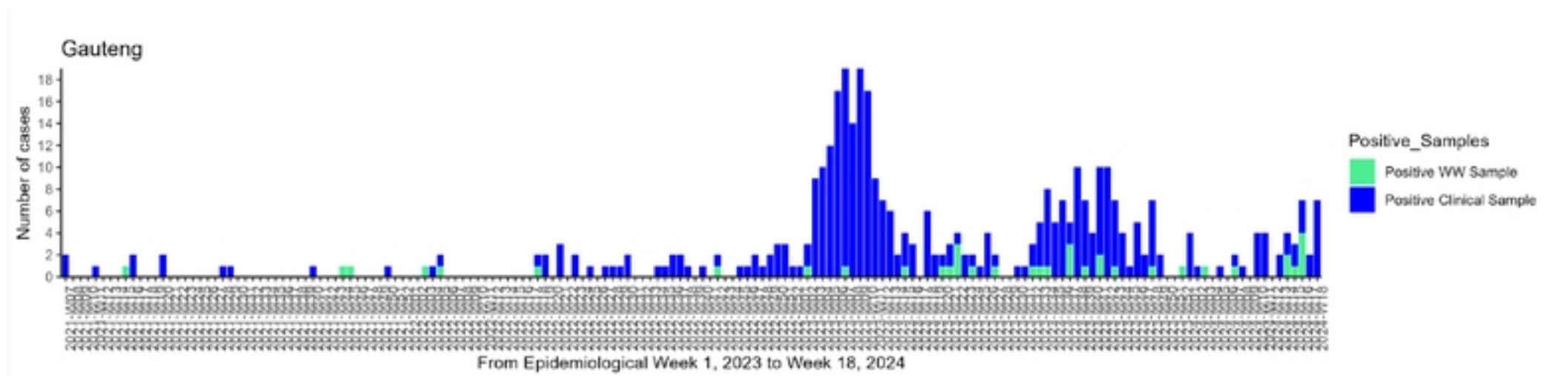
A**B**

Figure 2. Epidemiological curve showing the number of IgM positive cases submitted to the National Institute for Communicable Diseases as part of fever-rash surveillance (blue bars) and the number of positive wastewater samples (orange or green) by epidemiological week (2021, week 52, to 2024, week 10) from A) the entire South Africa, and B) Gauteng province

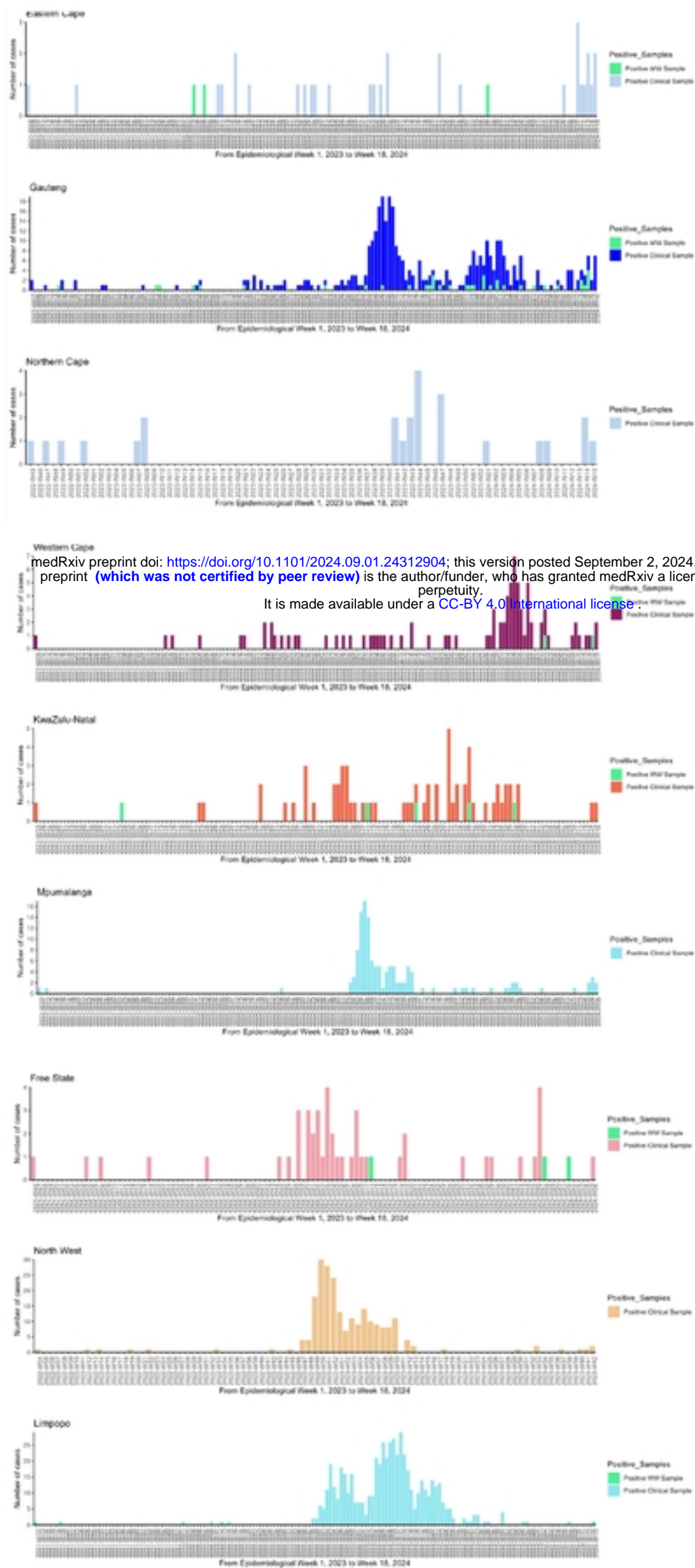


Figure S2. Epidemiological curves by province of South Africa showing the number of IgM positive cases submitted to the National Institute for Communicable Diseases as part of fever-rash surveillance and the number of positive wastewater samples (green) by epidemiological week (2021, week 52, to 2024, week 10)

medRxiv preprint doi: <https://doi.org/10.1101/2024.09.01.24312904>; this version posted September 2, 2024. The copyright holder for this preprint **(which was not certified by peer review)** is the author/funder, who has granted medRxiv a license to display the preprint in perpetuity.
It is made available under a [CC-BY 4.0 International license](#) .

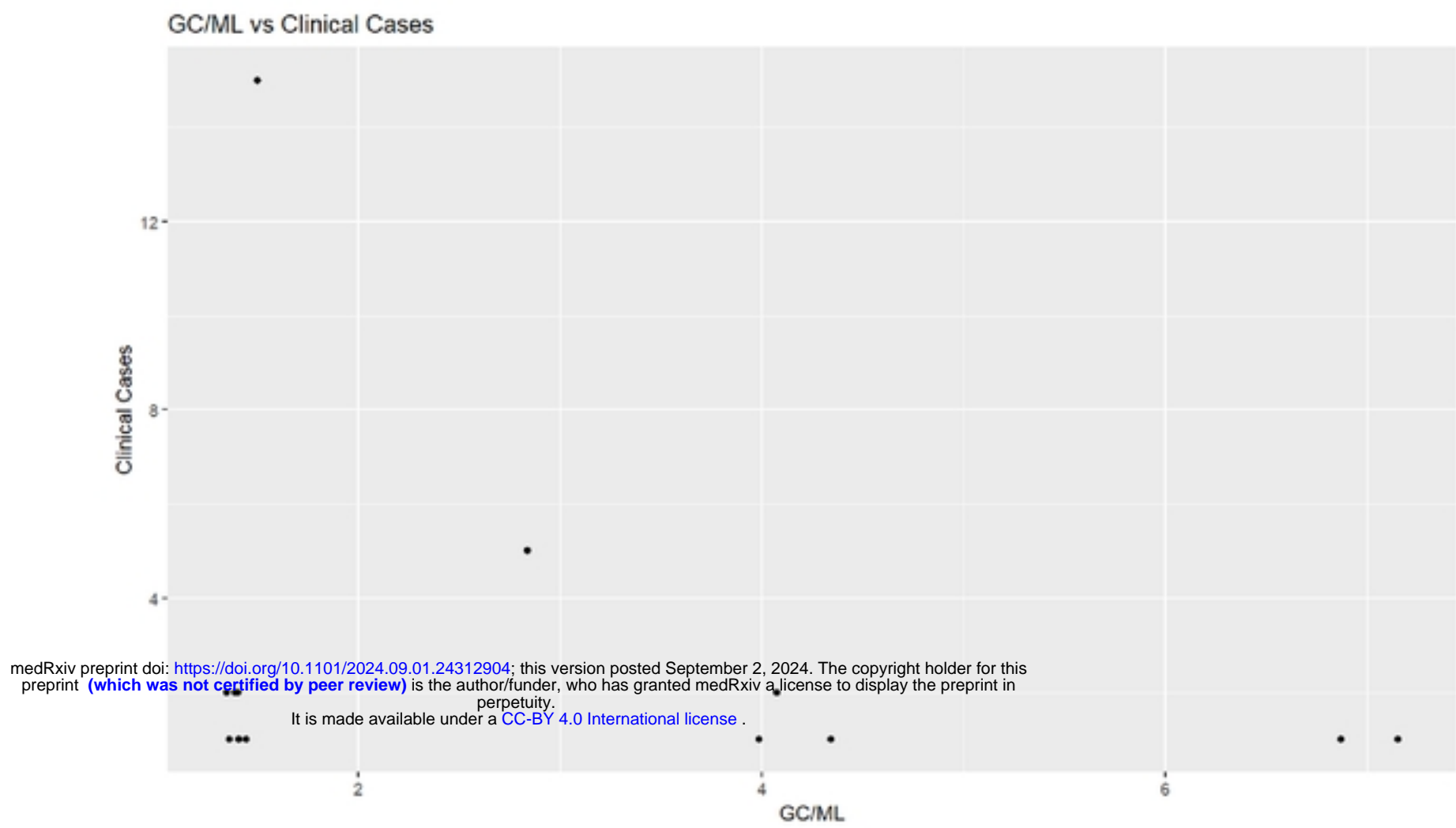


Figure S3. The number of laboratory-confirmed measles cases (vertical axis) by the number of genome copies of measles virus per millilitre of wastewater (horizontal axis) in wastewater collected from a sample collection point in the district where the measles case was identified (n=43)