

## Expanding the spectrum of white matter abnormalities in Wolfram syndrome: A retrospective review

1 Justin Simo, BSc<sup>1,2</sup>, Heather M. Lugar, MA<sup>3</sup>, Elka Miller, MD<sup>4</sup>, Adi Wilf-Yarkoni, MD, MSc<sup>5,6</sup>,  
2 Yael Goldberg, MD<sup>6,7</sup>, Ayça Kocağa, MD<sup>8</sup>, Shoichi Ito, MD, PhD<sup>9</sup>, Sirio Cocozza, MD, PhD<sup>10</sup>,  
3 Giulio Frontino, MD, MSc<sup>11</sup>, Cristina Baldoli, MD<sup>12</sup>, Aziz Benbachir<sup>1,2</sup>, Catherine Ashton,  
4 MBBS<sup>1,2,13</sup>, Guy Rouleau, MD, PhD<sup>1,2,14</sup>, Tamara Hershey, PhD<sup>3,15</sup>, Yann Nadjjar, MD, PhD<sup>16</sup>,  
5 Roberta La Piana, MD, PhD<sup>1,2,17</sup>

6 <sup>1</sup> The Neuro (Montreal Neurological Institute-Hospital), McGill University, Montreal, QC, Canada

7 <sup>2</sup> Department of Neurology and Neurosurgery, McGill University, Montreal, QC, Canada

8 <sup>3</sup> Department of Psychiatry, Washington University School of Medicine, St. Louis, MO, USA

9 <sup>4</sup> Department of Diagnostic Imaging, The Hospital for Sick Children (SickKids), University of  
10 Toronto, Toronto, ON, Canada

11 <sup>5</sup> Neuroimmunology Unit, Rabin Medical Center—Beilinson Hospital, Petach Tikva, Israel

12 <sup>6</sup> Faculty of Medicine, Tel Aviv University, Tel Aviv, Israel

13 <sup>7</sup> The Raphael Recanati Genetic Institute, Rabin Medical Center—Beilinson Hospital, Petach Tikva,  
14 Israel

15 <sup>8</sup> Department of Medical Genetics, Eskisehir City Hospital, 71 Evler Mahallesi, Çavdarlar Sk.,  
16 26080, Odunpazarı/Eskişehir, Turkey

17 <sup>9</sup> Department of Medical Education, Graduate School of Medicine, Chiba University, Chiba, Japan

18 <sup>10</sup> Department of Advanced Biomedical Sciences, University of Naples “Federico II,” Naples, Italy

19 <sup>11</sup> Department of Pediatrics, Diabetes Research Institute - IRCCS San Raffaele Hospital, Milan, Italy

20 <sup>12</sup> Neuroradiology Unit, IRCCS San Raffaele Scientific Institute, Milan, Italy

21 <sup>13</sup> Department of Neurology, Royal Perth Hospital, Perth, WA, Australia

22 <sup>14</sup> Department of Human Genetics, McGill University, Montreal, QC, Canada

23 <sup>15</sup> Mallinckrodt Institute of Radiology, Washington University School of Medicine, St. Louis, MO,  
24 USA

25 <sup>16</sup> Department of Neurology, Pitié-Salpêtrière University Hospital, Paris, France

26 <sup>17</sup> Department of Diagnostic Radiology, McGill University, Montreal, QC, Canada

27

28 \* Correspondence:

29 Roberta La Piana

30 [roberta.lapiana@mcgill.ca](mailto:roberta.lapiana@mcgill.ca)

## 31 Abstract

### 32 Background and Objectives

33  
34 Wolfram syndrome (WFS) is a genetic disorder mainly caused by pathogenic variants in the *WFS1*  
35 gene. It is characterized clinically by optic atrophy (OA), diabetes mellitus (DM), sensorineural  
36 hearing loss (SNHL), diabetes insipidus (DI), and variable neurological/psychiatric symptoms. WFS  
37 typically manifests before age 20 and progresses into adulthood. Classical neuroradiological features  
38 include cerebellar and/or brainstem atrophy as well as white matter abnormalities ranging from small,  
39 ovoid lesions to diffuse, symmetrical changes along the visual pathway. Following the identification  
40 of multifocal, progressive white matter abnormalities that prompted the consideration of multiple  
41 sclerosis (MS) in two molecularly confirmed WFS subjects, we sought to verify whether MS-like  
42 lesions constitute a novel WFS-associated MRI pattern.

### 43 44 Methods

45  
46 We conducted an international multicenter retrospective study of the clinical, genetic, and  
47 radiological data from 17 unrelated WFS subjects.

### 48 49 Results

50  
51 Seven subjects (7/17; 41%) showed at least one focal white matter lesion evocative of MS. Among  
52 these seven, three fulfilled the McDonald radiological criteria of dissemination in space and time,  
53 suggesting an inflammatory demyelinating process. All subjects reviewed in the study had at least  
54 one of the classical WFS MRI features.

### 55 56 Conclusions

57  
58 Our report expands the WFS spectrum of white matter involvement to include progressive, seemingly  
59 inflammatory demyelinating lesions. While we cannot exclude the possibility of a WFS-MS dual  
60 diagnosis in some cases, the role of *WFS1* in myelination suggests a selective white matter  
61 vulnerability in WFS. Our findings suggest that follow up MRI should be recommended to adult  
62 subjects with WFS. Further identification and longitudinal study of adult WFS subjects is required to  
63 confirm whether a WFS molecular diagnosis confers susceptibility to the development of MS.

## 64 1 Introduction

65 Wolfram syndrome (WFS) is a rare genetic spectrum disorder characterized clinically as any  
66 combination of optic atrophy (OA), diabetes mellitus (DM), diabetes insipidus (DI), and  
67 sensorineural hearing loss (SNHL), accompanied by other neurological and/or psychiatric features<sup>1-4</sup>.  
68 These latter features, seen in over 50% of cases, are usually progressive and include cerebellar ataxia,  
69 brainstem dysfunction, epilepsy, and cognitive disability<sup>3</sup>. Biallelic or monoallelic pathogenic  
70 variants in *WFS1* cause WFS, putatively through loss-of-function mechanisms that undermine  
71 endoplasmic reticulum (ER)-mitochondria dynamics and trigger unfolded protein response (UPR)-  
72 mediated cell death<sup>5-11</sup>.

73 From a neuroimaging perspective, although different CNS structures are involved, the most  
74 common imaging findings reported in WFS are cerebellar atrophy, brainstem atrophy, and signal  
75 changes along the visual pathway, posterior pituitary gland, pontine fibers, and cerebral white  
76 matter<sup>12-15</sup>. In particular, the patterns of white matter abnormalities range from small multifocal,  
77 ovoid-shaped T2-hyperintense lesions to symmetrical, diffuse involvement<sup>12-17</sup>. MRI findings in  
78 WFS can appear as early as the first decade, even when neurological symptoms are absent or barely  
79 noticeable, and they progress over time<sup>3,9,10,12,18</sup>. Interestingly, they seem to be coupled to more  
80 profound abnormalities that can be detected through advanced imaging techniques. These include  
81 microstructural alterations of the white matter in early myelinating structures (i.e., brainstem,  
82 posterior periventricular white matter), fueling the hypothesis that hypomyelination may play a role  
83 and precede adult stage neurodegeneration in WFS<sup>9,10,14</sup>.

84 In agreement with conventional and advanced neuroimaging findings that indicate white  
85 matter involvement in WFS, molecular studies strongly suggest that *WFS1* could play a vital role in  
86 establishing and maintaining white matter integrity<sup>17,19-24</sup>. To this end, it has been speculated that the  
87 pathophysiology of CNS features in WFS could at least in part overlap that of more common  
88 demyelinating diseases, such as multiple sclerosis (MS)<sup>14</sup>. In line with these speculations, and after  
89 identifying two unrelated, genetically confirmed WFS subjects through the White Matter Rounds  
90 Network<sup>25</sup>, in which multifocal, progressive, and contrast-enhancing white matter abnormalities led  
91 to the consideration of MS, we aimed to assess the prevalence of likely inflammatory white matter  
92 lesions and MS diagnosis in subjects with WFS.

## 93 2 Materials and methods

### 94 2.1 Participants

95 We conducted an international, multicenter retrospective review of the clinical,  
96 neuroradiological, and molecular data of subjects with the following inclusion criteria:

- 97 1) Clinical diagnosis of WFS, defined as the presence of:  
98 a. At least two of the four classical WFS features (OA, DM, DI, and SNHL).  
99 b. At least one neurological or psychiatric symptom in addition to SNHL and OA.

100 Patients with Wolfram-like syndrome (at least one classical feature plus one  
101 neurological/psychiatric symptom aside from SNHL and OA) were included if they had a  
102 positive WFS family history.

- 103 2) If above criterion not met, genetic diagnosis molecularly confirmed by detection of  
104 pathogenic or likely pathogenic variants in the *WFS1* gene, classified according to ACMG  
105 guidelines<sup>26</sup>, through an accredited clinical diagnostic laboratory.  
106 3) Available brain MRI with axial and sagittal T2-weighted and T2-FLAIR images at minimum.  
107 Any additional brain MR sequences or spinal cord images for subjects meeting this minimum  
108 requirement were also reviewed.

109 To achieve this, we contacted the corresponding authors of previously published WFS case  
110 reports and series (150 subjects). Ten authors responded and agreed to participate. We therefore  
111 included 17 subjects from seven countries: Canada (1), France (1), Israel (2), USA (8), Italy (3),  
112 Turkey (1), and Japan (1).

## 113 2.2. Data Analysis

114 For each included subject, we collected the following demographic and clinical data: sex,  
115 family history, age at onset (defined as the age at which at least one WFS classical feature or  
116 neurological/psychiatric deficit appeared), age at latest examination, and presence of ataxia/cerebellar  
117 signs, spasticity, abnormal reflexes, other movement disorders, cranial nerve dysfunction, vertigo,  
118 tinnitus, migraine, neuropathy, seizures, psychiatric disorders, cognitive deficits, sphincter  
119 dysfunction, and extra-neurological signs.

120 The MRI images were reviewed independently by two teams of raters:

- 121 a) JS and RLP, with >15 years of experience in white matter disorders.  
122 b) A neuroradiologist from each participating institution (SC/GF-CB for cases from Italy, AWY-  
123 YG for cases from Israel, AK for the case from Turkey, and SI for the case from Japan) **or** a  
124 neuroradiologist from outside the study (EM, with >20 years of experience, for all cases from  
125 Canada, USA, and France).

126 When available, for 10 subjects (10/17; 58.8% of the entire cohort), each MRI scan was re-  
127 evaluated four months later, blind to the initial MRI interpretation, with a focus on the multifocal  
128 white matter abnormalities documented in each subject. The raters remained blind to the clinical data  
129 during each review session to further mitigate lesion classification bias. Disagreements between  
130 raters were resolved by consensus.

131 We performed a qualitative analysis of all available MRI images to assess the presence and  
132 characteristics of the white matter abnormalities. The following criteria were analyzed: location  
133 (periventricular, subcortical, juxtacortical), lobar involvement (frontal, temporal, parietal, occipital,  
134 cerebellar), pattern of involvement (multifocal, confluent, diffuse), symmetry, and enhancement  
135 following gadolinium injection. In our study, a lesion was defined as a focal area of T2-hyperintense  
136 signal in the CNS white matter. Juxtacortical lesions were defined as lesions in direct contact with  
137 the cortical ribbon. Periventricular lesions included all lesions abutting any portion of lateral  
138 ventricles as well as intracallosal lesions and linear plate-like bandings. Subcortical lesions were  
139 defined as supratentorial non-juxtacortical, non-periventricular white matter lesions. MS-like lesions  
140 were defined as round/ovoid areas of T2-hyperintense signal at least 3mm in long axis<sup>27-29</sup>. MR  
141 images were also evaluated for cerebral, brainstem, and cerebellar (hemispheric and vermian)  
142 atrophy and when possible, depending on the available sequences, other associated features such as  
143 gray matter involvement, microvascular changes, and calcifications. When spinal cord MRI was  
144 available, we evaluated it for the presence of signal abnormalities and atrophy. Given the nature of

145 this retrospective review, there were intrinsic limitations in the analysis, as MRI examinations  
146 slightly differed in imaging quality and techniques.

### 147 2.3 Standard Protocol Approvals, Registrations, and Patient Consent

148 Access to patient medical histories and results of diagnostic investigations for collaborative  
149 retrospective study was granted by the review boards of each participating institution, in conformity  
150 to respective anonymization procedures.

## 151 3 Results

152 **Table 1** contains the clinical, genetic, and radiological data from the 17 included subjects.

### 153 3.1 Clinical findings

154 Demographic and clinical data were available for 16/17 subjects (94.1%); for one subject the  
155 only information was the sex, the age at last examination, and the confirmed molecular diagnosis.  
156 The cohort included nine female subjects (52.9%). Median age at onset of WFS was 15.5 years  
157 (range = 3-35 years). Regarding classical WFS features, nearly all exhibited OA (n = 15/16; 94%)  
158 except for one subject (#2), who had diminished visual acuity with a normal fundoscopic  
159 examination. Thirteen had DM (n = 13/16; 81%), nine had SNHL (n = 9/16; 57%), and seven had DI  
160 (n = 7/16; 44%). In all subjects except subject #11, for whom the first sign was non-syndromic  
161 epilepsy, the first sign(s) included one or multiple classical WFS features (n = 15/16; 94%), most  
162 commonly DM. Two subjects, #3 and #15, developed cataract, an uncommon, yet known WFS  
163 feature, at some point in the clinical course (n = 2/16; 13%).

164 Neurological and/or psychiatric symptoms, aside from OA and SNHL, manifesting several  
165 years post-onset (median = 6 years; range = 3-42 years), were documented in all subjects (n = 16/16;  
166 100%), consistent with the neurodegenerative character of WFS.

167 Two subjects, #2 and #3 (n = 2/16; 13%), presented acute focal deficits in the third/fourth  
168 decade that may be related to active demyelination as shown on MRI. These included hyperreflexia  
169 and fine motor impairment (subject #2) and truncal ataxia, appendicular ataxia, and dysarthria  
170 (subject #3).

### 171 3.2. Genetic findings

172 Pathogenic or likely pathogenic variants in *WFS1* (mono- or biallelic) were documented in all  
173 subjects for whom genetic testing had been performed (n = 16 tested/17 total; 94%). Subject #15 was  
174 diagnosed with Wolfram-like syndrome after detection of a monoallelic pathogenic *WFS1* variant  
175 through whole genome sequencing, which was performed because of unusual MRI features.

176 Family history was noteworthy for symptoms along the WFS spectrum in most subjects for  
177 whom this information was available (n = 10/15; 66%). The family history was positive for WFS in  
178 three cases (n = 3/15; 20%), cataract in three (n = 3/15; 20%), and cardiac anomalies/syndromes in  
179 two (n = 2/15; 13%), which have also been reported in WFS.

### 180 3.3. Neuroimaging findings

181 The mean age at the latest MRI available for review was 29 years old (range = 14-60 years).  
182 All subjects demonstrated at least one neuroradiological feature typical of WFS (**Figure 1**)<sup>12-15</sup>. For  
183 11 subjects (n = 11/17; 65%), two timepoints were available for assessment (mean follow-up MRI  
184 duration = 5.3 years).

### 185 Classical WFS-associated features

186 Involvement of the posterior periventricular white matter and/or optic radiations was the most  
187 common finding (n = 15/17; 88%), followed by punctate subcortical white matter changes (n = 9/17;  
188 53%), pontine signal changes (n = 7/17; 41%), brainstem atrophy (n = 6/17; 35%), cerebellar atrophy  
189 (n = 5/17; 29%), diffuse/confluent involvement of the centrum semiovale and/or peritrigonal white  
190 matter (n = 4/17; 24%), and absent/diminished T1-weighted posterior pituitary bright spot (n = 1/17;  
191 6%).

192 Enlarged perivascular spaces (n = 3/17; 18%), corpus callosum abnormalities (n = 3/17;  
193 18%), midbrain signal changes (n = 2/17; 12%), and abnormal occipital lobe gyrification with or  
194 without posterior horn ventricular enlargement (n = 2/17; 12%) were additionally observed.

### 195 MS-like white matter abnormalities

196 We detected T2-hyperintense white matter foci that were MS plaque-like<sup>27-29</sup> in seven subjects  
197 (n = 7/17; 41%) (**Figures 2 and 3**). In four of these subjects (n = 4/17; 24%), the McDonald  
198 radiological criteria of dissemination in space and time were either fully (n = 3) or partially (n = 1)  
199 fulfilled, inciting consideration of a WFS-MS double diagnosis (**Figure 2**)<sup>27</sup>. Some lesions in three of  
200 these four subjects showed gadolinium enhancement on T1-weighted imaging (**Figure 2A**), further  
201 supporting the existence of an underlying inflammatory process. Positive oligoclonal band status  
202 strongly supported a secondary diagnosis of MS in the only two subjects for whom lumbar puncture  
203 was performed (#2 and #3). In both cases, a secondary diagnosis of MS was communicated, and MS  
204 treatment with teriflunomide was initiated in subject #3. Follow-up MRI after teriflunomide initiation  
205 documented stabilization of the multifocal white matter lesion load with worsening of pre-existing  
206 cerebellar atrophy and diffuse bilateral subcortical white matter involvement (**Figure 2G-I**). The  
207 observed locations and characteristics of MS-like focal lesions are summarized in **Table 2**.

208 During blind re-analysis four months after the first image review, it was agreed that three  
209 subjects (#7, #8, and #13) had focal lesions not strictly belonging to either category (WFS- or MS-  
210 like/demyelinating) (**Figure 3D**; see **Table 1** for initial lesion categorization in each subject). The  
211 areas of suspicion were in the subcortical white matter and included two or more small, round, yet  
212 non-ovoid T2-hyperintense lesions close to one another. The lesions did not correspond to enlarged  
213 perivascular spaces.

## 214 **4 Discussion**

215 In this study, we report WFS subjects presenting with neuroradiological and, in some cases,  
216 clinical profiles compatible with a diagnosis of MS. The identification of four subjects with  
217 seemingly inflammatory white matter lesions that fully or partially fulfilled the McDonald criteria for  
218 MS diagnosis raises the possibility that a WFS molecular diagnosis may predispose to the  
219 development of neuroinflammatory white matter disorders such as MS. In fact, the worldwide  
220 prevalence estimates of MS (~1:2800)<sup>30</sup> and WFS (~1:500 000)<sup>31,32</sup> argue against coincidental  
221 occurrence of WFS and focal demyelinating events but rather suggest pathophysiological overlap  
222 between MS and WFS.



223 Our series focuses on MR imaging of adult subjects with WFS, who have been far less studied  
224 by imaging than pediatric subjects. Our findings suggest that secondary neuroinflammation, even  
225 when it does not satisfy the full criteria for MS, might contribute to gradual neurological and/or  
226 psychiatric decline in WFS<sup>9</sup>. Therefore, we recommend follow-up of WFS patients beyond  
227 adolescence to monitor the onset of inflammatory demyelinating lesions.

228 Importantly, multifocal white matter lesions have been previously described in WFS, albeit not  
229 with the usual features of MS plaques. Thus, the risk for individuals with Wolfram-like syndrome  
230 (i.e., partial WFS) to receive an incorrect primary diagnosis of MS is not negligible given the  
231 variability in neurological progression seen across subjects. We recommend that genetic testing for  
232 WFS be performed when a subject presents with multifocal white matter lesions – either seemingly  
233 inflammatory or not – and at least one of the classic diagnostic features of WFS.

234 In line with the hypothesis that some subjects in our study may be concomitantly suffering  
235 from WFS and MS, subject #3 responded to teriflunomide (**Figure 2G-I**). This was the only subject  
236 in our series who had started disease-modifying therapy for MS. While there is a possibility that the  
237 treatment had no impact on the natural course of WFS in this subject, it is plausible that underlying  
238 degenerative processes may have been exacerbated while inflammation was being suppressed. Even  
239 though the exact mechanisms contributing to this subject’s outcome remain undefined, simultaneous  
240 wolframin/WFS1 deficiency and teriflunomide treatment might have imposed a significant  
241 mitochondrial stressor. Indeed, Wolframin/WFS1 plays an indirect, yet essential role in multiple  
242 facets of mitochondrial quality control putatively through modulation of Ca<sup>2+</sup> homeostasis, while the  
243 mechanism of action of teriflunomide is the inhibition of dihydroorotate dehydrogenase, whose  
244 activity is intrinsically linked to the mitochondrial respiratory chain<sup>19,33</sup>. Thus, the classic WFS-  
245 associated neuroradiological features in this subject might have progressed, at least in part, because  
246 of a compounded mitochondrial insult, although dedicated studies are needed to validate this  
247 speculation.

248 Existing molecular evidence insists that unchecked tissue-specific and systemic inflammatory  
249 processes are significant drivers of WFS pathogenesis<sup>34–38</sup>. For example, in the context of DM,  
250 several works suggest that loss of wolframin protein (*Wfs1*) in murine pancreatic  $\beta$ -cells causes ER  
251 stress-mediated NLRP3 inflammasome activation and subsequent apoptosis by means of upregulated  
252 expression of pro-inflammatory cytokines, namely IL-1 $\beta$ <sup>35,37,38</sup>.  $\beta$ -cells lacking wolframin in turn  
253 show disproportionate increases in ER stress and pro-inflammatory mediator expression in response  
254 to applied cytokines and hyperglycemia, forming a positive feedback cycle that likely exacerbates  
255 DM in WFS<sup>35</sup>. In the context of OA, early stage optic nerve demyelination in *Wfs1*-KO mice is  
256 marked by ER stress-mediated STAT3 activation and an overall pro-neuroinflammatory, anti-  
257 survival transcriptomic shift in local glial populations<sup>34</sup>. This shift is associated with a  
258 downregulation of glial MCT1 that hampers neuron-bound lactate shuttling capacity, instigating  
259 retinal ganglion cell degeneration over time<sup>34</sup>. Critically, lower expression of MCT1 was additionally  
260 detected in the cortex and striatum of the mice, indicating that these neuroinflammatory  
261 transcriptomic shifts may tile the entire brain<sup>34</sup>. Furthermore, in a recent WFS case report, patient-  
262 derived peripheral blood mononuclear cells (PBMCs), which were anomalously wolframin-deficient,  
263 showed constitutively high, UPR-independent expression of pro-inflammatory cytokines that  
264 correlated with hypercytokinemia (TNF- $\alpha$ , IL-1 $\beta$ , and IL-6) and a positively skewed T<sub>h</sub>17/T<sub>reg</sub>  
265 ratio—signs of systemic inflammation<sup>37</sup>. A chronic, systemic inflammatory state characterized by  
266 hypercytokinemia was also corroborated in a WFS mouse model<sup>35</sup>. Such findings are particularly  
267 intriguing given the large body of evidence implicating T<sub>h</sub>17 cells in MS pathogenesis, importantly  
268 during the acute phase of disease<sup>39</sup>. Taken together, these studies implicate wolframin in the

269 regulation of parallel inflammatory signaling cascades that are perhaps simultaneously brewing in a  
270 WFS individual. Our result of focal enhancement post-contrast being observed in all radiological  
271 MS-mimicking subjects for whom this investigation was performed (subjects #2, #3, and #4), when  
272 interpreted alongside a potential chronic T<sub>H</sub>17-driven systemic inflammatory process and generalized  
273 neuroinflammatory state, begs the question of whether MS-overlapping pathology could arise in  
274 WFS.

275 In our review, some lesions were interpreted as neither MS- nor WFS-like. In the  
276 corresponding subjects, gadolinium administration was not performed, so we do not know whether  
277 these lesions could be inflammatory. This observation further supports the idea of a continuum  
278 between white matter involvement classically seen in WFS and in neuroinflammation. The  
279 identification of signs currently considered specific for MS, namely the central vein sign (CVS),  
280 could help in further classifying white matter lesions in WFS<sup>40</sup>. CVS could not be validated in our  
281 subjects due to a lack of susceptibility-weighted imaging sequences, no reconstructible planes, and  
282 probably insufficient field strength. Higher field imaging (7T MRI) could prove useful in not only  
283 detecting CVS, as demonstrated by a recent study evaluating the diagnostic performance of 3T vs. 7T  
284 MRI in MS<sup>41</sup>, but also in better depicting the signal characteristics of white matter abnormalities in  
285 WFS subjects, which may help differentiate WFS from MS by imaging.

286 A recent prospective study has supported the addition of the optic nerve as a fifth CNS location  
287 within the McDonald radiological criterion of dissemination in space<sup>42</sup>. Since dedicated optic nerve  
288 MRI was only performed in one subject from our cohort (who did not have a confirmed molecular  
289 diagnosis), and as mentioned, adult WFS subjects have been far less studied than pediatric subjects,  
290 the prevalence of optic nerve lesions in the adult WFS population remains unknown. Consequently,  
291 the proportion of WFS patients who will satisfy MS diagnostic criteria because of the proposed  
292 modification to the criteria cannot be estimated at this time.

293 Our study has several limitations, namely its retrospective nature (which precluded the use of  
294 advanced imaging techniques), the obstacles related to the identification and inclusion of adult WFS  
295 patients, and the lack of follow-up MRI in a considerable number of subjects. Future prospective  
296 imaging studies can help clarify the nature of white matter involvement in adult patients with WFS.

297 In conclusion, our report expands the WFS spectrum of white matter involvement to include  
298 late-onset progressive, seemingly inflammatory demyelinating lesions that, in the context of  
299 supportive clinical and laboratory findings, can prompt consideration of MS. We emphasize the need  
300 for continuous radiological follow-up of WFS patients into early and middle adulthood, and the  
301 utility of international collaboration in this regard, for better characterization of age- and/or immune-  
302 related MRI patterns. In the future, these results may lead to the inclusion of WFS to the growing list  
303 of single-gene disorders with the potential to mimic or confer susceptibility to MS<sup>43,44</sup>.

## 304 **5 Conflict of Interest**

305 The authors have no conflicts of interest to declare.

## 306 **6 Author Contributions**

307 JS: manuscript writing and project coordination (contacting WFS authors, collection, compilation,  
308 and analysis of data, via conference call or email correspondence, from all authors who accepted to  
309 collaborate). EM: external neuroradiologist invited for MRI review. HML & TH: data collection  
310 from WFS cohort followed at Washington University, USA (eight subjects). AWY & YG: data



311 collection from two WFS subjects followed at Tel Aviv University, Israel. AK: data collection from  
312 one Wolfram-like syndrome subject followed at Eskisehir City Hospital, Turkey. SI: data collection  
313 from one WFS subject followed at Chiba University, Japan. SC: data collection from one WFS  
314 subject seen at University of Naples “Federico II,” Italy. GF & CB: data collection from two  
315 subjects, derived from a larger cohort of 16 pre-screened WFS subjects (of which six were adults)  
316 seen at San Raffaele Hospital, Italy. AB: analysis of compiled data. CA, GR, & RLP: data collection  
317 from one WFS subject followed at McGill University, Canada. YN: data collection from one WFS  
318 subject followed at Pitié-Salpêtrière University Hospital, France. RLP: conceptualization of the  
319 study, analysis of compiled data, funding acquisition, and review and editing of the manuscript.

## 320 **7 Funding**

321 JS has received scholarships from the Canadian Institutes of Health Research (CIHR) and the Fonds de  
322 Recherche du Québec en Santé (FRQS). RLP has received a Research Scholar Junior 1 award from the  
323 FRQS, research funds from the Canadian Radiological Foundation, the Spastic Paraplegia Foundation, and  
324 received funds for further data on this project from Hoffman-La Roche Limited.

## 325 **8 Acknowledgment**

326 This work would not have been possible without our international collaborators, who are members of  
327 the [White Matter Rounds Network](#):

328  
329 *"Adult genetic leukoencephalopathies are rare neurological disorders that present unique diagnostic*  
330 *challenges due to their clinical and radiological overlap with more common white matter diseases, notably*  
331 *multiple sclerosis (MS). In this context, a strong collaborative multidisciplinary network is beneficial for*  
332 *shortening the diagnostic odyssey of these patients and preventing misdiagnosis. The White Matter Rounds*  
333 *(WM Rounds) are multidisciplinary international online meetings attended by more than 30 physicians*  
334 *and scientists from 15 participating sites that gather every month to discuss patients with atypical white*  
335 *matter disorders. [...] The WM Rounds Network demonstrate[s] the value of collaborative*  
336 *multidisciplinary international case discussion meetings in differentiating and preventing misdiagnoses*  
337 *between genetic white matter diseases and atypical MS."*

- 338 • Huang YT, et al. The White Matter Rounds experience: The importance of a multidisciplinary  
339 network to accelerate the diagnostic process for adult patients with rare white matter  
340 disorders. *Front. Neurol.* (2022) 13:928493. doi: 10.3389/fneur.2022.928493

341 **9 References**

- 342 1. Barrett T, Bunday SE, Macleod AF. ( DIDMOAD ) syndrome UK nationwide study of  
343 Wolfram. *Lancet*. 1995;346:1458-1463.
- 344 2. Shannon P, Becker L, Deck J. Evidence of widespread axonal pathology in Wolfram  
345 syndrome. *Acta Neuropathol*. 1999;98(3):304-308. doi:10.1007/s004010051084
- 346 3. Chaussenot A, Bannwarth S, Rouzier C, et al. Neurologic features and genotype-phenotype  
347 correlation in Wolfram syndrome. *Ann Neurol*. 2011;69(3):501-508. doi:10.1002/ana.22160
- 348 4. Urano F. Wolfram Syndrome: Diagnosis, Management, and Treatment. *Curr Diab Rep*.  
349 2016;16(1):1-8. doi:10.1007/s11892-015-0702-6
- 350 5. Inoue H, Tanizawa Y, Wasson J, et al. A gene encoding a transmembrane protein is mutated in  
351 patients with diabetes mellitus and optic atrophy (Wolfram syndrome). *Nat Genet*.  
352 1998;20(2):143-148. doi:10.1038/2441
- 353 6. Amr S, Heisey C, Zhang M, et al. A homozygous mutation in a novel zinc-finger protein,  
354 ERIS, is responsible for Wolfram syndrome 2. *Am J Hum Genet*. 2007;81(4):673-683.  
355 doi:10.1086/520961
- 356 7. Bai X, Lv H, Zhang F, et al. Identification of a novel missense mutation in the WFS1 gene as a  
357 cause of autosomal dominant nonsyndromic sensorineural hearing loss in all-frequencies. *Am J*  
358 *Med Genet Part A*. 2014;164(12):3052-3060. doi:10.1002/ajmg.a.36760
- 359 8. Rouzier C, Moore D, Delorme C, et al. A novel CISD2 mutation associated with a classical  
360 Wolfram syndrome phenotype alters Ca<sup>2+</sup> homeostasis and ER-mitochondria interactions.  
361 *Hum Mol Genet*. 2017;26(9):1599-1611. doi:10.1093/hmg/ddx060
- 362 9. Samara A, Rahn R, Neyman O, et al. Developmental hypomyelination in Wolfram syndrome:  
363 New insights from neuroimaging and gene expression analyses. *Orphanet J Rare Dis*.  
364 2019;14(1):1-14. doi:10.1186/s13023-019-1260-9
- 365 10. Loncke J, Vervliet T, Parys JB, Kaasik A, Bultynck G. Uniting the divergent Wolfram  
366 syndrome-linked proteins WFS1 and CISD2 as modulators of Ca<sup>2+</sup> signaling. *Sci Signal*.  
367 2021;14(702). doi:10.1126/scisignal.abc6165
- 368 11. Zmyslowska A, Kuljanin M, Malachowska B, et al. Multiomic analysis on human cell model  
369 of wolfram syndrome reveals changes in mitochondrial morphology and function. *Cell*  
370 *Commun Signal*. 2021;19(1):1-14. doi:10.1186/s12964-021-00791-2
- 371 12. Hershey T, Lugar HM, Shimony JS, et al. Early brain vulnerability in Wolfram syndrome.  
372 *PLoS One*. 2012;7(7). doi:10.1371/journal.pone.0040604
- 373 13. Lugar HM, Koller JM, Rutlin J, et al. Neuroimaging evidence of deficient axon myelination in  
374 Wolfram syndrome. *Sci Rep*. 2016;6(February):1-13. doi:10.1038/srep21167
- 375 14. Lugar HM, Koller JM, Rutlin J, et al. Evidence for altered neurodevelopment and  
376 neurodegeneration in Wolfram syndrome using longitudinal morphometry. *Sci Rep*.

- 377 2019;9(1):1-11. doi:10.1038/s41598-019-42447-9
- 378 15. Samara A, Lugar HM, Hershey T, Shimony JS. Longitudinal assessment of neuroradiologic  
379 features in wolfram syndrome. *Am J Neuroradiol.* 2020;41(12):2364-2369.  
380 doi:10.3174/ajnr.A6831
- 381 16. Labauge P, Renard D, Chaussenot A, Paquis-Flucklinger V. Wolfram syndrome associated  
382 with leukoencephalopathy. *J Neurol Neurosurg Psychiatry.* 2010;81(8):928.  
383 doi:10.1136/jnnp.2009.185579
- 384 17. Kocaaga A, Yimenicioglu S, Bayav M. A p.Val412Serfs pathogenic variant associated with  
385 Wolfram-like syndrome and leukodystrophy. *Egypt J Neurol Psychiatry Neurosurg.*  
386 2023;59(1):4-9. doi:10.1186/s41983-023-00608-8
- 387 18. Wilf-Yarkoni A, Shor O, Fellner A, et al. Mild Phenotype of Wolfram Syndrome Associated  
388 With a Common Pathogenic Variant Is Predicted by a Structural Model of Wolframin. *Neurol*  
389 *Genet.* 2021;7(2):e578. doi:10.1212/nxg.0000000000000578
- 390 19. Cagalinec M, Liiv M, Hodurova Z, et al. Role of Mitochondrial Dynamics in Neuronal  
391 Development: Mechanism for Wolfram Syndrome. *PLoS Biol.* 2016;14(7):1-28.  
392 doi:10.1371/journal.pbio.1002511
- 393 20. Plaas M, Seppa K, Reimets R, et al. Wfs1-deficient rats develop primary symptoms of  
394 Wolfram syndrome: Insulin-dependent diabetes, optic nerve atrophy and medullary  
395 degeneration. *Sci Rep.* 2017;7(1):1-16. doi:10.1038/s41598-017-09392-x
- 396 21. Sakakibara Y, Sekiya M, Fujisaki N, Quan X, Iijima KM. Knockdown of wfs1, a fly homolog  
397 of Wolfram syndrome 1, in the nervous system increases susceptibility to age- and stress-  
398 induced neuronal dysfunction and degeneration in Drosophila. *PLoS Genet.* 2018;14(1):1-25.  
399 doi:10.1371/journal.pgen.1007196
- 400 22. Chen YF, Kao CH, Chen YT, et al. Cisd2 deficiency drives premature aging and causes  
401 mitochondria-mediated defects in mice. *Genes Dev.* 2009;23(10):1183-1194.  
402 doi:10.1101/gad.1779509
- 403 23. Pourtoy-Brasselet S, Sciauvaud A, Boza-Moran MG, et al. Human iPSC-derived neurons  
404 reveal early developmental alteration of neurite outgrowth in the late-occurring  
405 neurodegenerative Wolfram syndrome. *Am J Hum Genet.* 2021;108(11):2171-2185.  
406 doi:10.1016/j.ajhg.2021.10.001
- 407 24. Kitamura RA, Maxwell KG, Ye W, et al. Multidimensional analysis and therapeutic  
408 development using patient iPSC-derived disease models of Wolfram syndrome. *JCI Insight.*  
409 2022;7(18). doi:10.1172/jci.insight.156549
- 410 25. Huang YT, Giacomini PS, Massie R, et al. The White Matter Rounds experience: The  
411 importance of a multidisciplinary network to accelerate the diagnostic process for adult  
412 patients with rare white matter disorders. *Front Neurol.* 2022;13.  
413 doi:10.3389/fneur.2022.928493
- 414 26. Richards S, Aziz N, Bale S, et al. Standards and guidelines for the interpretation of sequence

- 415 variants: a joint consensus recommendation of the American College of Medical Genetics and  
416 Genomics and the Association for Molecular Pathology. *Genet Med.* 2015;17(5):405-424.  
417 doi:10.1038/gim.2015.30
- 418 27. Thompson AJ, Banwell BL, Barkhof F, et al. Diagnosis of multiple sclerosis: 2017 revisions  
419 of the McDonald criteria. *Lancet Neurol.* 2018;17(2):162-173. doi:10.1016/S1474-  
420 4422(17)30470-2
- 421 28. Rovira À, Wattjes MP, Tintoré M, et al. Evidence-based guidelines: MAGNIMS consensus  
422 guidelines on the use of MRI in multiple sclerosis-clinical implementation in the diagnostic  
423 process. *Nat Rev Neurol.* 2015;11(8):471-482. doi:10.1038/nrneurol.2015.106
- 424 29. Filippi M, Preziosa P, Banwell BL, et al. Assessment of lesions on magnetic resonance  
425 imaging in multiple sclerosis: practical guidelines. *Brain.* 2019;142(7):1858-1875.  
426 doi:10.1093/brain/awz144
- 427 30. Walton C, King R, Rechtman L, et al. Rising prevalence of multiple sclerosis worldwide:  
428 Insights from the Atlas of MS, third edition. *Mult Scler.* 2020;26(14):1816-1821.  
429 doi:10.1177/1352458520970841
- 430 31. Rigoli L, Caruso V, Salzano G, Lombardo F. Wolfram Syndrome 1: From Genetics to  
431 Therapy. *Int J Environ Res Public Health.* 2022;19(6). doi:10.3390/ijerph19063225
- 432 32. Rigoli L, Bramanti P, Di Bella C, De Luca F. Genetic and clinical aspects of Wolfram  
433 syndrome 1, a severe neurodegenerative disease. *Pediatr Res.* 2018;83(5):921-929.  
434 doi:10.1038/pr.2018.17
- 435 33. Hauser SL, Cree BAC. Treatment of Multiple Sclerosis: A Review. *Am J Med.*  
436 2020;133(12):1380-1390.e2. doi:10.1016/j.amjmed.2020.05.049
- 437 34. Rossi G, Ordazzo G, Vanni NN, et al. MCT1-dependent energetic failure and  
438 neuroinflammation underlie optic nerve degeneration in Wolfram syndrome mice. *Elife.*  
439 2023;12:1-25. doi:10.7554/eLife.81779
- 440 35. Morikawa S, Blacher L, Onwumere C, Urano F. Loss of Function of WFS1 Causes ER Stress-  
441 Mediated Inflammation in Pancreatic Beta-Cells. *Front Endocrinol (Lausanne).*  
442 2022;13(March):1-12. doi:10.3389/fendo.2022.849204
- 443 36. Fonseca SG, Ishigaki S, Oslowski CM, et al. Wolfram syndrome 1 gene negatively regulates  
444 ER stress signaling in rodent and human cells. *J Clin Invest.* 2010;120(3):744-755.  
445 doi:10.1172/JCI39678
- 446 37. Panfili E, Mondanelli G, Orabona C, et al. Novel mutations in the WFS1 gene are associated  
447 with Wolfram syndrome and systemic inflammation. *Hum Mol Genet.* 2021;30(3-4):265-276.  
448 doi:10.1093/hmg/ddab040
- 449 38. Oslowski CM, Hara T, O'Sullivan-Murphy B, et al. Thioredoxin-interacting protein mediates  
450 ER stress-induced  $\beta$  cell death through initiation of the inflammasome. *Cell Metab.*  
451 2012;16(2):265-273. doi:10.1016/j.cmet.2012.07.005

- 452 39. Moser T, Akgün K, Proschmann U, Sellner J, Ziemssen T. The role of TH17 cells in multiple  
453 sclerosis: Therapeutic implications. *Autoimmun Rev.* 2020;19(10):102647.  
454 doi:10.1016/j.autrev.2020.102647
- 455 40. Maggi P, Absinta M, Grammatico M, et al. Central vein sign differentiates Multiple Sclerosis  
456 from central nervous system inflammatory vasculopathies. *Ann Neurol.* 2018;83(2):283-294.  
457 doi:10.1002/ana.25146
- 458 41. Okromelidze L, Patel V, Singh RB, et al. Central Vein Sign in Multiple Sclerosis: A  
459 Comparison Study of the Diagnostic Performance of 3T versus 7T MRI. *Am J Neuroradiol.*  
460 2024;45(1):76-81. doi:10.3174/ajnr.A8083
- 461 42. Vidal-Jordana A, Rovira A, Calderon W, et al. Adding the Optic Nerve in Multiple Sclerosis  
462 Diagnostic Criteria: A Longitudinal, Prospective, Multicenter Study. *Neurology.* 2024;102(1).  
463 doi:10.1212/WNL.0000000000207805
- 464 43. Weisfeld-Adams JD, Sand IBK, Honce JM, Lublin FD. Differential diagnosis of Mendelian  
465 and mitochondrial disorders in patients with suspected multiple sclerosis. *Brain.*  
466 2015;138(3):517-539. doi:10.1093/brain/awu397
- 467 44. Ayrignac X, Carra-Dallière C, Marelli C, Taïeb G, Labauge P. Adult-Onset Genetic Central  
468 Nervous System Disorders Masquerading as Acquired Neuroinflammatory Disorders: A  
469 Review. *JAMA Neurol.* 2022;79(10):1069-1078. doi:10.1001/jamaneurol.2022.2141
- 470 45. De Michele G, Maione L, Coccozza S, et al. Ataxia and Hypogonadism: a Review of the  
471 Associated Genes and Syndromes. *Cerebellum.* 2024;23(2):688-701. doi:10.1007/s12311-023-  
472 01549-x
- 473 46. Ito S, Sakakibara R, Hattori T. Wolfram syndrome presenting marked brain MR imaging  
474 abnormalities with few neurologic abnormalities. *Am J Neuroradiol.* 2007;28(2):305-306.
- 475



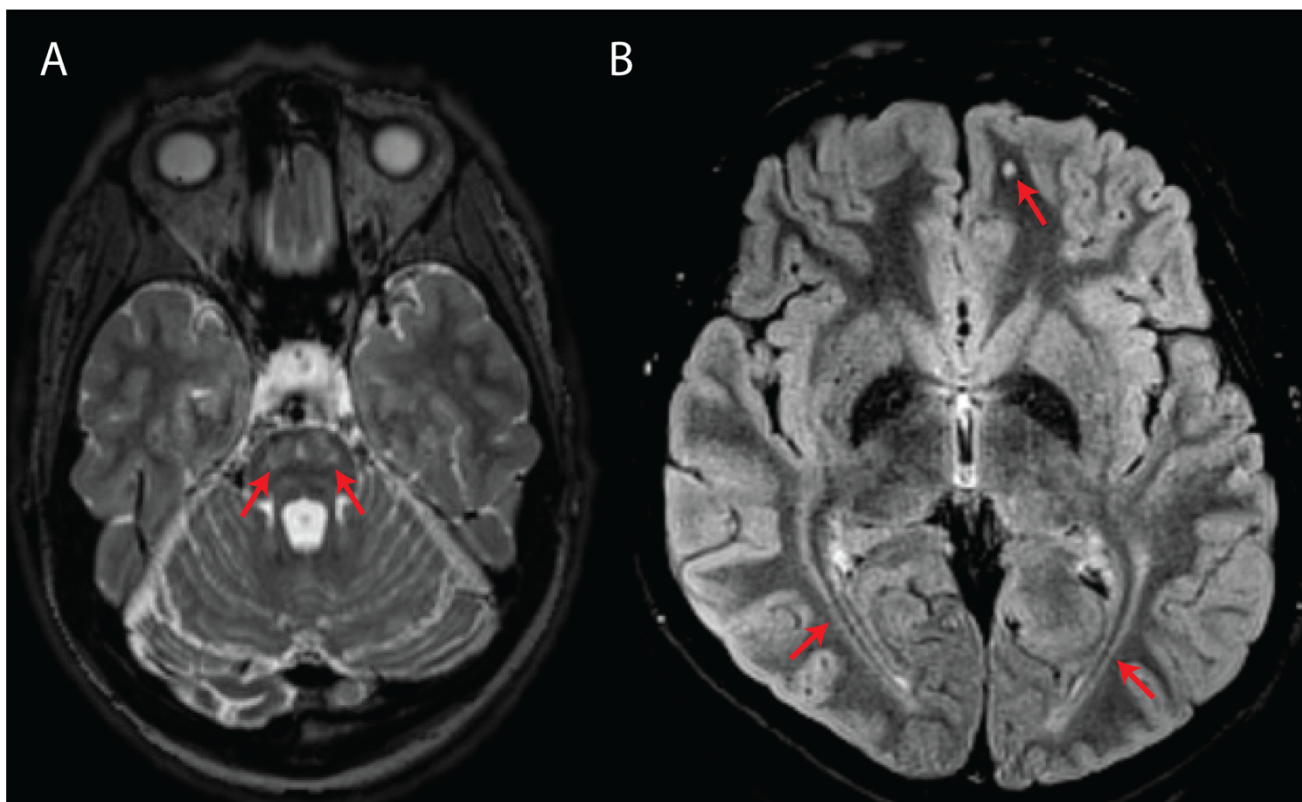
Subject <sup>ref</sup>	Origin	Age at onset/last exam (decade)	Zygoty	WFS1 variants (NM_006005.3)	Classic WFS symptoms	Neurological symptoms	Age at last MRI (decade)	Classical WFS MRI features	MS-like white matter foci	Dissemination in space and/or time	Gadolinium enhancement	Additional investigations or interventions	Full McDonald criteria (clinical + radiological)
1	Canada	30s/40s	Het	c.2389G>A, p.D797N	SNHL, OA	Hypor, M, PN	40s	Pit, PVp, Pun	Sub, PV/Cal, JxU	Yes, space + time**	N/P	N/P	Partially fulfilled
2	France	10s/30s	C Het	c.1112G>A, p.W371* c.1511C>G, p.P504R	DM, Vision loss	Hyperr, A, B	20s	D	Sub, PV/Cal, SC	Yes, space + time**	Yes (Cal; Sub)	LP: inflammatory profile w/ OCBs	Fulfilled
3	Israel	10s/30s	Hom	c.1230_1233delCTCT, p.V412Sfs	SNHL, OA, C	A, Hypor, S	30s	CA, PVp, D	Sub, JxU, PV, Cer, SC	Yes, space + time**	Yes (Sub – parietal)	LP: elevated WBCs w/ OCBs; MS-like foci stabilized upon teriflunomide use, while non-focal abnormalities progressed	Fulfilled
4 <sup>18</sup>	Israel	10s/60s	Hom	c.1672C>T, p.R558C	DM, OA	A, CD, B	60s	D, PVp	Sub	Yes, time only	Yes (Sub – occipital)	N/P	Partially fulfilled
5 <sup>45</sup>	Italy	Unknown/50s	N/A	N/A	N/A	N/A	50s	CA, BA, PVp	-	-	N/P	N/P	-
6 <sup>46</sup>	Japan	0s/30s	N/P	N/P	DM, SNHL, OA	DCo	30s	CA, BA, Pit, D, PVp	-	-	N/P	N/P	-
7 <sup>14</sup>	USA	10s/20s	C Het	c.817G>T, p.E273* c.1839G>A, p.W613*	DM, DI, SNHL, OA	A, Mo, S, Psy, CD, B	10s	Po, PVp, Pun†	PV	-	N/P	N/P	-
8 <sup>14</sup>	USA	10s/20s	C Het	c.605A>G, p.E202G c.631G>A, p.D211N	DM, OA	A	20s	CA, PVp (unilateral), Pun	Sub†	-	N/P	N/P	-
9 <sup>14</sup>	USA	10s/20s	C Het	c.376G>A, p.A126T c.1838G>A, p.W613*	DM, DI, OA	A, Psy, B	20s	Po, PVp, Pun	-	-	N/P	N/P	-
10 <sup>14</sup>	USA	20s/30s	C Het	c.1240_1242del, p.P414del c.1698_1703del, p.L567_P568del	DM, DI, SNHL, OA	A, Mo, Psy, B	30s	CA, BA, PVp, Pun	PV	-	N/P	N/P	-
11 <sup>14</sup>	USA	20s/20s	C Het	c.320G>A, p.G107E c.1885C>T, p.R629W	DM, DI, SNHL, OA	A, Mo, S, B	20s	CA, BA, Po, PVp, Pun	-	-	N/P	N/P	-
12 <sup>14</sup>	USA	10s/10s	C Het	c.740_741del, p.P247Cfs c.1243_1245del, p.V415del	DM, DI, SNHL, OA	A, Mo, M, PN, Psy, B	10s	CA, PVp, Pun	-	-	N/P	N/P	-
13 <sup>14</sup>	USA	10s/20s	C Het	c.599T>C, p.L200P c.695G>C, p.R232P	DM, SNHL, OA	A, Sp, Psy, CD, B	20s	BA, Po, PVp, Pun†	Sub, PV	-	N/P	N/P	-
14 <sup>14</sup>	USA	10s/10s	C Het	c.1251_1252delinsG, p.P417Lfs c.1885C>T, p.R629W	DM, DI, SNHL, OA	Hypor, Psy, B	10s	PVp, Pun	-	-	N/P	N/P	-
15 <sup>17</sup>	Turkey	10s/10s	Het	c.1230_1233delCTCT, p.V412Sfs	OA, C	A, S, CD	10s	BA, Po, D	-	-	N/P	N/P	-
16	Italy	0s/20s	C Het	c.605A>G, p.E202G c.1628T>G, p.L543R	DM, OA	DN, B	30s	Po, PVp	-	-	N/P	N/P	-
17	Italy	0s/10s	C Het	c.409_424dup16, p.V142Gfs c.1628T>G, p.L543R	DM, DI, SNHL, OA	Psy, B	10s	Po, PVp	-	-	N/P	N/P	-

477 **Table 1.** Clinical, genetic, and neuroradiological data compiled from 17 WFS subjects.

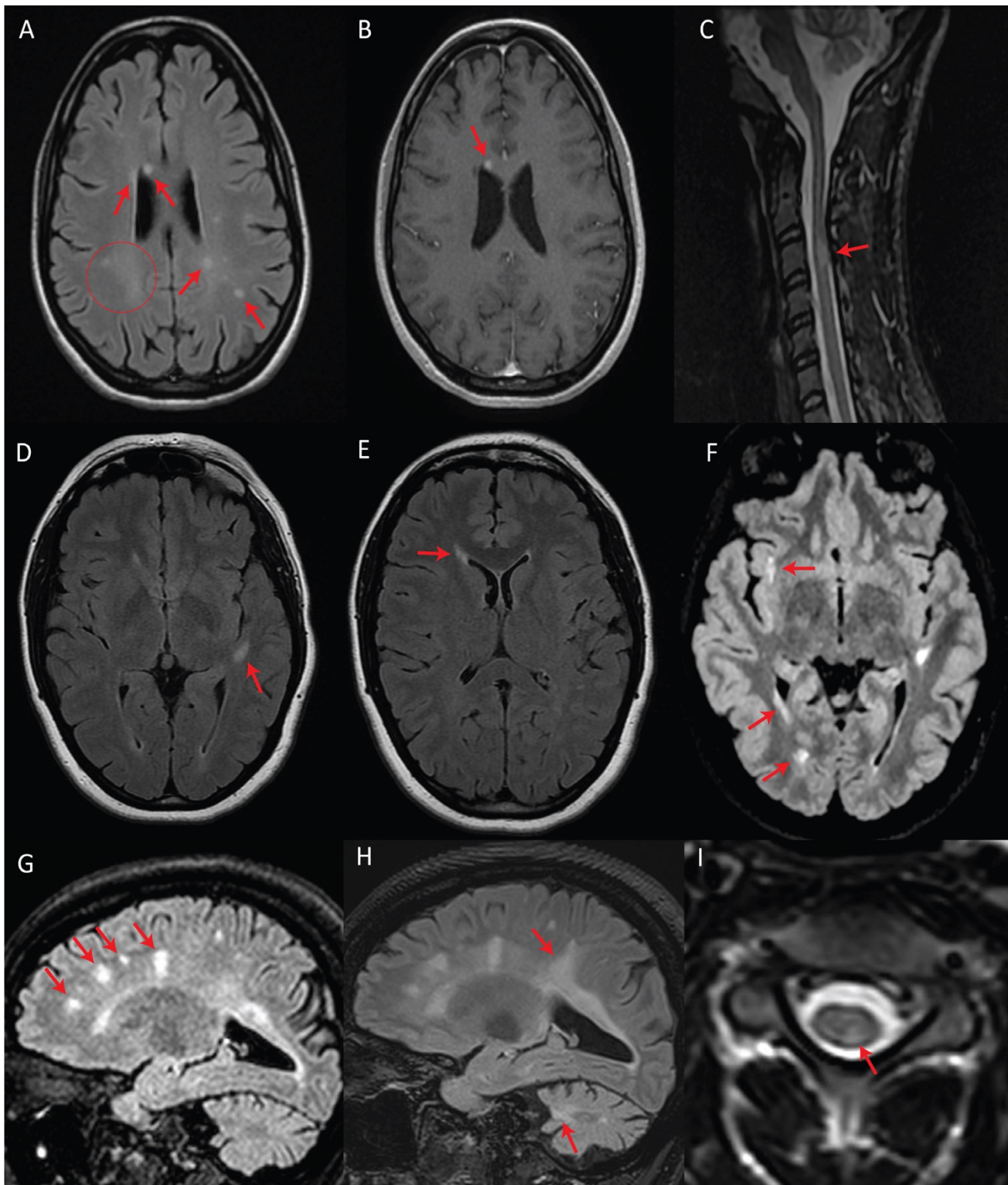
478 *Legend:* **A** = ataxia and/or other cerebellar signs; **B** = bladder dysfunction; **BA** = brainstem atrophy; **C** = cataract; **CA** = cerebellar atrophy; **Cal** = callosal/pericallosal; **CD** = cognitive deficit; **Cer** = cerebellar white  
479 matter/peduncles; **C Het** = compound heterozygous; **D** = diffuse/confluent involvement of the centrum semiovale and/or peritrigonal white matter; **DCo** = diabetic coma; **DI** = diabetes insipidus; **DM** = diabetes mellitus; **DN** =  
480 diabetic neuropathy; **Het** = heterozygous; **Hom** = homozygous; **Hyperr** = hyperreflexia; **Hypor** = hyporeflexia; **JxU** = juxtacortical/U-fiber; **LP** = lumbar puncture; **M** = migraine; **Mo** = other motor issues; **MS** = multiple  
481 sclerosis; **N/A** = not available; **N/P** = not performed; **OA** = optic atrophy; **OCBs** = oligoclonal bands; **Pit** = absent/diminished posterior pituitary bright spot; **PN** = peripheral neuropathy; **Po** = pontine signal changes; **Psy** =  
482 psychiatric symptoms; **Pun** = punctate subcortical white matter foci typical of WFS; **PV** = periventricular; **PVp** = diffuse, bilateral signal changes in posterior horn periventricular white matter and/or optic radiations; **S** =  
483 seizures; **SC** = spinal cord; **SNHL** = sensorineural hearing loss; **Sp** = spasticity; **Sub** = subcortical; **WBCs** = white blood cells; † = focal lesion(s) ultimately categorized as intermediate (in between WFS and MS); \*\* =  
484 McDonald radiological criteria fulfilled.

MS-like lesion location or characteristic	Number of subjects (% of subjects with MS-like lesions)
Subcortical	6 (86)
Periventricular	4 (57)
Juxtacortical/U-fiber	3 (43)
Callosal/pericallosal	2 (29)
Spinal cord (cervical)	2 (29)
Cerebellar (white matter/peduncles)	1 (14)
Gadolinium enhancement	3 (100)*

485 **Table 2.** Distribution of MS plaque-like foci across the seven subjects in which these were identified.  
486 \*Only three radiologically MS-like subjects underwent post-contrast imaging.



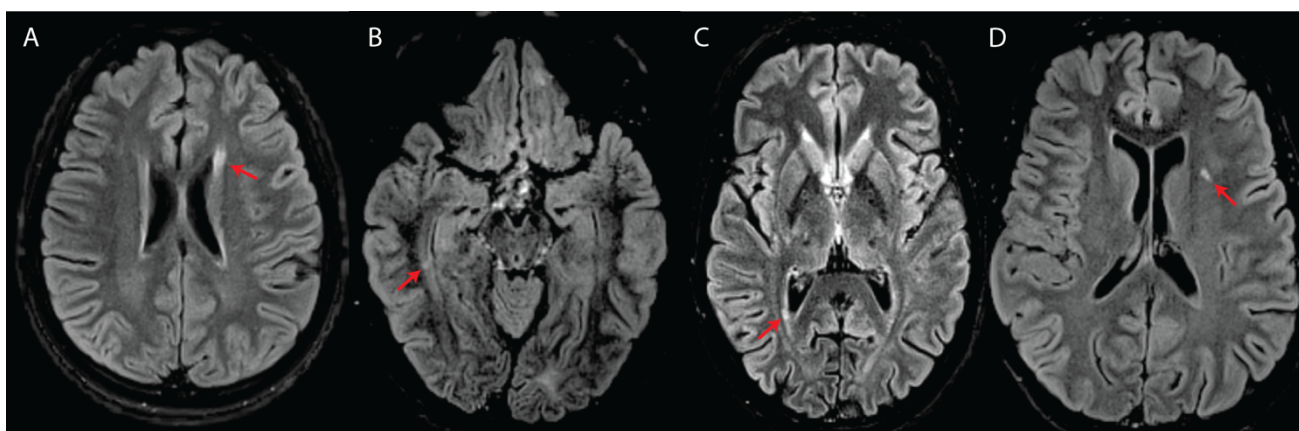
487 **Figure 1.** Classical MRI features associated with WFS. **A**, Axial T2-weighted image showing  
488 bilateral pontine signal abnormality (subject #10). **B**, Axial T2-FLAIR image showing bilateral  
489 symmetric posterior white matter abnormal signal as well as a punctate, round white matter signal  
490 abnormality in the left frontal lobe (subject #14).



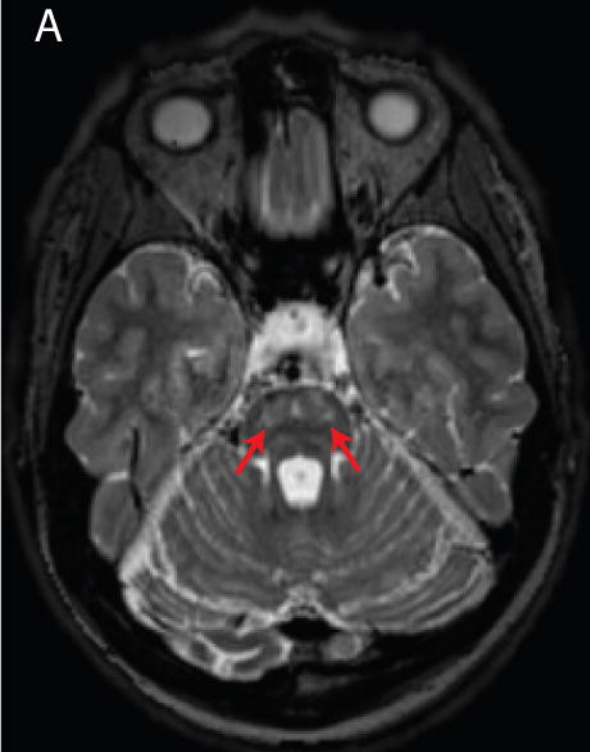
491 **Figure 2.** Patients with fulfilled or partially fulfilled McDonald criteria. **A, B,** and **C** represent  
492 subject #2 (criteria fulfilled). **A,** Axial T2-FLAIR image showing multifocal periventricular, callosal,  
493 and subcortical white matter lesions (arrows) with accompanying diffuse abnormal peritrigonal white  
494 matter signal (circle). **B,** Post-gadolinium axial T1 image showing an enhancing callosal lesion. **C,**  
495 Sagittal T2 image of the cervical and thoracic spinal cord showing a demyelinating lesion at the level  
496 of C3. **D, E,** and **F** represent subject #1 (criteria partially fulfilled). **D,** Axial T2-FLAIR showing an  
497 oval-shaped lesion in the left temporal subcortical white matter. **E,** Axial T2-FLAIR showing a

498 periventricular lesion around the frontal horn of the right lateral ventricle. **F**, Axial T2-FLAIR,  
499 performed seven years after the first exam (**D**, **E**), showing new focal white matter lesions in the right  
500 insula, right periventricular white matter, and along the posterior horn of the right lateral ventricle. **G**,  
501 **H**, and **I** represent subject #3 (criteria fulfilled). **G**, Sagittal T2-FLAIR showing multifocal white  
502 matter lesions perpendicular to the ventricular walls. **H**, Sagittal T2-FLAIR, performed four years  
503 after initial MRI (**G**), demonstrating progression of the lesion burden in both the supra- and  
504 infratentorial regions despite treatment with teriflunomide as of the first year in the four-year interval.  
505 **I**, Axial T2 spinal cord MRI showing a white matter lesion located in the left posterior cord at the C3  
506 level.





507 **Figure 3.** White matter abnormalities suggestive of an inflammatory process (**A, B, C**) or classified  
508 as intermediate (**D**) in four subjects with WFS. All images are axial T2-FLAIR. **A**, Elongated lesion  
509 located at the level of the anterior horn of the left lateral ventricle (subject #7). **B**, Small temporal  
510 periventricular lesion perpendicular to the right ventricular wall (subject #7). **C**, Small periventricular  
511 lesion perpendicular to the right ventricular wall (subject #10). **D**, Left insular deep white matter  
512 lesion classified as intermediate between suspicious for inflammatory process and typical for WFS  
513 (subject #8).

**A****B**