

1    Improving Type II Diabetes Care in West Africa:  
2    A Scoping Review of Barriers, Facilitators and  
3    the Way Forward

4    Abdul-Basit Abdul-Samed\*<sup>1</sup>, Yasmin Jahan<sup>2</sup>, Veronika Reichenberger<sup>2</sup>, Ellen Barnie Pephrah<sup>1</sup>, Mary Pomaa  
5    Agyekum<sup>1</sup>, Henry Lawson<sup>1</sup>, Dina Balabanova<sup>2</sup>, Tolib Mirzoev<sup>2</sup>, Irene Agyepong<sup>1</sup>

6  
7    <sup>1</sup>Ghana College of Physicians and Surgeons, Accra, Ghana

8    <sup>2</sup>London School of Hygiene & Tropical Medicine, London, United Kingdom

9  
10    \*Corresponding Author

11    [abdulbasitgunu@gmail.com](mailto:abdulbasitgunu@gmail.com)

12

13

14

15

16

17

18

19

## 20 Abstract

---

21

22 **Background:** The prevalence of diabetes is rising rapidly across West Africa, posing a significant public  
23 health challenge. Effective diabetes management through accessible and quality primary healthcare is  
24 crucial, yet multiple barriers persist. This review aimed to synthesise the available evidence on factors  
25 influencing access, utilisation, and quality of diabetes primary care in West Africa.

26 **Methods:** Our scoping review followed Arksey and O'Malley's methodology and PRISMA-ScR  
27 guidelines. We comprehensively searched electronic databases and grey literature for studies covering  
28 2000-2023 that reported factors related to diabetes primary care in West African countries. Data was  
29 extracted and analysed through a framework synthesis approach integrating the World Health  
30 Organisation Operational Framework for Primary Health Care, the Social Determinants of Health model,  
31 and the Innovative Care for Chronic Conditions model.

32 **Results:** Twelve studies were included from Nigeria (n=7), Ghana (n=4), and Senegal (n=1). Key barriers  
33 to access, utilisation, and quality were identified as health system deficiencies, including lack of  
34 infrastructure, workforce shortages, supply gaps, fragmented care coordination, absence of standardised  
35 guidelines, high costs of care, and limited governance for chronic disease management. Broader  
36 determinants of health, such as poverty, gender, cultural beliefs, reliance on traditional medicine, and  
37 health policy gaps, were found to influence access to and utilisation of care significantly. Individual-level  
38 barriers like psychological distress and delays in care-seeking were also significant. However,  
39 family/social support systems emerged as potential facilitators of accessing and utilising PHC services.

40 **Conclusions:** Our review indicates a complex interplay between health system deficiencies, deeply rooted  
41 cultural beliefs, and lived experiences shaping diabetes care in West Africa. The region's unique  
42 challenges demand a paradigm shift from conventional chronic care models to context-specific, adaptive  
43 models. Crucially, the gendered aspects of care and the integration of traditional healing practices emerge

44 as pivotal yet often overlooked factors in diabetes management. Furthermore, addressing the bidirectional  
45 relationship between mental health and diabetes offers a promising avenue for improving outcomes.  
46 Future strategies must transcend the biomedical model, embracing a sociocultural approach that leverages  
47 community assets and addresses structural inequities.

## 48 Introduction

---

49  
50 According to the World Health Organisation (WHO), the prevalence of diabetes has become a significant  
51 threat to global health, with over half a billion adults currently living with this condition worldwide. This  
52 burden is profoundly felt in low and middle-income countries (LMICs) in regions such as Sub-Saharan  
53 Africa (SSA), where an estimated 24 million people had diabetes in 2021(1). SSA is currently grappling  
54 with the double burden of communicable and noncommunicable diseases (NCDs), which is impacting the  
55 lives of millions across the continent (1).

56 In the West African region, the prevalence of undiagnosed diabetes is estimated at 4% and rising, with  
57 further estimates asserting that prevalence rates of undiagnosed diabetes in this region outpace rates in the  
58 rest of Africa (2–4). According to a systematic analysis (2), the pooled prevalence of undiagnosed  
59 diabetes mellitus across West Africa is at 4.72%, higher than the prevalence rates observed in other  
60 African regions, such as 4.43% in Eastern Africa, 4.27% in Northern Africa, and 1.46% in Southern  
61 Africa. The prevalence of diabetes varies across West African countries, with estimates ranging from  
62 2.8% to 3.95% in Ghana, 1.7% to 2.1% in Burkina Faso, and as high as 5.6% in Niger (5–7).

63 Uncontrolled diabetes can lead to complications, including cardiovascular disease, kidney failure,  
64 blindness, and premature death (8,9). These complications not only impact the quality of life of  
65 individuals living with diabetes but also place a substantial burden on healthcare systems and societies.  
66 Improving prevention, early detection, and management through effective primary health care (PHC) can

67 prevent complications and adverse outcomes in ambulatory care-sensitive (ACS) conditions such as type  
68 II diabetes.

69 For this study, we define primary health care as encompassing three interrelated components: integrated  
70 health services that prioritise primary and public health functions; multisectoral policy and action for  
71 health; and empowered people and communities (10). PHC represents the first point of contact within the  
72 health system, offering continuous, comprehensive, and coordinated care that includes prevention, early  
73 diagnosis, treatment, and management of complications.

74 The WHO recognises PHC as the most inclusive, equitable, and cost-effective approach to achieving  
75 universal health coverage (11). Compared to high-income countries (HIC), LMICs struggle with  
76 providing accessible, uninterrupted quality care for managing ACS conditions like diabetes that require  
77 lifelong self-care and continuous health system support (12). West Africa, in particular, has considerable  
78 barriers hampering access to quality PHC, consequently creating substantial gaps in the delivery of  
79 effective first-line services for diabetes (13,14). Health system barriers include limited resources, a  
80 shortage of human resources trained to manage diabetes, inadequate infrastructure, equipment, tools and  
81 supplies, and essential medicines (15–17).

82 Furthermore, in many settings, cultural beliefs and practices can also have a positive or negative influence  
83 on how people engage with PHC systems. For instance, deeply rooted traditional beliefs of supernatural  
84 causes of disease sometimes orient patients towards traditional healing rather than PHC services (18,19);  
85 such beliefs and practices can contribute to delayed and interrupted care (18). However, cultural beliefs  
86 and practices may facilitate care-seeking if appropriately leveraged through health system adaptation and  
87 community engagement (20,21). The multifaceted interactions between cultural factors and health  
88 systems highlight the need for a comprehensive approach to successfully integrate diabetes management  
89 into responsive PHC systems, which remains an immense challenge across Africa (22).

90

91

## 92 Framework for Primary Health Care

93

94 The WHO's PHC framework helps to understand and address the challenge of access to primary care by  
95 recognising the interdependence of three key elements: integrated health services, multisectoral policy  
96 and action, and empowered individuals and communities. These components are connected to primary  
97 healthcare (PHC) levers, such as political commitment and leadership, governance and policy structures,  
98 funding and resource distribution, and community and stakeholder involvement. When these components  
99 and levers function together effectively, they can enhance the quality, equity, and effectiveness of primary  
100 care services, ultimately resulting in improved health outcomes. However, deficiencies across multiple  
101 points in this continuum persist in LMICs, fundamentally constraining integrated diabetes care (11,23).

102 The literature on West Africa highlights gaps in integrated health service delivery models that do not  
103 adequately address the increasing burden of non-communicable diseases (NCDs). There is limited  
104 multisectoral coordination for diabetes prevention and a lack of community awareness and engagement in  
105 diabetes care. These factors, spanning across the healthcare system and society, significantly impact  
106 primary care for diabetes (22–24).

## 107 Quality in Diabetes Care

108

109 Quality of care is a complex, multifaceted concept that evolves through patients' experiences. Key  
110 attributes include responsiveness to individual patient needs and preferences, quality of patient-provider  
111 interactions, and management practices (25). Hanefeld et al. argued that quality is co-produced by various  
112 actors - patients, families, communities, providers, and health systems - and shaped by sociocultural  
113 contexts (25). Realising high-quality diabetes care involves providing safe, effective, timely, efficient,  
114 equitable and patient-centred prevention and treatment (26). This requires addressing challenges at  
115 multiple levels, from health worker skills and medication availability at the health system level to social

116 support systems at the community and individual levels. A holistic view spanning micro to macro factors  
117 is necessary to understand the various barriers and ensure quality, patient-centred diabetes care.

118 While previous studies have looked at the prevalence of diabetes and its risk factors in Africa, there is a  
119 notable lack of synthesised evidence on the various barriers and facilitators within primary healthcare  
120 systems that affect access to, utilisation and quality of diabetes-related primary care across West Africa  
121 (24). This lack of comprehensive understanding hinders the development of effective interventions and  
122 policy actions to improve diabetes care in the region. Our scoping review aims to address this gap by  
123 identifying and synthesising the literature on factors influencing access to, utilisation and quality of  
124 diabetes care in West Africa, exploring how and why these manifest, and distilling recommendations for  
125 strengthening PHC policy, practice, and implementation research to improve diabetes care. By providing  
126 this synthesis, we aim to inform more targeted and context-appropriate strategies for diabetes  
127 management in West African PHC settings.

## 128 **Materials and Methods**

---

129 This scoping review followed the methodology outlined in our published protocol (27), which adhered to  
130 the framework by Arksey and O'Malley (28), guidance from the Joanna Briggs Institute (29), and the  
131 PRISMA-ScR guidelines (30).

132 Two overall research questions were developed through an iterative process and extensive consultation  
133 with the research team and other stakeholders:

134 (1) What factors influence primary healthcare access, utilisation and quality for diabetes in West Africa?

135 (2) How and why do these factors work, and what are the gaps in the current literature?

136 The review focused on original peer-reviewed research published in English or French between January  
137 1, 2000, and December 31, 2023. It focused on factors influencing diabetes care in the adult population,  
138 excluding gestational diabetes. The inclusion and exclusion criteria are detailed in *Table 1*.

139

140 **Table 1 - Inclusion & Exclusion Criteria**

	<b>Inclusion</b>	<b>Exclusion</b>
<b>Year of publication</b>	2000 - 2023	N/A
<b>Language</b>	English, French	Other Languages
<b>Population</b>	Adults with diabetes	People with gestational diabetes
<b>Concept</b>	Access  Utilisation  Quality  PHC	N/A
<b>Context</b>	West Africa	Regions outside West Africa
<b>Study design</b>	<ul style="list-style-type: none"> <li>• Qualitative studies, Quantitative studies, Meta-analyses, Social Science Case studies/reports</li> <li>• Multi-country studies, which include West African countries</li> </ul>	<ul style="list-style-type: none"> <li>• Studies that do not contain empirical data on factors affecting access, utilisation and quality of PHC</li> <li>• Abstracts</li> <li>• Commentaries</li> <li>• Opinion pieces</li> </ul>

		<ul style="list-style-type: none"><li>• Scoping or Systematic reviews or protocols</li></ul>
--	--	--

141

142 The search strategy, developed with the assistance of an experienced librarian, was adapted for each  
143 database (PubMed, Scopus, Google Scholar, CAIRN Info) and utilised a combination of keywords and  
144 controlled vocabulary terms. Grey literature and reference lists of included studies and relevant systematic  
145 reviews were also searched. The search results were exported into Rayyan software for screening and  
146 management (31).

147 The study selection process, conducted by a team of six members who worked in pairs, involved three  
148 stages: deduplication, title/abstract screening and full-text screening. Conflicts were resolved through  
149 discussion and consensus with a third reviewer. A PRISMA flow diagram illustrates the study selection  
150 process (Fig 1).

151 **Figure 1 - PRISMA Flow Diagram**

152

153 Data extraction was performed using a standardised form in Microsoft Excel, which included study  
154 characteristics (author, year, country, design, population), barriers and facilitators to diabetes care access,  
155 utilisation, and quality at the health system and contextual levels, as well as key findings and conclusions.  
156 Four reviewers independently extracted data, which were then collated and summarised in a tabular  
157 format.

158 Further details of our methodology are available in our published protocol (27).

159 Twelve papers were included in this scoping review after screening 4,290 documents.



160

161

## 162 Conceptual Framework

163 We utilised a framework analysis approach to direct the analysis process for this scoping review. To gain  
164 a holistic and context-specific understanding, various factors were analysed at the macro (broader  
165 societal, economic, political, cultural, and environmental factors influencing health and healthcare), meso  
166 (organisational and community level factors), and micro (individual patient, family, and healthcare  
167 provider level factors) levels. This taxonomy drew on multiple complementary frameworks: the  
168 Operational Framework for PHC, which is an expansion of the WHO's six building blocks of health  
169 systems (11), the Social Determinants of Health (SDH) framework (32), and the Innovative Care for  
170 Chronic Conditions model (ICCC) (33).

171 These frameworks were selected because of their relevance to the complexity of diabetes care. The three  
172 frameworks we combined by examining their key domains and concepts, looking for similarities and  
173 differences. The WHO PHC framework served as the primary structure for health system components  
174 (11), while the SDH model allowed us to contextualise these within broader societal factors (32). The  
175 ICCC model offered specific insights into chronic disease management relevant to diabetes care (33).

176 We then created a unified scheme incorporating elements from all three frameworks. For example, the  
177 'health workforce' from the WHO PHC framework was expanded to include social and cultural  
178 competencies highlighted in the SDH model and the concept of a 'prepared, proactive practice team' from  
179 the ICCC model.

180 During data extraction and analysis, we applied this integrated scheme, allowing us to capture the  
181 multifaceted nature of factors influencing diabetes care. In our synthesis, we carefully considered how the  
182 findings were related to multiple framework components. For instance, a finding related to patient

183 adherence is analysed in terms of health system factors (WHO PHC), social determinants (SDH), and  
184 self-management support (ICCC).

185 This synthesised approach helped us gain a better understanding of the complex factors influencing  
186 diabetes care in West African primary healthcare settings.

187 Our analytical framework distinguishes two main categories: contextual and health system factors across  
188 the macro, meso, and micro levels (Fig 2). Context refers to the surroundings or milieu in which a  
189 particular event or phenomenon is situated and is a crucial factor in shaping health and healthcare (34,35).

190 **Fig 2- Structure for analysis of factors**

## 191 Results

---

192

193 Most of the included studies (n=7) were from Nigeria, with the remaining studies conducted in Ghana and  
194 Senegal. The study designs employed across the various studies included qualitative, cross-sectional, and  
195 mixed-methods studies, with study populations predominantly involving healthcare providers and  
196 patients.

197 The findings of this scoping review are organised and presented according to the integrated conceptual  
198 framework. We will explicitly link each key finding to relevant framework domains to provide a  
199 comprehensive understanding of the factors influencing diabetes care in West African primary healthcare  
200 settings (Table 2 and Table 3).

201

202

203 **Table 2 - Summary of included studies and findings**

204

Author(s)	Title	Country	Aim/Purpose of the Study	Study Participants	Key Findings
Ajisegiri et al (2023)	"We just have to help": Community health workers' informal task-shifting and task-sharing practices for hypertension and diabetes care in Nigeria	Nigeria	Explore roles and practices of CHWs in hypertension and diabetes care delivery	CHWs (n=77), local and state government stakeholders (n=7)	<p><b>Macro</b></p> <p>Inadequate training for Community Health Workers (CHWs) (reported by 84% of CHWs)</p> <p>Inadequate supplies of equipment (81%)</p> <p>Poor infrastructure (71%)</p> <p><b>Meso</b></p> <p>Inadequate supervision of CHWs (52%)</p> <p>CHWs flexibly implement national guidelines for hypertension and diabetes, exercising considerable discretion in interpretation</p> <p>Limited communication between Primary Health Care (PHC) facilities and higher-level facilities during referral processes</p> <p>Inadequate medication supply at PHC facilities</p> <p>Need for simplified NCD clinical algorithms/guidelines that can easily be used by CHWs at the point of care</p> <p>Continuous capacity building for CHWs is required to enhance their roles in NCD care</p> <p><b>Micro</b></p> <p>Government stakeholders' rigid views on restricting CHWs' role to screening and referral due to insufficient formal training and limited medication supply</p> <p>Balancing the need for referrals with maintaining patients' trust</p>

					in the services provided at the PHC facility
<b>Okoronkwo et al.(2015)</b>	Economic burden and catastrophic cost among people living with type2 diabetes mellitus attending a tertiary health institution in south-east zone, Nigeria	Nigeria	To assess the magnitude of economic burden borne and catastrophic costs incurred by people living with type 2 diabetes mellitus	T2D patients (n = 308) receiving care out-patient care	<p><b>Macro</b></p> <p>High cost of care impeding effective diabetes management due to low purchasing power, out-of-pocket payment at the point of need, and absence of prepayment mechanisms</p> <p>The magnitude of economic burden and catastrophic cost observed in the study area, despite being one of the oil-producing states with better resource allocation</p> <p>Implementation of the National Health Insurance Scheme, which presently covers some categories of government workers, but does not adequately protect the poor from the impact of out-of-pocket spending and increasing care costs (inequity)</p> <p><b>Micro</b></p> <p>Disproportionate experience of catastrophic costs tilting towards lower socioeconomic groups, indicating that the poor are not protected from the impact of out-of-pocket spending and increasing care costs</p> <p>People living with diabetes (PLWD) need to contend with high costs of care throughout their lifetime</p>

<p><b>Bosun-Arije et al.(2020)</b></p>	<p>Organisational factors influencing non-pharmacological management of type 2 diabetes mellitus (T2DM) in public hospitals across Lagos, Nigeria: A qualitative study of nurses' perspectives</p>	<p>Nigeria</p>	<p>Examine organisational factors influencing T2D management</p>	<p>Nurses from urban, suburban, and rural regions (n=17)</p>	<p><b>Meso</b></p> <p>Information and knowledge management within the clinical environment</p> <p>Relationship management within the clinical environment</p> <p>Staffing levels and nurse-to-patient ratio</p> <p>Decision-making autonomy of doctors</p> <p>Availability of medical supplies such as glucometers and strips</p>
<p><b>Iregbu et al. (2022)</b></p>	<p>An Interpretive Description of Sociocultural Influences on Diabetes Self-Management Support in Nigeria</p>	<p>Nigeria</p>	<p>To explore how the Nigerian social and cultural context influences healthcare providers' self-management support practices</p>	<p>HCPs from two diabetes clinics (n=19)</p>	<p><b>Macro</b></p> <p>Lack of health insurance, leading to out-of-pocket payments for treatment, which is significant considering the average income of Nigerians</p> <p>Inadequate funding for state-owned and -operated hospitals compared to federally funded hospitals, resulting in fewer staff and limited capacity to provide comprehensive care.</p> <p><b>Meso</b></p> <p>The rigidity of a hierarchical acute care model of diabetes services, not designed for ongoing diabetes self-management education or support</p> <p>Healthcare providers working in silos, with no evident interprofessional collaboration</p> <p>Absence of designated diabetes educators in hospitals, leading to unclear roles in providing diabetes education</p>

					<p>Lack of essential resources and leadership capacity in hospitals to effect change, resulting in healthcare providers feeling helpless and unable to make real changes</p> <p>Lack of support for continuing education for healthcare providers, resulting in a lack of skills for individualised support for patients</p> <p>Absence of a structured education plan and uniform approach among healthcare providers</p> <p>Absence of a structure for continued self-management support, patient follow-up, and coordination of care within the community</p> <p><b>Micro</b></p> <p>Patients' widespread beliefs in the supernatural origins of diabetes, impacting self-management and support strategies, and leading to delayed healthcare</p> <p>Patients' inability to afford medical bills, drugs, and necessary resources for diabetes self-management, forcing healthcare providers to adapt treatment</p> <p>Patients' lack of understanding of diabetes and its management, even after attending the clinic for some time</p> <p>Individual-family interdependence, myths, and limited understanding of</p>
--	--	--	--	--	---

					diabetes and its management among patients
<b>Ugwu et al. (2020)</b>	Diabetes care knowledge and practice among primary care physicians in Southeast Nigeria: a cross-sectional study	Nigeria	To evaluate diabetes care knowledge and practice among primary care physicians	Primary care physicians (n=64)	<p><b>Macro</b></p> <p>Absence of local diabetes clinical practice guidelines (CPG), identified as the greatest challenge faced by primary care physicians (PCPs) in managing people with diabetes.</p> <p><b>Meso</b></p> <p>Lack of access to diabetes specialists, identified by 70% of the respondents</p> <p>Lack of access to allied healthcare professionals, identified by 66% of the respondents</p> <p>Shortage of diabetes specialists and reliance on PCPs as the largest diabetes care medical manpower in Nigeria</p> <p>Low level of diabetes care knowledge among PCPs in Southeast Nigeria, indicating a significant gap in the quality of primary health care for diabetes.</p> <p><b>Micro</b></p> <p>Low knowledge of glycemic cut-offs for diagnosis of diabetes among PCPs: 26.6% for FBG, 45.3% for RBG, and 10.9% for A1c</p> <p>Lack of knowledge about prediabetes among PCPs</p>

					<p>Only 7.8% of PCPs correctly knew all three glycemic values for diagnosis of diabetes, while 48.4% did not have correct knowledge of any one of the glycemic cut-offs</p> <p>79.7% of respondents were not aware of any diabetes management guideline</p>
<b>Ugwu et al. (2020)</b>	Barriers to Diabetes Care in a Developing Country: Exploratory Evidence from Diabetes Healthcare Providers	Nigeria	To explore important barriers and facilitators to diabetes care from the perspectives of diabetes healthcare providers	Diabetes healthcare providers (n=129)	<p><b>Macro</b></p> <p>Poverty (ranked first among the major barriers, reported by 89.1% of respondents)</p> <p>Dysfunctional primary healthcare (PHC) system</p> <p>Unregulated alternative medicine practices.</p> <p><b>Meso</b></p> <p>Lack of diabetes care support staff</p> <p><b>Micro</b></p> <p>Low diabetes awareness (reported by 82.9% of participants)</p> <p>False religious and cultural beliefs</p> <p>Poor general practitioner's (GP's) knowledge of diabetes care</p> <p>Poor patient's knowledge of diabetes self-management</p>
<b>Oyewole et al. (2020)</b>	Primary Health Care Nurses' Competencies and Resources Availability for Diabetes Mellitus Care at Local Government Areas of Ibadan	Nigeria	To investigate PHC nurses' competency on diabetes mellitus care and evaluate	Primary healthcare nurses (n=88)	<p><b>Meso</b></p> <p>Lack of availability of insulin and insulin syringes at 98.4% and 100% of the primary healthcare centers (PHCs), respectively</p>



			the material resources available for care in the community		<p>Unavailability of glucometers, glucometer test strips, and teaching aids at 53.2%, 58.1%, and 62.9% of the PHCs, respectively</p> <p>Lack of functioning refrigerators for storing insulin in 64.5% of the PHCs.</p> <p><b>Micro</b></p> <p>Nurses' knowledge gaps in diabetes mellitus care: a. 69.3% got the definition of diabetes mellitus diet wrong b. 71.6% did not know the best method for home glucose testing c. Only 27.3% knew the treatment for low blood glucose d. 62.5% did not know what could cause a low blood glucose level e. 73.9% did not know the signs of ketoacidosis</p> <p>Overall, 58% of nurses had adequate knowledge of diabetes mellitus</p> <p>36.4% of nurses had never identified or treated hyperglycemia</p> <p>54.5% of nurses practiced below the expected level of diabetes mellitus nursing skills, while 45.5% practiced within the expected level</p>
<b>Opore-Addo et al. (2022)</b>	Healthcare services utilisation among patients with hypertension and diabetes in rural Ghana	Ghana	To determine the prevalence of hypertension and diabetes in rural districts and factors influencing	Patients from rural districts (n=684)	<p><b>Macro</b></p> <p>Educational level and health insurance enrollment increased likelihood of seeking care in public hospitals.</p> <p><b>Meso</b></p>

			preferences of healthcare facilities/ services		<p>Perceived good quality of care influenced the preference for health facilities.</p> <p>A little above half of the respondents (73; 53.28%) cited quality of care as the main reason for their preferred health facility followed by proximity/monce, which was also cited by 48 (35.04%) respondents.</p> <p><b>Micro</b></p> <p>Predisposing factors (age, marital status, education, occupation) and enabling factors (income, socioeconomic status) influenced preference for health facility</p>
<b>Kretchy et al. (2020)</b>	The Association between Diabetes-Related Distress and Medication Adherence in Adult Patients with Type 2 Diabetes Mellitus: A Cross-Sectional Study	Ghana	To estimate diabetes-specific distress and assess its impact on medication adherence	T2D patients recruited from outpatient clinic (n=188)	<p><b>Macro</b></p> <p>Lack of psychological and social support systems for diabetes-related distress</p> <p><b>Meso</b></p> <p>Lack of routine screening for diabetes-related distress in the health system</p> <p><b>Micro</b></p> <p>High levels of diabetes-related distress associated with lower medication adherence, negative emotions, dietary concerns, dissatisfaction with external</p>

					support, and diabetes management helplessness
<b>Mogre et al. (2019)</b>	Attitudes towards, facilitators and barriers to the provision of diabetes self-care support: A qualitative study among healthcare providers in Ghana	Ghana	Explore attitudes, barriers, facilitators to diabetes care support among HCPs	Healthcare providers (n=14)	<p><b>Macro</b></p> <p>Inadequate training of healthcare professionals (HCPs) in diabetes care due to little attention given to diabetes and its treatment in the curriculum</p> <p>Inadequacy of continuous professional development programmes for HCPs to equip their competencies regarding diabetes care</p> <p>Limited internet connectivity in hospitals, hindering opportunities for HCPs to learn more about diabetes</p> <p>Nutrition and dietetic care services are not insured, requiring patients to pay out-of-pocket</p> <p><b>Meso</b></p> <p>Poor inter-professional collaboration among the various types of healthcare professionals required to provide diabetes care (especially between nurses and nutritionists/dieticians)</p> <p>Insufficient number of trained healthcare professionals in diabetes clinics</p> <p>HCPs' perception of inadequate training in diabetes care</p> <p>Lack of regular access to basic diagnostic tools to test for important clinical variables such as HbA1c</p>

					<p><b>Micro</b></p> <p>HCPs adopting information-centric approaches instead of building patient-provider teams and patients' confidence for behavior change</p> <p>Good teamwork among HCPs of the same profession (e.g., nurses) but poor inter-professional collaboration</p> <p>Some types of healthcare professionals feeling more competent than others or perceiving a more important role in diabetes care, hindering inter-professional collaboration</p> <p>Language barriers between patients and HCPs, affecting effective communication, health literacy, and patients' trust in HCPs to manage their diabetes</p> <p>Patients' inability to pay for uninsured services like nutrition and dietetic care, negatively affecting the receipt of self-care support regarding diet</p>
<b>BeLue et al. (2012)</b>	A CULTURAL LENS TO UNDERSTANDING DAILY EXPERIENCES WITH TYPE 2 DIABETES SELF-MANAGEMENT AMONG CLINIC PATIENTS IN M'BOUR, SENEGAL	Senegal	To examine experiences with diabetes self-management among clinic patients using the PEN-3 cultural model	Clinic patients with type 2 diabetes (n=54)	<p><b>Macro</b></p> <p>Lack of integration between Western and Traditional medicine, with participants having their own perspectives about the utility of Traditional and/or biomedical/Western medicine</p> <p>The Wolof concept of "Lambatu," which loosely translates as "try whatever works until you feel better" in terms of healthcare seeking</p>

					<p><b>Meso</b></p> <p>Family dynamics serving as both supportive and inhibiting forces</p> <p><b>Micro</b></p> <p>Belief in supernatural origin of diabetes, individual-family interdependence, myths and limited understanding of diabetes, Financial challenges related to accessing medical care and adhering to prescribed diabetic diet</p>
<b>Mogre et al. (2019)</b>	Barriers to diabetic self-care: A qualitative study of patients' and healthcare providers' perspectives	Ghana	Explore patient and provider perspectives on diabetes care barriers	Healthcare providers (n=14) and people living with type 2 diabetes (n=23)	<p><b>Macro</b></p> <p>Poor income levels, inadequate access to variety of foods</p> <p><b>Meso</b></p> <p>Subjective norms/normative beliefs: a. Inadequate family support b. Culture and beliefs c. Social stigma</p> <p><b>Micro</b></p> <p>Attitudes/behavioral beliefs: a. Misconception and use of herbal medicine b. Difficulty changing old habits c. Intentional nonadherence and fatalism d. Worrying about the continuous taking of medication e. Feeling lazy to perform exercise f. Side effects of medication g. Fear of pricking the finger</p> <p>Perceived behavioral control/control beliefs: a. Nonreceipt of self-care support to perform self-monitoring of blood glucose (SMBG) b.</p>

					Inadequate knowledge and skills to operate the glucometer c. Patients having comorbid conditions d. Old age and body pains e. Poor income levels f. Inadequate access to a variety of foods g. Diet recommendations being too restrictive h. Busy work schedules
--	--	--	--	--	--

205

206 To provide a comprehensive overview of our findings and their relationship to the integrated conceptual  
207 framework, we have synthesised the key results in Table 3

208 **Table 3 - Summary of Key Findings on Diabetes Care in West Africa by Health System and Contextual Domains**

	<b>Key Findings</b>	<b>Source Studies</b>
<b>Service Delivery</b>	- Inadequate clinical spaces for diabetes care  - Limited avenues for diabetes education and counselling  - Absence of standardised clinical guidelines	(36–38)
<b>Health Workforce</b>	- Shortages of healthcare professionals, especially in rural areas  - Lack of up-to-date knowledge and skills among PHC workers	(39–41)
<b>Health Financing</b>	- Lack of health insurance  - High out-of-pocket expenditures  - Inadequate funding for state-owned hospitals	(39,40,42,43)

<b>Governance</b>	- Poor prioritisation of chronic diseases in health agendas  - Lack of robust regulatory framework for diabetes care	(40,42)
<b>Social Determinants of Health</b>	- Widespread beliefs in supernatural causes of diabetes  - Cultural food preferences challenging dietary management  - Proximity of health facilities	(36,39,42,44–46)
<b>Self-Management Support</b>	- Family and social support as critical enablers  - Women's central role in dietary modifications  - Psychological strains of diabetes and its management	(42,45,47)

209

## 210 Health System Factors

211

212 This review identified several barriers within the health system that contribute to suboptimal primary  
213 healthcare for diabetes in West Africa. As outlined below, these barriers include policy-related  
214 challenges, financial barriers, issues at the facility level, and workforce challenges.

### 215 Service Delivery and Organisation of Care

216 Our findings highlight prominent service delivery challenges, such as inadequate clinical spaces and limited  
217 avenues for diabetes education and counselling, significantly hindering the delivery of comprehensive diabetes  
218 care services (36). This issue was compounded by the absence of standardised clinical guidelines and care  
219 protocols for diabetes management at the primary care level, leading to inconsistencies in care provision and

220 potentially suboptimal outcomes (37). Ugwu et al. found that most primary care physicians were unaware of  
221 any diabetes management guidelines, suggesting the severity of this issue (37). Furthermore, the fragmentation  
222 of services and lack of teamwork undermined the quality and continuity of diabetes care, resulting in poor  
223 feedback, coordination, and management of patient transitions across levels of care (38).

#### 224 **Health Workforce**

225 Workforce challenges posed another major barrier to effective diabetes care. Shortages of healthcare  
226 professionals, particularly in rural primary care facilities, hampered effective diabetes care delivery (39). This  
227 shortage was exacerbated by the fact that frontline PHC workers often lacked up-to-date knowledge, skills, and  
228 training in evidence-based standards of diabetes care, leading to poor management of patients (40,41).  
229 Oyewole et al. observed negative attitudes towards caring for people with diabetes among care providers,  
230 further impacting the quality of care provided (41). However, the reviewed studies did not explicitly explore  
231 the underlying reasons for these negative attitudes.

232 Insufficient coordination and collaborative practices among healthcare provider cadres compounded these  
233 workforce issues. Instead of adopting an integrated, consultative approach to patient care, providers often  
234 worked in silos (44). The lack of clear role assignments and poor interprofessional collaboration among  
235 different types of healthcare providers involved in diabetes care, such as doctors, nurses, dietitians, and health  
236 educators, resulted in these noticeable silos. Iregbu et al. (44) found that nurses felt underutilised and that their  
237 roles did not optimally leverage their knowledge and skills. Some doctors believed they were solely  
238 responsible for providing diabetes education with little contribution from other professionals. Referrals from  
239 doctors to dietitians were inconsistent, and doctors sometimes needed to remember to refer patients or believed  
240 they could provide dietary counselling themselves.

241 Similarly, Mogre et al. showed that silos existed between nurses, doctors, and dietitians/nutritionists. There  
242 was limited teamwork and cooperation across these professional groups, with more collaboration occurring  
243 within specific professionals (e.g., among nurses) rather than between different health personnel. Poor  
244 communication, lack of information sharing, competition, and perceptions of relative importance in diabetes



245 care contributed to these silos. These professional silos primarily occurred at the provider level, reflecting a  
246 lack of integrated, multidisciplinary care teams.

### 247 **Health Financing**

248 Financial barriers emerged as a significant challenge in our review. The lack of health insurance and high out-  
249 of-pocket expenditures for medications, supplies, laboratory tests, provider fees, and related healthcare costs  
250 severely limited access to quality diabetes care (39,40,42,43). Okoronkwo et al. noted the inadequate  
251 implementation of the National Health Insurance Scheme in Nigeria, which failed to protect people  
252 experiencing poverty from the impact of out-of-pocket spending and increasing care costs (42). This issue was  
253 further compounded by insufficient funding for state-owned and operated hospitals compared to federally  
254 funded hospitals, resulting in fewer staff and limited capacity to provide comprehensive diabetes care (44). In  
255 some cases, crucial components of diabetes self-management support, such as nutrition and dietetic care, were  
256 not covered by health insurance schemes, forcing patients to pay out-of-pocket and further limiting access to  
257 comprehensive care (36).

### 258 **Leadership/Governance**

259 Several policy and governance issues undermined the provision of quality diabetes care. Authorities  
260 poorly prioritised and planned for the growing burden of chronic diseases like diabetes as health agendas  
261 continued to be dominated by infectious diseases (39). This lack of prioritisation was further worsened by  
262 high poverty rates and inadequate financial risk protection policies that limited the affordability of care  
263 (42,43). Consequently, the health system lacked the necessary resources and preparedness to manage the  
264 increasing prevalence of diabetes effectively.

265 Another significant challenge was the lack of a robust regulatory framework to ensure evidence-based  
266 practices and maintain quality standards in diabetes care. Ugwu et al. reported unregulated alternative  
267 medicine practices in Nigeria, which hindered effective diabetes management by promoting the use of  
268 unproven or potentially harmful treatments.

269 The review identified significant evidence of challenges in service delivery, health workforce, financing, and  
270 governance in primary healthcare settings in West Africa. However, there were noticeable gaps in evidence

271 regarding health information systems and comprehensive access to essential medicines and technologies for  
272 diabetes care. However, some studies found instances of shortages in necessary resources and supplies, such as  
273 glucometers, test strips, and teaching aids, which hindered effective diabetes management (41,44).

## 274 Contextual Factors

275  
276 Multiple studies reported widespread beliefs in supernatural causes of diabetes, such as curses, witchcraft, and  
277 spiritual attacks (39,40,44,45). These beliefs may lead to over-reliance on alternative medicine rather than  
278 evidence-based therapies, delaying effective diabetes management (39).

279 Furthermore, the dominance of carbohydrate-rich staple foods and dishes in typical West African cuisine  
280 presented a significant challenge for the dietary management of diabetes (40,45). The high consumption of  
281 carbohydrate-rich foods in West African diets was due to cultural preferences, the affordability of these staple  
282 foods compared to healthier options, and the wide availability of high-carbohydrate ingredients in local  
283 markets and cuisine. These factors posed significant challenges for adopting diabetes-friendly diets in these  
284 contexts.

285 Distance to health facilities was also cited as a factor influencing the choice of healthcare providers, with a  
286 significant proportion of respondents more likely to utilise facilities nearby (46).

287 Interestingly, while some cultural beliefs posed barriers, family and social support systems emerged as critical  
288 enablers deeply rooted in sociocultural norms. Women were identified as playing a central role in leading  
289 household dietary modifications for diabetes management, leveraging their traditional responsibilities in food  
290 preparation and family caregiving (44). However, the impact of family dynamics was not uniformly positive.  
291 The lack of social support also contributed to treatment non-adherence and difficulties in implementing  
292 lifestyle changes in specific contexts.(45). These findings emphasised the interplay of cultural beliefs, gender  
293 roles, and family structures and their influence on diabetes care.

294 At the behavioural level, patients' preferences for traditional medicine over biomedical care and delays in care-  
295 seeking (albeit often related to high costs of care) were found to be significant barriers to effective diabetes  
296 management (44). Crucially, mental health emerged as a critical psychosocial determinant shaping health

297 outcomes for diabetes. The study by Kretchy et al. highlighted the multifaceted nature of diabetes-related  
298 distress and its strong association with poorer self-management behaviours and decreased medication  
299 adherence in the Ghanaian context.

300 The findings also revealed that diabetes distress stemmed not only from the burden of the illness itself but also  
301 from its wider psychosocial ramifications (47). Notably, the study shed light on how people living with  
302 diabetes experience psychological distress due to poor social support, concerns related to meeting dietary  
303 requirements, and the risks of developing complications, leading to significant psychological turmoil. The  
304 psychological impact thus extended beyond individual concerns to include socioeconomic well-being.  
305 Furthermore, dissatisfaction with external support from healthcare providers and social networks was found to  
306 be a significant component of diabetes distress. Patients who did not receive support from their caregivers and  
307 care providers were more likely to experience distress and have poorer medication adherence.

## 308 Discussion

### 309 Transforming Diabetes Care - Insights from a PHC-Centered Analysis

---

310  
311 Amidst the rising burden of NCDs in LMICs, our scoping review explored the factors influencing access  
312 to, utilisation of, and quality of diabetes care in West African primary health systems. This review  
313 catalogues barriers and facilitators and unravels the intricate connections between health systems,  
314 sociocultural contexts, and individual experiences that shape diabetes care. Our findings also highlight the  
315 importance of deeply rooted cultural beliefs and the lived experiences of both patients and providers.  
316 As we discuss results, we aim to map out a future that recognises the unique complexities of the West  
317 African context while drawing on other, primarily similar global contexts to improve diabetes care in  
318 resource-constrained settings.

319 Our analysis of diabetes care in West Africa is grounded in the synthesis of three complementary  
320 theoretical frameworks: the WHO Operational Framework for Primary Health Care (PHC), the Social

321 Determinants of Health (SDH) model, and the Innovative Care for Chronic Conditions (ICCC) model.

322 This multi-framework approach provides a comprehensive lens through which we interpret our findings  
323 and develop recommendations. By leveraging the strengths of each framework, we create a more robust  
324 analytical tool for understanding and addressing diabetes care in West Africa.

325 This synthesis allows us to capture the complexity of diabetes care in LMICs, addressing challenges such  
326 as fragmented health systems, the impact of social determinants on diabetes management, and the  
327 integration of traditional healing practices. Our findings suggest that these frameworks, when adapted to  
328 LMIC contexts, can provide a more in-depth understanding of diabetes care challenges. For instance, the  
329 ICCC's emphasis on patient and family involvement is enriched by considering the gendered aspects of  
330 care prevalent in West African contexts.

331 The multi-framework approach enables us to interpret our results using established theoretical constructs  
332 and contributes to the evolution of these frameworks for better applicability in diverse global health  
333 contexts.

## 334 [Strengthening Integrated Health Services for Diabetes Care – The Challenges, The](#) 335 [Opportunities](#) 336

337 Our review reveals profound health system barriers impacting diabetes care in West Africa. Inadequate  
338 infrastructure, lack of standardised guidelines, and fragmented services compromise access to and quality  
339 of diabetes care. Workforce shortages, insufficient training, and financial barriers further exacerbate these  
340 challenges. Overarching these issues are policy gaps, with chronic diseases often deprioritised. Despite  
341 these challenges, we uncover critical leverage points to improve diabetes care, potentially leading to  
342 fundamental change in resource-constrained settings.

343

## 344 [Addressing Work force challenges and Care Fragmentation](#) 345

346 In West Africa, the 'ideal' integrated PHC system is unique. Healthcare providers often navigate the  
347 intersection of biomedical approaches and traditional healing practices in diabetes management. This dual  
348 paradigm necessitates reimagining patient education and adherence support rooted in local sociocultural  
349 structures.

350 Although West Africa's health system barriers share commonalities with other LMICs, they manifest in  
351 ways that challenge conventional global health models. For instance, workforce shortages transcend  
352 numerical deficits, encompassing capacity issues and competing health priorities. The persistent tension  
353 between addressing infectious diseases and the rising burden of NCDs exerts unique pressure on the  
354 health system, necessitating strategic resource reallocation and re-evaluations of care delivery. This  
355 dynamic connection between communicable and non-communicable disease management represents a  
356 blind spot in many global frameworks for chronic care (24). Similar challenges in resource reallocation  
357 from infectious disease programs to NCD management are evident in Southeast Asian countries like  
358 Indonesia and Vietnam (48), highlighting a broader LMIC phenomenon.

359 Based on our findings, care fragmentation in West Africa reveals a misalignment between long-term  
360 diabetes care needs and current primary health service structures. This misalignment, compounded by  
361 resource constraints limiting access to essential medicines and diagnostics, creates a system ill-equipped  
362 for effective diabetes management. Moreover, fragmented referral systems further worsen this issue,  
363 hindering the provision of comprehensive and continuous care for diabetes patients. Similar challenges  
364 have been observed in other regions, like India and South Africa (49,50), where efforts to integrate  
365 diabetes care into primary health services have faced implementation barriers, particularly in coordinating  
366 care across different health system levels and contributing to poor health outcomes.

367 The ICCC model's emphasis on prepared, proactive practice/care teams requires substantial  
368 reinterpretation in regions like West Africa. Preparedness in these regions extends beyond clinical  
369 knowledge to encompass cultural competence and resource-constrained problem-solving. This calls for  
370 rethinking health workforce training and fostering adaptability and innovation beyond standardised

371 guidelines. Addressing diabetes care in LMICs demands more than merely adapting existing care models.  
372 It requires a complete rethinking of delivering chronic care, considering local realities, and strategically  
373 using global best practices.

#### 374 [Adapting Global Best Practices to Local Contexts](#)

375

376 While global recommendations and best practices provide valuable guidance for diabetes care, our  
377 findings assert the critical importance of translating these into locally relevant and feasible interventions.  
378 This adaptation process must consider West African countries' unique challenges, resources, and  
379 sociocultural contexts. For instance, while comprehensive, the WHO's Package of Essential  
380 Noncommunicable (PEN) disease interventions may need significant modification to fit the West African  
381 context. Our review highlighted the prevalence of beliefs in supernatural causes of diabetes, utilisation of  
382 traditional medicine and the dominance of carbohydrate-rich diets, necessitating culturally sensitive  
383 adaptations.

384 Adapting the PEN package could involve several key strategies. Diabetes education programs could  
385 acknowledge traditional beliefs while integrating biomedical explanations. Additionally, nutritional  
386 guidance could focus on modifying traditional West African dishes to be more diabetes-friendly. This  
387 approach is similar to efforts in the US to adopt the DASH diet for African American communities (51).  
388 Furthermore, the decisive role of family support systems identified in our review suggests that family-  
389 centred diabetes education could be more effective than individual-focused approaches, aligning with  
390 successful community-based interventions in other developing regions (52).

391 The adaptation process must be context-specific and involve key elements such as stakeholder  
392 engagement, pilot testing, and continuous evaluation. Including patients, healthcare providers, traditional  
393 healers, and community leaders in the adaptation process ensures relevance and acceptability.  
394 Implementing adapted interventions on a small scale allows for assessing feasibility before a broader  
395 rollout. Regular evaluation of the effectiveness of these adapted interventions will enable iterative  
396 improvements over time.

397 **Multisectoral Policy and Action, People and Communities – The Broader**  
398 **Determinants**  
399

400 While addressing health system barriers is crucial, our review uncovered the profound impact of factors  
401 beyond the health sector on diabetes care in West Africa. A multisectoral lens reveals how finance,  
402 education, urban planning, and agriculture policies significantly influence diabetes care.

403 For instance, our review revealed that the lack of financial risk protection mechanisms, such as  
404 comprehensive health insurance schemes, directly correlates with reduced access to diabetes care and  
405 poorer health outcomes. The lack of financial risk protection mechanisms directly correlates with reduced  
406 access to diabetes care and poorer health outcomes. This misalignment between health system structures  
407 and socioeconomic realities undermines broader health equity and universal health coverage aspirations  
408 (53,54). LMICs face unique hurdles due to high poverty rates and limited formal employment sectors,  
409 which complicate the implementation of health insurance models (55).

410 Our review highlights several promising examples of intersectoral collaboration, demonstrating the  
411 transformative potential of coordinated action. The implementation of "sin taxes" on unhealthy products  
412 in the Philippines, ingeniously generating revenue for health programs, including diabetes prevention,  
413 stands out as a beacon of innovative policy (56). Equally compelling is Rwanda's expansion of  
414 community-based insurance schemes, which have significantly reduced out-of-pocket expenses and  
415 improved healthcare access for vulnerable populations (57). These initiatives emphasise that successful  
416 Universal Health Coverage requires collaboration across sectors to establish sustainable financing  
417 mechanisms and prioritise PHC in national budgets (58).

418 Complementing financial risk protection strategies with intersectoral actions that address the social  
419 determinants of health is important. Education, housing, and transportation sectors play crucial roles in  
420 creating environments that promote or hinder healthy lifestyles. The "Ciclovía" program in Colombia  
421 serves as an example of how urban planning can encourage physical activity and offers an adaptable

422 model for LMICs (59,60). Such initiatives transform cities from contributors to the NCD epidemic into  
423 active partners in health promotion.

424 As we shift our focus to empowered people and communities, we must rethink the connection between  
425 health systems and those they serve. The success of interventions at the system level is tied to their  
426 capacity to involve and empower individuals and communities as active partners in preventing and  
427 managing diabetes. The connection between system factors and community empowerment requires a  
428 comprehensive, system-based approach to enhance diabetes care in low- and middle-income countries  
429 (LMICs). This approach should acknowledge the interdependence of all PHC components and utilise  
430 local strengths and cultural resources to develop sustainable, contextually suitable solutions.

### 431 Empowering People and Communities

432  
433 Our exploration of cultural beliefs and traditional medicine practices provides further insight into our  
434 second research question, illustrating how these factors shape diabetes care. The widespread influence of  
435 cultural norms and alternative medicine on care-seeking behaviours demonstrates the intricate  
436 relationship between sociocultural contexts and health system utilisation.

### 437 Cultural Beliefs and Traditional Medicine

438  
439 The influence of cultural beliefs, social norms, and complementary and alternative medicine on diabetes  
440 care-seeking behaviours in Africa is widely recognised (61,62). Rather than viewing these factors as  
441 obstacles, they present unique opportunities for creating culturally resonant care models. The systematic  
442 study by Zeh et al. (63) highlights the significance of cultural relevance in diabetes care and pushes us to  
443 rethink this in various contexts.

444 Cultural sensitivity remains crucial even in situations of trans-migration. A study of Korean Americans  
445 showed improved glycemic control when community health workers had culturally tailored training (64).  
446 This example calls for integrating cultural competence into healthcare delivery, linking biomedical and  
447 traditional care systems.



448 Studies in Tanzania and ASEAN countries further highlight the role of traditional medicine in diabetes  
449 management, emphasising the need for culturally sensitive interventions (65,66). These indicate the  
450 importance of developing culturally appropriate health promotion strategies that engage community  
451 stakeholders to raise awareness about diabetes and promote timely care-seeking.

452 By leveraging cultural beliefs and traditional practices, we can empower communities to take ownership  
453 of diabetes prevention and management, fostering sustainable, context-appropriate solutions.

### 454 **Mental Health and Psychosocial Aspects of Diabetes Care**

455

456 While cultural factors significantly influence diabetes care, our review also reveals the critical dimension  
457 of mental health, particularly in LMIC settings such as West Africa. The manifestation of psychological  
458 vulnerability as burnout, low motivation, and disengagement from treatment (67) points to a cyclical  
459 pattern where poor mental health further deteriorates glycemic control. The psychological impact of diabetes  
460 extends far beyond the burden of self-care routines, encompassing complex psychosocial dimensions that  
461 are often overlooked in traditional care models.

462 Our review found that diabetes distress is deeply intertwined with sociocultural expectations and  
463 economic realities. Kretchy et al. revealed how diabetes can undermine one's sense of identity and social  
464 value, particularly among male patients struggling to fulfil traditional breadwinner roles (47). Similar  
465 findings in other cultural contexts, such as among Hispanic men in the U.S. (73), highlight the universal  
466 nature of this challenge. Moreover, the psychological burden often extends to the entire family unit.  
467 Diabetes-related financial stress significantly impacts family dynamics and the mental health of both  
468 patients and caregivers (74).

469 A growing body of evidence asserts a bidirectional relationship between diabetes and mental health  
470 disorders (68,69), with comorbidities significantly impairing self-management behaviours (70). The  
471 chronic nature of diabetes and its associated complications contribute to substantial psychological distress  
472 and diminished quality of life(71,72), hence creating a cycle of deteriorating physical and mental health.

473 Addressing the mental health aspects of diabetes care is crucial for empowering individuals to manage  
474 their condition effectively, emphasising the need for holistic, person-centred approaches to diabetes care.

### 475 Gender Dynamics in Diabetes Management

476  
477 Just as mental health plays a crucial role in diabetes management, our review also uncovered significant  
478 gender dynamics influencing care. Women's central role in leading household dietary modifications for  
479 diabetes management, leveraging their traditional responsibilities in food preparation and family  
480 caregiving, is a crucial finding resonating across many cultures, particularly in Africa and other LMICs  
481 (44). This observation serves as a springboard for understanding the interactions between gender and  
482 diabetes care.

483 Women's pivotal role in dietary management significantly influences household nutrition, shaped by local  
484 cultural norms and socioeconomic factors (75). However, this responsibility is a double-edged sword,  
485 empowering women to lead health-promoting changes and adding to their substantial caregiving burden.  
486 Research in South Africa and among Black and Latina women in the U.S. highlights how women with  
487 diabetes often struggle to balance their own health needs with caregiving roles (76,77). This struggle is  
488 exacerbated by economic constraints, with studies across Africa revealing that women are more likely  
489 than men to forgo treatment due to financial limitations (76,78) – a pattern also observed in other LMICs  
490 like India (79).

491 The impact of cultural beliefs and gender roles on diabetes management illustrates the emphasis of the  
492 SDH model on sociocultural factors affecting health. These deeply ingrained factors in West African  
493 societies highlight the importance of diabetes care strategies that consider both the clinical and broader  
494 social context of health.

495 In essence, the provision of diabetes care in LMICs is influenced by a complex interplay of factors that  
496 involve community-level dynamics and broader systemic issues - an intricate web of interactions at  
497 macro, meso, and micro levels. For example, macro-level health financing policies directly impact meso-

498 level health system capacities, affecting micro-level patient experiences. Resource scarcity at the meso  
499 level influences individual health-seeking behaviours, often causing patients to postpone seeking care or  
500 explore alternative treatments.

501 This analysis highlights the drawbacks of isolated approaches or solutions. It stresses the importance of  
502 comprehensive strategies that tackle policy obstacles, enhance healthcare system capabilities, and  
503 consider sociocultural factors to bring about positive improvements in diabetes care at all levels in West  
504 Africa.

## 505 **The Path Forward**

506  
507 The path forward for diabetes care in West Africa and other LMICs demands a bold reimagining of health  
508 systems and societal structures, transcending traditional boundaries. This calls for a revolutionary  
509 approach to interweaving health system strengthening, community empowerment, and multisectoral  
510 collaboration. At its core, this approach aligns with the WHO building blocks and the PHC framework  
511 while adapting to the unique challenges and opportunities in resource-constrained settings.

512 Central to this vision is strengthening health service delivery through innovative, context-specific  
513 strategies. We must amplify task-shifting approaches and implement a tiered strategy that trains  
514 community health workers in diabetes screening, education, and management while enhancing primary  
515 care providers' knowledge and skills through specialised curricula and programs in areas such as dietary  
516 management of diabetes. This helps address immediate workforce shortfalls and builds a system of  
517 diabetes care expertise. Additionally, we must develop and implement context-specific clinical guidelines,  
518 drawing inspiration from successful programs like the PACK (Practical Approach to Care Kit) adopted in  
519 South Africa, Botswana, and Brazil (80–82).

520 These strategies should be complemented by integrating diabetes care with other primary health services,  
521 including mental health support, and aligning with global trends towards holistic care models, as seen in  
522 places like Chile (83). It is crucial to Train healthcare providers to recognise and address the psychosocial

523 aspects of diabetes. We propose developing integrated care models incorporating mental health and  
524 traditional healing practices, ensuring evidence-based and culturally resonant care. A robust referral  
525 system leveraging digital health technologies should be a key component, ensuring continuity of care  
526 across different levels of the health systems.

527 The CASALUD model from Mexico offers valuable lessons in leveraging technology and community  
528 resources to improve diabetes care in resource-limited settings (84). Building on this, we recommend  
529 developing integrated diabetes information systems that combine clinical, community, and social data.  
530 This system should support patient management, population health strategies, resource allocation  
531 decisions, and policy evaluation, facilitating multisectoral action through interoperability with other  
532 sectoral information systems. Furthermore, access to essential medicines and technologies for diabetes  
533 care must be improved through strengthened supply chain management. By harnessing digital  
534 technologies for improved inventory tracking and forecasting, we can ensure a consistent supply of  
535 essential diabetes medicines and diagnostics. This technological integration aligns with the broader vision  
536 of leveraging innovation to overcome resource constraints.

537 We must rethink capacity building as a collaborative endeavour spanning multiple sectors, including  
538 education, agriculture, urban planning, information technology, finance, and social services (85). The  
539 multisectoral symphony can potentially redefine diabetes care. It can shift our focus from treating a  
540 disease to nurturing health-conscious societies. Envision communities where urban planners design cities  
541 that nudge citizens towards healthier lifestyles, where agricultural policies cultivate not just crops but  
542 community health, and where educational curricula sow the seeds of health literacy from early childhood.

543 The path forward also demands a fundamental shift in the power dynamics of healthcare, repositioning  
544 patients and communities from passive recipients to active co-creators of health. This transformation  
545 involves integrating culturally sensitive mental health support into diabetes care, implementing family-  
546 centred approaches that address the broader impact of diabetes on household dynamics and economics,  
547 and developing community-based support programs to mitigate social and economic challenges,

548 especially for vulnerable populations like women. Engaging stakeholders through community-based  
549 education programs and peer support groups is essential. Moreover, exploring collaborative partnerships  
550 with traditional healers can foster culturally sensitive care delivery, bridging the gap between formal  
551 healthcare systems and community practices.

552 To support these initiatives, strengthening the health information system is crucial. Establishing clear  
553 indicators and targets and promoting data sharing across sectors will enable evidence-based decision-  
554 making and policy influence. Innovative tools like the web-based ALMA Scorecards, successfully used  
555 for other health issues in developing countries (86), can be adapted to track progress in diabetes care.  
556 Robust monitoring and evaluation mechanisms will be key to the success of multisectoral initiatives.

557 Future research should focus on evaluating the long-term impact of various financial risk protection  
558 models on diabetes care outcomes in West Africa, investigating the effectiveness of intersectoral  
559 interventions in addressing social determinants of diabetes in LMICs, and exploring innovative financing  
560 mechanisms to sustain diabetes prevention and control efforts in resource-constrained settings.

561 Leadership and governance play a critical role in realising this vision. Effective multisectoral action for  
562 diabetes care in West Africa requires strong political commitment, stakeholder engagement, and  
563 sustainable financing mechanisms. By prioritising diabetes and, by extension, NCDs on national health  
564 agendas, fostering cross-sectoral partnerships, and exploring innovative funding sources, LMICs can lay  
565 the foundation for more resilient and responsive PHC systems.

## 566 **Strengths and Limitations**

567 The predominance of studies from Nigeria in our review may limit the generalizability of findings across  
568 West Africa due to contextual variations. Secondly, the heterogeneity of study designs, populations, and  
569 settings could introduce variability and impact comparability. Additionally, the lack of formal quality  
570 assessment of included studies, consistent with the scoping review methodology, may affect the reliability  
571 of the synthesised evidence. The focus on published literature risks potential publication bias, while the

572 time-bound evidence synthesis may have missed developments in the rapidly evolving diabetes care  
573 landscape. Despite these limitations, this review aims to offer a comprehensive synthesis, identifying  
574 critical gaps and highlighting areas for future research to advance strategies for improving diabetes  
575 primary care in West African settings.

576

577

## 578 Conclusions

---

579

580 Our multi-framework analysis revealed the complex landscape of diabetes care in West Africa, calling for  
581 a significant change in how we conceptualise and implement health interventions in resource-constrained  
582 settings. Our findings underscore the need to move beyond siloed approaches and embrace a systems-  
583 thinking approach that recognises the connections between health systems, sociocultural contexts, and  
584 individual experiences. This holistic perspective requires us to redefine NCDs not just as medical  
585 conditions but also as sociocultural phenomena deeply ingrained in societies.

586 Looking ahead, the challenge lies in translating these insights into actionable strategies. This necessitates  
587 boldly reimagining health system strengthening efforts that prioritise context-specific innovations,  
588 empower communities as active partners in health creation, and foster multisectoral collaboration. Future  
589 research and policy initiatives must focus on developing and evaluating adaptive, culturally resonant  
590 models of care that can effectively navigate biomedical and sociocultural factors shaping diabetes  
591 management in LMICs. By embracing this complexity and leveraging local strengths, we can pave the  
592 way for more resilient, equitable, and effective NCD care systems that improve health outcomes and  
593 contribute to broader social and economic development.

594

595

596

597

598

599

600

601

## 602 References

---

603

604 1. WHO | Regional Office for Africa [Internet]. [cited 2024 Feb 8]. Available from:  
605 <https://www.afro.who.int/>

606 2. Dessie G, Mulugeta H, Amare D, Negesse A, Wagnew F, Getaneh T, et al. A systematic analysis on  
607 prevalence and sub-regional distribution of undiagnosed diabetes mellitus among adults in African  
608 countries. *J Diabetes Metab Disord*. 2020 Dec 1;19(2):1931–41.

609 3. Abubakari AR, Lauder W, Jones MC, Kirk A, Agyemang C, Bhopal RS. Prevalence and time trends in  
610 diabetes and physical inactivity among adult West African populations: The epidemic has arrived. *Public*  
611 *Health*. 2009 Sep 1;123(9):602–14.

612 4. Diawara A, Coulibaly DM, Hussain TYA, Cisse C, Li J, Wele M, et al. Type 2 diabetes prevalence,  
613 awareness, and risk factors in rural Mali: a cross-sectional study. *Sci Rep*. 2023 Mar 6;13:3718.

614 5. Kazibwe J, Gad M, Abassah-Konadu E, Amankwah I, Owusu R, Gulbi G, et al. The epidemiological and  
615 economic burden of diabetes in Ghana: A scoping review to inform health technology assessment. *PLOS*  
616 *Glob Public Health*. 2024 Mar 12;4(3):e0001904.

617 6. International Diabetes Federation [Internet]. [cited 2024 May 7]. Burkina Faso. Available from:  
618 <https://idf.org/our-network/regions-and-members/africa/members/burkina-faso/>

619 7. World Bank Open Data [Internet]. [cited 2024 May 7]. World Bank Open Data. Available from:  
620 <https://data.worldbank.org>

621 8. Risk of Cause-Specific Death in Individuals With Diabetes: A Competing Risks Analysis | *Diabetes Care* |  
622 American Diabetes Association [Internet]. [cited 2024 Feb 13]. Available from:  
623 [https://diabetesjournals.org/care/article/39/11/1987/37229/Risk-of-Cause-Specific-Death-in-Individuals-](https://diabetesjournals.org/care/article/39/11/1987/37229/Risk-of-Cause-Specific-Death-in-Individuals-With)  
624 [With](https://diabetesjournals.org/care/article/39/11/1987/37229/Risk-of-Cause-Specific-Death-in-Individuals-With)

625 9. Deshpande AD, Harris-Hayes M, Schootman M. Epidemiology of Diabetes and Diabetes-Related  
626 Complications. *Phys Ther*. 2008 Nov;88(11):1254–64.

627 10. Declaration of Astana [Internet]. [cited 2024 Jun 27]. Available from:  
628 <https://www.who.int/publications/i/item/WHO-HIS-SDS-2018.61>

- 629 11. Operational Framework for Primary Health Care [Internet]. [cited 2024 Feb 10]. Available from:  
630 <https://www.who.int/publications-detail-redirect/9789240017832>
- 631 12. Atun R, Jaffar S, Nishtar S, Knaul FM, Barreto ML, Nyirenda M, et al. Improving responsiveness of  
632 health systems to non-communicable diseases. *The Lancet*. 2013 Feb 23;381(9867):690–7.
- 633 13. Ameh S, Akeem BO, Ochimana C, Oluwasanu AO, Mohamed SF, Okello S, et al. A qualitative inquiry of  
634 access to and quality of primary healthcare in seven communities in East and West Africa (SevenCEWA):  
635 perspectives of stakeholders, healthcare providers and users. *BMC Family Practice*. 2021 Feb 25;22(1):45.
- 636 14. Adebisi YA, Alaran A, Badmos A, Bamisaiye AO, Emmanuella N, Etukakpan AU, et al. How West  
637 African countries prioritize health. *Tropical Medicine and Health*. 2021 Oct 26;49(1):87.
- 638 15. Godman B, Basu D, Pillay Y, Mwitwa JC, Rweggerera GM, Anand Paramadhas BD, et al. Review of  
639 Ongoing Activities and Challenges to Improve the Care of Patients With Type 2 Diabetes Across Africa  
640 and the Implications for the Future. *Frontiers in Pharmacology* [Internet]. 2020 [cited 2024 Feb 9];11.  
641 Available from: <https://www.frontiersin.org/journals/pharmacology/articles/10.3389/fphar.2020.00108>
- 642 16. Tesema A, Joshi R, Abimbola S, Ajisegiri WS, Narasimhan P, Peiris D. Addressing barriers to primary  
643 health-care services for noncommunicable diseases in the African Region. *Bull World Health Organ*. 2020  
644 Dec 1;98(12):906–8.
- 645 17. WHO | Regional Office for Africa [Internet]. 2024 [cited 2024 Feb 9]. African region tops world in  
646 undiagnosed diabetes: WHO analysis. Available from: <https://www.afro.who.int/news/african-region-tops-world-undiagnosed-diabetes-who-analysis>  
647
- 648 18. Sifuna N. African Traditional Medicine: Its Potential, Limitations and Challenges. *Journal of Healthcare*.  
649 2022 Sep 30;5(1):141.
- 650 19. Aikins A de-Graft. Healer shopping in Africa: new evidence from rural-urban qualitative study of  
651 Ghanaian diabetes experiences. *BMJ*. 2005 Sep 29;331(7519):737.
- 652 20. Stone L. Cultural influences in community participation in health. *Social Science & Medicine*. 1992 Aug  
653 1;35(4):409–17.
- 654 21. Traditional healers broaden health care in Ghana [Internet]. 2024 [cited 2024 Feb 9]. WHO | Regional  
655 Office for Africa. Available from: <https://www.afro.who.int/photo-story/traditional-healers-broaden-health-care-ghana>  
656
- 657 22. Tesema AG, Ajisegiri WS, Abimbola S, Balane C, Kengne AP, Shiferaw F, et al. How well are non-  
658 communicable disease services being integrated into primary health care in Africa: A review of progress  
659 against World Health Organization’s African regional targets. *PLOS ONE*. 2020 Oct 22;15(10):e0240984.
- 660 23. Galvanizing Action on Primary Health Care: Analyzing Bottlenecks and Strategies to Strengthen  
661 Community Health Systems in West and Central Africa | *Global Health: Science and Practice* [Internet].  
662 [cited 2024 Feb 11]. Available from: [https://www.ghspjournal.org/content/9/Supplement\\_1/S47](https://www.ghspjournal.org/content/9/Supplement_1/S47)
- 663 24. Atun R, Davies JI, Gal EAM, Bärnighausen T, Beran D. Diabetes in sub-Saharan Africa: from clinical  
664 care to health policy. 2017;5.
- 665 25. Hanefeld J, Powell-Jackson T, Balabanova D. Understanding and measuring quality of care: dealing with  
666 complexity. *Bull World Health Organ*. 2017 May 1;95(5):368–74.



- 667 26. Quality of care [Internet]. [cited 2023 Jun 18]. Available from: [https://www.who.int/health-topics/quality-](https://www.who.int/health-topics/quality-of-care)  
668 of-care
- 669 27. Abdul-Samed AB, Peprah EB, Jahan Y, Reichenberger V, Balabanova D, Mirzoev T, et al. Exploring the  
670 path to optimal diabetes care by unravelling the contextual factors affecting access, utilisation, and quality  
671 of primary health care in West Africa: A scoping review protocol. PLOS ONE. 2024 May  
672 20;19(5):e0294917.
- 673 28. Arksey H, O'Malley L. Scoping studies: towards a methodological framework. International Journal of  
674 Social Research Methodology. 2005 Feb 1;8(1):19–32.
- 675 29. 11.3 The scoping review and summary of the evidence - JBI Manual for Evidence Synthesis - JBI Global  
676 Wiki [Internet]. [cited 2024 Feb 13]. Available from: [https://jbi-global-](https://jbi-global-wiki.refined.site/space/MANUAL/4687770/11.3+The+scoping+review+and+summary+of+the+evidence)  
677 [wiki.refined.site/space/MANUAL/4687770/11.3+The+scoping+review+and+summary+of+the+evidence](https://jbi-global-wiki.refined.site/space/MANUAL/4687770/11.3+The+scoping+review+and+summary+of+the+evidence)
- 678 30. Tricco AC, Lillie E, Zarin W, O'Brien KK, Colquhoun H, Levac D, et al. PRISMA Extension for Scoping  
679 Reviews (PRISMA-ScR): Checklist and Explanation. Ann Intern Med. 2018 Oct 2;169(7):467–73.
- 680 31. Rayyan – Intelligent Systematic Review - Rayyan [Internet]. 2021 [cited 2024 May 27]. Available from:  
681 <https://www.rayyan.ai/>
- 682 32. A Conceptual Framework for Action on the Social Determinants of Health [Internet]. [cited 2024 Mar 25].  
683 Available from: <https://www.who.int/publications-detail-redirect/9789241500852>
- 684 33. Innovative care for chronic conditions : building blocks for actions [Internet]. [cited 2024 Mar 25].  
685 Available from: [https://www.who.int/publications-detail-redirect/innovative-care-for-chronic-conditions-](https://www.who.int/publications-detail-redirect/innovative-care-for-chronic-conditions-building-blocks-for-actions)  
686 [building-blocks-for-actions](https://www.who.int/publications-detail-redirect/innovative-care-for-chronic-conditions-building-blocks-for-actions)
- 687 34. Kaplan HC, Provost LP, Froehle CM, Margolis PA. The Model for Understanding Success in Quality  
688 (MUSIQ): building a theory of context in healthcare quality improvement. BMJ Qual Saf. 2012 Jan  
689 1;21(1):13–20.
- 690 35. Mirzoev T, Das M, Ebenso B, Uzochukwu B, Rawat B, Blok L, et al. Contextual influences on the role of  
691 evidence in health policy development: what can we learn from six policies in India and Nigeria?  
692 Evidence & Policy. 2017 Jan;13(1):59–79.
- 693 36. Mogre V, Johnson NA, Tzelepis F, Paul C. Attitudes towards, facilitators and barriers to the provision of  
694 diabetes self-care support: A qualitative study among healthcare providers in Ghana. Diabetes &  
695 Metabolic Syndrome: Clinical Research & Reviews. 2019 May 1;13(3):1745–51.
- 696 37. Ugwu E, Young E, Nkpozi M. Diabetes care knowledge and practice among primary care physicians in  
697 Southeast Nigeria: a cross-sectional study. BMC Family Practice. 2020 Jul 1;21(1):128.
- 698 38. Ajisegiri WS, Abimbola S, Tesema AG, Odusanya OO, Peiris D, Joshi R. “We just have to help”:  
699 Community health workers’ informal task-shifting and task-sharing practices for hypertension and  
700 diabetes care in Nigeria. Front Public Health. 2023 Jan 26;11:1038062.
- 701 39. Ugwu E, Onung S, Ezeani I, Olamoyegun M, Adeleye O, Uloko A. Barriers to diabetes care in a  
702 developing country: exploratory evidence from diabetes healthcare providers. Journal of Advances in  
703 Medicine and Medical Research. 2020;32(10):72–83.
- 704 40. Mogre V, Johnson NA, Tzelepis F, Paul C. Barriers to diabetic self-care: A qualitative study of patients’  
705 and healthcare providers’ perspectives. Journal of Clinical Nursing. 2019;28(11–12):2296–308.

- 706 41. Rn OEY, Rn OLY, Abimbola OO. Primary Health Care Nurses' Competencies and Resources  
707 Availability for Diabetes Mellitus Care at Local Government Areas of Ibadan.
- 708 42. Okoronkwo IL, Ekpemiro JN, Okwor EU, Okpala PU, Adeyemo FO. Economic burden and catastrophic  
709 cost among people living with type2 diabetes mellitus attending a tertiary health institution in south-east  
710 zone, Nigeria. *BMC Res Notes*. 2015 Oct 1;8:527.
- 711 43. Bosun-Arije FS, Ling J, Graham Y, Hayes C. Organisational factors influencing non-pharmacological  
712 management of type 2 diabetes mellitus (T2DM) in public hospitals across Lagos, Nigeria: A qualitative  
713 study of nurses' perspectives. *Diabetes Research and Clinical Practice*. 2020 Aug 1;166:108288.
- 714 44. Iregbu SC, Duggleby W, Spiers J, Salami B. An Interpretive Description of Sociocultural Influences on  
715 Diabetes Self-Management Support in Nigeria. *Global Qualitative Nursing Research* [Internet]. 2022;9.  
716 Available from: [https://www.scopus.com/inward/record.uri?eid=2-s2.0-  
717 85138718707&doi=10.1177%2f23333936221121337&partnerID=40&md5=49e6236d3191543abb277dde  
718 2dbdec95](https://www.scopus.com/inward/record.uri?eid=2-s2.0-85138718707&doi=10.1177%2f23333936221121337&partnerID=40&md5=49e6236d3191543abb277dde2dbdec95)
- 719 45. BeLue R, Diaw M, Ndao F, Okoror T, Degboe A, Abiero B. A cultural lens to understanding daily  
720 experiences with type 2 diabetes self-management among clinic patients in M'bour, Senegal. *Int Q*  
721 *Community Health Educ*. 2012 2013;33(4):329–47.
- 722 46. Opare-Addo MNA, Osei FA, Buabeng KO, Marfo AF, Nyanor I, Amuzu EX, et al. Healthcare services  
723 utilisation among patients with hypertension and diabetes in rural Ghana. *African Journal of Primary*  
724 *Health Care & Family Medicine* [Internet]. 2020 [cited 7AD Jan 1];12(1). Available from:  
725 <http://www.phcfm.org/index.php/PHCFM/article/view/2114>
- 726 47. Kretchy IA, Koduah A, Ohene-Agyei T, Boima V, Appiah B. The Association between Diabetes-Related  
727 Distress and Medication Adherence in Adult Patients with Type 2 Diabetes Mellitus: A Cross-Sectional  
728 Study. *J Diabetes Res*. 2020 Mar 1;2020:4760624.
- 729 48. Dans A, Ng N, Varghese C, Tai ES, Firestone R, Bonita R. The rise of chronic non-communicable  
730 diseases in southeast Asia: time for action. *The Lancet*. 2011 Feb 19;377(9766):680–9.
- 731 49. Bhojani U, Devedasan N, Mishra A, Henauw SD, Kolsteren P, Criel B. Health System Challenges in  
732 Organizing Quality Diabetes Care for Urban Poor in South India. *PLOS ONE*. 2014 Sep 4;9(9):e106522.
- 733 50. Maimela E, Van Geertruyden JP, Alberts M, Modjadji SE, Meulemans H, Fraeyman J, et al. The  
734 perceptions and perspectives of patients and health care providers on chronic diseases management in  
735 rural South Africa: a qualitative study. *BMC Health Services Research*. 2015 Apr 8;15(1):143.
- 736 51. Baker EA, Barnidge EK, Schootman M, Sawicki M, Motton-Kershaw FL. Adaptation of a Modified  
737 DASH Diet to a Rural African American Community Setting. *Am J Prev Med*. 2016 Dec;51(6):967–74.
- 738 52. Teli M, Thato R, Hasan F, Rias YA. Effectiveness of Family-Based Diabetes Management Intervention on  
739 Glycated Haemoglobin Among Adults With Type 2 Diabetes: A Systematic Review and Meta-Analysis of  
740 Randomized Controlled Trials. *Biological Research For Nursing*. 2024 Apr 1;26(2):315–33.
- 741 53. Afroz A, Alramadan MJ, Hossain MN, Romero L, Alam K, Magliano DJ, et al. Cost-of-illness of type 2  
742 diabetes mellitus in low and lower-middle income countries: a systematic review. *BMC Health Services*  
743 *Research*. 2018 Dec 17;18(1):972.
- 744 54. Mutyambizi C, Pavlova M, Chola L, Hongoro C, Groot W. Cost of diabetes mellitus in Africa: a  
745 systematic review of existing literature. *Globalization and Health*. 2018 Jan 16;14(1):3.

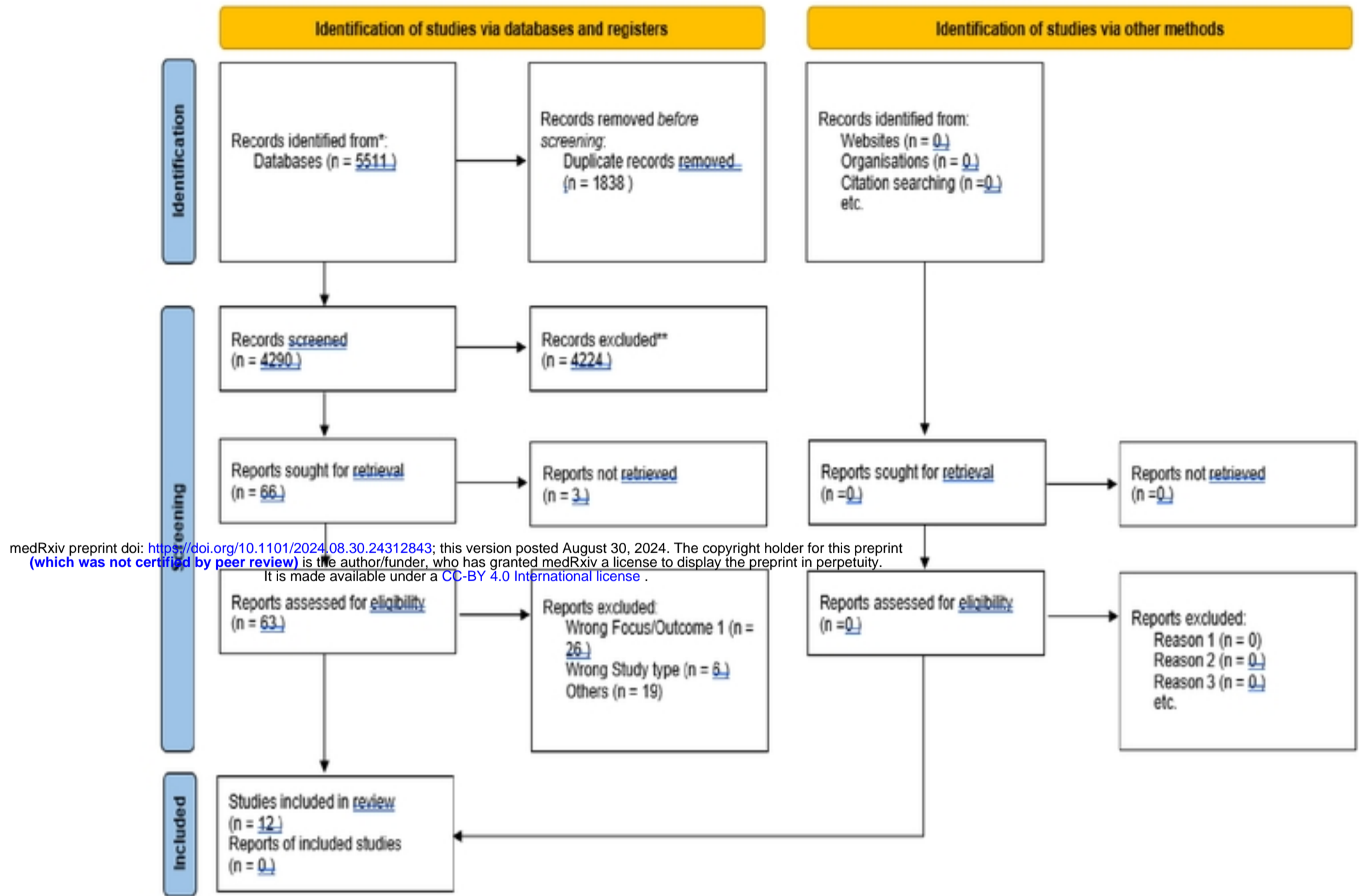
- 746 55. Akokuwebe ME, Idemudia ES. A Comparative Cross-Sectional Study of the Prevalence and Determinants  
747 of Health Insurance Coverage in Nigeria and South Africa: A Multi-Country Analysis of Demographic  
748 Health Surveys. *Int J Environ Res Public Health*. 2022 Feb 4;19(3):1766.
- 749 56. Official Gazette of the Republic of the Philippines [Internet]. 2012 [cited 2024 Jun 3]. Republic Act No.  
750 10351 | GOVPH. Available from: <https://www.officialgazette.gov.ph/2012/12/19/republic-act-no-10351/>
- 751 57. Chemouni B. The political path to universal health coverage: Power, ideas and community-based health  
752 insurance in Rwanda. *World Development*. 2018 Jun 1;106:87–98.
- 753 58. Koohpayehzadeh J, Azami-Aghdash S, Derakhshani N, Rezapour A, Alaei Kalajahi R, Sajjadi Khasraghi  
754 J, et al. Best Practices in Achieving Universal Health Coverage: A Scoping Review. *Med J Islam Repub*  
755 *Iran*. 2021 Dec 30;35:191.
- 756 59. Mujahid MS, Maddali SR, Gao X, Oo KH, Benjamin LA, Lewis TT. The Impact of Neighborhoods on  
757 Diabetes Risk and Outcomes: Centering Health Equity. *Diabetes Care*. 2023 Jun 24;46(9):1609–18.
- 758 60. Atlas Obscura [Internet]. [cited 2024 Jun 3]. La Ciclovía de Bogotá – Bogotá, Colombia. Available from:  
759 <https://www.atlasobscura.com/places/la-ciclovía-de-bogotá>
- 760 61. Ekpor E, Osei E, Akyirem S. Prevalence and predictors of traditional medicine use among persons with  
761 diabetes in Africa: a systematic review. *International Health*. 2023 Sep 14;ihad080.
- 762 62. James PB, Wardle J, Steel A, Adams J. Traditional, complementary and alternative medicine use in Sub-  
763 Saharan Africa: a systematic review. *BMJ Global Health*. 2018 Oct 1;3(5):e000895.
- 764 63. Zeh P, Sandhu HK, Cannaby AM, Sturt JA. The impact of culturally competent diabetes care  
765 interventions for improving diabetes-related outcomes in ethnic minority groups: a systematic review.  
766 *Diabetic Medicine*. 2012;29(10):1237–52.
- 767 64. Kim MT, Kim KB, Huh B, Nguyen T, Han HR, Bone LR, et al. The Effect of a Community-Based Self-  
768 Help Intervention Korean Americans With Type 2 Diabetes. *Am J Prev Med*. 2015 Nov;49(5):726–37.
- 769 65. Kasole R, Martin HD, Kimiywe J. Traditional Medicine and Its Role in the Management of Diabetes  
770 Mellitus: “Patients’ and Herbalists’ Perspectives”. *Evidence-Based Complementary and Alternative*  
771 *Medicine*. 2019 Jul 4;2019:e2835691.
- 772 66. Pumthong G, Nathason A, Tusewan M, Pinthong P, Klangprapun S, Thepsuriyanon D, et al.  
773 Complementary and alternative medicines for diabetes mellitus management in ASEAN countries.  
774 *Complementary Therapies in Medicine*. 2015 Aug 1;23(4):617–25.
- 775 67. Chew BH, Shariff-Ghazali S, Fernandez A. Psychological aspects of diabetes care: Effecting behavioral  
776 change in patients. *World J Diabetes*. 2014 Dec 15;5(6):796–808.
- 777 68. Mendenhall E, Norris SA, Shidhaye R, Prabhakaran D. Depression and Type 2 Diabetes in Low and  
778 Middle Income Countries: A Systematic Review. *Diabetes Res Clin Pract*. 2014 Feb;103(2):276–85.
- 779 69. Egede LE, Ellis C. Diabetes and depression: global perspectives. *Diabetes Res Clin Pract*. 2010  
780 Mar;87(3):302–12.
- 781 70. Tovilla-Zárate C, Juárez-Rojop I, Jimenez YP, Jiménez MA, Vázquez S, Bermúdez-Ocaña D, et al.  
782 Prevalence of Anxiety and Depression among Outpatients with Type 2 Diabetes in the Mexican  
783 Population. *PLOS ONE*. 2012 May 18;7(5):e36887.

- 784 71. Mendenhall E, Kohrt BA, Norris SA, Ndeti D, Prabhakaran D. Non-communicable disease syndemics:  
785 poverty, depression, and diabetes among low-income populations. *Lancet*. 2017 Mar 4;389(10072):951–  
786 63.
- 787 72. Tan K, Chan G, Eric H, Maria A, Norliza M, Oun B, et al. Depression, anxiety and stress among patients  
788 with diabetes in primary care: A cross-sectional study. *Malays Fam Physician*. 2015 Aug 31;10(2):9–21.
- 789 73. Cabassa LJ, Hansen MC, Palinkas LA, Ell K. “Azúcar y Nervios: Explanatory Models and Treatment  
790 Experiences of Hispanics with Diabetes and Depression.” *Soc Sci Med*. 2008 Jun;66(12):2413–24.
- 791 74. Jorwal P, Verma R, Balhara Y. Psychological health of caregivers of individuals with type 2 diabetes  
792 mellitus: A cross-sectional comparative study. *Journal of Social Health and Diabetes*. 2015  
793 Dec;03(02):095–101.
- 794 75. Lufuke M, Bai Y, Fan S, Tian X. Women’s Empowerment, Food Security, and Nutrition Transition in  
795 Africa. *Int J Environ Res Public Health*. 2022 Dec 24;20(1):254.
- 796 76. Mendenhall E, Norris SA. Diabetes care among urban women in Soweto, South Africa: a qualitative  
797 study. *BMC Public Health*. 2015 Dec 26;15(1):1300.
- 798 77. Britton LE, Kaur G, Zork N, Marshall CJ, George M. ‘We tend to prioritise others and forget ourselves’:  
799 How women’s caregiving responsibilities can facilitate or impede diabetes self-management. *Diabet Med*.  
800 2023 Mar;40(3):e15030.
- 801 78. de-Graft Aikins A, Awuah RB, Pera TA, Mendez M, Ogedegbe G. Explanatory models of diabetes in  
802 urban poor communities in Accra, Ghana. *Ethnicity & Health*. 2015 Jul 4;20(4):391–408.
- 803 79. Bansode B, Jungari DS. Economic burden of diabetic patients in India: A review. *Diabetes & Metabolic  
804 Syndrome: Clinical Research & Reviews*. 2019 Jul 1;13(4):2469–72.
- 805 80. Cornick R, Picken S, Wattrus C, Awotiwon A, Carkeek E, Hannington J, et al. The Practical Approach to  
806 Care Kit (PACK) guide: developing a clinical decision support tool to simplify, standardise and strengthen  
807 primary healthcare delivery. *BMJ Global Health*. 2018 Oct 1;3(Suppl 5):e000962.
- 808 81. Tsimba BM, Setlhare V, Nkomazana O. Developing the Botswana Primary Care Guideline: an integrated,  
809 symptom-based primary care guideline for the adult patient in a resource-limited setting. *J Multidiscip  
810 Healthc*. 2016;9:347–54.
- 811 82. Wattrus C, Zepeda J, Cornick RV, Zonta R, Andrade MP de, Fairall L, et al. Using a mentorship model to  
812 localise the Practical Approach to Care Kit (PACK): from South Africa to Brazil. *BMJ Global Health*.  
813 2018 Oct 1;3(Suppl 5):e001016.
- 814 83. Andrea K Rialda, Traub Donoso, Carolina Andrea, Martínez, Mayra, Corona Ravest, Francisca. World Bank.  
815 [cited 2024 Jun 24]. *Innovations in People-Centered Care for Chronic Conditions - Chile’s Story of  
816 Integration of Mental Health and Noncommunicable Disease Services at Primary Healthcare : Policy  
817 Note*. Available from: [https://documents.worldbank.org/en/publication/documents-  
818 reports/documentdetail/099905009192326165/IDU01f6d4d6b0f534045f808e8a0f35e7aed1503](https://documents.worldbank.org/en/publication/documents-reports/documentdetail/099905009192326165/IDU01f6d4d6b0f534045f808e8a0f35e7aed1503)
- 819 84. Tapia-Conyer R, Gallardo-Rincon H, Saucedo R. CASALUD: An innovative health-care system to control  
820 and prevent non-communicable diseases in Mexico. *Perspectives in public health*. 2015 Jul 27;135.

821 85. Saraf DS, Nongkynrih B, Pandav CS, Gupta SK, Shah B, Kapoor SK, et al. A Systematic Review of  
822 School-Based Interventions to Prevent Risk Factors Associated With Noncommunicable Diseases. *Asia*  
823 *Pac J Public Health*. 2012 Sep 1;24(5):733–52.

824 86. ALMA Scorecard Hub [Internet]. [cited 2024 Jun 3]. Introduction to the Scorecard Web Platform.  
825 Available from: <https://scorecardhub.org/swp-guide/introduction-to-the-scorecard-web-platform/>

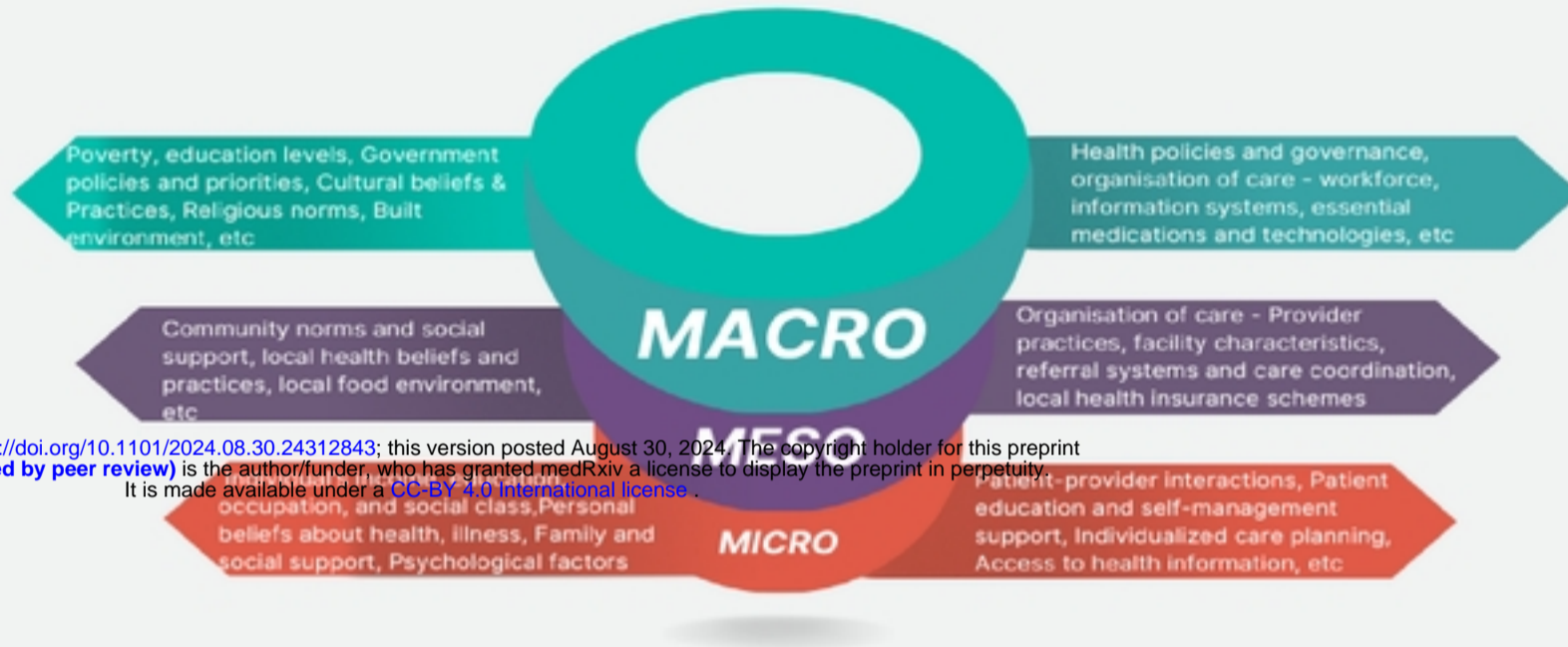
826





CONTEXTUAL FACTORS

HEALTH SYSTEM FACTORS



medRxiv preprint doi: <https://doi.org/10.1101/2024.08.30.24312843>; this version posted August 30, 2024. The copyright holder for this preprint (which was not certified by peer review) is the author/funder, who has granted medRxiv a license to display the preprint in perpetuity. It is made available under a [CC-BY 4.0 International license](#).