

1 **Full Title: “Dynamics of factors associated with neonatal**
2 **death in Madagascar: a comparative analysis of the 2003,**
3 **2008, 2021 DHS”**

4 **Short title: Neonatal mortality factors in Madagascar: DHS analysis 2003-2021**

5 **Authors:** Sedera Radoniaina Rakotondraso^{1,4*}, Kadari Cissé², Tieba Millogo³, Hajalalaina
6 Rabarisoa^{1,4}, Felix Alain¹, Seni Kouanda^{2,3}, Julio Rakotonirina^{1,4}

7 ¹ Faculty of Medicine of Antananarivo, University of Antananarivo, Madagascar

8 ² Institute of Research in Health Sciences (IRSS), National Center for Scientific and
9 Technological Research, Ouagadougou, Burkina Faso

10 ³ African Institute of Public Health (IASP), Ouagadougou, Burkina Faso

11 ⁴ Teaching Hospital of Care and Public Health, Analakely (CHUSSPA), Antananarivo,
12 Madagascar

13 * Corresponding author

14 E-mail: sederarado.srr@mail.com (SRR)

15 **Abstract**

16 Neonatal mortality remains a major public health challenge, as reductions have stagnated
17 worldwide despite cost-effective interventions in recent years. The temporal evolution of its
18 determinants is insufficiently studied. This study aimed to analyze the dynamics of factors
19 associated with neonatal death in Madagascar between 2003 and 2021.

20 A secondary analysis was conducted using data from the 2003, 2008, and 2021 Demographic
21 and Health Surveys (DHS) of Madagascar. The study population is focused on children under
22 the age of 5 years at the time of these surveys. The death of a newborn within 30 days after
23 birth constitutes the outcome variable. A multilevel binomial logistic regression was performed.

24 The number of children under 5 included in the analysis were 5,415 in 2003, 12,448 in 2008
25 and 12,399 in 2021. The prevalence of neonatal deaths was 3.05% in 2003, 2.42% in 2008, and
26 2.56% in 2021. Persistent significant associations with neonatal death were observed for low
27 birth weight, lack of breastfeeding, medium-sized households, large households, and high birth
28 weight. A loss of statistical significance of the association with neonatal death over time was
29 observed for a birth interval of 2 to 3 years and 4 years and more, mother's age 40-49 years, and
30 use of mosquito net by the mother. In 2021, new significant associations with neonatal mortality
31 were identified in the province of Toliara, absence of difficulty in accessing health centers, 4 to
32 7 ANC visits, and supervised delivery.

33 The factors associated with neonatal mortality, which have worsened over time in Madagascar,
34 include birth weight abnormalities, delivery in the presence of qualified personnel, and
35 evaluation of neonatal health before discharge from the facility. This deterioration underscores
36 the urgency of improving the quality of perinatal care in healthcare facilities, beyond mere
37 geographical accessibility.

38 **Keywords:** Dynamics, factors associated, Madagascar, neonatal mortality, stagnation, trend.

39 **1. Introduction**

40 Neonatal mortality is defined as the occurrence of death of a newborn within 28 days of birth
41 [1,2]. It represents a global public health burden, particularly in low- and middle-income
42 countries. In 2020, neonatal mortality accounted for 47% of deaths in children under 5 years
43 old, totaling 2.4 million newborns [3]. The highest rates are observed in India, sub-Saharan
44 Africa, and central and southern Asia. At the country level, the rate ranges from 1 to 44 deaths
45 per 1,000 live births [3]. Eighty percent of these deaths are attributable to preventable and
46 treatable conditions, including complications related to prematurity, intrapartum factors
47 including birth asphyxia, and neonatal infections [4]. In order to reduce neonatal mortality, cost-
48 effective evidence-based interventions have been identified and implemented in several
49 countries, but their impact varies from one country to another [1,2]. At the global level, neonatal
50 mortality has decreased by 50%, or 2.4% per year from 1990 to 2021 [3,5]. However, it is
51 slower compared to that of children aged 1 to 59 months, which was 3.3% per year. In Sub-
52 Saharan Africa, this reduction was approximately 39%, decreasing from 45.3 to 27.5 deaths per
53 1,000 live births between 1990 and 2019 [6]. Furthermore, neonatal mortality has remained
54 stagnant for several years in certain low- and middle-income countries, starting from 1990 in
55 the Philippines, 1994 in Ghana, 2006 in Uganda, and 2008 in Madagascar [7–13]. Potential
56 reasons for these stagnations are multiple, including the fragility of the healthcare system, the
57 deficiency of perinatal care coverage, and the weakness of the quality and equity of these care
58 services, likely resulting from insufficient preparation for the implementation of cost-effective
59 interventions. Additionally, the persistence of poverty, the behaviors and culture that are
60 detrimental to reproductive health, as well as the persistence of early adolescent pregnancies
61 [6–13]. Whereas, reducing neonatal mortality is a key objective of the Global Sustainable
62 Development Goals (SDGs), aiming to achieve a mortality rate of less than 12 per 1000 live

63 births by 2030 [6]. Many countries including Madagascar are committed to contributing to the
64 achievement of this goal.

65 Although the determinants of neonatal mortality have been the subject of several studies, their
66 temporal evolution remains poorly understood. However, the dynamics of these determinants,
67 particularly the absence of reduction in certain factors and the emergence of new determinants,
68 could be the cause of the observed stagnation in mortality rates. The few existing studies have
69 mainly focused on socioeconomic and demographic factors [11,14]. They have overlooked
70 other important aspects such as behavior and healthcare systems. Furthermore, they have
71 presented divergent results, highlighting a large inter-country variability in the evolving trend
72 of these factors. Given this variability and the multidisciplinary nature of the determinants of
73 neonatal mortality, a study in a different context, which takes into account these limitations by
74 integrating other variables for effective control of confounding factors, could enhance the
75 understanding of the factors underlying the stagnation of neonatal mortality and contribute to
76 its reduction.

77 In Madagascar, neonatal mortality remains high and stagnant, and has even shown an increase
78 in recent years, despite the implementation of interventions aimed at its reduction [13]. Indeed,
79 the neonatal death rate has increased from 24 to 26 per 1000 live births between 2008 and 2021.
80 Understanding the causes behind this stagnation, through knowledge of the dynamics of the
81 risk factors associated with neonatal mortality in the country, could contribute to the
82 achievement of this global objective. This knowledge could guide the adaptation of existing
83 interventions. The current study aims to investigate the dynamics of factors associated with
84 neonatal death in Madagascar from 2003 to 2021, within the context of stagnation at a high
85 level of neonatal mortality. Specifically, it seeks to describe the evolution of the prevalence of
86 neonatal death by studied characteristics, identify factors associated with neonatal death, and

87 assess the variations over time in the association of factors with neonatal mortality during the
88 studied periods.

89 **2. Methods**

90 **2.1. Study setting and design**

91 We conducted a secondary analysis of cross-sectional Demographic and Health Surveys data.
92 These surveys were carried out at a community level in Madagascar in 2003, 2008, and 2021.
93 Madagascar is a low-income country in sub-Saharan Africa. It is characterized by a
94 predominantly rural population, with only 10% of this rural population belonging to the highest
95 quintile of economic well-being. In terms of education, only 7% of women and 7% of men have
96 completed primary school. The health system of the country is organized in a health pyramid
97 and divided into central, regional, district, and community levels. It has experienced
98 fluctuations in performance depending on the country's economic and political contexts. A
99 reform initiated in the 2000s has improved access to care but was compromised in 2009 due to
100 the economic crisis linked to political instability. Despite these efforts, the healthcare system
101 faces persistent challenges such as underfunding, a lack of qualified personnel, inadequate
102 infrastructure, and disparities in access to healthcare services between urban and rural areas.
103 The healthcare system's performance before the COVID-19 pandemic was 54.5%, with
104 difficulties in financial access [15], human resources, population utilization, and geographical
105 accessibility of healthcare services [16]. The COVID-19 pandemic has undoubtedly
106 exacerbated these problems and put a strain on the Malagasy healthcare system.

107 **2.2. Conceptual framework of neonatal death**

108 To analyze the complex factors that affect neonatal mortality, several conceptual frameworks
109 have been used over time. Among the existing conceptual frameworks, the Mosley and Chen
110 model (1984) was the first to propose a systematic approach to the determinants of infant
111 mortality in developing countries [17]. It distinguishes between proximal and distal causes of
112 infant mortality but does not consider social factors [18] or the various factors that lead to delays
113 in care [19]. The main conceptual frameworks used in studies show a chronological trend,
114 starting from a focus on the biomedical factors of neonatal mortality and gradually
115 incorporating behavioral, social, environmental, and political dimensions.

116 A specific conceptual framework was developed for this study, based on that of Mosley and
117 Chen and other similar studies [17,20–22]. Adjustments were then made based on the available
118 data in the DHS (Fig 1).

119 **Fig 1: Conceptual framework of neonatal mortality, adapted from models by Mosley and**
120 **Chen [17].**

121 **2.3. Data source and sampling procedures**

122 The current study used the Birth Recode (BR) data of the 2003, 2008, and 2021 Demographic
123 Health Surveys (DHS) conducted in Madagascar. These surveys were carried out by the
124 National Institute of Statistics (INSTAT) of Madagascar, and their datasets are freely available
125 on the official website of the DHS Program [23]. These surveys initially focused on collecting
126 information on reproductive health, mortality, nutrition, malaria, and HIV/AIDS in the country.
127 They were conducted among women of reproductive age, including mothers of live-born
128 children within the 5 years before the survey. The sampling methods employed were based on
129 a two-stage stratified cluster sampling design. The samples are representative at the national

130 level, as well as at the level of the 6 provinces (in 2003), 22 regions (in 2008 and 2021), and
 131 urban and rural areas. The DHS sampling procedures for the three years are summarized in
 132 Table 1. These procedures are further detailed in the respective national reports [13,24,25].

133 **Table 1: Summary of the sampling procedures used in the 2003, 2008, and 2021 DHS**

| Characteristics | 2003 DHS | 2008 DHS | 2021 DHS |
|------------------------------------|-------------------------------------|---------------------------------------|---|
| Level of representativeness | 6 provinces, urban and rural strata | 22 regions, urban and rural strata | 22 regions, urban and rural strata |
| Strata | 12 | 45 | 45 |
| Clusters | 300 | 596 | 650 |
| Households | 8420 | 17857 | 20510 |
| Women aged 15-49 | 7949 | 17375 | 18869 |
| Response rate | 95% | 96% | 95% |
| The data collection period | November 23, 2003 – March 28, 2004 | November 23, 2008, to August 17, 2009 | Starts on March 3, 2021, for 143 calendar days. Resumed in February 2021. |

134
 135 For this study, newborns born in Madagascar during the 5 years preceding each of the 3 surveys
 136 were included. They correspond to live births during the following periods: 1998 to 2003, 2004
 137 to 2008, and 2016 to 2021.

138 Initially, all children whose mothers were selected for the individual survey were included in
 139 the study. Then, children aged 5 years and older at the time of the survey were excluded to
 140 reduce potential recall bias, resulting in a sub-sample of children under 5 years old, which

141 formed the final sample for this study (Fig 2). The sample sizes for children under 5 were 5,415
142 in 2003, 12,448 in 2008, and 12,399 in 2021.

143 **2.4. Study variables**

144 **2.4.1. Outcome variable**

145 The dependent variable of this study is represented by the survival status of the newborn, either
146 alive or dead. To define cases of neonatal death, we considered deaths that occurred before the
147 age of 30 days, a period that differs from the conventional definition of neonatal mortality (28
148 days). This choice was motivated by the potential lack of accuracy in determining the exact
149 time of death for mothers who lacked documentation to support the precise date of death of
150 their newborn. In such cases, mothers estimated the date to be one month. Furthermore, this
151 allows for easier comparison with similar studies that also included all deaths within the first
152 month [11,26,27].

153 **2.4.2. Explanatory variables**

154 *Distal factors*

155 Distal factors encompass sociodemographic factors of the households such as the province, the
156 area of residence (urban or rural), media exposure (the ability of the household to access sources
157 of information such as radio, television, and the internet: yes or no), the wealth index (very
158 poor, poor, medium, rich, very rich), household size (1 to 2, 3 to 5, 6 or more), mother's
159 involvement in decision-making (whether mother participate independently or collaboratively
160 with their husbands in decisions regarding their health, major household purchases, and visits
161 to family or relatives) and the mother's occupation (yes or no).

162 *Proximal factors*

163 The proximal factors are grouped into six categories: maternal, related to prenatal care,
164 neonatal, related to delivery, and postnatal care. Maternal factors include maternal education
165 level (none, primary, secondary, university), maternal age at delivery (less than 20 years, 20-
166 29 years, 30-39 years, or 40-49 years), birth intervals (less than 2 years, 2-3 years, 4 years or
167 more), use of bed nets during pregnancy (yes or no), maternal smoking (yes or no), the presence
168 of multiple maternal risks (the simultaneous presence of risk factors among the following: age
169 less than 18 years or more than 35 years, birth intervals <24 months: yes or no).

170 Factors related to antenatal care include the number of antenatal care (ANC) visits made by the
171 woman during pregnancy (less than 3, 4 to 7, more than 8), and difficulties in accessing the
172 health center (the fact that the woman has encountered difficulties related to distance,
173 transportation, or costs to reach the nearest health center).

174 Newborn and delivery factors include birth weight (low <2500g, normal 2500 – 4000g, high >
175 4000g), delivery in a health facility (yes or no), supervised delivery by skilled staff (the fact
176 that the woman was attended by a doctor, a midwife, nurse or paramedic during delivery), and
177 cesarean section (yes or no).

178 Factors related to postnatal care are represented by the newborn’s pre-discharge health check
179 (the fact that the newborn baby has been examined by a health professional before leaving the
180 birth center), the timing of breastfeeding initiation after birth (immediate, less than 24 hours,
181 24 hours or more), and breastfeeding (never breastfed, breastfed).

182 **2.5. Data management and analysis**

183 The variables of interest were extracted from the BR (Birth recode) database using Stata 17®
184 software (version 17, StataCorp LLC, College Station, TX 77845, USA). The dependent
185 variable “neonatal death” was created from the quantitative variable “age of the child”

186 expressed in years. Children aged 5 years and older were suppressed, followed by the
187 dichotomization of the variable.

188 All quantitative variables were discretized to facilitate the interpretation of the results. These
189 discretizations were performed manually using cut-offs commonly used in the literature and the
190 DHS program statistical manual [28].

191 The data were declared as a survey and were weighted using the individual sample weight of
192 women, stratification, and the primary sampling unit variable.

193 A descriptive analysis was carried out first. It includes a description of the sample, presenting
194 estimates as weighted frequencies and percentages. Then, the proportion of deaths was
195 presented for each variable and year, expressed as weighted percentages with 95% confidence
196 intervals.

197 Subsequently, bivariate analyses were performed for each variable and year. Chi-square tests
198 were applied. Crude odds ratios and their confidence intervals were calculated using simple
199 logistic regression. Variables were selected using an ascending approach, starting with an
200 empty model, and then gradually adding variables according to their statistical significance and
201 their epidemiological importance in the literature. Missing values were addressed using Stata's
202 multiple imputation methods by chained equations (ICE), with 20 imputations performed. It
203 was assumed that the missing data occurred randomly [29]. Multiple imputed datasets were
204 used to run multilevel logistic regressions. A post hoc sensitivity test was carried out by
205 comparing the results of the analysis of the original data with those of the imputed data. In the
206 end, the results of the imputed data were preferred. The selection of the multivariate model was
207 performed with multivariate logistic regression based on several criteria, such as the Akaike
208 information criterion (AIC) of the model, and the model's quality assessed by the Hosmer-
209 Lemeshow test, McFadden's pseudo-R² and the area under the ROC curve (AUC).

210 Multicollinearity was tested using the variance inflation factor (VIF) and the tolerance test. The
211 aim was to obtain a model that included as many variables as possible while remaining
212 statistically adequate to the data. The same explanatory variables were kept for all the years
213 studied to track the evolution of the association measures over time while ensuring an
214 acceptable model quality for each period [29].

215 Multilevel analysis was performed using a two-level multilevel logistic regression model. It is
216 assumed that the likelihood of a child dying in the neonatal period varies depending on the
217 community or village, as established by previous research [30]. Within the framework of the
218 Demographic and Health Surveys (DHS), the clusters represented by enumeration areas (EAs)
219 constitute the geographical level directly above households and are also the geographical areas
220 closest to the villages. In this study, the author chose to treat clusters as a community variable
221 due to the lack of village-specific variables in the DHS. Therefore, the random effect was
222 measured at the cluster level.

223 In this study, the two-level multilevel logistic regression model is written as [31] :

224
$$Y_{ij} = \log\left(\frac{\pi_{ij}}{1 - \pi_{ij}}\right) = \gamma_{00} + \gamma_{p0}X_{pij} + \gamma_{0q}Z_{qj} + u_{oj} \quad (1)$$

225 Where i refers to the individual and j to the corresponding village. Y_{ij} denotes the survival status
226 of the i^{th} child in the j^{th} cluster during his neonatal period, and π_{ij} represents the probability of
227 neonatal death for child i in village j . γ_{00} is the intercept of the model, representing the
228 probability of neonatal death in the absence of explanatory variables. X_p and Z_q are explanatory
229 variables at the individual and community levels, respectively. γ_{p0} denotes the regression
230 coefficient of the individual-level explanatory variables X_{pij} . γ_{0q} is the regression coefficient of
231 the community-level explanatory variables X_{pij} . Lastly, u_{oj} represents the level 2 random effect.

232 The intraclass correlation coefficient (ICC), which represents the proportion of contextual
233 (community-level) variance in the total variance of neonatal death, was estimated. Its value
234 varies between 0 and 1, and a higher value suggests greater similarity between individuals
235 within the same community, and therefore a difference between communities in terms of
236 neonatal death. The calculation is outlined as follows:

$$237 \quad \text{ICC} = \frac{\delta_{community}^2}{(\delta_{community}^2 + \frac{\pi^2}{3})} \quad (4)$$

238 Where $\delta_{community}^2$ represents the community level variance and $\frac{\pi^2}{3}$ denotes the individual level
239 variance.

240 Finally, trend analyses over time were carried out by comparing the weighted proportions and
241 adjusted Odds ratios for each studied period. Improvement in the epidemiological indicators of
242 neonatal mortality was concluded when a significant reduction in the proportion of deaths (no
243 overlap of confidence intervals), loss of statistical significance of their association with neonatal
244 death over time, or a progressive weakening of their positive association with neonatal death
245 over time was observed. Conversely, deterioration of these indicators was deduced if there was
246 a significant increase in the proportion of deaths (no overlap of confidence intervals), significant
247 associations consistently present over time, an increase in the strength of the association, and a
248 recent emergence of a significant positive association between the characteristic and neonatal
249 death.

250 Data analysis was also performed using Stata 17® software. Results were reported according
251 to the STROBE guidelines for cross-sectional studies.

252 **2.6. Ethics approval and consent to participate**

253 Although this secondary analysis meets the criteria for exempt research as defined in 45 CFR
254 46.102, considering that the data is publicly accessible and de-identified, approval was still
255 obtained from the Committee for Biomedical Research Ethics (CERBM) at the Ministry of
256 Public Health in Madagascar to conduct the study. It is important to note that the DHS databases
257 are generated from standard DHS questionnaires, which have undergone review and approval
258 by the institutional ethics review board (IRB) of ICF to ensure compliance with the regulations
259 set forth by the U.S. Department of Health and Human Services for the protection of human
260 subjects (45 CFR 46). At the national level, the text of voluntary consent was prepared by ICF
261 Macro based on the standard text developed by ICF Macro, and were reviewed and approved
262 by the Committee for Biomedical Research Ethics (CERBM) at the Ministry of Public Health
263 in Madagascar. During data collection, prior to each interview or test, written informed consent
264 is obtained from the participant. For individuals under the age of 18, written informed consent
265 from a parent or guardian was required and obtained. Further documentation on ethical issues
266 relating to the surveys is available at [https://dhsprogram.com/methodology/Protecting-the-
267 Privacy-of-DHS-Survey-Respondents.cfm](https://dhsprogram.com/methodology/Protecting-the-Privacy-of-DHS-Survey-Respondents.cfm). The data was accessed on August 31, 2022. A
268 written authorization was obtained from The DHS Program prior to utilizing the data, following
269 the submission of the study protocol and agreement to adhere to the conditions of use for the
270 DHS Program datasets. The author made no effort to search for information that could identify
271 individual participants throughout the study process and did not have access to it.

272 3. Results

273 3.1. Description of the study population

274 After the selection of the population, the sample consisted of 5,415 children under 5 years old
 275 in 2003, 12,448 in 2008, and 12,399 in 2021. Fig 2 below illustrates the sample size at each
 276 stage of participant selection.

277 Fig 2: Flowchart of sample selection steps in the 2003, 2008, and 2021 DHS.

278 The distribution of the population and missing data according to the studied characteristics and
 279 years studied is presented in Table 2 below. Approximately a quarter of the population resides
 280 in the province of Antananarivo (27.03% in 2003, 29.04% in 2008, and 25.53% in 2021). The
 281 majority of children reside in rural areas (81.65% in 2003, 89.14% in 2008, and 84.48% in
 282 2021). Over half of the children had a mother with primary education in 2003 and 2008 (52%
 283 in 2003, 55.26% in 2008). Children from very poor households represented 28.34% of the
 284 population in 2003, 25.78% in 2008, and 25.78% in 2021. Almost half of children lived in
 285 households of six or more people in 2003 and 2008 (49.50% in 2003, 52.27% in 2008). From
 286 2003 to 2021, a significant proportion of children have a working mother (86.87%, 92.51%,
 287 and 86.48%).

288 **Table 2: distribution of the population by studied characteristics**

| Variables | 2003 | 2008 | 2021 |
|-----------------|--------------------------|---------------------------|---------------------------|
| | N=5415 (% ^a) | N=12448 (% ^a) | N=12448 (% ^a) |
| Province | | | |
| Antananarivo | 1658 (27.03) | 2808 (29.04) | 2740 (25.53) |
| Fianarantsoa | 984 (22.10) | 3327 (23.30) | 2819 (18.84) |
| Toamasina | 807 (15.42) | 1328 (14.59) | 1376 (13.70) |

| | | | |
|------------------------|--------------|----------------|----------------|
| Mahajanga | 656 (14.73) | 1985 (11.38) | 1885 (12.07) |
| Toliara | 819 (13.83) | 2245 (15.71) | 2720 (22.32) |
| Antsiranana | 491 (6.88) | 755 (5.99) | 859 (7.54) |
| Residence | | | |
| Urban | 2951 (18.35) | 2222 (10.86) | 2364 (15.52) |
| Rural | 2464 (81.65) | 10 226 (89.14) | 10 035 (84.48) |
| Wealth Index | | | |
| Very poor | 1092 (28.34) | 3596 (25.78) | 3456 (25.78) |
| Poor | 780 (19.29) | 2622 (22.38) | 2758 (21.36) |
| Medium | 898 (20.93) | 2234 (20.01) | 2357 (20.23) |
| Rich | 1005 (16.74) | 2018 (17.75) | 2013 (17.97) |
| Very rich | 1640 (14.70) | 1978 (14.08) | 1815 (14.67) |
| Household size | | | |
| 1 to 2 | 131 (2.31) | 243 (1.91) | 391 (3.09) |
| 3 to 5 | 2696 (48.19) | 5685 (45.82) | 6686 (54.52) |
| >=6 | 2588 (49.50) | 6520 (52.27) | 5322 (42.39) |
| Education level | | | |
| None | 1127 (26.86) | 3510 (25.38) | 3145 (22.79) |
| Primary | 2577 (52.00) | 6415 (55.26) | 5420 (44.16) |
| Secondary | 1587 (20.16) | 2359 (18.33) | 3533 (30.62) |
| Academic | 124 (0.98) | 164 (1.04) | 301 (2.42) |
| Occupation | | | |
| Yes | 4363 (86.87) | 11 343 (92.51) | 10 747 (86.48) |
| No | 1052 (13.13) | 1105 (7.49) | 1652 (13.52) |
| Mother's age | | | |
| <20 years | 991 (19.11) | 2735 (21.07) | 3087 (25.09) |
| 20 - 29 years | 2820 (51.01) | 5967 (47.83) | 5907 (47.49) |
| 30 - 39 years | 1367 (25.16) | 3218 (26.58) | 2876 (23.33) |
| 40 - 49 years | 237 (4.72) | 528 (4.52) | 529 (4.09) |

| | | | |
|--|--------------|----------------|----------------|
| Birth interval | | | |
| <2 years | 930 (18.34) | 2159 (17.74) | 1952 (15.71) |
| 2 to 3 years | 2162 (41.84) | 5092 (40.99) | 3811 (29.82) |
| >= 4 years | 1002 (16.74) | 2293 (18.69) | 3193 (25.90) |
| Not applicable (first child) | 1321 (23.08) | 2904 (22.58) | 3443 (28.58) |
| Sleeping under a mosquito net | | | |
| No | 3328 (64.18) | 5254 (45.07) | 3931 (33.05) |
| Yes | 2087 (35.82) | 7194 (54.93) | 8468 (66.95) |
| Multiple maternal risks | | | |
| No | 5377 (99.12) | 12 347 (99.25) | 12 303 (99.29) |
| Yes | 38 (0.88) | 101 (0.75) | 96 (0.71) |
| Number of ANC^b visits | | | |
| <=3 | 1849 (37.75) | 4241 (33.87) | 3807 (29.72) |
| 4 to 7 | 1598 (25.21) | 4040 (32.21) | 5224 (43.23) |
| >=8 | 242 (3.16) | 288 (2.20) | 234 (2.01) |
| Unknown | 1726 (33.87) | 3879 (31.72) | 3134 (25.03) |
| Difficulty in accessing the health center | | | |
| Yes | 2234 (47.43) | 2936 (23.41) | 4755 (36.94) |
| No | 3181 (52.57) | 9512 (76.59) | 7644 (63.06) |
| Birth weight | | | |
| Low | 288 (13.04) | 611 (5.08) | 573 (4.94) |
| Normal | 2030 (83.44) | 4034 (32.81) | 3582 (30.31) |
| High | 101 (3.52) | 7803 (62.11) | 8244 (64.75) |
| unweighted/unknown | 2996 | 0 | 0 |
| Health facility birth | | | |
| No | 3316 (67.59) | 7871 (64.35) | 7738 (61.30) |

| | | | |
|---|--------------|----------------|----------------|
| Yes | 2029 (32.41) | 4459 (35.65) | 4602 (38.70) |
| Missing | 70 | 118 | 59 |
| Supervised delivery by qualified personnel | | | |
| No | 2087 (51.76) | 5997 (52.33) | 5055 (38.92) |
| Yes | 3078 (48.24) | 5628 (47.67) | 7344 (61.08) |
| Missing | 250 | 823 | 0 |
| Cesarean delivery | | | |
| No | 5265 (98.97) | 12 263 (98.54) | 12 048 (97.48) |
| Yes | 83 (1.03) | 175 (1.46) | 291 (2.52) |
| Missing | 67 | 10 | 60 |
| Child pre-discharge health check | | | |
| No | 1820 (38.33) | 2909 (22.77) | 310 (2.76) |
| Yes | 1488 (28.46) | 2342 (19.30) | 3298 (27.56) |
| Unknown/Not applicable | 2107 (33.21) | 7197 (57.93) | 8791 (69.69) |
| Breastfeeding initiation | | | |
| Immediate | 3503 (60.55) | 7907 (66.49) | 7343 (63.19) |
| <24 hrs | 1290 (28.16) | 3453 (26.02) | 3567 (28.89) |
| ≥24 hrs | 549 (11.29) | 916 (7.49) | 1111 (7.92) |
| Missing | 73 | 172 | 378 |
| Breastfeeding | | | |
| Never breastfed | 78 (1.68) | 216 (1.79) | 540 (4.18) |
| Breastfed | 5280 (98.32) | 12 094 (98.21) | 11 859 (95.82) |
| Missing | 57 | 138 | 0 |

289 ^aWeighted Percentage; ^bAntenatal Care

290 **3.2. Distribution and evolution of the weighted prevalence of** 291 **neonatal deaths**

292 Table 3 presents the temporal trend of the weighted prevalence of neonatal deaths from 2003
293 to 2021, according to the different characteristics studied. Overall, the proportion of neonatal
294 deaths remained relatively stable over this period (3.05% [2.27-4.09] in 2003, 2.42% [2.07-
295 2.82] in 2008, and 2.56% [2.25-2.91] in 2021). However, certain subgroups displayed notable
296 changes in neonatal mortality rates. Specifically, neonates residing in the province of Toliara
297 saw a significant decrease in neonatal deaths (4.33% [2.52-7.32] in 2003 to 1.79% [1.27-2.51]
298 in 2021), as did those whose mothers had no education (4.70% [3.11-7.06] in 2003 to 2.17%
299 [1.60-2.94] in 2021) , and those who were never breastfed (60.18% [43.42-74.86] in 2003,
300 60.5% [50.15-69.98] in 2008, and 29.42% [23.94-35.56] in 2021). Conversely, over the same
301 period, a significant increase in neonatal deaths was observed among newborns whose health
302 was not checked before discharge (3.20% [2.22-4.60] in 2003, 1.82% [1.31-2.53] in 2008, and
303 7.61% [4.79-11.89] in 2021).

304

305 **Table 3: Weighted prevalence of neonatal death by population characteristics, Madagascar DHS.**

| Variables | 2003 | | | 2008 | | | 2021 | | |
|---------------------------------|----------|------|-------------|----------|------|-------------|----------|------|-------------|
| | <i>n</i> | % | [95% CI] | <i>n</i> | % | [95% CI] | <i>n</i> | % | [95% CI] |
| Province | | | | | | | | | |
| Antananarivo | 42 | 3.22 | [1.54-6.58] | 76 | 2.34 | [1.68-3.25] | 97 | 3.47 | [2.81-4.29] |
| Fianarantsoa | 12 | 1.35 | [0.58-3.10] | 89 | 3.07 | [2.36-3.99] | 71 | 2.71 | [2.02-3.64] |
| Toamasina | 21 | 3.61 | [2.06-6.27] | 21 | 1.59 | [1.03-2.44] | 36 | 2.69 | [1.90-3.80] |
| Mahajanga | 19 | 4.04 | [2.46-6.59] | 44 | 2.55 | [1.65-3.93] | 42 | 2.30 | [1.60-3.31] |
| Toliara | 26 | 4.33 | [2.52-7.32] | 45 | 1.90 | [1.37-2.62] | 53 | 1.79 | [1.27-2.51] |
| Antsiranana | 10 | 1.96 | [0.83-4.56] | 23 | 3.40 | [1.86-6.11] | 13 | 1.52 | [0.87-2.65] |
| Residence | | | | | | | | | |
| Urban | 54 | 1.83 | [1.40-2.39] | 52 | 2.56 | [1.91-3.42] | 65 | 2.78 | [2.14-3.60] |
| Rural | 76 | 3.33 | [2.40-4.61] | 246 | 2.40 | [2.03-2.84] | 247 | 2.52 | [2.17-2.91] |
| Media exposure | | | | | | | | | |
| Yes | 87 | 2.96 | [2.04-4.28] | 190 | 2.66 | [2.21-3.21] | 200 | 2.68 | [2.27-3.16] |
| No | 43 | 3.22 | [2.03-5.07] | 108 | 2.06 | [1.62-2.61] | 112 | 2.38 | [1.91-2.96] |
| Mother's education level | | | | | | | | | |
| None | 39 | 4.70 | [3.11-7.06] | 80 | 2.33 | [1.81-3.00] | 69 | 2.17 | [1.60-2.94] |

| | | | | | | | | | |
|--|-----|------|--------------|-----|-------|--------------|-----|------|--------------|
| Primary | 51 | 2.28 | [1.59-3.27] | 165 | 2.52 | [2.05-3.10] | 143 | 2.71 | [2.24-3.27] |
| Secondary | 38 | 2.89 | [1.75-4.74] | 48 | 2.23 | [1.48-3.34] | 96 | 2.71 | [2.12-3.47] |
| University | 2 | 2.09 | [0.50-8.28] | 5 | 2.52 | [1.02-6.07] | 4 | 1.47 | [0.53-3.97] |
| Wealth index | | | | | | | | | |
| Very Poor | 34 | 3.45 | [2.28-5.20] | 81 | 2.52 | [1.89-3.37] | 72 | 2.24 | [1.68-2.98] |
| Poor | 20 | 3.01 | [1.80-4.99] | 66 | 2.42 | [1.74-3.35] | 65 | 2.52 | [1.86-3.42] |
| Medium | 23 | 3.00 | [1.86-4.79] | 45 | 1.98 | [1.44-2.71] | 68 | 2.65 | [2.00-3.48] |
| Rich | 23 | 3.00 | [1.70-5.24] | 60 | 2.78 | [1.90-4.05] | 58 | 2.83 | [2.11-3.77] |
| Very Rich | 30 | 2.49 | [1.04-5.83] | 46 | 2.39 | [1.70-3.36] | 49 | 2.71 | [1.97-3.73] |
| Household size | | | | | | | | | |
| 1 to 2 | 7 | 9.25 | [4.07-19.68] | 32 | 15.42 | [9.34-24.40] | 29 | 7.87 | [5.13-11.89] |
| 3 to 5 | 68 | 3.33 | [2.20-5.01] | 133 | 2.31 | [1.83-2.91] | 191 | 2.92 | [2.46-3.46] |
| >= 6 | 55 | 2.50 | [1.78-3.50] | 133 | 2.04 | [1.62-2.57] | 92 | 1.71 | [1.35-2.16] |
| Mother's participation in decision-making | | | | | | | | | |
| No | 42 | 3.81 | [2.80-5.18] | 83 | 2.57 | [2.00-3.31] | 93 | 2.60 | [2.07-3.25] |
| Yes | 88 | 2.81 | [1.97-4.00] | 215 | 2.37 | [1.98-2.83] | 219 | 2.54 | [2.17-2.98] |
| Mother's occupation | | | | | | | | | |
| Yes | 107 | 2.96 | [2.24-3.90] | 263 | 2.36 | [2.01-2.76] | 267 | 2.50 | [2.17-2.88] |

| | | | | | | | | | |
|---|-----|------|--------------|-----|------|--------------|-----|------|-------------|
| No | 23 | 3.69 | [1.76-7.57] | 35 | 3.19 | [2.09-4.84] | 45 | 2.93 | [2.06-4.16] |
| Age of the mother | | | | | | | | | |
| <20 years | 31 | 3.98 | [2.53-6.22] | 82 | 2.83 | [2.13-3.74] | 99 | 3.30 | [2.62-4.15] |
| 20 - 29 years | 58 | 2.55 | [1.74-3.73] | 122 | 2.05 | [1.63-2.57] | 120 | 2.00 | [1.59-2.51] |
| 30 - 39 years | 31 | 2.70 | [1.60-4.53] | 75 | 2.45 | [1.83-3.27] | 79 | 2.89 | [2.21-3.76] |
| 40 - 49 years | 10 | 6.60 | [2.62-15.63] | 19 | 4.25 | [2.28-7.79] | 14 | 2.63 | [1.43-4.78] |
| Birth interval | | | | | | | | | |
| <2 years | 30 | 4.35 | [2.83-6.63] | 54 | 2.69 | [1.96-3.68] | 52 | 2.69 | [1.92-3.75] |
| 2 to 3 years | 39 | 2.06 | [1.22-3.45] | 93 | 1.80 | [1.41-2.30] | 62 | 1.64 | [1.24-2.17] |
| >= 4 years | 17 | 2.06 | [0.78-5.31] | 45 | 2.32 | [1.59-3.37] | 79 | 2.53 | [1.93-3.31] |
| Not applicable (first child) | 44 | 4.55 | [3.28-6.27] | 106 | 3.41 | [2.70-4.31] | 119 | 3.47 | [2.82-4.26] |
| Sleeps under a mosquito net | | | | | | | | | |
| No | 85 | 3.01 | [2.09-4.32] | 149 | 2.80 | [2.22-3.52] | 109 | 3.00 | [2.38-3.77] |
| Yes | 45 | 3.13 | [2.08-4.67] | 149 | 2.11 | [1.71-2.59] | 203 | 2.34 | [2.01-2.72] |
| Multiple maternal risks | | | | | | | | | |
| No | 127 | 3.00 | [2.23-4.02] | 294 | 2.40 | [2.06-2.80] | 309 | 2.55 | [2.24-2.91] |
| Yes | 3 | 9.73 | [3.19-26.05] | 4 | 4.67 | [1.18-16.68] | 3 | 3.03 | [1.00-8.83] |
| Number of ANC^a visits | | | | | | | | | |
| <3 | 39 | 2.59 | [1.73-3.86] | 71 | 1.65 | [1.22-2.23] | 83 | 2.41 | [1.90-3.05] |

| | | | | | | | | | |
|---|-----|------|-------------|-----|------|--------------|-----|------|-------------|
| 4 to 7 | 17 | 1.96 | [0.93-4.12] | 57 | 1.59 | [1.15-2.20] | 78 | 1.54 | [1.19-2.00] |
| >8 | 4 | 1.18 | [0.39-3.52] | 8 | 4.76 | [2.04-10.74] | 5 | 1.93 | [0.75-4.87] |
| Unknown (not the youngest child) | 70 | 4.56 | [3.24-6.39] | 162 | 3.91 | [3.21-4.76] | 146 | 4.54 | [3.73-5.51] |
| Difficulty accessing health center | | | | | | | | | |
| Yes | 71 | 2.88 | [1.92-4.29] | 229 | 2.51 | [2.10-2.99] | 176 | 2.29 | [1.93-2.72] |
| No | 59 | 3.25 | [2.26-4.66] | 69 | 2.13 | [1.55-2.93] | 136 | 3.01 | [2.44-3.70] |
| Birth weight | | | | | | | | | |
| Low | 9 | 3.37 | [1.15-9.46] | 30 | 4.03 | [2.63-6.11] | 35 | 6.19 | [4.32-8.80] |
| Normal | 14 | 0.87 | [0.37-2.02] | 58 | 1.47 | [1.06-2.05] | 50 | 1.30 | [0.93-1.81] |
| High | 1 | 0.76 | [0.11-5.19] | 210 | 2.79 | [2.32-3.35] | 227 | 2.87 | [2.47-3.33] |
| Not Weighed/Unknown | 106 | 4.08 | [3.06-5.43] | - | - | - | - | - | - |
| Delivery in a health facility | | | | | | | | | |
| No | 76 | 2.92 | [2.14-3.97] | 165 | 2.21 | [1.79-2.74] | 162 | 2.09 | [1.73-2.52] |
| Yes | 39 | 2.25 | [1.27-3.97] | 119 | 2.61 | [2.07-3.29] | 146 | 3.22 | [2.67-3.88] |
| Supervised delivery by skilled personnel | | | | | | | | | |
| No | 57 | 3.07 | [2.16-4.36] | 132 | 2.25 | [1.77-2.85] | 97 | 2.06 | [1.60-2.64] |

| | | | | | | | | | |
|--|-----|-------|---------------|-----|-------|---------------|-----|-------|---------------|
| Yes | 55 | 2.41 | [1.43-4.02] | 140 | 2.54 | [2.03-3.17] | 215 | 2.88 | [2.46-3.36] |
| Cesarean delivery | | | | | | | | | |
| No | 125 | 3.02 | [2.27-4.01] | 294 | 2.40 | [2.06-2.80] | 290 | 2.43 | [2.13-2.78] |
| Yes | 3 | 2.00 | [0.55-7.03] | 4 | 3.75 | [1.05-12.53] | 19 | 6.59 | [4.08-10.48] |
| Health check of the baby before discharge | | | | | | | | | |
| No | 49 | 3.20 | [2.22-4.60] | 51 | 1.82 | [1.31-2.53] | 23 | 7.61 | [4.79-11.89] |
| Yes | 28 | 2.63 | [1.64-4.19] | 22 | 1.05 | [0.65-1.69] | 53 | 1.83 | [1.35-2.49] |
| Unknown/Not Applicable | 53 | 3.25 | [1.99-5.25] | 225 | 3.11 | [2.61-3.69] | 236 | 2.64 | [2.27-3.07] |
| Breastfeeding initiation | | | | | | | | | |
| Immediate | 58 | 2.15 | [1.55-2.96] | 146 | 1.70 | [1.38-2.09] | 135 | 1.89 | [1.55-2.29] |
| <24h | 27 | 2.47 | [1.57-3.87] | 58 | 1.71 | [1.26-2.32] | 60 | 1.42 | [1.03-1.94] |
| >24h | 12 | 2.52 | [1.28-4.90] | 20 | 2.36 | [1.15-4.78] | 26 | 2.50 | [1.60-3.88] |
| Breastfeeding | | | | | | | | | |
| Never Breastfed | 42 | 60.18 | [43.42-74.86] | 128 | 60.50 | [50.15-69.98] | 142 | 29.42 | [23.94-35.56] |
| Breastfed | 73 | 1.73 | [1.21-2.45] | 154 | 1.23 | [0.99-1.52] | 170 | 1.39 | [1.16-1.66] |

307 **3.3. Factors associated with neonatal deaths**

308 **3.3.1. Factors consistently associated with neonatal death over time**

309 After adjusting for confounding factors, certain factors maintained a consistent association with
310 neonatal mortality in Madagascar from 2003 to 2021 (Table 4). When other variables were held
311 constant, low birth weight increased the risk of death during the first 30 days by 2.95 times in
312 2008 and 5.52 times in 2021 compared to normal birth weight. Breastfeeding reduced the risk
313 of death by 99% in 2003 and 2008, and by 95% in 2021 compared to no breastfeeding. Medium-
314 sized households (composed of 3 to 5 people) reduced the risk of neonatal death by 81% in
315 2008 and 84% in 2021 compared to small households. Similarly, large households (6 people
316 and more) decreased the risk of death by 88% in 2008 and 92% in 2021. High birth weight
317 increased the risk of death by 2.52 times in 2008 and 2.95 times in 2021 compared to normal
318 birth weight.

319

320 **Table 4: Multilevel analysis of factors associated with neonatal deaths, 2003, 2008, and 2021 Madagascar DHS.**

| Variables | 2003 | | 2008 | | 2021 | |
|----------------------------------|--------------------------|---------------------------|--------------------------|---------------------------|--------------------------|---------------------------|
| | OR ^a [95% CI] | AOR ^b [95% CI] | OR ^a [95% CI] | AOR ^b [95% CI] | OR ^a [95% CI] | AOR ^b [95% CI] |
| FIXED EFFECTS | | | | | | |
| HOUSEHOLD CHARACTERISTICS | | | | | | |
| Province | | | | | | |
| Antananarivo | 1 | 1 | 1 | 1 | 1 | 1 |
| Fianarantsoa | 0.41 [0.13,1.27] | 0.43 [0.11,1.73] | 1.32 [0.86,2.04] | 1.60 [0.87,2.96] | 0.78 [0.53,1.13] | 1.20 [0.68,2.10] |
| Toamasina | 1.13 [0.44,2.89] | 1.40 [0.53,3.67] | 0.67 [0.39,1.17] | 1.01 [0.44,2.31] | 0.77 [0.51,1.17] | 0.52 [0.26,1.01] |
| Mahajanga | 1.27 [0.51,3.13] | 0.86 [0.22,3.44] | 1.09 [0.62,1.91] | 1.69 [0.84,3.38] | 0.66 [0.43,1.01] | 0.70 [0.37,1.35] |
| Toliara | 1.36 [0.54,3.44] | 1.29 [0.47,3.51] | 0.81 [0.50,1.29] | 0.93 [0.42,2.07] | 0.51 [0.34,0.76] ** | 0.40 [0.23,0.70] ** |
| Antsiranana | 0.60 [0.19,1.88] | 0.87 [0.21,3.51] | 1.47 [0.73,2.96] | 0.64 [0.19,2.20] | 0.43 [0.23,0.79] ** | 0.42 [0.17,1.01] |
| Residence | | | | | | |
| Urban | 1 | 1 | 1 | 1 | 1 | 1 |
| Rural | 1.85 [1.20,2.85] ** | 1.40 [0.63,3.08] | 0.94 [0.66,1.32] | 0.99 [0.51,1.93] | 0.90 [0.66,1.23] | 0.71 [0.45,1.10] |
| Media exposure | | | | | | |
| Yes | 1 | 1 | 1 | 1 | 1 | 1 |

| | | | | | | |
|--|---------------------|-------------------|----------------------|----------------------|----------------------|----------------------|
| No | 1.09 [0.60,1.96] | 0.61 [0.27,1.37] | 0.77 [0.57,1.03] | 0.70 [0.47,1.04] | 0.88 [0.66,1.18] | 0.94 [0.60,1.48] |
| Mother's education level | | | | | | |
| None | 2.31 [0.52,10.21] | 2.65 [0.22,32.70] | 0.92 [0.36,2.39] | 3.88 [1.04,14.41] * | 1.49 [0.51,4.35] | 2.77 [0.70,11.00] |
| Primary | 1.09 [0.26,4.68] | 0.96 [0.09,10.63] | 1.00 [0.39,2.55] | 3.80 [1.10,13.14] * | 1.87 [0.66,5.32] | 2.57 [0.70,9.49] |
| Secondary | 1.39 [0.32,6.01] | 0.90 [0.08,10.19] | 0.88 [0.33,2.39] | 4.09 [1.18,14.20] * | 1.87 [0.65,5.37] | 2.87 [0.81,10.22] |
| University | 1 | 1 | 1 | 1 | 1 | 1 |
| Household size | | | | | | |
| 1 to 2 | 1 | 1 | 1 | 1 | 1 | 1 |
| 3 to 5 | 0.34 [0.13,0.90] * | 0.81 [0.14,4.53] | 0.13 [0.07,0.24] *** | 0.19 [0.05,0.67] * | 0.35 [0.22,0.57] *** | 0.16 [0.08,0.33] *** |
| >=6 | 0.25 [0.09,0.67] ** | 0.61 [0.10,3.70] | 0.11 [0.06,0.21] *** | 0.12 [0.03,0.41] *** | 0.20 [0.12,0.35] *** | 0.08 [0.04,0.17] *** |
| Mother's Participation in Decision-Making | | | | | | |
| No | 1 | 1 | 1 | 1 | 1 | 1 |
| Yes | 0.73 [0.49,1.08] | 0.63 [0.36,1.12] | 0.92 [0.68,1.24] | 1.05 [0.69,1.59] | 0.98 [0.74,1.30] | 1.25 [0.84,1.87] |
| Mother's occupation | | | | | | |
| Yes | 1 | 1 | 1 | 1 | 1 | 1 |
| No | 1.25 [0.62,2.55] | 1.72 [0.74,3.97] | 1.37 [0.87,2.13] | 1.57 [0.75,3.30] | 1.18 [0.79,1.75] | 1.19 [0.70,2.02] |
| MOTHER'S CHARACTERISTICS | | | | | | |

| | | | | | | |
|---|---------------------|--------------------|--------------------|----------------------|---------------------|-------------------|
| Mother's age | | | | | | |
| <20 years | 1 | 1 | 1 | 1 | 1 | 1 |
| 20 - 29 years | 0.63 [0.34,1.16] | 1.65 [0.50,5.44] | 0.72 [0.51,1.02] | 1.40 [0.76,2.60] | 0.60 [0.42,0.84] ** | 0.95 [0.60,1.52] |
| 30 - 39 years | 0.67 [0.33,1.37] | 2.34 [0.62,8.83] | 0.86 [0.56,1.33] | 2.25 [0.90,5.62] | 0.87 [0.60,1.26] | 1.68 [0.87,3.26] |
| 40 - 49 years | 1.70 [0.68,4.28] | 2.82 [0.31,25.43] | 1.53 [0.76,3.08] | 4.95 [1.54,15.93] ** | 0.79 [0.40,1.56] | 1.82 [0.56,5.86] |
| Birth interval | | | | | | |
| <2 years | 1 | 1 | 1 | 1 | 1 | 1 |
| 2 to 3 years | 0.46 [0.24,0.91] * | 0.37 [0.17,0.81] * | 0.66 [0.45,0.98] * | 0.74 [0.46,1.21] | 0.60 [0.40,0.92] * | 0.83 [0.49,1.41] |
| >= 4 years | 0.46 [0.17,1.27] | 0.35 [0.14,0.88] * | 0.86 [0.52,1.42] | 0.53 [0.27,1.03] | 0.94 [0.60,1.47] | 0.92 [0.51,1.65] |
| Not applicable (first child) | 1.05 [0.63,1.75] | 1.29 [0.44,3.81] | 1.28 [0.88,1.87] | 1.09 [0.57,2.08] | 1.30 [0.86,1.96] | 1.31 [0.77,2.21] |
| Sleeps Under a Mosquito Net | | | | | | |
| No | 1 | 1 | 1 | 1 | 1 | 1 |
| Yes | 1.04 [0.63,1.72] | 0.97 [0.49,1.91] | 0.75 [0.54,1.03] | 0.47 [0.29,0.74] ** | 0.78 [0.58,1.03] | 0.86 [0.58,1.27] |
| Multiple maternal risks | | | | | | |
| No | 1 | 1 | 1 | 1 | 1 | 1 |
| Yes | 3.49 [1.12,10.93] * | 1.64 [0.17,15.97] | 1.99 [0.49,8.15] | 1.37 [0.30,6.21] | 1.19 [0.38,3.72] | 2.38 [0.43,13.10] |
| PRENATAL CARE | | | | | | |
| Number of ANC^c Visits | | | | | | |

| | | | | | | |
|---|-----------------------|---------------------|----------------------|---------------------|----------------------|-----------------------|
| <3 | 1 | 1 | 1 | 1 | 1 | 1 |
| 4 to 7 | 0.75 [0.35,1.63] | 0.70 [0.25,1.97] | 0.96 [0.62,1.49] | 1.07 [0.59,1.95] | 0.63 [0.44,0.92] * | 0.38 [0.20,0.70] ** |
| >8 | 0.45 [0.14,1.47] | 1.15 [0.24,5.56] | 2.97 [1.17,7.53] * | 0.38 [0.06,2.65] | 0.79 [0.29,2.14] | 0.39 [0.05,2.96] |
| Unknown (not the youngest child) | 1.80 [1.13,2.88] * | 3.08 [1.57,6.04] ** | 2.42 [1.69,3.46] *** | 2.82 [1.49,5.33] ** | 1.92 [1.42,2.61] *** | 3.28 [1.95,5.51] *** |
| Difficulty accessing health center | | | | | | |
| Yes | 1 | 1 | 1 | 1 | 1 | 1 |
| No | 1.13 [0.68,1.88] | 0.86 [0.43,1.73] | 0.85 [0.58,1.23] | 0.83 [0.52,1.32] | 1.32 [0.99,1.75] | 1.46 [1.01,2.10] * |
| NEWBORN AND DELIVERY CHARACTERISTICS | | | | | | |
| Birth weight | | | | | | |
| Low | 3.96 [1.65,9.54] ** | 2.90 [0.61,13.72] | 2.81 [1.63,4.82] *** | 2.95 [1.42,6.12] ** | 5.02 [3.02,8.33] *** | 5.52 [2.98,10.21] *** |
| Normal | 1 | 1 | 1 | 1 | 1 | 1 |
| High | 0.87 [0.10,7.32] | 1.26 [0.07,21.34] | 1.92 [1.32,2.79] *** | 2.52 [1.40,4.56] ** | 2.24 [1.57,3.21] *** | 2.95 [1.75,4.98] *** |
| Not weighed/unknown | 4.83 [1.99,11.74] *** | 4.91 [1.34,18.06] * | | | | |
| Supervised delivery by skilled Personnel | | | | | | |

| | | | | | | |
|--|----------------------|------------------|----------------------|----------------------|----------------------|----------------------|
| No | 1 | 1 | 1 | 1 | 1 | 1 |
| Yes | 0.78 [0.40,1.50] | 1.38 [0.54,3.54] | 1.13 [0.81,1.59] | 1.34 [0.75,2.38] | 1.41 [1.03,1.93] * | 1.59 [1.04,2.44] * |
| Cesarean delivery | | | | | | |
| No | 1 | 1 | 1 | 1 | 1 | 1 |
| Yes | 0.65 [0.17,2.46] | 1.23 [0.20,7.62] | 1.59 [0.43,5.89] | 1 | 2.83 [1.69,4.75] *** | 1.30 [0.51,3.33] |
| POSTNATAL CARE | | | | | | |
| Health check of the baby before discharge | | | | | | |
| No | 1 | 1 | 1 | 1 | 1 | 1 |
| Yes | 0.82 [0.47,1.41] | 1.36 [0.68,2.69] | 0.57 [0.34,0.96] * | 0.65 [0.34,1.27] | 0.23 [0.12,0.41] *** | 0.71 [0.22,2.32] |
| Unknown/Not applicable | 1.01 [0.56,1.84] | 1.32 [0.45,3.86] | 1.73 [1.19,2.51] ** | 0.75 [0.37,1.53] | 0.33 [0.20,0.56] *** | 0.31 [0.08,1.15] |
| Breastfeeding initiation | | | | | | |
| Immediate | 1 | 1 | 1 | 1 | 1 | 1 |
| <24h | 1.15 [0.77,1.73] | 1.02 [0.57,1.81] | 1.01 [0.71,1.44] | 0.72 [0.47,1.11] | 0.75 [0.52,1.08] | 0.71 [0.46,1.12] |
| >24h | 1.18 [0.58,2.42] | 0.79 [0.21,2.95] | 1.40 [0.65,3.00] | 0.99 [0.45,2.17] | 1.33 [0.82,2.16] | 1.10 [0.66,1.84] |
| Breastfeeding | | | | | | |
| Never breastfed | 1 | | 1 | 1 | 1 | 1 |
| Breastfed | 0.01 [0.01,0.02] *** | | 0.01 [0.01,0.01] *** | 0.01 [0.00,0.01] *** | 0.03 [0.02,0.05] *** | 0.05 [0.03,0.09] *** |
| Random effects | | | | | | |

| | | | | | | |
|---------------------------------|--|----------------------|--|----------------------|--|---------------------|
| Cluster variance | | 1.97 [0.87,3.08] *** | | 1.13 [0.58,1.67] *** | | 0.59 [0.22,0.96] ** |
| PCV ^d | | -64.60 | | -68.71 | | -25.26 |
| ICC ^e | | 37.47 | | 25.53 | | 15.31 |
| MOR ^f | | 3.75[2.32-5.18] | | 2.75[2.08-3.43] | | 2.09[1.61-2.56] |
| Model statistics | | | | | | |
| AIC ^g | | 1015.33 | | 1582.20 | | 1719.97 |
| Hosmer-Lemeshow (chi2; p-value) | | 6.77, p=.562 | | 4.33, p=.826 | | 7.58, p=.476 |
| HATSQ (linktest) | | -0.05, p=.963 | | 0.53, p=.593 | | 1.27, p=.204 |
| AUC ^h (%) | | 82.07 | | 80.78 | | 82.48 |

321 *p-value < 0.05; ** p-value < 0.01; ***p-value < 0.001;

322 ^aodds-ratio; ^badjusted odds-ratio; ^cAntenatal Care; ^dProportional Change in Variance; ^eIntraclass Correlation Coefficient; ^fMOR: Median Odds Ratio; ^hAUC: Area Under the

323 ROC Curve

324

325 **3.3.2. Factors associated with neonatal death that have lost their association** 326 **over time**

327 Some factors initially significantly associated with neonatal mortality lost this association over
328 time (Table 4). In 2003, children born with a birth interval of 2 to 3 years and 4 years and more
329 had 63% and 65% lower risk of death, respectively, compared to those with a short birth
330 interval, but these significant associations disappeared over time. In 2008, mother's age 40 - 49
331 years 4.95 increased the risk of death by 4.95 times compared to mother's age <20 years, but
332 these significant associations disappeared in 2021. The use of a mosquito net by the mother in
333 2008 decreased the risk of neonatal death by 53% compared to not using mosquito nets in the
334 same year. However, this effect was not observed in 2021.

335 **3.3.3. Factors recently associated with neonatal death**

336 Over time, new factors associated with neonatal mortality have emerged as outlined in Table 4.
337 In 2021, children residing in the province of Toliara had a 60% reduced risk of neonatal death
338 compared to those living in the province of Antananarivo. Children whose mothers attended 4
339 to 7 ANC visits had a 62% lower risk of death compared to those whose mothers attended less
340 than 3 ANC visits. Children in households facing no difficulty accessing health centers had a
341 1.46 times higher risk of death during the neonatal period compared to those encountering this
342 difficulty in 2021. Supervised delivery increased the risk of neonatal death by 1.59 times
343 compared to non-supervised delivery in 2021.

344 **3.3.4. Results of random-effects measurements and model statistics**

345 A significant cluster-level variance of neonatal death was observed over different periods,
346 showing a decreasing trend from 2003 to 2021 (1.97 [0.87, 3.08] in 2003, 1.13 [0.58, 1.67] in
347 2008, and 0.59 [0.22, 0.96] (Table 4). The intracluster correlation coefficient (ICC) also
348 decreased, from 37.47% in 2003 to 25.53% in 2008, and further to 15.31% in 2021. Individual

349 and community factors explained 96.2%, 85.78%, and 82.68% of the variance of neonatal death
350 in 2003, 2008, and 2021, respectively. The median odds ratio (MOR) followed the same
351 decreasing trend, from 3.75 (95% CI: 2.32-5.18) in 2003 to 2.75 (95% CI: 2.08-3.43) in 2008,
352 and then to 2.09 (95% CI: 1.61-2.56) in 2021. These significant values indicate that the
353 multilevel analysis is useful for each of the models. Furthermore, the decreases suggest a
354 reduction in disparities of neonatal death across clusters over the years.

355 The Hosmer-Lemeshow test showed a good fit of the model for all years, with non-significant
356 p-values ($p=0.562$ in 2003, $p=0.826$ in 2008, and $p=0.476$ in 2021). The link function test
357 (Hatsq) yielded non-significant results with values of (-0.05, $p = .963$) in 2003, (0.53, $p = .593$)
358 in 2008, and (1.27, $p = .204$) in 2021, indicating no model specification problem in the three
359 periods studied. Finally, the area under the curve (AUC) was 82.07% in 2003, 80.78% in 2008,
360 and 82.48% in 2021, demonstrating a high and stable discriminatory capacity of the model over
361 the years.

362 **4. Discussion**

363 The present study aims to investigate the dynamics of factors associated with neonatal mortality
364 in Madagascar between 2003 and 2021 in the context of stagnant neonatal mortality rates. Our
365 findings showed a stagnation in the prevalence of neonatal deaths from 2003 to 2021. Factors
366 associated with improvements in epidemiological indicators of neonatal mortality over time
367 included province of residence, age and education level of the mother, birth intervals, mosquito
368 net use, number of ANC visits, and breastfeeding. On the other hand, factors such as household
369 size, difficulty accessing healthcare services, low birth weight, supervised delivery by skilled
370 personnel and child health check before discharge were associated with worsening neonatal
371 mortality indicators over time.

372 **4.1. Neonatal mortality trends in Madagascar**

373 The evolution of neonatal mortality in Madagascar remained stagnant from 2003 to 2021, with
374 a slight non-significant decrease between 2003 and 2008. This trend reflects that observed in
375 sub-Saharan Africa, the Middle East, North Africa, and low-income countries, where stagnation
376 began later, around 2010, after a period of more rapid reduction [6]. In contrast, at the global
377 level, the reduction remained significant from 1999 to 2019. The slight improvement observed
378 in Madagascar between 2003 and 2008 coincides with the implementation and strengthening of
379 preventive community interventions in various regions of the country during this period [16].
380 This phenomenon is in line with the improvements observed globally and in sub-Saharan Africa
381 before 2010, attributed to the implementation of high-impact interventions such as peripartum
382 and postnatal care, nutrition strengthening, vaccination, and hygiene since 1990 [6]. However,
383 the impact of these interventions seems to be less pronounced in Madagascar than in other
384 regions. The post-2010 stagnation identified in West and Central Africa, the Middle East, North
385 Africa, and the average of low-income countries could be due to the more pronounced
386 persistence of the common structural deficits mentioned by Sharrow et al. as a cause of the slow
387 global reduction in neonatal deaths [6].

388 **4.2. Characteristics associated with improvement in** 389 **epidemiological indicators of neonatal mortality over time**

390 Residing in the Toliara province, birth interval greater than 2 years, 4 to 7 ANC visits, use of
391 mosquito net, and the absence of breastfeeding were associated with a lower risk of neonatal
392 death. In addition, the mother's lack of education and her age (40-49) increased the risk of
393 neonatal death. These factors showed improvement in neonatal mortality indicators (prevalence
394 and adjusted odds ratio) over time. The results of the random effects of neonatal deaths between

395 clusters have also highlighted a reduction in the heterogeneity of neonatal mortality between
396 clusters over time, and could probably be linked to improvements within the previous associated
397 factors.

398 The association between neonatal mortality and each of these factors are generally consistent
399 with the majority of studies. Some authors have found that high rates of neonatal mortality
400 differ by province due to regional variations in the implementation of health policies [26,32].
401 The mother's level of education is particularly important for improving knowledge of her child's
402 health and use of health services, unlike the father's, which generally facilitates access to well-
403 paid jobs [33]. Children born with short birth intervals were conceived under unfavorable
404 maternal health conditions, and exposed to pregnancy complications due to inadequate recovery
405 after the previous pregnancy [34]. Pregnancies in elderly mothers present a high risk of
406 gestational diabetes and gestational hypertension. Uteroplacental aging can also induce
407 circulatory insufficiency and placental hypoperfusion, compromising fetal growth [35]. The
408 absence of protection by a mosquito net exposes mothers to malaria-related complications
409 during pregnancy [36–38]. Antenatal care (ANC) reinforces maternal education and
410 compliance, while also offering screening for pregnancy complications, infection treatment,
411 and early management of newborn illnesses [39]. Non-breastfed infants are deprived of the
412 benefits of breastfeeding, exposing them to risks of dehydration, malnutrition, or infections
413 [40].

414 The improvements observed for each of these characteristics could be attributed to the impact
415 of increased coverage of preventive and promotional services particularly for elderly mothers.
416 This expanded coverage includes increased use of modern contraceptives associated with a
417 reduction in unmet family planning needs [41], wider distribution and use of mosquito nets,

418 improved attendance of adequate antenatal care visits, and intensified large-scale promotion of
419 breastfeeding at the community level [42].

420 **4.3. Characteristics associated with worsening of epidemiological** 421 **indicators of neonatal mortality over time**

422 Ease of access to health centers, low and high birth weight, supervised delivery by skilled
423 personnel, and child health check before discharge were associated with an increased risk of
424 mortality during the neonatal period. Furthermore, medium and large household size were
425 found to decrease the risk of neonatal death. For each of these factors, a deterioration in
426 epidemiological (prevalence and adjusted odds ratio) indicators of neonatal mortality was
427 observed over the years.

428 Among these factors, only the association of birth weight anomalies with neonatal death aligns
429 with existing evidence. Children with extreme birth weights are more likely to develop
430 respiratory, infectious, or metabolic complications due to their increased vulnerability [39,43].

431 The absence of a child health check-up at discharge was not significantly associated with
432 neonatal mortality in this study, although it is a factor that can lead to delays in the diagnosis
433 and treatment of neonatal complications, such as infections, asphyxia or hypothermia [44].

434 Existing evidence shows that small household size, easy access to health-care facilities and
435 supervised delivery by qualified personnel contribute to reducing neonatal mortality, which is
436 not in line with our result. The divergence of our results could be explained by several reasons.

437 According to some authors, a low probability of neonatal death in larger households could be
438 explained by the availability of an experienced person capable of taking care of the mother and
439 newborn [45]. Therefore, high mortality in smaller households could indicate parental

440 incompetence in adequately caring for sick or small newborns. Numerous studies have shown
441 that the presence of qualified personnel during childbirth is a protective factor against neonatal

442 mortality [46,47], although the results vary by region. In Asia, the presence of qualified
443 attendants during childbirth reduced neonatal mortality only during the first week of life, while
444 in Africa, it is associated with higher neonatal mortality due to the habit of the majority of the
445 population to seek qualified assistance only in case of complications, which could bias the effect
446 of these qualified personnel. This finding also highlights gaps in the training and equipment of
447 this personnel [48]. Our results are consistent with the findings of Singh and could be explained
448 by his hypotheses.

449 The deteriorations in neonatal mortality indicators observed over time could be explained by
450 deficiencies in both delivery and postnatal care, worsening over time. In other words, for birth
451 weight anomalies, it could reveal the inefficiency of interventions aimed at preventing and
452 managing preterm births, intrauterine growth retardation, and complications associated with
453 extreme birth weights. The absence of child health verification upon discharge could indicate
454 the persistence of poor delivery conditions, lack of medical follow-up, early discharge without
455 consent, or a shortage of healthcare personnel in maternal and child health [49]. Regarding
456 small household size, it could demonstrate the persistence of insufficient social and educational
457 support for parents unable to adequately care for their sick or weak newborns. Regarding ease
458 of access to healthcare centers, particularly in urban areas, the deterioration could reflect
459 insufficient quality of care provided to the mother and child. The coronavirus pandemic would
460 also likely have influenced the study results in urban settings. Finally, regarding supervised
461 delivery by skilled personnel, the deterioration in neonatal mortality indicators over time would
462 indicate and underline the growing need to improve the quality of birth attendant training and
463 equipment, as well as access to emergency obstetric care.

464 **4.4. Limitations and validity of the study**

465 This study is representative of the national level and the level of the 22 regions of Madagascar.
466 However, it is based on data from a cross-sectional survey that relies on retrospective maternal
467 reports, which can potentially introduce recall, selection, and reporting biases. Measures have
468 been taken to mitigate these potential biases by adjusting the data for potential confounding
469 factors and context. Furthermore, the cross-sectional nature of the data does not allow for the
470 study of the temporal sequence of causality.

471 It should also be noted that the data used do not allow for the evaluation of the effectiveness
472 and efficiency of existing or potential interventions to reduce neonatal mortality, nor do they
473 measure the impact of maternal and child health policies and programs. Evaluation studies
474 based on randomized trials or cost-effectiveness analyses could be relevant to identify best
475 practices and optimal strategies for reducing neonatal mortality.

476 Furthermore, the analyses could be biased by missing data. To manage the impact of these
477 missing data, some were categorized as "unknown" or "not applicable" when part of the
478 population was not concerned by the question asked in the variable, while the remaining
479 missing data were treated by multiple imputation.

480 Another limitation is that the data used do not allow for the identification of the exact causes of
481 these deaths, such as neonatal infections, asphyxia, prematurity, or congenital malformation.
482 Additionally, political and environmental factors such as governance and the performance of
483 the health system were not taken into account due to their unavailability in the EDS database.
484 However, the results regarding factors related to difficulty accessing care and the quality of care
485 in this study may reflect these unaccounted factors.

486 **5. Conclusion**

487 Overall, prenatal prevention and care have generally been associated with improved neonatal
488 mortality indicators, while care during delivery and the postnatal period has been associated
489 with a deterioration of these indicators. This study also found that the effect of the quality of
490 neonatal care in available health facilities on neonatal death is greater than that of geographical
491 accessibility.

492 Our recommendations for Madagascar underscore several critical priorities. It is imperative to
493 concentrate efforts on enhancing the quality of care provided during childbirth and the postnatal
494 period in easily accessible health centers, particularly within urban areas. This specifically
495 entails upgrading equipment and care protocols for both low- and high-birth-weight newborns,
496 re-evaluating and updating the training of skilled birth attendants, and improving the quality of
497 equipment utilized by these professionals. Furthermore, it is essential to strengthen protocols
498 for assessing the health of newborns before hospital discharge, develop targeted education and
499 support programs for parents in small households, and establish community support systems to
500 assist these families in caring for their newborns at home.

501 In the future, it would be important to evaluate, using rigorous methods, the impact of
502 community interventions on reducing neonatal mortality in Madagascar. In addition, it would
503 be pertinent to evaluate the effectiveness and impact of targeted interventions aimed at
504 improving the care of low-birth-weight newborns, as well as the competencies of parents from
505 small households in providing home-based care for their newborns. An in-depth study of the
506 quality of obstetric and neonatal care covering all regions and districts of the country would
507 also be of great importance, particularly during the postpartum period. Finally, an analysis of
508 parents' knowledge, attitudes and practices regarding home neonatal care is essential.

509 **Acknowledgments**

510 The research team would like to thank the DHS program for approving the use of the
511 Madagascar DHS database for this study.

512 **Authors' contributions**

513 **Conceptualization:** Sedera Radoniaina Rakotondrasoa, Seni Kouanda, Kadari Cissé

514 **Proposal validation:** Seni Kouanda and Julio Rakotonirina

515 **Data curation and formal analysis:** Sedera Radoniaina Rakotondrasoa

516 **Interpretation of data:** Sedera Radoniaina Rakotondrasoa, Kadari Cissé, Hajalalaina
517 Rabarisoa, Felix Alain

518 **Methodology:** Sedera Radoniaina Rakotondrasoa, Kadari Cissé, Hajalalaina Rabarisoa, Felix
519 Alain

520 **Supervision:** Kadari Cissé, Seni Kouanda and Julio Rakotonirina

521 **Writing and Original drafting:** Sedera Radoniaina Rakotondrasoa, Hajalalaina Rabarisoa,
522 Felix Alain

523 **Review:** Kadari Cissé, Tieba Millogo, Seni Kouanda, and Julio Rakotonirina

524 **Editing:** Sedera Radoniaina Rakotondrasoa, Hajalalaina Rabarisoa, Felix Alain, Kadari Cissé,
525 Seni Kouanda

526 **Final validation:** Kadari Cissé, Tieba Millogo, Seni Kouanda, Julio Rakotonirina

527 All authors read and approved the final version of the manuscript.

528 **BIBLIOGRAPHICAL REFERENCE**

- 529 1. Darmstadt GL, Bhutta ZA, Cousens S, Adam T, Walker N, de Bernis L, et al. Evidence-
530 based, cost-effective interventions: how many newborn babies can we save? *Lancet Lond*
531 *Engl.* 2005 Mar 12;365(9463):977–88.
- 532 2. Perin J, Mulick A, Yeung D, Villavicencio F, Lopez G, Strong KL, et al. Global, regional,
533 and national causes of under-5 mortality in 2000–19: an updated systematic analysis with
534 implications for the Sustainable Development Goals. *Lancet Child Adolesc Health.* 2022
535 Feb 1;6(2):106–15.
- 536 3. WHO. Newborn Mortality [Internet]. 2022 [cited 2022 Sep 13]. Available from:
537 [https://www.who.int/news-room/fact-sheets/detail/levels-and-trends-in-child-mortality-](https://www.who.int/news-room/fact-sheets/detail/levels-and-trends-in-child-mortality-report-2021)
538 [report-2021](https://www.who.int/news-room/fact-sheets/detail/levels-and-trends-in-child-mortality-report-2021)
- 539 4. WHO, UNICEF. Ending preventable newborn deaths and stillbirths by 2030: moving
540 faster towards high-quality universal health coverage in 2020–2025 [Internet]. Geneva;
541 2020 [cited 2023 Jul 1]. Available from: [https://www.unicef.org/reports/ending-](https://www.unicef.org/reports/ending-preventable-newborn-deaths-stillbirths-quality-health-coverage-2020-2025)
542 [preventable-newborn-deaths-stillbirths-quality-health-coverage-2020-2025](https://www.unicef.org/reports/ending-preventable-newborn-deaths-stillbirths-quality-health-coverage-2020-2025)
- 543 5. UNICEF. Neonatal mortality [Internet]. 2023 [cited 2024 Jan 25]. Available from:
544 <https://data.unicef.org/topic/child-survival/neonatal-mortality/>
- 545 6. Sharrow D, Hug L, You D, Alkema L, Black R, Cousens S, et al. Global, regional, and
546 national trends in under-5 mortality between 1990 and 2019 with scenario-based
547 projections until 2030: a systematic analysis by the UN Inter-agency Group for Child
548 Mortality Estimation. *Lancet Glob Health.* 2022 Feb;10(2):e195–206.

- 549 7. Bhutta ZA, Black RE. Global Maternal, Newborn, and Child Health — So Near and Yet
550 So Far. *N Engl J Med*. 2013 Dec;369(23):2226–35.
- 551 8. Haileamlak A. Why is the Neonatal Mortality Remains Stagnant in Ethiopia? *Ethiop J*
552 *Health Sci*. 2019 Nov;29(6):656.
- 553 9. Iii RB, Firth S, Hodge A, Jimenez-Soto E, Zeck W. Overcoming Stagnation in the Levels
554 and Distribution of Child Mortality: The Case of the Philippines. *PLOS ONE*. 2015 Oct
555 2;10(10):e0139458.
- 556 10. Pond B, Addai E, Kwashie ST. Stagnation of Ghana’s under-5 mortality rate. *The Lancet*.
557 2005 May 28;365(9474):1846.
- 558 11. Asiimwe JB, Nyegenye W, Muyingo E. Trends and determinants of neonatal mortality in
559 Uganda: further analysis of the demographic and health surveys [Internet]. Rockville,
560 Maryland, USA: ICF; 2019. (DHS Working Paper No. 151). Available from:
561 <https://www.dhsprogram.com/pubs/pdf/WP151/WP151.pdf>
- 562 12. Kraft AD, Nguyen KH, Jimenez-Soto E, Hodge A. Stagnant Neonatal Mortality and
563 Persistent Health Inequality in Middle-Income Countries: A Case Study of the Philippines.
564 *PLoS ONE*. 2013 Jan 7;8(1):e53696.
- 565 13. ICF, INSTAT. Enquête Démographique et de Santé à Madagascar, 2021 : Indicateurs Clés
566 [Internet]. 2021 [cited 2023 May 29]. Available from:
567 [https://www.unicef.org/madagascar/rapports/enqu%C3%AAt%C3%A9-d%C3%A9mographique-](https://www.unicef.org/madagascar/rapports/enqu%C3%AAt%C3%A9-d%C3%A9mographique-et-de-sant%C3%A9-%C3%A0-madagascar-edsmd-v-2021)
568 [et-de-sant%C3%A9-%C3%A0-madagascar-edsmd-v-2021](https://www.unicef.org/madagascar/rapports/enqu%C3%AAt%C3%A9-d%C3%A9mographique-et-de-sant%C3%A9-%C3%A0-madagascar-edsmd-v-2021)

- 569 14. Maniruzzaman M, Suri HS, Kumar N, Abedin MM, Rahman MJ, El-Baz A, et al. Risk
570 factors of neonatal mortality and child mortality in Bangladesh. *J Glob Health*. 2018
571 Jun;8(1):010417.
- 572 15. WHO. Rapport sur la performance des systèmes de santé dans la Région africaine de
573 l'OMS. Genève: WHO; 2020.
- 574 16. Ministère de la Santé Publique de Madagascar. Plan national de développement du secteur
575 santé 2020-2024 (PDSS). 2019.
- 576 17. Mosley W, Chen L. An analytical framework for the study of child survival in developing
577 countries. *Popul Dev Rev*. 1984;10 Suppl:25–45.
- 578 18. Upadhyay RP, Krishnan A, Rai SK, Chinnakali P, Odukoya O. Need to Focus Beyond the
579 Medical Causes: a Systematic Review of the Social Factors Affecting Neonatal Deaths:
580 Social factors influencing neonatal deaths. *Paediatr Perinat Epidemiol*. 2014
581 Mar;28(2):127–37.
- 582 19. Lassi ZS, Middleton P, Bhutta ZA, Crowther C. Health care seeking for maternal and
583 newborn illnesses in low- and middle-income countries: a systematic review of
584 observational and qualitative studies. *F1000Research*. 2019 Feb;8:200.
- 585 20. Målqvist M. Neonatal mortality: an invisible and marginalised trauma. *Glob Health
586 Action*. 2011 Mar 16;4:10.3402/gha.v4i0.5724.
- 587 21. Victora CG, Huttly SR, Fuchs SC, Olinto MT. The role of conceptual frameworks in
588 epidemiological analysis: a hierarchical approach. *Int J Epidemiol*. 1997 Feb;26(1):224–
589 7.

- 590 22. Akombi BJ, Ghimire PR, Renzaho AM. Factors associated with neonatal mortality in the
591 African Great Lakes region: A pooled analysis of national surveys. *J Glob Health Rep.*
592 2019 Aug 1;3:e2019043.
- 593 23. The DHS Program. Available Datasets [Internet]. [cited 2023 Jun 29]. Available from:
594 <https://dhsprogram.com/data/available-datasets.cfm>
- 595 24. INSTAT. Annuaire des statistiques du secteur santé de Madagascar 2013 [Internet]. 2014
596 [cited 2023 Sep 8]. Available from: [https://www.instat.mg/p/min-san-annuaire-des-](https://www.instat.mg/p/min-san-annuaire-des-statistiques-du-secteur-sante-de-madagascar-2013)
597 [statistiques-du-secteur-sante-de-madagascar-2013](https://www.instat.mg/p/min-san-annuaire-des-statistiques-du-secteur-sante-de-madagascar-2013)
- 598 25. INSTAT, ICF, Macro. Enquête Démographique et de Santé de Madagascar 2008-2009
599 [Internet]. 2010 [cited 2023 Jul 3]. Available from:
600 <https://www.instat.mg/index.php/p/edsmd-iv-enquete-demographique-et-de-sante-2008->
601 [2009](https://www.instat.mg/index.php/p/edsmd-iv-enquete-demographique-et-de-sante-2008-2009)
- 602 26. Fenta SM, Biresaw HB, Fentaw KD. Risk factor of neonatal mortality in Ethiopia:
603 multilevel analysis of 2016 Demographic and Health Survey. *Trop Med Health.* 2021 Feb
604 4;49(1):14.
- 605 27. Tesema GA, Worku MG. Individual-and community-level determinants of neonatal
606 mortality in the emerging regions of Ethiopia: a multilevel mixed-effect analysis. *BMC*
607 *Pregnancy Childbirth.* 2021 Jan 6;21(1):12.
- 608 28. USAID. Guide to DHS Statistics DHS-7 [Internet]. [cited 2022 Sep 17]. Available from:
609 [https://dhsprogram.com/data/Guide-to-DHS-](https://dhsprogram.com/data/Guide-to-DHS-Statistics/index.htm#t=Early_Childhood_Mortality.htm%23Neonatal_Mortality_Ratebc-2&rhtocid=_11_0_1)
610 [Statistics/index.htm#t=Early_Childhood_Mortality.htm%23Neonatal_Mortality_Ratebc-](https://dhsprogram.com/data/Guide-to-DHS-Statistics/index.htm#t=Early_Childhood_Mortality.htm%23Neonatal_Mortality_Ratebc-2&rhtocid=_11_0_1)
611 [2&rhtocid=_11_0_1](https://dhsprogram.com/data/Guide-to-DHS-Statistics/index.htm#t=Early_Childhood_Mortality.htm%23Neonatal_Mortality_Ratebc-2&rhtocid=_11_0_1)

- 612 29. Cottrell G, Cot M, Mary JY. L'imputation multiple des données manquantes
613 aléatoirement : concepts généraux et présentation d'une méthode Monte-Carlo. Rev
614 DÉpidémiologie Santé Publique. 2009 Oct;57(5):361–72.
- 615 30. Kuse KA, Chikako TU, Hagan JE, Seidu AA, Ahinkorah BO. Assessing Individual- and
616 Community-Level Variability in Predictors of Neonatal, Infant, and Under-Five Child
617 Mortality in Ethiopia Using a Multilevel Modeling Approach. Children. 2022 Jul
618 18;9(7):1071.
- 619 31. Tom A. B. Snijders. Multilevel Analysis. Int Encycl Stat Sci. 2011 Jan 1;879–82.
- 620 32. Baraki AG, Akalu TY, Wolde HF, Lakew AM, Gonete KA. Factors affecting infant
621 mortality in the general population: evidence from the 2016 Ethiopian demographic and
622 health survey (EDHS); a multilevel analysis. BMC Pregnancy Childbirth. 2020;20:1–8.
- 623 33. Islam MdA, Biswas B. Socio-economic factors associated with increased neonatal
624 mortality: A mixed-method study of Bangladesh and 20 other developing countries based
625 on demographic and health survey data. Clin Epidemiol Glob Health. 2021 Jul;11:100801.
- 626 34. Ogbo FA, Ezech OK, Awosemo AO, Ifegwu IK, Tan L, Jessa E, et al. Determinants of
627 trends in neonatal, post-neonatal, infant, child and under-five mortalities in Tanzania from
628 2004 to 2016. BMC Public Health. 2019 Sep 9;19(1):1243.
- 629 35. Wu H, Zhao M, Liang Y, Liu F, Xi B. Maternal age at birth and neonatal mortality:
630 Associations from 67 low-income and middle-income countries. Paediatr Perinat
631 Epidemiol. 2021 May;35(3):318–27.

- 632 36. Sinaga RSH, Affandi B. Effectiveness of Insecticide Treated Nets (ITNs) and Intermittent
633 Preventive Treatment (ITP) in the prevention of malaria in pregnancy. *Indones J Obstet*
634 *Gynecol.* 2011 Sep 29;33(1):28–34.
- 635 37. Hartman TK, Rogerson SJ, Fischer PR, Fischer PR. The impact of maternal malaria on
636 newborns. *Ann Trop Paediatr.* 2010 Jan 1;30(4):271–82.
- 637 38. Adeoye IA, Fagbamigbe AF. What is the Link between Malaria Prevention in Pregnancy
638 and Neonatal Survival in Nigeria. *Afr J Reprod Health.* 2019 Apr 4;23(1):139–49.
- 639 39. Dheresa M, Daraje G. A 12 Years Neonatal Mortality Rate and Its Predictors in Eastern
640 Ethiopia. *Glob Pediatr Health.* 2021 Jan;8:2333794X2110254.
- 641 40. Alebel A, Wagnew F, Petrucka P, Tesema C, Moges NA, Ketema DB, et al. Neonatal
642 mortality in the neonatal intensive care unit of Debre Markos referral hospital, Northwest
643 Ethiopia: a prospective cohort study. *BMC Pediatr.* 2020 Feb 15;20(1):72.
- 644 41. FP2030. Madagascar Aperçu des indicateurs de FP2030 : Rapport de mesure 2022
645 [Internet]. [cited 2023 Jul 1]. Available from:
646 https://track20.org/pages/data_analysis/core_indicators/progress_report.php
- 647 42. Victoria J. Quinn, Quinn VJ, A G, Guyon AB, Schubert JW, Stone-Jimenez M, et al.
648 Improving breastfeeding practices on a broad scale at the community level: success stories
649 from Africa and Latin America. *J Hum Lact.* 2005 Aug 1;21(3):345–54.
- 650 43. Rambliere L, de Lauzanne A, Nihor Diouf JB, Zo AZ, Landau M, Herindrainy P, et al.
651 Stillbirths and neonatal mortality in LMICs: A community-based mother-infant cohort
652 study. *J Glob Health.* 2023;13:04031.

- 653 44. Kolola T, Ekubay M, Tesfa E, Morka W. Determinants of Neonatal Mortality in North
654 Shoa Zone, Amhara Regional State, Ethiopia. Simeoni U, editor. PLOS ONE. 2016 Oct
655 14;11(10):e0164472.
- 656 45. Kamal A, Shakeel A. Differentials and determinants of neonatal mortality in Pakistan: A
657 cross sectional analysis (PDHS 2017-18). J Pak Med Assoc. 2021 Jan 5;71(3):1–14.
- 658 46. Chaka EE, Mekurie M, Abdurahman AA, Parsaeian M, Majdzadeh R. Association
659 between place of delivery for pregnant mothers and neonatal mortality: a systematic
660 review and meta-analysis. Eur J Public Health. 2020 Aug 1;30(4):743–8.
- 661 47. Berhan Y, Berhan A. Skilled Health Personnel Attended Delivery as a Proxy Indicator for
662 Maternal and Perinatal Mortality: A Systematic Review. Ethiop J Health Sci. 2014 Sep
663 12;24(0):69.
- 664 48. Singh K, Brodish P, Suchindran C. A Regional Multilevel Analysis: Can Skilled Birth
665 Attendants Uniformly Decrease Neonatal Mortality? Matern Child Health J. 2014
666 Jan;18(1):242–9.
- 667 49. Andriantsimietry S, Rakotovao J, Ramiandrison ER, Andriamiharisoa H, Razakariasy
668 EMR, Favero R, et al. Evaluation de la disponibilité des personnels qualifiés en santé
669 maternelle et néonatale à Madagascar. Afr Eval J. 2015 Oct 12;3(2):8.
- 670

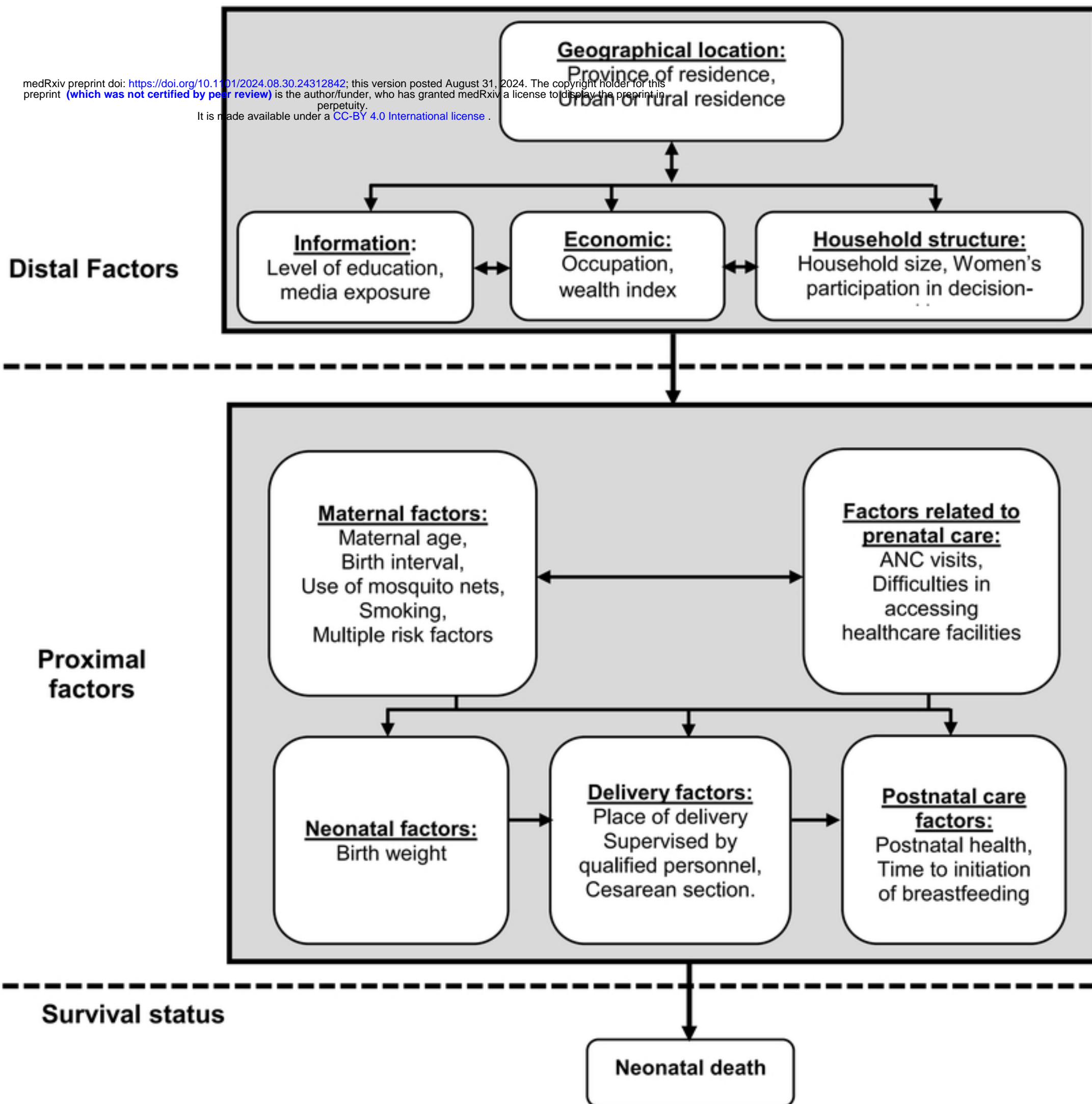


Fig1

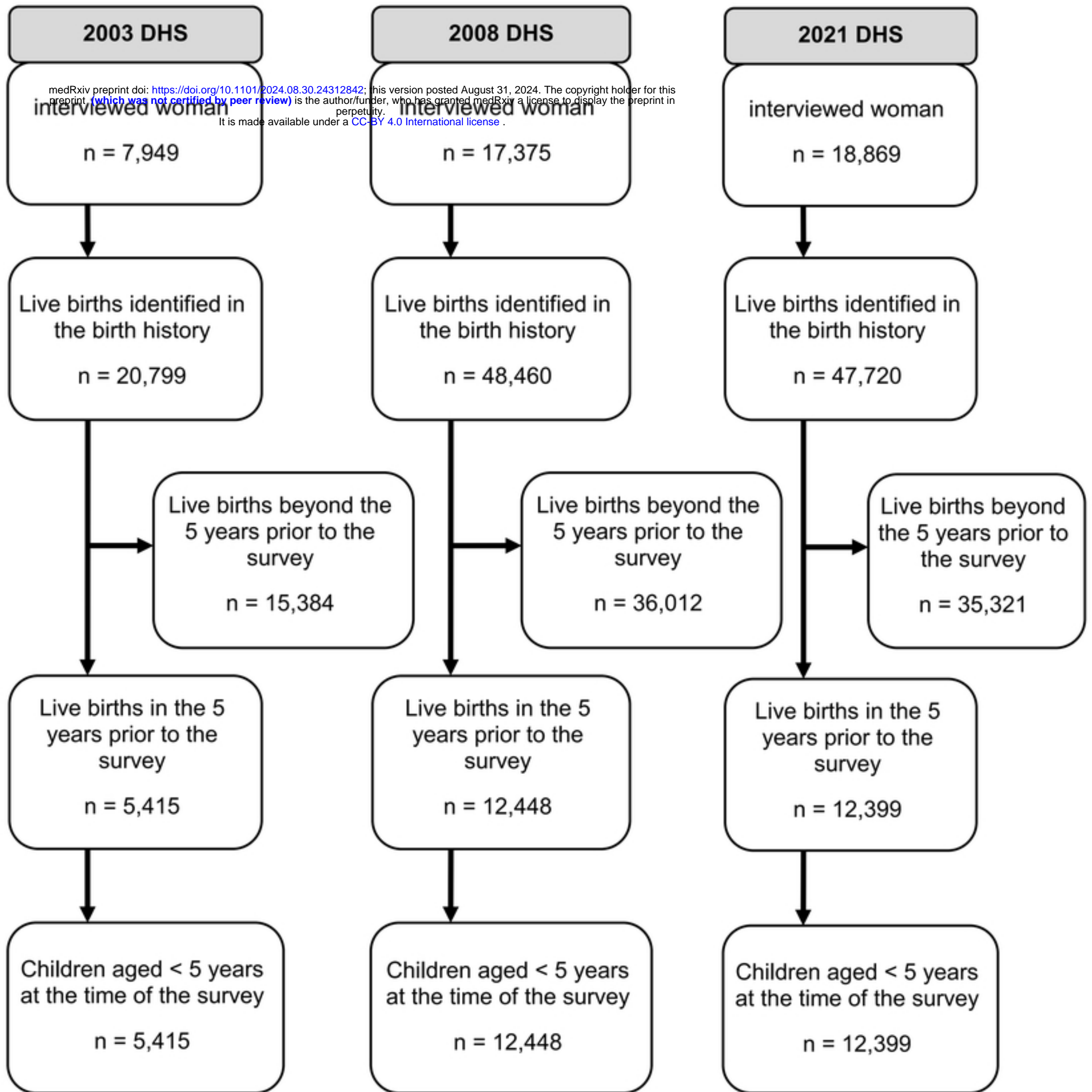


Fig2