

1 **Insufficient Water, Sanitation, and Healthcare Facilities**
2 **Hinder Schistosomiasis Control in Endemic Areas: A**
3 **Mixed Methods Study**

4 **Aspire Mudavanhu^{1,2*}, Rachele Weeda², Maxson Kenneth Anyolitho³, Linda Mlangeni²,**
5 **Luc Brendonck^{2,4}, Tawanda Manyangadze^{5,6}, Tine Huyse⁷**

6 ¹ Department of Biological Sciences, Bindura University of Science Education, Bindura,
7 Zimbabwe

8 ² Laboratory of Animal Ecology, Global Change and Sustainable Development, KU Leuven,
9 Leuven, Belgium

10 ³ Department of Community Health, Faculty of Public Health, Lira University, Lira, Uganda

11 ⁴ Water Research Group, Unit for Environmental Sciences and Management, North-West
12 University, South Africa.

13 ⁵ Department of Geosciences, School of Geosciences, Disaster and Development, Faculty of
14 Science and Engineering, Bindura University of Science Education, Bindura, Zimbabwe

15 ⁶ Discipline of Public Health Medicine, College of Health Sciences, University of KwaZulu-
16 Natal, Durban, South Africa

17 ⁷ Department of Biology, Royal Museum for Central Africa, Tervuren, Belgium

18 *Corresponding author

19 Email: mudavanhu.aspire@gmail.com

20

21 **Abstract**

22 **Introduction**

23 Schistosomiasis remains a significant public health issue in sub-Saharan Africa, particularly in
24 resource-limited settings. This mixed-methods study assesses the knowledge, attitudes, and
25 practices (KAP) related to schistosomiasis in two communities in Zimbabwe's Chiredzi
26 district: Hippo Valley Estate (HVE) and Chipimbi.

27 **Methodology**

28 In August 2022, a total of 279 household adults were surveyed using semi-structured
29 questionnaires, selected through systematic random sampling. Additionally, four key
30 informants were interviewed, and eight focus group discussions (FGDs) were conducted.
31 Cramer's V (ϕ) and Gamma (γ) coefficients were used to determine associations between
32 sociodemographic factors and KAP variables, with a p-value of 0.05 indicating statistical
33 significance. Quantitative data were analyzed using frequencies, percentages, and chi-square
34 tests, while qualitative data were analyzed by identifying themes and sub-themes.

35 **Results**

36 Awareness of schistosomiasis was high, with 87.5% of respondents having heard of the disease
37 and 86% knowing its transmission modes and symptoms. However, misconceptions persist,
38 such as the belief that walking barefoot or eating unwashed fruits are major risk factors. Only
39 7% recognized the importance of avoiding unsafe water, a challenge further amplified in both
40 communities due to their reliance on water for irrigation in HVE and as a primary water source
41 in Chipimbi, especially when stored water is depleted. Although 98% emphasized the
42 importance of latrine use, open defecation remains prevalent due to insufficient latrine

43 coverage in Chipimbi (14%) and occasional water shortages for flushing in HVE. Both
44 communities showed positive attitudes toward treatment, but access to healthcare facilities
45 remains a significant barrier due to selective treatment, long distances, and inadequate
46 facilities.

47 **Conclusion**

48 Despite high awareness and positive attitudes, inadequate water, sanitation, and healthcare
49 facilities hinder effective schistosomiasis control. Enhancing community-based awareness,
50 improving access to clean water, and increasing latrine coverage are crucial steps toward
51 sustainable schistosomiasis management

52 **Author Summary**

53 Schistosomiasis, a neglected tropical disease, remains a persistent public health challenge,
54 particularly in resource-limited areas. In Zimbabwe, despite six rounds of mass drug
55 administration, with a general prevalence rate of 23%. This study examines two contrasting
56 communities in Zimbabwe's Chiredzi district: Hippo Valley Estate (HVE), which has benefited
57 from extensive interventions including safe water provision, high latrine coverage, snail
58 control, and regular treatment programs, and Chipimbi, which has not received any such
59 interventions. Both communities are located in an area heavily impacted by large-scale
60 sugarcane irrigation, a factor known to exacerbate schistosomiasis transmission. The study
61 assesses the knowledge, attitudes, and practices (KAP) related to schistosomiasis through
62 surveys and focus group discussions. Findings reveal high awareness of schistosomiasis and
63 its symptoms in both communities, but with persistent misconceptions about risk factors.
64 Despite positive attitudes toward treatment, significant barriers remain, particularly in access
65 to healthcare. Moreover, risky practices like open defecation and unsafe water contact persist

66 due to inadequate water and sanitation infrastructure. This study underscores the need for
67 continued and tailored public health interventions that address misconceptions, improve
68 infrastructure, and enhance healthcare access to effectively control schistosomiasis in these
69 communities.

70 **Introduction**

71 Schistosomiasis, commonly known as bilharzia, is a waterborne parasitic disease categorized
72 as a neglected tropical disease (NTD). NTDs historically receive less attention from the
73 research community, disproportionately impacting impoverished communities worldwide [1].
74 Endemic in 78 countries, schistosomiasis puts approximately 779 million people at risk [2],
75 with over 230 million estimated infections globally as of 2014 [3]. Sub-Saharan Africa, home
76 to two-thirds of the global extremely poor population, bears over 90% of schistosomiasis cases
77 [2]. Considered a disease of poverty, schistosomiasis particularly affects those living in poor
78 conditions, with limited access to safe water and proper sanitation [4].

79 The parasites responsible for schistosomiasis belong to the genus *Schistosoma* (Trematoda:
80 Schistosomatidae), with a complex, multi-host lifecycle involving a freshwater snail and a
81 human host. Two main forms of human schistosomiasis exist i.e. urinary schistosomiasis
82 caused by *Schistosoma haematobium*, characterized by pain during urination and hematuria
83 [3]; and intestinal schistosomiasis caused by *Schistosoma mansoni*, characterized by symptoms
84 like abdominal pain, blood in stool, and liver enlargement [5]. Untreated infections can lead to
85 severe health complications, including infertility, liver fibrosis, anemia, and impaired cognition
86 [3]. Due to these lifelong impacts, schistosomiasis not only threatens individual and household
87 health but also imposes significant social and financial burdens [6,7].

88 Our study took place in Zimbabwe, a country where schistosomiasis is endemic, affecting 91%
89 of its districts and presenting a nationwide prevalence of 22.7% [8]. Following WHO 2012
90 recommendations, Zimbabwe so far implemented at least six rounds of mass drug
91 administration (MDA) targeting school-aged children, resulting in a significant reduction in
92 the intensity and morbidity prevalence of schistosomiasis in recipient communities [9]. Over
93 the past two decades, this strategy has contributed to a nearly 60% reduction in schistosomiasis
94 prevalence among school-aged children across sub-Saharan Africa [10]. However, MDA's
95 reliance has limitations, as it does not prevent reinfection, and the untreated population
96 continues to contaminate the environment through ongoing water contact [11]. Addressing
97 socio-ecological factors becomes imperative for designing effective control programs [4,12].
98 To achieve sustainable prevention, considerations should include snail control, improved
99 treatment coverage, enhanced water, sanitation, and hygiene (WASH) interventions, along with
100 behavioral change interventions [2,13].

101 Schistosomiasis, being a complex disease intertwined with environmental and socio-economic
102 aspects, poses unique challenges, especially in a culturally diverse nation like Zimbabwe.
103 Factors such as ethnicity, religion, gender, and education levels but also WASH facilities and
104 interventions can significantly shape the knowledge, attitudes, and practices (KAP) of
105 communities regarding schistosomiasis [14] yet a dearth of studies exploring this crucial
106 component exists. Recognizing this complexity, context-specific research at micro-
107 geographical levels becomes crucial to understanding the socio-ecological factors influencing
108 schistosomiasis infection and affecting the success of control interventions [15]. To that effect,
109 we conducted a comprehensive community-based survey, utilizing both quantitative and
110 qualitative approaches, focusing on the Chiredzi district of Zimbabwe. We selected two main
111 study areas that differ in socio-economic aspects such as access to WASH infrastructure and

112 past control interventions. This study aimed to provide valuable insights into the local
113 knowledge, attitudes, and practices surrounding schistosomiasis, and to test for a possible
114 influence of these socio-economic differences. The overall aim is to contribute to the
115 optimization of control programs, particularly in an area identified as one of the country's most
116 severely affected by schistosomiasis.

117 **Methodology**

118 **Research design**

119 We employed a mixed methods approach with an equal status design to evaluate the existing
120 levels of knowledge, attitudes, and practices of individuals in the study area regarding
121 schistosomiasis. This comprehensive strategy involved the collection and analysis of both
122 qualitative and quantitative data, recognizing their complementary nature [16]. Quantitative
123 data were acquired through pre-structured questionnaires, while qualitative insights were
124 obtained through focus group discussions (FGDs) and key informant interviews (KIIs). This
125 dual-method approach aimed to provide a more holistic understanding of the subject.

126 **Study area and setting**

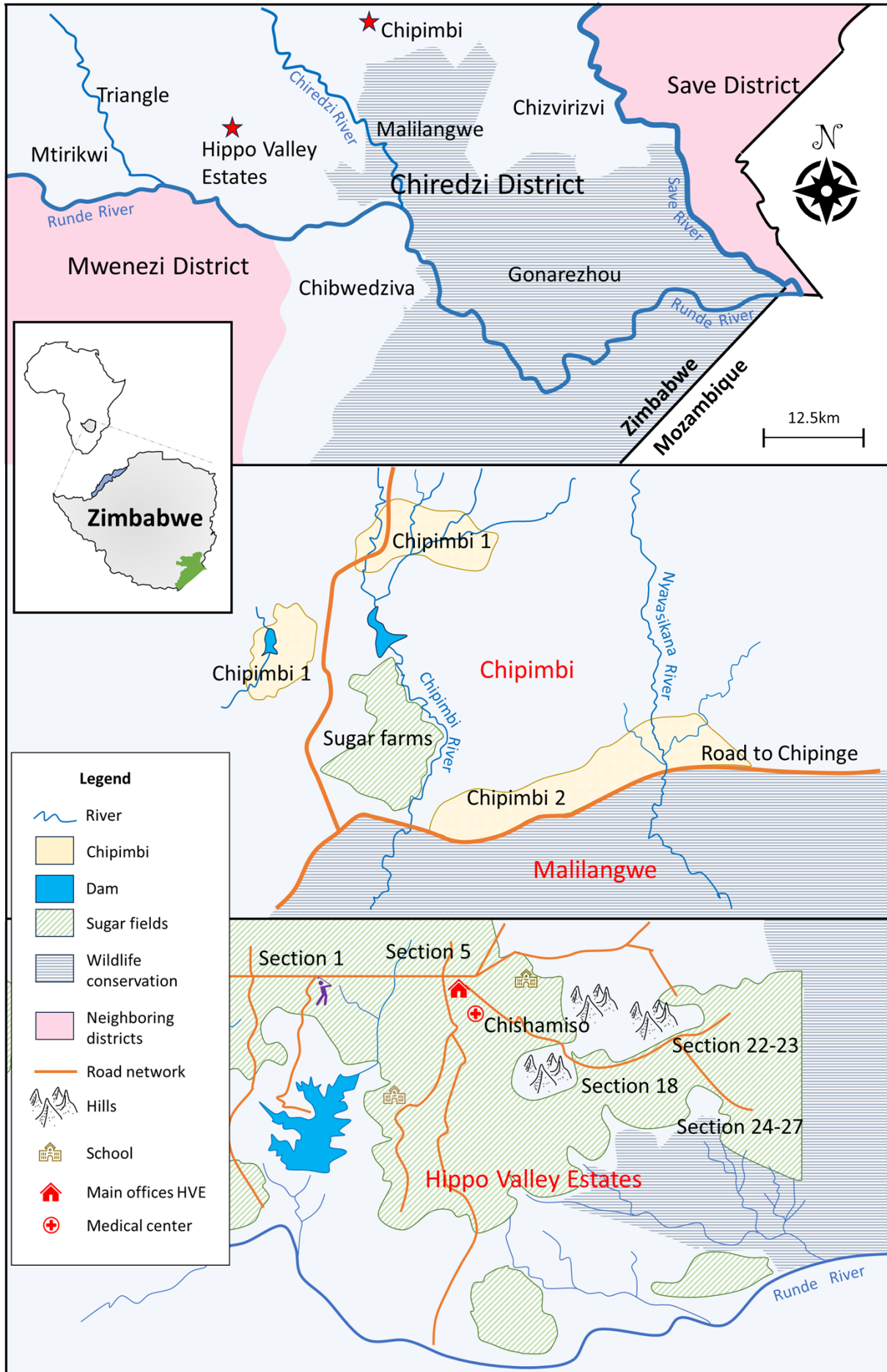
127 In August 2022, we conducted a cross-sectional study in Chiredzi, a district in Zimbabwe with
128 reported high prevalence rates of *Schistosoma mansoni* (43.7%) and *Schistosoma haematobium*
129 (43.7%) [8]. Our focus was on the communities of Hippo Valley Estate (HVE) and Chipimbi
130 (Fig. 1), which have contrasting access to water, sanitation, and healthcare facilities.

131 Villages in HVE, referred to here as sections, each have a satellite clinic in addition to the main
132 medical center. Managed by Tongaat Hulett, a multinational company, HVE has a long history
133 of disease control programs dating back to 1971 [17]. These programs include snail control, an

134 annual chemotherapy component targeting school children, and an intensive water and
135 sanitation component. Assessments of these control programs [18,19] have shown a significant
136 decline in both prevalence and intensity of infections over long periods, with a sustained phase
137 of prevalence below 10%. However, a recent malacological survey indicated that the
138 intermediate host snails, *Biomphalaria* and *Bulinus* spp., still persist in HVE in high numbers
139 – 60 and 122, respectively – although they were not infected [20]. Given the irrigation practices
140 in this region, it is reasonable to anticipate that many people are still exposed to infection.

141 In contrast, the clinic in Chipimbi remains unused, forcing residents to travel to the main district
142 clinic in Chiredzi town, more than 20 km away. No recorded interventions exist in Chipimbi,
143 and data on infection prevalence in the community is severely lacking. The community relies
144 primarily on open water sources such as the Chipimbi River and Magumire Dam for daily
145 activities related to agriculture, fishing, and personal use. Both *Biomphalaria* and *Bulinus* spp.
146 were recently reported in the Chipimbi River [20], with the former found to be infected with
147 *Schistosoma mansoni* at an infection prevalence of 11.1% (2/18).

148 Despite the proximity of HVE and Chipimbi and their shared climatic and cultural influences,
149 the stark differences in access to water, sanitation, and healthcare facilities provide a
150 compelling comparative setting for this study.



152 **Fig 1.** Map of the study area depicting villages and sections from which study participants were
153 recruited. (A) Position of the study area in Zimbabwe (shaded black) on the map of Africa and
154 the location of the study region (Chiredzi, shown as in green on the south-eastern part) on the
155 map of Zimbabwe. (B) Map of Chiredzi showing various communities of the district. (C) Map
156 of Chipimbi Community further divided in two: Chipimbi 1 comprise of villages 1 to 5 whereas
157 Chipimbi 2 comprises of villages 6 to 10. (D) Map of Hippo Valley Estates showing the various
158 sections and how they morph into areas based on the organization's internal disease
159 surveillance plan.

160 **Ethics statement**

161 Formal consent to carry out this study in the designated area was granted in writing by the
162 highest regional authority, the office of the District Administrator, and ethical clearance was
163 secured from the Social and Societal Ethics Committee at the University of Leuven (ref. no.
164 G-2022-5508-R2(MIN)).

165 In adherence to customary practices within Zimbabwean rural communities, explicit
166 permission was also sought from the village heads, complementing the approval granted by the
167 District Administrator. Specifically, within Chipimbi, a region further segmented into distinct
168 villages, the consent process extended to the Crow Heads with whom a meeting was organized
169 regarding the authorization, ensuring comprehensive community involvement and adherence
170 to local protocols.

171 Participants were provided with comprehensive oral and written information detailing the
172 nature and purpose of the study. Prior to their inclusion, individuals expressed their
173 understanding and agreement by signing a written informed consent document. To safeguard
174 confidentiality and anonymity, a unique code was assigned to each participant, dissociating
175 personal identifiers from the study data.

176 **Quantitative approach through questionnaires**

177 Pre-structured questionnaires were employed to assess the KAP levels of schistosomiasis.
178 Initially developed in English (<https://ee.kobotoolbox.org/x/GxcBYKog>), the questions were
179 later translated into Shona (<https://ee.kobotoolbox.org/x/g4hcTxJd>). KoboToolbox's online
180 platform facilitated immediate digitization of responses, accessible to the research team via the
181 KoboCollect application. Other advantages included features like skip-logic and mandatory
182 questions. The questionnaire covered demographic, socio-economic, and environmental data,
183 alongside practices related to schistosomiasis, including personal hygiene, water contact, and
184 treatment history. Additionally, questions on schistosomiasis knowledge encompassed
185 etiology, transmission, clinical manifestations, prevention, and control, incorporating closed-
186 ended and open-ended formats to capture quantitative and qualitative data. Specifically,
187 knowledge-related questions were open-ended, without multiple-choice answers which might
188 have given hints to the respondent thereby preventing potential biases. However, practice-
189 related questions presented multiple-choice options for assessing the frequency of the
190 participant's choice of these activities or actions.

191 The questionnaire comprised 72 questions, covering 15 on demography, 12 on knowledge, 15
192 on attitudes, 13 on practices, and 17 on infection, prevention, and health-seeking behavior (Fig
193 2). Demographic questions aimed at general information, knowledge questions assessed
194 respondents' understanding of schistosomiasis, attitude questions gauged participants'
195 seriousness and willingness to change behavior, and the practices section focused on actions
196 predisposing participants to infection. Utilizing skip-logic resulted in varied question numbers
197 per respondent based on given answers. Instead of schistosomiasis, the questionnaire used
198 '*bilharzia*' to align with local terminology.

199 The sample size for our study was determined using Kish's formula ($n = Z^2 PQ/E^2$). With a Z-
200 score of 1.96 (95% confidence interval) and a schistosomiasis prevalence of 22.7% in

201 Zimbabwe [8]. The calculated sample size was 269, distributed between HVE and Chipimbi in
202 a 3:1 ratio. Q is the proportion not infected, and E is the standard error set at 0.05. Ultimately,
203 279 questionnaires were administered – 218 in HVE and 61 in Chipimbi. To ensure
204 representation, at least six interviews were conducted in each of the 10 villages in Chipimbi.
205 In HVE, considering varying household numbers across sections, a similar per-section
206 calculation was employed (Additional Table 1).

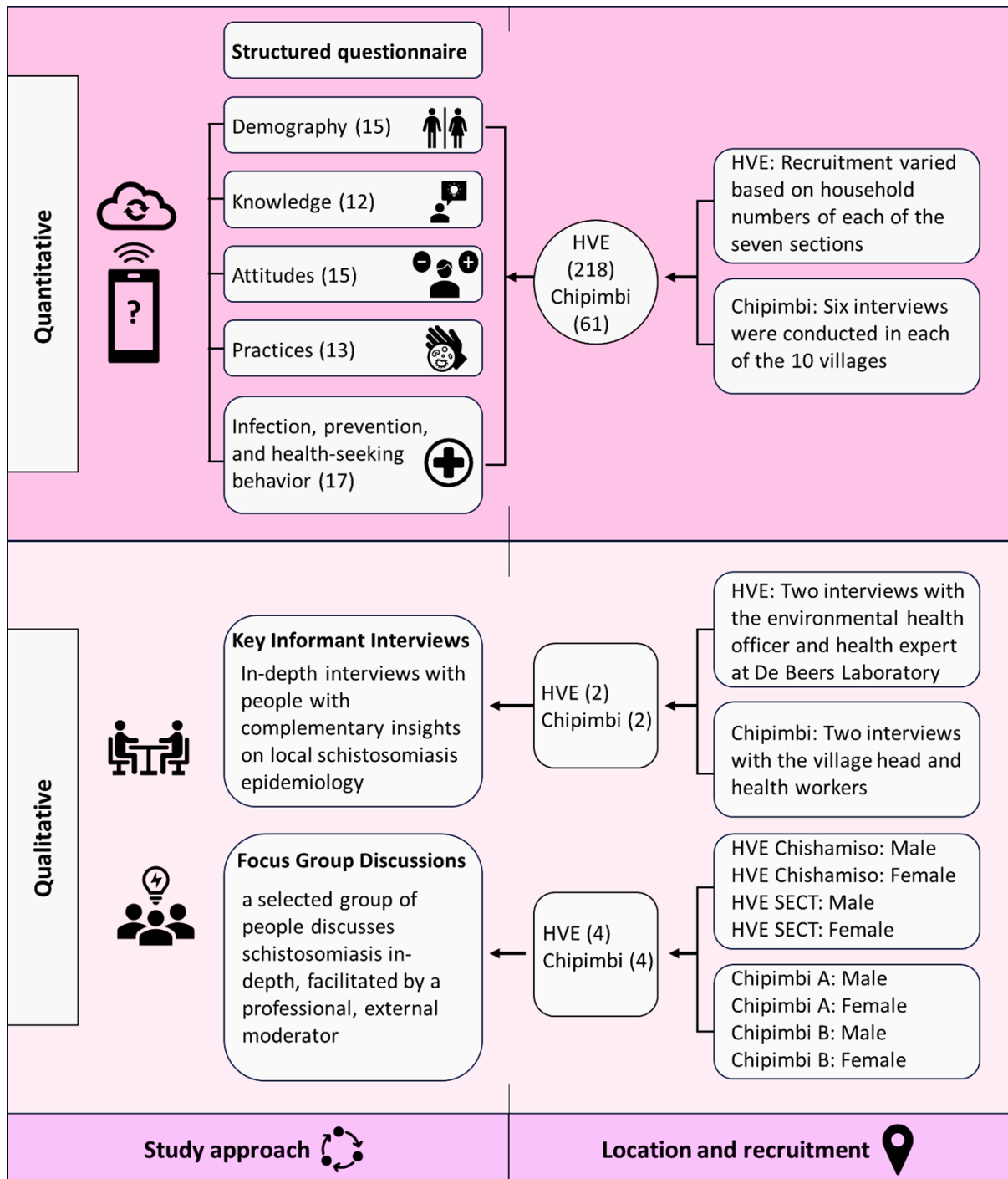
207 A blend of stratified and systematic sampling ensured geographic coverage and demographic
208 representation. Starting randomly, interviews proceeded at fixed intervals. Participants, aged
209 18 or older, were limited to one per household to avoid correlated responses. Interview intervals
210 were determined by dividing the (estimated) number of households per village or section by
211 the required questionnaires.

212 The research team consisted of the principal investigator (female), field supervisors (two males,
213 one female), and community research assistants (CRAs) (two males, eight females). The CRAs
214 were recruited from their respective HVE sections and all had prior experience in conducting
215 similar surveys. They received additional training on the technical aspects of the questionnaire
216 and the practical use of KoboToolbox. To ensure strict adherence to the sampling design, the
217 geo-location of each sampled household was captured in real-time using KoboToolbox. Data
218 from KoboToolbox underwent cleaning in Microsoft 365 Excel before export to IBM SPSS
219 Statistics for analysis.

220 **Qualitative approach through focus group discussions**

221 Eight focus-group discussions (FGDs) enriched quantitative data by exploring motivations.
222 FGDs, involving eight to 12 participants per session, following Khan et al [21], lasted one to
223 one and half hours. Sessions were single-sex (male or female) representing a wide age range

224 and the various villages (Fig 2). Gender-based FGDs aimed to capture diverse KAPs on
 225 schistosomiasis due to potential differences in gender roles. Participants, fluent in Shona, were
 226 selected by community leaders and health workers to ensure full representation of the different
 227 villages.



228

229 **Fig. 2.** Schematics of the study methodology, location, and recruitment of respondents and
230 participants.

231 **Qualitative approach through key informant interviews**

232 Key informants, chosen for their central community roles or schistosomiasis expertise,
233 underwent semi-structured interviews (Additional Text 1). Four face-to-face KIIs were
234 conducted, featuring the Chipimbi village head, two Chipimbi healthcare workers, a health
235 researcher from the Chiredzi district, and the senior Environmental Health Officer of HVE.
236 The aim was to understand information on past treatment campaigns, available WASH and
237 previous WASH campaigns, presence and capacity of hospitals, and to gauge community
238 knowledge.

239 **Quantitative data analysis**

240 The study considered six independent variables: age, education level, monthly income, marital
241 status, gender, and residence. For statistical analysis, these variables were assigned numerical
242 values. Ordinal variables such as age (categorized as 18-27, 28-37, 38-47, 48-57, 58-67, and
243 68+ years), education level (none, primary, lower secondary, higher secondary, tertiary), and
244 monthly income (less than 50 USD, 51-100 USD, 101-150 USD, 151-200 USD, above 200
245 USD) were recoded, with the lowest category assigned a value of 1, the second lowest as 2,
246 and so on. Residence, marital status, and gender were treated as binary variables.

247 The knowledge, attitude, and practice (KAP) sections were scored as follows:

- 248 i. Knowledge: Each correct response in the knowledge section received 1 point, with
249 a maximum possible score of 40. The knowledge score was computed by summing
250 the correct answers. Scores ranged from 0 to 40, with knowledge levels categorized

251 as low (0-13 points, coded as 0), moderate (14-26 points, coded as 1), and high (27-
252 40 points, coded as 2).

253 ii. Attitude: Likert scale responses were used to measure attitude, with scores ranging
254 from 1 to 5. Thirteen statements were averaged to compute the overall attitude
255 score, categorized as follows: negative attitude (1.00-1.99), somewhat negative
256 attitude (2.00-2.99), somewhat positive attitude (3.00-3.99), and positive attitude
257 (4.00-5.00). The internal consistency of the Likert scale was assessed using
258 Cronbach's alpha (α) coefficient, with the following interpretation: ≥ 0.9 =
259 excellent, ≥ 0.8 = good, ≥ 0.7 = acceptable, ≥ 0.6 = questionable, ≥ 0.5 = poor, and
260 ≤ 0.5 = unacceptable [22].

261 iii. Practice: Responses indicating safe practices related to water use and sanitation
262 were awarded 1 point, with a maximum possible score of 14. Practice levels were
263 categorized as bad (1-4 points), moderate (5-9 points), and good (10-14 points).

264 Descriptive statistics, including frequency values and percentages, were generated for the KAP
265 variables and the sociodemographic profile of respondents. Contingency tables were created,
266 and Cramer's V (ϕ) and Gamma (γ) coefficients were calculated to determine the associations
267 between sociodemographic characteristics and KAP variables, following the methodology of
268 Wambui et al [22]. A p-value of 0.05 was used to establish statistical significance. The strength
269 of associations was interpreted using the rule of thumb from Wambui et al [22]: 0.00-0.10
270 (negligible), 0.10-0.30 (small), 0.30-0.50 (medium), and 0.50 or more (large). All statistical
271 analyses were performed using IBM SPSS Statistics version 28.0.1.1 (14).

272 **Qualitative data analysis**

273 Data from FGDs and KIIs were translated and transcribed to English using the oTranscribe
274 online platform (<https://otranscribe.com/>). The framework method described by Gale et al [23]
275 was used to analyze the qualitative data. Initially, text was transcribed, then carefully read and
276 coded, with codes representing information types. Deductive coding, based on clear research
277 objectives and expected discussion outcomes, incorporated pre-defined codes derived from
278 questionnaire questions and answers. Additional codes were introduced as needed. Codes were
279 categorized into main and subcategories, allowing for easier comparisons between the different
280 texts. NVivo Release 1.7.1 (1534) was used to manage and process the qualitative analyses. To
281 ensure robustness, only statements and themes mentioned in at least two different groups or by
282 multiple FGD members were included in the results, minimizing reliance on individual views
283 unsupported by others.

284 **Results**

285 **Sociodemographic traits of respondents**

286 Hippo Valley Estates housed the majority of respondents (78%), with over half being female
287 (56%). Half were aged 37 or below (50%), while only 1% were older than 68. Around two-
288 thirds were married (59%), either monogamously or polygamously (6%). One-third belonged
289 to households of three to four people (33%) or five to six people (33%). Nearly half had lower
290 secondary education (49%), and almost all were literate (95%). Over 60% earned less than \$50
291 per month. Crop growing was the predominant occupation (23%), while about 18% were
292 unemployed, 14% were employed in the informal sector. Various religions were represented,
293 with Christian Pentecostal being the most common (29%) followed by the African apostolics
294 (25%), Catholics (11%) and the African indigenous practitioners (10%). The majority

295 identified as Shona (73%) followed by Shangani (15%). Additional Table 2 has more details
296 on sociodemographic traits of respondents.

297 **Knowledge with regards to schistosomiasis**

298 A large proportion of respondents in both HVE (88%) and Chipimbi (85%) were aware of
299 schistosomiasis. Almost all recognized it as a disease (98%), and most identified snails as the
300 transmission organism (HVE: 77%, Chipimbi: 57%). In HVE, many correctly identified
301 transmission routes, with swimming and bathing (89%) being most mentioned, followed by
302 irrigation work (43%) and fishing (35%). Drinking untreated water was also linked to
303 transmission (47%). Chipimbi participants most frequently associated transmission with
304 swimming and bathing (75%) and drinking untreated water (71%).

305 Several misconceptions about schistosomiasis were identified. In Chipimbi, 31% of
306 respondents mistakenly believed that schistosomiasis could be avoided by washing fruits and
307 vegetables, while 33% thought it could be prevented by avoiding walking barefoot. These
308 misconceptions were less prevalent in HVE, where only 14% and 11% of respondents,
309 respectively, held these views. Other incorrect beliefs included the association of
310 schistosomiasis transmission with playing in the soil (HVE: 5%, Chipimbi: 2%) and sexual
311 contact (HVE: 2%, Chipimbi: 6%).

312 These misconceptions were also highlighted in the focus group discussions (FGDs). For
313 example:

314 *“Also teach them [children] that when they go to the toilet, they should not urinate on the*
315 *floor. And that they should always wear shoes, so they don't get bilharzia” – female, HVE*

316 **section 24.**

317 “The way bilharzia is painful, as mentioned by the previous speaker, might be like STI because
318 for us women when it’s bilharzia, this part here burns [pointing to the loins]. You will finally
319 release urine after a lot of pain. Siki [local name for STIs] also shows the same burning
320 sensation and signs. So, when you try to explain it as bilharzia to someone else, they will say
321 you have siki and will not think of bilharzia” – **female, Chipimbi 1.**

322 Further misconceptions came up in the FGDs where participants associated schistosomiasis
323 with eating too much salt:

324 “We also hear in this community that if children eat a lot of salt it causes them bilharzia.” –
325 **female, HVE section 24.**

326 “We would hear our mothers and grandmothers say: ‘do not play in the sun, because if you play
327 in the heat you will get bilharzia. Also do not eat a lot of salt, otherwise you get bilharzia’”. –
328 **female, Chipimbi 2.**

329 Commonly associated symptoms were blood in urine (HVE: 83%, Chipimbi: 98%), painful
330 urination (HVE: 63%, Chipimbi: 87%), and blood in stool (HVE: 47%, Chipimbi: 50%).
331 Complications like bladder and kidney damage (HVE: 65%, Chipimbi: 60%), infertility (HVE:
332 47%, Chipimbi: 54%), and increased prostate cancer risk (around 40% for both communities)
333 were also recognized (Additional Table 3).

334 Over half of the respondents recognized water source treatment as a preventive measure for
335 schistosomiasis (HVE: 61%, Chipimbi: 75%), followed by avoiding open defecation and
336 urination (HVE: 58%, Chipimbi: 64%) and treatment for all infected individuals (HVE: 37%,
337 Chipimbi: 65%). Almost all participants acknowledged the role of urinating and defecating by
338 water in spreading schistosomiasis (HVE: 93%, Chipimbi: 88%). Nearly all respondents were

339 aware that drugs from health centers, pharmacies, or over-the-counter can help cure
340 schistosomiasis (HVE: 96%, Chipimbi: 98%) (Additional Table 3).

341 Ultimately, many respondents could be classified as having poor to moderate knowledge with
342 regards to schistosomiasis in both regions. Gamma (γ) and Cramer's V (ϕ) were employed to
343 assess the association between schistosomiasis knowledge and sociodemographic
344 characteristics of the respondents (Table 1). A moderate, positive association was identified
345 between monthly income and the knowledge score ($\gamma = 0.273$, $p = 0.005$), suggesting that
346 respondents with higher incomes generally possess greater knowledge of schistosomiasis. The
347 community of residence ($\phi = 0.212$, $p = 0.002$) and gender ($\gamma = 0.183$, $p = 0.009$) also exhibited
348 a small but significant association with knowledge of schistosomiasis. The direction of
349 association could not be established due to the nature of the variable community or the variable
350 gender and the statistical test.

351 **Table 1.** Knowledge, attitudes and practices score against age, education, monthly income,
352 community, gender, and marital status.

General knowledge score	Age		Education		Monthly Income	
	γ	P value	γ	P value	γ	P value
	.026	.754	.162	.076	.273	.005
	Community		Gender		Marital status	
	ϕ	P value	ϕ	P value	ϕ	P value
	.212	.002	.183	.009	.054	.666
General attitude score	Age		Education		Monthly Income	
	Y	P value	Y	P value	Y	P value
	.145	.012	.024	.700	.169	.015
	Community		Gender		Marital status	
	ϕ	P value	ϕ	P value	ϕ	P value
	.611	<.001	.277	.436	.316	.144
General practice score	Age		Education		Monthly Income	
	Y	P value	Y	P value	Y	P value
	.088	.127	.116	.078	.238	.001
	Community		Gender		Marital status	
	Φ	P value	ϕ	P value	ϕ	P value
	.385	<.001	.256	.051	.219	.206

353 **Local attitude towards schistosomiasis**

354 A general agreement existed between respondents in HVE and Chipimbi that indeed
355 schistosomiasis is a serious disease (Fig. 3). Respondents reflected it is necessary to take
356 preventative measures against the disease (HVE: 98%, Chipimbi: 100%), it is important to
357 know if they have schistosomiasis (HVE: 97%, Chipimbi: 97%), and that they will take
358 appropriate action if they discover they are infected (HVE: 97%, Chipimbi: 98%). The majority
359 (highly) agreed that the disease could be cured (HVE: 94%, Chipimbi: 98%) and realized the
360 importance of avoiding water contact (HVE: 80%, Chipimbi: 86%). Almost all respondents
361 (highly) agreed with the statement that urinating and defecating in the toilet is important for
362 their health (HVE: 98%, Chipimbi: 98%). The statement that taking medication for
363 schistosomiasis is important for their health was also (highly) agreed upon by many
364 respondents (HVE: 95%, Chipimbi: 100%). The respondents (highly) agreed that they should
365 go to the hospital if they find they have schistosomiasis (HVE: 99.5%). In HVE, a few people
366 (highly) agreed they should go to a traditional health practitioner (13%) or religious leader
367 (14%) when they find they are infected with the disease, while for Chipimbi it was 10% and
368 16% respectively. Most of the respondents (highly) agreed that it is important to be informed
369 about schistosomiasis (HVE: 95%, Chipimbi: 100%) and that they would wish to get more
370 information on it (HVE: 97%, Chipimbi: 100%).

371 At least one participant in each FGD – aside from the female group at HVE Chishamiso –
372 believes that schistosomiasis is a serious illness. Participants linked the seriousness of the
373 disease to the possible long-term consequence of becoming infertile and adverse effects on
374 child development:

375 “It [bilharzia] might be a very serious disease because you might fail to get children eventually,
376 in the future” – **male, HVE section 24.**

377 “It is a very important disease because in our lives when we are growing up, we are expecting
378 to bear children. So, when it causes me not to have children, it becomes a very important
379 disease to me.” **female, Chipimbi 2.**

380 “When we have children, we expect them to grow up and become nurses, doctors, teachers, but
381 when they get infected, there is nothing good that will come out of them. This means that as a
382 nation or family, we would have lost the potential of this child. They could have become nurses,
383 doctors, teachers, or even something better like president, it would have helped the nation to
384 become better in the future, but all is gone.” – **female, Chipimbi 2.**

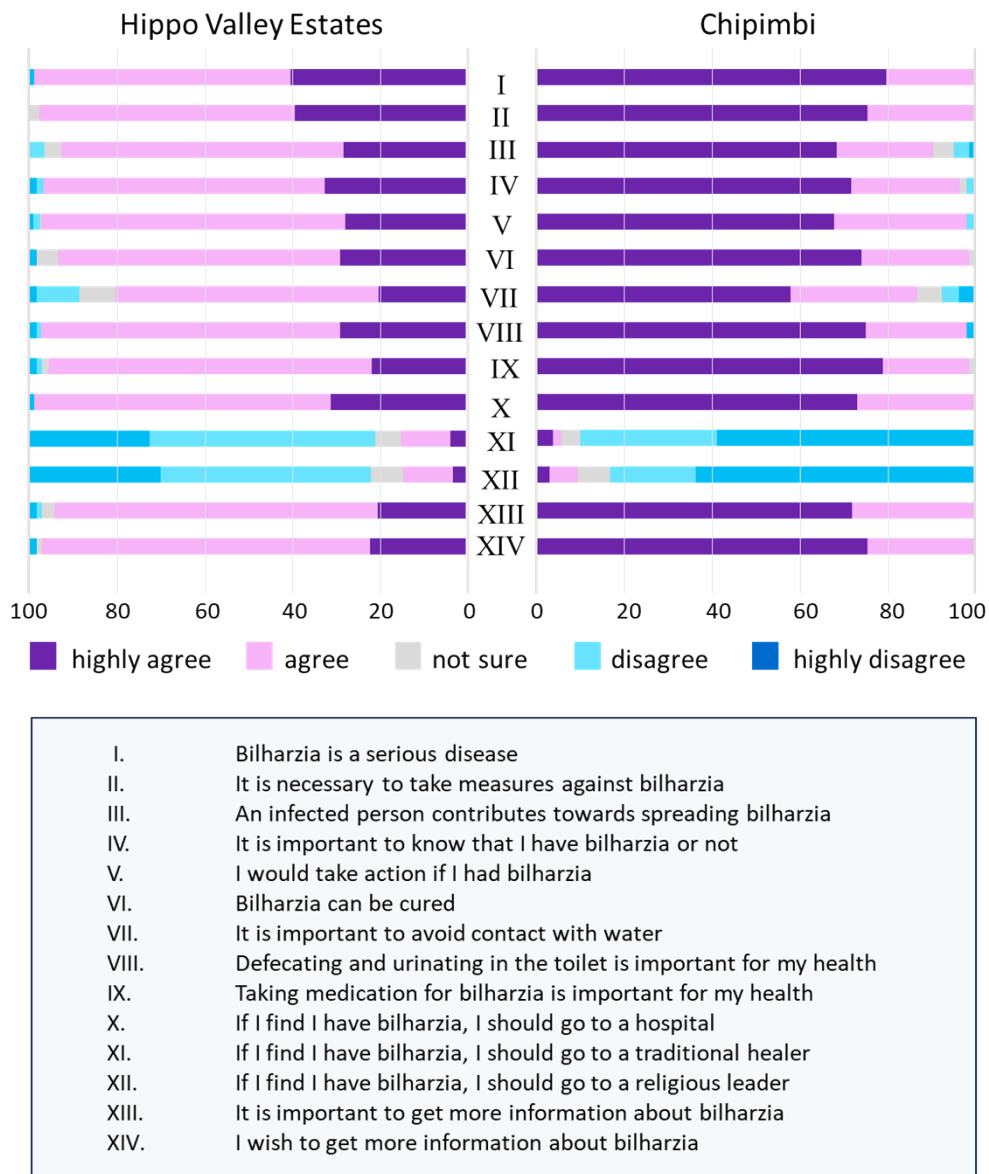
385 However, not all participants shared this sentiment; others pointed out that schistosomiasis is
386 not a disease that people in their village or section take seriously.

387 “Of course, it’s a disease that occurs but it is not very scary because even when you get it you
388 can be cured. Right?” – **male, Chipimbi 1.**

389 “When we were growing up, this disease was regarded as very important. Our mothers would
390 tell us that ‘you don’t play in the water. The stagnant water – never play in that water!’. But
391 now with other new, more sophisticated diseases, this disease has been overshadowed by many
392 other diseases. And today no one even talks about it.” – **female HVE section 24.**

393 The gamma coefficient (γ) and Cramer’s V (ϕ) were utilized to assess the association between
394 sociodemographic characteristics and attitudes (Table 1). Both age ($\gamma = 0.145$, $p = 0.012$) and
395 monthly income ($\gamma = 0.169$, $p = 0.015$) demonstrated a small positive association with
396 respondents' attitudes toward schistosomiasis. This suggests that older respondents and those
397 with higher monthly incomes are more likely to harbor a more positive attitude toward

398 schistosomiasis. Additionally, a strong and significant association was observed between the
 399 community of residence of the respondent ($\phi = 0.611$, $p = <0.001$) and their attitudes.



400

401 **Fig. 3.** Attitudes of Hippo Valley Estates and Chipimbi community members toward
 402 schistosomiasis.

403 **Health-seeking practices and local access to healthcare**

404 Some respondents highlighted that someone in their household suffered from schistosomiasis
405 (HVE: 29.8%, Chipimbi: 39.3%) and most patients consulted a health facility (HVE: 87.7%,
406 Chipimbi: 95.8%). While a significant portion of HVE (72.5%) took proactive measures to
407 prevent bilharzia, a somewhat lower percentage in Chipimbi agreed to do so (55.7%), with
408 some citing a lack of knowledge on preventive measures (Table 1). The most frequently
409 mentioned prevention method was avoiding open defecation (HVE: 75.3%, Chipimbi: 70.6%),
410 followed by medication (HVE: 54.4%, Chipimbi: 47.1%). Avoiding contact with water was
411 mentioned less frequently (HVE: 12%, Chipimbi: 17.6%). A substantial percentage of
412 respondents in HVE (77.5%) had received praziquantel before, while nearly half in Chipimbi
413 had done so (54.1%). Reasons for not receiving praziquantel included the absence of a
414 campaign or lack of awareness about the campaign. Most respondents were open and receptive
415 to a vaccine against schistosomiasis (HVE: 83.9%, Chipimbi: 93.4%). Additional Table 4 gives
416 a full description of health-seeking practices towards schistosomiasis.

417 FGDs held in HVE and Chipimbi showed that most respondents would go to a hospital if they
418 noticed they or their children were infected. Several participants of all discussions expressed
419 their faith in professional healthcare even above the local traditional treatment options:

420 *“Soon after seeing that you have the disease, waste no more time but run to the hospital and*
421 *describe it as it is and they will examine you” – male, Chipimbi 2.*

422 *“People now quickly seek medical health at the hospital” – KII Village Head Chipimbi 2.*

423 *“At the traditional healer, I don’t think it [bilharzia] will completely go away. Yes it might*
424 *reduce a bit like the previous speaker said, but to say it is completely cured, that is not going*
425 *to happen. Only the hospital can cure it” – male, HVE section 24.*

426 Several factors were mentioned to be confounding to the access to primary health care in both
427 communities. The first was selective access to health care. Tongaat Hulett supplied a hospital
428 and clinics, according to the environmental health officer in the KII, but FGDs show that these
429 facilities were exclusively intended for HVE employees and their families, excluding contract
430 laborers and others not affiliated with Tongaat Hulett.

431 *“As long as you do not have a company number, you will never receive treatment in this place.”*

432 - **male, HVE Chishamiso.**

433 Second, some health facilities were reported to be under-equipped with both medical and
434 human resources. When residents of Chipimbi come to them with signs and symptoms, the
435 VHWs of Chipimbi 1 mentioned in the KII that they cannot assist them beyond referring them
436 to the hospital. Nevertheless, it is said that the hospitals are devoid of medication.

437 *“We refer the patient to the hospital. And when they go to the hospital, the nurses there will
438 examine them and try to find out what exactly bothers them.”* – **KII VHW Chipimbi 1.**

439 *“You might not find it [the medication] there, but most importantly you might fail to raise the
440 transport money to get there”* – **male, Chipimbi 2.**

441 *“Sometimes you cannot find the medicine, even if you go to the hospital. They'll tell you that
442 the medicine is not there. And now you are left to look for other money to get the bus to go to
443 the general hospital of Chiredzi. And when you get to the general hospital, they also tell you
444 that they don't have the medicine. Now I must go to the pharmacist. Because I don't have money,
445 I am forced to come back home and continue to live with the disease”.* – **female, Chipimbi 2.**

446 Third, the difficulty of getting to the clinic or hospital was brought up in every Chipimbi FGD.
447 The distance to the nearest hospitals, Chizvirizvi Rural and Chipiwa Hospitals ranges from 10
448 to 40 km, depending on the place of residence within the villages. As a result, some participants

449 in Chipimbi opt for self-treatment or traditional healing and only go to the hospital when such
450 methods do not work:

451 *“They have assigned Chipiwa as our hospital, but it is still far away, and you would need a bus*
452 *to get there.” – female, Chipimbi 1.*

453 *“When I know that I am in trouble, before I think about the hospital I will first think, ‘Can a*
454 *certain herb help me?’ Then I dig it up and consume it. Maybe it might cure me but if it persists*
455 *then I go to the hospital” – male, Chipimbi 1.*

456 Fourthly, several females in HVE Chishamiso raised the issue of how they were afraid that
457 their medical information would be shared with the community, and this led to some of them
458 avoiding seeking professional healthcare. One FGD participant would resort to a traditional
459 healer:

460 *“I would start with seeing the traditional healers first and get the necessary herbs and go here*
461 *[the local clinic] only when it doesn’t work with the traditional healer. Because the fear is with*
462 *the health workers here in this community, when you tell them, your medical health issues will*
463 *be spread throughout the entire community. But the traditional healers will keep my secrets.”*
464 *– female, HVE Chishamiso.*

465 **Risky practices and water access**

466 The majority of HVE respondents identified piped water as their primary household water
467 source (98%), with only a small percentage (6%) mentioning natural sources like rivers,
468 streams, lakes, ponds, or irrigation canals. Water-related activities reported included bathing
469 (87%), laundry (81%), and water fetching (75%), with 51% visiting the water source more than

470 three times daily. Despite a general presence of taps in most homes, the environmental health
471 officer and participants in all HVE FGDs noted inconsistent water availability.

472 *“We make sure that it [tap water] is adequate, it is treated, it is always available, and it is free
473 for the users.”* – **KII, environmental health officer in HVE.**

474 *“When it [tap water] runs out when it finishes, we would go and fetch in the canal.”* – **female
475 HVE Section 24.**

476 *“When there are power cuts, when there is no electricity, the water doesn't come out from the
477 taps, and you have to go to the canals to take a bath.”* – **male HVE Chishamiso.**

478 In Chipimbi, the primary sources of household water, as reported by most respondents, were
479 boreholes (97%) and natural sources like rivers, streams, lakes, ponds, or irrigation canals
480 (46%). The village head of Chipimbi 2, in a KII, also emphasized the utilization of boreholes,
481 rivers, and dams. Village health workers mentioned in the KII that some boreholes were funded
482 and drilled by the Chinese through China Aid. Respondents highlighted various water-related
483 activities, including bathing and laundry (100%), water fetching (95%), agriculture (84%),
484 taking animals for drinking (54%), and fishing (54%). The frequency of visits to water sources
485 was reported with most respondents indicating twice (30%) or thrice a day (26%). FGDs further
486 elaborated on the use of water from different water sources.

487 *“At the borehole, they [women] get one bucket to drink, the rest [doing laundry, etc.] is from
488 the dam”* – **male, Chipimbi 1:**

489 *“We have a borehole and a tap, but we also have a river. That river is very important to us.
490 That is where we get water to wash and we wash while we are standing in that water, where
491 they say the bilharzia worms are found.”* – **female, Chipimbi 2.**

492 Risky practices by children have been discussed in three KII:

493 *“They [children aged 11-15] just come and swim [in the dam and river], but when they swim,*
494 *because children normally don't know, they'll just be thinking to themselves 'Oh I am just*
495 *having fun, I am just taking a swim', but without knowing that in that swimming there is a*
496 *chance of catching some germs that are already there in the water.” – KII, VHW Chipimbi*
497 **1.**

498 *“You will find they [school-aged children] would want to play in shallow canals.” – KII,*
499 **environmental health officer in HVE.**

500 In the KII with the environmental health officer of HVE, it was established that the Tongaat
501 Hullet organization in charge of HVE is aware employees are at risk of schistosomiasis
502 infection, due to the intensive use of water. Engineering programs are in place to alleviate this:

503 *“Our way of doing business creates risk for bilharzia transmission.... we are trying, by all*
504 *means, to make sure that our people are safe.... through a fortnightly program where all*
505 *waterbodies are inspected and treated to control the vectors.... a majority of the canals are*
506 *cement lined to allow water to flow and discourage survival of vector snails.” – KII,*
507 **environmental health officer in HVE.**

508 **Practices related to access to and use of toilets**

509 In HVE, nearly all respondents, except two, reported that their households have a toilet, and
510 the majority use a flush system (92%). About half of the respondents admitted to occasionally
511 defecating or urinating outside the toilet (51%), with the majority choosing the bush as the
512 preferred location (81%), while a small percentage did so near water bodies (9%). Less than
513 half of the respondents mentioned rare instances of such behavior (46%), while one in five

514 reported doing so quite often (20%). The primary reasons cited were the urgency of nature's
515 call (53%), lack of access to toilets (26%), and insufficient water to flush the toilet (16%).

516 Based on the insights gathered from the FGDs in HVE, most people generally have access to
517 either private or shared communal toilets. Participants have, however, reported using the canal
518 or bush instead of the toilets due to several issues such as the availability of water to flush down
519 the toilets.

520 *“Sometimes you might feel very lazy to go to the canal to get water to use for the toilet and*
521 *simply just go to the bushes directly to defecate there.” – female, HVE section 24.*

522 *“If people get there [the toilet] and they find out that the toilet is dirty they'll go to use the*
523 *canal. Or they don't use the toilet hole, they will do it on the floor instead.” – female, HVE*
524 **Chishamiso.**

525 In Chipimbi, a significant portion of respondents utilized pit latrines (48%), followed by
526 improved pit latrines (26%), while 26% indicated that their households had no toilet facilities.
527 A considerable number of respondents admitted to defecating or urinating outside the toilet
528 (62%), citing reasons such as nature calls (66%) and lack of access to toilets (50%). The
529 majority of those going outside the toilet did so in the bush (74%). Among those mentioning
530 such behavior, approximately one-third did so rarely (32%), while 29% reported doing so quite
531 often. Discussions in all FGDs and KIIs in Chipimbi highlighted the scarcity of available toilets
532 and this seems to have been understated in the questionnaires.

533 *“People without toilets are more than the ones that have toilets.” – KII, Village Head*
534 **Chipimbi 2.**

535 *“In village 1 there are only nine toilets, out of 84 households. In village 2 there are 50*
536 *households and only 12 toilets.” – KII VHW Chipimbi 1.*

537 “Most of us go to the bush because we do not have toilets.” – **female, Chipimbi 1.**

538 “Everyone wants a toilet but lacks money.” – **female, Chipimbi 1.**

539 In the FGDs, open defecation was reported to involve men, women, and children, although it
540 appears to be more prevalent among children.

541 “Everyone is involved—children, men, and women. Someone might be washing themselves in
542 the canal and think, 'Do I really have to get out of the canal to defecate and then come back to
543 wash again?' So, they just let it flow downstream.” – **Female, HVE Chishamiso.**

544 "Mostly children. But as mentioned, some men are also involved in these practices. Even some
545 adults, who can be quite difficult to correct, engage in such behavior. They can be very
546 mischievous, so they might end up doing that." – **Male, HVE Section 24.**

547 **Association between sociodemographic characteristics and risky** 548 **practice scores**

549 Overall, a small, positive association is found between the monthly income of a respondent and
550 their score on practices related to behavior putting themselves at risk of schistosomiasis ($\gamma =$
551 0.238 , $p=0.001$) (Table 1). The positive association implies that respondents with a higher
552 monthly income are more likely to have better practices that put them less at risk of
553 schistosomiasis. A moderate, significant association was also found between the community
554 of residence of a respondent and their practice score ($\phi =0.385$, $p = <0.001$), implying that the
555 community of residence influences how respondents engage in practices that are minimizing
556 schistosomiasis transmission.

557 **Discussion**

558 We employed a mixed-methods approach to explore the knowledge, attitudes, and practices
559 surrounding schistosomiasis in two distinct communities within the Chiredzi district of
560 Zimbabwe, each differing in their WASH (Water, Sanitation, and Hygiene) facilities and
561 interventions. The study targeted respondents aged 18 and above, encompassing a diverse
562 range of ages, occupations, genders, and residential locations. By combining quantitative and
563 qualitative techniques – including focus group discussions (FGDs), key informant interviews,
564 and questionnaires – we gathered comprehensive and complementary data. This approach
565 provided a nuanced understanding of the disparities in facilities and interventions between
566 Hippo Valley Estate (HVE) and Chipimbi, as well as the challenges these communities face.
567 Here, we discuss how these differences could impact infection risk and the effectiveness of
568 current and future control initiatives.

569 **Widespread awareness, but gaps in schistosomiasis knowledge** 570 **persist**

571 Our study revealed high levels of awareness about schistosomiasis among participants, with
572 88% from Hippo Valley Estate (HVE) and 85% from Chipimbi having heard of the disease,
573 and 98% recognizing it as a disease. These findings align with similar studies from sub-Saharan
574 Africa, where awareness levels were reported as 91% in Mozambique [24], 91% in South
575 Africa [25], 79% in Gabon [26], 91% in the DRC [22], and 99% in Uganda [27]. Within
576 Zimbabwe, high awareness levels were also reported in Gwanda (81%) [25] and Shamva (94%)
577 [15].

578 A moderate positive association was found between monthly income and knowledge of
579 schistosomiasis ($\gamma = 0.273$, $p = 0.005$), suggesting that higher-income respondents generally
580 had greater knowledge of the disease. This may be attributed to better access to educational

581 resources among wealthier individuals. Additionally, community of residence ($\phi = 0.212$, $p =$
582 0.002) showed a small but significant association with schistosomiasis knowledge, likely
583 reflecting the more extensive health education and intervention efforts historically present in
584 HVE, as reviewed by Chimbari [28].

585 Most participants first learned about bilharzia in school (HVE: 65%, Chipimbi: 44%), followed
586 by healthcare workers (HVE: 15%, Chipimbi: 23%). These sources were also highlighted in
587 focus group discussions, emphasizing the critical role of schools and healthcare workers in
588 raising awareness. The government of Zimbabwe has recently launched the School Health
589 Policy in 2018, a framework through which the central role of schools in teaching health related
590 issues will increase [29]. As also outlined in the Zimbabwe National Master Plan for the
591 Elimination of Neglected Tropical Diseases for the years 2023 to 2027, behaviour change
592 interventions will need to target schools given that children are more susceptible to NTDs and
593 are effective change agents in households and local communities [30]. Further, a majority,
594 particularly in Chipimbi (64%), recognize health education as a measure for schistosomiasis
595 control and prevention. Therefore, it would be beneficial to include prudent curriculum on
596 schistosomiasis especially also because mass drug administration campaigns are already
597 included in this policy.

598 Knowledge about the transmission of schistosomiasis and the role of snails was also high
599 among participants (HVE: 88%, Chipimbi: 67%), which is significantly greater than in a
600 similar study in Kenya, where only 3% made this connection [31]. However, few participants
601 recognized the importance of snail control in disease prevention. Many respondents understood
602 the role of contact with contaminated water in transmission (HVE: 89%, Chipimbi: 75%),
603 consistent with findings from Uganda (81%) [27] and higher than in Shamva, Zimbabwe
604 (44%) [15].

605 Despite this, some myths and misconceptions persist. In Chipimbi, 31% of respondents
606 believed schistosomiasis could be avoided by washing fruits and vegetables, and 33% by
607 avoiding walking barefoot, views held by very few in HVE (14% and 11% respectively). Focus
608 group discussions further revealed misunderstandings, such as the belief that schistosomiasis
609 can be contracted through direct contact with the urine of an infected person, particularly by
610 entering a toilet barefoot. This mirrors findings from Gwanda, Zimbabwe [25]. While it is true
611 that entering toilets barefoot does not transmit schistosomiasis, it does increase the risk of
612 infection with soil-transmitted helminths, which are also prevalent in the region [8,32]. The
613 historical overlap of treatment campaigns for schistosomiasis and soil-transmitted helminths in
614 Zimbabwe may have contributed to confusion regarding the transmission of these parasites.

615 Moreover, participants in four out of eight focus groups associated eating too much salt with
616 bilharzia. This misconception is not unique to Zimbabwe; a study in Kano State, Nigeria, found
617 that some people believe eating salty or sour foods causes schistosomiasis [33]. We speculate
618 that this myth may stem from the logic that excessive salt intake leads to water retention,
619 resulting in low volumes of concentrated, darker urine – resembling the blood in urine that is
620 a common symptom of urinary schistosomiasis. Although this is speculative, it offers a
621 plausible explanation for the persistence of this myth in geographically and ethnically diverse
622 regions.

623 In 60% of reviewed studies, schistosomiasis was mistakenly believed to be sexually transmitted
624 [4], with 27% in Mozambique , 26% Nigeria [34], and 27% in the DRC [22]. However, in our
625 study, only 2% of HVE and 6% of Chipimbi participants held this belief, consistent with
626 findings from South Africa and Zimbabwe [25]. Nonetheless, some women in both
627 communities noted that the presence of blood in urine – a common symptom of schistosomiasis
628 – could be confused with sexually transmitted infections (STIs), potentially leading to

629 reluctance in reporting symptoms. This was not discussed in the male groups. This gender
630 difference might be because of uneven health and social consequences related to STDs for
631 women compared to men [35].

632 The most commonly reported symptoms of schistosomiasis were blood in urine (HVE: 83%,
633 Chipimbi: 98%) and painful urination (HVE: 63%, Chipimbi: 87%), consistent with studies
634 from Zimbabwe (71%) [15], South Africa (65%) [36], and Gabon (91%) [26]. These symptoms
635 are indicative of urinary schistosomiasis [3]. The long-term consequences of untreated
636 schistosomiasis, such as kidney and bladder damage, and infertility, were frequently mentioned
637 in both questionnaires and focus group discussions. The emphasis on urinary symptoms,
638 despite the presence of both urinary and intestinal schistosomiasis in the study area, may be
639 due to the more distinctive nature of blood in urine compared to gastrointestinal symptoms,
640 which are common to other infections. This disparity may loosely indicate a situation of
641 underreported cases of intestinal schistosomiasis, underscoring the imperative to incorporate
642 this aspect into forthcoming health education programs.

643 **Attitudes regarding schistosomiasis**

644 Attitudes toward schistosomiasis play a critical role in determining how far local communities
645 will go to protect their health and the potential success of disease control initiatives. In this
646 study, nearly all respondents regarded schistosomiasis as a serious disease (HVE: 99%,
647 Chipimbi: 100%). This aligns with recent findings from Uganda, where 97% of participants
648 held similarly serious views about the disease [27]. Generally, respondents exhibited positive
649 attitudes towards schistosomiasis and its treatment, with older participants showing stronger
650 attitudes ($\gamma = 0.145$, $p = 0.012$), consistent with observations from Brazil [37]. Interestingly, a
651 strong association was found between respondents' community of residence and their attitudes

652 ($\varphi = 0.611$, $p < 0.001$), with Chipimbi displaying more positive attitudes than HVE, despite
653 HVE's history of more extensive interventions.

654 Focus group discussions (FGDs) in this study revealed that the perceived seriousness of
655 schistosomiasis was often linked to its long-term consequence of infertility. In many African
656 societies, fertility is highly valued, both at the individual and community levels, fulfilling
657 cultural and religious expectations [38–40]. For instance, Shona women in Zimbabwe often
658 define themselves by their marital status and motherhood [41], while in Eswatini, a woman's
659 fertility enhances her status within her marital family [42].

660 However, not all participants believed that people in the two communities were taking
661 schistosomiasis seriously. This sentiment mirrors findings from the Democratic Republic of
662 Congo (DRC), where the disease is often not regarded as serious, likely due to a lack of
663 knowledge about its link to fertility [22]. As highlighted by FGD participants, good knowledge
664 fosters positive attitudes, yet the perceived seriousness of schistosomiasis may be diminished
665 by the emergence of more threatening diseases like HIV/AIDS, malaria, and COVID-19.
666 Diseases like schistosomiasis, which often have subtle or unnoticed symptoms (e.g., bladder
667 fibrosis and anemia), struggle to be taken seriously in communities facing multiple challenges
668 – an issue likely exacerbated in the DRC, where average income is lower than in Zimbabwe.
669 This context may contribute to schistosomiasis being an 'accepted tropical disease' that is
670 overlooked.

671 Other reasons cited in the FGDs for the declining seriousness of schistosomiasis included its
672 curability and the fact that fewer people talk about it today. Despite this, schistosomiasis
673 remains a serious disease that reinforces poverty. As recent reports suggest, the disease
674 exacerbates malnutrition, stunts physical and cognitive development, and reduces educational

675 attainment, labor supply, and incomes – all of which hinder economic growth and the
676 improvement of sanitation, access to energy, water, education, and healthcare [43].

677 **Optimism meets obstacles: positive attitudes hindered by limited**
678 **healthcare access**

679 The high acceptability of treatment for schistosomiasis in Chiredzi is an encouraging sign, with
680 over 97% of respondents expressing the need for preventative measures, awareness of their
681 infection status, and willingness to seek treatment if infected. The majority also believed that
682 schistosomiasis could be cured (HVE: 94%, Chipimbi: 98%). Similar high levels of treatment
683 acceptance have been reported in Shamva, Zimbabwe [15] and other regions such as
684 Mozambique (90%) [24] and the DRC (95%) [22]. However, contrasting attitudes have been
685 observed elsewhere, such as in Tanzania, where treatment is often rejected due to community
686 fears and conspiracy theories about population reduction and covert birth control agendas [44].

687 Only a small percentage of respondents in both communities (less than 16%) considered
688 seeking help from traditional health practitioners or religious leaders if infected with
689 schistosomiasis. This distrust of traditional healers, particularly noted in the FGDs in Chipimbi,
690 echoes findings from northern Senegal, where the majority of people preferred to seek
691 treatment at local health centers [45]. Similarly, Mbereko et al. [25] observed that participants
692 in Zimbabwe and South Africa placed greater trust in Western medicine than in traditional
693 practices, a sentiment likely influenced by the region's widespread Christian beliefs, which
694 often discourage the use of traditional medicine [46].

695 Despite these positive attitudes, several obstacles to accessing healthcare were highlighted in
696 the FGDs and key informant interviews. In HVE, only permanent employees of Tongaat Hulett
697 and their families have access to the company's private medical center, leaving temporary

698 workers and others to seek care at distant public hospitals, which often require them to gather
699 funds for treatment. Although treating all HVE residents may be financially challenging,
700 extending medical services to a broader population could be beneficial, given the risk of
701 untreated individuals reinfecting others.

702 In Chipimbi, healthcare access is further complicated by under-equipped facilities and a lack
703 of medical and human resources, sometimes resulting in patients going untreated. The
704 community currently lacks a functional clinic, with residents forced to travel up to 20 km for
705 care, similar to the challenges faced in rural Uganda [47]. Because of this, village health
706 workers (VHWs) serve as primary caregivers but are limited by the complexity of conditions
707 they can treat and the availability of proper medications. The VHW program, initiated in the
708 1980s, plays a crucial role in disease prevention and primary care in rural and peri-urban areas
709 and has recorded many successes in healthcare programs [30]. However, economic and health
710 crises over the past decade have weakened community health systems, highlighting the need
711 for regular training and support for these key personnel, whose impact extends beyond
712 schistosomiasis control to the broader health of the community. Strengthening the VHW
713 program aligns with the goals of the Ministry of Health and Child Care and supports efforts to
714 achieve the 2030 NTDs elimination goals.

715 A significant difference was noted between the communities, with 65% of respondents in
716 Chipimbi recognizing treatment for all infected individuals as a preventive measure against
717 schistosomiasis, compared to only 37% in HVE. Additionally, 72.5% of HVE respondents took
718 proactive measures to prevent bilharzia, versus 55.7% in Chipimbi, where a lack of knowledge
719 on preventive measures was reported. This suggests the positive impact of WASH interventions
720 in HVE. Furthermore, a substantial percentage of HVE respondents (77.5%) had received
721 praziquantel before, compared to 54.1% in Chipimbi. The lower rates in Chipimbi were

722 attributed to a lack of awareness or absence of treatment campaigns, which were not mentioned
723 in any of the FGDs with Chipimbi participants. Both communities reported that school-aged
724 children received praziquantel as part of the national control program between 2012 and 2017,
725 though no data were available for later years.

726 This scarcity of mass drug administration (MDA) campaigns, particularly in rural communities
727 like Chipimbi that relies on government input for such interventions, presents a significant
728 obstacle to schistosomiasis control and prevention. Although Zimbabwe has conducted
729 extensive mapping and six MDA exercises for schistosomiasis and other NTDs resulting in a
730 great reduction of the two conditions as well as shrinking of the prevalence map as published
731 in the National Health Strategy [30], recent reports indicate a slowdown in progress, with no
732 one targeted or treated with MDA in 2020 [48]. This raises concerns about potentially reversing
733 the gains so far made in controlling the disease.

734 **Access to safe, treated water as a determinant of risky practices**

735 A moderate yet significant association was found between the community of residence and the
736 practice scores of respondents ($\phi = 0.385$, $p < 0.001$), implying that the community of residence
737 influences how respondents engage in practices that minimize schistosomiasis transmission. A
738 comparative analysis shows that more residents in HVE (64%) had moderate to good practices,
739 compared to only 34% in Chipimbi. This difference can be attributed to the higher income
740 levels in HVE, as a small but positive association was found between monthly income and
741 safer practices regarding schistosomiasis risk ($\gamma = 0.238$, $p = 0.001$). Higher income appears to
742 correlate with better practices [49] with possible reduction of schistosomiasis risk.

743 Households in HVE benefit from reliable access to tap water treated to WHO standards [50],
744 with 98% of respondents identifying piped water as their primary source. Only a small fraction

745 (6%) reported using natural sources like rivers, streams, or irrigation canals. Despite the general
746 availability of taps, FGDs in HVE revealed issues with inconsistent water supply, often due to
747 power cuts that affect water pumping, leading to the rapid depletion of stored water in tanks.
748 Additionally, the irrigation activities at HVE significantly increase the risk of water contact,
749 putting residents at a continued risk of schistosomiasis. The environmental health officer of
750 HVE highlighted that the Tongaat Hulett organization, which manages HVE, is fully aware of
751 these risks associated with intensive water use. Consequently, a fortnightly program has been
752 implemented to inspect and treat all water bodies to control the vector, with many canals
753 cement-lined to prevent snail habitation further reducing the potential for schistosomiasis
754 transmission.

755 In contrast, Chipimbi's situation is marked by poverty, which fosters schistosomiasis
756 transmission as residents often have no choice but to use contaminated water for daily
757 activities. The primary sources of water in Chipimbi are boreholes (97%), but with only seven
758 functional ones across ten villages, natural sources like rivers, streams, and dams become
759 essential alternatives. These sources are used for personal activities like bathing and laundry
760 (100%) and economic activities like agriculture (84%), animal watering (54%), and fishing
761 (54%), with 56% of respondents visiting these unsafe water sources at least twice a day.
762 Although 86% of respondents understood the importance of avoiding water contact, they are
763 left with limited options. FGDs in Chipimbi highlighted that while borehole water is available,
764 its scarcity means it is reserved mainly for drinking, while river water is used for other daily
765 activities such as laundry and bathing.

766 Unlike HVE, where NTDs and WASH services are managed privately by an organization,
767 Chipimbi and other rural areas in Zimbabwe rely on the government, where coordination is
768 more active at the national level than at subnational levels (province, district, and ward) [30].

769 This centralized approach may lead to delays in providing essential services, especially in
770 marginalized communities like Chipimbi, potentially compromising the government's goal of
771 "leaving no one and no place behind." The Presidential Rural Development Programme aims
772 to address this by having the Zimbabwe National Water Authority (ZINWA) drill a borehole
773 in each village, install reservoirs, and provide community water points with laundry facilities
774 and model ablution facilities [51]. So far, 2,890 boreholes have been drilled under this program,
775 with a target of 35,000. The recently launched national NTD masterplan acknowledges the
776 government's efforts to meet international health commitments but also highlights the
777 insufficient funding for the NTD program, largely due to low public revenue and
778 macroeconomic instability [30]. As a result, donor and bilateral support systems are crucial for
779 health financing, especially for priority diseases including NTDs. This is exemplified by one
780 of the boreholes in Chipimbi being donated by China Aid. If government goals are realized,
781 many water-borne diseases, including schistosomiasis, could be eliminated in Zimbabwe.

782 **No toilets, more problems!**

783 The use of toilets is crucial in breaking the transmission cycle of schistosomiasis [52]. Nearly
784 all respondents in both HVE and Chipimbi recognized the importance of using toilets for their
785 health, with 98% in each community agreeing on the necessity of proper sanitation. This
786 positive attitude contrasts sharply with findings in the DRC, where only 59% of participants
787 shared this sentiment [22].

788 In HVE, toilets are widely available, with most households having either private facilities (e.g.,
789 in Chishamiso) or shared communal toilets (e.g., Section 5). Almost all respondents, except
790 two, reported having access to a toilet, with 92% using a flush system. However, 51% admitted
791 to occasionally defecating or urinating outside the toilet, citing reasons such as the urgency of

792 nature's call (53%), lack of access to toilets (26%), and insufficient water for flushing (16%).
793 These findings suggest that merely providing toilets is not enough; regular community
794 education on the importance of consistent toilet use is essential. FGDs revealed that this issue
795 is particularly acute in Section 5, where shared communal toilets often become unsanitary due
796 to water shortages, leading residents to resort to open defecation.

797 The situation in Chipimbi is markedly different, with a significant scarcity of toilet facilities.
798 While 48% of respondents used pit latrines and 26% used improved pit latrines, 26% reported
799 having no toilet facilities at all. A considerable 62% of respondents admitted to defecating or
800 urinating outside, citing reasons such as the urgency of nature's call (66%) and lack of access
801 to toilets (50%). FGDs and KIIs in Chipimbi further highlighted that the scarcity of toilets was
802 understated in the questionnaires, revealing a more dire situation. For example, in Village 1,
803 there was an imbalanced ratio of nine toilets to 63 households (14.3%). This figure is even
804 lower than reported by the Zimbabwe National Statistical Agency (ZIMSTAT), which found
805 that at least 70% of households in some parts of the country lack access to toilets [53]. This
806 falls far short of WHO recommendations for each household to have access to a toilet to curb
807 the spread of neglected tropical diseases [54].

808 Promoting clean, odorless latrines is essential in rural Zimbabwe with a recent publication
809 advocates for at least one latrine per family, ensuring the facility is kept clean and used as
810 needed [55]. The Blair VIP latrine, developed in Zimbabwe at the Blair Research Institute (now
811 the National Institute of Health Research) by Morgan [56], is an ideal candidate due to its
812 simplicity, cost-effectiveness, and durability. Historical records show 100% usage of these
813 latrines in the Mushandike Resettlement Irrigation Scheme, where they were strategically
814 placed near fields, making them more accessible than the bush [57]. It is alarming that this
815 toilet design is not more widespread in rural Zimbabwe several years after its local inception.

816 This may be due to inadequate promotion by health personnel [55] and the dismantling of
817 robust health programs due to political instability in the early 2000s, which led to the brain
818 drain of key personnel involved in the development and advocacy of these facilities.

819 Toilet availability alone is not enough; proper toilet use is also critical. Despite the significant
820 difference in toilet ownership between HVE and Chipimbi, FGDs revealed that open
821 defecation, particularly by children, is a common issue in both areas. Children, who often see
822 defecating in the open as a game, are the ones most infected and are contributing substantially
823 to the transmission of schistosomiasis. Changing their behavior is essential, but this will only
824 happen if their parents and teachers reinforce the importance of proper sanitation. However, if
825 parents no longer view schistosomiasis as a serious disease, this behavior change will be
826 difficult to achieve. Similar findings were reported in Uganda, where defecation behaviors
827 were more strongly associated with infection status than household water and sanitation
828 infrastructure [58], underscoring the need to incorporate behavior change into community-led
829 total sanitation coverage through health and hygiene education.

830 **Strengths and limitations of the study**

831 This study's mixed-methods approach allowed for a more comprehensive understanding of the
832 factors influencing schistosomiasis control in the communities studied. The questionnaire data
833 indicated high levels of awareness and positive attitudes toward the disease, but it was the
834 FGDs that provided deeper insights into these findings. For example, the FGDs revealed the
835 connection between schistosomiasis and concerns about infertility, which helped explain the
836 strong positive attitudes toward seeking treatment. Additionally, the FGDs uncovered the
837 extent of open defecation practices, highlighting a significant issue that was underreported in

838 the questionnaires – the lack of adequate and clean toilets, exacerbated by the occasional
839 unavailability of water.

840 However, the study has some limitations. Notably, it did not include data on the current
841 prevalence of schistosomiasis infection. Due to financial and permission constraints, we were
842 unable to conduct testing within the population. This missing data limits our ability to directly
843 correlate the observed knowledge, attitudes, and practices with actual infection rates. Although
844 participants were asked about previous infections, this only provides a historical perspective
845 and may not accurately reflect the current situation. Consequently, the study offers more insight
846 into how these communities have historically managed schistosomiasis rather than providing a
847 clear picture of their current challenges and risks.

848 **Conclusions and recommendations**

849 This study reveals significant differences in knowledge, attitudes, and practices (KAP)
850 regarding schistosomiasis between Hippo Valley Estate (HVE) and Chipimbi, two
851 communities with distinctly different WASH (Water, Sanitation, and Hygiene) infrastructure
852 and health interventions. Although awareness of schistosomiasis is generally high in both areas,
853 likely due to nationwide campaigns from the 1960s and 70s, there remains a notable gap in
854 comprehensive knowledge, particularly concerning transmission and prevention, with
855 Chipimbi being more affected. HVE, benefiting from a long history of targeted interventions,
856 displays better practices and attitudes toward schistosomiasis management. Residents there are
857 more likely to engage in preventive behaviors and have a positive attitude toward medication.
858 However, despite this, challenges in accessing treatment persist, particularly for temporary
859 employees and residents who must rely on distant public health facilities. In contrast, Chipimbi
860 faces severe limitations in access to water, sanitation, and healthcare facilities, leading to more

861 risky practices and inadequate health-seeking behaviors. Despite the community's positive
862 attitude toward schistosomiasis treatment, the lack of available medication and proper
863 infrastructure exacerbates the disease's transmission. The prevalence of open defecation,
864 despite toilet ownership, and the reliance on unsafe water sources due to inadequate boreholes
865 further highlight the disparity between knowledge and practice. These findings underscore the
866 critical need for tailored health education programs and significant infrastructural
867 improvements in underserved areas like Chipimbi. The absence of clean and safe water,
868 combined with low latrine coverage, remains a significant barrier to effective disease control.
869 Therefore, there is an urgent need for the local government to accelerate the provision of clean
870 water sources and promote the use of the locally designed cost-effective latrines, especially in
871 more vulnerable regions. In conclusion, addressing the socio-ecological determinants of
872 schistosomiasis, such as infrastructure and healthcare access, is crucial for the long-term
873 success of control efforts in Zimbabwe and similar endemic regions. This requires a
874 combination of improved WASH infrastructure, tailored health education, and consistent
875 access to treatment to bridge the gap between knowledge and practice and mitigate the ongoing
876 risk of schistosomiasis.

877 **Funding**

878 AM was financially supported by the Vlaamse Interuniversitaire Raad (Flemish Interuniversity
879 Council)–Universitaire Ontwikkelingssamenwerking (VLIR-UOS) through a Global Minds
880 PhD Fellowship (Project no. 3E210232) in partnership with Bindura University of Science
881 Education. We acknowledge the travel grant from VLIR-UOS awarded to RW. The funders
882 had no role in study design, data collection and analysis, decision to publish, or preparation of
883 the manuscript.

884 **Availability of data and materials**

885 All data generated or analyzed during this study are included in this published article and the
886 supplementary materials. Further inquiries or requests can be directed to the corresponding
887 author.

888 **Supporting information**

889 **Additional Table 1:** Overview of the total number of households, number of households to be
890 interviewed, and intervals between interviewed households per section in HVE.

891 **Additional Text 1:** Guide for conducting semi-structured interviews with key informants
892 chosen for their central community roles or schistosomiasis expertise

893 **Additional Table 2:** Sociodemographic traits of respondents.

894 **Additional Table 3:** Knowledge regarding schistosomiasis.

895 **Additional Table 4:** Full description of health-seeking practices towards schistosomiasis.

896 **Acknowledgements**

897 We extend our deepest gratitude to the office of the district administration in Chiredzi for
898 permitting this study within their jurisdiction. Our heartfelt thanks go to the community leaders,
899 Mr. Chekenyere and Mr. Magumire of Chipimbi Community, for granting access to study areas
900 and for their active involvement in engaging the community, ensuring local acceptance of our
901 work. We are grateful for the valuable insights provided by Mr. White Soko of the De Beers
902 Research Laboratory (a satellite station of the National Institute of Health Research, Ministry
903 of Health and Child Care), Mr. Faustina Zvenyika from Hippo Valley Estates, Mrs. Otilia

904 Chauke, Mrs. Memory Nhengeri, and Mr. Chekenyere of Chipimbi Community. Special thanks
905 to Mr. Benny Tshuvuka of Malilangwe Trust for his crucial interpretation services to TH and
906 RW, which significantly contributed to the success of our study. Logistical support from the
907 Malilangwe Trust in Chiredzi was indispensable, and we thank Dr. Bruce Clegg (PhD), Mrs.
908 Sarah Clegg, and Dr. Allan Tarugara (PhD) for their assistance. We also appreciate Dr. Tongai
909 Mukwewa (MD) and Mr. Faustina Zvenyika for granting us access to study Hippo Valley
910 Estates and for their invaluable insights into the local disease history. Finally, we acknowledge
911 the dedicated local community health workers who served as community research assistants,
912 administering the questionnaire in Hippo Valley Estates.

913 **Author Contributions**

914 Conceptualization: Aspire Mudavanhu, Rachelle Weeda, Tine Huyse.

915 Data curation: Aspire Mudavanhu, Rachelle Weeda.

916 Formal analysis: Aspire Mudavanhu, Rachelle Weeda.

917 Funding acquisition: Aspire Mudavanhu, Rachelle Weeda, Tine Huyse.

918 Investigation: Aspire Mudavanhu, Rachelle Weeda, Tawanda Manyangadze Tine Huyse.

919 Methodology: Aspire Mudavanhu, Rachelle Weeda, Tine Huyse.

920 Project administration: Aspire Mudavanhu, Rachelle Weeda, Tine Huyse.

921 Supervision: Tine Huyse, Luc Brendock.

922 Writing – original draft: Aspire Mudavanhu, Rachelle Weeda.

923 Writing – review & editing: Aspire Mudavanhu, Rachelle Weeda, Linda Mlangeni, Tawanda

924 Manyangadze, Tine Huyse, Maxson Kenneth Anyolitho, Luc Brendonck.

925 **References**

- 926 1. Eisenstein M. Overlooked and underfunded: neglected diseases exert a toll. *Nature*.
927 2021;598:S20–2.
- 928 2. WHO. WHO guideline on control and elimination of human schistosomiasis [Internet].
929 World Health Organization; 2022 [cited 2024 Jul 31]. Available from:
930 <https://iris.who.int/handle/10665/351856>
- 931 3. Colley DG, Bustinduy AL, Secor WE, King CH. Human schistosomiasis. *Lancet Lond*
932 *Engl*. 2014;383:2253–64.
- 933 4. Sacolo H, Chimbari M, Kalinda C. Knowledge, attitudes and practices on Schistosomiasis
934 in sub-Saharan Africa: a systematic review. *BMC Infect Dis*. 2018;18:46.
- 935 5. Adenowo AF, Oyinloye BE, Ogunyinka BI, Kappo AP. Impact of human schistosomiasis
936 in sub-Saharan Africa. *Braz J Infect Dis*. 2015;19:196–205.
- 937 6. Redekop WK, Lenk EJ, Luyendijk M, Fitzpatrick C, Niessen L, Stolk WA, et al. The
938 Socioeconomic Benefit to Individuals of Achieving the 2020 Targets for Five Preventive
939 Chemotherapy Neglected Tropical Diseases. *PLoS Negl Trop Dis*. 2017;11:e0005289.
- 940 7. Rinaldo D, Perez-Saez J, Vounatsou P, Utzinger J, Arcand J-L. The economic impact of
941 schistosomiasis. *Infect Dis Poverty*. 2021;10:134.
- 942 8. Midzi N, Mduluzza T, Chimbari MJ, Tshuma C, Charimari L, Mhlanga G, et al.
943 Distribution of Schistosomiasis and Soil Transmitted Helminthiasis in Zimbabwe: Towards a
944 National Plan of Action for Control and Elimination. *PLoS Negl Trop Dis*. 2014; 8:e3014.
- 945 9. Mduluzza T, Jones C, Osakunor DNM, Lim R, Kuebel JK, Phiri I, et al. Six rounds of
946 annual praziquantel treatment during a national helminth control program significantly
947 reduced schistosome infection and morbidity levels in a cohort of schoolchildren in
948 Zimbabwe. *PLoS Negl Trop Dis*. 2020; 14. Available from:
949 <https://www.ncbi.nlm.nih.gov/pmc/articles/PMC7332090/>
- 950 10. Kokaliaris C, Garba A, Matuska M, Bronzan RN, Colley DG, Dorkenoo AM, et al. Effect
951 of preventive chemotherapy with praziquantel on schistosomiasis among school-aged
952 children in sub-Saharan Africa: a spatiotemporal modelling study. *Lancet Infect Dis*.
953 2022;22:136–49.
- 954 11. Zacharia A, Mushi V, Makene T. A systematic review and meta-analysis on the rate of
955 human schistosomiasis reinfection. *PLOS ONE*. 2020;15:e0243224.
- 956 12. Deribe K, Meribo K, Gebre T, Hailu A, Ali A, Aseffa A, et al. The burden of neglected
957 tropical diseases in Ethiopia, and opportunities for integrated control and elimination. *Parasit*
958 *Vectors*. 2012;5:240.

- 959 13. Faust CL, Osakunor DNM, Downs JA, Kayuni S, Stothard JR, Lamberton PHL, et al.
960 Schistosomiasis Control: Leave No Age Group Behind. *Trends Parasitol.* 2020;36:582–91.
- 961 14. Yusuf KA, Awoniyi AM, Dada OA, Aremu MB. Religion and gender behavior:
962 understanding the variations in risk to urinary schistosomiasis among farmers. *J Parasit Dis*
963 *Off Organ Indian Soc Parasitol.* 2022;46:12–7.
- 964 15. Mutsaka-Makuvaza MJ, Matsena-Zingoni Z, Katsidzira A, Tshuma C, Chin’ombe N,
965 Zhou X-N, et al. Urogenital schistosomiasis and risk factors of infection in mothers and
966 preschool children in an endemic district in Zimbabwe. *Parasit Vectors.* 2019;12:427.
- 967 16. Tariq S, Woodman J. Using mixed methods in health research. *JRSM Short Rep.*
968 2013;4:2042533313479197.
- 969 17. Shiff CJ, Clarke V de V, Evans AC, Barnish G. Molluscicide for the control of
970 schistosomiasis in irrigation schemes. *Bull World Health Organ.* 1973;48:299–307.
- 971 18. Chimbari MJ, Ndlela B. Successful control of schistosomiasis in large sugar irrigation
972 estates of Zimbabwe. *Cent Afr J Med.* 2001;47:169–72.
- 973 19. Evans AC. Control of schistosomiasis in large irrigation schemes by use of niclosamide.
974 A ten-year study in Zimbabwe. *Am J Trop Med Hyg.* 1983;32:1029–39.
- 975 20. Mudavanhu A, Schols R, Goossens E, Nhwatiwa T, Manyangadze T, Brendonck L, et al.
976 One Health monitoring reveals invasive freshwater snail species, new records, and
977 undescribed parasite diversity in Zimbabwe. *Parasit Vectors.* 2024;17:234.
- 978 21. Khan ME, Anker M, Patel BC, Barge S, Sadhwani H, Kohle R. The use of focus groups
979 in social and behavioural research: some methodological issues. *World Health Stat Q Rapp*
980 *Trimest Stat Sanit Mond.* 1991;44:145–9.
- 981 22. Wambui CW, Madinga J, Ashepet MG, Anyolitho MK, Mitashi P, Huyse T. Knowledge,
982 attitudes and practices toward female genital schistosomiasis among community women and
983 healthcare professionals in Kimpese region, Democratic Republic of Congo. *PLoS Negl Trop*
984 *Dis.* 2024;18:e0011530.
- 985 23. Gale NK, Heath G, Cameron E, Rashid S, Redwood S. Using the framework method for
986 the analysis of qualitative data in multi-disciplinary health research. *BMC Med Res*
987 *Methodol.* 2013;13:117.
- 988 24. Rassi C, Kajungu D, Martin S, Arroz J, Tallant J, Beyl CZ de, et al. Have You Heard of
989 Schistosomiasis? Knowledge, Attitudes and Practices in Nampula Province, Mozambique.
990 *PLoS Negl Trop Dis.* 2016;10:e0004504.
- 991 25. Mbereko A, Chimbari MJ, Manyangadze T, Mukaratirwa S. Knowledge and perceptions
992 of schistosomiasis, a water-borne disease, in two semi-arid rural areas of South Africa
993 (Ndumo) and Zimbabwe (Ntalale). *Food Waterborne Parasitol.* 2020;21:e00091.

- 994 26. Dejon-Agobé JC, Zinsou JF, Honkpehedji YJ, Edoa JR, Adegbité BR, Beh-Mba R, et al.
995 Knowledge, attitudes and practices pertaining to urogenital schistosomiasis in Lambaréné and
996 surrounding areas, Gabon. *Parasit Vectors*. 2021;14:486.
- 997 27. Anyolitho MK, Poels K, Huyse T, Tumusiime J, Mugabi F, Tolo CU, et al. Knowledge,
998 attitudes, and practices regarding schistosomiasis infection and prevention: A mixed-methods
999 study among endemic communities of western Uganda. *PLoS Negl Trop Dis*.
1000 2022;16:e0010190.
- 1001 28. Chimbari MJ. Enhancing Schistosomiasis Control Strategy for Zimbabwe: Building on
1002 Past Experiences. *J Parasitol Res*. 2012;2012:353768.
- 1003 29. Ministry of Health and Child Care. Zimbabwe School Health Policy [Internet]. Ministry
1004 of Health and Child Care; 2018 [cited 2024 Aug 6]. Available from:
1005 <https://zdhr.uz.ac.zw/xmlui/handle/123456789/1399>
- 1006 30. Ministry of Health and Child Care. National Master Plan for the Elimination of Neglected
1007 Tropical Diseases 2023 – 2027 [Internet]. Ministry of Health and Child Care; 2024 [cited
1008 2024 Aug 8]. Available from:
1009 [https://espen.afro.who.int/system/files/content/resources/Zimbabwe%20NTDs%20Master%20](https://espen.afro.who.int/system/files/content/resources/Zimbabwe%20NTDs%20Master%20Plan%202023-2027.pdf)
1010 [Plan%202023-2027.pdf](https://espen.afro.who.int/system/files/content/resources/Zimbabwe%20NTDs%20Master%20Plan%202023-2027.pdf)
- 1011 31. Adoka SO, Anyona DN, Abuom PO, Dida GO, Karanja D, Vulule JM, et al. Community
1012 perceptions of schistosomiasis transmission, prevalence and control in relation to aquatic
1013 habitats in the lake Victoria basin of Kenya. *East Afr Med J*. 2014;91:232–44.
- 1014 32. Strunz EC, Addiss DG, Stocks ME, Ogden S, Utzinger J, Freeman MC. Water,
1015 Sanitation, Hygiene, and Soil-Transmitted Helminth Infection: A Systematic Review and
1016 Meta-Analysis. *PLOS Med*. 2014;11:e1001620.
- 1017 33. Dawaki S, Al-Mekhlafi HM, Ithoi I, Ibrahim J, Abdulsalam AM, Ahmed A, et al. The
1018 Menace of Schistosomiasis in Nigeria: Knowledge, Attitude, and Practices Regarding
1019 Schistosomiasis among Rural Communities in Kano State. *PLOS ONE*. 2015;10:e0143667.
- 1020 34. Onyeneho NG, Yinkore P, Egwuage J, Emukah EC. Perceptions, Attitudes and Practices
1021 on Schistosomiasis in Delta State, Nigeria. *Tanzan J Health Res*. 2010;12:278–82.
- 1022 35. Shefer T, Strebel A, Wilson T, Shabalala N, Simbayi L, Ratele K, et al. The Social
1023 Construction of Sexually Transmitted Infections (STIs) in South African Communities. *Qual*
1024 *Health Res*. 2002;12:1373–90.
- 1025 36. Hambury SD, Grobler AD, Melariri PE. Knowledge, Attitudes, and Practices on Urinary
1026 Schistosomiasis among Primary Schoolchildren in Nelson Mandela Bay, South Africa.
1027 Marchand B, editor. *J Parasitol Res*. 2021;2021:1–12.
- 1028 37. Santos AJ dos, Lima SVMA, Sousa AFL de, Vasconcelos dos Santos A, Santos IG de A,
1029 Bezerra Santos M, et al. Knowledge, Attitude and Practices towards the Prevention of
1030 Schistosomiasis *Mansoni* in an Endemic Area of Alagoas, Northeast Brazil. *Trop Med Infect*
1031 *Dis*. 2023;8:34.

- 1032 38. Chimbatata NBW, Malimba C. Infertility in Sub-Saharan Africa: A Woman's Issue for
1033 How Long? A Qualitative Review of Literature. *Open J Soc Sci.* 2016;4:96–102.
- 1034 39. Dyer SJ. The value of children in African countries – insights from studies on infertility. *J*
1035 *Psychosom Obstet Gynecol.* 2007;28:69–77.
- 1036 40. Naab F, Brown R, Heidrich S. Psychosocial health of infertile Ghanaian women and their
1037 infertility beliefs. *J Nurs Scholarsh Off Publ Sigma Theta Tau Int Honor Soc Nurs.*
1038 2013;45:132–40.
- 1039 41. Runganga AO, Sundby J, Aggleton P. Culture, Identity and Reproductive Failure in
1040 Zimbabwe. *Sexualities.* 2001;4:315–32.
- 1041 42. Nyawo S. Feminist Critique of African Indigenous Perspectives on Women's Fertility as
1042 the Basis for their Self-worth: A Case Study of the Swati Patriarchal Society. *Afr Thought J*
1043 *Afro-Centric Knowl.* 2021;1:100–19.
- 1044 43. Rohr JR, Sack A, Bakhoun S, Barrett CB, Lopez-Carr D, Chamberlin AJ, et al. A
1045 planetary health innovation for disease, food and water challenges in Africa. *Nature.*
1046 2023;619:782–7.
- 1047 44. Hastings J. Rumours, riots and the rejection of mass drug administration for the treatment
1048 of schistosomiasis in Morogoro, Tanzania. *J Biosoc Sci.* 2016;48:S16–39.
- 1049 45. Sow S, de Vlas SJ, Mbaye A, Polman K, Gryseels B. Low awareness of intestinal
1050 schistosomiasis in northern Senegal after 7 years of health education as part of intense control
1051 and research activities. *Trop Med Int Health.* 2003;8:744–9.
- 1052 46. Rugwiji T. Faith-based healing and African traditional medicine in Zimbabwe: A
1053 postcolonial perspective. *Theol Viat.* 2019;43:10.
- 1054 47. Anyolitho MK, Nyakato VN, Huyse T, Poels K, Masquillier C. Health-seeking behaviour
1055 regarding schistosomiasis treatment in the absence of a mass drug administration (MDA)
1056 program: the case of endemic communities along Lake Albert in Western Uganda. *BMC*
1057 *Public Health.* 2023;23:1072.
- 1058 48. WHO. Country Disease Outlook - Zimbabwe [Internet]. World Health Organization
1059 African Region; 2023. Available from: [https://www.afro.who.int/sites/default/files/2023-](https://www.afro.who.int/sites/default/files/2023-08/Zimbabwe.pdf)
1060 [08/Zimbabwe.pdf](https://www.afro.who.int/sites/default/files/2023-08/Zimbabwe.pdf)
- 1061 49. Acheampong AO, Opoku EEO, Tetteh GK. Unveiling the effect of income inequality on
1062 safe drinking water, sanitation and hygiene (WASH): Does financial inclusion matter? *World*
1063 *Dev.* 2024;178:106573.
- 1064 50. WHO. Guidelines for drinking-water quality: fourth edition incorporating first addendum
1065 [Internet]. 4th ed + 1st add. Geneva: World Health Organization; 2017 [cited 2024 Aug 8].
1066 Available from: <https://iris.who.int/handle/10665/254637>

- 1067 51. ZINWA. Integrated Annual Report [Internet]. Zimbabwe National Water Authority;
1068 2021. Available from: [http://zinwa.co.zw/wp-content/uploads/2023/02/ZINWA-Annual-](http://zinwa.co.zw/wp-content/uploads/2023/02/ZINWA-Annual-Report-2021.pdf)
1069 [Report-2021.pdf](http://zinwa.co.zw/wp-content/uploads/2023/02/ZINWA-Annual-Report-2021.pdf)
- 1070 52. Grimes JE, Croll D, Harrison WE, Utzinger J, Freeman MC, Templeton MR. The roles of
1071 water, sanitation and hygiene in reducing schistosomiasis: a review. *Parasit Vectors*.
1072 2015;8:156.
- 1073 53. ZIMSTAT, UNICEF. Zimbabwe Multiple Indicator Cluster Survey 2019, Survey
1074 Findings Report. Harare, Zimbabwe: ZIMSTAT and UNICEF; 2019.
- 1075 54. WHO. Guidelines on sanitation and health [Internet]. Geneva: World Health
1076 Organization; 2018 [cited 2024 Aug 8]. Available from:
1077 <https://iris.who.int/handle/10665/274939>
- 1078 55. Shiff C. Why reinvent the wheel? Lessons in schistosomiasis control from the past. *PLoS*
1079 *Negl Trop Dis*. 2017;11:e0005812.
- 1080 56. Morgan PR. The pit latrine - revived. *Cent Afr J Med* [Internet]. 1977 [cited 2024 Aug
1081 8];23. Available from: https://journals.co.za/doi/epdf/10.10520/AJA00089176_1989
- 1082 57. Chimbari M, Ndlela B, Nyati Z, Thomson A, Chandiwana SK, Bolton P. Bilharzia in a
1083 small irrigation community: an assessment of water and toilet usage. *Cent Afr J Med*.
1084 1992;38:451–8.
- 1085 58. Exum NG, Kibira SPS, Ssenyonga R, Nobili J, Shannon AK, Ssempebwa JC, et al. The
1086 prevalence of schistosomiasis in Uganda: A nationally representative population estimate to
1087 inform control programs and water and sanitation interventions. *PLoS Negl Trop Dis*.
1088 2019;13:e0007617.
- 1089