

1 **Tentative analysis of biomarkers associated with filariasis in moungo division, littoral,**  
2 **cameroon.**

3 Jean Baptiste Hzounda Fokou<sup>1</sup>, Syntiche Teudem Biyong<sup>1</sup>, Francine Kouemo<sup>3</sup>, Fru Awah  
4 Akumwah<sup>1</sup>, Ambassa Reine<sup>1</sup>, Véronique Simone Fannang<sup>2</sup>, Juliette Koube<sup>1</sup>, Jules Clement  
5 Assob<sup>2</sup>

6 *1. Laboratory for Pharmacology, Department of Pharmaceutical Sciences, Faculty of Medicine and Pharmaceutical Science,*  
7 *University of Douala, PO Box 2701, Douala, Cameroon*

8 *2. Department of Biological Sciences, Faculty of Medicine and Pharmaceutical Science, University of Douala, PO Box 2701,*  
9 *Douala, Cameroon*

10 *3. Faculty of Health Sciences, University of Buea, PO Box 63, Buea Cameroon*

11

12 Corresponding author: [hzoundafokou@gmail.com](mailto:hzoundafokou@gmail.com)

13

14

15

16

17

18

19

20

21

22

23

**NOTE: This preprint reports new research that has not been certified by peer review and should not be used to guide clinical practice.**

## 24 **Abstract**

25 Filariasis is a significant cause of morbidity and a public health concern in most tropical  
26 countries. These diseases are usually contracted in childhood and most often diagnosed in  
27 adulthood. This study aimed to identify biochemical markers associated with filariasis and the  
28 endobacteria present in microfilariae.

29 This was a cross-sectional analytical study within a hospital setting. Persons aged from six years  
30 and above were included in the study. They were then clustered into asymptomatic and  
31 symptomatic. Data was collected from February to June 2023. Blood, urine, and skin samples  
32 were collected and analysed by microscopy to identify microfilariae. The plasmatic and urinary  
33 markers were evaluated by spectrophotometry and protein fraction was monitored by  
34 electrophoresis. The data was analysed using SPSS 25 with the significant threshold set at  
35 0.005.

36 A total of 55 persons were included in the study, representing 74,32% of the total population  
37 questioned. The sex ratio (F/M) was 2.66. The infection rate was 18.2% *Onchocerca volvulus*,  
38 54.54% *Mansonella perstans*, 22.72% *Loa loa* and 4.54% *Wuchereria bancrofti*. Protein levels  
39 were 35% higher in the asymptomatic with no parasite, 80% in the asymptomatic with detected  
40 parasite and 91.67% in the symptomatic. The decrease in albumin fraction and increase in  
41 gamma fractions seem to be correlated with the presence of parasites in the blood.

42 These results suggest that protidemia and serum protein are significant indicators in the  
43 diagnosis of filariasis.

44 **Keywords:** Microfilariae, Biomarkers, Moungo, Cameroon

45

46

## 47 **Introduction**

48 Filariasis is defined by The World Health Organisation (WHO) as a parasitic disease caused by  
49 the presence of filarial nematodes and their embryos in the body, microfilariae, which for a long  
50 time was classified as a "neglected" tropical disease [1,2]. Filariasis is a group of diseases that  
51 vary according to the parasite species, the clinical manifestations and the nature of the immune  
52 response induced [3]. Their socio-economic impact makes them a major cause of morbidity in  
53 most tropical countries [4–10].

54 It is estimated that over 200 million people worldwide are affected by filariasis out of  
55 approximately one billion people at risk [1]. Current global estimates suggest that by 2019, 863  
56 million people in 47 countries will be at risk of lymphatic filariasis, with 30% of these people  
57 living in the African region [9;12;13]. The number of persons infected with onchocerciasis is  
58 estimated at around 18 million, with over 99% living in intertropical Africa [13]. In Central  
59 Africa, 15 to 20 million people are infected with schistosomiasis and more than 50 million  
60 people are infected with dracunculiasis (*Medina filaria*) [14]. Several outbreaks have been  
61 described in Cameroon, notably in the town of Nkongsamba since 1937 [5]. According to the  
62 distribution of endemicity of neglected tropical diseases in Cameroon in 2017, 152 districts are  
63 endemic for lymphatic filariasis, 113 districts are endemic for onchocerciasis, and the  
64 prevalence of co-endemicity for schistosomiasis ranges from 0.2% to 6.2% [15].

65 Over the past few years, several therapeutic strategies have been developed, yet mass treatment  
66 is not recommended in regions where there is co-endemicity with loiasis, a type of filariasis  
67 that is just as challenging as onchocerciasis and volvulus [1,16,17]. Low-specific antigenic tests  
68 and Loa-scop have been developed for the diagnosis of filariasis, yet remain inaccessible in  
69 most endemic regions. The selection of populations infected with onchocerciasis or loiasis,  
70 respectively, means that they can be treated with ivermectin (Mectizan®), without the risk of

71 developing a serious adverse reaction requiring palliative care. However, those who are not  
72 eligible for this mass treatment are given an individual long-lasting treatment [19;20].  
73 Moreover, the risk of resistant microfilariae is a major concern, and the ineffectiveness of  
74 available antiparasitic drugs on adult worms represents a significant impairment to breaking the  
75 chain of transmission [20].

76 Filariasis is typically contracted during early childhood, with the majority of cases presenting  
77 with no symptoms. However, acute and chronic symptoms may subsequently emerge in  
78 adulthood [9]. Therefore, it is of the utmost importance to identify specific markers for filariasis,  
79 which could pave the way for the development of an early diagnosis method, the creation of a  
80 novel treatment, or even a vaccine. To achieve this, it is first necessary to conduct a preliminary  
81 mapping of all the metabolites that are directly or indirectly involved in the pathogenicity of  
82 the different forms of filariasis. The objective of this study is to identify biochemical markers  
83 associated with filariasis and the metabolome of the endobacteria present in the microfilariae  
84 identified.

## 85 **Material and Methods**

### 86 **Type of study:**

87 A cross-sectional and analytical study was conducted.

### 88 **Study site:**

89 Specimens were collected in public and private hospitals in the Moungo Division, with  
90 particular focus on the Nkongsamba Regional Hospital (NRH), the Ékol-Mbeng Integrated  
91 Health Centre (CSI-Ékol-mbeng), the Manengolè Catholic Medical Health Centre (CSMCM)  
92 and the Bon Samaritain private health centre in Njombé.

93 The samples were analysed at the Laboratory of Pharmacology, Faculty of Medicine and  
94 Pharmaceutical Sciences at the University of Douala, at Douala General Hospital and in the  
95 bacteriology laboratory at the Centre Pasteur du Cameroun in Yaoundé.

## 96 **The study population**

97 The study population consisted of patients of any sex aged at least six years.

### 98 **Inclusion criteria**

99 Any person of any sex, aged at least 6 years, who consented and who visited the hospitals  
100 concerned during the study period was included in the study.

### 101 **Non-inclusion criteria**

102 The following individuals were not selected for this study: hospital patients and children under  
103 the age of six.

### 104 **Exclusion criteria**

105 The study excluded three categories of participants: pregnant women; volunteers who had  
106 withdrawn their informed consent; and any individual with HIV, AIDS, or cancer, or another  
107 serious disease requiring specific monitoring, due to the potential for bias in our results caused  
108 by other diseases present.

## 109 **Sampling**

110 The sampling was non-exhaustive and consecutive, and the sample size was determined by the  
111 following Cochran formula.

$$112 \quad N = [T^2 \times p(1 - p)] / m^2$$

113 with

114 *N: The size of the sample*

115 *T: The standard deviation for the normal distribution, with a 95% confidence interval of 1.96*

116 *p: The prevalence of filariasis*

117 *m: The margin of error at 10%*

118 *Standard value for the margin of error: 0.1*

119 *The prevalence of filariasis in Cameroon is estimated to be 17% [21].*

120 *Consequently, N can be calculated as follows:*

121 
$$N = [1.96^2 \times 0.17 (1-0.17)] / 0.1^2 = 54.20$$

122 *Consequently, the minimum sample size was set at 54 participants.*

## 123 **Technical procedures**

### 124 **Patient recruitment**

125 Some patients were contacted by telephone, while others were approached and recruited in the  
126 consultation and sampling units of the laboratory departments of the hospitals involved in the  
127 study. Prior to their participation, all patients were given a detailed verbal presentation of the  
128 aim of the study. For those who agreed to take part, an informed consent form was provided for  
129 their signature, along with a data collection form and they were assisted when needed in filing  
130 the form.

### 131 **Data Collection**

132 Data were collected using an individual survey form (adults and minors). Data were collected  
133 from interviews with patients and/or parents or guardians who had read, understood and  
134 consented to participate in the study after the purpose of the study had been explained.

135 *The following variables were collected:*

136 - Socio-demographic data (age, sex, occupation, place and duration of residence in the region)

137 - Epidemiological and clinical data

138 - Biological data

## 139 **Pre-analytical steps**

### 140 ***Blood sampling:***

141 Venipuncture was done at the elbow or back of the hand during the daytime (12:00-16:00) in a  
142 plain tube for the determination of plasma markers (PCT, Total Proteins, Electrophoresis). An  
143 EDTA tube was used for the detection of *Loa loa* and *Mansonella perstans* microfilariae (thick  
144 film, leuco-concentration), and a simple prick at the fingertip was employed to collect the first  
145 drop of blood (fresh state) when possible. The nightly sampling period (22:00-01:00) entailed  
146 a simple venipuncture procedure at the elbow or back of the hand, conducted in an EDTA tube,  
147 with the objective of testing for *Wuchereria bancrofti*.

### 148 ***The sampling procedure employed was as follows:***

149 Once the required equipment has been assembled and the patient's previously identified tubes  
150 and slides have been located, a tourniquet is applied approximately 7 to 10 cm above the  
151 venipuncture site. The patient is then asked to point the bandage so that the vein is turgid, after  
152 which the vein is palpated and the puncture site is cleaned using a cotton wool pad soaked in  
153 povidone iodine 10%, which is then disposed of in the bin. Subsequently, the needle and pump  
154 body should be assembled and the needle inserted into the vein, with the bevel facing upwards.  
155 The collection tube is then inserted into the vacutainer and filled to the mark. Subsequently, the  
156 tube was removed from the holder and a dry swab was placed over the puncture site.  
157 Subsequently, the needle was also removed and a dry pad was applied to the lesion area in order  
158 to facilitate haemostasis. Once this had been achieved, the pad was removed and a dry dressing

159 was applied. The needle was then disconnected and discarded into the provided safety box. The  
160 sample was later secured and coded, the participant's little finger was massaged and the fingertip  
161 was disinfected. A brief puncture was made and the first drop was collected on a slide that had  
162 been previously identified and coded. Next, a dry cotton pad was placed over the puncture site  
163 to prevent further bleeding. A slide cover was placed over the freshly collected drop of blood  
164 and observed under an optical microscope as soon as possible.

### 165 ***Skin sampling:***

166 Skin sampling was conducted at the Ekol-Mbeng Centre for the Study of Infectious Diseases  
167 (CSI), also known as the "Centre des Grands Endémiques", which specialises in filarial  
168 infections, and at the Nkongsamba Regional Hospital.

169 Following disinfection of the sampling area, a sterile needle was employed to pinch a flap of  
170 skin. This was then incised with a scalpel blade and placed on a slide with a drop of  
171 physiological water between the slide and the slide covers. The flap was observed twice under  
172 a light microscope, with an interval of 60 minutes between observations.

### 173 ***Urine collection:***

174 Following the labelling and coding of the urine jars, the participants were provided with  
175 instructions on how to collect the urine. The urine was collected by the participants themselves  
176 in the toilets of the hospitals.

## 177 **Transport and storage**

178 Following sampling, the samples collected were transported to the parasitology and  
179 biochemistry laboratories. Samples from dry tubes were centrifuged at 3500 rpm for five (05)  
180 minutes, and the sera obtained were aliquoted and stored at -20°C until the day of analysis.  
181 Serums in EDTA tubes were stored at room temperature for three weeks before analysis.



182 Finally, the urine samples were analysed without delay in the biochemistry laboratories of the  
183 various hospitals where the samples were taken.

## 184 **Analytical stage**

185 The samples were analysed as follows:

### 186 *Microscopy:*

187 Identification, quantification and isolation of microfilariae.

### 188 *Identification and quantification of microfilariae - Giemsa staining of the thick film (GE)* 189 *and blood smear.*

190 *Principle:* The Giemsa solution is a mixture of eosin and methylene blue (azure). Methylene  
191 blue colours the parasite cytoplasm in blue. The ideal pH for highlighting the granulations  
192 associated with the parasites and identifying the different species is 7.2. Several methods are  
193 used to stain EG/blood smears. For this study, we opted for the slow method, which involves  
194 preparing a 3% Giemsa dye solution for staining times of 45-60 minutes.

### 195 *Procedure*

196 After spreading the drop of blood on a slide and drawing the smear, allow to air dry, then fix  
197 the smear by dipping it for two seconds in a jar containing methanol, then allow to air dry. Place  
198 the slides on the staining rack making sure that they do not touch each other, then carefully pour  
199 the staining solution over each slide until the spreads are covered. Allow to stain for 45 minutes,  
200 then carefully remove the remaining stain and gently rinse the slides in a jar of water buffered  
201 at pH 7.2. Then allow the slides to air dry and discard the remaining Giemsa solution. The  
202 prepared slides were read at objective 10 and with a drop of immersion oil at objective 100 [42].

203 Observations: Presence of a head, tail, sheath (optional), one or two internal bodies and somatic  
204 nuclei (purple).

205 ***Isolation of microfilariae by haemolysis:***

206 Principle: This consists of destroying the red blood cells contained in a whole blood sample to  
207 better identify the microfilariae.

208 Reagents: 2% saponin solution (pure saponin (S 7900 Sigma® 0.2g) 0.9% NaCl solution.

209 In a Falcons-type centrifuge tube of at least 20 ml, place 5 ml of blood taken on anticoagulant  
210 (or 1 volume). Add 10 ml of NaCl 0.9% (or two volumes) and turn to mix well. Then add the  
211 saponin solution dropwise (250 µL). Close and invert the tube several times to ensure complete  
212 haemolysis, particularly at the end cone of the tube, as the liquid should be completely  
213 translucent. Centrifuge at 500g (approximately 1,500 rpm) for 10 minutes and discard the  
214 supernatant, without inverting the tube completely, by wiping the sides with cotton wool or  
215 sponge paper mounted on forceps so that the haemolysis liquid does not dilute the pellet when  
216 it is turned upside down. Add one drop of NaCl 0.9%. Homogenise the pellet well, then take  
217 20 µL for quantification by the calibrated GE, and keep the rest for bacteriological and  
218 spectrometric analysis [22].

219 ***Evaluation of plasma and urinary biochemical markers.***

220 ***Determination of Procalcitonin (PCT)***

221 ***Principle:*** Finecare PCT rapid quantitative tests are based on fluorescence immunoassay  
222 technology for the quantitative determination of PCT concentrations in whole blood, serum or  
223 plasma. Add the sample to the intended sample dilution solution and mix; then add the mixed  
224 sample to the sample hole of the corresponding test cartridge, where it will combine with the  
225 fluorescently labelled PCT antibody in the labelling buffer to form reaction complexes. As the  
226 compounds migrate onto the nitrocellulose matrix by capillary action, they are captured by the  
227 PCT antibodies that have been immobilised on the detection line of the nitrocellulose  
228 membrane. The more PCT is present in the sample, the more the complexes accumulate on the

229 detection line. The intensity of the PCT antibody detection signal is proportional to the  
230 concentration of PCT in the specimen. The procedure strictly follows the manufacturer's  
231 instructions.

### 232 ***Evaluation of the urine strip with the URS-11 kit***

233 The literature review informs us that in certain patients with a high parasite load, microfilariae  
234 may be found in the urine, and their presence in the urinary tract could not be the cause of  
235 certain urinary tract infections in the patient [3]. We evaluated three (03) of the eleven  
236 parameters available in the URS-11 kit. The procedure was as describe by the manufacturer.

### 237 ***Determination of total protein using the Mindray BA-80 semi-automatic spectrophotometer.***

238 Principle: The Mindray BA-88A semi-automatic analyser is a spectrophotometer used for the  
239 quantitative determination of many biochemical tests. Its principle is based on  
240 spectrophotometry by measuring the absorbance of a solution at a given wavelength according  
241 to Beer Lambert's law, which stipulates that the absorbance of a solution is proportional to the  
242 concentration of the element it contains.

### 243 ***Serum protein electrophoresis on the MINICAP® instrument Serum protein electrophoresis*** 244 ***is a technique used to separate proteins into fractions of different mobility, obtaining their*** 245 ***relative percentages.***

246 Principle: The MINICAP system uses the principle of capillary electrophoresis in free solution,  
247 allowing the separation of charged molecules according to their electrophoretic mobility in a  
248 given pH buffer, and depending on the pH of the electrolyte, a greater or lesser electroosmotic  
249 flow. The MINICAP system comprises 2 capillaries in parallel, allowing 2 simultaneous  
250 analyses. With this system, the sample (diluted in the analysis buffer) is injected into the  
251 capillaries by suction at the anode. Separation is then achieved by applying a potential

252 difference of several thousand volts across each capillary, and the different fractions migrate  
253 according to their electrophoretic mobilities.

254 The direct detection of proteins is carried out by absorption spectrophotometry  
255 spectrophotometry at 200 nm on the cathode side. The capillaries are then washed with a  
256 washing solution, followed by the analysis buffer. Interpretation of protein electrophoresis is  
257 made by relating each fraction to the level of total serum protein (g/l). With the buffer used at  
258 basic pH (9.9), the order of migration of proteins with their serum constituents is as follows  
259 gamma globulins (7.5 to 16 g/L); beta-2 globulins (containing transferrin, fibrinogen  
260 transferrin, fibrinogen and the C3 fraction of complement); beta-1 globulins; alpha-2 globulins  
261 (6 to 10 g/L) consisting in particular of alpha-2 -macroglobulin, haptoglobin; alpha-1 globulins  
262 (1.5 to 4 g/L) including alpha-1 -antitrypsin, alpha-1 -anti chymotrypsin and orosomuroid; and  
263 albumin (33 to 50 g/L).

## 264 **Statistical analysis**

265 Microsoft Office Excel 2016 was used to enter our data; SPSS 25 for Windows (Statistical  
266 Package for Social Sciences) was used to analyse the data; Quantitative variables were  
267 represented as histograms and categorical variables as pie charts;

268 The Chi-square test was used to compare discontinuous quantitative variables (frequencies,  
269 proportions); and the Student t-test for continuous quantitative variables (mean and standard  
270 deviation); The difference was considered statistically significant for a value of  $p < 0.05$ .

## 271 **Ethical considerations**

272 In order to comply with the rules of biomedical ethics, we requested and obtained:

273 - Ethical clearance from the institutional Ethical committee of the University of Douala  
274 (3586/CEI-Udo/06/2023/M.)

275 Research authorization from:

276 - Regional Hospital of Nkongsamba (072/AR/MINSANTE/DRSPL/HRN/23)

277 - Njombe-Pendja health district (148/23MINSANTE/DRSPL/DSNP)

278 Ekol-mbeng health centre (001/L/MS/DRSL/SSDN/CSIE)

279 Informed consent from the participants, which consisted of having them read and understand  
280 the purpose of the study from top to bottom.

281 The study was conducted following good clinical laboratory practice. The anonymity of the  
282 participants and the confidentiality of the data obtained from the survey questionnaires were  
283 respected, and the results of the analyses were used exclusively for research purposes.  
284 Participation in the study was strictly voluntary.

## 285 **RESULTS**

### 286 **Sociodemographic characteristics and clinical history of** 287 **the population**

#### 288 **Sociodemographic characteristics of the population**

289 Our population was predominated by female (73%), they represented around 1/3 of our study  
290 population (sex ratio F/H of 2.66). The mean age of the population was  $35 \pm 2$  years with  
291 extremes of 6 and 71 years.

#### 292 **Distribution of the population according to collection sites, location, lifestyle, knowledge** 293 **of the disease and sampling periods.**

294 29.09% of our population was sampled at the HRN, 20% at the Ekole Mbeng CSI, 23.63% at  
295 the CSCM and 27.27% at the private health centres of Njombé-Penja. The majority came from

296 Nkongsamba, Manengolè, Njombé and Mboébo, with a higher distribution in Nkongsamba.  
 297 Most (54%) had been born and raised in these localities, and 24% had been living there for  
 298 more than 10 years. 51% of our population were working in the rural area, and 31% were still  
 299 scholars. Nearly 80% of the population had knowledge of filariasis and 25% did not sleep under  
 300 an impregnated mosquito net as recommended. 52.72% agreed to have their samples taken  
 301 during the two sampling periods, and the rest of the participants agreed to just one sampling  
 302 period (Table 1).

303 Table 1: Patient distribution and lifestyle.

Variables	Characters	Number (n=55)	Percentage (%)
Sampling Sites	HRN	16	29,09
	CSI d'Ekol-Mbeng	11	20
	CSMCM	13	23.63
	CSP. N-P	15	27.27
Localisations	Nkongsamba	14	25.45
	Manengolè	11	20
	Njombé	11	20
	Pendja	2	3.64
	Mbanga	2	3.64
	Mboébo	9	16.36
	Douala-Bonabérie	2	3.64
	Loum	1	1.81
	Mandjo	2	3.64
	Bafoussam	1	1.81

304 *HRN: Nkongsamba Regional Hospital; CSI: Centre de Santé Intégré; Centre de Santé Médicalisé Catholique de*  
 305 *Manengolè; CSP. N-P: Njombé-Pendja Private Health Centres.*

306

307

308

309 Table 1: Patient distribution and lifestyle.

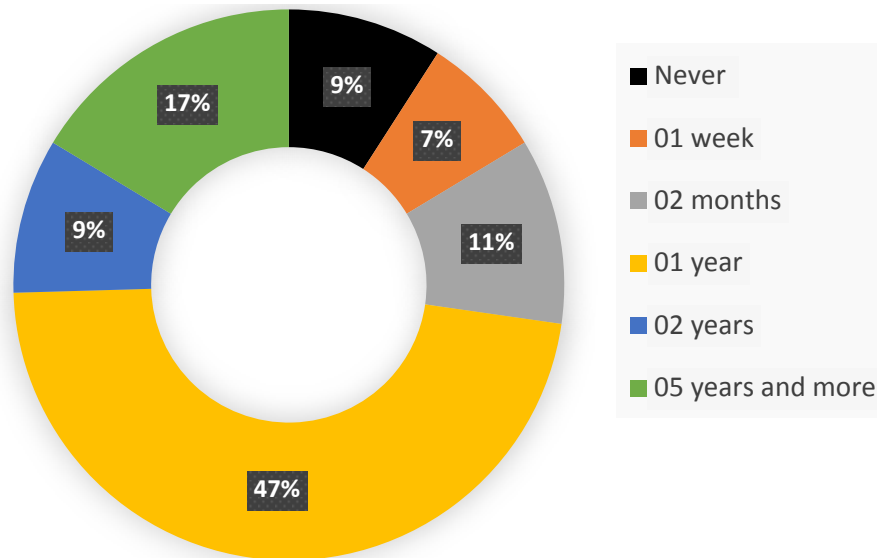
Occupations	farmer	17	30.9
	students	28	50.91
	others	10	18,18
Life style	Alcool	42	76.36
	smoker	6	10.9
knowledge	yes	44	80
	No	11	20
Impregnated mosquito nets	yes	41	74.54
	No	14	25.45
Sampling period	Diurne	19	34.55
	Nocturne	7	12.72
	Diurne + Nocturne	29	52.72

310 *HRN: Nkongsamba Regional Hospital; CSI: Centre de Santé Intégré; Centre de Santé Médicalisé Catholique de*  
 311 *Manengolè; CSP. N-P: Njombé-Pendja Private Health Centres.*

## 312 **Clinical history of the population**

### 313 **Distribution of the population according to the administration of** 314 **mass treatment.**

315 9.09% of the population had never taken the mass treatment offered free of charge by the  
 316 government, due to their fear of developing serious and disfiguring side effects. As the  
 317 Mectizan® distribution campaign is carried out once a year, we noted during this study that  
 318 people who had taken the treatment 1 year ago were statistically more numerous than others, as  
 319 summarised in the following figure 1.

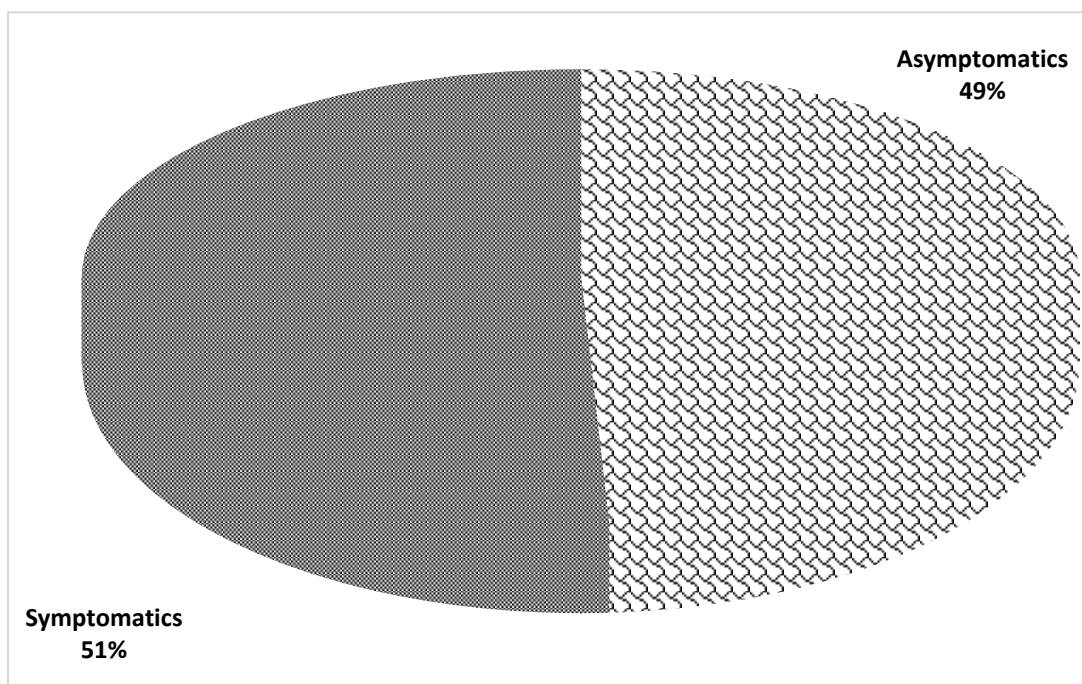


320

321 Figure 1 : participants distribution according to Mectizan® treatment.

322 **Distribution of the population according to the presence or**  
323 **absence of symptoms.**

324 Figure 2 shows that of the 55 participants selected for our study, 49% had no symptoms at the  
325 time of sampling, while the other 51% had some symptoms of filariasis, in particular  
326 elephantiasis of the lower limbs, subcutaneous nodules, itching on the hands and buttocks, etc.



327

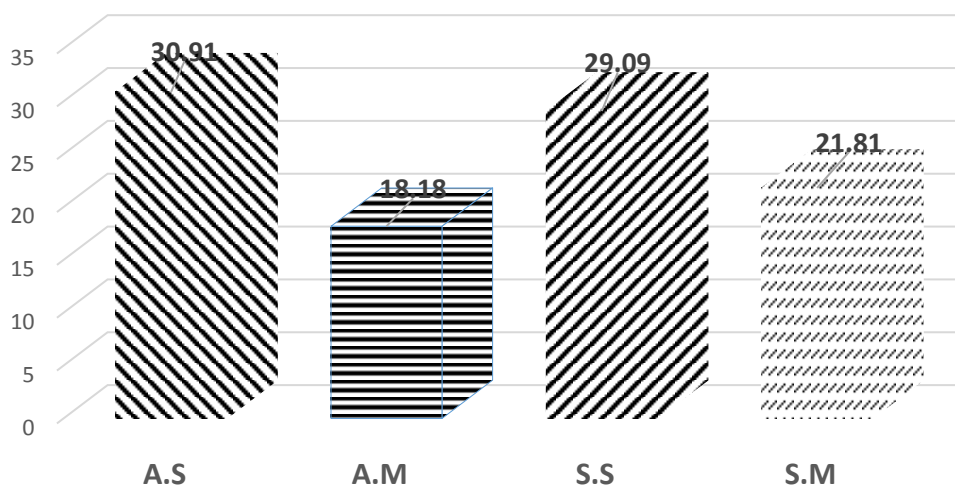
328 **Figure 2:** Repartition according to the symptomatology



## 329 Identification of microfilariae

### 330 Breakdown of participants into groups of Symptomatic (S) and 331 Asymptomatic (AS)

332 Out of 27 asymptomatic participants, 18.18% were positive cases, i.e. infected but  
333 asymptomatic patients, and out of 28 symptomatic participants, 21.81% were positive cases,  
334 i.e. infected and symptomatic patients, as summarised in Figure 3.



335

336 Figure 3: Distribution of symptomatic and asymptomatic participants

### 337 Identification of microfilariae and distribution according to type 338 of sample and infection

339 A total of 22 samples tested positive for microfilariae, present in mono infection and/or co-  
340 infection with another type of microfilaria. We recorded 01 co-infection out of 10 in  
341 asymptomatic patients and 5 co-infections out of 12 in symptomatic patients. This is  
342 summarised in Table III below.

343

344

345 Table III: Identification and distribution of microfilariae.

Parameter	Variables	number(n=22)	Percentage (%)
Positive sample	BCE	4	7,27
	Blood	18	32,72
	Urine	0	0
Type of infection	Coinfections	6	27,27
	Monoinfections	16	72,72
Monoinfections	S.M	7	58,33
	A.M	9	90
Coinfections	S.M	5	41,67
	A.M	1	10

346 A.M: Asymptomatic patients S.M: Symptomatic patients BCE: Bloodless skin biopsy

### 347 **Microfilariae identified and parasitic loads**

348 *Onchocerca volvulus* was identified in 4 patients (18.2%), *Wuchereria bancrofti* in a single  
 349 patient (4.54%), *Loa loa* in 5 patients (22.72%) and *Mansonella perstans* in 12 patients  
 350 (54.54%). Parasitic loads were a minimum of 1 mf/μL of blood, and a maximum of 4 mf/20μL  
 351 of blood, as summarised in Table IV below.

352 Table IV: Microfilariae identified and parasite loads.

Microfilaires	Cases	parasitic loads (mf/μL)
<i>Onchocerca volvulus</i>	4	[1-2]
<i>Wuchereria bancrofti</i>	1	1
<i>Loa loa</i>	5	[1-2]
<i>Mansonella perstans</i>	12	[2-4]

353

354

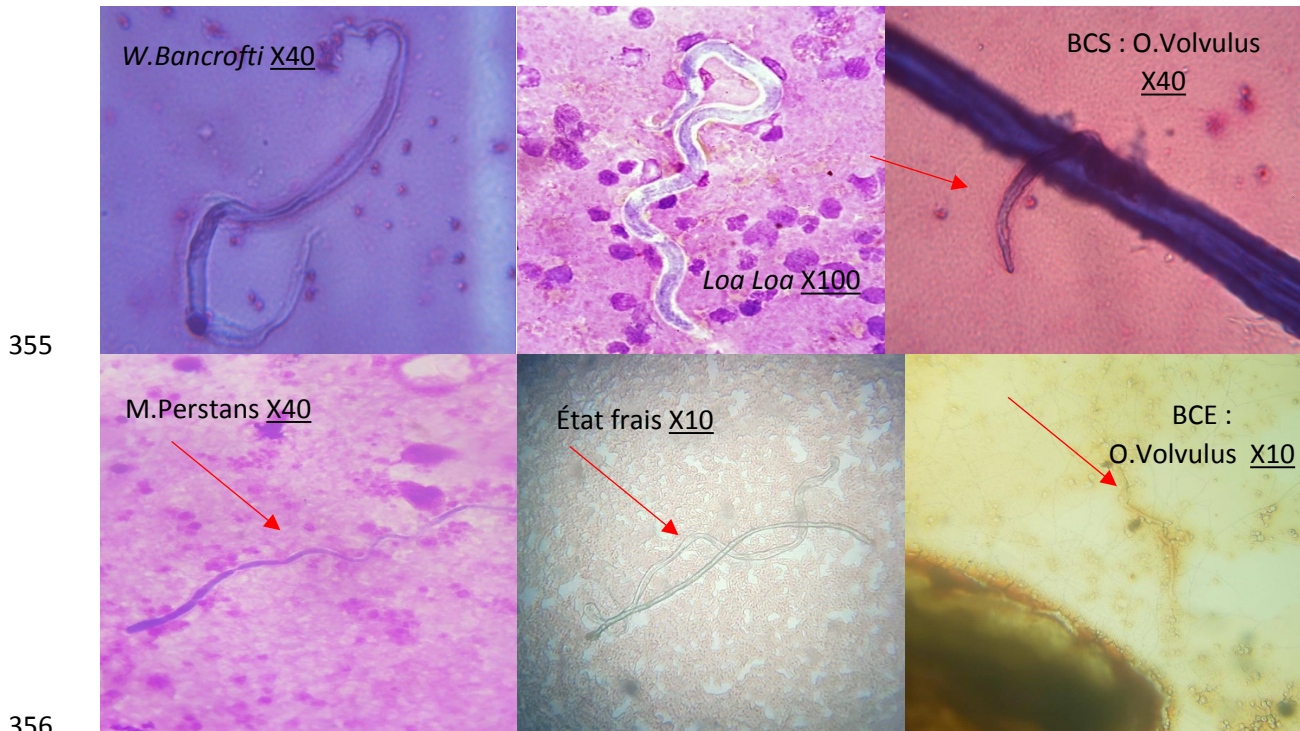


Figure 4: Microfilariiae observed under the light microscope.

## 358 Type of infection

359 33.33% of patients were co-infected with *Onchocerca volvulus* and *Mansonella perstans*, and  
360 66.67% were co-infected with *Loa loa* and *Mansonella Perstans*. 6.25% of patients were mono-  
361 infected with *Loa loa* and *Wuchereria bancrofti* respectively, 12.5% of patients were infected  
362 with *Onchocerca volvulus*, and finally, 75% of patients were infected with *Mansonella*  
363 *perstans*.

## 364 Results of biochemical parameters of participants

### 365 Urine dipstick and procalcitonin results

366 To avoid bias in the results of biochemical parameters, we subsequently excluded all  
367 symptomatic healthy patients, as the fact of presenting symptoms without any microfilaria  
368 found could be due to another pathology.

369 The results of the urinary biochemistry are presented in Table V. From the table, it came out  
370 that, 15.38% had proteinuria while 2.56% of patients had leukocytes in their urine. There were  
371 no positive nitrites, and no procalcitonin was detected in the urine of the participants

372 Table V: Urine dipstick and procalcitonin results.

Parameters	Variables	Number (n=39)	Percentage(%)
urinary Proteins	Positive	6	15,38
	Negative	33	84,62
Nitrites	Positive	0	0
	Negative	39	100
Leucocytes	Positive	1	2,56
	Negative	38	97,44
Procalcitonin	Positive	0	0
	Negative	39	100

373

### 374 **Total serum protein**

375 65% of asymptomatic patients had normal serum proteins and 35% abnormal serum proteins,  
376 with a minimum of 48.05 g/L and a maximum of 91.70 g/L. In asymptomatic infected patients,  
377 we obtained 80% elevated protidemia compared. 8.33% of symptomatic patients had normal  
378 protidemia compared to 91.67% with elevated protidemia. They had a minimum of 73.90 g/L,  
379 a maximum of 98.20 g/L and a mean of  $88.7408 \pm 2.04$  g/L; the standard deviation was 7.06  
380 g/L and the median was 86.80 g/L. The characteristics of these different groups are summarised  
381 in the figure below.

## 382 **Results of serum protein electrophoresis**

383 All the albumin fractions showed a relative decrease in all our patients, with a minimum of  
384 44.90% (for asymptomatic infected) and a maximum of 54.60% (for asymptomatic uninfected).  
385 All the symptomatic and infected patients had abnormal  $\alpha$ -1 globulin fractions. 50% had a  
386 decrease in the  $\alpha$ -2 globulin fraction.  $\beta$ -1 and  $\beta$ -2 globulin fractions were normal for all the  
387 patients. All gamma globulin fractions were higher in all patients, with a mean of 26.25%  $\pm$   
388 2.49% and extremes of 21.7 and 37%.

## 389 **Discussion**

390 This study aimed to determine the biochemical markers associated with filariasis in the hospital  
391 at the Moungo Division.

392 The study population was highly dominated by females. The sex ratio (F/M) was 2.66. In  
393 most articles in the literature, the population is dominated by males [23–25].  
394 35% of the population have microfilaria and 65% were not infected. These data are higher than  
395 that of Wandji *et al.*, [26] on top of these changes, these authors did not find *Wuchereria*  
396 *bancrofti*, in their studies sites in Cameroon. Moreover, these results are higher than that of  
397 Nana-Djeunga *et al.*, [27] who drew the map *Wuchereria bancrofti* throughout Cameroon and  
398 found that the prevalence of detection of microfilaria was between 0 and 1% in the same study  
399 area. Out of Cameroon, these data are lower compared to that of Lamontellerie *et al.*, [28] that  
400 found in Burkina Faso, 85.4% of the same filariasis. More specifically, 18,18% of our study  
401 population was infected but still asymptomatic. This goes in the same line with the report from  
402 Nana-Djeunga *et al.*, [27]. These authors found that even though the filarial load was low in  
403 many regions of Cameroon, the global circulating filarial antigen was at around 20% of his  
404 study population. 21.81% were symptomatic and had microfilaria in their blood. From this  
405 positive population, *Onchocerca* (18.2%), *Mansonella perstans* (54,54%), *Loa loa* (22.72%)

406 and *Wuchereria bancrofti* (4.54%) were detected. This does not correspond to the report from  
407 Wandji *et al.*, [26] who found that *Loa loa* was the most present in localities of the East Region  
408 of Cameroon followed by *Mansonella perstans*. In Burkina Faso, Lamontellerie *et al.*, [28]  
409 found onchocerca (32,4%), *Wuchereria bancrofti* (13,2%) and *Mansonella perstans* (33.8%).  
410 Moreover, Kuété *et al.*, [37] found that *O. volvulus* (26,38%), *Loa loa* (5,53%), and *Mansonella*  
411 *perstans* (4,7%) were found in Ntui in Cameroon. These differences observed in different  
412 regions and periods in Cameroon might be due to the massive drug administration done by the  
413 Cameroon state against lymphatic filariasis.

414 Taking into consideration the time after the massive drug administration campaign, 33.33%  
415 were asymptomatic and the same size were symptomatic two months after the campaign.  
416 15.38% were still symptomatic and infected one year after the campaign. After two years after  
417 the campaign, 40% of the patients were symptomatic and infected. These findings are different  
418 from those of Camara *et al.*, [29] at Sikasso region, Mali. These authors found that 9 months  
419 after the massive drug administration campaign, 2.33% of the population was still symptomatic  
420 and infected. This difference might be associated with the re-introduction of the disease from  
421 the neighbouring area where the disease is present [27] and mainly by the crisis in North West  
422 and South West regions of Cameroon that has led to a massive displacement of the population.

423 No microfilaria was detected in the urine of the patients. This is in accordance with the  
424 literature[30,31]. These research groups found out that the search for microfilaria in urine is  
425 important for diagnosis but the detection remains difficult and is mostly associated with another  
426 clinical feature. In addition, the results obtained from the urinary stick do not correlate  
427 significantly with the presence of microfilaria in the blood. Therefore, the presence of  
428 leukocytes in urine was probably associated with urinary infection by pathogens other than  
429 lymphatic filaria.

430 Procalcitonin is a valuable tool to assess the inflammatory response of the organism due to the  
431 infection by microorganisms. It is more specific with bacterial infections and slightly interesting  
432 for the diagnosis of parasitic diseases[32–37]. The level of procalcitonin does not depict the  
433 presence of any infection and concerning the abundant literature on that particular test[32–37],  
434 the results confirm that our participants do not suffer from bacteraemia or fungemia.

435 The lymphatic system is involved in several functions, including the regulation of blood volume  
436 through the transport and return of plasma proteins that have escaped from the bloodstream into  
437 the blood, and this function could be altered by the presence of microfilariae in the lymphatic  
438 system [38]. Therefore, monitoring proteinemia and proteinuria can be of help in the early  
439 diagnosis of filariasis[39]. In this study, 91.67% of symptomatic infected and non-infected  
440 patients have abnormal proteinemia. This falls in the same line with the observation by Nana-  
441 Djeunga *et al.*, [27] who found that the biochemical parameter goes down slowly after clearance  
442 of the filaria in the body. We also observed that the proteinemia was 80% higher in  
443 asymptomatic infected patients in contrast, the asymptomatic non-infected patients had their  
444 protidemia 35% higher than the normal range. We did not find in the literature authors that  
445 analysed the protidemia of the uninfected population from that particular rural area.

446 On the other hand, the albumin fraction was globally low in all study populations, it was lower  
447 in infected asymptomatic and symptomatic patients. Regarding the other protein fraction, we  
448 found that gamma globulin level was high in all infected patients. This result goes in the same  
449 line with that of Moreau *et al.*, in France who found that *Wuchereria Bancrofti*, *Loa loa* and  
450 *Mansonella Perstans* infection are correlated with an elevation of immunoglobulin G [40].

## 451 **Conclusion**

452 This study highlights the presence of *Onchocerca volvulus*, *Loa loa*, *Wuchereria bancrofti* and  
453 *Mansonella perstans* in the Mounjo division of the Littoral region. It also highlights that the

454 presence of microfilaria is poorly correlated to proteinemia and correlated to the albumin and  
455 gamma globulin levels of blood.

## 456 **Acknowledgements**

457 The authors are grateful to all participants for their collaboration

458 The authors are grateful to all the heads of health care centres in the Moungo division for their  
459 support during data collection. Also, the authors would like to thank the Director of the gyneco-  
460 obstetric Hospital of Douala for the support during data analysis.

461

## 462 **References**

- 463 1. Association Française des Enseignants de Parasitologie et de Mycologie (ANOFEL).  
464 Filarioses humaines. Univ Médicale Virtuelle Francoph. 2014;1–22.
- 465 2. Organisation mondiale de la Santé (OMS). Manuel à l'intention des programmes  
466 nationaux : Programme mondial pour l'élimination de la la filariose lymphatique. 107p.  
467 mise à jour 2018. 2018;10–22.
- 468 3. HAS. Actualisation de la nomenclature des actes de biologie médicale pour le  
469 diagnostic et le suivi des filarioses. Haute Autorité de santé. 2018;1–85.
- 470 4. Moyou R.S., Ouambe M.A., Fon E. BJ. Enquete Sur La Filariose Lymphatique Dans  
471 Sept Villages Du District. Med Trop. 2003;63:583–6.
- 472 5. Laboratoire du Centre Pasteur. filariose lymphatique au Cameroun : état des  
473 connaissances. Bull liais doc OCEAC1999. 1987;32(4):(15 mars 2008).
- 474 6. Valérie D. Onchocercose \_ définition, causes et prévention. passeport santé/maladies.



- 475 7. Adrian H., S. P. Élimination De L'Onchocercose Et De La Filariose Lymphatique.  
476 Numéro. 2015;12:14–6.
- 477 8. Tongue R. Une nouvelle stratégie pour éliminer les filaires au Cameroun - Méditerranée.
- 478 9. Nizeyimana JB, Mabée JM, Zongo JM. Étude Des Conditions De Dépistage Clinique  
479 Et Les Effets Psycho Socioéconomique Des Personnes Porteuses De L'Elephantiasis  
480 Des Jambes. Cas De L'Arrondissement De Guidiguis Cas De La Région De  
481 L'Extrême-Nord Cameroun De 2017-2020. Vol. 26, RUFSSO Journal of Social Sciences  
482 and Engineering. 2021.
- 483 10. Kamgno J, Boussinesq M. Hyperendémicité de la loase dans la plaine Tikar, région de  
484 savane arbustive du Cameroun. Bull la Soc Pathol Exot. 2001;94(4):342–6.
- 485 11. COLLOMB H, MILETTO G. Filariose lymphatique. Vol. 6, La Revue du praticien.  
486 1956. p. 839–50.
- 487 12. Pierre A. BAG. Filarioses lymphatiques: actualités 2021. :1–8.
- 488 13. Laurent Y., Christian L. JMH. Trente ans de lutte contre l'onchocercose en Afrique de  
489 l'Ouest. Traitements larvicides et protection de l'environnement. Trente ans de lutte  
490 contre l'onchocercose en Afrique de l'Ouest. Traitements larvicides et protection de  
491 l'environnement. 2003.
- 492 14. La France au Cameroun. Comprendre la filariose à Loa Loa au Congo Brazzaville et au  
493 Cameroun : Lancement des préparatifs du projet européen Morlo. Ambassade de  
494 France à Yaoundé.
- 495 15. OMS. RAPPORT TECHNIQUE ANNUEL DES ACTIVITES DE LUTTE CONTRE  
496 LES MALADIES TROPICALES NEGLIGÉES 2017 ( Additif : PLAN D ACTION  
497 ANNUEL 2018 ). 2017;1–48.

- 498 16. Kamgno J., Tsague D., Gardon J. BM. Données complémentaires sur l'endémie à Loa  
499 loa dans la Province du Centre du Cameroun- fdi\_010028375- Horizon. 2001 p.  
500 Bulletin de Liaison et de Documentation de l'OCEAC.
- 501 17. CDC. CDC - Onchocerciasis - Resources for Health Professionals. CDC -  
502 Onchocerciasis - Resources for Health Professionals. 2021. p. Online.
- 503 18. Kamgno J, Nana-Djeunga HC, Pion SD, Chesnais CB, Klion AD, Mackenzie CD, et al.  
504 Operationalization of the test and not treat strategy to accelerate the elimination of  
505 onchocerciasis and lymphatic filariasis in Central Africa. *Int Health*.  
506 2018;10(March):i49–53.
- 507 19. Mfoumou B. Le Cameroun adopte la stratégie \_Test and Treat\_ pour combattre  
508 l'onchocercose. Cameroon Radio Television.
- 509 20. Lepori A sophie. L ' onchocercose : données actuelles et nouvel horizon thérapeutique :  
510 le rôle de la doxycycline dans le traitement de l ' onchocercose To cite this version :  
511 HAL Id : hal-01732568 soutenance et mis à disposition de l ' ensemble de la Contact :  
512 ddoc-these. 2018;107.
- 513 21. DJAKO A. Epidémiologie spatiale des maladies tropicales négligées: cas de Maroua -  
514 extrême nord, Cameroun. :30.
- 515 22. BIOFORMA. Cahier de formation Biologie médicale N° 23 - Parasites sanguins. 2001.  
516 357 p.
- 517 23. Et S, Recherche DELA, Sciences UDES, Techniques DES, Des ET, Bamako TDE.  
518 These de medecine. 2020;
- 519 24. Amaechi EC, Ohaeri CC, Ukpai OM, Nwachukwu PC, Ukoha U. *Asian Pacific Journal*  
520 *of Tropical Disease*. *Asian Pacific J Trop Dis* [Internet]. 2016;6(9):709–13. Available

- 521 from: [http://dx.doi.org/10.1016/S2222-1808\(16\)61114-3](http://dx.doi.org/10.1016/S2222-1808(16)61114-3)
- 522 25. Soc TR, Med T. The impact of Loa loa microfilaraemia on research subject retention  
523 during a whole sporozoite malaria vaccine trial in Equatorial Guinea.  
524 2022;(April):745–9.
- 525 26. Wanji S, Esum ME, Njouendou AJ, Mbeng A, Ndongmo PWC, Abong RA, et al.  
526 Mapping of lymphatic filariasis in loiasis areas : A new strategy shows no evidence for  
527 Wuchereria bancrofti endemicity in Cameroon. PLoS Negl Trop Dis. 2019;13(3):1–15.
- 528 27. Nana-djeunga HC, Tchatchueng-mbougua JB, Bopda J. Mapping of Bancroftian  
529 Filariasis in Cameroon : Prospects for Elimination. PLoS Negl Trop Dis. 2015;9(9):1–  
530 19.
- 531 28. Lamontellerie M. Résultats d’enquêtes sur les filarioses dans l’Ouest de la Haute-Volta  
532 (Cercle de Banfora). Ann Parasitol Hum Comparée. 1972;47(6):783–838.
- 533 29. Camara MM. Dédicaces. 2012;1–46.
- 534 30. Mathison BA, Couturier MR, Pritt BS. Diagnostic identification and differentiation of  
535 microfilariae. J Clin Microbiol. 2019;57(10):1–13.
- 536 31. Sarangi J, Arava S, Kumar H. Microfilaria in urine cytology: Report of three cases with  
537 review of literature. Diagn Cytopathol. 2020;48(7):675–8.
- 538 32. Hausfater P. Procalcitonine et infection. Ann Fr Med d’Urgence. 2011;1(3):206–12.
- 539 33. Samsudin I, Vasikaran SD. Clinical utility and measurement of procalcitonin. Clin  
540 Biochem Rev. 2017;38(2):59–68.
- 541 34. de Carvalho FT, Rabello Filho R, Bulgarelli L, Serpa Neto A, Deliberato RO.  
542 Procalcitonin as a Diagnostic, Therapeutic, and Prognostic Tool: a Critical Review.

- 543 Curr Treat Options Infect Dis. 2019;11(1):1–11.
- 544 35. Lee H. Procalcitonin as a biomarker of infectious diseases. Korean J Intern Med.  
545 2013;28(3):285–91.
- 546 36. Wright CA, Path FRC, Burg M Van Der, Ph D, Geiger D, Sc M. Diagnosing  
547 Mycobacterial Lymphadenitis in Children Using Fine Needle Aspiration Biopsy :  
548 Cytomorphology , ZN Staining and Autofluorescence — Making More of Less. Diagn  
549 Cytopathol. 2008;36(4):245–51.
- 550 37. Azzini AM, Dorizzi RM, Sette P, Vecchi M, Coledan I, Righi E, et al. A 2020 review  
551 on the role of procalcitonin in different clinical settings: an update conducted with the  
552 tools of the Evidence Based Laboratory Medicine. Ann Transl Med. 2020;8(9):610–  
553 610.
- 554 38. Constantine M, Fili V, Biologiques S. Cours L3 IMMUNOLOGIE ( Pr TEBIBEL . S )  
555 Matière / Hématologie cellulaire et hématopoïèse Chapitre 1 Le milieu intérieur. :1–11.
- 556 39. Durand G. Jean-Louis Beaudoux, Biochimie médicale: Marqueurs actuels et  
557 perspectives, Chapitre 7: Les marqueurs biochimiques de l'inflammation, P 99-112; 2e  
558 édition, Médecine Sciences Publications, Lavoisier.
- 559 40. Moreau J, Cuzon G, Pichon G, Outin-Fabre D, J.Lagraulet. Les protbines sbriques du  
560 filarien lymphatique a wuchereria bancrofti var. Pacifica. Btude blectrophori~tique et  
561 dosage immunochimique des immunoglobulines a, m, g et e. Bull LA SOCIITE Pathol  
562 Exot. 1972;456–63.

563

564

565