

Substantial role of rare inherited variation in individuals with developmental disorders

Kaitlin E. Samocha^{1,2,3,4*}, V. Kartik Chundru^{4,5}, Jack M. Fu^{1,2,6}, Eugene J. Gardner⁴, Petr Danecek⁴, Emilie M. Wigdor^{4,7}, Daniel S. Malawsky⁴, Sarah J. Lindsay⁴, Patrick Campbell^{4,8}, Tarjinder Singh⁴, Ruth Y. Eberhardt⁴, Giuseppe Gallone⁴, Caroline F. Wright⁵, Hilary C. Martin⁴, Helen V. Firth^{4,8}, Matthew E. Hurles^{4,*}

1. Center for Genomic Medicine, Massachusetts General Hospital, Boston, MA, USA
2. Program in Medical and Population Genetics, Broad Institute of MIT and Harvard, Cambridge, MA, USA
3. Analytic and Translational Genetics Unit, Massachusetts General Hospital, Boston, MA, USA
4. Wellcome Sanger Institute, Wellcome Genome Campus, Hinxton, UK
5. Department of Clinical and Biomedical Sciences, University of Exeter Medical School, Royal Devon and Exeter Hospital, Exeter, UK
6. Department of Neurology, Massachusetts General Hospital and Harvard Medical School, Boston, MA, USA
7. Institute of Developmental and Regenerative Medicine, Department of Paediatrics, University of Oxford, Oxford, UK
8. Cambridge University Hospitals Foundation Trust, Addenbrooke's Hospital, Cambridge, UK

* Corresponding authors: K.E.S. (samocho@broadinstitute.org), M.E.H. (meh@sanger.ac.uk)

1 Abstract

2 While the role of *de novo* and recessively-inherited coding variation in risk for rare
3 developmental disorders (DDs) has been well established, the contribution of damaging
4 variation dominantly-inherited from parents is less explored. Here, we investigated the
5 contribution of rare coding variants to DDs by analyzing 13,452 individuals with DDs, 18,613 of
6 their family members, and 3,943 controls using a combination of family-based and case/control
7 analyses. In line with previous studies of other neuropsychiatric traits, we found a significant
8 burden of rare (allele frequency $< 1 \times 10^{-5}$) predicted loss-of-function (pLoF) and damaging
9 missense variants, the vast majority of which are inherited from apparently unaffected parents.
10 These predominantly inherited burdens are strongest in DD-associated genes or those
11 intolerant of pLoF variation in the general population, however we estimate that ~10% of the
12 excess of these variants in DD cases is found within the DD-associated genes, implying many
13 more risk loci are yet to be identified. We found similar, but attenuated, burdens when

14 comparing the unaffected parents of individuals with DDs to controls, indicating that parents
15 have elevated risk of DDs due to these rare variants, which are overtransmitted to their affected
16 children. We estimate that 6-8.5% of the population attributable risk for DDs are due to rare
17 pLoF variants in those genes intolerant of pLoF variation in the general population. Finally, we
18 apply a Bayesian framework to combine evidence from these analyses of rare, mostly-inherited
19 variants with prior *de novo* mutation burden analyses to highlight an additional 25 candidate DD-
20 associated genes for further follow up.

21

22 Introduction

23 Developmental disorders (DDs) have a strong genetic component with many hundreds
24 of genes associated with these disorders via both dominant and recessive mechanisms.
25 However, we are able to find diagnostic genetic variants for only ~40% of cases^{1,2}, leaving over
26 half of patients with potential genetic contributions undiagnosed. The majority of known
27 diagnoses in cohorts such as the Deciphering Developmental Disorders (DDD) are from *de*
28 *novo* variants (~76% of diagnosed cases in DDD²), including *de novo* single nucleotide variants
29 (SNVs), small insertions and deletions (indels), and structural variants (SVs) such as copy
30 number variants. Recessive diagnoses in DDD are a distant second (~12% of diagnosed cases)
31 and most commonly impact families with consanguinity². Large SVs, particularly at established
32 genomic disorder loci, are well-known DD risk factors, but are often observed in unaffected
33 family members and inherited from parents^{3,4}. While the field has long appreciated incomplete
34 penetrance of SVs⁵, there is still much to be learned about how incompletely penetrant SNVs
35 and indels that could be inherited from unaffected parents may contribute to overall risk of DDs⁶.

36 We and others have previously shown that inherited common variants influence
37 phenotypic variability⁷⁻⁹, but have not undertaken a systematic analysis of how rare, inherited
38 variants could contribute to DDs outside of *ANKRD11*¹⁰. Prior studies of DD individuals have
39 made the argument that variants inherited from unaffected parents can be diagnostic⁶.
40 Additionally, recent studies of autism, schizophrenia, and bipolar disorder have indicated a role
41 for rare, damaging variants in more common and complex neuropsychiatric disorders¹¹⁻¹⁷.
42 These rare variant burdens are most often concentrated in genes intolerant to loss-of-function
43 variants in the general population (“constrained genes”) or those genes previously associated
44 with severe DDs. Damaging variation in these two gene sets has also been tied to reduced
45 educational attainment and cognitive performance in population cohorts such as the UK
46 Biobank¹⁸⁻²³, further strengthening evidence of their role in DDs.

47 Here, we sought to define the contribution of rare, and mostly inherited, variation to DDs
48 in the DDD cohort. We jointly processed the entirety of the DDD cohort ($n = 32,065$) with
49 relatively healthy UK population samples from the INTERVAL study ($n = 3,943$), which allowed
50 us to evaluate both within-family and case/control rare variant burdens (**Fig 1a**). We found a
51 significant burden of rare, damaging variants, particularly concentrated in constrained and
52 known DD-associated genes, in both our case/control analysis and family-based analysis. In
53 line with these results, we also found that the parents in the DDD cohort have a significantly
54 higher burden of rare variants compared to controls. Finally, we combine gene-association
55 evidence from our prior *de novo* study²⁴ with the results of these analyses using TADA^{13,25}, and
56 nominate an additional 25 candidate DD genes for further investigation.

57

58 Results

59 Significant burden of rare variants in known DD-associated genes and constrained genes 60 in DD cases

61 We joint-called autosomal SNVs and indels in the DDD cohort with controls from the
62 INTERVAL study. After sample and variant quality control (see Methods), we retained 32,065
63 individuals from the DDD study (both parents and DD cases) of all inferred genetic ancestry
64 groups. Of these individuals, 25,701 were of inferred European genetic ancestry for comparison
65 against 3,943 ancestry-matched individuals from the INTERVAL study (**Supplementary Figure**
66 **1**). Post-quality control, we observed similar rates per exome of rare (allele frequency < 0.001)
67 autosomal variants in DD cases, their parents, and controls (**Supplementary Table 1;**
68 **Supplementary Figure 2**).

69 We first compared the rare (gnomAD²⁶ allele frequency $< 1 \times 10^{-5}$; dataset allele
70 frequency $< 1 \times 10^{-4}$) variant burden between DD cases and control individuals ($n = 10,644$ cases
71 versus 3,943 controls), correcting for sex, the first 20 principal components (PCs), and the
72 number of rare variants per exome, in line with recent work¹². Correcting for the number of rare
73 variants per exome leads to a significant odds ratio (OR) < 1 for synonymous variants when
74 testing across all genes (OR = 0.974, $p = 4.4 \times 10^{-6}$, **Fig 1b**); we thus conclude that our ORs for
75 damaging variants may be slightly under-estimated. Removing this correction, or correcting only
76 for rare nonsynonymous variants, results in an OR significantly > 1 for synonymous variants that
77 was not eliminated by various corrections (**Supplemental Note**).

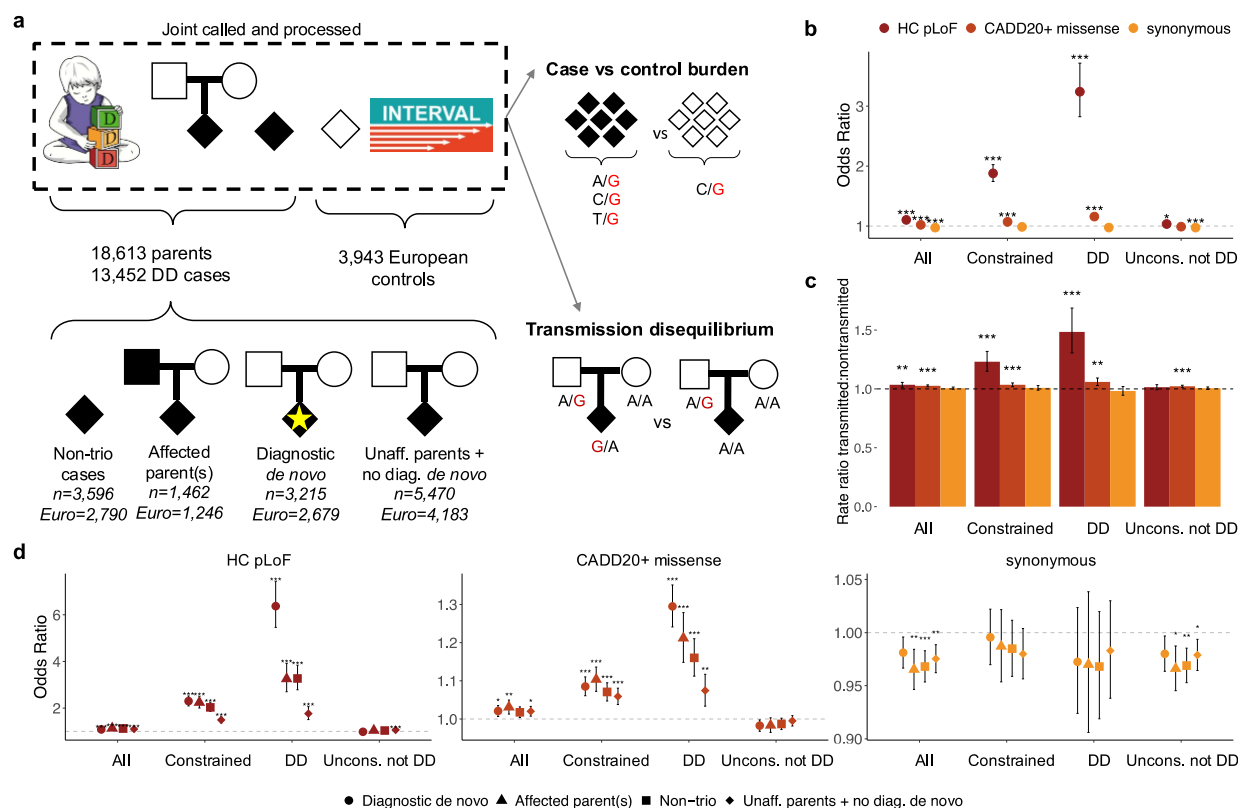
78 We found modest ORs for the burden of rare predicted loss-of-function (pLoF) or
79 damaging missense variants (defined as CADD²⁷ ≥ 20) when evaluating all genes at once
80 (LOFTEE²⁶ high-confidence pLoF OR = 1.10 and $p = 5.3 \times 10^{-19}$, damaging missense OR = 1.02
81 and $p = 5.3 \times 10^{-3}$; **Supplementary Table 2**). However, these ORs are much larger in previously
82 established monoallelic DD-associated genes^{24,28} ($n=666$ genes; pLoF OR = 3.24, $p = 2.7 \times 10^{-63}$)
83 and constrained genes²⁶ ($pLI \geq 0.9$, $n=2,699$ genes; pLoF OR = 1.88, $p = 1.0 \times 10^{-61}$). We used all
84 individuals in these analyses, but found nearly identical results when repeating the analyses
85 using only unrelated individuals (**Supplementary Figure 3**). These results reinforce the role for
86 these two gene sets in DDs, as has been demonstrated before^{23,29}.

87 We then split DD cases into non-trio cases ($n=2,790$) and trio cases ($n=7,854$), which
88 were further split based on whether (1) one or both parents were known to have a similar
89 phenotypic presentation and (2) whether the proband had a likely diagnostic *de novo* variant. All
90 groups have a significant burden of rare variants compared to controls (**Fig 1d; Supplementary**
91 **Table 2**), with significantly higher ORs for pLoF variants in constrained and DD-associated
92 genes compared to the set with unaffected parents and no *de novo* diagnosis ($n=4,183$; pLoF
93 OR = 1.49 and 1.73, respectively) for the non-trio cases (pLoF OR = 2.03 and 3.27; Wald test p
94 = 1.4×10^{-6} and 7.2×10^{-8} , respectively), trios with a diagnostic *de novo* variant ($n=2,679$; pLoF OR
95 = 2.30 and 6.37; Wald test $p = 2.8 \times 10^{-11}$ and $< 1 \times 10^{-20}$, respectively), and trios with one or more
96 affected parents ($n=1,246$; pLoF OR = 2.42 and 3.25; Wald test $p = 1.2 \times 10^{-8}$ and 8.2×10^{-7} ,
97 respectively; **Supplementary Table 3**). These significantly higher results were anticipated for
98 the trios with one or more affected parents, where we expected that the affected parent would
99 be transmitting risk variants to their children. For the trios with a likely diagnostic *de novo*
100 variant, we might not have expected to see a large exome-wide burden given the presence of a
101 high-impact variant (i.e., the diagnostic *de novo* variant), however this burden could be driven by
102 the *de novo* variants.

103 Given that *de novo* variants play a large role in DDs and that they were included here,
104 we repeated these regressions after removing the known *de novo* variants reported previously²⁴
105 and observed an attenuated signal in all trio groups. This attenuation was most notable for the
106 individuals that have a diagnostic *de novo* variant, which no longer have a significant burden of
107 rare damaging variants compared to controls in all genes (pLoF OR = 1.00, $p = 0.865$;
108 **Supplementary Figure 4; Supplementary Table 4**). However, this set of *de novo* diagnosed
109 individuals does retain some signal in constrained (pLoF OR = 1.19, $p = 3.9 \times 10^{-4}$) and DD-
110 associated genes (pLoF OR = 1.58, $p = 8.2 \times 10^{-8}$), even after removing the *de novo* variants.

111 While case/control comparisons are very sensitive to differences in genetic ancestry,
112 within-family analyses are protected against such stratification, allowing us to test all trios. We
113 sought to quantify the burden of rare variation that had been transmitted from parents using the
114 Transmission Disequilibrium Test (TDT). We applied TDT to 9,305 DDD trios (all inferred
115 genetic ancestry groups, but selecting only one sibling per family) and found a significant signal
116 of overtransmission of rare (gnomAD allele frequency $< 1 \times 10^{-5}$; transmitted doubletons
117 compared to nontransmitted singletons) damaging variants from parents to their children with
118 DDs (**Fig 1c; Supplementary Table 5**). We found similar patterns as with the case/control
119 analysis, with the strongest rate ratios (RRs) for pLoF variants in DD-associated and/or
120 constrained genes (RR DD = 1.48 and $p = 5.8 \times 10^{-10}$; RR constrained = 1.23 and $p = 1.4 \times 10^{-9}$).
121 Notably, we do not see any overtransmission of rare, synonymous variants in any of the gene
122 sets tested (RR for all genes = 1.01, $p = 0.183$).

123 As in the case/control analysis, we split the trios by parental affected status and whether
124 they had a diagnostic *de novo* variant. Even though the trios with one or more affected parents
125 ($n=1,306$) had higher RRs than trios with unaffected parents and no *de novo* diagnosis
126 ($n=5,124$) for pLoF variants in constrained (affected parents: RR = 1.51, $p = 5.5 \times 10^{-7}$; unaffected
127 parents, no *de novo* diagnosis: RR = 1.28, $p = 1.5 \times 10^{-7}$; **Supplementary Table 5**) and/or DD-
128 associated genes (affected parents: RR = 1.87, $p = 1.7 \times 10^{-5}$; unaffected parents, no *de novo*
129 diagnosis: RR = 1.68, $p = 2.1 \times 10^{-9}$), the differences were not significantly different from each
130 other (**Supplementary Table 6**). When evaluating the trios with a diagnostic *de novo* variant
131 ($n=3,155$), we found no significant overtransmission of damaging variants in any of the gene
132 sets (e.g., pLoF RR in constrained genes = 1.02, $p = 0.800$). These attenuated RRs for pLoF
133 variants were nominally significantly lower than what was seen for unaffected parent and no *de*
134 *novo* diagnosis trios, but not all comparisons survive multiple testing correction ($p = 0.05/16$
135 comparisons = 0.003; **Supplementary Table 6**). No differences were significant for missense
136 variants between trios with a diagnostic *de novo* variant and the unaffected parent, no
137 diagnostic *de novo* variant trios.
138

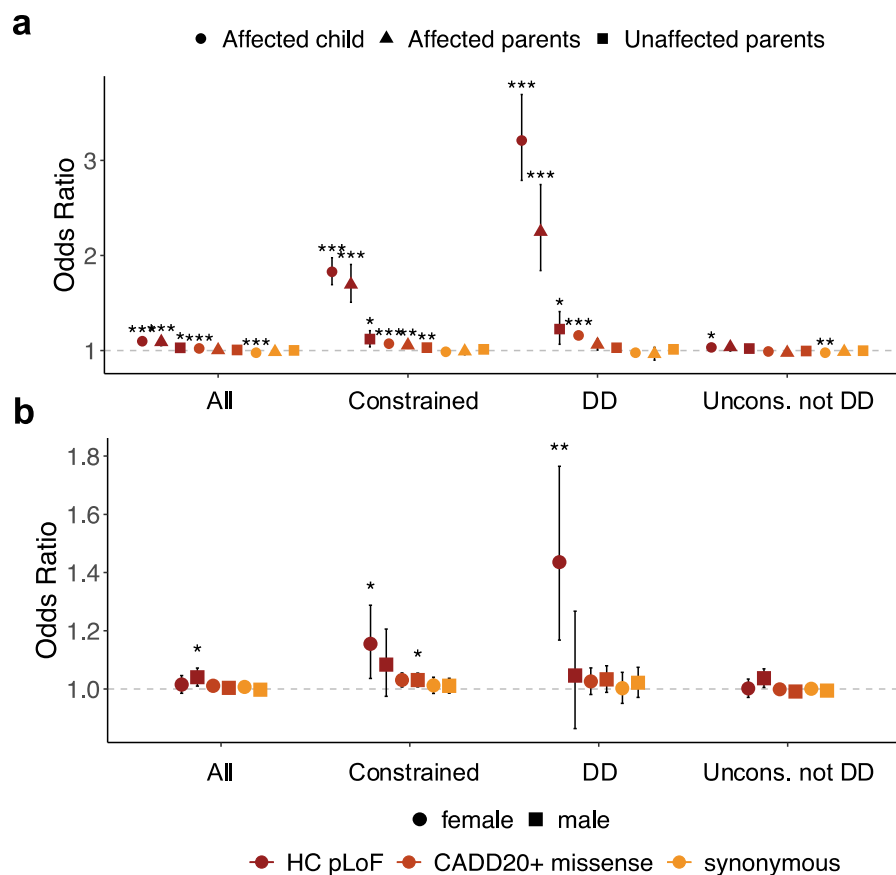


139

140 **Figure 1.** Overview of the dataset and analyses.

141 a) Schematic representation of the study, showing the joint-calling of 32,065 individuals from the
 142 DDD study (18,613 parents and 13,432 DD cases) with 3,943 genetic-ancestry matched
 143 controls from the INTERVAL study. DD cases can be further subdivided into non-trio cases
 144 ($n=3,596$; 2,790 of inferred European genetic ancestry), trio cases with at least one affected
 145 parent ($n=1,462$; 1,246 of inferred European genetic ancestry), trio cases with a *de novo*
 146 diagnosis ($n=3,215$; 2,679 of inferred European genetic ancestry), and trio cases with
 147 unaffected parents and no *de novo* diagnosis ($n=5,470$; 4,183 of inferred European genetic
 148 ancestry). Given the joint-calling, we performed both case versus control burden testing and
 149 within-family transmission disequilibrium tests (TDT). Case/control burden (b) and transmission
 150 disequilibrium (c) testing for all DD cases ($n=10,644$ for case/control, 9,305 for TDT). d)
 151 Case/control regressions split by the type of DD case being compared to controls: trios with a
 152 diagnostic *de novo* variant are shown in circles, trios with one or more affected parents are
 153 shown with triangle, non-trio DD cases are shown in squares, and trios with unaffected parents
 154 and no *de novo* diagnosis are shown in diamonds. In b) and d), we report the odds ratios from
 155 logistic regressions. For the TDT tests in c), we are displaying the rate ratio between transmitted
 156 to nontransmitted variants. Displayed are the results for three mutation classes—LOFTEE high
 157 confidence predicted loss-of-function (HC pLoF, dark red), damaging missense with CADD ≥ 20
 158 (orange), and synonymous (yellow) variants—and four gene sets: all genes ($n=18,610$),
 159 constrained (pLI ≥ 0.9 , $n=2,699$), monoallelic DD-associated ($n=666$), and unconstrained genes
 160 with no prior monoallelic DD-association ($n=15,667$). * $1 \times 10^{-3} \leq p < 1 \times 10^{-2}$; ** $1 \times 10^{-4} \leq p < 1 \times 10^{-3}$;
 161 *** $p < 1 \times 10^{-4}$.

162
163
164 As both the TDT and case/control analyses establish, inherited rare variants significantly
165 contribute to DDs as do common variants (see Huang*, Wigdor* et al.⁹). Given that we saw
166 significant overtransmission of damaging variants from unaffected parents in the TDT results,
167 we wanted to test if this was due to these parents having an excess of rare damaging variants
168 compared to controls versus other potential explanations, such as ascertaining families where
169 there was significant overtransmission of such variants. We therefore compared unaffected
170 parents to controls with a similar logistic regression as above and found significant differences
171 for missense and pLoF variation, albeit lower than what we found for the DD cases (13,861
172 unaffected parents versus 3,943 controls; **Supplementary Figures 5 & 6**). No significant
173 difference was seen for synonymous variants. As expected, affected parents have higher
174 burdens than unaffected parents, but the enrichments for pLoF variants in DD-associated and
175 constrained genes are significant for both sets of parents (**Fig 2a**). While we found a few
176 instances where mothers and fathers seemed to have a difference in their genetic burden – for
177 example, the OR of pLoF variants in DD-associated genes in unaffected mothers was higher
178 than in unaffected fathers (mother OR = 1.44 and $p = 5.9 \times 10^{-4}$, father OR = 1.05 and $p = 0.643$;
179 **Fig 2b**) – these differences were not statistically significant (**Supplementary Figure 7**).
180



181

182 **Figure 2.** Parents of DD cases have significant rare variant burdens compared to controls.

183 a) Odds ratio when comparing rare variant burdens to 3,943 controls for individuals of European
 184 genetic ancestry: developmental disorder cases in complete trios (“Affected child”, circles,
 185 n=7,854), affected parents (triangles, n=1,195), and unaffected parents (squares, n=13,861). b)
 186 The same plot as a), but with the unaffected parents split by sex of the parent. In all plots, high-
 187 confidence predicted loss-of-function (HC pLoF) variants are in dark red, damaging missense
 188 variants with CADD ≥ 20 are in orange, and synonymous variants are in yellow. There are four
 189 gene sets shown: all genes (n=18,610), constrained (pLI ≥ 0.9 , n=2,699), monoallelic DD-
 190 associated (n=666), and unconstrained genes with no prior monoallelic DD-association
 191 (n=15,667). * $1 \times 10^{-3} \leq p < 1 \times 10^{-2}$; ** $1 \times 10^{-4} \leq p < 1 \times 10^{-3}$; *** $p < 1 \times 10^{-4}$.

192

193 Investigating differences in rare variant burden

194 We wanted to further investigate differential burden in the DD cases, accounting for
 195 factors known to influence damaging genetic burden. Of note, neurodevelopmental disorders,
 196 particularly autism, have been reported to have a noticeable female protective effect^{30,31}. The
 197 female protective effect would be expected to lead to patterns where female cases and mothers
 198 have a higher burden of rare, damaging variants compared to male cases and fathers,

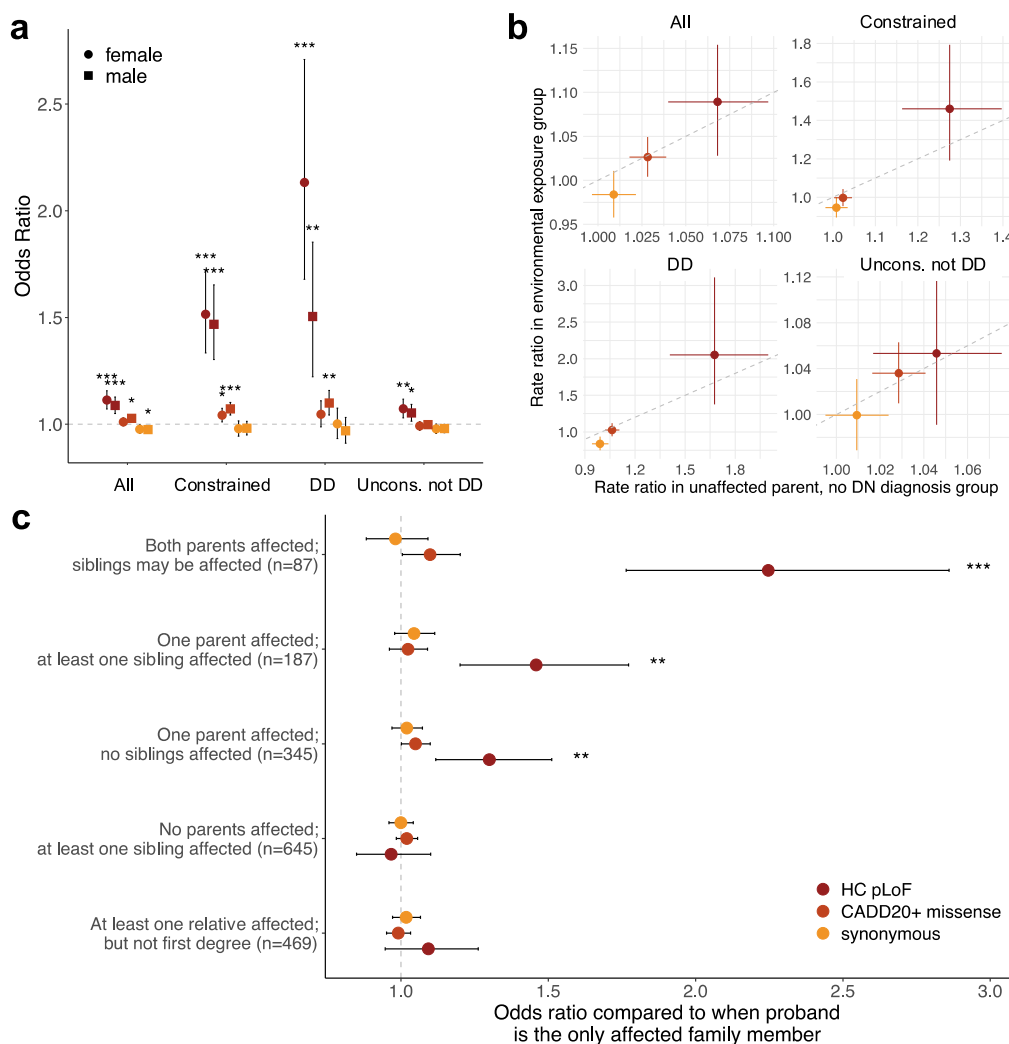
199 respectively. Indeed, we previously reported that female cases had a higher rate of damaging
200 *de novo* variants compared to male cases^{24,32}. However, we found no significant differences in
201 the rare autosomal variant burden when comparing: (1) male to female cases (**Fig 3a**,
202 **Supplementary Figure 8**), (2), unaffected mothers to unaffected fathers, as mentioned above
203 (**Supplementary Figure 7**), or (3) the burden inherited from mothers to that inherited from
204 fathers (**Supplementary Table 7**).

205 Under a liability threshold model, numerous genetic and environmental factors can
206 contribute to the risk of developing a given disorder, and individuals whose accumulated risk
207 factors (liability) cross a threshold are affected by the disorder³³. The female protective effect
208 discussed above can be thought of as one example of a liability threshold model, where, for
209 example, females require a greater liability (e.g., burden of risk factors) than males to be
210 diagnosed. Here, we wanted to explore other factors that could contribute overall to liability and
211 would therefore influence the amount of expected burden from rare variation. For example,
212 individuals who were born prematurely (< 37 weeks gestation) or had other environmental
213 exposures in utero^{34,35} may be expected to have a greater liability coming from environmental
214 factors and could have a lower rare variant burden than those without these exposures. In line
215 with this, we have previously reported that this set of individuals has a lower diagnostic rate than
216 those DD cases without prematurity of environmental exposures². Similarly, DD cases who have
217 affected family members have both been reported to have a significantly lower chance of having
218 a *de novo* variant and of receiving a genetic diagnosis^{2,36}. For those DD cases with affected
219 family members, we would anticipate a greater inherited genetic burden of rare and/or common
220 variants, the latter of which is explored in other work⁹, particularly given the lack of a large-
221 impact diagnostic variant.

222 For environmental exposures, we selected a set of 2,637 probands within DDD who
223 were born prematurely (< 37 weeks gestation), had mothers with diabetes, and/or were exposed
224 to antiepileptic medications in utero, all three of which were shown to have lower diagnostic
225 rates in DDD². Rare variant burdens for DD cases with unaffected parents and no diagnostic *de*
226 *novo* variant were similar whether they had or did not have an environmental exposure (**Fig 3b**,
227 **Supplementary Figure 9**), with no significantly different burdens when directly comparing
228 cases with (n=879) versus without (n=3,304) environmental exposures in a case versus case
229 regression (**Supplementary Table 8**).

230 By contrast, when we compared rare variant burdens in unrelated European ancestry
231 cases with versus without affected family members using a case versus case regression as
232 above, we found a significant trend of increasing burden in constrained genes that was

233 strongest for those cases with at least one affected parent (**Fig 3c**). These results are consistent
 234 with recent work⁹ that reported that cases with more affected first-degree relatives had lower
 235 polygenic scores for educational attainment³⁷ as well as a lower chance of receiving a
 236 monogenic diagnosis. However, we did not see as strong of a trend for DD-associated genes
 237 (**Supplementary Figure 10**) despite this being the gene set that showed the largest difference
 238 from controls (**Supplementary Figure 6**), nor did we find any significant differences in rare
 239 variant burdens when the other affected family members were siblings or other first-degree
 240 relatives, even though these cases have a lower diagnostic rates and lower polygenic scores for
 241 educational attainment^{9,36}.
 242



243

244 **Figure 3.** Comparison of rare variant burden between different subgroups of cases

245 a) Odds ratios when comparing female cases to female controls (circles, n = 1,651 and 1,940,
 246 respectively) and male cases to male controls (squares, n = 2,532 and 2,003, respectively) for

247 individuals of European genetic ancestry with unaffected parents and no *de novo* diagnosis.
248 While female cases have higher odds ratio estimates for high-confidence predicted loss-of-
249 function (HC pLoF) variants in DD-associated genes, there are no significant differences for any
250 group. b) The rate ratio from the transmission disequilibrium test (TDT) for cases of all genetic
251 ancestries with unaffected parents and no *de novo* diagnosis ($n = 5,124$) compared to that set of
252 cases who also had an environmental exposure (i.e., premature birth, maternal diabetes, and/or
253 exposure to antiepileptic medications in utero; $n = 1,075$). There were no significant differences
254 between the two sets. c) Odds ratios in constrained genes from a regression comparing
255 unrelated European genetic ancestry cases with and without additional affected family
256 members, split by the number and type of relative affected. All comparisons are against the
257 burden in cases that are the only affected family member ($n = 6,664$). For all panels, LOFTEE
258 high-confidence pLoFs are shown in dark red; missense variants with CADD ≥ 20 in orange;
259 and synonymous variants in yellow. For a) and b), there are four gene sets shown: all genes
260 ($n=18,610$), constrained ($pLI \geq 0.9$, $n=2,699$), monoallelic DD-associated ($n=666$), and
261 unconstrained genes with no prior monoallelic DD-association ($n=15,667$). Panel c) only shows
262 constrained genes. * $1 \times 10^{-3} \leq p < 1 \times 10^{-2}$; ** $1 \times 10^{-4} \leq p < 1 \times 10^{-3}$; *** $p < 1 \times 10^{-4}$.
263

264 **Burden of rare variation primarily resides outside of known DD-associated genes**

265 Given the heterogeneity of DD cases within our cohort, we expected to be
266 underpowered to detect significant burdens on an individual gene basis. When we performed a
267 Fisher's exact test to compare the burden of rare damaging variants in DD cases to those in
268 controls, no individual gene crossed an exome-wide significance threshold ($p < 2.8 \times 10^{-6}$). The
269 most significant gene was *ANKRD11* (pLoF carriers: 50 DD versus 1 control; Fisher's OR = 18.6
270 and $p = 3.7 \times 10^{-6}$), a well-established DD-associated gene, with at least 20 *de novo* variants
271 included in the DD carrier counts.

272 We therefore sought to estimate the excess burden in terms of the number of additional
273 variants in DD cases in the significant gene lists from above. To do so, we estimated the excess
274 of pLoF and damaging missense variants using the rate of observed variants in controls and
275 corrected for the synonymous burden in each gene group. In the 4,183 DD cases with
276 unaffected parents and no *de novo* diagnosis, we estimated an excess of approximately 4,000
277 pLoF and damaging missense variants, with two thirds coming from missense variants
278 (**Supplementary Figure 11**). Only ~11% of the excess was found in the previously DD-
279 associated genes, indicating that there are more disease-associated genes to be identified.
280 These excesses are not driven by specific individuals with far more variants than others, but by
281 a minor shift in the distribution of the number of rare variants per individual (**Supplementary**
282 **Figure 12**). Further, we estimated that the population attributable risk (PAR) from rare pLoF
283 variants in constrained genes was 8.4%. This estimate of PAR was only minimally impacted by

284 a range of population prevalence values for DDs, but drops to 5.9% when using the case/control
 285 analysis that removed known *de novo* variants (see **Supplemental Note** for caveats). This PAR
 286 estimate is similar to the 6% PAR reported for inherited pLoF variants in a recent autism study¹⁵.

287 To further investigate the nature of the rare variant exome-wide burden in the DD cases,
 288 we calculated s_{het} burden scores¹⁹, a measure of the cumulative burden of rare variants made
 289 by combining the s_{het} selection coefficients³⁸ for each autosomal gene impacted by damaging
 290 variants (pLoF with CADD ≥ 25 ; missense with MPC³⁹ ≥ 2 and CADD ≥ 25), for all individuals in
 291 the study (see Methods). Specifically, we wanted to evaluate if the exome-wide burden of rare
 292 inherited damaging variants in DD cases differed from the burden seen in parents. For these
 293 analyses, we removed known *de novo* variants from the DD cases when calculating s_{het} burden
 294 scores. We found a significant difference in s_{het} burden scores calculated from rare pLoF
 295 variants (CADD ≥ 25 as in Gardner et al.¹⁹) when comparing DD cases to the parental data
 296 (Wilcox $p = 2.01 \times 10^{-9}$), but not for s_{het} burden scores calculated using synonymous variants
 297 (Wilcox $p = 0.121$; **Table 1**). This suggests an overtransmission of pLoF s_{het} burden scores from
 298 parents to their children with DDs. Notably, we did not find a significant difference for s_{het} burden
 299 scores calculated using damaging missense variants as defined by Gardner et al.¹⁹, likely as the
 300 class is too rare for there to be large differences (CADD ≥ 25 and MPC ≥ 2 ; **Supplementary**
 301 **Table 9**). We also found no significant differences between s_{het} burden scores for male versus
 302 female DD cases, in line with analyses reported above.

Group	N	Synonymous		pLoF	
		Effect size (95% CI)	P-value	Effect size (95% CI)	P-value
All	9305	0.0038 (-0.0042 – 0.0106)	0.121	0.0045 (0.0027 – 0.0064)	1.88e-09
European	7037	-0.0029 (-0.0108 – 0.0064)	0.732	0.0047 (0.0028 – 0.0067)	6.01e-08
Unaffected parents, no DNM diagnosis	5124	0.0056 (-0.0048 – 0.0151)	0.344	0.0047 (0.0023 – 0.0074)	2.37e-05
DNM diagnosis	3155	0.0052 (-0.0093 – 0.0214)	0.111	0.0022 (-0.0004 – 0.0049)	0.002
Affected parents	1306	-0.0093 (-0.0262 – 0.0092)	0.992	0.0091 (0.0035 – 0.0152)	0.001

303 **Table 1.** Differences in the s_{het} burden scores for DD cases compared to their parents.
 304 Shown are s_{het} burden scores made when using rare synonymous variants or rare pLoF variants
 305 with CADD ≥ 25 for five sets of trios. In the case where a family had multiple affected children,

306 only one child (and thereby complete trio) was used. For these analyses, all known *de novo*
307 variants were removed from calculations. Bootstrapping with 1000 replicates was used to
308 determine the median difference in s_{het} burden scores as well as the 95% confidence intervals
309 (CI). P-values are from the Wilcoxon rank sum test.
310

311 We additionally compared the s_{het} burden scores between unrelated European genetic
312 ancestry DD cases (n=8,062) and controls in a logistic regression, which allowed us to estimate
313 the variance explained on the liability scale. Assuming a population prevalence of 1% for DDs,
314 we estimated that the s_{het} burden scores explained 2.6% [0.2 - 7.5%] of the variance on the
315 liability scale, which is lower than the estimated 11.2% due to common variants genome-wide⁹.
316 Additionally, we found that the variance explained was higher if only using the *de novo*
317 diagnosed individuals (n=1,905 cases; 4.6% of liability [1.1 - 10.1%]) compared to only
318 undiagnosed DD cases (n=6,157; 1.9% [0.4 - 6.3%]). By contrast, the raw counts of rare pLoF
319 and damaging missense variants would only explain 0.06% [0.03 - 0.1%] of the variance on the
320 liability scale.

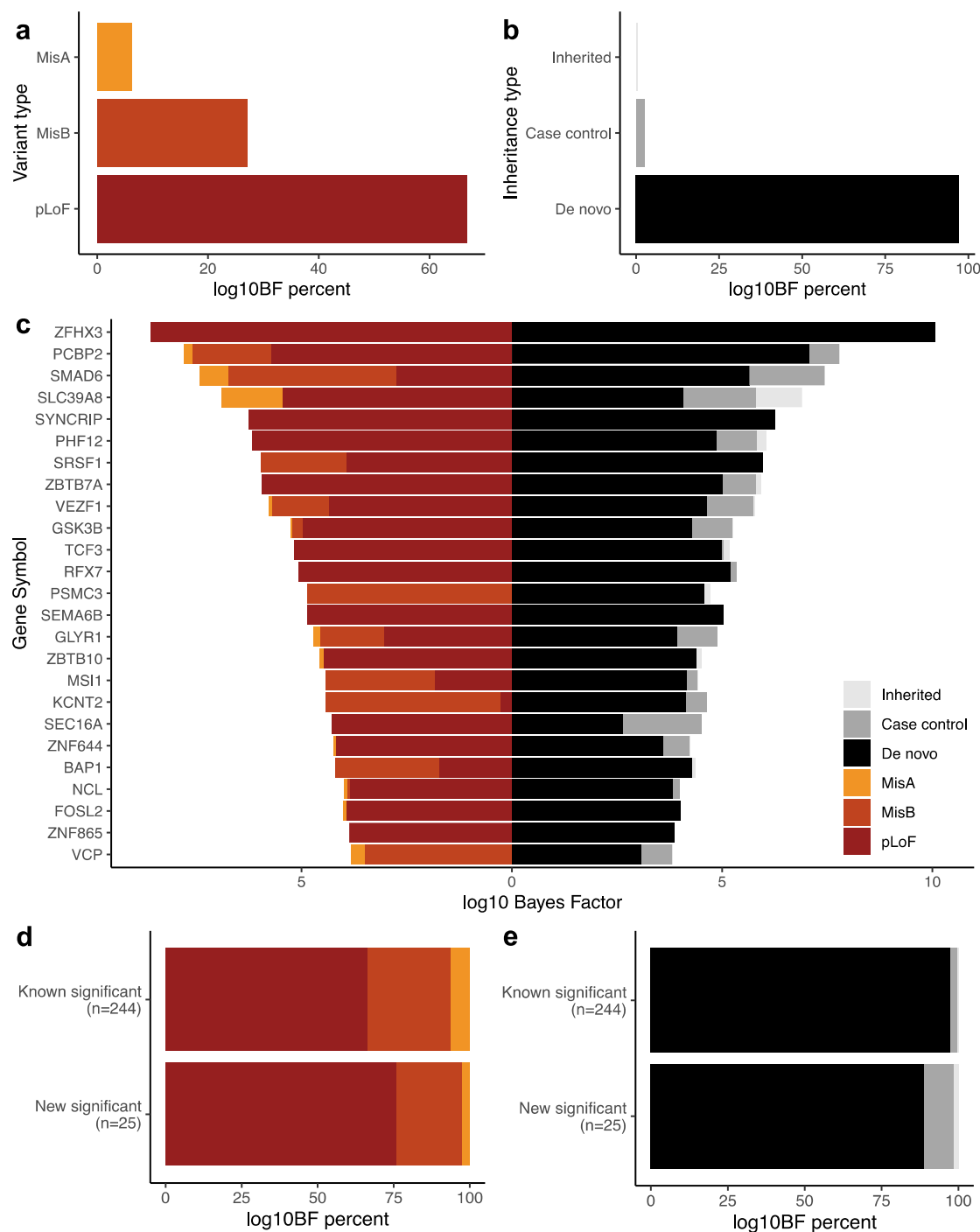
321 **Combining evidence from *de novo* and inherited variants identifies additional candidate** 322 **DD genes**

323 We previously identified nearly 300 genes significantly associated with DDs via a gene-
324 specific enrichment of *de novo* variants²⁴, with dozens more genes near the significance
325 threshold (“31k analysis”). We wanted to combine evidence from *de novo* variants with the TDT
326 and case/control analyses performed here to improve our ability to identify DD-associated
327 genes. We applied the Transmission and De Novo Association (TADA) framework^{13,25}, a
328 Bayesian analytical framework that makes use of priors on the risk of a given variant class in
329 each gene to measure statistical evidence, which has been successfully applied to studies of
330 the genetic basis of autism^{13,25,40}.

331 At an exome-wide significance threshold of 2.8×10^{-6} , we identified 269 significant genes
332 (**Supplementary Table 10**). As in the prior autism studies, pLoF variants had the largest
333 combined Bayes Factor (BF) contribution for the variant types tested (66.7%; **Fig 4a**), and we
334 found that nearly all of the BF contribution came from *de novo* variants (97.2%; **Fig 4b**) with
335 case/control a distant second (2.5%). Unsurprisingly given the strong *de novo* contribution, the
336 vast majority of these 269 genes were significant in our previous 31k analysis²⁴ (217; 81%). To
337 identify a set of genes with limited prior association to DDs, we focused on the 52 genes that
338 were not significant in the prior study of *de novo* variants. Of those, 27 already had strong or
339 definitive evidence of being monoallelic DD-associated genes according to DDG2P²⁸ as of July

340 2023 (**Supplementary Figure 13**). We selected the remaining 25 genes (2 with moderate, 8
341 with limited, and 15 with no evidence of being monoallelic DD-associated genes in DDG2P) for
342 deeper investigation (**Fig 4c**). For most of these genes, the primary driver of association was
343 the signal from *de novo* pLoF variants, although we saw stronger case/control and inherited
344 signals as measured by BF contribution for these 25 genes compared to the 244 significant but
345 known genes (**Fig 4d-e; Supplementary Table 11**).

346



347

348 **Figure 4.** Results from a combined *de novo*, case/control, and inherited analysis of rare variants
 349 in developmental disorder (DD) cases using the Transmission and De Novo Association (TADA)
 350 framework.

351 The evidence of association with DD, as measured by Bayes Factors (BF) in TADA, for different
 352 variant types (a) and inheritance types (b) across all 269 significant genes ($p < 2.8 \times 10^{-6}$). In c)
 353 we depict the specific Bayes Factors from TADA for 25 genes that were significant in the TADA

354 analysis, but were not significant in our prior analysis of *de novo* variants alone²⁴ and had
355 limited or no evidence of DD association in DDG2P. In d) and e) the Bayes Factor percentages
356 are compared for the TADA significant genes with previous DD-associations (“Known
357 significant”, n=244 genes) versus those with minimal prior evidence DD-association (“New
358 significant”, n=25 genes) for different variant types (d) and inheritance types (e). For all plots,
359 high-confidence predicted loss-of-function (pLoF) variants are depicted in red, missense
360 variants with MPC ≥ 2 (misB) in orange, and missense variants with $1 \leq \text{MPC} < 2$ (misA) in
361 yellow. Similarly, signal from *de novo* variants are depicted in black, case/control in dark gray,
362 and inherited (e.g., transmitted versus nontransmitted) in light gray.

363
364 For these 25 genes with limited evidence of association in DDG2P, we further classified
365 them as having high, medium, or low likelihood of being true DD-associated genes based on
366 manual curation of additional gene-phenotype databases (e.g., OMIM⁴¹, GenCC⁴², PanelApp⁴³),
367 constraint scores^{26,44,45}, literature searches, and evaluation of the Bayes Factors from TADA
368 (see **Supplemental Note** for more details about classification; **Supplementary Figures 14-15**).
369 Eleven of these 25 genes had strong evidence of being *bona fide* DD-associated genes,
370 primarily due to being considered by other clinical centers to have strong enough evidence to
371 use for diagnosis in closely related phenotypes (e.g., *SYNCRIP*) or recent publications (e.g.,
372 *FOSL2*⁴⁶). Thirteen of the genes were considered to have medium evidence of DD association;
373 the majority of these genes had strong statistical evidence but no additional evidence in the
374 literature. We note that 77% of these genes are highly constrained against loss-of-function
375 variation in the general population (10 of 13 genes are LOEUF < 0.35), a feature that is greatly
376 upweighted in TADA. Finally, one gene, *GLYR1*, had weaker evidence for true DD-association
377 given that two of the three *de novo* pLoF variants, which were the primary driver of association,
378 were found in patients that could be considered diagnosed by other variants. These findings
379 diminish the strength of association, but as a small subset of DDD cases have dual molecular
380 diagnosis², we cannot fully rule out this gene as a potential DD-associated gene.

381 For the eleven genes with a high likelihood of being true DD genes (*BAP1*, *FOSL2*,
382 *KCNT2*, *PSMC3*, *RFX7*, *SEMA6B*, *SRSF1*, *SYNCRIP*, *VCP*, *ZBTB7A*, *ZFHX3*), we investigated
383 how many of individuals harboring damaging variants in these genes were considered
384 diagnosed with other variants (see **Supplemental Note** for details). When using a Bayes Factor
385 threshold of >1.3 to define variant carriers, we found that only 14.1% (12 of 85) of individuals
386 with one of these variants has some other diagnosis, which was significantly lower than the
387 overall diagnostic rate (27.5%; Fisher’s exact $p = 4.8 \times 10^{-3}$). Of note, we recently estimated⁴⁷ that
388 a similar percentage (~12.5%) of DDD cases diagnosed with a *de novo* variant could have a

389 second *de novo* diagnosis, with most of that burden outside of the known genes. These results
390 emphasize that these eleven genes are more likely to be *bona fide* DD-associated genes.

391 Surprisingly, we found that a known biallelic DD-associated gene, *SLC39A8*, was
392 significant in the TADA analysis ($p = 1.14 \times 10^{-9}$) with contributions from all three inheritance
393 classes (i.e., *de novo*, case/control, and inherited). We reported a similar set of findings for
394 *KDM5B* previously⁴⁸, which also had signal from *de novo*, biallelic, and overtransmission of
395 pLoFs. *SLC39A8* shows some depletion of both pLoF and missense variants in population
396 cohorts (gnomAD²⁶ v2: pLoF observed / expected = 0.18 and missense observed / expected =
397 0.8), but does not have particularly strong constraint scores (pLI = 0.67 and LOEUF = 0.47),
398 meaning that the priors in TADA would not be large. Focusing on the contribution from pLoF
399 variants to the association signal for *SLC39A8*, there were three individuals with a *de novo* pLoF
400 in *SLC39A8*, four non-trio individuals that contributed to the case/control analysis (with zero
401 found in controls), and eight instances where a parent transmitted a pLoF variant (as part of an
402 8:0 transmitted:nontransmitted signal). Across these fifteen individuals, only one carried another
403 putatively diagnostic variant – one of the individuals with a *de novo* pLoF variant in *SLC39A8*
404 also harbored a *de novo* missense variant in *DDX6*, a known DD-associated gene. For those
405 individuals in the DDD cohort (all twelve in the case/control and inherited analysis), we searched
406 for additional rare coding variants in *SLC39A8* that could contribute to a recessive diagnosis. As
407 both missense and pLoF variants have been reported as pathogenic or likely pathogenic in
408 ClinVar⁴⁹ for *SLC39A8*, we included both in our search, but found no additional rare variants in
409 the twelve patients we queried.

410 Additionally, we noted a striking 24:3 transmitted:nontransmitted signal for missense
411 variants with moderate MPC scores³⁹ ($1 \leq \text{MPC} < 2$) in *SLC39A8*. Three of these 24 individuals
412 had a partial or full diagnosis from other variants, but the rest were considered undiagnosed
413 ($n=21$; 87.5%). As above, we searched for other rare coding variants in *SLC39A8* and found a
414 second missense variant inherited from the other parent for only one individual, whose
415 phenotypes were consistent with the recessive *SLC39A8*-Congenital Disorder of
416 Glycosylation⁵⁰. The remaining individuals have no other convincing diagnostic candidate or
417 other rare coding variants in *SLC39A8*. Based on these analyses, we consider *SLC39A8* a
418 promising candidate DD-associated gene that can operate via both monoallelic and biallelic
419 mechanisms, like the previously reported *KDM5B*.

420

421 Discussion

422 In this work, we demonstrated a significant contribution of rare, typically inherited,
423 damaging variants to the risk of severe developmental disorders (DD) by comparing both the
424 rare variant burden in DD cases to controls, as well as evaluating within-family overtransmission
425 of these variants from parents to their affected children. The majority of this rare variant burden
426 was found in genes intolerant of loss-of-function variants in reference population datasets (i.e.,
427 constrained genes)²⁶ and genes previously associated with DDs via monogenic forms of
428 inheritance, as has also been seen for other neurodevelopmental and psychiatric disorders<sup>11-
429 13,17,29</sup>. We estimate that rare pLoF variants in constrained genes, for example, account for 6-
430 8.5% of the population attributable risk in our cohort. While the burden of overtransmission was
431 stronger from affected parents, cohort-wide nearly all of the burden was transmitted from
432 unaffected parents (e.g., 92.5% of transmitted rare pLoFs and missense variants across all
433 genes are from unaffected parents). In a set of DD cases with unaffected parents, we found an
434 excess of thousands of rare pLoF and damaging missense variants spread across many genes
435 and concentrated outside the previously DD-associated genes, indicating that there are
436 additional DD risk loci to be identified. Finally, we applied the Transmission and De Novo
437 Association (TADA) framework¹³ to combine the evidence of association from *de novo* variants,
438 case/control analyses, and the overtransmission of variants within families, and identified 269
439 significant genes, of which 25 had limited to no prior evidence of DD-association.

440 When removing *de novo* variants, which are known to be large contributors to DD risk²⁴,
441 from our case/control analyses, we still found significant burdens of rare pLoF and, to a lesser
442 extent, damaging missense variants in constrained and DD-associated genes across all DD
443 cases (**Supplementary Figure 4**), even in those with a likely diagnostic *de novo* variant. In
444 recent work, we report that DD cases with a monogenic diagnosis have higher common,
445 polygenic risk than controls, but significantly less risk than undiagnosed cases⁹. However, this
446 increased polygenic risk was driven nearly entirely by affected parents in the diagnosed cases.
447 When repeating the case/control analyses for trios with a diagnostic *de novo* variant and
448 removing those with an affected parent (n=2,425 DD cases remaining), we found significant
449 burdens of rare pLoF and missense variants (**Supplementary Table 12**). Similarly, recent work
450 in DDD has shown via burden analysis that ~12.5% of probands who currently have a single
451 molecular diagnosis may also have an additional *de novo* variant (mostly outside of known
452 genes) contributing to their condition⁴⁷. These results show that rare, inherited variants may be
453 contributing both to DD risk and to phenotypic presentations for DD cases both with and without
454 a monogenic diagnosis.

455 The significant overtransmission of rare pLoF and damaging missense variants from
456 parents to their children with DDs could arise via multiple mechanisms, including skewed
457 transmission of deleterious variants and/or an overall excess of such variants in the parents
458 themselves. When directly testing the latter, we found that parents of DD cases—even those
459 apparently unaffected by DD-related phenotypes—were significantly different from ancestry-
460 matched controls in terms of their rare autosomal variant burden (**Fig 2**). The ORs were
461 attenuated compared to the DD cases, but were still significant for pLoF variants in constrained
462 and/or DD-associated genes (**Supplementary Figure 5**). While we did not see a significant
463 difference between unaffected mothers and unaffected fathers (**Supplementary Figure 7**), as
464 we might have predicted based on previous work on sex differences in reproductive success¹⁹,
465 we had incomplete power to detect modest differences. Beyond suggestive differences in the
466 ORs (e.g., in **Fig 3a** comparing male and female cases), we could not find any significant sex-
467 specific differences in rare variant burdens in this cohort, in line with the recent findings from a
468 smaller cohort of intellectual disability²⁹. Similarly, while we have reported a higher burden of *de*
469 *novo* variants in female cases previously^{24,51}, this excess was only found in well established DD-
470 associated genes with no significant differences in the *de novo* burden between male and
471 female cases in genes not associated with DDs or in undiagnosed cases²⁴.

472 Beyond diagnostic status and sex, we investigated other factors that could be associated
473 with differential rare variant burden within our cohort. While we found no differential burden for
474 DD cases with an environmental exposure, we found a relationship between genetic burden and
475 the number of family members with similar clinical phenotypes as in recent work on polygenic
476 burden⁹. Here, we observed stronger rare variant burdens in constrained genes (**Fig 3c**) as the
477 number of affected relatives increases, which is consistent with recent findings from Huang*,
478 Wigdor* et al. when comparing polygenic scores for traits related to DD-risk, such as
479 educational attainment^{9,37}. However, we did not see this same trend for DD-associated genes
480 (**Supplementary Figure 10**), in contrast to their work and that from Urpa and colleagues²⁹.

481 We estimated that there was an excess of ~4,000 rare pLoF and damaging missense
482 variants in 4,183 DD cases with unaffected parents and no diagnostic *de novo* variant, and that
483 only ~10% of this excess could be found within the known monoallelic DD-associated genes
484 (**Supplementary Figure 11**), which prompted us to search for additional DD risk genes. Given
485 our lack of significance for individual genes in a per-gene burden test and the knowledge that *de*
486 *novo* variants play a substantial role in DDs, we applied the TADA Bayesian framework to
487 combine association evidence across multiple variant classes (e.g., *de novo* and inherited),
488 following work from studies of autism¹³. Nearly all of the 269 significant genes from TADA were

489 previously tied to DDs either via our prior study on *de novo* variants²⁴ or the manually-curated
490 DDG2P²⁸ list. Of these significant genes, 25 had minimal evidence for prior association as of
491 July 2023 and eleven have additional evidence supporting their association with DD based on
492 recent publications or their addition to other DD-related gene lists. These 25 genes, however,
493 only represent ~1.5% of the excess of rare pLoF and missense variants reported above, again
494 reinforcing that there are additional DD-associated risk loci to be discovered.

495 In the TADA analysis, we found that the major driver of association was the *de novo*
496 variant contribution (**Fig 4b**). Indeed, ~80% of the significant genes in the TADA analysis were
497 significant in our prior study of *de novo* variants alone²⁴ and, of those that were not significant,
498 nearly all had suggestive evidence of association in the prior study (e.g., 20/25 with p-values <
499 0.001). For these genes with suggestive evidence previously, the inclusion of case/control and
500 inherited data provided enough additional statistical evidence to cross an exome-wide
501 significance threshold. In fact, the 25 TADA significant genes with minimal prior DD-association
502 evidence have a larger contribution from case/control or inherited analyses in the TADA
503 framework (**Fig 4d-e**; **Supplementary Table 11**) compared to the previously DD-associated
504 genes. For the eleven genes that were determined to have a high likelihood of being *bona fide*
505 DD-associated genes, we found that carriers of damaging variants in these genes were clinically
506 diagnosed at a significantly lower rate than the cohort overall (14% versus 27.5%, $p = 4.8 \times 10^{-3}$).
507 In some of the genes with mixed evidence of being *bona fide* DD risk genes (e.g., *ZNF644*), the
508 association signal seemed to be driven primarily by the genes' low LOEUF scores (indicating
509 severe selective constraint; **Supplementary Figure 15**), which are strongly upweighted in the
510 TADA framework (**Supplementary Table 13**). A deeper analysis of the phenotypic profiles of
511 individuals with damaging genetic variation in these genes would provide more confidence in
512 their association with DDs.

513 Beyond the limitations of sample size—which is most notable when the cohort is
514 subdivided by diagnostic status and parental affected status—another limitation of this study is
515 the inability to know which variants are truly having a large functional impact. We aimed to
516 reduce this limitation by using strict allele frequency thresholds and filtering only to LOFTEE
517 high-confidence pLoF variants and missense variants with some evidence of being deleterious
518 (e.g., CADD ≥ 20). However, we know that both rarity and *in silico* score deleteriousness
519 predictions are not sufficient to establish true variant impacts. For example, manual curation of
520 variants from the gnomAD database has shown that a large fraction of pLoF variants in
521 haploinsufficient genes associated with severe phenotypes have evidence that they are not true
522 loss-of-function variants^{52,53}. Generally, there is a need to better understand the incomplete

523 penetrance of DD-risk variants, and analyses like those presented here would be improved by
524 the creation of approaches to estimate penetrance of risk variants from population cohorts with
525 longitudinal health data. Finally, we did not consider combinations of rare variants or the
526 interaction between rare and common variants, but a recent paper by Urpa et al. found evidence
527 of additivity between rare and common variants when studying individuals with intellectual
528 disability²⁹. A more integrative model that could account for the contributions of rare variants,
529 polygenic risk, and environmental factors would further improve assessment of DD risk.

530 While this study has established a role for rare, inherited variants in DD risk, it will do
531 little to improve the diagnostic rate of patients with DD primarily because these risk-increasing
532 variants are often inherited from apparently unaffected parents. The majority of diagnostic
533 pipelines do not consider variants inherited from unaffected parents, even with increasing
534 evidence that incompletely penetrant variants can contribute both to diagnoses^{6,10} and to related
535 phenotypes²³. Diagnostic pipelines could be modified to allow for the consideration of these
536 lower penetrance variants, but such a change would need to balance the inclusion of these
537 potential risk variants with additional clinical curation time to evaluate the many other variants
538 that would also qualify for diagnostic consideration (e.g., ~19% of the trios have inherited at
539 least one rare pLoF variant in a constrained gene from an unaffected parent).

540 Potentially deeper phenotyping of the parents—including collecting data on their
541 educational history and phenotypes throughout life—would reveal sub-clinical phenotypes or
542 phenotypes that were stronger earlier in life that are not readily apparent in routine interactions
543 with clinicians when enrolling their children in studies such as DDD. Indeed, concurrent work in
544 birth cohorts (Malawsky et al. *in prep*) has shown that rare damaging variants in constrained
545 genes have a larger impact on cognitive ability early than later in life, implying that the parents
546 may have had learning difficulties in early childhood that subsequently improved. Considering
547 sub-clinical or earlier life phenotypes of parents could aid in identifying or prioritizing inherited
548 risk variation in DD cases, but would also necessitate additional genetic counseling
549 considerations, such as the impact on recurrence risk and the potential disclosure of these
550 incompletely penetrant variants to the parents.

551 There is also the possibility that parents appear to be able to tolerate apparently
552 damaging genetic variation due to other genetic, environmental, or stochastic factors that either
553 protect the parents or increase susceptibility in their children. For genetic factors, it has been
554 suggested that protective polygenic backgrounds (e.g., higher overall educational attainment
555 polygenic scores) or *cis*-regulatory variation that reduces the penetrance of the damaging
556 genetic variant⁵⁴ could contribute. While Kingdom et al.²³ reported evidence of educational

557 attainment polygenic scores protecting against the phenotypic impacts of carrying rare,
558 damaging genetic variants, we found no evidence of this in a study of 11,573 DD cases⁹. We
559 also found limited evidence for the protective effect of *cis*-regulatory variation in a set of 1700
560 trios where DD cases inherited rare, putatively damaging variants from unaffected parents⁵⁵.

561 Taken together, our findings indicate that most, if not all, DD cases in our cohort have
562 genetic contributions to risk from rare inherited variation, even those individuals with an
563 established diagnosis from a presumably large-effect *de novo* variant. We found stronger rare
564 variant burdens in undiagnosed cases and those with affected family members, as anticipated
565 given concurrent work on the contribution of polygenic scores⁹ to DDs and prior study of the
566 factors that impact diagnostic rates². However, there is still much work to be done to both
567 identify additional DD-associated genes and to understand how these rare variants are
568 increasing risk for DD, including how they may interact with polygenic risk and environmental
569 risk factors. Larger sample sizes, particularly those with access to longitudinal and
570 comprehensive phenotype or health record information for the parents, will improve our
571 understanding of the genetic architecture of DDs and will provide more insight into the
572 mechanisms of incomplete penetrance for rare, inherited damaging genetic variation.

573

574 **Acknowledgements**

575 We thank the families and their clinicians for their participation and engagement, and our
576 colleagues who assisted in the generation and processing of data. The DDD study presents
577 independent research commissioned by the Health Innovation Challenge Fund (grant number
578 HICF-1009-003). The full acknowledgements can be found at www.ddduk.org/access.html. We
579 additionally thank Rachel Hobson and Rosemary Kelsell for DDD project management, and the
580 Human Genetics Informatics (HGI) group at Sanger and Aleksejs Sazonovs for fruitful
581 discussions and support during quality control of the data. This study makes use of DECIPHER,
582 which is funded by the Wellcome Trust. This research was funded in part by Wellcome (grant
583 no. 220540/Z/20/A, “Wellcome Sanger Institute Quinquennial Review 2021–2026”). For the
584 purpose of open access, the authors have applied a CC-BY public copyright license to any
585 author accepted manuscript version arising from this submission.

586 **Author Contributions**

587 K.E.S. performed analyses and figure generation. K.E.S., V.K.C., E.J.G., P.D., E.M.W., S.J.L.,
588 T.S., R.Y.E., and G.G. were involved with data generation and quality control. V.K.C., J.M.F.,

589 D.S.M, S.J.L., and P.C. contributed to code, methods, or additional data. The DDD study is
590 supervised by C.F.W., H.C.M., H.V.F., and M.E.H. M.E.H. supervised this study. The primary
591 writing was completed by K.E.S. with input from V.K.C., C.F.W., H.C.M., and M.E.H. All authors
592 approved the final manuscript.

593 **Competing interests**

594 K.E.S. has received support from Microsoft for work related to rare disease diagnostics. E.J.G.
595 is an employee of and holds shares in Insmad Incorporated. M.E.H. is a co-founder of,
596 consultant to and holds shares in Congenica, a genetics diagnostic company. The remaining
597 authors declare no competing interests.

598 **Data Availability**

599 Sequence and variant-level data and phenotype data from the DDD study data are available on
600 the European Genome-phenome Archive (EGA; <https://www.ebi.ac.uk/ega/>) with study ID
601 EGAS00001000775. Exome sequencing for the INTERVAL cohort is also available on EGA with
602 study ID EGAD00001002221. Previously described databases were from the Genome
603 Aggregation Database (gnomAD v2.1.1; <https://gnomad.broadinstitute.org/downloads>) and the
604 Developmental Disorders Genotype-Phenotype Database (DDG2P;
605 <https://www.ebi.ac.uk/gene2phenotype/downloads>).

606 **Code Availability**

607 Analyses were primarily performed with Python and R (version 4.2.0). The R code used to
608 generate the TADA results are available at: https://github.com/talkowski-lab/TADA_2022

609 **References**

- 610 1. Clark, M. M. *et al.* Meta-analysis of the diagnostic and clinical utility of genome and exome
611 sequencing and chromosomal microarray in children with suspected genetic diseases. *NPJ*
612 *Genom Med* **3**, 16 (2018).
- 613 2. Wright, C. F. *et al.* Genomic Diagnosis of Rare Pediatric Disease in the United Kingdom
614 and Ireland. *N. Engl. J. Med.* **388**, 1559–1571 (2023).
- 615 3. Girirajan, S. & Eichler, E. E. Phenotypic variability and genetic susceptibility to genomic
616 disorders. *Hum. Mol. Genet.* **19**, R176–87 (2010).
- 617 4. Kirov, G. *et al.* The penetrance of copy number variations for schizophrenia and
618 developmental delay. *Biol. Psychiatry* **75**, 378–385 (2014).
- 619 5. Männik, K. *et al.* Copy number variations and cognitive phenotypes in unselected
620 populations. *JAMA* **313**, 2044–2054 (2015).
- 621 6. de Masfrand, S. *et al.* Penetrance, variable expressivity and monogenic

- 622 neurodevelopmental disorders. *Eur. J. Med. Genet.* **69**, 104932 (2024).
- 623 7. Niemi, M. E. K. *et al.* Common genetic variants contribute to risk of rare severe
624 neurodevelopmental disorders. *Nature* **562**, 268–271 (2018).
- 625 8. Kurki, M. I. *et al.* Contribution of rare and common variants to intellectual disability in a sub-
626 isolate of Northern Finland. *Nat. Commun.* **10**, 410 (2019).
- 627 9. Huang, Q. Q. *et al.* Dissecting the contribution of common variants to risk of rare
628 neurodevelopmental conditions. *bioRxiv* (2024) doi:10.1101/2024.03.05.24303772.
- 629 10. Aitken, S. *et al.* Finding Diagnostically Useful Patterns in Quantitative Phenotypic Data. *Am.*
630 *J. Hum. Genet.* **105**, 933–946 (2019).
- 631 11. Singh, T. *et al.* Rare coding variants in ten genes confer substantial risk for schizophrenia.
632 *Nature* **604**, 509–516 (2022).
- 633 12. Palmer, D. S. *et al.* Exome sequencing in bipolar disorder identifies AKAP11 as a risk gene
634 shared with schizophrenia. *Nat. Genet.* **54**, 541–547 (2022).
- 635 13. Fu, J. M. *et al.* Rare coding variation provides insight into the genetic architecture and
636 phenotypic context of autism. *Nat. Genet.* **54**, 1320–1331 (2022).
- 637 14. Wilfert, A. B. *et al.* Recent ultra-rare inherited variants implicate new autism candidate risk
638 genes. *Nat. Genet.* **53**, 1125–1134 (2021).
- 639 15. Zhou, X. *et al.* Integrating de novo and inherited variants in 42,607 autism cases identifies
640 mutations in new moderate-risk genes. *Nat. Genet.* **54**, 1305–1319 (2022).
- 641 16. Epi25 Collaborative. Electronic address: s.berkovic@unimelb.edu.au & Epi25 Collaborative.
642 Ultra-Rare Genetic Variation in the Epilepsies: A Whole-Exome Sequencing Study of
643 17,606 Individuals. *Am. J. Hum. Genet.* **105**, 267–282 (2019).
- 644 17. Epi25 Collaborative, Chen, S., Neale, B. M. & Berkovic, S. F. Shared and distinct ultra-rare
645 genetic risk for diverse epilepsies: A whole-exome sequencing study of 54,423 individuals
646 across multiple genetic ancestries. *medRxiv* (2023) doi:10.1101/2023.02.22.23286310.
- 647 18. Ganna, A. *et al.* Ultra-rare disruptive and damaging mutations influence educational
648 attainment in the general population. *Nat. Neurosci.* **19**, 1563–1565 (2016).
- 649 19. Gardner, E. J. *et al.* Reduced reproductive success is associated with selective constraint
650 on human genes. *Nature* **603**, 858–863 (2022).
- 651 20. Chen, C.-Y. *et al.* The impact of rare protein coding genetic variation on adult cognitive
652 function. *Nat. Genet.* **55**, 927–938 (2023).
- 653 21. Rolland, T. *et al.* Phenotypic effects of genetic variants associated with autism. *Nat. Med.*
654 **29**, 1671–1680 (2023).
- 655 22. Fenner, E. *et al.* Rare coding variants in schizophrenia-associated genes affect generalised
656 cognition in the UK Biobank. *bioRxiv* (2023) doi:10.1101/2023.08.14.23294074.
- 657 23. Kingdom, R., Beaumont, R. N., Wood, A. R., Weedon, M. N. & Wright, C. F. Genetic
658 modifiers of rare variants in monogenic developmental disorder loci. *Nat. Genet.* **56**, 861–
659 868 (2024).
- 660 24. Kaplanis, J. *et al.* Evidence for 28 genetic disorders discovered by combining healthcare
661 and research data. *Nature* **586**, 757–762 (2020).
- 662 25. He, X. *et al.* Integrated model of de novo and inherited genetic variants yields greater
663 power to identify risk genes. *PLoS Genet.* **9**, e1003671 (2013).
- 664 26. Karczewski, K. J. *et al.* The mutational constraint spectrum quantified from variation in
665 141,456 humans. *Nature* **581**, 434–443 (2020).
- 666 27. Rentzsch, P., Witten, D., Cooper, G. M., Shendure, J. & Kircher, M. CADD: predicting the
667 deleteriousness of variants throughout the human genome. *Nucleic Acids Res.* **47**, D886–
668 D894 (2019).
- 669 28. Thormann, A. *et al.* Flexible and scalable diagnostic filtering of genomic variants using G2P
670 with Ensembl VEP. *Nat. Commun.* **10**, 2373 (2019).
- 671 29. Urpa, L. *et al.* Evidence for the additivity of rare and common variant burden throughout the
672 spectrum of intellectual disability. *Eur. J. Hum. Genet.* **32**, 576–583 (2024).

- 673 30. Jacquemont, S. *et al.* A higher mutational burden in females supports a 'female protective
674 model' in neurodevelopmental disorders. *Am. J. Hum. Genet.* **94**, 415–425 (2014).
- 675 31. Wigdor, E. M. *et al.* The female protective effect against autism spectrum disorder. *Cell*
676 *Genom* **2**, 100134 (2022).
- 677 32. Deciphering Developmental Disorders Study. Prevalence and architecture of de novo
678 mutations in developmental disorders. *Nature* **542**, 433–438 (2017).
- 679 33. Antaki, D. *et al.* A phenotypic spectrum of autism is attributable to the combined effects of
680 rare variants, polygenic risk and sex. *Nat. Genet.* **54**, 1284–1292 (2022).
- 681 34. Blencowe, H. *et al.* Preterm birth-associated neurodevelopmental impairment estimates at
682 regional and global levels for 2010. *Pediatr. Res.* **74 Suppl 1**, 17–34 (2013).
- 683 35. Coste, J. *et al.* Risk of early neurodevelopmental disorders associated with in utero
684 exposure to valproate and other antiepileptic drugs: a nationwide cohort study in France.
685 *Sci. Rep.* **10**, 17362 (2020).
- 686 36. Deciphering Developmental Disorders Study. Prevalence and architecture of de novo
687 mutations in developmental disorders. *Nature* **542**, 433–438 (2017).
- 688 37. Lee, J. J. *et al.* Gene discovery and polygenic prediction from a genome-wide association
689 study of educational attainment in 1.1 million individuals. *Nat. Genet.* **50**, 1112–1121
690 (2018).
- 691 38. Agarwal, I., Fuller, Z. L., Myers, S. R. & Przeworski, M. Relating pathogenic loss-of-function
692 mutations in humans to their evolutionary fitness costs. *Elife* **12**, (2023).
- 693 39. Samocha, K. E. *et al.* Regional missense constraint improves variant deleteriousness
694 prediction. *bioRxiv* 148353 (2017) doi:10.1101/148353.
- 695 40. Satterstrom, F. K. *et al.* Large-Scale Exome Sequencing Study Implicates Both
696 Developmental and Functional Changes in the Neurobiology of Autism. *Cell* **180**, 568–
697 584.e23 (2020).
- 698 41. Home - OMIM. <https://omim.org/>.
- 699 42. DiStefano, M. T. *et al.* The Gene Curation Coalition: A global effort to harmonize gene-
700 disease evidence resources. *Genet. Med.* **24**, 1732–1742 (2022).
- 701 43. Martin, A. R. *et al.* PanelApp crowdsources expert knowledge to establish consensus
702 diagnostic gene panels. *Nat. Genet.* **51**, 1560–1565 (2019).
- 703 44. Weghorn, D. *et al.* Applicability of the Mutation-Selection Balance Model to Population
704 Genetics of Heterozygous Protein-Truncating Variants in Humans. *Mol. Biol. Evol.* **36**,
705 1701–1710 (2019).
- 706 45. Collins, R. L. *et al.* A cross-disorder dosage sensitivity map of the human genome. *Cell*
707 **185**, 3041–3055.e25 (2022).
- 708 46. Cospain, A. *et al.* FOSL2 truncating variants in the last exon cause a neurodevelopmental
709 disorder with scalp and enamel defects. *Genet. Med.* **24**, 2475–2486 (2022).
- 710 47. Chundru, V. K. *et al.* Federated analysis of the contribution of recessive coding variants to
711 29,745 developmental disorder patients from diverse populations. *bioRxiv* (2023)
712 doi:10.1101/2023.07.24.23293070.
- 713 48. Martin, H. C. *et al.* Quantifying the contribution of recessive coding variation to
714 developmental disorders. *Science* **362**, 1161–1164 (2018).
- 715 49. Landrum, M. J. *et al.* ClinVar: improvements to accessing data. *Nucleic Acids Res.* **48**,
716 D835–D844 (2020).
- 717 50. Park, J. H. SLC39A8-CDG. in *GeneReviews® [Internet]* (University of Washington, Seattle,
718 2023).
- 719 51. Deciphering Developmental Disorders Study. Prevalence and architecture of de novo
720 mutations in developmental disorders. *Nature* **542**, 433–438 (2017).
- 721 52. Singer-Berk, M. *et al.* Advanced variant classification framework reduces the false positive
722 rate of predicted loss-of-function variants in population sequencing data. *Am. J. Hum.*
723 *Genet.* **110**, 1496–1508 (2023).

- 724 53. Gudmundsson, S. *et al.* Exploring penetrance of clinically relevant variants in over 800,000
725 humans from the Genome Aggregation Database. *bioRxiv* (2024)
726 doi:10.1101/2024.06.12.593113.
- 727 54. Castel, S. E. *et al.* Modified penetrance of coding variants by cis-regulatory variation
728 contributes to disease risk. *Nat. Genet.* **50**, 1327–1334 (2018).
- 729 55. Wigdor, E. M. *et al.* Investigating the role of common cis-regulatory variants in modifying
730 penetrance of putatively damaging, inherited variants in severe neurodevelopmental
731 disorders. *Sci. Rep.* **14**, 8708 (2024).
- 732 56. Li, H. & Durbin, R. Fast and accurate short read alignment with Burrows-Wheeler
733 transform. *Bioinformatics* **25**, 1754–1760 (2009).
- 734 57. Li, H. Aligning sequence reads, clone sequences and assembly contigs with BWA-MEM.
735 (2013) doi:10.48550/ARXIV.1303.3997.
- 736 58. Poplin, R. *et al.* Scaling accurate genetic variant discovery to tens of thousands of samples.
737 *bioRxiv* 201178 (2018) doi:10.1101/201178.
- 738 59. Moore, C. *et al.* The INTERVAL trial to determine whether intervals between blood
739 donations can be safely and acceptably decreased to optimise blood supply: study protocol
740 for a randomised controlled trial. *Trials* **15**, 363 (2014).
- 741 60. Di Angelantonio, E. *et al.* Efficiency and safety of varying the frequency of whole blood
742 donation (INTERVAL): a randomised trial of 45 000 donors. *Lancet* **390**, 2360–2371 (2017).
- 743 61. Sifrim, A. *et al.* Distinct genetic architectures for syndromic and nonsyndromic congenital
744 heart defects identified by exome sequencing. *Nat. Genet.* **48**, 1060–1065 (2016).
- 745 62. Singh, T. *et al.* Rare loss-of-function variants in SETD1A are associated with schizophrenia
746 and developmental disorders. *Nat. Neurosci.* **19**, 571–577 (2016).
- 747 63. Danecek, P. *et al.* Twelve years of SAMtools and BCFtools. *Gigascience* **10**, (2021).
- 748 64. McLaren, W. *et al.* The Ensembl Variant Effect Predictor. *Genome Biol.* **17**, 122 (2016).
- 749 65. Manichaikul, A. *et al.* Robust relationship inference in genome-wide association studies.
750 *Bioinformatics* **26**, 2867–2873 (2010).
- 751 66. Price, A. L. *et al.* Long-range LD can confound genome scans in admixed populations. *Am.*
752 *J. Hum. Genet.* **83**, 132–5; author reply 135–9 (2008).
- 753 67. 1000 Genomes Project Consortium *et al.* A global reference for human genetic variation.
754 *Nature* **526**, 68–74 (2015).
- 755 68. Patterson, N., Price, A. L. & Reich, D. Population structure and eigenanalysis. *PLoS Genet.*
756 **2**, e190 (2006).
- 757 69. Price, A. L. *et al.* Principal components analysis corrects for stratification in genome-wide
758 association studies. *Nat. Genet.* **38**, 904–909 (2006).
- 759 70. Wright, C. F. *et al.* Making new genetic diagnoses with old data: iterative reanalysis and
760 reporting from genome-wide data in 1,133 families with developmental disorders. *Genet.*
761 *Med.* **20**, 1216–1223 (2018).
- 762
- 763 Malawsky D. S., Musa M. K., Danacek P., Wootton O., Wade E., Huang W., Huang Q., Arden
764 R., Lindsay S., Hurler M. E., Martin H. C. The differential effects of common and rare genetic
765 variants on cognitive performance across development. *In preparation*.

766 **Methods**

767 **Samples included in analyses**

768 *Deciphering Developmental Disorders (DDD)*

769 Patients with severe, undiagnosed developmental disorders were recruited from 24 regional
770 genetics services within the United Kingdom National Health Service and the Republic of Ireland
771 between 2011 and 2015. Families gave informed consent to participate, and the study was
772 approved by the UK Research Ethics Committee (10/H0305/83 granted by the Cambridge
773 South Research Ethics Committee, and GEN/284/12 granted by the Republic of Ireland
774 Research Ethics Committee). The inclusion criteria included neurodevelopmental conditions,
775 congenital, growth or behavioral abnormalities, and dysmorphic features. Additional details on
776 sample collection, exome sequencing, alignment, variant calling (inherited and *de novo*) and
777 variant annotation have been described previously^{24,51}. In brief, exome capture was carried out
778 with either Agilent SureSelect Human All Exon V3 or V5 baits. Reads were aligned to the
779 GRCh37 1000 Genomes Project phase 2 reference (hs37d5) using BWA aln and BWA
780 mem^{56,57}. Variants were called using GATK's HaplotypeCaller, CombineGVCFs, and
781 GenotypeGVCFs (GATK version 3.5.0)⁵⁸, and then restricted to merged bait regions from the
782 two capture kits plus 100 base pairs of padding on either side.

783
784 After removing samples that had withdrawn consent for research, these analyses involve 13,452
785 individuals with developmental disorders: 9,856 individuals with complete trios from 9,305
786 families, and 3,596 non-trio individuals. *De novo* and inherited variants from a subset of these
787 individuals have been published previously^{24,48}.

788 *Controls from the INTERVAL study*

789 The INTERVAL study⁵⁹ was a randomized controlled trial of the safety and efficacy of varying
790 the duration between blood donations⁶⁰. As part of this work, 50,000 presumed healthy adults
791 (18 years or older) were consented and recruited from NHS Blood and Transplant blood
792 donation centers across England. DNA extraction and genotyping was funded by the National
793 Institute of Health Research (NIHR), the NIHR BioResource (<http://bioresource.nihr.ac.uk/>) and
794 the NIHR Cambridge Biomedical Research Centre (www.cambridge-brc.org.uk). The academic
795 coordinating center for INTERVAL was supported by core funding from: NIHR Blood and
796 Transplant Research Unit in Donor Health and Genomics, UK Medical Research Council
797 (G0800270), British Heart Foundation (SP/09/002) and NIHR Research Cambridge Biomedical
798 Research Centre. A complete list of the investigators and contributors to the INTERVAL trial is
799 provided in Moore et al.⁵⁹ and at [www.intervalstudy.org.uk/about-the-study/whos-](http://www.intervalstudy.org.uk/about-the-study/whos-involved/interval-contributors/)
800 [involved/interval-contributors/](http://www.intervalstudy.org.uk/about-the-study/whos-involved/interval-contributors/).

801
802 For a subset of the INTERVAL cohort, exome sequencing was performed as described
803 previously^{61,62} using the Agilent SureSelect Human All Exon V5 baits. In this study, we had
804 access to exome sequencing data from 4,502 individuals. As detailed below, 3,943 of these

805 individuals were retained for analyses after QC and selecting for inferred northwestern
806 European genetic ancestry.

807 **Data quality control**

808 *Variant quality control*

809 We performed quality control on autosomal single nucleotide variants (SNVs) and
810 insertions/deletions (indels). We tested a range of values for both genotype-level (e.g., genotype
811 quality) and variant-level metrics (e.g., VQSLOD).

812
813 For SNVs, we selected our quality control filters by evaluating (1) the transmission rate of rare
814 synonymous variants from a parent to their child (allele count [AC] = 2, only seen in parent and
815 their child) and (2) sensitivity to retaining known *de novo* variants²⁴. The final filters for SNVs
816 were:

- 817 • VQSLOD ≥ -2
- 818 • Genotype quality (GQ) ≥ 20
- 819 • Depth (DP) ≥ 7
- 820 • p-value for sampling the observed allele balance under a binomial model, assuming an
821 allele balance of 0.5 for heterozygous sites $> 1 \times 10^{-3}$
- 822 • Fraction of non-missing genotypes passing genotype-level QC thresholds > 0.5

823
824 Using the above thresholds, our transmission rate of singleton synonymous variants was 0.500
825 (e.g., perfect balance of transmitted to nontransmitted variants) and our sensitivity to recovering
826 known *de novo* variants was 88%. Analyses were performed with bcftools⁶³.

827
828 For indels, we selected our quality control filters by evaluating (1) the transmission rate of rare
829 inframe variants in unconstrained (pLI < 0.9), non-monoallelic DD-associated genes from a
830 parent to their child, (2) the sensitivity to retaining known *de novo* variants, and (3) the
831 frameshift:nonsense ratio, which we expected to be 1-1.2. The final filters for indels were:

- 832 • VQSLOD ≥ -2
- 833 • GQ ≥ 25
- 834 • DP ≥ 10
- 835 • Allele balance (AB) > 0.3

836
837 Using the above thresholds, our transmission rate of rare inframe variants in unconstrained,
838 non-monoallelic DD-associated genes was 0.490 (not significantly different from the expected
839 0.5), our sensitivity to recover known *de novo* indels was 72%, and our frameshift:nonsense
840 ratio was 1.10. Finally, we removed indels found in the same gene and sample, which
841 represented ~4% of all indels with minor allele frequency (MAF) $< 1\%$. These indels were often
842 part of a complex mutational event that would require haplotype-aware annotations to resolve.

843 *Variants annotation and filtering*

844 Variants were annotated with VEP⁶⁴, including the LOFTEE plugin²⁶. We additionally annotated
845 all variants with CADD v1.4²⁷ and MPC³⁹.

846

847 Finally, variants in the joint VCF were filtered using the following criteria:

- 848 • gnomAD v2.1 raw allele frequency < 0.001
- 849 • Coding consequences based on VEP annotations in protein-coding genes
- 850 • On autosomes

851

852 Note that nearly all analyses in this work use a lower gnomAD allele frequency, namely $MAF < 1 \times 10^{-5}$, as well as a filter on dataset allele frequency. Additionally, we used the worst
853 consequence in protein-coding transcripts as the mutational consequence for variants.
854

855 *Sample relatedness*

856 KING⁶⁵ was run to determine relatedness between samples in this joint-called cohort. We used
857 common variants ($MAF > 1\%$) that passed the SNV filters listed above and, after applying those
858 filters, had low missingness ($< 5\%$). Related individuals were defined as those with a kinship
859 coefficient > 0.04419417 , which is the lower bound cut-off for third-degree relatives. A list of
860 unrelated parents ($n = 18,494$) and probands ($n = 10,613$) was created to maximize the number
861 of samples retained.

862 **Determining a set of individuals with inferred European genetic ancestry**

863 For analyses comparing cases to controls, we needed to identify a subset of individuals who
864 had similar inferred genetic ancestries. Given that both DDD and INTERVAL were primarily
865 collected in the United Kingdom, our largest genetic ancestry group for comparison was
866 individuals with inferred northwestern European genetic ancestry (e.g., matching ancestry
867 historically tied to the British Isles).

868

869 After splitting multiallelic variants, we selected common ($MAF > 1\%$) single nucleotide
870 polymorphisms (SNPs) that passed QC filters ($GQ \geq 20$ and $DP \geq 7$) and had $< 10\%$ genotype
871 missingness. Ambiguous SNPs and indels were removed as were variants in 24 long-range
872 linkage disequilibrium (LD) regions, such as the HLA⁶⁶. Overlapping SNPs from the 1000
873 Genomes Phase 3 individuals⁶⁷ were identified and filtered to those with $MAF > 1\%$ and
874 genotype missingness $> 10\%$. SNPs were then merged between our DDD/INTERVAL joint-call
875 and the 1000 Genomes, and LD-pruned ($r^2 < 0.2$), leaving 32,413 variants. Principal component
876 analysis (PCA) was performed on the 1000 Genomes samples using the smartpca function from
877 EIGENSOFT^{68,69}, with the DDD and INTERVAL samples projected onto the resulting PCs.
878 Further dimensionality reduction was done using UMAP on the first 20 PCs, and the individuals
879 of European genetic ancestry were defined as those overlapping with the labeled European
880 ancestry individuals from the 1000 Genomes Project.

881

882 We needed to generate PCs within the inferred European genetic ancestry subgroup to use as
883 covariate in the case/control regressions. To do this, we extracted variants from a set of
884 unrelated parents and controls as defined by KING⁶⁵ with inferred European genetic ancestry.
885 We performed similar variant filtering as above (e.g., $MAF > 1\%$, passing QC, not in long-range
886 LD regions) and additionally removed variants if they had $> 5\%$ missingness in any of three
887 groups: (1) parents sequenced using the V3 exome capture kit, (2) parents sequenced using the

888 V5 exome capture kit, or (3) controls. Samples that were outliers for differential missingness or
889 differential MAF were excluded. PCs were generated with smartpca. The remaining samples
890 (e.g., the DDD children) were projected onto these PCs (**Supplementary Figure 1**).

891 **Definitions of case subsets**

892 *Affected parents*

893 Parents were defined as potentially “affected” if clinicians listed HPO terms for them and/or
894 noted that they had similar phenotypes as their affected children. These analyses were only
895 done for complete parent-child trios. In total, 1,462 trios had at least one affected parent, of
896 which 1,246 were of inferred European genetic ancestry for use in case/control analyses and
897 1,306 were used for TDT analyses.

898 *Diagnosed with a de novo variant*

899 DD cases in complete parent-child trios were considered “diagnosed” with a *de novo* variant if
900 (1) a clinician had annotated a *de novo* variant as pathogenic or likely pathogenic, (2) they were
901 considered diagnosed with a *de novo* variant as part of an iterative analysis of the first ~1k
902 cases included DDD⁷⁰, and/or (3) they had a *de novo* loss-of-function variant in a monoallelic
903 DD-gene that had yet to be interpreted by a clinician. In total, 3,215 trios had a child with a *de*
904 *novo* diagnosis, of which 2,679 were of inferred European genetic ancestry for use in the
905 case/control analyses and 3,155 were used for TDT analyses.

906 *Unaffected parents with no de novo diagnosis*

907 These were trios that did not meet either criteria for having an affected parent or being
908 diagnosed with a *de novo* variant. In total, 4,183 trios of inferred European genetic ancestry
909 qualified for use in the case/control analyses and 5,124 were used for TDT analyses.

910 *Environmental exposures*

911 We used a list of 2,637 DD cases with environmental exposures as defined in Wright et al.².
912 Specifically, these DD cases were born prematurely (< 37 weeks gestation), had mothers with
913 diabetes, and/or were exposed to antiepileptic medications in utero. Of these, we focused only
914 on those with unaffected parents and no *de novo* diagnosis; for the case/control analysis, this
915 was 879 individuals, and for the TDT analysis it was 1,075 individuals.

916 *Affected family members*

917 We used a list of DD cases with affected family members as defined in Wright et al. and
918 Huang*, Wigdor* et al.^{2,9}. DD cases were split in 5 categories: (1) both parents are affected and
919 0 or more siblings are affected (n=87); (2) one parent is affected and at least one sibling is
920 affected (n=187); (3) one parent is affected and no siblings are affected (n=345); (4) neither
921 parent is affected but at least one sibling is affected (n=645); (5) a non-first degree family
922 member is affected (n=469). All numbers reported were for individuals of inferred European
923 genetic ancestry.

924 **Definition of gene sets**

925 *Constrained*

926 We defined constrained genes as those with a pLI (probability of being loss-of-function
927 intolerant) score ≥ 0.9 as defined in gnomAD v2.1²⁶ (n=2,699 autosomal genes).

928 *DD-associated*

929 We defined monoallelic DD-associated genes using DDG2P²⁸, downloaded on June 29, 2023.
930 Specifically, we selected genes with an allelic requirement of “monoallelic_autosomal” with
931 either “definitive” or “strong” for the confidence category (n=666 genes).

932 *Unconstrained not DD-associated*

933 Genes that had pLI < 0.9 and were not considered monoallelic DD-associated genes were
934 defined as unconstrained and not DD-associated (n=15,667 autosomal genes).

935 *Other gene sets evaluated*

936 Most analyses in the main text focused on all genes and the three gene lists described above.
937 However, we also tested (1) all unconstrained genes (pLI < 0.9 , n=15,911 autosomal genes); (2)
938 all genes that were not considered monoallelic DD-associated genes (n=17,944 autosomal
939 genes); (3) genes that were considered both constrained and monoallelic DD-associated genes
940 (n=422 autosomal genes); and (4) genes in the top decile of MOEUF (missense observed /
941 expected upper bound fraction, n=1,686 autosomal genes) from gnomAD v2.1²⁶.

942 **Case versus control regressions**

943 We included all DD cases of inferred European genetic ancestry in these analyses, including
944 those that were not in complete parent-child trios (n=10,644 cases versus 3,943 controls). We
945 focused on rare variants (gnomAD allele frequency $\leq 10^{-5}$ and allele count in the dataset < 7 ,
946 equivalent to an allele frequency $\sim 10^{-4}$) and, for each individual, determined the count of
947 alternative alleles, split by mutational consequence (e.g., loss-of-function, missense) and gene
948 set (e.g., constrained genes, known DD genes). For all tested mutation and gene set
949 combinations, we used a logistic regression that corrected for sex, the first 20 principal
950 components from the inferred European genetic ancestry group only analysis, and the number
951 of rare autosomal variants per person. The final correction has been used in recent
952 publications¹², and should be a conservative correction. Specifically, we ran:

$$953 \quad is.case \sim variant.count + sex + PC1 + PC2 \dots + PC20 + n_{rarevar}$$

954 where *is.case* is 0 for controls and 1 for cases, *variant.count* is the number of rare variants in a
955 given gene set, *sex* is the sex of the individual, *PC1* through *PC20* are the principal
956 components, and *n_{rarevar}* is the number of rare autosomal variants. Intercepts from these
957 regressions were transformed into odds ratios using the exponential function.

958

959 See **Supplemental Note** for more details about modifications to these regressions, including
960 removing the correction for the number of rare variants per person.

961 *Testing significance between two regressions*

962 To determine if the results of various regressions were different from each other (as in
963 **Supplementary Table 3**), a Wald test was performed to obtain Z-scores that were transformed
964 into p-values. Specifically,

965
$$Z = (b_1 - b_2) / \sqrt{(se_1^2 + se_2^2)}$$

966 where b_1 is the estimate and se_1 is the standard error from the logistic regression for the first
967 group, respectively, and b_2 is the estimate and se_2 is the standard error from the logistic
968 regression for the second group, respectively.

969 *Removing known de novo variants*

970 We repeated the regressions above after removing known *de novo* variants²⁴ from the trio case
971 counts (**Supplementary Figure 4**). We note that this is not a fair comparison, given that the
972 control individuals will also have a background rate of *de novo* variants, but since we do not
973 have parental information, we do not know which variants to remove.

974 **Transmission disequilibrium test (TDT)**

975 We included all DD cases, regardless of inferred genetic ancestry, that were in complete parent-
976 child trios. For families with multiple affected children, we randomly selected one child as the
977 representative trio for the family to avoid double counting, which resulted in 9,305 trios for
978 analysis. We focused on rare variants (gnomAD allele frequency $\leq 10^{-5}$), specifically transmitted
979 doubletons (AC=2 seen in a parent and their child) versus nontransmitted singletons (AC=1
980 seen only in a parent). The rate ratio reported was the number of transmitted variants to the
981 number of nontransmitted variants with the confidence intervals determined using the
982 `rateratio.test()` function in R. P-values were calculated using a χ^2 test.

983 *Testing significance between two TDT rate ratios*

984 To determine if the TDT results were different between two groups (as in **Supplementary Table**
985 **6**), we compared the transmitted to nontransmitted counts of each group in a 2x2 table and
986 performed a χ^2 test to obtain a p-value.

987 **Other regressions**

988 For all other regressions in this work, such as parents versus controls or male cases versus
989 female cases, we used rare variants as defined above (e.g., gnomAD allele frequency $\leq 10^{-5}$
990 and allele count in the dataset < 7) in individuals of inferred European genetic ancestry. These
991 were tested in a logistic regression that corrected for sex (except for sex-specific comparisons),
992 the first 20 principal components from the inferred European genetic ancestry group only
993 analysis, and the number of rare autosomal variants per person. We note that for the affected
994 family member analyses, we further restricted to only unrelated individuals of inferred European
995 ancestry to match similar work for polygenic scores⁹, but report that overall restricting to only
996 unrelated individuals has a minimal impact on the results (**Supplementary Figure 3**).

997 **Per gene burden testing**

998 For every gene, we tallied the number of individuals of inferred European genetic ancestry who
999 carried a rare (gnomAD allele frequency $\leq 10^{-5}$ and allele count in the dataset < 7) variant in the
1000 gene, split by mutational consequence. We then performed a Fisher's exact test to compare the
1001 rate of carriers in cases ($n=10,644$) versus controls ($n=3,943$) for pLoF variants, damaging
1002 missense (CADD ≥ 20) variants, pLoF and missense variants, and synonymous variants. We
1003 used an exome-wide significance threshold of 2.8×10^{-6} .

1004 **Estimating excess variants**

1005 To determine the excess number of variants per mutation consequence and gene list, we
1006 calculated the expected number of variants in cases by using the rate seen in controls and
1007 further corrected for the synonymous case versus control rate for the given gene list.
1008 Specifically, this was estimated as:

$$1009 \quad excess_{case} = nvar_{case} - \left(\frac{nvar_{control}}{n_{control}} \right) \times (n_{case}) \times (syn_{case/control\ rate})$$

1010 where $nvar_{case}$ is the number of variants in cases, $nvar_{control}$ is the number of variants in controls,
1011 n_{case} is the number of cases, $n_{control}$ is the number of controls, and $syn_{case/control\ rate}$ is the rate of
1012 synonymous variants in cases divided by the rate of synonymous variants in controls.

1013 **Population attributable risk**

1014 To estimate the population attributable risk (PAR), we used the following formula:

$$1015 \quad PAR = \frac{p * (RR - 1)}{p * (RR - 1) + 1}$$

1016 where p is the probability of inheriting a damaging rare variant from an unaffected parent and
1017 RR is the relative risk for DDs for those that inherited the given rare variants.

1018
1019 To estimate the RR , we used an estimated population prevalence of DDs of 1% and converted
1020 the odds ratio from the case/control regression of trios with unaffected parents and no
1021 diagnostic *de novo* variant for pLoF variants in constrained genes with the following formula:

$$1022 \quad RR = \frac{OR}{1 - p(DD | no\ inherited\ rare\ variants) + (p(DD | no\ inherited\ rare\ variants) * OR)}$$

1023
1024 To estimate p , we took the rate of controls who carry a rare pLoF variant in a constrained gene
1025 (~ 0.22) and used it in the following formula:

$$1026 \quad p = p(one\ parent\ carrier) * p(inheriting\ rare\ variant | one\ parent\ carrier) +$$
$$1027 \quad p(both\ parents\ carriers) * p(inheriting\ rare\ variant | both\ parents\ carriers)$$

1028 **Evaluating the s_{het} burden**

1029 In line with previous work¹⁹, we sought to determine a per person cumulative burden of rare
1030 variants by combining the s_{het} selection coefficients of each gene affected by these variants via
1031 the following equation (taken from Gardner et al):

1032

$$s_{het[i,v]} = 1 - \prod_g (1 - s_{het[i,v,g]})$$

1033 where $s_{het[i,v]}$ indicates individual i 's s_{het} burden for variant class v and $s_{het[i,v,g]}$ indicates the s_{het}
1034 score for gene g with a qualifying annotation for variant class v in individual i .

1035

1036 Here, qualifying variants were defined as:

- 1037 • gnomAD allele frequency $\leq 10^{-5}$ and allele count in the dataset < 7
- 1038 • pLoF: LOFTEE high-confidence & CADD ≥ 25
- 1039 • Missense: MPC ≥ 2 & CADD ≥ 25
- 1040 • Synonymous: no additional filters

1041

1042 Variants that fell into a gene without an s_{het} score were not included, and individuals with no
1043 qualifying variants were given an s_{het} burden score of 0. The specific variant filters were chosen
1044 to match what was done previously¹⁹. Additionally, compared to Gardner et al., we updated the
1045 selective coefficients scores to be those from Agarwal et al.³⁸ (called hs in their work, but s_{het}
1046 here for consistency with Gardner et al.).

1047

1048 We did two comparisons with these scores – within family and case versus control. For within
1049 family, we removed all known *de novo* variants²⁴ to ensure that we were comparing only
1050 inherited variants. These s_{het} burden scores were calculated for all parents and children included
1051 in the trios used for TDT analyses ($n=9,305$). We compared the s_{het} burden score in children to
1052 the scores seen in parents with a Wilcoxon rank sum test. Bootstrapping with 1000 replicates
1053 was used to determine the median difference in s_{het} burden scores as well as the 95%
1054 confidence intervals.

1055

1056 For the case versus control comparison, we included known *de novo* variants for the DD cases
1057 as we had no ability to remove such variants from the controls. We specifically focused on a set
1058 of 8,062 unrelated DD cases of inferred European genetic ancestry to compare to the 3,943
1059 controls. Here, we used a probit regression of case status by scaled s_{het} burden scores,
1060 corrected as above for sex, the first 20 principal components from the inferred European genetic
1061 ancestry group only analysis, and the number of rare autosomal variants per person.

1062 $is.case \sim scaled.s_{het}burden + sex + PC1 + PC2 \dots + PC20 + n_{rarevar}$

1063 In the regression, controls were given a weight of 1 and cases were given a weight of

1064

$$\frac{(1 - P) * K}{P * (1 - K)}$$

1065 where P is the fraction of cases in the regression and K is an estimate of the population
1066 prevalence (here, 1%). This regression was also repeated to compare only unrelated DD cases
1067 with a *de novo* diagnosis ($n=1,905$) to controls and unrelated, undiagnosed DD cases ($n=6,157$)
1068 to controls.

1069 **Determining variance explained on the liability scale**

1070 For both the s_{het} burden scores and the rare variant counts, we wanted to determine the
1071 variance explained on the liability scale. For the s_{het} burden scores, we used the estimate from
1072 the probit regression above and transformed it into a percent variance explained on the liability
1073 scale via the following equation:

$$1074 \frac{\beta^2}{1 + \beta^2}$$

1075 where β is the beta from the regression.

1076
1077 For the rare variant counts, we ran a probit regression with the same weights as mentioned
1078 above, replacing the scaled s_{het} burden scores with the total counts of rare pLoF and damaging
1079 missense variants across all genes.

1080 **Transmission and De Novo Association (TADA) test**

1081 TADA is a Bayesian framework that incorporates per-gene mutation rates, sample size, and a
1082 prior on the risk of a given variant in each gene to determine a Bayes Factor (BF) to measure
1083 the statistical evidence of association of each gene to the condition being tested. It has been
1084 used extensively to identify genes associated with autism^{13,40}. We used the TADA code from Fu
1085 et al. (https://github.com/talkowski-lab/TADA_2022) to analyze our data.

1086
1087 We used mutation rates from gnomAD v2.1 and recalculated the mutation rate expected for
1088 missense variants with $MPC \geq 2$ (“misB”) and $1 \leq MPC < 2$ (“misA”) by dividing the total
1089 missense mutation rate by the fraction of such variants possible in the gene. These missense
1090 categories matched those that were previously used¹³.

1091
1092 We additionally retrained the priors (or weights) used in TADA using the following data
1093 (displayed in **Supplementary Figure 16**):

- 1094 ● *De novo* analysis: *de novo* variants from 31,058 individuals with DD²⁴, which includes all
1095 DDD samples used in other analyses in this work
- 1096 ● Case versus control analysis: rare (gnomAD allele frequency $\leq 10^{-5}$ and allele count in
1097 the dataset < 7) variant counts from 2,790 non-trio DD cases and from 3,943 controls of
1098 inferred European genetic ancestry
- 1099 ● Inherited analysis: rare (gnomAD allele frequency $\leq 10^{-5}$ and allele count in the dataset $<$
1100 7) variants that were either transmitted from a parent to their child or not transmitted
1101 from parent to child in 9,305 trios

1102
1103 A comparison of the priors used in this analysis versus the Fu et al. paper is available in
1104 **Supplementary Table 13**, although we note that using the mutation rates and priors from the
1105 previous paper gives very similar results (**Supplementary Figure 17**). All results from the TADA
1106 analysis, including mutation rates, priors, Bayes Factors, and counts per gene are available in
1107 **Supplementary Table 10**.