

Estimating the undetected burden of infections and the likelihood of strain persistence of drug-resistant *Neisseria gonorrhoeae*

Kirstin I. Oliveira Roster^{1,2}, Minttu M. Rönn³, Heather Elder², Thomas L. Giff⁴, Kathleen A. Roosevelt², Joshua A. Salomon⁵, Katherine K. Hsu^{2,6}, Yonatan H. Grad^{1,*}

¹ Department of Immunology and Infectious Diseases, Harvard T.H. Chan School of Public Health, Boston MA

² Division of STD Prevention and HIV Surveillance, Massachusetts Department of Public Health, Boston, MA

³ Department of Global Health and Population, Harvard T. H. Chan School of Public Health, Boston, MA

⁴ Division of STD Prevention, Centers for Disease Control and Prevention, Atlanta, GA

⁵ Department of Health Policy, Stanford University School of Medicine, Stanford, CA

⁶ Section of Pediatric Infectious Diseases, Boston Medical Center, Boston, MA

* Correspondence: ygrad@hsph.harvard.edu

Abstract

Antimicrobial resistance (AMR) is a serious public health threat. *Neisseria gonorrhoeae* has developed resistance to all antibiotics recommended for treatment and reports of reduced susceptibility to ceftriaxone, the last-line treatment, are increasing. Since many asymptomatic infections remain undiagnosed and most diagnosed infections do not undergo antibiotic susceptibility testing, surveillance systems may underestimate the number of ceftriaxone non-susceptible infections. There is an urgent need for better interpretation and use of surveillance data to estimate the prevalence of resistance. In this modeling study, we simulated the spread of a new strain of ceftriaxone non-susceptible gonorrhea in a population of men who have sex with men as well as heterosexual men and women. We compared scenarios with varying strain characteristics and surveillance capacity. For each scenario, we estimated (i) the number of undetected infections by the time the non-susceptible strain was discovered and (ii) the likelihood of strain persistence in the absence of newly reported cases. Upon detection of one ceftriaxone non-susceptible isolate, the undetected disease burden was an estimated 5.4 infections with substantial uncertainty (0-18 infections, 95% uncertainty interval). In the absence of additional reports of ceftriaxone non-susceptible infections over the subsequent 180 days, the estimate declined to 2.5 infections with a narrower uncertainty interval (0-10 infections). The likelihood of ongoing transmission also declined from 66% (26-86%) at first detection to 2% (0-10%) after 180 days. Enhanced monitoring of the magnitude and trends of AMR is a key priority to reduce the burden of resistance and extend the useful lifespan of last-line antibiotics.

Word Count: 2964

1 Introduction

2
3 The urgent public health threat of antimicrobial resistance (AMR) demands new strategies
4 to slow and control its spread. An estimated 1.27 million people died from resistant
5 bacterial infections in 2019 globally (1). Especially concerning are rising rates of
6 resistance to last-line antibiotics (2) and resistance in pathogens with high incidence, such
7 as *Mycobacterium tuberculosis*, *Salmonella*, and *Neisseria gonorrhoeae* (3). *N.*
8 *gonorrhoeae* causes an estimated 82 million infections annually (4) and has developed
9 resistance to all antibiotics recommended for treatment (5). While novel therapeutics are
10 in development (6,7), reports of resistance to ceftriaxone, the last approved treatment,
11 are increasing (8–12), including in the United States (13).

12
13 Two cases of a *N. gonorrhoeae* strain with reduced susceptibility to ceftriaxone and
14 resistance or reduced susceptibility to all other approved anti-gonococcal antibiotics were
15 identified in Massachusetts in 2022 (14). After serendipitous discovery of the first case
16 through urine culture, the Massachusetts Department of Public Health (MDPH)
17 collaborated with the originating microbiology laboratory and the US Centers for Disease
18 Control and Prevention (CDC) to perform retrospective molecular testing of remnant
19 specimens from nucleic acid amplification tests (NAATs) conducted between January and
20 September 2022; a total of 54 remnant specimens were tested, leading to the discovery
21 of a second case from the same community health center from which the first non-
22 susceptible case was identified. The MDPH also issued a clinical alert (January 2023) to
23 encourage increased gonococcal culture for symptomatic patients across Massachusetts
24 (14,15). The expanded culture surveillance has yet to identify any additional ceftriaxone
25 non-susceptible cases.

26
27 However, many asymptomatic infections are undiagnosed (16–18) and the vast majority
28 of diagnosed gonococcal infections do not undergo antibiotic susceptibility testing (19).
29 Even after the clinical alert, culture isolates associated with only 5.5% of all NAAT-positive
30 gonococcal cases in Massachusetts were submitted to the MDPH (540 specimens from
31 9859 cases in the first year following clinical alert release) (20). Consequently,
32 surveillance systems may underestimate the number of ceftriaxone non-susceptible
33 cases. There is an urgent need for better interpretation and use of surveillance data to
34 estimate the unseen prevalence of resistance.

35
36 In this modeling study, we sought to understand how surveillance signals relate to the
37 true infection burden, including how much time must pass without detecting new cases of
38 the novel strain before being confident that there is no ongoing cryptic transmission. To
39 do so, we developed a mathematical model of gonorrhea transmission in Massachusetts
40 among men who have sex with men (MSM), men who have sex with men and women
41 (MSMW), men who have sex with women (MSW), and women who have sex with men
42 (WSM). We further split each group into two sexual activity classes with either high or low
43 partner change rates and calibrated mixing parameters to MDPH surveillance data. The
44 model accounted for the natural history of gonococcal infection, care seeking behavior,

45 and surveillance of antimicrobial resistance. We simulated the introduction of a
46 ceftriaxone non-susceptible case and measured the number of unreported infections and
47 the likelihood of cryptic transmission for different surveillance scenarios, including the
48 observed scenario in Massachusetts, in which no cases have been found since detection
49 of two ceftriaxone non-susceptible infections in 2022. As sensitivity analyses, we
50 examined scenarios in which we varied treatment failure rates of the non-susceptible
51 strain and rates of asymptomatic screening and antibiotic susceptibility testing.

52
53 This study provides a roadmap for situations where increased resistance to the last-line
54 antibiotic is observed globally and surveillance systems are tasked with tracking early
55 introductions and emergence of resistance locally. Improved interpretation of gonorrhea
56 surveillance data can help guide surveillance systems of AMR more broadly. Monitoring
57 population prevalence of antibiotic resistance is fundamental to ensure treatment
58 guidelines are compatible with the resistance profiles of circulating strains, to respond
59 quickly to rising levels of resistance, and to extend the clinically useful lifespan of last-line
60 antibiotics (3,19,21–23).

61
62

63 **Methods**

64
65 Transmission model. We developed a stochastic susceptible-infected-susceptible
66 compartmental model of gonorrhea transmission in Massachusetts (**Figure S1**). We
67 accounted for symptomatic and asymptomatic infections with either a ceftriaxone-
68 susceptible or non-susceptible strain of gonorrhea. In the context of this model, we
69 defined strains in terms of their antibiotic susceptibility patterns, distinguishing specifically
70 between those susceptible and non-susceptible to treatment with 500mg ceftriaxone. We
71 assumed that there were no infections with multiple strains of *N. gonorrhoeae*. The
72 population was stratified into eight subgroups based on gender identity, gender identity
73 of sex partners, and two sexual activity groups with either high or low partner change
74 rates.

75
76 Gonococcal infections were diagnosed in response to symptomatic care seeking or
77 asymptomatic screening. Resistance was monitored through antibiotic susceptibility
78 testing of a subset of gonorrhea-positive isolates, whereby not only the infection but also
79 the strain causing the infection was identified by the surveillance system. Rates of
80 asymptomatic screening (by gender, gender of sex partners, and sexual activity group)
81 and antibiotic susceptibility testing (by gender) were among the parameters fitted to
82 surveillance data in the main analysis (**Table S2**). In sensitivity analyses, we evaluated i)
83 rates of antibiotic susceptibility testing ranging from 1-40% of detected cases and ii)
84 screening frequency with up to two-fold increases (preserving the relative screening
85 intensity between groups).

86
87 We assumed that treatment of ceftriaxone non-susceptible infections results in treatment
88 failure in 80% of infections. In sensitivity analyses, we considered treatment failure rates

89 of 30-90%. This partial treatment failure is concordant with the two cases detected in
90 Massachusetts, since these were successfully treated with ceftriaxone, the first case with
91 500mg and the second case with 1g plus 1.2g azithromycin (14). We assumed that
92 identification of treatment failure (either through persistent symptoms or test of cure of
93 asymptomatic infections) would trigger antibiotic susceptibility testing, leading to the
94 detection of the non-susceptible infection, and treatment with an alternative curative
95 antibiotic. Asymptomatic cases that did were not followed up with a test of cure remained
96 infectious until natural recovery. Treatment of infections with the susceptible strain was
97 always successful.

98
99 *Model Calibration.* The model was calibrated to gonorrhea diagnosis rates by gender and
100 prevalence among MSM, MSW, and WSM using an Approximate Bayesian Computation
101 (ABC) rejection sampling approach with 1 million iterations (see **Table S1** for starting
102 conditions and **Table S3** for calibration targets). Prior distributions of model parameters
103 were defined using surveillance data from MDPH, where available, and values from the
104 literature otherwise (see **Table S2** for prior and posterior parameter distributions of fitted
105 parameters and **Table S1** for fixed parameters). Calibration was performed for the
106 ceftriaxone-susceptible strain only.

107
108 *Introduction of non-susceptible strain.* After calibration of the ceftriaxone-susceptible
109 strain dynamics, we introduced a single index case of the non-susceptible strain into one
110 of the eight population subgroups and ran 500 simulation iterations for each subgroup.
111 Sensitivity analyses were performed on the calibrated model. We iteratively filtered
112 simulations that were consistent with surveillance scenarios where detection of the first
113 case was followed by increasing periods (1-250 days) without reports of ceftriaxone-non-
114 susceptible infections. We examined scenarios where more than 1 case was detected
115 initially before detection ceased, from 2 detected cases, as was observed in
116 Massachusetts, up to 10 detected cases.

117
118 For each scenario, we calculated (1) the cumulative number of undetected infections with
119 the non-susceptible strain and (2) the likelihood of elimination of the non-susceptible
120 strain, defined as the proportion of simulations without new undetected infections.

121
122 Analyses were performed using python 3.9.13. All code is available at
123 <https://github.com/gradlab/iceberg>.

124
125

126 **Results**

127
128 *First discovery of the non-susceptible strain.* A diversity of transmission scenarios yielded
129 similar surveillance signals (**Figure 1**). Three example simulations (**Figure 1**) showcase
130 the wide range of possible trajectories underlying the detection of 2 cases of the
131 ceftriaxone non-susceptible strain, followed by a period without new reports of non-
132 susceptible infections. The strain may be eliminated shortly after detection of the second

133 case (**Figure 1A**) or it may persist in the population via continued transmission (**Figure**
134 **1B**). Detection of additional cases was associated either with strain persistence (**Figure**
135 **1B**) or strain elimination (**Figure 1C**).

136
137 The range of possible trajectories led to wide uncertainty intervals around initial estimates
138 of the number of unreported infections. Upon detection of the first non-susceptible case,
139 the total number of undetected non-susceptible infections was estimated to be 5.4
140 infections with a 95% uncertainty interval ranging from 0 to 18 infections (**Figure 2**). Over
141 time, additional detections of the new strain or the absence of new detections narrowed
142 the range of possible trajectories and thus increased confidence in estimates of the
143 number of undetected infections. In our simulations, after 6 months (180 days) without
144 any new detections of non-susceptible infections, the estimate of the cumulative number
145 of unreported infections was reduced to 2.5 with a narrower 95% uncertainty interval of
146 0-10 infections (**Figure 2**).

147
148 Increasing time without new detections of non-susceptible infections also raised the
149 likelihood that the strain had been eliminated. On the day the first non-susceptible case
150 was detected, the likelihood of elimination was only 34% (14-74%, 95% uncertainty
151 interval), meaning that the new strain continued causing new infections in 66% of
152 simulations (**Figure 3**). Each additional day without detection reduced the likelihood that
153 the non-susceptible strain still circulated in the population. After 180 days without
154 detection of ceftriaxone non-susceptible cases, the strain had been eliminated in 98% of
155 simulations (90-100%, 95% uncertainty interval).

156
157 Massachusetts scenario: detecting 2 non-susceptible infections. Considering the
158 scenario observed in Massachusetts in 2022, the number of unreported infections upon
159 detection of 2 non-susceptible infections was estimated to be 10.6 infections (2-28, 95%
160 uncertainty interval) (**Figure S2a**). In the absence of additional detections of ceftriaxone
161 non-susceptible infections over the subsequent 180 days, the estimate declined to 5.7
162 cumulative undetected infections (1-16, 95% uncertainty interval). The likelihood of strain
163 elimination increased as no new cases were detected, from 20% (7-53%, 95% uncertainty
164 interval) on day 0 to 98% (88-100%, 95% uncertainty interval) on day 180 (**Figure S2b**).

165
166 Comparing scenarios with varying numbers of initially detected cases. Expanding upon
167 the scenarios with 1 and 2 detections, we examined whether the impact of time without
168 detection depends on the number of cases initially detected. We considered simulations
169 with initial detections ranging from 1 to 10 cases, followed by periods without new reports
170 of non-susceptible infections, placing no restrictions on the time frame in which these
171 initial infections occurred. The cumulative number of infections varied primarily by the
172 number of initial detections (**Figure 4a**), whereas the average likelihood of strain
173 elimination varied primarily by the time since the last detected case (**Figure 4b**). When 1
174 case was discovered, it took 100 days to be 90% confident that the non-susceptible strain
175 had been eliminated, whereas when 10 cases had been reported, it took 150 days to
176 achieve 90% elimination likelihood (**Figure 4b**). Long time periods without new detected

177 cases became increasingly unlikely as more initial cases were detected, resulting in wider
178 uncertainty intervals around estimates of the undetected infection burden and the
179 likelihood of strain elimination (**Figure S3**).

180
181
182 Comparing strains with varying levels of resistance. Non-susceptible strains were
183 detected if a specimen was randomly sampled for antibiotic susceptibility testing or
184 through treatment failure. When a strain had a high treatment failure rate, infections were
185 less likely to be successfully treated and therefore more likely to be detected, due to either
186 persistent symptoms or test of cure. Higher treatment failure rates were therefore
187 associated with a lower number of unreported infections (**Figure S4**). Conversely, not
188 detecting any new cases of strains with a high treatment failure rate was more likely a
189 sign that there were indeed no new infections, resulting in higher confidence in strain
190 elimination. After 30 days without detecting new cases, a strain with a treatment failure
191 rate of 90% had been eliminated in 62% of simulations (36-90%, 95% uncertainty
192 interval), whereas a strain with a treatment failure rate of 30% had only a 47% chance of
193 being eliminated (24-79%, 95% uncertainty interval) (**Figure 5**).

194
195 Comparing varying surveillance intensities. We examined to what extent our estimates of
196 ceftriaxone non-susceptible infections depended on antibiotic susceptibility testing
197 coverage and screening frequency. Increasing levels of surveillance via increased
198 antibiotic susceptibility testing and asymptomatic screening both reduced the estimated
199 number of undetected infections, though the effect of increasing screening was stronger
200 (**Figure S5**). Doubling the baseline screening intensity (with fixed antibiotic susceptibility
201 testing of 10%) lowered the estimated undetected burden on the day of the first detection
202 from 5.1 (0-17, 95% uncertainty interval) to 4.3 infections (0-15, 95% uncertainty interval),
203 whereas doubling the rate of antibiotic susceptibility testing lowered the estimated
204 undetected infections to only 4.8 (0-16, 95% uncertainty interval) (**Figure S5**). Increased
205 surveillance also reduced the likelihood of ongoing transmission in the absence of
206 detection, again with a stronger effect of asymptomatic screening over antibiotic
207 susceptibility testing. Doubling screening frequency raised the likelihood of strain
208 elimination from 34% (17-66%) to 41% (21-77%), while doubling the antibiotic
209 susceptibility testing rate raised the likelihood to 35% (17-69%) (**Figure 6**).

210
211
212

213 **Discussion**

214
215 To help guide the surveillance of AMR, we estimated how many infections evade
216 detection when a new ceftriaxone non-susceptible strain of *N. gonorrhoeae* is first
217 detected, taking the reports of two multidrug non-susceptible infections in Massachusetts
218 as a case study. In our simulations, a wide range of disease scenarios generated similar
219 surveillance signals that were consistent with 2 detected cases followed by a period
220 without detection; these hidden dynamics ranged from rapid strain elimination to

221 persistence of the strain in the population. This diversity of outbreak trajectories
222 compatible with the same surveillance signal illustrates how difficult it can be to interpret
223 both days with and without detection and to anticipate whether newly detected strains of
224 concern will continue to spread in a given location.

225
226 We estimated that on the day a ceftriaxone non-susceptible strain was first discovered in
227 Massachusetts, the undetected burden was 5.4 infections and in the range of 0 to 18
228 cases. By the time two infections had been detected, an estimated 10.6 infections had
229 evaded detection, with a likely range of 2-28 infections. Transmission was ongoing in 66%
230 of simulations the day the first case was detected and declined to 2% after 180 days (six
231 months) without new reports of non-susceptible cases. In simulations with two detected
232 infections, 80% of simulations had ongoing transmission the day the second case was
233 detected, and the likelihood of strain persistence also declined to 2% after 180 days
234 without new reports of ceftriaxone non-susceptible infections.

235
236 The link between surveillance signals and the true disease dynamics was stronger for
237 highly resistant strains. When strains had a higher risk of treatment failure, the absence
238 of detection was more indicative of an underlying absence of transmission than for
239 intermediately resistant strains. This finding suggests that the phenotypic characteristics
240 of the novel strain should be considered in the interpretation of surveillance data.

241
242 The marginal improvement in confidence of elimination for each day without detecting a
243 new case decreased as more non-susceptible cases were reported. When only 1 case
244 had been detected, it took 100 days to be 90% confident that the strain had been
245 eliminated. But if 10 cases had initially been reported, the likelihood of strain elimination
246 after 100 days without detection was only 76%, and it would take 150 days without
247 detection to reach 90% confidence. This finding emphasizes the importance of
248 responding quickly to the first detected cases of a new strain of concern.

249
250 Increasing asymptomatic screening frequency reduced the estimated undetected
251 infection burden and thus increased surveillance accuracy. Greater screening coverage
252 also reduced the likelihood of ongoing transmission in the absence of detection, likely due
253 to the longer infectious period of asymptomatic infections which can produce new
254 transmission events even after a period without new detections of non-susceptible
255 infections.

256
257 Our findings rely on several modeling assumptions. We maintained many of the structural
258 elements in prior gonorrhea models (24–27) and added complexity only as necessary.
259 Many models of gonorrhea focus on a single subpopulation, such as men who have sex
260 with men (24,28). We modeled both heterosexual and homosexual contact networks
261 jointly, since ceftriaxone resistance has been observed in heterosexual men and women
262 (8), while gonorrhea prevalence is highest among MSM (29). However, we did not
263 explicitly account for other population heterogeneities such as age structure, geography,

264 or infection prevalence by anatomic site, since we did not have sufficiently confident
265 estimates of parameters required to construct such a model.

266

267 The rate at which gonorrhea infections are imported to Massachusetts (and globally) is
268 poorly understood. In this model, we measured outcomes for a single importation event,
269 a realistic assumption if importations of non-susceptible strains are sufficiently infrequent.
270 Estimates of the cumulative burden and likelihood of strain elimination will differ if multiple
271 independent importations occur or if non-susceptible infections are replenished before
272 the strain is eliminated. Given that reduced susceptibility to ceftriaxone has been reported
273 only 3 times in the US to date (13,14), it is probable that the two infections observed in
274 Massachusetts were linked. We assumed that importation may occur in any of our 8
275 subpopulations, since the relative contribution of different genders, genders of sex
276 partners, and sexual activity groups to strain importation has not yet been characterized.
277 Once more data become available, the simulations should be reweighted to account for
278 differences in importation frequency. We also note that while focused here on
279 importations of ceftriaxone non-susceptible strains, our results would also apply to *de*
280 *novo* mutations originating within the population (5).

281

282 With increasing global reports of non-susceptibility to ceftriaxone, the last remaining
283 antibiotic for empiric treatment of gonorrhea, challenges in treating gonococcal infections
284 are a serious public health threat. Scaling up surveillance of antimicrobial resistance in
285 gonorrhea is costly, given the challenges with culture-based surveillance, asymptomatic
286 infections, and contact tracing. To optimize the use of limited resources, we need tools to
287 help estimate the infection landscapes that could underlie the data from our surveillance
288 systems. The inferential approach reported here helps fill this need, both in interpreting
289 the data from Massachusetts and in establishing a platform for other settings.

290

291

292 **Acknowledgments**

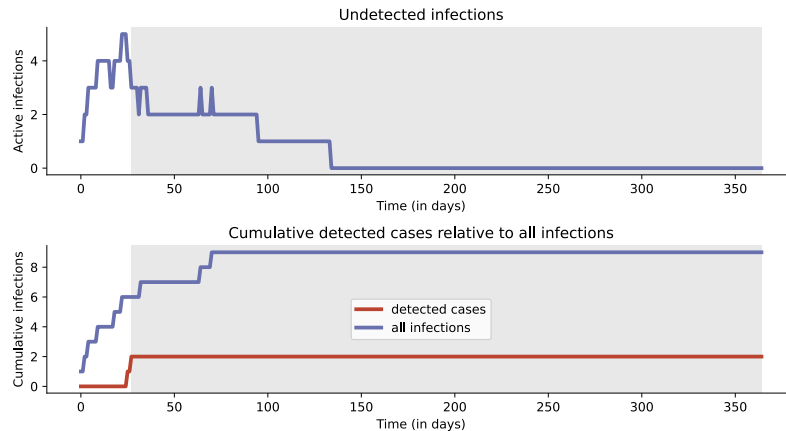
293

294 This project was funded by the U.S. Centers for Disease Control and Prevention, National
295 Center for HIV/AIDS, Viral Hepatitis, STD, and TB Prevention Epidemiologic and
296 Economic Modeling Agreement (NEEMA, #5 NU38PS004651). The findings and
297 conclusions in this report are those of the authors and do not necessarily represent the
298 official position of the CDC or other authors' affiliated institutions.

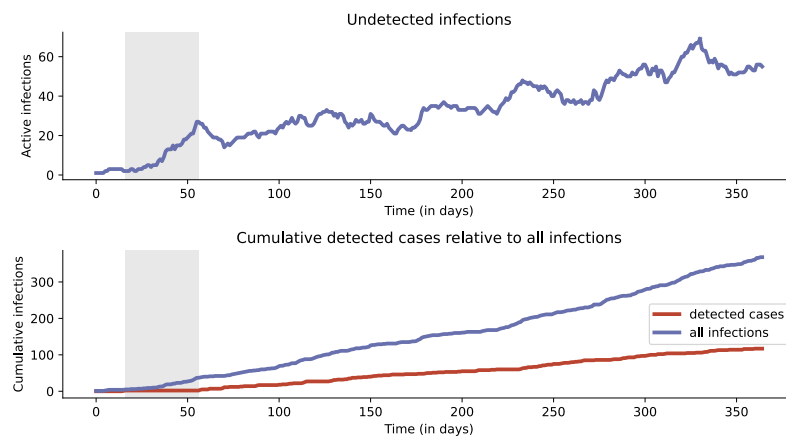
299

Figure 1. Sample simulation trajectories illustrating the relationship between observed and hidden dynamics. Active undetected infections (top row of the panel) and cumulative detected and total infections (bottom row of the panel) of the non-susceptible strain over time for three sample simulations. Shaded areas (gray) indicate time periods in which exactly two non-susceptible cases have been detected.

A) Rapid strain elimination.



B) Strain persistence.



C) Eventual strain elimination.

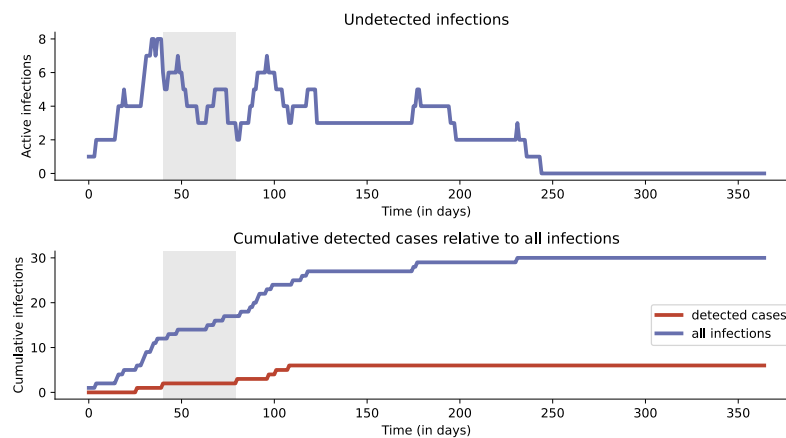


Figure 2. Updating the estimate of the undetected burden of non-susceptible infections with the passing of time without new reported non-susceptible infections after detection of one case of ceftriaxone non-susceptible strain. Estimate of the cumulative number of undetected non-susceptible infections as the number of days without observed non-susceptible cases increases. The solid line represents the average estimate and the shaded area highlights 95% uncertainty interval. Dashed lines highlight values at 0, 60, and 180 days without detection.

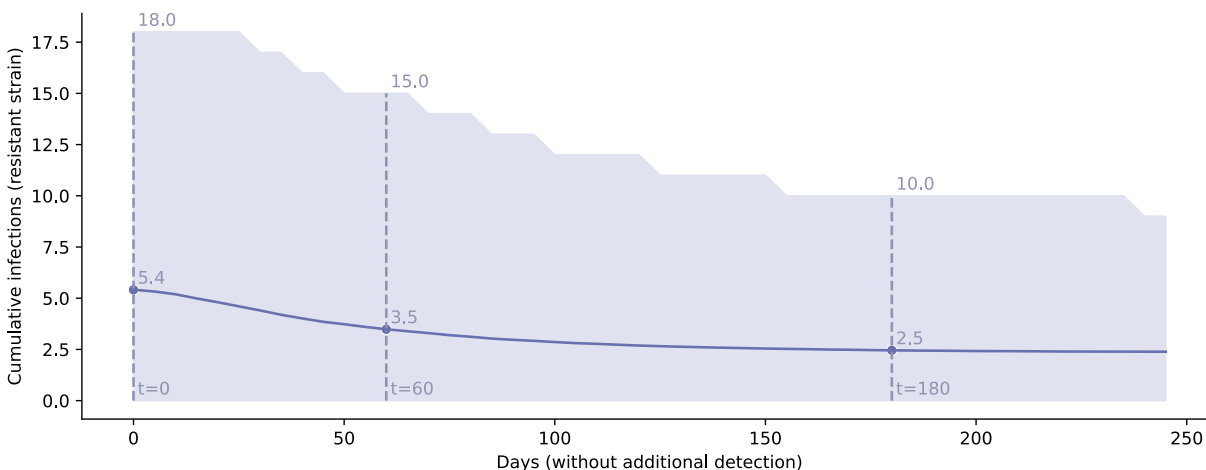


Figure 3. Likelihood of strain elimination for increasing days without detection of ceftriaxone non-susceptible cases after detection of one case of ceftriaxone non-susceptible strain. Proportion of simulations without new undetected infections for increasing days on which no new cases were detected (mean and 95% uncertainty interval). Dashed lines highlight values at 0, 60, and 180 days without detection.

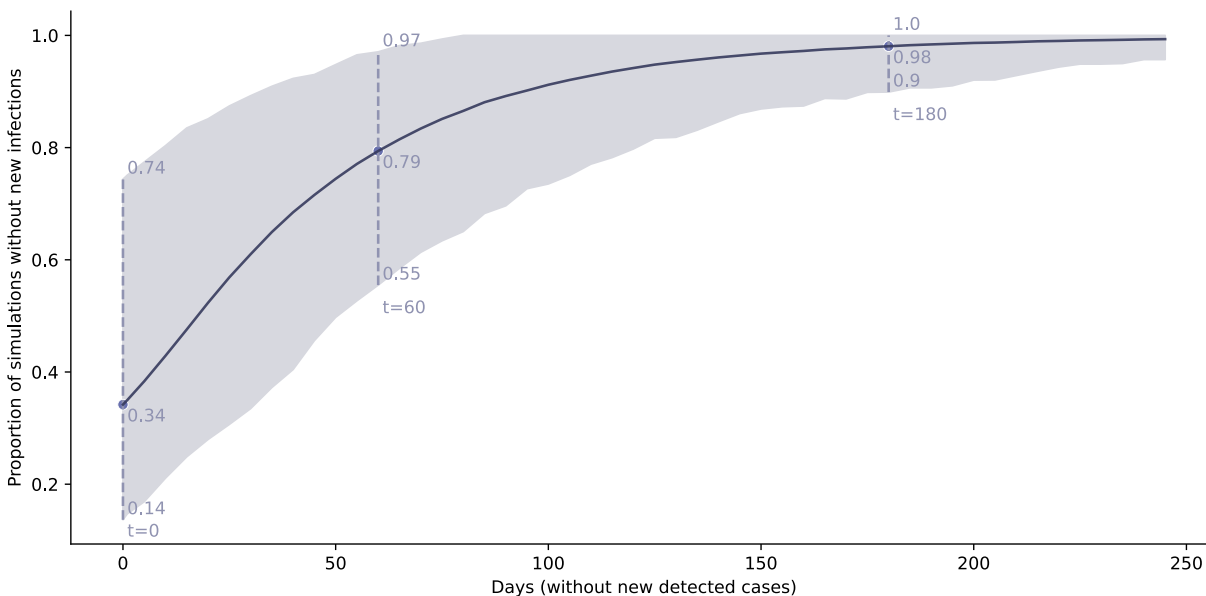


Figure 5. Varying treatment failure rates of non-susceptible strain. Likelihood of strain elimination for increasing days without newly reported non-susceptible cases (mean and 95% uncertainty interval), for treatment failure rates of 30%, 50%, 70%, and 90%.

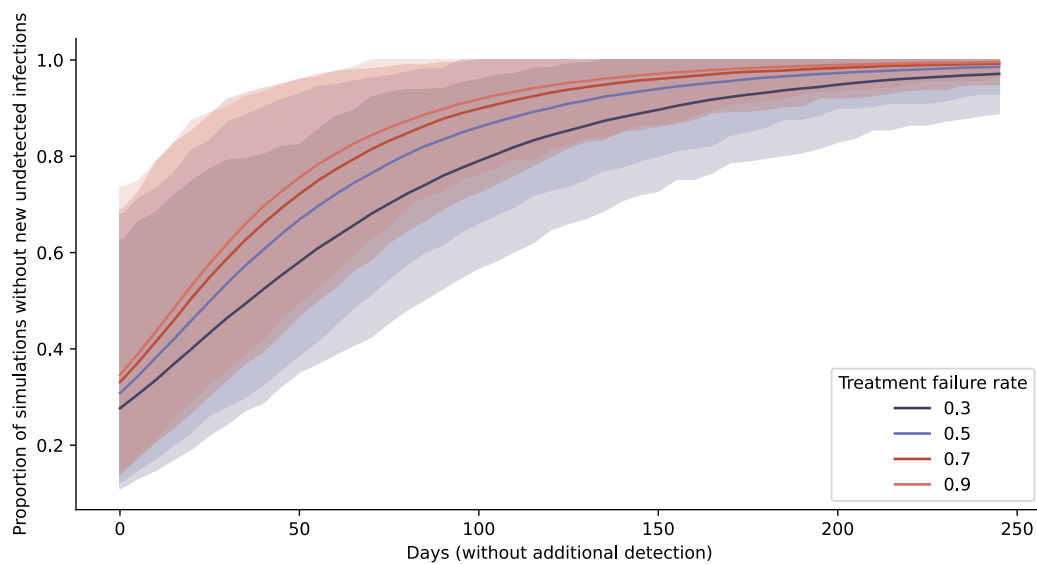
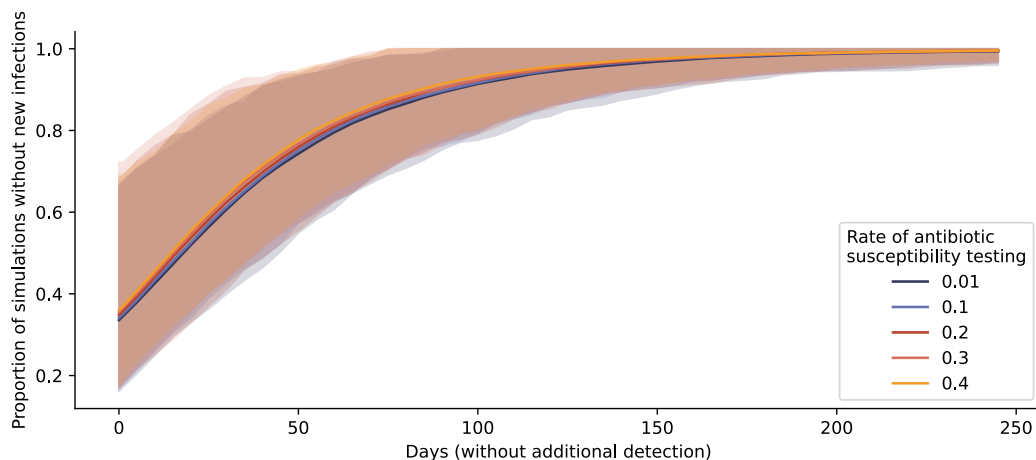
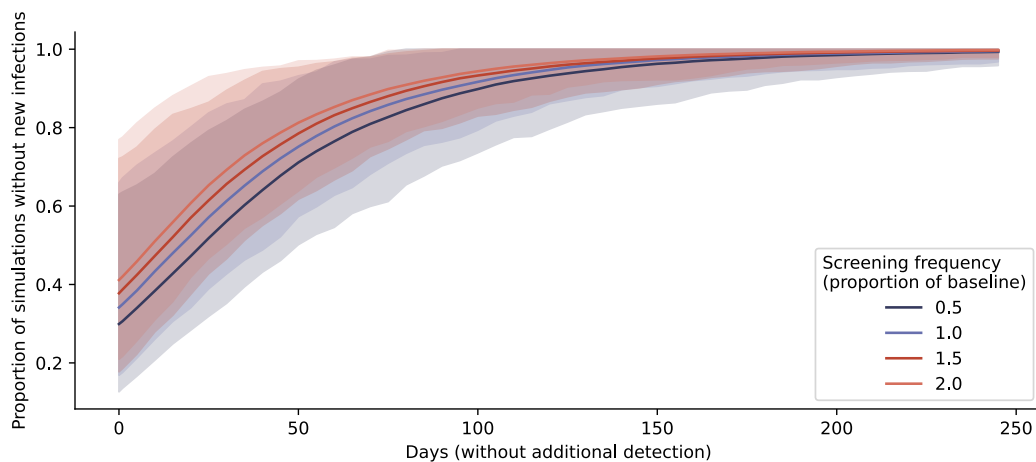


Figure 6. Varying surveillance intensities. Likelihood of strain elimination for increasing days without newly reported non-susceptible cases (mean and 95% uncertainty interval), for (A) antibiotic susceptibility testing rates ranging from 1-40% of all positive gonorrhea diagnoses, and (B) asymptomatic screening rates ranging from 50-200% of baseline levels in the calibrated model, preserving the relative screening intensities by population group.

A) Varying antibiotic susceptibility testing rates



B) Varying asymptomatic screening intensities



References

- 300 1. Murray CJ, Ikuta KS, Sharara F, Swetschinski L, Aguilar GR, Gray A, et al. Global
301 burden of bacterial antimicrobial resistance in 2019: a systematic analysis. *The*
302 *Lancet*. 2022 Feb 12;399(10325):629–55.
- 303 2. Global action plan on antimicrobial resistance [Internet]. [cited 2024 Jul 11]. Available
304 from: <https://www.who.int/publications/i/item/9789241509763>
- 305 3. Global antimicrobial resistance and use surveillance system (GLASS) report: 2022
306 [Internet]. [cited 2024 Jul 9]. Available from:
307 <https://www.who.int/publications/i/item/9789240062702>
- 308 4. Gonorrhoea (*Neisseria gonorrhoeae* infection) [Internet]. [cited 2024 Apr 29].
309 Available from: [https://www.who.int/news-room/fact-sheets/detail/gonorrhoea-](https://www.who.int/news-room/fact-sheets/detail/gonorrhoea-(neisseria-gonorrhoeae-infection))
310 [neisseria-gonorrhoeae-infection\)](https://www.who.int/news-room/fact-sheets/detail/gonorrhoea-(neisseria-gonorrhoeae-infection))
- 311 5. Unemo M, Shafer WM. Antibiotic resistance in *Neisseria gonorrhoeae*: origin,
312 evolution, and lessons learned for the future. *Ann N Y Acad Sci*. 2011;1230(1):E19–
313 28.
- 314 6. Taylor Stephanie N., Marrazzo Jeanne, Batteiger Byron E., Hook Edward W., Seña
315 Arlene C., Long Jill, et al. Single-Dose Zoliflodacin (ETX0914) for Treatment of
316 Urogenital Gonorrhea. *N Engl J Med*. 2018 Nov 8;379(19):1835–45.
- 317 7. Perry CR, Scangarella-Oman NE, Millns H, Flight W, Gatsi S, Jakielaszek C, et al.
318 Efficacy and Safety of Gepotidacin as Treatment of Uncomplicated Urogenital
319 Gonorrhea (EAGLE-1): Design of a Randomized, Comparator-Controlled, Phase 3
320 Study. *Infect Dis Ther*. 2023 Sep;12(9):2307–20.
- 321 8. Day M, Pitt R, Mody N, Saunders J, Rai R, Nori A, et al. Detection of 10 cases of
322 ceftriaxone-resistant *Neisseria gonorrhoeae* in the United Kingdom, December 2021
323 to June 2022. *Eurosurveillance*. 2022 Nov 17;27(46):2200803.
- 324 9. Pleininger S, Indra A, Golparian D, Heger F, Schindler S, Jacobsson S, et al.
325 Extensively drug-resistant (XDR) *Neisseria gonorrhoeae* causing possible
326 gonorrhoea treatment failure with ceftriaxone plus azithromycin in Austria, April 2022.
327 *Eurosurveillance*. 2022 Jun 16;27(24):2200455.
- 328 10. Ouk V, Pham CD, Wi T, Hal SJ van, Lahra MM. The Enhanced Gonococcal
329 Surveillance Programme, Cambodia. *Lancet Infect Dis*. 2023 Sep 1;23(9):e332–3.
- 330 11. Whiley DM, Jennison A, Pearson J, Lahra MM. Genetic characterisation of
331 *Neisseria gonorrhoeae* resistant to both ceftriaxone and azithromycin. *Lancet Infect*
332 *Dis*. 2018 Jul 1;18(7):717–8.

- 333 12. Lahra MM, Martin I, Demczuk W, Jennison AV, Lee KI, Nakayama SI, et al.
334 Cooperative Recognition of Internationally Disseminated Ceftriaxone-Resistant
335 *Neisseria gonorrhoeae* Strain. *Emerg Infect Dis*. 2018 Apr;24(4):735–40.
- 336 13. Picker MA. Notes from the Field: First Case in the United States of *Neisseria*
337 *gonorrhoeae* Harboring Emerging Mosaic penA60 Allele, Conferring Reduced
338 Susceptibility to Cefixime and Ceftriaxone. *MMWR Morb Mortal Wkly Rep* [Internet].
339 2020 [cited 2024 May 14];69. Available from:
340 <https://www.cdc.gov/mmwr/volumes/69/wr/mm6949a5.htm>
- 341 14. Reimche JL, Pham CD, Joseph SJ, Hutton S, Cartee JC, Ruan Y, et al. Novel
342 strain of multidrug non-susceptible *Neisseria gonorrhoeae* in the USA. *Lancet Infect*
343 *Dis*. 2024 Mar 1;24(3):e149–51.
- 344 15. Massachusetts Department of Public Health. CLINICAL ALERT: MULTI-DRUG
345 NON-SUSCEPTIBLE GONORRHEA IN MASSACHUSETTS. Massachusetts
346 Department of Public Health; 2023 Jan.
- 347 16. Handsfield HH, Lipman TO, Harnisch JP, Tronca E, Holmes KK. Asymptomatic
348 Gonorrhea in Men. *N Engl J Med*. 1974 Jan 17;290(3):117–23.
- 349 17. Pinsky L, Chiarilli DB, Klausner JD, Kull RM, O’Keefe R, Heffer C, et al. Rates of
350 Asymptomatic Nonurethral Gonorrhea and Chlamydia in a Population of University
351 Men Who Have Sex With Men. *J Am Coll Health*. 2012 Aug 1;60(6):481–4.
- 352 18. Farley TA, Cohen DA, Elkins W. Asymptomatic sexually transmitted diseases:
353 the case for screening. *Prev Med*. 2003 Apr 1;36(4):502–9.
- 354 19. Centers for Disease Control and Prevention. Gonococcal Isolate Surveillance
355 Project (GISP) [Internet]. 2023 [cited 2024 Apr 11]. Available from:
356 <https://www.cdc.gov/std/gisp/default.htm>
- 357 20. Data and reports about sexually transmitted infections (STIs) | Mass.gov
358 [Internet]. [cited 2024 Jul 9]. Available from: [https://www.mass.gov/lists/data-and-](https://www.mass.gov/lists/data-and-reports-about-sexually-transmitted-infections-stis)
359 [reports-about-sexually-transmitted-infections-stis](https://www.mass.gov/lists/data-and-reports-about-sexually-transmitted-infections-stis)
- 360 21. Fuhrmeister AS, Jones RN. The Importance of Antimicrobial Resistance
361 Monitoring Worldwide and the Origins of SENTRY Antimicrobial Surveillance
362 Program. *Open Forum Infect Dis*. 2019 Mar 15;6(Suppl 1):S1–4.
- 363 22. Amaratunga K, Tarasuk J, Tsegaye L, Archibald C. Advancing surveillance of
364 antimicrobial resistance: Summary of the 2015 CIDSC Report. *Can Commun Dis*
365 *Rep*. 2016 Nov 3;42(11):232–7.
- 366 23. Unemo M, Seifert HS, Hook EW, Hawkes S, Ndowa F, Dillon JAR. Gonorrhoea.
367 *Nat Rev Dis Primer*. 2019 Nov 21;5(1):1–23.

- 368 24. Reichert E, Yaesoubi R, Rönn MM, Gift TL, Salomon JA, Grad YH. Resistance-
369 minimising strategies for introducing a novel antibiotic for gonorrhoea treatment: a
370 mathematical modelling study. *Lancet Microbe*. 2023 Oct 1;4(10):e781–9.
- 371 25. Whittles LK, White PJ, Didelot X. Estimating the fitness cost and benefit of
372 cefixime resistance in *Neisseria gonorrhoeae* to inform prescription policy: A
373 modelling study. *PLOS Med*. 2017 Oct 31;14(10):e1002416.
- 374 26. Garnett GP, Mertz KJ, Finelli L, Levine WC, St Louis ME. The transmission
375 dynamics of gonorrhoea: modelling the reported behaviour of infected patients from
376 Newark, New Jersey. *Philos Trans R Soc B Biol Sci*. 1999 Apr 29;354(1384):787–97.
- 377 27. Hazel A, Marino S, Simon C. An anthropologically based model of the impact of
378 asymptomatic cases on the spread of *Neisseria gonorrhoeae*. *J R Soc Interface*.
379 2015 May 6;12(106):20150067.
- 380 28. Earnest R, Rönn MM, Bellerose M, Menon-Johansson AS, Berruti AA, Chesson
381 HW, et al. Modeling the Cost-Effectiveness of Express Multisite Gonorrhea Screening
382 Among Men Who Have Sex With Men in the United States. *Sex Transm Dis*. 2021
383 Nov;48(11):805.
- 384 29. CDC. Sexually Transmitted Disease Surveillance 2021. 2023; Available from:
385 <https://www.cdc.gov/std/statistics/2021/default.htm>