

1 **Cardiothoracic Ratio (CTR) Among Patients Presenting for Chest X-ray**  
2 **in Radiology Department at Mulago National Referral Hospital: A**  
3 **Patients' Health Indicator for Clinical Application.**

4 **Authors:** Alen Musisi<sup>1</sup>, Rebecca Nakatudde<sup>2</sup>, Oliver Namuwonge<sup>1</sup>, Deborah Babirye<sup>3</sup>, Ismail  
5 Kintu<sup>5</sup>, Francis Olweny<sup>4</sup>, Richard Malumba<sup>6</sup>, Victoria Nakalanzi<sup>6</sup>, Aloysius Gonzaga  
6 Mubuuke<sup>2</sup>.

7 **Institutions of Affiliations:**

8 1. Department of Physics, Ernest Cook Ultrasound Research and Education Institute  
9 P.O.Box 7161, kampala Uganda

10 2. Department of Radiology and Radiotherapy, College of Health Sciences, Makerere  
11 University, Kampala, Uganda

12 3. Department of Radiology, Ernest Cook Ultrasound Research and Education Institute,  
13 P.O.Box 7161, kampala Uganda

14 4. Clinical Epidemiology Unit, School of Medicine, College of Health Sciences,  
15 Makerere University, Kampala Uganda.

16 5. Department of Radiology, Interventional Radiology Wing, Mulago National Referral  
17 Hospital, P.O.Box 7051, Kampala, Uganda

18 6. Department of Research, Ernest Cook Ultrasound Research and Education Institute  
19 P.O.Box 7161, kampala Uganda

20 **Corresponding Author:** Alen Musisi

21 **E-mil:** alenmusisi2012@gmail.com

22 **Telephone:** +256772294065  
NOT RECOMMENDED FOR CLINICAL PRACTICE: This preprint reports new research that has not been certified by peer review and should not be used to guide clinical practice.

## 23 ABSTRACT

24 **Introduction/background:** The heart is vital, and even minor dysfunctions can significantly  
25 impact the body. Cardiologists need always to determine heart size, which varies with  
26 physiological changes. Advanced measurement techniques are costly and often inaccessible  
27 to a common man. Measuring the cardiothoracic ratio (CTR) via conventional X-ray is a  
28 common and more affordable option, but there's a need for even cheaper alternatives

29 **Objective:** To determine relationship between CTR and presenting clinical indications and to  
30 relate CTR to the body parameters to find an appropriate relationship that can be utilized in  
31 low resource facilities in determining heart size.

32 **Methodology:** This cross-sectional study involved 386 patients undergoing chest radiographs  
33 at Mulago National Specialized Hospital's radiology department. Data were summarized  
34 using frequencies and percentages. Associations between the cardiothoracic ratio (CTR) and  
35 independent variables were analyzed using Pearson's chi-square, Fisher's exact test,  
36 Spearman's correlation coefficient, simple linear regression, and multivariate regression.  
37 Statistical significance was set at a p-value of  $< 0.05$ .

38 **Results:** The median cardiothoracic ratio (CTR) was 0.46, with an interquartile range of 0.42  
39 to 0.50. Female patients had a higher CTR than males. Significant positive correlations were  
40 found between CTR; and BMI ( $p < 0.001$ , correlation 0.21), and BSA ( $p = 0.016$ , correlation  
41 0.12), and BSI ( $p < 0.001$ , correlation 0.19). The diagnostic accuracy of a linear regression  
42 equation containing BSA as an estimator of CTR showed relatively fair performance  
43 compared to the linear regression equations with BSI and BMI. It showed sensitivity,  
44 specificity, and positive and negative predictive values of 29.2%, 86.0%, 63.6%, and 59.0%

45 for males, and 8.3%, 98.1%, 75.0%, and 60.7% for females, respectively.

46 **Conclusion:** BSA shows a moderately good relationship with CTR, while the influence of  
47 body habitus on CTR is minimal. Thus, using body parameters to predict CTR should be  
48 approached cautiously. We recommend conducting a similar study on a more diverse general  
49 population

50 **Key Words:** Cardiomegaly, Cardiothoracic Ratio, Body Mass Index, Body Surface Area,  
51 Body Surface Index

## 52 INTRODUCTION

53 The heart is vital, with small dysfunctions causing significant effects. It measures 12cm by  
54 8.5cm by 6cm, and weighs 280-340g in males and 230-280g in females(1). Cardiomegaly is  
55 heart enlargement, evident when the heart's width exceeds half the chest's width on a  
56 posterior-anterior (PA) chest radiograph, indicating a pathological process(2). Determining  
57 heart size is crucial for cardiologists due to its variability based on sex, age, height, and weight.  
58 Establishing normal size ranges is essential, as slight changes may indicate pathology. What  
59 is normal for some may indicate disease in others. (3).

60 The cardiothoracic ratio (CTR) on a PA projection radiograph measures the ratio of heart size  
61 to chest width. It's calculated as the maximal horizontal cardiac width divided by the maximal  
62 horizontal inner thoracic cage diameter. A  $CTR > 0.5$  suggests cardiac enlargement(4, 5). An  
63 increased CTR on Chest X-ray is associated with an increased rate of morbidity in middle-  
64 aged and elderly groups and has a linear association with increased heart size and coronary  
65 heart disease(6). While chest radiography is cost-effective for detecting cardiomegaly and

66 measuring CTR, computed tomography (CT), magnetic resonance imaging (MRI), and  
67 echocardiography offer more precise but expensive options to a common man(7). CTR can  
68 be influenced by factors like pregnancy, ascites, or chest deformities, leading to variability in  
69 measurements unrelated to heart conditions. Studies highlight discrepancies in CTR accuracy  
70 compared to cardiac MRI(4, 8). Research also shows varying correlations between CTR and  
71 body mass index (BMI), body surface area (BSA), and body surface index (BSI), with obesity  
72 and age impacting CTR differently(9, 10). Age has been identified as a more reliable indicator,  
73 showing an increase in CTR with advancing age(11). Despite existing research on heart size  
74 and CTR in other populations, its applicability to Uganda remains unverified.

75 The CTR in Ugandans remains undetermined, with limited evidence on its relationship with  
76 body parameters in this population. Moreover, low-resource settings like Uganda face  
77 challenges in accessing affordable and accurate CTR measurements. Screening currently  
78 relies on costly and accessible methods like cardiac echocardiography, MRI, and CT. For  
79 most clinicians in Uganda, the practical option for heart size assessment remains the  
80 cardiothoracic ratio using conventional x-ray. Although body size influences cardiac cavity  
81 dimensions, indexed values like BMI, BSI, and BSA are not widely used to estimate CTR.

82 This research aimed to optimize the use of body parameters to estimate CTR when  
83 conventional x-ray measurement is unavailable. This technique was expected to assist  
84 cardiologists and clinicians in enhancing their diagnostic capabilities without depending on  
85 expensive methods for patients. CTR determination is a valuable parameter in patient  
86 assessment in hospital emergency departments and intensive care units, aiding in risk  
87 stratification, treatment evaluation, and prognosis across various diseases, beyond cardiology.

88 Therefore, this study sought to explore the relationship between the CTR and various clinical  
89 indications presented by patients and to examine the association between CTR and key body  
90 measurements, including BMI, BSA, and BSI.

## 91 **METHODS**

### 92 **Study Design and Setting.**

93 The study used a hospital-based cross-sectional design at Mulago National Referral Hospital  
94 in the radiology department. The equipment used was a digital conventional Philips X-ray  
95 machine (model: SRO33100ROT380, serial number: 989000086482), processing 20 to 30  
96 chest X-rays daily. This hospital serves patients referred from all regions of the country,  
97 ensuring the data collected is nationally representative

### 98 **Study Population**

99 The study included all individuals aged 18 years and older who underwent a Chest X-ray at  
100 Mulago National Referral Hospital's radiology department from 03<sup>rd</sup> July to 29<sup>th</sup> September,  
101 2023, selected through consecutive sampling. Patients that never had request forms and  
102 critically ill patients unable to provide consent were excluded, along with those whose clinical  
103 request forms indicated heart disease or were inadequately filled or those whose chest x-rays  
104 had motion artifacts.

### 105 **Sample Size estimation**

106 The formula for calculating sample size while using correlation coefficient in cross section  
107 study (12) ,  $N = \left[ \frac{(Z\alpha + Z\beta)}{c} \right]^2 + 3$ , where  $c = 0.5 \times \ln \left[ \frac{(1+r)}{(1-r)} \right]$ , was used to estimate the  
108 number of participants needed to determine the relationship between CTR and clinical  
109 indication or CTR and body parameters. Pearson's correlation coefficient,  $r=0.33$  was used

110 for clinical indications (13) and  $r$  of 0.283 was used for body mass index. To estimate the  
111 number of participants needed to describe the proportion of participants with abnormal CXR,  
112 we used Kish Leslie formula-  $n = \frac{z^2 \times \hat{p}(1 - \hat{p})}{\epsilon^2}$  while factoring in proportion of 0.5 ( $\hat{p}$ ) for  
113 infinite sample size because proportion of Ugandans with abnormal CTR is unknown. Margin  
114 of error of 0.05 ( $\epsilon^2$ ) and  $Z$  score of 1.96 that corresponds to 95% level of confidence. We  
115 therefore came up with an overall sample size of 385 participants.

### 116 **Study Variables**

117 The independent variables in this study were clinical indications such as cough, difficulty in  
118 breathing (DIB), and chest pain, along with demographic factors like age, height, weight, BMI,  
119 BSA, BSI, and gender. The dependent variable was CTR.

### 120 **Study Procedure**

121 The project coordinator oversaw the data collection process conducted by research assistants,  
122 under the supervision of the Principal and Co-Principal Investigators (PI and Co-PI). Patients  
123 presenting with request forms for chest X-rays were eligible for enrollment. Research  
124 assistants provided ready written consent forms to enrolled patients for reading, they  
125 explained the study's significance, ethical considerations, and objectives. The participants  
126 consented to the study by signing the consent form. Upon obtaining signed informed consent,  
127 demographic data such as age and clinical indications were extracted from the patients' request  
128 forms. If necessary, missing information was obtained directly from patients by research  
129 assistants or the principal investigator. Patient weight and height were measured to calculate  
130 Body Mass Index (BMI), Body Shape Index (BSI), and Body Surface Area (BSA).

131 Next, the patient underwent a chest X-ray procedure using posterior-anterior (PA) projection

132 with full inspiration. A Research Assistant obtained a soft copy of the patient's X-ray image  
133 and securely stored it on a password-protected research computer. All measurements and  
134 relevant data for each patient were recorded on a data collection form. Subsequently, this data  
135 was entered into a data entry screen created with Epi-data software version 3.1

### 136 **Calculating CTR, BMI, BSA, and BSI.**

137 PA radiographs were conducted with the patient in an upright position, achieving maximum  
138 inspiration, and utilizing a tube-detector distance of 180cm. The Radiant DICOM software  
139 was employed to measure the transverse cardiac diameter (TCD), calculated by summing the  
140 horizontal distances from the heart's right (a) and left (b) lateral borders to the midline  
141 (spinous processes of the vertebral bodies).

142 The widest transverse thoracic diameter (TTD) (c) was determined by measuring the broadest  
143 distance between the medial aspects of the ribs, specifically from pleura to pleura.

144 The CTR was obtained by dividing the TCD by the maximum TTD.

$$CTR = \frac{a + b}{c}$$

145

$$CTR = \frac{\text{Transverse Cardiac Diameter (TCD)}}{\text{Transverse Thoracic Diameter (TTD)}}$$

146

### 147 **Image demonstrating how CTR was measured.**

148 BMI was estimated mathematically as a ratio of the patient's weight in kilograms (kg) to the  
149 square of the patient's height in meters (m) (14);

$$BMI = \frac{\text{Weight (kg)}}{\text{Height}^2(\text{m}^2)}$$

150

151 BSA was estimated from the most widely used technique called Du Bois and Du Bois formula  
152 (15);

153 
$$BSA = 0.007184 \times \text{Height(m)}^{0.725} \times \text{Weight(kg)}^{0.425}$$

154 BSI, different studies show it is a more precise indicator of organ size/volume than both BMI  
155 and the BSA (16). It was estimated by dividing the both weight by the calculated square root  
156 of its BSA, it is mathematically expressed as;

157 
$$BSI = \frac{\text{Weight}}{\sqrt{BSA}}$$

### 158 **Data Management and Analysis**

159 Patient data was recorded in data collection forms, which were subsequently reviewed for  
160 consistency by the PI before the end of the business day. The validated data was then inputted  
161 into a password-protected data entry interface created with Epi-data software version 3.1. A  
162 backup of the entered data was stored on an external hard drive.

163 Data was summarized using frequencies and percentages. The relationship between CTR and  
164 independent variables was analyzed using simple linear regression and Spearman's  
165 correlation coefficient. Significance testing was conducted using Pearson's chi-square and  
166 Fisher's exact test, with a p-value < 0.05 considered statistically significant.

167 The dataset was then divided into two parts and analyzed in two stages. The first half was  
168 stratified by gender, where multivariate linear regression was employed in each stratum. This  
169 analysis accounted for participants' age and individually measured body parameters to  
170 establish a linear equation relating these variables to CTR.

171 The second half of the dataset utilized the linear equations derived from the first half to  
172 predict/estimate CTR values. This estimation considered measured body parameters and  
173 participant characteristics such as age. Subsequently, both the estimated CTR obtained from



174 input of participants age and corresponding body parameter into the derived linear equation  
175 and the CTR determined by the study radiologist were categorized as normal (CTR value  
176 between 0.42-0.50) or abnormal (below 0.42 or above 0.50). Sensitivity, specificity, and  
177 positive and negative predictive values of the estimated CTR were then calculated against the  
178 standard of practice CTR determined by the study radiologist to diagnose abnormal heart size  
179 (considering both micro-cardia and cardiomegaly).

## 180 **Ethical Consideration**

181 The study included patients referred for X-ray services during routine care, utilizing  
182 anonymized data comprising images and clinical information that cannot be linked back to  
183 individual patients. Ethical approval was obtained from the Makerere University, School of  
184 Medicine Research Ethics Committee (Mak-SoMREC-2022-480) at Makerere University,  
185 Kampala, Uganda. Prior to commencing the study, all investigators completed an online  
186 human subjects course.

## 187 **RESULTS**

### 188 **Study profile**

189 Out of 390 patients initially recruited for the study, 386 were ultimately enrolled. The  
190 exclusions included two patients without clinician request forms, one patient with an unclear  
191 indication for chest radiograph, and one critically ill patient unable to provide consent.

### 192 **Characteristics of the Study Participants**

193 In the study, 386 enrolled patients included 215 females (55.7%). The median age was 37  
194 years (interquartile range: 27-50 years), with the largest age group being 31-40 years old  
195 (27.7%). The most common clinical indication for chest radiographs was chest pain, reported

196 by 120 patients (31.2%). These details are presented in Table 1.

197

198 **Table 1:** Characteristics of 386 patients who presented for chest radiographs in the radiology

199 department of Mulago National Referral Hospital during the study.

Characteristics	Frequency	Percentages
<b>Gender</b>		
Female	215	55.7
Male	171	44.3
<b>Age categories</b>		
≤ 20	37	9.6
21-30	92	23.8
31-40	107	27.7
41-50	61	15.8
>50	89	23.1
<b>Indications for CXR</b>		
Chest pain	120	31.2
DIB	114	29.6
Cough	114	29.6
Others	37	9.6

200 **Relationship between CTR and Presented Clinical Indication among patients presented**

201 **for chest x-ray in Radiology Department at Mulago National Referral Hospital**

202 The median CTR was 0.46 with an interquartile range (IQR) of 0.42-0.50. Of the 386 patients,

203 114 (70.5%) had CTR > 0.49. Female patients had a high CTR, 70 (61.4%) compared to male  
204 patients. No statistically significant association was observed between gender and CTR (P-  
205 value, 0.144).

206 The indications for taking chest radiographs were not statistically significantly associated with  
207 cardiothoracic ratio (P-value, 0.190). However, a statistically significant association was  
208 observed between age categories and CTR, (P-value <0.001). This is shown in Table 2.

209 **Table 2:** Relationship between patient characteristics and CTR among patients who presented  
210 for chest radiographs in the radiology department of Mulago National Referral Hospital  
211 during the study period.

Characteristics	CTR categorized		P-value
	≤0.49	>0.49	
<b>Gender</b>			0.144
female	145 (53.3)	70 (61.4)	
male	127 (46.7)	44 (38.6)	
<b>Age categorized</b>			<0.001
≤ 20 years	32 (11.8)	5 (4.4)	
21-30	77 (28.3)	15 (13.2)	
31-40	82 (30.2)	25 (21.9)	
41-50	37 (13.6)	24 (21.1)	
>50	44 (16.2)	45 (39.5)	
<b>Indications for CXR</b>			0.190

chest pain	88 (32.4)	32 (28.3)
DIB	86 (31.6)	28 (24.8)
Cough	72 (26.5)	42 (37.2)
others	26 (9.6)	11 (9.7)

212 **Relationship between CTR and BMI among patients presented for chest x-ray in**

213 **Radiology Department at Mulago National Referral Hospital**

214 In Table 3, it was observed that the cardiothoracic ratio (CTR) was positively correlated with  
 215 BMI. This correlation was statistically significant, with a p-value of less than 0.001. However,  
 216 the strength of the association was weak, as indicated by the Spearman’s rank correlation  
 217 coefficient (r) of 0.21.

218 **Table 3:** Relationship between patient BMI and CTR among patients who presented for chest  
 219 radiographs stratified by gender, age, and indication at the radiology department of Mulago  
 220 National Referral Hospital during the study period.

		CTR	
		Spearman’s correlation	
Characteristic		coefficient (r)	p-value
<b>BMI stratified BMI</b>		0.21	<0.001
<b>independent variables</b>	<b>Gender</b>		
	female	0.22	<0.001
	male	0.16	0.033**
	<b>Age categorized (years)</b>		
	≤ 20	0.14	0.400

21-30	0.11	0.282
31-40	0.06	0.528
41-50	0.29	0.023**
>50	0.13	0.215

#### Indications for CXR

chest pain	0.25	0.006**
DIB	0.26	0.005**
Cough	0.12	0.198
others	0.22	0.192

221 For female patients, there was a positive but weak and statistically significant correlation  
222 between BMI and CTR ( $r=0.22$ ,  $P\text{-value}<0.001$ ). Similarly, among male patients, there was a  
223 positive and statistically significant correlation between CTR and BMI ( $r=0.16$ ,  $P\text{-value}$ ,  
224  $0.033$ ). Both of these correlations were also weak (Figure 3 and Table 3).

225 In Table 3, it was shown that patients aged 41-50 years had a statistically significant positive  
226 correlation between their CTR and BMI ( $r = 0.29$ ,  $P\text{-value} = 0.023$ ). This correlation was  
227 weak, however. BMI also showed a weak positive correlation with CTR for patients in other  
228 age categories, but these correlations were not statistically significant, with all  $p\text{-values} > 0.05$ .

229 The stratification of BMI based on indications for taking a chest x-ray revealed that the BMI  
230 of patients with chest pain showed a statistically significant, but weak, positive correlation  
231 with CTR ( $r = 0.25$ ,  $P\text{-value} = 0.006$ ). Similarly, difficulty in breathing as an indication was  
232 also found to have a statistically significant, weak positive correlation with CTR ( $r = 0.26$ ,  $P\text{-}$   
233  $\text{value} = 0.005$ ). However, there was no statistically significant correlation between BMI and

234 CTR for patients with cough and other indications.

235 Figure 3 below shows that BMI for both males and females positively increased as the  
 236 cardiothoracic ratio of both sexes increased however the increase was gradual and almost flat.

237 **Graphical presentation of CTR correlation with BMI**

238

239 **4.5 Relationship between CTR and BSA among patients presented for chest x-ray in**

240 **Radiology Department at Mulago National Referral Hospital**

241 In Table 4; the cardiothoracic ratio was positively correlated with BSA. This association was  
 242 significant with a p-value of 0.016 however, the strength of the association was very weak, ( $r$   
 243 = 0.12).

244 **Table 4:** Relationship between patient BSA and CTR among patients who presented for chest  
 245 radiographs stratified by gender, age and indication at radiology department of Mulago  
 246 National Referral Hospital during the study period

		<b>CTR</b>	
		<b>Spearman's correlation</b>	
<b>Characteristic</b>		<b>coefficient (<i>r</i>)</b>	<b>p-value</b>
<b>BSA stratified independent variables</b>	<b>BSA</b>	0.12	0.016**
	<b>Gender</b>		
	female	0.20	0.004**
	male	0.09	0.260
<b>Age categorized (years)</b>			

≤ 20	0.13	0.443
21-30	0.05	0.666
31-40	-0.10	0.307
41-50	0.05	0.716
>50	-0.07	0.497

#### Indications for CXR

chest pain	0.12	0.195
DIB	0.20	0.030**
Cough	0.03	0.778
others	0.18	0.295

247

248 The correlation between BSA for female patients and their CTR was weak but positive (r =  
249 0.20) and statistically significant (P-value = 0.004). However, the correlation between CTR  
250 and BSA among male patients though positive, was not statistically significant (P-value =  
251 0.260) and was weak (r = 0.09). The strata of BSA by all age categories as shown in table 4  
252 were not significantly associated with CTR. All p-values were > 0.05.

253 In clinical indications, DIB as strata of BSA was weak but positively correlated with CTR (r  
254 = 0.20) and was statistically significant (P-value = 0.030). Chest pain, cough, and other  
255 indications had p-values > 0.05.

256 Figure 4 below shows that BSA for both males and females positively increased as the  
257 cardiothoracic ratio of both sexes increased, however, the increase was gradual and almost  
258 flat.

259 **Graphical presentation of CTR correlation with BSA**

260

261 **4.6 Relationship between CTR and BSI among patients presented for chest x-ray in**

262 **Radiology Department at Mulago National Referral Hospital**

263 In Table 5, the cardiothoracic ratio was positively correlated with BSI. This association was  
264 statistically significant with a p-value less than 0.001 however, the strength of the association  
265 was very weak, ( $r = 0.19$ ). The correlation between BSI for female patients and their CTR  
266 was positive ( $r=0.24$ ) and statistically significant ( $p\text{-value} < 0.001$ ). However, the correlation  
267 between CTR and BSI among male patients though positive, was not statistically significant  
268 ( $p\text{-value} = 0.088$ ) and was weak ( $r = 0.13$ ).

269 **Table 5:** Relationship between patient BSI and CTR among patients who presented for chest  
270 radiographs stratified by gender, age and indication at radiology department of Mulago  
271 National Referral Hospital during the study period.

		CTR	
		Spearman's correlation	
Characteristic		coefficient (r)	p-value
BSI stratified independent variables	BSI	0.19	<0.001**
	Gender		
	female	0.24	<0.001**
	male	0.13	0.088
	Age categorized (years)		
	≤ 20	0.14	0.396



21-30	0.08	0.436
31-40	-0.01	0.883
41-50	0.18	0.151
>50	0.03	0.811

**Indications for CXR**

chest pain	0.22	0.017**
DIB	0.25	0.007**
Cough	0.09	0.361
others	0.22	0.189

272 The strata of BSI by all age categories as shown in table 5 above were all not significantly  
 273 associated with CTR (p-values > 0.05). Under clinical indication, DIB as a stratum of BSI  
 274 was weak but positively correlated ( $r=0.25$ ) with CTR and statistically significant (p-value =  
 275 0.007). Chest pain as a clinical indication and stratum of BSI was also weakly but positively  
 276 ( $r = 0.22$ ) correlated with CTR and was significant (p-value = 0.017)

277 **Figure 4:** below shows that BSI for both males and females positively increased as the  
 278 cardiothoracic ratio of both sexes increased however the increase was gradual and almost flat.

279 **Graphical presentation of CTR correlation with BSI**

280

281 **Linear Relationship between CTR, Measured Body Parameters and Age among Male**  
 282 **and Female Participants**

283 In Table 6 below, it is shown that the CTR increased by about 0.0015 for every unit change  
 284 in BMI while keeping age constant for female patients. CTR also increased by about 0.0017

285 for every unit change in age while keeping BMI constant for female patients. R-squared in  
 286 this model was 0.203 meaning that about 20.3% of variations in CTR can be explained by  
 287 variations in BMI and age among female patients. Even though the R-squared value was low,  
 288 an F-statistic of 13.6 was significant with a p-value of less than 0.001.

289 **Table 6:** Linear relationship between measured body parameters and CTR among patients  
 290 who presented for chest radiographs at radiology department of Mulago National Referral  
 291 Hospital during the study period.

<b>Linear equation relating body parameter to CTR</b>		
<b>Measured body parameter</b>	<b>Female</b>	<b>Male</b>
	CTR = 0.37218 + 0.001510BMI + CTR = 0.42547 + 0.0002BMI +	
BMI	0.001650AGE	0.00067AGE
	CTR = 0.37081+ 0.676410BSA + CTR = 0.536476 -1.98265BSA +	
BSA	0.001679AGE	0.001004AGE
	CTR = 0.368608 + 0.0001642BSI CTR = 0.46353 - 0.000152BSI +	
BSI	0.001635AGE	0.000817AGE

292 The study also showed that CTR increased by about 0.0002 for every unit change in BMI  
 293 while keeping age constant for male patients. CTR also increased by about 0.00067 for every  
 294 unit change in age while keeping BMI constant for male patients. R-squared in this modal was  
 295 0.032 meaning that only 3.2% of variation in CTR could be explained by variations in BMI  
 296 and age among male patients and F-statistic of 1.33 was not significant, (0.270).

297 Among females, the sensitivity of estimated CTR based on the derived equation from

298 regression of CTR against BSA and age as compared to CTR derived by the study radiologist  
 299 was 29.2%, 95%CI (17.0-44.1), specificity 86.0%, 95%CI (74.2-93.7), positive and negative  
 300 predictive values of 63.6%, 95%CI (40.7-82.8) and 59.0%, 95% CI (47.7-69.7) respectively.

301 Among males, the sensitivity of estimated CTR based on the derived equation from regression  
 302 of CTR against BSA and age as compared to CTR derived by the study radiologist was 8.2%,  
 303 (CI: 1.8-22.5), specificity 98.1%, (CI: 89.7-100.0), positive and negative predictive values of  
 304 75%, (CI: 19.4-99.4) and 60.7%, (CI: 49.5-71.2) respectively. This is shown in Table 7 below

305 **Table 7:** Sensitivity, Specificity, and Positive and Negative Predictive values for BMI,  
 306 BSA, and BSI relationship with CTR among female and male patients

Parameters and corresponding performance indicators	Female		Male	
	Percentage	95%CI	Percentage	95%CI
<b>BMI</b>				
Sensitivity	31.3	18.7-46.3	0.0	0.0-9.7
Specificity	86.0	74.2-93.7	98.1	89.7-100.0
Positive predictive value	65.2	42.7-83.6	0.0	0.0-97.5
Negative predictive value	59.8	48.3-70.4	58.6	47.6-69.1
<b>BSA*</b>				
Sensitivity	29.2	17.0-44.1	8.3	1.8-22.5

Specificity	86.0	74.2-93.7	98.1	89.7-100.0
Positive predictive value	63.6	40.7-82.8	75.0	19.4-99.4
Negative predictive value	59.0	47.7-69.7	60.7	49.5-71.2
<b>BSI</b>				
Sensitivity	31.3	18.7-46.3	0.0	0.0-9.7
Specificity	86.0	74.2-93.7	98.1	89.7-100.0
Positive predictive value	65.2	42.7-83.6	0.0	0.0-97.5
Negative predictive value	59.8	48.3-70.4	58.6	47.6-69.1

307 \*BSA was observed to have a moderate relationship with CTR and it provides a fairly better  
308 performance indicator for both males and females

### 309 **DISCUSSION**

310 The Cardiothoracic Ratio (CTR) is a straightforward measurement and calculation, providing  
311 a practical tool as a traditional indicator of cardiac size during cardiovascular disease  
312 screenings. This study aimed to investigate the relationship between CTR and clinical  
313 indications, as well as CTR and body parameters such as BMI, BSA, and BSI. The research  
314 was conducted as a hospital-based cross-sectional study.

#### 315 **Relationship between CTR and Demographics**

316 This study found that the median CTR for both males and females was 0.46, with an IQR of  
317 0.42-0.50. This IQR is consistent with the findings of studies by Truskiewicz et al. and  
318 Mohammad et al., which also identified the normal CTR range as being between 0.42 and  
319 0.50(8, 17). Several studies suggest that CTR values exceeding 0.5 or falling below 0.42

320 indicate pathological conditions such as cardiomegaly or microcardia, respectively (8, 17-19)  
321 Among participants with a high CTR (>0.49), female patients outnumbered males. This  
322 finding aligns with studies by Ominde et al. and Ali et al., which attributed the higher CTR in  
323 females to their smaller thoracic diameter(18, 19). Men typically engage in more physically  
324 demanding activities, which contribute to a wider thoracic diameter(17). Unlike our study,  
325 which found no statistically significant association between gender and CTR ( $p=0.144$ ), the  
326 studies by Ominde et al. and Mohammad et al. reported a statistically significant  
327 relationship(17, 18). This study also contradicted findings from a study conducted in Ghana  
328 by Brakohiapa et al., which observed a statistically significant difference in CTR across  
329 gender groups ( $p = 0.001$ ) (19).

330 In this study, CTR was found to increase with age, a statistically significant association ( $p <$   
331  $0.001$ ) that aligns with findings from Brakohiapa et al., Mohammad et al., and other studies(11,  
332 17, 19). The increase in CTR with age is attributed to the thickening of cardiac ventricular  
333 muscle due to higher vascular resistance or the loss of elasticity in the major blood vessels(11,  
334 17). However, the combined correlation ( $r$ ) between CTR and age groupings was weak, which  
335 contrasts with the Ekedigwe et al. 2014 study that found a significant correlation in males and  
336 a slightly lower correlation in females (9).

### 337 **Relationship between CTR and BMI**

338 Our study found a statistically significant association between CTR and BMI ( $p < 0.001$ ). This  
339 finding aligns with the results of the Emegoakor et al. study, which also demonstrated  
340 significant differences ( $p < 0.05$ ) in CTR relative to BMI among males and females(10). In  
341 both males and females, there was a modest positive association between CTR and BMI, with

342 correlation coefficients of 0.16 and 0.22, respectively. This finding is consistent with previous  
343 studies by Mehra et al., Ekedigwe et al., and Emegoakor et al (9-11). Similarly, this modest  
344 correlation was evident across both genders. While one might anticipate a significant  
345 correlation between CTR and BMI, our study did not demonstrate this. This discrepancy could  
346 stem from unaccounted physiological variations. Ugandans are recognized for their physical  
347 fitness, attributed to moderate-intensity work-related physical activities (20). This could lead  
348 to a slightly elevated CTR even with maintained low BMI levels. Additionally, the study only  
349 based on the clinical indications in request forms presented to the radiology department for  
350 chest x-ray and so might have missed to exclude patients with undisclosed possible cardiac  
351 conditions if not captured in the request form.

352 This study found a stronger statistical association between CTR and BMI in females ( $p <$   
353  $0.001$ ) compared to males ( $p = 0.033$ ), a phenomenon not consistently reported in previous  
354 research and thus warrants further investigation. Across age categories  $<20$ ,  $21-30$ ,  $31-40$ ,  
355 and  $>50$  years, there was no statistically significant relationship between CTR and BMI, with  
356 weak positive correlations observed. The only age category where statistical significance ( $p$   
357  $= 0.023$ ) was observed was  $41-50$  years, although the reason for this remains unclear.

358 Therefore, it's important to note that CTR shows a weak association with BMI. BMI  
359 measurement alone does not determine CTR, as BMI calculation does not account for age,  
360 which is significantly associated with CTR.

### 361 **Relationship between CTR and BSA**

362 Our study found a significant association ( $p = 0.016$ ) between CTR and total BSA, albeit with  
363 a weak positive correlation ( $r = 0.12$ ). This finding aligns with Emegoakor et al.'s study, which

364 also reported a significant association between CTR and BSA, as well as with Mehra et al.'s  
365 study, which similarly found a weak correlation(10, 11). CTR showed statistical significance  
366 with BSA among females ( $p = 0.004$ ), accompanied by a weak positive correlation. The weak  
367 correlation suggests that a twofold increase in BSA does not correspond to a twofold increase  
368 in CTR, consistent with findings from the Emegoakor et al. study(10).

369 A 2020 study exploring variations in cardiac geometry concerning body size among neonates  
370 with abnormal prenatal growth and birth weight indicated that adiposity influenced BSA,  
371 resulting in underestimated cardiac dimensions(21). This calls into question the use of BSA  
372 (or body weight) as a universal parameter in estimating CTR. However, a study conducted by  
373 Shiraz et al. to establish the standard reference CTR among Ghanaians demonstrated an  
374 average predictive relationship of 90.32% between CTR and BSA(22). However, the study's  
375 limitations include the absence of statistical significance, correlation coefficients, sensitivity,  
376 and specificity values, thereby limiting its reliability.

377 This study identified BSA as a more effective performance indicator for both males and  
378 females, with sensitivity, specificity, positive predictive value, and negative predictive value  
379 of 29.2%, 86.0%, 63.6%, and 59.0% for males, and 8.3%, 98.1%, 75.0%, and 60.7% for  
380 females, respectively. This underscores its superiority over BMI as an indexing tool.

381 Furthermore, it's notable that there was no statistical significance between CTR and BSA  
382 across different age groups, as BSA calculation does not account for age, which directly  
383 influences CTR.

384 **Relationship between CTR and BSI**

385 Our study found a significant association ( $p < 0.001$ ) between CTR and BSI overall, albeit  
386 with a weak positive correlation ( $r = 0.19$ ). Among females, the association between CTR and  
387 BSI was also significant, with a slightly stronger correlation ( $r = 0.24$ ), but less significant in  
388 males. There is limited literature on the relationship between CTR and BSI, and our study  
389 revealed a very weak relationship between the two, suggesting limited usefulness in predicting  
390 CTR.

391 In contrast, Shiraz et al. demonstrated that BSI provided a more accurate estimate of body  
392 size compared to BMI and BSA. Their study reported an average predictive relationship  
393 between CTR and BSI of 92.53%, higher than that observed for CTR and BSA or CTR and  
394 BMI(22). Despite this, Shiraz's study lacked sensitivity and specificity analysis, which limits  
395 the reliability of their findings.

396 In this study, after incorporating age into the CTR\_BSI relationship through multivariate  
397 regression, sensitivity and specificity values were observed to be more favorable for males  
398 than females, indicating that BSI may be a less effective performance indicator for predicting  
399 CTR in females.

#### 400 **Relationship between CTR and Clinical Indications**

401 In this study, we found no statistical significance between CTR and clinical indications  
402 presented ( $p = 0.190$ ). This may be attributed to our study not including patients with  
403 conditions like hypertension, renal failure, and other cardiac diseases known to significantly  
404 affect CTR, as observed in studies by Hailu et al., Saheera et al., and Chou et al.(23-25)

405 There was a statistically significant association between CTR and BMI for chest pain ( $p =$   
406  $0.006$ ) and difficulty in breathing (DIB) ( $p = 0.005$ ), showing moderate correlations. However,



407 there was no statistical significance observed for cough and other clinical indications in  
408 relation to CTR. Similarly, there was no statistical significance found for CTR with BSA and  
409 BSI, indicating strong correlations that support the idea that the clinical indications presented  
410 did not strongly influence CTR. This suggests that CTR is primarily affected by indications  
411 directly related to cardiac conditions.

#### 412 **Diagnostic performance of linear equation containing BSA and radiologist manual** 413 **method for estimation of CTR**

414 In the current study, the performance of linear equation derived using multilinear regression  
415 method containing BSA and age showed low sensitivity of 29.2% and a relative high  
416 specificity of 86.0% in determining CTR among males. It also showed low sensitivity of 8.3%  
417 and high specificity of 98.1% among female participants. Few to no studies have used BSA  
418 and other body parameters to estimate CTR. However, studies that attempted to estimate CTR  
419 used artificial intelligence or Deep learning vs manual method of estimation by radiologists  
420 rather than body parameters. These studies have shown high sensitivity and specificity. A  
421 study by Li et al (2019) that used Deep learning computer programming showed high sensitivity  
422 of 97.2% and specificity of 92.7% in estimating CTR (26). Similarly, a study by  
423 Saiviroonporn et al (2021) showed that an assisted artificial intelligence algorithm had a  
424 standard sensitivity of 97.5% and specificity of 82.8% in estimating CTR compared (27).  
425 Clearly the difference in the findings in our study and the above studies is in the method of  
426 estimation of CTR. Deep learning and AI methods may not be reliable or might even be  
427 inaccessible, expensive and slow as the distribution of computers and access to stable  
428 constantly available electricity is still a challenge in most African countries including Uganda.

## 429 **CONCLUSION**

430 Our study found that CTR shows minimal correlation with body parameters such as BMI,  
431 BSA, and BSI, suggesting these factors are not reliable determinants of CTR and should be  
432 used cautiously. Instead, CTR appears to be more influenced by age and sex. We observed a  
433 positive correlation between CTR and age, with higher values in females compared to males,  
434 underscoring the effectiveness of CTR measured from chest radiographs in screening for  
435 cardiomegaly in resource-limited settings.

436 Regarding body surface area (BSA), our study indicated a weak association with CTR. When  
437 age was included in multivariate regression analysis, BSA demonstrated relatively good  
438 performance metrics compared to BMI and BSI, with sensitivity, specificity, positive  
439 predictive value, and negative predictive value of 29.2%, 86.0%, 63.6%, and 59.0% for males,  
440 and 8.3%, 98.1%, 75.0%, and 60.7% for females, respectively. This suggests that BSA may  
441 be a more suitable tool for predicting CTR compared to BMI and BSI.

## 442 **LIMITATION(S) OF THE STUDY**

443 These study findings may not generalize to the broader population as they were conducted in  
444 a hospital-based setting where each patient had underlying medical conditions that could have  
445 influenced their CTR.

## 446 **RECOMMENDATION(S)**

447 We propose conducting a comparable study in a more diverse population with varied  
448 characteristics.

## 449 **Author's contributions**

450 AM conceptualized the idea, coordinated the project, wrote and reviewed the paper, RN was  
451 the finance director to the project, wrote and reviewed the paper, ON wrote and reviewed the  
452 paper, DB was the radiologist of the project, wrote and reviewed the paper, IS was the  
453 radiographer to the project and he reviewed the paper, FO was the data analyst to the project,  
454 wrote and reviewed the paper, RM wrote and reviewed the paper, VN wrote and reviewed the  
455 paper, AGM provided the overall mentorship of the project, wrote and reviewed the paper

#### 456 **Acknowledgements**

457 We acknowledge Makerere University Research and Innovations Fund (Mak-RIF) for funding  
458 this research. We also acknowledge Ernest Cook Ultrasound Research and Education Institute  
459 which is the primary affiliation to most of the authors including the first author.

460

#### 461 **REFERENCES**

- 462 1. Mohammadi S, Hedjazi A, Sajjadian M, Ghoroubi N, Mohammadi M, Erfani SJJoc, et al. Study of  
463 the normal heart size in Northwest part of Iranian population: a cadaveric study. 2016;8(3):119.
- 464 2. McKee JL, Ferrier KJNMJ. Is cardiomegaly on chest radiograph representative of true cardiomegaly:  
465 a cross-sectional observational study comparing cardiac size on chest radiograph to that on  
466 echocardiography. 2017;130(1464):57-63.
- 467 3. Pfaffenberger S, Bartko P, Graf A, Pernicka E, Babayev J, Lolic E, et al. Size matters! Impact of age,  
468 sex, height, and weight on the normal heart size. 2013;6(6):1073-9.
- 469 4. Simkus P, Gutierrez Gimeno M, Banisauskaite A, Noreikaite J, McCreavy D, Penha D, et al.  
470 Limitations of cardiothoracic ratio derived from chest radiographs to predict real heart size: comparison  
471 with magnetic resonance imaging. 2021;12:1-10.

- 472 5. Truszkiewicz K, Poręba R, Gać PJoCM. Radiological cardiothoracic ratio in evidence-based  
473 medicine. 2021;10(9):2016.
- 474 6. McKee J, Ferrier KJTNZMJ. Is cardiomegaly on chest radiograph representative of true  
475 cardiomegaly: a cross-sectional observational study comparing cardiac size on chest radiograph to that  
476 on echocardiography. 2017;130(1464):57-63.
- 477 7. Mensah Y, Mensah K, Asiamah S, Gbadamosi H, Idun E, Brakohiapa W, et al. Establishing the  
478 cardiothoracic ratio using chest radiographs in an Indigenous Ghanaian population: a simple tool for  
479 cardiomegaly screening. 2015;49(3):159-64.
- 480 8. Truszkiewicz K, Macek P, Poręba M, Poręba R, Gać PJRR, Practice. Radiological cardiothoracic ratio  
481 as a potential marker of left ventricular hypertrophy assessed by echocardiography.  
482 2022;2022(1):4931945.
- 483 9. Ekedigwe JE, Pam SD, Binitie PO, Sirisena AU, Hameed M, Adegbe EOJJoMitT. Cardiothoracic ratio  
484 and body mass index in normal young adult Nigerians. 2014;16(2):47-51.
- 485 10. Emegoakor A, Ukoha UJIJoB, Applied, Research I. Relationship between cardiothoracic ratio and  
486 some selected anthropometric parameters in relation to gender in an adult Nigerian population.  
487 2018;7(3):83-91.
- 488 11. Mehra S, Kumar S. Study of interrelationship between heart diameter and cardio-thoracic ratio  
489 with body habitus: a hospital based study to evaluate cardiac enlargement. 2019.
- 490 12. Sb CH, Browner W, Grady D, Newman T, Gaertner R. Designing clinical research: an epidemiologic  
491 approach. 2013.
- 492 13. Hattori K, Ishii T, Sato N, Motegi T, Yamada K, Gemma A, et al. Association Between Cardiothoracic  
493 Ratio On Plain Chest Roentgenogram And Cardiopulmonary Function In Patients With Chronic

- 494 Obstructive Pulmonary Disease. B24 COPD AND CARDIOVASCULAR DISEASE: American Thoracic  
495 Society; 2011. p. A2622-A.
- 496 14. Mohajan D, Mohajan HKJoliMR. Body mass index (BMI) is a popular anthropometric tool to  
497 measure obesity among adults. 2023;2(4):25-33.
- 498 15. Hall. BFCA. Body Surface Area. National Library of Medicine. 2022.
- 499 16. Shirazu I, Sackey T, Tiburu EK, Mensah Y, Forson AJJRSET. The use of body surface index as a better  
500 clinical health indicators compare to body mass index and body surface area for clinical application.  
501 2018;4(11):131-6.
- 502 17. Msuega C, Hameed M, Annongu IJJMSCR. Establishing the cardiothoracic ratio of nonhypertensive  
503 patients using posteroanterior (PA) chest radiographs in an indigenous Nigerian population. 2021;9(2):1-  
504 9.
- 505 18. Ominde BS, Enakpoya P, Ikubor J, Ovovwero OJGIJHSr. Assessment of the cardiothoracic ratio and  
506 its association with gender and age: a Nigerian study. 2023;8(2):1622.
- 507 19. Brakohiapa EK, Botwe BO, Sarkodie BDJEJoHS. Gender and age differences in cardiac size  
508 parameters of ghanaians adults: Can one parameter fit all? part two. 2021;31(3).
- 509 20. Nimusiima E, Wafula ST, Mendoza H, Ndejjo R, Atusingwize EJIH. Physical activity levels and  
510 sociodemographic factors associated with meeting recommended levels among shop attendants in  
511 Mbarara municipality, Uganda. 2022;14(2):183-8.
- 512 21. Olander R, Sundholm J, Ojala T, Andersson S, Sarkola TJUiO, Gynecology. Differences in cardiac  
513 geometry in relation to body size among neonates with abnormal prenatal growth and body size at birth.  
514 2020;56(6):864-71.
- 515 22. Shirazu I, Sackey TA, Tiburu EKJIJRSET. Determination of Standard Reference Cardiothoracic Ratio

516 and the Relationship with Body Parameters as A Patients Health Indicator for Clinical Application.

517 2019;6(5):318-226.

518 23. Halilu S, Aiyekomogbon J, Igashi J, Ahmed H, Aliyu YJAoIS. Cardiothoracic ratio on chest

519 radiographs as a predictor of hypertensive heart disease among adults with systemic hypertension.

520 2017;7(3):82-.

521 24. Saheera S, Krishnamurthy PJ. Cardiovascular changes associated with hypertensive heart

522 disease and aging. 2020;29:0963689720920830.

523 25. Chou C-Y, Wang CC, Chiang H-Y, Huang C-F, Hsiao Y-L, Sun C-H, et al. Cardiothoracic ratio values

524 and trajectories are associated with risk of requiring dialysis and mortality in chronic kidney disease.

525 2023;3(1):19.

526 26. Li Z, Hou Z, Chen C, Hao Z, An Y, Liang S, et al. Automatic cardiothoracic ratio calculation with deep

527 learning. IEEE Access. 2019;7:37749-56.

528 27. Saiviroonporn P, Rodbangyang K, Tongdee T, Chaisangmongkon W, Yodprom P, Siriapisith T, et al.

529 Cardiothoracic ratio measurement using artificial intelligence: observer and method validation studies.

530 BMC Med Imaging. 2021;21(1):95.

531

Image demonstrating how CTR was measured.

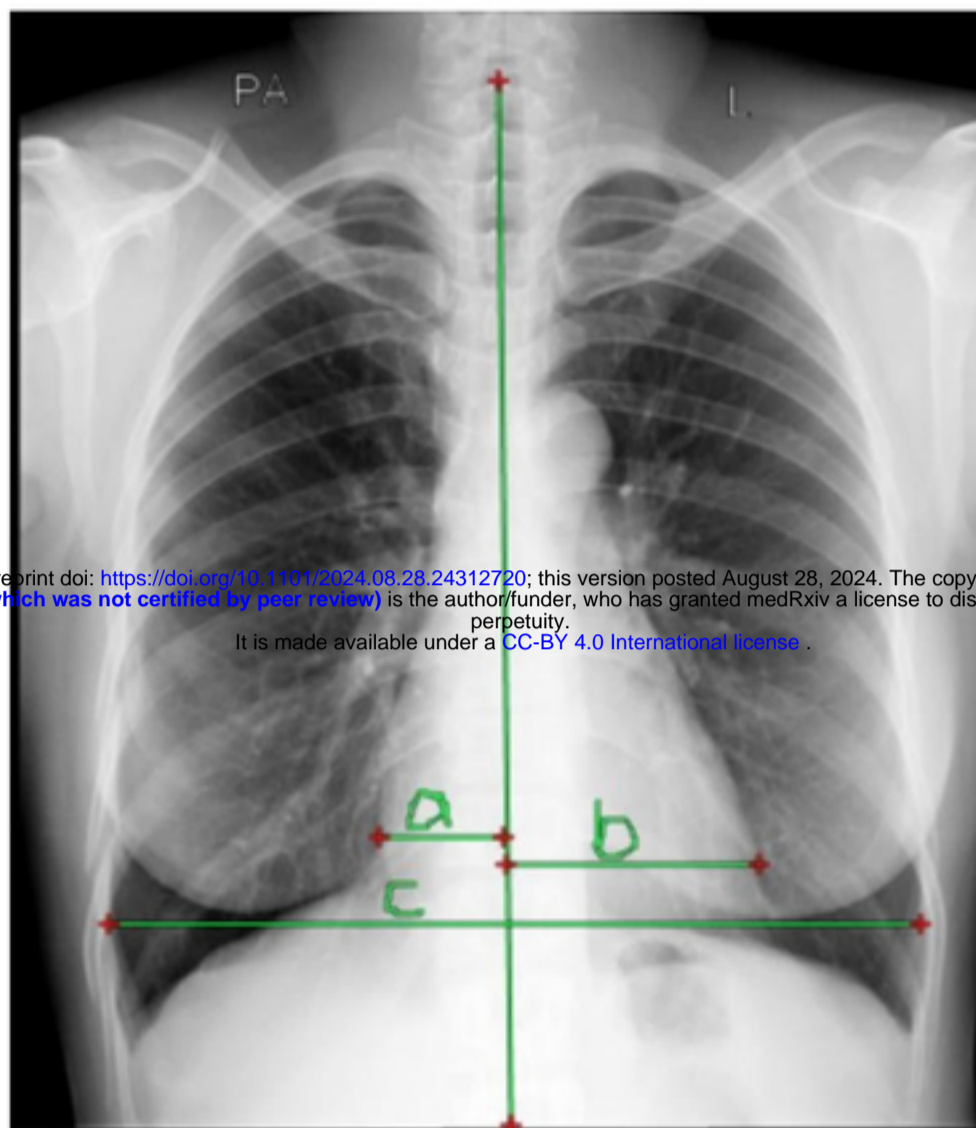


Fig 1; Demonstrating how CTR was measured.

## Study profile

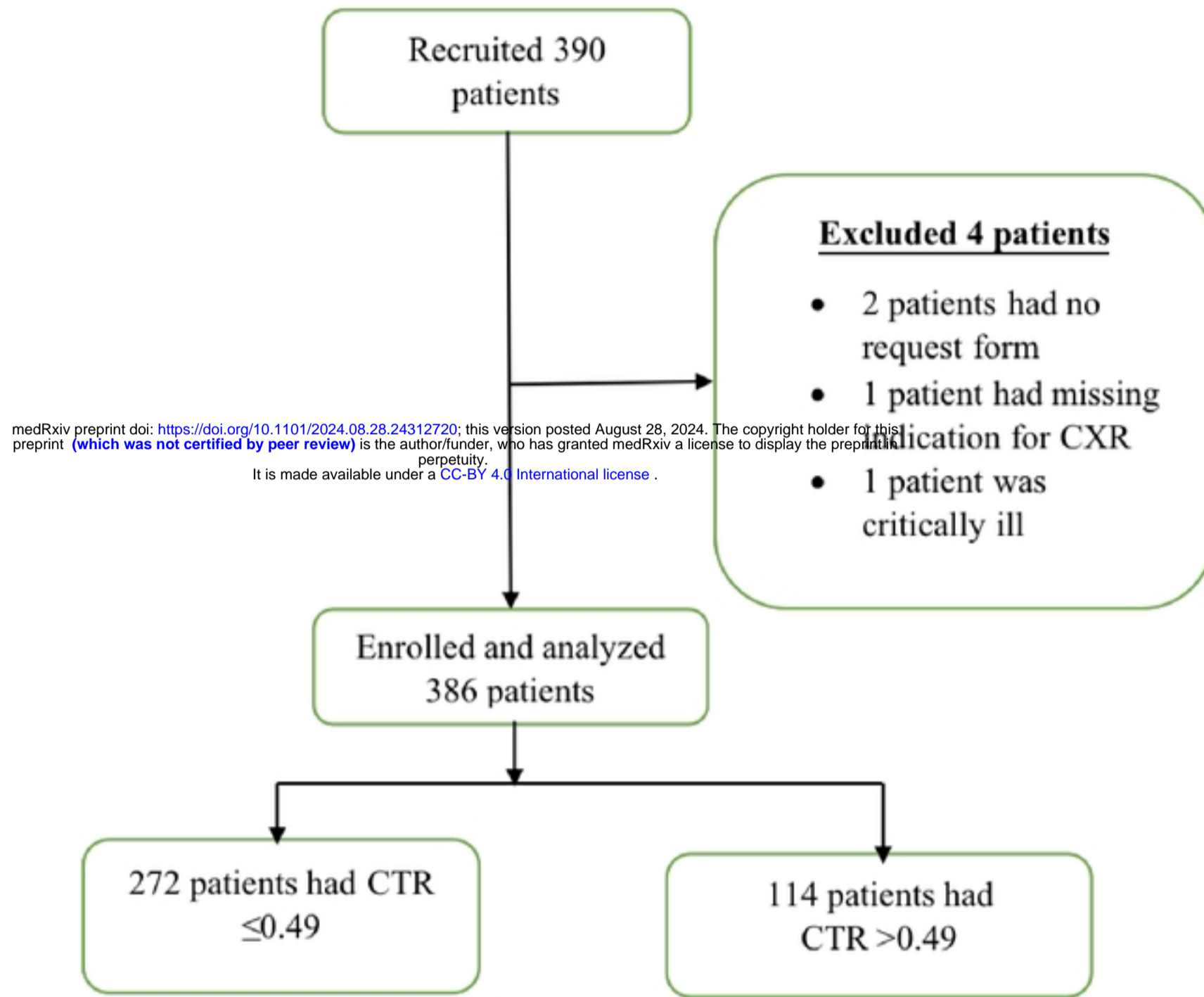


Fig 2; Study profile of patients presenting for chest radiographs in radiology department at Mulago National Referral Hospital during the study period.



### Graphical Presentation of CTR correlation with BMI

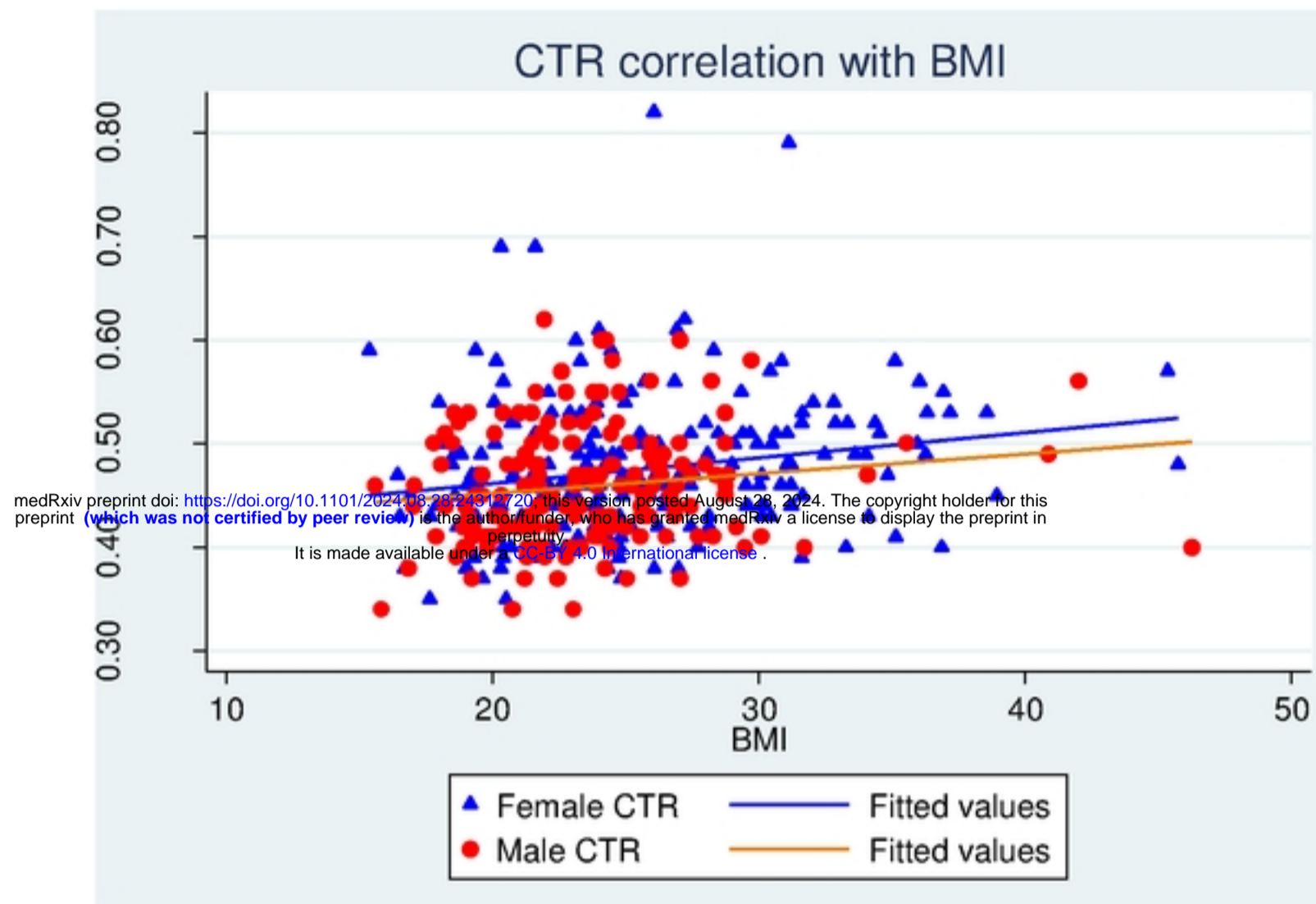


Fig 3; Correlation between strata of BMI by gender with CTR.

### Graphical Presentation of CTR correlation with BSA

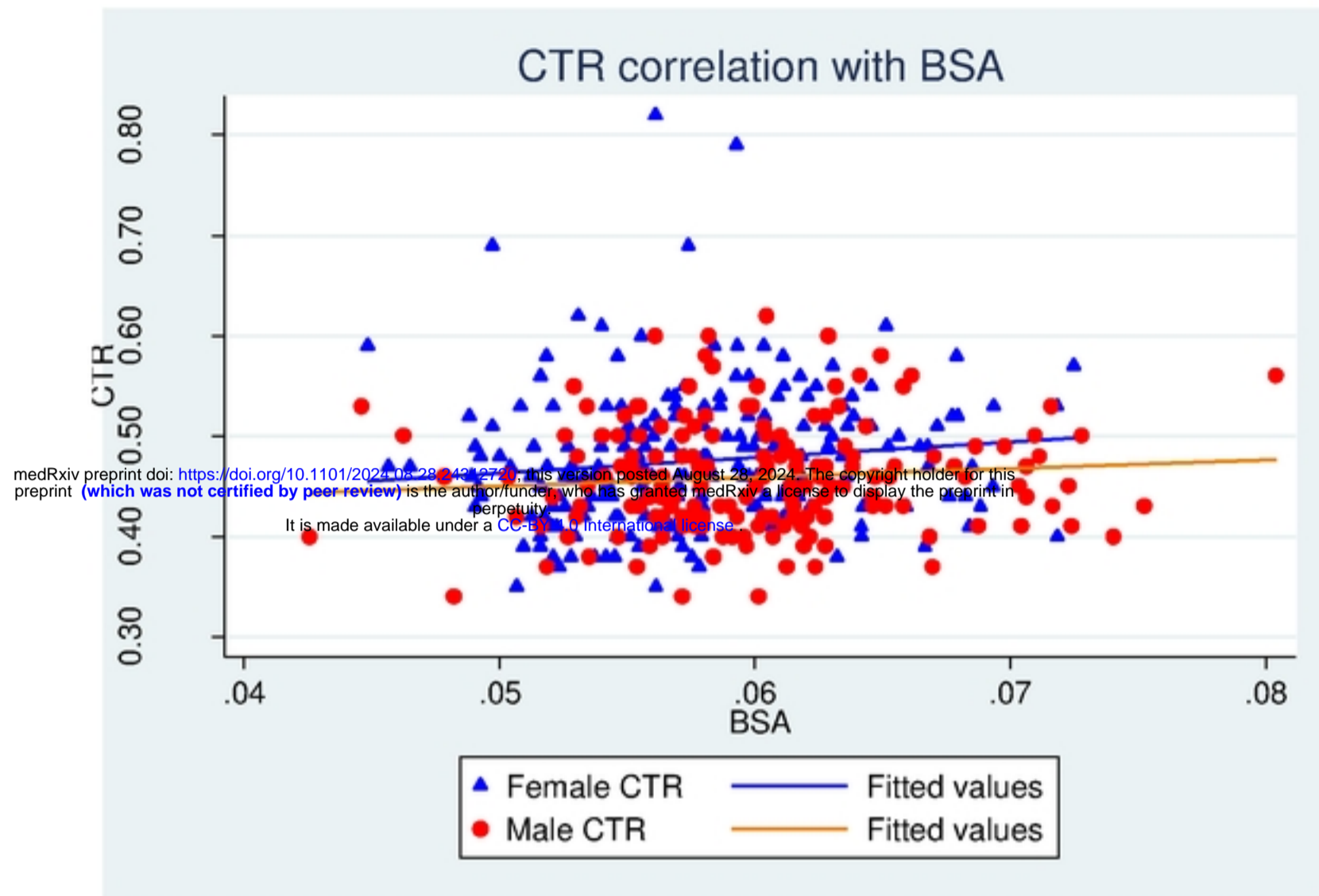


Fig 4; Correlation between strata of BSA by gender with CTR.

### Graphical Presentation of CTR correlation with BSI

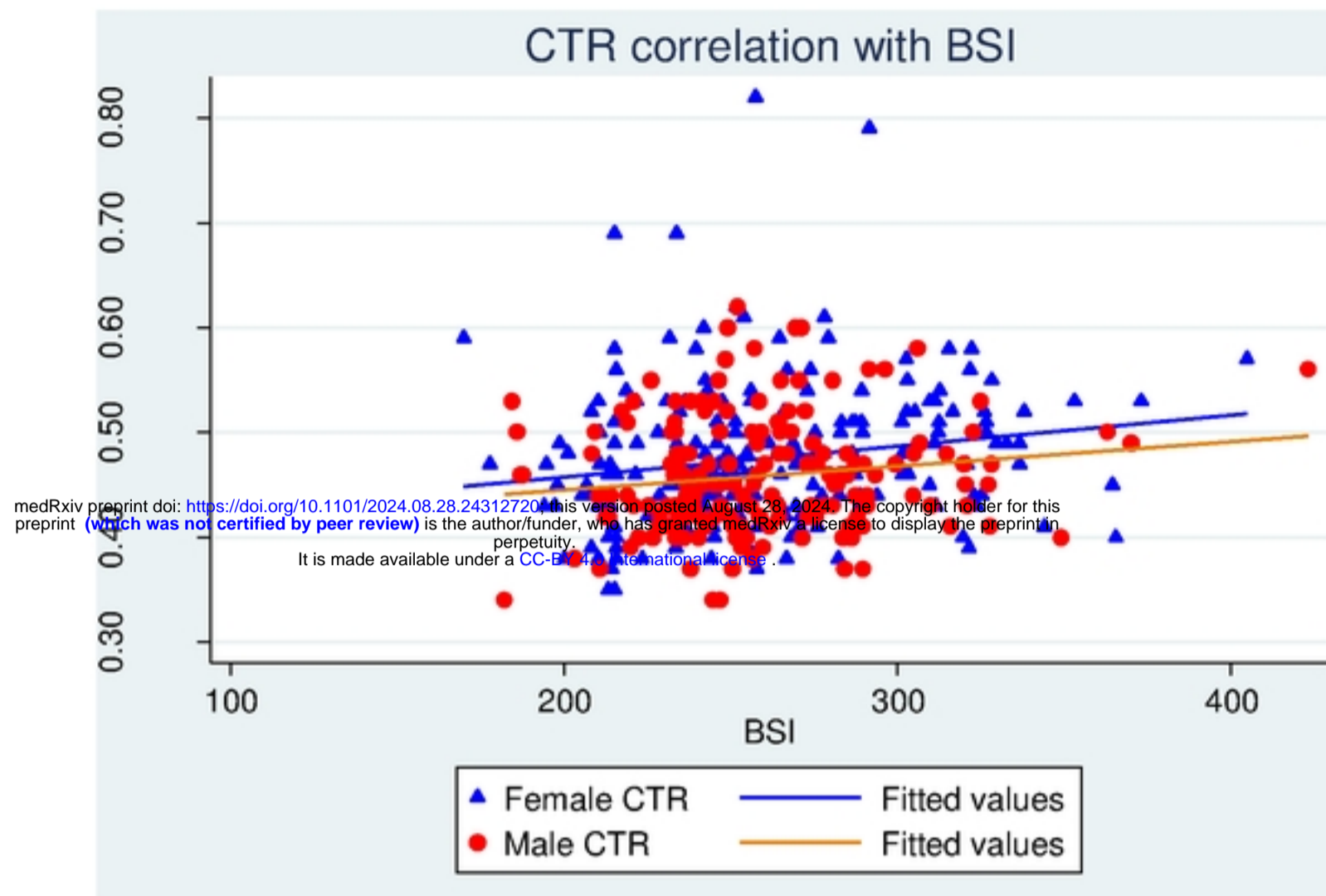


Fig 5; Correlation between strata of BSI by gender with CTR.