

1 **Cardiothoracic Ratio (CTR) Among Patients Presenting for Chest X-ray**
2 **in Radiology Department at Mulago National Referral Hospital: A**
3 **Patients' Health Indicator for Clinical Application.**

4 **Authors:** Alen Musisi¹, Rebecca Nakatudde², Oliver Namuwonge¹, Deborah Babirye³, Ismail
5 Kintu⁵, Francis Olweny⁴, Richard Malumba⁶, Victoria Nakalanzi⁶, Aloysius Gonzaga
6 Mubuuke².

7 **Institutions of Affiliations:**

8 1. Department of Physics, Ernest Cook Ultrasound Research and Education Institute
9 P.O.Box 7161, kampala Uganda

10 2. Department of Radiology and Radiotherapy, College of Health Sciences, Makerere
11 University, Kampala, Uganda

12 3. Department of Radiology, Ernest Cook Ultrasound Research and Education Institute,
13 P.O.Box 7161, kampala Uganda

14 4. Clinical Epidemiology Unit, School of Medicine, College of Health Sciences,
15 Makerere University, Kampala Uganda.

16 5. Department of Radiology, Interventional Radiology Wing, Mulago National Referral
17 Hospital, P.O.Box 7051, Kampala, Uganda

18 6. Department of Research, Ernest Cook Ultrasound Research and Education Institute
19 P.O.Box 7161, kampala Uganda

20 **Corresponding Author:** Alen Musisi

21 **E-mil:** alenmusisi2012@gmail.com

22 **Telephone:** +256772294065
NOT RECOMMENDED FOR PUBLICATION. This preprint reports new research that has not been certified by peer review and should not be used to guide clinical practice.

23 **ABSTRACT**

24 **Introduction/background:** The heart is vital, and even minor dysfunctions can significantly
25 impact the body. Cardiologists need always to determine heart size, which varies with
26 physiological changes. Advanced measurement techniques are costly and often inaccessible
27 to a common man. Measuring the cardiothoracic ratio (CTR) via conventional X-ray is a
28 common and more affordable option, but there's a need for even cheaper alternatives

29 **Objective:** To determine relationship between CTR and presenting clinical indications and to
30 relate CTR to the body parameters to find an appropriate relationship that can be utilized in
31 low resource facilities in determining heart size.

32 **Methodology:** This cross-sectional study involved 386 patients undergoing chest radiographs
33 at Mulago National Specialized Hospital's radiology department. Data were summarized
34 using frequencies and percentages. Associations between the cardiothoracic ratio (CTR) and
35 independent variables were analyzed using Pearson's chi-square, Fisher's exact test,
36 Spearman's correlation coefficient, simple linear regression, and multivariate regression.
37 Statistical significance was set at a p-value of < 0.05 .

38 **Results:** The median cardiothoracic ratio (CTR) was 0.46, with an interquartile range of 0.42
39 to 0.50. Female patients had a higher CTR than males. Significant positive correlations were
40 found between CTR; and BMI ($p < 0.001$, correlation 0.21), and BSA ($p = 0.016$, correlation
41 0.12), and BSI ($p < 0.001$, correlation 0.19). The diagnostic accuracy of a linear regression
42 equation containing BSA as an estimator of CTR showed relatively fair performance
43 compared to the linear regression equations with BSI and BMI. It showed sensitivity,
44 specificity, and positive and negative predictive values of 29.2%, 86.0%, 63.6%, and 59.0%

45 for males, and 8.3%, 98.1%, 75.0%, and 60.7% for females, respectively.

46 **Conclusion:** BSA shows a moderately good relationship with CTR, while the influence of
47 body habitus on CTR is minimal. Thus, using body parameters to predict CTR should be
48 approached cautiously. We recommend conducting a similar study on a more diverse general
49 population

50 **Key Words:** Cardiomegaly, Cardiothoracic Ratio, Body Mass Index, Body Surface Area,
51 Body Surface Index

52 INTRODUCTION

53 The heart is vital, with small dysfunctions causing significant effects. It measures 12cm by
54 8.5cm by 6cm, and weighs 280-340g in males and 230-280g in females(1). Cardiomegaly is
55 heart enlargement, evident when the heart's width exceeds half the chest's width on a
56 posterior-anterior (PA) chest radiograph, indicating a pathological process(2). Determining
57 heart size is crucial for cardiologists due to its variability based on sex, age, height, and weight.
58 Establishing normal size ranges is essential, as slight changes may indicate pathology. What
59 is normal for some may indicate disease in others. (3).

60 The cardiothoracic ratio (CTR) on a PA projection radiograph measures the ratio of heart size
61 to chest width. It's calculated as the maximal horizontal cardiac width divided by the maximal
62 horizontal inner thoracic cage diameter. A $CTR > 0.5$ suggests cardiac enlargement(4, 5). An
63 increased CTR on Chest X-ray is associated with an increased rate of morbidity in middle-
64 aged and elderly groups and has a linear association with increased heart size and coronary
65 heart disease(6). While chest radiography is cost-effective for detecting cardiomegaly and

66 measuring CTR, computed tomography (CT), magnetic resonance imaging (MRI), and
67 echocardiography offer more precise but expensive options to a common man(7). CTR can
68 be influenced by factors like pregnancy, ascites, or chest deformities, leading to variability in
69 measurements unrelated to heart conditions. Studies highlight discrepancies in CTR accuracy
70 compared to cardiac MRI(4, 8). Research also shows varying correlations between CTR and
71 body mass index (BMI), body surface area (BSA), and body surface index (BSI), with obesity
72 and age impacting CTR differently(9, 10). Age has been identified as a more reliable indicator,
73 showing an increase in CTR with advancing age(11). Despite existing research on heart size
74 and CTR in other populations, its applicability to Uganda remains unverified.

75 The CTR in Ugandans remains undetermined, with limited evidence on its relationship with
76 body parameters in this population. Moreover, low-resource settings like Uganda face
77 challenges in accessing affordable and accurate CTR measurements. Screening currently
78 relies on costly and accessible methods like cardiac echocardiography, MRI, and CT. For
79 most clinicians in Uganda, the practical option for heart size assessment remains the
80 cardiothoracic ratio using conventional x-ray. Although body size influences cardiac cavity
81 dimensions, indexed values like BMI, BSI, and BSA are not widely used to estimate CTR.

82 This research aimed to optimize the use of body parameters to estimate CTR when
83 conventional x-ray measurement is unavailable. This technique was expected to assist
84 cardiologists and clinicians in enhancing their diagnostic capabilities without depending on
85 expensive methods for patients. CTR determination is a valuable parameter in patient
86 assessment in hospital emergency departments and intensive care units, aiding in risk
87 stratification, treatment evaluation, and prognosis across various diseases, beyond cardiology.

88 Therefore, this study sought to explore the relationship between the CTR and various clinical
89 indications presented by patients and to examine the association between CTR and key body
90 measurements, including BMI, BSA, and BSI.

91 **METHODS**

92 **Study Design and Setting.**

93 The study used a hospital-based cross-sectional design at Mulago National Referral Hospital
94 in the radiology department. The equipment used was a digital conventional Philips X-ray
95 machine (model: SRO33100ROT380, serial number: 989000086482), processing 20 to 30
96 chest X-rays daily. This hospital serves patients referred from all regions of the country,
97 ensuring the data collected is nationally representative

98 **Study Population**

99 The study included all individuals aged 18 years and older who underwent a Chest X-ray at
100 Mulago National Referral Hospital's radiology department from 03rd July to 29th September,
101 2023, selected through consecutive sampling. Patients that never had request forms and
102 critically ill patients unable to provide consent were excluded, along with those whose clinical
103 request forms indicated heart disease or were inadequately filled or those whose chest x-rays
104 had motion artifacts.

105 **Sample Size estimation**

106 The formula for calculating sample size while using correlation coefficient in cross section
107 study (12) , $N = \left[\frac{(Z\alpha + Z\beta)}{c} \right]^2 + 3$, where $c = 0.5 \times \ln \left[\frac{(1+r)}{(1-r)} \right]$, was used to estimate the
108 number of participants needed to determine the relationship between CTR and clinical
109 indication or CTR and body parameters. Pearson's correlation coefficient, $r=0.33$ was used

110 for clinical indications (13) and r of 0.283 was used for body mass index. To estimate the
111 number of participants needed to describe the proportion of participants with abnormal CXR,
112 we used Kish Leslie formula- $n = \frac{z^2 \times \hat{p}(1 - \hat{p})}{\epsilon^2}$ while factoring in proportion of 0.5 (\hat{p}) for
113 infinite sample size because proportion of Ugandans with abnormal CTR is unknown. Margin
114 of error of 0.05 (ϵ^2) and Z score of 1.96 that corresponds to 95% level of confidence. We
115 therefore came up with an overall sample size of 385 participants.

116 **Study Variables**

117 The independent variables in this study were clinical indications such as cough, difficulty in
118 breathing (DIB), and chest pain, along with demographic factors like age, height, weight, BMI,
119 BSA, BSI, and gender. The dependent variable was CTR.

120 **Study Procedure**

121 The project coordinator oversaw the data collection process conducted by research assistants,
122 under the supervision of the Principal and Co-Principal Investigators (PI and Co-PI). Patients
123 presenting with request forms for chest X-rays were eligible for enrollment. Research
124 assistants provided ready written consent forms to enrolled patients for reading, they
125 explained the study's significance, ethical considerations, and objectives. The participants
126 consented to the study by signing the consent form. Upon obtaining signed informed consent,
127 demographic data such as age and clinical indications were extracted from the patients' request
128 forms. If necessary, missing information was obtained directly from patients by research
129 assistants or the principal investigator. Patient weight and height were measured to calculate
130 Body Mass Index (BMI), Body Shape Index (BSI), and Body Surface Area (BSA).

131 Next, the patient underwent a chest X-ray procedure using posterior-anterior (PA) projection

132 with full inspiration. A Research Assistant obtained a soft copy of the patient's X-ray image
133 and securely stored it on a password-protected research computer. All measurements and
134 relevant data for each patient were recorded on a data collection form. Subsequently, this data
135 was entered into a data entry screen created with Epi-data software version 3.1

136 **Calculating CTR, BMI, BSA, and BSI.**

137 PA radiographs were conducted with the patient in an upright position, achieving maximum
138 inspiration, and utilizing a tube-detector distance of 180cm. The Radiant DICOM software
139 was employed to measure the transverse cardiac diameter (TCD), calculated by summing the
140 horizontal distances from the heart's right (a) and left (b) lateral borders to the midline
141 (spinous processes of the vertebral bodies).

142 The widest transverse thoracic diameter (TTD) (c) was determined by measuring the broadest
143 distance between the medial aspects of the ribs, specifically from pleura to pleura.

144 The CTR was obtained by dividing the TCD by the maximum TTD.

$$CTR = \frac{a + b}{c}$$
$$CTR = \frac{\text{Transverse Cardiac Diameter (TCD)}}{\text{Transverse Thoracic Diameter (TTD)}}$$

147 **Image demonstrating how CTR was measured.**

148 BMI was estimated mathematically as a ratio of the patient's weight in kilograms (kg) to the
149 square of the patient's height in meters (m) (14);

$$BMI = \frac{\text{Weight (kg)}}{\text{Height}^2(\text{m}^2)}$$

151 BSA was estimated from the most widely used technique called Du Bois and Du Bois formula
152 (15);

153
$$BSA = 0.007184 \times \text{Height(m)}^{0.725} \times \text{Weight(kg)}^{0.425}$$

154 BSI, different studies show it is a more precise indicator of organ size/volume than both BMI
155 and the BSA (16). It was estimated by dividing the both weight by the calculated square root
156 of its BSA, it is mathematically expressed as;

157
$$BSI = \frac{\text{Weight}}{\sqrt{BSA}}$$

158 **Data Management and Analysis**

159 Patient data was recorded in data collection forms, which were subsequently reviewed for
160 consistency by the PI before the end of the business day. The validated data was then inputted
161 into a password-protected data entry interface created with Epi-data software version 3.1. A
162 backup of the entered data was stored on an external hard drive.

163 Data was summarized using frequencies and percentages. The relationship between CTR and
164 independent variables was analyzed using simple linear regression and Spearman's
165 correlation coefficient. Significance testing was conducted using Pearson's chi-square and
166 Fisher's exact test, with a p-value < 0.05 considered statistically significant.

167 The dataset was then divided into two parts and analyzed in two stages. The first half was
168 stratified by gender, where multivariate linear regression was employed in each stratum. This
169 analysis accounted for participants' age and individually measured body parameters to
170 establish a linear equation relating these variables to CTR.

171 The second half of the dataset utilized the linear equations derived from the first half to
172 predict/estimate CTR values. This estimation considered measured body parameters and
173 participant characteristics such as age. Subsequently, both the estimated CTR obtained from

174 input of participants age and corresponding body parameter into the derived linear equation
175 and the CTR determined by the study radiologist were categorized as normal (CTR value
176 between 0.42-0.50) or abnormal (below 0.42 or above 0.50). Sensitivity, specificity, and
177 positive and negative predictive values of the estimated CTR were then calculated against the
178 standard of practice CTR determined by the study radiologist to diagnose abnormal heart size
179 (considering both micro-cardia and cardiomegaly).

180 **Ethical Consideration**

181 The study included patients referred for X-ray services during routine care, utilizing
182 anonymized data comprising images and clinical information that cannot be linked back to
183 individual patients. Ethical approval was obtained from the Makerere University, School of
184 Medicine Research Ethics Committee (Mak-SoMREC-2022-480) at Makerere University,
185 Kampala, Uganda. Prior to commencing the study, all investigators completed an online
186 human subjects course.

187 **RESULTS**

188 **Study profile**

189 Out of 390 patients initially recruited for the study, 386 were ultimately enrolled. The
190 exclusions included two patients without clinician request forms, one patient with an unclear
191 indication for chest radiograph, and one critically ill patient unable to provide consent.

192 **Characteristics of the Study Participants**

193 In the study, 386 enrolled patients included 215 females (55.7%). The median age was 37
194 years (interquartile range: 27-50 years), with the largest age group being 31-40 years old
195 (27.7%). The most common clinical indication for chest radiographs was chest pain, reported

196 by 120 patients (31.2%). These details are presented in Table 1.

197

198 **Table 1:** Characteristics of 386 patients who presented for chest radiographs in the radiology

199 department of Mulago National Referral Hospital during the study.

Characteristics	Frequency	Percentages
Gender		
Female	215	55.7
Male	171	44.3
Age categories		
≤ 20	37	9.6
21-30	92	23.8
31-40	107	27.7
41-50	61	15.8
>50	89	23.1
Indications for CXR		
Chest pain	120	31.2
DIB	114	29.6
Cough	114	29.6
Others	37	9.6

200 **Relationship between CTR and Presented Clinical Indication among patients presented**

201 **for chest x-ray in Radiology Department at Mulago National Referral Hospital**

202 The median CTR was 0.46 with an interquartile range (IQR) of 0.42-0.50. Of the 386 patients,

203 114 (70.5%) had CTR > 0.49. Female patients had a high CTR, 70 (61.4%) compared to male
204 patients. No statistically significant association was observed between gender and CTR (P-
205 value, 0.144).

206 The indications for taking chest radiographs were not statistically significantly associated with
207 cardiothoracic ratio (P-value, 0.190). However, a statistically significant association was
208 observed between age categories and CTR, (P-value <0.001). This is shown in Table 2.

209 **Table 2:** Relationship between patient characteristics and CTR among patients who presented
210 for chest radiographs in the radiology department of Mulago National Referral Hospital
211 during the study period.

Characteristics	CTR categorized		P-value
	≤0.49	>0.49	
Gender			0.144
female	145 (53.3)	70 (61.4)	
male	127 (46.7)	44 (38.6)	
Age categorized			<0.001
≤ 20 years	32 (11.8)	5 (4.4)	
21-30	77 (28.3)	15 (13.2)	
31-40	82 (30.2)	25 (21.9)	
41-50	37 (13.6)	24 (21.1)	
>50	44 (16.2)	45 (39.5)	
Indications for CXR			0.190

chest pain	88 (32.4)	32 (28.3)
DIB	86 (31.6)	28 (24.8)
Cough	72 (26.5)	42 (37.2)
others	26 (9.6)	11 (9.7)

212 **Relationship between CTR and BMI among patients presented for chest x-ray in**

213 **Radiology Department at Mulago National Referral Hospital**

214 In Table 3, it was observed that the cardiothoracic ratio (CTR) was positively correlated with
 215 BMI. This correlation was statistically significant, with a p-value of less than 0.001. However,
 216 the strength of the association was weak, as indicated by the Spearman’s rank correlation
 217 coefficient (r) of 0.21.

218 **Table 3:** Relationship between patient BMI and CTR among patients who presented for chest
 219 radiographs stratified by gender, age, and indication at the radiology department of Mulago
 220 National Referral Hospital during the study period.

		CTR	
		Spearman’s correlation	
Characteristic		coefficient (r)	p-value
BMI stratified BMI		0.21	<0.001
independent variables	Gender		
	female	0.22	<0.001
	male	0.16	0.033**
	Age categorized (years)		
	≤ 20	0.14	0.400

21-30	0.11	0.282
31-40	0.06	0.528
41-50	0.29	0.023**
>50	0.13	0.215

Indications for CXR

chest pain	0.25	0.006**
DIB	0.26	0.005**
Cough	0.12	0.198
others	0.22	0.192

221 For female patients, there was a positive but weak and statistically significant correlation
222 between BMI and CTR ($r=0.22$, $P\text{-value}<0.001$). Similarly, among male patients, there was a
223 positive and statistically significant correlation between CTR and BMI ($r=0.16$, $P\text{-value}$,
224 0.033). Both of these correlations were also weak (Figure 3 and Table 3).

225 In Table 3, it was shown that patients aged 41-50 years had a statistically significant positive
226 correlation between their CTR and BMI ($r = 0.29$, $P\text{-value} = 0.023$). This correlation was
227 weak, however. BMI also showed a weak positive correlation with CTR for patients in other
228 age categories, but these correlations were not statistically significant, with all $p\text{-values} > 0.05$.

229 The stratification of BMI based on indications for taking a chest x-ray revealed that the BMI
230 of patients with chest pain showed a statistically significant, but weak, positive correlation
231 with CTR ($r = 0.25$, $P\text{-value} = 0.006$). Similarly, difficulty in breathing as an indication was
232 also found to have a statistically significant, weak positive correlation with CTR ($r = 0.26$, $P\text{-}$
233 $\text{value} = 0.005$). However, there was no statistically significant correlation between BMI and

234 CTR for patients with cough and other indications.

235 Figure 3 below shows that BMI for both males and females positively increased as the
236 cardiothoracic ratio of both sexes increased however the increase was gradual and almost flat.

237 Graphical presentation of CTR correlation with BMI

238

239 4.5 Relationship between CTR and BSA among patients presented for chest x-ray in

240 Radiology Department at Mulago National Referral Hospital

241 In Table 4; the cardiothoracic ratio was positively correlated with BSA. This association was
242 significant with a p-value of 0.016 however, the strength of the association was very weak, (r
243 = 0.12).

244 **Table 4:** Relationship between patient BSA and CTR among patients who presented for chest
245 radiographs stratified by gender, age and indication at radiology department of Mulago
246 National Referral Hospital during the study period

		CTR	
		Spearman's correlation	
Characteristic		coefficient (r)	p-value
BSA stratified independent variables	BSA	0.12	0.016**
	Gender		
	female	0.20	0.004**
	male	0.09	0.260
Age categorized (years)			

≤ 20	0.13	0.443
21-30	0.05	0.666
31-40	-0.10	0.307
41-50	0.05	0.716
>50	-0.07	0.497

Indications for CXR

chest pain	0.12	0.195
DIB	0.20	0.030**
Cough	0.03	0.778
others	0.18	0.295

247

248 The correlation between BSA for female patients and their CTR was weak but positive (r =
249 0.20) and statistically significant (P-value = 0.004). However, the correlation between CTR
250 and BSA among male patients though positive, was not statistically significant (P-value =
251 0.260) and was weak (r = 0.09). The strata of BSA by all age categories as shown in table 4
252 were not significantly associated with CTR. All p-values were > 0.05.

253 In clinical indications, DIB as strata of BSA was weak but positively correlated with CTR (r
254 = 0.20) and was statistically significant (P-value = 0.030). Chest pain, cough, and other
255 indications had p-values > 0.05.

256 Figure 4 below shows that BSA for both males and females positively increased as the
257 cardiothoracic ratio of both sexes increased, however, the increase was gradual and almost
258 flat.

259 **Graphical presentation of CTR correlation with BSA**

260

261 **4.6 Relationship between CTR and BSI among patients presented for chest x-ray in**

262 **Radiology Department at Mulago National Referral Hospital**

263 In Table 5, the cardiothoracic ratio was positively correlated with BSI. This association was
264 statistically significant with a p-value less than 0.001 however, the strength of the association
265 was very weak, ($r = 0.19$). The correlation between BSI for female patients and their CTR
266 was positive ($r=0.24$) and statistically significant ($p\text{-value} < 0.001$). However, the correlation
267 between CTR and BSI among male patients though positive, was not statistically significant
268 ($p\text{-value} = 0.088$) and was weak ($r = 0.13$).

269 **Table 5:** Relationship between patient BSI and CTR among patients who presented for chest
270 radiographs stratified by gender, age and indication at radiology department of Mulago
271 National Referral Hospital during the study period.

		CTR	
		Spearman's correlation	
Characteristic		coefficient (r)	p-value
BSI stratified independent variables	BSI	0.19	<0.001**
	Gender		
	female	0.24	<0.001**
	male	0.13	0.088
	Age categorized (years)		
	≤ 20	0.14	0.396

21-30	0.08	0.436
31-40	-0.01	0.883
41-50	0.18	0.151
>50	0.03	0.811

Indications for CXR

chest pain	0.22	0.017**
DIB	0.25	0.007**
Cough	0.09	0.361
others	0.22	0.189

272 The strata of BSI by all age categories as shown in table 5 above were all not significantly
273 associated with CTR (p-values > 0.05). Under clinical indication, DIB as a stratum of BSI
274 was weak but positively correlated ($r=0.25$) with CTR and statistically significant (p-value =
275 0.007). Chest pain as a clinical indication and stratum of BSI was also weakly but positively
276 ($r = 0.22$) correlated with CTR and was significant (p-value = 0.017)

277 **Figure 4:** below shows that BSI for both males and females positively increased as the
278 cardiothoracic ratio of both sexes increased however the increase was gradual and almost flat.

279 Graphical presentation of CTR correlation with BSI

280

281 Linear Relationship between CTR, Measured Body Parameters and Age among Male 282 and Female Participants

283 In Table 6 below, it is shown that the CTR increased by about 0.0015 for every unit change
284 in BMI while keeping age constant for female patients. CTR also increased by about 0.0017

285 for every unit change in age while keeping BMI constant for female patients. R-squared in
 286 this model was 0.203 meaning that about 20.3% of variations in CTR can be explained by
 287 variations in BMI and age among female patients. Even though the R-squared value was low,
 288 an F-statistic of 13.6 was significant with a p-value of less than 0.001.

289 **Table 6:** Linear relationship between measured body parameters and CTR among patients
 290 who presented for chest radiographs at radiology department of Mulago National Referral
 291 Hospital during the study period.

Linear equation relating body parameter to CTR		
Measured body parameter	Female	Male
	CTR = 0.37218 + 0.001510 BMI + CTR = 0.42547 + 0.0002 BMI +	
BMI	0.001650 AGE	0.00067 AGE
	CTR = 0.37081+ 0.676410 BSA + CTR = 0.536476 -1.98265 BSA +	
BSA	0.001679 AGE	0.001004 AGE
	CTR = 0.368608 + 0.0001642 BSI CTR = 0.46353 - 0.000152 BSI +	
BSI	0.001635 AGE	0.000817 AGE

292 The study also showed that CTR increased by about 0.0002 for every unit change in BMI
 293 while keeping age constant for male patients. CTR also increased by about 0.00067 for every
 294 unit change in age while keeping BMI constant for male patients. R-squared in this modal was
 295 0.032 meaning that only 3.2% of variation in CTR could be explained by variations in BMI
 296 and age among male patients and F-statistic of 1.33 was not significant, (0.270).

297 Among females, the sensitivity of estimated CTR based on the derived equation from

298 regression of CTR against BSA and age as compared to CTR derived by the study radiologist
 299 was 29.2%, 95%CI (17.0-44.1), specificity 86.0%, 95%CI (74.2-93.7), positive and negative
 300 predictive values of 63.6%, 95%CI (40.7-82.8) and 59.0%, 95% CI (47.7-69.7) respectively.

301 Among males, the sensitivity of estimated CTR based on the derived equation from regression
 302 of CTR against BSA and age as compared to CTR derived by the study radiologist was 8.2%,
 303 (CI: 1.8-22.5), specificity 98.1%, (CI: 89.7-100.0), positive and negative predictive values of
 304 75%, (CI: 19.4-99.4) and 60.7%, (CI: 49.5-71.2) respectively. This is shown in Table 7 below

305 **Table 7:** Sensitivity, Specificity, and Positive and Negative Predictive values for BMI,
 306 BSA, and BSI relationship with CTR among female and male patients

Parameters and corresponding performanc indicators	Female		Male	
	Percentage	95%CI	Percentage	95%CI
BMI				
Sensitivity	31.3	18.7-46.3	0.0	0.0-9.7
Specificity	86.0	74.2-93.7	98.1	89.7-100.0
Positive predictive value	65.2	42.7-83.6	0.0	0.0-97.5
Negative predictive value	59.8	48.3-70.4	58.6	47.6-69.1
BSA*				
Sensitivity	29.2	17.0-44.1	8.3	1.8-22.5

Specificity	86.0	74.2-93.7	98.1	89.7-100.0
Positive predictive value	63.6	40.7-82.8	75.0	19.4-99.4
Negative predictive value	59.0	47.7-69.7	60.7	49.5-71.2
BSI				
Sensitivity	31.3	18.7-46.3	0.0	0.0-9.7
Specificity	86.0	74.2-93.7	98.1	89.7-100.0
Positive predictive value	65.2	42.7-83.6	0.0	0.0-97.5
Negative predictive value	59.8	48.3-70.4	58.6	47.6-69.1

307 *BSA was observed to have a moderate relationship with CTR and it provides a fairly better
308 performance indicator for both males and females

309 **DISCUSSION**

310 The Cardiothoracic Ratio (CTR) is a straightforward measurement and calculation, providing
311 a practical tool as a traditional indicator of cardiac size during cardiovascular disease
312 screenings. This study aimed to investigate the relationship between CTR and clinical
313 indications, as well as CTR and body parameters such as BMI, BSA, and BSI. The research
314 was conducted as a hospital-based cross-sectional study.

315 **Relationship between CTR and Demographics**

316 This study found that the median CTR for both males and females was 0.46, with an IQR of
317 0.42-0.50. This IQR is consistent with the findings of studies by Truskiewicz et al. and
318 Mohammad et al., which also identified the normal CTR range as being between 0.42 and
319 0.50(8, 17). Several studies suggest that CTR values exceeding 0.5 or falling below 0.42

320 indicate pathological conditions such as cardiomegaly or microcardia, respectively (8, 17-19)
321 Among participants with a high CTR (>0.49), female patients outnumbered males. This
322 finding aligns with studies by Ominde et al. and Ali et al., which attributed the higher CTR in
323 females to their smaller thoracic diameter(18, 19). Men typically engage in more physically
324 demanding activities, which contribute to a wider thoracic diameter(17). Unlike our study,
325 which found no statistically significant association between gender and CTR ($p=0.144$), the
326 studies by Ominde et al. and Mohammad et al. reported a statistically significant
327 relationship(17, 18). This study also contradicted findings from a study conducted in Ghana
328 by Brakohiapa et al., which observed a statistically significant difference in CTR across
329 gender groups ($p = 0.001$) (19).

330 In this study, CTR was found to increase with age, a statistically significant association ($p <$
331 0.001) that aligns with findings from Brakohiapa et al., Mohammad et al., and other studies(11,
332 17, 19). The increase in CTR with age is attributed to the thickening of cardiac ventricular
333 muscle due to higher vascular resistance or the loss of elasticity in the major blood vessels(11,
334 17). However, the combined correlation (r) between CTR and age groupings was weak, which
335 contrasts with the Ekedigwe et al. 2014 study that found a significant correlation in males and
336 a slightly lower correlation in females (9).

337 **Relationship between CTR and BMI**

338 Our study found a statistically significant association between CTR and BMI ($p < 0.001$). This
339 finding aligns with the results of the Emegoakor et al. study, which also demonstrated
340 significant differences ($p < 0.05$) in CTR relative to BMI among males and females(10). In
341 both males and females, there was a modest positive association between CTR and BMI, with

342 correlation coefficients of 0.16 and 0.22, respectively. This finding is consistent with previous
343 studies by Mehra et al., Ekedigwe et al., and Emegoakor et al (9-11). Similarly, this modest
344 correlation was evident across both genders. While one might anticipate a significant
345 correlation between CTR and BMI, our study did not demonstrate this. This discrepancy could
346 stem from unaccounted physiological variations. Ugandans are recognized for their physical
347 fitness, attributed to moderate-intensity work-related physical activities (20). This could lead
348 to a slightly elevated CTR even with maintained low BMI levels. Additionally, the study only
349 based on the clinical indications in request forms presented to the radiology department for
350 chest x-ray and so might have missed to exclude patients with undisclosed possible cardiac
351 conditions if not captured in the request form.

352 This study found a stronger statistical association between CTR and BMI in females ($p <$
353 0.001) compared to males ($p = 0.033$), a phenomenon not consistently reported in previous
354 research and thus warrants further investigation. Across age categories <20 , $21-30$, $31-40$,
355 and >50 years, there was no statistically significant relationship between CTR and BMI, with
356 weak positive correlations observed. The only age category where statistical significance (p
357 $= 0.023$) was observed was $41-50$ years, although the reason for this remains unclear.

358 Therefore, it's important to note that CTR shows a weak association with BMI. BMI
359 measurement alone does not determine CTR, as BMI calculation does not account for age,
360 which is significantly associated with CTR.

361 **Relationship between CTR and BSA**

362 Our study found a significant association ($p = 0.016$) between CTR and total BSA, albeit with
363 a weak positive correlation ($r = 0.12$). This finding aligns with Emegoakor et al.'s study, which

364 also reported a significant association between CTR and BSA, as well as with Mehra et al.'s
365 study, which similarly found a weak correlation(10, 11). CTR showed statistical significance
366 with BSA among females ($p = 0.004$), accompanied by a weak positive correlation. The weak
367 correlation suggests that a twofold increase in BSA does not correspond to a twofold increase
368 in CTR, consistent with findings from the Emegoakor et al. study(10).

369 A 2020 study exploring variations in cardiac geometry concerning body size among neonates
370 with abnormal prenatal growth and birth weight indicated that adiposity influenced BSA,
371 resulting in underestimated cardiac dimensions(21). This calls into question the use of BSA
372 (or body weight) as a universal parameter in estimating CTR. However, a study conducted by
373 Shiraz et al. to establish the standard reference CTR among Ghanaians demonstrated an
374 average predictive relationship of 90.32% between CTR and BSA(22). However, the study's
375 limitations include the absence of statistical significance, correlation coefficients, sensitivity,
376 and specificity values, thereby limiting its reliability.

377 This study identified BSA as a more effective performance indicator for both males and
378 females, with sensitivity, specificity, positive predictive value, and negative predictive value
379 of 29.2%, 86.0%, 63.6%, and 59.0% for males, and 8.3%, 98.1%, 75.0%, and 60.7% for
380 females, respectively. This underscores its superiority over BMI as an indexing tool.

381 Furthermore, it's notable that there was no statistical significance between CTR and BSA
382 across different age groups, as BSA calculation does not account for age, which directly
383 influences CTR.

384 **Relationship between CTR and BSI**

385 Our study found a significant association ($p < 0.001$) between CTR and BSI overall, albeit
386 with a weak positive correlation ($r = 0.19$). Among females, the association between CTR and
387 BSI was also significant, with a slightly stronger correlation ($r = 0.24$), but less significant in
388 males. There is limited literature on the relationship between CTR and BSI, and our study
389 revealed a very weak relationship between the two, suggesting limited usefulness in predicting
390 CTR.

391 In contrast, Shiraz et al. demonstrated that BSI provided a more accurate estimate of body
392 size compared to BMI and BSA. Their study reported an average predictive relationship
393 between CTR and BSI of 92.53%, higher than that observed for CTR and BSA or CTR and
394 BMI(22). Despite this, Shiraz's study lacked sensitivity and specificity analysis, which limits
395 the reliability of their findings.

396 In this study, after incorporating age into the CTR_BSI relationship through multivariate
397 regression, sensitivity and specificity values were observed to be more favorable for males
398 than females, indicating that BSI may be a less effective performance indicator for predicting
399 CTR in females.

400 **Relationship between CTR and Clinical Indications**

401 In this study, we found no statistical significance between CTR and clinical indications
402 presented ($p = 0.190$). This may be attributed to our study not including patients with
403 conditions like hypertension, renal failure, and other cardiac diseases known to significantly
404 affect CTR, as observed in studies by Hailu et al., Saheera et al., and Chou et al.(23-25)

405 There was a statistically significant association between CTR and BMI for chest pain ($p =$
406 0.006) and difficulty in breathing (DIB) ($p = 0.005$), showing moderate correlations. However,

407 there was no statistical significance observed for cough and other clinical indications in
408 relation to CTR. Similarly, there was no statistical significance found for CTR with BSA and
409 BSI, indicating strong correlations that support the idea that the clinical indications presented
410 did not strongly influence CTR. This suggests that CTR is primarily affected by indications
411 directly related to cardiac conditions.

412 **Diagnostic performance of linear equation containing BSA and radiologist manual**
413 **method for estimation of CTR**

414 In the current study, the performance of linear equation derived using multilinear regression
415 method containing BSA and age showed low sensitivity of 29.2% and a relative high
416 specificity of 86.0% in determining CTR among males. It also showed low sensitivity of 8.3%
417 and high specificity of 98.1% among female participants. Few to no studies have used BSA
418 and other body parameters to estimate CTR. However, studies that attempted to estimate CTR
419 used artificial intelligence or Deep learning vs manual method of estimation by radiologists
420 rather than body parameters. These studies have shown high sensitivity and specificity. A
421 study by Li et al (2019) that used Deep learning computer programming showed high sensitivity
422 of 97.2% and specificity of 92.7% in estimating CTR (26). Similarly, a study by
423 Saiviroonporn et al (2021) showed that an assisted artificial intelligence algorithm had a
424 standard sensitivity of 97.5% and specificity of 82.8% in estimating CTR compared (27).
425 Clearly the difference in the findings in our study and the above studies is in the method of
426 estimation of CTR. Deep learning and AI methods may not be reliable or might even be
427 inaccessible, expensive and slow as the distribution of computers and access to stable
428 constantly available electricity is still a challenge in most African countries including Uganda.

429 **CONCLUSION**

430 Our study found that CTR shows minimal correlation with body parameters such as BMI,
431 BSA, and BSI, suggesting these factors are not reliable determinants of CTR and should be
432 used cautiously. Instead, CTR appears to be more influenced by age and sex. We observed a
433 positive correlation between CTR and age, with higher values in females compared to males,
434 underscoring the effectiveness of CTR measured from chest radiographs in screening for
435 cardiomegaly in resource-limited settings.

436 Regarding body surface area (BSA), our study indicated a weak association with CTR. When
437 age was included in multivariate regression analysis, BSA demonstrated relatively good
438 performance metrics compared to BMI and BSI, with sensitivity, specificity, positive
439 predictive value, and negative predictive value of 29.2%, 86.0%, 63.6%, and 59.0% for males,
440 and 8.3%, 98.1%, 75.0%, and 60.7% for females, respectively. This suggests that BSA may
441 be a more suitable tool for predicting CTR compared to BMI and BSI.

442 **LIMITATION(S) OF THE STUDY**

443 These study findings may not generalize to the broader population as they were conducted in
444 a hospital-based setting where each patient had underlying medical conditions that could have
445 influenced their CTR.

446 **RECOMMENDATION(S)**

447 We propose conducting a comparable study in a more diverse population with varied
448 characteristics.

449 **Author's contributions**

450 AM conceptualized the idea, coordinated the project, wrote and reviewed the paper, RN was
451 the finance director to the project, wrote and reviewed the paper, ON wrote and reviewed the
452 paper, DB was the radiologist of the project, wrote and reviewed the paper, IS was the
453 radiographer to the project and he reviewed the paper, FO was the data analyst to the project,
454 wrote and reviewed the paper, RM wrote and reviewed the paper, VN wrote and reviewed the
455 paper, AGM provided the overall mentorship of the project, wrote and reviewed the paper

456 **Acknowledgements**

457 We acknowledge Makerere University Research and Innovations Fund (Mak-RIF) for funding
458 this research. We also acknowledge Ernest Cook Ultrasound Research and Education Institute
459 which is the primary affiliation to most of the authors including the first author.

460

461 **REFERENCES**

- 462 1. Mohammadi S, Hedjazi A, Sajjadian M, Ghoroubi N, Mohammadi M, Erfani SJJoc, et al. Study of
463 the normal heart size in Northwest part of Iranian population: a cadaveric study. 2016;8(3):119.
- 464 2. McKee JL, Ferrier KJNMJ. Is cardiomegaly on chest radiograph representative of true cardiomegaly:
465 a cross-sectional observational study comparing cardiac size on chest radiograph to that on
466 echocardiography. 2017;130(1464):57-63.
- 467 3. Pfaffenberger S, Bartko P, Graf A, Pernicka E, Babayev J, Lolic E, et al. Size matters! Impact of age,
468 sex, height, and weight on the normal heart size. 2013;6(6):1073-9.
- 469 4. Simkus P, Gutierrez Gimeno M, Banisauskaite A, Noreikaite J, McCreavy D, Penha D, et al.
470 Limitations of cardiothoracic ratio derived from chest radiographs to predict real heart size: comparison
471 with magnetic resonance imaging. 2021;12:1-10.

- 472 5. Truskiewicz K, Poręba R, Gać PJoCM. Radiological cardiothoracic ratio in evidence-based
473 medicine. 2021;10(9):2016.
- 474 6. McKee J, Ferrier KJTNZMJ. Is cardiomegaly on chest radiograph representative of true
475 cardiomegaly: a cross-sectional observational study comparing cardiac size on chest radiograph to that
476 on echocardiography. 2017;130(1464):57-63.
- 477 7. Mensah Y, Mensah K, Asiamah S, Gbadamosi H, Idun E, Brakohiapa W, et al. Establishing the
478 cardiothoracic ratio using chest radiographs in an Indigenous Ghanaian population: a simple tool for
479 cardiomegaly screening. 2015;49(3):159-64.
- 480 8. Truskiewicz K, Macek P, Poręba M, Poręba R, Gać PJRR, Practice. Radiological cardiothoracic ratio
481 as a potential marker of left ventricular hypertrophy assessed by echocardiography.
482 2022;2022(1):4931945.
- 483 9. Ekedigwe JE, Pam SD, Binitie PO, Sirisena AU, Hameed M, Adegbe EOJJoMitT. Cardiothoracic ratio
484 and body mass index in normal young adult Nigerians. 2014;16(2):47-51.
- 485 10. Emegoakor A, Ukoha UJIJoB, Applied, Research I. Relationship between cardiothoracic ratio and
486 some selected anthropometric parameters in relation to gender in an adult Nigerian population.
487 2018;7(3):83-91.
- 488 11. Mehra S, Kumar S. Study of interrelationship between heart diameter and cardio-thoracic ratio
489 with body habitus: a hospital based study to evaluate cardiac enlargement. 2019.
- 490 12. Sb CH, Browner W, Grady D, Newman T, Gaertner R. Designing clinical research: an epidemiologic
491 approach. 2013.
- 492 13. Hattori K, Ishii T, Sato N, Motegi T, Yamada K, Gemma A, et al. Association Between Cardiothoracic
493 Ratio On Plain Chest Roentgenogram And Cardiopulmonary Function In Patients With Chronic

- 494 Obstructive Pulmonary Disease. B24 COPD AND CARDIOVASCULAR DISEASE: American Thoracic
495 Society; 2011. p. A2622-A.
- 496 14. Mohajan D, Mohajan HKJoliMR. Body mass index (BMI) is a popular anthropometric tool to
497 measure obesity among adults. 2023;2(4):25-33.
- 498 15. Hall. BFCA. Body Surface Area. National Library of Medicine. 2022.
- 499 16. Shirazu I, Sackey T, Tiburu EK, Mensah Y, Forson AJJRSET. The use of body surface index as a better
500 clinical health indicators compare to body mass index and body surface area for clinical application.
501 2018;4(11):131-6.
- 502 17. Msuega C, Hameed M, Annongu IJJMSCR. Establishing the cardiothoracic ratio of nonhypertensive
503 patients using posteroanterior (PA) chest radiographs in an indigenous Nigerian population. 2021;9(2):1-
504 9.
- 505 18. Ominde BS, Enakpoya P, Ikubor J, Ovovwero OJGIJHSr. Assessment of the cardiothoracic ratio and
506 its association with gender and age: a Nigerian study. 2023;8(2):1622.
- 507 19. Brakohiapa EK, Botwe BO, Sarkodie BDJEJoHS. Gender and age differences in cardiac size
508 parameters of ghanaian adults: Can one parameter fit all? part two. 2021;31(3).
- 509 20. Nimusiima E, Wafula ST, Mendoza H, Ndejjo R, Atusingwize EJIH. Physical activity levels and
510 sociodemographic factors associated with meeting recommended levels among shop attendants in
511 Mbarara municipality, Uganda. 2022;14(2):183-8.
- 512 21. Olander R, Sundholm J, Ojala T, Andersson S, Sarkola TJUiO, Gynecology. Differences in cardiac
513 geometry in relation to body size among neonates with abnormal prenatal growth and body size at birth.
514 2020;56(6):864-71.
- 515 22. Shirazu I, Sackey TA, Tiburu EKJJSRSET. Determination of Standard Reference Cardiothoracic Ratio

516 and the Relationship with Body Parameters as A Patients Health Indicator for Clinical Application.

517 2019;6(5):318-226.

518 23. Halilu S, Aiyekomogbon J, Igashi J, Ahmed H, Aliyu YJAoIS. Cardiothoracic ratio on chest

519 radiographs as a predictor of hypertensive heart disease among adults with systemic hypertension.

520 2017;7(3):82-.

521 24. Saheera S, Krishnamurthy PJct. Cardiovascular changes associated with hypertensive heart

522 disease and aging. 2020;29:0963689720920830.

523 25. Chou C-Y, Wang CC, Chiang H-Y, Huang C-F, Hsiao Y-L, Sun C-H, et al. Cardiothoracic ratio values

524 and trajectories are associated with risk of requiring dialysis and mortality in chronic kidney disease.

525 2023;3(1):19.

526 26. Li Z, Hou Z, Chen C, Hao Z, An Y, Liang S, et al. Automatic cardiothoracic ratio calculation with deep

527 learning. IEEE Access. 2019;7:37749-56.

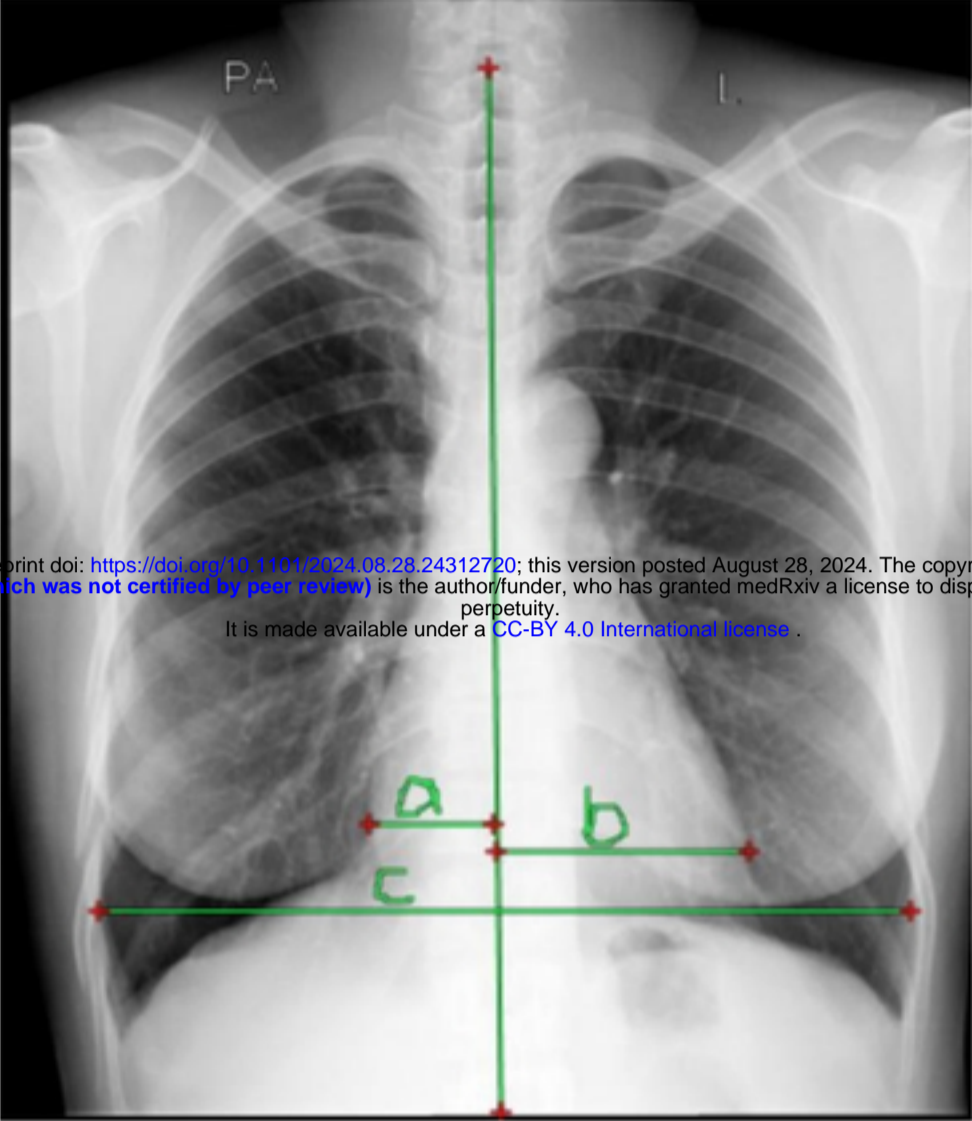
528 27. Saiviroonporn P, Rodbangyang K, Tongdee T, Chaisangmongkon W, Yodprom P, Siriapisith T, et al.

529 Cardiothoracic ratio measurement using artificial intelligence: observer and method validation studies.

530 BMC Med Imaging. 2021;21(1):95.

531

Image demonstrating how CTR was measured.



medRxiv preprint doi: <https://doi.org/10.1101/2024.08.28.24312720>; this version posted August 28, 2024. The copyright holder for this preprint (which was not certified by peer review) is the author/funder, who has granted medRxiv a license to display the preprint in perpetuity. It is made available under a [CC-BY 4.0 International license](https://creativecommons.org/licenses/by/4.0/).

Fig 1; Demonstrating how CTR was measured.

Study profile

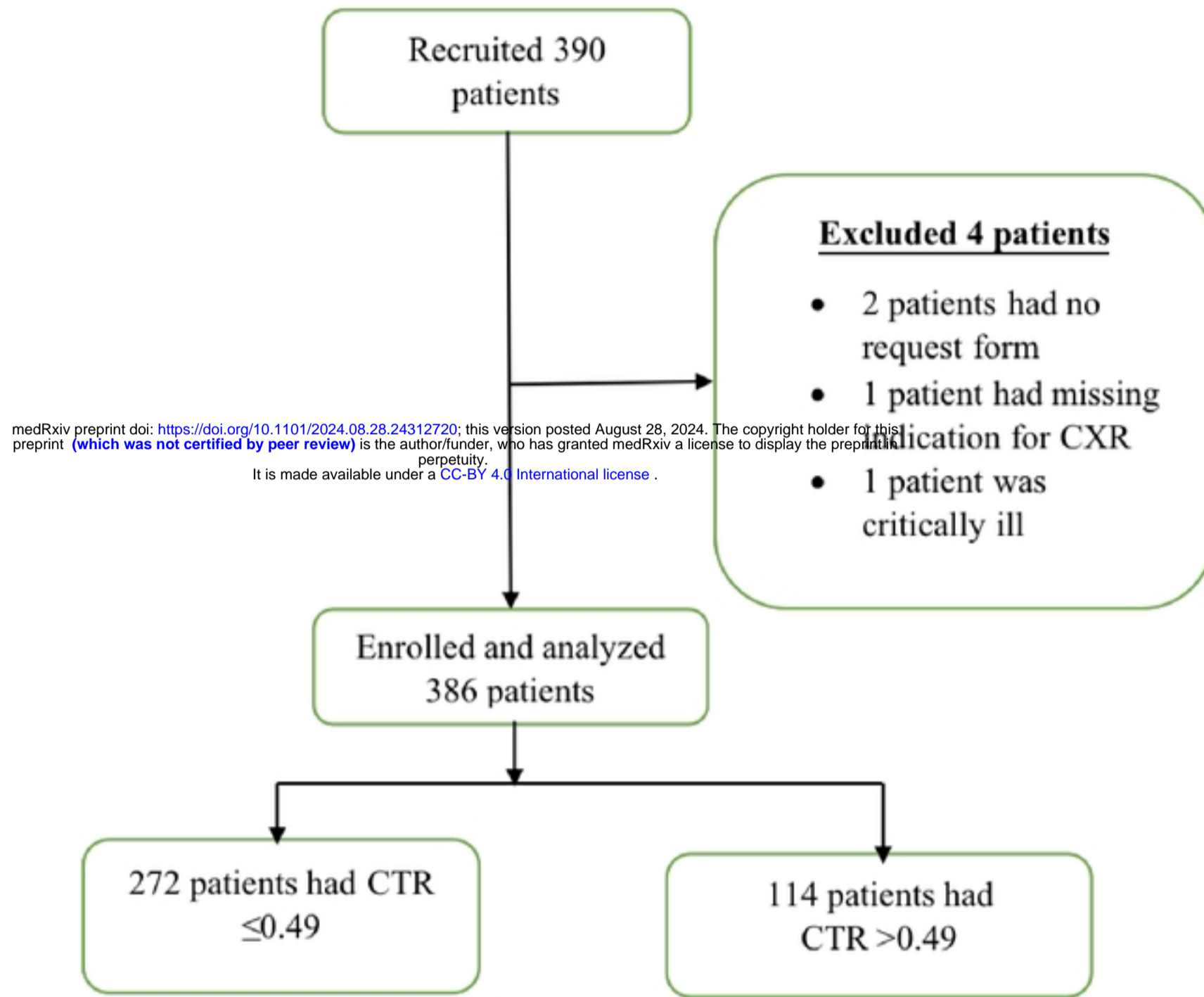


Fig 2; Study profile of patients presenting for chest radiographs in radiology department at Mulago National Referral Hospital during the study period.

Graphical Presentation of CTR correlation with BMI

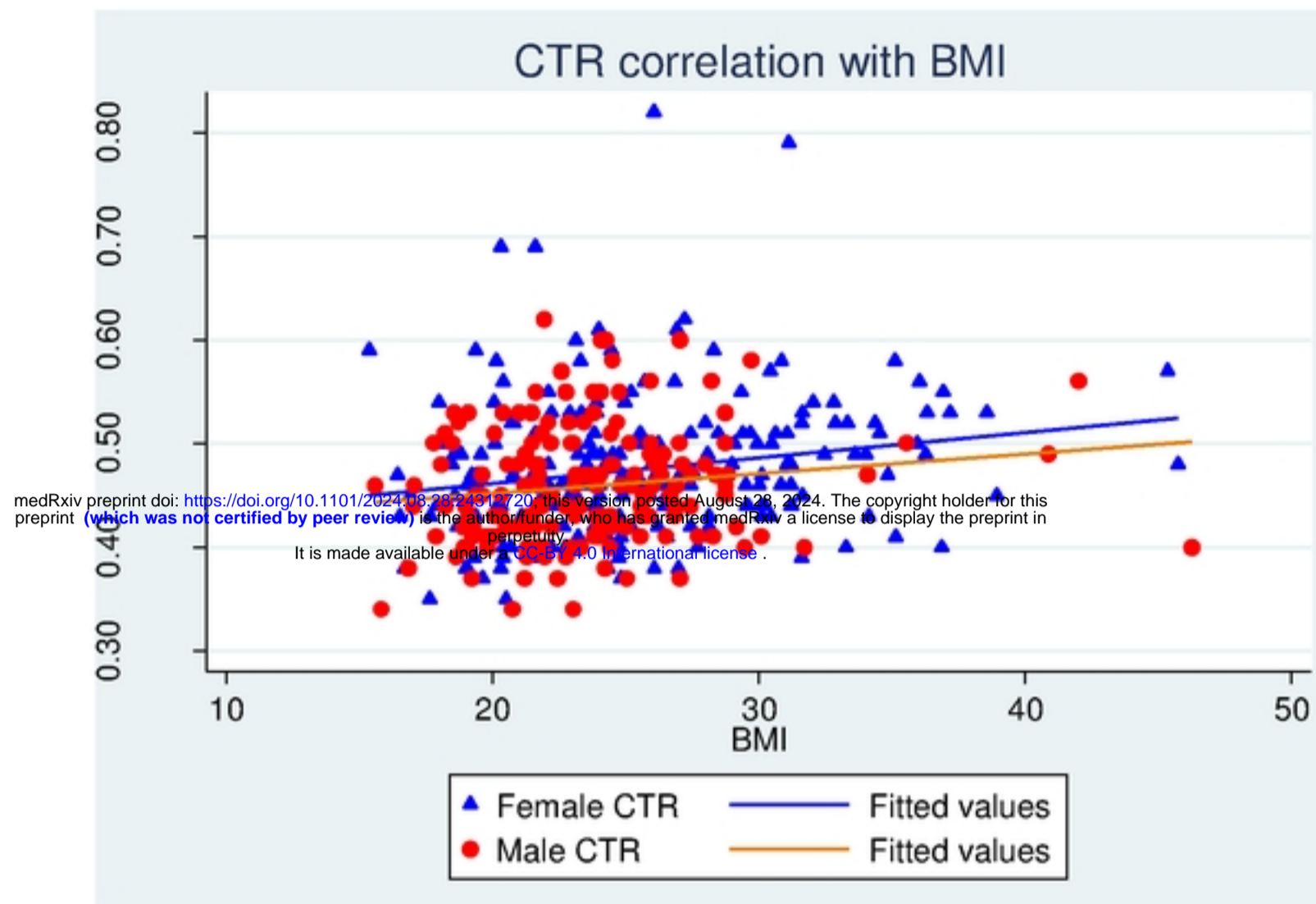


Fig 3; Correlation between strata of BMI by gender with CTR.

Graphical Presentation of CTR correlation with BSA

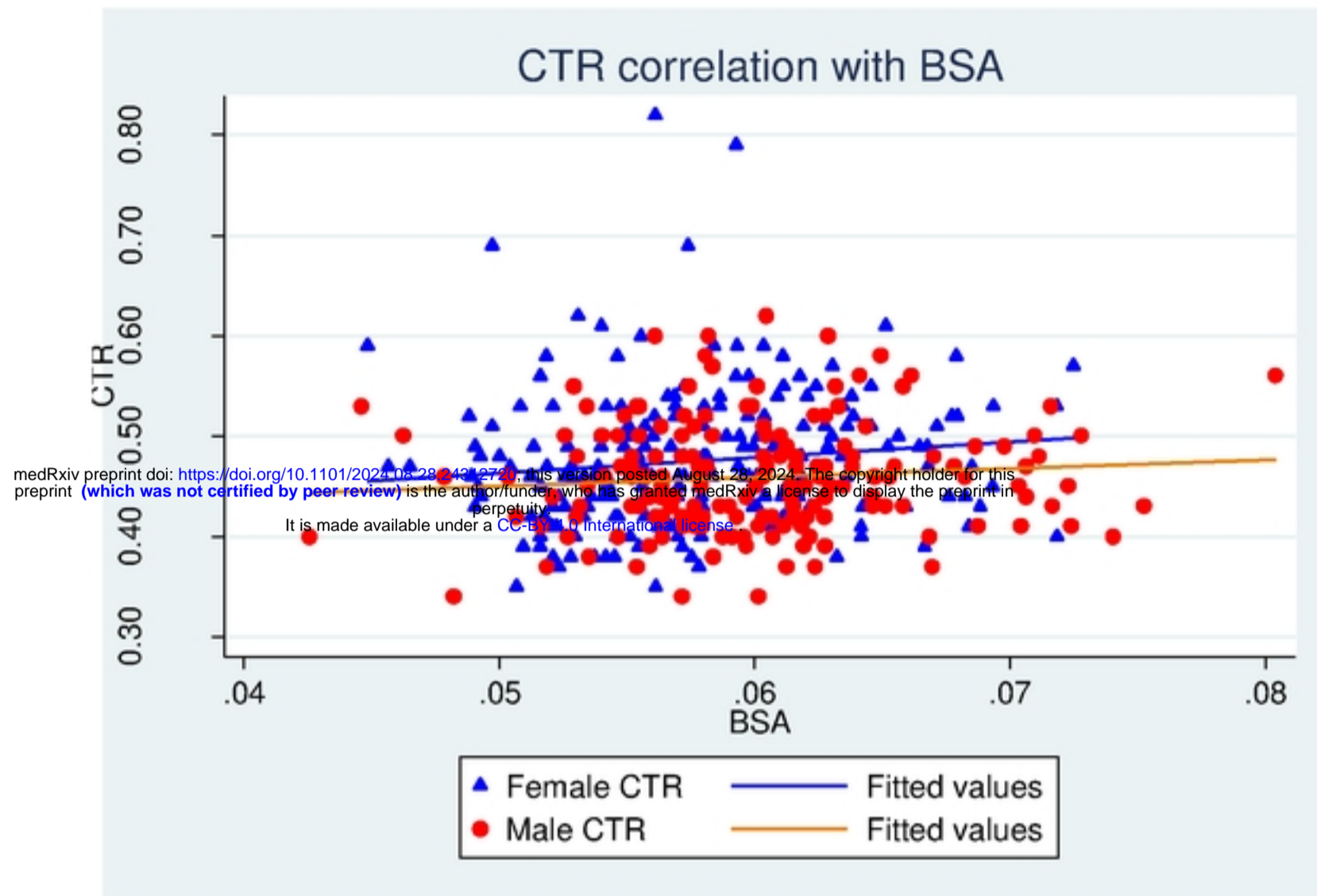


Fig 4; Correlation between strata of BSA by gender with CTR.

Graphical Presentation of CTR correlation with BSI

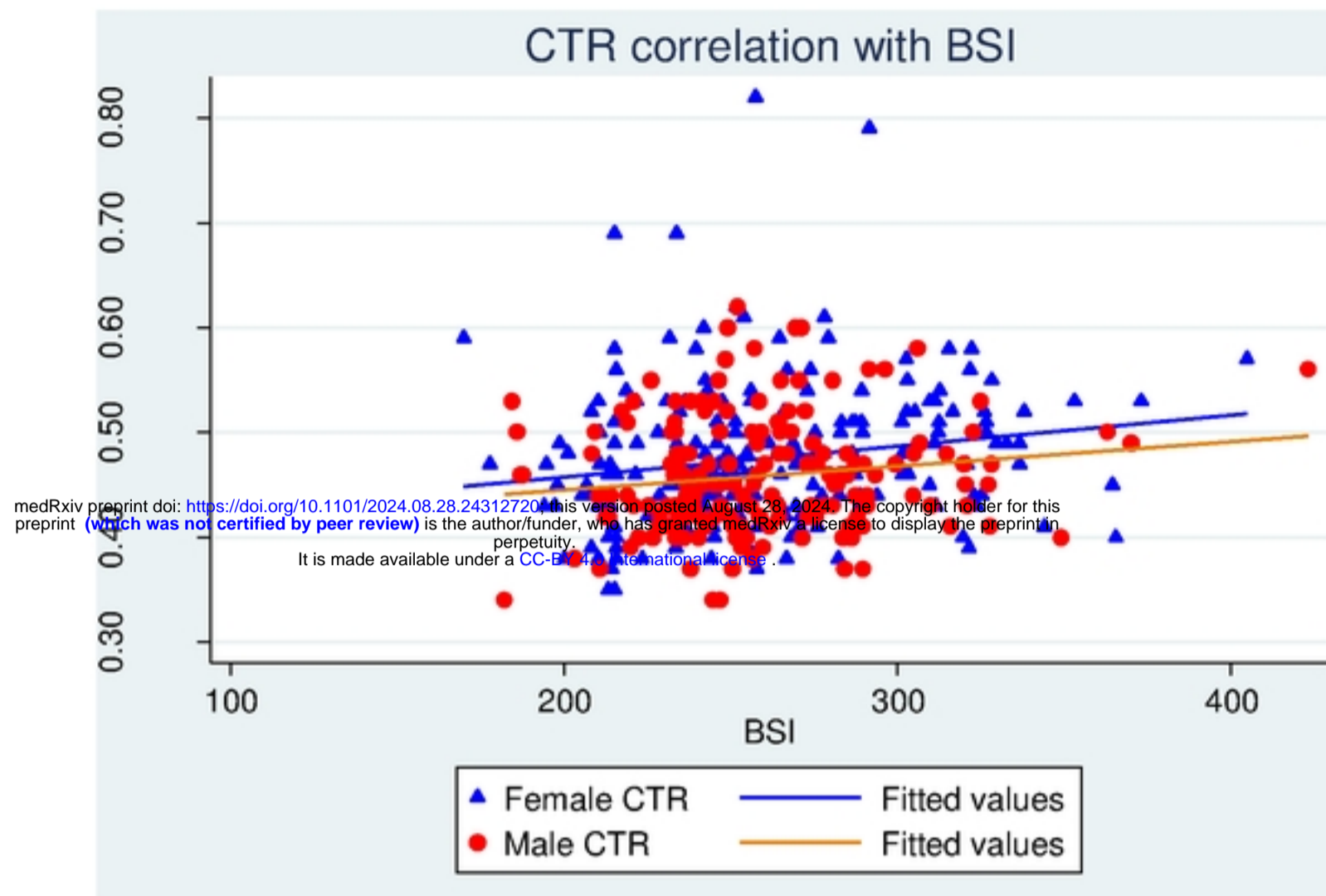


Fig 5; Correlation between strata of BSI by gender with CTR.