

# 1 Continued T12 transmission and shared antibiotic resistance during 2018-2023 *Vibrio* 2 *cholerae* outbreaks in Cameroon

3 Sen Claudine Henriette Ngomtcho<sup>1,2,3</sup>, Blaise Mboringong Akenji<sup>1,4</sup>, Roland Ndip<sup>4</sup>, Andrew S Azman<sup>5,6,7</sup>, Yanick Carolle  
4 Tayimetha<sup>8</sup>, Etienne Guenou<sup>8</sup>, Sylvain Engamba<sup>8</sup>, Marie Claire Assoumou Okomo<sup>1</sup>, Justin Lessler<sup>5,9,10</sup>, Shirlee Wohl<sup>5,11</sup>

5  
6 <sup>1</sup>Molecular Biology Unit, National Public Health Laboratory, Yaoundé, Cameroon

7 <sup>2</sup>Department of Microbiology, Hematology and Immunology, Faculty of Medicine and Pharmaceutical Sciences, University  
8 of Dschang, Dschang, Cameroon

9 <sup>3</sup>Genomic Surveillance Study Group, Ministry of Public Health, Yaoundé, Cameroon

10 <sup>4</sup>Department of Microbiology and Parasitology, Faculty of Science, University of Buea, Buea, Cameroon

11 <sup>5</sup>Department of Epidemiology, Johns Hopkins Bloomberg School of Public Health, Baltimore, MD, USA

12 <sup>6</sup>Geneva Centre for Emerging Viral Diseases, Geneva University Hospitals (HUG), Geneva, Switzerland

13 <sup>7</sup>Division of Tropical and Humanitarian Medicine, Geneva University Hospitals (HUG), Geneva, Switzerland

14 <sup>8</sup>Bacteriology Unit, National Public Health Laboratory, Yaoundé, Cameroon

15 <sup>9</sup>Gillings School of Global Public Health, University of North Carolina at Chapel Hill, Department of Epidemiology,  
16 Chapel Hill, NC, USA

17 <sup>10</sup>The Carolina Population Center, University of North Carolina at Chapel Hill, Chapel Hill, NC, USA

18 <sup>11</sup>Division of Infectious Diseases, Brigham and Women's Hospital, Boston, MA, USA

19  
20 Correspondence: [swohl@bwh.harvard.edu](mailto:swohl@bwh.harvard.edu) (S.W.), [ngomtchosen@gmail.com](mailto:ngomtchosen@gmail.com) (S.C.H.N.)

21

22

## 23 ABSTRACT

24 Seventh pandemic *Vibrio cholerae* was first identified in Cameroon in 1971, causing several sporadic disease  
25 clusters with few cases. More recent years have seen larger cholera outbreaks, but the mechanism behind these  
26 periodic outbreaks is poorly understood, and it is unclear the degree to which antibiotic resistant strains contribute  
27 to disease burden and spread. We used whole genome sequencing to characterize 14 *V. cholerae* isolates from the  
28 2020 and 2021-2023 cholera epidemics in Cameroon. All these isolates belonged to the T12 lineage, and most  
29 showed the same antimicrobial resistance (AMR) pattern regardless of year. This suggests that cholera outbreaks  
30 in Cameroon are, at least in part, a continuation of the outbreaks previously reported in 2018 and as far back as  
31 2012. This finding has important implications for cholera management since it suggests the ongoing presence of  
32 pathogenic cholera even in years with few reported cases. Similarly, the AMR results suggest the need for new  
33 treatment approaches, as resistance to many common antibiotics was found even within our limited sample set.  
34 As such, whole genome sequencing should be implemented in low-income countries such as Cameroon to improve  
35 disease surveillance and to detect and predict pathogen antibiotic resistance profiles.

## 36 INTRODUCTION

37 Since the first documented cholera pandemic in 1817, seven *Vibrio cholerae* pandemics have been recorded [1].  
38 The seventh pandemic originated in Southeast Asia in 1961 and is still ongoing. It reached the African continent  
39 in 1970, first affecting West African countries (Guinea-Bissau and Guinea Conakry), and then reaching Central  
40 Africa, and specifically Cameroon, in 1971 [2, 3]. Despite having been cholera-free before 1970, Africa now bears  
41 the major burden of the global cholera cases, with over 4 million cholera cases and 143,000 deaths reported in  
42 Africa per year [2].

43 Cameroon reported its first cholera cases in February 1971. This was followed by a 20-year period characterized  
44 by sporadic disease clusters with few cases. Following this period, larger outbreaks were reported in 1991, 1996,  
45 1998, 2004, 2010, 2011, and over 46,000 suspected cholera cases and 1,800 deaths were reported between 2004  
46 and 2013 [4]. Minimal cases were reported in intervening years, and the mechanism behind these periodic cholera  
47 outbreaks remains poorly understood. Specifically, it is unclear if successive outbreaks are caused by sustained  
48 circulation of existing strains, or if each is caused by a new introduction.

49 More recent cholera outbreaks in Cameroon have followed a similar trend, despite increased efforts to improve  
50 surveillance nationwide. On May 18, 2018, two suspected cases of cholera were reported in the North Region of  
51 Cameroon and ultimately confirmed as *Vibrio cholerae* by bacterial culture. Cases associated with this outbreak  
52 spread into the Far North Region and continued until December 2019, resulting in a total of 1212 suspected cases  
53 and a 5.1% case fatality rate (CFR) in the North Region and 350 cases (CFR: 4.6%) in the Far-North [5].

54 After a brief period of few cases, the Ministry of Health in Cameroon declared another outbreak following  
55 laboratory confirmation of *Vibrio cholerae* in late January 2020. 18 health districts were affected in four  
56 neighboring administrative regions (South-West, Littoral, South and Center) and the outbreak lasted throughout  
57 the final weeks of 2020, causing 1892 cases (CFR: 4.2%) [6]. After several months of minimal cases (<200 in  
58 total), a new outbreak was declared in Cameroon on October 29, 2021. As of October 2023, over 21,000 suspected  
59 cases have been reported (CFR: 2.4%) (**Supplementary Data 1**) [7]. This 2023 epidemic has spread to the six  
60 main regions of the country, with the central Littoral Region becoming the epicenter of the epidemic.  
61 Understanding how each of these outbreaks spread and the relationship between them may inform approaches to  
62 cholera containment in Cameroon and have implications for outbreak management elsewhere.

63 Molecular characterization of seventh pandemic *V. cholerae* may be one important tool for understanding cholera  
64 outbreak emergence and spread. Already, genomic data has led to new insights about global cholera transmission  
65 and has highlighted the important role of transmission within and between Asia and Africa [8, 9]. Combining  
66 genomic and epidemiological data has allowed scientists to better understand the dynamics of ongoing outbreaks,  
67 and advances in sequencing technology have recently made whole genome sequencing more feasible even in low-  
68 resource settings. Previous studies initially identified three waves of seventh pandemic *V. cholerae* [10] which  
69 were later broken down into at least 14 plausible introduction events from Asia into Africa, termed T1–T14 [8, 9,  
70 11]. These lineages can be used to identify the approximate source of case clusters; for example, cases caused by  
71 the same lineage as a previous outbreak might suggest undetected sustained transmission, while identification of  
72 a new lineage could suggest that new cases were caused by a new international introduction.

73 Even so, identification of *V. cholerae* strains responsible for cholera in Cameroon epidemics has been largely  
74 limited to bacteriological culture, without more advanced molecular analyses like whole genome sequencing [12].  
75 To better understand the cholera dynamics in Cameroon and Sub-Saharan Africa as a whole, we characterized *V.*  
76 *cholerae* O1 isolates from the 2018-2019, 2020, and 2021-2023 (still ongoing) epidemics, with the goal of  
77 identifying and comparing the *V. cholerae* lineages in circulation in Cameroon, and ultimately using this  
78 information to better understand cholera transmission dynamics in order to prioritize public health action. As

79 antimicrobial resistance is becoming an increasingly serious threat to public health [13], we also determined the  
80 antimicrobial resistance profile of these samples, in the hopes of providing information that can be used to limit  
81 the spread of pathogenic drug-resistant *V. cholerae*.

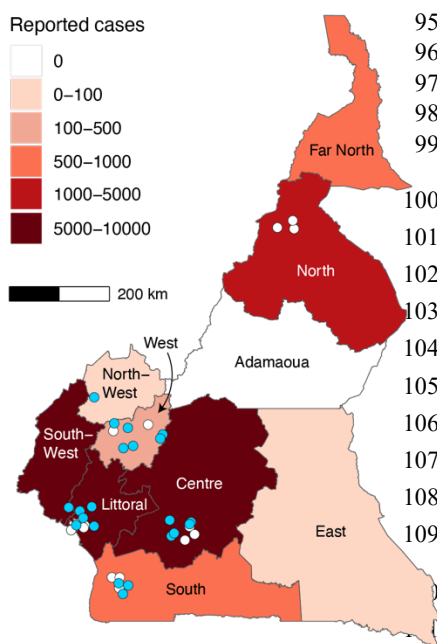
## 82 RESULTS

83 To better understand *V. cholerae* transmission patterns in Cameroon, we sequenced 55 isolates from  
84 epidemiological and laboratory-confirmed cases from the 2018, 2020 and 2021 epidemics (**Table 1**). We selected  
85 these isolates to ensure representation as many regions of Cameroon as possible (samples were sequenced from  
86 eight of the ten regions of Cameroon, see **Figure 1**). We sequenced these isolates at the National Public Health  
87 Laboratory in Cameroon using the Oxford Nanopore platform and generated whole genome sequences (>97%  
88 reference genome coverage) from 14 of the 55 isolates (25% success rate) (**Supplementary Data 1**). Although  
89 we successfully obtained sequences from six included regions, none of the isolates from the 2018 epidemic  
90 achieved our 97% coverage threshold and were therefore excluded from phylogenetic analysis. We observed  
91 higher sequencing success rate from samples from the most recent epidemics, perhaps due to contamination issues  
92 associated with poor long-term storage conditions of older samples.

93 **Table 1. Isolates selected for sequencing and antimicrobial resistance phenotyping.**

| Year         | Isolates Available | Isolates Sequenced | High quality Genomes | Disc Diffusion Results | Sequenced + Disc Diffusion | High quality + Disc Diffusion |
|--------------|--------------------|--------------------|----------------------|------------------------|----------------------------|-------------------------------|
| 2019         | 29                 | 2                  | 0                    | 2                      | 2                          | 0                             |
| 2020         | 30                 | 20                 | 4                    | 9                      | 9                          | 3                             |
| 2022         | 28                 | 22                 | 9                    | 10                     | 10                         | 5                             |
| 2023         | 43                 | 11                 | 1                    | 33                     | 0                          | 0                             |
| <b>TOTAL</b> | <b>130</b>         | <b>55</b>          | <b>14</b>            | <b>54</b>              | <b>21</b>                  | <b>8</b>                      |

94



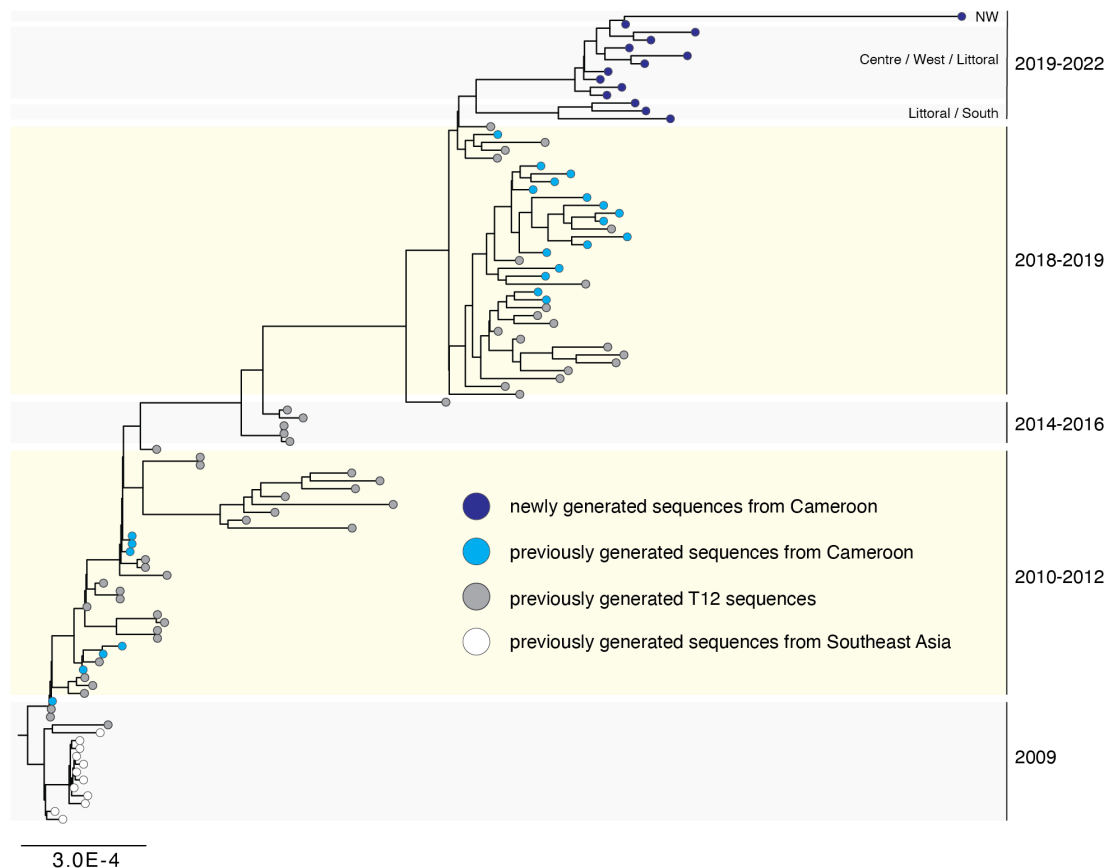
95 **Figure 1. Spatial distribution of *V. cholerae* isolates selected for**  
96 **sequencing.** Blue: high quality genomes included in downstream analyses;  
97 white: sequenced isolates that did not produce high quality genomes (see also  
98 **Supplementary Data 2**). The number of cholera cases reported between 18  
99 May 2018 – 17 October 2023 are shown in shades of red.

100 We generated a maximum likelihood tree using the 14 successful  
101 sequences to better understand how *V. cholerae* O1 was circulating in  
102 Cameroon over time and space (**Figure 2**). Combining these sequences  
103 with previously published global *V. cholerae* genomes demonstrated  
104 that they belonged to the T12 lineage [9], which was shown to be  
105 circulating in Cameroon as recently as 2018 [12] and is the only lineage  
106 to have been observed in Cameroon since 2009 (**Figure 2**, see also  
107 **Supplementary Data 3**). Sequences from both 2020 and 2022 are  
108 found in this lineage, with no evidence for sequences belonging to other  
109 lineages.

110 Combined with the results presented in Ekeng et al., our observation of  
111 T12 sequences in both the 2020 and 2021 outbreaks provides strong  
112 evidence for continuous circulation of this lineage within Cameroon.

113 From our data, it is clear that the T12 lineage is even more widespread than previously thought, as we observed  
114 this lineage in three new epidemiological areas: the North West, West, and South Regions (previously published  
115 sequences from the 2018 outbreak were exclusively from the North, Littoral and Center Regions of the country)

116 (Figure 2). The new sequences generated in this study form two distinct Cameroon-specific sub-clusters that both  
117 contain 2020 and 2022 sequences—as well as sequences from multiple regions of the country— suggesting  
118 circulation and evolution within Cameroon during the 2020 and 2021 outbreaks. These sub-clusters appear to be  
119 descendants of the West Africa T12 sub-cluster from 2018, supporting prior evidence for transmission between  
120 the neighboring countries of Nigeria, Niger, and Cameroon.



122 **Figure 2. Maximum likelihood tree of the *V. cholerae* T12 lineage.** Sequences generated in this study cluster together and  
123 are shown in dark blue. Previously generated sequences from Cameroon are shown in light blue, and other previously  
124 generated sequences from the T12 lineage are shown in gray. Groups of newly generated sequences are labeled by the region  
125 in Cameroon the corresponding isolates were collected in (NW = North West). Scale bar: nucleotide substitutions per site.

126 To understand sequenced isolates that did not generate a high-quality *V. cholerae* O1 genome, we looked more  
127 closely at samples that generated a large number of reads that did not map to the N16961 *V. cholerae* O1 reference  
128 sequence. We identified 24 samples that generated at least 39,000 reads (the minimum number of reads used to  
129 assemble a high-quality *V. cholerae* O1 genome in samples sequenced as part of this study) that were ultimately  
130 excluded from our analysis. Of these, more than half were completely missing the *ctxA* gene, according to the  
131 typing results (Supplementary Data 1). Although poor sequencing quality may still explain these results, the  
132 existence of potential non-O1 *V. cholerae* among these isolates should not be excluded.

133 We also explored the results of antimicrobial resistance (AMR) testing to better understand the relationship  
134 between isolates. We performed AMR testing on 54 isolates (including 13 of the 14 that produced *V. cholerae*  
135 O1 whole genome sequences) using disk-diffusion methods (Supplementary Data 4). We found that resistance  
136 to most of the antibiotics tested was mixed (except for erythromycin, to which nearly all tested isolates were  
137 resistant), and that these results did not cluster by time or place of sample collection. This finding highlights

138 why doxycycline, tetracycline, and ciprofloxacin are some of the primary antibiotics used to combat cholera  
139 disease in Cameroon, though approximately 50% of isolates tested in this study were resistant to doxycycline  
140 and/or tetracycline (55% and 50%, respectively), suggesting a need for continued monitoring of AMR, including  
141 the extent to which AMR phenotype may correlate with genetic signatures.

## 142 **DISCUSSION**

143 Our finding of the T12 lineage in both 2020 and 2022 in Cameroon supports previous evidence suggesting  
144 continuous circulation of the lineage in the country (or at least in the region) since it was first observed in 2009.  
145 This suggests that cholera containment efforts should, at least in part, focus on reducing community transmission,  
146 either by reducing transmission routes between linked regions, or focusing on prevention measures such as  
147 drinking and using clean water, washing hands with soap more often, and using adequate sanitation in regions  
148 with high case numbers.

149 One challenge to cholera containment may be the fact that *V. cholerae* strains circulating in Africa have reportedly  
150 been expanding the number of antibiotic classes to which they confer resistance [8]. This is cause for concern, as  
151 these antibiotic drugs have long been used for treating severe cholera cases. Our results show the presence of at  
152 least some resistant isolates in all drugs tested, highlighting the need for continued monitoring of antimicrobial  
153 resistance, even when cases seem to be derived from the same persistent lineage.

154 Despite the clear implications of our genomic findings for containment of the T12 lineage, genomic surveillance  
155 in low-resource public health settings continues to be challenging, in part because samples are not always collected  
156 and preserved with sequencing in mind. For example, we found that less than 30% of *V. cholerae* isolates  
157 sequenced in this study produced a high-quality genome. Because we performed only reference-based assemblies  
158 to the *V. cholerae* O1 reference, it is possible that some of the failed samples were because they were of a different  
159 serogroup (see typing results in **Supplementary Data 1**). However, most failed sequences are likely due to low  
160 input DNA concentrations due to poor storage conditions, inappropriate transport conditions from the field to  
161 NPHL, or lack of resources (i.e., transport media, technology support) needed for storage, transport, or sequencing.  
162 Notably, almost all samples from 2023 failed because of lack of sequencing platform support. Investment in  
163 surveillance systems that include routine whole genome sequencing may address some of these sequences,  
164 especially those caused by poor long-term storage conditions.

165 Since the introduction of *V. cholerae* into Africa from Asia in 1961, a limited number of isolates from central and  
166 western sub-region of Africa have been sequenced, with fewer than 100 (as of time of writing) sequences available  
167 from Cameroon, most of which were sequenced abroad. In the present study, we greatly increase the fraction of  
168 sequences generated in-country, which may ultimately decrease the time between sample collection and  
169 generation of actionable genomic results. This highlights the necessity for public health authorities in low-income  
170 countries to further develop genomic surveillance strategies of pathogens with epidemic potential such as cholera.

## 171 **MATERIAL AND METHODS**

### 172 **Data Availability**

173 Raw data for all sequenced isolates is available under NCBI BioProject accession: PRJNA954566. Source data  
174 files have been provided for all figures as Supplementary Data 1-4. Laboratory protocol and bioinformatics  
175 pipeline used for analysis are publicly available at <https://github.com/HopkinsIDD/minion-vc>.

## 176 **Ethics Statement**

177 Samples used in this study were collected as part of ongoing outbreak investigations for the monitoring of cholera  
178 in Cameroon. Only leftover clinical diagnostic samples (already stored as bacterial isolates) were used for  
179 sequencing. No identifying patient information was included in this study, and only bacterial isolates were  
180 sequenced (i.e., no chance of sequencing human data). Ethical approval was granted by the University of Buea  
181 (Cameroon) Faculty of Health Sciences Institutional Review Board (2023/1974-02/UB/SG/IRB/FHS).

## 182 **Sample selection, collection, and cholera confirmation**

183 In this study, we selected randomly from all *V. cholerae* isolates stored at NPHL from the 2018-2023 outbreaks  
184 (see **Table 1**). We excluded samples for which we did not obtain *V. cholerae* growth after replating the isolate on  
185 TCBS and Muller Hinton media.

186 These isolates were originally collected and cultured as follows: isolates were generated from fresh (within 24-48  
187 hours of symptom onset) stool samples from suspected cholera cases during the three most recent cholera  
188 outbreaks in Cameroon (starting in 2018, 2020, and 2021). These samples were initially collected in sterile screw-  
189 capped stool recipients by laboratory technicians and trained community healthcare workers in communities and  
190 health facilities in districts that notified suspected cases. Specifically, two sterile cotton swabs were immersed into  
191 the stool and aseptically inserted into a screw tube containing 10 ml Cary-Blair transport medium. For children  
192 who could not produce stools on demand, samples came from rectal swabs collected using moist cotton swabs  
193 and dipped into Cary-Blair transport media. Samples were placed in a triple package insulated box and transported  
194 to the National Public Health Laboratory (NPHL) in Cameroon within a maximum of 48 hours.

195 At NPHL, each stool sample collected during the outbreaks was first directly inoculated on thiosulfate citrate bile  
196 salt sucrose (TCBS) and incubated at 37°C for 24 hours. Immediately after culturing the first TCBS dish, sample  
197 was introduced into alkaline peptone water (APW) and incubated at 37°C for 8 hours. A second TCBS dish was  
198 then inoculated with the stool sample enriched on APW and incubated at 37°C. After 24 hours of incubation,  
199 characteristic *V. cholerae* colonies were selected and finally subcultured on Muller Hinton agar and incubated at  
200 37°C for 24 hours. Colonies resulting from this culture on Muller Hinton medium were resuspended in 5ml of  
201 sterile saline solution to obtain a 0.5 McFarland inoculum and used for the phenotypic identification of *V. cholerae*  
202 based on biochemical characteristics and serotyping. Biochemical identification was done using API 20E  
203 biochemical galleries (BioMerieux, USA). Each well was inoculated using a sterile pipette and then incubated for  
204 16-24 hours at 37°C and the reactions were noted as either positive or negative. Serotyping was done by  
205 agglutination tests using commercial *V. cholerae* Ogawa and Inaba antisera kits (Deben Diagnostics, India)  
206 according to the manufacturer instructions.

## 207 **Antibiotic Susceptibility Testing**

208 Antibiotic susceptibility testing was performed by disk-diffusion method [15] for the following antimicrobial  
209 drugs: amoxicillin (20µg), amoxicillin/clavulanic acid (10-20µg), cephalotin (20 µg), cefotaxim (30µg),  
210 chloramphenicol (30µg), gentamicin (15µg), nalidixic acid (20µg), doxycyclin (30µg), tetracycline (30µg),  
211 polymixin B, azythromycin (15µg) and ciprofloxacin (30µg). The tested antibiotics were chosen based on the  
212 European Committee on Antimicrobial Susceptibility Testing (EUCAST, <http://www.eucast.org>). These  
213 antibiotics and the agar swabbing inoculation technique described below underwent quality control using  
214 *Escherichia coli* ATCC 25922 reference strains before use for *V. cholerae*. In brief, after 5 min of incubation of  
215 *V. cholerae* inoculum on Mueller Hinton agar at room temperature, antibiotic discs were applied on the medium.  
216 Plates were incubated at 37°C overnight. Interpretation was done by measuring inhibition diameters around the  
217 disks using a caliper. Sensitivity, resistance, or the intermediate phenotypes of the strain to antibiotics was  
218 interpreted applying the appropriate EUCAST guidelines. Abricate software

219 ([www.github.com/tseemann/abricate](https://www.github.com/tseemann/abricate)) and the Comprehensive Antibiotic Resistance Database (CARD)  
220 ([www.card.mcmaster.ca/analyze/rgi](https://www.card.mcmaster.ca/analyze/rgi)) online tool were used to identify genes and single-nucleotide  
221 polymorphisms (SNPs) associated with antibiotic resistance.

## 222 **DNA extraction and quantification**

223 DNA extraction was performed at NPHL on *V. cholerae* isolates from the 2018 and 2020 outbreaks. Samples  
224 stored at -80°C in glycerol-brain heart infusion medium were allowed to thaw at room temperature, and then were  
225 re-plated on Mueller Hinton agar (MH) and TCBS. Samples from the 2021 outbreak were directly plated on TCBS  
226 culture medium. All plates were incubated at 37°C overnight. 2 to 4 colonies were then inoculated into 4ml of  
227 sterile Bacto™Peptone (alkaline peptone water) and incubated at 37°C overnight. A shaker was used during this  
228 incubation. Afterwards 1ml of cloudy culture media was used for DNA extraction using the Qiagen QIAmp DNA  
229 Mini Kit, with a final elution volume of 150 µL. The extracted DNA concentration was directly measured using  
230 a Quantus Fluorometer, following the instructions of the manufacturer.

## 231 **Oxford Nanopore library construction and sequencing**

232 Library preparation and sequencing was performed at NPHL in Yaoundé, Cameroon. We used modified version  
233 of the Oxford Nanopore 1D Native barcoding genomic DNA (with EXP-NBD104, EXP-NBD114, and SQK-  
234 LSK109) as described in Ekeng et al. [12]. The extracted DNA was diluted to 1 µg in 49 µL with nuclease-free  
235 water and 48µL of this solution was used for library preparation. For samples with a DNA concentration below  
236 20 ng/µL, 48µL of extracted DNA was used regardless of the final amount (<1µg). Sequences were prepared in 6  
237 different batches (**Supplementary Data 1**).

238 After library preparation following the Oxford Nanopore protocol, we diluted the final library to a final volume  
239 of 12 µL in Elution Buffer and combined with 37.5 µL Sequencing Buffer and 25.5 µL Loading Beads. This  
240 mixture was loaded onto a primed R9.4.1 FLO-MIN106 Oxford Nanopore MinION flow cell. For each sequencing  
241 library, the MinION was run for 48 hours.

## 242 **Reference-based genome assembly**

243 As described in Ekeng et al. [12], sequencing runs were basecalled using Guppy version 4.0.4 with the flip-flop  
244 model (dna\_r9.4.1\_450bps\_fast.cfg). Porechop (<https://github.com/rrwick/Porechop>) was used for  
245 demultiplexing and adapter removal, and we filtered out low quality sequencing reads using Filtlong  
246 (<https://github.com/rrwick/Filtlong>) with the following options: ‘filtlong --keep\_percent 90 --target\_bases  
247 800000000’.

248 Using the resulting filtered FASTQ files, we performed reference-based assembly following the bioinformatics  
249 pipeline available here: <https://github.com/HopkinsIDD/minion-vc>. We used the N16961 strain (Genbank  
250 accession: AE003852/AE003853) as a reference for these seventh pandemic O1 sequences and required coverage  
251 of at least 100x to call a base at each site across the genome. Assemblies with less than 97% coverage of the  
252 reference genome and a median read depth (across the complete N16961 reference genome) below 100 were  
253 excluded from subsequent phylogenetic analysis.

## 254 ***Vibrio cholerae* typing**

255 Typing was performed by mapping reads from sequenced isolate to reference genes *ctxA*, *tcpA\_classical*,  
256 *tcpA\_eltor*, *toxR*, *wbeO1*, and *wbfO139*, with Genbank accession numbers AF463401, M33514.1, KP187623.1,  
257 KF498634.1, KC152957 and AB012956, respectively [16]. We mapped filtered reads to each reference using  
258 minimap2 version 2.17 [17] using scripts included as part of the publicly available bioinformatics pipeline noted

259 above. Using samtools, we counted the number of reads mapping to each gene reference, the fraction of the gene  
260 covered by mapped reads, and the depth of coverage of each site across the reference gene of interest.

## 261 **Maximum likelihood estimation**

262 We concatenated reference-based assemblies generated during this study to 1323 previously published *V. cholerae*  
263 O1 whole genome sequences [8–10, 12, 18, 19] also assembled to the N16961 reference. These background  
264 sequences were selected to represent most of the publicly available whole genome sequences (**Supplementary**  
265 **Data 3**). We masked recombinant sites in these sequences as previously described, first with a selection of fixed  
266 masked sites from Weill et al. 2017 [8] (available at: <https://figshare.com/s/d6c1c6f02eac0c9c871e>) and then  
267 using Gubbins version 3.2.1 [20]. To generate maximum likelihood trees, we ran IQ-TREE version 1.4.4 [21]  
268 using the ModelFinder [22] option, which identified TVM+F+ASC+G4 as the best nucleotide substitution model,  
269 and 1000 ultrafast bootstrap replicates [23]. The final tree was rooted on the taxa labeled 5174\_7\_5 (accession:  
270 ERR025382), as described in Weill et al. 2019 [9] and Ekeng et al. 2021 [12]. We visualized the resulting tree in  
271 FigTree version 1.4.4 (<http://tree.bio.ed.ac.uk/software/figtree/>).

## 272 **REFERENCES**

- 273 1. **Hu D, Liu B, Feng L, Ding P, Guo X, et al.** Origins of the current seventh cholera pandemic. *Proc Natl Acad Sci U S*  
274 *A* 2016;113:E7730–E7739.
- 275 2. **Mengel MA, Delrieu I, Heyerdahl L, Gessner BD.** Cholera outbreaks in Africa. *Curr Top Microbiol Immunol*  
276 2014;379:117–144.
- 277 3. **Ali M, Nelson AR, Lopez AL, Sack DA.** Updated global burden of cholera in endemic countries. *PLoS Negl Trop*  
278 *Dis* 2015;9:e0003832.
- 279 4. **UNICEF.** Cholera epidemiology and response factsheet Cameroon.  
280 <https://www.platformecholera.info/attachments/article/220/UNICEF-Factsheet-Cameroon-EN-FINAL.pdf> (2013,  
281 accessed 6 November 2023).
- 282 5. Rapport de Situation N°15, Épidémie de choléra dans la région de l'Extrême-Nord, 17 septembre 2019. Ministère De  
283 La Sante Publique. <https://reliefweb.int/report/cameroon/rapport-de-situation-n-15-pid-mie-de-chol-ra-dans-la-r-gion-de-l-extr-me-nord-17> (18 September 2019, accessed 22 November 2023).
- 285 6. Rapport Situation Choléra Cameroun N°12. *CCOUSP*. [https://www.ccousp.cm/download/rapport-situation-cholera-](https://www.ccousp.cm/download/rapport-situation-cholera-cameroun-n12/)  
286 [cameroun-n12/](https://www.ccousp.cm/download/rapport-situation-cholera-cameroun-n12/) (2022, accessed 22 November 2023).
- 287 7. ACAPS Briefing note: Cameroon - Increase in cholera cases (29 June 2023). ACAPS.  
288 <https://reliefweb.int/report/cameroon/acaps-briefing-note-cameroon-increase-cholera-cases-29-june-2023> (29 June  
289 2023, accessed 22 November 2023).
- 290 8. **Weill F-X, Domman D, Njamkepo E, Tarr C, Rauzier J, et al.** Genomic history of the seventh pandemic of cholera  
291 in Africa. *Science* 2017;358:785–789.
- 292 9. **Weill F-X, Domman D, Njamkepo E, Almesbahi AA, Naji M, et al.** Genomic insights into the 2016–2017 cholera  
293 epidemic in Yemen. *Nature* 2019;565:230–233.
- 294 10. **Mutreja A, Kim DW, Thomson NR, Connor TR, Lee JH, et al.** Evidence for several waves of global transmission  
295 in the seventh cholera pandemic. *Nature* 2011;477:462–465.
- 296 11. **Benamrouche N, Belkader C, Njamkepo E, Zemam SS, Sadat S, et al.** Outbreak of Imported Seventh Pandemic



- 297 Vibrio cholerae O1 El Tor, Algeria, 2018. *Emerg Infect Dis* 2022;28:1241–1245.
- 298 12. **Ekeng E, Tchatchouang S, Akenji B, Issaka BB, Akintayo I, et al.** Regional sequencing collaboration reveals  
299 persistence of the T12 Vibrio cholerae O1 lineage in West Africa. *Elife*;10. Epub ahead of print 18 June 2021. DOI:  
300 10.7554/eLife.65159.
- 301 13. **Ievy S, Hoque MN, Islam MS, Sobur MA, Ballah FM, et al.** Genomic characteristics, virulence, and antimicrobial  
302 resistance in avian pathogenic Escherichia coli MTR\_BAU02 strain isolated from layer farm in Bangladesh. *J Glob*  
303 *Antimicrob Resist* 2022;30:155–162.
- 304 14. **QGIS Development Team.** *QGIS Geographic Information System*. QGIS Association. <https://www.qgis.org>.
- 305 15. **Hudzicki J.** Kirby-Bauer disk diffusion susceptibility test protocol. [https://asm.org/getattachment/2594ce26-bd44-](https://asm.org/getattachment/2594ce26-bd44-47f6-8287-0657aa9185ad/Kirby-Bauer-Disk-DiffusionSusceptibility-Test-Protocol-pdf.pdf)  
306 [47f6-8287-0657aa9185ad/Kirby-Bauer-Disk-DiffusionSusceptibility-Test-Protocol-pdf.pdf](https://asm.org/getattachment/2594ce26-bd44-47f6-8287-0657aa9185ad/Kirby-Bauer-Disk-DiffusionSusceptibility-Test-Protocol-pdf.pdf) (accessed 6 November  
307 2023).
- 308 16. **Greig DR, Schaefer U, Octavia S, Hunter E, Chattaway MA, et al.** Evaluation of Whole-Genome Sequencing for  
309 Identification and Typing of Vibrio cholerae. *J Clin Microbiol*;56. Epub ahead of print November 2018. DOI:  
310 10.1128/JCM.00831-18.
- 311 17. **Li H.** Minimap2: pairwise alignment for nucleotide sequences. *Bioinformatics* 2018;34:3094–3100.
- 312 18. **Bwire G, Sack DA, Almeida M, Li S, Voeglein JB, et al.** Molecular characterization of Vibrio cholerae responsible  
313 for cholera epidemics in Uganda by PCR, MLVA and WGS. *PLoS Negl Trop Dis* 2018;12:e0006492.
- 314 19. **Irengue LM, Ambroise J, Mitangala PN, Bearzatto B, Kabangwa RKS, et al.** Genomic analysis of pathogenic  
315 isolates of Vibrio cholerae from eastern Democratic Republic of the Congo (2014–2017). *PLoS Negl Trop Dis*  
316 2020;14:e0007642.
- 317 20. **Croucher NJ, Page AJ, Connor TR, Delaney AJ, Keane JA, et al.** Rapid phylogenetic analysis of large samples of  
318 recombinant bacterial whole genome sequences using Gubbins. *Nucleic Acids Res* 2015;43:e15.
- 319 21. **Nguyen L-T, Schmidt HA, von Haeseler A, Minh BQ.** IQ-TREE: a fast and effective stochastic algorithm for  
320 estimating maximum-likelihood phylogenies. *Mol Biol Evol* 2015;32:268–274.
- 321 22. **Kalyaanamoorthy S, Minh BQ, Wong TKF, von Haeseler A, Jermini LS.** ModelFinder: fast model selection for  
322 accurate phylogenetic estimates. *Nat Methods* 2017;14:587–589.
- 323 23. **Minh BQ, Schmidt HA, Chernomor O, Schrempf D, Woodhams MD, et al.** IQ-TREE 2: New Models and  
324 Efficient Methods for Phylogenetic Inference in the Genomic Era. *Mol Biol Evol* 2020;37:1530–1534.
- 325 24. **Dengo-Baloi LC, Semá-Baltazar CA, Manhique LV, Chitio JE, Inguane DL, et al.** Antibiotics resistance in El Tor  
326 Vibrio cholerae O1 isolated during cholera outbreaks in Mozambique from 2012 to 2015. *PLoS One*  
327 2017;12:e0181496.
- 328 25. **Fuesslin V, Krautwurst S, Srivastava A, Winter D, Liedigk B, et al.** Prediction of Antibiotic Susceptibility Profiles  
329 of Vibrio cholerae Isolates From Whole Genome Illumina and Nanopore Sequencing Data: CholerAegon. *Front*  
330 *Microbiol* 2022;13:909692.
- 331 26. **Parvin I, Shahunja KM, Khan SH, Alam T, Shahrin L, et al.** Changing Susceptibility Pattern of Vibrio cholerae  
332 O1 Isolates to Commonly Used Antibiotics in the Largest Diarrheal Disease Hospital in Bangladesh during 2000-  
333 2018. *Am J Trop Med Hyg* 2020;103:652–658.