

Multi-trait and multi-ancestry genetic analysis of comorbid lung diseases and traits improves genetic discovery and polygenic risk prediction

Yixuan He^{1,2,3}, Wenhan Lu^{1,2}, Yon Ho Jee^{1,2,4}, Ying Wang^{1,2,3}, Kristin Tsuo^{1,2,5}, David C Qian⁶, James A Diao^{3,7,8}, Hailiang Huang^{1,2,3}, Chirag J Patel⁷, Jinyoung Byun^{9,10}, Bogdan Pasaniuc^{11,12,13}, Elizabeth G. Atkinson¹⁴, Christopher I. Amos^{9,10}, Matthew Moll^{15,16,17}, Michael H. Cho^{15,16}, Alicia R. Martin^{1,2,3*}

1. Analytic and Translational Genetics Unit, Massachusetts General Hospital, Boston, MA, USA
2. Stanley Center for Psychiatric Research, Broad Institute of MIT and Harvard, Cambridge, MA, USA
3. Department of Medicine, Harvard Medical School, Boston, MA, USA
4. Department of Epidemiology, Harvard T.H. Chan School of Public Health, Boston, MA, USA
5. Program in Biological and Biomedical Sciences, Harvard Medical School, Boston, MA, USA
6. Department of Thoracic Radiation Oncology, The University of Texas MD Anderson Cancer Center, Houston, TX, USA
7. Department of Biomedical Informatics, Harvard Medical School, Boston, MA, USA
8. Department of Medicine, Brigham and Women's Hospital, Boston, MA, USA
9. Institute for Clinical and Translational Research, Baylor College of Medicine, Houston, TX, USA
10. Section of Epidemiology and Population Sciences, Department of Medicine, Baylor College of Medicine, Houston, TX, USA
11. Bioinformatics Interdepartmental Program, UCLA, Los Angeles, CA, USA
12. Department of Human Genetics, David Geffen School of Medicine at UCLA, Los Angeles, CA, USA
13. Department of Computational Medicine, University of California, Los Angeles
14. Department of Molecular and Human Genetics, Baylor College of Medicine, Houston, TX 77030, USA
15. Channing Division of Network Medicine, Brigham and Women's Hospital, Boston, MA, USA
16. Division of Pulmonary and Critical Care Medicine, Brigham and Women's Hospital, Boston, MA, USA
17. Section on Pulmonary, Critical Care, Sleep and Allergy, Department of Veteran Affairs, Boston Healthcare System, West Roxbury, MA, USA

Correspondence to:

Alicia R Martin
Analytic and Translational Genetics Unit
Massachusetts General Hospital
Richard B. Simches Research Center
185 Cambridge Street, CPZN-6818
Boston, MA 02114
armartin@broadinstitute.org

Abstract

While respiratory diseases such as COPD and asthma share many risk factors, most studies investigate them in insolation and in predominantly European ancestry populations. Here, we conducted the most powerful multi-trait and -ancestry genetic analysis of respiratory diseases and auxiliary traits to date. Our approach improves the power of genetic discovery across traits and ancestries, identifying 44 novel loci associated with lung function in individuals of East Asian ancestry. Using these results, we developed PRSextra (cross TRait and Ancestry), a multi-trait and -ancestry polygenic risk score approach that leverages shared components of heritable risk via pleiotropic effects. PRSextra significantly improved the prediction of asthma, COPD, and lung cancer compared to trait- and ancestry-matched PRS in a multi-ancestry cohort from the All of Us Research Program, especially in diverse populations. PRSextra identified individuals in the top decile with over four-fold odds of asthma and COPD compared to the first decile. Our results present a new framework for multi-trait and -ancestry studies of respiratory diseases to improve genetic discovery and polygenic prediction.

Introduction

Respiratory diseases are leading causes of morbidity, mortality, and disability-adjusted life-years globally. Chronic obstructive pulmonary disease (COPD) is the third leading cause of death globally, asthma is the most common chronic disease of childhood, and lung cancer is the leading cause of cancer deaths worldwide^{1–3}.

Existing models for predicting the risk of respiratory disease are limited and often do not consider environmental or genetic risk factors beyond smoking. For example, the Global Initiative for Chronic Obstructive Lung Disease (GOLD) classification system uses spirometry results to guide treatment and prognosis of COPD⁴; the asthma predictive index (API) determines the likelihood of pediatric asthma mainly based on family history information⁵; and lung cancer risk is primarily assessed by age and smoking history.

While respiratory diseases such as COPD and lung cancer are strongly influenced by smoking, they are complex diseases that develop due to the influence of many environmental and genetic risk factors. For instance, cumulative non-smoking factors can better predict and stratify COPD risk compared to smoking alone⁶. Genetic factors also play an important role. Family-based studies estimate heritability at 40% to 60% for COPD and asthma^{7–9}, respectively, and around 18% for lung cancer¹⁰, indicating a substantial genetic component.

Previous studies have shown that single-trait polygenic risk scores (PRS), which model the cumulative genetic risk using genome-wide association study (GWAS) summary statistics, can identify and stratify individuals with risk of respiratory diseases^{11,12}. While respiratory diseases share many comorbidities as well as genetic, clinical, and lifestyle risk factors, such as smoking exposure, most PRS to date have been constructed in the context of a single trait and ancestry group without modeling dense genetic correlations between traits and linkage disequilibrium (LD) and allele frequency patterns between ancestries.

To address these limitations, we expanded genetic studies of spirometry and developed a novel multi-trait and multi-ancestry PRS approach that integrates genetic correlations between respiratory disease and auxiliary traits and LD patterns across diverse populations. This approach improves the power for genetic discovery across traits and the predictive accuracy of PRS for respiratory diseases, thereby providing a more comprehensive risk assessment tool that can be used in research contexts or potentially integrated into existing clinical models.

Previous efforts have used multi-trait approaches to improve genetic discovery and prediction¹³. For example, multi-trait analysis of GWAS (MTAG) has demonstrated significant improvements in the power of detecting signals for psychiatric disorders, cardiomyopathies, and tobacco and alcohol use, among others^{14–16}. Multi-trait PRS constructed from a weighted sum of multiple cardiometabolic trait scores also predicts heart disease better than the single trait PRS^{17,18}. Similarly, lung function PRS from two spirometry measurements—Forced Expiratory Volume in one second (FEV1) and the ratio of FEV1 to Forced Vital Capacity (FVC)—can improve the identification of heterogeneity when predicting asthma and COPD^{11,19}. However, the majority of studies still report a single-trait PRS derived in cohorts of primarily European genetic ancestry.

This lack of diversity in genomic studies has been shown to greatly reduce the generalizability of prediction models and exacerbate healthcare disparities²⁰.

We hypothesize that the joint modeling of multi-trait and -ancestry information at the SNP level will enhance genomic discovery and prediction in respiratory diseases with the largest global disease burden and disparities. Specifically, we jointly model the genetic information of four ancestry groups with population labels and definitions based on training with genetic reference panels, including African (AFR), Admixed American (AMR), East Asian (EAS), and European (EUR)^{21,22}. We also model eight strongly correlated traits—COPD, asthma, lung cancer, forced expiratory volume (FEV1), forced vital capacity (FVC), FEV1/FVC, smoking status, and smoking heaviness.

To evaluate the utility of this approach for predicting respiratory diseases and interpreting genetic variant effects across traits and ancestries, we: 1) conducted the largest meta-analysis of lung function in East Asian populations and a comprehensive multi-trait meta-analysis of respiratory disease and related traits to significantly improve genetic discovery; 2) compared shared and distinct genetic architectures and effects by modeling pleiotropy across these traits; 3) developed and validated the PRSxtra (cross TRait and Ancestry) method in the All of Us Research Program, modeling genetic correlations between traits and ancestry-specific LD and allele frequency patterns between populations; and 4) quantified PRSxtra prediction accuracy and case stratification of asthma, COPD, and lung cancer risk across multiethnic populations, especially those traditionally underrepresented in genetic studies, and compared it to single-trait and -ancestry PRS and clinical risk factors.

Results

We aim to improve the power of genetic discovery and prediction of respiratory diseases through multi-ancestry and multi-trait analyses of eight correlated traits - COPD, asthma, lung cancer, spirometry (FEV1, FVC, FEV1/FVC), smoking status, and smoking heaviness in African (AFR), Admixed (AMR), East Asian (EAS), and European (EUR) ancestry populations. We conducted the largest meta-analysis GWAS of lung function in EAS to date and meta-analyzed additional GWAS from the Global Biobank Meta-analysis Initiative, GWAS & Sequencing Consortium of Alcohol and Nicotine (GSCAN), and multi-population genome-wide meta-analyses of lung function and lung cancer. We then developed the most predictive PRS of asthma, COPD, and lung cancer across populations using the strategy and datasets outlined in

Figure 1.

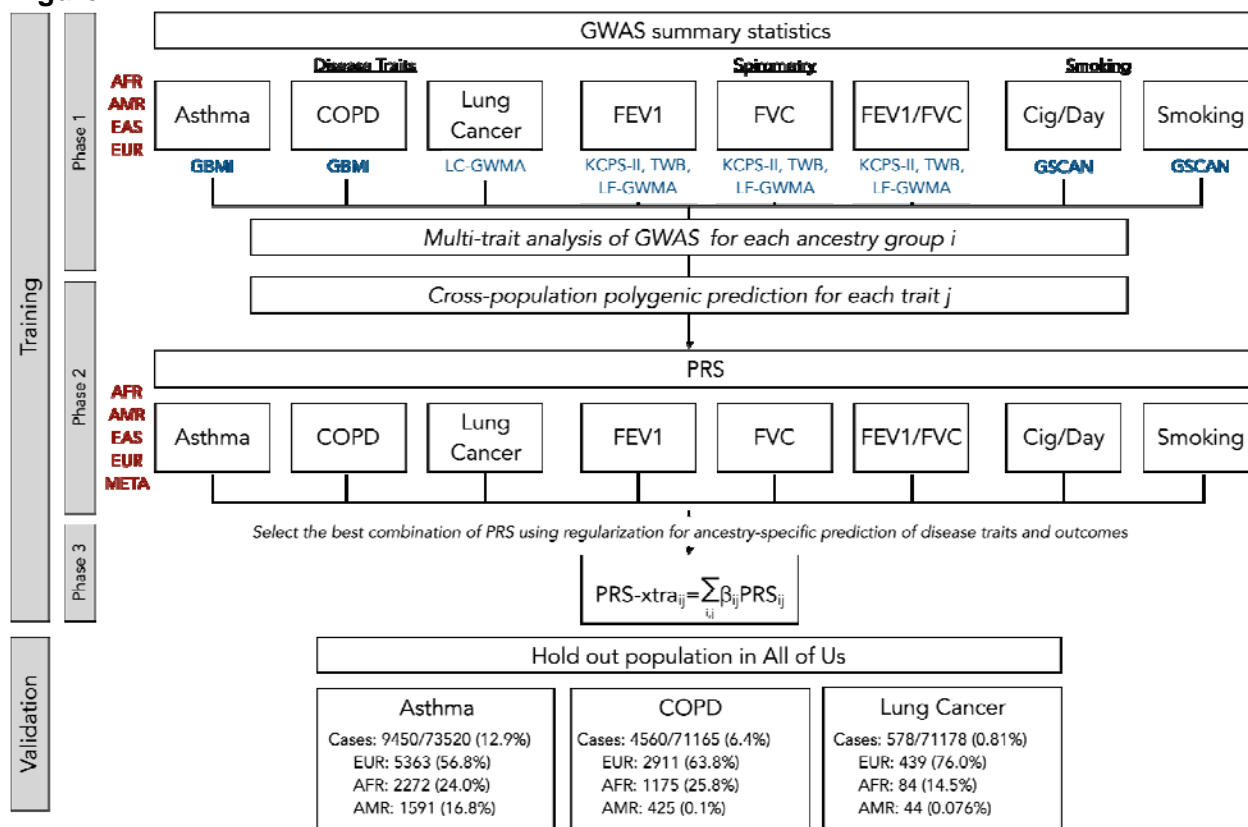


Figure 1. Study design overview. Training PRS models consisted of three phases: Phase 1 = multi-trait analysis, Phase 2 = multi-ancestry analysis, and Phase 3 = regularization to optimally predict traits. We validated PRS in All of Us data for asthma, COPD, and lung cancer case status. GBMI=Global Biobank Meta-analysis Initiative. LC/LF-GWMA=Lung Cancer/Lung Function multipopulation Genome-Wide Meta-Analysis. KCPS-II=Korean Cancer Prevention Study-II. TWB=Taiwan Biobank. GSCAN=GWAS & Sequencing Consortium of Alcohol and Nicotine use. Genetically defined ancestry group labels are based on population reference panels from the 1000 Genomes Project and Human Genome Diversity Project, as follows: AFR=African, AMR=Admixed American, EAS=East Asian, EUR=European, and META=meta-analysis across ancestries.

Largest genome-wide association study of lung function in the East Asian population identifies novel loci.

Spirometry is a pulmonary function test that evaluates lung function. As continuous measures of lung function, they are useful traits for studying the heritable basis of respiratory diseases. However, the largest genetic studies of spirometry to date have been Eurocentric. To identify novel loci associated with lung function in understudied populations, we performed the largest GWAS to date of East Asian (EAS) ancestry individuals of FEV1, FVC, and FEV1/FVC, combining GWAS summary statistics from the Korean Cancer Prevention Study-II (KCPS2) and Taiwanese Biobank (TWB) (**Supplementary Table 1**, Methods)^{23–25}. We conducted fixed-effects inverse-variance weighted meta-analysis for the three continuous spirometry measures of lung function across 132,200 total individuals. We applied quality control filters (Methods) that resulted in 8 million unique single-nucleotide polymorphisms (SNPs) for meta-analysis.

The meta-analysis identified 44, 73, and 31 independent loci for FEV1, FVC, and FEV1/FVC, respectively (**Figure 2**, **Supplementary Figure 1-3**). Of these, 44 are novel and have not been previously associated with each trait (**Supplementary Table 2**), including 25 novel loci for FVC, 17 for FEV1, and 2 for FEV1/FVC. Among these novel loci, several were previously associated with height, including rs3782886 in *BRAP* ($P=4.20\times 10^{-8}$, $\beta=0.0219$ with FEV1), rs7290267 near *FLJ27365* ($P=1.49\times 10^{-9}$, $\beta=-0.0272$ with FEV1), rs724016 in *ZBTB38* ($P=1.35\times 10^{-10}$, $\beta=-0.0178$ with FVC), rs58744877 near *GNAS* ($P=2.71\times 10^{-14}$, $\beta=-0.033$ with FVC), rs3176466 near *CDKN2C* ($P=4.59\times 10^{-8}$, $\beta=0.0236$ with FVC), rs28839214 near *RP11-361D14.2* ($P=1.91\times 10^{-13}$, $\beta=0.0197$ with FVC), rs149580940 in *FIBIN* ($P=7.89\times 10^{-10}$, $\beta=0.0449$ with FVC)^{26–28}. rs3782886 has also shown previous associations with other traits including alcohol use disorder, high-density lipoprotein, and type 2 diabetes^{29–31}. rs724016 has also been shown to be associated with Crohn's disease³², and rs150971595 near *GABBR1* ($P=1.49\times 10^{-8}$, $\beta=-0.0307$ with FVC) associated with total cholesterol level and triglyceride levels³³. Previous reported associations for each locus can be found in **Supplementary Table 3**.

We combined the results of our EAS meta-analysis of lung function with the largest multi-ancestry GWAS of lung function to date³⁴. Incorporating results from KCPS2 and TWB resulted in 519, 526, and 476 total loci discovered for FEV1, FVC, and FEV1/FVC, respectively, of which 131, 163, and 149 were not originally reported to be associated with each trait (**Figure 2**, **Supplementary Figure 4-5**). Significantly associated loci are reported in **Supplementary Table 4-6**.

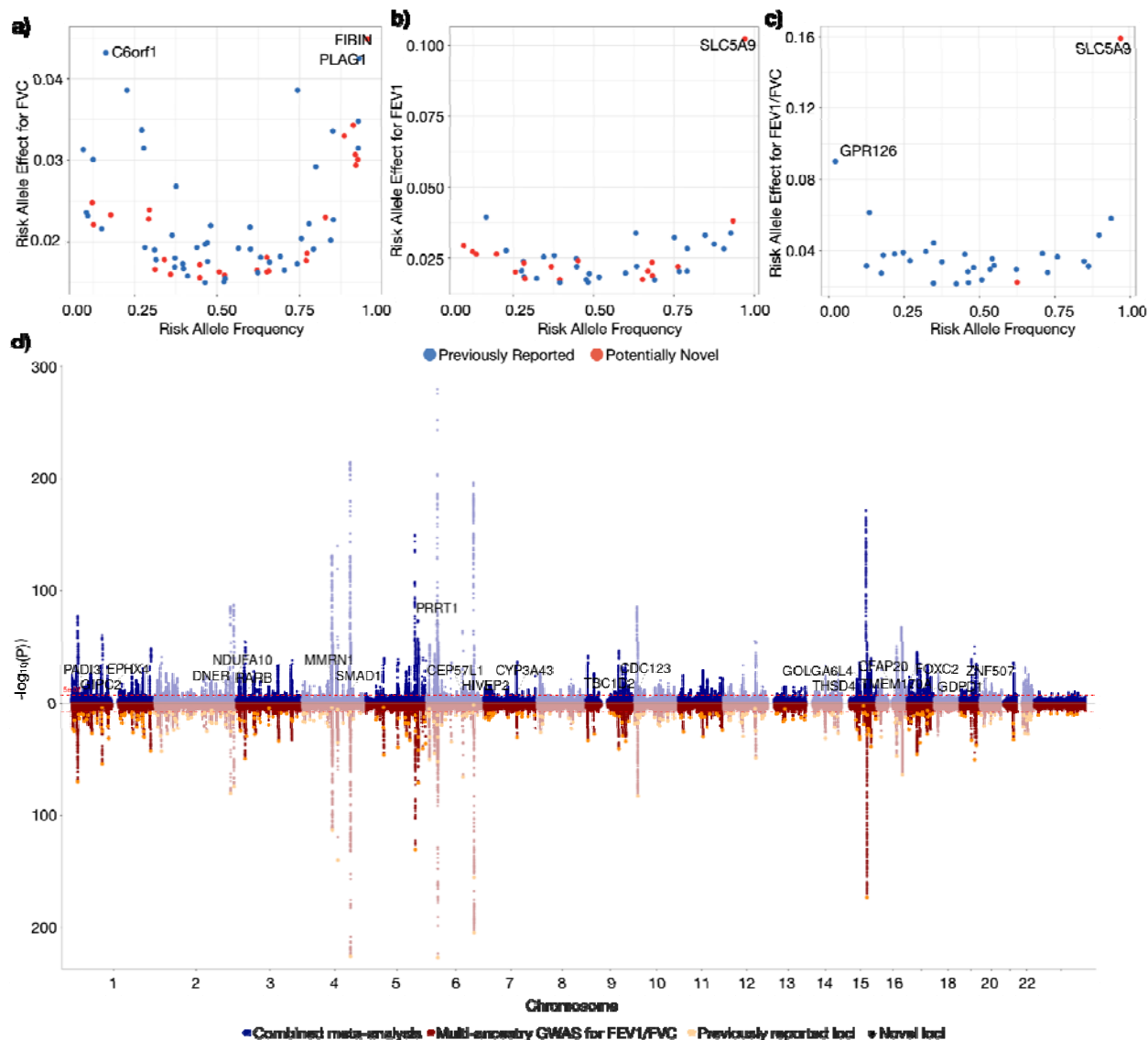


Figure 2. Meta-analysis results of spirometry in East Asian cohorts. Frequency and effect size of risk alleles of 44, 73, and 31 index variants for FVC (a), FEV1 (b), and FEV1/FVC (c). Novel associations are highlighted in red. Genes with large effect sizes are highlighted. d) Results of our combined EAS meta-analysis of FEV1/FVC with the largest multi-ancestry GWAS to date. The Manhattan plot of the previous multi-ancestry GWAS is shown in red on the bottom, with yellow dots representing previously identified loci associated with FEV1/FVC. The Manhattan plot of the meta-analyzed results of the previous study with our new EAS meta-analysis is shown in blue on the top, with new loci annotated and indicated with black stars. Gene names indicate the nearest gene to novel loci.

Pervasive pleiotropic effects across respiratory traits and diseases inform shared components of heritable risk

Measures of lung function are known clinical risk factors for respiratory diseases such as chronic obstructive pulmonary disease (COPD), asthma, and lung cancer. Using the largest multi-ancestry GWAS summary statistics to date, we found that lung function (FEV1, FVC,

FEV1/FVC), smoking behavior (smoking status and cigarettes/day), and respiratory diseases (asthma, COPD, and lung cancer) were all genetically significantly correlated with each other ($P < 0.05$) with the exception of FVC and lung cancer (**Figure 3a**).

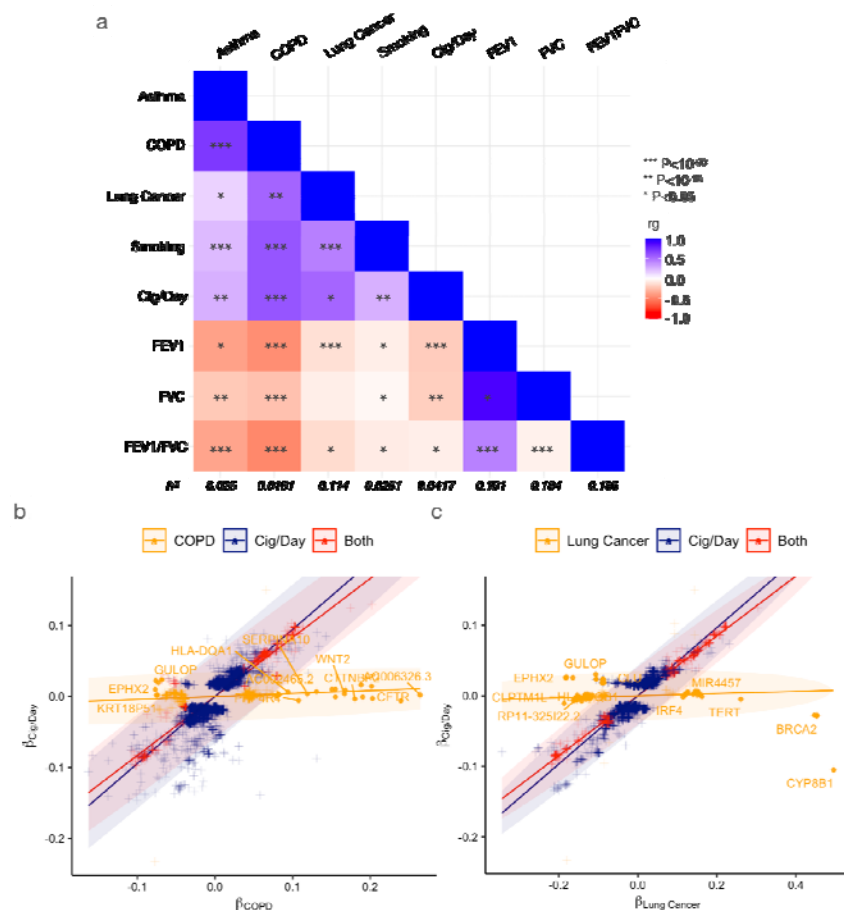


Figure 3: Shared and distinct heritable components inform the molecular basis of trait differences. a) Genetic correlations between traits (top) and heritability estimates (bottom) analyzed in this study based on S-LDSC correlations. Colors indicate magnitude of correlation and stars indicate degree of significance. Comparison of effect sizes of variants from GWAS on EUR samples for (b) COPD vs. Cigarettes smoked per day (Cig/day) and (c) Lung cancer vs. Cig/day. Effect sizes of variants on diseases (COPD and lung cancer) are on the x-axis and effect sizes of variants on Cig/day are on the y-axis. Three distinct groups of variant effects were identified by a Bayesian classifier in shared variants analysis, indicated by (colors) as follows: variants significantly associated with both traits (red), variants significantly associated with disease only (orange), and variants only significantly associated with Cig/day (navy). Solid dots are variants confidently assigned to the group indicated by the color of the dots with posterior probability $>95\%$, while crosses are variants not confidently assigned to any of the groups. The colored ellipse range indicates the 95% probability regions of the fitted bivariate effect size distributions with each class. Nearest gene names are labeled on disease-specific variants with the highest posterior probability for each gene.

To examine the distinct and shared variants among respiratory diseases and auxiliary traits, we first evaluated the consistency of lead SNPs between the traits. Many variants demonstrated pleiotropic effects associated with multiple traits. In particular, we explored the shared and

distinct genetic etiology among the three respiratory disease traits (asthma, COPD, and lung cancer), risk factors (smoking status, smoking heaviness), and a measure of lung function (FEV1/FVC). For each trait pair, we selected variants significantly associated with either or both of the traits. We computed the linear slopes of variant effect sizes within each category using an expectation-maximization (EM) algorithm, which typically revealed more than one linear trend and divergent slopes (Methods, **Figure 3, Supplementary Figure 6-8**). For example, genetic variants associated with the amount and frequency of smoking have mostly distinct effects from asthma. This suggests that there is no uniform explanation of the genetic mechanisms of the two traits across those variants.

We then implemented a Bayesian algorithm, *linemodels*³⁵, to classify the variant effect sizes into confident associations with trait 1, trait 2, or both traits. We used ancestry-specific (AFR, EAS, EUR) as well as meta-analyzed multi-ancestry GWAS results to identify variants having confident associations with a posterior probability above 0.95. We found 31 variants that were confidently associated with COPD and 108 with lung cancer, which are distinct from those associated with smoking heaviness, as measured by Cigarettes/Day, in EUR. No variants were confidently associated primarily with both traits or with smoking heaviness only (**Supplementary Table 7-8**). Two variants on chromosome 8 near the *GULOP* pseudogene, rs113623975 and rs56223946, were predominantly associated with both COPD and lung cancer.

When we further investigated variants with predominant effects on lung cancer across EAS, EUR, and the multi-ancestry meta-analysis GWAS results, we identified 7 variants from *TERT* appearing in all three groups and 6 variants significant only in the meta-analysis results (**Supplementary Figure 9-10**). These include rs34517439 from *DNAJB4*, rs11778371 from *CHRNA2*, and 4 other variants within or near *TERT*.

PRSxtra jointly models multi-ancestry and multi-trait effects to predict diseases and exacerbations.

To develop PRSxtra, we combined the results of our new GWAS meta-analysis of lung function in EAS with the largest and most diverse GWAS of COPD, asthma, lung cancer, and smoking (**Figure 1**) to conduct ancestry-specific multi-trait GWAS (MTAG)¹³. We then used PRS-CSx to jointly model trait-specific MTAG results across ancestry groups to derive candidate scores^{36,37} to include in the final PRSxtra.

First, MTAG resulted in a greater number of significant associations and loci discovered across traits (**Supplementary Table 9**). AMR and EUR ancestry-specific MTAG analysis resulted in the largest gains. For example, FVC in AMR and COPD in EUR cohorts had the greatest proportional increases in the number of lead SNPs discovered, from 2 to 34 (17-fold) and 27 to 441 (16-fold), respectively. In total, MTAG identified 609 more lead SNPs across all traits and ancestry groups. We assessed the gain in power for each run of MTAG by the increase in mean χ^2 statistic, where all but five GWAS (all of which were ancestry-specific spirometry GWAS) increased in power (**Supplementary Table 9**).

Next, we aggregated the summary statistics from MTAG to derive multi-trait and multi-ancestry polygenic risk scores. For each trait, we used PRS-CSx to jointly model trait-specific MTAG summary statistics across ancestry groups to derive a total of 39 candidate scores for individuals in the All of Us Research Program (AoU), a longitudinal cohort study continuously enrolling adults in the US with genotype, self-reported, and linked health record data. The program places a strong emphasis on including diverse populations that have traditionally been underrepresented in biomedical research. The individuals from AoU are independent from the cohorts in which the GWAS was obtained. For each trait, we randomly split participants who passed quality control into 70% for training and 30% for validation (**Figure 1**, Methods, **Supplementary Table 10-13**). We then used ridge regression to calculate linear combinations of the scores in the training set (**Supplementary Table 14-16**, **Supplementary Figure 11-13**).

We evaluated the performance of PRSxtra in the held-out validation cohort for predicting asthma ($N_{\text{cases}}=9450$, $N_{\text{controls}}=64070$), COPD ($N_{\text{cases}}=4560$, $N_{\text{controls}}=66605$), and lung cancer ($N_{\text{cases}}=578$, $N_{\text{controls}}=70600$) compared to a single ancestry- and trait-matched PRS (**Figure 1**, **Supplementary Table 10**). The validation cohort includes individuals of AFR, AMR, EAS, EUR, MID, and SAS genetic ancestries. In this multi-ancestry validation cohort, ancestry- and trait-matched PRS and PRSxtra were significantly correlated with each other ($P<0.0001$), with $r=0.444$, $r=0.185$, and $r=0.120$ for asthma, COPD, and lung cancer, respectively.

PRSxtra alone predicted asthma, COPD, and lung cancer more accurately than the trait- and ancestry-matched PRS alone ($P<0.0001$) in the multi-ancestry validation cohort (**Supplementary Table 17-19**). For asthma, the AUC improved from 0.543 (95% CI=[0.537, 0.549]) to 0.563 (95% CI=[0.557, 0.569]) using PRSxtra versus PRS. For COPD, AUC improved from 0.540 (95% CI=[0.532, 0.549]) to 0.589 (95% CI=[0.581, 0.597]). For lung cancer, AUC improved from 0.539 (95% CI=[0.516, 0.561]) to 0.592 (95% CI=[0.569, 0.616]) (**Figure 3**). Among individuals with each disease, the median percentile of PRSxtra was much higher than PRS (**Supplementary Table 20**). We observed the largest difference between scores in lung cancer, where cases had a median PRSxtra in the 64th percentile compared to the 57th percentile for PRS. Controls had a median PRSxtra and PRS both in the 50th percentile. The AMR population had the largest improvement in disease prediction between PRS and PRSxtra. For asthma, AUC improved from 0.509 (95% CI=[0.493, 0.524]) to 0.630 (95% CI=[0.616, 0.645]). For COPD, AUC improved from 0.540 (95% CI=[0.532, 0.549]) to 0.589 (95% CI=[0.581, 0.597]). These differences could reflect the increased EAS GWAS power for spirometry and the relatively low genetic divergence between EAS and AMR groups. However, these new ancestry-specific GWAS do not explain the most phenotypic variation when predicting these traits. Specifically, we further assessed the robustness of PRSxtra by conducting leave-one-out analyses for predicting COPD and asthma in the AMR cohort, where there were the largest improvements in prediction. Removing any single score did not significantly change the prediction ability of PRSxtra. For example, removing the EUR lung cancer candidate PRS resulted in the largest decrease in AUC of -0.0175 for predicting COPD, and removing EUR FVC candidate PRS resulted in the largest decrease in AUC of -0.000421 for predicting asthma.

PRSxtra improved overall stratification in the multi-ancestry validation cohort compared to PRS. In the bottom and top deciles of PRSxtra, asthma prevalence was 8.4% and 16.8% (+8.4%), respectively, versus 9.0% and 14.1% (+5.1%) for PRS. For COPD, the prevalence in the bottom and top deciles of PRSxtra was 2.8% and 9.1% (+6.3%), respectively, compared to 4.6% and 7.6% for PRS (+3.0%). Lung cancer prevalence in the bottom and top deciles of PRSxtra was 0.5% and 1.4% (+0.9%), respectively, compared to 0.46% to 0.90% (+0.44%) for PRS (**Supplementary Figure 14, Supplementary Table 21-23**). PRSxtra was also better at identifying individuals with the highest risk of disease. For example, individuals in the top decile of PRSxtra had 3.5 times the odds of COPD compared to those in the first decile, while PRS had 1.7 times the odds. The improvement was most apparent in the AMR population for asthma and COPD. Individuals in the top decile of PRSxtra had 4-fold odds of asthma and COPD compared to the first decile, whereas the top decile of PRS had almost the same odds of asthma and COPD compared to the first decile (**Supplementary Figure 14, Supplementary Table 24-26**).

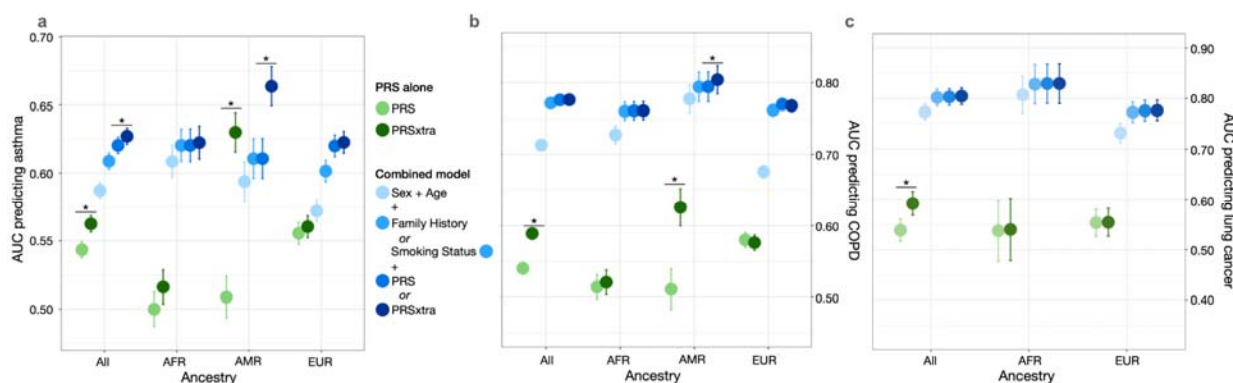


Figure 4. PRSxtra significantly improves prediction for several respiratory diseases compared to PRS and clinical risk factors. Diseases include: asthma (a), COPD (b), and lung cancer (c) in the full multi-ancestry held-out validation set and in ancestry-specific subgroups. Green dots indicate the performance of PRS or PRSxtra alone to predict diseases, blue dots represent the performance of the combined model with incremental variables added from sex and age, family history (for asthma) or smoking status (for COPD and lung cancer), and PRS or PRSxtra in gradually darker shades. The full validation set included individuals of AFR, AMR, EAS, EUR, MID, and SAS predicted genetic ancestry background.

We compared the performance of PRS and PRSxtra alone to a joint model of the strongest clinical risk factors for each disease, i.e. family history of asthma, and smoking for COPD and lung cancer. Clinical risk factors generally provided the largest improvement in performance from sex and age. In the multivariable model, PRSxtra remained significantly better than PRS for predicting asthma in the multi-ancestry validation cohort and for predicting asthma and COPD in the AMR subgroup. For lung cancer, the risk scores do not add additional information to the multivariable model of sex, age, and smoking status (**Figure 4, Supplementary Table 17-19**).

To investigate performance in clinical subgroups, we tested the association of PRSxtra with COPD and lung cancer in subgroups of never and ever smokers, and of asthma in individuals

with and without family history. We found similar performance between subgroups (**Supplementary Table 17-19, Supplementary Figure 15-17**). PRS_{extra} was positively associated with COPD and asthma exacerbations. PRS_{extra} predicted COPD exacerbation significantly better than PRS in the validation cohort, with AUC increasing from 0.572 (95% CI=[0.558-0.586]) to 0.600 (0.587-0.614). However, PRS_{extra} did not significantly improve prediction of asthma exacerbation compared to PRS (**Supplementary Table 27**).

Discussion

In this study, we conducted the most powerful multi-trait and multi-ancestry genetic analysis of respiratory diseases and comorbid traits to date. Our novel study framework contrasts with traditional genetic studies which typically analyze a single trait within a single population, thereby overlooking the genetic correlations between traits and LD patterns across diverse populations.

Our innovative approach, which iteratively models genetic correlations across traits and ancestry groups, significantly increases the power to detect novel genetic associations and enhances disease prediction and risk stratification, especially in non-European ancestry populations. Applying MTAG resulted in a greater number of significant associations and loci discovered across traits, with the largest gains in AMR and EUR ancestry-specific analyses. We also conducted the largest meta-analysis of lung function to date in EAS to identify 44 novel loci associated with lung function. Of these, several are associated with lipid levels such as high-density lipoprotein, total cholesterol level and triglyceride levels³³, as well as with diseases such as type 2 diabetes and Crohn's Disease, which supports previously documented relationships between lung dysfunction and disease risk and progression³⁸⁻⁴⁰.

Given that asthma, COPD, lung cancer, lung function, and smoking traits are genetically correlated with each other, we further investigated the distinct and shared variants among the respiratory diseases and auxiliary traits. We found variants with predominant effects on lung cancer across EAS, EUR, and the multi-ancestry meta-analysis GWAS results, with 7 variants from *TERT* appearing in all three groups and 6 variants significant only in the meta-analysis results from *DNAJB4* and *CHRNA2*. All three genes have been shown to have a role in respiratory function: 1) *TERT* mitigates oxidative stress and chronic inflammation, which are essential factors in the disease progression of COPD. It also prevents premature cellular aging and apoptosis in lung epithelial cells to sustain respiratory function. Polymorphisms in *TERT* have previously been associated with pulmonary fibrosis⁴¹ as well as COPD risk in an EAS population⁴². There is also evidence of strong gene-environment interaction between smoking and telomerase mutations, where carriers who do not smoke predominately develop pulmonary fibrosis, while smokers are also at risk for developing emphysema (alone or in combination with pulmonary fibrosis)⁴¹. 2) *CHRNA2*, which encodes a subunit of nicotinic acetylcholine receptors, plays a role in respiratory behavior and function by influencing nicotine addiction and smoking habits^{43,44}, but has a smaller effect than the *CHRNA3-CHRNA5* cluster. While *CHRNA2* affects respiratory function by modulating the neural pathways involved in nicotine response, the *CHRNA3-CHRNA5* cluster has a stronger and more consistently observed association with Cig/day^{45,46}. 3) *DNAJB4*, a part of the Hsp40 heat shock protein family, plays a crucial role in protein folding and cellular stress response. This protein helps prevent misfolded protein aggregation and is upregulated under oxidative stress, which is common in respiratory failure. *DNAJB4* enhances protein quality control and stress response, potentially reducing disease severity and progression by maintaining lung function under chronic stress⁴⁷.

In our investigation of pleiotropic effects across pairs of traits, we applied *linemodels* to dissect the pleiotropic effect of variants. Using this method, we identified unique genetic features of lung cancer and COPD not mediated by one of their leading risk factors - smoking. The *linemodels* algorithm, tailored for pleiotropy dissection, uses a Bayesian framework to probabilistically cluster genetic variants based on their linear relationships in effect sizes across two outcomes. This method optimizes model parameters using the EM algorithm and Gibbs sampling, accommodating correlated estimators due to sample overlaps. In contrast, techniques like Non-negative Matrix Factorization (NMF) decompose data into non-negative factors to capture latent structures without modeling direct linear relationships, highlighting the unique focus of *linemodels* on linear effect size clustering in genetic studies.

We then developed a cross-trait and -ancestry score, PRS_{extra}, to model the genetic correlations between related traits and ancestry-specific LD and allele frequency patterns between populations. While PRS_{extra} and the trait- and ancestry-matched PRS are significantly correlated, PRS_{extra} demonstrates significantly better prediction and stratification for respiratory diseases and disease exacerbations. Previous studies have shown the utility of integrating large and diverse sources of data to construct PRS. For example, GPS_{mult} was calculated by weighting the sum of multiple cardiometabolic trait components, which predicts heart disease better than the single trait PRS¹⁷. Similarly, PRS derived from two spirometry measurements predict asthma and COPD¹¹. Recent developments such as PRS_{mix} and BridgePRS jointly model summary information from multiple traits and ancestry groups at the score level but do not account for genetic correlations across traits or model differences in LD across ancestries. PRS_{extra}, however, shares information across traits and ancestries at the SNP level, refining putatively causal loci and improving PRS accuracy. We demonstrated the robustness of PRS_{extra} in a leave-one-out analysis, which showed minimal changes in predictive ability when candidate PRS were excluded. The enhanced predictive capacity of PRS_{extra} was particularly pronounced in the AMR population, which is not primarily explained by the candidate PRS from the new EAS spirometry GWAS. One potential explanation could be due to the phenotypic heterogeneity of asthma and COPD among Hispanic populations⁴⁸⁻⁵⁰. For example, asthma, and COPD are more prevalent in individuals of Puerto Rican heritage than among other Hispanics.

Our study does have limitations. We relied on phenotype definitions based on ICD codes and self-reported data, which can be imprecise. For example, definitions of COPD using common ICD-9 codes have been previously shown to misclassify patients compared to combining them with pharmacy data⁵¹. While we aimed to mitigate this effect by combining multiple ICD-9 and ICD-10 codes to define disease cases, it is unclear how adding spirometry would change disease definitions in AoU due to the lack of spirometry measures availability for all participants. We were also limited by the study design of existing GWAS. While traditional GWAS of FEV₁, FVC, and FEV₁/FVC are adjusted for smoking status, our meta-analysis of lung function in EAS was not due to the limitation of data availability. Our measures were also not explicitly post-bronchodilator lung function measures, although previous work demonstrated little impact of pre- versus post-bronchodilator definitions when predicting COPD^{52,53}. Additionally, we used ridge regression, which assumes a linear association of the candidate PRS. It is unclear how

other non-linear methods of combining PRS will compare. Our study sample is shaped by the All of Us Research Program's cohort creation process, which relies on partnerships with universities, research centers, volunteers, and community engagement⁵⁴. While All of Us is diverse, there are demographic sampling biases that may not be representative of the general population⁵⁵. Our results demonstrate significant improvements in a held-out cohort of diverse AoU participants, but they should be validated in an independent cohort.

In summary, we conducted the largest multi-trait and multi-ancestry genetic analysis of respiratory diseases and auxiliary traits to discover numerous novel genetic signals. We propose PRSxtra as a method to model genetic correlation across traits and LD differences between ancestry groups, significantly improving disease prediction and stratification for asthma, COPD, and lung cancer. PRSxtra has the potential to reduce the disparities in risk stratification between populations for survival and outcome, as well as to advance more equitable and generalizable prediction models for respiratory diseases.

Methods

Meta-analysis of lung function across East Asian populations

We performed a fixed-effects meta-analysis with inverse variance weighting, as implemented in METAL v2001-03-25 software, for FEV1, FVC, and FEV1/FVC across two East Asian cohorts using published summary statistics from Korean Cancer Prevention Study-II (KCPS2)^{24,25}, Taiwanese Biobank (TWB)^{23,33}. The details of their study design have been described previously. In summary, the Korean Cancer Prevention Study-II Biobank (KCPS2) is a prospective cohort study based in Korea of 153,950 subjects with genotype data and phenotype measurements between 2004 and 2013. The Taiwanese Biobank is a prospective cohort study of the Taiwanese population with 149,894 participants between the ages of 30-70 years old at recruitment (as of April 2021). FEV1 was defined as the total air blown between zero and 1 second (measured in Liters). FVC was defined as the vital capacity during forced expiration (measured in Liters). In KCPS2, FEV1 and FVC were measured using pulmonary/metabolic systems Vmax 20, Carefusion, USA. For each trait, samples with measurements that were more than 6 standard deviations away from the sample average were excluded.

Altogether, these cohorts had a total sample size of 132,200. In conducting our meta-analysis, we excluded genetic variants with minor allele frequency < 0.01. We used FUMA v. 1.5.2 to annotate and functionally map variants in the meta-analysis. Genome-wide significance was defined using a threshold of $P < 5 \times 10^{-8}$. Genomic risk loci included variants correlated with the most significant variant at $R^2 > 0.6$ using the 1000G Phase 3 EAS reference panel. Genome positions are reported in build hg37 for index variants. To designate a locus as previously known or potentially novel, the index variants, or the most significant variants in each locus, were at least 1 Mb in distance from a previously discovered genome-wide significant variant associated with the trait. Previously discovered variants were compiled from Shrine et al³⁴.

Comparison of pleiotropic effect analysis

We used S-LDSC to estimate heritability and genetic correlation of and between phenotypes using summary statistics of EUR populations. We then applied the linemodels package (<https://github.com/mjpirinen/linemodels>) to the GWAS summary statistics of three respiratory diseases (asthma, COPD, and lung cancer) and the three featured environmental and genetic risk factors (smoking status, smoking heaviness (Cigday), and FEV1/FVC) across three ancestry groups (AFR, EAS, and EUR) plus the corresponding meta-analysis results. We focused on comparisons for 12 pairs of traits selected from above. Three of these were between diseases phenotypes: asthma and COPD, asthma and lung cancer, COPD and lung cancer, and nine pairs were between disease phenotype and smoking or lung function. We considered variants significantly associated with either one of the traits being compared (**Supplementary Table 28**). We classified the variants into three classes (two when there is no variant associated with both traits) based on their association patterns: associated with trait 1 only, trait 2 only, and both. The classes were represented by linear trends whose slopes were estimated using an EM algorithm. Conditioning on these classes, we ran the linemodels package on the GWAS effect sizes and standard errors of overlapped variants of the two traits, where we set the scale parameters determining the magnitude of effect sizes to 0.2, the correlation parameters

determining the allowed deviation from the lines to 0.99 as default, and the slope parameter to the estimates from the previous EM step. The membership probabilities in the three classes were computed separately for each variant by assuming that the classes were equally probable a priori. We assumed no overlapping samples between the two GWASs being compared and set the correlation of their effect estimators to 0. Confident associations are defined as having a posterior probability above 0.95.

Multi-trait analysis

We conducted multi-trait genome-wide association studies as implemented in MTAG v. 1.0.7 for each ancestry group (AFR, AMR, EAS, EUR) by combining the ancestry-specific GWAS summary statistics for GBMI asthma, GBMI COPD, GWMA lung cancer, spirometry meta-analysis, and GSCAN smoking behaviors. MTAG performs a joint analysis of GWAS results from related traits to improve the number of genetic loci identified and the predictive power of polygenic scores. For each population, we used the ancestry-specific LD reference panel from the gnomAD reference panels v2.1.1. For each ancestry-specific MTAG, we included traits with $\chi^2 > 1.02$.

Study population

The *All of Us* Research Program is a longitudinal cohort study that has continuously enrolled US adults 18 years or older since May 2017. The program aims to engage in one million or more US participants and places a strong emphasis on including diverse populations that have traditionally been underrepresented in biomedical research. Details of the All of Us cohort have been previously described⁵⁴. In summary, participants of the program opt to provide self-reported data, linked health record data, and biospecimen data to be made available for research uses. The program's primary objective is to build a resource to help researchers understand individual differences in biological, clinical, social, and environmental determinants of health and disease to advance precision health care.

Informed consent for all the participants in the All of Us Research Program are conducted in person or through an eConsent platform. The protocol was reviewed by the Institutional Review Board (IRB) of the All of Us Research Program. Data can be accessed through the All of US Research Workbench, a secure cloud-based analytic platform. Whole genome sequencing, genotyping array variant data, variant annotations, computed ancestry, and quality reports are accessible through the Controlled Tier of the AoU. This project is registered in the All of Us program under the workspace name "PRSxtra AoU". In our analysis, we included individuals with whole genome data in the v7 Data Release, self-reported sex, and date of birth along with additional disease-dependent filtering criteria: For COPD and lung cancer, we excluded individuals who did not self-report report smoking status. For COPD, we additionally excluded individuals with homozygous polymorphism of *SERPINA1*, which encodes for a serine protease inhibitor alpha 1 antitrypsin, as this is a known risk allele associated with COPD⁵⁶. Participants were randomly split 70% for training and 30% for validation.

Phenotype ascertainment

We curated clinical phenotypes from All of Us using a combination of electronic health record data, and/or self-reported personal history data from the All of Us v7 Data Release. ICD codes for each phenotype and exacerbation are detailed in **Supplementary Table 29-33**.

We define smoking status and family history based on self-reported data. Previous smokers are individuals who smoked more than 100 pack years but do not currently smoke. Individuals who have never smoked more than 100 cigarettes are considered never smokers. Family history included mother, father, and siblings with the same record of disease as the participants. No family history included those who did not explicitly self-report a family history.

PRS_{xtra} construction

We constructed PRS_{xtra} in a three-layer process. Layer 1 consisted of performing multi-trait meta-analysis across related traits for each ancestry population as previously described. In layer 2, we used PRS-CS_x, which leverages linkage disequilibrium across discovery samples to jointly model the genetic effects across populations via a shared continuous shrinkage prior. We used the default parameters on PRS-CS_x on AFR, AMR, EAS, and EUR ancestry-specific meta-analysis results. Only HapMap3 variants—a set of 3 million variants compiled by the International HapMap Project which capture common patterns of variation in a variety of human populations—were included in calculating scores. In layer 3, we use ridge regression, as implemented by the “glmnet” R package⁵⁷, to jointly model the 39 standardized PRS (with mean 0 and variant 1) generated in layer 2 to construct an ancestry-specific PRS_{xtra} for the three disease phenotypes: COPD, asthma, and lung cancer. In ridge regression, we used 10-fold cross-validation and minimum lambda value to estimate the weights of each PRS. PRS_{xtra} was validated in the held-out multi-ancestry cohort from AoU.

PRS construction

As a baseline comparison to PRS_{xtra}, we derived trait- and ancestry-matched PRS using PRS-CS, which uses a Bayesian regression framework to infer posterior effect sizes of SNPs. We ran PRS-CS with default parameters on the trait- and ancestry-specific GWAS summary statistic (Supplementary Table).

Statistical analysis

For COPD, asthma, and lung cancer, we placed individuals into bins by their PRS and PRS_{xtra} deciles. In each decile, we calculated the prevalence of disease and disease exacerbation. We calculated the risk of disease and exacerbation for each decile compared to the lowest decile of PRS and PRS_{xtra} using logistic regression models. We evaluated the performance of predicting diseases based on PRS and PRS_{xtra} alone, as well as in a joint multi-variable model with covariates. The baseline model included age and sex. We then subsequently added clinical risk factors (smoking, family history), and PRS or PRS_{xtra}. We evaluated the predictive performance of each model using the area under the receiving operating curve. In the full population, we used the trait- and EUR-specific PRS as the baseline for comparison. All statistical analyses were two-sided and performed with the use of R software, version 3.5 (R Project for Statistical Computing).

Contributions

Y.H. M.H.C, and A.R.M designed the study. Y.H. and W.L. processed, analyzed, and conducted statistical analysis of the data. Y.H.J., Y.W., and K.T. provided methodological and statistical advice. Y.H., W.L., D.C.Q., J.A.D., M. M, M.H.C, and A.R.M interpreted the data. A.R.M. and Y.H. obtained funding. All authors provided critical feedback and revisions for the manuscript.

FUNDING

This work was supported by the National Institutes of Health under award number T32HG010464, K99/R00MH117229, U01HG011719. We are grateful for the volunteers who participated in the All of Us Research Program.

DECLARATION OF INTEREST

MHC has received grant support from GSK, consulting fees from Genentech and AstraZeneca, and speaking fees from Illumina. ARM has received speaker fees from Novartis. MM has received consulting fees from TheaHealth, 2ndMD, Axon Advisors, Verona Pharma, and Sanofi. All other authors declare no competing interests.

References

1. Chen, S. *et al.* The global economic burden of chronic obstructive pulmonary disease for 204 countries and territories in 2020–50: a health-augmented macroeconomic modelling study. *Lancet Glob. Health* **11**, e1183–e1193 (2023).
2. Sung, H. *et al.* Global Cancer Statistics 2020: GLOBOCAN Estimates of Incidence and Mortality Worldwide for 36 Cancers in 185 Countries. *CA. Cancer J. Clin.* **71**, 209–249 (2021).
3. Vos, T. *et al.* Global burden of 369 diseases and injuries in 204 countries and territories, 1990–2019: a systematic analysis for the Global Burden of Disease Study 2019. *The Lancet* **396**, 1204–1222 (2020).
4. GOLD. Global Strategy for the Diagnosis, Management, and Prevention of Chronic Obstructive Pulmonary Disease (2021 Report).
5. Castro-Rodriguez, J. A. The Asthma Predictive Index: early diagnosis of asthma. *Curr. Opin. Allergy Clin. Immunol.* **11**, 157–161 (2011).
6. He, Y. *et al.* Prediction and stratification of longitudinal risk for chronic obstructive pulmonary disease across smoking behaviors. *Nat. Commun.* **14**, 8297 (2023).
7. Duffy, D. L., Martin, N. G., Battistutta, D., Hopper, J. L. & Mathews, J. D. Genetics of Asthma and Hay Fever in Australian Twins. *Am. Rev. Respir. Dis.* **142**, 1351–1358 (1990).
8. Ingebrigtsen, T. *et al.* Genetic influences on chronic obstructive pulmonary disease – A twin study. *Respir. Med.* **104**, 1890–1895 (2010).
9. Silverman, E. K. Genetics of COPD. *Annu. Rev. Physiol.* **82**, 413–431 (2020).
10. Lichtenstein, P. *et al.* Environmental and Heritable Factors in the Causation of Cancer — Analyses of Cohorts of Twins from Sweden, Denmark, and Finland. *N. Engl. J. Med.* **343**, 78–85 (2000).
11. Moll, M. *et al.* Chronic obstructive pulmonary disease and related phenotypes: polygenic risk scores in population-based and case-control cohorts. *Lancet Respir. Med.* **8**, 696–708 (2020).
12. Tsuo, K. *et al.* Multi-ancestry meta-analysis of asthma identifies novel associations and highlights the value of increased power and diversity. *Cell Genomics* **2**, 100212 (2022).
13. Turley, P. *et al.* Multi-trait analysis of genome-wide association summary statistics using MTAG. *Nat. Genet.* **50**, 229–237 (2018).
14. Autism Spectrum Disorder Working Group of the Psychiatric Genomics Consortium *et al.* Identification of common genetic risk variants for autism spectrum disorder. *Nat. Genet.* **51**, 431–444 (2019).
15. Tadros, R. *et al.* Shared genetic pathways contribute to risk of hypertrophic and dilated cardiomyopathies with opposite directions of effect. *Nat. Genet.* **53**, 128–134 (2021).
16. 23andMe Research Team *et al.* Association studies of up to 1.2 million individuals yield new insights into the genetic etiology of tobacco and alcohol use. *Nat. Genet.* **51**, 237–244 (2019).
17. Patel, A. P. *et al.* A multi-ancestry polygenic risk score improves risk prediction for coronary artery disease. *Nat. Med.* **29**, 1793–1803 (2023).
18. Inouye, M. *et al.* Genomic Risk Prediction of Coronary Artery Disease in 480,000 Adults. *J. Am. Coll. Cardiol.* **72**, 1883–1893 (2018).
19. Moll, M. *et al.* Polygenic risk scores identify heterogeneity in asthma and chronic obstructive

- pulmonary disease. *J. Allergy Clin. Immunol.* **152**, 1423–1432 (2023).
20. Martin, A. R. *et al.* Clinical use of current polygenic risk scores may exacerbate health disparities. *Nat. Genet.* **51**, 584–591 (2019).
 21. The 1000 Genomes Project Consortium *et al.* A global reference for human genetic variation. *Nature* **526**, 68–74 (2015).
 22. Bergström, A. *et al.* Insights into human genetic variation and population history from 929 diverse genomes. *Science* **367**, eaay5012 (2020).
 23. Feng, Y.-C. A. *et al.* Taiwan Biobank: A rich biomedical research database of the Taiwanese population. *Cell Genomics* **2**, 100197 (2022).
 24. Jee, Y. H. *et al.* Genome-wide association studies in a large Korean cohort identify novel quantitative trait loci for 36 traits and illuminates their genetic architectures. Preprint at <https://doi.org/10.1101/2024.05.17.24307550> (2024).
 25. Jee, Y. H. *et al.* Cohort Profile: The Korean Cancer Prevention Study-II (KCPS-II) Biobank. *Int. J. Epidemiol.* **47**, 385–386f (2018).
 26. Yengo, L. *et al.* A saturated map of common genetic variants associated with human height. *Nature* **610**, 704–712 (2022).
 27. Chiou, J.-S. *et al.* Your height affects your health: genetic determinants and health-related outcomes in Taiwan. *BMC Med.* **20**, 250 (2022).
 28. Sohail, M. *et al.* Polygenic adaptation on height is overestimated due to uncorrected stratification in genome-wide association studies. *eLife* **8**, e39702 (2019).
 29. Kranzler, H. R. *et al.* Genome-wide association study of alcohol consumption and use disorder in 274,424 individuals from multiple populations. *Nat. Commun.* **10**, 1499 (2019).
 30. Graham, S. E. *et al.* The power of genetic diversity in genome-wide association studies of lipids. *Nature* **600**, 675–679 (2021).
 31. Mahajan, A. *et al.* Multi-ancestry genetic study of type 2 diabetes highlights the power of diverse populations for discovery and translation. *Nat. Genet.* **54**, 560–572 (2022).
 32. de Lange, K. M. *et al.* Genome-wide association study implicates immune activation of multiple integrin genes in inflammatory bowel disease. *Nat. Genet.* **49**, 256–261 (2017).
 33. Chen, C.-Y. *et al.* Analysis across Taiwan Biobank, Biobank Japan, and UK Biobank identifies hundreds of novel loci for 36 quantitative traits. *Cell Genomics* **3**, 100436 (2023).
 34. Shrine, N. *et al.* Multi-ancestry genome-wide association analyses improve resolution of genes and pathways influencing lung function and chronic obstructive pulmonary disease risk. *Nat. Genet.* **55**, 410–422 (2023).
 35. Pirinen, M. linemodls: clustering effects based on linear relationships. *Bioinformatics* **39**, btad115 (2023).
 36. Ge, T. *et al.* Development and validation of a trans-ancestry polygenic risk score for type 2 diabetes in diverse populations. *Genome Med.* **14**, 70 (2022).
 37. Ruan, Y. *et al.* Improving polygenic prediction in ancestrally diverse populations. *Nat. Genet.* **54**, 573–580 (2022).
 38. Ramalho, S. H. R. & Shah, A. M. Lung function and cardiovascular disease: A link. *Trends Cardiovasc. Med.* **31**, 93–98 (2021).
 39. I., A. A. E.-A., Hamdy, G., Amin, M. & Rashad, A. Pulmonary function changes in diabetic lung. *Egypt. J. Chest Dis. Tuberc.* **62**, 513–517 (2013).
 40. Lu, D.-G., Ji, X.-Q., Liu, X., Li, H.-J. & Zhang, C.-Q. Pulmonary manifestations of Crohn's

- disease. *World J. Gastroenterol.* **20**, 133–141 (2014).
41. Stanley, S. E., Merck, S. J. & Armanios, M. Telomerase and the Genetics of Emphysema Susceptibility. Implications for Pathogenesis Paradigms and Patient Care. *Ann. Am. Thorac. Soc.* **13 Suppl 5**, S447–S451 (2016).
 42. Ding, Y. *et al.* *TERT* gene polymorphisms are associated with chronic obstructive pulmonary disease risk in the Chinese Li population. *Mol. Genet. Genomic Med.* **7**, e773 (2019).
 43. Xu, K. *et al.* Genome-wide association study of smoking trajectory and meta-analysis of smoking status in 842,000 individuals. *Nat. Commun.* **11**, 5302 (2020).
 44. Wang, S. *et al.* Significant associations of *CHRNA2* and *CHRNA6* with nicotine dependence in European American and African American populations. *Hum. Genet.* **133**, 575–586 (2014).
 45. Thorgeirsson, T. E. *et al.* A variant associated with nicotine dependence, lung cancer and peripheral arterial disease. *Nature* **452**, 638–642 (2008).
 46. Saccone, N. L. *et al.* Multiple distinct risk loci for nicotine dependence identified by dense coverage of the complete family of nicotinic receptor subunit (*CHRN*) genes. *Am. J. Med. Genet. Part B Neuropsychiatr. Genet. Off. Publ. Int. Soc. Psychiatr. Genet.* **150B**, 453–466 (2009).
 47. Weihl, C. C. *et al.* Loss of function variants in *DNAJB4* cause a myopathy with early respiratory failure. *Acta Neuropathol. (Berl.)* **145**, 127–143 (2023).
 48. Barr, R. G. *et al.* Pulmonary Disease and Age at Immigration among Hispanics. Results from the Hispanic Community Health Study/Study of Latinos. *Am. J. Respir. Crit. Care Med.* **193**, 386–395 (2016).
 49. Pino-Yanes, M. *et al.* Genetic ancestry influences asthma susceptibility and lung function among Latinos. *J. Allergy Clin. Immunol.* **135**, 228–235 (2015).
 50. Kachuri, L. *et al.* Gene expression in African Americans, Puerto Ricans and Mexican Americans reveals ancestry-specific patterns of genetic architecture. *Nat. Genet.* **55**, 952–963 (2023).
 51. Cooke, C. R. *et al.* The validity of using ICD-9 codes and pharmacy records to identify patients with chronic obstructive pulmonary disease. *BMC Health Serv. Res.* **11**, 37 (2011).
 52. Buhr, R. G. *et al.* Reversible Airflow Obstruction Predicts Future Chronic Obstructive Pulmonary Disease Development in the SPIROMICS Cohort: An Observational Cohort Study. *Am. J. Respir. Crit. Care Med.* **206**, 554–562 (2022).
 53. COPDGene Investigators *et al.* Genetic loci associated with chronic obstructive pulmonary disease overlap with loci for lung function and pulmonary fibrosis. *Nat. Genet.* **49**, 426–432 (2017).
 54. The All of Us Research Program Investigators. The “All of Us” Research Program. *N. Engl. J. Med.* **381**, 668–676 (2019).
 55. He, Y. & Martin, A. R. We need more-diverse biobanks to improve behavioural genetics. *Nat. Hum. Behav.* **8**, 197–200 (2023).
 56. Li, X. *et al.* Genome-wide association study of lung function and clinical implication in heavy smokers. *BMC Med. Genet.* **19**, 134 (2018).
 57. Friedman, J., Hastie, T. & Tibshirani, R. Regularization Paths for Generalized Linear Models via Coordinate Descent. *J. Stat. Softw.* **33**, (2010).

