

1 **Evaluation of EUROSCORE II to determine the prognosis of patients with**
2 **moderate-to-severe aortic stenosis: a long-term retrospective study**

3 Xianzhen Cai^{1,2+}, Danchun Hu^{1,2+}, Baoxin Yan^{1,2}, Jinhao Chen^{1,2}, Weiwen Li^{1,2}, Ying
4 Lin^{1,2}, Run Lin^{1,2}, Junjun Ye^{1,2}, Xiaojun Huang¹, Bin Xie¹, Xiaodong Zhuang^{3*},
5 Jianying Chen^{4*}, Jilin Li^{1*}

6
7 ¹Department of Cardiology, Second Affiliated Hospital of Shantou University
8 Medical College, No. 69 North Dongxia Road, Shantou 515000, Guangdong, China

9 ²Shantou University Medical College, Shantou, Guangdong, China

10 ³Department of Cardiology, the First Affiliated Hospital of Sun Yat-Sen University,
11 58 Zhongshan 2nd Road, Guangzhou 510080, China

12 ⁴Department of Cardiology, Affiliated Hospital of Guangdong Medical University,
13 Zhanjiang 524001, China

14

15 [Author contributions](#)

16 ⁺Xianzhen Cai and Danchun Hu contributed to the manuscript equally.

17 Xianzhen Cai

18 Email: 2784815878@qq.com

19 ⁺Danchun Hu

20 Email: 1074969728@qq.com

21 [Contributor Information.](#)

22 * Corresponding authors

23 Jilin Li

24 Tel: +86 754-83141133, Email: lijilin@126.com

25 Xiaodong Zhuang

26 Email: zhuangxd3@mail.sysu.edu.cn

27 Jianying Chen

28 E-mail: jychen271@126.com

29

30 **Declaration of interests**

31 The authors declare no competing interests.

32 **Data availability**

33 The datasets used and/or analyzed during the current study are available from the
34 corresponding authors upon reasonable request.

35 **Funding**

36 Nothing to declare.

37 **Ethical approval**

38 This study was approved by the Ethics Review Committee of the Second Affiliated
39 Hospital of Shantou University Medical College(ERB number: ethics form 9-5).

40 Patient follow-up was conducted via telephone contact, with verbal informed consent
41 approved by the institutional ethics committee.

42 **Pre-registered clinical trial number**

43 NOTE: This preprint reports new research that has not been certified by peer review and should not be used to guide clinical practice.
Pre-registered clinical trial number: NCT06069292

44 **Consent for publication**

45 Not applicable.

46 **Competing interests**

47 The authors declare no competing interests.

48 **Acknowledgments**

49 We thank Mark Cleasby, PhD from Liwen Bianji (Edanz) (www.liwenbianji.cn) for
50 editing the language of a draft of this manuscript.

51

52 **Central Message** Our heart valvular disease intervention center construction unit
53 from The Second Affiliated Hospital of Shantou University Medical College is part of
54 the National Clinical Medical Research Center for Radiology and Therapy,
55 Interventional Center for Valvular Disease, Dongfang Huaxia Cardiovascular Health
56 Institute, Suzhou Industrial Park.

57 Our data were from Three heart valve centers, which are derived from a database
58 called Aortic Valve Diseases RiSk factOr assessment and Prognosis model
59 Construction (ARISTOTLE).

60

61 **Glossary of Abbreviations**

62 EuroSCORE II (European System for Cardiac Operative Risk Evaluation), SBP

63 (systolic blood pressure), CKD (chronic kidney disease), COPD (chronic obstructive

64 pulmonary disease), HB (haemoglobin), TC (total cholesterol) , HDL-C (high-density

65 lipoprotein-cholesterol), LDL-C(low-density lipoprotein-cholesterol), TG

66 (triglyceride), Cr (creatinine), CC(creatinine clearance), TBIL(total bilirubin), LVEF

67 (left ventricular ejection fraction), AV_Vmax(maximum velocity of blood flow

68 through the aortic valve), AV_MG (mean gradient across the aortic valve), AVA

69 (aortic valve area), PAH(pulmonary arterial hypertension), ACEI (angiotensin

70 converting enzyme inhibitor), ARB(angiotensin receptor blocker), CCB(calcium

71 channel blocker), LVEF (left ventricular ejection fraction),AV_Vmax(maximum flow

72 velocity through the aortic valve), AV_MG(mean gradient across the aortic valve),

73 AVA(aortic valve area), PAH(pulmonary arterial hypertension)

74

75 **word count of the manuscript text:4158**

76

77

78

79 **Background and Aims**

80 Aortic stenosis (AS) was a prevalent heart valve disease whose morbidity and
81 mortality can be reduced by aortic valve replacement (AVR) . EUROSCORE II
82 assesses the perioperative mortality of severe AS patients undergoing AVR. This study
83 explored EUROSCORE II's prognostic value for long-term all-cause mortality of
84 Chinese patients with moderate-to-severe AS and determined whether AVR affects
85 this.

86 **Methods**

87 Allocated to four groups following the EUROSCORE II (cut-off value of 4%) and
88 whether performed AVR, 544 patients with moderate-to-severe AS were enrolled.
89 Baseline data, Kaplan - Meier, Cox regression and subgroup analysis were used to
90 analyse the relationship between EUROSCORE II and participants' all-cause
91 mortality. Furthermore, ROC analysis determining the optimal cut-off value of
92 EUROSCORE II was utilized.

93 **Results**

94 During a median follow-up of 41.4 months, 177 (21.5%) participants reached the
95 endpoint, with higher risks (EUROSCORE II $\geq 4\%$) and no AVR exhibited
96 significantly increased all-cause mortality rates compared to other groups (55.4% vs.
97 6.5%, 13.4%, and 32.7%; $P < 0.001$). Kaplan-Meier curves confirmed these findings
98 (log-rank test $P < 0.001$). Cox regression analysis revealed a 6.891-fold higher risk
99 (HR, 6.891; 95% CI, 3.083-15.401; $P < 0.001$) in patients without AVR with higher
100 EUROSCORE II. The adjusted model ($P < 0.01$) and subgroup analyses (without AVR
101 $P = 0.001$; with AVR $P = 0.029$) supported EUROSCORE II's prognostic value for
102 all-cause mortality. The optimal EUROSCORE II cut-off for predicting all-cause
103 mortality in patients without AVR was 2.23% (AUC 0.675).

104 **Conclusions**

105 EUROSCORE II (cut-off value 4%) and AVR independently impact the long-term
106 prognosis of patients with moderate-to-severe AS.

107

108

109

110

111

112

113

114

115

116

117

118

119

120 **Keywords**

121 Aortic valve stenosis; EUROSCORE II; all-cause mortality; aortic valve replacement

122

123

124 **Introduction**

125 Aortic stenosis (AS) is the most prevalent heart valve disease, causing significant
126 morbidity and mortality in the elderly due to aging of the population[1-3]. Its
127 prevalence exceeds 10% in individuals aged over 65 in US and European
128 populations[4-6], although the prevalence in China may be lower, according to the
129 results of a single-centre retrospective study of the echocardiographic data of 287,556
130 patients[7]. The initial stages of the disease are characterized by the progression of
131 valvular lesions, involving endothelial cell damage, infiltration with lipids and
132 macrophages, lipid oxidation, and subsequent fibrosis and calcification, which
133 ultimately leads to obstruction of the aortic valve[6,8].

134 To date, owing to the absence of specific medication for the treatment or
135 prevention of the progression of AS, surgical aortic valve replacement (SAVR) or
136 transcatheter aortic valve implantation (TAVI) are the recommended means of treating
137 patients with severe symptoms[9,10]. EUROSCORE II is a widely-used risk
138 assessment tool[11-17] that uses various characteristics of the patient to estimate the
139 risk of adverse outcomes, and it has been clinically implemented to identify high-risk
140 patients during hospitalization and predict 30-day mortality in those undergoing
141 coronary artery bypass grafting (CABG)[18], SAVR, or TAVR[19]. However, data are
142 lacking regarding the long-time prognostic value of EUROSCORE II with respect to
143 the mortality and morbidity rates of patients with moderate-to-severe AS, and whether
144 AVR (SAVR or TAVR) is associated with a superior prognosis, especially in Chinese
145 patients.

146 Consequently, the primary objective of this retrospective study was to
147 characterize the relationships of EUROSCORE II and AVR status with all-cause
148 mortality in patients with moderate-to-severe AS. In addition, we aimed to identify the

149 optimal cut-off value of EUROSCORE II for prognostic use in patients who do not
150 undergo AVR.

151

152 **Methods**

153 **Study design and participants**

154 A total of 1,033 patients diagnosed with moderate-to-severe AS at the Second
155 Affiliated Hospital of Shantou University Medical College, the First Affiliated
156 Hospital of Sun Yat-sen University, or the Affiliated Hospital of Guangdong Medical
157 University were enrolled between January 2014 and July 2023. Three heart valve
158 centers are derived from a database called Aortic Valve Diseases RiSk facTO
159 assessmenT and Prognosis modeL Construction (ARISTOTLE). The primary outcome
160 was all-cause mortality during the follow-up period. The inclusion criteria were as
161 follows: (1) moderate-to-severe AS (peak aortic jet velocity (V_{max}) >3 m/s, mean
162 aortic pressure gradient (MG) >20 mmHg, or aortic valve area (AVA) ≤ 1.5 cm²) on
163 echocardiography, according to the 2021 European Society of Cardiology (ESC)/
164 European Association for Cardio Thoracic Surgery (EACTS) guidelines for the
165 management of valvular heart disease [9]; (2) congenital stenosis of the aortic valve;
166 (3) an initial diagnosis of aortic stenosis; and (4) no previous history of AVR. The
167 exclusion criteria were as follows: (1) a history of aortic valve replacement; (2) severe
168 dysfunction or malignancy of other organs or systems; (3) connective tissue disease;
169 (4) aortic stenosis in combination with severe mitral stenosis; (5) malignant tumour;
170 and (6) missing baseline data (N = 419). Ultimately, 544 patients with
171 moderate-to-severe AS remained for the analysis (Fig. 1).

172 The study was conducted according to the principles of the Declaration of

173 Helsinki and was approved by the Ethics Review Committee of the Shantou
174 University Medical College. All the data were collected from the hospital electronic
175 medical records, and follow-up was conducted through hospital visits or phone calls.
176 Verbal informed consent was obtained from the participants, as approved by the
177 Ethics Review Committee of the Second Affiliated Hospital of Shantou University
178 Medical College(ERB number: ethics form 9-5).

179 **Data collection and definitions**

180 Participants self-reported age, sex, height, body mass, smoking and alcohol
181 history, and medication upon admission. History of hypertension, diabetes, coronary
182 heart disease (CHD), atrial fibrillation, extra-cardiac artery lesions, or stroke was
183 further validated by medical professionals on the basis of blood test or imaging results.
184 Subsequent AVR surgery information was obtained from electronic medical records or
185 telephone interviews. BMI was calculated as body mass (kg)/height (m)².
186 Hypertension was defined by antihypertensive drug use, systolic blood pressure ≥ 140
187 mmHg, or diastolic blood pressure ≥ 90 mmHg. Chronic kidney disease (CKD) was
188 defined as estimated glomerular filtration rate (eGFR) < 60 mL/min/1.73 m² using
189 CKD-EPI equation [20].

190 Laboratory tests within 24 hours of admission included white blood cell count,
191 haemoglobin, creatinine, uric acid, total cholesterol, low-density
192 lipoprotein-cholesterol (LDL-C), high-density lipoprotein-cholesterol (HDL-C),
193 amino-terminal brain-natriuretic peptide precursor (NT-proBNP), and troponin. The
194 use of the following drugs was recorded: anti-platelet drugs, statins,
195 angiotensin-converting enzyme inhibitors (ACEIs), angiotensin receptor blockers
196 (ARBs), β -blockers, calcium channel blockers (CCBs), hypoglycaemic drugs, oral
197 anticoagulants, and diuretics. The following echocardiographic indices were also

198 recorded: left ventricular ejection fraction (LVEF), the maximum velocity of blood
199 passing through the aortic valve (AV_Vmax), the mean gradient across the aortic
200 valve (AV_MG), the aortic valve area (AVA), pulmonary arterial hypertension (PAH),
201 aortic regurgitation, mitral regurgitation, and mitral stenosis.

202 **Definitions of echocardiographic indices**

203 Transthoracic echocardiography followed American Society of Echocardiography
204 guidelines[21]. AS severity was defined as [3,4]: (1) moderate AS:
205 $1 \text{ cm}^2 < \text{AVA} \leq 1.5 \text{ cm}^2$, $3 \text{ m/s} < \text{Vmax} \leq 3.9 \text{ m/s}$, or $< 20 \text{ mm Hg} < \text{MG} \leq 39 \text{ mm Hg}$; and (2)
206 severe AS: $\text{AVA} \leq 1 \text{ cm}^2$, $\text{Vmax} \geq 4 \text{ m/s}$, or $\text{MG} \geq 40 \text{ mm Hg}$. PAH was defined as a
207 pulmonary arterial pressure $\geq 25 \text{ mm Hg}$, according to the Guidelines for the
208 Diagnosis and Treatment of Pulmonary Hypertension in China (2021 edition)[22].

209 **Outcomes**

210 The primary endpoint of the study was all-cause mortality from the time of the
211 diagnosis, whose information was collected by trained medical staff through
212 telephone contact with the participants or their families. The secondary endpoints
213 were cardiovascular-related mortality and aortic stenosis-related mortality. The
214 duration of follow-up was date of AS diagnosis to date of death or end of follow-up

215 **Statistical analysis**

216 Continuous datasets were tested for normality using the Shapiro–Wilk method, and
217 the data are presented as as mean \pm SD for normal distribution, or median and
218 interquartile range for skewed data. Categorical data are presented as counts and
219 percentages. Homogeneous datasets compared using ANOVA, heterogeneous using
220 Kruskal–Wallis test. $P \leq 0.05$ was considered statistically significant. The participants
221 were allocated to high-risk or low-risk groups using a cut-off value of EUROSCORE
222 II of 4%, according to the 2017 ESC/EACTS guidelines[23]. Student’s t-test or

223 ANOVA was used to evaluate differences between groups with respect to continuous
224 data, and Pearson's chi-square test or Fisher's exact test was used to compare
225 categorical datasets, as appropriate.

226 Kaplan–Meier method calculated cumulative survival, evaluated with log-rank
227 test. Cox proportional hazard analyses were performed, generating hazard ratios (HRs)
228 and 95% confidence intervals (CIs) for the relationships for EUROSCORE II and
229 AVR status association with all-cause mortality. Next, four multivariable models were
230 involved adjustment for potential confounders of all-cause mortality. Model 1 was
231 adjusted for smoking status, alcohol consumption status, diabetes, atrial fibrillation,
232 hypertension, gout, systolic blood pressure, and body mass. Model 2 was adjusted for
233 the parameters in model 1, with the addition of WBC, RBC, PLT, LDLC, TG, TBIL,
234 NTproBNP, troponin, and albumin. Model 3 was adjusted for the parameters in model
235 2, plus aortic valve deformity, rheumatic heart disease, AV-Vmax, AV-MG, the degree
236 of AVA mitral insufficiency, and mitral stenosis. Model 4 was adjusted for the
237 parameters in Model 3, with the addition of anti-platelet agent, statin, ACEI, ARB,
238 β -blocker, CCB, diuretic, insulin, oral antidiabetic drug, and oral anticoagulant use.
239 Further subgroup analyses were performed after the stratification of the participants
240 according to baseline sex, age (≤ 70 or >70 years), BMI (<24 or ≥ 24 kg/m²), diabetes,
241 hypertension, CHD, and the severity of AS (moderate or severe), to assess the
242 consistency of the prognostic use of EUROSCORE II for all-cause mortality. Finally,
243 the ROC curve was also used to determine the optimal cut-off value of EUROSCORE
244 II for the prediction of all-cause mortality in the participants. All analyses were
245 conducted in the IBM SPSS 26.0 statistical software and a two-sided P value <0.05
246 was considered statistically significant.

247

248

249 **Results**

250 **Baseline characteristics of the participants**

251

252 *Clinical characteristics of the participants, stratified according to EUROSCORE II* 253 *and AVR status*

254 A total of 1,033 patients who met the diagnostic criteria for AS were initially included
255 in the study, but 70 were excluded because they fulfilled one of the exclusion criteria,
256 219 because of missing EUROSCORE II data, and 200 because of missing covariant
257 data. Thus ultimately, data for 544 participants were analysed in the present study (Fig.
258 1), comprising 300 (55.2%) men and 244 (44.9%) women, with a mean age of
259 64.7 ± 13.0 years. The baseline characteristics of the participants, after being
260 categorized according to the recommended cut-off value (4%) of EUROSCORE II
261 and whether or not AVR was performed, are shown in Table 1.

262 We evaluated the following six types of characteristics of the participants in the
263 four groups: their general characteristics, preoperative status assessment,
264 comorbidities, laboratory parameters, echocardiographic findings, and medical
265 therapy. Those with a EUROSCORE II index $\geq 4\%$ who did not undergo AVR surgery
266 tended to be older, have higher serum Cr, TBIL, and blood glucose concentrations, to
267 have a high NYHA score, and to have more comorbidities, such as diabetes and
268 hypertension, but to have a lower body mass and LDL-C and TG concentrations than
269 those in the other groups (all $P \leq 0.05$). In addition, the echocardiographic findings
270 for the participants (Additional file Table S1) showed that the participants in this
271 group were more likely to have other valvular diseases, severe PAH, and lower LVEF.
272 In addition, these participants were more likely to be administering statins, insulin,

273 and oral anticoagulants. However, there were no differences among the four groups
274 with respect to sex, their history of alcohol consumption or smoking, or in their oral
275 anti-diabetic drug use (all $P>0.05$).

276 *Baseline characteristics of the participants, stratified according to only*

277 ***EUROSCORE II***

278 During a follow-up period of 10.7 years, 132 (21.5%) participants had reached an
279 endpoint. To evaluate the utility of EUROSCORE II alone for the prediction of
280 all-cause mortality in patients with moderate-to-severe AS, we compared two groups
281 of participants, categorized according to the recommended cut-off value (4%). As
282 shown in Additional file Table S2, participants with higher EUROSCORE II ($\geq 4\%$)
283 were more likely to be female, older, require surgery more urgently, have more
284 serious cardiac dysfunction and were more likely to have other heart valve diseases,
285 such as mitral stenosis, mitral regurgitation, and aortic regurgitation. However, there
286 were no significant differences between the groups with respect to the incidences of
287 comorbidities ($P>0.05$).

288

289 **Relationships of all-cause mortality with EUROSCORE II and AVR status**

290

291 *Results of the Kaplan–Meier analysis of the participants, stratified according to*

292 *both EUROSCORE II and AVR status*

293 The log-rank test was employed to compare the cumulative survival of the groups of
294 participants, as depicted in Fig. 2. The analysis demonstrated that the participants in
295 the group with high EUROSCORE II and who had not undergone AVR were at the
296 highest risk of all-cause mortality of the four groups (log-rank $P<0.001$).

297 ***Results of the Kaplan–Meier analysis of the participants who had/hadn’t***

298 ***undergone AVR, stratified according to their EUROSCORE II***

299 Compared with the low-risk group, the participants in the high-risk group showed

300 significantly poorer cumulative survival, according to the Kaplan–Meier curves

301 ($P=0.001$) (Additional File Fig. S1) . Similar results were obtained for the participants

302 who had not undergone AVR ($P=0.001$) (Additional File Fig. S2).

303 ***Comparison of the Kaplan–Meier curves for participants who did or did not***

304 ***undergo AVR***

305 For the low-risk group of participants (EUROSCORE II $<4\%$) , the Kaplan–Meier

306 curves and the log-rank test showed that the cumulative survival time significantly

307 differed between those who had or had not undergone AVR ($P=0.01$) (Additional File

308 Fig. S3). Similarly, among high-risk participants (EUROSCORE II $\geq 4\%$) , those who

309 had not undergone AVR ($P<0.01$) (Additional File Fig. S4) showed significantly

310 poorer cumulative survival time than participants undergone AVR.

311 However, there was no difference between those who underwent SAVR or TAVI

312 ($P=0.692$) (Additional File Fig. S5).

313

314 ***Predictors of all-cause mortality***

315 The findings of the univariate and multivariate Cox regression analyses of the

316 relationships of EUROSCORE II and AVR status with the all-cause mortality of the

317 participants are presented in Table 2. Univariate regression analysis showed that age,

318 CAD, CKD, COPD, diabetes, atrial fibrillation, hypertension, albumin, critical status,

319 urgency of surgery, EF, pulmonary hypertension, statin use, ACEI/ARB use, and

320 insulin use were predictors of all-cause mortality.

321 The univariate analysis showed that group 2 (EUROSCORE II $<4\%$, without

322 AVR) were associated with a 5.97-fold higher risk than group 1 (EUROSCORE II
323 <4%, with AVR) (HR, 5.966; 95% CI 3.033–11.737; $P<0.001$). Furthermore,
324 participants in group 4 (EUROSCORE II $\geq 4\%$ and no AVR) were at a 12.17-fold
325 higher risk of all-cause mortality vs. those in group 1 (HR, 12.168; 95% CI
326 5.958–24.848; $P<0.001$).

327 Multivariate Cox regression analyses showed that group 1 (EUROSCORE II <4%,
328 had undergone AVR) exhibited the lowest risk (HR, 3.705, 95% CI 1.738–7.896,
329 $P=0.001$; and HR, 6.891, 95% CI 3.083–15.401, $P<0.001$ groups 2,4, respectively
330 compared with group 1).

331 However, there no significant difference between participants in group 3
332 (EUROSCORE II $\geq 4\%$ and AVR) and group 1 (HR, 1.368; 95% CI 0.627–2.984,
333 $P=0.431$). Notably, significant and more steady results were obtained after further
334 adjustment for potential confounders in Models 1–4 (Table 3). The fully adjusted HR
335 and 95% CI in Model 4 for groups 2–4 vs. group 1 were 3.492 (1.583–7.703), 1.333
336 (0.605–2.936), and 6.605 (2.817–15.486), respectively ($P<0.05$).

337 Moreover, participants in high risk without surgery (group 4) were further adjusted as
338 the reference to prove that, among high-risk participants (EUROSCORE II $\geq 4\%$),
339 perform AVR (group 3) were associated with a 0.023-fold risk than without AVR
340 (group 4) (HR, 0.023; 95% CI 0.118-0.857, $P<0.01$).

341

342 **Results of the subgroup analyses**

343 To further validate the identified difference in risk between participants who had or
344 had not undergone AVR, two subgroup analyses were performed to evaluate the
345 effects of relevant parameters on the relationship between EUROSCORE II and the
346 all-cause mortality of the participants. The participants were stratified according to

347 sex (male or female), age (≤ 70 or > 70 years), diabetes (present or absent),
348 hypertension (present or absent), CHD (present or absent), severity of AS (moderate
349 or severe), aortic regurgitation (none, mild, moderate, or severe), LVEF ($< 40\%$,
350 $40\% - 50\%$, or $> 50\%$), and the use of hypoglycaemic medication (yes or no).

351 ***Results of the subgroup analysis of the participants who had not undergone AVR***

352 The results showed stronger associations between EUROSCORE II and the risk of
353 all-cause mortality in younger (≤ 70 years old) male participants who did not have
354 diabetes, hypertension, or CHD, were not taking hypoglycaemic medication, had mild
355 aortic regurgitation, had an LVEF $< 40\%$, and had moderate aortic stenosis (Fig. 3).
356 The relationship of the EUROSCORE II index with all-cause mortality remained after
357 adjustment for the confounders across all the subgroups, but there were no significant
358 interactions between the subgroups (P for all interactions > 0.05).

359 ***Results of the subgroup analysis of the participants who had undergone AVR***

360 Analysis of the data for the participants who had undergone AVR (Additional file Fig.
361 S6) revealed a similar association between EUROSCORE II and the risk of all-cause
362 mortality risk in participants who did not have diabetes or CHD and were not taking
363 hypoglycaemic medication. None of the subgroups showed significant interactions (P
364 for all interactions > 0.05).

365

366 **Optimal cut-off value of EUROSCORE II for the prediction of outcomes in the**
367 **participants who had not undergone AVR**

368 Fig. 4 shows the ROC curve analysis of the prognostic value of EUROSCORE II for
369 the participants. The optimal cut-off value of EUROSCORE II identified for the
370 prediction of the primary outcome in the participants who had not undergone AVR
371 was 2.23%, which was associated with an AUC of 0.675 (95% CI: 0.609–0.74;

372 $P<0.001$). Therefore, the predictive value of a EUROSCORE II threshold of 2.23%
373 appears to be superior to that of 4% for the prediction of outcomes in patients without
374 AVR.

375 We also performed Kaplan–Meier analysis and Cox multivariate analysis to
376 confirm this finding. Kaplan–Meier analysis in supplemental Fig. S7 demonstrated
377 that participants with a EUROSCORE II $>2.23\%$ had a higher risk of all-cause
378 mortality than those with values $<2.23\%$ (log-rank, $P<0.001$). Additionally, compared
379 with the lower EUROSCORE II group, the higher EUROSCORE II ($\geq 2.23\%$) group
380 had a 2.111-fold higher risk of all-cause mortality (HR 2.111, 95% CI (1.069–4.166),
381 $P=0.031$), according to Cox multivariate analysis (Additional file Table S2).

382

383 **Discussion**

384 A growing body of evidence demonstrates that patients with symptomatic severe
385 aortic stenosis have a poor prognosis if they do not undergo surgery, with a mean
386 survival time of <4 years[8,24]. Therefore, AVR is widely recommended for the
387 treatment of such patients and is effective[24].

388 In the present study, we first explored the relationship between EUROSCORE II
389 and the long-term prognosis of patients with moderate-to-severe AS. We found that a
390 high EUROSCORE II is significantly associated with a higher risk of all-cause-
391 mortality in such patients and AVR could reduce death risk to that of patients with a
392 lower EUROSCORE II ($<4\%$).

393 We first evaluated the long-term prognosis of patients who had received an initial
394 diagnosis of moderate-to-severe AS within the preceding 10 years, and found that
395 those with a EUROSCORE II $\geq 4\%$, whether or not they have undergone AVR, have a
396 significantly higher risk of all-cause mortality than those with a EUROSCORE II

397 <4%. Many previous clinical studies have shown that the EUROSCORE II has
398 potential for use as a predictor of all-cause mortality for patients who undergo TAVI.
399 A retrospective study of 350 patients with at least moderate AS who underwent TAVI
400 showed that patients who died within 30 days had higher EUROSCORE II than those
401 survived (12.6 ± 1.8 vs. $7.5\pm 0.3\%$, $P<0.001$). This was associated with an AUC of 0.70,
402 which implies that EUROSCORE II is a good predictor of short-term mortality[25].
403 Another study of data obtained from 59 patients with symptomatic severe aortic
404 stenosis who had undergone TAVI between 2010 and 2014 showed that
405 EUROSCORE II is a predictor of in-hospital mortality and 30-day mortality[26].
406 However, the duration of follow-up in these studies was too short for the findings to
407 be highly relevant to clinical practice. However, a recent study by Fan *et al.* classified
408 332 patients with low-gradient severe aortic stenosis and the preservation of LVEF
409 into high-risk (EUROSCORE II $\geq 4\%$, $n=115$) and low-risk (EUROSCORE II $<4\%$,
410 $n=208$) groups and followed them over a 2-year period. They found that the
411 cumulative survival of the high-risk group was significantly poorer than that of the
412 low-risk group[27], which is consistent with the present findings that the use of 4% as
413 a cut-off value has some predictive value over a period of >2 years.

414 Kaplan–Meier analysis showed that patients who undergo SAVR or TAVI to treat
415 moderate-to-severe AS have comparable risks of relevant outcomes ($P=0.692$). This
416 finding is in general consistent with the results of some recent studies. One
417 prospective study of medium-term follow-up data from the Nordic Aortic Valve
418 Intervention (NOTION) trial, which was obtained for 280 patients at three centres in
419 Denmark and Sweden, showed that there was no difference in the all-cause mortality
420 associated with TAVR or SAVR after 2 years (8.0% and 9.8%, respectively; $P=0.54$)
421 or with respect to cardiovascular mortality (6.5% and 9.1%; $P=0.40$)[28]. In addition,

422 another study of data obtained during the NOTION trial also showed no significant
423 difference in the risk of all-cause mortality after 8 years of follow-up of these
424 patients[29].

425 In the present study, which involved a duration of follow-up of up to 10 years, we
426 also found evidence that patients with a low EUROSCORE II (<4%) should still be
427 recommended to undergo SAVR or TAVR ($P=0.001$) to have a good prognosis,
428 especially when there is some urgency in their condition. According to the 2021
429 ESC/EACTS guidelines for the management of valvular heart disease, SAVR is
430 recommended for patients <75 years old, while TAVR is recommended for older
431 patients (>75 years), high-risk patients (STS-PROM/EUROSCORE II >8%), and
432 those who are not eligible for surgery (class I)[9]. Despite this, many previous
433 randomized clinical trials have demonstrated that TAVR is non-inferior or even
434 superior to SAVR with respect to both short- and medium-term outcomes[30-37].
435 Notably, the PARTNER2 study[40], the SURTAVI study[41], several studies of the
436 use of TAVR in low-risk patients performed by the American College of Cardiology
437 (ACC), including the PARTNER 3 study (using the SAPIEN-3 ultra transcatheter
438 heart valve) and the Evolut Low Risk Trial study (using the self-expanding Evolut R
439 valve)[42] showed that TAVR was associated with better than, or at least non-inferior,
440 results to, SAVR in low-risk patients. After the 5-year follow-up period, the Deep
441 Dive into the PARTNER 3 Five-Year Study showed that patients who undergo TAVR
442 or SAVR have similar annual incidences of cardiovascular-related mortality, stroke,
443 and re-hospitalization owing to cardiovascular disease (approximately 1%, 1%, and
444 3%, respectively). These findings are consistent with our conclusion that patients with
445 low EUROSCORE II (<4%) should still be recommended to undergo SAVR or TAVR.
446 Furthermore, some other studies have shown that SAVR and TAVR are safe and

447 effective, and are associated with a low risk of severe aortic stenosis, a low risk of
448 surgical complications, a short hospital stay, and a low risk of mortality during the
449 perioperative and 30-day postoperative periods[38-39].

450 Finally, the most appropriate cut-off value of EUROSCORE II to be used
451 prognostically varies according to the underlying disease, owing to the diversity in the
452 risk factors and pathophysiological mechanisms associated[43-44]. However, several
453 previous studies have shown that the use of EUROSCORE II is associated with an
454 underestimation of the risk of mortality for high-risk patients and an overestimation of
455 this risk for those with low levels of risk following various types of cardiac
456 surgery[43-49]. A previous study of 12,325 patients who underwent major cardiac
457 surgery showed that EUROSCORE II was a fairly accurate predictor up to a risk of
458 30%, but over-predicted outcomes above this level[50]. Furthermore, EUROSCORE
459 II was shown to be a fairly accurate predictor for octogenarians up to a risk level of
460 10%, but overestimated the risks above this level[49].

461 Although EUROSCORE II has been shown to be a good predictor of in-hospital
462 mortality following various types of surgery, the optimal cut-off values of
463 EUROSCORE II for the prediction of postoperative mortality were 10%–20%[51].
464 The present ROC curve analysis for EUROSCORE II showed that the most suitable
465 cut-off value for the prediction of outcomes in patients with moderate-to-severe AS
466 who had not undergone AVR was 2.23% (AUC, 0.675), rather than 4%. Therefore, we
467 next allocated the participants to a high EUROSCORE II group and a low
468 EUROSCORE II group using this cut-off value and compared their risks of outcomes.
469 Kaplan–Meier curve (log-rank $P<0.001$) and Cox multivariate (HR 2.111, 95% CI
470 (1.069–4.166), $P=0.031$) analyses were performed to provide further evidence that
471 2.23% is the optimal value to differentiate these groups of patients. It is worth

472 mentioning that the original value of 4% was used for patients with AS, whether or
473 not they had undergone surgery, whereas the 2.23% value calculated in the present
474 study is specific for patients with moderate-to-severe AS who have not undergone
475 AVR.

476 The major strength of the present study is that it was a multi-centre observational
477 study, the external validity of which could be verified. Furthermore, we followed the
478 participants for up to 10 years, which renders the results more reliable. We found a
479 significant association between EUROSCORE II and all-cause mortality in patients
480 with moderate-to-severe AS after comprehensive adjustment for potential confounders,
481 and made consistent findings in subgroup analyses. These findings should contribute
482 to the existing body of knowledge regarding the clinical utility of EUROSCORE II to
483 predict the outcomes of patients with AS, thereby leading to better outcomes and a
484 lower future burden of this valvular disease.

485

486 **Limitations**

487 The present study also had several limitations. First, the prediction of risk depends on
488 the accurate evaluation of each risk factor in EUROSCORE II, but the scores used are
489 based on European patients, rather than other groups. Therefore, the results need
490 further validation in studies of patients of other ethnicities. Second, although the
491 number of patients enrolled was relatively large and it was a multi-centre study, the
492 numbers were relatively low in comparison to the those accessible from a large
493 database, meaning that the analysis was relatively underpowered. Third, the
494 echocardiographic and laboratory parameters were only assessed once, at admission,
495 which may have resulted in bias owing to measurement errors or differences in
496 criteria between the centres. Finally, according to the 2021 ESC/EACTS guidelines,

497 SAVR should be recommended for younger patients with a low surgical risk (<75
498 years, STSPROM/EUROSCORE II <4%), while TAVR is recommended for older
499 patients (>75 years) and those at high risk (STS-PROM/EUROSCORE II >8%), but
500 we did not find a difference in the prognosis of the participants who underwent SAVR
501 or TAVI ($P>0.05$), which may be attributable to the limited sample size.

502

503 **Conclusions**

504 We have shown for the first time that both EUROSCORE II and whether or not AVR
505 is performed are independently associated with the long-term prognosis of patients
506 with moderate-to-severe AS. Moreover, those who receive an initial diagnosis of
507 moderate-to-severe AS are recommended to undergo surgery (SAVR or TAVR) early
508 in their disease course, regardless of their EUROSCORE II. Finally, we have
509 identified an optimal EUROSCORE II cut-off value of 2.23% for the determination of
510 the prognosis of patients with moderate-to-severe AS who have not undergone AVR.

511

512

513

514

515

516

517

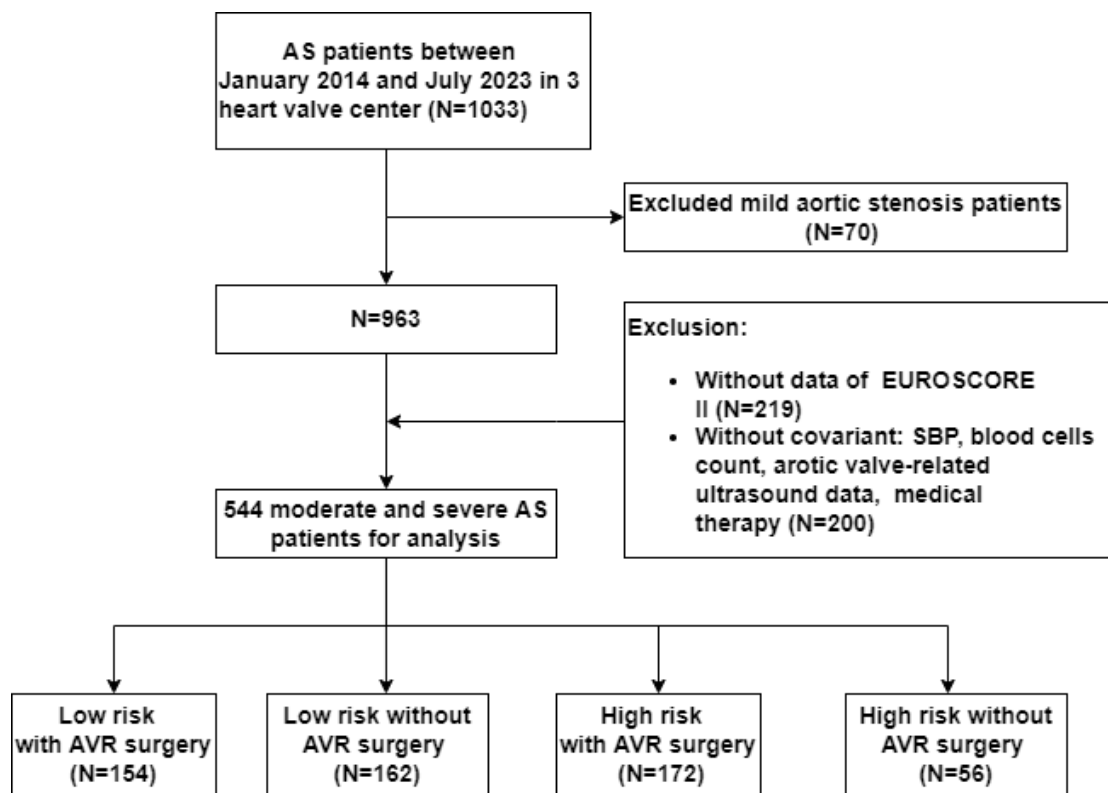
518

519

520

521

522



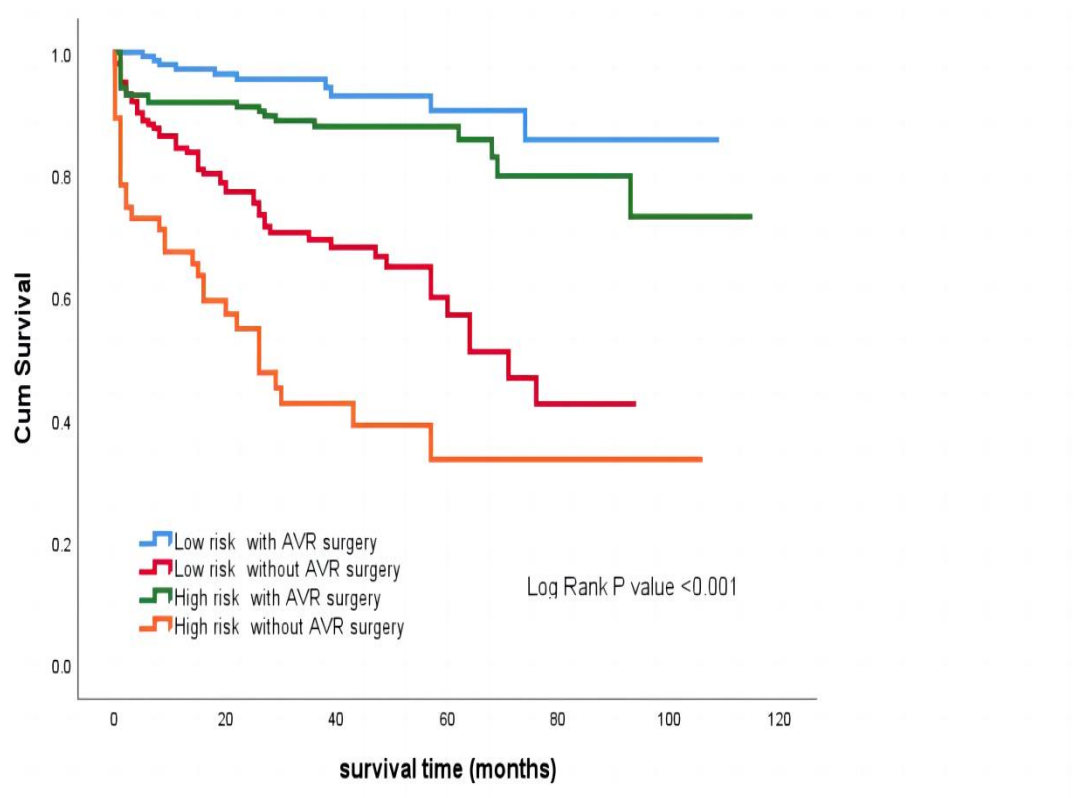
523

524 **Fig. 1.** Flow diagram describing the study sample

525

526

527



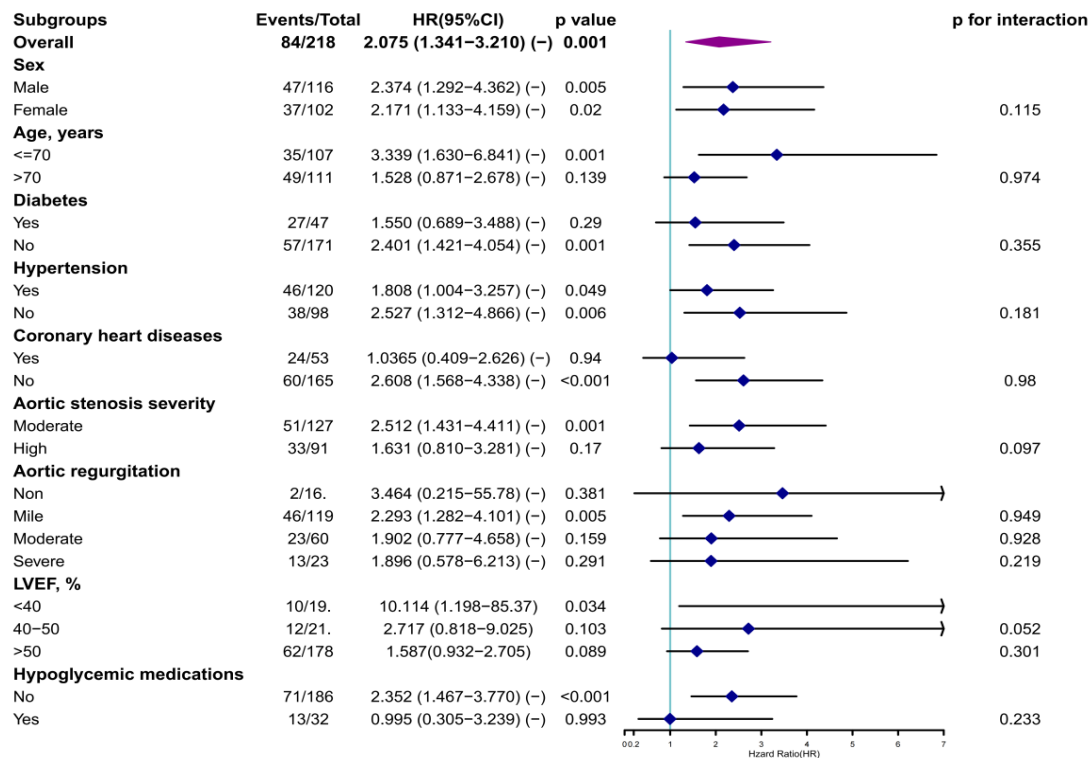
528

529 **Fig. 2.** Kaplan–Meier survival curves for the participants, categorized

530 according to their EUROSCORE II and their AVR status

531

532



533

534 **Fig. 3.** Results of the subgroup analysis of the association between

535 EUROSCORE II and the lack of AVR

536 HR, hazard ratio; CI, confidence interval.

537

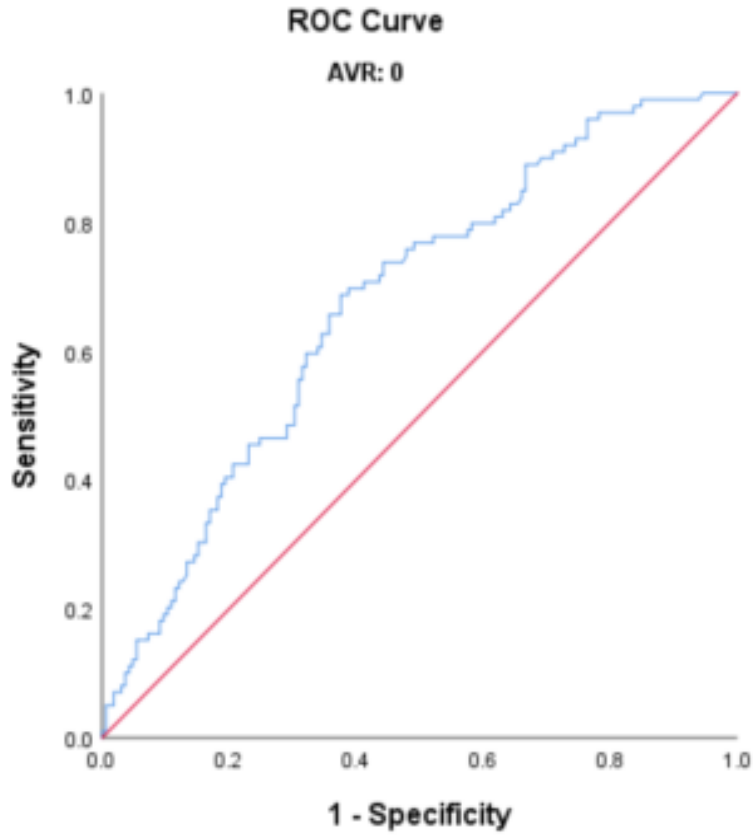
538

539

540

541

542



543

544 **Fig. 4.** ROC curve for the use of EUROSCORE II to evaluate the prognosis of
545 the participants who had not undergone AVR

546

547

548

549

550

551

552

553

554

555

556

557

558 **Table 1.** Clinical characteristics of the participants, stratified according to their
 559 EUROSCORE II and their AVR status

	total (N=544)	Low risk with surgery (n=154)	Low risk without surgery (n=162)	High risk with surgery (n=172)	High risk without surgery (n=56)	P value
EUROSCO					7.66±6.2	<0.0
RE II	4.58±4.99	2.32±1.06	1.89±0.89	8.14±6.14	3	01
General characteristics						
Hospital						
A	29 (5.33)	9 (5.84)	8 (4.94)	5 (2.91)	7 (12.50)	0.101
	454	124	138	146	46	
B	(83.46)	(80.52)	(85.19)	(84.88)	(82.14)	
C	61 (11.21)	21 (13.64)	16 (9.88)	21 (12.21)	3 (5.36)	
	64.69±12.	59.71±13.	67.58±11.	62.91±11.	75.48±11	<0.0
Age (years)	95	17	54	75	.44	01
Gender, n						
	(%)					
	300	105	92 (56.79)	79 (45.93)	24	0.395
Male	(55.15)	(68.18)			(42.86)	
	244	49 (31.82)	70 (43.21)	93 (54.07)	32	
Female	(44.85)				(57.14)	
	126.88±21	123.87±16	134.00±22	121.39±19	131.46±2	<0.0
SBP (mmHg)	.24	.88	.98	.72	4.81	01

	58.36±11.	60.60±10.	59.51±11.	56.08±9.7	55.85±11	<0.0
Weight (kg)	07	97	73	9	.51	01
State assessment						
Status at the first clinic visit						<0.0 01
elective	518 (95.22)	154 (100.00)	162 (100.00)	159 (92.44)	43 (76.79)	
urgent	26 (4.78)	0 (0.00)	0 (0.00)	13 (7.56)	13 (23.21)	
The urgency of the surgery						<0.0 01
0	264 (48.53)	70 (45.45)	146 (90.12)	6 (3.49)	42 (75.00)	
non-CABG	276 (50.74)	84 (54.55)	16 (9.88)	164 (95.35)	12 (21.43)	
2	3 (0.55)	0 (0.00)	0 (0.00)	2 (1.16)	1 (1.79)	
3+	1 (0.18)	0 (0.00)	0 (0.00)	0 (0.00)	1 (1.79)	
NYHA(first visit)						<0.0 01
I	129 (23.71)	40 (25.97)	62 (38.27)	13 (7.56)	14 (25.00)	
II	176 (32.35)	64 (41.56)	59 (36.42)	44 (25.58)	9 (16.07)	

	194				20	
III	(35.66)	46 (29.87)	36 (22.22)	92 (53.49)	(35.71)	
IV	45 (8.27)	4 (2.60)	5 (3.09)	23 (13.37)	13 (23.21)	
Comorbidities						
	213				33	<0.001
Hypertension	(39.15)	42 (27.27)	87 (53.70)	51 (29.65)	(58.93)	01
Rheumatic heart disease	92 (16.91)	25 (16.23)	26 (16.05)	36 (20.93)	5 (8.93)	0.199
Coronary disease	113 (20.77)	31 (20.13)	43 (26.54)	29 (16.86)	10 (17.86)	0.157
Previous major cardiac surgery	210 (38.60)	60 (38.96)	0 (0.00)	142 (82.56)	8 (14.29)	<0.001
Atrial fibrillation	88 (16.18)	17 (11.04)	27 (16.67)	28 (16.28)	16 (28.57)	0.025
Stroke	36 (6.62)	6 (3.90)	18 (11.11)	6 (3.49)	6 (10.71)	0.010
CKD	33 (6.07)	4 (2.60)	11 (6.79)	10 (5.81)	8 (14.29)	0.018
Extra-cardiac artery lesions	33 (6.07)	1 (0.65)	12 (7.41)	9 (5.23)	11 (19.64)	<0.001
COPD	22 (4.04)	4 (2.60)	8 (4.94)	3 (1.74)	7 (12.50)	0.003
diabetes mellitus	82 (15.07)	18 (11.69)	33 (20.37)	17 (9.88)	14 (25.00)	0.005
History of gout	20 (3.68)	1 (0.65)	10 (6.17)	3 (1.74)	6 (10.71)	0.001

History of smoking	149 (27.39)	50 (32.47)	43 (26.54)	42 (24.42)	14 (25.00)	0.75
History of drinking	84 (15.44)	26 (16.88)	25 (15.43)	27 (15.70)	6 (10.71)	0.75
Laboratory parameters						
HB	124.34±22	129.36±21	123.80±22	123.18±22	115.63±2	0.001
WBC	7.61±3.46	7.27±2.34	7.55±3.17	8.03±4.55	7.44±2.8	0.243
TC	4.55±1.26	4.65±1.33	4.73±1.35	4.40±1.08	4.23±1.2	0.014
HDLC	1.15±0.31	1.16±0.31	1.16±0.35	1.12±0.28	1.14±0.3	0.516
LDLC	2.89±0.96	2.97±1.11	2.99±0.97	2.80±0.78	2.63±0.9	0.039
TG	1.27±0.66	1.37±0.83	1.30±0.68	1.21±0.52	1.06±0.3	0.011
Cr	99.35±99.	81.78±25.	109.39±14	96.70±77.	126.79±1	0.012
CC	66.48±109	89.68±200	61.43±25.	58.95±22.	40.39±16	0.01
UREA	7.22±4.14	6.30±2.23	7.31±5.18	7.49±4.12	8.65±4.4	0.002
TBIL	16.43±17.	14.24±7.3	15.47±22.	17.96±15.	20.51±22	0.053

Blood					6.11±2.7	
glucose	5.54±2.66	5.11±1.25	5.87±3.99	5.43±1.81	9	0.024
	38.17±5.2	39.46±5.2	37.38±5.2	38.12±4.8	37.07±6.	0.001
Uric acid	4	1	2	0	05	
Elevated	275				40	<0.0
NT-proBNP	(50.55)	64 (41.56)	91 (56.17)	80 (46.51)	(71.43)	01
Troponin >						<0.0
40	15 (2.76)	6 (3.90)	2 (1.23)	4 (2.33)	3 (5.36)	01

560

561

562

563

564

565

566

567

568

569

570

571

572

573

574

575

576

577 **Table 2.** Results of the univariate and multivariate Cox analyses of the
 578 associations with EUROSCORE II and AVR status

	Univariate analysis	P	multivariate analysis	P
	HR(95% CI)	value	HR(<0.1,95% CI)	value
age	1.042(1.025-1.058)	0		
Male 0, female 1	0.956(0.664-1.376)	0.808		
SBP (mmHg)	1.008(1.000-1.016)	0.052	0.997(0.987-1.007)	0.545
Weight (kg)	0.984(0.967-1.002)	0.083	0.980(0.960-1.001)	0.067
Smoking	1.121(0.752-1.671)	0.576		
Drinking	0.902(0.539-1.509)	0.694		
Coronary disease	1.483(0.984-2.238)	0.06		
Myocardial infarction	2.360(1.150-4.843)	0.019		
Previous major cardiac surgery	0.280(0.177-0.444)	0		
Stroke	2.728(1.607-4.629)	0	1.539(0.821-2.886)	0.179
CKD	3.183(1.873-5.408)	0	1.583(0.841-2.981)	0.155
Extra-cardiac artery lesions	1.924(0.894-4.139)	0.094	0.669(0.296-1.513)	0.335
COPD	1.710(0.833-3.510)	0.144		
Diabetes mellitus	2.052(1.340-3.144)	0.001	1.382(0.832-2.298)	0.212
Atrial fibrillation	1.802(1.189-2.731)	0.006	1.472(0.910-2.380)	0.115
Hypertension	1.496(1.040-2.152)	0.03	0.856(0.529-1.385)	0.527
Stroke	4.210(2.254-7.863)	0	2.334(1.158-4.703)	0.018

NYHA (first visit)		0.189		
II	0.700(0.417-1.175)	0.177		
III	1.082(0.675-1.737)	0.742		
IV	1.290(0.640-2.600)	0.477		
Extracardiac artery lesions	1.104(0.538-2.263)	0.788		
WBC	1.055(1.017-1.094)	0.004	1.056(1.013-1.100)	0.010
HB	0.988(0.981-0.995)	0.001		
PLT	0.998(0.996-1.001)	0.132		
TC	0.999(0.853-1.170)	0.99		
HDLC	0.705(0.371-1.340)	0.286		
LDLC	1.038(0.849-1.270)	0.715		
TG	0.702(0.488-1.010)	0.056	0.888(0.603-1.308)	0.547
TBIL	1.012(1.006-1.017)	0	1.013(1.006-1.020)	0.000
Blood glucose	1.058(1.017-1.100)	0.005	1.022(0.964-1.085)	0.463
Uric acid	1.002(1.001-1.003)	0.005		
Elevated NT-proBNP	2.177(1.473-3.217)	0	1.314(0.851-2.029)	0.218
Troponin > 40	1.139(0.279-4.653)	0.856		
Albumin	0.915(0.885-0.946)	0	0.961(0.917-1.007)	0.097
Status at the first clinic visit	15.992(9.656-26.486)	0		
The urgency of the surgery	0.323(0.216-0.483)	0		
LVEF	0.983(0.969-0.996)	0.01		

Aortic valve bilobate malformation	0.554(0.298-1.032)	0.063	0.608(0.318-1.164)	0.133
AV_Vmax	0.799(0.632-1.009)	0.06	0.982(0.818-1.179)	0.843
AV_MG	0.991(0.980-1.001)	0.079	1.002(0.988-1.015)	0.824
AVA	0.909(0.476-1.738)	0.774		
PAH	1.538(1.173-2.017)	0.002		
Aortic regurgitation	0.960(0.772-1.194)	0.715		
Aortic stenosis	0.794(0.552-1.143)	0.214		
Mitral regurgitation	1.096(0.882-1.361)	0.409		
Mitral stenosis	1.042(0.870-1.248)	0.652		
Anti-plate medicine	1.267(0.867-1.851)	0.221		
Stains	1.788(1.237-2.583)	0.002	0.844(0.537-1.326)	0.462
ACEI/ARB	1.873(1.287-2.725)	0.001	1.374(0.878-2.150)	0.164
β-receptor blockers	1.149(0.798-1.655)	0.454		
CCB	1.464(0.934-2.295)	0.096	1.171(0.692-1.982)	0.555
Diuretic drug	0.791(0.536-1.165)	0.235		
Insulin	2.430(1.484-3.979)	0		
Oral antidiabetic drug	1.045(0.597-1.829)	0.878		
Oral anticoagulants	0.383(0.258-0.567)	0	0.807(0.470-1.385)	0.436
Group		0		0.000
2	5.966(3.033-11.737)	0	3.705(1.738-7.896)	0.001
3	1.972(0.938-4.144)	0.073	1.368(0.627-2.984)	0.431
4	12.168(5.958-24.848)	0	6.891(3.083-15.401)	0.000

579 SBP, systolic blood pressure; CKD, chronic kidney disease; COPD, chronic

580 obstructive pulmonary disease; HB, haemoglobin; WC, waist circumference;

581 TC, total cholesterol; HDL-C, high-density lipoprotein-cholesterol; LDL-C,
 582 low-density lipoprotein-cholesterol; TG, triglyceride; Cr, creatinine; CC,
 583 creatinine clearance; TBIL, total bilirubin; LVEF, left ventricular ejection
 584 fraction; AV_Vmax, maximum velocity of blood flow through the aortic valve;
 585 AV_MG, mean gradient across the aortic valve; AVA, aortic valve area; PAH,
 586 pulmonary arterial hypertension; ACEI, angiotensin converting enzyme
 587 inhibitor; ARB, angiotensin receptor blocker; CCB, calcium channel blocker.

588
 589
 590

591

592

593

594

595

596

597 **Table 3.** Relationships of EUROSCORE II and AVR status with the all-cause
 598 mortality of the participants

	Low risk with surgery (n=154)	Low risk without surgery (n=162)	High risk with surgery (n=172)	risk without surgery (n=56)	P
Model 1		5.541(2.7 37-11.216)	1.899(0.896-4. 025)	10.058(4.632-2 1.840)	<0.001
Model 2		4.211(2.05 3-8.637)	1.450(0.673-3. 125)	8.168(3.704-18 .015)	<0.001

Model		4.064(1.9	1.321(0.605-2.	7.342(3.281-16	
1					<0.001
3		58-8.433)	887)	.427)	
Model		3.492(1.5	1.333(0.605-2.	6.605(2.817-15	
1					<0.001
4		83-7.703)	936)	.486)	

599 Model 1 was adjusted for smoking status, alcohol consumption status,
600 diabetes, atrial fibrillation, hypertension, gout, systolic blood pressure, and
601 body mass; Model 2 was adjusted for the parameters in model 1, with the
602 addition of WBC, RBC, PLT, LDLC, TG, TBIL, NTproBNP, troponin, and
603 albumin; Model 3 was adjusted for the parameters in model 2, plus aortic valve
604 deformity, rheumatic heart disease, AV-Vmax, AV-MG, the degree of AVA
605 mitral insufficiency, and mitral stenosis; Model 4 was adjusted for the
606 parameters in Model 3, with the addition of anti-platelet agent, statin, ACEI,
607 ARB, β -blocker, CCB, diuretic, insulin, oral antidiabetic drug, and oral
608 anticoagulant use.

609

610

611

612 **Legends**

613 **Fig. 1.** Flow diagram describing the study sample

614 The study was performed at three heart valve centres: the Second Affiliated Hospital
615 of Shantou University Medical College, the First Affiliated Hospital of Sun Yat-sen
616 University, and the Affiliated Hospital of Guangdong Medical University. The
617 participants were allocated to high-risk or low-risk groups using a cut-off value of 4%
618 of EUROSCORE II. AVR Surgery, aortic valve replacement surgery. AS, aortic valve
619 stenosis.

620 **Fig. 2.** Kaplan–Meier survival curves for the participants, categorized according to
621 their EUROSCORE II and their AVR status

622 AVR, surgical aortic valve replacement or transcatheter aortic valve implantation.

623 **Fig. 3.** Results of the subgroup analysis of the association between EUROSCORE II
624 and the lack of AVR

625 HR, hazard ratio; CI, confidence interval.

626 **Fig. 4.** ROC curve for the use of EUROSCORE II to evaluate the prognosis of the
627 participants who had not undergone AVR

628 **Table 1.** Clinical characteristics of the participants, stratified according to their
629 EUROSCORE II and their AVR status

630 Continuous variables are shown as median and IQR, and categorical variables are
631 shown as absolute number (n) and percentage. Continuous datasets were compared

632 using the Mann–Whitney test, and categorical datasets were compared using the

633 chi-square test or Fisher’s exact test. A, Second Affiliated Hospital of Shantou

634 University Medical College; B, the First Affiliated Hospital of Sun Yat-sen University;

635 C, the Affiliated Hospital of Guangdong Medical University. SBP, systolic blood

636 pressure; CKD, chronic kidney disease; COPD, chronic obstructive pulmonary

637 disease; HB, haemoglobin; WC, waist circumference; TC, total cholesterol; HDL-C,

638 high-density lipoprotein-cholesterol; LDL-C, low-density lipoprotein-cholesterol; TG,

639 triglyceride; Cr, creatinine; CC, creatinine clearance; TBIL, total bilirubin.

640 **Table 2.** Results of the univariate and multivariate Cox analyses of the associations
641 with EUROSCORE II and AVR status

642 SBP, systolic blood pressure; CKD, chronic kidney disease; COPD, chronic

643 obstructive pulmonary disease; HB, haemoglobin; WC, waist circumference; TC, total

644 cholesterol; HDL-C, high-density lipoprotein-cholesterol; LDL-C, low-density

645 lipoprotein-cholesterol; TG, triglyceride; Cr, creatinine; CC, creatinine clearance;
646 TBIL, total bilirubin; LVEF, left ventricular ejection fraction; AV_Vmax, maximum
647 velocity of blood flow through the aortic valve; AV_MG, mean gradient across the
648 aortic valve; AVA, aortic valve area; PAH, pulmonary arterial hypertension; ACEI,
649 angiotensin converting enzyme inhibitor; ARB, angiotensin receptor blocker; CCB,
650 calcium channel blocker.

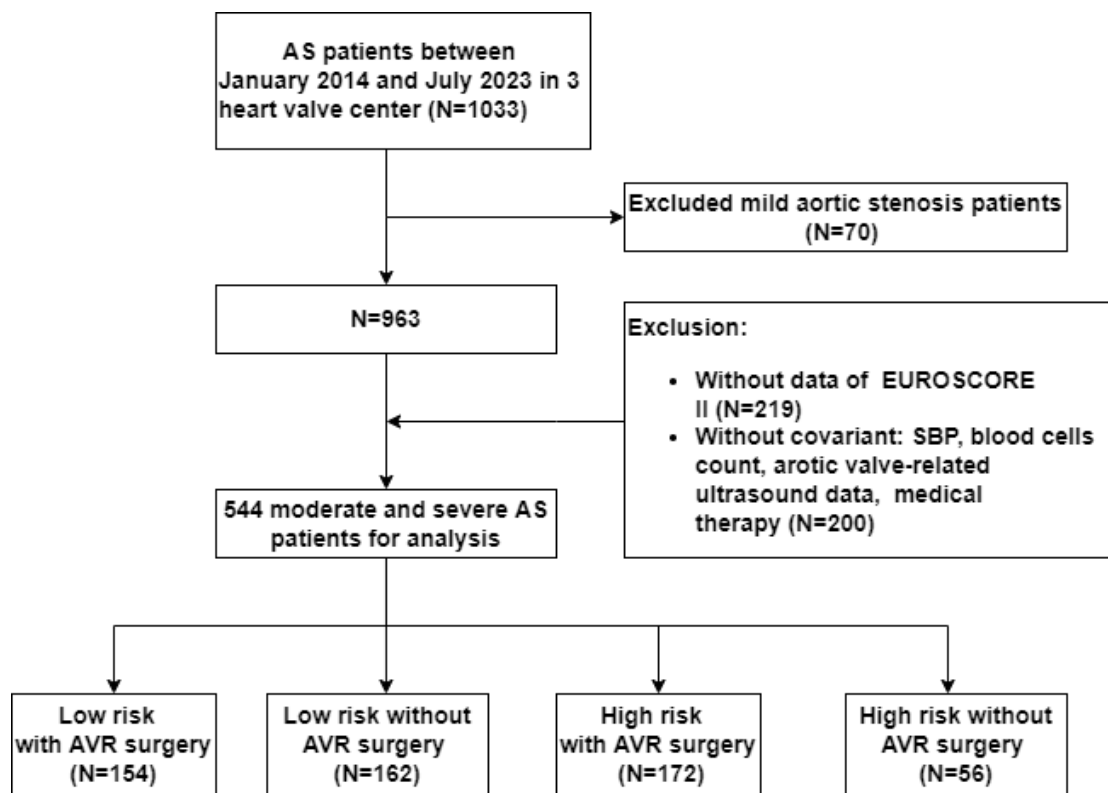
651 **Table 3.** Relationships of EUROSCORE II and AVR status with the all-cause
652 mortality of the participants

653 Model 1 was adjusted for smoking status, alcohol consumption status, diabetes, atrial
654 fibrillation, hypertension, gout, systolic blood pressure, and body mass; Model 2 was
655 adjusted for the parameters in model 1, with the addition of WBC, RBC, PLT, LDLC,
656 TG, TBIL, NTproBNP, troponin, and albumin; Model 3 was adjusted for the
657 parameters in model 2, plus aortic valve deformity, rheumatic heart disease, AV-Vmax,
658 AV-MG, the degree of AVA mitral insufficiency, and mitral stenosis; Model 4 was
659 adjusted for the parameters in Model 3, with the addition of anti-platelet agent, statin,
660 ACEI, ARB, β -blocker, CCB, diuretic, insulin, oral antidiabetic drug, and oral
661 anticoagulant use.

662

663

1



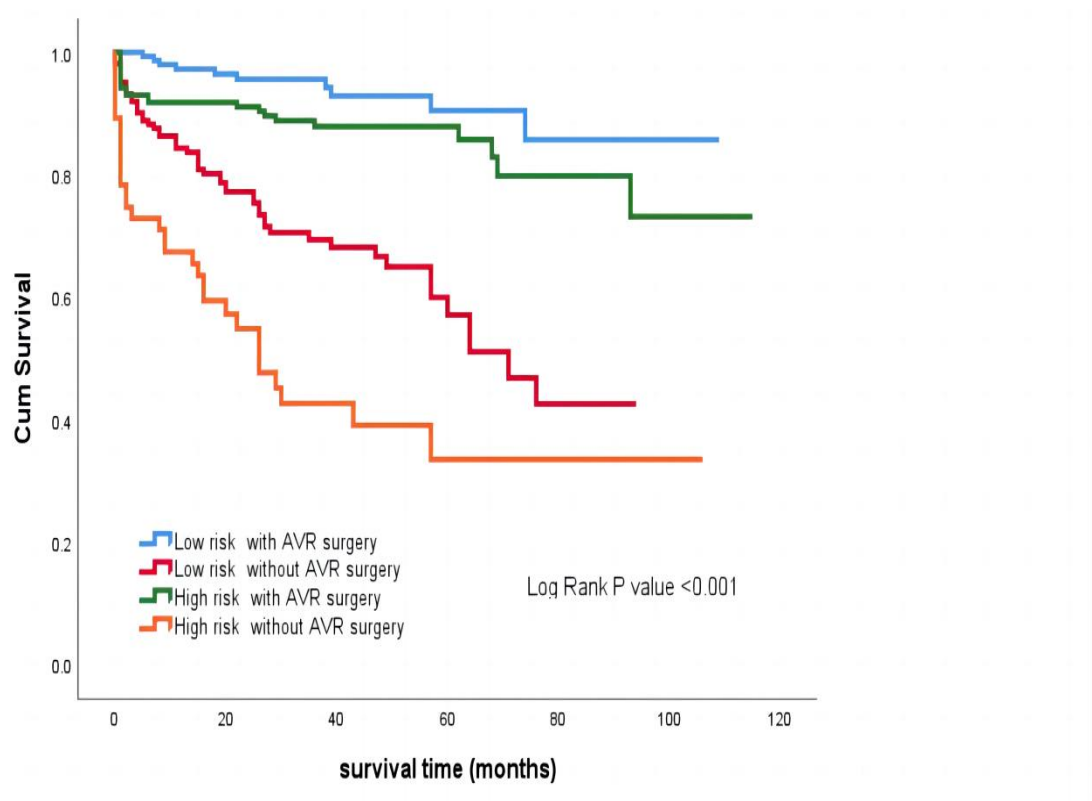
2

3 **Fig. 1.** Flow diagram describing the study sample

4

5

6

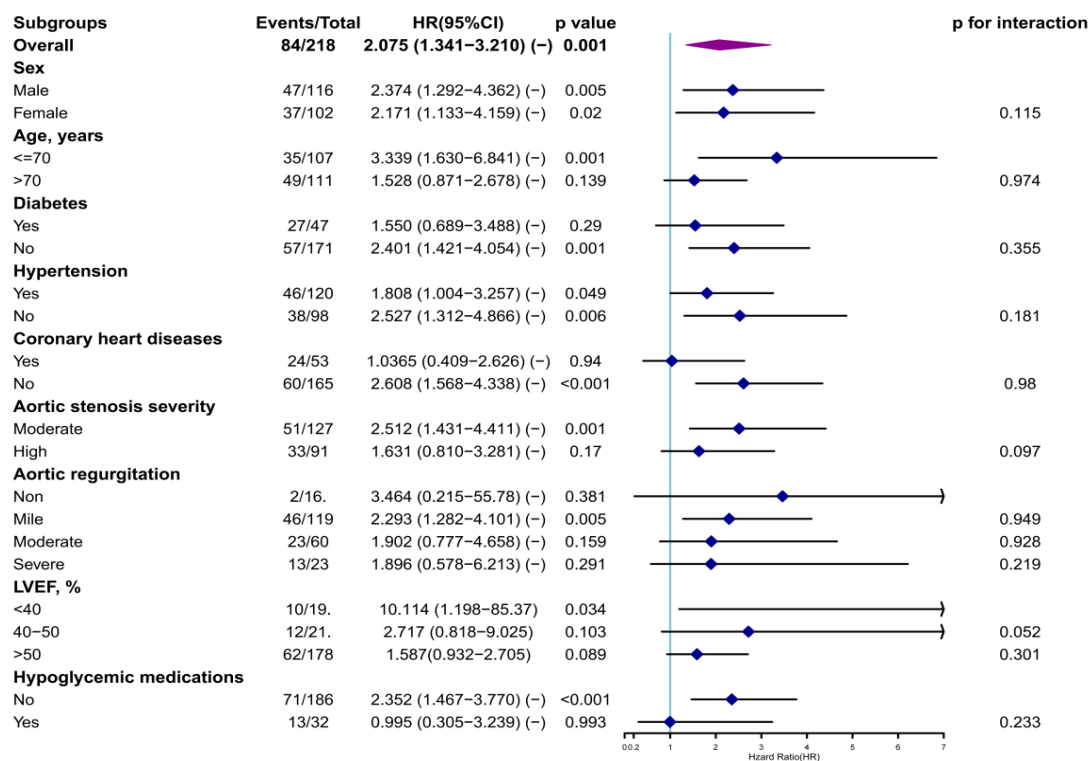


7

8 **Fig. 2.** Kaplan–Meier survival curves for the participants, categorized
9 according to their EUROSCORE II and their AVR status

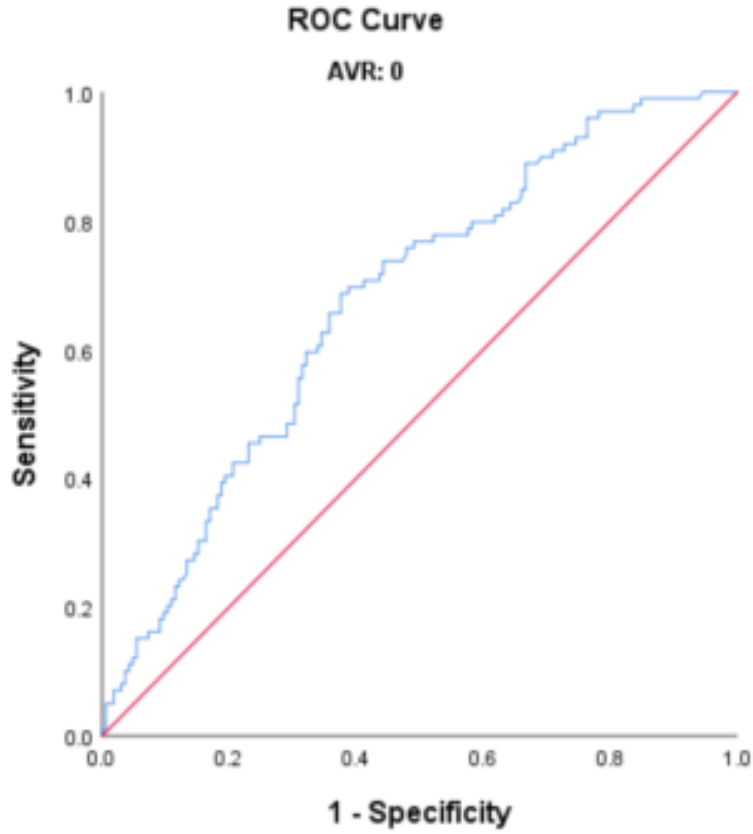
10

11



12
 13 **Fig. 3.** Results of the subgroup analysis of the association between
 14 EUROSCORE II and the lack of AVR
 15 HR, hazard ratio; CI, confidence interval.

16
 17
 18
 19
 20
 21



22

23 **Fig. 4.** ROC curve for the use of EUROSCORE II to evaluate the prognosis of
24 the participants who had not undergone AVR

25

26

27

28

29

30

31

32

33

34

35

36

37 **Table 1.** Clinical characteristics of the participants, stratified according to their
38 EUROSCORE II and their AVR status

	total (N=544)	Low risk with surgery (n=154)	Low risk without surgery (n=162)	High risk with surgery (n=172)	High risk without surgery (n=56)	P value
EUROSCO					7.66±6.2	<0.0
RE II	4.58±4.99	2.32±1.06	1.89±0.89	8.14±6.14	3	01
General characteristics						
Hospital						
A	29 (5.33)	9 (5.84)	8 (4.94)	5 (2.91)	7 (12.50)	0.101
	454	124	138	146	46	
B	(83.46)	(80.52)	(85.19)	(84.88)	(82.14)	
C	61 (11.21)	21 (13.64)	16 (9.88)	21 (12.21)	3 (5.36)	
	64.69±12.	59.71±13.	67.58±11.	62.91±11.	75.48±11	<0.0
Age (years)	95	17	54	75	.44	01
Gender, n						
(%)						
	300	105	92 (56.79)	79 (45.93)	24	0.395
Male	(55.15)	(68.18)			(42.86)	
	244	49 (31.82)	70 (43.21)	93 (54.07)	32	
Female	(44.85)				(57.14)	
	126.88±21	123.87±16	134.00±22	121.39±19	131.46±2	<0.0
SBP (mmHg)	.24	.88	.98	.72	4.81	01

	58.36±11.	60.60±10.	59.51±11.	56.08±9.7	55.85±11	<0.0
Weight (kg)	07	97	73	9	.51	01
State assessment						
Status at the						
first clinic						<0.0
visit						01
	518	154	162	159	43	
elective	(95.22)	(100.00)	(100.00)	(92.44)	(76.79)	
					13	
urgent	26 (4.78)	0 (0.00)	0 (0.00)	13 (7.56)	(23.21)	
The urgency						<0.0
of the surgery						01
	264		146		42	
0	(48.53)	70 (45.45)	(90.12)	6 (3.49)	(75.00)	
	276			164	12	
non-CABG	(50.74)	84 (54.55)	16 (9.88)	(95.35)	(21.43)	
2	3 (0.55)	0 (0.00)	0 (0.00)	2 (1.16)	1 (1.79)	
3+	1 (0.18)	0 (0.00)	0 (0.00)	0 (0.00)	1 (1.79)	
NYHA (first						<0.0
visit)						01
	129				14	
	(23.71)	40 (25.97)	62 (38.27)	13 (7.56)	(25.00)	
	176					
II	(32.35)	64 (41.56)	59 (36.42)	44 (25.58)	9 (16.07)	

	194				20	
III	(35.66)	46 (29.87)	36 (22.22)	92 (53.49)	(35.71)	
IV	45 (8.27)	4 (2.60)	5 (3.09)	23 (13.37)	13 (23.21)	
Comorbidities						
	213				33	<0.0
Hypertension	(39.15)	42 (27.27)	87 (53.70)	51 (29.65)	(58.93)	01
Rheumatic heart disease	92 (16.91)	25 (16.23)	26 (16.05)	36 (20.93)	5 (8.93)	0.199
Coronary disease	113 (20.77)	31 (20.13)	43 (26.54)	29 (16.86)	10 (17.86)	0.157
Previous major cardiac surgery	210 (38.60)	60 (38.96)	0 (0.00)	142 (82.56)	8 (14.29)	<0.0 01
Atrial fibrillation	88 (16.18)	17 (11.04)	27 (16.67)	28 (16.28)	16 (28.57)	0.025
Stroke	36 (6.62)	6 (3.90)	18 (11.11)	6 (3.49)	6 (10.71)	0.010
CKD	33 (6.07)	4 (2.60)	11 (6.79)	10 (5.81)	8 (14.29)	0.018
Extra-cardiac artery lesions	33 (6.07)	1 (0.65)	12 (7.41)	9 (5.23)	11 (19.64)	<0.0 01
COPD	22 (4.04)	4 (2.60)	8 (4.94)	3 (1.74)	7 (12.50)	0.003
diabetes mellitus	82 (15.07)	18 (11.69)	33 (20.37)	17 (9.88)	14 (25.00)	0.005
History of gout	20 (3.68)	1 (0.65)	10 (6.17)	3 (1.74)	6 (10.71)	0.001

History of smoking	149 (27.39)	50 (32.47)	43 (26.54)	42 (24.42)	14 (25.00)	0.75
History of drinking	84 (15.44)	26 (16.88)	25 (15.43)	27 (15.70)	6 (10.71)	0.75
Laboratory parameters						
	124.34±22	129.36±21	123.80±22	123.18±22	115.63±2	0.001
HB	.40	.35	.73	.75	0.31	
	7.61±3.46	7.27±2.34	7.55±3.17	8.03±4.55	7.44±2.8	0.243
WBC					6	
	4.55±1.26	4.65±1.33	4.73±1.35	4.40±1.08	4.23±1.2	0.014
TC					4	
	1.15±0.31	1.16±0.31	1.16±0.35	1.12±0.28	1.14±0.3	0.516
HDLC					0	
	2.89±0.96	2.97±1.11	2.99±0.97	2.80±0.78	2.63±0.9	0.039
LDLC					8	
	1.27±0.66	1.37±0.83	1.30±0.68	1.21±0.52	1.06±0.3	0.011
TG					7	
	99.35±99.	81.78±25.	109.39±14	96.70±77.	126.79±1	0.012
Cr	48	66	6.74	60	10.33	
	66.48±109	89.68±200	61.43±25.	58.95±22.	40.39±16	0.01
CC	.19	.12	92	90	.14	
	7.22±4.14	6.30±2.23	7.31±5.18	7.49±4.12	8.65±4.4	0.002
UREA					5	
	16.43±17.	14.24±7.3	15.47±22.	17.96±15.	20.51±22	0.053
TBIL	05	0	36	18	.38	

Blood					6.11±2.7	
glucose	5.54±2.66	5.11±1.25	5.87±3.99	5.43±1.81	9	0.024
	38.17±5.2	39.46±5.2	37.38±5.2	38.12±4.8	37.07±6.	0.001
Uric acid	4	1	2	0	05	
Elevated	275				40	<0.0
NT-proBNP	(50.55)	64 (41.56)	91 (56.17)	80 (46.51)	(71.43)	01
Troponin >						<0.0
40	15 (2.76)	6 (3.90)	2 (1.23)	4 (2.33)	3 (5.36)	01

39

40

41

42

43

44

45

46

47

48

49

50

51

52

53

54

55

56 **Table 2.** Results of the univariate and multivariate Cox analyses of the
 57 associations with EUROSCORE II and AVR status

	Univariate analysis	P	multivariate analysis	P
	HR(95% CI)	value	HR(<0.1,95% CI)	value
age	1.042(1.025-1.058)	0		
Male 0, female 1	0.956(0.664-1.376)	0.808		
SBP (mmHg)	1.008(1.000-1.016)	0.052	0.997(0.987-1.007)	0.545
Weight (kg)	0.984(0.967-1.002)	0.083	0.980(0.960-1.001)	0.067
Smoking	1.121(0.752-1.671)	0.576		
Drinking	0.902(0.539-1.509)	0.694		
Coronary disease	1.483(0.984-2.238)	0.06		
Myocardial infarction	2.360(1.150-4.843)	0.019		
Previous major cardiac surgery	0.280(0.177-0.444)	0		
Stroke	2.728(1.607-4.629)	0	1.539(0.821-2.886)	0.179
CKD	3.183(1.873-5.408)	0	1.583(0.841-2.981)	0.155
Extra-cardiac artery lesions	1.924(0.894-4.139)	0.094	0.669(0.296-1.513)	0.335
COPD	1.710(0.833-3.510)	0.144		
Diabetes mellitus	2.052(1.340-3.144)	0.001	1.382(0.832-2.298)	0.212
Atrial fibrillation	1.802(1.189-2.731)	0.006	1.472(0.910-2.380)	0.115
Hypertension	1.496(1.040-2.152)	0.03	0.856(0.529-1.385)	0.527
Stroke	4.210(2.254-7.863)	0	2.334(1.158-4.703)	0.018
NYHA (first visit)		0.189		

II	0.700(0.417-1.175)	0.177		
III	1.082(0.675-1.737)	0.742		
IV	1.290(0.640-2.600)	0.477		
Extracardiac artery lesions	1.104(0.538-2.263)	0.788		
WBC	1.055(1.017-1.094)	0.004	1.056(1.013-1.100)	0.010
HB	0.988(0.981-0.995)	0.001		
PLT	0.998(0.996-1.001)	0.132		
TC	0.999(0.853-1.170)	0.99		
HDLC	0.705(0.371-1.340)	0.286		
LDLC	1.038(0.849-1.270)	0.715		
TG	0.702(0.488-1.010)	0.056	0.888(0.603-1.308)	0.547
TBIL	1.012(1.006-1.017)	0	1.013(1.006-1.020)	0.000
Blood glucose	1.058(1.017-1.100)	0.005	1.022(0.964-1.085)	0.463
Uric acid	1.002(1.001-1.003)	0.005		
Elevated NT-proBNP	2.177(1.473-3.217)	0	1.314(0.851-2.029)	0.218
Troponin > 40	1.139(0.279-4.653)	0.856		
Albumin	0.915(0.885-0.946)	0	0.961(0.917-1.007)	0.097
Status at the first clinic visit	15.992(9.656-26.486)	0		
The urgency of the surgery	0.323(0.216-0.483)	0		
LVEF	0.983(0.969-0.996)	0.01		
Aortic valve bilobate malformation	0.554(0.298-1.032)	0.063	0.608(0.318-1.164)	0.133

AV_Vmax	0.799(0.632-1.009)	0.06	0.982(0.818-1.179)	0.843
AV_MG	0.991(0.980-1.001)	0.079	1.002(0.988-1.015)	0.824
AVA	0.909(0.476-1.738)	0.774		
PAH	1.538(1.173-2.017)	0.002		
Aortic regurgitation	0.960(0.772-1.194)	0.715		
Aortic stenosis	0.794(0.552-1.143)	0.214		
Mitral regurgitation	1.096(0.882-1.361)	0.409		
Mitral stenosis	1.042(0.870-1.248)	0.652		
Anti-plate medicine	1.267(0.867-1.851)	0.221		
Stains	1.788(1.237-2.583)	0.002	0.844(0.537-1.326)	0.462
ACEI/ARB	1.873(1.287-2.725)	0.001	1.374(0.878-2.150)	0.164
β-receptor blockers	1.149(0.798-1.655)	0.454		
CCB	1.464(0.934-2.295)	0.096	1.171(0.692-1.982)	0.555
Diuretic drug	0.791(0.536-1.165)	0.235		
Insulin	2.430(1.484-3.979)	0		
Oral antidiabetic drug	1.045(0.597-1.829)	0.878		
Oral anticoagulants	0.383(0.258-0.567)	0	0.807(0.470-1.385)	0.436
Group		0		0.000
2	5.966(3.033-11.737)	0	3.705(1.738-7.896)	0.001
3	1.972(0.938-4.144)	0.073	1.368(0.627-2.984)	0.431
4	12.168(5.958-24.848)	0	6.891(3.083-15.401)	0.000

58 SBP, systolic blood pressure; CKD, chronic kidney disease; COPD, chronic
59 obstructive pulmonary disease; HB, haemoglobin; WC, waist circumference;
60 TC, total cholesterol; HDL-C, high-density lipoprotein-cholesterol; LDL-C,
61 low-density lipoprotein-cholesterol; TG, triglyceride; Cr, creatinine; CC,

62 creatinine clearance; TBIL, total bilirubin; LVEF, left ventricular ejection
 63 fraction; AV_Vmax, maximum velocity of blood flow through the aortic valve;
 64 AV_MG, mean gradient across the aortic valve; AVA, aortic valve area; PAH,
 65 pulmonary arterial hypertension; ACEI, angiotensin converting enzyme
 66 inhibitor; ARB, angiotensin receptor blocker; CCB, calcium channel blocker.

67
 68
 69

70

71

72

73

74

75

76 **Table 3.** Relationships of EUROSCORE II and AVR status with the all-cause
 77 mortality of the participants

variabl es	Low risk with surgery (n=154)	Low risk without surgery (n=162)	High risk with surgery (n=172)	risk without surgery (n=56)	P
Model 1		5.541(2.7 37-11.216)	1.899(0.896-4. 025)	10.058(4.632-2 1.840)	<0.001
Model 2		4.211(2.05 3-8.637)	1.450(0.673-3. 125)	8.168(3.704-18 .015)	<0.001
Model 3		4.064(1.9 58-8.433)	1.321(0.605-2. 887)	7.342(3.281-16 .427)	<0.001

Model		3.492(1.5	1.333(0.605-2.	6.605(2.817-15	
1					<0.001
4		83-7.703)	936)	.486)	

78 Model 1 was adjusted for smoking status, alcohol consumption status,
 79 diabetes, atrial fibrillation, hypertension, gout, systolic blood pressure, and
 80 body mass; Model 2 was adjusted for the parameters in model 1, with the
 81 addition of WBC, RBC, PLT, LDLC, TG, TBIL, NTproBNP, troponin, and
 82 albumin; Model 3 was adjusted for the parameters in model 2, plus aortic valve
 83 deformity, rheumatic heart disease, AV-Vmax, AV-MG, the degree of AVA
 84 mitral insufficiency, and mitral stenosis; Model 4 was adjusted for the
 85 parameters in Model 3, with the addition of anti-platelet agent, statin, ACEI,
 86 ARB, β -blocker, CCB, diuretic, insulin, oral antidiabetic drug, and oral
 87 anticoagulant use.

88
 89
 90

91 **Legends**

92 **Fig. 1.** Flow diagram describing the study sample

93 The study was performed at three heart valve centres: the Second Affiliated Hospital
 94 of Shantou University Medical College, the First Affiliated Hospital of Sun Yat-sen
 95 University, and the Affiliated Hospital of Guangdong Medical University. The
 96 participants were allocated to high-risk or low-risk groups using a cut-off value of 4%
 97 of EUROSCORE II. AVR Surgery, aortic valve replacement surgery. AS, aortic valve
 98 stenosis.

99 **Fig. 2.** Kaplan–Meier survival curves for the participants, categorized according to
 100 their EUROSCORE II and their AVR status

101 AVR, surgical aortic valve replacement or transcatheter aortic valve implantation.

102 **Fig. 3.** Results of the subgroup analysis of the association between EUROSCORE II

103 and the lack of AVR

104 HR, hazard ratio; CI, confidence interval.

105 **Fig. 4.** ROC curve for the use of EUROSCORE II to evaluate the prognosis of the

106 participants who had not undergone AVR

107 **Table 1.** Clinical characteristics of the participants, stratified according to their

108 EUROSCORE II and their AVR status

109 Continuous variables are shown as median and IQR, and categorical variables are

110 shown as absolute number (n) and percentage. Continuous datasets were compared

111 using the Mann–Whitney test, and categorical datasets were compared using the

112 chi-square test or Fisher’s exact test. A, Second Affiliated Hospital of Shantou

113 University Medical College; B, the First Affiliated Hospital of Sun Yat-sen University;

114 C, the Affiliated Hospital of Guangdong Medical University. SBP, systolic blood

115 pressure; CKD, chronic kidney disease; COPD, chronic obstructive pulmonary

116 disease; HB, haemoglobin; WC, waist circumference; TC, total cholesterol; HDL-C,

117 high-density lipoprotein-cholesterol; LDL-C, low-density lipoprotein-cholesterol; TG,

118 triglyceride; Cr, creatinine; CC, creatinine clearance; TBIL, total bilirubin.

119 **Table 2.** Results of the univariate and multivariate Cox analyses of the associations

120 with EUROSCORE II and AVR status

121 SBP, systolic blood pressure; CKD, chronic kidney disease; COPD, chronic

122 obstructive pulmonary disease; HB, haemoglobin; WC, waist circumference; TC, total

123 cholesterol; HDL-C, high-density lipoprotein-cholesterol; LDL-C, low-density

124 lipoprotein-cholesterol; TG, triglyceride; Cr, creatinine; CC, creatinine clearance;

125 TBIL, total bilirubin; LVEF, left ventricular ejection fraction; AV_Vmax, maximum

126 velocity of blood flow through the aortic valve; AV_MG, mean gradient across the
127 aortic valve; AVA, aortic valve area; PAH, pulmonary arterial hypertension; ACEI,
128 angiotensin converting enzyme inhibitor; ARB, angiotensin receptor blocker; CCB,
129 calcium channel blocker.

130 **Table 3.** Relationships of EUROSCORE II and AVR status with the all-cause
131 mortality of the participants

132 Model 1 was adjusted for smoking status, alcohol consumption status, diabetes, atrial
133 fibrillation, hypertension, gout, systolic blood pressure, and body mass; Model 2 was
134 adjusted for the parameters in model 1, with the addition of WBC, RBC, PLT, LDLC,
135 TG, TBIL, NTproBNP, troponin, and albumin; Model 3 was adjusted for the
136 parameters in model 2, plus aortic valve deformity, rheumatic heart disease, AV-Vmax,
137 AV-MG, the degree of AVA mitral insufficiency, and mitral stenosis; Model 4 was
138 adjusted for the parameters in Model 3, with the addition of anti-platelet agent, statin,
139 ACEI, ARB, β -blocker, CCB, diuretic, insulin, oral antidiabetic drug, and oral
140 anticoagulant use.

141

142

143