

1 **Evaluation of EUROSCORE II to determine the prognosis of patients with**  
2 **moderate-to-severe aortic stenosis: a long-term retrospective study**

3 Xianzhen Cai<sup>1,2+</sup>, Danchun Hu<sup>1,2+</sup>, Baoxin Yan<sup>1,2</sup>, Jinhao Chen<sup>1,2</sup>, Weiwen Li<sup>1,2</sup>, Ying  
4 Lin<sup>1,2</sup>, Run Lin<sup>1,2</sup>, Junjun Ye<sup>1,2</sup>, Xiaojun Huang<sup>1</sup>, Bin Xie<sup>1</sup>, Xiaodong Zhuang<sup>3\*</sup>,  
5 Jianying Chen<sup>4\*</sup>, Jilin Li<sup>1\*</sup>

6  
7 <sup>1</sup>Department of Cardiology, Second Affiliated Hospital of Shantou University  
8 Medical College, No. 69 North Dongxia Road, Shantou 515000, Guangdong, China

9 <sup>2</sup>Shantou University Medical College, Shantou, Guangdong, China

10 <sup>3</sup>Department of Cardiology, the First Affiliated Hospital of Sun Yat-Sen University,  
11 58 Zhongshan 2nd Road, Guangzhou 510080, China

12 <sup>4</sup>Department of Cardiology, Affiliated Hospital of Guangdong Medical University,  
13 Zhanjiang 524001, China

14

15 [Author contributions](#)

16 <sup>+</sup>Xianzhen Cai and Danchun Hu contributed to the manuscript equally.

17 Xianzhen Cai

18 Email: [2784815878@qq.com](mailto:2784815878@qq.com)

19 <sup>+</sup>Danchun Hu

20 Email: [1074969728@qq.com](mailto:1074969728@qq.com)

21 [Contributor Information.](#)

22 \* Corresponding authors

23 Jilin Li

24 Tel: +86 754-83141133, Email: [lijilin@126.com](mailto:lijilin@126.com)

25 Xiaodong Zhuang

26 Email: [zhuangxd3@mail.sysu.edu.cn](mailto:zhuangxd3@mail.sysu.edu.cn)

27 Jianying Chen

28 E-mail: [jychen271@126.com](mailto:jychen271@126.com)

29

30 **Declaration of interests**

31 The authors declare no competing interests.

32 **Data availability**

33 The datasets used and/or analyzed during the current study are available from the  
34 corresponding authors upon reasonable request.

35 **Funding**

36 Nothing to declare.

37 **Ethical approval**

38 This study was approved by the Ethics Review Committee of the Second Affiliated  
39 Hospital of Shantou University Medical College(ERB number: ethics form 9-5).

40 Patient follow-up was conducted via telephone contact, with verbal informed consent  
41 approved by the institutional ethics committee.

42 **Pre-registered clinical trial number**

43 NOTE: This preprint reports new research that has not been certified by peer review and should not be used to guide clinical practice.  
Pre-registered clinical trial number: NCT06069292

44 **Consent for publication**

45 Not applicable.

46 **Competing interests**

47 The authors declare no competing interests.

48 **Acknowledgments**

49 We thank Mark Cleasby, PhD from Liwen Bianji (Edanz) ([www.liwenbianji.cn](http://www.liwenbianji.cn)) for  
50 editing the language of a draft of this manuscript.

51

52 **Central Message** Our heart valvular disease intervention center construction unit  
53 from The Second Affiliated Hospital of Shantou University Medical College is part of  
54 the National Clinical Medical Research Center for Radiology and Therapy,  
55 Interventional Center for Valvular Disease, Dongfang Huaxia Cardiovascular Health  
56 Institute, Suzhou Industrial Park.

57 Our data were from Three heart valve centers, which are derived from a database  
58 called Aortic Valve Diseases RiSk factOr assessment and Prognosis model  
59 Construction (ARISTOTLE).

60

61 **Glossary of Abbreviations**

62 EuroSCORE II (European System for Cardiac Operative Risk Evaluation), SBP

63 (systolic blood pressure), CKD (chronic kidney disease), COPD (chronic obstructive

64 pulmonary disease), HB (haemoglobin), TC (total cholesterol) , HDL-C (high-density

65 lipoprotein-cholesterol), LDL-C(low-density lipoprotein-cholesterol), TG

66 (triglyceride), Cr (creatinine), CC(creatinine clearance), TBIL(total bilirubin), LVEF

67 (left ventricular ejection fraction), AV\_Vmax(maximum velocity of blood flow

68 through the aortic valve), AV\_MG (mean gradient across the aortic valve), AVA

69 (aortic valve area), PAH(pulmonary arterial hypertension), ACEI (angiotensin

70 converting enzyme inhibitor), ARB(angiotensin receptor blocker), CCB(calcium

71 channel blocker), LVEF (left ventricular ejection fraction),AV\_Vmax(maximum flow

72 velocity through the aortic valve), AV\_MG(mean gradient across the aortic valve),

73 AVA(aortic valve area), PAH(pulmonary arterial hypertension)

---

74

75 **word count of the manuscript text:4158**

76

77

78

## 79 **Background and Aims**

80 Aortic stenosis (AS) was a prevalent heart valve disease whose morbidity and  
81 mortality can be reduced by aortic valve replacement (AVR) . EUROSCORE II  
82 assesses the perioperative mortality of severe AS patients undergoing AVR. This study  
83 explored EUROSCORE II's prognostic value for long-term all-cause mortality of  
84 Chinese patients with moderate-to-severe AS and determined whether AVR affects  
85 this.

## 86 **Methods**

87 Allocated to four groups following the EUROSCORE II (cut-off value of 4% ) and  
88 whether performed AVR, 544 patients with moderate-to-severe AS were enrolled.  
89 Baseline data, Kaplan - Meier, Cox regression and subgroup analysis were used to  
90 analyse the relationship between EUROSCORE II and participants' all-cause  
91 mortality. Furthermore, ROC analysis determining the optimal cut-off value of  
92 EUROSCORE II was utilized.

## 93 **Results**

94 During a median follow-up of 41.4 months, 177 (21.5%) participants reached the  
95 endpoint, with higher risks (EUROSCORE II  $\geq 4\%$ ) and no AVR exhibited  
96 significantly increased all-cause mortality rates compared to other groups (55.4% vs.  
97 6.5%, 13.4%, and 32.7%;  $P < 0.001$ ). Kaplan-Meier curves confirmed these findings  
98 (log-rank test  $P < 0.001$ ). Cox regression analysis revealed a 6.891-fold higher risk  
99 (HR, 6.891; 95% CI, 3.083-15.401;  $P < 0.001$ ) in patients without AVR with higher  
100 EUROSCORE II. The adjusted model ( $P < 0.01$ ) and subgroup analyses (without AVR  
101  $P = 0.001$ ; with AVR  $P = 0.029$ ) supported EUROSCORE II's prognostic value for  
102 all-cause mortality. The optimal EUROSCORE II cut-off for predicting all-cause  
103 mortality in patients without AVR was 2.23% (AUC 0.675).

104 **Conclusions**

105 EUROSCORE II (cut-off value 4%) and AVR independently impact the long-term  
106 prognosis of patients with moderate-to-severe AS.

107

108

109

110

111

112

113

114

115

116

117

118

119

120 **Keywords**

121 Aortic valve stenosis; EUROSCORE II; all-cause mortality; aortic valve replacement

122

123

---

## 124 **Introduction**

---

125 Aortic stenosis (AS) is the most prevalent heart valve disease, causing significant  
126 morbidity and mortality in the elderly due to aging of the population[1-3]. Its  
127 prevalence exceeds 10% in individuals aged over 65 in US and European  
128 populations[4-6], although the prevalence in China may be lower, according to the  
129 results of a single-centre retrospective study of the echocardiographic data of 287,556  
130 patients[7]. The initial stages of the disease are characterized by the progression of  
131 valvular lesions, involving endothelial cell damage, infiltration with lipids and  
132 macrophages, lipid oxidation, and subsequent fibrosis and calcification, which  
133 ultimately leads to obstruction of the aortic valve[6,8].

134 To date, owing to the absence of specific medication for the treatment or  
135 prevention of the progression of AS, surgical aortic valve replacement (SAVR) or  
136 transcatheter aortic valve implantation (TAVI) are the recommended means of treating  
137 patients with severe symptoms[9,10]. EUROSCORE II is a widely-used risk  
138 assessment tool[11-17] that uses various characteristics of the patient to estimate the  
139 risk of adverse outcomes, and it has been clinically implemented to identify high-risk  
140 patients during hospitalization and predict 30-day mortality in those undergoing  
141 coronary artery bypass grafting (CABG)[18], SAVR, or TAVR[19]. However, data are  
142 lacking regarding the long-time prognostic value of EUROSCORE II with respect to  
143 the mortality and morbidity rates of patients with moderate-to-severe AS, and whether  
144 AVR (SAVR or TAVR) is associated with a superior prognosis, especially in Chinese  
145 patients.

146 Consequently, the primary objective of this retrospective study was to  
147 characterize the relationships of EUROSCORE II and AVR status with all-cause  
148 mortality in patients with moderate-to-severe AS. In addition, we aimed to identify the

149 optimal cut-off value of EUROSCORE II for prognostic use in patients who do not  
150 undergo AVR.

151

## 152 **Methods**

---

### 153 **Study design and participants**

154 A total of 1,033 patients diagnosed with moderate-to-severe AS at the Second  
155 Affiliated Hospital of Shantou University Medical College, the First Affiliated  
156 Hospital of Sun Yat-sen University, or the Affiliated Hospital of Guangdong Medical  
157 University were enrolled between January 2014 and July 2023. Three heart valve  
158 centers are derived from a database called Aortic Valve Diseases RiSk facTO  
159 assessmenT and Prognosis modeL Construction (ARISTOTLE). The primary outcome  
160 was all-cause mortality during the follow-up period. The inclusion criteria were as  
161 follows: (1) moderate-to-severe AS (peak aortic jet velocity ( $V_{max}$ )  $>3$  m/s, mean  
162 aortic pressure gradient (MG)  $>20$  mmHg, or aortic valve area (AVA)  $\leq 1.5$  cm<sup>2</sup>) on  
163 echocardiography, according to the 2021 European Society of Cardiology (ESC)/  
164 European Association for Cardio Thoracic Surgery (EACTS) guidelines for the  
165 management of valvular heart disease [9]; (2) congenital stenosis of the aortic valve;  
166 (3) an initial diagnosis of aortic stenosis; and (4) no previous history of AVR. The  
167 exclusion criteria were as follows: (1) a history of aortic valve replacement; (2) severe  
168 dysfunction or malignancy of other organs or systems; (3) connective tissue disease;  
169 (4) aortic stenosis in combination with severe mitral stenosis; (5) malignant tumour;  
170 and (6) missing baseline data (N = 419). Ultimately, 544 patients with  
171 moderate-to-severe AS remained for the analysis (Fig. 1).

172 The study was conducted according to the principles of the Declaration of

173 Helsinki and was approved by the Ethics Review Committee of the Shantou  
174 University Medical College. All the data were collected from the hospital electronic  
175 medical records, and follow-up was conducted through hospital visits or phone calls.  
176 Verbal informed consent was obtained from the participants, as approved by the  
177 Ethics Review Committee of the Second Affiliated Hospital of Shantou University  
178 Medical College(ERB number: ethics form 9-5).

### 179 **Data collection and definitions**

180 Participants self-reported age, sex, height, body mass, smoking and alcohol  
181 history, and medication upon admission. History of hypertension, diabetes, coronary  
182 heart disease (CHD), atrial fibrillation, extra-cardiac artery lesions, or stroke was  
183 further validated by medical professionals on the basis of blood test or imaging results.  
184 Subsequent AVR surgery information was obtained from electronic medical records or  
185 telephone interviews. BMI was calculated as body mass (kg)/height (m)<sup>2</sup>.  
186 Hypertension was defined by antihypertensive drug use, systolic blood pressure  $\geq 140$   
187 mmHg, or diastolic blood pressure  $\geq 90$  mmHg. Chronic kidney disease (CKD) was  
188 defined as estimated glomerular filtration rate (eGFR)  $< 60$  mL/min/1.73 m<sup>2</sup> using  
189 CKD-EPI equation [20].

190 Laboratory tests within 24 hours of admission included white blood cell count,  
191 haemoglobin, creatinine, uric acid, total cholesterol, low-density  
192 lipoprotein-cholesterol (LDL-C), high-density lipoprotein-cholesterol (HDL-C),  
193 amino-terminal brain-natriuretic peptide precursor (NT-proBNP), and troponin. The  
194 use of the following drugs was recorded: anti-platelet drugs, statins,  
195 angiotensin-converting enzyme inhibitors (ACEIs), angiotensin receptor blockers  
196 (ARBs),  $\beta$ -blockers, calcium channel blockers (CCBs), hypoglycaemic drugs, oral  
197 anticoagulants, and diuretics. The following echocardiographic indices were also

198 recorded: left ventricular ejection fraction (LVEF), the maximum velocity of blood  
199 passing through the aortic valve (AV\_Vmax), the mean gradient across the aortic  
200 valve (AV\_MG), the aortic valve area (AVA), pulmonary arterial hypertension (PAH),  
201 aortic regurgitation, mitral regurgitation, and mitral stenosis.

## 202 **Definitions of echocardiographic indices**

203 Transthoracic echocardiography followed American Society of Echocardiography  
204 guidelines[21]. AS severity was defined as [3,4]: (1) moderate AS:  
205  $1 \text{ cm}^2 < \text{AVA} \leq 1.5 \text{ cm}^2$ ,  $3 \text{ m/s} < \text{Vmax} \leq 3.9 \text{ m/s}$ , or  $< 20 \text{ mm Hg} < \text{MG} \leq 39 \text{ mm Hg}$ ; and (2)  
206 severe AS:  $\text{AVA} \leq 1 \text{ cm}^2$ ,  $\text{Vmax} \geq 4 \text{ m/s}$ , or  $\text{MG} \geq 40 \text{ mm Hg}$ . PAH was defined as a  
207 pulmonary arterial pressure  $\geq 25 \text{ mm Hg}$ , according to the Guidelines for the  
208 Diagnosis and Treatment of Pulmonary Hypertension in China (2021 edition)[22].

## 209 **Outcomes**

210 The primary endpoint of the study was all-cause mortality from the time of the  
211 diagnosis, whose information was collected by trained medical staff through  
212 telephone contact with the participants or their families. The secondary endpoints  
213 were cardiovascular-related mortality and aortic stenosis-related mortality. The  
214 duration of follow-up was date of AS diagnosis to date of death or end of follow-up

## 215 **Statistical analysis**

216 Continuous datasets were tested for normality using the Shapiro–Wilk method, and  
217 the data are presented as as mean  $\pm$ SD for normal distribution, or median and  
218 interquartile range for skewed data. Categorical data are presented as counts and  
219 percentages. Homogeneous datasets compared using ANOVA, heterogeneous using  
220 Kruskal–Wallis test.  $P \leq 0.05$  was considered statistically significant. The participants  
221 were allocated to high-risk or low-risk groups using a cut-off value of EUROSCORE  
222 II of 4%, according to the 2017 ESC/EACTS guidelines[23]. Student’s t-test or



223 ANOVA was used to evaluate differences between groups with respect to continuous  
224 data, and Pearson's chi-square test or Fisher's exact test was used to compare  
225 categorical datasets, as appropriate.

226 Kaplan–Meier method calculated cumulative survival, evaluated with log-rank  
227 test. Cox proportional hazard analyses were performed, generating hazard ratios (HRs)  
228 and 95% confidence intervals (CIs) for the relationships for EUROSCORE II and  
229 AVR status association with all-cause mortality. Next, four multivariable models were  
230 involved adjustment for potential confounders of all-cause mortality. Model 1 was  
231 adjusted for smoking status, alcohol consumption status, diabetes, atrial fibrillation,  
232 hypertension, gout, systolic blood pressure, and body mass. Model 2 was adjusted for  
233 the parameters in model 1, with the addition of WBC, RBC, PLT, LDLC, TG, TBIL,  
234 NTproBNP, troponin, and albumin. Model 3 was adjusted for the parameters in model  
235 2, plus aortic valve deformity, rheumatic heart disease, AV-Vmax, AV-MG, the degree  
236 of AVA mitral insufficiency, and mitral stenosis. Model 4 was adjusted for the  
237 parameters in Model 3, with the addition of anti-platelet agent, statin, ACEI, ARB,  
238  $\beta$ -blocker, CCB, diuretic, insulin, oral antidiabetic drug, and oral anticoagulant use.  
239 Further subgroup analyses were performed after the stratification of the participants  
240 according to baseline sex, age ( $\leq 70$  or  $>70$  years), BMI ( $<24$  or  $\geq 24$  kg/m<sup>2</sup>), diabetes,  
241 hypertension, CHD, and the severity of AS (moderate or severe), to assess the  
242 consistency of the prognostic use of EUROSCORE II for all-cause mortality. Finally,  
243 the ROC curve was also used to determine the optimal cut-off value of EUROSCORE  
244 II for the prediction of all-cause mortality in the participants. All analyses were  
245 conducted in the IBM SPSS 26.0 statistical software and a two-sided P value $<0.05$   
246 was considered statistically significant.

247

248

## 249 **Results**

---

### 250 **Baseline characteristics of the participants**

251

#### 252 *Clinical characteristics of the participants, stratified according to EUROSCORE II* 253 *and AVR status*

254 A total of 1,033 patients who met the diagnostic criteria for AS were initially included  
255 in the study, but 70 were excluded because they fulfilled one of the exclusion criteria,  
256 219 because of missing EUROSCORE II data, and 200 because of missing covariant  
257 data. Thus ultimately, data for 544 participants were analysed in the present study (Fig.  
258 1), comprising 300 (55.2%) men and 244 (44.9%) women, with a mean age of  
259  $64.7 \pm 13.0$  years. The baseline characteristics of the participants, after being  
260 categorized according to the recommended cut-off value (4%) of EUROSCORE II  
261 and whether or not AVR was performed, are shown in Table 1.

262 We evaluated the following six types of characteristics of the participants in the  
263 four groups: their general characteristics, preoperative status assessment,  
264 comorbidities, laboratory parameters, echocardiographic findings, and medical  
265 therapy. Those with a EUROSCORE II index  $\geq 4\%$  who did not undergo AVR surgery  
266 tended to be older, have higher serum Cr, TBIL, and blood glucose concentrations, to  
267 have a high NYHA score, and to have more comorbidities, such as diabetes and  
268 hypertension, but to have a lower body mass and LDL-C and TG concentrations than  
269 those in the other groups (all  $P \leq 0.05$ ). In addition, the echocardiographic findings  
270 for the participants (Additional file Table S1) showed that the participants in this  
271 group were more likely to have other valvular diseases, severe PAH, and lower LVEF.  
272 In addition, these participants were more likely to be administering statins, insulin,

273 and oral anticoagulants. However, there were no differences among the four groups  
274 with respect to sex, their history of alcohol consumption or smoking, or in their oral  
275 anti-diabetic drug use (all  $P>0.05$ ).

276 *Baseline characteristics of the participants, stratified according to only*

277 ***EUROSCORE II***

278 During a follow-up period of 10.7 years, 132 (21.5%) participants had reached an  
279 endpoint. To evaluate the utility of EUROSCORE II alone for the prediction of  
280 all-cause mortality in patients with moderate-to-severe AS, we compared two groups  
281 of participants, categorized according to the recommended cut-off value (4%). As  
282 shown in Additional file Table S2, participants with higher EUROSCORE II ( $\geq 4\%$ )  
283 were more likely to be female, older, require surgery more urgently, have more  
284 serious cardiac dysfunction and were more likely to have other heart valve diseases,  
285 such as mitral stenosis, mitral regurgitation, and aortic regurgitation. However, there  
286 were no significant differences between the groups with respect to the incidences of  
287 comorbidities ( $P>0.05$ ).

288

289 **Relationships of all-cause mortality with EUROSCORE II and AVR status**

290

291 *Results of the Kaplan–Meier analysis of the participants, stratified according to*

292 *both EUROSCORE II and AVR status*

293 The log-rank test was employed to compare the cumulative survival of the groups of  
294 participants, as depicted in Fig. 2. The analysis demonstrated that the participants in  
295 the group with high EUROSCORE II and who had not undergone AVR were at the  
296 highest risk of all-cause mortality of the four groups (log-rank  $P<0.001$ ).

297 ***Results of the Kaplan–Meier analysis of the participants who had/hadn’t***

298 ***undergone AVR, stratified according to their EUROSCORE II***

299 Compared with the low-risk group, the participants in the high-risk group showed

300 significantly poorer cumulative survival, according to the Kaplan–Meier curves

301 ( $P=0.001$ ) (Additional File Fig. S1) . Similar results were obtained for the participants

302 who had not undergone AVR ( $P=0.001$ ) (Additional File Fig. S2).

303 ***Comparison of the Kaplan–Meier curves for participants who did or did not***

304 ***undergo AVR***

305 For the low-risk group of participants (EUROSCORE II  $<4\%$ ) , the Kaplan–Meier

306 curves and the log-rank test showed that the cumulative survival time significantly

307 differed between those who had or had not undergone AVR ( $P=0.01$ ) (Additional File

308 Fig. S3). Similarly, among high-risk participants (EUROSCORE II  $\geq 4\%$ ) , those who

309 had not undergone AVR ( $P<0.01$ ) (Additional File Fig. S4) showed significantly

310 poorer cumulative survival time than participants undergone AVR.

311 However, there was no difference between those who underwent SAVR or TAVI

312 ( $P=0.692$ ) (Additional File Fig. S5).

313

314 ***Predictors of all-cause mortality***

315 The findings of the univariate and multivariate Cox regression analyses of the

316 relationships of EUROSCORE II and AVR status with the all-cause mortality of the

317 participants are presented in Table 2. Univariate regression analysis showed that age,

318 CAD, CKD, COPD, diabetes, atrial fibrillation, hypertension, albumin, critical status,

319 urgency of surgery, EF, pulmonary hypertension, statin use, ACEI/ARB use, and

320 insulin use were predictors of all-cause mortality.

321 The univariate analysis showed that group 2 (EUROSCORE II  $<4\%$ , without

322 AVR) were associated with a 5.97-fold higher risk than group 1 (EUROSCORE II  
323 <4%, with AVR) (HR, 5.966; 95% CI 3.033–11.737;  $P<0.001$ ). Furthermore,  
324 participants in group 4 (EUROSCORE II  $\geq 4\%$  and no AVR) were at a 12.17-fold  
325 higher risk of all-cause mortality vs. those in group 1 (HR, 12.168; 95% CI  
326 5.958–24.848;  $P<0.001$ ).

327 Multivariate Cox regression analyses showed that group 1 (EUROSCORE II <4%,  
328 had undergone AVR) exhibited the lowest risk (HR, 3.705, 95% CI 1.738–7.896,  
329  $P=0.001$ ; and HR, 6.891, 95% CI 3.083–15.401,  $P<0.001$  groups 2,4, respectively  
330 compared with group 1).

331 However, there no significant difference between participants in group 3  
332 (EUROSCORE II  $\geq 4\%$  and AVR) and group 1 (HR, 1.368; 95% CI 0.627–2.984,  
333  $P=0.431$ ). Notably, significant and more steady results were obtained after further  
334 adjustment for potential confounders in Models 1–4 (Table 3). The fully adjusted HR  
335 and 95% CI in Model 4 for groups 2–4 vs. group 1 were 3.492 (1.583–7.703), 1.333  
336 (0.605–2.936), and 6.605 (2.817–15.486), respectively ( $P<0.05$ ).

337 Moreover, participants in high risk without surgery (group 4) were further adjusted as  
338 the reference to prove that, among high-risk participants (EUROSCORE II  $\geq 4\%$ ),  
339 perform AVR (group 3) were associated with a 0.023-fold risk than without AVR  
340 (group 4) (HR, 0.023; 95% CI 0.118-0.857,  $P<0.01$ ).

341

### 342 **Results of the subgroup analyses**

343 To further validate the identified difference in risk between participants who had or  
344 had not undergone AVR, two subgroup analyses were performed to evaluate the  
345 effects of relevant parameters on the relationship between EUROSCORE II and the  
346 all-cause mortality of the participants. The participants were stratified according to

347 sex (male or female), age ( $\leq 70$  or  $> 70$  years), diabetes (present or absent),  
348 hypertension (present or absent), CHD (present or absent), severity of AS (moderate  
349 or severe), aortic regurgitation (none, mild, moderate, or severe), LVEF ( $< 40\%$ ,  
350  $40\% - 50\%$ , or  $> 50\%$ ), and the use of hypoglycaemic medication (yes or no).

351 ***Results of the subgroup analysis of the participants who had not undergone AVR***

352 The results showed stronger associations between EUROSCORE II and the risk of  
353 all-cause mortality in younger ( $\leq 70$  years old) male participants who did not have  
354 diabetes, hypertension, or CHD, were not taking hypoglycaemic medication, had mild  
355 aortic regurgitation, had an LVEF  $< 40\%$ , and had moderate aortic stenosis (Fig. 3).  
356 The relationship of the EUROSCORE II index with all-cause mortality remained after  
357 adjustment for the confounders across all the subgroups, but there were no significant  
358 interactions between the subgroups ( $P$  for all interactions  $> 0.05$ ).

359 ***Results of the subgroup analysis of the participants who had undergone AVR***

360 Analysis of the data for the participants who had undergone AVR (Additional file Fig.  
361 S6) revealed a similar association between EUROSCORE II and the risk of all-cause  
362 mortality risk in participants who did not have diabetes or CHD and were not taking  
363 hypoglycaemic medication. None of the subgroups showed significant interactions ( $P$   
364 for all interactions  $> 0.05$ ).

365

366 **Optimal cut-off value of EUROSCORE II for the prediction of outcomes in the**  
367 **participants who had not undergone AVR**

368 Fig. 4 shows the ROC curve analysis of the prognostic value of EUROSCORE II for  
369 the participants. The optimal cut-off value of EUROSCORE II identified for the  
370 prediction of the primary outcome in the participants who had not undergone AVR  
371 was 2.23%, which was associated with an AUC of 0.675 (95% CI: 0.609–0.74;

372  $P<0.001$ ). Therefore, the predictive value of a EUROSCORE II threshold of 2.23%  
373 appears to be superior to that of 4% for the prediction of outcomes in patients without  
374 AVR.

375 We also performed Kaplan–Meier analysis and Cox multivariate analysis to  
376 confirm this finding. Kaplan–Meier analysis in supplemental Fig. S7 demonstrated  
377 that participants with a EUROSCORE II  $>2.23\%$  had a higher risk of all-cause  
378 mortality than those with values  $<2.23\%$  (log-rank,  $P<0.001$ ). Additionally, compared  
379 with the lower EUROSCORE II group, the higher EUROSCORE II ( $\geq 2.23\%$ ) group  
380 had a 2.111-fold higher risk of all-cause mortality (HR 2.111, 95% CI (1.069–4.166),  
381  $P=0.031$ ), according to Cox multivariate analysis (Additional file Table S2).

382

### 383 **Discussion**

---

384 A growing body of evidence demonstrates that patients with symptomatic severe  
385 aortic stenosis have a poor prognosis if they do not undergo surgery, with a mean  
386 survival time of  $<4$  years[8,24]. Therefore, AVR is widely recommended for the  
387 treatment of such patients and is effective[24].

388 In the present study, we first explored the relationship between EUROSCORE II  
389 and the long-term prognosis of patients with moderate-to-severe AS. We found that a  
390 high EUROSCORE II is significantly associated with a higher risk of all-cause-  
391 mortality in such patients and AVR could reduce death risk to that of patients with a  
392 lower EUROSCORE II ( $<4\%$ ).

393 We first evaluated the long-term prognosis of patients who had received an initial  
394 diagnosis of moderate-to-severe AS within the preceding 10 years, and found that  
395 those with a EUROSCORE II  $\geq 4\%$ , whether or not they have undergone AVR, have a  
396 significantly higher risk of all-cause mortality than those with a EUROSCORE II

397 <4%. Many previous clinical studies have shown that the EUROSCORE II has  
398 potential for use as a predictor of all-cause mortality for patients who undergo TAVI.  
399 A retrospective study of 350 patients with at least moderate AS who underwent TAVI  
400 showed that patients who died within 30 days had higher EUROSCORE II than those  
401 survived ( $12.6\pm 1.8$  vs.  $7.5\pm 0.3\%$ ,  $P<0.001$ ). This was associated with an AUC of 0.70,  
402 which implies that EUROSCORE II is a good predictor of short-term mortality[25].  
403 Another study of data obtained from 59 patients with symptomatic severe aortic  
404 stenosis who had undergone TAVI between 2010 and 2014 showed that  
405 EUROSCORE II is a predictor of in-hospital mortality and 30-day mortality[26].  
406 However, the duration of follow-up in these studies was too short for the findings to  
407 be highly relevant to clinical practice. However, a recent study by Fan *et al.* classified  
408 332 patients with low-gradient severe aortic stenosis and the preservation of LVEF  
409 into high-risk (EUROSCORE II  $\geq 4\%$ ,  $n=115$ ) and low-risk (EUROSCORE II  $<4\%$ ,  
410  $n=208$ ) groups and followed them over a 2-year period. They found that the  
411 cumulative survival of the high-risk group was significantly poorer than that of the  
412 low-risk group[27], which is consistent with the present findings that the use of 4% as  
413 a cut-off value has some predictive value over a period of  $>2$  years.

414 Kaplan–Meier analysis showed that patients who undergo SAVR or TAVI to treat  
415 moderate-to-severe AS have comparable risks of relevant outcomes ( $P=0.692$ ). This  
416 finding is in general consistent with the results of some recent studies. One  
417 prospective study of medium-term follow-up data from the Nordic Aortic Valve  
418 Intervention (NOTION) trial, which was obtained for 280 patients at three centres in  
419 Denmark and Sweden, showed that there was no difference in the all-cause mortality  
420 associated with TAVR or SAVR after 2 years (8.0% and 9.8%, respectively;  $P=0.54$ )  
421 or with respect to cardiovascular mortality (6.5% and 9.1%;  $P=0.40$ )[28]. In addition,



422 another study of data obtained during the NOTION trial also showed no significant  
423 difference in the risk of all-cause mortality after 8 years of follow-up of these  
424 patients[29].

425 In the present study, which involved a duration of follow-up of up to 10 years, we  
426 also found evidence that patients with a low EUROSCORE II (<4%) should still be  
427 recommended to undergo SAVR or TAVR ( $P=0.001$ ) to have a good prognosis,  
428 especially when there is some urgency in their condition. According to the 2021  
429 ESC/EACTS guidelines for the management of valvular heart disease, SAVR is  
430 recommended for patients <75 years old, while TAVR is recommended for older  
431 patients (>75 years), high-risk patients (STS-PROM/EUROSCORE II >8%), and  
432 those who are not eligible for surgery (class I)[9]. Despite this, many previous  
433 randomized clinical trials have demonstrated that TAVR is non-inferior or even  
434 superior to SAVR with respect to both short- and medium-term outcomes[30-37].  
435 Notably, the PARTNER2 study[40], the SURTAVI study[41], several studies of the  
436 use of TAVR in low-risk patients performed by the American College of Cardiology  
437 (ACC), including the PARTNER 3 study (using the SAPIEN-3 ultra transcatheter  
438 heart valve) and the Evolut Low Risk Trial study (using the self-expanding Evolut R  
439 valve)[42] showed that TAVR was associated with better than, or at least non-inferior,  
440 results to, SAVR in low-risk patients. After the 5-year follow-up period, the Deep  
441 Dive into the PARTNER 3 Five-Year Study showed that patients who undergo TAVR  
442 or SAVR have similar annual incidences of cardiovascular-related mortality, stroke,  
443 and re-hospitalization owing to cardiovascular disease (approximately 1%, 1%, and  
444 3%, respectively). These findings are consistent with our conclusion that patients with  
445 low EUROSCORE II (<4%) should still be recommended to undergo SAVR or TAVR.  
446 Furthermore, some other studies have shown that SAVR and TAVR are safe and

447 effective, and are associated with a low risk of severe aortic stenosis, a low risk of  
448 surgical complications, a short hospital stay, and a low risk of mortality during the  
449 perioperative and 30-day postoperative periods[38-39].

450 Finally, the most appropriate cut-off value of EUROSCORE II to be used  
451 prognostically varies according to the underlying disease, owing to the diversity in the  
452 risk factors and pathophysiological mechanisms associated[43-44]. However, several  
453 previous studies have shown that the use of EUROSCORE II is associated with an  
454 underestimation of the risk of mortality for high-risk patients and an overestimation of  
455 this risk for those with low levels of risk following various types of cardiac  
456 surgery[43-49]. A previous study of 12,325 patients who underwent major cardiac  
457 surgery showed that EUROSCORE II was a fairly accurate predictor up to a risk of  
458 30%, but over-predicted outcomes above this level[50]. Furthermore, EUROSCORE  
459 II was shown to be a fairly accurate predictor for octogenarians up to a risk level of  
460 10%, but overestimated the risks above this level[49].

461 Although EUROSCORE II has been shown to be a good predictor of in-hospital  
462 mortality following various types of surgery, the optimal cut-off values of  
463 EUROSCORE II for the prediction of postoperative mortality were 10%–20%[51].  
464 The present ROC curve analysis for EUROSCORE II showed that the most suitable  
465 cut-off value for the prediction of outcomes in patients with moderate-to-severe AS  
466 who had not undergone AVR was 2.23% (AUC, 0.675), rather than 4%. Therefore, we  
467 next allocated the participants to a high EUROSCORE II group and a low  
468 EUROSCORE II group using this cut-off value and compared their risks of outcomes.  
469 Kaplan–Meier curve (log-rank  $P<0.001$ ) and Cox multivariate (HR 2.111, 95% CI  
470 (1.069–4.166),  $P=0.031$ ) analyses were performed to provide further evidence that  
471 2.23% is the optimal value to differentiate these groups of patients. It is worth

472 mentioning that the original value of 4% was used for patients with AS, whether or  
473 not they had undergone surgery, whereas the 2.23% value calculated in the present  
474 study is specific for patients with moderate-to-severe AS who have not undergone  
475 AVR.

476 The major strength of the present study is that it was a multi-centre observational  
477 study, the external validity of which could be verified. Furthermore, we followed the  
478 participants for up to 10 years, which renders the results more reliable. We found a  
479 significant association between EUROSCORE II and all-cause mortality in patients  
480 with moderate-to-severe AS after comprehensive adjustment for potential confounders,  
481 and made consistent findings in subgroup analyses. These findings should contribute  
482 to the existing body of knowledge regarding the clinical utility of EUROSCORE II to  
483 predict the outcomes of patients with AS, thereby leading to better outcomes and a  
484 lower future burden of this valvular disease.

485

#### 486 **Limitations**

487 The present study also had several limitations. First, the prediction of risk depends on  
488 the accurate evaluation of each risk factor in EUROSCORE II, but the scores used are  
489 based on European patients, rather than other groups. Therefore, the results need  
490 further validation in studies of patients of other ethnicities. Second, although the  
491 number of patients enrolled was relatively large and it was a multi-centre study, the  
492 numbers were relatively low in comparison to the those accessible from a large  
493 database, meaning that the analysis was relatively underpowered. Third, the  
494 echocardiographic and laboratory parameters were only assessed once, at admission,  
495 which may have resulted in bias owing to measurement errors or differences in  
496 criteria between the centres. Finally, according to the 2021 ESC/EACTS guidelines,

497 SAVR should be recommended for younger patients with a low surgical risk (<75  
498 years, STSPROM/EUROSCORE II <4%), while TAVR is recommended for older  
499 patients (>75 years) and those at high risk (STS-PROM/EUROSCORE II >8%), but  
500 we did not find a difference in the prognosis of the participants who underwent SAVR  
501 or TAVI ( $P>0.05$ ), which may be attributable to the limited sample size.

502

### 503 **Conclusions**

---

504 We have shown for the first time that both EUROSCORE II and whether or not AVR  
505 is performed are independently associated with the long-term prognosis of patients  
506 with moderate-to-severe AS. Moreover, those who receive an initial diagnosis of  
507 moderate-to-severe AS are recommended to undergo surgery (SAVR or TAVR) early  
508 in their disease course, regardless of their EUROSCORE II. Finally, we have  
509 identified an optimal EUROSCORE II cut-off value of 2.23% for the determination of  
510 the prognosis of patients with moderate-to-severe AS who have not undergone AVR.

511

512

513

514

515

516

517

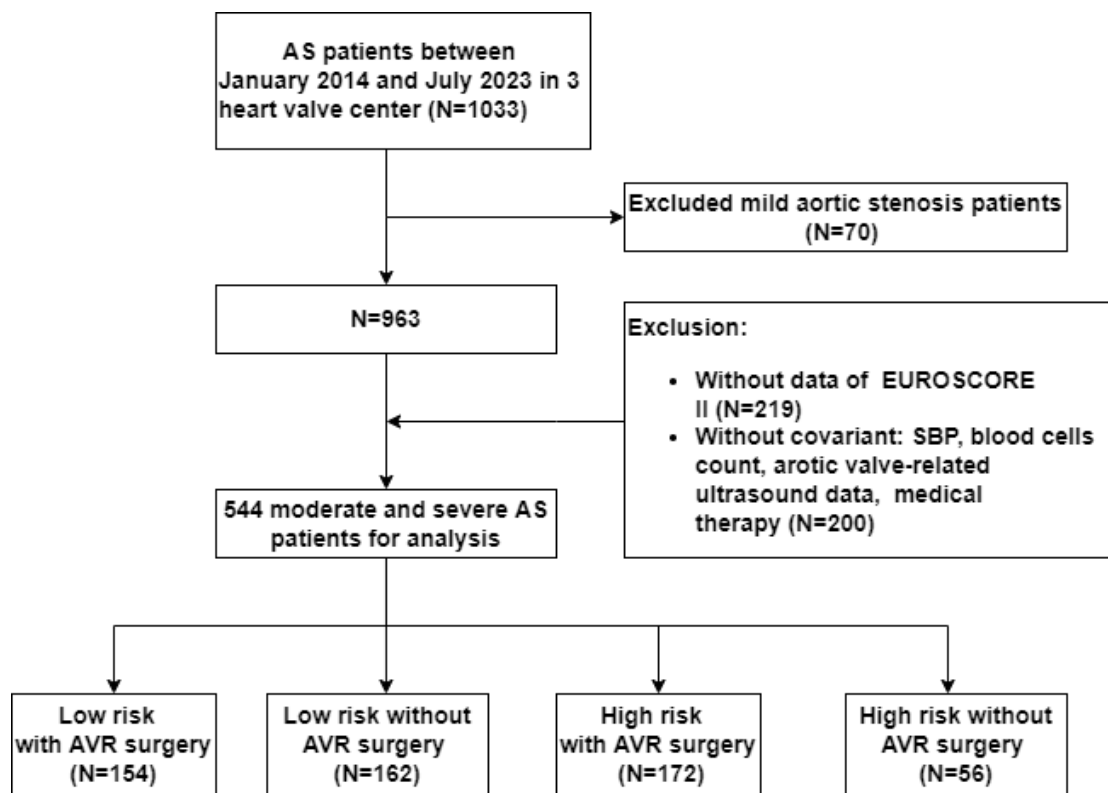
518

519

520

521

522



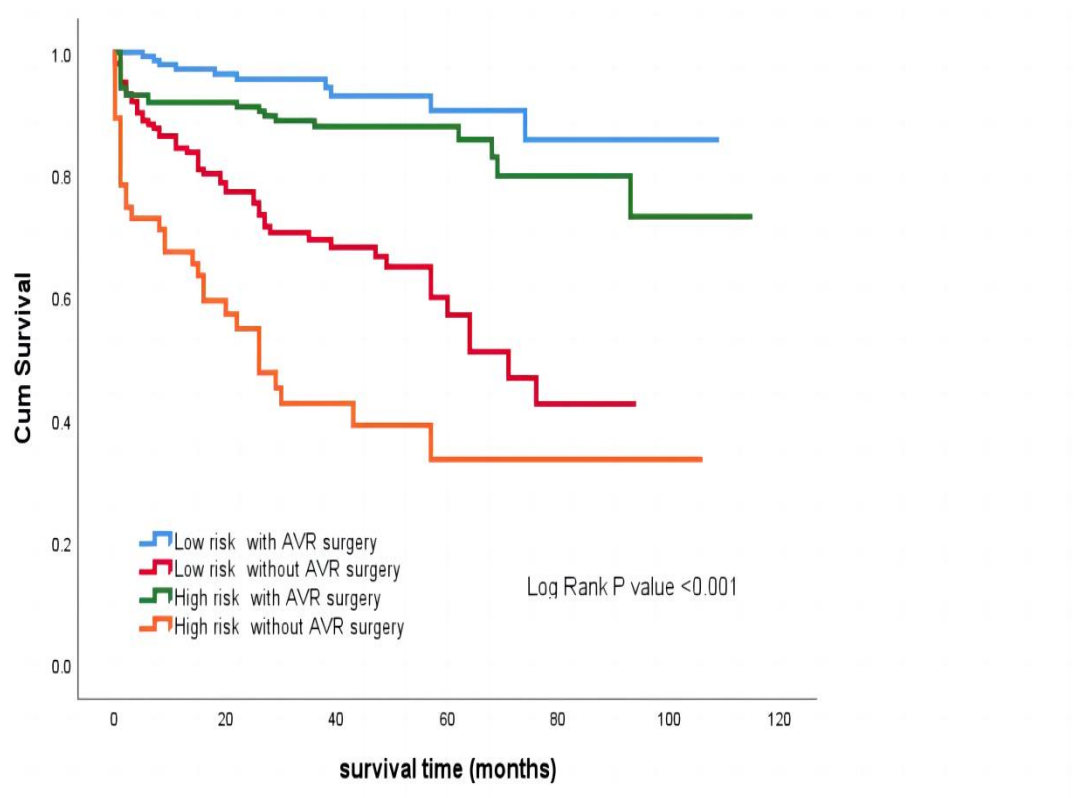
523

524 **Fig. 1.** Flow diagram describing the study sample

525

526

527



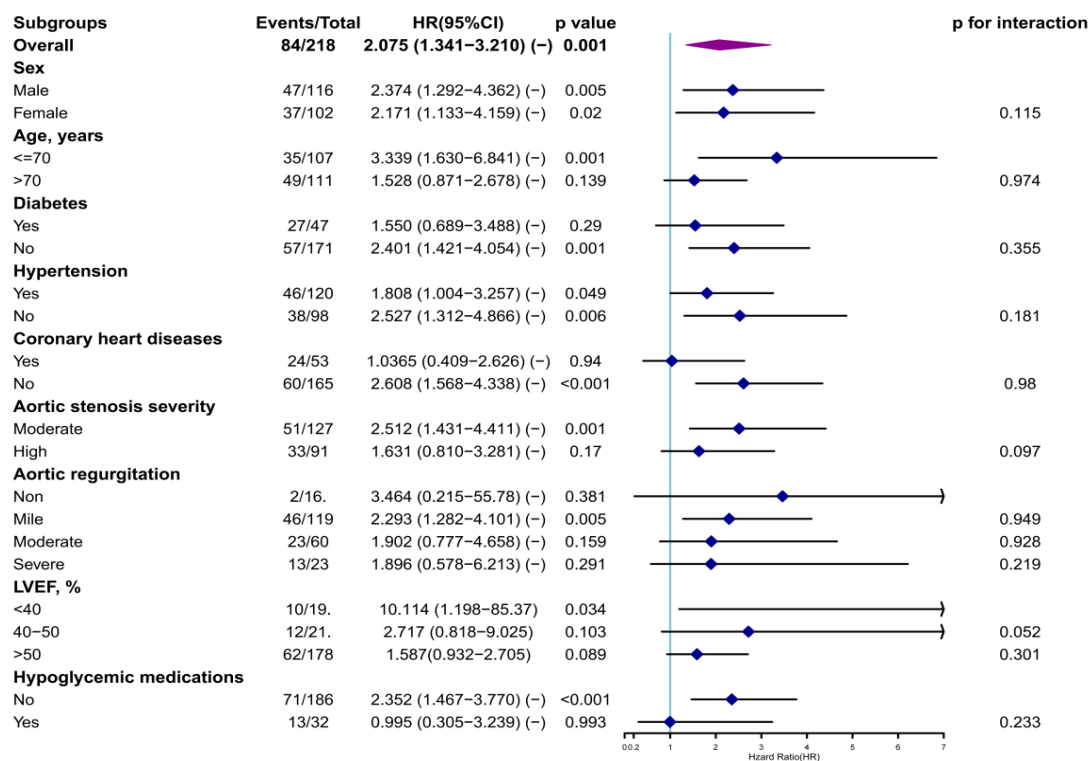
528

529 **Fig. 2.** Kaplan–Meier survival curves for the participants, categorized

530 according to their EUROSCORE II and their AVR status

531

532



533

534 **Fig. 3.** Results of the subgroup analysis of the association between

535 EUROSCORE II and the lack of AVR

536 HR, hazard ratio; CI, confidence interval.

537

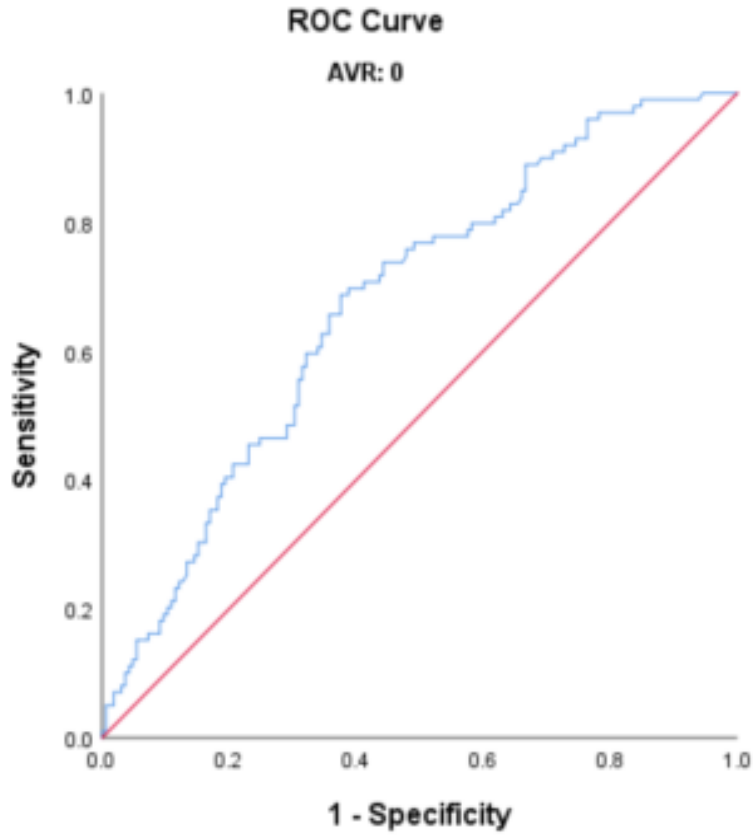
538

539

540

541

542



543

544 **Fig. 4.** ROC curve for the use of EUROSCORE II to evaluate the prognosis of  
545 the participants who had not undergone AVR

546

547

548

549

550

551

552

553

554

555

556

557



558 **Table 1.** Clinical characteristics of the participants, stratified according to their  
559 EUROSCORE II and their AVR status

	total (N=544)	Low risk with surgery (n=154)	Low risk without surgery (n=162)	High risk with surgery (n=172)	High risk without surgery (n=56)	P value
<b>EUROSCO</b>					7.66±6.2	<b>&lt;0.0</b>
<b>RE II</b>	4.58±4.99	2.32±1.06	1.89±0.89	8.14±6.14	3	<b>01</b>
<b>General characteristics</b>						
Hospital						
A	29 (5.33)	9 (5.84)	8 (4.94)	5 (2.91)	7 (12.50)	0.101
	454	124	138	146	46	
B	(83.46)	(80.52)	(85.19)	(84.88)	(82.14)	
C	61 (11.21)	21 (13.64)	16 (9.88)	21 (12.21)	3 (5.36)	
	64.69±12.	59.71±13.	67.58±11.	62.91±11.	75.48±11	<b>&lt;0.0</b>
Age (years)	95	17	54	75	.44	<b>01</b>
Gender, n						
	(%)					
	300	105	92 (56.79)	79 (45.93)	24	0.395
Male	(55.15)	(68.18)			(42.86)	
	244	49 (31.82)	70 (43.21)	93 (54.07)	32	
Female	(44.85)				(57.14)	
	126.88±21	123.87±16	134.00±22	121.39±19	131.46±2	<b>&lt;0.0</b>
SBP (mmHg)	.24	.88	.98	.72	4.81	<b>01</b>

	58.36±11.	60.60±10.	59.51±11.	56.08±9.7	55.85±11	<b>&lt;0.0</b>
Weight (kg)	07	97	73	9	.51	<b>01</b>
<b>State assessment</b>						
Status at the						
first clinic						<b>&lt;0.0</b>
visit						<b>01</b>
	518	154	162	159	43	
elective	(95.22)	(100.00)	(100.00)	(92.44)	(76.79)	
					13	
urgent	26 (4.78)	0 (0.00)	0 (0.00)	13 (7.56)	(23.21)	
The urgency						<b>&lt;0.0</b>
of the surgery						<b>01</b>
	264		146		42	
0	(48.53)	70 (45.45)	(90.12)	6 (3.49)	(75.00)	
	276			164	12	
non-CABG	(50.74)	84 (54.55)	16 (9.88)	(95.35)	(21.43)	
2	3 (0.55)	0 (0.00)	0 (0.00)	2 (1.16)	1 (1.79)	
3+	1 (0.18)	0 (0.00)	0 (0.00)	0 (0.00)	1 (1.79)	
NYHA( first						
visit )						<b>&lt;0.0</b>
	129				14	
	(23.71)	40 (25.97)	62 (38.27)	13 (7.56)	(25.00)	
	176					
II	(32.35)	64 (41.56)	59 (36.42)	44 (25.58)	9 (16.07)	

	194				20	
III	(35.66)	46 (29.87)	36 (22.22)	92 (53.49)	(35.71)	
IV	45 (8.27)	4 (2.60)	5 (3.09)	23 (13.37)	13 (23.21)	
<b>Comorbidities</b>						
	213				33	<b>&lt;0.001</b>
Hypertension	(39.15)	42 (27.27)	87 (53.70)	51 (29.65)	(58.93)	<b>01</b>
Rheumatic heart disease	92 (16.91)	25 (16.23)	26 (16.05)	36 (20.93)	5 (8.93)	0.199
Coronary disease	113 (20.77)	31 (20.13)	43 (26.54)	29 (16.86)	10 (17.86)	0.157
Previous major cardiac surgery	210 (38.60)	60 (38.96)	0 (0.00)	142 (82.56)	8 (14.29)	<b>&lt;0.001</b>
Atrial fibrillation	88 (16.18)	17 (11.04)	27 (16.67)	28 (16.28)	16 (28.57)	<b>0.025</b>
Stroke	36 (6.62)	6 (3.90)	18 (11.11)	6 (3.49)	6 (10.71)	<b>0.010</b>
CKD	33 (6.07)	4 (2.60)	11 (6.79)	10 (5.81)	8 (14.29)	0.018
Extra-cardiac artery lesions	33 (6.07)	1 (0.65)	12 (7.41)	9 (5.23)	11 (19.64)	<b>&lt;0.001</b>
COPD	22 (4.04)	4 (2.60)	8 (4.94)	3 (1.74)	7 (12.50)	<b>0.003</b>
diabetes mellitus	82 (15.07)	18 (11.69)	33 (20.37)	17 (9.88)	14 (25.00)	<b>0.005</b>
History of gout	20 (3.68)	1 (0.65)	10 (6.17)	3 (1.74)	6 (10.71)	<b>0.001</b>

History of smoking	149 (27.39)	50 (32.47)	43 (26.54)	42 (24.42)	14 (25.00)	0.75
History of drinking	84 (15.44)	26 (16.88)	25 (15.43)	27 (15.70)	6 (10.71)	0.75
<b>Laboratory parameters</b>						
HB	124.34±22	129.36±21	123.80±22	123.18±22	115.63±2	<b>0.001</b>
WBC	7.61±3.46	7.27±2.34	7.55±3.17	8.03±4.55	7.44±2.8	0.243
TC	4.55±1.26	4.65±1.33	4.73±1.35	4.40±1.08	4.23±1.2	<b>0.014</b>
HDLC	1.15±0.31	1.16±0.31	1.16±0.35	1.12±0.28	1.14±0.3	0.516
LDLC	2.89±0.96	2.97±1.11	2.99±0.97	2.80±0.78	2.63±0.9	<b>0.039</b>
TG	1.27±0.66	1.37±0.83	1.30±0.68	1.21±0.52	1.06±0.3	<b>0.011</b>
Cr	99.35±99.	81.78±25.	109.39±14	96.70±77.	126.79±1	<b>0.012</b>
CC	66.48±109	89.68±200	61.43±25.	58.95±22.	40.39±16	<b>0.01</b>
UREA	7.22±4.14	6.30±2.23	7.31±5.18	7.49±4.12	8.65±4.4	<b>0.002</b>
TBIL	16.43±17.	14.24±7.3	15.47±22.	17.96±15.	20.51±22	0.053

Blood					6.11±2.7	
glucose	5.54±2.66	5.11±1.25	5.87±3.99	5.43±1.81	9	<b>0.024</b>
	38.17±5.2	39.46±5.2	37.38±5.2	38.12±4.8	37.07±6.	<b>0.001</b>
Uric acid	4	1	2	0	05	
Elevated	275				40	<b>&lt;0.0</b>
NT-proBNP	(50.55)	64 (41.56)	91 (56.17)	80 (46.51)	(71.43)	<b>01</b>
Troponin >						<b>&lt;0.0</b>
40	15 (2.76)	6 (3.90)	2 (1.23)	4 (2.33)	3 (5.36)	<b>01</b>

560

561

562

563

564

565

566

567

568

569

570

571

572

573

574

575

576

577 **Table 2.** Results of the univariate and multivariate Cox analyses of the  
 578 associations with EUROSCORE II and AVR status

	Univariate analysis	P	multivariate analysis	P
	HR(95% CI)	value	HR(<0.1,95% CI)	value
age	1.042(1.025-1.058)	0		
Male 0, female 1	0.956(0.664-1.376)	0.808		
SBP (mmHg)	1.008(1.000-1.016)	0.052	0.997(0.987-1.007)	0.545
Weight (kg)	0.984(0.967-1.002)	0.083	0.980(0.960-1.001)	0.067
Smoking	1.121(0.752-1.671)	0.576		
Drinking	0.902(0.539-1.509)	0.694		
Coronary disease	1.483(0.984-2.238)	0.06		
Myocardial infarction	2.360(1.150-4.843)	0.019		
Previous major cardiac surgery	0.280(0.177-0.444)	0		
Stroke	2.728(1.607-4.629)	0	1.539(0.821-2.886)	0.179
CKD	3.183(1.873-5.408)	0	1.583(0.841-2.981)	0.155
Extra-cardiac artery lesions	1.924(0.894-4.139)	0.094	0.669(0.296-1.513)	0.335
COPD	1.710(0.833-3.510)	0.144		
Diabetes mellitus	2.052(1.340-3.144)	0.001	1.382(0.832-2.298)	0.212
Atrial fibrillation	1.802(1.189-2.731)	0.006	1.472(0.910-2.380)	0.115
Hypertension	1.496(1.040-2.152)	0.03	0.856(0.529-1.385)	0.527
Stroke	4.210(2.254-7.863)	0	2.334(1.158-4.703)	<b>0.018</b>

NYHA ( first visit )		0.189		
II	0.700(0.417-1.175)	0.177		
III	1.082(0.675-1.737)	0.742		
IV	1.290(0.640-2.600)	0.477		
Extracardiac artery lesions	1.104(0.538-2.263)	0.788		
WBC	1.055(1.017-1.094)	0.004	1.056(1.013-1.100)	<b>0.010</b>
HB	0.988(0.981-0.995)	0.001		
PLT	0.998(0.996-1.001)	0.132		
TC	0.999(0.853-1.170)	0.99		
HDLC	0.705(0.371-1.340)	0.286		
LDLC	1.038(0.849-1.270)	0.715		
TG	0.702(0.488-1.010)	0.056	0.888(0.603-1.308)	0.547
TBIL	1.012(1.006-1.017)	0	1.013(1.006-1.020)	<b>0.000</b>
Blood glucose	1.058(1.017-1.100)	0.005	1.022(0.964-1.085)	0.463
Uric acid	1.002(1.001-1.003)	0.005		
Elevated NT-proBNP	2.177(1.473-3.217)	0	1.314(0.851-2.029)	0.218
Troponin > 40	1.139(0.279-4.653)	0.856		
Albumin	0.915(0.885-0.946)	0	0.961(0.917-1.007)	0.097
Status at the first clinic visit	15.992(9.656-26.486)	0		
The urgency of the surgery	0.323(0.216-0.483)	0		
LVEF	0.983(0.969-0.996)	0.01		

Aortic valve bilobate malformation	0.554(0.298-1.032)	0.063	0.608(0.318-1.164)	0.133
AV_Vmax	0.799(0.632-1.009)	0.06	0.982(0.818-1.179)	0.843
AV_MG	0.991(0.980-1.001)	0.079	1.002(0.988-1.015)	0.824
AVA	0.909(0.476-1.738)	0.774		
PAH	1.538(1.173-2.017)	0.002		
Aortic regurgitation	0.960(0.772-1.194)	0.715		
Aortic stenosis	0.794(0.552-1.143)	0.214		
Mitral regurgitation	1.096(0.882-1.361)	0.409		
Mitral stenosis	1.042(0.870-1.248)	0.652		
Anti-plate medicine	1.267(0.867-1.851)	0.221		
Stains	1.788(1.237-2.583)	0.002	0.844(0.537-1.326)	0.462
ACEI/ARB	1.873(1.287-2.725)	0.001	1.374(0.878-2.150)	0.164
β-receptor blockers	1.149(0.798-1.655)	0.454		
CCB	1.464(0.934-2.295)	0.096	1.171(0.692-1.982)	0.555
Diuretic drug	0.791(0.536-1.165)	0.235		
Insulin	2.430(1.484-3.979)	0		
Oral antidiabetic drug	1.045(0.597-1.829)	0.878		
Oral anticoagulants	0.383(0.258-0.567)	0	0.807(0.470-1.385)	0.436
Group		0		<b>0.000</b>
2	5.966(3.033-11.737)	0	3.705(1.738-7.896)	<b>0.001</b>
3	1.972(0.938-4.144)	0.073	1.368(0.627-2.984)	0.431
4	12.168(5.958-24.848)	0	6.891(3.083-15.401)	<b>0.000</b>

579 SBP, systolic blood pressure; CKD, chronic kidney disease; COPD, chronic

580 obstructive pulmonary disease; HB, haemoglobin; WC, waist circumference;



581 TC, total cholesterol; HDL-C, high-density lipoprotein-cholesterol; LDL-C,  
 582 low-density lipoprotein-cholesterol; TG, triglyceride; Cr, creatinine; CC,  
 583 creatinine clearance; TBIL, total bilirubin; LVEF, left ventricular ejection  
 584 fraction; AV\_Vmax, maximum velocity of blood flow through the aortic valve;  
 585 AV\_MG, mean gradient across the aortic valve; AVA, aortic valve area; PAH,  
 586 pulmonary arterial hypertension; ACEI, angiotensin converting enzyme  
 587 inhibitor; ARB, angiotensin receptor blocker; CCB, calcium channel blocker.

588  
 589  
 590

591

592

593

594

595

596

597 **Table 3.** Relationships of EUROSCORE II and AVR status with the all-cause  
 598 mortality of the participants

	Low risk with surgery (n=154)	Low risk without surgery (n=162)	High risk with surgery (n=172)	risk without surgery (n=56)	P
Model 1		5.541(2.7 37-11.216)	1.899(0.896-4. 025)	10.058(4.632-2 1.840)	<b>&lt;0.001</b>
Model 2		4.211(2.05 3-8.637)	1.450(0.673-3. 125)	8.168(3.704-18 .015)	<b>&lt;0.001</b>

Model		4.064(1.9	1.321(0.605-2.	7.342(3.281-16	
1					<b>&lt;0.001</b>
3		58-8.433)	887)	.427)	
Model		3.492(1.5	1.333(0.605-2.	6.605(2.817-15	
1					<b>&lt;0.001</b>
4		83-7.703)	936)	.486)	

599 Model 1 was adjusted for smoking status, alcohol consumption status,  
600 diabetes, atrial fibrillation, hypertension, gout, systolic blood pressure, and  
601 body mass; Model 2 was adjusted for the parameters in model 1, with the  
602 addition of WBC, RBC, PLT, LDLC, TG, TBIL, NTproBNP, troponin, and  
603 albumin; Model 3 was adjusted for the parameters in model 2, plus aortic valve  
604 deformity, rheumatic heart disease, AV-Vmax, AV-MG, the degree of AVA  
605 mitral insufficiency, and mitral stenosis; Model 4 was adjusted for the  
606 parameters in Model 3, with the addition of anti-platelet agent, statin, ACEI,  
607 ARB,  $\beta$ -blocker, CCB, diuretic, insulin, oral antidiabetic drug, and oral  
608 anticoagulant use.

609

610

611

## 612 **Legends**

613 **Fig. 1.** Flow diagram describing the study sample

614 The study was performed at three heart valve centres: the Second Affiliated Hospital  
615 of Shantou University Medical College, the First Affiliated Hospital of Sun Yat-sen  
616 University, and the Affiliated Hospital of Guangdong Medical University. The  
617 participants were allocated to high-risk or low-risk groups using a cut-off value of 4%  
618 of EUROSCORE II. AVR Surgery, aortic valve replacement surgery. AS, aortic valve  
619 stenosis.

620 **Fig. 2.** Kaplan–Meier survival curves for the participants, categorized according to  
621 their EUROSCORE II and their AVR status

622 AVR, surgical aortic valve replacement or transcatheter aortic valve implantation.

623 **Fig. 3.** Results of the subgroup analysis of the association between EUROSCORE II  
624 and the lack of AVR

625 HR, hazard ratio; CI, confidence interval.

626 **Fig. 4.** ROC curve for the use of EUROSCORE II to evaluate the prognosis of the  
627 participants who had not undergone AVR

628 **Table 1.** Clinical characteristics of the participants, stratified according to their  
629 EUROSCORE II and their AVR status

630 Continuous variables are shown as median and IQR, and categorical variables are  
631 shown as absolute number (n) and percentage. Continuous datasets were compared

632 using the Mann–Whitney test, and categorical datasets were compared using the

633 chi-square test or Fisher’s exact test. A, Second Affiliated Hospital of Shantou

634 University Medical College; B, the First Affiliated Hospital of Sun Yat-sen University;

635 C, the Affiliated Hospital of Guangdong Medical University. SBP, systolic blood

636 pressure; CKD, chronic kidney disease; COPD, chronic obstructive pulmonary

637 disease; HB, haemoglobin; WC, waist circumference; TC, total cholesterol; HDL-C,

638 high-density lipoprotein-cholesterol; LDL-C, low-density lipoprotein-cholesterol; TG,

639 triglyceride; Cr, creatinine; CC, creatinine clearance; TBIL, total bilirubin.

640 **Table 2.** Results of the univariate and multivariate Cox analyses of the associations  
641 with EUROSCORE II and AVR status

642 SBP, systolic blood pressure; CKD, chronic kidney disease; COPD, chronic

643 obstructive pulmonary disease; HB, haemoglobin; WC, waist circumference; TC, total

644 cholesterol; HDL-C, high-density lipoprotein-cholesterol; LDL-C, low-density

645 lipoprotein-cholesterol; TG, triglyceride; Cr, creatinine; CC, creatinine clearance;  
646 TBIL, total bilirubin; LVEF, left ventricular ejection fraction; AV\_Vmax, maximum  
647 velocity of blood flow through the aortic valve; AV\_MG, mean gradient across the  
648 aortic valve; AVA, aortic valve area; PAH, pulmonary arterial hypertension; ACEI,  
649 angiotensin converting enzyme inhibitor; ARB, angiotensin receptor blocker; CCB,  
650 calcium channel blocker.

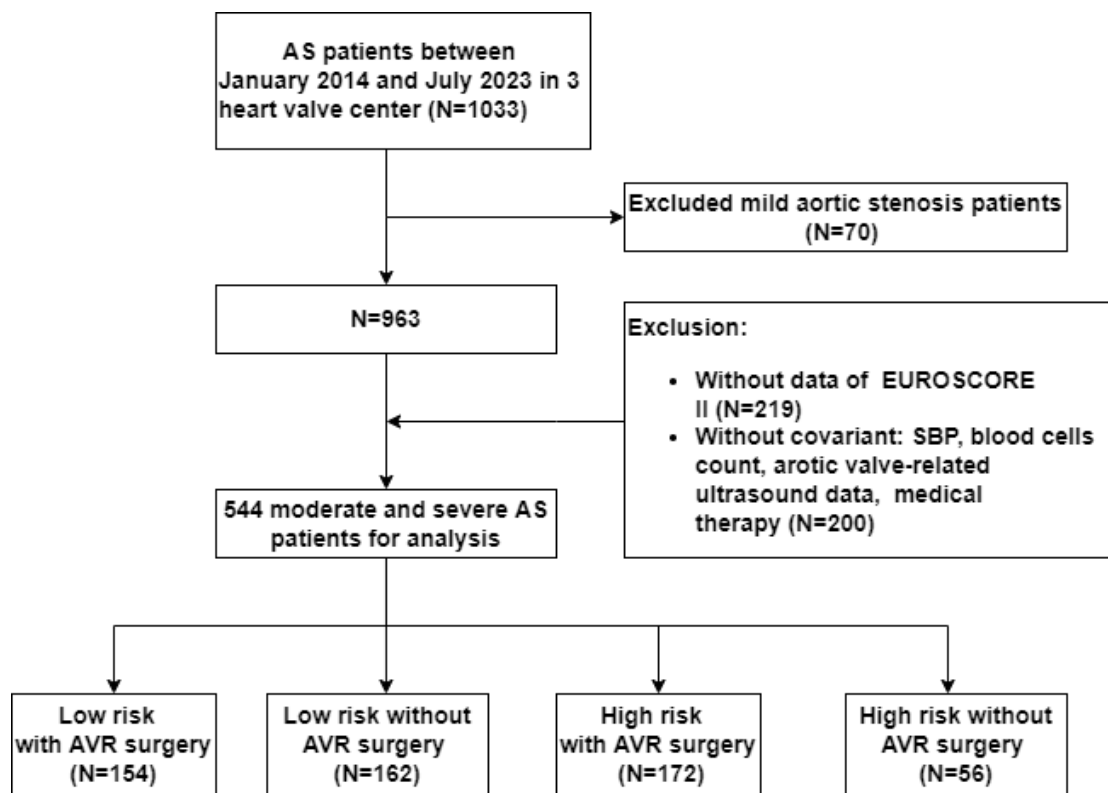
651 **Table 3.** Relationships of EUROSCORE II and AVR status with the all-cause  
652 mortality of the participants

653 Model 1 was adjusted for smoking status, alcohol consumption status, diabetes, atrial  
654 fibrillation, hypertension, gout, systolic blood pressure, and body mass; Model 2 was  
655 adjusted for the parameters in model 1, with the addition of WBC, RBC, PLT, LDLC,  
656 TG, TBIL, NTproBNP, troponin, and albumin; Model 3 was adjusted for the  
657 parameters in model 2, plus aortic valve deformity, rheumatic heart disease, AV-Vmax,  
658 AV-MG, the degree of AVA mitral insufficiency, and mitral stenosis; Model 4 was  
659 adjusted for the parameters in Model 3, with the addition of anti-platelet agent, statin,  
660 ACEI, ARB,  $\beta$ -blocker, CCB, diuretic, insulin, oral antidiabetic drug, and oral  
661 anticoagulant use.

662

663

1



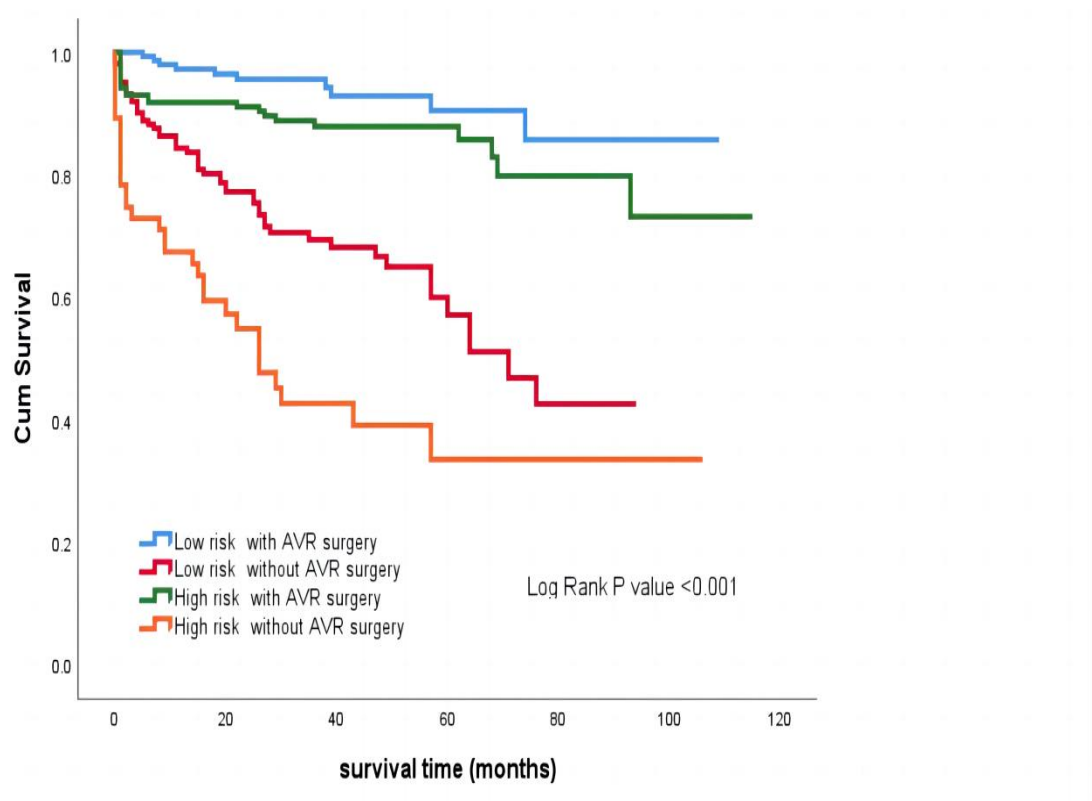
2

3 **Fig. 1.** Flow diagram describing the study sample

4

5

6

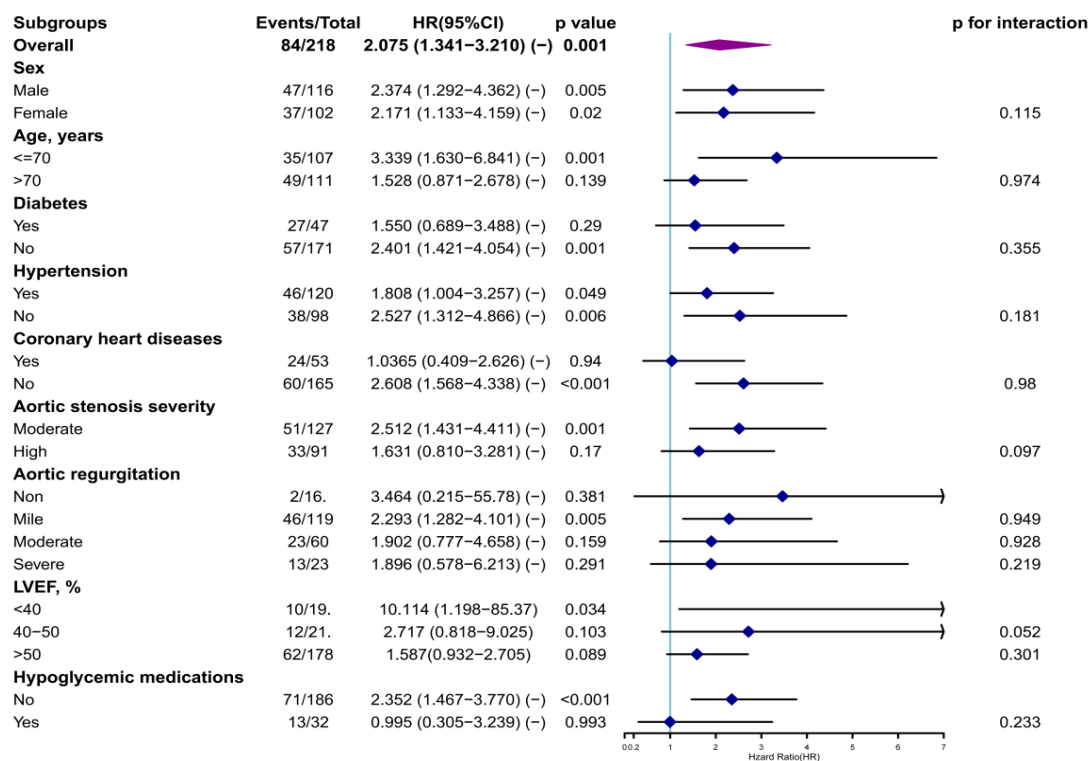


7

8 **Fig. 2.** Kaplan–Meier survival curves for the participants, categorized  
9 according to their EUROSCORE II and their AVR status

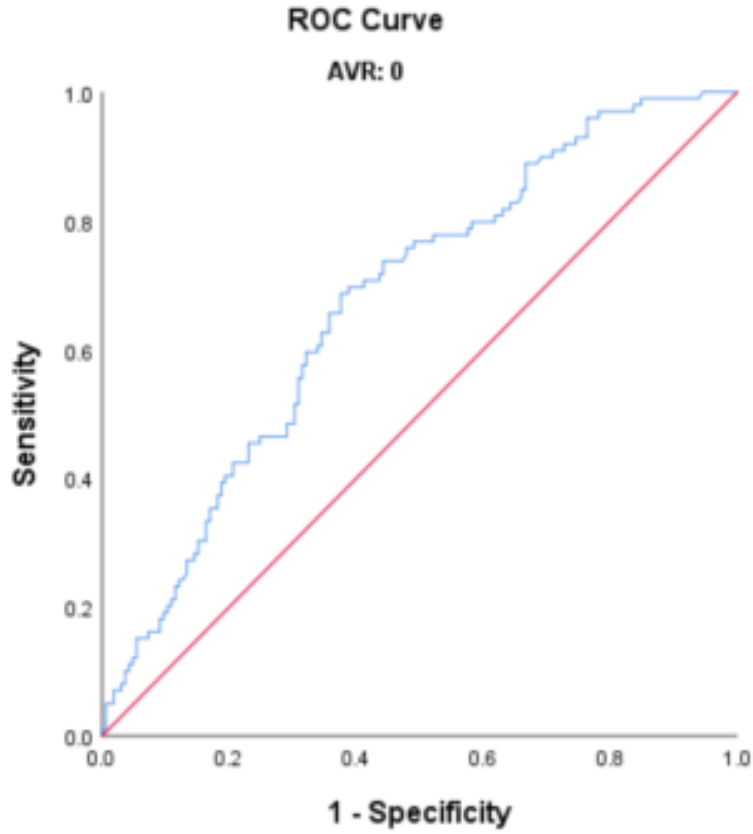
10

11



12  
 13 **Fig. 3.** Results of the subgroup analysis of the association between  
 14 EUROSCORE II and the lack of AVR  
 15 HR, hazard ratio; CI, confidence interval.

16  
 17  
 18  
 19  
 20  
 21



22

23 **Fig. 4.** ROC curve for the use of EUROSCORE II to evaluate the prognosis of  
24 the participants who had not undergone AVR

25

26

27

28

29

30

31

32

33

34

35

36



37 **Table 1.** Clinical characteristics of the participants, stratified according to their  
38 EUROSCORE II and their AVR status

	total (N=544)	Low risk with surgery (n=154)	Low risk without surgery (n=162)	High risk with surgery (n=172)	High risk without surgery (n=56)	P value
<b>EUROSCO</b>					7.66±6.2	<b>&lt;0.0</b>
<b>RE II</b>	4.58±4.99	2.32±1.06	1.89±0.89	8.14±6.14	3	<b>01</b>
<b>General characteristics</b>						
Hospital						
A	29 (5.33)	9 (5.84)	8 (4.94)	5 (2.91)	7 (12.50)	0.101
	454	124	138	146	46	
B	(83.46)	(80.52)	(85.19)	(84.88)	(82.14)	
C	61 (11.21)	21 (13.64)	16 (9.88)	21 (12.21)	3 (5.36)	
	64.69±12.	59.71±13.	67.58±11.	62.91±11.	75.48±11	<b>&lt;0.0</b>
Age (years)	95	17	54	75	.44	<b>01</b>
Gender, n						
(% )						
	300	105	92 (56.79)	79 (45.93)	24	0.395
Male	(55.15)	(68.18)			(42.86)	
	244	49 (31.82)	70 (43.21)	93 (54.07)	32	
Female	(44.85)				(57.14)	
	126.88±21	123.87±16	134.00±22	121.39±19	131.46±2	<b>&lt;0.0</b>
SBP (mmHg)	.24	.88	.98	.72	4.81	<b>01</b>

	58.36±11.	60.60±10.	59.51±11.	56.08±9.7	55.85±11	<b>&lt;0.0</b>
Weight (kg)	07	97	73	9	.51	<b>01</b>
<b>State assessment</b>						
Status at the first clinic visit						<b>&lt;0.0</b>
	518	154	162	159	43	<b>01</b>
elective	(95.22)	(100.00)	(100.00)	(92.44)	(76.79)	
urgent	26 (4.78)	0 (0.00)	0 (0.00)	13 (7.56)	13 (23.21)	
The urgency of the surgery						<b>&lt;0.0</b>
0	264 (48.53)	70 (45.45)	146 (90.12)	6 (3.49)	42 (75.00)	<b>01</b>
non-CABG	276 (50.74)	84 (54.55)	16 (9.88)	164 (95.35)	12 (21.43)	
2	3 (0.55)	0 (0.00)	0 (0.00)	2 (1.16)	1 (1.79)	
3+	1 (0.18)	0 (0.00)	0 (0.00)	0 (0.00)	1 (1.79)	
NYHA ( first visit)						<b>&lt;0.0</b>
	129 (23.71)	40 (25.97)	62 (38.27)	13 (7.56)	14 (25.00)	<b>01</b>
II	176 (32.35)	64 (41.56)	59 (36.42)	44 (25.58)	9 (16.07)	

	194				20	
III	(35.66)	46 (29.87)	36 (22.22)	92 (53.49)	(35.71)	
IV	45 (8.27)	4 (2.60)	5 (3.09)	23 (13.37)	13 (23.21)	
<b>Comorbidities</b>						
	213				33	<b>&lt;0.0</b>
Hypertension	(39.15)	42 (27.27)	87 (53.70)	51 (29.65)	(58.93)	<b>01</b>
Rheumatic heart disease	92 (16.91)	25 (16.23)	26 (16.05)	36 (20.93)	5 (8.93)	0.199
Coronary disease	113 (20.77)	31 (20.13)	43 (26.54)	29 (16.86)	10 (17.86)	0.157
Previous major cardiac surgery	210 (38.60)	60 (38.96)	0 (0.00)	142 (82.56)	8 (14.29)	<b>&lt;0.0</b> <b>01</b>
Atrial fibrillation	88 (16.18)	17 (11.04)	27 (16.67)	28 (16.28)	16 (28.57)	<b>0.025</b>
Stroke	36 (6.62)	6 (3.90)	18 (11.11)	6 (3.49)	6 (10.71)	<b>0.010</b>
CKD	33 (6.07)	4 (2.60)	11 (6.79)	10 (5.81)	8 (14.29)	0.018
Extra-cardiac artery lesions	33 (6.07)	1 (0.65)	12 (7.41)	9 (5.23)	11 (19.64)	<b>&lt;0.0</b> <b>01</b>
COPD	22 (4.04)	4 (2.60)	8 (4.94)	3 (1.74)	7 (12.50)	<b>0.003</b>
diabetes mellitus	82 (15.07)	18 (11.69)	33 (20.37)	17 (9.88)	14 (25.00)	<b>0.005</b>
History of gout	20 (3.68)	1 (0.65)	10 (6.17)	3 (1.74)	6 (10.71)	<b>0.001</b>

History of smoking	149 (27.39)	50 (32.47)	43 (26.54)	42 (24.42)	14 (25.00)	0.75
History of drinking	84 (15.44)	26 (16.88)	25 (15.43)	27 (15.70)	6 (10.71)	0.75
<b>Laboratory parameters</b>						
	124.34±22	129.36±21	123.80±22	123.18±22	115.63±2	<b>0.001</b>
HB	.40	.35	.73	.75	0.31	
	7.61±3.46	7.27±2.34	7.55±3.17	8.03±4.55	7.44±2.8	0.243
WBC					6	
	4.55±1.26	4.65±1.33	4.73±1.35	4.40±1.08	4.23±1.2	<b>0.014</b>
TC					4	
	1.15±0.31	1.16±0.31	1.16±0.35	1.12±0.28	1.14±0.3	0.516
HDLC					0	
	2.89±0.96	2.97±1.11	2.99±0.97	2.80±0.78	2.63±0.9	<b>0.039</b>
LDLC					8	
	1.27±0.66	1.37±0.83	1.30±0.68	1.21±0.52	1.06±0.3	<b>0.011</b>
TG					7	
	99.35±99.	81.78±25.	109.39±14	96.70±77.	126.79±1	<b>0.012</b>
Cr	48	66	6.74	60	10.33	
	66.48±109	89.68±200	61.43±25.	58.95±22.	40.39±16	<b>0.01</b>
CC	.19	.12	92	90	.14	
	7.22±4.14	6.30±2.23	7.31±5.18	7.49±4.12	8.65±4.4	<b>0.002</b>
UREA					5	
	16.43±17.	14.24±7.3	15.47±22.	17.96±15.	20.51±22	0.053
TBIL	05	0	36	18	.38	

Blood					6.11±2.7	
glucose	5.54±2.66	5.11±1.25	5.87±3.99	5.43±1.81	9	<b>0.024</b>
	38.17±5.2	39.46±5.2	37.38±5.2	38.12±4.8	37.07±6.	<b>0.001</b>
Uric acid	4	1	2	0	05	
Elevated	275				40	<b>&lt;0.0</b>
NT-proBNP	(50.55)	64 (41.56)	91 (56.17)	80 (46.51)	(71.43)	<b>01</b>
Troponin >						<b>&lt;0.0</b>
40	15 (2.76)	6 (3.90)	2 (1.23)	4 (2.33)	3 (5.36)	<b>01</b>

39

40

41

42

43

44

45

46

47

48

49

50

51

52

53

54

55

56 **Table 2.** Results of the univariate and multivariate Cox analyses of the  
57 associations with EUROSCORE II and AVR status

	Univariate analysis	P	multivariate analysis	P
	HR(95% CI)	value	HR(<0.1,95% CI)	value
age	1.042(1.025-1.058)	0		
Male 0, female 1	0.956(0.664-1.376)	0.808		
SBP (mmHg)	1.008(1.000-1.016)	0.052	0.997(0.987-1.007)	0.545
Weight (kg)	0.984(0.967-1.002)	0.083	0.980(0.960-1.001)	0.067
Smoking	1.121(0.752-1.671)	0.576		
Drinking	0.902(0.539-1.509)	0.694		
Coronary disease	1.483(0.984-2.238)	0.06		
Myocardial infarction	2.360(1.150-4.843)	0.019		
Previous major cardiac surgery	0.280(0.177-0.444)	0		
Stroke	2.728(1.607-4.629)	0	1.539(0.821-2.886)	0.179
CKD	3.183(1.873-5.408)	0	1.583(0.841-2.981)	0.155
Extra-cardiac artery lesions	1.924(0.894-4.139)	0.094	0.669(0.296-1.513)	0.335
COPD	1.710(0.833-3.510)	0.144		
Diabetes mellitus	2.052(1.340-3.144)	0.001	1.382(0.832-2.298)	0.212
Atrial fibrillation	1.802(1.189-2.731)	0.006	1.472(0.910-2.380)	0.115
Hypertension	1.496(1.040-2.152)	0.03	0.856(0.529-1.385)	0.527
Stroke	4.210(2.254-7.863)	0	2.334(1.158-4.703)	<b>0.018</b>
NYHA ( first visit)		0.189		

II	0.700(0.417-1.175)	0.177		
III	1.082(0.675-1.737)	0.742		
IV	1.290(0.640-2.600)	0.477		
Extracardiac artery lesions	1.104(0.538-2.263)	0.788		
WBC	1.055(1.017-1.094)	0.004	1.056(1.013-1.100)	<b>0.010</b>
HB	0.988(0.981-0.995)	0.001		
PLT	0.998(0.996-1.001)	0.132		
TC	0.999(0.853-1.170)	0.99		
HDLC	0.705(0.371-1.340)	0.286		
LDLC	1.038(0.849-1.270)	0.715		
TG	0.702(0.488-1.010)	0.056	0.888(0.603-1.308)	0.547
TBIL	1.012(1.006-1.017)	0	1.013(1.006-1.020)	<b>0.000</b>
Blood glucose	1.058(1.017-1.100)	0.005	1.022(0.964-1.085)	0.463
Uric acid	1.002(1.001-1.003)	0.005		
Elevated NT-proBNP	2.177(1.473-3.217)	0	1.314(0.851-2.029)	0.218
Troponin > 40	1.139(0.279-4.653)	0.856		
Albumin	0.915(0.885-0.946)	0	0.961(0.917-1.007)	0.097
Status at the first clinic visit	15.992(9.656-26.486)	0		
The urgency of the surgery	0.323(0.216-0.483)	0		
LVEF	0.983(0.969-0.996)	0.01		
Aortic valve bilobate malformation	0.554(0.298-1.032)	0.063	0.608(0.318-1.164)	0.133

AV_Vmax	0.799(0.632-1.009)	0.06	0.982(0.818-1.179)	0.843
AV_MG	0.991(0.980-1.001)	0.079	1.002(0.988-1.015)	0.824
AVA	0.909(0.476-1.738)	0.774		
PAH	1.538(1.173-2.017)	0.002		
Aortic regurgitation	0.960(0.772-1.194)	0.715		
Aortic stenosis	0.794(0.552-1.143)	0.214		
Mitral regurgitation	1.096(0.882-1.361)	0.409		
Mitral stenosis	1.042(0.870-1.248)	0.652		
Anti-plate medicine	1.267(0.867-1.851)	0.221		
Stains	1.788(1.237-2.583)	0.002	0.844(0.537-1.326)	0.462
ACEI/ARB	1.873(1.287-2.725)	0.001	1.374(0.878-2.150)	0.164
β-receptor blockers	1.149(0.798-1.655)	0.454		
CCB	1.464(0.934-2.295)	0.096	1.171(0.692-1.982)	0.555
Diuretic drug	0.791(0.536-1.165)	0.235		
Insulin	2.430(1.484-3.979)	0		
Oral antidiabetic drug	1.045(0.597-1.829)	0.878		
Oral anticoagulants	0.383(0.258-0.567)	0	0.807(0.470-1.385)	0.436
Group		0		<b>0.000</b>
2	5.966(3.033-11.737)	0	3.705(1.738-7.896)	<b>0.001</b>
3	1.972(0.938-4.144)	0.073	1.368(0.627-2.984)	0.431
4	12.168(5.958-24.848)	0	6.891(3.083-15.401)	<b>0.000</b>

---

58 SBP, systolic blood pressure; CKD, chronic kidney disease; COPD, chronic  
59 obstructive pulmonary disease; HB, haemoglobin; WC, waist circumference;  
60 TC, total cholesterol; HDL-C, high-density lipoprotein-cholesterol; LDL-C,  
61 low-density lipoprotein-cholesterol; TG, triglyceride; Cr, creatinine; CC,



62 creatinine clearance; TBIL, total bilirubin; LVEF, left ventricular ejection  
 63 fraction; AV\_Vmax, maximum velocity of blood flow through the aortic valve;  
 64 AV\_MG, mean gradient across the aortic valve; AVA, aortic valve area; PAH,  
 65 pulmonary arterial hypertension; ACEI, angiotensin converting enzyme  
 66 inhibitor; ARB, angiotensin receptor blocker; CCB, calcium channel blocker.

67  
 68  
 69

70

71

72

73

74

75

76 **Table 3.** Relationships of EUROSCORE II and AVR status with the all-cause  
 77 mortality of the participants

variabl es	Low risk with surgery (n=154)	Low risk without surgery (n=162)	High risk with surgery (n=172)	risk without surgery (n=56)	P
Model 1		5.541(2.7 37-11.216)	1.899(0.896-4. 025)	10.058(4.632-2 1.840)	<b>&lt;0.001</b>
Model 2		4.211(2.05 3-8.637)	1.450(0.673-3. 125)	8.168(3.704-18 .015)	<b>&lt;0.001</b>
Model 3		4.064(1.9 58-8.433)	1.321(0.605-2. 887)	7.342(3.281-16 .427)	<b>&lt;0.001</b>

Model		3.492(1.5	1.333(0.605-2.	6.605(2.817-15	
1					<b>&lt;0.001</b>
4		83-7.703)	936)	.486)	

78 Model 1 was adjusted for smoking status, alcohol consumption status,  
 79 diabetes, atrial fibrillation, hypertension, gout, systolic blood pressure, and  
 80 body mass; Model 2 was adjusted for the parameters in model 1, with the  
 81 addition of WBC, RBC, PLT, LDLC, TG, TBIL, NTproBNP, troponin, and  
 82 albumin; Model 3 was adjusted for the parameters in model 2, plus aortic valve  
 83 deformity, rheumatic heart disease, AV-Vmax, AV-MG, the degree of AVA  
 84 mitral insufficiency, and mitral stenosis; Model 4 was adjusted for the  
 85 parameters in Model 3, with the addition of anti-platelet agent, statin, ACEI,  
 86 ARB,  $\beta$ -blocker, CCB, diuretic, insulin, oral antidiabetic drug, and oral  
 87 anticoagulant use.

88  
 89  
 90

## 91 **Legends**

92 **Fig. 1.** Flow diagram describing the study sample

93 The study was performed at three heart valve centres: the Second Affiliated Hospital  
 94 of Shantou University Medical College, the First Affiliated Hospital of Sun Yat-sen  
 95 University, and the Affiliated Hospital of Guangdong Medical University. The  
 96 participants were allocated to high-risk or low-risk groups using a cut-off value of 4%  
 97 of EUROSCORE II. AVR Surgery, aortic valve replacement surgery. AS, aortic valve  
 98 stenosis.

99 **Fig. 2.** Kaplan–Meier survival curves for the participants, categorized according to  
 100 their EUROSCORE II and their AVR status

101 AVR, surgical aortic valve replacement or transcatheter aortic valve implantation.

102 **Fig. 3.** Results of the subgroup analysis of the association between EUROSCORE II

103 and the lack of AVR

104 HR, hazard ratio; CI, confidence interval.

105 **Fig. 4.** ROC curve for the use of EUROSCORE II to evaluate the prognosis of the

106 participants who had not undergone AVR

107 **Table 1.** Clinical characteristics of the participants, stratified according to their

108 EUROSCORE II and their AVR status

109 Continuous variables are shown as median and IQR, and categorical variables are

110 shown as absolute number (n) and percentage. Continuous datasets were compared

111 using the Mann–Whitney test, and categorical datasets were compared using the

112 chi-square test or Fisher’s exact test. A, Second Affiliated Hospital of Shantou

113 University Medical College; B, the First Affiliated Hospital of Sun Yat-sen University;

114 C, the Affiliated Hospital of Guangdong Medical University. SBP, systolic blood

115 pressure; CKD, chronic kidney disease; COPD, chronic obstructive pulmonary

116 disease; HB, haemoglobin; WC, waist circumference; TC, total cholesterol; HDL-C,

117 high-density lipoprotein-cholesterol; LDL-C, low-density lipoprotein-cholesterol; TG,

118 triglyceride; Cr, creatinine; CC, creatinine clearance; TBIL, total bilirubin.

119 **Table 2.** Results of the univariate and multivariate Cox analyses of the associations

120 with EUROSCORE II and AVR status

121 SBP, systolic blood pressure; CKD, chronic kidney disease; COPD, chronic

122 obstructive pulmonary disease; HB, haemoglobin; WC, waist circumference; TC, total

123 cholesterol; HDL-C, high-density lipoprotein-cholesterol; LDL-C, low-density

124 lipoprotein-cholesterol; TG, triglyceride; Cr, creatinine; CC, creatinine clearance;

125 TBIL, total bilirubin; LVEF, left ventricular ejection fraction; AV\_Vmax, maximum

126 velocity of blood flow through the aortic valve; AV\_MG, mean gradient across the  
127 aortic valve; AVA, aortic valve area; PAH, pulmonary arterial hypertension; ACEI,  
128 angiotensin converting enzyme inhibitor; ARB, angiotensin receptor blocker; CCB,  
129 calcium channel blocker.

130 **Table 3.** Relationships of EUROSCORE II and AVR status with the all-cause

131 mortality of the participants

132 Model 1 was adjusted for smoking status, alcohol consumption status, diabetes, atrial  
133 fibrillation, hypertension, gout, systolic blood pressure, and body mass; Model 2 was

134 adjusted for the parameters in model 1, with the addition of WBC, RBC, PLT, LDLC,

135 TG, TBIL, NTproBNP, troponin, and albumin; Model 3 was adjusted for the

136 parameters in model 2, plus aortic valve deformity, rheumatic heart disease, AV-Vmax,

137 AV-MG, the degree of AVA mitral insufficiency, and mitral stenosis; Model 4 was

138 adjusted for the parameters in Model 3, with the addition of anti-platelet agent, statin,

139 ACEI, ARB,  $\beta$ -blocker, CCB, diuretic, insulin, oral antidiabetic drug, and oral

140 anticoagulant use.

141

142

143