

# The effect of herpes zoster vaccination at different stages of the disease course of dementia: Two quasi-randomized studies

Min Xie<sup>1,2,†</sup>, Markus Eyting<sup>1,2,3,†</sup>, Christian Bommer<sup>1</sup>, Haroon Ahmed<sup>4</sup>, Pascal Geldsetzer<sup>1,5,6,\*</sup>

† These authors contributed equally to this work.

\* Corresponding author. Email: [pgeldsetzer@stanford.edu](mailto:pgeldsetzer@stanford.edu)

## Affiliations:

<sup>1</sup> Division of Primary Care and Population Health, Department of Medicine, Stanford University, Stanford, California, USA

<sup>2</sup> Heidelberg Institute of Global Health, Heidelberg University, Heidelberg, Germany

<sup>3</sup> Gutenberg School of Management and Economics, Mainz University, Mainz, Germany

<sup>4</sup> Division of Population Medicine, School of Medicine, Cardiff University, Cardiff, Wales, UK

<sup>5</sup> Department of Epidemiology and Population Health, Stanford University, Stanford, California, USA

<sup>6</sup> Chan Zuckerberg Biohub – San Francisco, San Francisco, California, USA

## 25 **Abstract**

26 The varicella zoster virus, a neurotropic herpesvirus, has been hypothesized to play a role in the  
27 pathophysiology of dementia, such as through neuroinflammatory processes or intracerebral  
28 vasculopathy. Using unique natural experiments, our group has previously found that live-  
29 attenuated herpes zoster (HZ) vaccination reduced the incidence of new diagnoses of dementia  
30 in both Wales and Australia. To inform further research and ultimately clinical care, it is crucial  
31 to understand at which stage of the disease course of dementia the HZ vaccine has its effect.  
32 Representing the two opposing ends of the dementia disease course as it can be ascertained  
33 from electronic health record data, the aims of this study were twofold: to determine the effect of  
34 HZ vaccination on i) new diagnoses of mild cognitive impairment (MCI) among individuals  
35 without any record of cognitive impairment, and ii) deaths due to dementia among individuals  
36 living with dementia. Our approach took advantage of the fact that at the time of the start date  
37 (September 1 2013) of the HZ vaccination program in Wales, individuals who had their eightieth  
38 birthday just after this date were eligible for HZ vaccination for one year whereas those who had  
39 their eightieth birthday just before were ineligible and remained ineligible for life. This eligibility  
40 rule created comparison groups just on either side of the September 2 1933 date-of-birth  
41 eligibility threshold who differed in their age by merely a week but had a large difference in their  
42 probability of receiving HZ vaccination. The key strength of our study is that these comparison  
43 groups should be similar in their health characteristics and behaviors except for a minute  
44 difference in age. We used regression discontinuity analysis to estimate the difference in our  
45 outcomes between individuals born just on either side of the date-of-birth eligibility threshold for  
46 HZ vaccination. Our dataset consisted of detailed country-wide electronic health record data  
47 from primary care in Wales, linked to hospital records and death certificates. We restricted our  
48 dataset to individuals born between September 1 1925 and September 1 1942. Among our  
49 study cohort of 282,557 without any record of cognitive impairment at baseline, HZ vaccination  
50 eligibility and receipt reduced the incidence of a new MCI diagnosis by 1.5 (95% CI: 0.5 – 2.9,  
51  $p=0.006$ ) and 3.1 (95% CI: 1.0 – 6.2,  $p=0.007$ ) percentage points over nine years, respectively.  
52 Similarly, among our study cohort of 14,350 individuals who were living with dementia at  
53 baseline, being eligible for and receiving HZ vaccination reduced deaths due to dementia by 8.5  
54 (95% CI: 0.6 – 18.5,  $p=0.036$ ) and 29.5 (95% CI: 0.6 – 62.9,  $p=0.046$ ) percentage points over  
55 nine years, respectively. Except for dementia, HZ vaccination did not have an effect on any of  
56 the ten most common causes of morbidity and mortality among adults aged 70 years and older  
57 in Wales in either of our two study cohorts. The protective effects of HZ vaccination for both MCI  
58 and deaths due to dementia were larger among women than men. Our findings suggest that the  
59 live-attenuated HZ vaccine has benefits for the dementia disease process at both ends of the  
60 disease course of dementia.

## 61 Introduction

62 Given the key role of neuroinflammation in the development and progression of dementia(1), it  
63 is conceivable that neurotropic viruses could be a factor that causes or accelerates the  
64 dementia disease process. Neurotropic herpesviruses have thus far received the greatest  
65 research attention in this regard(2–4) because they remain latent for life in the nervous system  
66 after primary infection, are more likely to reactivate with increasing age, and can cause  
67 encephalitis(5). Recently, several findings have further spurred interest in neurotropic  
68 herpesviruses, including the observation that they can seed  $\beta$ -amyloid in mice(6) and that the  
69 Epstein Barr Virus appears to be a causative factor in the development of Multiple Sclerosis(7).

70  
71 The neurotropic herpesvirus (the varicella zoster virus) that causes chickenpox and shingles  
72 has recently been linked to amyloid deposition and aggregation of tau proteins(8), as well as  
73 cerebrovascular disease that resembles the patterns commonly seen in Alzheimer’s disease,  
74 such as small to large vessel disease, ischemia, infarction, and hemorrhage(9–14). Reducing  
75 clinical and subclinical reactivations of the virus through herpes zoster (HZ) vaccination might,  
76 thus, have a beneficial impact on the development or progression of dementia. Moreover, as  
77 has been detailed recently elsewhere(15), it is possible that HZ vaccination, and potentially  
78 vaccinations in older age more generally, act on the dementia disease process through a  
79 pathogen-independent immune mechanism. Such an effect would add to the growing body of  
80 evidence suggesting that vaccines frequently have broader health benefits beyond their  
81 intended target(16–18). Of importance with respect to this present study, these beneficial off-  
82 target effects have often been found to be far stronger among female than male individuals(17),  
83 and for live-attenuated rather than other types of vaccines(16–19).

84  
85 In a recent preprint(20), we were able to take advantage of a unique quasi-randomization in  
86 Wales to provide evidence on the effect of HZ vaccination on new dementia diagnoses that is  
87 more likely to be causal than the previously existing associational evidence(21–30). This  
88 opportunity arose because the UK National Health Service rolled out the live-attenuated HZ  
89 vaccine (Zostavax, Merck) using strict date of birth-based eligibility rules(31). These rules  
90 resulted in an increase in the probability of ever receiving the HZ vaccine of almost 50  
91 percentage points between individuals who differed in their age by merely a week across the  
92 date of birth-based eligibility threshold for the vaccination program. We, thus, had the  
93 opportunity to compare dementia incidence between eligible and ineligible groups of individuals  
94 who were not expected to differ in their characteristics other than a difference in age of merely a  
95 few weeks and a large difference in ever receiving the HZ vaccine. We found that HZ  
96 vaccination averted an estimated one in five new dementia diagnoses over a seven-year follow-  
97 up period. Crucially, unlike the previously existing associational evidence(21–29), this study is  
98 not subject to the fundamental concern in associational studies that those who opt to be  
99 vaccinated differ from those who do not in a variety of characteristics that are difficult to  
100 measure(32). Most recently, taking advantage of a similar date of birth-based rollout of HZ  
101 vaccination in Australia, we have shown that this protective effect for new diagnoses of  
102 dementia from HZ vaccination also exists in the Australian population(33).

103  
104 To guide further research in this area and, ultimately, inform appropriate clinical care, it is critical  
105 to understand at which stage of the disease course of dementia the HZ vaccine has its benefit.  
106 Our previous analyses in Wales and Australia have left this question unanswered. The aims of  
107 this study, therefore, were twofold: to determine the effect of HZ vaccination on i) new  
108 diagnoses of mild cognitive impairment (MCI) among individuals without any record of cognitive  
109 impairment, and ii) deaths due to dementia among individuals living with dementia. In the  
110 absence of more widespread testing for amyloid  $\beta$  and tau pathology during the study period  
111 (2013 to 2022), these two aims represent the two opposite ends of the disease course of

112 dementia (considering the limitations in ascertaining different disease stages in electronic health  
113 record data). Thus, observing a beneficial effect from HZ vaccination in both aims would  
114 suggest that the vaccine appears to act across the entire disease course of dementia.

115  
116

## 117 **Methods**

### 118 **The herpes zoster vaccine rollout in Wales:**

119 Starting on September 1 2013, the National Health Service ([NHS], the United Kingdom's  
120 single-payer single-provider healthcare system(34)) in Wales made the live-attenuated HZ  
121 vaccine (Zostavax, Merck) available to a catch-up cohort of individuals using a staggered rollout  
122 system based on specific date-of-birth eligibility thresholds(31). Individuals who did not yet have  
123 their 80<sup>th</sup> birthday on the start date of the program (i.e., born on or after September 2 1933)  
124 were eligible for one year. By contrast, those who had their 80<sup>th</sup> birthday prior to the program  
125 start date (i.e., born before September 2 1933) never became eligible. A more detailed  
126 description of the rollout is provided in **Supplement Text S1**.

127  
128

### 128 **Data source:**

129 This study used the Secure Anonymised Information Linkage (SAIL) Databank(35, 36). This  
130 databank provides detailed electronic health record data from primary care in the NHS through  
131 the Welsh Longitudinal General Practice dataset(37), which contains data on diagnoses, clinical  
132 signs and observations, symptoms, laboratory tests and results (via the Welsh Results Report  
133 Service(38)), procedures performed (including vaccinations), prescribed medications, and  
134 administrative items(39). Using individuals' unique NHS number, SAIL links this primary care  
135 dataset to a series of databases. For our study, these databases consisted of the Welsh  
136 Demographic Service Dataset(40), the Patient Episode Database for Wales (containing  
137 hospital-based inpatient care data)(41), the Outpatient Database for Wales (containing  
138 specialist-based ambulatory care data)(42), the Welsh Cancer Intelligence and Surveillance Unit  
139 (containing data on care for cancer)(43), and the Annual District Death Extract (containing  
140 cause-of-death data)(44). Our data included individuals' date of birth in weeks (with weeks  
141 starting on a Monday). A detailed description of each dataset is provided in **Supplement Text**  
142 **S2**.

143  
144

### 144 **Study cohorts and follow-up period:**

145 We restricted our dataset to all individuals born between September 1 1925 and September 1  
146 1942 who were ever registered with a primary care provider in Wales, which is the case for over  
147 98% of Wales's adult population(45), and who were alive and residing in Wales as of the start  
148 date of the HZ vaccination program (September 1 2013). Given that each patient in our dataset  
149 had a unique NHS number, we were able to follow patients over time even if they changed  
150 primary care provider. We defined one study cohort for each of our two aims. For determining  
151 the effect of HZ vaccination on the incidence of MCI, we excluded patients whose electronic  
152 health record data suggested any cognitive impairment at any time prior to the start date of the  
153 HZ vaccination program. To do so, we used the code list for cognitive impairment published by  
154 Moran et al. (also shown in **Supplement Materials**)(46), which consists of detailed Read codes  
155 for any symptoms, signs, and diagnoses relating to cognitive impairment, such as disturbances  
156 of memory, orientation, concentration, or reasoning, as well as formal diagnoses of MCI and  
157 dementia. For determining the effect of HZ vaccination on the occurrence of deaths due to  
158 dementia, we restricted our analysis cohort to those patients with a diagnosis of dementia made  
159 at any time prior to the start date of the HZ vaccination program. This cohort is henceforth  
160 referred to as patients living with dementia at baseline. The Read and ICD codes used to define  
161 dementia (as well as all other diagnoses used in this study) are provided in **Supplement**  
162 **Materials**.

163  
164 The follow-up period for all primary analyses was nine years, starting on September 1 2013 (the  
165 start date of the HZ vaccination program) and ending on August 31 2022. In secondary  
166 analyses, we show all results when using follow-up periods from one to nine years in one-year  
167 increments.

#### 168 **Exposure and outcome definition:**

169 The exposure was eligibility for HZ vaccination based on one's date of birth. As shown in  
170 **Supplement Figs. S1** and **S2**, most eligible patients (especially in the first two eligibility cohorts  
171 of the phased rollout, which are the focus of our analysis) in each of our two study populations  
172 took up HZ vaccination during their first year of eligibility.

173  
174  
175 For determining the effect of HZ vaccination on MCI, our primary outcome was MCI as defined  
176 by a record of a Read code (see **Supplement Materials**) for MCI in our electronic health record  
177 data. As robustness check, we required that the first diagnosis of MCI not be followed by a new  
178 dementia diagnosis within three and within six months to examine the sensitivity of our findings  
179 to the possibility of a patient with mild-to-moderate dementia being falsely classified as having  
180 MCI. For determining the effect of HZ vaccination on deaths due to dementia, our primary  
181 outcome was defined as dementia being named as the underlying (i.e., primary) cause of death  
182 in the patient's death certificate (see **Supplement Materials** for ICD-10 codes used). We  
183 defined dementia as dementia of any type because of our reduced statistical power when  
184 studying less common outcomes, as well as the neuropathological overlap between dementia  
185 types and difficulty in distinguishing dementia types clinically(47–49). Dates of deaths were for  
186 the date of death registration as opposed to occurrence, whereby the median delay between  
187 death occurrence and registration in Wales in the years from 2001 to 2021 was five days(50).

188  
189 We used all-cause mortality among patients living with dementia at baseline as a secondary  
190 outcome. The rationale for analyzing this secondary outcome was that if HZ vaccination  
191 reduced deaths due to dementia, it will be important to ascertain whether this effect led to an  
192 increase in remaining life expectancy (in which case we would also observe a reduction in all-  
193 cause mortality) or merely to the replacement of dementia as the underlying cause of death on  
194 the death certificate with the mentioning of another cause (in which case we would observe no  
195 effect on all-cause mortality). The Read and ICD codes used to define all our outcomes,  
196 including those used as baseline balance checks and in negative control outcome analyses, as  
197 well as HZ vaccination are provided in **Supplement Materials**.

#### 198 **Statistical analysis**

199 The two authors who analyzed the data (M.E. and M.X.) conducted all parts of the analysis  
200 independently, compared their results, and, in the case of any discrepancies, agreed on the  
201 preferred coding approach through discussion.

#### 202 *Regression discontinuity analysis:*

203  
204 Patients born immediately before versus immediately after September 2 1933 would be  
205 expected to be exchangeable (i.e., similar in observable and unobservable characteristics) with  
206 each other except for their probability of receiving HZ vaccination (as a result of their eligibility  
207 status for HZ vaccination). Our analysis approach was guided by this expectation.

208  
209  
210 Regression discontinuity (RD) is a well-established method for causal effect estimation for such  
211 threshold-based exposure assignments(51). This technique estimates the outcome probability  
212 for individuals just on either side of the September 2 1993 date-of-birth eligibility threshold. As  
213 per recommended practice for RD(52–54), we used a mean squared error (MSE)-optimal

214 bandwidth with robust bias-corrected standard errors(55), and assigned a higher weight to  
215 observations closer to either side of the September 2 1933 date-of-birth eligibility threshold  
216 using triangular kernel weights. The MSE-optimal bandwidth was calculated separately for each  
217 combination of study cohort and outcome definition. We used local linear regression because it  
218 is the recommended and most reliable approach for RD analyses even when the relationship  
219 between date of birth and the outcome in the entire dataset is exponential(56). However, in  
220 robustness checks, we also analyzed our data using local quadratic instead of linear regression.  
221 Higher polynomial regressions are not recommended for RD(56). In addition, we verified that  
222 our results were not dependent on the choice of i) bandwidth (by using bandwidth choices of  
223 0.50, 0.75, 1.25, 1.50, 1.75, and 2.00 times the MSE-optimal bandwidth), and ii) grace period  
224 (i.e., the time since the index date after which follow-up time is considered to begin to allow for  
225 the time needed for a full immune response to develop after vaccine administration). In an  
226 additional robustness check, we adjusted the follow-up period to account for the staggered  
227 rollout of the HZ vaccination program. Thus, instead of starting the follow-up period for all  
228 individuals on September 1 2013, we started the follow-up period for each individual on the date  
229 on which they first became eligible for HZ vaccination (as detailed in **Supplement Text S1**). We  
230 added cohort fixed effects in these analyses to control for the one- to two-year (depending on  
231 the program year) differences between eligibility cohorts in the start of their follow-up period.  
232

233 For all outcomes, we estimated both the effect of being eligible for HZ vaccination based on  
234 one's date of birth (the intent-to-treat [ITT] effect), as well as the effect of actually receiving HZ  
235 vaccination (the complier average causal effect [CACE]). To estimate the CACE, we followed  
236 standard practice for RD by implementing a so-called fuzzy RD(54). While still comparing  
237 individuals just on either side of the date-of-birth eligibility threshold, fuzzy RD corrects the effect  
238 estimates for the fact that a proportion of eligible individuals did not receive the vaccine and a  
239 small proportion of ineligible individuals did receive the vaccine. Fuzzy RD is implemented by  
240 using an instrumental variable approach(54). In our analysis, the instrumental variable was a  
241 binary indicator for whether or not an individual was eligible for HZ vaccination (i.e., born on or  
242 after versus born before September 2 1933). This analysis, therefore, adjusted the effect size  
243 for being eligible for HZ vaccination for the magnitude of the abrupt change in the probability of  
244 receiving HZ vaccination at the September 2 1933 threshold. Importantly, fuzzy RD does not  
245 compare eligible vaccine recipients with eligible vaccine non-recipients because these groups  
246 likely have different health characteristics and behaviors (and, thus, confounding is likely).  
247

248 Given its implementation using local linear regression, RD yields absolute as opposed to  
249 relative effect estimates. All regression equations used in our analyses are shown in  
250 **Supplement Text S3**.

#### 251 *Testing for confounding from a competing intervention:*

252 The key advantage of our quasi-randomization approach is that a confounding variable can only  
253 bias our analysis if the variable changes abruptly at precisely the September 2 1933 date-of-  
254 birth threshold(52, 53). Thus, confounding bias is unlikely unless another intervention existed  
255 that used the identical date-of-birth eligibility threshold (i.e., September 2 1933) as the HZ  
256 vaccination program. We investigated whether such a competing intervention was likely to exist  
257 in four ways.  
258

259 First, if another intervention that used the identical date-of-birth eligibility threshold had been  
260 implemented prior to the HZ vaccination program, then we may expect to observe differences in  
261 patients' health characteristics or past uptake of preventive health services at the time of the  
262 start date of the HZ vaccination program. We, therefore, tested for differences (using the same  
263 RD approach as we used for our primary outcomes) across the September 2 1933 date-of-birth  
264

265 threshold in the prevalence of i) diagnoses made at any time prior to September 1 2013 for each  
266 of the ten most common causes of disability-adjusted life years (DALYs) and mortality among  
267 the age group 70+ years in Wales(57), and ii) indicators of past preventive health services  
268 uptake. The indicators of past preventive health services uptake available in our data were  
269 influenza vaccine receipt in the 12 months preceding program start, receipt of the  
270 pneumococcal vaccine as an adult, current statin use (defined as a new or repeat prescription of  
271 a statin in the 12 months preceding program start), current use of an antihypertensive  
272 medication (defined as a new or repeat prescription of an antihypertensive drug in the 12  
273 months preceding program start), and breast cancer screening participation (defined as the  
274 proportion of women with a record of referral to, attendance at, or a report from “breast cancer  
275 screening” or mammography at any time prior to the start date of the HZ vaccination program).  
276 The codes used to define each of these variables is provided in **Supplement Materials**.

277  
278 Second, if a dementia-specific intervention that used the identical date-of-birth eligibility  
279 threshold had been implemented before the HZ vaccination program, then we may expect to  
280 observe differences in the incidence of our outcomes across the September 2 1933 threshold  
281 prior to the start date of the HZ vaccination program. We, thus, conducted the identical analysis  
282 as for our primary outcomes except for starting the follow-up period nine years prior to the start  
283 date (September 1 2013) of the HZ vaccination program.

284  
285 Third, if an annual intervention used September 2 as a date-of-birth eligibility criterion, then we  
286 may expect to observe significant differences in our outcomes at the September 2 date-of-birth  
287 threshold for birth years other than 1933. We, thus, implemented the same analyses as we did  
288 for the September 2 1933 threshold for the September 2 threshold of each of the three years of  
289 birth preceding and succeeding 1933 (i.e., date-of-birth thresholds of September 2 1930,  
290 September 2 1931, September 2 1932, September 2 1934, September 2 1935, and September  
291 2 1936). To ensure that our analyses at these additional date-of-birth thresholds compared  
292 individuals of the same age range as in our primary analyses, we shifted the start and end date  
293 of the follow-up period to the same extent as the date-of-birth threshold. To maintain the same  
294 follow-up period in all comparisons, we, therefore, had to use a follow-up period of six as  
295 opposed to nine years. As an example, when comparing individuals across the September 2  
296 1930 threshold, we started the follow-up period on September 1 2010 and ended the follow-up  
297 period on August 31 2016.

298  
299 Fourth, unless another intervention that used the identical date-of-birth eligibility threshold was  
300 specifically designed to affect MCI and dementia only, we may expect to see an effect of such  
301 an intervention on health outcomes other than MCI, dementia, and deaths due to dementia. We,  
302 thus, conducted the same analysis as for our primary outcomes but for diagnoses of, and  
303 deaths due to, each of the ten leading causes of DALYs and mortality in Wales for the age  
304 group 70+ years(57), as well as indicators of preventive health services uptake available in our  
305 data. The indicators of preventive health services uptake were breast cancer screening among  
306 women (defined as a record of referral to, attendance at, or a report from “breast cancer  
307 screening” or mammography at any time after the start date of the HZ vaccination program),  
308 and, for the 12 months after the start of the HZ vaccination program, uptake of influenza  
309 vaccination as well as any prescription of a statin or antihypertensive medication.

#### 310 *Testing for ascertainment bias:*

311 If healthcare seeking for episodes of shingles constituted an important opportunity for the health  
312 system to identify previously undiagnosed MCI, then our analysis for the effect of HZ  
313 vaccination on MCI could suffer from ascertainment bias. We conducted three analyses to  
314 investigate whether this potential ascertainment bias was likely to represent an important source  
315

316 of bias in this study. First, if shingles episodes were an important opportunity for the health  
317 system to detect previously undiagnosed chronic conditions, then we may expect to observe an  
318 effect of HZ vaccination not only on MCI but also on other common chronic conditions. As  
319 described in the preceding section, we, therefore, implemented the same RD analysis as for  
320 MCI but for each of the ten leading causes of DALYs and mortality in Wales in 2019 for the age  
321 group 70+ years as outcomes(57). Second, if healthcare utilization for shingles had an  
322 important bearing on the health system's ability to diagnose MCI, then we may expect that  
323 controlling for indicators of healthcare utilization during the follow-up period would attenuate our  
324 effect estimates. We, therefore, adjusted our regressions for the number of primary care visits,  
325 outpatient visits, hospital admissions, and influenza vaccinations received during our nine-year  
326 follow-up period. Third, patients who frequently visit their primary care provider may be more  
327 likely to be (whether formally or informally) screened for MCI. An analysis in this cohort of  
328 patients should, therefore, be less susceptible to ascertainment bias. We, thus, also  
329 implemented our analysis when restricting our study population to the sample of those 135,712  
330 (48.0% of the analysis cohort for our primary analyses for MCI) patients who had made at least  
331 one visit to their primary care provider during each of the five years preceding the start of the HZ  
332 vaccination program.

333  
334 *Triangulation via a different quasi-experimental approach:*

335 We used a second quasi-experimental approach, namely a difference-in-differences (DID)  
336 analysis, to further investigate the robustness of our RD findings. After restricting our sample to  
337 patients born between March 1 1926 and February 28 1934, we implemented our DID approach  
338 by dividing our sample into yearly birth cohorts centered around September 1. We then divided  
339 each yearly birth cohort into a pre-September birth "season" and a post-September birth  
340 season. The pre-September birth season was, thus, defined as the six-months period of March  
341 1 to August 31 and the post-September birth season as the six-months period from September  
342 1 to February 28 of the succeeding year. Our DID model tested whether the difference in  
343 outcomes across birth seasons was different for the 1933/1934 birth cohort compared to other  
344 yearly birth cohorts. The rationale for our DID was that HZ vaccination eligibility only differed  
345 between the two birth seasons in the 1933/1934-cohort but not in other yearly birth cohorts. The  
346 DID approach naturally adjusts for any potential systematic differences between pre-September  
347 and post-September birth seasons. The regression equations for this DID approach are detailed  
348 in **Supplement Text S3**.

349  
350 Importantly, our DID did not rely on the continuity assumption (i.e., the assumption that potential  
351 confounding variables do not abruptly change at exactly the September 2 1933 date-of-birth  
352 eligibility threshold) made by RD. Instead, our DID relied on the assumption that had the HZ  
353 vaccination program not existed, then the difference in our outcomes between the pre- and  
354 post-September birth seasons would have been the same in the 1933/1934-cohort as in other  
355 yearly cohorts. A strength of our approach is that we were able to investigate whether this  
356 assumption was likely to be met by testing whether there were significant between-birth-season  
357 differences in our outcomes in cohorts other than the 1933/1934-cohort. We did identify such  
358 significant differences for MCI among patients without a record of cognitive impairment at  
359 baseline, but not for deaths due to dementia among patients living with dementia at baseline.  
360 Details are provided in **Supplement Fig. S3**. We, therefore, used the DID approach only when  
361 analyzing the effect of HZ vaccination on deaths due to dementia.

362  
363 *Effect heterogeneity by gender:*

364 In our previous analysis for the effect of HZ vaccination on new diagnoses of dementia(20), we  
365 found a stronger effect among women than men. We, therefore, tested for an effect  
366 heterogeneity by gender in both of our aims. To do so, in addition to analyzing the effect among



367 women and men separately, we implemented an interaction model that estimated the difference  
368 in effects by gender (the regression equations for this analysis are provided in **Supplement**  
369 **Text S3**).

370  
371 **Ethics:**  
372 Approval was granted by the Information Governance Review Panel (IGRP, application number:  
373 1306), which oversees and approves applications to use the SAIL databank. All analyses were  
374 approved and considered minimal risk by the Stanford University Institutional Review Board on  
375 June 9 2023 (protocol number: 70277).

376  
377  
378 **Results**

379 **Sample characteristics:**  
380 Our dataset consisted of 304,940 individuals born between September 1 1925 and September 1  
381 1942 who were alive and residing in Wales as of September 1 2013. Of these individuals,  
382 282,557 did not have a record of any cognitive impairment prior to September 1 2013 and were,  
383 thus, included in our study cohort for analyzing the effect of HZ vaccination on MCI. Our study  
384 cohort for analyzing the effect of HZ vaccination on deaths due to dementia consisted of the  
385 14,350 individuals in our dataset who had received a diagnosis of dementia prior to September  
386 1 2013. The sample characteristics of each of these two cohorts are shown in **Table 1**.  
387

| Among patients without cognitive impairment at baseline |  |                         | Full sample (born Sept 1 1925 to Sept 1 1942) |        |         |        |         |        | Sample in the MSE-optimal bandwidth |        |        |       |        |       |
|---|--|-------------------------|---|--------|---------|--------|---------|--------|-------------------------------------|--------|--------|-------|--------|-------|
| Variable  |  |                         | All   |        | Women   |        | Men     |        | All                                 |        | Women  |       | Men    |       |
|   |  |                         | n   | %      | n       | %      | n       | %      | n                                   | %      | n      | %     | n      | %     |
| Quintile of Welsh Index of Multiple Deprivation         | 1 (most deprived)                      |                         | 282,557                                       | 100.0  | 154,237 | 54.6   | 128,319 | 45.4   | 58,569                              | 100.0  | 32,311 | 55.2  | 26,258 | 44.8  |
|   | 2                                      |                         | 47,321  | 16.7   | 26,071  | 16.9   | 21,249  | 16.6   | 9,654                               | 16.5   | 5,391  | 16.7  | 4,263  | 16.2  |
|   | 3                                      |                         | 53,628  | 19.0   | 29,516  | 19.1   | 24,112  | 18.8   | 11,060                              | 18.9   | 6,248  | 19.3  | 4,812  | 18.3  |
|   | 4                                      |                         | 61,528  | 21.8   | 33,596  | 21.8   | 27,932  | 21.8   | 12,854                              | 21.9   | 7,081  | 21.9  | 5,773  | 22.0  |
|   | 5 (least deprived)                     |                         | 58,352  | 20.7   | 31,461  | 20.4   | 26,891  | 21.0   | 12,117                              | 20.7   | 6,569  | 20.3  | 5,548  | 21.1  |
| Clinical diagnoses                                      | Past shingles                          |                         | 61,728  | 21.8   | 33,593  | 21.8   | 28,135  | 21.9   | 12,884                              | 22.0   | 7,022  | 21.7  | 5,862  | 22.3  |
|   | Ischemic heart disease                 |                         | 34,280  | 12.1   | 20,461  | 13.3   | 13,819  | 10.8   | 7,611                               | 13.0   | 4,592  | 14.2  | 3,019  | 11.5  |
|   | COPD                                   |                         | 45,456  | 16.1   | 17,928  | 11.6   | 27,528  | 21.5   | 10,488                              | 17.9   | 4,168  | 12.9  | 6,320  | 24.1  |
|   | Past stroke                            |                         | 33,191  | 11.7   | 15,586  | 10.1   | 17,605  | 13.7   | 7,164                               | 12.2   | 3,314  | 10.3  | 3,850  | 14.7  |
|   | Past lower respiratory tract infection |                         | 20,938  | 7.4    | 10,028  | 6.5    | 10,910  | 8.5    | 4,879                               | 8.3    | 2,362  | 7.3   | 2,517  | 9.6   |
|   | History of lung cancer                 |                         | 145,299                                       | 51.4   | 80,214  | 52.0   | 65,085  | 50.7   | 30,880                              | 52.7   | 16,980 | 52.6  | 13,900 | 52.9  |
|   | Past fall(s)                           |                         | 1,179   | 0.4    | 554     | 0.4    | 625     | 0.5    | 268                                 | 0.5    | 130    | 0.4   | 138    | 0.5   |
|   | History of colorectal cancer           |                         | 52,620  | 18.6   | 35,997  | 23.3   | 16,623  | 13.0   | 11,897                              | 20.3   | 8,161  | 25.3  | 3,736  | 14.2  |
|   | History of lower back pain             |                         | 5,662   | 2.0    | 2,445   | 1.6    | 3,217   | 2.5    | 1,295                               | 2.2    | 557    | 1.7   | 738    | 2.8   |
|   | History of breast cancer               |                         | 128,210                                       | 44.7   | 72,250  | 46.8   | 53,960  | 42.1   | 26,471                              | 45.2   | 15,379 | 47.6  | 11,092 | 42.2  |
|   | History of pancreatic cancer           |                         | 6,508   | 2.3    | 6,449   | 4.2    | 57      | 0.4    | 1,327                               | 3.2    | 1,319  | 4.1   | 8      | < 0.1 |
|   | Diabetes mellitus                      |                         | 162   | 0.6    | 81      | < 0.1  | 81      | < 0.1  | 28                                  | < 0.1  | 14     | < 0.1 | 14     | < 0.1 |
|   | Uptake of preventive health measures   | Breast cancer screening |   | 55,354 | 19.6    | 26,289 | 17.0    | 29,065 | 22.7                                | 12,185 | 20.8   | 5,903 | 18.3   | 6,282 |
| PPV-23  |  |                         | 35,759  | 12.7   | 34,680  | 22.5   | -       | -      | 6,195                               | 10.6   | 5,952  | 18.4  | -      | -     |
| Influenza vaccine                                       |  |                         | 172,149                                       | 70.3   | 106,803 | 69.2   | 91,874  | 71.6   | 42,872                              | 73.2   | 23,109 | 71.5  | 19,763 | 75.3  |
| Recent statin use                                       |  |                         | 193,856                                       | 68.6   | 103,678 | 67.2   | 90,178  | 70.3   | 41,412                              | 70.7   | 22,248 | 68.9  | 19,164 | 73.0  |
| Recent antihypertensive use                             |  |                         | 130,175                                       | 46.1   | 65,910  | 42.7   | 64,265  | 50.1   | 27,747                              | 47.4   | 14,449 | 44.4  | 13,298 | 50.6  |
|   |  |                         | 198,677                                       | 61.0   | 93,025  | 60.3   | 79,124  | 61.7   | 37,712                              | 64.4   | 20,651 | 63.9  | 17,061 | 65.0  |

| Among patients living with dementia at baseline |  |                         | Full sample (born Sept 1 1925 to Sept 1 1942) |       |       |       |       |       | Sample in the MSE-optimal bandwidth |       |       |      |       |       |
|---|--|-------------------------|---|-------|-------|-------|-------|-------|-------------------------------------|-------|-------|------|-------|-------|
| Variable  |  |                         | All   |       | Women |       | Men   |       | All                                 |       | Women |      | Men   |       |
|   |  |                         | n   | %     | n     | %     | n     | %     | n                                   | %     | n     | %    | n     | %     |
| Quintile of Welsh Index of Multiple Deprivation | 1 (most deprived)                      |                         | 14,350  | 100.0 | 8,957 | 62.4  | 5,393 | 37.6  | 3,418                               | 100.0 | 2,064 | 60.4 | 1,354 | 39.6  |
|   | 2                                      |                         | 2,734   | 19.1  | 1,699 | 19.0  | 1,035 | 19.2  | 648                                 | 19.0  | 408   | 19.8 | 240   | 17.7  |
|   | 3                                      |                         | 3,012   | 21.0  | 1,897 | 21.2  | 1,115 | 20.7  | 729                                 | 21.3  | 458   | 22.2 | 271   | 20.0  |
|   | 4                                      |                         | 3,021   | 21.1  | 1,932 | 21.6  | 1,089 | 20.2  | 730                                 | 21.4  | 440   | 21.3 | 290   | 21.4  |
|   | 5 (least deprived)                     |                         | 2,788   | 19.4  | 1,718 | 19.2  | 1,070 | 19.8  | 655                                 | 19.2  | 379   | 18.4 | 276   | 20.4  |
| Clinical diagnoses                              | Past shingles                          |                         | 2,795   | 19.5  | 1,711 | 19.1  | 1,084 | 20.1  | 656                                 | 19.2  | 379   | 18.4 | 277   | 20.5  |
|   | Ischemic heart disease                 |                         | 1,761   | 12.3  | 1,176 | 13.1  | 585   | 10.8  | 400                                 | 11.7  | 254   | 12.3 | 146   | 10.8  |
|   | COPD                                   |                         | 2,975   | 20.7  | 1,513 | 16.9  | 1,462 | 27.1  | 725                                 | 21.2  | 360   | 17.4 | 365   | 27.0  |
|   | Past stroke                            |                         | 2,073   | 14.4  | 1,133 | 12.6  | 940   | 17.4  | 475                                 | 13.9  | 253   | 12.3 | 222   | 16.4  |
|   | Past lower respiratory tract infection |                         | 2,654   | 18.5  | 1,461 | 16.3  | 1,193 | 22.1  | 640                                 | 18.7  | 325   | 15.7 | 315   | 23.3  |
|   | History of lung cancer                 |                         | 8,661   | 60.4  | 5,365 | 59.9  | 3,296 | 61.1  | 2,013                               | 58.9  | 1,196 | 57.9 | 817   | 60.3  |
|   | Past fall(s)                           |                         | 58  | 0.4   | 28    | 0.3   | 30    | 0.6   | 20                                  | 0.6   | 10    | 0.5  | 10    | 0.7   |
|   | History of colorectal cancer           |                         | 6,652   | 46.4  | 4,608 | 51.4  | 2,044 | 37.9  | 1,476                               | 43.2  | 983   | 47.6 | 493   | 36.4  |
|   | History of lower back pain             |                         | 285   | 2.0   | 138   | 1.5   | 147   | 2.7   | 60                                  | 1.8   | 25    | 1.2  | 35    | 2.6   |
|   | History of breast cancer               |                         | 6,530   | 45.5  | 4,161 | 46.5  | 2,369 | 43.9  | 1,573                               | 46.0  | 996   | 48.3 | 577   | 42.6  |
|   | History of pancreatic cancer           |                         | 300   | 2.1   | 298   | 3.3   | < 10  | < 0.1 | 68                                  | 2.0   | 68    | 3.3  | < 10  | < 0.1 |
|   | Diabetes mellitus                      |                         | < 10  | < 0.1 | < 10  | < 0.1 | < 10  | < 0.1 | < 10                                | 0.1   | < 10  | 0.1  | < 10  | < 0.1 |
|   | Uptake of preventive health measures   | Breast cancer screening |   | 3,332 | 23.2  | 1,926 | 21.5  | 1,406 | 26.1                                | 853   | 25.0  | 486  | 23.5  | 367   |
| PPV-23  |  |                         | 1,384   | 9.6   | 1,327 | 14.8  | -     | -     | 343                                 | 10.0  | 323   | 15.6 | -     | -     |
| Influenza vaccine                               |  |                         | 10,478  | 73.0  | 6,330 | 70.7  | 4,148 | 76.9  | 2,512                               | 73.5  | 1,473 | 71.4 | 1,039 | 76.7  |
| Recent statin use                               |  |                         | 9,586   | 66.8  | 5,840 | 65.2  | 3,746 | 69.5  | 2,263                               | 66.2  | 1,331 | 64.5 | 932   | 68.8  |
| Recent antihypertensive use                     |  |                         | 6,596   | 46.0  | 3,863 | 43.1  | 2,733 | 50.7  | 1,650                               | 48.3  | 938   | 45.4 | 712   | 52.6  |
|   |  |                         | 7,535   | 52.5  | 4,608 | 51.4  | 2,927 | 54.3  | 1,801                               | 52.7  | 1,058 | 51.3 | 743   | 54.9  |

**Table 1. Sample characteristics at baseline of the two study cohorts in our analysis<sup>1,2,3,4,5</sup>**

<sup>1</sup> The baseline date was September 1 2013 (the start date of the HZ vaccination program).

<sup>2</sup> The length of the MSE-optimal bandwidth was 95.1 weeks for patients without cognitive impairment at baseline and 97.5 weeks for patients living with dementia at baseline.

<sup>3</sup> Deciles of the Welsh Index of Multiple Deprivation (WIMD) were calculated based on the 2011 WIMD survey(58).

<sup>4</sup> Breast cancer screening was defined as the proportion of women with a record of referral to, attendance at, or a report from “breast cancer screening” or mammography at any time prior to September 1 2013. “PPV-23” was defined as receipt of the pneumococcal vaccine as an adult at any time prior to September 1 2013. “Influenza vaccine” was defined as influenza vaccine receipt in the 12 months preceding September 1 2013. Recent statin and antihypertensive use was defined as a new or repeat prescription of a statin or antihypertensive drug, respectively, in the 12 months preceding September 1 2013.

<sup>5</sup> Diabetes mellitus referred to both diabetes mellitus type 1 or type 2.

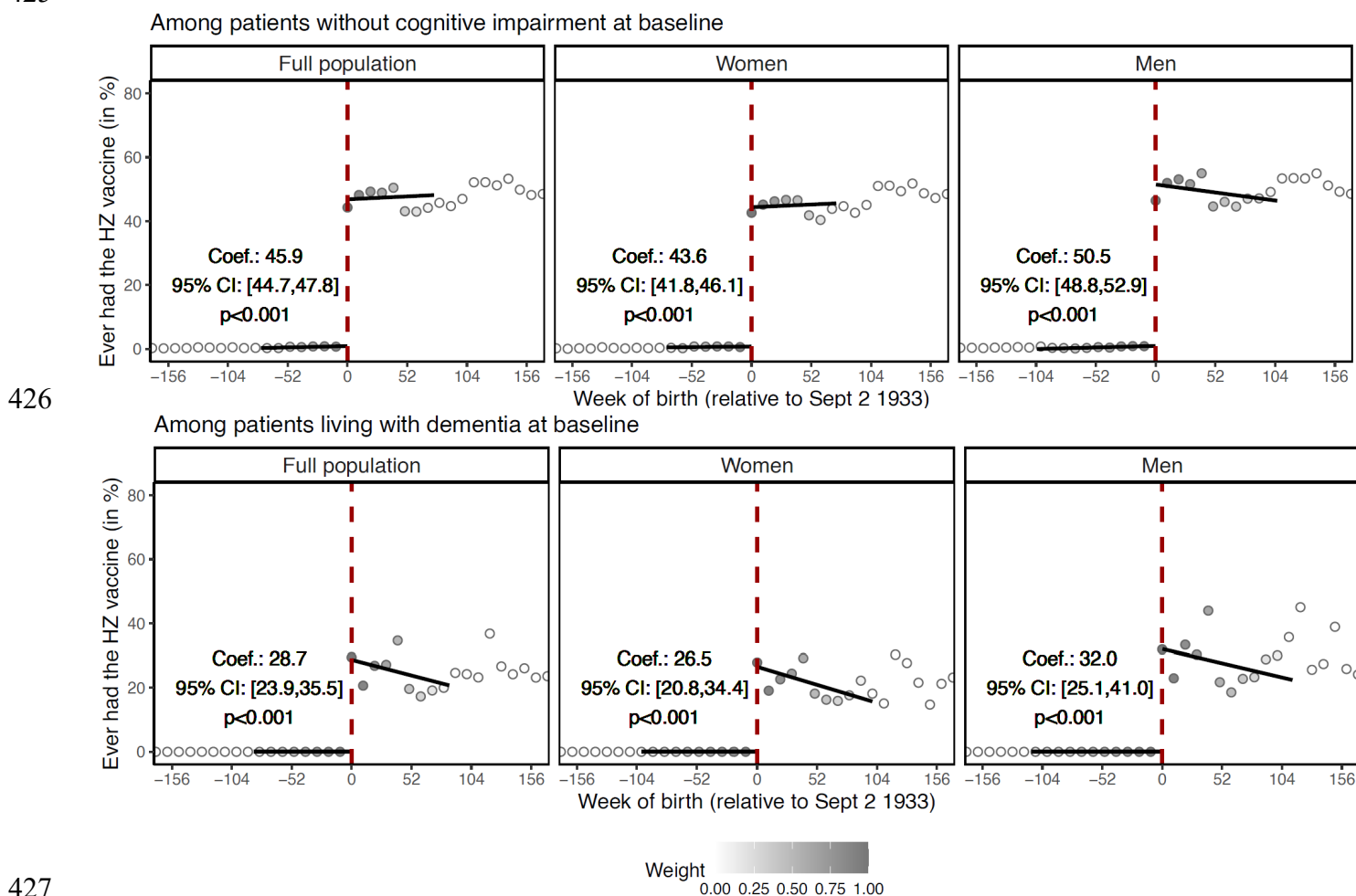
Abbreviations: Sept = September; MSE = mean squared error-optimal; COPD = Chronic Obstructive Pulmonary Disease; PPV-23 = Pneumococcal Polysaccharide Vaccine

### A one-week difference in age led to a large difference in HZ vaccination uptake:

In both of our study cohorts, a one-week difference in age across the September 2 1933 date-of-birth eligibility threshold resulted in a large difference in the probability of ever receiving HZ vaccination (**Fig. 1**). Specifically, among individuals without any record of cognitive impairment prior to the start of the HZ vaccination program, being born one week after September 2 1933, and thus being eligible for HZ vaccination, led to an abrupt increase in the probability of ever receiving HZ vaccination from 0.0% to 45.9% ( $p<0.001$ ). The corresponding abrupt increase

412 among patients living with dementia on the start date of the HZ vaccination program was from  
 413 0.0% to 28.7% ( $p < 0.001$ ). Thus, in both of our study cohorts, the eligibility rules of the HZ  
 414 vaccination program created comparison groups born just on either side of the September 2  
 415 1933 date-of-birth threshold who were likely similar to each other except for a minor difference  
 416 in age and a large difference in the probability of receiving HZ vaccination.

417  
 418 Prior to the start date of the HZ vaccination program, there were no significant differences at the  
 419 September 2 1933 date-of-birth threshold in the uptake of preventive health services, the  
 420 prevalence of any of the ten most common causes of DALYs and mortality among adults aged  
 421 70+ years in Wales (except ischemic heart disease among those living with dementia at  
 422 program start), the occurrence of HZ, diagnoses of MCI, and deaths due to dementia  
 423 (Supplement Figs. S4 and S5).  
 424  
 425



427  
 428 **Fig. 1. The abrupt change in the probability of receiving HZ vaccination at the September**  
 429 **2 1933 date-of-birth eligibility threshold.**<sup>1,2,3,4</sup>

430 <sup>1</sup> "Baseline" refers to the start date of the HZ vaccination program (i.e., September 1 2013).

431 <sup>2</sup> Linear regression lines were drawn in the MSE-optimal bandwidth only.

432 <sup>3</sup> Grey dots show the mean value for each 10-week increment in week of birth.

433 <sup>4</sup> The grey shading of the dots is in proportion to the weight that observations from this 10-week increment received in the analysis.

434 Abbreviations: HZ = herpes zoster; Coef. = coefficient; CI = confidence interval; Sept = September

436

437 **The effect of HZ vaccination on new diagnoses of mild cognitive impairment:**

438 Among our study cohort of individuals without any record of cognitive impairment prior to the  
439 start date of the HZ vaccination program, 20,712 (7.3%) were newly diagnosed with MCI during  
440 our nine-year follow-up period. Being born immediately after versus immediately before  
441 September 2 1933, and thus being eligible for HZ vaccination, decreased the incidence of new  
442 diagnoses of MCI over nine years by 1.5 (95% CI: 0.5 – 2.9,  $p=0.006$ ) percentage points (**Fig.**  
443 **2**). Scaled to the proportion of individuals who took up HZ vaccination if they were eligible using  
444 the fuzzy RD approach, the effect of actually receiving HZ vaccination was a 3.1 (95% CI: 1.0  
445 – 6.2,  $p=0.007$ ) percentage point reduction in new diagnoses of MCI over nine years. The effect  
446 across different follow-up periods is shown in **Supplement Fig. S6**. Both the effect of being  
447 eligible for HZ vaccination and the effect of actually receiving HZ vaccination were robust across  
448 different choices of bandwidth, grace period, and functional form (using local quadratic instead  
449 of local linear regression), when requiring that a new MCI diagnosis not be followed by a new  
450 dementia diagnosis within three and six months, when adjusting for the staggered rollout of the  
451 program, when adjusting for indicators of health service utilization, and when restricting the  
452 analysis cohort to frequent primary care visitors (**Supplement Fig. S7**).

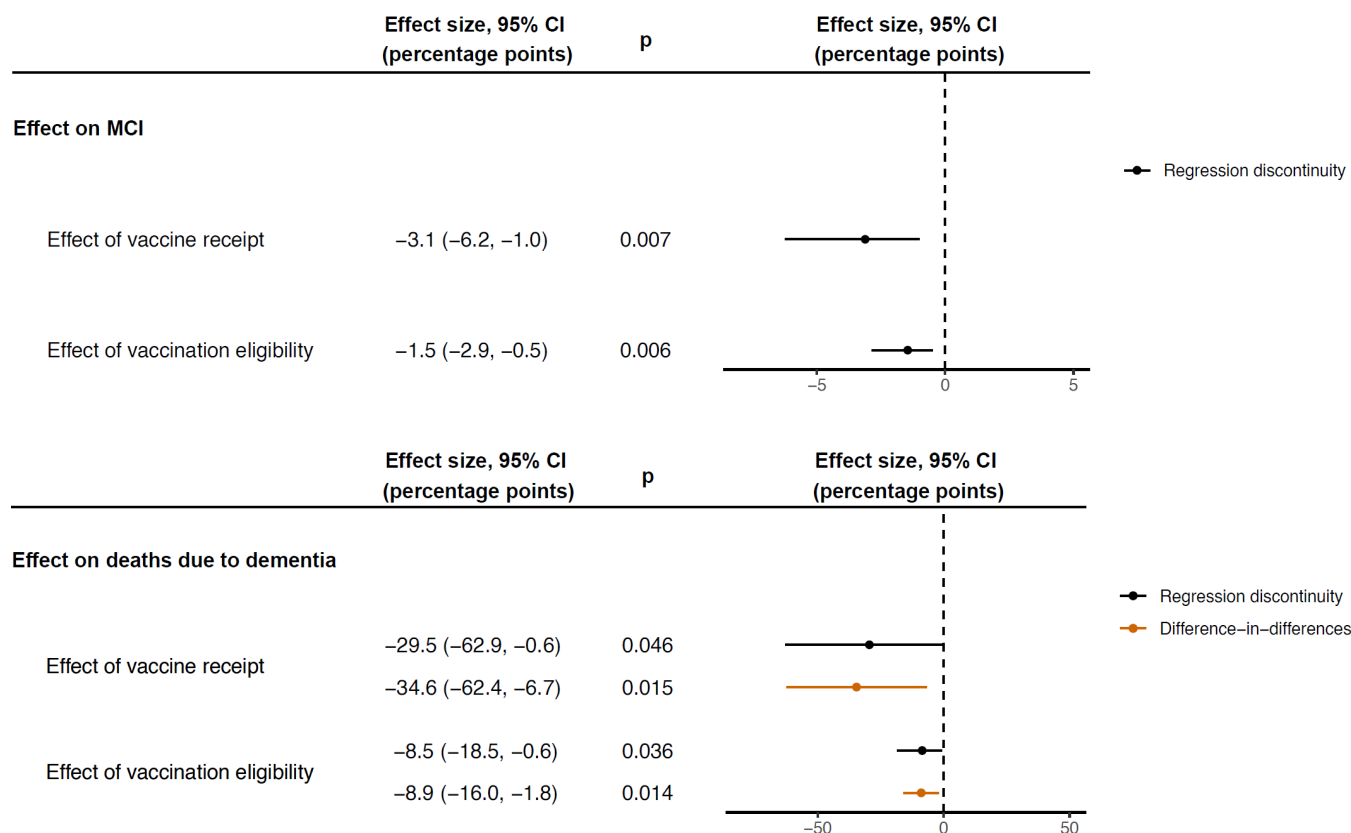
453

454 **The effect of HZ vaccination on deaths due to dementia:**

455 Among our study cohort of individuals with a diagnosis of dementia received prior to the start  
456 date of the HZ vaccination program, 7,049 (49.1%) died due to dementia over the nine-year  
457 follow-up period. Being eligible for HZ vaccination (i.e., being born shortly after versus shortly  
458 before September 2 1933) decreased the incidence of deaths due to dementia over nine years  
459 by 8.5 (95% CI: 0.6 – 18.5,  $p=0.036$ ) percentage points (**Fig. 2**). The effect of actually receiving  
460 HZ vaccination was a 29.5 (95% CI: 0.6 – 62.9,  $p=0.046$ ) percentage point reduction in deaths  
461 due to dementia over nine years. Our DID analysis yielded similar results as our RD analysis  
462 (**Fig. 2**). The effect across different follow-up periods is shown in **Supplement Fig. S8**. As for  
463 MCI as outcome, the point estimates for the effect of being eligible for HZ vaccination and the  
464 effect of actually receiving HZ vaccination were robust across different choices of bandwidth,  
465 grace period, and functional form (using local quadratic instead of local linear regression), and  
466 when adjusting for the staggered rollout of the program (**Supplement Fig. S9**). In addition, the  
467 effect remained significant when adding a dichotomous covariate that indicated whether an  
468 individual had been diagnosed with ischemic heart disease prior to the start date of the HZ  
469 vaccination program (**Supplement Fig. S9**).

470

471



472

473

474 **Fig. 2. The effect of HZ vaccination on new diagnoses of MCI and deaths due to**  
 475 **dementia.**<sup>1,2,3</sup>

476 <sup>1</sup> Dots show the point estimate and horizontal bars the 95% confidence interval.

477 <sup>2</sup> New diagnoses of MCI were analyzed among a study cohort of patients who did not have any record of cognitive  
 478 impairment prior to the start date of the HZ vaccination program.

479 <sup>3</sup> Deaths due to dementia were analyzed among a study cohort of patients who had received a diagnosis of dementia  
 480 prior to the start date of the HZ vaccination program.

481 Abbreviations: MCI = mild cognitive impairment; CI = confidence interval

482

483

484 **Testing for confounding:**

485 Given the focus of our RD approach on changes in the outcome variable at the date-of-birth  
 486 eligibility threshold, a confounding variable would only bias our analysis if it changed abruptly at  
 487 precisely the September 2 1933 date-of-birth threshold. Such bias could arise if another  
 488 intervention used the identical date-of-birth eligibility threshold (i.e., September 2 1933) as the  
 489 HZ vaccination program. As detailed in the Methods section, we tested for this possibility in four  
 490 ways.

491

492 First, the September 2 date-of-birth eligibility threshold only had a significant effect on our  
 493 primary outcomes in the birth year (1933) that was used by the HZ vaccination program, but not  
 494 in any of the three birth years prior to and after 1933 (**Supplement Fig. S10**). This finding  
 495 reduces the probability that an annual intervention existed that also used September 2 as a  
 496 date-of-birth eligibility criterion.

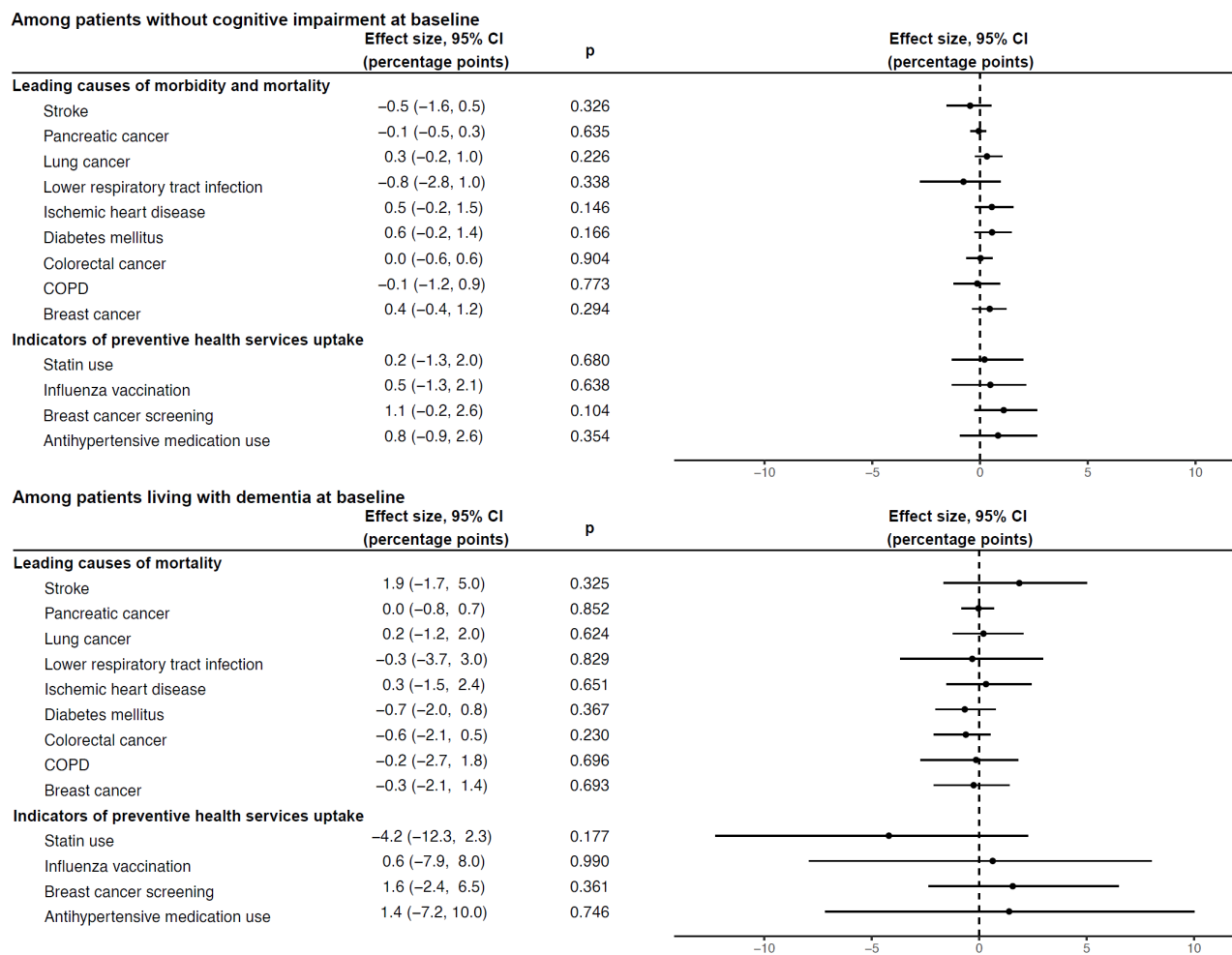
497

498 Second, at the time of the start date of the HZ vaccination program, we did not observe  
 499 systematic differences across the September 2 1933 date-of-birth threshold in past preventive

500 health services uptake nor the prevalence of the ten leading causes of DALYs and mortality  
501 among adults aged 70+ years in Wales (**Supplement Fig. S4** and **S5**). Third, there were no  
502 differences in the incidence of new MCI diagnoses (in our study cohort for analyzing the effect  
503 on MCI) and deaths due to dementia (in our study cohort for analyzing the effect on deaths due  
504 to dementia) across the September 2 1933 date-of-birth threshold in the nine years before the  
505 start of the HZ vaccination program (**Supplement Fig. S11**). Together, these tests reduce the  
506 likelihood that a competing intervention (i.e., another intervention that used the identical date-of-  
507 birth eligibility threshold as the HZ vaccination program) existed that was implemented prior to  
508 the HZ vaccination program.

509  
510 Fourth, other than for dementia, we did not observe any significant effects of the September 2  
511 1933 date-of-birth eligibility threshold on diagnoses of each the ten most common causes of  
512 DALYs and mortality (in our study cohort for analyzing the effect on MCI) and deaths due to the  
513 ten leading causes of mortality (in our study cohort for analyzing the effect on deaths due to  
514 dementia) among adults aged 70+ years in Wales over our nine-year follow-up period (**Fig. 3**).  
515 Neither did we observe any effects on indicators of preventive health services uptake during our  
516 follow-up period (**Fig. 3**). These tests provide evidence against the existence of an intervention  
517 that used the identical date-of-birth eligibility threshold as the HZ vaccination program and was  
518 not specifically designed to only affect our primary outcomes.

519



520  
521

**Fig. 3. No significant effect of being eligible for HZ vaccination on the leading causes of morbidity and mortality (other than dementia) nor on indicators of preventive health services uptake.**<sup>1,2,3,4,5,6,7,8</sup>

525 <sup>1</sup> Baseline refers to the start date (September 1 2013) of the HZ vaccination program.

526 <sup>2</sup> Dots show the point estimate and horizontal bars the 95% confidence interval.

527 <sup>3</sup> Among patients without a record of cognitive impairment prior to the start date of the HZ vaccination program, the  
528 leading causes of morbidity and mortality were the ten (other than dementia) leading causes of DALYs and mortality  
529 among adults aged 70+ years in Wales as estimated by the Global Burden of Disease Project(57).

530 <sup>4</sup> Among patients with a diagnosis of dementia made prior to the start date of the HZ vaccination program, the leading  
531 causes of mortality were the ten (other than dementia) leading causes of mortality among adults aged 70+ years in  
532 Wales as estimated by the Global Burden of Disease Project(57).

533 <sup>5</sup> Influenza vaccination was defined as receipt of influenza vaccination at any time in the 12 months after the start  
534 date of the HZ vaccination program.

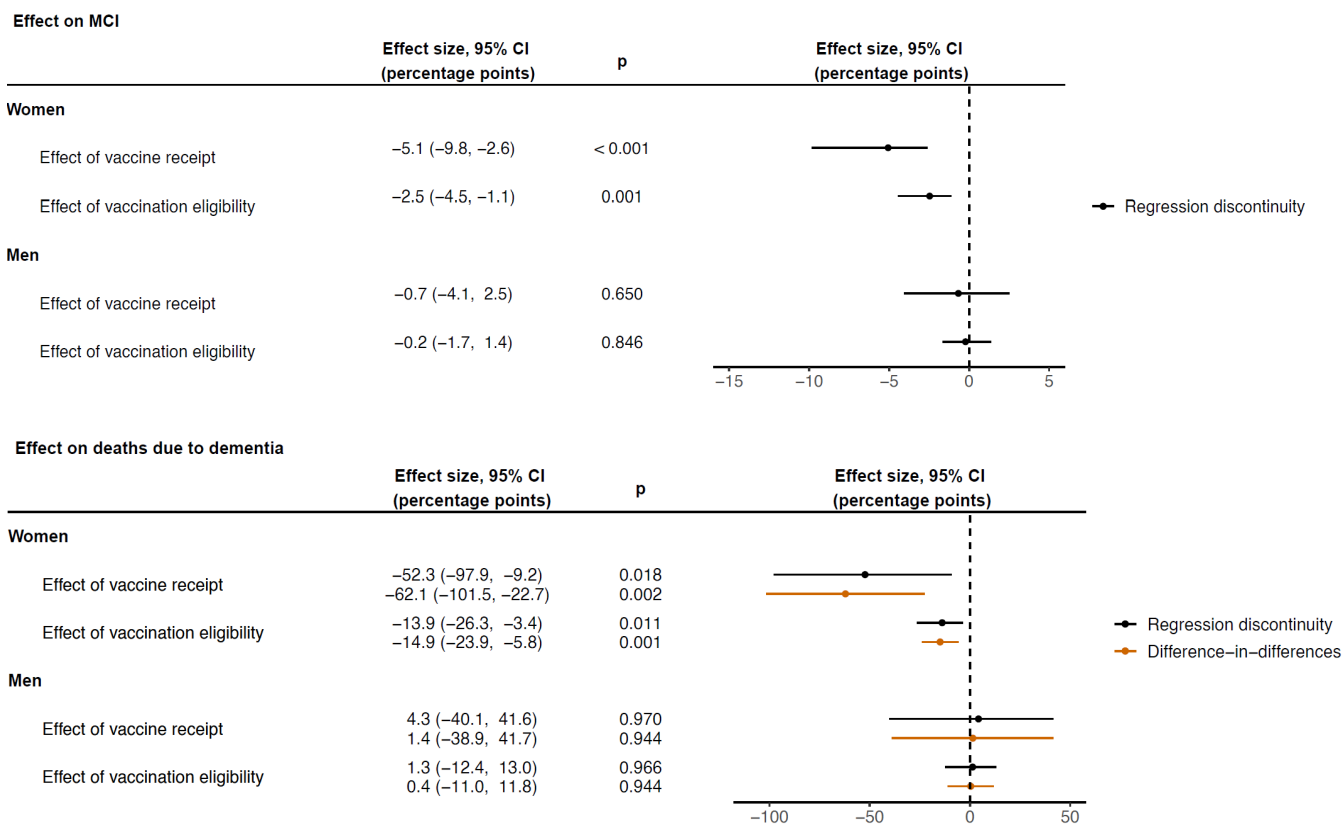
535 <sup>6</sup> Statin and antihypertensive medication use was defined as any prescription of these medications during the 12  
536 months after the start date of the HZ vaccination program.

537 <sup>7</sup> Breast cancer screening was analyzed among women only. It was defined as a record of referral to, attendance at,  
538 or a report from "breast cancer screening" or mammography at any time after the start date of the HZ vaccination  
539 program.

540 <sup>8</sup> The Read and ICD codes used to define each variable shown in this figure are provided in **Supplement Materials**.  
541 Abbreviations: COPD = Chronic Obstructive Pulmonary Disease; CI = Confidence Interval.

542 **Effect heterogeneity by gender:**

543 The effect of HZ vaccination both on reducing new diagnoses of MCI and deaths due to  
 544 dementia was larger among women than men (**Fig. 4**). Among women, the effects of being  
 545 eligible for, and actually receiving, HZ vaccination on new diagnoses of MCI were a reduction of  
 546 2.2 (95% CI: 0.9 – 4.2, p=0.002) and 4.7 (95% CI: 2.2 – 9.4, p=0.002) percentage points,  
 547 respectively. The corresponding estimates for the effects on deaths due to dementia among  
 548 women living with dementia at baseline were a decrease of 13.9 (95% CI: 3.4 – 26.3, p=0.011)  
 549 and 52.3 (95% CI: 9.2 – 97.9, p=0.018) percentage points. For both MCI and deaths due to  
 550 dementia, the estimates among men were statistically indistinguishable from zero. Formal  
 551 interaction tests by gender showed that the interaction was significant for both new MCI  
 552 diagnoses (p=0.029) and deaths due to dementia (p=0.039) (**Supplement Table S1**). The  
 553 significant effects among women were robust across different choices of bandwidth, grace  
 554 period, and functional form (using local quadratic instead of local linear regression), as well as  
 555 when requiring that a new MCI diagnosis not be followed by a new dementia diagnosis within  
 556 three and six months, adjusting for the staggered rollout of the program, adjusting for indicators  
 557 of health service utilization, and restricting the analysis cohort to frequent primary care visitors  
 558 (**Supplement Fig. S12 and S13**).  
 559  
 560



561

562

563

564

565 **Fig. 4. The effect of HZ vaccination on new diagnoses of MCI and deaths due to**  
 566 **dementia, separately by gender.**<sup>1,2,3</sup>

567 <sup>1</sup> Dots show the point estimate and horizontal bars the 95% confidence interval.

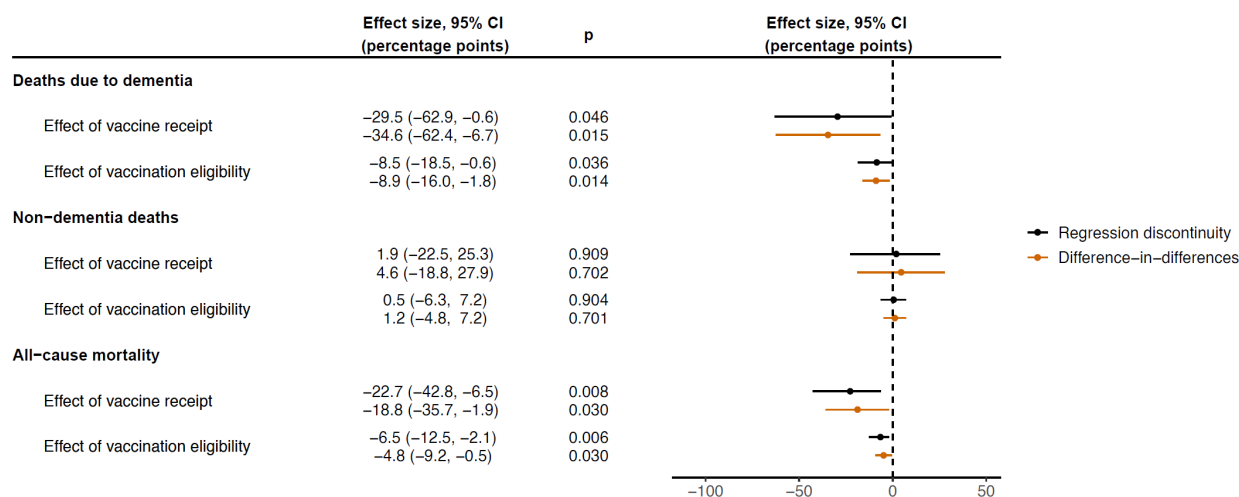
568 <sup>2</sup> New diagnoses of MCI were analyzed among a study cohort of patients who did not have any record of cognitive  
 569 impairment prior to the start date of the HZ vaccination program.

570 <sup>3</sup> Deaths due to dementia were analyzed among a study cohort of patients who had received a diagnosis of dementia  
 571 prior to the start date of the HZ vaccination program.

572 Abbreviations: MCI = mild cognitive impairment; CI = confidence interval



573 **The effect of HZ vaccination on all-cause mortality:**  
 574 Among patients living with dementia at baseline, being eligible for HZ vaccination (based on  
 575 being born immediately after versus immediately before September 2 1933) decreased all-  
 576 cause mortality over our nine-year follow-up period by 6.5 (95% CI: 2.1 – 12.5, p=0.006)  
 577 percentage points (**Fig. 5**). Adjusted for the proportion who took up HZ vaccination if they were  
 578 eligible using the fuzzy RD approach, the effect of actually receiving HZ vaccination was a 22.7  
 579 (95% CI: 6.5 – 42.8, p=0.008) percentage point reduction in all-cause mortality over nine years.  
 580 There was no significant effect of HZ vaccination eligibility or receipt on non-dementia deaths.  
 581 As for deaths due to dementia, the effects of HZ vaccination eligibility and receipt on all-cause  
 582 mortality were larger among women and statistically indistinguishable from zero among men  
 583 (**Supplement Fig. S14**). All results were similar for our DID as for our RD analysis. Both among  
 584 the whole sample and among women only, the effect on all-cause mortality was robust across  
 585 different choices of bandwidth and grace period, as well as when using local quadratic instead  
 586 of local linear regression, adjusting for the staggered rollout of the program, and when adding a  
 587 dichotomous covariate that indicated whether an individual had been diagnosed with ischemic  
 588 heart disease prior to the start date of the HZ vaccination program (**Supplement Fig. S15 and**  
 589 **S16**).  
 590  
 591



592  
 593 **Fig. 5. The effect of HZ vaccination on deaths due to dementia, non-dementia deaths, and**  
 594 **all-cause mortality.**<sup>1,2,3</sup>

595 <sup>1</sup> Dots show the point estimate and horizontal bars the 95% confidence interval.  
 596 <sup>2</sup> Deaths due to dementia were analyzed among a study cohort of patients who had received a diagnosis of dementia  
 597 prior to the start date of the HZ vaccination program.  
 598 <sup>3</sup> Non-dementia deaths were defined as deaths for which dementia was recorded as neither the underlying nor a  
 599 contributing cause of death in the death certificate.  
 600 Abbreviations: CI = confidence interval  
 601

602  
 603 **Discussion**

604 We found that HZ vaccination reduced both new diagnoses of MCI among those without any  
 605 record of cognitive impairment and deaths due to dementia among patients living with dementia.  
 606 The HZ vaccine, thus, appears to have a beneficial effect at both ends of the disease course of  
 607 dementia. Whilst our point estimates indicate large effect sizes, the exact magnitude of the  
 608 effect was difficult to ascertain in this analysis given the wide confidence intervals around our  
 609 estimates. Lower statistical power compared to standard associational analyses was a result of  
 610 our focus on individuals born in close proximity to the September 2 1933 date-of-birth threshold.

611  
612 Our findings suggest that HZ vaccination could be an effective intervention both to prevent or  
613 delay MCI and dementia, as well as to reduce disease progression among those already living  
614 with dementia. Using the same quasi-randomization approach as in this study, our group has  
615 previously shown that HZ vaccination reduced new diagnoses of dementia in both Wales as well  
616 as Australia(20, 33). This effect could have been observed as a result of HZ vaccination  
617 decreasing the transition from cognitively unimpaired to MCI, from MCI to dementia, or, because  
618 of the delay in diagnosing dementia in the health system(59–63), from undiagnosed to  
619 diagnosed dementia. This present study suggests that the HZ vaccine acts along the entire  
620 disease course of dementia and, thus, that our previously reported effects were due to a  
621 decrease in the transition along each of these dementia disease stages.

622  
623 Given that it is a readily available, relatively inexpensive(64–66), one-off intervention, the finding  
624 that HZ vaccination has a beneficial effect on the dementia disease process would be of great  
625 significance to population health, clinical medicine, and dementia research. Thus, confirming our  
626 previously reported findings from Wales and Australia is critical. In our view, it is key that such  
627 confirmatory studies utilize quasi-randomization opportunities because more standard  
628 associational analyses may lead to false confirmations as a result of confounding, such as the  
629 healthy vaccinee bias (i.e., the common observation that healthier, more health-motivated,  
630 individuals opt to be vaccinated(32)). Our quasi-randomized approach is far less vulnerable to  
631 these biases because health status, health-related motivation, and other dementia-related  
632 characteristics are unlikely to differ between individuals born just before versus just after a  
633 specific date-of-birth eligibility threshold. Therefore, in addition to its principal finding that the HZ  
634 vaccine appears to act along the entire disease course of dementia, an important contribution of  
635 this present study is that it confirms our previously reported findings in two different study  
636 populations (those without any record of cognitive impairment and those living with dementia)  
637 and using two different dementia-related outcomes (MCI and deaths due to dementia). Deaths  
638 with dementia as their primary cause among individuals living with dementia is a particularly  
639 opportune outcome in this regard because it is directly related to dementia, but less reliant on a  
640 timely diagnosis of dementia in the health system given that dementia is likely to be readily  
641 apparent by the time that it is the primary cause of death. Similarly, our secondary outcome of  
642 all-cause mortality among individuals living with dementia at baseline is entirely independent of  
643 the health system's process for diagnosing dementia. These mortality outcomes are, thus,  
644 largely measured differently than new diagnoses of dementia. In our view, being able to confirm  
645 the benefits of HZ vaccination for dementia using a set of outcomes that are all related to  
646 dementia, but measured differently, strengthens the evidence that HZ vaccination has an effect  
647 on the dementia disease process itself rather than only its measurement (e.g., a diagnostic  
648 pathway).

649  
650 We found that, among individuals living with dementia at baseline, HZ vaccination did not only  
651 lead to a decrease in deaths due to dementia but also a reduction in overall mortality.  
652 Specifically, we observed a decrease, which was larger among women than men, in both  
653 deaths due to dementia and all-cause mortality, but no effect on deaths for which dementia was  
654 not mentioned as the underlying or a contributing cause on the death certificate. Our findings,  
655 thus, imply that HZ vaccination among individuals living with dementia increased remaining life  
656 expectancy. This reduction in deaths due to dementia is unlikely to be a result of averted  
657 shingles episodes given that shingles has a low mortality rate(67). Instead, this study suggests  
658 that the HZ vaccine may slow dementia disease progression. Nonetheless, identifying the exact  
659 mechanism for this effect is in our view an important area of future research.

660

661 For each of our outcomes, we found that the protective effect of HZ vaccination was larger  
662 among women than men. We observed the same gender effect heterogeneity in our previous  
663 study in Wales for new diagnoses of dementia(20). However, although none of our results were  
664 statistically significant among men, we cannot exclude the possibility of substantial beneficial  
665 effects among men as well given the width of our confidence intervals. A strong gender effect  
666 heterogeneity, with beneficial effects usually being more pronounced among females, has  
667 frequently been observed for off-target effects of vaccines(17). Our observed effect  
668 heterogeneity between women and men may, thus, reflect immunological sex differences.  
669 These immunological sex differences may be pathogen-independent, but could also be specific  
670 to the interaction of the immune system with the varicella zoster virus(68). The occurrence of  
671 shingles has, for instance, been reported to be more common among women in several  
672 studies(69, 70). Additionally, it is equally possible that our observed gender effect heterogeneity  
673 reflects differences in the pathophysiology of some types of dementia between women and  
674 men; an area that has received increasing research interest in recent years(71–73).

675  
676 The key strength of this study is its quasi-randomized design. Prior to our analysis in Wales, all  
677 epidemiological studies on the relationship between vaccines and dementia had simply  
678 compared vaccine recipients with non-recipients whilst attempting to control for the myriad of  
679 characteristics that differ between those who opt to be vaccinated versus those who do not(21–  
680 29). Electronic health record data do not have detailed information on health behaviors, such as  
681 physical activity and diet(74, 75), that are known to be linked to other health behaviors  
682 (including vaccination) as well as dementia. These studies are, thus, vulnerable to  
683 confounding(76). Our approach is fundamentally different in that we compare individuals who  
684 were ineligible or eligible for HZ vaccination because they were born just before or just after the  
685 date-of-birth eligibility threshold (September 2 1933) for HZ vaccination. On average, individuals  
686 in Wales born in one week versus merely a week later would not be expected to differ in their  
687 health characteristics and behaviors. In the case of the September 2 1933 threshold, however,  
688 there was a large difference in the probability of ever receiving the HZ vaccine between these  
689 groups who differed in age by merely a week. The eligibility rules of the HZ vaccination program  
690 in Wales, thus, created two comparison groups just on either side of the September 2 1933  
691 threshold who were likely similar to each other except for their probability of receiving the  
692 intervention of interest (HZ vaccination). As a result, the findings from our analysis are more  
693 likely to reflect a causal relationship than those from the associational epidemiological  
694 evidence(21–30).

695  
696 The critical advantage of our quasi-randomization approach is that a confounding variable can  
697 only bias our analysis if it changes abruptly at precisely the September 2 1933 date-of-birth  
698 threshold(52, 53). Such an abrupt change in a confounding variable at the September 2 1933  
699 date-of-birth threshold might exist if there was another intervention that used the identical date-  
700 of-birth threshold as its eligibility criterion as the HZ vaccination program. We conducted a  
701 series of tests to investigate whether the existence of such an intervention is likely. Specifically,  
702 individuals just on either side of the September 2 1933 date-of-birth threshold were well-  
703 balanced at baseline in their past preventive health services uptake, prevalence of common  
704 causes of morbidity and mortality, and past incidence of MCI and deaths due to dementia.  
705 Similarly, there was no effect of the September 2 1933 date-of-birth threshold on common  
706 health outcomes (other than dementia) during our nine-year follow-up period, nor on preventive  
707 health services uptake indicators (other than HZ vaccination). Lastly, the September 2 date-of-  
708 birth threshold only had an effect on MCI and deaths due to dementia in the birth year (1933)  
709 that was used by the HZ vaccination program as its eligibility criterion. Thus, none of our tests  
710 suggested the existence of another intervention that also used the date of birth of September 2  
711 1933 as its eligibility criterion. It is in our view also unlikely that HZ vaccination led to increased

712 uptake of other preventive health services (e.g., the uptake of other vaccines at the same visit)  
713 because we did not observe any effect of HZ vaccination eligibility on available indicators of  
714 preventive health services among older adults in our data.

715  
716 We believe that our repeated findings from quasi-randomization studies of a beneficial effect of  
717 HZ vaccination for the dementia disease process call for further investments into this area of  
718 research, not only to confirm the effects but also to elucidate the mechanisms. Several potential  
719 mechanisms have already been identified. For instance, there is evidence that reactivations of  
720 the varicella zoster virus can lead to long-lasting cognitive impairment through vasculopathy(77,  
721 78), amyloid deposition and aggregation of tau proteins(8), neuroinflammation(11–14), as well  
722 as a pattern of cerebrovascular disease that is similar to that seen in Alzheimer’s disease, such  
723 as small to large vessel disease, ischemia, infarction, and hemorrhage(9–14). In addition,  
724 reactivations of the varicella zoster virus may lead to reactivations of the herpes simplex virus in  
725 the brain(79). This finding in turn would link HZ to the more extensive literature on the herpes  
726 simplex virus as a causative factor in the development of dementia(3, 80). Our repeated finding  
727 of a strong effect heterogeneity by gender, however, may also instead point to a pathogen-  
728 independent immunomodulatory mechanism(17). Some of these potential immune mechanisms  
729 have recently been described elsewhere(15).

730  
731 This study has several important limitations. First, given its implementation using local linear  
732 regression, RD is only able to reliably estimate absolute as opposed to relative effects(53, 54).  
733 Second, we were limited to information contained in electronic health record and death  
734 certificate data to define our study cohorts and outcomes. It is likely that there is considerable  
735 underascertainment in our data for cognitive impairment (to define the cognitively unimpaired  
736 study cohort for our first aim), dementia (to define the study cohort of individuals living with  
737 dementia for our second aim), MCI, and deaths due to dementia. Crucially, however, the degree  
738 of underascertainment (as well as any delay in making these diagnoses or in changes in data  
739 quality over time) is unlikely to differ between individuals born just before versus just after  
740 September 2 1933. As such, other than potential underestimation of the true benefits of HZ  
741 vaccination on an absolute scale, underascertainment of these variables was unlikely to bias  
742 our analysis. Third, we were also limited to the information available in electronic health record  
743 data to define the two stages of the disease course of dementia analyzed in this study. We, for  
744 instance, had no information on amyloid  $\beta$  or tau pathology or results from detailed  
745 neuropsychological assessments. Fourth, the COVID-19 pandemic started within our follow-up  
746 period and may have delayed new diagnoses of MCI as well as changed mortality rates among  
747 individuals living with dementia. However, as for our first limitation, the pandemic affected  
748 individuals just on either side of the September 2 1933 date-of-birth threshold equally and is,  
749 thus, unlikely to have introduced bias into our analysis. Fifth, some diagnoses of MCI in our data  
750 may have mistakenly been made for individuals who already had mild-to-moderate dementia.  
751 We believe that this is unlikely to be a major limitation of our analysis given that our effect  
752 estimates remained significant when requiring that a new diagnosis of MCI not be followed by a  
753 new diagnosis of dementia within three and within six months. Sixth, our findings pertain to  
754 those age groups born near to the September 2 1933 date-of-birth threshold (primarily those  
755 aged 79 to 80 years). We are unable to comment on the effects in other age groups. Seventh,  
756 we observed an imbalance in past ischemic heart disease diagnoses across the September 2  
757 1933 threshold among the study cohort for our second aim. We, however, show in the  
758 Supplement that our results were robust to any adjustment for this imbalance. In our view, this  
759 imbalance was likely a chance finding given that it was the only difference with a p-value less  
760 than 0.05 in 36 (18 among each of our two study cohorts) baseline balance tests that we  
761 conducted. Lastly, our results pertain to the live-attenuated HZ vaccine (Zostavax, Merck) only,  
762 because the newer recombinant HZ vaccine (Shingrix, GSK) was introduced into the NHS after

763 our follow-up period ended(81). A recent study of data from the United States that focused on  
764 comparing the association of HZ vaccination with dementia when only the older live-attenuated  
765 vaccine was available with the association when the newer recombinant vaccine was available,  
766 found that the newer vaccine was more strongly associated with a reduced risk of dementia(30).  
767 The study, however, had to assume that (after matching on select variables available in the  
768 electronic health record data) individuals who chose to be vaccinated for shingles when the  
769 older, one-dose, vaccine was available were not different in any of their dementia-related  
770 characteristics to those who chose to be vaccinated when the far more efficacious(68), two-  
771 dose, vaccine was available. One limitation, for instance, is therefore the possibility that some  
772 individuals may have delayed HZ vaccination to receive the more efficacious vaccine.

773  
774 In conclusion, this study suggests that HZ vaccination slows or prevents disease progression  
775 across the entire disease course of dementia. By taking advantage of the fact that the UK's  
776 National Health Service assigned individuals who differed in their age by just a few weeks to  
777 being eligible or ineligible for HZ vaccination based on their date of birth, we were able to  
778 generate evidence that is more likely to be causal than those from more standard  
779 epidemiological analyses. Our finding that HZ vaccination had a beneficial effect on two different  
780 dementia-related outcomes in two different patient samples, and at two opposing ends of the  
781 disease course of dementia, thus, provides promising evidence that HZ vaccination may prevent  
782 or slow the dementia disease process in a substantial proportion of individuals.

## 783 784 785 **Acknowledgements**

786 This study makes use of anonymized data held in the SAIL Databank. The authors are grateful  
787 for the continuous advice and support from the SAIL Databank analytical services team  
788 throughout all stages of the project. We would also like to acknowledge all the data providers  
789 who made anonymized data available for research. The responsibility for the interpretation of  
790 the data supplied by SAIL is the authors' alone. SAIL bears no responsibility for the further  
791 analysis or interpretation of their data, over and above that published by SAIL.

## 792 793 **Funding**

794 National Institutes of Health/National Institute on Aging, R01AG084535 (PG)  
795 National Institutes of Health/National Institute of Allergy and Infectious Diseases, DP2AI171011  
796 (PG)  
797 Chan Zuckerberg Biohub investigator award (PG)

## 798 799 **Authors' contributions**

800 M.X. and M.E. contributed equally to this work. M.X. and M.E. co-devised the methodology,  
801 analyzed and processed the data, created data visualizations, interpreted the results, and  
802 reviewed and edited the original draft. C.B. co-devised the methodology, interpreted the results,  
803 and reviewed and edited the original draft. H.A. interpreted the results, and reviewed and edited  
804 the original draft. P.G. conceived the overall project, acquired funding, conceived the study,  
805 devised the methodology, was responsible for administration and supervision, interpreted the  
806 results, wrote the original draft, and reviewed and edited the original draft.

## 807 808 **Competing interests**

809 The authors declare no competing interests.

## 810 811 **Data and materials availability**

812 The data that support the findings of this study are available from the SAIL Databank(33).  
813 Researchers must request access to the data directly from SAIL. The authors have no

814 permission to share the data. All Read and ICD codes to define variables are available in  
815 Supplement Materials. All statistical analysis code (in R) will be made available in a publicly  
816 accessible GitHub repository upon acceptance of the manuscript for publication.

817  
818  
819

## 820 **References:**

- 821 1. B. M. Bettcher, M. G. Tansey, G. Dorothée, M. T. Heneka, Peripheral and central immune  
822 system crosstalk in Alzheimer disease - a research prospectus. *Nat Rev Neurol* **17**, 689–701  
823 (2021).
- 824 2. R. F. Itzhaki, R. Lathe, B. J. Balin, M. J. Ball, E. L. Bearer, H. Braak, M. J. Bullido, C. Carter,  
825 M. Clerici, S. L. Cosby, K. Del Tredici, H. Field, T. Fulop, C. Grassi, W. S. T. Griffin, J.  
826 Haas, A. P. Hudson, A. R. Kamer, D. B. Kell, F. Licastro, L. Letenneur, H. Lövheim, R.  
827 Mancuso, J. Miklossy, C. Otth, A. T. Palamara, G. Perry, C. Preston, E. Pretorius, T.  
828 Strandberg, N. Tabet, S. D. Taylor-Robinson, J. A. Whittum-Hudson, Microbes and  
829 Alzheimer's Disease. *J Alzheimers Dis* **51**, 979–984 (2016).
- 830 3. D. P. Devanand, Viral Hypothesis and Antiviral Treatment in Alzheimer's Disease. *Curr*  
831 *Neurol Neurosci Rep* **18**, 55 (2018).
- 832 4. R. D. Moir, R. Lathe, R. E. Tanzi, The antimicrobial protection hypothesis of Alzheimer's  
833 disease. *Alzheimers Dement* **14**, 1602–1614 (2018).
- 834 5. A. Arvin, G. Campadelli-Fiume, E. Mocarski, P. S. Moore, B. Roizman, R. Whitley, K.  
835 Yamanishi, *Human Herpesviruses: Biology, Therapy, and Immunoprophylaxis* (Cambridge  
836 University Press, 2007).
- 837 6. W. A. Eimer, D. K. Vijaya Kumar, N. K. Navalpur Shanmugam, A. S. Rodriguez, T. Mitchell,  
838 K. J. Washicosky, B. György, X. O. Breakefield, R. E. Tanzi, R. D. Moir, Alzheimer's  
839 Disease-Associated  $\beta$ -Amyloid Is Rapidly Seeded by Herpesviridae to Protect against Brain  
840 Infection. *Neuron* **99**, 56-63.e3 (2018).
- 841 7. S. S. Soldan, P. M. Lieberman, Epstein–Barr virus and multiple sclerosis. *Nat Rev Microbiol*  
842 **21**, 51–64 (2023).
- 843 8. A. N. Bubak, C. N. Como, J. E. Hassell, T. Mescher, S. E. Frieze, C. S. Niemeyer, R. J.  
844 Cohrs, M. A. Nagel, Targeted RNA Sequencing of VZV-Infected Brain Vascular  
845 Adventitial Fibroblasts Indicates That Amyloid May Be Involved in VZV Vasculopathy.  
846 *Neurol Neuroimmunol Neuroinflamm* **9**, e1103 (2022).
- 847 9. J. Attems, K. A. Jellinger, The overlap between vascular disease and Alzheimer's disease--  
848 lessons from pathology. *BMC Med* **12**, 206 (2014).
- 849 10. P. A. Boyle, L. Yu, S. Nag, S. Leurgans, R. S. Wilson, D. A. Bennett, J. A. Schneider,  
850 Cerebral amyloid angiopathy and cognitive outcomes in community-based older persons.  
851 *Neurology* **85**, 1930–1936 (2015).

- 852 11. M. A. Nagel, A. N. Bubak, Varicella Zoster Virus Vasculopathy. *J Infect Dis* **218**, S107–  
853 S112 (2018).
- 854 12. M. A. Nagel, R. J. Cohrs, R. Mahalingam, M. C. Wellish, B. Forghani, A. Schiller, J. E.  
855 Safdieh, E. Kamenkovich, L. W. Ostrow, M. Levy, B. Greenberg, A. N. Russman, I.  
856 Katzan, C. J. Gardner, M. Häusler, R. Nau, T. Saraya, H. Wada, H. Goto, M. de Martino,  
857 M. Ueno, W. D. Brown, C. Terborg, D. H. Gilden, The varicella zoster virus  
858 vasculopathies: clinical, CSF, imaging, and virologic features. *Neurology* **70**, 853–860  
859 (2008).
- 860 13. M. A. Nagel, I. Traktinskiy, Y. Azarkh, B. Kleinschmidt-DeMasters, T. Hedley-Whyte, A.  
861 Russman, E. M. VanEgmond, K. Stenmark, M. Frid, R. Mahalingam, M. Wellish, A. Choe,  
862 R. Cordery-Cotter, R. J. Cohrs, D. Gilden, Varicella zoster virus vasculopathy: analysis of  
863 virus-infected arteries. *Neurology* **77**, 364–370 (2011).
- 864 14. M. A. Nagel, I. Traktinskiy, K. R. Stenmark, M. G. Frid, A. Choe, D. Gilden, Varicella-  
865 zoster virus vasculopathy: immune characteristics of virus-infected arteries. *Neurology* **80**,  
866 62–68 (2013).
- 867 15. A. S. Bukhbinder, Y. Ling, K. Harris, X. Jiang, P. E. Schulz, Do vaccinations influence the  
868 development of Alzheimer disease? *Hum Vaccin Immunother* **19**, 2216625 (2023).
- 869 16. C. S. Benn, A. B. Fisker, A. Rieckmann, S. Sørup, P. Aaby, Vaccinology: time to change  
870 the paradigm? *Lancet Infect Dis* **20**, e274–e283 (2020).
- 871 17. C. S. Benn, N. Amenyogbe, A. Björkman, J. Domínguez-Andrés, E. N. Fish, K. L.  
872 Flanagan, S. L. Klein, T. R. Kollmann, K. O. Kyvik, M. G. Netea, N. H. Rod, F. Scholtz-  
873 Buchholzer, F. Shann, L. Selin, S. M. Thysen, P. Aaby, Implications of Non-Specific  
874 Effects for Testing, Approving, and Regulating Vaccines. *Drug Saf* **46**, 439–448 (2023).
- 875 18. P. Aaby, C. S. Benn, K. L. Flanagan, S. L. Klein, T. R. Kollmann, D. J. Lynn, F. Shann,  
876 The non-specific and sex-differential effects of vaccines. *Nat Rev Immunol* **20**, 464–470  
877 (2020).
- 878 19. M. E. McGovern, D. Canning, Vaccination and all-cause child mortality from 1985 to  
879 2011: global evidence from the Demographic and Health Surveys. *Am J Epidemiol* **182**,  
880 791–798 (2015).
- 881 20. M. Eyting, M. Xie, S. Heß, P. Geldsetzer, Causal evidence that herpes zoster vaccination  
882 prevents a proportion of dementia cases. *medRxiv*, 2023.05.23.23290253 (2023).
- 883 21. K. Harris, Y. Ling, A. S. Bukhbinder, L. Chen, K. N. Phelps, G. Cruz, J. Thomas, Y. Kim,  
884 X. Jiang, P. E. Schulz, The Impact of Routine Vaccinations on Alzheimer’s Disease Risk in  
885 Persons 65 Years and Older: A Claims-Based Cohort Study using Propensity Score  
886 Matching. *J Alzheimers Dis* **95**, 703–718 (2023).

- 887 22. A. Lophatananon, K. Mekli, R. Cant, A. Burns, C. Dobson, R. Itzhaki, K. Muir, Shingles,  
888 Zostavax vaccination and risk of developing dementia: a nested case-control study-results  
889 from the UK Biobank cohort. *BMJ Open* **11**, e045871 (2021).
- 890 23. J. F. Scherrer, J. Salas, T. L. Wiemken, D. F. Hoft, C. Jacobs, J. E. Morley, Impact of  
891 herpes zoster vaccination on incident dementia: A retrospective study in two patient  
892 cohorts. *PLoS One* **16**, e0257405 (2021).
- 893 24. C. Schnier, J. Janbek, R. Lathe, J. Haas, Reduced dementia incidence after varicella zoster  
894 vaccination in Wales 2013-2020. *Alzheimers Dement (N Y)* **8**, e12293 (2022).
- 895 25. T. L. Wiemken, J. Salas, J. E. Morley, D. F. Hoft, C. Jacobs, J. F. Scherrer, Comparison of  
896 rates of dementia among older adult recipients of two, one, or no vaccinations. *J Am*  
897 *Geriatr Soc* **70**, 1157–1168 (2022).
- 898 26. A. Lophatananon, M. Carr, B. Mcmillan, C. Dobson, R. Itzhaki, R. Parisi, D. M. Ashcroft,  
899 K. R. Muir, The association of herpes zoster and influenza vaccinations with the risk of  
900 developing dementia: a population-based cohort study within the UK Clinical Practice  
901 Research Datalink. *BMC Public Health* **23**, 1903 (2023).
- 902 27. S. Ukraintseva, A. P. Yashkin, I. Akushevich, K. Arbeev, H. Duan, G. Gorbunova, E.  
903 Stallard, A. Yashin, Associations of infections and vaccines with Alzheimer’s disease point  
904 to a role of compromised immunity rather than specific pathogen in AD. *Exp Gerontol* **190**,  
905 112411 (2024).
- 906 28. S. Lehrer, P. H. Rheinstein, Herpes Zoster Vaccination Reduces Risk of Dementia. *In Vivo*  
907 **35**, 3271–3275 (2021).
- 908 29. T. Wilkinson, C. Schnier, K. Bush, K. Rannikmäe, R. A. Lyons, S. McTaggart, M. Bennie,  
909 C. L. Sudlow, Drug prescriptions and dementia incidence: a medication-wide association  
910 study of 17000 dementia cases among half a million participants. *J Epidemiol Community*  
911 *Health* **76**, 223–229 (2022).
- 912 30. M. Taquet, Q. Dercon, J. A. Todd, P. J. Harrison, The recombinant shingles vaccine is  
913 associated with lower risk of dementia. *Nat Med*, doi: 10.1038/s41591-024-03201-5 (2024).
- 914 31. UK Health Security Agency, Shingles: guidance and vaccination programme, *Shingles:*  
915 *guidance and vaccination programme* (2021).  
916 <https://www.gov.uk/government/collections/shingles-vaccination-programme>.
- 917 32. C. Renschmidt, O. Wichmann, T. Harder, Frequency and impact of confounding by  
918 indication and healthy vaccinee bias in observational studies assessing influenza vaccine  
919 effectiveness: a systematic review. *BMC Infect Dis* **15**, 429 (2015).
- 920 33. M. Pomirchy, C. Bommer, F. Pradella, F. Michalik, R. Peters, P. Geldsetzer, Herpes zoster  
921 vaccination and new diagnoses of dementia: A quasi-randomized study in Australia.  
922 *medRxiv*, 2024.06.27.24309563 (2024).



- 923 34. M. Anderson, E. Pitchforth, N. Edwards, H. Alderwick, A. McGuire, E. Mossialos, United  
924 Kingdom: Health System Review. *Health Syst Transit* **24**, 1–194 (2022).
- 925 35. Swansea University, SAIL Databank. <https://saildatabank.com/>.
- 926 36. D. V. Ford, K. H. Jones, J.-P. Verplancke, R. A. Lyons, G. John, G. Brown, C. J. Brooks, S.  
927 Thompson, O. Bodger, T. Couch, K. Leake, The SAIL Databank: building a national  
928 architecture for e-health research and evaluation. *BMC Health Serv Res* **9**, 157 (2009).
- 929 37. SAIL Databank, Welsh Longitudinal General Practice Dataset (WLGP) - Welsh Primary  
930 Care (2023). [https://web.www.healthdatagateway.org/dataset/33fc3ffd-aa4c-4a16-a32f-  
931 0c900aeea3d2](https://web.www.healthdatagateway.org/dataset/33fc3ffd-aa4c-4a16-a32f-0c900aeea3d2).
- 932 38. Welsh Results Reports Service (WRRS).  
933 <https://web.www.healthdatagateway.org/dataset/71d37610-ac55-432d-82a3-bdb04407acd8>.
- 934 39. T. Benson, The history of the Read Codes: the inaugural James Read Memorial Lecture  
935 2011. *Inform Prim Care* **19**, 173–182 (2011).
- 936 40. Digital Health and Care Wales, Welsh Demographic Service Dataset (WSDS) (2022).  
937 <https://web.www.healthdatagateway.org/dataset/cea328df-abe5-48fb-8bcb-c0a5b6377446#>.
- 938 41. Digital Health and Care Wales, Patient Episode Database for Wales, *Digital Health and  
939 Care Wales* (2020). [https://dhcw.nhs.wales/information-services/health-intelligence/pedw-  
940 data-online/](https://dhcw.nhs.wales/information-services/health-intelligence/pedw-data-online/).
- 941 42. Digital Health and Care Wales, Outpatient Database for Wales (OPDW) (2022).  
942 <https://web.www.healthdatagateway.org/dataset/d331159b-b286-4ab9-8b36-db39123ec229>.
- 943 43. Public Health Wales, Welsh Cancer Intelligence and Surveillance Unit (WCISU), *Public  
944 Health Wales* (2023). [https://phw.nhs.wales/services-and-teams/welsh-cancer-intelligence-  
945 and-surveillance-unit-wcisu/](https://phw.nhs.wales/services-and-teams/welsh-cancer-intelligence-and-surveillance-unit-wcisu/).
- 946 44. Digital Health and Care Wales, Annual District Death Extract (ADDE) (2023).  
947 <https://web.www.healthdatagateway.org/dataset/15cf4241-abad-4dcc-95b0-8cd7c02be999>.
- 948 45. NHS Digital, Attribution Data Set GP-Registered Populations Scaled to ONS Population  
949 Estimates - 2011. [https://digital.nhs.uk/data-and-  
950 information/publications/statistical/attribution-dataset-gp-registered-populations/attribution-  
951 data-set-gp-registered-populations-scaled-to-ons-population-estimates-2011](https://digital.nhs.uk/data-and-information/publications/statistical/attribution-dataset-gp-registered-populations/attribution-data-set-gp-registered-populations-scaled-to-ons-population-estimates-2011).
- 952 46. G. M. Moran, M. Calvert, M. G. Feltham, R. Ryan, T. Marshall, A retrospective cohort  
953 study to investigate fatigue, psychological or cognitive impairment after TIA: protocol  
954 paper. *BMJ Open* **5**, e008149 (2015).
- 955 47. Alzheimer's Association, 2022 Alzheimer's disease facts and figures. *Alzheimers Dement*  
956 **18**, 700–789 (2022).

- 957 48. P. A. Boyle, L. Yu, R. S. Wilson, S. E. Leurgans, J. A. Schneider, D. A. Bennett, Person-  
958 specific contribution of neuropathologies to cognitive loss in old age. *Ann Neurol* **83**, 74–83  
959 (2018).
- 960 49. P. A. Boyle, L. Yu, S. E. Leurgans, R. S. Wilson, R. Brookmeyer, J. A. Schneider, D. A.  
961 Bennett, Attributable risk of Alzheimer’s dementia attributed to age-related  
962 neuropathologies. *Ann Neurol* **85**, 114–124 (2019).
- 963 50. Office for National Statistics, Impact of registration delays on mortality statistics in  
964 England and Wales - Office for National Statistics.  
965 [https://www.ons.gov.uk/peoplepopulationandcommunity/birthsdeathsandmarriages/deaths/a](https://www.ons.gov.uk/peoplepopulationandcommunity/birthsdeathsandmarriages/deaths/articles/impactofregistrationdelaysonmortalitystatisticsinenglandandwales/latest)  
966 [rticles/impactofregistrationdelaysonmortalitystatisticsinenglandandwales/latest](https://www.ons.gov.uk/peoplepopulationandcommunity/birthsdeathsandmarriages/deaths/articles/impactofregistrationdelaysonmortalitystatisticsinenglandandwales/latest).
- 967 51. M. Villamizar-Villegas, F. A. Pinzon-Puerto, M. A. Ruiz-Sanchez, A comprehensive  
968 history of regression discontinuity designs: An empirical survey of the last 60 years.  
969 *Journal of Economic Surveys* **Epub ahead of print** (2022).
- 970 52. M. D. Cattaneo, N. Idrobo, R. Titiunik, *A Practical Introduction to Regression*  
971 *Discontinuity Designs: Foundations* (Cambridge University Press, Cambridge, 2020).
- 972 53. M. D. Cattaneo, L. Keele, R. Titiunik, A guide to regression discontinuity designs in  
973 medical applications. *Statistics in Medicine* **42**, 4484–4513 (2023).
- 974 54. G. W. Imbens, T. Lemieux, Regression discontinuity designs: A guide to practice. *Journal*  
975 *of Econometrics* **142**, 615–635 (2008).
- 976 55. S. Calonico, M. D. Cattaneo, R. Titiunik, Robust Nonparametric Confidence Intervals for  
977 Regression-Discontinuity Designs. *Econometrica* **82**, 2295–2326 (2014).
- 978 56. A. Gelman, G. Imbens, Why High-Order Polynomials Should Not Be Used in Regression  
979 Discontinuity Designs. *Journal of Business & Economic Statistics*, 1–10 (2017).
- 980 57. Global Burden of Disease Project 2019, GBD Compare (2020).  
981 <http://vizhub.healthdata.org/gbd-compare>.
- 982 58. Statistical Directorate, “Welsh Index of Multiple Deprivation 2011: Summary Report”  
983 (Welsh Government, Cardiff, 2011); [https://www.gov.wales/welsh-index-multiple-](https://www.gov.wales/welsh-index-multiple-deprivation-full-index-update-ranks-2011)  
984 [deprivation-full-index-update-ranks-2011](https://www.gov.wales/welsh-index-multiple-deprivation-full-index-update-ranks-2011).
- 985 59. L. Lang, A. Clifford, L. Wei, D. Zhang, D. Leung, G. Augustine, I. M. Danat, W. Zhou, J.  
986 R. Copeland, K. J. Anstey, R. Chen, Prevalence and determinants of undetected dementia in  
987 the community: a systematic literature review and a meta-analysis. *BMJ Open* **7**, e011146  
988 (2017).
- 989 60. D. van Vliet, M. E. de Vugt, C. Bakker, Y. a. L. Pijnenburg, M. J. F. J. Vernooij-Dassen, R.  
990 T. C. M. Koopmans, F. R. J. Verhey, Time to diagnosis in young-onset dementia as  
991 compared with late-onset dementia. *Psychol Med* **43**, 423–432 (2013).

- 992 61. A. Chiari, M. Tondelli, C. Galli, C. Carbone, L. Fiondella, S. Salemme, G. Vinceti, R.  
993 Bedin, M. A. Molinari, G. Zamboni, How long does it take to diagnose young-onset  
994 dementia? A comparison with late-onset dementia. *Neurol Sci* **43**, 4729–4734 (2022).
- 995 62. Y. Chen, M. C. Power, F. Grodstein, A. W. Capuano, B. S. Lange-Maia, A. Moghtaderi, E.  
996 K. Stapp, J. Bhattacharyya, R. C. Shah, L. L. Barnes, D. X. Marquez, D. A. Bennett, B. D.  
997 James, Correlates of missed or late versus timely diagnosis of dementia in healthcare  
998 settings. *Alzheimers Dement*, doi: 10.1002/alz.14067 (2024).
- 999 63. A.-S. Helvik, K. Engedal, J. Šaltytė Benth, G. Selbæk, Time from Symptom Debut to  
1000 Dementia Assessment by the Specialist Healthcare Service in Norway. *Dement Geriatr*  
1001 *Cogn Dis Extra* **8**, 117–127 (2018).
- 1002 64. Centers for Disease Control and Prevention, Archived CDC Vaccine Price List as of June 1,  
1003 2018, *Adult Vaccine Price List* (2022).  
1004 [https://www.cdc.gov/vaccines/programs/vfc/awardees/vaccine-management/price-](https://www.cdc.gov/vaccines/programs/vfc/awardees/vaccine-management/price-list/2018/2018-06-01.html)  
1005 [list/2018/2018-06-01.html](https://www.cdc.gov/vaccines/programs/vfc/awardees/vaccine-management/price-list/2018/2018-06-01.html).
- 1006 65. P. K. Singhal, D. Zhang, Costs of adult vaccination in medical settings and pharmacies: an  
1007 observational study. *J Manag Care Spec Pharm* **20**, 930–936 (2014).
- 1008 66. L. A. Prosser, R. Harpaz, A. M. Rose, A. Gebremariam, A. Guo, I. R. Ortega-Sanchez, F.  
1009 Zhou, K. Dooling, A Cost-Effectiveness Analysis of Vaccination for Prevention of Herpes  
1010 Zoster and Related Complications: Input for National Recommendations. *Ann Intern Med*  
1011 **170**, 380–388 (2019).
- 1012 67. H. Bricout, M. Haugh, O. Olatunde, R. G. Prieto, Herpes zoster-associated mortality in  
1013 Europe: a systematic review. *BMC Public Health* **15**, 466 (2015).
- 1014 68. R. Harbecke, J. I. Cohen, M. N. Oxman, Herpes Zoster Vaccines. *J Infect Dis* **224**, S429–  
1015 S442 (2021).
- 1016 69. D. M. Fleming, K. W. Cross, W. A. Cobb, R. S. Chapman, Gender difference in the  
1017 incidence of shingles. *Epidemiol Infect* **132**, 1–5 (2004).
- 1018 70. F. Marra, K. Parhar, B. Huang, N. Vadlamudi, Risk Factors for Herpes Zoster Infection: A  
1019 Meta-Analysis. *Open Forum Infect Dis* **7**, ofaa005 (2020).
- 1020 71. M. T. Ferretti, J. Martinkova, E. Biskup, T. Benke, G. Gialdini, Z. Nedelska, K. Rauen, V.  
1021 Mantua, D. Religa, J. Hort, A. Santuccione Chadha, R. Schmidt, Sex and gender differences  
1022 in Alzheimer’s disease: current challenges and implications for clinical practice: Position  
1023 paper of the Dementia and Cognitive Disorders Panel of the European Academy of  
1024 Neurology. *Eur J Neurol* **27**, 928–943 (2020).
- 1025 72. M. T. Ferretti, M. F. Iulita, E. Cavedo, P. A. Chiesa, A. Schumacher Dimech, A.  
1026 Santuccione Chadha, F. Baracchi, H. Girouard, S. Misoch, E. Giacobini, H. Depypere, H.  
1027 Hampel, Women’s Brain Project and the Alzheimer Precision Medicine Initiative, Sex

- 1028 differences in Alzheimer disease - the gateway to precision medicine. *Nat Rev Neurol* **14**,  
1029 457–469 (2018).
- 1030 73. K. R. Laws, K. Irvine, T. M. Gale, Sex differences in Alzheimer’s disease. *Curr Opin*  
1031 *Psychiatry* **31**, 133–139 (2018).
- 1032 74. G. Livingston, J. Huntley, A. Sommerlad, D. Ames, C. Ballard, S. Banerjee, C. Brayne, A.  
1033 Burns, J. Cohen-Mansfield, C. Cooper, S. G. Costafreda, A. Dias, N. Fox, L. N. Gitlin, R.  
1034 Howard, H. C. Kales, M. Kivimäki, E. B. Larson, A. Ogunniyi, V. Orgeta, K. Ritchie, K.  
1035 Rockwood, E. L. Sampson, Q. Samus, L. S. Schneider, G. Selbæk, L. Teri, N. Mukadam,  
1036 Dementia prevention, intervention, and care: 2020 report of the Lancet Commission. *Lancet*  
1037 **396**, 413–446 (2020).
- 1038 75. R. Townsend, A. Fairley, S. Gregory, C. Ritchie, E. Stevenson, O. M. Shannon, Nutrition  
1039 for dementia prevention: a state of the art update for clinicians. *Age Ageing* **53**, ii30–ii38  
1040 (2024).
- 1041 76. M. A. Hernan, J. M. Robins, *Causal Inference: What If* (Chapman & Hall/CRC, Boca  
1042 Raton, FL, 1st Edition., 2020).
- 1043 77. B. Silver, M. A. Nagel, R. Mahalingam, R. Cohrs, D. S. Schmid, D. Gilden, Varicella zoster  
1044 virus vasculopathy: a treatable form of rapidly progressive multi-infarct dementia after 2  
1045 years’ duration. *J Neurol Sci* **323**, 245–247 (2012).
- 1046 78. D. Gilden, C. Grose, T. White, L. Nague, R. L. Hendricks, R. J. Cohrs, M. A. Nagel,  
1047 Successful antiviral treatment after 6years of chronic progressive neurological disease  
1048 attributed to VZV brain infection. *J Neurol Sci* **368**, 240–242 (2016).
- 1049 79. D. M. Cairns, R. F. Itzhaki, D. L. Kaplan, Potential Involvement of Varicella Zoster Virus  
1050 in Alzheimer’s Disease via Reactivation of Quiescent Herpes Simplex Virus Type 1. *J*  
1051 *Alzheimers Dis* **88**, 1189–1200 (2022).
- 1052 80. R. F. Itzhaki, Overwhelming Evidence for a Major Role for Herpes Simplex Virus Type 1  
1053 (HSV1) in Alzheimer’s Disease (AD); Underwhelming Evidence against. *Vaccines (Basel)*  
1054 **9**, 679 (2021).
- 1055 81. C. X. Pan, M. S. Lee, V. E. Nambudiri, Global herpes zoster incidence, burden of disease,  
1056 and vaccine availability: a narrative review. *Ther Adv Vaccines Immunother* **10**,  
1057 25151355221084535 (2022).

1058