

1 **Triangulating Evidence for Antihypertensive Drug Class Efficacy on**
2 **Cardiovascular and Metabolic Outcomes Using Mendelian Randomisation and**
3 **Colocalisation**

4 Nhu Ngoc Le¹, Tran Quoc Bao Tran¹, John McClure¹, Dipender Gill², Sandosh
5 Padmanabhan¹

¹ BHF Cardiovascular Research Center, School of Cardiovascular and Metabolic Health, University of Glasgow, Glasgow G12 8TA, UK

² Department of Epidemiology and Biostatistics, School of Public Health, Imperial College London, London W2 1PG, UK

Corresponding author:

Prof. Sandosh Padmanabhan

Sandosh.Padmanabhan@glasgow.ac.uk

BHF Cardiovascular Research Center, School of Cardiovascular and Metabolic Health, University of Glasgow, Glasgow G12 8TA, UK

Total word count: 7237 words (Main text: 4369 words)

Abstract word count: 306 words

6 Abstract

7 Background

8 Current hypertension treatment guidelines typically recommend a standardised
9 approach, which may not account for the inter-individual variability in blood pressure
10 (BP) response or the complex causation of hypertension. This study aims to
11 investigate the heterogeneity of responses to a broad range of antihypertensive
12 drugs across various cardiometabolic and renal outcomes.

13 Methods

14 This study employed an integrative approach combining Mendelian randomisation
15 (MR), summary-based MR (SMR), and colocalisation analyses to investigate the
16 impact of BP lowering and the efficacy of seventeen antihypertensive drug classes
17 on the risk of coronary artery disease (CAD), myocardial infarction (MI), atrial
18 fibrillation (AF), heart failure (HF), ischemic stroke, chronic kidney disease (CKD),
19 and type 2 diabetes (T2D). Genetic association and gene expression summary data
20 were obtained from the largest European ancestry GWAS and GTEx v8 for 29
21 tissues that were broadly relevant to the pathophysiology of cardiovascular
22 outcomes included.

23 Results

24 The genetic evidence supported that lower SBP was universally beneficial, causally
25 associated with reduced risks of all studied outcomes. The association of genetically
26 predicted SBP lowering varied significantly depending on the antihypertensive drug
27 class, revealing heterogeneity in their impact on different health outcomes. Novel MR
28 associations were identified, including protective effects of endothelin receptor
29 antagonists, sGC stimulators, and PDE5 inhibitors against CAD (per 10-mmHg

30 decrease in SBP, OR range = 0.197 - 0.348) and ischemic stroke (OR range = 0.218
31 - 0.686); and sGC stimulators and PDE5 inhibitors against CKD risk (OR range =
32 0.532 - 0.55). SMR and colocalisation analyses include evidence for *GUCY1A3* and
33 CAD and MI risk, *KCNH2* with AF risk, and *PDE5A* with CAD risk.

34 **Conclusions**

35 Our results support potential differential impacts of antihypertensive drug classes on
36 cardiometabolic and renal outcomes, underscoring the potential for personalised
37 therapy. Future research should validate these findings across diverse populations
38 and explore the mechanistic pathways between antihypertensive BP modulation and
39 health outcomes.

40 **Clinical Perspective**

41 **What is New?**

- 42 • This study utilised Mendelian randomisation, summary-based MR, and
43 colocalisation analyses to explore the differential effects of 17
44 antihypertensive drug classes on various cardiometabolic and renal
45 outcomes.
- 46 • Although lower SBP is universally beneficial for reducing risks across all
47 outcomes, the effectiveness of SBP lowering varies significantly by
48 antihypertensive drug class, showing heterogeneity in their impact on different
49 health outcomes.
- 50 • Newer therapies, including ERAs, PDE5 inhibitors, and sGC stimulators,
51 showed significant protective effects across various outcomes, with ERAs
52 benefiting AF, CAD, MI, and stroke; PDE5 inhibitors protecting against all

53 outcomes except T2D; and sGC stimulators being effective against CAD, MI,
54 stroke, T2D, and CKD.

55 **What are the Clinical Implications?**

- 56 • Understanding the varying impacts of different antihypertensive drug classes
57 on health outcomes can guide more personalised treatment strategies,
58 potentially improving patient outcomes.
- 59 • These results not only validate the clinical relevance of existing
60 antihypertensive therapies but also highlight new therapeutic targets, such as
61 *GUCY1A3* and *PDE5A*, for further exploration.
- 62 • Future research should focus on validating these results across diverse
63 populations to refine hypertension management strategies and implement
64 personalised treatment in clinical practice.

65

66

67

68

69

70

71

72

73

74

75

76 Introduction

77 Blood pressure (BP) regulation is a complex, multifactorial process influenced by a
78 range of genetic, environmental, and lifestyle factors (1). Hypertension, defined as a
79 BP level above a specific threshold associated with an increased risk of
80 cardiovascular outcomes, is similarly multifactorial (2). Current hypertension
81 treatment guidelines generally recommend an empirical approach, where the initial
82 treatment involves the use of one or two first-line antihypertensive agents from
83 different pharmacological classes based on the severity of BP elevation (3-5). If BP
84 remains uncontrolled, additional agents are sequentially introduced. Given the
85 complexity of hypertension pathophysiology, it remains unclear whether the
86 standardised approach to treatment is the optimal strategy for BP control. The
87 question of whether individually targeted BP treatments can maximise clinical
88 benefits has not been thoroughly explored.

89 Randomised clinical trials (RCTs) have established the efficacy of commonly used
90 antihypertensive drugs (6, 7), leading to the perception that the case for
91 personalising therapy is more academic than clinically relevant. Nevertheless,
92 despite regularly updated guidelines and a wealth of clinical evidence, a significant
93 percentage of adults with hypertension continue to have uncontrolled BP despite
94 ongoing antihypertensive therapy (8). This persistent issue suggests that a re-
95 evaluation of treatment strategies may be necessary.

96 There is substantial evidence for intra- and inter-individual variability in BP response
97 to different antihypertensive drugs partially explained by factors such as genetics,
98 age, sex, dietary factors and baseline BP levels (1). Additionally, variability in long-

99 term outcomes has been observed depending on the antihypertensive drug class; for
100 example, ACE inhibitors and ARBs have demonstrated superior efficacy in reducing
101 the risks of heart failure and chronic kidney disease (9, 10). The recent PHYSIC trial,
102 employing a randomized repeated cross-over design, further highlighted significant
103 variability in individual BP responses to four commonly used antihypertensive drugs,
104 suggesting that personalised therapy could achieve greater BP reductions (11).
105 However, evidence gaps remain, particularly concerning other antihypertensive drug
106 classes and a broader range of clinically important outcomes, such as coronary
107 artery disease (CAD), stroke, heart failure (HF), atrial fibrillation (AF), chronic kidney
108 disease (CKD), and type 2 diabetes (T2D). Addressing these gaps through
109 randomized controlled trials (RCTs) is likely to be both challenging and impractical.

110 Over the last 15 years, genome-wide association studies (GWAS) have provided a
111 wealth of genetic data, enabling novel analytical approaches to study the causal
112 effects of risk factors and therapeutic interventions on health outcomes (12).
113 Mendelian randomisation (MR) (13), summary-based Mendelian Randomisation
114 (SMR) (14), and colocalisation analyses (15) are powerful tools that leverage genetic
115 variants as instrumental variables to infer causality and elucidate the mechanisms
116 underlying complex traits. By using genetic proxies for BP, MR can elucidate the
117 long-term effects of BP-reducing drug targets on various health outcomes, relatively
118 devoid of confounding factors and reverse causation (13). SMR further extends this
119 approach to identify causal effects of gene expression on traits, while colocalisation
120 distinguishes between pleiotropy and shared genetic causation (14, 15).

121 In this study, we propose to explore the heterogeneity of responses to a majority of
122 antihypertensive drugs across a wide range of cardiometabolic and renal outcomes
123 through an integrative approach combining MR, SMR, and colocalisation analyses.

124 By combining multiple methods along with triangulation of evidence, this study seeks
125 to strengthen the case for personalised therapy for hypertension, challenging the
126 standardised treatment approach currently advocated in clinical guidelines.

127 **Methods**

128 Study design: Our study includes two stages: (i) perform two-sample Mendelian
129 randomisation (MR) to explore potential causal effects of SBP reduction and
130 antihypertensive drug classes on a range of cardiovascular, diabetic, and renal
131 outcomes; (ii) perform summary-based MR and colocalisation to examine if any
132 detected drug-disease association is mediated through gene transcription,
133 integrating summary data from GWAS and expression quantitative trait loci (eQTL)
134 studies (**Figure 1**).

135 All data used in this study are publicly available summary data extracted from GWAS
136 and eQTL studies, with ethical approval and informed consent from all participants
137 being obtained from their original studies.

138 **Identification of antihypertensive drug classes and their drug target genes**

139 17 antihypertensive drug classes were identified by reviewing the British National
140 Formulary (BNF) (16). These are angiotensin-converting enzyme inhibitors (ACEi),
141 angiotensin II receptor blockers (ARBs), calcium channel blockers (CCBs), beta-
142 adrenoceptor blockers (BBs), thiazides and related diuretics (TZDs), alpha-
143 adrenoceptor blockers, adrenergic neuron blocking drugs, centrally acting
144 antihypertensive drugs, loop diuretics, potassium-sparing diuretics (PSDs),
145 aldosterone antagonists, renin inhibitors, endothelin receptor antagonists (ERAs),
146 phosphodiesterase type 5 (PDE5) inhibitors, soluble guanylate cyclase (sGC)
147 stimulators, and vasodilator antihypertensives. An emerging therapy included in our

148 study is Zilebesiran (17), an investigational RNA interference agent that inhibits the
149 production of hepatic angiotensinogen, which has shown effectiveness in lowering
150 BP (**Table S1**).

151 Pharmacologically active protein targets of each drug class and the corresponding
152 genes were identified using the Drugbank database. In total, we obtained 57 drug
153 target genes (**Table S1**).

154 **Selection of genetic instruments for MR analysis of drug class effects**

155 To proxy the effect of antihypertensive drug target perturbation, genetic instruments
156 were selected as single nucleotide polymorphisms (SNPs) located within 100 kb on
157 either side of each drug target gene and strongly associated with systolic blood
158 pressure (SBP) at a genome-wide significant level $p\text{-value} < 5 \times 10^{-8}$. Summary
159 statistics for SBP were obtained from a GWAS meta-analysis of 757,601 European-
160 ancestry participants drawn from the UK Biobank and the International Consortium of
161 Blood Pressure (ICBP) (18).

162 For some drug classes whose protein targets are encoded by different genes,
163 genetic instruments for each gene were combined as a single set of instruments for
164 the drug effect analysis (19).

165 Linkage disequilibrium (LD) clumping at $r^2 < 0.1$ was conducted to remove highly
166 correlated SNPs. F-statistics were calculated to evaluate the strength of individual
167 genetic instruments (20).

168 **Selection of genetic instruments for MR analysis of SBP-lowering effects**

169 SNPs associated with SBP at a $p\text{-value} < 5 \times 10^{-8}$ (18) across the whole genome were
170 selected as genetic instruments for SBP. Due to the large number of SNPs identified,

171 a more stringent threshold $r^2 < 0.001$ was used for the clumping to minimise potential
172 bias from LD. The instrument strength was quantified using R^2 and F-statistics (20).

173 **Selection of genetic instruments for summary-based MR analysis of drug** 174 **target gene expression**

175 Cis-expression quantitative loci (cis-eQTL) were selected as genetic instruments to
176 proxy for the effect of changes in gene expression level. Only cis-eQTL located
177 within 1 Mb window of the gene were considered for the selection. Significant cis-
178 eQTL data ($p < 5 \times 10^{-8}$) were obtained from GTEx version 8 (49 tissues, from nearly
179 1000 deceased individuals, predominantly European ancestry) (21). The eQTL data
180 is on a scale of 1 unit change in gene expression level per each additional effect
181 allele.

182 For positive control testing and validation, the association of gene expression with
183 SBP were examined - only genes whose expression levels were associated with
184 SBP ($p < 0.05$) were taken forward for the SMR analysis on the outcomes.

185 **Outcome data**

186 Outcomes under this study include CAD, MI, AF, HF, ischemic stroke, CKD and T2D.
187 These outcomes were selected for the study based on their clinical significance and
188 relevance to hypertension and BP-lowering drug effects (22-25). GWAS summary
189 data for these outcomes were obtained from the largest GWAS available, with most
190 participants of European ancestry to align with our exposure data (**Table 1**).

191 **Two-sample Mendelian randomisation analysis**

192 MR is a form of instrumental variable analysis, which uses genetic variants as
193 proxies to evaluate the potential causal effect of a modifiable exposure on health
194 outcomes. MR relies on three main assumptions: (i) the genetic variant is strongly

195 associated with the exposure; (ii) the genetic variant is not associated with any
196 confounders relating to the association between the exposure and the outcome; (iii)
197 the genetic variant is not associated with the outcome, except through the exposure.

198 In this two-sample MR analysis, genetic variants located in the vicinity of a gene that
199 encodes the BP-lowering drug target were used as instruments to investigate the
200 causal relationship between antihypertensive drugs and the outcomes. Data
201 harmonisation was performed to ensure the variant-exposure association and the
202 variant-outcome association are aligned to the same effect allele. Palindromic
203 variants were not excluded from the analysis. To ensure consistency in genetic
204 variants used across MR analyses, proxies were not used in our study.

205 The inverse-variant weighted (IVW) method was used as the main MR method. MR
206 estimates were presented as odds ratio (OR) for each outcome, with a 95%
207 confidence interval (CI) per 10 mmHg decrease in SBP. This is to reflect the BP-
208 lowering effect of antihypertensive drug classes. To account for multiple testing, a
209 Bonferroni-corrected p-value of 0.0007 ($0.05 / 11$ (drug classes & SBP) $\times 7$
210 outcomes) was used to detect significant associations; those with a p-value greater
211 than 0.0007 but less than 0.05 were considered nominal associations.

212 The simple median (26), weighted median (26) and MR Egger (27) methods were
213 performed as sensitivity analyses to evaluate the robustness of MR findings to
214 potential bias. These methods have less stringent assumptions compared to the IVW
215 method. Simple median and weight median methods require at least 50% of the
216 genetic variants to be valid to give a robust MR estimate. MR Egger can give a
217 consistent MR estimate of the causal effect when up to 100% of genetic variants are
218 invalid but require the Instrument Strength Independent of Direct Effect (InSIDE)
219 assumption to be satisfied. The InSIDE assumption states that there is no correlation

220 between the pleiotropic effects of genetic variants and the variant-exposure
221 association. Additionally, the MR Egger method provides a test, known as the MR
222 Egger intercept test, to detect directional pleiotropy. The deviation of the intercept
223 from zero indicates evidence of directional pleiotropy (27).

224 Negative control outcome MR analysis was performed for the following outcomes:
225 low hand grip strength (28) (48,596 cases; 207,927 controls; European ancestry),
226 myopia (29) (36,623 cases; 419,031 controls; European ancestry), Parkinson
227 disease (30) (15,056 cases, 18,618 proxy cases, 449,056 controls; European
228 ancestry), and heel bone mineral density (31) (583,314 European ancestry
229 individuals). These outcomes are selected as negative controls as they are currently
230 not known to share strong pathological pathways with hypertension.

231 As BP summary data were obtained from a GWAS meta-analysis that adjusted for
232 body mass index (BMI), collider bias might be introduced in the MR analysis. We
233 performed a sensitivity analysis using BP summary data from a UKB GWAS that did
234 not adjust for BMI (32).

235 To explore whether observed associations between antihypertensive drug classes
236 and the outcomes are mediated through their BP-lowering effect, we performed MR
237 analysis to investigate potential causal effects of genetically proxied SBP reduction
238 on the outcomes of interest, leveraging genetic instruments throughout the whole
239 genome.

240 LD clumping was performed using the TwoSampleMR package in R (33); IVW,
241 weighted median, simple median, and MR Egger were performed using the
242 MendelianRandomization package (version 0.6.0) in R (34).

243 **Summary-based Mendelian randomisation analysis**

244 Summary-based Mendelian randomisation analysis (SMR) is a form of MR analysis
245 that integrates GWAS and eQTL summary data to discover potential causal
246 association of gene expression level with an outcome. Out of 49 tissues in the GTEx
247 v8 (21), we performed the analysis on 29 tissues that are relevant to the
248 pathophysiology of outcomes of interest and mechanism of the antihypertensive
249 drugs. SMR estimate was presented as a beta coefficient with 95% CI per 1 unit
250 increase in the expression of the gene in a particular tissue. To account for multiple
251 SMR testing, a Bonferroni-corrected p-value of 0.0001 was used to explore
252 significant associations; a p-value greater than 0.0001 but less than 0.05 indicates a
253 nominal association.

254 HEIDI test is integrated into the SMR method to investigate if an observed
255 association between gene expression and the outcome is due to a linkage scenario,
256 in which the gene expression level and the outcome do not share a causal variant
257 (14). A p_{HEIDI} of 0.01 was used as a threshold to indicate a linkage scenario - $p_{\text{HEIDI}} <$
258 0.01 indicates the observed association is likely due to a linkage scenario (14, 35).

259 SMR analyses and HEIDI tests were performed using SMR software version 1.3.1.
260 Default settings were used: $p_{\text{eQTL}} < 5 \times 10^{-8}$, $\text{MAF} > 0.01$, and eQTL that are in very
261 high or very low LD with the top associated eQTL ($r^2 > 0.9$ or $r^2 < 0.05$) were
262 excluded from the HEIDI test to avoid collinearity (14).

263 **Colocalisation analysis**

264 Colocalisation analysis was performed to investigate if an observed association
265 between gene expression level and the outcome is due to a shared causal variant.
266 We used coloc v5.2.1 R package to perform the analysis. Within a particular

267 genomic region, a Bayesian test was performed to calculate posterior probabilities

268 (PP) for five scenarios (15):

269 H_0 : There is no variant associated with either trait.

270 H_1 and H_2 : There is a variant associated with only one of the two traits.

271 H_3 : There are distinct causal variants associated with each of the traits.

272 H_4 : There is a shared causal variant for both traits.

273 A high PP for H_4 indicates a high probability of a shared causal variant for the traits.

274 Whereas a high PP for H_3 suggests that the observed association is likely due to a

275 linkage scenario. We used default prior settings for the colocalisation analysis: $p_1 =$

276 10^{-4} , $p_2 = 10^{-4}$, $p_{12} = 10^{-5}$.

277 Results

278 Genetic instruments

279 Throughout the entire genome, 454 uncorrelated SNPs ($r^2 < 0.001$) were identified

280 as genetic instruments for SBP (**Table S2**). F-statistics for all of the SNPs were

281 greater than 10, suggesting a low risk of weak instrument bias. Genetic instruments

282 accounted for 4.7% of the total variance in SBP.

283 By using the predefined selection criteria, ten antihypertensive drug classes have

284 genetic instruments for their effects (**Table S3**). These drug classes include AGTi (2

285 SNPs), ACEi (1 SNP), CCBs (29 SNPs), BB (7 SNPs), alpha-blocker (1 SNP), loop

286 diuretic (4 SNPs), PSD (1 SNP), ERA (1 SNP), PDE5i (5 SNPs), and sGC stimulator

287 (6 SNPs). F-statistics for all SNPs were greater than 10 (ranging from 30.48 to

288 352.48), which suggests that the risk of weak instrument bias is low.

289 MR analysis of genetically proxied SBP reduction

290 Genetically predicted SBP reduction was significantly associated with a reduced risk
291 of all the primary outcomes, with ORs for the outcomes ranging from 0.71 to 0.87 per
292 10 mmHg decrease in SBP (**Fig 2, Table S4**). The results obtained from the simple
293 median, weighted median, and MR Egger methods were consistent with the primary
294 MR analysis for all the outcomes except for T2D. The MR Egger intercept test
295 indicated evidence of horizontal pleiotropy in the MR analysis of SBP with T2D risk
296 (p-value intercept test = 0.0004; MR Egger OR per 10 mmHg decrease in SBP, 1.08,
297 95% CI, 0.92 - 1.26, $p = 0.35$) (**Table S4**).

298 **MR analysis of antihypertensive drug classes**

299 Genetically proxied antihypertensive drugs showed varying associations with
300 cardiovascular outcomes (**Fig. 2-3, Table S5**). Most drugs were associated with a
301 reduced risk of CAD, with ACEi and alpha-blockers showing nominal association
302 (OR ranging from 0.197 to 0.747 per 10 mmHg decrease in SBP). AGTi, CCB, ERA,
303 and PDE5i showed protective effects against ischemic stroke, while there was
304 suggestive evidence for sGC and PSD (OR range = 0.218 - 0.822). BB and sGC
305 were associated with a reduced risk of MI; AGTi, CCB, ERA and PDE5i showed
306 nominal associations (OR range = 0.187 - 0.781). For AF risk, we observed
307 protective effects of CCB and BB, and suggestive evidence for loop diuretics, ERA,
308 and PDE5i (OR range = 0.409 - 0.766). For HF, CCB showed a protective effect,
309 while BB and PDE5i showed suggestive evidence of a protective effect (OR range =
310 0.652 - 0.731). sGC and PDE5i were associated with a reduced risk of CKD;
311 whereas alpha-blockers showed a nominal association with an increased CKD risk.
312 ACEi, sGC, and PSD were nominally associated with a reduced risk of T2D (OR
313 range = 0.454 - 0.793). Results from the weighted median, simple median and MR

314 Egger methods (where applicable) were consistent with those from the main MR
315 analysis, with no horizontal pleiotropy detected in the MR Egger intercept test.

316 Negative control outcome analyses did not detect any significant association (**Table**
317 **S6, Fig S1**). MR analysis using summary data for SBP obtained from a UKB GWAS
318 gave consistent results with the primary MR analysis (**Table S7**).

319 **SMR analysis of drug target gene expression**

320 Out of 56 genes encoding the protein targets of the antihypertensive drugs, there
321 were 19 genes whose expression levels were associated with SBP in at least one of
322 the 21 tissues under the study (**Table S8, Fig S2**).

323 SMR was used to examine associations of gene expression levels with the disease
324 outcomes across multiple tissues. Eighty-one associations were found across 15
325 tissues, which passed the HEIDI test. Three associations remain significant after
326 accounting for multiple testing ($p < 0.0001$) (**Fig 3-4, Fig S3-8, Table S9-16**). The
327 expression levels of *GUCY1A3* (targeted by sGC stimulators) in the tibial artery and
328 *PDE5A* (targeted by PDE5 inhibitors) in the aorta were significantly associated with
329 CAD risk ($p_{\text{SMR}} = 1.74 \times 10^{-06}$, $p_{\text{HEIDI}} = 0.345$ for *GUCY1A3*, and $p_{\text{SMR}} = 9.12 \times 10^{-06}$,
330 $p_{\text{HEIDI}} = 0.338$ for *PDE5A*). We also found a significant signal for the expression of
331 the *KCNH2* gene (targeted by BBs) in the brain cerebellum with AF risk ($p_{\text{SMR}} =$
332 6.02×10^{-05} , $p_{\text{HEIDI}} = 0.195$) (**Fig 3-4**).

333 Colocalisation analysis gave a high posterior probability for a shared causal variant
334 (H_4 PP > 80%) for the following pairs: tibial artery *GUCY1A3* eQTL and CAD risk;
335 tibial artery *GUCY1A3* eQTL and MI risk; and tibial nerve *KCNH2* and HF risk (**Fig 5,**
336 **Table S11**). For *PDE5A* expression in the aorta and CAD risk, the H_4 posterior
337 probability is 48%, whereas the H_3 posterior probability is 52%. For *KCNH2*

338 expression in the brain cerebellum and AF risk, we got a high H_3 posterior probability
339 (99%), suggesting that these traits have distinct causal variants in the gene region
340 (**Table S11**).

341 Discussion

342 Our study utilising an integrative approach that combines MR, SMR and
343 colocalization analyses, provides evidence on the effectiveness of 10
344 antihypertensive drug classes across a range of cardiovascular, metabolic, and renal
345 outcomes. While lower SBP is universally beneficial, with evidence of being causally
346 associated with reduced risks of all studied outcomes, the effect of SBP lowering
347 varied significantly depending on the antihypertensive drug class, revealing
348 heterogeneity in their impact on different health outcomes.

349 CCBs demonstrated evidence of consistently protective effects across nearly all
350 outcomes, except for T2D where no significant benefit was observed. BBs were
351 evidenced to be particularly beneficial in reducing the risks of CAD, MI, AF and HF,
352 though their effectiveness was inconclusive when considering other outcomes. AGTi
353 were evidenced to be generally effective across most outcomes but had a null effect
354 on T2D and did not reach statistical significance for HF and CKD. In contrast, ACEi
355 presented mixed results, offering significant protection against CAD and T2D, but
356 showing no effect on AF and MI, with inconclusive results for other outcomes. Alpha-
357 blockers were associated with a protective effect against CAD but exhibited a
358 detrimental impact on CKD. PSDs showed clear protective effects against stroke and
359 T2D, while results for AF and CAD were null, and the effects on MI, HF, and CKD
360 were inconclusive. Loop diuretics were protective against AF, CAD, and MI, had null
361 effect on CKD and inconclusive for other outcomes. Among the newer or emerging

362 therapies, ERAs were evidenced to show significant protective effects against AF,
363 CAD, MI and stroke. PDE5 inhibitors were protective across all studied outcomes
364 except T2D, sGC stimulators demonstrated protective effects against CAD, MI,
365 stroke, T2D and CKD.

366 This study further integrates data from large-scale GWAS and eQTL studies to
367 investigate whether the observed associations are mediated via gene transcription.

368 We employed the SMR method, followed by the HEIDI test and colocalisation
369 analysis to distinguish between linkage and true causality. The analyses were
370 performed for 19 genes across 29 tissues that were broadly relevant to the
371 pathophysiology of the outcomes and the mechanism of the antihypertensive drugs.
372 SMR associations, which were corroborated by both HEIDI test and coloc, include
373 *GUCY1A3* - CAD risk, *GUCY1A3* - MI risk in the tibial artery, and *KCNH2* - HF risk in
374 the tibial nerve. We also found a significant association between *PDE5A* in the aorta
375 and CAD risk, and between *KCNH2* in the cerebellum and AF risk, but coloc gave a
376 low to moderate posterior probability for a shared causal variant.

377 Our selection criteria for genetic instruments for antihypertensive drug classes in
378 two-sample MR is similar to the criteria applied in the previous study by Gill et al
379 (19). Genetic variants were selected as SNPs located within or near the genes
380 (which encode the protein targets of the drugs) and associated with SBP at $p <$
381 5×10^{-8} . These SNPs were then clumped to a linkage disequilibrium threshold of $r^2 <$
382 0.1 to ensure that the genetic instruments were uncorrelated. Furthermore, for SMR
383 analysis we used significant eQTL for genes encoding the drug-target proteins as
384 proxies for the effects of gene expression levels to evaluate whether the observed
385 MR association is mediated through gene transcription. There is another approach to
386 selecting genetic instruments for antihypertensive drugs, which was applied by

387 several MR studies (36, 37). In this approach, genetic variants were selected as
388 eQTL for the corresponding gene in any tissue using the GTEx v7. The selected
389 SNPs were further validated by evaluating their association with SBP using a two-
390 sample MR - SNPs that showed nominal association with SBP (p-value < 0.05) were
391 retained in the main two-sample MR analysis. Using this approach, a recent MR
392 study on atrial fibrillation found a preventative effect of SBP-lowering via alpha-
393 blockers, beta-blockers, calcium channel blockers, and vasodilators (37). Our current
394 MR study found significant protective effects of beta-blockers and calcium channel
395 blockers and suggestive evidence for loop diuretics and vasodilators (ERAs and
396 PDE5 inhibitors). Furthermore, our SMR analysis on AF risk found a significant
397 signal for the expression of the *KCNH2* gene (targeted by BB) in the brain
398 cerebellum, and nominal signals for this gene in the brain cerebellum hemisphere
399 and tibial nerve.

400 Our study supports the effectiveness of sGC stimulators in reducing the risks of
401 CAD, MI, and CKD. These findings align with previous research highlighting the role
402 of the nitric oxide (NO)-sGC-cGMP pathway in cardiovascular protection (38-40).
403 The *GUCY1A3* gene, which encodes an alpha subunit of the sGC complex, has
404 been linked to CAD and MI in large-scale GWAS (38, 39). Our results show that
405 increased *GUCY1A3* expression in the tibial artery is associated with lower SBP and
406 a reduced risk of CAD and MI, reinforcing the potential of sGC stimulation as a
407 therapeutic strategy for CAD management.

408 PDE5 inhibitors, commonly used for erectile dysfunction and pulmonary
409 hypertension, were also found to have cardioprotective effects (41, 42). Biological
410 plausibility is supported by its known function through inhibition of the breakdown of
411 cGMP, thereby enhancing NO activity, which has been associated with

412 cardiovascular benefits. Our MR study supports this, showing a causal association
413 between PDE5 inhibition and reduced risks of CAD and MI. This was corroborated
414 by SMR findings, which linked increased *PDE5A* expression in the aorta to higher
415 SBP and increased CAD risk, suggesting a potential role for PDE5 inhibitors in
416 cardiovascular disease management.

417 We also observed suggestive associations between *KCNH2* gene expression in the
418 tibial nerve and HF risk, with colocalisation analysis indicating a shared causal
419 variant. The *KCNH2* gene, known for its role in generating repolarising potassium
420 currents, has been implicated in long QT syndrome and drug-induced QT
421 prolongation, conditions associated with an increased risk of sudden cardiac death
422 (43). Our findings further support the association of beta-blockers with reduced risks
423 of HF and AF in relation to hypertension, highlighting *KCNH2* as a potential target for
424 therapeutic intervention.

425 Our study is the first study to conduct this in-depth investigation of the effects of a
426 wide range of antihypertensive drug classes - at the drug class level as well as the
427 individual target gene expression level - on a broad spectrum of diseases, including
428 cardiovascular, diabetic and renal diseases. The integration of MR, SMR, and
429 colocalization analyses allowed us to triangulate evidence and enhance the
430 credibility of our findings. The convergence of MR and SMR results for PDE5
431 inhibition, sGC stimulation, and ACE inhibition underscores the robustness of these
432 findings. By corroborating results across different analytical methods, we reduced
433 the likelihood of bias and confounding, thereby strengthening the causal inferences.
434 Our study has limitations. Firstly, as MR estimates the cumulative effect of lifetime
435 exposure to genetic variants, they may differ from the effects obtained from a clinical

436 intervention such as an antihypertensive treatment. Although the discrepancy
437 suggests that MR estimates may not precisely reflect the effect size of
438 pharmacological intervention, MR still serves as a valuable tool to detect the
439 existence and directionality of causal effects. Secondly, some of the drug classes do
440 not have genetic instruments, thus, the study was unable to investigate the potential
441 causal effects of those. Future studies that include a GWAS with a large sample size
442 for blood pressure (44) could potentially identify such variants and therefore could
443 provide a more profound understanding of the varying effects of different
444 antihypertensive drug classes. Thirdly, tissue misspecification is another limitation of
445 the study, given the limited availability of eQTL data for some specific tissues. eQTL
446 studies with sufficient sample sizes will help alleviate this issue. Finally, summary
447 data used in this study was restricted to individuals of European descent, potentially
448 limiting the generalizability of the results to this specific group. The availability of
449 large-scale GWAS datasets from more ethnically diverse populations will allow future
450 MR studies to investigate potential ethnic differences.

451 Conclusion

452 Our findings demonstrate the power of integrating MR, SMR, and colocalization
453 analyses to uncover the potential differential effects of various antihypertensive drug
454 classes on a broad spectrum of cardiometabolic and renal outcomes. The
455 heterogeneity observed in drug efficacy across different outcomes underscores the
456 potential of personalised antihypertensive therapy. These results not only validate
457 the clinical relevance of existing antihypertensive therapies but also highlight new
458 therapeutic targets, such as *GUCY1A3* and *PDE5A*, for further exploration. Future
459 research should focus on validating these findings in diverse populations and

460 exploring the mechanistic pathways that link blood pressure regulation to various
461 health outcomes, ultimately paving the way for more personalized and effective
462 hypertension management strategies.

463 Acknowledgement

464 Conceptualization: S.P.; Data curation: N.N.L.; Formal analysis: N.N.L.;
465 Methodology: N.N.L., T.Q.B., D.G. and S.P.; Supervision: J.M., D.G. and S.P.; Writing
466 – original draft: N.N.L.; Writing - review & editing: N.N.L., T.Q.B., J.M., D.G. and S.P.

467 Sources of Funding

468 SP is supported by the British Heart Foundation Centre of Excellence Award
469 (RE/18/6/34217) and the United Kingdom Research and Innovation Strength in
470 Places Fund (SIPF00007/1). TQBT is supported by a British Heart Foundation
471 Fellowship (FS/MBPhD/22/28005). NNL and SP acknowledge the support provided
472 by the Pontecorvo Chair of Pharmacogenomics endowment.

473 Disclosures

474 All authors report no conflict of interest.

475

476

477

478

479 **Tables**

480 **Table 1. GWAS used in MR analyses.**

Trait	Population	Sample size	Unit	Adjustments
Systolic blood pressure (18)	European	757,601	mmHg	Age, age squared, sex, BMI, genotyping chips, antihypertensive medication
Atrial fibrillation (45)	European	1,030,836 (60620 cases)	log-transformed odds	Age, sex, study-specific covariates, principal components
Heart failure (46)	European	977,323 (47309 cases)	log-transformed odds	Age, sex, principal components
Coronary artery disease (47)	> 95% European	1,165,690 (181,522 cases)	log-transformed odds	Age, sex, study-specific covariates, principal components
Myocardial infarction (39)	77% European	171,875 (43676 cases)	log-transformed odds	Age, sex, study-specific covariates, principal components
Ischemic stroke (48)	European	1,296,908 (62100 cases)	log-transformed odds	Age, sex, study-specific covariates, principal components

Type 2 diabetes (49)	European	933,970 (80154 cases)	log- transformed odds	Age, sex, study-specific covariates, principal components
Chronic kidney disease (50)	European	480,698 (41395 cases)	log- transformed odds	Age, sex, study-specific covariates, principal components

481

482

483

484

485

486

487

488

489

490

491

492

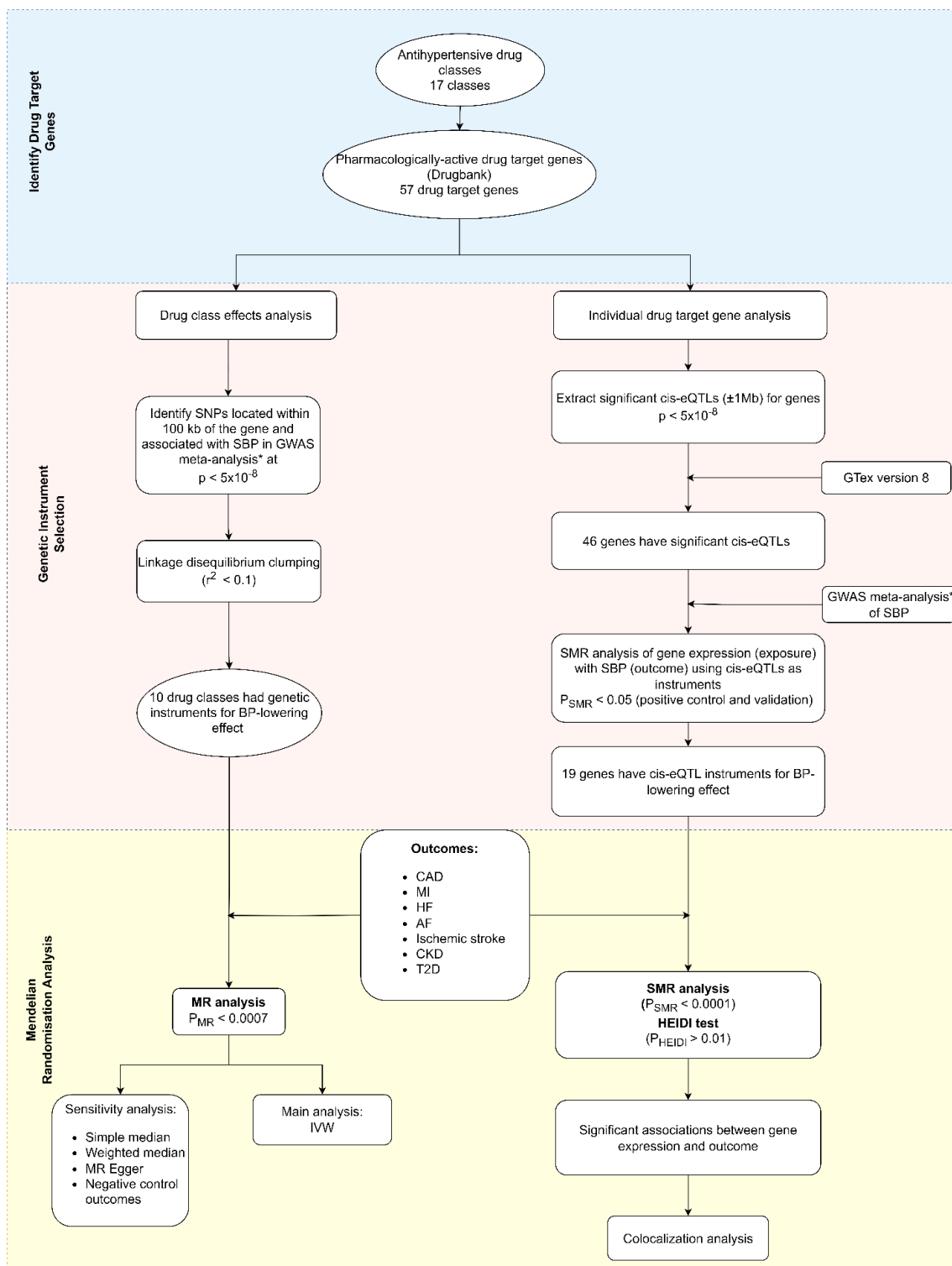
493

494

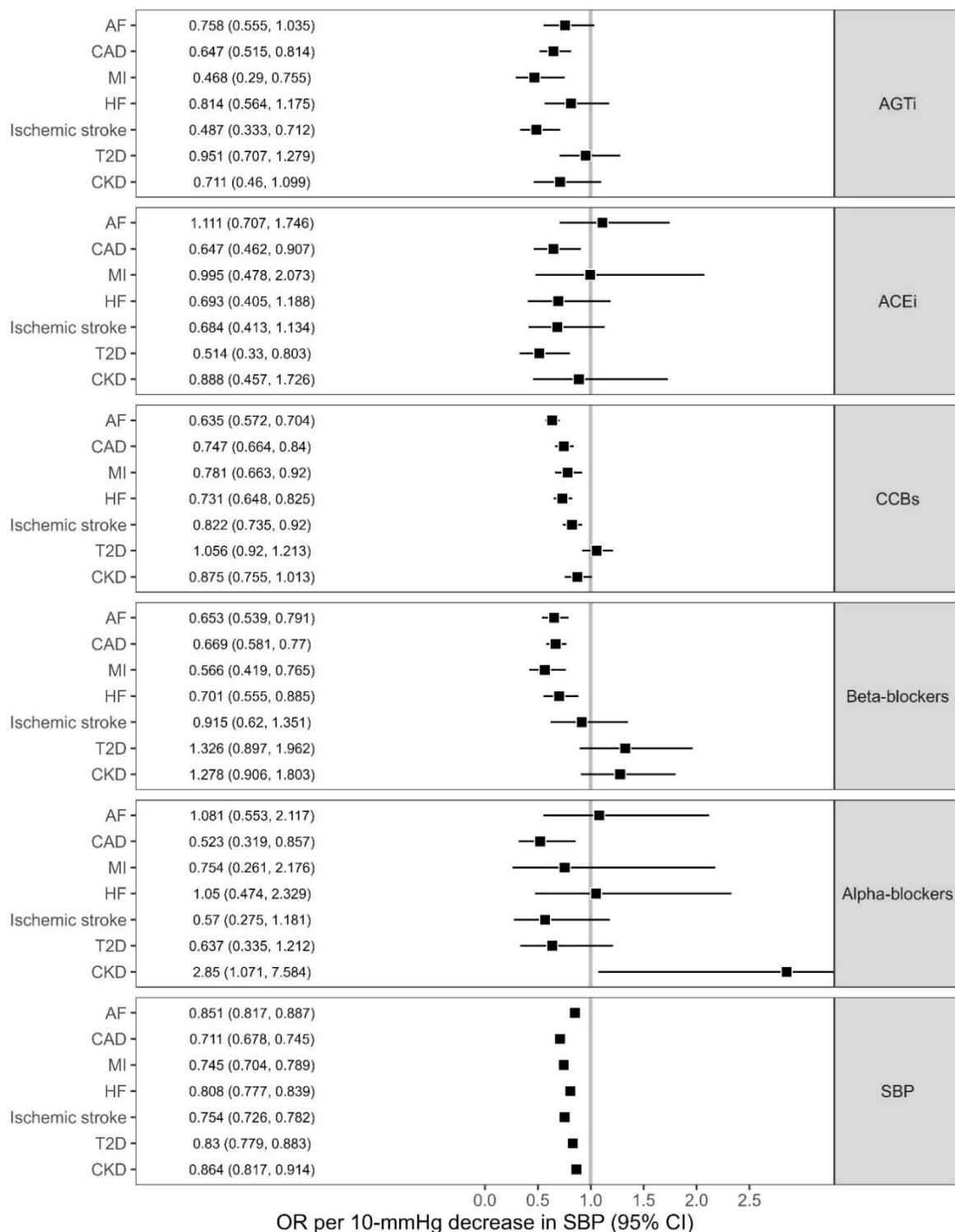
495 Figures

496 Figure 1. Study design

497 SBP, systolic blood pressure; GWAS, genome-wide association study; SNP, single nucleotide
 498 polymorphism; eQTL, expression quantitative loci; MR, Mendelian randomization; CAD, coronary
 499 artery disease; MI, myocardial infarction; AF, atrial fibrillation; HF, heart failure; CKD, chronic kidney
 500 disease; T2D, type 2 diabetes; IVW, inverse variant weighted; (*) indicates a blood pressure GWAS
 501 meta-analysis (18).



503 **Figure 2-A. MR estimates for the effect of genetically lower blood pressure through**
 504 **the drug target genes of antihypertensive drug classes on the risk of the outcomes.**
 505 Data were represented as odds ratio (OR) with 95% confidence interval (CI) of the outcome per 10
 506 mmHg decrease in systolic blood pressure with risk for the outcomes of interest. OR of less than 1
 507 suggests a decreased risk of disease associated with blood pressure lowering treatments, and vice
 508 versa. CAD indicates coronary artery disease; MI, myocardial infarction; AF, atrial fibrillation; HF, heart
 509 failure; CKD, chronic kidney disease; T2D, type 2 diabetes; AGTi, Angiotensinogen inhibitor; ACEi,
 510 angiotensin-converting enzyme inhibitors; CCBs, calcium channel blockers; SBP, systolic blood
 511 pressure.



513 **Figure 2-B. MR estimates for the effect of genetically lower blood pressure through**
 514 **the drug target genes of antihypertensive drug classes on the risk of the outcomes.**
 515 Data were represented as effect size with 95% confidence interval (CI) of the outcome per 10 mmHg
 516 decrease in systolic blood pressure with risk for the outcomes of interest. FG, fasting glucose; AGTi,
 517 Angiotensinogen inhibitor; ACEi, angiotensin-converting enzyme inhibitors; CCBs, calcium channel
 518 blockers; Other PSDs, potassium-sparing diuretics (not include aldosterone antagonists); ERAs,
 519 endothelin receptor antagonists; PDE5 inhibitors, phosphodiesterase type 5; sGC; soluble guanylate
 520 cyclase; SBP, systolic blood pressure.

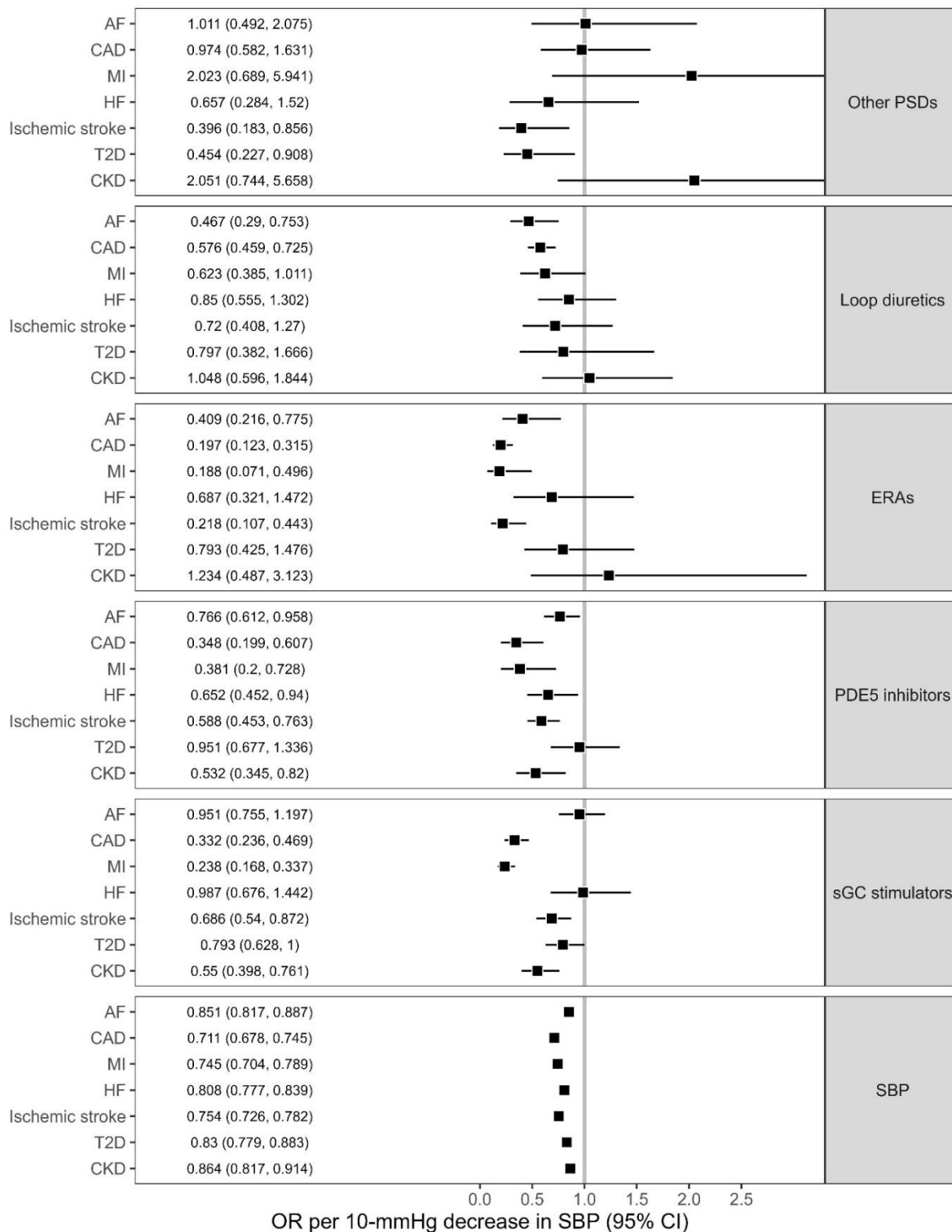


Figure 3. Results from MR, SMR, and colocalization analyses. Graph A shows MR results for drug classes that have association with the disease risk. Graph B shows SMR results for genes whose expression levels associated with the disease risk at p-value of 0.001; genes were placed at the same vertical point of the drug class that targets their proteins; full SMR results are shown in Fig 4, Fig S3-8. Graph C shows posterior probability for the scenario of distinct causal variants (H3, on the left of the vertical line) and of shared causal variant (H4, on the right). ASc, Adipose Subcutaneous; AdrG, Adrenal Gland; AAo, Artery aorta; ATib, Artery tibial; BCH, Brain Cerebellar Hemisphere; BC, Brain Cerebellum; BFCB9, Brain Frontal Cortex BA9; KC, Kidney Cortex; NTib, Nerve Tibial; Panc, Pancreas; Thy, Thyroid.

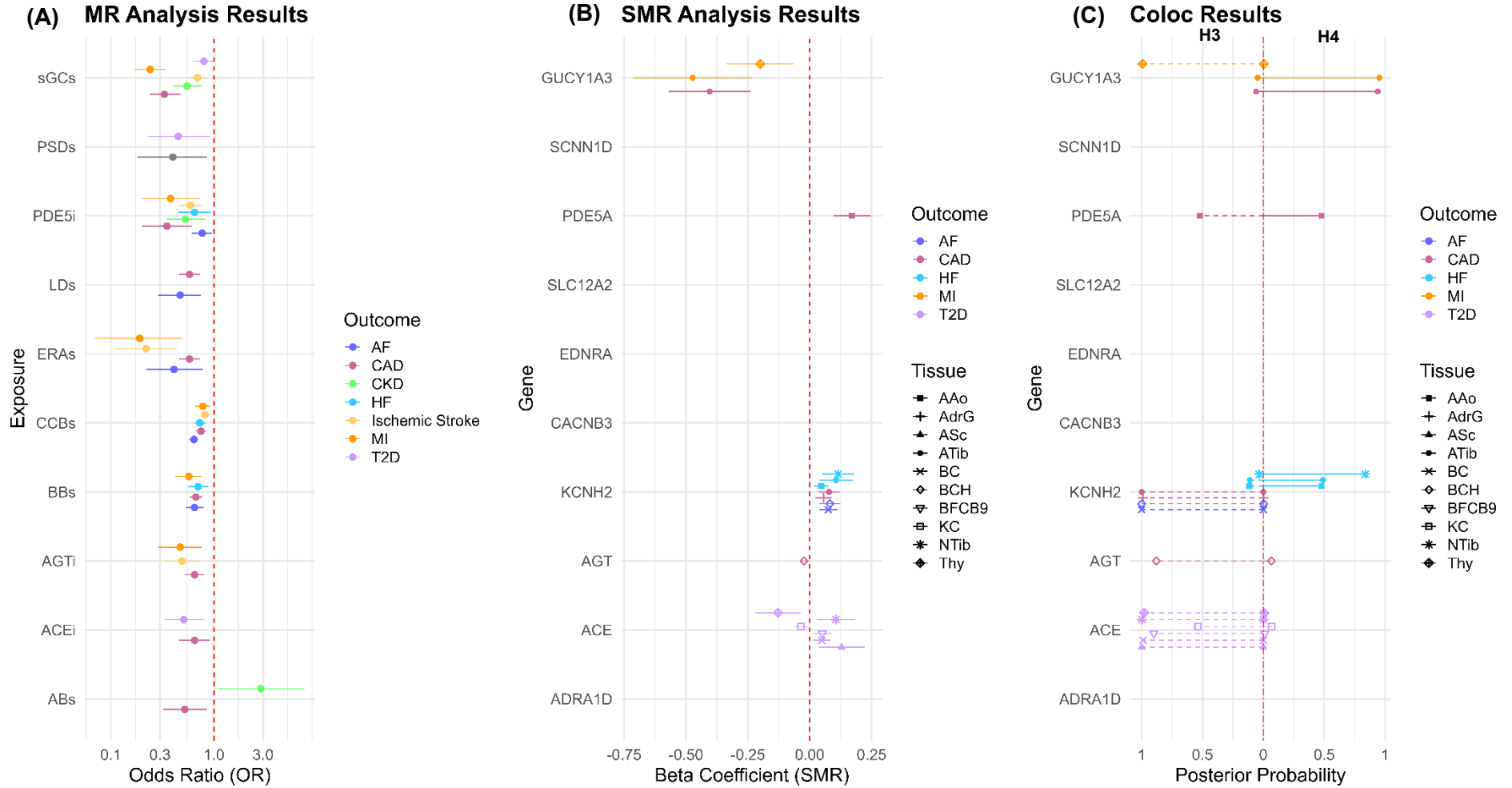


Figure 4. SMR associations of drug target gene-expression levels with CAD risk.

The x-axis represents the β estimates from SMR analysis, and the y-axis represents the $-\log_{10}(p_{\text{SMR}})$. The circle, which signifies the corresponding gene, was coloured according to the drug class that targets its protein. β_{SMR} were estimates from SMR analysis per 1 unit increase in the expression of the genes in a particular tissue. $\beta_{\text{SMR}} < 0$ suggests that an increase in gene expression levels in a particular tissue was associated with a decrease in CAD risk, and vice versa. The blue and orange dashed lines indicate a p-value of 0.05 and a Bonferroni-corrected p-value of 0.0001, respectively. The asterisk indicates HEIDI p-value greater than 0.01; The identifiers for each SMR association circle are the relevant gene name along with the following abbreviations for tissue types: AVO, Adipose Visceral Omentum; ASc, Adipose Subcutaneous; AdrG, Adrenal Gland; AAo, Artery aorta; Atib, Artery tibial, BCaud, Brain Caudate basal ganglia; BCH, Brain Cerebellar Hemisphere; BC, Brain Cerebellum; BCor, Brain Cortex; BFCB9, Brain Frontal Cortex BA9; BNacc, Brain Nucleus accumbens basal ganglia; BPut, Brain Putamen basal ganglia; HAA, Heart Atrial Appendage; HLV, Heart Left Ventricle, KC, Kidney Cortex, MSk, Muscle Skeletal, NTib, Nerve Tibial; Panc, Pancreas; Thy, Thyroid; WB, Whole Blood.

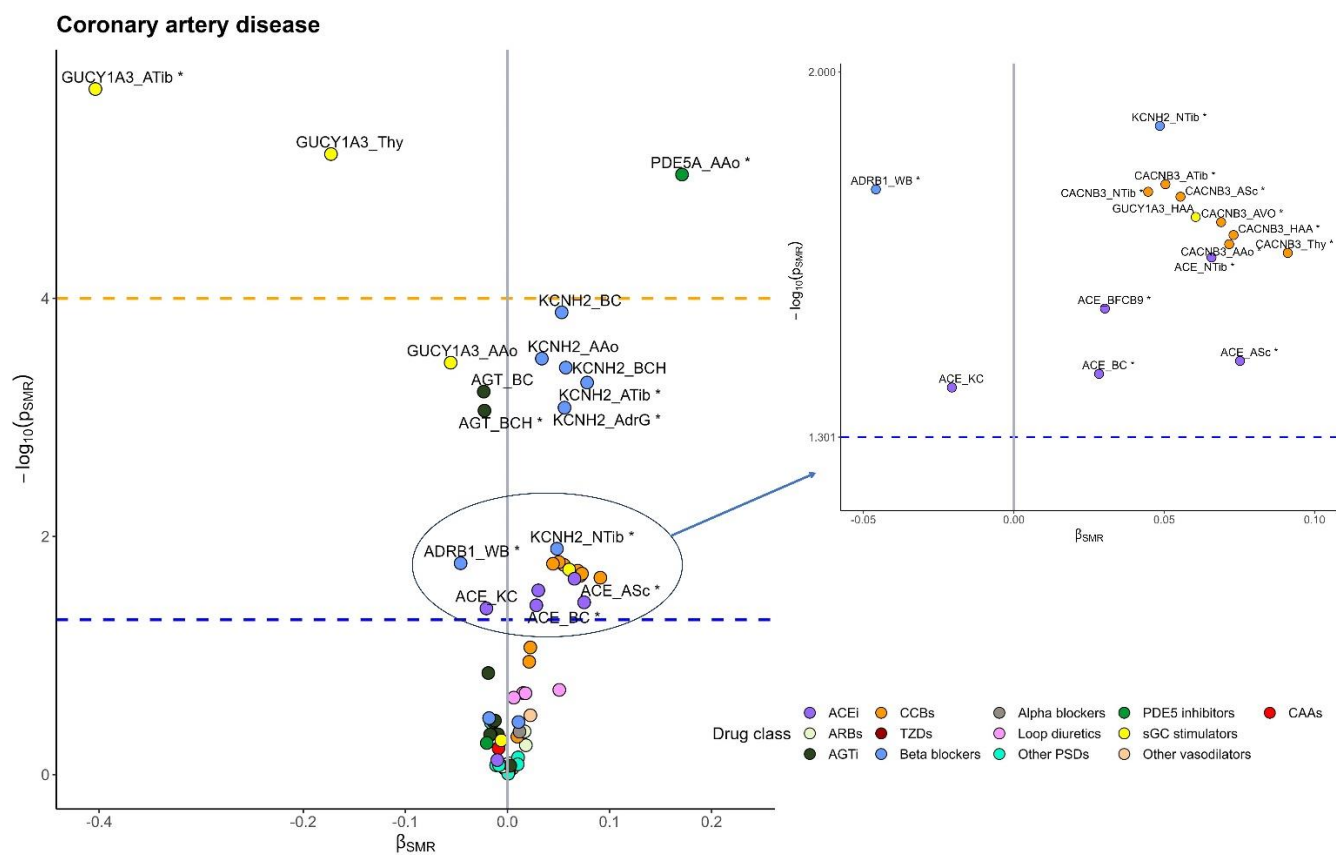
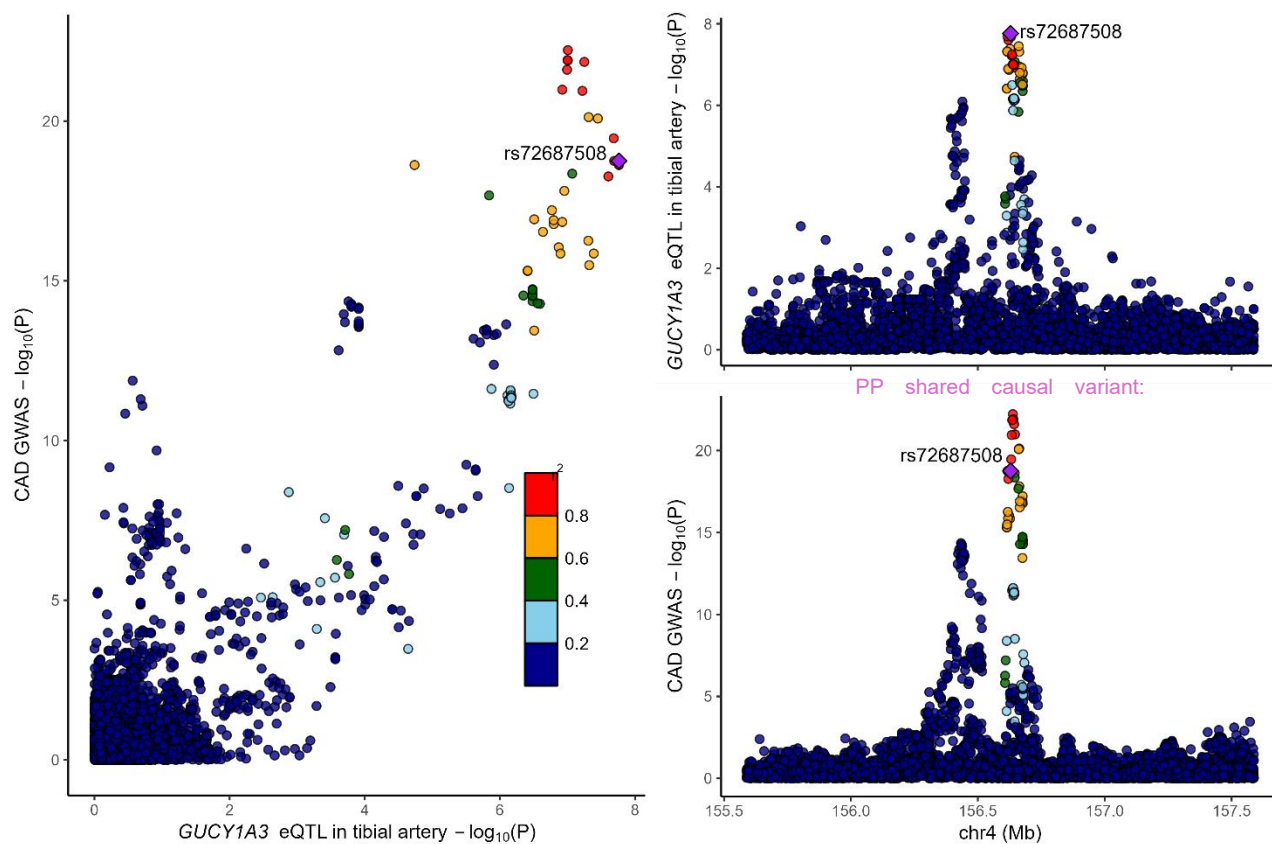


Figure 5. Colocalisation of eQTL in tibial artery for *GUCY1A3* and CAD risk.

Colocalisation of genetic signal for *GUCY1A3* levels and CAD outcome in the 1-Mb window of the gene. SNPs are coloured according to their LD r^2 with the lead SNP rs72687508.



References

1. Padmanabhan S, Dominiczak AF. Genomics of hypertension: the road to precision medicine. *Nat Rev Cardiol*. 2021;18(4):235-50.
2. Frohlich ED, Dustan HP, Bumpus FM, Irvine H. Page: 1901-1991. The celebration of a leader. *Hypertension*. 1991;18(4):443-5.
3. NICE guideline [NG136]. Hypertension in adults: diagnosis and management 28 August 2019 [updated 21 November 2023]. Available from: <https://www.nice.org.uk/guidance/ng136>.
4. Williams B, Mancia G, Spiering W, Agabiti Rosei E, Azizi M, Burnier M, et al. 2018 ESC/ESH Guidelines for the management of arterial hypertension. *Eur Heart J*. 2018;39(33):3021-104.
5. Whelton PK, Carey RM, Aronow WS, Casey DE, Jr., Collins KJ, Dennison Himmelfarb C, et al. 2017 ACC/AHA/AAPA/ABC/ACPM/AGS/APhA/ASH/ASPC/NMA/PCNA Guideline for the Prevention, Detection, Evaluation, and Management of High Blood Pressure in Adults: A Report of the American College of Cardiology/American Heart Association Task Force on Clinical Practice Guidelines. *Hypertension*. 2018;71(6):e13-e115.
6. Ettehad D, Emdin CA, Kiran A, Anderson SG, Callender T, Emberson J, et al. Blood pressure lowering for prevention of cardiovascular disease and death: a systematic review and meta-analysis. *Lancet*. 2016;387(10022):957-67.
7. Thomopoulos C, Parati G, Zanchetti A. Effects of blood pressure lowering on outcome incidence in hypertension: 4. Effects of various classes of antihypertensive drugs--overview and meta-analyses. *J Hypertens*. 2015;33(2):195-211.
8. Collaboration NCDRF. Worldwide trends in hypertension prevalence and progress in treatment and control from 1990 to 2019: a pooled analysis of 1201 population-representative studies with 104 million participants. *Lancet*. 2021;398(10304):957-80.
9. NICE guideline [NG106]. Chronic heart failure in adults: diagnosis and management 12 September 2018 [Available from: <https://www.nice.org.uk/guidance/ng106>].
10. NICE guideline [NG203]. Chronic kidney disease: assessment and management 25 August 2021 [updated 24 November 2021]. Available from: <https://www.nice.org.uk/guidance/ng203>.
11. Sundstrom J, Lind L, Nowrouzi S, Hagstrom E, Held C, Lytsy P, et al. Heterogeneity in Blood Pressure Response to 4 Antihypertensive Drugs: A Randomized Clinical Trial. *JAMA*. 2023;329(14):1160-9.
12. Tam V, Patel N, Turcotte M, Bosse Y, Pare G, Meyre D. Benefits and limitations of genome-wide association studies. *Nat Rev Genet*. 2019;20(8):467-84.
13. Smith GD, Ebrahim S. 'Mendelian randomization': can genetic epidemiology contribute to understanding environmental determinants of disease? *Int J Epidemiol*. 2003;32(1):1-22.
14. Zhu Z, Zhang F, Hu H, Bakshi A, Robinson MR, Powell JE, et al. Integration of summary data from GWAS and eQTL studies predicts complex trait gene targets. *Nat Genet*. 2016;48(5):481-7.

15. Giambartolomei C, Vukcevic D, Schadt EE, Franke L, Hingorani AD, Wallace C, et al. Bayesian test for colocalisation between pairs of genetic association studies using summary statistics. *PLoS Genet*. 2014;10(5):e1004383.
16. Joint Formulary Committee. British National Formulary (online) London: BMJ and Pharmaceutical Press [Available from: <http://www.medicinescomplete.com>.
17. Desai AS, Webb DJ, Taubel J, Casey S, Cheng Y, Robbie GJ, et al. Zilebesiran, an RNA Interference Therapeutic Agent for Hypertension. *New England Journal of Medicine*. 2023;389(3):228-38.
18. Evangelou E, Warren HR, Mosen-Ansorena D, Mifsud B, Pazoki R, Gao H, et al. Genetic analysis of over 1 million people identifies 535 new loci associated with blood pressure traits. *Nature Genetics*. 2018;50(10):1412-25.
19. Gill D, Georgakis MK, Koskeridis F, Jiang L, Feng Q, Wei WQ, et al. Use of Genetic Variants Related to Antihypertensive Drugs to Inform on Efficacy and Side Effects. *Circulation*. 2019;140(4):270-9.
20. Palmer TM, Lawlor DA, Harbord RM, Sheehan NA, Tobias JH, Timpson NJ, et al. Using multiple genetic variants as instrumental variables for modifiable risk factors. *Statistical Methods in Medical Research*. 2011;21(3):223-42.
21. Consortium GT. The GTEx Consortium atlas of genetic regulatory effects across human tissues. *Science*. 2020;369(6509):1318-30.
22. Rapsomaniki E, Timmis A, George J, Pujades-Rodriguez M, Shah AD, Denaxas S, et al. Blood pressure and incidence of twelve cardiovascular diseases: lifetime risks, healthy life-years lost, and age-specific associations in 1.25 million people. *Lancet*. 2014;383(9932):1899-911.
23. Anderson AH, Yang W, Townsend RR, Pan Q, Chertow GM, Kusek JW, et al. Time-updated systolic blood pressure and the progression of chronic kidney disease: a cohort study. *Ann Intern Med*. 2015;162(4):258-65.
24. Emdin CA, Anderson SG, Woodward M, Rahimi K. Usual Blood Pressure and Risk of New-Onset Diabetes: Evidence From 4.1 Million Adults and a Meta-Analysis of Prospective Studies. *J Am Coll Cardiol*. 2015;66(14):1552-62.
25. Emdin CA, Anderson SG, Salimi-Khorshidi G, Woodward M, MacMahon S, Dwyer T, et al. Usual blood pressure, atrial fibrillation and vascular risk: evidence from 4.3 million adults. *Int J Epidemiol*. 2017;46(1):162-72.
26. Bowden J, Davey Smith G, Haycock PC, Burgess S. Consistent Estimation in Mendelian Randomization with Some Invalid Instruments Using a Weighted Median Estimator. *Genet Epidemiol*. 2016;40(4):304-14.
27. Bowden J, Davey Smith G, Burgess S. Mendelian randomization with invalid instruments: effect estimation and bias detection through Egger regression. *Int J Epidemiol*. 2015;44(2):512-25.
28. Jones G, Trajanoska K, Santanasto AJ, Stringa N, Kuo CL, Atkins JL, et al. Genome-wide meta-analysis of muscle weakness identifies 15 susceptibility loci in older men and women. *Nat Commun*. 2021;12(1):654.
29. Jiang L, Zheng Z, Fang H, Yang J. A generalized linear mixed model association tool for biobank-scale data. *Nat Genet*. 2021;53(11):1616-21.
30. Nalls MA, Blauwendraat C, Vallerga CL, Heilbron K, Bandres-Ciga S, Chang D, et al. Identification of novel risk loci, causal insights, and heritable risk for Parkinson's disease: a meta-analysis of genome-wide association studies. *Lancet Neurol*. 2019;18(12):1091-102.
31. Loh PR, Kichaev G, Gazal S, Schoech AP, Price AL. Mixed-model association for biobank-scale datasets. *Nat Genet*. 2018;50(7):906-8.

32. Neale B. Rapid GWAS of Thousands of Phenotypes in the UK Biobank 2020 [
33. Hemani G, Zheng J, Elsworth B, Wade KH, Haberland V, Baird D, et al. The MR-Base platform supports systematic causal inference across the human phenome. *eLife*. 2018;7.
34. Yavorska OO, Burgess S. MendelianRandomization: an R package for performing Mendelian randomization analyses using summarized data. *Int J Epidemiol*. 2017;46(6):1734-9.
35. Chauquet S, Zhu Z, O'Donovan MC, Walters JTR, Wray NR, Shah S. Association of Antihypertensive Drug Target Genes With Psychiatric Disorders: A Mendelian Randomization Study. *JAMA Psychiatry*. 2021;78(6):623-31.
36. Walker VM, Kehoe PG, Martin RM, Davies NM. Repurposing antihypertensive drugs for the prevention of Alzheimer's disease: a Mendelian randomization study. *Int J Epidemiol*. 2020;49(4):1132-40.
37. Geurts S, Tilly MJ, Lu Z, Stricker BHC, Deckers JW, de Groot NMS, et al. Antihypertensive Drugs for the Prevention of Atrial Fibrillation: A Drug Target Mendelian Randomization Study. *Hypertension*. 2024;81(8):1766-75.
38. Kessler T, Wobst J, Wolf B, Eckhold J, Vilne B, Hollstein R, et al. Functional Characterization of the GUCY1A3 Coronary Artery Disease Risk Locus. *Circulation*. 2017;136(5):476-89.
39. Nikpay M, Goel A, Won HH, Hall LM, Willenborg C, Kanoni S, et al. A comprehensive 1,000 Genomes-based genome-wide association meta-analysis of coronary artery disease. *Nat Genet*. 2015;47(10):1121-30.
40. Erdmann J, Stark K, Esslinger UB, Rumpf PM, Koesling D, de Wit C, et al. Dysfunctional nitric oxide signalling increases risk of myocardial infarction. *Nature*. 2013;504(7480):432-6.
41. Hutchings DC, Anderson SG, Caldwell JL, Trafford AW. Phosphodiesterase-5 inhibitors and the heart: compound cardioprotection? *Heart*. 2018;104(15):1244-50.
42. Andersson DP, Landucci L, Lagerros YT, Grotta A, Bellocco R, Lehtihet M, et al. Association of Phosphodiesterase-5 Inhibitors Versus Alprostadil With Survival in Men With Coronary Artery Disease. *J Am Coll Cardiol*. 2021;77(12):1535-50.
43. Newton-Cheh C, Guo CY, Larson MG, Musone SL, Surti A, Camargo AL, et al. Common genetic variation in KCNH2 is associated with QT interval duration: the Framingham Heart Study. *Circulation*. 2007;116(10):1128-36.
44. Keaton JM, Kamali Z, Xie T, Vaez A, Williams A, Goleva SB, et al. Genome-wide analysis in over 1 million individuals of European ancestry yields improved polygenic risk scores for blood pressure traits. *Nat Genet*. 2024;56(5):778-91.
45. Nielsen JB, Thorolfsdottir RB, Fritsche LG, Zhou W, Skov MW, Graham SE, et al. Biobank-driven genomic discovery yields new insight into atrial fibrillation biology. *Nature Genetics*. 2018;50(9):1234-9.
46. Shah S, Henry A, Roselli C, Lin H, Sveinbjörnsson G, Fatemifar G, et al. Genome-wide association and Mendelian randomisation analysis provide insights into the pathogenesis of heart failure. *Nature Communications*. 2020;11(1).
47. Aragam KG, Jiang T, Goel A, Kanoni S, Wolford BN, Atri DS, et al. Discovery and systematic characterization of risk variants and genes for coronary artery disease in over a million participants. *Nature Genetics*. 2022;54(12):1803-15.
48. Mishra A, Malik R, Hachiya T, Jurgenson T, Namba S, Posner DC, et al. Stroke genetics informs drug discovery and risk prediction across ancestries. *Nature*. 2022;611(7934):115-23.

49. Mahajan A, Spracklen CN, Zhang W, Ng MCY, Petty LE, Kitajima H, et al. Multi-ancestry genetic study of type 2 diabetes highlights the power of diverse populations for discovery and translation. *Nat Genet.* 2022;54(5):560-72.
50. Wuttke M, Li Y, Li M, Sieber KB, Feitosa MF, Gorski M, et al. A catalog of genetic loci associated with kidney function from analyses of a million individuals. *Nat Genet.* 2019;51(6):957-72.