

1 **Likely cross-border introductions of MPXV Clade I into the Republic of the**
2 **Congo from the Democratic Republic of the Congo**

3
4 Claude Kwe Yinda^{1*}, Félix Koukouikila-Koussounda^{2,3*}, Pembe Issamou Mayengue^{2,3},
5 Golmard Reiche Elenga², Benjamin Greene¹, Missiani Ochwoto¹, Ghislain Dzeret Indolo²,
6 Yanne Vanessa Thiécesse Mavoungou², Dachel Aymard Eyenet Boussam², Bani Reize Vishnou
7 Ampiri², Chastel Claujens Mapanguy Mfoutou⁴, Yvanhe Deho Kianguébéni Mbouala⁴, Francine
8 Ntoumi^{4,5}, Jean-Médard Kankou², Vincent J. Munster^{#1}, Fabien Roch Niama^{#2,3}

9
10 ¹ *Laboratory of Virology, Division of Intramural Research, National Institute of Allergy and*
11 *Infectious Diseases, MT, USA.*

12 ² *Laboratoire National de Santé Publique (LNSP), Brazzaville, Republic of the Congo*

13 ³ *La Fondation Congolaise pour la Recherche Médicale (FCRM), Brazzaville, Republic of the*
14 *Congo*

15 ⁴ *Faculté des Sciences et Techniques, Marien NGOUABI University, Brazzaville, Republic of the*
16 *Congo*

17 ⁵ *Institute of Tropical Medicine, University Hospital Tübingen, Tübingen, Germany*

18

19

20 **These authors contributed equally.*

21 *# Corresponding author*

22

23

24 **Abstract**

25

26 **Background:** Mpox virus (MPXV) Clade I is endemic in several central African countries and
27 characterized by severe disease and high mortality. Since October 2023, a large-scale Mpox
28 outbreak has emerged in the Democratic Republic of the Congo (DRC), with 22,477 cases and
29 1,038 deaths reported as of May 26, 2024, and World Health organization (WHO) has declared
30 mpox a public health emergency of international concern on August 14 2024. Twenty-three
31 provinces in the DRC have been affected, 15 of which border another country, including the
32 Republic of the Congo (RoC). The RoC is bordered by five of these affected provinces,
33 increasing the risk of cross-border spread. In the RoC, Mpox cases have historically occurred in
34 the endemic areas of the Likouala department in the north. Recently, suspected cases have
35 emerged outside this region, and it is unclear if these cases are recent spillover events from the
36 DRC outbreaks. Therefore, we performed molecular analyses of these cases in the RoC.

37 **Methods:** Samples were collected from suspected cases between January and April 29, 2024, in
38 Likouala, Cuvette-Centrale, and Pointe-Noire. Blood samples, skin/oropharyngeal swabs or skin
39 crusts were obtained for molecular diagnosis at the Laboratoire National de Santé Publique
40 (LNSP), Brazzaville. MPXV sequences were obtained and analyzed using newly established
41 Nanopore sequencing methodology and bioinformatic pipeline.

42 **Findings:** Phylogenetic analysis of sequences shows the clustering of MPXV sequences
43 obtained from cases in RoC with sequences from the ongoing Mpox outbreak in the DRC. In
44 addition, sequences from the RoC show multiple phylogenetic positioning suggesting the
45 occurrence of multiple co-circulating strains in the human population.

46 **Interpretation:** The close genetic relatedness between sequences from RoC and those from
47 DRC indicates a possible cross-border transmission of MPXV from DRC to RoC. These data

48 highlight the need for implementation of expanded surveillance in countries bordering DRC and
49 RoC, in combination with control measures focused at containing the current outbreaks in DRC
50 and RoC to prevent escalation into a larger-scale epidemic.

51 **Funding:** This research was supported by the Intramural Research Program of the National
52 Institute of Allergy and Infectious Diseases (NIAID), National Institutes of Health (NIH).

53

54

55

56

57

58

59

60

61

62

63

64

65

66

67

68

69

70

71 **Introduction**

72 Mpox virus (MPXV) formerly known as monkeypox virus, is an enveloped, double stranded
73 DNA virus of the *Poxviridae* family and the etiological agent of Mpox ¹. There are two known
74 clades of MPXV: clade I which is endemic in central Africa and has been detected in the
75 Democratic Republic of the Congo (DRC), the Republic of the Congo (RoC), the Central African
76 Republic, Cameroon and Gabon, and clade II which is endemic in West Africa ². Mpox typically
77 presents with a 2–4-day prodrome followed by the appearance of a vesiculo-papular rash and is
78 combined with fever and lymphadenopathy ³. Case fatality rates (CFRs) across previously
79 reported Mpox outbreaks have averaged 11% for clade I MPXV and <4 % for clade II MPXV ^{4,5}.
80 In May 2022, Clade Iib MPXV caused the largest known multinational human outbreak of Mpox
81 with over 92,590 laboratory-confirmed cases, mostly outside of historically endemic regions in
82 West Africa ⁶. The Clade Iib MPXV outbreak appears to be largely driven by sustained human-
83 to-human transmission via male-to-male sexual or intimate contact (MSM). This Mpox outbreak
84 in non-endemic countries resulted in the declaration of a public health emergency of
85 international concern by the World Health Organization (WHO) in 2022 ⁶.
86 The RoC, a country of 342,000 km² with an estimated population size of 5.7 million inhabitants,
87 is endemic for Clade I MPXV in the northern part of the country ^{7,8}, and since the first confirmed
88 cases reported in 2003 ⁹ small self-limiting outbreaks have been reported over the last couple of
89 years. This historic occurrence of small outbreaks in RoC is in contrast with the continuous
90 increase in cases over the last decades, and the surge of cases throughout most of DRC reported
91 over 2023 and 2024 ¹⁰⁻¹³. Genomic analysis revealed a novel distinct MPXV clade now
92 designated as Clade Ib, divergent from previously sequenced Clade I strains circulating in
93 eastern DRC ¹⁰. The recent increase in Clade I Mpox cases suggest an increase in human-to-

94 human transmissibility for Clade I, similar to what has been reported for Clade IIb. There are
95 clear similarities between the emergence of Clade IIb and Clade I, with sexual contact
96 transmission now being reported for Clade I in DRC ¹⁴. However, whereas the clade IIb MPXV
97 circulated almost exclusively within the MSM population, the Clade I MPXV displays broad
98 circulation throughout the human population ^{15 14}. Due to this upsurge of Mpox in the DRC and
99 cases outside Africa ¹⁶, the WHO on August 14, 2024 declared Mpox a public health emergency
100 of international concern for the second time ¹⁷.

101 In March 2024, the first Mpox cases were reported outside the historic endemic areas in the RoC
102 and it is not clear if these cases are recent spillover events from the DRC outbreaks. Here we
103 describe the sequencing analyses of samples obtained from the Mpox cases in RoC at the
104 Laboratoire National de Santé Publique (LNSP), Brazzaville.

105

106 **Methods**

107 **Study design**

108 We performed a cross-sectional descriptive study of genomic sequences analyses on MPXV real-
109 time PCR confirmed samples collected in different sanitary departments in the RoC from
110 January to April 2024. MPXV positive samples were consecutively selected regardless of the
111 cycle threshold (Ct) values. Further selection criteria included the quantity of the remaining
112 biological sample after real-PCR screening and the availability of the filled data collection form.
113 The study took place at the molecular biology unit of the LNSP, Brazzaville.

114 **Sampling and data collection**

115 Mpox is one of the 18 diseases under surveillance in the RoC. In 2022, the Ministry of Health
116 and Population set a passive surveillance program for Mpox across the Country. Under this

117 program, focal points were trained for recognition of suspected cases following criteria for Mpox
118 suspicious set by the Direction de l’Epidémiologie et de la Lutte contre la Maladie (DELM),
119 sampling, data collection using a national standardized form established by the DELM and
120 sample shipment to the LNSP which is the national reference laboratory. If a case is confirmed, a
121 team including biologists from LNSP and epidemiologists from DELM is commissioned to go
122 into the outbreak area to conduct intensive field investigations consisting of identification of
123 contacts and that of new suspected cases, data collection, sampling (including whole blood, skins
124 lesion crusts or skin swabs) and rapid samples’ transfer to the LNSP for molecular diagnosis.
125 From January to April 2024, a total of 61 samples collected from suspected cases were received
126 at the LNSP. Suspected cases were from Brazzaville (9 cases), Cuvette centrale (23 cases),
127 Likouala (10 cases), Plateaux (4 cases) and Pointe-Noire (25 cases).

128

129 **Real-time PCR screening of the samples**

130 For all the samples, samples were handled in a class III biosafety cabinet, DNA was extracted
131 using the QIAamp DNA Mini Kit (Qiagen, Hilden, Germany), following the manufacturer’s
132 instructions. Extracted DNA was subsequently used for molecular diagnosis. Real time PCR
133 assays were performed using the Monkeypox Virus Real Time PCR Kit (Shanghai ZJ Bio-Tech
134 Co., Ltd. (“Liferiver”), China) according to manufacturer’s instructions. Of the 61 samples,
135 MPXV DNA was detected in 35 (57.37%), and based on the study criteria, 31 samples were
136 selected and stored at -20°C until further used for genomic sequencing under the current study.

137

138 **MPXV sequencing**

139 **Amplicon sequencing**

140 For sequencing of the positive samples, we used previously published methods (Ochwoto et al.,
141 2024, in preparation). Briefly, after the presence of PCR products were verified using gel
142 electrophoresis, the five PCR products were pooled together, and subject to end repair (NEB,
143 US) and barcoding (ONT, UK). Next, samples were cleaned with 0.4x volume AMPure XP
144 beads (Beckman, US) and eluted in 30 μ L of 10 millimolar Tris pH 8.0. Then sequencing
145 adapters were ligated to the barcoded amplicons using 5 μ L of Adapter Mix AMII (ONT), 5 μ L
146 of Quick T4 DNA Ligase (NEB, US) and 10 μ L of NEBNext Quick Ligation Reaction Buffer 5x
147 (NEB, US) to 30 μ L of the barcoded amplicon pool. Following a twenty-minute incubation at
148 room temperature, samples were cleaned again using AMPure XP beads (Beckman) and DNA
149 was eluted in 15 μ L of Elution Buffer (ONT, UK). DNA libraries were then quantified using the
150 Qubit High Sensitivity dsDNA assay according to manufacturer's instructions (Thermofisher,
151 US). Libraries were sequenced on Oxford Nanopore's GridION (ONT, UK) using FLO-
152 MIN106-D flow cell (ONT, UK) in accordance with the manufacturer's protocol. FASTQ files
153 were processed through Mpox-seek pipeline (<https://openomics.github.io/Mpox-seek/#citation>)
154 for read quality control, adapter trimming, consensus sequence, and phylogenetic tree generation.

155

156 **Full genome sequencing**

157 To determine the type of single nucleotide polymorphisms (SNPs) in these novel sequences we
158 further recovered the complete genomes of the sequences. First, the quality of the DNA was
159 assessed on the Agilent TapeStation 4200 (Agilent Technologies, Inc., USA) using genomic
160 tapes/reagents. One hundred nanograms of DNA was sheared to an average size of 550bp using
161 the Covaris LE220 (Covaris, LLC, MA) and final libraries were prepared using the Illumina
162 TruSeq DNA Nano v2 protocol (Illumina, USA) with 8 cycles of PCR amplification using 6ul of

163 IDT/Illumina-TruSeq UD Indexes as barcoded primers. Final libraries were cleaned using an
164 80% vol of AMPureXP beads (Agencourt, USA), visualized on a BioAnalyzer HS chip (Agilent
165 Technologies, Inc., USA), and quantified using the Kapa SYBR FAST Universal qPCR kit for
166 Illumina sequencing (Kapa Biosystems, USA) on the CFX384 Real-Time PCR Detection System
167 (Bio-Rad Laboratories, Inc, USA) and Qubit Fluorometer (Thermo Fisher Scientific, USA).
168 Libraries consisting of 40-250 ng of DNA were pooled into three pools (according to amount of
169 DNA and Ct value of sample). Viral sequences were captured using the HyperCap enrichment kit
170 (Roche Diagnostic Corp., USA), and final library was cleaned, analyzed using the Agilent
171 bioanalyzer and quantified using the Kapa SYBR FAST Universal qPCR as above. Each of the 3
172 captured-library pools were diluted to a final concentration of 2 nM and pooled equimolarly. This
173 final, MPXV DNA-captured, library pool was denatured and diluted to a 10.5 pM stock and a
174 paired-end 2 x 250 cycle sequencing was carried out on the MiSeq using a V2 flow cell and 500
175 cycle chemistry.

176 After sequencing, raw fastq reads were trimmed of adapter sequences using Cutadapt v. 1.12¹⁸
177 and filtered for quality using Fastx Toolkit v. 0.0.14¹⁹. Reads were then screened against the
178 human genome to remove host reads. Remaining reads for one of the sample were then de novo
179 assembled using SPAdes v. 3.15.5²⁰. Resulting contigs were manually assembled to create the
180 full-length genome. Assembly errors were corrected automatically using multiple rounds of pilon
181 v. 1.22²¹ and manual correction. The resulting assembly was then used for reference assembly of
182 the remaining genomes using Bowtie2 v. 2.2.9²² followed by multiple rounds of correction using
183 pilon v. 1.22.

184

185 **Phylogenetic analysis**

186 Full length genomes of old Clade I MPXV sequences were obtained from GISAID database
187 (<https://www.gisaid.org/>) and recent sequences from the Kamituga outbreak were obtained from
188 Github (https://github.com/inrblabgenpath/Mpox_sequencing_Kamituga). Clade Ib MPXV from
189 GISAID were used as outgroup. All sequences were trimmed to the required region and
190 alignments were built using MAFFT (FFT-NS-1 algorithm)²³, with the best model for distance
191 estimates identified with the ModelFinder function²⁴ as the one with the lowest Bayesian
192 information criterion (BIC). Maximum likelihood phylogenetic tree was constructed using IG-
193 TREE2²⁵ and branch support was assessed using both ultrafast bootstrap approximation (ufBoot,
194 1000 replicates)²⁶ and SH-like approximate likelihood ratio test (SH-aLRT). The tree was
195 visualized in FigTree (<http://tree.bio.ed.ac.uk/software/figtree/>) and rooted using Clade Ib
196 sequences. Only bootstrap values greater than 69% are shown. Bars indicate nucleotide
197 substitutions per site.

198 Furthermore, we utilized the full genomes to perform ancestral reconstruction for each internal
199 node on phylogeny, enabling mapping of single nucleotide polymorphisms (SNPs) along
200 branches following recently developed method²⁷. SNPs were categorized according to their
201 consistency with the APOBEC3 editing signature, which is characterized by specific mutations
202 (TC → TT and GA → AA). To estimate the date when the non-Kamituga MPXV genomes
203 (putative Clade Ib) outbreak in DRC and RoC started, we excluded all Kamituga MPXV
204 genomes and assumed non-APOBEC3 rate of evolution and used strict molecular clock with
205 constant model implemented in BEAST v. 1.10.4²⁸. For each analysis, three independent chains
206 of 100 million generations (sampled every 100,000 states) were run to ensure convergence and
207 then combined with appropriate burn-in. Statistical uncertainty was reflected in values of the
208 95% highest probability density (HPD). The chains were then combined with LogCombiner v.

209 1.10.4. For all subsequent analyses, we assessed convergence using Tracer, and constructed a
210 maximum clade credibility (MCC) tree (estimated from the posterior distribution of trees with
211 node heights scaled to mean values and posterior probabilities showing the statistical support for
212 individual nodes) in TreeAnnotator v. 1.10.4.

213 **Results**

214 A total of 31 Mpox confirmed cases between January and April 29, 2024, were included in this
215 study. Demographic data of these participants are summarized in Table 1. Mpox positive cases
216 were from Cuvette Centrale (19/31, 61%), Likouala (8/31, 26%), and Pointe Noire (5/31, 16%)
217 (Figure 1A) with males being the majority of these confirmed MPXV infection cases (20/31,
218 65%). The median age was 20 years (IQR 11-31) (Table 1). Children under 15 years constituted
219 39% (12/31) of confirmed cases, individuals aged 15-30 years made up 35% (11/31), and those
220 above 30 years accounted for 23% (7/31) of the cases. None of the individuals with confirmed
221 Mpox had been vaccinated against smallpox.

222 Overall, cycle threshold (Ct) ranged between 13.4 and 37.4. Respectively, we recovered eleven,
223 eight and one sequence from positive samples from Cuvette Centrale, Likouala and Pointe Noire
224 Provinces (Figure 1A). Phylogenetic analysis (Figure 1B) revealed that MPXV strains sequenced
225 from RoC are found in two major clusters within Clade Ia. The first is a more diverse cluster
226 made up of four sequences from this study all recovered from samples from the RoC Cuvette
227 Province clustering with two MPXV sequences from the current DRC outbreak (in Sud-
228 Ubangi), three older sequences from Central African Republic sequenced between 2017 and
229 2018, and seven sequences from DRC sequenced in 2006-07 and 2022. The second cluster is
230 made up of 16 sequences from this study clustering with sequences from the current DRC
231 outbreak (two sequences from Sud-Ubangil, two from Equateur and one from Kinshasa). The
232 nucleotide similarity between sequences from RoC and DRC in this cluster ranged from 99.5 to

233 99.9%. Sequences from 2018-2022 MPXV samples from the Pokola in the Sangha Province in
234 RoC clustered together with each other.

235

236 To analyze single nucleotide polymorphisms (SNPs) in these new sequences from the RoC, we
237 subjected the MPXV DNA from these samples to full genome sequencing, which produced 14
238 complete genomes: 8 from Cuvette Province and 6 from Likouala Province. All 14 genomes
239 displayed consistent phylogenetic placement with the ~13Kb sequences (Supplementary Figure
240 1A). Additionally, the proportion of APOBEC3-type mutations relative to other mutations in
241 these sequences was 16.2% (11 of 68 observed mutations) (Supplementary Figure 1B). To
242 estimate when these recent sequences from RoC were introduced into the human population, we
243 conducted molecular clock analysis. This analysis revealed two clusters of sequences from RoC
244 and the Democratic Republic of the Congo (DRC): the first cluster, which emerged around 2000,
245 includes RoC sequences from Sangha (a past outbreak) and Cuvette (the current outbreak)
246 regions, along with one DRC sequence from Sud-Ubangil Province. The second cluster, which
247 emerged in 2005, comprises the remaining RoC samples from the current outbreak and five
248 sequences from one of the ongoing DRC outbreaks, consistent with the ~13Kb sequences
249 (Supplementary Figure 2).

250

251 **Discussion**

252 Human infection with MPXV was first recognized in 1970 in DRC, with historically sporadic
253 Mpox outbreaks. The last decade has seen increasing frequency of Clade I Mpox cases in DRC
254 ¹¹. The rise in the number of Mpox cases in DRC in 2023, their occurrence in new geographic
255 areas, including outside Africa ^{10,29,30} resulted in second time Mpox was declared Mpox a public

256 health emergency of international concern by the WHO on August 14, 2024¹⁷. This increase in
257 cases suggests either anthropogenic changes, behavior changes, virus changes, or a combination
258 thereof driving the increased human-to-human transmission. During the ongoing Mpox epidemic
259 in DRC, the neighboring RoC observed a sudden rise in the number of Mpox cases in 2024. This
260 resulted to the declaration of a Mpox epidemic by the Ministry of Public Health of RoC in April
261 24, 2024³¹. Molecular epidemiology, using pathogen sequencing data has been successfully used
262 in Africa to trace the spread of emerging zoonotic pathogens such as Ebola virus and Lassa virus
263^{32,33}. To understand whether the increase in Mpox cases in RoC was driven by local emergence of
264 MPXV or spillover from DRC, we implemented a novel next-generation sequencing approach
265 using the Oxford Nanopore GridION platform.

266 The sequences of the Clade Ia MPXV from the RoC, obtained during the current outbreak cluster
267 roughly in three separate lineages. The diverse phylogenetic positioning of the RoC MPXV
268 sequences suggests the occurrence of multiple co-circulating strains in the human population and
269 reflects the MPXV diversity observed during the ongoing outbreaks in DRC¹⁰. Genomic data
270 from DRC demonstrates the co-circulation of multiple independent lineages, including Clade Ib,
271 suggesting several independent spillover events from the natural reservoir³⁰. The phylogenetic
272 congruence of circulating MPXV lineages observed in cases from the regions of the DRC
273 adjacent to the RoC suggests multiple independent introductions of MPXV into human
274 populations within the RoC. These introductions could have resulted from direct zoonotic
275 transmission of similar viral strains from a reservoir host into populations in both the DRC and
276 RoC or through cross-border human-to-human transmission. The latter is supported by the
277 observed 16% frequency of APOBEC3-like mutations in these new sequences, a significant
278 increase from the 8% (38 out of 463 sequences) previously reported in other Clade I sequences

279 from the DRC and other endemic regions of Africa²⁷. This increase in APOBEC3-like mutations
280 suggests a marginally higher rate of human-to-human transmission in these recent cases
281 compared to earlier reports. Consequently, this finding strengthens the argument for cross-border
282 human-to-human transmission as a significant factor in the spread of MPXV. Given the
283 magnitude of the outbreaks in the DRC, it is highly likely that the cases in the RoC represent
284 spillover events from the DRC into the RoC. However, the available epidemiological data is
285 insufficient to definitively confirm the directionality of Mpox transmission. The border areas
286 between RoC and DRC are known for extensive connectivity of the populations, with major
287 waterways connecting the region and major population centers such Mbandaka, Kinshasa and
288 Brazzaville and Lingala as the common language. Given the frequent travel between RoC and
289 DRC, there exists an elevated risk of trans-border transmission. Moreover, the clustering of
290 sequences from Mpox cases across different provinces in RoC, including Cuvette, Likouala, and
291 Pointe Noire, suggests probable local human-to-human transmission during the ongoing outbreak
292 in RoC, however, the rate of this transmission compared to the observed Clade IIb and Ib MPXV
293^{13,27} might be lower.

294 The reported 35 cases likely represent an underestimate of the true prevalence of Mpox cases in
295 RoC. Discussions with local healthcare workers reveal that many individuals exhibiting signs
296 and symptoms of Mpox remain within the community without seeking medical attention. The
297 drivers of the current human-to-human transmission in RoC are unknown, and follow-up
298 epidemiological investigations and expanded surveillance are urgently needed to better
299 understand the modes of MPXV transmission. In addition, it is currently unclear whether sexual
300 contact transmission is contributing to the outbreak as has been observed in Sud Kivu region in
301 DRC¹⁴. The sustained human-to-human transmission of clade I MPXV in the DRC and the

302 subsequent introduction into RoC, presents a significant cause for concern. This introduction into
303 RoC from DRC, highlights the vulnerability of the region for cross border introductions
304 potentially driving outbreaks over large geographical areas into bordering countries. We strongly
305 advocate for increased international support to strengthen epidemiology and surveillance, real-
306 time molecular tracking of MPXV in combination with broad scale availability of prophylactic
307 and therapeutic countermeasures to prevent escalation into another global Mpox outbreak ³⁴.

308

309 **Acknowledgments**

310 This research was supported by the Intramural Research Program of the National Institute of
311 Allergy and Infectious Diseases (NIAID), National Institutes of Health (NIH). We thank
312 NIAID's Research Technology Branch for whole genome sequencing (Craig Martens and Kent
313 D. Barbian) and for developing bioinformatic pipeline (Skyler Kuhn and Paul Schaughency). We
314 equally thank Dr. Willibrord "Chief Willy" Shasha (USAID) and Dr. Kerton R. Victory (CDC),
315 for in country technical support. We are thankful to WHO Congo for supporting biological
316 sample transport system and providing real-time PCR kits. We also appreciate the logistic
317 support from the US Embassy in RoC.

318

319 **Competing interests**

320 The authors declare that they have no conflict of interest.

321

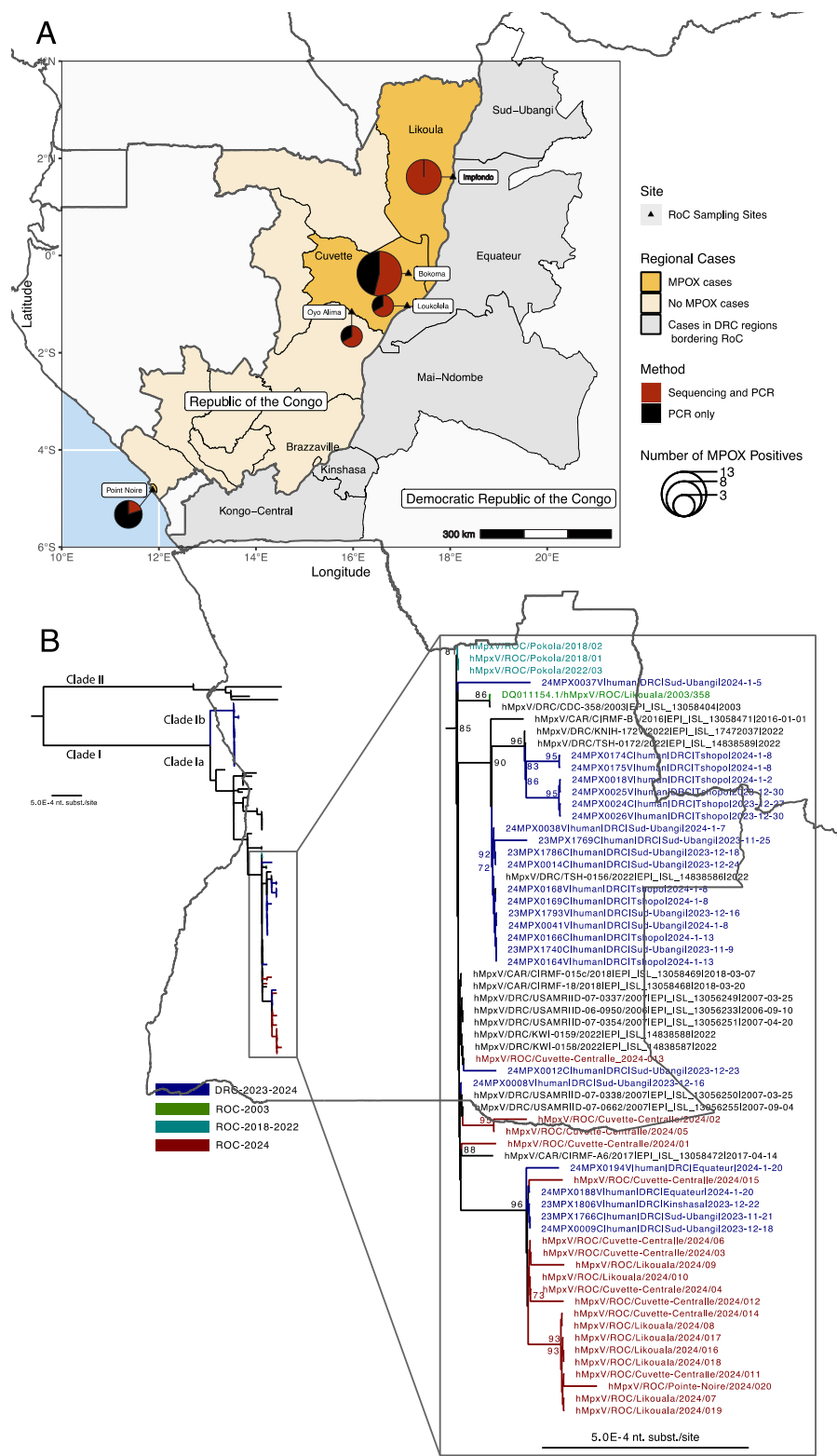
322 **Ethics**

323 This study was carried out in accordance with the declaration of Helsinki and was approved by
324 the Congolese Foundation for Medical Research Ethics committee (Avis
325 n°053/CEI/FCRM/2024).

326

327 **Data availability and Visualization**

328 All novel sequences reported are submitted to GISAID.



329
330

331 **Figure 1: A.** Map of the Republic of the Congo (RoC) and the neighboring provinces of the
332 Democratic Republic of the Congo (DRC). RoC regions with Mpx positive cases in yellow and

333 DRC grey. Size of the circle correspond with the number of cases, whereas the red to black ratio
334 indicates the number of Mpox PCR positive samples for which sequencing information was
335 obtained. **B.** Phylogenetic analysis of MPXV nucleotide sequences (~12kb from the 3' end)
336 including historic and contemporary Clade I sequence. Alignments were built with MAFFT
337 (FFT-NS-1 algorithm)²³, with the best model for distance estimates identified with the
338 ModelFinder function²⁴ as the one with the lowest Bayesian information criterion (BIC).
339 Maximum likelihood phylogenetic tree was constructed using IG-TREE2²⁵ and branch support
340 was assessed using both ultrafast bootstrap approximation (ufBoot, 1000 replicates)²⁶ and SH-
341 like approximate likelihood ratio test (SH-aLRT). The tree was visualized in FigTree
342 (<http://tree.bio.ed.ac.uk/software/figtree/>) and the phylogenetic tree were rooted using Clade II
343 MPXV sequences. MPXV sequences obtained in this study are indicated in red. Whereas,
344 historic RoC sequences are indicated in green, and contemporary DRC sequences from the
345 current outbreaks are indicated in blue³⁰. Node labels represent bootstrap values greater than 69,
346 1,000 replicates. Scale bar indicates nucleotide substitutions per site.

347 Table 1: Demographic characteristics of Mpox confirmed cases.
348

ID	Sequence ID/Accessions	Date	Gender	Age range	Department	Sample type	Ct-value	Full genome recovery
MPOX-CG-006	hMpxV/ROC/Cuvette-Centrale/2024/01	Feb-24	M	11-15	Cuvette-Centrale	Skin lesion	16.43	Y
MPOX-CG-010	hMpxV/ROC/Cuvette-Centrale/2024/02	Mar-24	M	6-10	Cuvette-Centrale	Skin lesion	21.78	Y
MPOX-CG-014	hMpxV/ROC/Cuvette-Centrale/2024/03	Feb-24	F	36 - 40	Cuvette-Centrale	Skin lesion	18.26	Y
MPOX-CG-015	hMpxV/ROC/Cuvette-Centrale/2024/04	Mar-24	M	26-30	Cuvette-Centrale	Skin lesion	16.43	Y
MPOX-CG-023	hMpxV/ROC/Cuvette-Centrale/2024/05	Mar-24	F	0-5	Cuvette-Centrale	Skin lesion	20.29	Y
MPOX-CG-025	hMpxV/ROC/Cuvette-Centrale/2024/06	Mar-24	F	21-25	Cuvette-Centrale	Skin lesion	15.96	Y
MPOX-CG-043	hMpxV/ROC/Likouala/2024/07	Feb-24	F	6-10	Likouala	Skin crust	15.42	Y
MPOX-CG-045	hMpxV/ROC/Likouala/2024/08	Feb-24	M	NR	Likouala	Skin crust	16.82	Y
MPOX-CG-061	hMpxV/ROC/Likouala/2024/09	Mar-24	M	36-40	Likouala	Skin crust	13.36	Y
MPOX-CG-062	hMpxV/ROC/Likouala/2024/010	Mar-24	M	36-40	Likouala	Skin lesion	19.01	Y
MPOX-CG-011	hMpxV/ROC/Cuvette-Centrale/2024/011	Feb-24	F	26-30	Cuvette-Centrale	Skin lesion	34.34	N
MPOX-CG-013	hMpxV/ROC/Cuvette-Centrale/2024/012	Feb-24	M	6-10	Cuvette-Centrale	Skin lesion	26.46	Y
MPOX-CG-017	hMpxV/ROC/Cuvette-Centrale/2024/013	Mar-24	M	46-50	Cuvette-Centrale	Skin lesion	22.78	Y
MPOX-CG-026	hMpxV/ROC/Cuvette-Centrale/2024/014	Mar-24	F	21-25	Cuvette-Centrale	Blood	33.74	N
MPOX-CG-027	hMpxV/ROC/Cuvette-Centrale/2024/015	Feb-24	F	36-40	Cuvette-Centrale	Blood	33.74	N
MPOX-CG-035	hMpxV/ROC/Likouala/2024/16	Feb-24	M	11-15	Likouala	Skin lesion	32.39	
MPOX-CG-036	hMpxV/ROC/Likouala/2024/017	Feb-24	M	NR	Likouala	Skin lesion	21.78	Y
MPOX-CG-042	hMpxV/ROC/Likouala/2024/018	Feb-24	F	6-10	Likouala	Skin crust	23.29	Y
MPOX-CG-044	hMpxV/ROC/Likouala/2024/019	Feb-24	M	11-15	Likouala	Skin crust	27.2	N
MPOX-CG-046	hMpxV/ROC/Pointe-Noire/2024/020	Feb-24	M	16-20	Pointe-Noire	Blood	33.44	N
MPOX-CG-019	NS	Mar-24	F	26-30	Cuvette-Centrale	Skin lesion	37.44	N
MPOX-CG-020	NS	Mar-24	F	26-30	Cuvette-Centrale	Blood	35.96	N
MPOX-CG-022	NS	Mar-24	M	26-30	Cuvette-Centrale	Blood	35.83	N
MPOX-CG-048	NS	Feb-24	M	16-20	Pointe-Noire	Skin lesion	34.71	N
MPOX-CG-049	NS	Feb-24	F	11-15	Pointe-Noire	Skin crust	35.56	N
MPOX-CG-024	NS	Feb-24	F	0-5	Cuvette-Centrale	Blood	34.34	N
MPOX-CG-007	NS	Mar-24	M	11-15	Cuvette-Centrale	Blood	36	N
MPOX-CG-012	NS	Feb-24	M	0-5	Pointe-Noire	Skin lesion	34.34	N
MPOX-CG-008	NS	Feb-24	M	31-35	Cuvette-Centrale	Blood	37.09	N
MPOX-CG-016	NS	Feb-24	M	26-30	Cuvette-Centrale	Blood	35.96	N
MPOX-CG-018	NS	Mar-24	M	46-50	Cuvette-Centrale	Blood	35.83	N

349 NR: age range not recorded, NS: No sequences obtained due to low viral load or poor sequence quality, M = male, F = female, Y
350 = full genome recovery successful, N = full genome recovery failed.

351

352 **References**

- 353 1. Hughes AL, Irausquin S, Friedman R. The evolutionary biology of poxviruses. *Infection, Genetics and*
354 *Evolution* 2010; **10**(1): 50-9.
- 355 2. McCollum AM, Shelus V, Hill A, et al. Epidemiology of Human Mpox - Worldwide, 2018-2021. *MMWR*
356 *Morb Mortal Wkly Rep* 2023; **72**(3): 68-72.
- 357 3. Altindis M, Puca E, Shapo L. Diagnosis of monkeypox virus - An overview. *Travel Med Infect Dis* 2022;
358 **50**: 102459.
- 359 4. Bunge EM, Hoet B, Chen L, et al. The changing epidemiology of human monkeypox-A potential threat? A
360 systematic review. *PLoS Negl Trop Dis* 2022; **16**(2): e0010141.
- 361 5. Hens M, Brosius I, Berens-Riha N, et al. Characteristics of confirmed mpox cases among clinical suspects:
362 A prospective single-centre study in Belgium during the 2022 outbreak. *New Microbes New Infect* 2023; **52**: 101093.
- 363 6. WHO. WHO Director-General declares the ongoing monkeypox outbreak a Public Health Emergency of
364 International Concern. 2022. [https://www.who.int/europe/news/item/23-07-2022-who-director-general-declares-the-](https://www.who.int/europe/news/item/23-07-2022-who-director-general-declares-the-ongoing-monkeypox-outbreak-a-public-health-event-of-international-concern)
365 [ongoing-monkeypox-outbreak-a-public-health-event-of-international-concern](https://www.who.int/europe/news/item/23-07-2022-who-director-general-declares-the-ongoing-monkeypox-outbreak-a-public-health-event-of-international-concern) (accessed 9/19/2022 2022).
- 366 7. Doshi RH, Guagliardo SAJ, Dzabatou-Babeaux A, et al. Strengthening of Surveillance during Monkeypox
367 Outbreak, Republic of the Congo, 2017. *Emerg Infect Dis* 2018; **24**(6): 1158-60.
- 368 8. Doshi RH, Guagliardo SAJ, Doty JB, et al. Epidemiologic and Ecologic Investigations of Monkeypox,
369 Likouala Department, Republic of the Congo, 2017. *Emerg Infect Dis* 2019; **25**(2): 281-9.
- 370 9. Learned LA, Reynolds MG, Wassa DW, et al. Extended interhuman transmission of monkeypox in a
371 hospital community in the Republic of the Congo, 2003. *Am J Trop Med Hyg* 2005; **73**(2): 428-34.
- 372 10. Masirika LM, Udahemuka JC, Schuele L, et al. Ongoing mpox outbreak in Kamituga, South Kivu
373 province, associated with monkeypox virus of a novel Clade I sub-lineage, Democratic Republic of the Congo,
374 2024. *Euro Surveill* 2024; **29**(11).
- 375 11. Ladnyj ID, Ziegler P, Kima E. A human infection caused by monkeypox virus in Basankusu Territory,
376 Democratic Republic of the Congo. *Bull World Health Organ* 1972; **46**(5): 593-7.
- 377 12. Rimoin AW, Mulembakani PM, Johnston SC, et al. Major increase in human monkeypox incidence 30
378 years after smallpox vaccination campaigns cease in the Democratic Republic of Congo. *Proceedings of the*
379 *National Academy of Sciences* 2010; **107**(37): 16262-7.

- 380 13. Vakaniaki EH, Kacita C, Kinganda-Lusamaki E, et al. Sustained human outbreak of a new MPXV clade I
381 lineage in eastern Democratic Republic of the Congo. *Nature Medicine* 2024.
- 382 14. Kibungu E, Vakaniaki E, Kinganda-Lusamaki E, et al. Clade I–Associated Mpox Cases Associated with
383 Sexual Contact, the Democratic Republic of the Congo. *Emerging Infectious Disease journal* 2024; **30**(1): 172.
- 384 15. Web R. DR Congo: Rapport de la situation épidémiologique de la variole simienne - sitrep no 2, 5-11 février
385 2024, 2024.
- 386 16. Control) EECfDPa. Risk assessment for the EU/EEA of the mpox epidemic caused by monkeypox virus
387 clade I in affected African countries. 2024.
- 388 17. Organization WH. WHO Director-General declares mpox outbreak a public health emergency of
389 international concern. 2024. p. [https://www.who.int/news/item/14-08-2024-who-director-general-declares-mpox-](https://www.who.int/news/item/14-08-2024-who-director-general-declares-mpox-outbreak-a-public-health-emergency-of-international-concern)
390 [outbreak-a-public-health-emergency-of-international-concern.](https://www.who.int/news/item/14-08-2024-who-director-general-declares-mpox-outbreak-a-public-health-emergency-of-international-concern)
- 391 18. Martin M. Cutadapt removes adapter sequences from high-throughput sequencing reads. *2011* 2011; **17**(1):
392 3.
- 393 19. Gordon A. FASTX-Toolkit (RRID:SCR_005534). http://hannonlab.cshl.edu/fastx_toolkit/.
- 394 20. Bankevich A, Nurk S, Antipov D, et al. SPAdes: a new genome assembly algorithm and its applications to
395 single-cell sequencing. *J Comput Biol* 2012; **19**(5): 455-77.
- 396 21. Walker BJ, Abeel T, Shea T, et al. Pilon: An Integrated Tool for Comprehensive Microbial Variant
397 Detection and Genome Assembly Improvement. *PLOS ONE* 2014; **9**(11): e112963.
- 398 22. Langmead B, Salzberg SL. Fast gapped-read alignment with Bowtie 2. *Nat Methods* 2012; **9**(4): 357-9.
- 399 23. Katoh K, Standley DM. MAFFT multiple sequence alignment software version 7: improvements in
400 performance and usability. *Mol Biol Evol* 2013; **30**(4): 772-80.
- 401 24. Kalyaanamoorthy S, Minh BQ, Wong TKF, von Haeseler A, Jermin LS. ModelFinder: fast model selection
402 for accurate phylogenetic estimates. *Nat Methods* 2017; **14**(6): 587-9.
- 403 25. Minh BQ, Schmidt HA, Chernomor O, et al. IQ-TREE 2: New Models and Efficient Methods for
404 Phylogenetic Inference in the Genomic Era. *Molecular Biology and Evolution* 2020; **37**(5): 1530-4.
- 405 26. Hoang DT, Chernomor O, von Haeseler A, Minh BQ, Vinh LS. UFBoot2: Improving the Ultrafast
406 Bootstrap Approximation. *Mol Biol Evol* 2018; **35**(2): 518-22.

- 407 27. O'Toole Á, Neher RA, Ndodo N, et al. APOBEC3 deaminase editing in mpox virus as evidence for
408 sustained human transmission since at least 2016. *Science* 2023; **382**(6670): 595-600.
- 409 28. Drummond AJ, Rambaut A. BEAST: Bayesian evolutionary analysis by sampling trees. *BMC Evol Biol*
410 2007; **7**: 214.
- 411 29. Organization WH. Multi-country outbreak of mpox. External situation report#30 – 25 November 2023.,
412 2023.
- 413 30. Vakaniaki EH, Kacita C, Kinganda-Lusamaki E, et al. Sustained Human Outbreak of a New MPXV Clade I
414 Lineage in Eastern Democratic Republic of the Congo. *medRxiv* 2024: 2024.04.12.24305195.
- 415 31. Reuters. Congo Republic declares mpox epidemic. 2024. p. ROC mpox outbreak.
- 416 32. Arias A, Watson SJ, Asogun D, et al. Rapid outbreak sequencing of Ebola virus in Sierra Leone identifies
417 transmission chains linked to sporadic cases. *Virus Evol* 2016; **2**(1): vew016.
- 418 33. Kafetzopoulou LE, Pullan ST, Lemey P, et al. Metagenomic sequencing at the epicenter of the Nigeria 2018
419 Lassa fever outbreak. *Science* 2019; **363**(6422): 74-+.
- 420 34. Nachega JB, Sam-Agudu NA, Ogoina D, et al. The surge of mpox in Africa: a call for action. *Lancet Glob*
421 *Health* 2024.
- 422