

1 **Lack of knowledge of stakeholders in the pork value chain:**
2 **considerations for transmission and control of *Taenia solium* and**
3 ***Toxoplasma gondii* in Burundi**

4 Salvator Minani^{1,2,3*}, Jean-Bosco Ntirandekura⁴, Koen Peeters Grietens³, Anastasie Gasogo¹,
5 Sarah Gabriël^{2#}, Chiara Trevisan^{3#}

6 ¹ Department of Biology, Faculty of Sciences, University of Burundi, Bujumbura, Burundi.

7 ² Laboratory of foodborne parasitic zoonoses, Department of Translational Physiology,
8 Infectiology and Public Health, Faculty of Veterinary Medicine, Ghent University,
9 Merelbeke, Belgium.

10 ³ Department of Public Health, Institute of Tropical Medicine, Antwerp, Belgium.

11 ⁴ Department of Animal Health and Productions, Faculty of Agronomy and Bio-Engineering,
12 University of Burundi, Bujumbura, Burundi.

13 * Corresponding author:

14 Email: salvator.minani@ub.edu.bi/sminani@itg.be (SM).

15 #These authors contributed equally to this work.

16 **Abstract**

17 **Background:** *Taenia solium* and *Toxoplasma gondii* are important foodborne zoonotic
18 parasites that cause substantial health and economic impacts worldwide. In Burundi, there
19 was a lack of data on the knowledge, attitudes, and practices of stakeholders in the pork value
20 chain. To fill this gap, this study aimed to assess the knowledge of stakeholders in the pork
21 value chain regarding *T. solium* and *T. gondii* infections and identify health-seeking routes
22 and factors contributing to parasitic transmissions.

NOTE: This preprint reports new research that has not been certified by peer review and should not be used to guide clinical practice.

23 **Methodology:** A mixed methods study was conducted in Bujumbura city, Kayanza, and
24 Ngozi provinces from January to April 2023. Quantitative data was collected using
25 questionnaire-based interviews with 386 participants, while qualitative data was gathered
26 through focus group discussions, informal conversations, and observations for 63 participants.
27 R and NVivo software were used for quantitative and qualitative data analyses, respectively.

28 **Principal findings:** The majority of the participants had heard about porcine
29 cysticercosis and pork tapeworm, although the transmission and symptoms of these diseases
30 were less known and inaccurately described. Most participants were not aware of human
31 cysticercosis, the link of human cysticercosis associated with epilepsy, and *T. gondii*
32 infections. Socio-demographic and healthcare factors contributed more to the choice of using
33 traditional medicine, biomedicine, prayers, and staying at home. Furthermore, the short
34 roasting time of pork, misconceptions about eating pork infected with cysts to prevent
35 amoebiasis, and low perception of the consequences of consuming infected pork expose pork
36 consumers to these parasitic infections.

37 **Conclusions/Significance:** Inadequate knowledge of the causes and symptoms of
38 *T. solium* and *T. gondii* infections, along with inadequate practices in treatment-seeking and
39 pork preparation and consumption, can lead to continued transmissions and pose significant
40 barriers to control programmes. Training and public health education following the One
41 Health approach are urgently needed to better tackle these parasitic infections in Burundi.

42 **Keywords:** Knowledge, practices, stakeholders, pork value chain, *Taenia solium*,
43 *Toxoplasma gondii*, Burundi

44 **Author summary**

45 The pork tapeworm *Taenia solium* and *Toxoplasma gondii* are important foodborne parasites
46 endemic to Burundi. Humans can get infected with pork tapeworm by consuming pork
47 contaminated with *T. solium* cysts. Ingesting food or water contaminated with eggs from pork
48 tapeworm carriers can lead to human (neuro)cysticercosis. Also, consuming meat infected
49 with *T. gondii* cysts or ingesting food and water contaminated with cat faeces can lead to
50 human toxoplasmosis. We designed the mixed methods research to assess the knowledge of
51 stakeholders in the pork value chain regarding these parasitic infections and identify health-
52 seeking routes and factors contributing to parasitic transmissions, to provide valuable insights
53 for effectively implementing disease control measures. Our results illustrate how inadequate
54 knowledge among stakeholders in the pork value chain about the causes and symptoms of
55 these parasitic infections, combined with inadequate practices in treatment-seeking and pork
56 consumption, presents significant barriers to implementing effective control programmes.
57 Based on our results, it is very important to implement control interventions based on the One
58 Health approach to reduce or eliminate the transmission of these parasitic infections in
59 Burundi.

60 **Introduction**

61 Around the world, foodborne parasitic diseases cause significant morbidity, mortality, and
62 economic losses (1). *Taenia solium* and *Toxoplasma gondii* are ranked among the major
63 foodborne parasites causing substantial health and economic burden (2,3). *Taenia solium* is a
64 zoonotic parasite affecting humans and pigs (4). Pigs develop porcine cysticercosis by
65 ingesting human faeces, food, and water contaminated with eggs from human *T. solium*
66 tapeworm carriers (5). Pork tapeworm eggs excreted in human stools may be transmitted to
67 pigs in case of inappropriate pig husbandry practices and sanitation (6,7). Larvae settle in the
68 muscles and organs of pigs and become metacestodes (cysticerci) (5,8). In humans, *T. solium*

69 leads to taeniosis by ingestion of undercooked or raw pork infected with cysticerci, while
70 ingestion of *T. solium* eggs primarily via contaminated water, food, and inadequate hygiene
71 can result in human cysticercosis (8). The migration of larvae in the human body to the tissues
72 of the central nervous system causes neurocysticercosis (NCC) of which epilepsy is the main
73 clinical sign (5,8,9). In sub-Saharan Africa, it has been reported that about 30% of people with
74 epilepsy were linked to NCC (10).

75 *Toxoplasma gondii* is a cosmopolitan zoonotic parasite of which cats and other species of the
76 Felidae family are the definitive host and wild and domestic animals including humans are the
77 intermediate host (11,12). Pigs like other livestock get infected through ingestion of water or
78 food contaminated with oocysts or via ingestion of meat infected with cysts (12,13). Humans
79 can acquire toxoplasmosis by ingesting the oocysts via water or food contaminated with cat
80 faeces, by ingesting raw or undercooked meat containing *T. gondii* cysts from livestock and
81 wild animals; blood transfusion or organ transplantation; transplacental transmission and
82 accidental inoculation of tachyzoites (12,14). Studies reported that 30-60% of acute infections
83 in pregnant women are associated with the consumption of undercooked meat (15). Human
84 toxoplasmosis is often asymptomatic, but severe cases can include abortion, stillbirth, and the
85 birth of apparently healthy babies who will develop neurological and ocular disorders later in
86 life (16,17). Neurological and ocular disorders may include encephalitis, mental retardation,
87 hydrocephalus, intracranial calcification, blindness, and chorioretinitis (17,18). Ten to 20% of
88 immunocompetent patients with toxoplasmosis may show chorioretinitis, lymphadenitis, and
89 polymyositis (18).

90 Lack of meat inspection, hygiene and sanitation, and some inappropriate practices associated
91 with animal husbandry, pig slaughter and culinary behaviour are common risk factors for both
92 *T. solium* infections and toxoplasmosis (6,19,20). Community health education was suggested
93 as an essential part of any intervention to control *T. solium* infections and toxoplasmosis

94 (6,21). Although community education and awareness campaigns are crucial for disease
95 control, studies conducted in Mexico and Tanzania showed that improving community
96 knowledge does not automatically change common practices and behaviours (22,23). People
97 might only change their practices after realising that their behaviour can harm their health and
98 cause serious illness or when economic benefits are threatened (6,22). Therefore, the lack of
99 knowledge about these diseases, their transmissions, and their clinical manifestations,
100 combined with culture and community beliefs, could hinder the control of these diseases. A
101 study evaluating the knowledge, practices, and attitudes of stakeholders in Burundi's pork
102 value chain could provide valuable insights for implementing disease control measures. This
103 study aimed to describe the knowledge of stakeholders in the pork value chain regarding *T.*
104 *solium* and *T. gondii* infections, to contribute to the identification of their specific treatment-
105 seeking routes, and to explore factors contributing to parasitic transmissions.

106 **Methods**

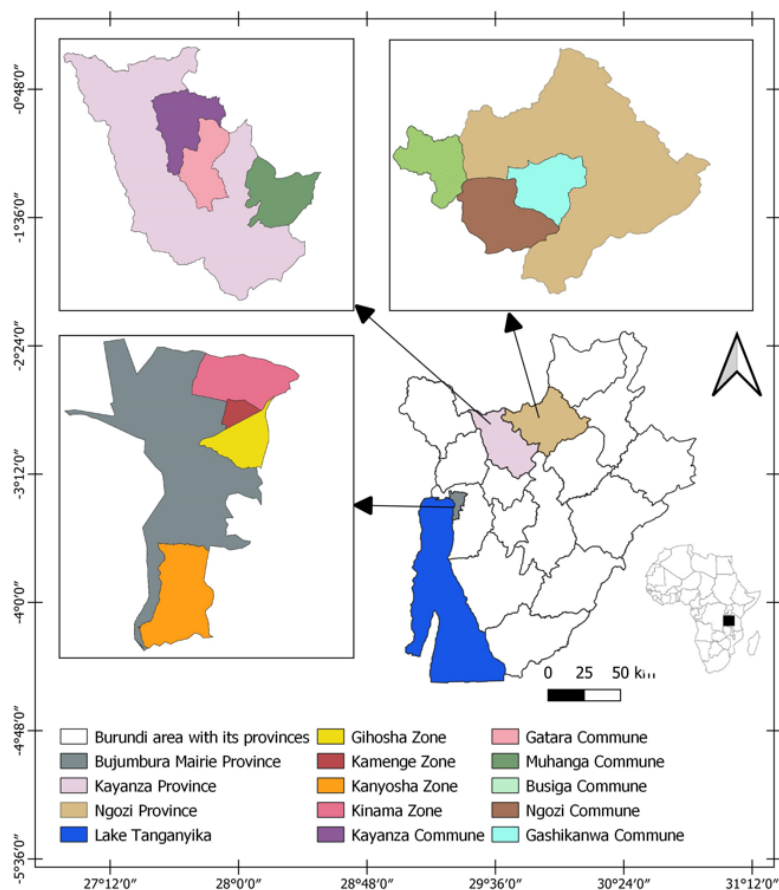
107 **Ethics statement**

108 The research protocol was approved by the National Ethics Committee in Burundi
109 (CNE/25/2022) and the Institutional Review Board of the Institute of Tropical Medicine
110 (ITM) in Belgium (IRB/RR/AC/091 Ref 1595/22). Ethical clearances were obtained from the
111 Ministry of Environment, Agriculture and Livestock and the Ministry of Finances, Budget,
112 and Economic Planning in Burundi. All participants were approached with courtesy and
113 informed about the purpose and importance of the study, types of questions, and themes
114 before the interview and FGDs. They were explained that participation was voluntary and that
115 they had the right to participate, decline, and interrupt the participation at any time without
116 consequences. Written informed consent was obtained before each interview. Verbal consent
117 for the audio records for the FGD was also requested before starting the discussions. Unique

118 coded identifiers were assigned to respect participants' confidentiality and privacy in the FGD
119 audio recording transcripts.

120 **Study area**

121 This research was conducted in Bujumbura city, Kayanza, and Ngozi provinces from January
122 to April 2023 (Fig 1). To enrol study participants, pig slaughterhouses, pork markets, and pig
123 farms located in the study area were visited. Bujumbura city was selected being the economic
124 capital and the largest city housing the national slaughterhouse. A substantial number of pigs
125 from the countryside are transported to the city for slaughter and marketing. In addition, there
126 is a significant demand for pork in the peripheral zones of the city. Kamenge and Kinama
127 (Ntakangwa commune) and Kanyosha (Muha commune) were included as pig slaughter and
128 trading of pork for markets, bars, and restaurants are common in these areas. Ngozi and
129 Kayanza provinces were selected as they are among the four most densely populated
130 provinces with large numbers of pigs raised in extensive systems and endemic for *T. solium*
131 (24–26). Three communes in Ngozi province (Ngozi, Gashikanwa, and Busiga) and three
132 communes in Kayanza province (Kayanza, Gatara, and Muhanga) were included in this study.



133

134 **Fig 1. Study area including Bujumbura city, Kayanza, and Ngozi provinces.**

135 **Study design**

136 A mixed-method triangulation design was used to collect concurrently quantitative and
137 qualitative data. These data were collected separately to triangulate, compare and contrast the
138 results.

139 **Quantitative strand**

140 **Sampling and data collection**

141 A sample size for participants was calculated using the formula $N = Z^2pq/L^2$ (27). Thus, 384
142 study participants were selected from different stakeholders involved in the pork value chain
143 in the study area. A multisampling strategy was adopted to reach out to the stakeholders.

144 Inclusion criteria for the study were established, which required participants to be involved in
145 the pork value chain (e.g. pig farmer, pig trader, butcher, slaughterhouse worker, veterinarian,
146 food safety quality control officer, and pork consumer), be over 18 years old, and willing and
147 able to provide informed consent. A questionnaire was developed and entered into the
148 Epicollect5 application for data collection on a tablet. The survey included both closed and
149 open-ended questions on knowledge regarding *T. solium* and *T. gondii* infections, practices
150 related to treatment-seeking, pork consumption, and culinary methods. The questionnaire was
151 tested before data collection to assess whether it was clear, reliable, valid, understandable, and
152 easy to follow with the Epicollect5 software (<https://five.epicollect.net/>). Stakeholders taking
153 part in the interviews were selected using random (farmers, butchers), purposive
154 (veterinarians), and convenience sampling (pork consumers). For pig slaughterhouses and pig
155 slaughter slabs, a brief explanation of the study was given to the slaughterhouse manager,
156 who then introduced the researcher to slaughterhouse workers and pig traders. Local
157 community leaders provided a list of pig farmers and butchers or pork retailers from which
158 participants were randomly selected. Pork consumers were recruited by convenience in the
159 places where the pork was marketed. Seven veterinarians and 2 food safety quality control
160 officers working in the study area were purposely recruited. During the interview, each
161 participant was asked to reply to the structured questionnaire. The interviews were made in
162 Kirundi (local language) and responses were then translated into English when entering into
163 Epicollect5. The interview and the translation of responses from Kirundi to English were
164 conducted by the first author. The interview lasted approximately 20 minutes. After each
165 interview, the participant responses were directly saved on a cloud-based drive.

166 **Data analysis**

167 All interview data were validated before analysis. They were downloaded as a comma-
168 separated values (CSV) file and then exported to R software for analysis (28). Descriptive

169 statistics were performed to estimate the frequencies and percentages of responses. For all
170 categorical variables, a Chi-square test was performed to estimate associations between them.
171 The association was significant if $p < 0.05$.

172 **Qualitative strand**

173 **Sampling and data collection**

174 Data was collected using focus group discussions (FGD), informal conversations, and
175 observations. Participants in FGDs were selected using a purposive and snowball sampling
176 technique. The same inclusion criteria were applied as for the quantitative data collection.
177 However, participants who took part in the questionnaire interviews were excluded.
178 Heterogeneity including gender, age range, and education level was considered when
179 selecting FGD participants, even though some stakeholders declined to participate due to fear
180 of participating or answering the questions. Participants were invited to join the FGD at the
181 agreed place and time. Two facilitators in each location were recruited to help the first author
182 during the discussion for moderation and group management. The number of participants in
183 each FGD varied from 8 to 9 people. Topic guides were designed before data collection and
184 were updated according to the local context of the study area and the participants. The FGDs
185 addressed three themes, including (i) knowledge of pork tapeworm and toxoplasmosis
186 infections in pigs and humans, (ii) risk behaviour in culinary practices of pork preparation and
187 consumption, and (iii) knowledge of control methods for pork tapeworm and toxoplasmosis.
188 All FGDs were conducted in Kirundi. They were audio-recorded and lasted approximately 65
189 minutes. The discussion was closed when data saturation was reached. Conclusions on
190 themes, salient points, and participants' body language were written down by the first author.
191 Observations and informal conversations were also conducted during the fieldwork. Visits
192 made at different slaughterhouses, pig farms, and pork markets allowed us to observe, interact

193 with people, and understand practices related to pig housing, pig selling, hygiene and
194 sanitation, meat inspection, pig slaughter at home and public places, pork marketing and meat
195 storage and consumption.

196 **Data analysis**

197 Audio recordings were transcribed verbatim to Microsoft Word in Kirundi and later translated
198 into English by the first author. All FGD transcripts were thematized and coded using NVivo
199 11 Qualitative Analysis software (QSR International Pty Ltd, Cardigan UK). In addition, FGD
200 findings were triangulated with the notes taken during informal conversations and
201 observations for the accuracy of information and identification of discrepancies.

202 **Results**

203 **Study participants**

204 **Quantitative strand**

205 In the study area, 386 interviews were conducted, including 134 pork consumers, 122 pig
206 farmers, 96 butchers/retailers, 14 slaughterhouse workers, 11 pig traders, 7 veterinarians, and
207 2 food safety quality control officers. One hundred and ninety-four participants were recruited
208 in Bujumbura city, 94 in Kayanza province, and 98 in Ngozi province (Table 1). The average
209 age of participants was 36 years old, with variations by location: 33 years in Bujumbura city,
210 41 years in Kayanza province, and 39 years in Ngozi province. Nearly 75% of the participants
211 were male. Approximately 40% of the participants had no formal education, 43.8% had
212 completed primary school, 14.3% had finished secondary school, and 2.3% had attained a
213 university level of education. Nearly 77% of the participants worked in the farming sector,
214 5.7% in the public sector and the rest (17.4%) had other occupations (traders, masons, drivers,

215 carpenters, students, unemployed, and restaurant waiters). Participants' households size
 216 ranged from 1 to 12 people with an average of 5 people.

217 **Table 1. Socio-demographic characteristics of participants.**

| Variables | Bujumbura city | Kayanza | Ngozi | Total | % | χ^2 | p-value |
|------------------------|-----------------------|----------------|--------------|--------------|----------|----------------------------|----------------|
| Gender | | | | | | | |
| Male | 171 | 57 | 61 | 289 | 74.9 | 36.6 | <0.001* |
| Female | 23 | 37 | 37 | 97 | 25.1 | | |
| Age category | | | | | | | |
| 18-30 years | 90 | 26 | 32 | 148 | 38.3 | 25.7 | <0.001* |
| 31-50 years | 94 | 47 | 47 | 188 | 48.7 | | |
| >50 years | 10 | 21 | 19 | 50 | 13 | | |
| Education | | | | | | | |
| None | 53 | 52 | 48 | 153 | 39.6 | 29.6 | <0.001* |
| Primary | 109 | 27 | 33 | 169 | 43.8 | | |
| Secondary | 27 | 13 | 15 | 55 | 14.3 | | |
| University | 5 | 2 | 2 | 9 | 2.3 | | |
| Occupation | | | | | | | |
| Farming | 132 | 84 | 81 | 297 | 76.9 | 40.1 | <0.001* |
| Public sector employee | 6 | 8 | 8 | 22 | 5.7 | | |
| Other occupation | 56 | 2 | 9 | 67 | 17.4 | | |
| Family size | | | | | | | |
| 1-2 people | 52 | 6 | 6 | 64 | 16.6 | 33.9 | <0.001* |
| 3-5 people | 86 | 42 | 46 | 174 | 45.1 | | |

| | | | | | | | |
|-------------------|----|----|----|-----|------|--|--|
| 6 people and more | 56 | 46 | 46 | 148 | 38.3 | | |
|-------------------|----|----|----|-----|------|--|--|

218 %: percentage, χ^2 : Chi-square, * significant (p<0.05)

219 Qualitative strand

220 Six FGDs, including a total of 51 participants, were conducted in Bujumbura city, Kayanza,
 221 and Ngozi provinces (Table 2). Thirty-seven participants (72.5%) were male and 14
 222 participants (27.5%) were female. In addition, 12 informal conversations were conducted with
 223 10 male and 2 female participants: 5 in Bujumbura city, 3 in Kayanza province, and 4 in
 224 Ngozi province.

225 **Table 2. Overview of participants in the focus group discussions.**

| Study area | Communes | Hills /quarters | Category of stakeholders | Number of participants | Average age |
|-------------------|----------|--------------------|-------------------------------|---------------------------|----------------|
| Bujumbura city | Ntangwa | Kinama | Butchers Pork consumers | 9 | 30 |
| | Muha | Kanyosha | Butchers Pork consumers | 9 | 33 |
| Kayanza | Kayanza | Nyabihogo | Pig farmers Pork consumers | 8 | 45 |
| | Gatara | Bihororo | Pig farmers Pork consumers | 8 | 45 |
| Ngozi | Ngozi | Kinyana | Pig farmers Pork consumers | 8 | 45 |
| | Busiga | Mihigo | Pig farmers Pork consumers | 9 | 47 |

226 **Knowledge about pork tapeworm infections**

227 ✓ **Porcine cysticercosis (PCC)**

228 The majority of the participants (94.8%) had heard of PCC (Table 3). Among them, 79.2%
229 had heard about it in the community, 16.7% at work and 4.1% at school. Over 93% of the
230 participants reported seeing white nodules in infected pigs such as in the eyes, meat, and
231 tongue. Also, FGD participants knew well about PCC. They had different ways of describing
232 this disease in pigs. They reported that “Ubupera” (cysts) might have come from the term
233 “Amapera” (guava) due to the grains of the guava fruit which look like cysts. Cysts
234 “Ubupera” were also described as “nodules or whitish buttons found inside the pork
235 resembling a chigoe flea (Imvunja)” (FGD2, FGD6); “finger millets but bigger than finger
236 millets, and when crushed they are full of liquids” (FGD2); “they are inside muscles similar to
237 the ice and when you break them, small larvae will appear from inside” (FGD3); “and after
238 the pig slaughter, you will find it was full in the whole body (cysts) like sorghum grains”
239 (FGD4). The heart and brain were added as locations for the cysts. However, they said the
240 cysts did not invade the outermost layer of the pig's body and showed that infected pigs were
241 asymptomatic.

242 *“It is difficult to see cysts without looking through its mouth. Cysts are seen on or under the*
243 *tongue and inside the eyes; they do not occupy the outermost layer of the pig's body. When*
244 *the pig is infected, it grows fat on the neck and has an excessive appetite but the thigh is thin,*
245 *FGD1”.*

246 In addition, they perceived huge economic losses from the disease when a farmer sold
247 infected pigs or when pigs showed cysts at the slaughterhouse.

248 “They [farmer and butcher] fix the price but the butcher will tell him that after a check of the
249 tongue, he will not pay the full amount if the pig will contain cysts. It can happen that instead
250 of three hundred thousand francs (300,000 BIF) for an adult pig, he will give him only one
251 hundred thousand francs (100,000 BIF), FGD3”.

252 Approximately 32% of the participants knew that pigs got PCC by ingesting human faeces,
253 food, and water contaminated with eggs from pork tapeworm carriers. In contrast, 59.0% of
254 the participants did not know the cause of PCC, and 9.3% had misconceptions about it. In the
255 latter case, 47.1% believed that PCC was transmitted by mating with infected pigs, 32.3% by
256 transplacental transmission, 11.7% by consumption of salty feed, and 8.9% by hot climate.
257 The level of knowledge about PCC was significantly different in the three provinces of the
258 study area ($\chi^2=21.7$, $p<0.001$) (Table 3). Participants from Ngozi and Kayanza provinces had
259 more knowledge than participants from Bujumbura city. The difference between stakeholder
260 groups was significant ($\chi^2=39.92$, $p<0.001$) regarding knowledge of the cause of PCC.
261 Veterinarians, food safety quality control officers, pig traders, and slaughterhouse workers
262 had more knowledge than other stakeholders. Based on education level, there was no
263 difference in the knowledge of the cause of PCC ($\chi^2=4.9$, $p=0.086$).

264 Despite their high knowledge of PCC in the FGDs, participants also displayed inadequate
265 knowledge of its transmission and held misconceptions.

266 “We do not know from where pigs get cysts because they can be born with cysts. If we try to
267 analyse the origin of them when they sell their mother, we can find that a sow has cysts.
268 Rather, we think that it depends on the kind of sow and boar and they will have it in that way,
269 FGD6”.

270 Additional misconceptions about the cause of PCC were reported, including changing pig
271 housing and specific dietary factors like eating banana bark, taro, and brewery grain residues.

272 However, a few participants knew from their experience in pig farming that letting pigs roam
273 freely could be the cause of PCC.

274 “*Cysts could attack them when owners let pigs wander in the bush. They can wander in the*
275 *bush and eat the faeces of infected children or adult persons, FGD5*”.

276 ✓ **Pork tapeworm**

277 Pork tapeworm infection was heard of by the majority of the participants (90.9%). Over 87%
278 of these participants had heard about it in the community, 9.1% had learned it at school and
279 3.7% had heard about it at the healthcare facilities. In the FGDs, participants described the
280 tapeworm infection based on parasite morphology. The tapeworm is known as “Igifwana”, a
281 worm that releases segments “Igihuka (proglottids)” and “Igikangaga” like a worm whose
282 segments look like a flat, whitish dry leaf of *Typha* (cattail) used to make mats. Other
283 explanations were provided for the tapeworm as a long white worm, a white rope, and a
284 rounded worm (a twisted worm) like a long rope that separates into several segments when it
285 exits the human intestine through the anus. However, some parts of the explanations seemed
286 correct and others completely incorrect. The tapeworm is flat instead of a rounded worm. On
287 top of that, they were confused about two types of tapeworms (beef tapeworm and pork
288 tapeworm). Some mentioned that the segments could come out of the anus without going to
289 the toilet, which might be specific to the beef tapeworm (present in Burundi) and *Dipylidium*
290 (never reported in Burundi), while for the pork tapeworm, the segments are in the stool.

291 “*When it[tapeworm] is its time to leave someone’s stomach, whether you go to the toilet or*
292 *not, it will separate into many pieces of segments and then they will drop down one by one*
293 *and it can take a long time. I used to see one of our family had that tapeworm. He could be*
294 *sitting and see some parts getting out through his anus, FGD3*”.

295 Most participants (62.1%) did not know the cause of pork tapeworm infection and cited it was
296 due to inadequate hygiene and drinking unsafe water. Nearly 72% did not know the symptoms
297 people infected with tapeworm would experience. The difference in the level of knowledge
298 about pork tapeworm in the three provinces was significant (Table 3). Participants from
299 Kayanza province had more knowledge than those from Bujumbura city and Ngozi province.
300 Regarding stakeholder groups, the difference in knowledge of the cause ($\chi^2=24.12$, $p=0.0005$)
301 and symptoms of pork tapeworm ($\chi^2=26.66$, $p=0.0001$) was significant. Veterinarians, food
302 safety quality control officers, and pig farmers had more knowledge than other stakeholders.
303 The difference between education levels and knowledge of the cause ($\chi^2=16.6$, $p=0.0002$) and
304 symptoms of pork tapeworm ($\chi^2=8.97$, $p=0.011$) was also significant. Stakeholders with
305 secondary and university education had more knowledge than others with no or only primary
306 education.

307 In the FGDs, they were not well aware of its transmission. Some of them knew it was due to
308 eating undercooked pork, while others provided the same inaccurate answers as in the
309 questionnaire. The tapeworm infection was not perceived as a severe illness beyond the
310 presence of proglottids in the stool, diarrhoea, anorexia, and abdominal and bone pain
311 experienced by infected people.

312 *“You become unable to have an appetite while eating food. You feel pains in your stomach
313 and bones. If you feel pain whenever you eat some kinds of food you used to eat without any
314 problem, make sure you have a tapeworm. It can grow and begin to break into segments. This
315 can be a significant sign of tapeworm in you, FGD6”.*

316 In addition, anal itching and pruritus, specific symptoms of beef tapeworm, were listed but
317 mistakenly attributed to amoebiasis for people eating pork infected with cysts. The confusion
318 between amoebiasis and tapeworm could be due to people who had allergies after eating pork

319 or those suffering from human cysticercosis, despite its symptoms taking several months to
320 appear rather than immediately.

321 *“I think people should roast pork well, if not the liquids that are inside the cysts can arise*
322 *amoebiasis for those who have already eaten undercooked pork. So, when you consume it*
323 *unroasted or undercooked, nodules and itch can quickly appear on someone's body, FGD2”.*

324 ✓ **Human cysticercosis (HCC)**

325 Most participants (96.4%) had never heard of HCC. Only 14 out of 386 participants (3.6%)
326 had heard about it at school or healthcare facilities. Nearly all of these 14 participants knew
327 how it was transmitted and what the symptoms were (Table 3). The difference between
328 stakeholder groups and the cause ($\chi^2=6.87$, $p=0.076$) and symptoms of HCC ($\chi^2=1.94$,
329 $p=0.585$) was not significant. No difference was found between education levels and the
330 cause ($\chi^2=1.53$, $p=0.466$) and symptoms of HCC ($\chi^2=3.94$, $p=0.139$). In the FGDs, all
331 participants had no idea about the disease.

332 ✓ **The link between human cysticercosis and epilepsy**

333 Most participants (76.4%) had seen people with epilepsy in their neighbourhood (Table 3).
334 Over 22% of the participants reported that eating pork infected with cysticerci could lead to
335 epilepsy, while 51.5% were unsure about the cause, 12.7% attributed it to evil spirits
336 (witchcraft), 7.8% to hereditary factors, 3.9% to flatulence emitted by people with epilepsy,
337 and 1.8% to trauma during childbirth. The difference between stakeholder groups and the
338 cause of epilepsy was significant ($\chi^2=68.33$, $p<0.001$). Veterinarians, food safety quality
339 control officers, pig traders, and slaughterhouse workers had more knowledge than other
340 stakeholders. There was no difference between education levels and the knowledge of the
341 cause of epilepsy ($\chi^2=2.51$, $p=0.284$).

342 During the FGDs, epilepsy was perceived as an incurable disease characterised by sudden
343 falls, uncontrolled movements, and loss of consciousness. Several names were attributed to
344 epilepsy depending on the symptoms and causes. According to the symptoms, “Intandara” is
345 a well-known name in the country, which means something that pops up and leads to
346 convulsions and injuries; “Igikange” which means something that surprises someone and
347 suddenly drops; and “Ibisazi” which means madness. Based on the causes, they listed
348 “Ibisigo, Ibishetani, and Imizimu” referring to evil spirits of ancestors or forest. Apart from
349 the mental problem, the same causes of epilepsy as during the interview were mentioned.
350 Most participants did not know the link between pork tapeworm and epilepsy. Those who
351 thought epilepsy was due to eating pork infected with cysts listed chronic headaches, seizures,
352 and itchy skin as clinical signs.

353 *“We heard that the pork tapeworm could lead to epilepsy. For butchers and those who like*
354 *eating undercooked or bad roasted pork; cysts can reach the brain, causing epilepsy and an*
355 *endless headache, FGD6”.*

356 However, they thought patients showed symptoms quickly, while HCC-associated epilepsy
357 takes a long time to manifest.

358 **Knowledge about toxoplasmosis**

359 Human toxoplasmosis is less known in Burundi. Only 34 out of 386 participants (8.8%) had
360 heard about it (Table 3). Of these participants, 19 (55.9%) had heard about it in health
361 facilities, 7 (20.6%) had learned about it at school, and 8 (23.5%) had heard about it in the
362 community from women diagnosed with it. Twenty-four participants (70.6%) mentioned
363 abortion, stillbirth, and babies with an abnormality as symptoms associated with the disease.

364 In the FGDs, human toxoplasmosis was not perceived as a severe disease because most
365 participants had no clue about it. Abortion, stillbirth, and babies with abnormalities still occur

366 in the community although the causes of these remain unknown. The cause of toxoplasmosis
 367 was known by 13 participants (38.2%). The difference between stakeholder groups and the
 368 cause ($\chi^2=11.41$, $p=0.043$) and symptoms of toxoplasmosis ($\chi^2=11.92$, $p=0.035$) was
 369 significant. Veterinarians, food safety quality control officers, and pig farmers had more
 370 knowledge than other stakeholders. No difference was found between education levels and the
 371 cause ($\chi^2=4.61$, $p=0.099$) and symptoms of toxoplasmosis ($\chi^2=1.43$, $p=0.488$).

372 In the FGDs, a few participants confirmed having heard it, but their knowledge of the cause
 373 and symptoms was limited.

374 “I heard it from a woman teacher. She told me that having a cat at home could transmit the
 375 disease if it breathes on you, FGD6”.

376 **Table 3. Participants’ knowledge of *Taenia solium* infections and toxoplasmosis.**

| Questions | Buju mbura | Kaya nza | Ngo zi | Total | % | χ^2 | P-value |
|---|------------|----------|--------|-------|------|----------|---------|
| 1. Porcine cysticercosis (PCC) | | | | | | | |
| “Ubupera” | | | | | | | |
| Has heard about PCC | | | | | | | |
| Yes | 176 | 93 | 97 | 366 | 94.8 | 13.33 | 0.0013* |
| No | 18 | 1 | 1 | 20 | 5.2 | | |
| Knew the appearance of cysts | | | | | | | |
| Rice grain in the tongue, meat, and eye | 163 | 89 | 89 | 341 | 93.2 | 1.33 | 0.52 |
| IDK | 13 | 4 | 8 | 25 | 6.8 | | |
| Knew the transmission of PCC | | | | | | | |
| Yes | 45 | 22 | 49 | 116 | 31.7 | 21.70 | <0.001* |

| | | | | | | | |
|---|-----|----|----|-----|------|-------|---------|
| IDK/wrong answers | 131 | 71 | 48 | 250 | 68.3 | | |
| 2. Pork tapeworm “Igifwana” | | | | | | | |
| Has heard about pork tapeworm | | | | | | | |
| Yes | 169 | 92 | 90 | 351 | 90.9 | 9.02 | 0.011* |
| No | 25 | 2 | 8 | 35 | 9.1 | | |
| Knew the transmission of pork tapeworm | | | | | | | |
| Eating raw infected pork | 47 | 44 | 42 | 133 | 37.9 | 14.10 | 0.0009* |
| IDK/Wrong answers | 122 | 48 | 48 | 218 | 62.1 | | |
| Knew the symptoms of pork tapeworm | | | | | | | |
| Proglottids in stools/chronic abdominal pain/constipation/diarrhoea | 28 | 44 | 27 | 99 | 28.2 | 28.94 | <0.001* |
| IDK | 141 | 48 | 63 | 252 | 71.8 | | |
| 3. Human cysticercosis (HCC) | | | | | | | |
| Has heard about HCC | | | | | | | |
| Yes | 5 | 7 | 2 | 14 | 3.6 | 5.24 | 0.073 |
| No | 189 | 87 | 96 | 372 | 96.4 | | |
| Knew the symptoms of HCC | | | | | | | |
| Epilepsy/Seizure/headache | 4 | 7 | 2 | 13 | 92.9 | 1.94 | 0.380 |
| IDK | 1 | 0 | 0 | 1 | 7.1 | | |
| Knew the transmission of HCC | | | | | | | |
| Water/fruit/vegetables contaminated with pork tapeworm eggs | 2 | 7 | 2 | 11 | 78.6 | 6.87 | 0.032* |

| | | | | | | | |
|---|-----|----|----|-----|------|-------|---------|
| IDK | 3 | 0 | 0 | 3 | 21.4 | | |
| 4. Epilepsy “Intandara= Igikange” | | | | | | | |
| Has seen someone with epilepsy | | | | | | | |
| Yes | 178 | 68 | 49 | 295 | 76.4 | 64.15 | <0.001* |
| No | 16 | 26 | 49 | 91 | 23.6 | | |
| Beliefs about the transmission of epilepsy | | | | | | | |
| Parasitic diseases/eating pork infected with cysts | 43 | 24 | 19 | 86 | 22.3 | 1.05 | 0.592 |
| IDK/wrong beliefs (evil spirits, flatulence gas) | 151 | 70 | 79 | 300 | 77.7 | | |
| 5. Human toxoplasmosis | | | | | | | |
| Has heard of human toxoplasmosis | | | | | | | |
| Yes | 11 | 8 | 15 | 34 | 8.8 | 7.54 | 0.023* |
| No | 183 | 86 | 83 | 352 | 91.2 | | |
| Knew the symptoms of toxoplasmosis | | | | | | | |
| Abortion/stillbirth/baby with abnormalities | 4 | 8 | 12 | 24 | 70.6 | 10.18 | 0.006* |
| IDK | 7 | 0 | 3 | 10 | 29.4 | | |
| Knew the transmission of toxoplasmosis | | | | | | | |
| Eating food infected with a cat (water, fruit, vegetables)/raw meat/transplacental transmission | 1 | 6 | 6 | 13 | 38.2 | 8.55 | 0.014* |
| IDK | 10 | 2 | 9 | 21 | 61.8 | | |

377 IDK: I do not know, PCC: Porcine cysticercosis, HCC: Human cysticercosis, * significant
378 ($p < 0.05$), %: percentage, χ^2 : Chi-square

379 **Practices and attitudes about treatment-seeking**

380 ✓ **Quantitative data**

381 For pork tapeworm infection, three possible treatment-seeking routes were identified: (i)
382 visiting health facilities for consultation and treatment, (ii) using traditional medicine (herbs)
383 at home, and (iii) visiting the pharmacy to purchase deworming drugs. Of all participants,
384 30.1% said that people with tapeworm infections went to health facilities, 58.5% did not know
385 if patients went to medical services and 11.4% did not go to any health facility (Table 4). In
386 the latter case, 4.5% went to the pharmacy to buy deworming tablets and 95.5% stayed at
387 home and used traditional medicine (herbs). They listed several traditional medicines such as
388 *Vernonia amygdalina* (umubirizi or umupfumya), *Senna occidentalis* (umuyoka or
389 umuyokayoka), *Rumex usambarensis* (umufumbegeti), *Plectranthus barbatus* Andrews
390 (igicuncu), *Eriosema psoraleoides* (umupfunyantoke), *Conyza sumatrensis* (umucutsa) and
391 leaves of *Nicotiana tabacum* (itabi) mixed with banana beer. The difference between
392 stakeholder groups and medical consultation was significant ($\chi^2=27.49$, $p=0.006$).
393 Veterinarians, pig traders, pig farmers, and slaughterhouse workers consulted medical
394 facilities more than other stakeholders. However, no difference was observed among
395 stakeholders not visiting medical facilities ($\chi^2=15.49$, $p=0.0503$). There was no difference
396 between education level for medical ($\chi^2=1.71$, $p=0.788$) and no medical consultation ($\chi^2=0.41$,
397 $p=0.816$).

398 For epilepsy, the participants revealed that people with epilepsy would either visit health
399 facilities, stay at home, or consult traditional healers or priests and pastors. Of all participants,
400 36.5% reported that people with epilepsy would visit a health facility for medical consultation

401 and treatment (Table 4). Nevertheless, 31.9% declared that they did not consult health
402 facilities and 31.6% did not know if they went to hospitals or stayed at home. When asked
403 about consulting the traditional healer, 7.3% of the participants said they had done so, while
404 others either did not (9.8%) or did not know (82.9%). Depending on the beliefs of the cause of
405 epilepsy, they suggested that for treatment, home remedies (traditional medicine) and prayers
406 could be combined with medication from the hospital. The difference between stakeholder
407 groups for both medical ($\chi^2=25.55$, $p=0.012$) and traditional healer consultation ($\chi^2=27.96$,
408 $p=0.005$) was significant. Veterinarians, pig farmers, and slaughterhouse workers consulted
409 medical facilities more than other stakeholders. However, pork consumers, pig traders, and
410 pig farmers consulted traditional healers more than other stakeholders. The difference was
411 significant between education level and medical consultation ($\chi^2=9.55$, $p=0.048$).
412 Stakeholders with secondary and university levels visited medical facilities more than others
413 with no or only primary education. However, no difference was observed between education
414 level and traditional healer consultation ($\chi^2=1.77$, $p=0.776$).

415 Regarding toxoplasmosis, the majority of the participants (93.0%) did not know the routes
416 taken by patients. However, 7.0% of the participants reported that patients had to go to health
417 facilities for treatment and check-ups (Table 4). They also suggested that patients had
418 difficulty knowing about the disease because there were no clinical signs associated with it.
419 Pregnant women were only informed of this when they were tested during the prenatal check-
420 up. The difference between stakeholder groups and medical consultation was significant
421 ($\chi^2=67.8$, $p<0.001$). Veterinarians and pig farmers consulted medical facilities more than other
422 stakeholders. The difference was also significant between education level and medical
423 consultation ($\chi^2=53.2$, $p<0.001$). Stakeholders with secondary and university levels visited
424 medical facilities more than others with no or only primary education.

425 **Table 4. Treatment-seeking practices and attitudes.**

| Questions | Bujumbura | Kayanza | Ngozi | Total | % | χ^2 | p-value |
|--|-----------|---------|-------|-------|------|----------|----------|
| Medical consultation for pork tapeworm | | | | | | | |
| Yes | 39 | 51 | 26 | 116 | 30.1 | 51.06 | <0.0001* |
| No | 14 | 10 | 20 | 44 | 11.4 | | |
| IDK | 141 | 33 | 52 | 226 | 58.5 | | |
| If no, other routes for seeking treatment | | | | | | | |
| Traditional medicine | 10 | 5 | 5 | 20 | 45.5 | 14.32 | 0.0063* |
| Stay at home (poverty) | 2 | 5 | 15 | 22 | 50.0 | | |
| Pharmacy | 2 | 0 | 0 | 2 | 4.5 | | |
| Medical consultation for epilepsy | | | | | | | |
| Yes | 51 | 52 | 38 | 141 | 36.5 | 25.98 | <0.0001* |
| No | 66 | 22 | 35 | 123 | 31.9 | | |
| IDK | 77 | 20 | 25 | 122 | 31.6 | | |
| Consultation for traditional healers | | | | | | | |
| Yes | 14 | 1 | 3 | 18 | 7.3 | 65.61 | <0.0001* |
| No | 2 | 18 | 4 | 24 | 9.8 | | |
| IDK | 127 | 23 | 53 | 203 | 82.9 | | |
| Medical consultation for toxoplasmosis | | | | | | | |
| Yes | 5 | 8 | 14 | 27 | 7.0 | 14.16 | 0.0008* |

| | | | | | | | |
|-----|-----|----|----|-----|------|--|--|
| IDK | 189 | 86 | 84 | 359 | 93.0 | | |
|-----|-----|----|----|-----|------|--|--|

426 IDK: I do not know, *significant ($p < 0.05$), %: percentage, χ^2 : Chi-square

427 ✓ **Qualitative data**

428 They reported the same routes as the part above, but they mentioned determining factors in
429 the decision-making for each route (Fig 2). Socio-demographic factors (stigma, beliefs about
430 the cause of the disease, religion, entourage) and healthcare factors (costs of consultation and
431 purchase of drugs, availability of drugs or traditional medicine, accessibility to health
432 structures, to the pharmacy and the traditional healer) contributed to the choice for treatment-
433 seeking.

434 • **Health facility and pharmacy route**

435 The choice of the decision could be motivated by the awareness of health and community
436 authorities and testimonials from former patients or their families.

437 *“When you go to the hospital, they diagnose you. They can know what kind of disease you
438 have in your stool and urine examinations. Then after laboratory results, they provide
439 medicines, FGD2”.*

440 However, the disease perception in the community (epilepsy), poverty, remoteness from the
441 hospital, and ineffective drugs (epilepsy and pork tapeworm) prevent patients from going to
442 health facilities.

443 *“They stay at home because they lack financial means. Years ago, I used to see those who
444 had epilepsy not able to go to the hospital. These aged persons were against sending these
445 patients to the hospital, FGD2”.*

446 • **Traditional healers route**

447 People who believed epilepsy and pork tapeworm infections could not be treated with
448 biomedical drugs often resorted to traditional healers. In Burundi, traditional healers are
449 people who sell different types of herbs at the market or at home to treat many different
450 diseases. In addition, witchdoctors deal with evil spirits and work from home. Trust, the
451 availability of these traditional medicines everywhere in the market, and their cheap price
452 encourage people to use them. However, witchdoctors might recommend frightening practices
453 to people with epilepsy for their treatment, such as holding a dead person in the grave or
454 regularly drinking lamb's urine.

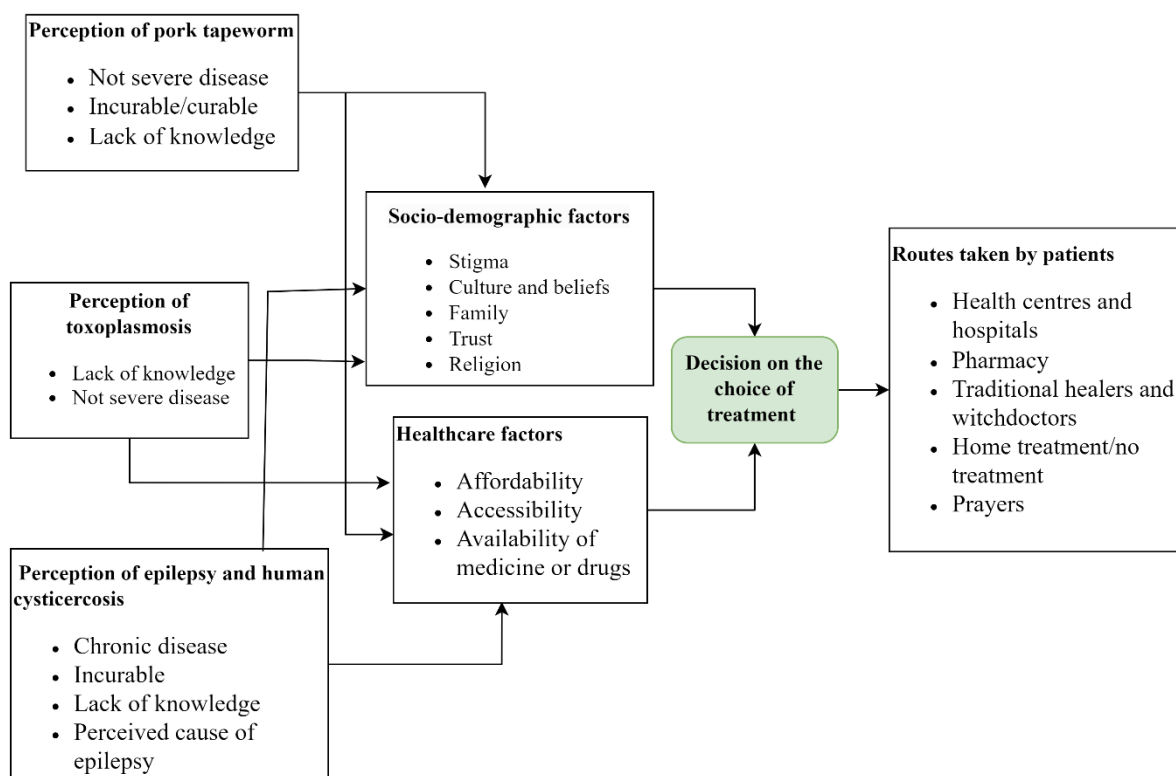
455 *“Sometimes they can go to look for witchdoctors after realising that pharmaceutical*
456 *medicines have been useless. Sometimes, they advise you to hold a dead person and enter first*
457 *in the grave so, you can be cured of epilepsy, FGD1”.*

458 • **Stay at home, home treatment and prayers route**

459 It turned out that sometimes after realising that many treatments requiring money are futile,
460 they seek other ways. Some reported believing in God, praying in church, staying at home,
461 and getting home treatment with forest or field herbs.

462 *“There are some people with epilepsy who use other means (prayers and traditional*
463 *medicine) to mitigate it because we hear people saying that it disappeared completely,*
464 *FGD4”.*

465 In addition, they might stay at home due to a lack of awareness about the disease and believe
466 that the disease could not be treated in health facilities, the ineffectiveness of biomedical
467 treatment or to escape stigma from neighbourhood members.



468

469 **Fig 2. Flowchart indicating treatment-seeking routes for pork tapeworm, epilepsy,**
 470 **human cysticercosis, and toxoplasmosis and their associated factors in Burundi (Model**
 471 **adapted from PASS model (29)).**

472 **Practices and attitudes for pork consumption**

473 All participants were asked if they consumed pork. Most participants (93.5%) consumed pork.
 474 Of these participants, 32.4% ate pork daily, 37.4% once per week, 11.1% once per month, and
 475 19.1% occasionally per year (once, twice, 3 times, 4 times, and 6 times). Most participants
 476 (74.5%) preferred roasted pork and others preferred boiled and fried pork (8.9%), boiled pork
 477 (12.2%), and fried pork (4.4%). The difference in pork consumption between the three
 478 provinces was significant (Table 5). The difference between stakeholder groups and pork
 479 consumption was also significant ($\chi^2=31.7$, $p<0.001$). Butchers, slaughterhouse workers, pork
 480 consumers, and veterinarians preferred more roasted pork than other stakeholders. No
 481 difference based on education level was observed ($\chi^2=2.77$, $p=0.249$). The amount of pork

482 consumed ranged from 100 to 500g, with an average of 171g per person, and depended on the
483 financial means of the consumers, especially in the city. Most participants (70.6%) consumed
484 100-200g per meal (one or two skewers). Roasted pork at bars commonly found in hill centres
485 and quarters of the city was preferred due to cooking time and charcoal saving reasons
486 aligning with consumers' budget. Even though the price of fresh pork per kilo was 11,000BIF
487 (4 USD), one piece of roasted pork weighing 125g was sold at 1,500BIF (0.5 USD). It was
488 also the primary choice for consumers because it was often paired with local drinks. These
489 local drinks are cheap and accessible to people with low resources. However, this method of
490 pork preparation was perceived as unsafe compared to boiling and frying due to its shorter
491 roasting time.

492 *“They roast meat well when it is the day. However, in the evening many people will eat it*
493 *badly roasted. The reason is that many persons need service, and twenty skewers can cost the*
494 *butcher only ten minutes of roasting, FGD3”.*

495 They indicated that pork for restaurant and home consumption came from butchers in bars
496 and markets, slaughterhouses, home slaughter by farmers, and clandestine slaughter like
497 stolen pigs during the night and pigs infected with cysts. In the case of pigs infected with
498 cysts, they slaughter and smuggle them to escape the condemnation of carcasses when
499 discovered by a veterinarian during meat inspection. Looking at the consequences of eating
500 pork infected with cysts, the majority of the participants (90.6%) said that it could be
501 inappropriate behaviour that could affect their health (Table 5). Nevertheless, more than half
502 of these participants (56.0%) mentioned that it could lead to illnesses, but they did not know
503 the specific illnesses that resulted from it. The risk of being infected with taeniosis was
504 answered by 31.7% of the participants, while 10.0% answered for epilepsy and 2.3% did not
505 perceive the risk. The difference in the three provinces was significant ($\chi^2=43.37$, $p < 0.0001$)
506 (Table 5). Based on stakeholder groups, veterinarians, food safety quality control officers, and

507 pig farmers were more aware than other stakeholders that infected pork could cause taeniasis
508 ($\chi^2=93.60$, $p<0.0001$). This was also noticed for stakeholders with secondary and university
509 levels ($\chi^2=25.51$, $p=0.003$). However, qualitative data showed that pigs infected with cysts
510 were still consumed, especially those from clandestine slaughter, those slaughtered in the
511 absence of a veterinarian at the slaughterhouse, and even those inspected pigs with light and
512 moderate infections at the slaughterhouse.

513 *“When we hear the butcher has found his pig full of cysts, we applaud and say that we are*
514 *lucky. He will cut according to the money we have without considering the price of meat. We*
515 *do not consider the negative effects of that infected meat, FGD6”.*

516 Butchers could exacerbate the risk to consumers by selling or roasting infected carcasses
517 overnight because customers would not recognise healthy or unhealthy pork. In addition, the
518 person's body condition (drunkenness), many clients at bars, clients in a hurry due to hunger,
519 and the limited knowledge of the risk of eating undercooked pork could influence the attitude
520 towards consuming undercooked pork. Some participants suggested that consuming pork
521 infected with cysts might be seen as a preventive measure against amoebiasis.

522 *“.... Old people will tell you that if you want to eradicate amoeba, it is better to eat pork*
523 *infected with cysts. So, you will contract the tapeworm which will consume amoeba, and then*
524 *it can be treated with no problem, FGD3”.*

525 Some participants were aware of boiling and frying infected pork to kill all cysts, and so the
526 pork was ready to eat.

527 *“Depending on the cysts it has, they can cook the meat because boiling water crushes the*
528 *cysts. If possible, they can filter and pour down the boiled water containing the cysts, then eat*
529 *the remaining meat, FGD2”.*

530 **Table 5. Practices for pork consumption.**

| Questions | Bujumbura | Kayanza | Ngozi | Total | % | χ^2 | p-value |
|---|-----------|---------|-------|-------|------|------------|----------|
| Eating pork | | | | | | | |
| Yes | 192 | 86 | 83 | 361 | 93.5 | 22.75 | <0.0001* |
| No | 2 | 8 | 15 | 25 | 6.5 | | |
| Frequency of eating pork | | | | | | | |
| Daily | 93 | 14 | 10 | 117 | 32.4 | 132.9 3 | <0.0001* |
| During a week | 88 | 15 | 32 | 135 | 37.4 | | |
| During a month | 7 | 18 | 15 | 40 | 11.1 | | |
| Occasionally a year | 4 | 39 | 26 | 69 | 19.1 | | |
| Preference for pork to be prepared | | | | | | | |
| Roasting | 154 | 59 | 56 | 269 | 74.5 | 34.31 | <0.0001* |
| Boiling | 12 | 9 | 23 | 44 | 12.2 | | |
| Boiling and frying | 15 | 13 | 4 | 32 | 8.9 | | |
| Frying | 11 | 5 | 0 | 16 | 4.4 | | |
| Quantity of pork consumed | | | | | | | |
| 100-200g | 107 | 79 | 69 | 255 | 70.6 | 45.50 | <0.0001* |
| >200-500g | 85 | 7 | 14 | 106 | 29.4 | | |
| Beliefs of eating pigs infected with cysts | | | | | | | |
| Yes | 172 | 85 | 93 | 350 | 90.7 | 3.01 | 0.2226 |
| No | 22 | 9 | 5 | 36 | 9.3 | | |
| Consequences of eating pork | | | | | | | |

| infected with cysts | | | | | | | |
|---------------------|-----|----|----|-----|------|-------|----------|
| Taeniasis | 28 | 46 | 37 | 111 | 31.7 | 43.37 | <0.0001* |
| Epilepsy | 20 | 8 | 7 | 35 | 10.0 | | |
| Illnesses | 120 | 29 | 47 | 196 | 56.0 | | |
| IDK | 4 | 2 | 2 | 8 | 2.3 | | |

531 IDK: I do not know, * significant (<0.05), %: percentage, χ^2 : Chi-square

532 Discussion

533 This study is the first in Burundi to report the knowledge of stakeholders involved in the pork
 534 value chain about *T. solium* and *T. gondii* infections, specific routes of treatment-seeking, and
 535 factors contributing to infection transmission.

536 • Knowledge

537 Inadequate knowledge about the transmission of *T. solium* and *T. gondii* infections was
 538 observed. Most participants had heard about PCC and had seen cysts in pigs, which is in line
 539 with findings reported in African and American countries (30,31). This high knowledge of the
 540 participants could be due to cysts seen when performing tongue palpation at pig farms, at pig
 541 slaughter, during meat inspection, and selling meat. However, inadequate knowledge of its
 542 transmission in pigs was noted, which is comparable to the results found in Tanzania (32,33).
 543 In addition, very limited knowledge was found in Burkina Faso (0.6%) and South Africa
 544 (16%) (34,35). Similar misconceptions about the cause of PCC such as mating with infected
 545 pigs, transmission at birth, and eating brewery grain residues, were reported in some African
 546 countries (34,36). In agreement with the findings of this study, PCC was perceived in Uganda
 547 as a disease that is not clinically manifest but rather identified on examination of the tongue
 548 and musculature after slaughter (37). This study showed that 90.6% of the participants had

549 heard about *T. solium* taeniosis, figures higher than those found in Burkina Faso (53.4%) and
550 Tanzania (48%) (32,38). Although known by our participants, its prevalence is very low
551 ranging from 0 to 1% (39). Nevertheless, inadequate knowledge of its transmission and
552 symptoms was noticed, which is similar to the findings in Tanzania (33). Moreover, the
553 knowledge of its transmission for this study was higher than in other countries: Uganda
554 (20%), Colombia (6%), and India (21.2%) (40–42). This study noted the mix-up between
555 tapeworms and roundworms when describing pork tapeworm morphology. The pork
556 tapeworm could not be referred to as the roundworm because it is flat, whitish, and looks like
557 a ribbon with many segments (5). It is very important that people are able to recognise the
558 morphology of a specific worm, as this could help them describe the symptoms during
559 medical consultation and seek the appropriate treatment. Failure to recognise the symptoms
560 can pose a potential risk of infecting others because the worm is not well treated. Although
561 the Ministry of Public Health organises health awareness campaigns on intestinal worms and
562 their prevention, the complexity of the life cycle of *T. solium* and the fact that most patients
563 remain asymptomatic could also explain the limited knowledge of its transmission for the
564 participants in this study. It was shown that education level could help improve knowledge
565 because the most educated were more knowledgeable about the pork tapeworm than the
566 illiterate participants. Hence continued sensitization about the tapeworm in primary and
567 secondary schools, combined with community education on improved hygiene and sanitation,
568 could be important to prevent *T. solium* infections. Regarding HCC, most participants had
569 never heard about it. This agrees with the findings reported in Zambia, India, and Colombia
570 (31,41,42). The link between HCC and epilepsy was not well known but the link between
571 pork infected with cysts and epilepsy was observed. The cause of HCC-associated epilepsy
572 was confusing where the consumption of pork infected with cysts was attributed to disease
573 transmission instead of ingestion of food and water contaminated with eggs from human *T.*

574 *solium* tapeworm carriers (8). Similar misconceptions that epilepsy was caused by evil spirits
575 (witchcraft), hereditary disease, mental problems, and flatulence and saliva from people with
576 epilepsy during seizures were reported in Tanzania, Zambia, and a previous study in Burundi
577 (43–45). Although misconceptions about the cause of epilepsy were observed, the prevalence
578 of NCC-associated epilepsy in Burundi was estimated at 38.3% by Ag-ELISA (46), which is
579 in line with the figures in Tanzania (47). These misconceptions about epilepsy could be due to
580 the lack of awareness, lack of diagnostic tools and trained personnel in many health facilities,
581 and negative disease perception. This study showed that the level of education could not
582 change these misconceptions. This is in agreement with the study findings in Tanzania where
583 some caregivers reported that epilepsy was caused by witchcraft, and was contagious through
584 frothing and saliva and by eating fatty foods (43). Thus, community health education could be
585 important in reducing misunderstandings and misconceptions about epilepsy. This study also
586 revealed limited knowledge of toxoplasmosis among stakeholders involved in the pork value
587 chain. This is consistent with the findings reported in Morocco, Ethiopia, and Mexico for
588 university students, health practitioners, and pregnant women (48–50). Although university
589 students are expected to have good knowledge, the cause of toxoplasmosis was known to only
590 36.5% of biology, medicine, and veterinary medicine students in Morocco, which could
591 explain the lack of significant difference between educated and illiterate stakeholders in
592 Burundi (49). Moreover, 36% of health workers in Tanzania knew the cause and symptoms of
593 toxoplasmosis, while only 4% of pregnant women were aware of it (51). A slight
594 improvement in knowledge was reported in the United States of America for pregnant women
595 where 40% knew the cause of toxoplasmosis (52). In Burundi, the lack of information on this
596 disease could be due to the fact that medical examinations at hospitals were carried out in
597 French, which is not understandable for all. Also, the fact that many health centres in the
598 country, which receive the largest part of the population, could not diagnose toxoplasmosis

599 explains this limited knowledge for our participants. Only people visiting provincial hospitals
600 and major hospitals across the country could be diagnosed with it. Thus, an update of the
601 knowledge of medical and veterinary professionals should be carried out because the health
602 education of the population could not be possible when the trainers in health education have
603 limited and unsuitable knowledge.

604 • **Treatment-seeking routes**

605 The disease perception could be the key for patients to the use of either biomedical drugs or
606 traditional medicine. This is in line with the study findings in Burundi which described that
607 there were diseases that were treated in (i) health facilities, (ii) both at health facilities and by
608 traditional healers, and (iii) by traditional healers only (53). It was also reported that spiritual
609 and mental problems, diarrheal diseases, poisonings, and infertility were treated by traditional
610 healers, but malaria was rather reserved for biomedicine (53). A third of the participants
611 indicated that patients with taeniasis visit health facilities, which shows a low level of medical
612 consultation, possibly because taeniosis does not have serious symptoms (4). Niclosamide and
613 praziquantel have been shown to be effective anthelmintic drugs against pork tapeworm
614 infection (54). However, our participants revealed that the pork tapeworm was incurable. This
615 could be due to the fact that in most health facilities all intestinal worms are grouped together
616 and treated with the same anthelmintics (mebendazole, albendazole), which at the given dose
617 are not effective for tapeworms (55,56). If they have been given the correct drug and the
618 correct dose, this belief about the incurability of pork tapeworm could change. Moreover, low
619 sensitivity of the microscopic test for intestinal worms in health facilities and limited patient
620 knowledge of taeniosis could prevent healthcare providers from prescribing the right
621 medication. Using pharmacy medications without being tested for tapeworms could also
622 explain the incurability of the disease by providing inappropriate anthelmintic treatment for

623 taeniosis. Reliance on the use of herbs from traditional healers or the forest was reported
624 because they are cheap, easy to access, and self-privacy is preserved. However, it was shown
625 in Burundi that 55% of the participants consulted a traditional healer and 75% used herbal for
626 self-treatment (53). The reason given is that traditional healers are flexible in payment, while
627 debts may be incurred in the case of health facility consultation, which is similar to our
628 findings (53). Nevertheless, the government of Burundi has implemented massive and free
629 administration of albendazole/mebendazole and praziquantel every year for children under 15
630 years of age to better prevent and control soil-transmitted helminthiasis and schistosomiasis,
631 which could also reduce the prevalence of tapeworm among the children (57). In addition,
632 low cost, availability, and low toxicity are some of the benefits that attract people to use
633 herbal medicine in Africa (58). However, its dosage and effectiveness remain a challenge. It
634 was also reported that up to 80% of people in Africa depended on the use of traditional
635 medicine for their health problems (59). Even though some herbs listed are helpful for
636 gastrointestinal worms, they are not effective for pork tapeworm, except for *Senna*
637 *occidentalis* which can be used for tapeworm (*Hymenolepis*) (60–62). Besides pumpkin seeds
638 which were widely known, some species of Zingiberaceae, Poaceae, Annonaceae, Rubiaceae,
639 Anacardiaceae, and Lauraceae might be effective in treating pork tapeworm, but their
640 effectiveness is questionable and needs to be further elucidated (63). A similar misconception
641 about pork tapeworm treatment was reported in Uganda, where butchers and pork consumers
642 believed that drinking strong alcohol (waragi) could kill the tapeworm (64). Therefore, the use
643 of ineffective drugs and herbal medicine leads pork tapeworm carriers to continue spreading
644 the proglottids and eggs in the environment, resulting in the persistence of infection in pigs
645 and humans. When looking at HCC-associated epilepsy, the level of medical consultations for
646 people with epilepsy was low, which is in line with the WHO report in 2019 that more than
647 75% of people with epilepsy in developing countries do not have access to antiepileptic drugs

648 (65). However, this low number of medical consultations is due to socio-demographic and
649 healthcare factors that push patients to decide on different treatment routes (29). The
650 perception of the incurability of epilepsy and misconceptions that epilepsy is caused by evil
651 spirits and witchcraft lead patients to resort first to traditional healers for treatment rather than
652 hospitals (43,44). While hospitals can serve as a secondary option, the inconsistent
653 availability of drugs, long distances to healthcare facilities, affordability issues related to drug
654 and diagnosis costs, and the shortage of neurology specialists further exacerbate the situation
655 (44). In Burundi, direct and indirect costs in the hospital setting were estimated at 72 USD in
656 2020 per case of NCC-associated epilepsy, which is not affordable for everyone (66).
657 Moreover, stigma, driven by misconceptions about epilepsy being contagious through saliva,
658 urine, and flatulence, as well as community discrimination about work, education, and
659 marriage could cause people with epilepsy in sub-Saharan Africa to isolate themselves due to
660 fear (67). In Burundi, 90% of the population is Christian and some churches preach that the
661 use of traditional medicine would be a sin, which explains why the reliance of some
662 participants on prayers and belief in God as the source of deliverance for epilepsy (53).
663 Nevertheless, religious practices could not prevent followers from resorting to traditional
664 healers and herbal medicine when sick, which explains the trust in traditional medicine
665 without considering some of its side effects (53). Therefore, public awareness needs to be
666 enhanced to reduce stigma towards people with epilepsy. Moreover, the capacity of health
667 facilities needs to be increased to enable improved service delivery. Although toxoplasmosis
668 is less known, those familiar with it reported that visiting health facilities was crucial for
669 prenatal check-ups and the prevention of transplacental transmission. However, the use of
670 spiramycin, an antiparasitic drug widely used for pregnant women infected with
671 toxoplasmosis, is less effective but could prevent vertical transmission by more than 50%
672 (68). While abortion is one of the clinical signs of toxoplasmosis, women who sometimes

673 abort may consult traditional healers (witchdoctors) thinking it is due to witchcraft from their
674 enemies in the neighbourhood to show them whether the cause is a supernatural force or not
675 (53). Thus, public sensitization combined with the extension of diagnostic tools in all health
676 centres and the availability of drugs could help the community to know and prevent
677 toxoplasmosis.

678 • **Pork consumption**

679 Although pork was consumed by participants, a low awareness of the consequences of eating
680 infected pork and inadequate pork preparation and consumption practices was noted. Similar
681 findings were reported in Tanzania and Uganda where most fried/roasted pork in local bars
682 was undercooked, which could expose consumers to the pork tapeworm (36,37,69). In
683 agreement with our findings, too many pork orders in bars, lack of pork roasting skills,
684 insufficient knowledge of the consequences of infected pork, and people's preference for how
685 pork is roasted drive people to eat undercooked pork in Uganda (37). Furthermore, it was
686 pointed out that drunkenness from local drinks at pork outlets in Uganda and Zambia further
687 contributes to the consumption of undercooked pork, which is similar to the findings in this
688 study (45,64). However, there are basic guidelines for dealing with infected pork, even though
689 it is challenging for butchers and pork consumers to implement them because infected pork is
690 still roasted or fried in pork outlets and at home. Cooking was considered as an effective
691 method to control *T. solium* cysts and *T. gondii* cysts in pork. Traditionally boiled pork has
692 been shown to kill *T. solium* cysts at 80°C for over 10 minutes (70). In addition, temperatures
693 from 60°C to 85°C could kill *T. solium* cysts for pork roasted traditionally for 17 hours and
694 90°C to 100°C for pork roasted commercially for 3 hours (71). This cannot be implemented in
695 Burundi because most pork is roasted in less than 15 minutes. While *T. gondii* cysts are
696 difficult to detect with the naked eye, the pork will be safe when it is heated at 67°C for 3

697 minutes (72). Although pork fried in oil is supposed to be safe, frying time is very important
698 for thick pork to destroy any pathogens. The fast deep-fried pork, mainly practised in most
699 restaurants and homes in Tanzania, was considered unsafe because of the hurry of pork
700 consumers due to hunger or preference for how pork is fried (70,73). Thus, health promotion
701 could be substantial for butchers and pork consumers to change behavioural practices
702 regarding the preparation and consumption of pork, although this may take time, to reduce the
703 risk of pork-borne parasitic infections in Burundi. Also, raising public awareness about
704 properly cooking pork could be the best solution to effectively destroy *T. solium* and *T. gondii*
705 cysts before reaching consumers.

706 **Conclusions**

707 This study revealed inadequate knowledge of stakeholders involved in the pork value chain in
708 Burundi regarding the transmission and symptoms of *T. solium* and *T. gondii* infections, as
709 well as inadequate practices in treatment-seeking and pork preparation and consumption. This
710 limited knowledge, combined with inadequate practices in pork preparation and consumption
711 and treatment-seeking, could pose serious obstacles to the prevention and control of these
712 foodborne parasitic infections. Therefore, the integrated control interventions following the
713 One Health approach are urgently needed in Burundi to improve the knowledge of pork value
714 chain stakeholders and the public through health education and continuing training to better
715 tackle *T. solium* and *T. gondii* infections.

716 **Acknowledgements**

717 The authors greatly thank all participants in this study. We would also like to thank the local
718 administration and communal and provincial officers for facilitating the fieldwork and the
719 completion of this study.

720 **Supporting information**

721 S1 Table. Knowledge of *T. solium* and *T. gondii* infections based on stakeholder groups.

722 S2 Table. Knowledge of *T. solium* and *T. gondii* infections based on the education level.

723 S3 Table. Treatment-seeking routes based on stakeholder groups.

724 S4 Table. Treatment-seeking routes based on the education level.

725 S5 Table. Pork consumption and preparation based on stakeholder groups.

726 S6 Table. Pork consumption and preparation based on the education level.

727 **Funding**

728 This work was supported by the Directorate General for Development Cooperation (DGD),
729 Belgium, through the individual sandwich PhD scholarship programme (Salvator Minani) of
730 the Institute of Tropical Medicine Antwerp, Belgium.

731 **Data Availability Statement**

732 The datasets used and/or analysed during the current study are available from the
733 corresponding author on reasonable request.

734 **Competing interests**

735 The authors declare that they have no competing interests

736 **Author contributions**

737 **Conceptualization:** Salvator Minani, Jean-Bosco Ntirandekura, Anastasie Gasogo, Chiara
738 Trevisan, Sarah Gabriël.

739 **Data curation:** Salvator Minani.

740 **Formal analysis:** Salvator Minani.

741 **Funding acquisition:** Salvator Minani, Chiara Trevisan, Sarah Gabriël.

742 **Investigation:** Salvator Minani.

743 **Methodology:** Salvator Minani, Chiara Trevisan, Sarah Gabriël.

744 **Project administration:** Salvator Minani, Chiara Trevisan, Sarah Gabriël.

745 **Software:** Salvator Minani.

746 **Supervision:** Jean-Bosco Ntirandekura, Anastasie Gasogo, Koen Peeters Grietens, Chiara
747 Trevisan, Sarah Gabriël.

748 **Validation:** Koen Peeters Grietens, Chiara Trevisan, Sarah Gabriël.

749 **Visualization:** Salvator Minani.

750 **Writing-original draft:** Salvator Minani.

751 **Writing-review & editing:** Salvator Minani, Jean-Bosco Ntirandekura, Anastasie Gasogo,
752 Koen Peeters Grietens, Chiara Trevisan, Sarah Gabriël.

753 **References**

- 754 1. WHO. WHO estimates of the global burden of foodborne diseases: foodborne disease
755 burden epidemiology reference group 2007-2015. 2015;1–265.
- 756 2. FAO/WHO. Multicriteria-Based Ranking for Risk Management of Food-Borne
757 Parasites. Microbiological Risk Assessment Series 23,. 2014. 1–322 p.
- 758 3. Torgerson PR, Devleeschauwer B, Praet N, Speybroeck N, Willingham AL, Kasuga F,
759 et al. World Health Organization Estimates of the Global and Regional Disease Burden
760 of 11 Foodborne Parasitic Diseases, 2010: A Data Synthesis. PLoS Med.
761 2015;12(12):1–22.

- 762 4. García HH, Gonzalez AE, Evans CAW, Gilman RH. *Taenia solium* cysticercosis:
763 Cysticercosis working group in Peru. *Lancet*. 2003;362(9383):547–56.
- 764 5. Murrell K, Dorny P, Flisser A, Geerts S, Kyvsgaard N, McManus D, et al.
765 WHO/FAO/OIE guidelines for the surveillance, prevention and control of
766 taeniosis/cysticercosis. 2005. 139 p.
- 767 6. Gabriël S, Dorny P, Mwape KE, Trevisan C, Braae UC, Magnussen P, et al. Control of
768 *Taenia solium* taeniasis/cysticercosis: The best way forward for sub-Saharan Africa?
769 *Acta Trop*. 2017;165:252–60. <http://dx.doi.org/10.1016/j.actatropica.2016.04.010>
- 770 7. Komba EVG, Kimbi EC, Ngowi HA, Kimera SI, Mlangwa JE, Lekule FP, et al.
771 Prevalence of porcine cysticercosis and associated risk factors in smallholder pig
772 production systems in Mbeya region, southern highlands of Tanzania. *Vet Parasitol*.
773 2013;198(3–4):284–91.
- 774 8. Mahanty S, Garcia HH. Cysticercosis and neurocysticercosis as pathogens affecting the
775 nervous system. *Prog Neurobiol*. 2010;91(2):172–84.
- 776 9. Millogo A, Kongnyu Njamnshi A, Kabwa-PierreLuabeya M. Neurocysticercosis and
777 epilepsy in sub-Saharan Africa. *Brain Res Bull*. 2019;145(March 2018):30–8.
778 <https://doi.org/10.1016/j.brainresbull.2018.08.011>
- 779 10. Ndimubanzi PC, Carabin H, Budke CM, Nguyen H, Qian YJ, Rainwater E, et al. A
780 systematic review of the frequency of neurocysticercosis with a focus on people with
781 epilepsy. *PLoS Negl Trop Dis*. 2010;4(11).
- 782 11. Castillo-Cuenca JC, Díaz-Cao JM, Martínez-Moreno Á, Cano-Terriza D, Jiménez-Ruiz
783 S, Almería S, et al. Seroepidemiology of *Toxoplasma gondii* in extensively raised
784 Iberian pigs in Spain. *Prev Vet Med*. 2020;175(2000):104854.

- 785 <https://doi.org/10.1016/j.prevetmed.2019.104854>
- 786 12. Stelzer S, Basso W, Benavides Silván J, Ortega-Mora LM, Maksimov P, Gethmann J,
787 et al. *Toxoplasma gondii* infection and toxoplasmosis in farm animals: Risk factors and
788 economic impact. *Food Waterborne Parasitol.* 2019;15.
- 789 13. Dubey JP. Toxoplasmosis in pigs-The last 20 years. *Vet Parasitol.* 2009;164(2–4):89–
790 103.
- 791 14. Dubey JP. History of the discovery of the life cycle of *Toxoplasma gondii*. *Int J*
792 *Parasitol.* 2009;39(8):877–82. <http://dx.doi.org/10.1016/j.ijpara.2009.01.005>
- 793 15. Cook AJ, Gilbert RE, Buffolano W, Zufferey J, Petersen E, Jenum PA, et al. Sources of
794 toxoplasma infection in pregnant women: European multicentre case-control study.
795 European Research Network on Congenital Toxoplasmosis. *BMJ.*
796 2000;321(7254):142–7.
- 797 16. Condoleo R, Rinaldi L, Sette S, Mezher Z. Risk Assessment of Human Toxoplasmosis
798 Associated with the Consumption of Pork Meat in Italy. *Risk Anal.* 2018;38(6):1202–
799 22.
- 800 17. Dubey JP, Murata FHA, Cerqueira-Cézar CK, Kwok OCH, Villena I. Congenital
801 toxoplasmosis in humans: An update of worldwide rate of congenital infections.
802 *Parasitology.* 2021;1–11.
- 803 18. Weiss ML, Dubey PJ. Toxoplasmosis: a history of clinical observations. *Int J Parasitol.*
804 2009;39(8):895–901.
- 805 19. Djurković-Djaković O, Bobić B, Nikolić A, Klun I, Dupouy-Camet J. Pork as a source
806 of human parasitic infection. *Clin Microbiol Infect.* 2013;19(7):586–94.
- 807 20. Davies PR. Pork safety: Achievements and challenges. *Zoonoses Public Health.*

- 808 2010;57(1):1–5.
- 809 21. Smith NC, Goulart C, Hayward JA, Kupz A, Miller CM, van Dooren GG. Control of
810 human toxoplasmosis. *Int J Parasitol*. 2021;51(2–3):95–121.
811 <https://doi.org/10.1016/j.ijpara.2020.11.001>
- 812 22. Sarti E, Rajshekhar V. Measures for the prevention and control of *Taenia solium*
813 taeniosis and cysticercosis. *Acta Trop*. 2003;87(1):137–43.
- 814 23. Ngowi HA, Carabin H, Kassuku AA, Mlozi MRS, Mlangwa JED, Willingham AL. A
815 health-education intervention trial to reduce porcine cysticercosis in Mbulu District,
816 Tanzania. *Prev Vet Med*. 2008;85(1–2):52–67.
- 817 24. Minani S, Dorny P, Trevisan C. Prevalence and risk assessment of porcine
818 cysticercosis in Ngozi province, Burundi. *Vet Parasitol Reg Stud Reports*.
819 2021;23:100514. <https://doi.org/10.1016/j.vprsr.2020.100514>
- 820 25. Ministère de l’Agriculture et de l’Elevage (MINAGRIE). Rapport National sur l’état
821 des Ressources Génétiques Animales au Burundi. 2003;57 p.
- 822 26. Ministère de l’Environnement de l’Agriculture et de l’Elevage (MINEAGRIE).
823 Enquête Nationale Agricole du Burundi. 2018;1-131 p.
- 824 27. Daniel, W W, Cross LC. *Biostatistics: A Foundation for Analysis in the Health*
825 *Sciences* (Tenth edition). John Wiley & Sons. 2013. 958 p.
- 826 28. R Core Team. R: A language and environment for statistical computing. R Foundation
827 for Statistical Computing, Vienna, Austria. 2023. <https://www.r-project.org/>
- 828 29. Hausmann Muela S, Muela Ribera J, Toomer E, Peeters Grietens K. The PASS-model:
829 a model for guiding health-seeking behavior and access to care research. *Malar*
830 *Reports*. 2012;2(1):17–23.

- 831 30. Sarti E, Flisser A, Schantz PM, Gleizer M, Loya M, Plancarte A, et al. Development
832 and evaluation of a health education intervention against *Taenia solium* in a rural
833 community in Mexico. *Am J Trop Med Hyg.* 1997;56(2):127–32.
- 834 31. Zulu G, Mwape KE, Welte TM, Simuunza MC, Hachangu A, Mutale W, et al.
835 Community knowledge, attitudes and practices related to *Taenia solium* taeniosis and
836 cysticercosis in Zambia. *PLoS Negl Trop Dis.* 2023;17(8):e0011375.
837 <http://dx.doi.org/10.1371/journal.pntd.0011375>
- 838 32. Nyangi C, Stelzle D, Mkupasi EM, Ngowi HA, Churi AJ, Schmidt V, et al.
839 Knowledge, attitudes and practices related to *Taenia solium* cysticercosis and taeniasis
840 in Tanzania. *BMC Infect Dis.* 2022;22(1):1–12. [https://doi.org/10.1186/s12879-022-](https://doi.org/10.1186/s12879-022-07408-0)
841 [07408-0](https://doi.org/10.1186/s12879-022-07408-0)
- 842 33. Chacha M, Yohana C, Nkwengulila G. Indigenous Knowledge, Practices, Beliefs and
843 Social Impacts of Porcine Cysticercosis and Epilepsy in Iringa Rural. *Health.*
844 2014;06(21):2894–903.
- 845 34. Dahourou LD, Gbati OB, Millogo A, Dicko A, Roamba CR, Pangui LJ. Analysis of the
846 Knowledge, Attitudes and Practices of Populations in Four Villages of the Boucle du
847 Mouhoun Region (Burkina Faso) Regarding *Taenia solium* Life Cycle. *Health.*
848 2018;10(01):95–106.
- 849 35. Shongwe NA, Byaruhanga C, Dorny P, Dermauw V, Qekwana DN. Knowledge,
850 practices and seroprevalence of *Taenia* species in smallholder farms in Gauteng, South
851 Africa. *PLoS One.* 2020;15:1–15. <http://dx.doi.org/10.1371/journal.pone.0244055>
- 852 36. Maridadi AF, Lwelamira J, Simime FG. Knowledge and Practices Related to *T. solium*
853 Cysticercosis-Taeniasis among Smallholder Farmers in Selected Villages in Kilolo
854 District in Iringa Region in Southern Highlands of Tanzania. *Int J Anim Vet Adv.*

- 855 2011;3(3):196–201.
- 856 37. Ngwili N, Thomas L, Githigia S, Johnson N, Wahome R, Roesel K. Stakeholders’
857 Knowledge, Attitude, and Perceptions on the Control of *Taenia solium* in Kamuli and
858 Hoima Districts, Uganda. *Front Vet Sci*. 2022;9:1–13.
- 859 38. Ngowi H, Ozbolt I, Millogo A, Dermauw V, Somé T, Spicer P, et al. Development of a
860 health education intervention strategy using an implementation research method to
861 control taeniasis and cysticercosis in Burkina Faso. *Infect Dis Poverty*. 2017;6(1):1–15.
- 862 39. Newell E, Vyungimana F, Geerts S, Van Kerckhoven I, Tsang VCW, Engels D.
863 Prevalence of cysticercosis in epileptics and members of their families in Burundi.
864 *Trans R Soc Trop Med Hyg*. 1997;91(4):389–91.
- 865 40. Alarakol SP, Bagaya BS, Yagos WO, Aginya EIO. Knowledge, attitudes and practices
866 of communities towards neurocysticercosis in the districts of Amuru and Gulu,
867 Northern Uganda. *J Parasitol Vector Biol*. 2020;12:17–28.
- 868 41. Alexander AM, Mohan VR, Muliyl J, Dorny P, Rajshekhar V. Changes in knowledge
869 and practices related to taeniasis/cysticercosis after health education in a south Indian
870 community. *Int Health*. 2012;4(3):164–9. <http://dx.doi.org/10.1016/j.inhe.2012.04.003>
- 871 42. Gamarra-Rueda R, Knudson-Ospina RA, Olaya AL, Gomez N, Orellano AI, Navarro
872 FL, et al. Knowledge and practices about taeniasis/cysticercosis complex within the
873 framework of the national plan for its elimination in Colombia, 2019. *Acta Trop*.
874 2023;242(2023):106907.
- 875 43. Makasi CE, Kilale AM, Ngowi BJ, Lema Y, Katiti V, Mahande MJ, et al. Knowledge
876 and misconceptions about epilepsy among people with epilepsy and their caregivers
877 attending mental health clinics: A qualitative study in *Taenia solium* endemic keeping

- 878 communities in Tanzania. *Epilepsia Open*. 2023;8:487–96.
- 879 44. Nsengiyumva G, Nubukpo P, Bayisingize M, Nzisabira L, Preux PM, Druet-Cabanac
880 M. L'épilepsie en milieu rural burundais: Connaissances, attitudes et pratiques.
881 *Epilepsies*. 2006;18(1):41–6.
- 882 45. Thys S, Mwape KE, Lefèvre P, Dorny P, Phiri AM, Marcotty T, et al. Why pigs are
883 free-roaming: Communities' perceptions, knowledge and practices regarding pig
884 management and taeniosis/cysticercosis in a *Taenia solium* endemic rural area in
885 Eastern Zambia. *Vet Parasitol*. 2016;225:33–42.
886 <http://dx.doi.org/10.1016/j.vetpar.2016.05.029>
- 887 46. Prado-Jean A, Kanobana K, Druet-Cabanac M, Nsengiyumva G, Dorny P, Preux PM,
888 et al. Combined use of an antigen and antibody detection enzyme-linked
889 immunosorbent assay for cysticercosis as tools in an epidemiological study of epilepsy
890 in Burundi. *Trop Med Int Heal*. 2007;12(7):895–901.
- 891 47. Stelzle D, Makasi C, Schmidt V, Trevisan C, Van I, Welte TM, et al. Epidemiological,
892 clinical and radiological characteristics of people with neurocysticercosis in Tanzania –
893 a cross-sectional study. *PLoS Negl Trop Dis*. 2022;16(11):e0010911.
- 894 48. Desta AH. Knowledge, Attitude and Practice of Community Towards Zoonotic
895 Importance of *Toxoplasma* Infection in Central. *Int J Biomed Sci Eng*. 2015;3(6):74–
896 81.
- 897 49. Hamou SA, Lamhamdi B, Hayah I, Belbacha I, Sadak A, Laboudi M. The Level of
898 Knowledge about Toxoplasmosis among University Students in Rabat in Morocco. *J*
899 *Parasitol Res*. 2021;2021:1–7.
- 900 50. Velazquez-Hernandez N, Aviles Avila AY, Rivas-Gonzalez MA, Delgado-Gonzalez

- 901 SP, Alvarado-Felix GA, Alvarado-Felix O, et al. Knowledge and practices regarding
902 toxoplasmosis in housewives : A cross sectional study in a northern Mexican city.
903 PLoS One. 2019;14(9):e0222094.
- 904 51. Onduru OG, Rumisha SF, Munyeme M, Phiri AM. Evaluation of the level of
905 awareness of congenital toxoplasmosis and associated practices among pregnant
906 women and health workers in Tanzania’s Temeke district in Dar es Salaam. Afr Health
907 Sci. 2019;19(4):3027–37.
- 908 52. Jones JL, Ogunmodede F, Scheftel J, Kirkland E, Lopez A, Schulkin J, et al.
909 Toxoplasmosis-related knowledge and practices among pregnant women in the United
910 States. Infect Dis Obs Gynecol. 2003;11:139–45.
- 911 53. Falisse JB, Masino S, Ngenzebuhoro R. Indigenous medicine and biomedical health
912 care in fragile settings: Insights from Burundi. Health Policy Plan. 2018;33(4):483–93.
- 913 54. Okello AL, Thomas LF. Human taeniasis: Current insights into prevention and
914 management strategies in endemic countries. Risk Manag Healthc Policy.
915 2017;10:107–16.
- 916 55. Steinmann P, Utzinger J, Du ZW, Jiang JY, Chen JX, Hattendorf J, et al. Efficacy of
917 single-dose and triple-dose albendazole and mebendazole against soil-transmitted
918 helminths and *Taenia* spp.: A randomized controlled trial. PLoS One. 2011;6(9).
- 919 56. Chai JY, Jung BK, Hong SJ. Albendazole and mebendazole as anti-parasitic and anti-
920 cancer agents: An update. Korean J Parasitol. 2021;59(3):189–225.
- 921 57. MSPLS. Plan Directeur De Lutte Contre Les Maladies Tropicales Negligées (MTN) au
922 Burundi 2016-2020. Organ Mond la Santé. 2017;106 p.
- 923 58. Ozioma E-OJ, Chinwe OAN. Herbal Medicines in African Traditional Medicine.

- 924 IntechOpen. 2019;10:191–214.
- 925 59. WHO. WHO Traditional Medicine Strategy 2002–2005. 2002;1–74.
- 926 60. Oyeyemi IT, Akinlabi AA, Adewumi A, Aleshinloye AO, Oyeyemi OT. *Vernonia*
927 *amygdalina*: A folkloric herb with anthelmintic properties. Beni-Suef Univ J Basic
928 Appl Sci. 2018;7(2018):43–9. <https://doi.org/10.1016/j.bjbas.2017.07.007>
- 929 61. Gahamanyi N, Munyaneza E, Dukuzimana E, Tuyiringire N, Pan CH, Komba EVG.
930 Ethnobotany, ethnopharmacology, and phytochemistry of medicinal plants used for
931 treating human diarrheal cases in Rwanda: A review. Antibiotics. 2021;10(10):1–14.
- 932 62. Kundu S, Roy S, Nandi S, Ukil B, Lyndem LM. In vitro anthelmintic effects of *Senna*
933 *occidentalis* (L.) link (Leguminosae) on rat tapeworm *Hymenolepis diminuta*. Int J
934 Pharm Pharm Sci. 2015;7(6):268–71.
- 935 63. Bizhani N. Herbal therapy and treatment of worm infections, emphasizing *Taenia*
936 *solium*. Iran J Public Health. 2015;44(11):1555–6.
- 937 64. Thompson R. Pigs, people, pathogens: A qualitative analysis of the pig value chain in
938 the central region of Uganda. ILRI/A4NH Discussion Paper 2. 2017;1–26.
- 939 65. WHO. Epilepsy : a public Health Imperative, Summary. World Heal Organ. 2019;1–
940 16.
- 941 66. Minani S, Devleesschauwer B, Gasogo A, Ntirandekura JB, Gabriël S, Dorny P, et al.
942 Assessing the burden of *Taenia solium* cysticercosis in Burundi, 2020. BMC Infect
943 Dis. 2022;22(1):1–13. <https://doi.org/10.1186/s12879-022-07849-7>
- 944 67. Baskind R, Birbeck GL. Epilepsy-associated stigma in sub-Saharan Africa: The social
945 landscape of a disease. Epilepsy Behav. 2005;7:68–73.

- 946 68. Konstantinovic N, Guegan H, Stājner T, Belaz S, Robert-gangneux F. Treatment of
947 toxoplasmosis : Current options and future perspectives. Food Waterborne Parasitol.
948 2019;12:1–15.
- 949 69. Roesel K, Ejobi F, Dione M, Pezo D, Ouma E, Kungu J, et al. Knowledge, attitudes
950 and practices of pork consumers in Uganda. Glob Food Sec. 2019;20:26–36.
951 <https://doi.org/10.1016/j.gfs.2018.12.001>
- 952 70. Møller SK, Ngowi H, Magnussen P, Magne J, Kabululu M, Johansen MV. The effect
953 of temperature and time on the viability of *Taenia solium* metacestodes in pork. Vet
954 Parasitol Reg Stud Reports. 2020;21:100436.
955 <https://doi.org/10.1016/j.vprsr.2020.100436>
- 956 71. Rodriguez-Canul R, Arguez-Rodriguez F, Pacheco De La Gala D, Villegas-Perez S,
957 Fraser A, Craig PS, et al. *Taenia solium* Metacestode Viability in Infected Pork after
958 Preparation with Salt Pickling or Cooking Methods Common in Yucatan, Mexico. J
959 Food Prot. 2002;65(4):666–9. <https://doi.org/10.4315/0362-028X-65.4.666>
- 960 72. Dubey JP, Kotula AW, Sharar A, Andrews CD, Lindsay DS. Effect of High
961 Temperature on Infectivity of *Toxoplasma gondii* Tissue Cysts in Pork. J Parasitol.
962 1990;76(2):201–4.
- 963 73. Møller KS, Magnussen P, Thamsborg SM, Gabriël S, Ngowi H, Magne J. The role of
964 cooking practices in the transmission of the foodborne parasite *Taenia solium*: A
965 qualitative study in an endemic area of Southern Tanzania. PLoS One. 2022;17(10):1–
966 25.
- 967