

1 **Benzodiazepine Initiation Effect on Mortality Among Medicare Beneficiaries**
2 **Post Acute Ischemic Stroke**

3
4 Madhav Sankaranarayanan, MS^a; Maria A. Donahue, MD^b; Shuo Sun, PhD^a; Julianne D. Brooks, MPH^a;
5 Lee H. Schwamm, MD^c; Joseph P. Newhouse, PhD^{d,e,f,g}; John Hsu, MD, MBA, MSCE^{d,h,i}; Deborah
6 Blacker, MD, ScD^{j,k}; Sebastien Haneuse, PhD^{a*}; Lidia M.V.R. Moura, MD, PhD, MPH^{b*}
7

8 ^a Department of Biostatistics, Harvard T.H. Chan School of Public Health, Boston, Massachusetts.

9 ^b Department of Neurology, Massachusetts General Hospital, Harvard Medical School, Boston,
10 Massachusetts.

11 ^c Department of Neurology, Yale New Haven Health, School of Public Health, New Haven.

12 ^d Department of Health Care Policy, Harvard Medical School, Boston, Massachusetts.

13 ^e Department of Health Policy and Management, Harvard T.H. Chan School of Public Health, Boston,
14 Massachusetts.

15 ^f Harvard Kennedy School, Cambridge, Massachusetts.

16 ^g National Bureau of Economic Research, Cambridge, Massachusetts.

17 ^h Mongan Institute, Massachusetts General Hospital, Boston, Massachusetts.

18 ⁱ Department of Medicine, Harvard Medical School, Boston, Massachusetts.

19 ^j Department of Psychiatry, Massachusetts General Hospital, Harvard Medical School, Boston,
20 Massachusetts.

21 ^k Department of Epidemiology, Harvard T.H. Chan School of Public Health, Boston, Massachusetts.
22

23 *These authors contributed equally.

24
25 **Short title:**

26 Benzodiazepine Impact on Ischemic Stroke Survivors
27

28 **Corresponding author:**

29 Madhav Sankaranarayanan

30 msankaranarayanan@bwh.harvard.edu

31 321 Franklin St. #2, Cambridge, MA 02139
32

33 **Total word count: 5,999**

34 **ABSTRACT**

35 **Rationale:** Despite guideline warnings, older acute ischemic stroke (AIS) survivors still receive
36 benzodiazepines (BZD) for agitation, insomnia, and anxiety despite being linked to severe adverse
37 effects, such as excessive somnolence and respiratory depression. Due to polypharmacy, drug
38 metabolism, comorbidities, and complications during the sub-acute post-stroke period, older adults
39 are more susceptible to these adverse effects. We examined the impact of receiving BZDs within 30
40 days post-discharge on survival among older Medicare beneficiaries after an AIS.

41
42 **Methods:** Using the Medicare Provider Analysis and Review (MedPAR) dataset, Traditional fee-for-
43 service Medicare (TM) claims, and Part D Prescription Drug Event data, we analyzed a random 20%
44 sample of TM beneficiaries aged 66 years or older who were hospitalized for AIS between July 1, 2016,
45 and December 31, 2019. Eligible beneficiaries were enrolled in Traditional Medicare Parts A, B, and D
46 for at least 12 months before admission. We excluded beneficiaries who were prescribed a BZD within
47 90 days before hospitalization, passed away during their hospital stay, left against medical advice, or
48 were discharged to institutional post-acute care. Our primary exposure was BZD initiation within 30
49 days post-discharge, and the primary outcome was 90-day mortality risk differences (RD) from
50 discharge. We followed a trial emulation process involving cloning, weighting, and censoring, plus we
51 used inverse-probability-of-censoring weighting to address confounding.

52
53 **Results:** In a sample of 47,421 beneficiaries, 826 (1.74%) initiated BZD within 30 days after discharge
54 from stroke admission or before readmission, whichever occurred first, and 6,392 (13.48%) died within
55 90 days. Our study sample had a median age of 79, with an inter-quartile range (IQR) of 12, 55.3%
56 female, 82.9% White, 10.1% Black, 1.7% Hispanic, 2.2% Asian, 0.4% American Native, 1.5% Other and
57 1.1% Unknown. After standardization based on age, sex, race/ethnicity, length of stay in inpatient, and
58 baseline dementia, the estimated 90-day mortality risk was 159 events per 1,000 (95% CI: 155, 166) for
59 the BZD initiation strategy and 133 events per 1,000 (95% CI: 132, 135) for the non-initiation strategy,
60 with an RD of 26 events per 1,000 (95% CI: 22, 33). Subgroup analyses showed RDs of 0 events per
61 1,000 (95% CI: -4, 11) for patients aged 66-70, 3 events per 1,000 (95% CI: -1, 13) for patients aged 71-
62 75, 10 events per 1,000 (95% CI: 3, 23) for patients aged 76-80, 27 events per 1,000 (95% CI: 21, 46) for

63 patients aged 81-85, and 84 events per 1,000 (95% CI: 73, 106) for patients aged 86 years or older. RDs
64 were 34 events per 1,000 (95% CI: 26, 48) and 20 events per 1,000 (95% CI: 11, 33) for males and
65 females, respectively. RDs were 87 events per 1,000 (95% CI: 63, 112) for patients with baseline
66 dementia and 18 events per 1,000 (95% CI: 13, 21) for patients without baseline dementia.

67

68 **Conclusion:** Initiating BZDs within 30 days post-AIS discharge significantly increased the 90-day
69 mortality risk among Medicare beneficiaries aged 76 and older and for those with baseline dementia.
70 These findings underscore the heightened vulnerability of older adults, especially those with cognitive
71 impairment, to the adverse effects of BZDs.

72 **INTRODUCTION**

73

74 Every year in the United States, about 800,000 individuals have a stroke,¹ and three-quarters of
75 all strokes occur in adults aged 65 and older, leading to around 610,000 hospital admissions annually.²
76 Acute ischemic stroke (AIS) survivors are often given benzodiazepines (BZDs) during the immediate
77 acute recovery period for periprocedural sedation or to manage insomnia, anxiety, and agitation,
78 despite guideline warnings.^{3,4}

79

80 BZDs are associated with severe adverse effects, such as cognitive impairment, psychomotor
81 difficulties, excessive somnolence, pneumonia, respiratory depression requiring intubation, falls, and
82 death.⁵⁻¹¹ Older adults are especially susceptible due to age-related changes in drug metabolism,
83 polypharmacy, and comorbidities.¹² Patients who experience an AIS are particularly vulnerable to the
84 risks associated with BZD use,^{10,13} with pre-existing brain damage and gait comorbidities compounding
85 the established risks of falls and fall-related injuries. Alarming, various studies have shown that up to
86 15% of stroke patients receive BZDs, often indefinitely, and 50-80% of older patients using BZDs
87 chronically experience adverse effects.^{3,6-9,14,15}

88

89 Despite state policies and national guidelines to curb BZD prescriptions, usage remains high.^{4,14}
90 There is a lack of data and studies on older adult outcomes among those receiving BZD prescriptions in
91 the sub-acute AIS recovery period. Trials among older adults are infeasible for several reasons:
92 exclusion criteria (e.g., comorbidities, polypharmacy, and functional limitations), recruitment barriers
93 (multimorbidity, disabilities, frailty, etc.), cognitive impairment, consent issues, drug interactions,
94 adverse effects, and high drop-out rates, among others.¹⁶ We examined the impact of new outpatient
95 BZD prescriptions dispensed 30 days post-AIS discharge among Medicare beneficiaries 65 years or
96 older.

97

98

99 **METHODS**

100 This study followed the Strengthening the Reporting of Observational Studies in Epidemiology
101 (STROBE)¹⁷ reporting guidelines and was approved by the Mass General Brigham Institutional Review

102 Board. Because we conducted a secondary analysis of data collected for routine care and billing
103 purposes, the requirement for informed consent was waived. The data supporting this study's findings
104 are collected by The Centers for Medicare & Medicaid Services (CMS) and were made available by CMS
105 with no direct identifiers. All results were aggregated following CMS Cell Suppression Policies.
106 Restrictions apply to the availability of these data, which were used under license for this study.
107 Medicare data are available through CMS with their permission. The code that produced the findings is
108 available upon reasonable request from any qualified investigator.

109

110 **Eligibility Criteria**

111 To properly define our target trial, we must establish the criteria for selecting patients in a 20%
112 random sample of Traditional Medicare Claims eligible for said trial. We identified 92,852 patients who
113 were admitted for AIS between July 1, 2016, and December 31, 2019, and enrolled in Traditional Fee-
114 For-Service Medicare with at least one year of enrollment in Parts A (hospital insurance information), B
115 (preventative and medically necessary services or medical insurance information), and D (prescription
116 drug coverage information) before AIS hospitalization. We included patients admitted to an acute
117 hospital and discharged home (short-stay hospitalization). We included patients aged 66 and above in
118 the analysis. We excluded patients with a recorded AIS diagnosis 12 months before hospitalization and
119 patients with one or more recorded outpatient BZD prescriptions within three months before
120 admission. The final eligible sample consisted of 47,421 patients (Figure 1).

121

122 **Study Design**

123 The target trial would randomly assign eligible patients discharged alive after an AIS
124 hospitalization to one of two arms: i) BZD treatment upon discharge and ii) usual care with no BZDs for
125 30 days post-discharge. We modeled an emulated trial based on this target trial, which involved
126 random assignment of eligible patients upon discharge from AIS hospitalization to one of two arms: i)
127 treatment with BZD within the window extending from discharge to 30 days post-discharge (or
128 readmission date if within the 30 days); ii) no BZDs given within the defined window from discharge to
129 30 days post-discharge or readmission, whichever occurred first. We assessed the primary outcome of
130 mortality during a follow-up period spanning 90 days starting from discharge. Patients were followed

131 from discharge to the earliest of the following events: mortality, readmission, or end of study (i.e., 90
132 days post-discharge, including the discharge day). Further details regarding the observational analysis
133 proposed for this emulated target trial can be found in Table 1.

134

135 **Individual Characteristics**

136 For each beneficiary, we captured demographic characteristics, i.e., age, documented sex,
137 reported race/ethnicity, dual Medicare and Medicaid eligibility status, and the original reason for
138 Medicare entitlement provided in Medicare’s Master Beneficiary Summary (MBSF) File. We used the
139 self-reported race/ethnicity variable provided in MBSF (White, Black, Hispanic, Asian, American Native,
140 Other, Unknown).¹⁸

141

142 We used acute hospitalization records from the Medicare Provider Analysis and Review
143 (MedPAR) file and outpatient diagnosis codes in the Outpatient and Carrier Claims files. AIS
144 hospitalizations were selected based on AIS ICD-10 code I63.¹⁹ We took the first hospitalization
145 chronologically for beneficiaries with more than one AIS hospitalization. We defined readmission as
146 any inpatient stay recorded post-stroke in the MedPAR file. We also obtained baseline stroke severity
147 using the National Institutes of Health Stroke Scale (NIHSS) score.²⁰ We identified NIHSS scores in the
148 MedPAR files using ICD-10 codes R297.00 to R297.42, and we used the maximum NIHSS score in the
149 case of multiple scores. NIHSS scores range from 0 to 42, with higher values indicating a more severe
150 stroke. We grouped NIHSS scores into two categories: Minor (≤ 4) and Moderate-to-High (> 4).²¹ As an
151 additional measure of stroke severity at baseline, we used the length of stay (LOS) during AIS
152 admission. A shorter LOS has been associated with increased risks of early readmissions and post-
153 discharge mortality.²² A U-shaped relationship between LOS and 30-day mortality has been described,
154 where both very short (1-2 days) and long (9-14 days) LOS were associated with high mortality rates
155 among patients with heart failure.²³

156

157 We captured comorbid conditions by leveraging all diagnoses present in the 12 months before
158 stroke admission. For each beneficiary, we evaluated the presence of a pre-admission history of
159 myocardial infarction (MI), congestive heart failure (CHF), peripheral vascular disease (PVD),

160 cardiovascular disease (CVD), chronic obstructive pulmonary disease (COPD), paralysis, diabetes, renal
161 disease, liver disease, rheumatism, and dementia²⁴ using ICD-10 diagnosis codes listed in Supplemental
162 Table S1 and the National Cancer Institute’s SEER-Medicare: Comorbidity SAS Macros.^{42,43} This
163 algorithm requires that for outpatient claims, a patient's diagnoses (not just specific codes) must
164 appear on at least two different claims more than 30 days apart. Additionally, we have death dates
165 from the master beneficiary summary file (MBSF). We describe the characteristics of eligible patients
166 stratified by BZD initiation strategy in Table 2.

167

168 **Benzodiazepine Exposure and Treatment Assignment Procedures**

169 In the target trial emulation, we obtained information on BZD prescriptions from outpatient
170 pharmacy data. The BZD list can be found in Table S1 in the Supplement.

171

172 We addressed immortal time and confounding bias by deploying cloning techniques.²⁵⁻²⁷ Every
173 patient is “assigned” to both the control and treatment arm and “observed” until they deviate from
174 the protocol of the given arm. This effectively doubles our sample size, giving us perfectly balanced
175 arms concerning baseline characteristics. We accounted for this artificial doubling of the sample by
176 “artificially” censoring the person-time for each patient clone when the actual treatment deviates from
177 the assigned treatment (e.g., a patient initiated on BZD within the 30-day exposure window would
178 have a clone in the control arm, contributing person-time until their initiation time). With this
179 approach, we aligned the discharge and assignment times directly. We accounted for the selection bias
180 due to this artificial censoring by using the inverse probability of censoring weighting (IPCW) on the
181 observations. We describe the cloning method in Figure S1 and “Technical Details” in the Supplement.

182

183 **Statistical Analysis**

184 To evaluate the effect of BZD initiation within the defined post-AIS exposure period on 90-day
185 mortality, we estimated the survival probability of the patients using model-based predictions. After
186 cloning and censoring the data, we weighted the expanded data using stabilized IPCWs to account for
187 artificial censoring. The models for IPCW were pooled linear logistic regressions over person days,
188 including age, sex, race/ethnicity, baseline dementia, and LOS as covariates, along with potential

189 interactions between them, separately for the two treatment strategies. For comparison, we estimated
190 the unadjusted Kaplan-Meier and an unadjusted cubic spline model-based survival probabilities of
191 mortality in the 90 days using the cloned dataset (see Figure S2 in the Supplement).

192

193 We fitted a pooled logistic regression model for mortality as a function of the following
194 covariates: treatment strategy, a B-spline function with 5 degrees of freedom of time (measured in
195 days post-discharge), and an interaction term between the treatment strategy and the B-spline for
196 time to allow for time-varying effects using the expanded weighted data. We obtained estimated
197 survival probabilities for each day under each treatment strategy and estimated the 90-day mortality
198 risk difference.

199

200 We used the bootstrap method based on 500 re-samplings to obtain 95% Confidence Intervals
201 (CI), accounting for sample size inflation by cloning. See Technical Details in the Supplement for the
202 specifics of our statistical analysis.

203

204 **Missing Data**

205 We found no missing demographic information for the patients in our selected cohort. There
206 was minimal missingness in the selected cohort's baseline medical conditions (4%). We assumed no
207 baseline conditions for those without a recorded one. For NIHSS scores, there was a high missingness
208 (58.6%). We performed a complete case analysis using NIHSS scores, sex, and dementia (please see the
209 Supplement for these analyses).

210

211 **Pre-planned Stratified Analysis**

212 We repeated the analyses above, stratifying on age categories since BZDs are viewed as more
213 detrimental to older patients. We also repeated our analyses stratified on baseline dementia, as BZD
214 has more damaging effects in those with dementia.²⁸ Lastly, we stratified on sex since females are
215 prescribed these medications more frequently and are more likely to experience side effects due to
216 physiological and pharmacodynamic differences. We also conducted a secondary analysis stratifying on

217 NIHSS scores (<4 vs. >4) in patients with a reported NIHSS score, as BZDs may be more detrimental to
218 patients with more severe AIS.

219

220 **Secondary Analysis**

221 In secondary analysis, we sought to include a marker of stroke severity at baseline because it
222 has been associated with prescription probability and mortality risk. We examined the proportion of
223 reported NIHSS scores, which was around 43% for the Medicare sample, and we relegated the use of
224 NIHSS scores as a metric for stroke severity to the Supplement (Table S4, Figure S6-S11, and the
225 Technical Details section).

226

227

228 **RESULTS**

229 **Study Population Characteristics**

230 In a sample of 235,912 beneficiaries discharged for an AIS during the study period, 47,421
231 patients met our inclusion criteria (Figure 1). Of these, 826 (1.74%) initiated BZDs within 30 days after
232 discharge from the stroke admission (or before readmission, whichever occurred first), and 6,392
233 (13.48%) passed away within 90 days. The median age of our study sample was 79 (IQR 12). Our
234 sample consisted of 55.3% female beneficiaries, 82.9% White, 10.1% Black/African American, 1.7%
235 Hispanic, 2.2% Asian, and 0.4% North American Native. We provide additional patient
236 demographic/clinical characteristics by BZD initiation strategy in Table 2.

237

238 **Outcome: Mortality**

239 After target trial emulation with cloning and adjustment for artificial censoring, the
240 standardized 90-day risk of mortality was 159 events per 1000 (95% CI: 155,166) for those under the
241 BZD initiation strategy and 133 events per 1000 (95% CI: 132,135) for those under the non-initiation
242 strategy, which resulted in a risk difference of 26 events per 1000 patients (95% CI: 22,33). Figure 2
243 shows the standardized survival functions.

244

245 Looking at age categories, the 90-day risk differences were 0 events per 1000 (95% CI: -4, 11)
246 for patients aged 66-70, 3 events per 1000 (95% CI: -1, 13) for patients aged 71-75, 10 events per 1000
247 (95% CI: 3, 23) for patients aged 76-80, 27 events per 1000 (95% CI: 21, 46) for patients aged 81-85,
248 and 84 events per 1000 (95% CI: 73, 106) for patients aged 86 years or older. Risk differences were 34
249 events per 1000 (95% CI: 26,48) and 20 events per 1000 (95% CI: 11,33) for male and female patients,
250 respectively. Risk differences were 87 events per 1000 (95% CI: 63,112) for patients with baseline
251 dementia and 18 events per 1000 (95% CI: 13,21) for patients without baseline dementia (Figure 3).
252 The standardized 90-day risks of mortality stratified by age categories, sex, and baseline dementia are
253 displayed in Table 3. The analysis in the subpopulation with reported NIHSS scores yielded results
254 similar to our primary analysis (“Additional Analysis” in the Supplement). The Supplementary Text
255 provides the Statistical Code used for the primary analysis.

256

257

258 **DISCUSSION**

259 Our results provide significant insights into the mortality risks associated with BZD initiation
260 following AIS among Medicare beneficiaries. There was an excess 90-day mortality risk for patients
261 who initiated BZDs within 30 days post-AIS discharge. This finding suggests that BZD use after an AIS
262 among patients over 76 years may be associated with increased mortality risk. When we further
263 analyzed by age groups, the mortality risk increased significantly with age; patients 86 years and older
264 had a higher risk than the 76-80 group.

265

266 Additionally, more female adults were initiated on BZDs than male adults. Perhaps the most
267 striking finding was the significant excess mortality among patients with baseline dementia. Therefore,
268 initiating BZDs should be based on carefully evaluating individual patient characteristics and weighing
269 the potential benefits against the increased mortality risk.

270

271 While anxiety or insomnia can be managed with BZDs in the short term, the potential risks and
272 side effects are significant among older adults due to age-related changes in drug metabolism,
273 polypharmacy, and comorbidities.^{12,29} Of concern, BZDs can impair cognition (i.e., excessive

274 somnolence, drowsiness, dizziness, confusion, memory problems, and difficulties with attention, etc.),
275 cause or aggravate often related psychomotor issues (i.e., gait and balance issues), and can lead to hip
276 fracture, pneumonia, respiratory depression requiring intubation, and death.^{5-11,30,31} Lastly, the
277 sedating effects of BZDs on ambulation dexterity might have a more significant impact among AIS
278 survivors who can walk during the early days of recovery (e.g., those with mild AIS) and are at risk for
279 falls and fall-related injuries.^{6,10}

280

281 Despite state policies and national guidelines to curb BZD prescriptions, usage remains high,^{4,14}
282 especially among older adults who often receive 180 doses or more.³² The prevalence of BZD usage
283 among older adults in the United States increased from 1.1% to 17.6% between 2012 and 2013 (when
284 BZDs were added to the Medicare formulary), with a BZD use rate ranging from 8.6% to 20% among
285 adults 65 years and older.³³ Of concern, many stroke patients receive BZD prescriptions indefinitely,
286 and the majority using BZDs chronically experience adverse effects.^{3,5-9,14,15} While BZD initiation
287 typically occurs at the hospital (where this type of medication might be of greater need), 4.7% of AIS
288 survivors received a new BZD prescription within the 90-day post-discharge window, and most were
289 female patients.³⁴ We examined outcomes associated with initiating BZDs at discharge when there is a
290 great concern for this population, as prescriptions might be unnecessary, are not as closely supervised,
291 and frequency is not controlled. Long-term use of BZDs can lead to physical dependence, even at
292 therapeutic doses. For older stroke survivors, this poses additional risks because sudden
293 discontinuation can lead to withdrawal symptoms, including rebound anxiety, insomnia, depression,
294 seizures, or delirium.^{11,35,36}

295

296 There is scarce data and studies on older adult patient outcomes among those receiving BZD
297 prescriptions. When trials are infeasible, comparative effectiveness and safety studies leveraging real-
298 world practice variation offer a powerful alternative.^{25,37,38} Additionally, we used techniques developed
299 by Hernan et al. that allowed us to address two primary sources of bias arising from structuring
300 initiation and using retrospective data using cloning.²⁵⁻²⁷ The first, known as immortal time bias, is due
301 to a differing discharge time and BZD initiation time, leading to spurious interpretations of this lag. The
302 second, known as confounding bias due to randomization, arises in retrospective settings as we did not

303 perform true randomization of our cohort. Using novel analytic strategies to emulate clinical trials that
304 would otherwise be infeasible or unethical, our study proves the utility of these techniques. It presents
305 meaningful results that should impact and reinforce BZD guidelines and improve health care for older
306 adults.

307

308 Our study provides valuable evidence suggesting that BZD initiation after AIS is associated with
309 increased mortality risk in Medicare beneficiaries, a greater risk observed predominantly among
310 individuals 76 years and older, males, and those with dementia. These findings underscore the
311 importance of careful consideration and individualized decision-making when managing post-stroke
312 care in older adults, weighing risks against potential benefits, and considering alternative treatments
313 when possible.

314

315 **Limitations**

316 The statistical analysis is contingent on modeling the survival function across the 90-day
317 observation period. Due to the large sample size and long observation window, statistical results are
318 sensitive to the initial specifications of the outcome model. In Technical Details (Supplement), we
319 provide further details about our outcome model's exact specifications and justifications, which
320 incorporate medical information and statistical parsimony.

321

322 The findings for our study population may not generalize to different age groups and patients
323 with varying diagnoses or subtype etiology (i.e., intracerebral hemorrhage, infarction, cardiac
324 embolism, etc.) and might not apply to Medicare Advantage beneficiaries. Due to data availability, our
325 sample was limited to Traditional Medicare.

326

327 **CONCLUSION**

328 Initiating BZDs within 30 days post-AIS discharge significantly increased the 90-day mortality
329 risk among Medicare beneficiaries aged 76 and older and those with baseline dementia.

330

331

332 **FUNDING**

333 NIH (1R01AG073410-01)

334

335 **DISCLOSURES**

336 M.A.D., J.D.B., M.P., L.H.S., S.H., and M.B.W. have no conflict of interest to disclose.

337 J.H. receives support from the National Institutes of Health, Agency for Healthcare Research and

338 Quality, Brandeis University, Altmed, Cambridge Health Alliance, Columbia University, Invitrx, and the

339 University of South Carolina and reports no conflict of interest.

340 D.B. receives support from the National Institutes of Health and reports no conflict of interest.

341 J.P.N. is the National Committee for Quality Assurance director and reports no conflict of interest.

342 L.M.V.R.M. receives support from NIH/NIA grants and the Epilepsy Foundation of America and reports

343 no conflict of interest.

344

345 **SUPPLEMENTAL MATERIALS**

346 Tables S1–S4

347 Figure S1-S12

348 Technical Details

349 Statistical Code

350 **REFERENCES**

- 351 1. CDC. Stroke Facts [Internet]. Stroke. 2024 [cited 2024 Jul 10];Available from:
352 <https://www.cdc.gov/stroke/data-research/facts-stats/index.html>
- 353 2. Ovbiagele B, Goldstein LB, Higashida RT, Howard VJ, Johnston SC, Khavjou OA, Lackland DT,
354 Lichtman JH, Mohl S, Sacco RL, et al. Forecasting the future of stroke in the United States: a policy
355 statement from the American Heart Association and American Stroke Association. *Stroke*.
356 2013;44:2361–2375.
- 357 3. Moura LMVR, Yan Z, Donahue MA, Smith LH, Schwamm LH, Hsu J, Newhouse JP, Haneuse S, Blacker
358 D, Hernandez-Diaz S. No short-term mortality from benzodiazepine use post-acute ischemic
359 stroke after accounting for bias. *J Clin Epidemiol*. 2023;154:136–145.
- 360 4. By the 2023 American Geriatrics Society Beers Criteria® Update Expert Panel. American Geriatrics
361 Society 2023 updated AGS Beers Criteria® for potentially inappropriate medication use in older
362 adults. *J Am Geriatr Soc*. 2023;71:2052–2081.
- 363 5. Lee JS. Necessary evil or systemic failure of care? Use of benzodiazepine and antipsychotic
364 medications in older people seeking emergency department care. *J Am Geriatr Soc*. 2022;70:698–
365 700.
- 366 6. Díaz-Gutiérrez MJ, Martínez-Cengotitabengoa M, Sáez de Adana E, Cano AI, Martínez-
367 Cengotitabengoa MT, Besga A, Segarra R, González-Pinto A. Relationship between the use of
368 benzodiazepines and falls in older adults: A systematic review. *Maturitas*. 2017;101:17–22.
- 369 7. Vozoris NT, Fischer HD, Wang X, Stephenson AL, Gershon AS, Gruneir A, Austin PC, Anderson GM,
370 Bell CM, Gill SS, et al. Benzodiazepine drug use and adverse respiratory outcomes among older
371 adults with COPD. *Eur Respir J*. 2014;44:332–340.
- 372 8. Markota M, Rummans TA, Bostwick JM, Lapid MI. Benzodiazepine Use in Older Adults: Dangers,
373 Management, and Alternative Therapies. *Mayo Clin Proc*. 2016;91:1632–1639.
- 374 9. Gupta A, Bhattacharya G, Balaram K, Tampi D, Tampi RR. Benzodiazepine use among older adults.
375 *Neurodegener Dis Manag*. 2021;11:5–8.
- 376 10. Sun S, Lomachinsky V, Smith LH, Newhouse JP, Westover MB, Blacker D, Schwamm L, Haneuse S,
377 Moura LMVR. Benzodiazepine Initiation and the Risk of Falls or Fall-Related Injuries in Older
378 Adults Following Acute Ischemic Stroke. *medRxiv*. 2024;2024.02.06.24302430.
- 379 11. Olfson M, King M, Schoenbaum M. Benzodiazepine use in the United States. *JAMA Psychiatry*.
380 2015;72:136–142.
- 381 12. Pesante-Pinto JL. Clinical Pharmacology and the Risks of Polypharmacy in the Geriatric Patient.
382 *Phys Med Rehabil Clin N Am*. 2017;28:739–746.

- 383 13. Lin S-M, Yang S-H, Liang C-C, Huang H-K, Loh C-H. Association between benzodiazepine use and
384 risks of chronic-onset poststroke pneumonia: a population-based cohort study. *BMJ Open*.
385 2019;9:e024180.
- 386 14. Wang F, Ma Z, Liu M, Wu X. Potentially inappropriate medications at admission and discharge in
387 older adults: A comparison of the Beers 2019 and 2015 criteria. *Int J Clin Pharmacol Ther*.
388 2020;58:299–309.
- 389 15. Agarwal SD, Landon BE. Patterns in Outpatient Benzodiazepine Prescribing in the United States.
390 *JAMA Netw Open*. 2019;2:e187399.
- 391 16. Buttgereit T, Palmowski A, Forsat N, Boers M, Witham MD, Rodondi N, Moutzouri E, Navidad AJQ,
392 Van't Hof AWJ, van der Worp B, et al. Barriers and potential solutions in the recruitment and
393 retention of older patients in clinical trials-lessons learned from six large multicentre randomized
394 controlled trials. *Age Ageing*. 2021;50:1988–1996.
- 395 17. von Elm E, Altman DG, Egger M, Pocock SJ, Gøtzsche PC, Vandenbroucke JP, STROBE Initiative.
396 Strengthening the Reporting of Observational Studies in Epidemiology (STROBE) statement:
397 guidelines for reporting observational studies. *BMJ*. 2007;335:806–808.
- 398 18. Eicheldinger C, Bonito A. More accurate racial and ethnic codes for Medicare administrative data.
399 *Health Care Financ Rev*. 2008;29:27–42.
- 400 19. McCormick N, Bhole V, Lacaille D, Avina-Zubieta JA. Validity of Diagnostic Codes for Acute Stroke
401 in Administrative Databases: A Systematic Review. *PLoS One*. 2015;10:e0135834.
- 402 20. Runde D. Calculated Decisions: NIH stroke scale/score (NIHSS). *Emerg Med Pract*. 2020;22:CD6–
403 CD7.
- 404 21. Schlegel D, Kolb SJ, Luciano JM, Tovar JM, Cucchiara BL, Liebeskind DS, Kasner SE. Utility of the
405 NIH Stroke Scale as a predictor of hospital disposition. *Stroke*. 2003;34:134–137.
- 406 22. Han TS, Murray P, Robin J, Wilkinson P, Fluck D, Fry CH. Evaluation of the association of length of
407 stay in hospital and outcomes. *Int J Qual Health Care*. 2021;34:mzab160.
- 408 23. Sud M, Yu B, Wijeyesundera HC, Austin PC, Ko DT, Braga J, Cram P, Spertus JA, Domanski M, Lee
409 DS. Associations Between Short or Long Length of Stay and 30-Day Readmission and Mortality in
410 Hospitalized Patients With Heart Failure. *JACC Heart Fail*. 2017;5:578–588.
- 411 24. Moura LMVR, Festa N, Price M, Volya M, Benson NM, Zafar S, Weiss M, Blacker D, Normand S-L,
412 Newhouse JP, et al. Identifying Medicare beneficiaries with dementia. *J Am Geriatr Soc*.
413 2021;69:2240–2251.
- 414 25. Hernán MA, Wang W, Leaf DE. Target Trial Emulation: A Framework for Causal Inference From
415 Observational Data. *JAMA*. 2022;328:2446–2447.

- 416 26. Hernán MA, Robins JM. Using Big Data to Emulate a Target Trial When a Randomized Trial Is Not
417 Available. *Am J Epidemiol*. 2016;183:758–764.
- 418 27. Hernán MA, Robins JM. Estimating causal effects from epidemiological data. *J Epidemiol*
419 *Community Health*. 2006;60:578–586.
- 420 28. Wu C-C, Liao M-H, Su C-H, Poly TN, Lin M-C. Benzodiazepine Use and the Risk of Dementia in the
421 Elderly Population: An Umbrella Review of Meta-Analyses. *J Pers Med*. 2023;13:1485.
- 422 29. Hoel RW, Giddings Connolly RM, Takahashi PY. Polypharmacy Management in Older Patients.
423 *Mayo Clin Proc*. 2021;96:242–256.
- 424 30. Votaw VR, Geyer R, Rieselbach MM, McHugh RK. The epidemiology of benzodiazepine misuse: A
425 systematic review. *Drug Alcohol Depend*. 2019;200:95–114.
- 426 31. Dublin S, Walker RL, Jackson ML, Nelson JC, Weiss NS, Von Korff M, Jackson LA. Use of opioids or
427 benzodiazepines and risk of pneumonia in older adults: a population-based case-control study. *J*
428 *Am Geriatr Soc*. 2011;59:1899–1907.
- 429 32. Shorr RI, Bauwens SF, Landefeld CS. Failure to limit quantities of benzodiazepine hypnotic drugs
430 for outpatients: placing the elderly at risk. *Am J Med*. 1990;89:725–732.
- 431 33. Maust DT, Kim HM, Wiechers IR, Ignacio RV, Bohnert ASB, Blow FC. Benzodiazepine Use among
432 Medicare, Commercially Insured, and Veteran Older Adults, 2013-2017. *J Am Geriatr Soc*.
433 2021;69:98–105.
- 434 34. Torres VL, Brooks JD, Donahue MA, Sun S, Hsu J, Price M, Blacker D, Schwamm L, Newhouse JP,
435 Haneuse S, et al. Benzodiazepine Utilization in Ischemic Stroke Survivors: Analyzing Initial Excess
436 Supply and Longitudinal Trends. *Stroke*. 2024; In press.
- 437 35. Juergens SM. Problems with benzodiazepines in elderly patients. *Mayo Clin Proc*. 1993;68:818–
438 820.
- 439 36. Maust DT, Petzold K, Strominger J, Kim HM, Bohnert ASB. Benzodiazepine Discontinuation and
440 Mortality Among Patients Receiving Long-Term Benzodiazepine Therapy. *JAMA Netw Open*.
441 2023;6:e2348557.
- 442 37. Moura LMVR, Donahue MA, Yan Z, Smith LH, Hsu J, Newhouse JP, Schwamm LH, Haneuse S,
443 Hernandez-Diaz S, Blacker D. Comparative Effectiveness and Safety of Seizure Prophylaxis Among
444 Adults After Acute Ischemic Stroke. *Stroke*. 2023;54:527–536.
- 445 38. Moura LM, Westover MB, Kwasnik D, Cole AJ, Hsu J. Causal inference as an emerging statistical
446 approach in neurology: an example for epilepsy in the elderly. *Clin Epidemiol*. 2017;9:9–18.

447

448
449
450

TABLES

Table 1. Description of a Target Trial and The Corresponding Observational Study

Target Trial	Emulated trial
Eligibility Criteria	
Discharge for cerebrovascular accident between 07/01/2016 and 12/31/2019 from any hospital, and enrolled in Traditional Medicare Part A, B, D 12 months before stroke admission	Same
Age ≥ 66	Same
Confirmed AIS	Same
Admitted to a short-stay hospital	Same
No previous history of AIS in the last 12 months before admission	No recorded diagnosis of AIS in the last 12 months before admission
No use of BZDs in the last 3 months prior to admission	No recorded prescription of BZDs in the last 3 months before admission
Treatment Strategies	
Treatment arm: Initiate BZD upon discharge, follow prescription strategy for 30 days Control arm: Subject to usual care without BZDs for 30 days post-discharge	Treatment arm: Initiate BZD within a defined window extending from AIS discharge to either the 30th day post-discharge or readmission date, whichever occurs first. Control arm: Refrain from initiating BZD within a defined window extending from AIS discharge to either the 30th day post- discharge or readmission date, whichever occurs first.
Assignment Procedures	
Randomized treatment assignment	Emulated randomization*
Outcomes	
Time to death within 90 days post-discharge	Same
Follow-up	
Starts at randomization (discharge) Ends at date of all-cause re-admission, death, loss to follow-up or end of study (90 days post-discharge); whichever occurs first	Starts at discharge Ends at date of all-cause re-admission, death (as recorded in Medicare data [†]), loss to follow-up (date of enrollment discontinuation [‡]) or end of study (90 days post-discharge); whichever occurs first
Causal Contrast	
Intention-to-treat effect	Observational analog of intention-to-treat effect [§]
Statistical Analysis	
Intention-to-treat effect analysis of time to mortality, accounting for censoring.	Intention-to-treat effect analysis of time to mortality, accounting for censoring and baseline confounding.

451 **Legend:** AIS, Acute Ischemic Stroke; BZD, Benzodiazepine (see Table S2). *Emulated randomization using cloning (see
452 technical details). †Medicare data mortality: Dates obtained from Master Beneficiary Summary File, reliable metrics
453 for mortality. ‡Date of enrollment discontinuation: Readmissions are a loss to follow-up; we do not have insurance
454 claims information inpatient, dates obtained from the Medicare Provider Analysis and Review file. §Analysis can be
455 consistent with “intention-to-treat” (treatment assignment as a strategy). However, the effect can also be analogous
456 to the “per-protocol” (when treatment strategy is considered a “protocol” that must be followed over time [grace
457 period]).

458 **Table 2. Characteristics of Patients Stratified by Benzodiazepine Initiation**

Characteristics	Overall Sample	BZD initiation		SMD
		No (n=46051)	Yes (n=1372)	
Age (median (IQR))	79 (12)	79 (12)	79 (14)	0.038
Age Categories (%)				
66-70	7963 (16.8)	7818 (16.8)	145 (17.6)	0.072
71-75	9465 (20.0)	9296 (20.0)	169 (20.5)	
76-80	9570 (20.2)	9425 (20.2)	145 (17.6)	
81-85	8648 (18.2)	8498 (18.2)	150 (18.2)	
86+	11775 (24.8)	11558 (24.8)	217 (26.3)	
Sex (%)				
Male	21192 (44.7)	20876 (44.8)	316 (38.3)	0.133
Female	26229 (55.3)	25719 (55.2)	510 (61.7)	
Race/Ethnicity (%)				
White	39333 (82.9)	38611 (82.8)	722 (87.4)	0.180
Black	4795 (10.1)	4748 (10.3)	47 (5.7)	
Asian	1055 (2.2)	1036 (2.2)	19 (2.3)	
Hispanic	796 (1.7)	781 (1.7)	15 (1.8)	
American Native	201 (0.4)	>190 (0.4)	<11 (0.7)	
Other	703 (1.5)	>692 (1.5)	<11 (1.0)	
Unknown	538 (1.1)	>527 (1.1)	<11 (1.1)	
US Regions (%)				
Midwest	10544 (24.0)	10387 (24.1)	157 (20.5)	0.095
Northeast	10464 (23.8)	10281 (23.8)	183 (23.9)	
Southeast	11230 (25.6)	11013 (25.5)	217 (28.3)	
Southwest	5127 (11.7)	5037 (11.6)	90 (11.7)	
West	6556 (14.9)	6436 (15.0)	120 (5.6)	
Year of Discharge (%)				
2016	6802 (14.3)	6682 (14.3)	120 (14.5)	0.042
2017	13695 (28.9)	13442 (28.8)	253 (30.6)	
2018	13375 (28.2)	13151 (28.2)	224 (27.1)	
2019	13549 (28.6)	13320 (28.7)	229 (27.7)	
Baseline Dementia (%)				
No	43039 (90.4)	42336 (90.9)	703 (85.1)	0.178
Yes	4382 (9.6)	4259 (9.1)	123 (14.9)	
History of MI (%)				
No	45204 (95.3)	44408 (95.3)	796 (96.4)	0.053
Yes	2217 (4.7)	2187 (4.7)	30 (3.6)	
CHF (%)				
No	39875 (84.1)	39174 (84.1)	701 (84.9)	0.022
Yes	7546 (15.9)	7421 (15.9)	125 (15.1)	
PVD (%)				
No	39906 (84.2)	39200 (84.1)	706 (85.5)	0.037
Yes	7515 (15.8)	7395 (15.9)	120 (14.5)	
CVD (%)				
No	40866 (86.2)	40142 (86.2)	724 (87.7)	0.044
Yes	6555 (13.8)	6453 (13.8)	102 (12.3)	
COPD (%)				
No	39979 (84.3)	39292 (84.3)	687 (83.2)	0.031

Yes	7442 (15.7)	7303 (15.7)	139 (16.8)	
Hemiplegia/Paraplegia (%)				
No	46918 (98.9)	46100 (98.9)	818 (99.0)	0.009
Yes	503 (1.1)	>492 (1.1)	<11 (1.0)	
Diabetes (%)				
No	33223 (70.1)	32650 (70.1)	573 (69.4)	0.015
Yes	14198 (29.9)	13945 (29.9)	253 (30.6)	
Renal Disease (%)				
No	39433 (83.2)	38733 (83.1)	700 (84.7)	0.044
Yes	7988 (16.8)	7862 (16.9)	126 (15.3)	
Liver Disease (%)				
No	47283 (99.7)	46460 (99.7)	823 (99.6)	0.013
Yes	138 (0.3)	>127 (0.3)	<11 (0.4)	
Rheumatic Disease (%)				
No	45790 (96.6)	44987 (96.5)	803 (97.2)	0.038
Yes	1632 (3.4)	1608 (3.5)	23 (2.8)	
NIHSS* (median (IQR))	4 (8)	4 (8)	4 (7)	0.008
NIHSS Categories* (%)				
≤ 4	11199 (57.1)	11015 (57.1)	184 (57.3)	0.004
> 4	8411 (42.9)	8274 (42.9)	137 (42.7)	
Length of Stay (median (IQR))	3 (2)	3 (2)	3 (2)	0.010

459

460

Legend: Characteristics of patients stratified by BZD initiation within 30 days post-discharge versus non-BZD initiation within 30 days post-discharge.

461

462

*Demographics of NIHSS scores are taken for the subset of the sample that has reported NIHSS scores

463

Note that the number of initiators (1372) is more than those who initiate before readmission (mentioned in the Results section as 826).

464

465

466

IQR, Inter-Quartile Range; BZD, Benzodiazepine; CHF, Congestive Heart Failure; COPD, Chronic Obstructive Pulmonary Disease; CVD, Cardiovascular Disease; MI, Myocardial Infarction; NIHSS, National Institutes of Health Stroke Scale;

467

PVD, Peripheral Vascular Disease.

468

469 **Table 3. Standardized 90-Day Risks of Mortality**

Covariate/ Stratum	Initiators		Non-initiators		Risk Difference	
	Estimate	95% CI	Estimate	95% CI	Estimate	95% CI
<i>Overall</i>	159	(155,166)	133	(132,135)	26	(22,33)
Age						
66 to 70 years	55	(50,66)	55	(53,58)	0	(-4,11)
71 to 75 years	69	(66,81)	66	(63,69)	3	(-1,13)
76 to 80 years	103	(96,115)	92	(90,95)	10	(3,23)
81 to 85 years	161	(156,182)	135	(131,139)	27	(21,46)
86+	356	(345,379)	272	(268,277)	84	(73,106)
Sex						
Male	143	(136,157)	110	(107,112)	34	(26,48)
Female	172	(165,173)	152	(150,154)	20	(8,26)
Baseline Dementia						
No Dementia	129	(124,136)	111	(110,113)	18	(13,23)
Dementia	434	(410,458)	346	(339,355)	87	(63,112)

470
 471 **Legend:** Standardized 90-day risk of mortality (events per 1000 individuals). CI, confidence intervals.
 472

473
 474 **FIGURES**
 475

476 **Figure 1. Schematic Describing Eligibility Criteria**
 477

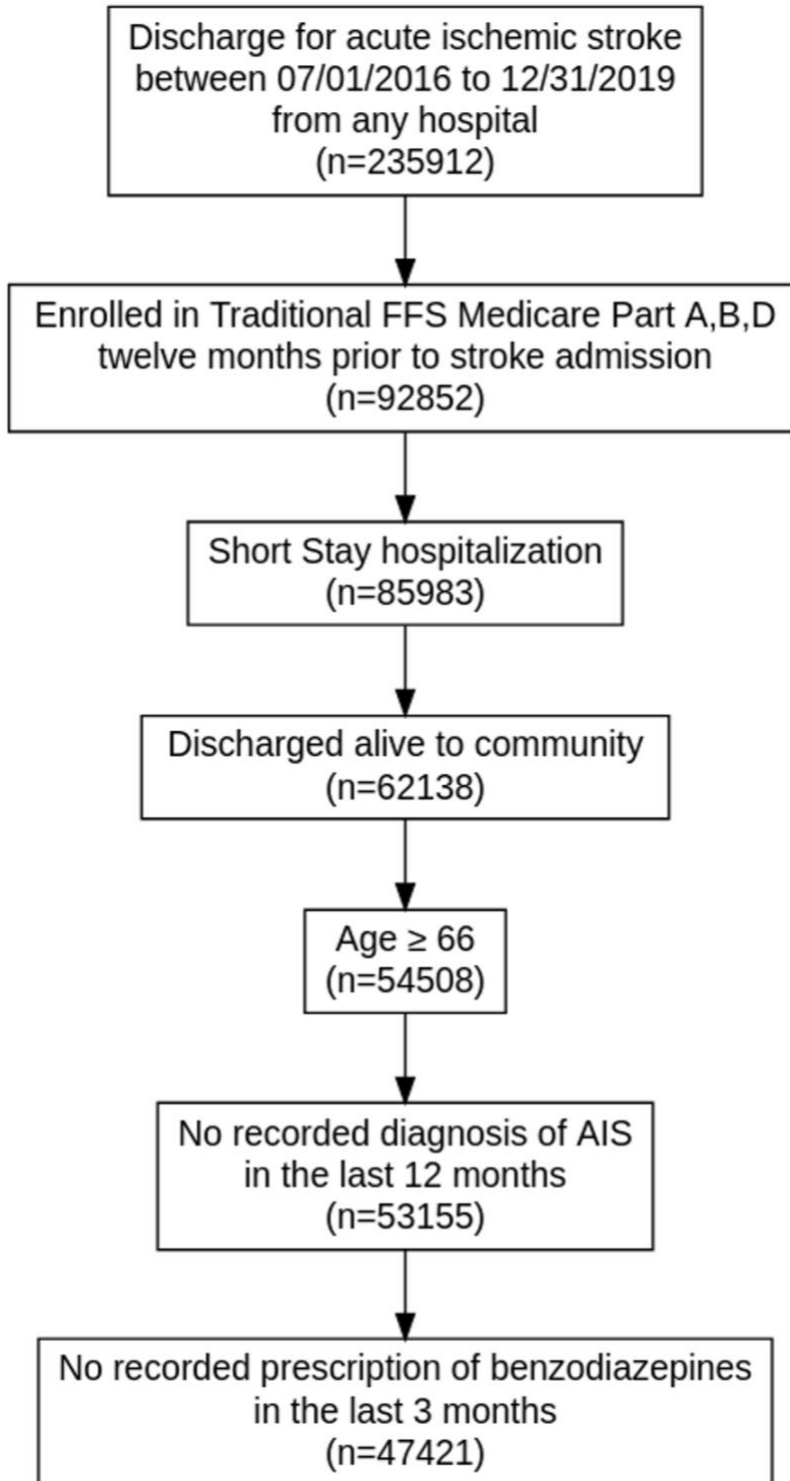
478 **Legend:** Describes the sampling process resulting in a sample of 47,421 patients. Medicare data files used:
 479 MedPAR (Inpatient data), MBSF (Summary data); Diagnosed for Acute Ischemic Stroke based on ICD-10 codes
 480 (I63 and I63.9); Part A: Hospital Insurance, Part B: Medical Insurance; Part D: Drug coverage. AIS, Acute Ischemic
 481 Stroke; FFS, Fee-for-Service.
 482

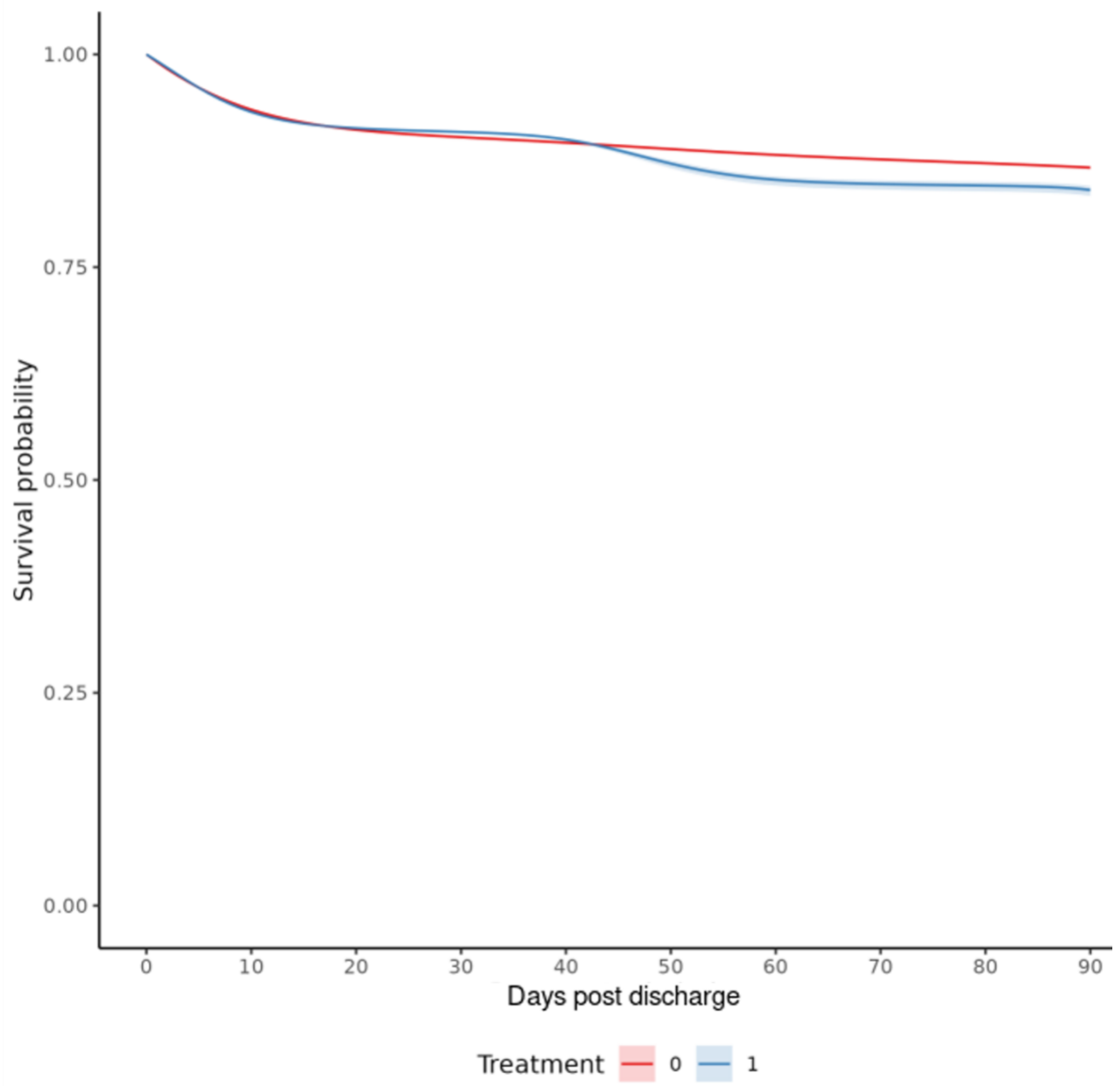
483 **Figure 2. Standardized Survival Curve by Benzodiazepine Initiation Strategy**
 484

485 **Legend:** pooled logistic regression survival curves for all patients. **Blue:** Strategy for benzodiazepine initiation
 486 within 30 days post-discharge from AIS admission. **Red:** Strategy for no benzodiazepine initiation within 30 days
 487 post-discharge from AIS admission. Shaded areas: 95% CIs were constructed using Bootstrap with 500
 488 replications.
 489

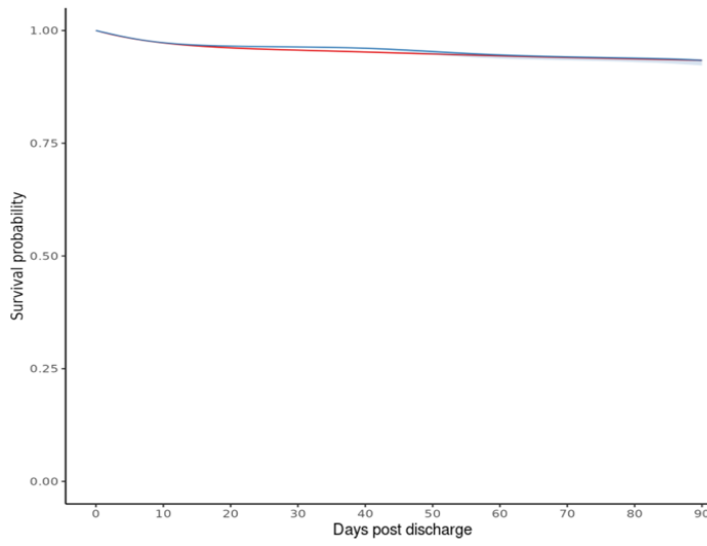
490 **Figure 3. Standardized Survival Curves, Stratified Based on Age, Sex, and Dementia**
 491

492 **Legend:** pooled logistic regression survival curves for patients of the given strata. **Blue:** Strategy for
 493 benzodiazepine initiation within 30 days post-discharge. **Red:** Strategy for no benzodiazepine initiation within 30
 494 days post-discharge. Shaded areas: 95% of CIs were constructed using Bootstrap with 500 replications.

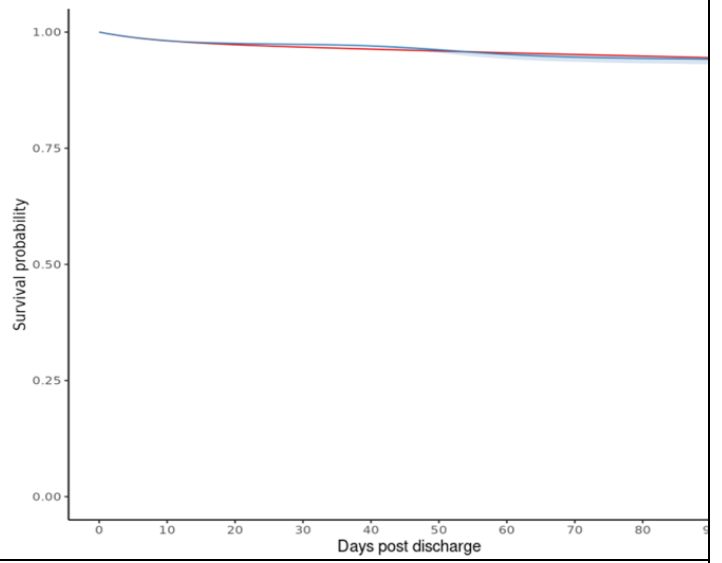




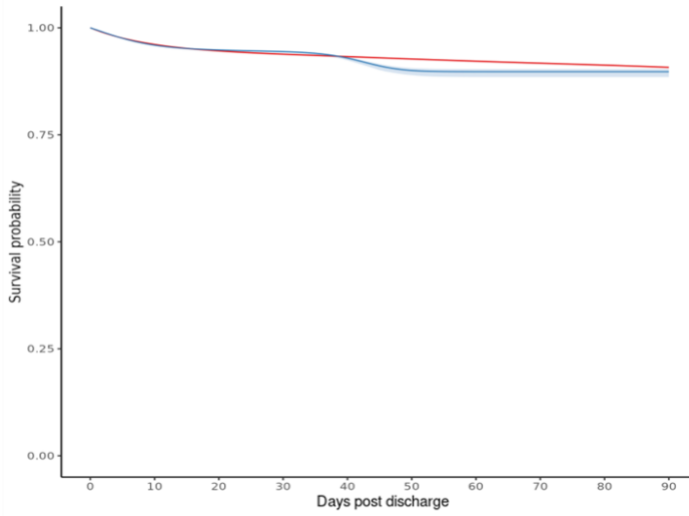
A. 66-70 years



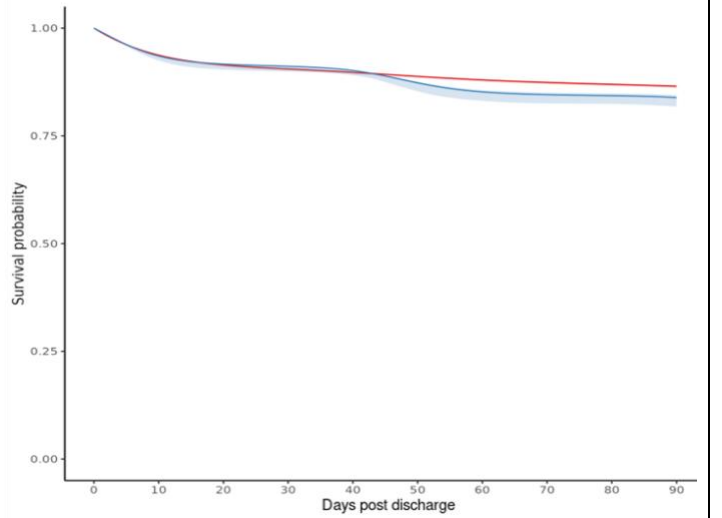
B. 71-75 years



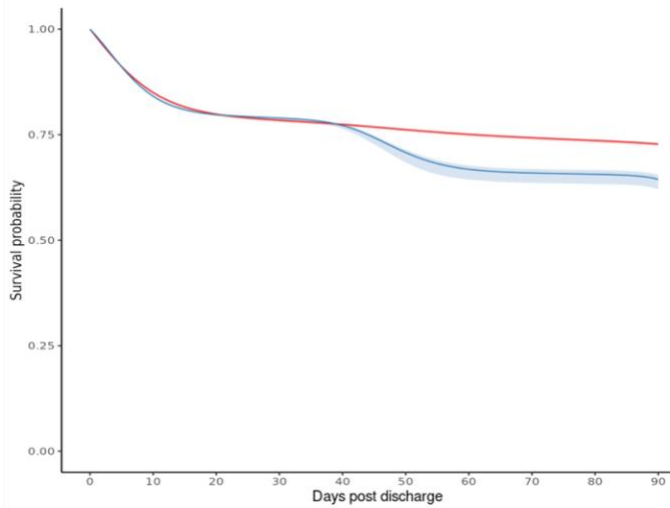
C. 76-80 years



D. 81-85 years

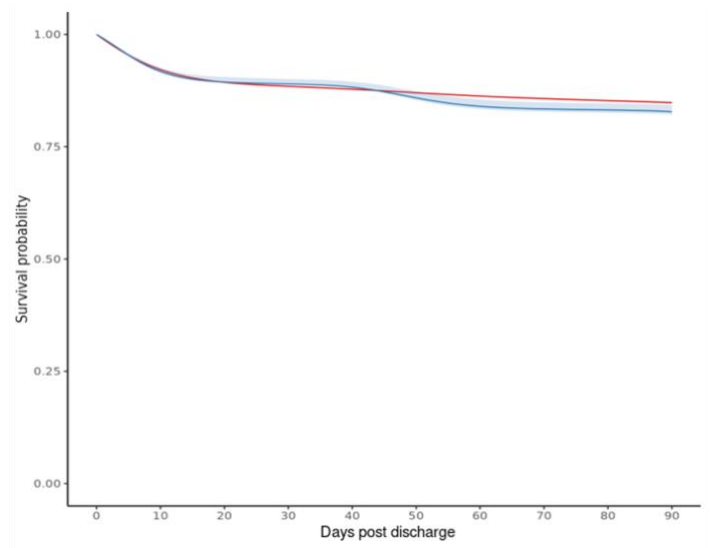
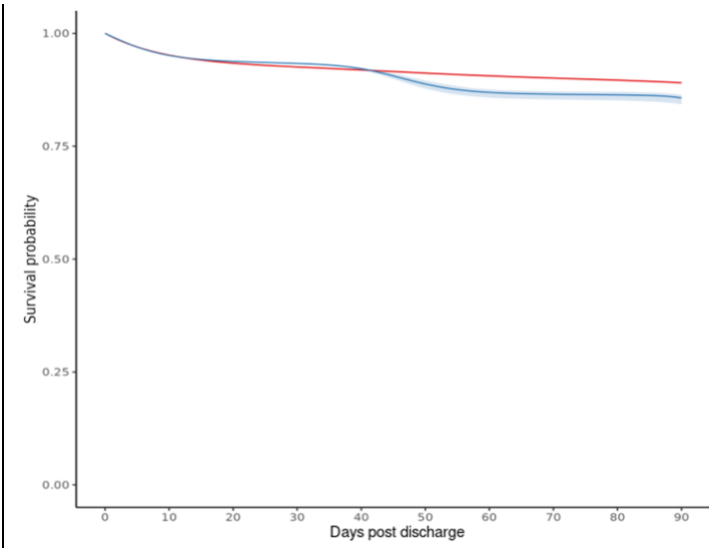


E. 86 years and above

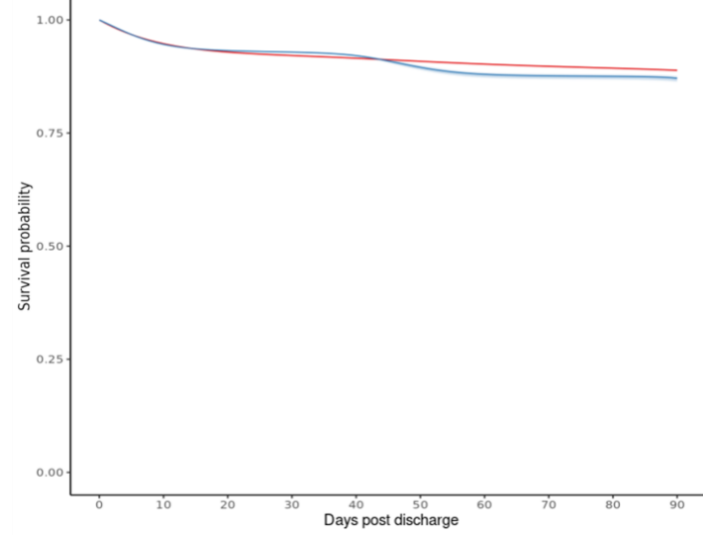


F. Male

G. Female



H. No Dementia



I. Dementia

