

1 **Analysis of Extraocular muscle volumes in idiopathic Hypertrophic** 2 **Pachymeningitis patients**

3 Suppakul Kitkamolwat, MD¹, Supichaya Soonthornpusit, MD², Akarawit Eiamsamarng,
4 MD², Natthapon Rattanathamsakul, MD³, Niphon Chirapapaisan, MD² and Chanon
5 Ngamsombat, MD¹

6 ¹*Department of Radiology, Faculty of Medicine Siriraj Hospital, Mahidol University,*
7 *Bangkok, Thailand*

8 ²*Department of Ophthalmology, Faculty of Medicine Siriraj Hospital, Mahidol University,*
9 *Bangkok, Thailand*

10 ³*Department of Medicine, Faculty of Medicine Siriraj Hospital, Mahidol University,*
11 *Bangkok, Thailand*

12 *corresponding author(s): Chanon Ngamsombat (ngamsombatc@gmail.com)*

13

14 **Abstract**

15 **Background:** Idiopathic hypertrophic pachymeningitis (HP) is a rare chronic inflammatory
16 condition without an identifiable cause characterized by fibrous thickening of the dura mater,
17 which can involve the extraocular muscles (EOM).

18 **Objective:** To evaluate volumetric changes of EOM in idiopathic HP patients compared with
19 healthy controls (HC) and study the correlation with ocular motility disturbance.

20 **Materials and methods:** A retrospective study of 22 diagnosed idiopathic HP patients and
21 22 age-matched, sex-matched HC underwent a 3T MRI scan from January 1, 2017, to
22 December 31, 2022. EOM was manually segmented from the T1W image using 3D Slicer
23 software, and volume was calculated using FSL software. T-tests and Mann-Whitney U tests
24 were used to compare EOM volumes between the idiopathic HP and control groups.
25 Pearson's correlation coefficient was then used to assess the correlation between ocular
26 motility and EOM enlargement.

27 **Results:** In idiopathic HP patients, the average EOM volumes, including the medial rectus
28 (MR), inferior rectus (IR), inferior oblique (IO), right lateral rectus (LR), right superior
29 oblique (SO), and left superior rectus (SR) muscles, were significantly larger compared to
30 those in HC, particularly in the left IR and both MR. However, there was no significant
31 correlation between the enlargement of these 9 EOMs and the extraocular movement
32 limitation.

33 **Conclusion:** In idiopathic HP patients, significantly larger EOM volumes were found
34 compared to control subjects. This enlargement could be due to the diffuse infiltrative
35 histopathology potentially involving microstructures in the EOM. Extraocular movement
36 limitations may be related to cranial nerve involvement.

37 **Keyword :** idiopathic pachymeningitis, extraocular muscle, volume measurement

38

NOTE: This preprint reports new research that has not been certified by peer review and should not be used to guide clinical practice.

39

40 **1. Introduction**

41 Hypertrophic pachymeningitis (HP) is a rare chronic inflammatory condition
42 characterized by fibrous thickening of the cerebral and/or spinal dura mater. HP is classified
43 into two types based on its etiology: primary (idiopathic) HP, which has no identifiable cause,
44 and secondary HP, which includes coexisting causes such as infectious (such as tuberculosis,
45 syphilis, and sarcoidosis), autoimmune (such as IgG4-related disease), vasculitis (such as
46 Wegener's granulomatosis), and neoplastic (such as lymphoma and metastasis).

47 Idiopathic HP is the most predominant etiology of HP (1-3). However, the
48 pathophysiology of idiopathic HP is currently unclear. Histopathological examination reveals
49 non-specific chronic inflammatory changes in the dura, including extensive fibrosis and
50 often-detected inflammatory cell infiltration. The dura mater surface may contain small,
51 mature lymphocytes, plasma cells, and epithelioid histiocytes (4).

52 HP is diagnosed based on clinical symptoms such as headaches, diplopia, visual loss,
53 ptosis, and facial pain, with thickening and enhancement of the dura mater seen on MRI
54 imaging and/or dura mater biopsy, which is the gold standard of diagnosis.

55 HP is a rare condition, with a reported prevalence of 0.949 per 100,000 people (5). A
56 prior study examined the clinical presentation, laboratory findings, and neuroradiologic
57 characteristics of HP. The results showed that idiopathic HP is the most common type, with
58 diplopia being the most common clinical manifestation (85.2%). CN VI was found to be the
59 most commonly involved cranial nerve, and the cavernous sinus was the most common
60 location of cranial dural thickening (3).

61 The aim of our study was to evaluate the volumetric changes of all EOM in idiopathic
62 HP patients compared to age-matched, sex-matched healthy controls (HC) and to study the
63 correlation with ocular motility disturbance. Our hypothesis was that the abnormal EOM
64 volumes cause extraocular muscle limitation.

65

66 **2. Materials and methods**

67 **Participants**

68 This retrospective study included twenty-two patients diagnosed with idiopathic HP at
69 Siriraj Hospital using search tools in the picture archiving and communication system
70 (PACS). The Siriraj institutional review board approved the study (certificate of approval
71 number Si 055/2023). The data was collected between January 1, 2017, and December 31,
72 2022.

73 The entry criteria were defined as follows: 1) The diagnosis was based on dura mater
74 biopsy or dura mater thickening or enhancement on MRI imaging, and 2) dural thickening or
75 enhancement could not be explained by intracranial hypotension, neoplastic pachymeningitis,
76 or other coexisting conditions. (3)

77 Patients with a history of other etiologies affecting EOMs, such as prior brain surgery
78 or trauma, underlying brain tumor or brain metastasis, focal mass at the EOM, or any EOM
79 enlargement recorded in the radiologist's official report, were excluded.

80 We included twenty-two age-matched and sex-matched healthy controls who
81 underwent MRI for non-specific indications without eye symptoms and no underlying eye
82 disease with normal MRI findings for comparison.

83 **Ophthalmological examination**

84 The data was gathered from medical records recorded by ophthalmologists at Siriraj
85 Hospital. EOM function was evaluated by asking the patient to move their eyes in an H-
86 shaped pattern. The ophthalmic examination was performed by trained technicians.

87 **MRI image acquisition**

88 All patients were scanned using clinical MRI scanners at Siriraj Hospital: Signa 3.0T
89 (General Electric Healthcare, USA), MAGNETOM Vida 3.0T (Siemens Healthcare,
90 Germany), and Achieva 3.0T (Philips Healthcare, Netherlands) with a 32-channel head coil.
91 The MRI protocol included a T1W image sequence using three-dimensional TFE with the
92 following parameters: echo time (TE) = 4.61 ms, repetition time (TR) = 9.53 ms, matrix size
93 = 352 x 352, field-of-view (FOV) = 230 x 230 x 172 mm³, voxel size = 0.72 x 0.72 x 0.5
94 mm³, flip angle = 8°, scan time 6 minutes.

95 **Data processing**

96 In brief, all EOM raw data were collected as DICOM images and transformed to
97 NiFTI format using DICOM to NiFTI software.

98 Segmentation of the EOM was performed using 3D Slicer software v.5.6.1. The ROI
99 of the EOM was drawn and finalized by a 3rd-year resident and a 15-year-experienced
100 neuroradiologist. The medial rectus (MR), inferior rectus (IR), lateral rectus (LR), superior
101 oblique (SO), and inferior oblique (IO) muscles were drawn separately in the coronal plane of
102 the T1W image (Fig. 1). Considering their anatomical closeness, the superior rectus (SR) and
103 levator palpebrae superioris muscles were measured together and named as the superior
104 rectus muscle (6-9).

105

106 **Fig. 1. MRI T1 weighted images in coronal plane of a representative case with EOM** 107 **segmentation by using 3D slicer software.**

108 The calculation of each EOM volume from the outlined ROI was performed using
109 FSL Software (<https://fsl.fmrib.ox.ac.uk>).

110 **3. Statistic Analysis**

111 After the image processing was done, statistical analysis was performed using SPSS
112 (PASW Statistics for Windows, version 18.0).

113 Demographic data, including age, sex, and duration between eye and MRI
114 examinations, were reported as means and standard deviations (SD). The quantitative data of
115 the subjects with idiopathic HP and the healthy control group were compared using T-tests.

116 The qualitative data of the subjects with idiopathic HP and the healthy control group were
 117 compared using the Chi-square test. Categorical data, including the location of dural
 118 thickening, were reported as frequency and percentage.

119 Comparisons of EOM volumes between patients and control groups were performed
 120 using T-tests for normal distributions and the Mann-Whitney U test for non-normal
 121 distributions. Pearson's correlation was used to identify a significant correlation between
 122 EOM volume and ocular motility. The criteria for statistical significance were defined as a p-
 123 value < 0.05.

124

125 4. Results

126 Clinical description

127 Clinical and demographic data for the idiopathic HP patients and HC are presented in
 128 Table 1. Twenty-two idiopathic HP patients, including 8 males and 14 females (mean age
 129 51.50 ± 15.41 years), and 22 healthy controls in the sex-matched and age-matched groups
 130 (mean age 51.41 ± 15.30 years) were included for analysis. There is no statistical difference
 131 in age or sex between the idiopathic HP and control groups ($p=0.984$ and $p=1.000$,
 132 respectively). The mean duration between the date of eye examination and MRI examination
 133 is 59.64 ± 99.40 days.

134 In idiopathic HP patients, most of the dural thickening is involved in the cavernous
 135 sinus and tentorium cerebelli (each 11/22 patients; 50%).

136 **Table 1 Demographic data**

	Group, n (%)		P-value
	Idiopathic HP (n=22)	Healthy control (n=22)	
Age (mean±sd) (years)	51.50±15.41	51.41±15.30	0.984
Sex			1.000
Male	8 (36.4)	8 (36.4)	
Female	14 (63.6)	14 (63.6)	
Duration between eye examination and MRI imaging (mean±sd) (days)	59.64±99.40	-	

137

138 MRI imaging analysis

139 The total 12 EOM volumes from both eyes of idiopathic HP patients and healthy
 140 control groups were measured and summarized in Table 2.

141 **Table 2 Statistic data compared the average extraocular muscle volume (mm³) of**
 142 **idiopathic HP patients versus healthy control patients.**

Extraocular muscle	EOM volume (mm ³)		P-value
	Idiopathic HP ;mean±SD	Healthy control ;mean±SD	

Right Medial rectus (MR)	560.65+122.89	445.47+111.97	0.002*
Right Lateral rectus (LR)	624.03+131.76	532.82+99.77	0.005*
Right Superior rectus (SR)	509.63+154.99	438.97+118.05	0.096
Right Superior oblique (SO)	340.71+70.15	271.07+81.23	0.004*
Right Inferior rectus (IR)	496.78+134.01	403.97+82.60	0.008*
Right Inferior oblique (IO)	300.31+117.56	217.45+79.83	0.009*
Left Medial rectus (MR)	554.06+138.19	436.26+100.66	0.002*
Left Lateral rectus (LR)	599.05+145.34	505.53+130.41	0.054
Left Superior rectus (SR)	533.22+146.82	418.74+108.25	0.005*
Left Superior oblique (SO)	315.33+99.93	267.05+78.92	0.083
Left Inferior rectus (IR)	512.07+98.18	398.00+69.46	<0.001*
Left Inferior oblique (IO)	282.52+82.17	215.74+67.51	0.005*

143 * denotes significant p-value

144 In brief, the average EOM volumes (mm³) in the left eye of idiopathic HP patients
 145 were 466.046 ± 170.261 mm³, and in the right eye were 472.022 ± 168.304 mm³, while the
 146 control group had 373.557 ± 137.288 mm³ and 384.296 ± 144.018 mm³. The average EOM
 147 volumes of both the left and right eyes were significantly greater than those of the control
 148 group (p ≤ 0.0001). (Fig. 2)

149

150 **Fig. 2 Box plots comparison of the extraocular muscle volume of left and eyes between**
 151 **case (idiopathic HP patients) and healthy controls.**

152 For each EOM, the mean volumes in idiopathic HP patients were 560.65 ± 122.89
 153 mm³ in the right medial rectus, 624.03 ± 131.76 mm³ in the right lateral rectus, 509.63 ±
 154 154.99 mm³ in the right superior rectus, 340.71 ± 70.15 mm³ in the right superior oblique,
 155 496.78 ± 134.01 mm³ in the right inferior rectus, 300.31 ± 117.56 mm³ in the right inferior
 156 oblique, 554.06 ± 138.19 mm³ in the left medial rectus, 599.05 ± 145.34 mm³ in the left
 157 lateral rectus, 533.22 ± 146.82 mm³ in the left superior rectus, 315.33 ± 99.93 mm³ in the left
 158 superior oblique, 512.07 ± 98.18 mm³ in the left inferior rectus, and 282.52 ± 82.17 mm³ in
 159 the left inferior oblique muscles.

160 In comparison to age-matched and sex-matched healthy controls, 9 of 12 EOM
 161 muscles showed significantly larger volumes. These included both MR (each p=0.002), both
 162 IR (right p=0.08 and left p<0.01), both IO (right p=0.009 and left p=0.005), right LR
 163 (p=0.005), right SO (p=0.004), and left SR muscles (p=0.005). However, there was no
 164 statistically significant difference in the volume of the right SR, left LR, and left SO muscles
 165 (p = 0.096, p = 0.054, and p = 0.083, respectively).

166 **Relationship between clinical and MRI measures**

167 Correlation with ocular function was assessed only in 9 of the 12 EOM (both MR, both
 168 IR, both IO, right LR, right SO, and left SR), which had statistically significant enlargement
 169 from prior analysis. Using Pearson's correlation, there was no statistically significant
 170 correlation between all 9 enlarged EOM and ocular motility in idiopathic HP patients, as
 171 presented in Table 3.

172 **Table 3 Correlation between the significant enlarged EOM volumes (mm³) of**
 173 **idiopathic HP patients and the ocular motility.**

Extraocular muscle	Mean volume in HP (mm ³), Mean±sd	Percentage of ocular motility limitation ,Mean±sd	Pearson Correlation(P-value)
			EOM volume vs percentage of ocular motility limitation
Right IO	300.31±117.56	11.59±24.17	-0.142(0.527)
Right IR	496.78±134.01	11.59±24.94	-0.337(0.125)
Right SO	340.71±70.15	11.59±24.94	0.051(0.821)
Right MR	560.65±122.89	7.50±21.69	-0.013(0.955)
Right LR	624.03±131.76	26.14±33.37	0.249(0.264)
Left SR	533.22±146.82	3.18±9.45	-0.107(0.637)
Left IO	282.52±82.17	4.55±13.35	0.180(0.423)
Left IR	512.07±98.18	3.18±9.45	-0.221(0.324)
Left MR	554.06±138.19	4.55±11.84	-0.321(0.145)

174 A p-value <0.05 indicates statistically significance

175 5. Discussion

176 Hypertrophic pachymeningitis (HP) is a rare fibrosing inflammatory disorder
 177 characterized by thickening of the dura mater, either focal or diffuse. Pathological
 178 examination reveals non-specific chronic inflammation, showing lymphoplasmacytic
 179 infiltration and dense fibrosis (10). The diagnosis of idiopathic HP is made by excluding
 180 various infectious, autoimmune, and neoplastic infiltration diseases. Therefore, when the
 181 clinical and imaging findings are consistent, a comprehensive investigation should be
 182 conducted to rule out any underlying pathological causes for the condition.

183 In our study, we observed that 9 out of 12 EOMs (both MR, both IR, both IO, right
 184 LR, right SO, and left SR) in idiopathic HP patients were significantly enlarged compared to
 185 the healthy control group. There have been no systematic studies specifically comparing
 186 extraocular muscles (EOM) in idiopathic HP patients and healthy individuals. However,
 187 many studies have been conducted on IgG4-related disease, which is a subset of HP
 188 associated with an autoimmune disorder. These studies have reported that the disease can
 189 infiltrate the EOM and cause multiple EOM enlargements. IgG4-related disease is a chronic
 190 inflammatory disorder characterized by IgG4-positive lymphoplasmacytic infiltrative lesions.
 191 Both idiopathic HP and IgG4-RD share similar demographics, histopathology, and natural
 192 histories (10-12). Based on its pathophysiology, we hypothesize that idiopathic HP may be a
 193 diffuse disease that potentially involves microstructural changes in the EOM, leading to
 194 structural volume alterations.

195 Also, it was noted that there were no studies about predilection muscle involvement in
 196 idiopathic HP. In our study, we observed that the left inferior rectus and both medial rectus
 197 muscles were significantly larger. As compared with other diseases that cause multiple EOM
 198 enlargements, such as IgG4-related disease, the LR muscle is most frequently affected, and in
 199 Graves' ophthalmopathy, the IR, MR, SR, and LR are mostly involved in that order (13-16).
 200 However, because our sample size was small, we were unable to conclude the predilection of
 201 specific muscles. Further studies may provide more information.

202 The extraocular movement limitation can occur due to various reasons, including
203 EOM enlargement, like in Graves' orbitopathy, where it is believed that more EOM
204 enlargement causes a more severe limitation of eye movement (8, 17). Therefore, this study
205 was conducted to clarify whether the restriction of ocular motility is caused by EOM
206 enlargement or not. However, our study found no significant correlation between increased
207 EOM volume and impaired ocular muscle movement in idiopathic HP patients. Previous
208 research suggests the clinical manifestation of idiopathic HP depends on the location of dura
209 infiltration surrounding the adjacent cranial nerves (8, 18). Specifically, deficits in cranial
210 nerves III, IV, and VI are associated with thickened meninges from the cavernous sinus to the
211 superior orbital fissure. Therefore, we imply that the limitation of EOM in patients with
212 idiopathic HP is caused by cranial nerve involvement rather than muscle enlargement.

213 There are several limitations to this study. Firstly, due to the rarity of idiopathic HP,
214 the single-center study had a small sample size. Secondly, the retrospective nature of the
215 study may affect its reliability. Lastly, although the control patients had an overall physical
216 examination and no history of eye symptoms, they did not undergo a complete ophthalmic
217 examination.

218

219 **6. Conclusion**

220 In idiopathic HP, patients have significantly larger EOM volumes, particularly in the
221 left IR and both MR muscles. This could be due to the diffuse infiltrative histopathology that
222 potentially involves microstructural changes in the EOM. However, no significant correlation
223 was found between the size of these enlarged EOMs and the extraocular movement
224 limitation.

225 **Competing interests**

226 The authors declare no competing interests.

227

228 **Acknowledgements**

229 This research project was supported by the Faculty of Medicine, Siriraj Hospital,
230 Mahidol University.

231 The authors would like to thank Mr. Karnchana Sae-jang and Mr. Yuti
232 Jirawattanapalin from Siriraj Radiology Department in statistical analysis.

233

234 **Author contributions**

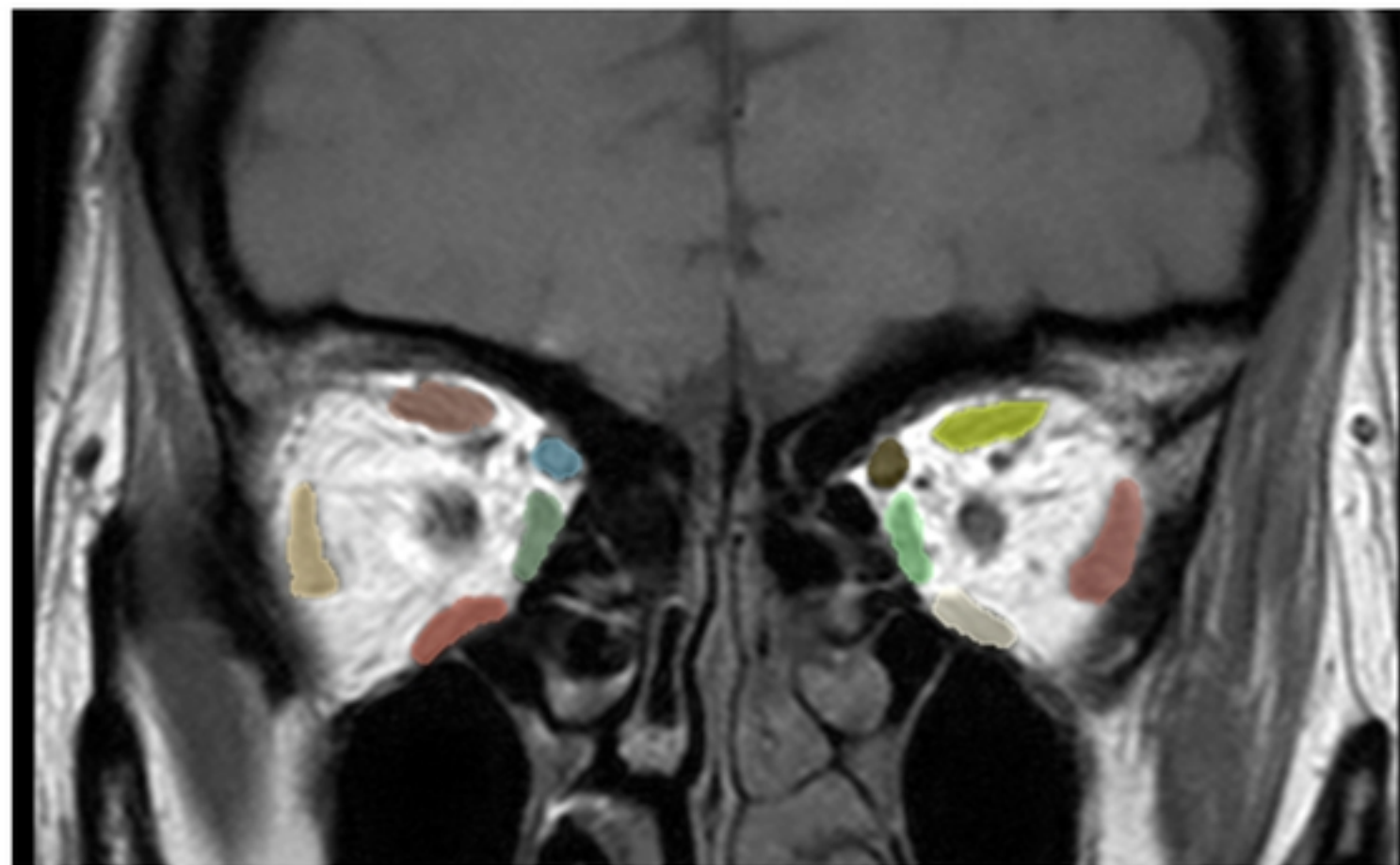
235 S.K., S.S. and A.E. collected, assembled, and analyzed data. N.R. and N.C. recruited
236 and examined patients. C.N. performed critical revision of the article for important
237 intellectual content.

238 **Reference**

- 239 1. Warittikoon S, Jakchairoongruang K. Distinguishing magnetic resonance imaging features
240 between idiopathic hypertrophic pachymeningitis and secondary hypertrophic pachymeningitis.
241 Asian Biomedicine. 2019;13:113-9. <https://doi.org/10.1515/abm-2019-0049>
- 242 2. Xiao X, Fu D, Feng L. Hypertrophic pachymeningitis in a southern Chinese population: a
243 retrospective study. Frontiers in Neurology. 2020;11:565088.
244 <https://doi.org/10.3389/fneur.2020.565088>
- 245 3. Sakdee W, Termglinchan T, Lertbutsayanukul P. Primary and secondary hypertrophic
246 pachymeningitis in Prasat Neurological Institute: clinical, laboratory and neuroradiologic features.
247 Thai journal of neurology. 2021;37(2):43-57.
- 248 4. Charleston Lt, Cooper W. An Update on Idiopathic Hypertrophic Cranial Pachymeningitis for
249 the Headache Practitioner. Curr Pain Headache Rep. 2020;24(10):57.
250 <https://doi.org/10.1007/s11916-020-00893-5>
- 251 5. Yonekawa T, Murai H, Utsuki S, Matsushita T, Masaki K, Isobe N, et al. A nationwide survey
252 of hypertrophic pachymeningitis in Japan. Journal of Neurology, Neurosurgery & Psychiatry. 2013.
253 <https://doi.org/10.1136/jnnp-2013-306410>
- 254 6. Tian S, Nishida Y, Isberg B, Lennerstrand G. MRI measurements of normal extraocular
255 muscles and other orbital structures. Graefe's archive for clinical and experimental ophthalmology.
256 2000;238:393-404. <https://doi.org/10.1007/s004170050370>
- 257 7. Bijlsma WR, Mourits MP. Radiologic measurement of extraocular muscle volumes in patients
258 with Graves' orbitopathy: a review and guideline. Orbit. 2006;25(2):83-91.
259 <https://doi.org/10.1080/01676830600675319>
- 260 8. Lee J-Y, Bae K, Park K-A, Lyu IJ, Oh SY. Correlation between extraocular muscle size
261 measured by computed tomography and the vertical angle of deviation in thyroid eye disease. PLoS
262 One. 2016;11(1):e0148167. <https://doi.org/10.1371/journal.pone.0148167>
- 263 9. El-Kaissi S, Wall JR. Determinants of extraocular muscle volume in patients with Graves'
264 disease. Journal of Thyroid Research. 2012;2012. <https://doi.org/10.1155/2012/368536>
- 265 10. Wallace ZS, Carruthers MN, Khosroshahi A, Carruthers R, Shinagare S, Stemmer-Rachamimov
266 A, et al. IgG4-related disease and hypertrophic pachymeningitis. Medicine. 2013;92(4):206.
267 <https://doi.org/10.1097/MD.0b013e31829c35>
- 268 11. Saitakis G, Chwalisz B. The neurology of IGG4-related disease. Journal of the Neurological
269 Sciences. 2021;424:117420. <https://doi.org/10.1016/j.jns.2021.117420>
- 270 12. Kim N, Yang HK, Kim JH, Hwang J-M. IgG4-related ophthalmic disease involving extraocular
271 muscles: case series. BMC ophthalmology. 2018;18(1):1-7. <https://doi.org/10.1186/s12886-018-0819-x>
- 272
- 273 13. Mombaerts I, Rose GE, Verity DH. Diagnosis of enlarged extraocular muscles: when and how
274 to biopsy. Current Opinion in Ophthalmology. 2017;28(5):514-21.
275 <https://doi.org/10.1097/ICU.0000000000000395>
- 276 14. Lakerveld M, van der Gijp A. Orbital Muscle Enlargement: What if It's Not Graves' Disease?
277 Current Radiology Reports. 2022;10(2):9-19. <https://doi.org/10.1007/s40134-022-00392-y>
- 278 15. Rana K, Juniati V, Patel S, Selva D. Extraocular muscle enlargement. Graefe's Archive for
279 Clinical and Experimental Ophthalmology. 2022;260(11):3419-35. <https://doi.org/10.1007/s00417-022-05727-1>
- 280
- 281 16. Garau LM, Guerrieri D, De Cristofaro F, Bruscolini A, Panzironi G. Extraocular muscle sampled
282 volume in Graves' orbitopathy using 3-T fast spin-echo MRI with iterative decomposition of water
283 and fat sequences. Acta Radiologica Open. 2018;7(6):2058460118780892.
284 <https://doi.org/10.1177/2058460118780892>
- 285 17. Chen YL, Chang TC, Huang KM, Tzeng SS, Kao SC. Relationship of eye movement to
286 computed tomographic findings in patients with Graves' ophthalmopathy. Acta ophthalmologica.
287 1994;72(4):472-7. <https://doi.org/10.1111/j.1755-3768.1994.tb02800.x>

288 18. Shao W, Tian C, Gao L, Cui B, Shi Q. Rapid bilateral visual loss as the initial clinical
289 manifestation in idiopathic hypertrophic cranial pachymeningitis. Clinical Case Reports.
290 2022;10(5):e05825. <https://doi.org/10.1002/ccr3.5825>

291



- | | |
|--|---|
|  Right MR |  Left MR |
|  Right LR |  Left LR |
|  Right SR |  Left SR |
|  Right SO |  Left SO |
|  Right IR |  Left IR |

Fig.1

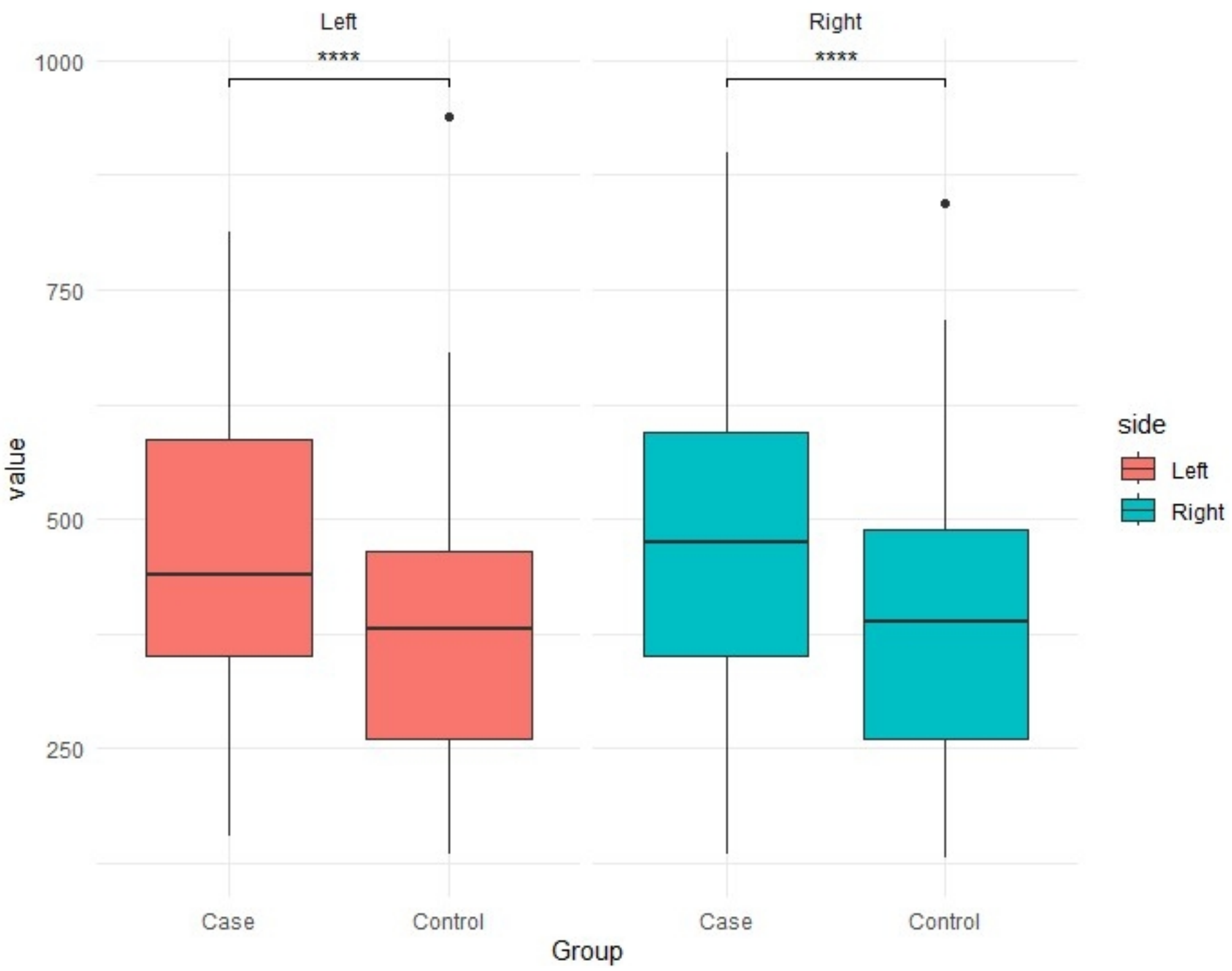


Fig.2