

1 **Exploring the bidirectional relationship between localized**  
2 **musculoskeletal pain and gait abnormalities: a Mendelian**  
3 **randomization study**

4

5 Xiaoming Xie<sup>1†</sup>, Kuayue Zhang<sup>2†</sup>, Xinyi Li<sup>3</sup>, Yi Lin<sup>1</sup>, Liangqing Huang<sup>1</sup>, Guihua

6 Tian<sup>1,\*</sup>

7 <sup>1</sup>*Dongzhimen Hospital, Beijing University of Chinese Medicine, Beijing, China*

8 <sup>2</sup>*The Third Affiliated Hospital, Beijing University of Chinese Medicine, Beijing, China*

9 <sup>3</sup>*Tsinghua University, Beijing, China*

10 Number of words:2511

11 Numbers of pages: 23

12 † Xiaoming Xie and † Kuayue Zhang contributed equally as the first author.

13 Correspondence to: Chief Physician, Guihua Tian, Department of Pain and Massage,

14 Dongzhimen Hospital, Beijing University of Chinese Medicine, No. 5 Haiyuncang,

15 Dongcheng District, Beijing 100700, P. R. China. Tel: (+86)010-8401-3152, Fax:

16 (+86) 010-8401-7756, E-mail: [roset](mailto:roset)

17 [tgh@163.com](mailto:tgh@163.com).

18

19 **NOTE: This preprint reports new research that has not been certified by peer review and should not be used to guide clinical practice.**

1 **Abstract**

2 **Background**

3 Abnormal gait will alter lower extremity joint mechanics load-bearing patterns,  
4 accelerate the osteoarticular disease process, trigger new oste-oarticular complications,  
5 and bring about multiple mobility impairments; scientific pain management strategies  
6 can help with walking training and rehabilitation exercises. However, studies to date on  
7 the relationship between localized musculoskeletal pain and gait abnormalities have not  
8 reached definitive conclusions.

9 **Purpose**

10 To investigate the bidirectional causal relationship between localized musculoskeletal  
11 pain and gait abnormalities.

12 **Methods**

13 The independent single nucleotide polymorphism (SNP) loci strongly associated with  
14 pain were extracted as instrumental variables (IVs) from Genome-wide association  
15 study (GWAS) data of localized musculoskeletal pain according to preset thresholds,  
16 and Inverse-variance weighted (IVW) method was used to assess the association  
17 between pain-related phenotypes and gait abnormalities; the Cochran Q test was used  
18 to assess the heterogeneity of the SNPs.

19 **Results**

20 Low back pain (OR=1.53, 95%CI=1.058~2.219, P=0.023) and hip pain (OR=1.55,  
21 95%CI=1.067~2.252, P=0.021) were significantly genetically predisposed to gait  
22 abnormalities, but knee pain (OR=2.15, 95%CI=0.234~19.789, P=0.498) was not

1 significantly genetically susceptible to gait abnormalities. None of the results of the  
2 reverse MR analysis supported reverse causality. The Cochran Q test showed no  
3 heterogeneity among the SNPs.

#### 4 **Conclusions**

5 This study suggests a robust correlation, gait abnormalities are related to low back pain  
6 and hip pain. Our findings contribute to a deeper comprehension of the intricate  
7 interplay between localized musculoskeletal pain and gait abnormalities, emphasizing  
8 the importance of employing tailored strategies to alleviate localized musculoskeletal  
9 pain.

10 **Key words:** Mendelian Randomization; Localized Musculoskeletal Pain; Gait  
11 Abnormalities; Bidirectional Causality

12

#### 13 **Introduction**

14 Gait abnormalities can stem from motor or sensory impairments, their features  
15 contingent upon the location of pathology. Specific abnormal gaits can serve as  
16 diagnostic clues for particular diseases. Particularly in musculoskeletal disorders, gait  
17 abnormalities manifest with heightened distinctiveness<sup>[1][2][3]</sup>. Studies have shown that  
18 long-term gait abnormalities can aggravate the condition of patients with osteoarthritis  
19 (OA)<sup>[4]</sup>, gait abnormalities can cause instability in the motor joints, and joint injuries  
20 are aggravated by joint activities, which in turn cause pain, gradual muscle atrophy,  
21 and more pronounced muscle strength loss, and so on in a vicious circle. This vicious  
22 cycle leads to the gradual aggravation of pain and dysfunction in musculoskeletal

1 disorders patients<sup>[4]</sup>. Therefore, analyzing the association between gait abnormalities  
2 and diseases will help clinicians in scientifically and precisely discerning disease  
3 etiology, diagnosing conditions, assessing treatment effectiveness, and guiding  
4 patients' walking rehabilitation programs<sup>[6][7]</sup>.

5 Mendelian randomization (MR) is an epidemiological method designed to  
6 overcome the limitations of observational studies and has been universally used in  
7 several studies. The MR aims to make full use of independent single nucleotide  
8 polymorphism (SNP) loci as instrumental variables (IVs) to infer causal relationships  
9 between exposure factors and outcomes<sup>[8]</sup>. This method can effectively avoid the  
10 effects of confounders, measurement error, and reverse causality that are typical of  
11 observational studies, and yield more plausible findings. The primary objective of this  
12 study was to perform bidirectional Mendelian randomization analysis of self-reported  
13 data from the Genome-wide association study (GWAS) data on localized  
14 musculoskeletal pain and gait abnormalities conducted in the openGWAS database, to  
15 deepen the understanding of the complex interactions between localized  
16 musculoskeletal pain and gait abnormalities and thereby informing more effective  
17 interventions<sup>[9]</sup>.

## 18 **1 Information and methodology**

19 1. 1 **Rationale** The basic steps of MR study include obtaining GWAS summary data,  
20 screening and evaluating SNPs, conducting statistical analysis, and implementing  
21 quality control measures. As shown in Fig. 1, the accuracy of the MR analysis is  
22 based on the fulfillment of three crucial assumptions<sup>[10][11]</sup>. Exposure factors and

1 outcome variables will be interchanged in each analysis to determine if reverse  
2 causality exists between the two.

3 Fig. 1 Steps of this Mendelian randomization analysis

4 1.2 **Data sources** Data related to low back pain, hip pain, and knee pain are obtained  
5 from the IEU openGWAS database, and the website is: <https://gwas.mrcieu.ac.uk/>.

6 Specific questions used to define these conditions can be found in Supplementary file

7 1. The low back pain dataset GWAS ID number is: ebi-a-GCST90018797, which

8 includes 22,413 patients with low back pain, and 445,856 controls in the population.

9 The hip pain dataset GWAS ID number is: ebi-a-GCST90013968. The knee pain

10 dataset GWAS ID number is: ukb-b-16254, which includes 98,704 patients with knee

11 pain, as well as a control population of 363,153. GWAS data for gait abnormalities is

12 also obtained from the IEU openGWAS database, and the ID number is: finn-b-R18

13 \_ABNORMALITI\_GAIT\_MOBIL, including 1,348 cases of gait abnormalities and

14 209,369 control populations. Details are shown in Table. 1. In the corresponding

15 original GWAS, all participants provided written informed consent, and the authors

16 had no access to information that could identify individual participants during or after

17 data collection.

18 Table. 1 The information from the GWAS database in the MR analysis

Variant	Sample size	Number of SNPs	population	Sex	Year
Low back pain	468269	24174741	European	Male and female	2021
Hip pain	407746	11039206	European	Not available	2021
Knee pain	461857	9851867	European	Male and female	2018
Gait abnormalities	210717	1638044	European	Male and female	2021

1 GWAS: Genome-wide association study; MR: Mendelian randomization;

2 SNP: single nucleotide polymorphism.

3 **1.3 Screening and entry of SNPs** Firstly, we performed correlation setting and  
4 extracted SNPs significantly associated with exposure from the GWAS summary  
5 database as IVs using  $P < 5 \times 10^{-8}$  as the screening condition, and when the number of  
6 SNPs obtained from screening is less than 2, the parameter can be appropriately  
7 relaxed to  $P < 5 \times 10^{-6}$  ; next, we set the independence setting, and excluded the  
8 interference of linkage disequilibrium by setting the parameters of  $r^2 < 0.001$  and kb =  
9 10000 to ensure the independence of IVs; the strength of IVs was assessed using the F  
10 statistic,  $F = [(N-k-1)/k] \times [R^2 / (1-R^2)]^{[12]}$ , and only when the F statistic  $> 10$  so that  
11 the SNPs could be included in the study. SNPs associated with confounders were  
12 sought and removed using the PhenoScanner V2 website  
13 (<http://www.phenoscanter.medschl.cam.ac.uk/>), and data for exposure and outcome  
14 were corrected in the same direction to remove SNPs with palindromic structures<sup>[13]</sup>.

15 **1.4 Statistical analysis** The causal effects between exposure and outcome variables  
16 were estimated in this study using five methods: the IVW method, the MR-Egger  
17 regression method, the weighted median method, the weighted mode method, and the  
18 simple mode method<sup>[14]</sup>. The IVW method is considered the standard method for MR  
19 analysis, which assumes that all instrumental variables are valid, and is based on the  
20 principle of combining the Wald ratio estimates. The MR-Egger regression method  
21 detects potential multicollinearity and takes into account the presence of an intercept  
22 term in the regression<sup>[15][16]</sup>.

1 **1.5 Quality control** First, Cochran Q test was used to assess the heterogeneity of  
2 SNPs, if Cochran Q test was statistically significant then it indicated that there was a  
3 significant heterogeneity in the analyzed results<sup>[17]</sup>. Second, Mendelian randomization  
4 pleiotropy residual sum and outlier (MR-PRESSO) was applied to search for the  
5 presence of outlier SNPs in the results, and if they existed, they were eliminated and  
6 reanalyzed<sup>[18]</sup>. Third, the "leave-one-out" method was applied to test the robustness of  
7 the results, and the combined effect of the remaining SNPs was calculated by  
8 excluding SNPs one by one to assess the effect of individual SNPs on the association  
9 between exposure and outcome variables<sup>[19]</sup>. The MR analysis and quality control  
10 were performed using the R language version 4.3.2 and the "Two Sample MR"  
11 software packages version 0.5.8.

## 12 **2 Results**

13 GWAS data for 3 types of localized musculoskeletal pain (including low back  
14 pain, hip pain, and knee pain) and 1 type of gait abnormality were analyzed in this  
15 study. Detailed information on IVs for each exposure factor can be found in  
16 Supplementary file 2.

### 17 **2.1 MR analysis of localized musculoskeletal pain on gait abnormalities**

18 The F-statistics of all SNPs were greater than 10 (20.86-91.68), indicating a low  
19 likelihood of weak instrumental bias. The results showed that the susceptibility to low  
20 back pain and hip pain was significantly associated with the risk of gait  
21 abnormalities. IVW results showed that low back pain (OR=1.53, 95%CI=1.058-  
22 2.219, P=0.023) and hip pain (OR=1.55, 95%CI=1.067-2.252, P=0.021) increased the

1 risk of gait abnormalities. However, susceptibility to knee pain was not significantly  
2 associated with the risk of gait abnormalities, and the available results do not support  
3 the conclusion that knee pain (OR=2.15, 95%CI=0.234-19.789, P=0.498) can increase  
4 the risk of developing gait abnormalities (Fig. 2, Fig. 3, Fig. 4). Detailed MR results  
5 and scatter plots of localized musculoskeletal pain on the risk of gait abnormalities are  
6 provided in Supplementary file 3.

7 Scatter plots for the causal relationship between localized musculoskeletal pain  
8 and gait abnormalities. Fig. 2 a Scatter plot for the causal relationship of low back pain  
9 on gait abnormalities; Fig. 3 b Scatter plot for the causal relationship of hip pain on  
10 gait abnormalities; Fig. 4 c Scatter plot for the causal relationship of knee pain on gait  
11 abnormalities. SNP: Single nucleotide polymorphism.

12 The results of the five MR statistical methods were shown in Table. 2, and in the  
13 MR analysis of low back pain and hip pain on gait abnormalities, except for the IVW  
14 method, the results of the remaining four methods were not significant, but according  
15 to the OR values and as shown in the scatter plots in Supplementary file 3, the total  
16 effect sizes of all methods were in the same direction. In contrast, in the MR analysis  
17 of knee pain on gait abnormalities, the results of all five statistical methods were not  
18 significant.

19 Table. 2 The results of the five MR methods

Disease	Method	nSNP	OR (95% CI)	P value
Low back pain	MR Egger	20	0.922 (0.317-2.681)	0.883
	Weighted median	20	1.348 (0.795-2.283)	0.268
	Inverse variance weighted	20	1.532 (1.058-2.219)	0.024
	Simple mode	20	1.225 (0.428-3.507)	0.709
	Weighted mode	20	1.151 (0.443-2.989)	0.776



Hip pain	MR Egger	39	1.408 (0.517-3.837)	0.508
	Weighted median	39	1.546 (0.924-2.588)	0.097
	Inverse variance weighted	39	1.550 (1.067-2.252)	0.021
	Simple mode	39	1.746 (0.521-5.844)	0.372
	Weighted mode	39	1.676 (0.545-5.158)	0.374
Knee pain	MR Egger	80	137.138 (0.034 - 541849.181)	0.248
	Weighted median	80	1.296 (0.060-28.254)	0.869
	Inverse variance weighted	80	2.152 (0.234-19.789)	0.498
	Simple mode	80	0.141 (0.00003-741.539)	0.656
	Weighted mode	80	0.267 (0.00008-886.247)	0.750

1 Note: MR: Mendelian randomization; OR: odds ratio; CI: confidence interval.

## 2 **2.2 MR analysis of gait abnormalities on localized musculoskeletal pain**

3 A total of four SNPs were finally included as instrumental variables for MR  
 4 analysis, and the F-statistics of all SNPs were greater than 10 (20.87-22.68),  
 5 indicating the presence of a weak instrumental bias was less likely.

6 Reverse MR analysis showed no significant causal relationship between gait  
 7 abnormalities and localized musculoskeletal pain, and IVW results showed that gait  
 8 abnormalities did not increase the risk of low back pain (OR=0.999, 95%CI=0.952 -  
 9 1.047, P=0.951) , hip pain (OR=1.001, 95%CI=0.969-1.034, P=0.961), and knee pain  
 10 (OR=1.000, 95%CI=0.996-1.005, P=0.872). For detailed MR results and scatter plots  
 11 of the risk of gait abnormalities on localized musculoskeletal pain, please see  
 12 Supplementary file 4.

## 13 **2.3 Quality control and sensitivity analysis**

14 The Cochran Q test results showed no heterogeneity among the SNPs included in  
 15 the analysis; the MR-Egger intercept test results showed no horizontal pleiotropy in

1 the MR analysis results, and the heterogeneity and horizontal pleiotropy among the  
2 genetic tools are described in Supplementary file 5. The "leave-one-out" sensitivity  
3 analysis showed that the overall error line did not change much and that the causal  
4 estimates were unlikely to be affected by some SNP effects, and more detailed  
5 information was shown in the Supplementary file 6. The MR-PRESSO results showed  
6 that no outlier SNPs were detected. The funnel plots and forest plots of the present  
7 MR analysis were shown in Supplementary file 7 and Supplementary file 8.

### 8 **3 Discussion**

9 Gait abnormalities will change the mechanical bearing pattern of lower limb  
10 joints, accelerate the process of osteoarthritic diseases, trigger new osteoarthritic  
11 complications, and bring about a variety of activity disorders, which has greatly  
12 affected patients' quality of life and gradually attracted people's attention. Some  
13 studies have reported that localized musculoskeletal pain is a risk factor for gait  
14 abnormalities, and in a cross-sectional study of healthy nondisabled volunteers aged  
15 65 years and older, researchers found that multisite pain were associated with slow  
16 gait speed (n=176)<sup>[20]</sup>. However, the causal relationship between localized  
17 musculoskeletal pain and gait abnormalities has not been definitively explained due to  
18 the limitations of randomized controlled trials (RCTs) in the real world, which limits  
19 the clinical pain management.

20 Several recent studies have utilized MR to explore risk or protective factors for  
21 localized musculoskeletal pain<sup>[21][22][23]</sup>. MR provides a pioneering approach to  
22 exploring the causal relationship between risk factors and disease outcomes, making it

1 a useful tool for making causal inferences in cases where a RCT is not feasible or  
2 unethical<sup>[24]</sup>. For this, in this study, the method of bidirectional MR analysis was used,  
3 and three types of localized musculoskeletal pain and one type of gait abnormality  
4 were selected as exposure and outcome indicators. This is the first time that MR have  
5 been used to explore the relationship between localized musculoskeletal pain and gait  
6 abnormalities. We hope that our findings will help clinical practitioners educate  
7 patients with gait abnormalities about targeted pain management<sup>Error! Reference source not</sup>  
8 found.

9 Our results suggested that localized musculoskeletal pain, especially low back  
10 pain and hip pain, could increase the risk of gait abnormality, but gait abnormality did  
11 not have a significant causal effect on the occurrence of localized musculoskeletal  
12 pain. Take low back pain as an example , it has been demonstrated that patients with  
13 low back pain exhibit altered movement patterns and control strategies during daily  
14 functional activities, patients with low back pain have a slowed gait speed and  
15 reduced stride length, and when patients with low back pain are asked to stride faster  
16 they only exhibit an increased stride frequency and an asymmetric stride length<sup>[27]</sup>. In  
17 another population-based study of non-disabled older adults, researchers found that  
18 the presence of two lower body pain sites was associated with slower gait speed<sup>[27]</sup>.  
19 Our results further validated the relationship between localized musculoskeletal pain  
20 and gait characteristics.

21 Pain-induced decline in gait performance may be associated with two  
22 mechanisms: firstly, motor control mechanisms. The idea that pain and motor

1 dysfunction interact with each other has been proposed from the perspective of motor  
2 control in patients with pain<sup>[28]</sup>, and researchers have suggested that pain is a powerful  
3 stimulus that leads to a redistribution of the motor system and adaptive changes in  
4 motor control<sup>[29]</sup>. Secondly, the cognitive pathway: at the cognitive-behavioral level,  
5 the fear-avoidance model of pain<sup>[30]</sup> illustrates that, for some patients, pain is often  
6 accompanied by an increase in fear and general avoidance of movements that may be  
7 associated with pain, which ultimately leads to a decrease in fitness and disability as  
8 time passes<sup>Error! Reference source not found.</sup>.

9 Notably, the results of this study demonstrated that low back pain and hip pain  
10 can increase the risk of gait abnormalities, while knee pain had no significant causal  
11 relationship with gait abnormalities. Further consideration is given from the results of  
12 our study, this may be related to the joint range of motion and positional structure of  
13 the knee joint. The gait cycle of human walking can be categorized into support phase  
14 and swing phase according to the position of the lower limbs during walking<sup>[32]</sup>. The  
15 activity of the support phase of the lower limbs belongs to the closed-chain  
16 movement, and the foot, ankle, knee, hip, pelvis, trunk, upper limbs, neck, head, etc.  
17 are all involved in the walking process. Any change in the closed-chain system will  
18 cause corresponding changes in the entire chain of motion, with the distal weight-  
19 bearing axis (ankle) having the greatest influence on the overall posture<sup>[33]</sup>. The swing  
20 phase belongs to the open chain movement, each joint can have isolated postural  
21 changes, but often cause compensatory changes in the posture of the contralateral  
22 lower limb, with the proximal axis (hip joint) having the greatest influence<sup>[34]</sup>. The

1 knee joint primarily performs flexion and extension movements and the range of  
2 flexion and extension is  $-10^{\circ}$  to  $135^{\circ}$ , but it has little effect on the support and sway  
3 phases involved in gait. Although the knee joint also has internal rotation and  
4 abduction functions, the range of knee internal rotation activities is  $0^{\circ}$  to  $30^{\circ}$  and the  
5 range of external rotation activities is  $0^{\circ}$  to  $40^{\circ}$ , compared with the lumbar, hip, ankle  
6 and other parts, in the process of walking, the range of motion of knee joint is smaller,  
7 the activity participation is lower, and thus the impact on the gait is relatively small.

8 The results of reverse MR analysis suggested that gait abnormalities did not have  
9 a significant causal effect on localized musculoskeletal pain, which may be due to the  
10 fact that only four SNPs were included in the reverse MR analysis, which may have  
11 led to the underestimation of exposure-outcome associations in the two-sample MR  
12 study, and the main reason for this bias was the insufficient sample size; therefore, we  
13 should be cautious in interpreting this result, and it needs to be validation using a  
14 larger sample size of GWAS data related to gait abnormalities in the future<sup>[35]</sup>.

15 Patients with gait abnormalities have been increasing in recent years, and our  
16 study will enhance the management of localized musculoskeletal pain in a high-risk  
17 population. Therefore, this study is crucial to explore the causal relationship between  
18 localized musculoskeletal pain factors and the risk of gait abnormalities. Our MR  
19 study provides strong evidence for a causal relationship between localized  
20 musculoskeletal pain and increased risk of gait abnormalities, which inspires us to  
21 actively intervene in the localized pain symptoms present in patients with gait  
22 abnormalities when treating and rehabilitating them clinically, and to restore their

1 imbalanced motor control system through effective pain management, thus improving  
2 the quality of life of patients with gait abnormalities. However, further validation and  
3 exploration of the intrinsic mechanism of the causal association between the two is  
4 still needed in the future<sup>[36]</sup>.

#### 5 **4 Conclusion**

6 Based on the findings from our study, we have gained valuable insights into the  
7 relationship between localized musculoskeletal pain and gait abnormalities. We  
8 observed that localized musculoskeletal pain, special low back pain and hip pain,  
9 may elevate the risk of gait abnormalities, while conversely, gait abnormalities do not  
10 significantly contribute to the occurrence of localized musculoskeletal pain.  
11 Consistent with prior research, our study underscores altered movement patterns and  
12 control strategies in individuals with localized musculoskeletal pain during daily  
13 activities, emphasizing the impact of pain on gait characteristics. Overall, our study  
14 contributes novel insights into the complex interplay between localized  
15 musculoskeletal pain and gait abnormalities, holding significant implications for the  
16 development of effective interventions. Future research endeavors should delve  
17 deeper into these relationships and translate findings into clinical practice to enhance  
18 the management of gait abnormalities and pain in patients.

19

#### 20 **Conflict of Interest**

21 The authors declare that they have no competing interests.

#### 22 **Author Contributions**

1 XXM, TGH conceived and designed the study. XXM, ZKY and HLQ extracted data  
2 and processed information using the appropriate software. XXM, LY and LXY  
3 analyzed and interpreted the data. All authors participated in drafting the manuscript,  
4 read and approved the final version of the manuscript, and provided consent for  
5 publication.

## 6 **Funding**

7 This work was supported financially by the National Natural Science Foundation of  
8 China (No: 81973623).

## 9 **Data Availability Statement**

10 All data generated or analyzed during this study are included in this published article  
11 and its supplementary information files.

12

13

14

15

16

## 17 **References**

18 [1] Yang LN, Chen K, Yin XP, et al. (2022) The comprehensive neural mechanism  
19 of oxytocin in analgesia. *Curr Neuropharmacol* 20:147-157

20 [2] Jackson T, Thomas S, Stabile V, et al. (2016) A systematic review and meta-  
21 analysis of the global burden of chronic pain without clear etiology in low and

- 1 middle-income countries: trends in heterogeneous data and a proposal for new  
2 assessment methods. *Anesth Analg* 123:739-748.
- 3 [3] Kassaw NA, Zhou A, Mulugeta A, Lee SH, Burgess S, Hyppönen E. Alcohol  
4 consumption and the risk of all-cause and cause-specific mortality-a linear and  
5 nonlinear Mendelian randomization study. *Int J Epidemiol*. 2024 Feb  
6 14;53(2):dyae046.
- 7 [4] Hunt MA, Birmingham TB, Bryant D, Jones I, Giffin JR, Jenkyn TR, et al.  
8 Lateral trunk lean explains variation in dynamic knee joint load in patients with  
9 medial compartment knee osteoarthritis. *Osteoarthritis Cartilage*. 2008  
10 May;16(5):591-9.
- 11 [5] Foroughi N, Smith R, Vanwanseele B. The association of external knee adduction  
12 moment with biomechanical variables in osteoarthritis: a systematic review.  
13 *Knee*. 2009 Oct;16(5):303-9.
- 14 [6] Reed JA, Meng DH. Clinical application of gait analysis[J]. *Chinese Journal of*  
15 *Physical Medicine and Rehabilitation*,2006(07):500-503.
- 16 [7] Junxia Zhang,Kun Gao,Bing Xie. A review of gait analysis research [J].  
17 *Packaging Engineering*,2022,43(10):41-53.
- 18 [8] Yoshikawa M, Asaba K, Nakayama T. Causal effect of atrial fibrillation/flutter on  
19 chronic kidney disease: A bidirectional two-sample Mendelian randomization  
20 study. *PLoS One*. 2021 Dec 13;16(12):e0261020.

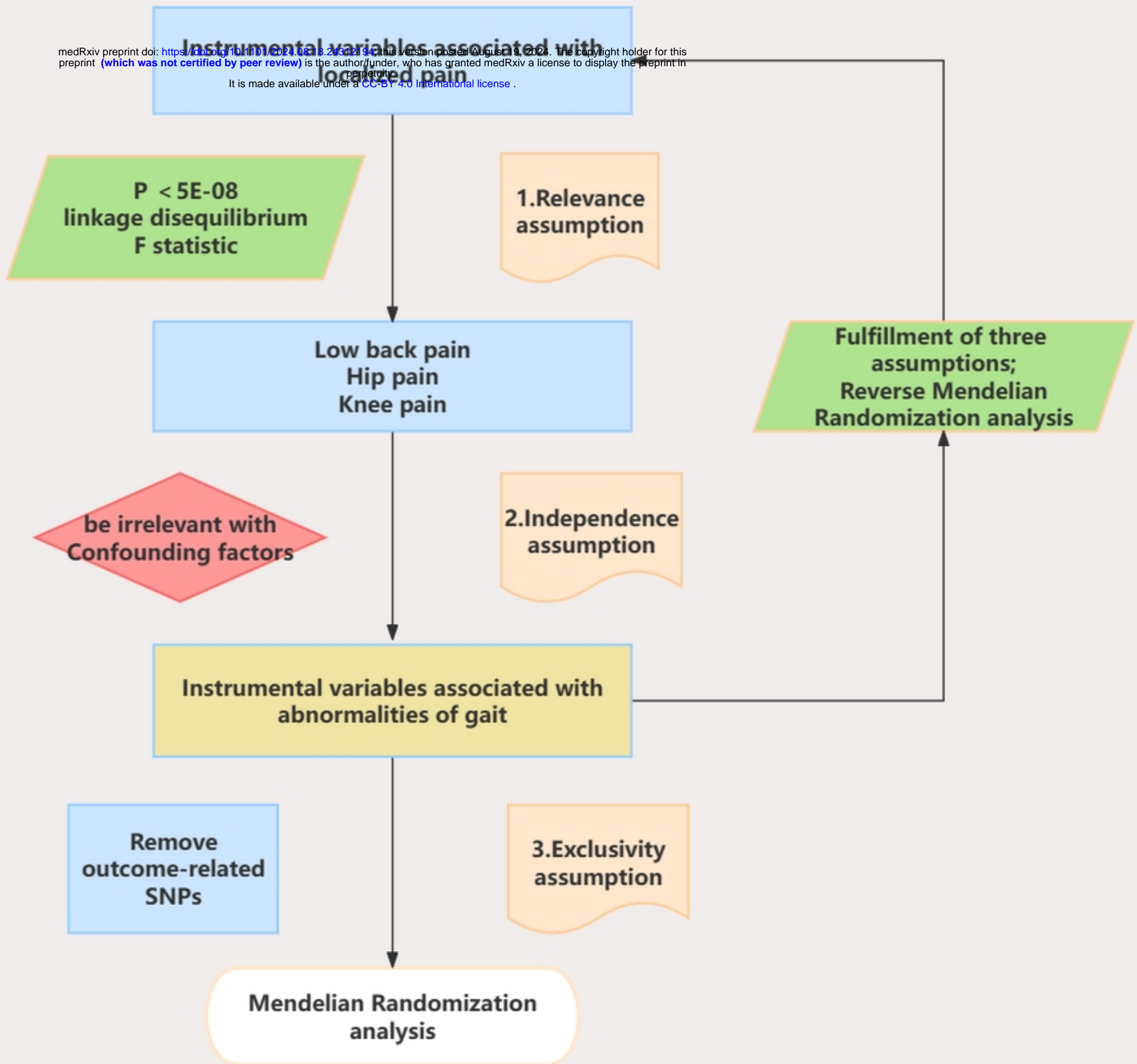


- 1 [9] Yao C, Zhang Y, Lu P, Xiao B, Sun P, Tao J, et al. Exploring the bidirectional  
2 relationship between pain and mental disorders: a comprehensive Mendelian  
3 randomization study. *J Headache Pain*. 2023 Jul 7;24(1):82.
- 4 [10]Zhang K, Shi W, Zhang X, Pang R, Liang X, Xu Q, et al. Causal relationships  
5 between COVID-19 and osteoporosis: a two-sample Mendelian randomization  
6 study in European population. *Front Public Health*. 2023 May 24;11:1122095.
- 7 [11]Lv Z, Cui J, Zhang J. Smoking, alcohol and coffee consumption and risk of low  
8 back pain: a Mendelian randomization study. *Eur Spine J*. 2022  
9 Nov;31(11):2913-2919.
- 10 [12]Guo G, Wu Y, Liu Y, Wang Z, Xu G, Wang X, et al. Exploring the causal effects  
11 of the gut microbiome on serum lipid levels: A two-sample Mendelian  
12 randomization analysis. *Front Microbiol*. 2023 Feb 16;14:1113334.
- 13 [13]Zhu Q, Chen L, Shen C. Causal relationship between leisure sedentary behaviors  
14 and low back pain risk: a Mendelian randomization study. *Eur Spine J*. 2023  
15 Sep;32(9):3300-3308.
- 16 [14]Hu Y, Lin L, Zhang L, Li Y, Cui X, Lu M, et al. Identification of Circulating  
17 Plasma Proteins as a Mediator of Hypertension-Driven Cardiac Remodeling: A  
18 Mediation Mendelian Randomization Study. *Hypertension*. 2024  
19 May;81(5):1132-1144.
- 20 [15]Wang X, Wu Y, Zhao P, Wang X, Wu W, Yang J. The causal relationship  
21 between serum metabolites and acne vulgaris: a Mendelian randomization study.  
22 *Sci Rep*. 2024 May 14;14(1):11045.

- 1 [16]Spiller W, Slichter D, Bowden J, Davey Smith G. Detecting and correcting for  
2 bias in Mendelian randomization analyses using Gene-by-Environment  
3 interactions. *Int J Epidemiol*. 2019 Jun 1;48(3):702-712.
- 4 [17]Papadimitriou N, Dimou N, Tsilidis KK,et al. Physical activity and risks of breast  
5 and colorectal cancer: a Mendelian randomization analysis. *Nat Commun*. 2020  
6 Jan 30;11(1):597.
- 7 [18]Tang X, Li Q, Li ZH. Mediating effect of metabolic syndrome in the association  
8 of educational attainment with intervertebral disc degeneration and low back  
9 pain. *Heliyon*. 2024 Apr 26;10(9):e30272.
- 10 [19]Duckworth A, Gibbons MA, Allen RJ, Almond H, Beaumont RN, Wood AR, et  
11 al. Telomere length and risk of idiopathic pulmonary fibrosis and chronic  
12 obstructive pulmonary disease: a mendelian randomization study. *Lancet Respir*  
13 *Med*. 2021 Mar;9(3):285-294 .
- 14 [20]Ogawa EF, Shi L, Bean JF, Hausdorff JM, Dong Z, Manor B, et al. Chronic Pain  
15 Characteristics and Gait in Older Adults: The MOBILIZE Boston Study II. *Arch*  
16 *Phys Med Rehabil*. 2020 Mar;101(3):418-425.
- 17 [21]Mokhtarinia H R, Sanjari M A, Chehrehrazi M, et al. Trunk coordination in  
18 healthy and chronic nonspecific low back pain subjects during repetitive flexion-  
19 extension tasks: effects of movement asymmetry, velocity and load[J]. *Hum Mov*  
20 *Sci*, 2016, 45: 182-192.

- 1 [22]Shu P, Ji L, Ping Z, Sun Z, Liu W (2022) Association of insomnia and daytime  
2 sleepiness with low back pain: a bidirectional Mendelian randomization analysis.  
3 Front Genet 13:938334.
- 4 [23]Lv X, Liang F, Liu S, Deng X, Lai R, Du J, et al. Causal relationship between  
5 diet and knee osteoarthritis: A Mendelian randomization analysis. PLoS One.  
6 2024 Jan 31;19(1):e0297269.
- 7 [24]Zhou J, Mi J, Peng Y, Han H, Liu Z (2021) Causal associations of obesity with  
8 the intervertebral degeneration, low back pain, and sciatica: a two-sample  
9 mendelian randomization study. Front Endocrinol (Lausanne) 12:740200.
- 10 [25]Liu S, Lv X, Deng X, Lai R, Du J, Wang C. Diet and risk of low back pain: a  
11 Mendelian randomization analysis. Eur Spine J. 2024 Feb;33(2):496-504.
- 12 [26]Wilder DG, Vining RD, Pohlman KA, Meeker WC, Xia T, Devocht JW,  
13 Gudavalli RM, Long CR, Owens EF, Goertz CM. Effect of spinal manipulation  
14 on sensorimotor functions in back pain patients: study protocol for a randomised  
15 controlled trial. Trials. 2011 Jun 28;12:161.
- 16 [27]Cruz-Almeida Y, Rosso A, Marcum Z, Harris T, Newman AB, Nevitt M, et al.  
17 Associations of musculoskeletal pain with mobility in older adults. Potential  
18 cerebral mechanisms. vol. 00, The Journals of Gerontology: series A.  
19 2017;00(00):1-7.
- 20 [28]Hodges P, van den Hoorn W, Dawson A, Cholewicki J. Changes in the  
21 mechanical properties of the trunk in low back pain may be associated with  
22 recurrence. J Biomech. 2009 Jan 5;42(1):61-6.

- 1 [29]Hodges P W. Pain and motor control: from the laboratory to rehabilitation[J]. J  
2 Electromyogr Kines, 2011, 21(2): 220-228.
- 3 [30]Madeleine P. On functional motor adaptations: from the quantification of motor  
4 strategies to the prevention of musculoskeletal disorders in the neck-shoulder  
5 region[J]. Acta Physiol, 2010, 199(Suppl 679): 1-46.
- 6 [31]Beebe JA, Kronman C, Mahmud F, Basch M, Hogan M, Li E, et al. Gait  
7 Variability and Relationships With Fear, Avoidance, and Pain in Adolescents  
8 With Chronic Pain. Phys Ther.
- 9 [32]Arendt-Nielsen L, Nie H, Laursen MB, Laursen BS, Madeleine P, Simonsen OH,  
10 et al. Sensitization in patients with painful knee osteoarthritis. Pain. 2010  
11 Jun;149(3):573-581.
- 12 [33]Yang C, Xiao H, Wang C, Mai L, Liu D, Qi Y, et al. Variation of plantar pressure  
13 in Chinese diabetes mellitus. Wound Repair Regen. 2015 Nov-Dec;23(6):932-8.
- 14 [34]Vlaeyen JWS, Linton SJ. Fear-avoidance and its consequences in chronic  
15 musculoskeletal pain: a state of the art. Pain. 2000 Apr;85(3):317-332.
- 16 [35]Barzilay Y, Segal G, Lotan R, et al. Patients with chronic nonspecific low back  
17 pain who reported reduction in pain and improvement in function also  
18 demonstrated an improvement in gait pattern[J]. European Spine  
19 Journal,2016,25(9):2761-2766.
- 20 [36]Roffey DM, Wai EK, Bishop P, Kwon BK, Dagenais S. Causal assessment of  
21 occupational standing or walking and low back pain: results of a systematic  
22 review. Spine J. 2010 Mar;10(3):262-72.

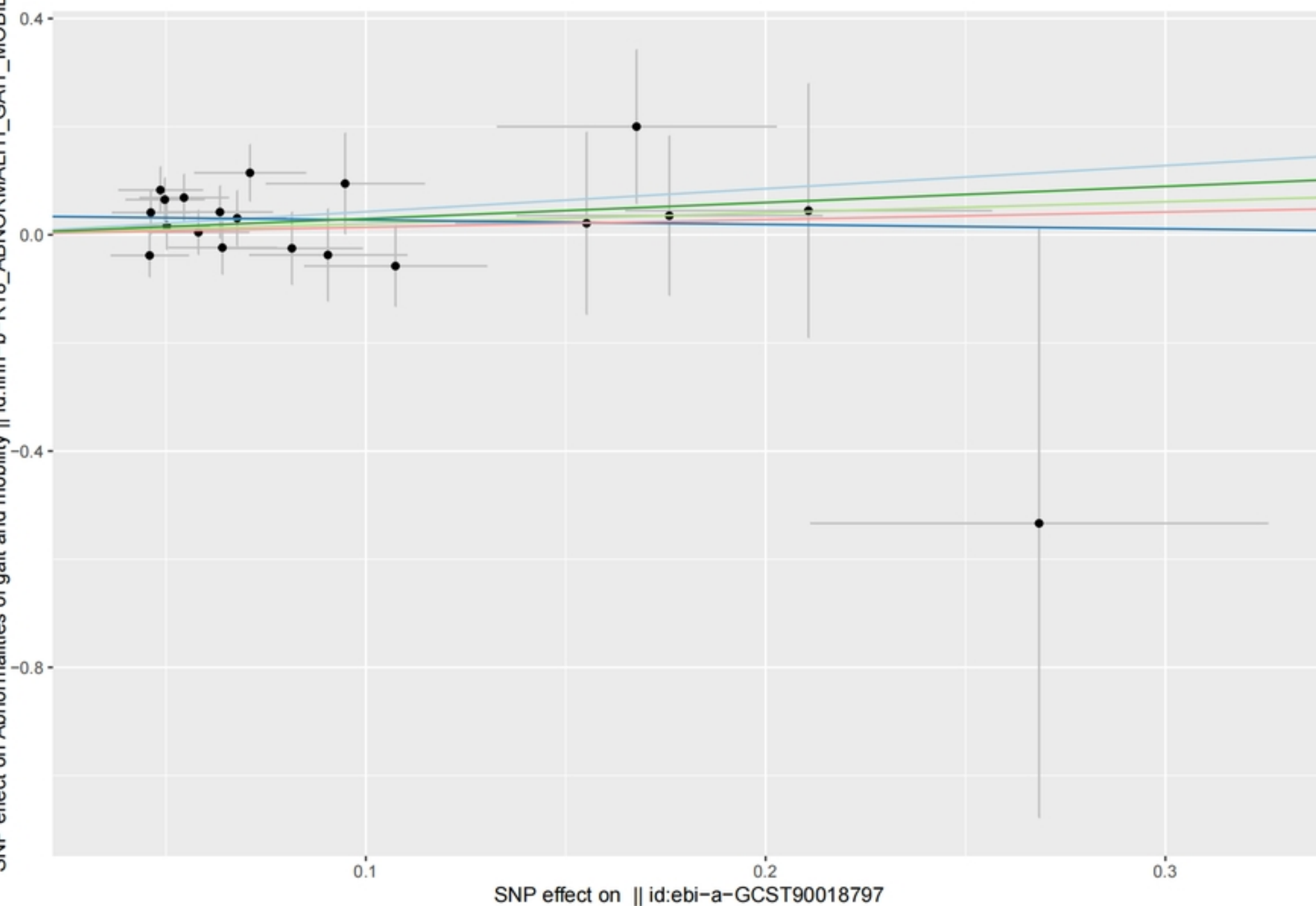


Figure

SNP effect on Abnormalities of gait and mobility || id:finn-b-R18\_ABNORMALITI\_GAIT\_MOBIL

MR Test

- Inverse variance weighted
- MR Egger
- Simple mode
- Weighted median
- Weighted mode

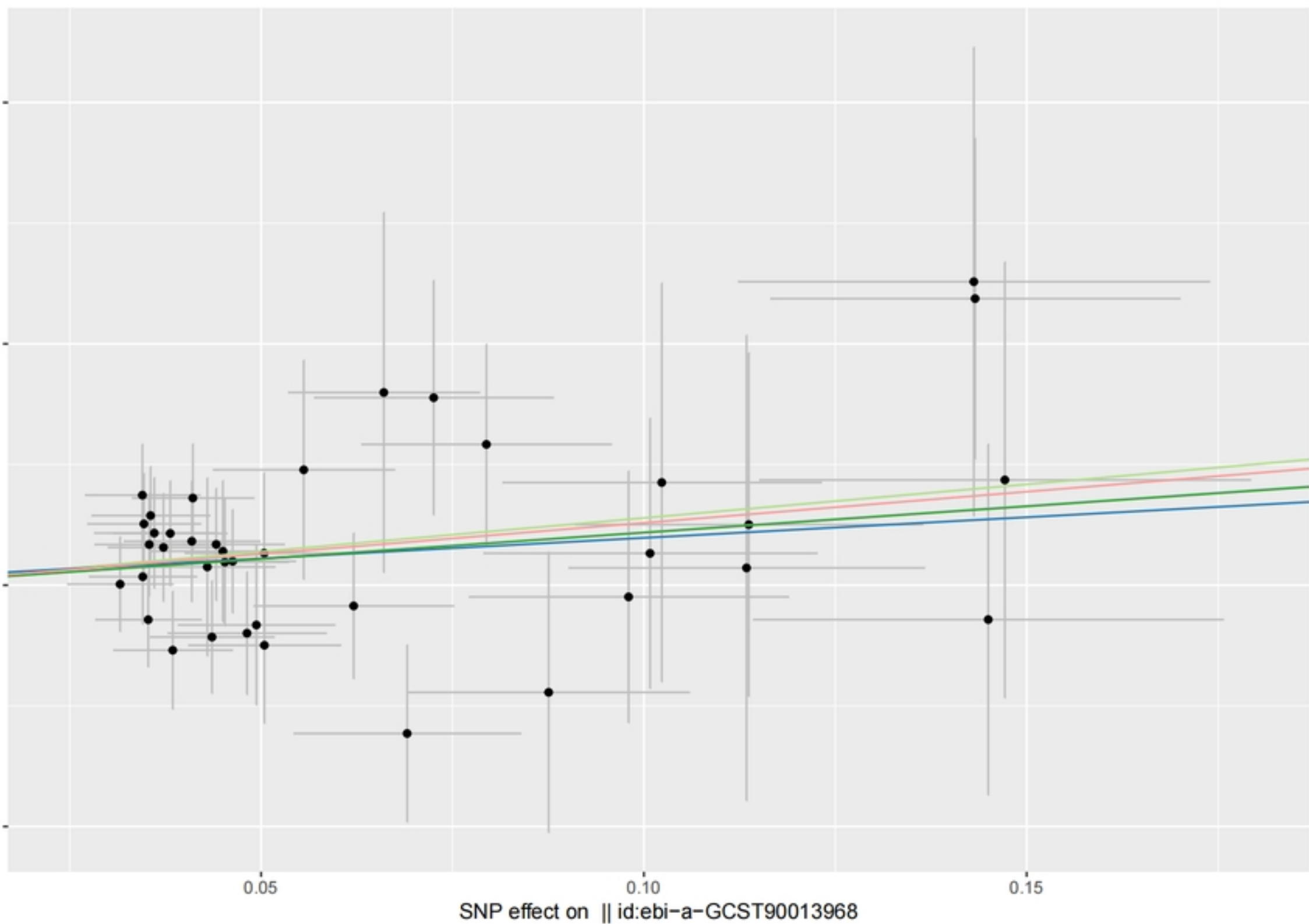


Figure

SNP effect on Abnormalities of gait and mobility || id:finn-b-R18\_ABNORMALITI\_GAIT\_MOBIL

MR Test

- Inverse variance weighted
- MR Egger
- Simple mode
- Weighted median
- Weighted mode

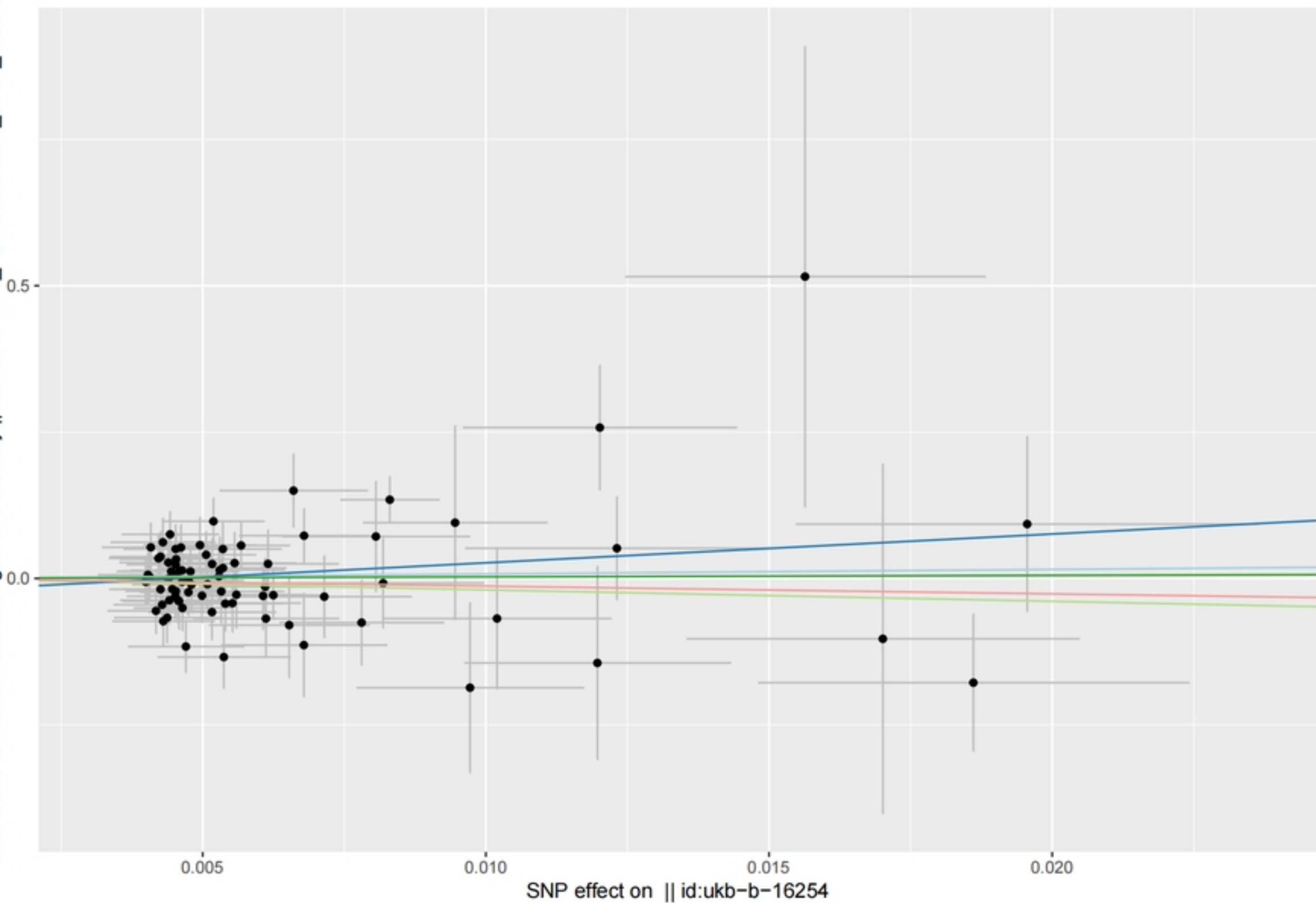


Figure

SNP effect on Abnormalities of gait and mobility || id:finn-b-R18\_ABNORMALITI\_GAIT\_MOBIL

MR Test

- Inverse variance weighted
- MR Egger
- Simple mode
- Weighted median
- Weighted mode



Figure