

1 **COLOURED LENSES RCT PROTOCOL MANUSCRIPT**

2 **Working Title:**

3 **Full Title (Max 250 characters)**

4 “Reading; through the eyes of a university student: A double-masked randomised placebo-controlled  
5 cross-over protocol investigating coloured spectacle lens efficacy in adults with visual stress.”

6

7 **Short Title (Max 100 characters)**

8 “A randomised controlled trial protocol using coloured spectacle lenses to manage adults with visual  
9 stress.”

10

11 **Authors & Affiliations:**

12 Mr Darragh L. Harkin<sup>1</sup>; Prof Julie-Anne Little<sup>1</sup>; Dr Sara J. McCullough<sup>1</sup>

13 <sup>1</sup> Centre for Optometry & Vision Science, School of Biomedical Sciences, Faculty of Life and Health  
14 Sciences, Ulster University, Cromore Road, Coleraine, Northern Ireland, BT52 1SA.

15

16 **Meta Data:**

17 **Data Availability:** Anonymised data will be made available upon request after completion of the  
18 trial.

19 **NOTE:** This preprint reports new research that has not been certified by peer review and should not be used to guide clinical practice.

20 **Funding:**

21 Materials (spectacle lenses & spectacle frames) have been funded by the Local Ophthalmic  
22 Committee Central Optical Fund (Ref: 202302). Additionally, D.H. is funded by Department for the  
23 Economy, Northern Ireland with a PhD scholarship at Ulster University. Funders have not and will  
24 not have a role in the design nor implementation of the trial protocol. Funders have not been  
25 involved in the writing of or decision to publish this protocol, nor shall they be involved in the  
26 analysis for dissemination of this trial's findings.

27

28 **Competing Interest:**

29 The authors have no competing interests to declare.

30

31 **Abstract:**

32 **Background:**

33 Visual stress is a reading disorder characterised by perceptual distortions, asthenopia and headache  
34 whilst reading, alongside increased sensitivity to repeated striped patterns ('pattern glare'), in the  
35 absence of underlying ocular pathology. Coloured filters including tinted spectacle lenses and  
36 coloured overlays/acetates have been reported to ameliorate visual stress symptoms. However,  
37 evidence on coloured spectacle lenses efficacy at managing symptoms of visual stress, particularly in  
38 adults, is lacking, with two recent systematic reviews advocating the need for large-scale  
39 randomised control trials.

40

41 Methods:

42 This is a double-masked randomised placebo-controlled trial. University students identified with  
43 symptoms of visual stress, through use of a reading symptom questionnaire and mid-spatial  
44 frequency pattern glare test, will be recruited. Sample size for power of 90% at 5% significance,  
45 accounting for 10% dropout will be 65. Participants will be randomly assigned experimental and  
46 control coloured spectacle lenses to wear for six weeks followed by a two week washout period,  
47 prior to wear of the alternate lenses for a further six weeks with a two week washout period.  
48 Participants will compare both sets of spectacle lenses in a ‘head-to-head’ comparison after the  
49 secondary washout period, prior to choosing the preferred lenses for voluntary future wear. Long-  
50 term adherence to the preferred lenses will be assessed three months post-comparison.  
51 Researchers and participants will be masked to spectacle lenses worn throughout the duration of  
52 the trial. Reading performance will be assessed with both sets of lenses at various time points  
53 within the trial. A range of reading tests, reading symptoms and pattern glare evaluation will be used  
54 to monitor change in reading performance and visual stress symptoms during the trial.

55

56 Discussion:

57 The study will evaluate the hypothesis that coloured spectacle lenses increase reading speed and  
58 reduce severity and frequency of reading symptoms in adults with visual stress.

59

60 Trial Registration:

61 The trial is registered at [clinicaltrials.gov](https://clinicaltrials.gov): NCT04318106

62

63 **Introduction:**

64 Visual Stress, occasionally referred to as ‘Meares-Irlen Syndrome’ and ‘Scotopic Sensitivity  
65 Syndrome’ is a visuoperceptual reading disorder with a reported prevalence varying between 13-  
66 96% [1] in both adults and children. Variable prevalence can be explained by the array of symptoms  
67 and signs employed to diagnose the condition, sample population tested [2][3] and unclear evidence  
68 on the underlying aetiology. In an absence of standardised diagnostic criteria [3][4], the condition is  
69 diagnosed by eyecare practitioners on an ad-hoc basis. Attempts have been made to standardise  
70 diagnostic criteria [3][5][6][7] however these have not been validated. Colorimetry – the practice of  
71 determining preferred chromaticity of coloured spectacle lenses to assist with reading symptoms, is  
72 performed in some primary eyecare settings. Coloured filters, in the form of tinted spectacle lenses  
73 or sheets of coloured acetate have been reported to improve reading performance and reduce  
74 symptoms in individuals with visual stress [6][8][9][10] in small-scale randomised controlled trials  
75 and case-controlled studies.

76

77 Symptoms of visual stress can be broadly described as the presence of perceptual distortions, such  
78 as words and letters ‘moving’ or ‘merging’, and appearance of ‘rivers’ or coloured patterns within  
79 lines of crowded text; typically black text printed on white backgrounds [3][7]. There are several  
80 aetiologies proposed to cause visual stress but, in brief, these either fall under (i) A deficit in  
81 magnocellular processing and inability to process high temporal frequency ‘flicker’ [11][12] or (ii)  
82 Hyperexcitation of the visual cortex from repetitive black-on-white striped patterns often found in  
83 written text [13][14]. With regard to theory (i), coloured spectacle lenses are proposed to reduce the  
84 extent of cortical hyperexcitation by attenuating the amount of potentially aversive visual  
85 information that is received by a hyperexcitable primary visual cortex [15][16]. For theory (ii),  
86 coloured filters are thought to suppress potentially aberrant intraretinal image patterns on saccadic

87 eye movements [11][17] and improve ocular movements whilst reading [18] in symptomatic  
88 individuals with underlying magnocellular pathway deficits.

89

90 Whilst the theories underpinning the aetiological mechanisms of visual stress are well explained in  
91 the literature, investigations into the efficacy of coloured lenses at ameliorating symptoms of visual  
92 stress are scant. Two recent systematic reviews, both conclude that a large-scale double-masked  
93 randomised control trial needs to take place to investigate coloured lens efficacy in subjects with  
94 visual stress [1][19]. Additionally, professional optometric bodies' management guidance in relation  
95 to the practice of colorimetry is guarded, citing a lack of robust evidence to either endorse or reject  
96 the practice [20][21][22]. This protocol will detail the methods employed in a double-masked cross  
97 over randomised placebo-controlled trial. We aim to test the hypothesis that providing coloured  
98 lenses to those with symptoms of visual stress will be effective at improving reading performance  
99 and reduce frequency of symptoms experienced whilst reading.

100

## 101 **Methods & Materials**

### 102 **Study Design**

103 This study is designed as a double-masked cross-over randomised placebo-controlled trial of  
104 coloured lens efficacy in adults with symptoms of visual stress. The trial design is supported by the  
105 Standard Protocol Items: Recommendations for Intervention Trials (SPIRIT) framework (see  
106 supporting information S1). Participants will be evenly and randomly assigned one of two sets of  
107 coloured spectacle lenses for initial spectacle wear for a period of six weeks, followed by wear of an  
108 alternate pair of spectacle lenses for a further six weeks. Coloured spectacle lenses will differ in their  
109 chromaticity, with the 'experimental' coloured lenses, tinted to optimal chromaticity, which are

110 presumed to reduce perceptual distortion symptoms, whilst ‘control’ lenses will comprise a  
111 chromaticity similar in perceptual colour appearance to ‘experimental’ lenses, to assist with  
112 masking, but differing in chromaticity, such that visual stress symptoms are neither improved nor  
113 worsened with use of tint. The ‘Control’ lenses shall therefore act as a placebo. Researchers and  
114 participants will both be masked to the spectacle lenses worn. A two week washout between  
115 periods of spectacle lens wear will be employed, so that any potential legacy effects of coloured  
116 lenses are negated.

117

## 118 **Study Population**

### 119 Sample Size Calculation

120 The Wilkins Rate of Reading Test reading speed has been used as the outcome measure for an  
121 improvement with use of coloured filters [9][10][23][25][26]. A within-subject standard deviation of  
122 10.85 words per minute has been calculated from estimated values from repeat measures data on  
123 77 school-age children [27]. The expected difference between the two treatments (i.e. ‘control’  
124 lenses vs ‘experimental’ lenses) has been estimated as 6.5 words per minute, derived from data on a  
125 non-dyslexic population for adults with visual stress [6]. A sample size of 59 participants was  
126 determined appropriate for this investigation with a power of 90% and an alpha level of 0.05. The  
127 required sample size has been increased by 10% to account for attrition. Therefore, 65 participants  
128 shall be recruited for the trial.

129

### 130 Study Location & Participant Demographics

131 Participants will be recruited from the undergraduate student population at Ulster University,  
132 Coleraine, Northern Ireland, UK and all study visits will take place at the Centre for Optometry and  
133 Vision Science at Ulster University.

#### 134 Inclusion Criteria

135 All participants shall be adult undergraduate students at Ulster University, aged 18-45-years.  
136 Participants shall be recruited in their first year of their current university degree. Participants will be  
137 enrolled in the trial on the basis of presence of symptoms suggestive of visual stress, as determined  
138 by a reading symptom questionnaire and as detailed in Table 1

139

#### 140 Exclusion Criteria

141 Participants will be excluded if they satisfy any one of the following criteria:

- 142 • Habitual distance monocular acuity poorer than 0.1 logMAR.
- 143 • Habitual near monocular acuity poorer than N5 at 40cm.
- 144 • Presence of manifest strabismus and/or decompensating phoria observed on alternating  
145 cover test.
- 146 • Near point of convergence less than 10cm.
- 147 • Failure to meet Duane-Hoffstetter Criteria for minimum binocular push-up accommodative  
148 amplitude ( $>15 - [0.25] * [\text{age in years}]$ ) – see Monger et al.[28]
- 149 • Absence of observable stereopsis on the TNO stereotest.
- 150 • Formal diagnosis of photosensitive epilepsy

151

#### 152 Recruitment

153 Reading Symptoms Screening

154 A reading symptom questionnaire was developed to screen large cohorts of undergraduate students  
155 in lecture theatres (see Supporting Information 2). There are currently no validated criteria used to  
156 diagnose visual stress [1][3]. Therefore, reading symptoms employed in the questionnaire were  
157 devised from symptoms of visual stress reported in the literature such as those proposed by a Delphi  
158 study [3] and the 'Visual Stress Index' [7]. The questionnaire includes 17-items and 6-point Likert  
159 scale with descriptors of symptom frequency (0=never; 5=always). Participants will be provided with  
160 a sample of crowded text in a foreign language, devoid of context, to consider when answering the  
161 questionnaire [7].

162

163 Further questions exploring participants' ocular and general health will be posed, as well as  
164 questions investigating presence of potential visual stress co-morbidities such as; headache [29][30];  
165 formal diagnosis of migraine[31][32][33][34]; diagnosis of dyslexia [6][35][36] and/or diagnosis of  
166 specific learning difficulties and other general health complaints, known to also be managed with  
167 coloured filters [16][37][38][39].

168

169 To determine presence of cortical hyperexcitability, a mid-spatial frequency pattern glare test will  
170 also be administered. A 40cm string will be affixed to the test, to measure the proposed viewing  
171 distance of 'pattern 2' of the pattern glare test series (spatial frequency 2.3cpd) [40]. Respondents  
172 will be directed to circle 'yes/no' responses to each of the seven pattern glare symptoms as per the  
173 test instructions [40][41]. Each positive 'yes' response will be summed to determine a total pattern  
174 glare score ranging from 0-7.

175



176 Reading symptom questionnaires will be administered during term time. The researchers will attend  
177 lecture theatres and inform students that they are conducting an investigation of symptoms  
178 students experience whilst reading. Recruitment to this study began on 08/12/2022. It is anticipated  
179 that final recruitment will be completed by 20/12/24. Participants will be informed that completion  
180 of the questionnaire is voluntary and that all information disclosed will be treated confidentially.  
181 Participants will not be informed of the potential to participate in the randomised control trial until  
182 after completion of the questionnaire to avoid biasing results.

183

184

#### 185 Determination of the Presence of Visual Stress

186 In the absence of standardised diagnostic criteria for visual stress, recruitment criteria were devised  
187 on the basis of previously reported criteria and methods of recruitment to previous investigations  
188 within the literature [6][8][9]. One drawback of previous investigations of coloured filter efficacy is  
189 the inability of some studies to accurately determine presence of visual stress in participants, with  
190 some incorrectly enrolling participants on the basis of dyslexia diagnosis [42][43][44] or due to  
191 variations in definition of visual stress symptoms (see review by Griffiths et. al. 2016)[1]. The current  
192 study will employ strict recruitment criteria to ensure that the most symptomatic individuals are  
193 included in the study. Participants who satisfy at least one set of the inclusion criteria as listed in  
194 Table 1 shall be invited to take part in the trial. By satisfying either criterion, participants will be  
195 recruited either on the basis of (i) presence of pattern glare and at least two significant  
196 visuoperceptual reading symptoms indicative of visual stress or (ii) overall summed symptom  
197 severity across an array of 14-visuoperceptual symptoms.

198

Participants must satisfy <b>at least one</b> of the following sets of inclusion criteria:	
1. Presence of Significant Symptoms and Pattern Glare	<p>Presence of any two symptoms with frequency scores <math>\geq 3</math>, from the following:</p> <p>‘Words / letters look jumbled’.</p> <p>‘Patterns seen in the white spaces between words / letters’.</p> <p>Colours in the white spaces between words / letters’.</p> <p>‘Repeating words / lines of text’.</p> <p>‘Skipping words / lines of text’.</p> <p>‘Losing your place when reading’.</p> <p>‘Words / letters flicker when reading’.</p> <p>‘Shimmering over the words/letters’.</p> <p>‘Words / letters wobble when reading’.</p> <p>‘Words / letters move’.</p> <p>‘Words / letters merge’.</p> <p>‘Patterns / shadows seen in text e.g., rivers’.</p> <p>‘Letters / words stand out in 3D above the page’.</p> <p>‘Letters / words fade or darken on the page’.</p> <p><u>AND</u> a pattern glare test score <math>&gt;3</math></p>
2. Total Symptom Score	Summed total Likert symptom frequency score of 14-symptoms from 0-5 exceeds a

>50%:	<p>50% total score threshold (&gt;35/70), when excluding 3 of the 17 Likert symptoms listed in the questionnaire, which may differentially diagnose other ocular abnormality (listed in brackets), which are:</p> <p>‘Headaches when reading’. (Headache)</p> <p>‘Eyestrain when reading’. (Asthenopia)</p> <p>‘Words / letters look blurred’. (Uncorrected Refractive Error)</p>
-------	---

199 Table 1 – Recruitment Criteria used to Determine Presence of Visual Stress

200

201 **Procedure**

202 Interventions Employed (Determination of Control Lens)

203 The ‘Curve’ Intuitive Colorimeter™ [45] will be used to determine chromaticity of ‘experimental’  
 204 (optimal) and ‘control’ (sub-optimal) tints, through manipulation of the hue, saturation and  
 205 luminance of a projected series of three primary colours to comprise a gamut of visible  
 206 chromaticities spaced throughout the 1976 CIELUV colour space[46][47].

207 Participants will identify an ‘experimental’ tint through a series of repeated presentations of  
 208 opposing hues. Initially, 12-predetermined hues, separated by a ‘hue angle’ of 30° will be presented.

209 Participants will compare the appearance and comfort of a random series of letters forming a  
 210 striped body of text devoid of context within the Intuitive Colorimeter™, illuminated under white  
 211 light and presented hue. Participants will note if the presented hue makes the appearance and  
 212 comfort of the crowded text ‘better’, ‘worse’ or ‘no-different’ than white-light. Beneficial hues will  
 213 be shortlisted. Saturation of each shortlisted hue will be reduced until symptoms arise. Saturation

214 will then be adjusted to the lowest level where symptoms resolve. A 2-alternative forced choice of  
215 preferred hue of ideal saturation will then be presented until an optimal chromaticity can be  
216 determined, as previously described [48]. Once optimal hue and saturation are  
217 determined, luminance will be attenuated between ‘half’ and ‘full’ settings and the participant  
218 offered a preference choice. An arc of beneficial therapeutic colours will be uncovered through this  
219 technique. This area of therapeutic chromaticities will represent an area on the 1976 CIELUV colour  
220 space wherein observers are expected to derive benefit from colour. The authors propose that  
221 variation in size and location of this therapeutic region will exist amongst observers. Boundaries of  
222 the colour space will be denoted as two ‘hue angles’ on the Intuitive Colorimeter™ colour wheel,  
223 outside which therapeutic benefit is lost. Optimal chromaticity will lie within this colour space. This  
224 arc of beneficial chromaticities will be herein referred to as the ‘Limit of Therapeutic Effect’.

225

226 The ‘control’ lens will act as the placebo and will be sub-optimal, when compared to ‘experimental’  
227 tint. To determine control tint, researchers will prescribe a colour that will not be aversive, yet not  
228 beneficial to the patient’s symptoms of visual stress that lies just outside the ‘Limit of Therapeutic  
229 Effect’. The researchers will choose the chromaticity closest to the optimal to assist with masking of  
230 experimental and control lenses. ‘Control’ tint will be of the same saturation and luminance to the  
231 ‘experimental’ tint. Researchers are mindful of previous work, stating interpractitioner and inter-  
232 instrumental measurement error may account for ~0.03 units of chromaticity difference (the  
233 Euclidean distance between colour coordinates mapped on the 1976 CIELUV Chromaticity Diagram)  
234 between lenses [49][50]. Whilst a consistent chromatic separation between lenses will not be  
235 applied, to account for assumed difference in size of ‘Limit of Therapeutic Effect’ by observers, size  
236 of chromatic separation between lenses will be considered in post-hoc analysis of reading  
237 performance.

238

239 The chromaticity difference, between colour coordinates of ‘experimental’ and ‘control’ lenses will  
240 be measured by the Mark 2 SpectroCAL Spectroradiometer (Cambridge Research Systems Ltd.,  
241 Cambridge, UK). Chromaticity coordinates will be plotted by computer software (Light Values  
242 Measuring System, Version 6.2.0, Windows 11.0 OS, Jeti Technische Instrumente GmbH  
243 Tatzendpromenade 2, Jena, Germany). Chromaticity difference between ‘experimental’ and ‘control’  
244 tints will be considered in post-hoc analysis of reading performance with the use of coloured lenses.

245

#### 246 Randomisation & Blinding

247 Randomisation of interventions will be conducted by the Ulster University School of Biomedical  
248 Sciences’ Clinical Trials Manager. Researchers and participants will be blinded as to which lenses are  
249 assigned throughout the duration of the trial. Both spectacle frames housing the spectacle lenses  
250 will be identical to mask researchers and participants to the intervention employed.

251

#### 252 Spectacle Wear Periods & Washout

253 Participants will wear each intervention for a period of six weeks. Participants will be informed that  
254 spectacle wear is voluntary and to wear as much as desired. Participants will be advised to avoid  
255 wearing coloured spectacle lenses when driving at night as per manufacturer’s specification [47], to  
256 ensure that spectral transmission complies with College of Optometrists’ Guidance for Professional  
257 Practice on provision of coloured filters when driving [51]. Within the first and final week of  
258 spectacle wear, participants will be asked to complete a spectacle wear diary online (Research  
259 Electronic Data Capture, version 11.0.3, 2021, or paper copy where necessary) at the end of each

260 day of wear. The diary will record the number of hours the spectacles are worn daily. If the  
261 participant indicates that they have not worn the spectacles, they will be asked to provide reasons  
262 for this. Participants will also be asked to note the number of hours completing concentrated and/or  
263 near-work tasks and if the coloured spectacles have been worn to assist with these tasks.  
264 Participants will also be asked to grade how helpful (if at all), the spectacle lenses have been in  
265 assisting their reading performance on a six point Likert scale (0 = 'Not at all helpful' to 5 =  
266 'Extremely helpful'). Fig. 2 comprises a flowchart of the questions that will be posed to participants  
267 in their online spectacle wear diary.

268

269 *Fig. 2 – Flowchart of Spectacle Wear Diary Questionnaire*

270

271 After six weeks of wear, a two week washout period will be initiated. Participants' spectacles will be  
272 collected and stored securely. Washout will ensure potential carryover effects from initial spectacle  
273 wear will be eliminated. An overview of trial visits can be seen in the study flowchart in Fig. 3.

274

275 *Fig. 3 – Randomised Control Trial efficacy of coloured lenses for visual stress symptoms Flowchart*

276

277 Upon completion of wear of both interventions a 'head-to-head' comparison of both coloured  
278 spectacles will take place. Participants will observe a crowded passage of text in a foreign language  
279 with both pair of spectacles under masked conditions. Participants will be asked to consider the  
280 reading symptoms they experience and to determine which pair of spectacles they find the greatest  
281 perceived benefit, irrespective of measures of reading speed and performance noted earlier in the

282 trial. Participants will be advised to wear the preferred spectacles voluntarily, as they require.  
283 Participants will be contacted via telephone after three-months to assess long-term spectacle wear  
284 compliance and to assess if a sustained benefit from coloured lenses can be determined. Unmasking  
285 of participants shall not take place until the three-month follow-up to avoid influencing compliance  
286 levels in long-term spectacle wear.

## 287 **Outcome Measures**

288 An overview of the outcome measures employed at each visit during the trial can be seen in Fig. 1 -  
289 Schedule of Enrolment, Interventions and Assessment.

### 290 Primary Outcome Measure: Wilkins Rate of Reading Test Reading Speed

291 The Wilkins Rate of Reading Test (WRRT) is a long established measure of reading speed with and  
292 without the use of coloured filters and has been used in previous reading studies[9][23][24][25][26].  
293 As discussed in full by Wilkins et al. [27], the test comprises 15-randomly-ordered monosyllabic  
294 commonly used English language words that repeat throughout 10-lines of a size 9-point text to  
295 form a crowded paragraph. Owing to the random order of words presented devoid of context, the  
296 test isolates the visual input of processing words whilst reading, so that neither syntactic nor  
297 semantic reading processes are involved [52].

298

299 Participants will read the passage of crowded text aloud within 60-seconds, with and without  
300 coloured lenses as detailed in Fig. 1 – Schedule of Enrolment, throughout the duration of the trial.  
301 The number of words-per-minute (wpm) read correctly will be calculated. The examiner will note  
302 the number of errors made, namely omissions, reversals, additions, substitutions and  
303 mispronunciation [27]. In the event of a ceiling effect whereby all 150 words are read correctly in  
304 less than 60 seconds, the time taken to complete the test will be noted, and used to calculate

305 equivalent wpm reading speed [52][53]. The number of additional words read correctly and the  
306 percentage reading speed change with coloured lenses will be calculated and compared to baseline  
307 measures.

308

309 Secondary Outcome Measures: Symptom Improvement, Reading Speed with Further Reading Tests,  
310 Pattern Glare Scores & Long-term Compliance with Coloured Lenses.

311 DEVELOPMENTAL EYE MOVEMENT (DEM) TEST

312 The Developmental Eye Movement Test (DEM) Version 1 (Bernell Ltd, 1987), as summarised by  
313 Facchin [54] and Tanke et al. [55], was originally proposed to measure horizontal saccadic function  
314 of readers [56] but is now thought to more broadly assess oculomotor function whilst reading [54].  
315 Horizontal and vertical reading speed will be measured. Number of omission, addition,  
316 transposition, and substitution errors will be noted and inform adjusted horizontal and vertical  
317 reading speed calculations. A ratio of adjusted horizontal:vertical reading speed will then be  
318 determined. The DEM will be completed with and without coloured lenses throughout the trial,  
319 owing to the low risk of a learning effect from repeat measures of a test comprising a random series  
320 of numbers.

321

322 TEST OF WORD READING EFFICIENCY (TOWRE)

323 The Test of Word Reading Efficiency (TOWRE) 1st Edition (Pro-Ed Ltd, Austin TX, 1999) comprises a  
324 series of two standardised reading tests which independently assess a participant's sight-word  
325 efficiency and phonemic decoding ability - as discussed further by Torgeson et al. [57]. Reading  
326 speed and number of errors made on both subtests will be recorded. A Total Word Efficiency



327 Standard Score will be determined and compared to age-equivalent normative scores and  
328 percentiles [57][58]. Reading tests will be completed with and without coloured lenses as detailed in  
329 the Schedule of Enrolment.

330

### 331 ADULT READING TEST 2ND EDITION (ART-2)

332 The Adult Reading Test 2nd Edition (ART-2) (Adult Reading Test Ltd, Hayling Island, 2017) will  
333 provide participants with a 'naturalistic' passage of text to be read aloud [59] with and without the  
334 use of coloured lenses, as detailed in the Schedule of Enrolment. The test will measure participants'  
335 comprehension and reading speed under timed conditions. Both ART-2 Test 1 passages – 'News'  
336 (178 words in two paragraphs; Flesch-Kincaid Grade Level 7.9) and 'Wildlife' (179 words in four  
337 paragraphs; Flesch-Kincaid Grade Level 7.1), will be alternatively presented to participants to avoid a  
338 learning effect. Upon initial collection of 'experimental' and 'control' lenses, participants will be  
339 asked comprehension questions on the completed ART-2 passage, to assess conceptual  
340 understanding of the passage. Each set of questions will only be asked once throughout the trial at  
341 each spectacle collection appointment, to avoid learning effects.

342

### 343 LOW, MID & HIGH SPATIAL FREQUENCY PATTERN GLARE TEST

344 The Pattern glare test (Institute of Optometry (i.O.O) Sales Ltd, London, UK, 2003) will measure  
345 presence and severity of cortical hyperexcitation with and without coloured lenses. Participants will  
346 be asked to focus on the horizontal striped patterns of increasing spatial frequencies (0.3, 2.3 and  
347 9.4 cpd) at a fixed 40cm viewing distance as per protocol discussed by Evans & Stevenson [41].  
348 Seven questions relating to perceptual distortion visual symptoms experienced will be posed to  
349 participants. Total number of symptoms reported will be summed, where normative values >3 on

350 the mid-spatial frequency grating, may indicate diagnosable pattern glare [41]. The series of pattern  
351 glare tests will be repeated throughout the duration of the trial to test the hypothesis that optimally  
352 selected coloured filters may reduce severity of pattern glare and thus cortical hyperexcitability.

353

#### 354 READING SYMPTOM CHANGE

355 Prior to commencing wear of coloured lenses, participants will be asked to rate reading symptom  
356 frequency on the 6-point Likert scale initially used to recruit participants with symptoms suggestive  
357 of visual stress to the trial. After 10 minutes and six weeks of coloured lens wear, participants will be  
358 asked to repeat the symptom questionnaire. Additionally, after a two week washout period,  
359 participants will be asked to rate reading symptom frequency without the use of coloured lenses.

360

#### 361 **Statistical Analyses**

362 The Statistical Package for Social Sciences (Version 29.0; IBM Corporation, USA), software will be  
363 used for statistical analysis of reading performance and symptom change with use of ‘experimental’  
364 and ‘control’ precision tints.

365

366 Average-measures Wilkins Rate of Reading Test reading speed performance with the use of  
367 ‘experimental’ and ‘control’ lenses will be assessed by repeat-measures AVOVA testing for both  
368 interventions.

369

370 Clinically significant improvement noted on the WRRT, will be informed by percentage reading  
371 speed improvement with ‘experimental’ lenses, compared to baseline. To date, no validated  
372 repeatability values nor defined clinically significant improvement on the test exists in the literature.  
373 Therefore, researchers will classify participants’ reading speed improvement by two categories: (i)  
374 >5% to 15% improvement; indicating a mild clinical improvement on the WRRT and (ii) >15%  
375 improvement; indicating a moderate clinical improvement on the WRRT. These values have been  
376 derived from the consensus in the literature, whereby a stricter criterion for reading speed  
377 improvement has been applied more recently [3].

378

379 Repeat-measures ANOVA testing will also assess reading speed on secondary reading tests  
380 employed in the trial with both ‘experimental’ and ‘control’ lenses, for the Adult Reading Test (2<sup>nd</sup>  
381 Edition), The Test of Word Reading Efficiency (TOWRE) and the Developmental Eye Movement  
382 (DEM) test. Additionally, repeat-measures ANOVA testing of low, mid and high-spatial frequency  
383 pattern glare test scores with both interventions shall be considered. Furthermore, McNemar’s Test  
384 of Proportions will investigate changes in reading symptom frequency scores at both the start and  
385 end of the six week spectacle wear period, with both spectacle lens interventions when compared to  
386 baseline reading symptoms reported.

387

388 Additional data incorporated in statistical analysis will include the number of errors made in each  
389 reading test with both interventions; number of days spectacle lenses worn; number of hours  
390 spectacle lenses worn and number of hours completing concentrated tasks with or without the use  
391 of coloured lenses.

392

### 393 **Data Management**

394 Data will be treated and stored in line with the Data Protection Act. Reading symptom  
395 questionnaires used will have personal information attached to allow the researchers to identify  
396 participants with relevant visual stress symptoms, so that they can be contacted to participate in the  
397 trial. Once collected and analysed, each questionnaire shall be anonymised and assigned a unique  
398 participant identification number. Participants enrolled in the trial will be identified using their  
399 identification number assigned to their reading symptom questionnaire to ensure anonymity during  
400 data entry and analysis. All clinical and sensitive information written on hard-copy shall be stored in  
401 a secured filing cabinet, of which only the researchers can access. All electronic data will be stored  
402 on University-issued encrypted hardware on password-protected and encrypted data analysis  
403 programmes. All data (electronic and hard copy) will be held for 10-years in line with university  
404 regulations. Anonymised data will be made available upon request upon cessation of the trial.

405

### 406 **Ethical Considerations**

407 The protocol has been approved by the Ulster University, School of Biomedical Sciences Ethical Filter  
408 Committee as of 28/10/2022 (Ref: FC-BMS-189). The trial is currently listed on ClinicalTrials.gov (Ref:  
409 NCT04318106). Participants will be informed that participation in the trial is voluntary and that they  
410 can withdraw their participation at any time. Informed consent will be ascertained through a written  
411 consent form provided alongside the reading symptom questionnaire (see supporting information 3  
412 – consent form). Risk of adverse incident from coloured spectacle lens wear is low. In the unlikely  
413 event that an adverse incident occurs, it will be reported to the project’s chief investigator S.J.M.  
414 and through Ulster University Research Governance protocols.

415

## 416 **Trial Progress To Date**

417 1071 undergraduates at Ulster University have been screened for symptoms of visual stress, 171  
418 undergraduates have met recruitment criteria and have been invited to participate in the trial. 60  
419 participants are currently enrolled in the trial. Researchers plan to screen newly enrolled  
420 undergraduate students at the start of the 2024-25 academic year, to ensure adequate trial  
421 enrolment.

422

423

## 424 **Discussion**

425 This study will be the largest randomised control trial investigating coloured lens efficacy in the  
426 management of visual stress in adults to date. Previous studies have been criticised for small sample  
427 sizes and being underpowered [1], therefore, it has been difficult to draw meaningful conclusions in  
428 relation to coloured lens efficacy. Additionally, this randomised control trial will be the first to assess  
429 reading symptoms and performance in a homogenous adult population, unlike previous  
430 investigations which have included both adults and children [10]. Evidence and guidance in relation  
431 to the practice of colorimetry from professional bodies in the United Kingdom is guarded [20][21],  
432 advocating for a large scale randomised control trial to take place prior to endorsing the practice.  
433 This is echoed in the findings of two recent systematic reviews [1][19]. Therefore, we believe this  
434 trial is of high importance to inform best clinical optometric practice.

435

436 Recent position statements from the College of Optometrists UK [20] and the Association of  
437 Optometrists UK [22] suggest weaknesses in the current evidence surrounding the effectiveness of

438 coloured lenses, and that the treatment of visual stress with coloured lenses remains controversial.  
439 Yet, over 300 optometry practices throughout the United Kingdom have an Intuitive Colorimeter™  
440 and assess patients with reading difficulties and symptoms of visual stress, and the wearing of  
441 coloured lenses is not uncommon. In addition, optometric practices may offer alternative methods  
442 of visual stress assessment, such as coloured overlay assessment, and ‘ChromaGen’ contact lens  
443 fitting, amongst others. Whilst this study will not directly influence the management of visual stress  
444 with these alternative treatments, further knowledge on coloured filter efficacy will be uncovered  
445 from the results of this trial. The results of this study will provide the much needed evidence-base  
446 for optometrists, orthoptists and other practitioners assessing visual stress and reading difficulties.  
447 Results of this trial may steer the future direction of this area of optometric practice in relation to  
448 the practice of colorimetry and prescription of precision tinted lenses.

449

#### 450 **Acknowledgements**

451 The authors would like to thank the Local Ophthalmic Committee Central Optical Fund for funding  
452 the coloured spectacle lenses and spectacle frames. The authors would also like to thank study  
453 participants for their commitment to take part in the trial. Additionally, the authors would like to  
454 thank technical and auxiliary staff at the Centre for Optometry and Vision Science, Ulster University  
455 for their support whilst conducting the trial.

456

#### 457 **References**

458 [1] Griffiths PG, Taylor RH, Henderson LM, et al. The effect of coloured overlays and lenses on  
459 reading: a systematic review of the literature. *Ophthalmic Physiol. Opt.* 2016;36: 517-544. DOI:  
460 10.1111/opo.12316.

- 461 [2] Wilkins AJ. Reading Through Colour: How Coloured filters can reduce reading difficulty, eye strain  
462 and headaches. 1<sup>st</sup> ed. Chichester: John Wiley & Sons Ltd.; 2003
- 463 [3] Evans BJW, Allen PM, Wilkins AJ. A Delphi study to develop practical diagnostic guidelines for  
464 visual stress (pattern-related visual stress). *J. Optom.* 2017;10: 161-168  
465 DOI: [10.1016/j.optom.2016.08.002](https://doi.org/10.1016/j.optom.2016.08.002).
- 466 [4] Gilchrist JM, Allen PM. Lexical decisions in adults with low and high susceptibility to pattern-  
467 related visual stress: a preliminary investigation. *Front Psychol.* 2015;6: 1-10  
468 DOI: [10.3389/fpsyg.2015.00449](https://doi.org/10.3389/fpsyg.2015.00449)
- 469 [5] Conlon EG, Lovegrove WJ, Chekaluk E, et al. Measuring Visual Discomfort. *Vis. Cogn.* 1999;6: 637-  
470 663 DOI: <https://doi.org/10.1080/135062899394885>
- 471 [6] Singleton C, Trotter S. Visual stress in adults with and without dyslexia. *J. Res. Read.* 2005;28:  
472 365-378 DOI: <https://doi.org/10.1111/j.1467-9817.2005.00275.x>
- 473 [7] Northway N. Undetected Visual Problems in Adults with Literacy Difficulties: Appendix 3 – The  
474 Visual Stress Index. 2009. Available from:  
475 <https://epale.ec.europa.eu/sites/default/files/downloadresource9450.pdf> [Accessed 8 February  
476 2024].
- 477 [8] Wilkins AJ, Evans BJW, Brown JA, et al. Double-masked placebo-controlled trial of precision  
478 spectral filters in children who use coloured overlays. *Ophthalmic Physiol. Opt.* 1994;14: 365-370  
479 DOI: <https://doi.org/10.1111/j.1475-1313.1994.tb00126.x>
- 480 [9] Lightstone A, Lightstone T, Wilkins AJ. Both coloured overlays and coloured lenses can improve  
481 reading fluency, but their optimal chromaticities differ. *Ophthalmic Physiol. Opt.* 1999;19: 279-285  
482 DOI: <https://doi.org/10.1046/j.1475-1313.1999.00442.x>

- 483 [10] Suttle CM, Conway ML. Efficacy of coloured lenses for patients diagnosed with visual stress.  
484 *Clin/ Exp. Optom.* 2024;107: 1-7 DOI: [10.1080/08164622.2024.2302822](https://doi.org/10.1080/08164622.2024.2302822)
- 485 [11] Wilkins AJ. Visual stress: Origins and treatment. *CNS.* 2021;6: 1-13 [https://www.oruen.com/wp-](https://www.oruen.com/wp-content/uploads/2021/01/74-86_Oruen_Vol-6_Jan-2021.pdf)  
486 [content/uploads/2021/01/74-86\\_Oruen\\_Vol-6\\_Jan-2021.pdf](https://www.oruen.com/wp-content/uploads/2021/01/74-86_Oruen_Vol-6_Jan-2021.pdf)
- 487 [12] Haigh SM, Laycox CA, Thompson L, et al. Flicker Impairs Reading Speed: Impacts on the Visually  
488 Sensitive. *J. Vis.* 2023;23: 4782. DOI: <https://doi.org/10.1167/jov.23.9.4782>.
- 489 [13] Wilkins AJ, Nimmo-Smith MI, Tait A, et al. A neurological basis for visual discomfort. *Brain.*  
490 1984;107: 989-1017 DOI: [10.1093/brain/107.4.989](https://doi.org/10.1093/brain/107.4.989)
- 491 [14] Wilkins AJ, Nimmo-Smith MI. The clarity and comfort of printed text. *Ergonomics.* 1987;30:  
492 1705-1720 DOI: [10.1080/00140138708966059](https://doi.org/10.1080/00140138708966059)
- 493 [15] Huang J, Zong X, Wilkins AJ, et al. fMRI evidence that precision ophthalmic tints reduce  
494 hyperexcitation in migraine. *Cephalgia.* 2011;31: 925-936 DOI: [10.1177/0333102411409076](https://doi.org/10.1177/0333102411409076)
- 495 [16] Wilkins AJ, Evans BJW, Plant GT. Potential Uses for Precision Tinted Lenses in a Neurology Clinic.  
496 *TouchREVIEWS in Neurology.* 2022;18: 93-102 DOI: <https://doi.org/10.17925/USN.2022.18.2.93>
- 497 [17] Berman SM, Greenhouse DS, Bailey IL, et al. Human Electroretinogram Responses to Video  
498 Displays, Fluorescent Lighting and Other High Frequency Sources. *Optom. Vis. Sci.* 1991;68: 645-662  
499 DOI: [10.1097/00006324-199108000-00012](https://doi.org/10.1097/00006324-199108000-00012)
- 500 [18] Guimarães MR, de Araújo-Vilhena D, Loew SJ, et al. Spectral Overlays for Reading Difficulties:  
501 Oculomotor Function and Reading Efficiency Among Children and Adolescents with Visual Stress.  
502 *Percept. Mot. Skills.* 2020;127 : 490-509 DOI : [10.1177/0031512519889772](https://doi.org/10.1177/0031512519889772)



- 503 [19] Evans BJW, Allen PM. A systematic review of controlled trials on visual stress using Intuitive  
504 Overlays or the Intuitive Colorimeter. *J. Optom.* 2016;9: 205-218 DOI: [10.1016/j.optom.2016.04.002](https://doi.org/10.1016/j.optom.2016.04.002)
- 505 [20] The College of Optometrists. Clinical Practice: Guidance: Evidence in Practice – Precision Tinted  
506 Lenses. n.d. Available from: [https://www.college-optometrists.org/clinical-guidance/using-evidence-](https://www.college-optometrists.org/clinical-guidance/using-evidence-in-practice/precision-tinted-lenses)  
507 [in-practice/precision-tinted-lenses](https://www.college-optometrists.org/clinical-guidance/using-evidence-in-practice/precision-tinted-lenses) [Accessed 2 February 2024]
- 508 [21] The College of Optometrists. What are coloured lenses and overlays really used for? *Acuity.*  
509 2020;Winter. Available from: [https://www.college-optometrists.org/professional-](https://www.college-optometrists.org/professional-development/college-journals/acuity/all-issues/winter-2020/2020-01-whatarecolouredlensesandoverlaysreallyfor)  
510 [development/college-journals/acuity/all-issues/winter-2020/2020-01-](https://www.college-optometrists.org/professional-development/college-journals/acuity/all-issues/winter-2020/2020-01-whatarecolouredlensesandoverlaysreallyfor)  
511 [whatarecolouredlensesandoverlaysreallyfor](https://www.college-optometrists.org/professional-development/college-journals/acuity/all-issues/winter-2020/2020-01-whatarecolouredlensesandoverlaysreallyfor) [Accessed 17 January 2024]
- 512 [22] The Association of Optometrists. Visual stress: how to apply the evidence in practice. *Optometry*  
513 *Today.* 2022;March. Available from: : [https://www.aop.org.uk/ot/professional-support/clinical-and-](https://www.aop.org.uk/ot/professional-support/clinical-and-regulatory/2022/03/03/visual-stress-how-to-apply-the-evidence-in-practice)  
514 [regulatory/2022/03/03/visual-stress-how-to-apply-the-evidence-in-practice](https://www.aop.org.uk/ot/professional-support/clinical-and-regulatory/2022/03/03/visual-stress-how-to-apply-the-evidence-in-practice) [Accessed 17 January  
515 2024]
- 516 [23] Jeanes R, Busby A, Martin J, et al. Prolonged use of coloured overlays for classroom reading. *Br J*  
517 *Psychol.* 1997;88: 531-548 DOI : <https://doi.org/10.1111/j.2044-8295.1997.tb02656.x>
- 518 [24] Harris D, MacRow-Hill SJ. Application of ChromaGen haplosopic lenses to patients with  
519 dyslexia: a double-masked placebo controlled trial. *J. Am. Optom. Assoc.* 1999;70: 629-640
- 520 [25] Bouldoukian J, Wilkins AJ, Evans BJW. Randomised controlled trial of the effect of coloured  
521 overlays on the rate of reading of people with specific learning difficulties. *Ophthalmic Physiol. Opt.*  
522 2002;22: 55-60 DOI: [10.1046/j.1475-1313.2002.00002.x](https://doi.org/10.1046/j.1475-1313.2002.00002.x)

- 523 [26] Cardona G, Borràs R, Peris E, et al. A placebo-controlled trial of tinted lenses in adolescents with  
524 good and poor academic performance: reading accuracy and speed. *J. Optom.* 2010;3 94-101 DOI:  
525 [10.1016/S1888-4296\(10\)70013-3](https://doi.org/10.1016/S1888-4296(10)70013-3)
- 526 [27] Wilkins AJ, Jeanes R, Pumfrey P, et al. Rate of Reading Test ®: its reliability and its validity in the  
527 assessment of the effects of coloured overlays. *Ophthalmic Physiol. Opt.* 1996;16: 491-497 DOI:  
528 <https://doi.org/10.1046/j.1475-1313.1996.96000282.x>
- 529 [28] Monger L, Wilkins AJ, Allen PM. Identifying visual stress during a routine eye examination. *J.*  
530 *Optom.* 2015;8: 140-145 DOI: [10.1016/j.optom.2014.10.001](https://doi.org/10.1016/j.optom.2014.10.001)
- 531 [29] Wilkins AJ, Huang J, Cao Y. Visual stress theory and its application to reading and reading tests.  
532 *J. Read. Res.* 2004;27: 152-162 DOI: <https://doi.org/10.1111/j.1467-9817.2004.00223.x>
- 533 [30] Evans BJW. The need for optometric investigation in suspect Meares-Irlen syndrome or visual  
534 stress. *Ophthalmic Physiol. Opt.* 2005;25: 363-370 DOI: [10.1111/j.1475-1313.2005.00289.x](https://doi.org/10.1111/j.1475-1313.2005.00289.x)
- 535
- 536 [31] Wilkins AJ, Patel R, Adjain R, et al. Tinted spectacle lenses and visually sensitive migraine  
537 *Cephalalgia.* 2002;22: 711-719 DOI: [10.1046/j.1468-2982.2002.00362.x](https://doi.org/10.1046/j.1468-2982.2002.00362.x)
- 538 [32] Harle DE, Evans BJW. The optometric correlates of migraine. *Ophthalmic Physiol. Opt.* 2004;24:  
539 369-383 DOI: [10.1111/j.1475-1313.2004.00212.x](https://doi.org/10.1111/j.1475-1313.2004.00212.x)
- 540 [33] Harle DE, Shepherd AJ, Evans BJW. visual stimuli Are common triggers of migraine and are  
541 associated with pattern glare. *Headache.* 2006;46: 1431-1440 DOI: [10.1111/j.1526-](https://doi.org/10.1111/j.1526-4610.2006.00585.x)  
542 [4610.2006.00585.x](https://doi.org/10.1111/j.1526-4610.2006.00585.x)

- 543 [34] Wilkins AJ, Huang H, Cao Y. Prevention of visual stress and migraine with precision spectral  
544 filters. *Drug Dev. Res.* 2007;68: 469-475 DOI: [10.1002/ddr.20216](https://doi.org/10.1002/ddr.20216)
- 545 [35] Singleton C, Henderson LM. Computerized screening for visual stress in children with dyslexia.  
546 *Dyslexia.* 2007;13: 130-151 DOI: [10.1002/dys.329](https://doi.org/10.1002/dys.329)
- 547 [36] Saksida A, Iannuzzi S, Bogliotti, et al. Phonological skills, visual attention span, and visual stress  
548 in developmental dyslexia. *Dev. Psychol.* 2016;52: 1503-1516 DOI: [10.1037/dev0000184](https://doi.org/10.1037/dev0000184)
- 549 [37] Wilkins AJ, Lewis E. Coloured overlays, text, and texture. *Perception.* 1999;28: 641-650 DOI :  
550 <https://doi.org/10.1068/p2761>
- 551 [38] Ludlow AK, Wilkins AJ, Heaton P. The effect of coloured overlays on reading ability in children  
552 with autism. *J. Autism Dev. Disord.* 2006;36: 507-516 DOI: [10.1007/s10803-006-0090-5](https://doi.org/10.1007/s10803-006-0090-5)
- 553 [39] Ludlow AK, Giannadou A, Franklin A, et al. The possible uses of precision tinted lenses to  
554 improve social cognition in children with autism spectrum disorders. *Vis. Res.* 2020;17: 53-59 DOI:  
555 <https://doi.org/10.1016/j.visres.2020.03.007>
- 556 [40] Wilkins AJ, Evans BJW. Pattern glare test instructions. 1<sup>st</sup> ed. London: Institute of Optometry  
557 Sales Ltd.; 2001
- 558 [41] Evans BJW, Stevenson SJ. The Pattern Glare Test: a review and determination of normative  
559 values. *Ophthalmic Physiol. Opt.* 2008;28: 295-309 DOI: [10.1111/j.1475-1313.2008.00578.x](https://doi.org/10.1111/j.1475-1313.2008.00578.x)
- 560 [42] Gole GA, Dibden SN, Pearson CC, et al. Tinted lenses and dyslexics – a controlled study. *Aus. N.Z.*  
561 *J. Ophthalmol.* 1989;17: 137-141 DOI: [10.1111/j.1442-9071.1989.tb00503.x](https://doi.org/10.1111/j.1442-9071.1989.tb00503.x)

- 562 [43] Menacker SJ, Breton ME, Breton ML, et al. Do tinted lenses improve reading performance of  
563 reading children? A cohort study. *Arch Ophthalmol*. 1993;111: 213-218 DOI:  
564 [10.1001/archopht.1993.01090020067025](https://doi.org/10.1001/archopht.1993.01090020067025)
- 565 [44] Uccula A, Enna M, Mulatti C. Colors, colored overlays and reading skills. *Front Psychol*. 2014;5:  
566 1-14 DOI: [10.3389/fpsyg.2014.00833](https://doi.org/10.3389/fpsyg.2014.00833)
- 567 [45] Cerium Visual Technologies. Colorimetry Protocol. 2018. Available from:  
568 <https://ceriumvistech.com/colorimetry-protocol/> [Accessed 26 May 2023]
- 569 [46] Wilkins AJ, Nimmo-Smith MI, Jansons JE. Colorimeter for the intuitive manipulation of hue and  
570 saturation, and its role in the study of perceptual distortion. *Ophthalmic Physiol. Opt.* 1992;12: 381-  
571 385 DOI: <https://doi.org/10.1111/j.1475-1313.1992.tb00413.x>
- 572 [47] Wilkins AJ. A System for Precision Ophthalmic Tinting. Manual for the Intuitive Colorimeter  
573 Mk.2 and Precision Tints. 2002. Available from: <https://visualstress.info/Mk2UKMAN.pdf> [Accessed  
574 18 November 2023]
- 575 [48] Wilkins AJ, Shira N. A colorizer for use in determining an optimal ophthalmic tint. *Col. Res. Appl.*  
576 1992;26: 246-253 DOI: [10.1002/col.1022](https://doi.org/10.1002/col.1022)
- 577 [49] Wilkins AJ, Shira N, Nimmo-Smith MI. How precise do precision tints have to be and how many  
578 are necessary? *Ophthalmic Physiol. Opt.* 2005;25: 269-276 DOI: [10.1111/j.1475-1313.2005.00279.x](https://doi.org/10.1111/j.1475-1313.2005.00279.x)
- 579 [50] Aldrich A, Lovell-Patel R, Allen PM, et al. The Repeatability of Colorimetry is Precise(ly) as  
580 Expected. *Neuro-Ophthalmology*. 2018;3: 1-6 DOI: [10.12691/novn-3-1-1](https://doi.org/10.12691/novn-3-1-1)
- 581 [51] The College of Optometrists. Guidance for Professional Practice: Examining Patients who Drive –  
582 Tints and Driving. 2023. Available from: <https://www.college-optometrists.org/clinical->

- 583 [guidance/guidance/knowledge,-skills-and-performance/examining-patients-who-drive/tints-and-](#)  
584 [driving](#) [Accessed 4 June 2024]
- 585 [52] Zeri F, Tavazzi S, Punzi, et al. New Italian version of the Wilkins Rate of Reading Test: Materials  
586 for repeated-measure designs in optometry and neuropsychological research. *Ophthalmic Physiol.*  
587 *Opt.* 2023;43: 629-639 DOI: <https://doi.org/10.1111/opo.13134>
- 588 [53] Gilchrist JM, Allen PM, Monger L, et al. Precision, reliability and application of the Wilkins Rate  
589 of Reading test. *Ophthalmic Physiol. Opt.* 2021;41: 1198-1208 DOI: [10.1111/opo.12894](https://doi.org/10.1111/opo.12894)
- 590 [54] Facchin A. Spotlight on the Developmental Eye Movement (DEM) Test. *Clin. Optom. (Auckl)*.  
591 2021;13: 73-81 DOI: [10.2147/OPTO.S232487](https://doi.org/10.2147/OPTO.S232487)
- 592 [55] Tanke N, Barsingerhorn A, Boonstra F, et al. Visual fixations rather than saccades dominate the  
593 developmental eye movement test *Sci. Rep.* 2021;11: 1162 DOI: [https://doi.org/10.1038/s41598-](https://doi.org/10.1038/s41598-020-80870-5)  
594 [020-80870-5](https://doi.org/10.1038/s41598-020-80870-5)
- 595 [56] Garzia RP, Richman JE, Nicholson SB, et al. A new visual-verbal saccade test: the developmental  
596 eye movement test (DEM). *J. Am. Optom. Assoc.* 1990;61: 124-145
- 597 [57] Torgeson J, Wagner R, Rashotte C. Test of Word Reading Efficiency – Examiners’ Manual. 1<sup>st</sup> ed.  
598 Austin, Texas: Pro-Ed. 1999
- 599 [58] Tarar JM, Meisinger EB, Dickens RH. Test Review: Test of Word Reading Efficiency – Second  
600 Edition (TOWRE-2) by Torgesen, J.K., Wagner, R.K., Rashotte, C.A. *Can. J. Psychol.* 2015;30: 320-326  
601 DOI: <https://doi.org/10.1177/0829573515594334>
- 602 [59] Brooks P, Everatt J, Fidler R. Adult Reading Test 2 (Silent and Oral Reading Manual), 2<sup>nd</sup> ed.  
603 Hayling Island: Adult Reading Test Ltd. 2017.



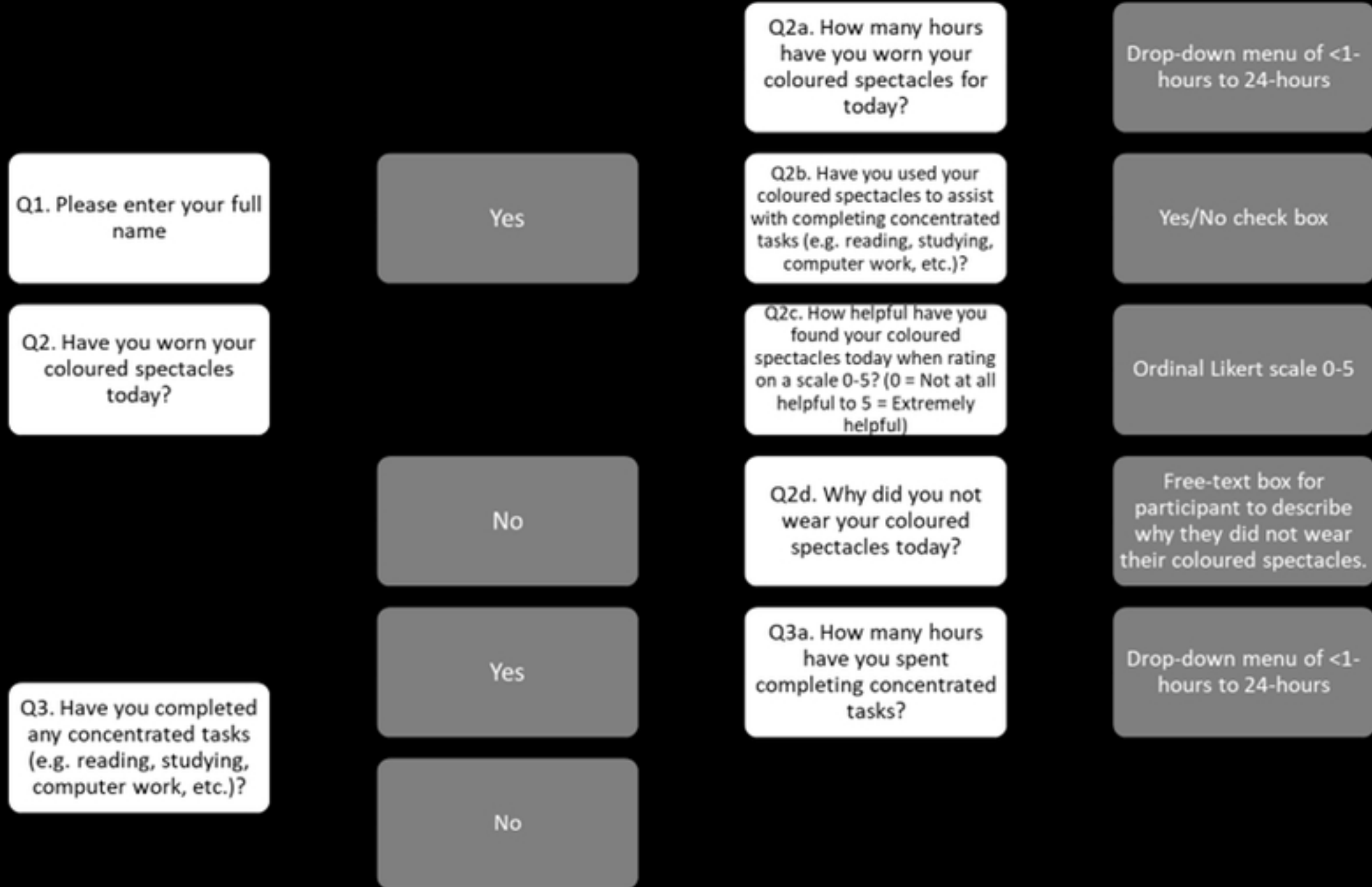

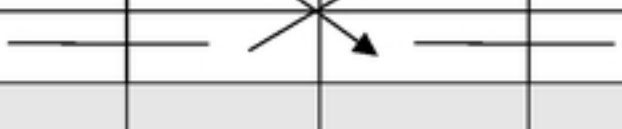


Figure 2 Flowchart of Spectacle Wear Diary Questionnaire

Figure 1 – Schedule of Enrolment

TIMEPOINT	STUDY PERIOD							
	Enrolment	Allocation	Post-allocation					Close-out
	-t <sub>1</sub> – Visit 1	0	t <sub>1</sub> – Visit 2a	t <sub>2</sub> – Visit 2b	t <sub>3</sub> – Visit 3a	t <sub>4</sub> – Visit 3b	t <sub>5</sub> – Visit 4	t <sub>x</sub> – Visit 5
Visit Summary	Baseline Measures	Randomisation & Allocation	Spectacle Collection 1	Spectacle Return 1	Spectacle Collection 2	Spectacle Return 2	Head-to-Head Comparison	Remote 3-Month Follow-Up
<b>ENROLMENT:</b>								
Informed Consent	X							
Eligibility Screen	X							
Habitual Vision / VA	X							
Binocular Vision Assessment	X							
City University Colour Vision	X							
Baseline Reading Tests	X							
Pattern Glare Test	X							
Colorimetry	X							
Allocation		X						
<b>INTERVENTIONS:</b>								
'Experimental' Coloured Lens								
'Control' Coloured Lens								
<b>ASSESSMENTS:</b>								
WRRT with Intervention			X	X	X	X		
WRRT without Intervention	X		X	X	X	X		
PGT with Intervention			X	X	X	X		
PGT without Intervention	X		X	X	X	X		
TOWRE with Intervention			X	X	X	X		
TOWRE without Intervention	X		X		X			
ART-2 with Intervention			X	X	X	X		
ART-2 without Intervention	X		X		X			
DEM with Intervention			X	X	X	X		
DEM without Intervention	X		X	X	X	X		
RSQ with Intervention			X	X	X	X		
RSQ without Intervention			X		X			
Foreign Language Reading Test							X	
Compliance Check								X

medRxiv preprint doi: <https://doi.org/10.1101/2024.08.18.24312188>; this version posted August 19, 2024. The copyright holder for this preprint (which was not certified by peer review) is the author/funder, who has granted medRxiv a license to display the preprint in perpetuity. It is made available under a [CC-BY 4.0 International license](https://creativecommons.org/licenses/by/4.0/).



**Key: VA: Visual Acuity, WRRT: Wilkins Rate of Reading Test; ART-2: Adult Reading Test 2<sup>nd</sup> Edition; TOWRE: Test of Word Reading Efficiency; DEM: Developmental Eye Movement Test; PGT: Pattern Glare Test; RSQ: Reading Symptom Questionnaire**

medRxiv preprint doi: <https://doi.org/10.1101/2024.08.18.24312188>; this version posted August 19, 2024. The copyright holder for this preprint (which was not certified by peer review) is the author/funder, who has granted medRxiv a license to display the preprint in perpetuity.  
It is made available under a [CC-BY 4.0 International license](https://creativecommons.org/licenses/by/4.0/) .

medRxiv preprint doi: <https://doi.org/10.1101/2024.08.18.24312188>; this version posted August 19, 2024. The copyright holder for this preprint (which was not certified by peer review) is the author/funder, who has granted medRxiv a license to display the preprint in perpetuity. It is made available under a [CC-BY 4.0 International license](https://creativecommons.org/licenses/by/4.0/).

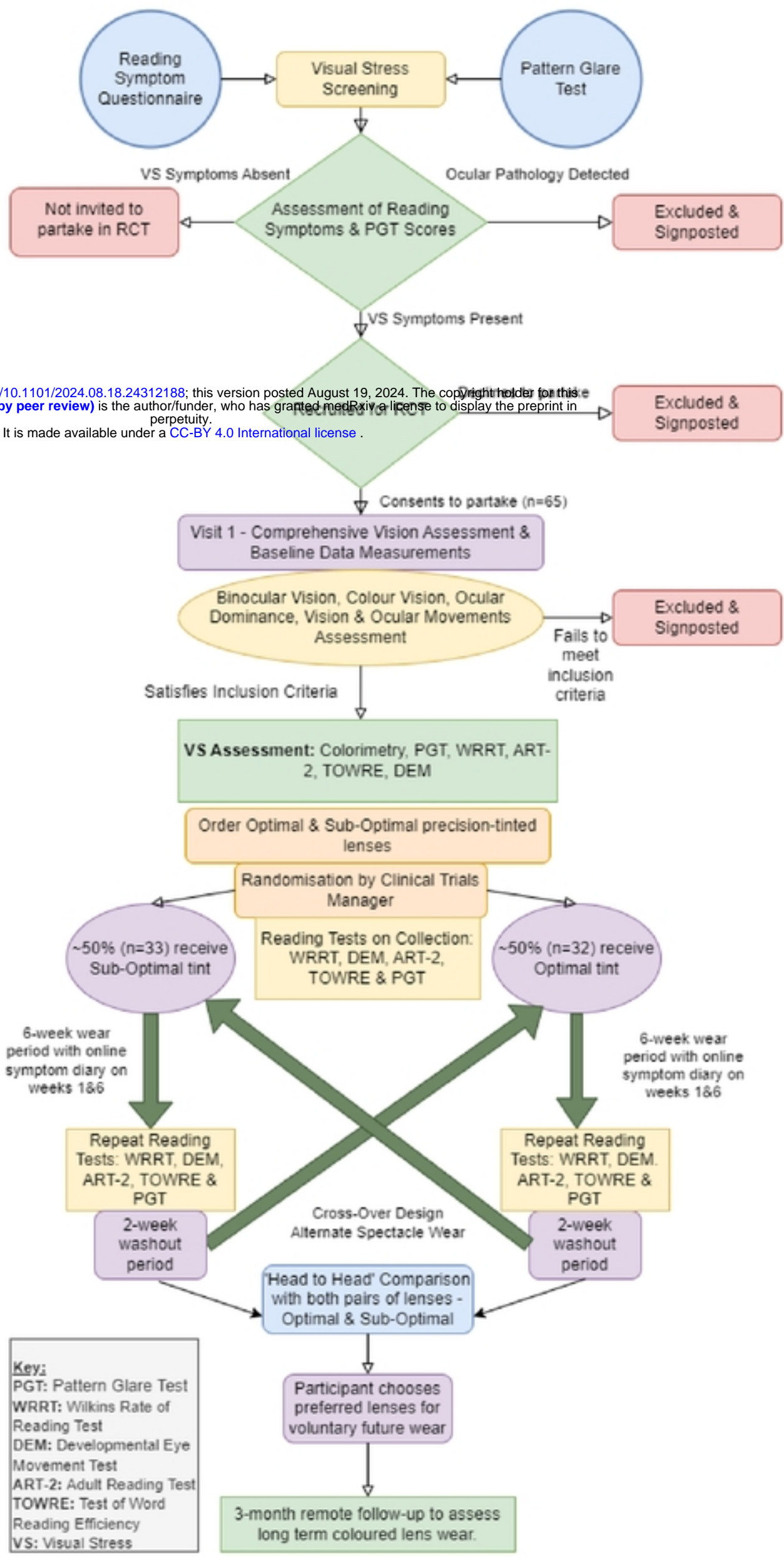


Figure 3 – Randomised Control Trial efficacy of coloured lenses for visual stress symptoms Flowchart

medRxiv preprint doi: <https://doi.org/10.1101/2024.08.18.24312188>; this version posted August 19, 2024. The copyright holder for this preprint **(which was not certified by peer review)** is the author/funder, who has granted medRxiv a license to display the preprint in perpetuity.  
It is made available under a [CC-BY 4.0 International license](#) .