

# Genetics of transient amnesia highlights a vascular role in memory

Manuel A. Rivas<sup>1</sup>, FinnGen, Mark J. Daly<sup>2,3,4</sup>

E-mail: [mrivas@stanford.edu](mailto:mrivas@stanford.edu) and [mjdaly@broadinstitute.org](mailto:mjdaly@broadinstitute.org)

1 Department of Biomedical Data Science, Stanford University, CA, USA

2 Institute for Molecular Medicine Finland (FIMM), University of Helsinki, Helsinki, Finland

3 Analytic and Translational Genetics Unit, Massachusetts General Hospital, Boston, MA, USA

4 Broad Institute of MIT and Harvard, Cambridge, MA, USA

## Abstract

Where memory is stored and how it is processed is poorly understood. Traditionally, genetics of low prevalence traits have been used to get a better understanding of naturally occurring conditions across species. Here, we conduct a genome-wide association of transient global amnesia (TGA), a specific type of heritable amnesia characterized by a sudden, temporary episode of memory loss, across 4,303 patients and over 1 million controls from three population biobanks in Finland, United States, and the United Kingdom, to better understand the genetic basis of memory. We find nine loci associated with TGA ( $p < 5 \times 10^{-8}$ ) including a missense variant in *CRIP1* with high posterior probability ( $> .9$ ) of being the causally relevant variant using fine-mapping, replicated across 3 cohorts. Furthermore, we find enrichment for a specific cell type, pericyte cells, which are a key part of the neurovascular unit, which includes astrocytes and neurons, and control interactions between neurons and the cerebral vasculature, implicating a direct vascular role in memory formation and retrieval. We anticipate these genetic studies at a larger scale to bring new biological understanding and therapeutic insights into the brain and memory.

## Introduction

Amnesia is a condition that affects memory, involving a loss of memory that may be partial or complete, temporary or permanent. It's directly related to memory because it specifically impacts the ability to recall information that was previously known or the ability to form new memories. Amnesia primarily impacts explicit (declarative) memory, which involves conscious recall of facts and events. Implicit (nondeclarative) memory, such as skills like riding a bike or swimming, typically remains unaffected because it is thought to be stored in different brain areas<sup>1</sup>. There are several types of amnesia, and they can be caused by various factors including brain injury, disease affecting the brain, certain medications, or psychological trauma.

The effects on memory can range from difficulty forming new memories (anterograde amnesia) to trouble recalling past experiences (retrograde amnesia).

Transient global amnesia (TGA) is a specific type of amnesia characterized by a sudden, temporary episode of memory loss, during which the individual cannot form new memories and may have difficulty recalling past events. These episodes are usually brief, typically lasting for several hours, after which the person's memory gradually returns, and there is no lasting damage to memory<sup>2</sup>. The cause of TGA is not entirely understood, but it's thought to be related to temporary disruption of blood flow to certain parts of the brain that are involved in memory formation and retrieval. Recent MRI data suggest that a transient perturbation of hippocampal function is the functional correlate of TGA because focal diffusion lesions can be detected in the CA1 field of the hippocampal cornu ammonis<sup>3</sup>. Nonetheless, these data are inconclusive. Notably, a diagnosis of TGA is not given when the amnesia may be related to stroke, epilepsy/seizure or neurodegenerative disease<sup>4</sup>.

Age and migraine are established risk factors to trigger TGA<sup>3</sup>. Historically, genetics has been a powerful approach to gain insights into the causal biology of poorly understood conditions<sup>5</sup>. Here, we use genetic analysis of transient global amnesia from global population biobanks to better understand memory. First, FinnGen has directly genotyped and aggregated phenotype outcomes in over 470,000 individuals from Finland, an isolated population with recent bottlenecks that offers an opportunity for studying genetic variants in complex phenotypes<sup>6</sup>. Second, UK Biobank has genotyped and aggregated medical records and phenotypes from over 500,000 individuals<sup>7,8</sup> living in the UK. Third, All of US has sequenced and aggregated phenotype outcomes in over 240,000 individuals from the United States<sup>9</sup>.

## Results

### Exploration of phenotypes in Finland correlated with transient global amnesia in time

Public summary data from FinRegistry, a research project that utilizes the registry system in Finland to combine health data with a wide range of information from nearly the whole population of Finland, indicates that transient global amnesia is associated with transient ischemic attack ( $J_i = 1.62$ ). In FinnGen we find consistent signals where transient cerebral ischemic attack is associated with a 3.3-fold increased risk of transient global amnesia ( $-\log_{10}(P) = 80.8$ ). Nonetheless, only 453 out of the 3020 matched cases that exhibit transient global amnesia have had an episode of transient cerebral ischemic attack.

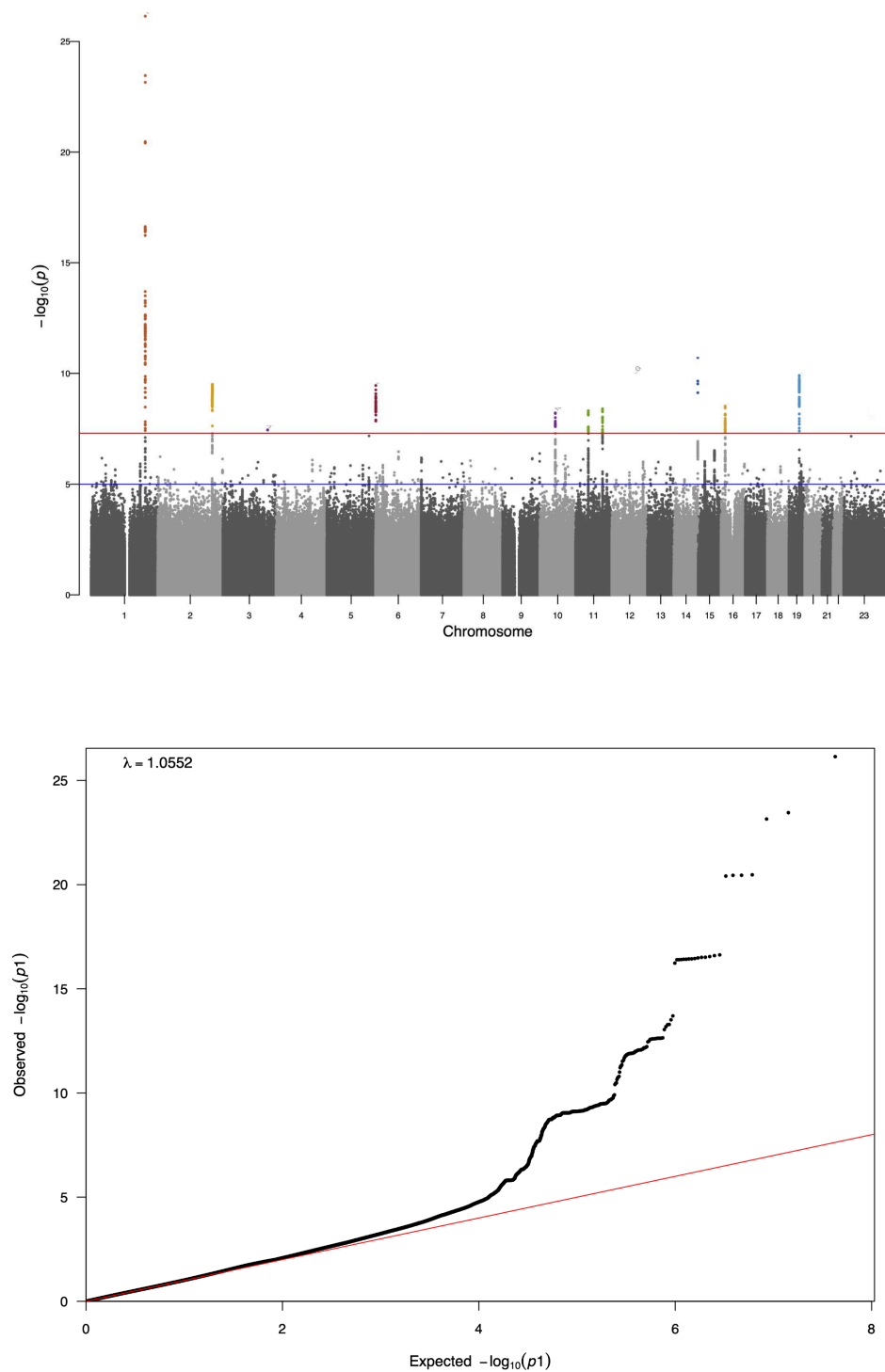
## Genome-wide meta-analysis identifies 9 loci associated with transient global amnesia

We undertook a meta-analysis of three transient global amnesia genome-wide association studies (GWAS) from FinnGen (number of cases = 3315, number of controls = 471,699), UK Biobank (number of cases = 692, number of controls = 413,669), and AllofUS (number of cases = 296 cases, number of controls = 124,781). We identified 9 new susceptibility loci meeting genome-wide significance as there has been no prior GWAS study conducted of TGA (see **Figure 1A**, see **Table 1**,  $P < 5 \times 10^{-8}$ ).

A quantile-quantile plot of the primary meta-statistic using single-SNP z-scores combined across all sample sets showed a marked excess of significant associations (see **Figure 1B**).

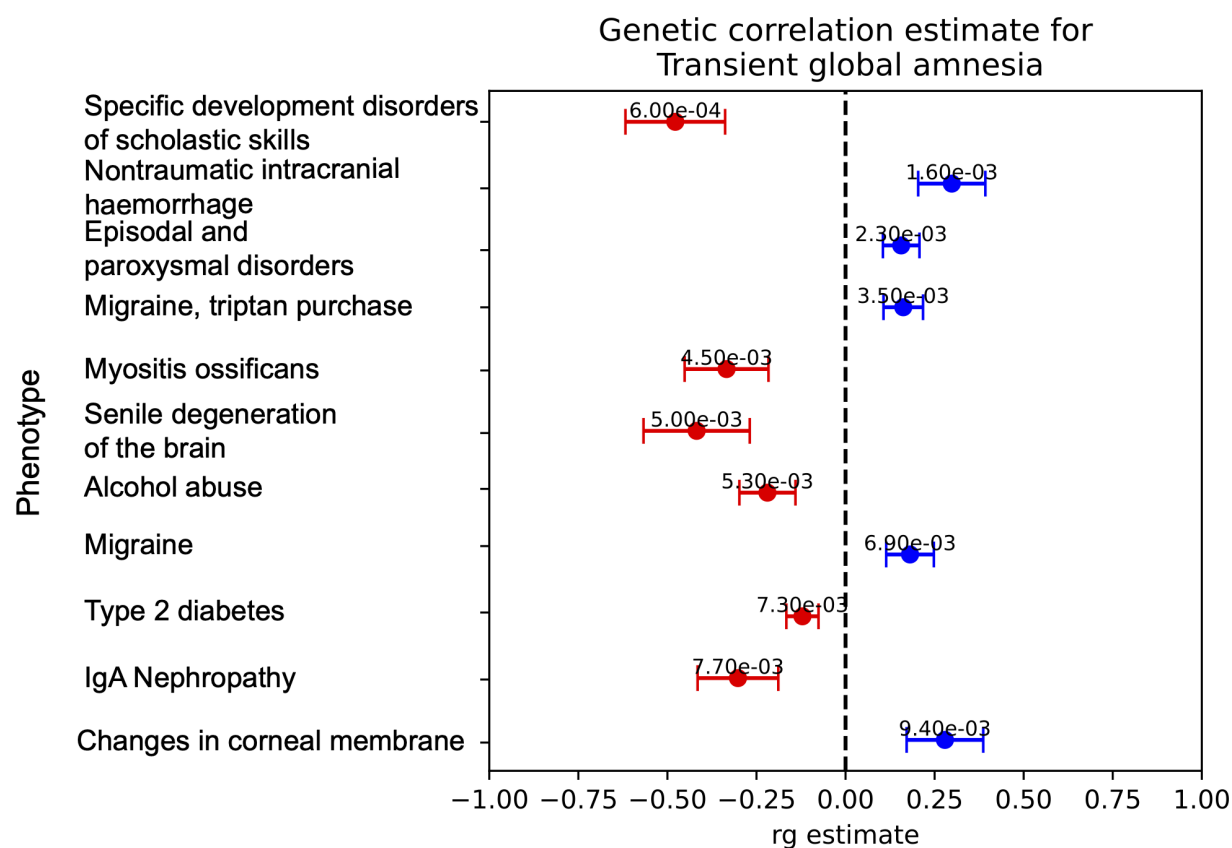
## Genetic correlation of transient global amnesia

Genetic correlation estimates are measures that describe the degree of shared genetic influences between two traits or disorders. These estimates can provide insights into whether and how strongly genetic factors contribute to the covariance between traits. Several factors can influence these estimates including pleiotropy, evolutionary history including genetic drift and selective pressures, and ascertainment bias (for example certain individuals may be excluded from the definition of a case thereby giving the appearance that the genetics of a trait has the opposite effect on the trait that was excluded). Here, we estimate the correlation of genetic effects between transient global amnesia and FinnGen phenotypes using LD score regression<sup>10</sup>. LD score regression uses genome-wide data to estimate the correlation of genetic effect parameters thereby not restricting to genome-wide significant findings. We find the genetics of nontraumatic intracranial haemorrhage and migraine to be positively correlated with the genetics of transient global amnesia ( $r_g = 0.29$ ,  $P = .0016$ ;  $r_g = 0.16$ ,  $P = 0.0035$ , respectively, see **Figure 2**). In addition, we find the genetics of specific developmental disorders of scholastic skills to be inversely correlated with the genetics of transient global amnesia ( $r_g = -0.48$ ,  $P = .0006$ ). Specific developmental disorders of scholastic skills refers to disorders in which the normal patterns of skill acquisition are disturbed from the early stages of development. It is not simply a consequence of mental retardation, and it is not due to any form of acquired brain trauma or disease<sup>11</sup>. Similarly, the genetics of senile degeneration of the brain and myositis ossificans were inversely correlated with the genetics of TGA ( $r_g = -0.42$ ,  $P = 0.005$ ;  $r_g = -0.33$ ,  $P = .0045$ , respectively, see **Figure 2**).



**Figure 1. a) Manhattan plot of genome-wide association meta-analysis for transient global amnesia. Summary statistics from GWAS analysis of 3,315 transient global amnesia**

cases and 471,669 controls in FinnGen were combined with summary statistics from GWAS analysis of 692 TGA cases and 413,669 controls in UK Biobank, and 296 TGA cases and 124,781 controls in AllofUS. (x-axis) genomic position of genetic variant, (y-axis)  $-\log_{10}(P\text{-value})$  of tested genetic variant. **b) Q-Q plot of p-values from genetic association meta-analysis for transient global amnesia.** (x-axis)  $-\log_{10}(\text{expected } P\text{-value})$  and (y-axis)  $-\log_{10}(\text{observed } P\text{-value})$ ).



**Figure 2. Estimates of the correlation of genetic effects between TGA and other phenotypes across FinnGen and UK Biobank.** (x-axis) rg estimate between TGA and (y-axis) phenotype. rg  $\pm$  SE is shown, LD score regression  $P$  value is shown in text. Phenotypes with  $P < .01$  are shown.

## Phenome-wide association of 9 TGA lead variants

Given the overall overlap of genetic effects with other conditions we asked whether the top 8 Transient global amnesia associated variants had patterns of pleiotropic effects (assessed as  $P < 5 \times 10^{-5}$ ) or whether the effects were specific to TGA. Of the 9 loci, 5 had evidence of being associated with another condition including coronary revascularization and myocardial infarction ( $n = 2$ ), hypertension ( $n = 2$ ), and pulse rate and pulse pressure ( $n=2$ ). Although we did find that the genetic variant proximal to *FOXF2* associated with TGA also associates to stroke, the effects are in the opposite direction (see **Supplementary Table 1**). To our surprise, multiple of the genetic variants that are significantly associated with transient global amnesia are specific, i.e.  $P > 5 \times 10^{-5}$  across all conditions assessed across both UK Biobank and FinnGen. In particular, we find that the associated variant, rs72744832 (OR = 1.41), an intronic variant in *LMOD1* does not associate with other diseases, but is associated with lean mass phenotypes in UK Biobank. *LMOD1* has high observed expression in tibial, coronary, and aorta artery (median TPM > 800), however quantitative trait analysis does not reveal any specific overlap that may indicate the genetic variant is involved in regulating expression of *LMOD1*<sup>12</sup>. In addition to the cardiovascular phenotypic overlaps being the most prominent, of the 7 genes noted in table 1 as the most likely based on proximity, 4 of these (*LMOD1*, *CRIP1*, *ACTN4*, *MYH11*) have extremely strong arterial expression in GTEx, while two others (*ARHGAP42* and *IPMK*) are more broadly expressed including substantial arterial expression.

To explore more specifically these potential genes, we used the Enrichr tool<sup>13</sup> program to probe two recently published compendia of cellular profiles: CellMarker<sup>13,14</sup> and Tabula Sapiens. The top associations are shown in **Supplementary Table 2** - of note, the most significant enrichment is with Mural cell brain expression in mouse ( $p = 9.2 \times 10^{-7}$ , OR = 244) and among human cells in Tabula Sapiens, the three equally enriched cell types ( $p < .001$ ) include vascular pericyte cells (the subset of mural cells relevant to small vessels/capillaries) ( $p = 6.7 \times 10^{-4}$ , OR = 67)<sup>13</sup>.

Variant ID	rsids	nearest_genes	OR	META_pval	Cell type expression
1-201926536-T-C	rs72744832	<i>LMOD1</i>	1.41	7.19E-27	Pericyte cell
14-105488368-C-T	rs55633823	<i>CRIP1</i>	1.19	1.93E-11	Vascular endothelial cells in cerebellum
19-38694171-G-A	rs7251903	<i>ACTN4</i>	0.87	1.24E-10	Vascular endothelial cells in cerebellum
2-203331895-C-T	rs116426890	many	1.22	4.90E-10	
6-1366655-G-T	rs192238573	<i>FOXF2</i>	0.79	5.52E-10	Mural cell brain
16-15814272-T-G	rs12919510	<i>MYH11</i>	1.14	3.00E-09	Pericyte cell
11-100639014-A-T	rs10894996	<i>ARHGAP42</i>	0.87	4.06E-09	

11-47637583-G-A	rs7118178	many	1.16	4.87E-09	
10-58170232-G-A	rs1769016	<i>IPMK</i>	0.86	1.45E-08	

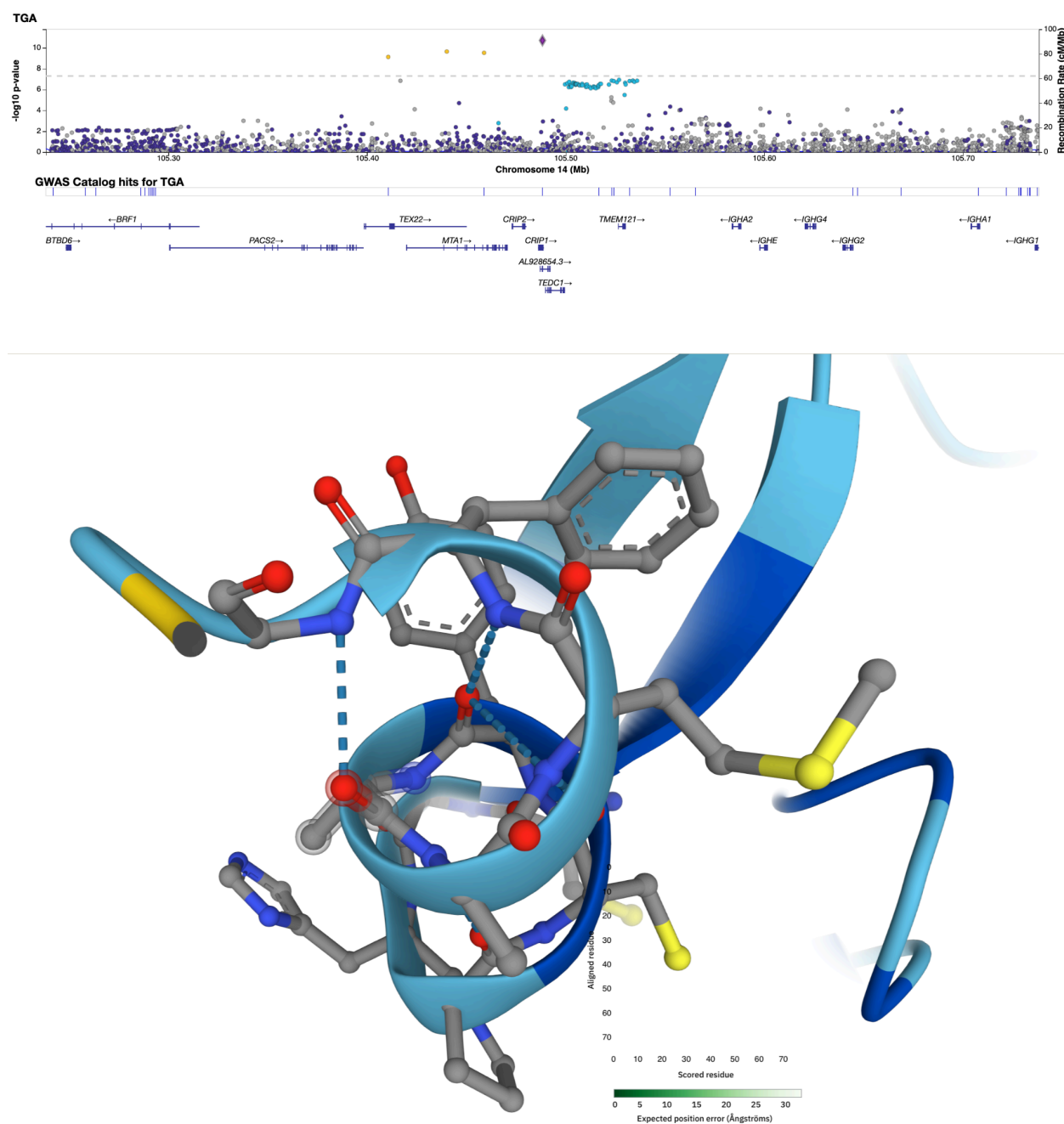
**Table 1. FinnGen and UK Biobank meta-analysis associated variants with index SNP.**

Genetic variants with  $P$  value  $< 5 \times 10^{-8}$  are shown. Variant ID corresponds to chromosome-position-ref-alt for hg38 build, rsids column correspond to the rsID of the index variant, nearest genes is the gene proximal to index SNP (when most associated SNPs are localized intrinsically or in a small intergenic region), beta corresponds to estimated log(odds ratio), META\_pval correspond to the meta analysis p-value when combining genetic effects estimated in FinnGen and UK Biobank, FINNGEN\_af\_alt corresponds to the allele frequency of the alternate allele in FinnGen and UKBB\_af\_alt corresponds to the allele frequency of the alternate allele in UK Biobank. For two loci, associated variants spanned long regions of LD with equivalent evidence for  $\sim 10$  genes, and for one (*CRIP1*) the gene was nominated based on the lead variant being a missense variant. All variants displayed had a  $P$  value  $> .05$  for heterogeneity of genetic effects, i.e. no significant evidence of heterogeneity observed.

## Protein-altering variant, p.Ala58Val, in *CRIP1* is associated with memory loss

Given established enrichment (along with improved interpretability) of protein-altering variants associated with disease<sup>15,16</sup> we asked whether any of the significantly associated variants pinpointed protein-altering variants that associate with TGA. Here, we found that a missense variant, p.Ala58Val, in *CRIP1* associates with transient global amnesia (meta-analysis  $P = 2.1 \times 10^{-11}$ , see **Figure 3**) - top index SNP in the region. The genetic variant has consistent effects in UK Biobank (odds ratio = 1.28,  $P = 3.1 \times 10^{-5}$ ) and FinnGen (odds ratio = 1.17,  $P = 6.9 \times 10^{-9}$ ) highlighting the robustness of the association. *CRIP1* is found to be highly expressed in coronary, tibial, and aorta artery tissue<sup>12</sup>. *CRIP1* has a role in zinc absorption and functions as an intracellular zinc transport protein<sup>17,18</sup>. This variant has been previously noted as the most likely causal variant ( $0.75 < \text{PIP} < 1$ ) underlying genome wide associations to increased height and heel bone mineral density and decreased calcium levels in UK Biobank quantitative trait analyses<sup>19</sup>.





**Figure 3. *CRIP1* locus associated with transient global amnesia.** On the x-axis is the location and gene diagram of the *CRIP1* locus. The scatter plot shows the associated variants, y-axis corresponds to the  $-\log_{10}$ (meta analysis *P* value). Highlighted is the missense variant, p.Ala58Val, in *CRIP1*. Location of CRIP1 p.Ala58Val mutation in protein structure UniProt P50238.



## Discussion

In this study we present the first genetic dissection of transient global amnesia, an unusual form of transient memory loss attributable to factors beyond those observed in Alzheimer's disease or secondary to stroke or seizure. Using genome wide association across three biobanks, totalling 4303 cases and more than 1 million controls, we identify nine genome wide significant associations.

Notably, the variants identified in this study overlap with previously documented associated variants to several cardiovascular phenotypes - with multiple hits to coronary revascularization, hypertension and pulse pressure among the associations with prior evidence of association. Along with a majority of implicated genes showing extremely strong expression in artery, this lends strong support to the hypothesis that TGA may have a largely vascular origin, rather than a neuronal one. The same susceptibility origin has previously been noted for migraine, one of the main established risk factors for TGA, though the associations described here are not broadly here seen in migraine.

One of the nine associations points strongly to a missense variant in CRIP1 that has previously been implicated as the likely causal variant in increased height and bone mineral density along with lower serum calcium levels. We anticipate that these results may open new opportunities towards understanding, in particular, the vascular components of memory and memory loss, providing genes and variants for deeper molecular and phenotypic exploration.

## References

1. Russell, W. R. *The Traumatic Amnesias*. (Oxford University Press, USA, 1971).
2. Ropper, A. H. Transient Global Amnesia. *N. Engl. J. Med.* **388**, 635–640 (2023).
3. Bartsch, T. & Deuschl, G. Transient global amnesia: functional anatomy and clinical implications. *Lancet Neurol.* **9**, 205–214 (2010).
4. Nehring, S. M., Spurling, B. C. & Kumar, A. Transient Global Amnesia. in *StatPearls [Internet]* (StatPearls Publishing, 2024).
5. Rommens, J. M. *et al.* Identification of the cystic fibrosis gene: chromosome walking and jumping. *Science* **245**, 1059–1065 (1989).
6. Kurki, M. I. *et al.* FinnGen provides genetic insights from a well-phenotyped isolated population. *Nature* **613**, 508–518 (2023).

7. Allen, N. E. *et al.* Prospective study design and data analysis in UK Biobank. *Sci. Transl. Med.* **16**, eadf4428 (2024).
8. Bycroft, C. *et al.* The UK Biobank resource with deep phenotyping and genomic data. *Nature* **562**, 203–209 (2018).
9. Genomic data in the All of Us Research Program. *Nature* **627**, 340–346 (2024).
10. Bulik-Sullivan, B. *et al.* An atlas of genetic correlations across human diseases and traits. *Nat. Genet.* **47**, 1236–1241 (2015).
11. Weindrich, D., Jennen-Steinmetz, C., Laucht, M., Esser, G. & Schmidt, M. H. Epidemiology and prognosis of specific disorders of language and scholastic skills. *Eur. Child Adolesc. Psychiatry* **9**, 186–194 (2000).
12. GTEx Consortium. Human genomics. The Genotype-Tissue Expression (GTEx) pilot analysis: multitissue gene regulation in humans. *Science* **348**, 648–660 (2015).
13. Chen, E. Y. *et al.* Enrichr: interactive and collaborative HTML5 gene list enrichment analysis tool. *BMC Bioinformatics* **14**, 128 (2013).
14. Hu, C. *et al.* CellMarker 2.0: an updated database of manually curated cell markers in human/mouse and web tools based on scRNA-seq data. *Nucleic Acids Res.* **51**, D870–D876 (2023).
15. Tanigawa, Y. *et al.* Rare protein-altering variants in ANGPTL7 lower intraocular pressure and protect against glaucoma. *PLoS Genet.* **16**, e1008682 (2020).
16. Sun, B. B. *et al.* Genetic associations of protein-coding variants in human disease. *Nature* **603**, 95–102 (2022).
17. O'Dell, B. L. Cysteine-rich intestinal protein (CRIP): a new intestinal zinc transport protein. *Nutr. Rev.* **50**, 232–233 (1992).
18. Zhang, L. *et al.* Cysteine-rich intestinal protein 1 suppresses apoptosis and chemosensitivity to 5-fluorouracil in colorectal cancer through ubiquitin-mediated Fas degradation. *J. Exp. Clin. Cancer Res.* **38**, 120 (2019).

19. Kanai, M. *et al.* Meta-analysis fine-mapping is often miscalibrated at single-variant resolution. *Cell Genom* **2**, (2022).

## Author information

### FinnGen

n

Full Name	Affiliation	E-mail	Role 1	Role 2
Aarno Palotie	Institute for Molecular Medicine Finland (FIMM), HiLIFE, University of Helsinki, Helsinki, Finland; Broad Institute of MIT and Harvard; Massachusetts General Hospital	aarno.palotie@helsinki.fi	Steering Committee	Steering Committee
Mark Daly	Institute for Molecular Medicine Finland (FIMM), HiLIFE, University of Helsinki, Helsinki, Finland; Broad Institute of MIT and Harvard; Massachusetts General Hospital	mark.daly@helsinki.fi	Steering Committee	Steering Committee
Bridget Riley-Gills	Abbvie, Chicago, IL, United States	bridget.rileygills@abbvie.com	Steering Committee	Pharmaceutical companies
Howard Jacob	Abbvie, Chicago, IL, United States	howard.jacob@abbvie.com	Steering Committee	Pharmaceutical companies
Coralie Violet	Astra Zeneca, Cambridge, United Kingdom	coralie.violet@astrazeneca.com	Steering Committee	Pharmaceutical companies
Slavé Petrovski	Astra Zeneca, Cambridge, United Kingdom	slav.petrovski@astrazeneca.com	Steering Committee	Pharmaceutical companies
Chia-Yen Chen	Biogen, Cambridge, MA, United States	chiayen.chen@biogen.com	Steering Committee	Pharmaceutical companies
Sally John	Biogen, Cambridge, MA, United States	sally.john@biogen.com	Steering Committee	Pharmaceutical companies
George Okafo	Boehringer Ingelheim, Ingelheim am Rhein, Germany	george.okafo@boehringer-ingenheim.com	Steering Committee	Pharmaceutical companies

Robert Plenge	Bristol Myers Squibb, New York, NY, United States	robert.plenge@bms.com	<b>Steering Committee</b>	<b>Pharmaceutical companies</b>
Joseph Maranville	Bristol Myers Squibb, New York, NY, United States	joseph.maranville@bms.com	<b>Steering Committee</b>	<b>Pharmaceutical companies</b>
Mark McCarthy	Genentech, San Francisco, CA, United States	mccarthy.mark@gene.com	<b>Steering Committee</b>	<b>Pharmaceutical companies</b>
Rion Pendergrass	Genentech, San Francisco, CA, United States	penders2@gene.com	<b>Steering Committee</b>	<b>Pharmaceutical companies</b>
Jonathan Davitte	GlaxoSmithKline, Collegeville, PA, United States	jonathan.m.davitte@gsk.com	<b>Steering Committee</b>	<b>Pharmaceutical companies</b>
Kirsi Auro	GlaxoSmithKline, Espoo, Finland	kirsi.x.auro@gsk.com	<b>Steering Committee</b>	<b>Pharmaceutical companies</b>
Simonne Longerich	Merck, Kenilworth, NJ, United States	simonne.longerich@merck.com	<b>Steering Committee</b>	<b>Pharmaceutical companies</b>
Anders Målarstig	Pfizer, New York, NY, United States	anders.malarstig@pfizer.com	<b>Steering Committee</b>	<b>Pharmaceutical companies</b>
Anna Vlahiotis	Pfizer, New York, NY, United States	anna.vlahiotis@pfizer.com	<b>Steering Committee</b>	<b>Pharmaceutical companies</b>
Katherine Klinger	Translational Sciences, Sanofi R&D, Framingham, MA, USA	katherine.klinger@sanofi.com	<b>Steering Committee</b>	<b>Pharmaceutical companies</b>
Clement Chatelain	Translational Sciences, Sanofi R&D, Framingham, MA, USA	clement.chatelain@sanofi.com	<b>Steering Committee</b>	<b>Pharmaceutical companies</b>
Jorg Blankenstein	Translational Sciences, Sanofi R&D, Framingham, MA, USA	jorg.blankenstein@sanofi.com	<b>Steering Committee</b>	<b>Pharmaceutical companies</b>
Karol Estrada	Maze Therapeutics, San Francisco, CA, United States	kestrada@mazetx.com	<b>Steering Committee</b>	<b>Pharmaceutical companies</b>
Robert Graham	Maze Therapeutics, San Francisco, CA, United States	rgraham@mazetx.com	<b>Steering Committee</b>	<b>Pharmaceutical companies</b>

Dawn Waterworth	Janssen Research & Development, LLC, Spring House, PA, United States	dwaterwo@its.jnj.com	<b>Steering Committee</b>	<b>Pharmaceutical companies</b>
Chris O'Donnell	Novartis Institutes for BioMedical Research, Cambridge, MA, United States	chris.odonnell@novartis.com	<b>Steering Committee</b>	<b>Pharmaceutical companies</b>
Nicole Renaud	Novartis Institutes for BioMedical Research, Cambridge, MA, United States	nicole.renaud@novartis.com	<b>Steering Committee</b>	<b>Pharmaceutical companies</b>
Tomi P. Mäkelä	HiLIFE, University of Helsinki, Finland, Finland	tomi.makela@helsinki.fi	<b>Steering Committee</b>	<b>University of Helsinki &amp; Biobanks</b>
Jaakko Kaprio	Institute for Molecular Medicine Finland (FIMM), HiLIFE, University of Helsinki, Helsinki, Finland	jaakko.kaprio@helsinki.fi	<b>Steering Committee</b>	<b>University of Helsinki &amp; Biobanks</b>
Minna Ruddock	Arctic biobank / University of Oulu	minna.ruddock@oulu.fi	<b>Steering Committee</b>	<b>University of Helsinki &amp; Biobanks</b>
Petri Virolainen	Auria Biobank / University of Turku / Hospital District of Southwest Finland, Turku, Finland	petri.virolainen@tyks.fi	<b>Steering Committee</b>	<b>University of Helsinki &amp; Biobanks</b>
Antti Hakanen	Auria Biobank / University of Turku / Hospital District of Southwest Finland, Turku, Finland	antti.hakanen@tyks.fi	<b>Steering Committee</b>	<b>University of Helsinki &amp; Biobanks</b>
Terhi Kilpi	THL Biobank / Finnish Institute for Health and Welfare (THL), Helsinki, Finland	terhi.kilpi@thl.fi	<b>Steering Committee</b>	<b>University of Helsinki &amp; Biobanks</b>
Markus Perola	THL Biobank / Finnish Institute for Health and Welfare (THL), Helsinki, Finland	markus.perola@thl.fi	<b>Steering Committee</b>	<b>University of Helsinki &amp; Biobanks</b>
Jukka Partanen	Finnish Red Cross Blood Service / Finnish Hematology Registry and Clinical Biobank, Helsinki, Finland	jukka.partanen@veripalvelu.fi	<b>Steering Committee</b>	<b>University of Helsinki &amp; Biobanks</b>
Taneli Raivio	Helsinki Biobank / Helsinki University and Hospital District of Helsinki and Uusimaa, Helsinki	taneli.raivio@hus.fi	<b>Steering Committee</b>	<b>University of Helsinki &amp; Biobanks</b>
Jani Tikkanen	Northern Finland Biobank Borealis / University of Oulu / Northern Ostrobothnia Hospital District, Oulu, Finland	jani.tikkanen@pohde.fi	<b>Steering Committee</b>	<b>University of Helsinki &amp; Biobanks</b>
Raisa Serpi	Northern Finland Biobank Borealis / University of Oulu / Northern Ostrobothnia Hospital District, Oulu, Finland	rais.serpi@oulu.fi	<b>Steering Committee</b>	<b>University of Helsinki &amp; Biobanks</b>

Kati Kristiansson	Finnish Clinical Biobank Tampere / University of Tampere / Pirkanmaa Hospital District, Tampere, Finland	kati.kristiansson@pirha.fi	<b>Steering Committee</b>	<b>University of Helsinki &amp; Biobanks</b>
Veli-Matti Kosma	Biobank of Eastern Finland / University of Eastern Finland / Northern Savo Hospital District, Kuopio, Finland	veli-matti.kosma@uef.fi	<b>Steering Committee</b>	<b>University of Helsinki &amp; Biobanks</b>
Jari Laukkanen	Central Finland Biobank / University of Jyväskylä / Central Finland Health Care District, Jyväskylä, Finland	jari.laukkanen@hyvaks.fi	<b>Steering Committee</b>	<b>University of Helsinki &amp; Biobanks</b>
Marco Hautalahti	FINBB - Finnish biobank cooperative	marco.hautalahti@finbb.fi	<b>Steering Committee</b>	<b>University of Helsinki &amp; Biobanks</b>
Outi Tuovila	Business Finland, Helsinki, Finland	outi.tuovila@businessfinland.fi	<b>Steering Committee</b>	<b>Other Experts/ Non-Voting Members</b>
Jeffrey Waring	Abbvie, Chicago, IL, United States	jeff.waring@abbvie.com	<b>Scientific Committee</b>	<b>Pharmaceutical companies</b>
Bridget Riley-Gillis	Abbvie, Chicago, IL, United States	bridget.rileygillis@abbvie.com	<b>Scientific Committee</b>	<b>Pharmaceutical companies</b>
Fedik Rahimov	Abbvie, Chicago, IL, United States	fedik.rahimov@abbvie.com	<b>Scientific Committee</b>	<b>Pharmaceutical companies</b>
Ioanna Tachmazidou	Astra Zeneca, Cambridge, United Kingdom	ioanna.tachmazidou@astrazeneca.com	<b>Scientific Committee</b>	<b>Pharmaceutical companies</b>
Chia-Yen Chen	Biogen, Cambridge, MA, United States	chiayen.chen@biogen.com	<b>Scientific Committee</b>	<b>Pharmaceutical companies</b>
Zhihao Ding	Boehringer Ingelheim, Ingelheim am Rhein, Germany	zhihao.ding@boehringer-ingenheim.com	<b>Scientific Committee</b>	<b>Pharmaceutical companies</b>
Marc Jung	Boehringer Ingelheim, Ingelheim am Rhein, Germany	marc_oliver.jung@boehringer-ingenheim.com	<b>Scientific Committee</b>	<b>Pharmaceutical companies</b>
Hanati Tuoken	Boehringer Ingelheim, Ingelheim am Rhein, Germany	hanati.tuoken@boehringer-ingenheim.com	<b>Scientific Committee</b>	<b>Pharmaceutical companies</b>

Shameek Biswas	Bristol Myers Squibb, New York, NY, United States	Shameek.Biswas@bms.com	Scientific Committee	Pharmaceutical companies
Rion Pendergrass	Genentech, San Francisco, CA, United States	penders2@gene.com	Scientific Committee	Pharmaceutical companies
Jonathan Davitte	GlaxoSmithKline, Collegeville, PA, United States	jonathan.m.davitte@gsk.com	Scientific Committee	Pharmaceutical companies
Neha Raghavan	Merck, Kenilworth, NJ, United States	neha.raghavan@merck.com	Scientific Committee	Pharmaceutical companies
Adriana Huertas-Vazquez	Merck, Kenilworth, NJ, United States	adriana.huertas.vazquez@merck.com	Scientific Committee	Pharmaceutical companies
Jae-Hoon Sul	Merck, Kenilworth, NJ, United States	jae.hoon.sul@merck.com	Scientific Committee	Pharmaceutical companies
Anders Målarstig	Pfizer, New York, NY, United States	anders.malarstig@pfizer.com	Scientific Committee	Pharmaceutical companies
Xinli Hu	Pfizer, New York, NY, United States	xinli.hu@pfizer.com	Scientific Committee	Pharmaceutical companies
Åsa Hedman	Pfizer, New York, NY, United States	asa.hedman@pfizer.com	Scientific Committee	Pharmaceutical companies
Katherine Klinger	Translational Sciences, Sanofi R&D, Framingham, MA, USA	katherine.klinger@sanofi.com	Scientific Committee	Pharmaceutical companies
Robert Graham	Maze Therapeutics, San Francisco, CA, United States	rgraham@mazetx.com	Scientific Committee	Pharmaceutical companies
Dawn Waterworth	Janssen Research & Development, LLC, Spring House, PA, United States	dwaterworth@its.jnj.com	Scientific Committee	Pharmaceutical companies
Nicole Renaud	Novartis Institutes for BioMedical Research, Cambridge, MA, United States	nicole.renaud@novartis.com	Scientific Committee	Pharmaceutical companies
Ma'en Obeidat	Novartis Institutes for BioMedical Research, Cambridge, MA, United States	maen.obeidat@novartis.com	Scientific Committee	Pharmaceutical companies



Jonathan Chung	Novartis Institutes for BioMedical Research, Cambridge, MA, United States	jonathan.chung@novartis.com	Scientific Committee	Pharmaceutical companies
Jonas Zierer	Novartis Institutes for BioMedical Research, Cambridge, MA, United States	jonas.zierer@novartis.com	Scientific Committee	Pharmaceutical companies
Mari Niemi	Novartis Institutes for BioMedical Research, Cambridge, MA, United States	mari.niemi@novartis.com	Scientific Committee	Pharmaceutical companies
Samuli Ripatti	Institute for Molecular Medicine Finland (FIMM), HiLIFE, University of Helsinki, Helsinki, Finland	samuli.ripatti@helsinki.fi	Scientific Committee	University of Helsinki & Biobanks
Johanna Schleutker	Auria Biobank / Univ. of Turku / Hospital District of Southwest Finland, Turku, Finland	johanna.schleutker@utu.fi	Scientific Committee	University of Helsinki & Biobanks
Markus Perola	THL Biobank / Finnish Institute for Health and Welfare (THL), Helsinki, Finland	markus.perola@thl.fi	Scientific Committee	University of Helsinki & Biobanks
Mikko Arvas	Finnish Red Cross Blood Service / Finnish Hematology Registry and Clinical Biobank, Helsinki, Finland	mikko.arvas@veripalvelu.fi	Scientific Committee	University of Helsinki & Biobanks
Olli Carpén	Helsinki Biobank / Helsinki University and Hospital District of Helsinki and Uusimaa, Helsinki	olli.carpén@helsinki.fi	Scientific Committee	University of Helsinki & Biobanks
Reetta Hinttala	Northern Finland Biobank Borealis / University of Oulu / Northern Ostrobothnia Hospital District, Oulu, Finland	reetta.hinttala@oulu.fi	Scientific Committee	University of Helsinki & Biobanks
Johannes Kettunen	Northern Finland Biobank Borealis / University of Oulu / Northern Ostrobothnia Hospital District, Oulu, Finland	johannes.kettunen@oulu.fi	Scientific Committee	University of Helsinki & Biobanks
Arto Mannermaa	Biobank of Eastern Finland / University of Eastern Finland / Northern Savo Hospital District, Kuopio, Finland	arto.mannermaa@uef.fi	Scientific Committee	University of Helsinki & Biobanks
Katriina Aalto-Setälä	Faculty of Medicine and Health Technology, Tampere University, Tampere, Finland	katriina.aalto-setala@tuni.fi	Scientific Committee	University of Helsinki & Biobanks
Mika Kähönen	Finnish Clinical Biobank Tampere / University of Tampere / Pirkanmaa Hospital District, Tampere, Finland	mika.kahonen@uta.fi	Scientific Committee	University of Helsinki & Biobanks
Jari Laukkanen	Central Finland Biobank / University of Jyväskylä / Central Finland Health Care District, Jyväskylä, Finland	jari.laukkanen@hyvaks.fi	Scientific Committee	University of Helsinki & Biobanks

Johanna Mäkelä	FINBB - Finnish biobank cooperative	johanna.makela@finbb.fi	Scientific Committee	University of Helsinki & Biobanks
Reetta Kälviäinen	Northern Savo Hospital District, Kuopio, Finland	reetta.kalviainen@kuh.fi	Clinical Groups	Neurology Group
Valtteri Julkunen	Northern Savo Hospital District, Kuopio, Finland	valtteri.julkunen@kuh.fi	Clinical Groups	Neurology Group
Hilkka Soininen	Northern Savo Hospital District, Kuopio, Finland	hilkka.soininen@uef.fi	Clinical Groups	Neurology Group
Anne Remes	Northern Ostrobothnia Hospital District, Oulu, Finland	anne.remes@oulu.fi	Clinical Groups	Neurology Group
Mikko Hiltunen	University of Eastern Finland, Kuopio, Finland	mikko.hiltunen@uef.fi	Clinical Groups	Neurology Group
Jukka Peltola	Pirkanmaa Hospital District, Tampere, Finland	jukka.peltola@pshp.fi	Clinical Groups	Neurology Group
Minna Raivio	Hospital District of Helsinki and Uusimaa, Helsinki, Finland	minna.raivio@geri.fi	Clinical Groups	Neurology Group
Pentti Tienari	Hospital District of Helsinki and Uusimaa, Helsinki, Finland	pentti.tienari@hus.fi	Clinical Groups	Neurology Group
Juha Rinne	Hospital District of Southwest Finland, Turku, Finland	juha.rinne@tyks.fi	Clinical Groups	Neurology Group
Roosa Kallionpää	Hospital District of Southwest Finland, Turku, Finland	roosa.kallionpaa@tyks.fi	Clinical Groups	Neurology Group
Juulia Partanen	Institute for Molecular Medicine Finland, HiLIFE, University of Helsinki, Finland	juulia.partanen@helsinki.fi	Clinical Groups	Neurology Group
Adam Ziemann	Abbvie, Chicago, IL, United States	adam.ziemann@abbvie.com	Clinical Groups	Neurology Group
Nizar Smaoui	Abbvie, Chicago, IL, United States	nizar.smaoui@abbvie.com	Clinical Groups	Neurology Group
Anne Lehtonen	Abbvie, Chicago, IL, United States	anne.lehtonen@abbvie.com	Clinical Groups	Neurology Group
Susan Eaton	Biogen, Cambridge, MA, United States	susan.eaton@biogen.com	Clinical Groups	Neurology Group
Heiko Runz	Biogen, Cambridge, MA, United States	heiko.runz@biogen.com	Clinical Groups	Neurology Group
Sanni	Biogen, Cambridge, MA, United States	sanni.lahden	Clinical	Neurology

Lahdenperä		pera@biogen.com	Groups	Group
Shameek Biswas	Bristol Myers Squibb, New York, NY, United States	shameek.biswas@bms.com	Clinical Groups	Neurology Group
Natalie Bowers	Genentech, San Francisco, CA, United States	bowersn1@gene.com	Clinical Groups	Neurology Group
Edmond Teng	Genentech, San Francisco, CA, United States	teng.edmond@gene.com	Clinical Groups	Neurology Group
Rion Pendergrass	Genentech, San Francisco, CA, United States	penders2@gene.com	Clinical Groups	Neurology Group
Fanli Xu	GlaxoSmithKline, Brentford, United Kingdom	chun-fang.2.xu@gsk.com	Clinical Groups	Neurology Group
David Pulford	GlaxoSmithKline, Stevenage, United Kingdom	david.x.pulford@gsk.com	Clinical Groups	Neurology Group
Kirsi Auro	GlaxoSmithKline, Espoo, Finland	kirsi.m.auro@gsk.com	Clinical Groups	Neurology Group
Laura Addis	GlaxoSmithKline, Brentford, United Kingdom	laura.x.addis@gsk.com	Clinical Groups	Neurology Group
John Eicher	GlaxoSmithKline, Brentford, United Kingdom	john.d.eicher@gsk.com	Clinical Groups	Neurology Group
Qingqin S Li	Janssen Research & Development, LLC, Titusville, NJ 08560, United States	QLi2@its.jnj.com	Clinical Groups	Neurology Group
Karen He	Janssen Research & Development, LLC, Spring House, PA, United States	khe2@its.jnj.com	Clinical Groups	Neurology Group
Ekaterina Khramtsova	Janssen Research & Development, LLC, Spring House, PA, United States	ekhramts@its.jnj.com	Clinical Groups	Neurology Group
Neha Raghavan	Merck, Kenilworth, NJ, United States	neha.raghavan@merck.com	Clinical Groups	Neurology Group
Martti Färkkilä	Hospital District of Helsinki and Uusimaa, Helsinki, Finland	martti.farkkila@hus.fi	Clinical Groups	Gastroenterology Group
Jukka Koskela	Hospital District of Helsinki and Uusimaa, Helsinki, Finland	jukka.koskela@helsinki.fi	Clinical Groups	Gastroenterology Group
Sampsa Pikkarainen	Hospital District of Helsinki and Uusimaa, Helsinki, Finland	sampsa.pikkarainen@hus.fi	Clinical Groups	Gastroenterology Group
Airi Jussila	Pirkanmaa Hospital District, Tampere, Finland	airi.jussila@pirkanmaa.fi	Clinical	Gastroenter

		shp.fi	<b>Groups</b>	<b>ology Group</b>
Katri Kaukinen	Pirkanmaa Hospital District, Tampere, Finland	katri.kaukinen@tuni.fi	<b>Clinical Groups</b>	<b>Gastroenterology Group</b>
Timo Blomster	Northern Ostrobothnia Hospital District, Oulu, Finland	timo.blomster@ppshp.fi	<b>Clinical Groups</b>	<b>Gastroenterology Group</b>
Mikko Kiviniemi	Northern Savo Hospital District, Kuopio, Finland	mikko.kiviniemi@kuh.fi	<b>Clinical Groups</b>	<b>Gastroenterology Group</b>
Markku Voutilainen	Hospital District of Southwest Finland, Turku, Finland	markku.voutilainen@tyks.fi	<b>Clinical Groups</b>	<b>Gastroenterology Group</b>
Mark Daly	Institute for Molecular Medicine, Finland (FIMM), HiLIFE, University of Helsinki, Helsinki, Finland; Broad Institute of MIT and Harvard; Massachusetts General Hospital	mark.daly@helsinki.fi	<b>Clinical Groups</b>	<b>Gastroenterology Group</b>
Jeffrey Waring	Abbvie, Chicago, IL, United States	jeff.waring@abbvie.com	<b>Clinical Groups</b>	<b>Gastroenterology Group</b>
Nizar Smaoui	Abbvie, Chicago, IL, United States	nizar.smaoui@abbvie.com	<b>Clinical Groups</b>	<b>Gastroenterology Group</b>
Fedik Rahimov	Abbvie, Chicago, IL, United States	fedik.rahimov@abbvie.com	<b>Clinical Groups</b>	<b>Gastroenterology Group</b>
Anne Lehtonen	Abbvie, Chicago, IL, United States	anne.lehtonen@abbvie.com	<b>Clinical Groups</b>	<b>Gastroenterology Group</b>
Tim Lu	Genentech, San Francisco, CA, United States	lut8@gene.com	<b>Clinical Groups</b>	<b>Gastroenterology Group</b>
Natalie Bowers	Genentech, San Francisco, CA, United States	bowersn1@gene.com	<b>Clinical Groups</b>	<b>Gastroenterology Group</b>
Rion Pendergrass	Genentech, San Francisco, CA, United States	penders2@gene.com	<b>Clinical Groups</b>	<b>Gastroenterology Group</b>
Linda McCarthy	GlaxoSmithKline, Brentford, United Kingdom	linda.c.mccarthy@gsk.com	<b>Clinical Groups</b>	<b>Gastroenterology Group</b>
Amy Hart	Janssen Research & Development, LLC, Spring House, PA, United States	ahart13@its.nj.com	<b>Clinical Groups</b>	<b>Gastroenterology Group</b>
Meijian Guan	Janssen Research & Development, LLC, Spring House, PA, United States	mguan4@its.nj.com	<b>Clinical Groups</b>	<b>Gastroenterology Group</b>
Jason Miller	Merck, Kenilworth, NJ, United States	jason.miller4@merck.com	<b>Clinical Groups</b>	<b>Gastroenterology Group</b>
Kirsi	Pfizer, New York, NY, United States	kirsi.kalpala	<b>Clinical</b>	<b>Gastroenter</b>

Kalpala		@pfizer.com	<b>Groups</b>	<b>ology Group</b>
Melissa Miller	Pfizer, New York, NY, United States	melissa.r.miller@pfizer.com	<b>Clinical Groups</b>	<b>Gastroenterology Group</b>
Xinli Hu	Pfizer, New York, NY, United States	xinli.hu@pfizer.com	<b>Clinical Groups</b>	<b>Gastroenterology Group</b>
Kari Eklund	Hospital District of Helsinki and Uusimaa, Helsinki, Finland	kari.eklund@hus.fi	<b>Clinical Groups</b>	<b>Rheumatology Group</b>
Antti Palomäki	Hospital District of Southwest Finland, Turku, Finland	ajpalo@utu.fi	<b>Clinical Groups</b>	<b>Rheumatology Group</b>
Pia Isomäki	Pirkanmaa Hospital District, Tampere, Finland	pia.isomaki@pshp.fi	<b>Clinical Groups</b>	<b>Rheumatology Group</b>
Laura Pirilä	Hospital District of Southwest Finland, Turku, Finland	laura.pirila@finnet.fi, laura.pirila@tyks.fi	<b>Clinical Groups</b>	<b>Rheumatology Group</b>
Oili Kaipainen-Seppänen	Northern Savo Hospital District, Kuopio, Finland	oili.kaipainen-seppanen@kuh.fi	<b>Clinical Groups</b>	<b>Rheumatology Group</b>
Johanna Huhtakangas	Northern Ostrobothnia Hospital District, Oulu, Finland	johanna.huhtakangas@kuh.fi	<b>Clinical Groups</b>	<b>Rheumatology Group</b>
Nina Mars	Institute for Molecular Medicine Finland (FIMM), HiLIFE, University of Helsinki, Helsinki, Finland	nina.mars@helsinki.fi	<b>Clinical Groups</b>	<b>Rheumatology Group</b>
Jeffrey Waring	Abbvie, Chicago, IL, United States	jeff.waring@abbvie.com	<b>Clinical Groups</b>	<b>Rheumatology Group</b>
Fedik Rahimov	Abbvie, Chicago, IL, United States	fedik.rahimov@abbvie.com	<b>Clinical Groups</b>	<b>Rheumatology Group</b>
Apinya Lertratankul	Abbvie, Chicago, IL, United States	apinya.lertratankul@abbvie.com	<b>Clinical Groups</b>	<b>Rheumatology Group</b>
Nizar Smaoui	Abbvie, Chicago, IL, United States	nizar.smaoui@abbvie.com	<b>Clinical Groups</b>	<b>Rheumatology Group</b>
Anne Lehtonen	Abbvie, Chicago, IL, United States	anne.lehtonen@abbvie.com	<b>Clinical Groups</b>	<b>Rheumatology Group</b>
Coralie Viollet	AstraZeneca, Cambridge, United Kingdom	coralie.viollet@astrazeneca.com	<b>Clinical Groups</b>	<b>Rheumatology Group</b>
Marla	Bristol Myers Squibb, New York, NY, United States	mhochfeld@	<b>Clinical</b>	<b>Rheumatolo</b>

Hochfeld		celgene.com	<b>Groups</b>	<b>gy Group</b>
Natalie Bowers	Genentech, San Francisco, CA, United States	bowersn1@genetene.com	<b>Clinical Groups</b>	<b>Rheumatology Group</b>
Rion Pendergrass	Genentech, San Francisco, CA, United States	penders2@genetene.com	<b>Clinical Groups</b>	<b>Rheumatology Group</b>
Jorge Esparza Gordillo	GlaxoSmithKline, Brentford, United Kingdom	jorge.x.esparza-gordillo@gsk.com	<b>Clinical Groups</b>	<b>Rheumatology Group</b>
Kirsi Auro	GlaxoSmithKline, Espoo, Finland	kirsi.m.auro@gsk.com	<b>Clinical Groups</b>	<b>Rheumatology Group</b>
Dawn Waterworth	Janssen Research & Development, LLC, Spring House, PA, United States	dwaterworth@its.jnj.com	<b>Clinical Groups</b>	<b>Rheumatology Group</b>
Fabiana Farias	Merck, Kenilworth, NJ, United States	fabiana.farias@merck.com	<b>Clinical Groups</b>	<b>Rheumatology Group</b>
Kirsi Kalpala	Pfizer, New York, NY, United States	kirsi.kalpala@pfizer.com	<b>Clinical Groups</b>	<b>Rheumatology Group</b>
Nan Bing	Pfizer, New York, NY, United States	nan.bing@pfizer.com	<b>Clinical Groups</b>	<b>Rheumatology Group</b>
Xinli Hu	Pfizer, New York, NY, United States	xinli.hu@pfizer.com	<b>Clinical Groups</b>	<b>Rheumatology Group</b>
Tarja Laitinen	Pirkanmaa Hospital District, Tampere, Finland	tarja.laitinen@pshp.fi	<b>Clinical Groups</b>	<b>Pulmonology Group</b>
Margit Pelkonen	Northern Savo Hospital District, Kuopio, Finland	margit.pelkonen@kuh.fi	<b>Clinical Groups</b>	<b>Pulmonology Group</b>
Paula Kauppi	Hospital District of Helsinki and Uusimaa, Helsinki, Finland	paula.kauppi@hus.fi	<b>Clinical Groups</b>	<b>Pulmonology Group</b>
Hannu Kankaanranta	University of Gothenburg, Gothenburg, Sweden/ Seinäjoki Central Hospital, Seinäjoki, Finland/ Tampere University, Tampere, Finland	hannu.kankaanranta@tuni.fi	<b>Clinical Groups</b>	<b>Pulmonology Group</b>
Terttu Harju	Northern Ostrobothnia Hospital District, Oulu, Finland	terttu.harju@oulu.fi	<b>Clinical Groups</b>	<b>Pulmonology Group</b>
Riitta Lahesmaa	Hospital District of Southwest Finland, Turku, Finland	rilahes@utu.fi	<b>Clinical Groups</b>	<b>Pulmonology Group</b>
Nizar Smaoui	Abbvie, Chicago, IL, United States	nizar.smaoui@abbvie.com	<b>Clinical Groups</b>	<b>Pulmonology Group</b>
Coralie Viollet	AstraZeneca, Cambridge, United Kingdom	coralie.viollet@astrazeneca.com	<b>Clinical Groups</b>	<b>Pulmonology Group</b>



Susan Eaton	Biogen, Cambridge, MA, United States	susan.eaton@biogen.com	Clinical Groups	Pulmonology Group
Hubert Chen	Genentech, San Francisco, CA, United States	chenh37@genentech.com	Clinical Groups	Pulmonology Group
Rion Pendergrass	Genentech, San Francisco, CA, United States	penders2@genentech.com	Clinical Groups	Pulmonology Group
Natalie Bowers	Genentech, San Francisco, CA, United States	bowersn1@genentech.com	Clinical Groups	Pulmonology Group
Joanna Betts	GlaxoSmithKline, Brentford, United Kingdom	joanna.c.betts@gsk.com	Clinical Groups	Pulmonology Group
Kirsi Auro	GlaxoSmithKline, Espoo, Finland	kirsi.m.auro@gsk.com	Clinical Groups	Pulmonology Group
Rajashree Mishra	GlaxoSmithKline, Brentford, United Kingdom	rajashree.x.mishra@gsk.com	Clinical Groups	Pulmonology Group
Majd Mouded	Novartis, Basel, Switzerland	majd.mouded@novartis.com	Clinical Groups	Pulmonology Group
Debby Ngo	Novartis, Basel, Switzerland	debby.ngo@novartis.com	Clinical Groups	Pulmonology Group
Teemu Niiranen	Finnish Institute for Health and Welfare (THL), Helsinki, Finland	teemu.niiranen@thl.fi	Clinical Groups	Cardiometabolic Diseases Group
Felix Vaura	Finnish Institute for Health and Welfare (THL), Helsinki, Finland	fechva@utu.fi	Clinical Groups	Cardiometabolic Diseases Group
Veikko Salomaa	Finnish Institute for Health and Welfare (THL), Helsinki, Finland	veikko.salomaa@thl.fi	Clinical Groups	Cardiometabolic Diseases Group
Kaj Metsärinne	Hospital District of Southwest Finland, Turku, Finland	kaj.metsarinne@tyks.fi	Clinical Groups	Cardiometabolic Diseases Group
Jenni Aittokallio	Hospital District of Southwest Finland, Turku, Finland	jemato@utu.fi	Clinical Groups	Cardiometabolic Diseases



			Group
Mika Kähönen	Pirkanmaa Hospital District, Tampere, Finland	mika.kahonen@uta.fi	<b>Clinical Groups</b> <b>Cardiometabolic Diseases Group</b>
Jussi Hernesniemi	Pirkanmaa Hospital District, Tampere, Finland	jussi.hernesniemi@tuni.fi	<b>Clinical Groups</b> <b>Cardiometabolic Diseases Group</b>
Daniel Gordin	Hospital District of Helsinki and Uusimaa, Helsinki, Finland	daniel.gordin@hus.fi	<b>Clinical Groups</b> <b>Cardiometabolic Diseases Group</b>
Juha Sinisalo	Hospital District of Helsinki and Uusimaa, Helsinki, Finland	juha.sinisalo@hus.fi	<b>Clinical Groups</b> <b>Cardiometabolic Diseases Group</b>
Marja-Riitta Taskinen	Hospital District of Helsinki and Uusimaa, Helsinki, Finland	marja-riitta.taskinen@helsinki.fi	<b>Clinical Groups</b> <b>Cardiometabolic Diseases Group</b>
Tiinamaija Tuomi	Hospital District of Helsinki and Uusimaa, Helsinki, Finland	tiinamaija.tuomi@hus.fi	<b>Clinical Groups</b> <b>Cardiometabolic Diseases Group</b>
Timo Hiltunen	Hospital District of Helsinki and Uusimaa, Helsinki, Finland	timo.hiltunen@hus.fi	<b>Clinical Groups</b> <b>Cardiometabolic Diseases Group</b>
Jari Laukkanen	Central Finland Health Care District, Jyväskylä, Finland	jari.laukkanen@hyvaks.fi	<b>Clinical Groups</b> <b>Cardiometabolic Diseases Group</b>
Amanda Elliott	Institute for Molecular Medicine Finland (FIMM), HiLIFE, University of Helsinki, Helsinki, Finland; Broad Institute, Cambridge, MA, USA and Massachusetts General Hospital, Boston, MA, USA	aelliott@broadinstitute.org	<b>Clinical Groups</b> <b>Cardiometabolic Diseases Group</b>
Mary Pat Reeve	Institute for Molecular Medicine Finland (FIMM), HiLIFE, University of Helsinki, Helsinki, Finland	mary.reeve@helsinki.fi	<b>Clinical Groups</b> <b>Cardiometabolic Diseases Group</b>
Sanni Ruotsalainen	Institute for Molecular Medicine Finland (FIMM), HiLIFE, University of Helsinki, Helsinki, Finland	sanni.ruotsalainen@helsinki.fi	<b>Clinical Groups</b> <b>Cardiometabolic Diseases Group</b>

en		ki.fi		<b>Diseases Group</b>
Dirk Paul	Astra Zeneca, Cambridge, United Kingdom	dirk.paul@astrazeneca.com	<b>Clinical Groups</b>	<b>Cardiometabolic Diseases Group</b>
Natalie Bowers	Genentech, San Francisco, CA, United States	bowersn1@genentech.com	<b>Clinical Groups</b>	<b>Cardiometabolic Diseases Group</b>
Rion Pendergrass	Genentech, San Francisco, CA, United States	penders2@genentech.com	<b>Clinical Groups</b>	<b>Cardiometabolic Diseases Group</b>
Audrey Chu	GlaxoSmithKline, Brentford, United Kingdom	audrey.y.chu@gsk.com	<b>Clinical Groups</b>	<b>Cardiometabolic Diseases Group</b>
Kirsi Auro	GlaxoSmithKline, Espoo, Finland	kirsi.m.auro@gsk.com	<b>Clinical Groups</b>	<b>Cardiometabolic Diseases Group</b>
Dermot Reilly	Janssen Research & Development, LLC, Boston, MA, United States	dreill11@its.jnj.com	<b>Clinical Groups</b>	<b>Cardiometabolic Diseases Group</b>
Mike Mendelson	Novartis, Boston, MA, United States	mike.mendelson@novartis.com	<b>Clinical Groups</b>	<b>Cardiometabolic Diseases Group</b>
Jaakko Parkkinen	Pfizer, New York, NY, United States	jaakko.parkkinen@pfizer.com	<b>Clinical Groups</b>	<b>Cardiometabolic Diseases Group</b>
Melissa Miller	Pfizer, New York, NY, United States	melissa.r.miller@pfizer.com	<b>Clinical Groups</b>	<b>Cardiometabolic Diseases Group</b>
Tuomo Meretoja	Department of Breast Surgery, Helsinki University Hospital Comprehensive Cancer Center and University of Helsinki, Helsinki, Finland	tuomo.meretoja@hus.fi	<b>Clinical Groups</b>	<b>Oncology Group</b>
Heikki Joensuu	Department of Oncology, Helsinki University Hospital Comprehensive Cancer Center and University of	heikki.joensuu@hus.fi	<b>Clinical Groups</b>	<b>Oncology Group</b>

Helsinki, Helsinki, Finland

Olli Carpén	Hospital District of Helsinki and Uusimaa, Helsinki, Finland	olli.carpén@helsinki.fi	<b>Clinical Groups</b>	<b>Oncology Group</b>
Johanna Mattson	Hospital District of Helsinki and Uusimaa, Helsinki, Finland	johanna.mattson@hus.fi	<b>Clinical Groups</b>	<b>Oncology Group</b>
Eveliina Salminen	Hospital District of Helsinki and Uusimaa, Helsinki, Finland	eveliina.e.salminen@hus.fi	<b>Clinical Groups</b>	<b>Oncology Group</b>
Annika Auranen	Pirkanmaa Hospital District, Tampere, Finland	anaura@utu.fi	<b>Clinical Groups</b>	<b>Oncology Group</b>
Peeter Karihtala	Department of Oncology, Helsinki University Hospital Comprehensive Cancer Center and University of Helsinki, Helsinki, Finland	peeter.karihtala@hus.fi	<b>Clinical Groups</b>	<b>Oncology Group</b>
Päivi Auvinen	Northern Savo Hospital District, Kuopio, Finland	paivi.auvinen@kuh.fi	<b>Clinical Groups</b>	<b>Oncology Group</b>
Klaus Elenius	Hospital District of Southwest Finland, Turku, Finland	klaus.elenius@utu.fi	<b>Clinical Groups</b>	<b>Oncology Group</b>
Johanna Schleutker	Hospital District of Southwest Finland, Turku, Finland	johanna.schleutker@utu.fi	<b>Clinical Groups</b>	<b>Oncology Group</b>
Esa Pitkänen	Institute for Molecular Medicine Finland (FIMM), HiLIFE, University of Helsinki, Helsinki, Finland	esa.pitkanen@helsinki.fi	<b>Clinical Groups</b>	<b>Oncology Group</b>
Nina Mars	Institute for Molecular Medicine Finland (FIMM), HiLIFE, University of Helsinki, Helsinki, Finland	nina.mars@helsinki.fi	<b>Clinical Groups</b>	<b>Oncology Group</b>
Mark Daly	Institute for Molecular Medicine Finland (FIMM), HiLIFE, University of Helsinki, Helsinki, Finland; Broad Institute of MIT and Harvard; Massachusetts General Hospital	mark.daly@helsinki.fi	<b>Clinical Groups</b>	<b>Oncology Group</b>
Relja Popovic	Abbvie, Chicago, IL, United States	relja.popovic@abbvie.com	<b>Clinical Groups</b>	<b>Oncology Group</b>
Jeffrey Waring	Abbvie, Chicago, IL, United States	jeff.waring@abbvie.com	<b>Clinical Groups</b>	<b>Oncology Group</b>
Bridget Riley-Gillis	Abbvie, Chicago, IL, United States	bridget.rileygillis@abbvie.com	<b>Clinical Groups</b>	<b>Oncology Group</b>
Anne Lehtonen	Abbvie, Chicago, IL, United States	anne.lehtonen@abbvie.com	<b>Clinical Groups</b>	<b>Oncology Group</b>
Margarete Fabre	AstraZeneca, Cambridge, United Kingdom	margarete.fabre@astrazeneca.com	<b>Clinical Groups</b>	<b>Oncology Group</b>

Jennifer Schutzman	Genentech, San Francisco, CA, United States	schutzman.jennifer@gene.com	Clinical Groups	Oncology Group
Natalie Bowers	Genentech, San Francisco, CA, United States	bowersn1@gene.com	Clinical Groups	Oncology Group
Rion Pendergrass	Genentech, San Francisco, CA, United States	penders2@gene.com	Clinical Groups	Oncology Group
Diptee Kulkarni	GlaxoSmithKline, Brentford, United Kingdom	diptee.a.kulkarni@gsk.com	Clinical Groups	Oncology Group
Kirsi Auro	GlaxoSmithKline, Espoo, Finland	kirsi.m.auro@gsk.com	Clinical Groups	Oncology Group
Alessandro Porello	Janssen Research & Development, LLC, Spring House, PA, United States	APorrell@ITS.JNJ.com	Clinical Groups	Oncology Group
Andrey Loboda	Merck, Kenilworth, NJ, United States	andrey_loboda@merck.com	Clinical Groups	Oncology Group
Heli Lehtonen	Pfizer, New York, NY, United States	heli.lehtonen@pfizer.com	Clinical Groups	Oncology Group
Stefan McDonough	Pfizer, New York, NY, United States	stefan.McDonough@pfizer.com	Clinical Groups	Oncology Group
Sauli Vuoti	Janssen-Cilag Oy, Espoo, Finland	svuoti@its.jnj.com	Clinical Groups	Oncology Group
Kai Kaarniranta	Northern Savo Hospital District, Kuopio, Finland; Department of Molecular Genetics, University of Lodz, Lodz, Poland	kai.kaarniranta@uef.fi	Clinical Groups	Ophthalmology Group
Joni A Turunen	Helsinki University Hospital and University of Helsinki, Helsinki, Finland; Eye Genetics Group, Folkhälsan Research Center, Helsinki, Finland	joni.turunen@helsinki.fi	Clinical Groups	Ophthalmology Group
Terhi Ollila	Hospital District of Helsinki and Uusimaa, Helsinki, Finland	terhi.ollila@helsinki.fi	Clinical Groups	Ophthalmology Group
Hannu Uusitalo	Pirkanmaa Hospital District, Tampere, Finland	hannu.uusitalo@tuni.fi	Clinical Groups	Ophthalmology Group
Juha Karjalainen	Institute for Molecular Medicine Finland (FIMM), HiLIFE, University of Helsinki, Helsinki, Finland	juha.karjalainen@helsinki.fi	Clinical Groups	Ophthalmology Group
Esa Pitkänen	Institute for Molecular Medicine Finland (FIMM), HiLIFE, University of Helsinki, Helsinki, Finland	esa.pitkanen@helsinki.fi	Clinical Groups	Ophthalmology Group
Mengzhen	Abbvie, Chicago, IL, United States	mengzhen.liu	Clinical	Ophthalmology

Liu		@abbvie.com	Groups	gy Group
Heiko Runz	Biogen, Cambridge, MA, United States	heiko.runz@biogen.com	Clinical Groups	Ophthalmology Group
Stephanie Loomis	Biogen, Cambridge, MA, United States	stephanie.loomis@biogen.com	Clinical Groups	Ophthalmology Group
Erich Strauss	Genentech, San Francisco, CA, United States	strauss.erich@gene.com	Clinical Groups	Ophthalmology Group
Natalie Bowers	Genentech, San Francisco, CA, United States	bowersn1@gene.com	Clinical Groups	Ophthalmology Group
Hao Chen	Genentech, San Francisco, CA, United States	haoc@gene.com	Clinical Groups	Ophthalmology Group
Rion Pendergrass	Genentech, San Francisco, CA, United States	penders2@gene.com	Clinical Groups	Ophthalmology Group
Kaisa Tasanen	Northern Ostrobothnia Hospital District, Oulu, Finland	kaisa.tasanen-maatta@oulu.fi	Clinical Groups	Dermatology Group
Laura Huilaja	Northern Ostrobothnia Hospital District, Oulu, Finland	laura.huilaja@oulu.fi	Clinical Groups	Dermatology Group
Katariina Hannula-Jouppi	Hospital District of Helsinki and Uusimaa, Helsinki, Finland	katariina.hannula-jouppi@hus.fi	Clinical Groups	Dermatology Group
Teea Salmi	Pirkanmaa Hospital District, Tampere, Finland	teea.salmi@pshp.fi	Clinical Groups	Dermatology Group
Sirkku Peltonen	Hospital District of Southwest Finland, Turku, Finland	sipelto@utu.fi	Clinical Groups	Dermatology Group
Leena Koulu	Hospital District of Southwest Finland, Turku, Finland	leena.koulu@tyks.fi	Clinical Groups	Dermatology Group
Nizar Smaoui	Abbvie, Chicago, IL, United States	nizar.smaoui@abbvie.com	Clinical Groups	Dermatology Group
Fedik Rahimov	Abbvie, Chicago, IL, United States	fedik.rahimov@abbvie.com	Clinical Groups	Dermatology Group
Anne Lehtonen	Abbvie, Chicago, IL, United States	anne.lehtonen@abbvie.com	Clinical Groups	Dermatology Group
David Choy	Genentech, San Francisco, CA, United States	choy.david@gene.com	Clinical Groups	Dermatology Group

Rion Pendergrass	Genentech, San Francisco, CA, United States	penders2@gene.com	<b>Clinical Groups</b>	<b>Dermatology Group</b>
Dawn Waterworth	Janssen Research & Development, LLC, Spring House, PA, United States	dwaterworth@itsnj.com	<b>Clinical Groups</b>	<b>Dermatology Group</b>
Kirsi Kalpala	Pfizer, New York, NY, United States	kirsi.kalpala@pfizer.com	<b>Clinical Groups</b>	<b>Dermatology Group</b>
Ying Wu	Pfizer, New York, NY, United States	ying.wu3@pfizer.com	<b>Clinical Groups</b>	<b>Dermatology Group</b>
Pirkko Pussinen	Hospital District of Helsinki and Uusimaa, Helsinki, Finland	pirkko.pussinen@helsinki.fi	<b>Clinical Groups</b>	<b>Odontology Group</b>
Aino Salminen	Hospital District of Helsinki and Uusimaa, Helsinki, Finland	aino.m.salmi@helsinki.fi	<b>Clinical Groups</b>	<b>Odontology Group</b>
Tuula Salo	Hospital District of Helsinki and Uusimaa, Helsinki, Finland	tuula.salo@helsinki.fi	<b>Clinical Groups</b>	<b>Odontology Group</b>
David Rice	Hospital District of Helsinki and Uusimaa, Helsinki, Finland	david.rice@helsinki.fi	<b>Clinical Groups</b>	<b>Odontology Group</b>
Pekka Nieminen	Hospital District of Helsinki and Uusimaa, Helsinki, Finland	pekka.nieminen@helsinki.fi	<b>Clinical Groups</b>	<b>Odontology Group</b>
Ulla Palotie	Hospital District of Helsinki and Uusimaa, Helsinki, Finland	ulla.palotie@helsinki.fi	<b>Clinical Groups</b>	<b>Odontology Group</b>
Maria Siponen	Northern Savo Hospital District, Kuopio, Finland	maria.siponen@uef.fi	<b>Clinical Groups</b>	<b>Odontology Group</b>
Liisa Suominen	Northern Savo Hospital District, Kuopio, Finland	liisa.suominen@uef.fi	<b>Clinical Groups</b>	<b>Odontology Group</b>
Päivi Mäntylä	Northern Savo Hospital District, Kuopio, Finland	paivi.mantyla@uef.fi	<b>Clinical Groups</b>	<b>Odontology Group</b>
Ulvi Gursoy	Hospital District of Southwest Finland, Turku, Finland	ulvi.gursoy@utu.fi	<b>Clinical Groups</b>	<b>Odontology Group</b>
Vuokko Anttonen	Northern Ostrobothnia Hospital District, Oulu, Finland	vuokko.anttonen@oulu.fi	<b>Clinical Groups</b>	<b>Odontology Group</b>
Kirsi Sipilä	Research Unit of Oral Health Sciences Faculty of Medicine, University of Oulu, Oulu, Finland; Medical Research Center, Oulu, Oulu University Hospital and University of Oulu, Oulu, Finland	kirsi.sipila@oulu.fi	<b>Clinical Groups</b>	<b>Odontology Group</b>
Rion Pendergrass	Genentech, San Francisco, CA, United States	pendergrass.sarah@gene.com	<b>Clinical Groups</b>	<b>Odontology Group</b>

ss		com	
Hannele Laivuori	Institute for Molecular Medicine Finland (FIMM), HiLIFE, University of Helsinki, Helsinki, Finland	hannele.laivuori@helsinki.fi	<a href="#">Clinical Groups</a> <b>Women's Health and Reproduction Group</b>
Venla Kurra	Pirkanmaa Hospital District, Tampere, Finland	venla.kurra@tuni.fi	<a href="#">Clinical Groups</a> <b>Women's Health and Reproduction Group</b>
Laura Kotaniemi-Talonen	Pirkanmaa Hospital District, Tampere, Finland	laura.kotaniemi-talonen@uni.fi	<a href="#">Clinical Groups</a> <b>Women's Health and Reproduction Group</b>
Oskari Heikinheimo	Hospital District of Helsinki and Uusimaa, Helsinki, Finland	oskari.heikinheimo@helsinki.fi	<a href="#">Clinical Groups</a> <b>Women's Health and Reproduction Group</b>
Ilkka Kalliala	Hospital District of Helsinki and Uusimaa, Helsinki, Finland	ilkka.kalliala@hus.fi	<a href="#">Clinical Groups</a> <b>Women's Health and Reproduction Group</b>
Lauri Aaltonen	Hospital District of Helsinki and Uusimaa, Helsinki, Finland	lauri.aaltonen@helsinki.fi	<a href="#">Clinical Groups</a> <b>Women's Health and Reproduction Group</b>
Varpu Jokimaa	Hospital District of Southwest Finland, Turku, Finland	varpu.jokimaa@utu.fi	<a href="#">Clinical Groups</a> <b>Women's Health and Reproduction Group</b>
Johannes Kettunen	Northern Ostrobothnia Hospital District, Oulu, Finland	Johannes.Kettunen@oulu.fi	<a href="#">Clinical Groups</a> <b>Women's Health and Reproduction Group</b>
Marja Vääräsmäki	Northern Ostrobothnia Hospital District, Oulu, Finland	marja.vaaras-maki@oulu.fi	<a href="#">Clinical Groups</a> <b>Women's Health and Reproduction Group</b>
Outi Uimari	Northern Ostrobothnia Hospital District, Oulu, Finland	outi.uimari@oulu.fi	<a href="#">Clinical Groups</a> <b>Women's Health and Reproduction Group</b>
Laure Morin-Pap	Northern Ostrobothnia Hospital District, Oulu, Finland	Imp@cc.oulu.fi	<a href="#">Clinical Groups</a> <b>Women's Health and</b>



unen				<b>Reproduction Group</b>
Maarit Niinimäki	Northern Ostrobothnia Hospital District, Oulu, Finland	maarit.niinimaki@oulu.fi	<b>Clinical Groups</b>	<b>Women's Health and Reproduction Group</b>
Terhi Piltonen	Northern Ostrobothnia Hospital District, Oulu, Finland	terhi.piltonen@oulu.fi	<b>Clinical Groups</b>	<b>Women's Health and Reproduction Group</b>
Katja Kivinen	Institute for Molecular Medicine Finland (FIMM), HiLIFE, University of Helsinki, Helsinki, Finland	katja.kivinen@helsinki.fi	<b>Clinical Groups</b>	<b>Women's Health and Reproduction Group</b>
Elisabeth Widen	Institute for Molecular Medicine Finland (FIMM), HiLIFE, University of Helsinki, Helsinki, Finland	elisabeth.widen@helsinki.fi	<b>Clinical Groups</b>	<b>Women's Health and Reproduction Group</b>
Taru Tukiainen	Institute for Molecular Medicine Finland (FIMM), HiLIFE, University of Helsinki, Helsinki, Finland	taru.tukiainen@helsinki.fi	<b>Clinical Groups</b>	<b>Women's Health and Reproduction Group</b>
Mary Pat Reeve	Institute for Molecular Medicine Finland (FIMM), HiLIFE, University of Helsinki, Helsinki, Finland	mary.reeve@helsinki.fi	<b>Clinical Groups</b>	<b>Women's Health and Reproduction Group</b>
Mark Daly	Institute for Molecular Medicine Finland (FIMM), HiLIFE, University of Helsinki, Helsinki, Finland; Broad Institute of MIT and Harvard; Massachusetts General Hospital	mark.daly@helsinki.fi	<b>Clinical Groups</b>	<b>Women's Health and Reproduction Group</b>
Niko Välimäki	University of Helsinki, Helsinki, Finland	niko.valimaki@helsinki.fi	<b>Clinical Groups</b>	<b>Women's Health and Reproduction Group</b>
Eija Laakkonen	University of Jyväskylä, Jyväskylä, Finland	eija.k.laakkonen@jyu.fi	<b>Clinical Groups</b>	<b>Women's Health and Reproduction Group</b>
Jaakko Tyrmi	University of Oulu, Oulu, Finland / University of Tampere, Tampere, Finland	jaakko.tyrmi@oulu.fi	<b>Clinical Groups</b>	<b>Women's Health and Reproduction Group</b>
Heidi	University of Oulu, Oulu, Finland	heidi.silven@	<b>Clinical</b>	<b>Women's</b>

Silven		student.oulu.fi	<b>Groups</b>	<b>Health and Reproduction Group</b>
Eeva Sliz	University of Oulu, Oulu, Finland	eeva.sliz@oulu.fi	<b>Clinical Groups</b>	<b>Women's Health and Reproduction Group</b>
Riikka Arffman	University of Oulu, Oulu, Finland	riikka.arffman@oulu.fi	<b>Clinical Groups</b>	<b>Women's Health and Reproduction Group</b>
Susanna Savukoski	University of Oulu, Oulu, Finland	susanna.savukoski@oulu.fi	<b>Clinical Groups</b>	<b>Women's Health and Reproduction Group</b>
Triin Laisk	Estonian biobank, Tartu, Estonia	triin.laisk@ut.ee	<b>Clinical Groups</b>	<b>Women's Health and Reproduction Group</b>
Natalia Pujol	Estonian biobank, Tartu, Estonia	natalia.pujolualdo@oulu.fi	<b>Clinical Groups</b>	<b>Women's Health and Reproduction Group</b>
Mengzhen Liu	Abbvie, Chicago, IL, United States	mengzhen.liu@abbvie.com	<b>Clinical Groups</b>	<b>Women's Health and Reproduction Group</b>
Bridget Riley-Gillis	Abbvie, Chicago, IL, United States	bridget.rileygillis@abbvie.com	<b>Clinical Groups</b>	<b>Women's Health and Reproduction Group</b>
Rion Pendergrass	Genentech, San Francisco, CA, United States	penders2@genentech.com	<b>Clinical Groups</b>	<b>Women's Health and Reproduction Group</b>
Janet Kumar	GlaxoSmithKline, Collegeville, PA, United States	janet.x.kumar@gsk.com	<b>Clinical Groups</b>	<b>Women's Health and Reproduction Group</b>
Kirsi Auro	GlaxoSmithKline, Espoo, Finland	kirsi.m.auro@gsk.com	<b>Clinical Groups</b>	<b>Women's Health and Reproduction Group</b>

Iiris Hovatta	University of Helsinki, Finland	iiris.hovatta@helsinki.fi	<b>Clinical Groups</b>	<b>Depression group</b>
Chia-Yen Chen	Biogen, Cambridge, MA, United States	chiayen.chen@biogen.com	<b>Clinical Groups</b>	<b>Depression group</b>
Erkki Isometsä	Hospital District of Helsinki and Uusimaa, Helsinki, Finland	erkki.isometsa@hus.fi	<b>Clinical Groups</b>	<b>Depression group</b>
Hanna Ollila	Institute for Molecular Medicine Finland (FIMM), HiLIFE, University of Helsinki, Helsinki, Finland	hanna.m.ollila@helsinki.fi	<b>Clinical Groups</b>	<b>Depression group</b>
Jaana Suvisaari	Finnish Institute for Health and Welfare (THL), Helsinki, Finland	jaana.suvisaari@thl.fi	<b>Clinical Groups</b>	<b>Depression group</b>
Antti Mäkitie	Department of Otorhinolaryngology - Head and Neck Surgery, University of Helsinki and Helsinki University Hospital, Helsinki, Finland	antti.makitie@helsinki.fi	<b>Clinical Groups</b>	<b>ENT (ear, nose and throat) Group</b>
Argyro Bizaki-Vallaskangas	Pirkanmaa Hospital District, Tampere, Finland	argyro.bizaki-vallaskangas@tuni.fi	<b>Clinical Groups</b>	<b>ENT (ear, nose and throat) Group</b>
Sanna Toppila-Salmi	University of Eastern Finland and Kuopio University Hospital, Department of Otorhinolaryngology, Kuopio, Finland and Department of Allergy, Helsinki University Hospital and University of Helsinki, Finland	sanna.salmi@helsinki.fi	<b>Clinical Groups</b>	<b>ENT (ear, nose and throat) Group</b>
Tytti Willberg	Hospital District of Southwest Finland, Turku, Finland	tytti.willberg@tyks.fi	<b>Clinical Groups</b>	<b>ENT (ear, nose and throat) Group</b>
Elmo Saarentaus	Institute for Molecular Medicine Finland (FIMM), HiLIFE, University of Helsinki, Helsinki, Finland	elmo.saarentaus@helsinki.fi	<b>Clinical Groups</b>	<b>ENT (ear, nose and throat) Group</b>
Antti Aarnisalo	Hospital District of Helsinki and Uusimaa, Helsinki, Finland	antti.aarnisalo@hus.fi	<b>Clinical Groups</b>	<b>ENT (ear, nose and throat) Group</b>
Eveliina Salminen	Hospital District of Helsinki and Uusimaa, Helsinki, Finland	eveliina.e.salminen@helsinki.fi	<b>Clinical Groups</b>	<b>ENT (ear, nose and throat) Group</b>
Elisa Rahikkala	Northern Ostrobothnia Hospital District, Oulu, Finland	elisa.rahikkala@ppshp.fi	<b>Clinical Groups</b>	<b>ENT (ear, nose and throat) Group</b>

Johannes Kettunen	Northern Ostrobothnia Hospital District, Oulu, Finland	johannes.kettunen@oulu.fi	<b>Clinical Groups</b>	<b>ENT (ear, nose and throat) Group</b>
Kristiina Aittomäki	Department of Medical Genetics, Helsinki University Central Hospital, Helsinki, Finland	kristiina.aittomaki@helsinki.fi	<b>Clinical Groups</b>	<b>POI (premature ovarian failure) Group</b>
Fredrik Åberg	Transplantation and Liver Surgery Clinic, Helsinki University Hospital, Helsinki University, Helsinki, Finland	fredrik.aberg@helsinki.fi	<b>Clinical Groups</b>	<b>LiverScore Group</b>
Mitja Kurki	Institute for Molecular Medicine Finland (FIMM), HiLIFE, University of Helsinki, Helsinki, Finland; Broad Institute, Cambridge, MA, United States	mkurki@broadinstitute.org	<b>FinnGen Analysis working group</b>	<b>FinnGen Analysis working group</b>
Samuli Ripatti	Institute for Molecular Medicine Finland (FIMM), HiLIFE, University of Helsinki, Helsinki, Finland	samuli.ripatti@helsinki.fi	<b>FinnGen Analysis working group</b>	<b>FinnGen Analysis working group</b>
Mark Daly	Institute for Molecular Medicine, Finland (FIMM), HiLIFE, University of Helsinki, Helsinki, Finland; Broad Institute of MIT and Harvard; Massachusetts General Hospital	mark.daly@helsinki.fi	<b>FinnGen Analysis working group</b>	<b>FinnGen Analysis working group</b>
Juha Karjalainen	Institute for Molecular Medicine Finland (FIMM), HiLIFE, University of Helsinki, Helsinki, Finland	juha.karjalainen@helsinki.fi	<b>FinnGen Analysis working group</b>	<b>FinnGen Analysis working group</b>
Aki Havulinna	Institute for Molecular Medicine Finland (FIMM), HiLIFE, University of Helsinki, Helsinki, Finland; Finnish Institute for Health and Welfare (THL), Helsinki, Finland	aki.havulinna@helsinki.fi	<b>FinnGen Analysis working group</b>	<b>FinnGen Analysis working group</b>
Juha Mehtonen	Institute for Molecular Medicine Finland (FIMM), HiLIFE, University of Helsinki, Helsinki, Finland	juha.mehtonen@helsinki.fi	<b>FinnGen Analysis working group</b>	<b>FinnGen Analysis working group</b>
Priit Palta	Institute for Molecular Medicine Finland (FIMM), HiLIFE, University of Helsinki, Helsinki, Finland	priit.palta@helsinki.fi	<b>FinnGen Analysis working group</b>	<b>FinnGen Analysis working group</b>
Shabbeer Hassan	Institute for Molecular Medicine Finland (FIMM), HiLIFE, University of Helsinki, Helsinki, Finland	shabbeer.hassan@helsinki.fi	<b>FinnGen Analysis working group</b>	<b>FinnGen Analysis working group</b>

Pietro Della Briotta Parolo	Institute for Molecular Medicine Finland (FIMM), HiLIFE, University of Helsinki, Helsinki, Finland	pietro.dellabriottaparolo@helsinki.fi	<a href="#">FinnGen Analysis working group</a>	<a href="#">FinnGen Analysis working group</a>
Wei Zhou	Broad Institute, Cambridge, MA, United States	wzhou@broadinstitute.org	<a href="#">FinnGen Analysis working group</a>	<a href="#">FinnGen Analysis working group</a>
Mutaamba Maasha	Broad Institute, Cambridge, MA, United States	mmaasha@broadinstitute.org	<a href="#">FinnGen Analysis working group</a>	<a href="#">FinnGen Analysis working group</a>
Shabbeer Hassan	Institute for Molecular Medicine Finland (FIMM), HiLIFE, University of Helsinki, Helsinki, Finland	shabbeer.hassan@helsinki.fi	<a href="#">FinnGen Analysis working group</a>	<a href="#">FinnGen Analysis working group</a>
Susanna Lemmelä	Institute for Molecular Medicine Finland (FIMM), HiLIFE, University of Helsinki, Helsinki, Finland	susanna.lemmela@helsinki.fi	<a href="#">FinnGen Analysis working group</a>	<a href="#">FinnGen Analysis working group</a>
Manuel Rivas	University of Stanford, Stanford, CA, United States	mrivas@stanford.edu	<a href="#">FinnGen Analysis working group</a>	<a href="#">FinnGen Analysis working group</a>
Aarno Palotie	Institute for Molecular Medicine Finland (FIMM), HiLIFE, University of Helsinki, Helsinki, Finland	aarno.palotie@helsinki.fi	<a href="#">FinnGen Analysis working group</a>	<a href="#">FinnGen Analysis working group</a>
Aoxing Liu	Institute for Molecular Medicine Finland (FIMM), HiLIFE, University of Helsinki, Helsinki, Finland	aoxing.liu@helsinki.fi	<a href="#">FinnGen Analysis working group</a>	<a href="#">FinnGen Analysis working group</a>
Arto Lehisto	Institute for Molecular Medicine Finland (FIMM), HiLIFE, University of Helsinki, Helsinki, Finland	arto.lehisto@helsinki.fi	<a href="#">FinnGen Analysis working group</a>	<a href="#">FinnGen Analysis working group</a>
Andrea Ganna	Institute for Molecular Medicine Finland (FIMM), HiLIFE, University of Helsinki, Helsinki, Finland	aganna@broadinstitute.org	<a href="#">FinnGen Analysis working group</a>	<a href="#">FinnGen Analysis working group</a>
Vincent Llorens	Institute for Molecular Medicine Finland (FIMM), HiLIFE, University of Helsinki, Helsinki, Finland	vincent.llorenses@helsinki.fi	<a href="#">FinnGen Analysis working group</a>	<a href="#">FinnGen Analysis working group</a>

Hannele Laivuori	Institute for Molecular Medicine Finland (FIMM), HiLIFE, University of Helsinki, Helsinki, Finland	hannele.laivuori@helsinki.fi	FinnGen Analysis working group	FinnGen Analysis working group
Taru Tukiainen	Institute for Molecular Medicine Finland (FIMM), HiLIFE, University of Helsinki, Helsinki, Finland	taru.tukiainen@helsinki.fi	FinnGen Analysis working group	FinnGen Analysis working group
Mary Pat Reeve	Institute for Molecular Medicine Finland (FIMM), HiLIFE, University of Helsinki, Helsinki, Finland	mary.reeve@helsinki.fi	FinnGen Analysis working group	FinnGen Analysis working group
Henrike Heyne	Institute for Molecular Medicine Finland (FIMM), HiLIFE, University of Helsinki, Helsinki, Finland	hheyne@broadoinstitute.org	FinnGen Analysis working group	FinnGen Analysis working group
Nina Mars	Institute for Molecular Medicine Finland (FIMM), HiLIFE, University of Helsinki, Helsinki, Finland	nina.mars@helsinki.fi	FinnGen Analysis working group	FinnGen Analysis working group
Joel Rämö	Institute for Molecular Medicine Finland (FIMM), HiLIFE, University of Helsinki, Helsinki, Finland	joel.ramo@helsinki.fi	FinnGen Analysis working group	FinnGen Analysis working group
Elmo Saarentaus	Institute for Molecular Medicine Finland (FIMM), HiLIFE, University of Helsinki, Helsinki, Finland	elmo.saarentaus@helsinki.fi	FinnGen Analysis working group	FinnGen Analysis working group
Hanna Ollila	Institute for Molecular Medicine Finland (FIMM), HiLIFE, University of Helsinki, Helsinki, Finland	hanna.m.ollila@helsinki.fi	FinnGen Analysis working group	FinnGen Analysis working group
Satu Strausz	Institute for Molecular Medicine Finland (FIMM), HiLIFE, University of Helsinki, Helsinki, Finland	satu.strausz@helsinki.fi	FinnGen Analysis working group	FinnGen Analysis working group
Tuula Palotie	University of Helsinki and Hospital District of Helsinki and Uusimaa, Helsinki, Finland	tuula.palotie@helsinki.fi	FinnGen Analysis working group	FinnGen Analysis working group
Kimmo Palin	University of Helsinki, Helsinki, Finland	kimmo.palin@helsinki.fi	FinnGen Analysis working group	FinnGen Analysis working group

Javier Garcia-Tabuena	University of Tampere, Tampere, Finland	javier.graciat.abuena@tuni.fi	FinnGen Analysis working group	FinnGen Analysis working group
Harri Siirtola	University of Tampere, Tampere, Finland	harri.siirtola@tuni.fi	FinnGen Analysis working group	FinnGen Analysis working group
Tuomo Kiiskinen	Institute for Molecular Medicine Finland (FIMM), HiLIFE, University of Helsinki, Helsinki, Finland	tuomo.kiiskinen@helsinki.fi	FinnGen Analysis working group	FinnGen Analysis working group
Jiwoo Lee	Institute for Molecular Medicine Finland (FIMM), HiLIFE, University of Helsinki, Helsinki, Finland; Broad Institute, Cambridge, MA, United States	jiwoo.lee@helsinki.fi	FinnGen Analysis working group	FinnGen Analysis working group
Kristin Tsuo	Institute for Molecular Medicine Finland (FIMM), HiLIFE, University of Helsinki, Helsinki, Finland; Broad Institute, Cambridge, MA, United States	kristintsuo@fas.harvard.edu	FinnGen Analysis working group	FinnGen Analysis working group
Amanda Elliott	Institute for Molecular Medicine Finland (FIMM), HiLIFE, University of Helsinki, Helsinki, Finland; Broad Institute, Cambridge, MA, USA and Massachusetts General Hospital, Boston, MA, USA	aelliott@broadinstitute.org	FinnGen Analysis working group	FinnGen Analysis working group
Kati Kristiansson	THL Biobank / Finnish Institute for Health and Welfare (THL), Helsinki, Finland	kati.kristiansson@thl.fi	FinnGen Analysis working group	FinnGen Analysis working group
Mikko Arvas	Finnish Red Cross Blood Service / Finnish Hematology Registry and Clinical Biobank, Helsinki, Finland	mikko.arvas@veripalvelu.fi	FinnGen Analysis working group	FinnGen Analysis working group
Kati Hyvärinen	Finnish Red Cross Blood Service, Helsinki, Finland	kati.hyvarinen@veripalvelu.fi	FinnGen Analysis working group	FinnGen Analysis working group
Jarmo Ritari	Finnish Red Cross Blood Service, Helsinki, Finland	jarmo.ritari@veripalvelu.fi	FinnGen Analysis working group	FinnGen Analysis working group
Olli Carpén	Helsinki Biobank / Helsinki University and Hospital District of Helsinki and Uusimaa, Helsinki	olli.carpén@helsinki.fi	FinnGen Analysis working group	FinnGen Analysis working group



Johannes Kettunen	Northern Finland Biobank Borealis / University of Oulu / Northern Ostrobothnia Hospital District, Oulu, Finland	johannes.kettunen@oulu.fi	<a href="#">FinnGen Analysis working group</a>	<a href="#">FinnGen Analysis working group</a>
Katri Pylkäs	University of Oulu, Oulu, Finland	katri.pylkas@oulu.fi	<a href="#">FinnGen Analysis working group</a>	<a href="#">FinnGen Analysis working group</a>
Eeva Sliz	University of Oulu, Oulu, Finland	eeva.sliz@oulu.fi	<a href="#">FinnGen Analysis working group</a>	<a href="#">FinnGen Analysis working group</a>
Minna Karjalainen	University of Oulu, Oulu, Finland	minna.k.karjalainen@oulu.fi	<a href="#">FinnGen Analysis working group</a>	<a href="#">FinnGen Analysis working group</a>
Tuomo Mantere	Northern Finland Biobank Borealis / University of Oulu / Northern Ostrobothnia Hospital District, Oulu, Finland	tuomo.mantere@oulu.fi	<a href="#">FinnGen Analysis working group</a>	<a href="#">FinnGen Analysis working group</a>
Eeva Kangasniemi	Finnish Clinical Biobank Tampere / University of Tampere / Pirkanmaa Hospital District, Tampere, Finland	eeva.kangasniemi@pshp.fi	<a href="#">FinnGen Analysis working group</a>	<a href="#">FinnGen Analysis working group</a>
Sami Heikkinen	University of Eastern Finland, Kuopio, Finland	sami.heikkinen@uef.fi	<a href="#">FinnGen Analysis working group</a>	<a href="#">FinnGen Analysis working group</a>
Arto Mannermaa	Biobank of Eastern Finland / University of Eastern Finland / Northern Savo Hospital District, Kuopio, Finland	arto.mannermaa@uef.fi	<a href="#">FinnGen Analysis working group</a>	<a href="#">FinnGen Analysis working group</a>
Eija Laakkonen	University of Jyväskylä, Jyväskylä, Finland	eija.k.laakkonen@jyu.fi	<a href="#">FinnGen Analysis working group</a>	<a href="#">FinnGen Analysis working group</a>
Nina Pitkänen	Auria Biobank / University of Turku / Hospital District of Southwest Finland, Turku, Finland	Niina.Pitkanen@tyks.fi	<a href="#">FinnGen Analysis working group</a>	<a href="#">FinnGen Analysis working group</a>
Samuel Lessard	Translational Sciences, Sanofi R&D, Framingham, MA, USA	samuel.lessard@sanofi.com	<a href="#">FinnGen Analysis working group</a>	<a href="#">FinnGen Analysis working group</a>

Clément Chatelain	Translational Sciences, Sanofi R&D, Framingham, MA, USA	clement.chatelain@sanofi.com	<a href="#">FinnGen Analysis working group</a>	<a href="#">FinnGen Analysis working group</a>
Lila Kallio	Auria Biobank / University of Turku / Hospital District of Southwest Finland, Turku, Finland	Lila.Kallio@tyks.fi	<a href="#">Biobank directors</a>	<a href="#">Biobank directors</a>
Tiina Wahlfors	THL Biobank / Finnish Institute for Health and Welfare (THL), Helsinki, Finland	tiina.wahlfors@thl.fi	<a href="#">Biobank directors</a>	<a href="#">Biobank directors</a>
Jukka Partanen	Finnish Red Cross Blood Service / Finnish Hematology Registry and Clinical Biobank, Helsinki, Finland	jukka.partanen@veripalvelu.fi	<a href="#">Biobank directors</a>	<a href="#">Biobank directors</a>
Eero Punkka	Helsinki Biobank / Helsinki University and Hospital District of Helsinki and Uusimaa, Helsinki	eero.punkka@hus.fi	<a href="#">Biobank directors</a>	<a href="#">Biobank directors</a>
Raisa Serpi	Northern Finland Biobank Borealis / University of Oulu / Northern Ostrobothnia Hospital District, Oulu, Finland	rais.serpi@ppshp.fi	<a href="#">Biobank directors</a>	<a href="#">Biobank directors</a>
Sanna Siltanen	Finnish Clinical Biobank Tampere / University of Tampere / Pirkanmaa Hospital District, Tampere, Finland	sanna.siltanen@pirha.fi	<a href="#">Biobank directors</a>	<a href="#">Biobank directors</a>
Veli-Matti Kosma	Biobank of Eastern Finland / University of Eastern Finland / Northern Savo Hospital District, Kuopio, Finland	veli-matti.kosma@uef.fi	<a href="#">Biobank directors</a>	<a href="#">Biobank directors</a>
Tiina Jokela	Central Finland Biobank / University of Jyväskylä / Central Finland Health Care District, Jyväskylä, Finland	tiina.a.jokela@jyu.fi	<a href="#">Biobank directors</a>	<a href="#">Biobank directors</a>
Anu Jalanko	Institute for Molecular Medicine Finland (FIMM), HiLIFE, University of Helsinki, Helsinki, Finland	anu.jalanko@helsinki.fi	<a href="#">FinnGen Teams</a>	<a href="#">Administration</a>
Auli Toivola	Institute for Molecular Medicine Finland (FIMM), HiLIFE, University of Helsinki, Helsinki, Finland	auli.toivola@helsinki.fi	<a href="#">FinnGen Teams</a>	<a href="#">Administration</a>
Huei-Yi Shen	Institute for Molecular Medicine Finland (FIMM), HiLIFE, University of Helsinki, Helsinki, Finland	huei-yi.shen@helsinki.fi	<a href="#">FinnGen Teams</a>	<a href="#">Administration</a>
Risto Kajanne	Institute for Molecular Medicine Finland (FIMM), HiLIFE, University of Helsinki, Helsinki, Finland	risto.kajanne@helsinki.fi	<a href="#">FinnGen Teams</a>	<a href="#">Administration</a>
Rodos Rodosthenous	Institute for Molecular Medicine Finland (FIMM), HiLIFE, University of Helsinki, Helsinki, Finland	rodos.rodosthenous@helsinki.fi	<a href="#">FinnGen Teams</a>	<a href="#">Administration</a>
Mervi Aavikko	Institute for Molecular Medicine Finland (FIMM), HiLIFE, University of Helsinki, Helsinki, Finland	mervi.aavikko@helsinki.fi	<a href="#">FinnGen Teams</a>	<a href="#">Administration</a>
Helen Cooper	Institute for Molecular Medicine Finland (FIMM), HiLIFE, University of Helsinki, Helsinki, Finland	helen.cooper@helsinki.fi	<a href="#">FinnGen Teams</a>	<a href="#">Administration</a>

Denise Öller	Institute for Molecular Medicine Finland (FIMM), HiLIFE, University of Helsinki, Helsinki, Finland	denise.oller@helsinki.fi	<a href="#">FinnGen Teams</a>	<b>Administration</b>
Tarja Laitinen	Institute for Molecular Medicine Finland (FIMM), HiLIFE, University of Helsinki, Helsinki, Finland	tarja.laitinen@helsinki.fi	<a href="#">FinnGen Teams</a>	<b>Administration</b>
Rasko Leinonen	Institute for Molecular Medicine Finland (FIMM), HiLIFE, University of Helsinki, Helsinki, Finland; European Molecular Biology Laboratory, European Bioinformatics Institute, Cambridge, UK	rasko@ebi.ac.uk	<a href="#">FinnGen Teams</a>	<b>Administration</b>
Henna Palin	Finnish Clinical Biobank Tampere / University of Tampere / Pirkanmaa Hospital District, Tampere, Finland	henna.palin@pshp.fi	<a href="#">FinnGen Teams</a>	<b>Administration</b>
Malla-Maria Linna	Helsinki Biobank / Helsinki University and Hospital District of Helsinki and Uusimaa, Helsinki	malla-maria.linna@hus.fi	<a href="#">FinnGen Teams</a>	<b>Administration</b>
Mitja Kurki	Institute for Molecular Medicine Finland (FIMM), HiLIFE, University of Helsinki, Helsinki, Finland; Broad Institute, Cambridge, MA, United States	mkurki@broadinstitute.org	<a href="#">FinnGen Teams</a>	<b>Analysis</b>
Juha Karjalainen	Institute for Molecular Medicine Finland (FIMM), HiLIFE, University of Helsinki, Helsinki, Finland	juha.karjalainen@helsinki.fi	<a href="#">FinnGen Teams</a>	<b>Analysis</b>
Pietro Della Briotta Parolo	Institute for Molecular Medicine Finland (FIMM), HiLIFE, University of Helsinki, Helsinki, Finland	pietro.dellabriottaparolo@helsinki.fi	<a href="#">FinnGen Teams</a>	<b>Analysis</b>
Arto Lehisto	Institute for Molecular Medicine Finland (FIMM), HiLIFE, University of Helsinki, Helsinki, Finland	arto.lehisto@helsinki.fi	<a href="#">FinnGen Teams</a>	<b>Analysis</b>
Juha Mehtonen	Institute for Molecular Medicine Finland (FIMM), HiLIFE, University of Helsinki, Helsinki, Finland	juha.mehtonen@helsinki.fi	<a href="#">FinnGen Teams</a>	<b>Analysis</b>
Wei Zhou	Broad Institute, Cambridge, MA, United States	wzhou@broadinstitute.org	<a href="#">FinnGen Teams</a>	<b>Analysis</b>
Masahiro Kanai	Broad Institute, Cambridge, MA, United States	mkanai@broadinstitute.org	<a href="#">FinnGen Teams</a>	<b>Analysis</b>
Mutaamba Maasha	Broad Institute, Cambridge, MA, United States	mmaasha@broadinstitute.org	<a href="#">FinnGen Teams</a>	<b>Analysis</b>
Zhili Zheng	Broad Institute, Cambridge, MA, United States	zhengzhi@broadinstitute.org	<a href="#">FinnGen Teams</a>	<b>Analysis</b>
Hannele Laivuori	Institute for Molecular Medicine Finland (FIMM), HiLIFE, University of Helsinki, Helsinki, Finland	hannele.laivuori@helsinki.fi	<a href="#">FinnGen Teams</a>	<b>Clinical Endpoint Development</b>

			t
Aki Havulinna	Institute for Molecular Medicine Finland (FIMM), HiLIFE, University of Helsinki, Helsinki, Finland; Finnish Institute for Health and Welfare (THL), Helsinki, Finland	aki.havulinna@helsinki.fi	<b>FinnGen Teams</b> <b>Clinical Endpoint Development</b>
Susanna Lemmelä	Institute for Molecular Medicine Finland (FIMM), HiLIFE, University of Helsinki, Helsinki, Finland	susanna.lemmela@helsinki.fi	<b>FinnGen Teams</b> <b>Clinical Endpoint Development</b>
Tuomo Kiiskinen	Institute for Molecular Medicine Finland (FIMM), HiLIFE, University of Helsinki, Helsinki, Finland	tuomo.kiiskinen@helsinki.fi	<b>FinnGen Teams</b> <b>Clinical Endpoint Development</b>
L. Elisa Lahtela	Institute for Molecular Medicine Finland (FIMM), HiLIFE, University of Helsinki, Helsinki, Finland	laura.lahtela@helsinki.fi	<b>FinnGen Teams</b> <b>Clinical Endpoint Development</b>
Mari Kaunisto	Institute for Molecular Medicine Finland (FIMM), HiLIFE, University of Helsinki, Helsinki, Finland	mari.kaunisto@helsinki.fi	<b>FinnGen Teams</b> <b>Communication</b>
Elina Kilpeläinen	Institute for Molecular Medicine Finland (FIMM), HiLIFE, University of Helsinki, Helsinki, Finland	elina.kilpelainen@helsinki.fi	<b>FinnGen Teams</b> <b>E-Science</b>
Tianduanyi Wang	Institute for Molecular Medicine Finland (FIMM), HiLIFE, University of Helsinki, Helsinki, Finland	tianduanyi.wang@helsinki.fi	<b>FinnGen Teams</b> <b>E-Science</b>
Timo P. Sipilä	Institute for Molecular Medicine Finland (FIMM), HiLIFE, University of Helsinki, Helsinki, Finland	timo.p.sipila@helsinki.fi	<b>FinnGen Teams</b> <b>E-Science</b>
Oluwaseun Alexander Dada	Institute for Molecular Medicine Finland (FIMM), HiLIFE, University of Helsinki, Helsinki, Finland	alexander.daada@helsinki.fi	<b>FinnGen Teams</b> <b>E-Science</b>
Awaisa Ghazal	Institute for Molecular Medicine Finland (FIMM), HiLIFE, University of Helsinki, Helsinki, Finland	awaisa.ghazal@helsinki.fi	<b>FinnGen Teams</b> <b>E-Science</b>
Anastasia Kytölä	Institute for Molecular Medicine Finland (FIMM), HiLIFE, University of Helsinki, Helsinki, Finland	anastasia.shcherban@helsinki.fi	<b>FinnGen Teams</b> <b>E-Science</b>
Rigbe Weldatsadik	Institute for Molecular Medicine Finland (FIMM), HiLIFE, University of Helsinki, Helsinki, Finland	rigbe.weldatsadik@helsinki.fi	<b>FinnGen Teams</b> <b>E-Science</b>
Sanni Ruotsalainen	Institute for Molecular Medicine Finland (FIMM), HiLIFE, University of Helsinki, Helsinki, Finland	sanni.ruotsalainen@helsinki.fi	<b>FinnGen Teams</b> <b>E-Science</b>

Jaska Uimonen	Institute for Molecular Medicine Finland (FIMM), HiLIFE, University of Helsinki, Helsinki, Finland	jaska.uimone n@helsinki.fi	<a href="#">FinnGen Teams</a>	<b>E-Science</b>
Kati Donner	Institute for Molecular Medicine Finland (FIMM), HiLIFE, University of Helsinki, Helsinki, Finland	kati.donner@ helsinki.fi	<a href="#">FinnGen Teams</a>	<b>Genotyping</b>
Anu Loukola	Helsinki Biobank / Helsinki University and Hospital District of Helsinki and Uusimaa, Helsinki	anu.loukola @hus.fi	<a href="#">FinnGen Teams</a>	<b>Sample Collection Coordination</b>
Päivi Laiho	THL Biobank / Finnish Institute for Health and Welfare (THL), Helsinki, Finland	paivi.laiho@t hl.fi	<a href="#">FinnGen Teams</a>	<b>Sample Logistics</b>
Tuuli Sistonen	THL Biobank / Finnish Institute for Health and Welfare (THL), Helsinki, Finland	tuuli.sistonen @thl.fi	<a href="#">FinnGen Teams</a>	<b>Sample Logistics</b>
Essi Kaiharju	THL Biobank / Finnish Institute for Health and Welfare (THL), Helsinki, Finland	essi.kaiharju @thl.fi	<a href="#">FinnGen Teams</a>	<b>Sample Logistics</b>
Markku Laukkanen	THL Biobank / Finnish Institute for Health and Welfare (THL), Helsinki, Finland	markku.laukk anen@thl.fi	<a href="#">FinnGen Teams</a>	<b>Sample Logistics</b>
Elina Järvensivu	THL Biobank / Finnish Institute for Health and Welfare (THL), Helsinki, Finland	elina.jarvensi vu@thl.fi	<a href="#">FinnGen Teams</a>	<b>Sample Logistics</b>
Sini Lähteenmäki	THL Biobank / Finnish Institute for Health and Welfare (THL), Helsinki, Finland	sini.lahteenm aki@thl.fi	<a href="#">FinnGen Teams</a>	<b>Sample Logistics</b>
Lotta Männikkö	THL Biobank / Finnish Institute for Health and Welfare (THL), Helsinki, Finland	lotta.mannikk o@thl.fi	<a href="#">FinnGen Teams</a>	<b>Sample Logistics</b>
Regis Wong	THL Biobank / Finnish Institute for Health and Welfare (THL), Helsinki, Finland	regis.wong@ thl.fi	<a href="#">FinnGen Teams</a>	<b>Sample Logistics</b>
Auli Toivola	THL Biobank / Finnish Institute for Health and Welfare (THL), Helsinki, Finland	auli.toivola@t hl.fi	<a href="#">FinnGen Teams</a>	<b>Sample Logistics</b>
Minna Brunfeldt	THL Biobank / Finnish Institute for Health and Welfare (THL), Helsinki, Finland	minna.brunfel dt@thl.fi	<a href="#">FinnGen Teams</a>	<b>Registry Data Operations</b>
Susanna Lemmelä	Institute for Molecular Medicine Finland (FIMM), HiLIFE, University of Helsinki, Helsinki, Finland	susanna.lem mela@helsin ki.fi	<a href="#">FinnGen Teams</a>	<b>Registry Data Operations</b>
Sami Koskelaine	THL Biobank / Finnish Institute for Health and Welfare (THL), Helsinki, Finland	sami.koskelai nen@thl.fi	<a href="#">FinnGen Teams</a>	<b>Registry Data Operations</b>
Tero Hiekkalinn	THL Biobank / Finnish Institute for Health and Welfare (THL), Helsinki, Finland	tero.hiekkalin na@helsinki.f i	<a href="#">FinnGen Teams</a>	<b>Registry Data Operations</b>
Teemu Paajanen	THL Biobank / Finnish Institute for Health and Welfare (THL), Helsinki, Finland	teemu.paajan en@thl.fi	<a href="#">FinnGen Teams</a>	<b>Registry Data</b>

				Operations
Priit Palta	Institute for Molecular Medicine Finland (FIMM), HiLIFE, University of Helsinki, Helsinki, Finland	priit.palta@helsinki.fi	<a href="#">FinnGen Teams</a>	Sequencing Informatics
Shuang Luo	Institute for Molecular Medicine Finland (FIMM), HiLIFE, University of Helsinki, Helsinki, Finland	shuang.luo@helsinki.fi	<a href="#">FinnGen Teams</a>	Sequencing Informatics
Mary Pat Reeve	Institute for Molecular Medicine Finland (FIMM), HiLIFE, University of Helsinki, Helsinki, Finland	mary.reeve@helsinki.fi	<a href="#">FinnGen Teams</a>	Trajectory
Shanmukha Sampath Padmanabhuni	Institute for Molecular Medicine Finland (FIMM), HiLIFE, University of Helsinki, Helsinki, Finland	sam.padmanabhuni@helsinki.fi	<a href="#">FinnGen Teams</a>	Trajectory
Marianna Niemi	University of Tampere, Tampere, Finland	marianna.niem@tuni.fi	<a href="#">FinnGen Teams</a>	Trajectory
Harri Siirtola	University of Tampere, Tampere, Finland	harri.siirtola@tuni.fi	<a href="#">FinnGen Teams</a>	Trajectory
Javier Gracia-Tabuena	University of Tampere, Tampere, Finland	javier.graciatabuena@tuni.fi	<a href="#">FinnGen Teams</a>	Trajectory
Mika Helminen	University of Tampere, Tampere, Finland	mika.helminen@tuni.fi	<a href="#">FinnGen Teams</a>	Trajectory
Tiina Luukkaala	University of Tampere, Tampere, Finland	tiina.luukkaala@tuni.fi	<a href="#">FinnGen Teams</a>	Trajectory
Iida Vähätalo	University of Tampere, Tampere, Finland	iida.vahatalo@epshp.fi	<a href="#">FinnGen Teams</a>	Trajectory
Iina Laak	Institute for Molecular Medicine Finland (FIMM), HiLIFE, University of Helsinki, Helsinki, Finland	iina.laak@helsinki.fi	<a href="#">FinnGen Teams</a>	Data protection officer
Marco Hautalahti	Finnish Biobank Cooperative - FINBB	marco.hautalahti@finbb.fi	<a href="#">FinnGen Teams</a>	FINBB - Finnish biobank cooperative
Johanna Mäkelä	Finnish Biobank Cooperative - FINBB	johanna.makela@finbb.fi	<a href="#">FinnGen Teams</a>	FINBB - Finnish biobank cooperative
Saija Haapa-Paananen	Finnish Biobank Cooperative - FINBB	saija.haapa-paananen@finbb.fi	<a href="#">FinnGen Teams</a>	FINBB - Finnish biobank cooperative
Sarah Smith	Finnish Biobank Cooperative - FINBB	sarah.smith@finbb.fi	<a href="#">FinnGen Teams</a>	FINBB - Finnish

Tom Finnish Biobank Cooperative - FINBB  
Southering  
ton

tom.southerin [FinnGen](#)  
gton@finbb.fi [Teams](#)

**biobank  
cooperative**

**FINBB -  
Finnish  
biobank  
cooperative**

Meri Finnish Biobank Cooperative - FINBB  
Lähteenmä  
ki

meri.lahteen [FinnGen](#)  
maki@finbb.fi [Teams](#)

**FINBB -  
Finnish  
biobank  
cooperative**