

1 **Inpatient Burden of Respiratory Syncytial Virus Infection and Influenza in Children Younger**
2 **than 5 years in Japan, 2011-2022: A database study**

3
4 Takeshi Arashiro^{1,2,3}, Rolf Kramer⁴, Jing Jin⁵, Munehide Kano¹, Fangyuan Wang⁶, Isao Miyairi⁷

5
6 ¹Sanofi Vaccines Medical, Tokyo, Japan

7 ²Faculty of Infectious and Tropical Diseases, London School of Hygiene and Tropical Medicine,
8 London, United Kingdom

9 ³School of Tropical Medicine and Global Health, Nagasaki University, Nagasaki, Japan

10 ⁴Sanofi Vaccines Medical, Lyon, France

11 ⁵Sanofi Vaccines Medical, Beijing, China

12 ⁶Real World Evidence, Syneos Health, Beijing, China

13 ⁷Department of Pediatrics, School of Medicine, Hamamatsu University, Hamamatsu, Japan

14
15
16 **Corresponding Author:** Takeshi Arashiro (Takeshi.Arashiro@sanofi.com)

17
18 **Running Title:** RSV and influenza in young children in Japan

21 **Abstract (250/250 words)**

22 **Background**

23 Respiratory syncytial virus (RSV) and influenza virus are major viral etiologies of pediatric lower
24 respiratory tract infection, but comparative data on inpatient burden are lacking.

25 **Methods**

26 Using a large-scale health claims database in Japan, we identified patients under 5 years of age with a
27 confirmed RSV or influenza diagnosis as an outpatient or inpatient between 2011-2022. Hospitalization
28 rate, inpatient characteristics, various in-hospital outcomes/complications, and healthcare resource
29 utilization were described.

30 **Results**

31 A total of 176,911 RSV-confirmed outpatients, 153,383 influenza-confirmed outpatients, 90,413 RSV-
32 confirmed hospitalizations, and 11,186 influenza-confirmed hospitalizations were identified. Among
33 outpatients, 24.7% of RSV infection and 2.8% of influenza cases required hospitalization within one
34 week. There was no comorbidities/prematurity for 95.0% of RSV hospitalizations and 96.5% of
35 influenza hospitalizations. Proportions of in-hospital outcomes/complications were (RSV infection vs
36 influenza): oxygen use 47.6% vs 14.8%, mechanical ventilation 2.1% vs 0.7%, pneumonia 33.6% vs
37 12.8%, otitis media 7.7% vs 2.3%, febrile seizure 1.5% vs 34.4%, encephalitis/encephalopathy 0.1% vs
38 0.5%, myocarditis <0.1% vs 0.6%, antibiotics prescription 48.0% vs 24.4%. The mean inpatient stay
39 was 6.1 vs 4.3 days at direct medical costs of 435,744 vs 315,809 JPY/patient. These trends held true in
40 age-stratified data. In-hospital death occurred in 31 RSV infection and 6 influenza cases.

41 **Conclusions**

42 Although both infections resulted in substantial burden, RSV infection led to more frequent
43 hospitalizations, worse in-hospital outcomes, longer inpatient stays, higher medical costs, and more
44 frequent antibiotics prescription compared to influenza. Most RSV hospitalizations occurred among
45 healthy term children, emphasizing the need for prevention measures in all children.

46

47 **Keywords:** pediatrics; respiratory syncytial virus infections; influenza; hospitalization; Japan

48

49 **Main Text**

50 **Introduction**

51 Lower respiratory tract infections (LRTIs) are major public health threats among young children.
52 Among pediatric LRTIs, respiratory syncytial virus (RSV) and influenza virus are major viral etiologies
53 with high burden globally.^{1,2} In Japan, the National Epidemiological Surveillance of Infectious Diseases
54 (NESID) is conducted by the National Institute of Infectious Diseases (NIID) and Ministry of Health,
55 Labour and Welfare (MHLW).³ For RSV infection and influenza, under the NESID, sentinel
56 surveillance provides information on trends and levels of epidemics to inform policy, risk
57 communication, and (for RSV infection) timing to initiate prophylaxis to individuals with underlying
58 health conditions or prematurity.^{4,5} However, the NESID data only provides age-stratified aggregate
59 data regardless of clinical severity. Therefore, detailed and comprehensive burden data on severe cases
60 require special studies and such data are scarce in Japan. Most previous reports on severe cases of LRTI
61 are based on small studies that describe single-center/single-prefecture experience or studies with only a
62 brief description of in-hospital outcomes.⁶⁻⁸ Furthermore, although RSV and influenza share several
63 clinical features in young children, comparative data on inpatient characteristics, inpatient outcomes,
64 complications, and healthcare resource utilization (HCRU) is lacking globally. Finally, epidemiology of
65 RSV infection and influenza has been disrupted globally due to the coronavirus disease (COVID-19)
66 pandemic and further data especially around epidemic shift in age group are warranted.^{9,10} Therefore,
67 we used one of the largest health claims databases in Japan to comprehensively describe RSV infection
68 and influenza in children with the aim to elucidate hospitalization rate among infected individuals,
69 inpatient characteristics, inpatient outcomes, and HCRU.

70

71 **Methods**

72 *Database and study population*

73 This retrospective cohort study was conducted using data from the Medical Data Vision (MDV)
74 database, one of the largest electronic health records databases in Japan covering approximately 450
75 hospitals (25% of acute care hospitals in Japan). The present study population was comprised of
76 patients under five years of age with a confirmed index diagnosis of RSV or influenza either outpatient
77 or inpatient based on the International Classification of Diseases 10th Revision (ICD-10) diagnostic
78 codes (**Supplementary Table 1**) within an identification period of April 1, 2011 to July 31, 2022.
79 Diagnoses which occurred within 6-months of the index diagnosis of the same infection (wash-out
80 period) were excluded to avoid duplicating the same episode. Patients with a record of another infection
81 with different pathogen within 30 days after the index date (e.g., suspected co-infection) were also
82 excluded.

84 *Baseline characteristics*

85 Data on age at diagnosis, sex, diagnosis date, and hospital size were collected. A 12-month look-
86 back period from the index date was used to define the baseline period during which presence of
87 comorbidities/prematurity and palivizumab use were ascertained. Comorbidities included in this study
88 were those eligible to receive palivizumab in Japan (ICD-10 codes in **Supplementary Table 1**).¹¹⁻¹⁴

91 *Definitions of hospitalized patients, clinical outcomes, healthcare resource utilization, and 92 hospitalization rates*

93 To describe inpatient characteristics including baseline characteristics, inpatient outcomes, and
94 HCRU, we included all patients who had a confirmed diagnosis in the inpatient setting regardless of
95 where or whether an outpatient RSV diagnosis was made (to ensure inclusion of patients who were
diagnosed with RSV infection at different healthcare facilities such as clinics and patients who were

96 never diagnosed before being hospitalized and diagnosed after hospitalization). To be identified as a
97 relevant hospitalization, the infection had to have been coded as any of the following: (1) the disease
98 that required the most medical resources, (2) primary disease for admission, or (3) disease that triggered
99 the hospitalization. Patients who were admitted to the hospital were followed to examine in-hospital
100 clinical outcomes and HCRU beginning from the index date and ending at the time of in-hospital death,
101 discharge, the last record available for the patient, or the end of the study period (August 31, 2022),
102 whichever occurred first. Variables for examination included intravenous (IV) fluid use, oxygen use,
103 high flow-nasal canula oxygen therapy use, use of mechanical ventilation, intensive care unit (ICU)
104 admissions, in-hospital death, antibiotics use, in-hospital complications (pneumonia, otitis media,
105 febrile seizure, encephalitis or encephalopathy, and myocarditis). Finally, length of inpatient stay and
106 direct medical costs during hospitalization for each patient were calculated by including all procedures,
107 clinical exams, imaging, and medications (in Japanese yen).

108 For the purpose of calculating hospitalization rate among outpatients, we divided the number of
109 patients with a confirmed index outpatient diagnosis by the number of patients who had a confirmed
110 inpatient diagnosis in the same hospital. This was done to ensure that patients included in the numerator
111 (hospitalized cases) were also in the denominator (outpatient cases). The basis of this algorithm was the
112 assumption that almost all patients diagnosed in an outpatient clinic of a hospital will be admitted to the
113 same hospital if the patient's condition deteriorates to the point of requiring inpatient care, as per
114 clinical practice in Japan. The date of first admission was used to estimate the percentage of eligible
115 patients hospitalized within 0-6 days, 0-13 days, and 0-29 days of the index date. Percent
116 hospitalizations within these time intervals were also calculated specifically for patients who required
117 oxygen or intravenous (IV) fluids to restrict to those requiring medical attention.

118

119 *Analyses*

120 We took a descriptive approach to understand baseline characteristics, hospitalizations rates, in-
121 hospital clinical outcomes, and HCRU. We concluded that it would not be appropriate to estimate the
122 relative measures of association (e.g., odds ratios) to compare such parameters between RSV
123 infection and influenza, as various confounders (e.g., testing intensity) may exist. Instead, whenever
124 possible, we presented data for the overall population, as well as data stratified by age since age is an
125 important cofounder that influences various outcomes. Age categories used were less than 6 months,
126 6 months-1 year, 1-2 years, and 2-4 years of age (summary data were also presented by month for
127 less than 1 year). Continuous variables were summarized with means/standard deviations (SD) and
128 median/interquartile range (IQR). Categorical variables were summarized using counts and
129 percentages.

130 Epidemic curves for outpatients and inpatients for RSV infection and influenza were created to
131 describe temporal trends. Finally, to understand the influence of the COVID-19 pandemic on
132 epidemiology, analyses were also performed and stratified by time period, including 2017-2019 (pre-
133 COVID-19), 2020-2022 (during-COVID-19), and the 2021 season (as this season showed a unique
134 RSV epidemic curve³). All analyses were performed using SAS software (version 9.4).

135

136 **Results**

137 During the study period between April 2011 and July 2022, 176,911 RSV-confirmed cases and
138 153,383 influenza-confirmed cases were identified in the outpatient setting (**Figure 1; Supplementary**
139 **Tables 2-3**). Furthermore, 90,413 RSV-confirmed hospitalizations and 11,186 influenza-confirmed
140 hospitalizations were identified (overall **Table 1**; healthy children **Supplementary Table 4**). For both
141 RSV infection and influenza, there were more males than females. Among hospitalized RSV cases,
142 39.0% were less than 6 months, 20.8% were 6 months-1 year, 26.4% were 1-2 years, and 13.7% were 2-
143 4 years. Among hospitalized influenza cases, 19.1% were less than 6 months, 10.6% were 6 months-1
144 year, 25.4% were 1-2 years, and 44.8% were 2-4 years. Among inpatients, 85,896/90,413 (95.0%) of
145 RSV cases and 10,789/11,186 (96.5%) of influenza cases occurred in patients with no record of relevant
146 comorbidities or prematurity. **Supplementary Table 5** shows the data among infants by month of age.

147 Regarding the epidemic curves for influenza, a clear seasonal pattern in wintertime was observed
148 with no epidemic occurring in late 2020-2022 (**Figure 2; Supplementary Table 6**). In contrast, RSV
149 infection also had epidemic peaks, but with considerable year-to-year variability. Specifically, before
150 and during 2016, the peaks were from fall to winter. In 2017-2019, peaks began and ended earlier
151 spanning summer to fall. There was no epidemic in 2020, but the largest wave was observed in 2021
152 peaking in early summer. These findings were in line with the corresponding NESID data. Also,
153 importantly, trends and levels of epidemics were similar between inpatients and outpatients for both
154 RSV infection and influenza, respectively.

155 Hospitalization rate among confirmed outpatient RSV diagnosis was 43,637/176,911 (24.7%)
156 within 6 days of diagnosis (**Table 2**). This rate was similar when restricting to hospitalization requiring
157 oxygen/IV usage (42,277/176,911; 23.9%). When stratified by age group, the highest percentage of
158 hospitalization was observed among the 1-2 years age category (11,995/42,485; 28.2%), although this
159 could be due to less outpatient testing (**Supplementary Methods**). Also, hospitalization rate within 6
160 days of diagnosis among healthy children was higher (41,666/141,843; 29.4%) than the non-restricted

161 population and the highest percentage was observed for the less than 6 months age category within 29
162 days of diagnosis (15,717/45,318; 34.7%). In contrast, hospitalization rate among confirmed outpatient
163 influenza diagnosis was much lower at 4,247/153,383 (2.8%) within 6 days of diagnosis. When
164 stratified by age group, the highest percentage of hospitalization was observed among those less than 6
165 months age (736/8,741; 8.4%).

166 Various in-hospital outcomes/HCRU-related factors were described (**Table 3**). IV fluid was used in
167 86,258/90,413 (95.4%) of RSV cases and 10,622/11,186 (95.0%) of influenza cases. Oxygen was
168 required in 43,056/90,413 (47.6%) of RSV cases and 1,656/11,186 (14.8%) of influenza cases.
169 Mechanical ventilation was required in 1,928/90,413 (2.1%) of RSV cases and 74/11,186 (0.7%) of
170 influenza cases. In-hospital death occurred in 31/90,413 (<0.1%) of RSV cases and 6/11,186 (0.1%) of
171 influenza cases. Antibiotics were prescribed in 43,418/90,413 (48.0%) of RSV cases and 2,728/11,186
172 (24.4%) of influenza cases. The mean inpatient stays were 6.1 days and 4.3 days with direct medical
173 costs of 435,744JPY/patient and 315,809JPY/patient for RSV infection and influenza, respectively.
174 Regarding in-hospital complications, pneumonia occurred in 30,376/90,413 (33.6%) of RSV cases and
175 1,428/11,186 (12.8%) of influenza cases. Otitis media occurred in 6,915/90,413 (7.7%) of RSV cases
176 and 255/11,186 (2.3%) of influenza cases. Febrile seizure occurred in 1,366/90,413 (1.5%) of RSV
177 cases and 3,843/11,186 (34.4%) of influenza cases. Encephalitis or encephalopathy occurred in
178 49/90,413 (0.1%) of RSV cases and 54/11,186 (0.5%) of influenza cases. Myocarditis occurred in
179 4/90,413 (<0.1%) of RSV cases and 68/11,186 (0.6%) of influenza cases.

180 Finally, we stratified the number of hospitalizations by COVID-19 era (**Supplementary Tables 7-**
181 **8**). There was a comparatively lower proportion of RSV hospitalizations in age <6 months and age 6-11
182 months during COVID-19 era (36.4%, 15.1%) and 2021 season (35.9%, 14.3%) compared to pre-
183 COVID-19 era (39.3%, 21.9%). Conversely, there was a comparatively higher proportion of RSV
184 hospitalizations in age 2 years to 4 years during COVID-19 era (21.3%) and 2021 season (22.0%)

185 compared to pre-COVID-19 era (12.0%). There were very few influenza hospitalizations during
186 COVID-19 era.

187

188 Discussion

189 We conducted a study using large electronic health records database covering approximately 25%
190 of acute care hospitals in Japan to elucidate the comprehensive inpatient burden of RSV infection and
191 influenza in young children. We found that a large number of RSV and influenza cases were diagnosed
192 in both outpatient and inpatient settings with substantial in-hospital outcomes/complications and HCRU
193 during the 11-year study period.

194 Similar to what has been observed in previous reports¹, over half of RSV hospitalizations occurred
195 in infants less than 1 year of age. Approximately 95% of these RSV hospitalizations occurred in patients
196 with no record of comorbidities or prematurity. We also observed hospitalization rates among children
197 diagnosed with RSV infection to be 20-30%, meaning that one in four medically-attended RSV
198 infections resulted in hospitalization. When restricting to patients without comorbidities/prematurity,
199 the rates were even higher (up to 35%), which is likely to be due to unavailability of prevention
200 measures in this population (unlike palivizumab for children with comorbidities/prematurity). These
201 were in stark contrast to low hospitalization rates for influenza where only 2-3% in children 6 months of
202 age or older and 8-9% among infants less 6 months of age.

203 We further examined in-hospital outcomes and HCRU related to each infection. Important in-
204 hospital outcomes including oxygen use, ICU admission, and mechanical ventilation were more
205 prevalent with RSV infections compared to influenza across all age groups. Still, ICU admission and
206 mechanical ventilation among the RSV inpatient population were much lower compared to the data
207 from the U.S., which could be due to a lower threshold of hospitalization in Japan and scarcity of
208 pediatric ICUs in Japan (i.e., some specialized care including mechanical ventilation is routinely done in
209 general wards).¹⁵ Although the numbers and proportions were small, a few in-hospital deaths occurred
210 for both infections. Antibiotic use was more prevalent for RSV infection than for influenza. This could
211 be due to more severe in-hospital outcomes for RSV infection and improved antimicrobial stewardship
212 is warranted. Regarding in-hospital complications, pneumonia and otitis media were more common in

213 RSV infection than in influenza. In contrast, febrile seizures, encephalitis/encephalopathy, and
214 myocarditis were more common in influenza than in RSV infection. Notably, approximately one-third
215 of influenza hospitalization were associated with febrile seizure. Longer inpatient stays (6.1 vs 4.3 days)
216 with higher direct medical costs (435,744 vs 315,809 JPY/patient) were observed with RSV infection
217 compared with influenza. Finally, analyses by COVID-19 era revealed a slight shift in age of RSV
218 hospitalizations to older age groups in 2021-2022, which is in line with lack of epidemic in 2020. This
219 shift may recover to pre-COVID-19 trends after a few years of epidemics together with disrupted
220 seasonal pattern as observed in the U.S.¹⁰

221 Given the substantial burden of RSV infection with considerable in-hospital
222 outcomes/complications and HCRU, the currently available RSV prophylaxis, palivizumab, which only
223 covers children with specific comorbidities or prematurity, is not enough to protect the majority of
224 children from hospitalization when infected, similar to influenza where routine vaccination is available.
225 Novel RSV prevention measures to protect all children are needed. Recently, another monoclonal
226 antibody with extended half-life, nirsevimab, has been approved for use as a preventative treatment for
227 all infants entering their first RSV season in the U.S. and several other countries.¹⁶ Maternal
228 immunization is also approved for use, although only available in a seasonal manner with a narrow
229 window period for immunization (pregnant individuals at 32-36 weeks gestational age) in the U.S.¹⁷
230 There are other potential preventive measures for toddlers under development.¹⁸ The current study
231 highlights that the burden of severe RSV infection in children in Japan and other countries are similarly.
232 Therefore, improved awareness of disease burden as well as wide use of these preventive measures are
233 highly anticipated upon approval.

234

235 *Limitations*

236 There are several limitations to this study. First, the current database is based on participating
237 hospitals only and there is no linkage of data across hospitals. Second, although both RSV and influenza

238 testing is covered by NHI (**Supplementary Methods**), careful interpretation is necessary as testing
239 intensity may differ between RSV infection and influenza as well as by age group (especially infants vs
240 young children >1 years). Third, the database did not have information on influenza vaccination/anti-
241 viral use, which may have influenced study outcomes. Nevertheless, the availability of
242 prevention/treatment for influenza and unavailability to prevention/treatment for RSV infection is
243 reflection of real-world disease burden from RSV disease, which may improve with novel prevention
244 measures mentioned above. Finally, similar to other database studies, medical coding may not always
245 reflect true diagnosis or procedures.

246

247 **Conclusions**

248 A large number of RSV and influenza cases were diagnosed in both Japanese outpatient and
249 inpatient settings during the study period. There were also substantial in-hospital
250 outcomes/complications and HCRU, many of which were more frequently observed with RSV infection
251 compared to influenza. Furthermore, longer inpatient stays with more expensive direct medical costs
252 were seen with RSV infection compared to influenza. Approximately one in four RSV infection resulted
253 in hospitalization with most hospitalization occurring among healthy term children, emphasizing the
254 need for RSV prevention measures in all children.

255

256 **Funding Information**

257 This work was supported by Sanofi and AstraZeneca.

258

259 **Potential Conflicts of Interest**

260 Takeshi Arashiro is a Sanofi employee and a cooperative researcher at the National Institute of
261 Infectious Diseases, Japan. Rolf Kramer, Jing Jin, and Munehide Kano are Sanofi employees. Fangyuan
262 Wang is a Syneos Health employee. Isao Miyairi received honoraria from Sanofi for lectures and
263 advisory committees.

264

265 **Ethics Statement**

266 The study was conducted under the ethical principles consistent with the Japanese Ethical Guidelines
267 for Medical and Biological Research Involving Human Subjects and the Declaration of Helsinki. The
268 requirement for informed consent was waived as all personal and identifying data were anonymized in
269 the administrative health claims dataset.

270

271 **Author Contributions**

272 All authors contributed to the conception and/or design of the study; TA and FW were involved in data
273 analyses; TA, RK, and IM were involved in interpretation of the data; TA drafted the first version of the
274 manuscript. All authors critically reviewed the manuscript for intellectual content and gave final
275 approval of the version to be published.

276

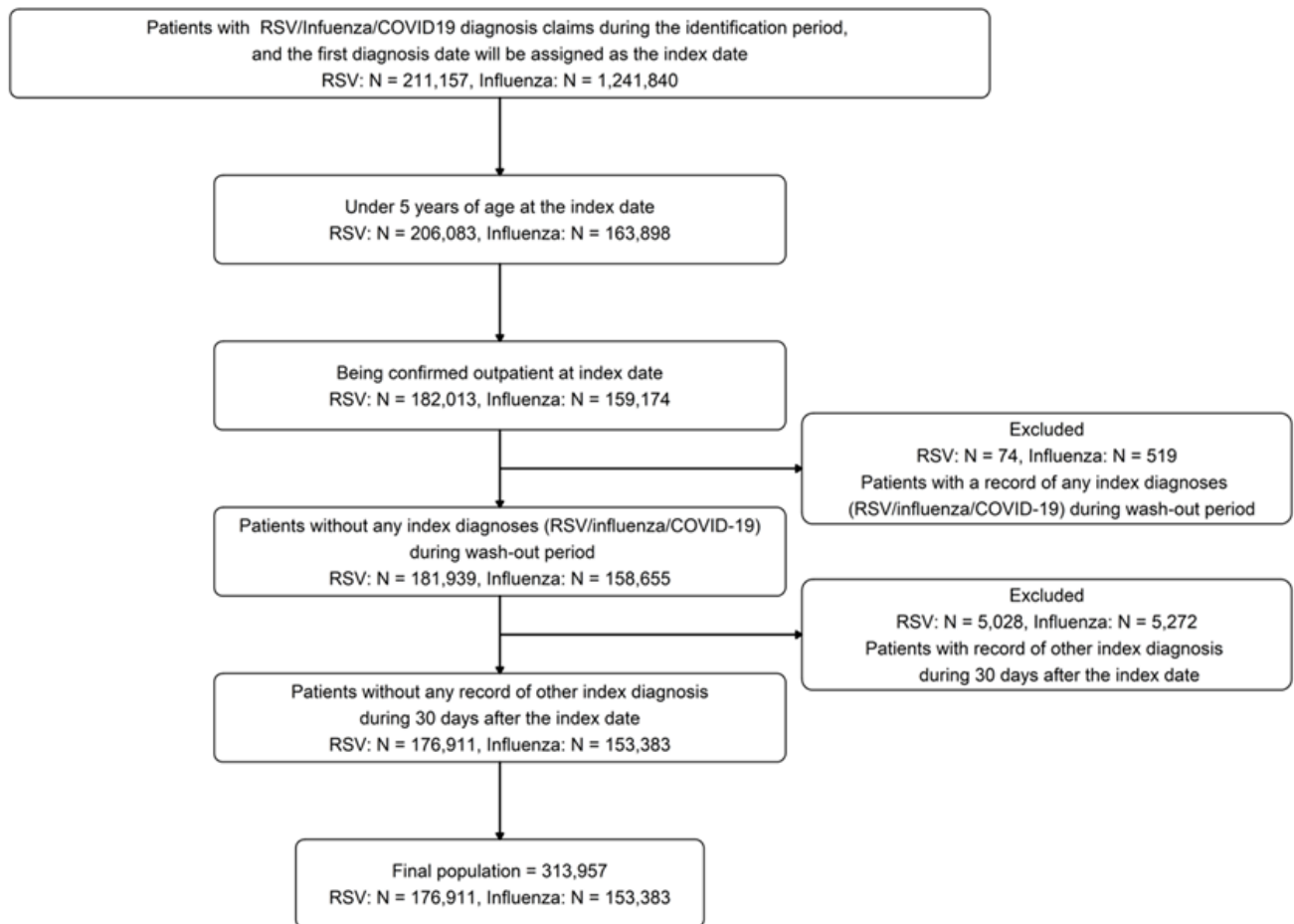
277 **Acknowledgements**

278 We thank employees of Syneos Health for technical assistance in study design and data analysis. We
279 also thank Ko Nakajo for technical assistance in study conception and design.

280

281 **Figure Legends**

282 **Figure 1. Description of the flow for assembling the outpatient population used to calculate**
283 **hospital admission rates**

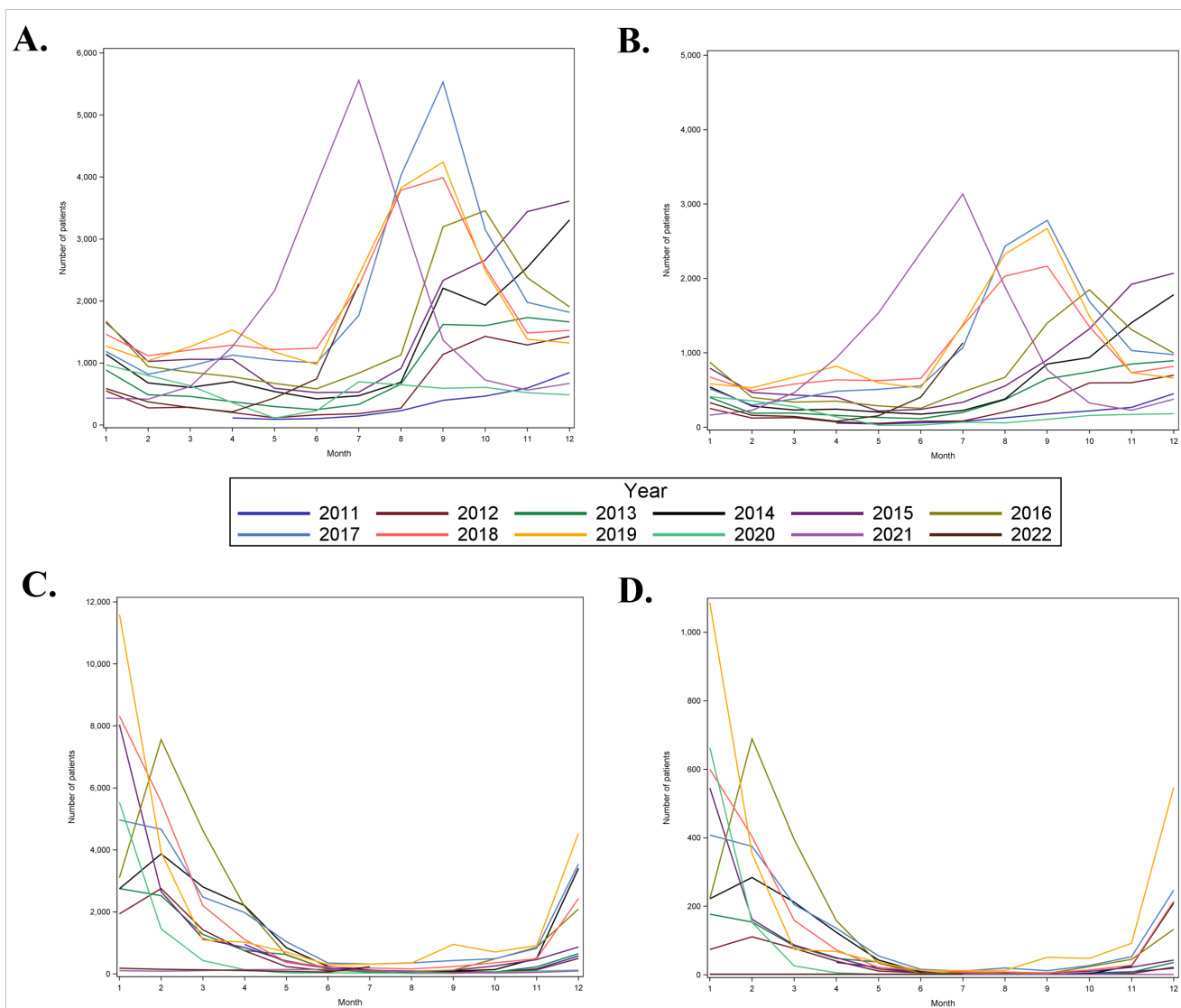


284

285 **Figure 2. Epidemic curve for RSV and influenza identified in outpatient and inpatient settings.**

286 (A) Outpatient RSV infection, (B) inpatient RSV infection, (C) outpatient influenza, (D) inpatient

287 influenza



288

289

290 References

- 291 1. Li Y, Wang X, Blau DM et al. Global, regional, and national disease burden estimates of acute
292 lower respiratory infections due to respiratory syncytial virus in children younger than 5 years in
293 2019: a systematic analysis. *Lancet*. 2022;399(10340):2047-64.
- 294 2. Wang X, Li Y, O'Brien KL et al. Global burden of respiratory infections associated with
295 seasonal influenza in children under 5 years in 2018: a systematic review and modelling study.
296 *Lancet Glob Health*. 2020;8(4):e497-e510.
- 297 3. National Institute of Infectious Diseases. Weekly Infectious Disease Report.
298 <https://www.niid.go.jp/niid/ja/idwr.html>. Accessed December 23, 2023. (In Japanese)
- 299 4. National Institute of Infectious Diseases. Influenza Epidemiological Information.
300 <https://www.niid.go.jp/niid/ja/diseases/a/flu.html>. Accessed December 23, 2023. (In Japanese)
- 301 5. National Institute of Infectious Diseases. RS Virus Infections 2018-2021. Infectious Agents
302 Surveillance Report. 2022;43(4):79-81. (In Japanese)
- 303 6. Nagasawa K, Ishiwada N. Disease burden of respiratory syncytial virus infection in the pediatric
304 population in Japan. *J Infect Chemother*. 2022;28(2):146-57.
- 305 7. Kobayashi Y, Togo K, Agosti Y, McLaughlin JM. Epidemiology of respiratory syncytial virus
306 in Japan: A nationwide claims database analysis. *Pediatr Int*. 2022;64(1):e14957.
- 307 8. Mashiba S, Takahashi T, Hayashi N et al. Features of patients with influenza virus infection
308 examined in the emergency department of a university hospital in north-western Japan. *J Int
309 Med Res*. 2004;32(3):331-6.
- 310 9. Bardsley M, Morbey RA, Hughes HE et al. Epidemiology of respiratory syncytial virus in
311 children younger than 5 years in England during the COVID-19 pandemic, measured by
312 laboratory, clinical, and syndromic surveillance: a retrospective observational study. *Lancet
313 Infect Dis*. 2023;23(1):56-66.
- 314 10. Hamid SW, A, Parikh R, Jones J et al. Seasonality of Respiratory Syncytial Virus — United
315 States, 2017–2023. *Morbidity and Mortality Weekly Report (MMWR)*. 2023;72(14):355-61.
- 316 11. Gantenberg JR, van Aalst R, Zimmerman N et al. Medically Attended Illness due to Respiratory
317 Syncytial Virus Infection Among Infants Born in the United States Between 2016 and 2020. *J
318 Infect Dis*. 2022;226(Suppl 2):S164-s74.
- 319 12. Bennett MV, McLaurin K, Ambrose C, Lee HC. Population-based trends and underlying risk
320 factors for infant respiratory syncytial virus and bronchiolitis hospitalizations. *PLoS One*.
321 2018;13(10):e0205399.
- 322 13. Mori M, Yoshizaki K, Watabe S et al. Safety, efficacy and pharmacokinetics of palivizumab in
323 off-label neonates, infants, and young children at risk for serious respiratory syncytial virus
324 infection: a multicenter phase II clinical trial. *Lancet Reg Health West Pac*. 2023;39100847.
- 325 14. AstraZeneca. Notification of Partial Change Approval Application for the Humanized
326 Monoclonal Antibody Against RS Virus, "Synagis". [https://www.astrazeneca.co.jp/media/press-
327 releases/1/2023/2023070301.html](https://www.astrazeneca.co.jp/media/press-releases/1/2023/2023070301.html). Accessed December 23, 2023. (In Japanese)
- 328 15. Arriola CS, Kim L, Langley G et al. Estimated Burden of Community-Onset Respiratory
329 Syncytial Virus-Associated Hospitalizations Among Children Aged <2 Years in the United
330 States, 2014-15. *J Pediatric Infect Dis Soc*. 2020;9(5):587-95.
- 331 16. Sanofi. Press Release: FDA approves Beyfortus™ (nirsevimab-alip) to protect infants against
332 RSV disease. [https://www.sanofi.com/en/media-room/press-releases/2023/2023-07-17-17-00-
333 00-2705911](https://www.sanofi.com/en/media-room/press-releases/2023/2023-07-17-17-00-00-2705911). Accessed December 23, 2023.
- 334 17. U.S. Food & Drug Administration. ABRYSVO. [https://www.fda.gov/vaccines-blood-
335 biologics/abrysvo](https://www.fda.gov/vaccines-blood-biologics/abrysvo). Accessed December 23, 2023.
- 336 18. PATH. RSV Vaccine and mAb Snapshot. [https://www.path.org/resources/rsv-vaccine-and-mab-
337 snapshot/](https://www.path.org/resources/rsv-vaccine-and-mab-snapshot/). Accessed December 23, 2023.
- 338

Table 1 Baseline characteristics for all children hospitalized with RSV infection and influenza overall and by age categories

	RSV					Influenza				
	Total	Age <6 months	Age 6-11 months	Age 1<2 years	Age 2<5 years	Total	Age <6 months	Age 6-11 months	Age 1<2 years	Age 2<5 years
Total number of patients, n (relative % by age group)	90,413 (100)	35,273 (39.0)	18,827 (20.8)	23,898 (26.4)	12,415 (13.7)	11,186 (100)	2,141 (19.1)	1,188 (10.6)	2,845 (25.4)	5,012 (44.8)
Sex, n (%)										
Female	40,958 (45.3)	15,564 (44.1)	8,030 (42.7)	11,133 (46.6)	6,231 (50.2)	4,890 (43.7)	986 (46.1)	517 (43.5)	1,282 (45.1)	2,105 (42.0)
Male	49,455 (54.7)	19,709 (55.9)	10,797 (57.4)	12,765 (53.4)	6,184 (49.8)	6,296 (56.3)	1,155 (54.0)	671 (56.5)	1,563 (54.9)	2,907 (58.0)
Age, months										
Mean (SD)	(11.8, 11.1)	(2.5, 1.4)	(8.4, 1.7)	(16.7, 3.4)	(33.9, 8.7)	(24.0, 17.4)	(2.6, 1.3)	(8.6, 1.7)	(17.4, 3.3)	(40.7, 10.6)
Median (IQR)	9.0 (3.0-17.0)	2.0 (1.0-4.0)	8.0 (7.0-10.0)	16.0 (14.0-19.0)	32.0 (27.0-40.0)	21.0 (9.0-38.0)	2.0 (2.0-3.0)	9.0 (7.0-10.0)	17.0 (14.0-20.0)	40.0 (31.0-50.0)
Season by year, n (%)										
2011 (May 2011 to April 2012)	2,000 (2.2)	724 (2.1)	451 (2.4)	547 (2.3)	278 (2.2)	360 (3.2)	70 (3.3)	38 (3.2)	79 (2.8)	173 (3.5)
2012 (May 2012 to April 2013)	3,609 (4.0)	1,367 (3.9)	845 (4.5)	940 (3.9)	457 (3.7)	517 (4.6)	99 (4.6)	44 (3.7)	129 (4.5)	245 (4.9)
2013 (May 2013 to April 2014)	5,259 (5.8)	2,252 (6.4)	1,191 (6.3)	1,227 (5.1)	589 (4.8)	933 (8.4)	147 (6.9)	99 (8.4)	223 (7.9)	464 (9.3)
2014 (May 2014 to April 2015)	8,057 (8.9)	3,223 (9.1)	1,793 (9.5)	2,038 (8.5)	1,003 (8.1)	1,142 (10.2)	262 (12.3)	117 (9.9)	275 (9.7)	488 (9.8)
2015 (May 2015 to April 2016)	9,532 (10.6)	3,834 (10.9)	2,057 (10.9)	2,464 (10.3)	1,177 (9.5)	1,575 (14.1)	231 (10.8)	202 (17.1)	403 (14.2)	739 (14.8)
2016 (May 2016 to April 2017)	8,926 (9.9)	3,626 (10.3)	2,057 (10.9)	2,302 (9.6)	941 (7.6)	1,378 (12.4)	302 (14.1)	128 (10.8)	348 (12.3)	600 (12.0)
2017 (May 2017 to April 2018)	13,434 (14.9)	5,148 (14.6)	2,987 (15.9)	3,588 (15.0)	1,711 (13.8)	1,677 (15.0)	303 (14.2)	174 (14.7)	396 (13.9)	804 (16.1)
2018 (May 2018 to April 2019)	12,356 (13.7)	5,105 (14.5)	2,754 (14.6)	3,148 (13.2)	1,349 (10.9)	1,895 (17.0)	423 (19.8)	186 (15.7)	490 (17.3)	796 (16.0)
2019 (May 2019 to April 2020)	11,576 (12.8)	4,380 (12.4)	2,382 (12.7)	3,313 (13.9)	1,501 (12.1)	1,660 (14.9)	296 (13.9)	194 (16.4)	491 (17.3)	679 (13.6)
2020 (May to December)	802 (0.9)	304 (0.9)	166 (0.9)	238 (1.0)	94 (0.8)	3 (0.0)	1 (0.1)	2 (0.2)	0 (0.0)	0 (0.0)
2021 (January to December)	12,396 (13.7)	4,456 (12.6)	1,771 (9.4)	3,438 (14.4)	2,731 (22.0)	6 (0.1)	1 (0.1)	1 (0.1)	3 (0.1)	1 (0.0)
2022 (January to July)	2,410 (2.7)	832 (2.4)	362 (1.9)	638 (2.7)	578 (4.7)	4 (0.0)	1 (0.1)	0 (0.0)	3 (0.1)	0 (0.0)
Comorbidity during baseline period, n (%)										
Down syndrome	387	123	91	74	99	20	3	4	2	11

	(0.4)	(0.4)	(0.5)	(0.3)	(0.8)	(0.2)	(0.1)	(0.3)	(0.1)	(0.2)
Congenital heart disease	1,817	902	501	264	150	119	36	33	29	21
	(2.0)	(2.6)	(2.7)	(1.1)	(1.2)	(1.1)	(1.7)	(2.8)	(1.0)	(0.4)
Bronchopulmonary dysplasia	110	40	42	18	10	5	1	2	1	1
	(0.1)	(0.1)	(0.2)	(0.1)	(0.1)	(0.0)	(0.1)	(0.2)	(0.0)	(0.0)
Prematurity	1,979	1,288	546	122	23	79	35	36	6	2
	(2.2)	(3.7)	(2.9)	(0.5)	(0.2)	(0.7)	(1.6)	(3.0)	(0.2)	(0.0)
Immunodeficiency	169	68	45	35	21	29	4	6	5	14
	(0.2)	(0.2)	(0.2)	(0.2)	(0.2)	(0.3)	(0.2)	(0.5)	(0.2)	(0.3)
Pulmonary hypoplasia	19	10	4	2	3	2	1	1	0	0
	(0.0)	(0.0)	(0.0)	(0.0)	(0.0)	(0.0)	(0.1)	(0.1)	(0.0)	(0.0)
Airway stenosis	36	9	9	13	5	2	0	0	2	0
	(0.0)	(0.0)	(0.1)	(0.1)	(0.0)	(0.0)	(0.0)	(0.0)	(0.1)	(0.0)
Esophageal atresia	3	1	0	2	0	0	0	0	0	0
	(0.0)	(0.0)	(0.0)	(0.0)	(0.0)	(0.0)	(0.0)	(0.0)	(0.0)	(0.0)
Congenital metabolic disorder	378	82	100	115	81	93	3	9	32	49
	(0.4)	(0.2)	(0.5)	(0.5)	(0.7)	(0.8)	(0.1)	(0.8)	(1.1)	(1.0)
Neuromuscular disorder	358	68	77	106	107	100	1	13	30	56
	(0.4)	(0.2)	(0.4)	(0.4)	(0.9)	(0.9)	(0.1)	(1.1)	(1.1)	(1.1)
Cystic fibrosis	0	0	0	0	0	0	0	0	0	0
	(0.0)	(0.0)	(0.0)	(0.0)	(0.0)	(0.0)	(0.0)	(0.0)	(0.0)	(0.0)
No record of these comorbidities	85,896	32,977	17,671	23,251	11,997	10,789	2,064	1,100	2,750	4,875
	(95.0)	(93.5)	(93.9)	(97.3)	(96.6)	(96.5)	(96.4)	(92.6)	(96.7)	(97.3)
Palivizumab use, n (%)										
Yes	1,559	706	453	354	46	82	16	28	33	5
	(1.7)	(2.0)	(2.4)	(1.5)	(0.4)	(0.7)	(0.8)	(2.4)	(1.2)	(0.1)
No record of use	88,854	34,567	18,374	23,544	12,369	11,104	2,125	1,160	2,812	5,007
	(98.3)	(98.0)	(97.6)	(98.5)	(99.6)	(99.3)	(99.3)	(97.6)	(98.8)	(99.9)
Size of healthcare facilities, n (%)										
Less than 200 beds	5,252	1,781	1,209	1,454	808	551	68	55	156	272
	(5.8)	(5.1)	(6.4)	(6.1)	(6.5)	(4.9)	(3.2)	(4.6)	(5.5)	(5.4)
200 to 499 beds	50,876	19,056	11,029	13,859	6,932	6,090	1,138	640	1,578	2,734
	(56.3)	(54.0)	(58.6)	(58.0)	(55.8)	(54.4)	(53.2)	(53.9)	(55.5)	(54.6)
500 or more beds	34,285	14,436	6,589	8,585	4,675	4,545	935	493	1,111	2,006
	(37.9)	(40.9)	(35.0)	(35.9)	(37.7)	(40.6)	(43.7)	(41.5)	(39.1)	(40.0)

Rounding may create totals slightly over or below 100% in some cases.

Table 2. Percentage of first hospitalizations after confirmed diagnosis of RSV or influenza at the outpatient setting in Japan among the overall population and after restricting to healthy children

	RSV					Influenza				
	Total	Age <6 months	Age 6-11 months	Age 1<2 years	Age 2<5 years	Total	Age <6 months	Age 6-11 months	Age 1<2 years	Age 2<5 years
All Children										
Total confirmed diagnoses at outpatient setting, n, (relative % by age group)	176,911 (100)	70,021 (39.6)	39,311 (22.2)	42,485 (24.0)	25,094 (14.2)	153,383 (100)	8,741 (5.7)	16,295 (10.6)	39,218 (25.6)	89,129 (58.1)
Overall hospitalizations after diagnosis (n, % of outpatient diagnoses)										
Admissions within 0-6 days	43,637 (24.7)	16,560 (23.7)	8,903 (22.7)	11,995 (28.2)	6,179 (24.6)	4,247 (2.8)	736 (8.4)	441 (2.7)	1,126 (2.9)	1,944 (2.2)
Admissions within 0-13 days	43,805 (24.8)	16,645 (23.8)	8,949 (22.8)	12,024 (28.3)	6,187 (24.7)	4,270 (2.8)	739 (8.5)	444 (2.7)	1,135 (2.9)	1,952 (2.2)
Admissions within 0-29 days	44,281 (25.0)	16,869 (24.1)	9,090 (23.1)	12,116 (28.5)	6,206 (24.7)	4,327 (2.8)	740 (8.5)	448 (2.8)	1,156 (3.0)	1,983 (2.2)
Hospitalizations with oxygen/IV usage (n, % of outpatient diagnoses)										
Admissions within 0-6 days	42,277 (23.9)	15,713 (22.4)	8,715 (22.2)	11,841 (27.9)	6,008 (23.9)	4,089 (2.7)	695 (8.0)	426 (2.6)	1,092 (2.8)	1,876 (2.1)
Admissions within 0-13 days	42,421 (24.0)	15,787 (22.6)	8,755 (22.3)	11,865 (27.9)	6,014 (24.0)	4,112 (2.7)	698 (8.0)	429 (2.6)	1,101 (2.8)	1,884 (2.1)
Admissions within 0-29 days	42,881 (24.2)	15,998 (22.9)	8,894 (22.6)	11,956 (28.1)	6,033 (24.0)	4,167 (2.7)	699 (8.0)	433 (2.7)	1,122 (2.9)	1,913 (2.2)
Healthy Children										
Overall hospitalizations after diagnosis n, (relative % by age group)	141,843 (100)	45,318 (31.9)	33,225 (23.4)	39,545 (27.9)	23,755 (16.7)	149,529 (100)	8,197 (5.5)	15,277 (10.2)	38,019 (25.4)	88,036 (58.9)
Overall hospitalizations after diagnosis, n, (% of outpatient diagnoses)										
Admissions within 0-6 days	41,666 (29.4)	15,717 (34.7)	8,443 (25.4)	11,573 (29.3)	5,933 (25.0)	4,020 (2.7)	694 (8.5)	386 (2.5)	1,066 (2.8)	1,874 (2.1)

Admissions within 0-13 days	41,814 (29.5)	15,794 (34.9)	8,479 (25.5)	11,600 (29.3)	5,941 (25.0)	4,042 (2.7)	697 (8.5)	389 (2.5)	1,075 (2.8)	1,881 (2.1)
Admissions within 0-29 days	42,228 (29.8)	15,970 (35.2)	8,610 (25.9)	11,688 (29.6)	5,960 (25.1)	4,095 (2.7)	698 (8.5)	392 (2.6)	1,094 (2.9)	1,911 (2.2)
Hospitalizations with oxygen/IV usage (% of outpatient diagnoses)										
Admissions within 0-6 days	40,384 (28.5)	14,919 (32.9)	8,276 (24.9)	11,425 (28.9)	5,764 (24.3)	3,874 (2.6)	657 (8.0)	375 (2.5)	1,033 (2.7)	1,809 (2.1)
Admissions within 0-13 days	40,515 (28.6)	14,988 (33.1)	8,308 (25.0)	11,449 (29.0)	5,770 (24.3)	3,896 (2.6)	660 (8.1)	378 (2.5)	1,042 (2.7)	1,816 (2.1)
Admissions within 0-29 days	40,916 (28.8)	15,154 (33.4)	8,437 (25.4)	11,536 (29.2)	5,789 (24.4)	3,947 (2.6)	661 (8.1)	381 (2.5)	1,061 (2.8)	1,844 (2.1)

**Healthy children were defined as those with children without a record of comorbidity of interest and no palivizumab use.*

Table 3. Clinical outcomes and healthcare resource utilization and cost for children hospitalized with RSV infection and influenza

	RSV					Influenza				
	Total	Age <6 months	Age 6-11 months	Age 1<2 years	Age 2<5 years	Total	Age <6 months	Age 6-11 months	Age 1<2 years	Age 2<5 years
Total number of patients, n (relative % by age group)	90,413 (100)	35,273 (39.0)	18,827 (20.8)	23,898 (26.4)	12,415 (13.7)	11,186 (100)	2,141 (19.1)	1,188 (10.6)	2,845 (25.4)	5,012 (44.8)
Intravenous fluids use										
No	4,155 (4.6)	2,432 (6.9)	656 (3.5)	548 (2.3)	519 (4.2)	564 (5.0)	124 (5.8)	58 (4.9)	122 (4.3)	260 (5.2)
Yes	86,258 (95.4)	32,841 (93.1)	18,171 (96.5)	23,350 (97.7)	11,896 (95.8)	10,622 (95.0)	2,017 (94.2)	1,130 (95.1)	2,723 (95.7)	4,752 (94.8)
Oxygen use										
No	47,357 (52.4)	19,575 (55.5)	9,106 (48.4)	12,105 (50.7)	6,571 (52.9)	9,530 (85.2)	2,014 (94.1)	1,016 (85.5)	2,292 (80.6)	4,208 (84.0)
Yes	43,056 (47.6)	15,698 (44.5)	9,721 (51.6)	11,793 (49.4)	5,844 (47.1)	1,656 (14.8)	127 (5.9)	172 (14.5)	553 (19.4)	804 (16.0)
High flow nasal canula oxygen therapy use										
No	88,117 (97.5)	33,791 (95.8)	18,426 (97.9)	23,614 (98.8)	12,286 (99.0)	11,162 (99.8)	2,137 (99.8)	1,185 (99.8)	2,841 (99.9)	4,999 (99.7)
Yes	2,296 (2.5)	1,482 (4.2)	401 (2.1)	284 (1.2)	129 (1.0)	24 (0.2)	4 (0.2)	3 (0.3)	4 (0.1)	13 (0.3)
Use of mechanical ventilation										
No	88,485 (97.9)	34,118 (96.7)	18,510 (98.3)	23,593 (98.7)	12,264 (98.8)	11,112 (99.3)	2,133 (99.6)	1,183 (99.6)	2,826 (99.3)	4,970 (99.2)
Yes	1,928 (2.1)	1,155 (3.3)	317 (1.7)	305 (1.3)	151 (1.2)	74 (0.7)	8 (0.4)	5 (0.4)	19 (0.7)	42 (0.8)
Intensive care unit (ICU) admissions										
No	89,813 (99.3)	34,842 (98.8)	18,743 (99.6)	23,846 (99.8)	12,382 (99.7)	11,147 (99.7)	2,138 (99.9)	1,186 (99.8)	2,831 (99.5)	4,992 (99.6)
Yes	600 (0.7)	431 (1.2)	84 (0.5)	52 (0.2)	33 (0.3)	39 (0.4)	3 (0.1)	2 (0.2)	14 (0.5)	20 (0.4)
In-hospital death										
No	90,382 (100)	35,262 (100)	18,818 (100)	23,892 (100)	12,410 (100)	11,180 (100)	2,140 (100)	1,188 (100)	2,844 (100)	5,008 (99.9)
Yes	31 (0.0)	11 (0.0)	9 (0.1)	6 (0.0)	5 (0.0)	6 (0.1)	1 (0.1)	0 (0.0)	1 (0.0)	4 (0.1)
Antibiotics use										
No	46,995 (52.0)	23,461 (66.5)	8,854 (47.0)	9,337 (39.1)	5,343 (43.0)	8,458 (75.6)	1,792 (83.7)	866 (72.9)	2,067 (72.7)	3,733 (74.5)
Yes	43,418 (48.0)	11,812 (33.5)	9,973 (53.0)	14,561 (60.9)	7,072 (57.0)	2,728 (24.4)	349 (16.3)	322 (27.1)	778 (27.4)	1,279 (25.5)
In-hospital complications										
Pneumonia	30,376	6,590	6,484	11,353	5,949	1,428	115	158	413	742

	(33.6)	(18.7)	(34.4)	(47.5)	(47.9)	(12.8)	(5.4)	(13.3)	(14.5)	(14.8)
Otitis media	6,915	1,047	1,876	2,911	1,081	255	17	45	102	91
	(7.7)	(3.0)	(10.0)	(12.2)	(8.7)	(2.3)	(0.8)	(3.8)	(3.6)	(1.8)
Febrile seizure	1,366	67	130	761	408	3,843	44	254	1,430	2,115
	(1.5)	(0.2)	(0.7)	(3.2)	(3.3)	(34.4)	(2.1)	(21.4)	(50.3)	(42.2)
Encephalitis or encephalopathy	49	24	2	12	11	54	4	5	24	21
	(0.1)	(0.1)	(0.0)	(0.1)	(0.1)	(0.5)	(0.2)	(0.4)	(0.8)	(0.4)
Myocarditis	4	1	1	1	1	68	1	5	15	47
	(0.0)	(0.0)	(0.0)	(0.0)	(0.0)	(0.6)	(0.1)	(0.4)	(0.5)	(0.9)
Length of inpatient stay, days										
Mean (SD)	6.1 (3.3)	6.3 (3.7)	6.2 (2.9)	5.9 (3.4)	5.7 (2.5)	4.3 (2.6)	4.1 (1.8)	4.5 (2.8)	4.4 (2.5)	4.3 (2.8)
Median (IQR)	6.0 (4.0-7.0)	6.0 (4.0-7.0)	6.0 (4.0-7.0)	5.0 (4.0-7.0)	5.0 (4.0-7.0)	4.0 (3.0-5.0)	4.0 (3.0-4.0)	4.0 (3.0-5.0)	4.0 (3.0-5.0)	4.0 (3.0-5.0)
Total costs during hospitalization (per patient)										
Mean (SD)	435,743.8 (271,703.1)	453,731.5 (314,856.1)	434,766.4 (248,195.8)	420,035.9 (243,875.7)	416,362.1 (215,192.6)	315,809.4 (209,438.7)	292,933.0 (151,420.1)	327,031.6 (248,576.5)	330,289.5 (234,427.2)	314,702.2 (204,736.6)
Median (IQR)	391,648.5 (286,581.3-524,253.1)	402,215.5 (291,487.7-542,645.5)	391,262.3 (286,157.9-524,239.2)	384,767.1 (283,405.0-506,331.2)	380,722.7 (280,912.3-504,248.2)	282,185.4 (207,122.7-371,700.4)	272,527.0 (200,339.0-346,756.2)	287,527.1 (217,363.1-377,209.5)	295,797.2 (219,178.9-391,632.7)	279,503.3 (202,282.5-372,237.4)

All costs are noted in Japanese Yen, Rounding may create totals slightly over or below 100% in some cases; Abbreviations: IQR, interquartile range; SD, standard deviation