

1  
2  
3  
4  
5  
6  
7  
8  
9  
10  
11  
12  
13  
14  
15  
16  
17  
18  
19  
20  
21  
22  
23

Trajectories of disability and influence of contextual factors among adults aging with HIV:  
insights from a community-based longitudinal study in Toronto, Canada

Tai-Te Su<sup>1</sup>, Ahmed M. Bayoumi<sup>2,3,4,5</sup>, Lisa Avery<sup>6</sup>, Soo Chan Carusone<sup>7</sup>, Ada Tang<sup>8</sup>, Patricia  
Solomon<sup>8</sup>, Aileen M. Davis<sup>1,5,9</sup>, and Kelly K. O'Brien<sup>1,5,9</sup>

1. Department of Physical Therapy, University of Toronto, Toronto, Ontario, Canada
2. MAP Centre for Urban Health Solutions, Li Ka Shing Knowledge Institute, St. Michael's Hospital, Toronto, Ontario, Canada
3. Division of General Internal Medicine, St. Michael's Hospital, Toronto, Ontario, Canada
4. Department of Medicine, Temerty Faculty of Medicine, University of Toronto, Toronto, Ontario, Canada
5. Institute of Health Policy, Management and Evaluation (IHPE), University of Toronto, Toronto, Ontario, Canada
6. University Health Network, Toronto, Ontario, Canada
7. McMaster Collaborative for Health and Aging, McMaster University, Hamilton, Ontario, Canada
8. School of Rehabilitation Science, Faculty of Health Sciences, McMaster University, Hamilton, Ontario, Canada
9. Rehabilitation Sciences Institute (RSI), University of Toronto, Toronto, Ontario, Canada

24 Please direct all correspondence to Kelly K. O'Brien, PhD, PT, Department of Physical Therapy,  
25 160-500 University Avenue, Toronto Ontario, M5G 1V7 Canada. Email:  
26 [kelly.obrien@utoronto.ca](mailto:kelly.obrien@utoronto.ca)

27

28 Author Notes

29 Tai-Te Su  <https://orcid.org/0000-0002-7166-0247>

30 Lisa Avery  <https://orcid.org/0000-0002-8431-5143>

31 Soo Chan Carusone  <https://orcid.org/0000-0003-3977-0523>

32 Ada Tang  <https://orcid.org/0000-0002-6641-4017>

33 Patricia Solomon  <https://orcid.org/0000-0002-5014-0795>

34 Aileen M. Davis  <https://orcid.org/0000-0002-9903-9399>

35 Kelly K. O'Brien  <https://orcid.org/0000-0002-1632-6537>

36

37 Number of Tables: 5

38 Number of Figures: 1

39 **Abstract**

40 **Background:** Individuals aging with HIV may experience disability that is multidimensional  
41 and evolving over time. Our aims were to characterize the longitudinal trajectories of disability  
42 and to investigate how intrinsic and extrinsic contextual factors influence dimensions of  
43 disability over an 8-month period among adults aging with HIV.

44 **Methods:** We analyzed longitudinal observational data from a community-based study in  
45 Toronto, Canada, where adults aging with HIV completed self-reported questionnaires over 8  
46 months (5 time points). We measured disability using the Short-Form HIV Disability  
47 Questionnaire (SF-HDQ), which included six dimensions: physical, cognitive, mental-emotional  
48 health challenges, uncertainty, difficulties with day-to-day activities, and challenges to social  
49 inclusion. Higher SF-HDQ scores (range: 0-100) indicate greater severity of disability. We  
50 assessed intrinsic (age, gender, education, living status, number of comorbidities, mastery) and  
51 extrinsic (stigma, social support) contextual factors using baseline self-reported questionnaires.  
52 Latent class growth analysis was performed to identify distinct disability trajectories within each  
53 of the six dimensions. Multinomial logistic regression models were used to assess the influence  
54 of contextual factors on the disability trajectories.

55 **Results:** Of 108 participants, 89% identified as men with a mean age of 50.6 years (standard  
56 deviation  $\pm 10.9$ ). We identified three disability trajectories: low, medium, and high disability  
57 severity in the physical, mental-emotional, and day-to-day activities dimensions. Four  
58 trajectories: low, medium-low, medium-high, and high (or high-declining) disability severity  
59 were in the cognitive, uncertainty, and social inclusion dimensions. Factors such as higher self-  
60 mastery and social support were associated with lower disability trajectories, whereas greater  
61 number of comorbidities and stigma were associated with more severe disability trajectories over  
62 time.

63 **Conclusion:** Disability experiences among adults aging with HIV included three or four distinct  
64 trajectories with considerable heterogeneity over time. Information on contextual factors may be  
65 helpful for informing interventions and supports that mitigate disability among adults aging with  
66 HIV.

67

68 *Keywords:* HIV, episodic disability, disability, longitudinal trajectories

69 **Introduction**

70 With advancements in medical treatments and healthcare services, people living with human  
71 immunodeficiency virus (HIV) are living longer [1–3]. Population-based studies in Europe and  
72 North America have shown that the average life expectancy of people living with HIV who have  
73 access to care is nearing that of the general population [3,4]. While HIV is now considered a  
74 chronic illness, people aging with HIV may experience a wide range of challenges such as  
75 adverse treatment effects (e.g., from prolonged antiretroviral treatment), comorbidities (e.g.,  
76 cardiovascular diseases, metabolic syndrome, neurocognitive disorders, cancer, or frailty),  
77 insecure employment or unemployment, and HIV-associated stigma and lack of social support  
78 [5–12]. Informed by the experiences of individuals living with HIV, the *Episodic Disability*  
79 *Framework* characterizes these health-related challenges as disability, and provides a conceptual  
80 foundation to illustrate its multidimensional and episodic nature [13]. The Framework includes  
81 six dimensions: physical, cognitive, mental or emotional symptoms, uncertainty or worry about  
82 the future, difficulties with day-to-day activities, and challenges to social inclusion [13,14]. The  
83 Framework also asserts that the severity and presence of disability are sometimes experienced as  
84 episodic in nature, which can be exacerbated or alleviated by a range of intrinsic contextual  
85 factors (i.e., personal attributes and living strategies) and extrinsic contextual factors (i.e., stigma  
86 and social support) [14].

87 To develop effective interventions and services, it is critical to understand the evolving  
88 nature of disability and its influencing factors experienced by people aging with HIV. Studies  
89 have attempted to delineate the patterns of change in disability among this population [15–21].  
90 For instance, Crystal and Sambamoorthi found that individuals living with HIV experienced an  
91 average of 0.32 additional functional limitation tasks in performing basic daily activities each



115 the effectiveness of a CBE intervention on cardiopulmonary fitness, strength, flexibility, and  
116 physical activity among adults aging with HIV [23]. Adults 18 years or older with HIV, who  
117 were considered medically stable and safe to participate in exercise, were recruited from HIV  
118 community-based organizations and the Toronto YMCA between July 29, 2016 and January 26,  
119 2017. For the first 8 months, participants were monitored every two months without any  
120 interventions. After this baseline monitoring phase, participants engaged in thrice-weekly  
121 supervised exercise sessions followed by self-monitored exercise. In this study, we examined  
122 disability trajectories during the 8-month baseline (pre-intervention) monitoring phase.

### 123 **Ethics and consent**

124 The study was registered (registration number: NCT02794415) and received approval from the  
125 Research Ethics Board at the University of Toronto (Protocol #32910). All participants provided  
126 written informed consent to participate in the study. Detailed information on study design and  
127 trial protocol has been published [23].

### 128 **Data sources**

129 We used bimonthly observational data collected during the 8-month baseline monitoring phase,  
130 whereby participants completed a series of self-reported electronic administered questionnaires  
131 at baseline, 2 months, 4 months, 6 months and 8 months (5 time points), to characterize  
132 experiences of disability over time prior to exercise intervention.

### 133 **Measures**

#### 134 **Disability**

135 Disability was assessed at each time point using the electronic version of the Short-Form HIV  
136 Disability Questionnaire (SF-HDQ) [24]. Derived from the original 69-item HDQ [25,26], the  
137 SF-HDQ is a patient-reported outcome measure containing 35 items that assess disability across

138 six different dimensions: physical symptoms (10 items), cognitive symptoms (3 items), mental  
139 and emotional symptoms (5 items), uncertainty about future health (5 items), difficulties carrying  
140 out day-to-day activities (5 items), and challenges to social inclusion (7 items). Scores for each  
141 dimension are derived from a Rasch-based logit scale ranging from 0 to 100 whereby higher  
142 scores indicate greater severity of disability [24]. A single summary score for disability is not  
143 provided by the SF-HDQ. At the end of the questionnaire, participants indicated whether they  
144 perceive they completed the SF-HDQ on a “good day” or “bad day” living with HIV. The SF-  
145 HDQ is an internally consistent instrument (Cronbach’s  $\alpha=0.78-0.85$ ) and possesses sensibility  
146 and utility for use in clinical and community-based settings among adults living with HIV  
147 [27,28].

#### 148 **Intrinsic contextual factors**

149 The selection of contextual factors was guided by the *Episodic Disability Framework* [13]. We  
150 included self-mastery and personal attributes measured at baseline as intrinsic contextual factors  
151 in this study. Levels of self-mastery were assessed using the Pearlin Mastery Scale [29]. The  
152 scale contains a total of seven items, including two positively worded statements (e.g., *What*  
153 *happens to me in the future mostly depends on me*) and five negatively worded statements (e.g.,  
154 *There is really no way I can solve some of the problems I have*). Participants self-reported their  
155 agreement with each statement on a 4-point Likert scale (strongly agree [1], agree [2], disagree  
156 [3], and strongly disagree [4]). Positively worded questions were reverse coded. Final scores  
157 were summed and ranged from 7 to 28, with higher scores representing greater self-mastery. The  
158 Pearlin Mastery Scale has demonstrated reliability and construct validity for caregivers of older  
159 adults and persons living with HIV [30,31].



160 Information on personal attributes, including age (years), gender (man vs. woman; only  
161 these categories were represented in the study), education (some university education or higher  
162 vs. otherwise), living status (living alone vs. living with others), and number of comorbidities  
163 was gathered through an electronically administered demographic questionnaire at baseline.

#### 164 **Extrinsic contextual factors**

165 Extrinsic contextual factors included self-perceived stigma and social support measured at  
166 baseline. We measured stigma using the 40-item HIV Stigma Scale, a self-administered  
167 questionnaire designed to assess HIV-related stigma across four subscales, including  
168 personalized stigma, disclosure concerns, negative self-image, and concern with public attitudes  
169 [32]. Participants self-reported their agreement with each item on a 4-point Likert scale (strongly  
170 disagree [1], disagree [2], agree [3], and strongly agree [4]). Final scores ranged from 40 to 160,  
171 with higher scores indicating greater HIV stigma. The HIV Stigma Scale demonstrates reliability  
172 (test-retest reliability  $\alpha=0.96$ ) and construct validity with people living with HIV [32,33].

173 We measured perceived social support using the 19-item Medical Outcomes Study Social  
174 Support Survey (MOS-SSS), a self-administered questionnaire designed for community-dwelling  
175 individuals with chronic conditions [34]. The questionnaire contains four domains:  
176 emotional/information support, tangible support, affectionate support, and positive social  
177 interaction. Participants reported the frequency of receiving each type of support on a 5-point  
178 Likert scale, ranging from none of the time (0) to all of the time (5). Following the established  
179 procedure, raw scores across the four domains were summed and transformed into a 100-point  
180 scale where higher scores represent greater social support [34]. The MOS-SSS has demonstrated  
181 internal-consistency reliability and construct validity among people living with HIV [35,36].

#### 182 **Analysis**

183 We described participants' personal and clinical characteristics at baseline. Mean and standard  
184 deviation were reported for continuous variables, while number and percentage were reported for  
185 categorical variables.

186 We conducted latent class growth analysis (LCGA), also known as group-based  
187 trajectory modeling, to identify trajectories across six disability dimensions as measured by the  
188 SF-HDQ over the 8-month baseline monitoring period [37]. LCGA is a specialized application of  
189 the semi-parametric finite mixture modeling where the population is assumed to consist of a  
190 finite number of unobserved latent groups, with individuals in each group exhibiting similar  
191 pattern or progression of outcomes over time [37,38]. Unlike basic growth curve analysis where  
192 a single trajectory was estimated by pooling individuals across the entire population, LCGA  
193 represents a flexible statistical procedure that is able to better characterize the heterogeneity in  
194 health outcomes, including disability over time. In particular, this approach allows researchers to  
195 identify specific subgroups with unique health-related challenges (e.g., dimensions of disability)  
196 or profiles and has the potential to inform personalized intervention programs and services [39].  
197 To account for variability in the timing of questionnaire completion caused by scheduling issues  
198 [40], we adjusted the time variable to accurately reflect the actual number of days between  
199 assessments. A quadratic link function for time was specified for the trajectory models. We  
200 determined the optimal number of trajectories for each disability dimension based on the  
201 parsimony principal and a combination of the following criteria: 1) lowest value of Bayesian  
202 Information Criteria (BIC), 2) group size not less than 5% of the total sample, and 3) the average  
203 posterior probability of group assignment ( $\geq 0.7$ ) [37]. Missing data were handled under the  
204 assumption of missing at random and accommodated using maximum likelihood estimations  
205 [41]. As a final step, the labeling of each disability trajectory was completed through joint

206 consideration of model parameters (e.g., intercept and slopes) and relative comparisons with  
207 other trajectories identified within the same dimension.

208 After participants were assigned to their respective trajectory group in each of the six  
209 disability dimensions, we conducted multinomial logistic regression models to assess the  
210 influence of intrinsic contextual factors (age, gender, education, living status, number of  
211 comorbidities, mastery) and extrinsic contextual factors (stigma, social support) on these  
212 disability trajectories. A total of six regression models were tested, with each focusing on a  
213 specific disability dimension. Considering the potential difficulty in interpreting relative  
214 comparisons such as relative risk ratio (RRR) to a specific trajectory group, we calculated  
215 marginal effects from the regression models to illustrate the associations between contextual  
216 factors and the predicted probabilities of each disability trajectory. A two-tailed  $p$ -value  $< 0.05$   
217 was considered statistically significant. All analyses were performed in the R software (Version  
218 4.3.1).

## 219 Results

### 220 Participant characteristics at baseline

221 Out of the 120 recruited adults, 108 consented to participate and initiated the baseline monitoring  
222 phase. Out of these 108 participants, 83 (77%) remained in the study at the end of the baseline  
223 monitoring phase (month 8). The present study comprised a total of 436 person-month of  
224 observations, with each participant completing an average of 4.0 (standard deviation [SD]  $\pm 1.4$ )  
225 assessments out of 5.

226 Table 1 includes participant characteristics and contextual factors among the 108  
227 participants at baseline. Overall, the average age was  $50.6 \pm 10.9$  years, and the majority were  
228 identified as White (63%), men (89%), and living alone (68%). The average duration since HIV

229 diagnosis was  $17.5 \pm 9.9$  years, with nearly all participants (99%) taking antiretroviral  
230 medications. Approximately half of the participants received some university degree or higher  
231 (45%), and they had an average of 5 comorbidities in addition to living with HIV. The three most  
232 prevalent comorbidities were mental health conditions ( $n=52$ ), joint pain ( $n=44$ ), and bone and  
233 joint disorders ( $n=39$ ). The average scores for self-mastery, total HIV-related stigma, and total  
234 social support were  $19.7 \pm 4.0$  (out of 28),  $93.6 \pm 24.6$  (out of 160), and  $53.3 \pm 24.8$  (out of 100),  
235 respectively. SF-HDQ disability severity domain scores ranged from  $15.1 \pm 13.6$  (difficulties with  
236 day-to-day activities) to  $38.4 \pm 22.5$  (uncertainty) on a 100-point scale at baseline (Table 2). Most  
237 participants (82%) reported having a ‘good day’ when they completed the SF-HDQ.  
238 Characteristics of participants who remained in the study at the end of the baseline monitoring  
239 phase ( $n=83$ ) is detailed in Supplementary Table 1.

240 **Table 1.** Characteristics of adults living with HIV and contextual factors at baseline (n = 108)

Participant characteristics	Mean ± SD / n (%)
Age (years)	50.6 ± 10.9
Gender (n)	
Men	96 (89)
Women	12 (11)
Race/Ethnicity	
White	68 (63)
Black or African	9 (8)
Hispanic or Latino	5 (5)
Number of years since HIV diagnosis	17.5 ± 9.9
Self-reported undetectable HIV viral load (<50 copies/mL)	90 (83)
Current use of antiretroviral medications	107 (99)
Education (some university+)	49 (45)
Living alone (n)	73 (68)
Number of comorbidities in addition to living with HIV (count)	4.9 ± 4.1
Three most common self-reported comorbidities	
Mental health condition (e.g., depression, anxiety)	52 (48)
Joint pain (arthritis)	44 (41)
Bone and joint disorder (e.g., osteonecrosis, osteopenia)	39 (36)
Pearlin Mastery Scale score (range: 7–28)	19.7 ± 4.0
HIV Stigma Scale total score (range: 40–160) †	93.6 ± 24.6
Personalized stigma subscale score (range: 18–72)	40.7 ± 12.0
Disclosure concerns subscale score (range: 10–40)	25.3 ± 7.2
Negative self-image subscale score (range: 13–52)	27.6 ± 8.6
Public attitudes subscale score (range: 20–80)	47.0 ± 13.0
MOS Social Support Survey total score (range: 0–100) ‡	53.3 ± 24.8
Emotional and information support raw score (range: 8–40)	26.1 ± 7.8
Tangible support raw score (range: 4–20)	11.7 ± 5.7
Affectionate support raw score (range: 3–15)	9.1 ± 4.1
Positive social interaction raw score (range: 4–20)	12.7 ± 4.6

241 **Notes:** SD = Standard deviation. †Sixteen items on the HIV Stigma Scale belong to more than one subscale, which  
242 reflects the intercorrelations between different subscales. ‡ Raw scores of the MOS Social Support Survey were  
243 summed across the four subdomains and transformed into a 100-point scale. Greater Pearlin Mastery Scale scores,  
244 HIV Stigma Scale scores, and MOS Social Support Survey scores reflect higher levels of self-mastery, HIV-related  
245 stigma, and perceived social support, respectively.

246 **Table 2.** Short-Form HIV Disability Questionnaire (SF-HDQ) scores at baseline (n = 108)

SF-HDQ domains	Mean ± SD / n (%)
Physical symptoms severity scores	30.2 ± 13.8
Cognitive symptoms severity scores	23.5 ± 20.2
Mental-emotional symptoms severity scores	35.6 ± 20.8
Uncertainty severity scores	38.4 ± 22.5
Difficulties with day-to-day activities severity scores	15.1 ± 13.6
Challenges to social inclusion severity scores	33.1 ± 14.8
Good day-bad day item	n (%)
Good day (%)	89 (82)
Bad day (%)	19 (18)

247 *Notes:* SD = Standard deviation. Severity scores were on a Rasch-based logit scale ranging from 0 to 100, where  
248 higher scores indicate greater disability severity. Participants self-reported whether they had a good day or bad day  
249 living with HIV when they completed the SF-HDQ.

## 250 **Disability trajectories across six dimensions over 8 months**

251 Fig 1 portrays the trajectories of disability across six dimensions, highlighting the substantial  
252 variability within and between participants' experiences over time. Results from the LCGA  
253 suggested that a model with three trajectory groups provided the best fit for the dimensions of  
254 physical symptoms, mental-emotional symptoms, and difficulties with day-to-day activities,  
255 whereas a model with four trajectory groups exhibited the best fit for the dimensions of  
256 cognitive symptoms, uncertainty, and challenges to social inclusion (Table 3). The three-group  
257 trajectories were labeled as low, medium and high disability severity, and the four-group  
258 trajectories were labeled as low, medium-low, medium-high, and high (or high-declining)  
259 disability severity over time.

260

261 **Fig 1.** Trajectories of disability across six dimensions among adults living with HIV over 8 months

262

263 *Notes:* Each bolded line corresponds to a unique trajectory group identified within each of the six disability  
264 dimensions. Each color represents a distinct disability trajectory group. The 95% confidence intervals are depicted  
265 as shaded areas.

266

267 For physical symptoms, 37% of participants, as indicated by the model probability of  
268 group assignment, exhibited a consistently low level of disability (mean SF-HDQ  
269 score:  $12.1 \pm 10.0$ ), while 34% and 29% showed medium ( $26.0 \pm 13.0$ ) and high ( $32.0 \pm 19.8$ ) levels  
270 of disability over time. For mental-emotional symptoms, 38% of participants exhibited a low  
271 ( $14.0 \pm 12.4$ ) level of disability, while 32% and 30% experienced medium ( $30.0 \pm 16.7$ ) and high  
272 ( $39.4 \pm 27.6$ ) levels of disability in this dimension. For difficulties with day-to-day activities, 36%  
273 showed a low ( $2.6 \pm 5.5$ ) level of disability, whereas 46% and 18% experienced medium  
274 ( $14.3 \pm 10.4$ ) and high ( $25.8 \pm 17.0$ ) levels of disability, respectively. For cognitive symptoms, 30%  
275 of participants demonstrated a low disability trajectory ( $3.9 \pm 6.9$ ), and the rest displayed medium-

276 low ( $14.0 \pm 11.4$ ; 33%), medium-high ( $28.4 \pm 16.7$ ; 31%), and high-declining ( $32.6 \pm 34.3$ ; 6.5%)  
277 trajectories. For the uncertainty dimension, 15% of participants exhibited a low ( $5.7 \pm 9.5$ )  
278 disability trajectory, while the majority showed medium-low ( $25.5 \pm 15.3$ ; 51%), medium-high  
279 ( $40.2 \pm 21.8$ ; 26%), and high ( $53.5 \pm 34.9$ ; 8.3%) trajectories. For challenges to social inclusion,  
280 participants demonstrated low ( $8.1 \pm 9.0$ ; 24%), medium-low ( $22.1 \pm 11.6$ ; 21%), medium-high  
281 ( $30.3 \pm 17.4$ ; 42%), and high ( $43.5 \pm 18.6$ ; 13%) trajectories over time. Detailed information on  
282 each disability trajectory, including intercepts and slopes, is provided in Supplementary Tables 2  
283 and 3. The average posterior probability of group assignment ranged from 0.86 to 0.98 across all  
284 trajectory groups, surpassing the standard of  $\geq 0.7$  (Supplementary Table 4). Throughout the 8-  
285 month monitoring phase, 60.2% of participants consistently reported having ‘good days’ when  
286 they completed the SF-HDQ, while 1.9% consistently reported ‘bad days’. Around 38% reported  
287 a combination of good and bad days during this period.



288 **Table 3.** Model fit statistics for disability trajectories across six dimensions among adults living with HIV over 8 months

Disability dimensions	Number of Trajectories	BIC	Posterior classification of trajectory memberships n (%)				
			Group 1	Group 2	Group 3	Group 4	Group 5
Physical symptoms	1	3543.0	108 (100)				
	2	3378.9	62 (57.4)	46 (42.6)			
	<b>3</b>	<b>3357.5</b>	<b>37 (34.3)</b>	<b>40 (37.0)</b>	<b>31 (28.7)</b>		
	4	3363.5	33 (30.6)	31 (28.7)	4 (3.7)	40 (37.0)	
Cognitive symptoms	1	3766.3	108 (100)				
	2	3589.1	41 (38.0)	67 (62.0)			
	3	3540.3	8 (7.4)	38 (35.2)	62 (57.4)		
	<b>4</b>	<b>3528.4</b>	<b>7 (6.5)</b>	<b>36 (33.3)</b>	<b>33 (30.6)</b>	<b>32 (29.6)</b>	
	5	3544.5	7 (6.5)	30 (27.8)	32 (29.6)	7 (6.5)	32 (29.6)
Mental-emotional symptoms	1	3858.1	108 (100)				
	2	3682.4	63 (58.3)	45 (41.7)			
	<b>3</b>	<b>3663.3</b>	<b>41 (38.0)</b>	<b>35 (32.4)</b>	<b>32 (29.6)</b>		
	4	3646.4	38 (35.2)	34 (31.5)	31 (28.7)	5 (4.6)	
Uncertainty	1	3868.9	108 (100)				
	2	3738.4	40 (37.0)	68 (63.0)			
	3	3644.0	63 (58.3)	17 (15.7)	28 (25.9)		
	<b>4</b>	<b>3618.2</b>	<b>16 (14.8)</b>	<b>9 (8.3)</b>	<b>28 (25.9)</b>	<b>55 (50.9)</b>	
	5	3609.3	54 (50.0)	16 (14.8)	2 (1.9)	11 (10.2)	25 (23.1)
Difficulties with day-to-day activities	1	3513.5	108 (100)				
	2	3362.1	32 (29.6)	76 (70.4)			
	<b>3</b>	<b>3305.6</b>	<b>50 (46.3)</b>	<b>39 (36.1)</b>	<b>19 (17.6)</b>		
	4	3307.5	39 (36.1)	13 (12.0)	49 (45.4)	7 (6.5)	
Challenges to social inclusion	1	3644.4	108 (100)				
	2	3353.2	73 (67.6)	35 (32.4)			
	3	3268.2	26 (24.1)	25 (23.2)	57 (52.8)		
	<b>4</b>	<b>3233.8</b>	<b>14 (13.0)</b>	<b>23 (21.3)</b>	<b>45 (41.7)</b>	<b>26 (24.1)</b>	
	5	3235.6	8 (7.4)	45 (41.7)	14 (13.0)	20 (18.5)	21 (19.4)

289 *Notes:* BIC = Bayesian Information Criterion. The final model selected for each disability dimension was marked in bold.

## 290 **Influences of contextual factors on disability dimension trajectories**

291 Table 4 and Table 5 summarize the influences of intrinsic and extrinsic contextual factors on the  
292 six dimensions of disability.

293 Overall, a decade increase in age was associated with a 12% increase in the probability of  
294 being allocated to the medium disability severity trajectory for physical symptoms ( $pr$ [Medium]:  
295 0.12 [0.00, 0.24]). Compared with women, men were 28% and 7% more likely to be allocated to  
296 the high disability severity trajectory for physical symptoms ( $pr$ [High]: 0.28 [0.20, 0.37]) and  
297 cognitive symptoms ( $pr$ [High]: 0.07 [0.01, 0.12]), respectively. In addition, compared with  
298 women, men were more likely to be allocated to the medium-low trajectory for challenges to  
299 social inclusion ( $pr$ [Medium-Low]: 0.18 [0.10, 0.27]) and the medium trajectory for mental-  
300 emotional symptoms ( $pr$ [Medium]: 0.33 [0.22, 0.44]). Participants with some university degree  
301 or higher were less likely to be allocated to the high severity trajectory for physical symptoms  
302 ( $pr$ [High]: -0.21 [-0.37, -0.04]), cognitive symptoms ( $pr$ [High]: -0.10 [-0.19, -0.02]), and  
303 uncertainty ( $pr$ [High]: -0.10 [-0.15, -0.05]) compared with those without such educational  
304 attainment. Compared with those living with others, participants who lived alone were more  
305 likely to be allocated to the high severity trajectory for cognitive symptoms ( $pr$ [High]: 0.10  
306 [0.04, 0.15]) but less likely to be allocated to the high trajectory for uncertainty ( $pr$ [High]: -0.13  
307 [-0.13, -0.12]). Regarding comorbidities, each additional comorbidity was associated with an  
308 increased probability of allocation to high or medium-high trajectories for physical ( $pr$ [High]:  
309 0.06 [0.02, 0.09]) and cognitive symptoms ( $pr$ [Medium-High]: 0.03 [0.00, 0.06]). Meanwhile, a  
310 greater number of comorbidities also was associated with a decreased probability of allocation to  
311 the low or medium-low trajectories for uncertainty ( $pr$ [Low]: -0.03 [-0.05, -0.01]), difficulties  
312 with day-to-day activities ( $pr$ [Low]: -0.05 [-0.08, -0.01]), and challenges to social inclusion

313 ( $pr$ [Medium-Low]: -0.03 [-0.06, -0.00]). Participants with a higher level of self-mastery were  
314 less likely to be allocated to the high or medium-high trajectories for physical symptoms  
315 ( $pr$ [High]: -0.31 [-0.58, -0.04]), cognitive symptoms ( $pr$ [High]: -0.31 [-0.56, -0.06]), mental-  
316 emotional symptoms ( $pr$ [High]: -0.29 [-0.58, -0.01]), and uncertainty over time ( $pr$ [Medium-  
317 High]: -0.40 [-0.62, -0.17]).

318 For stigma, a higher score on the HIV Stigma Scale (indicating greater stigma) was  
319 associated with an increased probability of being allocated on the medium or high trajectories for  
320 physical symptoms ( $pr$ [Medium]: 0.07 [0.02, 0.12]) and challenges to social inclusion ( $pr$ [High]:  
321 0.04 [0.01, 0.07]). Additionally, higher HIV Stigma scores were associated with a decreased  
322 probability of being allocated to the low trajectory for uncertainty ( $pr$ [Low]: -0.06 [-0.09, -0.03])  
323 and high-declining trajectory for cognitive symptoms ( $pr$ [High-Declining]: -0.04 [-0.07, -0.01]).  
324 For social support, participants with greater self-perceived social support were more likely to be  
325 allocated to the low disability trajectory for mental-emotional symptoms ( $pr$ [Low]: 0.04 [0.00,  
326 0.08]), uncertainty ( $pr$ [Low]: 0.04 [0.01, 0.06]), and challenges to social inclusion ( $pr$ [Low]:  
327 0.05 [0.01, 0.08]) over time.

328 **Table 4.** Influence of contextual factors on the predicted probabilities of disability trajectories (disability dimensions with three trajectories)

Contextual factors	Low (L) trajectory		Medium (M) trajectory		High (H) trajectory	
	Physical symptoms					
	Pr(L)	<i>p</i>	Pr(M)	<i>p</i>	Pr(H)	<i>p</i>
Age	-0.01 [-0.12, 0.10]	.81	0.12 [0.00, 0.24]	.04	-0.11 [-0.23, 0.02]	.09
Gender: Men	-0.27 [-0.61, 0.07]	.12	-0.01 [-0.37, 0.34]	.93	0.28 [0.20, 0.37]	<.001
University or higher	0.10 [-0.11, 0.31]	.35	0.11 [-0.10, 0.31]	.32	-0.21 [-0.37, -0.04]	.02
Living alone	-0.11 [-0.32, 0.10]	.32	-0.03 [-0.26, 0.19]	.77	0.14 [-0.02, 0.30]	.08
Comorbidities (count)	-0.05 [-0.08, -0.02]	.002	-0.01 [-0.04, 0.03]	.69	0.06 [0.02, 0.09]	<.001
Self-mastery	0.23 [-0.06, 0.53]	.12	0.07 [-0.24, 0.38]	.65	-0.31 [-0.58, -0.04]	.03
HIV stigma	-0.03 [-0.08, 0.02]	.27	0.07 [0.02, 0.12]	.01	-0.04 [-0.09, 0.01]	.11
Social support	0.02 [-0.03, 0.06]	.46	0.02 [-0.02, 0.06]	.37	-0.04 [-0.08, 0.00]	.07
Mental-emotional symptoms						
Contextual factors	Pr(L)	<i>p</i>	Pr(M)	<i>p</i>	Pr(H)	<i>p</i>
Age	0.07 [-0.03, 0.17]	.17	-0.04 [-0.15, 0.08]	.54	-0.03 [-0.14, 0.07]	.53
Gender: Men	-0.45 [-0.68, -0.22]	<.001	0.33 [0.22, 0.44]	<.001	0.12 [-0.10, 0.35]	.28
University or higher	0.08 [-0.13, 0.29]	.45	-0.01 [-0.24, 0.21]	.92	-0.07 [-0.27, 0.13]	.50
Living alone	-0.08 [-0.29, 0.13]	.46	-0.05 [-0.26, 0.18]	.67	0.13 [-0.05, 0.31]	.16
Comorbidities (count)	-0.01 [-0.04, 0.02]	.63	0.01 [-0.02, 0.04]	.45	-0.00 [-0.03, 0.03]	.76
Self-mastery	0.34 [0.05, 0.63]	.02	-0.05 [-0.36, 0.26]	.75	-0.29 [-0.58, -0.01]	.04
HIV stigma	-0.01 [-0.06, 0.04]	.71	0.01 [-0.04, 0.07]	.67	-0.00 [-0.05, 0.05]	.92
Social support	0.04 [0.00, 0.08]	.03	0.01 [-0.04, 0.05]	.80	-0.05 [-0.08, -0.02]	.004
Difficulties with day-to-day activities						
Contextual factors	Pr(L)	<i>p</i>	Pr(M)	<i>p</i>	Pr(H)	<i>p</i>
Age	-0.00 [-0.10, 0.10]	.99	-0.05 [-0.17, 0.07]	.41	0.05 [-0.04, 0.14]	.27
Gender: Men	0.04 [-0.32, 0.40]	.83	-0.09 [-0.51, 0.32]	.66	0.05 [-0.18, 0.28]	.65
University or higher	0.17 [-0.05, 0.39]	.13	-0.05 [-0.29, 0.19]	.68	-0.12 [-0.28, 0.05]	.16
Living alone	0.11 [-0.09, 0.32]	.28	-0.07 [-0.32, 0.17]	.54	-0.04 [-0.21, 0.13]	.65
Comorbidities (count)	-0.05 [-0.08, -0.01]	.01	0.03 [-0.01, 0.06]	.10	0.02 [-0.00, 0.04]	.06
Self-mastery	0.19 [-0.10, 0.49]	.20	0.02 [-0.32, 0.35]	.92	-0.21 [-0.44, 0.02]	.07
HIV stigma	0.00 [-0.05, 0.05]	.92	-0.03 [-0.08, 0.03]	.36	0.02 [-0.01, 0.06]	.22
Social support	0.01 [-0.03, 0.06]	.53	0.00 [-0.05, 0.05]	.99	-0.01 [-0.05, 0.02]	.43

329 *Notes:* Marginal mean probabilities were calculated from the multinomial logistic regression models. Pr() = probability of being allocated to a certain trajectory  
330 group. The 95% confidence intervals were presented in square brackets. To facilitate interpretation, we reported the results for contextual factors, including age,  
331 self-mastery, HIV stigma scores, and social support, scaled by a factor of 10 to interpret the predicted probabilities in terms of a decade increase or a 10-point  
332 increase in these factors.

333 **Table 5.** Influence of contextual factors on the predicted probabilities of disability trajectories (disability dimensions with four trajectories)

Contextual factors	Low (L) trajectory		Medium-low (M-L) trajectory		Medium-high (M-H) trajectory		High-declining (H-D) / High (H) trajectory	
	Pr(L)	<i>p</i>	Pr(M-L)	<i>p</i>	Pr(M-H)	<i>p</i>	Pr(H-D)	<i>p</i>
Cognitive symptoms								
Age	0.10 [-0.00, 0.20]	.06	-0.03 [-0.15, 0.09]	.62	-0.06 [-0.18, 0.05]	.28	-0.00 [-0.06, 0.06]	.91
Gender: Men	0.11 [-0.22, 0.45]	.51	-0.06 [-0.49, 0.36]	.78	-0.12 [-0.50, 0.26]	.54	0.07 [0.01, 0.12]	.01
University or higher	0.14 [-0.07, 0.35]	.19	0.08 [-0.15, 0.31]	.47	-0.12 [-0.32, 0.08]	.22	-0.10 [-0.19, -0.02]	.02
Living alone	-0.11 [-0.33, 0.11]	.32	0.06 [-0.17, 0.29]	.63	-0.04 [-0.24, 0.16]	.69	0.10 [0.04, 0.15]	.002
Comorbidities (count)	-0.03 [-0.06, 0.00]	.09	0.01 [-0.03, 0.04]	.68	0.03 [0.00, 0.06]	.03	-0.01 [-0.03, 0.01]	.22
Self-mastery	0.35 [0.05, 0.64]	.02	0.05 [-0.28, 0.37]	.79	-0.09 [-0.38, 0.21]	.57	-0.31 [-0.56, -0.06]	.02
HIV stigma	0.03 [-0.02, 0.08]	.25	-0.01 [-0.06, 0.05]	.83	0.02 [-0.03, 0.07]	.52	-0.04 [-0.07, -0.01]	.02
Social support	0.03 [-0.02, 0.07]	.24	-0.02 [-0.06, 0.03]	.52	-0.01 [-0.05, 0.03]	.77	-0.01 [-0.02, 0.01]	.49
Uncertainty								
Contextual factors	Pr(L)	<i>p</i>	Pr(M-L)	<i>p</i>	Pr(M-H)	<i>p</i>	Pr(H)	<i>p</i>
Age	0.03 [-0.04, 0.10]	.38	-0.10 [-0.20, 0.00]	.05	0.07 [-0.01, 0.15]	.07	-0.00 [-0.00, 0.00]	.44
Gender: Men	0.13 [-0.06, 0.33]	.18	-0.02 [-0.36, 0.33]	.92	-0.06 [-0.36, 0.23]	.68	-0.05 [-0.18, 0.07]	.39
University or higher	0.08 [-0.08, 0.24]	.32	0.04 [-0.18, 0.25]	.74	-0.02 [-0.19, 0.15]	.81	-0.10 [-0.15, -0.05]	<.001
Living alone	0.07 [-0.09, 0.22]	.40	0.20 [0.00, 0.39]	.04	-0.14 [-0.27, -0.00]	.05	-0.13 [-0.13, -0.12]	<.001
Comorbidities (count)	-0.03 [-0.05, -0.01]	.003	0.04 [0.01, 0.06]	.01	-0.00 [-0.02, 0.02]	.69	-0.00 [-0.00, 0.00]	.75
Self-mastery	0.07 [-0.16, 0.30]	.57	0.33 [0.04, 0.63]	.03	-0.40 [-0.62, -0.17]	<.001	-0.00 [-0.01, 0.01]	.57
HIV stigma	-0.06 [-0.09, -0.03]	<.001	0.03 [-0.02, 0.07]	.26	0.03 [-0.00, 0.06]	.08	0.00 [-0.01, 0.01]	.57
Social support	0.04 [0.01, 0.06]	.01	-0.02 [-0.06, 0.02]	.32	-0.02 [-0.05, 0.02]	.36	-0.00 [-0.00, 0.00]	.58
Challenges to social inclusion								
Contextual factors	Pr(L)	<i>p</i>	Pr(M-L)	<i>p</i>	Pr(M-H)	<i>p</i>	Pr(H)	<i>p</i>
Age	0.02 [-0.07, 0.10]	.39	0.05 [-0.02, 0.13]	.17	-0.05 [-0.18, 0.08]	.48	-0.02 [-0.12, 0.07]	.63
Gender: Men	-0.34 [-0.76, 0.08]	.11	0.18 [0.10, 0.27]	<.001	0.22 [-0.21, 0.65]	.32	-0.06 [-0.31, 0.18]	.62
University or higher	0.03 [-0.16, 0.22]	.73	0.00 [-0.17, 0.18]	.98	-0.07 [-0.30, 0.17]	.57	0.03 [-0.11, 0.17]	.66
Living alone	0.12 [-0.06, 0.29]	.20	-0.10 [-0.28, 0.09]	.30	-0.05 [-0.28, 0.18]	.67	0.03 [-0.11, 0.18]	.67
Comorbidities (count)	-0.02 [-0.04, 0.01]	.29	-0.03 [-0.06, -0.00]	.05	0.03 [-0.00, 0.06]	.09	0.02 [-0.00, 0.03]	.07
Self-mastery	-0.02 [-0.31, 0.27]	.91	0.19 [-0.07, 0.45]	.15	-0.16 [-0.47, 0.16]	.33	-0.01 [-0.19, 0.17]	.87
HIV stigma	-0.05 [-0.09, -0.01]	.02	-0.00 [-0.04, 0.04]	.92	0.01 [-0.04, 0.06]	.58	0.04 [0.01, 0.07]	.01
Social support	0.05 [0.01, 0.08]	.01	-0.00 [-0.04, 0.03]	.90	-0.03 [-0.07, 0.02]	.24	-0.02 [-0.04, 0.00]	.11

334 **Notes:** Marginal mean probabilities were calculated from the multinomial logistic regression models. Pr() = probability of being allocated to a certain trajectory  
335 group. The 95% confidence intervals were presented in square brackets. To facilitate interpretation, we reported the results for contextual factors, including age,

336 self-mastery, HIV stigma scores, and social support, scaled by a factor of 10 to interpret the predicted probabilities in terms of a decade increase or a 10-point  
337 increase in these factors.

338 **Discussion**

339 We characterized disability trajectories across six different dimensions and investigated the  
340 influence of contextual factors among adults aging with HIV over an 8-month period. We  
341 identified three distinct disability trajectories (low, medium, high) for physical symptoms,  
342 mental-emotional symptoms, and difficulties with day-to-day activities, and four trajectories  
343 (low, medium-low, medium-high, high) for cognitive symptoms, uncertainty, and challenges to  
344 social inclusion. Modifiable contextual factors such as self-mastery and social support were  
345 associated with lower disability trajectories, whereas comorbidities and HIV stigma were  
346 associated with more severe disability trajectories over time. The present study underscores the  
347 complex nature of disability and its diverse influencing factors among adults aging with HIV  
348 over time.

349 **Experiences of disability in the context of aging with HIV**

350 A growing body of evidence has documented the intertwined relationship between HIV and  
351 disability [42–45]. For example, a systematic review of 61 studies demonstrated that the  
352 experience of disability, broadly defined as any functional impairments, activity limitations, and  
353 participation restrictions, was prevalent among individuals living with HIV [44]. Our study  
354 contributes to the existing literature by adopting the SF-HDQ, an established patient-reported  
355 outcome measure, to assess the multidimensional nature of disability in the context of living with  
356 HIV over time. Our findings reveal that, even among a group of community-dwelling adults  
357 aging with HIV who are medically stable and able to conduct exercise, some individuals may  
358 still experience higher levels of disability than others over the course of living with HIV. In line  
359 with notions from prior research, the distinct disability dimension trajectories identified in this  
360 study highlight the necessity of adopting a tailored, individualized approach rather than viewing

361 people aging with HIV as a single homogenous group [15,19,22,46]. Recognizing these diverse  
362 experiences can help identify individuals with greater needs and guide healthcare professionals  
363 in refining treatments and services to better address the varying levels of disability among this  
364 population.

### 365 **Stability and variability of disability trajectories**

366 Overall, the mean trajectories of disability were observed to remain stable over the 8-month  
367 timeframe. However, it is important to underline the fluctuations and variations in disability  
368 trajectories across the individual participants assigned to each trajectory group. For instance,  
369 upon closer examination of the physical symptoms dimension, it became evident that there were  
370 notable fluctuations in the severity of disability for each study participant (Fig 1). Moreover,  
371 even within the same trajectory group, we noted between-person differences in the experience of  
372 disability over time. While we employed domain-specific scores to measure disability, our  
373 findings are consistent with Solomon et al.'s work, where they also discovered similar  
374 fluctuations in the levels of disability among individuals aging with HIV using item-specific  
375 questions and a qualitative longitudinal study design [46]. Although more than half of our study  
376 participants consistently reported having good days during the baseline monitoring period, our  
377 findings suggest that adults aging with HIV can still face varying levels of disability over time.  
378 As outlined in the *Episodic Disability Framework*, these observed patterns exemplify the  
379 characteristics of episodic disability, where individuals may experience fluctuating periods of  
380 illness and wellness, a phenomenon documented not only in HIV, but also other chronic health  
381 conditions such as Long COVID, arthritis, and relapsing-remitting multiple sclerosis [47–49].  
382 Altogether, this study portrays the episodic nature and complexity of disability among



383 individuals aging with HIV, stressing the importance of continuous monitoring and developing  
384 interventions that address the specific health challenges encountered by this population.

### 385 **Clinical distinction of disability trajectories**

386 Results from this study identified three to four distinct trajectories in each disability dimension.  
387 These trajectories, with SF-HDQ scores ranging from 3 to 55 on the 100-point scale, were  
388 considered statistically distinct using a data-driven approach. However, further verification is  
389 needed to determine the extent to which these differences are clinically distinct, beyond  
390 associated measurement error, and of clinical importance. Considering the precision of the SF-  
391 HDQ instrument and ongoing investigation into the interpretability of its scores [27], it is  
392 plausible that the actual number of clinically distinct trajectory groups may be fewer than  
393 identified in this analysis. Hence, the interpretability of the SF-HDQ should be taken into  
394 consideration by researchers and clinicians when evaluating the results and developing  
395 subsequent intervention strategies for individuals aging with HIV.

### 396 **Influence of contextual factors on disability trajectories**

397 This study adds to the extant literature by revealing how intrinsic and extrinsic contextual factors  
398 influence disability trajectories. Our findings highlight that beyond individual characteristics  
399 such as age, gender, or education, having a greater number of comorbidities and higher levels of  
400 stigma at baseline were associated with more severe disability trajectories for the physical,  
401 cognitive, uncertainty, difficulty with day-to-day activities, and challenges to social inclusion  
402 disability dimensions. On the contrary, greater baseline self-mastery and perceived social support  
403 were associated with lower trajectories (indicating better health) in these disability dimensions  
404 over time.

405           The observed deleterious impact of comorbidities and stigma, along with the protective  
406 role of self-mastery and social support, aligns with existing research [50–54] and helps to  
407 identify people living with HIV who may be more susceptible to greater disability, providing  
408 insights for shaping future care and services. Specifically, our findings emphasize the importance  
409 of adopting an integrated approach to support people aging with HIV, with the focus extending  
410 beyond standard HIV treatment to address other comorbidities such as mental health conditions  
411 and musculoskeletal disorders. In the meantime, opportunities may also be provided to enhance  
412 mastery, coping skills, and sense of control among people managing chronic health conditions  
413 such as HIV [52,55,56]. Moreover, our study highlights the critical role of building social  
414 support systems in the community, while emphasizing the urgent need for broader structural  
415 changes to combat HIV-related stigma and discrimination [54,57,58]. By drawing attention  
416 across various entities, from clinical care to public health, our study highlights the collective  
417 efforts needed to support the health and well-being of people living with HIV.

#### 418 **Strengths and limitations**

419 Strengths of our approach included our use of the *Episodic Disability Framework*, which offers a  
420 robust conceptual foundation for capturing the multidimensional and episodic nature of disability  
421 and contextual factors in the context of HIV [13]. This study is among the first known to employ  
422 a validated HIV-specific questionnaire that uses a Rasch-based interval scale to assess disability  
423 longitudinally over time [24]. However, several limitations exist. First, our sample size is  
424 smaller, and our follow-up period is shorter compared with previous studies that used public  
425 survey data to examine disability trajectories among general older populations [59–61]. The  
426 numbers and patterns of disability trajectories might have changed with a larger cohort and  
427 longer follow-up duration (e.g., years). Second, participants were community dwelling adults

428 recruited from HIV community-based organizations in Toronto, who were predominantly men,  
429 White, and medically stable. Caution should be exercised when generalizing our results to  
430 broader populations, especially those from rural areas and diverse sociodemographic  
431 backgrounds. Third, the current study assessed the role of contextual factors only at baseline,  
432 whereas these factors may also change over time and influence disability trajectories.  
433 Furthermore, although our study serves as the first step in adopting a multidimensional approach  
434 to examine disability trajectories across various life domains, the intersectionality of these  
435 dimensions exceeds our current scope [62]. An important avenue for future research is to  
436 leverage additional analytical procedures, such as group-based multi-trajectory modeling, to  
437 characterize the interconnections or latent clusters of individuals exhibiting similar trajectories  
438 across all six disability dimensions. In conjunction with these techniques, the application of other  
439 numeric metrics such as intra-individual mean (iMean), intra-individual standard deviation  
440 (iSD), and entropy may provide further insights into the dynamics and episodic nature of  
441 disability over time [63].

442         In conclusion, our findings suggest that experiences of disability among adults aging with  
443 HIV included three or four distinct trajectories over an 8-month monitoring phase. A  
444 combination of modifiable contextual factors such as comorbidities, self-mastery, stigma, and  
445 social support may influence disability trajectories over time and should be incorporated into  
446 interventions, services, policies aimed at preventing or mitigating disability and improving health  
447 outcomes among adults aging with HIV.

## 448 **References**

- 449 1. Wandeler G, Johnson LF, Egger M. Trends in life expectancy of HIV-positive adults on ART across  
450 the globe: comparisons with general population. *Curr Opin HIV AIDS*. 2016;11: 492–500.  
451 doi:10.1097/COH.0000000000000298
- 452 2. Antiretroviral Therapy Cohort Collaboration. Survival of HIV-positive patients starting  
453 antiretroviral therapy between 1996 and 2013: a collaborative analysis of cohort studies. *Lancet*  
454 *HIV*. 2017;4: e349–e356. doi:10.1016/S2352-3018(17)30066-8
- 455 3. Trickey A, Sabin CA, Burkholder G, Crane H, Monforte A d’Arminio, Egger M, et al. Life  
456 expectancy after 2015 of adults with HIV on long-term antiretroviral therapy in Europe and North  
457 America: a collaborative analysis of cohort studies. *Lancet HIV*. 2023;10: e295–e307.  
458 doi:10.1016/S2352-3018(23)00028-0
- 459 4. Trickey A, Zhang L, Sabin CA, Sterne JAC. Life expectancy of people with HIV on long-term  
460 antiretroviral therapy in Europe and North America: a cohort study. *The Lancet Healthy Longevity*.  
461 2022;3: S2. doi:10.1016/S2666-7568(22)00063-0
- 462 5. Maciel RA, Klück HM, Durand M, Sprinz E. Comorbidity is more common and occurs earlier in  
463 persons living with HIV than in HIV-uninfected matched controls, aged 50 years and older: a cross-  
464 sectional study. *Int J Infect Dis*. 2018;70: 30–35. doi:10.1016/j.ijid.2018.02.009
- 465 6. Pourcher V, Gourmelen J, Bureau I, Bouee S. Comorbidities in people living with HIV: An  
466 epidemiologic and economic analysis using a claims database in France. *PLoS One*. 2020;15:  
467 e0243529. doi:10.1371/journal.pone.0243529
- 468 7. Roomaney RA, van Wyk B, Pillay-van Wyk V. Aging with HIV: increased risk of HIV  
469 comorbidities in older adults. *Int J Environ Res Public Health*. 2022;19: 2359.  
470 doi:10.3390/ijerph19042359
- 471 8. Chawla A, Wang C, Patton C, Murray M, Punekar Y, de Ruiter A, et al. A review of long-term  
472 toxicity of antiretroviral treatment regimens and implications for an aging population. *Infect Dis*  
473 *Ther*. 2018;7: 183–195. doi:10.1007/s40121-018-0201-6
- 474 9. Smith R, Rossetto K, Peterson BL. A meta-analysis of disclosure of one’s HIV-positive status,  
475 stigma and social support. *AIDS Care*. 2008;20: 1266–1275. doi:10.1080/09540120801926977
- 476 10. Emlet CA. “You’re awfully old to have this disease”: experiences of stigma and ageism in adults 50  
477 years and older living with HIV/AIDS. *Gerontologist*. 2006;46: 781–790.  
478 doi:10.1093/geront/46.6.781
- 479 11. Bandeen-Roche K, Seplaki CL, Huang J, Buta B, Kalyani RR, Varadhan R, et al. Frailty in older  
480 adults: a nationally representative profile in the United States. *J Gerontol A Biol Sci Med Sci*.  
481 2015;70: 1427–1434. doi:10.1093/gerona/glv133
- 482 12. Morales DR, Moreno-Martos D, Matin N, McGettigan P. Health conditions in adults with HIV  
483 compared with the general population: a population-based cross-sectional analysis.  
484 *eClinicalMedicine*. 2022;47. doi:10.1016/j.eclinm.2022.101392

- 485 13. O'Brien KK, Bayoumi AM, Strike C, Young NL, Davis AM. Exploring disability from the  
486 perspective of adults living with HIV/AIDS: development of a conceptual framework. *Health Qual*  
487 *Life Outcomes*. 2008;6: 76. doi:10.1186/1477-7525-6-76
- 488 14. O'Brien KK, Davis AM, Strike C, Young NL, Bayoumi AM. Putting episodic disability into  
489 context: a qualitative study exploring factors that influence disability experienced by adults living  
490 with HIV/AIDS. *JIAS*. 2009;12: 30. doi:10.1186/1758-2652-12-30
- 491 15. Crystal S, Sambamoorthi U. Functional impairment trajectories among persons with HIV disease: a  
492 hierarchical linear models approach. *Health Serv Res*. 1996;31: 469–488.
- 493 16. Richert L, Brault M, Mercié P, Dauchy F-A, Bruyand M, Greib C, et al. Decline in locomotor  
494 functions over time in HIV-infected patients. *AIDS*. 2014;28: 1441.  
495 doi:10.1097/QAD.0000000000000246
- 496 17. Cai S, Miller SC, Wilson IB. Trajectory of physical functioning among persons living with HIV in  
497 nursing homes. *J Am Med Dir Assoc*. 2019;20: 497–502. doi:10.1016/j.jamda.2019.01.126
- 498 18. Gott C, Gates T, Dermody N, Brew BJ, Cysique LA. Cognitive change trajectories in virally  
499 suppressed HIV-infected individuals indicate high prevalence of disease activity. *PLOS ONE*.  
500 2017;12: e0171887. doi:10.1371/journal.pone.0171887
- 501 19. Brouillette M-J, Yuen T, Fellows LK, Cysique LA, Heaton RK, Mayo NE. Identifying  
502 neurocognitive decline at 36 months among HIV-positive participants in the CHARTER cohort  
503 using group-based trajectory analysis. *PLoS One*. 2016;11: e0155766.  
504 doi:10.1371/journal.pone.0155766
- 505 20. Parisi CE, Varma DS, Wang Y, Vaddiparti K, Ibañez GE, Cruz L, et al. Changes in mental health  
506 among people with HIV during the COVID-19 pandemic: qualitative and quantitative perspectives.  
507 *AIDS Behav*. 2022;26: 1980–1991. doi:10.1007/s10461-021-03547-8
- 508 21. Rzeszutek M, Gruszczyńska E. Positive and negative affect change among people living with HIV:  
509 a one-year prospective study. *IntJ Behav Med*. 2019;26: 28–37. doi:10.1007/s12529-018-9741-0
- 510 22. Bristowe K, Clift P, James R, Josh J, Platt M, Whetham J, et al. Towards person-centred care for  
511 people living with HIV: what core outcomes matter, and how might we assess them? A cross-  
512 national multi-centre qualitative study with key stakeholders. *HIV Med*. 2019;20: 542–554.  
513 doi:10.1111/hiv.12758
- 514 23. O'Brien KK, Bayoumi AM, Solomon P, Tang A, Murzin K, Carusone SC, et al. Evaluating a  
515 community-based exercise intervention with adults living with HIV: protocol for an interrupted time  
516 series study. *BMJ Open*. 2016;6: e013618. doi:10.1136/bmjopen-2016-013618
- 517 24. O'Brien KK, Dzingina M, Harding R, Gao W, Namisango E, Avery L, et al. Developing a short-  
518 form version of the HIV Disability Questionnaire (SF-HDQ) for use in clinical practice: a Rasch  
519 analysis. *Health Qual Life Outcomes*. 2021;19: 6. doi:10.1186/s12955-020-01643-2
- 520 25. O'Brien KK, Solomon P, Bergin C, O'Dea S, Stratford P, Iku N, et al. Reliability and validity of a  
521 new HIV-specific questionnaire with adults living with HIV in Canada and Ireland: the HIV  
522 Disability Questionnaire (HDQ). *Health Qual Life Outcomes*. 2015;13: 124. doi:10.1186/s12955-  
523 015-0310-9

- 524 26. O'Brien KK, Solomon P, Bayoumi AM. Measuring disability experienced by adults living with  
525 HIV: assessing construct validity of the HIV Disability Questionnaire using confirmatory factor  
526 analysis. *BMJ Open*. 2014;4: e005456. doi:10.1136/bmjopen-2014-005456
- 527 27. O'Brien KK, Solomon P, Carusone SC, Erlandson KM, Bergin C, Bayoumi AM, et al. Assessing  
528 the sensibility and utility of a short-form version of the HIV Disability Questionnaire in clinical  
529 practice settings in Canada, Ireland and the USA: a mixed methods study. *BMJ Open*. 2022;12:  
530 e062008. doi:10.1136/bmjopen-2022-062008
- 531 28. O'Brien KK, Ibáñez-Carrasco F, Solomon P, Chan Carusone S, Stewart A, Bayoumi AM, et al.  
532 Short-form HIV disability questionnaire sensibility, utility, and implementation considerations in  
533 community-based settings: a mixed methods study. *J Int Assoc Provid AIDS Care*. 2023;22:  
534 23259582231210800. doi:10.1177/23259582231210801
- 535 29. Pearlin LI, Schooler C. The structure of coping. *J Health Soc Behav*. 1978;19: 2–21.  
536 doi:10.2307/2136319
- 537 30. Lim ZX, Chua WL, Lim WS, Lim AQ, Chua KC, Chan E-Y. Psychometrics of the Pearlin Mastery  
538 Scale among Family Caregivers of Older Adults Who Require Assistance in Activities of Daily  
539 Living. *Int J Environ Res Public Health*. 2022;19: 4639. doi:10.3390/ijerph19084639
- 540 31. Turner HA, Pearlin LI, Mullan JT. Sources and determinants of social support for caregivers of  
541 persons with AIDS. *J Health Soc Behav*. 1998;39: 137–151. doi:10.2307/2676396
- 542 32. Berger BE, Ferrans CE, Lashley FR. Measuring stigma in people with HIV: psychometric  
543 assessment of the HIV stigma scale. *Res Nurs Health*. 2001;24: 518–529. doi:10.1002/nur.10011
- 544 33. Bunn JY, Solomon SE, Miller C, Forehand R. Measurement of stigma in people with HIV: a  
545 reexamination of the HIV Stigma Scale. *AIDS Educ Prev*. 2007;19: 198–208.  
546 doi:10.1521/aeap.2007.19.3.198
- 547 34. Sherbourne CD, Stewart AL. The MOS social support survey. *Soc Sci Med*. 1991;32: 705–714.  
548 doi:10.1016/0277-9536(91)90150-b
- 549 35. Tam C, Wesseling T, Wang L, Salters K, Moore DM, Dawydiuk N, et al. It's all about connection:  
550 determinants of social support and the influence on HIV treatment interruptions among people  
551 living with HIV in British Columbia, Canada. *BMC Public Health*. 2023;23: 2524.  
552 doi:10.1186/s12889-023-17416-7
- 553 36. Yu Y, Yang JP, Shiu C-S, Simoni JM, Xiao S, Chen W, et al. Psychometric testing of the Chinese  
554 version of the Medical Outcomes Study Social Support Survey among people living with  
555 HIV/AIDS in China. *Appl Nurs Res*. 2015;28: 328–333. doi:10.1016/j.apnr.2015.03.006
- 556 37. Nagin DS. *Group-based modeling of development*. Cambridge, MA: Harvard University Press;  
557 2005. Available: <https://www.hup.harvard.edu/catalog.php?isbn=9780674016866>
- 558 38. Jung T, Wickrama K a. S. An introduction to latent class growth analysis and growth mixture  
559 modeling. *Soc Personal Psychol Compass*. 2008;2: 302–317. doi:10.1111/j.1751-  
560 9004.2007.00054.x

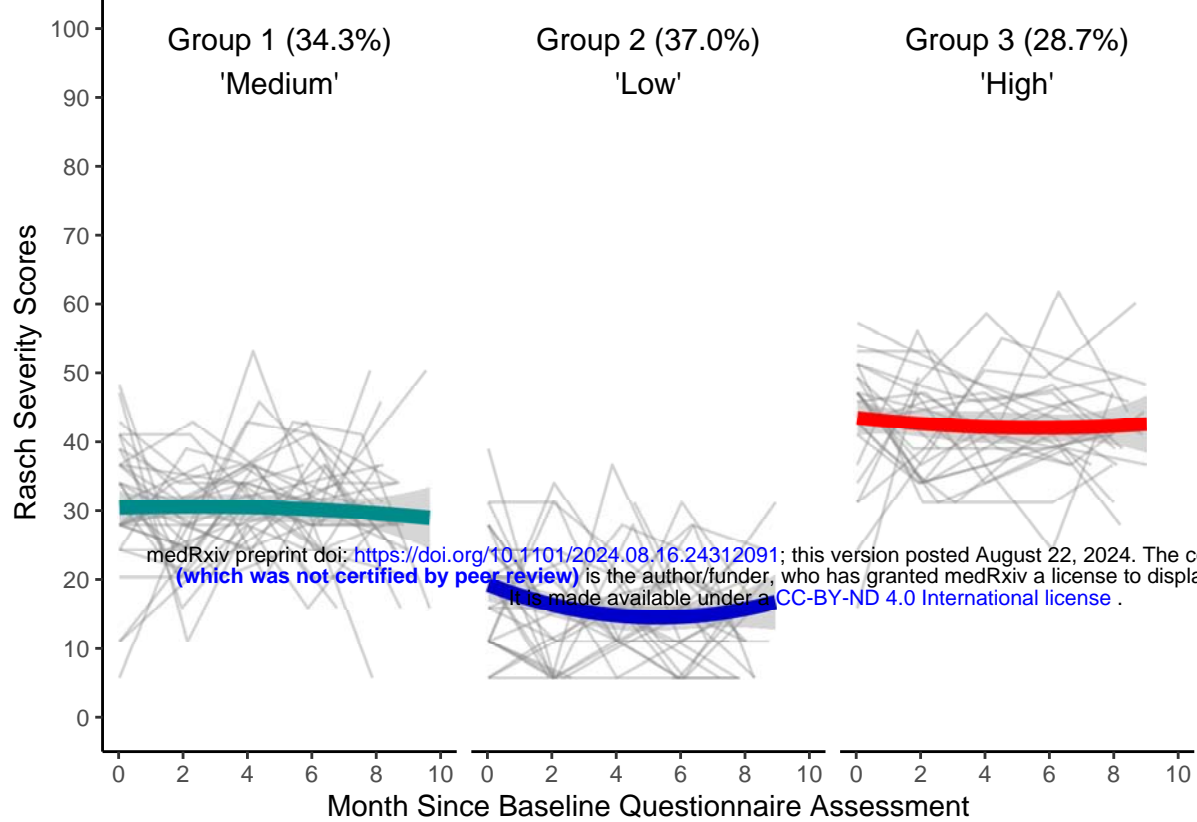


- 561 39. Nguefack HLN, Pagé MG, Katz J, Choinière M, Vanasse A, Dorais M, et al. Trajectory modelling  
562 techniques useful to epidemiological research: a comparative narrative review of approaches. *Clin*  
563 *Epidemiol.* 2020;12: 1205–1222. doi:10.2147/CLEP.S265287
- 564 40. O’Brien KK, Davis AM, Carusone SC, Avery L, Tang A, Solomon P, et al. Examining the impact  
565 of a community-based exercise intervention on cardiorespiratory fitness, cardiovascular health,  
566 strength, flexibility and physical activity among adults living with HIV: A three-phased intervention  
567 study. *PLoS One.* 2021;16: e0257639. doi:10.1371/journal.pone.0257639
- 568 41. Nagin DS, Odgers CL. Group-based trajectory modeling in clinical research. *Annu Rev Clin*  
569 *Psychol.* 2010;6: 109–138. doi:10.1146/annurev.clinpsy.121208.131413
- 570 42. Rajasuriar R, Wong PL. Disproportionate disability in people with HIV. *Lancet HIV.* 2023;10:  
571 e145–e146. doi:10.1016/S2352-3018(23)00027-9
- 572 43. Kuper H, Heydt P, Davey C. A focus on disability is necessary to achieve HIV epidemic control.  
573 *Lancet HIV.* 2022;9: e293–e298. doi:10.1016/S2352-3018(21)00345-3
- 574 44. Banks LM, Zuurmond M, Ferrand R, Kuper H. The relationship between HIV and prevalence of  
575 disabilities in sub-Saharan Africa: systematic review (FA). *Trop Med Int Health.* 2015;20: 411–429.  
576 doi:10.1111/tmi.12449
- 577 45. Rusch M, Nixon S, Schilder A, Braitstein P, Chan K, Hogg RS. Impairments, activity limitations  
578 and participation restrictions: prevalence and associations among persons living with HIV/AIDS in  
579 British Columbia. *Health Qual Life Outcomes.* 2004;2: 46. doi:10.1186/1477-7525-2-46
- 580 46. Solomon P, O’Brien KK, Nixon S, Letts L, Baxter L, Gervais N. Trajectories of episodic disability  
581 in people aging with HIV: a longitudinal qualitative study. *J Int Assoc Provid AIDS Care.* 2018;17:  
582 2325958218759210. doi:10.1177/2325958218759210
- 583 47. O’Brien KK, Brown DA, McDuff K, Clair-Sullivan NS, Solomon P, Carusone SC, et al.  
584 Conceptualising the episodic nature of disability among adults living with Long COVID: a  
585 qualitative study. *BMJ Global Health.* 2023;8: e011276. doi:10.1136/bmjgh-2022-011276
- 586 48. Vick A. The embodied experience of episodic disability among women with multiple sclerosis.  
587 *Disability & Society.* 2013;28: 176–189. doi:10.1080/09687599.2012.699279
- 588 49. Gignac MAM, Cao X, Tang K, Beaton DE. Examination of arthritis-related work place activity  
589 limitations and intermittent disability over four-and-a-half years and its relationship to job  
590 modifications and outcomes. *Arthritis Care Res.* 2011;63: 953–962. doi:10.1002/acr.20456
- 591 50. Kietrys D, Myezwa H, Galantino ML, Parrott JS, Davis T, Levin T, et al. Functional limitations and  
592 disability in persons living with hiv in South Africa and United States: similarities and differences. *J*  
593 *Int Assoc Provid AIDS Care.* 2019;18: 2325958219850558. doi:10.1177/2325958219850558
- 594 51. Hill M, Huff A, Chumbler N. “I’m Gonna Get Busy Living”: examining the trajectories of affect,  
595 behavioral health, and psychological resilience among persons living with HIV in a southeastern  
596 U.S. health district. *Global Qualitative Nursing Research.* 2019;6: 2333393619834937.  
597 doi:10.1177/2333393619834937

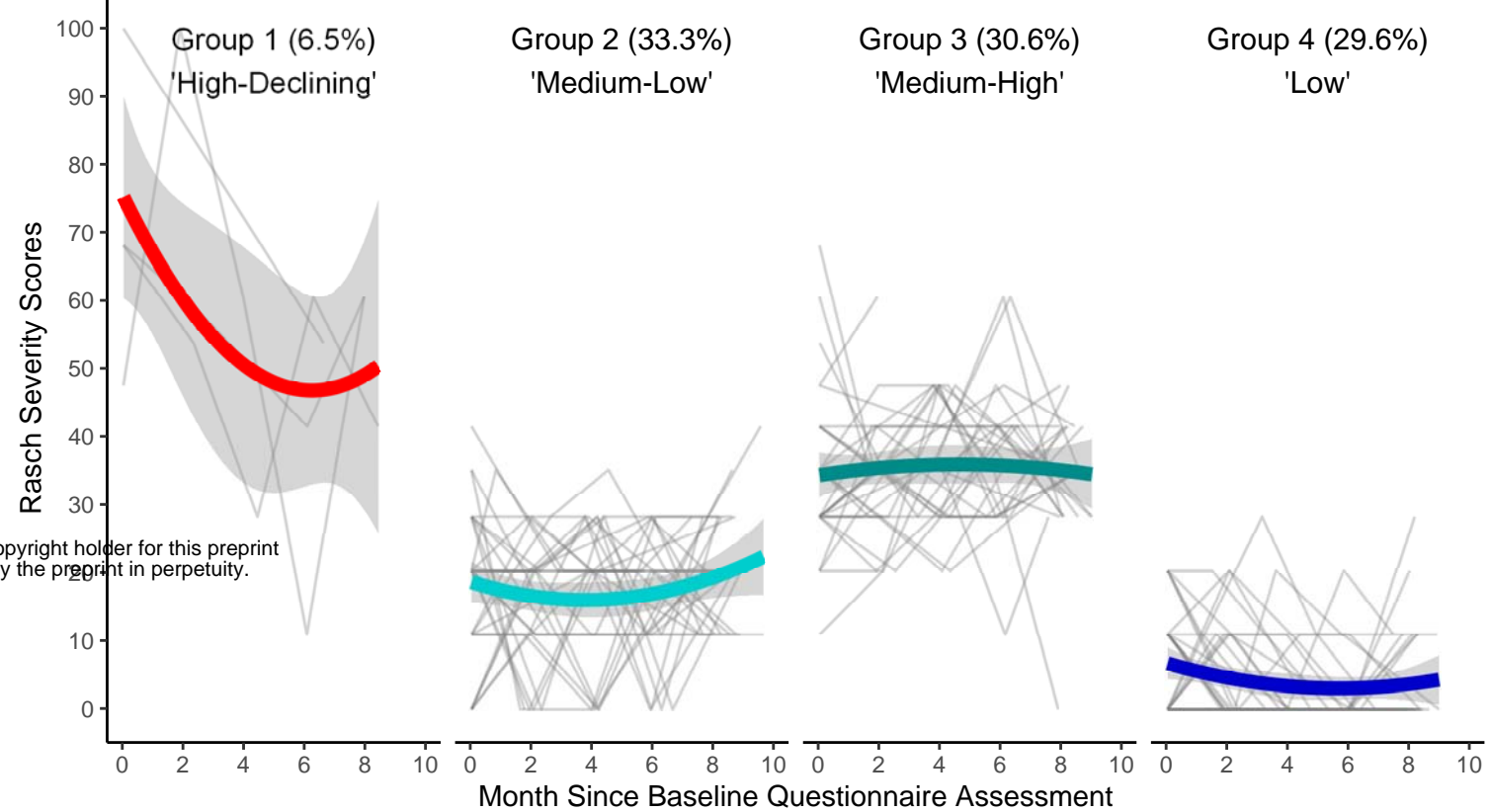
- 598 52. Gibson K, Rueda S, Rourke SB, Bekele T, Gardner S, Fenta H, et al. Mastery and coping moderate  
599 the negative effect of acute and chronic stressors on mental health-related quality of life in HIV.  
600 AIDS Patient Care STDS. 2011;25: 371–381. doi:10.1089/apc.2010.0165
- 601 53. Bekele T, Rourke SB, Tucker R, Greene S, Sobota M, Koornstra J, et al. Direct and indirect effects  
602 of perceived social support on health-related quality of life in persons living with HIV/AIDS. AIDS  
603 Care. 2013;25: 337–346. doi:10.1080/09540121.2012.701716
- 604 54. Turan B, Budhwani H, Fazeli PL, Browning WR, Raper JL, Mugavero MJ, et al. How does stigma  
605 affect people living with HIV? The mediating roles of internalized and anticipated HIV stigma in  
606 the effects of perceived community stigma on health and psychosocial outcomes. AIDS Behav.  
607 2017;21: 283–291. doi:10.1007/s10461-016-1451-5
- 608 55. Rueda S, Gibson K, Rourke SB, Bekele T, Gardner S, Cairney J, et al. Mastery moderates the  
609 negative effect of stigma on depressive symptoms in people living with HIV. AIDS Behav.  
610 2012;16: 690–699. doi:10.1007/s10461-010-9878-6
- 611 56. Emler CA, Shiu C, Kim H-J, Fredriksen-Goldsen K. Bouncing back: resilience and mastery among  
612 HIV-positive older gay and bisexual men. Gerontologist. 2017;57: S40–S49.  
613 doi:10.1093/geront/gnw171
- 614 57. Rubtsova AA, Kempf M-C, Taylor TN, Konkle-Parker D, Wingood GM, Holstad MM. Healthy  
615 aging in older women living with HIV infection: a systematic review of psychosocial factors. Curr  
616 HIV/AIDS Rep. 2017;14: 17–30. doi:10.1007/s11904-017-0347-y
- 617 58. Andersson GZ, Reinius M, Eriksson LE, Svedhem V, Esfahani FM, Deuba K, et al. Stigma  
618 reduction interventions in people living with HIV to improve health-related quality of life. Lancet  
619 HIV. 2020;7: e129–e140. doi:10.1016/S2352-3018(19)30343-1
- 620 59. Yu H-W, Chen D-R, Chiang T-L, Tu Y-K, Chen Y-M. Disability trajectories and associated  
621 disablement process factors among older adults in Taiwan. Archives of Gerontology and Geriatrics.  
622 2015;60: 272–280. doi:10.1016/j.archger.2014.12.005
- 623 60. Chiu C-J, Wray LA. Physical disability trajectories in older Americans with and without diabetes:  
624 the role of age, gender, race or ethnicity, and education. Gerontologist. 2011;51: 51–63.  
625 doi:10.1093/geront/gnq069
- 626 61. Keeney T, Fox AB, Jette DU, Jette A. Functional trajectories of persons with cardiovascular disease  
627 in late life. J Am Geriatr Soc. 2019;67: 37–42. doi:10.1111/jgs.15584
- 628 62. O'Brien KK, Hanna S, Solomon P, Worthington C, Ibáñez-Carrasco F, Chan Carusone S, et al.  
629 Characterizing the disability experience among adults living with HIV: a structural equation model  
630 using the HIV disability questionnaire (HDQ) within the HIV, health and rehabilitation survey.  
631 BMC Infect Dis. 2019;19: 594. doi:10.1186/s12879-019-4203-0
- 632 63. Koffer RE, Ram N, Almeida DM. More than counting: an intraindividual variability approach to  
633 categorical repeated measures. J Gerontol B Psychol Sci Soc Sci. 2018;73: 87–99.  
634 doi:10.1093/geronb/gbx086



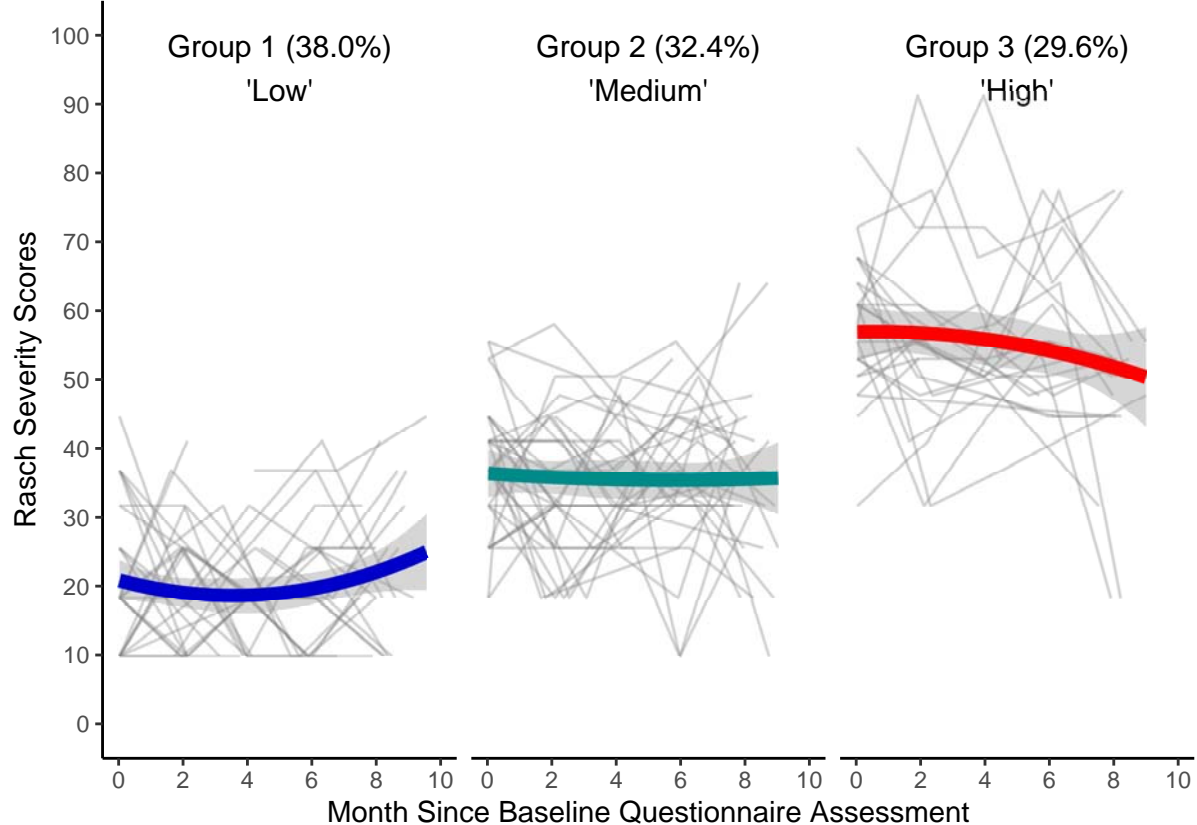
### (A) Physical Symptoms Trajectories



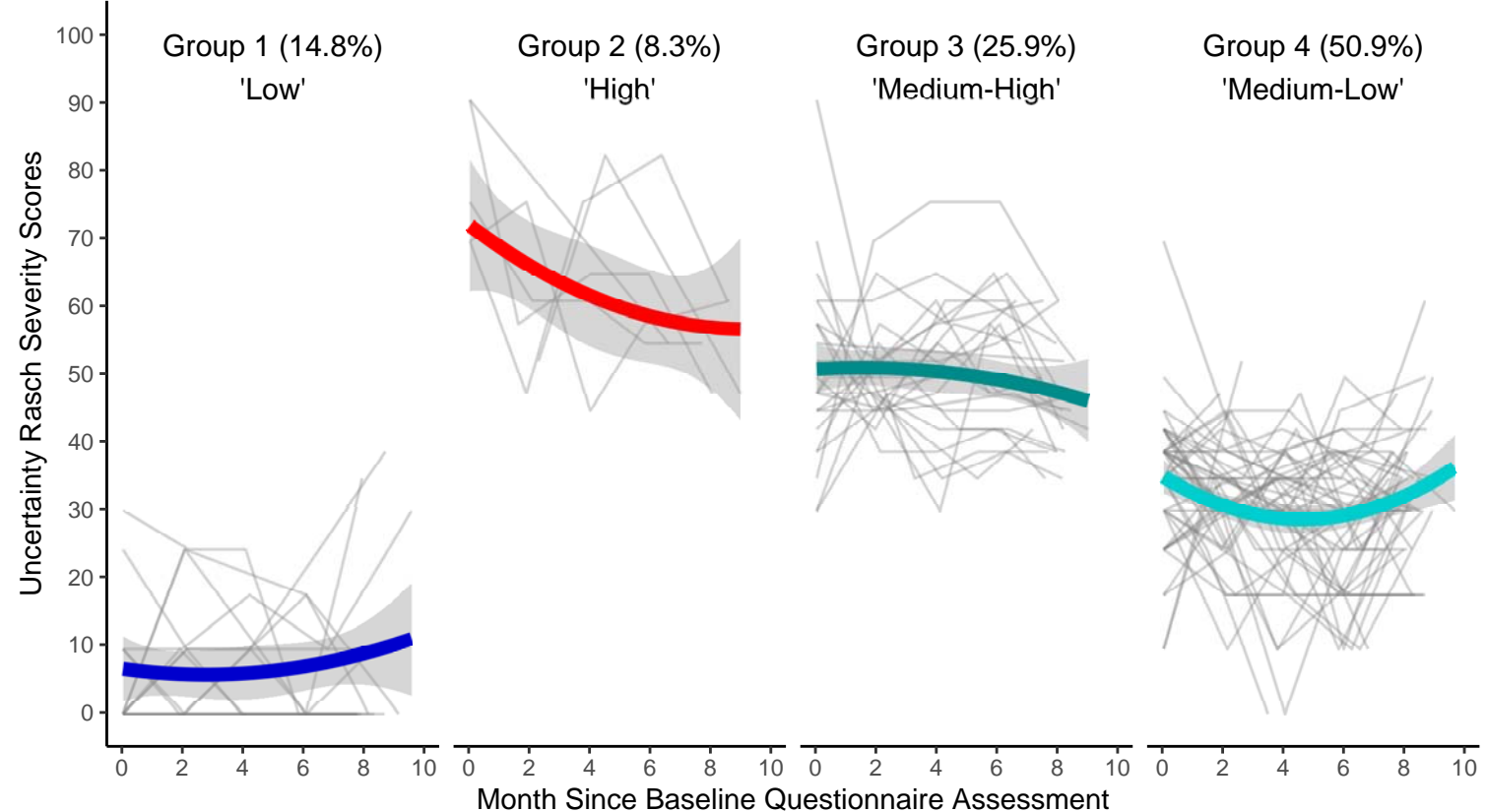
### (B) Cognitive Symptoms Trajectories



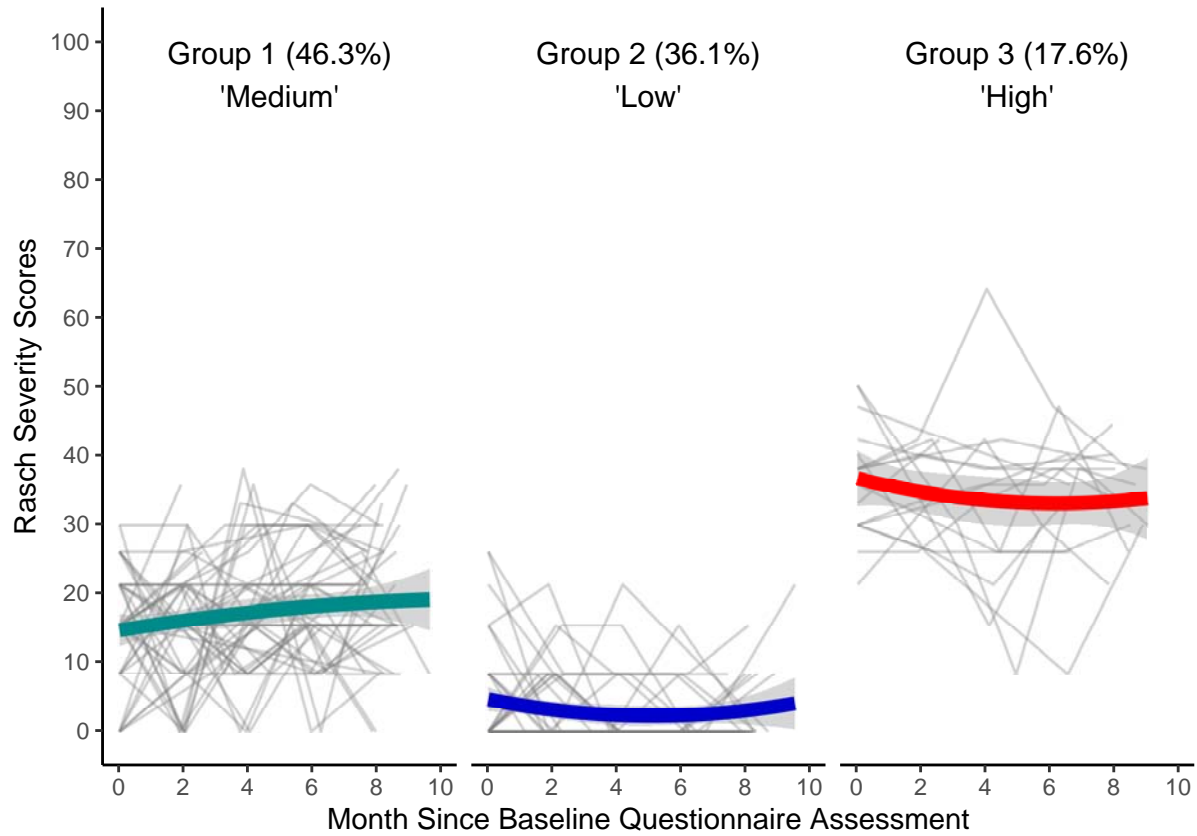
### (C) Mental-Emotional Symptoms Trajectories



### (D) Uncertainty Trajectories



### (E) Difficulties with Day-to-Day Activities Trajectories



### (F) Challenges to Social Inclusion Trajectories

