

1
2
3
4
5
6
7
8
9
10
11
12
13
14
15
16
17
18
19
20
21
22
23

Trajectories of disability and influence of contextual factors among adults aging with HIV:
insights from a community-based longitudinal study in Toronto, Canada

Tai-Te Su¹, Ahmed M. Bayoumi^{2,3,4,5}, Lisa Avery⁶, Soo Chan Carusone⁷, Ada Tang⁸, Patricia
Solomon⁸, Aileen M. Davis^{1,5,9}, and Kelly K. O’Brien^{1,5,9}

1. Department of Physical Therapy, University of Toronto, Toronto, Ontario, Canada
2. MAP Centre for Urban Health Solutions, Li Ka Shing Knowledge Institute, St. Michael's Hospital, Toronto, Ontario, Canada
3. Division of General Internal Medicine, St. Michael's Hospital, Toronto, Ontario, Canada
4. Department of Medicine, Temerty Faculty of Medicine, University of Toronto, Toronto, Ontario, Canada
5. Institute of Health Policy, Management and Evaluation (IHPE), University of Toronto, Toronto, Ontario, Canada
6. University Health Network, Toronto, Ontario, Canada
7. McMaster Collaborative for Health and Aging, McMaster University, Hamilton, Ontario, Canada
8. School of Rehabilitation Science, Faculty of Health Sciences, McMaster University, Hamilton, Ontario, Canada
9. Rehabilitation Sciences Institute (RSI), University of Toronto, Toronto, Ontario, Canada

24 Please direct all correspondence to Kelly K. O'Brien, PhD, PT, Department of Physical Therapy,
25 160-500 University Avenue, Toronto Ontario, M5G 1V7 Canada. Email:
26 kelly.obrien@utoronto.ca

27

28 Author Notes

29 Tai-Te Su  <https://orcid.org/0000-0002-7166-0247>

30 Lisa Avery <https://orcid.org/0000-0002-8431-5143>

31 Soo Chan Carusone <https://orcid.org/0000-0003-3977-0523>

32 Ada Tang <https://orcid.org/0000-0002-6641-4017>

33 Patricia Solomon <https://orcid.org/0000-0002-5014-0795>

34 Aileen M. Davis <https://orcid.org/0000-0002-9903-9399>

35 Kelly K. O'Brien <https://orcid.org/0000-0002-1632-6537>

36

37 Number of Tables: 5

38 Number of Figures: 1

39 **Abstract**

40 **Background:** Individuals aging with HIV may experience disability that is multidimensional
41 and evolving over time. Our aims were to characterize the longitudinal trajectories of disability
42 and to investigate how intrinsic and extrinsic contextual factors influence dimensions of
43 disability over an 8-month period among adults aging with HIV.

44 **Methods:** We analyzed longitudinal observational data from a community-based study in
45 Toronto, Canada, where adults aging with HIV completed self-reported questionnaires over 8
46 months (5 time points). We measured disability using the Short-Form HIV Disability
47 Questionnaire (SF-HDQ), which included six dimensions: physical, cognitive, mental-emotional
48 health challenges, uncertainty, difficulties with day-to-day activities, and challenges to social
49 inclusion. Higher SF-HDQ scores (range: 0-100) indicate greater severity of disability. We
50 assessed intrinsic (age, gender, education, living status, number of comorbidities, mastery) and
51 extrinsic (stigma, social support) contextual factors using baseline self-reported questionnaires.
52 Latent class growth analysis was performed to identify distinct disability trajectories within each
53 of the six dimensions. Multinomial logistic regression models were used to assess the influence
54 of contextual factors on the disability trajectories.

55 **Results:** Of 108 participants, 89% identified as men with a mean age of 50.6 years (standard
56 deviation ± 10.9). We identified three disability trajectories: low, medium, and high disability
57 severity in the physical, mental-emotional, and day-to-day activities dimensions. Four
58 trajectories: low, medium-low, medium-high, and high (or high-declining) disability severity
59 were in the cognitive, uncertainty, and social inclusion dimensions. Factors such as higher self-
60 mastery and social support were associated with lower disability trajectories, whereas greater
61 number of comorbidities and stigma were associated with more severe disability trajectories over
62 time.

63 **Conclusion:** Disability experiences among adults aging with HIV included three or four distinct
64 trajectories with considerable heterogeneity over time. Information on contextual factors may be
65 helpful for informing interventions and supports that mitigate disability among adults aging with
66 HIV.

67

68 *Keywords:* HIV, episodic disability, disability, longitudinal trajectories

69 **Introduction**

70 With advancements in medical treatments and healthcare services, people living with human
71 immunodeficiency virus (HIV) are living longer [1–3]. Population-based studies in Europe and
72 North America have shown that the average life expectancy of people living with HIV who have
73 access to care is nearing that of the general population [3,4]. While HIV is now considered a
74 chronic illness, people aging with HIV may experience a wide range of challenges such as
75 adverse treatment effects (e.g., from prolonged antiretroviral treatment), comorbidities (e.g.,
76 cardiovascular diseases, metabolic syndrome, neurocognitive disorders, cancer, or frailty),
77 insecure employment or unemployment, and HIV-associated stigma and lack of social support
78 [5–12]. Informed by the experiences of individuals living with HIV, the *Episodic Disability*
79 *Framework* characterizes these health-related challenges as disability, and provides a conceptual
80 foundation to illustrate its multidimensional and episodic nature [13]. The Framework includes
81 six dimensions: physical, cognitive, mental or emotional symptoms, uncertainty or worry about
82 the future, difficulties with day-to-day activities, and challenges to social inclusion [13,14]. The
83 Framework also asserts that the severity and presence of disability are sometimes experienced as
84 episodic in nature, which can be exacerbated or alleviated by a range of intrinsic contextual
85 factors (i.e., personal attributes and living strategies) and extrinsic contextual factors (i.e., stigma
86 and social support) [14].

87 To develop effective interventions and services, it is critical to understand the evolving
88 nature of disability and its influencing factors experienced by people aging with HIV. Studies
89 have attempted to delineate the patterns of change in disability among this population [15–21].
90 For instance, Crystal and Sambamoorthi found that individuals living with HIV experienced an
91 average of 0.32 additional functional limitation tasks in performing basic daily activities each

115 the effectiveness of a CBE intervention on cardiopulmonary fitness, strength, flexibility, and
116 physical activity among adults aging with HIV [23]. Adults 18 years or older with HIV, who
117 were considered medically stable and safe to participate in exercise, were recruited from HIV
118 community-based organizations and the Toronto YMCA between July 29, 2016 and January 26,
119 2017. For the first 8 months, participants were monitored every two months without any
120 interventions. After this baseline monitoring phase, participants engaged in thrice-weekly
121 supervised exercise sessions followed by self-monitored exercise. In this study, we examined
122 disability trajectories during the 8-month baseline (pre-intervention) monitoring phase.

123 **Ethics and consent**

124 The study was registered (registration number: NCT02794415) and received approval from the
125 Research Ethics Board at the University of Toronto (Protocol #32910). All participants provided
126 written informed consent to participate in the study. Detailed information on study design and
127 trial protocol has been published [23].

128 **Data sources**

129 We used bimonthly observational data collected during the 8-month baseline monitoring phase,
130 whereby participants completed a series of self-reported electronic administered questionnaires
131 at baseline, 2 months, 4 months, 6 months and 8 months (5 time points), to characterize
132 experiences of disability over time prior to exercise intervention.

133 **Measures**

134 **Disability**

135 Disability was assessed at each time point using the electronic version of the Short-Form HIV
136 Disability Questionnaire (SF-HDQ) [24]. Derived from the original 69-item HDQ [25,26], the
137 SF-HDQ is a patient-reported outcome measure containing 35 items that assess disability across

138 six different dimensions: physical symptoms (10 items), cognitive symptoms (3 items), mental
139 and emotional symptoms (5 items), uncertainty about future health (5 items), difficulties carrying
140 out day-to-day activities (5 items), and challenges to social inclusion (7 items). Scores for each
141 dimension are derived from a Rasch-based logit scale ranging from 0 to 100 whereby higher
142 scores indicate greater severity of disability [24]. A single summary score for disability is not
143 provided by the SF-HDQ. At the end of the questionnaire, participants indicated whether they
144 perceive they completed the SF-HDQ on a “good day” or “bad day” living with HIV. The SF-
145 HDQ is an internally consistent instrument (Cronbach’s $\alpha=0.78-0.85$) and possesses sensibility
146 and utility for use in clinical and community-based settings among adults living with HIV
147 [27,28].

148 **Intrinsic contextual factors**

149 The selection of contextual factors was guided by the *Episodic Disability Framework* [13]. We
150 included self-mastery and personal attributes measured at baseline as intrinsic contextual factors
151 in this study. Levels of self-mastery were assessed using the Pearlin Mastery Scale [29]. The
152 scale contains a total of seven items, including two positively worded statements (e.g., *What*
153 *happens to me in the future mostly depends on me*) and five negatively worded statements (e.g.,
154 *There is really no way I can solve some of the problems I have*). Participants self-reported their
155 agreement with each statement on a 4-point Likert scale (strongly agree [1], agree [2], disagree
156 [3], and strongly disagree [4]). Positively worded questions were reverse coded. Final scores
157 were summed and ranged from 7 to 28, with higher scores representing greater self-mastery. The
158 Pearlin Mastery Scale has demonstrated reliability and construct validity for caregivers of older
159 adults and persons living with HIV [30,31].

160 Information on personal attributes, including age (years), gender (man vs. woman; only
161 these categories were represented in the study), education (some university education or higher
162 vs. otherwise), living status (living alone vs. living with others), and number of comorbidities
163 was gathered through an electronically administered demographic questionnaire at baseline.

164 **Extrinsic contextual factors**

165 Extrinsic contextual factors included self-perceived stigma and social support measured at
166 baseline. We measured stigma using the 40-item HIV Stigma Scale, a self-administered
167 questionnaire designed to assess HIV-related stigma across four subscales, including
168 personalized stigma, disclosure concerns, negative self-image, and concern with public attitudes
169 [32]. Participants self-reported their agreement with each item on a 4-point Likert scale (strongly
170 disagree [1], disagree [2], agree [3], and strongly agree [4]). Final scores ranged from 40 to 160,
171 with higher scores indicating greater HIV stigma. The HIV Stigma Scale demonstrates reliability
172 (test-retest reliability $\alpha=0.96$) and construct validity with people living with HIV [32,33].

173 We measured perceived social support using the 19-item Medical Outcomes Study Social
174 Support Survey (MOS-SSS), a self-administered questionnaire designed for community-dwelling
175 individuals with chronic conditions [34]. The questionnaire contains four domains:
176 emotional/information support, tangible support, affectionate support, and positive social
177 interaction. Participants reported the frequency of receiving each type of support on a 5-point
178 Likert scale, ranging from none of the time (0) to all of the time (5). Following the established
179 procedure, raw scores across the four domains were summed and transformed into a 100-point
180 scale where higher scores represent greater social support [34]. The MOS-SSS has demonstrated
181 internal-consistency reliability and construct validity among people living with HIV [35,36].

182 **Analysis**

183 We described participants' personal and clinical characteristics at baseline. Mean and standard
184 deviation were reported for continuous variables, while number and percentage were reported for
185 categorical variables.

186 We conducted latent class growth analysis (LCGA), also known as group-based
187 trajectory modeling, to identify trajectories across six disability dimensions as measured by the
188 SF-HDQ over the 8-month baseline monitoring period [37]. LCGA is a specialized application of
189 the semi-parametric finite mixture modeling where the population is assumed to consist of a
190 finite number of unobserved latent groups, with individuals in each group exhibiting similar
191 pattern or progression of outcomes over time [37,38]. Unlike basic growth curve analysis where
192 a single trajectory was estimated by pooling individuals across the entire population, LCGA
193 represents a flexible statistical procedure that is able to better characterize the heterogeneity in
194 health outcomes, including disability over time. In particular, this approach allows researchers to
195 identify specific subgroups with unique health-related challenges (e.g., dimensions of disability)
196 or profiles and has the potential to inform personalized intervention programs and services [39].
197 To account for variability in the timing of questionnaire completion caused by scheduling issues
198 [40], we adjusted the time variable to accurately reflect the actual number of days between
199 assessments. A quadratic link function for time was specified for the trajectory models. We
200 determined the optimal number of trajectories for each disability dimension based on the
201 parsimony principal and a combination of the following criteria: 1) lowest value of Bayesian
202 Information Criteria (BIC), 2) group size not less than 5% of the total sample, and 3) the average
203 posterior probability of group assignment (≥ 0.7) [37]. Missing data were handled under the
204 assumption of missing at random and accommodated using maximum likelihood estimations
205 [41]. As a final step, the labeling of each disability trajectory was completed through joint

229 diagnosis was 17.5 ± 9.9 years, with nearly all participants (99%) taking antiretroviral
230 medications. Approximately half of the participants received some university degree or higher
231 (45%), and they had an average of 5 comorbidities in addition to living with HIV. The three most
232 prevalent comorbidities were mental health conditions ($n=52$), joint pain ($n=44$), and bone and
233 joint disorders ($n=39$). The average scores for self-mastery, total HIV-related stigma, and total
234 social support were 19.7 ± 4.0 (out of 28), 93.6 ± 24.6 (out of 160), and 53.3 ± 24.8 (out of 100),
235 respectively. SF-HDQ disability severity domain scores ranged from 15.1 ± 13.6 (difficulties with
236 day-to-day activities) to 38.4 ± 22.5 (uncertainty) on a 100-point scale at baseline (Table 2). Most
237 participants (82%) reported having a ‘good day’ when they completed the SF-HDQ.
238 Characteristics of participants who remained in the study at the end of the baseline monitoring
239 phase ($n=83$) is detailed in Supplementary Table 1.

240 **Table 1.** Characteristics of adults living with HIV and contextual factors at baseline (n = 108)

Participant characteristics	Mean ± SD / n (%)
Age (years)	50.6 ± 10.9
Gender (n)	
Men	96 (89)
Women	12 (11)
Race/Ethnicity	
White	68 (63)
Black or African	9 (8)
Hispanic or Latino	5 (5)
Number of years since HIV diagnosis	17.5 ± 9.9
Self-reported undetectable HIV viral load (<50 copies/mL)	90 (83)
Current use of antiretroviral medications	107 (99)
Education (some university+)	49 (45)
Living alone (n)	73 (68)
Number of comorbidities in addition to living with HIV (count)	4.9 ± 4.1
Three most common self-reported comorbidities	
Mental health condition (e.g., depression, anxiety)	52 (48)
Joint pain (arthritis)	44 (41)
Bone and joint disorder (e.g., osteonecrosis, osteopenia)	39 (36)
Pearlin Mastery Scale score (range: 7–28)	19.7 ± 4.0
HIV Stigma Scale total score (range: 40–160) †	93.6 ± 24.6
Personalized stigma subscale score (range: 18–72)	40.7 ± 12.0
Disclosure concerns subscale score (range: 10–40)	25.3 ± 7.2
Negative self-image subscale score (range: 13–52)	27.6 ± 8.6
Public attitudes subscale score (range: 20–80)	47.0 ± 13.0
MOS Social Support Survey total score (range: 0–100) ‡	53.3 ± 24.8
Emotional and information support raw score (range: 8–40)	26.1 ± 7.8
Tangible support raw score (range: 4–20)	11.7 ± 5.7
Affectionate support raw score (range: 3–15)	9.1 ± 4.1
Positive social interaction raw score (range: 4–20)	12.7 ± 4.6

241 *Notes:* SD = Standard deviation. †Sixteen items on the HIV Stigma Scale belong to more than one subscale, which
242 reflects the intercorrelations between different subscales. ‡ Raw scores of the MOS Social Support Survey were
243 summed across the four subdomains and transformed into a 100-point scale. Greater Pearlin Mastery Scale scores,
244 HIV Stigma Scale scores, and MOS Social Support Survey scores reflect higher levels of self-mastery, HIV-related
245 stigma, and perceived social support, respectively.

246 **Table 2.** Short-Form HIV Disability Questionnaire (SF-HDQ) scores at baseline (n = 108)

SF-HDQ domains	Mean ± SD / n (%)
Physical symptoms severity scores	30.2 ± 13.8
Cognitive symptoms severity scores	23.5 ± 20.2
Mental-emotional symptoms severity scores	35.6 ± 20.8
Uncertainty severity scores	38.4 ± 22.5
Difficulties with day-to-day activities severity scores	15.1 ± 13.6
Challenges to social inclusion severity scores	33.1 ± 14.8
Good day-bad day item	n (%)
Good day (%)	89 (82)
Bad day (%)	19 (18)

247 *Notes:* SD = Standard deviation. Severity scores were on a Rasch-based logit scale ranging from 0 to 100, where
248 higher scores indicate greater disability severity. Participants self-reported whether they had a good day or bad day
249 living with HIV when they completed the SF-HDQ.

250 **Disability trajectories across six dimensions over 8 months**

251 Fig 1 portrays the trajectories of disability across six dimensions, highlighting the substantial
252 variability within and between participants' experiences over time. Results from the LCGA
253 suggested that a model with three trajectory groups provided the best fit for the dimensions of
254 physical symptoms, mental-emotional symptoms, and difficulties with day-to-day activities,
255 whereas a model with four trajectory groups exhibited the best fit for the dimensions of
256 cognitive symptoms, uncertainty, and challenges to social inclusion (Table 3). The three-group
257 trajectories were labeled as low, medium and high disability severity, and the four-group
258 trajectories were labeled as low, medium-low, medium-high, and high (or high-declining)
259 disability severity over time.

260

261 **Fig 1.** Trajectories of disability across six dimensions among adults living with HIV over 8 months

262

263 *Notes:* Each bolded line corresponds to a unique trajectory group identified within each of the six disability
264 dimensions. Each color represents a distinct disability trajectory group. The 95% confidence intervals are depicted
265 as shaded areas.

266

267 For physical symptoms, 37% of participants, as indicated by the model probability of
268 group assignment, exhibited a consistently low level of disability (mean SF-HDQ
269 score: 12.1 ± 10.0), while 34% and 29% showed medium (26.0 ± 13.0) and high (32.0 ± 19.8) levels
270 of disability over time. For mental-emotional symptoms, 38% of participants exhibited a low
271 (14.0 ± 12.4) level of disability, while 32% and 30% experienced medium (30.0 ± 16.7) and high
272 (39.4 ± 27.6) levels of disability in this dimension. For difficulties with day-to-day activities, 36%
273 showed a low (2.6 ± 5.5) level of disability, whereas 46% and 18% experienced medium
274 (14.3 ± 10.4) and high (25.8 ± 17.0) levels of disability, respectively. For cognitive symptoms, 30%
275 of participants demonstrated a low disability trajectory (3.9 ± 6.9), and the rest displayed medium-

276 low (14.0 ± 11.4 ; 33%), medium-high (28.4 ± 16.7 ; 31%), and high-declining (32.6 ± 34.3 ; 6.5%)
277 trajectories. For the uncertainty dimension, 15% of participants exhibited a low (5.7 ± 9.5)
278 disability trajectory, while the majority showed medium-low (25.5 ± 15.3 ; 51%), medium-high
279 (40.2 ± 21.8 ; 26%), and high (53.5 ± 34.9 ; 8.3%) trajectories. For challenges to social inclusion,
280 participants demonstrated low (8.1 ± 9.0 ; 24%), medium-low (22.1 ± 11.6 ; 21%), medium-high
281 (30.3 ± 17.4 ; 42%), and high (43.5 ± 18.6 ; 13%) trajectories over time. Detailed information on
282 each disability trajectory, including intercepts and slopes, is provided in Supplementary Tables 2
283 and 3. The average posterior probability of group assignment ranged from 0.86 to 0.98 across all
284 trajectory groups, surpassing the standard of ≥ 0.7 (Supplementary Table 4). Throughout the 8-
285 month monitoring phase, 60.2% of participants consistently reported having ‘good days’ when
286 they completed the SF-HDQ, while 1.9% consistently reported ‘bad days’. Around 38% reported
287 a combination of good and bad days during this period.

288 **Table 3.** Model fit statistics for disability trajectories across six dimensions among adults living with HIV over 8 months

Disability dimensions	Number of Trajectories	BIC	Posterior classification of trajectory memberships n (%)				
			Group 1	Group 2	Group 3	Group 4	Group 5
Physical symptoms	1	3543.0	108 (100)				
	2	3378.9	62 (57.4)	46 (42.6)			
	3	3357.5	37 (34.3)	40 (37.0)	31 (28.7)		
	4	3363.5	33 (30.6)	31 (28.7)	4 (3.7)	40 (37.0)	
Cognitive symptoms	1	3766.3	108 (100)				
	2	3589.1	41 (38.0)	67 (62.0)			
	3	3540.3	8 (7.4)	38 (35.2)	62 (57.4)		
	4	3528.4	7 (6.5)	36 (33.3)	33 (30.6)	32 (29.6)	
	5	3544.5	7 (6.5)	30 (27.8)	32 (29.6)	7 (6.5)	32 (29.6)
Mental-emotional symptoms	1	3858.1	108 (100)				
	2	3682.4	63 (58.3)	45 (41.7)			
	3	3663.3	41 (38.0)	35 (32.4)	32 (29.6)		
	4	3646.4	38 (35.2)	34 (31.5)	31 (28.7)	5 (4.6)	
Uncertainty	1	3868.9	108 (100)				
	2	3738.4	40 (37.0)	68 (63.0)			
	3	3644.0	63 (58.3)	17 (15.7)	28 (25.9)		
	4	3618.2	16 (14.8)	9 (8.3)	28 (25.9)	55 (50.9)	
	5	3609.3	54 (50.0)	16 (14.8)	2 (1.9)	11 (10.2)	25 (23.1)
Difficulties with day-to-day activities	1	3513.5	108 (100)				
	2	3362.1	32 (29.6)	76 (70.4)			
	3	3305.6	50 (46.3)	39 (36.1)	19 (17.6)		
	4	3307.5	39 (36.1)	13 (12.0)	49 (45.4)	7 (6.5)	
Challenges to social inclusion	1	3644.4	108 (100)				
	2	3353.2	73 (67.6)	35 (32.4)			
	3	3268.2	26 (24.1)	25 (23.2)	57 (52.8)		
	4	3233.8	14 (13.0)	23 (21.3)	45 (41.7)	26 (24.1)	
	5	3235.6	8 (7.4)	45 (41.7)	14 (13.0)	20 (18.5)	21 (19.4)

289 *Notes:* BIC = Bayesian Information Criterion. The final model selected for each disability dimension was marked in bold.

290 **Influences of contextual factors on disability dimension trajectories**

291 Table 4 and Table 5 summarize the influences of intrinsic and extrinsic contextual factors on the
292 six dimensions of disability.

293 Overall, a decade increase in age was associated with a 12% increase in the probability of
294 being allocated to the medium disability severity trajectory for physical symptoms (pr [Medium]:
295 0.12 [0.00, 0.24]). Compared with women, men were 28% and 7% more likely to be allocated to
296 the high disability severity trajectory for physical symptoms (pr [High]: 0.28 [0.20, 0.37]) and
297 cognitive symptoms (pr [High]: 0.07 [0.01, 0.12]), respectively. In addition, compared with
298 women, men were more likely to be allocated to the medium-low trajectory for challenges to
299 social inclusion (pr [Medium-Low]: 0.18 [0.10, 0.27]) and the medium trajectory for mental-
300 emotional symptoms (pr [Medium]: 0.33 [0.22, 0.44]). Participants with some university degree
301 or higher were less likely to be allocated to the high severity trajectory for physical symptoms
302 (pr [High]: -0.21 [-0.37, -0.04]), cognitive symptoms (pr [High]: -0.10 [-0.19, -0.02]), and
303 uncertainty (pr [High]: -0.10 [-0.15, -0.05]) compared with those without such educational
304 attainment. Compared with those living with others, participants who lived alone were more
305 likely to be allocated to the high severity trajectory for cognitive symptoms (pr [High]: 0.10
306 [0.04, 0.15]) but less likely to be allocated to the high trajectory for uncertainty (pr [High]: -0.13
307 [-0.13, -0.12]). Regarding comorbidities, each additional comorbidity was associated with an
308 increased probability of allocation to high or medium-high trajectories for physical (pr [High]:
309 0.06 [0.02, 0.09]) and cognitive symptoms (pr [Medium-High]: 0.03 [0.00, 0.06]). Meanwhile, a
310 greater number of comorbidities also was associated with a decreased probability of allocation to
311 the low or medium-low trajectories for uncertainty (pr [Low]: -0.03 [-0.05, -0.01]), difficulties
312 with day-to-day activities (pr [Low]: -0.05 [-0.08, -0.01]), and challenges to social inclusion

313 (pr [Medium-Low]: -0.03 [-0.06, -0.00]). Participants with a higher level of self-mastery were
314 less likely to be allocated to the high or medium-high trajectories for physical symptoms
315 (pr [High]: -0.31 [-0.58, -0.04]), cognitive symptoms (pr [High]: -0.31 [-0.56, -0.06]), mental-
316 emotional symptoms (pr [High]: -0.29 [-0.58, -0.01]), and uncertainty over time (pr [Medium-
317 High]: -0.40 [-0.62, -0.17]).

318 For stigma, a higher score on the HIV Stigma Scale (indicating greater stigma) was
319 associated with an increased probability of being allocated on the medium or high trajectories for
320 physical symptoms (pr [Medium]: 0.07 [0.02, 0.12]) and challenges to social inclusion (pr [High]:
321 0.04 [0.01, 0.07]). Additionally, higher HIV Stigma scores were associated with a decreased
322 probability of being allocated to the low trajectory for uncertainty (pr [Low]: -0.06 [-0.09, -0.03])
323 and high-declining trajectory for cognitive symptoms (pr [High-Declining]: -0.04 [-0.07, -0.01]).
324 For social support, participants with greater self-perceived social support were more likely to be
325 allocated to the low disability trajectory for mental-emotional symptoms (pr [Low]: 0.04 [0.00,
326 0.08]), uncertainty (pr [Low]: 0.04 [0.01, 0.06]), and challenges to social inclusion (pr [Low]:
327 0.05 [0.01, 0.08]) over time.

328 **Table 4.** Influence of contextual factors on the predicted probabilities of disability trajectories (disability dimensions with three trajectories)

Contextual factors	Low (L) trajectory		Medium (M) trajectory		High (H) trajectory	
	Physical symptoms					
	Pr(L)	<i>p</i>	Pr(M)	<i>p</i>	Pr(H)	<i>p</i>
Age	-0.01 [-0.12, 0.10]	.81	0.12 [0.00, 0.24]	.04	-0.11 [-0.23, 0.02]	.09
Gender: Men	-0.27 [-0.61, 0.07]	.12	-0.01 [-0.37, 0.34]	.93	0.28 [0.20, 0.37]	<.001
University or higher	0.10 [-0.11, 0.31]	.35	0.11 [-0.10, 0.31]	.32	-0.21 [-0.37, -0.04]	.02
Living alone	-0.11 [-0.32, 0.10]	.32	-0.03 [-0.26, 0.19]	.77	0.14 [-0.02, 0.30]	.08
Comorbidities (count)	-0.05 [-0.08, -0.02]	.002	-0.01 [-0.04, 0.03]	.69	0.06 [0.02, 0.09]	<.001
Self-mastery	0.23 [-0.06, 0.53]	.12	0.07 [-0.24, 0.38]	.65	-0.31 [-0.58, -0.04]	.03
HIV stigma	-0.03 [-0.08, 0.02]	.27	0.07 [0.02, 0.12]	.01	-0.04 [-0.09, 0.01]	.11
Social support	0.02 [-0.03, 0.06]	.46	0.02 [-0.02, 0.06]	.37	-0.04 [-0.08, 0.00]	.07
Mental-emotional symptoms						
Contextual factors	Pr(L)	<i>p</i>	Pr(M)	<i>p</i>	Pr(H)	<i>p</i>
Age	0.07 [-0.03, 0.17]	.17	-0.04 [-0.15, 0.08]	.54	-0.03 [-0.14, 0.07]	.53
Gender: Men	-0.45 [-0.68, -0.22]	<.001	0.33 [0.22, 0.44]	<.001	0.12 [-0.10, 0.35]	.28
University or higher	0.08 [-0.13, 0.29]	.45	-0.01 [-0.24, 0.21]	.92	-0.07 [-0.27, 0.13]	.50
Living alone	-0.08 [-0.29, 0.13]	.46	-0.05 [-0.26, 0.18]	.67	0.13 [-0.05, 0.31]	.16
Comorbidities (count)	-0.01 [-0.04, 0.02]	.63	0.01 [-0.02, 0.04]	.45	-0.00 [-0.03, 0.03]	.76
Self-mastery	0.34 [0.05, 0.63]	.02	-0.05 [-0.36, 0.26]	.75	-0.29 [-0.58, -0.01]	.04
HIV stigma	-0.01 [-0.06, 0.04]	.71	0.01 [-0.04, 0.07]	.67	-0.00 [-0.05, 0.05]	.92
Social support	0.04 [0.00, 0.08]	.03	0.01 [-0.04, 0.05]	.80	-0.05 [-0.08, -0.02]	.004
Difficulties with day-to-day activities						
Contextual factors	Pr(L)	<i>p</i>	Pr(M)	<i>p</i>	Pr(H)	<i>p</i>
Age	-0.00 [-0.10, 0.10]	.99	-0.05 [-0.17, 0.07]	.41	0.05 [-0.04, 0.14]	.27
Gender: Men	0.04 [-0.32, 0.40]	.83	-0.09 [-0.51, 0.32]	.66	0.05 [-0.18, 0.28]	.65
University or higher	0.17 [-0.05, 0.39]	.13	-0.05 [-0.29, 0.19]	.68	-0.12 [-0.28, 0.05]	.16
Living alone	0.11 [-0.09, 0.32]	.28	-0.07 [-0.32, 0.17]	.54	-0.04 [-0.21, 0.13]	.65
Comorbidities (count)	-0.05 [-0.08, -0.01]	.01	0.03 [-0.01, 0.06]	.10	0.02 [-0.00, 0.04]	.06
Self-mastery	0.19 [-0.10, 0.49]	.20	0.02 [-0.32, 0.35]	.92	-0.21 [-0.44, 0.02]	.07
HIV stigma	0.00 [-0.05, 0.05]	.92	-0.03 [-0.08, 0.03]	.36	0.02 [-0.01, 0.06]	.22
Social support	0.01 [-0.03, 0.06]	.53	0.00 [-0.05, 0.05]	.99	-0.01 [-0.05, 0.02]	.43

329 *Notes:* Marginal mean probabilities were calculated from the multinomial logistic regression models. Pr() = probability of being allocated to a certain trajectory
330 group. The 95% confidence intervals were presented in square brackets. To facilitate interpretation, we reported the results for contextual factors, including age,
331 self-mastery, HIV stigma scores, and social support, scaled by a factor of 10 to interpret the predicted probabilities in terms of a decade increase or a 10-point
332 increase in these factors.

333 **Table 5.** Influence of contextual factors on the predicted probabilities of disability trajectories (disability dimensions with four trajectories)

Contextual factors	Low (L) trajectory		Medium-low (M-L) trajectory		Medium-high (M-H) trajectory		High-declining (H-D) / High (H) trajectory	
	Pr(L)	<i>p</i>	Pr(M-L)	<i>p</i>	Pr(M-H)	<i>p</i>	Pr(H-D)	<i>p</i>
Cognitive symptoms								
Age	0.10 [-0.00, 0.20]	.06	-0.03 [-0.15, 0.09]	.62	-0.06 [-0.18, 0.05]	.28	-0.00 [-0.06, 0.06]	.91
Gender: Men	0.11 [-0.22, 0.45]	.51	-0.06 [-0.49, 0.36]	.78	-0.12 [-0.50, 0.26]	.54	0.07 [0.01, 0.12]	.01
University or higher	0.14 [-0.07, 0.35]	.19	0.08 [-0.15, 0.31]	.47	-0.12 [-0.32, 0.08]	.22	-0.10 [-0.19, -0.02]	.02
Living alone	-0.11 [-0.33, 0.11]	.32	0.06 [-0.17, 0.29]	.63	-0.04 [-0.24, 0.16]	.69	0.10 [0.04, 0.15]	.002
Comorbidities (count)	-0.03 [-0.06, 0.00]	.09	0.01 [-0.03, 0.04]	.68	0.03 [0.00, 0.06]	.03	-0.01 [-0.03, 0.01]	.22
Self-mastery	0.35 [0.05, 0.64]	.02	0.05 [-0.28, 0.37]	.79	-0.09 [-0.38, 0.21]	.57	-0.31 [-0.56, -0.06]	.02
HIV stigma	0.03 [-0.02, 0.08]	.25	-0.01 [-0.06, 0.05]	.83	0.02 [-0.03, 0.07]	.52	-0.04 [-0.07, -0.01]	.02
Social support	0.03 [-0.02, 0.07]	.24	-0.02 [-0.06, 0.03]	.52	-0.01 [-0.05, 0.03]	.77	-0.01 [-0.02, 0.01]	.49
Uncertainty								
Contextual factors	Pr(L)	<i>p</i>	Pr(M-L)	<i>p</i>	Pr(M-H)	<i>p</i>	Pr(H)	<i>p</i>
Age	0.03 [-0.04, 0.10]	.38	-0.10 [-0.20, 0.00]	.05	0.07 [-0.01, 0.15]	.07	-0.00 [-0.00, 0.00]	.44
Gender: Men	0.13 [-0.06, 0.33]	.18	-0.02 [-0.36, 0.33]	.92	-0.06 [-0.36, 0.23]	.68	-0.05 [-0.18, 0.07]	.39
University or higher	0.08 [-0.08, 0.24]	.32	0.04 [-0.18, 0.25]	.74	-0.02 [-0.19, 0.15]	.81	-0.10 [-0.15, -0.05]	<.001
Living alone	0.07 [-0.09, 0.22]	.40	0.20 [0.00, 0.39]	.04	-0.14 [-0.27, -0.00]	.05	-0.13 [-0.13, -0.12]	<.001
Comorbidities (count)	-0.03 [-0.05, -0.01]	.003	0.04 [0.01, 0.06]	.01	-0.00 [-0.02, 0.02]	.69	-0.00 [-0.00, 0.00]	.75
Self-mastery	0.07 [-0.16, 0.30]	.57	0.33 [0.04, 0.63]	.03	-0.40 [-0.62, -0.17]	<.001	-0.00 [-0.01, 0.01]	.57
HIV stigma	-0.06 [-0.09, -0.03]	<.001	0.03 [-0.02, 0.07]	.26	0.03 [-0.00, 0.06]	.08	0.00 [-0.01, 0.01]	.57
Social support	0.04 [0.01, 0.06]	.01	-0.02 [-0.06, 0.02]	.32	-0.02 [-0.05, 0.02]	.36	-0.00 [-0.00, 0.00]	.58
Challenges to social inclusion								
Contextual factors	Pr(L)	<i>p</i>	Pr(M-L)	<i>p</i>	Pr(M-H)	<i>p</i>	Pr(H)	<i>p</i>
Age	0.02 [-0.07, 0.10]	.39	0.05 [-0.02, 0.13]	.17	-0.05 [-0.18, 0.08]	.48	-0.02 [-0.12, 0.07]	.63
Gender: Men	-0.34 [-0.76, 0.08]	.11	0.18 [0.10, 0.27]	<.001	0.22 [-0.21, 0.65]	.32	-0.06 [-0.31, 0.18]	.62
University or higher	0.03 [-0.16, 0.22]	.73	0.00 [-0.17, 0.18]	.98	-0.07 [-0.30, 0.17]	.57	0.03 [-0.11, 0.17]	.66
Living alone	0.12 [-0.06, 0.29]	.20	-0.10 [-0.28, 0.09]	.30	-0.05 [-0.28, 0.18]	.67	0.03 [-0.11, 0.18]	.67
Comorbidities (count)	-0.02 [-0.04, 0.01]	.29	-0.03 [-0.06, -0.00]	.05	0.03 [-0.00, 0.06]	.09	0.02 [-0.00, 0.03]	.07
Self-mastery	-0.02 [-0.31, 0.27]	.91	0.19 [-0.07, 0.45]	.15	-0.16 [-0.47, 0.16]	.33	-0.01 [-0.19, 0.17]	.87
HIV stigma	-0.05 [-0.09, -0.01]	.02	-0.00 [-0.04, 0.04]	.92	0.01 [-0.04, 0.06]	.58	0.04 [0.01, 0.07]	.01
Social support	0.05 [0.01, 0.08]	.01	-0.00 [-0.04, 0.03]	.90	-0.03 [-0.07, 0.02]	.24	-0.02 [-0.04, 0.00]	.11

334 **Notes:** Marginal mean probabilities were calculated from the multinomial logistic regression models. Pr() = probability of being allocated to a certain trajectory
 335 group. The 95% confidence intervals were presented in square brackets. To facilitate interpretation, we reported the results for contextual factors, including age,

336 self-mastery, HIV stigma scores, and social support, scaled by a factor of 10 to interpret the predicted probabilities in terms of a decade increase or a 10-point
337 increase in these factors.

338 **Discussion**

339 We characterized disability trajectories across six different dimensions and investigated the
340 influence of contextual factors among adults aging with HIV over an 8-month period. We
341 identified three distinct disability trajectories (low, medium, high) for physical symptoms,
342 mental-emotional symptoms, and difficulties with day-to-day activities, and four trajectories
343 (low, medium-low, medium-high, high) for cognitive symptoms, uncertainty, and challenges to
344 social inclusion. Modifiable contextual factors such as self-mastery and social support were
345 associated with lower disability trajectories, whereas comorbidities and HIV stigma were
346 associated with more severe disability trajectories over time. The present study underscores the
347 complex nature of disability and its diverse influencing factors among adults aging with HIV
348 over time.

349 **Experiences of disability in the context of aging with HIV**

350 A growing body of evidence has documented the intertwined relationship between HIV and
351 disability [42–45]. For example, a systematic review of 61 studies demonstrated that the
352 experience of disability, broadly defined as any functional impairments, activity limitations, and
353 participation restrictions, was prevalent among individuals living with HIV [44]. Our study
354 contributes to the existing literature by adopting the SF-HDQ, an established patient-reported
355 outcome measure, to assess the multidimensional nature of disability in the context of living with
356 HIV over time. Our findings reveal that, even among a group of community-dwelling adults
357 aging with HIV who are medically stable and able to conduct exercise, some individuals may
358 still experience higher levels of disability than others over the course of living with HIV. In line
359 with notions from prior research, the distinct disability dimension trajectories identified in this
360 study highlight the necessity of adopting a tailored, individualized approach rather than viewing

361 people aging with HIV as a single homogenous group [15,19,22,46]. Recognizing these diverse
362 experiences can help identify individuals with greater needs and guide healthcare professionals
363 in refining treatments and services to better address the varying levels of disability among this
364 population.

365 **Stability and variability of disability trajectories**

366 Overall, the mean trajectories of disability were observed to remain stable over the 8-month
367 timeframe. However, it is important to underline the fluctuations and variations in disability
368 trajectories across the individual participants assigned to each trajectory group. For instance,
369 upon closer examination of the physical symptoms dimension, it became evident that there were
370 notable fluctuations in the severity of disability for each study participant (Fig 1). Moreover,
371 even within the same trajectory group, we noted between-person differences in the experience of
372 disability over time. While we employed domain-specific scores to measure disability, our
373 findings are consistent with Solomon et al.'s work, where they also discovered similar
374 fluctuations in the levels of disability among individuals aging with HIV using item-specific
375 questions and a qualitative longitudinal study design [46]. Although more than half of our study
376 participants consistently reported having good days during the baseline monitoring period, our
377 findings suggest that adults aging with HIV can still face varying levels of disability over time.
378 As outlined in the *Episodic Disability Framework*, these observed patterns exemplify the
379 characteristics of episodic disability, where individuals may experience fluctuating periods of
380 illness and wellness, a phenomenon documented not only in HIV, but also other chronic health
381 conditions such as Long COVID, arthritis, and relapsing-remitting multiple sclerosis [47–49].
382 Altogether, this study portrays the episodic nature and complexity of disability among

383 individuals aging with HIV, stressing the importance of continuous monitoring and developing
384 interventions that address the specific health challenges encountered by this population.

385 **Clinical distinction of disability trajectories**

386 Results from this study identified three to four distinct trajectories in each disability dimension.
387 These trajectories, with SF-HDQ scores ranging from 3 to 55 on the 100-point scale, were
388 considered statistically distinct using a data-driven approach. However, further verification is
389 needed to determine the extent to which these differences are clinically distinct, beyond
390 associated measurement error, and of clinical importance. Considering the precision of the SF-
391 HDQ instrument and ongoing investigation into the interpretability of its scores [27], it is
392 plausible that the actual number of clinically distinct trajectory groups may be fewer than
393 identified in this analysis. Hence, the interpretability of the SF-HDQ should be taken into
394 consideration by researchers and clinicians when evaluating the results and developing
395 subsequent intervention strategies for individuals aging with HIV.

396 **Influence of contextual factors on disability trajectories**

397 This study adds to the extant literature by revealing how intrinsic and extrinsic contextual factors
398 influence disability trajectories. Our findings highlight that beyond individual characteristics
399 such as age, gender, or education, having a greater number of comorbidities and higher levels of
400 stigma at baseline were associated with more severe disability trajectories for the physical,
401 cognitive, uncertainty, difficulty with day-to-day activities, and challenges to social inclusion
402 disability dimensions. On the contrary, greater baseline self-mastery and perceived social support
403 were associated with lower trajectories (indicating better health) in these disability dimensions
404 over time.

405 The observed deleterious impact of comorbidities and stigma, along with the protective
406 role of self-mastery and social support, aligns with existing research [50–54] and helps to
407 identify people living with HIV who may be more susceptible to greater disability, providing
408 insights for shaping future care and services. Specifically, our findings emphasize the importance
409 of adopting an integrated approach to support people aging with HIV, with the focus extending
410 beyond standard HIV treatment to address other comorbidities such as mental health conditions
411 and musculoskeletal disorders. In the meantime, opportunities may also be provided to enhance
412 mastery, coping skills, and sense of control among people managing chronic health conditions
413 such as HIV [52,55,56]. Moreover, our study highlights the critical role of building social
414 support systems in the community, while emphasizing the urgent need for broader structural
415 changes to combat HIV-related stigma and discrimination [54,57,58]. By drawing attention
416 across various entities, from clinical care to public health, our study highlights the collective
417 efforts needed to support the health and well-being of people living with HIV.

418 **Strengths and limitations**

419 Strengths of our approach included our use of the *Episodic Disability Framework*, which offers a
420 robust conceptual foundation for capturing the multidimensional and episodic nature of disability
421 and contextual factors in the context of HIV [13]. This study is among the first known to employ
422 a validated HIV-specific questionnaire that uses a Rasch-based interval scale to assess disability
423 longitudinally over time [24]. However, several limitations exist. First, our sample size is
424 smaller, and our follow-up period is shorter compared with previous studies that used public
425 survey data to examine disability trajectories among general older populations [59–61]. The
426 numbers and patterns of disability trajectories might have changed with a larger cohort and
427 longer follow-up duration (e.g., years). Second, participants were community dwelling adults

428 recruited from HIV community-based organizations in Toronto, who were predominantly men,
429 White, and medically stable. Caution should be exercised when generalizing our results to
430 broader populations, especially those from rural areas and diverse sociodemographic
431 backgrounds. Third, the current study assessed the role of contextual factors only at baseline,
432 whereas these factors may also change over time and influence disability trajectories.
433 Furthermore, although our study serves as the first step in adopting a multidimensional approach
434 to examine disability trajectories across various life domains, the intersectionality of these
435 dimensions exceeds our current scope [62]. An important avenue for future research is to
436 leverage additional analytical procedures, such as group-based multi-trajectory modeling, to
437 characterize the interconnections or latent clusters of individuals exhibiting similar trajectories
438 across all six disability dimensions. In conjunction with these techniques, the application of other
439 numeric metrics such as intra-individual mean (iMean), intra-individual standard deviation
440 (iSD), and entropy may provide further insights into the dynamics and episodic nature of
441 disability over time [63].

442 In conclusion, our findings suggest that experiences of disability among adults aging with
443 HIV included three or four distinct trajectories over an 8-month monitoring phase. A
444 combination of modifiable contextual factors such as comorbidities, self-mastery, stigma, and
445 social support may influence disability trajectories over time and should be incorporated into
446 interventions, services, policies aimed at preventing or mitigating disability and improving health
447 outcomes among adults aging with HIV.

448 **References**

- 449 1. Wandeler G, Johnson LF, Egger M. Trends in life expectancy of HIV-positive adults on ART across
450 the globe: comparisons with general population. *Curr Opin HIV AIDS*. 2016;11: 492–500.
451 doi:10.1097/COH.0000000000000298
- 452 2. Antiretroviral Therapy Cohort Collaboration. Survival of HIV-positive patients starting
453 antiretroviral therapy between 1996 and 2013: a collaborative analysis of cohort studies. *Lancet*
454 *HIV*. 2017;4: e349–e356. doi:10.1016/S2352-3018(17)30066-8
- 455 3. Trickey A, Sabin CA, Burkholder G, Crane H, Monforte A d’Arminio, Egger M, et al. Life
456 expectancy after 2015 of adults with HIV on long-term antiretroviral therapy in Europe and North
457 America: a collaborative analysis of cohort studies. *Lancet HIV*. 2023;10: e295–e307.
458 doi:10.1016/S2352-3018(23)00028-0
- 459 4. Trickey A, Zhang L, Sabin CA, Sterne JAC. Life expectancy of people with HIV on long-term
460 antiretroviral therapy in Europe and North America: a cohort study. *The Lancet Healthy Longevity*.
461 2022;3: S2. doi:10.1016/S2666-7568(22)00063-0
- 462 5. Maciel RA, Klück HM, Durand M, Sprinz E. Comorbidity is more common and occurs earlier in
463 persons living with HIV than in HIV-uninfected matched controls, aged 50 years and older: a cross-
464 sectional study. *Int J Infect Dis*. 2018;70: 30–35. doi:10.1016/j.ijid.2018.02.009
- 465 6. Pourcher V, Gourmelen J, Bureau I, Bouee S. Comorbidities in people living with HIV: An
466 epidemiologic and economic analysis using a claims database in France. *PLoS One*. 2020;15:
467 e0243529. doi:10.1371/journal.pone.0243529
- 468 7. Roomaney RA, van Wyk B, Pillay-van Wyk V. Aging with HIV: increased risk of HIV
469 comorbidities in older adults. *Int J Environ Res Public Health*. 2022;19: 2359.
470 doi:10.3390/ijerph19042359
- 471 8. Chawla A, Wang C, Patton C, Murray M, Punekar Y, de Ruitter A, et al. A review of long-term
472 toxicity of antiretroviral treatment regimens and implications for an aging population. *Infect Dis*
473 *Ther*. 2018;7: 183–195. doi:10.1007/s40121-018-0201-6
- 474 9. Smith R, Rossetto K, Peterson BL. A meta-analysis of disclosure of one’s HIV-positive status,
475 stigma and social support. *AIDS Care*. 2008;20: 1266–1275. doi:10.1080/09540120801926977
- 476 10. Emlet CA. “You’re awfully old to have this disease”: experiences of stigma and ageism in adults 50
477 years and older living with HIV/AIDS. *Gerontologist*. 2006;46: 781–790.
478 doi:10.1093/geront/46.6.781
- 479 11. Bandeen-Roche K, Seplaki CL, Huang J, Buta B, Kalyani RR, Varadhan R, et al. Frailty in older
480 adults: a nationally representative profile in the United States. *J Gerontol A Biol Sci Med Sci*.
481 2015;70: 1427–1434. doi:10.1093/gerona/glv133
- 482 12. Morales DR, Moreno-Martos D, Matin N, McGettigan P. Health conditions in adults with HIV
483 compared with the general population: a population-based cross-sectional analysis.
484 *eClinicalMedicine*. 2022;47. doi:10.1016/j.eclinm.2022.101392

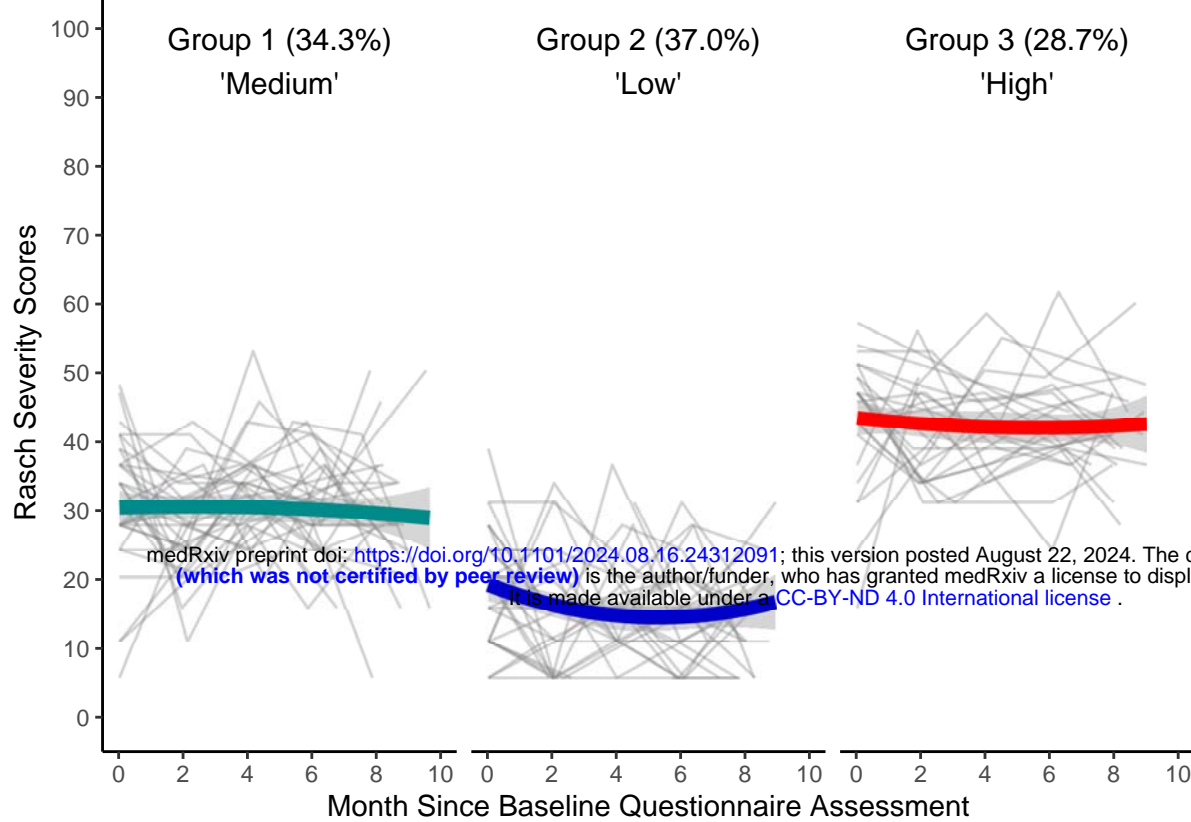
- 485 13. O'Brien KK, Bayoumi AM, Strike C, Young NL, Davis AM. Exploring disability from the
486 perspective of adults living with HIV/AIDS: development of a conceptual framework. *Health Qual*
487 *Life Outcomes*. 2008;6: 76. doi:10.1186/1477-7525-6-76
- 488 14. O'Brien KK, Davis AM, Strike C, Young NL, Bayoumi AM. Putting episodic disability into
489 context: a qualitative study exploring factors that influence disability experienced by adults living
490 with HIV/AIDS. *JIAS*. 2009;12: 30. doi:10.1186/1758-2652-12-30
- 491 15. Crystal S, Sambamoorthi U. Functional impairment trajectories among persons with HIV disease: a
492 hierarchical linear models approach. *Health Serv Res*. 1996;31: 469–488.
- 493 16. Richert L, Brault M, Mercié P, Dauchy F-A, Bruyand M, Greib C, et al. Decline in locomotor
494 functions over time in HIV-infected patients. *AIDS*. 2014;28: 1441.
495 doi:10.1097/QAD.0000000000000246
- 496 17. Cai S, Miller SC, Wilson IB. Trajectory of physical functioning among persons living with HIV in
497 nursing homes. *J Am Med Dir Assoc*. 2019;20: 497–502. doi:10.1016/j.jamda.2019.01.126
- 498 18. Gott C, Gates T, Dermody N, Brew BJ, Cysique LA. Cognitive change trajectories in virally
499 suppressed HIV-infected individuals indicate high prevalence of disease activity. *PLOS ONE*.
500 2017;12: e0171887. doi:10.1371/journal.pone.0171887
- 501 19. Brouillette M-J, Yuen T, Fellows LK, Cysique LA, Heaton RK, Mayo NE. Identifying
502 neurocognitive decline at 36 months among HIV-positive participants in the CHARTER cohort
503 using group-based trajectory analysis. *PLoS One*. 2016;11: e0155766.
504 doi:10.1371/journal.pone.0155766
- 505 20. Parisi CE, Varma DS, Wang Y, Vaddiparti K, Ibañez GE, Cruz L, et al. Changes in mental health
506 among people with HIV during the COVID-19 pandemic: qualitative and quantitative perspectives.
507 *AIDS Behav*. 2022;26: 1980–1991. doi:10.1007/s10461-021-03547-8
- 508 21. Rzeszutek M, Gruszczyńska E. Positive and negative affect change among people living with HIV:
509 a one-year prospective study. *IntJ Behav Med*. 2019;26: 28–37. doi:10.1007/s12529-018-9741-0
- 510 22. Bristowe K, Clift P, James R, Josh J, Platt M, Whetham J, et al. Towards person-centred care for
511 people living with HIV: what core outcomes matter, and how might we assess them? A cross-
512 national multi-centre qualitative study with key stakeholders. *HIV Med*. 2019;20: 542–554.
513 doi:10.1111/hiv.12758
- 514 23. O'Brien KK, Bayoumi AM, Solomon P, Tang A, Murzin K, Carusone SC, et al. Evaluating a
515 community-based exercise intervention with adults living with HIV: protocol for an interrupted time
516 series study. *BMJ Open*. 2016;6: e013618. doi:10.1136/bmjopen-2016-013618
- 517 24. O'Brien KK, Dzingina M, Harding R, Gao W, Namisango E, Avery L, et al. Developing a short-
518 form version of the HIV Disability Questionnaire (SF-HDQ) for use in clinical practice: a Rasch
519 analysis. *Health Qual Life Outcomes*. 2021;19: 6. doi:10.1186/s12955-020-01643-2
- 520 25. O'Brien KK, Solomon P, Bergin C, O'Dea S, Stratford P, Iku N, et al. Reliability and validity of a
521 new HIV-specific questionnaire with adults living with HIV in Canada and Ireland: the HIV
522 Disability Questionnaire (HDQ). *Health Qual Life Outcomes*. 2015;13: 124. doi:10.1186/s12955-
523 015-0310-9

- 524 26. O'Brien KK, Solomon P, Bayoumi AM. Measuring disability experienced by adults living with
525 HIV: assessing construct validity of the HIV Disability Questionnaire using confirmatory factor
526 analysis. *BMJ Open*. 2014;4: e005456. doi:10.1136/bmjopen-2014-005456
- 527 27. O'Brien KK, Solomon P, Carusone SC, Erlandson KM, Bergin C, Bayoumi AM, et al. Assessing
528 the sensibility and utility of a short-form version of the HIV Disability Questionnaire in clinical
529 practice settings in Canada, Ireland and the USA: a mixed methods study. *BMJ Open*. 2022;12:
530 e062008. doi:10.1136/bmjopen-2022-062008
- 531 28. O'Brien KK, Ibáñez-Carrasco F, Solomon P, Chan Carusone S, Stewart A, Bayoumi AM, et al.
532 Short-form HIV disability questionnaire sensibility, utility, and implementation considerations in
533 community-based settings: a mixed methods study. *J Int Assoc Provid AIDS Care*. 2023;22:
534 23259582231210800. doi:10.1177/23259582231210801
- 535 29. Pearlin LI, Schooler C. The structure of coping. *J Health Soc Behav*. 1978;19: 2–21.
536 doi:10.2307/2136319
- 537 30. Lim ZX, Chua WL, Lim WS, Lim AQ, Chua KC, Chan E-Y. Psychometrics of the Pearlin Mastery
538 Scale among Family Caregivers of Older Adults Who Require Assistance in Activities of Daily
539 Living. *Int J Environ Res Public Health*. 2022;19: 4639. doi:10.3390/ijerph19084639
- 540 31. Turner HA, Pearlin LI, Mullan JT. Sources and determinants of social support for caregivers of
541 persons with AIDS. *J Health Soc Behav*. 1998;39: 137–151. doi:10.2307/2676396
- 542 32. Berger BE, Ferrans CE, Lashley FR. Measuring stigma in people with HIV: psychometric
543 assessment of the HIV stigma scale. *Res Nurs Health*. 2001;24: 518–529. doi:10.1002/nur.10011
- 544 33. Bunn JY, Solomon SE, Miller C, Forehand R. Measurement of stigma in people with HIV: a
545 reexamination of the HIV Stigma Scale. *AIDS Educ Prev*. 2007;19: 198–208.
546 doi:10.1521/aeap.2007.19.3.198
- 547 34. Sherbourne CD, Stewart AL. The MOS social support survey. *Soc Sci Med*. 1991;32: 705–714.
548 doi:10.1016/0277-9536(91)90150-b
- 549 35. Tam C, Wesseling T, Wang L, Salters K, Moore DM, Dawydiuk N, et al. It's all about connection:
550 determinants of social support and the influence on HIV treatment interruptions among people
551 living with HIV in British Columbia, Canada. *BMC Public Health*. 2023;23: 2524.
552 doi:10.1186/s12889-023-17416-7
- 553 36. Yu Y, Yang JP, Shiu C-S, Simoni JM, Xiao S, Chen W, et al. Psychometric testing of the Chinese
554 version of the Medical Outcomes Study Social Support Survey among people living with
555 HIV/AIDS in China. *Appl Nurs Res*. 2015;28: 328–333. doi:10.1016/j.apnr.2015.03.006
- 556 37. Nagin DS. *Group-based modeling of development*. Cambridge, MA: Harvard University Press;
557 2005. Available: <https://www.hup.harvard.edu/catalog.php?isbn=9780674016866>
- 558 38. Jung T, Wickrama K a. S. An introduction to latent class growth analysis and growth mixture
559 modeling. *Soc Personal Psychol Compass*. 2008;2: 302–317. doi:10.1111/j.1751-
560 9004.2007.00054.x

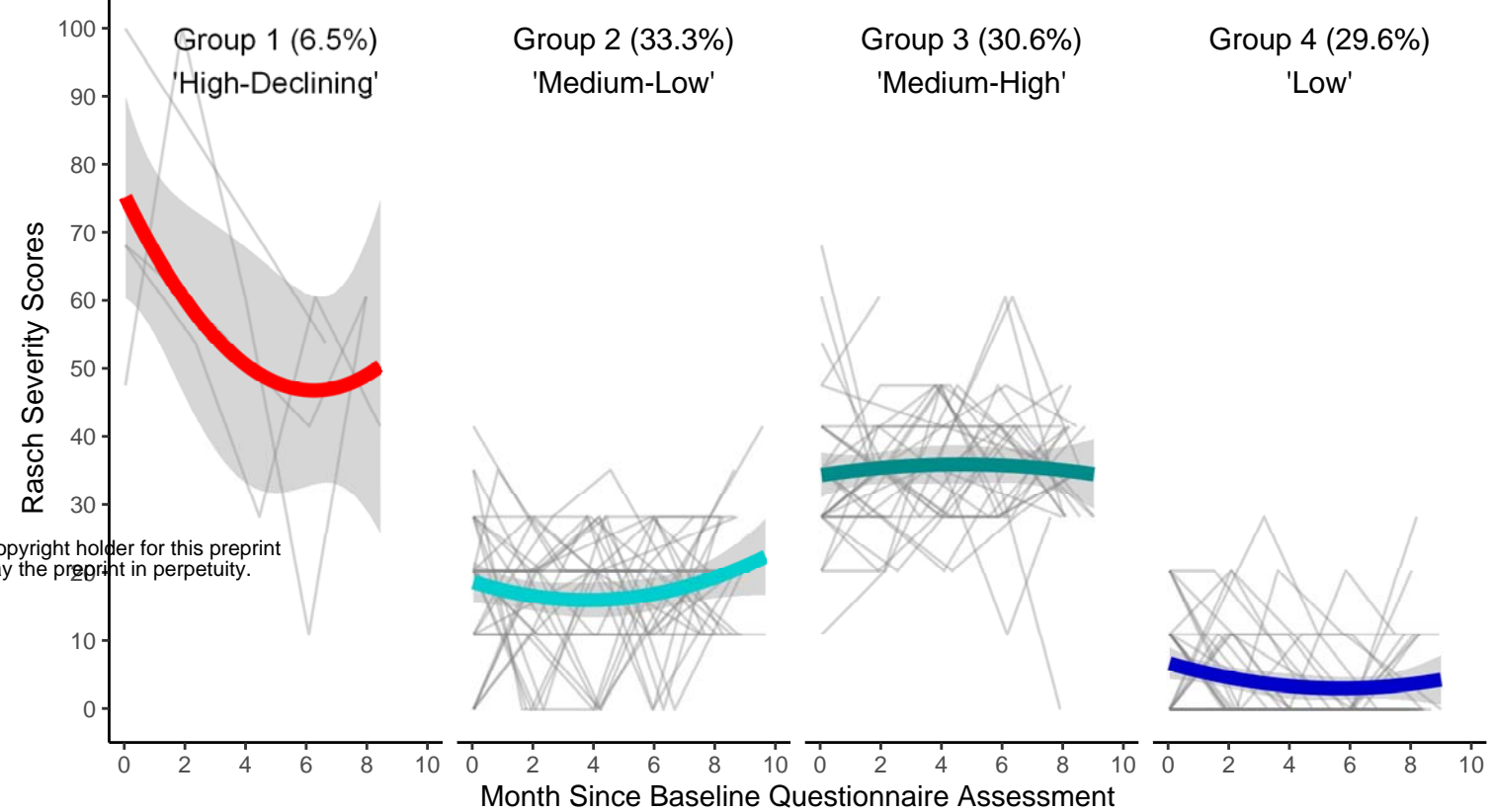
- 561 39. Nguefack HLN, Pagé MG, Katz J, Choinière M, Vanasse A, Dorais M, et al. Trajectory modelling
562 techniques useful to epidemiological research: a comparative narrative review of approaches. *Clin*
563 *Epidemiol.* 2020;12: 1205–1222. doi:10.2147/CLEP.S265287
- 564 40. O’Brien KK, Davis AM, Carusone SC, Avery L, Tang A, Solomon P, et al. Examining the impact
565 of a community-based exercise intervention on cardiorespiratory fitness, cardiovascular health,
566 strength, flexibility and physical activity among adults living with HIV: A three-phased intervention
567 study. *PLoS One.* 2021;16: e0257639. doi:10.1371/journal.pone.0257639
- 568 41. Nagin DS, Odgers CL. Group-based trajectory modeling in clinical research. *Annu Rev Clin*
569 *Psychol.* 2010;6: 109–138. doi:10.1146/annurev.clinpsy.121208.131413
- 570 42. Rajasuriar R, Wong PL. Disproportionate disability in people with HIV. *Lancet HIV.* 2023;10:
571 e145–e146. doi:10.1016/S2352-3018(23)00027-9
- 572 43. Kuper H, Heydt P, Davey C. A focus on disability is necessary to achieve HIV epidemic control.
573 *Lancet HIV.* 2022;9: e293–e298. doi:10.1016/S2352-3018(21)00345-3
- 574 44. Banks LM, Zuurmond M, Ferrand R, Kuper H. The relationship between HIV and prevalence of
575 disabilities in sub-Saharan Africa: systematic review (FA). *Trop Med Int Health.* 2015;20: 411–429.
576 doi:10.1111/tmi.12449
- 577 45. Rusch M, Nixon S, Schilder A, Braitstein P, Chan K, Hogg RS. Impairments, activity limitations
578 and participation restrictions: prevalence and associations among persons living with HIV/AIDS in
579 British Columbia. *Health Qual Life Outcomes.* 2004;2: 46. doi:10.1186/1477-7525-2-46
- 580 46. Solomon P, O’Brien KK, Nixon S, Letts L, Baxter L, Gervais N. Trajectories of episodic disability
581 in people aging with HIV: a longitudinal qualitative study. *J Int Assoc Provid AIDS Care.* 2018;17:
582 2325958218759210. doi:10.1177/2325958218759210
- 583 47. O’Brien KK, Brown DA, McDuff K, Clair-Sullivan NS, Solomon P, Carusone SC, et al.
584 Conceptualising the episodic nature of disability among adults living with Long COVID: a
585 qualitative study. *BMJ Global Health.* 2023;8: e011276. doi:10.1136/bmjgh-2022-011276
- 586 48. Vick A. The embodied experience of episodic disability among women with multiple sclerosis.
587 *Disability & Society.* 2013;28: 176–189. doi:10.1080/09687599.2012.699279
- 588 49. Gignac MAM, Cao X, Tang K, Beaton DE. Examination of arthritis-related work place activity
589 limitations and intermittent disability over four-and-a-half years and its relationship to job
590 modifications and outcomes. *Arthritis Care Res.* 2011;63: 953–962. doi:10.1002/acr.20456
- 591 50. Kietrys D, Myezwa H, Galantino ML, Parrott JS, Davis T, Levin T, et al. Functional limitations and
592 disability in persons living with hiv in South Africa and United States: similarities and differences. *J*
593 *Int Assoc Provid AIDS Care.* 2019;18: 2325958219850558. doi:10.1177/2325958219850558
- 594 51. Hill M, Huff A, Chumbler N. “I’m Gonna Get Busy Living”: examining the trajectories of affect,
595 behavioral health, and psychological resilience among persons living with HIV in a southeastern
596 U.S. health district. *Global Qualitative Nursing Research.* 2019;6: 2333393619834937.
597 doi:10.1177/2333393619834937

- 598 52. Gibson K, Rueda S, Rourke SB, Bekele T, Gardner S, Fenta H, et al. Mastery and coping moderate
599 the negative effect of acute and chronic stressors on mental health-related quality of life in HIV.
600 AIDS Patient Care STDS. 2011;25: 371–381. doi:10.1089/apc.2010.0165
- 601 53. Bekele T, Rourke SB, Tucker R, Greene S, Sobota M, Koornstra J, et al. Direct and indirect effects
602 of perceived social support on health-related quality of life in persons living with HIV/AIDS. AIDS
603 Care. 2013;25: 337–346. doi:10.1080/09540121.2012.701716
- 604 54. Turan B, Budhwani H, Fazeli PL, Browning WR, Raper JL, Mugavero MJ, et al. How does stigma
605 affect people living with HIV? The mediating roles of internalized and anticipated HIV stigma in
606 the effects of perceived community stigma on health and psychosocial outcomes. AIDS Behav.
607 2017;21: 283–291. doi:10.1007/s10461-016-1451-5
- 608 55. Rueda S, Gibson K, Rourke SB, Bekele T, Gardner S, Cairney J, et al. Mastery moderates the
609 negative effect of stigma on depressive symptoms in people living with HIV. AIDS Behav.
610 2012;16: 690–699. doi:10.1007/s10461-010-9878-6
- 611 56. Emlert CA, Shiu C, Kim H-J, Fredriksen-Goldsen K. Bouncing back: resilience and mastery among
612 HIV-positive older gay and bisexual men. Gerontologist. 2017;57: S40–S49.
613 doi:10.1093/geront/gnw171
- 614 57. Rubtsova AA, Kempf M-C, Taylor TN, Konkle-Parker D, Wingood GM, Holstad MM. Healthy
615 aging in older women living with HIV infection: a systematic review of psychosocial factors. Curr
616 HIV/AIDS Rep. 2017;14: 17–30. doi:10.1007/s11904-017-0347-y
- 617 58. Andersson GZ, Reinius M, Eriksson LE, Svedhem V, Esfahani FM, Deuba K, et al. Stigma
618 reduction interventions in people living with HIV to improve health-related quality of life. Lancet
619 HIV. 2020;7: e129–e140. doi:10.1016/S2352-3018(19)30343-1
- 620 59. Yu H-W, Chen D-R, Chiang T-L, Tu Y-K, Chen Y-M. Disability trajectories and associated
621 disablement process factors among older adults in Taiwan. Archives of Gerontology and Geriatrics.
622 2015;60: 272–280. doi:10.1016/j.archger.2014.12.005
- 623 60. Chiu C-J, Wray LA. Physical disability trajectories in older Americans with and without diabetes:
624 the role of age, gender, race or ethnicity, and education. Gerontologist. 2011;51: 51–63.
625 doi:10.1093/geront/gnq069
- 626 61. Keeney T, Fox AB, Jette DU, Jette A. Functional trajectories of persons with cardiovascular disease
627 in late life. J Am Geriatr Soc. 2019;67: 37–42. doi:10.1111/jgs.15584
- 628 62. O’Brien KK, Hanna S, Solomon P, Worthington C, Ibáñez-Carrasco F, Chan Carusone S, et al.
629 Characterizing the disability experience among adults living with HIV: a structural equation model
630 using the HIV disability questionnaire (HDQ) within the HIV, health and rehabilitation survey.
631 BMC Infect Dis. 2019;19: 594. doi:10.1186/s12879-019-4203-0
- 632 63. Koffer RE, Ram N, Almeida DM. More than counting: an intraindividual variability approach to
633 categorical repeated measures. J Gerontol B Psychol Sci Soc Sci. 2018;73: 87–99.
634 doi:10.1093/geronb/gbx086

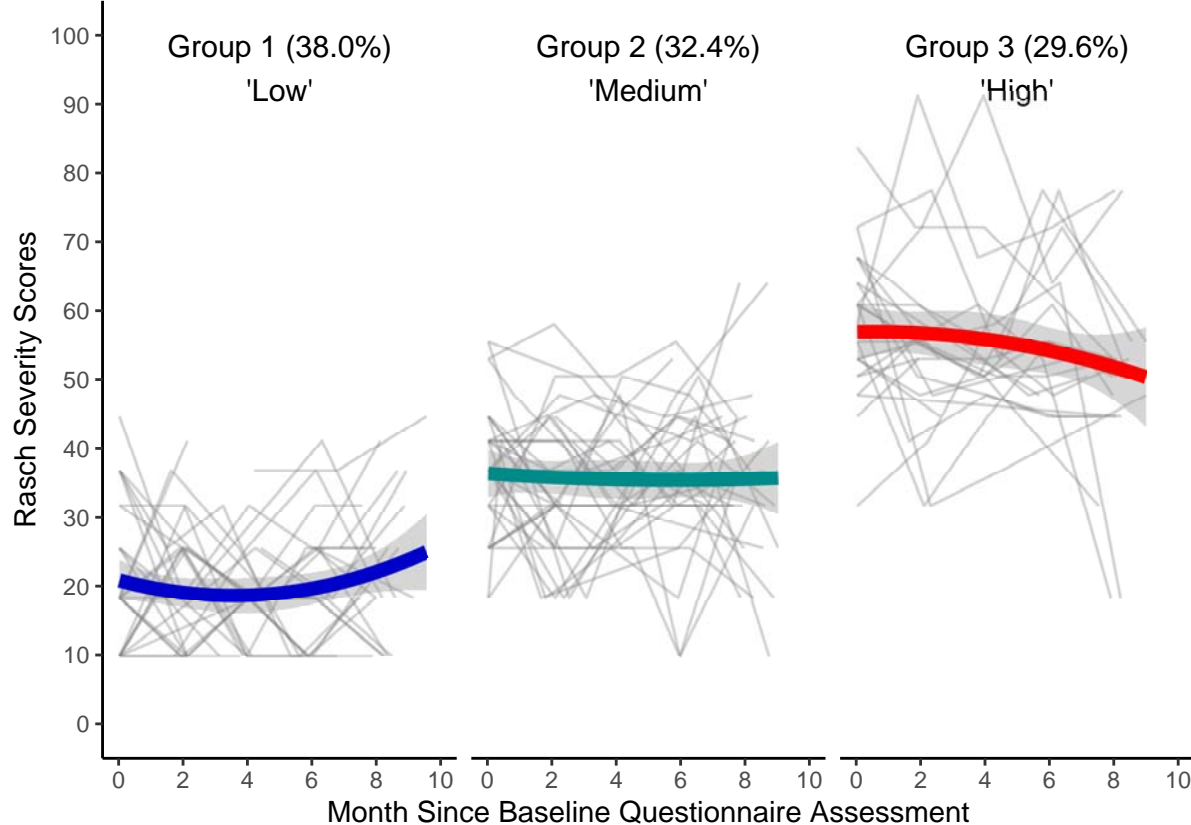
(A) Physical Symptoms Trajectories



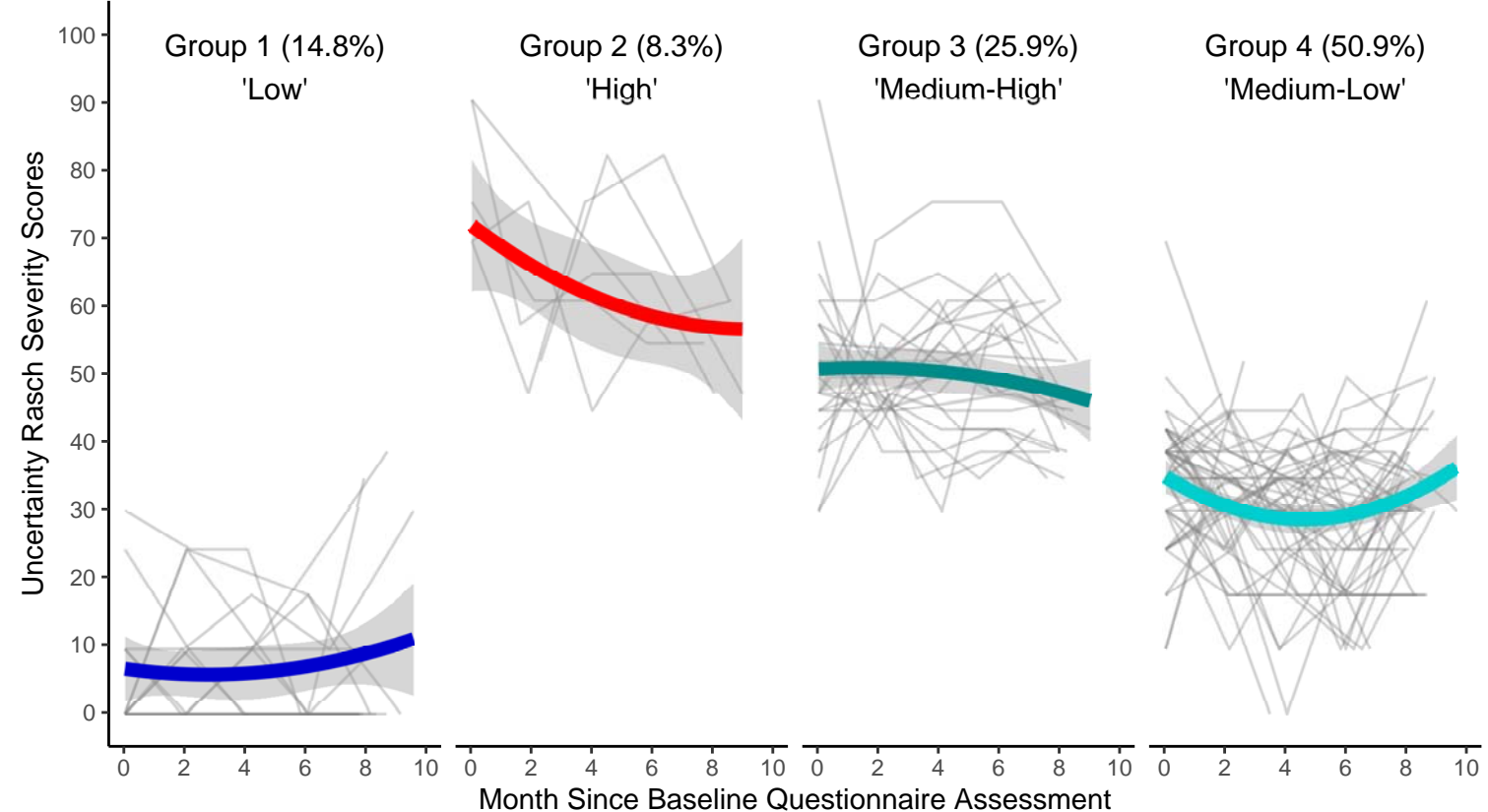
(B) Cognitive Symptoms Trajectories



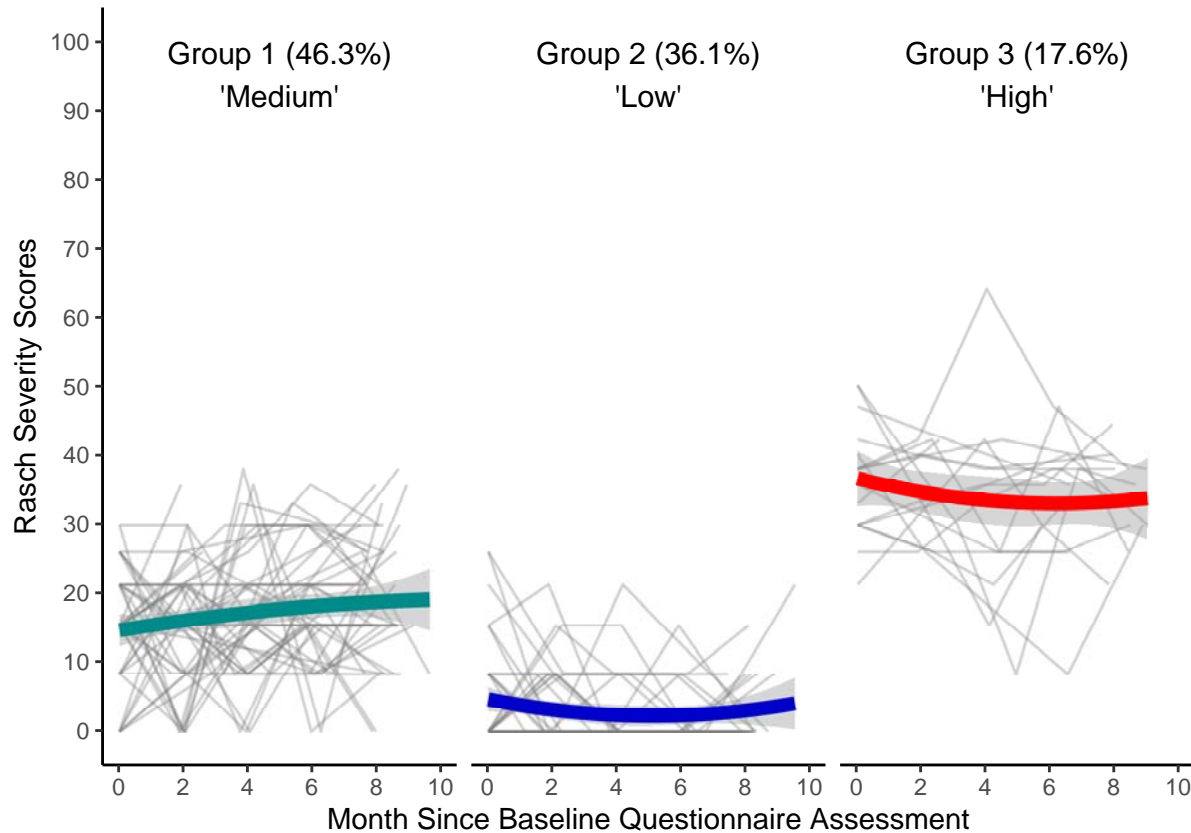
(C) Mental-Emotional Symptoms Trajectories



(D) Uncertainty Trajectories



(E) Difficulties with Day-to-Day Activities Trajectories



(F) Challenges to Social Inclusion Trajectories

