

# Availability, Price and Nutritional Assessment of Plant-Based Meat Alternatives in Hypermarkets and Supermarkets in Petaling, the Most Populated District in Malaysia

Short title: PBMA's in Petaling, Malaysia

Katty Jia Qi Lou<sup>1</sup>, Nadia Nantheni Rajaram<sup>2</sup>, Yee-How Say<sup>1\*</sup>

<sup>1</sup>Department of Biological Sciences, School of Medical and Life Sciences, Sunway University, 5, Jalan Universiti, Bandar Sunway, 47500 Selangor, Malaysia.

<sup>2</sup>Sunway Centre for Planetary Health, Sunway University, 5, Jalan Universiti, Bandar Sunway, 47500 Selangor, Malaysia.

\*Corresponding author: [yeehows@sunway.edu.my](mailto:yeehows@sunway.edu.my)

**Funding:** This research did not receive any specific grant from funding agencies in the public, commercial, or not-for-profit sectors.

## Declaration of competing interest

The authors declare that they have no known competing financial interests or personal relationships that could have appeared to influence the work reported in this paper.

## Data availability

Data will be made available on request.

NOTE: This preprint reports new research that has not been certified by peer review and should not be used to guide clinical practice.

## Abstract

This study investigated the availability, price, nutritional composition, and quality of PBMA in supermarkets and hypermarkets in Petaling, the most populated district in Malaysia. The survey covered 85 stores through on-site visits, identifying 251 unique PBMA products from 42 brands. The PBMA were categorized into nine groups: Burgers/Patties, Coated Meat, Luncheon Meat, Minced Meat, Pastries, Pieces/Chunks/Fillets/Strips, Prepacked Cooked Meals, Sausages, and Seafood Balls/Cakes/Meatballs. The survey indicated widespread availability of PBMA in Petaling, with premium supermarkets offering the most extensive selection. The median prices of PBMA across categories were below MYR 7 (~USD 1.6) per 100 grams, with Pieces/Chunks/Fillets/Strips being the most affordable. Nutritionally, PBMA exhibited lower energy, total fat, saturated fat, sodium, and protein levels than meat equivalents, while showing higher carbohydrate content. Nutri-Score profiling revealed generally favourable scores (Grade A to C), indicating moderate to good nutritional quality. These findings suggest that PBMA offer a viable alternative for consumers in Malaysia seeking healthier and more sustainable food options, particularly for those aiming to reduce their intake of fat and sodium. However, PBMA may not be recommended for individuals seeking a higher protein and lower carbohydrate diet. Further research is recommended to explore micronutrient profiles to enhance dietary decision-making.

*Keywords:* Plant-based meat alternatives; Malaysia; product availability; nutritional composition; nutritional quality; Nutri-Score; price analysis

## Introduction

PBMA are designed to mimic the taste, texture, and nutritional profile of conventional meat products while being derived entirely from plant sources [1,2]. These products, including burgers, sausages, and minced meat, have become popular among vegetarians and vegans and

flexitarians - individuals who seek to reduce their meat consumption for various reasons [3]. PBMA s are often formulated with specific ingredients aimed at replicating the texture and taste of meats. These ingredients typically include a blend of plant-based proteins such as legumes (e.g., soy, beans, peas) and cereals like wheat and quinoa [4]. Fats, commonly sourced from coconut oil, sunflower oil, or predominantly soy oil, are added to mimic the mouthfeel and juiciness associated with meat [4,5]. Additionally, ingredients such as mushrooms are used for their umami flavours, enhancing taste and aroma in PBMA s [6]. To ensure product cohesion during cooking, hydrocolloids like methylcellulose and gums are also used, aiding in replicating the texture of traditional meat products [5].

The global market for PBMA s has rapidly expanded, generating USD 11.38 billion in 2024, with an expected compound annual growth rate of 10.2% from 2024 to 2028 [7]. In Malaysia, demand is also rising, with projections of 1.5 million kg in volume and USD 23.22 million in revenue by 2028 [8]. This surge is mainly driven by the increasing awareness of the health benefits associated with plant-based diets, which are linked to lower risks of diabetes, cancer, cardiovascular diseases, and overall mortality, compared to omnivorous diets often featuring red and processed meats [9,10]. This is because plant-based foods are typically lower in saturated fats and cholesterol but higher in fibre, though they may lack certain nutrients like vitamin B12, protein, and calcium compared to meats and dairy products [9]. Beyond health concerns, environmental concerns, animal welfare, and consumer curiosity about new tastes and sensory experiences, along with the longer shelf life of PBMA s, also drive their popularity [11–13].

The growing popularity of PBMA s has sparked debates about their healthiness compared to traditional meat-based products. Most PBMA categories, including mince, meatballs, and

burgers, generally have better nutritional profiles than their meat equivalents [11]. PBMA often provide more dietary fibre and contain lower levels of calories, total fat, saturated fat, cholesterol, sodium, and salt compared to meat products [3,9,11]. Certain PBMA are also fortified with vitamins and minerals commonly found in red meat, like iron and zinc, enhancing their nutritional value [10]. However, concerns exist regarding the bioavailability of nutrients in PBMA, as the iron in meat is heme iron, which is more easily absorbed than the non-heme iron found in PBMA [10]. Furthermore, because anti-nutrients such as phytates, lectins, and tannins may limit the absorption of vitamins and minerals, their presence in PBMA must also be considered [3]. Critics argue that PBMA, despite being plant-based, are classified as ultra-processed foods, containing ingredients with little to no whole food content and frequently enhanced with additional tastes, colours, emulsifiers, and other additives [1–3,10,11]. Consumption of ultra-processed foods is strongly linked to an increased risk of obesity and noncommunicable diseases [14,15]. While there are clear benefits and drawbacks to consuming PBMA, their health implications vary based on the specific product, consumption frequency, and overall dietary quality [3].

In many markets, PBMA tend to be more expensive than conventional meat products, which often hinders consumer adoption [3,9,16,17]. This is because the cost of processing PBMA can drive up their final price for consumers [9]. Research indicates that if PBMA are less expensive, people are more likely to buy them [12]. However, another study contradicted these findings by reporting no significant price difference between PBMA and their meat equivalents [9]. Despite variable prices, the availability of PBMA is steadily increasing in supermarkets globally [1,18]. In Malaysia, the plant-based food market is also expanding, offering a wide variety of products [19]. The growing availability of PBMA in various retail

environments, from upscale grocery stores to more accessible supermarkets, reflects a broader trend toward integrating plant-based options into mainstream food choices.

Despite numerous studies assessing the nutritional profile and healthiness of PBMA, a quantitative analysis is currently unavailable in Malaysia. Therefore, the objectives of the study were: 1. To assess the availability and price of PBMA available in hypermarkets and supermarkets in Petaling District; 2. To compare the key nutrient contents (energy, protein, total fat, saturated fat, carbohydrates, and sodium) of these PBMA with their meat equivalents by their product categories; 3. To evaluate the nutritional profiles of these PBMA by their product categories using the Nutri-Score Nutritional Rating System to determine their relative healthiness.

## **Methods**

### **Sample Selection and Collection**

Petaling District is the most populated district in the country, registering the highest population in 2023 at 2.3 million [20]. This district is situated in the middle of the Klang Valley, adjacent to the capital of Malaysia – Kuala Lumpur, and has experienced tremendous urbanization. Supermarkets and hypermarkets in the Petaling District (covering Subang, Damansara, Shah Alam, Puchong, Kelana Jaya, and Petaling Jaya) were identified through Google Search. Searches such as "Supermarkets and Hypermarkets in Subang" were performed, followed by on-site visits to all identified locations from April to June 2024. The study focused exclusively on hypermarkets, supermarkets, and their chains, excluding small and medium-sized grocery stores. Out of 85 visited locations, 81 offered PBMA. PBMA selected for this study were defined as: products made from plant-based ingredients that are designed to replicate meat in taste, texture, and overall experience; available in chilled, frozen, or canned forms; labelled as

"vegan" or "vegetarian." Products like tofu and tempeh, which do not mimic meat, were excluded. During visits, photographs of the front packaging and nutrition labels (per 100g) of each PBMA were taken, and data on prices, packaging sizes, countries of origin, and availability were recorded.

### ***Product Categorization***

The PBMA identified were categorized into nine groups: Burger/Patties, Coated Meat, Luncheon Meat, Minced Meat, Pastries, Pieces/Chunks/Fillets/Strips, Prepacked Cooked Meals, Sausages, and Seafood Balls/Cakes/Meatballs (Table S1). These categories were chosen based on previous studies that have established these groups as representative of the variety and forms in which PBMA are typically available in the market [11,21–24]. In this study, two additional categories, Pastries and Prepacked Cooked Meals, have been included. The inclusion of these categories was because PBMA products are increasingly diverse due to growing consumer demand for more varied and convenient options. As these items are now available in Malaysia, adding these categories ensures a comprehensive analysis of all available PBMA options in the market.

### ***Statistical Analysis***

Data extracted from the images were compiled into a Google Sheet, including product name, brand, price (MYR), packing size (g), product origin, energy (kcal/100g), and nutritional content per 100g (protein, total fat, saturated fat, cholesterol, carbohydrates, total sugars, dietary fibre, and sodium). All statistical tests were conducted in the R statistical environment, v4.0.3. Normality was assessed using the Shapiro-Wilk test. All hypothesis testing was two-sided, and a  $p$ -value  $< 0.05$  was considered statistically significant.

## *Availability Assessment*

The supermarkets and hypermarkets ( $n = 81$ ) offering PBMA options were categorized as hypermarkets, supermarkets, and premium supermarkets (Table S2). Based on definitions provided by the Malaysian-German Chamber of Commerce and Industry (MGCC)[25], these categories are described as follows: Hypermarket: Large self-service stores with a sales floor area of at least 5,000 square meters, offering an extensive range of consumer goods, including both food and non-food items; Supermarket: Smaller self-service retail markets compared to hypermarkets but larger than traditional grocery stores, primarily selling food and household goods; Premium Supermarket: Upscale versions of typical supermarkets, providing high-quality and specialty products such as organic, gourmet, and imported foods.

A total of 2736 PBMA products were surveyed. We determined both the total number and variability of PBMA products available in each store category. The countries of origin of the PBMA product categories were analysed. The average number of PBMA products per store category was calculated. Differences in PBMA numbers across store categories were evaluated with Analysis of Variance (ANOVA) and Tukey's Honestly Significant Difference (HSD) tests.

## *Price Analysis*

Prices per 100g of packing size were calculated to standardize product prices. Six items lacking price or packaging size data were excluded, resulting in a final sample size of  $n = 2730$ . Price data were reported in MYR by product category, and price variations across store types were analysed.

## *Energy and Nutrient Content Comparison*

Due to the unavailability of saturated fat information in the Malaysian Food Composition Database (MyFCD) required for nutrient profiling, data for meat equivalents were sourced from Singapore's Energy & Nutrient Composition Database (<https://focos.hpb.gov.sg/eservices/ENCF/>). The meat equivalent products ( $n = 109$ ) were selected to correspond with the PBMA product categories. Each variable (energy, protein, total fat, saturated fat, carbohydrates, and sodium) was analysed across all product categories. To evaluate the differences in the energy and nutrient contents between PBMA and their meat equivalents, two-sample  $t$  tests were conducted.

### *Nutrient Profiling*

PBMAs were assessed using the Nutri-Score Nutritional Rating System, developed by the French Public Health Agency (Santé Publique France) [26]. The Nutri-Score grading and colour scheme for solid foods are as follows: A (Dark Green): -15 to -1 points; B (Light Green): 0 to 2 points; C (Yellow): 3 to 10 points; D (Orange): 11 to 18 points; E (Red): 19 to 40 points [27]. The Nutri-Score calculation is based on an algorithm considering positive nutritional factors (fruits, vegetables, legumes, fibre, protein) and negative factors (energy, sugars, saturates, salt). Based on the definition of PBMA as stated in section 2.1, the fruits, vegetables, and legumes content for all PBMA were set at 100%. The Nutri-Score was reported as mean  $\pm$  standard deviation (SD) by product category, and the frequencies of each Nutri-Score colour were reported for each product category (Table S4).

## **Results**

### **Availability of PBMA**

Across 81 surveyed supermarkets and hypermarkets in Petaling District, 34 were hypermarkets, 10 supermarkets, and 37 premium supermarkets. A total of 251 unique PBMA from 42 brands



were identified. The most prevalent PBMA product category was Coated Meats, followed by Pieces/Chunks/Fillets/Strips, and Pastries (Figure 1A). Luncheon Meat, Minced Meat, and Sausages were the least available PBMA product categories (Figure 1A). Premium supermarkets offered the highest variety of PBMA across all product categories, averaging about 40 PBMA per store (Figure 1B), significantly higher than hypermarkets ( $p < 0.001$ ), but not supermarkets ( $p = 0.47$ ). Of the identified PBMA, 73.71% were locally produced, while 26.29% were imported from eight countries: Thailand, Hong Kong, Singapore, Australia, the United Kingdom, Korea, China, and the United States (Figure 1C). Malaysia dominated the origins of PBMA across all categories, especially in Pieces/Chunks/Fillets/Strips. Most product categories feature PBMA items originating from three or more countries, except for Luncheon Meat (Malaysia and Hong Kong), and Sausages (Malaysia and UK) (Figure 1C).

### **Price Analysis of PBMA**

Figure 2A presents the prices of PBMA product categories in terms of prices per 100g in MYR. The median prices per 100g for all categories were below MYR 7 (~USD 1.6), with Pieces/Chunks/Fillets/Strips being the most affordable category with a median price of approximately MYR 3 (~USD 0.7) per 100g. Burger/Patties and Minced Meat were the least affordable, slightly above MYR 6 (~USD 1.3) per 100g. The category with the highest price variability was Seafood Balls/Cakes/Meatballs, indicated by the widest IQR. Price comparison between store types (Figures 2B-J) showed that supermarkets and hypermarkets generally had lower and more consistent prices, while premium supermarkets had significantly higher mean prices than supermarkets and hypermarkets for Burger/Patties, Coated Meat, Minced Meat, Pieces/Chunks/Fillets/Strips, and Seafood Balls/Cakes/Meatballs (Figures 2B, 2C, 2E, 2G, and 2J, respectively).

## Energy and Nutrient Content Comparison of PBMA

Out of 251 unique PBMA, 35 (14%) lacked nutritional labels and were therefore excluded from analysis (final  $n = 216$ ). Figure 3 and Table S3 compare the energy density and composition of key nutrients (protein, total fat, saturated fat, carbohydrates, and sodium) of PBMA and their meat equivalents across product categories. Five out of nine PBMA categories had lower mean energy density than their meat equivalents, with two significantly lower (Pastries, Sausages; Figure 3A). On the other hand, Pieces/Chunks/Fillets/Strips had significantly higher energy density than their meat equivalents (Figure 3A). Seven out of nine PBMA categories had lower protein content than their meat counterparts, with four significantly lower (Luncheon Meat, Minced Meat, Pieces/Chunks/Strips, Prepacked Meals; Figure 3B). Fat content-wise, seven out of nine PBMA categories had lower contents, with two significantly lower (Pastries, Sausages; Figure 3C). Six out of nine had lower saturated fat content compared to their meat equivalents, with two significantly lower (Pastries, Sausages; Figure 3D). Pieces/Chunks/Fillets/Strips had significantly higher saturated fat than its meat equivalents (Figure 3D). Notably, Coated Meat, Luncheon Meat, and Prepacked Cooked Meals had similar saturated fat levels with their meat equivalents. Conversely, eight out of nine PBMA categories had higher carbohydrate content, with four significantly higher (Burger/Patties, Pieces/Chunks/Fillets/Strips, Prepacked Meals, Seafood Balls/Cakes/Meatballs; Figure 3E). Five out of nine had lower sodium content compared to their meat equivalents, with three significantly lower (Luncheon Meat, Sausages, Seafood Balls/Cakes/Meatballs; Figure 3F). In contrast, PB Pieces/Chunks/Fillets/Strips had significantly higher sodium content than their meat equivalents (Figure 3F). Overall, there was a wide variation in the energy density and nutrient content per 100g among all PBMA and meat categories.

## Nutri-Score Evaluation of Nutritional Quality of PBMA

A total of 46 PBMA (21.3% of 216 products having nutritional labels) that were missing all the required nutritional factors were excluded from the analysis (final  $n = 170$ ). The mean Nutri-Score across all PBMA categories averaged 2.96, placing them in Grade C (Yellow), indicating moderate nutritional quality. Minced Meat had the lowest mean NutriScore at -9.25, placing it in the "healthiest" category (Grade A). Sausages and Pastries fell into Grade B. The remaining categories ranged from Nutri-Scores of 3 to 10, predominantly falling under Grade C, which denotes moderate nutritional quality. Among the categories, Prepacked Cooked Meals had the highest mean Nutri-Score at 7.88, indicating the least healthy among PBMA. Upon closer examination of individual products within each category (Figure 4; Table S4), Coated Meat, Pieces/Chunks/Fillets/Strips, and Prepacked Cooked Meals contained products classified under Grade E, although these represent less than 10% of the total products in each category. Most categories included products classified under Grade A, except for Luncheon Meat, where 70% of its products were Grade C and 30% Grade D.

## Discussion

Despite numerous studies assessing the nutritional profile and healthiness of PBMA, this study is the first to offer a quantitative analysis of the availability, price, nutritional composition, and nutritional quality of PBMA in Malaysian supermarkets and hypermarkets. Our survey indicates a significant presence of PBMA in Petaling District, with over 95% of visited supermarkets carrying these products. This aligns with global trends of increasing PBMA consumption, reflecting their acceptance and integration into both vegetarian/vegan and omnivorous diets [13]. Notably, premium supermarkets had greater PBMA variety compared to hypermarkets and regular supermarkets, primarily because they cater to a more affluent and health-conscious customer base, driving demand for a broader selection of PBMA. However,

all PBMA categories were still available in hypermarkets and supermarkets, indicating decent accessibility across store types. Although PBMA categories from nine countries were available, most products were produced locally in Malaysia. This is likely due to the advantages of local production, such as reduced transportation costs and import duties, leading to more competitive pricing and better alignment with local taste preferences and dietary habits [28].

The median prices per 100g for all PBMA categories were below MYR 7 (~USD 1.6). In 2023, Malaysians consumed approximately 50 kilograms of poultry meat per person [29]. Poultry, especially chicken, is the most popular meat in the country due to its affordability and versatility [30]. Compared to the median price per 100g of the least expensive PBMA category (Pieces/Chunks/Fillets/Strips at MYR 2.98 or ~USD 0.7), PBMA categories are at least twice as expensive as chicken, which has a ceiling price of MYR 1.14 (~USD 0.3) per 100g [31]. A study in Canada reported similar PBMA prices at USD 1.95 (~MYR 9.00) per 100g, with no significant price difference with their meat equivalents [9]. Categories such as Burger/Patties and Minced Meat were the most expensive, possibly due to a high percentage of imported products. Despite the higher cost of plant-based burgers, consumer surveys indicate a willingness to pay more for these items compared to other PBMA categories like sausages, chicken, and fish [32]. As expected, premium supermarkets which cater for a higher-income demographic, exhibited higher median prices and greater price variability.

When comparing PBMA categories in Malaysia with those in Europe (Table S5), both have similar energy densities, indicating similar caloric content, with slight variations depending on the product category. Malaysian PBMA categories generally have lower energy densities than European meat-based products, which can benefit consumers seeking to reduce caloric intake. Malaysian PBMA categories also consistently show lower protein content compared to European PBMA categories and meat-

based products. This indicates a potential area for improvement in the protein content of Malaysian PBMA. Malaysian PBMA also generally have comparable or lower total fat content than European PBMA. However, Malaysian PBMA often have higher saturated fat content. Compared to meat-based products, Malaysian PBMA tend to have lower total and saturated fat content, though some categories still need optimization. Malaysian PBMA generally have higher carbohydrate content compared to European PBMA and meat-based products. This higher carbohydrate content may result from more fillers and binding agents in Malaysian PBMA and could affect nutritional balance and glycaemic load. Finally, Malaysian PBMA typically have higher sodium content than European PBMA. Compared to meat-based products, Malaysian PBMA often have lower sodium content, although still high.

Over half of the PBMA categories in this study exhibited lower energy density compared to their meat equivalents, consistent with findings from other countries [5,9,11,22]. This is likely due to PBMA's lower fat and higher dietary fibre content, as they are often made from legumes and cereals [4]. Given the global obesity epidemic is linked to excessive caloric intake, PBMA could potentially aid in weight management and reduce obesity rates [23]. Supporting this, a randomized crossover trial showed significant weight loss when participants consumed PBMA instead of meat [33]. Additionally, consuming low energy density foods can help prevent secondary diseases such as cardiovascular diseases (CVDs) and cancer [23].

Our data also showed that most PBMA categories had lower total fat and saturated fat content compared to their meat equivalents. The fats in PBMA primarily come from vegetable oils, such as soybean, sunflower, and olive oils, which contain polyunsaturated and monounsaturated fats, unlike the saturated fats found in greater amounts in meat [5]. Although lower, excessive PBMA consumption could still lead to high fat diets, potentially affecting gut

microbiota and faecal metabolic profiles [13]. In Malaysia, the average daily intake of saturated fat exceeds the recommended 10% of total daily energy intake [34]. The World Health Organization recommends reducing saturated fat intake due to its effects on low-density lipoprotein cholesterol [11]. Therefore, substituting PBMA for meat could be a strategy to lower saturated fat intake and reduce CVD risks.

Most PBMA categories in this study had lower sodium content than their meat equivalents, except for Pieces/Chunks/Fillets/Strips, which had significantly higher sodium levels. This contradicts other studies that consistently found higher sodium content in PBMA [5,11,23,35]. Following the UK's traffic light labelling scheme for sodium content [36], many PBMA products analysed here would fall under the medium sodium category, with levels typically ranging from 120 mg to 600 mg per 100g. While some product categories, like Luncheon Meat and Prepacked Cooked Meals may exceed this range, the majority exhibit moderate sodium content. Despite variations, it is essential to note that processed foods, both plant-based and meat-based, often contain elevated sodium levels to enhance taste and preserve shelf life [5]. Given the World Health Organization's recommendation of limiting sodium intake to 2300 mg per day, a single 100g serving of certain PBMA categories could contribute up to 22% of this recommended daily limit. As the popularity of PBMA grows, there is a need for manufacturers to prioritize sodium reduction initiatives and refine product formulations, potentially targeting levels that qualify for the low sodium category (<120 mg per 100g) to align with health guidelines and consumer expectations.

While PBMA were generally favourable in terms of energy, total fat, saturated fat, and sodium contents, more than half of the categories had lower protein levels compared to their meat equivalents. Meat is a primary source of protein, comprising nearly 22% of its composition,

whereas plant-based products often have lower protein levels and may lack certain essential amino acids [5,23]. This poses a challenge for those on meatless diets, highlighting the need for health professionals to address protein intake concerns and develop public health policies accordingly. Nonetheless, plant protein intake has been associated with a reduced risk of type 2 diabetes, cardiovascular diseases, and overall mortality [23].

All PBMA categories, except Pastries, had higher carbohydrate content than their meat equivalents. This aligns with other studies reporting higher carbohydrates in PBMA [5,22–24,35]. However, the higher carbohydrate content may not negatively impact diet quality. A study on a plant-based diet rich in carbohydrates from whole grains and legumes and low in fat found it effective for weight loss and improving quality of life [37]. Therefore, the carbohydrate content in PBMA, derived from legumes and cereals, may not be excessive in a balanced diet.

Malaysian PBMA may be suited for individuals, especially those with high cholesterol and hypertension, who seek to lower their fat and sodium intake. These products typically have lower levels of total fat, saturated fat, and sodium compared to meat-based alternatives, which can aid in managing cholesterol and blood pressure, thereby supporting cardiovascular health. Research indicates that vegetarian diets are linked to a lower risk of all-cause mortality, and specifically reduce the risk of cardiovascular and coronary artery diseases [38]. However, Malaysian PBMA may not be ideal for those following high-protein, low-carbohydrate diets such as the Atkins or Keto diets [39]. Due to their lower protein content and higher carbohydrate levels, these products may not align with the needs of those on low-carbohydrate diets, which are often used therapeutically for conditions like severe obesity and type 2 diabetes, with proven benefits for weight loss and metabolic control in the short to medium term [39].

The Nutri-Score was used to assess the healthiness of PBMA categories, similar to other studies [18,21–23]. The Nutri-Score, a common front-of-package label, has sparked debate over its effectiveness in evaluating nutritional quality [40]. Our results showed PBMA categories ranged from Grade A to Grade C, with more than half falling under Grade C and Nutri-Scores ranging from 3 to 10. Prepacked Cooked Meals had the highest mean Nutri-Score of 7.88, likely due to their higher energy density and sodium content from added oils and sauces. The Nutri-Score, while useful, does not account for the degree of food processing. Highly processed foods, often included in the Nutri-Score categories, have been linked to various health issues, including CVD, depressive symptoms, gastrointestinal disease, and higher mortality risk [23,41]. Therefore, Nutri-Score should be supplemented with labels indicating processing levels, such as the NOVA classification.

Nevertheless, this study had some limitations and uncertainties. First, we used data from the Singapore’s Energy & Nutrient Composition Database, which may not be ideal as most meat equivalents were raw/uncooked while PBMA were processed. This difference in preparation methods may have influenced the comparative nutritional analysis. Secondly, the Nutri-Score calculation assumed a uniform 100% content of fruits, vegetables, legumes, nuts, and oils across all PBMA, potentially leading to an overestimation of their nutritional quality. Lastly, the study did not include an evaluation of micronutrient content. Micronutrients, including vitamins and minerals such as zinc and iron, are crucial for overall health, and omitting their assessment limits a comprehensive understanding of the nutritional profile of PBMA products.

## Conclusions



In summary, our results demonstrated that PBMAAs were widely available across most supermarkets and hypermarkets in the Petaling District, though the variety and number of products vary by store. The price analysis indicated that median prices for PBMA categories were generally below MYR 7 (~USD 1.6) per 100g, with Burger/Patties and Minced Meat identified as relatively less affordable options. Nutritionally, PBMAAs showed lower levels of energy, total fat, saturated fat, sodium, and protein compared to their meat equivalents, while exhibiting higher carbohydrate content. The Nutri-Scores assigned to these categories ranged from -15 to 10 (Grade A to C), indicating generally moderate nutritional profiles without falling into the "less healthy" orange or red zones. Considering these findings, PBMAAs present themselves as a viable choice for consumers in Malaysia in terms of availability, price, and nutritional composition (except carbohydrate). However, further research should include direct comparisons with local meat equivalents, encompassing both processed and unprocessed varieties, to better understand the complete nutritional benefits and limitations of PBMAAs. Additionally, a thorough assessment of micronutrient content is essential to fully assess the health implications of these products, ensuring that consumers are well-informed about their dietary choices.

#### **Authors' contributions**

Katty Jia Qi Lou: Data curation, Formal analysis, Investigation, Validation, Visualization, Writing – original draft. Nadia Nantheni Rajaram: Formal analysis, Validation, Writing – original draft, Writing – review & editing. Yee-How Say: Conceptualization, Formal analysis, Methodology, Supervision, Validation, Visualisation, Writing – original draft, Writing – review & editing.

#### **Declaration of competing interest**

The authors declare that they have no known competing financial interests or personal relationships that could have appeared to influence the work reported in this paper.

#### **Data availability**

Data will be made available on request.

#### **Acknowledgments**

This research did not receive any specific grant from funding agencies in the public, commercial, or not-for-profit sectors.

#### **Ethical Statement**

This paper does not involve any ethical issues, as we did not study any human or animal subjects, nor did we collect any personal information or sensitive data.

#### **References**

1. Marchese LE, Hendrie GA, McNaughton SA, Brooker PG, Dickinson KM, Livingstone KM. Comparison of the nutritional composition of supermarket plant-based meat and dairy alternatives with the Australian Food Composition Database. *Journal of Food Composition and Analysis*. 2024;129: 106017. doi:10.1016/j.jfca.2024.106017
2. Petersen T, Hirsch S. Comparing meat and meat alternatives: an analysis of nutrient quality in five European countries. *Public Health Nutr*. 2023;26: 3349–3358. doi:10.1017/S1368980023001945
3. El Sadig R, Wu J. Are novel plant-based meat alternatives the healthier choice? *Food Research International*. 2024;183: 114184. doi:10.1016/j.foodres.2024.114184

4. Locatelli NT, Chen GFN, Batista MF, Furlan JM, Wagner R, Bandoni DH, et al. Nutrition classification schemes for plant-based meat analogues: Drivers to assess nutritional quality and identity profile. *Current Research in Food Science*. 2024;9: 100796. doi:10.1016/j.crfs.2024.100796
5. Romão B, Botelho RBA, Torres ML, Maynard DDC, De Holanda MEM, Borges VRP, et al. Nutritional Profile of Commercialized Plant-Based Meat: An Integrative Review with a Systematic Approach. *Foods*. 2023;12: 448. doi:10.3390/foods12030448
6. Ayimbila F, Keawsompong S. Nutritional Quality and Biological Application of Mushroom Protein as a Novel Protein Alternative. *Curr Nutr Rep*. 2023;12: 290–307. doi:10.1007/s13668-023-00468-x
7. Statista. Meat Substitutes – Worldwide. 2024. Available: <https://www.statista.com/outlook/cmo/food/meat/meat-substitutes/worldwide>
8. Statista. Meat Substitutes – Malaysia. 2024. Available: <https://www.statista.com/outlook/cmo/food/meat/meat-substitutes/malaysia>
9. Lee JJ, Srebot S, Ahmed M, Mulligan C, Hu G, L'Abbé MR. Nutritional quality and price of plant-based dairy and meat analogs in the Canadian food supply system. *Journal of Food Science*. 2023;88: 3594–3606. doi:10.1111/1750-3841.16691
10. Van Vliet S, Bain JR, Muehlbauer MJ, Provenza FD, Kronberg SL, Pieper CF, et al. A metabolomics comparison of plant-based meat and grass-fed meat indicates large nutritional differences despite comparable Nutrition Facts panels. *Sci Rep*. 2021;11: 13828. doi:10.1038/s41598-021-93100-3
11. Alessandrini R, Brown MK, Pombo-Rodrigues S, Bhageerutti S, He FJ, MacGregor GA. Nutritional Quality of Plant-Based Meat Products Available in the UK: A Cross-Sectional Survey. *Nutrients*. 2021;13: 4225. doi:10.3390/nu13124225

12. Denver S, Nordström J, Christensen T. Plant-based food – Purchasing intentions, barriers and drivers among different organic consumer groups in Denmark. *Journal of Cleaner Production*. 2023;419: 138256. doi:10.1016/j.jclepro.2023.138256
13. Rizzolo-Brime L, Orta-Ramirez A, Puyol Martin Y, Jakszyn P. Nutritional Assessment of Plant-Based Meat Alternatives: A Comparison of Nutritional Information of Plant-Based Meat Alternatives in Spanish Supermarkets. *Nutrients*. 2023;15: 1325. doi:10.3390/nu15061325
14. Dicken SJ, Batterham RL. Ultra-processed Food and Obesity: What Is the Evidence? *Curr Nutr Rep*. 2024;13: 23–38. doi:10.1007/s13668-024-00517-z
15. Jardim MZ, Costa BVDL, Pessoa MC, Duarte CK. Ultra-processed foods increase noncommunicable chronic disease risk. *Nutrition Research*. 2021;95: 19–34. doi:10.1016/j.nutres.2021.08.006
16. Abu Bakar AR, Mahzan NA, Tarmazi SAA, Tumin SA. Plant-base Meat as Future Alternative: A Study of Malaysian Consumers Purchase Intention. *MJSSH*. 2023;8: e002397. doi:10.47405/mjssh.v8i7.2397
17. Manickam HV. Purchase Intention Towards Plant-Based Food in Malaysia. UTAR Institutional Repository; 2022. Available: [http://eprints.utar.edu.my/4846/1/8.\\_Hephzibah\\_Victor\\_1901444.pdf](http://eprints.utar.edu.my/4846/1/8._Hephzibah_Victor_1901444.pdf)
18. De Las Heras-Delgado S, Shyam S, Cunillera È, Dragusan N, Salas-Salvadó J, Babio N. Are plant-based alternatives healthier? A two-dimensional evaluation from nutritional and processing standpoints. *Food Research International*. 2023;169: 112857. doi:10.1016/j.foodres.2023.112857
19. Mohd Azman NM, Muhammad R, Ramli N, Abu Bakar SK. A Review of Product Knowledge and Determinants of Consumer Purchase Intention on Plant-Based Meat Products In Malaysia. *E-BPJ*. 2023;8: 157–163. doi:10.21834/e-bpj.v8iSI15.5106

20. Department of Statistics Malaysia (DOSM). Current Population Estimates by Administrative District. 2023. Available: <https://www.dosm.gov.my/portal-main/release-content/current-population-estimates-by-administrative-district>
21. Bryngelsson S, Moshtaghian H, Bianchi M, Hallström E. Nutritional assessment of plant-based meat analogues on the Swedish market. *International Journal of Food Sciences and Nutrition*. 2022;73: 889–901. doi:10.1080/09637486.2022.2078286
22. Cutroneo S, Angelino D, Tedeschi T, Pellegrini N, Martini D, SINU Young Working Group. Nutritional Quality of Meat Analogues: Results From the Food Labelling of Italian Products (FLIP) Project. *Front Nutr*. 2022;9: 852831. doi:10.3389/fnut.2022.852831
23. Pointke M, Pawelzik E. Plant-Based Alternative Products: Are They Healthy Alternatives? Micro- and Macronutrients and Nutritional Scoring. *Nutrients*. 2022;14: 601. doi:10.3390/nu14030601
24. Tonheim LE, Austad E, Torheim LE, Henjum S. Plant-based meat and dairy substitutes on the Norwegian market: comparing macronutrient content in substitutes with equivalent meat and dairy products. *J Nutr Sci*. 2022;11: e9. doi:10.1017/jns.2022.6
25. Malaysian-German Chamber of Commerce and Industry (MGCC). Food Distribution Channels in Malaysia & Recent Developments – Market Report 2016/2017. EU-Malaysia Chamber of Commerce and Industry.; Available: [https://www.eurocham.my/data/ckfinder/files/Publications/2\\_Food\\_Distribution\\_Channels\\_in\\_Malaysia\\_and\\_Recent\\_Developments\\_2016.pdf](https://www.eurocham.my/data/ckfinder/files/Publications/2_Food_Distribution_Channels_in_Malaysia_and_Recent_Developments_2016.pdf)
26. Hercberg S, Touvier M, Salas-Salvado J. The Nutri-Score nutrition label: A public health tool based on rigorous scientific evidence aiming to improve the nutritional status of the population. *International Journal for Vitamin and Nutrition Research*. 2022;92: 147–157. doi:10.1024/0300-9831/a000722

27. Brabants J. Nutri-Score Labelling Guide for Foodservice Operations. Apicbase; 2024.  
Available: <https://get.apicbase.com/nutri-score-science-based-nutritional-value-labelling-system/>
28. Lim Y. Factors that Affect the Food Production in Malaysia. UTAR Institutional Repository.; 2022. Available: [http://eprints.utar.edu.my/5230/1/Thesis\\_Full\\_Report\\_Lim\\_Yann\\_Torng\\_1802906.pdf](http://eprints.utar.edu.my/5230/1/Thesis_Full_Report_Lim_Yann_Torng_1802906.pdf)
29. Statista. Meat Consumption Per Capita in Malaysia in 2023, by Type. 2024. Available: <https://www.statista.com/statistics/756920/malaysia-meat-consumption-per-capita-by-type/>
30. Credence Research. Malaysia Meat Market. 2024. Available: <https://www.credenceresearch.com/report/malaysia-meat-market>
31. Harun H, Sallehuddin Q. Chicken prices rise slightly, won't reach RM11.40 per kg. NST Online. 2024. Available: <https://www.nst.com.my/news/nation/2024/03/1025604/chicken-prices-rise-slightly-wont-reach-rm1140-kg>. Accessed 13 Aug 2024.
32. Estell M, Hughes J, Grafenauer S. Plant Protein and Plant-Based Meat Alternatives: Consumer and Nutrition Professional Attitudes and Perceptions. Sustainability. 2021;13: 1478. doi:10.3390/su13031478
33. Crimarco A, Springfield S, Petlura C, Streaty T, Cunanan K, Lee J, et al. A randomized crossover trial on the effect of plant-based compared with animal-based meat on trimethylamine-N-oxide and cardiovascular disease risk factors in generally healthy adults: Study With Appetizing Plantfood—Meat Eating Alternative Trial (SWAP-MEAT). The American Journal of Clinical Nutrition. 2020;112: 1188–1199. doi:10.1093/ajcn/nqaa203

34. Mognard E, Sanubari TPE, Alem Y, Yuen JL, Ragavan NA, Ismail MN, et al. Breakfast Practices in Malaysia, Nutrient Intake and Diet Quality: A Study Based on the Malaysian Food Barometer. *Nutrients*. 2023;15: 2197. doi:10.3390/nu15092197
35. Curtain F, Grafenauer S. Plant-Based Meat Substitutes in the Flexitarian Age: An Audit of Products on Supermarket Shelves. *Nutrients*. 2019;11: 2603. doi:10.3390/nu11112603
36. Food Standards Agency UK. Guide To Creating A Front-Of-Pack Nutrition Label. 2013. Available: [https://www.gov.uk/government/uploads/system/uploads/attachment\\_data/file/207588/FINAL\\_VERSION\\_OF\\_THE\\_2013\\_FOP\\_GUIDANCE\\_-\\_WEB.pdf](https://www.gov.uk/government/uploads/system/uploads/attachment_data/file/207588/FINAL_VERSION_OF_THE_2013_FOP_GUIDANCE_-_WEB.pdf)
37. Kahleova H, Dort S, Holubkov R, Barnard ND. A Plant-Based High-Carbohydrate, Low-Fat Diet in Overweight Individuals in a 16-Week Randomized Clinical Trial: The Role of Carbohydrates. *Nutrients*. 2018;10: 1302. doi:10.3390/nu10091302
38. Cicero AFG, Veronesi M, Fogacci F. Dietary Intervention to Improve Blood Pressure Control: Beyond Salt Restriction. *High Blood Press Cardiovasc Prev*. 2021;28: 547–553. doi:10.1007/s40292-021-00474-6
39. Sukkar SG, Muscaritoli M. A Clinical Perspective of Low Carbohydrate Ketogenic Diets: A Narrative Review. *Front Nutr*. 2021;8: 642628. doi:10.3389/fnut.2021.642628
40. Sinu Scientific Board, Sinu Scientific Committee. “Front-of-pack” nutrition labeling. *Nutrition, Metabolism and Cardiovascular Diseases*. 2021;31: 2989–2992. doi:10.1016/j.numecd.2021.07.021
41. Romero Ferreiro C, Lora Pablos D, Gómez De La Cámara A. Two Dimensions of Nutritional Value: Nutri-Score and NOVA. *Nutrients*. 2021;13: 2783. doi:10.3390/nu13082783

## Figure legends

**Figure 1. Availability and origins of PBMA product categories sold in supermarkets and hypermarkets in Petaling District, Malaysia.** A. The percentages of PBMA product categories; B. The distribution of PBMA product categories across different store types: hypermarket, supermarket, and premium supermarket; C. The distribution of countries of origin for PBMA product categories.

**Figure 2. Price analysis of PBMA product categories sold in supermarkets and hypermarkets in Petaling District, Malaysia.** A. Boxplot of the median prices of PBMA product categories per 100g (MYR). Boxplot comparison of the median prices of PBMA product categories per 100g (MYR) across three store types: hypermarkets, supermarkets, and premium supermarkets: B. Burger/Patties; C. Coated Meat; D. Luncheon Meat; E. Minced Meat; F. Pastries; G. Pieces/Chunks/Fillets/Strips; H. Prepacked Cooked Meals; I. Sausages; J. Seafood Balls/Cakes/Meatballs. The left and right sides of the box are the lower and upper quartiles; the box covers the Interquartile Range (IQR); median is represented by the vertical line that split the box in two; cross represents the mean; whiskers at the bottom of box represents lower quartile, whiskers at the top of box represents upper quartile. \* indicates  $p < 0.05$ , \*\* indicates  $p < 0.01$ ; by Mann-Whitney  $U$  test.

**Figure 3. Energy and nutrient content comparison of PBMA product categories sold in supermarkets and hypermarkets in Petaling District, Malaysia with meat-based equivalent product categories.** A. Energy Density (kcal); B. Protein (g); C. Total Fat (g); D. Saturated Fat (g); E. Carbohydrates (g); and F. Sodium (mg). PB: plant-based, MB: meat-based. Energy and nutrient contents were sourced from labels of PBMA products, or from the



Singapore's Energy & Nutrient Composition Database for the meat-based equivalent products. \* indicates  $p < 0.05$ , \*\* indicates  $p < 0.01$ ; by  $t$ -test.

**Figure 4. Nutri-Score nutritional quality analysis of PBMA product categories sold in supermarkets and hypermarkets in Petaling District, Malaysia.** The Nutri-Score grades, colours, and points are as follows: A (most healthy; dark green): -15 to -1 points; B (light green): 0 to 2 points; C (yellow): 3 to 10 points; D (orange): 11 to 18 points; E (least healthy, red): 19 to 40 points.

## Supporting Information

**S1 Table:** PBMA Product Categories and Their Descriptions.

**S2 Table:** Distribution of PBMA's Across Visited Supermarkets and Hypermarkets in Petaling District, Malaysia.

**S3 Table.** Mean Energy Density and Nutritional Contents (per 100g)  $\pm$  Standard Deviations (Range) of Plant-Based vs. Meat-Based Product Categories.

**S4 Table.** Nutri-Score Classification across PBMA Product Categories.

**S5 Table.** Mean Energy Density and Nutritional Contents (per 100g) of Malaysian PBMA's vs. European PBMA's and Meat Equivalents.

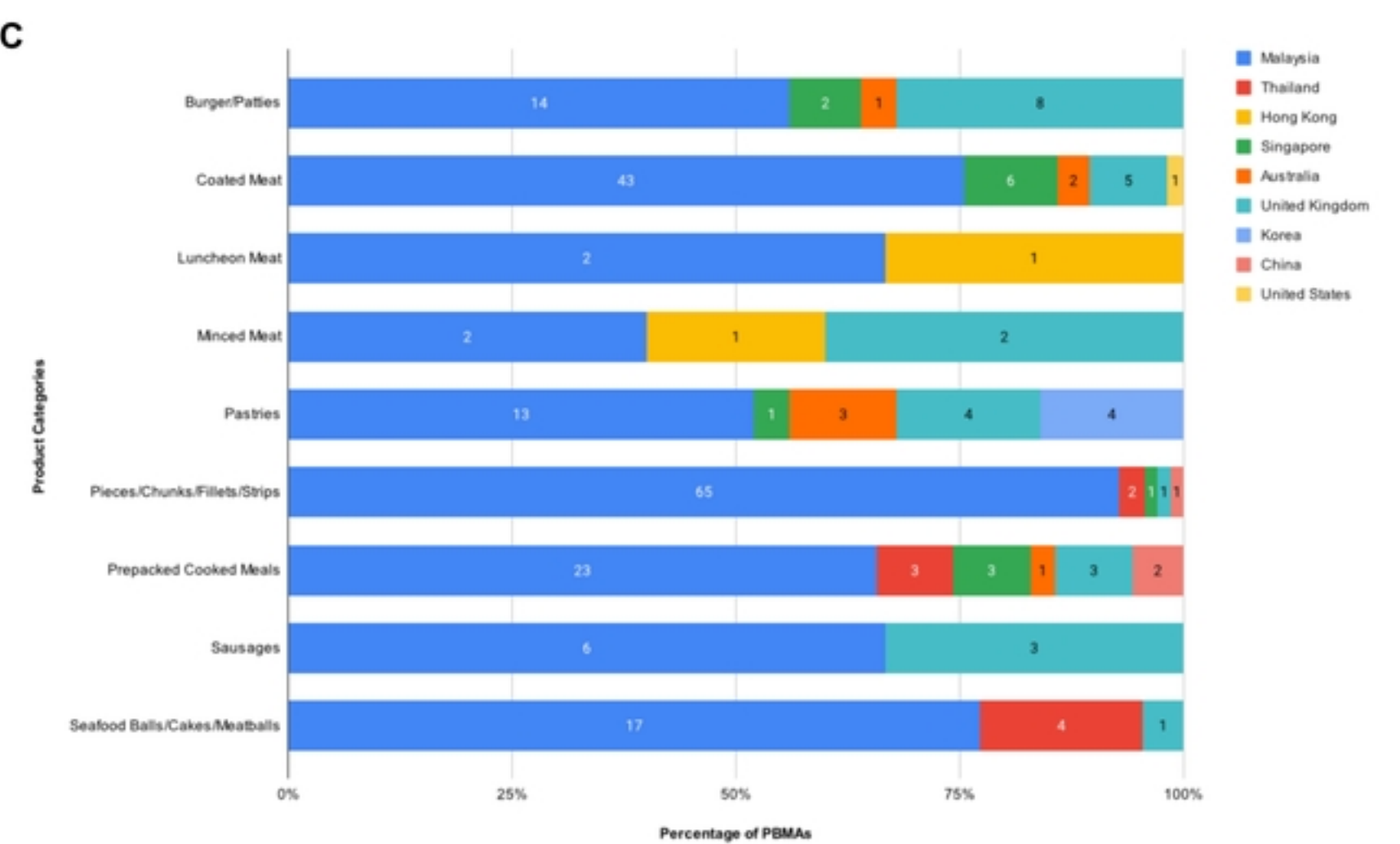
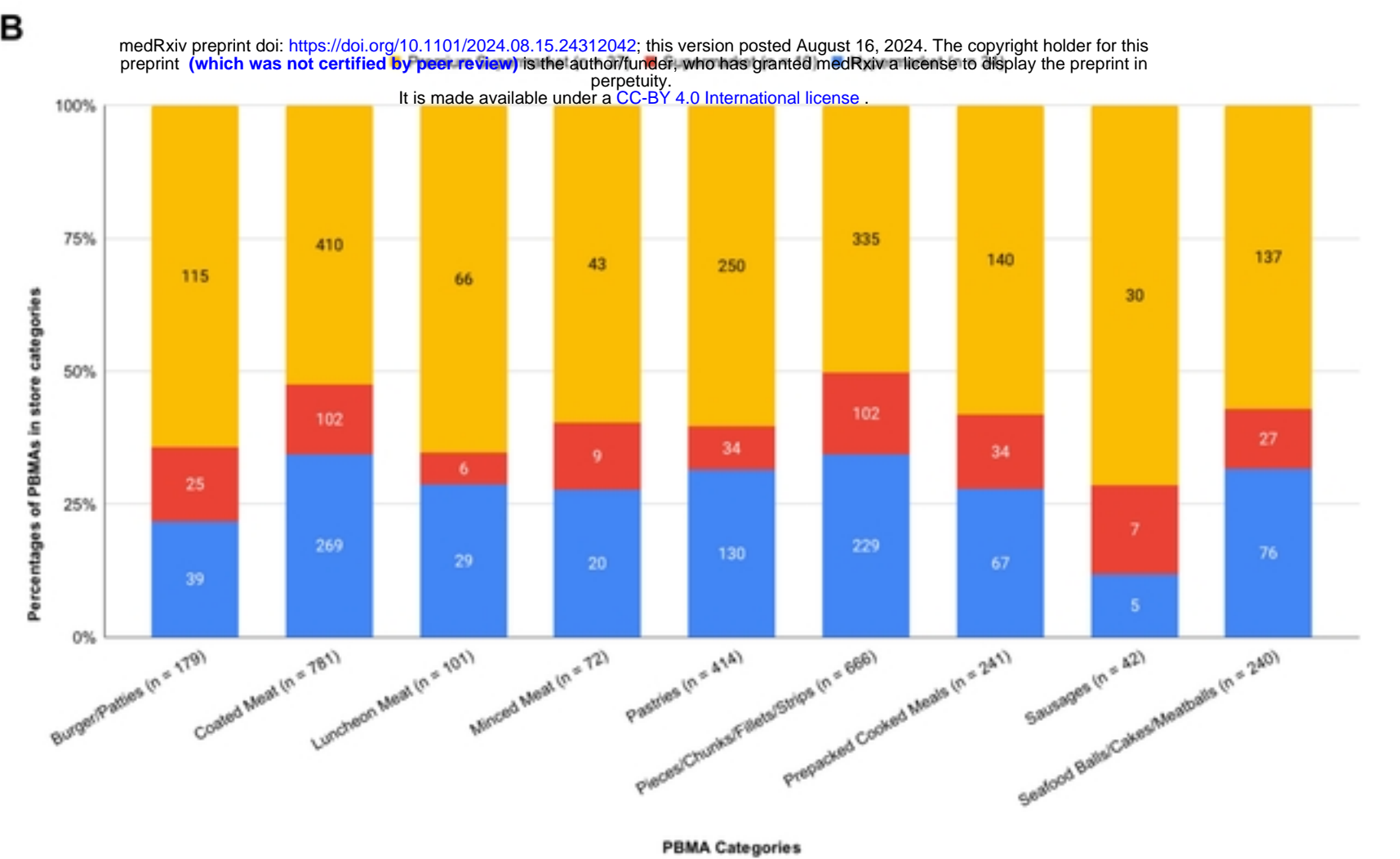
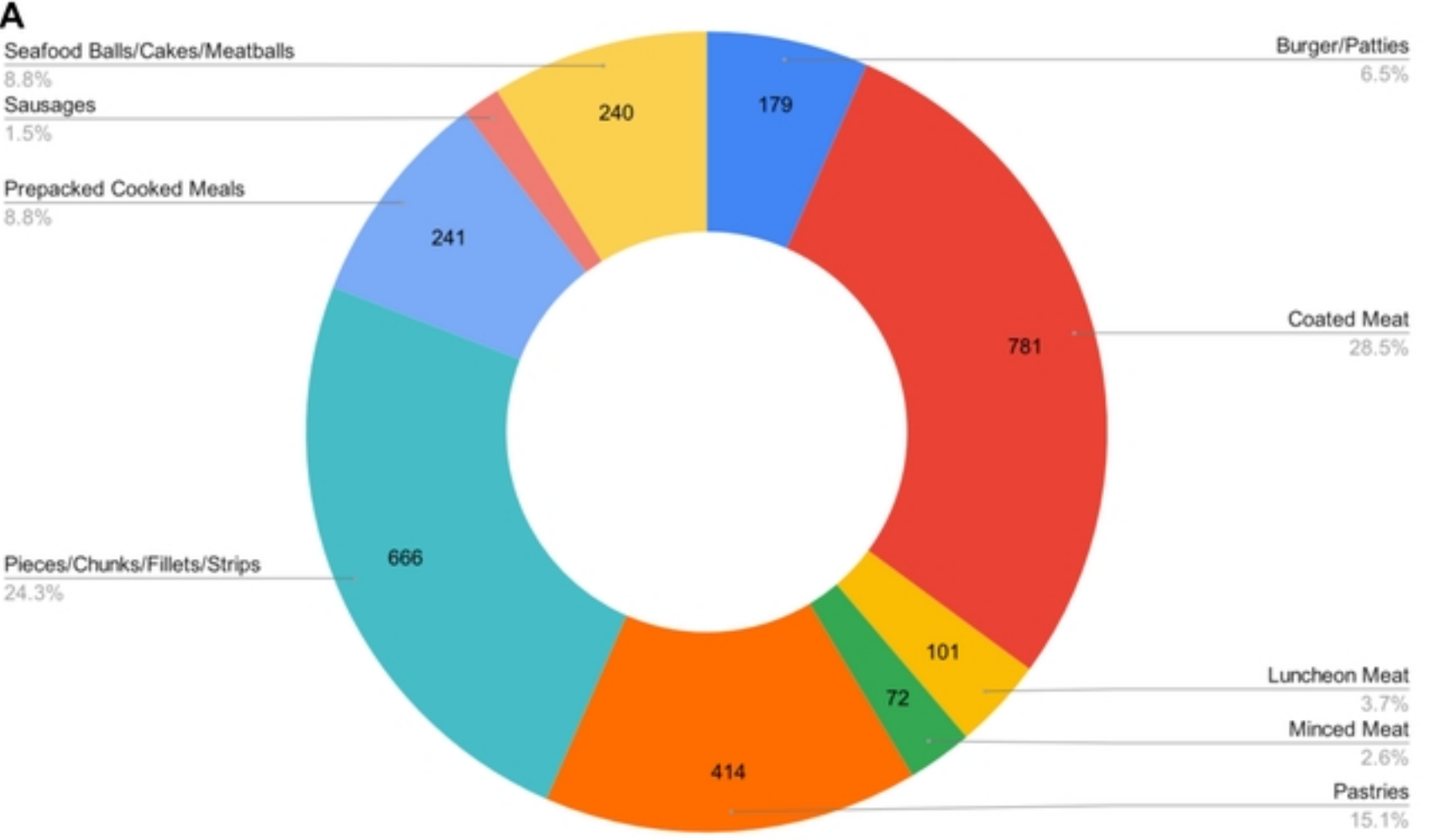


Figure 1

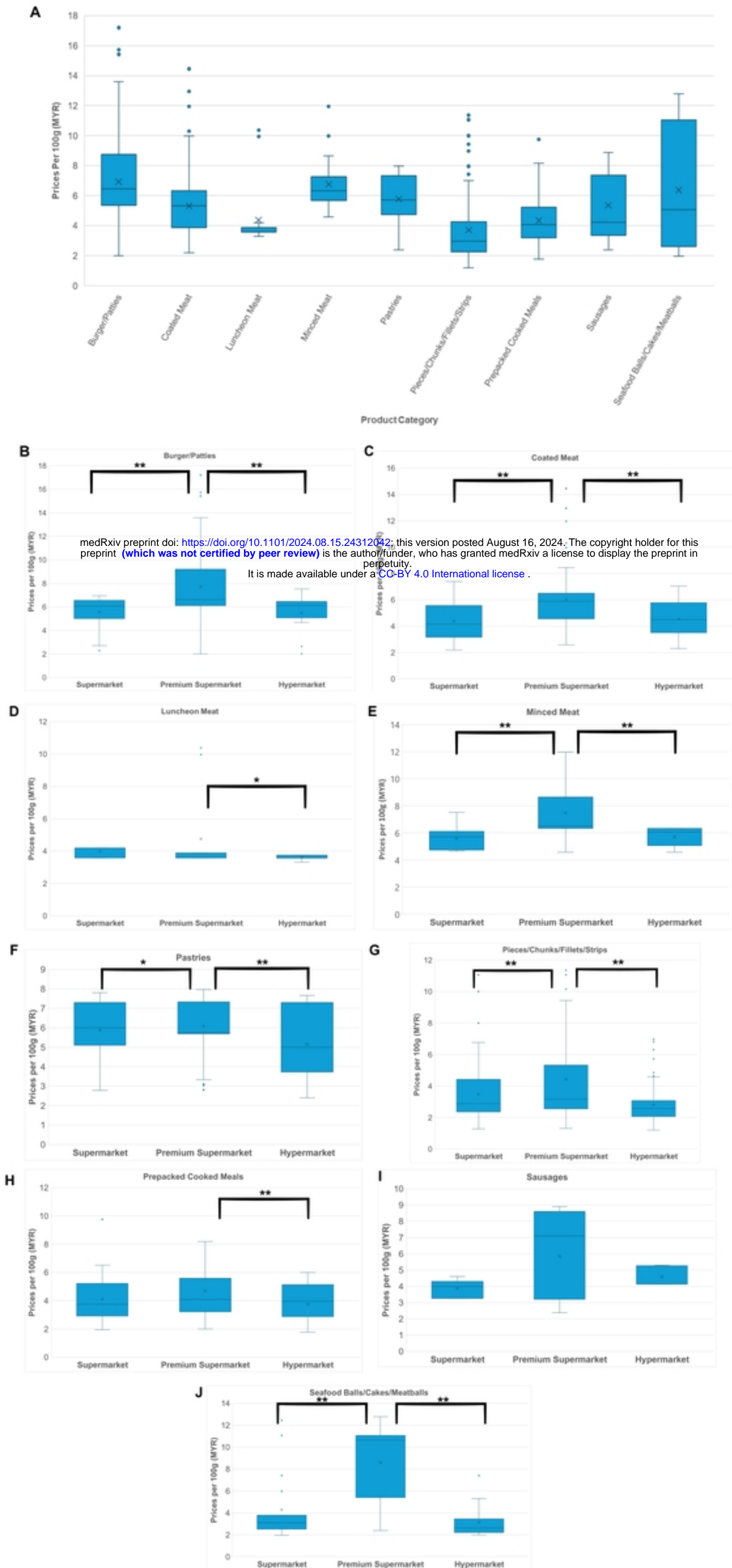


Figure 2

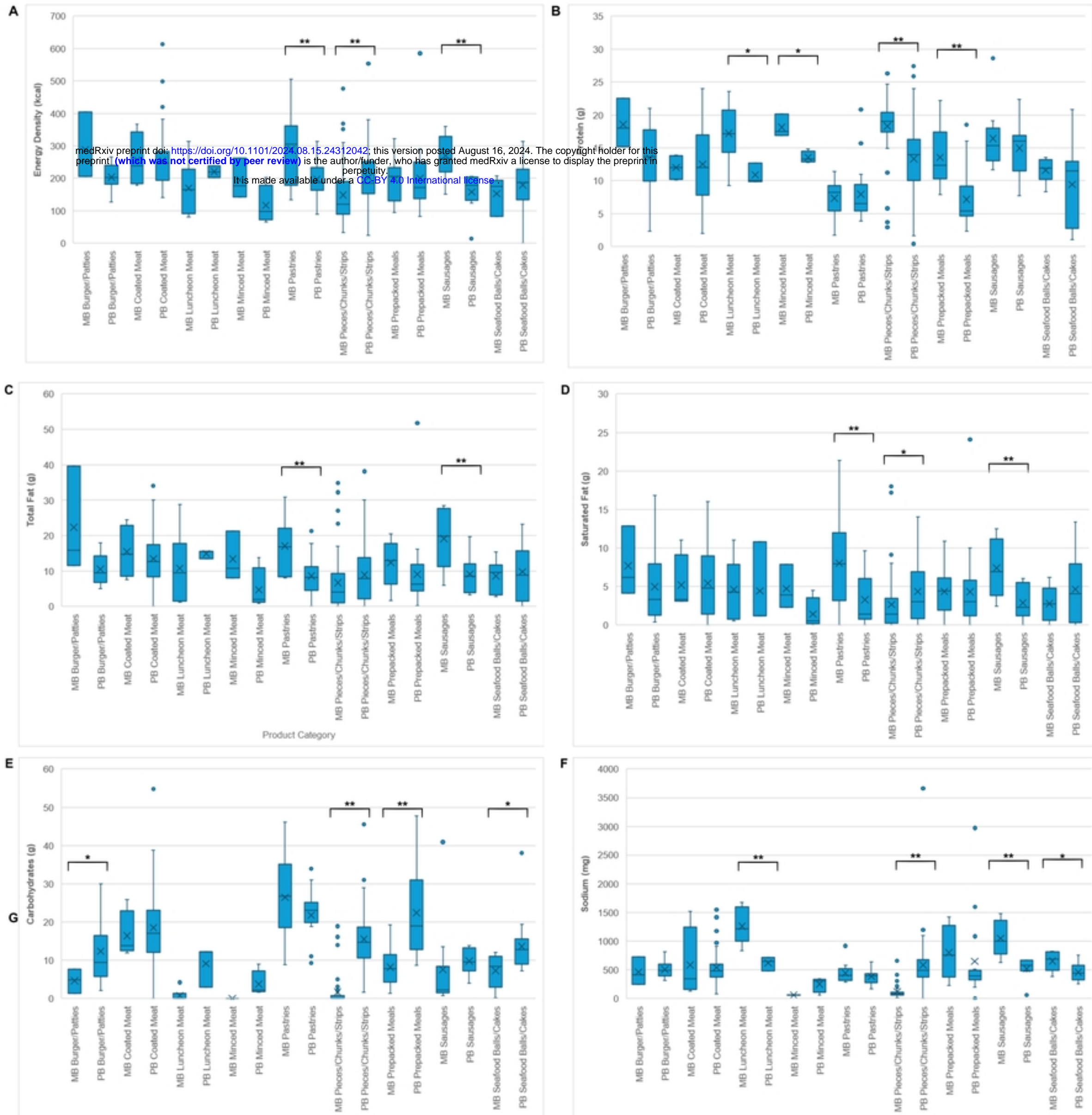


Figure 3

Product Categories

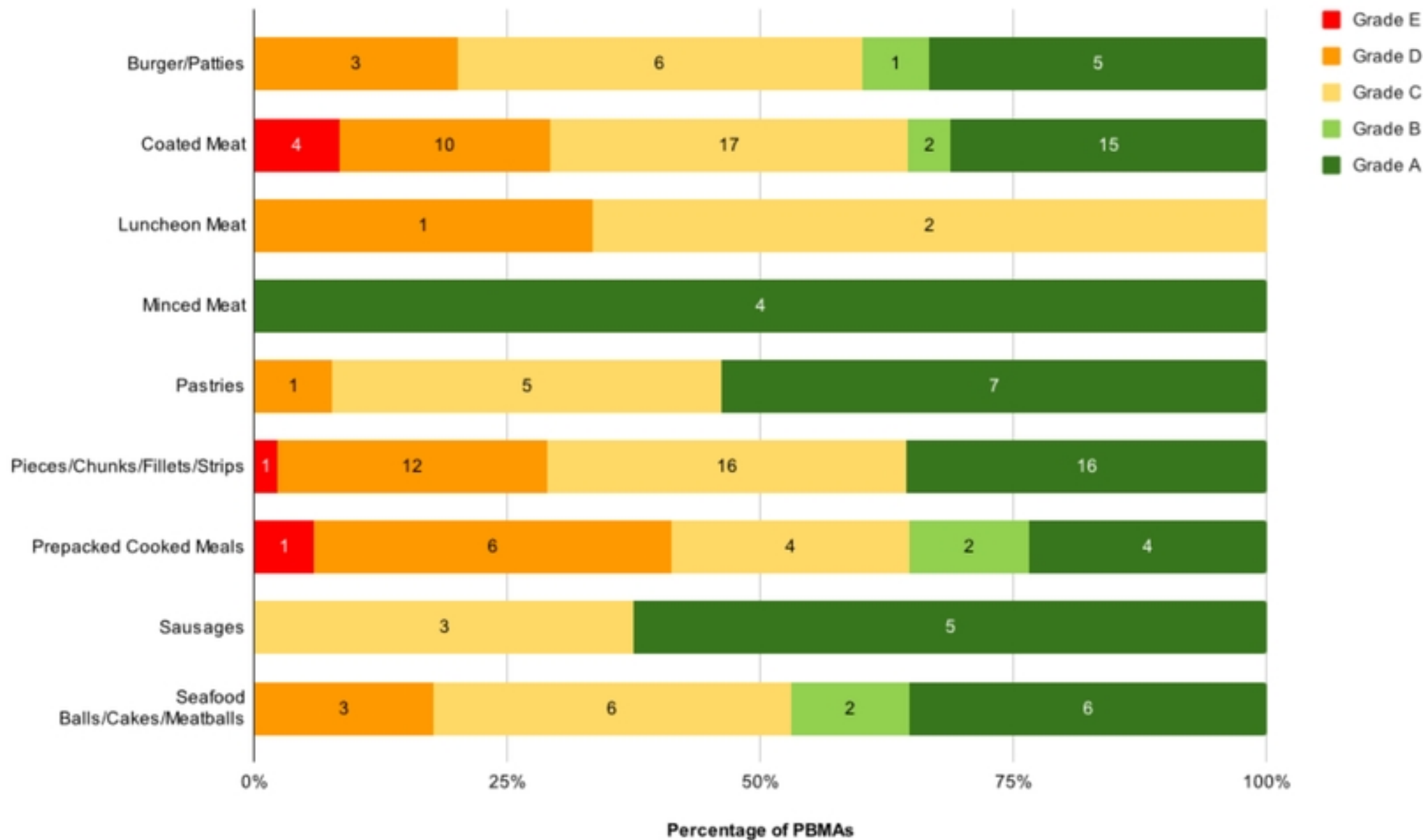


Figure 4