

# Disentangling the drivers of heterogeneity in SARS-CoV-2 transmission from data on viral load and daily contact rates

Billy J Quilty<sup>1,5</sup>, Lloyd AC Chapman<sup>1,2,5</sup>, James D Munday<sup>1,4</sup>, Kerry LM Wong<sup>1</sup>, Amy Gimma<sup>1</sup>, Suzanne Pickering<sup>3</sup>, Stuart JD Neil<sup>3</sup>, Rui Pedro Galão<sup>3</sup>, W John Edmunds<sup>1</sup>, Christopher I Jarvis<sup>1</sup>, Adam J Kucharski<sup>1</sup> on behalf of the CMMID COVID-19 Working Group

<sup>1</sup> CMMID Covid-19 Working Group, London School of Hygiene and Tropical Medicine

<sup>2</sup> Department of Mathematics and Statistics, Lancaster University

<sup>3</sup> Department of Infectious Diseases, School of Immunology & Microbial Sciences, King's College London

<sup>4</sup> Department of Biosystems Science and Engineering, ETH Zürich, Basel

<sup>5</sup> These authors share first authorship

## Abstract

SARS-CoV-2 spreads predominantly through superspreading, with a minority of individuals responsible for the majority of transmission, though the drivers of this heterogeneity are unclear. Here, we assess the contribution of variation in viral load and daily contact rates to this heterogeneity by combining viral load and contact survey data in a mathematical model to estimate the secondary infection distribution. Using data from the BBC Pandemic and CoMix contact surveys, we estimate the basic reproduction number ( $R_0 = 2.2$ , 95% CI 2.1-2.2) from first principles and the secondary infection distribution throughout the pandemic in the UK in 2020, and the effectiveness of frequent and pre-event rapid testing for reducing superspreading events. We find that individual heterogeneity in contacts – rather than individual heterogeneity in shedding – drives observed heterogeneity in the secondary infection distribution. Our results suggest that regular testing every 3 days, or pre-event testing with a minimum event size of 10, could reduce the mean reproduction number below 1 with moderate to high levels of uptake (60-80%) for pre-pandemic contact levels. This work demonstrates the potential for using viral load and contact data to predict heterogeneity in transmission and the effectiveness of rapid testing strategies for curbing transmission in future pandemics.

## Introduction

Transmission of SARS-CoV-2 occurs primarily through superspreading, with 20% of infections generating around 80% of secondary infections<sup>1</sup>. A review and meta-regression by Chen et al.<sup>2</sup> indicates that substantial variation in the respiratory viral load of individuals infected with SARS-CoV-2 is a driver of overdispersion in secondary infection generation. However, as most studies cited measured viral load at one point over the course of infection, it is unclear whether this is due to some individuals being more infectious than others generally (“wrong person” hypothesis) or whether most individuals pass through a highly infectious period which happens to coincide with a period of high contact (“wrong time” hypothesis). High contact rates are a prerequisite for infecting a large number of people, and hence the potential for superspreading should have varied over the course of the COVID-19 pandemic as contact distributions changed with the enactment and relaxation of restrictions.

In this paper, we reconstruct the secondary infection distribution of SARS-CoV-2 using a model of intra- and inter-host heterogeneity in infectiousness derived from viral load trajectories and infectivity combined with data on reported numbers of daily contacts from two social contact surveys in the UK.

**NOTE:** This preprint reports new research that has not been certified by peer review and should not be used to guide clinical practice.

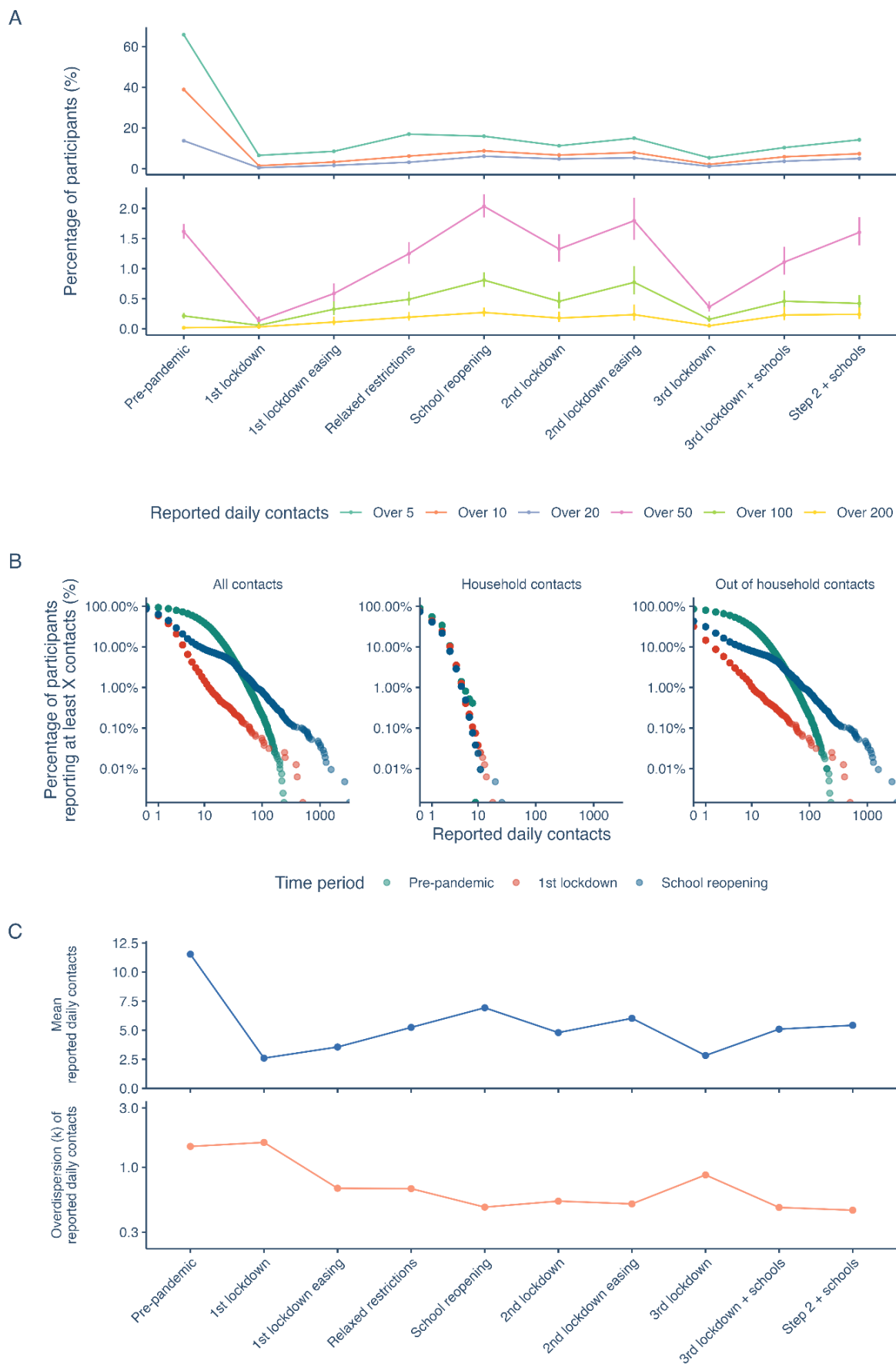
While previous models of superspreading of SARS-CoV-2 have either fitted to summary data on key epidemiological metrics, such as the mean reproduction number and distributions of individual-level numbers of secondary cases from contact tracing studies<sup>3</sup>, to estimate social contact rates, or considered a wide range of plausible contact rates<sup>4</sup>, here we estimate the secondary infection distribution from first principles using data on social contacts gathered prior to and during the pandemic in the UK. This allows us to characterise variation in the secondary infection distribution over time under different levels of restrictions on contacts. We also consider the impact of lateral flow tests (able to detect individuals with high viral loads when they are most likely to be infectious<sup>5,6</sup>) taken regularly or before events on the mean reproduction number and the potential for superspreading with differing levels of adherence and background contact rates.

The distribution of the number of secondary infections generated by each infectious individual can be characterised as negative binomial with mean equal to the mean number of secondary infections  $R$  and overdispersion parameter  $k$  representing the variation in the number of secondary infections (with smaller values of  $k$  representing greater variation). Even if the mean number of secondary infections  $R$  is below 1, there may still be a considerable probability of one or more secondary infections if  $k$  is small. We estimate the utility of regular rapid lateral-flow antigen tests (LFTs) on reducing  $R$  and the potential for superspreading events (by decreasing variation in numbers of secondary infections, i.e. increasing  $k$ ).

## Results

### Changes in the distribution of social contacts with changes in the intensity of restrictions

Figure 1A and Table 1 show the proportions of survey participants in the UK reporting more than a certain number of contacts (5, 10, 20, 50, 100 and 200) in the previous day over time, both pre-pandemic (BBC Pandemic survey) and from the CoMix survey for the 9 time periods during the survey with different levels of restrictions. The percentage of individuals reporting more than 20 contacts in a day was substantially lower during the pandemic compared to the pre-pandemic period (when it was 13.7%), varying from a low of 0.4% during the first lockdown from March to June 2020 to a peak of 6.1% in September 2020, when restrictions were most relaxed and schools reopened. The percentage of individuals reporting over 100 and 200 contacts was lower in the pre-pandemic BBC Pandemic contact survey compared to periods of relaxed restrictions due to differences in the reporting of high contact events. Overall, people reporting more than 50, 100, or 200 contacts made up <3% of the total CoMix survey sample.



**Figure 1: Changes in the distribution of social contacts in the UK from pre-pandemic to May 2021. A.** Percentage of participants in the BBC Pandemic and CoMix contact surveys reporting over 5, 10, 20, 50, 100,

and 200 daily contacts in 2018 (“pre-pandemic”) and nine time periods during the pandemic in the UK between March 2020 and May 2021. Median and 95% binomial confidence intervals shown. **B.** Distribution of the number of reported daily contacts for three indicative timepoints before and during the pandemic in the UK in 2020. **C.** Mean and overdispersion parameter,  $k$ , of negative binomial distribution fitted to contacts during the different time periods.

**Table 1. Percentage of participants in the CoMix and BBC Pandemic surveys with more than a certain number of contacts in different time periods in the UK from March 2020 to May 2021, and pre-pandemic in 2017-2018.**

Time period*	From	To	N	Over 5 (%)	Over 10 (%)	Over 20 (%)	Over 50 (%)	Over 100 (%)	Over 200 (%)
Pre-pandemic (BBC Pandemic)	01/09/2017	01/12/2018	40162	65.8	38.9	13.7	1.6	0.2	0
Lockdown 1	23/03/2020	03/06/2020	15906	6.6	1.5	0.5	0.1	0.1	0
Lockdown 1 easing	04/06/2020	29/07/2020	10651	8.6	3.3	1.7	0.6	0.3	0.1
Relaxed restrictions	30/07/2020	03/09/2020	15415	17.6	6.4	3.2	1.3	0.5	0.2
School reopening	04/09/2020	24/10/2020	20759	16.7	9	6.2	2.1	0.8	0.3
Lockdown 2	05/11/2020	02/12/2020	10008	11.9	6.9	4.9	1.3	0.5	0.2
Lockdown 2 easing	03/12/2020	19/12/2020	5898	16.1	8.1	5.4	1.8	0.8	0.2
Lockdown 3	05/01/2021	07/03/2021	21542	5.6	2.2	1.2	0.4	0.2	0.1
Lockdown 3 + schools	08/03/2021	31/03/2021	8452	10.8	5.9	3.7	1.2	0.5	0.2
Step 2 + schools	16/04/2021	16/05/2021	1771	16.6	8	5	1.9	0.7	0.3

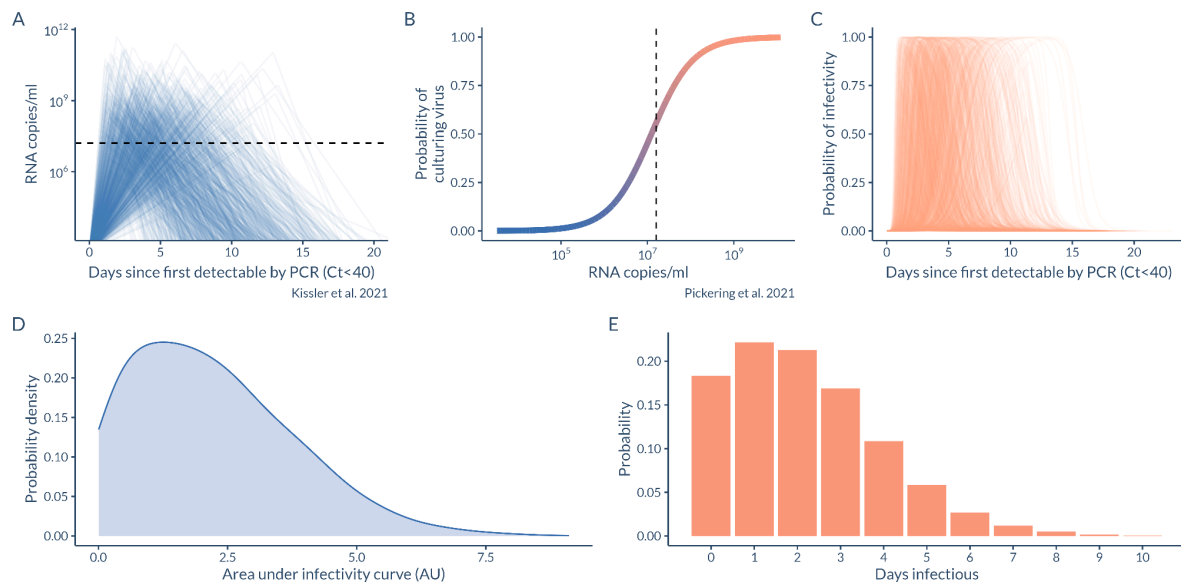
\*Different pandemic time periods are based on lockdowns and different levels of restrictions.

The estimated mean and overdispersion parameter  $k$  (lower values indicating more overdispersion (variation) in the distribution) of numbers of daily contacts in the UK were lower than that observed pre-pandemic, with mean daily contacts averaging  $\sim 6$  during the pandemic compared to  $\sim 12$  pre-pandemic, and  $k$  averaging  $\sim 0.6$  during the pandemic compared to  $\sim 1.5$  pre-pandemic, indicating individuals having on average lower, but more varied, numbers of daily contacts. These values also changed considerably across the different periods of restrictions in a similar pattern to the proportion of participants with high numbers of contacts, with the mean number of daily contacts ranging from  $\sim 3$  during the first lockdown to  $\sim 7$  when schools reopened in September 2020, with a similar drop during the third lockdown, but less of a drop during the second lockdown when schools remained open (Figure 1C). The overdispersion in contacts,  $k$ , was similar pre-pandemic and during the first lockdown (1.5 and 1.6 respectively) then became lower (more varied) following the easing of the first lockdown, where  $k$  averaged  $\sim 0.6$  (Figure 1C). Stratifying contacts by household/non-household revealed contact rates within the household remained stable throughout, with changing non-household contact rates driving much of the variation in the mean and  $k$  of daily contacts over the course of the pandemic (Figure S1). Both the mean and  $k$  of out-of-household daily contacts remained lower than pre-pandemic contact rates. Contact durations in CoMix differed significantly between household and non-household contacts, with a median duration of 45 minutes (95% CI: 0, 720 minutes) for

out-of-household contacts compared to 720 minutes (12 hours) (95% CI: 15, 1440 minutes) for household contacts (Figure S2).

## Variation in viral load and infectivity over the course of infection

Analysis by Kissler et al.<sup>12</sup> of densely sampled viral load trajectories in individuals infected with SARS-CoV-2 suggested substantial variation between individuals in the duration of proliferation and clearance phases of infection, and lowest Ct value (inversely correlated with peak viral load) (Figure 2A). By mapping viral load to infectivity via a logistic function based on viral load and culture (representing live, infectious virus) from Pickering et al. (Figure 2B), calculating  $P(\text{infectivity})$  by day (Figure 2C), then integrating under the infectivity curve, we can reproduce substantial heterogeneity in individual infectiousness as reported by Ke et al.<sup>6</sup>, with a >54-fold difference in individual-level infectivity between the 2.5% and 97.5% percentiles of the individual-level distribution (0.11 and 6.09, a.u, respectively) and a shape parameter of a fitted Gamma distribution of 1.55. Individuals had viral loads high enough to cause infections (had culturable virus) for a median of 2 days (95% CI: 0, 6 days). A substantial proportion (18.7%) were estimated to be infectious for zero days, though the remainder were infectious for at least one day and theoretically capable of causing superspreading events (Figure 2).

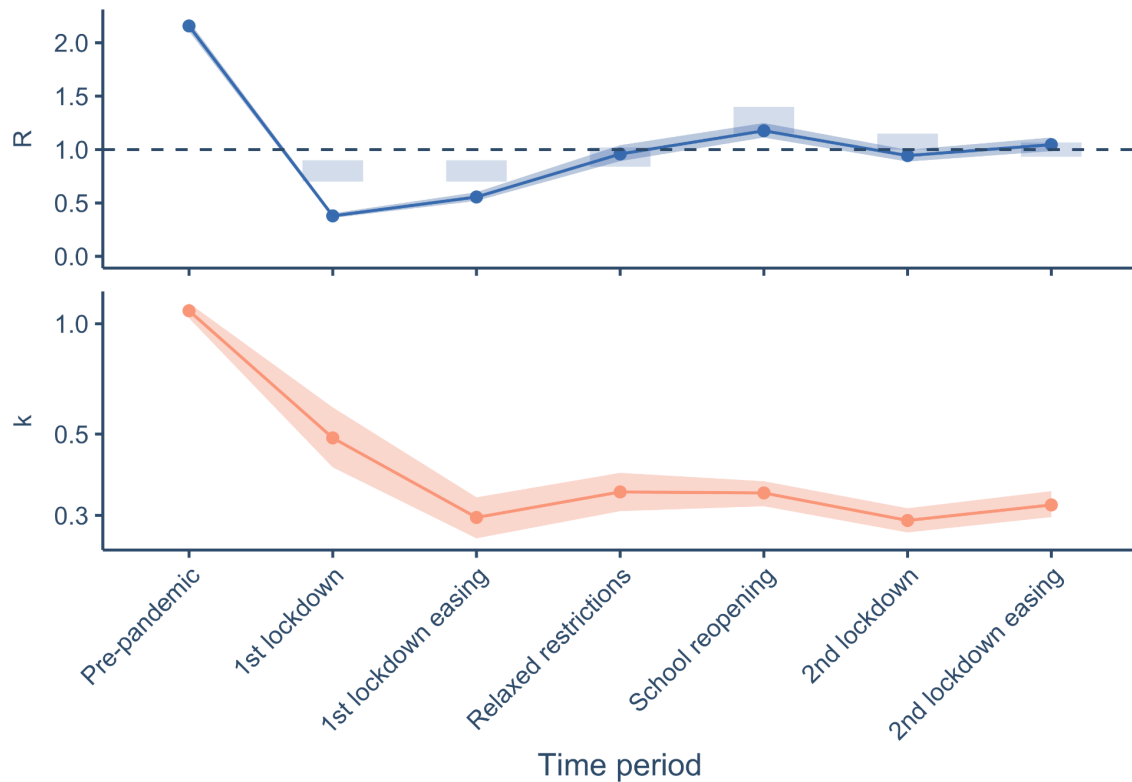


**Figure 2: Variation in viral load progression and infectivity.** **A.** Individual-level viral load trajectories. **B.** Logistic model for probability of culturing virus given a certain viral load. **C.** Probability of infectivity over time. **D.** Area under the infectivity curve. **E.** Distribution of the number of days for which individuals are infectious. Dashed line in A and B represents the RNA copies/ml required for a 50% probability of culturing virus/infectivity.

## Predicting transmission dynamics from heterogeneity in contact rates and viral load progression

Simulating secondary infections using an individual-based model based on daily contact rates, contact duration, and daily infectivity derived from viral load (see *Methods* section), we estimated an  $R_0$  (mean initial reproduction number based on UK pre-pandemic contact rates) of 2.2 (95% confidence interval (CI) 2.1-2.2), closely matching contemporaneous estimates<sup>15</sup>. The overdispersion in the initial reproduction number,  $k$ , was estimated at 1.1 (95% CI 1.0-1.1), somewhat higher than other estimates (less heterogeneous)<sup>1,16</sup>. Limiting our analysis to 2020 prior to the widespread emergence of more transmissible variants of SARS-CoV-2 and mass vaccination, during the first national lockdown  $R$  was estimated at 0.4 (95% CI 0.4-0.4) and  $k$  at 0.5 (95% CI 0.4-0.6).  $R$  rose as lockdown eased ( $R = 0.6$ , 95% CI 0.5-0.6) and restrictions were relaxed in the summer of 2020 ( $R = 1.0$ , 95% CI 0.9-1.0), before rising above 1 as schools reopened in the autumn ( $R = 1.2$ , 95% CI 1.1-1.2). As with contacts,  $k$  reduced as the pandemic began, indicating more variability in the secondary infection distribution, and

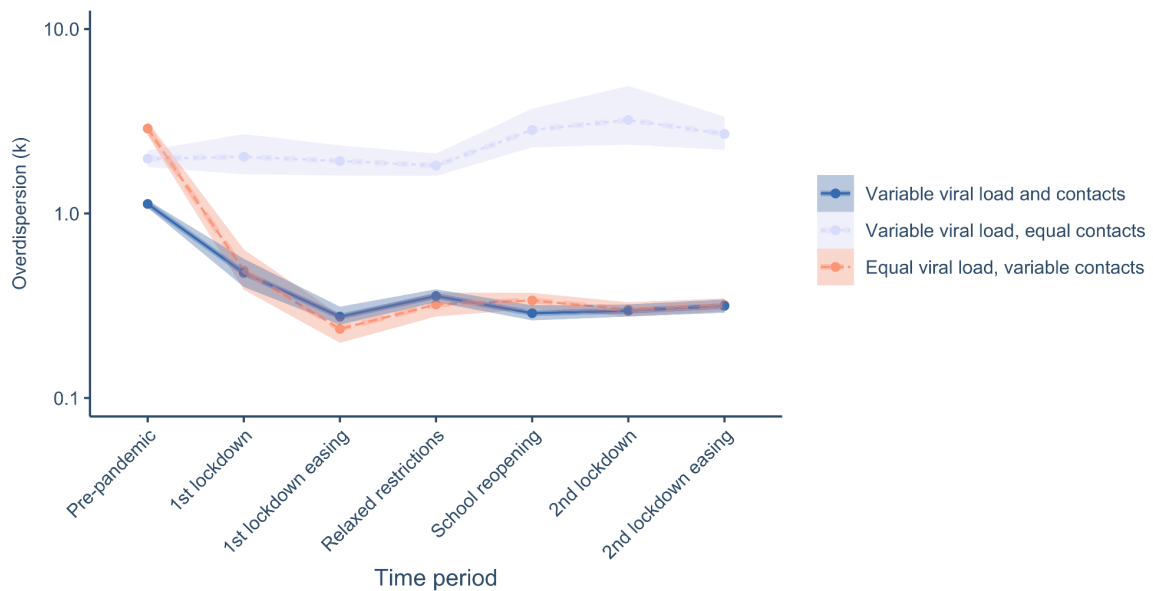
varied between 0.3 and 0.4 after the first lockdown up to the end of 2020 (Figure 3). A sensitivity analysis imputing a heavier tail for the BBC Pandemic contact distribution based on the tails of contact distributions from relaxed restrictions periods during the CoMix survey led to a small increase in our estimate of  $R_0$  from 2.2 to 2.5 and a reduction in  $k$  from 1.2 to 0.9 (Figure S3).



**Figure 3. Estimates of the mean and dispersion of negative binomial distributions fitted to simulated secondary infection distributions by time period in 2020.** The dispersion parameter  $k$  gives an indication of the variation in the secondary infection distribution, with smaller values corresponding to greater variation and values less than 1 corresponding to very large variation. Grey boxes in  $R$  plot show the average upper and lower bounds (90% confidence interval) of the consensus estimates published by the Scientific Pandemic Influenza group on Modelling in the UK for the specified time periods. Shaded bands show 95% bootstrap CIs for the  $R$  and  $k$  estimates.

### Contribution to heterogeneity in secondary infections due to variation in contact rates and viral load progression

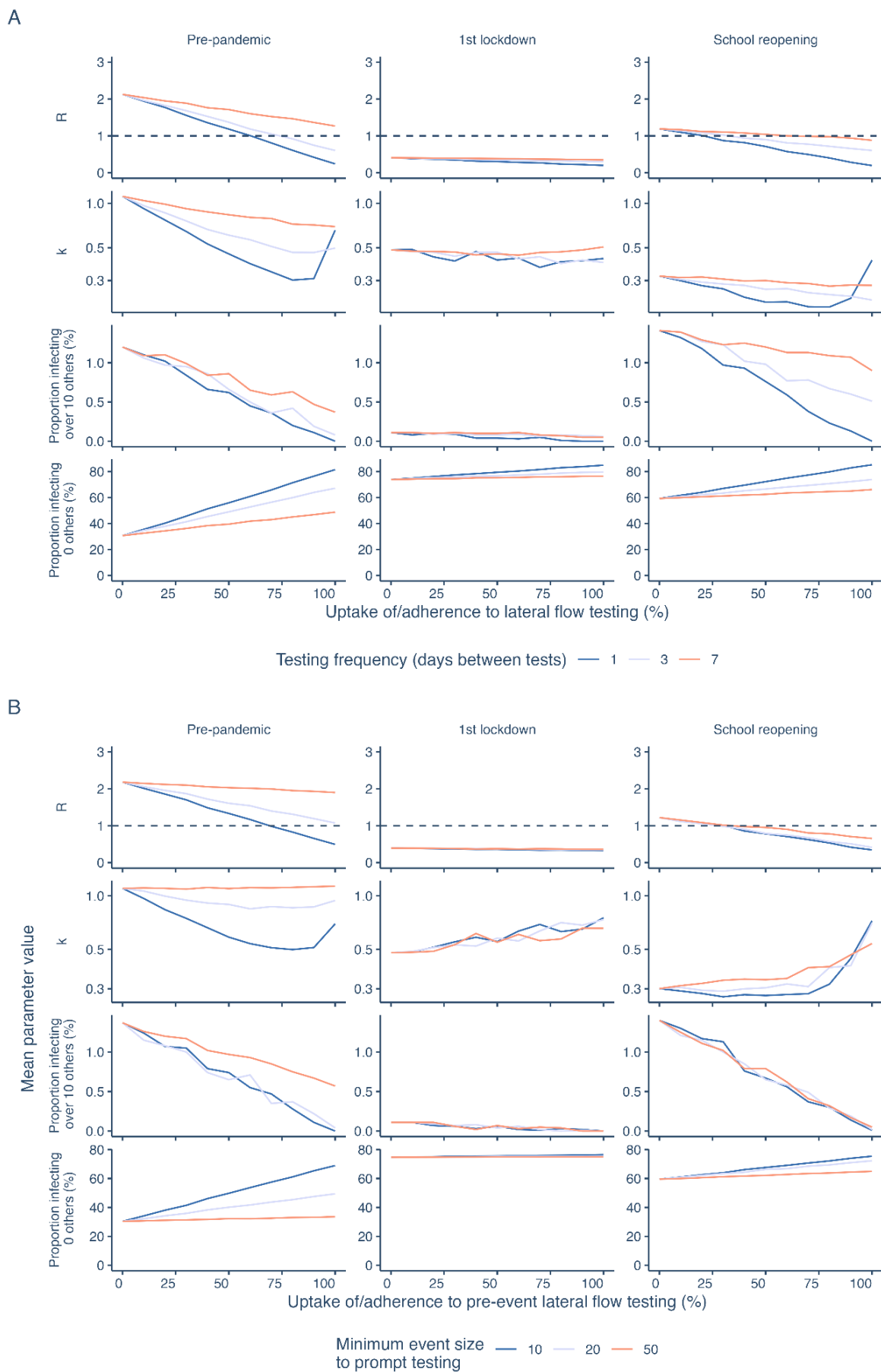
To investigate the contribution of heterogeneity in contact rates and heterogeneity in viral load between individuals to variation in the secondary infection distribution, each was either fixed at its median value or allowed to vary according to the full distribution. If both variables are fixed, then the secondary infection distribution is approximately Poisson with equal mean and variance (very large values of  $k$ ). If contacts are fixed at their mean but viral load is allowed to vary between individuals, then  $k$  is around 2-3. If viral load is fixed at the mean trajectory, but contacts allowed to vary, then values of  $k$  are approximately equal to that of both variable contacts and variable viral load, indicating that variable numbers of daily contacts, as the denominator in the infection process, are the primary factor required for superspreading rather than some individuals being much more infectious than others (Figure 4).



**Figure 4. Estimates of the mean and dispersion of negative binomial distributions fitted to secondary infection distributions by period, with contact rates and viral load trajectories either set at their median or allowed to vary.** The dispersion parameter  $k$  gives an indication of the variation in numbers of secondary infections, with smaller values corresponding to greater variation and values less than 1 corresponding to very large variation. Values of  $k$  for equal viral load and equal contacts not shown due to being very large (i.e., numbers of secondary infections are Poisson distributed). Shaded bands show 95% bootstrap CIs.

### Impact of rapid testing (regular testing vs. pre-event testing)

Finally, we assessed the hypothesis that if those with the highest viral loads are most likely to cause superspreading events, and lateral flow tests are most sensitive for those with the highest viral loads, then lateral flow tests should be able to prevent superspreading events, here defined as infecting over 10 contacts. We modelled regular (1-, 3-, and 7-day frequency) and pre-event lateral flow testing (before meeting >10, >20, >50 others) to determine the comparative effectiveness of rapid testing to control transmission. We considered three indicative timepoints before (BBC Pandemic) and during (1st lockdown (March-June) and the reopening of schools (September 2020)) the pandemic, and varied the rate of uptake or adherence to the specified policy. For pre-pandemic levels of contacts, uptake must exceed 60% to reduce  $R$  below 1 if testing daily and must be above 80% if testing every 3 days, but even 100% uptake will not reduce  $R$  below 1 if testing weekly (Figure 5A). For lockdown levels of contacts, testing does not appreciably reduce  $R$  below its already low level. For contact rates equivalent to those under relaxed restrictions with schools open, testing every 3 days will reduce  $R$  below 1 if uptake exceeds 50% (Figure 5A). Pre-event testing acts similarly, with high uptake necessary to reduce  $R$  below 1 for pre-pandemic levels of contact, but is effective in reducing  $R$  below 1 even if testing only when attending events with more than 20 others for moderate levels of adherence during relaxed restrictions with schools open (Figure 5B). Both regular testing and pre-event testing reduce the rate of superspreading as defined as the proportion of individuals infecting over 10 others; however, there is also a substantial increase in the proportion of individuals that infect no one. This results in a decrease in  $k$  (greater overdispersion in the secondary infection distribution) (Figure 5).



**Figure 5: Effect of testing on  $R$ ,  $k$ , and the proportion infecting over 10 or 0 others for varying levels of uptake/adherence and background contact rates. A. Regular testing. B. Pre-event testing.**



## Discussion

Using an individual-based model incorporating viral load trajectories and reported daily contacts, we find that we can reconstruct secondary infection distributions for SARS-CoV-2 from first principles over the course of the pandemic in the UK in 2020, closely matching contemporaneous estimates. Daily contact rates became both lower on average (from  $\sim 12$  per day to  $\sim 6$  per day) and more overdispersed during the pandemic in the UK in 2020 as some individuals maintained high contact rates (e.g., essential workers) while others had their number of daily contacts reduced to zero (those working from home). This drove a decrease in the mean number of secondary infections per infected individual (reproduction number), but an increase in the dispersion in the reproduction number. Our estimates of the degree of overdispersion in the reproduction number are similar to those reported by other authors, which are mostly between 0.3 and 0.6<sup>16,18</sup>.

Contact heterogeneity was found to contribute more to superspreading than heterogeneity in viral load, as the number of contacts an individual makes places an upper limit on the number of people they can infect, and, despite some individuals having much higher infectious potential than others, most infected individuals pass through a high viral load period, with  $>80\%$  estimated to have viral loads capable of infecting many others on at least one day of their infection. This indicates that superspreading is likely more a case of “wrong place, wrong time” than “wrong person”. Hence if reductions in contact rates can be targeted specifically at infected individuals during this window of high infectivity (e.g., by daily testing of their contacts<sup>19</sup>) then this may result in reductions in transmission while minimising the burden of quarantine. Other studies investigating the superspreading nature of SARS-CoV-2, such as that of Goyal et al.<sup>3</sup> have come to similar conclusions. Our study differs in that we investigate the impact of changes in contact heterogeneity using real-world contact distributions from before and during the pandemic and estimate infectiousness and LFT detectability using linked data analyses<sup>13</sup>. Our use of reported heterogeneity in viral load trajectories<sup>12</sup> also contributes to a wider estimated distribution for the number of days individuals are likely infectious, which closely matches empirical daily sampling<sup>6</sup> and human challenge studies<sup>5</sup>.

We hypothesised that lateral flow testing, by detecting individuals with high viral loads when they were most infectious, would reduce transmission through reducing the potential for superspreading. This manifested as a decrease in the proportion infecting over 10 others and a substantial increase in the proportion infecting zero others. This, perhaps counter-intuitively, resulted in a decrease in  $k$  as the relative increase in those infecting zero others exceeded the decrease in those infecting many others (here, over 10 others). Hence, assessment of superspreading solely via the metric of the overdispersion parameter  $k$  may conceal changes in both the upper and lower tail of the secondary infection distribution. Both regular testing and pre-event testing were effective in reducing  $R$  given high enough frequency or a low enough event size threshold, respectively, as long as uptake or adherence was high. Testing had the highest relative impact on transmission when contact rates were high (e.g., at pre-pandemic levels) as there were more potentially preventable exposures, meaning rapid testing could reduce  $R$  below the growth threshold of 1 while otherwise maintaining relatively normal contact rates. In contrast, testing during lockdown would have less impact as  $R$  was already below 1. This indicates that testing could be an effective, minimally disruptive intervention to reduce transmission if uptake/adherence could be maximised through incentivising use.

Our analysis has some limitations. The CoMix contact survey was designed to be comparable to previous contact surveys in the UK, namely the BBC Pandemic<sup>7,8,14</sup> and POLYMOD<sup>10</sup> surveys. However, previous surveys required participants to list contacts individually to include other information such as contact age, sex, occupation, meaning that it was difficult to include mass contacts such as those made at a large gathering, thus truncating the true contact distribution. From 18 May 2020 the CoMix survey introduced the option to record mass contacts as a count rather than listing each contactee in a separate entry. This means pre- and early pandemic contact distributions are not directly comparable to those conducted later. However, we conducted a sensitivity analysis to

check how this could impact our estimates of numbers of secondary infections, by imputing a heavier tail for the BBC Pandemic contact distribution based on the tails of the contact distributions during periods of relaxed restrictions in the CoMix survey, and observed only a small increase in our estimate of  $R_0$  and a small reduction in  $k$ . We assume that the probability of shedding infectious virus is equal to the probability of culturing virus, which in turn is dependent on intra-host viral load kinetics over the course of infection<sup>13,20</sup>. We focus on an index case and their infections in one other generation, which may underestimate second order effects that considering a full contact network structure would capture<sup>6</sup>. We do not consider other interventions that may have an additional impact on  $R$ , such as vaccination, contact tracing, or self-isolation upon symptom onset. We also do not consider the impact of variants with increased transmissibility, and hence limit our analysis to 2020 before the widespread emergence of Variants of Concern such as Alpha, Delta, and Omicron. We assumed within-household contacts for each individual were the same each day, whereas out-of-household contacts were sampled randomly for each individual per day, which may underestimate the overall contact rates and hence infection potential of specific individuals. We assume that self-isolating individuals are unable to fully self-isolate from their household members as reported by the majority of those surveyed by the ONS in England in April 2021<sup>21</sup>; further decreases in  $R$  may be possible if self-isolating individuals isolate themselves from household members.

Our results suggest superspreading for SARS-CoV-2 can be best explained as a random sample from the tail of the contact and shedding distribution: it occurs when an infected individual makes a high number of contacts during a highly infectious period lasting approximately 2 days on average, with over 80% of infected individuals being sufficiently infectious on at least one day to be capable of causing a superspreading event, given they make a high number of contacts. Changes in the number of contacts observed throughout the pandemic in the CoMix contact survey were able to explain changes in the reproduction number, with contact rates becoming more heterogeneous during the pandemic given lockdowns and changes in working practices. For future pandemics, regular or pre-event lateral flow testing may be an efficient way to target individuals when most infectious and hence minimise the burden of non-pharmaceutical interventions while maximising reduction in transmission rates, provided uptake is moderate to high.

## Methods

### Contact data

#### BBC Pandemic survey

The BBC Pandemic contact survey was conducted between September 2017 and December 2018 as part of a BBC Four documentary and involved over 40,000 participants (full details are published elsewhere<sup>7,8</sup>). Participants used an app to record their personal basic demographic information and the number of social contacts they made during the previous 24-hour period, as well as information such as the contact's age, type of interaction, and setting (home, work, school, other).

#### CoMix survey

The CoMix survey was a behavioural survey launched on 24th of March 2020 to gather social and behavioural data to aid the response to the COVID-19 pandemic. The contact survey was based on the POLYMOD contact survey<sup>10</sup>. The sample was broadly representative of the UK adult population. Participants were invited to respond to the survey once every two weeks. Weekly data was collected by running two alternating panels. Parents completed the survey on behalf of children (17 years old or younger). Participants recorded direct, face-to-face contacts made on the previous day, specifying certain characteristics for each contact including the age and sex of the contact, whether contact was physical (skin-to-skin contact), and where contact occurred (e.g. at home, work, while undertaking leisure activities, etc.). Full details have been published elsewhere<sup>9</sup>.

From the 24th May 2020 onwards, the CoMix survey included the ability to record an estimated mass contacts count in situations where it would be infeasible to record the detailed information of all contacts made, such as large gatherings. Since the BBC Pandemic survey did not include this option, and this potentially truncated the true contact distribution, we conducted a sensitivity analysis of the effect on  $R$  and  $k$  of imputing a heavier tail for the BBC Pandemic contact distribution. We did this by fitting a negative exponential distribution to the number of individuals reporting over 250 contacts in relaxed restrictions time periods ("Relaxed restrictions", "School reopening" and "Step 2 + schools") from the CoMix data and sampling proportionally from this distribution for the BBC Pandemic contacts.

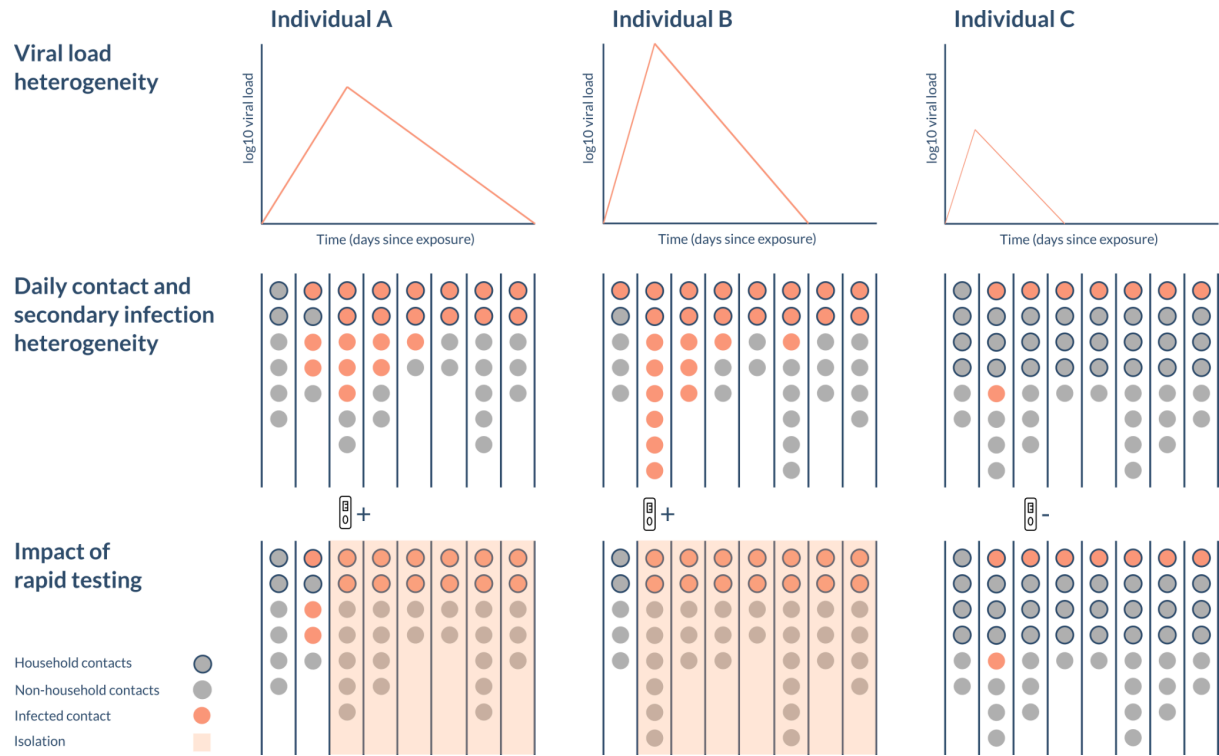
## Analysis of social contact data

We calculated the percentage of participants reporting more than 5, 10, 20, 50, 100, and 200 contacts in the 24-hour period prior to filling in the survey for nine indicative time periods between March 2020 and May 2021 representing different levels of restrictions (as defined in previous work<sup>9,11</sup>).

We compared contact distributions (overall and stratified by household/out of household) for the BBC Pandemic survey (here referred to as Pre-pandemic) and CoMix surveys<sup>9,11</sup>. For plotting contact distributions, we calculated the percentage of participants in each time period who reported a certain number of contacts to account for differences in numbers of participants per time period. We fitted negative binomial distributions to numbers of daily contacts in the different time periods to estimate the mean and dispersion of the contact distributions.

## Reconstruction of secondary infection distribution

To predict the distribution of individual-level transmission at different points in time, we simulated 10,000 individual respiratory viral load trajectories of index cases over the course of infection as a piecewise function defined by a proliferation phase (days from exposure to peak), a clearance phase (days from peak to cessation) and a peak viral load, with these three parameters drawn from distributions given in Kissler et al. 2021<sup>12</sup> (Figure 6). Viral load (in cycle threshold (Ct) units) was assumed to be Ct 40 (negative) at exposure and cessation of shedding, with a peak viral load of Ct 20.2 (95% CI: 18.7, 21.7). All parameters were assumed to be normally distributed. We then estimated the probability of infectiousness for a given viral load (in Ct) by fitting a logistic regression model to the probability of culturing virus at that viral load<sup>13</sup>, producing an infectiousness trajectory (Figure 2).



**Figure 6: Schematic of the model.** The viral load and number of daily contacts (circles) varies from person to person and over time, influencing the number of secondary infections (stratified by household (outlined) and non-household (no outline)) they generate. The viral load at time of testing also determines the likelihood they will test positive and subsequently isolate.

To simulate secondary infections, we first randomly sampled a number (and duration) of contacts from empirical contact distributions (the BBC Pandemic contact survey<sup>7,8,14</sup> and CoMix contact survey<sup>9</sup>) such that each index case had a certain number of household contacts and certain number of daily non-household contacts (work, school and “other” contacts). Each household and non-household contact had a duration, defined as the proportion of a 24-hour period spent at home or outside of the home respectively, also independently sampled from the CoMix survey (Figure S2). Household contacts were sampled once per index case, whereas non-household contacts were sampled daily. The infection process for each contact was modelled as Bernoulli with the probability of infection equal to the infectiousness of the index case on the day of contact multiplied by the duration of contact (see Supplementary Material for further details). We assumed uniform susceptibility of individuals in the model which does not vary by, for example, age.

We then estimated the corresponding  $R$  (mean number of secondary infections) and  $k$  (overdispersion in the number of secondary infections) by fitting a negative binomial distribution to the numbers of secondary infections across all individuals. 95% percentile bootstrap confidence intervals (CIs) for the  $R$  and  $k$  estimates were calculated by bootstrapping the simulated numbers of secondary infections with 1000 bootstrap samples, calculating  $R$  and  $k$  for each bootstrap sample and then finding the 2.5 and 97.5 percentiles of the distributions of the bootstrap estimates.

## Simulation of interventions

We estimated the impact of regular testing every 3 days with LFTs, with detection calculated by fitting a logistic regression model to the probability of detection with LFTs given viral load<sup>13</sup>, and individuals self-isolating at home upon their first positive test (i.e, we reduced the number of work, school and casual contacts to zero after the date of the positive test while leaving home contacts unchanged).

The code and data for this study can be found at [https://github.com/bquilty25/superspreading\\_testing](https://github.com/bquilty25/superspreading_testing).

## References

1. Endo, A., Centre for the Mathematical Modelling of Infectious Diseases COVID-19 Working Group, Abbott, S., Kucharski, A. J. & Funk, S. Estimating the overdispersion in COVID-19 transmission using outbreak sizes outside China. *Wellcome Open Res.* **5**, 67 (2020).
2. Chen, P. Z. *et al.* Heterogeneity in transmissibility and shedding SARS-CoV-2 via droplets and aerosols. *eLife* **10**, e65774 (2021).
3. Goyal, A., Reeves, D. B., Cardozo-Ojeda, E. F., Schiffer, J. T. & Mayer, B. T. Viral load and contact heterogeneity predict SARS-CoV-2 transmission and super-spreading events. *eLife* **10**, e63537 (2021).
4. Susswein, Z. & Bansal, S. Characterizing superspreading of SARS-CoV-2 : from mechanism to measurement. *medRxiv* 2020.12.08.20246082 (2020) doi:10.1101/2020.12.08.20246082.
5. Killingley, B. *et al.* Safety, tolerability and viral kinetics during SARS-CoV-2 human challenge. Preprint at <https://doi.org/10.21203/rs.3.rs-1121993/v1> (2022).
6. Ke, R. *et al.* Daily longitudinal sampling of SARS-CoV-2 infection reveals substantial heterogeneity in infectiousness. *Nat. Microbiol.* **7**, 640–652 (2022).
7. Klepac, P., Kissler, S. & Gog, J. Contagion! The BBC Four Pandemic - The model behind the documentary. *Epidemics* **24**, 49–59 (2018).
8. Klepac, P. *et al.* *Contacts in Context: Large-Scale Setting-Specific Social Mixing Matrices from the BBC Pandemic Project.* <http://medrxiv.org/lookup/doi/10.1101/2020.02.16.20023754> (2020) doi:10.1101/2020.02.16.20023754.
9. Jarvis, C. I. *et al.* Quantifying the impact of physical distance measures on the transmission of COVID-19 in the UK. *BMC Med.* **18**, 124 (2020).
10. Mossong, J. *et al.* Social Contacts and Mixing Patterns Relevant to the Spread of Infectious Diseases. *PLOS Med.* **5**, e74 (2008).
11. Gimma, A. *et al.* Changes in social contacts in England during the COVID-19 pandemic between March 2020 and March 2021 as measured by the CoMix survey: A repeated cross-sectional study. *PLoS Med.* **19**, e1003907 (2022).
12. Kissler, S. M. *et al.* Viral dynamics of acute SARS-CoV-2 infection and applications to diagnostic and public health strategies. *PLOS Biol.* **19**, e3001333 (2021).
13. Pickering, S. *et al.* Comparative performance of SARS-CoV-2 lateral flow antigen tests and association with detection of infectious virus in clinical specimens: a single-centre laboratory

- evaluation study. *Lancet Microbe* **2**, e461–e471 (2021).
14. Kucharski, A. J. *et al.* Effectiveness of isolation, testing, contact tracing, and physical distancing on reducing transmission of SARS-CoV-2 in different settings: a mathematical modelling study. *Lancet Infect. Dis.* S1473309920304576 (2020) doi:10.1016/S1473-3099(20)30457-6.
  15. Davies, N. G. *et al.* Effects of non-pharmaceutical interventions on COVID-19 cases, deaths, and demand for hospital services in the UK: a modelling study. *Lancet Public Health* **5**, e375–e385 (2020).
  16. Kremer, C. *et al.* Quantifying superspreading for COVID-19 using Poisson mixture distributions. *Sci. Rep.* **11**, 14107 (2021).
  17. Frieden, T. R. & Lee, C. T. Identifying and Interrupting Superspreading Events—Implications for Control of Severe Acute Respiratory Syndrome Coronavirus 2. *Emerg. Infect. Dis.* **26**, 1059–1066 (2020).
  18. Lau, M. S. Y. *et al.* Characterizing superspreading events and age-specific infectiousness of SARS-CoV-2 transmission in Georgia, USA. *Proc. Natl. Acad. Sci.* **117**, 22430–22435 (2020).
  19. Quilty, B. J. *et al.* Quarantine and testing strategies in contact tracing for SARS-CoV-2: a modelling study. *Lancet Public Health* (2021) doi:10.1016/S2468-2667(20)30308-X.
  20. Ke, R. *et al.* Daily Sampling of Early SARS-CoV-2 Infection Reveals Substantial Heterogeneity in Infectiousness. <http://medrxiv.org/lookup/doi/10.1101/2021.07.12.21260208> (2021) doi:10.1101/2021.07.12.21260208.
  21. Office for National Statistics. Coronavirus and self-isolation after testing positive in England. <https://www.ons.gov.uk/peoplepopulationandcommunity/healthandsocialcare/healthandwellbeing/bulletins/coronavirusandselfisolationaftertestingpositiveinengland/8to13march2021> (2021).
  22. Kissler, S. M. *et al.* Densely sampled viral trajectories suggest longer duration of acute infection with B.1.1.7 variant relative to non-B.1.1.7 SARS-CoV-2. 2021.02.16.21251535 Preprint at <https://doi.org/10.1101/2021.02.16.21251535> (2021).

## Acknowledgements

The authors acknowledge funding from the Medical Research Council (MC\_PC\_19065 - WJE); European Commission (EpiPose 101003688 - KLMW, AG, WJE); NIHR (CV220-088 - COMIX; 16/137/109 - BJQ, 16/136/46 - BJQ); Bill & Melinda Gates Foundation (OPP1139859 - BJQ); Wellcome Trust (206250/Z/17/Z - AJK, LACC; WT098049AIA - SJDN); NIHR HPRU in Modelling & Health Economics (NIHR200908 - AJK, LACC); King's Together Rapid COVID-19 Call - SJDN, RPG; Huo Family Foundation Award - SP, SJDN.

## Ethics

This study only involved secondary analysis of publicly available contact survey data and SARS-CoV-2 viral load data. Secondary analysis of this data was approved by the London School of Hygiene and Tropical Medicine Observational Research Ethics Committee (ref 14400 and ref 21795).