

# 1 Investigating chromosomal radiosensitivity in inborn errors of 2 immunity: insights from DNA repair disorders and beyond.

3 Elien Beyls<sup>1,2,3,†</sup>, Evi Duthoo<sup>1,2,3,6,†</sup>, Lynn Backers<sup>1,4,5,6</sup>, Karlien Claes<sup>1,2</sup>, RAPID clinicians, Marieke De  
4 Bruyne<sup>4,5</sup>, Lore Pottie<sup>4,5</sup>, Victoria Bordon<sup>7</sup>, Carolien Bonroy<sup>8,9</sup>, Simon J Tavernier<sup>1,2,4,10,11</sup>, Kathleen BM  
5 Claes<sup>4,5,6</sup>, Anne Vral<sup>6,12</sup>, Ans Baeyens<sup>6,12,‡</sup>, Filomeen Haerynck<sup>1,2,13,‡\*</sup>

6 <sup>1</sup>Primary Immunodeficiency Research Lab (PIRL), Department of Internal Medicine and Pediatrics, Ghent University, Ghent,  
7 Belgium

8 <sup>2</sup>Center for Primary Immunodeficiency, Jeffrey Modell Diagnosis and Research Center, Ghent University Hospital, Ghent,  
9 Belgium

10 <sup>3</sup>Department of Human Structure and Repair, Ghent University, Ghent, Belgium

11 <sup>4</sup>Center for Medical Genetics, Ghent University Hospital, Ghent, Belgium

12 <sup>5</sup>Department of Biomolecular Medicine, Ghent University, Ghent, Belgium

13 <sup>6</sup>Cancer Research Institute Ghent (CRIG), Ghent University Hospital, Ghent, Belgium

14 <sup>7</sup>Oncology and Stem Cell Transplantation expert Center, Department of Pediatric Hematology, Ghent University Hospital,  
15 Ghent, Belgium

16 <sup>8</sup>Department of Diagnostic Sciences, Ghent University, Ghent, Belgium

17 <sup>9</sup>Department of Laboratory Medicine, Ghent University Hospital, Ghent, Belgium

18 <sup>10</sup>Department of Biomedical Molecular Biology, Ghent University, Ghent, Belgium

19 <sup>11</sup>Unit of Molecular Signal Transduction in Inflammation, VIB-UGent Center for Inflammation Research, Ghent, Belgium

20 <sup>12</sup>Radiobiology Lab, Department of Human Structure and Repair, Ghent University, Ghent, Belgium

21 <sup>13</sup>Department of Pediatric Respiratory and Infectious Medicine, Ghent University Hospital, Ghent, Belgium

22 † These authors are co-first authors and contributed equally to this work

23 ‡ These authors share last authorship

24

## 25 **RAPID clinicians**

26 T. Kerre, B. Lambrecht, L. Hoste, B. Meertens, T. Van Genechten, A. Ferster, K. Vanden Driessche, C. De Vriendt,  
27 L. Dedeken, I. Moors, C. Dhooge, L. Kornreich, C. Heijmans, M. Le Roux, M. Colard, A. Van Damme, K. Van  
28 Schil, B. De Wilde

29

## 30 **\*Correspondence**

31 Email: [Filomeen.Haerynck@UGent.be](mailto:Filomeen.Haerynck@UGent.be)

32

## 33 **Key words**

34 Radiosensitivity, human inborn errors of immunity (IEI), micronucleus assay, DNA repair

NOTE: This preprint reports new research that has not been certified by peer review and should not be used to guide clinical practice.

35 **ABSTRACT**

36 Human inborn errors of immunity (IEI) represent a diverse group of genetic disorders affecting the  
37 innate and/or adaptive immune system. Some IEI entities comprise defects in DNA repair factors,  
38 resulting in (severe) combined immunodeficiencies, bone marrow failure, predisposition to  
39 malignancies, and potentially result in radiosensitivity (RS). While other IEI subcategories such as  
40 common variable immunodeficiency (CVID) and immune dysregulation disorders also associate with  
41 lymphoproliferative and malignant complications, the occurrence of RS phenotypes in the broader IEI  
42 population is not well characterized. Nonetheless, identifying RS in IEI patients through functional  
43 testing is crucial to reconsider radiation-related therapeutic protocols and to improve overall patient  
44 management. This study aimed to investigate chromosomal RS in a diverse cohort of 107 IEI patients  
45 using the G0 cytokinesis-block micronucleus (MN) assay. Our findings indicate significant variability  
46 in RS across specific genetic and phenotypical subgroups. Severe RS was detected in all ataxia-  
47 telangiectasia (AT) patients, a FANCI deficient and ERCC6L2 deficient patient, but not in any other IEI  
48 patient included in this cohort. Age emerged as the single influencing factor for both spontaneous and  
49 radiation-induced MN yields, while the manifestation of additional clinical features, including infection  
50 susceptibility, immune dysregulation, or malignancies did not associate with increased MN levels. Our  
51 extensive analysis of RS in the IEI population underscores the clinical importance of RS assessment in  
52 AT patients and supports RS testing in all IEI patients suspected of having a DNA repair disorder  
53 associated with radiosensitivity.

## 54 INTRODUCTION

55 Human inborn errors of immunity (IEI) encompass a diverse group of 485 disease-causing gene defects  
56 which are categorized into 10 subgroups (I-X) according to the International Union of Immunological  
57 Societies (IUIS). These subgroups comprise a range of overlapping clinical and immunological features  
58 including increased susceptibility to infections, autoimmunity, allergy, autoinflammatory diseases, and  
59 bone marrow failure. Additionally, IEIs often associate with lymphoproliferative disorders and early  
60 incidence of malignancy, primarily of lymphoid origin [1–4]. Despite advancements in diagnostic  
61 algorithms and next generation sequencing [5–7], the molecular diagnostic rate remains low due to  
62 individual rarity and heterogeneity of IEIs [8,9]. Nonetheless, early diagnosis is crucial for appropriate  
63 treatment and management, preventing life-threatening complications, and improving patient outcome  
64 [10].

65 For some IEI entities, the immunodeficiency is caused by a genetic defect in one of the DNA damage  
66 response (DDR) factors. While DNA double strand break (DSB) repair pathways are crucial for  
67 preserving genomic integrity against exogenous damage like ionizing radiation (IR), similar  
68 mechanisms are also utilized under normal physiological conditions. Development and diversification  
69 of the adaptive immune system relies on V(D)J recombination and class switch recombination (CSR),  
70 two somatic processes that require DSB repair. Depending on the DSB repair factors involved, IEI  
71 patients display a variable degree of clinical features, including a syndromic appearance, increased  
72 cancer predisposition, neurological deficits, and radiosensitivity (RS) [11–13]. Deficiencies in core  
73 components of the non-homologous end-joining (NHEJ) DSB repair pathway, such as Artemis and DNA  
74 ligase IV, are linked to severe combined immunodeficiency (SCID, group I) and RS [14,15]. The most  
75 radiosensitive syndromes result from defects in ataxia-telangiectasia mutated (*ATM*) and Nijmegen  
76 breakage syndrome 1 (*NBS1*) (categorized as syndromic combined immunodeficiencies (CID), group  
77 II) and both encode factors implicated in the initiation and coordination of DSB signaling, as well as  
78 homologous recombination (HR) repair [16].

79 Therapeutic and monitoring procedures, including diagnostic imaging, often involve the use of radiation  
80 or other genotoxic agents. However, radiosensitive IEI patients face an increased risk for adverse  
81 reactions towards conventional radiotherapy and conditioning regimens for hematopoietic stem cell  
82 transplantation (HSCT). Adapted therapeutic protocols are widely recognized for their ability to limit  
83 these severe radiation-induced toxicities and enhance overall patient prognosis [17–19]. Assessing the  
84 RS status of patients with a suspected DNA repair disorder through functional testing is thus highly  
85 recommended to guide the deliberate use of DSB-inducing agents [17,20]. Moreover, even with a  
86 definitive molecular diagnosis, functional RS testing remains important in DNA repair disorders [20].  
87 Prediction of the radiation response based solely on the affected DNA repair gene is still challenging as  
88 mildly impacting variants (e.g. leaky SCID, variant AT) may result in variable expression of clinical  
89 features, including the RS phenotype [21–24]. Moreover, progressive implementation of genetic testing  
90 continuously uncovers variants in novel IEI-causing genes. In these diseases, RS may not have been  
91 recognized as a phenotypic component [25–28].

92 Interestingly, a few reports have described increased *in vitro* RS in IEI disorders beyond the well-known  
93 DSB repair syndromes. RS was suggested as a potential disease characteristic in ARPC1B deficiency,  
94 LRBA deficiency, and hyper-IgM syndromes, including AID and CD40LG deficiency [29–32]. An  
95 increase in RS was also reported in patients with genetically undefined common variable  
96 immunodeficiency (CVID, group III), although the underlying mechanism remains unknown [33–36].

97 Of note, an excess risk of lymphoproliferation and malignant diseases was documented for these  
98 phenotypic subgroups.

99 This study aimed to comprehensively analyze chromosomal RS across a diverse spectrum of IEI patients  
100 using the standard G0 cytokinesis-block micronucleus (MN) assay, which primarily evaluates NHEJ-  
101 dependent DSB repair. In addition to inclusion of patients with genetically confirmed DNA repair  
102 defects, we focused on the following specific diagnostic categories: SCID, syndromic CID, CVID with  
103 lymphoproliferative or malignant disease, and bone marrow failure (BMF). Here, we present the largest  
104 study to date exploring RS testing in IEIs beyond DNA repair syndromes, validating its clinical  
105 importance in diagnosing IEI patients.

## 106 MATERIALS & METHODS

### 107 Study approval

108 This study was reviewed and approved by the Ethics Committee of the Ghent University Hospital  
109 (reference no. 2012/593, 2019/0461, and 2019/1565). Written informed consent was obtained from all  
110 participants in this study, in accordance with the 1975 Helsinki Declaration.

### 111 Study design and patient population

112 From January 2018 till March 2024, chromosomal RS was assessed in a cohort of patients with IEI at  
113 the Radiobiology Lab, Department of Human Structure and Repair, Ghent University (Belgium). RS  
114 testing was initially performed on IEI patients from Ghent University Hospital and was subsequently  
115 expanded to include patients from other Belgian hospitals. Both pediatric and adult ( $\geq 18$  years) patients  
116 were included, identified with either a genetically or clinically confirmed IEI. Criteria provided by the  
117 European Society for Immunodeficiency (ESID) were used to establish a definite IEI diagnosis [37]. IEI  
118 patients were categorized into 10 subgroups (I-X) based on the IUIS phenotypical classification [2].  
119 Patients were deemed not eligible for inclusion in the following cases: SCID patients with a maternal T  
120 cell engraftment and patients for whom an insufficient yield of binucleated (BN) cells were obtained  
121 upon MN scoring. Patients for whom an IUIS classification could not be determined due to insufficient  
122 available clinical information were also excluded. We additionally included healthy relatives carrying a  
123 heterozygous (likely) pathogenic variant in a known DNA repair gene.

124 Retrospective collection of demographic and clinical information for all patients included age at blood  
125 sampling for RS analysis, sex, age at onset of IEI symptoms, infection susceptibility, autoimmunity  
126 (autoimmune cytopenias, organ specific and systemic autoimmune diseases), and benign  
127 lymphoproliferation (overactivation of lymphoid organs: lymphadenopathies, splenomegaly, and  
128 hepatomegaly) as immune dysregulation phenotypes, consanguinity, and history of malignancy. During  
129 the time course of the study, information on the occurrence of malignancies or HSCT therapy post-RS  
130 testing was also collected. Information on concurrent therapies (e.g. immunoglobulin replacement  
131 therapy or immunosuppressive treatment) at the time of blood sampling was not recorded.

### 132 Genetic analysis

133 EDTA blood was drawn from the patients (and relatives) for DNA extraction and downstream molecular  
134 studies using the MagCore® Genomic DNA Large Volume Whole Blood Kit (RBC Bioscience, Code  
135 104) according to the manufacturer's protocols. For the generation of whole exome sequencing (WES)  
136 data, we applied the SureSelectXT Human All Exon V7 (Agilent Technologies) or KAPA HyperExome  
137 V1 (Roche) kits for target enrichment. Sequencing was performed on HiSeq 3000 or Novaseq 6000  
138 (Illumina).

139 The BWA-MEM 0.7.17 algorithm was used for read mapping against the human genome reference  
140 sequence (NCBI, GRCh38/hg38), duplicate read removal, and variant calling. Variant calling and  
141 filtering were performed using our in house developed analysis platform Seqplorer, a graphical web  
142 interface that executes SQLite Gemini queries on an underlying database through straightforward  
143 dropdown menus and presents the results in a clear manner (<https://github.ugent.be/cmvg/seqplorer>).  
144 The position of the called variants was based on NCBI build GRCh38. Nucleotide numbering was  
145 according to the Human Genome Variation Society guidelines (HGVS). Potential copy number variants

146 (CNV) of exons or entire genes were called using ExomeDepth, an algorithm which uses exome data to  
147 detect read depth differences, and an in-house developed script [38]. Variants are classified using an in  
148 house developed tool based on the ACMG [39] and ACGS [40] guidelines in the following classes: class  
149 1 = benign, class 2 = likely benign (>95% certainty that variant is benign), class 3 = variant of unknown  
150 significance, class 4 = likely pathogenic (>90% certainty that variant is pathogenic) and class 5 =  
151 pathogenic.

### 152 **Radiosensitivity assessment by the G0 cytokinesis-block micronucleus assay**

153 A standard protocol for the G0 MN assay was used, as described previously (for a detailed protocol: see  
154 Supplementary Materials and Fig. S1) [41]. A group of 50 adult healthy individuals (38% male, median  
155 age 32 years, age range of 22-58 years) was recruited to constitute reference values for RS classification  
156 of IEI patients. In this study, we defined the criterium for chromosomal instability as spontaneous MN  
157 yields (0 Gy) exceeding the mean + 3SD of the reference healthy control group. To determine radiation-  
158 induced MN values, spontaneous MN yields were subtracted from the MN values after 0.5 Gy and 1 Gy  
159 irradiation. RS classification was based on the results of the 1 Gy radiation dose. Patients for whom the  
160 1 Gy radiation-induced MN yields exceeded the mean + 3SD threshold of the reference healthy control  
161 group were considered as ‘severe radiosensitive’. ‘Intermediate radiosensitivity’ was indicated when  
162 these MN yields ranged between the mean +2SD and +3SD threshold. Patients with MN yields below  
163 the mean + 2SD threshold were designated as ‘not radiosensitive’. RS classification was based on the  
164 first sampling in all cases, although for some patients a second sample was obtained to investigate the  
165 reproducibility of the assay.

### 166 **Statistical analysis**

167 Data were analyzed using GraphPad Prism Software (version 10). Spearman’s r was used to test  
168 correlation of variables. Associations of clinical parameters with differential MN yields were assessed  
169 by excluding patients with a confirmed defect in one of the DNA DSB repair-related genes. A two-tailed  
170 t-test or a Mann-Whitney test was used for these analyses, in accordance with the normality assumption.  
171 Statistical significance was set at  $p < 0.05$ .



## 172 RESULTS

173 *Personally identifiable patient information was redacted in accordance with medRxiv requirements.*

### 174 Study population characteristics

175 IEI patients across all different IUIS subgroups were included, except autoinflammatory disorders  
176 (group VII) and complement deficiencies (group VIII). Predominantly antibody deficiencies (PAD)  
177 (IUIS group III) (n = 30, 28%) was the most common IUIS category (Table 1 and Fig. 1). Twenty-three  
178 patients (21%) were classified as CID with associated or syndromic features (group II), and 24 (22%)  
179 as BMF (group IX). The global male-to-female ratio was 1.02, with a median age of 15 years (range: 4  
180 months to 61 years). Out of 107 patients, 69 (64%) were younger than 18 years at the time of RS testing.  
181 Consanguinity in the parents was recorded for a minority of the patients (n = 8, 7%). Most patients  
182 displayed an early childhood-onset of IEI symptoms: 21 (20%) before the age of one and 57 (53%)  
183 between 1-10 years of age. First symptoms started after 20 years of age for 27 patients (25%). Recurrent  
184 infections were common (n = 72, 67%) in all IUIS categories, except group IX. Notably, signs of  
185 immune dysregulation were noted in 42 patients (39%), categorized in groups I, II, III, IV, VI, and IX.  
186 Thirty-three (31%) and 18 (17%) patients suffered from autoimmunity and lymphoproliferation,  
187 respectively. Seventeen (16%) patients underwent hematopoietic stem cell transplantation (HSCT) post-  
188 RS testing, while a history of malignancy was recorded for 21 (20%) patients. The malignant neoplasms  
189 were primarily of hematological origin and included nephroblastoma (n = 1), Hodgkin lymphoma (n =  
190 4), non-Hodgkin lymphoma (n = 4), leukemia (n = 3), and myelodysplastic syndrome (n = 9) (Table  
191 S1). Further details of the cohort are provided in Table 1 and Fig. 1.

192 A definitive genetic diagnosis was obtained for 45 patients (42%), either prior to RS testing or during  
193 follow-up. The diagnostic yield was particularly low in groups III and IX (Table 1 and Fig. 1). We  
194 identified 52 pathogenic variants across 21 distinct IEI-related genes, including 18 novel variants (not  
195 reported in ClinVar). Five out of these 21 genes are well-described to be implicated within one of the  
196 DNA DSB repair pathways [20], affecting a total of 18 patients. Within group II, 9 patients harbored  
197 biallelic defects in *ATM* and two harbored biallelic alterations in *BLM* [42]. Biallelic inactivation was  
198 detected in 5 patients of group IX (BMF): *FANCA* (n = 3), *FANCI* (n = 1), or *ERCC6L2* (n = 1). Several  
199 other IEI-causing variants were identified more than once: *LRBA* (n = 5), *IKZF1* (n = 6) [43], *SBDS* (n  
200 = 3), *RNU4ATAC* (n = 2) [44], and *STAT3* (gain-of-function, GOF) (n = 2). The remaining 11 genetic  
201 disorders were found in single cases, involving pathogenic variants in *IRAK4*, *NFKB1*, *PIK3CD* (GOF),  
202 *USB1*, *TTC37*, *UNC13D*, *SLC46A1*, *ADA*, *RMRP*, *WAS* (loss-of-function, LOF), and *CD40LG*. Full  
203 details regarding all identified variants are provided in Tables S2-8. Additionally, RS analysis was  
204 performed for 12 healthy heterozygous *ATM* carriers (Table S9), and three healthy heterozygous  
205 relatives of an Artemis patient (*DCLRE1C*), previously described by Strubbe et al. [45].

### 206 Evaluation of chromosomal instability and radiosensitivity within the total IEI cohort

207 Spontaneous and radiation-induced MN yields for 1 Gy are presented for the entire healthy control and  
208 IEI patient population, together with the threshold MN values for chromosomal instability and  
209 chromosomal RS (Fig. 2a). Next to IUIS group I (immunodeficiencies affecting cellular and humoral  
210 immunity), groups II (CID with syndromic features) and IX (BMF) are well-known to encompass  
211 monogenetic disorders of the DNA DSB repair pathways [3]. Among the 12 patients with elevated  
212 spontaneous MN values, one was categorized in group I, 9 in group II, and two in group III (PAD).  
213 Analysis of radiation-induced MN scores showed that chromosomal RS was absent in the majority of  
214 the patients (n = 92, 86%) (Fig. 2a). Intermediate RS was found in 4 patients: one patient in groups I, II,

215 IV (diseases of immune dysregulation), and IX. Eleven patients were considered as severe  
216 radiosensitive, of which 9 were categorized in group II and two in group IX. Importantly, none of the  
217 healthy controls exceeded the mean + 3SD threshold for 0 Gy or the mean + 2SD threshold for both  
218 radiation doses (Fig. 2a and Fig. S2a). For all doses, the coefficients of variation (CV) of the reference  
219 MN values were in accordance with those previously reported for healthy individuals (Table 2) [46,47].  
220 When considering all healthy controls and patients together, a moderate but significant correlation  
221 ( $r = 0.60$ ,  $p < 0.0001$ ) was observed between the radiation-induced MN yields of 0.5 Gy and 1 Gy (Fig.  
222 S2b). Given that the comparison between the two radiation doses did not reveal major discrepancies, a  
223 single dose (1 Gy) can be effectively used for RS classification.

224 To investigate the reproducibility of the categorization of chromosomal instability and RS used in this  
225 study, a second sample was analyzed for 11 healthy controls, 3 heterozygous carriers, and 12 patients  
226 (Fig 2b and Fig. S2c). For all examined healthy controls ( $n = 11$ ) and heterozygous mutation carriers ( $n$   
227  $= 3$ ), repeated sampling confirmed the absence of chromosomal instability or RS phenotypes (Fig. 2b).  
228 Of the 12 retested IEI patients, interpretation of chromosomal instability was inconsistent for 4 patients  
229 as spontaneous MN yields exceeded the threshold in only one of the two samples. Importantly, for two  
230 of the eleven severe RS patients, a second sampling readily confirmed this initial classification (Fig 2b).  
231 Of the 4 patients initially identified as intermediate radiosensitive, we were able to retest three patients,  
232 revealing a non-RS phenotype for the second sample (Fig. 2b). It must be noted that the criterium for  
233 intermediate RS is strict due to the narrow range between the mean +2SD and +3SD threshold (306-345  
234 MN per 1000 BN). The results of the repeated sampling prompted us to interpret the intermediate RS  
235 category with more caution. Taken together, these findings demonstrate the reliability of the G0 MN  
236 assay to identify severe RS phenotypes but suggest that a second sampling is required for cases with  
237 intermediate RS results.

### 238 **IEI patients with specific DNA repair gene defects display chromosomal instability and** 239 **radiosensitivity**

240 Within group I, increased spontaneous MN values were detected in one of the 6 related patients with an  
241 Ikaros deficiency (*IKZF1*) (Fig. 2b and Fig. 3a). The absence of a chromosomal instability phenotype  
242 in the affected relatives of this patient (female; 40-49 years) suggests that this increase does not originate  
243 from the *IKZF1* variant. Intermediate RS was observed in another patient presenting with a CID  
244 phenotype of unknown cause (group I) (Fig. 2b, Fig. 3a, and Fig. S3a). Due to HSCT therapy early in  
245 life, we were unable to perform lymphocyte-based RS analysis in patients with defects in core NHEJ  
246 factors causing T<sup>B</sup> RS-SCID, such as Artemis [3].

247 For both patients deficient in BLM (group II), a protein involved in HR-dependent DSB repair, a  
248 pronounced elevation in spontaneous MN was detected, albeit radiation-induced MN yields were not  
249 increased (Fig. 3b and Fig. S3b). All 9 radiosensitive cases within group II harbored biallelic *ATM*  
250 mutations. As AT is a known severe RS syndrome, these data support the validity of the mean + 3SD  
251 value as a threshold for RS. Importantly, the severe RS classification of one AT patient – identified with  
252 a novel homozygous *ATM* variant of uncertain significance (VUS) – underscores the added value of RS  
253 testing in supporting the pathogenic character of VUS (Table S3). Notably, considerable variability was  
254 noted among MN results of the AT patients (Fig 3c). Spontaneous MN values were only elevated for 6  
255 of the 9 AT patients, with values varying from 18-96 MN per 1000 BN cells. Similarly, a broad range  
256 of radiation-induced MN scores was observed: 168-412 and 380-816 MN per 1000 BN for 0.5 and 1  
257 Gy, respectively. These MN yields correspond to a fold increase over healthy controls ranging from 1.7-



258 4.9, consistent with previous reports [48,49]. Despite this variability, the G0 MN assay displayed  
259 sufficient sensitivity to effectively categorize all AT patients as severe RS. A more detailed analysis of  
260 the MN data based on the variant type suggested a genotype-phenotype correlation. Patients carrying  
261 two truncating *ATM* variants appeared to display higher MN scores for both spontaneous and radiation-  
262 induced conditions compared to a patient with biallelic missense variants, showing a more attenuated  
263 RS phenotype. MN scores of patients with both truncating and missense *ATM* variants in a compound  
264 heterozygous state ranged between these extremes. These results suggest that the variant type in *ATM*  
265 contributed to the different levels of chromosomal RS.

266 Increased spontaneous MN values were detected in a patient with Roifman syndrome (*RNU4ATAC*,  
267 group II), but not in the patient's sibling (Fig. 2b and Fig. 3b). Intriguingly, one patient with *SLC46A1*  
268 deficiency (group II), causing hereditary folate malabsorption, displayed an intermediate RS phenotype,  
269 but we were unable to repeat the MN assay for this patient (Fig. 3b, and Fig. S3b). RS has not been  
270 studied in this specific disorder, although folate deficiency was described to interfere with DNA integrity  
271 by causing various types of DNA breaks that are not repaired efficiently [50,51].

272 No chromosomal instability or RS phenotypes were observed among the heterozygous carriers of a  
273 monoallelic variant in either *DCLRE1C* (n = 3) or *ATM* (n = 12) (Fig. 3d and Fig. S3c).

274 Within group III (PAD), twenty patients were diagnosed with CVID. While no RS phenotypes were  
275 detected, two CVID patients (age range: 40-49 years) with unidentified genetic defects displayed  
276 chromosomal instability (Fig. 2b, Fig. 3e and Fig. S3d). Neither patient displayed signs of immune  
277 dysregulation (autoimmunity and lymphoproliferation) or had a history of malignancy.

278 Apart from one of the 5 LRBA patients with an intermediate RS phenotype (group IV, diseases of  
279 immune dysregulation), no other increases in spontaneous or radiation-induced MN yields were  
280 observed in the patients categorized in group IV, V (congenital defects of phagocyte number and  
281 function), or VI (defects in intrinsic and innate immunity) (Fig. 2b, Fig. 3f and Fig. S3e).

282 All three Fanconi anemia (FA, group IX, BMF) patients with pathogenic variants in *FANCA* showed  
283 normal spontaneous and radiation-induced MN yields, in contrast to one *FANCI* patient who displayed  
284 a severe RS phenotype (Fig. 3g and Fig. S3f). This patient developed a secondary malignancy (acute  
285 myeloid leukemia) at age 44 and succumbed to infectious complications during induction chemotherapy.  
286 Due to the rarity of reported *FANCI* cases and the lack of *in vitro* data, it remains unclear whether these  
287 clinical events and the observed chromosomal RS are connected [52]. Of note, impaired interstrand  
288 crosslink (ICL) DNA repair is a known hallmark of FA, which can be demonstrated by testing sensitivity  
289 to the interstrand crosslinkers Mitomycin C (MMC) or diepoxybutane (DEB) [53]. All FA patients  
290 exhibited MMC sensitivity (data not shown), supporting a definite diagnosis of FA. Intriguingly, a  
291 second patient in group IX exhibited severe RS with normal spontaneous MN values (Fig. 3g and Fig.  
292 S3f). Five years post-RS analysis, this patient was identified with a pathogenic biallelic *ERCC6L2*  
293 variant. Unfortunately, HSCT prevented repeated analysis to confirm these results. One patient with  
294 BMF of unknown cause showed intermediately elevated radiation-induced MN values, but not upon re-  
295 analysis (Fig. 2b, Fig. 3g, and Fig. S3f).

### 296 **Absence of significant association between MN yields and clinical manifestations**

297 Given the heterogeneity observed in immunological and clinical features among IEI patients, we  
298 conducted an extended analysis to explore potential associations between these features and differences  
299 in spontaneous or radiation induced MN yields (Fig. 4 and Fig. S4). Interestingly, no significant  
300 differences in MN yields were detected between male and female patients (Fig. 4a and Fig. S4a).

301 Pediatric patients (<18 years at time of RS analysis) exhibited lower levels of spontaneous MN,  
302 accompanied with higher levels of radiation-induced MN compared to adult patients (Fig. 4b and Fig.  
303 S4b). While MN yields did not appear to be affected by the occurrence of recurrent infections and  
304 lymphoproliferative disorders, patients with autoimmunity unexpectedly exhibited lower MN values  
305 compared to patients without autoimmune conditions, an observation that was only significant for the  
306 0.5 Gy irradiated samples (Fig. 4c-e and Fig. S4c-e). A history of malignancy in IEI patients, diagnosed  
307 either before or after RS testing, did not associate with a difference in MN scores (Fig. 4f and Fig. S4f).

### 308 **MN yields correlate with age**

309 Considering that the comparison between pediatric and adult IEI patients suggested a potential  
310 correlation between age and MN yields, we performed a more in-depth analysis using a pooled dataset  
311 of patients, healthy controls, and heterozygous mutation carriers (Fig. 5 and Fig. S5). Consistent with  
312 previous reports, we observed that spontaneous MN yields significantly increased with age (Fig. 5a)  
313 [54–57]. Markedly, 0.5 and 1 Gy radiation-induced MN yields tended to decrease with age, showing a  
314 weak negative correlation for both radiation doses. This correlation was also observed when considering  
315 all individuals together (healthy controls, patients, and heterozygotes) (Fig. 5b and Fig. S5). Although  
316 careful interpretation is warranted due to the clinical diversity of the individuals in our dataset, these  
317 results indicate that pediatric IEI patients are potentially characterized by a slightly increased  
318 chromosomal RS profile compared to adult IEI patients and adult healthy controls.

## 319 DISCUSSION

320 Among the 10 phenotypic categories in the IUIS classification for IEIs, three subgroups include defects  
321 in DSB repair pathways [3]. Although radiosensitivity (RS) is often considered a characteristic of these  
322 subgroups – with ataxia telangiectasia (AT) as the prototypic RS disorder – the characterization and  
323 understanding of RS in the broader IEI population, including certain DNA repair disorders, remains  
324 limited. Here, we conducted a comprehensive investigation into chromosomal RS across a diverse range  
325 of IEIs, including patients with confirmed or suspected DSB repair defects and those with additional  
326 complications such as lymphoproliferation and/or malignant diseases. The principal findings of this  
327 study include: (1) a potential genotype-phenotype correlation among the severe RS AT patients as  
328 indicated by the striking variability in MN yields, (2) the detection of increased RS in single patients  
329 with a FANCI-deficiency and ERCC6L2-deficiency, (3) the lack of severe RS phenotypes among all  
330 the other IEI patients tested in this cohort, and (4) the observation that the investigated clinical and  
331 immunological features did not correlate with increased MN yields, except for age. These findings  
332 provide additional insights into the chromosomal RS status associated with specific DNA repair defects  
333 and underscore the need for guidelines on RS testing within the IEI patient population for routine clinical  
334 practice, to improve both diagnosis and management.

335 Cytogenetic tests such as the G0 MN assay have repeatedly been recognized for their potential to detect  
336 RS in AT patients [48,49,58,59]. In our analysis of patients with syndromic CID (group II), all AT  
337 patients included indeed displayed a distinct RS phenotype. Our data additionally suggested a correlation  
338 between MN yields and the underlying *ATM* mutation type, indicating a potential link between the  
339 genotype and the degree of chromosomal RS. Analogous, the spectrum of clinical manifestations in AT  
340 patients correlates with *ATM* expression levels, with severe phenotypic patients generally harboring  
341 nonsense or truncating variants and milder or atypical cases harboring missense or splice-site variants,  
342 which often allow some kinase activity [60–62]. Presumably, a high variety in chromosomal RS among  
343 AT patients could reflect a clinically relevant range of radiation responses. Given that the G0 MN assay  
344 effectively differentiated between grades of severe RS and proved valuable in validating novel VUS,  
345 we recommend RS assessment as a crucial component in the diagnostic process of all newly identified  
346 AT patients.

347 Although *ATM* carriers are well-known to have a relatively higher risk for breast cancer, their association  
348 with increased *in vitro* RS remains unclear. While some studies, applying other RS assays, reported  
349 differentiation between *ATM* heterozygous carriers and healthy controls [48,63], a previous study using  
350 the G0 MN assay was not able to demonstrate increased RS, consistent with our findings [48]. Generally,  
351 *ATM* carriers do not exhibit an increase in clinical adverse responses to radiation and do not require  
352 adaptations in treatment protocols involving IR exposure [64].

353 Chromosomal instability, predisposition to early-onset cancer, and variable immunodeficiency are  
354 common features of Bloom syndrome (group II). The BLM protein has a well-defined role in the HR  
355 pathway for DSB repair, with the association of Bloom syndrome with RS remaining controversial in  
356 literature [25,65]. The two patients presented here showed a profound increase in spontaneous MN, but  
357 did not display RS. An increase in sister chromatid exchanges (SCEs) represents the standard diagnostic  
358 marker, although our results also support the diagnostic value of spontaneous MN for determining  
359 chromosomal instability in Bloom syndrome patients [20].

360 To date, 22 causal genes for Fanconi anemia (FA, group IX) have been identified. FA is associated with  
361 bone marrow failure (BMF), increased cancer predisposition, and a range of developmental

362 abnormalities. Many FA proteins are involved in both the HR and ICL repair pathway [66]. Despite the  
363 description of FA as a chromosomal instability syndrome, we did not detect increased spontaneous MN  
364 values in any of the 4 FA patients. Interestingly, chromosomal RS was absent in all three *FANCA*  
365 patients, while one *FANCI* patient presented with severe RS. These results indicate that the G0 MN test  
366 does not emerge as a suitable diagnostic marker for this syndromes, in contrast to ICL sensitivity assays  
367 [53,66]. Due to the large number of genes involved and the variety of RS assays used, *in vitro* studies  
368 have been unable to consistently demonstrate RS in FA patient cells [25,52,67–69].

369 ERCC6L2 deficiency, an autosomal recessive inherited BMF syndrome, was first identified by  
370 Tummala et al. and is clinically characterized by developmental abnormalities, progression to  
371 myelodysplastic syndrome, and acute myeloid leukemia, often necessitating HSCT therapy [70].  
372 Multifaceted roles were considered for ERCC6L2, including a contribution to NHEJ repair. Similar to  
373 the severe RS phenotype exhibited by our ERCC6L2 patient, Zhang et al. reported an increased  
374 sensitivity to IR in SV40-transformed ERCC6L2 deficient fibroblasts [21]. Further research into this  
375 disease is warranted as ERCC6L2 deficiency may underlie excessive radiation-related toxicities, which  
376 was recently described in a ERCC6L2 deficient breast cancer patient [71].

377 Besides *ATM*, *ERCC6L2*, *BLM*, *FANCA*, and *FANCI*, none of the other 16 IEI-causing genes identified  
378 in this study have defined roles in DSB repair. Accordingly, severe RS was not detected in any of the  
379 patients affected by these other IEIs. In single studies, RS was demonstrated for patients deficient for  
380 LRBA (6/11 patients), ADA (1/1 patient), WASP (1/1 patient), and CD40LG (8/11 patients) [30–32,69].  
381 In contrast to those previous reports, we did not observe severe RS in any of the 5 LRBA patients, nor  
382 in the single patients deficient for ADA, WASP, or CD40LG. Of note, one LRBA patient showed  
383 intermediate RS based on the first sample, but not upon retesting. Moreover, our group of CVID patients  
384 did not exhibit differences in radiation-induced MN yields as compared to healthy controls, contrary to  
385 reports of significant increases in RS in four other CVID cohorts [33–36]. However, it should be noted  
386 that RS was tested using another methodology throughout most of these studies. As cells are irradiated  
387 in the G2 and G0 phase respectively, the G2 chromatid and G0 MN assay may produce distinct results  
388 due to evaluation of cell cycle-specific repair mechanisms and different cell cycle checkpoints. For  
389 instance, Schrank et al. described that the nuclear actin polymerization factors WASP and the ARP2/3  
390 complex are specifically required for HR, but not NHEJ [72]. Accordingly, increased levels of G2  
391 chromatid-type aberrations were recently reported in patients deficient for ARPC1B and WASP [30].

392 CIDs, CVIDs, bone marrow failures, and immune dysregulation disorders represent the main IEI  
393 subtypes predisposing to malignancies [19,73,74]. While genomic instability and defective DNA repair  
394 are recognized as key factors in the tumorigenesis of monogenetic diseases such as AT, Bloom  
395 syndrome, and FA, the genetic etiology and mechanisms driving oncogenic processes in other IEIs  
396 remain largely undefined [73,75]. We could not document a potential link between chromosomal  
397 instability or RS and the occurrence of lymphoproliferative disorders or malignancies in our IEI patient  
398 cohort. Consequently, our findings do not allow to further define whether genomic instability and/or  
399 disrupted DNA DSB repair are key cancer hallmarks for these IEI entities.

400 In line with our data, a progressive increase in spontaneous MN frequencies has been reported in ageing  
401 individuals [54–57]. However, few studies have explored the effects of ageing on *in vitro* RS or extended  
402 the investigation by including pediatric individuals, with some controversy remaining due to small  
403 cohorts, limited age ranges, or variable methodologies [76–79]. Although our study cohort mainly  
404 consisted of IEI patients, the availability of MN data of both children and adults offered a valuable  
405 opportunity to investigate the effects of ageing more thoroughly. We observed a minor but negative

406 correlation between age and radiation-induced MN yields, suggesting higher *in vitro* sensitivity to IR in  
407 younger individuals. Interestingly, multiple reports identified ageing and sex as confounding factors,  
408 with sex affecting MN yields in older adults but not in children [55,57]. Consistent with this, we found  
409 no significant differences between male and female patients in our predominantly pediatric cohort.  
410 Together, these results point towards the requirement of age-matched, but not sex-matched, controls to  
411 obtain reference values for analyzing chromosomal instability and/or RS.

412 Although the G0 MN assay is a well-established cytogenetic tool with extensive applications in  
413 radiobiological research, its clinical implementations can be limited due to intrinsic inter- and intra-  
414 individual variability [80–85]. In this study, severe RS phenotypes were reliably identified, but the  
415 substantial individual variability prevented consistent and unequivocal interpretation of the intermediate  
416 RS category. A second sampling is thus strongly recommended when intermediate RS phenotypes are  
417 encountered in the initial analysis. Nevertheless, MN form a valuable cellular endpoint for RS as they  
418 represent both unrepaired and misrepaired DSBs, indicative for radiation-induced cell death and  
419 mutagenic processes, respectively. Importantly, MN yields remain to be used with caution as general  
420 predictive biomarkers of radiation-related adverse tissue reactions and radiation-induced cancer risks  
421 [86].

422 Based on our extensive investigation into chromosomal RS within the IEI population, we recommend  
423 RS testing in individual cases with concerns of an underlying DNA repair defect, especially prior to the  
424 therapeutic use of IR. Although the associated phenotypic features of these patients are often  
425 heterogeneous, early manifestation of an immunodeficiency in addition to a syndromic appearance,  
426 developmental and neurologic abnormalities, malignant disease, and/or BMF should raise suspicion of  
427 such inherited disorder [20]. We additionally emphasize the need for special awareness towards highly  
428 rare or newly identified IEI-associated genes with unknown RS associations. Our study also supports  
429 the use of RS testing as a guiding tool for genetic analysis. RS assays can aid in the validation of  
430 pathogenic VUS in known RS-associated genes (e.g. *ATM*) or can be indicative for the involvement of  
431 a DNA repair defect (e.g. *ERCC6L2*).

## 432 **Statements**

433 Personally identifiable patient information was redacted in accordance with medRxiv requirements. IDs used in  
434 this study were not known to anyone outside the research group.

## 435 **Acknowledgements**

436 We gratefully thank all patients and family for consenting to this research. The authors would also like to thank L.  
437 Pieters, G. De Smet, T. Thiron, J. Aernoudt, and E. Bes for performing the laboratory work and MN scoring. This  
438 work is supported by TBM-FWO RAPID. The Center for Primary Immune deficiency is recognized as a European  
439 Reference Network for Rare Immunodeficiency, Autoinflammatory, and Autoimmune Diseases Network (ERN-  
440 RITA) and is additionally supported by the Jeffrey Modell Diagnostic and Research foundation.

## 441 **Author contributions**

442 A.V., A.B., C.B., V.B., F.H., and K.B.M.C. acquired funding and conceptualized, planned, and supervised the  
443 study. L.B., M.B., L.P. and K.B.M.C. contributed to genetic data analysis. A.V. and A.B. supervised the  
444 radiosensitivity testing. E.B. and E.D. analyzed the radiosensitivity data, collected and analyzed clinical data, and  
445 drafted the manuscript and figures. V.B., F.H., and all RAPID clinicians included patients, provided patient  
446 material, and helped collecting clinical information. K.C. informed patients about the study and collected informed  
447 consent approved by the ethics committee. E.B., E.D., A.B., A.V., K.B.M.C., S.J.T., and F.H. provided scientific  
448 guidance and critical discussion. All authors contributed to critical review of the manuscript and approved the final  
449 version.

## 450 **Funding**

451 This work was supported by Research Foundation Flanders (FWO) (FWOTBM2018000102). S.J.T. is a  
452 beneficiary of a senior postdoctoral FWO grant (1236923N). Centre for Primary Immune deficiency Ghent (CPIG)  
453 is recognized as Jeffrey Modell Diagnostic and Research center and funded by the JMF foundation.

## 454 **Data availability**

455 The data generated and/or analyzed in the present study is available upon reasonable request to the corresponding  
456 authors.

## 457 **DECLARATIONS**

### 458 **Ethics approval**

459 This study was reviewed and approved by the Ethics Committee of the Ghent University Hospital (reference no.  
460 2012/593, 2019/0461 and 2019/1565). Written informed consent was obtained from all participants in this study,  
461 in accordance with the 1975 Helsinki Declaration.

### 462 **Conflicts of Interest**

463 The authors declare no conflicts of interest for this study.



464 **REFERENCES**

- 465 1. Modell V, Orange JS, Quinn J, Modell F. Global report on primary immunodeficiencies: 2018 update from the  
466 Jeffrey Modell Centers Network on disease classification, regional trends, treatment modalities, and physician  
467 reported outcomes. *Immunol Res.* 2018;66:367–80.
- 468 2. Bousfiha A, Moundir A, Tangye SG, Picard C, Jeddane L, Al-Herz W, et al. The 2022 Update of IUIS  
469 Phenotypical Classification for Human Inborn Errors of Immunity. *J Clin Immunol.* 2022;42:1508–20.
- 470 3. Tangye SG, Al-Herz W, Bousfiha A, Cunningham-Rundles C, Franco JL, Holland SM, et al. Human Inborn  
471 Errors of Immunity: 2022 Update on the Classification from the International Union of Immunological Societies  
472 Expert Committee. *J Clin Immunol.* 2022;42:1473–507.
- 473 4. Mitchell MR, Urdinez L, Bernasconi AR, Danielian S, Katsikas MM, Sajaroff EO, et al. Cancer Prevalence in  
474 Children with Inborn Errors of Immunity: Report from a Single Institution. *J Clin Immunol.* 2024;44:138.
- 475 5. Neirinck J, Emmaneel A, Buysse M, Philippé J, Van Gassen S, Saeys Y, et al. The Euroflow PID Orientation  
476 Tube in the diagnostic workup of primary immunodeficiency: Daily practice performance in a tertiary university  
477 hospital. *Front Immunol.* 2022;13:1–14.
- 478 6. Seitz L, Gaitan D, Berkemeier CM, Berger CT, Recher M. Cluster analysis of flowcytometric  
479 immunophenotyping with extended T cell subsets in suspected immunodeficiency. *Immun Inflamm Dis.* 2023;11.
- 480 7. Richardson AM, Moyer AM, Hasadsri L, Abraham RS. Diagnostic Tools for Inborn Errors of Human Immunity  
481 (Primary Immunodeficiencies and Immune Dysregulatory Diseases). *Curr Allergy Asthma Rep.* 2018;18.
- 482 8. Kwon SS, Cho YK, Hahn S, Oh J, Won D, Shin S, et al. Genetic diagnosis of inborn errors of immunity using  
483 clinical exome sequencing. *Front Immunol.* 2023;14:1–10.
- 484 9. Rojas-Restrepo J, Caballero-Oteyza A, Huebscher K, Haberstroh H, Fliegau M, Keller B, et al. Establishing  
485 the Molecular Diagnoses in a Cohort of 291 Patients With Predominantly Antibody Deficiency by Targeted Next-  
486 Generation Sequencing: Experience From a Monocentric Study. *Front Immunol.* 2021;12.
- 487 10. Elsink K, van Montfrans JM, van Gijn ME, Blom M, van Hagen PM, Kuijpers TW, et al. Cost and impact of  
488 early diagnosis in primary immunodeficiency disease: A literature review. *Clinical Immunology.* 2020;213:1–10.
- 489 11. Mizutani S, Takagi M. XCIND as a genetic disease of X-irradiation hypersensitivity and cancer susceptibility.  
490 *Int J Hematol.* 2013;97:37–42.
- 491 12. Slatter MA, Gennery AR. Update on DNA-Double Strand Break Repair Defects in Combined Primary  
492 Immunodeficiency. *Curr Allergy Asthma Rep.* 2020;20:1–12.
- 493 13. Morio T. Recent advances in the study of immunodeficiency and DNA damage response. *Int J Hematol.*  
494 2017;106:357–65.
- 495 14. Zhao B, Rothenberg E, Ramsden DA, Lieber MR. The molecular basis and disease relevance of non-  
496 homologous DNA end joining. *Nat Rev Mol Cell Biol.* 2020;21:765–81.
- 497 15. Woodbine L, Gennery AR, Jeggo PA. The clinical impact of deficiency in DNA non-homologous end-joining.  
498 *DNA Repair (Amst).* 2014;16:84–96.
- 499 16. Pastorczak A, Attarbaschi A, Bomken S, Borkhardt A, van der Werff ten Bosch J, Elitzur S, et al. Consensus  
500 Recommendations for the Clinical Management of Hematological Malignancies in Patients with DNA Double  
501 Stranded Break Disorders. *Cancers (Basel).* 2022;14.

- 502 17. Fournier B, Mahlaoui N, Moshous D, de Villartay J. Inborn errors of immunity caused by defects in the DNA  
503 damage response pathways: Importance of minimizing treatment-related genotoxicity. *Pediatric Allergy and*  
504 *Immunology*. 2022;33:1–9.
- 505 18. Slack J, Albert MH, Balashov D, Belohradsky BH, Bertaina A, Bleesing J, et al. Outcome of hematopoietic  
506 cell transplantation for DNA double-strand break repair disorders. *Journal of Allergy and Clinical Immunology*.  
507 2018;141:322–8.
- 508 19. Bomken S, van der Werff Ten Bosch J, Attarbaschi A, Bacon CM, Borkhardt A, Boztug K, et al. Current  
509 Understanding and Future Research Priorities in Malignancy Associated With Inborn Errors of Immunity and  
510 DNA Repair Disorders: The Perspective of an Interdisciplinary Working Group. *Front Immunol*. 2018;9:1–10.
- 511 20. Sharma R, Lewis S, Wlodarski MW. DNA Repair Syndromes and Cancer: Insights Into Genetics and  
512 Phenotype Patterns. *Front Pediatr*. 2020;8.
- 513 21. Zhang X, Jiang W, Jin Z, Wang X, Song X, Huang S, et al. A novel splice donor mutation in *DCLRE1C* caused  
514 atypical severe combined immunodeficiency in a patient with colon lymphoma: case report and literature review.  
515 *Front Oncol*. 2023;13:1–7.
- 516 22. Schon K, van Os NJH, Oscroft N, Baxendale H, Scoffings D, Ray J, et al. Genotype, extrapyramidal features,  
517 and severity of variant ataxia-telangiectasia. *Ann Neurol*. 2019;85:170–80.
- 518 23. Felgentreff K, Lee YN, Frugoni F, Du L, Van Der Burg M, Giliani S, et al. Functional analysis of naturally  
519 occurring *DCLRE1C* mutations and correlation with the clinical phenotype of ARTEMIS deficiency. *Journal of*  
520 *Allergy and Clinical Immunology*. 2015;136:140–50.
- 521 24. Lee PP, Woodbine L, Gilmour KC, Bibi S, Cale CM, Amrolia PJ, et al. The many faces of Artemis-deficient  
522 combined immunodeficiency - Two patients with *DCLRE1C* mutations and a systematic literature review of  
523 genotype-phenotype correlation. *Clinical Immunology*. 2013;149:464–74.
- 524 25. Joubert A, Zimmerman KM, Bencokova Z, Gastaldo J, Chavaudra N, Favaudon V, et al. DNA double-strand  
525 break repair defects in syndromes associated with acute radiation response: At least two different assays to predict  
526 intrinsic radiosensitivity? *Int J Radiat Biol*. 2008;84:107–25.
- 527 26. Berthel E, Ferlazzo ML, Devic C, Bourguignon M, Foray N. What does the History of Research on the Repair  
528 of DNA Double - Strand Breaks Tell Us ?— A Comprehensive Review of Human Radiosensitivity. *Int J Mol Sci*.  
529 2019;20:2–14.
- 530 27. Takagi M, Hoshino A, Bousset K, Röddecke J, Martin HL, Folcut I, et al. Bone Marrow Failure and  
531 Immunodeficiency Associated with Human *RAD50* Variants. *J Clin Immunol*. 2023;43:2136–45.
- 532 28. Zhang S, Pondarre C, Pennarun G, Labussiere-Wallet H, Vera G, France B, et al. A nonsense mutation in the  
533 DNA repair factor Hebo causes mild bone marrow failure and microcephaly. *Journal of Experimental Medicine*.  
534 2016;213:1011–28.
- 535 29. Péron S, Pan-Hammarström Q, Imai K, Du L, Taubenheim N, Sanal O, et al. A primary immunodeficiency  
536 characterized by defective immunoglobulin class switch recombination and impaired DNA repair. *Journal of*  
537 *Experimental Medicine*. 2007;204:1207–16.
- 538 30. Chiriaco M, Ursu GM, Amodio D, Cotugno N, Volpi S, Berardinelli F, et al. Radiosensitivity in patients  
539 affected by *ARPC1B* deficiency: a new disease trait? *Front Immunol*. 2022;13.

- 540 31. Mozdarani H, Kiaee F, Fekrvand S, Azizi G, Yazdani R, Zaki-Dizaji M, et al. G2-lymphocyte chromosomal  
541 radiosensitivity in patients with LPS responsive beige-like anchor protein (LRBA) deficiency. *Int J Radiat Biol.*  
542 2019;95:680–90.
- 543 32. Fekrvand S, Mozdarani H, Delavari S, Sohani M, Nazari F, Kiaee F, et al. Evaluation of Radiation Sensitivity  
544 in Patients with Hyper IgM Syndrome. *Immunol Invest.* 2020;50:580–96.
- 545 33. Aghamohammadi A, Moin M, Kouhi A. Chromosomal radiosensitivity in patients with common variable  
546 immunodeficiency. *Immunobiology.* 2008;213:447–54.
- 547 34. Mahmoodi M, Abolhassani H, Mozdarani H, Rezaei N. In vitro chromosomal radiosensitivity in patients with  
548 common variable immunodeficiency. *Clinical Immunology.* 2018;53:155–61.
- 549 35. Vorechovsky I, Scott D, Haeney MR, Webster DA. Chromosomal radiosensitivity in common variable immune  
550 deficiency. *Mutat Res.* 1993;290:255–64.
- 551 36. Palanduz S, Palanduz A, Yalcin I, Somer A. In Vitro Chromosomal Radiosensitivity in Common Variable  
552 Immune Deficiency. *Clin Immunol Immunopathol.* 1998;86:180–2.
- 553 37. Seidel MG, Kindle G, Gathmann B, Quinti I, Buckland M, van Montfrans J, et al. The European Society for  
554 Immunodeficiencies (ESID) Registry Working Definitions for the Clinical Diagnosis of Inborn Errors of  
555 Immunity. *Journal of Allergy and Clinical Immunology: In Practice.* 2019;7:1763–70.
- 556 38. Plagnol V, Curtis J, Epstein M, Mok KY, Stebbings E, Grigoriadou S, et al. A robust model for read count  
557 data in exome sequencing experiments and implications for copy number variant calling. *Bioinformatics.*  
558 2012;28:2747–54.
- 559 39. Richards S, Aziz N, Bale S, Bick D, Das S, Gastier-Foster J, et al. Standards and guidelines for the  
560 interpretation of sequence variants: A joint consensus recommendation of the American College of Medical  
561 Genetics and Genomics and the Association for Molecular Pathology. *Genetics in Medicine.* 2015;17:405–24.
- 562 40. Ellard S, Baple EL, Callaway A, Berry I, Forrester N, Turnbull C, et al. ACGS Best Practice Guidelines for  
563 Variant Classification in Rare Disease 2020. 2020.
- 564 41. Beyls E, Baeyens A, Vral A. The cytokinesis-block micronucleus assay for cryopreserved whole blood. *Int J*  
565 *Radiat Biol.* 2021;97:1252–60.
- 566 42. Backers L, Parton B, De Bruyne M, Tavernier SJ, Van Den Bogaert K, Lambrecht BN, et al. Missing  
567 heritability in Bloom syndrome: First report of a deep intronic variant leading to pseudo-exon activation in the  
568 BLM gene. *Clin Genet.* 2021;99:292–7.
- 569 43. Bogaert D, Kuehn HS, Bonroy C, Calvo KR, Dehoorne J, Vanlander A V, et al. A novel IKAROS  
570 haploinsufficiency kindred with unexpectedly late and variable B-cell maturation defects. *J Allergy Clin Immunol.*  
571 2018;141:432–5.
- 572 44. Bogaert DJ, Dullaers M, Kuehn HS, Leroy BP, Niemela JE, De Wilde H, et al. Early-onset primary antibody  
573 deficiency resembling common variable immunodeficiency challenges the diagnosis of Wiedeman-Steiner and  
574 Roifman syndromes. *Sci Rep.* 2017;7:1–12.
- 575 45. Strubbe S, De Bruyne M, Pannicke U, Beyls E, Vandekerckhove B, Leclercq G, et al. A Novel Non-Coding  
576 Variant in DCLRE1C Results in Deregulated Splicing and Induces SCID Through the Generation of a Truncated  
577 ARTEMIS Protein That Fails to Support V(D)J Recombination and DNA Damage Repair. *Front Immunol.*  
578 2021;12:1–13.

- 579 46. Vral A, Thierens H, Baeyens A, De Ridder L. Chromosomal aberrations and in vitro radiosensitivity: Intra-  
580 individual versus inter-individual variability. *Toxicol Lett*. 2004;149:345–52.
- 581 47. Pajic J, Rakic B, Rovcanin B, Jovicic D, Novakovic I, Milovanovic A, et al. Inter-individual variability in the  
582 response of human peripheral blood lymphocytes to ionizing radiation: comparison of the dicentric and  
583 micronucleus assays. *Radiat Environ Biophys*. 2015;54:317–25.
- 584 48. Claes K, Depuydt J, Taylor AMR, Last JI, Baert A, Schietecatte P, et al. Variant ataxia telangiectasia: Clinical  
585 and molecular findings and evaluation of radiosensitive phenotypes in a patient and relatives. *Neuromolecular*  
586 *Med*. 2013;15:447–57.
- 587 49. Vral A, Thierens H, De Ridder L. Micronucleus induction by <sup>60</sup>Co gamma-rays and fast neutrons in ataxia  
588 telangiectasia lymphocytes. *Int J Radiat Biol*. 1996;70:171–6.
- 589 50. Zhao R, Aluri S, Goldman ID. The proton-coupled folate transporter (PCFT-SLC46A1) and the syndrome of  
590 systemic and cerebral folate deficiency of infancy: Hereditary folate malabsorption. *Mol Aspects Med*. Elsevier  
591 Ltd; 2017. p. 57–72.
- 592 51. Courtemanche C, Huang AC, Elson-Schwab I, Kerry N, Ng BY, Ames BN. Folate deficiency and ionizing  
593 radiation cause DNA breaks in primary human lymphocytes: a comparison. *The FASEB journal: official*  
594 *publication of the Federation of American Societies for Experimental Biology*. 2004;18:209–11.
- 595 52. Zahnreich S, Weber B, Rösch G, Schindler D, Schmidberger H. Compromised repair of radiation-induced  
596 DNA double-strand breaks in Fanconi anemia fibroblasts in G2. *DNA Repair (Amst)*. 2020;96.
- 597 53. Francies FZ, Wainwright R, Poole J, De Leeneer K, Coene I, Wieme G, et al. Diagnosis of Fanconi Anaemia  
598 by ionising radiation- or mitomycin C-induced micronuclei. *DNA Repair (Amst)*. 2018;61:17–24.
- 599 54. Bolognesi C, Bonelli L, Compalati A, Ferla V, Stagnaro L, Ubezio G, et al. “ Normal values ” for the  
600 lymphocyte cytokinesis-block micronucleus cytome parameters : Repeatability and reproducibility in a healthy  
601 reference population. *Science of the Total Environment*. 2019;652:513–22.
- 602 55. Bonassi S, Fenech M, Lando C, Lin Y ping, Ceppi M, Peter Chang W, et al. Human micronucleus project:  
603 International database comparison for results with the cytokinesis-block micronucleus assay in human  
604 lymphocytes: I. Effect of laboratory protocol, scoring criteria, and host factors on the frequency of micronuclei.  
605 *Environ Mol Mutagen*. 2001;37:31–45.
- 606 56. Gajski G, Gerić M, Orešćanin V, Garaj-Vrhovac V. Cytokinesis-block micronucleus cytome assay parameters  
607 in peripheral blood lymphocytes of the general population: Contribution of age, sex, seasonal variations and  
608 lifestyle factors. *Ecotoxicol Environ Saf*. 2018;148:561–70.
- 609 57. Durmaz B, Taslidere H, Koturoglu G, Gunduz C, Orman M, Cogulu O. Determination of Lymphocyte  
610 Cytokinesis-Block Micronucleus Values in Apparently Healthy Children by means of Age and Sex. *Biomed Res*  
611 *Int*. 2019;2019.
- 612 58. Vujić DS, Petrović SZ, Leskovac AR, Joksić ID, Filipović JG, Valenta Šobot AP. Accurate diagnostics of  
613 ataxia-telangiectasia cellular phenotype by employing in vitro lymphocyte radiosensitivity testing. *Nuclear*  
614 *Technology and Radiation Protection*. 2013;28:221–4.
- 615 59. Bucher M, Endesfelder D, Roessler U, Borkhardt A, Dückers G, Kirlum HJ, et al. Analysis of chromosomal  
616 aberrations and  $\gamma$ H2A.X foci to identify radiation-sensitive ataxia-telangiectasia patients. *Mutat Res Genet Toxicol*  
617 *Environ Mutagen*. 2021;861–862.

- 618 60. Amirifar P, Ranjouri MR, Pashangzadeh S, Lavin M, Yazdani R, Moeini Shad T, et al. The spectrum of ATM  
619 gene mutations in Iranian patients with ataxia-telangiectasia. *Pediatric Allergy and Immunology*. 2021;32:1316–  
620 26.
- 621 61. Moeini Shad T, Yazdani R, Amirifar P, Delavari S, Heidarzadeh Arani M, Mahdavian SA, et al. Atypical  
622 Ataxia Presentation in Variant Ataxia Telangiectasia: Iranian Case-Series and Review of the Literature. *Front*  
623 *Immunol*. 2022;12.
- 624 62. Verhagen MMM, Last JI, Hogervorst FBL, Smeets DFCM, Roeleveld N, Verheijen F, et al. Presence of ATM  
625 protein and residual kinase activity correlates with the phenotype in ataxia-telangiectasia: A genotype-phenotype  
626 study. *Hum Mutat*. 2012;33:561–71.
- 627 63. Kato TA, Nagasawa H, Weil MM, Little JB, Kato TA, Nagasawa H, et al. Levels of  $\gamma$ -H2AX Foci after Low-  
628 Dose-Rate Irradiation Reveal a DNA DSB Rejoining Defect in Cells from Human ATM Heterozygotes in Two  
629 AT Families and in Another Apparently Normal Individual. *Radiat Res*. 2006;166:443–53.
- 630 64. Bergom C, West CM, Higginson DS, Abazeed ME, Arun B, Bentzen SM, et al. The Implications of Genetic  
631 Testing on Radiation Therapy Decisions: A Guide for Radiation Oncologists. *Int J Radiat Oncol Biol Phys*.  
632 2019;105:698–712.
- 633 65. Schoenaker MHD. Considerations for radiotherapy in Bloom Syndrome: A case series. *Eur J Med Genet*.  
634 2021;64.
- 635 66. Peake JD, Noguchi E. Fanconi anemia: current insights regarding epidemiology, cancer, and DNA repair. *Hum*  
636 *Genet*. 2022;141:1811–36.
- 637 67. Leskovic A, Petrovic S, Guc-Scekic M, Vujic D, Joksic G. Radiation-induced mitotic catastrophe in FANCD2  
638 primary fibroblasts. *Int J Radiat Biol*. 2014;90:373–81.
- 639 68. Mohseni-Meybodi A, Mozdarani H, Vosough P. Cytogenetic sensitivity of G0 lymphocytes of Fanconi anemia  
640 patients and obligate carriers to mitomycin C and ionizing radiation. *Cytogenet Genome Res*. 2007;119:191–5.
- 641 69. Gatti RA. The inherited basis of human radiosensitivity. *Acta Oncol (Madr)*. 2001;40:702–11.
- 642 70. Tummala H, Kirwan M, Walne AJ, Hossain U, Jackson N, Pondarre C, et al. ERCC6L2 mutations link a  
643 distinct bone-marrow-failure syndrome to DNA repair and mitochondrial function. *Am J Hum Genet*.  
644 2014;94:246–56.
- 645 71. Hakkarainen M, Kaaja I, Douglas SPM, Vulliamy T, Dokal I, Soulier J, et al. The clinical picture of ERCC6L2  
646 disease: from bone marrow failure to acute leukemia. *Blood*. 2023;141:2853–66.
- 647 72. Schrank BR, Aparicio T, Li Y, Chang W, Chait BT, Gundersen GG, et al. Nuclear ARP2/3 drives DNA break  
648 clustering for homology-directed repair. *Nature*. 2018;559:61–6.
- 649 73. Abolhassani H, Wang Y, Hammarström L, Pan-Hammarström Q. Hallmarks of Cancers: Primary Antibody  
650 Deficiency Versus Other Inborn Errors of Immunity. *Front Immunol*. 2021;12:1–10.
- 651 74. van der Werff ten Bosch J, Hlaváčková E, Derpoorter C, Fischer U, Saettini F, Ghosh S, et al. How to recognize  
652 inborn errors of immunity in a child presenting with a malignancy: guidelines for the pediatric hemato-oncologist.  
653 *Pediatr Hematol Oncol*. 2023;40:131–46.
- 654 75. de Miranda NFCC, Björkman A, Pan-Hammarström Q. DNA repair: The link between primary  
655 immunodeficiency and cancer. *Ann N Y Acad Sci*. 2011;1246:50–63.

- 656 76. Gomolka M, Oestreicher U, Roessler U, Samaga D, Lang P, Neumaier K, et al. Age dependent differences in  
657 DNA damage after in vitro CT exposure. *Int J Radiat Biol.* 2018;94:272–81.
- 658 77. Bakhmutsky M V, Joiner MC, Jones TB, Tucker JD, Bakhmutsky M V, Joiner MC, et al. Differences in  
659 Cytogenetic Sensitivity to Ionizing Radiation in Newborns and Adults Differences in Cytogenetic Sensitivity to  
660 Ionizing Radiation in Newborns and Adults. *Radiat Res.* 2014;181:605–16.
- 661 78. Schuster B, Ellmann A, Mayo T, Auer J, Haas M, Hecht M, et al. Rate of individuals with clearly increased  
662 radiosensitivity rise with age both in healthy individuals and in cancer patients. *BMC Geriatr.* 2018;18:1–8.
- 663 79. Joksi G, Petrovi S. Age-related changes in radiation-induced micronuclei among healthy adults. *Braz J Med*  
664 *Biol Res.* 2004;37:1111–7.
- 665 80. Samanta S, Dey P. Micronucleus and its applications. *Diagn Cytopathol.* 2012;40:84–90.
- 666 81. Vral A, Thierens H, Baeyens A, De Ridder L. The micronucleus and G2-phase assays for human blood  
667 lymphocytes as biomarkers of individual sensitivity to ionizing radiation: limitations imposed by intraindividual  
668 variability. *Radiat Res.* 2002;157:472–7.
- 669 82. Fenech M, Bonassi S, Turner J, Lando C, Ceppi M, Peter W, et al. Intra- and inter-laboratory variation in the  
670 scoring of micronuclei and nucleoplasmic bridges in binucleated human lymphocytes Results of an international  
671 slide-scoring exercise by the HUMN project. *Mutat Res.* 2003;534:45–64.
- 672 83. Gkikoudi A, Kalospyros SA, Triantopoulou S, Logotheti S, Softa V, Kappas C, et al. Molecular Biomarkers  
673 for Predicting Cancer Patient Radiosensitivity and Radiotoxicity in Clinical Practice. *Applied Sciences.*  
674 2023;13:1–30.
- 675 84. Bonassi S, El-Zein R, Bolognesi C, Fenech M. Micronuclei frequency in peripheral blood lymphocytes and  
676 cancer risk: Evidence from human studies. *Mutagenesis.* 2011;26:93–100.
- 677 85. Sommer S, Buraczewska I, Kruszewski M. Micronucleus assay: The state of art, and future directions. *Int J*  
678 *Mol Sci.* 2020;21:7–9.
- 679 86. Foray N, Bourguignon M, Hamada N. Individual response to ionizing radiation. *Mutat Res Rev Mutat Res.*  
680 2016;770:369–86.
- 681
- 682



683 **TABLES**

684 **Table 1. Demographic and clinical characteristics of IEI patients and heterozygous carriers.**

Parameters	All IEI patients (n = 107)	Patients with genetic IEI diagnosis (n = 45)	Patients with clinical IEI diagnosis (n = 62)	Heterozygous carriers (n = 15)
<b>IUIS classification, n (%)</b>				NA
I. Immunodeficiencies affecting cellular and humoral immunity	10 (9)	8 (18)	2 (3)	
II. CID with associated or syndromic features	23 (21)	17 (38)	6 (10)	
III. Predominantly antibody deficiencies	30 (28)	2 (4)	28 (45)	
IV. Diseases of immune dysregulation	13 (12)	8 (18)	5 (8)	
V. Congenital defects of phagocyte number or function	4 (4)	4 (9)	0 (0)	
VI. Defects in intrinsic and innate immunity	2 (2)	1 (2)	1 (2)	
IX. Bone marrow failure	24 (22)	5 (11)	19 (31)	
X. Phenocopies of inborn errors of immunity	1 (1)	0 (0)	1 (2)	
<b>Male sex, n (%)</b>	54 (50)	20 (44)	34 (55)	8 (53)
<b>Age at inclusion, n (%)</b>				
<10 years	29 (27)	16 (36)	13 (21)	1 (7)
10-19 years	49 (46)	20 (44)	29 (47)	1 (7)
20-29 years	13 (12)	4 (9)	9 (15)	2 (13)
30-39 years	3 (3)	1 (2)	2 (3)	6 (40)
40-49 years	8 (7)	2 (4)	6 (10)	2 (13)
≥ 50 years	5 (5)	2 (4)	3 (5)	3 (20)
<b>Consanguinity, n (%)</b>	8 (7)	7 (16)	1 (2)	NA
<b>Onset of IEI related symptoms, n (%)</b>				NA
< 1 year	21 (20)	12 (27)	9 (15)	
1-10 years	57 (53)	25 (56)	32 (52)	
11-20 years	20 (19)	5 (11)	15 (24)	
21-30 years	3 (3)	0 (0)	3 (5)	
≥ 30 years	4 (4)	1 (2)	3 (5)	
<b>History of recurrent infections, n (%)</b>	72 (67)	32 (71)	40 (65)	NA
<b>History of immune dysregulation, n (%)</b>	42 (39)	17 (38)	25 (40)	NA
Lymphoproliferation	18 (17)	8 (18)	10 (16)	
Autoimmunity	33 (31)	14 (31)	19 (31)	
<b>History of malignancy, n (%)</b>	21 (20)	3 (7)	18 (29)	NA
<b>Hematopoietic stem cell transplantation, n (%)</b>	17 (16)	6 (13)	11 (18)	NA
<b>Chromosomal instability, n (%)</b>	12 (11)	10 (22)	2 (3)	0 (0)
<b>Chromosomal radiosensitivity (RS) , n (%)</b>				
No RS	92 (86)	32 (71)	60 (97)	15 (100)
Intermediate RS	4 (4)	2 (4)	2 (3)	0 (0)
Severe RS	11 (10)	11 (24)	0 (0)	0 (0)

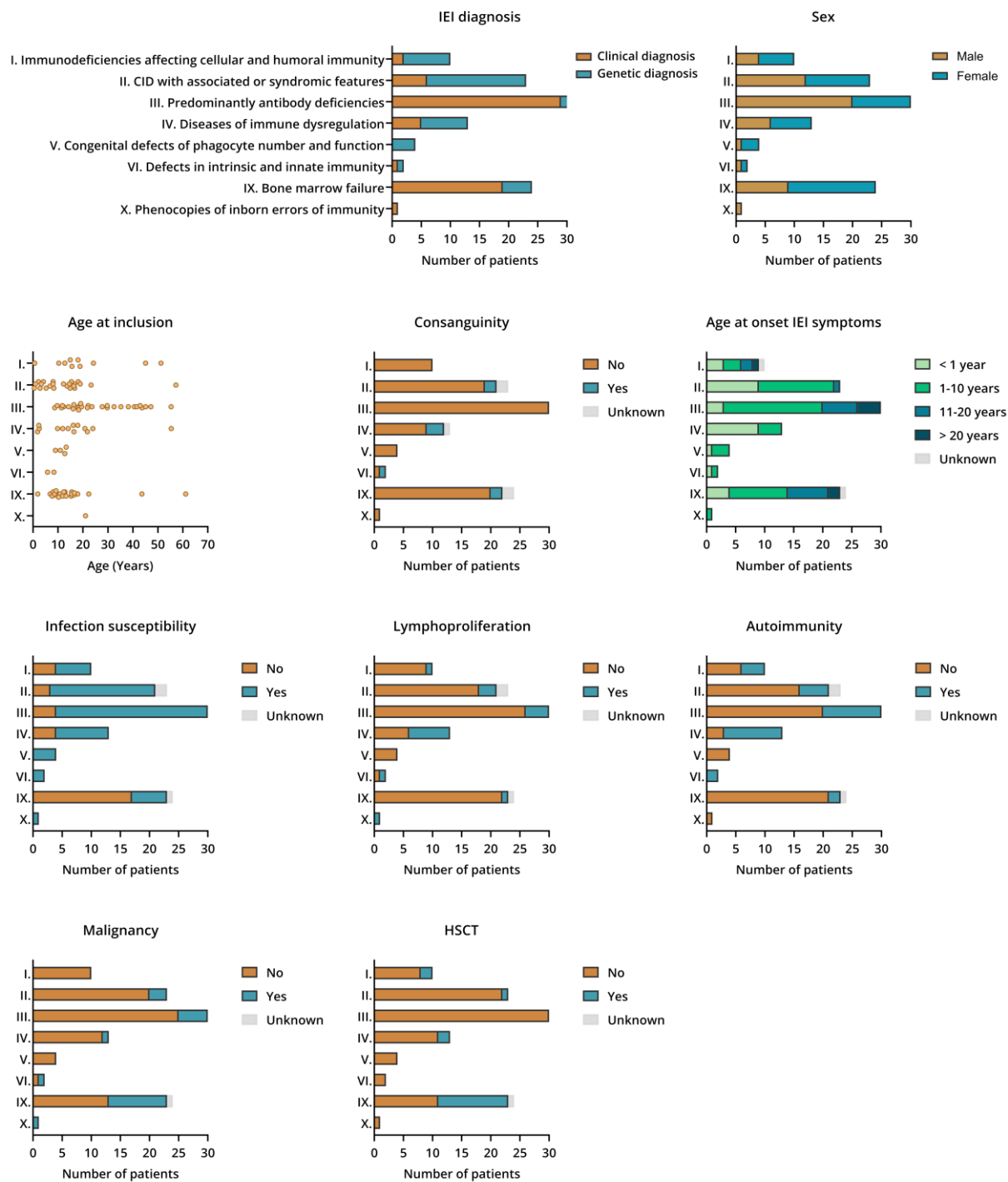
685 *IEI: Inborn error of immunity; IUIS: International Union of Immunological Societies*

686 **Table 2. Reference G0 MN values of the healthy control population (n = 50),**  
687 expressed as MN per 1000 BN.

<b>Parameter</b>	<b>0 Gy</b>	<b>0.5 Gy (RI)</b>	<b>1 Gy (RI)</b>
Mean	21.4	83.6	227.9
SD	11.3	16.1	39.1
Range	5-54	42-111	165-295
Mean +2SD	44.0	115.7	306.2
Mean +3SD	55.3	131.8	345.3
CV (%)	52.7	19.2	17.2

688 *MN, micronuclei; RI, Radiation-induced; SD, Standard deviation; CV, Coefficient of variation*  
689

690 **FIGURES**

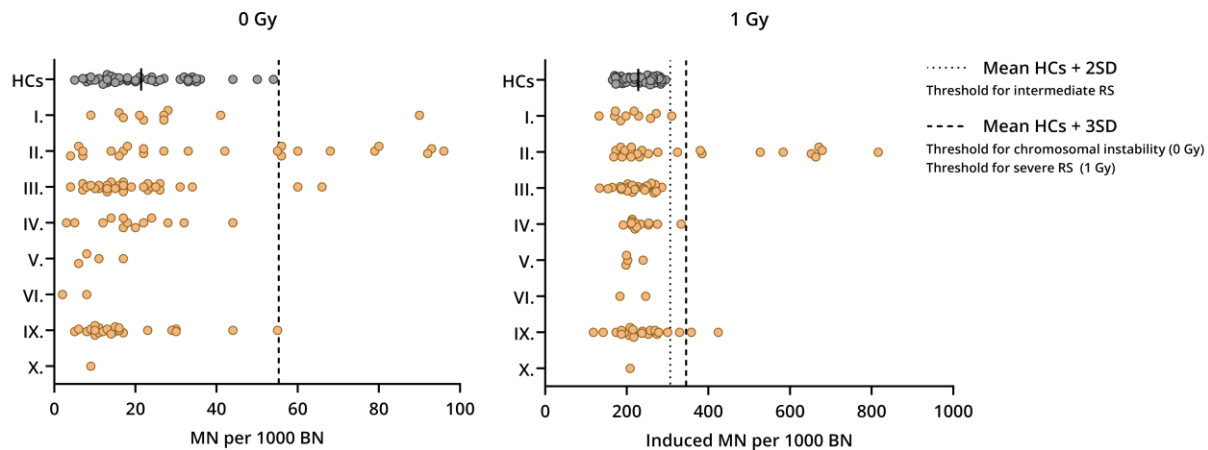


691  
692 **Figure 1. Study population characteristics of the inborn error of immunity (IEI) patient cohort (n = 107).**

693 Patients were classified according to the 10 IUIS subgroups of IEIs. Distribution of the patients across these  
694 subgroups is displayed, including the occurrence of the following clinical parameters and immunological  
695 manifestations: genetic or clinical IEI diagnosis, sex, age at inclusion, consanguinity, age at onset IEI symptoms,  
696 infection susceptibility, lymphoproliferation, autoimmunity, history of malignancy, and hematopoietic stem cell  
697 transplantation (HSCT).

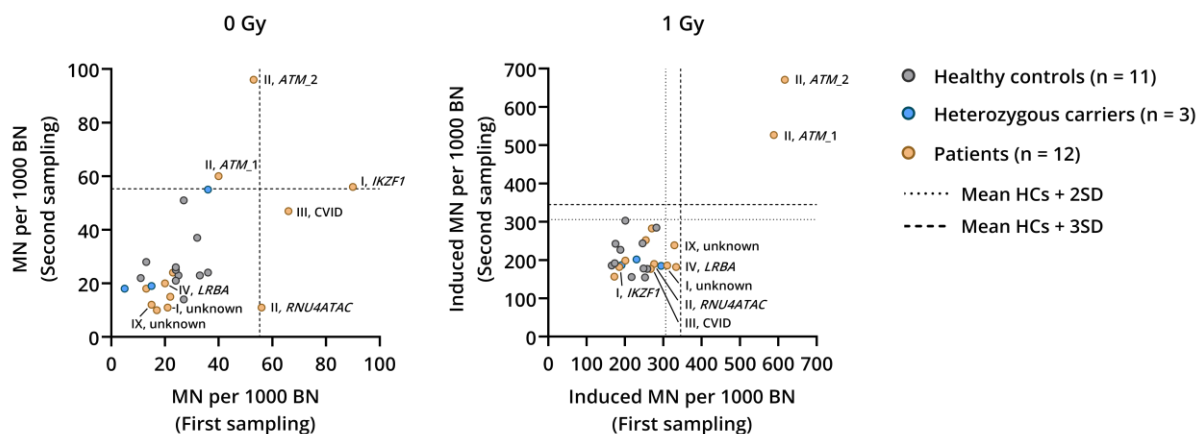
698

**a IUIS subgroups**



- I. Immunodeficiencies affecting cellular and humoral immunity
- II. CID with associated or syndromic features
- III. Predominantly antibody deficiencies
- IV. Diseases of immune dysregulation
- V. Congenital defects of phagocyte number and function
- VI. Defects in intrinsic and innate immunity
- IX. Bone marrow failure
- X. Phenocopies of inborn errors of immunity

**b Reproducibility**



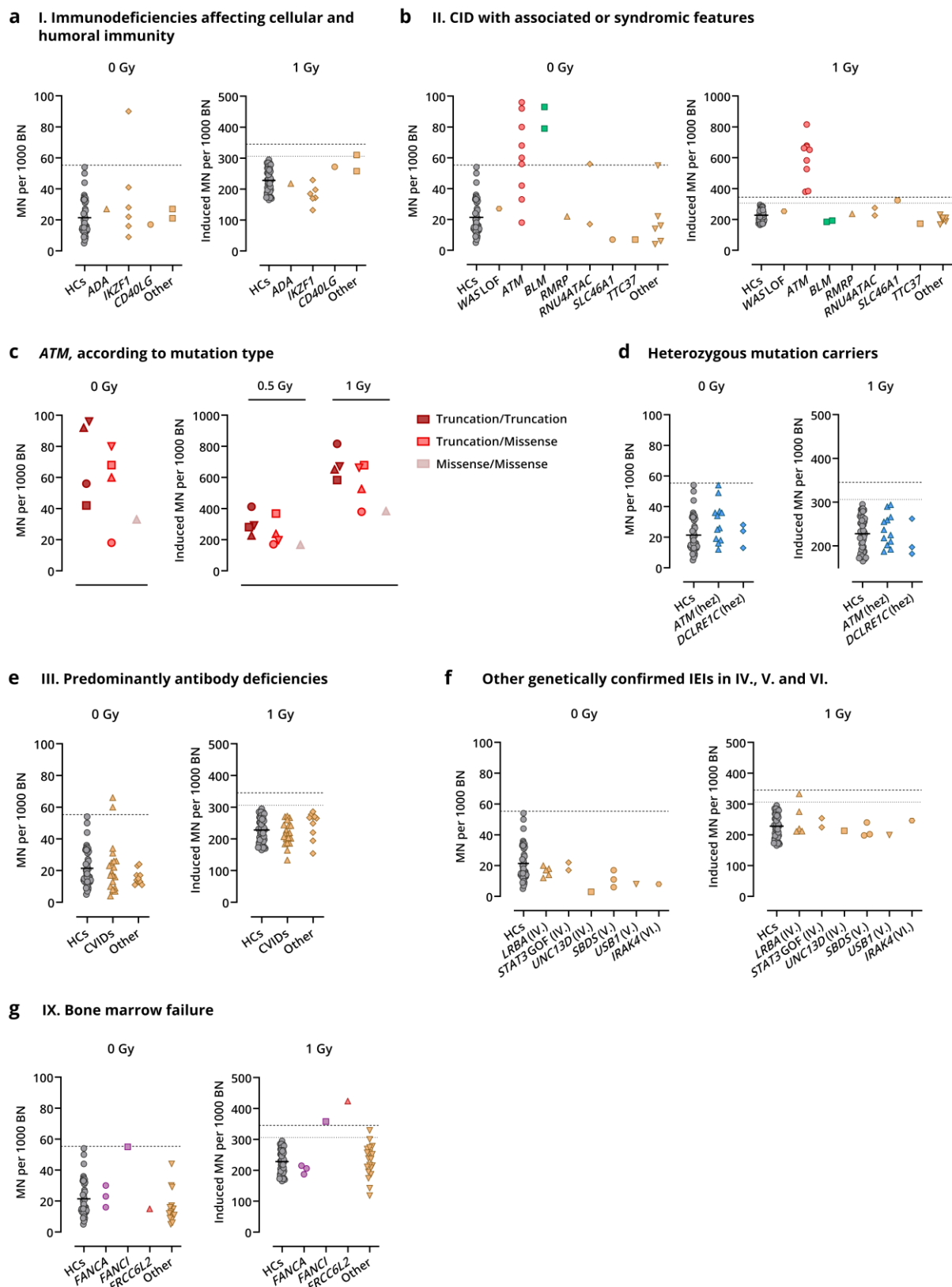
699

700 **Figure 2. Evaluation of chromosomal instability and radiosensitivity (RS) of the entire IEI patient cohort.**

701 (a) Spontaneous (0 Gy) and radiation-induced (1 Gy) MN yields are displayed per IUIS subgroup for all patients.  
 702 Chromosomal instability was indicated when MN values exceeded the mean + 3SD threshold (dashed line) for 0 Gy.  
 703 Patients with radiation-induced MN yields (1 Gy) higher than the mean + 2SD threshold (dotted line) or higher  
 704 than the mean + 3SD threshold (dashed line) were classified as intermediate or severe radiosensitive, respectively.  
 705 Patients were considered as not radiosensitive when the MN yields were lower than the mean + 2SD threshold. (b)  
 706 Reproducibility of the G0 MN assay was assessed by comparing spontaneous (0 Gy) and radiation-induced (1 Gy)  
 707 MN yields of the first and second sampling for 11 healthy controls, 3 heterozygous carriers, and 12 patients.  
 708 Patients that exceeded the 0 Gy and/or 1 Gy threshold are annotated on both panels.

709

710



711

712 **Figure 3. Chromosomal instability and radiosensitivity phenotypes according to specific gene defects.**

713 Spontaneous (0 Gy) and radiation-induced MN yields (1 Gy) are shown for healthy controls (HCs), heterozygous  
714 mutation carriers and patients with a confirmed genetic diagnosis, displayed per IUIS group. (a) Patients with a

715 confirmed genetic defect in IUIS group I (immunodeficiencies affecting cellular and humoral immunity) **(b)**  
716 Patients with an identified defect in IUIS group II (combined immunodeficiency (CID) with associated or  
717 syndromic features). **(c)** Variability in MN results (0 Gy, 0.5 Gy, and 1 Gy) among the 9 ataxia telangiectasia (AT)  
718 patients, distinguished according to the mutation type. Four patients carried two truncating variants, one harbored  
719 a biallelic missense variant, and 4 were compound heterozygous for a truncating and a non-truncating variant. **(d)**  
720 Relatives of IEI patients carrying a heterozygous mutation in *ATM* or *DCLRE1C* (Artemis). **(e)** Patients classified  
721 in group III (predominantly antibody deficiencies), displayed separately for common variable immunodeficiency  
722 (CVID) and non-CVID (other) patients. **(f)** Patients with a confirmed genetic defect in IUIS group IV (diseases of  
723 immune dysregulation), group V (congenital defects in phagocyte number and function) or group VI (defects in  
724 intrinsic and innate immunity). **(g)** Patients with an identified genetic defect, categorized in IUIS group IX (bone  
725 marrow failure). Dotted and dashed lines indicate the mean + 2SD and mean + 3SD threshold values, respectively.

726

727

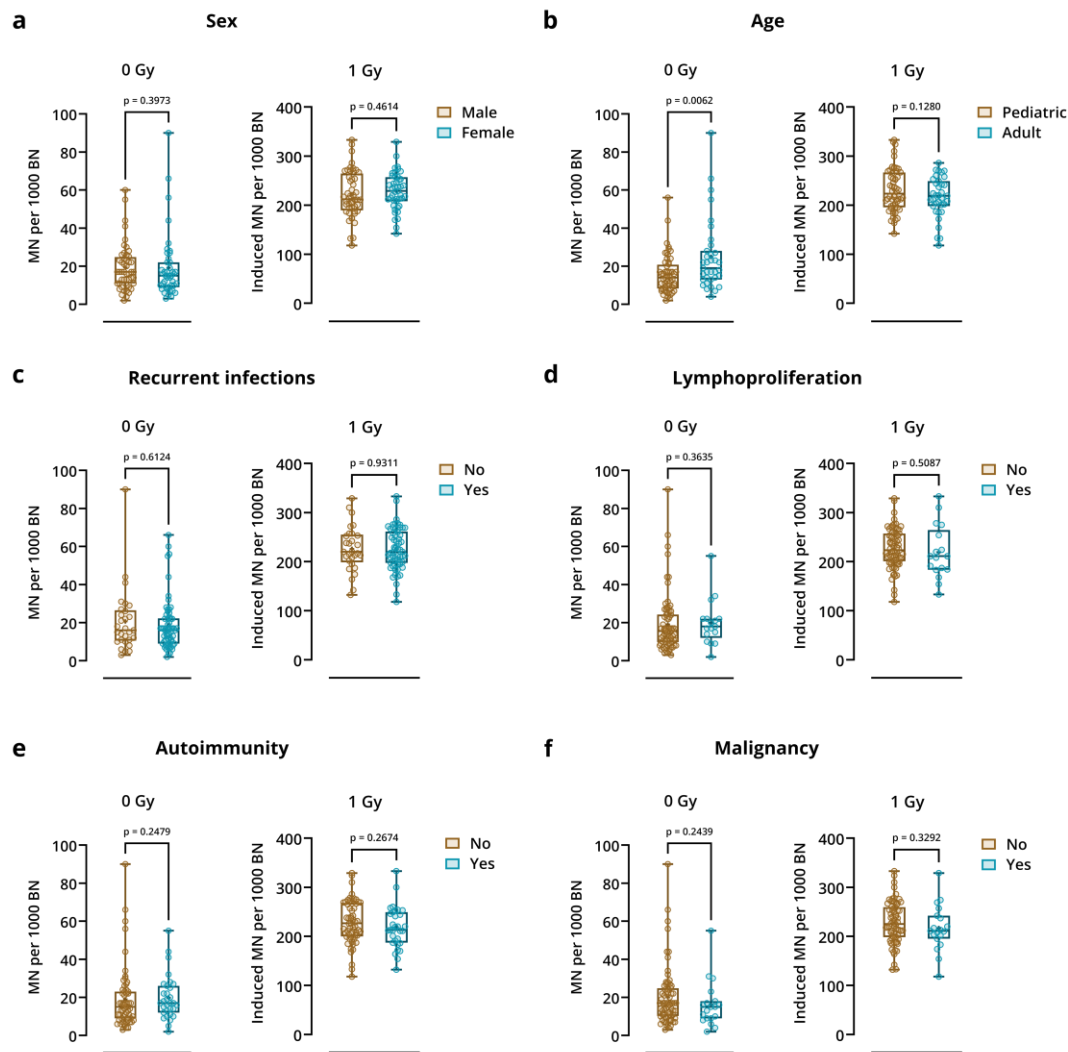
728

729

730

731

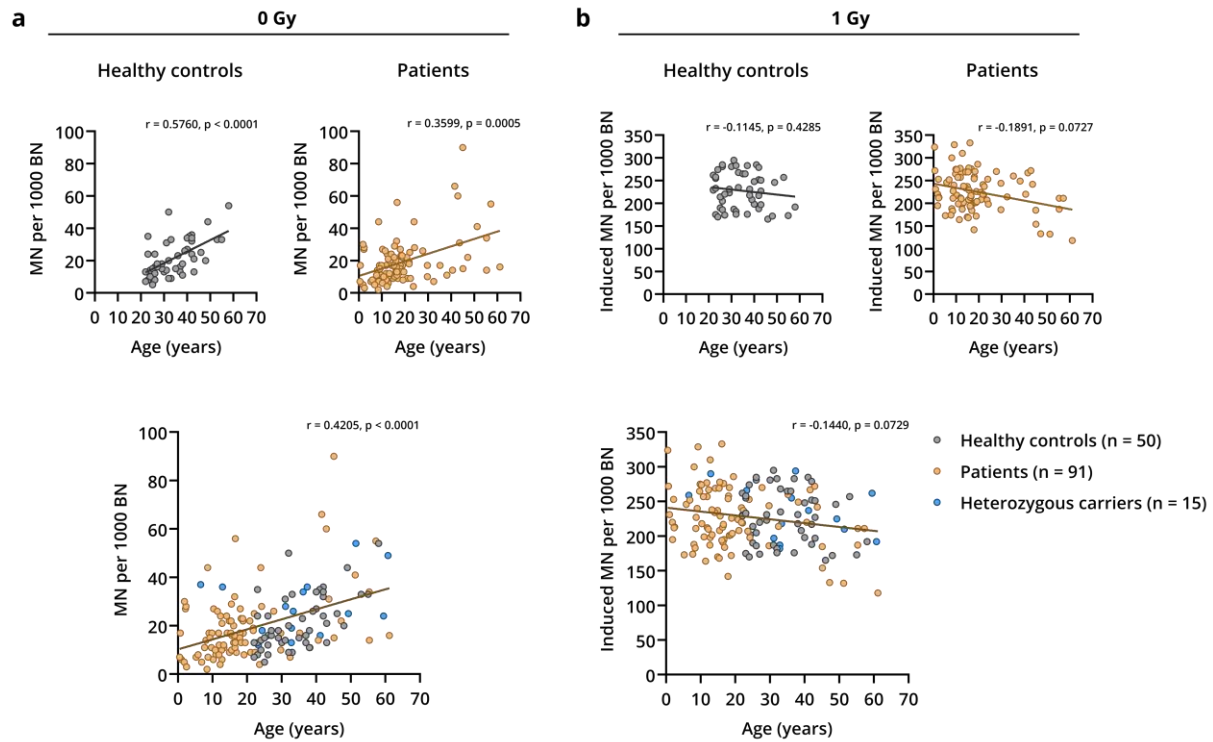




732 **Figure 4. The occurrence of IEI-related co-morbidities are not associated with increased spontaneous or**  
 733 **radiation-induced MN frequencies.**

734 Association between MN yields and the following clinical features and immunological manifestations were  
 735 investigated: (a) sex, (b) age at inclusion, (c) recurrent infections, (d) lymphoproliferation, (e) autoimmunity, and  
 736 (f) history of malignancy. Spontaneous (0 Gy) and radiation-induced MN yields (1 Gy) are displayed for each  
 737 parameter. Boxplots depict the median, lower and upper quartiles of the MN yields, whiskers indicate minimum  
 738 and maximum values. Statistical significance was assessed using the Mann-Whitney test (0 Gy) or unpaired t-tests  
 739 (1 Gy). Patients with a confirmed defect in one of the DNA DSB repair-related genes were excluded for this  
 740 analysis.

741  
 742  
 743  
 744  
 745  
 746



747 **Figure 5. Age-related variation in spontaneous and radiation-induced MN yields in the entire cohort of IEI**  
748 **patients, heterozygous carriers, and healthy controls.**

749 A correlation analysis was performed between age and (a) spontaneous (0 Gy) and (b) radiation-induced MN  
750 yields (1 Gy), by calculating the Spearman's rank correlation coefficient (r). The healthy control and IEI patient  
751 cohort were analyzed separately, as well as the entire study population together (healthy controls, patients, and  
752 heterozygous carriers). Patients with a confirmed defect in one of the DNA DSB repair-related genes were  
753 excluded for this analysis.