

1 **Daily steps are a predictor of, but perhaps not a modifiable risk factor for Parkinson's Disease:**
2 **findings from the UK Biobank**

3 Authors: Aidan Acquah^{1,2,3}, Dr. Andrew Creagh^{2,3}, Dr. Valentin Hamy⁴, Alaina Shreves^{1,2,5}, Charilaos Zisou^{1,2},
4 Dr. Charlie Harper^{1,2}, Dr. Stefan Van Duijvenboden^{1,2}, Prof. Chrystalina Antoniadou⁶, Prof. Derrick Bennett¹,
5 Prof. David Clifton^{3,7}, Prof. Aiden Doherty^{1,2}

6
7 **Affiliations:**

- 8 1. Nuffield Department of Population Health, University of Oxford, UK
9 2. Big Data Institute, Li Ka Shing Centre for Health Information and Discovery, University of Oxford, UK
10 3. Institute of Biomedical Engineering, Department of Engineering Science, University of Oxford
11 4. GSK, UK
12 5. Division of Cancer Epidemiology and Genetics, National Cancer Institute, National Institutes of Health,
13 Bethesda, MD, USA
14 6. Nuffield Department of Clinical Neurosciences, Medical Sciences Division, University of Oxford, Oxford,
15 UK
16 7. Oxford Suzhou Centre for Advanced Research, University of Oxford, Suzhou 215123, Jiangsu, China

17
18 **Correspondence to:**

19 Aiden Doherty, PhD
20 Professor of Biomedical Informatics
21 University of Oxford
22 Nuffield Department of Population Health
23 Big Data Institute, Old Road Campus
24 Oxford, UK OX3 7LF
25 Email: aiden.doherty@ndph.ox.ac.uk

26
27 Word count: 2,469 words

28 **Key Points**

29 **Question**

30 Is there an association between accelerometer-derived daily step count and the risk of incident Parkinson's disease,
31 considering the potential impact of reverse causation?

32 **Findings**

33 In this prospective cohort study of 94,696 UK Biobank participants, an inverse association was found between
34 daily step count and incident Parkinson's disease over a median follow-up of 7.9 years. However, this association
35 was attenuated when excluding the first six years of follow-up.

36 **Meaning**

37 While daily step counts may be associated with incident Parkinson's disease, these observations are likely
38 influenced by reverse causation, indicating changes in daily behaviours years before diagnosis.

39 **Abstract**

40 **Importance**

41 Higher physical activity levels have been suggested as a potential modifiable risk factor for lowering the risk of
42 incident Parkinson's disease (PD). This study uses objective measures of physical activity to investigate the role
43 of reverse causation in the observed association.

44 **Objective**

45 To investigate the association between accelerometer-derived daily step count and incident PD, and to assess the
46 impact of reverse causation on this association.

47 **Design**

48 This prospective cohort study involved a follow-up period with a median duration of 7.9 years, with participants
49 who wore wrist-worn accelerometers for up to 7 days.

50 **Setting**

51 The study was conducted within the UK Biobank, a large, population-based cohort.

52 **Participants**

53 The analysis included 94,696 participants aged 43-78 years (56% female) from the UK Biobank who provided
54 valid accelerometer data and did not have prevalent PD.

55 **Exposure**

56 Daily step counts were derived using machine learning models to determine the median daily step count over the
57 monitoring period.

58 **Main Outcomes and Measures**

59 The primary outcome was incident PD, identified through hospital admission and death records. Cox proportional
60 hazards regression models estimated hazard ratios (HR) and 95% confidence intervals (CI) for the association
61 between daily step count and incident PD, with adjustments for various covariates and evaluation of reverse
62 causation by splitting follow-up periods.

63 **Results**

64 During a median follow-up of 7.9 years (IQR: 7.4-8.4), 407 incident PD cases were identified. An inverse linear
65 association was observed between daily step count and incident PD. Participants in the highest quintile of daily
66 steps (>12,369 steps) had an HR of 0.41 (95% CI 0.31-0.54) compared to the lowest quintile (<6,276 steps; HR
67 1.00; 95% CI 0.84-1.19). A per 1,000 step increase was associated with an HR of 0.92 (95% CI 0.89-0.94).
68 However, after excluding the first six years of follow-up, the association was not significant (HR 0.96, 95% CI
69 0.92-1.01).

70 **Conclusions and Relevance**

71 The observed association between higher daily step count and lower incident PD is likely influenced by reverse
72 causation, suggesting changes in physical activity levels occur years before PD diagnosis. While step counts may
73 serve as a predictor for PD, they may not represent a modifiable risk factor. Further research with extended follow-
74 up periods is warranted to better understand this relationship and account for reverse causation.

75 **Introduction**

76 Parkinson's disease (PD) is the second most prevalent and most rapidly growing neurodegenerative disorder^{1,2},
77 with an estimated prevalence of 9.4 million³ cases in 2020, marking a substantial increase from 5.2 million cases
78 in 2004⁴. The prodromal phase of PD has many well-recognised motor-related symptoms, such as subtle motor
79 dysfunction, that are believed to occur over a decade before diagnosis⁵. Recognising these early indicators could
80 provide crucial insights for improved disease understanding and may offer the possibility of identifying modifiable
81 risk factors for developing PD.

82 In existing literature, low self-reported physical activity has been associated with a higher risk of incident PD^{6,7}.
83 Despite these observations, uncertainties remain, stemming from a reliance on self-report measurements of
84 physical activity, which are crude and less reliable, creating greater uncertainties in observed associations^{8,9}. In
85 addition, PD's progressive and prolonged development poses challenges in distinguishing between incident and
86 prevalent cases. This ambiguity can introduce reverse-causation bias, where the observed associations may be
87 influenced by the change in behaviour of individuals who already have underlying PD, rather than vice-versa.
88 One common approach to mitigate potential reverse causation is to exclude the first few years of follow-up data.
89 In PD studies, there is inconsistency around the number of years removed across studies, ranging between four to
90 ten years however reduced activity levels were still significantly associated with incident PD after this exclusion⁶.

91 Daily step counts serve as a valuable proxy for measuring physical activity levels. One of the primary advantages
92 of using average daily steps over other physical activity metrics is their simplicity, allowing for clear
93 communication and understanding among the general population. This ease of interpretation helps in translating
94 research findings into effective public health messaging¹⁰. Existing research into the association between physical
95 activity and incident PD have typically used metabolic equivalent of task (MET) scores to estimate physical
96 activity⁶. However, the increasing adoption of wearable devices, capable of estimating step counts, has encouraged
97 research on their accuracy and reliability, particularly in populations diagnosed with PD^{11,12}. The translatable
98 nature of daily step counts encourages the expansion of this research into incident PD, allowing for results to offer
99 insight into public health recommendations for potential disease prevention.

100 We, therefore, aimed to investigate the association between accelerometer-measured daily step counts and
101 incident Parkinson's disease, and how this association changed with latter windows of follow-up.

102 **Methods**

103 *Study Cohort*

104 The UK Biobank is a prospective cohort study of 502,536 adults in the United Kingdom who were recruited
105 between 2006 and 2010. The consented participants completed a questionnaire, interview, and provided physical
106 measurements, as well as blood, urine, and saliva samples^{13,14}. A subgroup of participants consented to wear an
107 Axivity AX3 wrist-worn accelerometer for up to 7 days between 2013-2015¹⁵. All participants provided written
108 informed consent and the study was approved by the National Information Governance Board for Health and
109 Social Care and the National Health Service North West Multicentre Research Ethics Committee (06/MRE08/65).

110 *Accelerometer-derived physical activity processing*

111 Accelerometer data was processed to derive step counts using the OxWearables “stepcount” package (version
112 2.1.5), a hybrid self-supervised machine learning model that was trained on ground truth free-living data and
113 counts peaks in detected walking windows of behaviour¹⁶. Steps were predicted for each participant's full period
114 of collected data, with missing periods due to non-wear imputed by averaging the step counts in the corresponding
115 times across valid days¹⁶. We then calculated the median of the imputed daily step counts, across the period of
116 monitoring, as the primary exposure in this study.

117 *Ascertainment of Parkinson's disease*

118 The diagnosis of PD was obtained from a combination of the UK Biobank's linked hospital data; inpatient hospital
119 admissions data, and death data. Diagnoses were coded according to the International Classification of Diseases
120 (version 10) coding system, with outcomes recorded as the first instance of a G20 diagnostic code¹⁷. This follows
121 the approach recommended by the UK Biobank¹⁷, and used by other studies in studying PD in the physical activity
122 monitoring cohort¹⁸⁻²⁰. Incident PD however was defined at their first diagnosis of PD. Participants were censored
123 at the first date of PD diagnosis, date of death, or at the end of their follow-up period (31 October 2022 for
124 England, 31 August 2022 for Scotland, and 31 May 2022 for Wales), whichever came first²¹.

125 *Statistical Analysis*

126 We processed the accelerometer data from 103,614 participants. We excluded participants with device calibration
127 or data reading errors (>1% of values outside +/-8g range), inadequate wear time (<3 days, or non-wear at a
128 particular time of day for all days of monitoring), unreasonably high average acceleration (>100 mg), and
129 stepcount model execution failure^{16,18,22,23}. We also excluded all 150 prevalent PD and 22 other Parkinsonism

130 cases, diagnosed before accelerometer wear, and participants with missing healthcare linkages or covariate data.
131 The final analysis included 94,696 participants (Figure 1).

132 A Cox proportional hazard regression model²⁴ was used to estimate adjusted hazard ratios (HRs) with 95%
133 confidence intervals (CIs) for the association between daily step counts and incident PD. The association was first
134 evaluated using quintiles of median daily step count. CIs were calculated using group-specific log HR variances
135 to enable comparisons across all groups, presented as floating absolute risks²⁵.

136 We then evaluated how the risk of PD was associated with each 1,000 steps per day higher. We sequentially
137 applied the full set of adjustments to the multivariable model. The impact of these sequential adjustments were
138 assessed using chi-squared test. Specifically, for the per-1000 median daily steps with one degree of freedom, we
139 compared the chi-squared values before and after adjustment. A likelihood ratio test comparing quintiles of daily
140 steps as categorical and ordinal was performed to test that the association between daily steps and incident PD did
141 not significantly depart from linearity²⁶. This allows for the reporting of hazard ratios per 1,000 steps rather than
142 quintiles of step count. At each step of this sequential adjustment, confounding was assessed by observing the chi-
143 squared from a likelihood ratio test of the association.

144 Multivariable models used age as the time scale were adjusted for season of wear (spring, summer, autumn,
145 winter), sex (female, male), ethnicity (white, non-white), Townsend Deprivation Index (TDI, stratified by
146 quintiles in UK population²⁷), geographic region of assessment centre (London, West Midlands, Yorkshire,
147 Northeast, Northwest, Southeast, Southwest England, Scotland, Wales), educational attainment (degree, diploma,
148 A/AS levels, professional qualification, GCSE/O levels, no degree/qualification), employment status (employed,
149 not employed), smoking status (never, previous, current) and alcohol consumption (never, < 3 times per week, ≥3
150 times per week) and coffee intake (non-drinker, ≤2 cups a day, >2 cups a day). All covariate data were provided
151 by participants at the UK Biobank baseline assessment visit, with details provided in supplementary material. The
152 proportional hazards assumption was tested using Schoenfeld residuals and no violations were observed.

153 We conducted several sensitivity analyses using the models assessing the risk for an increase in 1,000 daily steps.
154 First, we expanded our multivariable-adjusted models by additionally adjusting for body mass index (BMI) at
155 baseline, depression, type 2 diabetes, constipation, bladder dysfunction derived through a combination of self-
156 report and health records, and sleep duration derived from accelerometer data. We then explored whether the
157 observed associations differed within subpopulations of interest, including by age groups, sex, BMI (<25, 25–30,

158 30+ kg/m²)²⁸ and history of depression. Additionally, we performed a sensitivity analysis examining the
159 associations after excluding participants with any history of neurological disorder.

160 To address concerns regarding reverse causation bias and examine how the association may have changed over
161 successive follow up periods, we calculated the HR within specific follow-up periods (0-2 years, 2-4 years, 4-6
162 years, and 6+ years). Within each follow-up period, we censored events before and/or after each interval, as seen
163 in Floud et al. (2020)²⁹.

164 Results were reported according to Strengthening the Reporting of Observational Studies in Epidemiology
165 (STROBE) guidelines (Supplementary Table 3)³⁰.

166 **Results**

167 Among the 94,696 participants, 56% were female, 97% identified as White. Most were in the least deprived TDI
168 quintile, compared to the general UK population²⁷. Those with step counts in the highest quintile (12,369+ daily
169 steps) were younger, had a lower TDI, and lower BMI compared to those in the lowest step count group (<6,276
170 daily steps).

171 Participants had a median follow-up time of 7.9 years (IQR: 7.4, 8.4), during which 407 incident PD cases
172 occurred, with a median time to diagnosis of 5.2 years (IQR: 3.1, 6.8). We observed a strong and significant
173 inverse linear association between median daily step quintiles and incident PD using data from the entire duration
174 of follow-up. Those who walked over 12,369 steps daily had a 59% lower risk of PD (HR 0.41; 95% CI: 0.31-
175 0.54), compared to those walking less than 6,276 steps daily (HR 1.00; 95% CI: 0.84-1.19), after multivariable
176 adjustment. There was no evidence of departure from linearity (p=0.65).

177 For the multivariable model, a 1000-step increase in daily step counts was associated with an 8% lower risk of
178 PD (HR 0.92; 95% CI 0.89-0.94). The sequential adjustment of covariates from the univariable to multivariable
179 model showed minimal changes to the strength of the association and the chi-squared increased by 33% (shown
180 in the supplementary material). The further adjustment of additional covariates minimally altered the observed
181 associations. However, adjustment for sleep duration did attenuate the strength of association, with a reduction in
182 the chi-squared by 64%, as shown in supplementary figure 4. Furthermore, we observed no significant difference
183 across subgroups, including age groups, sex, BMI status and history of depression. After removing 9,734

184 individuals with prevalent neurological cases, the observed association was similar to that observed in our main
185 study sample (HR 0.92; 95% CI 0.89-0.95).

186 To address potential reverse causality, we assessed how the association between step counts and PD risk may
187 have changed over follow-up periods of <2, 2-4, 4-6 and 6+ (Figure 3). We observed the strongest association
188 within the first two years of follow-up (HR 0.83; 95% CI 0.70-0.90), during which there were 55 incident cases.
189 However, the association was attenuated for later windows of follow-up, trending towards the null. This is despite
190 having higher relative numbers of cases in latter periods of follow-up, reducing uncertainty in estimates. For the
191 follow-up period of over 6 years, the HR was no longer statistically significant, with a hazard of 0.96 (95% CI:
192 0.92 – 1.01).

193 **Discussion**

194 Higher accelerometer-derived physical activity levels, indicated by median daily step counts, were associated with
195 a lower risk of incident Parkinson's disease (PD) when using data from all periods of follow-up. This association
196 remained statistically significant after multivariable adjustment, investigating potential factors, and among
197 subpopulations of interest. However, this association was null when considering later periods of follow-up,
198 indicating that reverse causation bias is likely. Overall, these findings do not provide evidence that daily step
199 counts may be a modifiable risk factor for PD.

200 Our findings are in contrast to some previous literature in the field that supports an association between physical
201 activity levels and incident PD, even after the consideration of reverse causation^{6,19,20,31}. In a meta-analysis of
202 this association with a median (range) follow-up of 12 (6.1-22.0) years, the relative risk for incident PD comparing
203 the highest and lowest categories of total physical activity was 0.79 (95% CI 0.68-0.91), and remained significant
204 when the first four to ten years of follow-up was removed from the constituent studies (0.76; 95% CI 0.64-0.91)⁶.
205 In our study, removing years of follow-up reduced the strength of the observed association. Similar attenuations
206 between physical activity and diseases of aging have been reported in other studies. Our findings are more
207 consistent with results from a study on physical activity and dementia that was conducted in the Whitehall Study
208 and Million Women Study^{29,32}.

209 These results however support existing literature in finding lower physical activity levels to be a strong predictor
210 for late-stage prodromal PD/early-stage clinical PD among those who already have a PD diagnosis^{31,33}. One study
211 reported that this reduction in activity may occur up to 4 years before a clinical diagnosis³¹. A separate study

212 assessing minutes of daily physical activity³³ found a reduction of 29% in comparing clinic PD patients to controls,
213 in minutes of daily physical activity. There are several hypotheses for these activity changes, including changes
214 in overall disability, poorer walking performance, and fear of falls/anxiety/depression³³. It should be noted,
215 however, that this reduction in activity is not fully explained by known factors, with this study encouraging further
216 research into explaining this behaviour³³.

217 Our study has several strengths. First, we used objective measures of activity derived from accelerometer data,
218 which offers greater reliability in the measurement of this exposure compared to questionnaire-based studies.
219 Second, the use of step count as a measure of daily physical activity offers the opportunity for better
220 communication as step counts are easily translatable for public health messaging. Next, this work has built on
221 previous studies investigating PD using the UK Biobank physical activity monitoring study¹⁸⁻²⁰, however with
222 longer follow-up, while also addressing some of these studies' limitations. Of these limitations, we explored how
223 the association may change over follow-up periods to better describe the potential impact of reverse causation.

224 There are also some limitations to our study. Firstly, this analysis was purely observational; hence we cannot
225 exclude the possibility of unmeasured or residual confounding in the observed associations, despite considering a
226 comprehensive set of confounders. Secondly, the UK Biobank provides limited health data linkage for
227 participants, which we use to identify participants with PD. We use the approach recommended by UK Biobank
228 to ascertain PD, combining hospital inpatient, death register and self-reported data¹⁷. However, this does not
229 provide information regarding the severity or subtype of PD, which may offer further insights into this association.
230 Furthermore, the use of primary care data could bolster the PD cases, but this data is currently limited to just 45%
231 of participants and only up to 2017. Lastly, this study is limited by the number of cases observed within period of
232 follow-up. With 407 incident cases of PD from all periods of follow-up, and just 156 diagnosed at least 6 years
233 after participating in the study, we are somewhat limited in power to observe small effects of increased activity.
234 We are also limited by a maximum follow-up time of 9.4 years. The PD prodromal window is typically reported
235 to be at least 10 years prior to a clinical diagnosis⁵. Future studies in this population can benefit from increase
236 case numbers from a longer follow-up period, while also giving further insights into this association, beyond the
237 prodromal window of PD.

238 **Conclusion**

239 Results from this prospective study add to the literature on physical activity and incident PD, suggesting that
240 higher daily step counts were associated with lower risk of incident PD, but only for short follow-up periods.

241 Therefore, the observed association, may be explained by reverse causation bias. This work supports the continued
242 labelling of low physical activity as a marker for Parkinson’s disease, rather than as a modifiable risk factor leading
243 to Parkinson’s disease.

244 **Acknowledgements**

245 We thank Prof. Sarah Floud and Tonima Trisa for their guidance in the handling of reverse causation in this
246 association.

247 **Funding**

248 This research has been conducted using the UK Biobank Resource under Application Number 59070. This
249 research is supported by the EPSRC Centre for Doctoral Training in Health Data Science (EP/S02428X/1), and
250 by GlaxoSmithKline as part of an iCase studentship (EP/V519741/1). AD and SvD are supported by the Wellcome
251 Trust [223100/Z/21/Z]. AD and DB are supported by Novo Nordisk. AD, CH, and DB are supported by SwissRe.
252 CZ and AD are supported by the Oxford BHF Centre of Research Excellence [RE/18/3/34214]. DC is supported
253 by the Pandemic Sciences Institute at the University of Oxford; the National Institute for Health Research (NIHR)
254 Oxford Biomedical Research Centre (BRC); an NIHR Research Professorship; a Royal Academy of Engineering
255 Research Chair; the Wellcome Trust funded VITAL project (grant 204904/Z/16/Z); the EPSRC (grant
256 EP/W031744/1); and the InnoHK Hong Kong Centre for Cerebro-cardiovascular Engineering (COCHE). AS is
257 supported by the National Institutes of Health’s Intramural Research Program and by the National Institutes of
258 Health’s Oxford Cambridge Scholars Program. CA is supported by the National Institute for Health Research
259 Oxford Biomedical Research Centre and has received research grant support from UCB Pharma.

260 For the purpose of open access, the authors have applied a CC-BY public copyright licence to any author accepted
261 manuscript version arising from this submission.

262

263 References

- 264 1. Mhyre TR, Boyd JT, Hamill RW, Maguire-Zeiss KA. Parkinson's Disease. *Subcell Biochem.*
265 2012;65:389-455. doi:10.1007/978-94-007-5416-4_16
- 266 2. Dorsey ER, Elbaz A, Nichols E, et al. Global, Regional, and National Burden of Parkinson's
267 Disease, 1990– 2016: A Systematic Analysis for the Global Burden of Disease Study 2016.
268 *Lancet Neurol.* 2018;17(11):939-953. doi:10.1016/S1474-4422(18)30295-3
- 269 3. Maserejian N, Vinikoor-Imler L, Dilley A. Estimation of the 2020 Global Population of
270 Parkinson's Disease (PD). *MDS Abstr.* Published online 2020.
- 271 4. Ahlrichs C, Lawo M. Parkinson's Disease Motor Symptoms in Machine Learning: A Review.
272 *ArXiv Prepr ArXiv13123825.* Published online 2013.
- 273 5. Postuma RB, Berg D. Advances in Markers of Prodromal Parkinson Disease. *Nat Rev Neurol.*
274 2016;12(11):622-634. doi:10.1038/nrneurol.2016.152
- 275 6. Fang X, Han D, Cheng Q, et al. Association of Levels of Physical Activity With Risk of
276 Parkinson Disease: A Systematic Review and Meta-analysis. *JAMA Netw Open.*
277 2018;1(5):e182421. doi:10.1001/jamanetworkopen.2018.2421
- 278 7. LaHue SC, Comella CL, Tanner CM. The best medicine? The influence of physical activity and
279 inactivity on Parkinson's disease. *Mov Disord.* 2016;31(10):1444-1454. doi:10.1002/mds.26728
- 280 8. Sallis JF, Saelens BE. Assessment of Physical Activity by Self-Report: Status, Limitations, and
281 Future Directions. *Res Q Exerc Sport.* 2000;71(sup2):1-14.
282 doi:10.1080/02701367.2000.11082780
- 283 9. R J Shephard. Limits to the measurement of habitual physical activity by questionnaires. *Br J*
284 *Sports Med.* 2003;37(3):197. doi:10.1136/bjism.37.3.197
- 285 10. Bassett DR, Toth LP, LaMunion SR, Crouter SE. Step Counting: A Review of Measurement
286 Considerations and Health-Related Applications. *Sports Med Auckl Nz.* 2017;47(7):1303-1315.
287 doi:10.1007/s40279-016-0663-1
- 288 11. Shokouhi N, Khodakarami H, Fernando C, Osborn S, Horne M. Accuracy of Step Count
289 Estimations in Parkinson's Disease Can Be Predicted Using Ambulatory Monitoring. *Front Aging*
290 *Neurosci.* 2022;14. doi:10.3389/fnagi.2022.904895
- 291 12. Bianchini E, Galli S, Alborghetti M, et al. Four Days Are Enough to Provide a Reliable Daily
292 Step Count in Mild to Moderate Parkinson's Disease through a Commercial Smartwatch. *Sensors.*
293 2023;23(21):8971. doi:10.3390/s23218971
- 294 13. UK Biobank. UK Biobank Enable your research. June 24, 2021. Accessed February 13, 2024.
295 <https://www.ukbiobank.ac.uk/enable-your-research>
- 296 14. Sudlow C, Gallacher J, Allen N, et al. UK Biobank: An Open Access Resource for Identifying the
297 Causes of a Wide Range of Complex Diseases of Middle and Old Age. *PLOS Med.*
298 2015;12(3):e1001779. doi:10.1371/journal.pmed.1001779
- 299 15. Doherty A, Jackson D, Hammerla N, et al. Large Scale Population Assessment of Physical
300 Activity Using Wrist Worn Accelerometers: The UK Biobank Study. *PLOS ONE.*
301 2017;12(2):e0169649. doi:10.1371/journal.pone.0169649

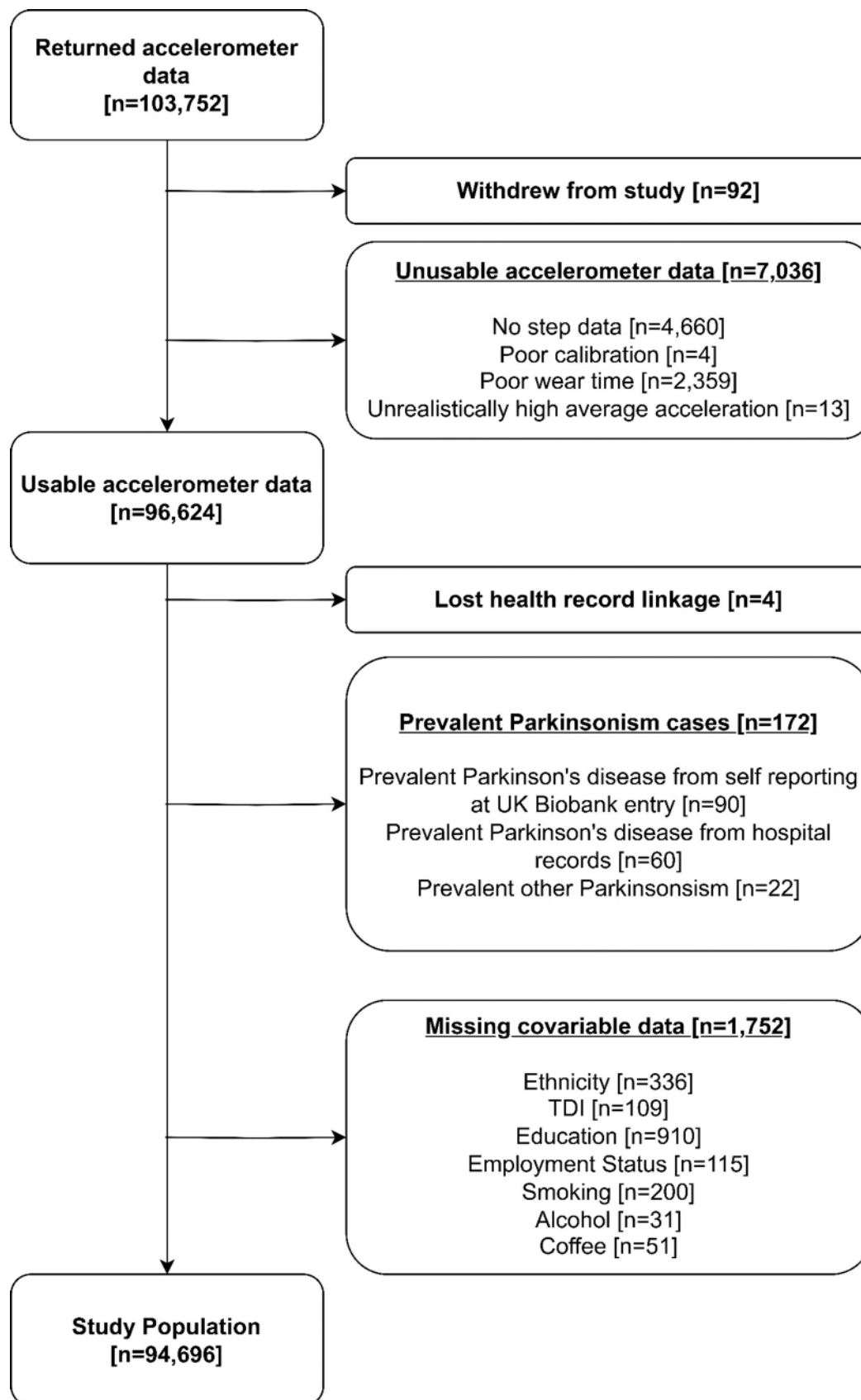
- 302 16. Small SR, Chan S, Walmsley R, et al. *Development and Validation of a Machine Learning Wrist-*
303 *Worn Step Detection Algorithm with Deployment in the UK Biobank*. Public and Global Health;
304 2023. doi:10.1101/2023.02.20.23285750
- 305 17. Bush K, Rannikmae K, Wilkinson T, Schnier C, Sudlow C. Definitions of Parkinson's Disease
306 and the Major Causes of Parkinsonism, UK Biobank Phase 1 Outcomes Adjudication. Published
307 online March 2018.
308 https://biobank.ndph.ox.ac.uk/showcase/showcase/docs/alg_outcome_pdp.pdf
- 309 18. Schalkamp AK, Peall KJ, Harrison NA, Sandor C. Wearable movement-tracking data identify
310 Parkinson's disease years before clinical diagnosis. *Nat Med*. 2023;29(8):2048-2056.
311 doi:10.1038/s41591-023-02440-2
- 312 19. Zhao A, Cui E, Leroux A, Lindquist MA, Crainiceanu CM. Evaluating the prediction
313 performance of objective physical activity measures for incident Parkinson's disease in the UK
314 Biobank. *J Neurol*. Published online August 24, 2023. doi:10.1007/s00415-023-11939-0
- 315 20. Liu M, Gan X, Ye Z, et al. Association of accelerometer-measured physical activity intensity,
316 sedentary time, and exercise time with incident Parkinson's disease. *Npj Digit Med*.
317 2023;6(1):224. doi:10.1038/s41746-023-00969-7
- 318 21. UK Biobank. UK Biobank. May 21, 2024. Accessed June 26, 2024. <https://www.ukbiobank.ac.uk>
- 319 22. Walmsley R, Chan S, Smith-Byrne K, et al. Reallocation of Time between Device-Measured
320 Movement Behaviours and Risk of Incident Cardiovascular Disease. *Br J Sports Med*. Published
321 online September 2021:bjssports-2021-104050. doi:10.1136/bjssports-2021-104050
- 322 23. Doherty A, Smith-Byrne K, Ferreira T, et al. GWAS Identifies 14 Loci for Device-Measured
323 Physical Activity and Sleep Duration. *Nat Commun*. 2018;9(1):5257. doi:10.1038/s41467-018-
324 07743-4
- 325 24. Cox DR. Regression Models and Life-Tables. *J R Stat Soc Ser B Methodol*. 1972;34(2):187-220.
- 326 25. Easton DF, Peto J, Babiker AG. Floating absolute risk: an alternative to relative risk in survival
327 and case-control analysis avoiding an arbitrary reference group. *Stat Med*. 1991;10(7):1025-1035.
328 doi:10.1002/sim.4780100703
- 329 26. Kirkwood BR, Sterne JAC. *Essential Medical Statistics*. John Wiley & Sons, Incorporated; 2003.
- 330 27. Yousaf S, Bonsall A. UK Townsend Deprivation Scores from 2011 census data. Presented at:
331 July 9, 2017. [https://s3-eu-west-](https://s3-eu-west-1.amazonaws.com/statistics.digitalresources.jisc.ac.uk/dkan/files/Townsend_Deprivation_Scores/UK%20Townsend%20Deprivation%20Scores%20from%202011%20census%20data.pdf)
332 [1.amazonaws.com/statistics.digitalresources.jisc.ac.uk/dkan/files/Townsend_Deprivation_Scores/](https://s3-eu-west-1.amazonaws.com/statistics.digitalresources.jisc.ac.uk/dkan/files/Townsend_Deprivation_Scores/UK%20Townsend%20Deprivation%20Scores%20from%202011%20census%20data.pdf)
333 [UK%20Townsend%20Deprivation%20Scores%20from%202011%20census%20data.pdf](https://s3-eu-west-1.amazonaws.com/statistics.digitalresources.jisc.ac.uk/dkan/files/Townsend_Deprivation_Scores/UK%20Townsend%20Deprivation%20Scores%20from%202011%20census%20data.pdf)
- 334 28. Weir CB, Jan A. BMI Classification Percentile And Cut Off Points. In: *StatPearls*. StatPearls
335 Publishing; 2023. Accessed January 16, 2024. <http://www.ncbi.nlm.nih.gov/books/NBK541070/>
- 336 29. Floud S, Simpson RF, Balkwill A, et al. Body mass index, diet, physical inactivity, and the
337 incidence of dementia in 1 million UK women. *Neurology*. 2020;94(2):e123-e132.
338 doi:10.1212/WNL.00000000000008779
- 339 30. von Elm E, Altman DG, Egger M, Pocock SJ, Gøtzsche PC, Vandenbroucke JP. The
340 Strengthening the Reporting of Observational Studies in Epidemiology (STROBE) statement:
341 guidelines for reporting observational studies. *The Lancet*. 2007;370(9596):1453-1457.
342 doi:10.1016/S0140-6736(07)61602-X

- 343 31. Xu Q, Park Y, Huang X, et al. Physical activities and future risk of Parkinson disease. *Neurology*.
344 2010;75(4):341-348. doi:10.1212/WNL.0b013e3181ea1597
- 345 32. Sabia S, Dugravot A, Dartigues JF, et al. Physical activity, cognitive decline, and risk of
346 dementia: 28 year follow-up of Whitehall II cohort study. *BMJ*. Published online June 22,
347 2017;j2709. doi:10.1136/bmj.j2709
- 348 33. van Nimwegen M, Speelman AD, Hofman-van Rossum EJM, et al. Physical inactivity in
349 Parkinson's disease. *J Neurol*. 2011;258(12):2214-2221. doi:10.1007/s00415-011-6097-7
- 350

351 Appendix

352 Table 1: Count by Demographic Characteristics in the UK Biobank

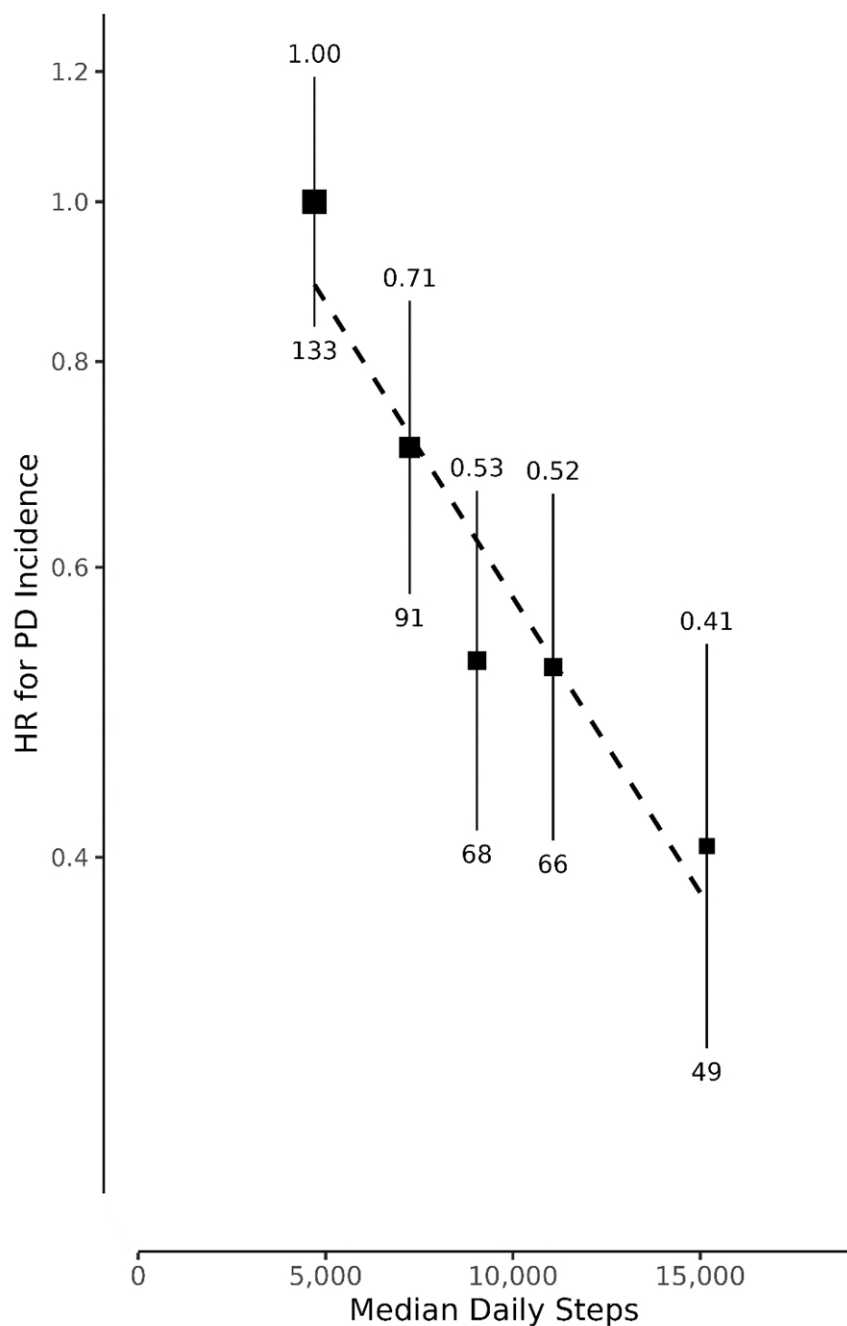
Characteristic	Median daily step count					All
	<6,276	6,276-8,145	8,146-9,966	9,967-12,368	12,369+	
No. of Participants	18,933	18,939	18,941	18,942	18,941	94,696
Demographic factors						
Age, mean (SD), (years)	63.3 (7.96)	62.6 (7.89)	62.3 (7.85)	62.1 (7.74)	61.4 (7.65)	62.3 (7.84)
Female, No. (%)	10,792 (57.0%)	10,916 (57.6%)	10,780 (56.9%)	10,727 (56.6%)	10,158 (53.6%)	53,373 (56.4%)
White ethnicity, No. (%)	18,288 (96.6%)	18,321 (96.7%)	18,377 (97.0%)	18,416 (97.2%)	18,406 (97.2%)	91,808 (97.0%)
Socio-economic factors, No. (%)						
Most Deprived UK Population TDI Quintile (>= 4.74)	799 (4.2%)	553 (2.9%)	596 (3.1%)	565 (3.0%)	619 (3.3%)	3,132 (3.3%)
No education/professional qualifications	2,157 (11.4%)	1,643 (8.7%)	1,489 (7.9%)	1,305 (6.9%)	1,270 (6.7%)	7,864 (8.3%)
Not employed	8,418 (44.5%)	7,271 (38.4%)	7,133 (37.7%)	6,793 (35.9%)	6,498 (34.3%)	36,113 (38.1%)
Recruitment Centre						
England	16,979 (89.7%)	16,997 (89.7%)	17,079 (90.2%)	16,961 (89.5%)	16,950 (89.5%)	84,966 (89.7%)
Scotland	1,147 (6.1%)	1,220 (6.4%)	1,170 (6.2%)	1,270 (6.7%)	1,357 (7.2%)	6,164 (6.5%)
Wales	807 (4.3%)	722 (3.8%)	692 (3.7%)	711 (3.8%)	634 (3.3%)	3,566 (3.8%)
Behavioural factors						
Alcohol 3+ times/week, No. (%)	7,732 (40.8%)	8,918 (47.1%)	9,506 (50.2%)	9,988 (52.7%)	10,234 (54.0%)	46,378 (49.0%)
Never smoker, No. (%)	9,971 (52.7%)	10,827 (57.2%)	11,025 (58.2%)	11,214 (59.2%)	11,057 (58.4%)	54,094 (57.1%)
Non coffee drinker, No. (%)	4,168 (22.0%)	3,751 (19.8%)	3,611 (19.1%)	3,555 (18.8%)	3,516 (18.6%)	18,601 (19.6%)
Accelerometer-derived Daily Sleep Duration, mean (SD), (hours)	9.28 (1.53)	8.97 (1.22)	8.82 (1.13)	8.69 (1.09)	8.50 (1.04)	8.85 (1.24)
BMI, mean (SD), (kgm ⁻²)	28.6 (5.58)	27.1 (4.45)	26.5 (4.16)	25.9 (3.88)	25.5 (3.68)	26.7 (4.53)
Prior disease, No. (%)						
Type 2 Diabetes	1,533 (8.1%)	857 (4.5%)	611 (3.2%)	535 (2.8%)	474 (2.5%)	4,010 (4.2%)
Depression	7,376 (39.0%)	6,534 (34.5%)	6,217 (32.8%)	5,928 (31.3%)	5,487 (29.0%)	31,542 (33.3%)
Constipation	1,020 (5.4%)	707 (3.7%)	652 (3.4%)	627 (3.3%)	548 (2.9%)	3,554 (3.8%)
Bladder Dysfunction	177 (0.9%)	122 (0.6%)	115 (0.6%)	89 (0.5%)	80 (0.4%)	583 (0.6%)
Season of device wear, No. (%)						
Spring	4,113 (21.7%)	4,160 (22.0%)	4,432 (23.4%)	4,413 (23.3%)	4,604 (24.3%)	21,722 (22.9%)
Summer	4,334 (22.9%)	4,536 (24.0%)	4,989 (26.3%)	5,378 (28.4%)	5,897 (31.1%)	25,134 (26.5%)
Autumn	5,675 (30.0%)	5,830 (30.8%)	5,663 (29.9%)	5,459 (28.8%)	5,305 (28.0%)	27,932 (29.5%)
Winter	4,811 (25.4%)	4,413 (23.3%)	3,857 (20.4%)	3,692 (19.5%)	3,135 (16.6%)	19,908 (21.0%)



353

354 *Figure 1: Exclusion flow diagram for analysis of UK Biobank Physical Activity Monitoring population. TDI =*

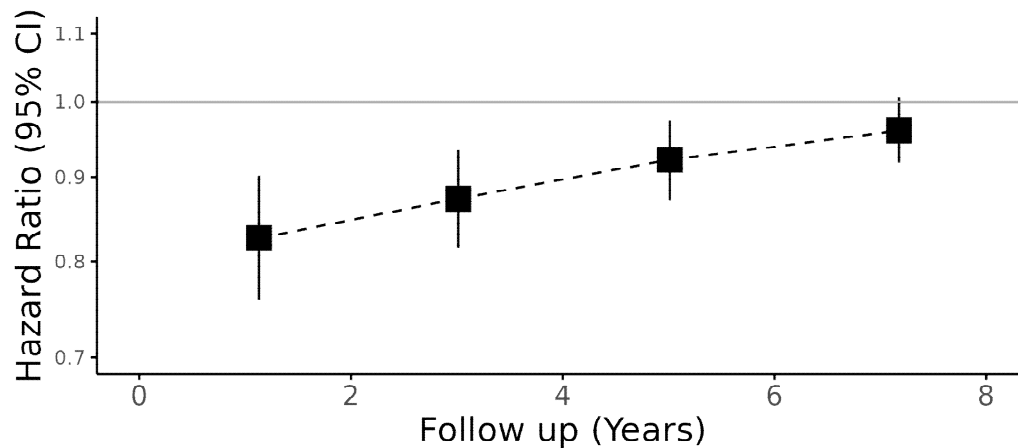
355 *Townsend deprivation index.*



356

357 *Figure 2: Association between quintiles of median daily step count and incident Parkinson's disease. Hazard*
358 *ratios (HR) and 95% confidence intervals were calculated using age as a timescale, adjusted for season of*
359 *wear, sex, ethnicity, Townsend deprivation index, geographic region, education, employment, alcohol intake,*
360 *smoking status and coffee intake. HR is above and the number of events is plotted below each data point. The*
361 *HR (95% CI) per 1,000 increase in daily steps is 0.92 (0.89 – 0.94).*

362



Cases/Population	55/94,696	83/94,099	113/93,189	156/91,952
Follow-up (mean for cases)	<2 years (1.1)	2-4 years (3.0)	4-6 years (5.0)	>6 years (7.2)
Hazard ratio (95% CI)	0.83 (0.76, 0.90)	0.87 (0.82, 0.94)	0.92 (0.87, 0.97)	0.96 (0.92, 1.01)

363

364

Figure 3: Hazard ratio for incident Parkinson's disease by period of follow-up per 1000-step increase in daily

365

steps. Models use age as timescale, and are adjusted for season of wear, sex, Townsend deprivation index,

366

geographic region of assessment centre, educational attainment, employment, smoking, alcohol and coffee

367

consumption. CI=confidence interval.

368