

1 **The effects of food-based versus supplement-based very low-energy diets on gut microbiome**
2 **composition and health outcomes in women with high body mass index (The MicroFit Study): a**
3 **randomised controlled trial**

4 **Authors:** Melissa M Lane (0000-0002-5739-4560)^{1*}, Amelia J McGuinness (0000-0003-3252-5824)^{1*},
5 Mohammadreza Mohebbi², Mojtaba Lotfaliany (0000-0001-6594-9004)³, Amy Loughman (0000-0002-
6 0257-1443)¹, Martin O’Hely (0000-0002-0212-1207)^{3,4}, Adrienne O’Neil (0000-0002-4811-5830)¹,
7 Jessica Batti¹, Mark A Kotowicz (0000-0002-8094-1411)^{1,3,5,6}, Michael Berk (0000-0002-5554-6946)^{1,3,7},
8 Lucy Saunders³, Richard Page^{8,9}, Sally Beatti¹⁰, Wolfgang Marx (0000-0002-8556-8230)^{1^}, Felice N Jacka
9 (0000-0002-9825-0328)^{1,11,12^}

10 *Joint first author

11 ^Joint senior author

12
13 ¹Deakin University, Geelong, Australia, the Institute for Mental and Physical Health and Clinical
14 Translation (IMPACT), Food & Mood Centre, School of Medicine and Barwon Health, Geelong,
15 Australia.

- 16 a. Melissa M Lane, Postdoctoral Research Fellow
17 b. Amelia J McGuinness, Postdoctoral Research Fellow
18 c. Amy Loughman, Senior Research Fellow
19 d. Adrienne O’Neil, Professor
20 e. Jessica Batti, Research Assistant
21 f. Wolfgang Marx, Senior Research Fellow
22 g. Felice N Jacka, Professor

23 ²Deakin University, Faculty of Health, Biostatistics Unit, Geelong, Australia

- 24 a. Mohammadreza Mohebbi⁴, Associate Professor

25 ³Deakin University, Geelong, Australia, the Institute for Mental and Physical Health and Clinical
26 Translation (IMPACT), School of Medicine and Barwon Health, Geelong, Australia.

- 27 a. Mojtaba Lotfaliany, Postdoctoral Research Fellow
28 b. Martin O’Hely, Postdoctoral Research Fellow
29 c. Mark Kotowicz, Professor
30 d. Michael Berk, Institute Director
31 e. Lucy Saunders, Research Coordinator

32 ⁴Murdoch Children’s Research Institute, Parkville, VIC, Australia

33 ⁵Department of Medicine-Western Health, The University of Melbourne, St Albans, Victoria,
34 Australia

35 ⁶Barwon Health, University Hospital, Geelong, VIC, Australia

36 ⁷Orygen, The National Centre of Excellence in Youth Mental Health, Centre for Youth Mental Health,
37 Florey Institute for Neuroscience and Mental Health and the Department of Psychiatry, The University
38 of Melbourne, Melbourne, Australia

39 ⁸Barwon Centre of Orthopaedic Research and Education, Deakin University, Geelong, VIC, Australia

- 40 a. Richard Page, Professor

41 ⁹Australian Orthopaedic Association National Joint Replacement Registry (AOANJRR), Adelaide, SA,
42 Australia

43 ¹⁰The University of Sydney, Sydney Medical School, Sydney, NSW, Australia

- 44 a. Sally Beattie, Research Affiliate

45 ¹¹Centre for Adolescent Health, Murdoch Children’s Research Institute, Melbourne, VIC, Australia

NOTE: This preprint reports new research that has not been certified by peer review and should not be used to guide clinical practice.

- 46 ¹²College of Public Health, Medical & Veterinary Sciences, James Cook University, Townsville, QLD,
47 Australia
- 48 **Word count (excluding abstract): 4,493**

49 **Correspondence to:**

50 Dr Amelia J McGuinness, PhD

51 Health and Education Research Building (HERB), Barwon Health, Deakin University, School of

52 Medicine, PO Box 281, Geelong, Victoria, Australia, 3220

53 a.mcguinness@deakin.edu.au

54 +61 3 5227 3893

55 X/Twitter handle: @ameliamcg

56

57 **Summary Box**

What is already known on this topic: Dietary interventions can alter gut microbiome composition, but the impact of food processing, including in nutritionally balanced very low energy diets (VLEDs), is less understood.

What this study adds: This study shows that a food-based VLED, with more whole food components and fewer highly processed industrial ingredients, increases gut microbiome diversity more than a supplement-based VLED.

How this study might affect research, practice, or policy. Summarise the implications of this study: Our findings underscore the need for further research into how specific components and attributes of diets, both including and beyond nutritional composition, influence the gut microbiome.

58

59 **Abstract**

60 **Objective:** To compare the effects of consuming food-based versus supplement-based very low-
61 energy diet (VLED) programs on gut microbiome composition in women with a high body mass index
62 (BMI).

63

64 **Design:** An investigator-initiated, single-blind, two-arm, parallel-group randomised controlled-feeding
65 trial with computer-generated 1:1 randomisation. From May 2021 to February 2022, women aged 30–
66 65 years with BMI 30–45 kg/m² were recruited from southwest Victoria, Australia, and randomised to
67 a three-week food-based or supplement-based VLED program. The primary outcome was between-
68 group differential change in faecal microbiome alpha diversity (Shannon index) from baseline to week
69 three, assessed using shotgun metagenomics. Outcome assessors, study investigators, and analysing
70 statisticians were blinded to group allocation until analysis completion. Allocation concealment was
71 managed by an independent researcher using a computer software system. Modified intention-to-
72 treat (mITT) analyses using linear mixed-effects regression models estimated mean between-group
73 differential changes, reported as beta-coefficient point estimates (β) and 95% confidence intervals
74 (95%CI), adjusted for multiple comparisons.

75

76 **Results:** Forty-seven participants were randomised (food-based: n=23, supplement-based: n=24). Of
77 the 45 participants analysed, there was a between-group differential change in the Shannon index
78 (mITT β : 0.37, 95%CI: 0.15 to 0.60) from baseline to week three, with a greater increase in the food-
79 based group (mean change: 0.26, 95%CI: 0.09 to 0.44; n=23) versus supplement-based group (mean
80 change: -0.10, 95%CI: -0.25 to 0.05; n=22). There were 27 non-serious adverse events (food-based:
81 8, supplement-based: 19), all non-serious.

82

83 **Conclusion:** A food-based VLED, with more whole food components and fewer highly processed
84 industrial ingredients, increases gut microbiome diversity more than a supplement-based VLED.

85 **Keywords:** gut microbiome, very low-energy diet, dietary intervention, randomised controlled trial,
86 obesity, women.

87 **Trial registration number:** ACTRN12620000301965

88 Introduction

89 The gut microbiome is intricately connected to human health and disease ¹. Understanding the
90 influence of diet on its composition and function may inform gut-focussed treatment strategies ¹. The
91 gut microbiome is shaped by both short- and long-term dietary exposures ²⁻⁵. Dietary interventions,
92 including high-fibre and Mediterranean-style diets, have been shown to beneficially alter the gut
93 microbiome ^{6 7}. This includes increasing bacterial diversity and the abundances of bacterial species
94 considered beneficial for health, enhancing carbohydrate breakdown by microbiome enzymes, and
95 reducing inflammation ^{4 7}. Conversely, more "Westernised" diets, characterised by higher intakes of
96 sugar, fat, and protein and lower intakes of fibre, are linked to reduced gut microbiome diversity and
97 functional capacity, higher body mass index (BMI), increased inflammatory markers, elevated risk of
98 diseases such as cancer ^{8 9}, and decreased hippocampal function within as little as four days ¹⁰.

99

100 Although dietary interventions have been linked to alterations in gut microbiome composition and
101 potential function ^{4 6 7 11}, the effects of food processing on the gut microbiome have yet to be directly
102 evaluated. Examples of heavily processed food items include the supplement-based shakes, bars, and
103 soups consumed as meal replacements in very low-energy diet (VLED) programs, which are designed
104 to provide an adequate ratio of macronutrients (proteins, fats, carbohydrates) and sufficient levels of
105 essential vitamins and minerals, whilst limiting energy. These VLEDs, designed for individuals with a
106 BMI of 25–30 kg/m² or higher, work by restricting energy intake to approximately 800–900 kcal per
107 day. While VLEDs have shown effectiveness in reducing weight and improving markers of type 2
108 diabetes and cardiovascular disease ^{12 13}, the impact of highly processed supplement-based VLEDs on
109 the gut microbiome is not well understood, especially compared to food-based VLEDs ¹⁴. Given the
110 crucial role of the gut microbiome in health ¹, understanding whether differential effects of these
111 VLEDs on the gut microbiome exist will help assess the full risk-benefit profile of these weight loss and
112 disease prevention approaches.

113

114 This study aimed to explore the effects of a food-based versus supplement-based VLED program on
115 gut microbiome composition and function, and physical and mental health outcomes, in women with
116 high BMI. As preclinical models have demonstrated that diet-microbiome associations are sex-
117 dependent ¹⁵, the present study was conducted entirely in women, with the next step being a larger
118 study to determine if findings extend to both sexes.

119

120 **Materials and Methods**

121 *Trial design*

122 The MicroFit Study was a three-week, investigator-initiated, single-blind, two-arm, parallel-group
123 randomised controlled-feeding trial with computer-generated 1:1 randomisation. Women with BMI
124 30–45 kg/m² were recruited from the south-west region of Victoria, Australia. Participants were
125 screened against eligibility criteria online via the REDCap platform ^{16 17}, and research assistants
126 obtained informed consent via telephone once eligibility was confirmed. At the baseline assessment,
127 research assistants collected anthropometric measurements to verify participants' eligibility based on
128 BMI. Eligible participants were randomised to consume a meal replacement program comprising
129 either primarily food-based or supplement-based VLED options. Participants attended in-person study
130 visits at baseline and week three at Australian Clinical Labs (ACL, Geelong, Australia) where a
131 phlebotomist collected serum samples after an overnight fast. Participants were provided kits to
132 collect faecal samples at home at baseline and week three, which they sent via prepaid mail to
133 Microba Pty Ltd (Brisbane, Australia) for analysis. Questionnaire data, including sociodemographic,
134 dietary, and health-related factors, were self-reported by participants at home using REDCap online
135 at both study timepoints ^{18 19}. Participants logged their food consumption using the Easy Diet Diary
136 application (Xyris Software Pty Ltd, Australia) every day for the entire study period. An *a priori* power
137 calculation was conducted, based on 40 participants (20 in each arm). However, by study completion,
138 we randomised 47 participants to account for missing baseline data and higher than anticipated
139 dropout, and the power calculation was adjusted accordingly.

140 This trial received ethical approval from the Barwon Health (19/112) and Deakin University (2018/211)
141 Human Research Ethics Committees and was registered on the Australian New Zealand Clinical Trials
142 Registry (ACTRN12620000301965). This manuscript is presented as per the Consolidated Standards of
143 Reporting Trials (CONSORT) statement and checklist ²⁰ and gut microbiome data are reported as per
144 the Strengthening the Organising and Reporting of Microbiome Studies (STORMS) checklist ²¹. The
145 completed checklists and additional details are provided in the Supplementary Methods. The trial and
146 manuscript development did not involve patients or the public owing to the absence of funding to
147 support consumer engagement for this research.

148

149 *Recruitment and participants*

150 Community-based recruitment was conducted from May 2021 to February 2022 using online
151 platforms hosted by Deakin University and Barwon Health (e.g. Facebook, Instagram, Twitter, Barwon

152 Health online newsletter), distributing flyers to local general practitioner offices, and through a variety
153 of both paid and free online advertising services.

154

155 Inclusion criteria were: of female sex (as a means of reducing interindividual heterogeneity); aged 30–
156 65 years; with a BMI of 30–45 kg/m²; able to commit to all study procedures, including attending in-
157 person appointments and consuming only the investigational products and recommended extras for
158 the study duration; able to understand study materials and directions presented in English; with
159 access to the internet and a computer, smartphone, or tablet; and able to agree to not to enrol in
160 another clinical trial while taking part in the study.

161

162 Exclusion criteria were: currently consuming VLED products; having a diagnosed food allergy or food
163 intolerance; receiving treatment with medications related to obesity; confirmed/suspected/planned
164 pregnancy, or lactating; diagnosed with or having commenced a new treatment for, anxiety and/or
165 depression within one month before baseline; having gastrointestinal disease or history of major
166 gastrointestinal surgery; having a pre-existing cardiometabolic conditions; having had a heart attack
167 within the past six months; having a diagnosed eating disorder; having other major medical conditions
168 likely to have systemic effects or deemed unfit for study participation by the research team (e.g., type
169 2 diabetes, prediabetic, insulin resistance); regularly using opioid-based medications; regularly using
170 recreational or illicit drugs; regularly using sodium-glucose co-transporter-2 inhibitors (i.e., gliflozins);
171 having used antibiotics, prebiotics, and/or probiotics in the month before baseline; and having been
172 enrolled in another clinical trial within the past three months.

173

174 *Randomisation, allocation, and blinding*

175 Eligible participants were randomly assigned in a 1:1 ratio to either the food-based or supplement-
176 based VLED using a computer-generated randomisation sequence with randomly ordered blocks of
177 sizes 2 and 4. This sequence was created by a study statistician and input into REDCap online by an
178 independent researcher to ensure allocation concealment from the study investigators. An unblinded
179 trial coordinator enrolled and informed participants of the VLED program to which they had been
180 assigned. The outcome assessors (research assistants) and all other study investigators, including the
181 analysing statisticians, remained blinded to the group allocations until data analysis completion. As
182 the study was single-blind, participants were aware of their group allocations and instructed not to
183 discuss their allocation with the outcome assessors to preserve blinding.

184

185 *Interventions*

186 The VLEDs were intended to be matched in overall energy (800–900 kcal per day), macronutrient
187 profiles, sugar, sodium, and fibre. The supplement-based VLED comprised three daily total meal
188 replacement options. Participants chose from a selection of powdered shakes and soups, bars, and
189 desserts (16 items). On average, approximately 70% of the composition of these options was made of
190 extracted, refined, fractionated, modified, and/or isolated proteins (e.g., calcium caseinate),
191 carbohydrates (e.g., maltodextrin), fats (e.g., medium chain triglycerides), and fibres (e.g., fructo-
192 oligosaccharide), as well as added vitamins (e.g., B1) and minerals (e.g., potassium citrate), and
193 additives like emulsifiers (e.g., 472c), non-sugar sweeteners (e.g., aspartame), flavours (e.g.,
194 unspecified "flavour"), colours (e.g., curcumin), thickeners and stabilisers (e.g., vegetable gum 414).
195 The remaining 30% consisted primarily of whole powdered milk. The food-based VLED comprised
196 three daily total meal replacement options (55 items) and a discretionary snack (11 items).
197 Participants chose from a selection of pre-prepared meals. On average, approximately 93% of the
198 composition of these options was made of vegetables (e.g., green cabbage), fruits (e.g., banana),
199 whole grains (e.g., oats), beans (e.g., cannellini beans), legumes (e.g., chickpeas), lean meats (e.g.,
200 chicken), dairy cheeses (e.g., ricotta), nuts (e.g., almond meal), seeds (e.g., flaxseed), herbs (e.g.,
201 parsley), and spices (e.g., cinnamon). The remaining 7% of the composition consisted primarily of
202 protein isolates (e.g., whey protein isolate), as well as additives such as emulsifiers (e.g., soy lecithin),
203 non-sugar sweeteners (e.g., stevia), flavours (e.g., vanilla extract), thickeners and stabilisers (e.g., guar
204 gum), with approximately less than 1% of the composition of discretionary snacks including an added
205 and isolated fibre (e.g., oligofructose) and the probiotic *Lactobacillus plantarum* (now
206 *Lactiplantibacillus plantarum*). The full list of the options in each group and their ingredients are
207 detailed in the Supplementary Methods.

208
209 Participants received all meal replacements without cost, delivered directly to their homes. They could
210 choose any three meal replacements to consume at any time throughout the day. Participants were
211 also permitted to include additional 'recommended extras' foods from a predetermined list (see
212 Supplementary Methods) . The supplement-based VLED group was recommended to consume at least
213 two cups of low starch vegetables. The food-based VLED group was recommended to include one
214 additional fruit or protein snack and three serves of side salads or vegetables. Non-sugar sweeteners,
215 diet jelly desserts, and sugar-free lollies and gum were not recommended for daily use in the food-
216 based VLED group, with diet cordial and diet soft drinks recommended as occasional options. The
217 supplement-based VLED group were recommended to consume these items *ad libitum*, with no
218 restrictions. Participants logged their daily food consumption using the Easy Diet Diary application
219 throughout the entire study period. These data were used to monitor adherence to the approximately

220 900 kcal per day target and to assess macronutrient intake, which was analysed using Australian food
221 composition databases via the FoodWorks Professional nutrient analysis software (Xyris Software Pty
222 Ltd, Brisbane, Australia ^{22,23} .

223

224 *Sample size*

225 An *a priori* sample size calculation was conducted based on 40 participants (20 in each arm) and a
226 similar study's sample size at the time of protocol development ²⁴ . As per benchmarks proposed by
227 Cohen (1998), the *a priori* power calculation showed that the study had above 80% power with an
228 alpha of 5% to detect moderate between-group difference effect sizes ($d=0.91$) in gut microbiome
229 alpha diversity (Shannon index). An *a posteriori* power calculation based on 45 participants had 80%
230 power to detect effect sizes of $d=0.85$.

231

232 *Clinical outcomes measures*

233 Anthropometric measurements included height (stadiometer), weight (electric scales), and hip and
234 waist circumferences (measuring tape). BMI was calculated as: $BMI = (\text{weight, kg}) / (\text{height, m})^2$. Serum
235 inflammation markers (homocysteine, interleukin (IL)- β , IL-6, and tumor necrosis factor (TNF)- α) were
236 assayed using the BDtm Cytometric Bead Array platform (SA Pathology, Adelaide Women's and
237 Children's Hospital). Serum leptin was measured using Merck Millipore radioimmunoassay kits (Royal
238 Prince Alfred's Central Sydney Pathology Services). Other serum biomarkers (glucose, insulin, liver
239 function markers (ALT, GGT, ALP, AST, total bilirubin, albumin, protein, and globulin), and lipid markers
240 (total cholesterol, HDL, LDL, non-HDL, LDL/HDL ratio, cholesterol/HDL ratio, triglycerides) were
241 analysed using Siemens' ADVIA[®] Chemistry kits (Australian Clinical Labs, Victoria). Self-reported
242 measures included: mental health symptoms using the Depression Anxiety Stress Scale-21 (DASS-21)
243 ²⁵ , with higher scores indicating more severe symptoms; perceived well-being using the World Health
244 Organization Wellbeing Scale (WHO-5) ²⁶ , with higher scores indicating better well-being; sleep-
245 related difficulties using the Athens Insomnia Scale (AIS) ²⁷ , with higher scores indicating more severe
246 issues; gastrointestinal symptoms using the Visual Analogue Scale for Irritable Bowel Syndrome (VAS-
247 IBS) ^{28,29} , with higher scores indicating better outcomes; stool consistency using the Bristol Stool Form
248 Scale (BSFS) ³⁰ , a 7-point scale spanning from firmest to softest stool, with mean scores estimated for
249 each participant across one week; physical activity using the International Physical Activity
250 Questionnaire-Short Form (IPAQ-SF) ³¹ , with categorical scores (i.e., low, moderate, high) estimated
251 as per guidelines ³² ; and habitual dietary intake at baseline using the Dietary Questionnaire for
252 Epidemiological Studies v3.2 (DQES v3.2) ³³ . Further details are provided in the Supplementary
253 Methods.

254 *Sample collection, transport, and storage*

255 Faecal samples (~15g) were collected by participants at baseline and week three using a Copan Italia
256 SPA FLOQSwab in an active drying tube, including an internal desiccant to preserve samples at room
257 temperature for up to four weeks, within 24–48 hours of their in-person appointments. Faecal
258 samples were sent directly to Microba via post at room temperature where they were stored at –80°C
259 until further processing. Fasted blood samples (40mL) were collected and stored at ACL as per
260 standard procedures.

261

262 *DNA extraction*

263 Faecal samples were extracted using the DNeasy 96 PowerSoil Pro QIAcube HT Kit (Qiagen 47021) in
264 a 2mL deep well plate format with a modified initial processing step on the QIAcube HT DNA extraction
265 system (Qiagen 9001793). Mechanical lysis was performed with PowerBead Pro beads (Qiagen
266 19311). DNA was quantified using a high-sensitivity dsDNA fluorometric assay (QuantIT,
267 ThermoFisher, Q33120), with samples needing to reach a minimum of 0.2 ng/μL for quality control.

268

269 *Library preparation*

270 Libraries were constructed using the Illumina DNA Prep (M) Tagmentation Kit (Illumina, 20018705)
271 with IDT for Illumina DNA/RNA UD Index Sets A-D (Illumina 20027213-16), modified to accommodate
272 processing in a 384-plate format. Individual libraries were pooled in equimolar amounts and assessed
273 using a high-sensitivity dsDNA fluorometric assay (QuantIT, ThermoFisher, Q33120) and visualised
274 with capillary gel electrophoresis using the QIAxcel DNA High Resolution Kit (Qiagen, 929002).

275

276 *Shotgun metagenomic sequencing*

277 Samples were sequenced on the NovaSeq6000 (Illumina) using v1.5 300bp paired-end sequencing
278 reagents. Sequence data were reviewed for yield and quality, with known control samples included in
279 each run to monitor for background contamination. Paired-end DNA sequencing data were
280 demultiplexed and adaptor trimmed using Illumina BaseSpace Bcl2fastq2 (v2.20) with one mismatch
281 allowed in index sequences. Reads were quality trimmed and residual adaptors removed using
282 Trimmomatic v0.39 with parameters: -phred33 LEADING:3 TRAILING:3 SLIDINGWINDOW:4:15
283 CROP:100000 HEADCROP:0 MINLEN:100. Human DNA was removed by aligning reads to the human
284 genome reference assembly 38 (GRCh38.p12) using bwa-mem v0.7.17 with a minimum seed length
285 of 31 (-k 31). Alignments were filtered using SAMtools v1.7, and reads mapping to the human genome
286 with greater than 95% identity over more than 90% of the read length were flagged as human DNA
287 and removed.

288 Species profiles were obtained using the Microba Community Profiler (MCP) v1.0 and the Microba
289 Genome Database (MGDB) v1.0.3, with reads assigned to genomes within MGDB to estimate and
290 report the relative cellular abundance of species clusters. Quantification of gene and pathway
291 abundance was performed using the Microba Gene and Pathway Profiler (MGPP) v1.0 against the
292 Microba Genes (MGGENES) database v1.0.3. Open reading frames from genomes in MGDB were
293 clustered against UniRef90 (release 2019/04) using MMSeqs2 with 90% identity over 80% of read
294 length. Gene clusters were annotated with UniRef90 identifiers and linked to Enzyme Commission and
295 Transporter Classification Database annotations via the UniProt ID mapping service. Enzyme
296 Commission annotations were then used to determine MetaCyc pathway encoding using enrichM,
297 with pathways classified as encoded if completeness exceeded 80%. DNA sequencing read pairs
298 aligning with gene sequences from any protein within an MGENES protein cluster were summed. The
299 abundances of encoded pathways for species detected by MCP were calculated by averaging the read
300 counts of all genes for each enzyme in the pathway.

301

302 *Data preparation*

303 Data normalisation was performed by down-sampling to a standardised number of reads before
304 profiling within the MCP. One sample (food-based, week 3) had low read count (2,779,002) and was
305 removed in sensitivity analyses. Alpha diversity was calculated using raw count data, with rarefaction
306 applied to match the smallest total number of prokaryotic reads across all samples. Centred log-ratio
307 (CLR) transformations were utilised before conducting beta-diversity and differential abundance
308 statistical tests (species, genus, family, and phylum) given the compositional and non-normal nature
309 of microbiome relative abundance data.

310

311 Alpha diversity, which summarises community structure within a sample, was evaluated using the
312 Shannon index and Richness metrics. Richness quantifies the number of different species present in
313 each sample. The Shannon index considers both the number of detected species (richness) and how
314 evenly distributed the species are (evenness); communities with higher numbers of detected species
315 and more even distributions of these species will result in higher Shannon index. Filtering was
316 conducted to remove low prevalence taxa present in less than 5% of samples. Beta diversity, which
317 summarises between-sample differences in community structure, was calculated using Aitchison
318 distances, defined as the Euclidean distance between CLR-transformed samples, via the *stats*³⁴
319 package. Principal Component Analysis (PCA) was used to reduce data dimensionality for visualisation
320 in two dimensions to identify patterns or clusters of samples within the dataset using the *Tjazi*³⁵
321 package.

322 *Statistical methods*

323 Participant baseline characteristics were summarised with mean and standard deviation for
324 continuous variables (or median and interquartile range where appropriate) and frequency and
325 percentage for categorical variables. We conducted modified intention-to-treat (mITT) analyses,
326 which included all participants who provided a baseline faecal sample. We also conducted complete
327 case analyses, which included only participants who provided both a baseline and week three faecal
328 sample as secondary analyses. We used linear mixed-effects regression (LMER) models to estimate
329 between-group (food-based vs. supplement-based) differential changes (week three vs. baseline) in
330 gut microbiome Shannon index (primary outcome) and secondary outcomes using the *lme4*³⁶
331 package. The models included participant as a random effect, and group allocation, nominal time
332 point, and the interaction between diet group and time point (i.e., diet group x time point) as fixed
333 effects. The interaction estimated the between-group differential changes from baseline to week
334 three using beta-coefficient point estimates (β) with 95% confidence intervals (95%CI) and p-values
335 (two-tailed; $p < 0.05$ for significance)³⁷. The supplement-based VLED was set as the reference group.
336 Missing covariate and secondary outcome data were imputed using predictive mean matching (five
337 imputations) using the *mice*³⁸ package, with baseline auxiliary variables included to increase accuracy.
338 Interaction plots of the estimated marginal means were created using the *emmeans*³⁹ package.
339 Additionally, mean (95%CI) within-group changes are provided for descriptive purposes only and not
340 as formal statistical tests, due to the limited sample size and low statistical power.

341

342 For beta diversity, we used complete cases to create individual CLR component-wise change scores
343 (baseline minus week three) and then used permutational analysis of variance using *adonis2* via the
344 *vegan*⁴⁰ package with 999 permutations to calculate the between-group differential change (i.e., beta
345 diversity change ~ group). We report the R-squared (r^2) statistic, providing a measure of the proportion
346 of variance explained by the grouping factor (i.e., diet group) in the model.

347

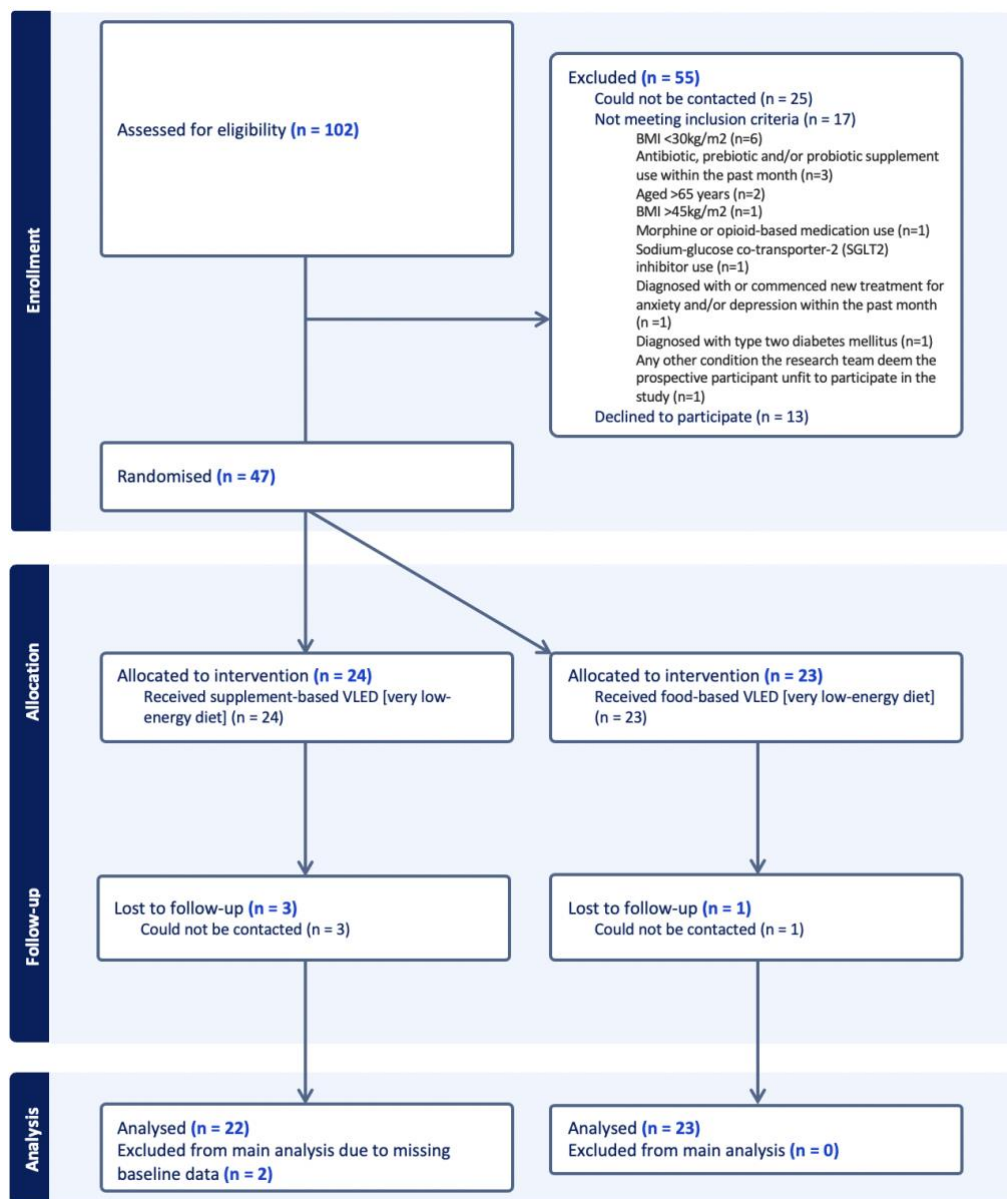
348 We applied the Benjamini-Hochberg procedure⁴¹ to adjust for multiple comparisons. Outcomes were
349 grouped into related categories (e.g., gastrointestinal outcomes) and multiple comparisons testing
350 was conducted within each category ($q < 0.1$ for significance given the small sample size). Finally, in
351 sensitivity analyses for the primary outcome, we adjusted for BMI due to baseline group imbalances,
352 and removed one sample with low read count. Statistical analyses were conducted using R in the
353 RStudio environment⁴².

354

355 **Results**

356 *Recruitment and trial retention*

357 We screened 102 participants for eligibility, of whom 40 were initially randomised (**Figure 1**). Due to
 358 participant withdrawal/loss to follow-up (n=4) and missing faecal samples (n=4), we aimed to recruit
 359 an additional eight participants to reach a sample size of 40 with complete data. Overall, 47
 360 participants were randomised, including 23 in the food-based VLED and 24 in the supplement-based
 361 VLED. Of these, 45 were included in mITT analyses (food-based: n=23, supplement-based: n=22), and
 362 39 in complete case analysis (food-based: n=22, supplement-based: n=17) of the primary outcome.
 363



364

365 **Figure 1.** Consolidated Standards of Reporting Trials (CONSORT) flow diagram.

366 *Baseline characteristics*

367 On average, participants in the food-based VLED were, less commonly married or employed compared
368 to the supplement-based VLED group (**Table 1**). More participants in the food-based VLED were taking
369 medication, and they also had higher average BMI, body weight, physical activity levels, and waist and
370 hip circumferences, compared to the supplement-based VLED.

371

372 **Table 1.** Baseline characteristics of participants randomised to food-based versus supplement-based
373 very low-energy diets.

	Food-based VLED (N=23)	Supplement-based VLED (N=24)	Total (N=47)
Sociodemographic factors			
Age, years – <i>M</i> (SD)	46.5 (10.3)	48.3 (9.91)	47.4 (10.0)
Born in Australia, <i>n</i> (%)	22 (96%)	19 (79%)	41 (87%)
Married, <i>n</i> (%)	15 (65%)	19 (79%)	34 (72%)
Post-secondary school education, <i>n</i> (%)	21 (91%)	20 (83%)	41 (87%)
Employed, <i>n</i> (%)	18 (78%)	23 (96%)	41 (87%)
Household income above \$74,999, <i>n</i> (%)	13 (57%)	13 (54%)	26 (55%)
Health factors			
Current smoker, <i>n</i> (%)	1 (4%)	2 (8%)	3 (6%)
Any medication use, <i>n</i> (%)	18 (78%)	13 (59%)	31 (69%)
Stool consistency – <i>M</i> (SD)	3.8 (1.1)	4.3 (1.2)	4.0 (1.2)
Body mass index – <i>M</i> (SD)	36.8 (3.6)	34.8 (3.2)	35.8 (3.5)
Weight, kilograms – <i>M</i> (SD)	101 (10.1)	94.1 (10.3)	97.3 (10.6)
Waist circumference, centimeters – <i>M</i> (SD)	107 (8.7)	103 (9.1)	105 (9.1)
Hip circumference, centimeters – <i>M</i> (SD)	124 (9.1)	119 (7.1)	122 (8.5)
Low physical activity, <i>n</i> (%)	13 (57%)	18 (75%)	31 (66%)

374 Notes: Stool consistency measured using the Bristol Stool Form Scale; Low physical activity measured using the International Physical Activity
375 Questionnaire. Abbreviations: BSFS, Bristol Stool Form Scale; *M*, Mean; *n* (%), Number and proportion of participants; VLED, very low-energy
376 diet; SD, Standard deviation.

377 **ADHERENCE & SAFETY**

378 *Diet adherence*

379 Of the complete cases (n=39), on average, dietary intake was recorded on 20 out of the requested 21
380 days. The average daily energy intake of 825 kcal was within the 800–900 kcal VLED target range (**Table**
381 **S1**). Both groups had similar average daily intakes of carbohydrate, protein, fibre, sugar, and sodium.
382 The food-based VLED had higher average total energy intake (903 vs. 748 kcal/d) and total fat intake
383 (40.1 vs. 22.5 g/d, equivalent to ~158kcal) compared to the supplement-based VLED, respectively. The
384 difference in average energy intake between the two groups closely matches the energy difference
385 attributable to the variation in fat intake.

386

387 *Adverse Events*

388 Participants in the supplement-based VLED reported more adverse events compared to the food-
389 based VLED (19 vs. 8, respectively) (**Table S2**). The most common adverse event reported for both
390 groups was headaches (5 vs. 3 events, respectively). No serious adverse events were reported in either
391 group.

392

393 **PRIMARY OUTCOME**

394 We observed a statistically significant between-group differential change in species-level Shannon
395 index (mITT β : 0.37 95%CI: 0.15 to 0.60) (**Table S3**), with the food-based VLED group experiencing a
396 greater increase in Shannon index (mean change: 0.27, 95%CI: 0.09 to 0.44) compared to the
397 statistically non-significant decrease observed in the supplement-based VLED group (mean change:
398 -0.11, -0.27 to 0.05). (**Figure 2 - A**). Results of complete case analyses (**Table S3**) and sensitivity
399 analyses adjusting for BMI and removing a sample with low read count (**Table S11**) were similar.

400

401 **SECONDARY OUTCOMES**

402 From baseline to week three, we observed a between-group differential change in species richness
403 (mITT β : 27.9, 12.1 to 43.7), with the food-based VLED group experiencing a greater increase in
404 richness (mean change: 23.2, 12.7 to 33.7) compared to the statistically non-significant decrease
405 exhibited in the supplement-based VLED group (mean change: -4.59, -17.0 to 7.78) (**Table S3; Figure**
406 **2 - B**).

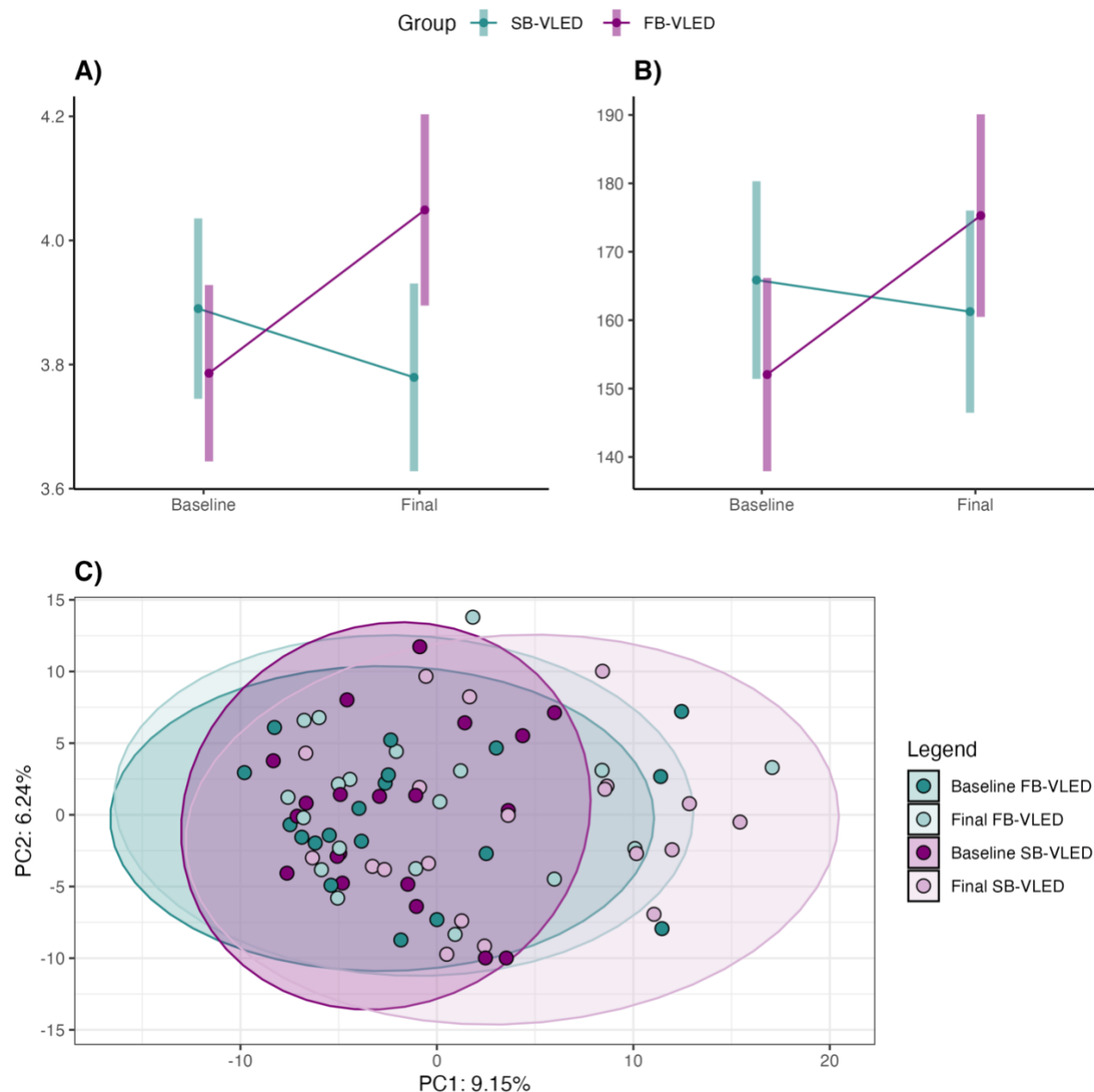
407

408 We also observed a between-group differential change in beta diversity (complete case $r^2=0.051$,
409 $p=0.001$) (**Table S4**), suggesting that 5.1% of the difference in the shift in beta diversity observed
410 between groups could be explained by the VLEDs. Visual inspection of the data using PCA suggested

411 a greater shift in beta diversity in the supplement-based VLED compared to the food-based VLED
412 (**Figure 2 – C**). The variance in Aitchison distances explained by time point was 1.8% in the food-based
413 VLED group and 4.5% in the supplement-based VLED group (**Table S4**).

414

415 There were 619 species for analysis after prevalence filtering. Of these, we observed between-group
416 differential changes in 72 bacterial species (**Table S5**); however, these results were not upheld after
417 adjustment for multiple comparisons. Results of complete case analyses were similar (**Table S6**). There
418 were between-group differential changes in 56 genera (**Table S7**), eight families (**Table S8**), three
419 MetaCyc groups (**Table S10**), and one phylum (**Table S9**); of these, 15 genera, 2 families, 6 MetaCyc
420 groups, and no phyla survived adjustment for multiple comparisons. For other secondary outcomes,
421 there was a between-group differential change in constipation symptoms; however, this result was
422 not upheld after adjustment for multiple comparisons (**Table S3**). No other between-group differential
423 changes, including in body weight, were observed across other secondary outcomes (**Table S3**).



424
425
426
427
428
429
430
431
432
433
434

Figure 2. Interaction plots for the estimated marginal means of **A)** species-level Shannon index (primary outcome) and **B)** species Richness, in participants that received a food-based very low-energy diet (FB-VLED; purple) versus supplement-based very low-energy diet (SB-VLED; blue) from baseline to week three (final). Vertical bars represent 95% confidence intervals. **C)** Principal component analysis of Aitchison distances in those that received a food-based very low-energy diet (FB-VLED; purple) versus supplement-based very low-energy diet (SB-VLED; blue) at baseline and week three (final). The scatter plot shows the first two principal components (PC1 and PC2), explaining 9.15% and 6.24% of the variance, respectively. Each point represents an individual sample. Ellipses around each group represent the 95% confidence intervals, illustrating the spread and central tendency of the samples within each group. The ellipses provide a visual indication of the multivariate normal distribution of the data points, helping to identify the degree of overlap or separation between different groups.

435 **Discussion**

436 We present novel evidence of the differential effects of food-based versus supplement-based VLEDs
437 on gut microbiome alpha diversity in women with high BMI. Additionally, there were differences in
438 beta diversity as a secondary outcome. Compared to the supplement-based VLED group, participants
439 in the food-based VLED exhibited greater increases in alpha diversity, a marker of better gut health in
440 adults⁴³, and smaller shifts in beta diversity, suggesting less variability or dissimilarity in overall gut
441 microbiome community structure between baseline and week three. We did not observe differences
442 between the two groups in terms of changes to other secondary outcomes, including gut microbiome
443 functional potential, body weight measures, serum metabolic and inflammatory markers, mental
444 health, or gastrointestinal parameters.

445

446 *Limitations*

447 Several limitations must be considered when interpreting our findings. While the single-blind nature
448 of the trial likely had little impact on the objective gut microbiome measures, knowledge of
449 intervention allocation may have influenced self-reported gastrointestinal and mental health
450 symptoms. Our study was conducted in women with a BMI at or above 30 kg/m², therefore findings
451 may not be directly applicable to other populations. Our study was of short duration and VLEDs are
452 typically followed for 12 weeks or more. Future research should involve more diverse populations and
453 extended follow-up periods to enhance generalisability. We randomised 47 participants instead of the
454 planned 40 to address missing data, withdrawals, and loss to follow up; however, mITT principles were
455 maintained, and LMER models, which partially mitigate bias from missing data, showed consistent
456 results aligned with complete case analyses. The large number of outcomes assessed increases the
457 potential for type I errors; however, outcomes were grouped into related categories and adjustments
458 for multiple comparisons were made for each analysis. There were differences between the groups in
459 BMI at baseline, likely due to the small sample size, which was not large enough to balance off all
460 confounders. Whilst results of sensitivity analyses adjusted for BMI at baseline were similar to primary
461 analyses, larger trials are required to confirm findings. Lastly, while the two VLED programs were
462 intended to be isocaloric and nutritionally equivalent in terms of macronutrients, differences in fat
463 and energy intake, as well as other program aspects such as restrictions on non-sugar sweeteners and
464 the inclusion of the probiotic *L. plantarum* in the discretionary snacks of the food-based VLED,
465 introduce additional variability. Although a small number of food-based VLED snacks contained less
466 than 1% of *L. plantarum*, this species was not detected in any of the faecal samples. Therefore, the
467 possible implications of these dietary differences on our findings remains unclear.

468

469 *Implications and future directions*

470 Our study is of potential relevance to the ongoing research and policy discussions regarding the role
471 of ultra-processed foods in health and disease. Although our study was not specifically designed to
472 investigate the impact of ultra-processed foods as defined by the widely used Nova food classification
473 system ⁴⁴, existing evidence links diets high in these foods to poorer health outcomes, including
474 greater risks of cardiovascular disease, type 2 diabetes, common mental disorders, and mortality ⁴⁵.
475 However, an oft-cited limitation to the current ultra-processed food literature is a lack of causal and
476 mechanistic understanding of these associations ^{46,47}. Although considered nutritionally complete, the
477 supplement-based VLED meal replacements were comprised almost entirely of highly processed
478 industrial ingredients, including substances extracted from foods (such as combinations of
479 macronutrient isolates like calcium caseinate, sodium caseinate, and medium chain triglycerides), as
480 well as additives (such as emulsifiers and non-sugar sweeteners like 472c and aspartame,
481 respectively). Conversely, the food-based VLED meal replacements primarily consisted of vegetables,
482 whole grains, and legumes, with far fewer heavily processed industrial ingredients. Emerging evidence
483 suggests that additives such as emulsifiers ⁴⁸ and non-nutritive sweeteners ⁴⁹ may adversely impact
484 the gut microbiome and related health. In contrast, intact food structures and matrices, along with
485 polyphenols and phytonutrients and diverse sources of fibre found in whole food components may
486 positively modulate the gut microbiome ^{50,51}. Acknowledging the limitations of our study, the findings
487 support future research specifically designed to investigate the gut microbiome as a potential
488 mechanism through which diets high in ultra-processed foods impact health outcomes.

489

490 *Conclusion*

491 Our study provides novel evidence of the differential impacts of food-based versus supplement-based
492 VLEDs on the diversity of the gut microbiome of women with high BMI. Our findings show that a food-
493 based VLED, with greater whole food components and fewer highly processed industrial ingredients,
494 increases gut microbiome diversity more than a supplement-based VLED. Further research is needed
495 to better understand specific components or attributes of these diets responsible for the observed
496 differential effects.

497

498

499 **Contributors:**

500

501 **Acknowledgements:** We would like to thank Dr Jerry Lai for their assistance with REDCap, Dr Jessica
502 Davis and Samantha Kernaghan for their assistance with data collection, and Chantelle Erwin for their
503 assistance with data cleaning of dietary data.

504

505 **Funding:** Aspects of this study (biochemical analyses) were funded by Be Fit Food. Investigational
506 products were provided by Be Fit Food as in-kind support. The study was supported and sponsored by
507 Deakin University. Both the study funders and sponsors were independent of the study design and
508 oversight, had no role in study design, in the collection, analysis, and interpretation of data, in the
509 writing of the report, and/or in the decision to submit the paper for publication.

510 **Competing interests:** All authors have completed the ICMJE uniform disclosure form at
511 www.icmje.org/coi_disclosure.pdf.

512 MML is Secretary for the Melbourne Branch Committee of the Nutrition Society of Australia (unpaid)
513 and has received travel funding support from the International Society for Nutritional Psychiatry
514 Research, the Nutrition Society of Australia, the Australasian Society of Lifestyle Medicine, and the
515 Gut Brain Congress.

516 AJM is immediate past Secretary for the International Society for Nutritional Psychiatry Research
517 (unpaid) and is funded through the NHMRC supported CREDIT CRE, the Centre for Research Excellence
518 for the Development of Innovative Therapies.

519 MB is supported by a NHMRC Senior Principal Research Fellowship (1156072). MB has received
520 Grant/Research Support from the NIH, Cooperative Research Centre, Simons Autism Foundation,
521 Cancer Council of Victoria, Stanley Medical Research Foundation, Medical Benefits Fund, National
522 Health and Medical Research Council, Medical Research Futures Fund, Beyond Blue, Rotary Health,
523 A2 milk company, Meat and Livestock Board, Woolworths, Avant and the Harry Windsor Foundation,
524 has been a speaker for Abbot, Astra Zeneca, Janssen and Janssen, Lundbeck and Merck and served as
525 a consultant to Allergan, Astra Zeneca, Bioadvantex, Bionomics, Collaborative Medicinal
526 Development, Janssen and Janssen, Lundbeck Merck, Pfizer and Servier – all unrelated to this work.

527 AL has received grant, research or travel support from Deakin University, The University of Melbourne,
528 RMIT University, National Health and Medical Research Council, Australian Academy of Science, The

529 Jack Brockhoff Foundation, Epilepsy Foundation of Australia, American Epilepsy Society and has
530 received speakers' honoraria from European Space Agency, Swisse Australia – all unrelated to this
531 work. AL is a named inventor on a patent relating to Prevotella.

532 MM has received Grant/research support from the NHMRC, Deakin University School of Medicine,
533 Deakin Biostatistics Unit, Institute for Mental and Physical Health and Clinical Translation, Stroke
534 Foundation and Medibank Health Research Fund.

535 WM is currently funded by an NHMRC Investigator Grant (#2008971). WM has previously received
536 funding from the Cancer Council Queensland and university grants/fellowships from La Trobe
537 University, Deakin University, University of Queensland, and Bond University. WM has received
538 funding and/or has attended events funded by Cobram Estate Pty. Ltd and Bega Dairy and Drinks Pty
539 Ltd. WM has received travel funding from Nutrition Society of Australia. WM has received consultancy
540 funding from Nutrition Research Australia and ParachuteBH. WM has received speakers honoraria
541 from VitaFoods, The Cancer Council Queensland and the Princess Alexandra Research Foundation.

542 FNJ has received: competitive Grant/Research support from the Brain and Behaviour Research
543 Institute, the National Health and Medical Research Council (NHMRC), Australian Rotary Health, the
544 Geelong Medical Research Foundation, the Ian Potter Foundation, The University of Melbourne;
545 industry support for research from Meat and Livestock Australia, Woolworths Limited, the A2 Milk
546 Company, Be Fit Food; philanthropic support from the Fernwood Foundation, Wilson Foundation, the
547 JTM Foundation, the Serp Hills Foundation, the Roberts Family Foundation, the Waterloo Foundation
548 and; travel support and speakers honoraria from Sanofi-Synthelabo, Janssen Cilag, Servier, Pfizer,
549 Network Nutrition, Angelini Farmaceutica, Eli Lilly and Metagenics. FNJ has written two books for
550 commercial publication. She is on the Scientific Advisory Board of the Dauten Family Centre for Bipolar
551 Treatment Innovation and Zoe Limited. She is currently supported by an NHMRC Investigator Grant
552 L1 (#1194982).

553 The Food & Mood Centre has received Grant/Research support from the a2 Milk Company, Be Fit
554 Food, Meat and Livestock Australia, and Woolworths Limited, and philanthropic support from the
555 Fernwood Foundation, Wilson Foundation, the JTM Foundation, the Serp Hills Foundation, the
556 Roberts Family Foundation, and the Waterloo Foundation.

557 AO receives funding support from the National Health and Medical Research Council (#2009295).

558

559 **Ethical approval:** The study was conducted following the principles of the Declaration of Helsinki and
560 had ethical approval from the Barwon Health (19/112) and Deakin University (2018/211) Human
561 Research Ethics Committees.

562

563 **Data sharing:** To access additional data from this study, the code and raw data can be found on GitHub
564 and NCBI Sequence Read Archive, respectively. For further assistance or inquiries, please contact the
565 corresponding author at <a.mcguinness@deakin.edu.au>

566

567 **Transparency:** The corresponding (the manuscript's guarantor) affirms that the manuscript is an
568 honest, accurate, and transparent account of the study being reported; that no important aspects of
569 the study have been omitted; and that any discrepancies from the study as planned (and, if relevant,
570 registered) have been explained.

571 **Dissemination to participants and related patient and public communities:** We will share our review
572 findings with academic, clinical, policy, and public audiences post-publication through various
573 channels, including conferences as well as personal and institutional media hosted primarily by Deakin
574 University and the Food & Mood Centre.

575 **Provenance and peer review:** Provenance and peer review: Not commissioned; externally peer
576 reviewed.

577 The default licence, a CC BY NC licence, is needed.

578 **References**

- 579 1. Lynch SV, Pedersen O. The Human Intestinal Microbiome in Health and Disease. *N Engl J Med*
580 2016;375(24):2369-79. doi: 10.1056/NEJMra1600266
- 581 2. Rothschild D, Weissbrod O, Barkan E, et al. Environment dominates over host genetics in shaping
582 human gut microbiota. *Nature* 2018;555(7695):210-15. doi: 10.1038/nature25973
- 583 3. Flint HJ, Duncan SH, Louis P. The impact of nutrition on intestinal bacterial communities. *Current*
584 *Opinion in Microbiology* 2017;38:59-65. doi: <https://doi.org/10.1016/j.mib.2017.04.005>
- 585 4. Wastyk HC, Fragiadakis GK, Perelman D, et al. Gut-microbiota-targeted diets modulate human
586 immune status. *Cell* 2021;184(16):4137-53.e14. doi: 10.1016/j.cell.2021.06.019 [published
587 Online First: 20210712]
- 588 5. David LA, Maurice CF, Carmody RN, et al. Diet rapidly and reproducibly alters the human gut
589 microbiome. *Nature* 2014;505(7484):559-63. doi: 10.1038/nature12820
- 590 6. Fu J, Xu K, Ni X, et al. Habitual Dietary Fiber Intake, Fecal Microbiota, and Hemoglobin A1c Level in
591 Chinese Patients with Type 2 Diabetes. *Nutrients* 2022;14(5) doi: 10.3390/nu14051003
592 [published Online First: 20220227]
- 593 7. Ghosh TS, Rampelli S, Jeffery IB, et al. Mediterranean diet intervention alters the gut microbiome
594 in older people reducing frailty and improving health status: the NU-AGE 1-year dietary
595 intervention across five European countries. *Gut* 2020;69(7):1218-28. doi: 10.1136/gutjnl-
596 2019-319654 [published Online First: 20200217]
- 597 8. Vangay P, Johnson AJ, Ward TL, et al. US Immigration Westernizes the Human Gut Microbiome. *Cell*
598 2018;175(4):962-72.e10. doi: 10.1016/j.cell.2018.10.029
- 599 9. O'Keefe SJ, Li JV, Lahti L, et al. Fat, fibre and cancer risk in African Americans and rural Africans. *Nat*
600 *Commun* 2015;6:6342. doi: 10.1038/ncomms7342 [published Online First: 20150428]
- 601 10. Attuquayefio T, Stevenson RJ, Oaten MJ, et al. A four-day Western-style dietary intervention
602 causes reductions in hippocampal-dependent learning and memory and interoceptive
603 sensitivity. *PLoS One* 2017;12(2):e0172645. doi: 10.1371/journal.pone.0172645 [published
604 Online First: 2017/02/24]
- 605 11. Walker AW, Ince J, Duncan SH, et al. Dominant and diet-responsive groups of bacteria within the
606 human colonic microbiota. *ISME J* 2011;5(2):220-30. doi: 10.1038/ismej.2010.118 [published
607 Online First: 20100805]
- 608 12. Mustajoki P, Pekkarinen T. Very low energy diets in the treatment of obesity. *Obes Rev*
609 2001;2(1):61-72. doi: 10.1046/j.1467-789x.2001.00026.x
- 610 13. Sellahewa L, Khan C, Lakkunarajah S, et al. A Systematic Review of Evidence on the Use of Very
611 Low Calorie Diets in People with Diabetes. *Curr Diabetes Rev* 2017;13(1):35-46. doi:
612 10.2174/1573399812666151005123431
- 613 14. Lane M, Howland G, West M, et al. The effect of ultra-processed very low-energy diets on gut
614 microbiota and metabolic outcomes in individuals with obesity: A systematic literature
615 review. *Obesity Research & Clinical Practice* 2020;14(3):197-204. doi:
616 <https://doi.org/10.1016/j.orcp.2020.04.006>
- 617 15. Bolnick DI, Snowberg LK, Hirsch PE, et al. Individual diet has sex-dependent effects on vertebrate
618 gut microbiota. *Nature Communications* 2014;5(1):4500. doi: 10.1038/ncomms5500
- 619 16. Harris PA, Taylor R, Minor BL, et al. The REDCap consortium: building an international community
620 of software platform partners. *Journal of biomedical informatics* 2019;95:103208.

- 621 17. Harris PA, Taylor R, Thielke R, et al. Research electronic data capture (REDCap)—a metadata-driven
622 methodology and workflow process for providing translational research informatics support.
623 *Journal of biomedical informatics* 2009;42(2):377-81.
- 624 18. Harris PA, Taylor R, Minor BL, et al. The REDCap consortium: Building an international community
625 of software platform partners. *J Biomed Inform* 2019;95:103208. doi:
626 10.1016/j.jbi.2019.103208 [published Online First: 20190509]
- 627 19. Harris PA, Taylor R, Thielke R, et al. Research electronic data capture (REDCap)—a metadata-driven
628 methodology and workflow process for providing translational research informatics support.
629 *J Biomed Inform* 2009;42(2):377-81. doi: 10.1016/j.jbi.2008.08.010 [published Online First:
630 20080930]
- 631 20. Schulz KF, Altman DG, Moher D. CONSORT 2010 statement: updated guidelines for reporting
632 parallel group randomised trials. *PLoS Med* 2010;7(3):e1000251. doi:
633 10.1371/journal.pmed.1000251 [published Online First: 2010/03/31]
- 634 21. Mirzayi C, Renson A, Furlanello C, et al. Reporting guidelines for human microbiome research: the
635 STORMS checklist. *Nature Medicine* 2021;27(11):1885-92. doi: 10.1038/s41591-021-01552-x
- 636 22. Food Standards Australia New Zealand AUSNUT (2011-2013). Food Composition Database 2014
637 [cited 2022]. Available from:
638 <https://www.foodstandards.gov.au/science/monitoringnutrients/ausnut/pages/default.aspx>
639 accessed July 2022.
- 640 23. Food Standards Australia New Zealand (FSANZ). Nutrient Tables for Use in Australia (NUTTAB
641 2010) 2015 [Available from:
642 [http://www.foodstandards.gov.au/science/monitoringnutrients/nutrientables/nuttab/pages](http://www.foodstandards.gov.au/science/monitoringnutrients/nutrientables/nuttab/pages/default.aspx)
643 [/default.aspx](http://www.foodstandards.gov.au/science/monitoringnutrients/nutrientables/nuttab/pages/default.aspx).
- 644 24. Ruiz A, Cerdó T, Jáuregui R, et al. One-year calorie restriction impacts gut microbial composition
645 but not its metabolic performance in obese adolescents. *Environ Microbiol* 2017;19(4):1536-
646 51. doi: 10.1111/1462-2920.13713 [published Online First: 2017/03/03]
- 647 25. Lovibond PF, Lovibond SH. The structure of negative emotional states: Comparison of the
648 Depression Anxiety Stress Scales (DASS) with the Beck Depression and Anxiety Inventories.
649 *Behaviour Research and Therapy* 1995;33(3):335-43. doi: [https://doi.org/10.1016/0005-](https://doi.org/10.1016/0005-7967(94)00075-U)
650 [7967\(94\)00075-U](https://doi.org/10.1016/0005-7967(94)00075-U)
- 651 26. Topp CW, Østergaard SD, Søndergaard S, et al. The WHO-5 Well-Being Index: A Systematic Review
652 of the Literature. *Psychotherapy and Psychosomatics* 2015;84(3):167-76. doi:
653 10.1159/000376585
- 654 27. Soldatos CR, Dikeos DG, Paparrigopoulos TJ. Athens Insomnia Scale: validation of an instrument
655 based on ICD-10 criteria. *Journal of Psychosomatic Research* 2000;48(6):555-60. doi:
656 [https://doi.org/10.1016/S0022-3999\(00\)00095-7](https://doi.org/10.1016/S0022-3999(00)00095-7)
- 657 28. Bengtsson M, Persson J, Sjolund K, et al. Further validation of the visual analogue scale for irritable
658 bowel syndrome after use in clinical practice. *Gastroenterology nursing : the official journal of*
659 *the Society of Gastroenterology Nurses and Associates* 2013;36(3):188-98. doi:
660 10.1097/SGA.0b013e3182945881 [published Online First: 2013/06/05]
- 661 29. Bengtsson M, Ohlsson B, Ulander K. Development and psychometric testing of the Visual Analogue
662 Scale for Irritable Bowel Syndrome (VAS-IBS). *BMC gastroenterology* 2007;7:16. doi:
663 10.1186/1471-230x-7-16 [published Online First: 2007/05/04]

- 664 30. Blake MR, Raker JM, Whelan K. Validity and reliability of the Bristol Stool Form Scale in healthy
665 adults and patients with diarrhoea-predominant irritable bowel syndrome. *Alimentary*
666 *Pharmacology & Therapeutics* 2016;44(7):693-703. doi: <https://doi.org/10.1111/apt.13746>
- 667 31. Questionnaire TIPA. Short Last 7 Days Self-Administered Format 2002 [cited 2018 March 12].
668 Available from: <http://www.ipaq.ki.se>.
- 669 32. Cheng H. A simple, easy-to-use spreadsheet for automatic scoring of the International Physical
670 Activity Questionnaire (IPAQ) Short Form (updated November 2016). *ResearchGate*, 2016
671 2016 doi: 10.13140/RG.2.2.21067.80165
- 672 33. Giles GG IP. Dietary Questionnaire for Epidemiological Studies Version 3.2 Melbourne: Cancer
673 Council Victoria; 1996 [
- 674 34. R, Core, Team. R: A language and environment for statistical computing Vienna, Austria: R
675 Foundation for Statistical Computing; 2017 [Available from: <https://www.R-project.org/>.
- 676 35. Bastiaanssen T, Quinn T, Loughman A. Treating Bugs as Features: A compositional guide to the
677 statistical analysis of the microbiome-gut-brain axis. *arXiv* 2022 doi:
678 <https://doi.org/10.48550/arxiv.2207.12475>
- 679 36. Bates D, Maechler M, Bolker B, et al. Fitting Linear Mixed-Effects Models Using lme4. *Journal of*
680 *Statistical Software* 2015;67(1):1-48. doi: 10.18637/jss.v067.i01
- 681 37. Greenland S, Senn SJ, Rothman KJ, et al. Statistical tests, P values, confidence intervals, and power:
682 a guide to misinterpretations. *European Journal of Epidemiology* 2016;31:337-50. doi:
683 10.1007/s10654-016-0149-3
- 684 38. van Buuren S, Groothuis-Oudshoorn K. mice: Multivariate Imputation by Chained Equations in R.
685 *Journal of Statistical Software* 2011;45(3):1-67. doi: 10.18637/jss.v045.i03
- 686 39. Lenth R. emmeans: Estimated Marginal Means, aka Least-Squares Means: R package version
687 1.10.3; 2024 [
- 688 40. Oksanen J SG, Blanchet F, Kindt R, Legendre P, Minchin P, O'Hara R, Solymos P, Stevens M, Szoecs
689 E, Wagner H, Barbour M, Bedward M, Bolker B, Borcard D, Carvalho G, Chirico M, De Caceres
690 M, Durand S, Evangelista H, FitzJohn R, Friendly M, Furneaux B, Hannigan, G, Hill M, Lahti L,
691 McGlenn D, Ouellette M, Ribeiro Cunha E, Smith T, Stier A, Ter Braak C, Weedon J. vegan:
692 Community Ecology Package: R package version 2.6-6.1; 2024 [
- 693 41. Haynes W. Benjamini–Hochberg Method. In: Dubitzky W, Wolkenhauer O, Cho K-H, et al., eds.
694 Encyclopedia of Systems Biology. New York, NY: Springer New York 2013:78-78.
- 695 42. RT. RStudio: Integrated Development for R. RStudio: PBC, Boston, MA; 2020 [
- 696 43. Zouiouich S, Loftfield E, Huybrechts I, et al. Markers of metabolic health and gut microbiome
697 diversity: findings from two population-based cohort studies. *Diabetologia* 2021;64(8):1749-
698 59. doi: 10.1007/s00125-021-05464-w
- 699 44. Monteiro CA, Cannon G, Levy RB, et al. Ultra-processed foods: what they are and how to identify
700 them. *Public Health Nutr* 2019;22(5):936-41. doi: 10.1017/s1368980018003762 [published
701 Online First: 2019/02/13]
- 702 45. Lane MM, Gamage E, Du S, et al. Ultra-processed food exposure and adverse health outcomes:
703 umbrella review of epidemiological meta-analyses. *bmj* 2024;384
- 704 46. UK Government. SACN statement on processed foods and health, 2023.

- 705 47. Maki KA, Sack MN, Hall KD. Ultra-processed foods: increasing the risk of inflammation and immune
706 dysregulation? *Nature Reviews Immunology* 2024;24(7):453-54. doi: 10.1038/s41577-024-
707 01049-x
- 708 48. Chassaing B, Compher C, Bonhomme B, et al. Randomized controlled-feeding study of dietary
709 emulsifier carboxymethylcellulose reveals detrimental impacts on the gut microbiota and
710 metabolome. *Gastroenterology* 2021 doi: <https://doi.org/10.1053/j.gastro.2021.11.006>
- 711 49. Suez J, Cohen Y, Valdés-Mas R, et al. Personalized microbiome-driven effects of non-nutritive
712 sweeteners on human glucose tolerance. *Cell* 2022;185(18):3307-28.e19. doi:
713 10.1016/j.cell.2022.07.016 [published Online First: 2022/08/21]
- 714 50. Srour B, Kordahi MC, Bonazzi E, et al. Ultra-processed foods and human health: from
715 epidemiological evidence to mechanistic insights. *The Lancet Gastroenterology & Hepatology*
716 2022 doi: 10.1016/S2468-1253(22)00169-8
- 717 51. Plamada D, Vodnar DC. Polyphenols-Gut Microbiota Interrelationship: A Transition to a New
718 Generation of Prebiotics. *Nutrients* 2021;14(1) doi: 10.3390/nu14010137 [published Online
719 First: 20211228]
- 720