

## Self-actualization of families by nurses and nurses themselves

- 1 **Self-actualization of families with a cerebrovascular disease patient by nurses, and of**
- 2 **self-actualization of nurses themselves: An integrative review based on Family**
- 3 **Care/Caring Theory**
- 4
- 5 Hiroko Ota, Naohiro Hohashi\*
- 6 Division of Family Health Care Nursing, Graduate School of Health Sciences, Kobe
- 7 University, Kobe, Hyogo, Japan
- 8 \* Corresponding author
- 9 E-mail: [naohiro@hohashi.org](mailto:naohiro@hohashi.org) (NH)

## Self-actualization of families by nurses and nurses themselves

### 10 **Abstract**

#### 11 **Background and purpose**

12 When caring for patients hospitalized with cerebrovascular disease, a caring phenomenon  
13 occurs between the patient's family and the nurse, and according to Hohashi's Family  
14 Care/Caring Theory, the family and the nurse achieve self-actualization. However, the  
15 contents of self-actualization through specific care/caring are unclear. The purpose of this  
16 integrative review was to clarify the self-actualization of the nurse as an outcome of family  
17 care/caring, and the self-actualization of other individuals (that is, the family) who are  
18 supported by nurses.

#### 19 **Methods**

20 Conducting a search using Ichushi-Web, CiNii and J-STAGE, which are extensive  
21 Japanese literature databases, 1,061 original articles were identified using the keywords  
22 "cerebrovascular disease AND nurse." The quality of the articles was assessed according  
23 to the Joanna Briggs Institute critical appraisal checklists. We conducted an integrative  
24 review of 11 articles describing transactions between nurses and families according to

## Self-actualization of families by nurses and nurses themselves

25 Toronto and Remington. Self-actualization of the nurse and self-actualization of other

26 individuals were classified as subcategories and then as categories.

### 27 **Results**

28 Of the 11 studies utilized, 10 were qualitative studies and one was a quantitative

29 descriptive study. Eight categories were identified for self-actualization of families with a

30 cerebrovascular patient by nurses, including “Families can realize their hopes through the

31 provision of an environment by nurses.” Three categories of self-actualization of the nurse

32 were identified, including “Nurses can obtain a sense of satisfaction from the family.”

### 33 **Conclusion**

34 During the recovery process after hospitalization for cerebrovascular disease, a caring

35 phenomenon occurs between the patient’s family and nurses, which can be understood

36 using Family Care/Caring Theory. The family’s self-actualization and the nurse’s self-

37 actualization were achieved through reciprocal concern between the two.

## Self-actualization of families by nurses and nurses themselves

### 38 **Introduction**

39 Cerebrovascular disease develops suddenly and causes irreversible functional disorders  
40 such as consciousness disturbance, paralysis, and speech impairment, leaving serious  
41 aftereffects. In Japan, the number of patients hospitalized due to stroke, a typical  
42 cerebrovascular disease, reached 123,300 in 2020 [1]. Looking at the number of people  
43 transported by ambulance for sudden illnesses [2], circulatory system diseases, including  
44 brain diseases and heart diseases, account for 14.7% of the total, and by disease category,  
45 emergency transportation is the most common. Patients with cerebrovascular disease who  
46 are admitted to the emergency room require immediate treatment, and their symptoms  
47 must be monitored in the intensive care unit (ICU) or hospital ward.

48 The families of critically ill patients may suffer emotional, psychological, physical,  
49 and social burdens, and in such cases are referred to as postintensive care syndrome  
50 families (PICS-F). The prevalence of physiological problems in PICS-F, including  
51 depression, anxiety and post-traumatic syndrome, is 20% to 40% at 6 months after ICU  
52 admission [3]. Families of patients with cerebrovascular disease experience change and

## Self-actualization of families by nurses and nurses themselves

53 loss, and the family members are easily subject to emotional instability due to the  
54 aftereffects of the disease, the risk of recurrence, an uncertain situation, a sense of loss and  
55 the burden of taking care of a family member [4].

56 In other words, care is essential not only for patients with cerebrovascular disease but  
57 also for their families/family members. In addition, family care involves family caring [5].  
58 Family Care/Caring Theory (FC2T) [5, 6], a middle-range family nursing theory, was  
59 proposed by family nursing researcher/practitioner Naohiro Hohashi in 2013. The FC2T  
60 explains nursing and family phenomena in which a relationship is created between the  
61 nursing professional and the family, focusing on self-actualization of the nursing  
62 professional together with self-actualization of other individuals and the process of  
63 establishing a family care/caring relationship.

64 In FC2T, the noun, family care, and the gerund, family caring, are treated as different  
65 concepts. Family care is the acts (practices) of realizing, maintaining, and improving  
66 family well-being. On the other hand, family caring is the attitude or mindset of becoming  
67 aware of family beliefs and family demands, understanding them, and harnessing them to

## Self-actualization of families by nurses and nurses themselves

68 family care. Family caring involves an alternating relationship of caring for others (family  
69 members) and caring for oneself (nurse) simultaneously, through a circular process of  
70 transaction between nurses and families (Fig 1). From the nurse's perspective, supporting  
71 the growth, development, and transcendence of the family that is the subject of nursing  
72 care, and realizing family well-being (self-actualization of the family, that is, the nurse's  
73 goal). At the same time, it helps nurses achieve their own growth, development, and  
74 transcendence, and helps nurses achieve self-actualization. This phenomenon that occurs  
75 between nurses and families is the family caring phenomenon [5].

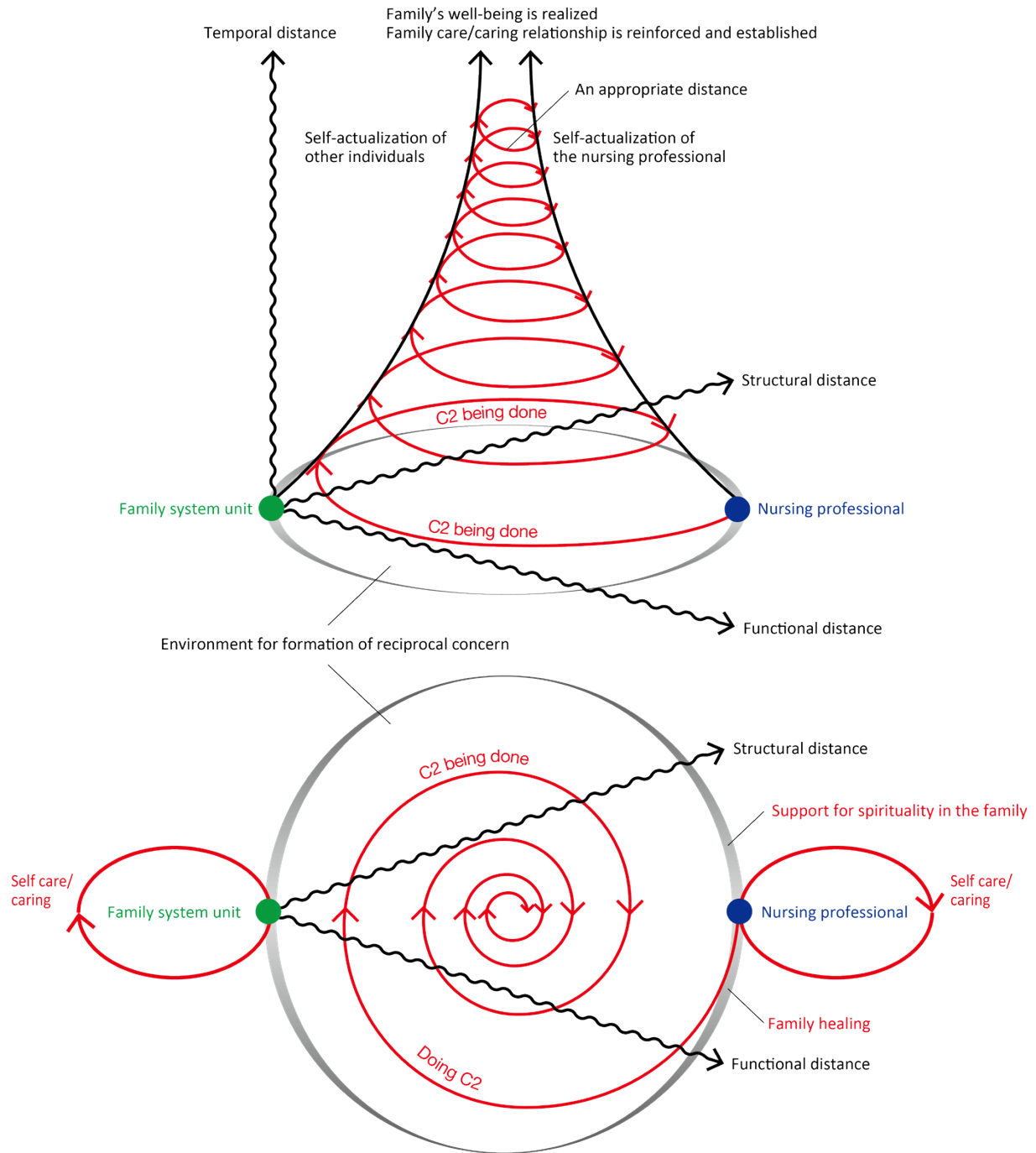
76 An integrative review of caring [7] revealed that caring behavior leads to increased  
77 physical and mental well-being and satisfaction for patients, as well as job satisfaction for  
78 nurses. A literature review on the impact of nurses' caring on families found that families  
79 of AIDS patients were able endure their hospitalization, and that home hospice care was  
80 highly effective in alleviating family anxiety [8]. When caring for patients with  
81 cerebrovascular disease in the ICU, nurses are under considerable stress caused by  
82 emotional exhaustion, depersonalization and perceived lack of personal fulfillment [9],

## Self-actualization of families by nurses and nurses themselves

83 making it difficult to practice caring. If smooth communication and transactions between  
84 nurses and patients and their families are not realized, it will be difficult for nurses to  
85 achieve self-actualization. Family care/caring is also important for alleviating the anxiety  
86 of the families of patients with cerebrovascular disease (i.e., for nurses to realize their true  
87 selves). Furthermore, it is necessary to materialize self-actualization of other individuals  
88 and self-actualization of the nurse.

89 In this study therefore, we selected literature that describes nursing practices for  
90 cerebrovascular disease patients and their families, and focused on the self-actualization of  
91 nurses as outcomes of family care/caring, and the self-realization of others supported by  
92 nurses (i.e., family self-actualization).

## Self-actualization of families by nurses and nurses themselves



93

94 **Fig 1. Model diagram of Family Care/Caring Theory (Ver. 2.0).**

95 C2 = Care/Caring.

## 96 **Methods**

## 97 **Operational definitions of terms**



## Self-actualization of families by nurses and nurses themselves

98 In this study, we operationally defined terms based on Family Care/Caring Theory (FCCT)

99 [5, 6] as follows:

100 (1) **Family care:** Acts (practices) towards the physical body of the family system unit that

101 are performed with the aim of realizing, maintaining and improving family well-being.

102 (2) **Family caring:** An attitude or mindset for becoming aware of family beliefs and

103 demands, understanding them, and harnessing this understanding to family care.

104 (3) **Family care/caring:** A general term for family care and family caring that maintains

105 unity.

106 (4) **Self-actualization of other individuals:** The process and goal of supporting the

107 growth, development, and transcendence of others in order for them to become who they

108 want to be.

109 (5) **Self-actualization of the nursing professional:** The process and goal of achieving

110 personal growth, development, and transcendence in order to become the person they want

111 to be.

## Self-actualization of families by nurses and nurses themselves

### 112 **Search strategy and quality appraisal**

113 An integrative review of this study was conducted based on the instructions of Toronto  
114 and Remington [10].

115 In Japan, scant literature exists on the subject of family caring [11]. We therefore  
116 decided to search a wide range of original papers using the keywords “cerebrovascular  
117 disease AND nurse” and to extract content related to family care/caring that occurs  
118 between families having a patient with cerebrovascular disease and nurses (Fig 2).

119 Three representative literature databases in Japan were utilized: Ichushi-Web, which  
120 is medical-related, and CiNii and J-STAGE, which cover a wide range of both literature  
121 and science. All articles registered in the databases up to December 2023 were  
122 searched, and 1,061 original articles were retrieved, excluding duplicates.

123 Based on the above, 192 articles were selected after applying the following  
124 exclusion criteria for title and abstract: no mention of family, no practice by nurses, and  
125 no adult patients with cerebrovascular disease. The 192 articles were collected and read  
126 closely, and the quantitative and qualitative studies were screened for inclusion and

## Self-actualization of families by nurses and nurses themselves

127 critical appraisal for methodological quality using the Joanna Briggs Institute (JBI)  
128 tools. The methodological quality of the studies was assessed by two researchers  
129 working independently. In the case of a disagreement between the two reviewers, the  
130 item would be discussed and agreement obtained. For the study, in order to assemble a  
131 wide range of practical content on family caring, we targeted papers with high or  
132 moderate quality ratings.

133 Specifically, we used the JBI Qualitative Assessment and Review Instrument (JBI-  
134 QARI) to appraise the quality of qualitative research [12]. The tool assessed 10 items,  
135 including 1) If congruity exists between the stated philosophical perspective and the  
136 research methodology; 2) If congruity exists between the research methodology and the  
137 research question or objectives; 3) If congruity exists between the research  
138 methodology and the methods used to collect data; 4) If congruity exists between the  
139 research methodology and the representation and analysis of data; 5) If congruence  
140 exists between the research methodology and the interpretation of results; 6) If the  
141 researcher is located culturally or theoretically; 7) If influence of the researcher on the

## Self-actualization of families by nurses and nurses themselves

142 research, and vice-versa, is adequately  
143 addressed; 8) If participants and their voices are represented; 9) If ethical approval by  
144 an appropriate body was obtained; and 10) If a relationship of conclusions to analysis,  
145 or interpretation of the data, was established. Each item was assessed as “Yes,” “No,”  
146 “Unclear” or “Not applicable,” with the total number of “Yes” items evaluated as  
147 follows: low (0-4 items), moderate (5-7 items) and high (8-10 items).

148 Additionally, we used the JBI Checklist for Analytical Cross-Sectional Studies to  
149 appraise the quality of quantitative research [13]. This tool assessed 8 items, including  
150 1) If the criteria for inclusion in the sample were clearly defined; 2) If the study  
151 subjects and the setting were described in detail; 3) If the exposure was measured in a  
152 valid and reliable way; 4) If objective, standard criteria were used for measurement of  
153 the condition; 5) If confounding factors were identified; 6) If strategies to deal with  
154 confounding factors were stated; 7) If the outcomes were measured in a valid and  
155 reliable way; and 8) If appropriate statistical analysis was used. Each item was assessed  
156 as “Yes,” “No,” “Unclear” or “Not applicable,” with the total number of “Yes” items

## Self-actualization of families by nurses and nurses themselves

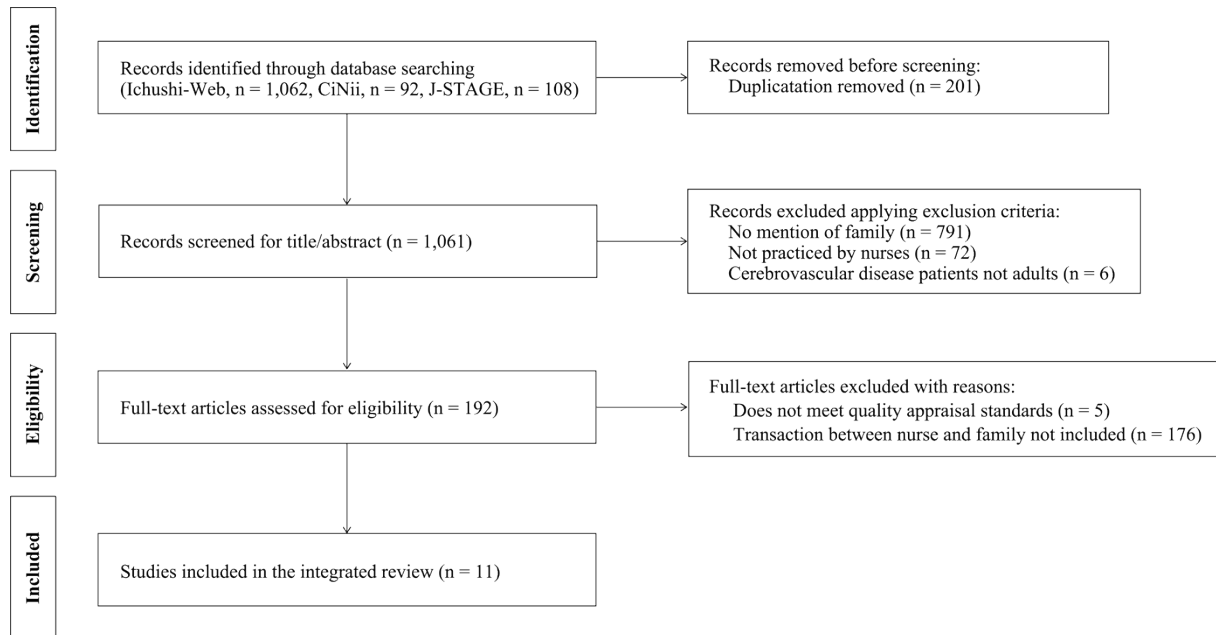
157 evaluated as follows: low (0-4 items), moderate (5 or 6 items) and high (7 or 8 items).

158 Five papers that did not meet the JBI criteria of high or moderate were excluded.

159 Furthermore, based on the Family Care/Caring Theory, 176 papers that did not include

160 interactions between nurses and families were excluded, leaving 11 papers for analysis

161 [14-24].



162

163 **Fig 2. Flow diagram of literature identification and selection.**

## 164 **Data analysis procedure and trustworthiness**

165 After carefully perusing the 11 papers, we identified self-actualization of the nursing

166 professionals and self-actualization of other individuals from descriptions of family

167 care/caring expressed in the results, and wrote them in concise sentences without

## Self-actualization of families by nurses and nurses themselves

168 sacrificing meaning. This was then encoded. In addition to the codes, the literature was  
169 organized using Garrard's matrix method [25] based on the article title, research  
170 purpose, stage classification of patients with cerebrovascular disease, and JBI  
171 Qualitative Assessment and Review Instrument or JBI Checklist for Analytical Cross-  
172 Sectional Studies scores. The codes were subsequently classified and subcategories  
173 were named, taking into consideration the commonality and specificity of the content.  
174 After that, we found commonalities and differences from the subcategories and named  
175 them as categories by increasing the level of abstraction [26]. The categories were  
176 deductively classified into two main categories: self-actualization of other individuals  
177 and self-actualization of the nursing professional [27].

178 All analyses were reviewed by two family nursing researchers until a consensus was  
179 reached. At the same time, we received repeated opinions from seven researchers to  
180 ensure the trustworthiness of the analysis.

### 181 **Ethical consideration**

182 This research did not require approval from an institutional review board as neither

## Self-actualization of families by nurses and nurses themselves

183 humans nor animals were involved. In conducting the research, we complied with research  
184 ethics and clearly indicated sources to avoid problems of copyright infringement. The  
185 written content of the paper was then closely read and written accurately so that the  
186 authors' intent and meaning were not compromised.

## 187 **Results**

### 188 **Details and characteristics of the included studies**

189 Details and characteristics of the included studies are indicated in Table 1. The purpose of  
190 the research was to clarify nurses' practices, their processes, and their relationships with  
191 patients and their families, and others. Of the 11 papers, 10 were qualitative studies and  
192 one was a quantitative descriptive study using the Delphi method. As for stage the  
193 classification of patients with cerebrovascular disease in the 11 papers, six were acute  
194 stage and five were convalescent stage.

195 **Table 1. Details and characteristics of the included studies.**

<b>First author, year [Reference No.]</b>	<b>Article title</b>	<b>Purpose of the research</b>	<b>Design</b>	<b>Stage</b>	<b>JBI scores</b>
Hasegawa, R., 2014 [14]	Skills of Certified Nurse in Stroke Rehabilitation Nursing to support survival	To clarify the skills of Certified Nurse in Stroke Rehabilitation Nursing and obtain suggestions for supporting nurses in specialized areas.	Qualitative	Convalescent	6/10
Honda, K., 2012 [15]	The nursing practices nurses consider important in the tertiary emergency rooms	To clarify the characteristics of nursing practice that nurses consider particularly important in the tertiary emergency department.	Quantitative	Acute	9/9
Iiitsuka, M., 2018 [16]	Nurses' awareness of care for families of patients experiencing disorders of consciousness following surgery for stroke	To clarify nurses' perceptions of care for the families of patients who remain with impaired consciousness after surgery for stroke.	Qualitative	Acute	8/10
Inagaki, N., 2015 [17]	A review of nursing care for 10 stroke patients with mechanical circulation support in the ICU	To clarify what nursing practices were applied for patients who suffered a stroke while wearing an assisted circulation device in the ICU.	Qualitative	Acute	6/10
Inukai, T., 2021 [18]	Surrogate decision-making support for families of hyperacute stroke patients provided by certified nurses	To clarify nursing practices used by Certified Nurses (CNs) in proxy decision-making by the families of hyperacute stroke patients.	Qualitative	Acute	8/10
Inukai, T., 2009 [19]	"Difficulties in building relationships which don't pass patient with cranial neurological diseases" between nurses and families of patients: Analysis based on interview data to nurse in acute stage	To clarify the factors that influence the relationship between nurses and families of patients with cranial nerve disease, and to consider support for building relationships with families.	Qualitative	Acute	10/10
Ito, M., 2013 [20]	Nursing care for elderly patients with persistent disturbance of consciousness in acute hospital	To clarify the nursing care that nurses practice on a daily basis for older adult patients with prolonged disorders of consciousness in acute care hospitals.	Qualitative	Acute	7/10



Self-actualization of families by nurses and nurses themselves

Matsuoka, C., 2005 [21]	Nursing process of discharge planning for older patients with cerebrovascular accidents	To clarify nurses' discharge assistance process for older adult patients with cerebrovascular disease.	Qualitative	Convalescent	9/10
Ono, M., 2006 [22]	Discharge planning process for patient and family to back home in the recovery rehabilitation ward	To clarify the process of assisting families of patients in a convalescent rehabilitation ward who find it difficult to be discharged home.	Qualitative	Convalescent	8/10
Takeuchi, C., 2020 [23]	A constituent of discharge support for elderly patients with cerebrovascular disease from the viewpoint of "living individual": Focusing on the convalescence rehabilitation ward nurses	To clarify the structure of discharge support based on the living model that nurses in convalescent rehabilitation wards provide for elderly patients with cerebrovascular disease.	Qualitative	Convalescent	8/10
Umegaki, H., 2018 [24]	Components of care that elicit positive responses from elderly patients in a persistent vegetative state and the process of changes that nurses undergo as they accumulate experience	To clarify the components of care that elicit positive responses from older adult patients with prolonged disorders of consciousness and the transformation process for nurses.	Qualitative	Convalescent	9/10

196 JBI = Joanna Briggs Institute, Stage = Stage of cerebrovascular disease.

## Self-actualization of families by nurses and nurses themselves

### 197 **Self-actualization of other individuals**

198 Eight subcategories and 18 categories were extracted for self-actualization of other  
199 individuals (Table 2). During the course of a family member developing and recovering  
200 from cerebrovascular disease, family caring provided by nurse as an expert could help  
201 achieve the family self-actualization. Below, categories are indicated inside quotation  
202 marks.

203 Nurses gave consideration to listen to family other than at bedside, and even when a  
204 cerebrovascular patient had been admitted emergently and visits were restricted, they gave  
205 consideration to secure the visiting time and place that the family desired. Nurses created  
206 an environment in which the family could participate in patient care such as grooming and  
207 others during visits, and by keeping the patient's hands clean so that visiting family  
208 members could hold the patient's hands. As a result, "the family could meet with the  
209 patient without being shocked."

210 The nurse made an effort to understand the family's reaction and the family's feelings  
211 of grief over the lack of treatment options for the patient, and to perform active listening to

## Self-actualization of families by nurses and nurses themselves

212 the family. Through this relationship, “the family was able to express their emotions with  
213 the help of nurses.”

214 Faced with the condition of the family member who had developed cerebrovascular  
215 disease, the family felt fear, conflict, and regret that the patient’s recovery was hopeless. In  
216 addition, the family’s desire by the nurses to know the patient’s medical condition and  
217 prognosis could be understood. Through these transactions with nurses, “families could  
218 express their fears and complications regarding the patient’s health.”

219 The family’s concealed feelings for the patient was understood by the nurse, even  
220 though it was difficult to communicate with the patient due to decreased consciousness and  
221 language impairment due to cerebrovascular disease. Additionally, families were able to  
222 get nurses to understand their desire to protect patients who were unable to express their  
223 wishes, and by receiving bridging support from nurses, “families were able to acquire a  
224 means of communication between family members.”

225 The family was able to receive professional family care from a team of nurses. This  
226 means that even when the patient’s treatment and progress were specialized, the family

## Self-actualization of families by nurses and nurses themselves

227 could easily understand the patient’s treatment and progress, and by being able to receive  
228 comprehensive family care that might easily be overlooked, “the family could obtain  
229 expert family nursing care.”

230 As the patient moved out of the acute phase and began to recover, the family and  
231 patient were conflicted about the place where the patient would be discharged from the  
232 hospital and what direction to take in the future. The family was understood by nurses that  
233 family members interacted with each other while concealing their feelings, and was  
234 provided opportunities for discussion between the patient and family. As a result, “family  
235 could relieve tension.”

236 The nurse intervened between family members by providing caring, and the family  
237 felt that their relationship with the patient had improved, and that they had developed a  
238 sense that “the family could gain a sense of security.”

239 Even when the family was unable to communicate with the patient, the family felt  
240 that nurses shared family hopes and the hopes the patient had harbored before symptoms  
241 developed, and incorporated them into the patient’s care.

## Self-actualization of families by nurses and nurses themselves

242 Furthermore, by exploring the patient’s meaning in life with family members, the  
 243 family worked with nurses to describe the image of the life that both the patient and family  
 244 would like, which led to “family could realize their hopes through the provision of an  
 245 environment by nurses.”

246 **Table 2. Categories of self-actualization of families with a cerebrovascular disease**  
 247 **patient by the nurse, and of self-actualization of the nurse.**

Main categories (n = 2)	Categories (n = 11)	Subcategories (n = 23)	Reference No.
Self-actualization of other individuals	Family can meet with the patient without being shocked.	Family can secure a time and place to meet with the patient with consideration from the nurse.	16, 17, 21
		Family can meet with the patient without feeling shocked by the nurses’ arrangement of an environment.	17, 21
	Family can express their emotions with the help of nurses.	Family can express their emotions by the nurse’s active listening.	17
		Family can be provided with support through the nurse’s monitoring the family’s reactions.	15, 21
	Family can express their fears and complications regarding the patient’s recovery.	Family can express their fears and complications that the patient has no hope of recovery.	16, 17, 18, 19
		Family can be understood by the nurse that the family is in a crisis situation in which the family is desperately clinging to straws.	19, 16
	Family can acquire a means of communication between family members.	Family can be understood by the nurse of their hidden feelings to patients with whom communication is difficult.	19, 21, 22
		Family can be understood by the nurse of their desires to protect patients who are unable to express their wishes.	19
		Family can communicate with patients through the help of nurses.	19, 21
	Family can obtain expert family nursing care.	Family can receive family care from a team of nurses.	16, 20
		Family can receive patient information from	15, 18, 19

## Self-actualization of families by nurses and nurses themselves

		nurses.	
		Family can obtain the kind of detailed care that is frequently overlooked by nurses.	18, 21
	Family can relieve tension.	Family can be understood by the nurse concerning the tension between the patient and the family.	22
		Family can reduce tension between patients and the family.	20, 21, 22
	Family can gain a sense of security.	Family can improve their relationship with the patient.	18, 21, 24
		Family can feel secure.	18
	Family can realize their hopes through provision of an environment by nurses.	Family can have the opportunity to realize the patient's and family's hopes through the environment provided by the nurse.	14, 16, 17, 19
		Family can describe the life and way of life they desire by working with nurses.	22, 23
Self-actualization of the nursing professional	Nurses can harbor the belief that they will not give up on the patient's recovery.	Nurses can consider that they want to take care of the family.	15, 19
		Nurses can possess strengths when encountering the family.	14
	Nurses can find inner calm and harmony.	Nurses can resonate with the unknown spiritual inner world.	14
	Nurses can obtain a sense of satisfaction from the family.	Nurses can rejoice with the patient's family about the patient's situation.	16
		Nurses can feel recognized by families.	14, 16, 19

### 248 **Self-actualization of the nursing professional**

249 Five subcategories and three categories were extracted for self-actualization of the nursing  
 250 professional (Table 2). Below, categories are indicated inside double quotation marks.

251 By being happy with the family of the patient with cerebrovascular disease and  
 252 feeling recognized by the family, the nurse was able “to obtain a sense of satisfaction from  
 253 the family.” In addition, through the experience of resonance with an unknown spiritual

## Self-actualization of families by nurses and nurses themselves

254 world through the practice of family caring, nurses were able “to find inner calm and  
255 harmony,” and felt a sense of inner self-growth. Underlying this were nurses’ beliefs that  
256 the words of family members were important, their desire to take care of the family, and  
257 possession of strengths when encountering the family, and that “nurses harbor the belief  
258 that they will not give up on the patient’s recovery.” The nurses had such a belief and  
259 practiced family caregiving at the same time as caring for patients with cerebrovascular  
260 disease who had difficulty communicating. While attending to the feelings of the family  
261 members, the nurses experienced a spiritual inner world and felt as if their own energy was  
262 amplified.

## 263 **Discussion**

### 264 **Self-actualization of other individuals**

265 Cerebrovascular disease often develops suddenly, putting families in a critical state not  
266 unlike the patient. The family can meet with the patient without feeling shocked because  
267 they feel the patient is receiving the best possible care, such as by seeing the patient well-  
268 groomed when visiting and participating in the patient’s care, which can be thought of as

## Self-actualization of families by nurses and nurses themselves

269 self-actualization of the family. When a family feels that a patient in a life-threatening  
270 situation is receiving the best possible treatment and care, their suffering is alleviated [5].  
271 Families with cerebrovascular patients achieved self-actualization through nurses' family  
272 caring from their emergency hospitalization to the recovery process.

273 Families are able to express their emotions with the help of nurses and express their  
274 fears and complications regarding the patient's recovery. Family members who see the  
275 sudden onset of symptoms become upset, realize that the patient's life is in danger, may  
276 suffer from sequelae, and feel helpless and regretful that the patient has changed from  
277 before the onset of symptoms [28]. Emotional involvement may also affect family  
278 functioning and lead to psychological trauma [29]. We believe that nurses' assistance in  
279 being able to express the family's emotions provides an opportunity for the family to  
280 receive psychological support [30].

281 Cerebrovascular disease is a pathological condition caused by damage to the cranial  
282 nerves due to cerebral infarction or cerebral hemorrhage, resulting in aftereffects such as  
283 impaired consciousness, language impairment, and motor paralysis, leading to a decline in



## Self-actualization of families by nurses and nurses themselves

284 family functioning due to decreased interaction with family members as a result of  
285 impaired communication [29]. Even in a situation where family interaction with the patient  
286 is reduced, nurses are able to act as a mediator, allowing families to acquire a means of  
287 communication between family members and obtain expert family nursing care. The  
288 family is in an uncertain situation, unable to understand the patient's treatment and future  
289 course. Considering the family situation, it is important for nurses to support the patient  
290 and family by using verbal, nonverbal, and descriptive means so that the family can  
291 communicate with the patient. Because obstructed communication can affect the  
292 relationship between patients and families [31], nurses provide information to families by  
293 modifying specialized contents into language that families can easily understand [32]. In  
294 addition, through nurses' understanding that the family wishes to receive truthful  
295 information, the family is able to gain an opportunity to communicate with the patient.  
296 When families are confused and desperate, a sensitive nurse who spends time with them  
297 and listens to them can be the best help [30]. We believe that nurses, as professionals who  
298 can provide delicate care to families, are important for the family's self-actualization.

## Self-actualization of families by nurses and nurses themselves

299           As the patient recovers, the family is relieved that the patient is out of the acute  
300 phase, but at the same time, are still uncertain about the aftereffects and what kind of life  
301 they will need to lead in the future, and they are trying to determine how to live their lives  
302 henceforth [33]. Uncertainty about the disease state is highest immediately after the onset  
303 of the disease, and although it decreases, it rises again, and the family continues to feel  
304 uneasy about the unknown future [34]. Because of this uncertainty, the family becomes  
305 anxious about decision-making and are hesitant when dealing with the patient's feelings.  
306 Tensions between family members can be alleviated by being regulated by nurses.  
307 Furthermore, the family feels that relationships between family members have improved,  
308 which leads to the family's self-actualization through the gaining of a sense of security.

309           Even in situations where family members are unable to communicate with the patient,  
310 nurses provide care that incorporates the patient's wishes and preferences, and nurses  
311 adjust the environment to portray the patient's purpose in life and the image of the life  
312 desired by the family, enabling self-actualization, such as through realization of their  
313 hopes, to be achieved. In order to build a relationship of trust for the future of the family,

## Self-actualization of families by nurses and nurses themselves

314 nurses practice family caring, starting from an interest in the patient's family and  
315 exploring the wishes of the family [30]. Attentive reassurance indicates availability and a  
316 more hopeful outlook [35]. The nurse's attitude of searching for the family's desired way  
317 of life leads to self-actualization of the family that attends to the unconscious patient,  
318 through such ways as gaining detailed reassurance and achieving the family's wishes.

319 In addition, nurses' support produces a transaction by which patients and nurses work  
320 together to create meaning, and when they find a path to recovery, they promote self-  
321 actualization in patients [36]. The constructive philosophy of family caring proposed by  
322 Hohashi incorporates the key factors that make up family caring, that is, concern,  
323 knowledge, trust, and hope [5]. The results suggest that not only patients but also families  
324 experience the philosophy of family caring through family caring practices by nurses,  
325 leading to family self-actualization.

## 326 **Self-actualization of the nursing professional**

327 Because cerebrovascular disease is characterized by changes in condition and uncertainty  
328 [4], not only patients and families, but also nurses may feel anxious and wonder whether

## Self-actualization of families by nurses and nurses themselves

329 they should provide care actively. In this way the nurse's feeling of being accepted by the  
330 family may lead to a sense of satisfaction from the family as well as finding inner calm  
331 and harmony. At the root of this is nurses' belief that the words of families are important,  
332 their desire to place value on families, and their possession of strengths when they meet  
333 families, as a result nurses harbored the belief that they will not give up on the patient's  
334 recovery.

335 Self-actualization is extremely important for nurses as professionals, and they have an  
336 internal drive to excel at their work [37]. It can be seen that the nurses have a strong desire  
337 for the patient's recovery, recognize that the presence of the family is important for that  
338 purpose, and practice family caring. Also, during interactions with families, nurses  
339 experienced a spiritual inner world and felt that their own energy was amplified.

340 According to Watson, when the nurse enters into the other's experience new  
341 phenomena, referred to as Caritas Field, is created that is greater than that of two persons;  
342 thus another person enters into the nurse's experience. And the union of feelings can  
343 potentiate self-healing, discovery of power and control and contribute to another person

## Self-actualization of families by nurses and nurses themselves

344 finding meaning in their existence [38]. Hohashi explains that spiritual dimension is the  
345 realm where something fundamental exists, which gives a person meaning and purpose in  
346 life, and can be understood from relationships and time [5]. While the patient is in an  
347 uncertain situation, nurses and their families deepen their relationship with each other over  
348 the course of the time they care for the patient, promoting mutual understanding,  
349 recognizing that they are necessary, and fostering self-growth, that is, inner self-growth. It  
350 is possible that they feel that their personal growth is expanding.

### 351 **Storyline based on Family Care/Caring Theory**

352 In Hohashi's Family Care/Caring Theory (FC2T) (Figure 1), reinforcing and establishing  
353 family care/caring relationships is understood in terms of three distances: structural  
354 distance, functional distance, and temporal distance [5, 6]. In other words, nurses provide  
355 family care/caring to families, and in the process of mutual care/caring, the structural  
356 distance and functional distance between nurses and families become closer in the  
357 environment for formation of reciprocal concern, and the family's well-being will be  
358 realized. Based on the categories clarified in this study, the storyline of the relationship

## Self-actualization of families by nurses and nurses themselves

359 between nurses and families based on temporal distance is as follows:

360 The starting point for care/caring by nurses begins when a cerebrovascular patient is  
361 admitted to the hospital. Owing to the care/caring of the nurses, the family is able to meet  
362 with the patient without being shocked and is able to express their emotions with the help  
363 of the nurse. Through the process of nurses interacting with families as professionals,  
364 families were able to express their fears and complications regarding the patient's  
365 recovery, and the nurse's role as a bridge enabled families to acquire a means of  
366 communication between family members. As the patient's condition improved, the family  
367 was able to relieve tension, gain a sense of security, and realize their hopes through  
368 provision of an environment by the nurses. For nurses on the other hand, over the passing  
369 of time they achieved self-actualization such as observing a sense of satisfaction from the  
370 family and finding inner calm and harmony. At the basis of this was the belief that nurses  
371 will not give up on the cerebrovascular patient's recovery.

### 372 **Limitations**

373 Because this study analyzed Japanese literature, the contents regarding self-actualization

## Self-actualization of families by nurses and nurses themselves

374 of the nursing professional and self-actualization of other individuals may differ depending  
375 on culture. In addition, there are scant examples of literature that study transactions  
376 between entire families and nurses, or self-actualization of families with a cerebrovascular  
377 disease patient by nurses, and of self-actualization of nurses themselves. Consequently it is  
378 difficult to draw general conclusions from the results of this study. In the future, we intend  
379 to study the building of relationships between nurses and families and the self-  
380 actualization of both parties based on practical situations of family care/caring that nurses  
381 practice with families, and will need to clarify specifically what kinds of transactions  
382 occur.

## 383 **Conclusion**

384 After a patient is hospitalized due to cerebrovascular disease, the patient's family receives  
385 care/caring from nurses during the recovery process, gaining self-actualization such as by  
386 the obtaining of a sense of security. Nurses, on the other hand, obtained care/caring from  
387 the patients' families and gained self-actualization such as through observing the family's  
388 satisfaction. This phenomenon of care/caring can be understood using Family Care/Caring

## Self-actualization of families by nurses and nurses themselves

389 Theory, and a relationship can be established through reciprocal concerns of care/caring  
390 between nurses and families.

### 391 **Acknowledgments**

392 Our laboratory members' discussions in the data analysis were instrumental in ensuring its  
393 trustworthiness. For their conscientious efforts, the authors would like to express our  
394 deepest thanks and appreciation.

### 395 **References**

- 396 1. Ministry of Health, Labour and Welfare, Japan. Summary of patient survey, 2020.  
397 Available from: <https://www.mhlw.go.jp/toukei/saikin/hw/kanja/20/index.html>
- 398 2. Fire and Disaster Management Agency, Japan. Current status of emergency rescue  
399 2023 edition. Available from:  
400 [https://www.fdma.go.jp/publication/rescue/items/kkkg\\_r05\\_01\\_kyukyu.pdf](https://www.fdma.go.jp/publication/rescue/items/kkkg_r05_01_kyukyu.pdf)
- 401 3. Shirasaki K, Hifumi T, Nakanishi N, Nosaka N, Miyamoto K, Komachi MH, et al.  
402 Postintensive care syndrome family: A comprehensive review. *Acute Med Surg.* 2024;



## Self-actualization of families by nurses and nurses themselves

- 403 11(1): e939. <https://doi.org/10.1002/ams2.939> PMID: 38476451
- 404 4. Greenwood N, Mackenzie A. Informal caring for stroke survivors: Meta-ethnographic  
405 review of qualitative literature. *Maturitas*. 2010; 66(3): 268-276.  
406 <https://doi.org/10.1016/j.maturitas.2010.03.017> PMID: 20430542
- 407 5. Hohashi N. Understanding family health care nursing through applicable terminology:  
408 Family Care/Caring Theory (ver. 2.0). Kanagawa, Japan: Editex; 2023.
- 409 6. Hohashi N, Honda J. Concept development and implementation of Family Care/Caring  
410 Theory in Concentric Sphere Family Environment Theory. *Open J Nurs*. 2015; 5(9):  
411 749-757. <https://doi.org/10.4236/ojn.2015.59078>
- 412 7. Leyva EWA, Peralta AB, Tejero LMS, Santos MA. Global perspectives of caring: An  
413 integrative review. *Int J Hum Caring*. 2015; 19(4): 7-29. [https://doi.org/10.20467/1091-](https://doi.org/10.20467/1091-5710.19.4.7)  
414 [5710.19.4.7](https://doi.org/10.20467/1091-5710.19.4.7)
- 415 8. Werner JS, Wendler MC, McCormick J, Paulus-Smith S, Jackson C, Nie J. Human  
416 response outcomes influenced by nurse caring. *Int J Hum Caring*. 2002; 6(3): 15-23.

## Self-actualization of families by nurses and nurses themselves

417 <https://doi.org/10.20467/1091-5710.6.3.15>

418 9. Quesada-Puga C, Izquierdo-Espin FJ, Membrive-Jiménez MJ, Aguayo-Estremera R,

419 Cañadas-De La Fuente GA, Romero-Béjar JL, et al. Job satisfaction and burnout

420 syndrome among intensive-care unit nurses: A systematic review and meta-analysis.

421 Intensive Crit Care Nurs. 2024; 82: 103660. <https://doi.org/10.1016/j.iccn.2024.103660>

422 PMID: 38394983

423 10. Toronto CE, Remington R. A step-by-step guide to conducting an integrative review.

424 Cham, Switzerland: Springer International Publishing; 2020.

425 11. Ota H, Hohash, N. Research trends and topics related to caring for families of patients

426 with cerebrovascular disease. Proc 41st Conf Jpn Acad Nurs Sci. 2021; 41: 758.

427 12. Lockwood C, Munn Z, Porritt K. Qualitative research synthesis: Methodological

428 guidance for systematic reviewers utilizing meta-aggregation. Int J Evid Based

429 Healthc. 2015; 13(3): 179-187. <https://doi.org/10.1097/XEB.0000000000000062>

430 PMID: 26262565

## Self-actualization of families by nurses and nurses themselves

- 431 13. Aromataris E, Lockwood C, Porritt K, Pilla B, Jordan Z. JBI manual for evidence  
432 synthesis. JBI. 2024. Available from: <https://synthesismanual.jbi.global/>
- 433 14. Hasegawa R, Morita N, Kinoshita Y, Tamura Y. Skills of Certified Nurse in Stroke  
434 Rehabilitation Nursing to support survival. Proc Jpn Soc Nurs: Nurs Manage. 2014;  
435 44: 309-312.
- 436 15. Honda K, Miyake C, Yao M, Kurushima M, Toyoda K. The nursing practices nurses  
437 consider important in the tertiary emergency rooms. J Hum Nurs Stud. 2012; 10: 15-  
438 24. [https://doi.org/10.24795/nk010\\_015-024](https://doi.org/10.24795/nk010_015-024)
- 439 16. Iiitsuka M, Enomoto Y. Nurses' awareness of care for families of patients  
440 experiencing disorders of consciousness following surgery for stroke. Fac J Komazawa  
441 Women Univ. 2018; 1: 49-60. <https://komajo.repo.nii.ac.jp/records/1358>
- 442 17. Inagaki N, Tsukuda J. A review of nursing care for 10 stroke patients with mechanical  
443 circulation support in the ICU. Nurs J Osaka Univ. 2015; 21(1): 21-28.  
444 <https://doi.org/10.18910/56880>

## Self-actualization of families by nurses and nurses themselves

- 445 18. Inukai T, Watanabe K. Surrogate decision-making support for families of hyperacute  
446 stroke patients provided by certified nurses. *Jpn J Res Fam Nurs*. 2021; 26(2): 119-  
447 130. [https://jarfn.or.jp/newsletter/doc/kikanshi/26-2/26-2\\_12.pdf](https://jarfn.or.jp/newsletter/doc/kikanshi/26-2/26-2_12.pdf)
- 448 19. Inukai T, Watanabe K, Nomura K. “Difficulties in building relationships which don’t  
449 pass patient with cranial neurological diseases” between nurses and families of  
450 patients: Analysis based on interview data to nurse in acute stage. *J Jpn Soc Nurs Res*.  
451 2009; 32(5): 75-81. <https://doi.org/10.15065/jjsnr.20090519006>
- 452 20. Ito M, Hara S, Okinaka Y, Ono M. Nursing care for elderly patients with persistent  
453 disturbance of consciousness in acute hospital. *Bull Shimane Univ Fac Med*. 2013; 36:  
454 31-38. <https://ir.lib.shimane-u.ac.jp/ja/28660>
- 455 21. Matsuoka C. Nursing process of discharge planning for older patients with  
456 cerebrovascular accidents. *Univ Hyogo Coll Nurs Art Sci Bull*. 2005; 12: 37-51.  
457 <https://u-hyogo.repo.nii.ac.jp/record/1309/files/KJ00004175396.pdf>
- 458 22. Ono M. Discharge planning process for patient and family to back home in the  
459 recovery rehabilitation ward. *J Jpn Soc Nurs Res*. 2006; 29(1): 97-105.

## Self-actualization of families by nurses and nurses themselves

460 <https://doi.org/10.15065/jjsnr.20051104008>

461 23. Takeuchi C, Kuroshima A, Tani M. A constituent of discharge support for elderly

462 patients with cerebrovascular disease from the viewpoint of “living individual”:

463 Focusing on the convalescence rehabilitation ward nurses. *Jpn J Rehabil Nurs.* 2020;

464 10(1): 51-60

465 24. Umegaki H. Components of care that elicit positive responses from elderly patients in

466 a persistent vegetative state and the process of changes that nurses undergo as they

467 accumulate experience. *J Jpn Acad Gerontol Nurs.* 2018; 23(1): 94-102.

468 [https://doi.org/10.20696/jagn.23.1\\_94](https://doi.org/10.20696/jagn.23.1_94)

469 25. Garrard J. Health sciences literature review made easy: The matrix method. Sudbury,

470 MA: Jones & Bartlett Learning; 2020.

471 26. Elo S, Kyngäs H. The qualitative content analysis process. *J Adv Nurs.* 2008; 62(1):

472 107-115. <https://doi.org/10.1111/j.1365-2648.2007.04569.x> PMID: 18352969

473 27. Hsieh HF, Shannon SE. Three approaches to qualitative content analysis. *Qual Health*

## Self-actualization of families by nurses and nurses themselves

- 474 Res. 2005; 15(9): 1277-1288. <https://doi.org/10.1177/1049732305276687> PMID:  
475 16204405
- 476 28. Iwasa Y, Kato M, Hara S. Sentiments found in adult children of elderly patients  
477 hospitalized in acute hospitals due to the onset of cerebral strokes. *J Jpn Soc Nurs Res.*  
478 2019; 42(5): 889-897. <https://doi.org/10.15065/jjsnr.20190724058>
- 479 29. Gawulayo S, Erasmus CJ, Rhoda AJ. Family functioning and stroke: Family members'  
480 perspectives. *Afr J Disabil.* 2021; 10: a801. <https://doi.org/10.4102/ajod.v10i0.801>  
481 PMID: 34858798
- 482 30. Lehto B, Kylmä J, Åstedt-Kurki P. Caring Interaction with stroke survivors' family  
483 members: Family members' and nurses' perspectives. *J Clin Nurs.* 2019; 28(1-2): 300-  
484 309. <https://doi.org/10.1111/jocn.14620> PMID: 29989233
- 485 31. Lu Q, Mårtensson J, Zhao Y, Johansson L. Needs of family members caring for stroke  
486 survivors in China: A deductive qualitative content analysis study by using the  
487 caregiver task inventory-25. *BMC Geriatr.* 2022; 22(1): 96.  
488 <https://doi.org/10.1186/s12877-022-02774-5> PMID: 35114940

## Self-actualization of families by nurses and nurses themselves

- 489 32. Al-Shamaly HS. Patterns of communicating care and caring in the intensive care unit.  
490 Nurs Open. 2022; 9(1): 277-298. <https://doi.org/10.1002/nop2.1061> PMID: 34536338
- 491 33. Merati-Fashi F, Dalvandi A, Parsa Yekta Z. Stroke survivors and their family  
492 caregivers' experiences of health information seeking: A qualitative study. Int J  
493 Community Based Nurs Midwifery. 2022; 10(4): 269-278.  
494 <https://doi.org/10.30476/IJCBNM.2022.94489.1997> PMID: 36274666
- 495 34. Hayashi M, Usui C. An investigation on uncertainty in illness of family members of  
496 patient with cerebrovascular disease in acute and sub-acute phases. Bull Tenri Health  
497 Care Univ. 2020; 8(1): 27-35. [https://doi.org/10.24667/thcu.8.1\\_27](https://doi.org/10.24667/thcu.8.1_27)
- 498 35. Duffy JR. Quality caring in nursing: Applying theory to clinical practice, education,  
499 and leadership. New York, NY: Springer Publishing; 2018.
- 500 36. Mohammadipour F, Atashzadeh-Shoorideh F, Parvizy S, Hosseini M. Concept  
501 development of “nursing presence”: Application of Schwartz-Barcott and Kim’s  
502 Hybrid Model. Asian Nurs Res. 2017; 11(1): 19-29.  
503 <https://doi.org/10.1016/j.anr.2017.01.004> PMID: 28388976

## Self-actualization of families by nurses and nurses themselves

504 37. Welch TD, Carter M. Expertise among critical care nurses: A grounded theory study.

505 Intensive Crit Care Nurs. 2020; 57: 102796.

506 <https://doi.org/10.1016/j.iccn.2019.102796> PMID: 31959379

507 38. Watson J. Human caring science: A theory of nursing. Sudbury, MA: Jones & Bartlett

508 Learning; 2012.



medRxiv preprint doi: <https://doi.org/10.1101/2024.08.09.24311763>; this version posted August 13, 2024. The copyright holder for this preprint (which was not certified by peer review) is the author/funder, who has granted medRxiv a license to display the preprint in perpetuity. It is made available under a [CC-BY 4.0 International license](#).

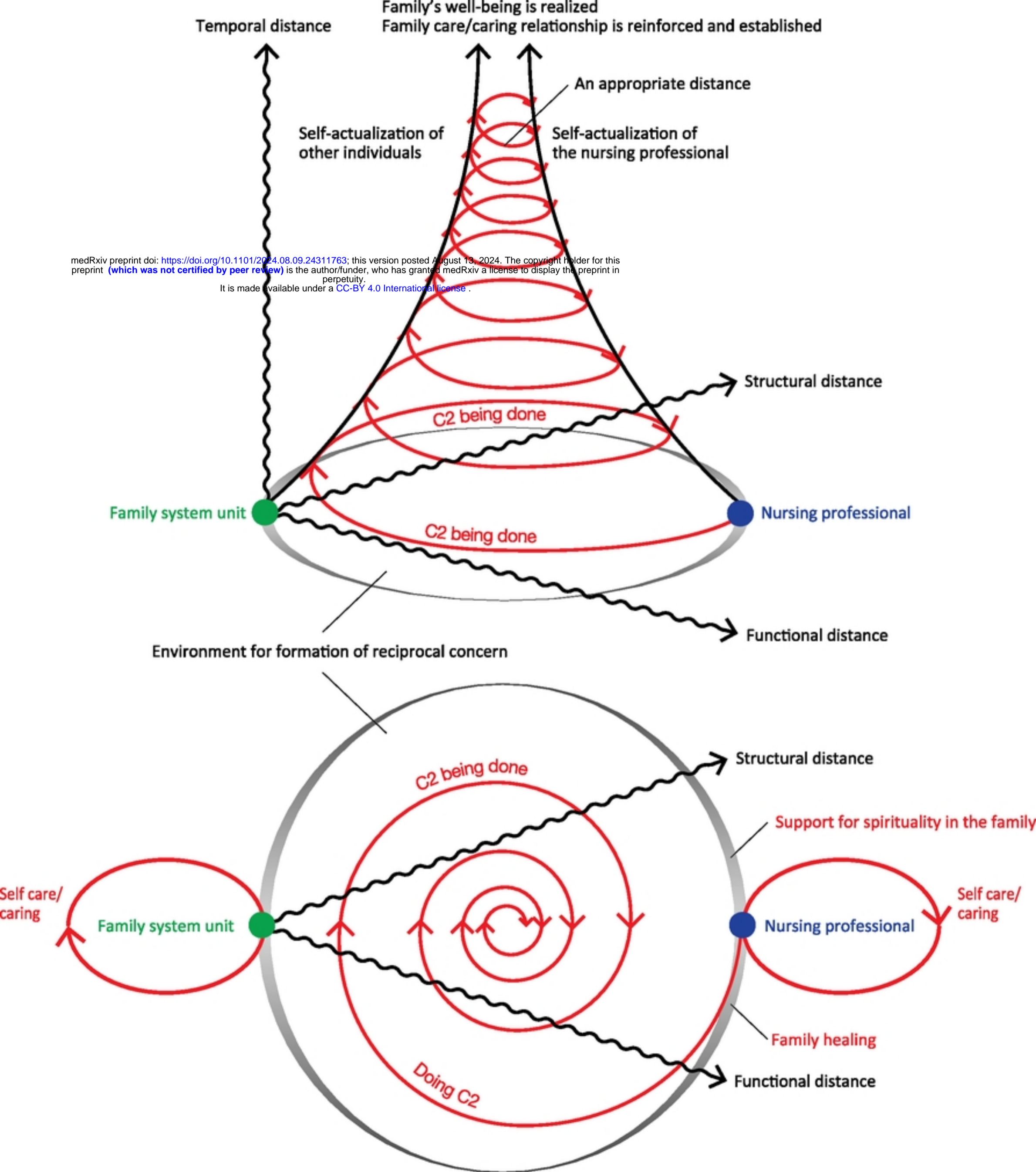


Figure 1

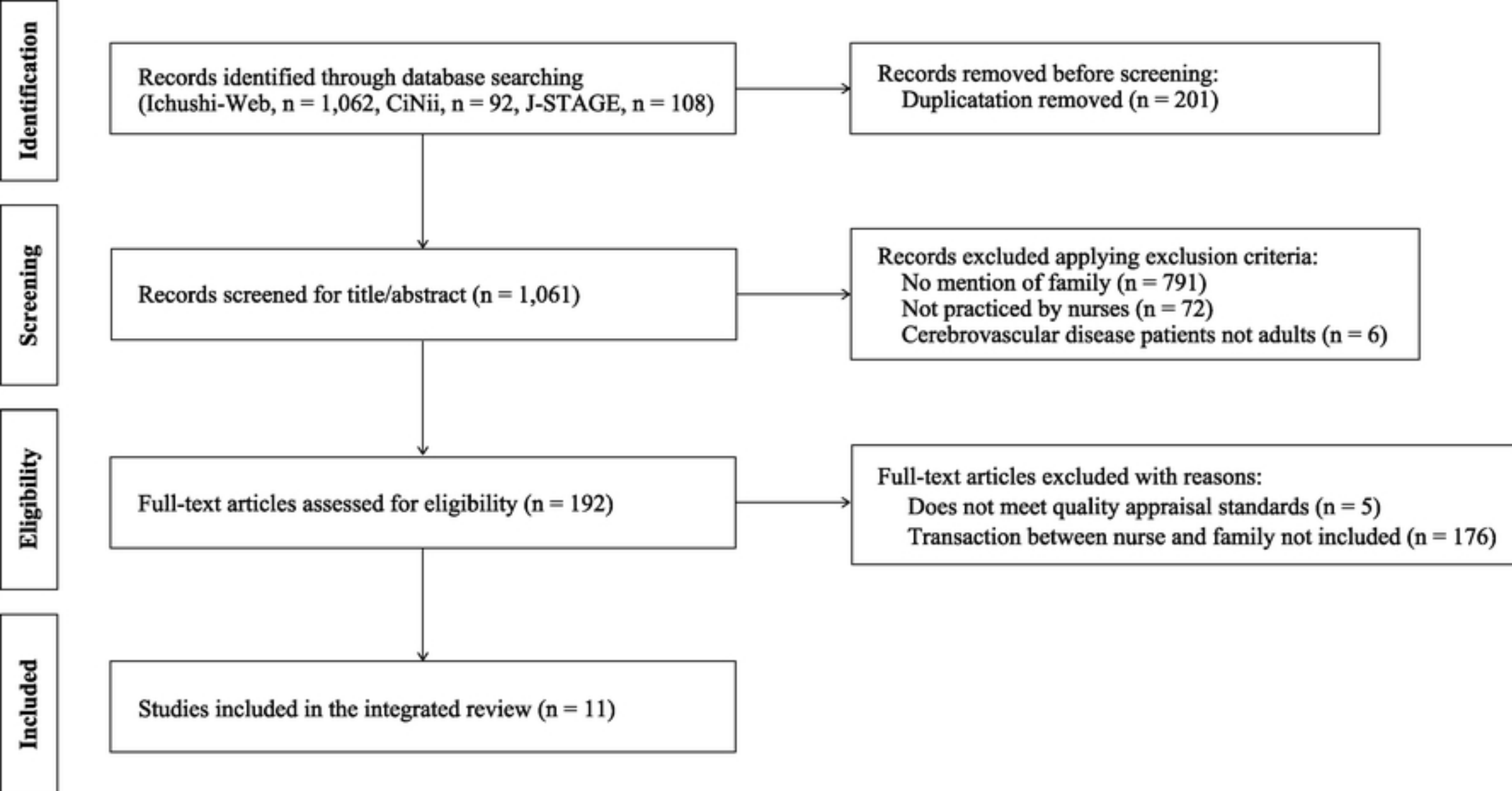


Figure 2