

1 **Title: Association of Cardiologist Clinic Visits with Cardiovascular Primary Prevention Outcomes**  
2 **Among People with HIV from Underrepresented Racial and Ethnic Groups in the Southern United**  
3 **States**

4 Short Title. Cardiology Clinic Visits and Outcomes among PWH.

5 Authors: Matthew S. Durstenfeld, MD MAS,<sup>1</sup> C. Larry Hill, PhD,<sup>2</sup> Robert M. Clare,<sup>2</sup> Karen Chiswell,<sup>2</sup>  
6 Gretchen Sanders, RN, MSN,<sup>2</sup> Shamea Gray, BS, MDIV,<sup>3</sup> Linda Cooper,<sup>4</sup> Joseph Vicini, BA, MDIV,<sup>5</sup>  
7 Keith Marsolo,<sup>2</sup> Nwora Lance Okeke, MD, MPH,<sup>3</sup> Eric G. Meissner, MD, PhD,<sup>6</sup> Kevin L. Thomas, MD,<sup>3</sup>  
8 Caryn G. Morse, MD MPH,<sup>7</sup> Gerald S. Bloomfield, MD, MPH<sup>2,8</sup> April C. Pettit, MD, MPH,<sup>9</sup> and Chris  
9 T. Longenecker, MD<sup>10</sup>

10 Affiliations: 1. Division of Cardiology at Zuckerberg San Francisco General, University of California San  
11 Francisco, San Francisco, CA, USA 2. Duke Clinical Research Institute, Durham, North Carolina, USA.  
12 3. Department of Medicine, Duke University School of Medicine, Durham, North Carolina, USA. 4.  
13 Division of Infectious Diseases, Medical University of South Carolina, Charleston, South Carolina, USA  
14 5. Department of Medicine, Vanderbilt University Medical Center, Nashville, Tennessee, USA 6.  
15 Division of Infectious Diseases, Department of Microbiology and Immunology, Medical University of  
16 South Carolina, Charleston, South Carolina, USA 7. Division of Infectious Diseases, Wake Forest Baptist  
17 Health, North Carolina, USA 8. Duke Global Health Institute, Division of Cardiology, Duke University,  
18 Durham, North Carolina, USA 9. Division of Infectious Diseases & Epidemiology, Vanderbilt University  
19 Medical Center, Nashville, TN, USA 10. Division of Cardiology & Department of Global Health,  
20 University of Washington, Seattle, WA, USA

21  
22 **Address for Correspondence:**

23 Matthew S. Durstenfeld, MD MAS  
24 Division of Cardiology, UCSF at Zuckerberg San Francisco General Hospital  
25 1001 Potrero Avenue,  
26 5G8 San Francisco, CA 94110, USA  
27 Tel: +1 628 206 5562  
28 Fax: +1 628 206 5447  
29 e-mail: matthew.durstenfeld@ucsf.edu

30  
31 Total Word Count: 7301

32

33 **Abstract**

34 **Background:** People with HIV (PWH) are at elevated risk for atherosclerotic cardiovascular disease  
35 (ASCVD). Underrepresented racial and ethnic groups (UREGs) with HIV in the southern U.S. are  
36 disproportionately affected, yet whether cardiology specialist care for this at-risk group improves blood  
37 pressure and lipid control or prevents cardiovascular events is unknown.

38 **Methods:** We evaluated a cohort of PWH from UREGs at elevated ASCVD risk without known  
39 cardiovascular disease who received HIV-related care from 2015–2018 at four academic medical centers  
40 in the Southern United States with follow up through 2020. Primary outcomes were blood pressure  
41 control (<140/90 mmHg) and lipid control (LDL-C  $\leq$  100 mg/dl) over 2 years and time to first major  
42 adverse cardiovascular (MACE) event. Statistical analyses were adjusted for cohort/site and patient  
43 factors including HIV measures and comorbidities.

44 **Results:** Among 3972 included PWH (median age 47 years old, 32.6% female) without diagnosed  
45 cardiovascular disease, 276 (6.9%) had a cardiology clinic visit. Cardiology clinic visits were not  
46 significantly associated with subsequent blood pressure control (adjusted OR 0.78, 95% CI 0.49-1.24,  
47  $p=0.29$ ) or lipid control (adjusted OR 2.25, 95% CI 0.72-7.01,  $p=0.16$ ). Over a median follow up of 5  
48 years, patients who had a cardiology clinic visit had higher risk of MACE, overall mortality, and  
49 falsification endpoints (hospitalization or death from accident/trauma and pneumonia/sepsis) indicating a  
50 higher risk group overall, even after adjusting for measured risk factors.

51 **Conclusions:** Among UREG PWH at elevated cardiovascular risk, a cardiology clinic visit was not  
52 associated with improved cardiovascular risk factors or reduced risk of cardiovascular events. Our study  
53 suggests that seeing a cardiologist is not alone sufficient to promote cardiovascular health or prevent  
54 cardiovascular events among PWH, but with low confidence given the higher risk among those who had a  
55 cardiology visit.

56 **Key Words:** HIV; primary prevention; cardiovascular diseases specialty; outcomes

57 **What is known?**

- 58 • People with HIV are at increased cardiovascular risk, and the burden of both  
59 cardiovascular disease and HIV are high among people from underrepresented racial and  
60 ethnic groups who live in the Southern United States.
- 61 • Treating people with HIV at elevated cardiovascular risk with statins reduces risk of  
62 cardiovascular events.

63 **What the study adds?**

- 64 • Among people with HIV at elevated cardiovascular risk from underrepresented racial and  
65 ethnic groups who received care at four academic medical centers in the southern United  
66 States, cardiology clinic visits were not associated with better lipid control, blood  
67 pressure control, or prevention of cardiovascular events.
- 68 • People with HIV who attended a cardiology clinic visit had higher risk of cardiovascular  
69 events and mortality.

70

## 71 **Introduction**

72           People with HIV (PWH) have elevated risk of developing atherosclerotic cardiovascular disease  
73 (ASCVD), with two-fold higher risk of myocardial infarction.<sup>1</sup> Similarly, PWH are at increased risk for  
74 heart failure and arrhythmias. In the United States, people who belong to underrepresented racial and  
75 ethnic groups (UREGs) bear a disproportionate share of both HIV and ASCVD disease burden, especially  
76 in the South.

77           Among PWH, early diagnosis of HIV, linkage to HIV care, and treatment with antiretroviral  
78 therapy (ART) remain foundational to promote long and healthy lives. Among PWH linked to HIV care,  
79 guidelines recommend estimating ASCVD risk to guide primary prevention strategies.<sup>2,3</sup> Among those  
80 predicted to have elevated risk, one potential strategy to mitigate the excess risk of ASCVD may be  
81 involvement of cardiologists in the care of PWH to optimize primary prevention of cardiac events.  
82 Whether a clinic visit with a cardiologist has an impact on primary prevention of cardiovascular outcomes  
83 among PWH (or even the general population without HIV) is unknown.

84           Therefore, we designed a multi-center observational cohort study to examine the association  
85 between cardiology clinic visits and cardiovascular outcomes among PWH from UREGs with elevated  
86 ASCVD risk. We hypothesized that a clinic visit with a cardiologist would be associated with  
87 improvement in risk factors (blood pressure and lipid) control at 2 years and therefore lower risk of major  
88 adverse cardiovascular events and mortality over 5 years among PWH from UREGs. Because our  
89 research question is causal (“Does seeing a cardiologist prevent heart disease?”), we employed multiple  
90 comparative effectiveness strategies to rigorously answer these questions, as described further in the  
91 methods section below. Our hope was that our findings would inform whether a cardiologist visit should  
92 be implemented as a strategy to prevent cardiovascular events among PWH from UREGs.

## 93 **Methods**

### 94 *Study Design*

95 As previously described, the Pathways to Cardiovascular Disease Prevention and Impact of  
96 Specialty Referral in Under-Represented Racial/Ethnic Minorities with HIV (PATHWAYS) study  
97 (NCT04025125) is a multi-center collaborative observational electronic health record (EHR) based cohort  
98 study focused on PWH who are UREGs who receive clinical care in the Southern United States.<sup>4</sup> For this  
99 study, we used a series of nested cohort studies, as described in more detail in the Statistical Analysis  
100 section below.

### 101 *Setting*

102 Four academic health centers located in the United States South that participate in the  
103 Stakeholders, Technology, and Research (STAR) Clinical Research Network were included in this study:  
104 Duke Health, The Medical University of South Carolina, Vanderbilt University Medical Center, and  
105 Wake Forest Baptist Health. EHR data was harmonized in the National Patient-Centered Clinical  
106 Research Network, PCORnet® Common Data Model.<sup>5</sup> We included EHR data from January 1, 2014-  
107 December 31, 2020 extracted and harmonized from 2021-2022.

### 108 *Participants*

109 We included individuals aged 18-99 years old with evidence of HIV documented in the EHR who  
110 were retained in HIV care at a participating site (defined by an HIV viral load laboratory test, a  
111 prescription for antiretroviral therapy (ART), and/or an encounter with an HIV provider in the 12 months  
112 prior to their index date) and with race or ethnicity documented as Black/African American, American  
113 Indian or Alaska Native, Asian, Multiple Race, or Hispanic. We included those who had elevated  
114 ASCVD risk defined as a 10-year risk  $\geq 5\%$  estimated by the pooled cohort equations or  $\geq 7.5\%$  by the  
115 Framingham risk score for those  $\geq 40$  years of age, and  $\geq 40\%$  lifetime risk by the pooled cohort equations  
116 for those  $< 40$  years of age. The index date for entry into the overall cohort was defined as the first clinic  
117 visit between 2015-2018 with elevated ASCVD risk. We excluded those with prior major adverse cardiac  
118 event (MACE) including prior myocardial infarction or stroke (requiring secondary prevention), heart

119 failure, and atrial fibrillation, or any prior encounter with a cardiologist within one of the participating  
120 centers with a lookback period to 2014. We also excluded those who were documented to have MACE,  
121 heart failure, or atrial fibrillation at the time of their cardiologist visit. The CONSORT Diagram is shown  
122 in Supplemental Figure 1. Patients were followed for up to five years, until death, or until they were  
123 administratively censored at the end of EHR data availability (December 31, 2020).

#### 124 *Exposure, Outcomes, and Other Variable Definitions*

125 The exposure was an ambulatory clinic visit with a cardiologist, as defined previously based on  
126 the provider specialty listed in the common data model and the provider's National Provider Identifier  
127 restricted to ambulatory clinic visits and excluding encounters for cardiac diagnostic testing alone,<sup>4</sup> that  
128 occurred after the index date and before the end of follow up. The comparator group consisted of patients  
129 with at least one ambulatory clinic visit after the index date and before the end of follow up with at least  
130 one non-cardiologist clinician. The selection of patients into the exposure and comparator groups is  
131 described under Statistical Methods. For the MACE outcome, we further stratified the exposure into  
132 cardiology visits for "prevention" and "management" based on the ICD codes documented at the  
133 cardiology visit. All ICD codes coded for during a cardiology visit were manually classified by two  
134 board-certified cardiologists blinded to clinical data with disagreements resolved through consensus  
135 (Supplemental Materials Appendix 1-3). We classified visits which had ICD codes for cardiovascular  
136 diagnoses, abnormal cardiovascular testing, and cardiovascular symptoms (chest pain, for example), as  
137 management visits. We classified visits which only had ICD codes for non-cardiovascular diagnoses,  
138 cardiovascular risk factors, and pre-operative assessment as prevention visits.

139 Our first two primary outcomes were blood pressure control (defined as systolic blood pressure  
140 <140 mm Hg and diastolic blood pressure <90 mm Hg) and lipid control defined as LDL cholesterol ≤  
141 100 mg/dl (2.6 mmol/L). For blood pressure we averaged available blood pressures within each given  
142 calendar month and used the last available month within two years of the cardiology visit or equivalent

143 non-cardiology visit to define control. For lipids we used the last available lipid panel after the cardiology  
144 visit or equivalent non-cardiology visit within two years.

145 The third primary outcome was incidence of major adverse cardiovascular events (MACE) over  
146 five years defined as cardiovascular death, myocardial infarction, acute coronary syndrome, stroke  
147 including transient ischemic attack, peripheral arterial disease treated with revascularization with  
148 percutaneous or surgical bypass, and coronary artery disease treated with revascularization with  
149 percutaneous coronary intervention or coronary artery bypass grafting. Non-fatal outcomes were defined  
150 by hospitalization discharge ICD codes for diagnoses and CPT codes for procedures and were not  
151 manually adjudicated due to lack of access to clinical notes. Cardiovascular death was defined based on  
152 ICD codes for cardiovascular causes of death recorded in the National Death Index Plus.

153 As secondary outcomes we also considered the change in LDL and change in systolic blood  
154 pressure over 2 years as continuous measures assessed longitudinally among those with two years of  
155 follow-up available. We also considered heart failure hospitalization, all-cause mortality, and alternative  
156 definitions of MACE including: MACE + heart failure hospitalization and MACE + non-cardiovascular  
157 mortality.

158 We included comorbid conditions and procedures recorded in the electronic health record as  
159 covariates using ICD codes and the Charlson Comorbidity Index (Supplemental Table 1). We also  
160 included medication prescriptions for antiretroviral therapy and cardiovascular medications, systolic and  
161 diastolic blood pressures, body mass index, and laboratory results including lipid, creatinine (to estimate  
162 the glomerular filtration rate based on the 2009 version of the CKD EPI equation without race), and  
163 hemoglobin A1c.

#### 164 *Data Sources*

165 Data were extracted from the EHRs of the participating sites and harmonized into a single dataset.  
166 Data included participant level data (demographics) as well as billing code (ICD/CPT) data, vital signs,

167 and laboratory data. Mortality data, including cause of death, were obtained from the National Death  
168 Index Plus.

### 169 *Statistical Methods*

170 *Sequence of nested cohort studies:* To select the cardiology group and a non-cardiology  
171 comparator group, we divided the study period (2015-2018) into eight six-month intervals. In each  
172 interval we constructed a cohort study (Figure 1). For each cohort we identified living participants who  
173 met the eligibility criteria in that period and had not yet had a MACE event, or a prior cardiology visit.  
174 We considered those “exposed” if they had a clinic visit with a cardiologist during that period using the  
175 first cardiology visit date as the start of follow-up time. We classified those without a cardiology  
176 encounter during that period as “unexposed” and started their follow-up time at the last outpatient (non-  
177 cardiology) visit date in that six-month period. Patients who were “unexposed” were eligible for inclusion  
178 in the subsequent cohort if they continued to meet eligibility criteria, thus patients could be counted in  
179 multiple cohorts. We then pooled the eight sequential cohort studies into a single analysis, accounting for  
180 inclusion of the same patient in multiple cohorts.<sup>6</sup> This pooled cohorts design allowed us to ensure that  
181 both exposed and unexposed patients were still eligible at the time of entry into the cohort; provided a  
182 mechanism to align the start of follow-up between exposed and unexposed groups; and minimized  
183 immortal time bias that could result from assigning patients to groups after the start of follow-up (for  
184 example, if follow-up had been started prior to cardiology visit at the time when ASCVD risk was  
185 elevated).

186 *Baseline Data:* Baseline data were assessed for each of the eight cohorts. Vital signs, LDL, and  
187 cardiovascular medications were assessed at/before the start of follow-up within each cohort (up to 2  
188 years prior for LDL and blood pressure and up to 13 months prior for medications). Other characteristics  
189 were assessed using the most recent available data up to the end date of the cohort for which that patient  
190 was included.



191 *Missing Data:* For missing data on covariates and primary prevention status (no history of  
192 MACE), we carried forward the last available data based on the baseline date for each sub-cohort.  
193 Because we used mixed effects models for the longitudinal data, we did not impute missing outcomes  
194 (LDL cholesterol, for example).

195 *Models:* To estimate associations between cardiology encounters and subsequent lipid and blood  
196 pressure changes, we used hierarchical mixed effects models with random effects for patients, and  
197 patients nested within a cohort to account for the potential inclusion of a single patient in multiple cohorts  
198 as well as longitudinal measures for a patient within a cohort. For time-to-first-MACE analyses, we used  
199 hierarchical Cox proportional hazards models using a three-level exposure variable (cardiovascular  
200 prevention encounter, cardiology management encounter, and no cardiology encounter) based on the first  
201 recorded cardiology encounter, censored participants at the time of first MACE, and used robust sandwich  
202 covariance estimates to account for potential contribution of the same participant across cohorts.

203 Adjustment variables included site of care, age, sex, insurance, rural location, social deprivation index,  
204 HIV variables (CD4 count, viral suppression, anti-retroviral therapy), hepatitis C, Charlson Comorbidity  
205 Index, estimated glomerular filtration rate, BMI, diabetes, and smoking. For the lipid analyses we  
206 additionally adjusted for baseline LDL-C and lipid lowering medication use and the blood pressure  
207 analyses for baseline systolic blood pressure and anti-hypertensives. For MACE we additionally adjusted  
208 for SBP, LDL-C, antihypertensive treatment, and lipid therapy.

209 *Falsification Endpoints:* We hypothesized that cardiology encounters would be unlikely to have  
210 an impact on HIV viral suppression (defined as viral load <200 copies/ml) or change in CD4 counts. We  
211 also hypothesized that cardiology encounters would be unlikely to impact hospitalization or death from  
212 pneumonia or sepsis or from accident, suicide, or homicide. Therefore, we used falsification endpoints as  
213 negative controls to detect confounding by being unaffected by the exposure of interest but likely  
214 reflecting an intrinsic quality that affects the outcomes of interest.<sup>7</sup>

215 *Study Approval and Reporting*

216 The Duke University Health System IRB approved this study with a waiver of informed consent  
217 as the single IRB with the other sites relying on this IRB. The study results are reported in accordance  
218 with the Strengthening the Reporting of Observational Research guidelines.<sup>8</sup>

## 219 **Results**

220 We identified 3972 individuals who met our inclusion and exclusion criteria including 276 (6.9%)  
221 who had a cardiology clinic visit (Table 1). Approximately one third of the cohort were female sex, nearly  
222 all identified as Black (95%), and 9% identified their ethnicity as Hispanic or Latinx. There were notable  
223 differences between those who did and did not have a cardiology clinic visit. For example, those with a  
224 cardiology clinic visit were more likely to be older, female, and have diabetes or have a history of an  
225 AIDS diagnosis, suggestive of more advanced HIV disease (lower nadir CD4 count and/or opportunistic  
226 infection or malignancy). They were also more like to have a higher predicted ASCVD risk by the pooled  
227 cohort equations (median 9.0% over 10 years compared to median 6.6%) and higher median Charlson  
228 comorbidity index (5 versus 3). There were no differences in the proportion prescribed antiretroviral  
229 therapy, CD4 count, or the proportion virally suppressed.

### 230 *Lipid and Blood Pressure Control*

231 At baseline, there were no differences in LDL (median 100 vs 97.5 mg/dL), but a higher  
232 proportion were prescribed lipid lowering therapy at baseline among those with a future cardiology clinic  
233 visit (22% vs 12%). The proportion prescribed antihypertensives increased to 24% after cardiology visit  
234 compared to 15% after the equivalent ambulatory visit. Cardiology clinic visits were not associated with  
235 subsequent lipid control over two years (55% vs 47%, adjusted OR 2.25, 95% CI 0.72-7.0, p=0.16, Figure  
236 2), although with wide confidence intervals that do not exclude a possible benefit. Compared to those  
237 without a cardiology clinic visit, there was no significant difference in the change in LDL (3.7 mg/dl  
238 increase per year among those with a cardiology visit compared to 0.44 mg/dl increase per year among

239 those without a cardiology encounter, or a between-group difference of 3.3 mg/dl per year, 95% CI -3 to  
240 10, p=0.31, Table 2).

241 At baseline, there were no differences in systolic blood pressure (median of 130 vs 129 mm Hg),  
242 but a higher proportion among those with a future cardiology clinic visit were prescribed  
243 antihypertensives at baseline (41% vs 28%). The proportion prescribed antihypertensives increased to  
244 51% after cardiology visit compared to 29% after the equivalent ambulatory visit. Cardiology clinic visits  
245 were not associated with subsequent blood pressure control over two years (66% versus 70%, adjusted  
246 OR 0.78, 95% CI 0.49-1.24, p=0.29, Figure 2). Compared to those without a cardiology clinic visit, those  
247 with a cardiology clinic visit did not subsequently have lower increase in systolic blood pressure (0.7 mm  
248 Hg increase per year for patients with a cardiology visit, compared to 0.2 mm Hg increase per year for  
249 those without a cardiology visit, for a between-group difference of 0.5 mm Hg per year, 95% CI -0.4 to  
250 1.4, p=0.27, Table 2).

251 Results were similar for our falsification endpoints of viral suppression (Figure 2) and CD4 count  
252 (Table 2) with no difference in the proportion with viral suppression or in the CD4 count over two years  
253 among those with a cardiology clinic visit compared to those without a cardiology clinic visit.

#### 254 *Major Adverse Cardiovascular Events*

255 Among 3,972 included patients, 276 (6.9%) had a cardiology clinic visit, of which 154 (56%)  
256 were classified as preventive and 122 (44%) were classified as management encounters. Over a median 5  
257 years of follow-up, 237 individuals had a MACE event with 206 in the no cardiology clinic visit group  
258 and 31 in the cardiology clinic visit group. There were 2.5 incident MACE events per 100 patient years  
259 among those without a cardiology encounter (95% CI 2.3-2.8), 7.2 with a prevention cardiology  
260 encounter (95% CI 5.2-9.9), and 5.6 with a management cardiology encounter (95% CI 3.8-8.4). The  
261 unadjusted risk of MACE was 2.5 times higher among those with a prevention cardiology encounter  
262 (Hazard ratio (HR) 2.5, 95% CI 1.6-3.9) and 2.0 times higher for a management cardiology encounter

263 (95% CI 1.1-3.5), than in patients without a cardiology visit. After adjustment for potential measured  
264 confounders, the hazard ratios were only slightly attenuated (adjusted HR 1.74, 95% CI 1.1-2.9 for  
265 prevention vs none and adjusted HR 1.76, 95% CI 0.9 to 3.5 for management vs none).

266 The risk of our falsification endpoints, which we hypothesized would not be impacted by a  
267 cardiologist clinic visit, were similarly higher among those with a cardiology clinic visit. The event rates  
268 per 100 patient years for hospitalization or death from accident, homicide, or suicide were 2.2 (95% CI  
269 2.1-2.4), 6.8 (95% CI 4.8-9.6), and 4.0 (95% CI 2.5-6.4) for those without a cardiology clinic visit, those  
270 with a preventive cardiology clinic visit, and those with a management cardiology clinic visit,  
271 respectively. Compared to those without a cardiology clinic visit, the adjusted hazard ratios were 2.6  
272 (95% CI 1.7-3.9) for preventive and 1.8 (95% CI 1.1-3.2) for management, compared to patients without  
273 a cardiology visit. The results for hospitalization or death from pneumonia or sepsis were nearly identical  
274 with event rates of 2.0 (95% CI 1.9-2.1), 7.3 (95% CI 5.2-10.2), and 3.7 (95% CI 2.3-6.1), and adjusted  
275 hazard ratios of 2.6 (95% CI 1.9-3.6) and 2.1 (95% CI 1.4-3.4), respectively. Results were similar in  
276 sensitivity analyses including non-cardiovascular mortality and heart failure in the MACE outcome  
277 (Supplemental Table 2).

#### 278 *Type of Events by Cardiology Encounter*

279 In a descriptive analysis, we examined the cumulative incidence of events within five years.  
280 Compared to those with a cardiology visit, the overall incident event rates were lower among those  
281 without a cardiology clinic visit with differences in the event types that occurred (Figure 4). Heart failure  
282 hospitalization had a similar cumulative incidence to non-cardiovascular mortality and MACE among  
283 those with a cardiology clinic visit, regardless of whether it was a management or prevention visit) but  
284 was less common among those without a cardiology clinic visit. Non-cardiovascular mortality was  
285 highest among those with a cardiology prevention clinic visit and revascularization was more common  
286 among those with a cardiology management clinic visit.

## 287 Discussion

288 Among a cohort of PWH from UREGs without known cardiovascular disease across four health  
289 systems in the Southern United States, few patients had a “primary prevention” cardiology clinic visit  
290 prior to a major cardiovascular event or diagnosis; cardiology clinic visits were not associated with  
291 improvements in blood pressure or lipid control. Even accounting for higher baseline risk, those with a  
292 cardiology clinic visit had a higher subsequent risk of MACE, heart failure hospitalization, and mortality  
293 as well as our falsification endpoints than those without a cardiology clinic visit regardless of whether the  
294 first cardiology encounter was classified as a prevention or management visit.

295 To our knowledge, there are no prior studies establishing whether cardiology encounters result in  
296 better lipid control and blood pressure control (primordial prevention) or prevent future cardiovascular  
297 events (primary prevention). Compared to people without HIV, PWH have worse cardiovascular health as  
298 operationalized by the American Heart Association’s Life’s Essential 8.<sup>9</sup> Earlier control of risk factors, or  
299 optimization of cardiovascular health, is associated with longer morbidity-free survival among PWH.<sup>10</sup>  
300 Although the American Society for Preventive Cardiology has established clinical practice guidelines for  
301 primordial and primary prevention including the role of the preventive cardiologist to promote health  
302 equity,<sup>11</sup> data are lacking on the association between cardiology clinic visits and cardiovascular outcomes  
303 among patients at risk for cardiovascular disease.

304 In this study, we found that a cardiologist encounter alone is not strongly associated with  
305 achievement of lipid control, defined as an LDL-C<100 mg/dL, or blood pressure control, defined as  
306 <140/90 mm Hg. Those with a cardiology clinic visit within our study had higher baseline rates of  
307 antihypertensive and lipid lowering prescriptions such that there were no differences in LDL or blood  
308 pressure at baseline. We expected that cardiologists would be more aggressive about prescribing lipid  
309 lowering therapy, and that statin prescriptions would be specific mechanism by which a single cardiology  
310 clinic visit could prevent cardiovascular events. Unexpectedly, the proportion prescribed lipid-lowering  
311 therapy was nearly identical after the cardiology encounter, while there was a modest increase in anti-

312 hypertensive prescriptions, with no significant improvements in mean LDL or SBP or the proportion  
313 controlled, although the wide confidence intervals for LDL do not exclude a possible clinically significant  
314 benefit. Perhaps cardiologists were reluctant to prescribe statins due to concerns about drug-drug  
315 interactions with older antiretroviral therapy regimens, did not think statins were appropriate without  
316 clinical trial data to support their use among PWH, or did not feel that it was their role to prescribe them  
317 for primary prevention. Our qualitative research in the same population suggests that individual and  
318 structural stigma may impact the effectiveness of cardiology specialty care.<sup>12</sup>

319         It is important to note this study was conducted before completion of the Randomized Trial to  
320 Prevent Vascular Events in HIV (REPRIEVE), which demonstrated that pitavastatin reduced  
321 cardiovascular events among PWH at elevated cardiovascular compared to placebo,<sup>13</sup> so it may be that  
322 cardiologists (as well as HIV and primary care physicians) would now be more aggressive about initiation  
323 of lipid lowering therapy. Guidelines have now shifted toward considering statins for all PWH over age  
324 40 and recommending them for all with elevated cardiovascular risk.<sup>3,14</sup>

325         Our findings that cardiology clinic visits were associated with more than double the risk of  
326 MACE, even controlling for measured confounders, were unexpected. It is possible that referring  
327 providers are identifying and selectively referring those at higher risk of cardiovascular disease and  
328 overall mortality in ways that are not adequately captured in the EHR and thus could not be adequately  
329 accounted for in our adjusted models. A hypothetical patient vignette that may help explain how our  
330 findings diverged from our hypothesis is a patient with worsening chronic stable angina being managed  
331 by a primary care physician who subsequently sees a cardiologist and is referred for revascularization;  
332 such a patient would have a shorter time to a revascularization event in the cohort in which they saw a  
333 cardiologist. However, similar findings for all-cause mortality and most strikingly for our falsification  
334 endpoints suggest that the patients seen by cardiologists are at higher overall baseline risk. Another  
335 alternative explanation is that the cardiologist clinic visits could increase risk of MACE particularly via

336 referral for procedures that have risk, but we would not expect the cardiology encounter would increase  
337 the risk of our falsification endpoints, so this explanation is less likely.

338 Our study highlights how there is equipoise regarding interventions and strategies to promote  
339 cardiovascular health and equity. It is challenging to adequately answer these causal questions with  
340 observational EHR-based research. One recent randomized clinical trial, A Nurse-Led Intervention to  
341 Extend the HIV Treatment Cascade for Cardiovascular Disease Prevention (EXTRA-CVD), of an  
342 implementation strategy for a nurse-led care coordination program that includes an electronic health  
343 record tools, home blood pressure monitoring, and an evidence-based treatment algorithm, improved  
344 blood pressure and lipid control over 12 months, something that we were not able to demonstrate in this  
345 observational study.<sup>15</sup> Several features of EXTRA-CVD that may have contributed to its success were that  
346 the intervention was a multidisciplinary, nurse-led approach with longitudinal relationships aided by  
347 integrated EHR tools. Finally, by randomizing individuals EXTRA-CVD was able to ensure greater  
348 exchangeability between those who did and did not get the intervention to assess the causal impact of the  
349 intervention.

### 350 *Limitations*

351 This is an observational comparative effectiveness study with limitations inherent to the study  
352 design. The use of EHRs is a reasonable approach to study the question of a whether cardiology clinic  
353 visits (which are easily measurable in the EHR) are associated with process and outcome measures,  
354 including blood pressure and lipids which are often measured within the EHR, but it still comes with  
355 serious drawbacks. For example, capturing the factors that lead to cardiology referral without access to  
356 the clinician and patient interaction (or even the documentation of the referral in the EHR) makes the risk  
357 of confounding by indication challenging to overcome, and even our qualitative work in this patient  
358 population only captures the perspectives of those who completed their cardiology referral.<sup>12</sup> Nonetheless,  
359 we tried to stratify our exposure variable by the diagnoses coded by the cardiologist, which may have  
360 been misclassified and depends on the coding strategy of the cardiologists and was likely subject to

361 misclassification. We did not have data on referral to cardiology to identify time from referral to  
362 cardiology clinic visit, to classify those who were referred but did not see a cardiologist as exposed, or to  
363 identify those who had MACE events or died while waiting to see a cardiologist. In our previous work in  
364 this cohort, we observed a long delay between eligibility (onset of elevated cardiovascular risk) and  
365 cardiology encounter (~2 years)<sup>4</sup>, so we had to develop an analytic strategy to prevent immortal time bias  
366 in our outcomes analysis. Our use of a sequential cohort design and using equivalent non-cardiology  
367 ambulatory encounters partially addresses the issues of immortal time bias but does not address the  
368 concern of those who had MACE events occurring between cardiology referral, which was unmeasured,  
369 and scheduled cardiology clinic visit. Because the factors leading to cardiology encounters were not well-  
370 captured, we could not accurately develop a model to predict propensity for cardiology encounters for a  
371 matching-based strategy to maximize exchangeability between groups. Because our study population is  
372 limited to PWH who identify as UREGs who live in the South, these findings may not be externally  
373 generalizable to all PWH, people without HIV, or people in other regions of the country where  
374 discrimination or other structural factors attenuate the efficacy of a cardiology clinic visit in ways specific  
375 to the included patient population.

### 376 *Conclusions*

377 In conclusion, our study demonstrates that for PWH who identify as members of UREGs, a single  
378 cardiology clinic visit is not strongly associated with improved lipid or blood pressure control. Those who  
379 have a cardiology clinic visit have higher risk of adverse outcomes including MACE, mortality, and non-  
380 cardiovascular outcomes. Whether prospective referral of PWH at elevated cardiovascular risk would  
381 result in optimization of cardiovascular health and prevention of cardiovascular events cannot be  
382 determined from our observational study and is an important area for further research, but our findings  
383 suggest that a single cardiology encounter may not have a large effect on cardiovascular health in this  
384 population.

385



386 **Acknowledgements:** None.

387 **FUNDING:** Research reported in this publication was supported by the National Institute of  
388 Minority Health and Health Disparities (R01MD013493, PI: Bloomfield); the National Institutes  
389 of Health (Okeke, PI: K23HL137611-04; R01MH113438, PI: Pettit); the National Institute of  
390 General Medical Sciences (P20GM130457, PI: Meissner); the Tennessee Center for AIDS  
391 Research (P30AI110527, PI: Pettit); and powered by PCORnet®. PCORnet has been developed  
392 with funding from the Patient-Centered Outcomes Research Institute® (PCORI®). Dr.  
393 Durstenfeld is funded by NIH/NHLBI grant K23HL172699. Its contents are solely the  
394 responsibility of the authors and do not necessarily represent the official views of the NIH or  
395 views of organizations participating in, collaborating with, or funding PCORnet or of PCORI.

396 **Disclosures:** CTL is on the advisory board for Theratechnologies outside the scope of this work.  
397 None of the other authors have pertinent disclosures or relevant conflicts of interest.

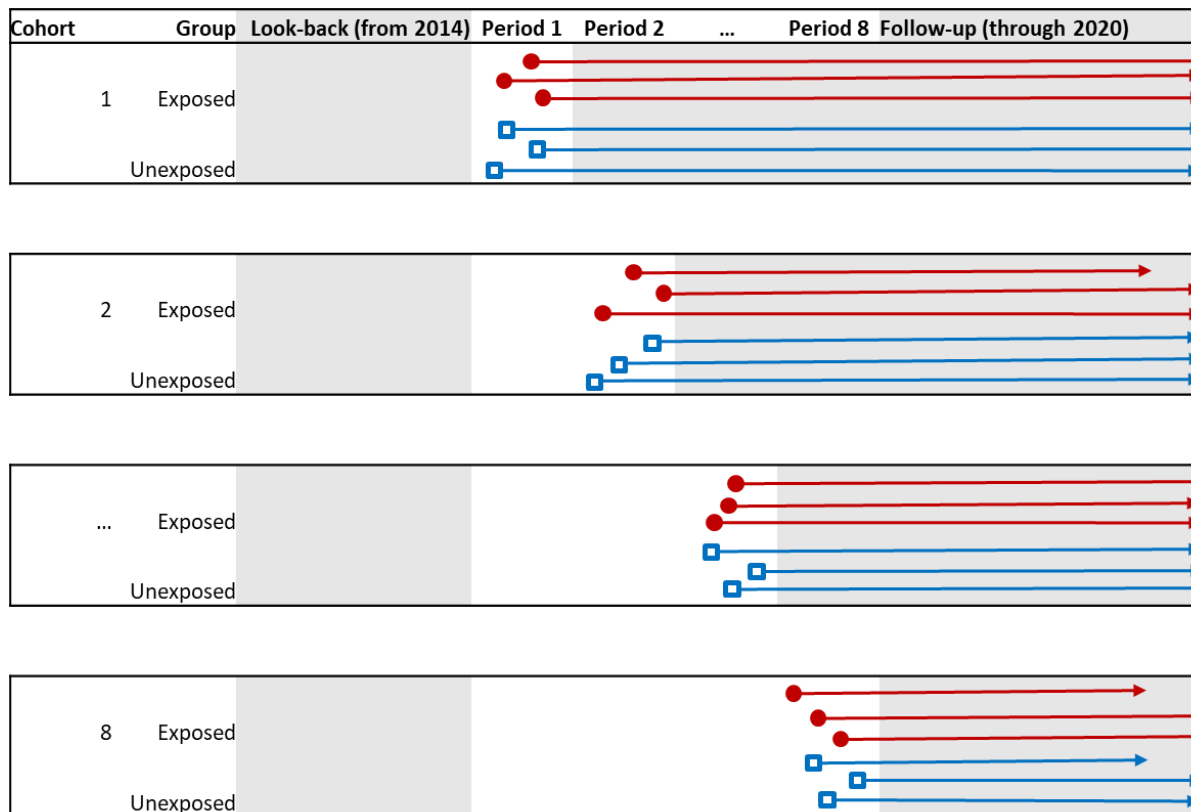
398 **Presentation:** Preliminary results were presented at the American Heart Association  
399 Epidemiology and Lifestyle Scientific Sessions in March 2024 in Chicago, IL.

400

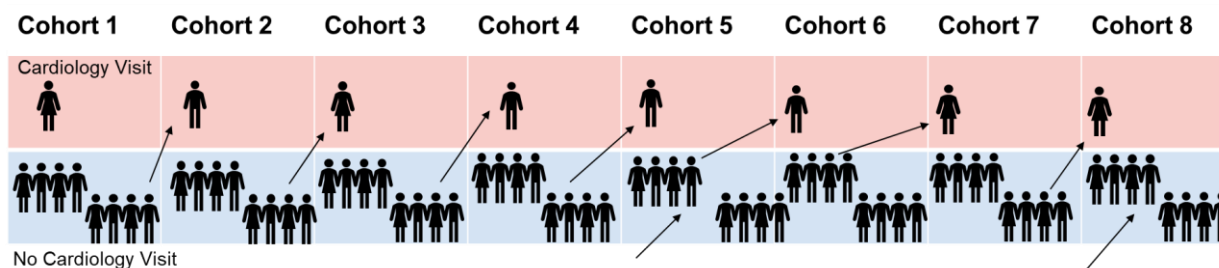
401

402 **Figure 1. Diagram of Study Participants**

403



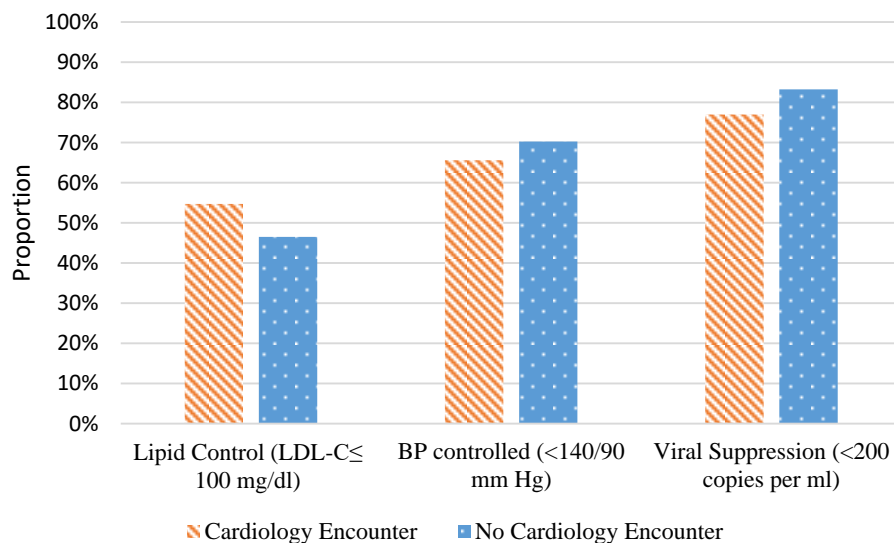
404



405

406 Figure Legend. We used a sequential cohort design in which the study period was divided into eight six-  
 407 month intervals. Within each interval we constructed a cohort study of eligible patients, identifying  
 408 patients with a cardiology visit (exposed group), with remaining patients comprising the unexposed  
 409 group, excluding those with MACE or a cardiology visit during the lookback period. For each cohort,  
 410 follow-up started at the time of the first cardiology visit in the interval (red circle), or the last non-  
 411 cardiology visit in the interval (blue square), thus minimizing the immortal time from the delay between  
 412 eligibility and first cardiology encounter. As shown in the bottom panel, patients with a cardiology clinic  
 413 visit (exposed) were ineligible for subsequent cohorts, but patients without a cardiology visit (unexposed)  
 414 could be included in the subsequent cohort if they continued to meet eligibility criteria (e.g., primary  
 415 prevention status).

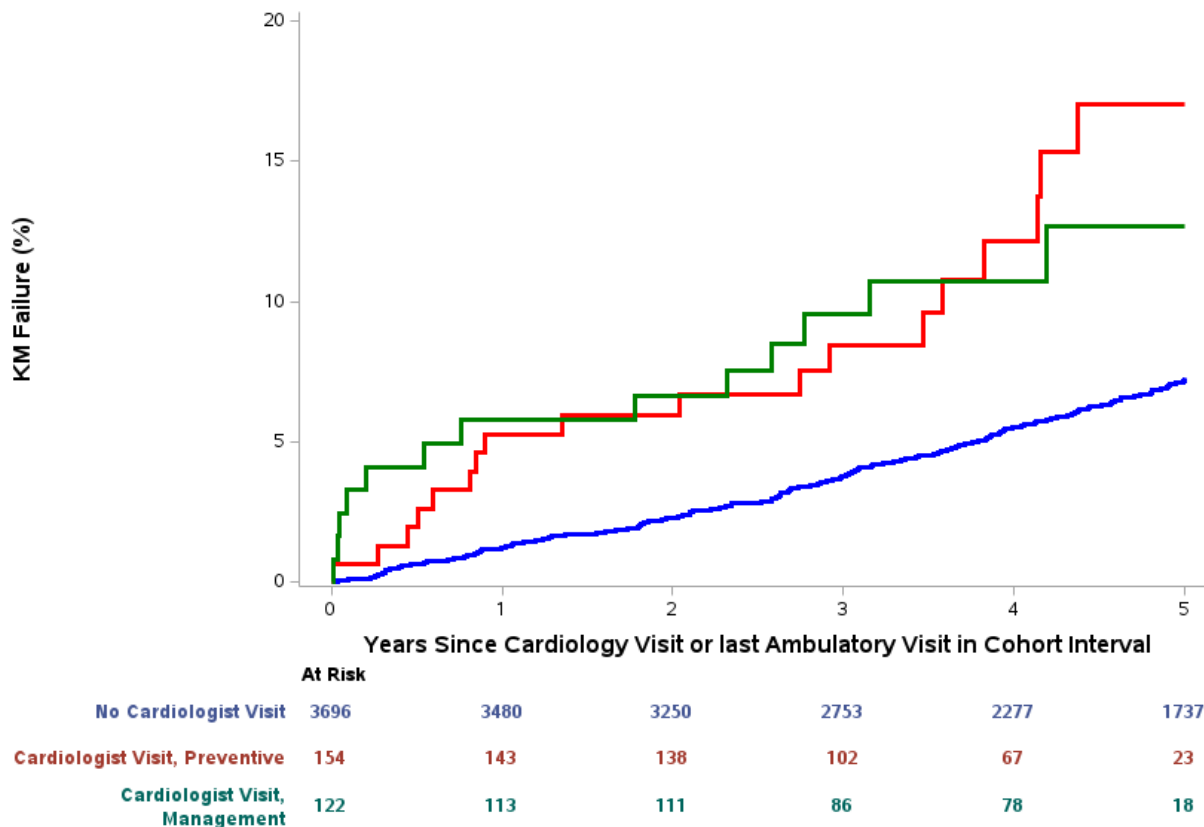
416 **Figure 2. Lipid, Blood Pressure, and HIV Control Over 2 Years by Cardiology Clinic Visit**



417

418 Figure Legend. Among UREG PWH with elevated cardiovascular risk, cardiology clinic visits were not  
419 associated with improved lipid control (adjusted OR 2.25, 95%CI 0.72-7.01, p= 0.16), blood pressure  
420 control (adjusted OR 0.78, 95% CI 0.49-1.24, p=0.29), or with the falsification endpoint of viral  
421 suppression, defined as either viral load <200 copies/ml or undetectable (adjusted OR 0.34, 95% CI 0.08-  
422 1.45, p=0.15).

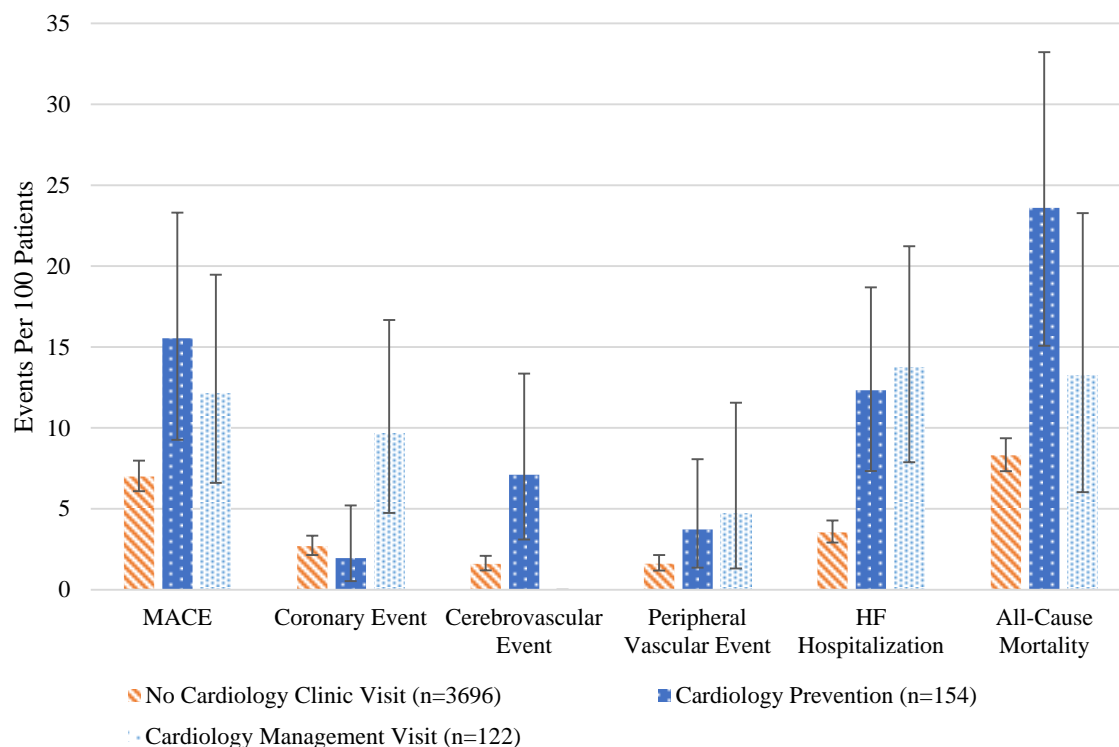
423 **Figure 3. Kaplan Meier Failure Curves for MACE by Cardiology Clinic Visit**



424  
 425 Figure Legend: Kaplan Meier plots of first MACE event by cardiology visit with the number at risk at  
 426 each time interval below (No Cardiology Clinic Visit, Cardiology Clinic Visit-Prevention, and  
 427 Cardiology Clinic Visit-Management). MACE events occurred earlier among those with a cardiology  
 428 clinic visit; those with a management visit had earlier occurrence of first MACE, largely due to higher  
 429 rates of coronary revascularization (see “Coronary Events” in Figure 4).

430 **Figure 4. Five Year Cumulative Incidence of Cardiovascular Events and Mortality By Cardiology**  
431 **Clinic Visit Group**

432



433

434

435 Figure Legend: Bar charts of cumulative incidence of MACE events, heart failure (HF) hospitalization,  
436 and all-cause mortality over 5 years of follow-up (bars represent events per 100 patient years and lines  
437 represent 95% CI). These events are not mutually exclusive; a single patient could have a coronary event,  
438 cerebrovascular event, and heart failure hospitalization within 5 years, for example. Coronary event  
439 included myocardial infarction, hospitalization for acute coronary syndrome, percutaneous coronary  
440 intervention, and coronary artery bypass graft surgery; cerebrovascular event included stroke and  
441 transient ischemic attack, and peripheral vascular event includes peripheral vascular disease requiring  
442 revascularization. All outcomes were more common among individuals with a cardiology encounter.

443

444 **Table 1: Participant Characteristics by Cardiology Encounter**

Characteristic <sup>[1]</sup>	No Cardiology Visit N=3696	ANY Cardiology Visit N=276 <sup>[5]</sup>	Cardiology- Preventive N=154 <sup>[5]</sup>	Cardiology- Management N=122 <sup>[5]</sup>
Site, n (%)				
Duke	924 (25.0)	51 (18.5)	25 (16.2)	26 (21.3)
MUSC	700 (18.9)	22 (8.0)	11 (7.1)	11 (9.0)
Vanderbilt	1208 (32.7)	47 (17.0)	7 (4.5)	40 (32.8)
Wake Forest	864 (23.4)	156 (56.5)	111 (72.1)	45 (36.9)
<b>Demographics</b>				
Age, years, Median (IQR)	47.0 (36.0, 54.0)	53.0 (46.0, 58.0)	52.5 (46.0, 57.0)	53.0 (46.0, 58.0)
Race, n/N (%)				
American Indian or Alaska Native	16/3440 (0.5)	2/259 (0.8)	2/145 (1.4)	0/114 (0.0)
Asian	55/3440 (1.6)	2/259 (0.8)	0/145 (0.0)	2/114 (1.8)
Black or African American	3257/3440 (94.7)	248/259 (95.8)	142/145 (97.9)	106/114 (93.0)
Native Hawaiian or Other Pacific Islander	2/3440 (0.1)	0/259 (0.0)	0/145 (0.0)	0/114 (0.0)
White	94/3440 (2.7)	7/259 (2.7)	1/145 (0.7)	6/114 (5.3)
Multiple race	16/3440 (0.5)	0/259 (0.0)	0/145 (0.0)	0/114 (0.0)
Hispanic or Latino/Latina/Latinx Ethnicity, n/N (%)	322/3687 (8.7)	21/275 (7.6)	10/153 (6.5)	11/122 (9.0)
Sex, n/N (%)				
Female	1174/3696 (31.8)	119/276 (43.1)	74/154 (48.1)	45/122 (36.9)
Male	2522/3696 (68.2)	157/276 (56.9)	80/154 (51.9)	77/122 (63.1)
Urban area (vs Rural), n (%)	3276 (88.7)	263 (95.3)	145 (94.2)	118 (96.7)
Social Deprivation Index	76.0 (56.0, 89.0) [3616]	76.0 (57.0, 93.0) [268]	78.5 (60.0, 94.0) [148]	74.0 (51.5, 92.0) [120]
<b>Insurance</b>				
Medicare/Medicaid, n/N (%)	1550/3696 (41.9)	168/276 (60.9)	110/154 (71.4)	58/122 (47.5)
Private insurance, n/N (%)	1575/3696 (42.6)	98/276 (35.5)	40/154 (26.0)	58/122 (47.5)
HRSA insurance, n/N (%)	990/3696 (26.8)	46/276 (16.7)	27/154 (17.5)	19/122 (15.6)
Other insurance, n/N (%)	179/3696 (4.8)	10/276 (3.6)	5/154 (3.2)	5/122 (4.1)
None or missing insurance, n/N (%)	1986/3696 (53.7)	197/276 (71.4)	125/154 (81.2)	72/122 (59.0)
<b>Vital Measures</b>				
BMI, kg/m <sup>2</sup> , Median (IQR) [N]	27.4 (23.7, 32.3) [3326]	27.5 (23.3, 33.6) [273]	27.3 (22.7, 33.7) [152]	27.6 (24.5, 33.5) [121]
<b>Medication Prescription prior to 'Baseline' Visit<sup>[2]</sup></b>				
Diabetes medication, n (%)	220 (6.8)	26 (10.5)	15 (10.9)	11 (10.1)
Antihypertensive, n (%)	902 (27.9)	102 (41.3)	56 (40.6)	46 (42.2)
Lipid Lowering, n (%)	396 (12.2)	53 (21.5)	26 (18.8)	27 (24.8)
Anticoagulation, n (%)	106 (3.3)	6 (2.4)	2 (1.4)	4 (3.7)
Antiplatelet, n (%)	137 (4.2)	22 (8.9)	10 (7.2)	12 (11.0)
<b>Medication Prescription on/after 'Baseline' Visit<sup>[2]</sup></b>				
Diabetes medication, n (%)	253 (7.8)	30 (12.1)	15 (10.9)	15 (13.8)

Characteristic <sup>[1]</sup>	No Cardiology Visit N=3696	ANY Cardiology Visit N=276 <sup>[5]</sup>	Cardiology- Preventive N=154 <sup>[5]</sup>	Cardiology- Management N=122 <sup>[5]</sup>
Antihypertensive, n (%)	926 (28.6)	126 (51.0)	60 (43.5)	66 (60.6)
Lipid Lowering, n (%)	481 (14.9)	59 (23.9)	25 (18.1)	34 (31.2)
Anticoagulation, n (%)	103 (3.2)	15 (6.1)	9 (6.5)	6 (5.5)
Antiplatelet, n (%)	140 (4.3)	29 (11.7)	10 (7.2)	19 (17.4)
<b>Other Relevant Medical History</b>				
Hypertension, n (%)	1425 (38.6)	185 (67.0)	109 (70.8)	76 (62.3)
Diabetes, n (%)	483 (13.1)	67 (24.3)	38 (24.7)	29 (23.8)
Total Cholesterol > 200 mg/dL, n (%)	785 (27.2)	68 (27.0)	36 (25.5)	32 (28.8)
Hepatitis C, n (%)	419 (11.3)	41 (14.9)	23 (14.9)	18 (14.8)
Charlson Comorbidity Index (Glasheen 2019), score [N] <sup>[3]</sup>	3.0 (3.0, 6.0) [3696]	5.0 (3.0, 7.0) [276]	6.0 (3.0, 8.0) [154]	5.0 (3.0, 7.0) [122]
Estimated Glomerular Filtration Rate, mL/min/1.73m <sup>2</sup> , Median (IQR) [N] <sup>[4]</sup>	86.5 (69.6, 101.4) [3559]	78.8 (64.5, 98.5) [273]	79.1 (65.8, 101.9) [153]	75.6 (63.4, 93.2) [120]
<b>HIV Characteristics</b>				
AIDS diagnosis, n (%)	988 (26.7)	107 (38.8)	67 (43.5)	40 (32.8)
CD4 Count, cells/uL Median (IQR) [N]	598.0 (380.0, 829.0) [3373]	610.5 (370.0, 860.0) [256]	560.0 (332.0, 820.0) [141]	670.0 (395.0, 896.0) [115]
CD4 count <200 in previous 2 years, n/N (%)	566/3373 (16.8)	45/256 (17.6)	30/141 (21.3)	15/115 (13.0)
HIV viral load, copies/mL, Median (IQR) [N]	40.0 (2.3, 100.0) [2537]	24.0 (1.6, 97.7) [211]	20.0 (1.0, 251.2) [123]	39.4 (4.1, 54.8) [88]
<b>Viral Suppression, n (%)</b>				
Undetectable	1159 (31.4)	65 (23.6)	31 (20.1)	34 (27.9)
<200 copies/mL	2018 (54.6)	167 (60.5)	91 (59.1)	76 (62.3)
>=200 copies/mL	519 (14.0)	44 (15.9)	32 (20.8)	12 (9.8)
Antiretroviral Therapy, n (%)	2986 (80.8)	229 (83.0)	126 (81.8)	103 (84.4)
<b>Behavioral and Social Factors</b>				
Cocaine Use Disorder, n/N (%)	278/3696 (7.5)	33/276 (12.0)	20/154 (13.0)	13/122 (10.7)
Alcohol Use Disorder, n/N (%)	235/3696 (6.4)	41/276 (14.9)	24/154 (15.6)	17/122 (13.9)
<b>Predicted Risk</b>				
Pooled Cohort Equations 10-year risk score, Median (IQR) [N]	6.6 (4.4, 11.1) [1681]	9.0 (5.2, 14.5) [220]	9.0 (5.2, 15.4) [122]	9.0 (5.2, 13.1) [98]
Pooled Cohort Equations Lifetime risk score, Median (IQR) [N]	45.5 (39.1, 50.4) [1204]	39.1 (31.7, 50.4) [32]	36.4 (26.9, 45.5) [19]	50.4 (39.1, 50.4) [13]
Framingham risk score, Median (IQR) [N]	12.1 (8.6, 20.6) [2266]	15.8 (10.4, 25.6) [238]	14.5 (10.1, 27.5) [130]	16.4 (10.8, 24.2) [108]
<b>Baseline Values for Outcomes</b>				
Systolic BP, mmHg, Median (IQR) [N]	129 (120, 140) [3233]	130 (118, 144) [247]	127 (116, 144) [138]	130.0 (120, 143) [109]
Diastolic BP, mmHg, Median (IQR) [N]	80 (72, 85) [3233]	79 (70, 88) [247]	78 (69, 87) [138]	79 (71, 89) [109]
LDL Cholesterol, Median (IQR) [N]	98 (78, 123) [3235]	101 (78, 128) [247]	94.5 (74, 127) [138]	104 (85, 132) [109]

445 Footnotes: [1] Continuous variables are listed with Median (IQR). Number included is listed in brackets. Categorical variables  
446 are listed as frequency (percentage). [2] Baseline visit is defined as the first cardiology clinic visit or the last non-cardiology  
447 clinic appointment within each 6-month cohort. [3] Components are age, MI, CHF, PVD, DVA/TIA, Dementia, COPD,  
448 Connective tissue disease, Peptic ulcer disease, liver disease, diabetes, hemiplegia, moderate to severe chronic kidney disease,

449 solid tumor, leukemia, lymphoma, AIDS. [4] eGFR calculated from creatinine using 2009 version of the CKD-EPI equation  
 450 without race. [5] For descriptive purposes, patients with a cardiology visit were included in the cardiology visit column, and their  
 451 data are summarized using the cohort of their first cardiology visit. These patients are classified as preventative/management  
 452 based on diagnoses coded for their first cardiology visit. Remaining patients are included in the no cardiology visit column, and  
 453 their data are summarized using the first cohort for which they were eligible.

**Table 2: Change in Blood Pressure, LDL Cholesterol, and CD4 Count Per Year by Cardiology Clinic Visit<sup>(1)</sup>**

Outcome Measurement	Cardiology Visit	No Cardiology Visit	Adjusted Difference in Change per Year	P-value
Systolic Blood Pressure, mm Hg per year <sup>(2)</sup>	0.70 (-0.16, 1.55)	0.21 (0.07, 0.34)	0.49 (-0.38, 1.36)	0.27
Diastolic Blood Pressure, mm Hg per year <sup>(2)</sup>	0.34 (-0.22, 0.90)	0.31 (0.22, 0.40)	0.03 (-0.53, 0.60)	0.91
LDL Cholesterol, mg/dL per year <sup>(3)</sup>	3.70 (-2.53, 9.94)	0.44 (-0.45, 1.33)	3.26 (-3.03, 9.56)	0.31
<b>FALSIFICATION ENDPOINT</b>				
CD4 Count, cells per mL per year <sup>(4)</sup>	2.63 (-14.4, 19.7)	14.4 (12.2, 16.6)	-11.8 (-28.9, 5.39)	0.18

Footnotes: <sup>(1)</sup> Adjustment variables include age, sex, insurance (public, private, HRSA, other, no insurance), rural location, social deprivation index, HIV variables (CD4 count, viral suppression, anti-retroviral therapy), hepatitis C, Charlson Comorbidity Index, eGFR, BMI, diabetes, smoking, systolic blood pressure, and baseline LDL-C. Blood pressure analyses additionally adjust for anti-hypertensive treatment and lipid analyses additionally adjust for lipid lowering treatment at baseline. <sup>(2)</sup> N=3376 unique patients (244 with cardiology encounter). <sup>(3)</sup> N=2340 (159 with cardiology encounter) due to missing outcome assessments. <sup>(4)</sup> N=3100 unique patients included in this analysis, N=229 with cardiology visit.

454

455



456 **Table 3. Incident Events by Cardiology Visit**

Outcome / Cardiologist Visit	Unadjusted <sup>[2]</sup>			Adjusted <sup>[3]</sup>	
	Incident events per 100 patient years	Hazard Ratio (95% CI)	P-value	Hazard Ratio (95% CI)	P-value
<b>MACE<sup>[1]</sup></b>					
No Cardiology Visit (Reference)	2.52 (2.28, 2.80)				
Cardiology Visit-Preventive	7.17 (5.20, 9.90)	2.47 (1.55, 3.93)	<0.001	1.74 (1.05, 2.88)	0.032
Cardiology Visit-Management	5.63 (3.77, 8.40)	2.00 (1.14, 3.50)	0.016	1.76 (0.88, 3.52)	0.109
<b>All-cause Mortality</b>					
No Cardiology Visit (Reference)	1.66 (1.47, 1.88)				
Cardiology Visit-Preventive	5.21 (3.60, 7.55)	3.74 (2.59, 5.40)	<0.001	2.23 (1.43, 3.49)	<0.001
Cardiology Visit-Management	2.62 (1.49, 4.61)	1.65 (0.93, 2.93)	0.090	1.94 (1.04, 3.61)	0.037
<b>HF-Hospitalization</b>					
No Cardiology Visit (Reference)	2.19 (1.96, 2.44)				
Cardiology Visit-Preventive	7.73 (5.64, 10.57)	5.48 (3.45, 8.71)	<0.001	2.83 (1.57, 5.11)	0.001
Cardiology Visit-Management	5.82 (3.93, 8.62)	4.39 (2.62, 7.35)	<0.001	3.31 (1.71, 6.40)	<0.001
<b>FALSIFICATION ENDPOINTS</b>					
<b>Hospitalization or Death from Accident/Homicide/Suicide</b>					
No Cardiology Visit (Reference)	2.23 (2.12, 2.35)				
Cardiology Visit-Preventive	6.81 (4.82, 9.64)	3.51 (2.59, 4.74)	<0.001	2.56 (1.67, 3.92)	<0.001
Cardiology Visit-Management	3.97 (2.47, 6.39)	1.89 (1.27, 2.82)	0.002	1.84 (1.06, 3.17)	0.029
<b>Hospitalization or Death from Pneumonia/Sepsis</b>					
No Cardiology Visit (Reference)	2.00 (1.89, 2.11)				
Cardiology Visit-Preventive	7.30 (5.22, 10.22)	3.87 (2.89, 5.19)	<0.001	2.58 (1.85, 3.60)	<0.001
Cardiology Visit-Management	3.73 (2.29, 6.09)	1.99 (1.34, 2.96)	0.001	2.14 (1.36, 3.37)	0.001

457 Footnotes: <sup>[1]</sup> MACE events include Myocardial Infarction, Acute Coronary Syndrome, Angina, Percutaneous Coronary  
458 Intervention, Coronary Artery Bypass Graft Surgery, Ischemic Stroke, Transient Ischemic Attack, Peripheral Arterial Disease  
459 with Revascularization, and Cardiovascular Death. <sup>[2]</sup> N=3972 unique patients included in unadjusted models, N=276 with  
460 cardiology visit. Unadjusted results account for patients in multiple cohorts but does not include demographic or clinical  
461 variables. <sup>[3]</sup> N=3152 unique patients included in adjusted models, N=227 with cardiology visit. Adjusted results account for  
462 patients in multiple cohorts as well as controlling for age, sex, insurance, rurality, Social Deprivation Index, HIV variables (CD4  
463 count, Viral Suppression, ART use), Hepatitis C, Charlson Comorbidity Index, eGFR, BMI, Systolic Blood Pressure, Diabetes,  
464 Smoking, LDL Cholesterol, Lipid Treatment.

465  
466

467

## 468 References

- 469 1. Freiberg MS, Chang CC, Kuller LH, Skanderson M, Lowy E, Kraemer KL, Butt AA,  
470 Bidwell Goetz M, Leaf D, Oursler KA, et al. HIV infection and the risk of acute  
471 myocardial infarction. *JAMA Intern Med.* 2013;173:614-622. doi:  
472 10.1001/jamainternmed.2013.3728
- 473 2. Feinstein MJ, Hsue PY, Benjamin LA, Bloomfield GS, Currier JS, Freiberg MS,  
474 Grinspoon SK, Levin J, Longenecker CT, Post WS. Characteristics, Prevention, and  
475 Management of Cardiovascular Disease in People Living With HIV: A Scientific  
476 Statement From the American Heart Association. *Circulation.* 2019;140:e98-e124. doi:  
477 10.1161/CIR.0000000000000695
- 478 3. HIV USDoHaHSHPftUoAAiAaAw. Recommendations for the Use of Statin Therapy as  
479 Primary Prevention of Atherosclerotic Cardiovascular Disease in People with HIV. 2024.
- 480 4. Bloomfield GS, Hill CL, Chiswell K, Cooper L, Gray S, Longenecker CT, Louzao D,  
481 Marsolo K, Meissner EG, Morse CG, et al. Cardiology Encounters for Underrepresented  
482 Racial and Ethnic Groups with Human Immunodeficiency Virus and Borderline  
483 Cardiovascular Disease Risk. *Journal of Racial and Ethnic Health Disparities.* 2023. doi:  
484 10.1007/s40615-023-01627-0
- 485 5. Qualls LG, Phillips TA, Hammill BG, Topping J, Louzao DM, Brown JS, Curtis LH,  
486 Marsolo K. Evaluating Foundational Data Quality in the National Patient-Centered  
487 Clinical Research Network (PCORnet(R)). *EGEMS (Wash DC).* 2018;6:3. doi:  
488 10.5334/egems.199
- 489 6. Hernan MA, Alonso A, Logan R, Grodstein F, Michels KB, Willett WC, Manson JE,  
490 Robins JM. Observational studies analyzed like randomized experiments: an application  
491 to postmenopausal hormone therapy and coronary heart disease. *Epidemiology.*  
492 2008;19:766-779. doi: 10.1097/EDE.0b013e3181875e61
- 493 7. Lipsitch M, Tchetgen Tchetgen E, Cohen T. Negative controls: a tool for detecting  
494 confounding and bias in observational studies. *Epidemiology.* 2010;21:383-388. doi:  
495 10.1097/EDE.0b013e3181d61eeb
- 496 8. von Elm E, Altman DG, Egger M, Pocock SJ, Gøtzsche PC, Vandenbroucke JP. The  
497 Strengthening the Reporting of Observational Studies in Epidemiology (STROBE)  
498 statement: guidelines for reporting observational studies. *Ann Intern Med.* 2007;147:573-  
499 577. doi: 10.7326/0003-4819-147-8-200710160-00010
- 500 9. McLaughlin MM, Durstenfeld MS, Gandhi M, Greene M, Ma Y, Beatty AL, Hsue PY.  
501 Cardiovascular health among persons with HIV without existing atherosclerotic  
502 cardiovascular disease. *AIDS.* 2023. doi: 10.1097/QAD.0000000000003666
- 503 10. Wilkins JT, Ning H, Berry J, Zhao L, Dyer AR, Lloyd-Jones DM. Lifetime risk and years  
504 lived free of total cardiovascular disease. *JAMA.* 2012;308:1795-1801. doi:  
505 10.1001/jama.2012.14312
- 506 11. German CA, Baum SJ, Ferdinand KC, Gulati M, Polonsky TS, Toth PP, Shapiro MD.  
507 Defining preventive cardiology: A clinical practice statement from the American Society  
508 for Preventive Cardiology. *Am J Prev Cardiol.* 2022;12:100432. doi:  
509 10.1016/j.ajpc.2022.100432
- 510 12. Muiruri C, Dombeck C, Swezey T, Gonzales S, Lima M, Gray S, Vicini J, Pettit AC,  
511 Longenecker CT, Meissner EG, et al. Specialty Care Referral for Underrepresented  
512 Minorities Living with HIV in the United States: Experiences, Barriers, and Facilitators.  
513 *AIDS Patient Care STDS.* 2024;38:259-266. doi: 10.1089/apc.2024.0066

- 514 13. Grinspoon SK, Fitch KV, Zanni MV, Fichtenbaum CJ, Umbleja T, Aberg JA, Overton  
515 ET, Malvestutto CD, Bloomfield GS, Currier JS, et al. Pitavastatin to Prevent  
516 Cardiovascular Disease in HIV Infection. *N Engl J Med*. 2023;389:687-699. doi:  
517 10.1056/NEJMoa2304146
- 518 14. Durstenfeld MS, Hsue PY. Advances in the Management of Cardiovascular Disease in  
519 the Setting of Human Immunodeficiency Virus. *Infect Dis Clin North Am*. 2024. doi:  
520 10.1016/j.idc.2024.04.006
- 521 15. Longenecker CT, Jones KA, Hileman CO, Okeke NL, Gripshover BM, Aifah A,  
522 Bloomfield GS, Muiruri C, Smith VA, Vedanthan R, et al. Nurse-Led Strategy to  
523 Improve Blood Pressure and Cholesterol Level Among People With HIV: A Randomized  
524 Clinical Trial. *JAMA Netw Open*. 2024;7:e2356445. doi:  
525 10.1001/jamanetworkopen.2023.56445
- 526
- 527