

1 **Title:** Adverse events reported during weekly isoniazid-rifapentine (3HP) tuberculosis preventive  
2 treatment among people living with HIV in Uganda

3 **Authors:** Jillian L. Kadota\*<sup>1,2</sup>, Allan Musinguzi\*<sup>3</sup>, H el ene E. Aschmann<sup>1,2</sup>, Lydia Akello<sup>3</sup>, Fred Welishe<sup>3</sup>,  
4 Jane Nakimuli<sup>3</sup>, Christopher A. Berger<sup>1,2</sup>, Noah Kiwanuka<sup>4</sup>, Patrick PJ Phillips<sup>1,2</sup>, Achilles Katamba<sup>5,6</sup>,  
5 David W. Dowdy<sup>7</sup>, Adithya Cattamanchi\*\*<sup>2,9</sup>, Fred C. Semitala\*\*<sup>3,8,10</sup>

6 1. Division of Pulmonary and Critical Care Medicine, University of California San Francisco, San  
7 Francisco CA USA

8 2. Center for Tuberculosis, University of California San Francisco, San Francisco CA USA

9 3. Infectious Diseases Research Collaboration, Kampala, Uganda

10 4. Department of Epidemiology and Biostatistics, School of Public Health, Makerere University  
11 College of Health Sciences, Kampala, Uganda

12 5. Clinical Epidemiology & Biostatistics Unit, Department of Medicine, Makerere University College of  
13 Health Sciences, Kampala, Uganda

14 6. Uganda Tuberculosis Implementation Research Consortium, Kampala, Uganda

15 7. Department of Epidemiology, Johns Hopkins Bloomberg School of Public Health, Baltimore, MD,  
16 USA

17 8. Department of Medicine, Makerere University College of Health Sciences, Kampala, Uganda

18 9. Division of Pulmonary Diseases and Critical Care Medicine, University of California Irvine, Orange  
19 CA USA

20 10. Makerere University Joint AIDS Program, Kampala, Uganda

21 \*Contributed equally as first authors

22 \*\*Contributed equally as senior authors

23 **Corresponding author:**

24 Adithya Cattamanchi

25 University of California Irvine

26 333 City Blvd. West, Suite 400

27 Orange, CA 92868

28 **Summary (40 words):** 3HP is being rolled out for TB prevention in high burden countries. We describe  
29 the incidence and clinical management of adverse events in a real-world clinical setting among people  
30 living with HIV participating in a pragmatic implementation study in Uganda.

31 **Number of figures/tables:** 3

32

33

34

35

36

37

38

39

40

41

42

43

44

45

46

47

48

49

50

51

52

53 **ABSTRACT**

54 **Background:** Short-course tuberculosis (TB) prevention regimens, including 12 weeks of isoniazid and  
55 rifapentine (3HP), are increasingly used in high TB-burden countries. Despite established safety and  
56 tolerability in efficacy trials, 3HP-related adverse events (AE) could differ in routine settings. Real-world  
57 data on AE type, frequency, and timing is crucial for health systems considering 3HP programmatic scale-  
58 up.

59 **Methods:** We reviewed AEs among people living with HIV (PLHIV) participating in a pragmatic  
60 implementation trial of facilitated 3HP taken by directly observed therapy (DOT) or self-administered  
61 therapy (SAT) in Kampala, Uganda, and classified them using the Common Terminology Criteria for  
62 Adverse Events. We assessed AE timing and summarized related clinical actions including lab tests,  
63 diagnoses made, medications prescribed, and treatment interruptions.

64 **Results:** Among 1655 PLHIV treated between July 2020-September 2022, 270 (16.3%) reported 451  
65 events; main issues included general (7%), nervous system (6%), musculoskeletal (5%), gastrointestinal  
66 (5%), and dermatologic (3%) disorders. Most (61%) occurred within 6 weeks of initiating 3HP. Among  
67 those with events, 211 (78%) required further clinician evaluation, 202 (75%) required laboratory testing,  
68 102 (38%) had medications prescribed, 40 (15%) had treatment paused, and 14 (5%) discontinued 3HP.  
69 Women, those multidimensionally impoverished, and DOT recipients were more likely to report an AE.  
70 SAT users and later enrollees were more likely to have 3HP interrupted or stopped due to an AE.

71 **Conclusions:** In a routine setting, 3HP was safe with 16% of PLHIV reporting AEs and only 3% requiring  
72 temporary or permanent treatment interruption. These findings support 3HP expansion in routine  
73 HIV/AIDS care settings for TB prevention.

## 74 **BACKGROUND**

75 Prevention of tuberculosis (TB) is an urgent priority for global TB programs (1,2) and scale-up of TB  
76 preventive treatment (TPT) in high TB burden countries is critical for achieving ambitious TB elimination  
77 goals by 2030. Short-course regimens, such as 12 weekly doses of isoniazid and rifapentine (3HP), are  
78 now recommended as an option for TB prevention based on several trials demonstrating efficacy, safety,  
79 and improved completion relative to the traditional standard of six to nine months of daily isoniazid (3–6).  
80 However, data on the safety of 3HP in routine care settings remain sparse and are needed to help  
81 policymakers better anticipate the resources required for adverse event management as 3HP is rolled  
82 out for TB prevention.

83

84 Here, we describe adverse events reported in the *3HP Options Trial*, a pragmatic implementation trial  
85 that delivered 3HP to adult PLHIV accessing routine clinical HIV/AIDS care in Kampala, Uganda via  
86 facilitated directly observed therapy (DOT), facilitated self-administered therapy (SAT) or participant  
87 choice between facilitated DOT and SAT. In this pragmatic trial, routine health workers were responsible  
88 for monitoring, evaluating, and providing care to participants receiving 3HP treatment. We previously  
89 reported that treatment completion was high overall (94%), and similar across trial arms (95%, 92% and  
90 94% for facilitated DOT, facilitated SAT and Choice, respectively) (7). Our objective here was to  
91 characterize the frequency, type and severity of adverse events, and secondarily to identify demographic  
92 and clinical characteristics associated with reported adverse events and with 3HP treatment interruption  
93 or discontinuation.

94

## 95 **METHODS**

### 96 *Study design and population*

97 The study design and population, including eligibility criteria, are described in detail elsewhere (7,8).  
98 Briefly, the *3HP Options Trial* was a pragmatic trial of 3HP delivery strategies among adult ( $\geq 18$  years)  
99 PLHIV accessing care at the Mulago Immune Suppression Syndrome (IS;) clinic, the largest HIV/AIDS

100 clinic in Uganda. Eligible PLHIV were randomized to one of three delivery strategies: facilitated directly  
101 observed therapy (DOT), facilitated self-administered therapy (SAT), or participant choice between  
102 facilitated DOT and SAT. After taking the first dose in person, participants taking 3HP via facilitated DOT  
103 returned to the clinic weekly for the remaining 11 doses, whereas those taking 3HP via facilitated SAT  
104 had scheduled clinic visits for in-person dosing at weeks 6 and 12 only.

105

#### 106 *Adverse events reporting and assessment*

107 Prior to 3HP dosing at scheduled clinic visits, a Mulago ISS clinic pharmacy technician used a  
108 standardized form to screen participants for the presence/absence of any side effect and if present to  
109 screen for each of the following commonly reported side effects of 3HP treatment: 1) loss of appetite, 2)  
110 nausea or vomiting, 3) yellow eyes or skin, 4) abdominal pain, 5) diarrhea, 6) rash/hives, 7) fever or chills,  
111 8) dizziness/fainting, 9) numbness or tingling, 10) headache, 11) joint pain, 12) itching, 13) weakness, or  
112 14) other (with the option to specify). Following self-administered doses, participants taking 3HP by SAT  
113 could report that they were feeling unwell via weekly two-way toll-free interactive voice response (IVR)  
114 phone calls sent by a digital adherence monitoring platform used for the study (99DOTS, Everwell Health  
115 Solutions, Bengaluru, India). Mulago ISS clinic pharmacy technicians made phone calls to participants  
116 who reported feeling unwell and screened for side effects using the same standardized form used during  
117 in-person visits. In addition, all participants were instructed that they could visit or call the clinic at any  
118 time during open hours if they felt unwell, without the need to wait for their next scheduled appointment.  
119 Thus, participants could report adverse events at scheduled clinic visits for in-person dosing, IVR phone  
120 calls (SAT only), or through unscheduled phone calls and clinic visits.

121

122 Mulago ISS clinic pharmacists recorded the presence or absence of each common side effect using the  
123 standardized form. The form also included fields to specify if the patient was referred for further evaluation  
124 by a clinician, if or which laboratory tests were ordered, results of any laboratory testing, medications  
125 prescribed because of adverse event(s) reported, and details about treatment interruption or permanent

126 discontinuation. Of note, Mulago ISS clinic pharmacists made all decisions to refer participants with  
127 suspected adverse events to a routine (*i.e.*, non-study) clinician who then managed all activities related  
128 to adverse events assessment, including additional clinical or laboratory evaluation and decisions to hold  
129 or discontinue 3HP treatment.

130

### 131 *Statistical analysis*

132 At the conclusion of participant follow-up, two analysts (JLK and HEA) independently re-coded all adverse  
133 events initially recorded as “other” (*e.g.*, those not in pre-defined categories and/or those with different  
134 spellings). The same analysts then independently re-categorized all adverse events using the Common  
135 Terminology Criteria for Adverse Events (CTCAE), version 5.0 (9). Two research staff with medical  
136 training (AM and LA) adjudicated disagreements in categorizations.

137

138 Time to adverse event onset was calculated by taking the difference between the date of first report of  
139 the adverse event and the date of 3HP initiation. We quantified adverse events that resulted in referrals,  
140 additional lab tests ordered, diagnoses made, and medications prescribed using counts and percentages,  
141 and compared across study arms using Fisher’s exact tests. Finally, we used multivariable logistic  
142 regression to explore the clinical and sociodemographic variables associated with reporting any adverse  
143 event and discontinuing treatment because of an adverse event. Variables included in final multivariate  
144 models were those determined *a priori* based on relationships identified in the literature (10,11).

145

146 The trial is registered at ClinicalTrials.gov (NCT03934931) and was approved by the ethical committees  
147 at the University of California San Francisco, Makerere University College of Health Sciences School of  
148 Public Health, and the Uganda National Council for Science and Technology. All participants gave written  
149 informed consent for study participation.

150

## 151 **RESULTS**

152 Between July 13, 2020, and July 8, 2022, we enrolled 1,655 eligible PLHIV. Follow-up continued until  
 153 September 29, 2022. In the Choice arm, 370 participants (67.0%) initially preferred facilitated DOT; thus,  
 154 921 participants received 3HP via facilitated DOT, and 734 participants via facilitated SAT. Median  
 155 participant age was 42 years (interquartile range [IQR]: 36-48); 1,122 (67.8%) were female; and median  
 156 time on ART was 9.0 years (IQR: 5.6-12.5), with no differences by treatment strategy (**Table 1**).

157

158 **Table 1. Participant characteristics comparing those taking 3HP via directly observed therapy versus self-**  
 159 **administered therapy (n=1,655).<sup>1</sup>**

	<b>DOT (n=921)</b>	<b>SAT (n=734)</b>
<b>Age</b>	41.9 (9.4)	42.6 (9.2)
<b>Female sex</b>	614 (66.7)	508 (69.2)
<b>Education</b>		
None	71 (7.7)	68 (9.3)
Primary	452 (49.1)	330 (45.0)
Secondary	335 (36.4)	265 (36.1)
Tertiary/Vocational	37 (4.0)	48 (6.5)
University/Graduate School	26 (2.8)	23 (3.1)
<b>Employment status<sup>2</sup></b>		
Unemployed	129 (14.0)	96 (13.1)
Hired worker	105 (11.4)	99 (13.5)
Self-employed worker	445 (48.3)	372 (50.7)
Temporary/informal worker	233 (25.3)	163 (22.2)
Other	3 (0.3)	2 (0.3)
<b>Multidimensional Poverty Index<sup>3</sup></b>		
Not vulnerable to multidimensional poverty	378 (41.0)	341 (46.5)
Vulnerable to multidimensional poverty	332 (36.1)	251 (34.2)
Multidimensionally poor	167 (18.1)	118 (16.1)
Severely multidimensionally poor	44 (4.8)	24 (3.3)
<b>Reported an adverse event while taking 3HP</b>	175 (19.0)	95 (12.9)
<b>Prior TB infection</b>	165 (17.9)	136 (18.5)

<b>Time (years) on ART</b>	8.8 (4.5)	8.9 (4.4)
<b>ART Regimen</b>		
Dolutegravir + Lamivudine + Tenofovir	804 (87.3)	647 (88.2)
Tenofovir + Lamivudine + Efavirenz	65 (7.1)	46 (6.3)
Other <sup>4</sup>	52 (5.6)	41 (5.6)
<b>Viral load &lt;1000 copies/mL<sup>5</sup></b>	906 (98.4)	727 (99.1)
<b>Body Mass Index (kg/m<sup>2</sup>)</b>	25.9 (5.8)	26.3 (5.4)

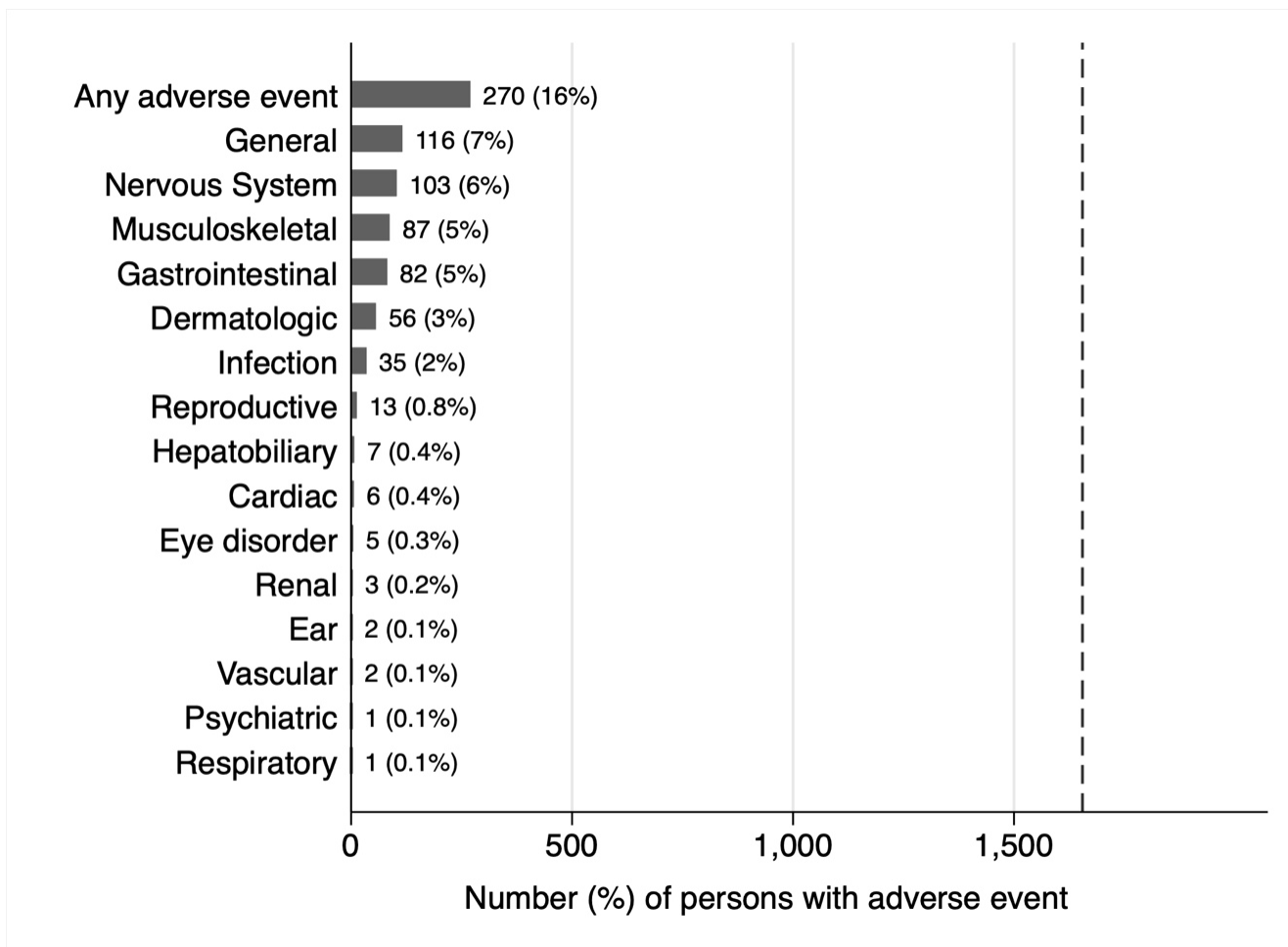
- 160 ART=antiretroviral therapy; DOT=directly observed therapy; SAT=self-administered therapy; TB=tuberculosis  
 161 1. Data are n (%) or mean and standard deviation (SD).  
 162 2. n=8 missing.  
 163 3. The global multidimensional poverty index (MPI) examines deprivations across 10 indicators in dimensions of  
 164 health, education, and standards of living, with those deprived in one-third or more of the 10 indicators counted  
 165 as being multidimensionally poor. MPI scores can range from 0 to 1 and are classified as not vulnerable to  
 166 multidimensional poverty (MPI score: 0-0.19), vulnerable to multidimensional poverty (MPI score: 0.20-0.32),  
 167 multidimensionally poor (MPI score: 0.33-0.49) and severely multidimensionally poor (MPI score: ≥0.50).  
 168 4. Other regimens included Abacavir + Lamivudine + Dolutegravir (n=82), Lamivudine + Zidovudine + Dolutegravir  
 169 (n=8), Lamivudine and Zidovudine 150mg/300mg tablet (n=1), Abacavir + Lamivudine + Efavirenz (n=1).  
 170 5. Suppressed defined as <1000 copies/mL according to Ugandan guidelines; n=2 missing.  
 171

172 *Adverse event frequency, typology and timing*

173 Overall, 270 (16.3%) participants reported at least one adverse event over the course of 3HP treatment  
 174 (**Figure 1**), including 175 (19.0%) people receiving 3HP via DOT and 95 (12.9%) receiving 3HP via SAT  
 175 (**Table 1**). Participants in the DOT arm, those who were female, or multidimensionally poor people were  
 176 more likely to report any adverse event, associations confirmed in multivariable logistic regression models  
 177 (adjusted odds ratios [aORs]=1.59, 95% confidence interval (CI): 1.21, 2.09; p=0.001 for DOT; 1.61, 95%  
 178 CI: 1.05-2.01; p=0.02 for female sex; and 1.40, 95% CI: 1.00, 1.96; p=0.05; for poverty or severe  
 179 multidimensional poverty) (**Supplement Table 1**).

180  
 181 **Figure 1. Frequency of reported adverse events during 3HP treatment according to Common Terminology**  
 182 **Criteria for Adverse Events (version 5.0) categories.**





183

184 Shown are the number and percentage of participating PLHIV taking 3HP for prevention of tuberculosis who  
185 reported adverse events in each category. The total number of participants assessed for adverse events in the 3HP  
186 Options Trial was 1,655, as indicated by the dashed vertical line.

187

188

189 The most frequently reported adverse events (reclassified according to CTCAE, **Supplement Table 2**)  
190 were general disorders such as fever or flulike illness (n=116 PLHIV, 7% of all study participants),  
191 nervous system disorders (n=103, 6%), musculoskeletal disorders (n=87, 5%), gastrointestinal disorders  
192 (n=82, 5%), or dermatologic disorders (n=56, 3%; **Figure 1**). Hepatobiliary disorders were infrequent,  
193 with only seven participants (0.4%) reporting related adverse events.

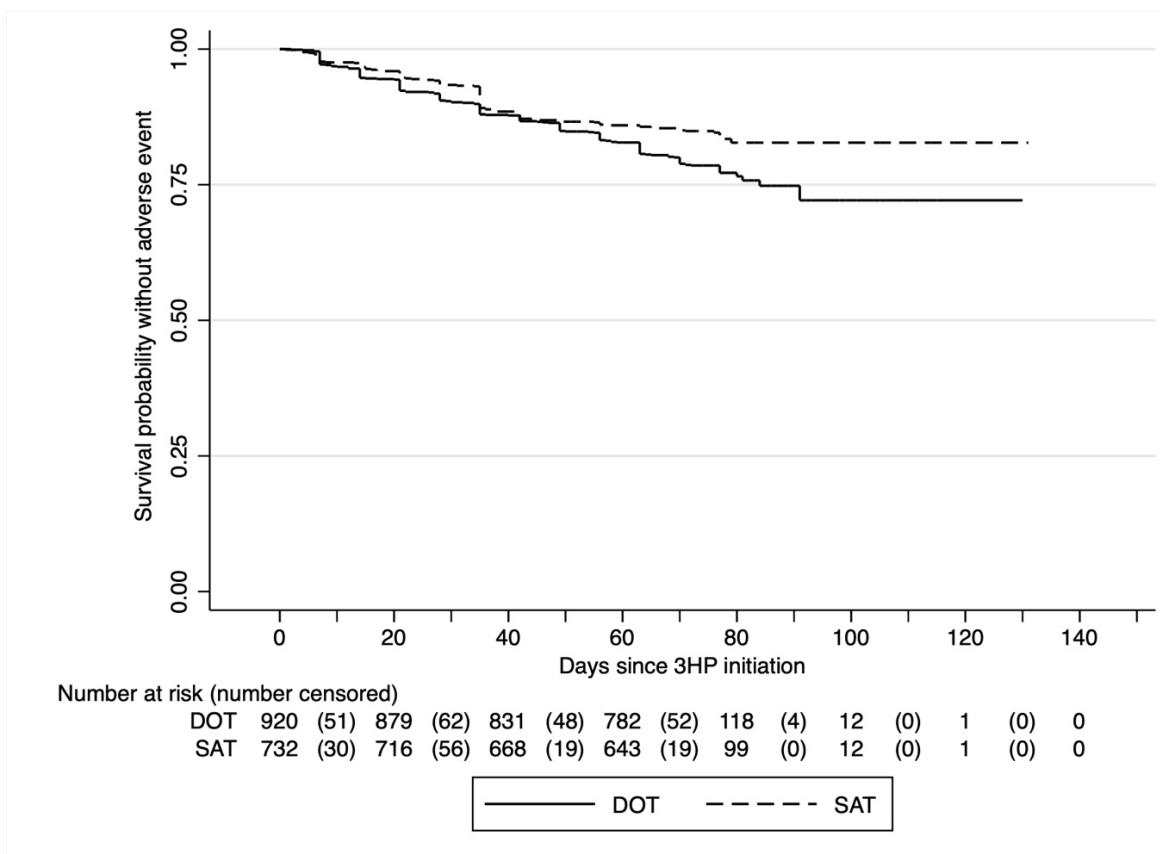
194

195 Among participants who had an adverse event, the median time to an adverse event was 35 days (IQR:  
196 14-49). There was a significant difference in the survival curves comparing time to an adverse event

197 between participants receiving 3HP via DOT vs. SAT, with people receiving 3HP by SAT less likely to  
 198 report an adverse event (log-rank  $p=0.001$ ; **Figure 2**).

199

200 **Figure 2. Time to first adverse event experience stratified by 3HP delivery strategy (facilitated DOT vs.**  
 201 **facilitated SAT).**



202

203

204 DOT=directly observed therapy; SAT=self-administered therapy

205 The solid horizontal stepped line represents the cumulative probability of not have an adverse event among  
 206 participants receiving 3HP via facilitated directly observed therapy (DOT), and the dashed horizontal stepped line  
 207 represents those receiving 3HP via facilitated self-administered therapy (SAT). The numbers outside of parentheses  
 208 at the bottom of the figure represent the total number of participants at risk, while the numbers in parentheses  
 209 represent the number censored at the time interval indicated.

210

211 *Additional health care utilization for adverse events*

212 Among those reporting adverse events, 211 (78.1%) were referred to a clinician for further evaluation,  
 213 202 (74.8%) required laboratory testing, and 102 (37.8%) had medication(s) prescribed. The most

214 common types of lab tests ordered included urinalysis (n=77), malaria tests (n=59), and blood glucose  
215 tests (n=24). For the 209 total lab tests ordered, 35 diagnoses were made (**Supplement Figure 1**). The  
216 proportion referred to a clinician was similar among those taking 3HP via facilitated DOT vs. facilitated  
217 SAT (p=0.22). Those who took 3HP by facilitated SAT were more likely to have laboratory testing ordered  
218 (46.3% vs. 33.1%, p=0.04), whereas those who took 3HP by facilitated DOT were more likely to be  
219 prescribed medications to treat adverse events (78.9% vs. 67.4%, p=0.04).

220

221 Among the 270 PLHIV reporting adverse events, 40 (14.8%) had treatment held temporarily and 14  
222 (5.1%) had treatment permanently discontinued by a Mulago ISS clinician (<1% of PLHIV taking 3HP  
223 overall). Participants taking 3HP via SAT (28.4% vs 15.4%) and participants enrolled after the first six  
224 months of the study (22.1% vs 15.7%) were more likely to have 3HP treatment held or discontinued due  
225 to an adverse event (**Supplement Table 3**).

226

## 227 **DISCUSSION**

228 Growing interest in the use of short-course TPT regimens such as 3HP for TB prevention requires better  
229 data on adverse events to inform planning for programmatic scale-up. In this pragmatic trial of 1,655  
230 PLHIV taking 3HP in Kampala, Uganda with minimal loss to follow-up prior to treatment completion, the  
231 frequency of adverse events was low, with only 16% of participants experiencing any adverse event.  
232 Adverse events were effectively managed by routine healthcare providers, with no deaths, only 3%  
233 requiring treatment interruption, and <1% requiring treatment discontinuation. These data add to the  
234 existing body of literature demonstrating 3HP safety and tolerability as some of the first data to come  
235 from a high-burden, programmatic context, and may provide reassurance to programs planning for or  
236 considering short-course regimens as alternatives for TPT in similar settings.

237

238 The frequency of adverse events reported in this pragmatic trial were comparable to what has been  
239 documented in other recent studies of 3HP implementation in high burden settings (12,13), but was

240 substantially lower than what was reported from a multi-country randomized trial of 3HP (14), in which  
241 77% reported one or more symptoms at any time during treatment (11). However, data from the only  
242 participating African country in that trial included only a small number of participants (n=83). Additionally,  
243 treatment dosing/supervision, study follow-up, and adverse event management in that trial were  
244 managed by trained research staff. Here, we provide data from people taking 3HP in the context of routine  
245 HIV/AIDS care, which may be a more accurate reflection of what can be expected in other programmatic  
246 settings. In this context, although the majority of participants who reported an adverse event were  
247 prescribed medications for those symptoms, the burden of laboratory testing was relatively modest.

248

249 As expected, we found that adverse events were more commonly reported with DOT than with SAT. DOT  
250 provides more opportunities for health workers to directly ask about and screen for potential side effects.  
251 It is also possible that PLHIV had a lower threshold for reporting potential side effects when face-to-face  
252 with a health worker than when prompted to so via IVR phone calls. Given the similar treatment  
253 completion rates between DOT and SAT, it is unlikely serious adverse events were more likely to be  
254 reported with one vs. the other.

255

256 A strength of this study was its pragmatic nature, including management of adverse events by routine  
257 healthcare providers. We therefore provide some of the first real-world evidence of 3HP adverse event  
258 occurrence from a clinical setting in a high-burden country. Limitations include the lack of a formal cost  
259 analysis of adverse event management and the possibility that people included in our study were more  
260 carefully screened for adverse events than would typically occur in the absence of a research study. As  
261 such, while we may overestimate the frequency of adverse events, management of those events  
262 including decisions to withhold or discontinue 3HP, may have been more careful.

263

264 In conclusion, this analysis of a pragmatic implementation trial in a large HIV clinic in Kampala, Uganda,  
265 reaffirms the safety of 3HP, with only one in six participants reporting an adverse event and fewer than

266 1% requiring permanent treatment discontinuation. These data also confirm that routine clinical staff can  
267 effectively manage 3HP-related adverse events. These data can be useful to National TB Programs and  
268 other implementing partners as they plan resources to support broader roll-out of short-course TPT,  
269 including an understanding of the potential additional time required and/or training needed for healthcare  
270 staff to manage 3HP-related adverse events and the potential additional costs for anticipated laboratory  
271 tests ordered and medications prescribed associated with 3HP-related adverse events. Based on our  
272 findings, these additional resources and/or costs associated with 3HP-related adverse events are likely  
273 to be low. Future studies of the total cost of 3HP-related adverse event management could provide a  
274 more complete picture of the adverse event profile likely to be experienced during programmatic scale-  
275 up. Nonetheless, these pragmatic data indicate that 3HP can be delivered safely and effectively in routine  
276 settings and can help implementers plan resources for adverse event management.

277

278

279

280

281

282

283

284

285

286

287

288

289

290

291

292 **ACKNOWLEDGEMENTS**

293 **Author contributions:** JLK: Formal analysis, Data curation, Writing – Original draft, Writing – Review  
294 and editing, Visualization, Project administration; AM: Data curation, Validation, Data curation, Writing –  
295 Review and editing, Project administration; HEA: Formal analysis, Data curation, Writing – Original draft,  
296 Writing – Review and editing; LA: Data curation, Writing – Review and editing; FW: Data curation, Writing  
297 – Review and editing; JN: Data curation, Writing – Review and editing; CAB: Project administration,  
298 Writing – Review and editing; NK: Conceptualization, Methodology, Supervision, Writing – Review and  
299 editing; AK: Conceptualization, Methodology, Investigation, Supervision, Writing – Review and editing;  
300 DWD: Conceptualization, Methodology, Investigation, Supervision, Project Administration, Writing –  
301 Review and editing; AC: Conceptualization, Methodology, Investigation, Supervision, Project  
302 Administration, Funding acquisition, Writing – Review and editing; FS: Conceptualization, Methodology,  
303 Investigation, Supervision, Project Administration, Resource, Writing – Review and editing.

304 **Acknowledgements:** The authors thank the administration, staff, and patients at the Mulago ISS clinic  
305 for their time and participation, and the research administration of the Infectious Diseases Research  
306 Collaboration (IDRC) and Walimu.

307 **Data availability:** Data not publicly available.

308 **Funding/support:** The study was supported by the National Heart Lung and Blood Institute of the U.S.  
309 National Institutes of Health under award number R01HL144406 (AC).

310 **Financial Disclosure:** None reported.

311

312

313

314

315

316

317

## 318 REFERENCES

- 319 1. The End TB Strategy: Global strategy and targets for tuberculosis prevention, care and control after  
320 2015. World Health Organization; 2014.
- 321 2. Millington KA, White RG, Lipman M, McQuaid CF, Hauser J, Wooding V, et al. The 2023 UN high-  
322 level meeting on tuberculosis: renewing hope, momentum, and commitment to end tuberculosis.  
323 *The Lancet Respiratory Medicine*. 2024 Jan;12(1):10–3.
- 324 3. Podany AT, Bao Y, Swindells S, Chaisson RE, Andersen JW, Mwelase T, et al. Efavirenz  
325 Pharmacokinetics and Pharmacodynamics in HIV-Infected Persons Receiving Rifapentine and  
326 Isoniazid for Tuberculosis Prevention. *Clin Infect Dis*. 2015/06/18 ed. 2015 Oct 15;61(8):1322–7.
- 327 4. Farenc C, Doroumian S, Cantalloube C, Perrin L, Esposito V, Cieren-Puisseux, et al. Rifapentine  
328 Once-Weekly Dosing Effect on Efavirenz, Emtricitabine and Tenofovir Pharmacokinetics. In Boston,  
329 MA, USA; 2014.
- 330 5. Weiner M, Egelund EF, Engle M, Kiser M, Prihoda TJ, Gelfond JA, et al. Pharmacokinetic  
331 interaction of rifapentine and raltegravir in healthy volunteers. *J Antimicrob Chemother*. 2013/12/18  
332 ed. 2014 Apr;69(4):1079–85.
- 333 6. Dooley KE, Savic R, Gupte A, Marzinke MA, Zhang N, Edward VA, et al. Once-weekly rifapentine  
334 and isoniazid for tuberculosis prevention in patients with HIV taking dolutegravir-based antiretroviral  
335 therapy: a phase 1/2 trial. *The Lancet HIV*. 2020 Jun;7(6):e401–9.
- 336 7. Semitala FC, Kadota JL, Musinguzi A, Welishe F, Nakitende A, Akello L, et al. Comparison of 3  
337 optimized delivery strategies for completion of isoniazid-rifapentine (3HP) for tuberculosis  
338 prevention among people living with HIV in Uganda: A single-center randomized trial. Denkinge  
339 CM, editor. *PLoS Med*. 2024 Feb 20;21(2):e1004356.
- 340 8. Kadota JL, Musinguzi A, Nabunje J, Welishe F, Ssemata JL, Bishop O, et al. Protocol for the 3HP  
341 Options Trial: a hybrid type 3 implementation-effectiveness randomized trial of delivery strategies  
342 for short-course tuberculosis preventive therapy among people living with HIV in Uganda.  
343 *Implement Sci*. 2020/08/14 ed. 2020 Aug 12;15(1):65.
- 344 9. Common Terminology Criteria for Adverse Events (CTCAE) Version 5.0 [Internet]. U.S.  
345 DEPARTMENT OF HEALTH AND HUMAN SERVICES; 2017. Available from:  
346 [https://ctep.cancer.gov/protocoldevelopment/electronic\\_applications/ctc.htm](https://ctep.cancer.gov/protocoldevelopment/electronic_applications/ctc.htm)
- 347 10. Sandul AL, Nwana N, Holcombe JM, Lobato MN, Marks S, Webb R, et al. High Rate of Treatment  
348 Completion in Program Settings With 12-Dose Weekly Isoniazid and Rifapentine for Latent  
349 *Mycobacterium tuberculosis* Infection. *Clin Infect Dis*. 2017/06/03 ed. 2017 Oct 1;65(7):1085–93.
- 350 11. Sadowski C, Belknap R, Holland DP, Moro RN, Chen MP, Wright A, et al. Symptoms and Systemic  
351 Drug Reactions in Persons Receiving Weekly Rifapentine Plus Isoniazid (3HP) Treatment for  
352 Latent Tuberculosis Infection. *Clinical Infectious Diseases*. 2023 Jun 16;76(12):2090–7.
- 353 12. Rahman MT, Hossain F, Banu RS, Islam MS, Alam S, Faisal AJ, et al. Uptake and Completion of  
354 Tuberculosis Preventive Treatment Using 12-Dose, Weekly Isoniazid-Rifapentine Regimen in  
355 Bangladesh: A Community-Based Implementation Study. *Trop Med Infect Dis*. 2023 Dec 20;9(1):4.

- 356 13. Churchyard G, Cardenas V, Chihota V, Mngadi K, Sebe M, Brumskine W, et al. Annual  
357 Tuberculosis Preventive Therapy for Persons With HIV Infection : A Randomized Trial. Ann Intern  
358 Med [Internet]. 2021/08/24 ed. 2021 Aug 24; Available from:  
359 <https://www.ncbi.nlm.nih.gov/pubmed/34424730>
- 360 14. Belknap R, Holland D, Feng PJ, Millet JP, Cayla JA, Martinson NA, et al. Self-administered Versus  
361 Directly Observed Once-Weekly Isoniazid and Rifapentine Treatment of Latent Tuberculosis  
362 Infection: A Randomized Trial. Ann Intern Med. 2017/11/09 ed. 2017 Nov 21;167(10):689–97.
- 363