

FULL TITLE: Utility of thromboelastography to assess the effect of anticoagulation reversal in intracranial hemorrhage

AUTHORS: Zepeski A^{1,2}, Faine BA^{1,2}, Ghannam M³, Olalde HM³, Wendt L⁴, Naidech A⁵, Mohr NM^{1,6,7}, Leira EC^{3,7,8}

INSTITUTIONAL AFFILIATIONS:

1. Department of Emergency Medicine, University of Iowa College of Medicine
2. University of Iowa College of Pharmacy
3. Department of Neurology, University of Iowa College of Medicine
4. Institute for Clinical and Translational Sciences, University of Iowa
5. Department of Neurology, Northwestern Medicine Feinberg School of Medicine
6. Department of Anesthesia, University of Iowa College of Medicine
7. Department of Epidemiology, University of Iowa College of Public Health
8. Department of Neurosurgery, University of Iowa College of Medicine

SHORT TITLE: Thromboelastography to assess anticoagulation reversal in intracranial hemorrhage

CORRESPONDING AUTHOR:

Anne Zepeski, PharmD, BCPS
anne-zepeski@uiowa.edu
University of Iowa Health Care
200 Hawkins Drive, C132-GH
Iowa City, IA 52242

TOTAL WORD COUNT: 3,825

ABSTRACT

Background:

Intracranial hemorrhage (ICH) is a serious complication associated with oral anticoagulant use and is associated with significant morbidity and mortality. Although anticoagulation reversal agents are utilized as standard of care, practitioners are limited in their ability to assess degree of anticoagulation reversal for direct oral anticoagulants (DOACs). There is a clinical need to identify biomarkers to assess anticoagulation status in patients with DOAC-associated ICH to ensure hemostatic efficacy of anticoagulation reversal agents in the acute setting. The purpose of this study was to assess the utility of thromboelastography (TEG) to assess the impact of anticoagulation reversal in patients presenting to the emergency department (ED) with DOAC-associated ICH.

Methods:

We conducted a prospective, observational cohort study in adult patients presenting to the ED with acute DOAC-associated ICH. Patients were excluded if last DOAC dose was >48 hours prior to hospital arrival, if they experienced polytrauma, were pregnant, incarcerated, had a history of hepatic failure or coagulopathy, or received anticoagulation reversal with products other than prothrombin complex concentrates (PCCs). We collected baseline TEG samples from participants prior to anticoagulation reversal, as well as 30-minutes, 12-hours, and 24-hours post-reversal. TEG samples were also collected from participants who transferred to our facility after reversal at ED presentation, as well as 12- and 24-hours post-reversal.

Results:

Pre-reversal TEG was collected on 10 participants prior to DOAC reversal. A significant decrease in TEG R-time was observed at 30 minutes post-reversal. R-time increased at 12- and 24-hours to baseline levels. Significant changes were not observed in K-time, clot strength, maximum amplitude, or coagulation index.

Conclusions:

TEG R-time may be able to detect a change in anticoagulation activity of DOACs in ICH after anticoagulation reversal. R-time decreases acutely after anticoagulation reversal and rebounds at 12- and 24-hours post-reversal.

MANUSCRIPT

Introduction

Direct oral anticoagulants (DOACs), including factor Xa inhibitors have become the cornerstone of outpatient anticoagulation therapy for stroke prevention in atrial fibrillation and treatment of venous thromboembolism.^{1,2} Despite having a more favorable safety profile, factor Xa inhibitors still carry risk of bleeding complications, including intracranial hemorrhage (ICH). Use of oral anticoagulation has been shown to increase both short and long-term mortality in acute spontaneous and traumatic ICH.³⁻⁵ Acute spontaneous ICH is associated with 2 times greater mortality than ischemic stroke.⁶ Coagulation factor Xa [recombinant], inactivated-zhzo is recommended by guidelines to emergently reverse anticoagulation activity of apixaban or rivaroxaban, however prothrombin complex concentrates (PCCs) are frequently utilized with comparable efficacy and reduced thrombotic effects.⁷⁻¹⁰ Regardless of the reversal agent of Xa inhibitors that are used, clinicians are limited in current clinical practice by the lack of simple and reliable biomarkers to monitor anticoagulation activity in these patients.

Previous studies have outlined shortcomings of traditional coagulation assays to assess DOAC activity.¹¹ Apixaban has no significant impact on activated partial thromboplastin time (aPTT), prothrombin time (PT), or international normalized ratio (INR). Rivaroxaban may increase PT/INR and aPTT, but only at high serum concentrations. The Annexa-4 Trial utilized anti-factor Xa assays as a surrogate to measure recombinant coagulation factor Xa activity.¹² The use of Anti Xa levels remains limited in most emergent settings, although it has been correlated with hematoma expansion.^{9,13} Unfortunately, our ability to measure both the degree

of anticoagulation activity and reversal in patients with acute DOAC-related bleed remains limited, which impacts optimal patient management.^{7,14-16}

Thromboelastography (TEG) is a coagulation study that has been utilized in trauma and surgical populations to provide a comprehensive, objective measurement of the combined impact of clotting factors, fibrin, fibrinogen, and platelet activity.¹⁷ Novel approaches of TEG application have investigated its utility in the emergency department (ED) to identify patients who have taken DOACs in the setting of bleeding or may need hemostatic treatment, particularly prior to neurosurgery.¹⁸⁻²⁰ However, a significant evidence gap remains regarding the utility of TEG to measure the degree of anticoagulation reversal after pre-ICH anticoagulant reversal. The primary objective of our study is to determine the changes in TEG with anticoagulation reversal in patients with DOAC-associated ICH.

Methods

This was a prospective, cohort study of patients presenting to a Level I Trauma Center/Comprehensive Stroke Center with acute ICH from November 2022 – August 2023. Patients were included in the study if they were taking rivaroxaban or apixaban, were 18 years of age or older, and had confirmed ICH on computed tomography (CT) imaging. Patients were excluded from enrollment if the last dose of DOAC was ≥ 48 hours prior to enrollment, if DOAC use could not be confirmed, if they were pregnant, incarcerated, presented with polytrauma (any identified injury other than ICH), had a history of hepatic failure or coagulopathy, or received coagulation factor Xa [recombinant], inactivated-zhzo for DOAC reversal. Patients with imminent death, receiving active cardiopulmonary resuscitation or transition to palliative care

in the ED were also excluded from the study. Informed written consent was obtained by all participants or their legally authorized representative. The study was approved by the local Institutional Review Board. This study is reported in accordance with the STROBE publication criteria for observational studies.²¹

Participants were divided into 3 subgroups based on timing of PCC administration and TEG serum sampling. Administration of activated PCC was not an intervention of the study— data collection was completely observational, and tracked the biomarker response to anticoagulation reversal.

1. Group 1 included participants who received activated PCC for anticoagulation reversal at the enrolling institution with baseline TEG drawn prior to reversal as well at 0.5 hours, 12 hours, and 24 hours post-reversal.
2. Group 2 included participants who received anticoagulation reversal prior to TEG collection and had levels drawn after reversal (first available), 12 hours, and 24 hours post-reversal.
3. Group 3 included participants who were consented to the study but ultimately never received anticoagulation reversal. Group 3 participants had TEG samples drawn at time of consent (first available), 12 hours after ED presentation and 24 hours after ED presentation.

After patients consented to participate in the study, we collected whole blood samples in light blue sodium citrate tubes (a minimum volume of 2.7 mL of whole blood was required). Study staff delivered samples immediately to the core lab after collection.

Thromboelastography was performed on whole blood samples using TEG[®] 5000 hemostasis analyzer (Haemonetics[®]; Boston, MA) upon receipt in the laboratory.

Data collection included gender, age, admission creatinine clearance, admission Glasgow Coma Scale (GCS), admission National Institutes of Health (NIH) Stroke Scale, ICH location and volume, DOAC dose and indication, concomitant anticoagulants, medications used for anticoagulation reversal and dose, baseline anti-Xa assays, PTT, INR, and discharge disposition.

Data Analysis

Repeated data (e.g., TEG values over time repeated for individual participants) were analyzed with linear mixed models using R, version 4.3.3 (R Project for Statistical Analysis, Vienna, Austria, 2004). For each outcome of interest, a univariate model was fit with timepoint as the predictor, analyzed categorically. The baseline timepoint was used as the reference group for comparisons and coefficients were generated for each subsequent timepoint along with 95% confidence intervals and p-values. Additionally, F-Tests from these models were used to assess the overall impact of Timepoint on the outcome of interest. Pearson's correlation was also used to assess the relationship between baseline anti-Xa levels and R-time in the group 1 cohort, and the correlation coefficient and its corresponding p-value were reported. REDCap[™] was used to securely store abstracted data (NIH and CTSA grant number: UM1TR004403).

Results

A total of 117 patients were screened. Eighty were found to be non-eligible, and the reasons for exclusion are shown in Figure 1. Thirty-seven participants were enrolled in the

study. Three of these patients were excluded due to protocol deviations, so 34 participants were included in the final analysis. Baseline characteristics of participants are included in Table 1. Ten participants (29%) were enrolled prior to administration of DOAC reversal (group 1), 21 participants (62%) received anticoagulation reversal prior to enrollment due to interfacility transfer (group 2). Three participants were enrolled in the study but did not receive DOAC reversal (group 3). The baseline characteristics of these patients is shown in table 1. Most participants were taking apixaban (n= 25, 74%) prior to arrival and the most common indication for DOAC use was stroke prevention in atrial fibrillation (n=27, 79%). Two-thirds of participants experienced ICH of traumatic etiology. Concomitant antiplatelet use was common with 38% of participants taking aspirin prior to arrival.

Ten participants were enrolled prior to anticoagulation reversal with PCC, all of whom received activated PCC based on institutional protocol. The median dose of activated PCC was 24.8 units/kg (IQR 20.5-29.7). Anti-Xa levels were drawn prior to anticoagulation reversal, which are reported in Table 1. Figure 2 illustrates TEG R-time values at baseline, 30-minutes post PCC reversal (group 1) and at 12 hours post-PCC reversal. Table 2 summarizes TEG parameters before and after anticoagulation reversal. There was not a statistically significant linear correlation between baseline anti-Xa levels and R-time in the group 1 cohort ($R = -0.273$, $p = 0.417$). The median R-time prior to anticoagulation reversal was 5.40 seconds (IQR 4.38-5.73) and 4.20 seconds (IQR 3.68-4.75) after reversal with activated PCCs. By 24 hours after reversal, R-time increased to 5.30 seconds (IQR 5.00-5.80). R-time values were shown to significantly decrease after DOAC reversal at 30 minutes ($\text{Beta} = -0.91$, $p = 0.035$), but were not significantly

different at 12 and 24 hours compared to baseline values (Table 3). This effect was not observed when assessing clot Angle, or rate of clot formation.

Discussion

This was an exploratory study in real-world patients presenting to the ED with acute ICH. We prospectively measured TEG before and after the administration of activated PCC in patients with DOAC-associated ICH. We observed substantial changes in TEG parameters 30 minutes after treatment, with subsequent return to baseline measures. These results show that TEG is a potential biomarker to measure the effect of anticoagulant reversal in patients with DOAC-associated ICH. These results suggest TEG may be beneficial in addition to measures of anti-Xa activity in patients with DOAC-associated ICH. Anti-factor Xa assays have been utilized in the ED setting to assess presence of DOAC but the defined utility in determining degree of anticoagulation remains limited. Our findings suggest that rivaroxaban and apixaban assays were not associated with baseline R-time prior to reversal. This may further support the limitations of anti-Xa assays in determining degree of anticoagulation in patients requiring emergent DOAC reversal, despite their specificity for the presence of factor Xa inhibitors.

Although all participants were treated with DOACs prior to ICH, variability in baseline R-time values DOAC-associated ICH was observed. This is not an unexpected result as apixaban and rivaroxaban do not rely on standardized measured levels of anticoagulation for observed efficacy.^{22,23} Other studies have utilized DOAC-calibrated TEG 6s to identify presence of DOAC, utilizing specific R-time thresholds, but have not assessed changes to R-time after administration of anticoagulation reversal.²⁰ Despite the observed variability, R-time

significantly decreased after activated PCC administration, underscoring improvement in coagulation with activated PCC administration. A change in R-time may be a more valuable marker of anticoagulation reversal and hemostasis rather than achievement of an absolute R-time value.

R-time increased as measured at 12- and 24-hour intervals after the administration of PCCs. This rebound in R-time is not unexpected and is consistent with the estimated 8-12 hour duration of action of PCCs.²⁴ It is for this same rationale, that guidelines recommend concomitant administration of vitamin K with PCCs to ensure sustained reversal of warfarin anticoagulant activity.¹⁰ Overall, these trends in R-time relative to anticoagulation reversal with PCCs are expected as R-time reflects time to beginning of clot formation, which is driven by coagulation factors. Artang et al. reported TEG R-time was significantly and positively correlated with measured DOAC concentrations in healthy volunteers. The same association was not found in alpha-angle (surrogate for fibrinogen activity), and maximum amplitude (surrogate for platelet activity).¹⁸ The observed changes in TEG biomarkers after reversal suggest that this technique may be useful to guide this treatment. Future analyses might test the hypothesis that changes in TEG biomarkers are predictive of hematoma expansion as measured with semi-automated voxel-based techniques, a modifiable predictor of worse outcome in patients with acute ICH.

We recognize the limitations of our study. First, there was a high level of participant heterogeneity in the sample and notably a mix of traumatic and spontaneous ICH patients. Trauma-induced coagulopathy can lead to changes in TEG values and may confound interpretation of TEG in patients on anticoagulation, especially measurements of LY30.²⁵ It can

be difficult to determine etiology of ICH acutely in the absence of known severe trauma, therefore all ICH was intentionally included in the sample and etiology was determined based on chart review after hospital discharge. Additionally, the investigators attempted to address this the impact of trauma-induced coagulopathy by excluding patients with polytrauma. Second, several of the participants received anticoagulation reversal prior to enrollment, limiting the proportion of the sample with baseline TEG values prior to reversal. Because of the nature of our referral center, a sizeable number of patients are transferred from outside hospitals which limits our ability to obtain pre-treatment baseline levels.

Conclusion

In patients with DOAC-associated ICH, the administration of activated PCC was associated changes in TEG biomarkers of hemostasis at 30 minutes that returned to baseline at 12 hours. Future research might determine if these changes predict hematoma expansion and determine biomarkers of efficacy for anticoagulant reversal.

Acknowledgments: None

Sources of Funding:

Funding for this project was provided by the NIH StrokeNet Research Trainee Program and a seed grant from the Department of Emergency Medicine at the University of Iowa Carver College of Medicine.

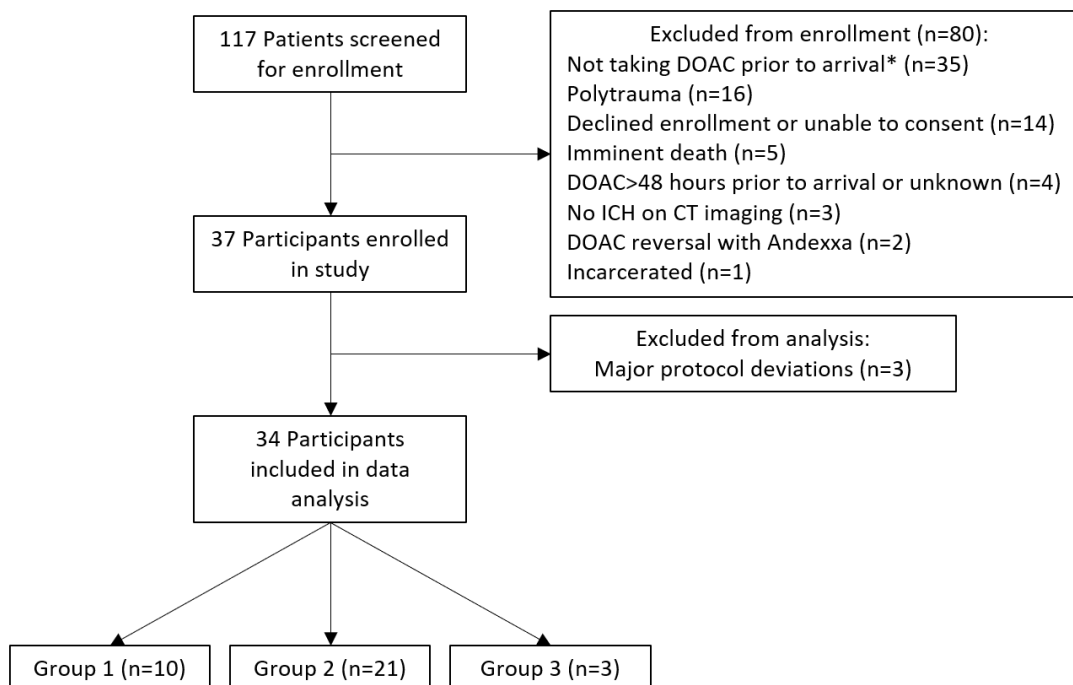
Disclosures: EL: Associate Editor of *Stroke*, salary support from NIH-NINDS; AZ, BF, MG, HO, LW, AN, NM: report no relevant disclosures or conflicts of interest.

References

1. Iyer GS, Tesfaye H, Khan NF, Zakoul H, Bykov K. Trends in the Use of Oral Anticoagulants for Adults With Venous Thromboembolism in the US, 2010-2020. *JAMA Netw Open*. 2023;6:e234059. doi: 10.1001/jamanetworkopen.2023.4059
2. Navar AM, Kolkailah AA, Overton R, Shah NP, Rousseau JF, Flaker GC, Pignone MP, Peterson ED. Trends in Oral Anticoagulant Use Among 436 864 Patients With Atrial Fibrillation in Community Practice, 2011 to 2020. *J Am Heart Assoc*. 2022;11:e026723. doi: 10.1161/JAHA.122.026723
3. Fernando SM, Qureshi D, Talarico R, Tanuseputro P, Dowlatshahi D, Sood MM, Smith EE, Hill MD, McCredie VA, Scales DC, et al. Intracerebral Hemorrhage Incidence, Mortality, and Association With Oral Anticoagulation Use: A Population Study. *Stroke*. 2021;52:1673-1681. doi: 10.1161/STROKEAHA.120.032550
4. Powers AY, Pinto MB, Tang OY, Chen JS, Doberstein C, Asaad WF. Predicting mortality in traumatic intracranial hemorrhage. *J Neurosurg*. 2019;132:552-559. doi: 10.3171/2018.11.JNS182199
5. Zeng Z, Chen J, Qian J, Ma F, Lv M, Zhang J. Risk Factors for Anticoagulant-Associated Intracranial Hemorrhage: A Systematic Review and Meta-analysis. *Neurocrit Care*. 2023;38:812-820. doi: 10.1007/s12028-022-01671-4
6. Andersen KK, Olsen TS, Dehlendorff C, Kammersgaard LP. Hemorrhagic and ischemic strokes compared: stroke severity, mortality, and risk factors. *Stroke*. 2009;40:2068-2072. doi: 10.1161/STROKEAHA.108.540112
7. Tomaselli GF, Mahaffey KW, Cuker A, Dobesh PP, Doherty JU, Eikelboom JW, Florido R, Gluckman TJ, Hucker WJ, Mehran R, et al. 2020 ACC Expert Consensus Decision Pathway on Management of Bleeding in Patients on Oral Anticoagulants: A Report of the American College of Cardiology Solution Set Oversight Committee. *J Am Coll Cardiol*. 2020;76:594-622. doi: 10.1016/j.jacc.2020.04.053
8. Panos NG, Cook AM, John S, Jones GM, Neurocritical Care Society Pharmacy Study G. Factor Xa Inhibitor-Related Intracranial Hemorrhage: Results From a Multicenter, Observational Cohort Receiving Prothrombin Complex Concentrates. *Circulation*. 2020;141:1681-1689. doi: 10.1161/CIRCULATIONAHA.120.045769
9. Connolly SJ, Sharma M, Cohen AT, Demchuk AM, Czlonkowska A, Lindgren AG, Molina CA, Berezcki D, Toni D, Seiffge DJ, et al. Andexanet for Factor Xa Inhibitor-Associated Acute Intracerebral Hemorrhage. *N Engl J Med*. 2024;390:1745-1755. doi: 10.1056/NEJMoa2313040
10. Greenberg SM, Ziai WC, Cordonnier C, Dowlatshahi D, Francis B, Goldstein JN, Hemphill JC, 3rd, Johnson R, Keigher KM, Mack WJ, et al. 2022 Guideline for the Management of Patients With Spontaneous Intracerebral Hemorrhage: A Guideline From the American Heart Association/American Stroke Association. *Stroke*. 2022;53:e282-e361. doi: 10.1161/STR.0000000000000407
11. Dunois C. Laboratory Monitoring of Direct Oral Anticoagulants (DOACs). *Biomedicines*. 2021;9. doi: 10.3390/biomedicines9050445
12. Connolly SJ, Milling TJ, Jr., Eikelboom JW, Gibson CM, Curnutte JT, Gold A, Bronson MD, Lu G, Conley PB, Verhamme P, et al. Andexanet Alfa for Acute Major Bleeding Associated with Factor Xa Inhibitors. *N Engl J Med*. 2016;375:1131-1141. doi: 10.1056/NEJMoa1607887
13. Zepeski AE, Faine BA, Merrill AE, Sutamtewagul G, Bhagavathi S. Utilization of anti-factor Xa levels to guide reversal of oral factor Xa inhibitors in the emergency department. *Am J Health Syst Pharm*. 2022;79:e20-e26. doi: 10.1093/ajhp/zxab326
14. Dinkelaar J, Patiwaal S, Harenberg J, Leyte A, Brinkman HJ. Global coagulation tests: their applicability for measuring direct factor Xa- and thrombin inhibition and reversal of

- anticoagulation by prothrombin complex concentrate. *Clin Chem Lab Med*. 2014;52:1615-1623. doi: 10.1515/cclm-2014-0307
15. Martin AC, Le Bonniec B, Fischer AM, Marchand-Leroux C, Gaussem P, Samama CM, Godier A. Evaluation of recombinant activated factor VII, prothrombin complex concentrate, and fibrinogen concentrate to reverse apixaban in a rabbit model of bleeding and thrombosis. *Int J Cardiol*. 2013;168:4228-4233. doi: 10.1016/j.ijcard.2013.07.152
 16. Martin AC, Gouin-Thibault I, Siguret V, Mordohay A, Samama CM, Gaussem P, Le Bonniec B, Godier A. Multimodal assessment of non-specific hemostatic agents for apixaban reversal. *J Thromb Haemost*. 2015;13:426-436. doi: 10.1111/jth.12830
 17. Bugaev N, Como JJ, Golani G, Freeman JJ, Sawhney JS, Vatsaas CJ, Yorkgitis BK, Kreiner LA, Garcia NM, Aziz HA, et al. Thromboelastography and rotational thromboelastometry in bleeding patients with coagulopathy: Practice management guideline from the Eastern Association for the Surgery of Trauma. *J Trauma Acute Care Surg*. 2020;89:999-1017. doi: 10.1097/TA.0000000000002944
 18. Artang R, Anderson M, Nielsen JD. Fully automated thromboelastograph TEG 6s to measure anticoagulant effects of direct oral anticoagulants in healthy male volunteers. *Res Pract Thromb Haemost*. 2019;3:391-396. doi: 10.1002/rth2.12206
 19. Artang R, Dias JD, Walsh M, Bliden K, Nielsen JD, Anderson M, Thurston BC, Tantry US, Hartmann J, Gurbel PA. Measurement of Anticoagulation in Patients on Dabigatran, Rivaroxaban, and Apixaban Therapy by Novel Automated Thrombelastography. *TH Open*. 2021;5:e570-e576. doi: 10.1055/a-1692-1415
 20. Dias JD, Lopez-Espina CG, Ippolito J, Hsiao LH, Zaman F, Muresan AA, Thomas SG, Walsh M, Jones AJ, Grisoli A, et al. Rapid point-of-care detection and classification of direct-acting oral anticoagulants with the TEG 6s: Implications for trauma and acute care surgery. *J Trauma Acute Care Surg*. 2019;87:364-370. doi: 10.1097/TA.0000000000002357
 21. von Elm E, Altman DG, Egger M, Pocock SJ, Gøtzsche PC, Vandenbroucke JP. The Strengthening the Reporting of Observational Studies in Epidemiology (STROBE) statement: guidelines for reporting observational studies. *Journal of Clinical Epidemiology*. 2008;61:344-349. doi: <https://doi.org/10.1016/j.jclinepi.2007.11.008>
 22. Granger CB, Alexander JH, McMurray JJ, Lopes RD, Hylek EM, Hanna M, Al-Khalidi HR, Ansell J, Atar D, Avezum A, et al. Apixaban versus warfarin in patients with atrial fibrillation. *N Engl J Med*. 2011;365:981-992. doi: 10.1056/NEJMoa1107039
 23. Agnelli G, Buller HR, Cohen A, Curto M, Gallus AS, Johnson M, Masiukiewicz U, Pak R, Thompson J, Raskob GE, et al. Oral apixaban for the treatment of acute venous thromboembolism. *N Engl J Med*. 2013;369:799-808. doi: 10.1056/NEJMoa1302507
 24. Sarode R, Milling TJ, Jr., Refaai MA, Mangione A, Schneider A, Durn BL, Goldstein JN. Efficacy and safety of a 4-factor prothrombin complex concentrate in patients on vitamin K antagonists presenting with major bleeding: a randomized, plasma-controlled, phase IIIb study. *Circulation*. 2013;128:1234-1243. doi: 10.1161/CIRCULATIONAHA.113.002283
 25. Hunt H, Stanworth S, Curry N, Woolley T, Cooper C, Ukoumunne O, Zhelev Z, Hyde C. Thromboelastography (TEG) and rotational thromboelastometry (ROTEM) for trauma induced coagulopathy in adult trauma patients with bleeding. *Cochrane Database Syst Rev*. 2015;2015:CD010438. doi: 10.1002/14651858.CD010438.pub2

Figure 1. Participant screening and enrollment



Group 1: received activated PCC for anticoagulation reversal with baseline TEG drawn prior to reversal. Group 2: received anticoagulation reversal prior to TEG collection and had levels drawn after reversal. Group 3: consented to the study but never received anticoagulation reversal.

Figure 2. Change in TEG R-time over time (Groups 1 and 2)

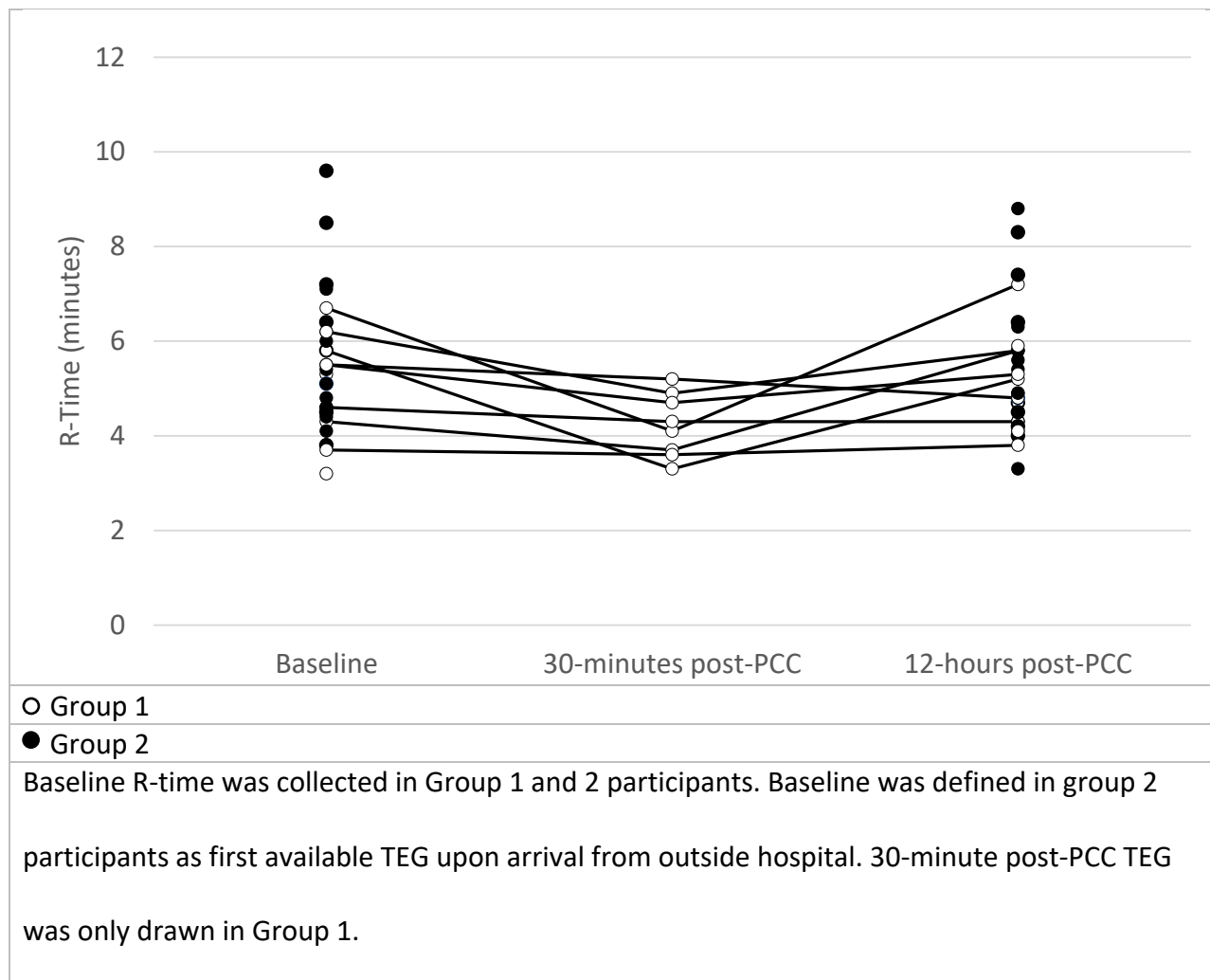


Table 1. Baseline Characteristics

	Participants (n=34)
Age (years), median (IQR)	81 (72-84)
Gender (male), (%)	24 (70.6)
CrCl (mL/min), (%)	
<30	4 (11.7)
30-59	13 (38.2)
≥60	17 (50.0)
Pre-admission DOAC (%)	
Apixaban	25 (73.5)
Rivaroxaban	9 (26.5)
Time since last known well (hours), median (IQR) ¹	
DOAC indication (%)	
Atrial fibrillation	27 (79.4)
Venous thromboembolism	7 (20.6)
*Other	3 (8.8)
Concomitant medications (%)	
Aspirin	13 (38.2)
Clopidogrel	2 (5.9)
None	20 (58.8)
ICH Type (%)	
Traumatic	23 (67.6)
Spontaneous	10 (29.4)
Unknown	1 (2.9)
TEG Sampling Group (%)	
Group 1	10 (29.4)
Group 2	21 (61.7)
Group 3	3 (8.8)
Transfer Type (%)	
Transfer from other facility	26 (76.5)
Direct presentation	8 (23.5)
Group 1 Characteristics	
Time from last DOAC dose to study enrollment, median (IQR)	11.1 (8.9-13.9)
Anti-Xa level (ng/mL), median (IQR)	
Apixaban assay (n=8)	158 (75-252)
Rivaroxaban assay (n=1)	158
activated PCC dose (units/kg), median (IQR)	24.8 (20.5-29.7)
¹ Time from reported last known well to hospital presentation	
² peripheral vascular disease (n=1), apical akinesis (n=1), transcatheter aortic valve replacement (n=1)	

Table 2. TEG Values Relative to Anticoagulation Reversal Administration (Group 1)

Characteristic Median (IQR)	Baseline, N = 10	30 Minutes post-PCC, N = 8²	12 Hours post-PCC, N = 10	24 Hours post-PCC, N = 9³	p-value²
R-Time	5.40 (4.38, 5.73)	4.20 (3.68, 4.75)	5.25 (4.43, 5.80)	5.30 (5.00, 5.80)	0.044
K-Time	1.25 (1.10, 1.30)	1.05 (0.80, 1.23)	1.20 (1.03, 1.38)	1.20 (1.10, 1.30)	0.999
LY30	0.10 (0.03, 0.35)	0.75 (0.00, 1.15)	0.35 (0.05, 0.90)	0.10 (0.00, 0.70)	0.039
Clot Strength	13.70 (12.28, 14.23)	10.70 (9.73, 12.45)	13.75 (12.03, 14.73)	12.70 (10.30, 15.30)	0.309
MA	73.4 (71.0, 74.0)	68.2 (66.0, 71.3)	73.4 (70.7, 74.7)	71.8 (67.3, 75.4)	0.342
CI	3.10 (1.83, 3.58)	3.35 (1.83, 3.83)	2.30 (1.40, 3.35)	2.60 (2.30, 3.40)	0.736
¹ F-Test from Linear Mixed Model ² Missing data are attributable to missed lab draw time or laboratory error (unable to run sample).					

Table 3. Pairwise Time Differences for TEG R-time (Group 1)

R-Time N=37	Beta	95% CI ¹	p-value
Baseline	--	--	
30 Minutes	-0.91	-1.8, -0.07	0.035
12 Hours	0.14	-0.65, 0.93	0.7
24 Hours	0.25	-0.56, 1.1	0.5

¹Confidence Interval