

1 Persistence of respiratory, enteric, and fecal  
2 indicator viruses in fecal sludge from on-site  
3 sanitation in Dakar, Senegal

4 Short Title: Viral RNA decay in fecal sludge from on-site sanitation

5 Lorelay Mendoza Grijalva<sup>a</sup>, Alsane Seck<sup>b</sup>, Laura Roldan-Hernandez<sup>a</sup>, Katherine E. Graham<sup>a,c</sup>,  
6 Alexandria B. Boehm<sup>a</sup>, William A. Tarpeh<sup>a,d,\*</sup>

7  
8 <sup>a</sup>Department of Civil and Environmental Engineering, Stanford University, Stanford, 94305, USA

9 <sup>b</sup>DELVIC Sanitation Initiatives, Dakar, 15542, Senegal

10 <sup>c</sup>School of Civil and Environmental Engineering, Georgia Institute of Technology, Atlanta,  
11 Georgia, 30332, USA

12 <sup>d</sup>Department of Chemical Engineering, Stanford University, Stanford, 94305, USA

13 \*Corresponding Author: [wtarpeh@stanford.edu](mailto:wtarpeh@stanford.edu)

14

15

16

## 17 Abstract

18 As wastewater-based epidemiology (WBE) broadens its focus to include prevalent diseases  
19 with significant global health impact, existing surveillance systems concentrate on sewer-based  
20 infrastructure, which excludes the 2.7 billion people using non-sewered systems. To address  
21 this gap, our study explores the potential of fecal sludge treatment plants (FSTPs) for WBE,  
22 emphasizing the stability of virus RNA targets within pooled fecal sludge. We screened fecal  
23 sludge from a centralized treatment facility in Dakar, Senegal for SARS-CoV-2, human  
24 norovirus (HuNoV), and microbial source trackers (MSTs) pepper mild mottle virus (PMMoV)  
25 and tomato brown rugose fruit virus (ToBRFV). Decay kinetics of genomic RNA markers from  
26 these viruses were examined at 4 °C, 15 °C, and 30 °C over 70 days. Results indicate high  
27 persistence of viral targets in fecal sludge (T90 value of 3.3 months for exogenous SARS-CoV-2  
28 N1 and N2, 6.2 months for ToBRFV), with all targets detected throughout the 70-day experiment  
29 under various temperatures with limited decay (<1 log<sub>10</sub> reduction). This study addresses a  
30 crucial gap in understanding virus persistence in on-site sanitation systems by providing  
31 essential decay rate constants for effective target detection. Our results indicate that sampling  
32 at centralized facilities treating fecal sludge from on-site sanitation could facilitate localized  
33 pathogen surveillance in low-income settings.

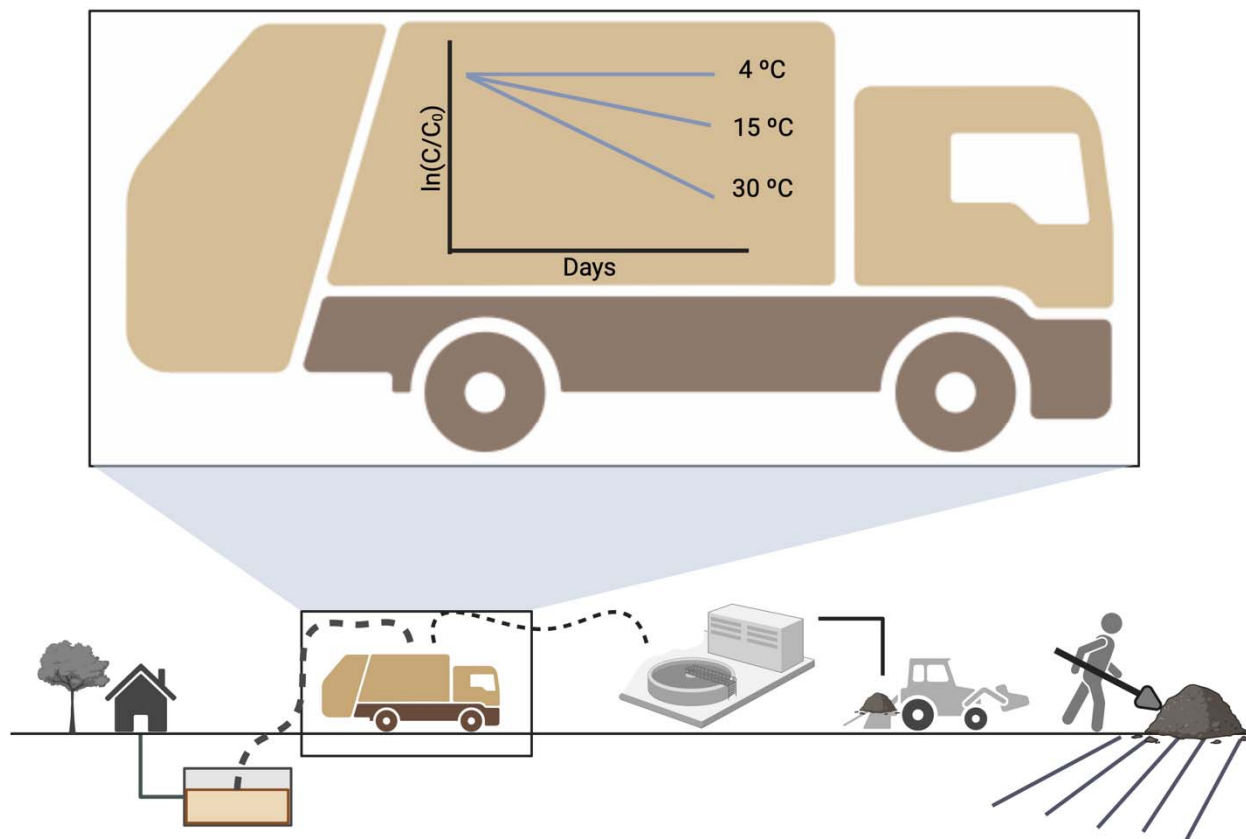
## 34 Keywords

- 35 • Environmental surveillance
- 36 • Fecal sludge treatment plant
- 37 • Virus RNA decay
- 38 • Wastewater-based epidemiology

## 39 Highlights

- 40 • Investigation of the persistence of SARS-CoV-2, HuNoV, PMMoV, and ToBRFV  
41 genomic RNA in pooled fecal sludge derived from on-site sanitation systems.
- 42 • Novel microbial source tracker (MST), ToBRFV, exhibited comparable abundance to  
43 PMMoV, a well-established MST, in fecal sludge.
- 44 • No significant decay observed for HuNoV and PMMoV over 70 days at all temperature  
45 conditions (4, 15, and 30 °C).
- 46 • SARS-CoV-2 N1 and N2 showed  $T_{90}$  values of 3.3 months at 30 °C.
- 47 • Fecal sludge treatment plants offer a centralized sampling location for wastewater-based  
48 epidemiology, providing a strategic approach for monitoring public health.

## 49 Graphical Abstract



50

51

52

53

## 54 Introduction

55 Wastewater-based epidemiology (WBE) emerged as a vital tool amid the COVID-19 pandemic,  
56 offering actionable public health insights that supplement traditional disease surveillance. Its  
57 pandemic response contributions include capturing asymptomatic carriers, identifying hotspots  
58 requiring resource deployment (Kirby *et al.*, 2021; Diamond *et al.*, 2022), and illustrating the  
59 regional spread of emerging variants (Izquierdo-Lara *et al.*, 2021; Boehm *et al.*, 2022). WBE has  
60 since extended its scope to the surveillance of other infectious diseases caused by viruses  
61 (CDC, 2022; Wolfe *et al.*, 2023). While advancements in WBE have focused on urban, high-  
62 income areas served by centralized, sewer treatment facilities thus far (Naughton *et al.*,  
63 2021), on-site sanitation technologies, such as septic tanks and pit latrines, predominant in Sub-  
64 Saharan Africa (72%), Central Asia (68%), and Latin America and the Caribbean (31%) (Greene  
65 *et al.*, 2021), are often overlooked. Despite serving 2.7 billion individuals, the potential to provide  
66 community disease surveillance for populations reliant on non-sewered, on-site sanitation  
67 systems has been highlighted (Capone *et al.* 2020; Li *et al.* 2023) but remains underexplored.  
68  
69 Conducting community health surveillance in non-sewered settings using fecal sludge presents  
70 context-specific challenges, such as scale, representativeness, and the stability of viral targets  
71 in on-site sanitation. Scale concerns arise because septic tanks and pit latrines typically serve  
72 individual households, making community surveillance resource-intensive. Attaining  
73 representativeness poses challenges in areas with limited sanitation infrastructure. Although  
74 environmental sampling can detect pathogens, the samples collected may generally lack  
75 information about the origin of flow inputs, the contributing population, and the environmental  
76 conditions between excretion and sampling. These inconsistencies may adversely impact the  
77 quality of measurements, thus challenging reproducibility and diminishing the ability to compare  
78 results between sites or studies. The limited understanding of target stability also increases the

79 challenge of interpreting the data because on-site sanitation technologies may retain excreta for  
80 extended periods (i.e., months to years) before disposal (Jensen *et al.*, 2009; Kumwenda, 2019;  
81 Musaazi *et al.*, 2023).

82  
83 Sampling from fecal sludge treatment plants (FSTPs) can begin to address these challenges;  
84 FSTPs serve as centralized facilities that collect and treat fecal sludge from diverse areas, and  
85 are common in urban and peri-urban areas (Atitaya Panuvatvanich, 2013; Sanitation Matters,  
86 2013; Harada, Strande and Fujii, 2015). FSTPs receive sludge from trucks servicing on-site  
87 systems, offering a pooled sample more representative than individual sanitation systems.  
88 Factors like sewershed size, input frequency, and sources may be more feasibly estimated than  
89 from surface water or soil samples, offering clearer understanding into the environmental  
90 conditions affecting the integrity of the sampled wastewater. Leveraging existing waste  
91 operations in non-sewered localities like Dakar, Senegal, presents promising opportunities to  
92 survey community health. Compared to on-site sanitation systems alone, FSTPs serve a larger  
93 population (scale) and encompass a known or consistent group of people (representative);  
94 however, insights into the stability of viral targets within the community's waste stream are  
95 unknown.

96  
97 The stability of targets has been highlighted as an important research area within WBE (Capone  
98 *et al.*, 2021; Li *et al.*, 2021), and determining the persistence of viral RNA in fecal sludge from  
99 FSTPs is a sensible first step towards developing effective WBE programs in communities that  
100 use on-site sanitation systems. While numerous studies have explored virus decay in  
101 wastewater from sewered settings (Ahmed *et al.*, 2020; Bivins *et al.*, 2020; Fu *et al.*, 2022;  
102 Roldan-Hernandez *et al.*, 2022), research on pathogen persistence within on-site sanitation  
103 systems is limited. On-site systems, dealing with smaller volumes and potentially higher solids  
104 content, may not consistently receive household greywater. Their characteristics can differ from

105 sewerage wastewater, and wastewater composition is known to impact pathogen decay (Koné *et*  
106 *al.*, 2007; Mehl *et al.*, 2011; Darimani *et al.*, 2015). Assessing their decay in context-specific  
107 matrices, such as fecal sludge from aggregated on-site sanitation systems, is vital due to  
108 potential variations in wastewater composition. Relying on decay values from other wastewater  
109 sources may not represent the unique characteristics of these sanitation contexts. Determining  
110 the decay rate of viral targets in fecal sludge may also offer insight into the maximum duration of  
111 sludge residence in on-site systems that still allow for their detection using molecular methods.

112  
113 In this study, we sought to assess the feasibility of utilizing FSTPs to implement WBE. We  
114 focused on the stability of various viral genomic RNA targets in fecal sludge samples from a  
115 centralized fecal sludge treatment facility in Dakar. We screened for key respiratory, enteric, and  
116 fecal indicator viruses' genomic RNA, and then examined their persistence. Specifically, we  
117 measured first-order decay kinetics of an exogenous respiratory virus, SARS-CoV-2 RNA; an  
118 endogenous enteric virus, human norovirus (HuNoV) RNA; and two endogenous human fecal  
119 indicator viruses, pepper mild mottle virus (PMMoV) and tomato brown rugose fruit virus  
120 (ToBRFV) RNA in fecal sludge at three relevant temperature conditions (4 °C, 15 °C, and 30  
121 °C). Collectively, these objectives contribute vital insights into fecal sludge sampling protocols in  
122 non-sewered settings and shed light on virus RNA persistence across diverse waste matrices.  
123 With the results of this study, we aim to advance understanding of monitoring infectious  
124 diseases in non-sewered settings.

125

126

## 127 Methods

### 128 Experiment overview and setup

129 Untreated fecal sludge was sampled from collection trucks at the inlet of a mid-sized fecal  
130 sludge treatment plant in Dakar, Senegal (Supplemental methods M1) and shipped to Stanford  
131 University, California. Each fecal sludge sample was aliquoted into duplicate 50-mL conical  
132 tubes. Tube racks were placed into three temperature-controlled rooms (4 °C, 15 °C, and 30  
133 °C), and covered in aluminum foil to prevent photodegradation. The total experiment duration  
134 was 70 days, with samples taken throughout and analyzed for RNA of four target viruses  
135 (Figure S1).

### 136 Site selection

137 In collaboration with Delvic Sanitation Initiatives, we identified six potential sampling sites in  
138 Senegal, considering operational areas, ease of sampling, and proximity to shipping services  
139 (Figure S2). Subsequently, we ranked and narrowed down these candidate regions based on  
140 COVID-19 prevalence in October 2020, ultimately choosing the city of Dakar. From the four  
141 FSTPs in Dakar, we selected the one with the largest "sewershed" population, serving  
142 approximately 600,000 people (Table S1). Cambérène, our chosen FSTP, receives 600 m<sup>3</sup> of  
143 fecal sludge daily from emptying trucks servicing on-site sanitation systems and contains two  
144 parallel settling thickening tanks and 10 unpacked drying beds. The facility removes solids from  
145 the sludge before pumping the remaining liquid to a neighboring activated sludge wastewater  
146 treatment plant for further treatment (Figure S3).



## 147 Target selection and screening

148 Candidate viruses were chosen through a comprehensive evaluation, considering factors such  
149 as relevance (e.g., COVID-19), regional importance, disease burden, knowledge gaps, logistical  
150 feasibility, and novelty of the work (Table S2). SARS-CoV-2, specifically the N1 and N2 regions  
151 of its genome, was selected due to its relevance to the COVID-19 pandemic. In 2017, diarrheal  
152 diseases, caused by enteric bacterial and viral pathogens, resulted in 1.6 million deaths  
153 globally, with children being the most affected (Dattani *et al.*, 2023). Diarrheal diseases also  
154 rank among the top 5 causes of death in Senegal (*Senegal - CDC - Center for Global Health*,  
155 2019). This prevalence motivated our selection of HuNoV, given its implications in a context  
156 where diarrheal diseases pose a considerable threat to public health.

157  
158 Pepper mild mottle virus (PMMoV), a commonly used microbial source tracker (MST) found  
159 ubiquitously in feces, was included due to its use as a normalization basis for other WBE targets  
160 (D'Aoust *et al.*, 2021; S. McClary-Gutierrez *et al.*, 2021; Wu *et al.*, 2022) and as an indirect  
161 measurement of the fecal strength of wastewater (Rosario *et al.*, 2009; Symonds, Rosario and  
162 Breitbart, 2019). Although studies exist on PMMoV persistence in wastewater influent and solids  
163 (Roldan-Hernandez *et al.*, 2022; Burnet *et al.*, 2023; Li *et al.*, 2023), there is novelty in studying  
164 PMMoV in on-site sanitation systems. Lastly, tomato brown rugose fruit virus (ToBRFV) was  
165 selected because it is an emerging microbial source tracker like PMMoV (Natarajan *et al.*,  
166 2023). ToBRFV is an RNA virus that infects tomatoes and peppers. Reports indicate its  
167 detection in crops in over 35 countries (Zhang *et al.*, 2022), as well as its specificity and  
168 abundance in human feces (Rothman and Whiteson, 2022; Natarajan *et al.*, 2023). This study  
169 marks the first detection of ToBRFV in Senegal and the first study globally to document the  
170 decay of ToBRFV RNA in any wastewater matrix based on a systematic literature search as of  
171 October 2023 (Supplemental methods M2 and M3).

172

173 Preliminary fecal sludge samples were sent to Stanford University for characterization in  
174 February and March 2022. Samples were screened for the presence of SARS-CoV-2, HuNoV,  
175 PMMoV, and ToBRFV virus RNA (assay information in Table S3). If a target was detected in the  
176 sacrificial screening sample, decay experiments were performed with the endogenous virus in  
177 the received fecal sludge. If no target was detected, exogenous virus was spiked before decay  
178 experiments. All three shipments (Table S4) of fecal sludge were negative for endogenous  
179 SARS-CoV-2 RNA during screening, which was expected considering the relatively low burden  
180 of disease in Dakar in the months preceding shipments (*Ministère de la santé, 2022*). All  
181 samples yielded detectable levels of PMMoV, ToBRFV and HuNoV RNA. Decay experiments  
182 proceeded with exogenous SARS-CoV-2 in the samples and the endogenous viruses (HuNoV,  
183 PMMoV and ToBRFV) found in the fecal sludge.

## 184 Sample collection and processing

185 Grab samples were collected on October 3rd, 2022 from a vacuum truck during discharge of  
186 fecal sludge to Cambérène FSTP. Samples were manually composited; 3 L of samples were  
187 taken at the beginning, 5 L of sample in the middle, and 3 L of sample at the end of the  
188 discharge process. The sampling strategy was coordinated with vacuum truck operators and the  
189 samples were mixed vigorously with a stirring rod or ladle and collected to minimize settling  
190 (Figure S4). After collection in plastic bottles, sludge samples were enclosed in sealed plastic  
191 bags, placed in a styrofoam cooler, and shipped to Stanford University within 24 hours.

192

193 Upon arrival at Stanford (within 6 days), the samples were analyzed for temperature (20 °C), pH  
194 using a pH meter (Mettler Toledo, Columbus, -OH), and total solids using standard methods  
195 (U.S. Environmental Protection Agency, 2001); they were then stored at at 4 °C while the

196 remaining experimental setup was completed for up to 12 hours. Samples were then mixed and  
197 aliquoted into duplicate 50 mL sterile conical tubes for each time point (Corning, Glendale, AZ);  
198 each conical tube was spiked with heat-inactivated SARS-CoV-2 (Integrated DNA technologies,  
199 Coralville, Iowa). First, a suspension of the SARS-CoV-2 stock was made by making a mix of 1  
200  $\mu\text{L}$  of stock per 1 mL of 1x tris-EDTA (TE) buffer. Then, 1 mL of the working stock was added to  
201 each aliquot for a resulting spike of  $(2.08 \times 10^6)$  gene copies per mL). Duplicate aliquots for each  
202 time point were subsequently incubated in three temperature-controlled rooms (4, 15, and 30  
203  $^{\circ}\text{C}$ ) to assess the effect of temperature on SARS-CoV-2, HuNoV, PMMoV, and ToBRFV RNA.  
204 The samples were covered in foil to prevent potential photodegradation. Both replicate aliquots  
205 were processed on day 0 (the day they were prepared), and on days 2,4,6,8,10,12,18,40,55,  
206 and 70 were immediately centrifuged upon collection for sample dewatering.

## 207 RNA extraction and RT-ddPCR

208 We dewatered fecal sludge samples using a modified existing protocol and extracted them upon  
209 day of collection (Topol *et al.*, 2021). After centrifugation at 24000 x g for 30 min at 4  $^{\circ}\text{C}$ , the  
210 entire supernatant was decanted, taking care not to disturb the pellet, and all solids were  
211 retained. 0.22 g of the dewatered sludge pellet were resuspended in a 2.9 mL solution of  
212 DNA/RNA shield spiked with 1.5  $\mu\text{L}$  of rehydrated bovine coronavirus (BCoV) vaccine (500,000  
213 copies/mL in the solution) as an extraction control. The final concentration of dewatered solids  
214 resuspended in the BCoV-spiked DNA/RNA shield was approximately 75 mg/mL.

215 Homogenization with four grinding balls (OPS Diagnostics, Lebanon, NJ) at 1,000 rpm for two  
216 minutes (MP Biomedicals, Santa Ana, California) was followed by brief centrifugation at 4000 x  
217 g for five minutes. RNA extraction, conducted the same day, used Qiagen Allprep Powerviral  
218 Kits (Qiagen, Germantown, MD). Each sample was processed in duplicate from concentration  
219 through quantification. One positive and two negative extraction controls per sampling timepoint

220 were included. RNA recovery efficiency was determined by comparing measured BCoV  
221 concentrations to stock concentrations, which also served as our positive extraction control.  
222 Extracted RNA, stored at  $-80^{\circ}\text{C}$  (69–189 days), was quantified via reverse transcription droplet  
223 digital PCR (RT-ddPCR) using Bio-Rad (Hercules, CA) droplet digital PCR kits (catalog no.  
224 12013743). Reaction mix concentrations and thermal cycling conditions can be found in  
225 supplemental methods M4. Each ddPCR plate included one positive control and three no-  
226 template (negative) controls. SARS-CoV-2 positive controls were patient-derived RNA. The  
227 positive control for BCoV was RNA extracted from reconstituted BCoV vaccines. Positive  
228 controls for PMMoV, HuNoV and ToBRFV consisted of synthetic gene fragments. ToBRFV's  
229 positive control was cloned in a plasmid vector (IDT); the rest were purchased directly as gBlock  
230 gene fragments (IDT). All negative controls were molecular grade water (Corning, Corning, NY).  
231 The N1 and N2 duplex assay and HuNoV and ToBRFV singleplex assays were conducted in  
232 triplicate wells, and the BCoV/ PMMoV duplex assay was conducted in duplicate wells; replicate  
233 wells were merged for analysis. QuantaSoft and Quantasoft Analysis Pro (Bio-Rad) were used  
234 for ddPCR data analysis, where clusters were manually assigned to positive and negative  
235 controls per manufacturer instructions (Bio-Rad). Formation of at least 10,000 droplets was  
236 required, and a sample was considered positive for a target if three or more droplets were  
237 positive in the merged wells.

## 238 Data analysis

239 Data were exported as CSV files from ddPCR Quantasoft software and dimensional analysis to  
240 convert concentrations per well to gene copies per gram of fecal sludge solids was conducted in  
241 Microsoft Excel (version 16.71). The remainder of data processing, plotting, and model fitting  
242 analyses were performed in R (version 4.1.2) using Rstudio (version 2022.07.1) (Supplemental  
243 methods M5). For ddPCR data, the error bars are reported as standard deviations from total

244 error associated with technical replicates (merged wells). Experimental replicate concentrations  
245 were averaged prior to plotting and model fitting, and errors were propagated for upper and  
246 lower error bars separately (Supplemental methods M6).

247  
248 The decay of all RNA targets in fecal sludge was analyzed using a first-order decay model  
249 (Equation 1). The decay rate constant,  $k$ , was calculated by linearizing and determining the  
250 slope (Equation 2). The time required to achieve a 90% (one log) reduction ( $T_{90}$ ) was calculated  
251 using Equation 3.

252

253 Equation 1  $C_t = C_0 e^{-kt}$

254 Equation 2  $\ln\left(\frac{C_t}{C_0}\right) = -kt$

255 Equation 3  $T_{90} = \frac{-\ln(0.1)}{k}$

256

257 In these equations  $C_t$  is the concentration of virus RNA at time  $t$ ,  $C_0$  is the starting concentration  
258 at time zero, and  $k$  is the first order decay rate constant.

## 259 Results and discussion

### 260 Quality assurance and quality control

261 We followed the Environmental Microbiology Minimum Information (EMMI) Guidelines  
262 (Borchardt *et al.*, 2021) as closely as possible (Supplemental methods M7). Extraction and  
263 ddPCR positive and negative controls were positive and negative, respectively, for all viral RNA  
264 targets. BCoV recovery averaged 29%, and the limit of detection was determined by identifying  
265 samples with three positive droplets. Samples meeting this threshold were considered positive.

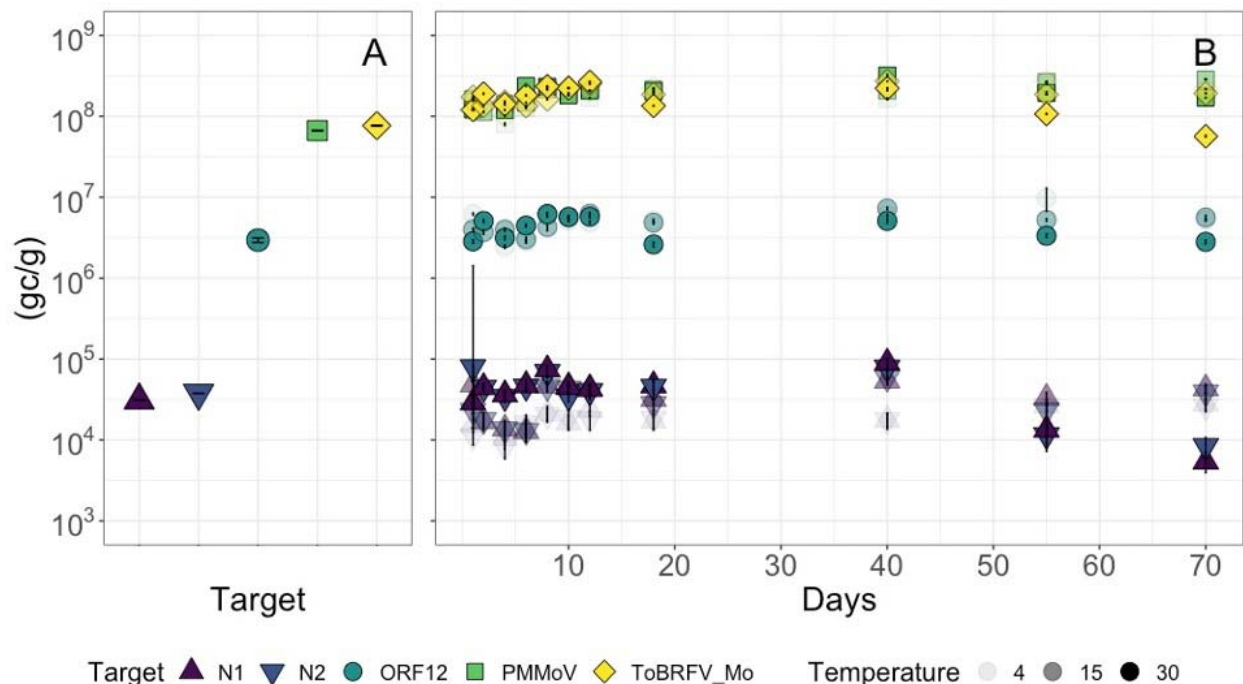
266 Graphical analysis of viral RNA target concentration assessed the impact of template dilution  
267 (both undiluted and 10x dilution were performed). RNA extracts were run at a tenfold dilution for  
268 all targets, with undiluted plates selected for SARS-CoV-2 targets due to samples falling below  
269 the limit of detection at a dilution factor of 10. Duplicate samples were averaged for plotting,  
270 except when one data point was missing. Three sample replicates were excluded from analyses  
271 due to lab processing loss. In such cases, the concentration value of the viable replicate was  
272 used.

## 273 Overall detection of targets

274 Endogenous viruses PMMoV and ToBRFV are non-infectious to humans but their RNA is  
275 abundant in human feces and found at similar orders of magnitude ( $6.6 \times 10^7$  and  $7.67 \times 10^7$   
276 gc/g in initial samples, respectively, Figure 1A). They were found at concentrations almost 1.5  
277 orders of magnitude higher than HuNoV ( $2.9 \times 10^6$  gc/g in initial samples). This difference in  
278 abundance was expected because while all feces may contain fecal markers, not all individuals  
279 are infected with HuNoV. Exogenous (spiked) SARS-CoV-2 N1 and N2 genes were consistently  
280 detected at an average concentration of  $3.51 \times 10^4$  gc/g in initial samples. All targets remained  
281 detectable throughout the 70-day experiment (Figure 1B).

282

283



284  
285 **Figure 1.** Panel A (left) illustrates the concentrations of all target viruses at 4, 15, and 30 °C in  
286 the initial sample, while panel B (right) depicts concentrations throughout the 70-day experiment  
287 reported at gene copies per gram of dry fecal sludge solids. In the legend, SARS-CoV-2 targets  
288 (N1 and N2) are denoted by triangle points, HuNoV (ORF12) by circles, and MST viruses  
289 (PMMoV and ToBRFV) by squares. The opacity of the data points in Panel B increases with  
290 temperature. Error bars depict standard deviations among experimental duplicates (aliquots)  
291 and technical replicates (wells) for each target.

## 292 Persistence study

293 Despite the extended experiment duration, limited decay ( $<1 \log_{10}$  reduction) was observed for  
294 all RNA targets across all temperature conditions. Table 1 provides details on the first-order  
295 decay rate constants (hereafter referred to as “ $k$  values”) and the time required to achieve a  
296 90% reduction ( $T_{90}$ ) in concentration for SARS-CoV-2 (N1 and N2 genes), HuNoV, PMMoV, and  
297 ToBRFV. Positive  $k$  values were exclusively observed at 30° C ( $p < 0.05$ ), ranging from 0.010 to

298 0.023 day<sup>-1</sup>. However, at 4 and 15 °C, *k* was negative (indicating increasing concentration over  
 299 time) for all RNA targets, although often not significantly different from zero (Table 1). Additional  
 300 linearized data for model fits can be found in supplemental table S6.

301  
 302 **Table 1.** First-order decay rate constants *k* for all targets and all temperatures in fecal sludge.  
 303 Negative *k* values indicate there was a positive slope (indicating  $C > C_0$ );  $T_{90}$  values were not  
 304 calculated for positive slopes. Asterisk (\*) indicates *k* values significantly different from zero ( $p <$   
 305 0.05).

Target	Temperature (°C)	<i>k</i> (days <sup>-1</sup> )	<i>p</i> value	$T_{90}$ (days)	$T_{90}$ (months)
N1	4	-0.01	0.02*		
	15	-0.01	0.27		
	30	0.023	0.02*	100	3.3
N2	4	-0.01	0.02*		
	15	-0.01	0.24		
	30	0.023	0.01*	100	3.3
HuNoV	4	-0.008	0.14		
	15	-0.01	0.07		
	30	0.01	0.32	500	16.7
PMMoV	4	-0.01	0.02*		



	15	-0.01	0.004*		
	30	-0.003	0.50		
ToBRFV	4	-0.007	0.09		
	15	-0.004	0.23		
	30	0.012	0.03*	187	6.2

306

### 307 **N1/N2 targets**

308 Exogenous SARS-CoV-2 RNA exhibited high persistence, with statistically significant decay  
 309 ( $k=0.023$  and  $p<0.05$  for N1 and N2) only observed at 30 °C, resulting in a  $T_{90}$  value of 3.3  
 310 months (Table 1). At 15 °C, minimal to negligible decay was observed. In fact, the RNA  
 311 concentrations remained stable ( $k = -0.01 \text{ day}^{-1}$ ,  $p > 0.05$ ). At 4 °C there was a slight positive  
 312 slope (Figure 2A and B) that was significantly different from 0 ( $k = -0.01 \text{ day}^{-1}$  and  $p < 0.05$ ),  
 313 perhaps due to the small sample size (12 time points) of the study.

314

315 Our findings share several parallels with existing observations. So far, only one other  
 316 persistence study, conducted using river water and seawater at 4 and 20° C, also observed  
 317 negligible decay of SARS-CoV-2 RNA (Sala-Comorera *et al.*, 2021). Persistence studies in  
 318 wastewater influent report higher  $k$  values with substantially faster decay at higher  
 319 temperatures, ranging from  $k = 0.05 \text{ day}^{-1}$  at 4 °C to as high as  $4.32 \text{ day}^{-1}$  at 20°C (Weidhaas *et*  
 320 *al.*, 2021; Burnet *et al.*, 2023). However, a study by Roldan-Hernandez (2022), focusing on  
 321 persistence in primary settled solids from a centralized system in the US, observed a slower  
 322 decay with  $k$  values approaching levels comparable but higher than those in the present study  
 323 ( $k = 0.024 \text{ day}^{-1}$  at 4°C, and  $k = 0.06 \text{ day}^{-1}$  at 37°C). This convergence may be attributed to the

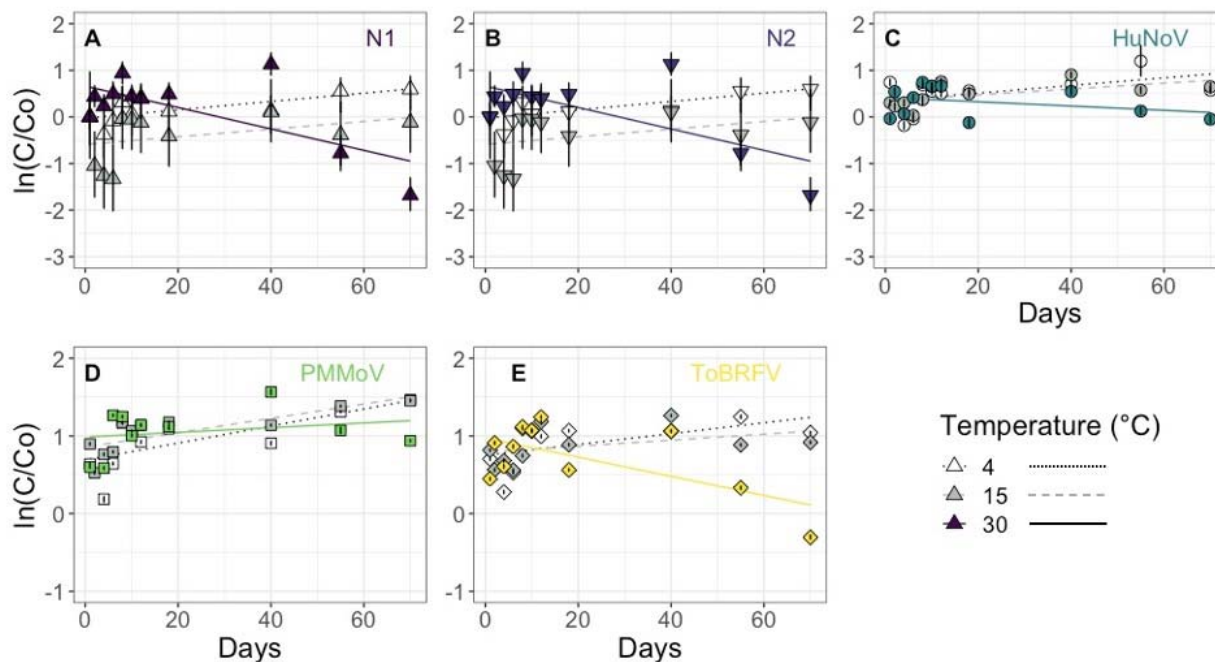
324 higher solids content shared by primary settled solids and fecal sludge (Table S5), underscoring  
325 the potential influence of matrix composition on decay dynamics.

326

### 327 **HuNoV target**

328 No significant decay ( $p > 0.05$ ) was observed for HuNoV RNA at any of the three temperature  
329 conditions (Figure 2C). Few studies investigate the persistence of HuNoV RNA, and those that  
330 do have focused on inactivation or detection in environmental waters—a justified emphasis  
331 given its contribution to recreational waterborne illness (Viau, Lee and Boehm, 2011; Boehm,  
332 Soller and Shanks, 2015; Wade *et al.*, 2018). Nevertheless, there is a lack of attention to  
333 persistence in wastewaters, including fecal sludge. Our results align with other studies despite  
334 differences in the water matrix. One recent study conducted in river water documented a range  
335 of  $k$  values for HuNoV RNA, spanning from no significant decay to  $k = 0.12 \text{ day}^{-1}$  (Kennedy *et*  
336 *al.*, 2023).

337 These persistence results are impactful for water, sanitation, and hygiene (WASH) initiatives  
338 because the provision of universally safe sanitation directly influences disease burden (World  
339 Health Organization and United Nations Children’s Fund (UNICEF), 2017). For example, one  
340 study conducted in Dhaka, Bangladesh revealed a 14% lower prevalence of diarrheal disease in  
341 communities with access to safely managed sanitation compared to those without (Akter *et al.*,  
342 2022). At present, the high persistence of HuNoV RNA in fecal sludge suggests a feasible  
343 opportunity to collect public health data from on-site sanitation contexts. Although HuNoV RNA  
344 remains detectable via molecular methods for longer than viable norovirus (Shaffer *et al.*, 2022),  
345 future studies should elucidate exposure risks to sanitation workers and the potential impacts on  
346 broader public health initiatives.



347  
348 **Figure 2.** First-order decay curves of SARS-CoV-2 N1 (A), N2 (B), HuNoV (C), PMMoV (D) and  
349 ToBRFV (E) RNA in fecal sludge. Temperature is indicated by open (4 °C), gray (15 °C), and  
350 solid color (30 °C) symbols with dotted, dashed, and solid lines, respectively. Colors and shapes  
351 indicate target type consistent with Figure 1. Error bars depict standard deviations among  
352 experimental duplicates (aliquots) and technical replicates (wells) for each target.

353  
354 **PMMoV and ToBRFV targets**  
355 Based on our literature review, we hypothesized minimal decay of PMMoV RNA; indeed, there  
356 was no significant decay even at 30 °C ( $k = -0.003 \text{ day}^{-1}$ ,  $p > 0.05$ ). Roldan-Hernandez *et al.*  
357 (2022) found high persistence of endogenous PMMoV RNA in primary settled solids, with decay  
358 rates varying between 0.01 and 0.09  $\text{day}^{-1}$  (Table 1). At 4 °C and 15 °C, RNA concentrations in  
359 final samples after 70 days were slightly but statistically significantly higher than the initial  
360 concentrations (Figure 2D). This observed variation is likely attributable to measurement  
361 artifacts that reflect inherent variability across all sample processing stages. Burnet *et al.* (2023)  
362 also observed increased PMMoV RNA concentrations at 4, 12, and 20 °C after 27 days. Other

363 hypotheses for these observations include potential changes in the composition (biotic or  
364 abiotic) of the sample matrix during incubation, which might enhance the availability of RNA for  
365 extraction and result in variable decay rate constants (Burnet *et al.*, 2023; Kennedy *et al.*, 2023).  
366 Observing similar persistence as previous reports demonstrates PMMoV's utility as both a  
367 microbial source tracker and a fecal strength control in various contexts.

368

369 ToBRFV RNA was overall highly persistent over 70 days at the lower temperatures of 4 and 15  
370 °C. At 30 °C (Figure 2E), slight but significant decay was observed ( $k = 0.012 \text{ day}^{-1}$ ,  $T_{90} = 6.2$   
371 months). Although the literature lacks comparative  $k$  values, our results describing faster decay  
372 at higher temperatures are consistent with general trends for other targets (e.g., PMMoV). To  
373 date, ToBRFV has been suggested as an MST tool due to its specificity to humans and  
374 abundance in feces. In the broader context of WBE, particularly for on-site systems, PMMoV  
375 and ToBRFV serve as highly resilient fecal indicator viruses.

376

### 377 **Implications**

378 The decay rate constants, on the whole, are quite modest;  $k$  values for all targets in our study  
379 consistently show lower values than those reported for sewerage wastewater influent and  
380 wastewater solids. However, they are consistent with findings indicating that virus RNA exhibits  
381 minimal decay in wastewater solids (Roldan-Hernandez *et al.*, 2022; Burnet *et al.*, 2023). The  
382 limited decay observed implies that the targets remain detectable for an extended period. This  
383 finding is encouraging for using FSTPs as a centralized point for sampling and identifying viral  
384 targets and underscores the importance of understanding average time between collections in  
385 non-sewered settings (Delaire *et al.*, 2021).

386

387 In some studies, nonlinear decay models, such as JM2 (Juneja, Huang and Marks, 2006), have  
388 been proposed for pathogens and fecal indicators in wastewater, manure, and biosolids, as

389 observed by Mitchell (2015). This model accommodates shouldering (an initial delay in decay)  
390 and tailing (decay slowing with time). Considering these features, our findings of exceptionally  
391 low decay rates for endogenous viral RNA targets might be explained by capturing the tail end  
392 of decay models seen in other studies, making our observed decay curve appear relatively flat.  
393 Capturing the tail end is logical considering fecal sludge from emptying trucks exhibits a mixed  
394 age profile due to variations in filling durations and emptying rates among on-site sanitation  
395 systems (Conaway *et al.*, 2023). However, a prior study in Malawi found that sampling depth in  
396 pit latrines (indirect measure of sludge age) did not strongly impact the detection of enteric  
397 pathogens using molecular methods (Capone *et al.*, 2021), suggesting consistent detection  
398 even in aged fecal sludge.

399

#### 400 **Limitations**

401 Several limitations should be considered to contextualize the results of this study. First, this  
402 study is limited to RNA persistence, not infectivity. Consequently, the findings do not necessarily  
403 imply potential risks to sanitation workers, despite the significance of this concern. It is also  
404 possible that by sampling at an FSTP where fecal sludge has been pumped out of containment,  
405 we may have exposed the sample to aerobic conditions and thus disrupted ongoing anaerobic  
406 processes. Additionally, the 4 to 5 days of sample shipment time may lead to differences  
407 between our initial concentrations of endogenous viral RNA and the concentrations in feces  
408 deposited into the pit latrines from which the sludge was collected. This lag allows for the  
409 possibility of biological or chemical processes in the initial days before analysis, potentially  
410 resulting in decay not captured in our study. Future research can estimate decay during  
411 transport by introducing a known concentration of a tracer virus at the time of sampling and  
412 measuring its concentration immediately upon sample receipt after shipment.

413 Because our study was conducted using a composited sample from one fecal sludge collection  
414 truck, future work should also look at inter-shipment variability and seasonal variability of viral  
415 targets in fecal sludge. This approach mirrors the methodology employed in studies within  
416 sewer settings, where intraday variability in wastewater influent is commonly examined  
417 (Ahmed *et al.*, 2021; Bivins *et al.*, 2021; Mendoza Grijalva *et al.*, 2022). Further decay  
418 experiments are necessary for fecal sludges at temperatures exceeding 30°C, which are typical  
419 in regions like sub-Saharan Africa and India. Additionally, experiments conducted at room  
420 temperature (20°C) can address potential limitations in accessing temperature-controlled  
421 facilities or incubators, which may vary both in the field and among different laboratories. While  
422 our study indicates that refrigerating samples may not be necessary for accurate detection and  
423 quantification of viruses, it is advisable to verify our findings. Valuable insights into workflow  
424 optimization can be obtained through such investigations.

## 425 Conclusions

426 This study introduces an original approach to WBE in a non-sewered area in Dakar, Senegal.  
427 We collected fecal sludge samples from a centralized facility that receives and consolidates  
428 fecal sludges from nearby on-site sanitation systems. Our analysis identified the presence of  
429 endogenous HuNoV, PMMoV, and ToBRFV RNA. Exogenous SARS-CoV-2 N1 and N2 RNA  
430 exhibited modest decay at 30 °C ( $k = 0.023 \text{ day}^{-1}$ ,  $p < 0.05$ ), corresponding to a  $T_{90}$  value of 3.3  
431 months. Endogenous ToBRFV RNA also showed modest decay at 30 °C ( $k = 0.012 \text{ day}^{-1}$ ,  $p <$   
432  $0.05$ ), with a  $T_{90}$  value of 6.2 months. No significant decay was observed for HuNoV or PMMoV  
433 RNA at any temperature condition (4, 15, and 30 °C) over the 70-day period. Our study presents  
434 the first detection of ToBRFV as a novel microbial source tracker in Senegal wastewaters, and  
435 the first persistence study of its nucleic acids in any water matrix. By providing novel first-order

436 decay rate constants, this study begins to address a significant knowledge gap concerning the  
437 stability of viral RNA in fecal sludges.

438

439 Next steps for assessing the utility of sampling from FSTPs for community health surveillance  
440 include examining correlations between clinical data and fecal sludge data from FSTPs, as has  
441 been done with environmental surveillance studies (Rogawski McQuade *et al.*, 2023). Utilizing  
442 FSTPs could streamline site selection for environmental surveillance studies because they are  
443 already centralized and contained, which could facilitate data interpretation. Sampling directly  
444 from on-site sanitation systems offers more control over obtaining fresh sludge due to sampling  
445 depth (Capone *et al.*, 2021; Li *et al.*, 2023), while opting for older sludge at an FSTP may  
446 provide a more representative sample of a wider community. Overall, results from our study  
447 suggest the feasibility of utilizing FSTPs for WBE sampling and highlight their potential as a  
448 valuable complement to current surveillance of wastewater and environmental waters. On-site  
449 sanitation technologies constitute up to 72% of sanitation system usage in much of the global  
450 south (Greene *et al.*, 2021); our findings encourage researchers to leverage established fecal  
451 sludge management infrastructure to develop community health surveillance programs.

452

## 453 Acknowledgments

454 Financial support for this study was generously provided by the Stanford Diversifying Academia,  
455 Recruiting Excellence (DARE) Fellowship awarded to LMG, as well as grants from the Stanford  
456 School of Engineering, the Dreyfus Foundation, the Stanford Center for Innovation in Global  
457 Health (CIGH), and the Stanford Department of Chemical Engineering. We would also like to  
458 acknowledge the team at Delvic Sanitation Initiatives for sample collection and Aravind

459 Natarajan for his technical assistance with the ToBRFV assay. Graphical abstract was created  
460 using BioRender.

## 461 Supplementary materials

462 The supplementary materials document contains details about experimental design, literature  
463 review process, and data processing.

464

465



## 466 References

- 467 Ahmed, W. *et al.* (2020) 'Decay of SARS-CoV-2 and surrogate murine hepatitis virus RNA in  
468 untreated wastewater to inform application in wastewater-based epidemiology', *Environmental*  
469 *Research*, 191, p. 110092. Available at: <https://doi.org/10.1016/j.envres.2020.110092>.
- 470 Ahmed, W. *et al.* (2021) 'Intraday variability of indicator and pathogenic viruses in 1-h and 24-h  
471 composite wastewater samples: Implications for wastewater-based epidemiology',  
472 *Environmental Research*, 193, p. 110531. Available at:  
473 <https://doi.org/10.1016/j.envres.2020.110531>.
- 474 Akter, J. *et al.* (2022) 'Equity in access to safely managed sanitation and prevalence of diarrheal  
475 diseases in Bangladesh: a national and sub-national analysis', *BMC Infectious Diseases*, 22(1),  
476 p. 871. Available at: <https://doi.org/10.1186/s12879-022-07884-4>.
- 477 Atitaya Panuvatvanich (2013) 'Financial Feasibility Analysis for FSM Business in Thailand'.
- 478 Bivins, A. *et al.* (2020) 'Persistence of SARS-CoV-2 in Water and Wastewater', *Environmental*  
479 *Science & Technology Letters*, 7(12), pp. 937–942. Available at:  
480 <https://doi.org/10.1021/acs.estlett.0c00730>.
- 481 Bivins, A. *et al.* (2021) 'Within- and between-Day Variability of SARS-CoV-2 RNA in Municipal  
482 Wastewater during Periods of Varying COVID-19 Prevalence and Positivity', *ACS ES&T Water*,  
483 p. acsestwater.1c00178. Available at: <https://doi.org/10.1021/acsestwater.1c00178>.
- 484 Boehm, A.B. *et al.* (2022) 'Regional Replacement of SARS-CoV-2 Variant Omicron BA.1 with  
485 BA.2 as Observed through Wastewater Surveillance', *Environmental Science & Technology*  
486 *Letters*, 9(6), pp. 575–580. Available at: <https://doi.org/10.1021/acs.estlett.2c00266>.
- 487 Boehm, A.B., Soller, J.A. and Shanks, O.C. (2015) 'Human-Associated Fecal Quantitative  
488 Polymerase Chain Reaction Measurements and Simulated Risk of Gastrointestinal Illness in  
489 Recreational Waters Contaminated with Raw Sewage', *Environmental Science & Technology*  
490 *Letters*, 2(10), pp. 270–275. Available at: <https://doi.org/10.1021/acs.estlett.5b00219>.

491 Borchardt, M.A. *et al.* (2021) 'The Environmental Microbiology Minimum Information (EMMI)  
492 Guidelines: qPCR and dPCR Quality and Reporting for Environmental Microbiology',  
493 *Environmental Science & Technology*, 55(15), pp. 10210–10223. Available at:  
494 <https://doi.org/10.1021/acs.est.1c01767>.

495 Burnet, J.-B. *et al.* (2023) 'Persistence of endogenous RNA biomarkers of SARS-CoV-2 and  
496 PMMoV in raw wastewater: Impact of temperature and implications for wastewater-based  
497 epidemiology', *Science of The Total Environment*, 857, p. 159401. Available at:  
498 <https://doi.org/10.1016/j.scitotenv.2022.159401>.

499 Capone D *et al.* (2021) 'Impact of sampling depth on pathogen detection in pit latrines.', *PLoS*  
500 *Negl Trop Dis*, 15(3), p. e0009176. Available at: <https://doi.org/10.1371/journal.pntd.0009176>.

501 CDC (2022) *National Wastewater Surveillance System, Centers for Disease Control and*  
502 *Prevention*. Available at: [https://www.cdc.gov/healthywater/surveillance/wastewater-](https://www.cdc.gov/healthywater/surveillance/wastewater-surveillance/wastewater-surveillance.html)  
503 [surveillance/wastewater-surveillance.html](https://www.cdc.gov/healthywater/surveillance/wastewater-surveillance/wastewater-surveillance.html) (Accessed: 10 January 2022).

504 Capone, Drew, David Berendes, Oliver Cumming, Jackie Knee, Rassul Nalá, Benjamin B. Risk,  
505 Christine Stauber, Kevin Zhu, and Joe Brown. 2020. "Analysis of Fecal Sludges Reveals  
506 Common Enteric Pathogens in Urban Maputo, Mozambique." *Environmental Science &*  
507 *Technology Letters* 7 (12): 889–95. <https://doi.org/10.1021/acs.estlett.0c00610>.

508 Conaway, K. *et al.* (2023) 'On-site sanitation system emptying practices and influential factors in  
509 Asian low- and middle-income countries: A systematic review', *Hygiene and Environmental*  
510 *Health Advances*, 6, p. 100050. Available at: <https://doi.org/10.1016/j.heha.2023.100050>.

511 D'Aoust, P.M. *et al.* (2021) 'Quantitative analysis of SARS-CoV-2 RNA from wastewater solids  
512 in communities with low COVID-19 incidence and prevalence', *Water Research*, 188, p. 116560.  
513 Available at: <https://doi.org/10.1016/j.watres.2020.116560>.

514 Darimani, H.S. *et al.* (2015) 'Effect of Post-treatment Conditions on the Inactivation Rate of  
515 Pathogenic Bacteria after the Composting Process', *Compost Science & Utilization*, 23(3), pp.  
516 164–173. Available at: <https://doi.org/10.1080/1065657X.2015.1015082>.

- 517 Dattani, S. *et al.* (2023) 'Diarrheal Diseases', *Our World in Data* [Preprint]. Available at:  
518 <https://ourworldindata.org/diarrheal-diseases> (Accessed: 5 December 2023).
- 519 Delaire, C. *et al.* (2021) 'How Much Will Safe Sanitation for all Cost? Evidence from Five Cities',  
520 *Environmental Science & Technology*, 55(1), pp. 767–777. Available at:  
521 <https://doi.org/10.1021/acs.est.0c06348>.
- 522 Diamond, M.B. *et al.* (2022) 'Wastewater surveillance of pathogens can inform public health  
523 responses', *Nature Medicine*, 28(10), pp. 1992–1995. Available at:  
524 <https://doi.org/10.1038/s41591-022-01940-x>.
- 525 Fu, S. *et al.* (2022) 'The decay of coronavirus in sewage pipes and the development of a  
526 predictive model for the estimation of SARS-CoV-2 infection cases based on wastewater  
527 surveillance'. medRxiv, p. 2022.03.16.22272521. Available at:  
528 <https://doi.org/10.1101/2022.03.16.22272521>.
- 529 Harada, H., Strande, L. and Fujii, S. (2015) 'Challenges and Opportunities of Faecal Sludge  
530 Management for Global Sanitation', *Ischaemic heart disease* [Preprint].
- 531 Izquierdo-Lara, R. *et al.* (2021) 'Monitoring SARS-CoV-2 Circulation and Diversity through  
532 Community Wastewater Sequencing, the Netherlands and Belgium', *Emerging Infectious  
533 Diseases*, 27(5), pp. 1405–1415. Available at: <https://doi.org/10.3201/eid2705.204410>.
- 534 Jensen, P.K. *et al.* (2009) 'Survival of *Ascaris* eggs and hygienic quality of human excreta in  
535 Vietnamese composting latrines', *Environmental Health*, 8(1), p. 57. Available at:  
536 <https://doi.org/10.1186/1476-069X-8-57>.
- 537 Juneja, V.K., Huang, L. and Marks, H. (2006) 'Approaches for Modeling Thermal Inactivation of  
538 Foodborne Pathogens', in *Advances in Microbial Food Safety*. American Chemical Society  
539 (ACS Symposium Series, 931), pp. 235–251. Available at: [https://doi.org/10.1021/bk-2006-  
540 0931.ch016](https://doi.org/10.1021/bk-2006-0931.ch016).
- 541 Kennedy, L.C. *et al.* (2023) 'Persistence of Human Norovirus (GII) in Surface Water: Decay  
542 Rate Constants and Inactivation Mechanisms', *Environmental Science & Technology*, 57(9), pp.

- 543 3671–3679. Available at: <https://doi.org/10.1021/acs.est.2c09637>.
- 544 Kirby, A.E. *et al.* (2021) ‘Using Wastewater Surveillance Data to Support the COVID-19  
545 Response — United States, 2020–2021’, *MMWR. Morbidity and Mortality Weekly Report*,  
546 70(36), pp. 1242–1244. Available at: <https://doi.org/10.15585/mmwr.mm7036a2>.
- 547 Koné, D. *et al.* (2007) ‘Helminth eggs inactivation efficiency by faecal sludge dewatering and co-  
548 composting in tropical climates’, *Water Research*, 41(19), pp. 4397–4402. Available at:  
549 <https://doi.org/10.1016/j.watres.2007.06.024>.
- 550 Kumwenda, S. (2019) ‘Inactivation of pathogens in ecological sanitation latrines in Malawi: An  
551 observational follow up study’, *Malawi Medical Journal*, 31(1), pp. 12–18. Available at:  
552 <https://doi.org/10.4314/mmj.v31i1.3>.
- 553 Li, Y. *et al.* (2023) ‘Decay of enveloped SARS-CoV-2 and non-enveloped PMMoV RNA in raw  
554 sewage from university dormitories’, *Frontiers in Microbiology*, 14, p. 1144026. Available at:  
555 <https://doi.org/10.3389/fmicb.2023.1144026>.
- 556 Li D, Quon H, Ervin J, Jiang S, Rosso D, Van De Werfhorst LC, Steets B, and Holden PA. 2023.  
557 “Modeled and Measured SARS-CoV-2 Virus in Septic Tank Systems for Wastewater  
558 Surveillance.” *J Water Health* 21 (9): 1242–56. <https://doi.org/10.2166/wh.2023.128>.
- 559 Mehl, J. *et al.* (2011) ‘Pathogen destruction and solids decomposition in composting latrines:  
560 study of fundamental mechanisms and user operation in rural Panama’, *Journal of Water and*  
561 *Health*, 9(1), pp. 187–199. Available at: <https://doi.org/10.2166/wh.2010.138>.
- 562 Mendoza Grijalva, L. *et al.* (2022) ‘Diurnal Variability of SARS-CoV-2 RNA Concentrations in  
563 Hourly Grab Samples of Wastewater Influent during Low COVID-19 Incidence’, *ACS ES&T*  
564 *Water*, p. acsestwater.2c00061. Available at: <https://doi.org/10.1021/acsestwater.2c00061>.
- 565 *MINISTÈRE DE LA SANTÉ ET DE L’ACTION SOCIALE* | (no date). Available at:  
566 <https://www.sante.gouv.sn/> (Accessed: 15 December 2023).
- 567 Mitchell, A. (2015) *Pathogen Specific Persistence Modeling Data, Global Water Pathogen*  
568 *Project*. Michigan State University, UNESCO. Available at:

569 <https://www.waterpathogens.org/book/pathogen-specific-persistence-modeling-data> (Accessed:  
570 5 December 2023).

571 Musaaazi, I.G. *et al.* (2023) 'A systematic review and meta-analysis of pathogen reduction in  
572 onsite sanitation systems', *Water Research X*, p. 100171. Available at:  
573 <https://doi.org/10.1016/j.wroa.2023.100171>.

574 Natarajan, A. *et al.* (2023) *Tomato brown rugose fruit virus Mo gene is a novel microbial source*  
575 *tracking marker*. preprint. Microbiology. Available at: <https://doi.org/10.1101/2023.01.09.523366>.

576 Rogawski McQuade, E.T. *et al.* (2023) 'Real-time sewage surveillance for SARS-CoV-2 in  
577 Dhaka, Bangladesh versus clinical COVID-19 surveillance: a longitudinal environmental  
578 surveillance study (December, 2019–December, 2021)', *The Lancet Microbe*, 4(6), pp. e442–  
579 e451. Available at: [https://doi.org/10.1016/S2666-5247\(23\)00010-1](https://doi.org/10.1016/S2666-5247(23)00010-1).

580 Roldan-Hernandez, L. *et al.* (2022) *Persistence of endogenous SARS-CoV-2 and pepper mild*  
581 *mottle virus RNA in wastewater settled solids*. preprint. Infectious Diseases (except HIV/AIDS).  
582 Available at: <https://doi.org/10.1101/2022.01.06.22268855>.

583 Rosario, K. *et al.* (2009) 'Pepper Mild Mottle Virus as an Indicator of Fecal Pollution', *Applied*  
584 *and Environmental Microbiology*, 75(22), pp. 7261–7267. Available at:  
585 <https://doi.org/10.1128/AEM.00410-09>.

586 Rothman, J.A. and Whiteson, K.L. (2022) 'Sequencing and Variant Detection of Eight Abundant  
587 Plant-Infecting Tobamoviruses across Southern California Wastewater', *Microbiology Spectrum*,  
588 10(6), p. e0305022. Available at: <https://doi.org/10.1128/spectrum.03050-22>.

589 Sala-Comorera, L. *et al.* (2021) 'Decay of infectious SARS-CoV-2 and surrogates in aquatic  
590 environments', *Water Research*, 201, p. 117090. Available at:  
591 <https://doi.org/10.1016/j.watres.2021.117090>.

592 Sanitation Matters (2013) 'Faecal Sludge Management in Africa. Developments, Research and  
593 Innovation', March.

594 *Senegal - CDC - Center for Global Health* (2019). Available at:

595 <https://www.cdc.gov/globalhealth/countries/senegal/default.htm> (Accessed: 5 April 2023).

596 Shaffer, M. *et al.* (2022) 'Viable Norovirus Persistence in Water Microcosms', *Environmental*

597 *Science & Technology Letters*, 9(10), pp. 851–855. Available at:

598 <https://doi.org/10.1021/acs.estlett.2c00553>.

599 S. McClary-Gutierrez, J. *et al.* (2021) 'Standardizing data reporting in the research community to

600 enhance the utility of open data for SARS-CoV-2 wastewater surveillance', *Environmental*

601 *Science: Water Research & Technology*, 7(9), pp. 1545–1551. Available at:

602 <https://doi.org/10.1039/D1EW00235J>.

603 Symonds, E.M., Rosario, K. and Breitbart, M. (2019) 'Pepper mild mottle virus: Agricultural

604 menace turned effective tool for microbial water quality monitoring and assessing (waste)water

605 treatment technologies', *PLOS Pathogens*, 15(4), p. e1007639. Available at:

606 <https://doi.org/10.1371/journal.ppat.1007639>.

607 Topol, A. *et al.* (2021) 'High Throughput pre-analytical processing of wastewater settled solids

608 for SARS-CoV-2 RNA analyses protocol...' Available at: [https://www.protocols.io/view/high-](https://www.protocols.io/view/high-throughput-pre-analytical-processing-of-waste-b2kmqcu6/metadata)

609 [throughput-pre-analytical-processing-of-waste-b2kmqcu6/metadata](https://www.protocols.io/view/high-throughput-pre-analytical-processing-of-waste-b2kmqcu6/metadata) (Accessed: 12 December

610 2023).

611 U.S. Environmental Protection Agency (2001) 'Method 1684: Total, Fixed, and Volatile Solids in

612 Water, Solids, and Biosolids'. Available at:

613 <https://nepis.epa.gov/Exe/ZyNET.exe/P1002CZ8.TXT?ZyActionD=ZyDocument&Client=EPA&Index=2000+Thru+2005&Docs=&Query=&Time=&EndTime=&SearchMethod=1&TocRestrict=n&Toc=&TocEntry=&QField=&QFieldYear=&QFieldMonth=&QFieldDay=&IntQFieldOp=0&ExtQFieldOp=0&XmlQuery=&File=D%3A%5Czyfiles%5CIndex%20Data%5C00thru05%5CTxt%5C00000016%5CP1002CZ8.txt&User=ANONYMOUS&Password=anonymous&SortMethod=h%7C-&MaximumDocuments=1&FuzzyDegree=0&ImageQuality=r75g8/r75g8/x150y150g16/i425&Display=hpfr&DefSeekPage=x&SearchBack=ZyActionL&Back=ZyActionS&BackDesc=Results%20page&MaximumPages=1&ZyEntry=1&SeekPage=x&ZyPURL#>.

620

- 621 Viau, E.J., Lee, D. and Boehm, A.B. (2011) 'Swimmer Risk of Gastrointestinal Illness from  
622 Exposure to Tropical Coastal Waters Impacted by Terrestrial Dry-Weather Runoff',  
623 *Environmental Science & Technology*, 45(17), pp. 7158–7165. Available at:  
624 <https://doi.org/10.1021/es200984b>.
- 625 Wade, T.J. *et al.* (2018) 'Asymptomatic norovirus infection associated with swimming at a  
626 tropical beach: A prospective cohort study', *PLOS ONE*, 13(3), p. e0195056. Available at:  
627 <https://doi.org/10.1371/journal.pone.0195056>.
- 628 Weidhaas, J. *et al.* (2021) 'Correlation of SARS-CoV-2 RNA in wastewater with COVID-19  
629 disease burden in sewersheds', *Science of The Total Environment*, 775, p. 145790. Available  
630 at: <https://doi.org/10.1016/j.scitotenv.2021.145790>.
- 631 Wolfe, M.K. *et al.* (2023) 'Wastewater Detection of Emerging Arbovirus Infections: Case Study  
632 of Dengue in the United States', *Environmental Science & Technology Letters* [Preprint].  
633 Available at: <https://doi.org/10.1021/acs.estlett.3c00769>.
- 634 World Health Organization and United Nations Children's Fund (UNICEF) (2017) *Progress on  
635 drinking water, sanitation and hygiene: 2017 update and SDG baselines*. Geneva: World Health  
636 Organization. Available at: <https://iris.who.int/handle/10665/258617> (Accessed: 15 December  
637 2023).
- 638 Wu, F. *et al.* (2022) 'SARS-CoV-2 RNA concentrations in wastewater foreshadow dynamics and  
639 clinical presentation of new COVID-19 cases', *Science of The Total Environment*, 805, p.  
640 150121. Available at: <https://doi.org/10.1016/j.scitotenv.2021.150121>.
- 641 Zhang, S. *et al.* (2022) 'Tomato brown rugose fruit virus: An emerging and rapidly spreading  
642 plant RNA virus that threatens tomato production worldwide', *Molecular Plant Pathology*, 23(9),  
643 pp. 1262–1277. Available at: <https://doi.org/10.1111/mpp.13229>.