

# 1 **Prevalence of early neonatal mortality and its predictors in** 2 **sub-Saharan Africa: A Systematic review and Meta-Analysis.**

3 **Teebeny Zulu<sup>1\*</sup>, Choolwe Jacobs<sup>1,3</sup>, Godfrey Biemba<sup>4,5</sup>, Patrick Musonda<sup>1,2</sup>**

4 1. Department of Epidemiology and Biostatistics, School of Public Health, University of  
5 Zambia, Lusaka, Zambia

6 2. University of Bergen, Bergen, Norway

7 3. Women in Global Health, Lusaka, Zambia

8 4. Department of Public Health, school of medicine, Apex Medical University, Lusaka,  
9 Zambia

10 5. Zambia Academy of Sciences, Lusaka, Zambia.

11

12 Corresponding Author

13 \*Teebeny Zulu

14 [teebenyzulu@gmail.com](mailto:teebenyzulu@gmail.com)

## 15 **Abstract**

16 **Background:** Although early neonatal mortality (ENM) has been reported to have a greater  
17 contribution to the overall neonatal mortality compared to late neonatal mortality, no meta-analysis  
18 has studied this phenomenon in isolation. The prevalence of ENM and its predictors in sub-Saharan  
19 Africa (SSA) remains unknown. Therefore, this meta-analysis is aimed at pooling the prevalence  
20 of ENM and its predictors in SSA.

21 **Methods:** Google Scholar, PubMed, Scopus, CINAHL, and Google were searched for studies  
22 conducted in SSA that reported the prevalence and predictors of ENM. The data were extracted  
23 using a Microsoft Excel spreadsheet and imported into R version 4.4.1 for further analysis.  
24 Publication bias, heterogeneity, sensitivity analysis, and subgroup analysis were performed.  
25 Prevalence and odds ratios were pooled using the random effects model if significant heterogeneity  
26 existed; otherwise, the fixed effects model was used.

27 **Results:** A total of 26 studies were included in this systematic review and meta-analysis. The  
28 overall pooled prevalence of ENM in SSA was 11% (95% CI: 7-15;  $I^2=100\%$ ). Birth asphyxia  
29 (OR=3.85; 95% CI: 1.12-13.21;  $P = 0.0388$ ;  $I^2 = 86.6\%$ ), home delivery (OR=2.46; 95% CI: 1.79-  
30 3.38;  $p<0.001$ ;  $I^2 = 0.0\%$ ), prematurity (OR=4.69; 95% CI: 3.57-6.16;  $p<0.001$ ;  $I^2 = 36.8\%$ ), male  
31 gender (OR= 1.37; 95% CI: 1.28-1.46;  $P < 0.001$ ;  $I^2 = 30.7\%$ ), delivery through caesarean section  
32 (OR=1.74; 95% CI: 1.49-2.02;  $P < 0.001$ ;  $I^2 = 31.5\%$ ) and low birth weight (OR=3.00; 95% CI:  
33 1.01-8.91;  $P = 0.0482$ ;  $I^2 = 94.4\%$ ) were associated with a significant increase in pooled odds of  
34 ENM in SSA.

35 **Conclusion:** The prevalence of ENM in SSA is significantly high and it contributes greatly to the  
36 overall neonatal mortality. Therefore, tailor-made interventions that target the reduction of birth  
37 asphyxia, prematurity, home delivery, and low birth weight should be implemented in order to  
38 reduce the burden of ENM in SSA.

39 **Keywords:** SSA, systematic review, meta-analysis, ENM

## 40 **Introduction**

41 Early neonatal mortality is defined as the death of a newborn that occurs within seven days of life  
42 [1]. Although neonatal mortality has decreased significantly over the past few decades, it still poses

43 a serious problem in most parts of the world [2]. Early neonatal mortality accounts for around 33%  
44 of all under-five deaths globally [3]. Of the 2.8 million babies that die throughout the neonatal  
45 period (0-28 days) globally each year, 73% do so in the first seven days of life [1, 4]. Ninety-nine  
46 percent of newborn fatalities and stillbirths take place in low- and middle-income countries like  
47 those in SSA [5]. Sub-Saharan Africa had the highest newborn mortality rate in 2019 with 27  
48 deaths per 1,000 live births, followed by Central and Southern Asia with 24 deaths per 1,000 live  
49 births [6]. A child born in SSA or southern Asia had a tenfold higher probability of dying in the  
50 first month of life than a child born in a high-income country [6]. Sustainable Development Goal  
51 (SDG) 3 aims to reduce the neonatal mortality rate to 12 or less per 1000 live births by 2030 [7,  
52 8]. Even though neonatal mortality has decreased significantly since 1990, further efforts are  
53 required to accelerate this progress and meet the SDG objective by 2030 [9].

54 Literature has shown that birth asphyxia [10-12], delivery through caesarean section [13-15],  
55 gestation less than 37 weeks [11, 13], giving birth from home [13, 16, 17], low birth weight [13,  
56 15, 17, 18], male gender [16, 19], not attending antenatal care [11, 13], having no formal education  
57 [13, 16, 20] and prematurity [10, 21, 22] are factors associated with an increase in ENM.

58 The early neonatal period, the first seven days of life, is the most precarious for a baby's survival  
59 and it contributes a higher percentage to the overall neonatal mortality [6]. Children face the  
60 highest risk of death in their first week of life [6], especially in low- and middle-income countries  
61 such as those of SSA. Despite this phenomenon being well documented in the literature, no meta-  
62 analysis has been performed to pool the evidence specifically, on the prevalence and predictors of  
63 ENM across individual studies conducted in SSA. An understanding of the burden and predictors  
64 of ENM is key in the development and sustainability of interventions aimed at reducing ENM in

65 SSA. Therefore, this study provides a timely meta-analysis to understand the prevalence and  
66 predictors of ENM in SSA in order to bridge the existing gap in knowledge.

## 67 **Methods**

68 **2.1. Eligibility Criteria and Information Sources.** This systematic review and meta-analysis  
69 included studies conducted in SSA to assess the prevalence of ENM and its predictors. The studies  
70 were evaluated using study area, study setting, title, abstract, and full texts before inclusion in this  
71 meta-analysis. This study is prepared based on preferred reporting items for systematic reviews  
72 and meta-analysis (PRISMA) statements [23]. In this review, published articles, surveys, and  
73 unpublished articles reported in English were explored and included accordingly. Studies that were  
74 conducted from inception to July 2024 were searched. Mendeley reference manager was used to  
75 manage retrieved articles.

76 **2.2. Search Strategy and Selection of Studies.** We conducted a comprehensive search to identify  
77 studies. Electronic databases, grey literature sources, and reference lists of articles were explored  
78 independently by three investigators Teebeny Zulu (TZ) Patrick Musonda (PM) and Godfrey  
79 Biemba (GB). Google Scholar, PubMed, Scopus, CINAHL, and Google were explored. Searching  
80 was conducted using key terms: (a) population (early neonates, perinatal, and newborns); (b)  
81 exposure (associated factors, risk factors, determinants, and predictors); (c) outcome (prevalence  
82 of early neonatal mortality, death, mortality, and birth outcomes); (d) study setting (hospitals,  
83 neonatal intensive care units, NICUs, facility-based, community-based surveys, and health  
84 centres); and (e) location (Sub-Saharan Africa, SSA, and Sub-Saharan countries). Boolean  
85 operators such as “OR” and “AND” were used during the search process. Screening and selection

86 of studies was done using the Covidence screening tool by two authors (TZ and GB) and  
87 disagreements between the two authors was resolved by the third author (PM).

88 **2.3. Data Extraction Process.** A structured and pretested data extraction checklist in Microsoft  
89 Excel was used to extract information by two authors (TZ and GB). From included studies, we  
90 extracted the name of the first author, publication year, study country, sample sizes, study setting,  
91 study design, prevalence of ENM, adjusted odds ratio and their corresponding confidence intervals  
92 as the measure of association of the predictors.

93 **2.4. Assessment of Study Quality.** The Joanna Briggs Institute Prevalence Critical Appraisal Tool  
94 for use in the systematic review of prevalence studies was used for the critical appraisal of studies  
95 [24]. Moreover, the methodological and other qualities of each article were assessed based on a  
96 modified version of the Newcastle-Ottawa Scale adapted from [25].

97 **2.5. Summary Measures.** The primary outcome of this study was the prevalence of ENM (death  
98 before 7 days of life) in SSA. The second outcome was predictors of ENM that were computed  
99 from studies reporting predictors in the form of odds ratios. The pooled odds ratios were computed  
100 using the adjusted odds ratios with 95% confidence intervals (CI) that were reported in the original  
101 studies. The pooled odds ratios were presented with a 95% CI. Independent predictors were  
102 declared when  $p\text{-value} < 0.05$ . The effect sizes were the prevalence of ENM and odds ratios  
103 predicting ENM.

104 **2.6. Statistical Methods and Analysis.** In the present meta-analysis, R software version 4.4.1 was  
105 used for computing the pooled estimates of both the odds ratios of ENM and its predictors. We  
106 used the *'metaprop'* function from the Meta package for pooling the prevalence of ENM in SSA  
107 and the *'metagen'* function for pooling log-odds ratios. The inverse method and the Der Simonian-

108 Laird (DL) were used for pooling the prevalence and the heterogeneity parameter (Tau),  
109 respectively, in the random effects model. Subgroup analyses were performed using study setting  
110 (facility or community-based studies), region, and study design. Sensitivity analysis was  
111 performed using the leave-one-out method, which assesses the influence of each study on the  
112 pooled effect. Meta-analyses were presented using forest plots, summary tables, and texts.

113 **2.7. Publication Bias and Heterogeneity.** Publication bias was assessed by looking at the  
114 asymmetry of the funnel plot and/or the statistical significance of Egger's regression test.  
115 Publication bias was declared when Egger's regression test was significant ( $p < 0.05$ ) [26].  
116 Heterogeneities among studies were explored using forest plots, the I-squared test ( $I^2$ ), and  
117 Cochran Q statistics [27]. The  $I^2$  values of 25%, 50%, and 75% were interpreted as low, medium,  
118 and high heterogeneity, respectively [28]. In this study, the presence of heterogeneity was declared  
119 and justified when  $I^2 \geq 50\%$  with a p-value  $< 0.05$ . The sources of possible significant  
120 heterogeneities were explored through subgroup analyses and sensitivity analyses using the leave-  
121 one-out plot.

## 122 **3. Results**

123 **3.1. Selection of Eligible Studies.** In the initial search, 1676 studies were found. These studies  
124 were retrieved from electronic databases and other sources. Of these studies, 1326 were duplicate  
125 files, and 257 studies were removed after screening using abstracts. The full texts of 93 studies  
126 were reviewed. Finally, 26 studies [3, 10–22, 29–40] were included in the final analysis of this  
127 systematic review and meta-analysis (Figure 1).

128 **3.2. Characteristics of the Studies.** Most articles in this systematic review and meta-analysis were  
129 conducted in Ethiopia (14). This meta-analysis included 18 studies from East Africa, 4 from West

130 Africa, 2 from Central Africa, and 2 from selected countries in SSA. Sixteen studies were  
131 conducted in facilities, while 10 were conducted in communities. This meta-analysis consisted of  
132 12 cross-sectional studies, 6 prospective cohort studies, 4 case-control studies, and 4 retrospective  
133 cohort studies. The proportion of ENM found in the studies varied from 1.5% to 33% as shown in  
134 Table 1.

135 **3.3. The Pooled prevalence of ENM in SSA.** Twenty-three articles [[3](#), [10-13](#), [16-21](#), [29-40](#)] were  
136 included to estimate the pooled prevalence of ENM in SSA. The pooled prevalence of ENM in  
137 SSA was found to be 11%, or 110 deaths per 1000 live births (95% CI: 7%–15%;  $I^2=100%$ ) (Figure  
138 2).

139 **Subgroup analysis, publication bias and sensitivity analysis.** Subgroup analysis was conducted  
140 on the basis of region, setting, and study design. Our regional subgroup analysis indicated that  
141 studies conducted in East Africa had the highest pooled prevalence of ENM at 13% (95% CI: 8%–  
142 19%,  $I^2=99%$ ). (Figure 2). Figure 3 demonstrates that research done in facility settings showed a  
143 higher pooled prevalence of ENM than community-based studies, at 17% (95% CI: 14%–21%;  
144  $I^2=98%$ ). Moreover, the greatest pooled prevalence 18% (95% CI: 10%–26%,  $I^2=99%$ ) came from  
145 case-control studies (Figure 4).

146 An assessment of publication bias was done through a funnel plot and Egger's regression test.  
147 Skewed distribution on a funnel plot suggested potential publication bias. Additionally, Egger's  
148 regression test ( $p<0.001$ ) objectively showed evidence of publication bias. Analysis utilizing the  
149 Der Simonian-Laird random-effects model revealed that no any individual study had an impact on  
150 the overall prevalence of ENM in SSA (Figure 7).

151

## 152 3.4 Factors associated with ENM in SSA

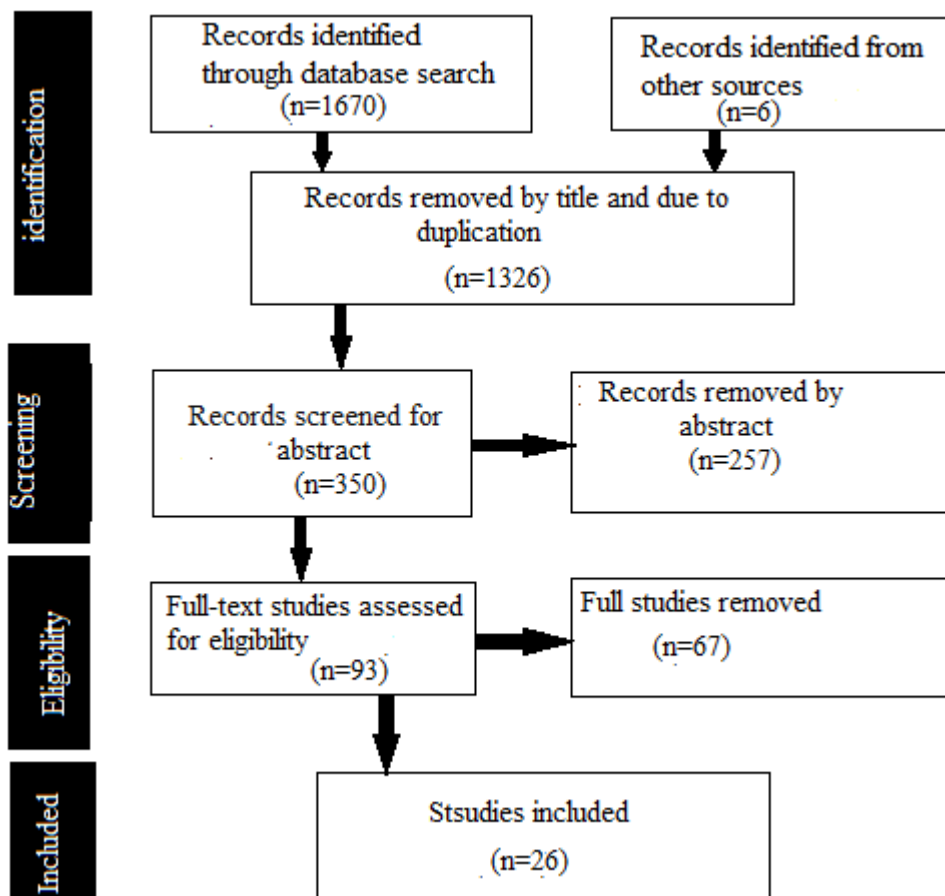
153 3.4.1. *Birth asphyxia*. Five studies [10-13, 21] examined the association between birth asphyxia  
154 and ENM in SSA. The pooled odds of ENM for neonates who experienced birth asphyxia were  
155 3.85 times the odds of those who did not experience it (95% CI: 1.12-13.21;  $p=0.0388$ ) and  
156 heterogeneity ( $I^2 = 86.6\%$ ,  $p < 0.001$ ).

157 3.4.2 *Home delivery*. Six studies [13, 15-17, 21, 31] examined the association between home  
158 delivery and ENM in SSA. The pooled odds of mortality among early neonates who were delivered  
159 at home were 2.46 times higher than their counterparts who were delivered at a health facility  
160 (95% CI: 1.79-3.38;  $p=0.0388$ ). No significant heterogeneity was observed among these studies  
161 ( $I^2 = 0.0\%$ ,  $p < 0.4305$ ).

162 3.4.3. *Prematurity*. We included 4 studies [10, 13, 21, 22] to assess the association between  
163 prematurity and ENM in SSA. The pooled odds of death for premature early neonates increased  
164 by a factor of 4.69 compared to their full-term counterparts (95% CI: 3.57-6.16;  $p<0.001$ ) and  
165 heterogeneity ( $I^2 = 36.8\%$ ,  $p = 0.1915$ ).

166





167

168 **Figure 1: PRISMA flow diagram for showing screening and selection process of studies.**

169

170

171 **Table 1. Characteristics of included studies for prevalence of ENM in SSA**

Author	Country	Region	Study Design	Setting	Sample	ENM
Alebel et al. (2020)	Ethiopia	East Africa	prospective cohort	Facility	513	18%
Avoka et al. (2018)	Ghana	West Africa	cross-sectional	Facility	811	11%
Backlund et al. (2014)	Rwanda	Central Africa	cross-sectional	Community	7726	1.5%
Koum et al. (2015)	Cameroon	East Africa	cross-sectional	Facility	269	13%
Gessesse et al. (2024)	Ethiopia	East Africa	prospective cohort	Facility	387	15%
Gody et al. (2021)	CAR	Central Africa	case-control	Facility	4168	15%
Gudayu et al. (2020)	Ethiopia	East Africa	retrospective cohort	Facility	504	14.5%
Shayo et al. (2022)	Tanzania	East Africa	retrospective cohort	Facility	20250	09%
Worku et al. (2012)	Ethiopia	East Africa	cross-sectional	Facility	3789	23%
Weddih et al. (2019)	Mauritania	West Africa	cross-sectional	Facility	669	24%
Ahmed et al. (2021)	Ethiopia	East Africa	retrospective cohort	Facility	765	13%

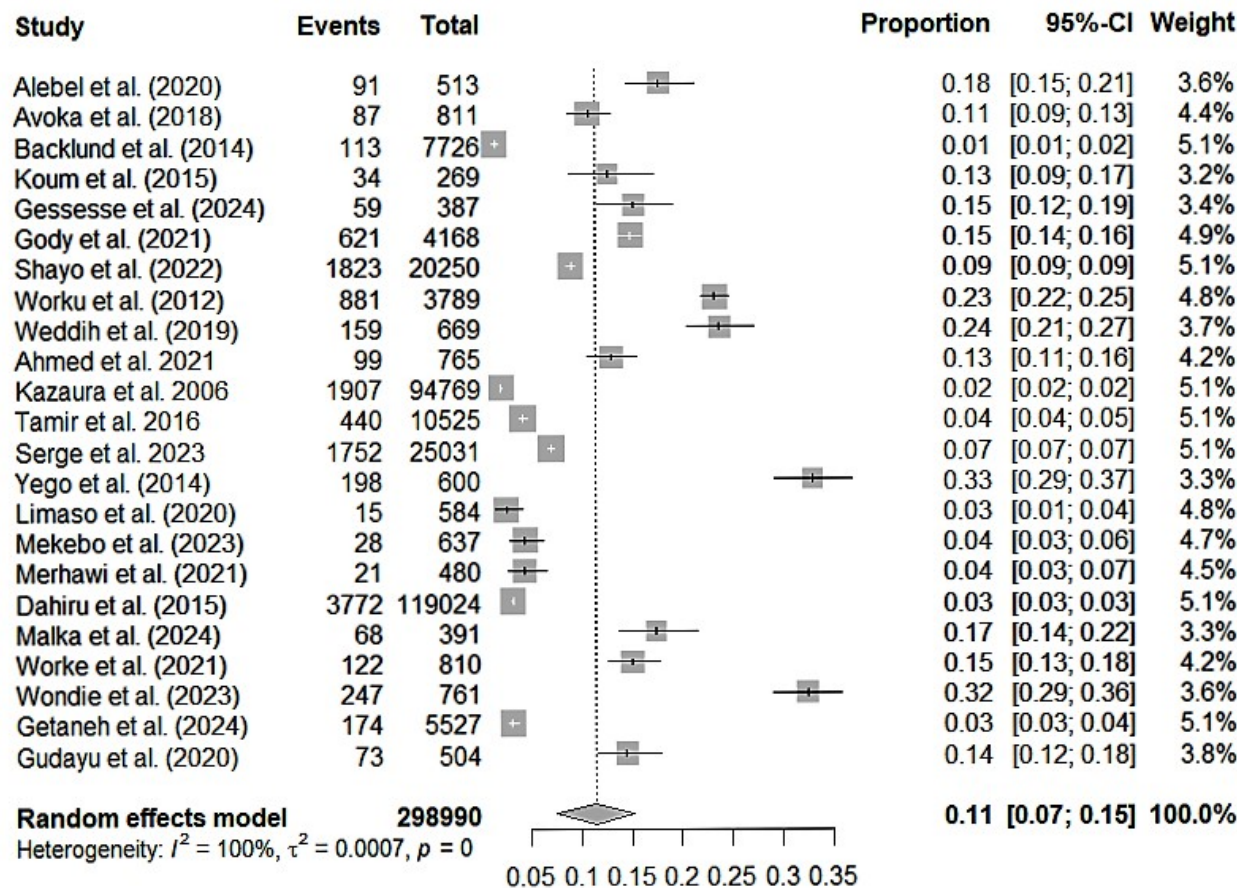
Kazaure et al. (2006)	Tanzania	East Africa	cross-sectional	Community	94769	02%
Tamir et al. (2016)	Ethiopia	East Africa	cross-sectional	Community	10525	04%
Limaso et al. (2020)	Ethiopia	East Africa	prospective cohort	Community	584	2.6%
Serge et al. (2023)	Benin	West Africa	case-control	Community	25031	07%
Yego et al. (2014)	Kenya	East Africa	case-control	Facility	600	33%
Tamir et al. (2024)	SSA	SSA	cross-sectional	Community	262,763	2.3%
Sandie et al. (2023)	SSA	SSA	cross-sectional	Community	155 172	-
Mekebo et al. (2023)	Ethiopia	East Africa	cross-sectional	Facility	637	4.4%
Kebede et al. (2021)	Ethiopia	East Africa	case-control	Community	1077	-
Merhawi et al. (2021)	Ethiopia	East Africa	prospective cohort	Facility	480	4.3%
Dahiru et al. (2015)	Nigeria	West Africa	cross-sectional	Community	119024	3.2%
Malka et al. (2024)	Ethiopia	East Africa	prospective cohort	Facility	391	17.4%
Worke et al. (2021)	Ethiopia	East Africa	prospective cohort	Facility	810	15.1%
Wondie et al. (2023)	Ethiopia	East Africa	retrospective cohort	Facility	761	32.5%
Getaneh et al. (2024)	Ethiopia	East Africa	Cross-sectional	Community	5527	3.1%

172 ENM=Early Neonatal Mortality; CAR=Central African Republic; SSA=Sub-Saharan Africa

173 3.4.4. *Male gender.* We included 8 studies [[13](#), [14](#), [16](#), [19](#), [20](#), [31](#), [33](#), [36](#)] to determine the  
 174 association between male gender and ENM in SSA. As compared to female early neonates, the  
 175 pooled odds of death for male early neonates increased by 37%, and this increase can be as low as  
 176 28% to as high as 46% in SSA with a 0.95 probability. No significant heterogeneity was observed  
 177 among these studies ( $I^2 = 30.7\%$ ,  $p = 0.1831$ ).

178 3.4.5. *Delivery through caesarean section.* Eight studies [[12–15](#), [17](#), [20](#), [22](#), [33](#)] reported the  
 179 association between delivery through a caesarean section and ENM in SSA. The pooled odds of  
 180 ENM for neonates who were delivered through caesarean section were 74% higher than those who  
 181 were delivered through the vagina (95% CI: 1.49–2.02;  $p < 0.001$ ) and heterogeneity ( $I^2 = 31.5\%$ ,  
 182  $p = 0.1768$ ).

183



184

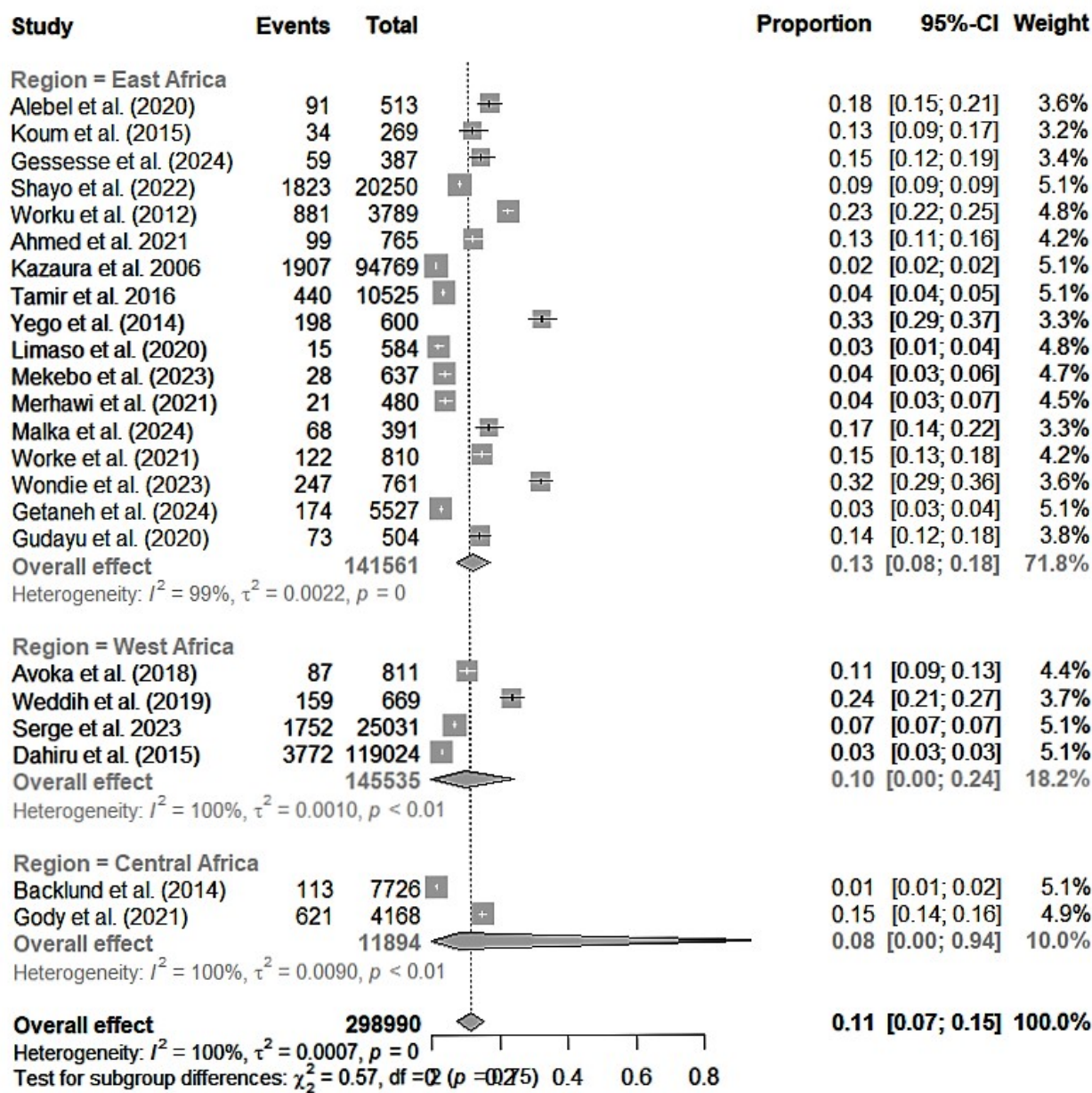
185 **Figure 2: Forest plot for the pooled prevalence of ENM in SSA**

186 3.4.6. *Low birth weight (>2.5kg)*. The odds ratio of the association between low birth weight and  
 187 ENM was pooled from 13 studies [11-15, 17-21, 30, 31, 36]. Low birth weight was found to  
 188 increase ENM by a factor of 3 compared to normal birth weight (95% CI: 1.01-8.91;  $p < 0.0482$ )  
 189 and heterogeneity ( $I^2 = 94.4\%$ ,  $p < 0.001$ ).

190 On the other hand, having no education compared to having some education (OR = 1.44; 95% CI:  
 191 0.72-2.89,  $P = 0.2454$ ,  $I^2 = 94.4\%$ ), not attending antenatal care compared to attending (OR = 3.56;  
 192 95% CI: 0.64-19.84,  $P = 0.0864$ ,  $I^2 = 93.1\%$ ), having respiratory distress compared to not having  
 193 (OR = 4.73; 95% CI: 0.01-2170.45,  $P = 0.3893$ ,  $I^2 = 83.9\%$ ), and gestation less than 37 weeks (OR  
 194 = 12.49; 95% CI: 0.85-182.94,  $P = 0.0560$ ,  $I^2 = 91.1\%$ ) were associated with an increase in the  
 195 pooled odds of ENM in SSA, though the association was not statistically significant.

## 196 4. Discussion

197 This meta-analysis was aimed at estimating the pooled prevalence of ENM and its associated  
 198 predictors in SSA. The study found a relatively high prevalence of ENM in SSA. Birth asphyxia,  
 199 home delivery, prematurity, male gender, delivery through a caesarean section, and low birth  
 200 weight were factors associated with a significant increase in neonatal mortality.

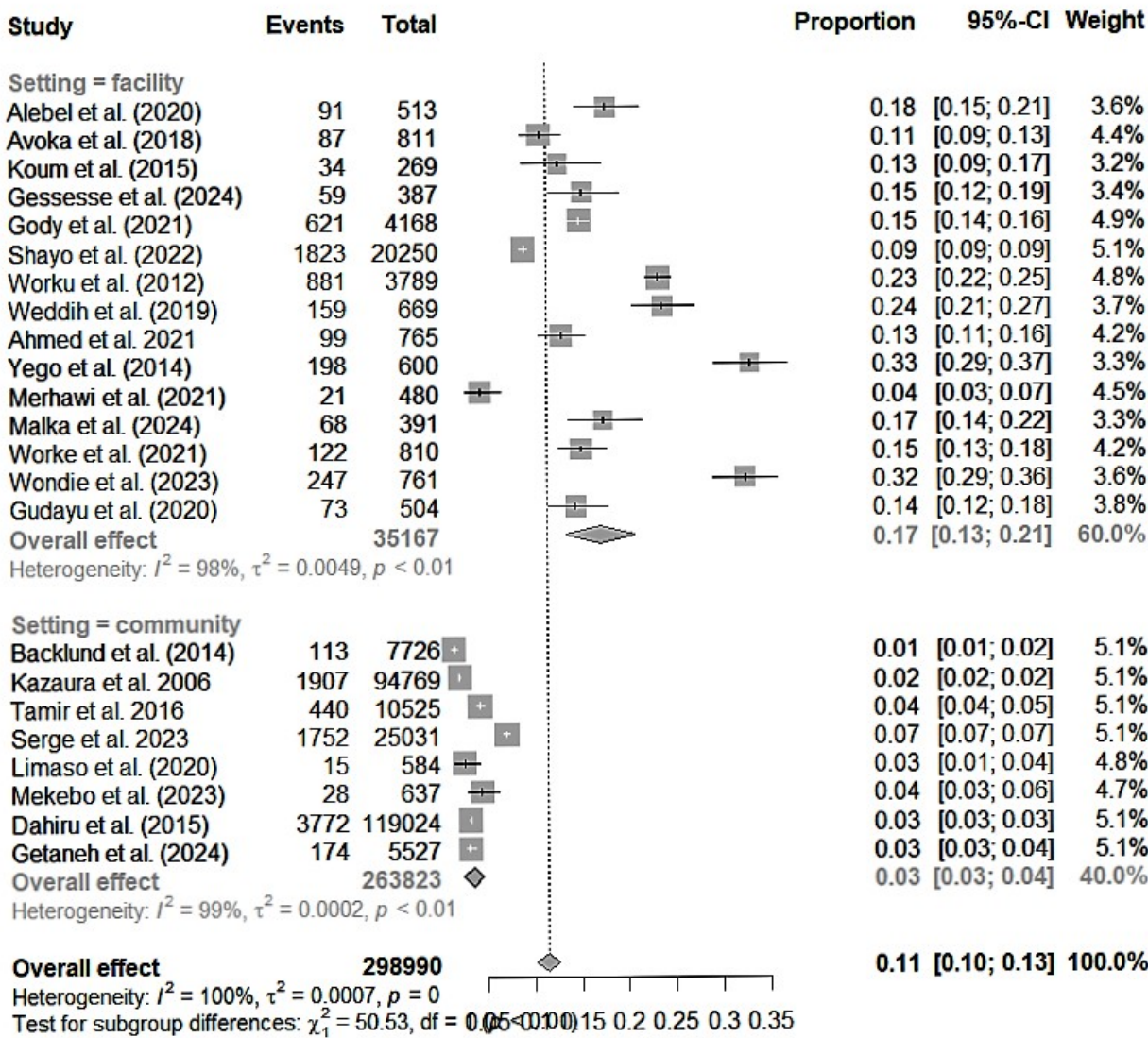


201

202 **Figure 3: forest plot for subgroup analysis by study region**

#### 203 **4.1 prevalence of ENM in SSA**

204 Our meta-analysis is one of its kind, pooling evidence from studies across SSA to explore the  
205 prevalence and predictors of ENM in SSA. The pooled prevalence of ENM in SSA was estimated  
206 from 23 studies, and it was found to be 11% (110 deaths per 1000 live births). The high prevalence  
207 observed is not surprising as a higher percentage of newborn deaths occur in the first week of life  
208 especially in limited resource settings like SSA [[1](#), [5](#)]. The high prevalence can also be explained  
209 by the large number of facility-based studies included in this meta-analysis which overestimates  
210 ENM. Subgroup analysis revealed that East Africa reported the highest prevalence of ENM in SSA  
211 (13%). We also found that the pooled prevalence of ENM was higher in facility-based studies  
212 (17%) as compared to community-based studies (3%), mostly those performed on national  
213 demographic and health surveys. These figures show that the prevalence of ENM is still high, and  
214 there is a need to scale up efforts aimed at reducing the burden of ENM in SSA.

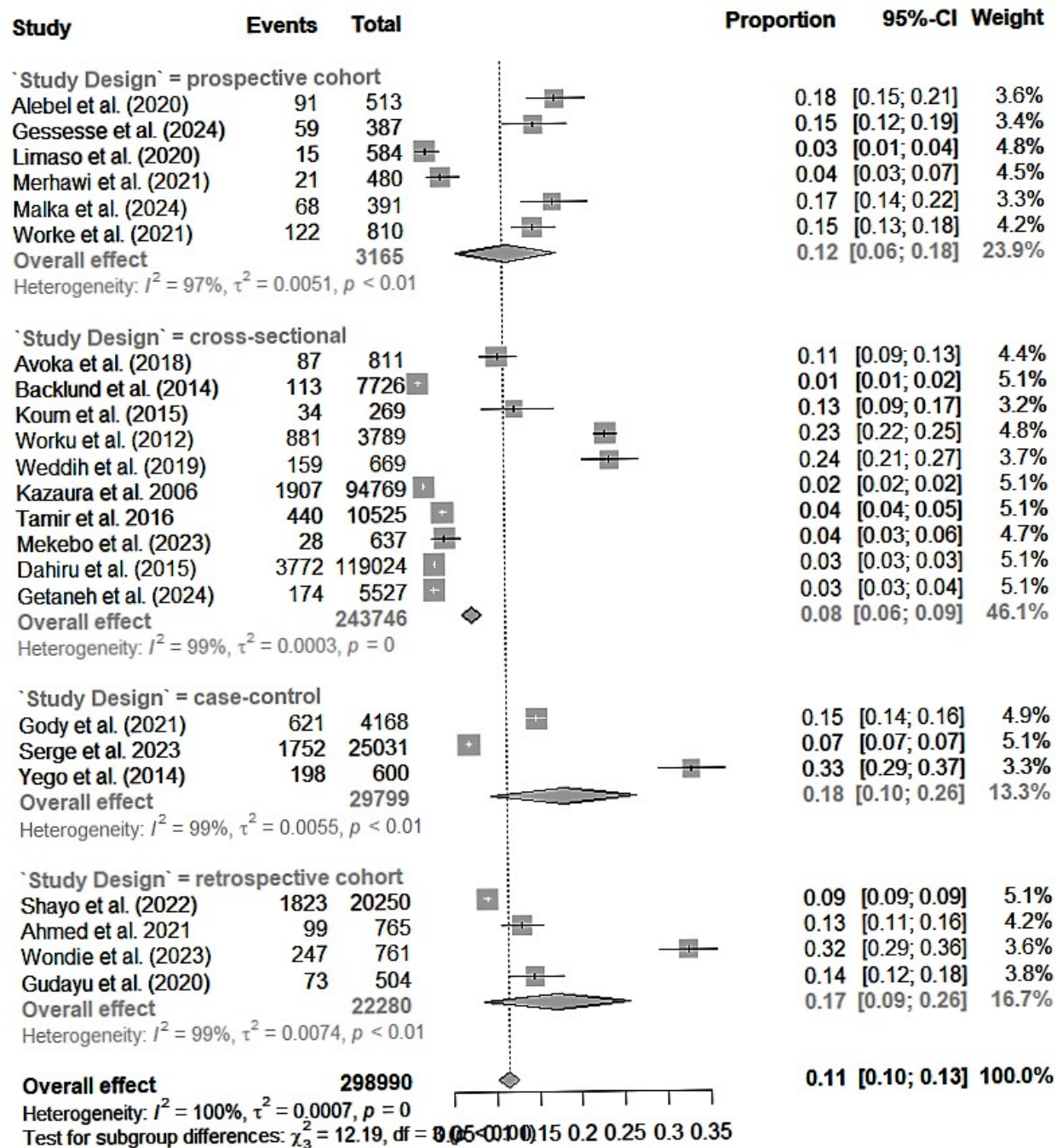


215

216 **Figure 4: Forest plot for subgroup analysis by study setting**

217

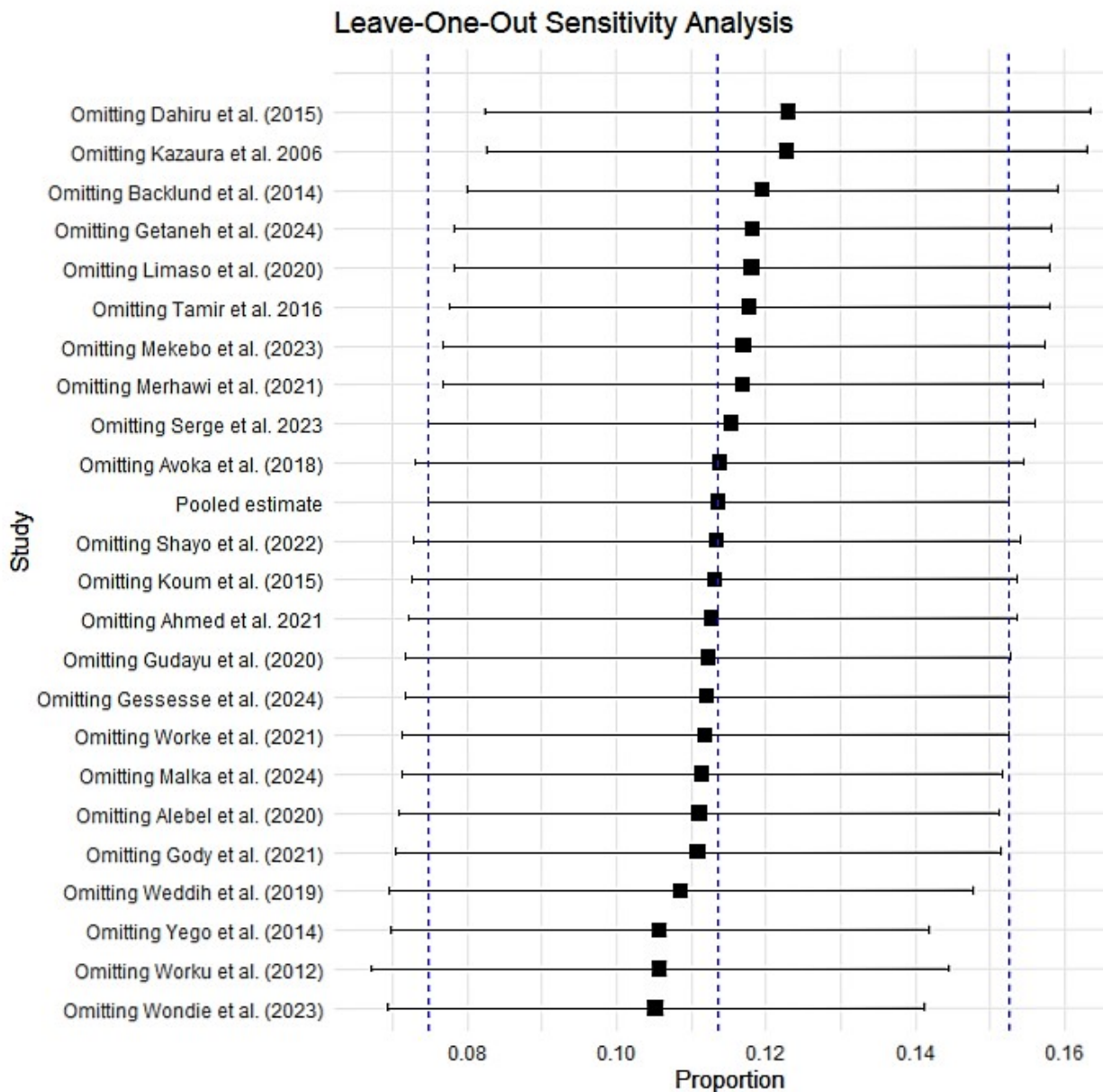
218



219

220

Figure 5: Forest plot for subgroup analysis by study design



221

222 **Figure 6: Sensitivity analysis stratified by effect size for studies included to estimate the**  
 223 **pooled prevalence of ENM in SSA**

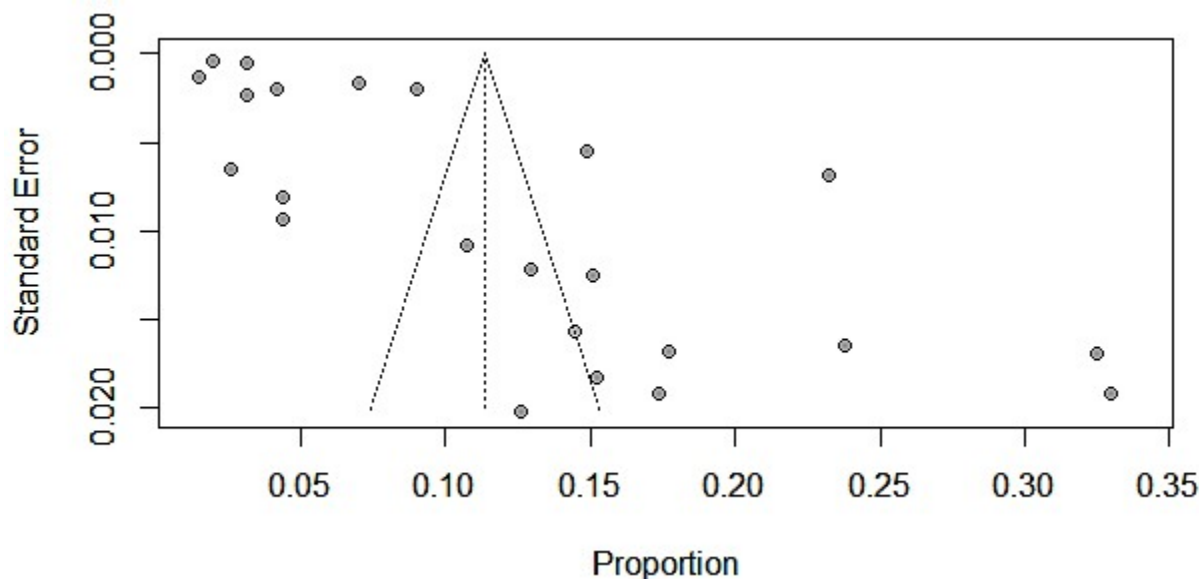
224 **4.2 Predictors of ENM in SSA**

225 Our meta-analysis combined odds ratios for 10 predictors of ENM in sub-Saharan Africa. A  
 226 predictor had to be included in an adjusted model in a minimum of three studies to be included in  
 227 the meta-analysis. We observed that birth asphyxia, delivering at home, being born prematurely,



228 being male, having a caesarean section, and having a low birth weight were significantly linked to  
229 an increase in ENM. However, not having received a formal education, not attending antenatal  
230 care, experiencing respiratory distress, and having a gestation period of less than 37 weeks were  
231 found to be factors that increased the risk of ENM. However, the combined odds ratios for these  
232 factors did not show statistical significance in this research.

233 Our research revealed that newborns aged 0-7 days who suffered from birth asphyxia had a higher  
234 chance of mortality compared to those who didn't undergo such a condition. This result aligns with  
235 the results of previous studies [[10–13](#), [21](#)]. Birth asphyxia occurs when a newborn's brain and other  
236 organs are deprived of sufficient oxygen and nutrients before, during, or immediately following  
237 delivery. Birth asphyxia is one of the leading causes of mortality for newborns; the effect of birth  
238 asphyxia is not limited to death but also leads to physical, mental, and social incapability in  
239 newborns due to severe hypoxic-ischemic organ damage [[41](#)]. Hence, to reduce overall newborn  
240 mortality and its long-term consequences, the quality of medical care before birth, at birth, and  
241 after birth is essential.



242  
243 **Figure 7: Funnel plot showing publication bias among studies included to estimate a pooled**  
244 **prevalence of ENM in SSA.**

245 Findings have shown that newborn babies born at home had a higher probability of dying within  
246 the first week of life than those born in a medical center. This discovery aligns with findings from  
247 other research studies [13, 16, 17, 21, 42]. Babies born at home with a non-professional attendant  
248 may not receive all necessary newborn and postpartum care services. In cases of delivery  
249 complications, it is best to opt for institutional deliveries as both mothers and babies receive  
250 professional care and have access to life-saving tools at healthcare facilities, resulting in mutual  
251 benefits. Further, having a skilled team at a healthcare facility could provide an additional benefit  
252 in minimizing possible delays and improving the early treatment of pregnancy-related issues and  
253 birth difficulties [43]. This discovery shows a necessity to enhance the provision of health facility  
254 delivery in SSA in order to raise the likelihood of newborn survival. Male babies were more likely  
255 to die within the first week of life after birth compared to female babies. This result is consistent  
256 with the previous studies [16, 19, 33]. The possible reason could be that males are biologically  
257 weaker than females. Therefore, specialized care should be given to newborns especially, male  
258 ones.

259 **Table 2: predictors of ENM in SSA**

Predictors	Included studies	OR (95% CI)	POR (95% CI), p-value	Heterogeneity
<b>Birth asphyxia</b>	Ahmed et al. 2021	2.20 (0.94, 5.13)	3.85 (1.12, 13.21) <b>P = 0.0388</b>	$I^2 = 86.6\%$ , $p < 0.001^{**}$
	Koum et al. 2015	17.80 (2.01, 157.42)		
	Gody et al. 2021	12.72 (6.54, 24.73)		
	Worku et al. 2012	1.82 (1.32, 2.51)		
	Yego et al. 2014	2.40 (1.60, 3.60)		
<b>Home delivery</b>	Ahmed et al. 2021	1.00 (0.20, 4.95)	2.46 (1.79, 3.38) <b>P &lt; 0.001</b>	$I^2 = 0.0\%$ , $p = 0.4305^*$
	Backlund et al. 2014	3.50 (1.89, 6.49)		
	Gody et al. 2021	1.43 (0.64, 3.20)		
	Mekebo et al. 2023	2.29 (0.97, 5.39)		
	Tamir et al. 2024	3.59 (1.41, 9.14)		
	Tamir et al. 2016	2.40 (1.32, 4.36)		
<b>Prematurity</b>	Ahmed et al. 2021	3.60 (1.66, 7.81)	4.69 (3.57, 6.16) <b>p &lt; 0.001</b>	$I^2 = 36.8\%$ , $p = 0.1915^*$
	Koum et al. 2015	21.30 (1.45, 313.96)		
	Gody et al. 2021	6.11 (4.09, 9.12)		
	Kebede et al. 2021	3.62 (2.36, 5.55)		
<b>Male gender</b>	Backlund et al. 2014	1.43 (0.86, 2.38)	1.38 (1.30, 1.48) <b>P &lt; 0.001</b>	$I^2 = 0.0\%$ , $p = 0.7703^*$
	Gody et al. 2021	1.27 (0.88, 1.84)		
	Kazaura et al. 2006	1.40 (1.30, 1.50)		
	Mekebo et al. 2023	1.63 (0.79, 3.36)		
	Sandie et al. 2023	1.23 (0.94, 1.62)		
	Shayo et al. 2022	1.50 (1.14, 1.98)		
	Serge et al. 2023	1.04 (0.68, 1.59)		
<b>Delivery through C-section</b>	Gody et al. 2021	1.69 (1.18, 2.42)	1.74 (1.49, 2.02) <b>P &lt; 0.001</b>	$I^2 = 31.5\%$ , $p = 0.1768^*$
	Kebede et al. 2021	1.16 (0.78, 1.72)		
	Sandie et al. 2023	2.37 (1.64, 3.42)		
	Shayo et al. 2022	2.10 (1.48, 2.98)		
	Tamir et al. 2024	1.81 (1.31, 2.51)		
	Tamir et al. 2016	1.60 (0.69, 3.73)		
	Serge et al. 2023	1.13 (0.64, 2.00)		
	Yego et al. 2014	1.50 (0.29, 7.70)		
<b>Low birth weight</b>	Ahmed et al. 2021	2.50 (0.30, 21.16)	4.29 (2.30, 8.02) <b>P = 0.0003</b>	$I^2 = 94.0\%$ , $p < 0.001^{**}$
	Avoka et al. 2018	2.0700 (1.09, 3.92)		
	Backlund et al. 2014	3.45 (1.88, 6.34)		
	Gody et al. 2021	22.59 (15.93, 32.04)		
	Kazaura et al. 2006	18.40 (15.81, 21.41)		
	Sandie et al. 2023	2.35 (0.50, 10.94)		
	Tamir et al. 2024	3.27 (2.16, 4.95)		
	Tamir et al. 2016	3.30 (1.36, 7.99)		
	Serge et al. 2023	0.84 (0.30, 2.35)		
	Worku et al. 2012	9.64 (3.32, 27.98)		
	Yego et al. 2014	2.40 (0.88, 6.54)		
	Weddih et al. 2019	3.91 (1.69, 9.05)		

260 **OR**=odds ratio; **POR**=pooled odds ratio; **CI**=confidence interval; \*=**fixed effects model**; \*\*=**random effects model**

261

262 **Table 2 continued**

Predictors	Included studies	OR (95% CI)	POR (95% CI), p-value	Heterogeneity
<i>No education</i>	Gody et al. 2021	5.65 (4.08, 7.82)	1.44 (0.72, 2.89)	$I^2 = 94.4\%$ $p < 0.001^{**}$
	Kazaura et al. 2006	1.29 (0.66, 2.54)	<b><math>P = 0.2454</math></b>	
	Mekebo et al. 2023	2.13 (1.14, 3.99)		
	Sandie et al. 2023	1.14 (0.88, 1.47)		
	Tamir et al. 2024	0.83 (0.69, 1.00)		
	Tamir et al. 2016	0.50 (0.17, 1.46)		
	Serge et al. 2023	1.30 (1.08, 1.56)		
<i>No antenatal care visits</i>	Gody et al. 2021	5.54 (3.95, 7.78)	3.56 (0.64, 19.84)	$I^2 = 93.1\%$ , $p < 0.001^{**}$
	Worku et al. 2012	1.70 (1.28, 2.26)	$P = 0.0864$	
	Yego et al. 2014	5.40 (1.99, 14.64)		
<i>Respiratory distress</i>	Koum et al. 2015	130.37 (9.28,	4.73 (0.01, 2170.45) $P =$	$I^2 = 83.9\%$ , $p = 0.002^{**}$
	Gody et al. 2021	1831.92)	$P = 0.3893$	
	Yego et al. 2014	1.22 (0.88, 1.69)		
		1.60 (1.08, 2.36)		
<i>Gestation less than 37 weeks</i>	Gody et al. 2021	29.36 (20.13, 42.83)	12.49 (0.85, 182.94)	$I^2 = 91.1\%$ , $p < 0.001^{**}$
	Worku et al. 2012	3.60 (1.64, 7.90)	$P = 0.0560$	
	Yego et al. 2014	16.60 (8.19, 33.65)		

263 OR=odds ratio; POR=pooled odds ratio CI=confidence interval; \*=fixed effects model; \*\*=random effects model

264 Consistent with previous research [21, 44], premature infants had a higher likelihood of mortality  
 265 in the first week of life in comparison to full-term infants. Preterm babies face risks such as organ  
 266 failure, neurodevelopmental and learning disabilities, vision problems, and long-term  
 267 cardiovascular and non-communicable diseases [45]. Hence, it is necessary to introduce measures  
 268 that can decrease early mortality rates related to prematurity. For instance, according to a  
 269 systematic review of low and middle-income countries [46], giving pregnant mothers multiple  
 270 micronutrient supplements and improving the quality of antenatal care can decrease prematurity  
 271 and stillbirth. In pre-term neonates, feeding support, probiotics, and thermal regulation were  
 272 reported to improve survival rates in premature newborns.

273 Although a cesarean section (CS) is performed to save the life of the newborn, the possibility of  
 274 ENM was higher among babies delivered by CS compared to babies delivered vaginally. This  
 275 finding was coherent with previous studies [15, 14, 47, 48]. On this basis, previous scientific

276 literature also recommends avoiding CS as an intrapartum intervention when there is no clear  
277 medical indication that it will improve the outcome for the mother or the baby [44, 47]. However,  
278 it could be plausible that the higher likelihood of ENM among babies born via CS was since the  
279 majority of CS deliveries occur as a last option for delivery when there are pregnancy  
280 complications [15]. Another possible explanation for this finding in SSA could be due to poor  
281 labour care, poor surgical care at the time of cesarean section, and poor neonatal care post-CS that  
282 may be observed in most SSA countries' health facilities [13].

283 Regarding birth weight, the likelihood of ENM was higher among low birth-weight (LBW) babies  
284 compared to babies of normal birth weight. This is consistent with previous studies [15, 49, 50].  
285 One of the common reasons for the higher risk of ENM among LBW babies is that most of the  
286 time, LBW babies are preterm births and/or small for gestational age [49]. These findings suggest  
287 the need to improve mother care during pregnancy, childbirth, and postnatal periods, particularly  
288 for LBW babies. The World Health Organisation has also developed clinical guidelines to increase  
289 baby survival and advocates the need for careful essential newborn care for LBW babies [51].  
290 Kangaroo mother care can be an option for LBW neonates which involves skin-to-skin contact  
291 between a mother and her newborn [52].

## 292 **Study strengths and limitations**

293 The main strength of this study is that reputable databases were explored to find all possible  
294 articles. This study is the first of its type to determine the prevalence of ENM in SSA and unfold  
295 the possible predictors of ENM using odds ratios. In addition, the subgroup analysis performed in  
296 this study which revealed high prevalence among facility-based studies indicates the quality of  
297 newborn care service delivery across facilities in SSA. This finding will have a paramount

298 importance for program planners and policymakers in SSA, where the burden of ENM is  
299 considerably high. Despite these strengths, the presence of scant studies in countries other than  
300 Ethiopia could obscure some other predictors of ENM in SSA. The lack of reports on the  
301 prevalence of ENM in community-based studies could also be associated with underestimation of  
302 the prevalence of ENM in SSA. Studies in countries other than Ethiopia and community-based  
303 studies could unfold all possible causes of ENM in the future.

## 304 **Conclusion**

305 We determined the prevalence of ENM and its predictors in SSA. The pooled prevalence of ENM  
306 was significantly high in SSA. Facility-based studies contributed greatly to the high prevalence of  
307 ENM in SSA. Birth asphyxia, home delivery, prematurity, male gender, delivery through cesarean  
308 section and low birth weight were factors associated with a significant increase in the likelihood  
309 of ENM in SSA. Therefore, there is a need to design strategies to address all these predictors of  
310 ENM to reduce the high burden of ENM in SSA.

## 311 **References**

- 312 1. Lehtonen L., et al. Early neonatal death: a challenge worldwide in Seminars in Fetal and  
313 Neonatal Medicine. 2017. Elsevier. <https://doi.org/10.1016/j.siny.2017.02.006> PMID:  
314 28238633.
- 315 2. Kibria G.M.A., et al., Determinants of early neonatal mortality in Afghanistan: an  
316 analysis of the Demographic and Health Survey 2015. Globalization and health, 2018.  
317 14(1): p. 1–12
- 318 3. Dahiru T. Determinants of Early Neonatal Mortality in Nigeria: Results from 2013  
319 Nigeria DHS. J Pediatric Neonatal Care. 2015; 2 (5):1–8.

- 320 4. Lawn J.E., et al., Every Newborn: progress, priorities, and potential beyond survival. The  
321 lancet, 2014. 384(9938): p. 189–205. [https://doi.org/10.1016/S0140-6736\(14\)60496-7](https://doi.org/10.1016/S0140-6736(14)60496-7)  
322 PMID: 24853593
- 323 5. Arsenault C., et al., Equity in antenatal care quality: an analysis of 91 national household  
324 surveys. The Lancet Global Health, 2018. 6(11): p. e1186–e1195.  
325 [https://doi.org/10.1016/S2214-109X\(18\)30389-9](https://doi.org/10.1016/S2214-109X(18)30389-9) PMID: 30322649
- 326 6. Newborns, W., Improving survival and well-being. World Health Organization.  
327 <https://www.who.int/news-room/fact-sheets/detail/newborns-reducing-mortality>, 2020
- 328 7. Transforming our world Cf, O. The 2030 Agenda for Sustainable Development. United  
329 Nations: New York, NY, USA, 2015.
- 330 8. Sudfeld C.R. and Fawzi W.W., Importance of innovations in neonatal and adolescent  
331 health in reaching the sustainable development goals by 2030. JAMA pediatrics, 2017.  
332 171(6): p. 521–522. <https://doi.org/10.1001/jamapediatrics.2017.0261> PMID: 28384685
- 333 9. Hug L., et al., National, regional, and global levels and trends in neonatal mortality  
334 between 1990 and 2017, with scenario-based projections to 2030: a systematic analysis.  
335 The Lancet Global Health, 2019. 7(6): p. e710–e720. [https://doi.org/10.1016/S2214-  
336 109X\(19\)30163-9](https://doi.org/10.1016/S2214-109X(19)30163-9) PMID: 31097275.
- 337 10. Koum DCK, Essomba NE, Moby H, Halle MPE, Ngaba GP, Nguedjam MM, et al.  
338 Factors associated with early neonatal morbidity and mortality in an urban district  
339 hospital in Douala, Cameroon. Int J latest Res Sci Technol. 2016; 5(3):43–9.
- 340 11. Worku B, Kassie A, Mekasha A, Tilahun B, Worku A. Predictors of early neonatal  
341 mortality at a neonatal intensive care unit of a specialized referral teaching hospital in  
342 Ethiopia. Ethiop J Heal Dev. 2012; 26(3):200–7.

- 343 12. Yego F, D'Este C, Byles J, Nyongesa P, Williams JS. A case-control study of risk factors  
344 for fetal and early neonatal deaths in a tertiary hospital in Kenya. *BMC Pregnancy*  
345 *Childbirth*. 2014; 14(1):1–9.
- 346 13. Gody JC, Engoba M, Mejiozem BOB, Danebera LV, Kakouguere EP, Bangué MCN, et  
347 al. Risk Factors of Early Neonatal Deaths in Pediatric Teaching Hospital in Bangui,  
348 Central African Republic. *Open J Pediatr*. 2021; 11(04):840–53.
- 349 14. Sandie AB, Mutua MK, Sidze E, Nyakangi V, Sylla EHM, Wanjoya A, et al.  
350 Epidemiology of emergency and elective caesarean section and its association with early  
351 neonatal mortality in sub-Saharan African countries. *BMJ Open*. 2023; 13(10).
- 352 15. Tamir TT, Mohammed Y, Kassie AT, Zegeye AF. Early neonatal mortality and  
353 determinants in sub-Saharan Africa: Findings from recent demographic and health survey  
354 data. *PLoS One* [Internet]. 2024; 19(6):e0304065. Available from:  
355 <http://dx.doi.org/10.1371/journal.pone.0304065>
- 356 16. Mekebo GG, Aga G, Gondol KB, Regesa BH, Woldeyohannes B, Wolde TS, et al. Why  
357 Babies die in the first 7 days after birth in Somalia Region of Ethiopia? *Ann Med Surg*.  
358 2023; 85(5):1821–5.
- 359 17. Tamir TT, Asmamaw DB, Negash WD, Belachew TB, Fentie EA, Kidie AA, et al.  
360 Prevalence and determinants of early neonatal mortality in Ethiopia: Findings from the  
361 Ethiopian Demographic and Health Survey 2016. *BMJ Paediatr Open*. 2023; 7(1):1–8.
- 362 18. Weddih A, Ahmed MLCB, Sidatt M, Abdelghader N, Abdelghader F, Ahmed A, et al.  
363 Prevalence and factors associated with neonatal mortality among neonates hospitalized at  
364 the national hospital Nouakchott, Mauritania. *Pan Afr Med J*. 2019; 34:1–7.



- 365 19. Kazaura.R,Kidanto H LSN. M. Level,trends and risk for early neonatal mortality at  
366 Muhimbili National Hospital,Tanzania,199-2005. East African J Public Heal. 2006;  
367 3(10):10–3.
- 368 20. Serge T, Georgia DB, Badirou A. Epidemiological Aspects and Factors Associated with  
369 Early Neonatal Death From 2018 to 2020 in the Maternity of the Savè-Ouessè Health  
370 Zone, Benin, West Africa. J Matern Child Heal. 2023; 8(1):91–104.
- 371 21. Ahmed AT, Farah AE, Ali HN, Ibrahim MO. Determinants of early neonatal mortality  
372 (hospital based retrospective cohort study in Somali region of Ethiopia). Sci Rep. 2023;  
373 13(1):1–13.
- 374 22. Kebede E, Kekulawala M. Risk factors for stillbirth and early neonatal death: a case-  
375 control study in tertiary hospitals in Addis Ababa, Ethiopia. BMC Pregnancy Childbirth.  
376 2021; 21(1):1–11.
- 377 23. Page MJ, McKenzie JE, Bossuyt PM, Boutron I, Hofmann TC, Mulrow CD, et al. The  
378 PRISMA 2020 Statement: an updated guideline for reporting systematic reviews. Bmj.  
379 2021; 372.
- 380 24. Munn Z., S. Moola, K. Lisy, D. Riitano, and C. Tufanaru, “Methodological guidance for  
381 systematic reviews of observational epidemiological studies reporting prevalence and  
382 cumulative incidence data,” International Journal of Evidence-Based Healthcare, vol. 13,  
383 no. 3, pp. 147–153, 2015.
- 384 25. Modesti P. A., G. Reboldi, F. P. Cappuccio et al., “Panethnic differences in blood  
385 pressure in Europe: a systematic review and meta-analysis,” PLoS One, vol. 11, no. 1,  
386 article e0147601, 2016.

- 387 26. Sterne and M. Egger J. A. C., “Funnel plots for detecting bias in meta-analysis:  
388 guidelines on choice of axis,” *Journal of Clinical Epidemiology*, vol. 54, no. 10, pp.  
389 1046–1055, 2001.
- 390 27. Rücker G, Schwarzer G, Carpenter J. R, and Schumacher M, “Undue reliance on I<sup>2</sup> in  
391 assessing heterogeneity may mislead,” *BMC Medical Research Methodology*, vol. 8, no.  
392 1, 2008.
- 393 28. Higgins J. P. T, and Thompson S. G., “Quantifying heterogeneity in a meta-analysis,”  
394 *Statistics in Medicine*, vol. 21, no. 11, pp. 1539–1558, 2002.
- 395 29. Alebel A, Wagnew F, Petrucka P, Tesema C, Moges NA, Ketema DB, et al. Neonatal  
396 mortality in the neonatal intensive care unit of Debre Markos referral hospital, Northwest  
397 Ethiopia: A prospective cohort study. *BMC Pediatr*. 2020; 20(1):1–11.
- 398 30. Avoka JA, Adanu RM, Wombeogo M, Seidu I, Dun-Dery EJ. Maternal and neonatal  
399 characteristics that influence very early neonatal mortality in the Eastern Regional  
400 Hospital of Ghana, Koforidua: A retrospective review. *BMC Res Notes* [Internet]. 2018;  
401 11(1):1–5. Available from: <https://doi.org/10.1186/s13104-018-3196-x>
- 402 31. Backlund A. Maternal health care in Rwanda and its association to early neonatal  
403 mortality. 2015;
- 404 32. Gessesse AD, Belete MB, Tadesse F. Dar City public hospitals. 2024; (June):1–16.  
405 Available from: <https://doi.org/10.3389/fped.2024.1335858>
- 406 33. Shayo A, Mlay P, Ahn E, Kidanto H, Espiritu M, Perlman J. Early neonatal mortality is  
407 modulated by gestational age, birthweight and fetal heart rate abnormalities in the low  
408 resource setting in Tanzania – a five year review 2015–2019. *BMC Pediatr* [Internet].  
409 2022; 22(1):1–11. Available from: <https://doi.org/10.1186/s12887-022-03385-0>

- 410 34. Wondie WT, Zeleke KA, Wubneh CA. Incidence and predictors of mortality among low  
411 birth weight neonates in the first week of life admitted to the neonatal intensive care unit  
412 in Northwestern Ethiopia comprehensive specialized hospitals, 2022. Multi-center  
413 institution-based retrospective f. *BMC Pediatr.* 2023; 23(1):1–13.
- 414 35. Worke MD, Mekonnen AT, Limenh SK. Incidence and determinants of neonatal  
415 mortality in the first three days of delivery in northwestern Ethiopia: a prospective cohort  
416 study. *BMC Pregnancy Childbirth* [Internet]. 2021; 21(1):1–11. Available from:  
417 <https://doi.org/10.1186/s12884-021-04122-8>.
- 418 36. Gudayu T. W, Zeleke E. G, and Lakew A. M, “Time to death and its predictors among  
419 neonates admitted in the intensive care unit of the University of Gondar Comprehensive  
420 Specialized Hospital, Northwest Ethiopia,” *Research and Reports in Neonatology*, vol.  
421 Volume 10, no. 1, pp. 1–10, 2020.
- 422 37. Merhawi B, G w H. Early Neonatal Death in Northern Ethiopia and its Predictors. *Res*  
423 *Artic Divers Equal Heal Care.* 2021; 18(11):488–92.
- 424 38. Malka ES, Solomon T, Kassa DH, Erega BB, Tufa DG. Time to death and predictors of  
425 mortality among early neonates admitted to neonatal intensive care unit of Addis Ababa  
426 public Hospitals, Ethiopia: Institutional-based prospective cohort study. *PLoS One*  
427 [Internet]. 2024;19(6.0):1–22. Available from:  
428 <http://dx.doi.org/10.1371/journal.pone.0302665>
- 429 39. Getaneh FB, Belete AG, Ayres A, Ayalew T, Muche A, Derseh L. A generalized Poisson  
430 regression analysis of determinants of early neonatal mortality in Ethiopia using 2019  
431 Ethiopian mini demographic health survey. *Sci Rep* [Internet]. 2024; 14(1):1–9.  
432 Available from: <https://doi.org/10.1038/s41598-024-53332-5>

- 433 40. Limaso A. A, Dangisso M. H, and Hibstu D. T, “Neonatal survival and determinants of  
434 mortality in Aroresa district, southern Ethiopia: a prospective cohort study,” BMC  
435 Pediatrics, vol. 20, no. 1, p. 33, 2020
- 436 41. Golubnitschaja O, Yeghiazaryan K, Cebioglu M, Morelli M, and Herrera-Marschitz M.  
437 Birth asphyxia as the major complication in newborns: moving towards improved  
438 individual outcomes by prediction, targeted prevention and tailored medical care. EPMA  
439 Journal. 2011; 2(2):197–210.
- 440 42. Ajaari J. Impact of place of delivery on neonatal mortality in rural Tanzania. Value in  
441 Health 2013; 16:A209–10.
- 442 43. Ronsmans C, Scott S, Qomariyah SN, et al. Professional assistance during birth and  
443 maternal mortality in two Indonesian districts. Bull World Health Organ 2009; 87:416–  
444 23.
- 445 44. Mengesha, H. G., Lerebo, W. T., Kidanemariam, A., Gebrezgabher, G. & Berhane, Y.  
446 Pre-term and post-term births: Predictors and implications on neonatal mortality in  
447 Northern Ethiopia. BMC Nurs. 15(1), 1–11 (2016).
- 448 45. Villar, J. et al. International standards for newborn weight, length, and head  
449 circumference by gestational age and sex: The Newborn Cross-Sectional Study of the  
450 INTERGROWTH-21st Project. Lancet 384(9946), 857–868 (2014).
- 451 46. Wastnedge E, Waters D, Murray SR, McGowan B, Chipeta E, Nyondo-Mipando AL,  
452 Gadama L, Gadama G, Masamba M, Malata M, Tauro F, Dube Q, Kawaza K, Khomani  
453 PM, Whyte S, Crampin M, Freyne B, Norman JE, Reynolds RM; DIPLOMATIC  
454 Collaboration. Interventions to reduce preterm birth and stillbirth, and improve outcomes  
455 for babies born preterm in low- and middle-income countries: A systematic review. J

- 456 Glob Health. 2021 Dec 30; 11: 04050. doi: 10.7189/jogh.11.04050. PMID: 35003711;  
457 PMCID: PMC8709903.
- 458 47. Althabe F., et al., Cesarean section rates and maternal and neonatal mortality in low-,  
459 medium-, and high-income countries: an ecological study. *Birth*, 2006. 33(4): p. 270–  
460 277. <https://doi.org/10.1111/j.1523-536X.2006.00118.x> PMID: 17150064
- 461 48. Gregory K.D., et al., Cesarean versus vaginal delivery: whose risks? Whose benefits?  
462 *American journal of perinatology*, 2012. 29(01): p. 07–18. [https://doi.org/10.1055/s-](https://doi.org/10.1055/s-0031-1285829)  
463 0031-1285829 PMID: 21833896
- 464 49. Suparmi S., Chiera B., and Pradono J., Low birth weights and risk of neonatal mortality  
465 in Indonesia. *Health Science Journal of Indonesia*, 2016. 7(2): p. 113–117.
- 466 50. Migoto M.T., et al., Early neonatal mortality and risk factors: a case-control study in  
467 Parana' State. *Revista Brasileira de Enfermagem*, 2018. 71: p. 2527–2534
- 468 51. Soon B.T., *The global action report on preterm birth*. Geneva: World Health  
469 Organization, 2012: p. 2.
- 470 52. Conde-Agudelo A D.R.J. and Belizan J., Kangaroo mother care to reduce morbidity and  
471 mortality in low birthweight infants (Review). *The Cochrane Collaboration*. 2005, Wiley.