

Novel Perceval Sizing Technique: Single Center Experience

Rafik Margaryan, MD, PhD Giovanni Concistre MD
Giacomo Bianchi, MD, PhD Marco Solinas, MD

2024-08-06

1 Abstract

2 **Objective** Aim of this study was to compare old (manufacturer recommended) and new (institution based)
3 sizing techniques for sutureless valve.

4 Materials

5 A 226 consecutively operated patients underwent aortic valve replacement with Perceval sutureless valve
6 (Corcym) and had CT scan with contrast enhancement were included to this study. The final decision of
7 appropriate size is based on intra-operative obturator sizing. Briefly, we have measured on the CT scans the
8 annular ring surface and perimeter in order to estimate the prosthesis size. New sizing technique uses only
9 white obturator of Perceval and it should passe trough the annulus with slight friction, which practically
10 under-sizes with respect to manufacturer's recommendations.

11 **Results** The operative mortality was 1 (0.4424779%). There were no prosthesis migration neither annular
12 rupture in any group. The mean follow up was lower in new group (3.3 ± 2.0 vs 9.7 ± 1.6 , $p < 0.01$). At
13 the discharge the patients who have used the new sizing technique had less gradient on the prosthetic valve
14 (13.4 ± 5.0 vs 15.2 ± 5.5 , $p = 0.02$). The new sizing was less prone to degeneration at the follow-up which
15 would require intervention (13.4 ± 5.0 vs 15.2 ± 5.5 , $p = 0.02$). Oversizing of 22.6% had significant role on
16 valve gradient increase and structural degeneration ($p < 0.05$).

17 Conclusions

18 New sizing technique is safe and reproducible. It seem to deliver better immediate and long term benefits
19 for Perceval sutureless valve, less postoperative gradient, less probability or structural degeneration.

20 Introduction

21 The Perceval sutureless aortic bioprosthesis (Corcym Inc.) is an intraannular, true sutureless valve implanted
22 surgically. Similarly to transcatheter aortic valve implantation (TAVI) devices, the anchoring and good
23 sealing of the Perceval bioprosthesis relies on oversizing the stent frame compared with the native aortic
24 annulus. Cardiac computed tomography (CT) is a gold standard technique for measuring the aortic annu-
25 lus in patients undergoing TAVI, and the CT-derived axial image of the aortic virtual basal ring (VBR) is
26 considered as the reference for sizing by most of the manufacturers of transcatheter valves [1]. Interestingly,
27 the VBR lies exactly on the plane passing through the nadir of the 3 aortic cusps, that is where, accord-
28 ing to the instructions for use, a correctly positioned Perceval valve should be deployed [2]. Because the
29 Perceval valve stent is a self-expandable nitinol stent with relatively low radial force, the area of the aortic
30 annulus VBR could provide a good estimate of the final cross-sectional area of the stent after deployment
31 and could therefore be used to calculate the degree of oversizing (or underexpansion) of the valve. Recent
32 evidence in Perceval treated patients suggests that significant over-sizing can increased transprosthetic gra-
33 dients and possibly predisposing to other negative outcomes such as valve thrombosis, low platelet counts,
34 thromboembolic events, and early degeneration [3]. Moreover, there is evidence that excessive oversizing of
35 the Perceval valve is detrimental [4]. However, a systematic analysis of the relationship between the degree
36 of oversizing and the hemodynamic performance and longevity of the Perceval valve is lacking. The present
37 study investigats novel sizing technique in order to find best evidence base valve diameter determination.

38 Material and Methods

39 Patients

40 From March 2011 to July 2023, 1150 patients underwent aortic valve replacement (AVR) with the Perceval
41 at our institution [5]. A baseline preoperative cardiac CT allowing for correct sizing of the aortic annulus
42 was available for 226 patients constituted the population of the present study. The demographic and clinical
43 patients' characteristics are reported in Table 1. All of the data presented in the study were prospectively
44 collected and entered in our institutional database, that are filled in consecutively by anesthesiologists,
45 surgeons, perfusionists, and intensive care unit and ward physicians. The study was approved by the Ospedale
46 Del Cuore Fondazione G Monasterio Clinical Audit Committee to meet ethical and legal requirements, and
47 individual consent was waived.

48 Over-sizing was calculated as:

$$O = (1 - A/P) * 100\%$$

49 where O is percentage of over-sizing, A is a native virtual aortic ring surface area, P is the Perceval's cross
50 sectional area by manufacturer as published by our group before [6] (see Figure 1).

51 Surgical Procedure

52 The operations details are presented in Table 2. The aortic root was accessed through a high aortotomy at
53 the level of the aortic fat pad or immediately below it [7]. The aortic valve leaflets were resected, and the
54 annulus was de-calcified accurately (see supplementary Video 1).

55 Surgical Sizing

56 Aortic annulus measurements approach were described by our group previously [8]. Briefly, old sizing was
57 performed according to the instructions for use from manufacturer: the size of the prosthesis to be implanted
58 was indicated by the sizer for which the transparent obturator passed through the annulus but the white
59 obturator did not. New sizing was performed in our institution since 2017: the size of prosthesis to be
60 implanted was indicated by the sizer for which the white obturetor passes with slight friction trough the
61 native annulus. Thus, in practice it tends to under-size with respect to manufacturer recommendations of
62 sizing [9].

63 CT Protocol

64 For the purposes of this study, only patients with a suitable preoperative cardiac CT scan performed at our
65 institution were considered. Cardiac CT was performed with a 320-slice multidetector CT scanner (Toshiba
66 Aquilion ONE; Toshiba Medical Systems S.R.L., Rome, Italy). The scan was done using retrospective
67 electrocardiogram gating in spiral technique. Contrast media (80 mL) was injected at 4 mL/s, and bolus
68 tracking was used. The reconstructed slice width was 1 mm or less, and all of the measurements were done in
69 diastole (75% of the cardiac cycle) to maximize the image quality and to avoid variation because the systolic
70 images were not available for all patients. The patients' CT scan Digital Imaging and Communications
71 in Medicine (National Electrical Manufacturers Association, Rosslyn, VA) files were downloaded from our
72 institutional images server, anonymized, and independently analyzed. The area and perimeter of the aortic
73 valve VBR were measured on the three-dimensional multiplanar reconstructions as recommended [2] [10].

74 Clinical and Hemodynamic Assessment

75 All patients were managed according to our routine institutional protocol. At the end of the surgical
76 procedure, the prosthetic valve function was assessed by an expert cardiologist or cardiac anesthesiologist.
77 Trans-thoracic echocardiography was always repeated before discharge and at follow up. Continuous-
78 wave Doppler was used to assess the flow velocity across the prosthetic valve. The clinical and hemodynamic
79 outcomes are defined according to the Valve Academic Research Consortium 2 guidelines [11]. Procedure
80 success was defined as having a single, normally functioning valve in the proper anatomical position. A mean
81 transprosthetic gradient of 20 mm Hg or more was defined as an increased transprosthetic gradient. We have
82 used standardized definition of structural valve degeneration for surgical and transcatheter bioprosthetic
83 aortic valves [12]. Follow up is expressed in years.

84 Statistical Analysis

85 Continuous variables are expressed as mean \pm standard deviation, and categorical variables are expressed as
86 percentages. The association of preoperative, intraoperative, and postoperative variables with an increased
87 postoperative gradient was investigated by the Fisher exact test or Kruskal Wallis rank sum test (dichoto-
88 mous variables) or by the unpaired Student t test (continuous variables). Normally distributed continuous
89 variables were analyzed by the Mann-Whitney U test. Factors significantly associated to the end point of
90 the study were included in a logistic multivariate regression model to ascertain their independent role. Also
91 included were factors for which the univariate analysis gave a p value of 0.1 or less, or of known biologic
92 significance, but failed to meet the critical level. Odds ratios (OR) and 95% confidence intervals (CIs)
93 were calculated. Receiver operating characteristic (ROC) curves were calculated to single out the best cutoff
94 value of prosthesis over-sizing predicting an increased postoperative gradient. The accuracy of the test was
95 assessed by measuring the area under the ROC curve. The statistical significance of difference of the area
96 under the ROC curve from that of the "line of no information" was evaluated by Mann-Whitney U statistic.
97 A p value of less than 0.05 was considered significant. Statistical analysis was conducted using [R Foundation](#)
98 [for Statistical Computing](#) with RStudio [IDE](#).

99 **Results**

100 **Procedural Outcome and Complications**

101 Postoperative outcomes and complications are reported in Table 3. The operative mortality was 1
102 (0.4424779%). There were no prosthesis migration in neither of groups. There were no annular rupture
103 or any kind of aortic root complication due to valve over-sizing. Postoperative PM implantation was
104 documented in 12 (5.309735%) and it was not different between groups ($p = 0.12$). The mean follow up
105 was lower in new group (3.3 ± 2.0 vs 9.7 ± 1.6 years, $p < 0.01$). At the discharge the patients who have
106 used the new sizing technique had less gradient on the prosthetic valve (13.4 ± 5.0 vs 15.2 ± 5.5 mmHg, p
107 $= 0.02$). The new sizing was less prone to degeneration which requires intervention at median follow-up (2
108 (1.324503%) vs 15 (20%), $p < 0.01$).

109 **Prosthetic Valve performance**

110 Gradient on prosthetic valve was significantly higher in the old group ($p = 0.02$). Over-sizing degree was
111 significantly higher in the old group ($p < 0.01$). Gradient on prosthetic valve at 5.1 (95% CI: 0.4, 11.2) years
112 of follow up was still significantly higher in the old group ($p < 0.01$, see Figure 1). Gradient on the valve
113 at discharge and follow up were significantly correlating with over-sizing level ($p < 0.05$, see Figure 5, see
114 Table 4).

115 **Valve degeneration and survival analysis**

116 At median follow up the survival probability was high (99.5575221 %, see Figure 4). At the available follow
117 up there were no statistically different valve degeneration probability between two groups ($p = 0.11$, see
118 Figure 4). However, when considering >22.6 % over sizing as a cut off (see Figure 3), there were significant
119 degeneration difference being high in the old group ($p < 0.01$, see Figure 4).

120 Discussion

121 Our study demonstrates that standard sizing of the Perceval valve is associated with increased trans-
122 prosthetic gradients, higher degeneration probability if oversized.
123 Our study evidences the novel sizing technique is better alternative, which is safe and delivers less postoper-
124 ative gradient, lower degeneration rate and long life cycle. It has been shown previously that over-sizing of
125 30% or more in the annular anatomical area was associated with a 16-fold increase of the risk of developing
126 increased postoperative gradients [6]. In this study we found that even 22.6 % over-sizing is influencing neg-
127 atively on valve degeneration (see Figure 4) and we recommended to avoid it. Intra-operative sizing for the
128 Perceval valve, as recommended by the manufacturer instructions for use, does tend to over-size see Table 2.
129 Surgical obturator-based sizing is a complex process that converts to a number several non-numeric inputs,
130 including visual assessment, tactile feedback, stiffness of the cardiac tissues, the amount and distribution of
131 calcium, the fragility of the aortic wall or the height of the coronary arteries and other relevant features based
132 on operator. However, in our experience neither the size nor the approach do change the over-sizing degree
133 (see Figure 2). Baert and coworkers [4] recently reported valve recoiling caused by excessive over-sizing in 4
134 patients (2.9% of their Perceval population). They suggested back in 2017 to modify the sizing process and
135 to implant the valve size “Given by the sizer of which the white obturator pass the annulus with friction”
136 [4]. We do use the novel sizing technique since 2017. In our opinion, CT guided sizing could be the best
137 practice in order not to oversize more then 22.6 %. By given data, 15% over-sizing or less is well tolerated
138 and has no accelerating influence on valve degeneration. Unlike previous studies our study focused on the
139 early postoperative and follow-up periods. Increased gradients early after AVR can be related to many re-
140 versible factors, which disappear with time (unpublished data), and are often of limited clinical significance.
141 However, increased gradients in patients with Perceval valves with known native annulus dimensions should
142 not be neglected. In fact, as observed above, the presence of an increased gradient could indicate altered
143 kinetics of the leaflets and may herald other negative outcomes, such as sub-clinical valve thrombosis and
144 early degeneration, at least in some patients [13].

145 Math explanation of oversizing

146 Area of a perfect circle is given by:

$$Area = \pi R^2$$

147 where R is the circle’s radius. Ellipse shape has an area give by this formula:

$$Area = \pi AB$$

148 Where A and B are two radius-es of the ellipse. In order to achieve the same area ellipse should have shorter
149 and longer radius’s multiplication equal to perfect circle’s radius square. On the other hand perimeter
150 calculated as:

$$Perimeter = 2\pi R$$

151 for perfect circle, and

$$Perimeter \approx \pi \sqrt{2(A^2 + B^2)}$$

152 for elliptic shape. For every given prosthesis the perimeter is constant. Distorting is shape (other then
153 perfect circle) yields to less area for given fix perimeter, hence higher gradient. Oversize valve had external
154 (heart’s) tissues radial forces which will distort it and constrain it into the non circular shape [13].

155 Conclusions

156 New sizing technique is safe and reproducible. It seem to deliver better immediate and long term benefits for
157 Perceval sutureless valve, less postoperative gradient, less probability or structural degeneration. Over-sizing
158 above the 22.6 % should be avoided.

159 **Figures**

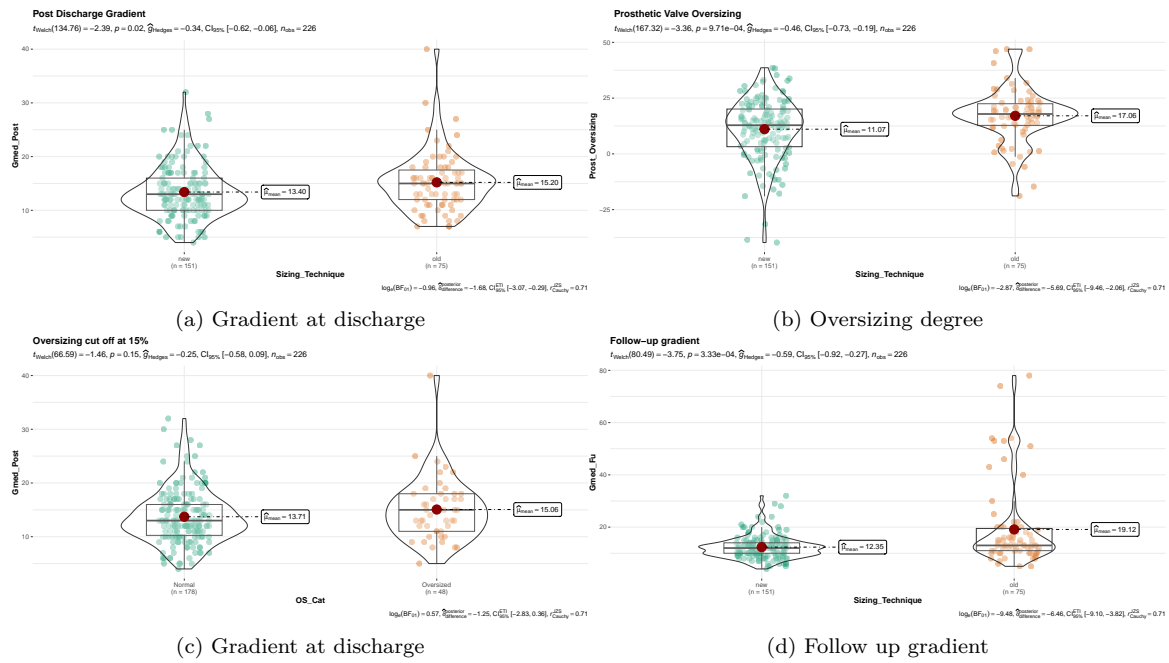


Figure 1: Prosthesis characteristics: a) gradient on prosthetic valve at discharge expressed in mmHg; b) calculated oversizing degree by sizing technique; c) discharge gradient divided by cut off point (22.6%), d) follow-up gradient by sizing technique.

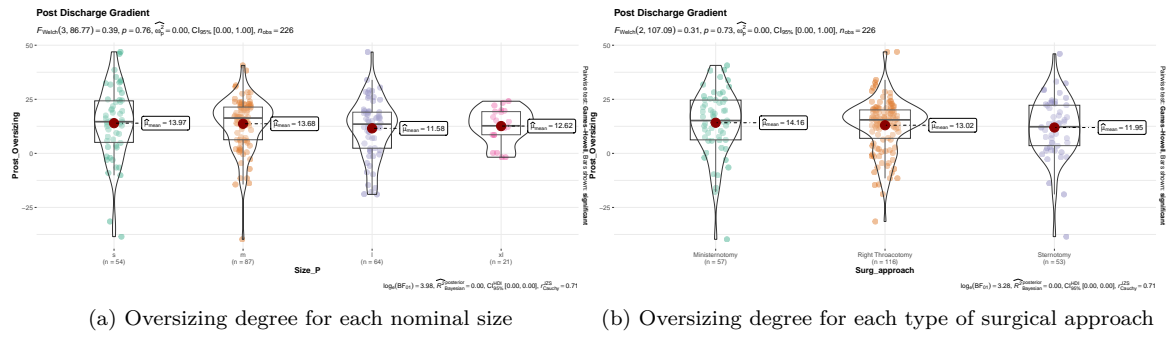


Figure 2: Prosthesis correlation to a) four sizes of Perceval prosthesis b) three surgical approaches.

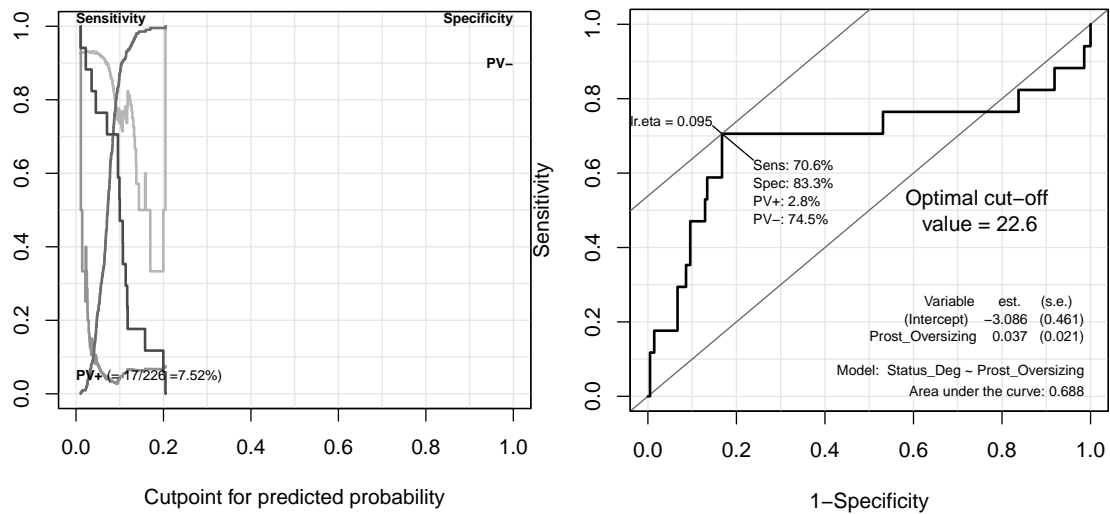


Figure 3: Over-sizing cut of analysis: a) cut-point of predicted probability; b) cut-off point and its parameters maximized (sensitivity, specificity) and model details that has been used to find the cut-off point.

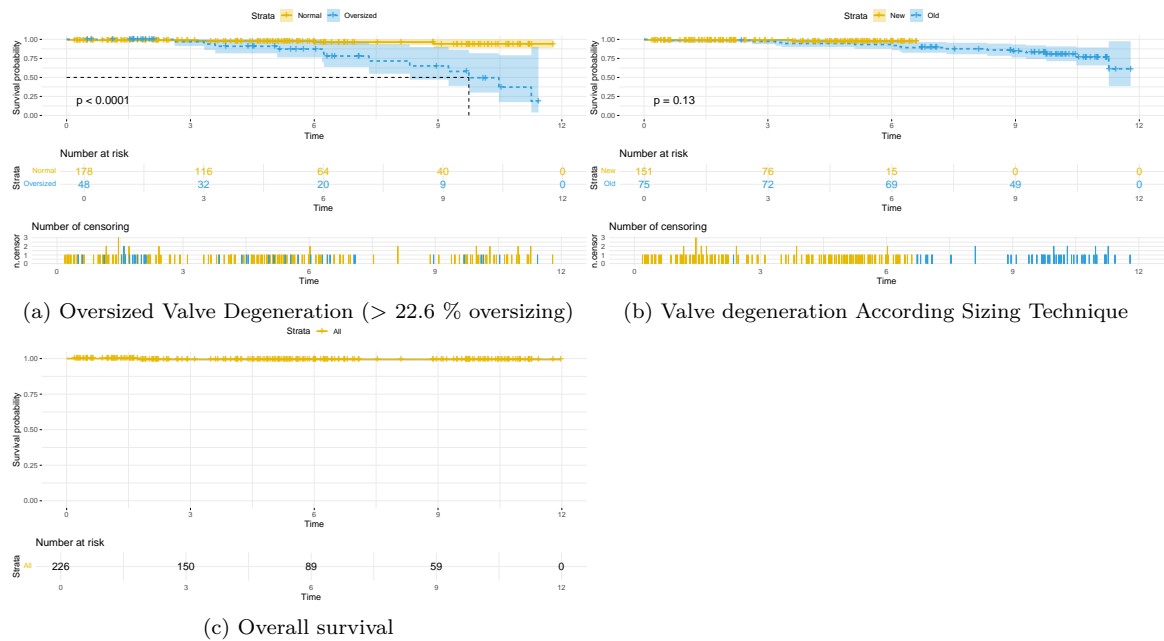


Figure 4: Kaplan Meier Curves: a) time to event of prosthesis structural valve degeneration(SVD) end/or surgical intervention; b)SVD divided by sizing technique; c) overall survival curve for cohort.

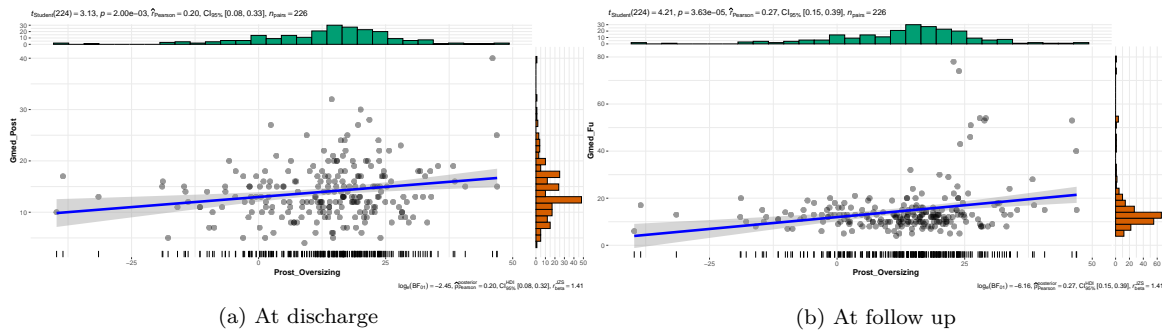


Figure 5: Oversizing and mean gradient correlation: a) at discharge; b) at follow-up.

160 **Tables**

Table 1: Patients' Demographics And Baseline Characteristics

Variable	N = 226 ¹
Age	68.3 days ± 132.9
Sex	
Female	126 (56%)
Male	100 (44%)
BMI	27.3 ± 4.6
BSA	1.79 ± 0.23
Sizing Technique	
new	151 (67%)
old	75 (33%)
Perceval's Size	
s	54 (24%)
m	87 (38%)
l	64 (28%)
xl	21 (9.3%)
Hypertension	147 (68%)
Diabetes	46 (21%)
Chronic renal failure	3 (1.3%)
Logisic Euroscore	10.0 ± 8.1

161 ¹Mean ± SD; n (%)

Table 2: Surgical Characteristics

Variable N = 151 ¹ N = 75 ¹	new old p-value ²		
Surgical Approach			<0.001
Ministernotomy	53 (35 %)	4 (5.3 %)	
Minithoracotomy	55 (36 %)	61 (81 %)	
Sternotomy	43 (28 %)	10 (13 %)	
Area	4.81 ± 1.06	4.79 ± 1.01	>0.9
Perimeter	7.87 ± 0.88	7.96 ± 0.92	0.4
Prosthesis Oversizing	11 ± 14	17 ± 12	0.002
Perceval's Size			<0.001
s	45 (30 %)	9 (12 %)	
m	57 (38 %)	30 (40 %)	
l	32 (21 %)	32 (43 %)	
xl	17 (11 %)	4 (5.3 %)	
CPB	106 ± 32	98 ± 35	0.003
Aortic X-Clamping	65 ± 19	62 ± 24	0.038
BSA	1.80 ± 0.24	1.77 ± 0.21	0.2
BMI	27.3 ± 4.4	27.1 ± 5.0	0.7

¹n (% %); Mean ± SD

²Pearson's Chi-squared test; Wilcoxon rank sum test

Table 3: Postoperative Outcomes

Variable N = 151 ¹ N = 75 ¹	new old p-value ²		
Hospital Mortality	0 (0%)	1 (1.3%)	0.3
Postoperative Stroke			
No	151 (100%)	75 (100%)	

¹n (%)

²Fisher's exact test

Table 4: Risk Factors for Degeneration.

Characteristic	Degeneration Risks			Time to Death		
	OR ¹	95% CI ¹	p-value	HR ¹	95% CI ¹	p-value
age	0.95	0.90, 0.99	0.025	0.93	0.89, 0.99	0.013
Prost_Oversizing	1.06	1.03, 1.10	0.001	0.91	0.87, 0.96	<0.001
OS_Cat						
Normal	—	—		—	—	
Oversized	0.42	0.16, 1.09	0.082	80.5	11.4, 568	<0.001

¹OR = Odds Ratio, CI = Confidence Interval, HR = Hazard Ratio

164

165 **Acknowledgments**

166 Conceptualization of the scientific question by RM, data were collected in mixed fashion by RM and GC.
167 Manuscript drafting, editing and finalization by RM, GC and MS. Our study has some limitations: it
168 is a single-institution retrospective analysis of prospectively collected data in a population of consecutive
169 patients.

170 **Supplemental Material**

171 Bibliography

- 172 1. Achenbach S, Delgado V, Hausleiter J, Schoenhagen P, Min JK, Leipsic JA. [SCCT expert consensus document on computed tomography imaging before transcatheter aortic valve implantation \(TAVI\)/transcatheter aortic valve replacement \(TAVR\)](#). *Journal of Cardiovascular Computed Tomography*. 2012;6(6):366–80.
- 173 2. Pfeiffer S, Sirch J, Vogt F, Fischlein T, Santarpino G. [Implantation of the Sorin Perceval® sutureless aortic valve: A step by step approach](#). *Minerva Cardioangiologica*. 2017 Apr;65(2):184–92.
- 174 3. Hansson NC, Grove EL, Andersen HR, Leipsic J, Mathiassen ON, Jensen JM, et al. [Transcatheter Aortic Valve Thrombosis: Incidence, Predisposing Factors, and Clinical Implications](#). *Journal of the American College of Cardiology*. 2016 Nov;68(19):2059–69.
- 175 4. Baert J, Astarci P, Noirhomme P, Kerchove L de. [The risk of oversizing with sutureless bioprosthesis in small aortic annulus](#). *The Journal of Thoracic and Cardiovascular Surgery*. 2017 Feb;153(2):270–2.
- 176 5. Concistrè G, Bianchi G, Margaryan R, Zancanaro E, Chiamonti F, Kallushi E, et al. Ten-year experience with sutureless Perceval bioprosthesis: Single-centre analysis in 1157 implants. *Journal of Cardiovascular Medicine*. 2023 Aug;24(8):506.
- 177 6. Cerillo AG, Amoretti F, Mariani M, Cigala E, Murzi M, Gasbarri T, et al. [Increased Gradients After Aortic Valve Replacement With the Perceval Valve: The Role of Oversizing](#). *The Annals of Thoracic Surgery*. 2018 Jul;106(1):121–8.
- 178 7. Concistrè G, Chiamonti F, Bianchi G, Cerillo A, Murzi M, Margaryan R, et al. [Aortic Valve Replacement With Perceval Bioprosthesis: Single-Center Experience With 617 Implants](#). *The Annals of Thoracic Surgery*. 2018 Jan;105(1):40–6.
- 179 8. Margaryan R, Kallushi E, Gilmanov D, Micelli A, Murzi M, Solinas M, et al. Sutureless Aortic Valve Prosthesis Sizing Estimation and Prediction Using Multidetector-Row Computed Tomography. *Innovations*. 2015 Jul;10(4):230–5.
- 180 9. Glauber M, Miceli A, Bacco L di. Sutureless and rapid deployment valves: Implantation technique from A to Z—the Perceval valve. *Annals of Cardiothoracic Surgery*. 2020 Jul;9(4):33040–340.
- 181 10. Piazza N, Jaegere P de, Schultz C, Becker AE, Serruys PW, Anderson RH. [Anatomy of the aortic valvar complex and its implications for transcatheter implantation of the aortic valve](#). *Circulation Cardiovascular Interventions*. 2008 Aug;1(1):74–81.
- 182 11. Kappetein AP, Head SJ, Généreux P, Piazza N, Mieghem NM van, Blackstone EH, et al. [Updated standardized endpoint definitions for transcatheter aortic valve implantation: The Valve Academic Research Consortium-2 consensus document \(VARC-2\)](#). *European Journal of Cardio-Thoracic Surgery: Official Journal of the European Association for Cardio-Thoracic Surgery*. 2012 Nov;42(5):S45–60.
- 183 12. Dvir D, Bourguignon T, Otto CM, Hahn RT, Rosenhek R, Webb JG, et al. Standardized Definition of Structural Valve Degeneration for Surgical and Transcatheter Bioprosthetic Aortic Valves. *Circulation*. 2018 Jan;137(4):388–99.
- 184 13. Cerillo AG, Amoretti F, Mariani M, Chiappino D. [Sutureless Valve Thrombosis: The Role of Stent Geometry](#). *The Annals of Thoracic Surgery*. 2018 Mar;105(3):986–8.