

## Clinical Assessment of a Plasma AT(N) Panel for Alzheimer's Disease

Authors: Bradley B. Collier, Ph.D.<sup>1\*</sup>; Matthew R. Chappell, B.S.<sup>1</sup>; Whitney C. Brandon, M.S.<sup>1</sup>; Tien Le, M.S.<sup>1</sup>; Ayla B. Harris, B.S.<sup>1</sup>; Joseph M. Volpe, Ph.D.<sup>2</sup>; Robert Martone, B.S.<sup>3</sup>; John W. Winslow, Ph.D.<sup>4</sup>; Deborah Boles, Ph.D.<sup>1</sup>, Andre Valcour, Ph.D.<sup>1</sup>, Russell P. Grant, Ph.D.<sup>1</sup>

<sup>1</sup>Center for Esoteric Testing, Labcorp, <sup>2</sup>Labcorp, <sup>3</sup>Labcorp Biopharma, <sup>4</sup>Monogram Biosciences, Labcorp

\*Address correspondence to this author at: Center for Esoteric Testing, Labcorp, 1447 York Court, Burlington, NC, 27517, USA. E-mail: [collib7@labcorp.com](mailto:collib7@labcorp.com)

## 1. Abstract

**Importance:** With the emergence of new therapeutics for treatment of Alzheimer's disease, there is currently a critical need for sensitive and accurate blood-based tests to assist with the diagnosis and treatment of Alzheimer's disease.

**Objective:** To determine the clinical validity of an analytically validated plasma panel for the assessment of Alzheimer's disease.

**Design, Setting, and Participants:** This cross-sectional study measured biomarkers representative of the Alzheimer's disease AT(N) framework in 200 plasma specimens acquired from the Australian Imaging, Biomarker & Lifestyle (AIBL) Study of Ageing. Specimens were obtained from amyloid PET negative subjects classified as cognitively unimpaired (n = 75) and amyloid PET positive subjects classified as having no cognitive impairment (n = 49), mild cognitive impairment (n = 26), or Alzheimer's disease dementia (n = 50).

**Exposures:** Amyloid PET and plasma A $\beta$ 42/40, pTau181, and NfL.

**Main Outcomes and Measures:** To assess the utility of the plasma panel to assess onset and progression of Alzheimer's disease with respect to amyloid PET results and cognitive impairment.

**Results:** A difference was observed for each assay with respect to amyloid status (p<0.0001). Receiver operating characteristic (ROC) analysis of clinical specimen results from validated assays produced an area-under-the-curve (AUC) of 0.941 for A $\beta$ 42/40, 0.847 for pTau181, and 0.666 for NfL (p < 0.0001 for all biomarkers). The sensitivity (96.0%) and specificity (86.7%) observed for A $\beta$ 42/40 measurements meets current recommendations for triage testing. In addition, plasma levels of pTau181 and NfL were also found to increase with worsening cognitive impairment.

**Conclusions and Relevance:** The clinical concordance with amyloid PET for each biomarker is consistent with the biological progression of the AD continuum. As such, the availability of this AT(N) panel will provide clinicians with a simple blood-based means to provide evidence of AD pathological changes and could help identify AD patients much faster, shorten the overall AD patient diagnostic journey, and enable earlier treatment interventions.

## Abbreviations:

- A± – amyloid status (positive or negative) based on PET imaging
- Aβ – amyloid beta
- Aβ40 – amyloid beta consisting of amino acid residues 1-40
- Aβ42 – amyloid beta consisting of amino acid residues 1-42
- Aβ42/40 – the ratio of Aβ42 to Aβ40
- AIBL – Australian Imaging, Biomarkers and Lifestyle (Study of Ageing)
- AUC – area-under-the-curve
- AD – Alzheimer’s disease
- ADD – Alzheimer’s disease dementia
- AT(N) – amyloid, tau, neurodegeneration
- CSF – cerebrospinal fluid
- M/S – moderate or severe (with respect to MMSE scores)
- MMSE – mini-mental state examination
- Negl. – negligible (with respect to MMSE scores)
- NfL – neurofilament light chain
- PET – positron emission tomography
- pTau181 – microtubule-associated protein tau phosphorylated at threonine 181
- ROC – receiver operator characteristic

## 2. Introduction

Alzheimer's disease (AD) is understood to be a progressive neurodegenerative disease that presents as a continuum from a presymptomatic/prodromal stage to severe dementia.<sup>1-6</sup> In conjunction with this understanding, a biomarker framework was proposed for assessing the underlying brain pathology of AD irrespective of patient symptoms.<sup>1-6</sup> The AT(N) framework consists of various biomarkers traditionally grouped into three categories based on the type of Alzheimer's related pathology investigated:

- **A** – biomarkers associated with amyloid pathology (e.g. plaques)
- **T** – biomarkers associated with tau pathology (e.g. neurofibrillary tangles)
- **(N)** – biomarkers associated with neurodegeneration

where the order listed is representative of the typical progression of AD and *N* is placed in parentheses to indicate that neurodegeneration is not specific to AD.<sup>2,6-8</sup>

Positron emission tomography (PET) and other imaging techniques as well as measurements of cerebrospinal fluid (CSF) biomarkers have demonstrated utility for identifying Alzheimer's disease (AD) pathology in each of the three AT(N) categories; however, these tools remain costly, invasive, and/or not widely available.<sup>9-12</sup> Due to the growing prevalence of this progressive disease and emerging therapeutics, robust blood plasma-based measurements are a desirable alternative.<sup>3,9,11-13</sup>

Advancements in plasma biomarker platforms, which enable more accurate identification of disease pathology at lower levels of detection, led to the extension of the AT(N) framework to support the clinical diagnosis of AD.<sup>5,7,14</sup> The AT(N) framework provides an objective approach to determine the status of biological changes that are indicative of Alzheimer's disease. A widely available plasma-based AT(N) panel could support the triage of patients whose initial lab results and/or cognitive exams merit further evaluation of dementia. An AT(N) panel having sufficient analytical and clinical accuracy would allow for an initial, simple, blood-based test to provide evidence of AD pathology, which could then be confirmed with either a CSF test or PET scan. Such a panel could help identify AD patients much faster, shorten the overall AD patient diagnostic journey, enable earlier treatment interventions, and potentially reduce the enrollment duration and cost of clinical trials for AD therapeutics.

Although various analytes have been proposed for plasma-based assessments of brain pathophysiology, this study focuses on measurements using automated, high sensitivity immunoassay platforms for each respective AT(N) biomarker.<sup>3,9-13,15,16</sup> Amyloid-beta 1-42 (A $\beta$ 42) and amyloid-beta 1-40 (A $\beta$ 40) are measured independently to determine the ratio of the protein isoforms (A $\beta$ 42/40) which has been shown to decrease with the onset of AD.<sup>9,11,15,17-20</sup> In addition, measurements of microtubule-associated protein tau phosphorylated at threonine 181 (pTau181) and neurofilament light chain (NfL) were investigated as both have been shown to become elevated with progression of AD.<sup>9,11,15,21-30</sup> Significant evidence for each of these analytes demonstrates their viability

as respective biomarkers of the AT(N) framework. Notably, we confirm the concordance of a plasma A $\beta$ 42/40 ratio test, relative to amyloid PET status, in a well-characterized clinical cohort distinct from the initial investigation of clinical utility for this analytical platform.<sup>17,31</sup>

### **3. Methods**

#### **3.1. Assays Utilized**

Measurements of A $\beta$ 40 and A $\beta$ 42 were performed using high sensitivity chemiluminescent enzyme immunoassays on a Sysmex<sup>®</sup> HISCL-5000 instrument as previously reported.<sup>17,31</sup> NfL and pTau181 measurements were performed using Roche Elecsys<sup>®</sup> electrochemiluminescence immunoassays on a Roche cobas<sup>®</sup> e801 instrument.<sup>32</sup> Both instruments are considered high-throughput clinical autoanalyzers. The assays used have not yet received regulatory approval from the FDA although the Sysmex assays are CE marked and have received regulatory approval in Japan. All measurements were performed at the Center for Esoteric Testing of Labcorp (Burlington, NC). Analytical validation studies, based on guidance from the Clinical & Laboratory Standards Institute, were previously performed for each assay (Supplemental Table 1). All results described are a result of single measurements.

#### **3.2. Clinical Specimens**

To assess the clinical performance of the AT(N) panel, 200 specimens from subjects in the Australian Imaging, Biomarker & Lifestyle (AIBL) Study of Ageing were tested (Supplemental Table 2).<sup>33,34</sup> The AIBL study was approved by various institutional ethics committees and all subjects provided written informed consent.<sup>33,35</sup> For each subject, amyloid status (A $\pm$ ) was determined using PET imaging (where centiloid levels  $\geq 26$  were deemed positive) and specimens were collected intravenously using K3EDTA tubes (Sarstedt 01.1605.008) with prostaglandin E1 added (33 ng/mL of whole blood). Following centrifugation, plasma was removed, sub-aliquoted, and stored in deep frozen conditions (*i.e.* -80°C) until measurement.<sup>33,34</sup>

The neuropsychological information of each subject was reviewed following each visit using a clinical panel (using standardized clinical criteria) to determine the cognitive status of each subject: cognitively unimpaired (CU), mild cognitive impairment (MCI), Alzheimer's disease dementia (ADD)<sup>36</sup>. The specimens utilized came from 75 CU/A-, 49 CU/A+, 26 MCI/A+, and 50 ADD/A+ subjects (Supplemental Table 3). As part of the neuropsychological information used to assess cognitive status, mini-mental state examinations (MMSE) were performed on each subject to provide a quantification of cognitive impairment.<sup>37</sup> Note that 3 subjects (34, 47, and 75) provided specimens at 2 different time points and different clinical states (see Supplemental Table 3).

To further assess NfL levels with respect to age, two additional sets of samples were acquired. K2EDTA plasma specimens were collected from 41 subjects less than 50 years

in age under an IRB approved protocol (WCG IRB protocol #520100174, Supplemental Table 4). MMSE scores were assumed to be negligible for these subjects. Additionally, 12 K2EDTA plasma specimens were purchased from ProteoGenex (Inglewood, CA); these were obtained from subjects that have been diagnosed with Alzheimer's disease using one or more forms of brain structural or functional evaluation (Supplemental Table 5). Specimens were collected under ethical regulations and informed consent was obtained for each subject.<sup>38</sup> Age and MMSE scores were provided for these subjects.

### **3.3. Statistical Analysis**

Receiving operator characteristic (ROC) analysis was performed with respect to amyloid PET status to assess the clinical performance of each AT(N) biomarker. In addition, box-and-whisker plots (using the Tukey method for plotting the whiskers and outliers) were used to visually represent results while the Mann-Whitney U test was performed to determine statistical significance with the clinically defined groups (i.e. CU/A-, CU/A+, MCI/A+, ADD/A+). Statistical significance is represented using the following convention: \* ( $p < 0.05$ ), \*\* ( $p < 0.01$ ), \*\*\* ( $p < 0.001$ ), and \*\*\*\* ( $p < 0.0001$ ).

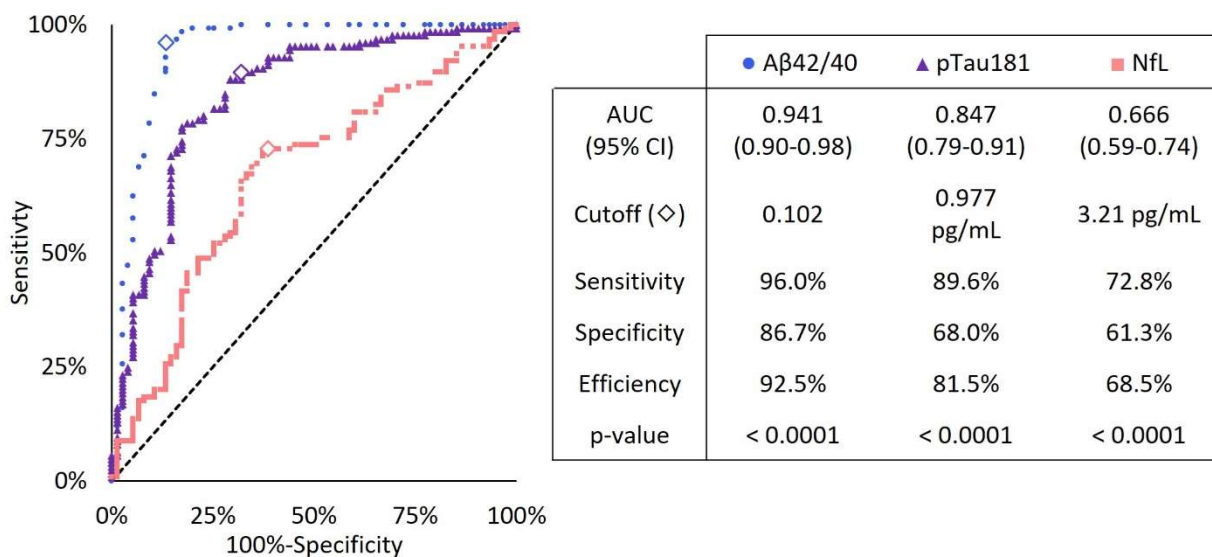
Analysis with respect to amyloid status and MMSE scores was performed by subdividing scores into the following groups: negligible (26-30), mild (21-25), moderate (11-20), and severe ( $\leq 10$ ) similar to previous reports<sup>39</sup>. Subjects outside of the AIBL cohort less than 50 years of age were assumed to be A- and have MMSE scores within the negligible region. Results from two A- subjects (subjects 155 and 126) were removed from MMSE analysis as they were classified as CU but had MMSE scores that fell into the mild region (Supplemental Table 2). In addition, results from moderate (11-20) and severe ( $\leq 10$ ) scores were combined (M/S) from analysis utilizing results from only the AIBL cohort as only 3 subjects had results in the severe range (subjects 22, 46, 50).

## 4. Results

### 4.1. ROC Analysis

Assessment of results (Figure 1 and Supplemental Figure 1) indicated that each biomarker was able to demonstrate a high degree of statistical difference ( $p < 0.0001$ ) between A- and A+ subjects. Decreasing  $A\beta_{42/40}$  values were observed with A+ subjects producing an area-under-the curve (AUC) of 0.941 with a maximum efficiency (*i.e.* accuracy) of 92.5% observed at a cutoff ratio of 0.102. Results for pTau181 produced an AUC of 0.847 with a maximum efficiency of 81.5% at a cutoff of 0.977 pg/mL. NfL results produced an AUC of 0.666 with a maximum efficiency of 68.5% at a cutoff of 3.21 pg/mL. Note that the assays utilized herein have not been standardized to produce comparable concentrations across different assays and platforms; hence the cutoffs proposed are not applicable to measurements made using other available assays (Supplemental Figure 2).

**Figure 1: ROC plot of AT(N) biomarkers.** Results are with respect to amyloid PET status and include the corresponding statistical results.

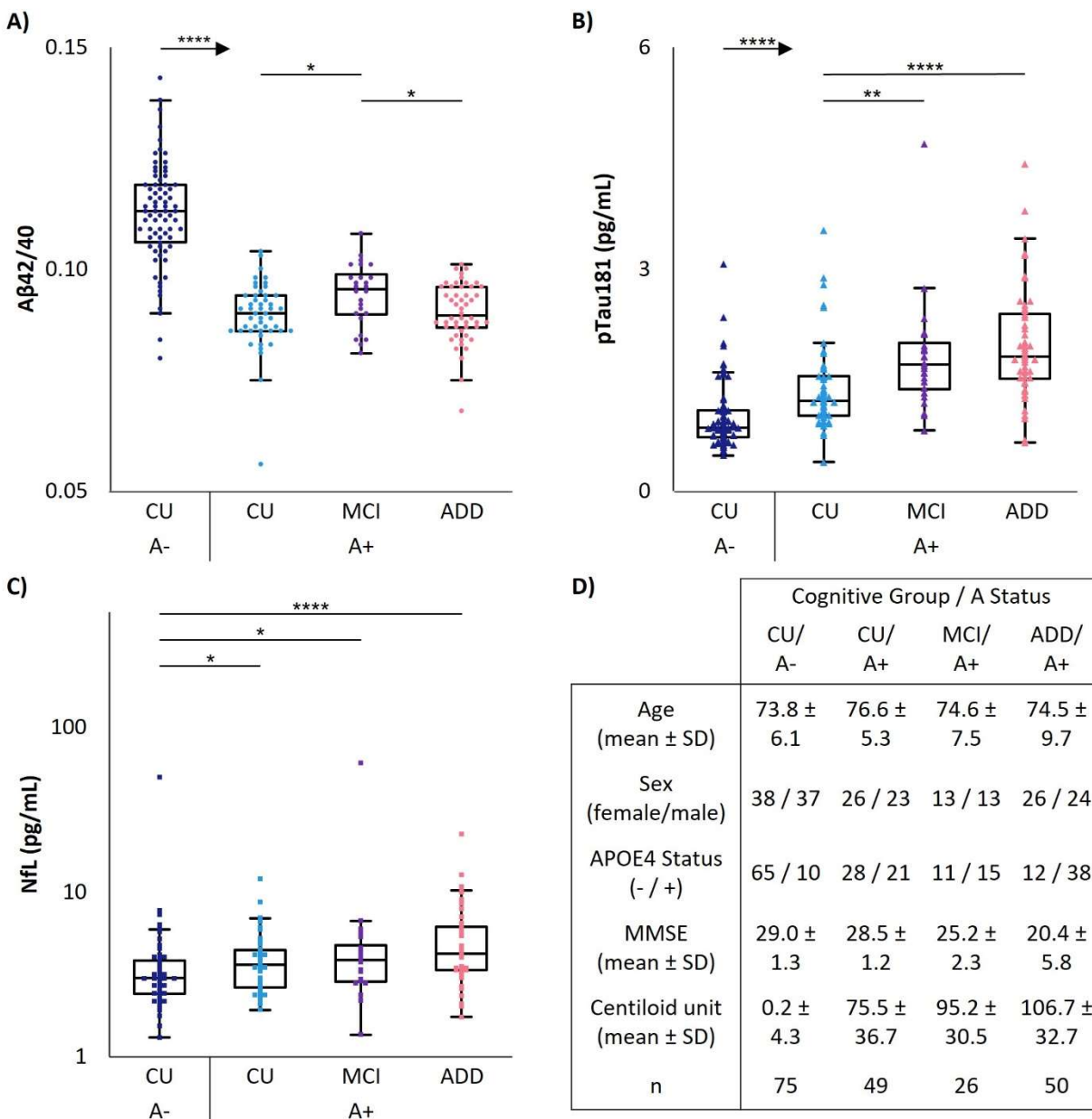


#### **4.2. Amyloid and Cognitive Status Analysis**

Investigation of A $\beta$ 42/40 results with respect to amyloid status as well as clinically defined cognitive status demonstrated a high significant difference ( $p < 0.0001$ ) between A- and A+ subjects from each cognitive state (Figure 2A). There was also a difference observed between MCI/A+ subjects and CU/A+ as well as ADD/A+ subjects ( $p < 0.05$ ) but not between CU/A+ and ADD/A+ subjects indicating that A $\beta$ 42/40 is likely not a good indicator of cognitive status. Results for pTau181 also demonstrated a high degree of significance ( $p < 0.0001$ ) between A- and A+ subjects from each cognitive state (Figure 2B). However, pTau181 results from CU/A+ subjects were also found to be different than results from MCI/A+ subjects ( $p < 0.01$ ) and ADD/A+ subjects ( $p < 0.0001$ ). Results between the latter two groups were not statistically significant. NfL results for A- subjects as compared to the A+ subjects were statistically significant ( $p < 0.05$ ) but the results between the different A+ groups were not (Figure 2C).



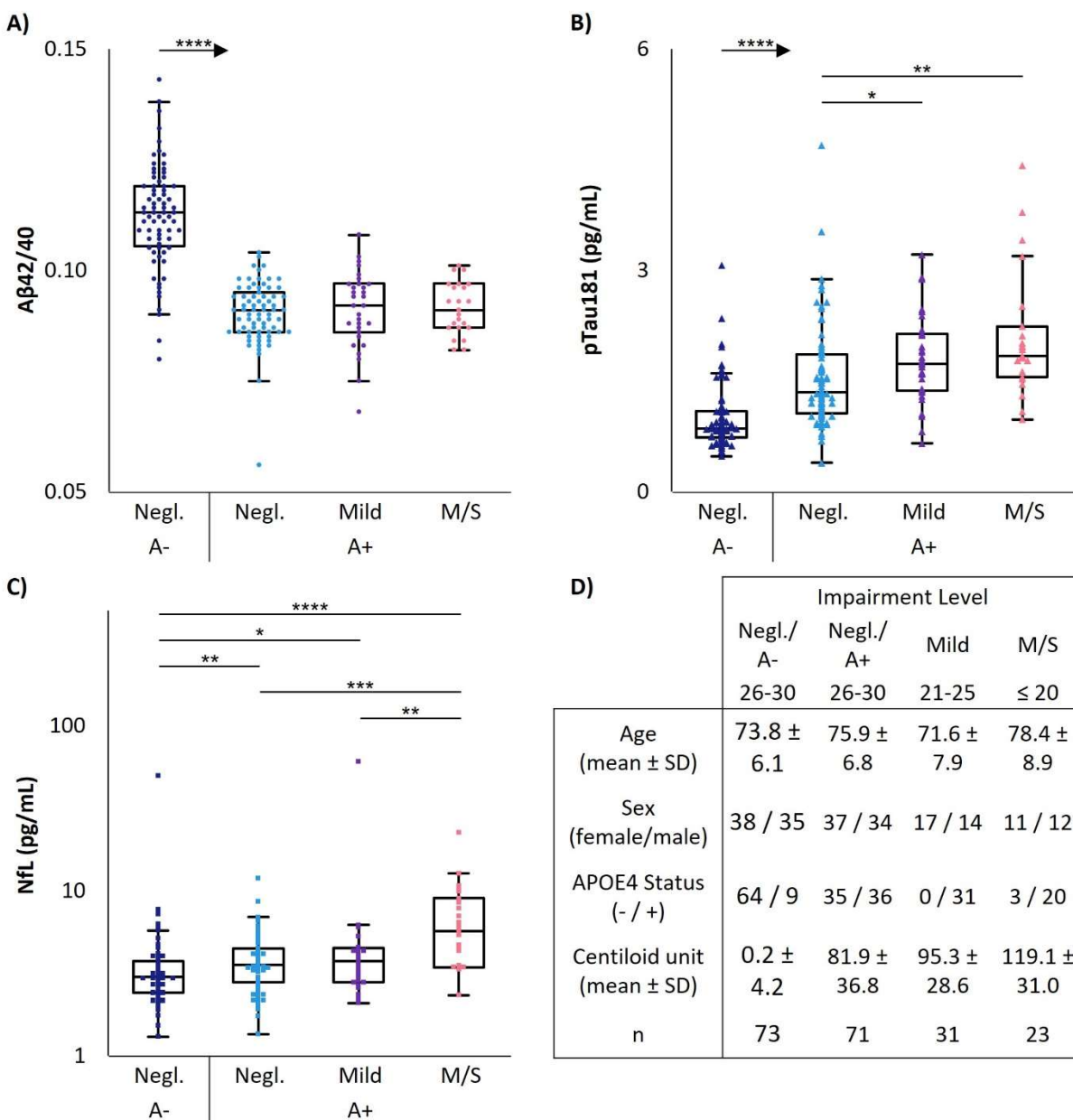
**Figure 2: Results with respect to amyloid and clinically defined cognitive statuses.** Results for A) A $\beta$ 42/40, B) pTau181, and C) NfL (note the logarithmic y-axis for NfL) are shown along with D) additional information for each of the groups analyzed.



### **4.3. Amyloid Status and MMSE Score Analysis**

Similar to results observed with respect to amyloid and cognitive status, A $\beta$ 42/40 results differed between A- and A+ subjects with a high degree of significance ( $p < 0.0001$ ) irrespective of MMSE scores (Figure 3A). However, results for A+ subjects from the negligible, mild, and moderate/severe groups were not statistically different. Results for pTau181 again demonstrated differences having a high degree of significance ( $p < 0.0001$ ) between A- and A+ subjects from each MMSE range (Figure 23B). Results from negligible/A+ subjects were also found to be different than results from mild/A+ subjects ( $p < 0.05$ ) and M/S/A+ subjects ( $p < 0.01$ ). Results between the latter two groups were not statistically significant. NfL results, however, demonstrated statistical differences across all groups investigated ( $p < 0.05$ ) with the exception A+ subjects having negligible and mild scores (Figure 3C). Similar results for each biomarker were observed with respect to centiloid values measured during PET analysis (Supplemental Figure 3).

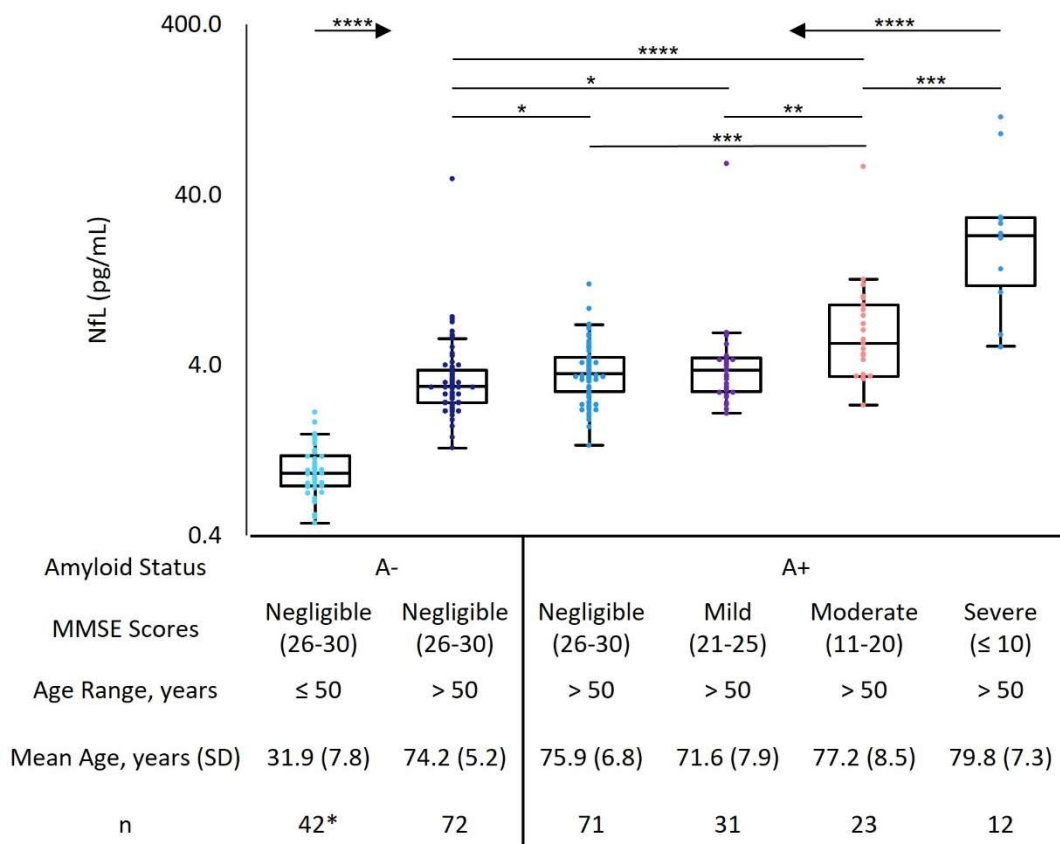
**Figure 3: Results with respect to amyloid status and MMSE scores.** Results for A) A $\beta$ 42/40, B) pTau181, and C) NfL (note the logarithmic y-axis for NfL) are shown along with D) additional information for each of the groups analyzed.



#### **4.4. NfL Levels with Respect to Age and MMSE Scores**

Expanding our analysis of NfL results to include additional younger subjects and more A+ subjects with severe MMSE scores (Figure 4), it is apparent that NfL levels are lower ( $p < 0.0001$ ) in younger subjects ( $\leq 50$  years) as compared to older subjects ( $> 50$  years) regardless of amyloid status or MMSE scores. In addition, NfL levels from subjects with severe MMSE scores differed from subjects with moderate, mild, and negative MMSE scores with a high significant difference ( $p < 0.001$ ). Older A- subjects with negligible MMSE scores also demonstrated statistically significant differences as compared to older A+ subjects with negligible and mild MMSE scores ( $p < 0.05$ ). The significance increased when comparing older A- subjects with negligible MMSE scores to older A+ subjects with moderate MMSE scores ( $p < 0.0001$ ). Older A+ subjects with negligible MMSE scores ( $p < 0.001$ ) and older A+ subjects with mild MMSE scores ( $p < 0.01$ ) also demonstrated a difference in NfL results as compared to older A+ subjects with moderate MMSE scores. Although a statistically significant difference was not observed between older A+ subjects with negligible and moderate MMSE scores, the results overall demonstrate an elevation of NfL with increased cognitive impairment.

**Figure 4: Expanded NfL Results.** NfL results across multiple specimen groups with respect to amyloid status and MMSE scores (note the logarithmic y-axis for NfL). Additional information for each of the groups analyzed can be found below the graph.



\*One subject (ID 146) was less than 50 years of age.

## 5. Discussion

In order to assess relative performance of these assays, the observed AUC results were compared to those previously reported for ROC analyses performed with respect to amyloid status and irrespective of cognitive impairment. In addition, only results from standalone analysis of each biomarker (*i.e.* without incorporating additional measures or demographic information) were used. Unless otherwise noted, the reported AUCs were generated using different biomarker assays as well as different clinical cohorts where amyloid status was determined using a variety of techniques. In cases where multiple cohorts were utilized, only the comprehensive AUC (where available) is referenced herein.

A $\beta$ 42/40 results within this study yielded an AUC (0.941) greater than those reported for other A $\beta$ 42/40 measurement methods (0.64 to 0.89).<sup>9,15,18,20,24,34,40–46</sup> It is interesting to note that the same A $\beta$ 42/40 measurement system and assays utilized herein produced similar AUC results (0.87–0.95) reported for different clinical cohorts with the same measurement system.<sup>17,47</sup> In addition, the cutoff proposed in one of these studies matches the optimal A $\beta$ 42/40 ratio observed in the current study (0.102).<sup>17</sup> Furthermore, the sensitivity (96.0%) and specificity (86.7%) observed herein for A $\beta$ 42/40 meets current recommendations for sensitivity ( $\geq 90.0\%$ ) and specificity ( $\geq 85.0\%$ ) for a triage test performed in a primary care setting.<sup>48</sup> As A $\beta$ 42/40 is indicative of the early stages of AD progression (*i.e.* formation of amyloid plaques), it is not expected that it is an indicator of the progression of the disease from cognitively unimpaired to dementia nor indicative of lower MMSE scores.<sup>49</sup> As such, A $\beta$ 42/40 levels appear to plateau following subjects becoming A+.

AUC results observed (0.847) for measurements of pTau181 are consistent with other reported AUC results (0.72 to 0.96).<sup>9,10,23,24,34,40,43,46,47,50–53</sup> The AUC observed is also greater than the AUCs (0.77 to 0.80) previously reported using an assay from the same manufacturer but on a different instrument model (*i.e.* Roche cobas<sup>®</sup> e601) with 2 different clinical cohorts.<sup>9</sup> Despite the lower AUC values with respect to the AUC observed for A $\beta$ 42/40, pTau181 and other markers of tau pathology have been observed to be better predictors of cognitive and functional decline.<sup>54–56</sup> In addition, the optimal cutoff observed with this cohort (0.977 pg/mL, Figure 1) is not statistically different than the cutoff established during initial validation studies (0.95 pg/mL, Supplemental Table 1)

Measurements of NfL on these AIBL samples demonstrated an AUC (0.666) consistent with those found in the literature (0.50 to 0.73).<sup>9,40,46,47,52,57</sup> NfL results were also assessed with respect to pTau181 positivity, as defined using the pTau181 cutoff (0.977 pg/mL) determined during ROC analysis (Figure 1), as Tau positivity would indicate subjects that have progressed further along the biological framework of AD towards neurodegeneration. From this analysis, an AUC of 0.799 with  $p < 0.0001$  was observed (Supplemental Figure 4). Elevation of both pTau181 and NfL levels was observed with

worsening cognitive status or MMSE scores as has been previously reported.<sup>26,30,58,59</sup> In addition, increases in NfL concentrations with respect to age has also been previously reported.<sup>60</sup> These results coupled with the relatively low AUC of NfL (with respect to amyloid status) are further evidence that NfL may be an indicator of disease severity in AD.<sup>12,21,26,29,51,61</sup>

Although each biomarker investigated demonstrated the ability to distinguish between A- and A+ subjects, the AUCs were found to decrease with each AT(N) biomarker with respect to amyloid PET status. However, pTau181 and NfL correlated better with cognitive status than did the A $\beta$ 42/40 ratio (Figure 2 and Figure 3) suggesting that while the A $\beta$ 42/40 ratio may be central to differentiating AD from other diseases, pTau181 and NfL may provide some measure of disease severity.<sup>12,21,26,27,29,51,61,62</sup> This is expected, as amyloid PET only indicates the presence of amyloid plaques within the brain and not the presence of other biological aspects of AD (*i.e.* tau pathologies and neurodegeneration). One shortcoming of this study is the lack of imaging endpoints for pTau181 and NfL (*e.g.* Tau PET or MRI) to make more appropriate correlative comparisons for each biomarker. However, age-dependent reference intervals can indicate if pathological levels exist especially for NfL where elevated levels are not AD specific (Supplemental Table 1).<sup>16,63</sup>

Although each of these biomarkers independently demonstrated clinical utility using specimens from subjects with known amyloid status, the combination of (quantitated) biomarkers with other factors such as demographics and the presence of the apolipoprotein E4 allele have been used to further improve the clinical accuracy of measurements.<sup>9,14,52,64–67</sup> Additional biomarkers, such as tau protein phosphorylated at threonine 217 and glial fibrillary acidic protein, have also been reported to further characterize the underlying biology of AD as well as to assist in differentiating it from other forms of dementia.<sup>5,14,16,56,56,67–70</sup>

## 6. Conclusions

The AT(N) plasma panel is the first blood-based offering that analyzes three well-studied biomarkers to accurately detect biological evidence consistent with Alzheimer's disease pathology. Furthermore, the sensitivity and specificity of the A $\beta$ 42/40 assay met current recommendations for triage testing. As such, the panel can be utilized to assess progression of subjects along the AT(N) framework when used within the context of a full clinical workup. The observed results indicate the advancements in and utility of blood-based biomarkers for assessing patients for Alzheimer's disease. The availability of this panel serves as an important tool to assist in patient assessment and accelerate the path to diagnosis (and treatment) while the understanding of AD etiology and related pathophysiology continues to grow.

## **7. Conflicts of Interest and Disclosures**

BBC, MRC, WCB, TL, ABH, JMV, RM, JWW, DB, AV, and RPG are employees of Labcorp and all participate in the employee stock purchase plan.

## **8. Acknowledgements**

The authors would like to thank Christopher Fowler and the AIBL Research Group for assistance in obtaining clinical specimens from the AIBL cohort, Roche for assistance with the NfL and pTau181 assays, and Sysmex for assistance with the A $\beta$ 40 and A $\beta$ 42 assays. In addition, the authors would like to thank Christos Petropoulos of Monogram Biosciences (Labcorp) for his role in the acquisition and validation of AIBL samples as well as providing guidance in the validation and characterization of these assays. Furthermore, the authors would like to thank Ahmed Chenna of Monogram Biosciences for assistance with sample measurements using alternate instruments and assays as well as acquisition of samples. Finally, the authors would like to thank Amanda Suchanek, previously of Labcorp, for her initial work with the Sysmex<sup>®</sup> instrument and assays.



## 9. References

1. Jack CR, Bennett DA, Blennow K, et al. A/T/N: An unbiased descriptive classification scheme for Alzheimer disease biomarkers. *Neurology*. 2016;87(5):539-547. doi:10.1212/WNL.0000000000002923
2. Jack CR, Bennett DA, Blennow K, et al. NIA-AA Research Framework: Toward a biological definition of Alzheimer's disease. *Alzheimers Dement*. 2018;14(4):535-562. doi:10.1016/j.jalz.2018.02.018
3. Smirnov DS, Ashton NJ, Blennow K, et al. Plasma biomarkers for Alzheimer's Disease in relation to neuropathology and cognitive change. *Acta Neuropathol (Berl)*. 2022;143(4):487-503. doi:10.1007/s00401-022-02408-5
4. Sperling RA, Aisen PS, Beckett LA, et al. Toward defining the preclinical stages of Alzheimer's disease: Recommendations from the National Institute on Aging-Alzheimer's Association workgroups on diagnostic guidelines for Alzheimer's disease. *Alzheimers Dement*. 2011;7(3):280-292. doi:10.1016/j.jalz.2011.03.003
5. Hampel H, Cummings J, Blennow K, Gao P, Jack CR, Vergallo A. Developing the ATX(N) classification for use across the Alzheimer disease continuum. *Nat Rev Neurol*. 2021;17(9):580-589. doi:10.1038/s41582-021-00520-w
6. Aisen PS, Cummings J, Jack CR, et al. On the path to 2025: understanding the Alzheimer's disease continuum. *Alzheimers Res Ther*. 2017;9(1):60-60. doi:10.1186/s13195-017-0283-5
7. Andrews, Jeffrey Scott, Beach, Thomas G., Buracchio, Teresa, et al. Revised Criteria for Diagnosis and Staging of Alzheimer's Disease: Alzheimer's Association Workgroup. Published online October 9, 2023.
8. 2023 Alzheimer's disease facts and figures. *Alzheimers Dement*. 2023;19(4):1598-1695. doi:10.1002/alz.13016
9. Palmqvist S, Stomrud E, Cullen N, et al. An accurate fully automated panel of plasma biomarkers for Alzheimer's disease. *Alzheimers Dement*. 2023;19(4):1204-1215. doi:10.1002/alz.12751
10. Teunissen CE, Verberk IMW, Thijssen EH, et al. Blood-based biomarkers for Alzheimer's disease: towards clinical implementation. *Lancet Neurol*. 2022;21(1):66-77. doi:10.1016/S1474-4422(21)00361-6
11. Simrén J, Leuzy A, Karikari TK, et al. The diagnostic and prognostic capabilities of plasma biomarkers in Alzheimer's disease. *Alzheimers Dement*. 2021;17(7):1145-1156. doi:10.1002/alz.12283

12. Ashton NJ, Schöll M, Heurling K, et al. Update on biomarkers for amyloid pathology in Alzheimer's disease. *Biomark Med.* 2018;12(7):799-812. doi:10.2217/bmm-2017-0433
13. Blennow K, Zetterberg H. Biomarkers for Alzheimer's disease: current status and prospects for the future. *J Intern Med.* 2018;284(6):643-663. doi:10.1111/joim.12816
14. Dubois B, Villain N, Frisoni GB, et al. Clinical diagnosis of Alzheimer's disease: recommendations of the International Working Group. *Lancet Neurol.* 2021;20(6):484-496. doi:10.1016/S1474-4422(21)00066-1
15. Altomare D, Stampacchia S, Ribaldi F, et al. Plasma biomarkers for Alzheimer's disease: a field-test in a memory clinic. *J Neurol Neurosurg Psychiatry.* 2023;94(6):420-427. doi:10.1136/jnnp-2022-330619
16. Hansson O. Biomarkers for neurodegenerative diseases. *Nat Med.* 2021;27(6):954-963. doi:10.1038/s41591-021-01382-x
17. Yamashita K, Miura M, Watanabe S, et al. Fully automated and highly specific plasma  $\beta$ -amyloid immunoassays predict  $\beta$ -amyloid status defined by amyloid positron emission tomography with high accuracy. *Alzheimers Res Ther.* 2022;14(1):86-86. doi:10.1186/s13195-022-01029-0
18. Nakamura A, Kaneko N, Villemagne VL, et al. High performance plasma amyloid- $\beta$  biomarkers for Alzheimer's disease. *Nature.* 2018;554(7691):249-254. doi:10.1038/nature25456
19. Fogelman I, West T, Braunstein JB, et al. Independent study demonstrates amyloid probability score accurately indicates amyloid pathology. *Ann Clin Transl Neurol.* 2023;10(5):765-778. doi:10.1002/acn3.51763
20. Zicha S, Bateman RJ, Shaw LM, et al. Comparative analytical performance of multiple plasma A $\beta$ 42 and A $\beta$ 40 assays and their ability to predict positron emission tomography amyloid positivity. *Alzheimers Dement.* 2023;19(3):956-966. doi:10.1002/alz.12697
21. Ou YN, Hu H, Wang ZT, Xu W, Tan L, Yu JT. Plasma neurofilament light as a longitudinal biomarker of neurodegeneration in Alzheimer's disease. *Brain Sci Adv.* 2019;5(2):94-105. doi:10.26599/BSA.2019.9050011
22. Ashton NJ, Janelidze S, Al Khleifat A, et al. A multicentre validation study of the diagnostic value of plasma neurofilament light. *Nat Commun.* 2021;12(1):3400-3400. doi:10.1038/s41467-021-23620-z
23. Barthélemy NR, Horie K, Sato C, Bateman RJ. Blood plasma phosphorylated-tau isoforms track CNS change in Alzheimer's disease. *J Exp Med.* 2020;217(11). doi:10.1084/jem.20200861

24. Janelidze S, Mattsson N, Palmqvist S, et al. Plasma P-tau181 in Alzheimer's disease: relationship to other biomarkers, differential diagnosis, neuropathology and longitudinal progression to Alzheimer's dementia. *Nat Med*. 2020;26(3):379-386. doi:10.1038/s41591-020-0755-1
25. Preische O, Schultz SA, Apel A, et al. Serum neurofilament dynamics predicts neurodegeneration and clinical progression in presymptomatic Alzheimer's disease. *Nat Med*. 2019;25(2):277-283. doi:10.1038/s41591-018-0304-3
26. Mattsson N, Cullen NC, Andreasson U, Zetterberg H, Blennow K. Association Between Longitudinal Plasma Neurofilament Light and Neurodegeneration in Patients With Alzheimer Disease. *JAMA Neurol*. 2019;76(7):791-791. doi:10.1001/jamaneurol.2019.0765
27. Coomans EM, Verberk IMW, Ossenkoppele R, et al. A Head-to-Head Comparison Between Plasma pTau181 and Tau PET Along the Alzheimer's Disease Continuum. *J Nucl Med*. 2023;64(3):437-443. doi:10.2967/jnumed.122.264279
28. Tissot C, L. Benedet A, Therriault J, et al. Plasma pTau181 predicts cortical brain atrophy in aging and Alzheimer's disease. *Alzheimers Res Ther*. 2021;13(1):69-69. doi:10.1186/s13195-021-00802-x
29. Raket LL, Kühnel L, Schmidt E, Blennow K, Zetterberg H, Mattsson-Carlgrén N. Utility of plasma neurofilament light and total tau for clinical trials in Alzheimer's disease. *Alzheimers Dement Diagn Assess Dis Monit*. 2020;12(1). doi:10.1002/dad2.12099
30. Ashton NJ, Leuzy A, Lim YM, et al. Increased plasma neurofilament light chain concentration correlates with severity of post-mortem neurofibrillary tangle pathology and neurodegeneration. *Acta Neuropathol Commun*. 2019;7(1):5-5. doi:10.1186/s40478-018-0649-3
31. Yamashita K, Watanabe S, Ishiki K, et al. Fully automated chemiluminescence enzyme immunoassays showing high correlation with immunoprecipitation mass spectrometry assays for  $\beta$ -amyloid (1–40) and (1–42) in plasma samples. *Biochem Biophys Res Commun*. 2021;576:22-26. doi:10.1016/j.bbrc.2021.08.066
32. Alzheimer's Disease Data Initiative. The NeuroToolKit. Accessed May 7, 2024. <https://www.alzheimersdata.org/ntk>
33. Fowler C, Rainey-Smith SR, Bird S, et al. Fifteen Years of the Australian Imaging, Biomarkers and Lifestyle (AIBL) Study: Progress and Observations from 2,359 Older Adults Spanning the Spectrum from Cognitive Normality to Alzheimer's Disease. *J Alzheimers Dis Rep*. 2021;5(1):443-468. doi:10.3233/ADR-210005
34. Chatterjee P, Pedrini S, Doecke JD, et al. Plasma A $\beta$ 42/40 ratio, p-tau181, GFAP, and NfL across the Alzheimer's disease continuum: A cross-sectional and longitudinal

- study in the AIBL cohort. *Alzheimers Dement.* 2023;19(4):1117-1134. doi:10.1002/alz.12724
35. Ellis KA, Bush AI, Darby D, et al. The Australian Imaging, Biomarkers and Lifestyle (AIBL) study of aging: methodology and baseline characteristics of 1112 individuals recruited for a longitudinal study of Alzheimer's disease. *Int Psychogeriatr.* 2009;21(4):672-687. doi:10.1017/S1041610209009405
36. van der Kall LM, Truong T, Burnham SC, et al. Association of  $\beta$ -amyloid level, clinical progression and longitudinal cognitive change in normal older individuals. *Neurology.* Published online November 2020:10.1212/WNL.0000000000011222-10.1212/WNL.0000000000011222. doi:10.1212/WNL.0000000000011222
37. Folstein MF, Folstein SE, McHugh PR. "Mini-mental state": A practical method for grading the cognitive state of patients for the clinician. *J Psychiatr Res.* 1975;12(3):189-198. doi:10.1016/0022-3956(75)90026-6
38. Proteogenex. Ethics Policy. <https://www.proteogenex.com/about-us/ethics-policy/>
39. Pernecky R, Wagenpfeil S, Komossa K, Grimmer T, Diehl J, Kurz A. Mapping Scores Onto Stages: Mini-Mental State Examination and Clinical Dementia Rating. *Am J Geriatr Psychiatry.* 2006;14(2):139-144. doi:10.1097/01.JGP.0000192478.82189.a8
40. Ashton NJ, Pascoal TA, Karikari TK, et al. Plasma p-tau231: a new biomarker for incipient Alzheimer's disease pathology. *Acta Neuropathol (Berl).* 2021;141(5):709-724. doi:10.1007/s00401-021-02275-6
41. Janelidze S, Teunissen CE, Zetterberg H, et al. Head-to-Head Comparison of 8 Plasma Amyloid- $\beta$  42/40 Assays in Alzheimer Disease. *JAMA Neurol.* 2021;78(11):1375-1382. doi:10.1001/jamaneurol.2021.3180
42. Li Y, Schindler SE, Bollinger JG, et al. Validation of Plasma Amyloid- $\beta$  42/40 for Detecting Alzheimer Disease Amyloid Plaques. *Neurology.* 2022;98(7):e688-e699. doi:10.1212/WNL.0000000000013211
43. Martínez-Dubarbie F, Guerra-Ruiz A, López-García S, et al. Accuracy of plasma A $\beta$ 40, A $\beta$ 42, and p-tau181 to detect CSF Alzheimer's pathological changes in cognitively unimpaired subjects using the Lumipulse automated platform. *Alzheimers Res Ther.* 2023;15(1):163. doi:10.1186/s13195-023-01319-1
44. Ovod V, Ramsey KN, Mawuenyega KG, et al. Amyloid  $\beta$  concentrations and stable isotope labeling kinetics of human plasma specific to central nervous system amyloidosis. *Alzheimers Dement.* 2017;13(8):841-849. doi:10.1016/j.jalz.2017.06.2266
45. Schindler SE, Bollinger JG, Ovod V, et al. High-precision plasma  $\beta$ -amyloid 42/40 predicts current and future brain amyloidosis. *Neurology.* 2019;93(17):e1647-e1659. doi:10.1212/WNL.0000000000008081

46. Thijssen EH, La Joie R, Wolf A, et al. Diagnostic value of plasma phosphorylated tau181 in Alzheimer's disease and frontotemporal lobar degeneration. *Nat Med*. 2020;26(3):387-397. doi:10.1038/s41591-020-0762-2
47. Bun S, Ito D, Tezuka T, et al. Performance of plasma A $\beta$ 42/40, measured using a fully automated immunoassay, across a broad patient population in identifying amyloid status. *Alzheimers Res Ther*. 2023;15(1):149. doi:10.1186/s13195-023-01296-5
48. Schindler SE, Galasko D, Pereira AC, et al. Acceptable performance of blood biomarker tests of amyloid pathology — recommendations from the Global CEO Initiative on Alzheimer's Disease. *Nat Rev Neurol*. Published online June 12, 2024. doi:10.1038/s41582-024-00977-5
49. Hanseeuw BJ, Betensky RA, Jacobs HIL, et al. Association of Amyloid and Tau With Cognition in Preclinical Alzheimer Disease: A Longitudinal Study. *JAMA Neurol*. 2019;76(8):915-924. doi:10.1001/jamaneurol.2019.1424
50. Karikari TK, Pascoal TA, Ashton NJ, et al. Blood phosphorylated tau 181 as a biomarker for Alzheimer's disease: a diagnostic performance and prediction modelling study using data from four prospective cohorts. *Lancet Neurol*. 2020;19(5):422-433. doi:10.1016/S1474-4422(20)30071-5
51. Mielke MM, Hagen CE, Xu J, et al. Plasma phospho-tau181 increases with Alzheimer's disease clinical severity and is associated with tau- and amyloid-positron emission tomography. *Alzheimers Dement*. 2018;14(8):989-997. doi:10.1016/j.jalz.2018.02.013
52. Palmqvist S, Janelidze S, Quiroz YT, et al. Discriminative Accuracy of Plasma Phospho-tau217 for Alzheimer Disease vs Other Neurodegenerative Disorders. *JAMA*. 2020;324(8):772-781. doi:10.1001/jama.2020.12134
53. Shen XN, Huang YY, Chen SD, et al. Plasma phosphorylated-tau181 as a predictive biomarker for Alzheimer's amyloid, tau and FDG PET status. *Transl Psychiatry*. 2021;11(1):585. doi:10.1038/s41398-021-01709-9
54. Tropea TF, Waligorska T, Xie SX, et al. Plasma phosphorylated tau181 predicts cognitive and functional decline. *Ann Clin Transl Neurol*. 2023;10(1):18-31. doi:10.1002/acn3.51695
55. Lehmann, Sylvain, Schraen-Maschke, Susanna, Vidal, Jean-Sébastien, et al. Plasma phosphorylated tau 181 predicts amyloid status and conversion to dementia stage dependent on renal function. *J Neurol Neurosurg Amp Psychiatry*. 2023;94(6):411. doi:10.1136/jnnp-2022-330540
56. Ashton NJ, Brum WS, Di Molfetta G, et al. Diagnostic Accuracy of a Plasma Phosphorylated Tau 217 Immunoassay for Alzheimer Disease Pathology. *JAMA Neurol*. 2024;81(3):255-263. doi:10.1001/jamaneurol.2023.5319

57. Palmqvist S, Janelidze S, Stomrud E, et al. Performance of Fully Automated Plasma Assays as Screening Tests for Alzheimer Disease–Related  $\beta$ -Amyloid Status. *JAMA Neurol.* 2019;76(9):1060-1060. doi:10.1001/jamaneurol.2019.1632
58. Jin M, Cao L, Dai Y ping. Role of Neurofilament Light Chain as a Potential Biomarker for Alzheimer’s Disease: A Correlative Meta-Analysis. *Front Aging Neurosci.* 2019;11. <https://www.frontiersin.org/articles/10.3389/fnagi.2019.00254>
59. Giacomucci G, Mazzeo S, Ingannato A, et al. Future perspective and clinical applicability of the combined use of plasma phosphorylated tau 181 and neurofilament light chain in Subjective Cognitive Decline and Mild Cognitive Impairment. *Sci Rep.* 2024;14(1):11307. doi:10.1038/s41598-024-61655-6
60. Koini M, Pirpamer L, Hofer E, et al. Factors influencing serum neurofilament light chain levels in normal aging. *Aging.* 2021;13(24):25729-25738. doi:10.18632/aging.203790
61. Giacomucci G, Mazzeo S, Bagnoli S, et al. Plasma neurofilament light chain as a biomarker of Alzheimer’s disease in Subjective Cognitive Decline and Mild Cognitive Impairment. *J Neurol.* 2022;269(8):4270-4280. doi:10.1007/s00415-022-11055-5
62. Qin W, Li F, Jia L, et al. Phosphorylated Tau 181 Serum Levels Predict Alzheimer’s Disease in the Preclinical Stage. *Front Aging Neurosci.* 2022;14. <https://www.frontiersin.org/articles/10.3389/fnagi.2022.900773>
63. Khalil M, Teunissen CE, Otto M, et al. Neurofilaments as biomarkers in neurological disorders. *Nat Rev Neurol.* 2018;14(10):577-589. doi:10.1038/s41582-018-0058-z
64. Schindler SE, Bateman RJ. Combining blood-based biomarkers to predict risk for Alzheimer’s disease dementia. *Nat Aging.* 2021;1(1):26-28. doi:10.1038/s43587-020-00008-0
65. Cullen NC, Leuzy A, Palmqvist S, et al. Individualized prognosis of cognitive decline and dementia in mild cognitive impairment based on plasma biomarker combinations. *Nat Aging.* 2021;1(1):114-123. doi:10.1038/s43587-020-00003-5
66. Mattsson-Carlgrén N, Salvadó G, Ashton NJ, et al. Prediction of Longitudinal Cognitive Decline in Preclinical Alzheimer Disease Using Plasma Biomarkers. *JAMA Neurol.* 2023;80(4):360-369. doi:10.1001/jamaneurol.2022.5272
67. Hansson O, Edelmayer RM, Boxer AL, et al. The Alzheimer’s Association appropriate use recommendations for blood biomarkers in Alzheimer’s disease. *Alzheimers Dement.* 2022;18(12):2669-2686. doi:10.1002/alz.12756
68. Ashton NJ. Differential roles of A $\beta$ 42/40, p-tau231 and p-tau217 for Alzheimer’s trial selection and disease monitoring. *Nat Med.* 2022;28.

69. Kim KY, Shin KY, Chang KA. GFAP as a Potential Biomarker for Alzheimer's Disease: A Systematic Review and Meta-Analysis. *Cells*. 2023;12(9). doi:10.3390/cells12091309
70. Shir D, Graff-Radford J, Hofrenning EI, et al. Association of plasma glial fibrillary acidic protein (GFAP) with neuroimaging of Alzheimer's disease and vascular pathology. *Alzheimers Dement Diagn Assess Dis Monit*. 2022;14(1):e12291. doi:10.1002/dad2.12291