
THE DICHOPTIC CONTRAST ORDERING TEST: A METHOD FOR MEASURING THE DEPTH OF BINOCULAR IMBALANCE

A medRxiv PREPRINT

Alex S Baldwin*

McGill Vision Research
Department of Ophthalmology & Visual Sciences
McGill University
Montreal, Quebec, Canada
alexsbaldwin@gmail.com

Marie-Céline Lorenzini

McGill Vision Research
Department of Ophthalmology & Visual Sciences
McGill University
Montreal, Quebec, Canada

Annabel Wing-Yan Fan

McGill Vision Research
Department of Ophthalmology & Visual Sciences
McGill University
Montreal, Quebec, Canada

Robert F Hess

McGill Vision Research
Department of Ophthalmology & Visual Sciences
McGill University
Montreal, Quebec, Canada

Alexandre Reynaud

McGill Vision Research
Department of Ophthalmology & Visual Sciences
McGill University
Montreal, Quebec, Canada

August 5, 2024

ABSTRACT

1 In binocular vision, the relative strength of the input from the two eyes can have significant functional
2 impact. These inputs are typically balanced, however in some conditions (e.g. amblyopia) one eye will
3 dominate over the other. To quantify imbalances in binocular vision, we have developed the Dichoptic
4 Contrast Ordering Test (DiCOT). Implemented on a tablet device, the program uses rankings of
5 perceived contrast (of dichoptically-presented stimuli) to find a scaling factor that balances the two
6 eyes. We measured how physical interventions (applied to one eye) affect the DiCOT measurement.
7 These were: i) neutral density filters, ii) Bangerter filters, and iii) optical blur introduced by a +3 D
8 lens. The DiCOT results were compared to those from the Dichoptic Letter Test (DLT). Both the
9 DiCOT and the DLT showed excellent test-retest reliability, however the magnitude of the imbalances
10 introduced by the interventions was greater in the DLT. To find consistency between the methods,
11 rescaling the DiCOT results from individual conditions gave good results. However, the adjustments
12 needed for the +3 D lens condition were quite different from those for the ND and Bangerter filter. Our
13 results indicate that the DiCOT and DLT measure partially separate aspects of binocular imbalance.
14 This supports the simultaneous use of both measures in future studies.

15 **Keywords** binocular vision · contrast matching · ocular dominance · psychophysics · suppression

16 1 Introduction

17 When operating under normal healthy conditions, our brains combine the visual input from the two eyes to give a unified
18 binocular percept. This combination process is only partially understood. It is known to involve both excitatory and

*corresponding author

THE DICHOPTIC CONTRAST ORDERING TEST

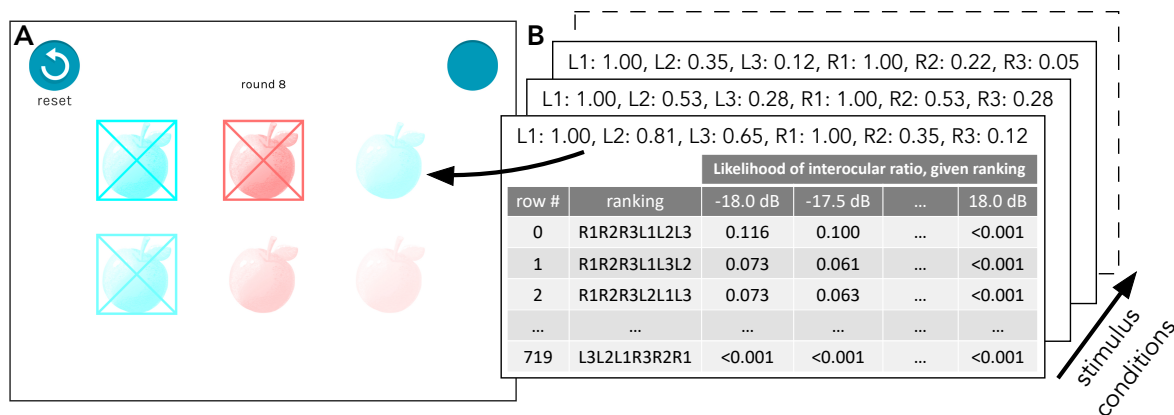


Figure 1: Stimulus display for a single DiCOT trial. Panel A shows a screenshot of a trial with an arrangement of left eye stimuli (in red) and right eye stimuli (in cyan) with each set having a high, medium, and low contrast stimulus determined by the algorithm to provide information on the binocular imbalance of the participant. Depending on the degree of imbalance, in some cases the lower contrast stimuli may not be visible to the participant. Panel B shows an illustration of the look-up tables (generated by Monte Carlo simulation, one per stimulus condition). Each column is a probability distribution, giving the probability of a particular ranking response being made for that stimulus condition by an individual with that interocular ratio. Each row is a likelihood function, where the ranking made in response to a stimulus condition indicates the likelihood of the participant's visual system being balanced by some interocular ratio parameter (from -18 to +18 dB).

19 inhibitory influences between the inputs from the two eyes (Ding and Sperling, 2006; Meese et al., 2006). With basic
 20 psychophysics, we can explore these interactions by looking at performance on tasks involving binocular summation
 21 and interocular suppression. While these interactions are typically “balanced” (e.g. suppression from the left eye to the
 22 right is similar to that from the right eye to the left), they can be severely imbalanced in some visual conditions such as
 23 amblyopia (Hess et al., 2014).

24 An imbalance in binocular vision may be observed due to a weaker input from one eye, reducing its contribution to
 25 the binocular percept. This may also have a compounding effect, where that weaker signal also leads to that eye exerting
 26 a weaker suppression on the other eye. Alternatively, the two eyes may provide an equal strength of input, with the
 27 weight of suppression applied from each eye to the other being imbalanced (Wang et al., 2021). The resulting imbalances
 28 can be observed through masking studies, either by measuring interactions between stimuli at corresponding locations
 29 in the two eyes (dichoptic overlay masking) or with stimuli at nearby non-overlapping locations (dichoptic surround
 30 masking). The two methods have been shown (Huang et al., 2012) to reveal separable aspects of binocular combination
 31 and suppression. Even the suppression effects have been shown to be complex, as demonstrated both by the tuning
 32 functions for dichoptic masking (Baker and Meese, 2007) and differential effects of short-term monocular deprivation
 33 that depend on mask orientation (Baldwin and Hess, 2018). It is important to note that in some measurements it may be
 34 difficult to distinguish between a situation where an eye is providing a weaker input and one where an eye is providing
 35 an equally strong input but is penalised by greater interocular suppression. For the brief measurements we discuss here
 36 the two will likely have equivalent effects.

37 There can also be a dynamic component to the imbalance between the eyes where the dominance of each eye's
 38 percept varies over time. This phenomenon is studied with the binocular rivalry paradigm, where incompatible
 39 spatially-overlapping stimuli seen by the two eyes compete. This results in the percept switching between the two eyes'
 40 inputs (Blake and Camisa, 1979). The binocular rivalry phenomenon is thought to involve a combination of low level
 41 (eye-based suppression) and higher-level (perhaps attentional) factors. There is also a further dynamic component of
 42 plasticity on rivalry, where perceptual experience can affect the degree of exclusivity of the monocular percepts (Klink
 43 et al., 2010). For an expert review of binocular rivalry, the reader is directed to (Alais, 2012). In the current study, we
 44 are interested in measuring imbalance in the effective strength of stable monocular percepts, whatever the cause.

THE DICHOPTIC CONTRAST ORDERING TEST

45 While our understanding of the mechanisms underlying binocular vision has advanced in recent years, it is far from
46 complete (Hess et al., 2014). A plethora of laboratory approaches have been devised to quantify imbalances in binocular
47 vision (such as those induced by short-term deprivation of one eye, see various methods compared in Min et al., 2021); a
48 non-exhaustive list is provided in Table A1 of Appendix A. Each depends on a contrast-based metric which is consistent
49 with the current view that the site of interocular suppression is located early in the cortical pathway where contrast gain
50 control occurs (Baker et al., 2008; Meese et al., 2006). These studies have provided information on the factors which
51 influence suppression such as the spatial and temporal properties, and the visual locus. A number of these different
52 laboratory-validated approaches have been simplified to enable their use in the clinic, these include; motion coherence
53 (Black et al., 2011), Dichoptic Letters Test (Kwon et al., 2015), the Worth 4 Dot test app (Webber et al., 2020), phase
54 combination (Ding and Sperling, 2006) and orientation combination (Wang et al., 2019). Of these, it is only the Worth
55 4 Dot test app that does not require elaborate computer equipment, as it is implemented on a self-contained handheld
56 digital device. It has been shown to be effective in measuring the size of the suppression scotoma, though it may fall
57 short in the measurement of the depth of suppression, possibly due to the added complication of having chromatic as
58 well as achromatic contrast defining the stimuli (Webber et al., 2020).

59 We have developed the Dichoptic Contrast Ordering Test (DiCOT) as a tool for making quick measurements of the
60 relative contribution of the two eyes to binocular vision. A prototype application has been implemented on a handheld
61 digital device (iPad tablet) for convenience and portability. The subject views the screen through red/green anaglyph
62 glasses, allowing for a dichoptic presentation of stimuli. The principle of the test is that an imbalance between the two
63 eyes (i.e. due to imbalanced suppression) will cause the apparent contrast seen by one eye to be greater than that seen
64 by the other (Bagolini, 1957; Reynaud and Hess, 2016). The goal of the measurement is to find a contrast scaling factor
65 that equalises the contrast seen by the two eyes.

66 The contrast scaling factor is found by showing a set of images (Figure 1A) to the two eyes of various contrasts
67 (three to the left eye and three to the right eye, in the current version of the method) and asking the participant to rank
68 them in order from most to least “visible” (having previously trained the participant to understand “visibility” to refer to
69 contrast). A single scaling factor adjusts the balance of contrasts seen by the two eyes, searching for a compensation
70 that counter-acts any binocular imbalance. To find the scaling factor a series of “trials” are tested. On each trial, a new
71 set of contrasts are shown to each eye, with the stimulus set selected by an entropy-minimising procedure that allows the
72 tool to efficiently determine the most likely scaling factor in a small number of trials. This is achieved through a look-up
73 table that maps the relative likelihood of each ranking order to a quantised list of possible scaling factors (Figure 1B).
74 Bootstrapping is used to deliver this most likely value along with a 95% confidence interval. An associated measurement
75 error is a fundamental requirement of any clinical test that is involved with therapeutic assessment/endpoint evaluation
76 as it allows statistical evaluations on a single case basis.

77 In the prototype application, there are three small images (cartoon pictures of fruit) shown to each eye. A simpler
78 version of the measurement would present only one image to each eye and simply ask which is of higher apparent
79 contrast, however we have a few reasons for preferring a ranking of multiple images. The first is that on each trial, one
80 of the images (the “high contrast” image) shown to each eye is always at the maximum (100%) contrast. The other two
81 images (“medium” and “low” contrast) vary in their contrast as determined by the algorithm. The goal of the fixed high
82 contrast image is to prevent any eye-based contrast adaptation or renormalisation that might possibly occur over the
83 course of the measurement. The second reason is that the participant implicitly makes multiple comparisons of apparent
84 contrast (between all of the available images on the display) at the same time. This provides more information about the
85 correct scaling from a single presentation. The stimuli are shown continuously until the participant has completed the
86 response for that trial. The outcome of this approach is a simple, game-like measurement involving touching elements
87 on the screen in order of their perceived visibility. This task can be accomplished by children at least as young as 8
88 years old (Reynaud et al., in review).

89 A variety of approaches have been evaluated to measure the strength of interocular suppression with a contrast-based
90 metric (see Table A1). However, we would not consider any of these yet as a widely-accepted clinical “gold standard”

91 for the quantitative measurement of the strength of suppression. In this study we therefore choose to compare our test to
92 the recent Dichoptic Letters Test (DLT) (Kwon et al., 2015) because, like ours, it is designed as a clinical tool to quantify
93 the binocular imbalance that may be due to suppression, and it has recently come into common use in the literature
94 (Birch et al., 2016; Martín et al., 2020; Sauvan et al., 2019). In this study, we introduce the new DiCOT method to
95 measure imbalances in binocular vision. We analyse the test-retest reliability of the DiCOT measurements and compare
96 that result to the DLT. We also compare the results obtained by each measurement to the other. To simulate a range of
97 binocular imbalances, measurements are taken from participants with normal vision, making use of three methods to
98 introduce interocular imbalances: neutral density (ND) filters, Bangerter filters, and optical blur (Li et al., 2012).

99 **2 Methods**

100 **2.1 Participants**

101 The experiments were conducted in accordance with the procedures and protocol approved by the institutional research
102 ethics board of the McGill University Health Center and complying with the Declaration of Helsinki. Written informed
103 consent was obtained. A total of 12 adult participants (age range 19-71 years) took part in this study, with normal
104 or corrected-to-normal vision. This was a number sufficient to estimate test-retest ICC scores for each filter or lens
105 condition with an expected precision of ± 0.1 (Bonett, 2002). Four of the participants were study authors (AR, AWF,
106 MCL, RFH). The remaining four participants were recruited from the local McGill University Health Centre community
107 through word of mouth and posters. They were naïve to the expected impact of the experimental manipulations on their
108 behaviour in the DiCOT task.

109 All participants were tested wearing their best correction. Screening was performed by the experimenters responsible
110 for the study. Visual acuity was measured using a Snellen chart and stereoacuity was measured with the Randot Preschool
111 Stereotest (Stereo Optical Co. Inc., Chicago, IL, USA). Normal vision was defined as better than or equal to 0.0
112 logMAR acuity in each eye with stereoacuity < 400 arc sec. Had any participants reported any known visual, cognitive
113 or neurological impairments they would have been excluded, however this was not the case for any of our recruits.

114 **2.2 Experiment Design**

115 The relative strength of the two eyes, taken as an index of the imbalance of the two eyes' contribution to binocular
116 vision, was measured using the existing Dichoptic Letters Test (DLT) (Kwon et al., 2015) and our newly-developed
117 Dichoptic Contrast Ordering Test (DiCOT). Procedures and apparatus for these two tests are detailed below. To produce
118 a wide range of imbalances, measurements were conducted under different lens or filter viewing conditions designed to
119 affect interocular balance. The strength of these manipulations was determined based both on the previous experience
120 of the experimenters and on our initial informal explorations (to try to avoid choosing a penalisation for one eye that
121 could be strong enough to render either task impossible). Vision was deprived by placing either a Bangerter filter (0.8
122 Power), a 1ND filter (10% transmittance) or a +3 D Lens in front of one eye. Deprivation of both the left eye (OS) and
123 the right eye (OD) was performed for each condition. We also measured the baseline with no filter or lens. This made
124 for a total of 7 conditions to be tested per subject. To measure test-retest reliability, all measures were performed twice
125 in a randomised order.

126 **2.3 Dichoptic Contrast Ordering Test (DiCOT)**

127 **2.3.1 Stimuli and Apparatus**

128 The DiCOT stimuli were displayed dichoptically using colour anaglyph presentation. Cyan (with contrast only in the
129 Green and Blue colour channels) and red (with contrast only in the Red colour channel) cartoon drawings representing
130 fruit (i.e., apple, cherry or grape) with normalised RMS contrast (normalised for luminance contrast across the different

THE DICHOTIC CONTRAST ORDERING TEST

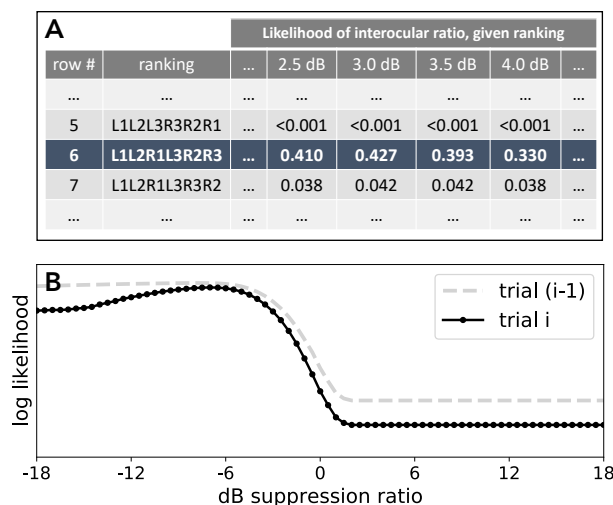


Figure 2: Post-response analysis performed in the DiCOT. The ranking given by the participant selects a row in the look-up table for that trial (A). The likelihoods from this row are converted to log values before being added to the cumulative history of the log likelihoods from all previous trials (B). The curves in this illustration show relative log likelihoods of the different parameter values based on the cumulative history up to either trial (i - 1), in grey, or up to trial i, in dark blue. This example demonstrates the possible impact of adding trial i, which is to sharpen the estimate of the best parameter value, as well as to vertically translate the function downward.

131 fruits and different anaglyph eye presentations) were displayed on an iPad (iPad mini 5th generation A2133; resolution:
 132 2048 × 1536 pixels, 128 pixels per cm) display with a uniform white background (561 cd/m², measured with an LS-150
 133 Luminance Meter, Konica Minolta Sensing Americas Inc, NJ, USA) with varying contrasts. The software was written
 134 in the Unity Engine (Unity Technologies, Copenhagen, Denmark). The screen was viewed through red/green anaglyph
 135 glasses (Gulden Ophthalmics, Pennsylvania, USA) at a distance of 40 cm. The fruit pictures each filled a 2.5 cm (3.6
 136 degrees of visual angle, or “deg”) square box, and were positioned in a square grid arranged 4 cm (5.7 deg) apart
 137 centre-to-centre.

138 Through the red filter the screen luminance was 26 cd/m², whereas it was 52 cd/m² through the green filter. Across
 139 this relatively modest range of luminances we would expect contrast constancy to hold (Ashraf et al., 2022), were it
 140 not to this would result only in a constant bias of the “balance” point of our measurement. Through the red filter, the
 141 Cyan stimuli appeared darker than the background. Through the green filter, the Red stimuli appeared darker than
 142 the background. A custom-written shader was used to apply luminance gamma correction for linear contrast control,
 143 and to balance the contrast seen by the two eyes through the red/green anaglyph presentation. This means that the
 144 contrasts we define for our stimuli are the effective luminance contrast after the image has passed through the coloured
 145 anaglyph filter. Spectral measurements from the iPad mini display made with a VPixx-Edition X-Rite i1Pro (VPixx
 146 Technologies, Saint-Bruno, Canada) showed that the red and green colour channels were not entirely independent.
 147 Attempts to show green stimuli also introduced a small red component. The result of this for our anaglyph presentation
 148 was a cross-talk image at 20% of the presented contrast when viewing through the red filter as compared to only 3%
 149 contrast when viewing through the green filter. The expected outcome of this cross-talk would be a small bias favouring
 150 the green-filter eye.

151 2.3.2 Procedure

152 Testing began with a few example pages where participants had to select some binocularly-presented cartoon images
 153 of fruit in order from high to low contrast (though the on-screen instructions used the term “visibility”, the examples
 154 provided served the purpose of linking the idea of visibility to contrast). Selecting the fruit in the correct order (by

THE DICHOPTIC CONTRAST ORDERING TEST

155 tapping the screen with a finger) was a requirement to pass through this training, which ensured participants understood
156 how to perform the task required. The participant then proceeded to the measurement trials.

157 On each measurement trial, participants saw six cartoon images of fruit (Figure 1A) at various contrasts. These
158 were presented dichoptically so three were seen by each eye. Their task was to select the fruits in order from the highest
159 to lowest apparent contrast by tapping on them with a finger (“Please tap fruits from most to least visible”). When a
160 fruit was tapped there was both visual feedback (the fruit became crossed-out) and auditory feedback. If the participant
161 decided they made a mistake and tapped the wrong fruit they could choose to reset the trial by tapping a “reset” button.
162 The trial completed when all six fruits had been tapped, initiating a 0.5 second delay before the next trial was presented.
163 There is a possibility that on some trials the lower contrast images may not be visible (for example if a measurement
164 was being made under conditions that heavily affected the strength of the input from one eye). Provided the participant
165 had at least one eye with good contrast sensitivity we would always expect a minimum of three fruits (seen by that better
166 eye) to be visible. If any fruits are still not visible the participant is instructed to guess. To prevent the measurement
167 stalling if the participant will not guess, a skip button becomes available 15 seconds after the third fruit is selected. This
168 has the effect of selecting the remaining fruit in random order on behalf of the participant (similar to the “guess button”
169 introduced by García-Pérez, 2010), thus ending the trial.

170 For the first trial, the stimulus set showed the same contrast range to the two eyes (100%, 53%, 28%). After this, the
171 contrast on each trial was set by an entropy-minimising procedure that attempted to determine the best value for the
172 interocular contrast ratio in the fewest trials. Interpretation of the rankings provided by the participant depends on a set
173 of look-up tables that give the probability of different ranking responses for the different stimulus conditions under
174 various assumed interocular contrast gain ratios (Figure 1B). These were generated through Monte-Carlo simulation
175 (100,000 simulations per stimulus condition and per parameter value which stepped from -18 dB to +18 dB in 0.5 dB
176 intervals). In the simulations, the input gain of the two eyes varies according to the interocular gain ratio, with the
177 judgement of contrast being linear but affected by a 10% internal additive Gaussian contrast “noise”. Varying this
178 noise parameter has the effect of making the likelihood functions overall broader (for large values) or narrower (for
179 small values). The value of 10% was not selected on the assumption that it is a good estimate of the amount of noise
180 affecting this process in human vision. Instead, it is a value which gives reasonably broad likelihood functions that
181 do not challenge the precision limit for representing and manipulating probability values (which may become very
182 small) in the software. In the stimulation, the participant simply selects the targets in order of the amplitude of the noisy
183 response to each target. In the tables, each column gives the relative frequency of the 720 (6! for the ranking of six
184 targets) possible ranking outcomes generated on the basis of a specific stimulus condition and interocular gain ratio.
185 Therefore, the values in each column must add up to 1.

186 When a participant completes their ranking in response to the stimulus condition, the corresponding row in the
187 relevant look-up table is selected (Figure 2A). This indicates the relative likelihood of each of the possible (quantised)
188 parameter values on the basis of the ranking given in that trial. We say relative likelihood here, as we are ignoring
189 the possibility of the parameter taking a value either between those we sampled (our quantisation was chosen to give
190 a precision which would be realistic based on the length of the measurement) or outside that range (for such large
191 imbalances the algorithm will return its maximum of either -18 dB or +18 dB). The log of this value is added to the
192 sum of all of the previous log likelihoods (Figure 2B) to obtain an overall log-likelihood function, the peak of which
193 indicates the most likely parameter value given the data (under the assumption that the prior for this parameter is flat). A
194 1% probability of lapsing (responding randomly) on each trial was also incorporated in this calculation. After each trial,
195 the updated likelihoods of the different parameter values were used to select the stimulus condition for the next trial.
196 The selected stimulus condition was the one which minimised the expected posterior entropy from that trial’s response
197 (see Appendix B). In other words, the algorithm considers all of the possible conditions that could be tested on the next
198 trial and (based on the previous responses) chooses the one that will be most informative regarding the imbalance.

199 The algorithm terminated once a certain confidence interval limit (3 dB) was reached (after a minimum of 10
200 trials) or after a maximum of 20 trials if the confidence intervals were not sufficiently narrow by that time. The 95%

201 confidence interval is determined through non-parametric bootstrapping (1000 samples), randomly resampling from the
202 individual trials and selecting the most likely value from each bootstrapped dataset. A subset of the measurements was
203 timed, from these the typical duration was approximately 2–3 minutes.

204 **2.4 Dichoptic Letters Test**

205 **2.4.1 Stimuli and Apparatus**

206 The Dichoptic Letters Test was adapted from Kwon et al. (Birch et al., 2016; Kwon et al., 2015). This method consists
207 of reading dichoptically displayed band-pass 2 cycle/deg filtered Sloan letters arranged in a layout similar to the ETDRS
208 acuity chart on a gray background (60 cd/m²). The stimuli were generated and controlled using MATLAB (version
209 9.7.0) with Psychophysics Toolbox extensions for Windows 10, running on a PC desktop computer. Stimuli were
210 presented dichoptically on an active 3D display setup using the Nvidia 3D Vision 2 shutter glasses (nVidia Corp., Santa
211 Clara, CA) running at 60 Hz frame rate per eye and an LCD monitor (model: Asus VS278H-E; refresh rate: 120 Hz;
212 resolution: 1920 × 1080; maximum luminance: 250 cd/m²). Participants were seated 50 cm away from the screen in a
213 dimly-lit room. Two different sets of 5 letters of different contrast were presented dichoptically overlapping to each eye.
214 At each position, the identity and interocular contrast-ratio of the letter on each chart differed.

215 **2.4.2 Procedure**

216 The balance point between the two eyes, the interocular contrast-ratio required to report the letter in each eye with
217 equal probability was determined via an adaptive procedure described in detail by Kwon et al. (2015). In each trial,
218 participants were instructed to read aloud the more visible letter at each of the 5 positions in the chart from left-to-right,
219 then the experimenter manually input the letters. The relative contrast of overlapping letters in each eye was adjusted
220 via a customised adaptive procedure adapted from the QUEST (Watson and Pelli, 1983) for a total of 60 data points (12
221 charts × 5 contrast ratios) (Kwon et al., 2015). The task typically took 1-2 minutes.

222 **2.5 Statistical Analysis**

223 Different filters and lenses (i.e., ND filter, Bangerter filter, and blurring lens +3 D, see Methods) were tested twice
224 separately on each eye of the participants performing both tests. In each test, the interocular suppression ratio was
225 expressed in decibels

$$\text{dB ratio} = 20 \times \log_{10} \left(\frac{\text{Effective right eye input strength}}{\text{Effective left eye input strength}} \right). \quad (1)$$

226 A measurement of 0 dB would indicate perfect binocular balance, with each 6 dB step above or below that equivalent to
227 a factor of 2 ratio in either direction. Penalising the input from the left eye is therefore expected to have the effect of
228 making the dB ratio more positive.

229 Statistical analysis was performed in R (R Core Team, 2023), with additional packages providing Intraclass
230 Correlation Coefficients (Gamer et al., 2019) and Bland-Altman (Datta, 2017) analysis. We assessed the test-retest
231 reliability of each method using a) the agreement version of the Intraclass Correlation Coefficient (ICC) and b) a
232 Bland-Altman plot (Bland and Altman, 1999) where the difference between the two values (test-retest) is plotted as
233 a function of the mean of the two values for each subject. We then compared the DiCOT against the DLT. When
234 comparing the two tests against each other the consistency version of the ICC was used. We also looked for the best
235 linear relationship between the dB values obtained on the two tests and used this to perform a transformation of the
236 DiCOT values to put them in their best agreement. The relationship between these values and the DLT were also
237 assessed through a scatterplot and a Bland-Altman plot (taking the DLT as the reference value for the x axis).

238 **3 Results**

239 **3.1 Influence of simulated monocular visual loss on interocular suppression ratios**

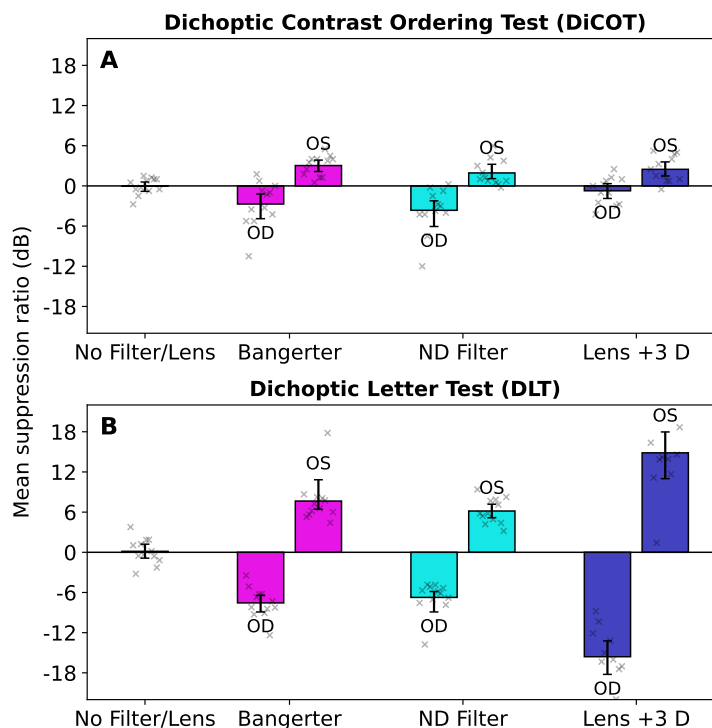


Figure 3: Binocular imbalance without lens/filter and under three lens/filter conditions. The bar graphs represent the mean interocular suppression ratio parameter at baseline and in the 3 conditions where the filter or lens is placed over either the left (OS) or right eye (OD). Panel **A** shows the results from the DiCOT, panel **B** from the DLT. Error bars represent the bootstrapped 95% confidence interval of the mean. Individual participant data are shown for each bar with the cross symbols.

240 In total, 168 measurements were completed with the DiCOT. For 15 of these measurements the information regarding
241 the confidence interval width was lost. For the remaining 153 measurements, we found that the 3 dB confidence interval
242 width criterion was satisfied in 93% of measurements. The remaining 7% reached 20 trials without the CI width
243 reaching 3 dB or lower. For the DLT there were two participants who in a +3 D Lens condition could not perform the
244 measurement on either the test or the retest measure. For the DiCOT, we looked for a relationship between the absolute
245 degree of imbalance and the associated error (95% confidence interval width). We found no significant relationship
246 (Pearson $R = 0.00$, $P = 0.98$).

247 In Figure 3, we compare the imbalance that was introduced in the results of the two tests for the various filter and
248 lens manipulations we used. Each method introduced an imbalance that could be quantified by both the DiCOT and
249 DLT. These imbalances tended to result in more extreme results on the DLT than on the DiCOT (comparing the standard
250 deviation of all measurements pooled together: 3 dB vs. 10 dB). Figure 3A presents the average measurements for the
251 12 participants obtained with the DiCOT as a function of the type of filter worn. Deprivation of the right eye would
252 lead to negative values whereas deprivation of the left eye would lead positive values. Figure 3B displays the same
253 measurements but obtained using the Dichoptic Letters Test (DLT). A similar pattern is observed; however, the effect of
254 the lens (+3 D) was more exaggerated in the DLT compared to the DiCOT. We believe this is due to the DLT being

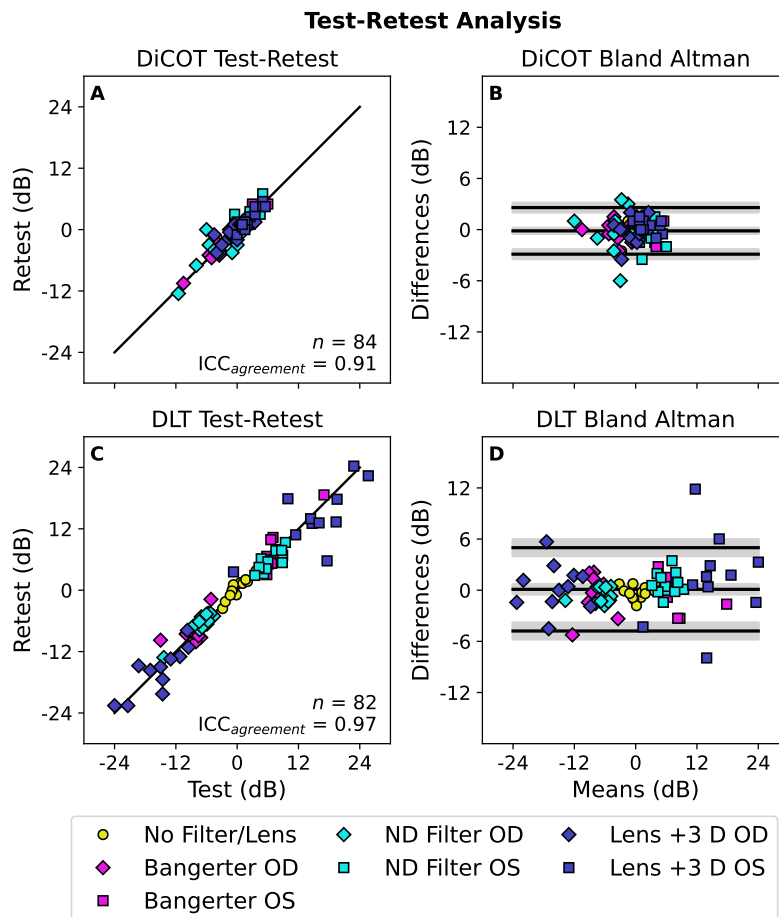


Figure 4: Test-retest reliability. The left column shows correlations between first and second (test and retest) measurements obtained using **A** the DiCOT and **C** the DLT. The solid diagonal line indicates equality. Each point indicates a data point from one participant in one lens/filter condition (84 in total for the DiCOT, 82 in the DLT due to cases where a measurement result could not be obtained). The right column shows Bland-Altman plots giving the test-retest difference as a function of the mean of the two measures. The three black lines show the bias and the upper and lower limits of agreement. The shaded region around each line gives the 95% confidence interval. The results for each filter or lens condition are shown individually in Appendix Figure A1, with statistics reported in Table 1.

255 tested at a further distance than the DiCOT (50 vs. 40 cm). At this distance, the lens has a more dramatic effect on
 256 visual acuity (20/125 reduction compared to 20/50).

257 **3.2 Test-retest reliability of the interocular suppression assessment methods**

258 The test-retest comparisons made with the two measurement tools are shown in Figure 4. The plots in the left column
 259 are the test-retest scatter plots. Figure 4A shows this for the DiCOT, with the agreement between the test and retest
 260 measurements quantified by the $ICC_{agreement}$ score. This is a specific test of the extent to which the second measurement
 261 differs from the first (i.e., it is not a simple correlation measure looking for an unconstrained linear relationship between
 262 the two). With this, we obtain a value of 0.91 which can be interpreted as excellent (Cicchetti, 1994). A marginally
 263 better result is found for the DLT, shown in Figure 4C (0.97).

264 The right column of Figure 4 shows the Bland-Altman plots for each method. We see that the limits of agreement
 265 are narrower (around half the width, see bottom row of Table 1) for the DiCOT than they are for the DLT. This is

Table 1: Test-retest reliability. Reporting test-retest reliability statistics shown in Figure 4 and Appendix Figure A1. The agreement form of the Intraclass Correlation Coefficient is reported, as well as the bias and the limits of agreement from the Bland-Altman plots.

Condition	DiCOT		DLT	
	ICC _{agreement}	Bland-Altman Bias [LOA]	ICC _{agreement}	Bland-Altman Bias [LOA]
No Filter/Lens	0.78	-0.1 [-1.9, 1.7]	0.92	-0.3 [-1.8, 1.1]
Bangerter	0.97	-0.2 [-2.2, 1.7]	0.97	-0.4 [-4.3, 3.6]
ND Filter	0.88	-0.3 [-4.2, 3.6]	0.98	+0.1 [-2.4, 2.6]
Lens +3 D	0.89	+0.1 [-2.3, 2.5]	0.97	+0.9 [-7.1, 8.8]
Pooled	0.91	-0.1 [-2.9, 2.6]	0.97	+0.1 [-4.8, 5.0]

Table 2: ICC consistency calculated for the individual lens/filter conditions (as shown in Figure 6), in each case combining the OS and OD data. As there was no significant linear relationship for the No Filter/Lens condition, they were not included for the individual analysis with the Adjusted DiCOT.

Condition	Mean DLT vs DiCOT regression slope	Mean ICC _{consistency} with adjusted DiCOT	Adjusted DiCOT Bland-Altman Bias [LOA] (Means)
No Filter/Lens	-0.03	N/A	N/A
Bangerter	0.31	0.63	0 [-18.6, 18.6]
ND Filter	0.39	0.62	0 [-15.6, 15.6]
Lens +3 D	0.10	0.56	0 [-42.0, 42.0]
Pooled	0.18	0.44	0 [-32.3, 32.3]

266 unsurprising, as the range of values obtained is also narrower for this measurement. Visual inspection reveals no evident
267 systematic relationship between the degree of imbalance and the difference between test and retest measurements.

268 A further analysis was performed on the data from the individual filter and lens conditions. The scatter and
269 Bland-Altman plots are provided in Appendix Figure A1, with the statistics reported in Table 1. In most cases, the
270 test-retest reliability was comparable between the different conditions. The exception was for testing without a filter or
271 lens. For the DiCOT in particular, the ICC_{agreement} score was lower in this condition (0.78). The reason for the poorer
272 performance of the DiCOT in this case is likely due to the smaller range of imbalances found in our study participant
273 population (in the absence of filter or lens manipulations designed to introduce imbalances).

274 3.3 Comparison between interocular suppression assessment methods

275 Interocular suppression ratios obtained with the DLT are compared against those measured with the DiCOT in Figure 5.
276 As in Figure 4, each participant and lens/filter condition is plotted as a separate point. The top and bottom rows give the
277 data from the test and retest measurements respectively. The consistency ICC between the two measurements was poor
278 (0.32) in both cases. Looking for any linear relationship in the scatter plots (left column), we find best-fitting lines with
279 slopes of 0.18 on the log-log axes for both the test and retest measurements. This accounts for 27-29% of the variance.
280 Because the slope of this relationship was not unity, we find a systematic relationship between the DLT result and the
281 difference between the DLT and DiCOT results in the Bland-Altman plots (right column of Figure 5).

282 We performed a separate analysis of the relationship between the DiCOT and DLT results obtained with the different
283 filter and lens manipulations. This is plotted in Appendix Figure A2 with the full statistics reported in Appendix Table
284 A1. The ICC_{consistency} was poorest for the measurements without filter or lens, likely due to the small baseline variation
285 in the imbalance in our population relative to the variability in the measurements. The ICC_{consistency} for the Lens +3 D
286 condition was also lower than for the other filter and lens conditions, as would be expected based on the differences
287 in the magnitudes of the effects seen in Figure 3. These magnitudes would affect the slope of the linear relationship
288 between the DLT and the DiCOT, which the ICC_{consistency} metric is sensitive to (as it assumes that the effects of the
289 different measurements on the two tests will have equal magnitude and so the slope will be unity). The slopes from

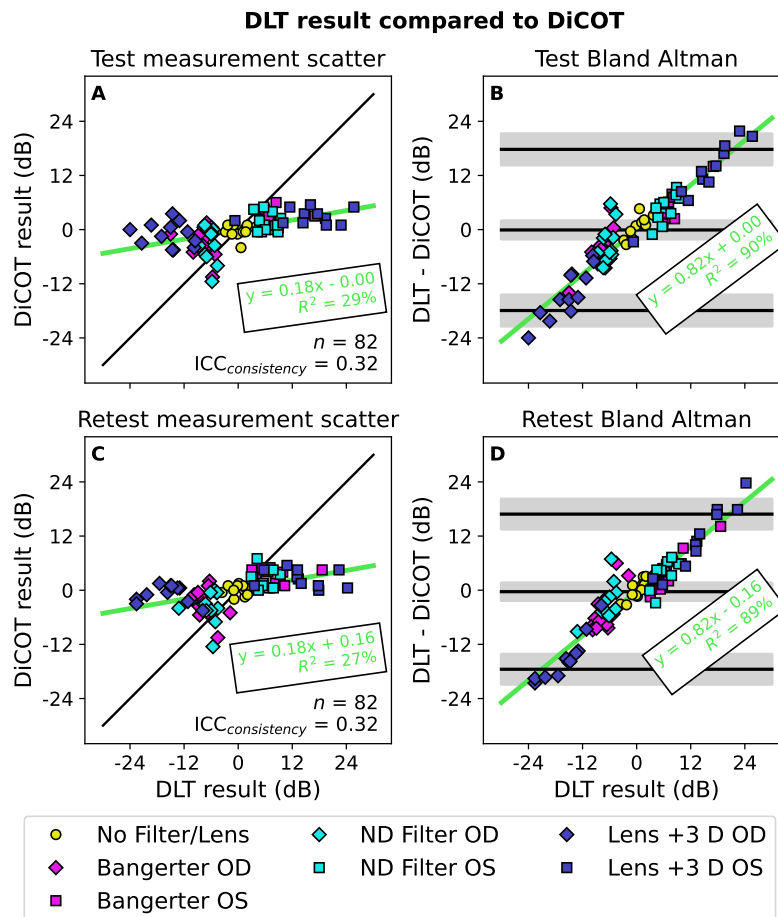


Figure 5: Comparison between DLT and DiCOT. The left column shows scatterplots comparing the measurement made with one test against that made with the other. The top row compares the test (first) measurements, and the bottom compares the second (retest measurements). The diagonal green line is the best-fitting linear relationship (parameters given in green text). The black line shows equality. The right column shows Bland-Altman plots derived from the scatter plots. The three black lines show the bias and the upper and lower limits of agreement. The shaded region around each line gives the 95% confidence interval. The diagonal green line is the best-fitting linear relationship (parameters given in green text). The results for each filter or lens condition are shown individually in Appendix Figure A2, with statistics reported in-part in Table 2 and in-full in Appendix Table A1.

290 the scatter plots are summarised in Table 2. Without filter or lens there was no significant relationship between the
 291 DiCOT and the DLT. The Bangerter and ND Filter conditions had a steeper slope (0.31 to 0.39) whereas the Lens +3 D
 292 condition had a shallower slope (0.10).

293 To improve the consistency between the DLT and DiCOT, we used the best-fitting linear slope and constant
 294 parameters to transform the DiCOT results such that they should have their best correlation with the DLT. The
 295 relationships with the adjusted DiCOT results are shown in Figure 6. As expected, this slightly improves the ICC to
 296 0.43–0.45 (“fair” by Cicchetti, 1994). The right column shows the Bland-Altman plots calculated on the basis of the
 297 adjusted DiCOT values. The limits of agreement here are very broad (± 32 dB). There are a variety of differences
 298 between the two measurements which may account for the discrepancy between the results obtained with them. We
 299 performed an additional, separate analysis for each of the filter and lens conditions. These were transformed based on
 300 the linear relationships for each condition reported in Appendix Table A1. As there was no significant relationship for
 301 the No Filter/Lens condition, that condition was excluded from this analysis.

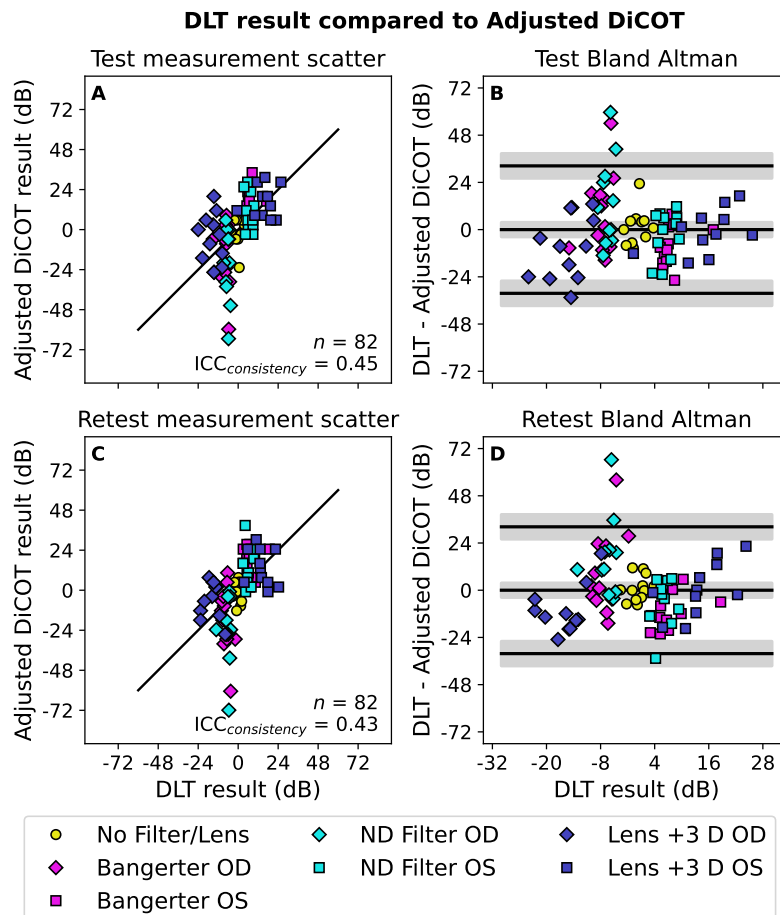


Figure 6: Comparison between DLT and adjusted DiCOT measurements. Similar to Figure 5, however in this case the DiCOT values are adjusted according to the linear relationships reported in Figure 5A (for the test measurements) and Figure 5C (for the retest measurements). The results for each filter or lens condition are shown individually in Appendix Figure A3, with statistics reported in-part in Table 2 and in-full in Appendix Table A2.

302 The mean $ICC_{consistency}$ for each filter or lens condition is provided in Table 2. In each case, the consistency between
 303 the adjusted DiCOT and DLT values was better (0.56 to 0.63) for the individual conditions than for the pooled data
 304 (0.44). So overall, we do see consistency between the two tests within an individual lens or filter condition, but the
 305 relative scaling of the impact of the different manipulations varies between the two methods. Specifically, the Bangerter
 306 filter and ND filter seem to have a similar relationship, but the +3 D Lens has a relatively small effect measured in the
 307 DiCOT compared to the DLT (as shown in Figure 3). This may be expected, as the viewing distance for the DLT was
 308 greater and so the impact of the blur from the lens would also be greater. We also see much larger Bland-Altman limits
 309 of agreement in this condition compared to the Bangerter or ND Filter conditions.

310 4 Discussion

311 This study introduces a new quick method, the Dichoptic Contrast Ordering Test (DiCOT), for measuring the relative
 312 strength of the two eyes' contribution to binocular vision. With anaglyph presentation, it can be delivered on a variety
 313 of digital devices. It involves a simple task of ranking the visibility of dichoptically-presented stimuli, which after
 314 only 10–20 trials provides a quantitative estimate of the magnitude and direction of any imbalance along with the

THE DICHOPTIC CONTRAST ORDERING TEST

315 associated measurement error. It has excellent test-retest reliability both in the combined analysis of all of our conditions
316 (Figure 4A) and in the analysis of the results from individual filter or lens conditions (Appendix Figure A1).

317 We chose the Dichoptic Letters Test (DLT) (Kwon et al., 2015) to compare its results with those obtained from
318 the DiCOT. We do not expect that the two methods measure an identical interocular suppression process. The DLT
319 measures overlay suppression, namely the suppression between corresponding regions of the visual field in both eyes
320 which are presented with rivalrous stimuli. Our DiCOT on the other hand measures dichoptic differences in perceived
321 contrast, which may be mediated by suppression arising from surrounding regions of the visual field from the other
322 eye. The DLT result we expect to mostly reflect feedforward and local inter-cortical interactions while the DiCOT
323 would be expected to depend more on feedback interactions from higher cortical areas (Angelucci and Shushruth, 2013).
324 However, what the tests have in common is that they both are suitable to be used in clinical measurements. They are
325 appropriate for children as well as for adult patients, and they both provide the error associated with the measurement.

326 When penalising with lenses and filters, both tests show changes in the binocular imbalance (Figure 3). The (DLT),
327 which we propose is based on effects of overlay suppression and rivalry dominance (where that rivalry state itself may
328 affect the behaviour of the system, see Klink et al., 2010), gave more extreme values than the DiCOT. Our DiCOT
329 measure is designed to reflect both the feed-forward contrast gain of the two eyes inputs, as well as any effects of
330 dichoptic surround suppression from the elements seen in the other eye. Both tests exhibited excellent test-retest
331 reliability. Although the pattern of results found with the two tests was similar, the results from one accounted for less
332 than half of the variance in the results from the other (Figure 5, Figure A2). We argue that they target (at least partially)
333 distinct aspects of binocular vision and so are differentially affected by our different manipulations. This is reflected by
334 the different regression slopes reported in Table 2. For example, to the extent that the DLT is a rivalry-based task there is
335 an expectation that a blurred input in one eye (from our +3 D Lens) would greatly reduce the dominance of that blurred
336 image (Arnold et al., 2007). On the other hand, we would also expect a (less dramatic) reduction in the perceived
337 contrast in the DiCOT if the image were to be blurred in one eye (May and Georgeson, 2007). This exaggerated effect
338 of blurring on the DLT is reflected visually in our results (Figure 3) and by the relatively shallow regression slope
339 (Table 2). Determining the best instructions and training to separate blur from contrast judgements in the DiCOT is a
340 topic for future research. If we adjust the data from each filter or lens condition individually, we do find they each show
341 a comparable consistency between the DiCOT and the DLT (ICC_{consistency} scores of 0.56 to 0.63 in Table 2). This is still
342 lower than the test-retest reliability, indicating a residual difference between the two measurements. The possibility
343 that the DiCOT and the DLT may target distinct aspects of binocular imbalance makes the combined use of both tests
344 interesting. One such study has been performed comparing the two measures in amblyopia (Reynaud et al., in review).

345 Although both the DLT and the DiCOT should reflect imbalances in the gain of the input from each eye, we do find
346 a wider range in the DLT results. This may be due to the rivalrous stimulus design. Exaggeration of the imbalance
347 for measurements made with rivalrous stimuli would also be expected in amblyopia (Meier et al., 2023). The other
348 difference of interest to us would be the ways that the two tasks would be affected by interocular suppression. Spatially,
349 suppression can be induced both by stimuli occupying a corresponding retinal locus (overlay suppression) and those in
350 neighbouring regions of the visual field (surround suppression). Overlay suppression is thought to mostly involve local
351 responses from neurons responding within the stimulus area and exhibits orientation tuning. Surround suppression
352 involves more remote suppressive interactions. These involve both intracortical horizontal connections and likely
353 feedback contributions from higher visual areas (Angelucci and Shushruth, 2013). Very remote surround interactions
354 do not exhibit orientational tuning (Shushruth et al., 2013). Interocular suppression in individuals with normal healthy
355 vision that have induced interocular imbalances, or in amblyopic individuals who have intrinsic interocular imbalances
356 as a result of a disruption of normal visual development, involves contributions of both overlay and surround suppression
357 (Huang et al., 2012). This imbalance in amblyopia does not affect behaviour on contrast matching tasks when stimuli
358 are presented monocularly (Hess and Bradley, 1980), suggesting that there is no suprathreshold impact of interocular
359 suppression on perceived contrast under monocular stimulation. Under dichoptic viewing however, contrast matching
360 is impacted (Reynaud and Hess, 2016). The specificity of this phenomenon to simultaneous dichoptic presentation

361 underlies our argument that imbalances measured with the DiCOT can be considered to reflect interocular suppression.
362 However, for many purposes to which this tool may be used, the distinction between imbalances in gain and those in
363 suppression may be irrelevant.

364 **4.1 Limitations and Future Work**

365 A number of possible improvements to the DiCOT measurement have been recognised throughout the study process.
366 From the beginning, we have anticipated that the multiple comparisons made by the participant should allow, in
367 principle, for the participants' responses to be validated for internal consistency. This will be implemented in a future
368 iteration. In the Monte Carlo simulations that generate our look-up tables, we use a linear response to contrast. This
369 means that in the simulated rankings, equal differences in linear contrast are equally discriminable. To better correspond
370 to the human visual system, the look-up tables would be improved if they instead operated on a logarithmic contrast
371 scale. This would make the discriminable differences follow the Weber-Fechner Law where the discriminable increment
372 in some property (such as contrast) is proportional to the baseline amount (Wixted, 2019). The effect of such a change
373 will be to rebalance the relative importance of transpositions made in the ranking of contrasts in the lower or higher
374 contrast range. A linear simulation is "better" at ranking the higher contrast stimuli accurately than a simulation
375 following the Weber-Fechner Law would be. This means that deviations from the expected ranking order made with
376 those higher contrasts are less probable, and so will have a greater impact on the predicted imbalance in the current
377 form of the DiCOT. The effect of changing this rule will be explored in a future study with a new version of the DiCOT.

378 There is also a need to investigate how technical aspects of the stimulus presentation (e.g. alternatives to the
379 anaglyph mode of dichoptic presentation) and design (spacing between the targets, broadband vs. spatially bandpass
380 targets) affect the measurements. In the current study, the DiCOT presented via red/green anaglyph on an iPad is
381 compared against the DLT presented on a 3D display system using active shutter glasses. A comparison was made
382 between the two measurements on the different technologies as there was not a version of the DLT available for colour
383 anaglyph, nor do we have a version of the DiCOT for an active 3D system. So, effects due to the equipment may have
384 impacted any differences we found. A comprehensive analysis of these factors will be pursued in future studies. The
385 participants free-viewed the stimuli without eye-tracking, so there was no opportunity to analyse the potential impacts
386 of eye movements on their behaviour. We also did not instruct the participants to prioritise the speed of their response,
387 so we do not know whether there was a relationship between the imbalance and the speed with which the task could be
388 performed. These aspects may be of scientific interest in future investigations.

389 **5 Additional information**

390 **5.1 Acknowledgements**

391 The authors thank MiYoung Kwon and Peter Bex for sharing the code of the Dichoptic Letters test. This
392 pre-print manuscript was written in \LaTeX using TeXShop, and is formatted with a custom style available at:
393 github.com/alexsaldwin/biorxiv-inspired-latex-style.

394 **5.2 Author contributions in CREDIT format**

395 **Alex S Baldwin:** Conceptualization, Methodology, Software, Validation, Formal Analysis, Data Curation, Writing -
396 Original Draft, Writing - Review & Editing, Visualization, Supervision, Project Administration, Funding Acquisition;
397 **Marie-Céline Lorenzini:** Investigation, Writing - Review & Editing; **Annabel Wing-Yan Fan:** Investigation, Software,
398 Validation, Writing - Review & Editing; **Robert F Hess:** Conceptualization, Resources, Writing - Original Draft, Writing
399 - Review & Editing, Supervision, Project Administration, Funding Acquisition; **Alexandre Reynaud:** Conceptualization,
400 Investigation, Writing - Original Draft, Writing - Review & Editing, Supervision, Project Administration, Funding
401 Acquisition.

402 5.3 Potential Conflicts of Interest

403 Authors ASB and RFH are inventors on a patent application (PCT/CA2024/050874) that describes the inventive aspects
404 of the DiCOT measurement tool. The study protocol was designed by the authors AR, ASB and RFH, and conducted
405 by all authors at RI-MUHC; McGill University. Novartis Pharma AG (Basel) supported the study with funds under a
406 research agreement entered into on March 31st, 2020.

407 6 Appendix

408 6.1 Table of Suppression Measurement Methods

409 The findings from a review of previously-published methods for measuring binocular imbalance (such as from interocular
410 suppression) are presented in Table A1.

411 6.2 Algorithm Details

412 The goal of the measurement is to estimate the underlying interocular contrast ratio that defines the imbalance in the
413 perceived contrast between the eyes. This is found as the most likely value of the interocular ratio parameter (r) based
414 on the history of ranking responses given to the different stimulus conditions

$$\log \mathbf{L}(r_i) = \sum_j \log L(r_i | \text{condition}_j, \text{response}_j), \quad (2)$$

415 where $\log \mathbf{L}(r_i)$ is the overall log-likelihood of the i^{th} parameter value, calculated as the sum of the log-likelihoods
416 based on the responses given to the conditions presented over each j of the trials. These likelihood values are obtained
417 from pre-generated look-up tables. After converting from log-likelihood back to likelihood, we normalise to give \mathbf{L}'

$$\mathbf{L}'(r_i) = \frac{\mathbf{L}(r_i)}{\sum_i \mathbf{L}(r_i)}, \quad (3)$$

418 where the sum of \mathbf{L}' over each i of the possible ratios is 1. This $\mathbf{L}'(r_i)$ is our running estimate of the likelihood of each
419 of our discretely-sampled parameter values r_i . The algorithm attempts to estimate the most likely of these parameter
420 values. This is done by minimising the expected posterior entropy. The entropy given all previous trials is defined as

$$\mathbf{H}(\mathbf{r}) = - \sum_i \mathbf{L}'(r_i) \times \log \mathbf{L}'(r_i). \quad (4)$$

421 To obtain the expected posterior entropy, we must consider adding one more trial and account for the various possible
422 responses that the participant is more or less probable to give based on the current best estimate of their interocular
423 ratio. To find the expected entropy resulting from the $j + 1$ trial, we determine the normalised likelihood function that
424 would be the outcome for each possible ranking response in that trial. We use Bayes' Theorem, simply

$$\mathbf{L}'(r | \text{rank}) = \frac{P(\text{rank} | r) \times \mathbf{L}'(r)}{P(\text{rank})}, \quad (5)$$

425 where $\mathbf{L}'(r)$ is the prior likelihood of the ratio value, and $P(\text{rank})$ is the marginal probability of the ranking outcome.
426 This probability, $P(\text{rank})$, of giving a certain (k^{th}) ranking response has to take into account the relative likelihoods of
427 the different interocular ratio parameter options

$$P(\text{rank}_k | \text{condition}_{j+1}) = \sum_i \mathbf{L}'(r_i) \times P(\text{rank}_k | r_i, \text{condition}_{j+1}), \quad (6)$$

428 where the probability of a certain ranking being given to a particular condition under a particular interocular ratio
429 parameter, $P(\text{rank}_k | r_i, \text{condition}_{j+1})$, can be obtained directly from the Monte-Carlo generated look-up tables.

Table A1: Results of a review of existing methods for measuring interocular suppression.

Relevant study	Identifier	Parameter measured	Potential disadvantage	Special contribution
Wolfe (1986)	Binocular rivalry	Duration	Artificial viewing condition	Dynamic nature
Hess (1991)	Contrast adaptation	Contrast	Decays over time	Putative site in V1
Harrad and Hess (1992)	Dichoptic increment detection	Contrast		Contrast-level dependence
Tsuchiya et al. (2006)	Continuous flash suppression	Contrast		Extended suppression of stimulus from awareness
Huang et al. (2009)	Phase combination	Contrast / Phase	Limited to lower spatial frequencies	Measures balance in fusion state
Black et al. (2011)	Global motion	Contrast / Motion	Time-consuming	Putative site in extra-striate cortex
Li et al. (2011)	Bagolini striated glass	Contrast	Uncontrolled room lighting	
Maehara et al. (2011)	Contrast combination	Contrast		Spatial frequency dependence
Huang et al. (2012)	Acuity measure	Contrast		Spatio-temporal properties
Babu et al. (2013)	Regional contrast matching	Contrast	Local	Measures regional visual field dependence
Zhou et al. (2013)	Global orientation	Contrast / Orientation		Putative site in extra-striate cortex
Kwon et al. (2015)	Dichoptic letter test	Contrast	Measurement under artificial dichoptic mismatch.	Rivalry-based (winner take all). Acuity dependence.
Spiegel et al. (2016)	Blurred edge combination	Contrast / Position	Time-consuming.	Highlights the probabilistic nature of suppression.
Bossi et al. (2017)	Dichoptic increment/decrement	Contrast	Increment/decrement nonlinearity presented dichoptically	Performed while watching movies
Zhou et al. (2018)	Noise masking	Contrast	Off-frequency effects	Spatial frequency dependence
Wang et al. (2019)	Orientation combination	Contrast / Orientation	Cross-orientation effects	Spatial frequency dependence of fusional consequences
Webber et al. (2020)	Quantitative Worth 4 Dot	Contrast	Colour-contrast effects	Relevance to existing clinical tool

430 Substituting the appropriate values into Equation 5, we have

$$\mathbf{L}'(r_i | \text{condition}_{j+1}, \text{rank}_k) = \frac{P(\text{rank}_k | r_i, \text{condition}_{j+1}) \times \mathbf{L}'(r_i)}{P(\text{rank}_k | \text{condition}_{j+1})}. \quad (7)$$

431 The conditional entropy of the likelihood function from that single trial outcome (a specific ranking response given to
432 the presented condition) is then calculated

$$\mathbf{H}_{j+1}(\mathbf{r} | \text{condition}_{j+1}, \text{rank}_k) = - \sum_i \mathbf{L}'(r_i | \text{condition}_{j+1}, \text{rank}_k) \times \log \mathbf{L}'(r_i | \text{condition}_{j+1}, \text{rank}_k). \quad (8)$$

433 The expected entropy resulting from the $j + 1$ trial given a certain condition is the weighted average of the entropies
434 calculated from the likelihood functions for each k of the different possible ranking responses. They are weighted by
435 the probability of each ranking response being given

$$\mathbf{H}_{j+1}(\mathbf{r} | \text{condition}_{j+1}) = \sum_k \mathbf{H}_{j+1}(\mathbf{r} | \text{condition}_{j+1}, \text{rank}_k) \times P(\text{rank}_k | \text{condition}_{j+1}). \quad (9)$$

THE DICHOPTIC CONTRAST ORDERING TEST

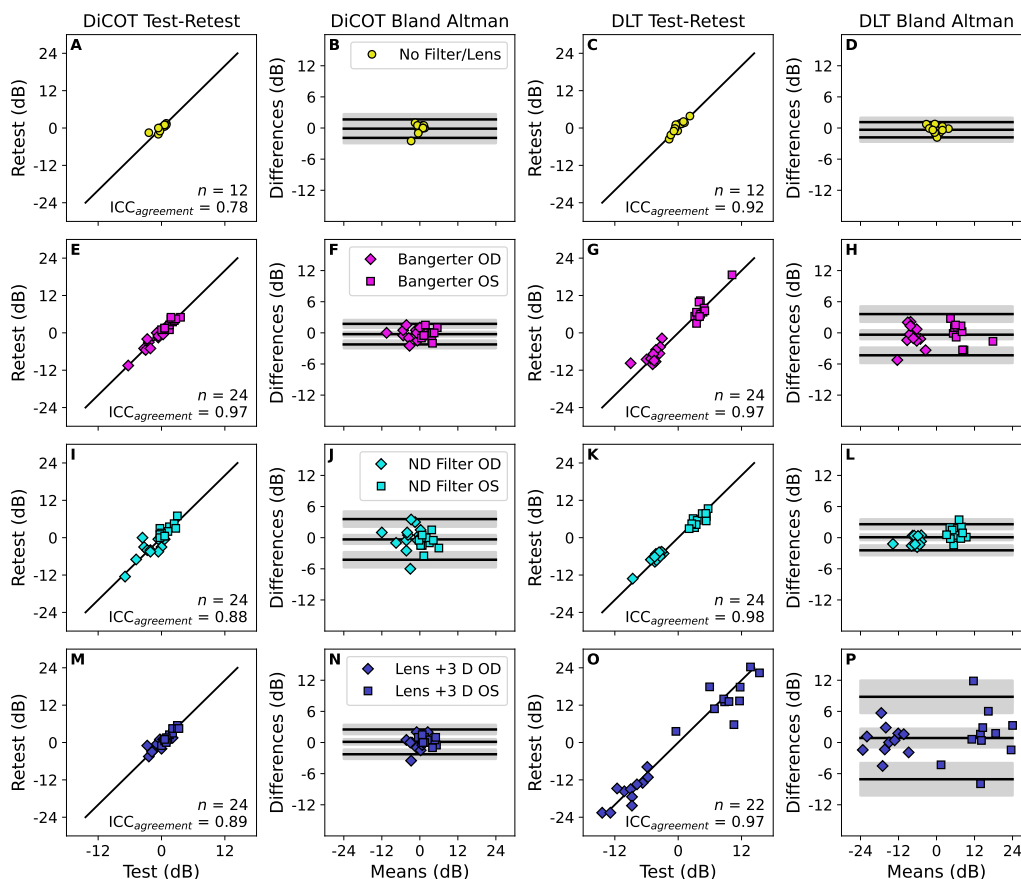


Figure A1: Test-retest reliability. The data of Figure 4 are replotted here, separated into the different filter or lens conditions (rows). The first two columns show the DiCOT measurements. The remaining two columns show data from the DLT. In each pair, the left column shows correlations between test and retest measurements. The solid diagonal line indicates equality. Each point indicates a data point from one participant in one lens/filter condition. The right column shows Bland-Altman plots giving the test-retest difference as a function of the mean of the two measures. The three black lines show the bias and the upper and lower limits of agreement. The shaded region around each line gives the 95% confidence interval.

436 The conditions for the next trial ($condition_{j+1}$) are therefore chosen to minimise the value of Equation 9. As we
 437 consider only a relatively small set of possible conditions, we are able to calculate this value for all of the candidates
 438 and select the one that produces the smallest value.

439 6.3 Supplementary Analysis

440 In addition to the combined analysis given in Figure 4, we also analysed the test-retest data for each individual filter or
 441 lens condition. This is plotted in Figure A1, with the statistics for these individual conditions reported in Table 1.

442 When comparing the two measurement tools (DLT vs DiCOT), we also analysed the data from the individual
 443 conditions separately. This is presented in Figure A2. The regression slopes from these plots are summarised in Table 2,
 444 with the complete analysis reported in Table A1. A significant linear relationship is found between the DLT and DiCOT
 445 results for all conditions except “No Filter/Lens”, due to the relatively small variation in binocular imbalance in our
 446 population. As in Figure 5, because the slope of the relationship in the scatter plots is not unity, we find a strong
 447 relationship between the DLT result value and the DLT-DiCOT error in the Bland-Altman analysis (where the slope of
 448 that relationship is equal to one minus the slope from the scatter plot).

THE DICHOPTIC CONTRAST ORDERING TEST

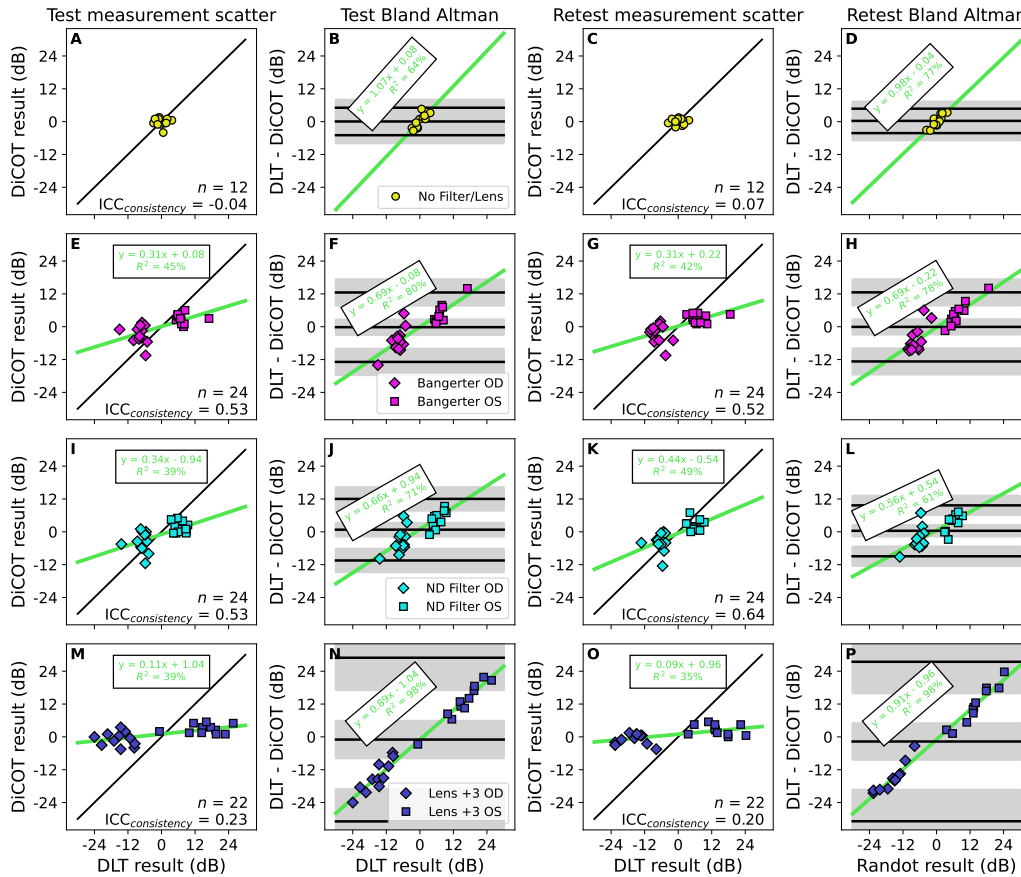


Figure A2: Comparison between DLT and DiCOT. The data of Figure 5 are replotted here, separated into the different filter or lens conditions (rows). The first two columns show comparisons of the test (first) measurements. The remaining two columns show comparisons of the retest (second) measurements. In each pair, the left column shows scatterplots comparing the measurement made with one test against that made with the other. The diagonal green line is the best-fitting linear relationship (parameters given in green text). The black line shows equality. The right column shows Bland-Altman plots derived from the scatter plots. The three black lines show the bias and the upper and lower limits of agreement. The shaded region around each line gives the 95% confidence interval. The diagonal green line is the best-fitting linear relationship (parameters given in green text).

449 In Figure 6, we transformed the DiCOT results according to the overall linear relationship found with the DLT
 450 data. Here, we report an additional analysis where this transformation was performed separately for each filter or
 451 lens condition (n.b. the “No Filter/Lens” condition is excluded as there was no significant relationship to base the
 452 transformation on). This analysis is shown in Figure A3, with statistics reported in Table A3. The transformation
 453 accounts for both the slope and bias of the relationships reported in the scatter plots in Figure A2. Therefore, after the
 454 transformation the scatter plot relationship is, by definition, $y = x$. There is no bias on the Bland-Altman plot and the
 455 slope of the regression in that plot is zero. The $ICC_{consistency}$ score is improved by this adjustment, though there remains
 456 a wide limits of agreement range on the Bland-Altman plot.

THE DICHOPTIC CONTRAST ORDERING TEST

Table A2: Comparison between DLT and DiCOT. Statistics from Figure A2, giving the consistency form of the Intraclass Correlation Coefficient, as well as the linear regression analysis, the bias and limits of agreement from the Bland-Altman plots, and the linear regression analysis from the Bland-Altman plots.

Condition	Scatter ICC _{consistency}	Scatter Regression	Bland Altman Bias [LOA]	Bland-Altman Regression
No Filter (test)	-0.04	$y = -0.07x - 0.08$ $r = -0.09, p = 0.782$	0.06 [-4.96, 5.08]	$y = 1.07x + 0.08$ $r = 0.80, p = 0.002$
No Filter (retest)	0.07	$y = 0.02x + 0.04$ $r = 0.04, p = 0.913$	0.27 [-4.19, 4.74]	$y = 0.98x - 0.04$ $r = 0.88, p < 0.001$
Bangerter (test)	0.53	$y = 0.31x + 0.08$ $r = 0.67, p < 0.001$	-0.17 [-12.86, 12.52]	$y = 0.69x - 0.08$ $r = 0.89, p < 0.001$
Bangerter (retest)	0.52	$y = 0.31x + 0.22$ $r = 0.65, p = 0.001$	-0.07 [-12.69, 12.56]	$y = 0.69x - 0.22$ $r = 0.88, p < 0.001$
ND Filter (test)	0.53	$y = 0.34x - 0.94$ $r = 0.62, p = 0.001$	0.77 [-10.48, 12.02]	$y = 0.66x + 0.94$ $r = 0.84, p < 0.001$
ND Filter (retest)	0.64	$y = 0.44x - 0.54$ $r = 0.70, p < 0.001$	0.36 [-8.94, 9.66]	$y = 0.56x + 0.54$ $r = 0.78, p < 0.001$
Lens +3 D (test)	0.23	$y = 0.11x + 1.04$ $r = 0.63, p = 0.002$	-0.98 [-30.89, 28.92]	$y = 0.89x - 1.04$ $r = 0.99, p < 0.001$
Lens +3 D (retest)	0.20	$y = 0.09x + 0.96$ $r = 0.60, p = 0.003$	-1.69 [-30.83, 27.45]	$y = 0.91x - 0.96$ $r = 0.99, p < 0.001$

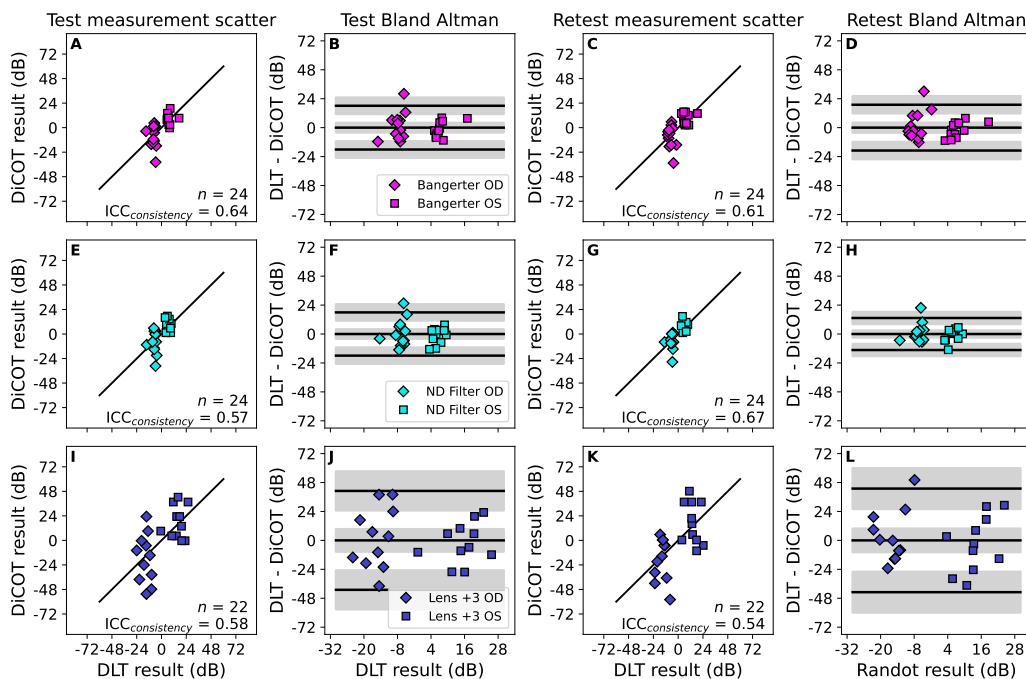


Figure A3: Comparison between DLT and adjusted DiCOT measurements. Similar to Figure A2, but with DiCOT values adjusted according to the linear relationships reported in Figure A2.

Table A3: Comparison between DLT and adjusted DiCOT measurements. Statistics from Figure A3, giving the consistency form of the Intraclass Correlation Coefficient, as well as the bias and the limits of agreement from the Bland-Altman plots.

Condition	Scatter ICC _{consistency}	Bland-Altman Bias [LOA]
Bangerter (test)	0.64	0 [-18.1, 18.1]
Bangerter (retest)	0.61	0 [-19.0, 19.0]
ND Filter (test)	0.57	0 [-17.9, 17.9]
ND Filter (retest)	0.67	0 [-13.3, 13.3]
Lens +3 D (test)	0.58	0 [-41.0, 41.0]
Lens +3 D (retest)	0.54	0 [-43.0, 43.0]

457 References

- 458 Alais, D. (2012). Binocular rivalry: Competition and inhibition in visual perception. *WIREs Cognitive Science*, 3:87–103.
- 459 Angelucci, A. and Shushruth, S. (2013). Beyond the classical receptive field: Surround modulation in primary visual cortex. In *The*
460 *New Visual Neurosciences*, pages 425–444.
- 461 Arnold, D. H., Grove, P. M., and Wallis, T. S. A. (2007). Staying focused: A functional account of perceptual suppression during
462 binocular rivalry. *Journal of Vision*, 7(7):7.
- 463 Ashraf, M., Mantiuk, R., Martinovic, J., and Wuerger, S. (2022). Suprathreshold Contrast Matching between Different Luminance
464 Levels. *Color and Imaging Conference*, 30(1):219–224.
- 465 Babu, R. J., Clavagnier, S. R., Bobier, W., Thompson, B., and Hess, R. F. (2013). The Regional Extent of Suppression: Strabismics
466 Versus Nonstrabismics. *Investigative Ophthalmology & Visual Science*, 54(10):6585.
- 467 Bagolini, B. (1957). Presentazione di una sbarra di filtri a densita scalare assorbenti i raggi luminosi. *Boll. Ocul.*, 36(10):638–651.
- 468 Baker, D. H. and Meese, T. S. (2007). Binocular contrast interactions: Dichoptic masking is not a single process. *Vision Research*,
469 47(24):3096–3107.
- 470 Baker, D. H., Meese, T. S., and Hess, R. F. (2008). Contrast masking in strabismic amblyopia: Attenuation, noise, interocular
471 suppression and binocular summation. *Vision Research*, 48(15):1625–1640.
- 472 Baldwin, A. S. and Hess, R. F. (2018). The mechanism of short-term monocular deprivation is not simple: Separate effects on
473 parallel and cross-oriented dichoptic masking. *Scientific Reports*, 8(1):6191.
- 474 Birch, E. E., Morale, S. E., Jost, R. M., De La Cruz, A., Kelly, K. R., Wang, Y.-Z., and Bex, P. J. (2016). Assessing Suppression in
475 Amblyopic Children With a Dichoptic Eye Chart. *Investigative Ophthalmology & Visual Science*, 57(13):5649.
- 476 Black, J. M., Thompson, B., Maehara, G., and Hess, R. F. (2011). A Compact Clinical Instrument for Quantifying Suppression.
477 *Optometry and Vision Science*, 88(2):E334–E343.
- 478 Blake, R. and Camisa, J. (1979). On the Inhibitory Nature of Binocular Rivalry Suppression. *Journal of Experimental Psychology:*
479 *Human Perception and Performance*, 5(2):315–323.
- 480 Bland, J. M. and Altman, D. G. (1999). Measuring agreement in method comparison studies. *Statistical Methods in Medical*
481 *Research*, 8:135–160.
- 482 Bonett, D. G. (2002). Sample size requirements for estimating intraclass correlations with desired precision. *Statistics in Medicine*,
483 21(9):1331–1335.
- 484 Bossi, M., Taylor, V. K., Anderson, E. J., Bex, P. J., Greenwood, J. A., Dahlmann-Noor, A., and Dakin, S. C. (2017). Binocular
485 Therapy for Childhood Amblyopia Improves Vision Without Breaking Interocular Suppression. *Investigative Ophthalmology &*
486 *Visual Science*, 58(7):3031.
- 487 Cicchetti, D. V. (1994). Guidelines, criteria, and rules of thumb for evaluating normed and standardized assessment instruments in
488 psychology. *Psychological Assessment*, 6(4):284–290.
- 489 Datta, D. (2017). *Blandr: A Bland-Altman Method Comparison Package for R*.
- 490 Ding, J. and Sperling, G. (2006). A gain-control theory of binocular combination. *Proceedings of the National Academy of Sciences*,
491 103(4):1141–1146.

THE DICHOPTIC CONTRAST ORDERING TEST

- 492 Gamer, M., Lemon, J., Fellows, I., and Singh, P. (2019). *Irr: Various Coefficients of Interrater Reliability and Agreement*.
- 493 García-Pérez, M. A. (2010). Denoising forced-choice detection data. *British Journal of Mathematical and Statistical Psychology*,
494 63(1):75–100.
- 495 Harrad, R. and Hess, R. (1992). Binocular integration of contrast information in amblyopia. *Vision Research*, 32(11):2135–2150.
- 496 Hess, R. (1991). The site and nature of suppression in squint amblyopia. *Vision Research*, 31(1):111–117.
- 497 Hess, R. F. and Bradley, A. (1980). Contrast perception above threshold is only minimally impaired in human amblyopia. *Nature*,
498 287(5781):463–464.
- 499 Hess, R. F., Thompson, B., and Baker, D. H. (2014). Binocular vision in amblyopia: Structure, suppression and plasticity. *Ophthalmic
500 and Physiological Optics*, 34(2):146–162.
- 501 Huang, C. B., Zhou, J., Lu, Z. L., Feng, L., and Zhou, Y. (2009). Binocular combination in anisometropic amblyopia. *Journal of
502 Vision*, 9(3):17–17.
- 503 Huang, P.-C., Baker, D. H., and Hess, R. F. (2012). Interocular suppression in normal and amblyopic vision: Spatio-temporal
504 properties. *Journal of Vision*, 12(11(29)):1–12.
- 505 Klink, P. C., Brascamp, J. W., Blake, R., and van Wezel, R. J. (2010). Experience-driven plasticity in binocular vision. *Current
506 Biology*, 20:1464–1469.
- 507 Kwon, M., Wiecek, E., Dakin, S. C., and Bex, P. J. (2015). Spatial-frequency dependent binocular imbalance in amblyopia. *Scientific
508 Reports*, 5(1):17181.
- 509 Li, J., Thompson, B., Ding, Z., Chan, L. Y. L., Chen, X., Yu, M., Deng, D., and Hess, R. F. (2012). Does Partial Occlusion Promote
510 Normal Binocular Function? *Investigative Ophthalmology & Visual Science*, 53(11):6818.
- 511 Li, J., Thompson, B., Lam, C. S. Y., Deng, D., Chan, L. Y. L., Maehara, G., Woo, G. C., Yu, M., and Hess, R. F. (2011). The Role of
512 Suppression in Amblyopia. *Investigative Ophthalmology & Visual Science*, 52(7):4169.
- 513 Maehara, G., Thompson, B., Mansouri, B., Farivar, R., and Hess, R. F. (2011). The Perceptual Consequences of Interocular
514 Suppression in Amblyopia. *Investigative Ophthalmology & Visual Science*, 52(12):9011.
- 515 Martín, S., Portela, J. A., Ding, J., Ibarrondo, O., and Levi, D. M. (2020). Evaluation of a Virtual Reality implementation of a
516 binocular imbalance test. *PLOS ONE*, 15(8):e0238047.
- 517 May, K. A. and Georgeson, M. A. (2007). Blurred edges look faint, and faint edges look sharp: The effect of a gradient threshold in
518 a multi-scale edge coding model. *Vision Research*, 47(13):1705–1720.
- 519 Meese, T. S., Georgeson, M. A., and Baker, D. H. (2006). Binocular contrast vision at and above threshold. *Journal of Vision*,
520 6(11):7–7.
- 521 Meier, K., Tarczy-Hornoch, K., Boynton, G. M., and Fine, I. (2023). Characterizing amblyopic perception under non-rivalrous
522 viewing conditions. *Scientific Reports*, 13(1):7993.
- 523 Min, S. H., Gong, L., Baldwin, A. S., Reynaud, A., He, Z., Zhou, J., and Hess, R. F. (2021). Some psychophysical tasks measure
524 ocular dominance plasticity more reliably than others. *Journal of Vision*, 21(8):20.
- 525 R Core Team (2023). *R: A Language and Environment for Statistical Computing*. Vienna, Austria.
- 526 Reynaud, A. and Hess, R. F. (2016). Is Suppression Just Normal Dichoptic Masking? Suprathreshold Considerations. *Investigative
527 Ophthalmology & Visual Science*, 57(13):5107.
- 528 Reynaud, A., Lorenzini, M.-C., Koenekoop, R. K., Hess, R. F., and Baldwin, A. S. (in-review). Amblyopic binocular imbalance
529 quantified by the Dichoptic Contrast Ordering Test and Dichoptic Letters Test.
- 530 Sauvan, L., Stolowy, N., Denis, D., Matonti, F., Chavane, F., Hess, R. F., and Reynaud, A. (2019). Contribution of Short-Time
531 Occlusion of the Amblyopic Eye to a Passive Dichoptic Video Treatment for Amblyopia beyond the Critical Period. *Neural
532 Plasticity*, 2019:1–12.
- 533 Shushruth, S., Nurminen, L., Bijanzadeh, M., Ichida, J. M., Vanni, S., and Angelucci, A. (2013). Different Orientation Tuning of
534 Near- and Far-Surround Suppression in Macaque Primary Visual Cortex Mirrors Their Tuning in Human Perception. *The Journal
535 of Neuroscience*, 33(1):106–119.
- 536 Spiegel, D. P., Baldwin, A. S., and Hess, R. F. (2016). The Relationship Between Fusion, Suppression, and Diplopia in Normal and
537 Amblyopic Vision. *Investigative Ophthalmology & Visual Science*, 57(13):5810.

THE DICHOPTIC CONTRAST ORDERING TEST

- 538 Tsuchiya, N., Koch, C., Gilroy, L. A., and Blake, R. (2006). Depth of interocular suppression associated with continuous flash
539 suppression, flash suppression, and binocular rivalry. *Journal of Vision*, 6:1068–1078.
- 540 Wang, X., Baldwin, A. S., and Hess, R. F. (2021). Balanced binocular inputs support superior stereopsis. *Investigative Ophthalmology*
541 *& Visual Science*, 62(12)(10):1–8.
- 542 Wang, Y., He, Z., Liang, Y., Chen, Y., Gong, L., Mao, Y., Chen, X., Yao, Z., Spiegel, D. P., Qu, J., Lu, F., Zhou, J., and Hess, R. F.
543 (2019). The Binocular Balance at High Spatial Frequencies as Revealed by the Binocular Orientation Combination Task. *Frontiers*
544 *in Human Neuroscience*, 13:106.
- 545 Watson, A. B. and Pelli, D. G. (1983). Quest: A Bayesian adaptive psychometric method. *Perception & Psychophysics*, 33(2):113–
546 120.
- 547 Webber, A. L., Mandall, T. R., Molloy, D. T., Lister, L. J., and Birch, E. E. (2020). Worth 4 Dot App for Determining Size and Depth
548 of Suppression. *Translational Vision Science & Technology*, 9(4):9.
- 549 Wixted, J. (2019). The forgotten history of signal detection theory. *Journal of experimental psychology. Learning, memory, and*
550 *cognition*.
- 551 Wolfe, J. M. (1986). Briefly Presented Stimuli Can Disrupt Constant Suppression and Binocular Rivalry Suppression. *Perception*,
552 15(4):413–417.
- 553 Zhou, J., Huang, P.-C., and Hess, R. F. (2013). Interocular suppression in amblyopia for global orientation processing. *Journal of*
554 *Vision*, 13(5):19–19.
- 555 Zhou, J., Reynaud, A., Yao, Z., Liu, R., Feng, L., Zhou, Y., and Hess, R. F. (2018). Amblyopic Suppression: Passive Attenuation,
556 Enhanced Dichoptic Masking by the Fellow Eye or Reduced Dichoptic Masking by the Amblyopic Eye? *Investigative*
557 *Ophthalmology & Visual Science*, 59(10):4190.