

1 **Original Article**

2 Title page

3

4 Title: Assessing the Role of Red Blood Cell Distribution Width in Hospital Mortality

5 Among Elderly and Non-Elderly COVID-19 Patients: A Prospective Study in a

6 Brazilian University Hospital

7

8 Short Title: RDW and COVID-19 mortality

9

10 Helena Duani^{1,2,4}

11 Máderson Alvares de Souza Cabral^{1,2}

12 Carla Jorge Machado³

13 Thalyta Nogueira Fonseca²

14 Milena Soriano Marcolino^{1,4}

15 Vandack Alencar Nobre Jr.^{1,4}

16 Cecilia Gómez Ravetti⁴

17 Paula Frizera Vassallo⁵

18 Unaí Tupinambás^{1,2,4}

19

20 ¹Programa de Pós-Graduação em Ciências da Saúde: Infectologia e Medicina Tropical,
21 Faculdade de Medicina, Universidade Federal de Minas Gerais, Belo Horizonte, Brazil.

22 ²Serviço de Doenças Infecciosas e Parasitárias, Hospital das Clínicas, Universidade
23 Federal de Minas Gerais, Belo Horizonte, Brazil.

24 ³Programa de Pós Graduação em Promoção de Saúde e Prevenção da Violência,
25 Faculdade de Medicina, Universidade Federal de Minas Gerais, Belo Horizonte, Brazil.

26 ⁴Departamento de Clínica Médica, Faculdade de Medicina, Universidade Federal de Minas
27 Gerais, Belo Horizonte, Brazil.

28 ⁵Unidade de Terapia Intensiva Adulto, Hospital das Clínicas, Universidade Federal de
29 Minas Gerais, Belo Horizonte, Brazil.

30

31 Corresponding Author:

32

33 Helena Duani, PhD

NOTE: This preprint reports new research that has not been certified by peer review and should not be used to guide clinical practice.

34 Programa de Pós-Graduação em Ciências da Saúde: Infectologia e Medicina
35 Tropical, Serviço de Infectologia, Faculdade de Medicina, Universidade Federal
36 de Minas Gerais, UFMG.

37 Avenida Professor Alfredo Balena 190, room #503, Belo Horizonte, Minas
38 Gerais,

39 Brazil. CEP: 30130-100
40 Telephone: (+55 31) 33079383
41 Cell phone: (+55 31) 983056583
42 e-mail: duani@ufmg.br
43 alternative e-mail: hduani@gmail.com
44
45 ORCID:
46
47 Helena Duani: <https://orcid.org/0000-0001-9345-018X>
48 Máderson Alvares de Souza Cabral: <https://orcid.org/0000-0001-8556-1998>
49 Carla Jorge Machado: <https://orcid.org/0000-0002-6871-0709>
50 Thalyta Nogueira Fonseca: <https://orcid.org/0000-0003-2319-6520>
51 Milena Soriano Marcolino: <https://orcid.org/0000-0003-4278-3771>
52 Vandack Alencar Nobre Jr.: <https://orcid.org/0000-0002-7922-0422>
53 Cecilia Gómez Ravetti: <https://orcid.org/0000-0002-6349-3063>
54 Paula Frizera Vassallo: <https://orcid.org/0000-0002-7531-0607>
55 Unaí Tupinambás: <https://orcid.org/0000-0001-6833-3870>
56
57
58

59 Summary

60 This study investigated the role of red blood cell distribution width (RDW) as a risk
61 factor for hospital mortality in COVID-19 patients at a public hospital in Minas
62 Gerais, Brazil. The study included 161 patients over 16 years old hospitalized
63 between May and October 2020, with 39 (24.2%) deaths. Key mortality risk factors
64 identified were age over 70 years (RR=2.78; $p<0.001$), male sex (RR=2.28;
65 $p=0.005$), cardiovascular disease (RR=1.8; $p=0.044$), and abnormal chest X-ray
66 upon admission (RR=3.07; $p=0.022$). Although high RDW at admission did not
67 significantly predict mortality (31.1% vs 21.7%; RR=1.43; $p=0.413$), it was linked to
68 higher mortality in patients aged 70 and over (66.7% vs 33.3%; RR=2; $p=0.029$).
69 High RDW during hospitalization was a strong mortality factor for the entire cohort
70 (41.1% vs 10.2%; RR=4.03; $p<0.001$) and at any time during the stay (39.7% vs
71 9.6%; RR=4.14; $p<0.001$). The Cox model analysis showed that age >70 years
72 (HR=4.8; $p<0.001$), white race (HR=3.2; $p=0.018$), need for invasive ventilation
73 (HR=3.8; $p=0.001$), and abnormal chest X-ray (HR=3.5; $p=0.044$) were significant
74 risk factors, but RDW was not associated with mortality.

75

76 Keywords: COVID-19, RDW, mortality, SARS-CoV-2, biomarkers.

77

78 Introduction

79

80 In December 2019, an outbreak of atypical cases of viral pneumonia, henceforth
81 referred to as COVID-19, was reported in Wuhan, China. A few weeks later, a new
82 beta-coronavirus – the severe acute respiratory syndrome coronavirus 2 (SARS-
83 CoV-2) – was established as the etiologic agent of this disease. COVID-19 quickly
84 spread throughout the globe and was classified as a pandemic by the World Health
85 Organization in March 2020 [1].

86 The spectrum of clinical presentation of COVID-19 is broad, varying from
87 asymptomatic infection to severe and critical disease. Patients with old age and
88 comorbidities, such as heart, lung, or kidney disease; hypertension; diabetes;
89 cancer; smoking; and obesity have a higher risk for severe disease and mortality.
90 [2-7]

91 Many researchers are interested in identifying circulating biomarkers able to select
92 patients with a higher risk of unfavorable clinical outcomes and death. In this
93 context, some studies have shown that high D-dimer levels, lymphocytopenia [3,8],
94 and some higher red blood cell distribution widths (RDW) are associated with poor
95 outcomes [9]. Froy et al. concluded that patients with COVID-19 that presented with
96 a high RDW upon hospital admission and an increasing RDW during hospitalization
97 presented a higher risk of mortality [9].

98 Thus, the present study aimed to investigate, in a Brazilian sample of COVID-19
99 patients admitted to a public university hospital, if RDW measured upon admission
100 or during hospitalization is associated with hospital mortality.

101

102 Material and Methods

103

104 This study included all patients aged ≥ 16 years who had been admitted between

105 May 1 and October 31, 2020 to the Hospital das Clínicas of the Universidade
106 Federal de Minas Gerais (HC-UFMG), in Belo Horizonte, Brazil, with Severe Acute
107 Respiratory Syndrome (SARS) or clinical symptoms whose evolution led to the
108 suspicion of COVID-19 within the first three weeks of hospitalization. Patients
109 hospitalized for other pathologies who became infected with COVID-19 during
110 hospitalization were not included. Belo Horizonte, the capital city of the Southeast
111 region of Brazil, has a population of over 2 million people. Among these residents,
112 more than 80,000 are aged between 70 and 74 years old, highlighting a significant
113 elderly demographic within the city ([https://cidades.ibge.gov.br/brasil/mg/belo-](https://cidades.ibge.gov.br/brasil/mg/belo-horizonte/panorama)
114 [horizonte/panorama](https://cidades.ibge.gov.br/brasil/mg/belo-horizonte/panorama), assessed in July 11, 2024.

115

116 The HC-UFMG is a university hospital with more than 400 beds and is a regional
117 reference for the treatment of high complexity cases, including organ transplants
118 and neoplasms. Since the onset of the COVID-19 pandemic, the hospital has been
119 a part of the Brazilian Unified Health System (SUS) for the treatment of suspected
120 cases in the metropolitan area of Belo Horizonte, Brazil.

121 Patients were followed up by the study team through a daily active search. Data
122 were collected prospectively based on the hospital's electronic medical records
123 and radiological and laboratory examination information systems.

124

125 A confirmed case of COVID-19 was defined as patients with a positive real-time
126 polymerase chain reaction (RT-PCR) for the detection of SARS-CoV-2 in tracheal
127 aspirate or naso-oropharyngeal swab. Cases with clinical suspicion and
128 radiological findings but without laboratory confirmation were not included.

129

130 A questionnaire was filled out during the study team's follow-up to obtain the
131 variables to be studied and compiled in a database. The race/color variable was
132 obtained by self-declaration.

133

134 The duration of symptoms reported in the first medical record was considered.

135 Comorbidities reported in medical records were recorded and categorized.

136 Immunosuppression was defined as the presence of neoplasia, an

137 immunosuppressive hematologic condition, primary or acquired immunodeficiency,

138 or a relevant clinical condition whose treatment involves the use of

139 immunosuppressants or high-dose of corticosteroids. The first chest X-ray or

140 computed tomography (CT) scan performed during hospitalization was considered.

141 X-rays were considered suggestive if bilateral diffuse interstitial infiltrate was found

142 in an independent review by two physicians (in case of disagreement, a third

143 physician reviewed the exam for a definitive opinion) and CT findings were taken

144 from an official report prepared by a radiologist.

145

146 All laboratory tests were performed according to clinical indication, following the

147 institution's protocol for the treatment of suspected COVID-19 cases. The

148 admission blood count was defined as the first blood count test performed within

149 24 hours of admission. For this test, the values of the RDW, total leukocytes,

150 lymphocytes, neutrophils, mean corpuscular volume (MCV), and platelets were

151 analyzed as continuous variables and categorized as low, normal, or high (in

152 relation to standardized reference values in the service laboratory). The RDW was

153 also categorized as normal (no changes during hospitalization) or high (value

154 above the upper limit of normality at some point during hospitalization).

155

156 This research was conducted in accordance with the ethical principles established

157 in the Declaration of Helsinki. The study protocol was reviewed and approved by

158 the Institutional Review Board of UFMG, under the approval number

159 30437020.9.3001.5124. All participants were informed about the study's objectives,

160 procedures, potential risks, and benefits, and they signed a written informed

161 consent form prior to participation.

162

163 Statistical Analysis

164

165 After categorizing the variables, an analysis stratified by survival or death, was
166 performed using mean and standard deviation for continuous variables, with normal
167 distribution, and absolute numbers and percentages for categorical variables. The
168 adopted significance level was 5% ($p < 0.05$).

169

170 For data stratified into normal RDW and high RDW groups, the percentage of
171 deaths within these groups was calculated and compared across two selected age
172 categories (< 70 years and ≥ 70 years). The rationale for using 70 years as the age
173 criterion was to investigate potential differences in RDW-related outcomes across
174 age groups. This threshold is commonly employed in clinical studies to distinguish
175 between younger and older populations, considering the physiological and clinical
176 changes that occur with aging. Additionally, 72 years is recognized as the global
177 life expectancy [10]. Other studies on COVID-19 mortality and comorbidities have
178 shown that individuals aged 70 years or older are more likely to have underlying
179 health conditions and, therefore, a higher risk of mortality [11].

180

181 Subsequently, the Gross and Mantel-Haenszel-adjusted risk ratios were calculated
182 to assess the association between RDW levels and mortality risk. The same
183 analytical procedure was applied to data stratified based on RDW upon admission
184 (normal RDW upon admission vs. high RDW upon admission). A significance level
185 of 5% ($p < 0.05$) was adopted for all statistical tests.

186

187 Next, for the data stratified into normal RDW and high RDW, the percentage of

188 deaths in these groups was calculated, which was then compared within two
189 selected age groups (<70 years and 70 years or more), after which the Gross and
190 Mantel-Haenszel-adjusted risk ratio was calculated. The same procedure was also
191 used for data stratified into normal RDW upon admission and high RDW upon
192 admission. The adopted significance level was 5% ($p<0.05$).

193

194 A time-to-death analysis was performed for variables that proved to be significant
195 ($p<0.05$) in the comparison between people who survived and died using the Cox
196 proportional hazards model in univariate regression analysis. Those variables that
197 revealed a significance level equal to or less than 20% ($p<0.20$) formed the basis
198 of an initial multivariate model, and only those with a significance level equal to or
199 greater than 5% remained in this model ($p<0.05$). Finally, Kaplan Meier survival
200 curves for the variables in the final model were estimated to obtain a better graphic
201 visualization of the differences between the categories in time until death.

202

203 Results

204

205 Among the 169 patients with laboratory confirmations of COVID-19 who were
206 hospitalized during the study period, 161 patients were included, of which 145
207 (90.1%) were directly admitted to respiratory isolation with SARS and 16 (9.9%)
208 were admitted with nonspecific symptoms that led to the suspicion of COVID-19
209 after an average of 6.6 (1 to 18) days. Eight patients with detectable RT-PCR were
210 not included because they were suspected cases of healthcare-associated COVID-
211 19 infection, it means that the patient acquired the virus inside the hospital, we not
212 exclude another bacterial or fungal healthcare infections. The main characteristics
213 presented by the patients included in the study are shown in Table 1. Of the 161
214 patients included, 39 (24.2%) died during hospitalization, 32 of them within the first
215 30 days, resulting in a 30-day mortality of 19.9%.

216 Eighty patients (49.7%) were male and 147 (91.3%) were self-declared black (black
217 or brown). Mortality was 14.8% among women and 33.8% among men, this
218 difference being statistically significant (RR=2.28; p=0.005). There was no
219 difference in mortality rates between whites and blacks (42.7% vs 22.5%; RR=1.9;
220 p=0.089).

221 The mean age was 60.1 years (17 to 93, standard deviation - SD 16.9), with a
222 median of 63 years. The mean age among survivors was 56.9 (16.7) years, while it
223 was 70.3 (13.3) years among non-survivors, with a statistically significant difference
224 (p<0.001). In addition, patients over 70 years of age had a higher mortality rate
225 (43.1% vs 15.5%; RR=2.78; p<0.001).

226

227 The mean time from symptoms to hospital admission was 6.1 days (standard
228 deviation - SD - 4.6), with a median of 5 days. Patients had an average of 2.44
229 comorbidities (SD 1.4), the most common being systemic arterial hypertension (74;
230 46%) and solid or hematologic malignancy (41; 25.5%). Seventy-one patients
231 (44.1%) were considered to have immunosuppression. Four patients were living
232 with HIV. Only eight (5%) patients had no previous comorbidity, with 38 (23.6%)
233 having one, 45 (27.9%) two, and 70 (43.5%) at least three comorbidities.

234 Among the most commonly reported comorbidities, the presence of chronic heart
235 disease was a risk factor for mortality (37.1% vs 20.6%; RR=1.8; p=0.044). The
236 presence of other comorbidities was not associated with mortality.

237 In this cohort, 62 patients (38.5%) developed a critical form of the disease and
238 required admission to intensive care, with 34 of them (54.8%) being admitted
239 directly to the Intensive Care Unit (ICU). The mean length of stay in ICU was 12.9
240 (14.3) days. Forty-one patients (25.5%) required invasive mechanical ventilation
241 (MV), with a mean length of stay of 15.5 (19.3) days.

242

243 As expected, the mortality rate was higher among patients who required intensive

244 care (51.6% vs 7.1%; RR= 7.26; $p < 0.001$) and those who required mechanical
245 ventilation (73.2% vs 7.3%; RR=10.03; $p < 0.001$). However, there was no difference
246 in mortality rates between patients who were admitted directly to intensive care and
247 those who were admitted to the ward and later transferred to intensive care (47.1%
248 vs 57.1%; RR=0.82; $p = 0.429$). Furthermore, among those who required such
249 interventions, there was no difference in the length of stay in intensive care (mean
250 13.6, SD 11.2 vs mean 12.2, SD 17.3; $p = 0.7194$) or in the time of MV (mean 12.7,
251 SD 10.6 vs mean 23.1, SD 32.7; $p = 0.1275$) between deaths and survivors.

252

253 Imaging exams

254

255 One hundred and forty-four (89.4%) patients underwent at least one chest X-ray
256 during hospitalization, the first being analyzed in cases in which it was performed
257 more than once. COVID-19 was considered suggestive in 114 (79.2%) of these
258 patients based on an interpretation by two clinicians.

259 Computed tomography of the chest was performed in 110 (68.3%) of the patients,
260 on average 9.3 days after the onset of symptoms (SD 5.7), with the results being
261 compatible with COVID-19 in 81 cases (73.6%) in an official report prepared by a
262 radiologist. The most common findings were: ground glass opacities in 91 cases
263 (82.7%), which was diffuse with peripheral predominance in 81 cases (73.6%; 2 of
264 these patients also had ground glass opacities of bilateral central distribution) and
265 localized in 10 cases (9.1%); septal thickening in 62 cases (56.4%); consolidation
266 in 39 cases (35.5%); pleural effusion in 32 cases (29.1%); atelectasis in 28 cases
267 (25.5%); lymphadenopathy in 23 cases (20.9%); and mosaic paving in 20 cases
268 (18.2%).

269

270 A chest X-ray considered suggestive of COVID-19 was associated with a higher
271 mortality rate (30.7% vs 10%; RR=3.07; $p = 0.022$). However, a chest CT that was

272 reported as compatible with COVID-19 did not represent an additional risk of
273 mortality (18.5% vs 9.5%; RR=1.95; p=0.512). Among the findings described in the
274 CT scan reports, the presence of a mosaic paving pattern was found to be a risk
275 factor for higher mortality (45% vs 11.1%; RR=4.05; p<0.001). No difference was
276 found in the time taken to perform a chest CT between survivors and deaths (mean
277 9.5, SD 5.7 vs mean 8.4, SD 5.9; p=0.4478).

278

279 Laboratory exams

280

281 Fifty-two patients underwent at least one D-dimer measurement at some point
282 during hospitalization, with mean values of 2,708 (SD 4,797), which was
283 categorized as normal in 7 (13.5%) and high in 45 (86.5%) patients.

284 No difference was found in the D-dimer value between survivors and non-survivors
285 (mean 2518, SD 4,063 vs mean 3418, SD 7,114; p=0.5857) and having a high D-
286 dimer was not a risk factor for mortality (22.2% vs 14.3%; RR=1.55; p=0.798).

287 All 161 patients underwent at least one blood count test during hospitalization. A
288 total of 2,227 blood counts were taken, with a mean of 13.8 per patient (standard
289 deviation 12.9), ranging from 1 to 84. The RDW upon admission was normal in 115
290 (71.4%), high in 45 (28%), and low in 1 (0.6%). The mean RDW values upon
291 admission were 14.5 (SD 2.4), a value that is within the normal range.

292 Among patients with normal RDW upon admission, 82 (71.3%) remained normal
293 and 33 (28.7%) rose to high levels over time. Among those with high RDW upon
294 admission, 40 (88.9%) remained high and 5 (11.1%) returned to normal. The only
295 patient with low RDW upon admission returned to normal. When categorized, 88
296 (54.7%) had normal RDW and 73 (45.3%) had high RDW during the whole
297 hospitalization time. No difference was found in the mean RDW value upon
298 admission between survivors and non-survivors (14.4 [2.4] between survivors' vs
299 14.9 [2.4] between non-survivors; p=0.2081).

300

301 The risk for mortality in the group with high RDW upon admission was higher than
302 in the group with normal RDW, but without statistical significance (31.1% vs 21.7%;
303 RR=1.43; p=0.413). However, in the subgroup of patients ≥ 70 years old, a statistical
304 significance was observed in the mortality (66.7% for high RDW vs 33.3% for
305 normal RDW; RR=2; p=0.029), Table 2.

306

307 Furthermore, when subsequent laboratory findings of progression (RDW evolution,
308 Table 1) is categorized, there is a higher risk of mortality among those with high
309 RDW after admission (41.1% vs 10.2%; RR=4.03; p<0.001). Moreover, when
310 considering the RDW that changes at any time during hospitalization against such
311 a normal parameter in all of the blood count results, a significant risk of mortality
312 tends to be observed for the entire cohort (39.7% vs 9.6%; RR=4.14; p<0.001).

313

314 No significant difference was found in mortality between the different categories
315 upon admission in relation to other parameters analyzed in the blood count, except
316 for the absolute platelet counts between survivors and non-survivors (mean
317 216.3×10^3 , SD 110.7 vs mean 171.2×10^3 , SD 80; p=0.0198).

318

319 Survival analysis

320 In a univariate analysis using the Cox Model (Table 3), the risk factors for lower
321 survival were: male sex, HR 2.3 (1.1;4.5), p=0.018; age >70 years, HR 3.3 (1.7;6.5),
322 p<0.001; white race, HR 2.5 (1.0;6.1), p=0.039; need for invasive mechanical
323 ventilation, HR 4.9 (2.2;10.6), p<0.001; and need for intensive care admission, HR
324 3.7 (1.6;8.6), p=0.003.

325

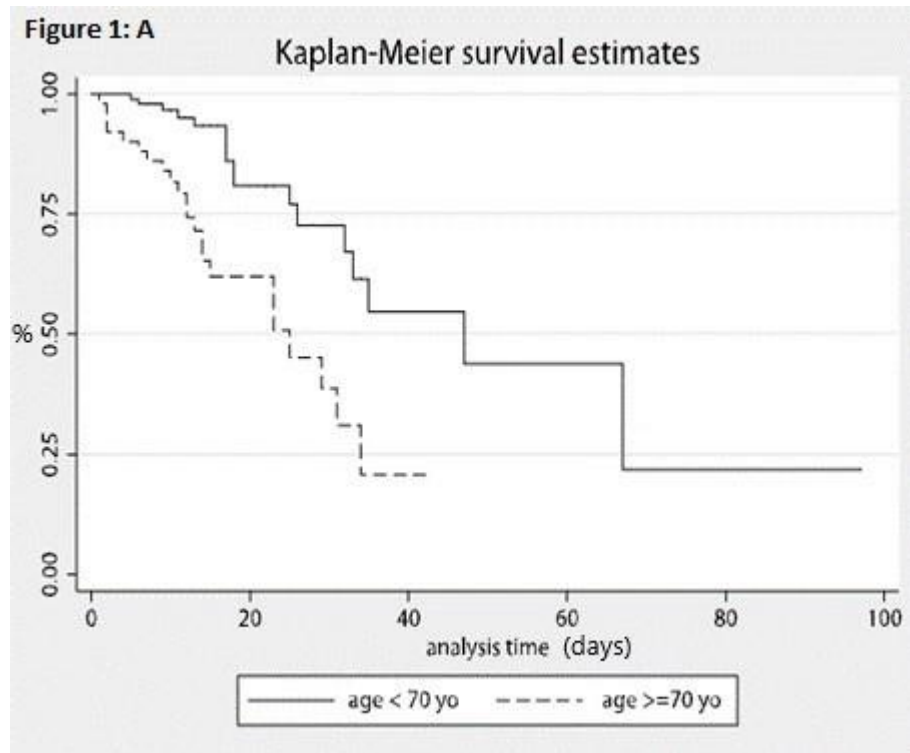
326

327 We included the variables that were significant in the univariate analysis in our
328 multivariate model. Although RDW was not included because it was significant only
329 for a subset of the population (patients over 70 years), we aimed to develop a
330 generalized model suitable for the diverse and complex patient population in our
331 cohort. The multivariate analysis was adjusted for variables that provided the best
332 model fit, enhancing its robustness despite the complexity of the cases studied.
333 When performing a multivariate analysis, the following continue to be risk factors
334 for lower survival: age >70 years, HR 4.8 (95% CI: 2.3;10.3), $p < 0.001$; white race,
335 HR 3.2 (95% CI: 1.2; 8.61), $p = 0.018$; and need for invasive MV, HR 3.8 (1.7;8.7),
336 $p = 0.001$. The presence of a chest X-ray suggestive of COVID-19, HR 3.5 (95% CI:
337 1.0;11.5), $p = 0.044$, also appears to be a risk factor in this analysis. Figure 1 shows
338 the Kaplan-Meier curves for the variables that presented a lower risk of survival in
339 the multivariate analysis.

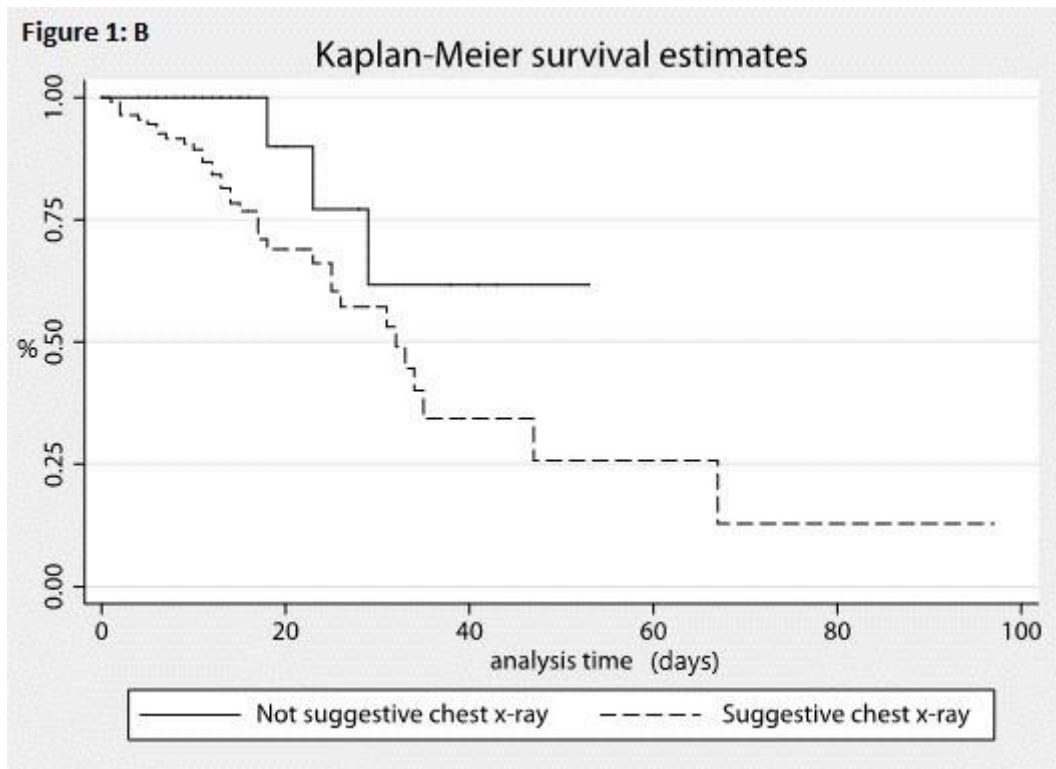
340

341 **Figure 1:** Kaplan-Meier curves for survival estimates of COVID-19 patients in a
342 public university hospital in Belo Horizonte, Brazil, 2020. A Kaplan-Meier survival
343 estimates by age: <70 and ≥ 70 years. B. Kaplan-Meier survival estimates by not
344 suggestive chest x-ray and suggestive. C. Kaplan-Meier survival estimates by non-
345 white race and white race. D. Kaplan-Meier survival estimates by non-need of
346 invasive MV (mechanical ventilation) and need of MV.

347

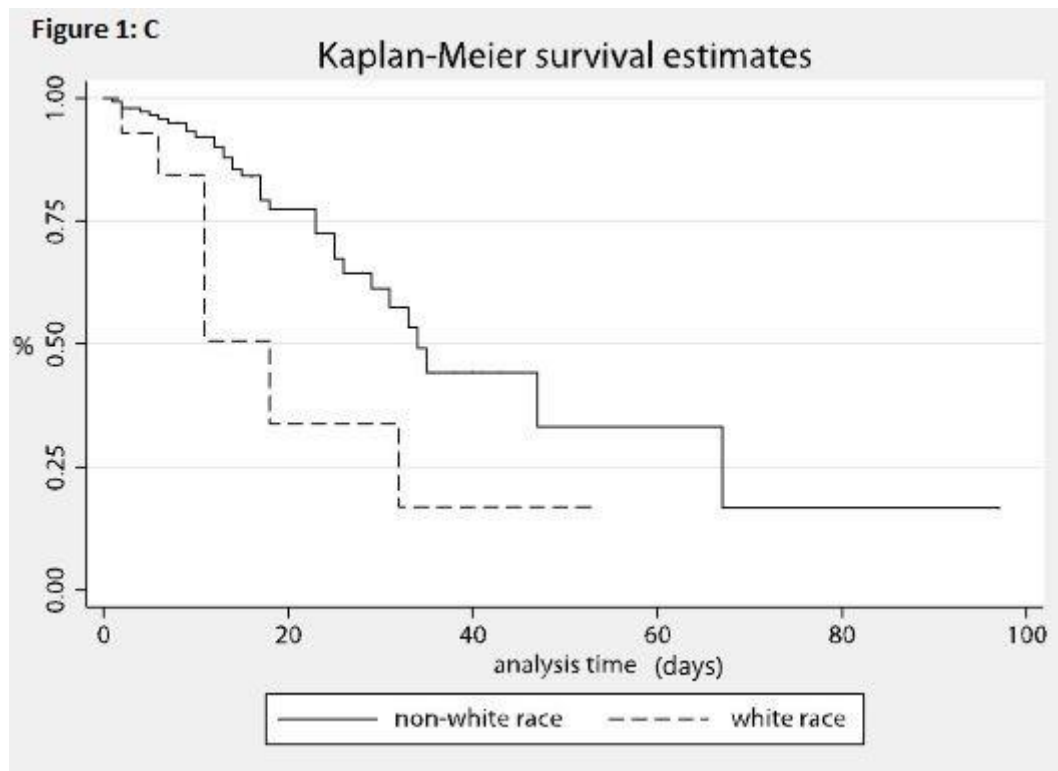


348

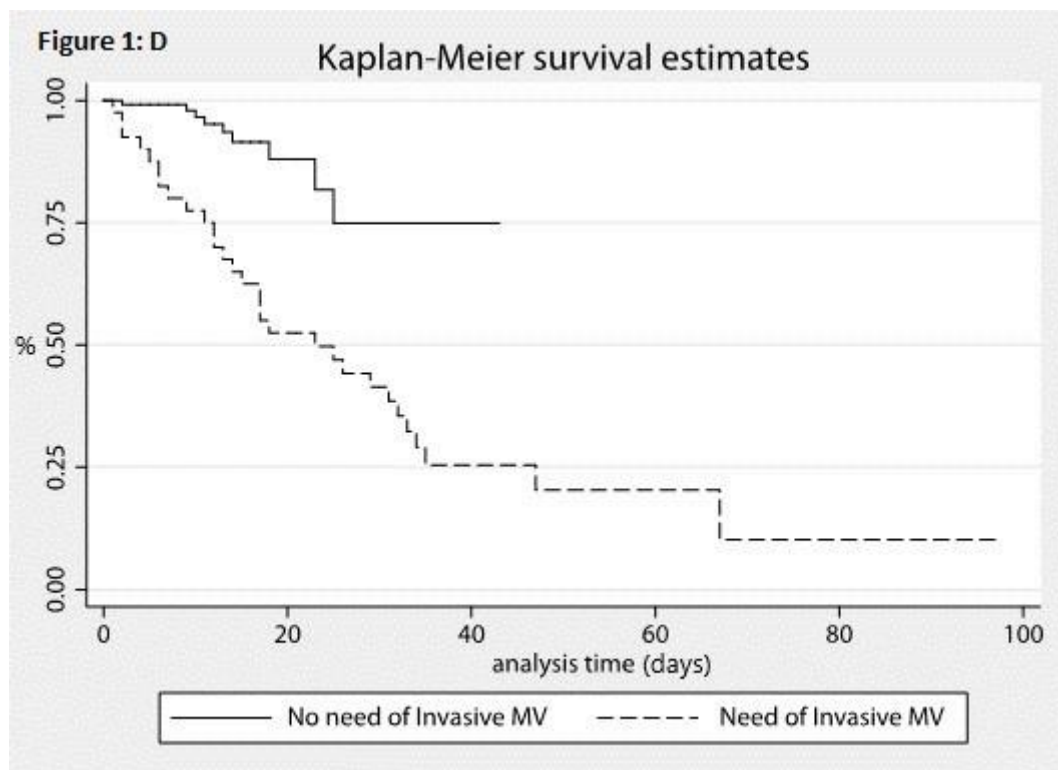


349

350



351



352

353

354 Discussion

355

356 This work studies the mortality rates of patients with confirmed COVID-19 who were
357 admitted to a university hospital, a reference for the treatment of highly complex
358 conditions. The objective was to find the factors that are unique to this population

359 with different comorbidities, as well as the factors involved in greater severity and
360 mortality from the disease.

361

362 The total mortality rate was 24.2% during hospitalization, with a 30-day mortality
363 rate of 19.9%. Initial studies showed a mortality rate of 4.3% to 15% among patients
364 hospitalized for SARS, [1,8], with more recent studies showing that it reaches 14%
365 to 28% [3,12].

366

367 The data show a high median age (63 years) among patients hospitalized with
368 SARS and that those in the older age group have a higher mortality rate (43.1% in
369 those aged 70 years or over vs 15.5% in the others; RR=2.78; $p<0.001$). Initial
370 cohorts studied in China found median ages of 49 to 56 years among confirmed
371 and hospitalized cases of COVID-19, [1,8] although higher medians were also
372 found in later studies, such as a cohort study in New York that found a median age
373 of 63 years in patients with SARS [12]. Other studies have also shown higher
374 mortality rates in older age strata [2,12,13]. When stratified by the same age groups,
375 data from a multicenter study in New York found similar mortality rates (21% in-
376 hospital mortality, with 42.83% aged 70 years or over vs 9.97% in other adults) [13].
377 A Brazilian multicenter study, including patients from less complex hospitals, found
378 a mortality rate of 35.88% in patients aged 65 years or older vs 12.88% in the others
379 [14].

380

381 In this study's cohort, individuals had an average of 2.44 comorbidities before
382 admission. This number is similar to that found in a subgroup of 355 patients in a
383 report from Italy who died from COVID-19, where the average previous comorbidity
384 was 2.7, [13] which reflects the previous clinical complexity of the patients included
385 in this study. In particular, 95% of the individuals included in the present study had
386 at least one previous comorbidity, with 23.6% having one, 27.9% having two, and

387 43.5% having at least 3 comorbidities. The Italian study showed a prevalence of
388 comorbidity of 25.1%, 25.6%, and 48.5%, respectively, in patients who died from
389 COVID-19 [13]. This reflects a greater previous clinical severity of patients treated
390 in a high complexity hospital, which proved to be in the spectrum of the highest
391 prevalence of comorbidities found in other studies. While there is a high prevalence
392 of classic non-communicable comorbidities in other cohorts, such as arterial
393 hypertension, obesity, and diabetes mellitus, [3,13,14] there was a high prevalence
394 of more complex conditions in this study, such as neoplasms, heart disease, and
395 immunosuppression, which are considered important factors for greater severity
396 and mortality [5,13].

397

398 Males corresponded to 49.7% of the cases, which is a risk factor for mortality
399 (33.8% vs 14.8%; RR=2.28; p=0.005). Males also account for a disproportionately
400 high number of critical cases and deaths in diverse cohorts worldwide [13,15-17].
401 A Danish study showed a mortality rate among confirmed COVID-19 cases of
402 11.2% in males and 7.4% in females, with 47.1% of the individuals included being
403 male [16]. A meta-analysis using data from 90 studies from 46 different countries
404 totaling 3,111,714 individuals with a similar proportion of the sexes identified the
405 male sex as a risk factor for 2.84 times more intensive care admissions and 1.39
406 times greater mortality [17].

407

408 The black race (self-declared black or brown individuals) represented more than
409 90% of this cohort, in contrast with the proportions found in the Brazilian population,
410 where in the 2019 National Household Sample Survey (in Portuguese: Pesquisa
411 Nacional por Amostra de Domicílios - PNAD), 42.7% of Brazilians declared
412 themselves as white, 46.8% as brown, 9.4% as black, and 1.1% as yellow or
413 indigenous [18]. This percentage may reflect disparities in the social determinants
414 of health in this population segment, as was found in other studies [19, 20], in

415 addition to highlighting social inequality in the Brazilian population. There is also a
416 tendency toward a higher mortality rate among whites (although without statistical
417 significance), with this group having a lower survival in the Cox model; however,
418 the small percentage of self-declared white patients limits the extrapolation of these
419 findings to the general population. Analyses controlled for comorbidities and
420 socioeconomic factors found no association between race and in-hospital COVID-
421 19 outcomes [21,22].

422

423 A median of 5 days of symptoms at the time of hospitalization was slightly lower
424 than that found in other studies. Data suggest disease progression with mild
425 symptoms in the first week [23]. One study showed a median of 5 days for the onset
426 of dyspnea and 7 days for hospital admission [8]. Another study found a median of
427 8 days for the onset of dyspnea [1].

428

429 This study's data also draws attention to one of the difficulties in the management
430 of respiratory syndromes: the etiological diagnosis. Despite the collection being
431 done shortly after admission, the test results of swab exams take an average of
432 three days to be released. One study showed a mean time of 15.4 hours for RT-
433 PCR results [12]. The delay in making the etiological diagnosis of pulmonary
434 conditions can lead to the unnecessary use of antimicrobials and their
435 consequences, as well as the need to use other more invasive forms of workup to
436 clarify the diagnosis [24].

437

438 The need for intensive care in 38% of hospitalized patients in this cohort was
439 compatible with the end of greater severity reported in other studies, where it varied
440 between 14% and 48%, but with a similar mortality rate [3,12,13,14]. The need for
441 MV of 25.5% was also similar to findings described in other studies, varying
442 between 12% and 33% [3,12,14], but this time with a higher mortality rate among

443 those requiring MV, which was 73% in our study compared to 60% in others [3].
444 The severity of the underlying health conditions in this cohort may have contributed
445 to its occurrence since the patients were being treated for serious diseases in a
446 high-complexity hospital. Despite not being statistically significant, the tendency for
447 those who survived to spend a longer amount of time on mechanical ventilation is
448 noteworthy, suggesting possible earlier death.

449

450 Having a chest X-ray taken – a simple, quick, and inexpensive procedure that can
451 be easily interpreted by a radiologist – was of fundamental importance when
452 COVID-19 was suspected (79.2% of the patients had a suggestive test), as well as
453 for the outcome. The presence of about 20% of chest X-rays without any changes
454 is consistent with what has been reported in the literature [25]. That there is such a
455 readily performed test that predicts severity allows courses of treatment to be
456 quickly implemented.

457

458 The most common findings on chest CTs were similar to those reported in other
459 studies regarding the presence of ground glass opacities and septal thickening.
460 Consolidations were slightly less common; pleural thickening and air bronchograms
461 were much less frequently reported in this study's cohort. By contrast, the
462 abundance of reports of pleural effusion and atelectasis, which may be associated
463 with other comorbidities, becomes important [26].

464

465 Although other studies have linked an increase in D-dimer with mortality as it
466 reflects the pro-coagulant changes associated with COVID-19 [3,8,27,28], this
467 finding was not associated with higher mortality in this study, despite a small
468 percentage of patients who had this test available during hospitalization. This may
469 be explained by the fact that this test was performed only when there was a clinical
470 indication or suspicion of pulmonary thromboembolism/deep venous thrombosis

471 (PTE/DVT) and not for the initial assessment of pro-coagulability in COVID-19.

472

473 The presence of lymphopenia was a common finding in most patients (58.4%). It
474 was also common in other studies, despite the variation in the total leukocyte count
475 [1, 29, 30].

476

477 A high RDW upon admission was not statistically significant as a risk factor for
478 mortality in this cohort (31.1% vs 21.7%; RR=1.43; p=0.413). However, this finding
479 was associated with higher mortality in the subgroup of patients aged 70 years and
480 over (66.7% vs 33.3%; RR=2; p= 0.029). Furthermore, a high RDW during
481 hospitalization after admission was a factor for mortality in the entire cohort (41.1%
482 vs 10.2%; RR=4.03; p<0.001), and if all measurements are considered (admission
483 plus elevation), having a high RDW at any time during the hospital stay was
484 associated with higher mortality (39.7% vs 9.6%; RR=4.14; p<0.001). Some studies
485 have associated higher RDW values with critical forms and mortality from COVID-
486 19. [31-36] This may explain why our study found an association between RDW
487 and mortality when age was stratified at such a high age (70 and over), where
488 critical forms may occur more frequently, but not over the entire spectrum of the
489 survival curve. In other words, the association was only true for higher ages. One
490 study of 1,641 patients found a relative mortality risk of 2.73 in patients with high
491 RDW upon admission as compared to those with normal RDW at that time. [9]

492

493 Factors that may contribute to this finding are the smaller number of patients
494 included in the present study and the fact that there is a larger number of patients
495 with cancer, who are known to have a better chance of having a previous change
496 in the RDW. [37, 38] Recent studies have highlighted the prognostic value of RDW
497 in both COVID-19 and cancer patients. In a prospective observational study, RDW
498 was found to be a significant predictor of COVID-19 severity, with higher levels

499 associated with severe illness and acute kidney injury (AKI). Patients with elevated
500 RDW had increased odds of severe outcomes, emphasizing the need for routine
501 RDW assessment in COVID-19 patients. Another study from Massachusetts
502 General Hospital corroborated these findings, showing that an RDW greater than
503 14.5% at admission was linked to a significantly higher mortality risk, which
504 remained robust even after adjusting for various demographic and clinical factors.
505 Additionally, a further increase in RDW during hospitalization was associated with
506 a heightened mortality risk. These insights underline the utility of RDW as a valuable
507 biomarker for risk stratification and prognosis in both COVID-19 and cancer
508 contexts. [39-40]

509

510 There is a simple, available, fast, and inexpensive biomarker indicative of higher
511 mortality upon admission for the elderly as well as in disease progression for any
512 age group: a change in the RDW at any time increases mortality in relation to normal
513 measurements during hospitalization.

514

515 It is worth noting that these findings support considering RDW as a mortality factor
516 even when there is a high prevalence of previous comorbidities with high clinical
517 complexity. Even with the presence of factors for which this test may be changed
518 prior to infection (which could explain the lack of statistical significance for said
519 change as a risk factor for mortality at admission), this marker has a prognostic
520 value. The relevance of including it in the risk stratification of patients hospitalized
521 for COVID-19 is underscored, as is the fact that such an assessment ought to
522 consider the dynamics of these changes and not only admission statistics. It also
523 supports the use of a combination of risk factors (for example, age and RDW) in
524 predicting the risk of negative outcomes due to COVID-19.

525

526 To the best of our knowledge, no other study has evaluated this aspect for patients

527 of such clinical complexity for the Brazilian population. This is a single-center study
528 with a clinical profile and previous comorbidities different from those found in other
529 hospitals that do not provide treatment for complex cases, given that it is a
530 university hospital known to be a reference for such cases. The race variable might
531 interfere with hetero-identification instead of self-declaration upon admission. The
532 number of patients with cancer may interfere with RDW values, since such an exam
533 may already present altered values prior to SARS-CoV-2 infection in such patients.
534 In addition, several underlying acute and chronic diseases can change the RDW,
535 which could be a summary marker of the presence of such diseases associated
536 with unfavorable outcomes in COVID-19.

537

538 The study concludes that elevated RDW is a significant factor associated with
539 higher mortality in COVID-19 patients, particularly in those aged 70 years and older.
540 A high RDW during hospitalization is linked to increased mortality across the entire
541 cohort and having a high RDW at any point during the hospital stay correlates with
542 higher mortality rates. Additionally, age, male sex, radiographic changes, and
543 cardiovascular disease, which are already known severity and mortality factors, are
544 associated with higher intrahospital mortality from COVID-19. Further studies are
545 warranted to determine whether RDW alone can be used as a simple and available
546 biomarker for predicting COVID-19 mortality and to explore its relationship to the
547 pathophysiology of the disease.

548

549 Acknowledgement

550 We are deeply grateful to the patients who participated in this study and to the
551 healthcare workers who provided unwavering care and support.

552

553 Financial Disclosure or Funding

554 This research did not receive any specific grant from funding agencies in the public,

555 commercial, or not-for-profit sectors.

556

557 Conflict of Interest

558 The authors declare that there is no conflict of interest regarding the publication of
559 this paper.

560

561 Author Contributions

562 Dr. Helena Duani: Conceptualization, Methodology, Supervision, Writing -
563 original draft. Dr. Maderson Alvarez: Data curation, Formal analysis,
564 Visualization, Writing - review & editing. Dr. Cecília Ravetti and Dr. Paula
565 Vassallo: Investigation, Resources, Project administration. Dr. Carla Jorge
566 Machado: Validation, Software, Writing - review & editing. Dr. Vandack
567 Nobre and Milena Marcolino: Supervision, Project administration, Writing -
568 review & editing.

569 Data Availability

570 The data from this clinical study in the field of medicine are available upon request
571 to the authors, subject to prior evaluation.

572

573 Abbreviations and acronyms used in the manuscript:

574 COVID-19: Coronavirus Disease 2019

575 CT: computed tomography

576 HC-UFMG: Hospital das Clínicas of the Universidade Federal de Minas Gerais

577 HR: Hazard Ratio

578 ICU: Intensive Care Unit

579 MCV: mean corpuscular volume

580 MV: mechanical ventilation

581 PNAD: National Household Sample Survey, in Portuguese: Pesquisa Nacional por

582 Amostra de Domicílios

583 PTE/DVT: thromboembolism/deep venous thrombosis

584 RDW: Red blood cell distribution width

585 RR: Risk Ratio

586 RT-PCR: real-time polymerase chain reaction

587 SARS: Severe Acute Respiratory Syndrome

588 SD: standard deviation

589 SUS: Brazilian Unified Health System

590

591

592 **REFERENCES**

593

594 1. Huang C., Wang Y., Li X., et al. Clinical features of patients infected with
595 2019 novel coronavirus in Wuhan, China. *The Lancet*.
596 2020;395(10223):497–506.

597

598 2. Wu Z., McGoogan JM. Characteristics of and Important Lessons from the
599 Coronavirus Disease 2019 (COVID-19) Outbreak in China: Summary of a
600 Report of 72314 Cases from the Chinese Center for Disease Control and
601 Prevention. *JAMA - Journal of the American Medical Association*.

602 2020;323(13):1239–42.

603

604 3. Zhou F., Yu T., Du R., et al. Clinical course and risk factors for mortality of
605 adult inpatients with COVID-19 in Wuhan, China: a retrospective cohort
606 study. *The Lancet*. 2020;395(10229):1054–62.

607

608 4. Liang W., Guan W., Chen R., et al. Cancer patients in SARS-CoV-2
609 infection: a nationwide analysis in China. *Lancet Oncol*. 2020;21(3):335–
610 7.

611

612 5. Chow N., Fleming-Dutra K., Gierke R., et al. Preliminary Estimates of the
613 Prevalence of Selected Underlying Health Conditions Among Patients with
614 COVID-19 - US, February 12-March 28, 2020. *MMWR Morb Mortal Wkly*
615 *Rep*. 2020;69(13):382–6.

616

617 6. Lighter J, Phillips M, Hochman S, et al. Obesity in patients younger than
618 60 years is a risk factor for Covid-19 hospital admission. *Clin Infect Dis*.
619 2020;71(15):896–7. Mehra MR., Desai SS., Kuy S., Henry TD., Patel AN.
620 Cardiovascular Disease, Drug Therapy, and Mortality in Covid-19. *New*
621 *England Journal of Medicine*. 2020;382(25):e102.

622

623 7. Wang D., Hu B., Hu C., et al. Clinical Characteristics of 138 Hospitalized
624 Patients with 2019 Novel Coronavirus-Infected Pneumonia in Wuhan,
625 China. *JAMA - Journal of the American Medical Association*.
626 2020;323(11):1061–9.

627

628 8. Higgins JM., Foy BH., Carlson JCT., et al. Association of Red Blood Cell
629 Distribution Width with Mortality Risk in Hospitalized Adults with SARS-

- 630 CoV-2 Infection. *JAMA Netw Open*. 2020;3(9):1–13.
- 631
- 632 9. Chen N., Zhou M., Dong X., et al. Epidemiological and clinical
633 characteristics of 99 cases of 2019 novel coronavirus pneumonia in
634 Wuhan, China: a descriptive study. *The Lancet*. 2020;395(10223):507–13.
- 635
- 636 10. GBD 2021. Demographics Collaborators. Global age-sex-specific mortality,
637 life expectancy, and population estimates in 204 countries and territories and
638 811 subnational locations, 1950-2021, and the impact of the COVID-19
639 pandemic: a comprehensive demographic analysis for the Global Burden of
640 Disease Study 2021. *The Lancet*. 2024;403(10440):1989-2056.
- 641
- 642 11. Walker, J. L., Grint, D. J., Strongman, H., Eggo, R. M., Peppia, M., Minassian,
643 C., Mansfield, K. E., Rentsch, C. T., Douglas, I. J., Mathur, R., Wong, A. Y.
644 S., Quint, J. K., Andrews, N., Bernal, J. L., Scott, J. A., Ramsay, M., Smeeth,
645 L., & McDonald, H. I. (2021). UK prevalence of underlying conditions which
646 increase the risk of severe COVID-19 disease: a point prevalence study
647 using electronic health records. *BMC public health*. 2021;21(1),484:1-14.
- 648
- 649 12. Onder G., Rezza G., Brusaferro S. Case-Fatality Rate and Characteristics
650 of Patients Dying in Relation to COVID-19 in Italy. *JAMA - Journal of the
651 American Medical Association*. 2020;323(18):1775–6.
- 652
- 653 13. Williamson EJ., Walker AJ., Bhaskaran K., et al. Factors associated with
654 COVID-19-related death using OpenSAFELY. *Nature*.
655 2020;584(7821):430–6.
- 656
- 657 14. Chen T., Wu D., Chen H., et al. Clinical characteristics of 113 deceased
658 patients with coronavirus disease 2019: Retrospective study. *The BMJ*.
659 2020;368.

660

661 15.Kragholm K., Andersen MP., Gerds TA., et al. Association between Male
662 Sex and Outcomes of Coronavirus Disease 2019 (COVID-19)-A Danish
663 Nationwide, Register-based Study. *Clinical Infectious Diseases*.
664 2021;73(11):E4025–30.

665

666 16.Peckham H., de Gruijter NM., Raine C., et al. Male sex identified by global
667 COVID-19 meta-analysis as a risk factor for death and ITU admission. *Nat*
668 *Commun*. 2020;11(1):1–10.

669

670 17.IBGE. Características adicionais do mercado de trabalho 2019. 2020:12.

671

672 18.Price-Haywood EG., Burton J., Fort D., Seoane L. Hospitalization and
673 Mortality among Black Patients and White Patients with Covid-19. *New*
674 *England Journal of Medicine*. 2020;382(26):2534–43.

675

676 19.Mackey K., Ayers CK., Kondo KK., et al. Racial and ethnic disparities in
677 covid-19-related infections, hospitalizations, and deaths a systematic
678 review. *Ann Intern Med*. 2021;174(3):362–73.

679

680 20.Moore J., Ricaldi J., Rose C., et al. Disparities in incidence of COVID-19
681 among underrepresented racial/ethnic groups in counties identified as
682 hotspots during June 5-18, 2020 - 22 States, February-June 2020. *MMWR*
683 *Morb Mortal Wkly Rep*. 2020;69(33):1122–6.

684

685 21.Munõz-Price LS., Nattinger AB., Rivera F., et al. Racial Disparities in
686 Incidence and Outcomes among Patients with COVID-19. *JAMA Netw*
687 *Open*. 2020;3(9):1–12.

688

- 689 22. Cohen PA., Hall LE., John JN., Rapoport AB. The Early Natural History of
690 SARS-CoV-2 Infection: Clinical Observations From an Urban, Ambulatory
691 COVID-19 Clinic. *Mayo Clin Proc.* 2020;95(6):1124–6.
692
- 693 23. Khan S., Hasan SS., Bond SE., Conway BR., Aldeyab MA. Antimicrobial
694 consumption in patients with COVID-19: a systematic review and meta-
695 analysis. *Expert Rev Anti Infect Ther.* 2022;20(5):749–72.
696
- 697 24. Wong HYF., Lam HYS., Fong AHT., et al. Frequency and Distribution of
698 Chest Radiographic Findings in Patients Positive for COVID-19.
699 *Radiology.* 2020;296(2):E72–8.
700
- 701 25. Bao C., Liu X., Zhang H., Li Y., Liu J. Coronavirus Disease 2019 (COVID-
702 19) CT Findings: A Systematic Review and Meta-analysis. *Journal of the*
703 *American College of Radiology.* 2020;17(6):701–9.
704
- 705 26. Wu C., Chen X., Cai Y., et al. Risk Factors Associated with Acute
706 Respiratory Distress Syndrome and Death in Patients with Coronavirus
707 Disease 2019 Pneumonia in Wuhan, China. *JAMA Intern Med.*
708 2020;180(7):934–43.
709
- 710 27. Liao D., Zhou F., Luo L., et al. Haematological characteristics and risk
711 factors in the classification and prognosis evaluation of COVID-19: a
712 retrospective cohort study. *Lancet Haematol.* 2020;7(9):e671–8.
713
- 714 28. Guan W., Ni Z., Hu Y., et al. Clinical Characteristics of Coronavirus
715 Disease 2019 in China. *New England Journal of Medicine.*
716 2020;382(18):1708–20.

717

718 29.Parag Goyal JJC. Correspondence Clinical Characteristics of Covid-19 in
719 China. *Clinical Characteristics of Covid-19 in China*. 2020;100(1):1–3.

720

721 30.Lee JJ., Montazerin SM., Jamil A., et al. Association between red blood
722 cell distribution width and mortality and severity among patients with
723 COVID-19: A systematic review and meta-analysis. *J Med Virol*.
724 2021;93(4):2513–22.

725

726 31.Lippi G., Henry BM., Sanchis-Gomar F. Red Blood Cell Distribution Is a
727 Significant Predictor of Severe Illness in Coronavirus Disease 2019. *Acta*
728 *Haematol*. 2021;144(4):360–4.

729

730 32.Lanini S., Montaldo C., Nicastrì E., et al. COVID-19 disease - Temporal
731 analyses of complete blood count parameters over course of illness, and
732 relationship to patient demographics and management outcomes in
733 survivors and non-survivors: A longitudinal descriptive cohort study. *PLoS*
734 *One*. 2020;15(12 December):1–17.

735

736 33.Zinellu A., Mangoni AA. Red blood cell distribution width, disease severity,
737 and mortality in hospitalized patients with SARS-CoV-2 infection: A
738 systematic review and meta-analysis. *J Clin Med*. 2021;10(2):1–11.

739

740 34.Bommenahalli Gowda S., Gosavi S., Ananda Rao A., et al. Prognosis of
741 COVID-19: Red Cell Distribution Width, Platelet Distribution Width, and C-
742 Reactive Protein. *Cureus*. 2021;(February).

743

744 35.Kaufmann CC., Ahmed A., Brunner U., et al. Red Cell Distribution Width

- 745 Upon Hospital Admission Predicts Short-Term Mortality in Hospitalized
746 Patients With COVID-19: A Single-Center Experience. *Front Med*
747 (*Lausanne*). 2021;8(3):1–9.
- 748
- 749 36. Yağcı S., Serin E., Acicbe Ö., Zeren Mİ., Odabaşı MS. The relationship
750 between serum erythropoietin, hepcidin, and haptoglobin levels with
751 disease severity and other biochemical values in patients with COVID-19.
752 *Int J Lab Hematol*. 2021;43(S1):142–51.
- 753
- 754 37. Patel HH., Patel HR., Higgins JM. Modulation of red blood cell population
755 dynamics is a fundamental homeostatic response to disease. *Am J*
756 *Hematol*. 2015;90(5):422–8.
- 757
- 758 38. Chaudhury A., Miller GD., Eichner D., Higgins JM. Single-cell modeling of
759 routine clinical blood tests reveals transient dynamics of human response
760 to blood loss. *Elife*. 2019;8:1–12.
- 761
- 762 39. Henry BM, Benoit JL, Benoit S, Pulvino C, Berger BA, Olivera MHSd,
763 Crutchfield CA, Lippi G. Red Blood Cell Distribution Width (RDW) Predicts
764 COVID-19 Severity: A Prospective, Observational Study from the
765 Cincinnati SARS-CoV-2 Emergency Department Cohort. *Diagnostics*.
766 2020; 10(9):618.
- 767
- 768 40. Foy BH, Carlson JCT, Reinertsen E, et al. Association of Red Blood Cell
769 Distribution Width with Mortality Risk in Hospitalized Adults With SARS-
770 CoV-2 Infection. *JAMA Netw Open*. 2020;3(9):e2022058.

771

772 **Table 1:** Main baseline characteristics, comorbidities, laboratory and radiological findings

773 of COVID-19 patients, survivor and non-survivors, in Belo Horizonte, Brazil, 2020.

| | | Total N=161 (100.0%) | Survivor N=122 (75.8%) | Death N=39 (24.2%) | P-value |
|--|---------------|-------------------------|------------------------------|--------------------------|---------|
| Age | Mean (SD) | 60.1 (16.9) | 56.9 (16.7) | 70.3 (13.3) | <0.001 |
| Age >70 years [N (%)] | Yes | 51 (31.7) | 29 (56.9) | 22 (43.1) | 0.000 |
| Sex [N (%)] | Male | 80 (49.7) | 53 (66.3) | 27 (33.8) | 0.005 |
| Race/color [N (%)] | Black | 147 (91.3) | 114 (77.6) | 33 (22.5) | 0.089 |
| | | | | | |
| Comorbidities [N (%)] | Mean (DP) | 2.44 (1.4) | 2.42 (1.4) | 2.51 (1.5) | 0.7184 |
| BMI > 30 Kg/m2 | Yes | 20 (12.4) | 18 (90) | 2 (10) | 0.163 |
| Previous smoking | Yes | 34 (21.1) | 26 (76.5) | 8 (23.5) | 0.916 |
| Current smoking | Yes | 8 (5.0) | 4 (50) | 4(50) | 0.098 |
| Systemic Arterial Hypertension [N (%)] | Yes | 74 (46.0) | 54 (73) | 20 (27) | 0.444 |
| Solid or hematological neoplasm [N (%)] | Yes | 41 (25.5) | 29 (70.7) | 12 (29.3) | 0.383 |
| Diabetes mellitus [N (%)] | Yes | 38 (23.6) | 27 (71.1) | 11 (29) | 0.437 |
| Chronic heart disease [N (%)] | Yes | 35 (21.7) | 22 (62.9) | 13 (37.1) | 0.044 |
| Chronic lung disease [N (%)] | Yes | 26 (16.1) | 19 (73.1) | 7 (26.9) | 0.726 |
| Chronic kidney disease [N (%)] | Yes | 18 (11.2) | 14 (77.8) | 4 (22.2) | 1.000 |
| Solid organ transplant [N (%)] | Yes | 12 (7.5) | 10 (83.3) | 2 (16.7) | 0.732 |
| Immunosuppression [N (%)] | Yes | 71 (44.1) | 52 (73.2) | 19 (26.8) | 0.505 |
| Time of symptoms upon admission | Mean (DP) | 6.07 (4.6) | 6.4 (4.7) | 5.2 (4.0) | 0.1528 |
| Time of symptoms until swab collection ¹ | Mean (DP) | 8.0 (5.3) | 8.3 (5.2) | 7.3 (5.6) | 0.3006 |
| Time of hospitalization until swab collection¹ | Mean (DP) | 2.0 (4.0) | 2.0 (3.8) | 2.1 (4.5) | 0.8162 |
| Time until swab result¹ | Mean (DP) | 3.1 (1.7) | 3.1 (1.7) | 3.4 (1.5) | 0.2941 |
| Hospitalization time² | Mean (DP) | 16.0 (12.9) | 15.4 (12.7) | 17.8 (13.6) | 0.3185 |
| Need for intensive care [N (%)] | Yes | 62 (38.5) | 30 (48.4) | 32 (51.6) | 0.000 |
| Direct admission to ICU [N (%)] | Yes | 34 (54.8) | 18 (52.9) | 16 (47.1) | 0.429 |
| ICU time | Mean (DP) | 12.9 (14.3) | 12.2 (17.3) | 13.6 (11.2) | 0.7194 |
| Need for invasive mechanical ventilation [N (%)] | Yes | 41 (25.5) | 11 (26.8) | 30 (73.2) | 0.000 |
| Invasive mechanical ventilation time | Mean (DP) | 15.5 (19.3) | 23.1 (32.7) | 12.7 (10.6) | 0.1275 |
| Suggestive chest x-ray [N (%)] ³ | Yes | 114 (79.2) | 79 (69.3) | 35 (30.7) | 0.022 |
| Compatible chest CT [N (%)] ⁴ | indeterminate | 8 (7.3) | 6 (75) | 2 (25) | 0.512 |
| | No | 21 (19.1) | 19 (90.5) | 2 (9.5) | |
| | Yes | 81 (73.6) | 66 (81.5) | 15 (18.5) | |
| Time of symptoms until CT | Mean (DP) | 9.3 (5.7) | 9.5 (5.7) | 8.4 (5.9) | 0.4478 |
| Ground glass | Yes | 91 (82.7) | 73 (80.2) | 18 (19.8) | 0.186 |
| Peripheral diffuse ground glass | Yes | 81 (73.6) | 64 (79) | 17 (21) | 0.149 |
| Central diffused ground glass | Yes | 2 (1.8) | 2 (100) | 0 (0.0) | 1.000 |
| Localized ground glass | Yes | 10 (9.1) | 9 (90) | 1 (10) | 1.000 |
| Consolidation | Yes | 39 (35.5) | 29 (74.4) | 10 (25.6) | 0.085 |
| Septal thickening | Yes | 62 (56.4) | 49 (79) | 13 (21) | 0.244 |
| Bronchial thickening | Yes | 7 (6.4) | 7 (100) | 0 (0) | 0.602 |
| Pleural thickening | Yes | 4 (3.6) | 2 (50) | 2 (50) | 0.137 |

| | | | | | |
|---|-----------|---------------|---------------|--------------|--------|
| Mosaic paving | Yes | 20 (18.2) | 11 (55) | 9 (45) | 0.000 |
| Atelectasis | Yes | 28 (25.5) | 22 (78.6) | 6 (21.4) | 0.500 |
| Pleural effusion | Yes | 32 (29.1) | 26 (81.3) | 6 (18.8) | 0.793 |
| Lymphadenopathy | Yes | 23 (20.9) | 19 (82.6) | 4 (17.4) | 1.000 |
| Air bronchogram | Yes | 3 (2.7) | 2 (66.7) | 1 (33.3) | 0.437 |
| Pericardial effusion | Yes | 9 (8.2) | 8 (88.9) | 1 (11.1) | 1.000 |
| Cardiomegaly | Yes | 17 (15.5) | 14 (82.4) | 3 (17.7) | 1.000 |
| Nodule(s) | Yes | 16 (14.5) | 11 (68.8) | 5 (31.3) | 0.110 |
| Micronodule(s) | Yes | 12 (10.9) | 10 (83.3) | 2 (16.7) | 1.000 |
| Mass(es) | Yes | 3 (2.7) | 1 (33.3) | 2 (66.7) | 0.077 |
| Pulmonary hypertension | Yes | 12 (10.9) | 10 (83.3) | 2 (16.7) | 1.000 |
| Tree-in-bud | Yes | 1 (0.9) | 0 (0) | 1 (100) | 0.173 |
| Bronchiectasis | Yes | 6 (5.5) | 6 (100) | 0 (0) | 0.587 |
| Pulmonary infarction | Yes | 3 (2.7) | 2 (66.7) | 1 (33.3) | 0.437 |
| Emphysema | Yes | 9 (8.2) | 7 (77.8) | 2 (22.2) | 0.652 |
| Number of recovered blood counts | Mean (SD) | 13.8 (12.9) | 12.8 (12.9) | 17 (12.5) | 0.0778 |
| RDW upon admission | Mean (SD) | 14.5 (2.4) | 14.4 (2.4) | 14.9 (2.4) | 0.2081 |
| Leukocyte count upon admission | Mean (SD) | 9.84 (25.0) | 9.9 (28.5) | 9.5 (6.6) | 0.9320 |
| Lymphocyte count upon admission | Mean (SD) | 1.30 (2.0) | 1.38 (2.1) | 1.02 (1.1) | 0.3374 |
| Neutrophil count upon admission | Mean (SD) | 6.20 (6.7) | 5.9 (7.32) | 7.0 (4.4) | 0.4079 |
| Platelet count upon admission | Mean (SD) | 205.3 (105.6) | 216.3 (110.7) | 171.2 (80.0) | 0.0198 |
| VCM upon admission | Mean (SD) | 86.6 (7.3) | 86.6 (7.3) | 86.6 (7.3) | 0.9973 |
| First D-dimer performed upon admission ⁵ | Mean (SD) | 2708 (4797) | 2518(4063) | 3418 (7114) | 0.5857 |
| RDW category | high | 45 (28.0) | 31 (68.9) | 14 (31.1) | 0.413 |
| | normal | 115 (71.4) | 90 (78.3) | 25 (21.7) | |
| | low | 1 (0.6) | 1 (100) | 0 (0.0) | |
| RDW evolution | high | 73 (45.3) | 43 (58.9) | 30 (41.1) | 0.000 |
| | normal | 88 (54.7) | 79 (89.8) | 9 (10.2) | |
| | low | | | | |
| Leukocyte Category | high | 46 (28.6) | 40 (87) | 6 (13) | 0.094 |
| | normal | 94 (58.4) | 66 (70.2) | 28 (29.8) | |
| | low | 21 (13) | 16 (76.2) | 5 (23.8) | |
| Lymphocyte category | high | 6 (3.7) | 4 (66.7) | 2 (33.3) | 0.301 |
| | normal | 61 (37.9) | 50 (82) | 11 (18) | |
| | low | 94 (58.4) | 68 (72.3) | 26 (27.7) | |
| Neutrophil category | high | 108 (67.1) | 77 (71.3) | 31 (28.7) | 0.197 |
| | normal | 40 (24.8) | 34 (85) | 6 (15) | |
| | low | 13 (8.1) | 11 (84.6) | 2 (15.4) | |
| Platelet category | high | 20 (12.4) | 18 (90) | 2 (10) | 0.187 |
| | normal | 110 (68.3) | 83 (75.5) | 27 (24.6) | |
| | low | 31 (19.3) | 21 (67.7) | 10 (32.3) | |
| VCM category | high | 11 (6.8) | 7 (63.6) | 4 (36.4) | 0.631 |
| | normal | 116 (72.1) | 89 (76.7) | 27 (23.3) | |
| | low | 34 (21.1) | 26 (76.5) | 8 (23.5) | |
| D-dimer category ⁵ | high | 45 (28.0) | 35 (77.8) | 10 (22.2) | 0.798 |
| | na | 109 (67.7) | 81 (74.3) | 28 (25.7) | |
| | normal | 7 (4.3) | 6 (85.7) | 1 (14.3) | |

¹ 4 patients underwent external swab before admission. For this variable: total 157, survivors 118, deaths 39.
² 1 patient remained hospitalized at the end of follow-up. For this variable: total 160, survivors 121, deaths 39.
³ 144 patients underwent chest X-ray. For this variable: total 144, survivors 106, deaths 38.
⁴ 110 patients underwent chest CT. For this variable: total 110, survivors 91, deaths 19.
⁵ 52 patients had D-dimer level registered. For this variable: total 52, survivors 41, deaths 11.

774

775

776 **Table 2:** Mortality risk according to age-stratified RDW category (normal or high) of COVID-
 777 19 patients, in Belo Horizonte, Brazil, 2020.

| Age group | Normal RDW during hospitalization | | High RDW during hospitalization | | P-value | Risk ratio (95% CI) |
|------------------------|-----------------------------------|-------------------|---------------------------------|-------------------|----------|---------------------|
| | N | Mortality [n (%)] | N | Mortality [n (%)] | | |
| <70 | 59 | 4 (6.8) | 51 | 13 (25.5) | 0.007 | 3.76 (1.31;10.8) |
| 70+ | 24 | 4 (16.7) | 27 | 18 (66.7) | <0.001 | 4.00 (1.58;10.2) |
| Total cohort | 83 | 8 (9.6) | 78 | 31 (39.7) | <0.001 | |
| gross | | | | | | 4.12 (2.02; 8.41) |
| Mantel-Haenszel Method | | | | | | 3.89 (1.93; 7.83) |
| Age group | Normal RDW at admission | | High RDW at admission | | P- value | Risk ratio (95% CI) |
| | N | Mortality [n (%)] | N | Mortality [n (%)] | | |
| <70 | 80 | 13 (16.3) | 30 | 4 (13.3) | >0.999 | 0.82 (0.29;2.31) |
| 70+ | 36 | 12 (33.3) | 15 | 10 (66.7) | 0.029 | 2.00 (1.07;3.74) |
| Total cohort | 116 | 25 (21.6) | 45 | 14 (31.1) | 0.204 | |
| gross | | | | | | 1.44 (0.82; 2.55) |
| Mantel-Haenszel Method | | | | | | 1.41 (0.83; 2.39) |

778

779

780

781

782

783

784

785

786 **Table 3** - Cox Model results and survival analysis of baseline characteristics, comorbidities,
787 laboratory and radiological findings of COVID-19 patients, survivor and non-survivors, in
788 Belo Horizonte, Brazil, 2020.

| Variable | Univariate | | Multivariate | |
|--|----------------|---------|----------------|---------|
| | HR (95% CI) | P-value | HR (95% CI) | P-value |
| Sex | | | | |
| Female | 1.00 | ---- | ---- | ---- |
| Male | 2.3 (1.1;4.5) | 0.018 | ---- | ---- |
| Age (in years) | | | | |
| <70 | 1.0 | ---- | 1.00 | ---- |
| 70+ | 3.3 (1.7;6.5) | <0.001 | 4.8 (2.3;10.3) | <0.001 |
| Race/color | | | | |
| Not white | 1.0 | ---- | 1.00 | ---- |
| White | 2.5 (1.0;6.1) | 0.039 | 3.2 (1.2; 8.6) | 0.018 |
| Suggestive chest X-ray | | | | |
| No | 1.0 | ---- | 1.00 | ---- |
| Yes | 3.2 (1.0;10.5) | 0.052 | 3.5 (1.0;11.5) | 0.044 |
| Compatible chest CT | | | | |
| No | 1.0 | ---- | ---- | ---- |
| Yes | 1.6 (0.7;3.6) | 0.218 | ---- | ---- |
| Solid or hematological neoplasm | | | | |
| No | 1.0 | ---- | ---- | ---- |
| Yes | 1.8 (0.9;3.7) | 0.095 | ---- | ---- |
| Chronic heart disease | | | | |
| No | 1.0 | ---- | ---- | ---- |
| Yes | 1.9 (1.0;3.8) | 0.053 | ---- | ---- |
| Chronic lung disease | | | | |
| No | 1.0 | ---- | ---- | ---- |
| Yes | 1.3 (0.6;2.9) | 0.584 | ---- | ---- |
| Immunosuppression | | | | |
| No | 1.0 | ---- | ---- | ---- |
| Yes | 1.6 (0.8;3.0) | 0.173 | ---- | ---- |
| Leukocyte category | | | | |
| Low | 1.1 (0.4; 2.8) | 0.892 | ---- | ---- |
| Normal | 1.0 | ---- | ---- | ---- |
| High | 0.5 (0.2; 1.1) | 0.091 | ---- | ---- |
| Neutrophil category | | | | |
| Low | 0.7 (0.1;3.5) | 0.647 | ---- | ---- |
| Normal | 1.0 | --- | ---- | ---- |
| High | 1.6 (0.7;3.9) | 0.287 | ---- | ---- |
| VCM category | | | | |
| Low | 0.8 (0.4; 1.9) | 0.670 | ---- | ---- |

| | | | | |
|--|----------------|--------|---------------|-------|
| Normal | 1.0 | ---- | ---- | ---- |
| High | 1.4 (0.5;3.9) | 0.559 | ---- | ---- |
| Need for invasive MV | | | | |
| No | 1.0 | ---- | 1.00 | ---- |
| Yes | 4.9 (2.2;10.6) | <0.001 | 3.8 (1.7;8.7) | 0.001 |
| Need for ICU | | | | |
| No | 1.0 | ---- | ---- | ---- |
| Yes | 3.7 (1.6;8.6) | 0.003 | ---- | ---- |
| High RDW while hospitalized | | | | |
| No | 1.0 | ---- | ---- | ---- |
| Yes | 1.9 (0.9;4.1) | 0.102 | ---- | ---- |
| High RDW upon admission or while hospitalized | | | | |
| No | 1.0 | ---- | ---- | ---- |
| Yes | 1.9 (0.8;4.2) | 0.133 | ---- | ---- |

789
790
791