

## Navigating the Cholera Elimination Roadmap in Zambia - a Scoping Review (2013-2023)

1

2

3 Nyuma Mbewe<sup>1¶\*</sup>; John Tembo<sup>2¶</sup>; Mpanga Kasonde<sup>1&</sup>, Kelvin Mwangilwa<sup>1&</sup>, Paul Zulu<sup>1&</sup>, Joseph Sereki<sup>3&</sup>,  
4 William Ngosa<sup>1&</sup>, Kennedy Lishipmi<sup>4&</sup>, Lloyd Mulenga<sup>4&</sup>, Roma Chilengi<sup>1¶</sup>, Nathan Kapata<sup>1¶</sup>, Martin P.  
5 Grobusch<sup>5¶</sup>

6

7 <sup>1</sup>National Cholera Elimination Taskforce, Zambia National Public Health Institute, Lusaka, Zambia

8 <sup>2</sup>HERPEZ Zambia – Institute for Infectious Disease Research, Lusaka, Zambia

9 <sup>3</sup>Regional Cholera Support Coordinator, International Federation of Red Cross Society, Lusaka, Zambia

10 <sup>4</sup>Ministry of Health Headquarters, Ndeke House, Lusaka, Zambia

11 <sup>5</sup>Center of Tropical Medicine and Travel Medicine, Department of Infectious Diseases, Amsterdam University  
12 Medical Centres, location AMC, Amsterdam Infection & Immunity, Amsterdam Public Health, University of  
13 Amsterdam, Amsterdam, The Netherlands

14

15 \*Correspondence: [nymbewe@gmail.com](mailto:nymbewe@gmail.com) (NM)

16 ¶These authors contributed equally to this work.

17 &These authors also contributed equally to this work.

18

19 **Abstract**

20 **Background:** Cholera outbreaks are increasing in frequency and severity, particularly in Sub-Saharan Africa.  
21 Zambia, committed to ending cholera by 2025, is coming off its most significant outbreak in 2024. This review  
22 examines the perceived regression in elimination efforts by addressing two questions: (1) what is known  
23 about cholera in Zambia; and (2) what are the main suggested mechanisms and strategies to further  
24 elimination efforts in the region?

25 **Methodology/Principal Findings:** A scoping literature search was conducted in PUBMED to identify relevant  
26 studies published between January 2013 and June 2024 using the search terms 'cholera' and 'Zambia'. We  
27 identified 45 relevant publications. With the increasing influence of climate change, population growth, and  
28 rural-urban migration, further increases in outbreak frequency and magnitude are expected. Major risk  
29 factors for recurrent outbreaks include poor access to water, sanitation, and hygiene services in urban  
30 unplanned settlements and rural fishing villages. Interventions are best planned at a decentralized,  
31 community-centric approach to prevent elimination and reintroduction at the district level. Pre-emptive  
32 vaccination campaigns before the rainy season and climate-resilient WASH infrastructure are also  
33 recommended.

34 **Conclusions/Significance:** The goal to eliminate cholera by 2025 was unrealistic as evidence points to the  
35 disease becoming endemic. Our findings confirm the need to align health and WASH investments with the  
36 Global Roadmap to Cholera Elimination by 2030 through a climate-focused lens. Recommendations for  
37 cholera elimination, including improved access to safe drinking water and sanitation, remain elusive in many  
38 low-income settings like Zambia. Patient-level information on survival and transmissibility is lacking. New  
39 research tailored to country-level solutions is urgently required. Insights from this review will be integrated  
40 into the next iteration of the National Cholera Control Plan and could be applicable to other countries with  
41 similar settings.

42 **Word Count: 283**

43 **Keywords:** Cholera; GTFCC, Cholera control, elimination; Climate Change, Zambia; sub-Saharan Africa

44 **Article Summary**

45 Despite known evidence of the risks from insufficient safe water supplies, sanitation and hygiene (WASH),  
46 the protective effects of oral cholera vaccines, and a Roadmap from the Global Task Force on Cholera  
47 Control, there is a continuous increase in cholera outbreaks on the continent. Now endemic in many parts  
48 of Zambia, it is postulated that the true burden of cholera in the country is underreported due to inadequate  
49 completeness of data, particularly during outbreaks. With an increasing frequency related to climatic  
50 conditions and unplanned urbanization, it will be important to adopt a decentralised approach to cholera  
51 control in Zambia. There is a continued need to advocate strongly for multisectoral interventions aligning  
52 health and WASH investments. The findings expose gaps in the local literature, such as how to improve  
53 climate-resilient WASH infrastructure, strategies to boost vaccine availability, and also the host and  
54 environmental factors that may be protective at personal and household levels from being asymptomatic or  
55 dying of cholera. This work provides evidence-based recommendations for the next iteration of the National  
56 Cholera Control Plan for Zambia and for neighbouring countries that may be in the process of developing  
57 their own plans.

58 **Word Count: 191**

59

60

## 61 **Introduction**

62 Cholera outbreaks are increasing in frequency and severity across the world, particularly in sub-Saharan  
63 Africa. This is despite efforts by the Global Task Force on Cholera Control (GTFCC) to achieve cholera  
64 elimination in at least 20 countries by 2030 [1]. Zambia, with its Republican President serving as the Global  
65 Champion for Cholera Control, had set out to lead the elimination efforts by 2025 ahead of the global targets  
66 [2]. However, the country is now coming off experiencing its most significant outbreak to date with 23,381  
67 cumulative cases, and 740 fatalities of which 304 were facility deaths representing a case fatality of 1.8%  
68 (Accessed on 31<sup>st</sup> July 2024 [3]. We reported elsewhere a survival analysis of a cohort of patients admitted  
69 to treatment centres in Lusaka and found that lack of prior vaccination and the presence of comorbidities  
70 were statistically significant contributors to in-patient mortality [4].

71  
72 The GTFCC Roadmap to Cholera Elimination by 2030 focuses on investment in Water Sanitation and Hygiene  
73 (WASH), early case investigation, and the systematic use of Oral Cholera Vaccines (OCV) as part of cholera  
74 elimination strategies as a bridge towards longer-term investments in Water Sanitation and Hygiene (WASH)  
75 [1]. The country is currently conducting a mid-term revision of the National Cholera Control Plan (NCP). It  
76 was thus necessary to undertake this work in order to understand what constitutes published knowledge on  
77 cholera in Zambia and also to learn from lessons and evidence-based practices that could contribute to  
78 reduced cholera mortality and overall number of cases in outbreaks by 2030.

79  
80 Several other countries earmarked for cholera elimination have documented progress and lessons learned.  
81 Haiti, for example, notes the need for case-area targeted interventions, given ongoing vulnerabilities and  
82 vaccine shortages [5]. In the Democratic Republic of Congo (DRC), a narrative review detailed the successes  
83 and challenges in the implementation of three iterations of their multisectoral cholera elimination plan  
84 (2008-2012, 2013-2017 and 2018-2021) to influence the implementation of their NCP 2023-2027 [6]. They

85 noted that there has been largely no change since the pre-NCP period. Lastly, Uganda noted the use of a  
86 scorecard to track cholera elimination efforts at district and ward levels. They highlighted the risks of periods  
87 of elimination and then resurgence in some areas if ongoing elimination efforts such as improved WASH and  
88 OCV campaigns were not sustained [7]. Global efforts to improve vaccine availability and rapid diagnostic  
89 kits must be matched by domestic adaptation of GTFCC guidelines to ensure better response efforts during  
90 outbreaks and a speedier transition from control to elimination of cholera in endemic countries.

91  
92 To better adapt cholera control and elimination strategies in Zambia, we summarized the current evidence  
93 on the cholera situation in the country. With a One-Health approach of interaction between human, animal  
94 and environmental factors, this scoping review was undertaken to summarise existing evidence on cholera  
95 epidemiology and elimination in Zambia. By examining the perceived regression in cholera elimination  
96 efforts, we sought to document the evidence generated from the different pillars to facilitate a  
97 comprehensive multisectoral response strategy. We addressed two main questions: (1) what is known about  
98 cholera in Zambia; (2) what are the main suggested mechanisms and strategies to further cholera control  
99 efforts in the region?

100

## 101 **Methods**

102 A scoping literature search was conducted to identify relevant studies. Our goal was to map the existing  
103 literature, present evidence-based strategies in the different thematic areas of prevention/control, and  
104 present hypotheses on the best strategy to accelerate progress towards cholera control and eventual  
105 elimination in Zambia. We also sought to identify gaps in the research data that could be important for  
106 prioritizing intervention areas which may otherwise be overlooked.

107 In preparation for this narrative review, articles were identified in PUBMED using the search terms 'cholera'  
108 and 'Zambia' for articles published between 1<sup>st</sup> January 2013 and 30<sup>th</sup> May 2024; filtered to English only. We  
109 used the same search terms for Embase and Google Scholar. Reference lists of selected papers and reviews

110 were also screened for relevant papers, as were local publications and preprints within the period under  
111 review. We excluded meeting reports, conference proceedings, daily situation reports, study protocols and  
112 articles related to cholera but not specifically about Zambia. The search was conducted, and all papers were  
113 screened between December 2023 and May 2024.

114

## 115 **Results**

### 116 **Study Identification and Selection**

117 A total of 45 records were identified that investigated cholera and Zambia from 2013 – 2024 from PUBMED,  
118 including one previous article exploring the epidemiology of cholera in Zambia from 2000-2010 [8]. Embase  
119 was inaccessible due to institutional restrictions, whilst Google Scholar brought up 11,300 articles. Eight  
120 studies that did not mention Zambia in the main text were excluded; and six additional ones were identified  
121 from alternative sources such as in preprint, in local journals or otherwise not listed on PUBMED were  
122 included [9–13]. Full texts were available for all the studies and reported according to the PRISMA guidelines  
123 [14] (Figure 1). All identified citations were uploaded into a Mendeley database and data was extracted using  
124 a predesigned form. Key findings and study designs were then collated into thematic areas based on the  
125 GTFCC Global Road Map for Cholera Control [1]. The GTFCC describes three axes achievable across six  
126 different pillars for a comprehensive multisectoral control plan [1]. Figure 2 shows how the analysed  
127 publications were evaluated in light of the different pillars.

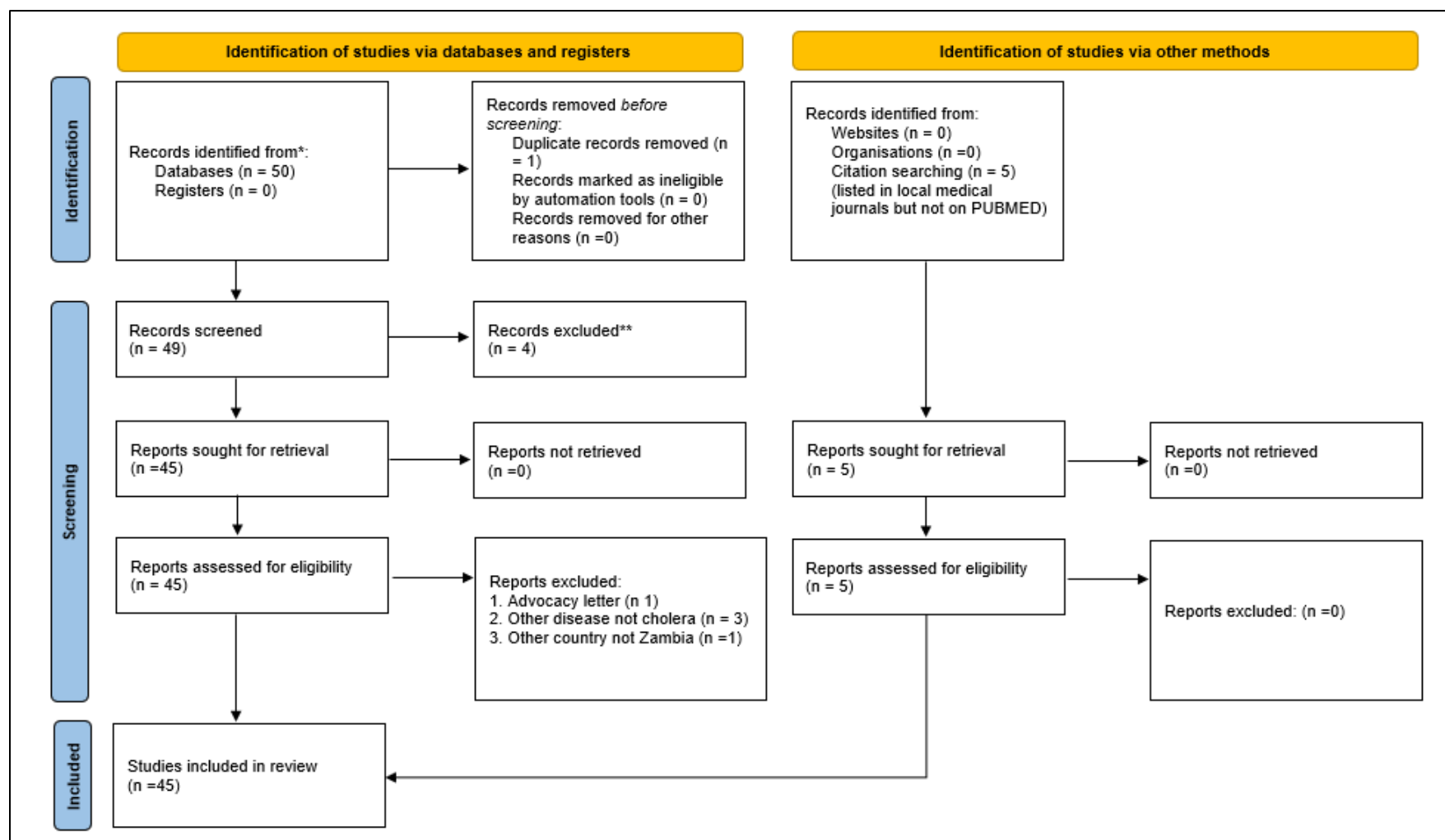
128



130  
131

132  
133

Figure 1: Study flow diagram showing the selection processes in line with the Prisma Guidelines

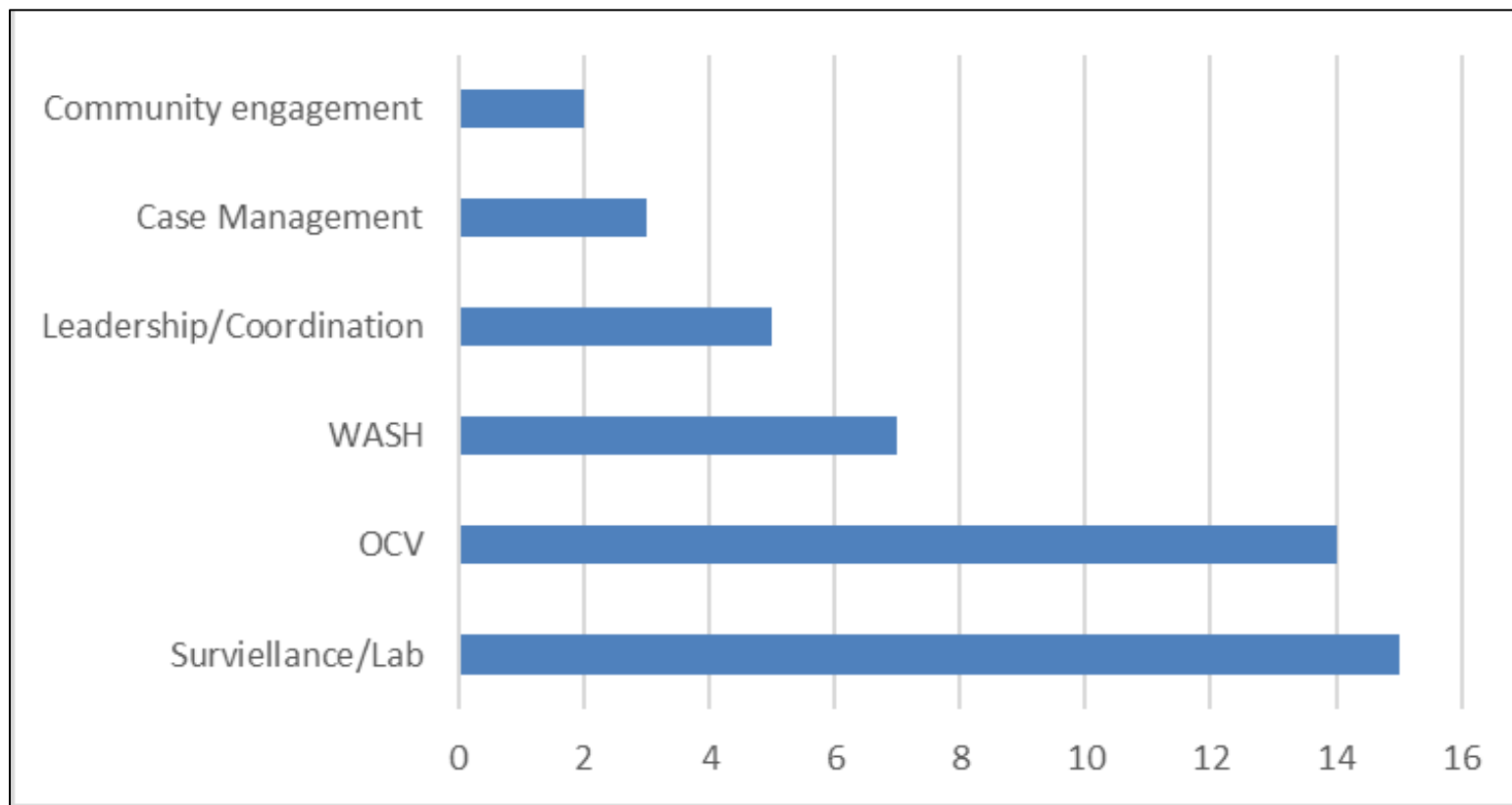


134



135 **Figure 2: Frequency of Publications by Pillar**

136



137  
138  
139

140 **Cholera Epidemiology and Burden**

141 Table 1 shows the overall epidemiology of cholera in Zambia. Over the years and consistently across the  
 142 studies, over 80% of the cases were identified in peri-urban areas, particularly in Lusaka – the capital.  
 143 Consistently, the definition of an outbreak, based on the national Integrated Disease Surveillance and  
 144 Response (IDSR) guidelines, was the confirmation by stool culture of *V. cholerae* in at least one cholera  
 145 suspect patient with three episodes of acute watery diarrhoea in a 24-hour period in each district [15].  
 146 Subsequent cholera suspect patients are included in the total case count per year based on fitting the clinical  
 147 case definition with or without culture confirmation. All the referenced papers document cholera  
 148 epidemiology in Zambia during outbreaks and show an increasing annual incidence [8,16,17]. Given the  
 149 endemicity in certain parts of the country, it has been postulated that by only exploring the proportion of  
 150 clinically suspected cholera cases and not all confirmed by culture, the true incidence of *V. cholerae*  
 151 infections in the region and the true burden of disease may be higher, than reported especially outside  
 152 outbreak seasons [18].

153

154 **Table 1: Cholera Epidemiology and Burden in Zambia (2013 -2024)**

Author	Aims	Study Design	Number of Participants	Location
Olu et al. 2013 [8]	Cholera epidemiology in Zambia from 2000-2010 to describe implications for improving cholera prevention and control strategies	10-year descriptive data extracted from the eiDSR compared to the global health atlas to ensure consistency. Subsequent review of the minutes of the National Epidemic Preparedness and	In 2010, 6794 cases (a 500% increase compared to 2003) and 115 deaths (CFR 1.6%). 39,285 cases in total over the 10 years	Seventy-three percent (73%) of all the cases of cholera reported from 2001 to 2010 were from Lusaka Province followed by 7%, 6%, 5% and 4% respectively from Luapula, Southern, Central and Copperbelt Provinces

	in the country	Prevention Committee (NEPPC Meetings) and key informant interviews with stakeholders		
Matapo et al. 2016 [10]	Successful Multi-partner Response to a Cholera Outbreak in Lusaka, Zambia 2016: A Case-Control Study	Case-control study using 1:3 sampling for cholera cases seen at Bauleni Health Centre in Lusaka District	441 cholera cases in the register by case definition, 49 cases and 151 controls included in the study	Bauleni township in Lusaka
Chirambo et al. 2016 [12]	Epidemiology of the Cholera outbreak in Chibombo District 2016	Descriptive analysis of cholera cases in Chibombo district between February and March 2016 following a confirmed outbreak	23 cases identified, no fatalities	Chibombo district which neighbours Lusaka, but is not known as a traditional cholera hotspot in the country
Mwambi et al. 2016 [21]	Timely Response and Containment of 2016 Cholera Outbreak in Northern Zambia	Descriptive analysis of cholera cases in Nsama district between March and April 2016	66 cases identified, 8 culture-confirmed, 3 mortalities, 4.5% case fatality rate	Nsama district in Northern province, which has informal settlements along fishing villages, and cross-border transmission from

				DRC
Gama et al. 2017 [9]	Cholera Outbreak in Chiengi and Nchelenge Fishing Camps, Zambia	Case-control study of risk factors for cholera acquisition amongst fisherfolk in Luapula province compared to controls	1115 cases in Nchelenge and 257 in Chiengi during the period under review. 76 patients and contracts were subjected to semi-structured interviews assessing their access to WASH interventions such as hand washing soap and running water	Nchelenge and Chiengi districts in Luapula Province
Sinyange et al. 2018 [20]	Cholera epidemic Lusaka, Zambia – October 2017 – May 2018	Description of the outbreak and the interventions done at different stages of the response. And a cross-sectional study on Knowledge, attitudes and practises of households in the affected communities	5,905 cases and 98 deaths case fatality rate of 1.6 %  KAP survey in 98 households	Lusaka, the capital with most cases occurring in Kanyama, a peri-urban unplanned settlement
Mwaba et al.	Identification of cholera hotspots	Descriptive analysis using poisson-based	34,950 participants countrywide, however,	Country-wide, 80% of the cases were Lusaka-based

2020[24]	in Zambia: a spatiotemporal analysis of cholera data from 2008 to 2017	space and time scan statistics to cover for spatial differences	29080 of these were in Lusaka over the 10 years	
Mbewe et al 2024 [4]	Survival Analysis of Cholera Patients admitted in Lusaka, Zambia.	Cohort analysis using Cox proportional hazard models to assess survival probabilities and identify predictors of mortality	Medical records for 1529 patients were analysed. overall survival rate was 97%, with the highest mortality being within the first 24 hours of admission	Lusaka

155  
156

157

158 **Risk Factors and Determinants of Transmission**

159 Male sex, close contact with a cholera case and the use of borehole water were found to be risk factors for  
 160 cholera infection [19–22]. Drinking water sources were found to have inadequately low free-residual  
 161 chlorine (FRC) in up to 71% of households surveyed [20,23]. Thirty-one per cent of those households with  
 162 inadequate FRC had evidence of faecal contamination. Low latrine coverage, poor drainage systems, and  
 163 sharing latrines [8,19] were also documented vulnerability factors that allowed for the perennial occurrence  
 164 of cholera in some localities, particularly unplanned settlements such as the fishing villages in many of the  
 165 areas bordering lakes [9,24]; and in peri-urban areas with high population densities such as Lusaka and the  
 166 cities on the Copperbelt [20,24]. Whilst poor hygiene practices (mostly superimposed on people due to lack  
 167 of facilities) were a notable risk factor, consumption of food products, particularly fresh fish was not

168 associated with an increased risk [13].

169

170 The availability of drinking water and the quality of the peri-urban areas of Lusaka was assessed. It was found  
171 that in areas underserved by the municipal utility companies, private borehole companies known as ‘Water  
172 Trusts’ would operate small shops known as ‘kiosks’ where community members could go and draw small  
173 quantities of water in buckets at a minimal cost to cover the fees only, and not for profit [23]. These trusts  
174 treated and provided water to the communities in these water-stressed unplanned settlements as an adjunct  
175 to the provincial utility company, and yet they were found to serve less than 60% of the communities in need  
176 of their services [8,19]. Despite this limitation, they were noted to present a safer alternative than privately  
177 consumer-owned boreholes and shallow wells in terms of faecal contamination with *Escherichia coli* and  
178 nitrite content of the water [23]. Those unable to afford the kiosk water would tend to use unsafe surface  
179 water sources such as shallow wells in their locality [19,20]. These presented the highest risk of  
180 contamination particularly due to topographical features such as the high-water table in Lusaka Province  
181 leading to a high risk of contamination of these shallow wells from nearby pit latrines [22,23].

182

183 The smallest surveillance unit of population reported was the ward level. It was found that the greatest risk  
184 for cholera was found in the wards with the densest populations, unimproved sanitation and evidence of *E.*  
185 *coli* contamination of piped sources [11]. Elsewhere, as was seen in Kabwe, through an environmental  
186 sampling of groundwater using polymerase chain reactions (PCR) tracers, there was evidence of  
187 groundwater contamination with documented environmental vibriosis [22]. The authors postulated that  
188 private boreholes are vulnerable to contamination possibly due to incompetent casing which may then  
189 provide an artificial pathway for the vibriosis from contaminated ground sources and hence pose an even  
190 greater risk. Supporting this, was the rapid decrease in cases seen during outbreaks, when there was an  
191 increased provision in water and sanitation services such as hyper-chlorination of the water utility lines,  
192 provision of safe water through emergency tanks in the hotspot areas [25] and with the use of reactive OCV

193 campaigns [26].

194

### 195 ***Inter-district and inter-country spread of outbreaks***

196 Risk factors for continued outbreaks between the peak years included increased poverty and inadequacies  
197 of social services due to rural-urban migration [8,19,27]. Similarly, movement between neighbouring districts  
198 (24) and neighbouring countries [16,28,29] were identified as factors associated with epidemic cholera in  
199 Zambia. Chirabombo and colleagues documented how naïve districts neighbouring traditional hotspots such  
200 as Lusaka, can also then present with outbreaks of their own with evidence of local transmission [12]. The  
201 question of environmental persistence versus reintroduction into the district from neighbouring countries  
202 such as the DRC and Tanzania, which equally have continuous outbreaks, has been documented [9,24,30].  
203 This is reaffirmed by laboratory studies and descriptive analyses of genomic sequencing isolates that showed  
204 a wide genetic diversity [16] and close linkage with isolates from other parts of the Great Lakes region  
205 [28,31]. This underscores the need for both a decentralised approach at the district and ward levels but also  
206 shows a need for enhanced cross-border surveillance and possible cross-border joint responses [31,32].

207

### 208 ***Clinical Characteristics and Host Predisposition***

209 Globally, there is a dearth of information on the clinical characteristics of patients affected by outbreaks  
210 beyond general case counts and case fatality rates [33]. Little is known about the proportion of pregnant  
211 women, elderly or paediatric patients affected by cholera, nor the number of patients presenting with co-  
212 morbid conditions or other complications of care. What was seen is that having received limited education  
213 and being older than 55 years constituted one risk factor for increased mortality [34]. There was a slightly  
214 higher proportion of patients documented to have died prior to arrival at the treatment facilities (i.e. at  
215 home or community deaths) vs in the facility (55% community deaths vs 45% facility deaths, respectively);  
216 with similar proportions having been noted to have received some oral rehydration solutions (ORS) before  
217 presentation or death. Intravenous fluids were not available beyond Cholera Treatment Centres (CTC), and

218 there was no documented use of Community Oral Rehydration Points before the 2023/2024 outbreak. Prior  
219 antibiotic use was not found to be protective, although noted that patients often took metronidazole which  
220 is not one of the recommended agents [34]. Adequate ORS was protective [34], yet it was clear that there  
221 were disparities in the availability of ORS, particularly in rural communities [35]. In younger patients, cholera  
222 was noted to be an important cause of morbidity and mortality in the under-five age group, with increasing  
223 antimicrobial resistance over the years [32,36]. Case management was reported to have improved, with  
224 reductions in the case fatality rate (CFR) decreasing from 6.7% in 2000 to 1.7% in 2010 [8]. However, as of  
225 the 2018 outbreak, the case fatality rate hovered around 2.5% [20]. The case fatality rate of the 2023/2024  
226 outbreak was 1.3%, with increased documentation of community deaths [3]. For inpatient fatalities, there  
227 were higher odds of dying for those with pre-existing comorbid conditions [4].

228

### 229 ***Vaccine availability and effectiveness***

230 Vaccines are known to be a useful tool for community-level interventions for controlling waterborne diseases  
231 such as cholera, in places where access to water, sanitation and hygiene remains limited [37]. More recent  
232 studies have used the new Euvichol plus<sup>®</sup>, which is the Eubiologics<sup>®</sup> bivalent vaccine of El Tor and Ogawa  
233 presented in glass containers as opposed to plastic vials to improve cold chain in humanitarian crises [42].  
234 They have shown a higher vaccine efficacy in the two-dose strategy than the single dose (at 74% and 81%,  
235 respectively [43]; and that reported OCV administrative coverage is often much lower than the actual  
236 coverage which was found to be 66% of people getting both doses, which may further lower efficacy rates  
237 [44]. Questions persist about the very high dropout rate of 18% between the two doses [44]. Similarly, it  
238 remains to be seen the effect of previous preventative campaigns, as a lead up to future multiyear  
239 preventative vaccination campaigns.

240

241 Pugliese-Garcia and colleagues attempted to explore the factors influencing vaccine acceptance and  
242 hesitancy in the hotspot districts of Lusaka. They found that traditional remedies, religious beliefs and



243 alcohol use persist as impediments [45], as does a background mistrust towards Western medicine [46].  
244 There was an overarching sense of helplessness or ‘fate’ as the participants were aware they could not  
245 change their living conditions and did not realise their ability to use safer water practices to protect  
246 themselves [46].

247  
248 Investigation of the immunogenicity of the vaccines in a controlled population in one of the high-risk fishing  
249 villages found no significant difference in vibriocidal antibodies at two weeks or six months and provided  
250 evidence for the delayed dosing schedule [47], but also waning immunity beyond 12 months [48]. The group  
251 found no influence of ABO blood groupings on vaccine response [49]. HIV-positivity was found to reduce  
252 immunogenicity in these individuals regardless of the CD4 count, whilst serum vitamin A levels had no effect  
253 positive or negative [50]. Elsewhere, there was a suggestion of vitamin A supplementation as a possible  
254 adjuvant to improve T-cell expression following vaccination, particularly in children [51,52], which may offer  
255 a gateway into host-specific factors for improved immunity and transmission dynamics. There was no work  
256 yet published on the role of the gut microbiome in cholera vaccine responsiveness nor protection in the face  
257 of household exposure. Most recently a comparison of vibriocidal antibodies in naturally infected vs  
258 vaccinated individuals was found to be comparable, with peak immunity seen around day 19 post-infection  
259 and waning after day 30-39 [53]. The authors suggested the need for booster vaccinations, particularly in  
260 high-risk areas as a possible public health protective strategy.

261  
262 The use of a single-dose campaign of Sanchol® was found to be cost-effective, amounting to just under \$ 1  
263 million to vaccinate 500,000 people [26]. A further evaluation of the cost of cholera illness and the cost-  
264 effectiveness of the single-dose campaign in Lusaka was close to \$1000 per disability-adjusted-life year  
265 (DALY) averted, especially in those above the age of 15 years [54]. The social implications for affected  
266 communities have not been deeply studied, nor the cost-benefit analysis of community-based interventions  
267 and health education initiatives in the hotspot districts. With the increasing size of the outbreaks, it remains

268 to be seen the cost-effectiveness of reactive campaigns, and also the macro-economic effects of the overall  
269 cholera responses.

270

### 271 ***Climate variability***

272 The role of climate variability and extreme weather events cannot be ignored with a strong association  
273 between the onset of rainfall and epidemic outbreaks [20]. Cholera outbreaks in Zambia, like many other  
274 African countries, are seasonal [22,30], differing from the Ganges Delta where it occurs perennially [30]. The  
275 outbreaks start with the onset of the rainy season in 71% of cases and have been associated with 50% of all  
276 recorded drought years. Outbreaks are expected to increase in frequency by 300% in the near future with  
277 recurrent El Nino events [55]. Following seasonal rains, the larger outbreaks are often heralded by flooding  
278 which is a specific sequel of torrential rains possibly enhanced by climate change. Flooding has been  
279 associated with damage to WASH infrastructure, and the decay of flooding countermeasures such as  
280 clogged-up drainage canals and sealing of ground passages for water, particularly when big cities such as  
281 Lusaka are afflicted [20,55] further compounding the problem. Reduced rainfall (i.e. drought periods) may  
282 also increase cholera outbreaks as seen in the U-shaped occurrence of diarrhoeagenic bacteria such as *V.*  
283 *cholerae* with rainfall and pathogen proliferation [56]. Groundwater drilling during the drought years, if not  
284 carefully planned, will worsen the already water-stressed situation in certain parts of the country [55]. The  
285 anticipated periods of droughts in the near future are expected to exacerbate rural-urban migration into the  
286 peri-urban slums, further compounding the water-stressed situations and the likelihood of larger cholera  
287 outbreaks [55].

288

289 Mathematical modelling was used to predict the expected time to extinction of cholera in Lusaka and based  
290 on previous estimates of a second wave in each outbreak found that heavy rains were associated with an  
291 increased environment to human transmission [27]. They warned that environmental vibrios could  
292 persevere for eight months to six years in the environment especially the shallow wells and areas with poor

293 drainage, hence future outbreaks would be longer and more severe. They also recommended enforcement  
294 of the multisectoral cholera elimination plan, which sought the combination of WASH interventions with  
295 periodic oral cholera vaccinations [27]. All the reviewed articles are listed in [Table 2](#) with their key findings  
296 and possible mitigating factors that can contribute to cholera control and elimination in Zambia.

297

## 298 **Discussion**

299 Since the first documented outbreak in 1977, Zambia has recorded major outbreaks every three to five years  
300 with increasing intensity and fatality [4,8,11]. The outbreaks were predictable concerning the timing in the  
301 calendar year and with an increasing frequency related to climatic conditions and urbanization [11,20,23].  
302 Because most of the reporting is done based on case definitions during outbreaks, it is postulated that the  
303 true burden of cholera in Zambia, like other parts of the world, is underreported outside of explosive  
304 outbreaks [57,58]. The major risk factors for recurrent outbreaks in the country were poor access to water  
305 and sanitation services in urban unplanned settlements and the rural fishing villages [9,19,24]. These factors  
306 were found persistent even in the 2023/2024 outbreak, which is the largest to date [4], different from other  
307 cholera-prone areas which are often coastal areas in South Asia [30] or places with humanitarian crises and  
308 conflicts such as Northern Nigeria and Haiti [59,60].

309

310 Zambia was not considered endemic of cholera at the time of the development of the first multisectoral  
311 cholera elimination plan (MCEP). However, the increased frequency and almost annual occurrence of  
312 outbreaks in certain localities necessitate its reclassification as an endemic country eligible for cholera  
313 control as opposed to cholera elimination in line with GTFCC guidance [1]. Because of the risk of re-  
314 introduction of cholera following elimination at ward and district levels [29,30], interventions are best  
315 planned using a decentralized community-centric approach to surveillance and case management through  
316 case-area targeted interventions. This has been seen to be effective in countries such as Uganda, DRC and  
317 Burundi, which are also all working towards elimination [7,61,62]. The predictable geographic location and

318 seasonality of the outbreaks could be used to envisage the location and size of repeat vaccination campaigns  
319 with the possibility of pre-emptive campaigns timed before the rainy season to be included in the expanded  
320 program for immunizations [63–65]. Excitement surrounds the recent WHO prequalification of Euvichol S<sup>®</sup>,  
321 a simplified version of the Euvichol Plus<sup>®</sup> that is easier to produce but just as efficacious as its predecessors.  
322 [66] It is anticipated that its introduction in the global stockpile will increase vaccine access and hence permit  
323 countries, such as Zambia to plan for multiyear vaccination campaigns, as part of the cholera control and  
324 elimination efforts. These multiyear vaccine campaigns would serve as a bridge to increased WASH  
325 investments.

326  
327 Similarly, these WASH investments can be planned in a decentralized construct as the different localities,  
328 even within the same country, have peculiar challenges expected to increase with the changing weather  
329 patterns [9,14,20,17,25]. Likewise, case management would need to have a further investigation into  
330 patient-specific factors such as host genomics. Research into the host microbiome is in early phases with  
331 mixed results but gives potential for newer treatment modalities such as probiotics and phage therapy  
332 against *Vibrio cholerae* [67-69]. Efforts to combat vaccine hesitancy, myths and misconceptions, must be  
333 made continuously, not only at the onset of outbreaks. This would help counter fears from the communities,  
334 particularly concerns of Western malevolence [45,46]. Here, we propose the need for enhanced  
335 collaborations of medical education and global exchanges of knowledge from low-income to high-income  
336 countries which would allow for hastened vaccine manufacturing locally, as recommended by the President  
337 of the Republic of Zambia, in his capacity as the World Health Organisation (WHO) global and Southern Africa  
338 Development Community (SADC) regional cholera control champion (70).

339  
340 Isolates from the 2023/2024 outbreak in Zambia have yet to be fully analysed for host and pathogen  
341 genomics. However, recent sequencing results from Malawi give insight into a possible new transmission  
342 event into the subcontinent, that bears close resemblance to strains of Asian origin [71]. Zambia and Malawi

343 share many porous borders, and trade and intermarriage are common between the people. The Malawian  
344 study postulated that the strain of vibrio in their 2022/2023 outbreak, the worst in Malawian history, was a  
345 highly successful cone of pandemic potential worsened by humanitarian and climate crises and then  
346 propagated by suitable environmental factors [71]. This agrees with earlier findings suggesting that  
347 outbreaks in Kanyama and other hotspots like the fishing villages, were due to a combination of recent  
348 introduction of newer pathogenic strains, and favourable environmental factors like deplorable WASH status  
349 [29, 30]. This also underscores the importance of joint cross-border surveillance and response activities in  
350 the region [21,30,31,32].

351

352

353 Challenges and gaps persist in cholera elimination efforts in Zambia. The need for a multisectoral,  
354 decentralised approach is evident, as no single intervention would remove all the various identified risk  
355 factors. The studies reviewed showcased different aspects of interventions during outbreak settings, or  
356 vaccination efforts in a reactive response. What can be seen is that cholera outbreaks in Zambia are  
357 progressively larger [8,20,23] and call for enhanced multisectoral and cross border collaboration [8,25].  
358 Without environmental source control such as improving flush-to-sewage plumbing systems and overall  
359 climate-resilient solutions, it can be anticipated that the number of outbreaks in the country will continue to  
360 increase [11,14, 72, 73]. Our findings broadly confirm the need to align health and WASH investments with  
361 the GTFCC's Roadmap to Cholera Elimination by 2030 [1] but also highlight the need for additional research  
362 across the various pillars to ensure tailored solutions, are adaptable to the local setting and able to inform  
363 best practice.

364

365 The study is limited mainly because of the scoping review methodology. Statistical tests could not be applied  
366 to any of the findings, and the overall recommendations are largely descriptive, differing from a systematic  
367 review. However, the challenges and gaps in cholera elimination in Zambia have been clearly outlined, and

368 targeted interventions can be planned to ensure that the next iteration of the National Cholera Control Plan  
369 will be met with additional successes. Potential areas for future research on cholera elimination efforts must  
370 address best approaches for implementing community-centric surveillance and Case Area Targeted  
371 Interventions (CATI). Patient-level information on survival and transmissibility is lacking. There is a need to  
372 better understand the co-morbid conditions that may negatively influence patient outcomes, especially in  
373 patient groups such as the elderly or pregnant women. The role of host genetic factors such as the gut  
374 microbiome and its influence on symptomatology and transmissibility at the household level needs better  
375 understanding. Further, application of metagenomics to point-of-care testing to improve surveillance and  
376 how it relates to clinical outcomes remains an important gap in knowledge. The use of adjuvant therapies  
377 for vaccination and treatment is also not discussed in literature. Lastly, the impact of climate change on  
378 health in general and WASH interventions warrants a deeper dive to track the mechanisms and causal  
379 effects; be it extreme dryness due to drought or floods due to excess water. These are important gaps in  
380 knowledge for the global scientific community to consider as we work our way towards the 2030 elimination  
381 timeline.

382

### 383 **Conclusion**

384 This scoping review collated evidence supporting a decentralised approach to cholera control in Zambia and  
385 Sub-Saharan Africa overall. Two key findings emerge from the analysis: first is the steady increase in cases  
386 and deaths over the years, despite adopting the first iteration of the Multisectoral Cholera Elimination Plan  
387 in 2019, and an anticipated increase in the coming years with rapid population growth and changing climate.  
388 The second key finding is that a wealth of evidence has already been generated in Zambia regarding best  
389 practices towards cholera control. There is a continued need to advocate strongly for multisectoral  
390 interventions with an alignment of health and WASH investment at the district and ward level, to align with  
391 this decentralised approach. The findings suggest many areas of further research considering the now  
392 endemicity of cholera in Zambia. We propose that our insights and recommendations can inform

393 policymakers in crafting guidelines for implementing ward-level interventions, and these will be integrated  
394 into the next iteration of the National Cholera Control Plan. It is our hope that the lessons from here can be  
395 applied in other sub-Saharan African countries facing similar challenges and seeking to internalize the Global  
396 Roadmap for Cholera Control by 2030.

397

398 **WORD COUNT: 4310**

399

400 **Acknowledgements**

401 This work is part of ongoing efforts from the Zambia National Public Health Institute, as the Secretariat of  
402 the National Cholera Control Taskforce, to better understand efforts towards Cholera Control in the Region.  
403 Many thanks to various task force members and partners who were directly and indirectly involved in this  
404 work.

405

406 **Declarations and conflicts of interest**

407 All authors have no conflicts of interest to declare

408

409 **Funding**

410 There was no funding received for this work

411

412 **Data availability statement**

413 All relevant data are included in the paper or its Supplementary Information.

414

415 **Author Contributions**

416 **Conceptualization:** Nyuma Mbewe, Nathan Kapata, John Tembo, Martin Peter Grobusch

417 **Methodology and Data Curation:** Nyuma Mbewe, Nathan Kapata, William Ngosa, John Tembo, Martin

418 Peter Grobusch

419 **Supervision and Validation:** Nathan Kapata, Kelvin Mwangilwa, Mpanga Kasonde, Roma Chilengi, Kennedy  
420 Lishimpi, Lloyd Mulenga and Martin Peter Grobusch

421 **Writing, reviewing and editing:** Nyuma Mbewe, John Tembo, Kelvin Mwangilwa, Paul Zulu, William Ngosa,  
422 Lloyd Mulenga, Kennedy Lishimpi, Joseph Adiva Sereki, Mpanga Kasonde, Roma Chilengi, Nathan Kapata,  
423 and Martin Peter Grobusch

424

## 425 References

426

- 427 1. GTFCC Ending Cholera Global Roadmap to 2030. Available from: [https://www.gtfcc.org/about-](https://www.gtfcc.org/about-gtfcc/roadmap-2030/)  
428 [gtfcc/roadmap-2030/](https://www.gtfcc.org/about-gtfcc/roadmap-2030/)
- 429 2. Zambia Multisectoral Cholera Elimination Plan 2019-2025. Lusaka, Zambia; 2018. Available from  
430 <https://www.gtfcc.org/wp-content/uploads/2019/05/national-cholera-plan-zambia.pdf>
- 431 3. Zambia National Public Health Institute, Cholera Situation Report Situation Report No. 149 -Situation  
432 Report as of 31<sup>st</sup> July 2024 [Internet]. Lusaka; 2024 Apr. Available from:  
433 <https://w2.znphi.co.zm/resources/>
- 434 4. Mbewe N, Mwangilwa K, Tembo J, Grobusch MP, Kapata N. Survival analysis of patients with cholera  
435 admitted to treatment centres in Lusaka, Zambia. The Lancet Infectious Diseases 2024. Published  
436 Online June 12, 2024 [https://doi.org/10.1016/S1473-3099\(24\)00361-X](https://doi.org/10.1016/S1473-3099(24)00361-X)
- 437 5. Rebaudet S, Dély P, Boncy J, Henrys JH, Piarroux R. Toward cholera elimination, Haiti. Emerg Infect  
438 Dis. 2021 Nov 1;27(11):2932–6.
- 439 6. Taty N, Bompangue D, de Richemond NM, Muyembe J. Spatiotemporal dynamics of cholera in the  
440 Democratic Republic of the Congo before and during the implementation of the Multisectoral Cholera  
441 Elimination Plan: a cross-sectional study from 2000 to 2021. BMC Public Health. 2023 Dec 1;23(1).
- 442 7. Bwire G, Sack DA, Lunkuse SM, Ongole F, Ngwa MC, Namanya DB, et al. Development of a Scorecard  
443 to Monitor Progress toward National Cholera Elimination: Its Application in Uganda. American Journal  
444 of Tropical Medicine and Hygiene. 2023 May 1;108(5):954–62.
- 445 8. Olu O, Babaniyi O, Songolo P, Matapo B, Chizema E, Kapin'a-Kanyanga M, et al. Cholera Epidemiology  
446 in Zambia from 2000-2010: Implications for Improving Cholera Prevention and Control Strategies in  
447 the Country. Vol. 90, East African Medical Journal. 2013.
- 448 9. Gama A, Kabwe P, Nanzaluka F. Cholera Outbreak in Chiengwe and Nchelenge Fishing Camps, Zambia.  
449 Vol. 2. Health Press Zambia Bulletin; 2017.
- 450 10. Matapo B, Chizema E, Hangombe H, Chisimba K, Mwiinde A, Mwanamwalywe I, et al. Successful  
451 Multi-partner Response to a Cholera Outbreak in Lusaka, Zambia 2016: A Case Control Study. Medical  
452 Journal of Zambia. 2016;43(3):116–22.
- 453 11. Gething PW, Ayling S, Mugabi J, Muximpua OD, Kagulura SS, Joseph G. Cholera risk in Lusaka: A  
454 geospatial analysis to inform improved water and sanitation provision. PLOS Water. 2023 Aug  
455 22;2(8):e0000163.
- 456 12. Chirambo M, Mufunda J, Songolo P, Kachimba J, Vwalika B. Epidemiology of the 2016 Cholera  
457 Outbreak of Chibombo District, Central Zambia. Medical Journal of Zambia. 2016;43(2):61–3.



- 458 13. Malata M, Bwalya Muma J, Siamate JS, Bumbangi FN, Hang'ombe BM, Mumba C. Quantitative  
459 Exposure Assessment to *Vibrio cholerae* through Consumption of Fresh Fish in Lusaka Province of  
460 Zambia. *University of Zambia Journal of Agricultural and Biomedical Sciences* [Internet]. 2021 Apr  
461 1;5(2):37–55. Available from: <https://journals.unza.zm/index.php/JABS/article/view/667>
- 462 14. The PRISMA 2020 statement: an updated guideline for reporting systematic reviews (14)  
463 *BMJ* 2021;372: n71. (Published 29 March 2021) Available from <https://doi.org/10.1136/bmj.n71>
- 464 15. Zambia Technical Guidelines for Integrated Disease Surveillance and Response (IDSR) in the African  
465 Region developed by WHO AFRO and CDC. Version 3 Feb 2020.
- 466 16. Mwape K, Kwenda G, Kalonda A, Mwaba J, Lukwesa-Musyani C, Ngulube J, et al. Characterisation of  
467 *Vibrio cholerae* isolates from the 2009, 2010 and 2016 cholera outbreaks in Lusaka province, Zambia.  
468 *Pan African Medical Journal*. 2020;35.
- 469 17. Mwaba J, Debes AK, Shea P, Mukonka V, Chewe O, Chisenga C, et al. Identification of cholera hotspots  
470 in Zambia: A spatiotemporal analysis of cholera data from 2008 to 2017. *PLoS Neglected Tropical*  
471 *Diseases*. 2020 Apr 1;14(4):1–14.
- 472 18. Wiens KE, Xu H, Zou K, Mwaba J, Lessler J, Malembaka EB, et al. Estimating the proportion of clinically  
473 suspected cholera cases that are true *Vibrio cholerae* infections: A systematic review and meta-  
474 analysis. *PLoS Med*. 2023 Sep 1;20(9 September).
- 475 19. Nanzaluka FH, Davis WW, Mutale L, Kapaya F, Sakubita P, Langa N, et al. Risk factors for epidemic  
476 cholera in Lusaka, Zambia-2017. *American Journal of Tropical Medicine and Hygiene*. 2020 Aug  
477 1;103(2):646–51.
- 478 20. Sinyange N, Brunkard JM, Kapata N, Mazyanga ;, Mazaba L, Musonda KG, et al. Cholera Epidemic —  
479 Lusaka, Zambia, October 2017–May 2018. *Morbidity and Mortality Weekly Report* [Internet]. 2018  
480 May 18;67(19). Available from:  
481 [https://www.cdc.gov/mmwr/volumes/67/wr/mm6719a5.htm?s\\_cid=mm6719a5\\_w](https://www.cdc.gov/mmwr/volumes/67/wr/mm6719a5.htm?s_cid=mm6719a5_w)
- 482 21. Mwambi P, Mufunda J, Lupili M, Bangwe K, Bwalya F, Mazaba ML. Timely Response and Containment  
483 of 2016 Cholera Outbreak in Northern Zambia. *Medical Journal of Zambia*. 2016;43(2):64–9.
- 484 22. Sorensen JPR, Lapworth DJ, Read DS, Nkhuwa DCW, Bell RA, Chibesa M, et al. Tracing enteric  
485 pathogen contamination in sub-Saharan African groundwater. *Science of the Total Environment*.  
486 2015 Dec 15;538:888–95.
- 487 23. Reaver KM, Levy J, Nyambe I, Hay MC, Mutiti S, Chandipo R, et al. Drinking Water Quality and  
488 Provision in Six Low-Income, Peri-Urban Communities of Lusaka, Zambia. *Geohealth*. 2021 Jan 1;5(1).
- 489 24. Mwaba J, Ferreras E, Chizema-Kawesa E, Mwimbe D, Tafirenyika F, Rauzier J, et al. Evaluation of  
490 the SD bioline cholera rapid diagnostic test during the 2016 cholera outbreak in Lusaka, Zambia. *Trop*  
491 *Med Int Health*. 2018 Aug;23(8):834–840. doi: 10.1111/tmi.13084. Epub 2018 Jun 29. PMID:  
492 29851181.
- 493 25. Kapata N, Sinyange N, Mazaba ML, Musonda K, Hamoonga R, Kapina M, et al. A multisectoral  
494 emergency response approach to a cholera outbreak in Zambia: October 2017-February 2018. *Journal*  
495 *of Infectious Diseases*. 2018 Oct 15;218:S181–3.
- 496 26. Poncin M, Zulu G, Voute C, Ferreras E, Muleya CM, Malama K, et al. Implementation research:  
497 Reactive mass vaccination with single-dose oral cholera vaccine, Zambia. *Bull World Health Organ*.  
498 2018 Feb 1;96(2):86–93.
- 499 27. Maity B, Saha B, Ghosh I, Chattopadhyay J. Model-Based Estimation of Expected Time to Cholera  
500 Extinction in Lusaka, Zambia. *Bull Math Biol*. 2023 Jul 1;85(7).
- 501 28. Moore S, Miwanda B, Sadjji AY, Thefenne H, Jeddi F, Rebaudet S, et al. Relationship between distinct  
502 African Cholera epidemics revealed via MLVA Haplotyping of 337 *Vibrio cholerae* Isolates. *PLoS*  
503 *Neglected Tropical Diseases*. 2015 Jun 25;9(6).
- 504 29. Mwaba J, Debes AK, Murt KN, Shea P, Simuyandi M, Laban N, et al. Three transmission events of  
505 *Vibrio cholerae* O1 into Lusaka, Zambia. *BMC Infectious Diseases*. 2021 Dec 1;21(1).
- 506 30. Sack DA, Debes AK, Ateudjieu J, Bwire G, Ali M, Ngwa MC, et al. Contrasting Epidemiology of Cholera

- 507 in Bangladesh and Africa. *Journal of Infectious Diseases*. 2021 Dec 15;224:S701–9.
- 508 31. Irengue LM, Ambroise J, Mitangala PN, Bearzatto B, Kabangwa RKS, Durant JF, et al. Genomic analysis  
509 of pathogenic isolates of vibrio cholerae from eastern Democratic Republic of the Congo (2014-2017).  
510 *PLoS Neglected Tropical Diseases*. 2020 Apr 1;14(4):1–16.
- 511 32. Mshana SE, Matee M, Rweyemamu M. Antimicrobial resistance in human and animal pathogens in  
512 Zambia, Democratic Republic of Congo, Mozambique and Tanzania: An urgent need of a sustainable  
513 surveillance system. Vol. 12, *Annals of Clinical Microbiology and Antimicrobials*. 2013.
- 514 33. Pampaka D, Ciglenecki I, Albeti K, Olson D, Risk Factors of Cholera Mortality A Scoping Review. Global  
515 Task Force for Cholera Control. 2022. Available from [https://www.gtfcc.org/wp-](https://www.gtfcc.org/wp-content/uploads/2023/02/gtfcc-risk-factors-of-cholera-mortality.pdf)  
516 [content/uploads/2023/02/gtfcc-risk-factors-of-cholera-mortality.pdf](https://www.gtfcc.org/wp-content/uploads/2023/02/gtfcc-risk-factors-of-cholera-mortality.pdf)
- 517 34. Mutale LS, Winstead A V., Sakubita P, Kapaya F, Nyimbili S, Mulambya NL, et al. Risk and protective  
518 factors for cholera deaths during an urban outbreak-Lusaka, Zambia, 2017-2018. *American Journal of*  
519 *Tropical Medicine and Hygiene*. 2020;102(3):534–40.
- 520 35. Gona PN, Gona CM, Chikwasha V, Haruzivishe C, Rao SR, Mapoma CC. Oral rehydration solution  
521 coverage in under 5 children with diarrhoea: a tri-country, subnational, cross-sectional comparative  
522 analysis of two demographic health surveys cycles. *BMC Public Health*. 2020 Dec 1;20(1).
- 523 36. Chiyangi H, Muma JB, Malama S, Manyahi J, Abade A, Kwenda G, et al. Identification and antimicrobial  
524 resistance patterns of bacterial enteropathogens from children aged 0-59 months at the University  
525 Teaching Hospital, Lusaka, Zambia: A prospective cross-sectional study. *BMC Infect Dis*. 2017 Feb  
526 2;17(1).
- 527 37. Meki CD, Ncube EJ, Voyi K. Community-level interventions for mitigating the risk of waterborne  
528 diarrheal diseases: a systematic review. *Systematic Reviews*. 2022 Dec 1;11(1).
- 529
- 530 38. Fakoya B, Hullahalli K, Rubin DHF, Leitner DR, Chilengi R, Sack DA, et al. Nontoxigenic *Vibrio cholerae*  
531 Challenge Strains for Evaluating Vaccine Efficacy and Inferring Mechanisms of Protection. *mBio*. 2022  
532 Apr 1;13(2).
- 533 39. Ferreras E, Chizema-Kawesha E, Blake A, Chewe O, Mwaba J, Zulu G, et al. Single-Dose Cholera Vaccine  
534 in Response to an Outbreak in Zambia. *New England Journal of Medicine*. 2018 Feb 8;378(6):577–9.
- 535 40. Ferreras E, Matapo B, Chizema-Kawesha E, Chewe O, Mzyece H, Blake A, et al. Delayed second dose  
536 of oral cholera vaccine administered before high-risk period for cholera transmission: Cholera control  
537 strategy in Lusaka, 2016. *PLoS One*. 2019 Aug 1;14(8).
- 538 41. Ferreras E, Blake A, Chewe O, Mwaba J, Zulu G, Poncin M, et al. Alternative observational designs to  
539 estimate the effectiveness of one dose of oral cholera vaccine in Lusaka, Zambia. *Epidemiol Infect*.  
540 2020;
- 541 42. Odevall L, Hong D, Digilio L, Sahastrabuddhe S, Mogasale V, Baik Y, et al. The Euvichol story –  
542 Development and licensure of a safe, effective and affordable oral cholera vaccine through global  
543 public-private partnerships. Vol. 36, *Vaccine*. Elsevier Ltd; 2018. p. 6606–14.
- 544 43. Sialubanje C, Kapina M, Chewe O, Matapo BB, Ngomah AM, Gianetti B, et al. Effectiveness of two  
545 doses of Euvichol-plus oral cholera vaccine in response to the 2017/2018 outbreak: a matched case-  
546 control study in Lusaka, Zambia. *BMJ Open*. 2022 Nov 11;12(11).
- 547 44. Mukonka VM, Sialubanje C, Matapo BB, Chewe O, Ngomah AM, Ngosa W, et al. Euvichol-plus vaccine  
548 campaign coverage during the 2017/2018 cholera outbreak in Lusaka district, Zambia: a cross-  
549 sectional descriptive study. *BMJ Open*. 2023 Oct 5;13(10).
- 550 45. Pugliese-Garcia M, Heyerdahl LW, Mwamba C, Nkwemu S, Chilengi R, Demolis R, et al. Factors  
551 influencing vaccine acceptance and hesitancy in three informal settlements in Lusaka, Zambia.  
552 *Vaccine*. 2018 Sep 5;36(37):5617–24.
- 553 46. Heyerdahl LW, Pugliese-Garcia M, Nkwemu S, Tembo T, Mwamba C, Demolis R, et al. ‘It depends how  
554 one understands it.’ A qualitative study on differential uptake of oral cholera vaccine in three  
555 compounds in Lusaka, Zambia. *BMC Infect Dis*. 2019 May 14;19(1).

- 556 47. Mwaba J, Chisenga CC, Xiao S, Ng'ombe H, Banda E, Shea P, et al. Serum vibriocidal responses when  
557 second doses of oral cholera vaccine are delayed 6 months in Zambia. *Vaccine*. 2021 Jul  
558 22;39(32):4516–23.
- 559 48. Ngombe H, Simuyandi M, Mwaba J, Luchen CC, Alabi P, Chilyabanyama ON, et al. Immunogenicity  
560 and waning immunity from the oral cholera vaccine (Shanchol®) in adults residing in Lukanga Swamps  
561 of Zambia. *PLoS One*. 2022 Jan 1;17(1 January).
- 562 49. Chisenga CC, Bosomprah S, Chilyabanyama ON, Alabi P, Simuyandi M, Mwaba J, et al. Assessment of  
563 the influence of ABO blood groups on oral cholera vaccine immunogenicity in a cholera endemic area  
564 in Zambia. *BMC Public Health*. 2023 Dec 1;23(1).
- 565 50. Luchen CC, Mwaba J, Ngombe H, Alabi PIO, Simuyandi M, Chilyabanyama ON, et al. Effect of HIV  
566 status and retinol on immunogenicity to oral cholera vaccine in adult population living in an endemic  
567 area of Lukanga Swamps, Zambia. *PLoS One*. 2021 Dec 1;16(12 December).
- 568 51. Mwanza-Lisulo M, Chomba MS, Chama M, Besa EC, Funjika E, Zyambo K, et al. Retinoic acid elicits a  
569 coordinated expression of gut-homing markers on T lymphocytes of Zambian men receiving oral  
570 Vivotif, but not Rotarix, Dukoral or OPVERO vaccines. *Vaccine*. 2018 Jun 27;36(28):4134–41.
- 571 52. Mwanza-Lisulo M, Kelly P. Potential for use of retinoic acid as an oral vaccine adjuvant. Vol. 370,  
572 *Philosophical Transactions of the Royal Society B: Biological Sciences*. Royal Society of London; 2015.
- 573 53. Chisenga CC, Phiri B, Ng'ombe H, Muchimba M, Musukuma-Chifulo K, Silwamba S, et al.  
574 Seroconversion and Kinetics of Vibriocidal Antibodies during the First 90 Days of Re-Vaccination with  
575 Oral Cholera Vaccine in an Endemic Population. *Vaccines (Basel)*. 2024 Apr 1;12(4).
- 576 54. Tembo T, Simuyandi M, Chiyenu K, Sharma A, Chilyabanyama ON, Mbwili-Muleya C, et al. Evaluating  
577 the costs of cholera illness and cost-effectiveness of a single dose oral vaccination campaign in Lusaka,  
578 Zambia. *PLoS One*. 2019 May 1;14(5).
- 579 55. Libanda B, Rand E, Gyang GN, Sindano CT, Simwanza L, Chongo M. Recent and future exposure of  
580 water, sanitation, and hygiene systems to climate-related hazards in Zambia. *Journal of Water and  
581 Climate Change*. 2024 Mar 1;15(3):958–77.
- 582 56. Colston JM, Zaitchik BF, Badr HS, Burnett E, Ali SA, Rayamajhi A, et al. Associations Between Eight  
583 Earth Observation-Derived Climate Variables and Enteropathogen Infection: An Independent  
584 Participant Data Meta-Analysis of Surveillance Studies with Broad Spectrum Nucleic Acid Diagnostics.  
585 *Geohealth*. 2022 Jan 1;6(1).
- 586 57. Wiens KE, Xu H, Zou K, Mwaba J, Lessler J, Malembaka EB, et al. Estimating the proportion of clinically  
587 suspected cholera cases that are true *Vibrio cholerae* infections: A systematic review and meta-  
588 analysis. *PLoS Med*. 2023 Sep 1;20(9 September).
- 589 58. Kanungo S, Azman AS, Ramamurthy T, Deen J, Dutta S. Cholera. Vol. 399, *The Lancet*. Elsevier B.V.;  
590 2022. p. 1429–40.
- 591 59. Charnley GEC, Yennan S, Ochu C, Kelman I, Gaythorpe KAM, Murray KA. Cholera past and future in  
592 Nigeria: Are the Global Task Force on Cholera Control's 2030 targets achievable? *PLoS Neglected  
593 Tropical Diseases*. 2023 May 1;17(5).
- 594 60. Charnley GEC, Kelman I, Gaythorpe KAM, Murray KA. Accessing sub-national cholera epidemiological  
595 data for Nigeria and the Democratic Republic of Congo during the seventh pandemic. *BMC Infectious  
596 Disease*. 2022 Dec 1;22(1).
- 597 61. Debes AK, Shaffer AM, Ndikumana T, Liesse I, Ribaira E, Djumo C, et al. Cholera hot spots and  
598 contextual factors in burundi, planning for elimination. *Trop Med Infect Dis*. 2021;6(2).
- 599 62. Sauvageot D, Njanpop-Lafourcade BM, Akilimali L, Anne JC, Bidjada P, Bompangue D, et al. Cholera  
600 Incidence and Mortality in Sub-Saharan African Sites during Multi-country Surveillance. *PLoS  
601 Neglected Tropical Diseases*. 2016 May 17;10(5).
- 602 63. Gupta S Sen, Ganguly NK. Opportunities and challenges for cholera control in India. Vol. 38, *Vaccine*.  
603 Elsevier Ltd; 2020. p. A25–7.
- 604 64. Ray A, Sarkar K, Haldar P, Ghosh R. Oral cholera vaccine delivery strategy in India: Routine or

- 605 campaign? — A scoping review. Vol. 38, *Vaccine*. Elsevier Ltd; 2020. p. A184–93.
- 606 65. Panda S, Chatterjee P, Deb A, Kanungo S, Dutta S. Preventing cholera in India: Synthesizing evidence  
607 through a systematic review for policy discussion on the use of oral cholera vaccine. Vol. 38, *Vaccine*.  
608 Elsevier Ltd; 2020. p. A148–56.
- 609 66. Editorial, A simplified vaccine for cholera outbreak control. *The Lancet Infectious Diseases* VOLUME  
610 24, ISSUE 6, P557, JUNE 2024, Published: June, 2024: [https://doi.org/10.1016/S1473-3099\(24\)00301-](https://doi.org/10.1016/S1473-3099(24)00301-3)  
611 [3](https://doi.org/10.1016/S1473-3099(24)00301-3)
- 612 67. Weil A, Midani F, Chowdhury F, Khan A, Begum Y, Charles R, et al. The Gut Microbiome and  
613 Susceptibility to *Vibrio cholerae* Infection. *Open Forum Infect Dis*. 2015 Dec 9;2(suppl\_1).
- 614 68. Bactolife Binding Proteins and the Future of Cholera Management, [www.bactolife.com](http://www.bactolife.com) Accessed April  
615 2024
- 616 69. ProlhaLytic-VC (PVC) orally dosed 3-phage cholera cocktail in predevelopment,  
617 [www.phageproinc.com](http://www.phageproinc.com) Accessed April 2024
- 618 70. Adebowale-Tambe, N. (2023, November 28). CPHIA 2023 - Zambia Seeks to Host Oral Cholera Vaccine  
619 Manufacturing Hub. Retrieved from Premium Times of Nigeria:  
620 [https://www.premiumtimesng.com/news/top-news/647113-cphia23-zambia-seeks-to-host-](https://www.premiumtimesng.com/news/top-news/647113-cphia23-zambia-seeks-to-host-cholera-vaccine-production-hub.html?tztc=1)  
621 [cholera-vaccine-production-hub.html?tztc=1](https://www.premiumtimesng.com/news/top-news/647113-cphia23-zambia-seeks-to-host-cholera-vaccine-production-hub.html?tztc=1) Accessed 13.06.24
- 622 71. Chaguza C, Chibwe I, Chaima D, Musicha P, Ndeketa L, Kasambara W, et al. Genomic insights into the  
623 2022–2023 *Vibrio cholerae* outbreak in Malawi. *Nature Communications*, (2024), 6291, 15(1).  
624 <https://doi.org/10.1038/s41467-024-50484-w>
- 625 72. Charnley GEC, Kelman I, Murray KA. Drought-related cholera outbreaks in Africa and the implications  
626 for climate change: a narrative review. Vol. 116, *Pathogens and Global Health*. Taylor and Francis Ltd.;  
627 2022. p. 3–12.
- 628 73. Olu OO, Usman A, Ameda IM, Ejiofor N, Mantchombe F, Chamla D, et al. The Chronic Cholera Situation  
629 in Africa: Why Are African Countries Unable to Tame the Well-Known Lion? *Health Serv Insights*. 2023  
630 Jan 1;16.
- 631
- 632

633

634 **Table 2: Comprehensive Review of Cholera Research in Zambia (2013-2024): Aims, Study Design, Population, Identified Risk Factors and**635 **Mitigative Measures**

First Author	Aims	Study Design	Population and Location	Identified Risk Factor	Possible Mitigative Factor	Pillar
Mshana SE 2013 [32]	Antimicrobial resistance in human and animal pathogens in Zambia, DRC, Mozambique and Tanzania	Review of published and unpublished laboratory data from four SSA countries reviewing 68 articles between 1990 and 2020	Zambia, DRC, Tanzania, Mozambique	Diarrhoea diseases cause 25% of Under5 mortality, with increasing resistance between outbreaks of cholera. for example, the cholera outbreak in 1990 was susceptible to tetracyclines with only 5% resistance, compared to 95% in 1992	Urgent need for sustainable surveillance system and cross-border collaborations. Concluded the need for improved surveillance between countries and antimicrobial resistance and sensitivity data sharing.	Laboratory/ Surveillance
Olu O 2013 [8]	Cholera Epidemiology in Zambia from 2000-2010: Implications for improving cholera prevention and control strategies in the country	Review of epi data disaggregated by province from 2000-2010	Endemic cholera in Lusaka, Luapula, Southern and Copperbelt. In 2010 increased to 6974 cases which was a 500% increase from 2003. CFR 1.6%	Cholera was endemic even at that point with confirmed outbreaks every year. LSWC had set up water kiosks to improve access at \$0.02 per 20l of water, which had not increased yet the poor in the slums are still unable to afford the water and resort to shallow wells	Health systems strengthening, multisectoral collaboration and attention to urban development vis a vis well-planned urban dwelling	Leadership & Coordination
Moore S 2015 [28]	Relationship between distinct African cholera epidemics revealed via MLVA haplotyping of 337 vibrio cholera isolates	Microbiological screening of plankton and meteorological monitoring to help better understand environmental factors that trigger cholera outbreaks in the region	Uvira in DRC and Mpulungu in Zambia between 2000-2014 47 environmental samples from Mpulungu from water, plankton and fish between August 2012 and October 2014	Found distinct MVLA haplotypes in the outbreaks different from the singletons found in the environmental samples. Concluded that humans remain the main reservoir disputing the environmental perseverance	Climate dynamics play a part in cholera transmission but most outbreaks in African regions are due to genetically diverse strains that spread into non-endemic areas and cause explosive outbreak	Laboratory/ Surveillance

<b>First Author</b>	<b>Aims</b>	<b>Study Design</b>	<b>Population and Location</b>	<b>Identified Risk Factor</b>	<b>Possible Mitigative Factor</b>	<b>Pillar</b>
Sorensen JP 2015 [22]	Tracing enteric pathogen contamination in sub-Saharan Africa groundwater	Examined water samples from 22 groundwater supplies in Kabwe and explored 16S RNA gene fragments	In Kabwe boreholes and shallow wells using qPCR as tracers for groundwater contamination	Found new evidence that boreholes are vulnerable to contamination possibly due to incompetent casing of shallow wells providing artificial pathways. 41% of the water sources tested had VC on PCR. First evidence of inland persistence of VC even during off-season	Expansion of the city with informal settings and increased boreholes puts people at an increased risk of contaminated water due to the false assumption that the borehole water is safe First evidence for perennial inland freshwater reservoir of vibrio cholera inland (most were in the tropics – unlike the Ganges delta)	Water, Sanitation and Hygiene
Matapo B 2016 [10]	Successful Multipariter response to a cholera outbreak in Lusaka, Zambia 2016: a case-control study	Case-control study done 1:3 to identify factors associated with a cholera outbreak	Cases were identified from the CTC register in Bauleni and controls were residents of Bauleni without water diarrhoea between March and May 2016	Positive vibrio in stool was associated with drinking inadequately treated borehole water.	Akin to the London cholera outbreak of 1854, the closure of a contaminated water source (borehole in this case) directly led to a reduction of cholera cases in the locality. Vaccines were also deployed	Leadership & Coordination
Mwaba J 2016 [24]	Evaluation of the SB Bionline® cholera rapid diagnostic test during the 2016 cholera outbreak in Lusaka, Zambia	RCT of RDT vs Culture on fresh stool of 170 cholera suspects.	Lusaka-based RCT during the 2016/2017 outbreak between April and June 2017. 90% sensitivity and 95% sensitivity and recommended for use in the field early in an outbreak	Paper focused on the lab analysis of the RDT kit and found it as a useful tool to increase the turnaround time for surveillance needs especially in settings with prevalent acute water diarrhoea	Enhanced surveillance for cases with AWD to increase the identification of cases	Laboratory/ Surveillance

<b>First Author</b>	<b>Aims</b>	<b>Study Design</b>	<b>Population and Location</b>	<b>Identified Risk Factor</b>	<b>Possible Mitigative Factor</b>	<b>Pillar</b>
Chirambo RM 2016 [12]	Epidemiology of the 2016 cholera outbreak in Chibombo District, Central	Descriptive study using routine epi-data	23 cholera cases meeting case definition between 9th Feb - 20 March 2016	Index case was imported from Lusaka hence even areas that have never reported outbreaks can have introduction	More emphasis needed on preventative efforts as opposed to response efforts.	Laboratory/ Surveillance
Mwambi P 2016 [21]	Timely response and containment of 2016 Cholera outbreak in Northern Zambia	Descriptive study of epidemiological records	68 cases from Nsumbu, Nsama district between 10th March and 3rd April 2016	Outbreak precipitated by flooding of Kapisha Dam, leading to the submerging of pit latrines. High CFR of 3.6 % possibly due to late notification	Improve response timeliness (utility of 7-1-7 frameworks)	Laboratory/ Surveillance
Chiyangi H 2017 [36]	Identification and antimicrobial resistance patterns of bacterial enteropathogens a prospective cross-sectional study	Hospital-based cross-sectional study examining stool samples	Cross-sectional study of stool in children 0-59months, enrolled 271, December 2015 to April 2016 at University Teaching Hospital in Lusaka	31% of total samples had either VC, Salmonella, DEC or Shigella. (40.8% of which were VC). Of the cholera cotrimoxazole resistance and the common pattern	Was part of the recommendation to change our case management guidelines for Cholera Case Management guidelines away from empirical cotrimoxazole and ampicillin to Doxycycline	Laboratory/ Surveillance
Gama A 2017 [9]	Cholera Outbreak in Chiengi and Nchelenge Fishing Camps, Zambia 2017	Outbreak report reviewing medical records of suspected and confirmed cases	76 cases from Nchelenge and Chiengi districts in Luapula Province which neighbours DRC on the shores of Lake Mweru	Poor sanitary facilities in the fishing camps, movement of people across water borders, poor knowledge of WASH and drinking water from shallow water sources that were contaminated	Recommended improved lab capacity even in rural settings to improve case confirmation and surveillance. Continuous community sensitization	Laboratory/ Surveillance
Ferreras E 2018 [39]	Single dose cholera vaccine in response to an outbreak in Zambia, correspondence in the NEJM	Matched case-control study to quantify the short-term effectiveness of a single dose campaign. Between April	66 cases with confirmed cholera and 330 matched controls from Lusaka	This was the early evidence of the protective efficacy of short-term reactive campaigns with OCV. Still, the fact that we had another outbreak in Lusaka in 2017 makes one question the efficacy of the single-dose campaign	Probably OCV isn't the only answer to achieve cholera elimination. especially since shortages on the global stockpile don't seem to be ending soon. Although suggested doing so annually before the endemic season, like in Cameroon	Oral Cholera Vaccinations

First Author	Aims	Study Design	Population and Location	Identified Risk Factor	Possible Mitigative Factor	Pillar
		2016 and June 2016				
Kapata N 2018 [25]	A multisectoral emergency response approach to a cholera outbreak in Zambia from October 2017 to February 2018	Descriptive analysis of outbreak response with timing of particular interventions	Cholera outbreak in Lusaka, between 7th October 2017 and February 2018 when 3989 cases reported	Poor drainage, reliance on groundwater, and showed how the deployment of emergency tanks reduced the number of cases. Reported also on the first use of OCV in a reactive campaign to help curtail the outbreak	advocated for the first iteration of the MCEP with a combination of planned pre-emptive campaigns of OCV every 3 years, and longer-term WASH investment	Leadership & Coordination
Mwanza Lisulo M 2018 [51]	Retinoic acid elicits a coordinated expression of gut homing markers on T lymphocytes of Zambian men receiving oral Vivotif® but not Rotarix®, Dukoral® or Opvero® vaccines	Initial paper was mouse models for supplementation of vit A and immunogenicity (52), second phase was in adult males	Diminished immunogenicity and efficacy of oral vaccines, Vit A supplementation reduces death	The immune boosting effect of vitamin A is in typhoid vaccine but not the others	Immune boosting effect of vit A seen in typhoid vaccine but not others including Duchoral® and Rotarix® however this shows insight into the possibility of adjuvants to improve host response to the vaccines	Oral Cholera Vaccinations
Poncin M 2018 [26]	Implementation research: reactive mass vaccination with a single dose oral cholera vaccine, Zambia	Documented the successful implementation of a single dose campaign in 10 wards of Lusaka. Single dose because of shortage on the global stockpile	Lusaka during the 2016 outbreak, with a campaign conducted 2 months from confirmation of the first case	Showed successful implementation of the single dose campaign (though it cost almost \$1mil total for the campaign to vaccinate just over 424,100 doses given in 17 days representing 78% coverage) meaning cost increases with every outbreak - currently on 3 mil doses needed for Lusaka. Plus	Increase access to vaccines to keep the global stockpile replenished. In the meantime, single-dose campaigns allow protection for a greater population during an outbreak. Also, static sites more effective than house-to-house	Oral Cholera Vaccinations



<b>First Author</b>	<b>Aims</b>	<b>Study Design</b>	<b>Population and Location</b>	<b>Identified Risk Factor</b>	<b>Possible Mitigative Factor</b>	<b>Pillar</b>
				an outbreak 2 years later questions the efficacy		
Pugliese-Garcia 2018 [45]	Factors influencing vaccine acceptance and hesitance in three informal settlements in Lusaka, Zambia	Nested in vaccine uptake study	Reported findings from 48 focus group discussions with lay ppl, neighbourhood health committee members and vaccinators	Traditional remedies, alcohol use and religious beliefs emerged as drivers of vaccine hesitancy, likely reinforced by a background of distrust towards Western medicine	recommended community-driven models that incorporate factual communication by professionals. Vaccine information should be pre-emptive not just during the campaigns	Community Engagement
Sinyange et al. 2018 [20]	Cholera epidemic- Lusaka, Zambia October 2017 - May 2018	Description of the outbreak and the interventions done at different stages of the response. A cross-sectional household survey	5,905 cases and 98 deaths case fatality rate of 1.6 %  Knowledge, Attitudes and Perspectives (KAP) survey in 98 households in the affected communities	Inadequate supply of safe water by utility companies, i.e. use of shallow wells, private boreholes or water kiosks, contamination of piped water sources	Due to cost implications of city-wide water and sanitation infrastructure, a targeted approach to improvement in the particular wards with firstly flush to sewage sanitation systems, and then possibly improvement of piped water sources in these communities.	Laboratory/ Surveillance

<b>First Author</b>	<b>Aims</b>	<b>Study Design</b>	<b>Population and Location</b>	<b>Identified Risk Factor</b>	<b>Possible Mitigative Factor</b>	<b>Pillar</b>
Ferreras E 2019 [40]	Delayed second dose of OCV administered before high-risk period for cholera transmission: cholera control strategy in Lusaka, 2016	Post vaccination coverage survey done in December 2016 following the outbreak that was declared in February (Poncin 2018 reported on the actual campaign)	505 randomly selected people after 1st round, and 442 after 2nd round	Post-vaccination coverage survey only 33.9% of two doses, and 36.0% of one dose in the targeted neighbourhoods. And for those getting their vaccination in April 30% vs 70% in December suggesting that only a fraction of the population was still present in the vaccination areas. Only 19% had two doses and there was another outbreak in October 2017 showing limited efficacy of the targeted campaign	They had suggested that annual campaigns prior to the cholera seasons might be a more effective strategy to reduce the risk of outbreaks in places at high risk of transmission, especially in settings like this with highly mobile populations	Oral Cholera Vaccinations
Heyerdahl LW 2019 [46]	"It depends on how one understands it" - a qualitative study on the differential uptake of OCV in 3 compounds in Lusaka	Study on community perspectives of OCV, nested study within the rapid qualitative assessments in 3 compounds in Lusaka during the 2016 outbreak	Findings from 18 focus group discussions with equal men and women who reported being unvaccinated during the first and second round of vaccinations and 6 with men and women who were vaccinated at the end of the second round	Some in at-risk groups not taking the vaccine due to concerns of Western malevolence. Those who took both doses had awareness of their risks and that they were unable to change their living conditions. Others though did not take the vaccine because they felt helpless and susceptible anyway	Myths and misconceptions exist that could affect vaccine acceptance, some steeped deep in traditional beliefs, so need to be more transparent and open communication, and more local studies on efficacy	Community Engagement
Tembo T 2019 [54]	Evaluating the cost of cholera illness and cost-effectiveness of a single dose OCV in Lusaka Zambia	Retrospective cost-effective analysis to estimate out-of-pocket costs to the individuals who were	From April to June 2017, 189 cholera survivors from Lusaka	The cost per administered vaccine was US\$1.72, treatment costs higher for older patients \$17.66-\$35.16 mostly for non-medical items. Costs per case averted by vaccination \$369-\$532, cost per life year saved US\$18515 - US\$27,976 and total	Cost-effectiveness of the reactive vaccination campaign, particularly at the household level but not on a macroeconomic scale	Leadership & Coordination

<b>First Author</b>	<b>Aims</b>	<b>Study Design</b>	<b>Population and Location</b>	<b>Identified Risk Factor</b>	<b>Possible Mitigative Factor</b>	<b>Pillar</b>
		treated for cholera		DALY averted was up to \$1000 for patients older than 16		
Ferreras E 2020 [41]	Alternative observational designs to estimate the effectiveness of one dose OCV in Lusaka, Zambia	Compared the methods of testing effectiveness, matched case-control, test negative case-control and case-cohort study to interrogate methods of vaccine efficacy studies	360 vaccinated and 561 unvaccinated individuals in Lusaka. Followed up for 6 months	found 88% effectiveness of one dose strategy but for only 60 days protection. Useful in reactive campaigns. Bias towards elderly patients. Poor quality of vaccination cards so poor retention of these	In fact, the rains and the timing of seasons, you wouldn't expect to see cases after June even after the vaccination. Also, efficacy was higher in these studies because they had older populations. The efficacy of single-dose strategy in Bangladesh under 5 is less than 58% so we may need to revisit this recommendation	Oral Cholera Vaccinations
Gona PN 2020 [35]	Examined the coverage of ORS available in households in Zambia, Malawi and Zimbabwe amongst households with children with diarrhoea using cross-sectional comparative analysis of two demographic health survey cycles	Tri-county cross-sectional survey across 2 time periods and compared DHS data and household questionnaires	Country-wide assessment over two DHS cycles. Plateaued ORS coverage. Lower in rural provinces (Muchinga, Northern, and Central had less than 60% coverage in 2013)	Identified hotspots with lower coverage, also mothers with less education, older or HIV negative had less routine ORS usage despite increase in diarrhoeal deaths. Noted increased diarrhoea expected with climate change effects	Policies needed to strengthen access to appropriate treatments and promote ORS use to be implemented which could help reduce routine deaths from diarrhoea and conversely community deaths from cholera	Case Management

<b>First Author</b>	<b>Aims</b>	<b>Study Design</b>	<b>Population and Location</b>	<b>Identified Risk Factor</b>	<b>Possible Mitigative Factor</b>	<b>Pillar</b>
Ireng LM 2020 [31]	Genomic analysis of pathogenic isolates of vibrio cholera from eastern DRC (2014-2017)	Lab-based descriptive study	97 patient isolates from 3 sites in DRC	Phenotypic analysis and WGS for strains from DRC to determine relatedness from DRC and potential to spread to Zed (ST%15 Clade spread here from DRC)	Need for enhanced cross-border surveillance	Laboratory/ Surveillance
Mutale L 2020 [34]	Risk and Protective factors for cholera deaths during an urban outbreak in Lusaka 2017-2018	Case-control study, administered questionnaire and used univariate logistic regression to calculate matched odds ratios for death	Lusaka between October 2017 and January 2018 and compared 38 decedents and 76 survivors	Mean age was 38 for deaths and 25 for survivors. Odds of death above age 55 was 6.3 with 95% CI:1.2-63.0 or those who did not complete primary school (mOR 8.6, 95%CI:1.8-81.7)	Higher odds of dying with increased age above 55 years or illiterate hence messaging should address these groups and not only traditional print media. Also, need for emphasis on ORS at home as cornerstone of early treatment	Case Management
Mwape K 2020 [16]	Characterisation of V. cholerae isolates from 2009, 2010, and 2016 outbreaks in Lusaka Province	Lab-based descriptive cross-sectional study that examined 83 isolates from 3 different outbreaks (2009, 2010 and 2016)	Stool and rectal swabs from stored samples in the Lusaka outbreak were examined	Showed high genetic diversity amongst the strains suggesting not only a common source but also rising multidrug resistance. 90% were sensitive to cotrimoxazole, which is different from sensitivities seen in the 2023/2024 outbreak. Ogawa strains were responsible for 2009 and 2016, but Inaba for 2010	Recommended close monitoring of the V. cholerae strains causing outbreaks due to increasing MDR strains, and reversion to previously sensitive strains	Laboratory/ Surveillance
Nanzaluka FH 2020 [19]	Risk factors for epidemic Cholera in Lusaka, Zambia - 2017	Case-control study with controls as neighbours with no diarrhoea during the period. 2:1. tested FRC and the presence of	Lusaka, 82 cases and 132 controls in Lusaka District in Dec 2017	Inadequate supply of safe water by utility companies, i.e. use of shallow wells, private boreholes or water kiosks, contamination of piped water sources (57% of cases and 52% of controls used shallow wells hence resorting to shallow wells, especially during rationing. 84% of cases and 88% of controlled reported	Borehole water was one of the risks, male, close contact of cholera case. All households reported inadequate access to water due to intermittent supply. Need for enhanced investment in municipal infrastructure for centralized water delivery in adequate quantities	Laboratory/ Surveillance

First Author	Aims	Study Design	Population and Location	Identified Risk Factor	Possible Mitigative Factor	Pillar
		soap in the home		inadequate water in their homes from any source		
Reaver et al 2020 [23]	Evaluated the quality and provision of drinking water provision in six low-income peri-urban communities of Lusaka, Zambia	Examined water samples from 77 unique sites in the 6 communities with matched GPS coordinates at 4 time points between June 2013 and June 2019	Peri-urban slums in Lusaka - particularly Chaisa, Chazanga, Chipata, Garden, Ngombe and Kanyama. Covering a total population of over 1 million people. They sampled 16 Water Trust boreholes, 23 kiosks linked to Water Trust boreholes, 27 shallow hand-dug wells and 11 privately owned boreholes over the 6 years	These peri-urban communities overlay crystallite dolomite and dolomitic limestone formations that render them extremely vulnerable to groundwater contamination. Water trusts are private boreholes that treat and provide water to the communities as a supplement to municipal water utility companies. Shallow wells were found to be most contaminated with Ecoli and the Trusts offered a safer alternative. However, all showed evidence of nitrite contamination (72% for the shallow wells, 25% private boreholes and 16% water trusts) showing vulnerability to faecal contamination even at those depths	Water Trusts provide a safer alternative to underserved populations, however, only cater for 60% of the population who would still need shallow wells. There would be a need to expand the distribution capacity of the trusts and subsidise costs to the population, particularly vulnerable to increase access to safe water, as a bridge to longer-term investment. Added need to expand monitoring of water quality by the Ministry of Health	Water, Sanitation and Hygiene

<b>First Author</b>	<b>Aims</b>	<b>Study Design</b>	<b>Population and Location</b>	<b>Identified Risk Factor</b>	<b>Possible Mitigative Factor</b>	<b>Pillar</b>
Mwaba J et al 2020 [17]	Identification of cholera hotspots in Zambia: A spatiotemporal analysis of cholera data from 2008 - 2017	Descriptive analysis of the cholera outbreaks in the 10 provinces of Zambia based on the data collected from the MOH surveillance platform over 10 years, with additional information from the Demographic Health Survey. Then used Poisson-based space-time scan statistics to estimate spatial districts and hotspots	Cases were noted by district and age and showed 72 of 116 districts had reported cholera cases. 29,080 cases were reported in Lusaka in the 10 years (i.e., 89% of the total 34,950 cases during the period). Limitation was they excluded children under 2 years even in hotspots	Wards in Lusaka that housed high-density communities (only 3 of the 33 wards had the highest risk) Outside of Lusaka, districts that had proximity to water bodies, and movement between neighbouring districts. Hypothesised increase of cases associated with rainfall and flooding. Limited by the lack of access to WASH data	Targeted interventions in the hotspot districts and the particularly affected wards. Recommended for real-time case investigation with GIS mapping for future outbreaks for real-time interventions. This was done during the 2023/2024 outbreak	Laboratory/ Surveillance
Luchen CC 2021 [50]	Effect of HIV Status and retinol on immunogenicity to OCV in adult population living in an endemic area of Lukanga Swamps, Zambia	Nested study in a cohort of patients in Lukanga swamps followed up for 4 years investigating long-term immunogenicity of OCV	Compared 47 participants and found 24 who were HIV positive	Reduced immunogenicity from HIV positive in line with the CD4 and viral load and so more work is needed	Host factors such as HIV status need to be specifically studied to understand vaccine efficacy and transmission dynamics	Oral Cholera Vaccinations

<b>First Author</b>	<b>Aims</b>	<b>Study Design</b>	<b>Population and Location</b>	<b>Identified Risk Factor</b>	<b>Possible Mitigative Factor</b>	<b>Pillar</b>
Mwaba J 2020 [29]	Three transmission events of vibrio cholerae 01 into Lusaka Zambia	Examination of 72 VC isolates from the 3 different outbreaks to compare the multilocus variable number tandem repeat analysis (MLVA) and whole genomic sequencing	Isolates from stored stool samples from the Lusaka outbreaks, and Mpulungu and Chiengi for the later outbreaks. Mpulungu isolates identical to Lusaka	MLVA of isolates from the 2009,2016 and 2017 outbreaks shows that 3 separate transmission events occurred. Isolates from 2016 and 2017 in Kanyama were distinct and showed the vulnerability of these wards	Dispute the endemicity theory since the isolates were genetically distinct even in concurrent years. Instead, advocate for measures to prevent reintroduction and recurrent spread of vibrio into Zambia	Laboratory/ Surveillance
Mwaba J 2021 [47]	Serum vibriocidal responses when second doses of oral cholera vaccine are delayed 6 months in Zambia	Open-label phase 2 RCT in healthy adults to compare vaccine vibriocidal GMT at 2 weeks and 6 months (so 14 days after OCV was given)	152 Adults in Lukanga Swamps (70 km from Kabwe) dosed between October 2017 and April 2018	People residing in fishing camps, with high mobility to Lusaka where an outbreak was happening. Hence the delayed second dose is acceptable	No difference hence suggesting the flexible dosing for the 2d dose is acceptable	Oral Cholera Vaccinations
Sack D 2021 [30]	Contrasting epidemiology of Cholera in Bangladesh and Africa	Review article comparing patterns of cholera outbreaks in Bangladesh and in Cameroon, at sentinel sites, the team had set up as part of enhanced surveillance efforts	Compared outbreaks in Bangladesh to what was seen in Cameroon, DRC, Zambia, Zanzibar and Uganda	Ganges Delta is seasonal, but in Africa inconsistent with explosive outbreaks. Elimination of lineages and reintroduction possibly by travellers. Need to re-examine the use of OCV and WASH. Proposed that reintroduction more likely than environmental reservoirs which spring up when climatic conditions are favourable since the lineages are different across the years. Evident association with climatic factors influencing outbreaks in Africa	Need for improved surveillance systems to ensure that estimated burden of cholera in Africa is not an overestimation. Reintroduction events also warrant a need for better cross-border collaboration. Champion for elimination efforts to be done at district level and prevent reintroduction. Need to explore household transmission dynamics and effects, and further studies to explore environmental reservoirs	Laboratory/ Surveillance

<b>First Author</b>	<b>Aims</b>	<b>Study Design</b>	<b>Population and Location</b>	<b>Identified Risk Factor</b>	<b>Possible Mitigative Factor</b>	<b>Pillar</b>
Malata M 2021 [13]	Quantitative exposure assessment to <i>Vibrio cholerae</i> through consumption of fresh fish in Lusaka province	Simulation study using Swift Quantitative Microbial Risk Assessment (sQMRA) model framework following pathogen numbers in 3 transmission settings	Used secondary data from MOH sources, then conducted household questionnaires in different social strata in Lusaka	Low risk of cholera acquired through consumption across different pathways in Lusaka because of the food preparation practises here (raw fish rarely eaten)	Messaging should be clear and need not mention fish as a transmission route as this has been disproved	Laboratory/ Surveillance
Colston J 2022 [56]	Associations between eight earth observation-derived climate variables and enteropathogen infection: an independent participant data metanalysis of surveillance sites with Broad spectrum nucleic acid diagnostics	Metanalysis of studies from different countries bringing together data sources from molecular and climatic zones	64,788 eligible stool samples from 20,760 children were analysed	Rotavirus infection decreased markedly following increasing 7-day average temperatures-a relative risk of 0.76 (95% confidence interval: 0.69-0.85) above 28°C-while ETEC risk increased by almost half, 1.43 (1.36-1.50), in the 20-35°C range. Risk for all pathogens was highest following soil moistures in the upper range. Humidity was associated with increases in bacterial infections and decreases in most viral infections	supports evidence of a U-shaped association between rainfall and enteric pathogen proliferation due to concentration-dilution hypothesis greater precipitation variability due to climate change on diarrhoea-causing pathogens is not certain and is likely to be highly species and location-specific	Water, Sanitation and Hygiene
Fakoya B 2022 [38]	Non-toxigenic vibrio cholera challenge strains for evaluation vaccine efficacy and inferring mechanisms of protection	Preclinical studies on Zchol strains that have been shown to effectively induce immunity	Infant mice models to show toxicity vs immunity garnered from the Zchol strains	Created a non-toxigenic Zchol strain that can be used in controlled human infection studies. However, noted that these human challenge studies are often not done in endemic countries. But proposed that such a strain could be useful to one day	Recommended for additional research in endemic areas such as ours to test out new vaccines, plus other studies into transmission dynamics	Oral Cholera Vaccinations



<b>First Author</b>	<b>Aims</b>	<b>Study Design</b>	<b>Population and Location</b>	<b>Identified Risk Factor</b>	<b>Possible Mitigative Factor</b>	<b>Pillar</b>
Meki CD 2022 [37]	Community Level interventions for mitigating the Risk of water-borne diarrhoeal disease - a systematic review	Systematic review of full papers published across the world between 2009 and 2020 describing various community-level interventions that could reduce diarrhoeal disease	Worldwide, including publications from Zambia	Poor WASH and poor healthcare systems were identified as risks for cholera outbreaks, minimal evidence of the efficacy of vaccines, and the need for improved surveillance	Recommend that interventions for waterborne diseases be concentrated in developing countries as they are the main areas where these diseases are most common. The interventions must also concentrate mostly on control of the disease in children even though adults are also affected. At a community level, vaccines seem to be the most effective interventions and are probably the easiest to implement	Oral Cholera Vaccinations
Ng'ombe H 2022 [48]	Immunogenicity and waning immunity from the oral cholera vaccine (ShanchoI™) in adults residing in Lukanga Swamps of Zambia	Sub study of the nested control trail in Lukanga swamps	Cohort of 223 patients aged 18 - 65	Seroconversion was only 25% for organ and inaba after 1 dose. Waned below baseline by 12 months and increased at 36 months maybe natural exposure so that would be a good time to revaccinate	Vibriocidal Antibodies wane by month 36 hence recommendation for repeat vaccination campaigns every 3 years	Oral Cholera Vaccinations
Sialubanje C 2022 [43]	Effectiveness of two doses of Euvichol plus oral cholera vaccine in response to the 2017/2018 outbreak: a matched case-control study in Lusaka Zambia	Matched case-control study following mass vaccination campaign in 2018 in Lusaka	79 cases and 316 controls identified from 5715 patients who had been recorded at any of the 6 CTCs in Lusaka	Conditional logistical regression analysis showed a significant association between two doses of the Euvichol- plus OCV and vaccine protection (AOR=0.19; 95% CI 0.16 to 0.28) with vaccine effectiveness of 81% (95% CI 72.0% to 84.0%; p value <0.01) (table 2). The effectiveness of any (one or more) doses of Euvichol-plus® vaccine was 74%. It was the first use of Euvichol® here and suggested that the two-dose strategy was better than a single dose in outbreak setting'	Recommended for more longitudinal studies to determine the long-term effectiveness of two doses of OCV among the vaccinated populations in the local context. Further research is also required to determine the effectiveness and usefulness of Euvichol- plus® vaccine in conferring herd immunity among non-vaccinated individuals during mass immunisation and to determine the required minimum	Oral Cholera Vaccinations

First Author	Aims	Study Design	Population and Location	Identified Risk Factor	Possible Mitigative Factor	Pillar
					coverage. Finally, further research is needed to determine Euvichol-plus® vaccine effectiveness among people living with HIV and its usefulness among these populations	
Chisenga CC 2023 [49]	Assessment of the influence of ABO blood groups on OCV immunogenicity in a cholera endemic area in Zambia	Longitudinal study nested in the clinical trial in Lukanga Swamps with patients being followed up 4 years post-vaccination. Measured GMT at day 28, 6M, 12M, 24M, 30M, 36M and 48 M	Lukanga Swamps, 4-year cohort, 133 patients included in the assessment	Sub-study of their 4-year cohort found no influence of ABO on the influence of vaccine uptake and cholera response	No support for ABO influencing vaccine uptake, but an important study opening the gateway to investigate host-specific factors associated with cholera acquisition	Oral Cholera Vaccinations

<b>First Author</b>	<b>Aims</b>	<b>Study Design</b>	<b>Population and Location</b>	<b>Identified Risk Factor</b>	<b>Possible Mitigative Factor</b>	<b>Pillar</b>
Maity B 2023 [27]	Model-Based estimation to expected time to cholera extinction in Lusaka, Zambia	Exploration of epidemiological modes of transmission. Used weekly case numbers and inputted them into two transmission modes human-to-human vs environment-to-human	Mathematical modelling for Lusaka based on cases between October 2017 and May 2018	Calculating R0 both modes were active in first wave but Environment-to-human route was a dominant mode in second wave - heavy rainfalls, floods and reducing in water and sanitation led to an indirect mode of transmission due to increased environmental vibrio. Time to extinction was calculated as Cholera can last 8 months - 6.5 years. they quoted the MCEP as supporting their findings	WASH interventions and Mass vaccinations should be combined to end cholera	Water, Sanitation and Hygiene
Mukonka VM 2023 [44]	Euchivol-plus® vaccine campaign coverage during the 2017/2018 cholera outbreak in Lusaka district; a cross-sectional descriptive study	Descriptive cross-sectional analysis of OCV coverage in 2017/2018 outbreaks using satellite map-based sampling to identify households	1691 participants from four localities in Lusaka (Kanyama, Chawama, Chipata and Matero)	Reported OCV administratively was much higher than actual coverage, with only 66% getting two doses and, an 18% dropout rate. Majority vaccinated were female, could that explain our male predominance now? Reliance on administration has always been lower because of data inaccuracies and also studies to look into reasons for high vaccine dropout rates	Recommend interventions during OCV campaigns that target particular patient groups (men in this case) and risk communication initiatives to reduce dropout rates	Oral Cholera Vaccinations
Gething W 2023 [11]	Geospatial analysis of cholera risk in Lusaka to inform improved water and sanitation provision following 2018 outbreak	Conducted geospatial mapping of the cases and their communities to produce granular risk maps followed by mathematical modelling of risk factors against	Lusaka wide	Risk factors here increased density, unimproved sanitation, high sanitation index and prevalence of E. coli contamination in water sources. Plus decreased risk with distance from flooding	Provision of flush-to- sewer to all households reduced 90% of cholera cases if implemented. Next was provision of piped water to all households would reduce by 61%. Proposed interventions would need to be done at ward level to counter high-cost implications	Water, Sanitation and Hygiene

First Author	Aims	Study Design	Population and Location	Identified Risk Factor	Possible Mitigative Factor	Pillar
		different scenarios to predict reductions in cholera cases based on the different proposed interventions				
Wiens KE 2023 [18]	Systematic review estimating the proportion of clinically suspected cholera cases that are true vibrio cholerae infections - a systematic review and metanalysis	Meta-analysis of 119 papers from 30 countries	Worldwide meta-analysis of 30 countries over 20 years from 2000 to 2023	Suggested that the number of cases meeting the case definition may be higher than true cholera cases especially outside outbreak seasons, so we needed more specific testing (only 52% representing true V. cholerae) outside of outbreak seasons	Need to improve clinical cholera surveillance (e.g. patients visiting traditional healers and pharmacists) may help understand the true burden especially early in outbreaks - i.e. recommend a clinical early warning system	Laboratory/ Surveillance
Chisenga C 2024 [53]	Examination of seroconversion and kinetics of vibriocidal antibodies during the first 90 days of revaccination with OCV in an endemic population.	A prospective study following a cohort of patients who had been vaccinated 4 years prior vs naïve. Bloods collected at 5 time points and vibriocidal antibodies compared for an estimate of the protective immunity provided	Lukanga Swaps in Kapiri Mposhi, 182 in the final analysis	Seroconversion was similar regardless of previous vaccination status with rapid waning	Proposed revaccination at day 30 as the antibodies are higher than baseline in naïve individuals	Oral Cholera Vaccinations

<b>First Author</b>	<b>Aims</b>	<b>Study Design</b>	<b>Population and Location</b>	<b>Identified Risk Factor</b>	<b>Possible Mitigative Factor</b>	<b>Pillar</b>
Libanda B 2024 [55]	Recent and future exposure of water, sanitation and hygiene systems to climate-related hazards in Zambia	Utilised the WHO/UNICEF Joint Monitoring Programme on Water, supply, Sanitation and Hygiene for 2000-2021 to estimate WASH coverage in Zambia. Then combined with the Global Precipitation Climatology Centre's monthly precipitation data, they conducted simulations from the latest Coupled Model Intercomparing Project Phase 6 (CMIP6)	Nationwide	Nationally, 65% of the population have access to safe drinking water, 32% rely on unimproved water services, 6% on limited service and 7% depend on surface water. 32% of the population have access to basic sanitation, 20% limited sanitation, 11% depend on open defecation, and 37% use unimproved sanitation - with urban dwellers, particularly in the peri-urban slums that represent 70% of the population, fairsing worse than rural ones in terms of sanitation. Less than half the population have hygiene services. Association with rainy season 71% of cholera outbreaks, a 300% increase with El Nino. Drought is the most common high-impact hazard, and drought-driven water shortages will lead more people to unsafe water sources. Besides increasing people's exposure to contaminated water, these climatic events also lead to deterioration of sanitary services	Need to build urban resilience against flooding. All drainages need to be interconnected, particularly in Lusaka which has peri-urban settlements. Climate resilience should lead to ongoing WASH investment, particularly when seeking to secure groundwater sources which will drop to critically low levels during the drought years projected in the middle of the century. Rural populations facing drought may migrate more to peri-urban settlements, further compounding the water-stressed situations and the likelihood of cholera outbreaks	Water, Sanitation and Hygiene
Mbewe N 2024 [4]	Survival analysis of patients with cholera admitted to treatment centres in Lusaka, Zambia	Cohort analysis of in-patient data in Lusaka during the 2023/204 outbreak	1529 patient survival outcomes described between 10th January and 30th April 2024 admitted in any CTC in Lusaka	Older age and the presence of comorbid conditions are associated with higher odds of mortality during admission. Previous vaccination seen as protective	Need to understand better the interplay of comorbidities on case management, particularly the implication on fluid management	Case Management