

1 AROMHA Brain Health Test: A Remote Olfactory 2 Assessment as a Screen for Cognitive Impairment

3 Benoît Jobin^{1,2}, Colin Magdamo^{1,3}, Daniela Delphus¹, Andreas Runde¹, Sean Reineke⁴, Alysa Alejandro
4 Soto¹, Beyzanur Ergun¹, Alefiya Dhillal Albers^{5,1*}, Mark W. Albers^{1,3*}.

5
6 1 Department of Neurology, Massachusetts General Hospital.

7 2 Department of Psychology, Université du Québec à Trois-Rivières.

8 3 Harvard Medical School.

9 4 AROMHA Inc.

10 5 Department of Psychology, Endicott College.

11
12
13 *Corresponding authors: Alefiya Dhillal Albers, aalbers@endicott.edu;

14 Mark W Albers, albers.mark@mgh.harvard.edu

15
16 Contact author: Mark W. Albers, 114 16th Street, Room 2003, Charlestown, MA 02129, United
17 States. Phone: 617-724-7401.

23 **Abstract**

24 Cost-effective, noninvasive screening methods for preclinical Alzheimer’s disease (AD) and
25 other neurocognitive disorders remain an unmet need. The olfactory neural circuits develop AD
26 pathological changes prior to symptom onset. To probe these vulnerable circuits, we developed
27 the digital remote AROMHA Brain Health Test (ABHT), an at-home odor identification,
28 discrimination, memory, and intensity assessment.

29 The ABHT was self-administered among cognitively normal (CN) English and Spanish speakers
30 (n=127), participants with subjective cognitive complaints (SCC; n=34), and mild cognitive
31 impairment (MCI; n=19). Self-administered tests took place remotely at home under unobserved
32 (among interested CN participants) and observed modalities (CN, SCC, and MCI), as well as in-
33 person with a research assistant present (CN, SCC, and MCI).

34 Olfactory performance was similar across observed and unobserved remote self-administration
35 and between English and Spanish speakers. Odor memory, identification, and discrimination
36 scores decreased with age, and olfactory identification and discrimination were lower in the MCI
37 group compared to CN and SCC groups, independent of age, sex, and education.

38 The ABHT revealed age-related olfactory decline, and discriminated CN older adults from those
39 with cognitive impairment. Replication of our results in other populations would support the use
40 of the ABHT to identify and monitor individuals at risk for developing dementia.

41 Keywords: Remote assessment, screening, Alzheimer’s disease, Mild cognitive impairment,
42 olfaction.

43

44 **Introduction**

45 Alzheimer's disease (AD) affects over 6.9 million Americans, and this number is
46 expected to grow to 13.9 million by 2060 with devastating economic consequences for society
47 (>\$335B / year in the US) and families (>\$330B in unpaid care provided predominantly by
48 family members)¹. The dementia syndrome of AD is now considered an advanced stage of the
49 disease since radiological and pathological evidence demonstrate that pathology begins to
50 accumulate 15-20 years before the onset of memory symptoms²⁻⁵. At the onset of self-reported
51 memory symptoms, neuropsychological testing is often normal – a stage termed subjective
52 cognitive decline or subjective cognitive complaints (SCC)⁶. As the disease progresses to
53 amnesic memory deficits revealed by psychometric testing, this stage becomes mild cognitive
54 impairment (MCI), a stage preceding dementia where activities of daily living are not impaired
55 yet by cognitive deficits. While most clinical trials have focused on the symptomatic stage of the
56 disease, many investigators hypothesize that treatment during these preclinical SCC and MCI
57 stages is likely to be more efficacious⁷⁻⁹. A cost-effective, noninvasive screen for preclinical AD
58 performed at home would enable important research in this area by affording a means for more
59 efficient screening, such as blood-based biomarkers and imaging, for eligibility criteria for
60 clinical trials targeting preclinical or early-stage disease¹⁰⁻¹².

61
62 The measurement of early olfactory impairment is a prime candidate as a component of an early
63 detection assessment¹³. Many brain regions process olfactory input from primary olfactory
64 neurons¹⁴⁻¹⁶, and these regions are damaged early in the disease – with both the olfactory bulb
65 and entorhinal cortex among the first sites of tau pathology¹⁷. The amygdala and piriform

66 cortices are also early sites of tau pathology^{17,18}. In addition, the olfactory epithelium shows
67 evidence of amyloid and tau deposition¹⁹. MRI studies demonstrated reduced olfactory bulb
68 volume in AD patients and a smaller primary olfactory cortex (i.e., piriform cortex, amygdala,
69 and entorhinal cortex) in MCI compared to cognitively unimpaired older adults^{20–23}.
70
71 The hypothesis that cognitive processing of odor input may be compromised at early stages of
72 the disease has been tested predominantly with smell identification performance, usually
73 assessed by forced-choice measures like the University of Pennsylvania Smell Identification Test
74 (UPSIT)²⁴ or Sniffin Sticks²⁵ where the four odor name choices are viewed prior to or in parallel
75 with sniffing the odor. Smell identification performance has been associated with AD
76 biomarkers, elevated levels of CSF and PET tau^{18,26–30} and worse performance is associated with
77 smaller hippocampal volume in older adults^{31,32} and in patients with cognitive impairment on the
78 AD clinical continuum^{22,33–37}. Smell identification score is related to declarative memory in older
79 adults³⁸ and survives in models to predict the conversion from MCI to dementia^{14,39–43}.
80 Furthermore, smell identification scores have been shown to help predict cognitive decline in
81 cognitively unimpaired older adults^{44–49} and the conversion to MCI^{42,50,51}.
82
83 However, additional olfactory cognitive assessment tasks that probe other neural circuits
84 vulnerable to aging and neurodegeneration could add sensitivity and specificity for olfactory
85 screens of early damage in aging and a variety of neurodegenerative diseases, including AD,
86 Parkinson's^{14,52} and Traumatic Brain Injury⁵³. For instance, odor memory and olfactory
87 discrimination tasks have been associated with earlier preclinical stages of the disease^{43,48,54}, and

88 selective odor memory deficits, after correction for odor identification and odor discrimination
89 performance, have been associated with AD biomarkers⁴³. The incorporation of self-confidence
90 within olfactory testing could additionally improve the sensitivity and specificity of olfactory
91 testing since metacognition and self-awareness were found to be predictive of cognitive decline
92 and biomarkers in patients with AD or MCI⁵⁵⁻⁵⁹.

93
94 While olfaction has been suggested as a potential screening tool for AD, logistical challenges
95 and questions of specificity have hindered its widespread adoption^{43,60,61}. To address these
96 limitations, we developed a battery of olfactory tests. This battery includes an odor percept
97 identification (OPID) test, where participants smell an odor, answer a question, and then choose
98 from four provided odor names. The battery also includes a percepts of odor episodic memory
99 (POEM) test, where participants distinguish between new odors and those presented earlier; and
100 an odor discrimination (OD) test, where participants identify pairs of smells as either the same or
101 different. This battery was administered using an olfactometer to deliver odors in earlier work,
102 and we demonstrated selective odor memory loss in participants at risk of developing MCI⁴³. In
103 response to the urgency of the COVID pandemic and the respiratory transmission of the SARS-
104 CoV2 virus, our team moved to the use of one-time use labels with embedded odors and
105 developed an abbreviated COVID Smell Test⁶² as an early at-home screen for SARS-CoV2
106 infection. Subsequent testing using one-time odor labels in both English and Spanish in 30 states
107 and Puerto Rico⁶³, as well as in Argentina (manuscript in preparation), provided valuable pilot
108 data that allowed us to adapt our olfactory battery into a bilingual at-home self-administered
109 brain health test to screen for both nasal and cognitive deficits in processing olfactory deficits.

110

111 Here, we describe and validate this digital accessible remote olfactory-mediated health
112 assessment: the AROMHA Brain Health Test (ABHT). We aimed (1) to validate unobserved
113 remote self-administration of the ABHT by comparing results with observed remote self-
114 administration and (2) to compare the results of the ABHT between cognitively healthy English
115 and Spanish-speaking populations. We also aimed to validate the ABHT by comparing metrics
116 between a group of clinical anosmic patients and a control group of cognitively normal
117 individuals. Finally, we aimed to assess the feasibility of using the ABHT in a population at risk
118 of dementia due to AD by determining whether it is sensitive to aging and cognitive decline in a
119 cohort of cognitively normal healthy adults without cognitive complaints (CN), with subjective
120 cognitive complaints (SCC), and with MCI.

121

122 **Results**

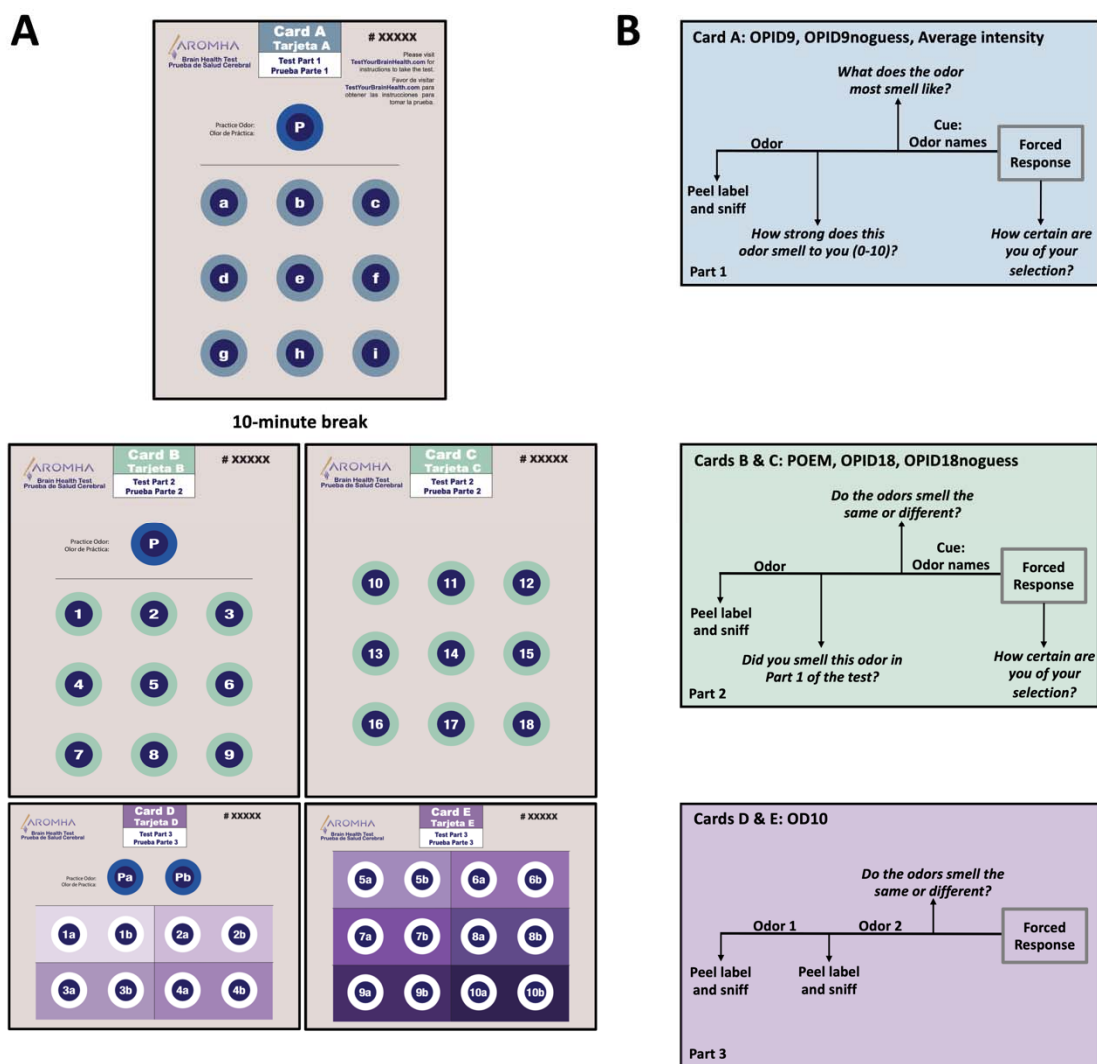
123

124 **Design and Implementation of the AROMHA Brain Health Test**

125

126 The workflow of the self-administered ABHT includes tests of odor percept identification
127 (OPID), percepts of odor episodic memory (POEM), and odor discrimination (Fig. 1), which
128 parallels our previous researcher-administered tests, where odors were delivered through an
129 olfactometer⁴³ or through hand-held, repeat use devices (Whispis)⁶⁴. The ABHT leverages the
130 remote administration aspects of our COVID Smell Test⁶² by delivering the odor stimuli using
131 odor labels arrayed on mailable cards, by including an odor intensity measure, and by enabling
132 self-administration by developing a web-based platform⁶⁵ to collect responses. Additionally, the

133 ABHT adds a meta-cognition measure embedded in the odor percept identification tasks.
134 Participants were instructed by the web-based app to sample the odor, and then choose an odor
135 name from a forced choice list of 4 options. They are then asked to evaluate their confidence in
136 each odor identification decision with a scale that includes the following options: “I Gussed,” “I
137 Narrowed Down to Three,” “I Narrowed Down to Two,” or “I Am Certain.”. This confidence
138 metric is quantified for the OPID9 and OPID18 odor identification tests as the number answered
139 correct among items paired with the “I am Certain”, “I Narrowed Down to Three”, and “I
140 Narrowed Down to Two” responses (OPID9noguess, OPID18noguess scores).
141
142 Three sets of bilingual (English / Spanish) cards, which are arrayed with odor labels, were
143 designed to administer the OPID9 odor percept identification and odor intensity test (Part 1, Card
144 A), the OPID18 odor percept identification and POEM memory test (Part 2, Cards B and C), and
145 the OD10 odor discrimination test (Part 3, Cards D and E) (Figure 1). Numerous concentrations
146 of each odor were packaged in different labels, and perceptions of odor intensity using a 10-point
147 Likert scale that ranges from 0 (no odor) to 10 (strongest odor imaginable) were obtained from
148 healthy college-aged participants in pilot studies. The final label-embedded odorant
149 concentrations were selected with a mean perceived intensity of 7-7.5. To ensure that the
150 headspace for each label was not contaminated by one or more components of the adhesive to
151 hold the labels together, we performed gas chromatography / mass spectrometry for each odor
152 label (Extended Data Figure 1). We did not find a common component in the headspace of all
153 labels, which could confound olfactory performance.



154

155 **Figure 1. AROMHA Brain Health Test Schematic.** Following online prescreening, online
 156 consent, the web-based program instructs you through the 5 bilingual (English / Spanish) cards
 157 (A). Card A is comprised of a practice odor P followed by the 9 odor labels comprising the
 158 OPID9 test. Adjacent in the blue box (B) is the workflow for these tests as directed by
 159 the testyourbrainhealth.com software to generate the OPID9, OPID9noguess, and average
 160 intensity scores. After a 10-minute break, participants are instructed to work through Cards B
 161 and C using the workflow in the green box (B) to generate the POEM, OPID18, and
 162 OPID18noguess scores. Then participants are instructed to move on to Cards D and E using the
 163 workflow in the purple box (B) to generate an OD10 odor discrimination score.

164
165 We revamped the foil choices so they are more orthogonal to the target odor and more
166 specifically evocative rather than generalized. For example, we avoided using foils describing
167 fruit odors when the target odor was a fruit. We also incorporated foil names like “coconut” or
168 “fresh bread” in order to include evocative odor names. We specifically avoided foils that may
169 have a contextual association with the target odor because they are often co-presented in the real
170 world, to reduce bias from the other foils. Finally, we expanded our set of odor names so that
171 each odor name was only presented once within the OPID9 or OPID18 odor identification tests, ,
172 either as a target odor or a foil, (Extended Data Tables 1& 2). When the 9 odors, presented in
173 the first OPID9 odor identification and intensity test, were presented again (after a 10-minute
174 break) in the OPID18 odor identification and POEM memory test, new sets of foils were
175 presented with the correct name for each target odor to vary the identification experience and
176 reduce learning carryover from OPID9 (Extended Data Tables 1& 2).

177

178 **Validation of Unobserved Remote Testing of the AROMHA Brain Health Test in** 179 **Cognitively Normal Individuals**

180

181 In the first phase of self-administered testing (between 5/9/23 and 8/11/23), all participants
182 completed the ABHT in an observed setting (remote via Zoom or in person) during a scheduled
183 appointment with the research assistant (n = 70). Participants shared their testing screen and
184 video with the research assistant via Zoom during remote observed testing or completed the
185 testing in person with their testing screen visible to the research assistant. In both these
186 conditions, the research assistant observed and noted participant interactions with the software
187 and the cards and remained on standby if there were questions or confusion. Once we felt

188 confident that the self-administered testing workflow ran smoothly, we offered an unobserved
189 (vs observed) self-administration option to interested cognitively normal participants in order to
190 validate the feasibility of this administration mode and our ability to scale future data collection.
191 When cognitively healthy participants, enrolled in our study after 8/11/23, were given the option
192 to self-administer remotely, independent of a research assistant, 70% chose to test on their own
193 with the option of live help over the telephone, if needed. The overall distribution of participants
194 by each administration modality is described in Extended Data Table 3.

195
196 When comparing olfactory scores between CN observed and unobserved groups, there were no
197 significant differences in the olfactory outcomes after Bonferroni correction. Age ($p < .001$) was
198 significantly greater and Spanish ($p < .001$) language was significantly more common in the
199 unobserved group, due to operational factors such as the availability of the unobserved option
200 during phases of recruitment, scheduling, and participant preference. Test duration ($p < .001$)
201 was also significantly greater in the unobserved group compared to the observed group, which
202 may have biased the unobserved group to perform less well on olfactory measures. Sex and
203 education were not different between the observed and unobserved groups (Table 1).

204

	CN Observed Self-administration (n = 71)	CN Unobserved Self-administration (n = 56)	<i>p</i> values
Age (years)	44.89 (22.18) (19 to 93 years)	67.77 (16.60) (20 to 92 years)	< .001
Sex (female %)	66%	64%	.82
Education	16.80 (3.86)	16.68 (2.99)	.84
Speaking language (Spanish %)	51%	9%	<.001
OPID9 (/9)	5.93 (1.38)	5.89 (1.40)	.88
OPID9noguess (/9)	5.54 (1.58)	5.25 (1.92)	.37
OPID18 (/18)	11.85 (2.79)	11.05 (2.57)	.10
OPID18noguess (/18)	10.83 (3.24)	9.46 (3.57)	.03

OD10 (/10)	8.59 (1.23)	8.36 (1.41)	.33
POEM (-1 to +1)	0.36 (0.32)	0.33 (0.28)	.57
Average intensity (/10)	5.53 (1.83)	5.79 (1.70)	.41
Test Duration (minutes)	31.87 (8.70)	41.16 (16.35)	< .001

205 **Table 1. Demographic information and olfactory function in cognitively normal**
 206 **participants who underwent observed and unobserved self-administration conditions of the**
 207 **AROMHA Brain Health Test.** Values are means (SD). T-tests were performed across groups
 208 for age, education, olfactory scores, and test duration. Chi-square test was performed on sex and
 209 speaking-language proportions across groups. **Bold** indicates a statistically significant difference
 210 that remained significant after Bonferroni correction.

211
 212 **Validation of the AROMHA Brain Health Test in Anosmic patients.**

213 Table 2 displays the demographics and olfactory scores of 7 patients with anosmia recruited from
 214 a smell loss clinic and CN participants. As expected, the anosmic group performed significantly
 215 worse on every olfactory metric ($p < .001$) in our battery, as compared to the CN group although
 216 they did not take significantly longer to complete the battery when grouped across various
 217 modalities (Extended Data Table 3). The anosmic group did not perform statistically different
 218 from chance performance on every olfactory measure, which was not the case for the CN control
 219 group.

220

	Score of chance performance	Anosmic (n=7)	CN (n=127)	P values
Age (years)	NA	54.14 (20.28) (23 to 77 years)	54.98 (22.88) (19 to 93 years)	.91
Sex (female %)	NA	57%	65%	.97
Education (years)	NA	16.43 (2.44)	16.75 (3.49)	.96
OPID9 (/9)	2.25	2.57 (0.79)	5.91 (1.38)	<.001
OPID9noguess (/9)	2.25	1.00 (1.29)	5.41 (1.14)	<.001
OPID18 (/18)	4.5	5.00 (1.29)	11.50 (2.71)	<.001
OPID18noguess (/18)	4.5	1.14 (1.46)	10.23 (3.45)	<.001
OD10 (/10)	5	6.14 (1.57)	8.49 (1.31)	<.001
POEM (-1 to +1)	0	-0.02 (0.10)	0.35 (0.30)	<.001
Average intensity (/10)	NA	1.80 (1.33)	5.64 (1.77)	<.001
Test Duration (minutes)	NA	33.46 (11.33)	35.96 (13.42)	.50

221 **Table 2. Distribution of olfactory scores of anosmic patients and CN participants on the**
 222 **AROMHA Brain Health Test.** The first column lists the score following random selection of
 223 the answers for each test, e.g., the participant had no olfactory information to guide selection of
 224 the answers. Values are means (SD). NA = not applicable. Wilcoxon signed-rank tests were
 225 performed across groups for age, education, olfactory scores, and test duration. The chi-square
 226 test was performed for sex. **Bold** indicates a statistically significant difference that remained
 227 significant after Bonferroni correction.

228

229 **Equivalence of the AROMHA Brain Health Test in English vs. Spanish-speaking**

230 **Cognitively Normal Participants**

231 When assessing the potential effect of language, no significant differences were found across
 232 olfactory scores between cognitively normal English-speaking and Spanish-speaking
 233 participants. Demographically only age was significantly different, as the English-speaking
 234 group was significantly older than the Spanish-speaking group ($p = .001$) (Table 3).

235

	CN English-speaking participants (n = 86)	CN Spanish-speaking participants (n = 41)	<i>p</i> values
Age (years)	59.16 (23.36) (19 to 93 years)	46.20 (19.32) (19 to 79 years)	.001
Sex (female %)	63%	71%	.38
Education	16.47 (2.84)	17.34 (4.56)	.26
OPID9 (/9)	5.86 (1.46)	6.02 (1.21)	.51
OPID9noguess (/9)	5.33 (1.86)	5.59 (1.47)	.40
OPID18 (/18)	11.28 (2.92)	11.95 (2.18)	.15
OPID18noguess (/18)	10.00 (3.62)	10.71 (3.04)	.25
OD10 (/10)	8.42 (1.35)	8.63 (1.22)	.37
POEM (-1 to 1)	0.31 (0.30)	0.42 (0.30)	.06
Average intensity (/10)	5.62 (1.77)	5.70 (1.80)	.82
Test Duration (minutes)	36.28 (14.63)	35.30 (10.58)	.67

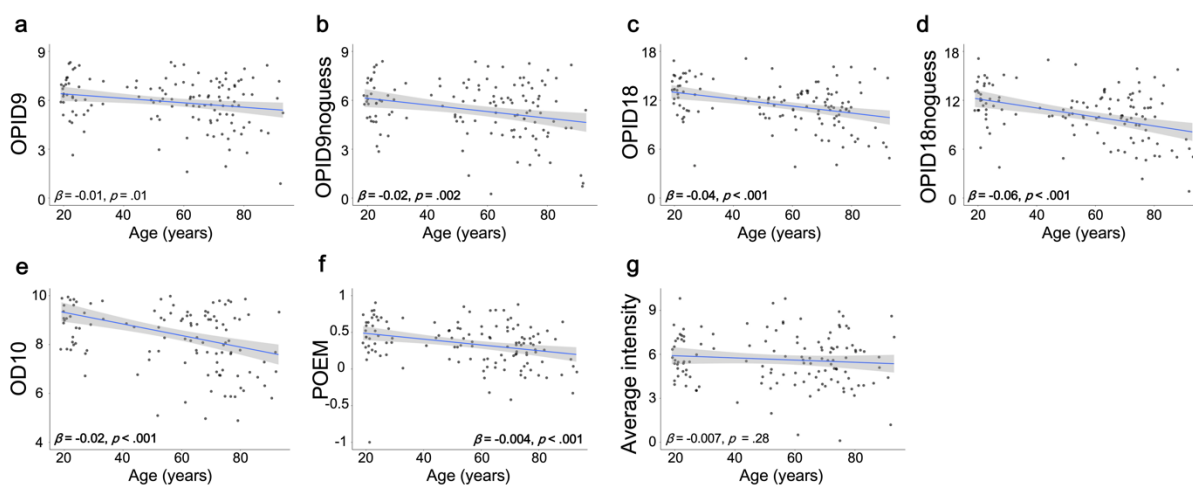
236 **Table 3. Demographic information and olfactory function in cognitively normal English-**
 237 **speaking and Spanish-speaking participants.** Values are means (SD). T-tests were performed
 238 across groups for age, education, clinical variables, olfactory scores, and test duration. Chi-

239 square test was performed on sex and speaking-language proportions across groups. **Bold**
240 indicates a statistically significant difference that remained significant after Bonferroni
241 correction.

242

243 **Diminished Olfactory Measures in the AROMHA Brain Health Test with increasing age**

244 When assessing the effect of age on olfaction, linear regression models of olfactory scores as a
245 function of age of the CN participants showed that greater age was significantly associated with
246 lower OPID9noguess ($\beta = -0.02$, $p = .002$), OPID18 ($\beta = -0.04$, $p < .001$), lower OPID18noguess
247 ($\beta = -0.06$, $p < .001$), lower OD10 ($\beta = -0.02$, $p < .001$), and lower POEM ($\beta = -0.004$, $p < .001$)
248 scores, while the association with OPID9 ($\beta = -0.01$, $p = .01$) and average intensity ($\beta = -0.007$, p
249 = .28) scores did not reach significance after Bonferroni correction (Figure 2).



250

251 **Figure 2. Linear regression model between olfactory scores and age across CN participants.**

252 Greater age was significantly associated with lower (b) OPID9noguess ($\beta = -0.02$, $SE = .007$, $p =$
253 $.002$, $adj. R^2 = .06$), (c) OPID18 ($\beta = -0.04$, $SE = 0.001$, $p < .001$, $adj. R^2 = .12$), (d)
254 OPID18noguess ($\beta = -0.06$, $SE = 0.03$, $p < .001$, $adj. R^2 = .13$), (e) OD10 ($\beta = -0.02$, $SE =$
255 0.005 , $p < .001$, $adj. R^2 = .16$), and (f) POEM ($\beta = -0.004$, $SE = 0.001$, $p < .001$, $adj. R^2 = .08$)
256 scores, while the association with (a) OPID9 ($\beta = -0.01$, $SE = 0.005$, $p = .01$, $adj. R^2 = .04$) and

257 (f) average intensity ($\beta = -0.007$, $SE = 0.007$, $p = .28$, $adj. R^2 = .001$) scores did not reach
 258 significance after Bonferroni correction for 21 comparisons ($p < .002$).

259
 260 **Performance of AROMHA Brain Health Test Distinguishes Participants Aged +55 who are**
 261 **Cognitively Normal, with Subjective Cognitive Concerns or with Mild Cognitive**
 262 **Impairment.**

263 The sex and education of participants across the CN, SCC, and MCI groups were not
 264 significantly different after Bonferroni correction. Participants in the MCI group were, as
 265 expected, older than those in the CN group ($p=0.01$). Comparisons of each olfactory score of the
 266 ABHT for participants who are CN, have SCC, or have MCI reveal significant olfactory
 267 differences between subgroups, other than in the OD10, POEM odor memory score, and
 268 evaluations of average odor intensity (Table 4). Comparisons across cognitive groups in this +55
 269 sample revealed no demographic differences in sex and education, or in the test duration time.

270

	CN (n=73)	SCC (n=31)	MCI (n=19)	<i>p</i> values		
				CN vs. SCC	CN vs. MCI	SCC vs. MCI
Age (years) (56 to 95 years)	72.25 (9.13)	75.48 (9.22)	78.00 (8.07)	.11	.01	.32
Sex (female %)	63%	62%	53%	.99	.57	.76
Education (years)	16.42 (3.62)	16.26 (2.50)	16.53 (3.49)	.78	.91	.77
OPID9 (/9)	5.71 (1.51)	5.19 (1.45)	3.95 (1.43)	.10	< .001	.005
OPID9noguess (/9)	5.16 (1.93)	4.29 (1.79)	3.16 (1.77)	.03	< .001	.04
OPID18 (/18)	10.79 (2.74)	10.68 (2.95)	7.26 (2.86)	.62	< .001	< .001
OPID18noguess (/18)	9.4 (3.47)	8.03 (4.02)	5.16 (3.35)	.11	< .001	.009
OD10 (/10)	8.12 (1.35)	7.42 (1.52)	6.95 (1.96)	.03	.02	.38
POEM (-1 to +1)	0.27 (0.29)	0.24 (0.25)	0.22 (0.20)	.61	.37	.72
Average intensity (/10)	5.55 (1.85)	4.93 (1.34)	4.71 (2.30)	.06	.15	.71
Test Duration (minutes)	40.10 (14.67)	40.49 (14.89)	40.69 (11.01)	.66	.85	.83

271 **Table 4. Olfactory function across cognitive status among participants aged 55+.** Values are
 272 means (SD). T-tests were performed across groups for age, education, clinical variables,

273 olfactory scores, and test duration. Chi-square test was performed on sex proportion across
 274 groups. **Bold** indicates a statistically significant difference that remained significant after
 275 Bonferroni correction for 21 comparisons ($p < .002$).

276
 277 When assessing the effect of cognitive status group on olfactory test components, ANCOVAs
 278 revealed a significant effect on OPID9, OPID9noguess, OPID18, OPID18noguess, and OD10
 279 scores (Table 5). No effects of cognitive status group were found for the POEM or average
 280 intensity scores. After Bonferroni correction for 21 comparisons ($p < .002$), post-hoc pairwise
 281 comparisons revealed significantly lower scores in the MCI group compared to CN older adults
 282 for the OPID9, OPID18, OPID18noguess, OD10 and to the SCC group for the OPID18 and
 283 OPID9 scores.

284
 285 Interaction effects were found with age for the OPID9noguess, OPID18 no guess scores, and
 286 OD10, however they did not remain significant after Bonferroni correction for 7 comparisons (p
 287 $< .007$). Other olfactory components did not interact with age ($p > .05$). No interaction effect
 288 with sex or education were found with any olfactory scores ($p > .05$) (Table 4).

289

Source	DF	F	p	η^2	Post-hoc comparisons' p values ^a		
					CN VS SCC	CN VS MCI	SCC VS MCI
<i>OPID9</i>							
Group	2	11.07	<.001	0.17	.28	<.001	.0017
Age	1	3.08	.08	0.03			
Sex	1	0.009	.92	<.001			
Education	1	0.28	.60	0.003			
Group * Age	2	1.90	.15	0.03			
Group * Sex	2	0.22	.80	0.004			
Group * Education	2	2.37	.10	0.04			

Source	DF	F	p	η^2	Post-hoc comparaisons' <i>p</i> values ^a		
					CN VS SCC	CN VS MCI	SCC VS MCI
Residuals	111						
<i>OPID9noguess</i>							
Group	2	10.35	<.001	0.16	.10	<.001	.01
Age	1	8.92	.003	0.07			
Sex	1	0.80	.37	0.007			
Education	1	0.05	.83	<.001			
Group * Age	2	3.96	.02	0.07			
Group * Sex	2	1.79	.17	0.03			
Group * Education	2	0.28	.76	0.004			
Residuals	111						
<i>OPID18</i>							
Group	2	12.84	<.001	0.19	.76	<.001	<.001
Age	1	2.49	.12	0.02			
Sex	1	2.53	.11	0.02			
Education	1	0.01	.93	<.001			
Group * Age	2	3.34	.04	0.06			
Group * Sex	2	1.35	.26	0.02			
Group * Education	2	0.48	.62	0.008			
Residuals	111						
<i>OPID18noguess</i>							
Group	2	11.93	<.001	0.18	.16	<.001	.003
Age	1	8.11	.005	0.07			
Sex	1	0.33	.57	0.003			
Education	1	0.18	.68	0.002			
Group * Age	2	4.79	.01	0.08			
Group * Sex	2	1.81	.17	0.03			
Group * Education	2	0.67	.52	0.01			
Residuals	111						
<i>OD10</i>							
Group	2	6.09	.003	0.10	.03	.001	.14
Age	1	2.65	.11	0.02			
Sex	1	0.22	.64	0.001			
Education	1	0.001	.96	<.001			
Group * Age	2	4.81	.01	0.08			
Group * Sex	2	1.08	.34	0.02			
Group * Education	2	1.10	.34	0.02			
Residuals	111						

Source	DF	F	p	η^2	Post-hoc comparaisons' <i>p</i> values ^a		
					CN VS SCC	CN VS MCI	SCC VS MCI
<i>POEM</i>							
Group	2	0.35	.71	0.006	.55	.68	.96
Age	1	3.44	.07	0.03			
Sex	1	0.44	.51	0.004			
Education	1	0.28	.60	0.003			
Group * Age	2	0.41	.66	0.007			
Group * Sex	2	2.83	.06	0.05			
Group * Education	2	0.52	.60	0.009			
Residuals	111						
<i>Average intensity</i>							
Group	2	2.29	.11	0.04	.16	.27	.99
Age	1	1.36	.25	0.01			
Sex	1	3.75	.06	0.03			
Education	1	0.007	.93	<.001			
Group * Age	2	0.063	.94	0.003			
Group * Sex	2	0.052	.95	<.001			
Group * Education	2	0.80	.45	0.01			
Residuals	111						

290 **Table 5. ANCOVA models comparing different olfactory scores across groups.** DF =
 291 Degrees of Freedom, F = F-statistic, p = p-value, η^2 = partial Eta squared. CI = Confidence
 292 interval. **Bold** represents post-hoc *p* values that remained significant after Bonferroni correction
 293 for 21 comparisons ($p < .002$).

294 ^a *p* values from pairwise post-hoc comparisons adjusted for age, sex, and education.

295

296 Discussion

297

298 In this study, we tested and validated a self-administered olfactory test battery on cognitively

299 healthy English and Spanish-speaking cohort in the home setting, under observed and

300 unobserved self-administered conditions. We began with observed self-administered testing of

301 participants who were cognitively normal, had expressed subjective cognitive concerns (SCC),
302 and had a diagnosis of Mild Cognitive Impairment (MCI). Both participants with SCC and MCI
303 are at risk of developing Alzheimer's disease dementia^{66,67}. The majority of this observed testing
304 was completed with the convenience of a remote in-home setting, using Zoom to share the
305 testing screen and a video of the participant with a research assistant observing the workflow,
306 noting challenges, and being available if questions or concerns arose. Some of the participants
307 chose to self-administer the test without the Zoom interface and with a research assistant in the
308 room for questions because they preferred this or found it more convenient. After about three
309 months of observed and largely remote self-administered testing across the spectrum of cognitive
310 impairment (from CN to MCI), we shifted to a completely unobserved remote testing option for
311 any cognitively normal participants who felt comfortable engaging with the test entirely on their
312 own. When given the option to self-administer the test remotely, independent of a research
313 assistant, the majority of cognitively healthy participants, representing a wide age spectrum
314 ranging from 20 to 92 years old, chose unobserved self-administration.

315
316 We found equivalent olfactory performance when comparing observed and unobserved self-
317 administration of the ABHT among CN participants in unadjusted analyses, other than shorter
318 test duration and a younger population on average in the observed setting. We also validated the
319 test on an anosmic subsample, demonstrating that anosmic patients performed as expected at
320 chance level for each olfactory test. When comparing the olfactory battery scores between
321 languages, no differences were found regarding olfactory subtest scores between CN English and
322 Spanish-speaking populations in unadjusted analyses. We also found that lower odor percept

323 identification (OPID9 and OPID18noguess and OPID18 scores), odor memory (POEM) and odor
324 discrimination (OD10) scores were negatively associated with age. Finally, by comparing
325 olfactory scores between participants aged 55+ with CN, SCC, and MCI, we found that the
326 means of all odor percept identification scores (OPID9, OPID9noguess, OPID18,
327 OPID18noguess) and the odor discrimination score were associated with cognitive decline, i.e.,
328 lower scores in the MCI subgroup relative to the older CN subgroup. The negative relationships
329 observed in our analyses between identification measures adjusted for metacognition
330 (OPID9noguess and OPID18noguess) and increasing age and cognitive impairment are
331 intriguing, given prior work on the general prevalence of olfactory overconfidence in relation to
332 the emotionality of odors and eventual identification accuracy^{68,69}. Further work on these new
333 “noguess” measures is needed in relation to AD biomarkers and longitudinal outcomes in order
334 to better understand this finding.

335
336 By leveraging our experience during the COVID pandemic, we were able to successfully adapt
337 and evolve our previous brain health test for remote at home self-administration in our target
338 populations of interest. This included protocols for online screening for eligibility, online
339 consenting, and an optimized remote user interface to guide participants through various
340 olfactory tasks. We also modified odor delivery by using odor labels on mailable cards. Unlike
341 our COVID test^{62,63}, the ABHT is particularly targeted for participants aged 55+, a population
342 generally less familiar with fully online test administration. We enrolled participants as old as 88
343 in the CN and SCC groups and 95 in the MCI group, who were able to successfully self-
344 administer the test and enter responses on the web-based platform. The remote administration

345 paradigm afforded participation from 21 different US states and Puerto Rico through online
346 recruitment via an MGH and clinicaltrials.gov websites. The robust engagement of older
347 participants in entirely independent, unobserved testing—yielding olfactory performance
348 outcomes statistically indistinguishable from those obtained in observed settings—constitutes a
349 significant finding. This challenges the prevailing assumption that older individuals are either
350 unable or unwilling to effectively engage in self-administered remote screening methods such as
351 ours. This screen was designed to address the unmet need of early detection of biomarkers in
352 participants who are CN and those who have SCC but may not meet testing thresholds for MCI.
353
354 We recruited patients with MCI to validate the efficacy of this screen to detect differences in our
355 olfactory tests under conditions of more apparent cognitive impairment, as we and others
356 previously demonstrated^{40,43,60,70}. Each olfactory identification score from the ABHT, including
357 the 9-item sub scores (i.e., OPID9, OPID9 no guess), was lower in the MCI group compared to
358 CN aged +55 groups. This result indicates that the ABHT could be used as a marker of cognitive
359 decline in older adults and replicates the findings of two meta-analyses that demonstrated a
360 specific pattern of olfactory impairment targeting more severely olfactory identification in
361 patients with Alzheimer’s disease dementia⁵² and MCI⁷⁰. This early decline in odor identification
362 likely reflects damage in specific limbic and medial temporal lobe olfactory areas involved in
363 olfactory identification in the earliest stages of AD (i.e., piriform cortex, amygdala, entorhinal
364 cortex, hippocampus)^{20,21,31–37,71,72}. At the cognitive level, olfactory identification tasks are
365 associated with declarative memory^{38,73} and are predictive of cognitive decline in CN older
366 adults^{44–49} and of the conversion to MCI^{42,50,51}. Future studies should aim to replicate these

367 findings and assess the predictive value of the ABHT and odor percept identification sub-scores
368 on AD biomarkers and longitudinal cognitive decline in CN older adults.

369
370 Olfactory discrimination (OD10) was also lower in the MCI group compared to CN aged 55+
371 group. This result replicates and is aligned with the results of previous studies showing a lower
372 olfactory discrimination performance in MCI⁵⁴ and predictive value of olfactory discrimination
373 in further cognitive decline⁴⁸. Unlike the basic detection of odors, both identification and
374 discrimination of odors require high-level cognitive functions such as working memory and
375 decision making, which could explain our results⁵⁴. The hippocampal network is also associated
376 with olfactory discrimination⁷⁴, early damages to this structure in AD could explain these
377 findings. Future studies should investigate the relationship between hippocampal damage and
378 olfactory discrimination tasks in participants at risk of AD using volumetric magnetic resonance
379 imaging and tau PET¹⁸.

380
381 Objective measurements of olfactory identification, discrimination, and memory were negatively
382 associated with age in the asymptomatic CN sample. These results are not surprising and
383 replicate the robust literature on the effect of normal aging on olfactory function. Indeed,
384 according to a meta-analysis including 175,073 participants (18-101 years), olfactory impairment
385 would be prevalent at 34.5% in studies with a mean age above 55 years, while the prevalence
386 would be at 7.5% in studies with a mean age below 55 years⁷⁵. The decline starts in the fifth
387 decade of life⁷⁶ and is general across different olfactory capacities such as olfactory detection,
388 discrimination, identification⁷⁷, and memory^{78,79}. Our results indicate that perceived olfactory

389 average intensity was not related to age. While some studies using magnitude estimation
390 procedures to assess the perceived intensity of odors across different concentrations found no
391 significant age-related differences^{80,81}, another study found that older individuals perceived
392 increases in menthol concentration as less intense than younger individuals⁸². These mixed
393 results suggest that while perceived odor intensity may not always show a clear age-related
394 decline, other aspects of olfactory function, such as identification, discrimination, and memory,
395 are consistently negatively impacted by aging.

396
397 Having validated remote unobserved self-administration in CN people and demonstrated that
398 remote observed self-administration of the ABHT is feasible in an MCI population (95% of MCI
399 participants completed testing in this mode), and by finding expected differences in olfactory
400 identification scores as shown in previous studies, we are poised to begin studies in deeply
401 phenotyped populations to quantify the predictive value of ABHT outcomes on biomarkers of
402 neurodegenerative disease, including Alzheimer's, Lewy Body disease, and concussive and non-
403 concussive head trauma. These studies can incorporate both English and Spanish-speaking
404 participants, as we did not find any differences in olfactory scores among the CN English and
405 Spanish-speaking participants. Different olfactory-behavioral profiles are hypothesized to
406 emerge depending on disease neuropathology, as different brain areas and networks of the
407 central olfactory system are associated with different olfactory tasks⁸³⁻⁸⁵. While previous studies
408 showed that MCI and AD predominantly affect olfactory identification^{52,70}, the olfactory bulb is
409 affected at the earliest stage of Parkinson's disease resulting in a general olfactory impairment
410 with reduced olfactory detection performance and leads to a decrease in various olfactory tasks

411 (e.g., discrimination of odors, identification of odors)^{52,86}. Other conditions such as Lewy body
412 dementia⁸⁷, frontotemporal dementia⁸⁸, and exposure to head impacts and traumatic brain
413 injury⁸⁹⁻⁹¹ can also cause olfactory impairments.

414

415 When combined with other digital biomarkers, a mobile self-administrated and diverse smell
416 assessment like ours could accelerate screening for neurodegenerative diseases in asymptomatic
417 or newly symptomatic individuals who would benefit from more definitive subsequent tests^{92,93},
418 such as blood-based, image-based, or cerebrospinal fluid (CSF)-based diagnostics, especially in
419 individuals presenting additional risk factors for dementia such as subjective cognitive decline⁶⁶,
420 depression⁹⁴, and genetic risks factors such as the APOE-4 allele⁹⁵. Home-based tests also have
421 the potential to enhance the involvement of underrepresented groups in research settings⁹⁶ and to
422 save time and cost of transportation, to save costs for the healthcare system, and to increase
423 patient satisfaction^{97,98}.

424

425 This study has certain limitations. The main limit is the restricted availability of
426 neuropsychological testing for a proportion of the participants (unverified vs verified) in the
427 sample. Additionally, the results of this study correlate with a robust body of literature, and
428 demonstrate its utility in real-world settings. Future longitudinal studies will assess the predictive
429 value of the ABHT on longitudinal cognitive decline and highlight the utility of this olfactory
430 battery in mapping correlations between patterns olfactory decline and the progression of various
431 neurodegenerative diseases. While not a limitation in this preliminary validation of the

432 AROMHA Brain Health Test, biomarker availability will be an essential component in future
433 studies that assess the predictive power that this noninvasive preliminary screen may hold.

434

435 **Conclusion**

436 The ABHT is a novel remote olfactory battery that exhibited similar performance across
437 observed and unobserved self-administration among CN participants as well as among English
438 and Spanish-speaking CN participants, while anosmic patients performed at chance level as
439 expected. Odor percept identification, discrimination, and memory subtests were sensitive to the
440 aging effect on the olfactory system. Each olfactory identification subtest, including the short 9-
441 item version, and the olfactory discrimination subtest showed lower performance in the MCI
442 group, mirroring results in the literature. These results suggest that the ABHT could be used in
443 clinical research settings in different languages to explore the utility of olfactory biomarkers to
444 predict the presence of blood-based, image-based, or cerebrospinal fluid (CSF)-based biomarkers
445 of neurodegenerative disease and longitudinal development of clinical symptoms.

446

447 **Methods**

448

449 **Development and Quality Control of the AROMHA Brain Health Test**

450

451 The ABHT was updated for remote at-home self-administration of previously developed Odor
452 Percept Identification (OPID), Percepts of Odor Episodic Memory (POEM), and Odor
453 Discrimination (OD) subtests⁴³. All pre-screening, informed consent, and administration of the
454 test occurs online through a web-based interface (testyourbrainhealth.com). This updated version
455 of the test consisted of five different 8.5 “ x 11” single-use cards that were packaged in one

456 envelope and mailed to the participant's home. We expanded the manufacturing of odor labels
457 from the three odors utilized in the COVID smell test⁶² to include additional 15 odors. Odor
458 labels were manufactured by MFR Samplings using Living LibraryTM odors purchased from
459 International Flavors and Fragrances (IFF)⁶². Odors were presented to participants in a peel-and-
460 sniff manner and contained proprietary naturalistic odors from the Living Library developed by
461 IFF (<https://www.iff.com/>). Gas chromatography/mass spectrometry were conducted at the Mass
462 Spectrometry core at the Bauer Laboratory in the Harvard Chemistry Department. Briefly, each
463 odor label was completely opened in a stoppered 15 ml conical tube and allowed to reach
464 equilibrium for 1 minute at room temperature. Then a Hamilton Syringe was used to inject a
465 representative sample of the headspace into the GC/MS instrument. The peaks were normalized
466 to 2-methyl-3-heptanone equivalents, and analyzed for common set of peaks that might represent
467 a common contaminant from the adhesive. All samples were run the same day to eliminate batch
468 effects (Extended Data Figure 1).

469
470 Participant responses to all components of the ABHT were collected on a web-based application
471 at testyourbrainhealth.com designed for independent self-administration of the survey questions
472 and the olfactory battery (Extended Data Figure 2). The data is stored on a HIPPA-compliant
473 AWS server. The prescreening module and the informed consent module were developed on a
474 RedCAP platform at the Massachusetts General Hospital. All protected health information was
475 kept on RedCAP platform. Participants had the option to call a research assistant for live help in
476 English or Spanish at any time during remote testing. The web-based AHBT application directed
477 participants to a RedCap secure e-consent project to collect identifiers. Once consented,
478 participants were sent back to the AROMHA, Inc. app to walk through all three parts of the

479 battery and collect olfactory information associated with their card ID. The app was designed to
480 lead participants through every stage of testing, including directions on how to peel odor labels
481 and sample odors as well as respond to questions regarding odor intensity, odor identification &
482 naming confidence, odor memory, and odor discrimination. The application has the ability to run
483 in an English or Spanish language mode, based on participant preference. During testing, it
484 collects participant responses for all aspects of the olfactory battery in addition to the timing of
485 those inputs. The app generates summary and item-specific data on these metrics that can be
486 downloaded by researchers for analysis and joined offline to demographic information collected
487 in RedCap following the e-consent process. These results are not shared with participants.

488

489 ***Part 1: Odor Percept Identification Test (OPID9)***. Participants first completed the OPID9,
490 which involved identifying nine distinct odors: menthol, clove, leather, strawberry, lilac,
491 pineapple, smoke, soap, and grape. These odors were selected for their predictive value in
492 identifying the conversion to Alzheimer’s disease (AD) in patients with mild cognitive
493 impairment (MCI)³⁹. After each odor presentation, participants rated the intensity on a Likert
494 scale from 0 to 10. Subsequently, they were presented with four odor names, asked to choose the
495 label that best represented the odor they sampled, and asked to rate their confidence in their
496 identification choice using the following scale: “I Guessed,” “I Narrowed Down to Three,” “I
497 Narrowed Down to Two,” or “I Am Certain.” (Extended Data Figure 2B). This process was
498 repeated for all nine odors. Following the completion of the OPID9 test, there was a 10-minute
499 delay during which participants answered demographic, medical, nasal, and memory-related
500 questions.

501

502 **Part 2: Percepts of Odor Episodic Memory (POEM) / OPID18.** After the 10-minute break,
503 participants completed the POEM/OPID18 tests. These tests included the nine odors from Part 1
504 and nine additional odors: coffee, peach, chocolate, orange, dirt, banana, lemon, bubble gum, and
505 rose. The odors were presented in a stereotyped random order that was held consistent across all
506 participants. For each odor, participants first indicated whether the odor sampled was presented
507 in Part 1 (yes/no), OPID9. As in the earlier odor identification test, they then selected the odor
508 name most representative of the odor from four choices and rated their confidence in their
509 selection.

510

511 **Part 3: Odor Discrimination (OD10).** In Part 3, participants were presented with 10 pairs of
512 odors, all of which were previously presented in Parts 1 and 2. They were asked to determine
513 whether the paired odors were the same or different (yes/no).

514

515 The POEM index was calculated as the difference between the proportion of correct and
516 incorrect recognitions, with scores ranging from -1 to 1. OPID9 and OPID18 scores were
517 calculated as the total number of correctly identified odors, with maximum scores of 9 and 18,
518 respectively. The OD10 score was the total number of correctly discriminated odor pairs, with a
519 maximum score of 10. The average intensity score was derived from the mean intensity ratings
520 of the nine odors from Part 1 on the Likert scale. OPID9noguess and OPID18noguess scores
521 were calculated as the total number of odors identified correctly where the participant did not
522 select “I Guessed” for the confidence question immediately following identification.

523

524 After verifying participants' comfort with using the web-based application in conjunction with
525 the AROMHA Brain Health Test's smell cards through the use of research assistant observation,
526 cognitively healthy participants were given the option to complete the test with or without the
527 observation of a research assistant. Verified cognitively impaired participants were not given this
528 option and were only able to self-administer the smell test remotely or in person under the
529 observation of a research assistant.

530

531 *Participants*

532 Since May 2023, 127 CN, 34 SCC, and 19 MCI participants were recruited across 21 states in
533 the United States, and from Puerto Rico, from the Longitudinal Cohort at the Massachusetts
534 Alzheimer's Disease Research Center (ADRC), through an internet posting on the Massachusetts
535 General Hospital research site, and through clinicaltrials.gov (NCT05881239). Anosmic
536 participants were recruited from the Smell Clinic of Dr. Mark Albers at Massachusetts General
537 Hospital.

538

539 The cognitive status classification was verified for subjects recruited from the ADRC
540 Longitudinal Cohort (n = 59), whereas participants recruited from the internet were classified
541 cognitively based on self-reported cognitive complaints or medical diagnoses affecting cognitive
542 function (n = 118). All participants underwent informed consent before participation. The
543 research protocol was conducted in accordance with the Declaration of Helsinki and approved by
544 the Institutional Review Board of Partners Health.

545

546 Unverified CN (n = 99) were recruited from the internet and were aged 18 years old and over and
547 reported no cognitive complaints or medical diagnoses affecting cognitive function. From the
548 unverified CN participants, we created a subgroup of unverified CN aged 55+ (n = 45). Verified
549 CN aged 55+ recruited from the ADRC (n = 28), had a Montreal Cognitive Assessment (MoCA)
550 score within the normal range adjusted for age, sex, and education level, a Clinical Dementia
551 Rating (CDR) global score of 0, and a performance within the normal range on the Logical
552 Memory II subscale delayed paragraph recall (LM-IIa) of the Wechsler Memory Scale-Revised
553 (WMS-R) (≥ 16 years of education: ≥ 9 ; 8-15 years: ≥ 5 ; 0-7 years: ≥ 3). In total, we recruited 127
554 CN participants, 73 of them were aged 55+.

555
556 Unverified Subjective Cognitive Concern (SCC) participants (n = 13) were aged 55+ and
557 reported SCC based on the following 3 questions: 1) Have you experienced a change in your
558 memory in the last 1-3 years? 2) Has this been a persistent change over the last 6 months? and 3)
559 Are you concerned about this change? Responses were on a Likert scale: “Not at all,” “Slightly,”
560 “Moderately,” “Considerably,” and “Extremely.” If participants endorse “Slightly” or worse to
561 all 3 questions, they will be categorized as SCC. Verified SCC participants (n = 18) were
562 assigned using the same criteria as verified CN older adults, as well as reporting significant
563 subjective memory concerns based on the three questions presented above. Three participants
564 under 55 reported SCC and were removed from the analyses. In total, we included 31
565 participants with SCC.

566

567 Unverified MCI participants (n = 4) were aged 55+ and reported a clinical diagnosis of MCI by a
568 certified physician. Verified MCI participants (n = 15) were aged 55+, met the National Institute
569 on Aging-Alzheimer's Association (NIA-AA) diagnostic criteria for MCI⁹⁹, with a performance
570 below an education-adjusted cut-off score on the WMS-R LM-IIa (≥ 16 years: ≤ 8 ; 8-15 years: ≤ 4 ;
571 0-7 years: ≤ 2), or had a MoCA score indicating MCI adjusted for age, sex, and education level,
572 had a CDR global score from 0.5 to 1 (with memory box score of 0.5 or 1), had preserved IADL
573 (determined by a clinician), and were not demented. In total, we recruited 19 participants with
574 MCI.

575
576 We performed Wilcoxon rank sum/Mann Whitney tests to compare the median performance on
577 each olfactory measure between verified and unverified participants in each subgroup (CN, SCC,
578 and MCI). Since, after adjustment for multiple comparisons, no difference was significant at a
579 threshold of 0.05 we combined the verified and unverified participants within a subgroup for the
580 purposes of these analyses. Clinical data comparing the verified participants in each group are
581 presented and compared in Extended Data Table 4.

582

583 **Statistical Analysis**

584 All analyses were conducted in R using *Base R*, *effectsize*, *emmeans*, and *rstatix* packages.
585 Student T-tests were used to compare demographics and olfactory variables between observed
586 and unobserved conditions and between English and Spanish-speaking groups, while the
587 Wilcoxon signed-rank test was used to compare anosmic patients with CN participants. To assess

588 the effect of age on olfaction, we conducted linear regression models with age and olfactory
589 scores. We performed this analysis for each olfactory subtests (OPID9, OPID9noguess, OPID18,
590 OPID18noguess, OD10, POEM, and average intensity). To assess the effect of cognitive status
591 on olfaction, ANCOVAs were performed to compare olfactory functioning (OPID9,
592 OPID9noguess, OPID18, OPID18noguess, OD10, POEM, and average intensity) among older
593 adults without cognitive impairment, participants with SCC, and with MCI, including age, sex,
594 and education as covariates. For all the analyses, we set the alpha value at 0.05 and used
595 Bonferroni correction for multiple comparisons.

596

597 **Acknowledgements**

598 We thank the participants and their families for their dedication to the study. We thank
599 Dr. Jennifer Wang and Dr. Sunia Traeger from the Mass Spectrometry core at the Bauer
600 Laboratory in the Harvard Chemistry Department for the GC/MS analysis, Jay Lockwood for
601 software development, Dr. Matthias Tabert at IFF for advice about odors, Daniel Tater for
602 software advice, Pablo Ripoli and Juan Manual Arias at MFR Samplings for advice about odor
603 labels, Emily Rusk for input about quality controls and regulatory advice, Patrizia Vannini and
604 Gad Marshall for discussions about metacognition in smell testing, Judy Johanson, Teresa
605 Gomez-Isla M.D., Ph.D., and Brad Hyman, M.D., Ph.D. for their assistance with recruiting
606 ADRC subjects.

607 BJ is supported by scholarships from the Canadian Institutes of Health Research, the
608 Fonds de Recherche Québec Santé, the Quebec Bio-Imaging Network, the Université du Québec
609 à Trois-Rivières, and MITACS. The study was funded by NIH R41AG062130 and NIHR42AG
610 062130 (awarded to S.R.), and U01DC019579 (awarded to M.W.A.).

611

612 **Author Contributions**

613 S.R., A.D.A., and M.W.A. conceptualized and designed the study. B.J., C.M., D.D., A.R.,
614 A.A.S., B.E., acquired and analyzed data. B.J., C.M., A.R., A.D.A., and M.W.A. drafted text and
615 prepared figures. All authors revised content.

616

617 **Competing interests**

618

619 S.R. and M.W.A. are co-founders and own shares in Aromha, Inc. C.M. and A.D.A. are
620 consultants for Aromha, Inc. M.W.A. and A.D.A.'s participation in this research was reviewed
621 by the MGB Office of Industrial Interactions. M.W.A is a consultant for Sudo Bioscience
622 Limited, Transposon Therapeutics, and has received in kind donations from IFF and from Eli
623 Lilly. He has received speaking fees from Biohaven and Incyte.

624

625 **Data availability statement**

626 The dataset generated and analyzed for the current study are available to academic researchers
627 with a Data Use Agreement with MGH and Aromha, Inc.

628

629 **References**

630 1. 2023 Alzheimer's disease facts and figures. *Alzheimer's & Dementia* **19**, 1598–1695 (2023).

631 2. Jack, C. R. *et al.* Longitudinal tau PET in ageing and Alzheimer's disease. *Brain* **141**, 1517–
632 1528 (2018).

633 3. Bateman, R. J. *et al.* Clinical and Biomarker Changes in Dominantly Inherited Alzheimer's
634 Disease. *n engl j med* **10** (2012).

635 4. Villemagne, V. L. *et al.* Amyloid β deposition, neurodegeneration, and cognitive decline in
636 sporadic Alzheimer's disease: a prospective cohort study. **12**, 11 (2013).

637 5. Jia, J. *et al.* Biomarker Changes during 20 Years Preceding Alzheimer's Disease. *N Engl J*
638 *Med* **390**, 712–722 (2024).

639 6. Munro, C. E. *et al.* Recent contributions to the field of subjective cognitive decline in aging: A
640 literature review. *Alz & Dem Diag Ass & Dis Mo* **15**, e12475 (2023).

641 7. Knopman, D. S. *et al.* Alzheimer disease. *Nat Rev Dis Primers* **7**, 33 (2021).

- 642 8. Cummings, J., Feldman, H. H. & Scheltens, P. The “rights” of precision drug development for
643 Alzheimer’s disease. *Alz Res Therapy* **11**, 76 (2019).
- 644 9. Sperling, R. A., Jack, C. R. & Aisen, P. S. Testing the Right Target and Right Drug at the
645 Right Stage. *Sci. Transl. Med.* **3**, (2011).
- 646 10. Kim, C. K. *et al.* Alzheimer’s disease: key insights from two decades of clinical trial
647 failures. *Journal of Alzheimer’s Disease* **87**, 83–100 (2022).
- 648 11. Cummings, J. *et al.* Re-engineering Alzheimer clinical trials: Global Alzheimer’s Platform
649 network. *The journal of prevention of Alzheimer’s disease* **3**, 114 (2016).
- 650 12. Reiss, A. B. *et al.* Alzheimer’s disease: many failed trials, so where do we go from here?
651 *Journal of Investigative medicine* **68**, 1135–1140 (2020).
- 652 13. Murphy, C. Olfactory and other sensory impairments in Alzheimer disease. *Nat Rev*
653 *Neurol* **15**, 11–24 (2019).
- 654 14. Albers, M. W., Tabert, M. H. & Devanand, D. P. Olfactory dysfunction as a predictor of
655 neurodegenerative disease. *Curr Neurol Neurosci Rep* **6**, 379–386 (2006).
- 656 15. Pashkovski, S. L. *et al.* Structure and flexibility in cortical representations of odour
657 space. *Nature* **583**, 253–258 (2020).
- 658 16. Sosulski, D. L., Bloom, M. L., Cutforth, T., Axel, R. & Datta, S. R. Distinct
659 representations of olfactory information in different cortical centres. *Nature* **472**, 213–216
660 (2011).
- 661 17. Braak, H. & Braak, E. Neuropathological stageing of Alzheimer-related changes. *Acta*
662 *Neuropathol* **82**, 239–259 (1991).
- 663 18. Diez, I. *et al.* Tau propagation in the brain olfactory circuits is associated with smell
664 perception changes in aging. *Nat Commun* **15**, 4809 (2024).
- 665 19. Arnold, S. E. *et al.* Olfactory epithelium amyloid- β and paired helical filament-tau
666 pathology in Alzheimer disease. *Ann Neurol.* **67**, 462–469 (2010).

- 667 20. Jobin, B., Boller, B. & Frasnelli, J. Volumetry of Olfactory Structures in Mild Cognitive
668 Impairment and Alzheimer's Disease: A Systematic Review and a Meta-Analysis. *Brain*
669 *Sciences* **11**, 1010 (2021).
- 670 21. Jobin, B., Boller, B. & Frasnelli, J. Smaller grey matter volume in the central olfactory
671 system in mild cognitive impairment. *Experimental Gerontology* (2023).
- 672 22. Lu *et al.* Functional Connectivity between the Resting-State Olfactory Network and the
673 Hippocampus in Alzheimer's Disease. *Brain Sciences* **9**, 338 (2019).
- 674 23. Vasavada, M. M. *et al.* Olfactory cortex degeneration in Alzheimer's disease and mild
675 cognitive impairment. *Journal of Alzheimer's disease* **45**, 947–958 (2015).
- 676 24. Doty, R. L., Shaman, P., Kimmelman, C. P. & Dann, M. S. University of Pennsylvania
677 Smell Identification Test: a rapid quantitative olfactory function test for the clinic. *The*
678 *Laryngoscope* **94**, 176–178 (1984).
- 679 25. Hummel, T., Sekinger, B., Wolf, S. R., Pauli, E. & Kobal, G. 'Sniffin'sticks': olfactory
680 performance assessed by the combined testing of odor identification, odor discrimination and
681 olfactory threshold. *Chemical senses* **22**, 39–52 (1997).
- 682 26. Lafaille-Magnan, M.-E. *et al.* Odor identification as a biomarker of preclinical AD in older
683 adults at risk. *Neurology* **89**, 327–335 (2017).
- 684 27. Risacher, S. L. *et al.* Olfactory identification in subjective cognitive decline and mild
685 cognitive impairment: Association with tau but not amyloid positron emission tomography.
686 *Alzheimer's & Dementia: Diagnosis, Assessment & Disease Monitoring* **9**, 57–66 (2017).
- 687 28. Tu, L. *et al.* Association of Odor Identification Ability With Amyloid- β and Tau Burden: A
688 Systematic Review and Meta-Analysis. *Front. Neurosci.* **14**, 586330 (2020).
- 689 29. Klein, J. *et al.* Olfactory Impairment Is Related to Tau Pathology and Neuroinflammation
690 in Alzheimer's Disease. *JAD* **80**, 1051–1065 (2021).
- 691 30. Reijls, B. L. R. *et al.* Relation of Odor Identification with Alzheimer's Disease Markers in
692 Cerebrospinal Fluid and Cognition. *JAD* **60**, 1025–1034 (2017).

- 693 31. Devanand, D. P. *et al.* Olfactory identification deficits and MCI in a multi-ethnic elderly
694 community sample. *Neurobiology of Aging* **31**, 1593–1600 (2010).
- 695 32. Kose, Y. *et al.* Association between the inability to identify particular odors and physical
696 performance, cognitive function, and/or brain atrophy in community-dwelling older adults from
697 the Fukuoka Island City study. *BMC Geriatr* **21**, 421 (2021).
- 698 33. Hagemeyer, J. *et al.* Odor identification deficit in mild cognitive impairment and
699 Alzheimer's disease is associated with hippocampal and deep gray matter atrophy.
700 *Psychiatry Research: Neuroimaging* **255**, 87–93 (2016).
- 701 34. Kjelvik, G. *et al.* The brain structural and cognitive basis of odor identification deficits in
702 mild cognitive impairment and Alzheimer's disease. *BMC Neurol* **14**, 168 (2014).
- 703 35. Murphy, C., Jernigan, T. L. & Fennema-Notestine, C. Left hippocampal volume loss in
704 Alzheimer's disease is reflected in performance on odor identification: A structural MRI study.
705 *J Int Neuropsychol Soc* **9**, 459–471 (2003).
- 706 36. Yoshii, F., Onaka, H., Kohara, S., Ryo, M. & Takahashi, W. Association of Smell
707 Identification Deficit with Alzheimer's Disease Assessment Scale-Cognitive Subscale,
708 Japanese Version Scores and Brain Atrophy in Patients with Dementia. *Eur Neurol* **81**, 145–
709 151 (2019).
- 710 37. Yu, H., Chen, Z., Zhao, J., Duan, S. & Zhao, J. Olfactory Impairment and Hippocampal
711 Volume in a Chinese MCI Clinical Sample. *Alzheimer Disease & Associated Disorders* **33**,
712 124–128 (2019).
- 713 38. Jobin, B., Roy-Côté, F., Frasnelli, J. & Boller, B. Olfaction and Declarative Memory in
714 Aging: A Meta-analysis. *Chemical Senses* bjad045 (2023) doi:10.1093/chemse/bjad045.
- 715 39. Tabert, M. H. *et al.* A 10-item smell identification scale related to risk for Alzheimer's
716 disease. *Ann Neurol.* **58**, 155–160 (2005).
- 717 40. Devanand, D. P. *et al.* Combining Early Markers Strongly Predicts Conversion from Mild
718 Cognitive Impairment to Alzheimer's Disease. *Biological Psychiatry* **64**, 871–879 (2008).

- 719 41. Conti, M. Z. *et al.* Odor Identification Deficit Predicts Clinical Conversion from Mild
720 Cognitive Impairment to Dementia Due to Alzheimer's Disease. *Archives of Clinical*
721 *Neuropsychology* **28**, 391–399 (2013).
- 722 42. Roberts, R. O. *et al.* Association between olfactory dysfunction and amnesic mild
723 cognitive impairment and Alzheimer disease dementia. *JAMA neurology* **73**, 93–101 (2016).
- 724 43. Dhillal Albers, A. *et al.* Episodic memory of odors stratifies Alzheimer biomarkers in
725 normal elderly: POEM: Odor Memory Biomarker in Normal Elderly. *Ann Neurol.* **80**, 846–857
726 (2016).
- 727 44. Devanand, D. P. *et al.* Olfactory deficits predict cognitive decline and Alzheimer
728 dementia in an urban community. *Neurology* **84**, 182–189 (2015).
- 729 45. Dintica, C. S. *et al.* Impaired olfaction is associated with cognitive decline and
730 neurodegeneration in the brain. *Neurology* **92**, e700–e709 (2019).
- 731 46. Growdon, M. E. *et al.* Odor identification and Alzheimer disease biomarkers in clinically
732 normal elderly. *Neurology* **84**, 2153–2160 (2015).
- 733 47. Olofsson, J. K., Larsson, M., Roa, C., Wilson, D. A. & Jonsson Laukka, E. Interaction
734 Between Odor Identification Deficit and APOE4 Predicts 6-Year Cognitive Decline in Elderly
735 Individuals. *Behav Genet* **50**, 3–13 (2020).
- 736 48. Sohrabi, H. R. *et al.* Olfactory discrimination predicts cognitive decline among
737 community-dwelling older adults. *Transl Psychiatry* **2**, e118–e118 (2012).
- 738 49. Windon, M. J., Kim, S. J., Oh, E. S. & Lin, S. Y. Predictive value of olfactory impairment
739 for cognitive decline among cognitively normal adults. *The Laryngoscope* **130**, 840–847
740 (2019).
- 741 50. Wheeler, P. L. & Murphy, C. Olfactory Measures as Predictors of Conversion to Mild
742 Cognitive Impairment and Alzheimer's Disease. *Brain Sciences* **11**, 1391 (2021).
- 743 51. Wilson, R. S. *et al.* Olfactory Identification and Incidence of Mild Cognitive Impairment in
744 Older Age. *Arch Gen Psychiatry* **64**, 802 (2007).

- 745 52. Rahayel, S., Frasnelli, J. & Joubert, S. The effect of Alzheimer's disease and
746 Parkinson's disease on olfaction: A meta-analysis. *Behavioural Brain Research* **231**, 60–74
747 (2012).
- 748 53. Schofield, P. W., Moore, T. M. & Gardner, A. Traumatic Brain Injury and Olfaction: A
749 Systematic Review. *Front. Neurol.* **5**, (2014).
- 750 54. Audronyte, E., Pakulaite-Kazliene, G., Sutnickiene, V. & Kaubrys, G. Odor Discrimination
751 as a Marker of Early Alzheimer's Disease. *JAD* 1–10 (2023) doi:10.3233/JAD-230077.
- 752 55. Bastin, C. *et al.* Anosognosia in Mild Cognitive Impairment: Lack of Awareness of
753 Memory Difficulties Characterizes Prodromal Alzheimer's Disease. *Front. Psychiatry* **12**,
754 631518 (2021).
- 755 56. Gallo, D. A., Cramer, S. J., Wong, J. T. & Bennett, D. A. Alzheimer's disease can spare
756 local metacognition despite global anosognosia: Revisiting the confidence–accuracy
757 relationship in episodic memory. *Neuropsychologia* **50**, 2356–2364 (2012).
- 758 57. Cosentino, S., Metcalfe, J., Butterfield, B. & Stern, Y. Objective Metamemory Testing
759 Captures Awareness of Deficit in Alzheimer's Disease. *Cortex* **43**, 1004–1019 (2007).
- 760 58. Vannini, P. *et al.* Decreased meta-memory is associated with early tauopathy in
761 cognitively unimpaired older adults. *NeuroImage: Clinical* **24**, 102097 (2019).
- 762 59. López-Martos, D. *et al.* Awareness of episodic memory and meta-cognitive profiles:
763 associations with cerebrospinal fluid biomarkers at the preclinical stage of the Alzheimer's
764 continuum. *Front. Aging Neurosci.* **16**, 1394460 (2024).
- 765 60. Albers, M. W. *et al.* At the interface of sensory and motor dysfunctions and Alzheimer's
766 disease. *Alzheimer's & Dementia* **11**, 70–98 (2015).
- 767 61. Patel, Z. M. *et al.* International consensus statement on allergy and rhinology: Olfaction.
768 *Int Forum Allergy Rhinol* **12**, 327–680 (2022).

- 769 62. Rodriguez, S. *et al.* Innate immune signaling in the olfactory epithelium reduces odorant
770 receptor levels: modeling transient smell loss in COVID-19 patients. Preprint at
771 <https://doi.org/10.1101/2020.06.14.20131128> (2020).
- 772 63. Ergun, B. *et al.* Longitudinal Assessment Of Subjective And Objective Changes In
773 Olfactory Function Following Sars-Cov-2 Infection: A Focus On Odor Identification, Intensity,
774 And General Smell Function. in (Bonita Springs, FL, 2024).
- 775 64. Jobin, B. *et al.* Olfactory function is predictive of brain volumes and memory of former
776 professional football players in the Harvard Football Players Health Study. in (Reykjavík,
777 Iceland., 2024).
- 778 65. Runde, A. *et al.* Digital Accessible Remote Olfactory Mediated Health Assessments For
779 Preclinical AD. in (Bonita Springs, FL, 2024).
- 780 66. Jessen, F. *et al.* A conceptual framework for research on subjective cognitive decline in
781 preclinical Alzheimer's disease. *Alzheimer's & Dementia* **10**, 844–852 (2014).
- 782 67. Sperling, R. A. *et al.* Toward defining the preclinical stages of Alzheimer's disease:
783 Recommendations from the National Institute on Aging-Alzheimer's Association workgroups
784 on diagnostic guidelines for Alzheimer's disease. *Alzheimer's & Dementia* **7**, 280–292 (2011).
- 785 68. Jonsson, F. U. Olfactory Metacognition. *Chemical Senses* **28**, 651–658 (2003).
- 786 69. Jonsson, F. U. Odor Emotionality Affects the Confidence in Odor Naming. *Chemical*
787 *Senses* **30**, 29–35 (2005).
- 788 70. Roalf, D. R. *et al.* A quantitative meta-analysis of olfactory dysfunction in mild cognitive
789 impairment. *J Neurol Neurosurg Psychiatry* **88**, 226–232 (2017).
- 790 71. Kjelvik, G. *et al.* The Human Brain Representation of Odor Identification in Amnesic Mild
791 Cognitive Impairment and Alzheimer's Dementia of Mild Degree. *Frontiers in Neurology* **11**,
792 1779 (2021).
- 793 72. Patin, A. & Pause, B. M. Human amygdala activations during nasal chemoreception.
794 *Neuropsychologia* **78**, 171–194 (2015).

- 795 73. Larsson, M. *et al.* Olfactory memory in the old and very old: relations to episodic and
796 semantic memory and APOE genotype. *Neurobiology of Aging* **38**, 118–126 (2016).
- 797 74. Martin, C., Beshel, J. & Kay, L. M. An Olfacto-Hippocampal Network Is Dynamically
798 Involved in Odor-Discrimination Learning. *Journal of Neurophysiology* **98**, 2196–2205 (2007).
- 799 75. Desiato, V. M. *et al.* The Prevalence of Olfactory Dysfunction in the General Population:
800 A Systematic Review and Meta-analysis. *Am J Rhinol Allergy* **35**, 195–205 (2021).
- 801 76. Zhang, C. & Wang, X. Initiation of the age-related decline of odor identification in
802 humans: A meta-analysis. *Ageing Research Reviews* **40**, 45–50 (2017).
- 803 77. Oleszkiewicz, A., Schriever, V., Croy, I., Hähner, A. & Hummel, T. Updated Sniffin' Sticks
804 normative data based on an extended sample of 9139 subjects. *European Archives of Oto-*
805 *Rhino-Laryngology* **276**, 719–728 (2019).
- 806 78. Moberg, P. J. & Raz, N. Aging and Olfactory Recognition Memory: Effect of Encoding
807 Strategies and Cognitive Abilities. *International Journal of Neuroscience* **90**, 277–291 (1997).
- 808 79. Murphy, C., Nordin, S. & Acosta, L. Odor learning, recall, and recognition memory in
809 young and elderly adults. *Neuropsychology* **11**, 126 (1997).
- 810 80. Rovee, C. K., Cohen, R. Y. & Schlapack, W. Life-span stability in olfactory sensitivity.
811 *Developmental Psychology* **11**, 311 (1975).
- 812 81. Cowart, B. J. Relationships between taste and smell across the adult life span a. *Annals*
813 *of the New York academy of Sciences* **561**, 39–55 (1989).
- 814 82. Murphy, C. Age-related effects on the threshold, psychophysical function, and
815 pleasantness of menthol. *Journal of Gerontology* **38**, 217–222 (1983).
- 816 83. Frasnelli, J. *et al.* Neuroanatomical correlates of olfactory performance. *Exp Brain Res*
817 **201**, 1–11 (2010).
- 818 84. Savic, I., Gulyas, B., Larsson, M. & Roland, P. Olfactory Functions Are Mediated by
819 Parallel and Hierarchical Processing. *Neuron* **26**, 735–745 (2000).

- 820 85. Wilson, D. A. *et al.* Cortical Odor Processing in Health and Disease. in *Progress in Brain*
821 *Research* vol. 208 275–305 (Elsevier, 2014).
- 822 86. Haehner, A., Hummel, T. & Reichmann, H. Olfactory Loss in Parkinson's Disease.
823 *Parkinson's Disease* **2011**, 450939 (2011).
- 824 87. Yoo, H. S. *et al.* Olfactory dysfunction in Alzheimer's disease– and Lewy body–related
825 cognitive impairment. *Alzheimer's & Dementia* **14**, 1243–1252 (2018).
- 826 88. Carnemolla, S. E. *et al.* Olfactory dysfunction in frontotemporal dementia and psychiatric
827 disorders: A systematic review. *Neuroscience & Biobehavioral Reviews* **118**, 588–611
828 (2020).
- 829 89. Lecuyer Giguere, F. *et al.* Early Parosmia Signs and Affective States Predict Depression
830 and Anxiety Symptoms 6 Months After a Mild Traumatic Brain Injury. *Chemical Senses* **45**,
831 483–490 (2020).
- 832 90. Alosco, M. L. *et al.* Olfactory Function and Associated Clinical Correlates in Former
833 National Football League Players. *Journal of Neurotrauma* **34**, 772–780 (2017).
- 834 91. Zigrand, C. *et al.* Olfactory perception in patients with a mild traumatic brain injury: a
835 longitudinal study. *Brain Injury* **36**, 985–990 (2022).
- 836 92. Doraiswamy, P. M., Narayan, V. A. & Manji, H. K. Mobile and pervasive computing
837 technologies and the future of Alzheimer's clinical trials. *Npj Digital Medicine* **1**, 1 (2018).
- 838 93. Kaye, J. *et al.* Using digital tools to advance Alzheimer's drug trials during a pandemic:
839 the EU/US CTAD task force. *The journal of prevention of Alzheimer's disease* **8**, 513–519
840 (2021).
- 841 94. Green, P., Rohling, M. L., Iverson, G. L. & Gervais, R. O. Relationships between
842 olfactory discrimination and head injury severity. *Brain Injury* **17**, 479–496 (2003).
- 843 95. Tsai, M. S. *et al.* Apolipoprotein E: risk factor for Alzheimer disease. *Am J Hum Genet*
844 **54**, 643–649 (1994).

- 845 96. Weiner, M. W. *et al.* Increasing participant diversity in AD research: plans for digital
846 screening, blood testing, and a community-engaged approach in the Alzheimer's Disease
847 Neuroimaging Initiative 4. *Alzheimer's & Dementia* **19**, 307–317 (2023).
- 848 97. Kruse, C. S. *et al.* Telehealth and patient satisfaction: a systematic review and narrative
849 analysis. *BMJ Open* **7**, e016242 (2017).
- 850 98. Atmojo, J. T. *et al.* Telemedicine, Cost Effectiveness, and Patients Satisfaction: A
851 Systematic Review. *J HEALTH POLICY MANAGE* **5**, 103–107 (2020).
- 852 99. Albert, M. S. *et al.* The diagnosis of mild cognitive impairment due to Alzheimer's
853 disease: Recommendations from the National Institute on Aging-Alzheimer's Association
854 workgroups on diagnostic guidelines for Alzheimer's disease. *Alzheimer's & Dementia* **7**,
855 270–279 (2011).

856

857 **Figure legends.**

858 **Figure 1. AROMHA Brain Health Test.** Following online prescreening, online consent, the
859 web-based program instructs you through the 5 bilingual (English / Spanish) cards (A). Card A is
860 comprised of a practice odor P followed by the 9 odor labels comprising the OPID9 test.
861 Adjacent in the blue box (B) is the workflow for these tests as directed by
862 the testyourbrainhealth.com software to generate the OPID9, OPID9noguess, and average
863 intensity scores. After a 10-minute break, participants are instructed to work through Cards B
864 and C using the workflow in the green box (B) to generate the POEM, OPID18, and
865 OPID18noguess scores. Then participants are instructed to move on to Cards D and E using the
866 workflow in the purple box (B) to generate an OD10 odor discrimination score.

867

868 **Figure 2. Linear regression model between olfactory scores and age across CN participants.**

869 Greater age was significantly associated with lower (b) OPID9noguess ($\beta = -0.02$, $SE = .007$, $p =$
870 $.002$, $adj. R^2 = .06$), (c) OPID18 ($\beta = -0.04$, $SE = 0.001$, $p < .001$, $adj. R^2 = .12$), (d)
871 OPID18noguess ($\beta = -0.06$, $SE = 0.03$, $p < .001$, $adj. R^2 = .13$), (e) OD10 ($\beta = -0.02$, $SE =$
872 0.005 , $p < .001$, $adj. R^2 = .16$), and (f) POEM ($\beta = -0.004$, $SE = 0.001$, $p < .001$, $adj. R^2 = .08$)

873 scores, while the association with (a) OPID9 ($\beta = -0.01$, $SE = 0.005$ $p = .01$, $adj. R^2 = .04$) and
874 (f) average intensity ($\beta = -0.007$, $SE = 0.007$, $p = .28$, $adj. R^2 = .001$) scores did not reach
875 significance after Bonferroni correction for 21 comparisons ($p < .002$).

876

877 **Table legends.**

878 **Table 1. Demographic information and olfactory function in cognitively normal**
879 **participants who underwent observed and unobserved self-administration conditions of the**
880 **AROMHA Brain Health Test.** Values are means (SD). T-tests were performed across groups
881 for age, education, olfactory scores, and test duration. Chi-square test was performed on sex and
882 speaking-language proportions across groups. **Bold** indicates a statistically significant difference
883 that remained significant after Bonferroni correction.

884

885 **Table 2. Distribution of olfactory scores of anosmic patients and CN participants on the**
886 **AROMHA Brain Health Test.** The first column lists the score following random selection of
887 the answers for each test, e.g., the participant had no olfactory information to guide selection of
888 the answers. Values are means (SD). NA = not applicable. Wilcoxon signed-rank tests were
889 performed across groups for age, education, olfactory scores, and test duration. The chi-square
890 test was performed for sex. **Bold** indicates a statistically significant difference that remained
891 significant after Bonferroni correction.

892

893 **Table 3. Demographic information and olfactory function in cognitively normal English-**
894 **speaking and Spanish-speaking participants.** Values are means (SD). T-tests were performed
895 across groups for age, education, clinical variables, olfactory scores, and test duration. Chi-
896 square test was performed on sex and speaking-language proportions across groups. **Bold**
897 indicates a statistically significant difference that remained significant after Bonferroni
898 correction.

899

900 **Table 4. Olfactory function across cognitive status among participants aged 55+.** Values are
901 means (SD). T-tests were performed across groups for age, education, clinical variables,
902 olfactory scores, and test duration. Chi-square test was performed on sex proportion across

903 groups. **Bold** indicates a statistically significant difference that remained significant after
904 Bonferroni correction for 21 comparisons ($p < .002$).

905

906 **Table 5. ANCOVA models comparing different olfactory scores across groups.** DF =
907 Degrees of Freedom, F = F-statistic, p = p-value, ηp^2 = partial Eta squared. CI = Confidence
908 interval. **Bold** represents post-hoc p values that remained significant after Bonferroni correction
909 for 21 comparisons ($p < .002$). ^a p values from pairwise post-hoc comparisons adjusted for age,
910 sex, and education.