

## **ASSOCIATIONS BETWEEN PRENATAL ADVERSITY AND NEONATAL WHITE MATTER MICROSTRUCTURE ON LANGUAGE OUTCOMES AT AGE 2 YEARS**

Jacob Bjork, BA<sup>1</sup>, Jeanette K. Kenley, BSEE<sup>2</sup>, Caleb Gardner, BSBE<sup>2</sup>, Aidan Latham, BS<sup>2</sup>, Tara A. Smyser, MSE<sup>1</sup>, J. Philip Miller AB<sup>6</sup>, Joshua J. Shimony MD<sup>4</sup>, Jeffrey J. Neil, MD, PhD<sup>2</sup>, Barbara Warner, MD<sup>3</sup>, Joan Luby, MD<sup>1</sup>, Deanna M. Barch, PhD<sup>1,4,5</sup>, Cynthia E. Rogers, MD<sup>1,3</sup>, Christopher D. Smyser, MD<sup>2,3,4</sup>, and Rachel E. Lean, PhD<sup>1</sup>

<sup>1</sup> Department of Psychiatry, Washington University School of Medicine, St. Louis, MO

<sup>2</sup> Department of Neurology, Washington University School of Medicine, St. Louis, MO

<sup>3</sup> Department of Pediatrics, Washington University School of Medicine, St. Louis, MO

<sup>4</sup> Mallinckrodt Institute of Radiology Washington University School of Medicine, St. Louis, MO

<sup>5</sup> Department of Psychological and Brain Sciences, Washington University in St. Louis, St. Louis, MO

<sup>6</sup> Department of Biostatistics and Medicine, Washington University School of Medicine, St. Louis, MO

**Word Count (title page, main text, key points and relevance): 4,947/5,000**

**Tables/Figures: 6**

**Abbreviated Title:** Prenatal Adversity, Neonatal White Matter, and Language

## ABSTRACT

**Background:** Early life adversity is associated with microstructural alterations in white matter regions that subservise language. However, the mediating and moderating pathways between adversities experienced *in utero* and key neonatal white matter tracts including the corpus callosum (CC), superior longitudinal fasciculus (SLF), arcuate fasciculus (AF), inferior fronto-occipital fasciculus (IFOF), and uncinate on early language outcomes remains unknown.

**Methods:** This longitudinal study includes 160 neonates, oversampled for prenatal exposure to adversity, who underwent diffusion MRI (dMRI) in the first weeks of life. dMRI parameters were obtained using probabilistic tractography in FSL. Maternal Social Disadvantage and Psychosocial Stress was assessed throughout pregnancy. At age 2 years, the Bayley Scales of Infant and Toddler Development-III evaluated language outcomes. Linear regression, mediation, and moderation assessed associations between prenatal adversities and neonatal white matter on language outcomes.

**Results:** Prenatal exposure to Social Disadvantage ( $p < .001$ ) and Maternal Psychosocial Stress ( $p < .001$ ) were correlated with poorer language outcomes. When Social Disadvantage and maternal Psychosocial Stress were modeled simultaneously in relation to language outcomes, only Social Disadvantage was significant ( $p < .001$ ). Independent of Social Disadvantage ( $p < .001$ ), lower neonatal CC fractional anisotropy (FA) was related to poorer global ( $p = .02$ ) and receptive ( $p = .02$ ) language outcomes. CC FA did not mediate the association between Social Disadvantage and language outcomes (indirect effect 95% CIs -0.96-0.15), and there was no interaction between Social Disadvantage and CC FA on language outcomes ( $p > .05$ ). Bilateral SLF/AF, IFOF, and uncinate were not significant ( $p > .05$ ).

**Conclusions:** Prenatal exposure to Social Disadvantage and neonatal CC FA were independently related to language problems by age 2, with no evidence of mediating or moderating associations with language outcomes. These findings elucidate the early neural underpinnings of language development and suggest that the prenatal period may be an important time to provide poverty-reducing support to expectant mothers to promote offspring neurodevelopmental outcomes.

**Key Words:** Prenatal adversity, white matter, language

## **Abbreviations:**

AD	Axial diffusivity
AF	Arcuate fasciculus
Bayley-III	Bayley Scales of Infant and Toddler Development-III
CC	Corpus callosum
dMRI	Diffusion magnetic resonance imaging
eLABE	Early Life Adversity and Biological Embedding study
FA	Fractional anisotropy
FSL	FMRIB Software Library
GA	Gestational age
IFOF	Inferior fronto-occipital fasciculus
MD	Mean diffusivity
PMA	Postmenstrual age
PSD	Prenatal Social Disadvantage
RD	Radial diffusivity
ROI	Regions-of-Interest
SD	Standard deviation
SLF	Superior longitudinal fasciculus

## **ASSOCIATIONS BETWEEN PRENATAL ADVERSITY AND NEONATAL WHITE MATTER MICROSTRUCTURE ON LANGUAGE OUTCOMES AT AGE 2 YEARS**

Speech and language delays are one of the most common neurodevelopmental problems, affecting 8 – 20% of school-age children (Nelson, Nygren, Walker, & Panoscha, 2006). Early childhood is a critical period of language development. Receptive language skills, such as the discrimination of phonemes, begin to emerge in the first year of life (Gervain, 2020). Expressive language skill acquisition also rapidly unfolds during early childhood, with children progressing from basic two-word sentences in older infancy to storytelling and compound sentences by age 4 years (Visser-Bochane, Reijneveld, Krijnen, van der Schans, & Luinge, 2020). Importantly, receptive and expressive language deficits pose significant challenges for children across multiple domains, including school readiness delays, communication-interaction problems, and socioemotional dysfunction (Bornstein et al., 2020; Chow, Ekholm, & Coleman, 2018; Kastner, May, & Hildman, 2001; Vallotton & Ayoub, 2011). Investigation of the mechanisms that underlie disparities in language development is important to identify children in need of early language interventions and improve longer-term literacy and social-communication outcomes.

Childhood exposure to social disadvantage and maternal psychosocial stress are well-established, and relatively stable, risk factors for language delays throughout childhood (Fernald, Marchman, & Weisleder, 2013; Justice et al., 2019; Perkins, Finegood, & Swain, 2013). While such postnatal exposures play a critical role in disrupting language skill acquisition, exposures during the prenatal period may also be important (Gervain, 2020). In a retrospective cohort study of infants born preterm, children born to mothers residing in disadvantaged neighborhoods during

pregnancy showed higher rates of language delays and impairments in early childhood (Nwanne et al., 2022). Similarly, aspects of maternal psychosocial dysfunction including depression, anxiety, and stress during pregnancy are also related to poorer language outcomes in childhood (D'Souza et al., 2019; Laplante, Brunet, Schmitz, Ciampi, & King, 2008; Naudé et al., 2022). However, these previous investigations did not oversample for exposure to adversity, employed a retrospective study design, and/or assessed language outcomes in infants born preterm. Given these considerations, associations between prenatal adversity and early language development remain unclear.

Prenatal programming posits that adversity experienced *in utero* has a pronounced impact on vulnerable fetal structural and functional brain systems and, in turn, increases offspring susceptibility for adverse neurodevelopmental outcomes (Kwon & Kim, 2017). The prenatal environment has been linked with variability in newborn neural responses to speech heard in the womb, suggesting that prenatal experiences begin to shape language circuitry *in utero* when axonal development and myelination may be especially vulnerable to intra-uterine experiences (Dubois et al., 2014; Gervain, 2015). Prenatal exposure to social disadvantage and maternal psychosocial stress has been associated with lower fractional anisotropy (FA) in the corpus callosum (CC) and uncinate in neonates (Graham et al., 2020; Lautarescu, Craig, & Glover, 2020; Thompson et al., 2019). Longitudinal follow-up studies also suggest that neonatal microstructural alterations in the CC, uncinate, inferior fronto-occipital fasciculus (IFOF), and longitudinal fasciculi increase the likelihood of language problems as early as age 12 months (Bugada, Kline, & Parikh, 2021; Dubner, Rose, Bruckert, Feldman, & Travis, 2020; Feng et al., 2019; Salvan et al., 2017; Sket et al., 2019), with similar cross-sectional findings in school-age

children (Mürner-Lavanchy et al., 2018; Ostertag et al., 2023). However, no study has yet examined the extent that neonatal alterations in language pathways represent a key neural mechanism by which prenatal adversity places children at risk of language delays in early childhood.

In the Early Life Adversity and Biological Embedding (eLABE) cohort, we have previously shown that prenatal social disadvantage (PSD) is related to altered neonatal CC, uncinate, and IFOF microstructure (Lean et al., 2022; Sanders et al., 2024). Research from other groups also demonstrates prospective associations between disrupted neonatal white matter organization and difficulties in early language skill acquisition (Dubner et al., 2020; Feng et al., 2019; Sket et al., 2019). Taken together, these previous findings might suggest that adversity-related alterations in neonatal white matter may be a key mediator linking prenatal adversity with language delays in the first years of life. Prenatal exposure to adversity may also moderate associations between white matter organization and language development. In the eLABE cohort, associations between prenatal exposure to measures of maternal perceived or biological stress were differentially related to neonatal macro- or micro-structural brain outcomes depending on the level of PSD, with disrupted or maladaptive relationships among dyads experiencing higher levels of PSD (Herzberg et al., 2023; Lean et al., 2022; Sanders et al., 2024). However, the extent that prenatal adversity disrupts or exacerbates links between altered neonatal white matter and early language problems remains unknown.

This study seeks to address this gap in by examining prenatal exposure to adversity and neonatal white matter microstructure in relation to language outcomes at age 2 years in a cohort recruited

prenatally and oversampled for adversity. Current study aims were to examine associations between maternal social and psychosocial adversity during pregnancy on child language outcomes at age 2 years, identify the neonatal white matter correlates of early language outcomes focusing on the CC, IFOF, uncinate, and a bundle comprised of the superior longitudinal fasciculus/arcuate fasciculus (SLF/AF, see Supporting Information) as key language pathways, and investigate the mediating and moderating associations between prenatal adversity, neonatal white matter microstructure, and language outcomes. We hypothesized that neonatal white matter microstructure would mediate the link between prenatal adversity and language outcomes and that associations between neonatal white matter and language outcomes would be disrupted in children experiencing higher levels of adversity (Lean et al., 2022; Luby et al., 2024; Sanders et al., 2024).

## **METHODS**

### **Sample & Ethical Considerations**

The current study draws data from the longitudinal eLABE cohort of 398 mother-child dyads (Luby et al., 2023). From 09/2017 to 02/2020, 395 women were recruited during pregnancy (four mothers had two singleton pregnancies) identified from the Washington University March of Dimes Prematurity Research Center (Stout et al., 2022). Mothers were oversampled from an obstetric clinic serving low-income women to enrich the cohort for adversity. eLABE exclusion criteria were multiple gestation pregnancies, congenital infections, and prenatal alcohol or substance use (other than tobacco or marijuana for representativeness of pregnant women experiencing adversity (el Marroun et al., 2008; Passey, Sanson-Fisher, D'Este, & Stirling,



2014)). Study procedures were approved by the Washington University Institutional Review Board. Written informed consent was obtained from all mothers.

## **Procedure**

Mothers completed surveys in each trimester of pregnancy to assess social background and mental health. At an average of 41 weeks postmenstrual age (PMA, range 38-45 weeks), non-sedated neonates underwent multimodal MRI scans on a Siemens Prisma 3T Scanner with a 64-channel head coil. Neonates were fed, swaddled, and positioned in a head-stabilized vacuum wrap before being placed in the head coil on foam padding to reduce motion. At age 2 years, 206 children returned for a neurodevelopmental assessment which included the Bayley Scales of Infant and Toddler Development-III (Bayley-III). Paired neonatal diffusion magnetic resonance imaging (dMRI) and 2-year language outcome data were obtained for 160 children (Table 1, Figure S1). Infants with high-grade perinatal brain injury and/or admission to the neonatal intensive care unit >7 days were excluded from the current study analyses.

## **Measures**

### ***Prenatal Adversities***

As described in Luby et al. (2023), structural equation modeling was used in the larger eLABLE cohort to derive two latent constructs of prenatal adversity. First, PSD provided an aggregated measure of financial and material hardship (Luby et al., 2023). Measures included maternal health insurance status, highest level of education, family income-to-needs ratios (Office of the Assistant Secretary for Planning and Evaluation, 2024), Area Deprivation Index (Kind & Buckingham, 2018), and the Healthy Eating Index-2015 (Krebs-Smith et al., 2018). Observed

social variables were highly correlated (-0.66-0.74,  $p < .001$ ), supporting the use of a latent factor score.

Second, Psychosocial Stress was comprised of maternal depression symptoms, perceived stress, stressful/traumatic events, and racial discrimination (Luby et al., 2023). Measures included the Edinburgh Postnatal Depression Scale (Cox, Holden, & Sagovsky, 1987), Cohen Perceived Stress Scale (Cohen, Kamarck, & Mermelstein, 1983), Stress and Adversity Inventory for Adults (Slavich & Shields, 2018), and Everyday Discrimination Survey (Williams, Yu, Jackson, & Anderson, 1997). All psychosocial stress variables were correlated (0.21-0.93,  $p < 0.01$ ) (Luby et al., 2023). In the current study sample, PSD and Psychosocial Stress were moderately correlated ( $r = 0.40$ ,  $p < .001$ ). Similar Social Disadvantage and Psychosocial Stress factors were also created for the 2-year follow-up (Table S1).

### ***Neonatal White Matter Tracts***

Neonatal dMRI scans were acquired as two 5-minute runs using MB4, TR/TE=2500/79.4 ms, (1.75 mm)<sup>3</sup> voxels, with whole brain coverage (80 slices), 108 b-values sampled on three shells of  $b = 500$ -2500 s/mm<sup>2</sup> and 7  $b = 0$  images interspersed throughout each run with phase encoding direction reversal (anterior→posterior and posterior→anterior) for susceptibility- and eddy-current distortion correction. Seed regions-of-interest (ROIs) were created for the start-, way-, and end-points of each white matter tract using standard anatomical landmarks on a neonatal FA atlas. The atlas was then registered to the subject's native space FA image using FSL FLIRT (version 6.0.4). Calculated transforms were applied to each set of seed ROIs. Probabilistic tractography was performed using FSL Probtrackx. The diffusion tensor model was completed

using FSL's dtifit. Tensors were fitted using FSL's bedpostx and modelled to allow for two crossing fibers. If more than one waypoint mask was required, waypoint crossing was forced in listed order. Probtrackx output files were then thresholded to retain streamlines indicating greater certainty of white matter. All tracts were visually and numerically inspected. Infants whose data were consistently outside of 3 standard deviations (SD) were adjusted as required. Key tracts of interest (Figure 1) included the CC, IFOF, uncinate, and a SLF/AF language bundle. The SLF and the superior portion of the AF were examined as a language bundle given the proximity of the SLF and AF (Figures S2-S3 demonstrating tract overlap) and the relative immaturity of these tracts in neonates which precluded the isolation of the SLF and AF as separate pathways (Liang et al., 2022; Schilling et al., 2022; Zhang et al., 2006). The corticospinal tract (CST) was included as a negative control tract (Natali, Reddy, & Bordoni, 2024).

### ***Language at Age 2 Years***

The Bayley-III was administered by psychometricians at the 2-year follow-up to evaluate children's language and cognitive development. Age-normed standard scores for global language and scaled scores for receptive and expressive language are reported. As some participants completed follow-up before the COVID-19 Pandemic Lockdown (n=29, 18%), between-groups differences in timing of language assessment before and after March 16<sup>th</sup>, 2020 were conducted, with no differences in outcomes found (Table S2).

### ***Maternal Cognitive Ability and Home Enrichment***

Maternal cognitive ability was assessed using the Test of Premorbid Function (TOPF) (Wechsler, 2012). Age-normed standard scores are reported (data collected n=99, 62%). The

TOPF demonstrates concurrent validity with the Wechsler Adult Intelligence Scale-IV (Wechsler, 2012). The parent-report StimQ-Toddler was also completed at the 2-year follow-up as a measure of cognitive enrichment provided in the home, assessing availability of learning materials, reading books, parental involvement in developmental advancement, and parental verbal responsiveness (Cates et al., 2023). StimQ-Toddler total scores are reported (data collected  $n=81$ , 51%). There was no difference in PSD between participants who did or did not have TOPF ( $t=0.49$ ,  $p=.62$ ) or StimQ-Toddler ( $t=-0.50$ ,  $p=.62$ ) data collected.

### **Data Analysis**

Data analysis was performed in SPSS (Version 28). Neonatal dMRI variables (FA, mean diffusivity [MD], axial diffusivity [AD], and radial diffusivity [RD]) and child language outcome scores (global, receptive, and expressive) were screened for non-normal distributions and extreme outlier values ( $>3$  SD). Extreme outliers were corrected by assigning the next poorest non-extreme outlier score in the distribution.

Linear regression models were used to relate PSD and maternal Psychosocial Stress to child language outcomes, adjusted for gestational age (GA) and sex assigned at birth (male=1, female=2). For each dependent variable (global, receptive, and expressive language scores), latent prenatal adversity constructs were first fitted separately as independent variables, and then simultaneously to evaluate the independent contribution of each latent factor. A mean-centered interaction term between PSD and Psychosocial Stress was also tested. Regression models were also performed with dMRI variables as independent variables, along with PMA at MRI scan, to identify neonatal white matter correlates of language outcomes. Regression models were BH-

False Discovery Rate corrected for multiple comparisons ( $q < .05$ ). The PROCESS 4.0 macro for SPSS (Hayes & Rockwood, 2017) was used to evaluate whether neonatal white matter mediated (95% confidence intervals performed with bootstrapping, 5000 samples) the association between prenatal adversity and language outcomes. Formal moderation analysis with mean-centered interaction terms examined whether associations between neonatal white matter and language outcomes were moderated by PSD.

Additional analyses were performed including TOPF standard scores and StimQ-Toddler total scores as independent variables to account for maternal cognitive ability and home enrichment, respectively. Analysis was also performed with Bayley-III Cognition standard scores as the dependent variable to examine the specificity of dMRI findings for outcomes. Last, sensitivity analysis was undertaken excluding children with significant cognitive delay (Bayley-III Cognition  $< 70$ ,  $n=17$ ) and children born preterm ( $< 37$  weeks GA,  $n=15$ ).

## RESULTS

### Prenatal Adversities and Language Outcomes

When modeled individually, PSD ( $p < .001$ ; total  $R^2$  range .17 to .27) and Psychosocial Stress ( $p \leq .01$ ; total  $R^2$  range .07 to .14) were each associated with global, receptive, and expressive language outcomes by age 2, after accounting for sex and GA (Table 2). However, when both prenatal latent factors were simultaneously entered in the regression models, only PSD remained significant ( $p < .001$ ). There was no interaction between PSD and maternal Psychosocial Stress on language outcomes (all  $p > .05$ ).

As expected, year 2 Social Disadvantage was also correlated with language ability at age 2 years (Pearson's  $r$  range  $-0.38$  to  $-0.44$ ,  $p < .001$ , Table S1). However, prenatal and year 2 Social Disadvantage were highly colinear ( $r = .93$ ,  $p < .001$ ) and could not be included simultaneously in regression models. Given our interest in prospective associations between prenatal adversity, neonatal white matter, and language outcomes, PSD was included in subsequent regression and mediation analyses. However, moderation analyses were undertaken first with PSD, and then with 2-year Social Disadvantage, to examine whether the timing of exposure to Social Disadvantage impacted moderation analyses.

### **Neonatal White Matter and Language Outcome**

White matter tract descriptives are shown in Table S3. Results of regression models (Table 3) showed that lower neonatal CC FA ( $p = .01$ ) and CC AD ( $p = .02$ ) were associated with poorer global language ability by age 2, after covariate adjustment. Similarly, lower CC FA ( $p = .01$ ) and AD ( $p = .02$ ) were related to poorer receptive language outcomes (Table S4), whereas only lower CC FA ( $p = .02$ ) was related to poorer expressive outcomes (Table S5). CC MD and RD were not associated with language outcomes ( $p > .05$ , Table S6). There were no significant findings for the other hypothesized tracts including the SLF/AF language bundle, IFOF, or uncinate ( $p > .05$ , Table 3). The negative control CST was also not related to language outcomes ( $p > .05$ , Table 3).

### **PSD and Neonatal White Matter Microstructure on Language Outcomes**

Results of stepwise linear regression analysis showed that PSD ( $p < .001$ , Step 1  $R^2 = .25$ ) and lower neonatal CC FA ( $p = .02$ , Step 2  $R^2$  change =  $.03$ ) were independently associated with poorer global language outcomes at age 2 years (Table 4). Similar results for PSD ( $p < .001$ , Step 1

$R^2=.27$ ) and CC FA ( $p=.02$ , Step 2  $R^2$  change=.03) were observed for receptive language skills, whereas only PSD ( $p<.001$ , Step 1  $R^2=.17$ ) was associated with expressive language skills. CC AD was not associated with language outcomes ( $p>.05$ ) after accounting for PSD ( $p<.001$ , Table S7).

### ***Mediation Analysis***

Given that PSD and neonatal CC FA were associated with language outcomes, we examined whether the indirect effect of PSD to language via neonatal CC FA (*i.e.*, the product *ab*; (Hayes & Rockwood, 2017)) attenuated the association between PSD and language outcome. As shown in Table S8, the indirect effects for global (95% CIs: -0.96 – 0.15) and receptive (95% CIs: -0.19 – 0.03) were not significant.

### ***Moderation Analysis***

As shown in Table S9, the interaction term between PSD and CC FA was not significant for either global ( $p=.14$ ) or receptive language ( $p=.13$ ). Moderation analysis was repeated with postnatal year 2 Social Disadvantage, which similarly showed there was no interaction between neonatal CC FA and 2-year Social Disadvantage on global ( $B=-72.3$ ,  $SE=43.1$ ,  $p=.10$ ) or receptive ( $B=-13.3$ ,  $SE=8.24$ ,  $p=.11$ ) language outcomes.

### **Maternal Cognitive Ability and Home Enrichment**

When examined separately, maternal TOPF scores ( $r=.54$ ,  $p<.001$ ) and Stim-Q Toddler Total scores ( $r=.32$ ,  $p=.01$ ) were both correlated with global language scores. We also note that neonatal CC FA was not correlated with maternal TOPF scores ( $r=.19$ ,  $p>.05$ ), but was positively

correlated with later StimQ-Toddler total scores ( $r=.25$ ,  $p=.03$ ). When TOPF and StimQ-Toddler total scores were included simultaneously, along with PSD and neonatal CC FA, as independent variables fitted to global language scores, only PSD was independently associated with language outcomes ( $p<.001$ , Table 5).

### **Bayley-III Cognition**

Regression models with covariate factors were repeated using Bayley-III Cognition scores as the dependent variable. As shown in Table S10, CC FA ( $p=.09$ ) and AD ( $p=.10$ ) were not related to cognitive outcome (Table S10).

### **Sensitivity Analyses**

When excluding children with Bayley-III Cognition  $<70$ , associations between neonatal CC FA and AD and poorer language outcomes were unchanged (Table S11). Study conclusions also remained the same after excluding children born preterm (Table S11).

## **DISCUSSION**

In this cohort of prenatally-recruited infants enriched for adversity, PSD was associated with poorer global, receptive, and expressive language outcomes, with PSD explaining approximately 10% more of the variance in receptive language development than expressive language development at age 2 years. Prenatal exposure to maternal Psychosocial Stress was not significant after accounting for PSD. We extend previous research to show that prospective associations between Social Disadvantage and language development may begin *in utero* (Fernald et al., 2013; Justice et al., 2019; Nwanne et al., 2022). Postnatal Social Disadvantage



was also related to language outcomes, suggesting that ongoing exposure likely continues to shape language development into childhood. Key postnatal mechanisms previously associated with social disadvantage include difficulty accessing high-quality child education, reduced learning materials in the home, or limited parental time to engage in parent-child interactions where language modelling and conversational turn-taking take place (Hirsh-Pasek et al., 2015; Nwanne et al., 2022; Perkins et al., 2013). We considered maternal cognitive ability as a heritable factor and home enrichment as a postnatal environmental factor correlated with language outcomes, but neither were significant over and above PSD. While our findings might highlight the substantial associations between severe disadvantage on neurodevelopment, we note that sample size was smaller for analyses of maternal cognitive ability and home enrichment. Nonetheless, our findings suggest that PSD may begin to shape language development prior to exposure to postnatal mechanisms known to support language acquisition (Duncan, Magnuson, & Votruba-Drzal, 2017; Lean, Paul, Smyser, & Rogers, 2018; Perkins et al., 2013).

Independent of PSD, lower neonatal CC FA was associated with language outcomes. Lower FA may reflect a combination of reduced axonal packing, smaller axonal diameter, less myelination, or overall more immature white matter (Feldman, Yeatman, Lee, Barde, & Gaman-Bean, 2010). Study findings are somewhat in line with Sket et al. (2019), who also found that lower neonatal CC FA was related to worse parent-report ratings of infant language ability at age 12 months whereas maternal income and education were not significant. Differences in study findings may reflect the fact that our cohort was oversampled for dyads from low-income background, we included more aspects of social disadvantage, and assessed language using the gold-standard

Bayley-III. The CC is one of the largest and fastest proliferating white matter tracts (Dubois et al., 2014). Additional work using probabilistic tractography has also shown that the interhemispheric pathways connecting language regions travel through the CC (Xiang et al., 2012). Taken together, neonatal alterations in the neural architecture that facilitates the interhemispheric transfer of information may underlie the development of early problems in language processing (Friedrich et al., 2020; Ocklenburg, Ball, Wolf, Genç, & Güntürkün, 2015). We note that in our study, the CC was not related to cognition. We assessed CC microstructure with probabilistic tractography, whereas some previous studies have used tract-based spatial statistics in neonates and most commonly found that microstructure of the genu predicts cognitive development (Duerden et al., 2015; Feng et al., 2019; Parikh et al., 2021). The genu projects into the medial prefrontal cortex, a region known to be important for numerous cognitive functions (van den Heuvel, Mandl, Kahn, & Hulshoff Pol, 2009; Ridderinkhof, Ullsperger, Crone, & Nieuwenhuis, 2004; Simon, Rudebeck, & Rich, 2021). The body and splenium of the CC project into motor and visual regions, respectively, which map onto Brodmann's semantic function and language processing areas (Ardila, Bernal, & Rosselli, 2016; Hertrich, Dietrich, & Ackermann, 2016; van den Heuvel et al., 2009).

Of particular interest was the potential mediating pathways between PSD and language outcomes via neonatal white matter tracts that subserve language. However, CC microstructure did not mediate the relationship between PSD and language outcomes. Moderation analyses further suggested that the association between CC microstructure and language outcome did not vary as a function of PSD. While previous work in the eLABE cohort has demonstrated that associations between measures of maternal stress and inflammation during pregnancy on neonatal brain

macro- and micro-structure depend on the level of PSD (Herzberg et al., 2023; Lean et al., 2022; Sanders et al., 2024), our study results suggest that individual differences in neonatal CC white matter microstructure relate to language ability at age 2 years regardless of the level of PSD. Interactions between neonatal CC white matter and 2-year postnatal Social Disadvantage on language ability were also not significant, suggesting that infants with pronounced neonatal microstructural alterations were not differentially more sensitive to postnatal disadvantage (Miller, Chau, Synnes, Miller, & Grunau, 2022). While the CC is one of the earliest developing fibers, myelination and maturation continues throughout early childhood (Lebel, Walker, Leemans, Phillips, & Beaulieu, 2008). Longer-term alterations in CC development from birth and throughout early life may come to mediate or moderate associations between PSD and language outcomes at older ages. Mechanistic pathways may also be more discernable later in language development when disparities in language ability may have widened as a function of ongoing exposure to postnatal social disadvantage. (Armstrong et al., 2017; Fernald et al., 2013; Houweling et al., 2022). This is an important topic for future study.

In contrast to our hypothesis, the uncinate, IFOF, or the SLF/AF bundle were not associated with language outcomes at age 2 years. These tracts have been implicated in language functions in older populations, connecting brain regions in dorsal and ventral language pathways, as well as Wernicke's and Broca's areas (Fujii et al., 2016; Ostertag et al., 2023; Urger et al., 2015; Von Der Heide, Skipper, Klobusicky, & Olson, 2013). In the neonate, however, the uncinate, IFOF and SLF/AF have slower rates of myelination than the CC (Horgos et al., 2020; Huang et al., 2006). Nonetheless, findings in two preterm-born cohorts have also shown that neonatal microstructure in the uncinate was not yet related to early language outcomes at age 2 years

(Bugada et al., 2021; Dubner et al., 2020). Given that the uncinate, IFOF, and SLF demonstrate protracted trajectories of myelination early childhood into adulthood (Lebel et al., 2008; Olson, Heide, Alm, & Vyas, 2015; Zhang et al., 2007), it may be that later development and/or ongoing alterations in the microstructure of the uncinate, IFOF and SLF/AF will be important for subsequent language outcomes.

Current study findings have critical clinical and research implications. Associations between PSD on language outcomes, independent of maternal cognitive ability, further informs the type of preventions focused on PSD. For example, supplementing income and expanding access to social welfare programs during pregnancy may address some of the modifiable aspects of PSD related to language development in offspring (Goldfeld et al., 2024). Further, future studies might explore the language exposure of the fetus prenatally to investigate whether such exposures during pregnancy might enhance language development in offspring. Families experiencing social adversity during the prenatal period and into the early child rearing years may also benefit from access to government-funded services that provide families with education and/or in-home materials that focus on ways that parents can support infant and toddler language skill acquisition in the context of the parent-child relationship (Health Resource & Service Administration, 2024).

Study strengths included longitudinal study design beginning in pregnancy, oversampling of mothers from low-income backgrounds, assessment of multidimensional constructs measuring adversity experienced *in utero*, high quality neonatal dMRI data, standardized task-based language assessments, and consideration of maternal cognitive ability and home enrichment.

Study limitations include technical considerations regarding probabilistic tractography of the SLF and AF (see Supporting Information), which are slow to myelinate and difficult to track individually in the neonate compared to the CC which is larger and more established at birth (Janelle et al., 2022; Liang et al., 2022; Schilling et al., 2022). Additionally, prenatal and postnatal Social Disadvantage were inter-correlated and thus stable over time, potentially reflecting the lack of social mobility in our Midwestern cohort (Connor & Storper, 2020). As such, we were unable to disentangle the possible importance of timing of exposure to Social Disadvantage on language outcomes.

## **Conclusions**

These findings suggest that PSD is associated with language delays by age 2 years. Lower neonatal CC FA was also related to language delays by age 2 years, independent of PSD. However, a clear mechanistic relationship between PSD and neonatal CC microstructure on language outcome was not found at this early developmental point. Such associations may emerge as language disparities continue to widen over time with ongoing exposure to Social Disadvantage. Nonetheless, findings highlight the CC as an important commissural fiber that may underlie early language development and thus identify infants who may benefit from early referral to language therapies before observable language delays emerge. Importantly, findings also underscore the importance of broadening access to social welfare programs that reduce the burden and stressors of social disadvantage during the critical prenatal window to support infant neurodevelopmental outcomes.

## **Key Points and Relevance:**

- Prenatal Social Disadvantage (PSD) is associated with early child language delays, independent of maternal cognitive ability and home enrichment.
- After accounting for PSD, lower neonatal corpus callosum fractional anisotropy was associated with language delays by age 2 years.
- Neonatal white matter microstructure did not mediate the link between PSD and language outcomes at age 2 years, suggesting independent pathways to language outcomes.
- Findings reveal white matter correlates to help identify infants who may benefit from early intervention before delays emerge and underscore the importance of broadening access to social welfare programs during the critical prenatal window of neurodevelopment.

**Acknowledgements:** This study was supported by the National Institute of Mental Health (R01 MH113883, K01 MH122735), March of Dimes Prematurity Research Center at Washington University, Washington University Intellectual and Developmental Disability Research Center (P50 HD103525), Children’s Discovery Institute, McDonnell Center for Systems Neuroscience, and a NARSAD Young Investigator Grant (No. 28521) from the Brain and Behavior Research Foundation. We thank the families involved in this study.

**Conflicts of Interest:** The authors have no real or perceived conflicts of interest to disclose.

**Data Availability Statement:** Data can be made available to qualified researchers by written request to Primary Investigators Drs. Luby, Smyser, and Warner under the guidance of a formal

data sharing agreement. Data will also be available via the open access NIMH Data Archive repository at the conclusion of this study.

**Correspondence to:** Dr. Rachel E. Lean, PhD. Campus box 8514, 660 South Euclid Avenue, Washington University School of Medicine, St. Louis, Missouri 63110. E-mail: [rachel.lean@wustl.edu](mailto:rachel.lean@wustl.edu)

## REFERENCES

- Ardila, A., Bernal, B., & Rosselli, M. (2016). How Localized are Language Brain Areas? A Review of Brodmann Areas Involvement in Oral Language. *Archives of Clinical Neuropsychology, 31*(1), 112–122.
- Armstrong, R., Scott, J. G., Whitehouse, A. J. O., Copland, D. A., McMahon, K. L., & Arnott, W. (2017). Late talkers and later language outcomes: Predicting the different language trajectories. *International Journal of Speech-Language Pathology, 19*(3), 237–250. Taylor & Francis.
- Bornstein, M. H., Putnick, D. L., Bohr, Y., Abdelmaseh, M., Lee, C. Y., & Esposito, G. (2020). Maternal Sensitivity and Language in Infancy Each Promotes Child Core Language Skill in Preschool. *Early Childhood Research Quarterly, 51*, 483–489.
- Bugada, M. C., Kline, J. E., & Parikh, N. A. (2021). Microstructural Measures of the Inferior Longitudinal Fasciculus Predict Later Cognitive and Language Development in Infants Born With Extremely Low Birth Weight. *Journal of Child Neurology, 36*(11), 981–989. SAGE Publications Inc.
- Chow, J. C., Ekholm, E., & Coleman, H. (2018). Does oral language underpin the development of later behavior problems? A longitudinal meta-analysis. *School Psychology Quarterly: The Official Journal of the Division of School Psychology, American Psychological Association, 33*(3), 337–349.
- Cohen, S., Kamarck, T., & Mermelstein, R. (1983). A global measure of perceived stress. *Journal of Health and Social Behavior, 24*(4), 385–396.



- Connor, D. S., & Storper, M. (2020). The changing geography of social mobility in the United States. *Proceedings of the National Academy of Sciences*, *117*(48), 30309–30317.
- Proceedings of the National Academy of Sciences.
- Cox, J. L., Holden, J. M., & Sagovsky, R. (1987). Detection of postnatal depression. Development of the 10-item Edinburgh Postnatal Depression Scale. *The British Journal of Psychiatry: The Journal of Mental Science*, *150*, 782–786.
- D’Souza, S., Crawford, C. N., Buckley, J., Underwood, L., Peterson, E. R., Bird, A., Morton, S. M. B., et al. (2019). Antenatal determinants of early childhood talking delay and behavioural difficulties. *Infant Behavior & Development*, *57*, 101388.
- Dubner, S. E., Rose, J., Bruckert, L., Feldman, H. M., & Travis, K. E. (2020). Neonatal white matter tract microstructure and 2-year language outcomes after preterm birth. *NeuroImage: Clinical*, *28*, 102446.
- Dubois, J., Dehaene-Lambertz, G., Kulikova, S., Poupon, C., Hüppi, P. S., & Hertz-Pannier, L. (2014). The early development of brain white matter: A review of imaging studies in fetuses, newborns and infants. *Neuroscience, Secrets of the CNS White Matter*, *276*, 48–71.
- Duerden, E. G., Foong, J., Chau, V., Branson, H., Poskitt, K. J., Grunau, R. E., Synnes, A., et al. (2015). Tract-Based Spatial Statistics in Preterm-Born Neonates Predicts Cognitive and Motor Outcomes at 18 Months. *American Journal of Neuroradiology*, *36*(8), 1565–1571.
- Duncan, G. J., Magnuson, K., & Votruba-Drzal, E. (2017). Moving Beyond Correlations in Assessing the Consequences of Poverty. *Annual Review of Psychology*, *68*(1), 413–434.

- Feldman, H. M., Yeatman, J. D., Lee, E. S., Barde, L. H. F., & Gaman-Bean, S. (2010). Diffusion Tensor Imaging: A Review for Pediatric Researchers and Clinicians. *Journal of developmental and behavioral pediatrics: JDBP*, *31*(4), 346–356.
- Feng, K., Rowell, A. C., Andres, A., Bellando, B. J., Lou, X., Glasier, C. M., Ramakrishnaiah, R. H., et al. (2019). Diffusion Tensor MRI of White Matter of Healthy Full-term Newborns: Relationship to Neurodevelopmental Outcomes. *Radiology*, *292*(1), 179–187. Radiological Society of North America.
- Fernald, A., Marchman, V. A., & Weisleder, A. (2013). SES differences in language processing skill and vocabulary are evident at 18 months. *Developmental Science*, *16*(2), 234–248.
- Friedrich, P., Fraenz, C., Schlüter, C., Ocklenburg, S., Mädler, B., Güntürkün, O., & Genç, E. (2020). The Relationship Between Axon Density, Myelination, and Fractional Anisotropy in the Human Corpus Callosum. *Cerebral Cortex*, *30*(4), 2042–2056.
- Fujii, M., Maesawa, S., Ishiai, S., Iwami, K., Futamura, M., & Saito, K. (2016). Neural Basis of Language: An Overview of An Evolving Model. *Neurologia medico-chirurgica*, *56*(7), 379–386.
- Gervain, J. (2015). Plasticity in early language acquisition: The effects of prenatal and early childhood experience. *Current Opinion in Neurobiology*, *35*, 13–20.
- Gervain, J. (2020). Chapter 15—Typical language development. In A. Gallagher, C. Bulteau, D. Cohen, & J. L. Michaud (Eds.), *Handbook of Clinical Neurology*, Neurocognitive Development: Normative Development (Vol. 173, pp. 171–183). Elsevier. Retrieved May 29, 2024, from <https://www.sciencedirect.com/science/article/pii/B9780444641502000162>

- Goldfeld, S., Downes, M., Gray, S., Pham, C., Guo, S., O'Connor, E., Redmond, G., et al. (2024). Household income supplements in early childhood to reduce inequities in children's development. *Social Science & Medicine*, *340*, 116430.
- Graham, R. M., Jiang, L., McCorkle, G., Bellando, B. J., Sorensen, S. T., Glasier, C. M., Ramakrishnaiah, R. H., et al. (2020). Maternal Anxiety and Depression during Late Pregnancy and Newborn Brain White Matter Development. *American Journal of Neuroradiology*, *41*(10), 1908–1915. *American Journal of Neuroradiology*.
- Hayes, A. F., & Rockwood, N. J. (2017). Regression-based statistical mediation and moderation analysis in clinical research: Observations, recommendations, and implementation. *Behaviour Research and Therapy*, *98*, 39–57.
- Health Resource & Service Administration. (2024, April). Maternal, Infant, and Early Childhood Home Visiting (MIECHV) Program | MCHB. *HRSA Maternal & Child Health*. Retrieved July 12, 2024, from <https://mchb.hrsa.gov/programs-impact/programs/home-visiting/maternal-infant-early-childhood-home-visiting-miechv-program>
- Hertrich, I., Dietrich, S., & Ackermann, H. (2016). The role of the supplementary motor area for speech and language processing. *Neuroscience & Biobehavioral Reviews*, *68*, 602–610.
- Herzberg, M. P., Triplett, R., McCarthy, R., Kaplan, S., Alexopoulos, D., Meyer, D., Arora, J., et al. (2023). The Association Between Maternal Cortisol and Infant Amygdala Volume Is Moderated by Socioeconomic Status. *Biological Psychiatry Global Open Science*, Special Section: Metabolic Psychiatry, *3*(4), 837–846.
- van den Heuvel, M. P., Mandl, R. C. W., Kahn, R. S., & Hulshoff Pol, H. E. (2009). Functionally linked resting-state networks reflect the underlying structural connectivity architecture of the human brain. *Human Brain Mapping*, *30*(10), 3127–3141.

- Hirsh-Pasek, K., Adamson, L. B., Bakeman, R., Owen, M. T., Golinkoff, R. M., Pace, A., Yust, P. K. S., et al. (2015). The Contribution of Early Communication Quality to Low-Income Children's Language Success. *Psychological Science*, *26*(7), 1071–1083.
- Horgos, B., Mecea, M., Boer, A., Szabo, B., Buruiana, A., Stamatian, F., Mihu, C.-M., et al. (2020). White Matter Dissection of the Fetal Brain. *Frontiers in Neuroanatomy*, *14*. Retrieved January 26, 2022, from <https://www.frontiersin.org/article/10.3389/fnana.2020.584266>
- Houweling, T. A. J., Oude Groeniger, J., Jansen, P. W., van Lier, P., Horoz, N., Buil, M., & van Lenthe, F. J. (2022). Trajectories of socioeconomic inequality in early child development: A cohort analysis. *International Journal for Equity in Health*, *21*(1), 79.
- Huang, H., Zhang, J., Wakana, S., Zhang, W., Ren, T., Richards, L. J., Yarowsky, P., et al. (2006). White and gray matter development in human fetal, newborn and pediatric brains. *NeuroImage*, *33*(1), 27–38.
- Janelle, F., Iorio-Morin, C., D'amour, S., & Fortin, D. (2022). Superior Longitudinal Fasciculus: A Review of the Anatomical Descriptions With Functional Correlates. *Frontiers in Neurology*, *13*. Frontiers. Retrieved July 12, 2024, from <https://www.frontiersin.org/journals/neurology/articles/10.3389/fneur.2022.794618/full>
- Justice, L. M., Jiang, H., Purtell, K. M., Schmeer, K., Boone, K., Bates, R., & Salsberry, P. J. (2019). Conditions of Poverty, Parent-Child Interactions, and Toddlers' Early Language Skills in Low-Income Families. *Maternal and Child Health Journal*, *23*(7), 971–978.
- Kastner, J. W., May, W., & Hildman, L. (2001). Relationship between language skills and academic achievement in first grade. *Perceptual and Motor Skills*, *92*(2), 381–390.

- Kind, A. J. H., & Buckingham, W. R. (2018). Making Neighborhood-Disadvantage Metrics Accessible—The Neighborhood Atlas. *The New England journal of medicine*, *378*(26), 2456–2458.
- Krebs-Smith, S. M., Pannucci, T. E., Subar, A. F., Kirkpatrick, S. I., Lerman, J. L., Tooze, J. A., Wilson, M. M., et al. (2018). Update of the Healthy Eating Index: HEI-2015. *Journal of the Academy of Nutrition and Dietetics*, *118*(9), 1591–1602.
- Kwon, E. J., & Kim, Y. J. (2017). What is fetal programming?: A lifetime health is under the control of in utero health. *Obstetrics & Gynecology Science*, *60*(6), 506–519.
- Laplante, D. P., Brunet, A., Schmitz, N., Ciampi, A., & King, S. (2008). Project Ice Storm: Prenatal maternal stress affects cognitive and linguistic functioning in 5 1/2-year-old children. *Journal of the American Academy of Child and Adolescent Psychiatry*, *47*(9), 1063–1072.
- Lautarescu, A., Craig, M. C., & Glover, V. (2020). Chapter Two - Prenatal stress: Effects on fetal and child brain development. In A. Clow & N. Smyth (Eds.), *International Review of Neurobiology, Stress and Brain Health: Across the Life Course* (Vol. 150, pp. 17–40). Academic Press. Retrieved July 12, 2024, from <https://www.sciencedirect.com/science/article/pii/S0074774219301199>
- Lean, R. E., Paul, R. A., Smyser, C. D., & Rogers, C. E. (2018). Maternal intelligence quotient (IQ) predicts IQ and language in very preterm children at age 5 years. *Journal of Child Psychology and Psychiatry, and Allied Disciplines*, *59*(2), 150–159.
- Lean, R. E., Smyser, C. D., Brady, R. G., Triplett, R. L., Kaplan, S., Kenley, J. K., Shimony, J. S., et al. (2022). Prenatal exposure to maternal social disadvantage and psychosocial

- stress and neonatal white matter connectivity at birth. *Proceedings of the National Academy of Sciences of the United States of America*, 119(42), e2204135119.
- Lebel, C., Walker, L., Leemans, A., Phillips, L., & Beaulieu, C. (2008). Microstructural maturation of the human brain from childhood to adulthood. *NeuroImage*, 40(3), 1044–1055.
- Liang, W., Yu, Q., Wang, W., Dhollander, T., Suluba, E., Li, Z., Xu, F., et al. (2022). A comparative study of the superior longitudinal fasciculus subdivisions between neonates and young adults. *Brain Structure and Function*, 227(8), 2713–2730.
- Luby, J. L., England, S. K., Barch, D. M., Warner, B. B., Rogers, C., Smyser, C. D., Triplett, R., et al. (2023). Social disadvantage during pregnancy: Effects on gestational age and birthweight. *Journal of Perinatology*, 43(4), 477–483. Nature Publishing Group.
- Luby, J. L., Herzberg, M. P., Hoyniak, C., Tillman, R., Lean, R. E., Brady, R., Triplett, R., et al. (2024). Basic Environmental Supports for Positive Brain and Cognitive Development in the First Year of Life. *JAMA Pediatrics*, 178(5), 465–472.
- el Marroun, H., Tiemeier, H., Jaddoe, V. W. V., Hofman, A., Mackenbach, J. P., Steegers, E. A. P., Verhulst, F. C., et al. (2008). Demographic, emotional and social determinants of cannabis use in early pregnancy: The Generation R study. *Drug and Alcohol Dependence*, 98(3), 218–226.
- Miller, J. V., Chau, V., Synnes, A., Miller, S. P., & Grunau, R. E. (2022). Brain Development and Maternal Behavior in Relation to Cognitive and Language Outcomes in Preterm-Born Children. *Biological Psychiatry*, 92(8), 663–673.

- Mürner-Lavanchy, I. M., Kelly, C. E., Reidy, N., Doyle, L. W., Lee, K. J., Inder, T., Thompson, D. K., et al. (2018). White matter microstructure is associated with language in children born very preterm. *NeuroImage: Clinical*, *20*, 808–822.
- Natali, A. L., Reddy, V., & Bordoni, B. (2024). Neuroanatomy, Corticospinal Cord Tract. *StatPearls*. Treasure Island (FL): StatPearls Publishing. Retrieved July 12, 2024, from <http://www.ncbi.nlm.nih.gov/books/NBK535423/>
- Naudé, P. J. W., Pariante, C., Hoffman, N., Koopowitz, S.-M., Donald, K. A., Zar, H. J., & Stein, D. J. (2022). Antenatal maternal depression, early life inflammation and neurodevelopment in a South African birth cohort. *Brain, Behavior, and Immunity*, *105*, 160–168.
- Nelson, H. D., Nygren, P., Walker, M., & Panoscha, R. (2006). Screening for Speech and Language Delay in Preschool Children: Systematic Evidence Review for the US Preventive Services Task Force. *Pediatrics*, *117*(2), e298–e319.
- Nwanne, O. Y., Rogers, M. L., McGowan, E. C., Tucker, R., Smego, R., Vivier, P. M., & Vohr, B. R. (2022). High-Risk Neighborhoods and Neurodevelopmental Outcomes in Infants Born Preterm. *The Journal of Pediatrics*, *245*, 65–71.
- Ocklenburg, S., Ball, A., Wolf, C. C., Genç, E., & Güntürkün, O. (2015). Functional cerebral lateralization and interhemispheric interaction in patients with callosal agenesis. *Neuropsychology*, *29*(5), 806–815. US: American Psychological Association.
- Office of the Assistant Secretary for Planning and Evaluation. (2024, January 17). Poverty Guidelines. *ASPE*. Retrieved July 12, 2024, from <https://aspe.hhs.gov/topics/poverty-economic-mobility/poverty-guidelines>

Olson, I. R., Heide, R. J. V. D., Alm, K. H., & Vyas, G. (2015). Development of the uncinate fasciculus: Implications for theory and developmental disorders. *Developmental Cognitive Neuroscience, 14*, 50–61.

Ostertag, C., Reynolds, J. E., Kar, P., Dewey, D., Gibbard, W. B., Tortorelli, C., & Lebel, C. (2023). Arcuate fasciculus and pre-reading language development in children with prenatal alcohol exposure. *Frontiers in Neuroscience, 17*. Frontiers. Retrieved July 12, 2024, from <https://www.frontiersin.org/journals/neuroscience/articles/10.3389/fnins.2023.1174165/full>

Parikh, M. N., Chen, M., Braimah, A., Kline, J., McNally, K., Logan, J. W., Tamm, L., et al. (2021). Diffusion MRI Microstructural Abnormalities at Term-Equivalent Age Are Associated with Neurodevelopmental Outcomes at 3 Years of Age in Very Preterm Infants. *American Journal of Neuroradiology, 42*(8), 1535–1542.

Passey, M. E., Sanson-Fisher, R. W., D'Este, C. A., & Stirling, J. M. (2014). Tobacco, alcohol and cannabis use during pregnancy: Clustering of risks. *Drug and Alcohol Dependence, 134*, 44–50.

Perkins, S. C., Finegood, E. D., & Swain, J. E. (2013). Poverty and Language Development: Roles of Parenting and Stress. *Innovations in Clinical Neuroscience, 10*(4), 10–19.

Ridderinkhof, K. R., Ullsperger, M., Crone, E. A., & Nieuwenhuis, S. (2004). The Role of the Medial Frontal Cortex in Cognitive Control. *Science, 306*(5695), 443–447. American Association for the Advancement of Science.



- Salvan, P., Tournier, J. D., Batalle, D., Falconer, S., Chew, A., Kennea, N., Aljabar, P., et al. (2017). Language ability in preterm children is associated with arcuate fasciculi microstructure at term. *Human Brain Mapping*, *38*(8), 3836–3847.
- Sanders, A. F. P., Tirado, B., Seider, N. A., Triplett, R. L., Lean, R. E., Neil, J. J., Miller, J. P., et al. (2024). Prenatal exposure to maternal disadvantage-related inflammatory biomarkers: Associations with neonatal white matter microstructure. *Translational Psychiatry*, *14*(1), 1–18. Nature Publishing Group.
- Schilling, K. G., Tax, C. M. W., Rheault, F., Landman, B. A., Anderson, A. W., Descoteaux, M., & Petit, L. (2022). Prevalence of white matter pathways coming into a single white matter voxel orientation: The bottleneck issue in tractography. *Human Brain Mapping*, *43*(4), 1196–1213.
- Simon, J., Rudebeck, P. H., & Rich, E. L. (2021). Chapter One - From affective to cognitive processing: Functional organization of the medial frontal cortex. In A. T. Brockett, L. M. Amarante, M. Laubach, & M. R. Roesch (Eds.), *International Review of Neurobiology*, What does Medial Frontal Cortex Signal During Behavior? Insights from Behavioral Neurophysiology (Vol. 158, pp. 1–28). Academic Press. Retrieved July 25, 2024, from <https://www.sciencedirect.com/science/article/pii/S0074774220301562>
- Sket, G. M., Overfeld, J., Styner, M., Gilmore, J. H., Entringer, S., Wadhwa, P. D., Rasmussen, J. M., et al. (2019). Neonatal White Matter Maturation Is Associated With Infant Language Development. *Frontiers in Human Neuroscience*, *13*. Retrieved August 1, 2023, from <https://www.frontiersin.org/articles/10.3389/fnhum.2019.00434>

- Slavich, G. M., & Shields, G. S. (2018). Assessing Lifetime Stress Exposure Using the Stress and Adversity Inventory for Adults (Adult STRAIN): An Overview and Initial Validation. *Psychosomatic Medicine*, *80*(1), 17.
- Stout, M. J., Chubiz, J., Raghuraman, N., Zhao, P., Tuuli, M. G., Wang, L. V., Cahill, A. G., et al. (2022). A multidisciplinary Prematurity Research Cohort Study. *PLOS ONE*, *17*(8), e0272155. Public Library of Science.
- Thompson, D. K., Kelly, C. E., Chen, J., Beare, R., Alexander, B., Seal, M. L., Lee, K., et al. (2019). Early life predictors of brain development at term-equivalent age in infants born across the gestational age spectrum. *NeuroImage*, *185*, 813–824.
- Urger, S. E., De Bellis, M. D., Hooper, S. R., Woolley, D. P., Chen, S. D., & Provenzale, J. (2015). The superior longitudinal fasciculus in typically developing children and adolescents: Diffusion tensor imaging and neuropsychological correlates. *Journal of Child Neurology*, *30*(1), 9–20.
- Vallotton, C., & Ayoub, C. (2011). Use your words: The role of language in the development of toddlers' self-regulation. *Early Childhood Research Quarterly*, *26*(2), 169–181.
- Visser-Bochane, M. I., Reijneveld, S. A., Krijnen, W. P., van der Schans, C. P., & Luinge, M. R. (2020). Identifying Milestones in Language Development for Young Children Ages 1 to 6 Years. *Academic Pediatrics*, *20*(3), 421–429.
- Von Der Heide, R. J., Skipper, L. M., Klobusicky, E., & Olson, I. R. (2013). Dissecting the uncinate fasciculus: Disorders, controversies and a hypothesis. *Brain*, *136*(6), 1692–1707.
- Wechsler, D. (2012, November 12). Wechsler Adult Intelligence Scale—Fourth Edition. Retrieved July 12, 2024, from <http://doi.apa.org/getdoi.cfm?doi=10.1037/t15169-000>

- Williams, D. R., Yu, Y., Jackson, J. S., & Anderson, N. B. (1997). Racial Differences in Physical and Mental Health: Socio-economic Status, Stress and Discrimination. *Journal of Health Psychology, 2*(3), 335–351.
- Xiang, H., Dediu, D., Roberts, L., Oort, E. van, Norris, D. G., & Hagoort, P. (2012). The Structural Connectivity Underpinning Language Aptitude, Working Memory, and IQ in the Perisylvian Language Network. *Language Learning, 62*(s2), 110–130.
- Zhang, J, Evans, A. C., Hermoye, L., Donohue, P., Wakana, S., Zhang, W., Miller, M. I., et al. (2006). Late Development of the Superior Longitudinal Fasciculus Revealed by Diffusion Tensor Imaging (DTI). *Proceedings of International Society of Magnetic Resonance in Medicine, 14*, 738.
- Zhang, Jiangyang, Evans, A., Hermoye, L., Lee, S.-K., Wakana, S., Zhang, W., Donohue, P., et al. (2007). Evidence of slow maturation of the superior longitudinal fasciculus in early childhood by diffusion tensor imaging. *NeuroImage, 38*(2), 239–247.

## TABLES

**Table 1.** Sample background characteristics ( $n=160$ )

	<b>N</b>	<b><i>m</i></b>	<b><i>SD</i></b>	<b>Range</b>
<b>Infant background</b>				
Gestational age (weeks)	160	38.2	1.33	34 – 41
Birthweight (g)	160	3204	520	2200-4627
Born preterm, % (n)	160			
Preterm (< 37 weeks gestation)	9.4 (15)			
Term ( $\geq$ 37 weeks gestation)	90.6 (145)			
Sex assigned at birth, % (n)	160			
Male	55.0 (88)			
Female	45.0 (72)			
Race (medical chart review), % (n)	160			
Asian	1.3 (2)			
Black or African American	60.0 (96)			
Pacific Islander	0.6 (1)			
Other Pacific Islander	0.6 (1)			
White or Caucasian	38.1 (61)			
Ethnicity (medical chart review), % (n)	160			
Hispanic or Latina/o	1.9 (3)			
Not Hispanic or Latina/o	98.1 (157)			
Postmenstrual age at MRI (weeks)	160	41.2	1.38	38 – 45
<b>Year 2 neurodevelopmental outcomes</b>				

**Table 1.** Sample background characteristics ( $n=160$ )

	<b>N</b>	<b><i>m</i></b>	<b><i>SD</i></b>	<b>Range</b>
Age at year 2 visit (years)	160	2.11	0.14	1.93 – 2.61
<b>Bayley Scales of Infant and Toddler Development – III standard scores</b>				
Global Language	160	89.5	16.9	53 – 138
Receptive Language	160	7.6	3.3	1 – 16
Expressive Language	160	8.8	2.8	3 – 19
Cognition	160	89.4	12.5	55 - 125
<b>Maternal background during pregnancy</b>				
Age at delivery (Years)	160	29.3	5.4	19.0 - 41.9
Race (self-report), % (n)	160			
Asian	1.3 (2)			
Black or African American	59.4 (95)			
Pacific Islander	1.3 (2)			
White or Caucasian	38.1 (61)			
Ethnicity (self-report), % (n)	160			
Hispanic or Latina	1.9 (3)			
Not Hispanic or Latina	98.1(157)			
Education, % (n)	141			
Less than high school	46.3 (74)			
High school graduate	46.3 (74)			
College graduate	15.0 (24)			
Postgraduate degree	23.1 (37)			

**Table 1.** Sample background characteristics ( $n=160$ )

	<b>N</b>	<b><i>m</i></b>	<b><i>SD</i></b>	<b>Range</b>
Insurance Status, % (n)	160			
Public or uninsured	43.1 (69)			
Private	56.9 (91)			
Income-to-Needs Ratio <sup>a</sup>	158	1.76	2.56	0.37 – 12.1
Area Deprivation Index Percentile	160	69.4	24.6	7 – 100
Healthy Eating Index	136	58.3	11.1	31.7 – 80.7
Prenatal Social Disadvantage <sup>b</sup>	160	-0.07	1.0	-2.22, 1.50
Edinburgh Postnatal Depression (EPDS) <sup>a</sup>	160	4.6	3.8	0 – 20.5
EPDS in clinical range (>13), % (n)	4.4 (7)			
Perceived Stress Scale (PSS) <sup>a</sup>	160	12.9	6.6	1.33 – 30.0
PSS in clinical range (>13), % (n)	42.5 (68)			
STRAIN, count	157	6.9	5.3	0 – 25
STRAIN, severity	157	19.5	15.6	0 – 73
Everyday Discrimination Scale	158	2.3	2.1	1 – 8
Psychosocial Stress score <sup>c</sup>	160	-0.12	0.9	-1.68, 2.59
<b>Other background factors</b>				
Maternal TOPF standard scores	99	93.17	17.3	50 - 124
STIMQ-Toddler total score	81	28.54	7.4	9 - 39

*Note.* STRAIN, Stress and Adversity Inventory for Adults; TOPF, Test of Premorbid Function

<sup>a</sup> Average score across 3 prenatal trimesters

<sup>b</sup> Latent factor score comprised of income-to-need ratio in each trimester, area deprivation index,

**Table 1.** Sample background characteristics ( $n=160$ )

	<b>N</b>	<b><i>m</i></b>	<b><i>SD</i></b>	<b>Range</b>
education, health insurance status, healthy eating (Luby et al. 2023)				

<sup>c</sup> Latent factor score comprised of maternal depression symptoms, perceived stress, STRAIN count and weighted severity, everyday discrimination (Luby et al. 2023)

**Table 2.** Associations between prenatal adversity and language outcomes at age 2 years

	<i>Global Language</i>				<i>Receptive Language</i>				<i>Expressive Language</i>			
	<i>B (SE)</i>	$\beta$	<i>p</i>	<i>q</i>	<i>B (SE)</i>	$\beta$	<i>p</i>	<i>q</i>	<i>B (SE)</i>	$\beta$	<i>p</i>	<i>q</i>
<b>Model 1</b>	$R^2 = .25^{***}$				$R^2 = .27^{***}$				$R^2 = .17^{***}$			
Gestational Age	1.41 (.91)	.11	.12	.17	.32 (.17)	.13	.06	.09	.15 (.16)	.07	.36	.51
Child Sex	4.40 (2.36)	.31	.06	.08	.78 (.45)	.12	.09	.10	.77 (.42)	.14	.07	.09
PSD	-7.61 (1.24)	-.44	<b>&lt;.001</b>	<b>&lt;.001</b>	-1.50 (.24)	-.45	<b>&lt;.001</b>	<b>&lt;.001</b>	-1.07 (.22)	-.37	<b>&lt;.001</b>	<b>&lt;.001</b>
<b>Model 2</b>	$R^2 = .13^{***}$				$R^2 = .14^{***}$				$R^2 = .07^{**}$			
Gestational Age	2.28 (.96)	.18	.02*	.08	.49 (.18)	.20	.01	.04	.27 (.17)	.13	.10	.04
Child Sex	5.17 (2.54)	.15	.04*	.98	.93 (.48)	.14	.06	.10	.88 (.44)	.15	.05	.09
Psych Stress	-4.70 (1.44)	-.25	<b>&lt;.001</b>	<b>.003</b>	-.96 (.28)	-.26	<b>&lt;.001</b>	<b>.003</b>	-.64 (.25)	-.20	<b>.01</b>	<b>.03</b>
<b>Model 3</b>	$R^2 = .25^{***}$				$R^2 = .27^{***}$				$R^2 = .18^{***}$			
Gestational Age	1.37 (.90)	.11	.13	.17	.31 (.17)	.13	.07	.09	.14 (.16)	.07	.38	.51
Child Sex	4.43 (2.36)	.13	.06	.08	.78 (.45)	.12	.08	.10	.77 (.42)	.14	.07	.09
PSD	-6.97 (1.35)	-.40	<b>&lt;.001</b>	<b>&lt;.001</b>	-1.37 (.26)	-.41	<b>&lt;.001</b>	<b>&lt;.001</b>	-.99 (.24)	-.34	<b>&lt;.001</b>	<b>&lt;.001</b>
Psych Stress	-1.77 (1.45)	-.09	.22	.22	-.39 (.28)	-.11	.16	.16	-.22 (.26)	-.07	.39	.39



**Table 2.** Associations between prenatal adversity and language outcomes at age 2 years

	<i>Global Language</i>				<i>Receptive Language</i>				<i>Expressive Language</i>			
	<i>B (SE)</i>	$\beta$	<i>p</i>	<i>q</i>	<i>B (SE)</i>	$\beta$	<i>p</i>	<i>q</i>	<i>B (SE)</i>	$\beta$	<i>p</i>	<i>q</i>
<b>Model 4</b>	$R^2 = .26^{***}$				$R^2 = .28^{***}$				$R^2 = .18^{***}$			
Gestational Age	1.14 (.93)	.09	.22	.22	.28 (.18)	.12	.11	.11	.10 (.16)	.05	.56	.56
Child Sex	4.15 (2.37)	.12	.08	.08	.74 (.45)	.11	.10	.10	.72 (.42)	.13	.09	.09
PSD	-6.27 (1.49)	-.36	<b>&lt;.001</b>	<b>&lt;.001</b>	-1.27 (.28)	-.38	<b>&lt;.001</b>	<b>&lt;.001</b>	-.85 (.26)	-.29	<b>&lt;.001</b>	<b>&lt;.001</b>
Psych Stress	-2.09 (1.48)	-.11	.16	.22	-.43 (.28)	-.12	.13	.16	-.28 (.26)	-.09	.28	.39
PSD x Psych Stress	1.78 (1.60)	.09	.27	.27	.25 (.30)	.07	.41	.41	.34 (.28)	.10	.23	.23

*Note.* PSD, prenatal Social Disadvantage; Psych Stress, Psychosocial Stress; *q*, *p*-value corrected for multiple comparisons using Benjamini-Hochberg False Discovery Rate ( $q < .05$ ).

\*  $p < .05$ , \*\*  $p < .01$ , \*\*\*  $p < .001$

**Table 3.** Associations between neonatal white matter microstructure and global language outcomes at age 2 years.

	<i>FA</i>				<i>AD</i>			
	<i>B (SE)</i>	$\beta$	<i>p</i>	<i>q</i>	<i>B (SE)</i>	$\beta$	<i>p</i>	<i>q</i>
<b>Model 1: Corpus Callosum</b>		R <sup>2</sup> = .12***				R <sup>2</sup> = .10**		
Gestational Age	2.08 (1.03)	.16	.05	.05	1.88 (1.05)	.15	.08	.08
Child Sex	5.94 (2.57)	.18	.02	.05	6.08 (2.61)	.18	.02	.06
PMA at MRI scan	-.20 (1.08)	-.02	.85	.85	1.64 (1.04)	.13	.12	.39
Corpus Callosum	136.9 (49.4)	.24	<b>.01</b>	<b>.01</b>	107.8 (47.6)	.18	<b>.02</b>	<b>.02</b>
<b>Model 2: R SLF/AF</b>		R <sup>2</sup> = .07*				R <sup>2</sup> = .05*		
Gestational Age	2.30 (1.07)	.18	.03	.05	2.18 (1.06)	.17	.04	.06
Child Sex	5.30 (2.62)	.16	.05	.05	5.13 (2.63)	.15	.05	.06
PMA at MRI scan	1.02 (1.10)	.08	.36	.78	.69 (1.10)	.06	.52	.52
R SLF/AF	-3.52 (48.6)	-.01	.94	.93	-7.78 (10.9)	-.06	.48	.48
<b>Model 3: L SLF/AF</b>		R <sup>2</sup> = .05*				R <sup>2</sup> = .05*		
Gestational Age	2.26 (1.07)	.18	.04	.05	2.27 (1.06)	.18	.03	.06
Child Sex	5.29 (2.62)	.16	.05	.05	5.29 (2.63)	.16	.05	.06

**Table 3.** Associations between neonatal white matter microstructure and global language outcomes at age 2 years.

	<i>FA</i>				<i>AD</i>			
	<i>B (SE)</i>	$\beta$	<i>p</i>	<i>q</i>	<i>B (SE)</i>	$\beta$	<i>p</i>	<i>q</i>
PMA at MRI scan	.91 (1.16)	.07	.43	.78	.95 (1.12)	.08	.40	.51
L SLF/AF	7.20 (51.0)	.01	.89	.89	-1.08 (12.5)	-.01	.93	.93
<b>Model 4: R Uncinate</b>		$R^2 = .07^*$				$R^2 = .08^*$		
Gestational Age	2.29 (1.06)	.16	.03	.05	2.43 (1.07)	.19	.02	.06
Child Sex	5.28 (2.63)	.09	.05	.05	5.05 (2.64)	.15	.06	.06
PMA at MRI scan	1.06 (1.11)	-.01	.34	.78	.76 (1.05)	.06	.47	.52
R Uncinate	-8.68 (55.8)	.03	.88	.88	-24.5 (30.9)	-.06	.43	.43
<b>Model 5: L Uncinate</b>		$R^2 = .07^*$				$R^2 = .07^*$		
Gestational Age	2.36 (1.07)	.19	.03	.05	2.23 (1.07)	.18	.05	.06
Child Sex	5.24 (2.63)	.16	.05	.05	5.30 (2.62)	.16	.05	.06
PMA at MRI scan	1.15 (1.08)	.09	.29	.78	1.07 (1.05)	.09	.31	.51
L Uncinate	-24.8 (55.9)	-.04	.66	.66	81.2 (41.9)	.16	.05	.05
<b>Model 6: R IFOF</b>		$R^2 = .07^*$				$R^2 = .09^{**}$		

**Table 3.** Associations between neonatal white matter microstructure and global language outcomes at age 2 years.

	<i>FA</i>				<i>AD</i>			
	<i>B (SE)</i>	$\beta$	<i>p</i>	<i>q</i>	<i>B (SE)</i>	$\beta$	<i>p</i>	<i>q</i>
Gestational Age	2.24 (1.06)	.18	.04	.05	2.12 (1.05)	.17	.04	.06
Child Sex	5.30 (2.62)	.16	.05	.05	5.97 (2.62)	.18	.02	.06
PMA at MRI scan	.73 (1.24)	.06	.56	.84	1.82 (1.09)	.15	.10	.39
R IFOF	17.8 (48.1)	.04	.71	.71	81.2 (41.9)	.16	.05	.05
<b>Model 7: L IFOF</b>		$R^2 = .07^*$				$R^2 = .09^{**}$		
Gestational Age	2.29 (1.06)	.18	.03	.05	2.09 (1.06)	.17	.05	.06
Child Sex	5.27 (2.64)	.16	.05	.05	5.96 (2.65)	.18	.03	.06
PMA at MRI scan	1.04 (1.22)	.09	.39	.78	1.70 (1.12)	.14	.13	.39
L IFOF	-3.96 (49.0)	-.01	.94	.94	62.1 (42.0)	.13	.14	.14
<b>Model 8: R CST</b>		$R^2 = .08^*$				$R^2 = .07^*$		
Gestational Age	2.10 (1.07)	.17	.05	.05	2.30 (1.07)	.18	.03	.06
Child Sex	5.36 (2.62)	.16	.04	.05	5.30 (2.63)	.16	.05	.06
PMA at MRI scan	.51 (1.13)	.04	.65	.84	1.04 (1.13)	.09	.36	.51

**Table 3.** Associations between neonatal white matter microstructure and global language outcomes at age 2 years.

	<i>FA</i>				<i>AD</i>			
	<i>B (SE)</i>	$\beta$	<i>p</i>	<i>q</i>	<i>B (SE)</i>	$\beta$	<i>p</i>	<i>q</i>
R CST	80.4 (84.0)	.09	.34	.34	2.11 (18.7)	.01	.91	.91
<b>Model 9: L CST</b>		$R^2 = .08^*$				$R^2 = .07^*$		
Gestational Age	2.08 (1.06)	.16	.05	.05	2.34 (1.07)	.18	.03	.06
Child Sex	5.52 (2.62)	.16	.04	.05	5.34 (2.63)	.16	.05	.06
PMA at MRI scan	.37 (1.14)	.03	.75	.84	1.16 (1.14)	.10	.31	.51
L CST	93.6 (78.3)	.11	.23	.23	6.40 (19.1)	.03	.74	.74

*Note.* PSD, prenatal Social Disadvantage; PMA, post-menstrual age; R, right; L, left; SLF/AF, superior longitudinal fasciculus/arcuate fasciculus; IFOF, inferior fronto-occipital fasciculus; CST, corticospinal tract; *q*, p-value corrected for multiple comparisons using Benjamini-Hochberg False Discovery Rate ( $q < .05$ ).

\*  $p < .05$ , \*\*  $p < .01$ , \*\*\*  $p < .001$

**Table 4.** Stepwise associations between prenatal Social Disadvantage, neonatal corpus callosum fractional anisotropy, and language outcomes at age 2 years

	<i>Global Language</i>			<i>Receptive Language</i>			<i>Expressive Language</i>		
	<i>B (SE)</i>	$\beta$	<i>p</i>	<i>B (SE)</i>	$\beta$	<i>p</i>	<i>B (SE)</i>	$\beta$	<i>p</i>
<b>Step 1</b>	$R^2 = .25^{***}$			$R^2 = .27^{***}$			$R^2 = .17^{***}$		
Gestational Age	1.41 (.91)	.11	.12	.32 (.17)	.13	.06	.15 (.16)	.07	.36
Sex	4.40 (2.36)	.13	.06	.78 (.45)	.12	.09	.77 (.42)	.14	.07
PSD	-7.61 (1.24)	-.44	<b>&lt;.001</b>	-1.51 (.24)	-.45	<b>&lt;.001</b>	-1.07 (.22)	-.37	<b>&lt;.001</b>
<b>Step 2</b>	$\Delta R^2 = .03^*$			$\Delta R^2 = .03^*$			$\Delta R^2 = .02$		
Gestational Age	1.12 (.95)	.09	.25	.24 (.18)	.10	.18	.13 (.17)	.06	.46
Sex	4.95 (2.34)	.15	.03	.88 (.44)	.14	.05	.85 (.42)	.15	.04
PSD	-7.21 (1.24)	-.41	<b>&lt;.001</b>	-1.42 (.24)	-.43	<b>&lt;.001</b>	-1.02 (.22)	-.35	<b>&lt;.001</b>
PMA at MRI scan	-.43 (.98)	-.04	.67	-.02 (.18)	-.01	.94	-.12 (.18)	-.06	.49
CC FA	106.7 (45.2)	.18	<b>.02</b>	20.6 (8.55)	.18	<b>.02</b>	15.5 (8.02)	.16	.06

*Note.* PSD, prenatal Social Disadvantage; PMA, post-menstrual age; CC, corpus callosum; FA, fractional anisotropy

---

\* p<.05, \*\* p<.01, \*\*\* p<.001

**Table 5.** Associations between prenatal Social Disadvantage, neonatal corpus callosum fractional anisotropy, and global language outcomes accounting for maternal cognitive ability and home enrichment

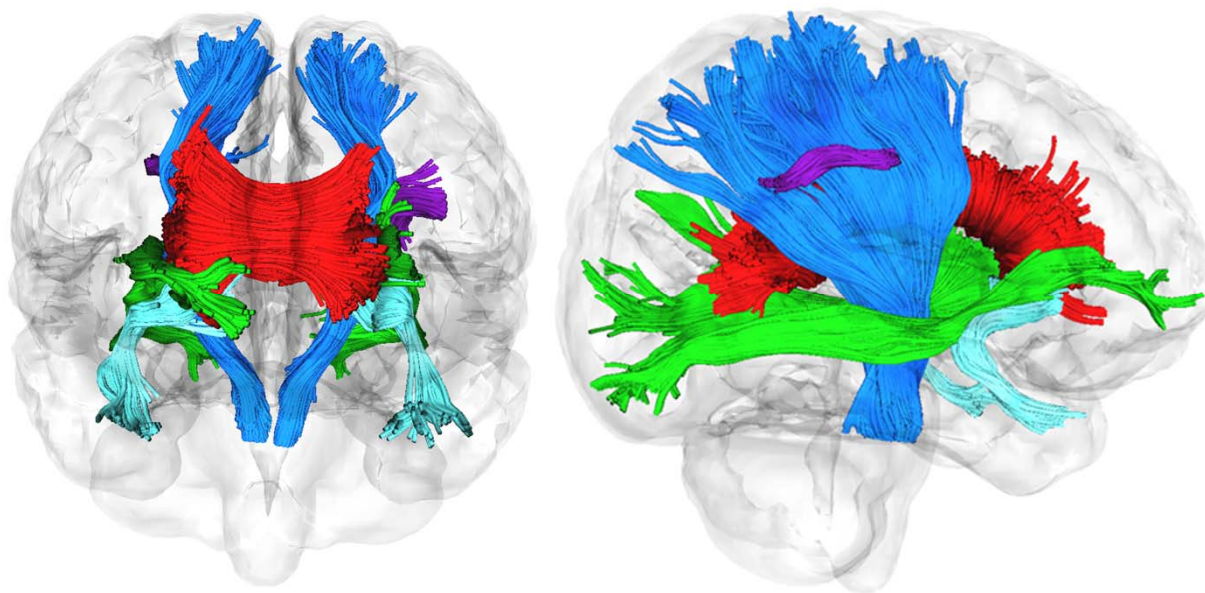
	<i>B (SE)</i>	<i>β</i>	<i>p</i>
<b>Global Language</b>		$R^2 = .49^{**}$	
Gestational Age	.75 (1.12)	.07	.50
Child Sex	5.52 (3.00)	.18	.07
PSD	-13.1 (2.75)	-.83	<b>&lt;.001</b>
PMA at MRI scan	.47 (1.20)	.04	.80
CC FA	71.0 (61.9)	.12	.26
Maternal TOPF	-.20 (.16)	-.22	.21
StimQ-Toddler Total	-.16 (.24)	-.08	.49

*Note.* PSD, prenatal Social Disadvantage; TOPF, Test of Premorbid Function, PMA, post-menstrual age; CC, corpus callosum; FA, fractional anisotropy

\*  $p < .05$ , \*\*  $p < .01$ , \*\*\*  $p < .001$



## FIGURE LEGENDS



**Figure 1. Illustration of key white matter tracts of interest.** Key tracts of interest involved in language pathways include the uncinate (aqua), corpus callosum (red), inferior occipital fasciculus (green), and superior longitudinal fasciculus/arcuate fasciculus/language bundle (purple). The corticospinal tract (blue) was included as a negative control tract.