

# Associations between genetic HPV 16 diversity and cervical cancer prognosis

Patrícia Patury<sup>1</sup>, Fábio B. Russomano<sup>2</sup>, Luiz F.L. Martins<sup>3</sup>, Miguel Angelo Martins  
Moreira<sup>4</sup>, Raquel B.M. Carvalho<sup>5</sup>, Nádia R. C. Kappaun<sup>6</sup>, Liz Maria de Almeida<sup>3</sup>

1 Gynecologic Oncology Department, Brazilian National Cancer Institute (INCA),  
Ministry of Health, Rio de Janeiro, Rio de Janeiro, Brazil and Departament of Clinical  
and Surgical Care of Women, National Institute of Women, Children and Adolescents  
Health Fernandes Figueira, Rio de Janeiro, Rio de Janeiro, Brazil

2 Departament of Clinical and Surgical Care of Women, National Institute of Women,  
Children and Adolescents Health Fernandes Figueira, Rio de Janeiro, Rio de Janeiro,  
Brazil

3 Division of Surveillance and Situation Analysis, Brazilian National Cancer Institute  
(INCA), Ministry of Health, Rio de Janeiro, Rio de Janeiro, Brazil

4 Genetics Program, Brazilian National Cancer Institute (INCA), Ministry of Health, Rio  
de Janeiro, Rio de Janeiro, Brazil

5 Departament of Physiotherapy, Brazilian National Cancer Institute (INCA), Ministry of  
Health, Rio de Janeiro, Rio de Janeiro, Brazil and Departament of Female  
Endocrinology, National Institute of Women, Children and Adolescents Health  
Fernandes Figueira, Rio de Janeiro, Rio de Janeiro, Brazil

6 Departament of Physiotherapy, Brazilian National Cancer Institute (INCA), Ministry of  
Health, Rio de Janeiro, Rio de Janeiro, Brazil

E-mail: [patricia.patury1@gmail.com](mailto:patricia.patury1@gmail.com) (PP)

## Abstract

**Introduction:** Cervical cancer (CC) arises as a result of chronic and persistent

female genitalia infection by different oncogenic human papillomaviruses (HPV).

NOTE: This preprint reports new research that has not been certified by peer review and should not be used to guide clinical practice.

38 The incidence of this disease is still high in developing countries such as Brazil,  
39 where the diagnosis is often made in advanced stages. HPV 16 is the most  
40 common type of CC worldwide. Studies concerning the association of different  
41 HPV 16 lineages with overall and disease-free CC survival rates can contribute  
42 to further understanding the behavior of different HPV 16 lineages concerning the  
43 prognosis of CC cases. **Objective:** Assess the CC prognosis of patients treated  
44 in a Brazilian institution with regard to HPV16 strains. **Methods:** Data were  
45 obtained from a prospective cohort of 334 CC patients recruited between July  
46 2011 and March 2014 and treated at the Brazilian National Cancer Institute  
47 (INCA), in Rio de Janeiro, Brazil. HPV 16 lineages were identified in tumor tissue  
48 samples. Genetic HPV 16 diversity comprised 218 cases of lineage A, 10 of  
49 lineage B, 10 of lineage C and 96 of lineage D. In addition to HPV 16 lineages,  
50 age, histopathological type, staging, and treatment completion were evaluated  
51 regarding CC prognosis. **Results:** Median patient age was 48 years old. The  
52 most common histopathological type was squamous cell carcinoma (82.3%),  
53 followed by adenocarcinoma. Locally advanced disease staging was the most  
54 frequently detected, represented by similar stage II and III percentages (36.2%  
55 and 37.7%), followed by initial stage I (19.2%) and stage IV presenting distant  
56 disease (6.9%). Only 187 patients completed CC treatment. Age, histological  
57 type, staging, and treatment completion were associated with a higher risk of  
58 death, which was not observed for the HPV 16 lineage variable. With regard to  
59 age, each one year of life increase led to about a 1% increase in risk of death.  
60 Other histopathological types (poorly differentiated carcinoma, adenosquamous,  
61 neuroendocrine and sarcoma) were associated with a higher risk of death  
62 compared to adenocarcinoma. Squamous cell carcinoma also represented a

63 higher risk of death compared to adenocarcinoma, albeit non-statistically  
64 significant. Patients diagnosed in advanced stages exhibited a higher risk of  
65 death, and those who did not complete treatment exhibited an over 2-fold  
66 increased risk of death. **Conclusion:** This study found no associations between  
67 HPV 16 lineages A, B, C and D and CC prognosis.

68

69 **Keywords:** Cervical neoplasia, HPV 16, HPV 16 strains, prognosis, survival.

70

## 71 **Introduction**

72 Cervical cancer (CC) is still a serious public health problem, especially in  
73 less developed countries, despite being considered a preventable disease  
74 through vaccination, screening, and treatment of precursor lesions. In countries  
75 with an opportunistic screening system, such as Brazil, or in those without public  
76 screening programs, CC diagnoses are often made when women already present  
77 advanced symptoms, compromising survival and quality of life [1].

78 Cervical cancer is the third most common cancer in Brazil among women  
79 excluding non-melanoma skin cancer. The number of new CC cases expected in  
80 Brazil is of 17,010 for each year of the 2023-2025 triennium, with a mortality rate  
81 of 6,627 deaths noted for 2021 [2, 3].

82 Different CC evolution processes in women with similar prognostic factors  
83 have not yet been fully clarified. Age, staging at diagnosis, lymphovascular space  
84 invasion, histopathological type and the presence of anemia are classically  
85 associated to CC prognoses [1, 4]. The prognostic value of oncogenic human  
86 papillomaviruses (HPV) DNA detection in tumors has not yet been established  
87 and studies with this objective have reported conflicting results. Some authors

88 postulate that the presence of oncogenic HPV may be a useful CC prognosis  
89 marker prior to treatment, as this makes the precursor lesion progression more  
90 aggressive [5, 6]. Others, however, state that different types of oncogenic HPV  
91 have no prognostic value in CC cases [7, 8].

92 HPV 16 is the HPV most commonly associated with CC, and its four  
93 lineages were initially named according to the geographic region where they were  
94 most frequently identified, associated to local ethnicities [9, 10]. Since 2013,  
95 however, they have been termed A, B, C and D [11-14]. Each HPV 16 lineage (A,  
96 B, C and D) is subdivided into sublineages, as follows: A1-A3 (European and  
97 Asian lineages), A4 (Asian lineage); B1-B4 (African lineage 1); C1-C4 (African  
98 lineage 2); D1-D3 (North American and Asian-American lineages) [9, 10].

99 Some evidence suggests that different HPV16 lineages may present  
100 different pathogenicities, and some of them are associated with a greater risk of  
101 developing CC than others [15]. Certain authors have demonstrated that lineages  
102 B, C and D play a more important role in the progression of precursor cervix  
103 lesions in the invasive CC form when compared to lineage A [9, 16, 17]. Other  
104 studies, however, have suggested that the D lineage, in particular, is highly  
105 associated with viral infection persistence and progression to CC [18, 19, 20].

106 Regarding the prognostic value of different HPV16 lineages and  
107 sublineages in CC cases, Tornesello et al. [21] suggested that the AA (Asian-  
108 American) lineage was associated to more aggressive CC behavior. Another  
109 study evaluated 301 *in situ* cases and 727 CC cases and reported a higher  
110 frequency of HPV 16 D3 and A4 in CC cases and lower disease-free survival  
111 rates in women infected with the HPV 16 B lineage compared to lineages A, C  
112 and D [22]. In another assessment, Zuna et al. [23] reported more advanced

113 stages (II-IV) and lower survival rates in women infected with the European HPV  
114 16 lineage when assessing 155 CC patients.

115 In view of these contradictions and the possibility that differences may be  
116 associated with population characteristics or influenced by treatment strategies,  
117 this study aimed to assess whether the HPV 16 lineages present in CC cases  
118 treated at the Brazilian National Cancer Institute (INCA) in Rio de Janeiro, Brazil,  
119 influence CC prognosis regarding overall survival and progression-free survival.

120

## 121 **Methods**

### 122 **Patients**

123 This prospective cohort study took place at a specialized gynecological  
124 oncology center in Brazil from July 2011 to March 2014. It selected women aged  
125 18 years or older, diagnosed with FIGO-2009 IB1 or higher cervical cancer (CC),  
126 and excluded patients who had undergone previous cancer treatment [17, 24].  
127 Over the course of a five-year duration, all participants were monitored, with their  
128 clinical data collected until January of 2022. All participants provided written  
129 informed consent prior to participation. Ethical approval for the study was  
130 provided by the Human Research Ethics Committee at the oncology center.

131 Nine hundred and sixty-eight women with a histopathological diagnosis of  
132 CC were included. All were 18 years old or older and had not undergone previous  
133 oncological CC treatment. The HPV types and lineages in positive HPV16 cases  
134 were identified by tumor tissue biopsies obtained at the first consultation for 594  
135 (61.4%) patients. New samples were not obtained for the remaining cases due to  
136 technical difficulties, poor clinical patient conditions or refusal to undergo the

137 procedure. The samples were immediately stored in RNA-Later at -80°C and  
138 deposited in the National Cancer Institute Tumor Bank.

139

## 140 **DNA isolation and identification of HPV16 genotypes** 141 **and lineages**

142 Total DNA was isolated from the obtained biopsies using the QIAamp DNA  
143 Mini Kit (Qiagen, Hilden, Germany) and eluted in 200 microliters (µL) of AE buffer  
144 and stored at – 80°C. After isolation, the presence of viral DNA was detected by  
145 polymerase chain reactions (PCR) with a set of PGMY09/11 primers [25]. When  
146 DNA was not detected by this technique, a nested PCR was performed employing  
147 the GP5p/GP6p primers [17, 26].

148 The amplified PCR products were purified using the GFX PCR and DNA  
149 Band Purification kit (GE Healthcare), sequenced with the Big Dye Terminator  
150 v3.1 Cycle Sequencing Kit (Applied Biosystems, Foster City, CA) and analyzed  
151 using an ABI Prism. 3130XL Genetic Analyzer (Applied Biosystems). All  
152 sequences were edited and analyzed using the 4Peaks Software (Nucleobytes,  
153 Amsterdam, Netherlands). HPV genotypes were identified using the Basic Local  
154 Alignment Search Tool (BLASTn, <http://blast.ncbi.nlm.nih.gov/>) [17]. The biopsies  
155 presenting HPV16 genotypes (n=392) were submitted to PCR for amplification of  
156 the viral genomic regions *E6* and *LCR*, followed by DNA sequencing. This  
157 allowed the identification of different haplotypes, and HPV16 lineages and were  
158 reported previously in Vidal et al. (2016) [27]. HPV16 lineages were identified in  
159 334 samples Fig 1.

160 **Fig 1. Flowchart depicting patient inclusion and types of detected HPV. Fig**  
161 **1. (INCA, 2011-2014).**

162

## 163 **Socioeconomic data**

164 A questionnaire was applied to obtain educational, environmental, and  
165 socioeconomic characteristics of all enrolled patients. Clinical information  
166 concerning treatment and follow-up regarding patients infected with HPV16 was  
167 obtained from both physical and electronic records.

168

## 169 **Statistical analyses**

170 Crude and adjusted prevalence ratios and their respective 95% confidence  
171 intervals (95% CI) were calculated by means of the Poisson regression model  
172 with variations to determine associations between HPV 16 lineages and other  
173 variables [28, 29]. A multinomial logistic regression model was applied  
174 concerning histological type, due to three histological categories. Models  
175 presenting p values < 0.05 were considered significant.

176 Kaplan-Meyer curves were used in a univariate and stratified manner for  
177 confounding variables for the survival analyses. A semiparametric proportional  
178 risk model (Cox model) was used for the multivariate analyses. Two Schoenfeld  
179 residuals were analyzed to verify model validity, and associations were  
180 considered significant when  $p < 0.05$ .

181 Overall survival rates were calculated setting the survival time as the  
182 interval between the data of histopathological revision of the biopsy for diagnosis  
183 confirmation and the date of death or last follow-up. Recurrence or recurrence-  
184 free survival times were defined in months, considering the interval between the  
185 date of the end of the treatment and the date of the recurrence or the date of the  
186 last consultation with no CC signs. Patients presenting disease progression

187 throughout the treatment or at treatment end were not included in the disease-  
188 free survival analysis.

189 All procedures were approved by the INCA Ethics and Research  
190 Committee (number 156/10, on 02/25/2011) and a specific amendment for this  
191 study (CAAE: 53398416.0.0000.5274, on 03/01/2016) and all the patients signed  
192 a consent form.

193

## 194 Results

195 Patient and tumor characteristics are depicted in Table 1. Median patient  
196 age was 48 years old. Most women carried lineages A (65.3%) and D (28.7%),  
197 while lineage B was detected in 3% of all cases and lineage C, in another 3%.

198 The most common histopathological type was squamous cell carcinoma  
199 (82.3%), followed by adenocarcinoma (12.9%). Stages II and III were the most  
200 common (36.2% and 37.7%), followed by stage I (19.2%) and IV (6.9%). Only  
201 187 women completed treatment. Regarding treatment results, about 1/3 of the  
202 patients exhibited disease persistence (31.4%), most displayed disease  
203 remission and did not relapse (65%) and 192 died during the follow-up period  
204 Table 1.

205

206 **Table 1. Description of the study population (n = 334).**

Characteristics	n	%
<b>Sociodemographic</b>		
<b>Age (years)</b>		
Up to 39	96	28.7
40 to 49	93	27.8



50 to 64	106	31.7
65 and over	39	11.7
<b>Years of study</b>		
None	19	5.7
1 to 3	70	21.0
4 to 7	108	32.3
8 to 10	82	24.6
11 and over	55	16.5
<b>Marital status</b>		
Single	28	8.4
Married	184	55.1
Divorced	71	21.3
Widow	51	15.3
<b>Skin color</b>		
White	108	32.3
Brown	178	53.3
Black	46	13.8
Yellow	2	0.6
<b><i>HPV 16 genotyping (detected lineages)</i></b>		
A	218	65.3
B	10	3.0
C	10	3.0
D	96	28.7
<b><i>Tumor and treatment features</i></b>		
<b>Histological Type</b>		
Squamous cell carcinoma	275	82.3
Adenocarcinoma	43	12.9

Others <sup>1</sup>	16	4.8
<b>Staging</b>		
I	64	19.2
II	121	36.2
III	126	37.7
IV	23	6.9
<b>Treatment completion</b>		
Yes	187	56.0
No	147	44.0
<b>Outcome</b>		
<b>Persistence</b>		
Yes	105	31.4
No	229	68.6
No data		
<b>Relapse (of the 229 patients with no disease persistence)</b>		
Yes	80	34.9
No	149	65.1
<b>Death</b>		
Yes	192	57.5
No	142	42.5
<b>Death due to cervical cancer</b>		
Yes	174	52.1
No	18	5.4

207 (1) 6 G3 Carcinoma cases, 5 Adenosquamous cases, 4 Neuroendocrine cases and 1 Sarcoma  
208 case.

209

210 **Overall Survival**

211 The median follow-up time for the enrolled patients was of 35.9 months  
212 (1Q = 12.6 months; 2Q = 36.3 months and 3Q = 66 months), and the median  
213 overall survival time was of 40.3 months (CI<sub>95%</sub>: 29.9 – 49.8).

214 Kaplan-Meyer curves according to each HPV 16 lineage are displayed in  
215 Fig 2. The median overall survival was of 35.9 months among patients carrying  
216 lineage A and 45.9 months among those carrying lineage D. No estimated  
217 median was determined for the B/C group, as the survival curve was influenced  
218 by sample size. No statistically significant difference between the survival curves  
219 (p = 0.21; Log Rank test) was observed.

220

221 **Fig 2 - Five-year overall survival curve of cervical cancer patients since the**  
222 **beginning of the treatment according to HPV 16 lineage\*.**

223 **Fig 2. Lineage A = 218 cases, B = 10 cases, C = 10 cases, D = 96 cases. \*HPV**  
224 **16 lineages B and C were grouped due to their low frequency.**

225

226 Table 2 indicates risk of patient death according to the study variables.  
227 Age, histological type, treatment completion and staging were associated with a  
228 higher risk of death, while HPV 16 lineage was not. Concerning age, about a 1%  
229 increase in the risk of death was noted for each one year of life increase.

230 Tumors characterized as other histopathological types (poorly  
231 differentiated carcinoma, adenosquamous, neuroendocrine and sarcoma) were  
232 associated to a higher risk of death compared to adenocarcinoma (HR: 2.47)  
233 (95% CI 1.17 - 5.19). Patients presenting squamous cell carcinomas also  
234 exhibited a higher risk of death than those presenting adenocarcinomas,  
235 although non-statistically significant Table 2.

236 Women diagnosed in advanced stages displayed a higher risk of death  
237 and those who did not complete treatment presented a more than two-fold  
238 increased risk of death (HR: 2.69 (2.00 - 3.61)) Table 2.

239 **Table 2. Overall risk of death in patients with cervical cancer (n = 334)**

Characteristic	n	Crude HR (CI 95%)	P value
<b>HPV 16 lineage</b>			
A	218	1.18 (0.85 - 1.64)	0.32
B/C	20	0.67 (0.32 - 1.41)	0.29
D	96	1	-
<b>Age (years)</b>		1.01 (1.00 - 1.02)	0.02
<b>Histological type</b>			
Squamous cell carcinoma	275	1.51 (0.94 - 2.43)	0.09
Adenocarcinoma	43	1	-
Others	16	2.47 (1.17 - 5.19)	0.02
<b>Staging</b>			
I or II	185	1	-
III or IV	149	2.69 (2.00 - 3.61)	< 0.001
<b>Treatment completion</b>			
Yes	187	1	
No	147	4.06 (3.00 - 5.48)	< 0.001

240 HR: hazard ratio.

241

242 The staging, histological type and treatment completion data distribution  
243 suggest an association between intermediate variables and HPV 16 lineages,  
244 which was not observed for age. Considering the possibility that different HPV 16

245 lineages could be associated with variables that could lead to worse CC  
 246 prognoses, prevalence ratios between HPV 16 lineages and other variables  
 247 explaining worse prognosis were calculated Table 3. The association between  
 248 HPV 16 lineages, staging and treatment completion reached borderline  
 249 significance (p=0.07).

250

251 **Table 3. Prevalence ratios between HPV 16 lineages and explanatory**  
 252 **variables for worse prognosis**

Characteristic	Advanced staging <sup>1</sup>		Histological type <sup>2</sup>		Did not finish treatment	
	Prevalence ratio* (CI 95%)	p value	Prevalence ratio* (CI 95%)	p value	Prevalence ratio* (CI 95%)	p value
<b>HPV 16 lineage</b>						
A	1.30 (0.97 - 1.74)	0.07	0.70 (0.35 - 1.38)	0.30	1.31 (0.98 - 1.75)	0.07
B/C	0.82 (0.40 - 1.67)	0.54	1.86 (0.52 - 6.73)	0.34	0.80 (0.39 - 1.64)	0.54
D	1				1	-

253 <sup>1</sup> – Staging III and IV

254 <sup>2</sup> - Histological type (Squamous cell carcinoma, Adenocarcinoma, others); using the multiple  
 255 logistic regression model

256

## 257 **Disease-Free Survival**

258 Up to 75% of all patients exhibited a disease-free timeframe lower than  
 259 23.9 months. The Kaplan-Meyer disease-free survival curves according to HPV  
 260 16 lineage are presented in Fig 3. The third survival quartile was of 23.5 months  
 261 among patients carrying lineage A, 31.1 for patients carrying the B/C lineages

262 and 24.9 months for those carrying lineage D. No estimated median was  
263 calculated for group B/C due to the number of patients carrying this lineage. No  
264 statistically significant difference between survival curves was noted when  
265 applying the log-rank test ( $p = 0.43$ ).

266

267 **Fig 3 - Disease-free survival curve in 5 years of patients with cervical cancer**  
268 **since the end of treatment according to HPV 16 lineage\*.**

269 **Fig 3. \*Patients who did not exhibit persistent cervical cancer after**  
270 **treatment. \*HPV 16 lineages B and C were grouped due to their low**  
271 **frequency.**

272

273 Staging was the only variable significantly associated with the risk of CC  
274 recurrence, expressed by risk ratios. In this case, women presenting advanced  
275 staging exhibited a HR of 1.83 (95%CI 1.17 - 2 .87) compared to those presenting  
276 early staging Table 4.

277

278 **Table 4. Risk of cervical cancer recurrence (n = 229\*).**

Characteristic	n	Crude HR <sup>†</sup> (CI 95%)	P value
<b>HPV 16 lineage</b>			
A	218	0.77 (0.48 - 1.23)	0.28
B/C	20	0.35 (0.13 - 1.00)	0.3
D	96	1	-
<b>Age (years)</b>		1.00 (0.99 - 1.02)	0.59
<b>Histological type</b>			

Squamous cell carcinoma	275	0.70 (0.41 – 1.18)	0.18
Adenocarcinoma	43	1	-
Others	16	0.24 (0.03 – 1.83)	0.17

### Staging

I or II	185	1	
III or IV	149	1.83 (1.17 - 2.87)	0.008

### Treatment completion

Yes	187	1	-
No	147	1.14 (0.68 – 1.92)	0.61

279 \* Patients who did not exhibit persistence post-treatment cervical cancer,

280 †HR = *hazard ratio*

281

## 282 Discussion

283 This study aimed to assess the influence of HPV 16 strains on CC  
284 prognosis. In this sense, only age, histopathological type, disease staging, and  
285 treatment completion were associated with a higher risk of death.

286 No associations between HPV 16 lineages and CC prognosis were noted,  
287 although different prevalences of each were detected according to stage, with no  
288 confounding effect demonstrated between these variables Table 3. The low  
289 frequencies of lineages B and C may have contributed to the lack of statistically  
290 significant associations noted herein. The most frequently detected lineage was  
291 the A (Asian-European) lineage, in contrast to that reported by Tornesello et al.  
292 [30] (Asian-American), which was termed lineage D in this study. As suggested

293 by Tornesello et al. [30], lineage D exhibited more aggressive behavior in CC  
294 cases [30].

295 Although no significant CC prognosis differences were detected in relation  
296 to HPV 16 lineages, other authors have noted this association. Zuna et al. [31],  
297 for example, reported lower survival rates in women carrying the European  
298 lineage. In our study, the better survival rates observed for patients carrying non-  
299 European lineages (B, C and D) were partially mediated by initial staging at  
300 diagnosis, suggesting that this lineage is associated to less aggressive tumor  
301 behavior compared to the European lineage. In another study, Rader et al. [32]  
302 reported lower disease-free survival rates in patients carrying the HPV16 B  
303 lineage.

304 The median age of CC patients in the present study was 48 years old, and  
305 a 1% increase in the risk of death was noted with each increasing year. This  
306 finding is in agreement with studies that have demonstrated age as an  
307 independent CC prognostic factor [33-38].

308 Squamous cell carcinoma was the most common histopathological type  
309 detected in the present study, representing 82.3% of all cases Table 1, in line  
310 with other literature reports [1]. The “others” histopathological category defined  
311 herein (poorly differentiated carcinoma, adenosquamous, neuroendocrine and  
312 sarcoma) presented a higher risk of death in relation to adenocarcinoma Table 2.  
313 These tumors exhibit a more aggressive clinical evolution and are generally  
314 diagnosed at more advanced stages [39, 40].

315 Contrary to other authors, who report worse prognosis for adenocarcinoma  
316 cases [41-44], a higher risk of death for patients presenting squamous cell



317 carcinoma was observed herein, albeit not statistically significant. This may be  
318 due to the fact that most adenocarcinoma cases were detected in stage I.

319 Staging was the only significant variable regarding CC recurrence risk, in  
320 agreement with other authors [1, 45]. Furthermore, patients exhibited a 4-fold  
321 increase concerning risk of death when they did not complete the treatment. Most  
322 women unable to complete treatment presented advanced CC stages and  
323 exhibited associated comorbidities, such as anemia and kidney failure, making it  
324 impossible to complete initial therapeutic plans. Other authors have associated  
325 treatment completion and other variables to age, reporting that CC patients aged  
326 70 or over exhibit a higher rate of less aggressive treatment or were unable to  
327 receive treatment at all, although they do not mention why no treatment or  
328 incomplete treatment took place [33].

329 An unequal incomplete treatment distribution according to HPV 16 lineage  
330 Table 4 was noted in the present study, where just over half of the patients  
331 carrying lineages A and D did not complete the treatment, while 80% of those  
332 carrying the B/C lineages did so. This may have been influenced by lineage  
333 staging distribution.

334 Although no significant association between HPV 16 strains and CC  
335 prognosis was observed, few studies have assessed this issue to date. This  
336 association may not have been detected in the present study due to the limited  
337 sample size for certain HPV 16 lineages. Studies encompassing larger sample  
338 sizes will be able elucidate this issue and guide new treatment protocols and  
339 better information for patients if associations are demonstrated.

340

## 341 **Conclusion**

342 No statistically significant associations between HPV 16 lineages and CC  
343 prognosis were observed herein. Age, poorly differentiated carcinoma,  
344 adenosquamous, neuroendocrine and sarcoma histopathological types,  
345 advanced staging and incomplete treatment were associated with worse CC  
346 prognoses. Considering the sample size limitations of some of HPV16 strains in  
347 this study, their influence on CC prognosis cannot be disregarded, and further  
348 studies in this regard may contribute to elucidate this issue.

349

## 350 Acknowledgments

351 We thank all the women treated at INCA in Rio de Janeiro, for allowing this project  
352 to be carried out. We also thank the interdisciplinary teams that participated in  
353 the treatment and follow up of these women.

354

## 355 References

356

- 357 1. Marth C, Landoni S, Mahner S, et al. **Cervical Cancer: ESMO Clinical**  
358 **Practice Guidelines for Diagnosis, Treatment and Follow-Up**. Ann  
359 Oncol [Internet]. 2017 [citado em: 23 de novembro de 2021];  
360 28(suppl\_4):iv72-iv83. Erratum in: Ann Oncol. 2018 1;29 (Suppl 4): iv262.  
361 Disponível em: <https://pubmed.ncbi.nlm.nih.gov/28881916/>. Doi:  
362 10.1093/annonc/mdx220. PMID: 28881916.
- 363 2. BRASIL. Ministério da Saúde. INCA - Instituto Nacional de Câncer José  
364 Alencar Gomes da Silva [Internet]. **Estatísticas de câncer**. [Publicado  
365 em 23 de junho de 2022, atualizado em 24 de novembro de 2022]. [citado  
366 em: 30 de novembro de 2022]. Disponível em: [https://www.gov.br/inca/pt-  
367 br/assuntos/cancer/numeros](https://www.gov.br/inca/pt-br/assuntos/cancer/numeros).
- 368 3. BRASIL. Ministério da Saúde. INCA - Instituto Nacional de Câncer José  
369 Alencar Gomes da Silva. **Detecção Precoce**. [Internet]. 2022 [citado em:

- 370 30 de novembro de 2022]. Publicado em 2022. Disponível em:  
371 [https://www.gov.br/inca/pt-br/assuntos/gestor-e-profissional-de-](https://www.gov.br/inca/pt-br/assuntos/gestor-e-profissional-de-saude/controlado-cancer-do-colo-do-utero/acoes/deteccao-precoce)  
372 [saude/controlado-cancer-do-colo-do-utero/acoes/deteccao-precoce](https://www.gov.br/inca/pt-br/assuntos/gestor-e-profissional-de-saude/controlado-cancer-do-colo-do-utero/acoes/deteccao-precoce).
- 373 4. Koulis TA, Kornaga EN, Banerjee R, et al. **Anemia, Leukocytosis and**  
374 **Thrombocytosis as Prognostic Factors in Patients with Cervical**  
375 **Cancer Treated with Radical Chemoradiotherapy: A Retrospective**  
376 **Cohort Study**. Clin Transl Radiat Oncol [Internet]. 2017 [citado em: 09  
377 de julho de 2022]; 4;51-56. Disponível em:  
378 <https://pubmed.ncbi.nlm.nih.gov/29594208/>. Doi:  
379 10.1016/j.ctro.2017.05.001. PMID: 29594208; PMCID: PMC5833917.
- 380 5. Li Ping, Tan Yue, Zhu Li-Xia, et al. **Prognostic Value of HPV DNA Status**  
381 **in Cervical Cancer Before Treatment: A Systematic Review and Meta-**  
382 **Analysis**. Oncotarget [Internet]. 2017 [citado em: 04 de setembro de  
383 2021]; 8(39):66352–66359. Disponível em:  
384 <https://pubmed.ncbi.nlm.nih.gov/29029517/>. Doi:  
385 10.18632/oncotarget.18558. PMID: 29029517; PMCID: PMC5630417.
- 386 6. Chong GO, Lee YH, Soo Han H, et al. **Prognostic Value of Pre-**  
387 **Treatment Human Papilloma Virus DNA Status in Cervical Cancer**.  
388 Gynecologic Oncology [Internet]. 2017 [citado em: 02 de junho de 2022];  
389 p97-102. Disponível em: <https://pubmed.ncbi.nlm.nih.gov/29153540/>. Doi:  
390 10.1016/j.ygyno.2017.11.003. PMID: 29153540.
- 391 7. Ikenberg H, Sauerbrei W, Schottmüller U, et al. **Human Papillomavirus**  
392 **Dna in Cervical Carcinoma—Correlation with Clinical Data and**  
393 **Influence on Prognosis**. Int. J. Cancer [Internet]. 1994 [citado em: 05 de  
394 agosto de 2022]; 59 (3)322–326. Disponível em:  
395 <https://europepmc.org/article/MED/7927936>. Doi:  
396 [10.1002/ijc.2910590306](https://doi.org/10.1002/ijc.2910590306). PMID: 7927936.
- 397 8. Füle T, Csapó Z, Máthé M, et al. **Prognostic Significance of High-Risk**  
398 **Hpv Status in Advanced Cervical Cancers and Pelvic Lymph Nodes**.  
399 Gynecol Oncol [Internet]. 2006 [citado em: 09 de outubro de 2022]; 100  
400 (3) 570–578. Epub 2005. Disponível em:  
401 <https://pubmed.ncbi.nlm.nih.gov/16325245/>. doi:  
402 10.1016/j.ygyno.2005.09.019. PMID: 16325245.

- 403 9. Clifford GM, Tenet V, Georges D, et al. **Human papillomavirus 16 sub-**  
404 **lineage dispersal and cervical cancer risk worldwide: whole viral**  
405 **genome sequences from 7116 HPV16- positive women.** Papillomavirus  
406 Res [Internet]. 2019 [citado em: 16 de setembro de 2021]; 7:67-74.  
407 Disponível em: <https://pubmed.ncbi.nlm.nih.gov/30738204/>. Doi:  
408 10.1016/j.pvr.2019.02.001. PMID: 30738204; PMCID: PMC6374642.
- 409 10. Mirabello L, Clarke MA, Nelson CW, et al. **The Intersection of HPV**  
410 **Epidemiology, Genomics and Mechanistic Studies of HPV-Mediated**  
411 **Carcinogenesis.** Viruses [Internet]. 2018 [citado em: 09 de outubro de  
412 2022]; 10(2):80. Disponível em:  
413 <https://pubmed.ncbi.nlm.nih.gov/29438321/>. Doi: 10.3390/v10020080.  
414 PMID: 29438321; PMCID: PMC5850387.
- 415 11. Ho L, Chan S, Burk R, et al. **The Genetic Drift of Human Papillomavirus**  
416 **Type 16 Is a Means of Reconstructing Prehistoric Viral Spread and**  
417 **the Movement of Ancient Human Populations.** J Virol [Internet]. 1993  
418 [citado em: 08 de abril de 2022]; 16:6413–6423. Disponível em:  
419 <https://journals.asm.org/doi/10.1128/jvi.67.11.6413-6423.1993>.
- 420 12. Ong CK, Chan SY, Campo MS, et al. **Evolution of Human**  
421 **Papillomavirus Type 18: An Ancient Phylogenetic Root in Africa and**  
422 **Intrate Diversity Reflect Coevolution with Human Ethnic Groups.** J  
423 Virol [Internet]. 1993 [citado em: 08 de abril de 2022]; 67(11):6424–6431.  
424 Disponível em: <https://pubmed.ncbi.nlm.nih.gov/8411344/>. Doi:  
425 10.1128/JVI.67.11.6424-6431.1993. PMID: 8411344; PMCID:  
426 PMC238077.
- 427 13. Yamada T, Manos MM, Peto J, et al. **Human Papillomavirus Type 16**  
428 **Sequence Variation in Cervical Cancers: A Worldwide Perspective.** J  
429 Virol [Internet]. 1997 [citado em: 03 de março de 2022]; 71(3):2463-72.  
430 Disponível em: <https://pubmed.ncbi.nlm.nih.gov/9032384/>. Doi:  
431 10.1128/JVI.71.3.2463-2472.1997. PMID: 9032384; PMCID:  
432 PMC191357.71:2463–2472.
- 433 14. Burk RD, Terai M, Gravitt PE, et al. **Distribution of human**  
434 **papillomavirus types 16 and 18 variants in squamous cell carcinomas**  
435 **and adenocarcinomas of the cervix.** Cancer Res [Internet]. 2003

- 436 [citado em: 09 de abril de 2022]; 63(21):7215–20. Disponível em:  
437 <https://pubmed.ncbi.nlm.nih.gov/14612516>.
- 438 15. Margolis B, Cagle-Colon K, Chen L, et al. **Prognostic Significance of**  
439 **Lymphovascular Space Invasion for Stage Ia1 and Ia2 Cervical**  
440 **Cancer**. Int J Gynecol Cancer [Internet]. 2020 [citado em: 07 de março  
441 de 2022]; 30:735-743. Disponível em:  
442 <https://pubmed.ncbi.nlm.nih.gov/32179697/>. Doi: 10.1136/ijgc-2019-  
443 000849. PMID: 32179697.
- 444 16. Chen JL, Huang C-Y, Huang Y-S, et al. **Differential clinical**  
445 **characteristics, treatment response and prognosis of locally**  
446 **advanced adenocarcinoma/adenosquamous carcinoma and**  
447 **squamous cell carcinoma of cervix treated with definitive**  
448 **radiotherapy**. Acta Obstet Gynecol Scand [Internet]. 2014 [citado em: 01  
449 de março de 2023]; 93(7):661-8. Disponível em:  
450 <https://pubmed.ncbi.nlm.nih.gov/24666257/>. Doi: 10.1111/aogs.12383.  
451 PMID: 24666257.
- 452 17. Vidal JPCB, Felix SP, Chaves CBP, et al. **Genetic Diversity of HPV16**  
453 **and HPV18 in Brazilian Patients with Invasive Cervical Cancer**. J Med  
454 Virol [Internet]. 2016 [citado em: 14 de março de 2023]; 88(7):1279-87.  
455 Disponível em: <https://pubmed.ncbi.nlm.nih.gov/26694554/>. Doi:  
456 10.1002/jmv.24458. PMID: 26694554.
- 457 18. Schiffman M, Rodriguez AC, Chen Z, et al. **A population-based**  
458 **prospective study of carcinogenic human papillomavirus variant**  
459 **lineages, viral persistence, and cervical neoplasia**. Cancer Res  
460 [Internet]. 2010 [citado em: 30 de abril de 2023]; 70(8):3159-69.  
461 Disponível em: <https://pubmed.ncbi.nlm.nih.gov/20354192/>. Doi:  
462 10.1158/0008-5472.CAN-09-4179. PMID: 20354192; PMCID:  
463 PMC2855741.
- 464 19. Berumen J, Ordoñez RM, Lazcano E, et al. **Asian-American variants of**  
465 **human papillomavirus 16 and risk for cervical cancer: a case-control**  
466 **study**. J Natl Cancer Inst [Internet]. 2001 [citado em: 02 de dezembro de  
467 2022]; 5;93(17):1325-30. Disponível em:  
468 <https://pubmed.ncbi.nlm.nih.gov/11535707>. Doi: 10.1093/jnci/93.17.1325.  
469 PMID: 11535707.

- 470 20. Xi LF, Koutsky LA, Hildesheim A, et al. **Risk for high-grade cervical**  
471 **intraepithelial neoplasia associated with variants of human**  
472 **papillomavirus types 16 and 18.** Cancer Epidemiol Biomarkers Prev  
473 [Internet]. 2007 [citado em: 05 de dezembro de 2022]; 16(1):4-10.  
474 Disponível em: <https://pubmed.ncbi.nlm.nih.gov/17220325/>. Doi:  
475 10.1158/1055-9965.EPI-06-0670. PMID: 17220325.
- 476 21. Tornesello ML, Losito S, Benincasa G, et al. **Human papillomavirus**  
477 **(HPV) genotypes and HPV16 variants and risk of adenocarcinoma**  
478 **and squamous cell carcinoma of the cervix.** Gynecol Oncol [Internet].  
479 2011 [citado em: 10 de dezembro de 2022]; 121(1):32-42. Disponível em:  
480 <https://pubmed.ncbi.nlm.nih.gov/21211829/>. Doi:  
481 10.1016/j.ygyno.2010.12.005. PMID: 21211829.
- 482 22. Rader JS, Tsaih SW, Fullin D, et al. **Genetic variations in human**  
483 **papillomavirus and cervical cancer outcomes.** Int J Cancer [Internet].  
484 2019 [citado em: 03 de janeiro de 2023]; 144(9): 2206–2214. Disponível  
485 em: <https://pubmed.ncbi.nlm.nih.gov/30515767/>. Doi:10.1002/ijc.32038.  
486 PMID: 30515767; PMCID: PMC6450540.
- 487 23. Zuna RE, Tuller E, Wentzensen N, et al. **HPV16 variant lineage, clinical**  
488 **stage, and survival in women with invasive cervical cancer.** Infect  
489 Agents Cancer [Internet]. 2011 [citado em: 23 de abril de 2023]; 6:19.  
490 Disponível em: <https://doi.org/10.1186/1750-9378-6-19>.
- 491 24. de Almeida LM, Martins LFL, Pontes VB, et al. **Human Papillomavirus**  
492 **Genotype Distribution among Cervical Cancer Patients prior to**  
493 **Brazilian National HPV Immunization Program.** J Environ Public Health  
494 [Internet]. 2017 [citado em: 04 de dezembro de 2022]; v. 2017:1645074,  
495 p.9. Disponível em: <https://pubmed.ncbi.nlm.nih.gov/28512474/>. Doi:  
496 10.1155/2017/1645074. PMID: 28512474; PMCID: PMC5420420.
- 497 25. Gravitt PE, Peyton CL, Alessi TQ, et al. **Improved amplification of**  
498 **genital human papillomaviruses.** J Clin Microbiol [Internet]. 2000  
499 [citado em: 01 de fevereiro de 2023]; 38:357–361. Disponível em:  
500 <https://pubmed.ncbi.nlm.nih.gov/10618116/>. Doi: 10.1128/JCM.38.1.357-  
501 361.2000. PMID: 10618116; PMCID: PMC88724.
- 502 26. Fuessel Haws AL, He Q, Rady PL, et al. **Nested PCR with the**  
503 **PGMY09/11 and GP5(+)/6(+) primer sets improves detection of HPV**

- 504           **DNA in cervical samples.** J Virol Methods **[Internet]**. 2004 [citado em: 13  
505           de fevereiro de 2023]; 122:87–93. Disponível em:  
506           <https://pubmed.ncbi.nlm.nih.gov/15488625/>.           doi:  
507           10.1016/j.jviromet.2004.08.007. PMID: 15488625.
- 508           27. Vidal JPCB, Felix SP, Chaves CBP, et al. **Genetic Diversity of HPV16**  
509           **and HPV18 in Brazilian Patients with Invasive Cervical Cancer.** J Med  
510           Virol **[Internet]**. 2016 [citado em: 14 de março de 2023]; 88(7):1279-87.  
511           Disponível em: <https://pubmed.ncbi.nlm.nih.gov/26694554/>. Doi:  
512           10.1002/jmv.24458. PMID: 26694554.
- 513           28. Zocchetti C, Consonni D, Bertazzi PA. **Relationship between prevalence**  
514           **rate ratios and odds ratios in cross-sectional studies.** Int J Epidemiol  
515           **[Internet]**. 1997 [citado em: 26 de março de 2023]; 26(1):220-3.  
516           Disponível em: <https://pubmed.ncbi.nlm.nih.gov/9126523/>. Doi:  
517           10.1093/ije/26.1.220. PMID: 9126523.
- 518           29. Barros AJ, Hirakata VN. **Alternatives for logistics regression in cross-**  
519           **sectional studies: an empirical comparison of models that directly**  
520           **estimate prevalence ratio.** BMC Medical Research Methodology  
521           **[Internet]**. 2003 [citado em: 29 de março de 2023]; 3(21):1-13. Disponível  
522           em: <https://pubmed.ncbi.nlm.nih.gov/14567763/>. Doi: 10.1186/1471-2288-  
523           3-21. PMCID: PMC521200. PMID: 14567763.
- 524           30. Tornesello ML, Losito S, Benincasa G, et al. **Human papillomavirus**  
525           **(HPV) genotypes and HPV16 variants and risk of adenocarcinoma**  
526           **and squamous cell carcinoma of the cervix.** Gynecol Oncol **[Internet]**.  
527           2011 [citado em: 10 de dezembro de 2022]; 121(1):32-42. Disponível em:  
528           <https://pubmed.ncbi.nlm.nih.gov/21211829/>.           Doi:  
529           10.1016/j.ygyno.2010.12.005. PMID: 21211829
- 530           31. Zuna RE, Tuller E, Wentzensen N, et al. **HPV16 variant lineage, clinical**  
531           **stage, and survival in women with invasive cervical cancer.** Infect  
532           Agents Cancer **[Internet]**. 2011 [citado em: 23 de abril de 2023]; 6:19.  
533           Disponível em: <https://doi.org/10.1186/1750-9378-6-19>.
- 534           32. Rader JS, Tsaih SW, Fullin D, et al. **Genetic variations in human**  
535           **papillomavirus and cervical cancer outcomes.** Int J Cancer **[Internet]**.  
536           2019 [citado em: 03 de janeiro de 2023]; 144(9): 2206–2214. Disponível

- 537 em: <https://pubmed.ncbi.nlm.nih.gov/30515767/>. Doi:10.1002/ijc.32038.  
538 PMID: 30515767; PMCID: PMC6450540.
- 539 33. Quinn BA, Deng X, Colton A, et al. **Increasing Age Predicts Poor**  
540 **Cervical Cancer Prognosis with Subsequent Effect on Treatment and**  
541 **Overall Survival**. Brachytherapy [Internet]. 2019 [citado em: 19 de  
542 janeiro de 2023];18(1):29-37. Disponível em:  
543 <https://pubmed.ncbi.nlm.nih.gov/30361045/>. Doi:  
544 10.1016/j.brachy.2018.08.016. PMID: 30361045; PMCID: PMC6338515.
- 545 34. Barben J, Kamga AM, Dabakuyo-Yonli TS, et al. **Cervical cancer in older**  
546 **women: Does age matter?** Maturitas [Internet]. 2022 [citado em: 16 de  
547 março de 2022]; 158:40-46. Epub 2021. Disponível em:  
548 <https://pubmed.ncbi.nlm.nih.gov/35241237/>. Doi:  
549 10.1016/j.maturitas.2021.11.011. PMID: 35241237.
- 550 35. Knüppel S, STANG A. **DAG Program: identifying minimal sufficient**  
551 **adjustment sets**. Epidemiology [Internet]. 2010 [citado em: 24 de março  
552 de 2023]; 21(1):159. Erratum in: Epidemiology. 2010; 21(3):432.  
553 Disponível em: <https://pubmed.ncbi.nlm.nih.gov/20010223/>. Doi:  
554 10.1097/EDE.0b013e3181c307ce. PMID: 20010223.
- 555 36. Sharma C, Deutsch I, Horowitz DP, et al. **Patterns of care and treatment**  
556 **outcomes for elderly women with cervical cancer**. Cancer [Internet].  
557 2012 [citado em: 22 de fevereiro de 2022]; 15;118(14):3618-26, ISSN  
558 1097–0142. Epub 2011. Disponível em:  
559 <https://pubmed.ncbi.nlm.nih.gov/22038773/>. Doi: 10.1002/cncr.26589.  
560 PMID: 22038773.
- 561 37. de Sanjose S, Wheeler CM, Quint WGV, et al. **Age-specific occurrence**  
562 **of HPV 16-and HPV 18-related cervical cancer**. Cancer Epidemiol  
563 Biomarkers Prev [Internet]. 2013 [citado em: 06 de março de 2021];  
564 1313–1318. Disponível em: <https://pubmed.ncbi.nlm.nih.gov/23632816/>.  
565 Doi: 10.1158/1055-9965.EPI-13-0053. PMID: 23632816; PMCID:  
566 PMC4306595.
- 567 38. Dale DC. **Poor prognosis in elderly patients with cancer: the role of**  
568 **bias and undertreatment**. J Support Oncol [Internet]. 2003 [citado em:  
569 20 de janeiro de 2023]; 1(4 Suppl 2):11-7. PMID: 15346995. Disponível  
570 em: <https://www.ncbi.nlm.nih.gov/pubmed/15346995>. PMID: 15346995.



- 571 39. Albores-Saavedra J, Gersell D, Gilks B, et al. **Terminology of Endocrine**  
572 **Tumors of The Uterine Cervix: Results of A Workshop Sponsored by**  
573 **The College of American Pathologists And The National Cancer**  
574 **Institute**. Arch Pathol Lab Med [Internet]. 1997 [citado em: 15 de junho  
575 de 2022]; 121(1):34-9. Disponível em:  
576 <https://pubmed.ncbi.nlm.nih.gov/9111090/>. PMID: 9111090.
- 577 40. Wang SS, Sherman ME, Silverberg SG, et al. **Pathological**  
578 **Characteristics of Cervical Adenocarcinoma in A Multi-Center U.S.**  
579 **Based Study**. Gynecol Oncol [Internet]. 2006 [citado em: 02 de agosto de  
580 2022]; 103(2):541-6. Disponível em:  
581 <https://pubmed.ncbi.nlm.nih.gov/16697450/>. Doi:  
582 10.1016/j.ygyno.2006.03.049. PMID: 16697450.
- 583 41. Galic V, Herzog TJ, Lewin SN, et al. **Prognostic Significance of**  
584 **Adenocarcinoma Histology in Women with Cervical Cancer**. Gynecol  
585 Oncol [Internet]. 2012 [citado em: 05 de junho de 2022]; 125(2):287-291.  
586 Disponível em: <https://pubmed.ncbi.nlm.nih.gov/22266551/>. Doi:  
587 10.1016/j.ygyno.2012.01.012. PMID: 22266551.
- 588 42. Kodama J, Seki N, Nakamura K, et al. **Prognostic Factors in Pathologic**  
589 **Parametrium-Positive Patients with Stage Ib-IIb Cervical Cancer**  
590 **Treated by Radical Surgery and Adjuvant Therapy**. Gynecol Oncol  
591 [Internet]. 2007 [citado em: 13 de janeiro de 2022]; 105:757-761.  
592 Disponível em: <https://pubmed.ncbi.nlm.nih.gov/17433424/>. Doi:  
593 10.1016/j.ygyno.2007.02.019. PMID: 17433424.
- 594 43. Kasamatsu T, Onda T, Sawada M, et al. **Radical Hysterectomy for Figo**  
595 **Stage I-IIb Adenocarcinoma of The Uterine Cervix**. Br J Cancer  
596 [Internet]. 2009 citado em: 08 de janeiro de 2023]; 100:1400–1405.  
597 Disponível em: <https://doi.org/10.1038/sj.bjc.6605048>.
- 598 44. Katanyoo K, Sanguanrungrasirikul S, Manusirivithaya S. **Comparison of**  
599 **Treatment Outcomes Between Squamous Cell Carcinoma and**  
600 **Adenocarcinoma in Locally Advanced Cervical Cancer**. Gynecol  
601 Oncol [Internet]. 2012 [citado em: 09 de janeiro de 2023]; 125:292-296.  
602 Disponível em: <https://pubmed.ncbi.nlm.nih.gov/22293041/>. Doi:  
603 10.1016/j.ygyno.2012.01.034. PMID: 22293041.

604 45. Kang S, Wu J, Li J, et al. **Prognostic Significance of**  
605 **Clinicopathological Factors Influencing Overall Survival and**  
606 **EventFree Survival of Patients with Cervical Cancer: A Systematic**  
607 **Review and Meta-Analysis.** Med Sci Monit [Internet]. 2022 [citado em:  
608 10 de abril de 2023]; 28:e934588. Disponível em:  
609 <https://pubmed.ncbi.nlm.nih.gov/35260545/>. Doi: 10.12659/MSM.934588.  
610 PMID: 35260545; PMCID: PMC8919681.

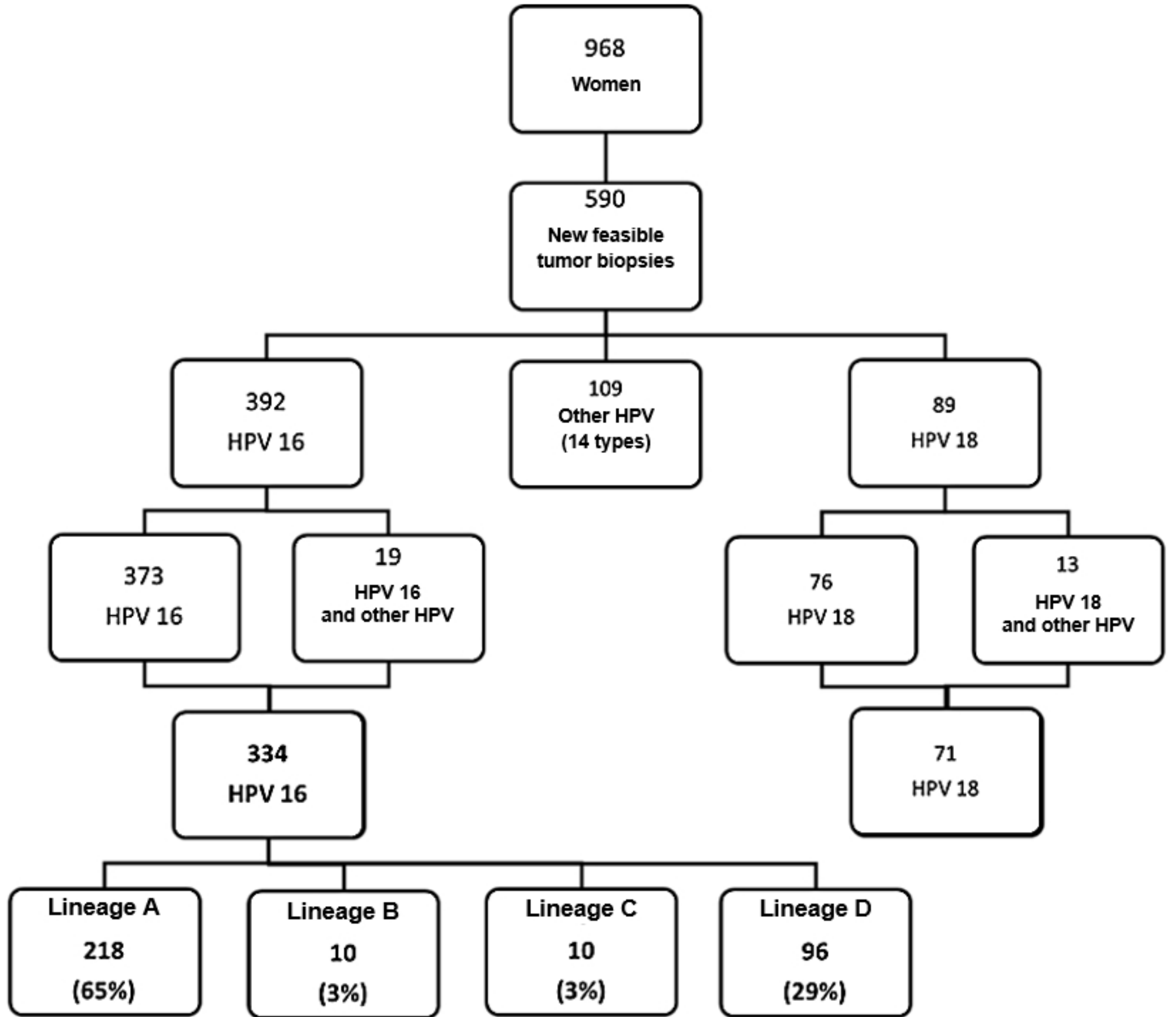


Figure 1

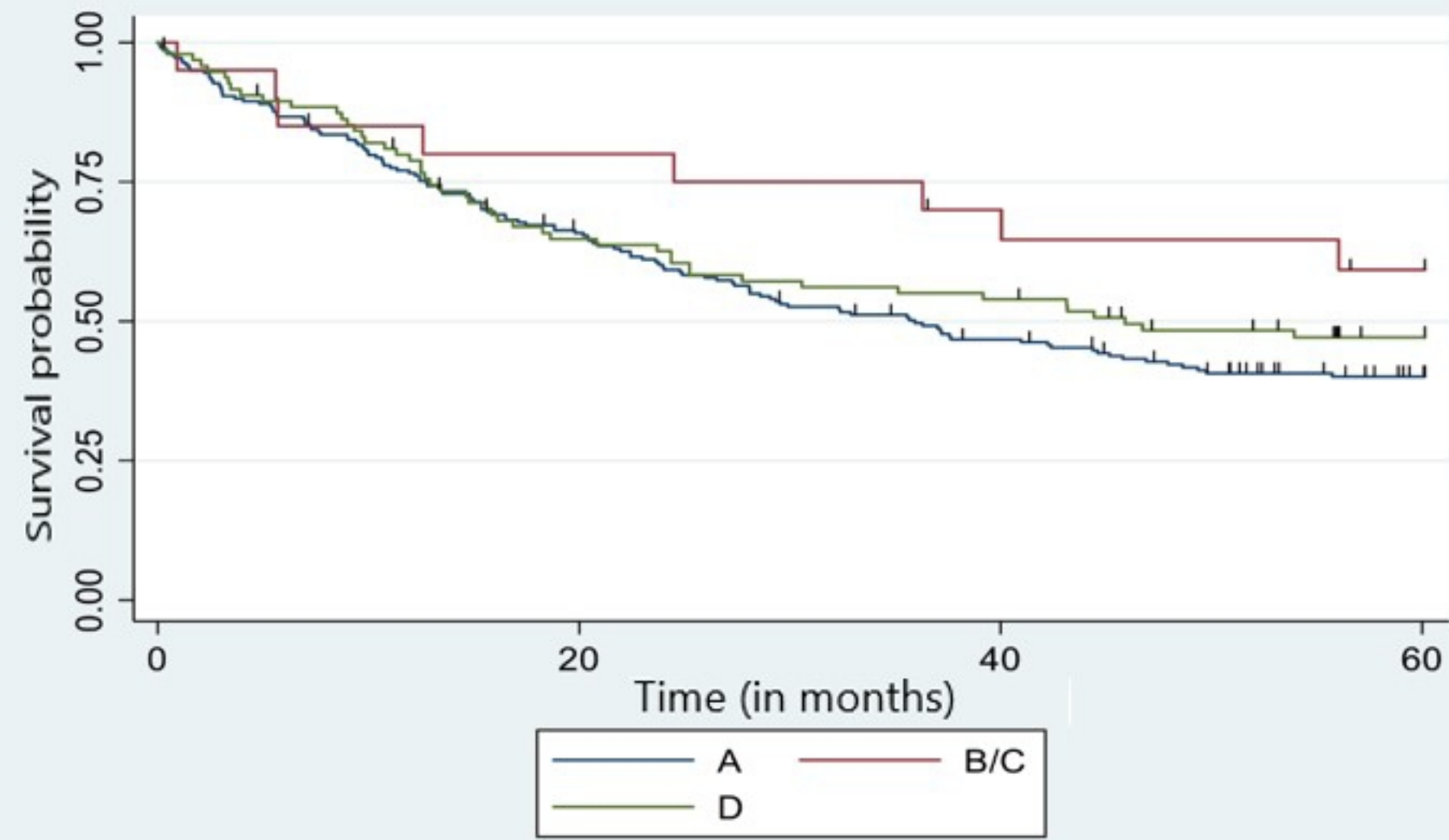


Figure 2

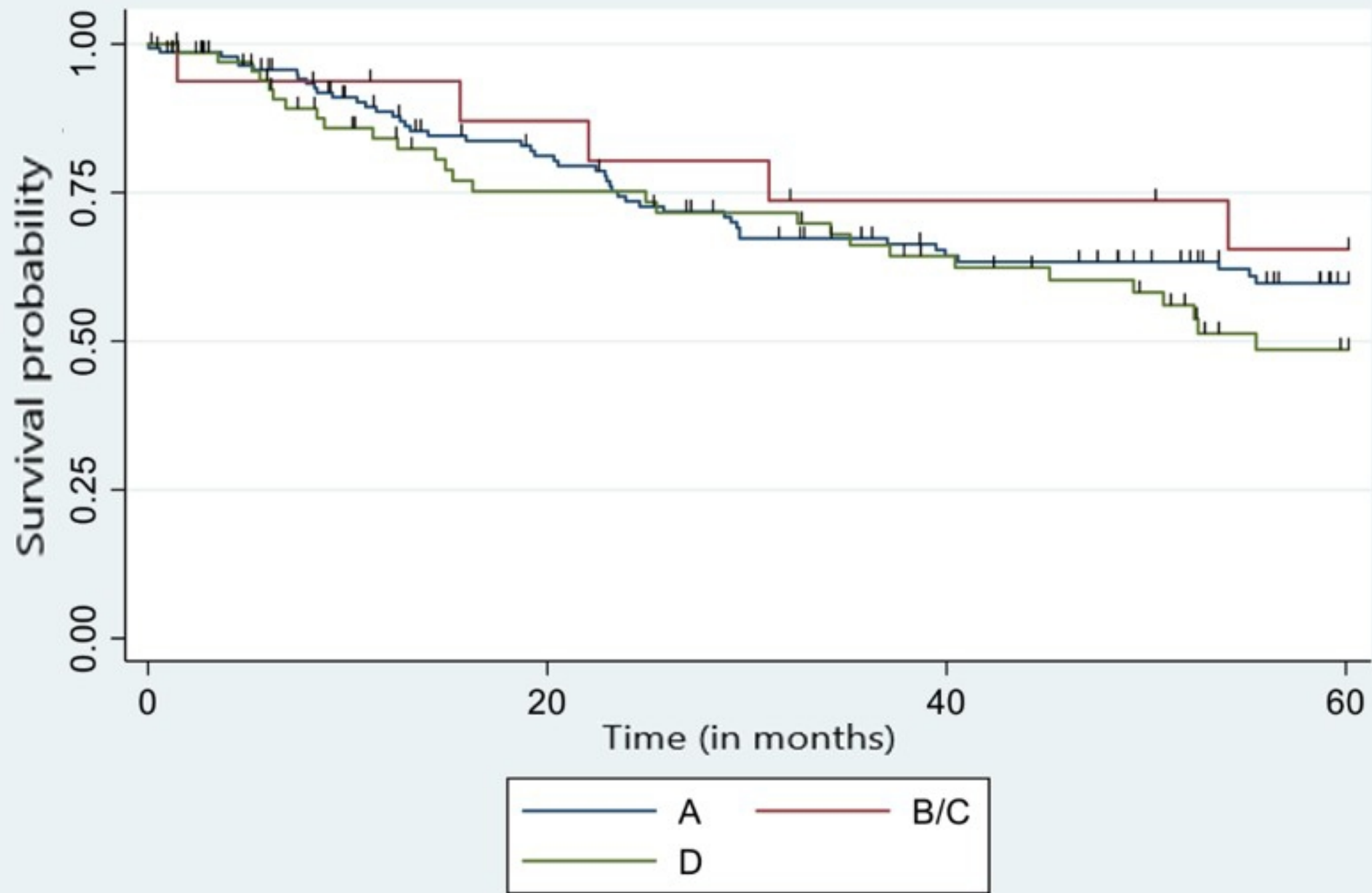


Figure 3