

1 **Durability of SARS-CoV-2 IgG Antibodies: Insights from a Longitudinal Study, Puerto Rico**

2 Zachary J. Madewell, PhD¹, Nathan Graff, MS², Velma K. Lopez, PhD¹, Dania M. Rodriguez, MS¹,
3 Joshua M. Wong, MD¹, Panagiotis Maniatis, MS³, Freddy A. Medina¹, Jorge L. Muñoz, PhD¹, Melissa
4 Briggs-Hagen, MD², Laura E. Adams, DVM¹, Vanessa Rivera-Amill, PhD⁴, Gabriela Paz-Bailey, MD,
5 PhD¹, Chelsea G. Major, MPH¹

6
7 **Affiliations**

- 8 1. Division of Vector-Borne Diseases, Centers for Disease Control and Prevention, San Juan, Puerto
9 Rico
10 2. Coronavirus and Other Respiratory Viruses Division, Centers for Disease Control and Prevention,
11 Atlanta, Georgia
12 3. Division of Bacterial Diseases, Centers for Disease Control and Prevention, Atlanta, Georgia
13 4. Ponce Health Sciences University/Ponce Research Institute, Ponce, Puerto Rico

14
15 **Corresponding author:** Zachary J. Madewell

16 **Corresponding author email:** ock0@cdc.gov

17 **Abstract**

18 Understanding the dynamics of antibody responses following vaccination and SARS-CoV-2 infection is
19 important for informing effective vaccination strategies and other public health interventions. This study
20 investigates SARS-CoV-2 antibody dynamics in a Puerto Rican cohort, analyzing how IgG levels vary by
21 vaccination status and previous infection. We assess waning immunity and the distribution of hybrid
22 immunity with the aim to inform public health strategies and vaccination programs in Puerto Rico and
23 similar settings. We conducted a prospective, longitudinal cohort study to identify SARS-CoV-2
24 infections and related outcomes in Ponce, Puerto Rico, from June 2020–August 2022. Participants
25 provided self-collected nasal swabs every week and serum every six months for RT-PCR and IgG testing,
26 respectively. IgG reactivity against nucleocapsid (N) antigens, which generally indicate previous
27 infection, and spike (S1) and receptor-binding domain (RBD) antigens, which indicate history of either
28 infection or vaccination, was assessed using the Luminex Corporation xMAP® SARS-CoV-2 Multi-
29 Antigen IgG Assay. Prior infection was defined by positive RT-PCRs, categorized by the predominant
30 circulating SARS-CoV-2 variant at the event time. Demographic information, medical history, and
31 COVID-19 vaccination history were collected through standardized questionnaires. Of 882 participants
32 included in our analysis, 34.0% experienced at least one SARS-CoV-2 infection, with most (78.7%)
33 occurring during the Omicron wave (December 2021 onwards). SARS-CoV-2 antibody prevalence
34 increased over time, reaching 98.4% by the final serum collection, 67.0% attributable to vaccination
35 alone, 1.6% from infection alone, and 31.4% from both. Regardless of prior infection status, RBD and S1
36 IgG levels gradually declined following two vaccine doses. A third dose boosted these antibody levels
37 and showed a slower decline over time. N-antibody levels peaked during the Omicron surge and waned
38 over time. Vaccination in individuals with prior SARS-CoV-2 infection elicited the highest and most
39 durable antibody responses. N or S1 seropositivity was associated with lower odds of a subsequent
40 positive PCR test during the Omicron period, with N antibodies showing a stronger association. By
41 elucidating the differential decay of RBD and S1 antibodies following vaccination and the complexities of
42 N-antibody response following infection, this study in a Puerto Rican cohort strengthens the foundation
43 for developing targeted interventions and public health strategies.

44 **Keywords**

45 Antibody dynamics, Omicron, Caribbean, COVID-19, vaccination, humoral immunity

46 **Introduction**

47 The ongoing COVID-19 pandemic has spurred extensive research into diagnostic methods for
48 current infections. Reverse transcription polymerase chain reaction (RT-PCR) and antigen tests are vital
49 for detecting current infections, but retrospective identification of SARS-CoV-2 infections is also
50 important for informing public health measures such as vaccine development and for understanding
51 transmission dynamics. Serological assays offer rapid and reliable tools for identifying prior infections by
52 detecting antibodies following SARS-CoV-2 infection.^{1,2} These assays commonly target
53 immunoglobulins M (IgM) and G (IgG) antibodies in humans.³

54 IgG antibodies are generally detectable for longer periods after infection compared to IgM and
55 potentially play a role in long-term immunity following SARS-CoV-2 infection or vaccination. During
56 the human immune response to SARS-CoV-2, IgG conversion typically occurs around 14 days post-
57 infection, with antibodies remaining detectable for up to at least 15 months.⁴⁻⁷ Recent studies have
58 revealed variations in immune responses to COVID-19 vaccines, with mRNA vaccines eliciting higher
59 antibody affinity and resulting IgG titers compared to other vaccine types.⁸⁻¹⁰ Receiving three or more
60 doses of mRNA vaccines have been shown to provide greater IgG durability than completion of just two
61 vaccine doses,⁹ offering strong protection against hospitalization with vaccine effectiveness estimates of
62 82.5% (95% CI: 77.8%–86.2%) after the third vaccine dose and 87.3% (95% CI: 75.5%–93.4%) after the
63 fourth dose.¹¹ Hybrid immunity, resulting from both previous infection and vaccination, has been reported
64 to provide better protection compared to infection or vaccination alone.¹² Serological assays that detect
65 IgG antibodies against multiple SARS-CoV-2 proteins can be valuable in differentiating between
66 previous infection and vaccination, as well as assessing potential differences in resulting immunity
67 duration. However, knowledge gaps remain regarding the longevity of these protective responses,
68 particularly with the emergence of new variants.

69 Key IgG targets include the nucleoprotein (N) and the spike (S1) glycoprotein's receptor-binding
70 domain (RBD), both major structural viral proteins of SARS-CoV-2.¹³⁻¹⁵ S1 interacts with the human
71 ACE2 receptor, facilitating viral entry, whereas RBD is a specific binding site within S1 targeted by

72 neutralizing antibodies.¹⁶ Understanding the persistence of these antibodies post-infection is essential for
73 evaluating immunity, especially in the context of vaccination. S1 and RBD antibodies may indicate both
74 infection-induced and vaccine-induced immunity. Conversely, N antibodies primarily indicate infection-
75 induced immunity due to the exclusion of N protein in current FDA-approved vaccines which focus on
76 eliciting an immune response that targets S1. In settings with high vaccination rates, N antibody assays
77 can be helpful in distinguishing prior SARS-CoV-2 infections from vaccination-induced responses,
78 especially for mild or asymptomatic infections which often go undetected during their acute phase.¹⁷

79 Waning of infection-induced or vaccine-induced antibodies over time is a concern, particularly
80 with the emergence of new SARS-CoV-2 variants.^{18,19} Different variants may elicit diverse antibody
81 responses and be variably affected by immunity from prior infections or vaccination. For example,
82 infection with the Omicron variant has been shown to result in a higher anti-N IgG response than other
83 variants, particularly among vaccinated individuals.²⁰ The Omicron variant showed greater resistance to
84 IgG neutralization generated from early (wild-type) infection or original COVID-19 monovalent vaccines,
85 leading to relatively high infection rates in previously infected and vaccinated individuals.^{6,21} In light of
86 these findings, further characterization of immune response durability is necessary. This includes
87 investigating how factors such as age, underlying health conditions, and the combined effect of
88 vaccination and infection history influence IgG persistence and resulting immunity.

89 This study investigates SARS-CoV-2 IgG antibody responses (N, S1, RBD) in a community-
90 based cohort in Puerto Rico during 2020–2022. We analyze IgG levels by vaccination status and previous
91 infection, assessing potential waning over time and variations related to age, chronic conditions, putative
92 SARS-CoV-2 variant based on collection time, and vaccination-infection sequence. Additionally, we
93 estimate the distribution of hybrid immunity over time and evaluate associations between IgG
94 seroreactivity and subsequent infections. These analyses aim to provide insights into long-term immunity
95 against SARS-CoV-2, informing public health strategies and vaccination programs in Puerto Rico and
96 similar settings.

97

98 **Methods**

99 *Study Design and Population*

100 Communities Organized to Prevent Arboviruses (COPA) is an ongoing cohort study launched in
101 2018 in Ponce, Puerto Rico, to assess arbovirus burden and control interventions in a community-based
102 population. COPA is a collaboration involving Ponce Health Sciences University/Ponce Research
103 Institute, the Puerto Rico Vector Control Unit, and the U.S. Centers for Disease Control and Prevention
104 (CDC). Study enrollment and data collection activities are described elsewhere.^{22,23} Approval for the
105 COPA project was obtained from the Ponce Medical School Foundation, Inc. Institutional Review Board
106 (protocol number 2402185168/171110-VR).

107 A COPA sub-study for COVID-19, COCOVID, was implemented in June 2020, enrolling COPA
108 participants and other residents from 15 selected community areas.^{24,25} Eligible individuals were ≥ 1 year
109 old, spent four or more nights a week in the selected residence, and had no definite plans to move in the
110 next 12 months. Primary study enrollment occurred from June 2020 to February 2021, with subsequent
111 secondary enrollment until April 2022 limited to household members of active participants. Participants
112 answered questionnaires and provided serum for multi-IgG antibody testing at enrollment and every 6
113 months until August 2022. They also provided weekly self-collected anterior nasal swabs for SARS-CoV-
114 2 RT-PCR testing until April 2022. Additional anterior nasal swabs for expedited RT-PCR testing were
115 collected by study staff for participants with COVID-like symptoms or close contact with a COVID-19
116 case during the entire COCOVID study period and until February 2023 for all participants that remained
117 active in the COPA cohort.

118

119 *IgG Antibody Testing*

120 The Luminex xMAP® SARS-CoV-2 Multi-Antigen IgG Assay²⁶ was used according to the
121 manufacturer's instructions to assess seroreactivity in COCOVID serum specimens against three key
122 antigen components: N, S1, and RBD.²⁷ The multiplex assay uses Luminex MagPlex beads for each IgG
123 antigen target, and specimens were considered positive for N, S1, or RBD when their median

124 fluorescence intensity (MFI) was >700 call threshold. The MFI is considered a measure of the total
125 degree of saturation in the Luminex test platform and was used as a surrogate marker for the level of
126 antibody titers in our analyses.

127

128 *Infection Events and Status*

129 SARS-CoV-2 infection was defined by positive RT-PCR results from nasal swabs collected
130 weekly throughout the study period (June 2020–August 2022), including up to 6 months after the
131 participants' final serological test. In our analyses, participant infection status at each serum collection
132 date was assigned based on RT-PCR test results from all previously collected swabs, either as having had
133 one or more previous RT-PCR positive results or all negative previous RT-PCR results. Positive tests
134 separated by ≥ 90 days and accompanied by at least one negative test in between were considered separate
135 illness episodes.²⁸

136 Based on dominant variants circulating in Puerto Rico, infection events that occurred prior to and
137 after serum was collected for IgG testing were categorized by collection date of first positive nasal swab:
138 pre-Delta (June 2020–May 2021), Delta (June–November 2021), and Omicron (December 2021–February
139 2023)^{29,30}; pre-Delta variant circulation periods were not individually defined due to low sample size. For
140 participants with more than one apparent infection event within a 6-month period, the variant circulation
141 period for the most recent infection was assigned.

142

143 *Vaccination Status, Hybrid Immunity, and Other Participant Characteristics*

144 Questionnaires answered by participants at enrollment and every 6 months during follow-up
145 included data collection on demographics, health conditions, and COVID-19 vaccination status, including
146 the number of doses, date of each dose, and manufacturer (Pfizer-BioNTech's BNT162b2, Moderna's
147 mRNA-1273). Serum specimens were categorized based on the number of COVID-19 vaccine doses the
148 participant had received prior to the collection date: unvaccinated (no doses), 1 dose, 2 doses, and 3
149 doses.

150 Consistent with previous research,³¹ for the sub-analysis of hybrid immunity, vaccine-induced
151 immunity was defined as history of at least one COVID-19 vaccination confirmed by vaccination cards,
152 infection-induced immunity was defined as anti-N and anti-S1 antibody detection, and hybrid immunity
153 was defined as combined protection from ≥ 1 dose of COVID-19 vaccination, and anti-N and anti-S1
154 antibody detection.

155 Sera were also categorized by participant age group at the time of collection (<20 years, 20–39
156 years, 40–64 years, ≥ 65 years), and whether they had been previously diagnosed with any chronic health
157 condition by a medical provider. Any chronic health condition included reporting one or more previously
158 diagnosed physical or mental health conditions, and serum specimens from participants with and without
159 specific physical conditions, including hypertension, chronic respiratory disease, diabetes, and high
160 triglycerides, were also compared.

161

162 *Sample Population*

163 We analyzed blood samples (serum specimens) collected at 6-, 12-, and 18-month follow-up
164 visits from participants in the COCOVID study (December 2020–August 2022). Blood samples from
165 enrollment and the 24-month visit were excluded due to incomplete data on past infections using RT-PCR
166 tests. Weekly anterior nasal swab collections for all participants ended in April 2022, before any
167 participant reached their 24-month visit. However, RT-PCR results from anterior nasal swabs up to the
168 18-month visit were used to categorize IgG responses. All RT-PCR results throughout the study period,
169 including weekly anterior nasal swabs up to April 2022 and additional swabs collected for symptomatic
170 testing or close contact investigation, were considered to identify infections that occurred after
171 vaccination or a documented prior infection. Blood samples from 6-, 12-, and 18-month visits were
172 included if participants met one of the following criteria: 1) completed at least 80% of RT-PCR tests
173 within the preceding 6 months, or 2) had a positive RT-PCR test result within the preceding 6 months.
174 Due to the low number of participants receiving Johnson & Johnson’s single-dose Ad26.COV2.S vaccine
175 in this cohort, analyses excluded serum specimens from those who only received this vaccine. However,

176 participants who received at least one dose of an mRNA vaccine after an initial Ad26.COV2.S dose were
177 included.

178

179 *Statistical Analysis*

180 The prevalence of vaccine-induced, infection-induced, or hybrid immunity was estimated for four
181 time periods (Dec 2020–Apr 2021, May–Sep 2021, Oct 2021–Feb 2022, Mar–Aug 2022), stratified by
182 age group. SARS-CoV-2 IgG anti-N, anti-RBD, and anti-S1 responses were assessed by days since last
183 COVID-19 vaccine dose and vaccination status, days since RT-PCR positivity, and sequence of RT-PCR
184 positivity and vaccination for those completing a two-dose primary series. Medians and interquartile
185 ranges (IQR) for the MFI were calculated for each of the three IgG responses by vaccination status, days
186 since vaccination (<14, 14–27, 28–89, 90–179, ≥180), and months since RT-PCR positivity (<2, 2–4, ≥5,
187 no previous positive RT-PCR). All MFI values were log-transformed. For participants without prior RT-
188 PCR positivity and negative anti-N antibodies, we evaluated anti-S1 and anti-RBD seropositivity by days
189 since their last vaccine. Anti-N seropositivity rates were examined in previously infected individuals by
190 vaccination status.

191 Generalized linear mixed-effects regression, with participant ID included as a random effect, was
192 used to evaluate unadjusted and adjusted associations between anti-N, anti-RBD, and anti-S1 IgG
193 responses and time since RT-PCR positivity, time since last vaccine dose, and chronic conditions (see
194 Appendix S1 for additional details). Logistic regression with a random intercept was used to analyze
195 associations between IgG seroreactivity and RT-PCR confirmed infection in subsequent six months
196 during the Omicron predominant period. All available data from participants at each follow-up visit was
197 included in the analysis, regardless of their subsequent participation status. All analyses were done using
198 R software, version 4.3.1 (R Foundation for Statistical Computing, Vienna, Austria).

199

200 **Results**

201 *Study Population*

202 Among the 1,030 participants enrolled in the COCOVID study, 882 (85.6%) had one or more
203 serologic test results included in our analyses. Of these 882 participants, 789 (89.5%) had qualifying
204 serologic test results available at 6 months, 774 (87.8%) at 12 months, and 567 (64.3%) at 18 months
205 following study enrollment (Table S1). Median age of these participants at baseline was 37 years (IQR:
206 18–49), 52.7% were female, and 59.3% had any chronic health condition, of which hypertension (22.4%),
207 respiratory illness (17.2%), and diabetes (11.6%) were most frequently reported (Table 1). By their final
208 serologic test, 86 (9.8%) participants were unvaccinated, 10 (1.1%) had received one dose, 316 (35.8%)
209 had received two vaccine doses, 468 (53.1%) had received three doses, and two (0.2%) had received four
210 doses (Tables 1, S1).

211

212 *SARS-CoV-2 Infection*

213 Of the 882 participants with one or more serologic test results, 300 (34.0%) had at least one
214 positive SARS-CoV-2 RT-PCR test during the study period, with eight (2.7%) experiencing two separate
215 RT-PCR confirmed infections. By the 18-month serologic test, 20.7% (183/882) had at least one positive
216 RT-PCR test, with 78.7% (n=144) occurring during the Omicron predominant period (December 2021
217 onwards). The remaining 119 infections occurred in the 6 months following the final serologic test, all of
218 which occurred during the Omicron predominant period.

219

220 *Distribution of Vaccine-induced, Infection-induced, and Hybrid Immunity over Time*

221 The prevalence of SARS-CoV-2 antibodies indicative of prior infection or vaccination (both anti-
222 N and anti-S1 positive or anti-N positive only) increased substantially over the study period. In the
223 earliest analysis period (December 2020–April 2021), only 26.9% (95% CI: 23.2%, 30.9%) of 528
224 participants with serological test results had detectable SARS-CoV-2 antibodies. This included
225 individuals with vaccine-induced immunity alone (25.2%), infection-induced immunity alone (0.9%), and
226 hybrid immunity (0.8%) (Figure 1). By the final period (March–August 2022), 98.4% (95% CI: 96.6%,
227 99.3%) of 564 participants with eligible results had SARS-CoV-2 antibodies, with 67.0% from

228 vaccination alone, 1.6% from infection alone, and 31.4% from both. During this final period, the
229 prevalence of hybrid immunity was highest among participants <20 years (39.3%, 95% CI: 31.1%,
230 48.1%) and lowest among those ≥ 65 years (13.0%, 95% CI: 5.4%, 27.0%).

231 The widespread availability of COVID-19 vaccines in Puerto Rico (April–May 2021) coincided
232 with an increase in RBD and S1 antibody titers (Figure 2). Among participants previously negative for
233 RT-PCR and N antibodies, all who had a serum sample collected within 7–13 days post-second vaccine
234 dose seroconverted for both S1 and RBD antibodies. However, by 90–179 days after the second dose, S1
235 detection dropped to 75.6%, while RBD remained detectable in 99.1% (Figures S1, S2). A third vaccine
236 dose resulted in 100% detection of both RBD and S1 antibodies at 90–179 days post-vaccination.

237 N antibody levels increased dramatically during a surge of COVID-19 cases in Puerto Rico
238 following the introduction of the Omicron variant at the end of 2021 (Figure 2). Among participants
239 tested during this period, 28.3% (196/692) showed N IgG seroconversion, of whom 75.5% (148/196) had
240 a previous positive RT-PCR test. Among participants who seroconverted for N antibodies, median
241 log(MFI) for N antibodies was higher in participants with a previous positive RT-PCR (8.20, IQR: 7.52,
242 8.70) than those with negative RT-PCRs (7.60, IQR: 7.24, 8.61) regardless of vaccination status
243 ($p=0.022$).

244

245 *IgG Responses and Waning by Vaccination Status*

246 Analysis of all serum samples suggests that RBD and S1 antibody responses were more
247 commonly detected and persisted longer than N antibody responses across all vaccination groups (Figures
248 3, S3). For individuals who received two doses, the overall median log(MFI) at any time post-vaccination
249 was 9.42 (IQR: 8.93, 9.70) for RBD, 7.55 (IQR: 6.86, 8.17) for S1, and 4.05 (IQR: 3.37, 4.87) for N
250 (Figure S3). RBD and S1 antibodies were highly correlated regardless of vaccine dosage ($r \geq 0.83$)
251 (Figure S4).

252 In participants who received two vaccine doses without a prior positive RT-PCR, both RBD and
253 S1 levels gradually waned over time (Figures 3, S3). The median log(MFI) for RBD and S1 decreased

254 from 9.73 (IQR: 9.64, 9.83) and 8.09 (IQR: 7.73, 8.38) at 14–27 days post-vaccination to 8.65 (IQR: 8.24,
255 9.12) and 6.64 (IQR: 6.16, 7.26) at ≥ 180 days, respectively. Younger participants (< 20 years) had higher
256 antibody levels than those aged ≥ 65 at later time points (> 180 days post-vaccination), with a median
257 log(MFI) for S1 of 7.51 versus 6.35, and for RBD, 9.22 versus 8.48 (Figure S5).

258 Almost all antibody tests for participants who received a third vaccine dose were conducted
259 during the Omicron predominant period. Among all serum samples collected from participants with a
260 third dose, both RBD and S1 antibody levels peaked at 14–27 days post-vaccination (median log[MFI]:
261 9.90, IQR: 9.85, 9.94, and 9.22, IQR: 9.05, 9.47, respectively), declining thereafter to 9.74 (IQR: 9.48,
262 9.90) and 8.79 (IQR: 8.33, 9.08) ≥ 180 days post-vaccination, respectively (Figure S3). Adjusting for age
263 group, sex, chronic conditions, and previous infection, log(MFI) for RBD and S1 decreased by -0.002
264 (95% CI: -0.004, -0.001) and -0.009 (95% CI: -0.012, -0.005), respectively, for each month post-third
265 dose (Figure S6). RBD and S1 responses were higher for participants who received a third dose than those
266 who with second doses regardless of age group or time since vaccination (Figure S5).

267 To directly assess the rate of antibody decline, we analyzed changes in IgG levels between paired
268 serum samples collected at different time points after the second and third vaccine doses in participants
269 with and without prior PCR-confirmed infection. For individuals with a second dose and without a
270 previous positive RT-PCR, RBD and S1 levels fell by 8.8% (from 9.73 to 8.78) and 20.9% (from 8.44 to
271 6.68), respectively, after six months (Figure S7). For those with a third dose and without a previous
272 positive RT-PCR, RBD and S1 levels fell by 2.3% (from 9.82 to 9.59) and 6.2% (from 8.97 to 8.41),
273 respectively, after six months (Figure 4). For those with a third dose and a previous positive RT-PCR, S1
274 levels decreased by 4.1% (from 9.21 to 8.83), while RBD levels remained stable at 9.90 after six months.
275 There were no participants with paired SARS-CoV-2 IgG antibody responses at two time points six
276 months apart with a second dose and a previous positive RT-PCR. N-specific antibodies for sample pairs
277 demonstrate N levels fell by 6.9% (from 7.84 to 7.30) for those with a positive RT-PCR.

278

279 *Nucleocapsid Responses and RT-PCR Positivity*

280 Among individuals with a previous positive RT-PCR (80.8% N seropositive), N antibody levels
281 were higher (median log[MFI]: 7.89, IQR: 6.90, 8.56) compared to those without a positive RT-PCR
282 (median log[MFI]: 4.34, IQR: 3.60, 5.13) (Figures 3, S3). N antibody levels peaked within two months of
283 a positive test (median log[MFI]: 8.27, IQR: 7.09, 8.69) and gradually declined thereafter, reaching a
284 median log(MFI) of 7.24 (IQR: 6.43, 8.30) at five months after testing positive. Among individuals
285 without a history of previous infection, N-seropositivity following an infection was 83.7% and 74.6% for
286 those who received two and three doses, respectively, not significantly different from unvaccinated
287 individuals (77.8%) ($p=0.498$) (Table 2).

288 Both vaccination and previous RT-PCR positivity provided a stronger boost to RBD and S1
289 antibody responses compared to either factor alone (Figures 3, S3). The order of vaccination and RT-PCR
290 positivity did not significantly impact antibody responses among participants who received two doses
291 (Figure S8).

292

293 *IgG Seroreactivity and Subsequent RT-PCR positivity*

294 Our analysis revealed that individuals with detectable antibodies against either N or S1 were less
295 likely to experience a positive RT-PCR test in the following six months during the Omicron-dominant
296 period. Specifically, N and S1 seropositivity were associated with 90.3% (95% CI: 78.8%, 95.6%) and
297 58.3% (95% CI: 12.1%, 80.2%) lower odds, respectively, of a subsequent positive test, after adjusting for
298 age group, sex, and chronic conditions (Table 3). Participants with a higher N antibody level ($\log(\text{MFI}) \geq$
299 8.55) had an even greater reduction in odds (96.3%, 95% CI: 73.0%, 99.5%) compared to those who were
300 N seronegative. These findings suggest that SARS-CoV-2 infection, as indicated by N seropositivity,
301 provided substantial protection against reinfection during the Omicron period, while vaccination, as
302 indicated by S1 seropositivity, also offered significant, though comparatively lower, protection.

303

304 *Chronic Conditions and IgG Responses*

305 Among participants who received two doses, diabetes was associated with lower RBD (β : -0.022,
306 95% CI: -0.039, -0.006) and S1 (β : -0.029, 95% CI: -0.056, -0.002) responses compared to those without
307 diabetes, after adjusting for age group, sex, and previous RT-PCR positivity (Figure S9). Similarly, for
308 participants who received a third dose, high triglycerides were associated with lower RBD (β : -0.009,
309 95% CI: -0.016, -0.003) and S1 (β : -0.024, 95% CI: -0.040, -0.007) responses compared to those with
310 normal triglyceride levels. No significant associations were found between other chronic conditions and
311 antibody responses.

312

313 **Discussion**

314 This study provides novel real-world data on SARS-CoV-2 antibody dynamics in a semi-isolated
315 Caribbean island population throughout the COVID-19 pandemic. This unique setting allows for a more
316 controlled analysis of antibody response compared to geographically dispersed populations. We observed
317 a substantial rise in seropositivity (from 26.9% to 98.4%) over the study period, including an increase in
318 hybrid immunity from 0.8% to 31.4%. Studies have shown that hybrid immunity offers several
319 advantages, including enhanced protection against severe disease and death, slower waning of immunity,
320 reduced risk of reinfection, promotion of B cell diversity, and facilitation of T cell activation during
321 subsequent vaccination.³² However, the impact of this increase on population immunity remains unclear
322 due to the emergence and potential immune escape of SARS-CoV-2 variants. These findings emphasize
323 the importance of ongoing surveillance and tailored vaccination strategies to effectively manage the
324 COVID-19 pandemic.

325 RBD and S1 antibody levels gradually declined over time following initial vaccine doses,
326 reflecting the natural decay of vaccine-induced humoral immunity. S1 levels waned faster than RBD
327 levels, consistent with previous research.³³ This difference might be due to the inherent structural stability
328 of the RBD region,³⁴ potentially contributing to slower degradation and potentially longer-lasting
329 protection against viral entry. However, limitations of the assay used warrant further investigation with
330 assays optimized for S1 and RBD detection to definitively assess their relative decay rates. As expected,

331 booster doses substantially increased RBD and S1 levels compared to the primary series, peaking 14-27
332 days post-booster dose, indicating a rapid and robust immune response.

333 Recent SARS-CoV-2 infections boosted N, RBD, and S1 antibody levels, peaking within two
334 months and gradually declining after six months, suggesting natural humoral immunity decay. Although
335 infection may provide protective benefits through antibody boosts, vaccination remains the safest
336 strategy for building immunity against COVID-19, considering the risk of severe illness during infection.

337 One-quarter of participants with N seroconversion during the Omicron-predominant period
338 lacked a positive RT-PCR result. This could be due to asymptomatic or mild infections, transient viral
339 RNA levels below the detection threshold, or infections that were too recent for RT-PCR detection.
340 Alternatively, they could have had an acute infection that was not yet RT-PCR detectable. Supporting this
341 hypothesis, a previous study reported declining RT-PCR sensitivity for detecting asymptomatic cases
342 over time, with peak sensitivity occurring within the first few days after infection.³⁵ Conversely, some
343 participants with positive RT-PCRs had negative N tests, possibly reflecting early infection before
344 significant antibody development. Alternatively, some individuals with mild or asymptomatic infections
345 might not generate a strong immune response. As a result, their antibody production, including N
346 antibodies, may be minimal or undetectable.³⁶ These findings highlight the limitations of single testing
347 methods and the importance of considering viral load and timing of testing when interpreting results.
348 They also suggest the potential value of comprehensive testing approaches that combine multiple methods
349 for more accurate diagnosis.

350 Consistent with previous research,³⁷ 84% of individuals who had their first SARS-CoV-2
351 infection after vaccination developed N antibodies. In contrast to pre-Omicron studies,¹⁷ we observed no
352 significant differences in N antibody detection between vaccinated and unvaccinated individuals with
353 recent infection. Omicron's mutations in RBD may enhance breakthrough infections by evading vaccine-
354 induced antibody neutralization,³⁸⁻⁴⁰ potentially leading to increased reliance on and strengthening of the
355 immune system's N antibody response. Additionally, Omicron has a higher replication rate in the
356 nasopharynx, saliva, and upper respiratory tract compared to ancestral variants.^{41,42} This may lead to

357 increased shedding of viral particles, including the N protein, which the immune system can detect and
358 generate antibodies against.

359 Younger individuals (<20 years) had higher S1 and RBD levels than adults over 65 years beyond
360 5 months post-vaccination, consistent with other studies.^{43,44} Differences associated with advancing age
361 may be attributed to thymic involution and reduced B cell generation, differences in inflammatory
362 response or cytokine production, and underlying comorbidities or immune modulatory medications.⁴⁵
363 Among the explored comorbidities, diabetes and high triglycerides were associated with lower IgG
364 responses. The inverse association with high triglyceride concentrations could be due to potential
365 interference from triglycerides with the assay used. Although an interfering substances study was not
366 performed for this study, it is a consideration for future investigations. For diabetes specifically, potential
367 mechanisms include a reduced number of circulating helper T cells and impaired antigen presentation, as
368 reported by Soetedjo *et al.*⁴⁶ Further research is needed to understand the specific immunological
369 mechanisms by which certain comorbidities compromise vaccine-induced humoral immunity. These
370 findings emphasize the need for tailored vaccination strategies, potentially involving adjuvants to enhance
371 immune responses in older adults and considering earlier booster doses for vulnerable populations.

372 This study included persons vaccinated with monovalent mRNA vaccines, initially designed
373 against the wild-type SARS-CoV-2. While highly effective in preventing severe illness,^{11,47} these vaccines
374 faced declining effectiveness as newer variants emerged.^{48,49} Over three-quarters of infections in our study
375 occurred during the Omicron wave. Omicron sub-lineages from BA.1 to BA.5 and subsequent variants
376 such as XBB.1.5 and JN.1 demonstrated increased transmissibility and immune escape due to S1 protein
377 mutations, rendering the monovalent vaccines less protective.⁵⁰ In response, bivalent mRNA boosters
378 targeting both the original strain and Omicron subvariants (BA.1 or BA.4-5) were developed for use in
379 late 2022 and demonstrated increased effectiveness against severe outcomes with Omicron infection
380 compared to monovalent vaccines in both laboratory and real-world studies.⁵¹⁻⁵³ COVID-19 vaccine
381 formulations were subsequently updated for 2023–2024 to a new monovalent vaccine, designed to target

382 the Omicron XBB.1.5 sub-lineage.⁵⁴ The earlier bivalent and monovalent formulations are no longer
383 authorized for use in the U.S.

384 Despite waning antibody levels and variant emergence, vaccines remain an important way to
385 prevent severe illness, hospitalization, mechanical ventilation, and death associated with COVID-19.^{11,53}
386 Additionally, effective treatments are available, further contributing to the reduction of severe outcomes.
387 This protects individual health and reduces the economic burden on healthcare systems. Treating severe
388 COVID-19 cases is costly, with inpatient stays averaging \$11,275 as of March 2022.⁵⁵ Widespread
389 vaccination reduces these high-cost hospitalizations, offering clear economic benefits.

390 This study was subject to several limitations. First, our analysis relied on specific antibody assays
391 measuring IgG levels of N and S1 proteins. However, other relevant immune responses, such as B cell
392 and T cell-mediated immunity, were not assessed. Second, this study focused on antibody levels, not
393 directly assessing their functional effectiveness against variants. Changes in levels may not always
394 translate to altered protection against clinical outcomes. Our findings showed an association between
395 higher anti-N IgG levels and a decreased likelihood of a subsequent positive RT-PCR test. The
396 relationship between antibody levels and disease severity can be complex and may vary depending on
397 factors such as the specific variant, the type of antibodies measured (IgG versus neutralizing antibodies),
398 and individual immune response. However, our findings align with studies suggesting that higher IgG
399 levels may be associated with a lower risk of developing symptomatic COVID-19 infection.^{56,57}

400 Our study describes IgG responses following vaccination and infection among a cohort in Puerto
401 Rico. Understanding the differential decay of RBD and S1 antibodies, the impact of comorbidities, and
402 the nuances of N response following infection further informs targeted interventions and public health
403 strategies. Some observed N and S1 serum reactivity might reflect undetected SARS-CoV-2 exposure,
404 underscoring the value of serological testing in capturing broader population immunity compared to RT-
405 PCR testing, which is only detectable for a short time and might miss asymptomatic or mild cases.
406 Optimal testing to understand viral pathogenesis requires serial determinations of both viral antigens and
407 antibody responses.

408

409 **References**

- 410 1 Guevara-Hoyer, K. *et al.* Serological Tests in the Detection of SARS-CoV-2 Antibodies.
411 *Diagnostics (Basel)* **11** (2021). <https://doi.org/10.3390/diagnostics11040678>
- 412 2 GeurtsvanKessel, C. H. *et al.* An evaluation of COVID-19 serological assays informs future
413 diagnostics and exposure assessment. *Nature Communications* **11**, 3436 (2020).
414 <https://doi.org/10.1038/s41467-020-17317-y>
- 415 3 Ghaffari, A., Meurant, R. & Ardakani, A. COVID-19 Serological Tests: How Well Do They
416 Actually Perform? *Diagnostics (Basel)* **10** (2020). <https://doi.org/10.3390/diagnostics10070453>
- 417 4 Dehgani-Mobaraki, P. *et al.* Long-term persistence of IgG antibodies in recovered COVID-19
418 individuals at 18 months post-infection and the impact of two-dose BNT162b2 (Pfizer-
419 BioNTech) mRNA vaccination on the antibody response: Analysis using fixed-effects linear
420 regression model. *Virology* **578**, 111-116 (2023). <https://doi.org/10.1016/j.virol.2022.12.003>
- 421 5 Assaid, N. *et al.* Kinetics of SARS-CoV-2 IgM and IgG Antibodies 3 Months after COVID-19
422 Onset in Moroccan Patients. *Am J Trop Med Hyg* **108**, 145-154 (2023).
423 <https://doi.org/10.4269/ajtmh.22-0448>
- 424 6 Gilboa, M. *et al.* Durability of Immune Response After COVID-19 Booster Vaccination and
425 Association With COVID-19 Omicron Infection. *JAMA Netw Open* **5**, e2231778 (2022).
426 <https://doi.org/10.1001/jamanetworkopen.2022.31778>
- 427 7 Yousefi, Z. *et al.* Long-Term Persistence of Anti-SARS-COV-2 IgG Antibodies. *Curr Microbiol*
428 **79**, 96 (2022). <https://doi.org/10.1007/s00284-022-02800-0>
- 429 8 Rose, R. *et al.* Humoral immune response after different SARS-CoV-2 vaccination regimens.
430 *BMC Medicine* **20**, 31 (2022). <https://doi.org/10.1186/s12916-021-02231-x>
- 431 9 Ailsworth, S. M. *et al.* Enhanced SARS-CoV-2 IgG durability following COVID-19 mRNA
432 booster vaccination and comparison of BNT162b2 with mRNA-1273. *Ann Allergy Asthma*
433 *Immunol* **130**, 67-73 (2023). <https://doi.org/10.1016/j.anai.2022.10.003>

- 434 10 Adjobimey, T. *et al.* Comparison of IgA, IgG, and Neutralizing Antibody Responses Following
435 Immunization With Moderna, BioNTech, AstraZeneca, Sputnik-V, Johnson and Johnson, and
436 Sinopharm's COVID-19 Vaccines. *Front Immunol* **13**, 917905 (2022).
437 <https://doi.org/10.3389/fimmu.2022.917905>
- 438 11 Song, S., Madewell, Z. J., Liu, M., Longini, I. M. & Yang, Y. Effectiveness of SARS-CoV-2
439 vaccines against Omicron infection and severe events: a systematic review and meta-analysis of
440 test-negative design studies. *Front Public Health* **11**, 1195908 (2023).
441 <https://doi.org/10.3389/fpubh.2023.1195908>
- 442 12 Virk, A. *et al.* Hybrid Immunity Provides Protective Advantage Over Vaccination or Prior
443 Remote Coronavirus Disease 2019 Alone. *Open Forum Infect Dis* **10**, ofad161 (2023).
444 <https://doi.org/10.1093/ofid/ofad161>
- 445 13 McBride, R., van Zyl, M. & Fielding, B. C. The coronavirus nucleocapsid is a multifunctional
446 protein. *Viruses* **6**, 2991-3018 (2014). <https://doi.org/10.3390/v6082991>
- 447 14 Huang, Y., Yang, C., Xu, X. F., Xu, W. & Liu, S. W. Structural and functional properties of
448 SARS-CoV-2 spike protein: potential antiviral drug development for COVID-19. *Acta*
449 *Pharmacol Sin* **41**, 1141-1149 (2020). <https://doi.org/10.1038/s41401-020-0485-4>
- 450 15 Tai, W. *et al.* Characterization of the receptor-binding domain (RBD) of 2019 novel coronavirus:
451 implication for development of RBD protein as a viral attachment inhibitor and vaccine. *Cell Mol*
452 *Immunol* **17**, 613-620 (2020). <https://doi.org/10.1038/s41423-020-0400-4>
- 453 16 Pang, N. Y., Pang, A. S., Chow, V. T. & Wang, D. Y. Understanding neutralising antibodies
454 against SARS-CoV-2 and their implications in clinical practice. *Mil Med Res* **8**, 47 (2021).
455 <https://doi.org/10.1186/s40779-021-00342-3>
- 456 17 Follmann, D. *et al.* Antinucleocapsid Antibodies After SARS-CoV-2 Infection in the Blinded
457 Phase of the Randomized, Placebo-Controlled mRNA-1273 COVID-19 Vaccine Efficacy Clinical
458 Trial. *Ann Intern Med* **175**, 1258-1265 (2022). <https://doi.org/10.7326/m22-1300>

- 459 18 Pooley, N. *et al.* Durability of Vaccine-Induced and Natural Immunity Against COVID-19: A
460 Narrative Review. *Infect Dis Ther* **12**, 367-387 (2023). [https://doi.org/10.1007/s40121-022-](https://doi.org/10.1007/s40121-022-00753-2)
461 [00753-2](https://doi.org/10.1007/s40121-022-00753-2)
- 462 19 Townsend, J. P., Hassler, H. B., Sah, P., Galvani, A. P. & Dornburg, A. The durability of natural
463 infection and vaccine-induced immunity against future infection by SARS-CoV-2. *Proc Natl*
464 *Acad Sci U S A* **119**, e2204336119 (2022). <https://doi.org/10.1073/pnas.2204336119>
- 465 20 Hornsby, H. *et al.* Omicron infection following vaccination enhances a broad spectrum of
466 immune responses dependent on infection history. *Nat Commun* **14**, 5065 (2023).
467 <https://doi.org/10.1038/s41467-023-40592-4>
- 468 21 Canetti, M. *et al.* Immunogenicity and efficacy of fourth BNT162b2 and mRNA1273 COVID-19
469 vaccine doses; three months follow-up. *Nature Communications* **13**, 7711 (2022).
470 <https://doi.org/10.1038/s41467-022-35480-2>
- 471 22 Adams, L. E. *et al.* Risk factors for infection with chikungunya and Zika viruses in southern
472 Puerto Rico: A community-based cross-sectional seroprevalence survey. *PLoS Negl Trop Dis* **16**,
473 e0010416 (2022). <https://doi.org/10.1371/journal.pntd.0010416>
- 474 23 Rodríguez, D. M. *et al.* HTrack: A new tool to facilitate public health field visits and electronic
475 data capture. *PLoS One* **15**, e0244028 (2020). <https://doi.org/10.1371/journal.pone.0244028>
- 476 24 Major, C. G. *et al.* Investigating SARS-CoV-2 Incidence and Morbidity in Ponce, Puerto Rico:
477 Protocol and Baseline Results From a Community Cohort Study. *JMIR Res Protoc* **13**, e53837
478 (2024). <https://doi.org/10.2196/53837>
- 479 25 Madewell, Z. J. *et al.* Diagnostic Accuracy of the Abbott BinaxNOW COVID-19 Antigen Card
480 Test, Puerto Rico. *Influenza Other Respir Viruses* **18**, e13305 (2024).
481 <https://doi.org/10.1111/irv.13305>
- 482 26 Luminex. *xMAP® SARS-CoV-2 Antibody Testing*, <[https://www.luminexcorp.com/xmap-sars-](https://www.luminexcorp.com/xmap-sars-cov-2-antibody-testing/)
483 [cov-2-antibody-testing/](https://www.luminexcorp.com/xmap-sars-cov-2-antibody-testing/)> (2023).

- 484 27 Luminex. *xMAP® SARS-CoV-2 Multi-Antigen IgG Assay Package Insert*,
485 <https://www.fda.gov/media/140256/download> (2022).
- 486 28 Centers for Disease Control and Prevention. *Investigative Criteria for Suspected Cases of SARS-*
487 *CoV-2 Reinfection (ICR)*, <https://stacks.cdc.gov/view/cdc/96072> (2020).
- 488 29 Santiago, G. A. *et al.* SARS-CoV-2 Omicron Replacement of Delta as Predominant Variant,
489 Puerto Rico. *Emerging Infectious Diseases* **29**, 855 (2023).
- 490 30 Santiago, G. A. *et al.* Genomic surveillance of SARS-CoV-2 in Puerto Rico enabled early
491 detection and tracking of variants. *Commun Med (Lond)* **2**, 100 (2022).
492 <https://doi.org/10.1038/s43856-022-00168-7>
- 493 31 Jones, J. M. *et al.* Estimates of SARS-CoV-2 Seroprevalence and Incidence of Primary SARS-
494 CoV-2 Infections Among Blood Donors, by COVID-19 Vaccination Status - United States, April
495 2021-September 2022. *MMWR Morb Mortal Wkly Rep* **72**, 601-605 (2023).
496 <https://doi.org/10.15585/mmwr.mm7222a3>
- 497 32 Lapuente, D., Winkler, T. H. & Tenbusch, M. B-cell and antibody responses to SARS-CoV-2:
498 infection, vaccination, and hybrid immunity. *Cell Mol Immunol* **21**, 144-158 (2024).
499 <https://doi.org/10.1038/s41423-023-01095-w>
- 500 33 Wagner, A. *et al.* Neutralising SARS-CoV-2 RBD-specific antibodies persist for at least six
501 months independently of symptoms in adults. *Communications Medicine* **1**, 13 (2021).
502 <https://doi.org/10.1038/s43856-021-00012-4>
- 503 34 Upadhyay, V., Lucas, A., Panja, S., Miyauchi, R. & Mallela, K. M. G. Receptor binding, immune
504 escape, and protein stability direct the natural selection of SARS-CoV-2 variants. *J Biol Chem*
505 **297**, 101208 (2021). <https://doi.org/10.1016/j.jbc.2021.101208>
- 506 35 Hellewell, J. *et al.* Estimating the effectiveness of routine asymptomatic PCR testing at different
507 frequencies for the detection of SARS-CoV-2 infections. *BMC Med* **19**, 106 (2021).
508 <https://doi.org/10.1186/s12916-021-01982-x>

- 509 36 Ko, J. H. *et al.* Neutralizing Antibody Production in Asymptomatic and Mild COVID-19 Patients,
510 in Comparison with Pneumonic COVID-19 Patients. *J Clin Med* **9** (2020).
511 <https://doi.org/10.3390/jcm9072268>
- 512 37 den Hartog, G. *et al.* Assessment of hybrid population immunity to SARS-CoV-2 following
513 breakthrough infections of distinct SARS-CoV-2 variants by the detection of antibodies to
514 nucleoprotein. *Scientific Reports* **13**, 18394 (2023). <https://doi.org/10.1038/s41598-023-45718-8>
- 515 38 Cao, Y. *et al.* Omicron escapes the majority of existing SARS-CoV-2 neutralizing antibodies.
516 *Nature* **602**, 657-663 (2022). <https://doi.org/10.1038/s41586-021-04385-3>
- 517 39 Wang, Q. *et al.* Antibody evasion by SARS-CoV-2 Omicron subvariants BA.2.12.1, BA.4 and
518 BA.5. *Nature* **608**, 603-608 (2022). <https://doi.org/10.1038/s41586-022-05053-w>
- 519 40 Planas, D. *et al.* Resistance of Omicron subvariants BA.2.75.2, BA.4.6, and BQ.1.1 to
520 neutralizing antibodies. *Nat Commun* **14**, 824 (2023). [https://doi.org/10.1038/s41467-023-36561-](https://doi.org/10.1038/s41467-023-36561-6)
521 [6](https://doi.org/10.1038/s41467-023-36561-6)
- 522 41 Granerud, B. K. *et al.* Omicron Variant Generates a Higher and More Sustained Viral Load in
523 Nasopharynx and Saliva Than the Delta Variant of SARS-CoV-2. *Viruses* **14** (2022).
524 <https://doi.org/10.3390/v14112420>
- 525 42 Hui, K. P. Y. *et al.* Replication of SARS-CoV-2 Omicron BA.2 variant in ex vivo cultures of the
526 human upper and lower respiratory tract. *EBioMedicine* **83**, 104232 (2022).
527 <https://doi.org/10.1016/j.ebiom.2022.104232>
- 528 43 Karachaliou, M. *et al.* SARS-CoV-2 infection, vaccination, and antibody response trajectories in
529 adults: a cohort study in Catalonia. *BMC Medicine* **20**, 347 (2022).
530 <https://doi.org/10.1186/s12916-022-02547-2>
- 531 44 Richards, N. E. *et al.* Comparison of SARS-CoV-2 Antibody Response by Age Among
532 Recipients of the BNT162b2 vs the mRNA-1273 Vaccine. *JAMA Netw Open* **4**, e2124331 (2021).
533 <https://doi.org/10.1001/jamanetworkopen.2021.24331>

- 534 45 Bartleson, J. M. *et al.* SARS-CoV-2, COVID-19 and the aging immune system. *Nature Aging* **1**,
535 769-782 (2021). <https://doi.org/10.1038/s43587-021-00114-7>
- 536 46 Soetedjo, N. N. M., Iryaningrum, M. R., Lawrensia, S. & Permana, H. Antibody response
537 following SARS-CoV-2 vaccination among patients with type 2 diabetes mellitus: A systematic
538 review. *Diabetes Metab Syndr* **16**, 102406 (2022). <https://doi.org/10.1016/j.dsx.2022.102406>
- 539 47 Ssentongo, P. *et al.* SARS-CoV-2 vaccine effectiveness against infection, symptomatic and
540 severe COVID-19: a systematic review and meta-analysis. *BMC Infect Dis* **22**, 439 (2022).
541 <https://doi.org/10.1186/s12879-022-07418-y>
- 542 48 Madewell, Z. J., Yang, Y., Longini, I. M., Jr., Halloran, M. E. & Dean, N. E. Household
543 Secondary Attack Rates of SARS-CoV-2 by Variant and Vaccination Status: An Updated
544 Systematic Review and Meta-analysis. *JAMA Netw Open* **5**, e229317 (2022).
545 <https://doi.org/10.1001/jamanetworkopen.2022.9317>
- 546 49 Menegale, F. *et al.* Evaluation of Waning of SARS-CoV-2 Vaccine-Induced Immunity: A
547 Systematic Review and Meta-analysis. *JAMA Netw Open* **6**, e2310650 (2023).
548 <https://doi.org/10.1001/jamanetworkopen.2023.10650>
- 549 50 Chatterjee, S., Bhattacharya, M., Nag, S., Dhama, K. & Chakraborty, C. A Detailed Overview of
550 SARS-CoV-2 Omicron: Its Sub-Variants, Mutations and Pathophysiology, Clinical
551 Characteristics, Immunological Landscape, Immune Escape, and Therapies. *Viruses* **15** (2023).
552 <https://doi.org/10.3390/v15010167>
- 553 51 Hyun, H. J. *et al.* Neutralizing Activity against BQ.1.1, BN.1, and XBB.1 in Bivalent COVID-19
554 Vaccine Recipients: Comparison by the Types of Prior Infection and Vaccine Formulations.
555 *Vaccines (Basel)* **11** (2023). <https://doi.org/10.3390/vaccines11081320>
- 556 52 Davis-Gardner, M. E. *et al.* Neutralization against BA.2.75.2, BQ.1.1, and XBB from mRNA
557 Bivalent Booster. *N Engl J Med* **388**, 183-185 (2023). <https://doi.org/10.1056/NEJMc2214293>

- 558 53 Song, S. *et al.* A systematic review and meta-analysis on the effectiveness of bivalent mRNA
559 booster vaccines against Omicron variants. *Vaccine* (2024).
560 <https://doi.org/10.1016/j.vaccine.2024.04.049>
- 561 54 Regan, J. J. *et al.* Use of Updated COVID-19 Vaccines 2023-2024 Formula for Persons Aged ≥ 6
562 Months: Recommendations of the Advisory Committee on Immunization Practices - United
563 States, September 2023. *MMWR Morb Mortal Wkly Rep* **72**, 1140-1146 (2023).
564 <https://doi.org/10.15585/mmwr.mm7242e1>
- 565 55 Kapinos, K. A. *et al.* Inpatient Costs of Treating Patients With COVID-19. *JAMA Netw Open* **7**,
566 e2350145 (2024). <https://doi.org/10.1001/jamanetworkopen.2023.50145>
- 567 56 Messchendorp, A. L. *et al.* Incidence and Severity of COVID-19 in Relation to Anti-Receptor-
568 Binding Domain IgG Antibody Level after COVID-19 Vaccination in Kidney Transplant
569 Recipients. *Viruses* **16** (2024). <https://doi.org/10.3390/v16010114>
- 570 57 Chen, X. *et al.* Association between levels of IgG antibodies from vaccines and Omicron
571 symptomatic infection among children and adolescents in China. *Front Med (Lausanne)* **10**,
572 1240340 (2023). <https://doi.org/10.3389/fmed.2023.1240340>

573 **Additional Information**

574 **Acknowledgements:** COCOVID study staff and participants

575 **Disclaimer:** The findings and conclusions in this report are those of the authors and do not necessarily
576 represent the official position of the US Centers for Disease Control and Prevention.

577

578 **Funding:** V. R.-A. acknowledges grant number U01CK000580 awarded by the Centers for Disease
579 Control and Prevention.

580

581 **Contributions:** Conception and design: ZJM, NG, VKL, LEA, CGM; Acquisition of data: CGM, DMR;
582 Analysis and interpretation of data: ZJM, NG, VKL, DMR, JMW, LEA, GP, CGM; Drafting of the
583 manuscript: Analysis and interpretation of data: ZJM, NG, VKL, DMR, JMW, LEA, CGM; Revision of
584 the manuscript: All authors.

585

586 **Competing interests:** The author(s) declare no competing interests.

587

588 **Data availability:** Due to data security and confidentiality guidelines, all analyses, and restricted-use
589 datasets, including questionnaire forms and code, must be requested from CDC and PMSF after
590 submitting a concept proposal to dengue@cdc.gov.

591 **Figure Titles and Legends**

592 **Figure 1. Distribution of vaccine-induced, infection-induced, and hybrid (immunity derived from a**
593 **combination of vaccination and infection) immunity^a against SARS-CoV-2 by age group, Puerto**
594 **Rico, 2020–2022.** ^aCombined detection of anti-S1 antibodies (produced by both COVID-19–vaccination
595 and SARS-CoV-2 infection) and anti-N antibodies (specific to prior infection), along with vaccination
596 history from vaccination cards. *Vaccine-induced immunity*: Individuals with history of ≥ 1 COVID-19
597 vaccination dose from vaccination card. *Infection-induced immunity*: Individuals with positive anti-N
598 antibodies and positive anti-S1 antibodies. *Hybrid immunity*: Individuals with self-reported history of ≥ 1
599 COVID-19 vaccination dose and positive antibodies for both S1 and N antigens.

600

601 **Figure 2. (A) Weekly distribution of SARS-CoV-2 N, RBD, and S1 antibody responses during the**
602 **serosurvey period and B) case counts (confirmed and probable) reported to the Puerto Rico**
603 **Department of Public Health in Ponce Health Region, 2020–2022.** Departamento de Salud PR.
604 COVID-19 en cifras en Puerto Rico. 2024 [cited 2024 May 17]; Available from:
605 https://www.salud.pr.gov/estadisticas_v2.

606

607 **Figure 3. SARS-CoV-2 IgG antibody responses by days since last vaccine stratified by RT-PCR**
608 **positivity in previous six months vs. no previous RT-PCR positivity and N negative (A) and**
609 **antibody responses by days since last positive RT-PCR and vaccination status (B), Puerto Rico,**
610 **2020–2022.** The lines are loess smoothing lines and shaded bands are 95% CIs.

611

612 **Figure 4. Paired SARS-CoV-2 IgG antibody responses for individuals at two time points six months**
613 **apart among people who had received three vaccine doses by prior RT-PCR positivity, Puerto Rico,**
614 **2020–2022.** * $P < 0.05$, ** $P < 0.01$. NS: not significant.

L5

Table 1. Descriptive characteristics of COCOVID participants, Puerto Rico, 2020–2022.

Characteristic	N = 882 n (%)
Age group	
<20 years	249 (28.2)
20–39 years	237 (26.9)
40–64 years	300 (34.0)
≥65 years	96 (10.9)
Sex	
Female	465 (52.7)
Male	417 (47.3)
Any chronic condition^a	
Yes	523 (59.3)
No	359 (40.7)
Follow-up visit	
6 months	789 (37.0)
12 months	774 (36.3)
18 months	567 (26.6)
COVID-19 vaccination status recorded on final visit	
Unvaccinated	86 (9.8)
One dose	10 (1.1)
Two doses	316 (35.8)
Three doses	468 (53.1)
Four doses	2 (0.2)
Positive SARS-CoV-2 RT-PCR during study	
Any positive RT-PCR	300 (34.0)
Pre-Delta predominant period	28 (3.2)
Delta predominant period	17 (1.9)
Omicron predominant period	263 (29.8)
No positive RT-PCR	582 (66.0)

^a Any chronic condition included hypertension (N=198), chronic respiratory illness (N=152), diabetes (N=102), cardiac conditions (N=80), thyroid conditions (N=81), gastrointestinal problems (N=75), high triglycerides (N=72), asthma (N=60), arthritis (N=57), neurological disorders (N=35), anxiety (N=33), rheumatic conditions (N=28), depression (N=27), blood disorder (N=24), fibromyalgia (N=24), kidney conditions (N=24), cancer (N=23), mental illness (N=17), physical disabilities (N=15), liver conditions (N=14), obesity (N=14), stroke (N=9), and other (N=155).

L6

L7

Table 2. Anti-N seropositivity rates among participants who tested positive for SARS-CoV-2 by RT-PCR at least 14 days after vaccination and were previously seronegative and RT-PCR negative, Puerto Rico, 2020–2022.

Vaccination status	All Anti-N seropositivity		Pre-Omicron Anti-N seropositivity		Omicron Anti-N seropositivity	
	Participants N	% (95% CI)	Participants N	% (95% CI)	Participants N	% (95% CI)
Unvaccinated	18	77.8 (51.9, 92.6)	16	81.2 (53.7, 95.0)	2	50.0 (9.5, 90.5)
Two doses	49	83.7 (69.8, 92.2)	13	69.2 (38.9, 89.6)	36	88.9 (73.0, 96.4)
Three doses	67	74.6 (62.3, 84.1)	–	–	67	74.6 (62.3, 84.1)

18

Table 3. Associations between SARS-CoV-2 seroreactivity and subsequent RT-PCR positivity within six months during the Omicron predominant period, Puerto Rico, 2020–2022.

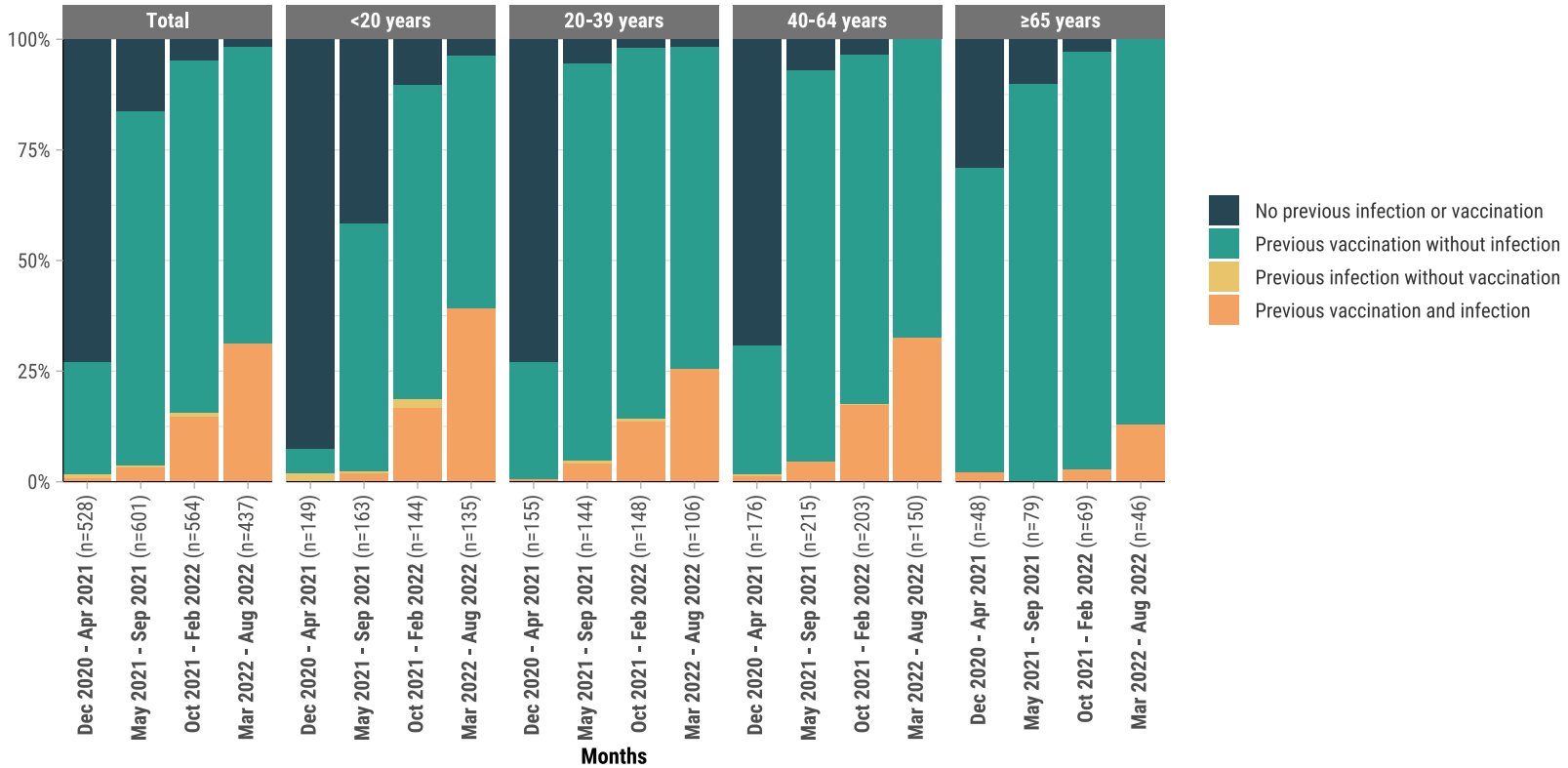
	Positive RT-PCR in 6 months after serology N = 129 ^a n (%)	No positive RT-PCR in 6 months after serology N = 625 ^a n (%)	Odds Ratio (95% CI)	P-value	Adjusted ^b Odds Ratio (95% CI)	P-value
S1: seroreactivity				0.003		0.022
Seropositive	116 (89.9)	602 (96.3)	0.341 (0.168, 0.692)		0.417 (0.198, 0.879)	
Seronegative	13 (10.1)	23 (3.7)	<i>Reference</i>		<i>Reference</i>	
S1: log(MFI)				0.005		0.089
≥8.56	77 (59.7)	448 (71.7)	0.304 (0.148, 0.626)		0.407 (0.190, 0.870)	
7.56-8.55	32 (24.8)	116 (18.6)	0.488 (0.223, 1.070)		0.487 (0.214, 1.106)	
6.56-7.55	7 (5.4)	38 (6.1)	0.326 (0.114, 0.936)		0.292 (0.098, 0.873)	
Seronegative	13 (10.1)	23 (3.7)	<i>Reference</i>		<i>Reference</i>	
N: seroreactivity				<0.001		<0.001
Seropositive	7 (5.4)	218 (34.9)	0.107 (0.049, 0.234)		0.097 (0.044, 0.212)	
Seronegative	122 (94.6)	407 (65.1)	<i>Reference</i>		<i>Reference</i>	
N: log(MFI)				<0.001		<0.001
≥8.56	1 (0.8)	184 (29.4)	0.042 (0.006, 0.307)		0.037 (0.005, 0.270)	
7.56-8.55	3 (2.3)	155 (24.8)	0.133 (0.041, 0.431)		0.124 (0.038, 0.403)	
6.56-7.55	3 (2.3)	148 (23.7)	0.156 (0.048, 0.507)		0.140 (0.043, 0.458)	
Seronegative	122 (94.6)	138 (22.1)	<i>Reference</i>		<i>Reference</i>	

MFI: median fluorescence intensity

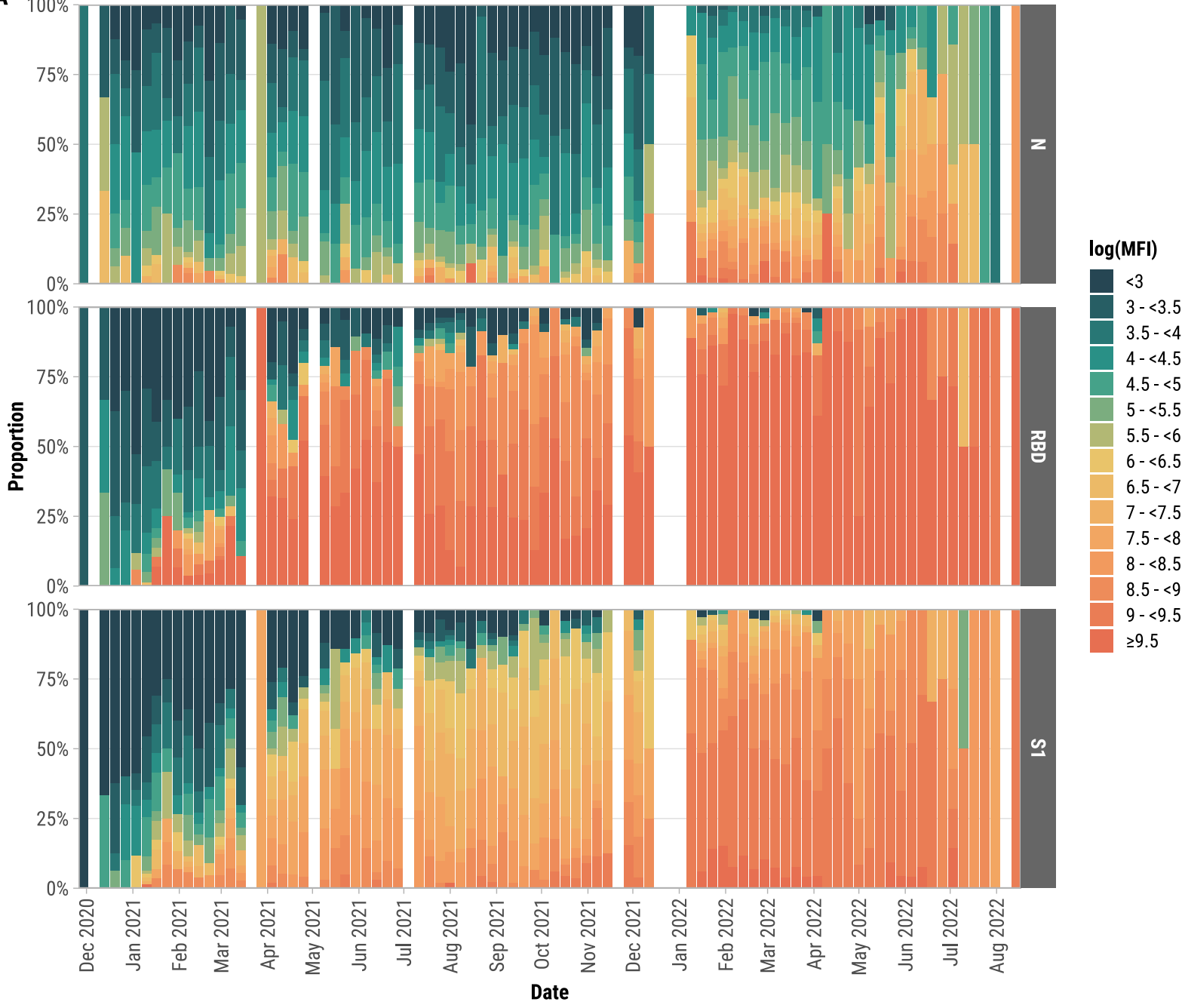
Almost all (98%) antibody tests were seropositive for RBD, therefore RBD was excluded from this analysis.

^a The denominator is the number of serological tests performed.

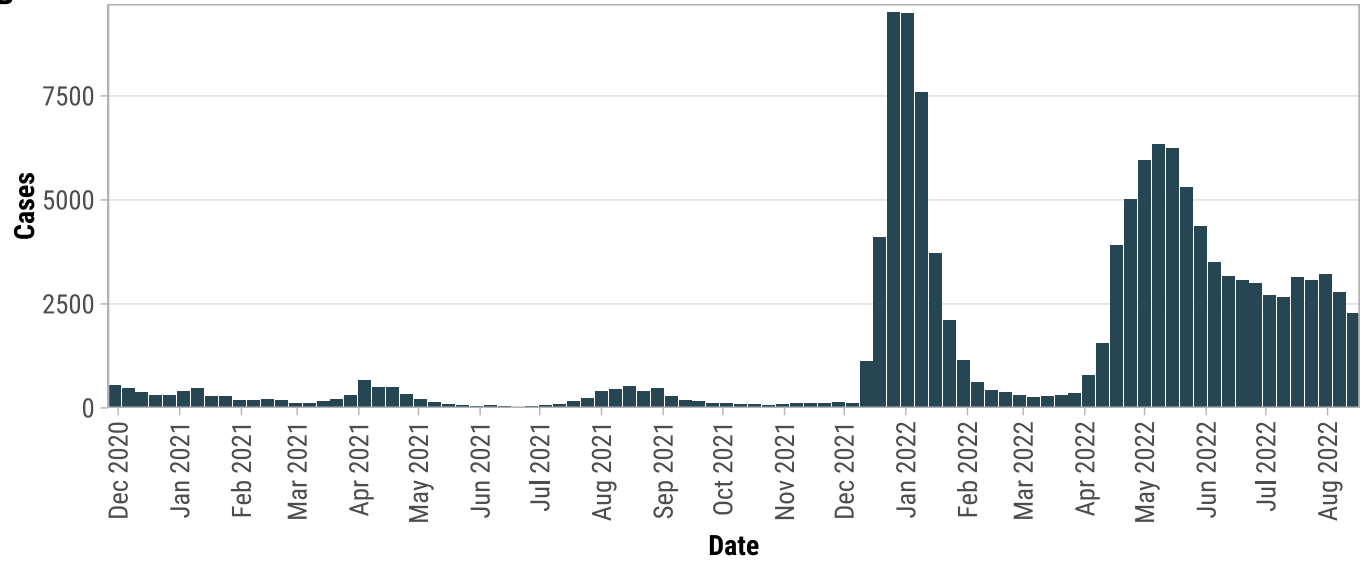
^b Adjusted for age group, sex, and any chronic condition using mixed-effects logistic regression. All models included participant as a random effect. Associations with S1 were also adjusted for N seroreactivity; associations with N were adjusted for S1 seroreactivity.

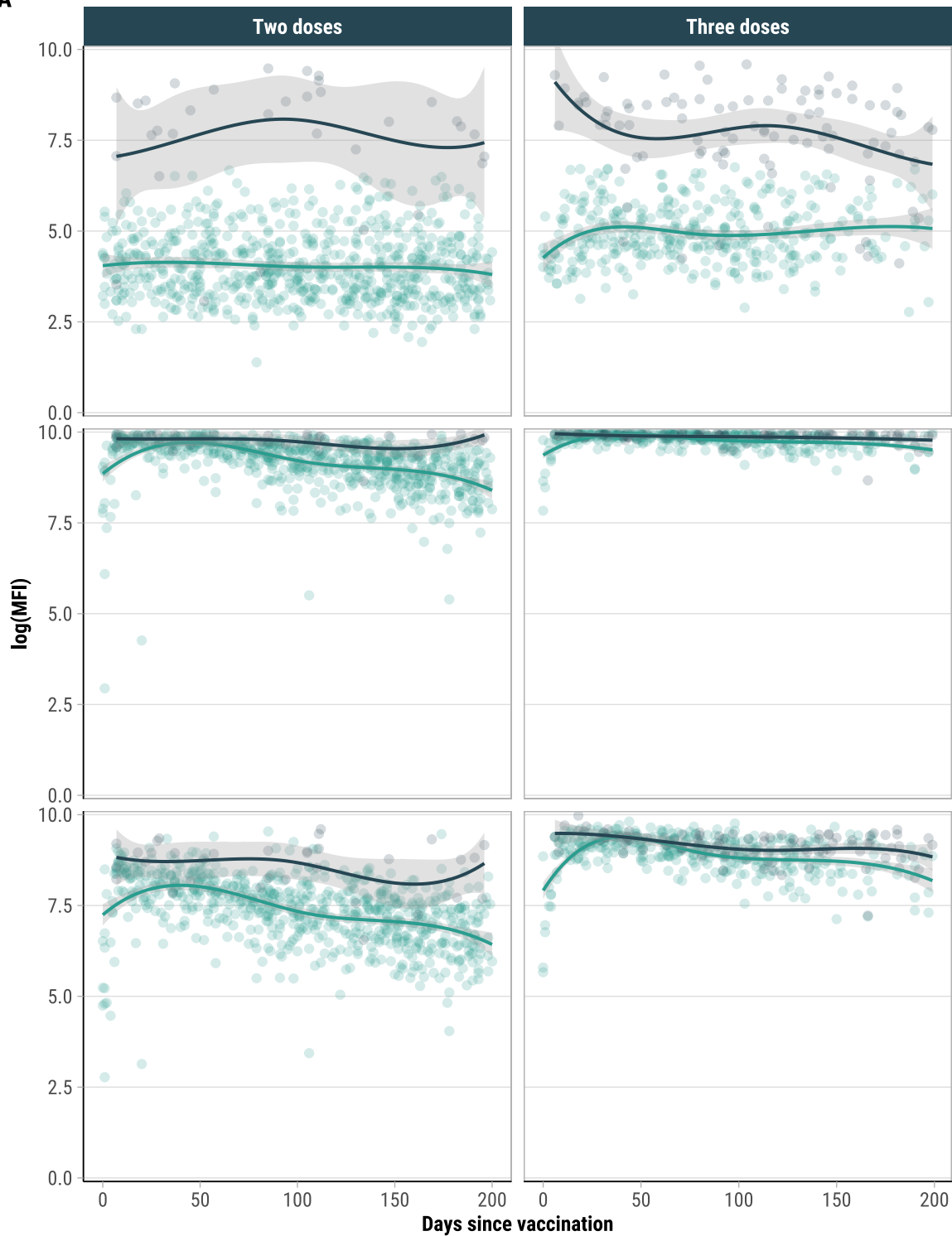
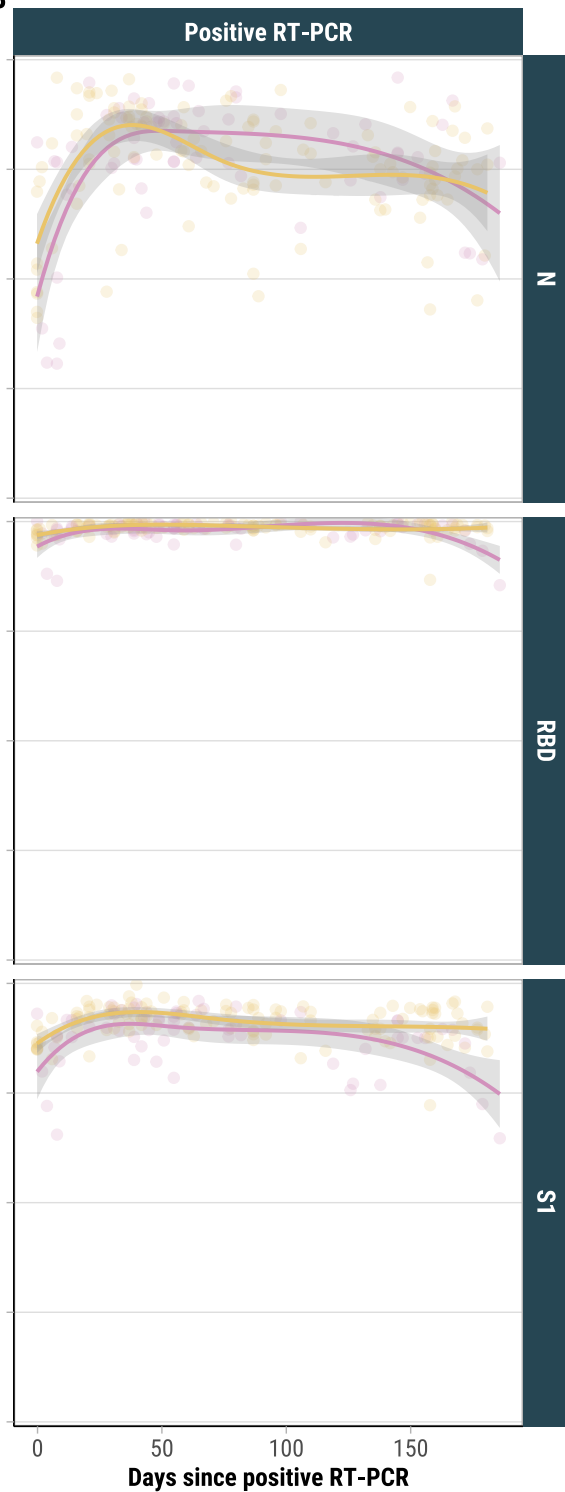


A



B



A**B**

— Previous positive RT-PCR

— RT-PCR and N negative

— Two doses

— Three doses

