

TISSUE AND PERIPHERAL T-CELL REPERTOIRE PREDICTS IMMUNOTHERAPY RESPONSE AND PROGRESSION-FREE SURVIVAL IN NSCLC PATIENTS

Manuel Pino-González^{1#}, Martín Lázaro-Quintela^{1,2#}, Irene Alonso-Álvarez¹, María Gallardo-Gómez¹, Laura Juaneda-Magdalena¹, Alejandro Francisco-Fernández³, Silvia Calabuig-Fariñas^{4,5,6}, Eloisa Jantus-Lewintre^{5,6,7}, Mónica Martínez-Fernández^{1*}

1. Translational Oncology Group. Galicia Sur Health Research Institute (IIS Galicia Sur). SERGAS UVIGO. Hospital Álvaro Cunqueiro. Carretera Clara Campoamor, 341. 36213 (Vigo), Spain.
2. Medical Oncology Service. Hospital Álvaro Cunqueiro. Carretera Clara Campoamor, 341. 36213 (Vigo), Spain.
3. Medical Oncology Service. Hospital Provincial de Pontevedra. Calle Doutor Loureiro Crespo, 2. 36001 (Pontevedra), Spain.
4. Department of Pathology. Universitat de València, 46010 (Valencia), Spain.
5. Centro de Investigación Biomédica en Red Cáncer (CIBERONC). Valencia, Spain.
6. Mixed Unit TRIAL. General University Hospital of Valencia Research Foundation and Príncipe Felipe Research Center. Hospital General Universitario de Valencia, 46014 (Valencia), Spain.
7. Department of Biotechnology. Universitat Politècnica de València, 46022 (Valencia), Spain.

Equal contribution

*Corresponding author: Mónica Martínez-Fernández. Translational Oncology Group. Galicia Sur Health Research Institute (IIS Galicia Sur). SERGAS-UVIGO. Hospital Álvaro Cunqueiro. Estrada de Clara Campoamor, 341, 36213 (Vigo), Spain.

Email: monica.martinez@iisgaliciasur.es

Running title

TCR Predicts Immunotherapy Response and Progression in NSCLC Patients

Keywords

non-small cell lung cancer; immunotherapy; predictive biomarker; immunotherapy response; T cell receptor; TCR repertoire.

NOTE: This preprint reports new research that has not been certified by peer review and should not be used to guide clinical practice.

Abstract

Immunotherapy has opened new avenues of treatment for patients with advanced non-small cell lung cancer (NSCLC) without previous hope of survival. Unfortunately, only a small percentage of patients benefit from it, and it is still not well understood which tumor characteristics can be used to predict immunotherapy response. As the key cellular effectors of antitumor immunity, T cells are endowed with specialized T cell receptors (TCRs) to recognize and eliminate cancer cells. Here, we evaluated the potential of TCR repertoire as a predictive biomarker in patients treated with immunotherapy. With this aim, advanced NSCLC patients treated with immunotherapy at first-line were included. After obtaining peripheral blood and tissue samples at baseline, next-generation sequencing targeting TCR β/γ was performed. Beyond TCR metrics, clonal space of the most frequent clones was determined. We found a positive association between uneven tumor-infiltrating TCR β repertoire and the immunotherapy response. Moreover, the use of various tumor-infiltrating and circulating TRBV/J genes predicted the immunotherapy response. Our results indicate the importance of evaluating tissue and circulating TCR β repertoire prior immunotherapy, showing it as a promising immunotherapy response biomarker in NSCLC patients.

1 Introduction

2 According to the latest estimates from the International Agency for Research on Cancer (IARC),
3 lung cancer is the most common and deadliest cancer worldwide [1]. Regarding its histology, it
4 can be classified into non-small cell lung cancer (NSCLC) and small cell lung cancer (SCLC).
5 NSCLC accounts for 85% of cases and is further subdivided into adenocarcinoma, squamous
6 cell carcinoma, and large cell carcinoma [2–4]. Although environmental exposures (such as
7 fuels, arsenic, radon, and air pollution) and medical conditions (as chronic obstructive
8 pulmonary disease, HIV infection, or presence of driver mutations), contribute to its incidence
9 and mortality, smoking is the main risk factor associated with lung cancer [2,3,5].

10 NSCLC is a highly heterogeneous disease with nonspecific symptoms, leading to a common late
11 diagnosed at advanced stages (III-IV), where surgery is not feasible [2,4,5]. This greatly
12 compromise the patient's prognosis, which is clearly reflected in the 5-year survival rate,
13 decreasing from 60% in early stages to 4-6% in metastatic settings [2,4,5]. In fact, 90% of
14 cancer deaths are due to metastasis [6].

15 Nowadays, targeted therapy against many actionable mutations (*EGFR*, *ALK*, *RET*, *BRAF*, *ROS1*,
16 *NTRK*, *MET*, *HER2* and *KRAS*) represent the standard treatment for molecularly defined
17 populations [2,7]. Unfortunately, only 25% of patients carry any of these mutations [2,8]. In
18 2015, the combination of immunotherapy based on immune checkpoint inhibitors (ICIs) and
19 chemotherapy (CTX) as first-line treatment significantly improved overall survival (OS) in
20 NSCLC patients compared to those treated with CTX alone [2,9,10]. Thus, ICIs has been
21 established as the standard treatment for patients with advanced NSCLC who do not have
22 actionable mutations, either as monotherapy or in combination with CTX, leading to a 5-year
23 survival rate up to 20% [2,9,10]. Unfortunately, only a small percentage of patients (20-40%)
24 benefit from it [2,9,10]. Its high cost, the limited time for therapy selection, and the possibility
25 of developing autoimmune-related side effects (such as inflammatory arthritis, colitis and
26 pneumonitis) underscore the importance of identifying those patients who can truly benefit
27 from the treatment [2,9,10].

28 Currently, PD1/PD-L1 immunostaining is the only approved predictive biomarker for
29 immunotherapy response, so patients with a tumor proportion score (TPS) $\geq 50\%$ are classified
30 as PD-L1 positive and thus, expected to respond [2,9–11]. However, its reproducibility has
31 been limited by the heterogeneity of results obtained in subsequent studies, largely due to
32 lack of standardization (calculation systems, thresholds, and use of different antibodies) [2,9–
33 11]. Over time, other alternatives such as tumor mutational burden (TMB), tumor-infiltrating

34 lymphocytes (TILs) and other molecular characteristics have been proposed, but none have
35 been able to reliably predict patient response in the real clinical practice [2,9–11].

36 Although the antitumor response is mediated by different cellular populations, cytotoxic T cells
37 play a key role by recognizing neoantigens and killing cancer cells [12,13]. Neoantigens are
38 recognized by the T cell receptors (TCRs). This transmembrane glycoprotein is composed of an
39 α and a β chain in T $\alpha\beta$ cells (95%) or by a γ and a δ chain in T $\gamma\delta$ cells (5%). Its synthesis occurs
40 through a somatic, stochastic, and imprecise recombination of various non-contiguous
41 homologous gene sets during T cell differentiation in the thymus [11,13–17]. Each chain
42 consists of a variable and a constant region. The variable region of the α and γ chains results
43 from recombination between the V and J genes, while β and δ chains results from
44 recombination between the V, D, and J genes. The result of this V(D)J recombination creates a
45 variable domain that is transcribed and joins one of the constant genes (C), resulting in a
46 functional chain. Each chain contains three hypervariable loops (CDR1, CDR2, and CDR3) in its
47 structure, with CDR3 mediating peptide recognition and thus determining TCR specificity
48 [11,13–17]. CDR3 is encoded by V(D)J genes and undergoes a series of random nucleotide
49 insertions and deletions (N) during recombination at gene junctions (VN(D)NJ). This entire
50 process ensures the creation of a vast array of unique TCRs capable of recognizing a wide
51 range of antigens [11,13–17].

52 Considering its key role in neoantigen recognition, TCR repertoire analysis provides valuable
53 information about the antitumor response [11,12,14,15,18,19]. Furthermore, advancements in
54 sequencing technologies and bioinformatics tools have enabled sensitive and precise
55 characterization of TCR repertoire in various types of tumors, including NSCLC, making it
56 feasible to study as a potential biomarker for immunotherapy response [11,14,15,18,19]. In
57 recent years, various studies have suggested the potential use of the TCR repertoire as a
58 biomarker for immunotherapy response, both for anti-CTLA4 and anti-PD-L1/PD1 therapies in
59 different types of cancer (such as melanoma, breast and liver), including NSCLC [20–39]. These
60 studies have yielded contradictory results but indicate a potential capacity for the TCR
61 repertoire to be used as an immunotherapy response biomarker. Consequently, the main
62 objective of this study is to evaluate the potential of TCR repertoire analysis as a biomarker for
63 response to immunotherapy in patients with advanced NSCLC.

64 **Materials and Methods**

65 **Study design and sample collection**

66 This study included twelve patients diagnosed with advanced (IIIA-IVB) NSCLC treated with
67 pembrolizumab either as first-line (N = 11) or second-line treatment (N = 1) at Álvaro
68 Cunqueiro Hospital in Vigo. The study was conducted with appropriate authorization from the
69 Galician Regional Research Ethics Committee (2019/046) following the Helsinki Declaration of
70 1975 and all patients signed informed consent approving their participation. Patients were
71 classified as responders (R: those showing complete/partial response or stable disease) and
72 non-responders (NR: those with tumor progression or unable to be evaluated due to death)
73 regarding the Response Evaluation Criteria for Solid Tumours (RECIST) [40] at 3 months. To
74 determine both tumor and peripheral TCR repertoire, formalin-fixed paraffin-embedded (FFPE)
75 tissue samples were obtained from all patients prior to immunotherapy and blood samples
76 were drawn from 10 out of 12 patients before the first ICIs dose. Peripheral blood
77 mononuclear cells (PBMCs) were isolated from blood samples by gradient density
78 centrifugation using Ficoll® (Sigma-Aldrich) and cryopreserved until use. DNA was chosen over
79 RNA for analysis due to its superior stability in FFPE samples.

80 **DNA Extraction**

81 DNA extraction from PBMCs was performed using the QIAamp® DNA Blood Mini Kit (QIAGEN)
82 following the manufacturer's instructions. DNA from FFPE samples was extracted using the
83 AllPrep® DNA/RNA FFPE Kit (QIAGEN) following the manufacturer's instructions. DNA
84 quantification was carried out using NanoDrop™ 2000c Spectrophotometer (Thermo Fisher
85 Scientific).

86 **Library preparation and TCR sequencing**

87 A total of 250 ng of genomic DNA was used to prepare the libraries for TCR CDR3β/γ region
88 sequencing following the OncoPrint™ TCR Pan-Clonality Assay (Thermo Fisher Scientific). This
89 targeted next-generation sequencing (NGS) assay has been specifically designed to sequence
90 the FR3-J regions of the TCR beta and TCR gamma chains. Libraries were pooled on an Ion 540
91 chip at 25 pmol/L and sequenced using an Ion GeneStudio S5 Plus Series (Thermo Fisher
92 Scientific).

93 **Data analysis**

94 After sequencing, data analysis was conducted using Ion Reporter version 5.20.2.0 (Thermo
95 Fisher Scientific). Regarding quality control, off target and unproductive reads were removed.
96 Read classification is shown in *Supp. File S1*. Afterwards, the software reported the VDJ
97 rearrangements and the main repertoire metrics, such as richness, convergence, diversity, and

108 evenness. TCR richness represented the total number of clones, defined as unique TCR
109 beta/gamma nucleotide sequences. TCR convergence was determined as the aggregate
110 frequency of clones which shared a variable gene and CDR3 amino acid sequence. Diversity
111 (Shannon's diversity) and evenness (normalized Shannon's diversity) were calculated using the
112 formulas below, in which p_i is the frequency of clone i for the sample with n unique clones.
113 Evenness describes how evenly distributed is the TCR repertoire. It ranges from 0, meaning the
114 repertoire is unbalanced by a reduced number of predominant clones, to 1, meaning the
115 repertoire is balanced with similar frequencies of all the clones.

106
$$\text{Shannon's diversity (H)} = - \sum_{i=1}^n p_i \log(p_i)$$

107
$$\text{Evenness (E)} = H / \log n$$

108 In addition, clones were classified according to their relative abundance in the repertoire,
109 named total clonal space, for each sample. We divided it into top 1% clonal space, top 3%
110 clonal space and top 5% clonal space, so the top 1% clonal space is defined as the aggregate
111 frequencies of the top 1% most frequent clones. All the variables were categorized as "high" or
112 "low" based on their median value.

113 **Statistical analysis**

114 Statistical analyses were performed using R-Studio version 2023.12.0 and Bioconductor version
115 3.19 environment. Statistical significance was considered by an overall p-value < 0.05. TCR
116 repertoire variables were correlated with clinical-pathological data (age, sex, tumor histology,
117 PD1/PD-L1 expression, and smoking status), clinical response and survival data (OS and PFS).
118 OS was defined as the time from treatment initiation to death or last follow-up, and PFS was
119 defined as time from treatment initiation to progression or death (whichever is earlier), or last
120 follow-up. Mann-Whitney U test and Student's t-tests were used to study the relationship
121 between TCR repertoire variables and clinical-pathological data and clinical response. Choice
122 of appropriate test (Mann-Whitney or Student's t) was based on normality (Shapiro-Wilk test)
123 and variance homogeneity (Levene test). Spearman rank non-parametric test was used for
124 variable correlations. Contingency table analyses when comparing clinical-pathological data
125 with clinical response or clinical-pathological data with TCR repertoire variables were done
126 using Fisher exact test. Kaplan-Meier survival analyses and Log-Rank test were used for time-
127 dependent variables such as OS and PFS. Receiver operating characteristics (ROC) curve
128 analyses were performed to evaluate response prediction, and area under the curve (AUC),

129 sensitivity and specificity values were obtained. The Youden Index method was used to select
130 the best cut-off values [41]. Random Forest Analysis (number of trees = 1000) was used to
131 evaluate the combined predictive signatures performances.

132 **Results**

133 **Age is associated with immunotherapy response and tumor-infiltrating evenness**

134 This retrospective observational study included a total of twelve patients diagnosed with
135 locally advanced or advanced NSCLC (IIIA-IVB) treated with pembrolizumab at first-line (N = 11)
136 or second-line (N = 1). The most relevant clinico-pathological characteristics are represented in
137 *Table 1*. None of the patients had actionable mutations. Both tissue (N = 12) and PBMCs (N =
138 10) samples were collected before treatment and were subjected to TCR sequencing. We
139 obtained valid TCR data in all cases (100%).

140 First, we evaluated the effect of immunotherapy response on patient prognosis. As expected,
141 R had statistically significant longer PFS ($p = 0.015$) than NR (*Fig. 1A*). We found the same trend
142 regarding OS ($p = 0.057$) (*Supp. File S2A*). Interestingly, we detected an association between
143 response and age, where R were statistically significant older than NR ($p = 0.008$; R age range =
144 71-81 years; NR age range = 43-71 years) (*Fig. 1B*). All R were above the median age of the
145 cohort (70.5 years) (*Supp. File S2B*). No other association was detected between clinico-
146 pathological characteristics and response or prognosis.

147 Second, we sought for possible associations between the clinico-pathological characteristics
148 and TCR repertoire characterization. We detected that squamous tumors presented
149 statistically significant higher tumor-infiltrating TCR β convergence ($p = 0.026$) than
150 adenocarcinomas (*Fig. 1C*). Furthermore, we found an association between age and tumor-
151 infiltrating evenness in both TCR β and TCR γ , where younger patients (<71 years old) had
152 statistically significant higher tumor-infiltrating evenness than older patients (≥ 71 years old) (p
153 = 0.022 and $p = 0.041$, respectively) (*Fig. 1D-E*).

154 **Tumor-infiltrating TCR β evenness is associated with immunotherapy response and** 155 **Progression-Free Survival (PFS)**

156 When comparing tumor tissues, we found that R had statistically significant lower tumor-
157 infiltrating TCR β evenness than NR ($p = 0.044$) (*Fig. 2A*). Thus, its ability of potentially
158 predicting the response and survival of these patients was analysed. As represented in *Fig. 2B*,
159 tumor-infiltrating TCR β evenness predicted response with an AUC of 0.86, where a tumor-
160 infiltrating TCR β evenness lower than 0.795 had a 60% sensitivity and 100% specificity of

161 predicting response. Moreover, patients with low tumor-infiltrating TCR β evenness (< 0.8441)
162 had statistically significant longer PFS than patients with high (≥ 0.8441) tumor-infiltrating
163 TCR β evenness ($p = 0.013$) (*Fig. 2C*). Similarly, we found the same trend regarding circulating
164 TCR β evenness ($p = 0.139$) (*Fig. 2D*). Despite they did not reach the statistical significance the
165 same trends were found regarding TCR γ in both tissue and blood, respectively ($p = 0.149$ and p
166 $= 0.114$), showing a lower evenness in R patients (*Fig. 2E-F*). It is worth to mention that R
167 patients showed a tendency to a higher tumor-infiltrating and circulating TCR β top 3% and top
168 5% clonal space compared with NR patients (*Supp. File S3A-D*). Accordingly, TCR β evenness
169 and top 3% and 5% clonal space were always strongly negatively correlated both in tissue ($R = -$
170 0.81 , $p = 0.001$; $R = -0.91$, $p < 0.001$, respectively) and blood ($R = -0.99$, $p < 0.001$; $R = -0.97$, $p <$
171 0.001 , respectively) (*Supp. File S4*). No other association was detected between clinico-
172 pathological characteristics and TCR repertoire variables.

173 **Tumor-infiltrating and circulating TCR β TRBV and TRBJ genes usage is associated with** 174 **immunotherapy response and Progression-Free Survival**

175 Next, we sought for any relation between TRBV/TRGV and TRBJ/TRGJ genes frequencies and
176 the immunotherapy response. Regarding TCR γ , there was no association between TRGV and
177 TRGJ genes frequency and clinical response, neither in tissue nor in blood. Interestingly,
178 tumor-infiltrating TCR β *TRBV6.5*, *TRBV11.3* and *TRBJ2.1* genes frequencies were statistically
179 significant lower in R than in NR (Table 2; $p = 0.011$, $p = 0.048$ and $p = 0.002$, respectively).
180 Moreover, circulating TCR β *TRBV5.3* gene frequency was statistically significant higher in R
181 than in NR ($p = 0.019$), while *TRBV27*, *TRBV28*, *TRBJ2.1* and *TRBJ2.6* genes frequencies were
182 statistically significant lower in R than in NR ($p = 0.039$, $p = 0.029$, $p = 0.017$, and $p = 0.008$,
183 respectively), as shown in *Table 3*.

184 Then, we analysed their ability of potentially predict the PFS and the immunotherapy response
185 in these patients. As represented in *Fig. 3A*, patients with low tumor-infiltrating TCR β
186 *TRBV11.3* gene frequency presented statistically significant longer PFS than patients with high
187 frequency ($p = 0.002$). Tumor-infiltrating TCR β *TRBV11.3* gene frequency predicted response
188 with an AUC of 0.86, where a lower frequency than 0.0057 had an 80% sensitivity and 85.7%
189 specificity predicting response (*Fig. 3B*). In the same line, but not reaching the statistical
190 significance ($p = 0.051$), patients with low tumor-infiltrating TCR β *TRBJ2.1* gene frequency had
191 higher PFS than patients with high frequency (*Fig. 3C*). Tumor-infiltrating TCR β *TRBJ2.1* gene
192 frequency predicted response with an AUC of 0.94, where a lower frequency than 0.0460 had
193 an 100% sensitivity and 85.7% specificity predicting response (*Fig. 3D*). Moreover, patients

194 with low circulating TCR β *TRBJ2.6* gene frequency had statistically significant higher PFS than
195 patients with high frequency ($p = 0.003$) (*Fig. 3E*). Circulating TCR β *TRBJ2.6* gene frequency
196 predicted response with an AUC of 1.00, where a lower frequency than 0.0055 had an 100%
197 sensitivity and 100% specificity predicting response (*Fig. 3F*). Regarding the other genes,
198 despite most of them showed a clear tendency predicting PFS, they did not reach the statistical
199 significance, as represented in *Supp. File S5*. In fact, most of them predicted response with high
200 AUC (0.88-0.96) (*Supp. File S6*).

201 **Combined TCR β signatures to predict response**

202 Although some of these TRBV/TRBJ genes did not reach the statistical significance in predicting
203 PFS, they were still able to accurately predict the clinical response. Based on this observation,
204 we decided to develop two predictive signatures that combine the previously described tumor-
205 infiltrating or circulating TCR β variables associated with clinical response.

206 For the tissue predictive signature, we included variables such as evenness, TRBV6.5,
207 TRBV11.3, and TRBJ2.1. By performing Random Forest analyses, this signature was able to
208 predict clinical response with an AUC of 0.83. A positive result from this signature had a
209 sensitivity of 100% and a specificity of 71.4% in predicting response (*Fig. 4A*). In contrast, the
210 predictive signature for blood samples included the variables TRBV5.3, TRBV27, TRBV28,
211 TRBJ2.1, and TRBJ2.6. After conducting Random Forest analyses, this signature demonstrated a
212 predictive ability with an AUC of 0.92. In this case, a positive result had a sensitivity of 75% and
213 a specificity of 100% in predicting response (*Fig. 4B*).

214 These findings highlight the potential of using combined TCR β variables to create effective
215 predictive signatures for both tissue and blood, aiding in the accurate prediction of clinical
216 response.

217 **Discussion**

218 ICI-based immunotherapy is the standard treatment for advanced NSCLC patients who lack of
219 actionable mutations and cannot undergo surgery. Despite ICIs have significantly improved
220 both life expectancy and quality of life for patients who benefit from it, the response rate is
221 still low (20-40%) [2,9,10]. To date, the lack of a reliable predictive response biomarkers leads
222 to the fact that most of patients are treated with ICIs, highlighting the huge need of identifying
223 those patients who can truly benefit from the treatment and offer alternative treatments to
224 the others [2,9,10]. Recently, the study of the TCR repertoire has emerged as a potential
225 predictive biomarker for immunotherapy response in various types of cancer (such as lung,

226 melanoma, liver or breast) [20–39]. It is noteworthy and important to consider the lack of
227 methodological standardization. Although most of the starting materials, technologies, library
228 preparation approaches, statistical methods and bioinformatics tools used are valid and
229 approved, the combination of all these factors generates variability that greatly complicates
230 the comparison of results [15,18,19,42,43]. Therefore, in this study we employed a reliable and
231 efficient commercial kit for library preparation, along with user-friendly and practical software
232 designed to work with FFPE samples, which are commonly used by clinicians. Additionally, we
233 opted to use DNA instead of RNA due to its superior stability, a particularly important
234 consideration when working with FFPE samples [18,42,43].

235 To the best of our knowledge this is the first study sequencing the tumor-infiltrating and
236 circulating TCR β/γ repertoire at baseline in advanced NSCLC patients treated with
237 immunotherapy. Most studies regarding the TCR repertoire have focused solely on T $\alpha\beta$ cells
238 [20–26,29–32,34–39], with very few studying the T $\gamma\delta$ cells, especially in solid tumors [27,28].
239 Although the mechanism of action of T $\gamma\delta$ cells is still not precisely known and they represent
240 only a small portion of the T cell population, it has been shown that they can play an important
241 role in antitumor response in both systemic and local immunosurveillance [14,17,27,28,33].
242 For this reason, we decided to include also the γ chain in this work. Moreover, many studies
243 have analysed the TCR repertoire dynamics before and after treatment [20,23,25,26,30–
244 32,34,37,39], providing valuable insights into the mechanisms behind the antitumor response
245 reactivation. However, most advanced NSCLC patients do not survive long enough to start a
246 second-line therapy. Thus, the study of the TCR repertoire as a biomarker for ICIs response
247 should be applicable before the first-line treatment. Therefore, this study focused on the TCR
248 repertoire at baseline.

249 In this study, we included 12 advanced NSCLC patients treated with ICIs at first and second
250 line. Our results confirmed that R achieved greater PFS, with the same trend observed for OS.
251 Interestingly, we found that R were older than NR. On the contrary, a comprehensive
252 comparative analysis using a cohort of anti-PD1-treated patients with renal cell carcinoma
253 identified no statistically significant difference in PFS or OS with age [44]. However, due the
254 limited numbers of older patients treated with ICIs available for their analyses there is a need
255 for further investigation of this subject in other cancer types, including NSCLC [44]. We also
256 found older patients had a lower TCR β/γ evenness in tissue but not in blood. In concordance,
257 Erbe *et al.* reported a decrease in tissue TCR evenness with age in patients with
258 adenocarcinoma [44]. Moreover, Dong *et al.* did not find such an association regarding blood

259 either [32]. On the contrary, following a different methodology, Liu et al. found that circulating
260 TCR β diversity was lower in older patients (>60 years) [26].

261 Regarding the histological classification and the TCR repertoire, previous studies showed
262 contradictory associations. For instance, some studies described how patients with squamous
263 cell carcinomas had lower tumor-infiltrating TCR β evenness [24,38], clonal richness [38] or
264 diversity [24] compared to patients with adenocarcinoma. In contrast, and as far as we know
265 for the first time, we observed squamous had higher tumor-infiltrating TCR β convergence than
266 adenocarcinomas, while others did not find any association between histology and any TCR
267 repertoire metric [31,32]. Although it should be verified in larger cohorts, this disparity might
268 be due to our cohort containing only three squamous cell carcinomas.

269 Previous studies showed smoking can inhibit T cell proliferation and that smoking duration
270 negatively correlates with TCR evenness [32,38]. While some studies found lower circulating
271 TCR β clonal richness in smokers [32], others noted higher tumor-infiltrating TCR β evenness in
272 never-smokers [24]. However, other studies found no association between TCR metrics and
273 smoking [21,29]. Discrepancies may arise from how former smokers are classified. Given that
274 smoking effects persist long-term, we included former smokers with smokers. Due to having
275 only one non-smoker in our cohort, we lacked the statistical power to assess smoking's impact
276 on TCR repertoire metrics.

277 Our results showed that R exhibit low tumor-infiltrating TCR β evenness at baseline, as well as
278 been able of predicting a longer PFS. This could be due to the clonal expansion of the clones
279 mediating the response. Concordant findings were also found in clear cell renal cell carcinoma,
280 where R were observed to have lower tumor-infiltrating TCR β evenness at baseline [39].
281 Moreover, Casarrubios *et al.* reported a high tumor-infiltrating TCR β top 1% clonal space and a
282 low evenness at baseline were involved in a pro-inflammatory tumor microenvironment
283 associated with the complete pathological response of partially advanced stage NSCLC patients
284 treated with neoadjuvant chemo-immunotherapy [34]. Additionally, they described how these
285 same top 1% clones expanded in peripheral blood after treatment, suggesting a possible role
286 of systemic immunosurveillance in preventing relapse. Despite us and Zhang *et al.*, found this
287 same trend regarding circulating TCR β there is no study reporting such association
288 [20,30,32,34,35,39].

289 In our case, as well as in other studies [26,30,32,34], we did not find any association between
290 TCR β diversity at baseline and the clinical response. On the contrary, other studies observed
291 patients with greater circulating TCR β diversity at baseline showed a better response and

292 longer PFS to ICIs + CTX or ICIs alone, highlighting the role of cytotoxic T cells in the antitumor
293 response [25,31,35]. A possible explanation for this disparity could be that in peripheral blood,
294 the abundance of tumor-specific T cell may be diluted by other factors (age, antigen exposure,
295 or immunosuppression), affecting especially the diversity.

296 After studying the TCR β gene usage regarding the response and the PFS to immunotherapy,
297 we found some of them (*TRBV5.3*, *TRBV6.5*, *TRBV11.3*, *TRBV27*, *TRBV28*, *TRBJ2.1* and *TRBJ2.6*)
298 were associated with the immunotherapy response either regarding tissue or blood. Besides,
299 *TRBV11.3* and *TRBJ2.6* also predicted PFS. Interestingly, R had a higher circulating TCR β
300 *TRBV5.3* than NR. This could be due some of the neoantigens commonly expressed in the
301 tumor presented high affinity for the sequence encode by this gene. As consequence, it would
302 promote the recognition and eliminations of the tumor cells, mediating the antitumoral
303 response. Similarly, Dong *et al.* reported a circulating TCR β low *TRBV6.5* and high *TRBV20.1* at
304 baseline showed a longer PFS and OS [32]. Plus, *TRBV20.1* has been reported previously as one
305 of the most used TCR β V-gene in tumor-infiltrating T cells in several solid tumors [45].
306 Therefore, it seems the TRBV/J gene usage is also, being able predict the response both in
307 tissue and blood. However, it is not clear which genes are more decisive, if there are ones.

308 Consequently, we decided to combine all the variables associated with response either in a
309 tumor-infiltrating or circulating predictive signature using a random forest classifier. In both
310 cases, they predicted the response accurately (AUC of 0.83 with 100% sensitivity and 71.4%
311 specificity for tissue, and AUC of 0.92 with 75% sensitivity and 100% specificity for blood),
312 suggesting that a combined signature could be more reliable than a specific variable to predict
313 immunotherapy response.

314 Regarding TCR γ , we detected the same trend found in TCR β repertoire without reaching the
315 statistical significance, where R had a lower tumor-infiltrating and circulating TCR γ evenness at
316 baseline than NR. However, we did not find association between TCR variables or V/J genes
317 usage and immunotherapy response. Although a high number of distinct TCR $\gamma\delta$ can
318 theoretically be generated, certain rearrangements and chain pairings are substantially over-
319 represented, biasing V(D)J recombination and the selection of functional clones [14]. This leads
320 to various oligoclonal populations predominating in the circulation and in different tissues.
321 Furthermore, there is minimal knowledge reported to date regarding the TCR γ repertoire as an
322 immunotherapy response biomarker [27,28], so further validation will be necessary to verify
323 these findings and draw more definitive conclusions.

324 It is noteworthy that in our study, we described both tumor-infiltrating and circulating TCR β
325 gene usage is associated with response and PFS, although different genes are present in each
326 compartment. One possible explanation is that a group of T $\alpha\beta$ cells clones had recognized a
327 series of neoantigens, expanding in peripheral blood and started infiltrating into the tumor,
328 which would explain the low TCR β evenness found in the tissue. However, some of the clones
329 were remaining in circulation due to the expression of immune checkpoints by the tumor cells.
330 This would change with treatment, allowing all the clones to identify these cancer cells as
331 malignant, thereby promoting their complete infiltration and the elimination of the target. The
332 fact of finding potential biomarkers in blood is particularly important because, although the
333 tumor-infiltrating TCR repertoire can provide more detailed information about the immune
334 response, it can be biased by biopsy due to intratumoral heterogeneity [7,8]. Additionally,
335 finding minimally invasive circulating biomarkers that are easily measurable throughout
336 therapy would facilitate their implementation in daily clinical practice, as the number of recent
337 studies has demonstrated [23,25,26,31,32,35].

338 **Conclusions**

339 In summary, although much remains to be understood about the antitumor response, this
340 study highlights the potential of TCR β repertoire analysis as a potential biomarker of response
341 to immunotherapy in NSCLC patients, as we found various tumor-infiltrating and circulating
342 TCR β variables at baseline able to predict response and progression-free survival. However,
343 the present retrospective observational study is primarily exploratory, aiming to generate
344 hypotheses rather than confirm them definitively. Consequently, further validation in larger
345 cohorts will be necessary to substantiate these findings and for better understanding of the
346 dynamics of the antitumor response.

347 **Data accessibility**

348 The datasets supporting the findings of this study are available from the corresponding authors
349 upon reasonable request.

350 **Author contributions**

351 MPG performed formal analytics and statistical analysis and wrote the manuscript. MLQ
352 enrolled patients, reviewed the clinical data annotations and wrote the manuscript. IAA
353 performed and optimized DNA isolation and libraries preparation. MGG gave analytics and
354 statistical analysis support. LJM evaluated tissue availability for FFPE sample selection. AFF

355 reviewed the clinical data annotations. SCF and EYL performed TCR sequencing. MMF
356 conceived and designed the study, provided supervision and oversight for the management
357 and execution of this study, acquired financial support for the project, and correct the
358 manuscript. All authors provided critical review, edited the manuscript, and approved the final
359 version.

360 **Acknowledgements**

361 Authors thank all the enrolled patients and their families. Samples were collected and stored
362 by the Galicia Sur Health Research Institute (IIS Galicia Sur) Biobank (registry B.0000802).

363 **Funding sources and disclosure of conflicts of interest**

364 This work was supported by the Instituto de Salud Carlos III (ISCIII) and the European Social
365 Fund (“Investing in your future”) (PI21/00348, CP20/00188). MPG is currently supported by a
366 grant for the predoctoral stage (IN606A-2024/017) from the Axencia Galega de Innovación-
367 GAIN, Xunta de Galicia. MGG is currently supported by a grant for the postdoctoral stage
368 (IN606B-2024/014) from the Axencia Galega de Innovación-GAIN, Xunta de Galicia. MMF is
369 currently supported by the Miguel Servet program (CP20/00188) from the Instituto de Salud
370 Carlos III (ISCIII).

371 The authors declare no competing interests.

372 **References**

- 373 1 Bray F, Laversanne M, Sung H, Ferlay J, Siegel RL, Soerjomataram I, et al. Global cancer
374 statistics 2022: GLOBOCAN estimates of incidence and mortality worldwide for 36 cancers
375 in 185 countries. *CA A Cancer J Clinicians*. 2024;**74**(3):229–263.
- 376 2 Wang M, Herbst RS, Boshoff C. Toward personalized treatment approaches for non-small-
377 cell lung cancer. *Nat Med*. 2021;**27**(8):1345–1356.
- 378 3 Leiter A, Veluswamy RR, Wisnivesky JP. The global burden of lung cancer: current status and
379 future trends. *Nat Rev Clin Oncol*. 2023;**20**(9):624–639.
- 380 4 Lahiri A, Maji A, Potdar PD, Singh N, Parikh P, Bisht B, et al. Lung cancer immunotherapy:
381 progress, pitfalls, and promises. *Mol Cancer*. 2023;**22**(1):40.

- 382 5 Padinharayil H, Varghese J, John MC, Rajanikant GK, Wilson CM, Al-Yozbaki M, et al. Non-
383 small cell lung carcinoma (NSCLC): Implications on molecular pathology and advances in
384 early diagnostics and therapeutics. *Genes & Diseases*. 2023;**10**(3):960–989.
- 385 6 Fares J, Fares MY, Khachfe HH, Salhab HA, Fares Y. Molecular principles of metastasis: a
386 hallmark of cancer revisited. *Sig Transduct Target Ther*. 2020;**5**(1):28.
- 387 7 Tomasik B, Skrzypski M, Bieńkowski M, Dziadziuszko R, Jassem J. Current and future
388 applications of liquid biopsy in non-small-cell lung cancer—a narrative review. *Transl Lung
389 Cancer Res*. 2023;**12**(3):594–614.
- 390 8 Yang Y, Liu H, Chen Y, Xiao N, Zheng Z, Liu H, et al. Liquid biopsy on the horizon in
391 immunotherapy of non-small cell lung cancer: current status, challenges, and perspectives.
392 *Cell Death Dis*. 2023;**14**(3):230.
- 393 9 Dugage MR, Albarrán-Artahona V, Laguna JC, Chaput N, Vignot S, Besse B, et al. Biomarkers
394 of response to immunotherapy in early stage non-small cell lung cancer. *European Journal
395 of Cancer*. 2023;S0959804923000783.
- 396 10 Oitabén A, Fonseca P, Villanueva MJ, García-Benito C, López-López A, Garrido-Fernández A,
397 et al. Emerging Blood-Based Biomarkers for Predicting Immunotherapy Response in NSCLC.
398 *Cancers*. 2022;**14**(11):2626.
- 399 11 Luo H, Wang W, Mai J, Yin R, Cai X, Li Q. The nexus of dynamic T cell states and immune
400 checkpoint blockade therapy in the periphery and tumor microenvironment. *Front
401 Immunol*. 2023;**14**:1267918.
- 402 12 Jhunjhunwala S, Hammer C, Delamarre L. Antigen presentation in cancer: insights into
403 tumour immunogenicity and immune evasion. *Nat Rev Cancer*. 2021;**21**(5):298–312.
- 404 13 Sun L, Su Y, Jiao A, Wang X, Zhang B. T cells in health and disease. *Sig Transduct Target Ther*.
405 2023;**8**(1):235.
- 406 14 Mensurado S, Blanco-Domínguez R, Silva-Santos B. The emerging roles of $\gamma\delta$ T cells in
407 cancer immunotherapy. *Nat Rev Clin Oncol*. 2023;**20**(3):178–191.
- 408 15 Sanromán ÁF, Joshi K, Au L, Chain B, Turajlic S. TCR sequencing: applications in immuno-
409 oncology research. *Immuno-Oncology and Technology*. 2023;**17**:100373.

- 410 16 Kabelitz D, Serrano R, Kouakanou L, Peters C, Kalyan S. Cancer immunotherapy with $\gamma\delta$ T
411 cells: many paths ahead of us. *Cell Mol Immunol*. 2020;**17**(9):925–939.
- 412 17 Hu Y, Hu Q, Li Y, Lu L, Xiang Z, Yin Z, et al. $\gamma\delta$ T cells: origin and fate, subsets, diseases and
413 immunotherapy. *Sig Transduct Target Ther*. 2023;**8**(1):434.
- 414 18 Porciello N, Franzese O, D’Ambrosio L, Palermo B, Nisticò P. T-cell repertoire diversity:
415 friend or foe for protective antitumor response? *J Exp Clin Cancer Res*. 2022;**41**(1):356.
- 416 19 Joshi K, Milighetti M, Chain BM. Application of T cell receptor (TCR) repertoire analysis for
417 the advancement of cancer immunotherapy. *Current Opinion in Immunology*. 2022;**74**:1–8.
- 418 20 Zhang L. TCR Convergence in Individuals Treated With Immune Checkpoint Inhibition for
419 Cancer. *Frontiers in Immunology*. 2020;**10**.
- 420 21 Wang Y, Peng L, Zhao M, Xiong Y, Xue J, Li B, et al. Comprehensive analysis of T cell receptor
421 repertoire in patients with KRAS mutant non-small cell lung cancer. *Transl Lung Cancer Res*.
422 2022;**11**(9):1936–1950.
- 423 22 Joshi K, De Massy MR, Ismail M, Reading JL, Uddin I, Woolston A, et al. Spatial heterogeneity
424 of the T cell receptor repertoire reflects the mutational landscape in lung cancer. *Nat Med*.
425 2019;**25**(10):1549–1559.
- 426 23 Sheng J, Wang H, Liu X, Deng Y, Yu Y, Xu P, et al. Deep Sequencing of T-Cell Receptors for
427 Monitoring Peripheral CD8+ T Cells in Chinese Advanced Non–Small-Cell Lung Cancer
428 Patients Treated With the Anti–PD-L1 Antibody. *Front Mol Biosci*. 2021;**8**:679130.
- 429 24 Reuben A, Zhang J, Chiou S-H, Gittelman RM, Li J, Lee W-C, et al. Comprehensive T cell
430 repertoire characterization of non-small cell lung cancer. *Nat Commun*. 2020;**11**(1):603.
- 431 25 Nakahara Y, Matsutani T, Igarashi Y, Matsuo N, Himuro H, Saito H, et al. Clinical significance
432 of peripheral TCR and BCR repertoire diversity in EGFR/ALK wild-type NSCLC treated with
433 anti-PD-1 antibody. *Cancer Immunol Immunother*. 2021;**70**(10):2881–2892.
- 434 26 Liu Y, Yang Q, Yang J, Cao R, Liang J, Liu Y, et al. Characteristics and prognostic significance
435 of profiling the peripheral blood T-cell receptor repertoire in patients with advanced lung
436 cancer. *Int J Cancer*. 2019;**145**(5):1423–1431.

- 437 27 Janssen A, Villacorta Hidalgo J, Beringer DX, Van Dooremalen S, Fernando F, Van Diest E, et
438 al. $\gamma\delta$ T-cell Receptors Derived from Breast Cancer–Infiltrating T Lymphocytes Mediate
439 Antitumor Reactivity. *Cancer Immunology Research*. 2020;**8**(4):530–543.
- 440 28 Hunter S, Willcox CR, Davey MS, Kasatskaya SA, Jeffery HC, Chudakov DM, et al. Human liver
441 infiltrating $\gamma\delta$ T cells are composed of clonally expanded circulating and tissue-resident
442 populations. *Journal of Hepatology*. 2018;**69**(3):654–665.
- 443 29 Hu Q, Frank ML, Gao Y, Ji L, Peng M, Chen C, et al. Spatial heterogeneity of T cell repertoire
444 across NSCLC tumors, tumor edges, adjacent and distant lung tissues. *Oncolimmunology*.
445 2023;**12**(1):2233399.
- 446 30 Han J, Yu R, Duan J, Li J, Zhao W, Feng G, et al. Weighting tumor-specific TCR repertoires as
447 a classifier to stratify the immunotherapy delivery in non–small cell lung cancers. *Sci Adv*.
448 2021;**7**(21):eabd6971.
- 449 31 Han J, Duan J, Bai H, Wang Y, Wan R, Wang X, et al. TCR Repertoire Diversity of Peripheral
450 PD-1+CD8+ T Cells Predicts Clinical Outcomes after Immunotherapy in Patients with Non–
451 Small Cell Lung Cancer. *Cancer Immunology Research*. 2020;**8**(1):146–154.
- 452 32 Dong N, Moreno-Manuel A, Calabuig-Fariñas S, Gallach S, Zhang F, Blasco A, et al.
453 Characterization of Circulating T Cell Receptor Repertoire Provides Information about
454 Clinical Outcome after PD-1 Blockade in Advanced Non-Small Cell Lung Cancer Patients.
455 *Cancers*. 2021;**13**(12):2950.
- 456 33 Davey MS, Willcox CR, Joyce SP, Ladell K, Kasatskaya SA, McLaren JE, et al. Clonal selection
457 in the human V δ 1 T cell repertoire indicates $\gamma\delta$ TCR-dependent adaptive immune
458 surveillance. *Nat Commun*. 2017;**8**(1):14760.
- 459 34 Casarrubios M, Cruz-Bermúdez A, Nadal E, Insa A, García Campelo M del R, Lázaro M, et al.
460 Pretreatment Tissue TCR Repertoire Evenness Is Associated with Complete Pathologic
461 Response in Patients with NSCLC Receiving Neoadjuvant Chemoimmunotherapy. *Clinical*
462 *Cancer Research*. 2021;**27**(21):5878–5890.
- 463 35 Abed A, Beasley AB, Reid AL, Law N, Calapre L, Millward M, et al. Circulating pre-treatment
464 T-cell receptor repertoire as a predictive biomarker in advanced or metastatic non-small-
465 cell lung cancer patients treated with pembrolizumab alone or in combination with
466 chemotherapy. *ESMO Open*. 2023;**8**(6):102066.

- 467 36 Hogan SA, Courtier A, Cheng PF, Jaberg-Bentele NF, Goldinger SM, Manuel M, et al.
468 Peripheral Blood TCR Repertoire Profiling May Facilitate Patient Stratification for
469 Immunotherapy against Melanoma. *Cancer Immunology Research*. 2019;**7**(1):77–85.
- 470 37 Robert L, Tsoi J, Wang X, Emerson R, Homet B, Chodon T, et al. CTLA4 Blockade Broadens
471 the Peripheral T-Cell Receptor Repertoire. *Clinical Cancer Research*. 2014;**20**(9):2424–2432.
- 472 38 Kargl J, Busch SE, Yang GHY, Kim K-H, Hanke ML, Metz HE, et al. Neutrophils dominate the
473 immune cell composition in non-small cell lung cancer. *Nat Commun*. 2017;**8**(1):14381.
- 474 39 Au L, Hatipoglu E, Robert De Massy M, Litchfield K, Beattie G, Rowan A, et al. Determinants
475 of anti-PD-1 response and resistance in clear cell renal cell carcinoma. *Cancer Cell*.
476 2021;**39**(11):1497-1518.e11.
- 477 40 Eisenhauer EA, Therasse P, Bogaerts J, Schwartz LH, Sargent D, Ford R, et al. New response
478 evaluation criteria in solid tumours: Revised RECIST guideline (version 1.1). *European*
479 *Journal of Cancer*. 2009;**45**(2):228–247.
- 480 41 Youden WJ. Index for rating diagnostic tests. *Cancer*. 1950;**3**(1):32–35.
- 481 42 Barennes P, Quiniou V, Shugay M, Egorov ES, Davydov AN, Chudakov DM, et al.
482 Benchmarking of T cell receptor repertoire profiling methods reveals large systematic
483 biases. *Nat Biotechnol*. 2021;**39**(2):236–245.
- 484 43 Chiffelle J, Genolet R, Perez MA, Coukos G, Zoete V, Harari A. T-cell repertoire analysis and
485 metrics of diversity and clonality. *Current Opinion in Biotechnology*. 2020;**65**:284–295.
- 486 44 Erbe R, Wang Z, Wu S, Xiu J, Zaidi N, La J, et al. Evaluating the impact of age on immune
487 checkpoint therapy biomarkers. *Cell Reports*. 2021;**36**(8):109599.
- 488 45 Li B, Li T, Pignon J-C, Wang B, Wang J, Shukla SA, et al. Landscape of tumor-infiltrating T cell
489 repertoire of human cancers. *Nat Genet*. 2016;**48**(7):725–732.
- 490
- 491
- 492
- 493

494 **Tables**

495 *Table 1: Clinico-pathologic characteristics of patients.*

Clinico-pathologic characteristics	Responders (N = 5)	Non-responders (N = 7)	Cohort (N = 12)
Age (years)			
Median (range)	74 (71-81)	60 (43-71)	70.5 (43-81)
Sex			
Male	4	5	9
Female	1	2	3
Smoking status			
Smoker	2	4	6
Former smoker	3	2	5
Never smoker	0	1	1
Histology			
Squamous	2	1	3
Adenocarcinoma	3	6	9
Stage			
IIIA	0	1	1
IIIC	0	1	1
IVA	4	0	4
IVB	1	5	6
PD1/PD-L1 staining			
Positive	4	6	10
Negative	1	1	2
Response type			
CP	0	0	0
PR	3	0	3
SD	2	0	2
PD	0	4	4
NE	0	3	3
PFS (days)			
Median (range)	328 (116-952)	72 (3-148)	100 (4-952)
OS (days)			
Median (range)	405 (126-952)	113 (4-364)	225 (4-952)

496 *ADC: adenocarcinoma, CR: complete response, N: number of patients, NE: non-evaluable. PD: progressive disease,*
 497 *PFS: Progression-free survival, PR: partial response, SCC: squamous cell carcinoma, SD: stable disease, OS: overall*
 498 *survival.*

499

500

501

502

503

504 Table 2: Tumor-infiltrating TCR β TRBV and TRBJ genes frequency in responder (R) compared to non-responders (NR).

Variable		Responder (N = 5)	Non-responder (N = 7)	p-value
TRBV6.5	Median	0.0082	0.0359	0.011*
TRBV11.3	Median	0.0054	0.0077	0.048*
TRBJ2.1	Median	0.0230	0.0581	0.002**

505 P-value was obtained using Student's t test. N: number of patients, *: statistically significance, **: strongly
506 statistically significance.

507

508

509

510

511

512

513

514

515

516

517

518

519

520

521

522

523

524

525

526 Table 3: Circulating TCR β TRBV and TRBJ genes frequency in responder (R) compared to non-responder (NR). N,
527 number; *, statistically significance; **, very statistically significance.

Variable		Responder (N = 4)	Non-responder (N = 6)	p-value
TRBV5.3	Median	0.0003	0.0001	0.019*
TRBV27	Median	0.0423	0.0897	0.039*
TRBV28	Median	0.0176	0.0633	0.029*
TRBJ2.1	Median	0.0257	0.0662	0.017*
TRBJ2.6	Median	0.0032	0.0092	0.008**

528 P-value was obtained using Student's t test. N: number of patients, *: statistically significance, **: strongly
529 statistically significance.

530

531

532

533

534

535

536

537

538

539

540

541

542

543

544

545

546

547 Figure legends

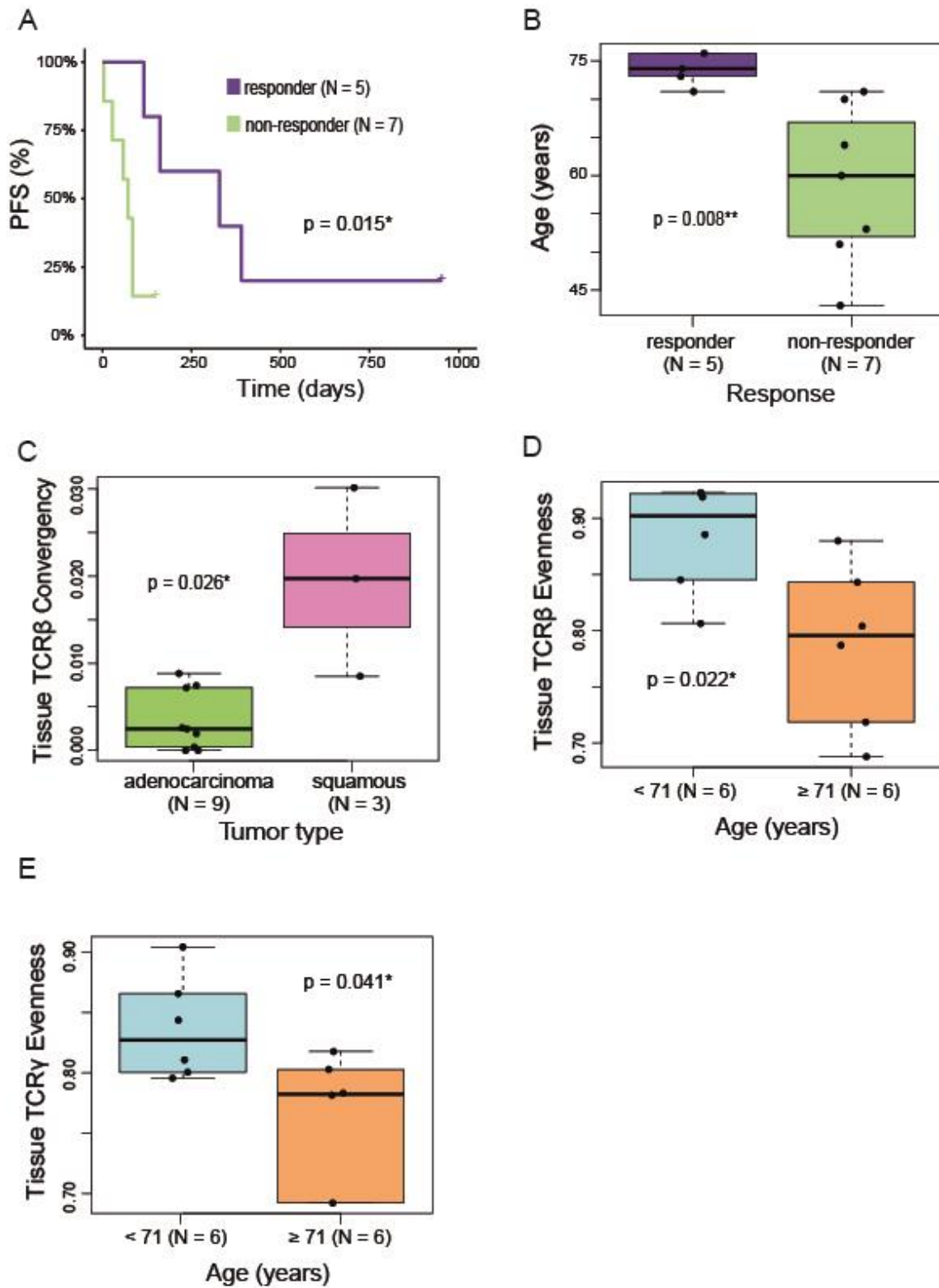
548 *Figure 1: A) Responders (R) have statistically significant longer PFS than non-responders (NR) ($p = 0.015$). P-value*
549 *was obtained using Log-Rank test. B) There are an association between response and age, where R are statistically*
550 *significant older than NR ($p = 0.008$). P-value was obtained using Student's t test. C) Squamous have statistically*
551 *significant higher tumor-infiltrating TCR β convergence than adenocarcinomas ($p = 0.026$). P-value was obtained*
552 *using Mann-Whitney test. D) Younger patients (< 71 years old) have statistically significant higher tumor-infiltrating*
553 *TCR β evenness than older patients (≥ 71 years old) ($p = 0.022$). P-value was obtained using Student's t test. E)*
554 *Younger patients have statistically significant higher tumor-infiltrating TCR γ evenness than older patients ($p =$*
555 *0.041). P-value was obtained using Mann-Whitney test. N: number of patients, PFS: progression-free survival, *:*
556 *statistically significance, **: strongly statistically significance.*

557 *Figure 2: A) Responders (R) have statistically significant lower tumor-infiltrating TCR β evenness than non-responders*
558 *(NR) ($p = 0.044$). P-value was obtained using Student's t test. B) Tumor-infiltrating TCR β evenness predicts response*
559 *with an AUC of 0.86. A lower tumor-infiltrating TCR β evenness than 0.795 have a 60% sensitivity and 100%*
560 *specificity predicting response. C) Patients with low tumor-infiltrating TCR β evenness have statistically significant*
561 *higher PFS than patients with high tumor-infiltrating TCR β evenness ($p = 0.013$). P-value was obtained using Log-*
562 *Rank test. D) R have a non-statistically significant lower circulating TCR β evenness than NR ($p = 0.139$). P-value was*
563 *obtained using Student's t test. E) R have a non-statistically significant lower tumor-infiltrating TCR γ evenness than*
564 *NR ($p = 0.149$). P-value was obtained using Mann-Whitney test. F) R have a non-statistically significant lower*
565 *circulating TCR γ evenness than NR ($p = 0.114$). P-value was obtained using Mann-Whitney test. AUC: Area Under the*
566 *Curve, N: number of patients, PFS: progression-free survival, *: statistically significance.*

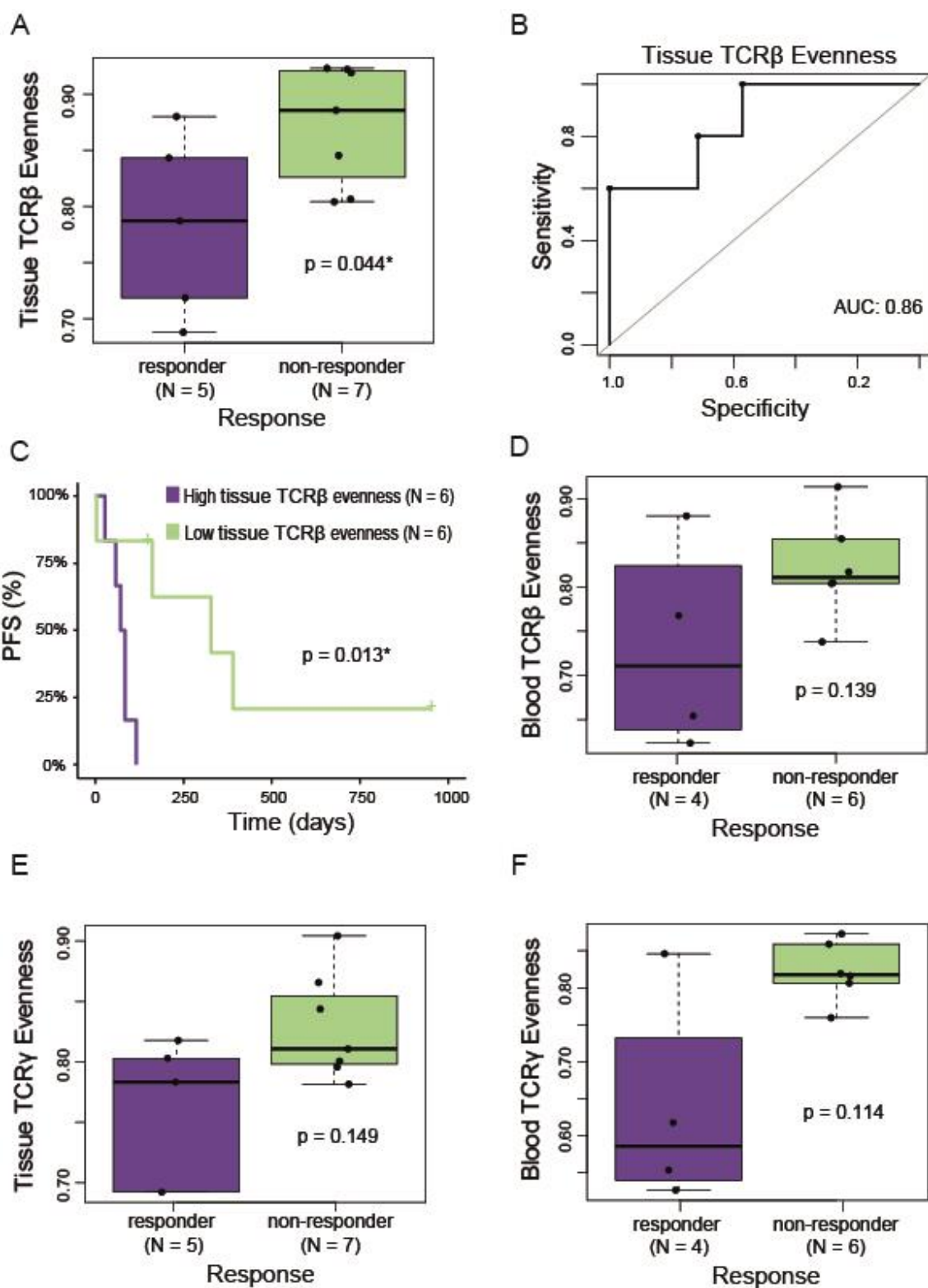
567 *Figure 3: A) Patients with low tumor-infiltrating TCR β TRBV11.3 gene frequency have statistically significant higher*
568 *PFS than patients with high tumor-infiltrating TCR β TRBV11.3 gene frequency ($p = 0.002$). P-value was obtained*
569 *using Log-Rank test. B) Tumor-infiltrating TCR β TRBV11.3 gene frequency predicts response with an AUC of 0.86. A*
570 *lower tumor-infiltrating TCR β TRBV11.3 gene frequency than 0.0057 have an 80% sensitivity and 85.7% specificity*
571 *predicting response. C) Patients with low tumor-infiltrating TCR β TRBJ2.1 gene frequency have non-statistically*
572 *significant higher PFS than patients with high tumor-infiltrating TCR β TRBJ2.1 gene frequency ($p = 0.051$). P-value*
573 *was obtained using Log-Rank test. D) Tumor-infiltrating TCR β TRBJ2.1 gene frequency predicts response with an*
574 *AUC of 0.94. A lower tumor-infiltrating TCR β TRBJ2.1 gene frequency than 0.0460 have an 100% sensitivity and*
575 *85.7% specificity predicting response. E) Patients with low circulating TCR β TRBJ2.6 gene frequency have statistically*
576 *significant higher PFS than patients with high circulating TCR β TRBJ2.6 gene frequency ($p = 0.003$). P-value was*
577 *obtained using Log-Rank test. F) Circulating TCR β TRBJ2.6 gene frequency predicts response with an AUC of 1.00. A*
578 *lower circulating TCR β TRBJ2.6 gene frequency than 0.0055 have an 100% sensitivity and 100% specificity predicting*
579 *response. AUC: Area Under the Curve, N: number of patients, PFS: progression-free survival, *: statistically*
580 *significance, **: strongly statistically significance.*

581 *Figure 4: A) A predictive signature including tumor-infiltrating TCR β variables (evenness, TRBV6.5 gene frequency,*
582 *TRBV11.3 gene frequency and TRBJ2.1 gene frequency) predicts response with an AUC of 0.83. A positive result has*
583 *an 100% sensitivity and 71.4% specificity predicting response. B) A predictive signature including circulating TCR β*
584 *variables (TRBV5.3 gene frequency, TRBV27 gene frequency, TRBV28 gene frequency, TRBJ2.1 gene frequency and*
585 *TRBJ2.6 gene frequency) predicts response with an AUC of 0.92. A positive result has an 75% sensitivity and 100%*
586 *specificity predicting response. AUC: Area Under the Curve.*

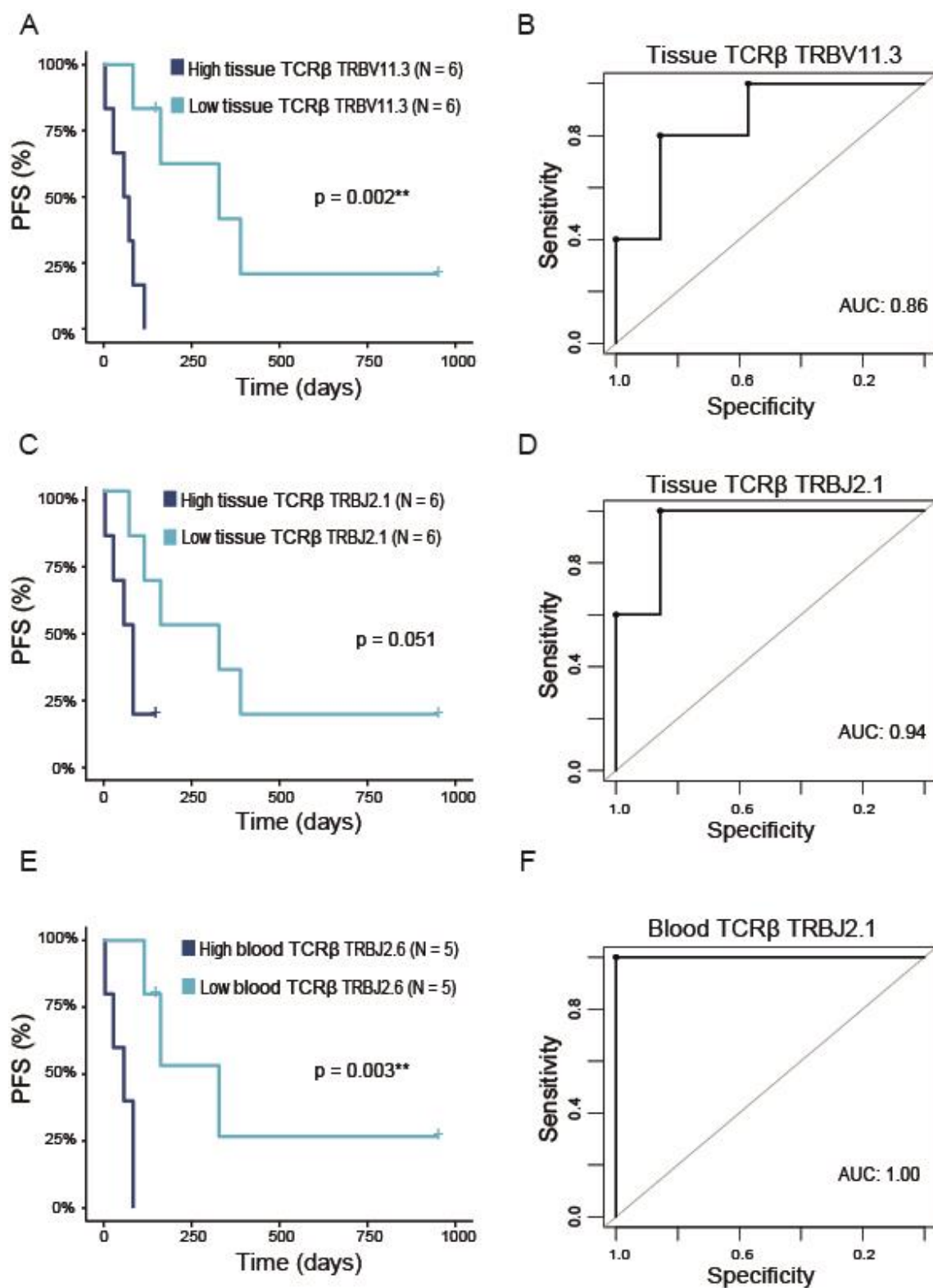
587 **Figure 1**



589 **Figure 2**



591 **Figure 3**



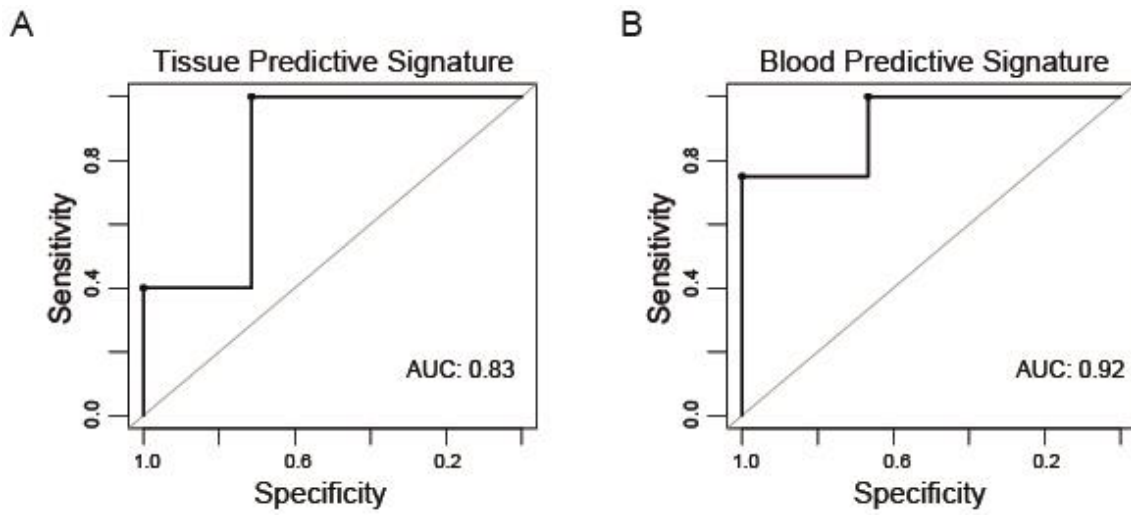
592

593

594

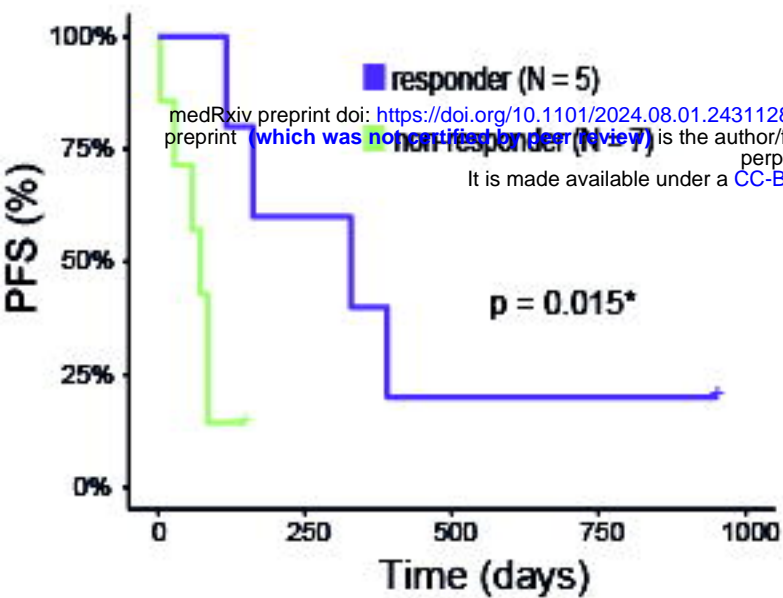
595

596 **Figure 4**

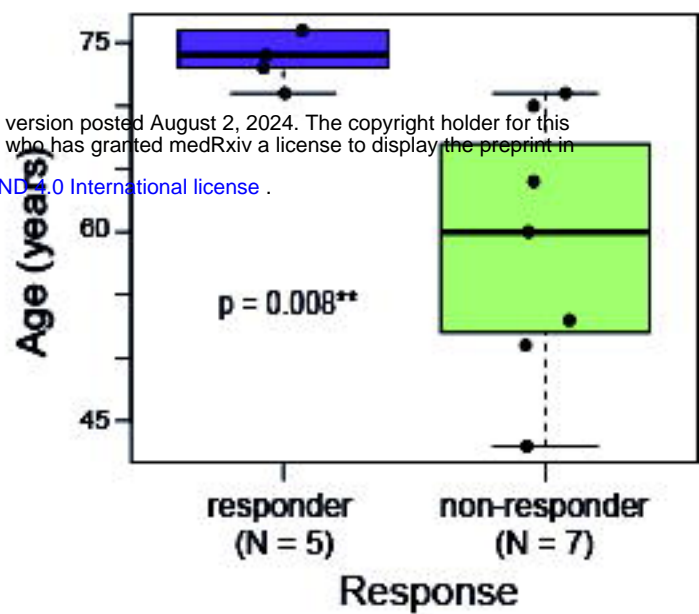


597

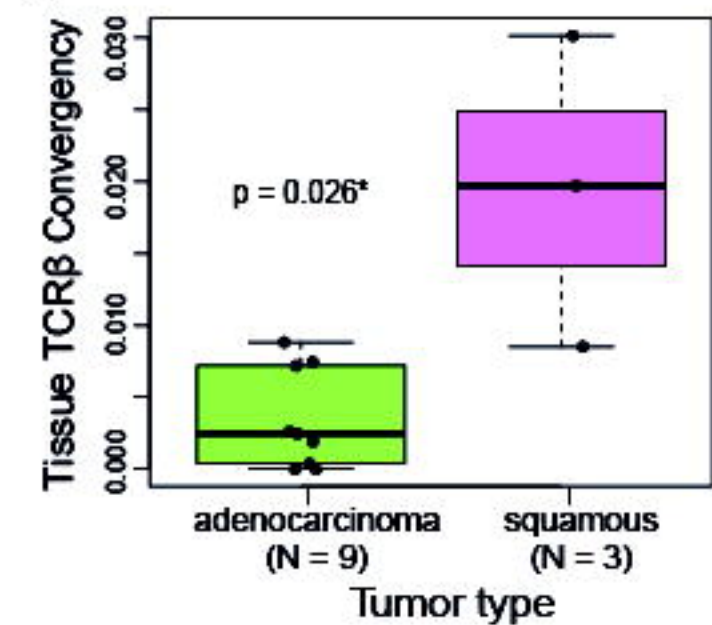
A



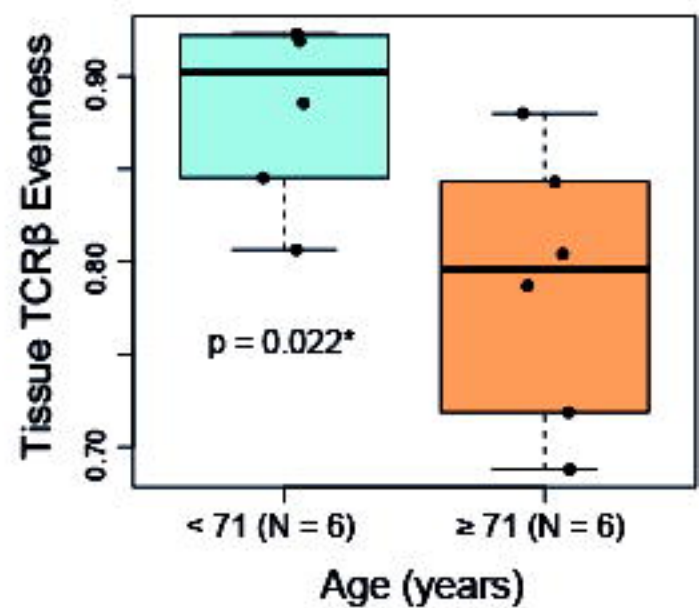
B



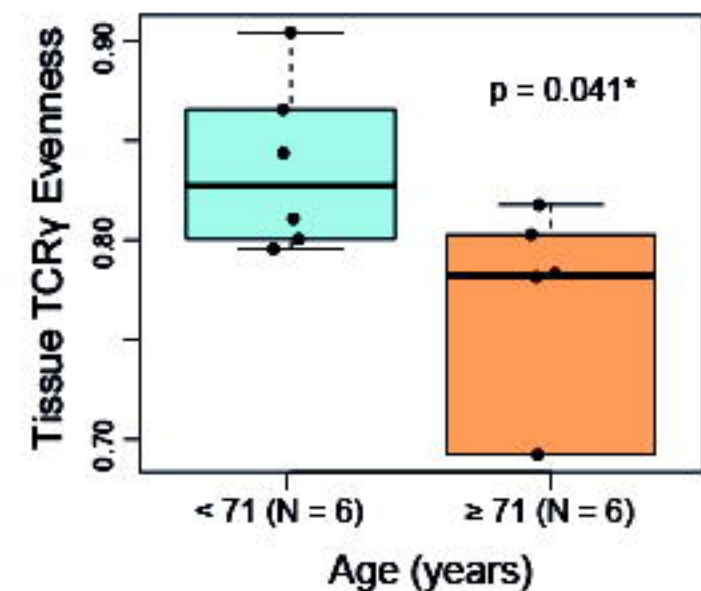
C



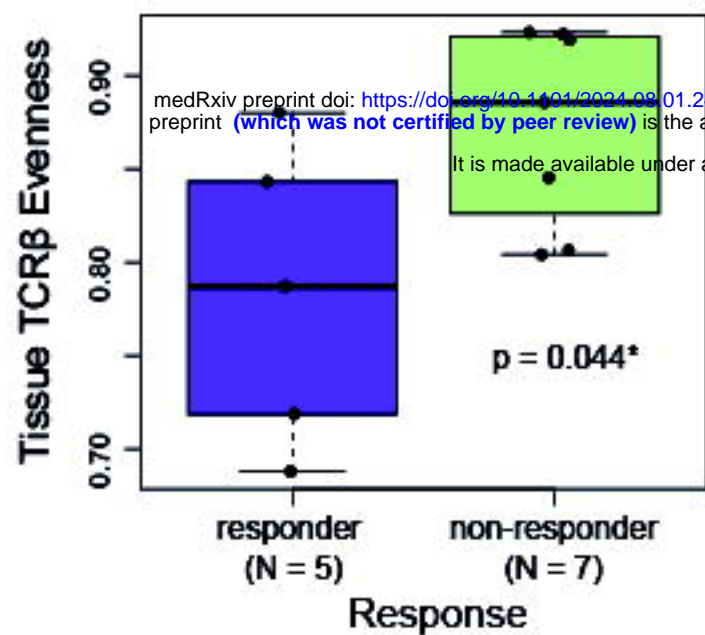
D



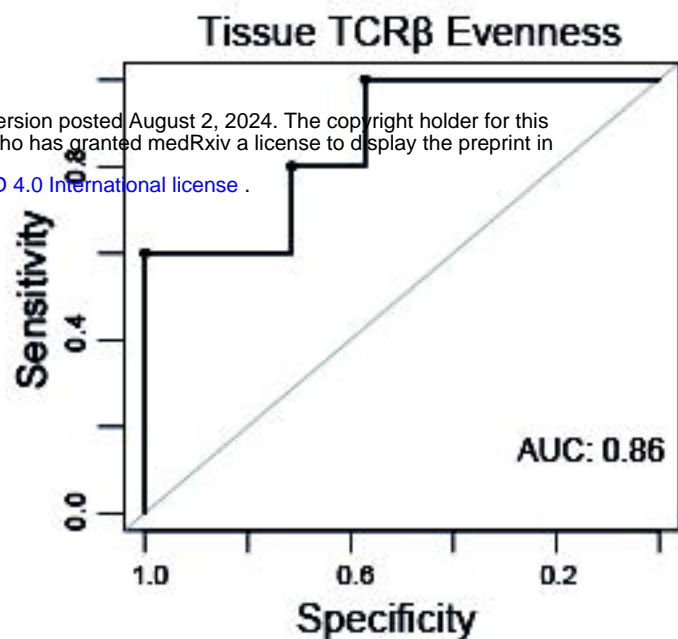
E



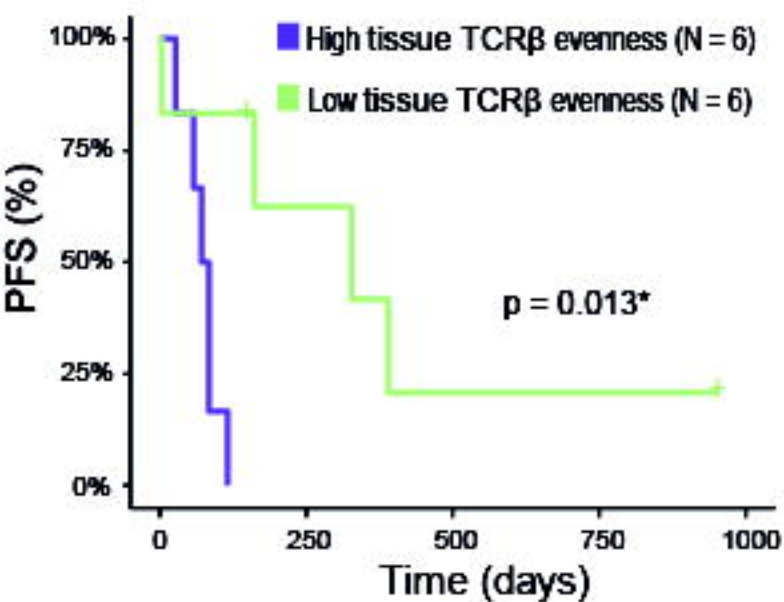
A



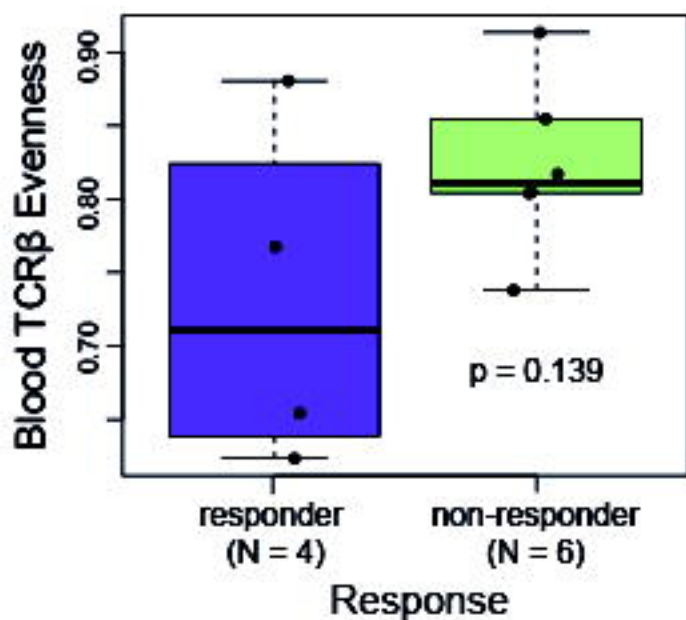
B



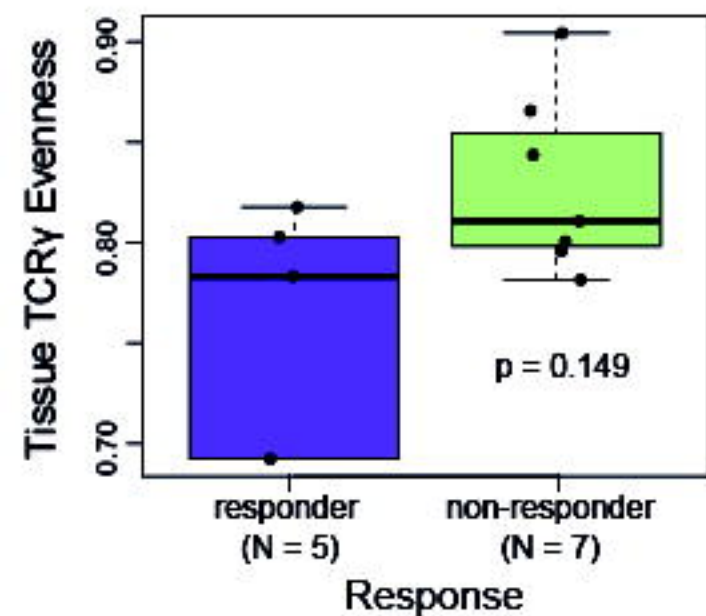
C



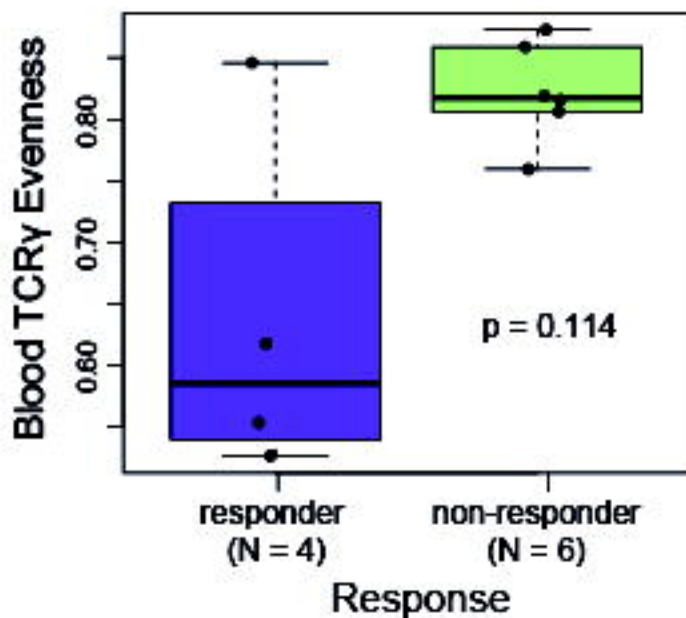
D

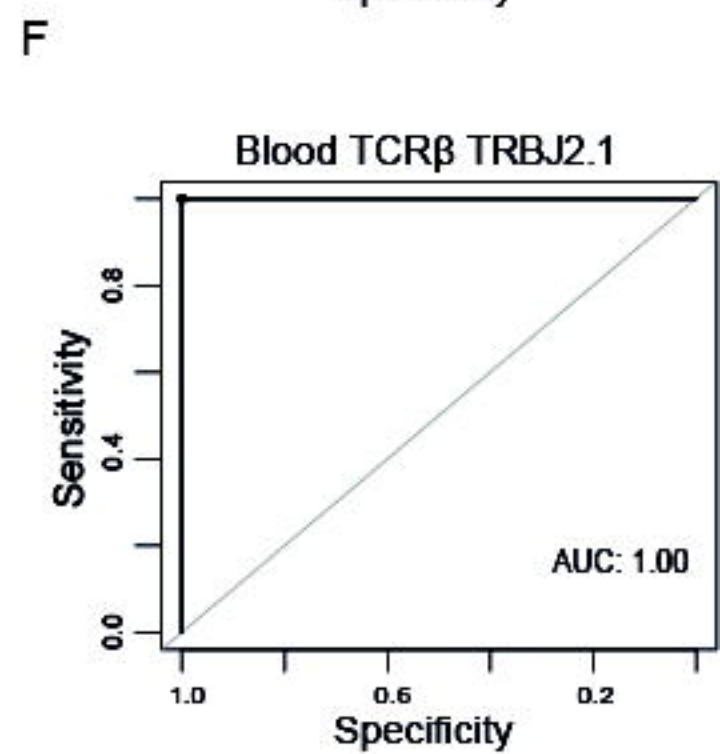
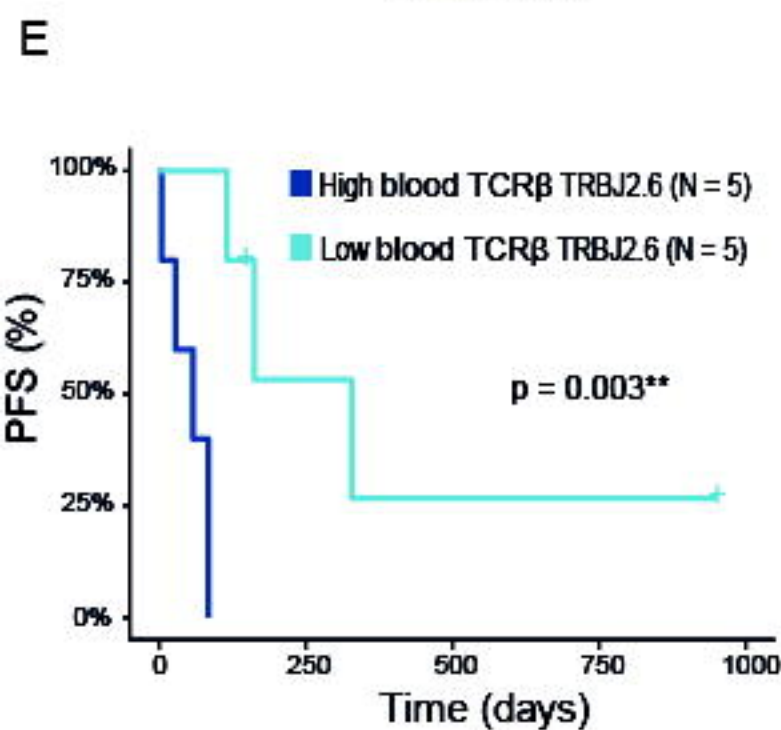
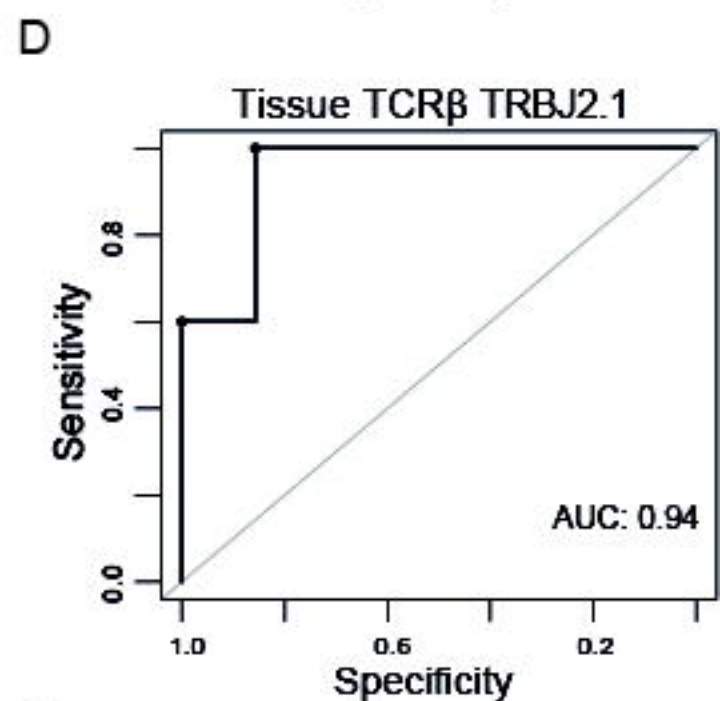
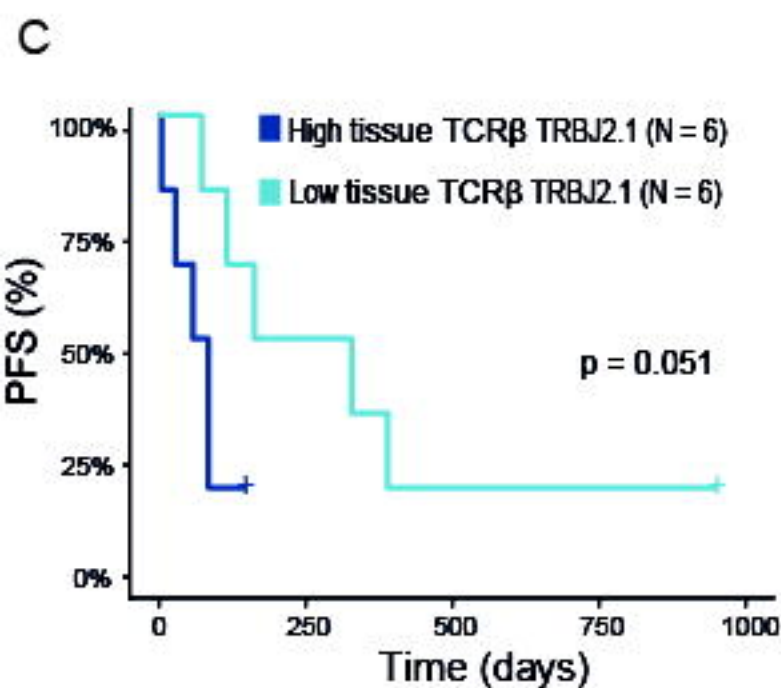
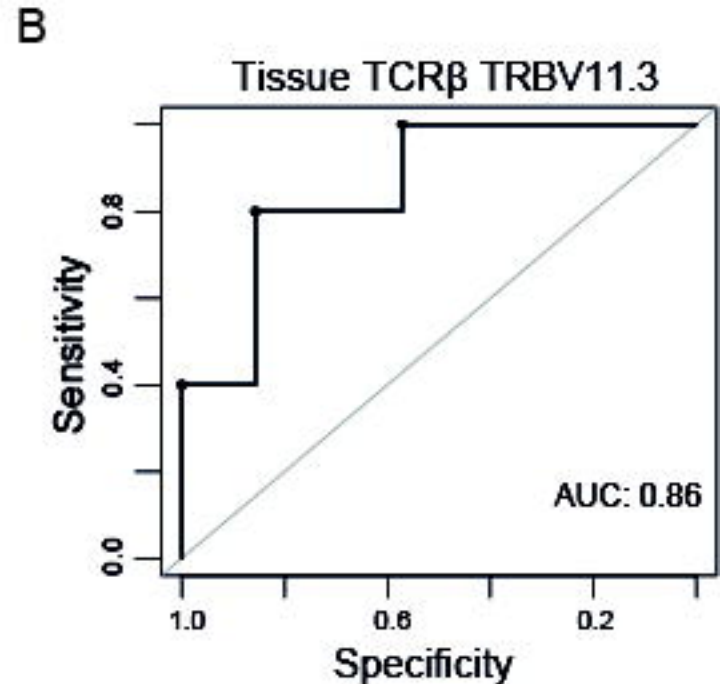
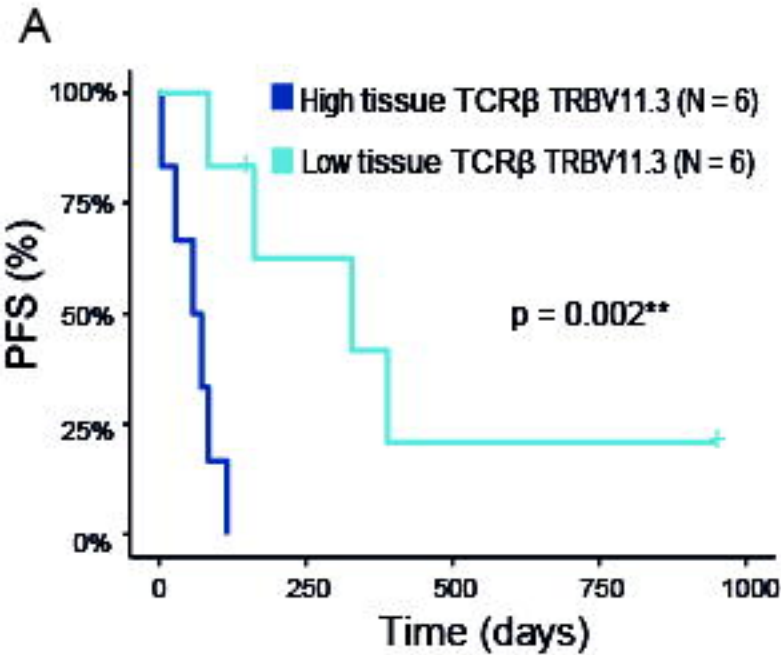


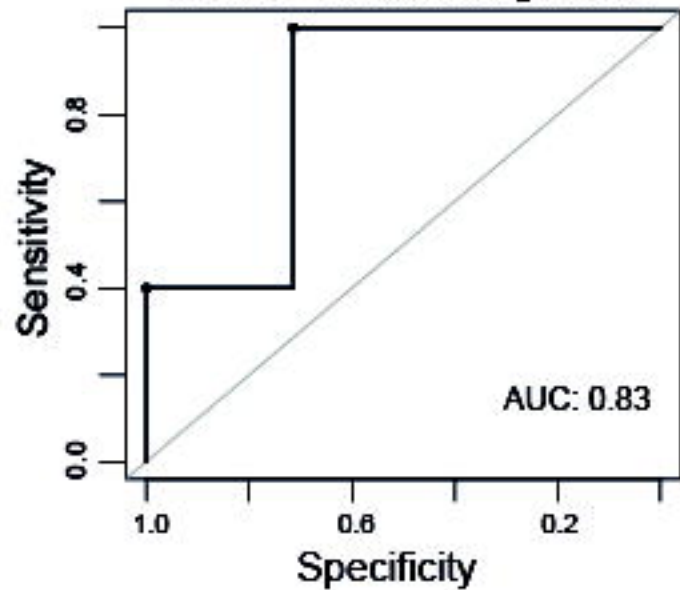
E



F





A**Tissue Predictive Signature****B****Blood Predictive Signature**