

1 **TITLE:** Differences in bioprosthetic valve failure after aortic valve replacement in patients  
2 with immune mediated inflammatory diseases  
3

4 **AUTHORS:** Christopher Sefton, MD<sup>1</sup>; Davis Leaphart, MD<sup>1</sup>; Benjamin Klein, DO<sup>1</sup>; Garrett  
5 Santini, MD<sup>1</sup>; Aditi Patel, MD<sup>2</sup>; M. Elaine Husni, MD<sup>2</sup> MPH; Patrick R. Vargo, MD<sup>3</sup>; Eric E.  
6 Roselli, MD<sup>3</sup>; Lars Svensson, MD, PhD<sup>3</sup>; Amar Krishnaswamy, MD<sup>4</sup>; Samir Kapadia, MD<sup>4</sup>;  
7 Venu Menon, MD<sup>4</sup>; Umesh Khot, MD<sup>4</sup>; Heba Wassif, MD<sup>4</sup>  
8

9 <sup>1</sup> Internal Medicine Residency Program, Cleveland Clinic, Cleveland, OH

10 <sup>2</sup> Orthopedic and Rheumatological Institute, Department of Rheumatology, Cleveland Clinic,  
11 Cleveland, OH

12 <sup>3</sup> Heart, Vascular and Thoracic Institute, Department of Thoracic and Cardiovascular Surgery,  
13 Cleveland Clinic, Cleveland, OH

14 <sup>4</sup> Heart, Vascular and Thoracic Institute, Department of Cardiovascular Medicine, Cleveland  
15 Clinic, Cleveland, OH  
16  
17  
18

19 **Word Count: 3578**  
20  
21  
22  
23

24 **Corresponding Author**

25 Heba Wassif, MD, MPH  
26 Department of Cardiology  
27 Heart Vascular Thoracic Institute  
28 Cleveland Clinic Foundation  
29 9500 Euclid Ave, J2  
30 Cleveland, OH 44195  
31 [wassifh@ccf.org](mailto:wassifh@ccf.org)  
32  
33

34 **IRB Review:** Study Number 23-095  
35  
36  
37  
38  
39  
40  
41  
42  
43  
44  
45  
46

47 **ABSTRACT**

48

49 **Introduction:**

50 Immune-mediated inflammatory disease (IMID) is a subset of autoimmune diseases including  
51 systemic lupus erythematosus, rheumatoid arthritis, and psoriasis that is emerging as a risk factor  
52 for many cardiovascular diseases including valvular disease.

53

54 **Objectives:**

55 To determine whether IMID is associated with frequent and early development of bioprosthetic  
56 valve failure (BVF) after surgical aortic valve replacement (SAVR) and transcatheter valve  
57 replacement (TAVR).

58

59 **Methods:**

60 Serial echocardiograms for patients who underwent SAVR and TAVR at Cleveland Clinic  
61 between 2000 and 2022 were assessed for time to development of BVF after procedure. ICD10  
62 codes were used to stratify to those with and without IMID. Kaplan-Meier curve and cox  
63 proportional hazard regression analysis were used to assess for differences in development of  
64 BVF after TAVR and SAVR.

65

66 **Results:**

67 351 TAVR patients (52 IMID and 299 controls) and 1961 SAVR patients (300 IMID and 1661  
68 controls) were included. BVF after TAVR occurred in 12 (23.1%) IMID and 21 (7.0%) control  
69 patients, respectively, yielding an adjusted hazard ratio of 4.02 (1.81 - 8.92). Time to 50% of  
70 patients developing BVF was earlier among IMID, occurring at 6.6 years IMID and not reached  
71 in controls ( $p < 0.001$ ). There were no significant differences in prevalence and time to  
72 development of BVF in IMID vs controls after SAVR.

73

74 **Conclusion:**

75 After TAVR, BVF occurred earlier and more frequently in patients with IMID than controls.  
76 This risk should be included during shared decision making among IMID patients considered for  
77 TAVR, and may warrant more frequent monitoring post procedure. These differences in BVF  
78 were not seen after SAVR.

79

80

81

82

83

84

85

86

87

88

89

90

91

92 **Keywords:** Bioprosthetic valve failure, transcatheter aortic valve replacement, surgical aortic  
93 valve replacement, autoimmune disease, immune mediated inflammatory disease, aortic stenosis  
94

95 **Abbreviations:**

96 IMID: immune mediated inflammatory disease

97 SLE: systemic lupus erythematosus

98 RA: Rheumatoid arthritis

99 CAD: Coronary artery disease

100 SAVR: surgical aortic valve replacement

101 TAVR: Transcatheter aortic valve replacement

102 BVF: bioprosthetic valve failure

103 AVR: Aortic valve replacement

104 MCTD: mixed connective tissue disease

105 DMARD: disease modifying antirheumatic drug  
106  
107  
108  
109  
110  
111  
112  
113  
114  
115  
116  
117  
118  
119  
120  
121  
122  
123  
124  
125  
126  
127  
128  
129  
130  
131  
132  
133  
134  
135  
136  
137

138 **INTRODUCTION:**

139

140

Immune mediated inflammatory diseases (IMID), including systemic lupus

141 erythematosus (SLE), rheumatoid arthritis (RA), and psoriasis among others<sup>1</sup>, are emerging as

142 significant risk factors for development of early and accelerated cardiovascular disease<sup>2,3,4,5</sup>.

143 Notable examples include increased incidence of cardiovascular disease and cardiovascular

144 deaths in SLE patients<sup>6</sup>, and RA with similar risk for developing coronary artery disease (CAD)

145 as diabetes mellitus<sup>7</sup>. Furthermore, a recent population-based study found increased incidence of

146 nearly every cardiovascular disease, including CAD, atrial fibrillation, heart failure, and valvular

147 disease, in patients with autoimmune disease<sup>8</sup>.

148 The relationship between valvular disease and IMID has not been fully explored. Recent

149 study suggests there is an increased risk for development of valvular disease in patients with

150 IMID<sup>8,9,10</sup>. One large population-based study reported non-inferior outcomes in acute mortality

151 among IMID patients after surgical aortic valve replacement (SAVR) or transcatheter aortic

152 valve replacement (TAVR) as compared to those without concomitant IMID<sup>11</sup>. However, the role

153 of auto-immune inflammation on the durability of implanted valves remains unclear. Whether

154 patients with IMID are at risk of early prosthetic valve dysfunction or failure compared to

155 patients without IMID is unknown. We sought to explore this question using longitudinal

156 echocardiographic data to assess differences in development of bioprosthetic valve failure (BVF)

157 after surgical and transcatheter aortic valve replacements between patients with and without

158 IMID.

159 **METHODS:**

160 Patients who underwent TAVR or SAVR at Cleveland Clinic between 2000 and 2022  
161 were considered for inclusion. Patients were only included if they had at least 2 echocardiograms  
162 in the Cleveland Clinic system available for review after TAVR or SAVR. Patients were  
163 included in the IMID group if they had an ICD10 code for autoimmune disease in their chart.  
164 These diagnoses included rheumatoid arthritis, psoriasis, vasculitis, polymyalgia rheumatica,  
165 Sjogren's, systemic lupus erythematosus, mixed connective tissue disease, and ankylosing  
166 spondylitis (supplemental table 1). Patients without ICD10 codes for IMID were considered  
167 controls. Patient demographics, comorbidities and medications were extracted from the medical  
168 record.

169 Serial echocardiograms performed after aortic valve replacement (AVR) were examined  
170 for evidence of bioprosthetic valve failure (BVF) after TAVR or SAVR. Patients were  
171 determined to have BVF if they developed one of the following: 1) increase in mean  
172 transvalvular gradient of greater than or equal to 20 mmHg resulting in a mean gradient greater  
173 than or equal to 30 mmHg when compared with gradients 1 to 3 months post procedure; 2) new  
174 occurrence of severe aortic regurgitation not from paravalvular leak; or 3) repeat aortic valve  
175 intervention. These criteria were derived from previously published criteria from the VARC3  
176 committee<sup>12</sup>. Post-TAVR echocardiograms with concern for aortic regurgitation were manually  
177 reviewed to exclude regurgitation due to paravalvular leak. Echocardiograms performed within  
178 the Cleveland Clinic enterprise undergo regular quality assurance to ensure consistency in  
179 interpretation. Total follow up time for each patient was determined using the most recent  
180 echocardiogram performed after aortic valve replacement.

181 Differences in time to development of BVF after TAVR and SAVR between patients  
182 with IMID and without IMID were examined. Patients were included if they developed evidence  
183 of BVF at any point after 30 days post-procedure or if they had echocardiogram follow up of at  
184 least three years post-procedure. Time to development of BVF was assessed in a univariate  
185 capacity with Kaplan-Meier curves using the *survfit* package in R Version 2023.12.0+369  
186 (2023.12.0) as has been previously described<sup>13</sup>. Cox proportional hazards regression was used  
187 for multivariate analysis to account for differences in age, sex, and medical comorbidities  
188 between the groups as been previously described<sup>13</sup>. Separate analysis was done in the SAVR and  
189 TAVR populations. A Kaplan-Meier curve was generated with both TAVR and SAVR patients  
190 to compare overall rates of BVF between groups.

191

192

193

194

195

196

197

198

199

200

201

202

203

204 **RESULTS:**

205 ***Bioprosthetic Valve Failure after TAVR:***

206 A total of 354 IMID patients and 1202 controls who underwent native valve TAVR at  
207 Cleveland Clinic between 2000 and 2022 who had greater than 2 echocardiograms were  
208 considered for inclusion in the study. 1,203 (302 IMID and 903 controls) were excluded due to  
209 insufficient duration of follow echocardiograms up post TAVR (less than 3 years). 351 TAVR  
210 patients (52 IMID and 299 controls) were included in the final analysis (Figure 1A). A higher  
211 percentage of IMID patients were excluded compared with controls (302/354 (85.3% excluded)  
212 vs 903/1203 (75.1% excluded);  $p < 0.001$ ). Mean total follow up times were similar for IMID  
213 and controls at  $4.1 \pm 1.4$  years and  $4.3 \pm 1.3$  years ( $p = 0.354$ ), respectively. Medical comorbidities  
214 between the IMID and controls were similar, including similar rates of hypertension,  
215 hyperlipidemia, chronic kidney disease, coronary artery disease, and atrial fibrillation. Chronic  
216 obstructive pulmonary disease and type 2 diabetes were more common in IMID group than  
217 controls. Additionally, there were more women in the IMID group (33 (63.5%) vs 114 (38.1%);  
218  $p < 0.001$ ) and the IMID group was younger relative to the controls ( $78.1 \pm 9.4$  years vs  $80.1 \pm 8.7$   
219 years;  $p = 0.017$ ).

220 Medication use and individual autoimmune disease prevalence for IMID patients who  
221 underwent TAVR are displayed in table 1 and 2, respectively. Diagnoses included RA (15,  
222 28.8%), psoriasis (12, 23.1%), vasculitis (7, 13.5%), polymyalgia rheumatica (PMR)(7,  
223 12.0%), mixed connective tissue disease (MCTD) (3, 5.8%), SLE (3, 5.8%), Sjogren's  
224 disease (4, 7.7%), and ankylosing spondylitis (1, 1.9%) (Table 2). Due to low sample size, there  
225 was insufficient power to detect differences in BVF for individual IMID diagnoses. Rates of  
226 disease-modifying antirheumatic drugs (DMARDs) were predictably higher among IMID

227 patients (Table 1). There were 8 (15.4%) patients on methotrexate, 14 (26.9%)  
228 hydroxychloroquine, 5 (9.6%) rituximab, 3 (5.8%) leflunomide, and 4 (7.7%) anti-TNF agents  
229 (Table 1).

230 Edwards LifeSciences was the most common manufacturer represented among the  
231 cohort. Medtronic, Abbot, Boston Scientific, and Direct Flow represented a small minority of  
232 valves present. Edwards Lifesciences valves were less prevalent among IMID compared to  
233 controls (43 (82.7%) vs 276 (92.3%);  $p = 0.026$ ) Mean valve size was smaller among IMID  
234 patients relative to control patients ( $24.7 \pm 2.6$  vs  $25.7 \pm 2.5$ ;  $p = 0.005$ ) (Table 4).

235 The development of BVF after TAVR was more frequent in patients with IMID when  
236 compared with controls. BVF occurred in 12 (23.1%) of IMID patients compared with 21 (7.0%)  
237 of controls. Among IMID patients, 5 met BVF criteria due to repeat aortic valve replacement and  
238 7 developed BVF due to severely increased gradients. Indication for repeat aortic valve  
239 replacement was infective endocarditis (IE) in 4 patients, and severe prosthetic valve aortic  
240 regurgitation in 1 patient. One IMID patient developed aortic regurgitation, but upon manual  
241 review this was paravalvular leak and was excluded. Among controls, 5 met BVF criteria due to  
242 repeat aortic valve intervention and 16 developed BVF due to increased gradients. Indication for  
243 repeat aortic valve replacement was IE in 2 patients and severe prosthetic valve stenosis in 3  
244 patients. There were 9 patients with evidence of aortic regurgitation, but upon manual review 7  
245 had a component of paravalvular leak and were excluded. For consistency, the remaining 2 were  
246 excluded in order to have consistent comparisons between IMID and controls within the TAVR  
247 comparison.

248 Development of BVF also occurred significantly earlier in IMID patients compared with  
249 controls. Figure 2 shows a Kaplan Meier curve demonstrating earlier failure rates in IMID, with



250 estimated time to 50% of IMID developing BVF to be 6.6 years, while this time could not be  
251 calculated in controls due to low prevalence of failure ( $p < 0.001$ ) (Figure 2). Differences in  
252 development of BVF persisted after multivariate analysis with cox proportional hazard  
253 regression. After adjustment for differences in age, sex, and comorbidities between IMID and  
254 control group, the adjusted hazard ratio for developing BVF in IMID compared with control was  
255 4.02 (CI: 1.81 – 8.92) ( $p < 0.001$ ) (Table 3). Development of BVF was also independently  
256 associated with increased age and nonwhite race (Table 3).

257

### 258 ***Bioprosthetic valve failure after SAVR:***

259

260 There were 443 patients with IMID and 2316 controls who underwent native valve  
261 SAVR between 2000 and 2022 with at least 2 consecutive echocardiograms post procedure in the  
262 Cleveland Clinic system. Of these, 798 (143 IMID and 655 controls) were excluded due to  
263 insufficient follow up time of less than 3 years. A total of 1961 (300 IMID and 1661 controls)  
264 were included in the analysis after exclusions. A higher percentage of IMID were excluded  
265 relative to controls (143/443 (32.3% excluded) vs 655/2316 (28.3% excluded);  $p = 0.089$ ).  
266 Comorbidities such as HTN, HLD, HLD, CAD, and atrial fibrillation were similar between  
267 groups. When comparing IMID to controls, there was more type 2 diabetes (134 (44.7%) vs 598  
268 (36.0%);  $p = 0.004$ ), COPD (131 (43.7%) vs 486 (29.3%);  $p < 0.001$ ), and women (117 (39.0%)  
269 vs 451 (27.2%);  $p < 0.001$ ). The IMID group was also older, with mean age  $69.3 \pm 12.1$  years vs  
270  $66.9 \pm 12.4$  years ( $p = 0.003$ ). Similar to the TAVR analysis, rates of disease-modifying  
271 antirheumatic drugs (DMARDs) was predictably higher among IMID patients (Table 1).

272

273 Medication use and individual autoimmune disease prevalence for IMID patients who  
underwent SAVR can be seen in table 1 and 2, respectively. Diagnoses included RA 98, 32.7%),

274 psoriasis (65, 21.7%), vasculitis (41, 13.7%), PMR (40, 13.3%), MCTD (17, 5.7%), SLE (17,  
275 5.7%), Sjogren's (15, 5.0%), and ankylosing spondylitis (7, 2.3%) (Table 2). There were 52  
276 (17.3%) patients on methotrexate, 42 (14.0%) hydroxychloroquine, 9 (3.0%) rituximab, 14  
277 (3.0%) leflunomide, 26 (8.7%) anti-TNF agents (Table 1).

278 Bioprosthetic, homograft, and mechanical valve replacements were present in both  
279 groups. Bioprosthetic replacement was most common, and homograft and mechanical  
280 replacements had similar prevalence (Table 5). Prevalence of each replacement type was similar  
281 in IMID compared with control, with bioprosthetic being slightly more prevalent among IMID  
282 compared with controls ( $p = 0.074$ )(Table 5). Manufacturers of each valve type were collected  
283 for each group. Among bioprosthetic valves, Edwards Lifesciences and St. Jude Trifecta were  
284 the most common manufacturers. Several additional manufacturers made up a small minority of  
285 the remainder of the valves, including Cryolife, Medtronic, Perceval, and Sorin. Overall  
286 prevalence of each manufacturer for IMID and control valves were similar among bioprosthetic  
287 valves ( $p = 0.812$ )(Table 4). Among mechanical valve replacements, St Jude, Carbomedics, and  
288 On-X were present with distribution of individual manufacturers being similar when IMID group  
289 is compared to control ( $p = 0.942$ )(Table 5). Mean valve size was smaller in IMID compared  
290 with controls ( $23.0 \pm 2.3$  vs  $23.3 \pm 2.4$ ;  $p = 0.0299$ ).

291 The mean follow up time in patients who underwent SAVR included for study was  
292  $8.9 \pm 4.6$  years and  $9.5 \pm 5.3$  years for IMID and controls, respectively ( $p = 0.056$ ). There was no  
293 significant difference in the development BVF in the IMID group compared with control. BVF  
294 occurred in 59 (19.7%) of IMID patients and in 425 (25.6%) of control patients. Among BVF in  
295 IMID patients, 23 had severe aortic regurgitation, 35 had elevated gradients, and one had  
296 evidence of both at first detection of BVF. Among controls, 139 had severe aortic regurgitation,

297 265 had elevated gradients, and 21 had evidence of both at first detection of BVF. Multivariable  
298 analysis was performed with cox proportional hazard regression. After adjustment for differences  
299 in age, sex, and comorbidities between IMID and control group, the adjusted hazard ratio for  
300 developing BVF in IMID compared with control was 0.90 (CI: 0.68 – 1.19) ( $p = 0.417$ ) (Table  
301 3). Additionally, female sex, increased age, and CAD were associated with increased risk of  
302 developing BVF independent of IMID status (Table 3). Estimated time to development of BVF  
303 after SAVR was also not significantly different, occurring at 16.2 years and 16.0 years in the  
304 IMID and control groups, respectively ( $p = 0.47$ ). Kaplan Meier curve demonstrating  
305 development of BVF after SAVR over time in both groups is displayed in Figure 3.

306 RA was the most common IMID diagnosis in the SAVR cohort, and a separate analysis  
307 was performed to assess development of BVF after SAVR in RA patients only compared to  
308 controls. Within the IMID SAVR cohort, there were 98 patients with RA available for study.  
309 There was no difference in time to development of BVF after SAVR in in patients with RA  
310 compared to patients without RA (Figure 4).

311

### 312 ***Comparing IMID population in TAVR and SAVR:***

313 Demographic, medical comorbidities, medication use, and individual diagnoses within  
314 patients with IMID who underwent TAVR and SAVR were compared (Table 1)(Table 2).  
315 Notably, when compared with SAVR IMID patients, TAVR IMID patients were significantly  
316 older (mean age  $78.1 \pm 9.4$  vs  $69.3 \pm 12.1$  years;  $p < 0.001$ ) and contained higher proportion of  
317 females (33 (63.5%) vs 117 (39.0%);  $p < 0.001$ ), though the trend of more females in the IMID  
318 group was the same in both TAVR and SAVR. Comorbidities were similar between groups.  
319 Prevalence of CAD was similar between groups, but rates of prior myocardial infarction were

320 higher among TAVR patients (18 (34.6%) vs 63 (21.0%);  $p = 0.031$ ). There was significantly  
321 higher prevalence of hydroxychloroquine usage among TAVR patients compared with SAVR  
322 patients (14 (26.9%) vs 42 (14.0%);  $p = 0.019$ ) as well as rituximab (5 (9.6%) vs 9 (3.0%);  $p =$   
323  $0.024$ ). Usage of other DMARDs was similar. Rates of individual autoimmune disease diagnoses  
324 were similar between groups (Table 2).

325       Development of BVF occurred earlier in the IMID group in the TAVR cohort but not in  
326 the SAVR cohort as discussed above. TAVR cohort members only had bioprosthetic valves,  
327 while SAVR cohort members were distributed between bioprosthetic (majority), mechanical, and  
328 homografts. In order to assess for confounding of the mechanical and homograft valves in the  
329 SAVR cohort, a separate analysis was performed using only the patients who had bioprosthetic  
330 valves in the SAVR cohort and comparing this with the TAVR cohort. This generated a Kaplan  
331 Meier curve (Figure 5) with both SAVR (bioprosthetic valves only) and TAVR cohorts together.  
332 TAVR patients with IMID developed BVF significantly earlier than the rest of the groups.  
333 TAVR patients without IMID appear to develop BVF at a similar rate to the SAVR cohort  
334 (Figure 5).

335

336

337

338

339

340

341

342

343 **DISCUSSION:**

344 To our knowledge, this is the first study to examine bioprosthetic valve function after  
345 TAVR and SAVR in patients with IMID. Our results support that patients with IMID who  
346 undergo TAVR develop BVF significantly earlier and more frequently relative to patients  
347 without IMID. These differences in BVF among IMID patients were not seen after SAVR, but  
348 comparisons between the studied TAVR and SAVR populations are limited by the retrospective,  
349 observational nature of the study. Prior population-based studies examining outcomes in patients  
350 with autoimmune disease after aortic valve replacement have focused on outcomes such as  
351 mortality, length of hospital stay, and readmission using broad national databases<sup>11, 14</sup>. They  
352 showed similar rates of mortality with the primary conclusion that autoimmune disease should  
353 not preclude this patient population from undergoing these procedures. The results of the present  
354 study are important, because they suggest IMID patients have different outcomes in prosthetic  
355 valve function after TAVR than those without IMID. While IMID should not preclude patients  
356 from undergoing these procedures, it may necessitate special consideration in choosing between  
357 TAVR or SAVR in these patients. Frequency of follow-up imaging in the IMID patients may  
358 also be impacted by these findings.

359 Notably, the TAVR IMID group was the only group studied with significantly different  
360 rates of BVF, and differences in BVF in patients with or without IMID were not observed in the  
361 SAVR cohort (Figure 5). The control TAVR group developed BVF at similar rates to all SAVR  
362 groups. This is consistent with growing evidence that long term outcomes of TAVR are similar  
363 to SAVR<sup>15</sup>, and this consistency lends strength to this study.

364 Differences in characteristics between the IMID TAVR and SAVR groups were  
365 considered in an attempt to explain this difference in outcomes between AVR methods. Rates of

366 individual IMID diagnoses were similar within the groups, as were majority of medical  
367 comorbidities, other than SAVR patients being notably younger. Younger age has consistently  
368 been shown to be associated with BVF in prior surgical studies<sup>16</sup>. The only rheumatologic  
369 difference observed between groups was rate of hydroxychloroquine and rituximab utilization.  
370 Prevalence of hydroxychloroquine and rituximab in TAVR IMID patients were roughly double  
371 that seen in SAVR IMID patients (Table 1). The role of DMARDs in development of  
372 cardiovascular disease in patients with autoimmune disease is an area of interest, with many  
373 studies suggesting an overall protective effect with increased exposure<sup>17, 18</sup>. The differences in  
374 medication usage may signal differences in disease severity, which could contribute to  
375 differences in outcomes between the TAVR and SAVR groups.

376 Differences in bioprosthetic valve characteristics were also considered as potential  
377 confounders in the study, including differences in valve sizes and types between TAVR and  
378 SAVR groups. On average, IMID patients had smaller valve size in both TAVR and SAVR  
379 compared with controls, likely explained by higher proportion of women in the IMID groups.  
380 This trend was similar in both TAVR and SAVR cohorts, however the skew toward women was  
381 greater among TAVR. When considered in multivariate analysis with cox regression, male sex  
382 appeared protective against BVF in SAVR, but not TAVR. This difference between populations  
383 could contribute to the differences in outcomes and larger study with sufficient power for more  
384 nuanced matching is warranted in the future.

385 One hypothesis for the development of BVF after TAVR but not SAVR may be related to  
386 the mechanism of valvular disease in IMID and the differences in how the aortic valve  
387 procedures are performed. The biologic mechanisms of valvular disease from calcification is a  
388 result of inflammation from CD4+ T-cell signaling and pro-inflammatory macrophages<sup>19, 20, 21, 22</sup>.

389 Studies reporting surgical pathology of aortic stenosis in patients with autoimmune disease show  
390 a more inflammatory microscopic profile relative to what is seen in patients without  
391 inflammatory disease<sup>23, 24</sup>. The excision of the native aortic valve and surrounding tissue during  
392 SAVR may be protective against future inflammation and degradation in the prosthetic valve, in  
393 contrast to TAVR where the native inflamed tissue remains post procedure. Other potential  
394 mechanisms could be related to the hypercoagulable state seen in some IMID. Hypoattenuating  
395 leaflet thrombosis, a known complication after SAVR and TAVR with unclear clinical  
396 implications<sup>25, 26, 27</sup>, was not assessed in the present study but would warrant investigation in  
397 future research.

398         Furthermore, IE was more prevalent among IMID patients after TAVR compared with  
399 controls. Differences in development of IE were not seen after SAVR. There were 4 IMID  
400 patients (7.7%) and 2 control patients (0.7%) who developed IE post TAVR. The mechanism for  
401 this difference is unclear. It could be similarly related to the proinflammatory state of IMID as  
402 described in the previous paragraph, leaving the bioprosthetic valve at increased vulnerability for  
403 seeding with transient bacteremia due to increased inflammation. Alternatively, the  
404 immunosuppression used in management of IMID could predispose these patients to IE.  
405 However, the 4 IMID patients who developed IE were either on MTX monotherapy (2 patients)  
406 or HCQ monotherapy (2 patients) rather than more severe immunosuppression such as rituximab  
407 or other biologic agents.

408         The difference in outcomes in the TAVR and SAVR groups has potential significance for  
409 IMID patients being considered for AVR. Since FDA approval of TAVR in low-risk surgical  
410 patients in 2019, the role of TAVR has been expanded to patients who previously would have  
411 been recommended SAVR<sup>28</sup>. Continued positive results from long term, prospective follow up

412 such at the NOTION trial<sup>15</sup> will likely continue to increase rates of TAVR. Additionally,  
413 guidelines recommend “shared decision making” for decision of TAVR vs SAVR in patients age  
414 65 to 80<sup>29</sup>. The results of the present study suggest patients with IMID in this age window being  
415 considered for TAVR should be carefully counseled on the potential risk of early BVF. Special  
416 considerations may be necessary, such as increased frequency of follow up due to increased risk  
417 of early BVF. The potential increased risk for IE in IMID patients should also be considered  
418 during shared decision making, and antibiotics for IE prophylaxis should be emphasized in this  
419 population. Further study is needed in larger cohorts to validate these findings and make  
420 interpopulation assessments between differences in SAVR and TAVR outcomes in patients with  
421 IMID.

422         This study has limitations. Notably, the rate of valve dysfunction reported here appears  
423 higher than previously reported<sup>15,30</sup>. This is likely due to the retrospective nature of the study,  
424 which artificially increases prevalence of BVF since significant patient numbers were excluded  
425 due to insufficient follow up. This preferentially excludes patients without valve issues, since  
426 sicker patients would be expected to have closer follow-up. Secondly, while the study effectively  
427 captured a multitude of IMID diagnoses, disease severity is not readily accounted for in our  
428 analysis. It is possible that comorbid IMID disease severity in TAVR patients was greater than in  
429 SAVR patients, which could explain the differences seen in development of BVF. Thirdly, due  
430 to high rates of exclusion for lack of appropriate follow up, our population of IMID patients is  
431 small. The control TAVR and SAVR patients are also a small subset of a larger cohort patients  
432 who have undergone aortic valve replacement at Cleveland Clinic. This small size increases  
433 potential for both type 1 and type 2 error, and repeat study is warranted in a larger, multicenter  
434 population. Lastly, while both TAVR and SAVR populations were studied, limited comparisons



435 between the groups can be made due to the retrospective, observational nature of the study.

436 Further large-scale study is needed to draw conclusions when comparing patients with IMID

437 who undergo SAVR and TAVR.

438 In conclusion, in this single-center, retrospective study, patients with IMID that undergo

439 TAVR develop BVF significantly earlier and more frequently than patients without IMID. Rates

440 of BVF after SAVR were similar between patients with and without IMID. This may have

441 implications for shared decision making in choosing aortic valve interventions for patients with

442 IMID, and warrant increased follow up intervals in IMID patients who undergo TAVR.

443

444

445

446

447

448

449

450

451

452

453

454

455

456

457 **REFERENCES:**

- 458 1. McGonagle D, McDermott MF. A proposed classification of the immunological diseases.  
459 *PLoS Medicine*. 2006;3(8):1242–1248.
- 460 2. Polachek, A., Touma, Z., Anderson, M. and Eder, L. (2017), Risk of Cardiovascular  
461 Morbidity in Patients With Psoriatic Arthritis: A Meta-Analysis of Observational Studies.  
462 *Arthritis Care & Research*, 69: 67-74. <https://doi.org/10.1002/acr.22926>
- 463 3. Gonzalez A, Kremers HM, Crowson CS, *et al*. Do cardiovascular risk factors confer the  
464 same risk for cardiovascular outcomes in rheumatoid arthritis patients as in non-  
465 rheumatoid arthritis patients? *Annals of the Rheumatic Diseases* 2008;**67**:64-69.
- 466 4. Ogdie A, Yu Y, Haynes K, Love TJ, Maliha S, Jiang Y, Troxel AB, Hennessy S, Kimmel  
467 SE, Margolis DJ, Choi H, Mehta NN, Gelfand JM. Risk of major cardiovascular events in  
468 patients with psoriatic arthritis, psoriasis and rheumatoid arthritis: a population-based  
469 cohort study. *Ann Rheum Dis*. 2015 Feb;74(2):326-32. doi: 10.1136/annrheumdis-2014-  
470 205675. Epub 2014 Oct 28. PMID: 25351522; PMCID: PMC4341911.
- 471 5. Agca R, Smulders Y, Nurmohamed M. Cardiovascular disease risk in immune-mediated  
472 inflammatory diseases: recommendations for clinical practice. *Heart*. 2022 Jan;108(1):73-  
473 79. doi: 10.1136/heartjnl-2019-316378. Epub 2021 Mar 4. PMID: 33674356; PMCID:  
474 PMC8666803.
- 475 6. Ajeganova S, Hafström I, Frostegård J. Patients with SLE have higher risk of  
476 cardiovascular events and mortality in comparison with controls with the same levels of  
477 traditional risk factors and intima-media measures, which is related to accumulated  
478 disease damage and antiphospholipid syndrome: A case-control study over 10 years.  
479 *Lupus Science and Medicine*. 2021;8(1):1–11.

- 480 7. Peters, M.J., et al., *Does rheumatoid arthritis equal diabetes mellitus as an independent*  
481 *risk factor for cardiovascular disease? A prospective study.* *Arthritis Rheum*, 2009.  
482 **61**(11): p. 1571-9.
- 483 8. Conrad N, Verbeke G, Molenberghs G, Goetschalckx L, Callender T, Cambridge G,  
484 Mason JC, Rahimi K, McMurray JJV, Verbakel JY. Autoimmune diseases and  
485 cardiovascular risk: a population-based study on 19 autoimmune diseases and 12  
486 cardiovascular diseases in 22 million individuals in the UK. *Lancet*. 2022 Sep  
487 3;400(10354):733-743. doi: 10.1016/S0140-6736(22)01349-6. Epub 2022 Aug 27.  
488 PMID: 36041475.
- 489 9. Johnson TM, Mahabir CA, Yang Y, et al. Aortic Stenosis Risk in Rheumatoid  
490 Arthritis. *JAMA Intern Med*. 2023;183(9):973–981.  
491 doi:10.1001/jamainternmed.2023.3087
- 492 10. Ward MM. Lifetime risks of valvular heart disease and pacemaker use in patients with  
493 ankylosing spondylitis. *Journal of the American Heart Association*. 2018;7(20).
- 494 11. Gad MM, Lichtman D, Saad AM, Isogai T, Bansal A, Abdallah MS, Roselli E, Chatterjee  
495 S, Reed GW, Kapadia SR, Menon V, Wassif H. Autoimmune connective tissue diseases  
496 and aortic valve replacement outcomes: a population-based study. *European Heart*  
497 *Journal Open*. 2022;2(3):1–14.
- 498 12. Généreux P, Piazza N, Alu MC, Nazif T, Hahn RT, Pibarot P, Bax JJ, Leipsic JA, Blanke  
499 P, Blackstone EH, Finn MT, Kapadia S, Linke A, Mack MJ, Makkar R, et al. Valve  
500 Academic Research Consortium 3: Updated Endpoint Definitions for Aortic Valve  
501 Clinical Research. *Journal of the American College of Cardiology*. 2021;77(21):2717–  
502 2746.

- 503 13. Arthur Allignol, Aurelien Latouche (2023). CRAN Task View: Survival Analysis.  
504 Version 2023-09-10. URL <https://CRAN.R-project.org/view=Survival>.
- 505 14. Rudasill SE, Sanaiha Y, Xing H, Mardock AL, Khoury H, Jaman R, Ebrahimi R,  
506 Benharash P. Association of Autoimmune Connective Tissue Disease and Outcomes in  
507 Patients Undergoing Transcatheter Aortic Valve Implantation. *American Journal of*  
508 *Cardiology*. 2019;123(10):1675–1680.
- 509 15. Thyregod HGH, Jørgensen TH, Ihlemann N, Steinbrüchel DA, Nissen H, Kjeldsen BJ,  
510 Petursson P, De Backer O, Olsen PS, Søndergaard L. Transcatheter or surgical aortic  
511 valve implantation: 10-year outcomes of the NOTION trial. *European Heart Journal*.  
512 2024:1–9.
- 513 16. Johnston DR, Soltesz EG, Vakil N, Rajeswaran J, Roselli EE, Sabik JF 3rd, Smedira NG,  
514 Svensson LG, Lytle BW, Blackstone EH. Long-term durability of bioprosthetic aortic  
515 valves: implications from 12,569 implants. *Ann Thorac Surg*. 2015 Apr;99(4):1239-47.
- 516 17. Baoqi Y, Dan M, Xingxing Z, Xueqing Z, Yajing W, Ke X, Liyun Z. Effect of Anti-  
517 Rheumatic Drugs on Cardiovascular Disease Events in Rheumatoid Arthritis. *Frontiers*  
518 *in Cardiovascular Medicine*. 2022;8(February):1–13.
- 519 18. Yates M, Iftikhar Talib A, Aldus C, Brown J, Macgregor A. Pos0321 Co-Morbidity in  
520 Polymyalgia Rheumatica. *Annals of the Rheumatic Diseases*. 2022;81(Suppl 1):411.2-  
521 412.
- 522 19. Breed ER, Binstadt BA. Autoimmune valvular carditis. *Curr Allergy Asthma Rep*.  
523 2015;15(1):491. doi:[10.1007/s11882-014-0491-z](https://doi.org/10.1007/s11882-014-0491-z)
- 524 20. Otto CM, Kuusisto J, Reichenbach DD, Gown AM, O'Brien KD. Characterization of the  
525 early lesion of 'degenerative' valvular aortic stenosis. Histological and

- 526 immunohistochemical studies. *Circulation*. 1994;90(2):844–53. Epub 1994/08/01.  
527 pmid:7519131.
- 528 21. Mohler ER 3rd, Adam LP, McClelland P, Graham L, Hathaway DR. Detection of  
529 osteopontin in calcified human aortic valves. *Arteriosclerosis, thrombosis, and vascular*  
530 *biology*. 1997;17(3):547–52. Epub 1997/03/01. pmid:9102175.
- 531 22. O'Brien KD, Kuusisto J, Reichenbach DD, Ferguson M, Giachelli C, Alpers CE, et al.  
532 Osteopontin is expressed in human aortic valvular lesions. *Circulation*. 1995;92(8):2163–  
533 8. Epub 1995/10/15. pmid:7554197.
- 534 23. Peyrou J, Saxer-Sekulic N, Lerch R, Müller H. Fast progression of aortic stenosis in  
535 rheumatoid arthritis. *Archives of Cardiovascular Diseases*. 2009;102(3):251–252.
- 536 24. Bridge K, Farivar RS. A case of Sjögren's syndrome leading to mitral and aortic valve  
537 replacement. *Journal of Thoracic and Cardiovascular Surgery*. 2010;139(6):e139–e140.
- 538 25. Garcia S, Fukui M, Dworak MW, et al. Clinical Impact of Hypoattenuating Leaflet  
539 Thickening After Transcatheter Aortic Valve Replacement. *Circulation: Cardiovascular*  
540 *Interventions*. 2022;15(3):e011480. doi:[10.1161/CIRCINTERVENTIONS.121.011480](https://doi.org/10.1161/CIRCINTERVENTIONS.121.011480)
- 541 26. Hein M, Schoechlin S, Schulz U, et al. Long-Term Follow-Up of Hypoattenuated Leaflet  
542 Thickening After Transcatheter Aortic Valve Replacement. *JACC: Cardiovascular*  
543 *Interventions*. 2022;15(11):1113-1122. doi:[10.1016/j.jcin.2022.04.018](https://doi.org/10.1016/j.jcin.2022.04.018)
- 544 27. Sondergaard L, De Backer O, Kofoed KF, Jilaihawi H, Fuchs A, Chakravarty T, Kashif  
545 M, Kazuno Y, Kawamori H, Maeno Y, Bieliauskas G, Guo H, Stone GW, Makkar R.  
546 Natural history of subclinical leaflet thrombosis affecting motion in bioprosthetic aortic  
547 valves. *Eur Heart J*. 2017;38(28):2201-2207.

- 548 28. Coylewright M, Forrest JK, McCabe JM, Nazif TM. TAVR in Low-Risk Patients: FDA  
549 Approval, the New NCD, and Shared Decision-Making. *Journal of the American College*  
550 *of Cardiology*. 2020;75(10):1208–1211.
- 551 29. Otto CM, Nishimura RA, Bonow RO, Carabello BA, rwin JP, Gentile F, Jneid H, Krieger  
552 ric V., Mack M, McLeod C, O’Gara PT, Rigolin VH, Sundt TM, Thompson A, Toly C.  
553 *2020 ACC/AHA Guideline for the Management of Patients With Valvular Heart Disease:*  
554 *A Report of the American College of Cardiology/American Heart Association Joint*  
555 *Committee on Clinical Practice Guidelines.*; 2021.
- 556 30. Barbanti M, Costa G, Zappulla P, Todaro D, Picci A, Rapisarda G, Di Simone E, Sicuso  
557 R, Buccheri S, Gulino S, Pilato G, Spina K La, D’Arrigo P, Valvo R, Indelicato A, et al.  
558 Incidence of long-term structural valve dysfunction and bioprosthetic valve failure after  
559 transcatheter aortic valve replacement. *Journal of the American Heart Association*.  
560 2018;7(15):1–10.

561

562

563

564

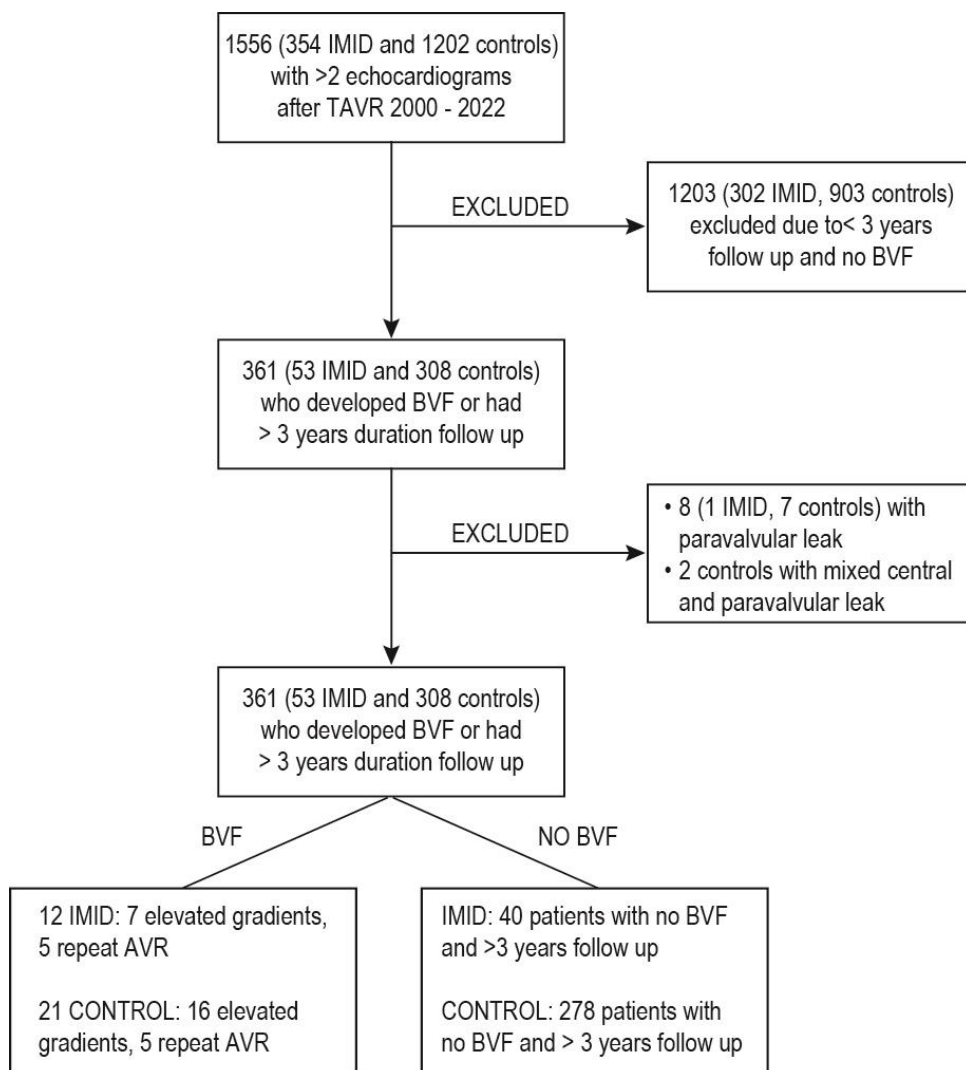
565

566

567

568

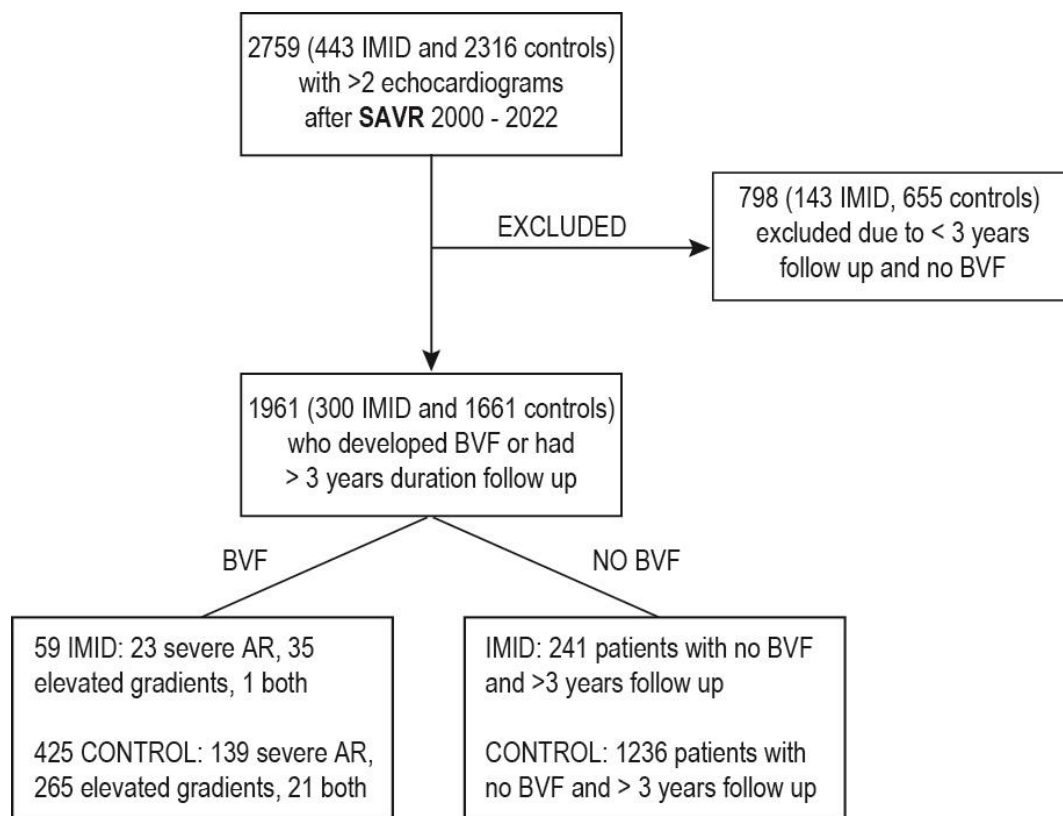
569



570  
571 Figure 1A. Flow chart delineating inclusion exclusion process for TAVR patients for  
572 assessment of BVF  
573

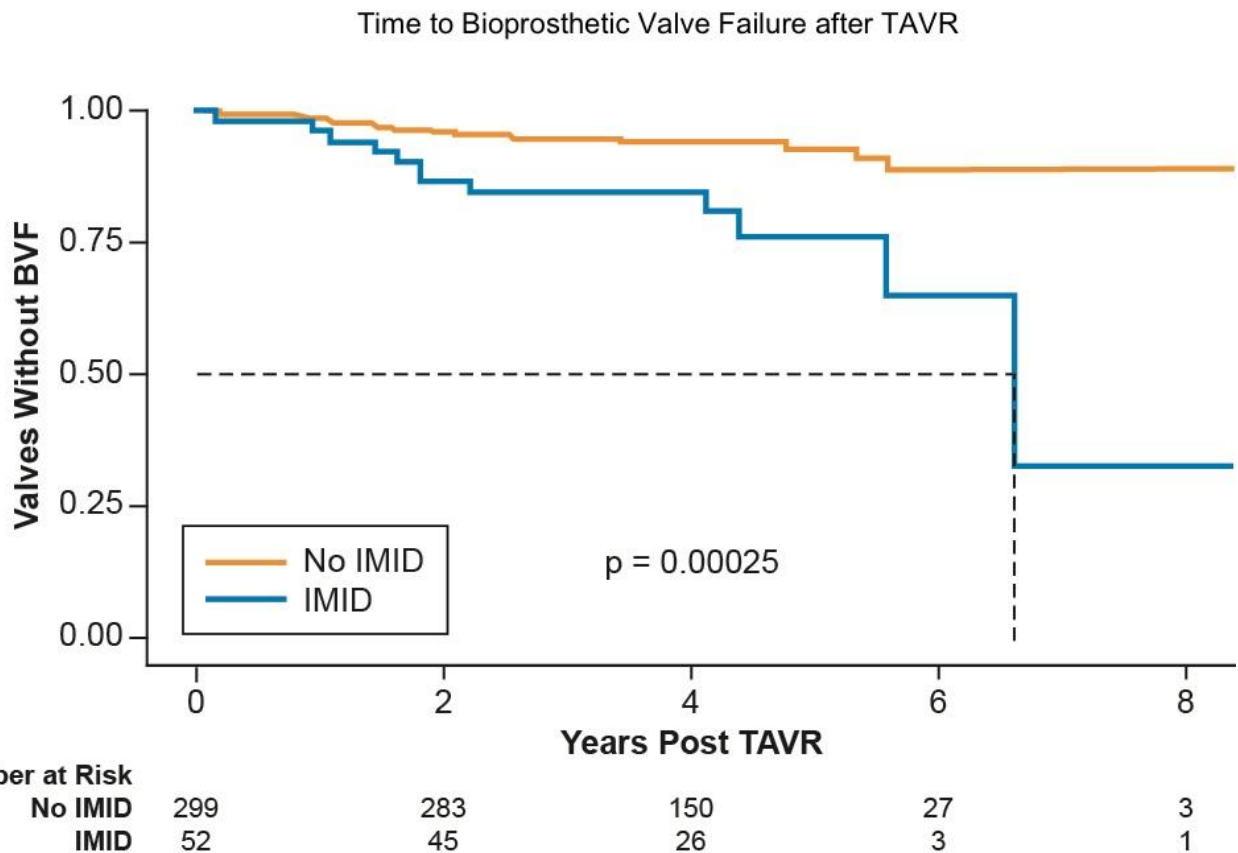
574 *TAVR=transcatheter aortic valve replacement; IMID=immune mediated inflammatory disease;*  
575 *BVF=bioprosthesis valve failure; AVR=aortic valve replacement*

576  
577  
578  
579  
580  
581  
582



583 Figure 1B. Flow chart delineating inclusion exclusion process SAVR patients for assessment  
584 of BVF  
585 SAVR=surgical aortic valve replacement; BVF=bioprosthetic valve failure; IMID=immune  
586 mediated inflammatory disease; AR=aortic regurgitation

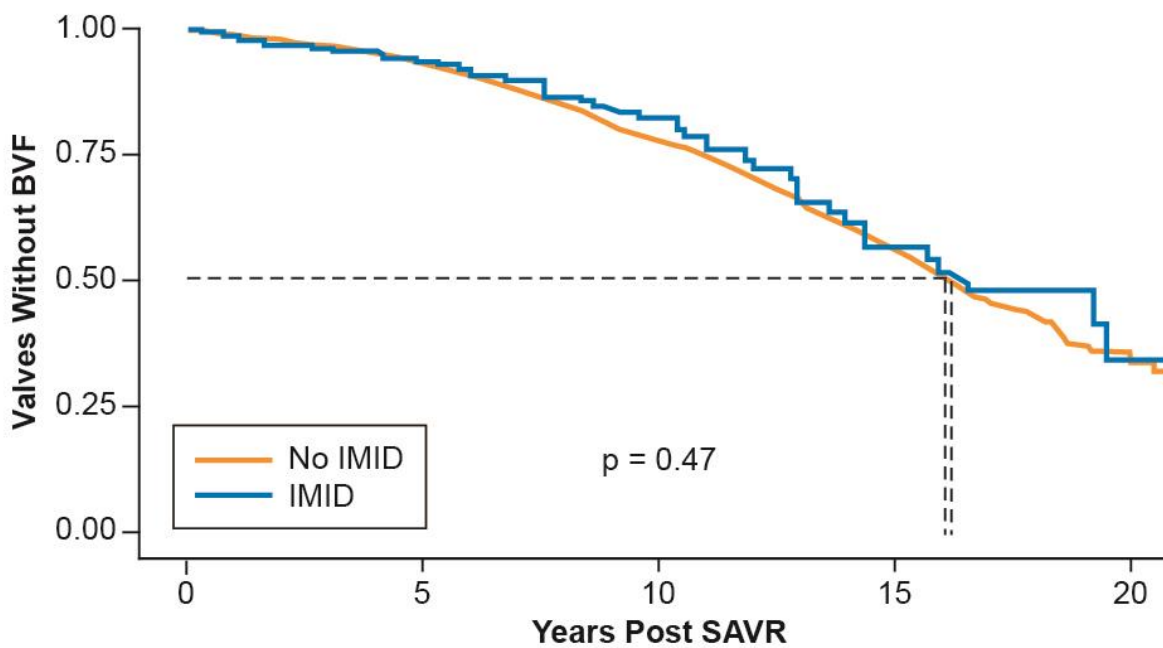




587  
 588 Figure 2. Kaplan Meier curve assessing development of BVF after TAVR in patients with and  
 589 without IMID  
 590  
 591 *IMID=immune mediated inflammatory disease; TAVR=transcatheter aortic valve replacement;*  
 592 *BVF=bioprosthetic valve failure*  
 593

594  
 595  
 596  
 597  
 598  
 599  
 600  
 601

### Time to Bioprosthetic Valve Failure after SAVR



Number at Risk						
No IMID	1661		1253	524	195	55
IMID	300		225	87	20	2

602

603 Figure 3. Kaplan Meier curve assessing development of BVF after SAVR in patients with and  
 604 without IMID

605

606 *IMID=immune mediated inflammatory disease; SAVR=surgical aortic valve replacement;*

607 *BVF=bioprosthetic valve failure*

608

609

610

611

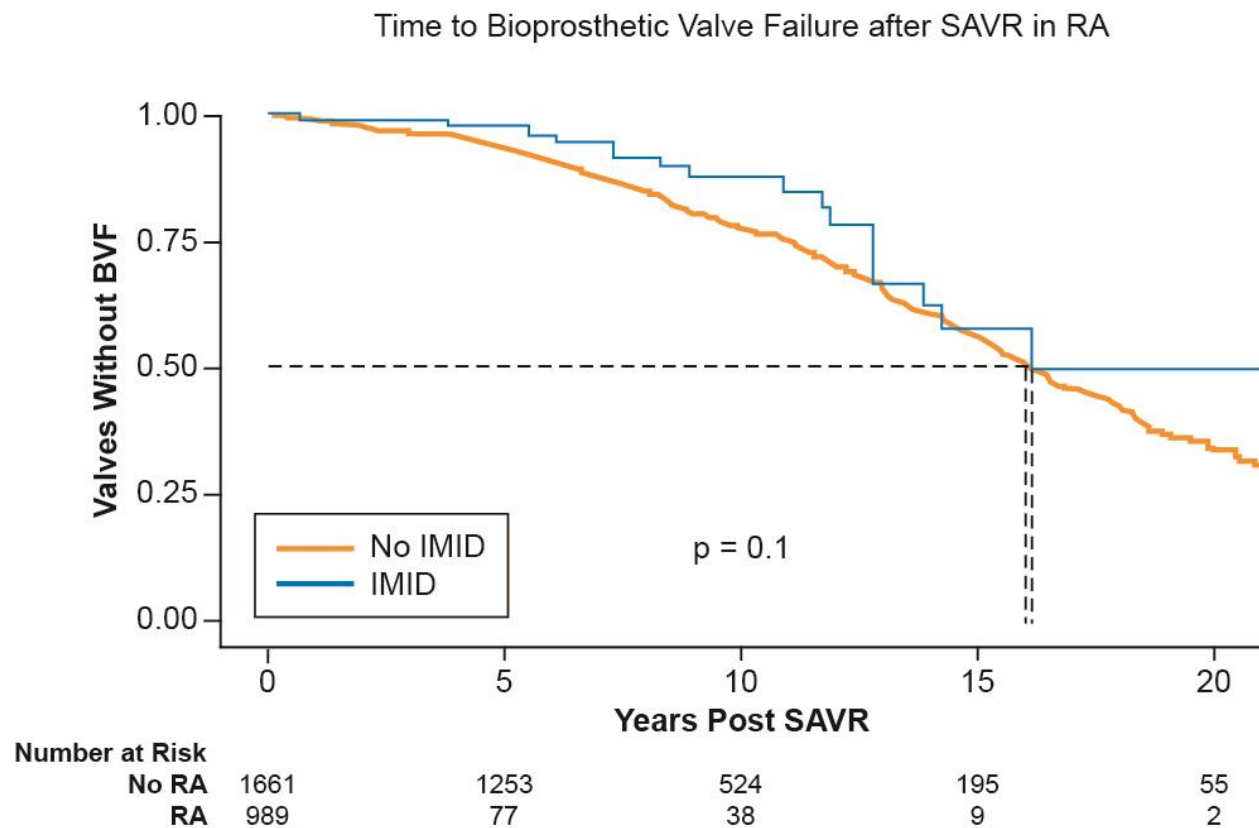
612

613

614

615

616



617

618 Figure 4. Kaplan Meier curve assessing development of BVF after SAVR in patients with  
 619 and without Rheumatoid Arthritis

620

621 *RA=rheumatoid arthritis; SAVR=surgical aortic valve replacement; BVF=bioprosthetic valve*  
 622 *failure*

623

624

625

626

627

628

629

630

631

632

633

634

635

636

637

638

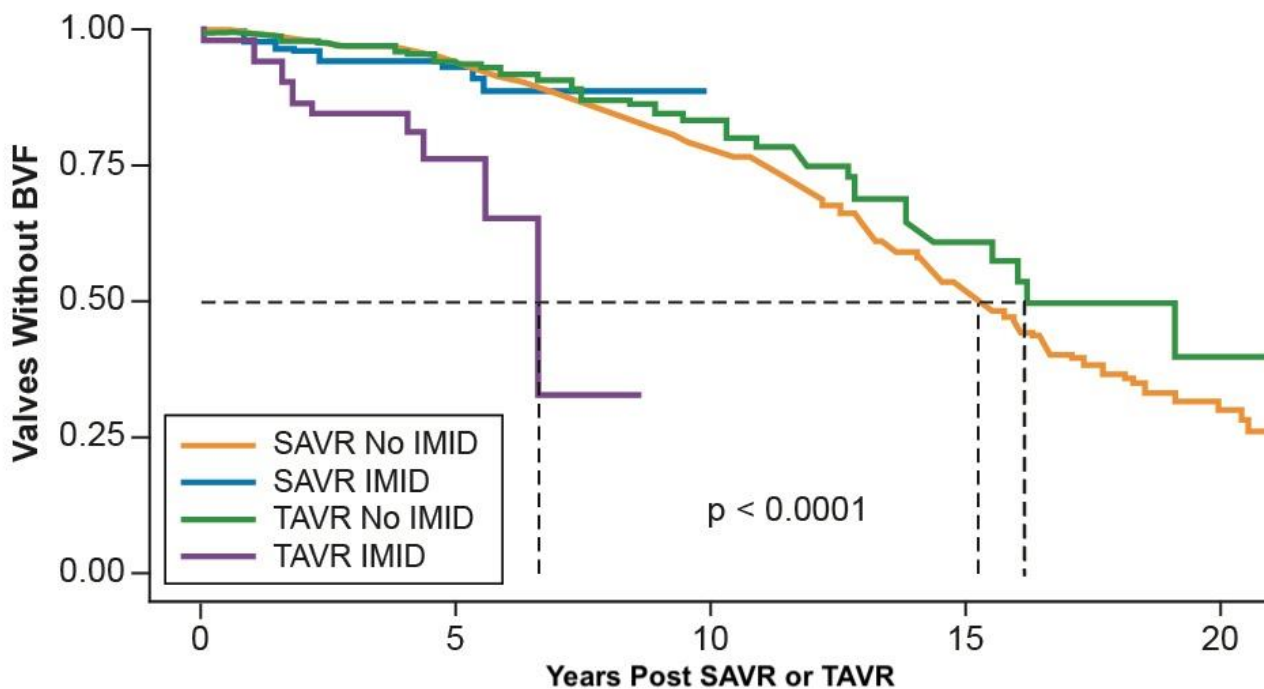
639

640

641

642

### Time to Bioprosthetic Valve Failure after SAVR or TAVR



Number at Risk		0	5	10	15	20
SAVR No IMID	1426	1056	396	114	19	
SAVR IMID	272	202	73	17	1	
TAVR No IMID	299	72	0	0	0	
TAVR IMID	52	10	0	0	0	

643  
644  
645  
646  
647  
648  
649  
650  
651  
652  
653  
654  
655  
656  
657  
658  
659  
660  
661

Figure 5. Kaplan Meier curve assessing development of BVF after SAVR or TAVR in patients with and without IMID

SAVR=surgical aortic valve replacement; TAVR=Transcatheter aortic valve replacement; IMID=immune mediate inflammatory disease; BVF=bioprosthetic valve failure; AVR=Aortic valve replacement

	TAVR			SAVR			IMID in TAVR vs SAVR		
	IMID (n= 52)	Control (n = 299)	P-value	IMID (n = 300)	Control (n = 1661)	P-value	IMID TAVR (n = 52)	IMID SAVR (n = 300)	P-value
Age, mean (SD)	78.1 (9.4)	80.1 (8.7)	<b>0.017</b>	69.3 (12.1)	66.9 (12.4)	<b>0.003</b>	78.1 (9.4)	69.3 (12.1)	<b>&lt;0.001</b>
Female, n (%)	33 (63.5%)	114 (38.1%)	<b>&lt;0.001</b>	117 (39.0%)	451 (27.2%)	<b>&lt;0.001</b>	33 (63.5%)	117 (39.0%)	<b>&lt;0.001</b>
Race, n (%)									
White	49 (94.2%)	275 (91.9%)	0.678	281 (93.7%)	1510 (90.9%)	0.284	49 (94.2%)	281 (93.7%)	0.391
Black	3 (5.8%)	20 (6.7%)		11 (3.7%)	93 (5.6%)		3 (5.8%)	11 (3.7%)	
Other	0	4 (1.3%)		8 (2.7%)	58 (3.5%)		0	8 (2.7%)	
Hypertension, n (%)	51 (98.1%)	289 (96.7%)	0.587	283 (94.3%)	1547 (93.1%)	0.445	51 (98.1%)	283 (94.3%)	0.258
Hyperlipidemia, n (%)	51 (98.1%)	277 (92.7%)	0.144	269 (89.7%)	1442 (86.8%)	0.173	51 (98.1%)	269 (89.7%)	0.052
COPD, n (%)	27 (51.9%)	112 (37.5%)	0.049	134 (44.7%)	486 (29.3%)	<b>&lt; 0.001</b>	27 (51.9%)	134 (44.7%)	0.332
Type 2 Diabetes, n (%)	27 (51.9%)	111 (37.1%)	<b>0.043</b>	134 (44.7%)	598 (36.0%)	<b>0.004</b>	27 (51.9%)	134 (44.7%)	0.332
CKD, n (%)	26 (50.0%)	151 (50.5%)	0.947	124 (41.3%)	589 (35.5%)	0.052	26 (50.0%)	124 (41.3%)	0.243
CAD, n (%)	26 (50.0%)	161 (53.8%)	0.608	154 (51.3%)	817 (49.2%)	0.494	26 (50.0%)	154 (51.3%)	0.859
MI	18 (34.6%)	83 (27.8%)	0.313	63 (21.0%)	300 (18.1%)	0.228	18 (34.6%)	63 (21.0%)	<b>0.031</b>
PCI	8 (15.4%)	79 (26.4%)	0.089	32 (10.7%)	181 (10.9%)	0.906	8 (15.4%)	32 (10.7%)	0.322
CABG	11 (21.2%)	99 (33.1%)	0.086	122 (40.7%)	677 (40.8%)	0.976	11 (21.2%)	122 (40.7%)	0.007
Atrial Fibrillation, n (%)	32 (61.5%)	173 (57.9%)	0.619	194 (64.7%)	1039 (62.6%)	0.485	32 (61.5%)	194 (64.7%)	0.664
Tobacco Use, n (%)	27 (51.9%)	185 (61.9%)	0.176	177 (59.0%)	1002 (60.3%)	0.666	27 (51.9%)	177 (59.0%)	0.339
Medications, n (%)									
ARNI	2 (3.8%)	27 (9.0%)	0.211	6 (2.0%)	75 (4.5%)	<b>0.044</b>	2 (3.8%)	6 (2.0%)	0.411
SGLT2	9 (17.3%)	27 (9.0%)	0.069	23 (7.7%)	119 (7.2%)	0.757	9 (17.3%)	23 (7.7%)	<b>0.026</b>
Digoxin	13 (25.0%)	40 (13.4%)	<b>0.031</b>	57 (19.0%)	268 (16.1%)	0.219	13 (25.0%)	57 (19.0%)	0.317
Methotrexate	8 (15.4%)	1 (0.3%)	<b>&lt;0.001</b>	52 (17.3%)	7 (0.4%)	<b>&lt;0.001</b>	8 (15.4%)	52 (17.3%)	0.731
Hydroxychloroquine	14 (26.9%)	0	<b>&lt;0.001</b>	42 (14.0%)	10 (0.6%)	<b>&lt;0.001</b>	14 (26.9%)	42 (14.0%)	<b>0.019</b>
Rituximab	5 (9.6%)	1 (0.3%)	<b>&lt;0.001</b>	9 (3.0%)	0	<b>&lt;0.001</b>	5 (9.6%)	9 (3.0%)	<b>0.024</b>
Leflunimide	3 (5.8%)	0	<b>&lt;0.001</b>	14 (4.7%)	0	<b>&lt;0.001</b>	3 (5.8%)	14 (4.7%)	0.732
Anti-TNF	4 (7.7%)	0	<b>&lt;0.001</b>	26 (8.7%)	9 (0.5%)	<b>&lt;0.001</b>	4 (7.7%)	26 (8.7%)	0.816

662  
663 Table 1. Demographics, comorbidities, and medication usage of patients with and without  
664 IMID undergoing TAVR and SAVR  
665

666 *P* values for TAVR and SAVR are comparing characteristics of IMID versus controls. The third  
667 column is comparing the IMID groups between TAVR and SAVR cohorts  
668

669 TAVR=transcatheter aortic valve replacement; SAVR=Surgical aortic valve replacement;  
670 IMID=Immune mediated inflammatory disease; SD=standard deviation; COPD=chronic  
671 obstructive pulmonary disease; CKD=chronic kidney disease; CAD=coronary artery disease;  
672 MI=myocardial infarction; PCI=percutaneous coronary intervention; CABG=coronary artery  
673 bypass graft; ARNI=angiotensin receptor/neprilysin inhibitor; SGLT2=sodium glucose  
674 transporter inhibitor  
675

676

Disease, n (%)	TAVR (n =52)	SAVR (n=300)	P - value
Rheumatoid Arthritis	15 (28.8%)	98 (32.7%)	0.586
SLE	3 (5.8%)	17 (5.7%)	0.976
Sjogren's	4 (7.7%)	15 (5.0%)	0.428
PMR	7 (13.5%)	40 (13.3%)	0.968
Vasculitis	7 (13.5%)	41 (13.6%)	0.728
Mixed Connective Tissue Disease	3 (5.8%)	17 (5.7%)	0.976
Psoriasis	12 (23.1%)	65 (21.7%)	0.821
Ankylosing Spondylitis	1 (1.9%)	7 (2.3%)	0.855

677

678

679 Table 2. Prevalence of individual autoimmune diagnoses in TAVR and SAVR cohort

680

681 *P value determined in assessing the difference in distribution of each individual diagnosis*  
682 *between the TAVR and SAVR cohort*

683

684 *SLE=systemic lupus erythematosus; PMR=polymyalgia rheumatica; TAVR=Transcatheter aortic*  
685 *valve replacement; SAVR=surgical aortic valve replacement*

686

687

688

689

690

691

692

693

694

695

696

697

698

699

700

701

	TAVR		SAVR	
	AHR (95% CI)	P-value	AHR (95% CI)	p-value
IMID	<b>4.02</b> (1.81 - 8.92)	<b>6.15E-04</b>	0.90 (0.68-1.19)	0.477
Male Sex	0.97 (0.45-2.07)	0.932	<b>0.75</b> (0.59-0.88)	<b>0.005</b>
White Race	<b>0.32</b> (0.12 – 0.91)	<b>0.032</b>	0.74 (0.53-0.97)	0.061
Age	<b>0.97</b> (0.94 – 0.99)	<b>0.042</b>	<b>0.98</b> (0.97-0.99)	<b>7.48E-06</b>
Hypertension	1.36 (0.18 – 10.43)	0.767	1.26 (0.79-1.62)	0.224
Hyperlipidemia	0.73 (0.22 – 2.40)	0.601	<b>0.72</b> (0.54-0.91)	<b>0.012</b>
COPD	0.56 (0.25 – 1.24)	0.155	1.11 (0.91-1.34)	0.294
Type 2 Diabetes	0.81 (0.37 – 1.81)	0.597	1.11 (0.89-1.32)	0.301
Chronic Kidney Disease	1.16 (0.55 – 2.48)	0.687	1.10 (0.90-1.34)	0.384
Atrial Fibrillation	0.89 (0.43 – 1.86)	0.768	1.12 (0.91-1.33)	0.329
Coronary Artery Disease	0.65 (0.29 – 1.41)	0.277	<b>1.30</b> (1.07-1.58)	<b>0.009</b>

702  
703  
704  
705  
706  
707  
708  
709  
710  
711  
712  
713  
714  
715  
716  
717  
718  
719  
720  
721  
722  
723  
724  
725  
726  
727  
728  
729  
730  
731  
732  
733  
734  
735  
736  
737

Table 3. Risk factors for developing BVF after TAVR and SAVR

Adjusted hazards ratios generated using cox proportional hazards regression in multivariate fashion

*IMID=immune mediated inflammatory disease; TAVR=transcatheter aortic valve replacement; SAVR=surgical aortic valve replacement; AHR=adjusted hazard ratio; COPD=chronic obstructive pulmonary disease*

	IMID (n = 52)	Control (n = 299)	P value
Valve Size (mm), mean (SD)	24.7 (2.6)	25.7 (2.5)	0.005
<b>Valve Manufacturer</b>			0.026
<b>Edwards Lifesciences</b>	43 (82.7%)	276 (92.3%)	
<i>Sapien 3</i>	41 (76.9%)	271 (90.6%)	
<i>Sapien XT</i>	2 (3.8%)	3 (1.0%)	
<i>Sapien Ultra</i>	0	2 (0.6%)	
<b>Other</b>	9 (17.3%)	23 (7.7%)	
<i>Medtronic</i>	7 (13.4%)	12 (4.0%)	
<i>Boston Scientific</i>	1 (1.9%)	4 (1.3%)	
<i>Direct Flow</i>	1 (1.9%)	6 (2.0%)	
<i>Abbot</i>	0	1 (0.3%)	

738  
739  
740  
741  
742  
743  
744  
745  
746  
747  
748  
749  
750  
751  
752  
753  
754  
755  
756  
757  
758  
759  
760  
761  
762  
763  
764  
765  
766  
767  
768  
769  
770  
771  
772  
773  
774  
775  
776  
777  
778  
779

Table 4. Characteristics of aortic valves used in transcatheter aortic valve replacements among patients with and without IMID

*P* value assess distribution between Edwards Lifesciences, Medtronic, and Other manufacturers. Valve types in italics below Edwards Lifesciences and Other are subsets of those categories included in the total

IMID=Immune mediated inflammatory disease; SD=Standard deviation



	<b>IMID (n = 300)</b>	<b>Control (n = 1661)</b>	<b>P-value</b>
<b>Valve Size, mean (SD)</b>	23.0 (2.3)	23.3 (2.4)	<b>0.0299</b>
<b>Valve Type, n (%)</b>			0.071
Bioprosthetic	272 (90.7%)	1426 (85.9%)	
Mechanical	11 (3.7%)	105 (6.3%)	
Homograft	17 (5.7%)	130 (7.8%)	
<b>Valve Manufacturer, n (%)</b>			0.812
<b>Bioprosthetic</b>	272 (100%)	1426 (100%)	
Edwards	204 (75.0%)	1075 (75.4%)	
St Jude	58 (21.3%)	309 (21.7%)	
Other	10 (3.7%)	42 (2.9%)	
Cryolife	0 (0%)	1 (0.1%)	
Medtronic	4 (1.5%)	8 (0.6%)	
Perceval	2 (0.7%)	27 (1.9%)	
Sorin	4 (1.5%)	6 (0.4%)	
<b>Mechanical</b>	11 (100%)	105 (100%)	
St Jude	6 (54.5%)	52 (49.5%)	0.942
Carbomedics	3 (27.3%)	30 (28.6%)	
On-X	2 (18.2%)	23 (21.9%)	

780 Table 5. Characteristics of aortic valves used in surgical aortic valve replacements among  
781 patients with and without IMID  
782

783 *P* values compare total distribution of BP, mechanical, and homograft valves as well as the  
784 distribution of types of valves within the bioprosthetic and mechanical subsets  
785

786 *IMID=immune mediate inflammatory disease; SD=standard deviation;*  
787

788

789

790

791

792

